

# County Employment Gaining, State Report Says

Eastland County is one of the bright spots in the 10-county 22nd senatorial district of Texas, according to a recently completed survey of the area by the Texas Unemployment Commission.

These encouraging statistics are reported as a result of the extensive research study of the area:

(1) Eastland County's population has increased since the last census report of 1950.

(2) Total employment in the area also has shown a marked gain over the two-year period.

(3) Non-agricultural employment and employment in manufacturing enterprises in the county has increased during the 1950-52 span.

Only dismal facts revealed during the TUC's survey are minor.

Agricultural employment has shown a slight decline in the county. And unemployment has risen slightly.

The state agency estimates that Eastland County's population has now climbed over the 24,000 mark. Population of the area in the 1950 census was listed as 23,942. On Nov. 1, 1952—three months ago—the county's men, women and children numbered 24,000, a gain of 58 since April, 1950.

Total of 7,850 men and women were reported as employed in the county compared to 7,800 on Nov. 1, 1950—two years ago.

Agricultural jobs were held by 1,550 persons on Nov. 1, 1952—a slight decline over the 1,600 farm employment total of Nov. 1, 1950.

Non-agricultural employment is held—as of Nov. 1, 1952—by about 6,300 Eastland Countians. This is a gain of 100 jobs over the 6,200 total of Nov. 1, 1950.

Manufacturing and industrial plants in the county are increasing payrolls, according to findings of the state agency survey. There were 650 persons reported on manufacturers' payrolls in the area in November, 1950. But on Nov. 1, 1952 that number had swelled to 725.

Eastland County's unemployment total is now around 550 persons. That figure was estimated back on Nov. 1 of last year. Two years ago—on Nov. 1, 1950—the area's unemployed labor force was estimated at 500 persons.

Here is a summary of labor market conditions in the 10-county 22nd senatorial district:

Population. According to the Bureau of the Census, this ten-county senatorial district had a population of 174,535 in April, 1950. Thirty months later, in November, 1952, the estimated population of the district was 177,582, a gain of 3,047, or a moderate 1.7 per cent. Two counties—Callahan and Clay—registered minor increases, and the losses were traceable to reduction in the rural farm population in both counties. All the remaining counties made slight gains: increases of 946 and 1022 in Palo Pinto and Parker Counties, respectively, being the largest. There were no major population shifts—the only significant development being the district-wide decrease in rural farm population, brought about by the widespread drought which forced curtailment of some farm operations and an increase in cattle-raising. Most of the gain in Palo Pinto and Parker Counties was concentrated in Mineral Wells and Weatherford and was caused by the activation of Volters Air Force Base at Mineral Wells. Similarly, increases in Montague and Jack Counties can be attributed to oil production activity. There was also considerable oil activity in Clay, Eastland, and Stephens Counties.

The effect on the population during this period has not been very noticeable.

Employment. The total labor force for the district increased less than 1 per cent during the period—from 58,687 in 1950 to 59,200 in 1952. Total employment rose 1.5 per cent from 55,623 to 56,464. Agricultural employment slumped perceptibly by 3.6 per cent from 17,721 in November, 1950 to 17,076 in November, 1952. This decline in farm employment was a natural result of a crippling drought which cut farm production and forced many farm families to seek employment elsewhere. The situation would be reversed if sufficient rainfall should be received to permit intensification of the diversified farming which has become characteristic of the area. A 4 per cent gain in nonfarm employment was not due to any large industrial developments but for the most part to a steady growth of trade in the towns. Exceptions are in the expansion of oil production and the new cement plants in Denton and Eastland. A good number of people residing in this area commute to the large industrial centers of Fort Worth and Dallas for employment in defense plants. In Denton County it is estimated that 1200 residents commute to employment outside the county. Approximately 500 Wise County residents are employed outside that county. Parker County sends about 1200 workers daily to Fort Worth and its defense plants.

Unemployment. In 1950, 3,064 residents of this district (5.2 per cent of the labor force) were unemployed. By November, 1952, this number had been reduced to 2,736, or 4.6 per cent of the labor force.

Industry. Despite a decrease in rural farm population and a slump in agricultural employment, farming and ranching continue to be the greatest industries in the district. Beef cattle raising has grown in importance throughout the area. In the counties of Callahan, Clay, Palo Pinto, and Stephens the raising of cattle is the principal source of income. The cattle-raising is supplemented by the farming of such crops as grain sorghums, wheat, corn, peanuts, watermelons, fruit, oats, cotton, and vegetables. Dairying is fast becoming a major farm activity. In Wise County there are over 300 Grade A dairies and heavy production of poultry. Oil is produced in Callahan, Clay, Eastland, Jack, Montague, Palo Pinto, Stephens, and Wise Counties. The principal manufacturing activities are flour,

brick, food products, dairy products, and garments in Denton County; petroleum products and flour in Jack County; leather goods in Montague County; cottonseed oil, clothing, and food products in Parker County; clay products, machine shops, garments, carbon black, and gas in Stephens County; and milk products, garments, and brick in Wise County. Denton is a foremost educational center and a great part of that county's economy is based on the colleges and universities located there.

Outlook Concerning Labor Market Conditions. The proximity of several of the most populous counties of this district to the industrial centers of Fort Worth and Dallas will be a definite factor in holding unemployment to a low level. Furthermore, despite losses in rural farm population and agricultural employment during the past two years, this area is still prosperous and with the prospects that the long drought has been broken it is expected that more intensive farming will be practiced in 1953. The dairying industry

will continue to expand to keep pace with the increased demand for milk and dairy products in the nearby fast-growing cities. Beef cattle raising, more and more a governing factor in the area's economy, will continue to expand. The labor supply will be adequate to meet the anticipated demand in all phases of industry, and further industrial development is expected. Generally, the outlook for the district as a whole is encouraging, with its natural resources, sound agricultural practices on good soil, and nearness to major markets be-

ing factors contributing to such expectations. \* \* \*

Subject Employers and Covered Employees. Any employer having eight or more employees during twenty calendar weeks in a calendar year is subject to the Texas Unemployment Compensation Act. An employer may do business in more than one county in the state, but he usually files his reports from the county in which his home office is located. Once each year he files a report indicating the number of persons

employed by him in each county. For the first quarter of 1952, 740 subject employers filed reports from this district, reflecting an average monthly combined employment of 14,005 workers. Total wages paid to these covered employees during the first quarter amounted to \$10,155,789.

Texas Employment Commission Activity. The Commission maintains two full-time offices in this Senatorial District— at Denton and Mineral Wells—and regular (Continued On Page 4)

## Eastland Telegram AND WEEKLY CHRONICLE

VOLUME TWENTY-FOUR

No. 178

EASTLAND, TEXAS, THURSDAY, FEBRUARY 5, 1953

PRICE FIVE CENTS



### AROUND THE SQUARE

We have tried about everything from salad wafers to angostura bitters in our efforts to reduce, but so far the only thing that has helped us has been "shortage of groceries." This will get the job done, and no fooling.

We have paid good money for a score of guaranteed "fat" removers, but they didn't work—none of them. The only fat they will remove is pocket-book fat. Just keep on buying these nostrums and it won't be long until you find a "lean" pocketbook.

Dieting is the only thing worthwhile. When you quit eating you will lose weight. There is no doubt about this—just try it for yourself. The less food you consume the quicker you will lose that excessive weight. However, don't be a fool and quit eating entirely, for if you do you will likely land in a hospital for an indefinite period, where doctors will have to train you to eat again.

After all your body is largely water. There is some bone, blood and minerals in the make-up and if you will treat it right, you will likely enjoy good health, and retain your more or less slender figure. However, when you begin cramming it full of fat T-bone steaks, sugars and starches you may not be surprised when you notice the waist-line is swelling. Had to have a silo for storage, and the "tummy" (where the foods are) is the best and most convenient place.

You may pat it for a while and think it looks pretty good, but when it begins looking like a beer keg with the center hoops knocked off, you will likely change your mind. It doesn't look good and never did, and everytime people think about you they will think about a hippopotamus. You may dress in the finest of tailor made garments, but you will always look like a stuffed toy.

Finally you learn that you are growing all out of regular shape—that you have more belly than brain, and that your life is being shortened because of it. About this time you wake up to the fact that you have been living to eat—not eating to live, and that if you are not careful your big tummy may crowd your heart altogether. That's why "fatties" die early for their heart plays out before they are ready to die. Yet they die just the same.

If your case is obstinate better see your family doctor. He may not give you a drop of medicine, but in all probability he will take most of your cats from you. He may substitute spinach for fat steaks, and tell you that a couple of ounces of raw cabbage or a carrot is sufficient for the evening meal. He'll tell you to take your coffee straight—no cream and no sugar, and to not take your bourbon at all.

He may tell you to run every-time you think of candy, but that a nice glass of grapefruit juice is just what you need.

Within a few days you will be able to take up a notch or two in your belt, and you will feel better.

Never try to find out just how much you can consume, in the way of food, but how little you may consume and still enjoy good health. There are individuals who consume two and three pounds of food each day, and most of this the wrong kind. They want sweets, fats and starches, and they do not need them at all.

Most people can eat a little of most anything and still hold their figure and retain their health. It is the "fates" who will eat anything until it doesn't taste good. He suffers now, will die an immensely death, and suffer when he dies. Why eat a 16 ounce steak when four ounces will suffice?

You may do well to leave this (Continued On Page 4)

## JUDGES FOR LIVESTOCK SHOW HAVE BEEN CHOSEN, WILL BE HELD IN EASTLAND MAR. 27-28

The judges for the different divisions at the annual Eastland County Livestock Show on March 27 and 28th have been named C. M. McCain, general superintendent said recently.

The two day show will be held at the old Eastland airport one mile northeast of that city.

James A. Gray, Extension Animal Husbandman, San Angelo, will judge the breeding classes of beef cattle, hogs, sheep and goats. Gray has judged many county shows in the southwest part of the state for the past several years it was said.

The dairy cattle will be judged by I. R. Shelton, Jr., Brownwood. Shelton, prominent breeder of registered Jersey cattle, served in the same capacity at the 1952 show.

Walter Rice, Ft. Worth, official of the stockyards company of that city will place the boys and girls fat steers and fat barrows. Rice will also bring along a judge for the boys and girls fat lamb classes from one of the commission companies operating on the Ft. Worth yards.

The horse show will not be held in connection with the livestock show this year according to Sutton Crofts, Cisco, president of the Eastland County Livestock Raisers Ass'n., sponsors of the show. It is expected that the annual horse show will be held later on in the spring.

Superintendents of the different divisions of the show have already been named Crofts said.

The catalogue is expected to be ready for distribution in the very near future.

## It'll Be Cooler Friday, Says Weather Man

Eastland County's enjoyable spring-like weather is due to taper cooler tonight and Friday.

That's the latest word from the U. S. Weather Bureau which forecast a low for Thursday night of around 40 degrees and a drop of about 15 degrees Friday.

The weathermen said today's high would be in the very warm 80's—sometime this afternoon.

But tomorrow's highest mercury reading will be considerably lower—probably in the low 60's.

Skies were due to be partly cloudy, and stiff breezes were scheduled to blow today and tonight.

The West Texas forecast: Partly cloudy and cooler Thursday night and Friday and in Panhandle Thursday afternoon.

## 10 Per Cent Gain Reported--

# Ranger Junior College Enrollment Increases

Total enrollment of Ranger Junior College for the newly begun spring semester is ten per cent above the total for the preceding fall and winter period, Jean W. W. Smith, acting president of the Ranger co-educational institution reported today.

In addition to the enrollment of many new civilian students, here has been a very notable increase in the number of Korean War veterans enrolled, Smith reported.

Ranger Junior College, one of the southwest's outstanding junior institutions of higher learning, was first founded back in 1926—17 years ago.

In contrast to the mere handful of young men and women who were members of the first RJC graduating class back in the 1920's era, about 175 1953 senior students will be awarded diplomas during commencement rites to be held at the First Baptist Church in Ranger on Sunday evening, May 31.

The spring semester got underway on Jan. 23 and the session will continue until May 29.

Announcement of the college's continuing gain in enrollment was another bright report in the institution's steady growth and progress over its 27-year history, Smith said.

The development of the co-educational school is attributed to the valued support of Ranger and the surrounding territory. Important building and expansion projects of past years have been made possible through generous support and operation of area business and educational leaders.

The physical plant of Ranger Junior College is conservatively estimated to be worth near \$400,000.

Eighty-five per cent of the students who attend the Ranger school enter other colleges and universities to complete studies for their bachelor degrees. A student may transfer up to 72 hours of work and every hour is fully accredited.

First president of the school was R. F. Holloway, who is credited with first organizing the college. Holloway's successor in the post was W. T. Walton, Dr. Grover C. Boswell, now associated with the Texas general land office at Austin, served as president of the college for 12 years and a great deal of the school's growth and progress was achieved under the administration of the veteran educator.

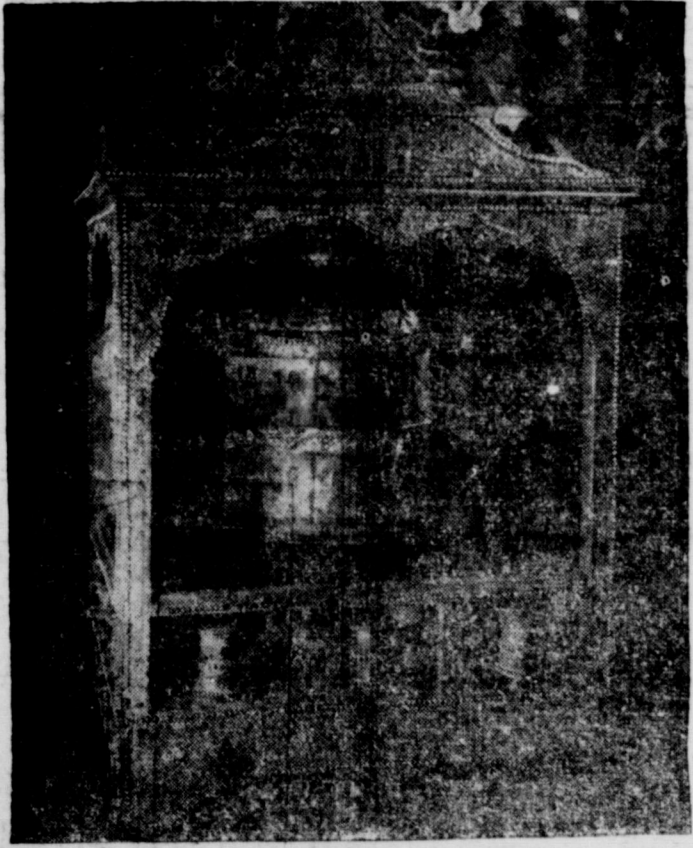
## Lt. Ralph Wheat Given Citation For Act Bravery

First Lt. Ralph G. Wheat of Eastland, has received the Bronze Star Medal with V-device from Brig. Gen. Derrill M. Daniel, assistant 7th Division commander, near Chor-wen, Korea. Wheat was cited for heroism while without regard for his own safety he moved across an impact area which was under intense artillery and mortar fire, until he was assured that the hill was clear of all the wounded.

Since his arrival in Korea last May, he has served with Company M of the 7th Division's 17th Infantry Regiment.

The son of Mr. and Mrs. T. L. Wheat of Rt. 2, the lieutenant attended Texas A&M College before entering the Army in March of 1951.

A chemical analysis will show whether water being considered for irrigation is suitable for the purpose.



The strange object shown above is a Laman Prayer Mill from far-off Tibet. It has been used by Lama priests for centuries and each cylinder has inscribed within thousands of prayers. Turning the cylinder one revolution is believed to be the equivalent of offering many meditations verbally. The unique object is one of many on exhibit with others of Robert Ripley's strange and fabulous collection which is being shown in downtown Eastland tomorrow.

# Peanut Industry Has Made Record Growth

## Robert Ripley Exhibit Due Here Tomorrow

A mobile museum of Robert Ripley's collection of "Believe It or Not" oddities and art objects will be presented in Eastland on Friday, Feb. 6.

The exhibit is mounted on a special built trailer, which is one of six on the third year of a national tour. Each unit carries a different collection of items, and only one unit is shown in a city each year.

This will be the third to be exhibited in Eastland, and the collection will include oddities from the Far East, such as a genuine Laman Prayer Mill, a Chinese Bride Bed, a Tibetan rosary of human bones, poison rings, holy amulets, and the amazing Brahman Pyramid puzzle, which requires billions of years to solve completely.

Each item is selected from the unusual assortment of strange things which Mr. Ripley spared no effort or expense to unearth during his endless explorations in all parts of the world. Many are the relics and collector's items, such as Japanese dolls made of sand, flowers of fish scales, King Zeg's cigarette holder, and a gold scale model of a Tibet monastery.

Location of the showing is in downtown Eastland and the exhibit will be open from 9 a.m. to 9 p.m. Teachers are invited to bring classes at any time during these hours. No admission is charged although voluntary contributions are accepted.

## Lab Tests Back Advertising Of Maryland Club

Certified tests of Southwestern Laboratories back up the statements in the current advertising campaign for Maryland Club Coffee which appears in your Eastland Telegram.

The recent tests show that "smart shoppers" who buy this popular brand of coffee get 10 to 15 more delicious cups out of every pound and thus save up to 25 cents per pound.

Featured in the series, in addition to the convincing sales message, are photos of glamorous housewives proudly displaying the attractive one-pound tins of Maryland Club Coffee—"the coffee you'd drink if you owned all the coffee in the world!"

## Ball Season To End Next Week

The last home game for this season, will be played Friday night when Santa Anna comes over to give the Mavericks a little exercise. Santa Anna is said to have a good team, but they will find some good teams here. In all probability it will be a battle with plenty of thrills.

Tuesday night of next week the Mavericks will go to Baird, for their last game before the district tourney which will be in Brownwood on Feb. 12, 13 and 14.

HEADS UP! Here comes the New Rocket OSBORNE MOTOR COMPANY Eastland, Texas

## Olden Hornets Drop Game, Girls Win

The Olden Hornets went to Scranton Tuesday night and clashed with both the clubs.

Coach Hilliard's girls took their game, 42-28, in easy fashion, in a neatly played game, with praise going to the guards for the best defense game of the season.

Coach Weaver's boys dropped a close game to the Scranton club, the final score being 42-38 in favor of Scranton. This was a well played game all the way, and at one time Olden was leading, only to see their lead fade away to defeat.

Scranton, last year's winners and heavy contenders for this year's honors, has been bothered with Coach Weaver's fast-breaking club all this season.

In last night's game the Hornets played a real defensive game all the way, plus the ability to find the basket. Scoring honors went to Slatten with 12 points, followed by Lindsey and Rowch with 11 points each.

The Hornets will see action again Friday night, Feb. 6, in the Olden gym when they take on the much improved ball club from Carbon.

## Mrs. Wright, 75, Ex-Resident, To Be Buried Today

Funeral services for Mrs. Lillian Lee Wright, 75-year-old former Eastland County resident who died at her home in Pampa Wednesday morning, will be held at the Church of Christ in Eastland this afternoon at 3 o'clock.

Bro. W. E. Moore will officiate during the services and interment will be in the Corinth Cemetery with the Hamner Funeral Home, Eastland, in charge of arrangements.

Mrs. Wright was born in Aulsbury, Tenn., on Feb. 26, 1877 and would have been 76 years of age on Feb. 26.

She was united in marriage with the late Green Wright on Aug. 21, 1904. He preceded her in death 14 years ago.

Much of her life was spent in Eastland county, and for a number of years Mrs. Wright taught school in this area. She will be remembered by many old timers who are still living. She was a member of the Church of Christ.

Survivors include two sons and one daughter, Nathan Wright of Odessa, P. G. Wright of Kermit, and Mrs. Walter Niver of Pampa. Also five sisters, Mmes. D. C. Frost of Eastland; Rhoda Burkett, Reed Young and W. P. Caldwell, all of Cisco, and Mattie Wheat of Abilene. She also leaves other relatives and a host of friends.

## Little Items Of Local Interest

With the thermometer standing at 50 degrees at 6:00 a.m. today and weather information indicating that it will get warmer during the day, and without prospects for rain or cold, local "fishers" have started pricing bait, and buying up a supply of new fishing equipment.

An Abilene optometrist has predicted a well developed sandstorm for this area, should arrive about Friday, he says.

## Citizens-of-The Month Named

The following students were elected Tuesday afternoon at Eastland Junior high school in each section of the three grades, as "good citizens" for the month of January.

6A, R. L. Stuard; 6B, Nancy Beck; 7A, Marion Woods; 7P, Nellis Campbell SA, J. C. Jarrett; 8D, Herman Dempsey.



**EASTLAND TELEGRAM AND WEEKLY CHRONICLE**

Eastland County Record established in 1931, consolidated Aug. 31, 1951. Chronicle established 1887, Telegram established 1923. Entered as second class matter at the Postoffice at Eastland, Texas under the act of Congress of March 3, 1879.

O. H. Dick, Manager  
Ray B. McCorkle, Editor  
TIMES PUBLISHING COMPANY  
O. H. Dick and Joe Dennis, Publishers  
Published Daily Afternoons (Except Saturday and Monday) and Sunday Morning.

One week by carrier in city ..... .20  
One month by carrier in city ..... .85  
One year by mail in county ..... 2.95  
One year by mail in state ..... 4.50  
One year by mail out of state ..... 7.50

NOTICE TO PUBLIC—Any erroneous reflection upon the character, standing or reputation of any person, firm or corporation which may appear in the columns of this newspaper will be gladly corrected upon being brought to the attention of the publishers.

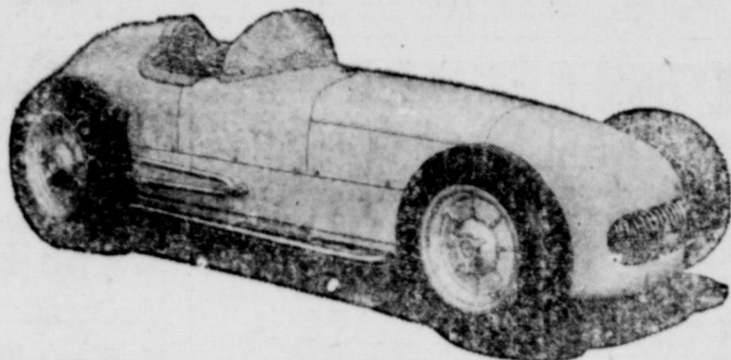
**COURTHOUSE NEWS AND RECORDS**

Real Estate Transfers, Marriages  
Suits Filed, Court Judgments  
Orders, Etc.

**INSTRUMENTS FILED**  
The following instruments were filed for record in the County Clerk's office last week:  
James L. Anderson to Nellie F. Schneiderjan, MD.  
M. H. Alexander to Ella Myers, warranty deed.  
A. L. Andrus to J. G. Wooten, assignment of oil and gas lease.  
Adrian Allen to W. B. Wright, Rec. deed.  
A. J. Bassell to Earl Wilson, warranty deed.  
E. R. Bakan to Sophia B. Purvis, MD.  
E. R. Bakan to Murle W. Bahan, MD.  
E. R. Bakan to Mary L. Whiteman, MD.  
Martha J. Barnhill to C. B. O'Brien, warranty deed.  
Peter L. Barnes to Claud Griffin, warranty deed.  
Baptist Foundation of Texas to C. W. Henry, release of vendor's lien.  
Bankline Oil Co. to Don L. Choate, assignment of ORR.  
British-American Oil Prod. Co. to Marjorie A. Olson, release of oil and gas lease.  
T. A. Byrd to Guy Parker, warranty deed.  
Leah Barton to Earlene Walker, bill of sale.  
H. C. Bowers to First State Bank, Rising Star, deed of trust.

James A. Beard to Winnie Lou Beard, warranty deed.  
Commissioners Court of Eastland to State of Texas, right of way.  
Hudson Collins to Calvin Brown, warranty deed.  
Emmitt Caldwell to C. L. Gannaway, assignment of oil and gas lease.  
Lucy R. Crawford to H. H. Harrelson, release of vendor's lien.  
Hudson Collins to W. L. Andrus, transfer of vendor's lien.  
Commercial State Bank, Ranger to First Federal S & L Assn., transfer of MML.  
N. M. Crain to Mary Agnes Cobb, warranty deed.  
City of Eastland to Robert O. Robinson, deed.  
W. O. Dawson to C. L. Gannaway, oil and gas lease.  
E. L. Danley to First Federal S&L Assn., deed of trust.  
C. D. Davis to Leslie Davis, assignment of ORR.  
Allen D. Dabney to T. A. Byrd, release of deed of trust.  
Uzell A. Davis to C. C. Hailey, warranty deed.  
H. Sterling Drumwright to Rezi J. Cogdell, warranty deed.  
Ida Leona Erwin to J. L. Erwin, warranty deed.  
O. R. Floyd to Hickok Prod. & Dev. Co., assignment of oil and gas lease.

**CHRYSLER SHOWS NEWEST DEVELOPMENTS IN DESIGN**



Two of the newest advances in motorcar development, the Chrysler "Special" sports coupe and the "404 Racer," are having their first public showing in the United States in the Chrysler International Salon in New York City. The "Special," only 55 inches high, made its debut last month in Paris where it was labeled the "sensation of the show" by the French press. Designed by Chrysler engineers, and built in Italy by Ghia, the "Special" keynotes the basic fundamentals of automotive design. It has the characteristic low, sweeping lines of European sport cars and embodies many unusual design features. Also displayed is the Chrysler powered "404 Racer," which recently broke all Indianapolis speed and endurance records, attaining speeds of 170 m.p.h. on the straightaways with its modified Chrysler V-8 engine.

F & M National Bank, DeLeon to S. S. Powers, extension of lien.  
First Federal S&L Assn., to T. H. McCullough, release of deed of trust.  
Mrs. M. A. Glenn to Ella Myers Caldwell, quit claim deed.  
Gorman Independent School Dist. to A. C. Dodson, release of judgment.  
W. H. Greer to Hickok Prod. & Dev. Co., quit claim deed.  
B. H. Gray to Hickok Prod. & Dev. Co., quit claim deed.  
Ben Goodwin to Thurman Armstrong, MD.

Jas. E. Gray to the Public, proof of heirship.  
W. H. Green to G. D. Nicholson, assignment of oil and gas lease.  
W. H. Green to W. T. Jones, assignment of oil and gas lease.  
S. F. Harris to the Public, proof of heirship.  
Tom Harris to Dorothy Dean Haecher, warranty deed.  
Clyde G. Hood to Hickok Prod. & Dev. Co., quit claim deed.  
Hickok Prod. & Dev. Co., to John N. Fidel, assignment of oil and gas lease.  
Higginbotham Eros & Co. to Federal Land Bank of Houston, transfer and assignment.  
Mary P. Hill to G. M. Harris, warranty deed.  
Sallie Hiji to Russell Hill, warranty deed.  
Mrs. Roxie Hibbert to First National Bank, Cisco, deed of trust.  
Mrs. Rae Hodges to Harry M. Warner, quit claim deed.  
Jack Hsiley to L. G. Johnson, assignment of oil and gas lease.  
A. M. Hearn to Rose E. Day, oil and gas lease.  
F. R. Hanrahan to E. E. Stephens, assignment of oil and gas lease.  
Intex Oil Company to the Public, proof of Am. of C of Ins.  
W. W. Joyce to the Public, proof of heirship.  
Marshall E. Jolly to Ranger Lbr. and Supply Co., MML.  
J. U. Johnson to James M. Sheriff, warranty deed.  
Robert Kincaid to State of Texas, right of way.  
Era Elvis King to C. W. Ho-

well, warranty deed.  
Eugene Koder to Oliver Wesley, warranty deed.  
M. W. Krjar to Keith Langford, warranty deed.  
J. P. Lohan to I. Weiner, assignment of oil and gas lease.  
Ray Lancy to N. B. Gray, correction deed.  
Lone Star Producing Co. to Lillian Lee Porter, release of oil and gas lease.  
Thomas J. Leeper to Julius N. Underwood, warranty deed.  
J. T. Lewis to Joe L. Lewis, power of attorney.  
John O. Lewis, to the Public, roof of heirship.  
Fred D. Macey to the Public, withdrawal.  
Victoria H. May to H. R. Tye, release of vendor's lien.  
Jack Markhan to R. H. Fulton, assignment of oil and gas lease.  
Dan O. Martin to Horace E. Horton, lease.  
McElroy Ranch Co. to Lewis W. Welch, assignment of oil and gas lease.  
Minnie B. McMillen to James H. Higdon, release of vendor's lien.  
T. H. McCullough to S. G. McCullough, warranty deed.  
S. G. McCullough to First Federal S&L Assn., deed of trust.  
H. D. Oden to Hickok Prod. & Dev. Co., assignment of oil and gas lease.  
L. R. Pearson to State of Texas, right of way.  
F. W. Roberts to Jack R. Gryder, warranty deed.  
Tom J. Rainey to Era Elvis King, warranty deed.  
W. H. Spradling to W. O. Dawson, release of oil and gas lease.  
Ellis Strickland to C. M. Bowden, power of attorney.  
Robert J. Starr to Federal Land Bank of Houston, transfer and assignment.  
Henry A. Schaefer to Voy Wilks, warranty deed.  
E. E. Stephens to Ace Oil Co., assignment.  
M. M. Sheffield to R. F. St. John, deed of trust.  
Robert F. Starr to W. B. Starr, release of vendor's lien.  
W. B. Starr to Federal Land Bank of Houston, deed of trust.  
William Tilman Stubblefield to W. B. Wright, quit claim deed.  
W. G. Skelly to A. J. Thomas, release of oil and gas lease.  
W. G. Skelly to Jack Hailey, assignment of oil and gas lease.  
Cordelia Shinnman to F & M National Bank of DeLeon, transfer of vendor's lien.  
Sec. Life & Accd. Co. to R. L. Williams, release of deed of trust.  
B. B. Simms to T. C. Wiley, bill of sale.  
E. E. Stephens to Ace Oil Co., assignment of oil and gas lease.  
O. C. Stewart to Federal Land Bank of Houston, deed of trust.  
O. C. Stewart to the Public, right of way.  
H. R. Tye to Edwin L. Wittrop, warranty deed.  
J. M. Taylor to Hickok Prod. & Dev. Co., assignment of oil and gas lease.  
Briggs Terry to Gustus A. Duan, release of vendor's lien.  
A. L. Thomas to Jack Hailey, oil and gas lease.  
T. E. Warden to Elizabeth Davennort, quit claim deed.  
Mrs. W. B. White to J. C. Wheatley, oil and gas lease.  
J. C. Wheatley to Sinclair Oil

& Gas Co., assignment of oil and gas lease.  
John H. Wilson to Lewis W. Welch, MD.  
S. Williams to Tom Harris, release of vendor's lien.  
Wilson Feed & Seed Co., to the Public, notice of partnership.  
Willard K. White to Hickok Prod. & Dev. Co., quit claim deed.  
Glynn A. Wilson to Federal Land Bank of Houston, deed of trust.  
Voy Wilks to Mattie E. Lewis, warranty deed.  
John H. Wilson to C. C. Ferzuson, MD.  
Harry M. Warner to Mrs. J. B. Weathers, warranty deed.  
T. R. Wilson to First Federal S&L Assn., deed of trust.  
T. C. Wylie to Betty Wolford, bill of sale.

**PROBATE**

James O. Arnold, deceased, application to probate will.  
J. E. Marrs, deceased, application to probate will.

**MARRIAGE LICENSES**

The following couples were licensed to wed last week:  
James Taft Justice to Colleen S. Davis, Panger.  
Harold Bryant Green to Glenna Louise Moody, Ranger.  
Terry Lee White to Mrs. Anna Mae Chamberlain.  
Thomas Cole Millap to Mrs. Barbara S. Self, Eastland.

Buster Clyde Hathcock to Elizabeth Jane Evans, Ranger.  
**SUITS FILED**  
The following suits were filed for record in the 91st District Court last week:  
Bess Moon v. Clarence Moon, divorce.  
Audine Reed v. Gordon L. Reed, divorce and custody.  
Dorothy Roberts v. M. L. Roberts, divorce and custody.  
Wanda Dolores Cutlip v. Robert D. Cutlip, divorce and custody.  
Blanch Brooks v. Howard Brooks, divorce.

**ORDERS & JUDGMENTS**

The following orders and judgments were rendered from the 91st District Court last week:  
T. E. Townzen v. Crystal Smith Townsend, order of dismissal.  
Barbara Jane Lewis v. C. Lewis, order appointing attorney for defendant.  
Viola F. Baker to M. J. Baker, order.  
Barbara Jane Lewis v. A. C. Lewis, judgment.  
Cattin v. Cattin, order.  
Dick Hollis v. Betty Lou Hollis, judgment.  
Property losses in the Kansas River flood of July, 1950, were nearly a third as much as all American flood losses from 1902 to 1949.

**Phil Laws, Insurance & Real Estate**

Representing Old, Non-assignable, Money-Saving Mutual Insurance Companies  
Up to 20% immediate saving on Fire Insurance  
214 S. Cent. Phone 856

**OPPORTUNITY**  
**Are you the type for type? . . .**  
You may be just the right type for the printing business!  
The handling of type, which is the basis of printing, requires skill and alertness.  
Why try to get into the overcrowded professions when a career awaits you in one of the world's greatest industries?  
No trade or business offers higher wages, more prestige, or greater opportunity for advancement to executive positions than printing. We have several jobs for every graduate.  
Write now for information.  
**SOUTHWEST SCHOOL OF PRINTING**  
1820 CLAREMONT DRIVE  
DALLAS 17, TEXAS

**Office Supplies**  
GET THEM AT  
**EASTLAND TELEGRAM OFFICE**

Your Eastland Office Supply Store!

- CARBON PAPER
- PENCILS
- BOXED PAPER
- BOX FILES
- LARGE WASTE BASKETS
- STAPLERS
- STAPLES
- BUSINESS RECORDS
- CARD FILES
- DESKSIDE FILES
- TYPEWRITER TABLES
- STAMP PADS
- LISTO PENCILS
- ESTERBROOK PENS
- TYPEWRITER RIBBONS

**Hundreds Of Other Items Come See!**

**FRECKLES AND HIS FRIENDS**

By Merrill Blosser



**VIC FLINT**

By Michael O'Malley and Ralph Lane



**ALLEY OOP**

By V. T. Hamlin





**NEWS FROM CARBON**

Mr. and Mrs. Garland Garrett and family, Mr. and Mrs. Tom L. Garrett, and Mr. and Mrs. Marshall Berry, were in Fort Worth to attend the funeral of their sister-in-law, Mrs. Leslie Garrett, last Saturday.

Mr. and Mrs. Minor Townsend and family of Fort Worth, visited his mother, Mrs. Mamie Townsend, Sunday.

Elly Wyatt of Fort Worth spent the weekend here visiting his parents, Mr. and Mrs. Ray Wyatt.

Mr. and Mrs. T. D. Whitehorn and family of Abilene, visited her mother, Mrs. Ruth Craighead last week.

Abe Hall of Eunice, N. M., visited his parents, Mr. and Mrs. H. Hall, last weekend.

**Soothe Itching, FIERY PILES**

Don't let sore, itchy, painful itching simple Pile drive you nearly crazy. In 15 minutes CHRYSLER starts giving you wonderful cooling, soothing, temporary itching relief from pain, burning and itching. Apply back furnished. Genuine. Only \$1.00 at drugstore.

Mrs. J. T. Clement visited with Mrs. J. A. Clement at Moran last week.

Mr. and Mrs. Jack Black and family of Brady, visited his parents, Mr. and Mrs. J. L. Black and other relatives here last weekend.

Mr. and Mrs. W. M. Medford visited her mother, Mrs. W. J. Stacks in Fort Worth Sunday.

Gene Butler of Abilene visited relatives and friends here last weekend.

Mr. and Mrs. Abb Putnam and children, visited her mother, Mrs. Arnold in Eastland Sunday.

Mr. and Mrs. E. C. Painter visited their son, Elmo Painter and family at Grainger over the weekend.

James Thompson of Gorman was in Carbon on business Tuesday.

Leo McDaniel of Abilene, spent the weekend here with his mother Mrs. C. N. McDaniel.

Bobby Lucas who has been stationed in Korea, the past year, has received his discharge, and visited friends here Monday.

Mrs. Edna Lovell attended the

**VICE ADMIRAL LAURANCE DUBOSE U.S. NAVY**  
COMMANDER EASTERN SEA FRONTIER



**HIS DARING STRATEGY** IN ACTION BROUGHT SEVERE DAMAGE UPON ENEMY FORCES DURING W.W.II, AND FOR HIS SERVICES HE RECEIVED MANY OF AMERICA'S HIGHEST AWARDS.

**HIS FORCES FOUGHT OFF REPEATED JAPANESE AIR ATTACKS TO ESCORT 2 TORPEDO-DAMAGED CRUISERS TO SAFETY.**

**IN 1948 HE WAS SELECTED TO COMMAND ALL BATTLESHIPS AND CRUISERS IN THE PACIFIC AND LATER HEADED THE CRUISER-DESTROYER FORCE IN THE PACIFIC.**

singing held at Oliver Springs, Sunday.

Mrs. W. J. Greer is visiting her daughter, Mrs. Monte Montgomery and family in Fort Worth.

W. E. Moore and wife of Eastland visited friends here Sunday.

Mr. and Mrs. C. K. Hill of Abilene spent the weekend with her brother and sister, Benny Greenwood and Mrs. Edna Lovell.

Lee Weaver who has been in Harris hospital in Fort Worth, has returned home very much improved.

Mr. and Mrs. Buck Speer and children of Haskell, visited his mother, Mrs. May Speers and her

sister, Mrs. Jim Brewer and Mr. Brewer over the weekend.

Mrs. C. C. Gilbert is visiting her sister, Mrs. C. H. Kirby in El Paso this week.

Mr. and Mrs. W. M. Dunn, Mrs. J. S. Davis and E. R. Butler were visiting in Sipe Springs Sunday.

Last year 1,073 applications from 163 Texas counties for cotton classing and market news service were handled by the State Review Committee under the Smith-Doxey Program. 1,407 gins and 111,179 cooperating farmers who planted 15 varieties of adopted cotton on 10,350,830 acres were involved in this program of cotton improvement.

**COOKS IN JUST 7 MINUTES!**

**MACARONI-AND-CHEESE**

Another fine product of the Kraft Foods Company

**Special FLUFFY MACARONI PLUS SUPERB CHEESE FLAVOR OF KRAFT GRATED**

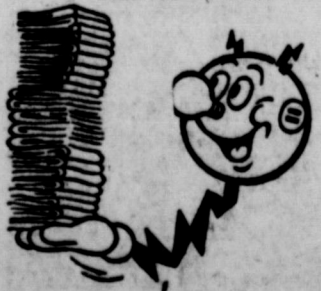
**PICK Anyday AS WASHDAY...**

if you have an Automatic **ELECTRIC CLOTHES DRYER**



Winter washes stacking up? Don't worry about windy, rainy or cold weather. Just dial "sunshine" on an amazing electric clothes dryer and let Reddy Kilowatt take over on washday. With an automatic electric clothes dryer you have convenient economical, warm air drying anytime you want it. And, too, you'll have more time for other things a busy woman needs to do. When you install an electric clothes dryer in your home you cut washday work in half. And when you install your dryer along with an electric washer and ironer... lady... washday means PLAYDAY.

**DRY CLOTHES FAST... ANYTIME, WITH AN AUTOMATIC ELECTRIC DRYER!**



Take the work out of washday... select an automatic electric washer, dryer and ironer from your favorite electric appliance dealer.

**TEXAS ELECTRIC SERVICE COMPANY**  
W. B. PICKENS, Manager

**A COMPLETE CROSLY KITCHEN AWARDED EVERY DAY**

**ENTER TODAY!** 20 DAILY CONTESTS 20 CROSLY KITCHENS

**CAMAY IVORY SNOW**

BATH SIZE FOR 23¢ GIANT 69¢  
REG. SIZE 8¢ LARGE 28¢

**EXTRA PRIZE** winners of the 20 daily contests who send in a Giant Ivory Soap boxtop or 3 Bath Size Camay wrappers with their entry will receive an extra prize of \$100 down payment on a Crosley TV Set or Crosley Room Air Conditioner.

**GRAND PRIZE \$5,000 CASH**

GET ENTRY BLANKS AND COMPLETE DETAILS HERE

**EXTRA** at **PIGGLY WIGGLY**

We Give "S.N." Green Stamps

**SPECIAL TO OUR CUSTOMERS** IF YOU WIN A CROSLY KITCHEN WE'LL AWARD YOU 1 YEAR'S SUPPLY OF CAMAY and IVORY SOAP **plus \$200. WORTH OF GROCERIES**

IMPERIAL PURE CANE SUGAR	10 Pound Bag	87c
TWIN HARBOR CHUM SALMON	No. 1 Tall Can	37c
America's Favorite—Preferred 2 to 1 CRISCO	3 Pound Can	79c
AUNT JEMIMA WHITE CORN MEAL	5 Pound Bag	47c

**FARM FRESH**

WAXED RUTABAGAS	1 pound	7c
SUN KIST LEMONS	1 pound	19c
FRESH GREEN ONIONS	1 bunch	5c
TEXAS ORANGES	5 lb. cello bag	33c

CAMPBELL'S TOMATO SOUP 3 No. 1 Can	36c	Get details here... <b>15¢ BONUS OFFER</b> on Medium Ivory	VAN CAMP'S PORK & BEANS 2 No. 300 Cans	25c
		<b>IVORY</b> MEDIUM 3 CAKES for		<b>22c</b>

**CHOICE MEATS**

BEEF SHORTRIBS	1 pound	39c
CHOICE BEEF GROUND MEAT	1 pound	49c
ARMOUR'S STAR SAUSAGE	1 pound	39c
ARMOUR'S BANNER BACON	1 pound	49c

**GERBER'S BABY CEREALS** 8 oz. pkg. 19c

**NIBLET'S—Extra Tender MEXICORN** 12 oz. can 21c

Hunt's—No finer Flavored Fruit **PEARS** No. 2 1/2 Can 37c

HUNT'S TOMATO—Don't Miss It **CATSUP** 14 oz. Bottle 17c

**MODART SHAMPOO** 4 1/2 oz. jar 55c

<b>Strawberry Preserves</b> ZESTEE PURE 12 Oz. Tumbler	25c
<b>Mushroom Buttons</b> FIRST STATE 4 Oz. Can	38c

**SAVE! SPECIAL 10¢ COUPON ON TIDE**

USE IT ON YOUR NEXT TIDE PURCHASE

**Tide**

LARGE BOX 25c  
GIANT SIZE 67c



NEWS FROM STAFF

Mrs. Era Slaughter from Abilene, visited with relatives in this community recently.

Mrs. Katy Brashear has been a guest for the past week in the home of her daughter, Mrs. L. G. Powell and Mr. Powell.

Mrs. Floyd Crawley was the guest of her sister, Mrs. Era Slaughter in Abilene, Monday.

Mr. and Mrs. M. O. Hazard visited Mrs. F. C. Williamson, Sr., Wednesday afternoon, in the Ranger Hospital. She was admitted to the hospital on January 24.

BABIES LIKE IT LIKES THEM. Image of a baby and a 7UP can.

T. E. Pope was on the sick list last week.

Mr. and Mrs. L. G. Powell and Mrs. Mary Brashear, were visiting in Eastland Monday.

Mr. and Mrs. T. E. Pope had as guests Wednesday, Mr. and Mrs. R. H. Purdon from Mangum.

Mr. and Mrs. M. O. Hazard were Abilene visitors Tuesday and Friday.

Allen Crosby and wife were visiting in Eastland Saturday.

Mr. and Mrs. O. T. Hazard have been suffering from influenza the past week. Mrs. Hazard has been quite ill and confined to her bed.

Walter Duncan visited Sunday afternoon in Olden, with Jess Dick who is quite ill.

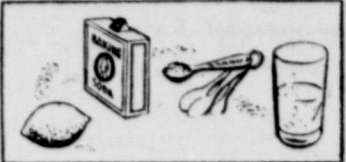
Mr. and Mrs. M. O. Hazard had as guests Saturday, their son, B. H. Hazard and wife from Morton Valley.

Mrs. Bessie Bennett was admitted to the Eastland Memorial Hospital, Tuesday.

Mr. and Mrs. J. A. Cox from Claiborne, were the weekend

WHAT'S THE ANSWER?

Q. I realize there's just no way to cure a cold. But isn't there something I can do about aching bones, a runny nose, and all this sneezing and coughing?



A. You're right—there's no sure cure. But you'll recover from your cold more comfortably if you follow these rules. If at all possible, go to bed when you feel a cold coming on and stay there for twenty-four hours. Don't exert yourself. Every three hours on the first day, and two or three times a day thereafter while the cold hangs on, take the following mixture: To the juice of 1 fresh lemon, add 1/2 glass of water and 1/2 teaspoon baking soda. Drink as foaming quills. Follow a sound health regime: eat lightly of nourishing food. Drink plenty of liquids. Try to isolate yourself as much as possible. And, remember, if the cold persists, or if there is fever, by all means call your doctor!

guests of their son, R. C. Reeves and family.

Mrs. R. A. Parker is ill with the flu at this time.

Mr. and Mrs. Floyd Crawley has as guests, their nephew, Joe Wallis and Miss Ginger Davis from Abilene, Friday and Saturday.

Mr. and Mrs. M. O. Hazard visited in Eastland Saturday with Mr. Hazard's sister, Mrs. Pearl Bourland, who has been quite ill in the Eastland Memorial Hospital.

A large congregation was in attendance at Sunday School and for the preaching services here Sunday. Pastor Clifford Hampton from Brownwood brought the messages. Rev. and Mrs. Hampton were guests of Mr. and Mrs. J. L. Little for Sunday dinner.

Mr. and Mrs. Maurice Hazard and Donald of Eastland, were visitors in the homes of their parents, the R. A. Parkers and M. O. Hazards Sunday afternoon.

Dale Pope and family from Monument, N.M. visited his parents, the T. E. Papes over the weekend. The two families visited in DeLeon Friday evening in the home of Royce Pope and family.

Mrs. C. L. Henderson is ill with the flu in the Blackwell hospital in Gorman.

Mr. and Mrs. George Greger and Miss Nannie Falls of Ranger, were guests Sunday afternoon in the T. E. Pope home.

Mr. and Mrs. Jack Cole of Wichita Falls spent the weekend with her parents, the O. T. Hazards.

The T. E. Papes had as their guests Thursday, Mr. and Mrs. Gid Blackwell of the Cheaney community.

Personal To Women With Nagging Backache

Nagging backache, loss of pep and energy, headaches and dizziness may be due to slow-down of kidney function. Doctors say good kidney function is very important to good health. When some everyday condition, such as stress and strain, causes this important function to slow down, many folks suffer nagging backache—feel miserable. Minor bladder irritations due to acid or wrong diet may cause getting up nights or frequent passages. Don't neglect your kidneys if these conditions bother you. Try Doan's Pills—a mild diuretic. Used successfully by millions for over 50 years. It's amazing how many times Doan's give happy relief from these discomforts—help the 15 miles of kidney tubes and filters flush out waste. Get Doan's Pills today!

The Peacock Path

THE STORY: In an effort to solve the murder of Ames Warburton, Jim Orth, private detective, must consider his client, Marney Cravath, who invited Orth to come to Windover, his estate, and pose as a playboy after two attempts had been made on Cravath's life. Even Cravath's niece Sally, for whom Orth already has expressed a fondness, might be a killer. Other guests at Windover are Jack Dumont, another partner, and his wife Dolly, and a client, Mrs. Eve Wheeler, a wealthy widow. But there seems no motive for murder, or for the attempts on Cravath.

I LOOKED at the picture of Cravath in the sloop. Some photographic trick had given his jaw a pronounced jut that it didn't have in actuality. And yet, his real jaw was firm and determined enough. I couldn't imagine a man with a chin like that quietly and supinely acceding to—say, blackmail.

I fingered the statuette of the bowler, hefted it, admired it. A graceful beautiful little thing, throwing sharp silvery gleams against the dark decor of the den. Then I studied the picture of the Yale football team that had won the Big Three championship. Dumont played with Cravath. I found him standing in the back row, a younger, slimmer Dumont, eyes keen even in this old photograph, and with a luxuriant mop of hair.

If I stopped thinking, the football had been light, but unmistakable. It came from my own bedroom. I'd left the connecting door between that and Cravath's sanctum ajar. Now I moved to it.

Mrs. Ring, the housekeeper, was standing in my room. She wore her gray uniform and her eyes, gray, too, and steely, seemed to be darting questioningly about the place. "Did you want me, Mrs. Ring?" I said. She straightened up with a out haste and the steely eyes made me their target.

COUNTY—

(Continued from Page 1)

ly scheduled itinerant service is available at Eastland, Decatur, and Nocona. Other populated places in the district are within easy commuting distance to these offices or to other offices outside the district. The Commission cooperates with such organizations and agencies as Chambers of Commerce, Council of Social Agencies, the State Board of Vocational Rehabilitation, and veterans groups, as well as with schools and colleges in the area. Regular labor market information is furnished employers and workers through monthly newsletters, radio and press releases. Special analyses of specific industries, occupations, wage structures, etc. are furnished when requested. The offices of the Commission operate well-rounded counseling and testing programs. The testing program includes general aptitude test batteries used in connection with job counseling, aptitude tests for specific jobs and performance tests such as typing and stenography.

Job Placements. The Texas Employment Commission was instrumental in placing workers in 6,428 job openings in the district from January 1, 1950, through September 30, 1952. Of this number, 2,262 were farm placements and 4,166 were nonfarm. Veterans were placed in 831 of the openings. Service is rendered to every type of industry in the area in finding and placing workers in these job openings. The Commission does not limit its service and facilities to those employers subject to the Act. Smaller businesses not included in the

deepening steadily, still permitted good visibility. But beneath the trees shadows look over to create semi-dark. I entered this gloomier place for no particular reason.

I took half a dozen noiseless strides . . . and stopped short. It is a moot point, though, whether they would have heard me had I arrived accompanied by a fanfare of trumpets. And as for seeing me—well, obviously they were seeing no one except themselves. Ringed by shadows in the three-quarter dark, they simply stood there, mute and—it seemed—a little bemused, in each other's arms.

I FELT my jaw drop. For a second, I could have been planted in the spot. Then, the first shock over, I collected a few of my wits. I began a cautious retreat.

And stopped again. This time a cold sensation, an odd mixture of surprise and fear, went prickling down my spine. The sound was low but, somehow horrible.

A gusty puff of sound that might have been made by some infuriated animal, sucking in its breath. Strangely, it seemed to send something like a slow wave of fidgetiness creeping through the dank void under the branches. I listened, fully alerted now, my eyes on the two merged figures in the gloom before me. Momentarily lost to the world, they hadn't heard it. And the sound was not repeated. But from somewhere on my right came a slight crackle, as of a twig snapping.

The next instant I was certain, intuitively. A fourth person, identity unknown, lurked in the little wood. And it was probable, since I had been conscious of no one anywhere near me on my walk from the house, that he or she had followed Eve Wheeler and Marston Cravath . . . to their trusting place in the mist. An unknown fourth hidden in shadow had watched that embrace in amazement and sudden red-eyed anger. That low suction of breath had suggested both conditions.

(To Be Continued.)

Vic Vet says

IF YOU WANT TO TAKE FARM TRAINING UNDER THE NEW KOREAN GI BILL, YOU HAVE TO OWN OR MANAGE A FARM. . . THIS TRAINING COMBINES CLASSROOM STUDIES WITH PRACTICAL WORK ON SUCH A FARM.



For full information contact your nearest VETERANS ADMINISTRATION office

Sugar was often burned for use in the early settlers of New Mexico in their Christmas celebrations.

AROUND—

(Continued from Page 1)

table hungry, but you will add days to your life.

That is why we shall make this double saving. First we will not buy any "reducing pills" and by cutting down on the fats, the grocery bill won't be so high. We have lost eleven pounds since the first of the year, whether we show it or not, and are better off physically and financially than if we had been consuming fat T-bone steaks. Watch us shrink!

Symptoms of Distress Arising from STOMACH ULCERS DUE TO EXCESS ACID QUICK RELIEF OR NO COST Ask About 15-Day Trial Offer!

Over four million bottles of the WILSON TARRANT have been sold for relief of symptoms of distress arising from Stomach and Duodenal Ulcers due to Excess Acid—Poor Digestion, Sour or Upraised Stomach, Gasiness, Heartburn, Sleeplessness, etc., due to Excess Acid. Ask for "Wilson's Message" which fully explains this remarkable home treatment—free—at Davis-Maxey Drug Co.

OPPORTUNITY To parents who wonder . . . Are you wondering what your high school son is to become? Is he headed for the overcrowded profession? If these questions bother you, consider this PRINTING, one of the world's oldest crafts and one of the greatest industries, needs trained men. Your boy doubtless can be trained for this interesting and profitable calling. It offers the greatest opportunity of any industry, the highest pay, and a wonderful opportunity for advancement to unexcelled positions. Write for information. SOUTHWEST SCHOOL OF PRINTING 1100 CLARENDON DRIVE DALLAS 11, TEXAS

Heap your Market Basket HIGH with these Prize Buys. FRESH DRESSED FRYERS 49c Pound. CRACKERS 26c. PEAS 2 for 25c. BANANAS 2 lbs. 25c. POTATOES 10 lbs. 53c. BACON lb. 45c. PORK CHOPS lb. 49c. SAUSAGE lb. 35c. LESLIE GROCERY & MARKET NORTH SIDE OF SQUARE

WARREN MOTOR COMPANY STUDEBAKER SALES AND SERVICE 306 East Main Eastland Phone 616. "THERE'S BIG NEWS COMING SOON FROM STUDEBAKER". Image of a giraffe and a monkey.

This is the little princess, who reigns out at the Dairy King.



MISS SUSAN COLEMAN She is the daughter of Mr. and Mrs. Otis Coleman. She posed for this photo at Shultz Studio, who specialize in making life-like pictures of children.

Telephone 603 for appointment. Your baby too will take a lovely picture. SHULTZ STUDIO Over The Corner Drug

Smart shopper. Every smart shopper knows that MARYLAND CLUB is her best buy in coffee . . . because with MARYLAND CLUB she can get 10 to 15 more delicious cups out of every pound . . . thus she can actually save up to 25c per pound and still enjoy the very best! No wonder smart shoppers everywhere are switching from less flavorful coffees to MARYLAND CLUB, the world's richest coffee! Buy MARYLAND CLUB the next time you shop . . . enjoy its richer flavor and the economy bonus it gives you in every pound. Remember . . . MARYLAND CLUB is the coffee you'd drink if you owned all the coffee in the world! DUNCAN'S MARYLAND CLUB COFFEE



CLASSIFIED

Advertising Rates—(Minimum Ad Size 70c; Times per word 3c; Times per word 5c; Times per word 7c; Times per word 9c; Times per word 11c; Times per word 13c; Times per word 15c; Times per word 17c)

FOR SALE

FOR SALE: Residence at 508 S. Bassett. Phone 53-W.

FOR SALE: Table top stove, electric portable washing machine and other items. 209 W. Patterson.

FOR SALE: Household furniture, 800 pieces of cafe equipment. Girl's bicycle. 1004 West Main. Call 890-M.

FOR SALE: Cypress water tank, holds 45-barrel. L. L. Thomas, Box 65, Olden.

FOR SALE: Fresh fertile eggs, 1401 S. Hyrens St., W. A. Rodgers.

FOR SALE: Baby's play pen, buggy, mattress, jumper and etc. 217 South Oak.

FOR SALE: J. H. Williams farm, 6 miles northwest of Desdemona, see Mrs. E. E. Williams, 808 W. Commerce, Eastland.

FOR SALE: Our home, 309 North Ammerman, mecs G. I. Loan requirements. Carl Elliott.

FOR SALE: Few lots in Burket Addition, Eastland. See Henry Collins, Carbon.

FOR SALE: Baby chicks, Hatches each Monday of highest quality chicks. \$5 per and up. Nine breeds. Write for Price List. Stax Hatchery, Baird, Tex.

T L FAGG R. L. JONES Real Estate Property Management Home and Farm Loans

Real Estate and Rentals MRS. M. P. HERRING 1002 S. Seaman Phone 726-W

ROYAL CROWN COLA BEST BY TASTE TEST

For MONUMENTS Of Distinction call MRS. ED AYCOCK Our years of experience enables us to give you prompt and courteous service. See display at 206 Ave. E. or call 183 for appointment. Cisco

Alex Rawlins & Sons MONUMENTS WEATHERFORD, TEX Serving This Community For More Than 68 Years

We Live In a Great Country... and one of the things that has helped to make it so is Insurance. In one particular at least the average American buys more insurance than any other nationality. This means that he don't want to carry his own risks and the attendant worries that go along with them. He just insures himself, his family, his property, everything he has—because it's good business to do so. Yes, it's American to be insured and Insurance is typically American! If It's Insurance We Write It! Earl Bender & Company Eastland Insurance since 1924 Texas

LEGAL NOTICE

CONTRACTORS' NOTICE OF TEXAS HIGHWAY CONSTRUCTION

Sealed proposals for constructing 4.653 miles of Grading, Structure, Pave & Surfacing from FM 569, 7.0 mi. S. W. of Cisco west thru Seranton to County road at County line on Highway No. FM 1864, covered by R 1778-2-1, in Eastland County, will be received at the Highway Department, Austin, until 9:00 a.m., Feb. 17, 1953, and then publicly opened and read.

This is a "Public Works" Project, as defined in House Bill No. 54 of the 43rd Legislature of the State of Texas and House Bill No. 115 of the 44th Legislature of the State of Texas, and as such is subject to the provisions of said House Bills. No provisions herein are intended to be in conflict with the provisions of said Acts.

In accordance with the provisions of said House Bills, the State Highway Commission has ascertained and set forth in the proposal the wage rates, for each craft or type of workman or mechanic needed to execute the work on above named project, now prevailing in the locality in which the work is to be performed, and the Contractor shall pay not less than these wage rates as shown in the proposal for each craft or type of laborer, workman or mechanic employed on this project.

Legal holiday work shall be paid for at the regular governing rates. Plans and specifications available at the office of G. L. Smith, Resident Engineer Eastland, Texas, and Texas Highway Department, Austin. Usual rights reserved.

NEWS FROM OLDEN

Mr. and Mrs. J. M. Moore and girls, visited her parents in Dallas this week.

Mrs. Chrystene Howell of Breckenridge, visited her mother, Mrs. Rice Wednesday.

Mrs. Nettie Fox visited her daughter, Mrs. Bill Noblett in Henderson, last week.

Mr. and Mrs. J. F. Boland of Eunice, N. M., visited with the Bernard O'Brian family Thursday.

Mrs. Joe Langdon of Breckenridge, visited with Mrs. Lee McGuire, Friday.

Mr. and Mrs. Turney McKelvin and J. W., visited Mr. and Mrs. Dick Yielding and family Tuesday night.

Mr. and Mrs. Leonard Anderson and family of Abilene, visited relatives in Olden Sunday. The Andersons are enroute to California to make their home.

A group of high-school children enjoyed a TV show in the home of Wanda Yielding after the ball games Friday night.

Mr. and Mrs. Jim Colburn and family of Brownwood, spent Sunday here with her brother and family, Mr. and Mrs. Walter Colburn and family.

Mrs. Berry Elliott and Mrs. Clarence Langitz were in Goldthwaite last week to attend the funeral of a brother-in-law.

Miss Laura Simer of Wichita Falls, spent the week end here in her home.

Mr. and Mrs. Bud Hull of Rising Star, were Sunday afternoon callers in the Dick Yielding home.

The benefit ball game here last Friday night was a great success, and all proceeds went to the March of Dimes. Olden boys won over Strawn and Olden girls won from Rising Star.

DADDY'S DIARY



WE SHINE YOUR CAR TO LOOK ITS BEST NO BETTER JOB EAST OR WEST! WE HAVE A WELL! We will pick them up, and deliver them back. Gulf Service Station East Main Phone 9536 D. L. TUCKER

Hook Rack Teaches Tidiness



Little Kathleen is enjoying her "Peg-Board" hook rack on the door of her closet, because it's so easy for her to hang up her things when she gets home from school. There's room for her coat, mittens, hair ribbons, purse and even some jewelry, not to mention that note her mother wrote. Hooks and spring clips can be moved about as she likes. Kathleen's mother is saving lots of work picking up after her daughter since she put up the hook rack. Besides, she's teaching the youngster a good habit, tidiness. The board is perforated tempered Pressboard, a tough, splinter-free hardboard.

Mr. and Mrs. Cozier Jordan and family, of Abilene, and Mrs. Ray Howell of Breckenridge, visited Grandma Hambrick here Sunday evening.

Mr. and Mrs. Junior Hamilton visited his mother, Mrs. Edna Hamilton, over the weekend.

Recent visitors in the home of Mr. and Mrs. Max Cotter, were Robert Newberry and two friends of Dallas. Also the Methodist

\$20.00 FOR YOUR OLD DINETTE Regardless of condition, on this beautiful five piece Chrome Dinette Set in gleaming Chrome Chairs, upholstered in plastic. Three colors.

A Sensational OFFER!



Regular 59.50 Value Less Old Dinette 20.00

Yours For Only 39.50 WHILE THEY LAST! HOME FURNITURE CO. East Side of Square Phone 199

Relatives, Friends Here For Mrs. Truly's Rites

Out of town relatives here for the funeral of Mrs. R. B. Truly were Mrs. Dan Carothers of Eugene-Springfield, Ore.; Mrs. Maurice Cates, Mr. and Mrs. Raymond York of Breckenridge; Mr. and Mrs. P. G. Arnold, Oressa; Mrs. Ethel Dunn, Fox, Stockton; Mr. and Mrs. R. E. Truly, C. W. Johnson, of Ballinger; Mr. and Mrs. C. E. Lewis and Mr. and Mrs. Lloyd Fland, of Wichita Falls; Mrs. Roy Langston of Weatherford; Rev. Lester Deventer of Meridian, Mrs. Ella Westbrook, Mrs. Alex Clark and Christopher of Fort Worth.

Ladies Bible Class Honor New Pastor

Members of the Ladies Bible Class met Wednesday morning in the Fellowship Hall of the Church of Christ for their regular monthly luncheon.

Each brought a gift for an old fashioned pounding for their pastor, Austin Varner, and Mrs. Varner.

Thirty-five members attended. The meal was informal and served buffet style.

Day Service MULTY STUDIO

Mrs. Linkenhogger Will Be In Charge Of Story Hour

Mrs. W. W. Linkenhogger will be in charge of the regular first Saturday Children's Story Hour held at the Woman's Club.

The story hour, sponsored by the Thursday Afternoon Club, is held at 10 a.m. the first Saturday of each month for the children of Eastland and surrounding area.

All children are invited.

Parrish Family Return Here

Mr. and Mrs. C. P. Parrish of San Angelo and their two sons, Mickey and C. H. Jr., have moved here and are making their home at 211 South College.

Mr. and Mrs. Parrish formerly lived here. He is employed at Muirhead Motor Co.

CALL 601 FOR CLASSIFIED AD SERVICE

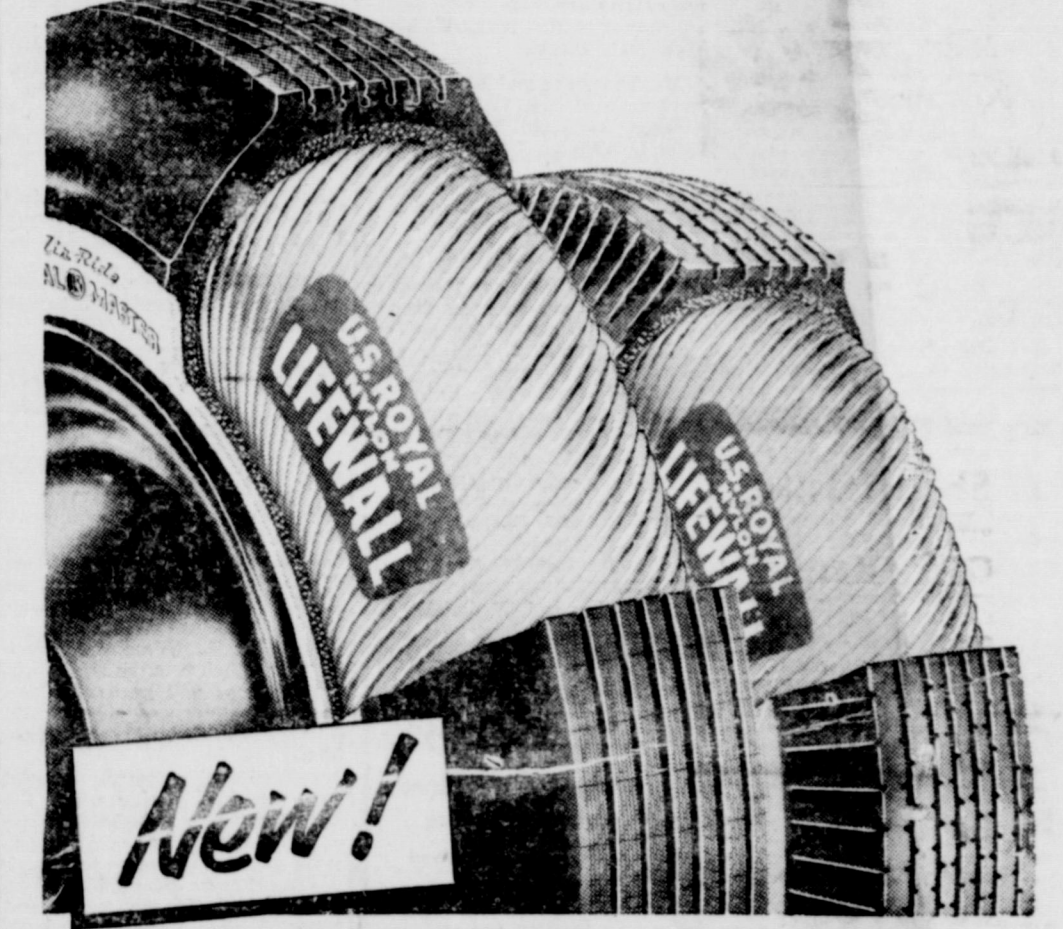
ASTHMA COUGHS

Don't let difficult breathing, coughing and wheezing due to irritating vapors of Asthma or simple bronchitis ruin your sleep and energy without trying LIFEWALL. Works through your blood to help loosen and remove thick, strangling mucus. This usually stops coughing which permits freer breathing and sounder sleep. Get LIFEWALL under money back guarantee at drugstore.

FARMS - RANCHES Pentecost & Johnson REAL ESTATE City Property

Overseas Veterans Welcome Post No. 4136 VETERANS OF FOREIGN WARS Meets 2nd and 4th Thursday 8:00 p.m. Karl and Boyd Tanner

STEAM CURED HAYDITE LIGHT WEIGHT BUILDING BLOCKS New you can enjoy low first cost. Quicker Construction. Less Up-keep Expense. Smaller Insurance Premiums. Savings on Cooling and Heating. Grimes Brothers Block Co. Phone 620



NEW! LIFEWALL U.S. ROYAL TIRES

Now-All in One! Blowout Prevention Skid Protection Life Protection With the Only EVERLASTING WHITEWALLS to keep the spotless beauty of your tires! CURB GUARD\* PROTECTIVE RIB to end curb-scuff nuisance and expense! ROYALTEX TREAD and TRACTION —world's utmost non-skid stopping power! and with up to TWICE THE SAFE MILES —your one tire investment for years! \*Trademark of UNITED STATES RUBBER COMPANY

Muirhead Motor Co. 304 W. Main BUICK - PONTIAC Phone 692



# Church... Society ...Clubs

## Mrs. Ranney Is Honoree At Tea Sunday Afternoon In Rhodes' Home

Mrs. C. A. Ranney, who moved this week to Grand Prairie was the honoree Sunday afternoon at a farewell tea, hosted by Meses. J. L. Brashears, Frank Sayre, Earl F. Stephens, and Miss Jessie Lee Ligon, and Mrs. Gene Rhodes, in whose home at 605 South Mulberry, the tea was held.

Mrs. Stephens presided over the register, which was laid with a lace cloth over blue and was decorated with an arrangement of yellow chrysanthemums. Hot spiced tea, nuts and cookies were served.

Those attending were Meses. H. P. Pentecost, Lee Horn, Pearson Grimes, Harry Taylor, E. E. Layton, J. R. Gilkey, Solora Gilkey, Jack Lewis, Carl Jones, H. T. Weaver, H. F. Vermillion, the hostess group and the honoree.

## Methodist Young People To Have Tacky Party

The Young People of the First Methodist Church will have an old fashioned "Tacky Party" at 7:15 p.m. Saturday in the Fellowship Hall of the church, sponsors announced today.

**DEALERS WANTED**  
In Many Texas Towns for **AMANA FOOD FREEZERS**  
Lead Available  
If You Sell on Much-Publicized **FOOD - FREEZER PLAN**  
If you sell an appliance, hardware, furniture, radio, TV, frozen food, crockery, farm equipment dealer or locker, you can increase your profit margin with the food freezer guaranteed to outperform all others... fastest growing, most profitable phase of appliance industry. We give sales training... liberal advertising co-op. Write in detail to Dallas Distributor.

**BAUCHMAN-LaPRELLE, INC.**  
2016 Richardson Dallas, Texas

Your Local **USED-COW Dealer** Removes



**CENTRAL HIDE & RENDERING CO.**

For Immediate Service  
**PHONE COLLECT**  
141 Eastland, Texas

## Post Nuptial Shower Honors Mrs. Thompson

Mrs. Marion Thompson, recent bride and the former Miss Shirley Stewart of Breckenridge was the honoree, Friday evening when Mrs. J. M. Mitchell, Mrs. Howell Sledge and Miss Mildred Thompson entertained with a miscellaneous shower in Mrs. Mitchell's home West Main Street.

Mr. Thompson and Miss Stewart were married Jan. 17th in Breckenridge, and are making their home in Abilene.

Mr. and Mrs. N. O. Thompson, South High Street, are the parents of the bridegroom.

Mrs. Mitchell greeted guests at the door. They were registered in the bride's book by Miss Thompson, sister of the bridegroom.

Frosted punch and white cake squares were served from the bride's table laid with a linen Battenburg Cloth.

About thirty guests called. The many beautiful and useful gifts were attractively displayed.

Rev. J. Morris Bailey, pastor of the First Methodist Church, attended Minister's Week at Southern Methodist University in Dallas, Tuesday and Wednesday.

**Hail Typewriter**  
• Adding Machines  
Sales - Service  
27 Years in Eastland  
803 W. VALLEY  
PHONE 310-M

## Social Calendar

Feb. 8-14 "Twirp Week" at Eastland High School.

February 9th Rotary Club 12 noon Connellee Hotel. XI Alpha Zeta Chapter of Beta Sigma Phi 7:30 p.m. W. B. Barrow home.

Feb. 9th Eastland County Council of Christian Women's Fellowship, First Christian Church annex, 2:30 p.m.  
Fellowship supper 7 p.m. First Christian Church.

February 10 Lions Club 12 noon First Methodist church.

Taylor Study Spring Recital, 7:30 p.m. First Methodist Church.  
Home Makers Class monthly covered dish dinner 7 p.m. Mrs. Don Daniels, hostess, Winona Davis co-hostess.

Feb. 11. Civic League and Garden Club 3 p.m. Woman's Club.

Feb. 12—Alpha Delphian Club 3 p.m. Woman's Club.

February—Rotary Club, 12 noon Connellee Hotel.

Feb. 14—Beta Sigma Dinner-Dance, honoring Valentine Girls, Connellee Hotel Roof Garden.  
End of football season of Eastland high school.

Feb. 15—Valentine party for seniors 4 p.m. First Christian Church annex, sponsored annually by CWF.

Feb. 17th West Ward P-TA, West Ward Cafeteria 3:15 p.m.

Feb. 19th Past Macons Association 7:30 p.m. in home of Mrs. Lena Kincaid, East Highway 80.

Feb. 20—High school carnival, 6 p.m. at high school gym.

Feb. 24—Senior banquet, fellowship room First Baptist Church 8 p.m. sponsored annually by

Feb. 27—High school coronation 8 p.m. Eastland high school auditorium.

## Mrs. H. C. Young Is Hostess To Circle Meeting

Mrs. Clyde H. Young was hostess Tuesday evening to members of the Lamp Lighter's Circle of the First Methodist Church, at her home, 207 North Walnut.

Mrs. W. L. White, vice-president, presided over the short business session, and presented Mrs. Rudolph Little, who reviewed "The Silver Chalice", by Peter B. Costain.

Following the program a social hour was held during which the hostess served a refreshment plate of spiced punch and cookies, carrying out the Valentine theme.

Present were Meses. W. P. Leslie and E. J. Turner, guests, and Meses. White, Neon Howard, C. G. Stinecomb, Henry VanGeem, J. Morris Bailey, Little, Hubert Jones, Misses Loretta Morris and Wanda Couch.



**LUXURY DOLLS IN SANTA'S PACK**—With hair that "grows," and wearing mink coats, these dolls are among the more expensive items to be found in Santa's pack this year. First displayed at a pre-holiday show of toys in New York, the dolls' hair is made to "grow" by means of a winding device concealed in each doll's head. Linda Lupton, 5, seems delighted with the expensive playthings, which cost about \$300 at Santa's North Pole workshop.

## West Ward P-TA Study Club Plans For Bake Sale

Mrs. E. E. Garner, president, presided over the business session of members of the West Texas Parent-Teacher's study club, during which they planned a bake sale setting tentative date as Saturday, Feb. 21, subject to the approval of the P-TA.

Mrs. D. Webb led in the discussion of "Do Parent-Teacher Conferences Pay Dividends" and brought out that although teachers are always willing to interview parents, the report card should indicate if an interview is necessary. Two interviews a year between parent and teacher was considered ample, because the teacher will call, otherwise the teacher's time is limited.

Announcement was made of the regular February meeting which will be at 3:15 in the West Ward Cafeteria and will be a Founder's Day program with Mrs. Don Choate, president, of the Eastland County Council of Cico, as guest speaker. Second grade mothers will be the hostesses.

Mrs. B. Howard Green reported \$147.95 collected from the schools for the March of Dimes.

## Typewriters Adding Machines

NEW AND REBUILT  
Sales-Service-Rentals-Supplies  
**STEPHENS Typewriter Co.**  
417 S. Lamar St.  
Tel. 639 Eastland

## Mrs. Clifton Beck Hosts Meeting Of HDC Club

Mrs. Clifton Beck was hostess to members of the Morton Valley Home Demonstration Club for their regular meeting Tuesday, Feb. 3, at her home in Morton Valley.

Mrs. Beck, president, presided and Mrs. Robert Kincaid was elected vice president and Mrs. L. W. Leach were elected secretary and treasurer to fill the places of Mrs. D. D. Franklin and Mrs. Charles

Harris, who resigned.  
Mrs. J. C. Butler gave a demonstration on the building of a plant box and told of the planting and care of seedlings.

Mrs. John Nix was chosen as nominee to the district THDA.  
A total of \$67.15 was reported for the March of Dimes, which made the community way over its quota, which was \$40.

Announcement was made of the next meeting, at 2 p.m., Feb. 18, in the home of Mrs. W. C. Baker. Refreshments of cakes and cookies with valentine candies were served.  
Present were Meses. Baker, L.

Hale, Kincaid, L. W. Leach, J. C. Butler, F. W. Morris, Wince Graham, Nolan Butler, John Nix and Jack Robinson.

CALL 221 FOR CLASSIFIED AD SERVICE  
READ THE CLASSIFIEDS

**Real Estate**  
And Rentals  
MRS. J. C. ALLISON  
Phone 347 - 920 W. Commerce

these values are **FOOD NEWS** today's biggest

PRICES FOR FRIDAY AND SATURDAY

<b>LARGE HEADS Lettuce</b>	2 Heads	25c
<b>TEXAS Oranges</b>	5 LB. SACK	29c
<b>PASCAL Celery</b>	Stalk	15c
<b>MARYLAND CLUB COFFEE</b>		
<b>1 Pound Can</b>		<b>85c</b>

<b>CRISCO</b>	3 Pound Can	83c
<b>KIMBELL'S BEST FLOUR</b>	25 Pound Bag	\$1.79
<b>MISSION SUGAR PEAS</b>	No. 303 can	15c
<b>DEL MONTE PEACHES</b>	3 No. 7 1/2 cans	1.00
<b>TIDE</b>	large box	28c
<b>AZALEA OLEO</b>	pound	19c

<b>Loin Steak</b>	LB.	69c
<b>Short Ribs</b>	LB.	29c

<b>Chuck Roast</b>	LB.	43c
<b>Club Steak</b>	LB.	69c

FRESH GROUND **HAMBURGER MEAT** lb. 39c  
**T-BONE STEAK** pound 79c

**FOOD QUALITY MARKET**  
James Watson, Mgr.  
400 SOUTH SEAMAN EASTLAND

• Electroaire Pure Air  
**MAJESTIC**  
Thursday  
LOUIS HAYWARD IDOL OF WOMEN... KING OF THE SEAS... FABULOUS ADVENTURES  
**CAPTAIN PIRATE**  
TECHNICOLOR  
PLUS Birthday Nite

**PALACE**  
THEATRE - IN CISCO, TEXAS  
THURSDAY - FRIDAY - SATURDAY  
February 5 - 6 - 7  
THREE BIG DAYS—THIS IS TOO GOOD TO MISS—  
Admission—Adults 60c and Children Under 12 Years 25c  
THOSE MADCAP FUNNYBONERS ARE SETTING NEW LAFF RECORDS!  
DEAN **MARTIN** JERRY **LEWIS** AND **THE STOOGES**  
with EDDIE MAYHEOFF - POLLY BERGEN - MARION MARSHALL  
Plus News and Cartoon

**JOY DRIVE-IN**  
CISCO - EASTLAND HIGHWAY  
Thursday Nite Buck Nite  
\$1.00 Per Car

**UNDER AGE**  
GIRL VICTIM EXPOSES TOURIST CAMP RACKET!  
NAN GREY - NEAL ALANBAKTER  
PLUS

**MISSING DAUGHTERS**  
IDENTITY LOST... Among Sinister Shadows of the Hostess Reveal!  
THE YEAR'S PRIZE THRILLER  
Richard Barthelme ARLEN HUDSON - MARIAN MARSH - ISABEL JEWELL  
Plus Cartoon

**CLEARANCE!**  
ON WOMEN'S TOPPERS AND SUITS

<b>ONE WOOL GABARDINE COAT</b>	Zip-Out Lining. One Only 34.98 Value	<b>9.99</b>
<b>WOMEN'S TOPPERS</b>	Swana Cloth, crush Resistance 10.98 Value	<b>4.99</b>
<b>WOMEN'S LINEN TOPPERS</b>	3.98 Value	<b>4.99</b>
<b>WOMEN'S GABARDINE JACKETS</b>	5.98 Value	<b>2.99</b>
<b>WOMEN'S SUITS</b>	Values to 19.98	<b>9.99</b>

**BURRS**  
A BUTLER BROTHERS STORE