

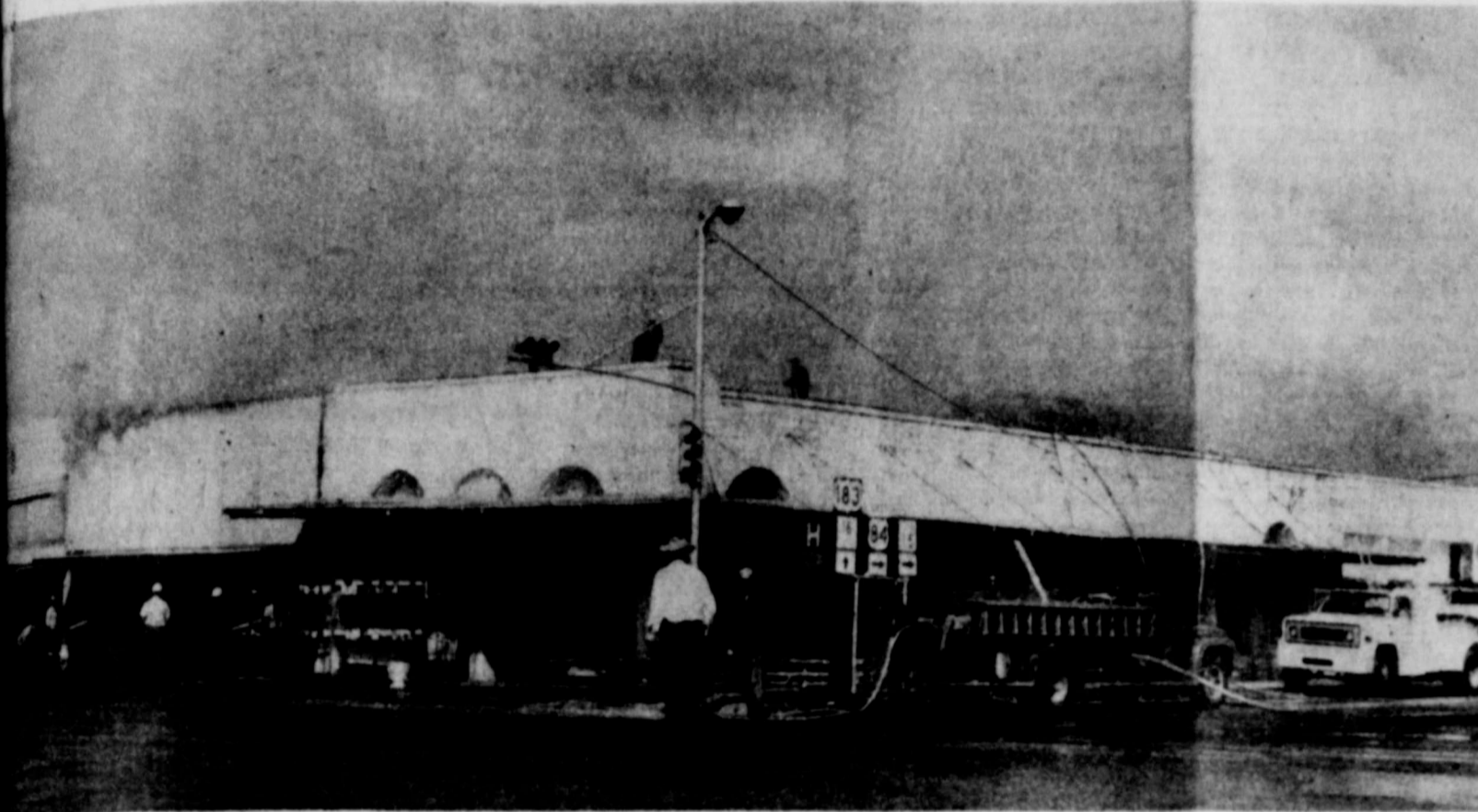
The Goldthwaite Eagle



Vol. 86, No. 29 ★ Goldthwaite, Mills County, Texas ★ Thurs., Nov. 1, 1979

On Fisher St. —

Major Fire Destroys Downtown Structure



A fire of undetermined origin kept downtown Goldthwaite in a nervous condition Tuesday afternoon.

The fire was in the Geeslin Building, occupied by B & H Enterprise, a marble fabricating plant. It was first reported to fire department officials about 12:30 p.m.

Firemen fought the blaze all afternoon, with several men staying nearly all night watching the fire burn itself out. The construction of the building was such that the fire could not be extinguished. The roof had fallen in and semi-moistened the rafters, roofing material, and combustibles below, causing them to smolder, and keep the water from hoses from getting to the fire.

A total of eight hoses were in operation at one time during the disaster, as fire department leaders utilized two fire plugs and four pumping trucks.

The marble works, owned by Zeke Becker of Goldthwaite, uses several kinds of resins and highly combustible mixtures in the preparation of its products. At many occasions during the course of the fight, explosions could be heard all over the downtown area as containers blew because of the intense heat.

Two persons were slightly injured in the fire. Johnny

Blansitt of Goldthwaite sustained a minor head laceration when a pry bar broke and hit him. He was treated at Childress Clinic and later returned to help further in the effort.

Another man was cut by glass from the front display windows of the building following an explosion that blew the glass out. His identity is not known, however, his injuries were described as very minor.

On numerous occasions throughout the afternoon, firemen were slightly overcome by the noxious fumes of the fire, and exchanged duties on the hoses frequently to avoid serious injury.

R & W Floor Covering, located on the corner, and Steen Hardware, located just North of the fire site, sustained minor smoke damage and some water damage, according to fire department officers. Most of the perishable merchandise was taken out of R & W soon after the fire was discovered.

R & W previously occupied a building four doors down the block, and were burned out at that location on June 14 of this year. They suffered complete loss of merchandise in that fire. The Geeslin Building fire was also listed as a total loss.

City Council Sets Agenda For Meeting

Dale Allen, City Manager of the City of Goldthwaite, announces that the City Council will meet in regular session Thursday, November 1, 1979, at 7:00 p.m. in the Council Room of the Goldthwaite City Hall.

The meeting will be called to order and the invocation given. Then the following items will be presented for discussion:

- Minutes of previous meeting will be read.
- Operations reports and paid bills.
- Lone Star Gas Co. request for rate increase (1st reading).
- Cable Vision rate increase (Final Reading).
- Fire Department Retirees and Policies.
- Amend Budget, General Fund (Fire Dept.).
- Policy on City Employees sick leave.
- Agreement for Technical Services - L.C.R.A.
- Reports and requests from Council.
- Report from the City Manager.

...ing at the Northeast corner of the Courthouse square in Goldthwaite Tuesday afternoon was quite a "back from the normal business bench" scene. The Geeslin Building, the

second structure off Fourth Street, see arrow, was ablaze. The fire was first reported at about 12:30 p.m. Tuesday and fire fighters worked at the disaster for about four hours

before the fire was in a "contained" stage. Units of the Goldthwaite Fire Department and one from the Mullin Fire Department fought the fire. Zeke Becker

was the renter of the building, using the premises for the operation of his custom marble vanity shop, known as B & H Enterprise. Workers can be seen with

two hoses pumping water in the front of the building, and four other hoses were strung over the corner building trying to get to the heart of the blaze.

— Laughlin Studio Photo

Eagles Popped By Dublin; Host Bearcats Friday

By MIKE LEE
Eagle Staff Writer

How many times have you taken a walk to the total after last week's Goldthwaite-Dublin game. Four crucial mistakes the Eagles directly led to the Dublin touchdowns.

The Eagles responded with a well-executed 66-yard drive. Quarterback Ted Tucker passed 14 yards to Stephen Schwartz for the six-pointer. The TD combination was kind of ironic since Schwartz started at quarterback and Tucker at tight end. Angel Bosquez ran for two extra points to trim Dublin's lead to 17-8 with 3:25 left in third quarter.

The Eagles held off a Lion threat at the Eagle nine but the Eagles couldn't move the ball and had to punt.

MISTAKE No. 3
On the third play after the punt Dublin's Garry King swept to his left end, zig-zagged among many Eagle defenders and finally came to rest at the 3-yard line. He scored on the next play and Bryant booted the PAT to increase the Lions' lead to 24-8 with 9:27 to play in the game.

MISTAKE No. 4
The second play after the kickoff, the Lions intercept an errant Eagle pass at the Dublin 46. Bryant throws a pass downfield for Taylor. Two Eagle defenders are right with Taylor. All three leaped for the ball. Taylor

came down with the ball, the Eagle defenders fell down and Taylor trots to the end zone for six more points. The Eagles blocked the extra point twice, the second time without any penalties and Dublin's lead remained 30-8.

"We had to shuffle our (offensive) backs," Eagle coach Joe Winchell stated of the losses of Hammond and Corona. "Angel Bosquez and David Livingston did a super job in replacing them."

It was the first time Livingston had played offense this year. The starting fullback for the past two seasons carried 3 times for 17 yards, but was used mainly as a blocker.

Stephens rushed 13 times for 95 yards to pace the running attack. Bosquez, a 125-lb. Sophomore added 27 yards on 8 carries. And Schwartz, who started at quarterback, ended up as the leading receiver with 4 catches for 57 yards.

"We're disappointed, but we're not discouraged with our kids," Winchell said. "We enjoy working out."

The Eagles host the De Leon Bearcats Friday night at Eagle Field. It will be the final home game of the 1979 season.

New Farm Bureau Officers Elected

Officers of the Mills County Farm Bureau for the coming year are Ted Darby, President; James A. Wells, Vice President; Ronald Davis, Secretary-Treasurer.

The Directors which were elected to serve a 3-year term were Ronald Davis and Elmo Watson of Goldthwaite; and Bobby Duren of Mullin. Wendell Tucker was elected to serve an unexpired term of DeWayne McCasland. Other Directors that will serve on the Board are Chester Huggins, Ted Darby, Troy Berry, W.J. Hopper, James A. Wells, James Horton, W.C. Whittenburg and Milton Meier.

Voting Delegates elected to attend the State Convention in McAllen, Dec. 2-5, are Mr. and Mrs. Homer McCasland and Mr. and Mrs. Ronald Davis, along with the president and wife,

Friday, the Bearcats own a 1-2-1 district record and a 2-4-1 season mark.

Players quitting the team and injuries, namely lineman Tim Hare, have hurt the Bearcats.

"DeLeon is the best coached team in the district as far as technique and execution are concerned," Winchell believes. He says that the Bearcats "Won't beat themselves."

The Bearcats will run a wishbone and veer offense and a 5-2 defense. Steady performers have been quarterback - split end John Ledbetter, halfback Jimmy Lewis and linemen Clint Taylor and Jerry Walker.

"We should win all three of these final games if we keep out of injury trouble," Winchell concluded.

Homecoming Royalty

Margaret Roberts and Jeff Shelton were selected the Homecoming Sweetheart and Beau at the Mullin G and Beau at the Bulldog game last Thursday night. The Bulldogs won the game

Eagles	STATISTICS	Dublin
14	Firstdowns	18
169	Yds. Rushing	194
62	Yds. Passing	192
5-3	Passes Comp/Att.	10-16
2	Interceptions by	1
5-37.6	Punts	3-46.3
2.2	Fumble-Lost	2-0
7-72	Penalties	8-100

District 10-A Standings	Team	Season	District	W	L	T
	Dublin	(7-0)		4	0	0
	San Saba	(4-3)		4	0	0
	Early	(4-2-1)		3	1	0
	Bangs	(4-2-1)		2	1	1
	DeLeon	(2-4-1)		1	2	1
	Cross Plains	(2-5)		1	3	0
	G'waite	(0-7)		0	4	0
	Ranger	(0-7)		0	4	0



Homecoming Royalty

over Sidney, also, making the night a jubilant one for Mullin football fans. See the football story on Page 8 of this week's Eagle.

— Laughlin Studio Photo

Predator Control Assn. Quickly Rejuvenated Here

Members of the Mills County Predator Control Association met October 29, 1979 to discuss problems of funding the program, which the association has encountered the last few months. Because of the lack of interest of people who once participated in the program and more numerous bounties paid during 1979, the predator control program has been running short of funds at the close of each month. Prior to the meeting, the Predator fund showed a balance of \$31.49.

Mills County receives equipment, a trapper, fuel and a pickup for \$425.00 per month. Mr. Bud Moon, Animal Damage Control Specialist, met with the association and explained that Mills County is the only county in Central Texas that is receiving a vehicle at no additional cost. Our pickup is old and in bad need of major repairs. This pickup will have to be sold at public auction in San Antonio soon by the A.D.C.

The Animal Damage Control association will furnish forms in the near future for ranchers to sign which will permit helicopter hunting late this year. Everyone is urged to sign up for helicopter hunting. If an animal runs from a pasture that is signed up to a pasture that is not, the animal cannot be killed. Forms for helicopter hunting will be available from Norman Duren at the post office, at Mills County State Bank, and the office of the County Judge. Also, the A.D.C. will furnish twenty cents per mile if our trapper furnishes his own pickup. Members discussed going before the Mills County Commissioners' Court at their next budget hearing to seek county-wide support.

Business conducted at the recent meeting consisted of the following agenda:

1. To pay five cents per mile above the twenty cents furnished by the A.D.C.A. Motion by Homer McCasland, seconded by Tom Casbeer, carried unanimously.
2. To pre-pay for maintaining the program at the present. Motion by C.W. Daniel, seconded by Don Geeslin, unanimous.
3. To provide members who wish to contact ranchers to keep the program alive a list of active and inactive people in the program. Motion by Lucius Stephens,

seconded by Homer McCasland - unanimous.

4. To keep ranch operators from collecting a bounty. Motion by Don Geeslin, seconded by Tommy Head - unanimous.

Members present at the meeting were: Tommy Head, S.R. 'Tot' Casbeer, Owen Smith, John Clifton, June Clifton, Lucius M. Stephens, A. B. Conrad, Homer McCasland, Glenn Miller, J.C. Miles, Don Geeslin, Tom Cody Graves, Charles Conrad, Hammon Humphries, Bill Bishop, C. W. Daniel and James Ledbetter.

The following list of donations are from people who realize a high percentage of ranches and businesses in Mills County were paid for by sheep and goat production. This was collected in less than 12 hours time.

Bill Blackwell & Joe Langford	260.00
Elmo Watson	25.00
Boykin Feed Store	75.00
Western Auto	10.00
Spradley Furniture	25.00
Blackwell Ranch	100.00
Rudd & McLean	40.00
Lester P. Geeslin	25.00
Steen Hardware	50.00
Ray Duren	25.00
Cook's Drilling	50.00
Lee Roy Stacy	60.00
Charles Childress	150.00
Pigfoot Ranch	250.00
Owen Smith	5.00
Clifton & Daniels Livestock	125.00
J. C. Miles	29.00
Three M Ranch	40.00
Blackburn's Department Store	15.00
Hudson-McMahan Pharmacy	25.00
L. B. Burnham	5.00
Dan Tyson	20.00
Gilbert Casbeer	45.00
Robert L. Roberson	135.00
H. G. Brooks	15.00
Muse Ranch	36.00
G. C. Head	25.00
Jim Smith	7.50
Tom Duren	50.00
Dean Dickerson	90.00
Tommy Head	75.00
S. R. Casbeer	15.00
Bill Bishop	70.00
Don Geeslin	125.00
Howard Campbell	35.00
Lucius M. Stephens	62.50
C. L. Patterson	71.50
Charles Conrad	52.00

Rocksprings School Reunion

Mrs. Monte Kirkland of Goldthwaite, former teacher and long time resident of Rocksprings, was in Rocksprings last Saturday, October 20th, attending the reunion of the classes of 1936-'37-'38-'39.

Mrs. Kirkland had taught these former students, as she taught school for 27 years in Rocksprings, from 1927 to 1954. Mrs. Floyd Porter of Lometa, accompanied Mrs. Kirkland to the reunion.

A reception, honoring Mrs. Kirkland, other teachers and ex-students and local pupils, was held.

Star Community News

Coach Grant Tidwell spent last week in the hospital. A definite diagnosis had not been made as to the cause of his illness. He missed Thursday night's game in Cherokee. It was the first game he has missed in 20 years as coach. His is improving and hopes to be back in action with the boys soon. We pray he will be well soon as he is greatly missed.

for a covered dish luncheon. Mrs. Callie Pyburn was present from the Mills County Sr. Center. The following people attended: Josie and Alvin Kemp, Mr. and Mrs. Winner, Mr. and Mrs. Bud Kincheloe, Isa Kincheloe, Mr. and Mrs. B.F. Poore, Gladys Henry, Randolph Garret. They had a good lunch and a good time of fellowship.

ents of a granddaughter born in Comanche Hospital. The little girl, Jessica Michelle, weighed 6 lbs. 11 ozs. Her parents are Michelle and David Brown. Her paternal grandmother is Mrs. Marshall Brown of Priddy.

Services For Mrs. George Reese Held Here Oct. 27

Mrs. George (Olyarie) Reese, 68, passed away Wednesday, October 24, 1979, at 10:59 p.m., at Scott and White Hospital in Temple.

Mrs. Reese was born April 14, 1911, in Lampasas to George Oliver and Maggie Reid Shettle. She was married to George Reese on June 2, 1934, in Josephine, Texas. They moved to Goldthwaite from Gonzales in 1948. She was a member of the Methodist Church and a retired school teacher.

Funeral services for Mrs. Reese were conducted Saturday, October 27, at 2:00 p.m. in the First United Methodist Church of Goldthwaite, with Rev. Ben Welch officiating. Burial was in the Goldthwaite Memorial Cemetery.

Survivors include her husband, George, of Goldthwaite; one daughter, Mrs. Tommy Clint (Margaret) Daniel of Franklin, Tenn.; two grandsons, Kevin and Scott Daniel, of Franklin; two brothers, Keith Shettle of Dallas and George O. Shettle of Midland; and two nephews.

Serving as pallbearers were Norman Duren, Glynn Collier, Tom Cody Graves, Thurman Head, Hollis Blackwell, and G. C. Head. Honorary pallbearers were Herman Jones of Brownwood, Bob Steen,

Don Geeslin, Eugene Dyas, Harold Yarborough, and T. J. Blackburn.

★ Star News

(Too late for last week)

The Gustine Jr. High came to Star Tuesday night for a game. The Pee Wees played very hard and ended their game in a tie, 6-6. The regular game had a final score of Gustine 58, Star 32. Carl Norwood won the cake given away by the Junior Class.

Friday night, Richland Springs came to Star and lost the game by a score of Star 46, Richland Springs 13. The Richland Springs Drill Team performed at halftime and were very good. There was a lot of good defensive play and two of the best in this writers' opinion were David Stark and Darryl Newton.

STARR FFA HAYRIDE

Saturday night the Star FFA had a Hayride and picnic supper. There was a fair turnout and those who participated went on to a party at the Sammy Harpers given by Dixie Clary. The Jr. Class at Star would like to wish Dixie a Happy Birthday.

UNUSUAL SERVICES AT BAPTIST CHURCH

Sunday there was some unusual activity at the Star Baptist Church. There was dinner following the morning service and a singing and playing, or 'picking and grinning' session later. The instrumental music was provided by Sammy Harper on fiddle, Thurman Head, Jude Miles and Culver Emdy on guitars, and Gayla Ethridge at the piano. The young people sang and played "Pass It On", featuring Gina Britten on the guitar and Darla Emdy at the piano. Special guests were Jude and Ruby D. Miles, Mrs. Charlie Shelton, Mr. and Mrs. Charles Emdy, Mrs. Charles Hunter, and Mr. and Mrs. Thurman Head. There was a lot of good food and enjoyable music.

Mr. and Mrs. Charles Emdy, the brother of Ozella Hunter and Margaret Cox, are visiting with their relatives in the area. It was a pleasure to have them in the church service Sunday.



YVONNE HUMPHRIES BRIAN LUNDY

Engagement Announced

Mr. and Mrs. Hammon Humphries of Goldthwaite wish to announce the engagement and approaching marriage of their daughter, Yvonne, to Brian Lundy, son of Mr. and Mrs. Raymond Lundy of Pearl River, New York.

The couple will exchange marriage vows December 16, 1979, at 3:00 p.m., in the First Baptist Church in Goldthwaite.

The bride-elect is a 1978 graduate of Goldthwaite High School and also attended one year at Texas Tech University in Lubbock.

She is currently employed at Geeslin Motors in Goldthwaite. The prospective groom is a 1978 graduate of Pearl River High School in New York and is now with the United States Air Force stationed at Reese Air Force Base in Lubbock.

NOTICE

The Bill Woody land located south of Goldthwaite and east of railroad is now leased to Jack Morgan for all hunting rights. By: [signed] W. P. Woody

Former Mullin

Preacher Passes

Brother J. A. Criswell, former pastor of the Mullin Church of Christ, died Monday October 29, 1979 at 5:30 p.m. at the Pleasanton Hospital in Pleasanton. He died of a heart attack.

He was pastor in Mullin for four years, and is well known in this area. Survivors are his wife and one son.

The Rock Pit

Sandstone - Limestone Native stone for residential and commercial buildings, or custom haul and cut your stone. HARLAN JERNIGAN Rt. 2, Box 99-A Goldthwaite, Tx. 76444 Phone: Day 938-5328 Nite 938-5282

New Hours: 8 a.m. to 6 p.m. Hill Country Store

Hwy. 84 North - Goldthwaite

Fresh Supply

★ SMOKED HAMS lb. \$1.39
★ SMOKED TURKEYS \$1.49

★ Best Sandwiches In Texas . . .

★ Discount Groceries ★

Corn, 17 oz. 33¢

Pork & Beans, 16 oz. 32¢

Campbell's Soup, 10¾ oz. . . . 30¢

Flour, 5 lb. bag \$1.01

Bakery

For your homemade pies, bread and cookies, call 648-2737 and we'll have your order ready when you want it!

CONSOLIDATED REPORT OF CONDITION (Including Domestic Subsidiaries)

LEGAL TITLE OF BANK			
Mills County State Bank			
CITY	COUNTY	STATE	ZIP CODE
Goldthwaite, T	Mills	Texas	76844
STATE BANK NO.	FEDERAL RESERVE DIST. NO.	CLOSE OF BUSINESS DATE	
369	11th	September 29, 1979	
ASSETS			
1. Cash and due from banks		3,924	1
2. Due from other depositories and all cash items in the process of collection		11	2
3. U.S. Treasury securities		2,202	3
4. Obligations of other U.S. Government agencies and corporations		1,865	4
5. Obligations of States and political subdivisions in the United States		8,566	5
6. All other securities		None	6
7. Federal funds sold and securities purchased under agreements to resell		1,500	7
8. Total loans (including overdrafts totaling \$ 26) (From Schedule A, Item 8)		19,460	8
9. Lease financing receivables		None	9
10. Bank premises, furniture and fixtures, and other assets representing bank premises		185	10
11. Real estate owned other than bank premises		None	11
12. Letters of credit and customers' liability on acceptances outstanding		49	12
13. All other assets		491	13
14. TOTAL ASSETS (sum of items 1 thru 13)		38,253	14
LIABILITIES			
15. Demand deposits of individuals, partnerships, and corporations		8,609	15
16. Time and savings deposits of individuals, partnerships, and corporations		22,814	16
17. Deposits of United States Government		9	17
18. Deposits of States and political subdivisions in the United States		1,445	18
19. Due to banks		225	19
20. All other deposits		None	20
21. Certified and officers' checks		126	21
22. Total Deposits (sum of items 15 thru 21)		33,258	22
a. Total demand deposits		9,337	22a
b. Total time and savings deposits		23,921	22b
23. Federal funds purchased and securities sold under agreements to repurchase		None	23
24. Interest-bearing demand notes issued to the U.S. Treasury and other liabilities for borrowed money		180	24
25. Mortgage indebtedness for which the bank is directly liable		None	25
26. Unearned discount on loans		565	26
27. Letters of credit and acceptances outstanding		49	27
28. All other liabilities		365	28
29. TOTAL LIABILITIES (excluding subordinated notes and debentures) (sum of items 22 thru 28)		34,417	29
30. Subordinated notes and debentures		None	30
31. Allowance for possible loan and investment losses		145	31
EQUITY CAPITAL			
32. Common stock (No. of shares outstanding 22,500)		450	32
33. Certified surplus		450	33
34. Undivided profits		2,791	34
35. Uncertified surplus, reserve for contingencies, and other capital reserves		None	35
36. TOTAL EQUITY CAPITAL (sum of items 32 thru 35)		3,691	36
37. TOTAL LIABILITIES AND EQUITY CAPITAL (sum of items 29, 30, 31 and 36)		38,253	37

NOTE: This report must be signed by an authorized officer and attested by not less than three directors other than the officer signing the report.

I, the undersigned officer, do hereby declare that this Report of Condition (including the supporting schedules) has been prepared in conformance with the instructions and is true to the best of my knowledge and belief.

SIGNATURE OF OFFICER AUTHORIZED TO SIGN REPORT: *V. L. Williams* AREA CODE/TELEPHONE NO.: 915-648-2216 DATE SIGNED: 10-5-79

NAME AND TITLE OF OFFICER AUTHORIZED TO SIGN REPORT: V. L. Williams, Cashier

We the undersigned directors, attest the correctness of this Report of Condition (including the supporting schedules) and declare that it has been examined by us and to the best of our knowledge and belief has been prepared in conformance with the instructions and is true and correct.

SIGNATURE OF DIRECTOR: *Tom Cody Graves* SIGNATURE OF DIRECTOR: *Glynn Collier*

(MAKE MARK FOR NOTARY'S SEAL) State of Texas Sworn to and subscribed before me this 5th day of October 1979 My commission expires 2-20-1981 Notary Public

Mullin Community News

Mr. and Mrs. Ernest L. Fisher went to Talpa last week to visit with Mr. and Mrs. Paul Moore and Jennifer. Jennifer came back with her grandparents and spent several days.

Mrs. Henry Long has been in the Childress Hospital at Goldthwaite. She had the misfortune to fall and fracture a knee.

Mr. and Mrs. E.W. Vandevender and grandson Kent Swan of Burleson visited with me for a while Sunday.

Recent visitors of Mrs. Margaret Tolver were Maria Taylor and Michael and Greg Holland of Austin, Mrs. Ernest Obenhaus and Rickey Holland of Brownwood. Anita Eubank is visiting in Austin for a few days.

Mr. and Mrs. Roy Routh and Janis of Ballinger, Mr. and Mrs. Kenneth Routh and Clint of Midland; Mr. and Mrs. Ed Ferguson, Mr. and Mrs. Raymond Spinks and girls; and Mr. and Mrs. Doug Spinks and Kelly spent Sunday with Mrs. Alma Spinks. Martha Calder and Neva Warren.

Recent guests in the W.T. Anderson home were Mr. and Mrs. Deward Reynolds, Jane Petsick and Tammy Donowho of Goldthwaite; Willard Anderson and Curtis Lewis of Garland; Mary Eilers and Lisa Allison of Burleson and Joy Collier of Waco. Also, two of Mrs. Anderson's brothers and wives, Mr. and Mrs. Eldred Conway of Vernon and Mr. and Mrs. Jim Conway of Comanche, visited the Andersons.

For every trouble under the sun, there's a remedy or there is none; If there be one, try to find it; if there be none - Never Mind It!!



Engagement Announced

The engagement of Elizabeth Ann Owens and Paul Carl Ising has been announced by their parents, Mr. and Mrs. Davis Owens of Center City and Mr. and Mrs. Charlie Ising of Star.

Chamber Comments

The column this week is devoted to two items of extreme importance to the directors of your Chamber. First is our invitation for all Priddy folks to join us for our next meeting. We will meet in the Priddy school lunchroom on Monday, November 5th, at 7:30 p.m.

Chappell Hill

We didn't get much rain. It is still dry and dusty. We received a letter from Mrs. J.B. Hopper of El Paso. She reported it was dry and dusty there also. Sunday visitors of Mr. and Mrs. O.L. Harris were Wayne Harris and family and Mrs. Ferol Neely. George and I visited the folks at Hillview Manor Home, found them all doing nicely. We also visited Mr. and Mrs. William G. Crawford and family Saturday afternoon. Mr. and Mrs. A.L. Crawford visited Miss Lola Stevens Friday. Mr. Crawford attended the stock sale. Mr. and Mrs. Lewis Stahnke visited Mr. and Mrs. Henry Hopper at Priddy Sunday. We enjoyed a short visit with our old neighbors, Miss Florence Jones and Mrs. Lizzie Price, at Heritage Home. George Crawford visited Jimmie and Jessie Partin. Jessie is doing some plowing and reports it is dry and dusty. Visitors last Sunday with Mr. and Mrs. Hugh Nowell were Matthew Nowell and Mr. and Mrs. Gene Tibbs of Temple.

Goldthwaite School Menu

Thursday, Nov. 1
Hamburgers
Vegetable Salad
Sliced Pickles-French Fries
Diced Jello - Milk

Friday, Nov. 2
Fish Portions w/Catsup
Creamed Potatoes
Green Beans - Hot Roll
Applesauce Cake - Milk

Monday, Nov. 5
Spaghetti w/Meat Sauce
Creamed Potatoes
Lettuce - Hot Roll
Chocolate Pudding - Milk

Tuesday, Nov. 6
Baked Chicken
English Peas
Cheese Sticks
Cranberry Sauce
Mixed Fruit - Milk

Wednesday, Nov. 7
Sloppy Joe - French Fries
Beet Strips
Peach Cobbler - Milk

Thursday, Nov. 8
Steak Fingers w/Gravy
Macaroni Salad
Ranch Style Beans
Hot Roll
Bluberry Shortcake - Milk

Friday, Nov. 9
Turkey Slices - Green Beans
Creamed Potatoes
Batter Bread
Oatmeal Cookies w/Raisins
Milk

TIMEX WATCHES —

New stock and display has just been received.




Come by and see the many different styles in both ladies and mens Timex watches




Twiston® by Speidel

MEN'S AND LADIES' WATCHBANDS



Popularly priced watchbands to fit Timex® and other fine watches. Fashioned to compliment any other style watch.

Hudson-McMahan Pharmacy, Inc.
648-2284 Goldthwaite

Business Management Services

Bookkeeping
Financial Statements
Income Tax
Inventory
Payroll
Complete Business Management Services.
Bill Wainwright
985-3739

Bloodmobile Here Next Week

First Baptist Church Youth Center

1 p.m. to 6 p.m.

Thursday, November 8, 1979

Blood Used:
Sept. — 29 Units
Oct. — 23 Units

Dr. Merle M. Ellis
OPTOMETRIST
308 Citizen's National Bank Building
Brownwood, Texas
glasses contact lenses
Call 646-8778 or write P.O. Box 149 For Appointment

We Will Buy Your Pecans

★ Top Prices Assured ★

Blackwell Wool & Mohair

Phone 648-2231 Fisher Street Goldthwaite

Noritake Sale —

20% Off Versatone and Stonewear

★ ONIEDA SALE ★

40% Off Onieda Heirloom Stainless 5 Pc. Setting, reg. \$32.50 — SALE \$19.50

Onieda DeLuxe Stainless 30% Off 40 Pc. Service for 8, reg. \$110.00 — SALE \$77.00

Brides names who are registered —

Elaine Harper Eva Hodges Brenda Anne Russell



STORE HOURS:
9:00 a.m. to 5:00 p.m.
Closed only on Mondays.

Phone 915/648-2415 Goldthwaite, Texas

Pickin And Grinnin Saturday Night

Don't Forget! Saturday night, Nov. 3, there will be Pickin' 'N Grinnin' at the Mills County Senior Citizens Center.

You will want to be there when the band starts playing, which is 7:00 p.m.

— WE WILL INSURE YOUR —

Life	Business
Home	Animals
Furniture	Jewelry
Automobile	Crops
Truck	Motorcycle
Tractor	Plate Glass Windows
Mobile Home	Farm Machinery
Trailer	Industrial Machinery
Boat	

— WE ALSO WRITE —

Mortgage Life	Hospitalization
Personal Liabilities	Bonds
Business Liabilities	Cargo
Workman's Comp.	Accident
Burglary	Under Age Drivers
Garage Liabilities	

Stacy's Insurance Agency

Goldthwaite 648-2481

Services For Edker Mikeal

Edker Mikeal, Houston, passed away October 26, at North Shore Plaza. Grave-side services were held Tuesday, October 30, 1979 at 2:00 p.m. in Center City Cemetery. Roland Fry, minister of Church of Christ of Goldthwaite, officiated.

Mr. Mikeal was born September 18, 1911, at Jacksboro, Texas. His parents were Frederick and Mary Elizabeth Culley Mikeal.

Mr. Mikeal moved to Houston from Goldthwaite in 1944.

Survivors include his wife of Houston; one son, Edker Jackson Mikeal; two brothers, Dick and Bud Mikeal of Goldthwaite; two granddaughters; three sisters, Mary Lindsey, Lena Leonard and Mattie Lord.

CONTACT CLOIS CAGLE 648-3255

Small Carpenter Work

For House Painting Interior/Exterior Also Tape & Bed and Acoustical Ceilings

R & W Furniture and Floor Covering

- Carpet
- Linoleum - Tile
- Upholstery
- Furniture

1110 Fisher St. Goldthwaite, Texas
Phone: 648-3100

Mead Hearing Aid Service

Hudson McMahan Pharmacy - Goldthwaite
7:00 - 8:00 p.m. every second Tuesday for your convenience

mead hearing aid service
708 4th Street
Marble Falls, TX 76854
Ph. 512-694-4106

- Pre-Need Service Plans
- EMT Staffed Ambulance Service

Wilkins Funeral Home

Telephone 648-2255 Ricky Stacy

The high rate with the short wait.

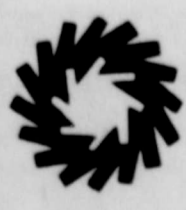
12.193%

Effective From Nov. 1, Thru Nov. 7, 1979

Your best "cash crop" for the yield and the term is Money Market Certificates. You deposit a minimum of \$10,000 for 6 months. Regulations prohibit compounding during the term of these certificates and there is a required penalty for early withdrawal, but... at the end of 182 days at the current rate, you'll have your original \$10,000 to reinvest and take home

\$607.97

At Southern Savings, you can have confidence that we're always working for your best interest.

 **Southern Savings**
Member FSLIC
Goldthwaite Branch, 1105 Parker, 648-2263
Home Office: 501 Center, 646-4561, Brownwood

The ULTIMATE FALL FOOD SALE

a new high in food savings!

Goldthwaite, Texas **Schwartz Food Store**
 Prices Good Full Week — Thurs., Nov. 1, thru Wed., Nov. 7, 1979

We Give S & H Green Stamps



Shurfine Preserves Are Good
Apple Butter 28 oz. **69¢**
Grape Jelly 18 oz. **69¢**
Strawberry 18 oz. **99¢**

Big Buy
SYRUP Quart **79¢**

Shurfine Peanut Butter 18 oz. Jar **\$1.09**

Shurfine Yellow Popcorn 2 lb. bag **49¢**

Compare With Any Brand
Limit 8 4 16 oz. Cans **\$1**

Shurfine Mixed Vegetables 16 oz. can 4 For **\$1**

In Heavy Syrup
 16 oz. can **38¢**

SUGAR 5 lb. Bag **96¢**
 Limit One

Save 40% Over Some Brands
 Shurfine **Drinks** Big 2 Liter Size **69¢**

Shurfine Plastic Bags
 Tall Kitchen 15 Ct. **89¢**
 Trash Bag Box of 40 **\$3.89**

Field Trial, Dry—Chunk
Dog Food 10 lb. bag **\$1.99**

DETERGENT 49 oz. box **99¢**

"Check This Low Price"
 Shurfine Seedless Raisins 15 oz. box **\$1.19**

New Shipment of Glazed Candied Fruit For Your Holiday Baking

Shurfine Marshmallow Creme 7 oz. jar **49¢**

Compare Price
 4 oz. can **69¢**

Tall Can **39¢**

Shurfine Pink Salmon Tall Can **\$1.79**

6½ oz. can **79¢**

Gebhardt's, With Beans
 15 oz. can **58¢**

"Non-Food Savings"
 Denture Cleaner 40 ct. **\$1.49**
Efferdent

Vaseline Intensive Care SKIN
 10 oz. **99¢**
Lotion

Brawny Paper Towels Lg. Roll **65¢**

Hair Spray
 9 oz. can **99¢**
Style

Toothpaste
 7 oz. Tube **\$1.29**
Crest

12 oz. size **\$1.39**

12 Oz. Can **79¢**

Shurfine "Heat and Eat" GLAZED Donuts 14 oz. box **79¢**

9 oz. **55¢**

Frozen "Ready To Bake" Pet Ritz Pies Large 26 oz.

Apple Cherry Peach **99¢ \$1.29 99¢**

Made With Cottonseed Protein Mrs. Baird's High Protein Bread Lb. **99¢**

3 lb. can **\$1.99**
 Limit 1

Pillsbury Hungry Jack Pancake Mix 2 lb. box **89¢**

Everyday Low Price
 18 oz. box **49¢**

lb. box **69¢**

12 oz. pkg. **99¢**

Cream Filled SANDWICH COOKIES 20 oz. pkg. **79¢**

Lb. can **\$2.29**
 Limit 2

Box of 12 **\$1.29**

3 oz. Jar **1.99**
 Limit One

PRODUCE VALUES

Jonathan Apples 3 lb. bag **59¢**

California Avocados 4 For **\$1**

Cello Radishes Pkg. **15¢**
 Green Onions Bunch **15¢**
 Fancy Celery Stalk **33¢**

margarine Lb. **39¢**
 Limit 2

Colby 10 oz. pkg. **\$1.19**

Shurfresh, Grade A Medium Eggs Dozen Limit 3 **57¢**

"Meats To Please You"
 Grade A, Whole Lb. Fryers **49¢**
 Thurs., Fri., Saturday

Fresh Lb. Pork Roast **89¢**
 We Use Pen Fed Beef

Forequarter Chuck Roast Lb. **\$1.39**

Extra lean, Cubed Stew Meat Lb. **\$1.99**

Meaty Beef Ribs Lb. **89¢**

Fresh Homekilled Calf Liver Lb. **99¢**

Silver Spur Pork Sausage 2 lb. bag **\$1.79**

Sliced Slab Bacon Lb. **89¢**

Shurfresh Tra-Pak Bacon Lb. **\$1.19**
 3 lb. can **\$4.99**

R & W Floor Covering & Furniture

Franklin Blvd — Felton Wright
648-3100 — Goldthwaite

Heritage Nursing Home Inc.

Phone 648-2258
Goldthwaite, Texas

Harper Implement Co.

Your John Deere Dealer
Phone 648-2272 — Goldthwaite

Nathan Carothers Gulf Oil Agent

Gulf Tires and Accessories
Phone 648-3225 — Goldthwaite

Boykin Feed Company

Your Feed and Seed Headquarters
Phone 648-3311 — Goldthwaite, Texas

Steen Hardware

The Stockman's Store
Goldthwaite

Cable-Vision, Inc.

1108 Parker — Phone 648-3411
Goldthwaite, Texas

Auldridge Building Center

Building Materials of All Kinds
Phone 648-2477 — Goldthwaite

Hillview Manor

1110 Rice — Phone 648-2247
Goldthwaite, Texas

JRB Food Store

Quality — Service — Satisfaction
Goldthwaite

Wagon Wheel Cafe

Les, Eva and Stephen Stewart
Phone 648-3535 — Goldthwaite

**Cattleman's Production
Credit Association**

Goldthwaite Office

The Rag House

Phone 648-2633
1116 Fisher — Goldthwaite

Don Geeslin Farms

We're Behind You Eagles
Phone 648-3523 — Goldthwaite

Head Electric

Quality Whirlpool Appliances
Phone 648-3133 — Parker St. — Goldthwaite

Laughlin Studio

Phone 648-3124
Goldthwaite

City Utilities

Phone 648-3186
Goldthwaite, Texas

**Central Texas Telephone
Cooperative**

Serving The Rural Area of Central Texas
Goldthwaite, Texas

Mills County State Bank

Member FDIC
Goldthwaite, Texas

**GO!
EAGLES**

**Goldthwaite
Eagles**



VS.

DeLeon Bearcats



In A District 10-A Battle

★ **Eagle Field** ★

In Goldthwaite

7:30 p.m.

Varsity Schedule:

- Sept. 7 — **Eagles 8, Hico 13** Here
- Sept. 14 — **Eagles 0, Hamilton 26** There
- Sept. 21 — **Eagles 13, Santa Anna 14** Here
- Sept. 28 — OPEN
- Oct. 5 — **Eagles 20, San Saba 42** Here
- Oct. 12 — **Eagles 0, Early 37** There
- Oct. 19 — **Eagles 12, Bangs 21** Here
- Oct. 26 — **Eagles 8, Dublin 30** There
- Nov. 2 — **DE LEON** Here
- Nov. 9 — **RANGER** There
- Nov. 16 — **CROSS PLAINS** There

Non-Conference Games Begin at 8:00 P.M.

Conference Games Begin at 7:30 P.M.

● - Denotes District 10-A Games

●● - Denotes Homecoming

**The civic-minded
businesses and individuals**

**listed on this page
urge you to support
the Eagles . . .**

Attend the Games!!



Jr. High

- Sept. 13 - Hamilton - Here
 - Sept. 20 - Santa Anna - There
 - Sept. 27 - Open
 - Oct. 4 - San Saba - There
 - Oct. 11 - Early - Here
 - Oct. 18 - Bangs - There
 - Oct. 25 - Dublin - Here
 - Nov. 1 - De Leon - There
 - Nov. 8 - Ranger - Here
 - Nov. 15 - Cross Plains - Here
- All Games Start at 5 P.M.
Games to Include 7th and 8th Grade Games

Barnes & McCullough
Everything To Build Anything
Phone 648-2284 — Goldthwaite

Mills County Commission Co.
June, Helen and John
Goldthwaite

Blackwell Wool & Mohair
Phone 648-2231 — Goldthwaite
Go Get 'Em Eagles!

Southern Savings And Loan
Ruth Dennard, Manager
Member FSLIC — Goldthwaite

Hudson-McMahan Pharmacy, Inc.
What You Want, When You Want It
Phone 648-2484 — Goldthwaite

Frazier Brothers Grocery
— All The Way Eagles —
Goldthwaite

Sears Catalog Sales Agency
Phone 648-2423
Goldthwaite, Texas

W. D. Henry Welding Co.
— Boosting The Eagles —
Goldthwaite, Texas

The Goldthwaite Eagle
Printing — Office Supplies — Office Furniture
Phone 648-2244 — Goldthwaite

LeRoy Miller Conoco Station
Quality Conoco Products
Goldthwaite, Texas

Dairy Cup
Pit Barbecue
Phone 648-2250 — Goldthwaite

Patty's Of Texas
Myrna Dale O'Neal, Manager
Goldthwaite, Texas

Watson Variety & Supply
On The Square
Phone 648-2291 — Goldthwaite

Geeslin Motors
Your Chevrolet Dealer
Phone 648-2273 — Goldthwaite

Shelton Auto Parts
Go, Eagles Go!
Phone 648-3312 — Goldthwaite

Duren & Holcomb
Real Estate, Bookkeeping & Tax Service
Goldthwaite, Texas



Regency Happenings

By MRS. ALTON JONES

ill dry. The farmers and
others are sure in for a
job this winter feeding
stock, for there surely
it be anything for them
are on.

inford Hodges of
getown spent the week-
with Mr. and Mrs.
Cooper.

tra Rowlett went to
wood Thursday to
with the children of
and Mrs. Ross Rowlett
they went to a
hers meeting.

ry went to San Angelo
Friday to see an eye
We returned home
Friday. My brother-in-law
Bolinger is in poor

health and is bedfast.

Scott Sears visited one
afternoon as he came from
school. We always enjoy
him. Poor little fellow gets
lonesome out here as he has
no one to play with out
here.

We went to Dallas for a
few days to see my nephew
and wife Julie. We went
with Mr. and Mrs. G. W.
Newsom of San Angelo, as
it was their son and wife,
Jimmie and Julie Newsom.
They sure have a beautiful
home.

We visited Mr. and Mrs.
Hulon Egger Saturday.
Anna Bell is doing some
sewing for Kay, so we had
to go for a fitting of a dress.
I tell you Pa and Kay are
watching a program on TV

which must be a 'doosie' for
they are enjoying a good
laugh.

Mr. and Mrs. Jess Whit-
ley of Goldthwaite visited us
Saturday afternoon. We
always enjoy them.

PERSONAL

Mr. and Mrs. M. L.
Lindsay and Hulda Doggett
of Goldthwaite spent a few
days visiting in Houston
recently with Mr. and Mrs.
Douglas Pace (Annette
Lindsay). They also visited
Mr. and Mrs. Earl Doggett
and Mr. and Mrs. Ralph
Lowe. All the couples they
visited with had new homes.
Everyone reported having a
very good time visiting.

When The Old Bird Was Younger



10 Years Ago

(Taken from the Eagle
files of Nov. 30, 1969).

Melissa Collier and Randy
Leonhard were presented as
the 1969 Sweetheart and
Beau of the Goldthwaite
High School Eagle Marching
Band at the game
against Bangs, October 17.
Howard Hoover was elect-
ed president of the Men's
Downtown Bible Class last
Sunday at their 19th annual
meeting.

Miss Mary Muse became
the bride of Don Kent
Geeslin Saturday evening,
October 25.

50 yrs. ago (11-1-29) - A
wood chopping contest will
be staged by Fairman Co.
for Friday, Nov. 15, in front
of their building on Flaher
Street. Peter McLaren, the
world champion wood chop-
per, will defend his title in
this contest and offers a
prize of \$50 to anyone who
can chop a log in two in
50% more time than it takes
him to cut it.

15 Years Ago

(Taken from the Eagle
files of Oct. 29, 1964).

Miss Janan Gray was
named Queen of the Goldth-
waite Harvest Festival last
Friday night. Her escort
was Billy Miller.

Sandra Jordan was re-
cently selected Sweetheart
of the Goldthwaite FFA
Chapter.

R. V. Geeslin, Burl
Holland, W. O. Kemp and
Horace Brooks have return-
ed from a 10day hunting trip
to the Colorado mount-

20 Years Ago

(Taken from the Eagle
files of Oct. 29, 1959).

Mike Hoover, a senior,
was named Beau by the
Goldthwaite Pep Squad dur-
ing halftime ceremonies at
the Homecoming game last
week.

Mr. and Mrs. Joe Bur-
dette of Mullin will cele-
brate their 65th Wedding
Anniversary at their home
Sunday, Nov. 8, from 2:00
to 5:00 p.m.

Officers re-elected for
Farm Bureau at their last
meeting were Homer Mc-
Casland, President; W. C.
Bishop, Vice President; W.

W. Fox, Sec.-Treasurer.
Mrs. Cecil Williams was
elected reporter.

70 yrs. ago (10-30-09)
W. T. Vessell, J. A. Harris
and J. O. Swindle were
visitors in town from Indian
Gap country Thursday. They
came over in Mr. Harris'
automobile.

City Iron & Metal

Paying highest prices for
scrap steel, iron, tin,
clean cast, dirty cast,
motor blocks, scrap
brass, copper, radi-
ators, aluminum and junk
batteries.

We also have new and
used steel for building
purposes.

5th & Brady Hwy.
Phone: 915/646-9391
BROWNWOOD

Lometa Commission Co.

LOMETA, TEXAS
Sale every Friday - 12:00 O'clock Noon
Specializing in Fresh Country Cattle
with plenty of buyers
Bud Harrell, Owner
512-752-3168 Office
512-752-3286 Residence
915-597-2981 Brady Office
Bud Harris, Manager
512-752-3168 Office
512-752-3211 Residence

The Goldthwaite Eagle

AND THE MULLIN ENTERPRISE
Published Every Thursday at Goldthwaite,
Mills County, Texas
P. O. Box 249—Goldthwaite, Texas 76844
Phone: 915/648-2244

G. Frank Bridges — Editor and Publisher
AN INDEPENDENT NEWSPAPER

TEXAS PRESS MEMBER 1979 ASSOCIATION

SUBSCRIPTION RATES —

Mills & Adjoining Counties, 1 year \$ 8.00
Elsewhere in Texas, 1 year \$ 9.00
Outside Texas, 1 year \$10.00
Single Copy \$.15

Subscription Discontinued Upon Expiration
Entered as Second-Class Matter at the Post
Office in Goldthwaite, Texas, under the Act
of Congress of March 3, 1879

Any erroneous reflection upon the character or
standing of any individual, firm, or corporation, will be
cheerfully corrected when brought to the attention of
the Publisher.

Jubilees Entertain At Self Culture Club Meeting

Mr. Gene Talbot and 14
of his Jubilee Singers
entertained the Self Culture
Club. The Tuesday Study
Club and other guests at the
Jennie Trent Dew Library
Clubroom on October 25th.

Selections from Oliver,
"What a Beautiful Morn-
ing", "This Is My
Country", "Wouldn't it be
Lovely", and Gay 90 Fan-
tasy, were sung by the
group. Mr. Bill Laughlin
accompanied the group at
the piano. Mr. Laughlin also
gave some lovely piano
numbers. The music and
songs were greatly enjoyed
and appreciated. Thanks to
all.

Dainty refreshments were
served from a clever Hal-
loween decorated table after
the program.

Mrs. Norman Durin, the
president, presided over the

business meeting. Mrs.
Fred Reynolds gave the
invocation.

The next meeting of the
Self Culture Club will be a
Thanksgiving program, with
Minister Roland Fry as the
guest speaker.

Personal

Visitors in the Henry
Long home last Tuesday
were Mr. and Mrs. Jack
Cartwright of Weslaco and
Mrs. J. H. Hall of Kemp-
ner. While here, Mrs. Long
fell and cracked her knee
cap. She went to the doctor
Wednesday morning and
was confined to the hospi-
tal. She is doing fine and
hopes to come home some-
time this week. Mrs. Cart-
wright and Mrs. Hall are
Henry's sisters.

Watson's Variety & Supply

North Side of the Square — Goldthwaite
We Have New Merchandise
Gift Items ★ Toys ★ Silk Flowers
Others too numerous to mention
Register For FREE Drawing beginning
Nov. 1 thru Dec. 24th.

(You don't have to be present to win)

Free Prizes . . .

1. Air Tank, \$34.95 Value
2. Spartus Electric Clock, \$16.88 Value
3. \$15.00 Gift Certificate
4. \$10.00 Gift Certificate
5. \$5.00 Gift Certificate

★ Use our convenient
Lay-A-Way for Christmas!!

This Is Your 2nd Week SHURFINE Fall Food SALE

Tomato Soup 5 For \$1.00
Pineapple 4 For \$1.00
Peaches 29 as Can 59¢
Tomatoes 3 For 89¢
Beef Stew Reg 1.47 Now 79¢
Dill Pickles Reg 1.29 Now \$1.19
Tomato Sauce 6 For \$1.00
Vienna Sausage 2 For 89¢
Corn Meal 1 Lb 89¢
Can Milk 2 For 79¢
Dairygold Milk Gal. \$1.87
Coconut \$1.19
Apple Juice \$1.49
Tamales 15 Oz Can 49¢
Waffle Syrup 32 Oz Reg 99¢ Now 79¢
Grape Juice 34 Oz Reg 99¢ Now 79¢
Raisin 15 Oz Box \$1.19
Cake Mix 16 1/2 Oz Box 49¢
Jelly-Jam-Preserves 38 Oz Reg 81¢ Now 69¢
Fruit Cocktail 16 Oz Can 49¢

'Top Choice Grain Fed Beef'

Round Steak \$1.68
Sirloin Steak \$2.33
T-Bone Steak \$2.43
Chuck Roast \$1.43
Hamburger Meat \$1.39
Boneless Brisket \$1.18
Fryers \$1.39
7-Bone Roast \$1.63
Sliced Bacon \$1.89
Swiss Steak \$1.83
7 Bone Steak \$1.73
Chuck Steak \$1.53
Center Cut Pork Chops \$1.59
German Style Sausage \$1.39

WALTER'S DISCOUNT FOODS, INC. 'SAN SABA'

FROZEN FOOD
Whipped Topping 8 Oz 55¢
Potatoes 2 Lb Bag 79¢
Lemonade 6 For \$1.00
Potatoes 2 Lb Bag 59¢
Sour Cream, Half & Half, Whipping Cream Your Choice 59¢
Oleo 1 Lb 39¢
Biscuits 6 For 89¢
American Cheese 12 Oz Pkg \$1.39
Shurfresh Eggs 57¢
PRODUCE
Tomatoes \$1.37
Potatoes \$1.09
Potatoes \$1.69
Cabbages \$1.15
Lettuce \$1.29



Engagement Announced

Mr. and Mrs. O.D. Box of 615 Early Blvd. have announced the engagement and approaching marriage of their daughter, Terrie Jeanette, to Jesse Dean Hurst, son of Mr. and Mrs. George Hurst, Jr., of Star...

Mullin In 4-Way Tie In Dist. 5-B

Last Thursday night was the Homecoming game for the Mullin Bulldogs when they hosted Sidney and came up with another win. The final score being 65-28. Terry Clendenen made 5 touchdowns - one on a 27-yard run, one on a 3-yard run, one on a 46-yard run, one on a 30-yard run, and one TD on a 25-yard pass from Jon Mangham.

6-man teams. Gustine will travel to Cherokee to play Thursday night, Nov. 1, at 7:00 p.m. Mullin will travel to May Friday night. Game time will be at 7:00 p.m. These games are anxiously awaited by the four teams.



TINA STUDER ...Contestant Tina Studer Competes In Contest

Miss Tina Studer has entered the District "Make It With Wool Contest", which will be held in Mason, Texas, November 3, 1979.



Big Valley Baptist In 96th Year

The Big Valley Baptist Church will observe its 96th anniversary Sunday, November 4, 1979. The regular morning services will begin at 10:30 with the pastor, Rev. Ramon Garcia, officiating.

The members of Big Valley Church are proud that they were the first church group in Mills County to enrich their Christian fellowship by opening their doors to the Mexican-American community.

All former members friends are invited to the special anniversary services next Sunday.

Sr. Citizens Bits and Pieces

We have a lovely handmade quilt we will have a drawing for at our Bazaar which will be held Dec. 5th. Come take a look at it!

Douglas Robertson, Mrs. Odessa Tubbs, and Mrs. Chas. W. Holden.

Calendar Of Events THURSDAY, Nov. 1 - 12:00 Meal; 6:00 KKK covered dish supper and practice. FRIDAY, Nov. 2 - 12:00 Meal; 3:00 Housing Assistance.

Happy Anniversary To J. D. & Faye Kight, Luke and Lillie Thompson.

Menu for the Week: THURSDAY, Nov. 1 Country Fried Steak Mashed Potatoes Canned Spinach Tomato Juice - Roll Tropical Apples - Milk FRIDAY, Nov. 2 Meat Potato Burger Cauliflower Apple, Carrot, Celery Salad Cornbread - Applesauce Milk

THURSDAY, Nov. 8 Oven Fried Chicken Stewed Tomatoes Rice - Peach Half on Lettuce Leaf Canned Prunes Roll - Milk

Young Homeroom Sat Meet Nov.

The next meeting of Mills County Young Homemakers will be held Thursday, November 1st at 7 p.m. at Suzanne Dugg's home.

Heritage Happenings

Spooks and Goblins will be out tonight, so everyone be on the lookout. We are looking forward to seeing a host of them. We have lots of treats, so please come by. We want to thank everyone who donated items for our sale and those who bought them.

See Us For Your Cancer Insurance.

Why does the Company we represent write over 60% of all the Cancer Insurance in the World?

G. C. Head Insurance Phone 648-2282 Goldthwaite, Texas

Fall Sportswear SALE

Group Ladies Jackets, Pants, Skirts, Tops, Blouses 1/3 off Reg. Price

Group Ladies Sleepwear SHOES 1/2 PRICE Group Ladies Sportswear and Dresses 2/3 off Reg. Price

Yarborough's Beat the Bearcats

Hospital Report

- October 23 - Admitted: Ewald A. Hertz of Comanche; Emmett T. Singleton of Goldthwaite. Discharged: Mazie Runnels, Della Butler. October 24 - Admitted: Alfreda S. Smith of Goldthwaite; Verna Lee Long of Mullin. October 25 - Admitted: None. Discharged: Ewald Hertz. October 26 - Admitted: Nora Beck Carothers and Jessie W. Geeslin, Goldthwaite. October 27 - Admitted: Robert Clary, Evant; Frances Armstrong, Pamela Gail Talbot, and Harper Jeff Walls, Goldthwaite. Discharged: Pamela Talbot, Margie Lorene Dunlap. October 28 - Admitted: Albert Evans of Priddy, Natalie Renee Scott of San Saba. Discharged: Harper Jeff Walls. October 29 - Admitted: Vicky Ray Wiedebusch of Brownwood; Harold P. Beard of Hamilton; Luther V. French and Eunice Belle Knowles of Goldthwaite. Discharged: Velma A. Bramblett.

Memorials & Donations To Museum

- Following is the latest list of Memorials and Donations made to the Mills County Museum: In memory of Delton (Puny) Barnett: Mr. & Mrs. B.F. Rainey Mr. & Mrs. O.H. Renfro Mr. & Mrs. Sam Drew In memory of Foy Gibbard: Mr. & Mrs. Ronnie Cline In memory of Mrs. George Reese: Mr. & Mrs. Wilson Head In honor of Mrs. Hollis Blackwell: Mrs. Talbot Ledbetter

Silver River Club

Proctor, Texas 'Where Good Times Flow Every Week'

Wednesday, October 31st Bill Smallwood Band Special "Spooky" Halloween Party (\$3.00 Per Person) Cash prizes awarded to best costumed male and female

Thursday, November 1st Disco (\$1.00 Per Person)

Friday, November 2nd Texas Fever (With Remote Fiddler) (\$3.00 Per Person)

Saturday, November 3rd Texas Highlanders (\$3.00 Per Person)

Wednesday, November 7th Jerry Nail (\$2.00 Per Person)

Tuesday thru Saturday We Open Every Evening At 7 p.m. For Membership Information Call 817/879-2750