

The Way It Was The Country Store

Hartal Langford Blackwell

Because they sold the goods that made up the sustenance of the storekeepers were considered the mainstay of early communities. Most stores were general mercantile establishments and their shelves were laden with everything imaginable. The storekeeper believed he would sell anything to people for a profit, but was soon to learn that obligations were many and opportunities few.

His store was the place people went for everything from calico to turpentine to canned goods. He was asked to carry materials of all descriptions - Coffey's Readers, kerosene, baby's crump medicine, plates for school, ladies' fancy comb, bolts for plows and axes for newlyweds. His shelves were laden with the things of home remedies - tragacanth, epsom salts, castor oil, opium for pain, Hostetter's pills, Hood's Sarsaparilla for skin and baking soda for insecticide. From his shelves were bought to study symptoms and what to do for them - turpentine and lumber when it was over.

The storekeeper became the civic leader, barterer, confidant and public creditor of the community. When times were hard and no rains came he was the one person people turned to for credit and help. He listened to every farmer's woes - every person's illnesses, political views and arguments. No one knew a community so well as the storekeeper.

To describe one general mercantile store is to describe most of them; however, some carried more merchandise than others. There was usually the back porch and double front doors. Windows flanked the front doors and were crammed with merchandise barely visible through the thick coating of dirt that had collected there for years.

But to step inside a country store was a world within itself. First came the vision of mess and gloom due to no lighting and the heavily burdened shelves and tables with rows of articles between them. But the walls of just about everything that one forget all else. There was the odor of plug tobacco, cut coffee, just ground beans hanging in bunches along the walls; the unforgettable aroma of rounds of cheese; leather just made into saddles, boots and belts; the tang of bolt after bolt of brass materials and the sweet, stinging delight of smelling permitt candy.

When the eyes became accustomed to the dimness inside, one soon saw that not an inch of space had been wasted. On one side of the

store was a counter for groceries; down the middle of the store were tables overflowing with bolts of cloth; and on the other wall were boxes stacked with shoes, long-handled underwear, socks, blue denim shirts and coveralls.

Toward the back of the store was the hardware department. There could be found washpots, milk buckets, cotton batts, milk crocks, churns, milk coolers, kerosene lamps and just about anything the pioneer woman could ask for. Farther back in the store was the storekeeper's little office stuffed with a huge roll-top desk and swivel chair, and on the wall was an opening through which people paid their bills.

Arranged at different places over the store were kegs and barrels of all sizes. They were brimming with sugar, flour, vinegar, pickles, salt, molasses, nails and bolts. In some stores, especially those in settlements of German ancestry, there was always a barrel of a pickled herring ready for the taking.

The center of the store was a place of importance for there stood the pot-bellied stove. It was around this stove that people were inevitably drawn to visit, sit in a circle on old rawhide or rope-bottomed chairs and talk the time away, spending the good part of a morning or afternoon. A pan of ashes in front of the stove served as a spittoon and was missed more than it was hit. A big cracker barrel stood nearby, usually, and the warmth of the stove kept the crackers crisp. They gathered around the cold stove in the summer months, too. It was their one place to sit and talk.

Pioneer women often went to town with their husbands, and for them this occasional visit was a happy break from their monotonous and lonely lives. They doled bolts of materials - calico and muslin; pored over the finer silks - sighed and walked away. There usually was a bench near the front door where women often sat and chatted together about the ills of their children, how their gardens grew and perhaps complimented each other on a new calico dress or a ruffled bonnet. They seldom sat with the men around the stove.

When the husband had finished with his visit and learned all the news of the community, he gathered what supplies he could afford to buy and drove into the sunset to once again take up the task of making some sort of living for the family. Probably the storekeeper added another sum to the already mounting bill, hoping as he did that rain would come soon, or that the price of cotton would be good in the fall. Maybe he could then feed and clothe his own family.

There have been many early-

day storekeepers in Mills County - the Egger Brothers from Hanna Valley (Regency), Harry Oglesby and his father, William Oglesby of Big Valley, Alton and Jewel Jones from Regency, Carl Jeske from Priddy, and many others. Some of them stayed for a short time, while others spent a great part of their lives 'keeping the store'. A short history of three of the storekeepers will follow in later issues of the Eagle - A. J. Gatlin who kept the Red Store when Goldthwaite was in its infancy; Dick Jeske from Star who kept the Star Cash Store for forty-four years; and Mohler Oglesby from Center City who operated his store during the time of the great depression.

All rights reserved.

Dove Season Opens Here September 1st

For any who might need to be reminded, dove season opens September 1. Traditional noon to sunset shooting hours must be observed during the continuous morning dove season Sept. 1 through Oct. 14 in the North Zone and in the first portion of the season established recently by the Texas Parks and Wildlife Commission.

Daily bag on the mourning dove is 10 birds with possession limit of 20. This applies to all Texas dove seasons.

A split season is set for the North Zone beginning Jan. 1 and runs through Jan. 16 when the shooting hours start 30 minutes before sunrise and will end at sunset.

Last year an experimental all-day season was tried in the winter segment of the South Zone with no appreciable change in dove harvest. Hunters contacted by the TP&WC generally were pleased with the additional hunting opportunity whether they took more doves or not.

According to Clyde Holt, TP&WC biologist in Decatur, the opening of dove season will probably be a little "slower" than normal for the North Central Texas area. Holt said it is strictly a food situation and at this early date we have no abundance of dove feed. As the croton (dove weed), sunflowers and milk weed matures our dove population should build up where this type of situation exists. Holt also advised hunters to keep a close watch on the harvest of grain fields because under the right conditions they provide some of the very best dove hunting.

The Goldthwaite Eagle

Established in 1894

Volume 80 - Number 20 Goldthwaite, Mills County, Texas 76844 Thursday, August 19, 1976



Wild Rider

Eddie Martinez of Goldthwaite was one of the finalists in the bareback bronc riding

during the Gold-Tex Finals held this past weekend. Laughlin Studio Photo

Gold-Tex Winners Announced

Finals of the Gold-Tex Rodeo were held in Goldthwaite last weekend, August 12, 13 and 14. Trophies were awarded Saturday night to the over-all winners in each event, which are listed below:

BAREBACK BRONC
1st - Dale Partin, 2nd - T. J. Wilson, 3rd - Brian Mster

TIE-DOWN ROPING
1st - Davy Thomson, 2nd - Larry Adams, 3rd - James Siger

JR. BARRELS
1st - Sherri Curry, 2nd - Angela Beavers, 3rd - Cindy Parrish

HIGH SCHOOL BARRELS
1st - Shelly Covington, 2nd - Kay Bush, 3rd - Tommy Mas-singill

RIBBON ROPING
1st - Larry Adams, 2nd - Gracy Burrus, 3rd - James Siger

JR. POLE BENDING
1st - Jeanie Leonard, 2nd -

Kathryn Lewis, 3rd - Paula Bundrant
SR. POLE BENDING
1st - Katy Leonard, 2nd - Anne Parker, 3rd - Teresa Buchanan
BREAKAWAY ROPING
1st - Bobby J. Smith, 2nd - Billy Dean Jones, 3rd - Rusty Allen

CALF RIDING
1st - Ricky Smith, 2nd - Roby McKinney, 3rd - Brian Petty
BULL RIDING
1st - Ray Hall, 2nd - Bobby Smith, 3rd - Joe Cook
WILD HORSE RACE
1st - Zephyr, 2nd - San Saba, 3rd - Early

Museum Co-Sponsors

Cindy Ynostrosa In Contest

Cindy Ynostrosa will represent Mills County as candidate for Queen of the Diez y Seis de Septiembre Las Fiestas Patrias, to be held in the coliseum in Brownwood on September 18. Mills County Historical Museum and Mills County Mexican Bicentennial Committee, non-profit organizations, will sponsor Cindy and her alternate, Janie Torres, and help to raise enough money to win the contest.

Money raised by Cindy and her co-sponsors will determine the number of votes she receives as a candidate. Half of the money raised will come back to the Museum and the Mexican Committee. Raffle tickets are being sold for a 16-inch color TV as first prize, \$100.00 as second prize, and \$50.00 as third prize.

The queen's contest is a part of the day's activities planned for the celebration, sponsored by the United Mexican Alliance of Brownwood. Among the other attractions will be Mariachos and Ballet Foliorico (folk dances) from Mexico, food concessions, the raffle drawing, and a public dance in the evening.

Raffle tickets may be purchased from Cindy by calling her at home, 648-3223, and they will be available, also, at the Museum on Sept. 1. THE MUSEUM WILL BE CLOSED THE LAST TWO WEEKS IN AUGUST SO THAT MRS. WEATHERS CAN TAKE HER VACATION, AND WILL RE-OPEN ON SEPT. 1. The latest list of donations

and memorials to the Museum follows:
Mr. and Mrs. Robert Long
Mr. and Mrs. W. G. Saylor
Mr. and Mrs. J. D. Harper
Mills County Young Home-makers
Mexican Bicentennial Committee
Mr. and Mrs. Kellis Landrum
Teen Union Building
Koen Reunion
Mrs. Roy Wilkins
Mr. and Mrs. Forest Frazier
Mr. and Mrs. Harmon Frazier
Mrs. L. O. Kelly
Mrs. Harvey Dunkle
Mr. and Mrs. Jimmy L. Huffman - in memory of Prentiss Dale Head
Mr. and Mrs. Riley E. Burdette - in memory of Mr. and Mrs. Joe Burdette



CINDY YNOSTROSA

Council Adopts Ordinance Establishing City Tax Rate

The Goldthwaite City Council, meeting in special session on August 12, adopted an ordinance establishing the tax rate for the City at \$1.50 per \$100 valuation of property. This tax is for the purpose of maintaining the General Fund budget

of the City and is collected on a fiscal year basis from July 1, 1976.

The Council revised the 1976-77 City Budget for Revenue Sharing Fund to correspond with the Planned Use Report, delineating fund expenditures already forwarded to the federal government. The amended amount in this fund is \$11,552.86, an increase of \$1,052.86. This fund is used for street paving and repair and for the library.

The Council also adopted a resolution endorsing the local Senior Citizen effort to obtain a federal grant for acquisition of a facility.

The next regular meeting of the City Council will be September 4 at 7 p.m. in the City Hall. The public, as always, is invited to attend.

Eagles Scrimmage B'wood Tonight

"All in all, we were real pleased with the inner-squad scrimmage Saturday night," commented Head Coach Norman Brister. "All the boys exhibited a good deal of enthusiasm and displayed quite a lot of good hitting throughout the game."

Thursday, tonight, the Eagles will scrimmage here at Eagle Field at 7:30 p.m. against the Brownwood Junior Varsity. Coach Brister and assistant coach John Smith are confident the boys will be ready for the upcoming scrimmage.

A total of thirty-eight boys have turned out for football workouts.

Star Sponsors Open Youth Rodeo Aug. 19-21

The Star Mountain Youth Horse Club, Star, Texas, will present their first annual open youth rodeo Thursday, Friday and Saturday nights, August 19, 20 and 21. Performances will get underway each night at 8 p.m.

Events include bull riding, steer riding, ribbon roping, tie-down roping, bareback bronc riding, breakaway roping, poles, barrels and wild mule race.

Entries must be in by 10 p.m. Wednesday, August 18. Entries should be given to Sherryl Harper, 915-948-3856, after 4 p.m. The rodeo will follow AJRA rules.

First through third place trophies will be awarded in each age group in each event. The all-around high-point boy and girl in each age group will be awarded a \$50 belt buckle.

Latest Park Donors Named

Latest contributors to the Mills County Park Fund, according to W. P. Duren, chairman of the committee, are: Marie Hunter; Mr. and Mrs. A. P. Lee; Mr. and Mrs. Robert C. McCoy; Mr. and Mrs. R. L. Mills. Total contributions to date amount to \$1230.50. Anyone wishing to donate to the fund should mail their checks to Mills County State Bank.

CORRECTION --

In last week's list of Park Fund contributors, the name of Mrs. B. C. Wicker should have been listed as the Koen Family Reunion.

Head Start Registration

Registration for the Head Start program will be Friday, August 20th. The registration will be held between the hours of 8 a.m. and 4 p.m. at the Show Barn.

In order to register, children must be between the ages of 3 years-7 months and four years. The older children must be considered first. Birth certificates and shot records are required when registering.

The Head Start program will begin August 23rd, according to Virginia Coronado, teacher for the group. The program will be conducted each school day from 8 a.m. until 2 p.m.



Regency Store

The Regency Store, built in late 1870's, was once a store called Hannaville, as well as a general mercantile store until the community was named Regency. The store was destroyed through the 1936 flood and stands.

Owners through the years have been a Mr. Doran, A. J. Jones, J. H. James and Sons, Mr. Watkins, Baz Lindsay, Harris Lee and J. J. Kelling, Skeltons, and Ben and Henry Egger who operated the store from 1919 until 1957 when Alton

Jones and Robert Phillips bought it.

The Jones closed the store in 1971 - after its doors had been open for business for almost one-hundred years. Alton Jones' home is at back of picture.

J R B

SUPERMARKETS

BROWNWOOD, COLEMAN, CROSS PLAINS, ABILENE, RANGER,
EASTLAND, CISCO, DE LEON, BRADY, WICHITA FALLS, STAM-
FORD, LLANO, HAMLIN, SPRINGTOWN, NEWARK,
BRIDGEPORT, ALBANY, HASKELL, GOLDTHWAITE AND DUBLIN

PRICES GOOD THROUGH WED., AUGUST 25th
WE RESERVE THE RIGHT TO LIMIT

BIG BUYS in DAIRY AND FROZEN FOODS

- LITE SPREAD 39¢
CHIFFON
- MARGARINE 59¢
CHIFFON 2-8 OZ TUBS
- MARGARINE 59¢
MAZOLA CORN OIL - 1 LB Quarters
- COTTAGE CHEESE 49¢
GANDY'S QUALITY CHECKED 12 oz. ctn.
- PIES MRS. SMITH 89¢
APPLE OR DUTCH APPLE Big 26 oz.
- ORANGE JUICE 5/\$1.00
BRIGHT & EARLY Imitation 6 oz. Can
- PIZZAS CHEF BOY AR DEE All Varieties Large 89¢

- FACIAL TISSUE 59¢
KLEENEX 280 count box
- TOWELS 49¢
TERI Jumbo Roll
- PET FOOD 9/\$1.00
PARADE, DOG OR CAT 300 can
- MIXED VEGETABLES 5/\$1.00
PARADE 303 can
- SALT 2/29¢
PARADE, PLAIN OR IODIZED 26 oz.
- FRUIT DRINK 3/\$1.00
PARADE ORANGE 46 oz. can

JELLY \$1.39
SMUCKER-GRAPE
3 LB. JAR

PEANUT BUTTER 79¢
PARADE
Smooth or Crunchy
18 oz. jar

SUGAR

EGGS

JRB
5 LB. BAG - LIMIT 1

89¢

JRB
GRADE A MEDIUM
DOZEN

59¢

BISCUITS

PARADE
SWEET MILK or BUTTERMILK
10 COUNT CAN

12/\$1.00

BACON

FARMLAND
BOYER RIVER
1 LB. VAC. PACKAGE

99¢ Ea.

CORN

GARDEN FRESH
LARGE EARS

5/69¢

BIG BUYS in MEAT

GROUND BEEF 69¢

Family Pack - 3 LB. or more

- SHORT RIBS 59¢
USDA Inspected Heavy Beef
- STEW MEAT 89¢
BONELESS
- SIRLOIN STEAK \$1.39
USDA Inspected Heavy Beef
- T-BONE STEAK \$1.69
USDA Inspected Heavy Beef
- ROUND STEAK \$1.19
USDA Inspected Heavy Beef Boneless
- ROUND STEAK \$1.29
USDA Inspected Heavy Beef Tenderized
- TOP ROUND STEAK \$1.39
USDA Inspected Heavy Beef Boneless

- SWISS STEAK 79¢
USDA Inspected Heavy Beef Arm Round Bone Cut
- FAMILY STEAK 69¢
USDA Inspected Heavy Beef 7-Bone Cut
- RIB STEAK \$1.09
USDA Inspected Heavy Beef
- GROUND BEEF 79¢
SMALL PKG.
- GROUND BEEF 99¢
LEAN
- ROLL SAUSAGE 99¢
FARMLAND - 1 lb. pkg. - reg. or hot
- BOLOGNA 99¢
- Mkt. Sliced
- FRANKS 79¢
ARMOUR CAMPFIRE 12 oz pkg.
- SMOOKES \$1.09
ARMOUR STAR 12 oz pkg.
- HOT LINKS 99¢
ARMOUR CAMPFIRE
- CUTLETS \$1.69
USDA Inspected Heavy Beef

- WHITE GRAPES 49¢
THOMPSON SEEDLESS
- RED ONION 29¢
ITALIAN SWEET
- BELL PEPPER 39¢
LARGE PODS

TOMATOES
LARGE SIZE

39¢
LB.



- BACK TO SCHOOL SPECIALS -

CRAYONS

No. 24, Reg. 69¢

37¢

ELMERS GLUE Reg. or Back to School 1 1/2 oz. Reg. 39¢ 17¢

LUNCH KITS ALADIN Reg. 4.29 \$3.29

Double

Stamps

Wed. &

Saturday

LIGHT BULBS

G.E. 60-75-100 watt soft white 4 PKGS. \$1.29

TEA

PARADE INSTANT 99¢
3 oz. jar

DETERGENT

SUPER SUDS 69¢
6L Size

CORN

PARADE GOLDEN CREAM STYLE 5/1.00
303 can.

GREEN BEANS

PARADE CUT 6/1.00
303 can.

PEACHES

PARADE SLICED OF HALVES 4/1.00
303 can.

POTATOES

PARADE WHOLE 5/1.00
303 can.

SPINACH

ARGO 7/1.00
303 can.

SAUERKRAUT

PARADE 5/1.00
303 can.

POTATOES

10 LB BAG ONLY 19¢
WITH YOUR SUPER DISCOUNT BOOKLET

ICE CREAM

1/2 GAL ONLY 19¢
ALL FLAVORS WITH YOUR SUPER DISCOUNT BOOKLET

Homo MILK

1/2 GAL ONLY 9¢
WITH YOUR SUPER DISCOUNT BOOKLET

FRANKS

12 OZ PKG ONLY 9¢
WITH YOUR SUPER DISCOUNT BOOKLET

30¢ off VALUABLE COUPON SAVE - SAVE - SAVE 30¢ off
PARADE Catsup
26 OZ. BOTTLE 39¢ WITH THIS COUPON
69¢ WITHOUT COUPON
GOOD AT GOLDTHWAITE JRB
COUPON EXPIRES AUG. 25th

30¢ off VALUABLE COUPON SAVE - SAVE - SAVE 30¢ off
PARADE Mayonnaise
QUART. 59¢ WITH THIS COUPON
89¢ WITHOUT COUPON
GOOD AT GOLDTHWAITE JRB
COUPON EXPIRES AUG. 25th

30¢ off VALUABLE COUPON SAVE - SAVE - SAVE 30¢ off
PARADE ALL VEGETABLE Shortening
3 LB CAN 59¢ WITH THIS COUPON
89¢ WITHOUT COUPON
GOOD AT GOLDTHWAITE JRB
COUPON EXPIRES AUG. 25th

30¢ off VALUABLE COUPON SAVE - SAVE - SAVE 30¢ off
PARADE Flour
5 LB BAG 49¢ WITH THIS COUPON
79¢ WITHOUT COUPON
GOOD AT GOLDTHWAITE JRB
COUPON EXPIRES AUG. 25th

Policy Adopted By Board Regarding Drug And Alcohol Use

Goldthwaite Independent District Board of Trustees recently, have adopted the following new policy regarding the use of drugs and alcohol in local schools:

In order to ensure a propitious and healthful atmosphere, conducive to the education of all students in the Goldthwaite School System, a policy regarding the use of drugs and alcohol is hereby adopted. This policy must be clearly understood and strictly enforceable in dealing directly with the problems of drug and alcohol abuse in the school.

"The possession, use, or influence of alcoholic beverages on the premises of Goldthwaite Schools is absolutely prohibited and will be punished by a three day expulsion and exclusion from all extracurricular activities for six weeks, or as otherwise deemed appropriate by the school administrative officials.

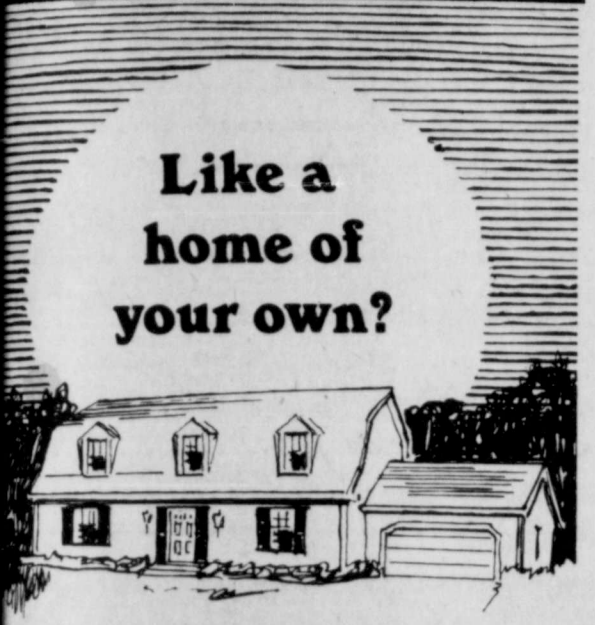
"Any drug used in any manner by any student for any reason on school premises or school-sponsored or sanctioned activities must be properly identified. Its use must be supervised by the school nurse, classroom teacher, or proper school representative. Non-prescription drugs must be in properly labeled containers and accompanied by a verifiable signed note from the student's parent or guardian giving permission and instructions for the drug's use. A prescription drug must be in the originally dispensed container which must be labeled with accurate instructions for its use. Prescription drugs should be taken with the consent and under the supervision of the school nurse, classroom teacher, or other proper school official. Prescription drugs are also subject to verification by parents, pharmacist, or physician. Any drug not properly identified or without adequate directions for use, or without written parental or guardian consent for its use, will be confiscated. The drug will be confiscated, if possible, in the presence of a responsible and recorded witness. It will be labeled with the student's name and the date and place of confiscation. It will be placed in a sealed container and stored by the principal or superintendent for future reference. The offending student's parents or guardian will be summoned as rapidly as possible, if possible. Unless the drug is readily identifiable without doubt by parent, guardian, physician, or pharmacist by name and use, appropriate law officials will be summoned to take charge of the contraband and the situation. The

school's punishment for a drug violation will be entirely independent of that determined by the laws of the state and nation. A drug violation will be punished by expulsion indefinitely and forfeiture of participation in all extracurricular activities for a minimum of six weeks, or as otherwise deemed appropriate for the specific offense by school administration.

"The term 'drug', as used in this policy statement, applies in the broadest sense of the word to include substances used orally, by injection, suppositories, topical preparations, inhalants, and smokable substances.

"Any student who willfully withholds evidence or information about drug or alcohol violations may be punished for their negligence and complicity as demanded by the incident.

"Violation of the drug or alcohol policies of the Goldthwaite Schools will also result in the automatic loss of all class and organization offices, leadership positions and the privilege of school representation for the remainder of the school year."



Like a home of your own?

It's as easy as opening a savings account! With your regular deposits and our high interest, you'll have the down-payment for a home socked away before you know it. Don't put it off any longer. See us now.

Make life richer.

LAMPASAS FEDERAL SAVINGS & LOAN ASSOCIATION
P. O. BOX 949
LAMPASAS, TEXAS 76550



SUPER SCREEN SIZE
SUPER VALUE

ZENITH 19" BLACK & WHITE
DIAGONAL

PORTABLE TV

Energy Saving 100%
Solid-State Chassis with Zenith Power Sentry System

Uses less energy than a 60-watt light bulb.

The BRIDGETON • H192W—A popular screen size at a popular price. Solid-state chassis with Power Sentry uses up to 64% less energy than Zenith's previous 19" all-tube models. Power Sentry controls voltage for longer component life, better picture quality. Solid-state tuning with Perma-Set VHF fine tuning and 70-position UHF channel selector. Molded cabinet with simulated Walnut finish.

\$169.00
ONLY

KELLY TV & APPLIANCE

Phone 648-3390 Goldthwaite

age by any student at any school-sponsored or school-related activity, in or about any other school district's facility, contest, meeting or program, or on any off-campus school sanctioned trip is prohibited. Punishment for violation of this rule will be expulsion for three days and exclusion from all extracurricular activities for six weeks, or as otherwise deemed appropriate.

"Any drug used in any manner by any student for any reason on school premises or school-sponsored or sanctioned activities must be properly identified. Its use must be supervised by the school nurse, classroom teacher, or proper school representative. Non-prescription drugs must be in properly labeled containers and accompanied by a verifiable signed note from the student's parent or guardian giving permission and instructions for the drug's use. A prescription drug must be in the originally dispensed container which must be labeled with accurate instructions for its use. Prescription drugs should be taken with the consent and under the supervision of the school nurse, classroom teacher, or other proper school official. Prescription drugs are also subject to verification by parents, pharmacist, or physician. Any drug not properly identified or without adequate directions for use, or without written parental or guardian consent for its use, will be confiscated. The drug will be confiscated, if possible, in the presence of a responsible and recorded witness. It will be labeled with the student's name and the date and place of confiscation. It will be placed in a sealed container and stored by the principal or superintendent for future reference. The offending student's parents or guardian will be summoned as rapidly as possible, if possible. Unless the drug is readily identifiable without doubt by parent, guardian, physician, or pharmacist by name and use, appropriate law officials will be summoned to take charge of the contraband and the situation. The

school's punishment for a drug violation will be entirely independent of that determined by the laws of the state and nation. A drug violation will be punished by expulsion indefinitely and forfeiture of participation in all extracurricular activities for a minimum of six weeks, or as otherwise deemed appropriate for the specific offense by school administration.

"The term 'drug', as used in this policy statement, applies in the broadest sense of the word to include substances used orally, by injection, suppositories, topical preparations, inhalants, and smokable substances.

"Any student who willfully withholds evidence or information about drug or alcohol violations may be punished for their negligence and complicity as demanded by the incident.

"Violation of the drug or alcohol policies of the Goldthwaite Schools will also result in the automatic loss of all class and organization offices, leadership positions and the privilege of school representation for the remainder of the school year."

Mr. and Mrs. Kyle Mark Geeslin of Goldthwaite announce the birth of a daughter, Karen Renae, born August 13, 1976, at Childress Hospital. She arrived at 5:41 p.m., weighing 8 lbs. 6 ozs.

Maternal grandparents are Mr. and Mrs. Jack Davis, and paternal grandparents are Mr. and Mrs. Don Geeslin, all of Goldthwaite.

Paternal great grandparents are Mr. and Mrs. W. T. Davis of Goldthwaite and Mr. and Mrs. O. W. Randolph of Odessa, Texas.

Paternal great grandparents are Mrs. J. M. Geeslin of Goldthwaite and Mrs. T. D. Goodwin of Blanket.

Mr. and Mrs. Delbert Lynn McCaig of Goldthwaite announce the birth of a baby girl, Kristina Lyndell, born at Childress Hospital, August 12, 1976. She arrived at 12:15 a.m. and weighed 6 lbs. 8 ozs.

Maternal grandparents are Mr. and Mrs. A. J. Harbour of Goldthwaite. Paternal grandparents are Mrs. Mary Wanda Newton of Hamilton and Sgt. Willard McCaig of Plainview.

Paternal great grandparents are Mrs. Rosa L. Kelley of San Saba and Mrs. A. M. Harbour of Lometa.

Paternal great grandparents are Mr. and Mrs. Dalton Edwards and Mrs. Opal Brymer, all of Plainview.

She has a big sister, Deanna Lee, to welcome her home.

Mr. and Mrs. Thomas M. Dean of Goldthwaite announce the birth of a daughter, Emily Jane, born August 11, 1976. She weighed 5 lbs. 11 1/2 ozs.

Maternal grandparents are Mr. and Mrs. R. M. Morgan of Goldthwaite. Paternal grandparents are Mr. and Mrs. James A. Dean, Jr. of Universal City, Texas.

Maternal great grandmother is Ella Collyer of Heritage Nursing Home, Goldthwaite.

Paternal great grandmother is Rose M. Evans of Seattle, Washington.



Hillview Highlights

We were thrilled at the "foot-tapping" music brought to us last week by Sybil Head and Julian Evans on the piano and drums. We enjoyed singing along with them on the old familiar tunes such as "When You and I Were Young, Maggie" and "Let Me Call You Sweetheart". We hope they will come again real soon.

We are looking forward to having the Pecan Valley Swingers come on Monday night, the 23rd, and square dance for us. We would like to invite all who love to watch to come enjoy this gala occasion with us. Bob Fisher from Brownwood will do the calling.

Those who joined the "mending" for residents last Thursday at 3:00 were Myrtle Kilion, Audrey Stark, Ella Bishop and Ruth Dumas. These ladies are members of RSVP and are doing a tremendous job of helping others with this project. One of the men residents remarked how nice it was to have the holes mended in his shirt pockets so that now he can keep his pencil and other articles.

We welcome Mrs. Edna Bell Council as one of our new residents. Mrs. Council comes from Evant.

Mrs. Lena Brown is back after an extended stay in the hospital. It's nice to see her up and dressed in her bright, colorful clothing once again. Mrs. Brown is 90 years of age and has some very interesting stories of the 'good ole days'.

Extension Highlights

BY JUDY BEAVERS
Mills County Extension Agent

Selecting needles and threads for homesewing is more than just picking up a package of needles and finding thread to match the fabric color.

Kind and size of needle and thread necessary depend upon fiber, fabric construction and purpose for stitching.

For example, in buying needles, choose ball point needles when sewing knits and sharp needles when sewing woven fabrics.

Specialists recommend using 100 per cent polyester or cotton-covered polyester thread for polyester or polyester blend fabrics. These threads have elasticity and do not shrink in washing.

Because of their irregularities, today's American-made polyester or cotton covered polyester threads are not sized like 100 per cent cotton thread.

Consequently, larger size (size 14 or 16) needles are necessary when sewing with this thread to prevent breaking, tangling and uneven tension. The eye of the needle must be large enough for the largest part of the thread to pass through.

Some Swiss-made polyester threads are more uniform in shape, and they are sized. A fine needle may be used when sewing with fine thread.

Thread for topstitching, commonly called buttonhole twist, is available in polyester or in cotton. It is heavier and thicker than regular thread. Choose the kind which is most compatible to the fabric being used. A size 16 or 18 needle, used when sewing with buttonhole twist, allows the thread to move through the eye freely without fraying.

Swiss-made cotton buttonhole twist may be preshrunk on the spool before used in stitching on polyester, polyester blends or cotton fabrics. Cotton thread

has a higher luster than polyester.

If your machine does not sew with heavy threads or buttonhole twist, use two stands of thread for topstitching.

Wind some thread on a second bobbin and thread it and the spool thread together on top. Separate the two threads at the tension disc if your machine has a top tension regulator.

Thread both threads through the needle. This provides a heavier looking topstitching than one strand and resembles buttonhole twist.

Square Dance Lessons

Plans are being made for square dance lessons to be given in Goldthwaite by Dub Bass of Waco.

Lessons will begin mid-September. Square dancing is recreation for the whole family.

If interested, please contact the following numbers for further information:
648-2657
938-5592
985-3332
948-3395 or 948-3564

Write Your Congressman

(Editor's Note: As a public service the Eagle is publishing the names and addresses of our representatives in both Washington and Austin.)

U. S. SENATORS
Lloyd Bentsen (D)
P. O. Box 61466
Houston, Texas 77002 or
Suite 912, Federal Bldg.
Austin, Texas 78701

John G. Tower (R)
1714 Federal Bldg.
Dallas, Texas 75202 or
961 Federal Bldg.
Austin, Texas 78701

U. S. REPRESENTATIVES
W. R. "Bob" Poage
205 Federal Bldg.
Waco, Texas 76701

STATE SENATOR
Grant Jones
Capitol Bldg., Rm. 419
Austin, Texas 78700
Phone 512-475-3733

STATE REPRESENTATIVE
Camm Lary, Jr.
P. O. Box 456
Burnet, Texas 78611
Phone 512-756-2156

Ice Cream Supper To Honor Boyd Family

An ice cream supper honoring the Russell Boyd family will be held Sunday evening, August 22, at 7:30 p.m. at the school ground tabernacle in Star.

Everyone is invited to attend. Please bring a freezer of cream or cake and utensils and dishes.

Listen to

KBAL

1410 on your dial.

Hear Eagle player profiles

now thru Aug. 30

KEEP TAKING THE MEDICINE!

Too often, people will stop taking a medicine because they think that an illness has disappeared. This can be harmful, especially in cases of children who are given anti-biotics to combat an infection. If your physician directs you to give a child a medicine four times a day for ten days, keep giving that prescription until it is all used up.

In studies where medicine was stopped before it was finished, over 20 per cent of the children showed lingering traces of infection, requiring another round of medication.

YOU OR YOUR DOCTOR CAN PHONE US when you need a delivery. We will deliver promptly without extra charge. A great many people rely on us for their health needs. We welcome requests for delivery service and charge accounts.

Phone 648-2484

PRESCRIPTION CHEMISTS

HUDSON DRUG

"What you want when you want it!"
Goldthwaite, Texas

Deer Lease Inquiries Coming In

With autumn fast approaching, the Eagle Office is beginning to receive a deluge of mail inquiring about available deer leases in our county.

directed to the CTCOG Office, P. O. Box 551, Goldthwaite, Texas 76844.

This will be of great help to our office and will also speed the answer to your inquiries.

We do not have this information in our office and ask that all inquiries please be

DON'T LET YOUR PAINT GET INTO SCRAPES LIKE THIS!

Beat Paint Blistering with MINNFLOX LATEX HOUSE PAINT

- Lets moisture through... eliminates unsightly blistering
- Takes half the time to apply... lasts twice as long, too
- 1 coat Repainting... no primer needed
- Hundreds of style-setting, fade-resistant colors to choose from
- Quick water clean-up... dries in minutes.

See us for all your paint needs...
Brushes, sand paper, rollers, etc.

BARNES & McCullough

"Everything to build anything"
Goldthwaite

Joe H. Rothe, Director Of Extension Service

Joe H. Rothe has been named associate director of the Extension Service, effective August 1.

He has served as Extension assistant director and state agent since May, 1971. Rothe's appointment was announced July 27 by the Texas A&M University System Board of Regents. Rothe has served with the Extension Service for 29 years in roles ranging from state agricultural agent to district



Joe H. Rothe

agent, county Extension agent and assistant county agent. "Rothe is uniquely qualified for the position of associate director of the Extension Service. He is extremely knowledgeable about the overall operations of the organization, and is highly respected both by staff members and the agricultural leadership of Texas," said Dr. Daniel C. Pfannstiel, director of the Extension Service. "Rothe has provided dynamic leadership in the development of extension education programs in Texas, and has repeatedly demonstrated his ability to mobilize Extension resources and initiate and implement educational programs to meet the needs of people," Pfannstiel added.

Rothe began his Extension career in 1947 as assistant county Extension agent in Lavaca County, and transferred the following year to Brown County as agent. From 1954 to 1963, he was district agent for Extension District 12, and then served as district agent for District 11 from 1963 to 1965, when he became state agricultural agent.

He received the U.S. Department of Agriculture's Superior Service Award in 1973. A native of Hondo, Rothe is a graduate of Texas A&M University and took other graduate courses in supervision at the University of Arkansas. He achieved the rank of colonel in the U.S. Army Reserve. During World War II, he was awarded the Bronze Star and the French Croix de Guerre for meritorious military service.

Rothe is a past president of the Professional Agricultural Workers of Texas. He and Mrs. Rothe have a daughter, Mrs. Jim Chiles of Bryan, and a son, Joseph M., of San Antonio.

To report child abuse, contact the local office of the Department of Public Welfare, or local law enforcement authorities, or call this toll-free number, day or night: 1-800-292-5400.

Lometa Commission Co.

Market Report

Lometa Commission Co.
Lometa, Texas
D. HARRELL, Owner
August 13, 1976
RECEIPTS: 1074

Light Weight Steer Calves, 30-45.00; Medium Weight Steer Calves, 36.00-44.50; Heavy Weight Steer Calves, 40-41.00.

Light Weight Heifer Calves, 30-34.00; Medium Weight Heifer Calves, 30.00-34.00; Heavy Weight Heifer Calves, 30-35.50.

Under Heifers - 29.00-33.50
Under Steers - 35.00-41.00
Yearlings - 26.00-29.00
Cows - 24.00-30.00
Cows and Calves, 185.00-340.00
Calf Calves - 35.00-42.00
Yearlings - 32.00-38.00
Cows - 26.00-34.50
Cows - 16.00-27.00
Cows - 14.00-20.00

All choice light weight steer calves were \$2 to \$3 higher. Heifer calves were \$1 to \$2 higher. All choice medium weight steer calves were \$2 higher. Heifers were \$1 higher. Choice heavy weight steer calves were \$1 to \$3 higher. Yearling steers were \$1 to \$2 higher. Yearling heifers were steady. Packer bulls and cows were steady with last week's to \$2 rise. Fat calves were fully steady.

REPRESENTATIVE SALES
Anderson, Pontotoc, 34.25
5 lb. Fat Heifer, Rich, Spgs., 34.25
Lloyd Locher, Rich, Spgs., 34.25
10 lb. Hereford Steer, 44.00
Deep Creek Ranch, San Saba, 43.80
Hereford Steers, 43.80
McCullough Ranch, G'waite, 43.25
Hereford Steers, 43.25
K. R. Boultinghouse, C'kee, 41.50
10 lb. Red Brahma Steer, 41.50
McCullough Ranch, G'waite, 34.75
Hereford Heifers, 34.75
Rough Creek Ranch, S. Saba, 39.25
10 lb. Bik. Wf. Steer, 39.25
Charlie Boyd, Lometa, 34.50
10 lb. Bik. Wf. Heifer, 34.50
Malcom Otto, Llano, 27.00
10 lb. Packer Cow, 27.00
Edward Howell, Hamilton, 43.75
10 lb. Bik. Wf. Steer, 43.75

Plainer kinds of cattle and all calves were steady. All of choice steer calves were \$1 to \$3 higher. Heifer calves were \$1 higher. Yearling steers were \$2 higher. Buyer attendance was excellent and bidding was very active.
REMEMBER, Our Sale Starts 12:00 Noon On Friday.

NOW!... HELP WITH PAYING THE RENT

A new rent supplement program is beginning in Central Texas. Section 8 of the 1974 Community Development Act of the Federal Government provides for:
• Up to 75% rental supplement for qualifying families paid direct to the landlord CTHAPP.
• Leases from one to three years.
You can rent a privately owned apartment, a single family home, or a duplex under this program.

WHO SHOULD APPLY?
Persons or families with low incomes and/or who are elderly, disabled, handicapped or large.

FOR MORE INFORMATION
Mills County Courthouse
2nd Floor 2 p.m. to 4 p.m.
Friday, Aug. 20

CENTRAL TEXAS HOUSING ASSISTANCE PAYMENTS PROGRAM

201-1/2 East Central • Belton, Texas 76513 • 817-939-5724

Come in now, register for free prizes

Affiliated's 31st

Anniversary SALE

* 1976 MONTE CARLO

* \$1000 CASH

* MINK COAT

* 4 CB RADIOS



Drawing to be held Sept 12, 1976 in Dallas

5 lb bag
59¢
limit one

3 oz
\$1.39

Morrison's
Sopapilla Mix **15¢** pkg
Cracker Jacks **10¢** Box

1/2 gal ctn
59¢

5 lb bag
Limit 1
99¢

Morton's Frozen Honey
Buns
box of 4 **49¢**

Welch's Frozen GRAPE
Juice
12 oz can **59¢**

For Homemade Ice Cream
Junket Mix **35¢** box
Morton's Salt **29¢** 4 lb box

Ida Treat Potatoes
French Fries 5 lb bag **\$1.39**

12 oz box
79¢

4 sticks lb
49¢

Shurfine sliced or halves
Peaches 29 oz can **49¢**

Royal Scot limit 5
SOLID OLEO 5 LBS **\$1**

6 1/2 oz can
48¢

2 lb box
\$1.89

Shurfine, pure vegetable
Shortening **99¢** 3 lb can

Dry Dog Food
Purina 5 lb bag **\$1.19**

Peppy Dog Food
10¢ can

Smuckers Strawberry
Preserves 18 oz **88¢**

Q-tips
box of 88
Reg 89¢ **48¢**

Gillette TRAC II
save 5¢ pkg
reg \$1.49 **98¢**

Shurfine Full Strength
Bleach limit 1 **39¢** gallon

Rubbing ALCOHOL Pint size **25¢**

liquid dish soap
Dawn 32 oz size **\$1.15**

84 oz box
\$1.99

Best in Produce Buys
Thompson Seedless white
Grapes lb **39¢**
Crisp Pascal
Celery lg stalk **29¢**
New Crop East Texas
Yams US # 1 lb **29¢**

We Feature Homegrown Pen-Fed Beef
Fresh Lean Chuck Quality
Ground Beef lb **99¢**
Sirloin Steak lb **\$1.49**
T-Bone Steak lb **\$1.49**
Beef Ribs lb **55¢**
Forequarter blade
Chuck Roast lb **69¢**
Cooked Fresh, Daily
Barbeque Beef lb **\$1.98**

GRADE 'A', whole
Fryers lb **49¢**

Boneless, fillet turbot
Fish lb **99¢**

'Heat & Eat'
STEAK Fingers lb **99¢**

Affiliated Premium Quality
Bacon lb **1.49**

Prices good full week Thurs., Aug 19 thru Wednesday, Aug. 25
SCHWARTZ FOOD STORE
GOLDTHWAITE, TEXAS 76844 WHERE YOUR DOLLAR BUYS MORE / PLUS
DOUBLE STAMPS ON WEDNESDAY & SATURDAY

News
 kip-Bo, "42"
 a new modern
 re enjoyed. It
 have an hour
 after lunch at
 Dunlap will
 the program at
 ig day, August
 n out and let's
 store for us
 n will be in
 program each
 should be a
 fun and good
 you know that
 dominates here
 ? Well, they
 in Bingo game
 is just like a
 you do is sell
 the red shoes
 are
 CO.
 livestock Shipped Out Of
 ate Must Meet Regulations
 all livestock shipped out of
 as must now meet federal
 and certification re-
 quirements, the U.S. Depart-
 ment of Agriculture (USDA) an-
 nounced recently.
 These intensified regulations
 are the result of action by
 the U.S. Animal and Plant Health
 Inspection Service (APHIS) desig-
 nating the entire state of
 Texas as an area of recurring
 screwworm infestations. Prior
 to this announcement, only the
 southern counties of the state
 were so designated.
 APHIS officials said the
 change will mean that all live-
 stock, including cattle, sheep,
 goats, horses, mules and
 swine shipped from Texas
 must be inspected by state or
 federal animal health officials
 and accredited veterinarians and
 certified free of screwworms
 before shipment. Animals found
 to be infested with the parasite
 will be treated, and the entire
 shipment of livestock will be
 sprayed or dipped with a USDA-
 approved insecticide.
 In addition, all animals
 shipped from Texas into south-
 western states are required to
 be dipped or sprayed even if
 found to be screwworm-free.
 These special requirements
 have been initiated in order to
 prevent the spread of screw-
 worms into the Southeast, an
 area which has been free of
 the parasite for over 15 years.
 Previously, cattle shipped in
 interstate channels from Texas
 counties not designated as areas
 of recurring screwworm infes-
 tations were not required to be
 inspected and treated for the
 parasite before shipment. Many
 of these cattle had wounds or
 disease conditions which could
 harbor screwworms. When
 moved without restriction,
 these cattle could be the means
 by which screwworms were
 spread to uninfested states.
 Texas has been placed under
 stricter federal regulations as
 a result of an increase in the
 number of laboratory confirm-

Goldthwaite Eagle

AND THE MULLIN ENTERPRISE
 Published Every Thursday at Goldthwaite, Mills County, Texas
 P. O. Box 249, Goldthwaite, Texas 76844 — PHONE (915) 648-2244

G. Frank Bridges Editor and Publisher
 AN INDEPENDENT NEWSPAPER



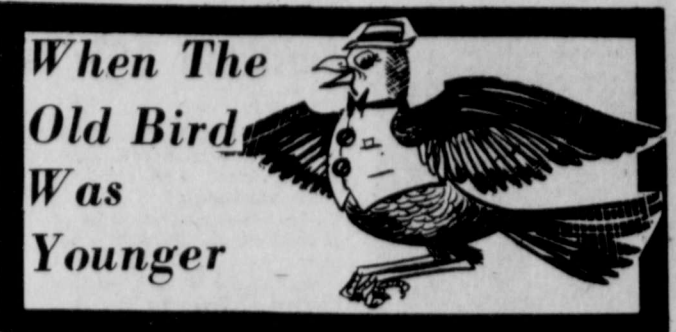
SUBSCRIPTION RATES —

	Amount	Tax	Total
Mills and adjoining Counties, one year	\$6.00	.30	\$6.30
Elsewhere in Texas, one year	7.00	.35	7.35
Outside of Texas, one year	8.00	.00	8.00
Single Copy15	.01	.16

SUBSCRIPTIONS DISCONTINUED UPON EXPIRATION
 Entered as Second-class matter at the Post Office in Goldthwaite, Texas, under the Act of Congress of March 3, 1879.

Livestock Shipped Out Of State Must Meet Regulations

All livestock shipped out of Texas must now meet federal inspection and certification requirements, the U.S. Department of Agriculture (USDA) announced recently. These intensified regulations are the result of action by the U.S. Animal and Plant Health Inspection Service (APHIS) designating the entire state of Texas as an area of recurring screwworm infestations. Prior to this announcement, only the southern counties of the state were so designated. APHIS officials said the change will mean that all livestock, including cattle, sheep, goats, horses, mules and swine shipped from Texas must be inspected by state or federal animal health officials and accredited veterinarians and certified free of screwworms before shipment. Animals found to be infested with the parasite will be treated, and the entire shipment of livestock will be sprayed or dipped with a USDA-approved insecticide. In addition, all animals shipped from Texas into southwestern states are required to be dipped or sprayed even if found to be screwworm-free. These special requirements have been initiated in order to prevent the spread of screwworms into the Southeast, an area which has been free of the parasite for over 15 years. Previously, cattle shipped in interstate channels from Texas counties not designated as areas of recurring screwworm infestations were not required to be inspected and treated for the parasite before shipment. Many of these cattle had wounds or disease conditions which could harbor screwworms. When moved without restriction, these cattle could be the means by which screwworms were spread to uninfested states. Texas has been placed under stricter federal regulations as a result of an increase in the number of laboratory confirm-



When The Old Bird Was Younger

10 Years Ago
 (Taken From The Eagle Files Of August 11, 1966)

J. C. Wesson, owner of Wesson's Western Auto Store, has announced plans to build a new building. It will be located next door to his present one in the Bradford building on Fisher St.

Five contestants from Goldthwaite placed in the finals of the 1977 Lometa FFA Rodeo. They were: Sam Campbell, calf roping, 2nd; Diane McKenzie, barrels, 1st; Kathi Head, barrels, 3rd; Eric Wright, steer riding, 3rd; and Roger Dellis, steer riding, 5th.

Ronald Schuster of Priddy exhibited the grand champion angora doe at the Texas Angora Goat Raisers Assoc. show and sale in Fredericksburg. This was the fourth time for the doe to take grand champion honors in Texas Angora shows.

Funeral services for Miss Laura Gertrude Head, 84, of Goldthwaite were held Sunday, August 7. Miss Head was born Nov. 18, 1881, in Center City, daughter of the late J. B. and Asenath Baker Head. She was a member of the Methodist Church and a lifetime resident of Mills County.

Robert Terry Pribble will graduate from the University of Texas College of Engineering August 27th. He is the son of Mr. and Mrs. A. M. Pribble and the grandson of Mrs. Robert Littlepage.

25 Years Ago
 (Taken From The Eagle Files Of August 3, 1951)

Elmer Edwin Petty, 69, farmer and rancher of Zephyr, died of a heart attack in Goldthwaite last Saturday just before final rites for First Lieut. Raymond F. King, nephew of Mr. Petty's wife. Mr. Petty died soon after

40 Years Ago
 (Taken From The Eagle Files Of August 14, 1936)

Urbach Hardware Store has been robbed three times in as many years, and the third time brought the first apprehension of any of the thieves, two boys,

9 and 15 years of age. About three dozen pocket knives were taken.
 Barton Smith will open his Sinclair station on the highway south of the courthouse Saturday.
 Crowds continue to come to the race meet being held here this weekend. Forty horses are entered, with five sets of races run daily. Yesterday's race winners were:
 First race - Imacount, He-might, Lone Eagle
 Second race - American King, Lapanflower, Eunice
 Third race - Walter K. Rocky Boss, Overrose
 Fourth race - Jesse Coppage, J. G. Mahaffey, Purple
 Goldthwaite boys defeated the Comanche players 10 to 3 in softball Wednesday evening. The home team was composed of Farest Frazier, Walter Glynn Saylor, Bobbie Boland, William Todd, Albert Hunt, Jr., Hurley Wilcox, Merlin Faulkner, Ceylon Smythe, Joseph Bowles, Jim Weathers and Eugene Fox.

Chappell Hill

By Pearl Crawford
 We are having some warm weather. The farmers are busy with their hay crops and breaking land.
 Mr. and Mrs. Lou Stahnke attended church at Priddy Sunday. Mrs. Frieda Christenson came home with them for lunch and an afternoon visit.
 George Crawford visited Mr. and Mrs. Bill Woody and a number of friends at Heritage Home Friday.
 Mr. and Mrs. W. W. Ratliff visited Mrs. Fay Duffner and other relatives at Austin. We are happy to report they are doing nicely at present. We wish all the sick folks a speedy recovery.
 Mr. and Mrs. Leroy Manuel spent the weekend with his mother, Mrs. Ollie Manuel. Others who visited Mrs. Manuel and Mrs. Maud Parker were Miss Lola Stevens and Mr. and Mrs. V. T. Stevens, Pearl Crawford and Mrs. Len Price.

BANK CENT'S

By: W.P. Duren, President
 Mills County State Bank

A bank is a service organization. The banking services that you require are always available for the asking. A few of the major and most frequently used services are, loans, checking account, savings accounts, certificates of deposits, money orders, (cashiers cheques) travelers cheques, and the list could go on and on. We have tried for many years to find most all of the avenues the bank can be of service to you, but if there is a service that we do not provide, please let us know and we will attempt to set it up.

We want you to know more about our business!!!

Dr. Merle M. Ellis
 OPTOMETRIST
 308 Citizen's National Bank Building
 Brownwood, Texas
 GLASSES - CONTACT LENS
 Call 646-8778 or write P. O. Box 149 For Appointment

Carrier Air Conditioning
 Electrical Contracting and Repairs
ISHAM ELECTRIC
 SAN SABA Phone 372-3485
 We service all makes

COMANCHE COUNTY ELECTRIC COOPERATIVE ANNUAL MEMBERSHIP MEETING
 August 20 8 P.M.
Indian Memorial Stadium In Comache
 Registration Gifts - Refreshments - Door Prizes
 Registration begins at 7 p.m.

BURIAL INSURANCE for all ages
 Infants - Old Age
 Reasonable Rates
 Payable Monthly, Quarterly or Annually
 Stop in, Write or Phone for Application Blanks or Information
Wilkins Burial Association
 Phone 648-2255
 Goldthwaite, Texas

STOREWIDE DISCOUNTS
 PRICES EFFECTIVE THRU WED. AUG. 25, 1976

DAIRY DISCOUNTS!
 Velveeta 2 lb. \$1.89
 Folger's Coffee 1 lb. \$1.79
 Flour 5 lb. 69¢
 Gladiola 10-lb. \$1.69
 Purina 10-lb. 3.79
 Cottage Cheese 24-oz. 89¢
 Sour Cream, Half & Half, Whipping Cream 39¢
 Round Steak 1.19
 7-Bone Roast 79¢
 Sirloins 1.29
 T-Bones 1.39
 Arm Roast 89¢
 Chuck Roast 69¢
 Rib Roast 89¢
 Picnics 69¢
 Hamburger Meat 79¢
 Slab Bacon 1.19
 Pork Sausage 2 \$1.69
 Fryer Breast 2 \$2.99
 Bacon Ends 49¢
 Pork Steaks 99¢

FROZEN FOOD DISCOUNTS
 Pie Shells 39¢
 Donuts 59¢
 Lemonade 49¢
 Cream Pies 7 for \$1.00
 Potatoes 1.69
 Orange Juice 4 for \$1
 Orange Drink 5 for \$1
 Potatoes 10 89¢
 Sweet Corn 10 \$1.00
 Celery 19¢
 Lettuce 29¢
 Bananas 19¢

WALTER'S DISCOUNT FOODS SAN SABA
 Flour \$2.99
 Tissue 59¢
 Peanut Butter \$1.29
 DRINK 49¢
 Bama 3 for \$1.00
 Cheer \$1.19
 Bleach 39¢
 Pineapple 59¢
 Prune Juice 49¢
 Tuna 49¢
 Spinach 4 for \$1.00
 Green Beans 4 for \$1.00
 Tomatoes 4 for \$1.00

Coca Cola, Sprite 4 for \$1.00
Little Friskies 49¢
Hi Dri Towels 2 for 89¢
Coffee-Mate 89¢
Salad Dressing 49¢
Catsup 59¢
Pinto Beans 23¢
Bread 3 for 99¢
Canned Drinks 8 for \$1.00
Fruit Cocktail 3 for \$1.00
Vienna Sausage 4 for \$1.00
Crackers 39¢
Milk 69¢

Men's Bible Class Singing Aug. 22

The Men's Downtown Bible Class will sponsor their annual all-day singing August 22 at the high school auditorium. The 30th anniversary singing will feature special singers such as the Campbell Quartet of Plainview, Newman and Family of Santa Anna and Brown

Quartet of Fort Worth. Lunch will be served at the noon hour. Ladies are asked to bring cakes, pies and salads. The Bible Class will furnish the rest of the meal. The singing will start promptly at 10 a.m. Everyone is invited to attend.

Agency established
in 1919

G. C. Head
Insurance

GOLDTHWAITE

Absolutely. YES!

THE NECKLACE KNOWS.

YOUR EXTRA SENSORY pendant

And what fun it is to discover what it knows!

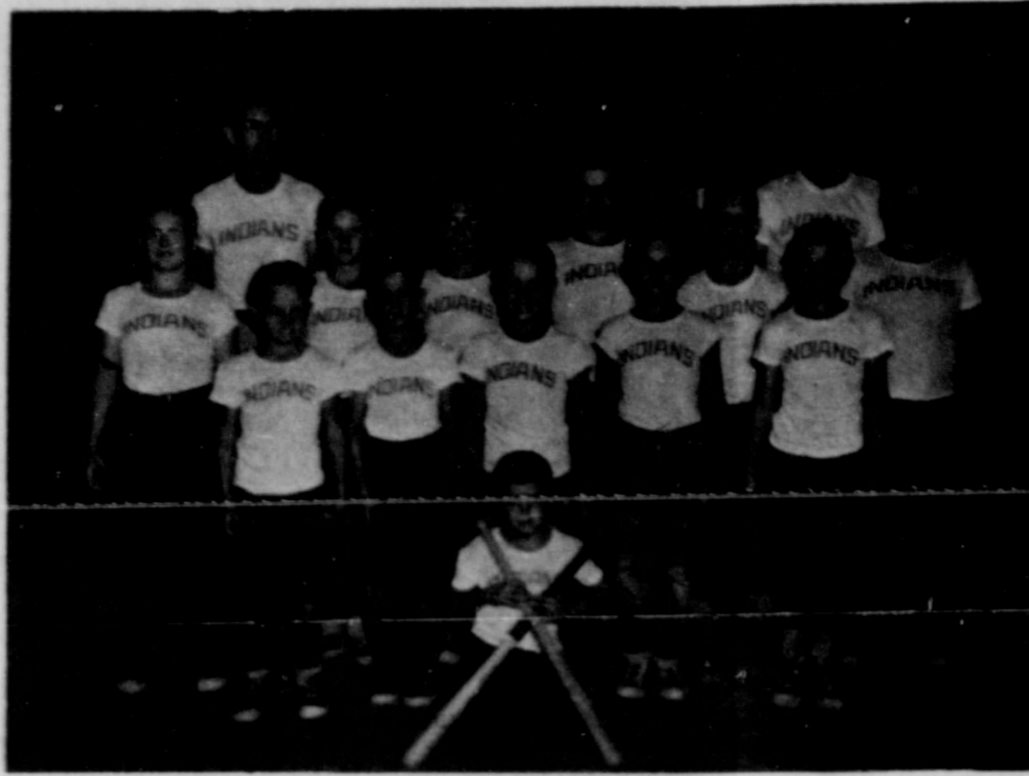
The Unique YES pendant is perfect for anyone who enjoys reading into the past and is adventurous enough to explore the future. It's terrific party fun and handsome enough to wear all the time.

Now YES pendant comes with a complete instruction booklet.

\$2.50

Town & Country Fabrics

NORTH SIDE OF THE SQUARE GOLDTHWAITE



'56 Little League Champs

CHAMPIONS—Pictured here are the Mills County Little League Indians, with their managers and bat boy, who won the county championship title when they defeated Priddy in the play-offs (1956). The contest ended last week, Tues-

day night, at the Municipal Ball Park in Goldthwaite. Managers L. J. Ward and Bally Bask are standing at the back. Members of the team are, left to right, Delton Ripley, Clois Cagle, Paul Denman, Dale

Sears, Jerry Duren, Donald Cagle, Phillip Carr, Lynn Elliott, Pat Bask, Charles Denman and Butch Schuman. In front of the team is Mike Conrad, who served the Indians as "bat boy".



GHS Cheerleaders

The Goldthwaite cheerleaders were among some 325 participants in the 1976 Southwest Cheerleader Camp held on the campus of Cisco Junior College June 20-25. Back row, left to right, are Cindy Ynostrosa, Tamra Long, Mina Kay Johnson, and front row, Karen Studer, Gwyn Saylor and Ruth Ann Johnson. They received two superiors,

two excellents, and the spirit stick three nights during evaluation. They were one of the few squads picked to bring the spirit stick home at the end of the week. The group was also given a ribbon for being a super star squad.

One of the most dangerous snakes in our country is the cottonmouth moccasin. It tends to stand its ground more often than others and strike out when it is encountered.

You are responsible for reporting a boating accident if you were the operator or owner of a boat involved. Reports should be made to the local state boating authorities or to the Coast Guard. An accident is reportable if a person involved dies, disappears or is disabled, or, if property damage totals more than \$100. Sometimes less. In cases of personal injury, incapacitation, disappearance or death, the report must be filed within 48 hours. If the accident only causes property damage, the report must be submitted within five days. There is a maximum penalty of \$500 for failure to report an accident.



OLD PROSPECTOR—Looks as though one of Mills County's old time "prospectors" is preparing for another trip to hunt for riches. This picture of the "Mills County Prospector" was taken this week.

Outlines Set For Free School Lunches

The Texas Education Agency, Division of Administrative Services, School Lunch Section, Free and Reduced Price Lunch Policy Statement has been approved for the 1976-77 school year. Application blanks will be given to students the first day of school for free and reduced

lunches or parents may pick them up at the schools. Mills County school superintendents want parents to understand that the free and reduced lunches do in no way come from the school treasury. The free and reduced price lunches are reimbursed teach

school by the federal government. Parents are encouraged to sign up for the program if they qualify. The above named program pertains to all Mills County Schools.

Grand OPENING

Dairy Cup Game Room

SATURDAY, AUGUST 21

Free candy & balloons for children 12 & under

Register for free roll of quarters to be given away Saturday

Good food & drinks - Fine recreation

Mr. & Mrs. Mike Wright & Terry

WE HAVE the HEAT-HANDLERS

Pick one up today ...be cool today!

A complete line of Whirlpool

air conditioners — from 5,000 BTU take-home models to 31,000 BTU Heat Handlers! SEE US AND SAVE!



Models AVL179-30

BIG 18,000 BTU Model

REGULAR only \$349.95

\$429.95

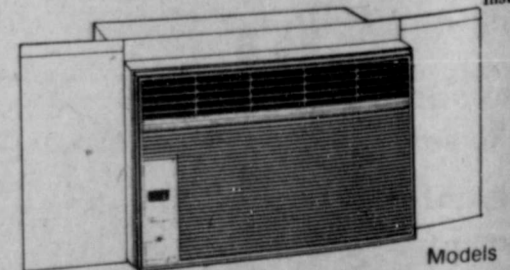
Plus Installation

7,000 BTU Whirlpool air conditioner

REGULAR only \$269.95

\$319.95

Plus Installation



Models AXF075-2

Head Electric

648-3133

Goldthwaite

COME IN — See our big Whirlpool "Comfort Center" display! We're a servicing Whirlpool dealer!

BUY NOW WHILE OUR SELECTION LASTS!