











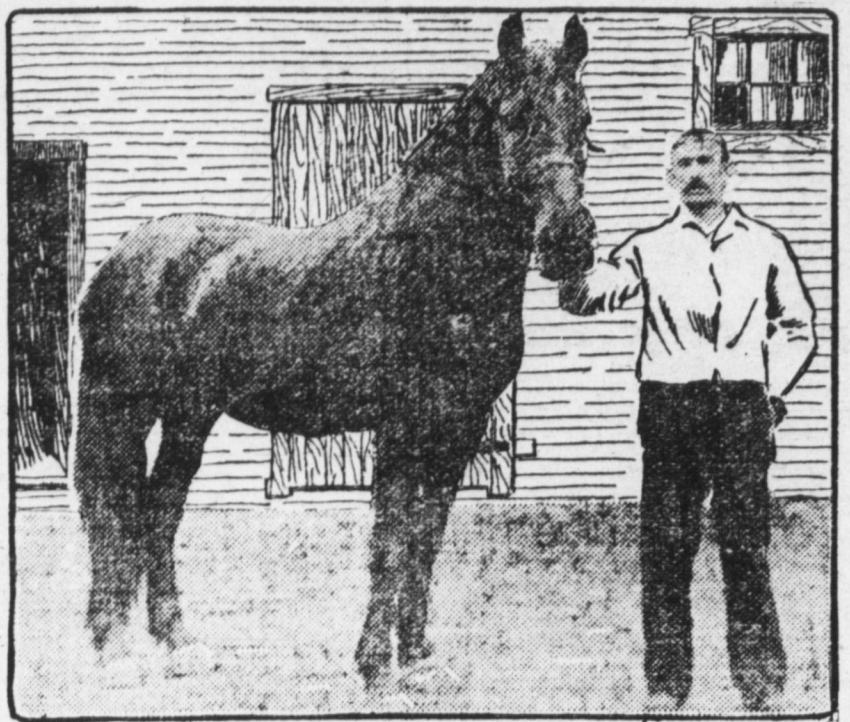




33 Years Selling Direct
Our vehicles and harness have been sold direct from our factory to users for a third of a century.

\$1,000 OFFERED FOR DEFENSE
D. T. Bomar and E. A. Paffrath
Subscribe
PROTECT PACKERS
Declared Plants Are Conforming to State Laws as Near as Possible

HORSE HAS SAVED 5,000 CHILDREN
Blood Furnishes Anti-toxin for City of Pittsburgh
PITTSBURG, May 12.—If you were a doctor and had saved the lives of 5,000 of God's little children, the loftiest praise in the hearts of humanity would be yours.



"CHARLEY" AND HIS GROOM.
But if you were a horse and did the same thing?
As he is known in the city stables of Pittsburgh, a disabled fire horse, is the animal which has the proudest life saving record of any creature not of the human species in the world.

FEEDING STEEPS
Purchasing light feeders upon the larger markets during the late spring and early summer months and shipping to the country to graze during the pasturing season to develop large frames preparatory for winter feeding is a practice gradually winning popularity among farmers in some sections of the country.

Advantages of the Method
The one great advantage of this practice is the feeder is able to select his feeders at a season of the year when the market is less fluctuating with prospective purchasers and is able to pick out a better grade of feeders.

ANTI-TRUST CASES SET
Suits Against Commission Men Come Up May 15

LIGHTFOOT COMING
Will Answer Contempt Charges in Seventeenth District Court at Fort Worth

AUSTIN, May 8.—Suits of the state against Fort Worth commission men, the Fort Worth Stock Yards company and the Swift and Armour packing plants, engaged in business at Fort Worth, charging a large number of defendants with violation of the Texas anti-trust laws, were this morning set for Tuesday, May 15.

Interest in the suits was renewed late Monday afternoon when a citation was served here on Assistant Attorney General J. P. Lightfoot, charging him with being in contempt of the Seventeenth district court at Fort Worth. The proceedings against the latter's alleged retention of books and papers belonging to the Fort Worth live stock exchange, which he is charged with having taken to Austin and refused to return. Ex parte proceedings were begun against Judge Lightfoot in the Seventeenth district court at Fort Worth late Saturday night, but the action was kept secret until the citation could be served.

Mr. Paffrath suggests that the fund be placed in the hands of the Board of Trade or similar organization, to be used as seems best in the matter. Discussing the situation Mr. Paffrath said: "Ex-Senator Carter's ideas that the people of Fort Worth put in motion an organization to protect the packing firms of Armour & Co. and Swift & Co., located in Fort Worth, against the expense and penalties as sued for by the state of Texas, are good ones and I concur in and fully endorse D. T. Bomar's opinion on the same question. In which he says he will subscribe \$500 to a fund to be used in defraying the expense and penalties of Swift & Co. and Armour & Co. In the anti-trust suits now pending.

Law Can't Be Obeyed
"I don't believe that the people of Texas really understand the full meaning of the anti-trust law because under the anti-trust law it is next to impossible for two or more persons to do a legitimate business without violating the law and without forfeiting the property of the corporation or the firm that may be engaged in business."

TRUST SUITS SET FOR TUESDAY
Believed Trial of Cases Will Be Postponed

Calling of the anti-trust suits filed by the attorney general of Texas in the district court of Travis county against Fort Worth live stock commission men, the Fort Worth Live Stock exchange and the Swift and Armour packing companies, is scheduled to come up in Austin Tuesday of this week. Inasmuch as the defendants in the suits have until Tuesday to file their answer, it is believed that when the cases come up Tuesday they will be postponed another week. Whether or not the attorney general's department will attempt to force immediate trial is speculation among those interested in the suits here.

FIFTY HORSES BURN TO DEATH
HUTCHINSON, Kan., May 12.—Frank McKee's barn burned today with fifty horses and sixty livey rigs. The flames spread to the Hutchinson Transfer and Storage Company, causing \$10,000 damage. The high wind carried the embers, which set fire to many roofs, including the Harvey hotel, two blocks away. The total loss will reach \$25,000.

MAXCY HERE TO MEET PACKERS
Plans for Laboratory Being Considered

J. W. Maxcy of Houston arrived in Fort Worth Tuesday morning and met the Fort Worth representatives of the packers in consultation concerning the establishment of the proposed laboratory in this city. When asked regarding the time of official steps, Mr. Maxcy said: "This is a large undertaking and it takes a long time to complete all the detail work incidental to the establishment of a bacteriological laboratory. It will be some time before official steps can be taken. It is certain to come, however."

IS A "SPOTTED COUNTRY"
Henrietta Stockman Talks of Conditions in Monahan

D. C. Kogler, one of Henrietta's stockmen, who makes it a habit to keep on feed a goodly stock of marketable stuff, came in from the west and was investigating the chances for obtaining something that would suit him to put on grass up in the range country. "I have been out in the Monahan country," said he, "ever since the cattlemen's convention looking into matters and things pertaining to the spotted country. Rain has fallen enough to make that country look as green as it ever does. It is a peculiar country indeed. It is what might be called a spotted country. The grass is green, for where the sand is exposed to the winds the grass is literally blown out and the sand is bare of vegetation as the sands of the coast. Where there is any protection it does well enough, but the most protection it has is around the small mesquite. Of course where the soil is stiff and has some resting qualities, the grass grows finely. They have the Gramma grass also that seems to be indigenous to the country and holds its own with a certain tenacity against wind and everything else."

A RUSH FOR HOMES
Hines Clark Tells of Arrivals in Neucos County

Hines Clark, from south Texas, was in with a lot of cattle which were shipped from Alfred, a station on the railroad in Neucos county. He reports plenty of rain and grass and everything doing fine, especially weeds. However, cattle are not as fat as might be expected, for stockmen let market stuff go into the winter too thin. There is a great rush for lands down there and the desire for homes seems to be genuine. Of course a lot of land is being bought up that is to be held by speculators, but this is to be expected. A man who has a body of land that is suitable for agricultural purposes, is careless of his own interests when he sells it in a lump to a man who will cut it up and sell it for three or four times the price he paid for it. Anyone who has gone through many years of stock raising in our country ought to get all he can out of his land, for he has certainly earned the reward for the hard times he has gone through and the narrow escapes he has had from utter ruin by drought, hail and other complications, not forgetting to mention that terror to all stockmen, the mortgage.

In Val Verde County
According to a report received yesterday afternoon, Messrs. Kelley & Norris of Comstock have sold their entire spring clip of wool, about 75,000 pounds, to Mr. Rouse of wool buyers for Willis & Co. of Boston, at 25 1/2 cents.

Horseman Organize
The Texas Saddle Horse Breeders' Association was organized at a meeting of horsemen from various parts of the state, held at the rooms of the Dallas Commercial Club.

The meeting was held in response to an invitation from the manager of the saddle horse department of the state fair live stock exhibit. It was announced that the state fair will permit such horses to exhibit at the entertainment fair unless they are registered in either the American Saddle Horse Association or the Texas Saddle Horse Breeders' Association.

Cattle Loaders
While every body has heard of the man who loads cattle for the owners at stations and then rides to market with them to see that they are all right, there is a class of men who have been at the business for years, employed by the railroads and who travel along the road and load cars expeditiously so that there will be no delay in getting the cattle to market. There are such men, however, and they are well known to the stockmen who are nervous about their duties and know exactly how to go to work to get cattle on and off trains in the most expeditious manner.

A FINE MENU
One That Can Be Used In "Food Cure."
A man may try all sorts of drugs to help him to get well, but after all, the "food cure" is the method intended by Nature.

Let one meal in the day consist of an abundance of green meat, potato, and one other vegetable. This method will quickly prove the value of the selection of the right kind of food to rebuild the body and replace the lost tissue which is destroyed every day and must be made up, or disease of some sort enters in. This is an age of specialists, and the above suggestions are given by a specialist in food values, dietetics and hygiene.

ARE YOU IN ARREARS?
Whether You Are or Not, Be Sure and Read Every Word of This Advertisement
Send us \$1.50 to pay for your subscription for one year to The Stockman-Journal, or send 75c to pay for subscription for yourself for six months and 75c more to pay subscription for six months for any one you may name who is not now a subscriber, and we will send you as a premium absolutely free, postage prepaid a copy of Ropp's Commercial Calculator.

Simpson-Eddystone Shepherd Plaids
Dainty checks that make bright, beautiful Spring and Summer dresses. The standard of quality, Permanent, fadeless color.

ARE YOU IN ARREARS?
Whether You Are or Not, Be Sure and Read Every Word of This Advertisement
Send us \$1.50 to pay for your subscription for one year to The Stockman-Journal, or send 75c to pay for subscription for yourself for six months and 75c more to pay subscription for six months for any one you may name who is not now a subscriber, and we will send you as a premium absolutely free, postage prepaid a copy of Ropp's Commercial Calculator.

What the Calculator Is.
A Ready Calculator, Business-Arithmetic and Reference Book Combined.
This is unquestionably the most complete and convenient work on Figures, for Practical Use ever published. It contains nearly all the Short Cuts known; Hundreds of Simple Rules and Original Methods for "Easy and Rapid Calculation," and Millions of Accurate Answers to Business Examples and to Practical Problems.

It Will Show at a Glance, Without the Use of Pencil, Pen or Paper
The exact contents of lumber, clsters, bins, wagon beds, corn cribs, cord wood and carpenters', plasterers' and bricklayers' work.
The exact interest on any sum, for any time, at any practical rate per cent.

Sawyer—Your walnut Log measures 24 inches in diameter and 16 feet in length, which according to Scribner's or Doyle's Tables, will make 400 feet of lumber.

GRAIN BUYER—The top price for No. 2 Corn today is 38c. Your load weighs 1800 lbs. net. Take a seat while I tell them a discount of 10%.

FARMER—According to Ropp's Tables (p. 41)—the only correct and reliable Log measure—it will cut exactly 4 feet, and therefore I demand payment for that many feet and no less.

MERCHANT—At what figure must we mark these Goods in order to sell them at a discount of 10%? ACCOUNTANT—The marking price must be just 1 1/4 times the cost price, according to Ropp's Discount Table No. 4.

Stock Sellers—The net weight of your lot of Hops is 4425 lbs. and at \$3.75 per cwt., amount to \$1659.45. Here is your check.

FARMER—I wish to borrow \$500 for 90 days. Will you pay the \$5.04 interest next Saturday, as I must have even \$500 to-day. BANKER—How do you know that the interest is just \$5.04? No. 4.

BRICKLAYER—If you want this Cistern to hold just 200 barrels, how are we to determine its depth and diameter, and also the number of brick it will require to wall it up.

FARMER—How do you know that the interest is just \$5.04? No. 4.

DO YOU DIP CATTLE TICKLE?
If so use
Specially selected Crude Petroleum. Used for two years by largest consumers. In all instances has given perfect satisfaction.

The Sunset Route
NEW ORLEANS to SAN FRANCISCO
OVER THE ROAD OF A THOUSAND WONDERS IN CALIFORNIA
FINEST EQUIPMENT, OIL BURNING LOCOMOTIVES
Makes connection at New Orleans with Southern Pacific Steamship Line for New York and Havana. Also rail connection to Memphis, Atlanta, Birmingham, Chattanooga, Cincinnati, Chicago and all points in the North and East.

Fill Out This Coupon
And mail at once to
The Texas Stockman-Journal
Fort Worth, Texas
Name:
Address: