

# Bailey County Journal

"The Community of Opportunity -- Where Water Makes the Difference"

Published every Sunday at Muleshoe, Texas 79347

MULESHOE PUBLISHING COMPANY, INC.

VOL. 45 NO. 14

8 PAGES

SUNDAY APRIL 2, 1967



SIGNING PROCLAMATION — Mayor Wilbur LeVeque is pictured here with Robert Hotten as he signs the proclamation for Chamber of Commerce Week April 2-9.

## Chamber of Commerce Community Life Flow

A proclamation has been signed by Mayor Wilbur LeVeque declaring April 2-9 Chamber of Commerce week.

"Muleshoe is proud of its Chamber of Commerce for its efforts in making our city a balanced community and a better place in which to live and work," the proclamation reads.

"The Muleshoe Chamber of Commerce has taken an active part in all phases of our community's development, and its more than 250 members have been in the forefront of every worthwhile civic project undertaken in Muleshoe.

"Our Chamber of Commerce has championed the free enterprise system, encouraged private initiative and provided the organizational framework necessary to make the business community an effective partner in our civic, cultural, economic and educational activities.

"Those of us in government have benefited by the counsel of the Chamber when matters of common interest have been at the heart of the American tradition and Chambers of Commerce are one of the organization most firmly devoted to the effectiveness of joint, cooperative action in the solution of all major problems, at local, state and national levels, as may be most fitting.

"We believe these tributes

are well-earned and we cannot help but wonder why this recognition has been so long in coming," a local businessman said.

"Perhaps part of the answer lies in the fact that the Chamber does its job well and has become taken for granted both by members and the public in general," he said.

"Too often, the Chamber of Commerce movement is thought to be concerned solely with the advancement of commerce and industry.

Even if this were true, then the Chamber would certainly deserve our accolade, for a healthy business climate is essential to the welfare of a free society.

Actually, Chambers of Commerce in Communities throughout our State and Nation have exhibited a remarkable diversity of interest.

To quote Williams Adams, 11, CCE, President of the American Chamber of Commerce Executives, "Voluntarism, is at the heart of the American tradition and Chambers of Commerce are one of the organization most firmly devoted to the effectiveness of joint, cooperative action in the solution of all major problems, at local, state and national levels, as may be most fitting.

"Team work through and with Chambers of Commerce can bring practical, lasting answers to each of the challenging problems and opportunities being faced in the United States and other nations."

The many good deeds and worthy projects undertaken by the Muleshoe Chamber of Commerce certainly lends substance to Adams' words.

The Muleshoe Area Industrial Foundation, the recent undertaking to provide public school, solicitation control, promotion of the National Memorial to the Mule, the Annual July 4th celebration, along with work on a Junior College for this area and the Farm Labor Housing committees now functioning as well as many, many more projects too

numerous to mention.

The Journals, the people of Muleshoe join Mayor LeVeque in setting aside this week in saluting the Chamber of Commerce.

Lyndal Murray, past president said many things which were in the budding stage in 1966 have come to pass since I was president for that term. The United Fund is now going

and successful...we were fighting tooth and toe nail then for Highway 84 which has now being brought to reality seven years later and many other advancements are evident in this parade of progress for the Chamber and it's Chamber born organizations."

This past year saw the largest See CHAMBER on Page 2

### HELD IN KILLING OF DALLAS GIRL

## Suspect in Slaying Arrested at Olton



A man accused of slaying a 15 year-old Dallas junior high school student was arrested about 1:15 p.m. Friday at Adams Tractor Co. in Olton.

John Robert Whirly, 22, charged with slaying Rosie Marie Martin, whose body was found Thursday near White Rock Lake in Dallas, was in Hale County Jail here late Friday. The girl was raped and strangled, authorities said.

Bailey County highway patrolman Freddie Jack and Muleshoe city Patrolman Jim Kinser were among South Plains officers alerted and arrived on the scene as Hale County Patrolman Carl Mullins was making the arrest.

Dallas authorities have returned Whirly to Dallas. Whirly, who had been living in Dallas and was wanted in Massachusetts for parole violation on a car theft sentence, was working at the tractor company in Olton at the time of the arrest.

A.D. Adams, owner-manager of the company, said Whirly came to the plant about 9 a.m. seeking a temporary job.

"He said he was going to California and just needed a couple of days' work," Adams said. "I talked to him about 40 minutes and I never talked to anyone so nice."

Whirly began work at the company about 10 a.m. "Just being a general flunky" and had worked about two hours when he was arrested.

"He was a good worker," Adams said. "He put a clutch in a truck we had out here in those two hours. He said he could do just about anything."

Adams said that when Whirly first asked for the job "I asked him if he had ever been in any trouble with the police or anything."

"He said yes, he had gotten some traffic violations," Adams said. "Then I asked him, 'You were never arrested

## West Texas To See Soybean Increase

"Award to thw issue should be sufficient," says High Plains Research Foundation officials. It is evident that West Texas in 1967 is going to see a considerable increase in acreage planted to soybeans. The big question in every farmer's mind is, "What variety am I going to plant and where am I going to get the seed?"

There are a number of varieties considered acceptable for this area. The variety chosen by an individual will have to depend on his own situation. There are five varieties which seem to be best adapted to the West Texas soils and climate. The HNN, HILL, AND LEE varieties are full season varieties with high yield potential. The PATTERSON and CLARK63

varieties are short season types. There are many farms where the latter will fit into a farmer's planning better than the full-season varieties.

Regardless of the variety chosen, one extremely important fact must be taken into consideration. Soybeans are no longer a "step-child crop." If you are going to expect a profitable yield from your 1967 crop, the germination of the seed you planted must be known. Normal recommendations on seeding rate could result in a severe loss in yield if germination of the planting seed happened to be quite low. Due to a set of unfavorable weather conditions, many fields of soybeans grown in 1966 for seed have low germination. Combine damage at harvest

or rough handling can crack the seed coat and reduce germination of soybeans. Immature seed at time of killing frost also can contribute to low germination.

See SOYBEANS on Page 2

### Representative Here Thursday

Thursday of each week has been set for the Social Security Representative to be in Muleshoe, John G. Hutton, District manager of the Social Security Administration, announced today.

The Lubbock representative has been in Muleshoe on Wednesday of each week. The change in dates starts this week.

### Small Farmers Increase Benefits

The child of a self-employed farmer's gross income up to \$2400 can now be reported for social security credit, even if the farmer operated at a net loss, provided he made \$600 or more in gross farm income.

Previously \$1800 was the upper limit for optional reporting. This information comes from John C. Kennedy, local County Supervisor of Farmers Home Administration.

Further information can be obtained from Jim Lattimer of Social Security Administration, who is at the County Judge's office each Thursday from 9:00 to 12:00 a.m.

### Oswald Buys Shop Equipment

Jack Oswald, Plainview Commercial Print shop owner, has purchased the Muleshoe Publishing Company's commercial printing equipment.

Oswald will open a printing shop at 111 East Ave. D. L.B. Hall, Journal's publisher said "This will enable us to expand our newspaper facilities."

"We wish to thank our customers for their patronage in the commercial printing business," Hall concluded.

### Commission Discusses Grant

The Bailey County Planning Commission met at the courthouse Thursday, March 30, to discuss the \$5000 grant to the Commission by FHA for the preparation of a comprehensive water and sewer plan and study for the rural areas in this county.

There is four parts to the study, with the first part covering preparation of a preliminary report on population, economic conditions, existing public utilities, natural resources, agricultural production trends, and water resources.

Ralph Douglas, representing the planner, B.L. Nelson & Associates hired by the Commission, stated that Part 1 of the contract should be completed within four to six weeks.

Attending the meeting were Bailey County Judge Don Chihak, Bako Johnson, Eddie Wallace, Mayor Wilbur LeVeque, Leldon Phillips and Clinton Kennedy.

### Watering Time Important

"Results of the 1966 study on the irrigation of grain sorghum definitely point out the necessity of a well timed pre-boot irrigation. A six day delay in this irrigation reduced yields in our test approximately 1,000 pounds per acre."

Commenting on the future of grain sorghum, Valliant said that grain sorghum will probably be planted on more irrigated acres than any other crop in the High Plains of Texas in 1967 because of the feed grain program requiring only a 20% acreage diversion. With the increase in planted acreage, the use of irrigation water will also increase. This will require the farmer to carefully plan the most practical use of practical efficiency."

"A four year average showed

no significant increase in yield with three summer irrigations over two summer irrigations."

See WATERING on Page 2

See SUSPECT on Page 2

## Feed Lot Expansion Announced by King

Harold King announced today that a new cattle feeding operation is being built west of Muleshoe.

The company will be formed by King Grain Company and three of its key personnel, Jim Small, office manager; Bob Bliss, Feed Lot manager and C.H. (Bud) Holdeman, elevator superintendent.

"King Grain Company is run on a family basis, with management working closely with the personnel. The company is fortunate to have in its organization, men such as Bliss, Small and Holdeman, who have proven their ability over the years and is very pleased

to be in partnership with these men," King said.

"We are proud to have these men as business partners in view of their past record and ability," he stated.

This new company is starting with a feeding capacity of approximately 3,000 head with ample room for expansion, as the need arises.

The type of feeding to be done will be what is called "warming up" cattle. This means the cattle will be fed a ration that will enable them to grow and acquire a good flesh cover which will better prepare them for finishing.

The new feed lot will be

operated on a commercial basis with contract feeding being done for people other than the owners.

King states that he hopes to have this plant in operation by late April.

King has been in the grain and feed business here for years.



CONSTRUCTION SITE -- Bob Bliss and Max King are shown near the feed troughs being built of concrete for the new feed lot under construction. Loading chutes can be seen in the background.



IN FORMS -- These are the concrete feeding troughs being built for the new King Feed Lot. Three of them are pictured in the foreground after being poured from the large mixer.



LOADING CHUTES -- These are loading chutes at the new feed lot west of Muleshoe. The new pens will be in operation in late April.

### Chamber...

Continued from Page 1

Christmas tree in the history of Muleshoe brought in for the holidays through the efforts of the Businessmen's Activities Committee, a family jamboree was held during the year and special events scheduled throughout the year to keep the town active.

What is your Chamber of Commerce? What does it mean to you and your community? Let us start with a definition, which in itself also gives the purpose of the Chamber of Commerce, -- people working together, to make their community a better place in which to live and make a living.

That means civic improvements as well as business improvements. For the ones who have to see that they are getting something in dollars and cents out of something let me express it in a different way. The Chamber of Commerce is a part of your business. It serves many purposes. Three departments that the Chamber of Commerce serves are the (1) Education Department; (2) Trade Department; (3) Industrial Department. Few, if any, small businesses in town could afford to have these three departments in their business. These are the departments that give you your dollars and cents return, but the most important department is the department of COOPERATIVE EFFORT. This

department has a big responsibility in that it is supposed to improve business and build a better community. That sounds much like what has been said before, but here is where the difference comes in. It is done in a different way. The Chamber of Commerce tries to help businessmen to work together to overlook their petty differences and work for the betterment of the community as a whole and not as individuals. If the community is improved then you in turn will be improved in dollars and cents. Stop and think at this point. Most businessmen fully understand what has been said so far, but there is something besides dollars and cents that should be of interest. All should be interested in improving the conditions that are not right in our community, without expecting a penny for it. A lot of people miss the aim of the Chamber of Commerce and feel that it is a failure if they do not see a few new industries in the community every time they turn around. But can say that it has been a failure if there has been civic improvement? After all, the people who live in a community benefit from the improvements. Let us keep this in mind always. Don't expect miracles overnight. You might be disappointed.

Your Chamber of Commerce is an investment. Never think of it in any other way. In fact your Chamber of Commerce is an investment in the future. But only through your combined efforts can that future be a success. Cooperative with each other and in turn you will be cooperating with your Chamber of Commerce because you are the Chamber of Commerce.

#### WOMEN GETTING RE-TIRED

AKRON, Ohio (AP) — Women, seldom seen around tire racks a few years ago, now buy 15 percent of the 100-million-plus replacement tires sold annually in the United States, says The Goodyear Tire & Rubber Company.

### Suspect...

Continued from Page 1  
before for fighting or anything?" and he said "No, sir."

Adams described Whirly as being "very neat in appearance, with short, neat hair. He talked real nice. He didn't use any slang or anything."

Adams said some of the men Whirly was working with were listening to a radio during the Dallas slaying and a description of the suspect.

One of the men told City Judge W. B. Smith Jr. that he thought the radio description fit Whirly.

The judge copied down the license number of Whirly's motorcycle and, after contacting local police officials to check on the owner of the vehicle, confirmed that the man was Whirly.

Whirly surrendered peacefully to highway patrolman Carl Mullins. "He Didn't give anybody any trouble," said Adams. "He didn't really look like he was excited."

The Dallas girl, a student at Long Junior High School, was found strangled with her blue and white knit blouse.

### Soybeans...

Continued from Page 1  
mination. It is strongly recommended that registered or certified seed be obtained if possible. If a farmer is going to use non-certified seed, a germination test should be made to know how much seed will be necessary for a good stand. Once more, if you are planting on a good soybean crop in 1967, the first rule of success is good quality planting seed.

Further information on the timing of irrigation of grain sorghum and other crops can be found in the 1966 Annual Research Report to be published in the near future by the High Plains Research Foundation.



AUTO MECHANICS ---- These are the Muleshoe Auto Mechanics who participated in the Friday and Saturday contest at Pala Duro high school, Amarillo. They are Ronnie Farmer, Paul Wolfe, Joe Luis Elizarraraz, Weldon Phillips, Robert Ottwell, E.J. Johnson and instructor, Jim Beller. They are members of VICA of Muleshoe high school.

### Watering...

Continued from Page 1  
his available water. The declining level in the ground water formation makes this advance planning more important each year. Efficiency of water use is highly important to the grain sorghum producer. For this reason, the High Plains Research Foundation is continually studying ways and means to maintain and improve the income from grain sorghum with reduced amounts of underground water.

In irrigating grain sorghum the approximate 20 day period beginning with the 6 to 8 leaf stage and ending with bud emergence is the most critical. Pre-bud is the period when the small head can be seen forming if the plant is stripped

## Texas Farmers Elected To Governing Body

Twelve Texas cotton farmers were elected Friday, March 24 to serve on the governing body of a 51-member beltwide cotton producer organization to develop and implement research and promotion projects under the dollar-a-bale Cotton Research and Promotion Act. Texas selections were made by representatives of 14 Texas cotton producer organizations meeting in Dallas, according to Howard Alford of Lubbock, who was elected chairman of the caucus. All selections were by unanimous vote.

Producer organizations from all cotton producing states were expected to complete their "trustee" elections by March 31. Alford said the 51 trustees are expected to meet about mid-April, adopt by-laws, elect a 17-man executive committee, and make application to the Cotton Board for a contract to carry out the program.

The Cotton Board is a 20-member group appointed earlier this month to administer provisions of the Act. Appointments to the Board were made by the Secretary of Agriculture from nominations made by approved state and regional cotton producer organizations.

Membership on the trustee group was allotted to the states on the basis of two members for the first 400,000 bales of production and one for each additional 400,000 bales or major fraction thereof.

The twelve members from Texas were also selected by the group in Dallas on the basis of production from the various areas of the State, with five places going to the High Plains, three to South Texas, three to the combined Rolling Plains and Blacklands areas and one to the Pecos-El Paso region.

From the High Plains, elected representatives are J.D. Smith of Littlefield, Roy Forkner of Lubbock, Howard Alford of Lubbock, Joe B. Pate, Jr., of Lubbock, and L. C. Unfred, New Home.

Smith is President of Plains Cotton Growers, Inc., and Forkner is FCG Board Chairman. Elected from the Rolling Plains-Blacklands were Aubrey Lockett of Vernon and Ropesville, Charles Stenholm of Stamford, and Dan Pustejovsky of Hillsboro.

From South Texas W.W. Hart of Sinton, Lawrence Peterson of Danevang and John Abbott of Harlingen were selected.

Bob Skov of El Paso was chosen from the Pecos-El Paso area.

Pate, who was named an alternate on the Cotton Board for the Cotton Research and Promotion Act, immediately resigned from that post since he could not serve in both capacities.

Donald A. Johnson, FCG Executive Vice President, and Jay Cannon of Hale Center were nominated to take Pate's place as an alternate Cotton Board member. The Secretary will appoint one of these two.

#### ONE-ROOM SCHOOLS GOING

FRANKFORT, Ky. (AP) — About 400 one-room schools have disappeared from Kentucky in the past four years. The number of small high schools in the state also is declining through mergers.

#### BAILEY COUNTY JOURNAL

Established March 11, 1910  
Published by Muleshoe Publishing Co., Inc.  
Every Sunday at 304 W. Second  
Lubbock, Texas  
Larry B. Hall, President  
James C. Hall, Sec.-Treas.  
Muleshoe, Texas 1967  
Zone 1-Deliver: Pariser-Cottrill-Lamb...  
Zone 2-Deliver: Pariser-Cottrill-Lamb...  
Zone 3-Deliver: Pariser-Cottrill-Lamb...  
Zone 4-Deliver: Pariser-Cottrill-Lamb...  
Zone 5-Deliver: Pariser-Cottrill-Lamb...  
Zone 6-Deliver: Pariser-Cottrill-Lamb...  
Zone 7-Deliver: Pariser-Cottrill-Lamb...  
Zone 8-Deliver: Pariser-Cottrill-Lamb...  
Zone 9-Deliver: Pariser-Cottrill-Lamb...  
Zone 10-Deliver: Pariser-Cottrill-Lamb...  
Zone 11-Deliver: Pariser-Cottrill-Lamb...  
Zone 12-Deliver: Pariser-Cottrill-Lamb...  
Zone 13-Deliver: Pariser-Cottrill-Lamb...  
Zone 14-Deliver: Pariser-Cottrill-Lamb...  
Zone 15-Deliver: Pariser-Cottrill-Lamb...  
Zone 16-Deliver: Pariser-Cottrill-Lamb...  
Zone 17-Deliver: Pariser-Cottrill-Lamb...  
Zone 18-Deliver: Pariser-Cottrill-Lamb...  
Zone 19-Deliver: Pariser-Cottrill-Lamb...  
Zone 20-Deliver: Pariser-Cottrill-Lamb...  
Zone 21-Deliver: Pariser-Cottrill-Lamb...  
Zone 22-Deliver: Pariser-Cottrill-Lamb...  
Zone 23-Deliver: Pariser-Cottrill-Lamb...  
Zone 24-Deliver: Pariser-Cottrill-Lamb...  
Zone 25-Deliver: Pariser-Cottrill-Lamb...  
Zone 26-Deliver: Pariser-Cottrill-Lamb...  
Zone 27-Deliver: Pariser-Cottrill-Lamb...  
Zone 28-Deliver: Pariser-Cottrill-Lamb...  
Zone 29-Deliver: Pariser-Cottrill-Lamb...  
Zone 30-Deliver: Pariser-Cottrill-Lamb...  
Zone 31-Deliver: Pariser-Cottrill-Lamb...  
Zone 32-Deliver: Pariser-Cottrill-Lamb...  
Zone 33-Deliver: Pariser-Cottrill-Lamb...  
Zone 34-Deliver: Pariser-Cottrill-Lamb...  
Zone 35-Deliver: Pariser-Cottrill-Lamb...  
Zone 36-Deliver: Pariser-Cottrill-Lamb...  
Zone 37-Deliver: Pariser-Cottrill-Lamb...  
Zone 38-Deliver: Pariser-Cottrill-Lamb...  
Zone 39-Deliver: Pariser-Cottrill-Lamb...  
Zone 40-Deliver: Pariser-Cottrill-Lamb...  
Zone 41-Deliver: Pariser-Cottrill-Lamb...  
Zone 42-Deliver: Pariser-Cottrill-Lamb...  
Zone 43-Deliver: Pariser-Cottrill-Lamb...  
Zone 44-Deliver: Pariser-Cottrill-Lamb...  
Zone 45-Deliver: Pariser-Cottrill-Lamb...  
Zone 46-Deliver: Pariser-Cottrill-Lamb...  
Zone 47-Deliver: Pariser-Cottrill-Lamb...  
Zone 48-Deliver: Pariser-Cottrill-Lamb...  
Zone 49-Deliver: Pariser-Cottrill-Lamb...  
Zone 50-Deliver: Pariser-Cottrill-Lamb...  
Zone 51-Deliver: Pariser-Cottrill-Lamb...  
Zone 52-Deliver: Pariser-Cottrill-Lamb...  
Zone 53-Deliver: Pariser-Cottrill-Lamb...  
Zone 54-Deliver: Pariser-Cottrill-Lamb...  
Zone 55-Deliver: Pariser-Cottrill-Lamb...  
Zone 56-Deliver: Pariser-Cottrill-Lamb...  
Zone 57-Deliver: Pariser-Cottrill-Lamb...  
Zone 58-Deliver: Pariser-Cottrill-Lamb...  
Zone 59-Deliver: Pariser-Cottrill-Lamb...  
Zone 60-Deliver: Pariser-Cottrill-Lamb...  
Zone 61-Deliver: Pariser-Cottrill-Lamb...  
Zone 62-Deliver: Pariser-Cottrill-Lamb...  
Zone 63-Deliver: Pariser-Cottrill-Lamb...  
Zone 64-Deliver: Pariser-Cottrill-Lamb...  
Zone 65-Deliver: Pariser-Cottrill-Lamb...  
Zone 66-Deliver: Pariser-Cottrill-Lamb...  
Zone 67-Deliver: Pariser-Cottrill-Lamb...  
Zone 68-Deliver: Pariser-Cottrill-Lamb...  
Zone 69-Deliver: Pariser-Cottrill-Lamb...  
Zone 70-Deliver: Pariser-Cottrill-Lamb...  
Zone 71-Deliver: Pariser-Cottrill-Lamb...  
Zone 72-Deliver: Pariser-Cottrill-Lamb...  
Zone 73-Deliver: Pariser-Cottrill-Lamb...  
Zone 74-Deliver: Pariser-Cottrill-Lamb...  
Zone 75-Deliver: Pariser-Cottrill-Lamb...  
Zone 76-Deliver: Pariser-Cottrill-Lamb...  
Zone 77-Deliver: Pariser-Cottrill-Lamb...  
Zone 78-Deliver: Pariser-Cottrill-Lamb...  
Zone 79-Deliver: Pariser-Cottrill-Lamb...  
Zone 80-Deliver: Pariser-Cottrill-Lamb...  
Zone 81-Deliver: Pariser-Cottrill-Lamb...  
Zone 82-Deliver: Pariser-Cottrill-Lamb...  
Zone 83-Deliver: Pariser-Cottrill-Lamb...  
Zone 84-Deliver: Pariser-Cottrill-Lamb...  
Zone 85-Deliver: Pariser-Cottrill-Lamb...  
Zone 86-Deliver: Pariser-Cottrill-Lamb...  
Zone 87-Deliver: Pariser-Cottrill-Lamb...  
Zone 88-Deliver: Pariser-Cottrill-Lamb...  
Zone 89-Deliver: Pariser-Cottrill-Lamb...  
Zone 90-Deliver: Pariser-Cottrill-Lamb...  
Zone 91-Deliver: Pariser-Cottrill-Lamb...  
Zone 92-Deliver: Pariser-Cottrill-Lamb...  
Zone 93-Deliver: Pariser-Cottrill-Lamb...  
Zone 94-Deliver: Pariser-Cottrill-Lamb...  
Zone 95-Deliver: Pariser-Cottrill-Lamb...  
Zone 96-Deliver: Pariser-Cottrill-Lamb...  
Zone 97-Deliver: Pariser-Cottrill-Lamb...  
Zone 98-Deliver: Pariser-Cottrill-Lamb...  
Zone 99-Deliver: Pariser-Cottrill-Lamb...  
Zone 100-Deliver: Pariser-Cottrill-Lamb...

**HEAP BIG MEDICINE ON YOUR INCOME TAX**

No need to be sick about tax. Get Big Medicine. Sneak away from reservation first chance. Take tax to BLOCK. Save you time, worry... often much wampum, too.

**COMPLETE RETURNS \$5 UP**

**GUARANTEE** We guarantee accurate preparation. Every tax return. If we make any errors that cost you any penalty or interest, we will pay the penalty or interest.

**MR. BLOCK Co.**  
America's Largest Tax Service with Over 1500 Offices

**125 W AMERICAN BLVD. MULESHOE, TEXAS**

**ONLY ONE CONNECTION Electric**

**85% OF ALL NEW HOMES HAVE SPACE and WIRING AVAILABLE**

**ONLY \$25.50 LESS to buy**

**REDDY KILOWATT RECOMMENDED Electric APPLIANCE DEALER**

**SOUTHWESTERN PUBLIC SERVICE COMPANY**

**Convenient ELECTRIC Drying**

## These advantages plus \$15.00 certificate

Be a wise buyer! Southwestern Public Service customers can now save an additional \$15.00 with the purchase of a new electric clothes dryer from a Reddy Kilowatt Dealer.

This money-saving offer is equal to getting 300 loads of clothes dried free because electric dryers cost only 5¢ a load to operate — and that's total cost. Buy now and save!

**BUY AT THE STORE WITH REDDY ON THE DOOR**

**REDDY KILOWATT RECOMMENDED Electric APPLIANCE DEALER**

**SOUTHWESTERN PUBLIC SERVICE COMPANY**

**Convenient ELECTRIC Drying**

**WALLACE THEATRE**

Sunday & Monday  
APRIL 2-3

**penelope**  
the world's most beautiful bank-robber!

Friday & Saturday  
APRIL 7-8

**A SHOT IN THE DARK**

**THE PINK PANTHER**

**BEEN THINKING ABOUT A NEW HOME?**

MURRAY-WRIGHT LUMBER CO. OF LUBBOCK, REGISTERED BUILDERS, MEMBERS OF THE NATIONAL HOME BUILDER'S ASSOCIATION WILL CONSTRUCT YOUR HOME WITH BUILT-IN QUALITY

**Over 20 Years of Building & Lumber Experience**

**Among the Many Services Offered, You Will Find**

- \*QUALIFIED PERSONNEL TO DRAFT YOUR PLANS FROM YOUR IDEAS OR OURS
- \*ASSISTANCE IN YOUR COLOR SCHEMES
- \*MANY PLANS FOR YOU TO SELECT FROM, ALL TYPES AND SIZES

**Will Build FHA, GI, or Conventional in Your Town or on Your Farm ALSO:**

FOR YOUR BUILDING MATERIAL NEEDS, WE HAVE AN EXPERIENCED ESTIMATOR... BRING IN YOUR LISTS FOR A FREE ESTIMATE

**MURRAY-WRIGHT LUMBER CO.**  
5238 34th. St. Lubbock, Texas  
Phone SW2-3721 Area Code 806  
CLIP AND MAIL TO US

Mail to: MURRAY-WRIGHT LUMBER COMPANY  
5238 34th. St., Lubbock, Texas

NAME \_\_\_\_\_ PHONE \_\_\_\_\_  
ADDRESS \_\_\_\_\_

I am interested in further information regarding your building program.  
Please have one of your representatives call me.

**We Salute**

**GEORGE (Pee Wee) WILLIAMS**

**PRESIDENT'S AWARD QUALIFIER**

Lubbock Agency

**Great American Reserve Ins. Co.**

MARSHALL FARRELL, C.L.U., Mgr.



## Women Host Bula Easter Egg Hunt

by Mrs. John Blackman

Mrs. Connie Clevenger, Mrs. Fulingham and Mrs. James Boley, hosted the Easter egg hunt for the first grade class at school on Wednesday afternoon before the Easter holidays. Refreshments of punch, and cookies were served and plastic eggs filled with candy given as favors.

Mrs. Jimmie Gresham, Mrs. Bernadino Davila, Mrs. Clifford Baca and Mrs. Keith Hansen, sponsored the second and third grade Easter egg hunt, at the J. C. Snitker home. They served refreshments of punch and cookies.

Mrs. Vera Hawkins spent the holidays with her son and family at Dimmitt and also with relatives in Lubbock. Mrs. Hawkins is teacher of the second and third grade classes.

J. Logan Green of Lordsburg, Ark., spent three days last week with his daughter and family, the J. C. Snitkers. Also present for Easter Sunday were Mr. and Mrs. Curtis Green and children, Lubbock and Hayward Smith, Dimmitt.

Mr. and Mrs. Leon Kessler and children left Sunday after church services for Austin. They spent Sunday night with her uncle and wife Mr. and Mrs. F. G. Woodard at Kerrville.

Monday, they did some sight seeing on their way to Austin. Tuesday morning Kessler attended a legislative breakfast for Chamber of Commerce members, held at Steven F. Austin Hotel, in Austin.

Company for Mr. and Mrs. Erwin Campbell this week has been their daughters, Mrs. Glenn Campbell and baby, Stacy, Baytown, and Mrs. Jonnie Williams, Hartley.

Mr. and Mrs. John Latham spent Sunday at Lake Thomas, with other relatives. Her nephew, Terry Flowers, Taboka accompanied them home for a visit over the holidays.

Terry Blake, minister of the local Church of Christ spoke at 10 a.m. Wednesday morning at the 9th Annual Lectureship of the Church of Christ Bible Chair, E.N.M.U., Portales. His topic being "The Prayer of Intercession."

Mr. and Mrs. C. A. Williams accompanied their daughter Barbara and other senior students, to Hardin Simmons Thursday for a get acquainted trip with the college.

Donna Autry, who makes her home at the Knights Rest Home, Littlefield, spent the Easter holidays in the home of her brother and family the Elwood Autry's.

Mr. and Mrs. Lonnie Cape and daughter Lenna, Lubbock, spent Easter with her parents, the A. H. Arends.

Miss Opal Bogard, teacher in the McCamby public school system spent the holidays with her parents the, Tom Bogards.

Rickie Hernandez, first grade student was able to return to school Wednesday after having suffered a rattle snake bite on Tuesday the week before. He

was hospitalized in the Morton Hospital.

Mr. and Mrs. John Crockett, and children and Mr. and Mrs. Bradley Robertson and children were Easter day lunch guests of the Burtis Clowns of Morton, also Mr. and Mrs. Don Bennett of San Antonio.

Mr. and Mrs. Don Grusendorf and daughter Patricia and Mr. and Mrs. Dale Nichols and children spent the holidays fishing at Proctor Lake.

Mrs. Cora Lawhorn, Little Rock, Ark. and Mrs. M. R. Slaughter, Levelland, visited Thursday afternoon with Mrs. F. L. Simmons.

Karen Armstead of Littlefield spent Tuesday night with Barbara Williams. It was Barbara's birthday.

Mr. and Mrs. R. B. Wright and son Howard, spent Saturday night and Easter Sunday with his mother, Mrs. J. M. McKinney, Odessa.

Mr. and Mrs. W. R. Adams visited Sunday afternoon with friends Mr. and Mrs. Ben Edson who make their home at the present, in the Manor Rest Home at Levelland.

Durwood Fred, who is doing civil service work near San Diego, Calif, flew home for the Easter holidays with his parents the E. P. Freds.

Other Sunday guests were Mr. and Mrs. Richard Greer of Morton.

Mr. and Mrs. Richard Black and children spent the first of the week visiting with relatives and doing some fishing at San Angelo.

Easter guests in the D. J. Cox home were her parents Mr. and Mrs. J. H. Chesher, of Morton and Mr. and Mrs. Leo Wallace, Plainview, also Mr. and Mrs. Lawrence Taylor and children, Arch, N. M.

Mr. and Mrs. W. L. Clawson spent Sunday with her daughter and family the James Collins of Amarillo.

Mrs. L. L. Walden visited the past week in Lubbock with her children, Mr. and Mrs. Leo Nixon, Mr. and Mrs. Clifford Walden and Mr. and Mrs. M. D. Walden.

Mr. and Mrs. Terry Blake and children visited Thursday and Friday with friends the Steve Brackens' at Fluvanna.

Tuesday evening company for the Jack Withrows were her mother, Mrs. Lola Lentz and Mr. and Mrs. Floyd Amstead and Bob, Littlefield, and Mrs. Jerry Standifer and baby son Todd, Midland.

Mrs. Dutch Cash and grandson Dennis Cash, Portales, spent Thursday to Monday in Fort Worth with the Douglas Cash's.

Mr. and Mrs. Bill Stewart, Airman Ronald H. Coomer, son of Mr. and Mrs. Preston H. Coomer of Rt. 2, Muleshoe, has been selected for training at Sheppard AFB, Tex., as an Air Force aircraft maintenance specialist.

The airman, a 1965 graduate of Muleshoe High School, recently completed basic training at Amarillo AFB. He has studied at West Texas State University, Canyon.

## Douglas Service Held Saturday

Funeral services for Albert H. Douglas, 87, were held at 2:30 p.m. Saturday, April 1, in Singleton's Chapel of the Chimes with the Rev. J. Frank Peery, First Methodist Church minister, officiating.

Burial was at 4:30 p.m. in Rest Haven Memorial Park, Lubbock, under direction of Singleton Funeral Home.

Douglas, the father of Ralph Douglas, city engineer, was

## Douglas Service Held Saturday

born March 8, 1880 in Collins County. He had made his home here with the Ralph Douglas' for the past seven years, moving here from Lubbock where he had lived for the past 30 years. He operated Douglas Produce

Methodist Church. He was a member of the Methodists.

Survivors other than Ralph are two daughters, Mrs. Mark in Schwarb, Lubbock, Mrs. Ben B. Hutchinson, Lubbock; one sister, Mrs. Joe Durning, Sherman, five grandchildren and two great grandchildren.

## LEGAL NOTICE

NOTICE TO DEBTORS AND CREDITORS

THE STATE OF TEXAS ) COUNTY OF BAILEY ) TO THOSE INDEBTED TO, OR HOLDING CLAIMS AGAINST THE ESTATES OF RAZZ CLAIBORN CLINE AND RENA ELLEN CLINE, DECEASED, NO. 761, IN THE COUNTY COURT OF BAILEY COUNTY, TEXAS, AT PROBATE, GREETING:

The undersigned, having been duly appointed administratrix

## LEGAL NOTICE

of the estates of Razz Claiborn Cline and Rena Ellen Cline, deceased, late of Bailey County, Texas, by the Judge of the County Court of said County on the 5th day of October, 1966, hereby notifies all persons indebted to said estates to come forward and make settlement, and those having claims against said estates to present them to her within the time prescribed by law at her residence at 11319 Haskell Street, Granada Hills, California, where she receives her mail or to her duly authorized and appointed agent for service of process, V.M. Blesker, at his residence in the city of Otton, County of Lamb

and the State of Texas, or at P.O. box 134, Otton, Texas, where he receives his mail.

WITNESS my hand this the 15 day of February, 1967.

s/Cleta Lora Wheelless Cleta Lora Wheelless, Administratrix of the Estates of Razz Claiborn Cline and Rena Ellen Cline, Deceased.

t-Itc

LEARN HOW LOUISVILLE (AP) - Sign on a church bulletin board: "In order to get to Heaven, take your flight training here."

## Protection Against Insect Damage Recommended

Peach trees in the home garden can be protected from insects. Expensive equipment is not required and labor needed is not excessive considering the results obtained, says County Agent J. K. Adams.

The following spray schedule is recommended. Spray the peach tree or trees with either Carbaryl (Sevin), malathion, methoxychlor or diazinon when 75 percent of the blossom petals have fallen. Make the second or shock split application 10 days after the first application with one of insecticides listed for first spray. Then 10 to 14 days after the second spraying make the third spraying with one of the recommended insecticides and 14 to 21 days later make a repeat application of the number three spraying.

The home gardener can do a satisfactory spraying job with a small power sprayer or a hand sprayer if close attention is given to the thorough coverage of the tree. It's important, says the agent, to use enough spray to wet all fruit, leaf and bark surfaces.

Should infestations of fruit-damaging insects occur following the completion of recommended spray schedule, Carbaryl (Sevin) can be used effectively up to within one day of harvest, says Adams.

Insecticides are essential tools in the home garden; however, they should be used in accordance with the rate and safety directions printed on the container label, the county agent reminds.

It is well to remember, he adds, that Carbaryl may be applied to peaches up to one day before harvest; that malathion should not be used within 7 days of harvest.

For detailed information on spray schedules not only for peaches but other fruits and nuts, Adams says a visit or telephone call to his office will make it available.

We take this means to thank those for the food, flowers, cards, prayers and kindness shown as during our recent bereavement. We especially thank the firemen and their wives.

May God richly bless each of you in our prayer.

The Family of Ira Robinson The Turner family

14s-Itc

Bring your... **BUCCANEER Bonus COUPONS** TO OUR STORE, & DURING THE NEXT 4 WEEKS, ACCUMULATE UP TO... **5,000 FREE BONUS STAMPS**

Borden's **ICE CREAM** 1/2 Gal. **49¢**

**HOL'N ONE DONUTS** ... A TREAT **Hol'N One DONUTS**

Ted Makes 'Em!

**DR. PEPPER** NO DEPOSIT-NO RETURN BOTTLES 6 Btl. Ctn. **55¢**

**ROUND STEAK** Lb. **79¢**

**5¢ FRESH DAILY!** **59¢** Doz.

Shurfine **SALAD DRESSING** OT. **39¢**

Shurfine **CATSUP** 14 Oz. Btl. **5 For \$1**

Soffin **TOILET TISSUE** 10 Roll Pkg. **69¢**

Bremner **JUMBO PIES** 12 Per. Box **39¢**

**FRYERS** Fresh Dressed Lb. **29¢**

FEED LOT BEEF **SIRLOIN STEAK** Lb. **79¢**

**RODEO BOLOGNA** 1 Lb. **59¢**

**RODEO ASSORTED** 6 Oz. Pkg. **3 For 89¢**

**LUNCH MEATS** RODEO FULLY COOKED **3 For 89¢**

**PICNICS** Lb. **39¢**

**CABBAGE** Lb. **5¢** Fresh Firm

**RED GRAPES** 2 Lb. For **29¢**

**PEARS** Lb. **12 1/2¢**

FRESH **Corn On The Cob** 3 ears **25¢**

Morton's 9 Oz. **FROZEN FOODS**

**HONEY BUNS** 4 For **\$1**

**PECAN PIES** Morton's 16 Oz. **49¢**

**ORANGE JUICE** Shurfine 12 Oz. Can **4 For \$1**

Bring your... **BUCCANEER Bonus COUPONS** TO OUR STORE, & DURING THE NEXT 4 WEEKS, ACCUMULATE UP TO... **5,000 FREE BONUS STAMPS**

**Jim's Pay 'N Save, Muleshoe**

**Calvert's Groc., Muleshoe**

**Wagnon's Groc., Muleshoe**

**Red's Little Giant, Muleshoe**

**Eddie's Food Mkt., Needmore**

**Maple Groc., Maple**

**Smart Groc., Circleback**

**Henderson Groc., Sudan**

**BUCCANEER STAMPS**

**Jim's Pay 'N Save** FRIENDLIEST STORE IN TOWN

Open 7 Days A Week

QUALITY MERCHANDISE AT LOWEST PRICES

# Society News

PAT JOHNSON--SOCIETY EDITOR  
Phone-272-4536

## Lodge Members Attend Meeting

Ona Berry, Allie Snyder, Circleback were honored Fern Davis, Lucille Gross and guests.  
Polly Otwell, Muleshoe Rebekah Also honored during the evening. Birthdays night ing were Thurstie Reed and at the Rebekah Lodge in Morton. Maude Young, Muleshoe and Past President of Rebekahs, Bula Kelton, Needmore, Thelma Gage and Past Grand Those present enjoyed a Master, Raymond Gage of Salad supper.



## TOPS Club

The weekly meeting of the Jenny TOPS was held Thursday March 30, 7 p.m. in the Community room of the Bailey County Electric Cooperative Building. The meeting was opened with the TOPS pledge and the Fellowship song, sung by the 16 members present. Two guests were present, Mrs. George Crain, Lazbuddie and Pam McDonald.

Queen for the week, was Jewel Peeler and Comtesse were June Vinson and Anna McDonald. Myrtle Wells and Gertie Kirk who had been visiting in Brownwood for the past month attended two TOPS meetings while there and Myrtle Wells gave an interesting report on their visit to the club.

Napkins have been purchased by members of the TOPS club to be sold, and money made from sales will be used to send two delegates to the State Convention in Austin, April 14 and 15. Anyone wishing to purchase these napkins may do so by contacting any member of the club.

Thursday night ended the local contest and the Losers are to be entertained with a salad supper at the next meeting which will be held Thursday April 6 in the Community room of the Bailey County Electric Co-



Mr. and Mrs. Dwight Leon Sooter

## Bovell, Sooter Vows Solemnized

Marriage vows were solemnized for Miss Inez Edwards Bovell, and Dwight Leon Sooter at the First Christian Church, Friday, March 24.

The Rev. Don Boles read the double ring ceremony at 8 o'clock before an altar banked with greenery flanked by candleabras.

The bride, given in marriage by Spencer Beavers, is the daughter of Mrs. Juarene Bovell and the late W.T. Bovell. Dwight Sooter is the son of Mr. and Mrs. Joe Sooter, Route 3, Muleshoe.

The bride's gown was designed along princess lines from Peau de sole, featuring a chapel train. Her bouffant veil was attached to a jeweled-studded crown. She carried a cascade arrangement of white roses with steamers.

Matron of honor was Mrs. Jacque Bass, Lubbock, sister of the bride. She wore an emerald belted shift dress featuring long sleeves. Roy Sooter, brother of the bridegroom served as best man. Candelighters were Tim Sooter, Muleshoe, Eddie Bass, Lubbock.

Traditional wedding selections were played by organist Mrs. Tommie Bratcher, sister of the bride, and soloist was Hulian Bass, brother-in-law of the bride.

Ushers were Dwyan Calvert and Larry Meyers.

A reception followed the ceremony in the home of the bride's mother, 305 East Fir. For a wedding trip to Albuquerque, the bride wore a yellow sleeveless princess styled dress of cotton linen. Her coat was yellow and green featuring long sleeves with a matching yellow hat. Her ensemble was highlighted with white accessories.

The couple will make their home at 2006 Main, Lubbock. Where they are students at Texas Tech.

### REHEARSAL

A rehearsal dinner was held at the Corral with members of the wedding party attending. Special guests were John Johnson and Karen Hunt, Houston.



Mr. and Mrs. Oran Odell Howard

## Miss Hawkins, Mr. Howard Exchange Wedding Vows

Lola Deona Hawkins became the bride of Oran Odell Howard in a quiet ceremony read at the Primitive Baptist Church at 3 p.m. Sunday, March 19. The double ring service was read by the Rev. Albert Owen.

The bride is the daughter of Mr. and Mrs. J. L. Hawkins, Sudan, and the bridegroom's parents are Mr. and Mrs. Marion Howard, Muleshoe.

Escorted and given in marriage by her father, the bride wore a ballerina-length, sheath styled dress of white satin with a lace overlay. Her bridal satin duster was three-quarter length with three-quarter-length sleeves. Her veil of silk illusion was edged with scallops of white lace and caught to a circular seed pearl crown. The white cartation bride's bouquet was accented with pink streamers tied in love knots.

Lora Hawkins, twin sister of

the bride was maid of honor. She was attired in a ballerina sheath dress of pink, featuring a rounded neckline. Her corsage was white carnations. Charlie Howard, Muleshoe, served as his brother's best man.

A reception followed the ceremony in the church with Linda Hawkins, sister of the bride and her mother, Mrs. J.L. Hawkins presiding at the serving table.

A three-tiered wedding cake centered the table laid with a lace cloth and appointed with silver and crystal services. The couple are making their home here where the bridegroom is employed by Mills Machine Shop.

### TIPS

A drop or two of tabasco sauce will perk up mayonnaise to be served with fish or seafood.

**DOLLAR DAYS** are here again!

ONE GROUP LADIE'S & JUNIOR DRESSES \$5  
Values up to \$34.95

\*\*\*\*\*  
ONE GROUP Values to \$39.95  
**\$10**

Check Our Dollar Day Savings on Other Items!  
The Fashion Shop  
OF MULESHOE

operative Building. The 6 month Queen will be crowned and members are reminded to bring their gifts for her and fruit for the March Queen.

The club will have a special guest speaker at their meeting, April 20, Robin Taylor, who will speak on foods.

SIMON REWRITES 'CHARITY' NEW YORK (AP)—Neil Simon, author of the two current Broadway comedy hits, "Barefoot in the Park" and "The Odd Couple," now officially receives credit for the book of the upcoming musical, "Sweet Charity."

The story was originally attributed to Bert Lewis, a pen name of Bob Fosse, who is directing the show that stars his wife, Gwen Verdon. Simon was called in as a consultant and made extensive changes which prompted the shift in authorship credit.

## Tips

Household Tip.  
FROST FIGHT-- If your refrigerator seems to be frosting up excessively, here are a couple of things you might check to improve the situation.

First, carefully examine the rubber seal around the door. If the rubber has dried or lost its resiliency, it could be causing an air leak in the door. It should be replaced. Second try checking the temperature control. If it is too low, it could be causing the freezing unit to over-ice. A third thing to watch is leaving foods uncovered. The moisture in the food just adds to the frosting problem.

## Art Association Meets Monday

The regular monthly meeting of the Muleshoe Art Association will be held Monday, April 5, 9:30 a.m. in the Community Room of the Muleshoe State Bank Building, with Mrs. Jack Linderson bringing the program.

Discussions will be held and final plans made for the Muleshoe Area Art Show that will be held the last week in April. Committees will also be appointed.

Mildred Williams is now exhibiting her work at L.B.'s Cafe.

**SPRING HOUSEWARE SALE**  
10 BIG DAYS

**AREA RUGS** 27" x 48" Reg. \$2.27 **\$2.97**

**WINDOW SHADES** Reg. \$1.19 **88¢**

**THROW RUGS** 19" x 13" Reg. 37¢ **27¢**

**MATERIAL** ASSORTED COLORS Reg. 47¢ Yd. **29¢ Yd.**

**HEAD 100% NYLON ASSORTED COLORS**

**SCARVES** Reg. 39¢ **19¢**

**PATIO TABLE** **\$1.97**

**PICTURES** SIZE 24" x 48" Reg. \$12.88 **\$9.88**

**PICTURES** SIZE 20" x 40" Reg. \$8.88 **\$5.37**

**Ironing Board PAD & COVER** Reg. 98¢ **77¢**  
Teflon Coated Ironing Board

**COVER** Reg. \$1.98 **\$1.37**

**CLOTHES PINS** Reg. 15¢ Doz. **5¢ Doz.**

Floral **BATH TOWELS** Reg. 97¢ **77¢**

**BATH TOWELS** Reg. 77¢ **2 For \$1**

**DRAPES PLASTIC** Reg. \$1.19 **88¢**

Ladie's Nylon **SEAMLESS HOSE** Reg. 59¢ **37¢**

**APRONS** \$1  
**SALAD BOWLS** 47¢  
**KAPOK PILLOWS** 88¢  
Glass Novelty ITEMS Values Up to \$1.79 **99¢**

Metal Adjustable **IRONING BOARD** Reg. \$4.99 **\$3.47**  
Super Tex

**ENAMEL PAINT** Reg. \$1.69 Qt. **\$1.09 Qt.**  
Super Tex With Silicone

**ENAMEL PAINT** Reg. \$1.79 Qt. **\$1.09 Qt.**

**PERRY'S**  
KNOWN FOR BETTER VALUES

**DOLLAR DAY Specials**

**Ladies' Spring DRESSES & SUITS**  
These Are All New Styles & Fabrics  
Values to \$125 **1/4 OFF**

**Ladies' SPRING COATS**  
Good Selection of Colors & Fabrics  
Values to \$60 **1/4 OFF**

**MEN'S CORDUROY JEANS**  
Large Selection of Colors  
These Are All A Famous Brand  
**DOLLAR DAY!** **\$3.99**  
Reg. \$5.98

**BOY'S VELOUR SOCKS**  
Large Selection of Colors.  
Size 9 to 11  
Reg. 79¢ **\$1**  
2 Pr. For

**GIRL'S DRESSY DRESSES**  
Stock Up Now on These New Spring Styles  
Size 1 to 14  
**1/4 OFF**

**MULESHOE MULE SWEAT SHIRTS**  
These Make Excellent Gift Items.  
Children's Sizes S-M-L  
Reg. \$2 **DOLLAR DAY!** **\$1.59**

**Savings & Loan Association of Clovis**  
801 Pils - Clovis, N. M. - 88101  
BRANCH OFFICE  
2nd and Abilene Street  
PORTALES, NEW MEXICO

**5.25%** (PER ANNUM)  
ON SAVINGS CERTIFICATE ACCOUNTS in amounts of \$15,000 up.

**5%** (PER ANNUM)  
ON SAVINGS CERTIFICATE ACCOUNTS in amounts of \$10,000 but less than \$15,000.00.

**4.75%** (PER ANNUM)  
ON REGULAR SAVINGS ACCOUNTS All accounts opened by the 10th will earn from the 1st.

(After the 10th earnings will start on date of Certificate)

Second Largest and One of the Oldest Federally Chartered Savings and Loans in New Mexico

**Cobb's**





# Caprock District TFWC Convention Held in Lubbock

The Texas Federation of Women's Clubs of the Caprock District of which the Muleshoe Study Club is a member, had their convention in Lubbock Monday and Tuesday in the Pioneer Hotel.

Mrs. Louis Cummings of Plainview, District president, presided. "Caprock Angels" was the theme for the convention. Mrs. E. H. Boedeker was general Chairman of the event. A semi-formal "Golden Wings" board dinner was held

7 p.m. in the hotel ballroom. The speaker was Mrs. Charles Caldwell of Midland, professional teacher of Charn and Modeling Classes for adults and teenagers. Her topic was "Woman to Woman."

Mrs. Caldwell presents book reviews and narrates style shows. She is a graduate of Rice University and has spoken to 15 high schools and 24 colleges on the subjects, "Is God Dead?", "The New Morality," and "Lone Courtship and Marriage," Mrs. Caldwell is a

member of the First Baptist Church where she and her husband work with young people. Registration was conducted from 3 to 5 p.m. after which the executive committee met in the suite of the Caprock District President.

Peggy Parker, was featured speaker at the convention, she is a special correspondent for The New York Daily News, and recently toured the combat zones in Viet Nam. She spoke at the banquet at 7 p.m.,

Tuesday in the Lubbock Country Club.

The day began with a "Heavenly Harp Breakfast" in the hotel. The hostess clubs served coffee during registration from 8 - 9:30 a.m. on the mezzanine floor.

At the opening ceremonies, introductions were made and reports of District officers were also made.

A noon luncheon was addressed by Mrs. B. F. Seay, Andrews, State President of the T.F.W.C. and "Fashion for Fun

Parade" began at 1:30 with adjournment of business at 5 p.m.

Two hundred and fifty women registered for the Convention. Awards presented during the Convention were: Mrs. Jack Kelly, Lubbock Woman's Study Club was winner of the Knit division and Mrs. Gene Handley, Athena, Junior Club of Lockney was winner of the Fabric division in the "Fashion for Fun" style show.

Progressive Study Club of Friona won first on the "Pres-

idents report."

"Federation Overall Report," Area Council of Women's Clubs of Morton won first; "Best Department report," Mrs. R. L. Webb, of Texas Study Club of Denver City won first. Mrs. L. T. Maybough of Plainview was given a Life Membership in the district. She has contributed 54 years of consecutive service to the Federation.

The delegates to the Convention also went on record as opposing the "Liquor by the drink" bill during voting, Tuesday.

Those on the nominating Committee of the Caprock District are Mrs. A.T. Cocanougher, Lubbock; Mrs. O.C. Thomas, Ralls; Mrs. M. E. Kelly, Earth. Mrs. C. W. Dickson, Friona and Mrs. T. L. Dunlap, Littlefield was named the district's trustee for the coming year.

Dr. Mary Buhls of Plainview, Medical Director of the High Plains Childrens Training Center, the Caprock Districts project, said the Center is now handling over 100 individuals and has a waiting list. She also said 50 volunteers have given 2,936 hours of service to the Center. It was organized by the High Plains Association for Retarded Children and the Junior Service League of Plainview and has been joined by other groups and individuals.

The control and direction is handled by the board of directors. The Muleshoe Study Club has joined in this District project.

Mrs. Cecil Cole, president of the Muleshoe Study Club and Mrs. Rufus Gilbreath, board member of the High Plains Childrens Training Center, attended the convention, bringing home second place on the press Book in the District.

The Littlefield Woman's Club won first place on their outstanding program of the year. Mrs. Roy McQuatters is president and Mrs. Bernard Perlman, a former Muleshoe resident, is program Chairman. The program winning was on international affairs, "Visit to Iran," given by Mrs. John Farley a member of the Muleshoe Club. She had several articles from Iran on display which made her talk more interesting.

The Muleshoe Study Club will have a called meeting, Monday afternoon at 4 p.m. in the Muleshoe State Bank Community Room. All members are urged to attend this important meeting.



Mrs. Roger Simpson... the former Pauletta Templeton

### Recent Vows Exchanged

Pauletta Templeton and Roger Simpson were united in marriage March 29 with the Elder Glenn Williams performing the ceremony.

Pauletta is the daughter of Mr. and Mrs. Paul Templeton of Lazbodie and the groom is the son of Mrs. Charles Kersey and the late Roger Benjamin Simpson.

After a short trip to New Mexico, the couple will reside at Dimmitt, where Mrs. Simpson will continue her education.

### Service Guild Met Monday

The Wesleyan Service Guild of the First Methodist Church met Monday, March 27, 7:30 p.m. in the home of Mrs. C. O. LaRue, 210 W. Ave. J.

Elizabeth Harden gave the opening prayer and guests, Miss Vandale Blesker and Jean Haskins sang "Jesus My Savior". A devotional was given by Mrs. Ray Edwards using an Easter theme.

The program was given by Mrs. Burl Wingo. "Joy Cometh in the Morning," as told by Mary of Bethany. Twelve members and two guests, were present.

Next Meeting will be April 10 in the home of Mrs. M.H. Laney.



### CONGRATULATIONS TO:

Mr. and Mrs. Carl Wiley, Ft. Worth, on the birth of a son born March 29, 11 a.m. in the West Plains Hospital and weighed 8-6. He was named Eric Lew.

Mr. and Mrs. George Bridges, Muleshoe, on the birth of a girl, Margie Sue, born March 30, 6:58 a.m. in West Plains Hospital and weighed 6-10.

- MULESHOE ASSEMBLY OF GOD**  
517 S First  
J.W. Farmer, Evangelist
- SPANISH ASSEMBLY OF GOD**  
East 6th and Ave. F.  
Rev. Enock Ramirez
- FIRST BAPTIST CHURCH**  
220W. Ave. E.  
Rev. Don Murray, Pastor
- PRIMITIVE BAPTIST CHURCH**  
621 S. First  
Alton Richards, Elder
- TRINITY BAPTIST CHURCH**  
314 E. Ave. B.  
Troy Walker, Pastor
- ST. MATTHEW BAPTIST CHURCH**  
W. Third  
Rev. E. McFrazier, Pastor
- CALVARY BAPTIST CHURCH**  
1733 W. Ave. C.  
Rev. Bill Felts
- RICHLAND HILLS BAPTIST CHURCH**  
17th & West Ave. D.  
Rev. Leland K. Callaway
- SPANISH BAPTIST MISSION**  
409 E. Ave. F.
- PROGRESS BAPTIST CHURCH**  
Progress, Texas  
Sam Sowder, Pastor
- FIRST CHRISTIAN CHURCH**  
130 W. Ave. G.
- IMMACULATE CONCEPTION CATHOLIC CHURCH**  
(Fr.) Robert O'Leary  
Northeast of City
- MULESHOE CHURCH OF CHRIST**  
Cloviss Hwy.  
D.L. Thompson, Minister
- NORTHSIDE CHURCH OF CHRIST**  
117 E. Brich Street  
H.R. Stevens, Minister
- CHURCH OF CHRIST**  
West Brich and Chicago  
H.R. Stevens, Minister
- JEHOVAH'S WITNESS**  
Friona Highway  
Boyd Lowery, Minister
- ST. PAUL LUTHERAN Muleshoe Presbyterian**  
Brian V. Engel, Reverend
- FIRST METHODIST CHURCH**  
507 W. Second  
J. Frank Peery, Pastor
- ST. JOHN LUTHERAN**  
Lariat, Texas  
Herbert E. Pelman
- LATIN AMERICAN METHODIST MISSION**  
Ave. D. & 5th St.  
Esteve (Steve) Lara Pastor
- CHURCH OF THE NAZARENE**  
Ninth & Ave. C.  
Alvin Keswater, Pastor
- FIRST PRESBYTERIAN**  
Morton Highway

## SAME OLD STORY!

A boy and girl... he carries her books to school... they share stories and laughter... yes, it's the same old story, but it's all new to them. Even though we have seen it many times before, we receive joy in seeing their joy.

From the beginning of man's time on earth, God has revealed himself to man, and man has told others about God, and how much God has done for man. Through centuries the story has not changed, but there are many who have not heard the story. Invite someone to church this Sunday. It may be their first opportunity to hear of God's great love.

"For God so loved the world that he gave his only begotten Son, that whosoever believeth in him should not perish, but have everlasting life."

John 3:16



The Church is God's appointed agency in this world for spreading the knowledge of His love for man and of His demand for man to respond to that love by loving his neighbor. Without this grounding in the love of God, no government or society or way of life will long persevere and the freedoms which we hold so dear will inevitably perish. Therefore, even from a selfish point of view, one should support the Church for the sake of the welfare of himself and his family. Beyond that, however, every person should uphold and participate in the Church because it tells the truth about man's life, death and destiny; the truth which alone will set him free to live as a child of God.

**Go To Church Every Sunday**

**The Following Business Firms Urge You To Attend the Church of Your Choice This Sunday and Every Sunday**

- First National Bank**  
1st. & Ave B
- Cashway Gro.**  
402 Main
- Bovell Motor Supply**
- Western Drug**  
114 Main
- James Jennings Insurance**  
115 E. Ave. D.
- St. Clair's**
- Muleshoe Motor**  
106 S. 1st.
- The Fashion Shop**  
OF MULESHOE
- Cox Drive-In**  
Theatre, Friona Hwy.
- Pool Insurance Agency**  
114 E. Ave. C.
- Fry & Cox**  
401 S. 1st.
- Cobb's**
- Bub Shafer Bell Service**  
Cloviss Road
- Charles Lenau Lumber Co.**  
202 E. Ash
- Brock Motor Co.**
- Muleshoe State Bank**  
304 Main
- L & H Gro.**  
14 W. American Blvd.
- Darl-Delite**
- Muleshoe Co-Op Gins**  
Muleshoe
- Western Auto Store**  
228 Main

## Welcome to Muleshoe



Billy Smith

Newcomer to Muleshoe is Billy Smith, Lab Technician at West Plains Hospital. He was previously associated with Richards Clinic & Hospital, Rockdale, Texas. Smith and his wife, Gladys, moved from Lufkin, Texas with their son Mark, 5. They now live at 406 Ave. F. The Smiths attend the First Baptist Church.

The following firms extend a cordial welcome to the Smiths:

<p><b>CASHWAY GROCERY</b></p> <p>402 MAIN Ph. 272-4244</p>	<p><b>DAMRON DRUG CO.</b> REXALL</p> <p>308 MAIN Ph. 272-4210</p>
<p><b>JAMES GLAZE CO.</b></p> <p>INSURANCE REAL ESTATE LOANS</p>	<p><b>MULESHOE STATE BANK</b></p> <p>MEMBER FDIC</p>



# TRADE CLASSIFIED SELL BUY ADS LEASE

## WANT ADS PH. 272-4536

**CLASSIFIED RATES**  
 First insertion, per word - 6¢  
 Second and additional insertions - 4¢  
 Minimum charge - 65¢  
 Card of Thanks - \$1.00  
 Double rate for blind ads  
 Classified Display - 85¢ per col inch  
 95¢ col. inch for reverses

**DEADLINES FOR INSERTION**  
 Thursday's Muleshoe Journal - 4 p.m. Monday  
 Sunday's Bailey County Journal - 4 p.m. Thursday

The Journals reserve the right to classify, revise, or reject any classified ad.

Check advertisement and report any error immediately. Journals are not responsible for error after ad has already run once.

### 1. PERSONALS

Will care for elderly people in my home. 2009 Wallace Clovis, N.M. Call 762-3179  
 1-12s-8tp

AVON, Phone 3510.  
 1-46t-1fc

for rent, 15 ft. campsr.  
 By day or week, Call 272-3163.  
 1-35s-1fc

### 3. HELP WANTED

WANTED: LVN for 3 to 11 shift, Apply Mrs. Glen Singletary, Community Hospital Otter, 3-7s-1fc

WANTED TO HIRE  
 Experienced Construction Foreman, Capable of supervising people, accepts responsibility, conscientious, honest and not afraid of hard work and long hours. Experience will lead to assistant manager. Must have at least high school education, Good salary for right person and advancement. Contact T. L. Timmons, State Line Irrigation, Littlefield, Texas.  
 3-12t-1fc

### 5. APTS. FOR RENT

3 room unfurnished apt. See Spencer Beavers at Post Office, 5-10t-1fc

For rent small furnished apt., Bills paid Layne apt. 824 S. L. Timmons, State Line Irrigation, Littlefield, Texas.  
 5-8t-1fc

FURNISHED APARTMENTS  
 Trailer Space, Briscoe Apartments, Phone 272-3465  
 5-28t-1fc

Help wanted. Carhop wanted- Bill's Drive Inn.  
 3-11s-1fc

FOR RENT; 2 bedroom with utility, wall heat and fenced back yard. Lewis Stewart, phone 272-4052  
 5-10t-1fc

FOR RENT; 3 room furnished house. Phone 4080  
 5-11s-1fc

FOR RENT; One-four room and bath and one three room furnished apartment. Newly painted. Traylor space Call 272-3181  
 5-12t-1fc

### 6. ROOMS FOR RENT

Bedroom for rent: 522 W. 3 rd. Phone 3710.  
 6-12s-1fc

3 Bedrooms for rent. 410 West 2nd. Rosie McMillip.  
 6-41t-1fc

### 8. REAL ESTATE FOR SALE

10x50 Mobile Home \$150 down monthly payments 72.70. Early American Furniture and all carpeted. Call 965-2180  
 8-14s-2tc

For Sale: 4 bedroom, 2 1/2 bath, den, utility room, double garage, 3000 sq. ft. on 1 acre of land ideal location, 2 miles on Friona HI way. Priced to sell, \$16,000.00, Call 272-3492 after 6 p.m.  
 8-3t-1fc

FOR SALE; Brick three bedroom, 2 baths, carpeted, throughout, 2 car garage, 1,497 Sq. feet. Built-ins. George Sultemier. Phone 272-4086 or 272-3193 office.  
 8-9t-1fc

"Bargain" 144 acres of land, Lamb County, 52 acres cotton, 85 acres feed, 1-10 and 1-8 inch wells, Asbestos under-ground line, \$290.00 per acre. Gene Brown, Earth, Texas, Bus. 257-3951, Res. 257-3871  
 8-3t-1fc

FOR SALE OR RENT; 2 and 3 bedroom houses. RENT: 1 and 2 bedroom apartments call D. L. Morrison 272-4886 or 272-3421.  
 8-13t-1fc

For Sale or Trade for Muleshoe irrigated land, 389 1/2 acres Bosque River Bottom. Stock farm located in Central Texas. Exclusive listing. Cross Real Estate, Box 661, Muleshoe, 511 South 1st. St. 8-3t-1fc

2 bedroom and den home with rent property other 2 and 3 bedroom homes. 4 1/2-30-80 and 160 acres all well improved.  
 Exclusive: 15 A. well improved a good well, near highway.  
 HOLLID REAL ESTATE  
 121 W. American Blvd.  
 272-3293 day or night  
 8-11t-1fc

Two unit, adult burial plot in Garden 1, Lots 1-2, Block 75, Bailey County Memorial Park. Write or call Bill Rutherford, Hamilton, Texas. Phone 386-5448.  
 8-8t-1fc

FOR SALE: Quarter section of land south of Bovina, and West of Oklahoma Lane. Good full pipe 8" irrigation well. Good land. Good allotments and good terms at 5 1/2 interest. Price only \$425. per acre. This is an outstanding investment opportunity for some one. Contact O.W. Rheinhart at Glascock Real Estate, office ph. 238-3231, res. ph. 238-4452, Bovina, Texas. 8-13t-2tc

USED EQUIPMENT  
 1360' 5" used sprinkler Line. 48-5" Mesa Skid Pans and Tour Hitches for Drag Line. 120 10" Land Roller Pump. 2F 244 Red Seal Engines. 1 U 501 Red Seal Radiator on tractor.  
 1-50 H.P. Amarillo gear drive ratio 1 to 1.  
 1-50 H.P. Peerless ItoI. D. H. Sneed  
 410 North First Phone 272-3426.  
 8-12t-1fc

FARM EQUIPMENT  
 Farm Equipment for Sale. Cash for used tractors and implements. No wood implement - 1209 South Main  
 10-51t-1fc

FOR SALE: Good used aluminum pipe, 4" 5" 6" 7" 8" at a good price. Also we have the well known extruded aluminum pipe in all sizes. We buy used aluminum pipe. Before you trade, see State Line Irrigation in Littlefield, Phone 12-6s-1fc

FOR SALE: Sprinkler System, 48 joints 4", 42 joints 5", 20 joints 6", all 3/3 foot joints, all accessories. Parts or this has never been used. rest used very little. Phone 825-2954 Okla. Lane exchange, 2 miles South 1 1/2 west of West Camp Baptist Church.  
 10-13s-2tp

### 11. FOR SALE OR TRADE

FOR SALE OR TRADE  
 My equity in 2 bedroom home. Carport, furnace heat, Located at 305 Birch. If interested contact C. J. Tiller 946-2627.  
 11-8t-1fc

### 12. HOUSEHOLD GOODS

DISHWASHER  
 1963 Frigidaire portable dishwasher, with cutting board top. Not useable in new home with built-ins. Price: Very reasonable. Phone 272-4536  
 12-40t-1tp

"TAKE OVER PAYMENTS, in Muleshoe area on 1966 Model Singer sewing Machine, Automatic Zig-Zag, blind hem, fancy patterns, etc. 4 payments at \$6.74, discount for cash. Write Credit Dept. 1114, 19th Street, Lubbock, Texas. 12-6s-1fc

Expert TV technician. 27 yrs. experience. Poyner's White Store. Phone 272-3511  
 12-49t-1fc

### 13. Farm for Lease

FOR LEASE: 160 A. irrigated land 75 A. Cotton. Phone 272-3191  
 13-52s-1tc

### 15 MISCELLANEOUS

FOR SALE: Childcraft and atlas workbooks. Call 272-4536.  
 15-8t-1fc

GERT's a gay girl-ready for a whirl after cleaning carpets with Blue Lustré. Rent electric shampooer \$1. Sam's Auto Store 222 Main St. Muleshoe, 15-14s-1tc

### NEW COACH

John Kerr, new coach of the Chicago Bulls, set a National Basketball Association record by playing in 917 straight league games.

NOTICE TO ALL PERSONS HAVING CLAIMS AGAINST THE ESTATE OF GEORGE ROBERT BRAGG, JR., DECEASED  
 Notice is hereby given that

### 16. Livestock

FOR SALE: 3 year old Chestnut mare, Bob Byrd - 925-3360  
 16-12t-4tp

### 17. SEED AND FEED

FOR SALE: Baled Sudan and Baled Cane. E. O. Baker - 272-4422  
 17-7t-1fc

**WANTED GROWERS**  
 Millet Field Seed and Sorghum Sudan Hybrids  
**CONTACT**  
 Bob Dodson  
 Phone F1.5-0026 A. C. 806  
 After 6:00 p.m., 6105 Jamison Road Amarillo, Texas

original Letters Testimentary upon the estate of George Robert Bragg, Jr., deceased, were issued to me, the undersigned of the 31st day of March, 1967, in the proceeding indicated below my signature hereto, which is still pending, and that I now hold such Letters. All persons having claims against said estate, which is being administered in the county below named, are hereby required to present the same to me respectively, at the address below given, before suit upon same are barred by the general statutes of limitation, and within the time prescribed by law. My residence and Post Office address are 1814 West Avenue D, Muleshoe, Texas, County of Bailey, State of Texas. Dated this 31st day of March, 1967.  
 s/ LaTtie Duesee Bragg  
 Executrix of the Estate of Robert Bragg, Jr., Deceased, No. 797 in the County Court of Bailey County, Texas

### CARD OF THANKS

I take this means of saying "Thank You," but words simply cannot express my appreciation for the kind words and deeds, the many cards, letters and flowers that came my way while in the hospital. They helped more than you will ever know. Again Thanks.  
 s/ Mrs. O.N. Jennings

## TELEVISION SCHEDULE FOR THE MULESHOE AREA

WESTERN DRUG	KGNC - TV (4) Amarillo Muleshoe Cable 4	KVII - TV (7) Amarillo Muleshoe Cable 5	KFDA - TV (10) Amarillo Muleshoe Cable 6	KCDB - TV (11) Lubbock Muleshoe Cable 2	KLBB - TV (13) Lubbock Muleshoe Cable 3
Mon. thru Wed. Daytime Viewing	Mon. thru Wed. Daytime Viewing	Mon. thru Wed. Daytime Viewing	Mon. thru Wed. Daytime Viewing	Mon. thru Wed. Daytime Viewing	Mon. thru Wed. Daytime Viewing
7:00 - Today Show 7:25 - News 8:00 - Today Show 9:00 - Reach Stars 9:25 - News 9:30 - Concen. 10:00 - Pat Boone 10:30 - Holly S. 11:00 - Jeopardy 11:30 - Eye Guess 11:55 - News 12:00 - News 12:10 - Weather 12:15 - Ruth Brent 12:30 - Make Deal 12:55 - News 1:00 - Days of Live 1:30 - Doctors 2:00 - Another W. 2:30 - You Don't S. 3:00 - Match Game 3:25 - News 3:30 - Mike D. 4:30 - Cheyenne 5:30 - News	9:00 - Jack Lalanne 9:30 - Date Line 10:00 - Super Sweep 10:30 - One in a Mill 11:00 - Every body's T 11:30 Donna Reed 12:00 - Fugitive 1:00 - Newly Wed 1:30 - Dream Girl 1:55 - News 2:00 - General Hospital 2:30 - Dark Shadow 3:00 - Dating Game 3:30 - Movie 5:00 - P. Jennings 5:15 - News 5:25 - Weather 5:30 - Have Gun 6:00 - Marshal Dillon	6:25 Sign On 6:30 - Amar. Col. 7:30 - Farm Ranch 7:27 - News 7:30 - News 8:00 - Cap. Kang. 9:30 - Ber. Hill-Bill 10:00 - Andy 10:30 - Van Dyke 11:00 - Love Of 11:25 - News 11:30 - S. S. 11:30 - Tomarrow 11:45 - Guid, Light 12:00 - News 12:10 - Weather 12:15 - News 12:30 - Farm-Ranch 12:30 - As World 1:00 - Passport 1:30 - House Party 2:00 - Tell Truth 2:25 - News 2:30 - Edge Of 3:00 - Storm 3:30 - Candid Camera 3:30 - Mr. Mimkin 5:00 - Science Fic. 5:00 - Yogi 5:00 - S. Fletton. 5:30 - News 6:00 - News 6:20 - Weather 6:30 - Gilligan's Is. 7:00 - Terrific 7:30 - Lucy 8:00 - A. Griffin 8:30 - Family Affair 9:00 - Tell The Truth 9:30 - Secret 10:00 - News 10:15 - Weather 10:25 - Background 10:30 - Big Flicker 10:55 - News 11:00 - Big Flicker	7:00 - Headlines 7:05 - Farm Rep. 7:25 - Weather 7:30 - Today 8:25 - News 8:30 - Today 9:00 - Reach Stars 9:25 - News 9:30 - Concentration 10:00 - Pat Boone 10:30 - Holly S. 11:00 - Jeopardy 11:30 - Eye Guess 11:55 - News 12:00 - News 12:10 - Weather 12:15 - News 12:30 - Make A Deal 12:55 - News 1:00 - Days of Our 1:30 - The Star 2:00 - Another World 2:30 - Don't Say 3:00 - Match Game 3:25 - News 3:30 - Dating Game 4:00 - Dona Reed 4:30 - Beaver 5:00 - Lassie	6:30 - Popeye 6:45 - Farm-Ranch 7:05 - Mike Wallace 7:30 - M. Show 8:00 - Cand. Kang. 9:30 - Bev. Hill. 10:00 - Andy 10:30 - Van Dyke 11:00 - Love of Life 11:25 - News 11:30 - S. for Tom. 11:45 - Guiding L. 12:00 - News 12:30 - World Turns 1:00 - Passport 1:30 - House Party 2:00 - Gen. Hosp. 2:30 - Edge Of 3:00 - Sec. Storm 3:30 - Movie 5:00 - Rifleman 5:30 - News 6:00 - News 6:15 - weather	
MONDAY EVENING	MONDAY EVENING	MONDAY EVENING	MONDAY EVENING	MONDAY EVENING	MONDAY EVENING
6:00 - News 6:15 - Weather 6:25 - Sports 6:30 Monkeys: 7:00 - Jeannie 7:30 - Branded 8:00 - Road West 9:00 - Run for Life 10:00 - News 10:15 - Weather 10:25 - Sports 10:30 - Tonight 12:00 - Sign Off	6:30 Iron Horse 7:30 Rat Patrol 8:00 - Felony Squad 8:30 - Peyton Place 9:00 - Big Valley 10:00 News-Wea. 10:30 - Movie	6:30 - Gilligan's Is. 7:00 - Terrific 7:30 - Lucy 8:00 - A. Griffin 8:30 - Family Affair 9:00 - Tell The Truth 9:30 - Secret 10:00 - News 10:15 - Weather 10:25 - Background 10:30 - Big Flicker 10:55 - News 11:00 - Big Flicker	6:30 - Huntley-B. 6:00 - News 6:30 - Monkeys 7:00 - Ice Capades 7:30 - Ice Capades 8:00 - Road West 9:00 - Run For 10:00 - 10:00 report 11:30 - Tonight	6:30 - Iron Horse 7:30 - Lucy 8:00 - Andy G. 8:30 - Family Affair 9:00 - Big Valley 10:00 - News-Wea. 10:30 - Combat 11:30 - Overland Trail	
TUESDAY EVENING	TUESDAY EVENING	TUESDAY EVENING	TUESDAY EVENING	TUESDAY EVENING	TUESDAY EVENING
6:30 - Movie 8:00 - Movie 10:00 - News 10:15 - Weather 10:25 - Sports 10:30 - Tonight 12:00 - Sign OFF	6:30 - Comb. 7:30 - Invaders 8:30 - Peyton Place 9:00 - Fugitive 10:00 - News - Wea. 10:30 - Movie	6:30 - Dakari 7:30 - Red Skelton 8:30 - P. Junction 9:00 - CBS Report 10:00 - News 10:15 - Weather 10:25 - Background 10:30 - Golden Spread 10:55 - News 11:00 - Big Flicker	5:30 - Huntley-B. 6:00 - News 6:30 - Monkeys 7:30 - Ice Capades 8:00 - Movie 9:00 - Golden Award 10:00 - News 10:30 - Tonight	6:30 - Dakari 7:30 - Red Skelton 8:30 - Brigadoon! 10:00 - News 10:30 - The Avengers 11:30 - Riverboat	
WEDNESDAY EVE.	WEDNESDAY EVE.	WEDNESDAY EVE.	WEDNESDAY EVE.	WEDNESDAY EVE.	WEDNESDAY EVE.
6:00 - News 6:15 - Weather 6:25 - Sports 6:30 - Virginian 8:00 - Bob Hope 9:00 - I Spy 9:00 - News 9:15 - Weather 9:25 - Sports 9:30 - Tonight 2:00 - Sign OFF	6:30 - Batman I 7:00 - Monroes 8:00 - Movie 10:00 - News - Wea. 10:30 - Movie	6:30 - In Space 7:30 - Hillbillies 8:00 - G. Acres 8:30 - Gomer Pyle 9:00 - Danny Kaye 10:00 - News 10:15 - Weather 10:25 - Background 10:30 - Big Flicker 10:55 - News 11:00 - Big Flicker	6:00 - News 6:30 - Virginian 8:00 - Bob Hope 9:00 - Golden Award 10:00 - News 10:30 - Tonight	6:30 - Lost in space 7:30 - Hillbillies 8:00 - G. Acres 8:30 - Gomer Pyle 9:00 - Bewitched 9:30 - Love on 10:00 - News 10:30 - Wild Wild 11:30 - Cimarron Cl.	

## BUSINESS SERVICES DIRECTORY

THE MONEY YOU SPEND AT HOME STAYS AT HOME!

FOR FHA, GI and FARM LOANS AND THE BEST INSURANCE SEE POOL INSURANCE CO.

Phone 272-4531  
 W. M. Pool Jr.

Muleshoe  
 Lee R. Pool

Save Money On Auto Parts!  
**BOVELL MOTOR SUPPLY**  
 107 E. Ave. B - Dial 272-4288  
 MRS. W. T. BOVELL, Owner

**SINGLETON FUNERAL HOME**  
 24 HOUR AMBULANCE SERVICE  
 PHONE 272 4574 MULESHOE

**W. O. CASEY**  
 GENERAL INSURANCE  
 Let Our Complete Coverage Take Care of All Your Insurance Problems  
 Muleshoe State Bank Bldg. Ph. 272-4571

**NEWSPAPERS**  
 MAKE A BIG DIFFERENCE IN PEOPLE'S LIVES

**BERRY ELECTRIC CO.**  
 ELECTRIC WIRING and REPAIRS REFRIGERATION SERVICE  
 104 E. AVE. B Phone 272-3375

**SEPTIC TANKS & CESSPOOL SERVICE**  
 DRILLED - REPAIRED - INSTALLED  
 Cesspools - Pier Holes  
 Root Pits - Storm Callars  
 We Drill Up to 9 Ft. in Diameter & 45 Ft. Deep  
 Concrete Covers & Turnkey Jobs Available  
**WILSON DRILLING CO.**  
 Dial 272-4180  
 NIGHT PHONE 272-3148  
 CLOVIS HWY. MULESHOE

**WESTERN DRUG**  
 Prescriptions Drugs & Supplies  
 for all your Veterinarian needs  
 Fountain Service

**WIEDEBUSH & CHILDERS**  
 VEHICLES ARE 2-WAY RADIO EQUIPPED To Assure You of Prompt Service in BUTANE PROPANE MOTOR OIL AMALIE FRAM OIL FILTERS DIAL 272-4218 Muleshoe Clovis Highway We Deliver Anywhere

BATTERIES - USED TIRES - FAST, EFFICIENT SERVICE  
**GOOD YEAR**  
**Johnson-Pool Tire Co.**  
 MULESHOE Ph. 272-4594



**DOUBLE WEDNESDAY**  
With \$2.50 Purchase or More

# Your Best Produce Buys are at Piggly Wiggly

THESE PRICES GOOD APRIL 3-5 AT YOUR PIGGLY WIGGLY IN MULESHOE  
WE RESERVE THE RIGHT TO LIMIT QUANTITIES.

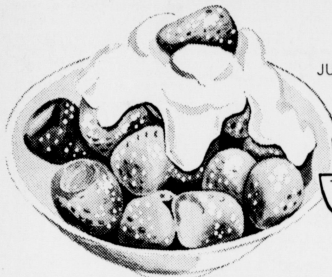
## Money Saving FOOD TIPS:

**LEFTOVER ICED TEA**  
Freeze into ice cubes, eliminates waste of leftover tea and keeps tea from becoming watery... Submitted by Mrs. Mary R. Bailey, 940 Steves Avenue, San Antonio, Texas.

Piggly Wiggly will pay you \$5.00 for Money Saving Food Tips that are accepted for publication... Send your Food Tips to:

**FOOD TIPS**  
SHOP RITE FOODS, INC.  
Box 7130  
Amarillo, Texas

# STRAWBERRIES



FULLY RIPE,  
JUST RIGHT TO USE.  
Red Ripe

# 3 \$1

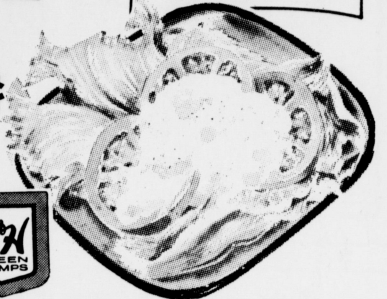
Pint Basket

# LETTUCE

AN EXCELLENT SALAD VEGETABLE.  
Large Crisp Romaine Heads

# 19¢

Each



**GREEN ONIONS** Large Crisp Bunches  
**NEW RED POTATOES**  
**CORN ON THE COB** Large Well Filled Ears

3 Bunches 25¢  
2 Pounds 25¢  
3 For 29¢



## PORK ROAST

Lean Northern Boneless Pork, Cut from Boston Butts Rolled & Tied for Easy Carving

# 69¢

Pound

**CREAM CHEESE** 8-Oz. Pkg. 35¢

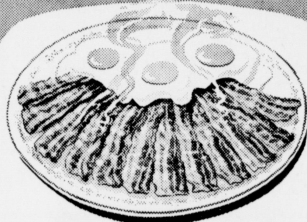
**LUNCH MEAT** 3 6-Oz. Pkg. \$1.00

## FAMILY STEAK

U.S.D.A. Choice, Aged, Heavy Beef, Chuck Cuts,

# 59¢

Pound

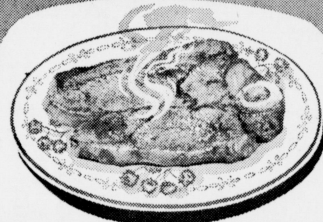


# BACON

SLICED  
Farmer Jones, First Grade, Fancy, Lean

# 59¢

Pound



# ROUND STEAK

U.S.D.A. Choice, Aged, Heavy Beef, HEEL Cuts

# 79¢

Pound

## SHORT RIBS

U.S.D.A. Choice, Aged, Heavy Beef, Fine for BBQ

# 29¢

Pound

Glover's Brand, All Meat

**FRANKS** Fine Flavor Juicy Pound 59¢

Glover's Brand, Sliced **BOLOGNA** Tasty Pound 59¢

## SWISS STEAK

U.S.D.A. Choice, Aged, Heavy Beef, Arm Bone Cut,

# 69¢

Pound

All Popular Brands, Regular or King Size

# CIGARETTES

10-Pack Carton

# \$2.99

# BEVERAGES

6 Bottle Carton

# 39¢

Folger's **COFFEE** All Grinds 1-Lb. Can 69¢

Folger's **COFFEE** All Grinds 2-Lb. Can \$1.37

## VELVEETA

Kraft's Cheese Spread

# 89¢

2 Pound Loaf

Frozen Selections for Your Freezer!

# ORANGE JUICE

Treesweet 6-Ounce Cans

# 12 1/2¢

Sliced, Adair **STRAWBERRIES** 10-Oz. Pkg. 27¢

Simplet **POTATOES** Hash Brown 3 2-Lb. Poly Bags 89¢

# MEAT PIES

Banquet, Chicken and Turkey

Beef Enchilada **DINNERS** Patio 12-Oz. Plate 49¢

Libby's **CUT CORN** 5 10-Oz. Pkg. \$1.00

# 5 \$1

8-Ounce Package

Carnation **MILK** Evaporated 3 Small Cans 25¢

Carnation **MILK** Evaporated 3 Large Cans 45¢

## MAYONNAISE

Kraft's with Fresh Lemon Juice

# 59¢

Quart Jar

Folger's **COFFEE** 3-Lb. Can \$1.99

Carey's **SALT** Iodized or Free Running 26-Oz. Box 10¢

# OLEO

Blue Bonnet, In Quarters

# 28¢

Pound

Borden's All Flavors Premium Quality

# ICE CREAM

WITH \$5 PURCHASE OR MORE

# 59¢

Half-Gallon Carton

Imperial, C & H, or Holly

# SUGAR

WITH \$5 PURCHASE OR MORE

# 5 39¢

Pound Bag

Pineapple **JUICE** Del Monte 46-Oz. Can 34¢

Tomato **JUICE** Red Bird 46-Oz. Can 29¢

# FLOUR

Gold Medal, Enriched

# 5 55¢

5 Pound Bag

Health and Beauty Buy of the Week!

Colgate, Family Size with free 3-Ounce Colgate 100 Mouthwash

# TOOTHPASTE 79¢

\$1.34 Value

Lowest Prices... Greatest Variety... always at...



Houseware Buy of the Week!

Galvanized Metal 30-Gallon Capacity with Lid.

# GARBAGE CAN \$3.29