

SAVE \$77.00
WHEN YOU BUY THIS NEW
RCA ESTATE GAS RANGE



\$50 off on range plus a \$27
Hallite Set FREE!

Yes, with the purchase of this new RCA Estate range, you get this beautiful Hallite set by Wear-Ever absolutely FREE!



enjoy the carefree convenience of RCA Estate gas cooking

Look at these advanced RCA Estate features — four fast top burners, two of them giant size . . . big Balanced Heat oven . . . broiler adjustable at a touch to 5 positions . . . and two giant storage drawers. You save \$50 on price . . . \$27 on the gift. Act now.

SEE THIS NEW RANGE . . . AND GET A \$1.00
ROAST THERMOMETER FOR ONLY 39¢!

Ballinger Truck & Tractor Co.

SOCIETY

Parents Honored at Banquet by Future Homemakers

Jerry Pruser, president of the Future Homemakers chapter of the Ballinger High School, was mistress of ceremonies for the banquet program honoring the fathers and mothers, held in the Junior school cafeteria Friday evening, March 23.

She Tubbs gave the invocation. Following the welcome by Jerry Pruser, Miss Pat Zappe, a former homemaker student and also the winner of the Betty Crocker "homemaker of tomorrow" award last year, was introduced as the guest speaker. Miss Zappe, who is majoring in Home Economics at Incarnate Word College, San Antonio, talked on "What Homemaking Means to Me."

The president, Jerry Pruser, talked on "My Generation," and Lynn Herring, the recording secretary, discussed "The Business of a Household." Following a song by Maudie Parker, Principal Joe Forester presented the Betty Crocker "homemaker of tomorrow" award to Audie Vee Vestal, who made the highest score on a written test on home-making aptitude among girl graduates. The test was prepared by Science Research Associates for General Mills.

Honorary membership and a gold key to the chapter was presented Oscar C. Pruser by his daughter, Jerry Pruser. After Pauline James explained "Degrees of Achievement," Superintendent Ernest Quakey presented degrees of achievement to around 34 young students.

As Jerry Pruser presented the following new officers she gave each a red rosebud (the rose is the chapter's flower): president, Patsy Toplock; vice-president, Jerry Ann Pruser; second vice-president, Karen Carpenter; recording secretary, Lynn Herring; corresponding secretary, Frances Allen; treasurer, Molly Word; reporter, Ruth Ann Henniger; historian, Elois Scrivener; parliamentarian, Doris Stokes; song leader, Maudie Parker; sergeant-at-arms, Jackie Canady; sponsor, Mrs. Billy F. Brown; FHA King, Clarence Bryan.

Red roses were presented each mother of members. Members of the chapter presented gifts to Mrs. Billy F. Brown, teacher of the classes; to Clarence Bryan and to Jerry Pruser.

Miss Higginbotham, Elmer Curry to marry

Mr. and Mrs. C. H. Higginbotham of Houston are announcing the engagement and approaching marriage of their daughter, Sara Sue, to Elmer E. Curry Jr. of Abilene. He is the son of Mr. and Mrs. Elmer E. Curry Sr., former residents of

Ballinger and now of Coleman.

The couple will be married June 8 in Houston, where they will live.

The bride-elect was graduated from Orlando High School and Orlando Junior College in Florida. The prospective bridegroom was graduated from Ballinger High School and Texas A. & M. College.

Mrs. G. W. Mathis Has 95th Birthday

Mrs. G. W. Mathis celebrated her 95th birthday anniversary Sunday with a dinner in the home of a daughter, Mrs. Sid Jones. Members of her family were present for the occasion.

Mrs. Mathis was born in Weatherford on March 19, 1861 and came to Runnels County in 1904 with her husband, the late

G. W. Mathis. The couple and their four children came to the county in two covered wagons and a surrey. Settling in the Tokeen community, she remembers living in a tent while her husband built a home. This home is still standing.

Two of her four children still survive. Mrs. Jones and Mrs. W. F. Long of Jacksboro. Others are eight grandchildren, eleven great-grandchildren and one great-great-grandchild, making five generations.

When asked what she attributed her longevity to, she replied "I guess it is God's will." Until a recent illness she was an active member of the Church of Christ and still reads her Bible daily without glasses. In her more active years she cheered many with visits to the sick and shut-ins.

A number of friends and relatives called at the home during the afternoon.

Citation by Publication THE STATE OF TEXAS

To any Sheriff or any Constable within the State of Texas—**GREETING:** You are hereby commanded to cause to be published once each week for four consecutive weeks, the first publication to be at least twenty-eight days before the return day thereof, in a newspaper printed in Runnels County, Texas, the accompanying citation, of which the herein below following is a true copy.

Citation by Publication THE STATE OF TEXAS

TO: Malcolm A. Jones, Defendant. **Greeting:** YOU ARE HEREBY COMMANDED to appear before the Honorable District Court of Runnels County at the Court-house thereof, in Ballinger, Texas, by filing a written answer at or before 10 o'clock A. M. of the first Monday next after the expiration of forty-two days from the date of the issuance of this citation, same being the seventh day of May, A. D. 1956, to Plaintiff's Petition filed in said court, on the 23rd day of January, A. D. 1956, in this cause, numbered 6624 on the docket of said court, and styled Lucile Jones, Plaintiff, vs. Malcolm A. Jones, Defendant.

A brief statement of the nature of this suit is as follows, to wit:

Suit by plaintiff, Lucile Jones against defendant, Malcolm A. Jones, in which said plaintiff seeks judgment against defendant for divorce and dissolving the bonds of matrimony existing between them, and for the restoration of her maiden name which was Lucile Smith, and for all costs of Court, and for general relief.

As is more fully shown by Plaintiff's Petition on file in this suit.

If this citation is not served within ninety days after the date of its issuance, it shall be returned unadvised.

The officer executing this writ shall promptly serve the same according to requirements of law, and make due return as the law directs.

Issued and given under my hand and the seal of said court at Ballinger, Texas, this the 19th day of March, A. D. 1956.

(Seal) Attest: Willie Stephens Clerk District Court Runnels County, Texas 22-41.

Class envelopes, all sizes from 3 1/2 by 6 to 12 by 15 1/2 inches. Ballinger Printing Co.

Flash bulletin from Mobilgas Economy Run

FORD WINS IN ECONOMY TOO!



V-8 WINS CLASS A

In this year's Economy Run a new Ford V-8, with Fordomatic was the official victor over every car in its field, with a winning average of 47.7643 ton-miles per gallon. This means that the sturdier, heavier Ford carried more weight, with greater gas economy per pound, than any car in its field.

This latest Ford victory was scored over a rough and rigorous 1,468.8-mile route running from Los Angeles to Colorado Springs. The winning Ford threaded its way over the tough and twisting course averaging better than 40 mph. Through the heat of Death Valley and over the chilling height of an 11,000-foot mountain peak . . . through

the gas-eating stop-and-go of city traffic and over the straight-line open road . . . Ford proved anew its traditional reputation for economical performance.

The winning Ford was a regular-production model taken right from the assembly line and officially impounded until the starter's gun sounded. It was no different than thousands of '56 Fords you see on the road and in dealers' showrooms. This proves that Ford, the Performance, Style and Safety leader, leads in Economy, too! That adds up to four big reasons why the '56 Ford is worth more when you buy it, while you drive it, and when you sell it, too!

The "ton-mile" formula is used by contest officials to insure equal chance for all cars in each class regardless of size or weight. Ton-miles per gallon equals the car weight (including passengers) in tons, multiplied by the number of miles traveled, divided by number of gallons of gasoline consumed.

Test Drive the Economy Winner . . . '56 Ford

Frank & Lanham Flynt Motors

Eighth Street and Strong Avenue

GREAT TV, FORD THEATRE,

FORD

ALL-AMERICAN

PERFORMANCE CHAMPION

Top-Award Winner for All-Around Stock Car Performance . . .

Winner of MANUFACTURER'S TROPHY Daytona Beach, Florida



The ONLY Really Modern refrigerator in America today...

You've never lived until you've used the NEW SERVEL!

Servel gas refrigerator

3 great appliances in 1!

1. Automatic Ice Server — Just reach in . . . take one or a basketful. Only Servel makes ice-cubes without trays and puts them in a basket — AUTOMATICALLY. No trays to fill, spill and refill . . . no more "slopovers" to mop up.

2. Spacious Freezer — Let's you plan, buy, bake and — cook for many meals ahead. It's big — holds 70 lbs. of food, igloo-cold. And it's completely separate.

3. Automatic Defrosting Refrigerator — No more messy defrosting. Servel's Frostender melts frost away automatically — so safe that foods lose none of their flavor and vitamins.

More Reasons Why Servel is the ONLY Really Modern Refrigerator

Adjustable roll-out shelves, In-A-Dor storage, Trip-saver handle and Dew Action Fresheners. What's more — a Servel is trouble-free. There's no moving parts, a small gas flame does all the work. And only with Servel do you get a 10-year warranty on the whole freezing system. No, you've never really lived until you've used the new Servel!

See this exciting Servel Automatic Ice Server Refrigerator TODAY!

AS LITTLE AS **\$387** PER WEEK

Payable Monthly

Available at **LONE STAR GAS COMPANY** or

BALLINGER APPLIANCE & ELECTRIC SHOP
 Eighth Street
 BALLINGER, TEXAS

4 Tribute to Our Chamber of Commerce!

The sincere men who aggressively promote the industrial advantages and potential profit possibilities of our city, comprise our most important, single group of citizens. They are the hard-working members of our Chamber of Commerce. On their shoulders falls the responsibility of attracting new factories and industries to our community, in order that more and more payrolls, families and homes will augment our already prosperous area. Indeed, we might say that the CHAMBER OF COMMERCE is the very life-blood of our daily lives, for their activities penetrate each business large and small—bringing to all, the kind of help that counts, directly or indirectly, every man, woman and child in our proud community. We salute the incomparable work of our Chamber of Commerce!

sponsored in the public interest by

Wells Drug

PHONE 2-1491

We Salute Our Town



FAMILY CHAUFFEUR?



Give her the extra protection of the policy with the

P.S.*

*Personal Service

Shuttling back and forth to school, to market, to the station. Doesn't she deserve the finest protection?

Let us make sure she has it with an Aetna Casualty insurance policy. It's the policy with the P.S. that means personal service. It guarantees prompt help whenever she needs it—from us or from thousands of other Aetna agents coast to coast, backed by Aetna's nationwide claim offices. It means our personal service, too, in seeing that your coverage exactly fits your family's needs—now and in the future. Call today for full details on the better protection you get with the policy with the P.S.

Purifoy & Co.

Call 3481

Albert C. Purifoy



Representing Aetna Casualty and Surety Company, Hartford 15, Connecticut

SOCIETY

Ballinger H. D. Club Has Safety and Health Program
Seventeen members of the Ballinger home demonstration club answered roll by naming a safety and health idea or habit which they liked to practice, when the club held its meeting Thursday afternoon in the home of Mrs. Rufus Allen on Tenth Street. Mrs. Carley Watkins was co-hostess with Mrs. Allen.

Mrs. George Hall, president, directed the business. Mrs. D. J. Goetz Sr. read the "Thoughts For the Day," and Mrs. W. A. Nance gave the primary purpose of Home Demonstration Clubs. Mrs. Raymon Berryhill gave the 4-H Club report, and Mrs. Alvin Spreen gave the council report.

Open dates for a number of programs for the remainder of the year were filled in with a review of the book, "Women of the Bible," to be given by Mrs. Felix Itz; an all-day craft program; a program on juvenile delinquency; and a program on first aid and fire prevention. The club voted to have a family night pot luck supper at 7:30 o'clock, May 1, in the City Park, in observance of Home Demonstration Week. The committee named to make arrangements for the supper included Mrs. H. F. Tickle, Mrs. Cal Adair, Mrs. Alvin Spreen, and Mrs. D. J. Goetz Jr. The president announced that Mrs. Goetz Sr. and Mrs. Drury Hathaway would model the dresses, which they made, at the next council meeting.

Mrs. Spreen gave the program on "Getting Down to Brass Tacks on Safety," and A. H. Dallinger provided the material for the demonstration.

A sandwich plate with hors d'oeuvres, candies, and punch was served. Mrs. R. L. Conner of Menard was a visitor. The Easter motif was used for decorations.

The next meeting will be held on April 12, in the home of Mrs. H. F. Tickle.

Slides on Interior Decorating Shown at Fannie Stephens Study Club Program

"Fresh Viewpoint," program theme for spring interior decorating, was presented to the Fannie Stephens Study Club by

Salad Server Free

Friday, Saturday, Monday, Tuesday, Mar. 30-31 April 2-3

4 Days Only—All you have to do—is to come in and try on a pair of our wonderful Summerettes—You don't have to buy anything—We'll be expecting you.



Higginbotham Bros. & Co.

be colorful
Summerettes
go casual



Add smartness and comfort to your wardrobe with multicolored casuals. Flexible soles won't mark floors and the platform is cushioned for extra bounce. Gay as a summer breeze. Captivating new colors.

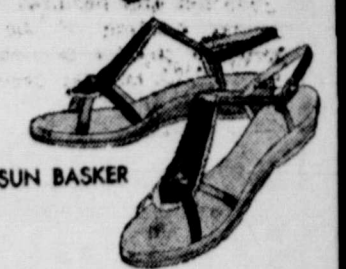
\$3.95



SUNG COOLER



POMONA



SUN BASKER

Be your coolest in this imported straw cloth ballet. Dainty enough for a party dress, casual enough for your carefree hours. Soft colors.

\$3.95

A gay, cool casual that will go anywhere. Smart braided vamp teamed with cushioned platform and flexible soles give you a shoe that's sure to be underfoot from morn 'til night.

\$3.95

Flatter your foot with this wisp of a sandal. Gay multicolored straps atop a cushiony insole keep you cool and comfortable anywhere your fancy takes you.

\$3.95

Mrs. E. C. Grindstaff, program chairman, Wednesday afternoon of last week in the library club room.

The colored slides, which offered suggestions on all phases of interior decorating in all rooms throughout a home, was sent to the club prepared by the Celanese Corporation of America. This corporation has furnished this program to the Federated Clubs of America and had been brought back by popular demand. Mrs. T. L. Epting was the commentator for the showing. A door prize was given by the corporation, and the award was a 54 inch square of the Celanese material which went to Mrs. Doyle St. John.

An added attraction to the afternoon program was a display of Early American and

Contemporary furniture, along with samples of wool and cotton carpeting and drapery material displayed by the Ballinger Home Furniture Co.

Mrs. B. J. Williams Jr., president, conducted the business and announced that Mrs. John S. Miller, district conservation chairman, would present a program on "Conservation," at the next meeting to be held April 4.

Members present were: Mmes. J. Dexter Eoff, Williams, Grindstaff, Epting, Ted Tisdale, St. John, W. E. Moss, E. Y. Bailey, Felix W. Keys Jr., H. G. Agnew, M. E. McClenny, John Cody, and W. E. Elkins. Mrs. J. C. Yearly was a visitor.

H. C. Davis Honored On Birthday Anniversary
Mr. H. C. Davis, who was celebrating his 50th birthday

anniversary March 16, was honored by his son-in-law and daughter, Mr. and Mrs. Jim Wilson, at a surprise party in the home of Mr. and Mrs. Davis in South Ballinger.

Games of forty-two were played and slides of pictures made by the Davis' in a number of states were shown. The birthday cake which was iced in green and decorated with yellow roses was served with coffee and cakes from the dining table centered with an arrangement of daffodils.

Those present were Messrs. and Mmes. J. F. Moragne, Charlie James, Dause Sherman, Cleburne Hogue, Jim Wilson, Mrs. Davis and the honor guest's grandchildren, Beverly and Larry Dobbins.

Belgium and the Netherlands separated by treaties signed in 1839.

Receipt Books—singles for 10 cents per book, large books with 4 to 8 receipts to the sheet and duplicates, \$1.50 and \$2.00. Ballinger Printing Co.

Armadillos are always triplets and each set is either all male or all female.

NAPKINS for every occasion. Cocktail and luncheon sizes in all colors. Special designs for anniversary celebrations and parties. These can be bought with printed names and dates in all colors of ink including silver and gold. Ballinger Printing Co., Phone 6522.

BURIAL INSURANCE
for \$100 to \$600

See Us for Complete Information
Newby-Davis Burial Assn.
BALLINGER, TEXAS

EASTER SUNDAY

STARTING PROMPTLY AT
SUNRISE, 6:31 A. M.
SUNDAY, APRIL 1



SAN ANGELO

Lawnhaven Memorial Association Presents
The Glorious Easter Morn

A Pageant under the direction of William D. Wheatley
Director of Choral Music Robert E. Lee Jr. H. School
Singing by Robert E. Lee Mixed Choir

PROGRAM AS IT UNFOLDS

- I. THE GARDEN
John 17:25, 26-18:1 Matthew 26:36—William D. Wheatley
Choir—"In The Garden," Miles
Prayer—Sylvia Roach
Response, Mallotes, "Lord's Prayer"—Girls' voices of Choir
- II. PILATE DELIVERS CHRIST TO BE CRUCIFIED
John 19:14-19—William D. Wheatley
Choir: "Were You There When They Crucified My Lord?"
arranged by Waring
- III. THE SEVEN LAST WORDS OF CHRIST ON THE CROSS
John 19:23-30 Matthew 27:51-54—William D. Wheatley
Choir: "The Old Rugged Cross," Bennard
- IV. THE ENTOMBMENT
John 19:38-42—Sylvia Roach
"When I Survey the Wondrous Cross," arranged by Mason
Sharon Lawson at the Piano
- V. THE RESURRECTION
John 20:1-17—William D. Wheatley
Choir: "Christ Arose," Lowry
- VI. JESUS APPEARS TO THE DISCIPLES
Luke 24:25-35—Sylvia Roach
Choir: "Let Us Break Bread Together"
Spiritual arranged by Waring
- VII. THE ASCENSION
Luke 24:36-53—William D. Wheatley
Choir: "Christ the Lord is Risen Today," Chas. Wesley
- VIII. BENEDICTION
William D. Wheatley
Scenery supervised by Mrs. Geo. Faulkner and chairman J. R. Rounds,
committee of the Advanced Art Department of Robert E. Lee Jr. H. School.

Music by
Robert E. Lee
Junior High School Choir

Christus Annex
Where service will
be conducted

The kiss of the sun for pardon,
The song of the birds for mirth;
One is nearer God's heart in a garden
Than anywhere else on earth.

— Dorothy Frances Gurney.



Lawnhaven Memorial Gardens

Eastertide

To all men may
this season bring
The light of hope,
The joy of spring!

A HAPPY EASTER FROM
OUR BANK'S STAFF.

The First National Bank
OF BALLINGER
SINCE 1886



Member Federal Deposit Insurance Corporation

SEE US FOR COMPLETE
MECHANICAL SERVICE
Wrecker and Pole Winch Service
 Ford and Chevrolet 15 inch Wheels, Tires and Tubes
RAY'S WRECKING YARD
 PHONE 3935 DAY OR NIGHT SERVICE

Louder, Mrs. Lyle Currie, Mrs. W. O. Mathis and Miss Curtis Gregory were hostesses to the members of the Fidelis Class of the First Baptist Church on Tuesday evening, entertaining in the Florence home on Ninth Street. Arrangements of spring flowers were used for decorations.

In the absence of the president, Mrs. Cam Blackmon, Mrs. Joe Flynt presided at the business session after Mrs. W. A. McDonald gave the opening prayer. Mrs. Foy Farmer brought the devotional.

Pie and coffee was served to Mrs. S. L. Ferguson, Willis Smith, Flynt, McDonald, Farmer, J. G. Tuckey, Melvin Patterson, Fred Harwell, Howard Hamner, Sam Ledford, Bill Johnson, and to Miss Anna Belle Haab and the class teacher, Miss Ruth Morgan.

FIRST PRESBYTERIAN CHURCH
 Corner Broadway and Phillips
EASTER SUNDAY
 Morning worship service will be broadcast over
Station KRUN
 You are invited to listen

Neysa Petrie attended a senior class party in the home of Mr. and Mrs. Boyd McClure.

I. J. Burson had surgery at Shannon Hospital in San Angelo Monday.

Mr. and Mrs. Will Mathis visited his children this past week. They were Billie Mathis in Abilene, Marguerite Mathis in Paducah, Melvin Mathis in Goodlett and Elvin Mathis in Mattoon.

Mr. and Mrs. Sam Faubion of Brownfield are visiting friends and relatives here.

Roy Money of Carrollton and Mickey Money of Greenville stopped for a short visit with relatives here Sunday. They were enroute home from San Angelo.

Mrs. Thad Traylor and daughter, Darlene and Doris Jean, visited in the W. H. Pape home Saturday afternoon.

W. H. Pape was honored on his 62nd birthday anniversary Sunday with a dinner in his home. Those present were Mr. and Mrs. N. L. Faubion, Carylon, Arline and Rodney; Mary and Bradley Pape of Winters. Visitors during the day were: Mr. and Mrs. Owen Bragg and family, Ed Pape of Ballinger, Mr. and Mrs. Sonny Pape and son of Hobbs, New Mexico, Kay Pape of San Angelo.

Mr. and Mrs. W. H. Pape and Mrs. Owen Bragg visited their daughter and sister, Mrs. J. E. Branscum, in Dallas last week. Patsy Fisher became ill in Brownwood on Thursday of last

Bethel Lutheran Church
 1701 Broadway
 invites you to worship with them and hear of the blessings which Jesus has for all.

Good Friday—7:30 p. m.
 Easter Sunday—10:00 a. m.
 "The Church of 'This Is The Life'"

SOCIETY

Mrs. John King Entertains Beta Sigma Phi
 Mrs. E. Y. Bailey, president, conducted the business at the regular meeting of the Omicron Phi chapter of Beta Sigma Phi last Monday evening at which Mrs. John King was hostess in the home of her aunt, Mrs. E. E. King on Broadway.

The following new officers were elected and will take office May 1: Mrs. T. L. Epling, president; Mrs. H. B. Edmondson, vice-president; Mrs. Clarence Wiedenfeld, corresponding secretary; Mrs. Foy Farmer, recording secretary; Mrs. Charles Webb, treasurer; Mrs. Ben Sims Parrish, extension officer and Mrs. Charles F. Bailey was reelected club sponsor.

The club voted to send \$3.00 per member, \$57.00, to the state project of Beta Sigma Phi, the National Muscular Dystrophy Research Foundation at Liberty, Texas.

Mrs. Velma Lee was program leader, and discussed "Her Crowning Glory." She gave illustrations on the styling of women's hair from the olden days up to the present permanent coiffure.

The hostess served assorted hors d'oeuvres, mints and drinks to those previously mentioned and to: Misses Jewel O'Neal and Doris Queen, Misses John E. Green Jr., W. E. Elkins, Max McCrary Jr., B. J. Williams Jr., Jack Moore, J. D. Reneau and the sponsor, Mrs. Bailey.

Baptist Fidelis Class Meets in Florence Home
 Mrs. Carl Florence, Mrs. Dixie

chairman of Americanism, TFWC, spoke on that subject in the morning; Delbert Downing, manager of the Midland Chamber of Commerce, was the luncheon speaker at the Cactus Hotel; and Miss Nanine Simmons of Mexia, chairman of public affairs, TFWC, was the afternoon speaker.

More than 230 women officially registered at the convention.

business and J. D. Reneau spoke the invocation.

Following the supper, Mr. and Mrs. Estes M. Lynn showed colored slides of the pictures which they had taken while touring the Northwestern states.

Others present were Mrs. Morris Stokes, Charles Webb, Ed. Curry, W. N. Selby, Chid Stone; Messrs. and Mrs. T. L. Epling, Lanham Flynt, Taylor Russell, J. D. Reneau, Ernest Caskey, Wyle Hearn, Darward Bissett, Curtis Stacy, Clyde Simmons, and Bill Witt.

CREWS

Mrs. Stella McClure was a recent visitor in the home of Mrs. Effie Dietz.

Mrs. Maurice Harper and children visited in the home of Mr. and Mrs. W. L. Porter last week and also Mr. and Mrs. W. H. Schwartz.

Mr. and Mrs. W. L. Porter visited with Mrs. Bates at Novice Sunday.

Ballinger Club Women Attend Sixth District Convention

Mrs. J. B. Dankworth, president of the Ballinger Shakespeare Club, Mrs. Edgar Boelsche and Mrs. John Miller members of the club; and Mrs. J. Dexter Eoff, incoming president of the Fannie Stephens Study Club, attended the Sixth District, Texas Federation of Women's Club, 41st annual convention which convened at San Angelo Monday and Tuesday.

Mrs. L. E. Dudley, state TFWC president and chairman of the district nominating committee, presented the new slate of officers, which were elected by acclamation. They included Mrs. Gilbert Theriot of San Angelo, president; Mrs. Richard Moseley of Rochelle, first vice-president; Mrs. O. M. McGinty of Abilene, second vice-president; and Mrs. Edgar Boelsche of Ballinger, third vice-president.

Abilene was selected as the city to host the 1957 spring convention.

The Ballinger Shakespeare Club was awarded the third place in USO scrap books.

Three speakers were featured at the Monday sessions. Miss Elene Westinoreland of Mexia,

Northwestern States Pictures Shown at Class Supper

Mrs. John E. Green, Mrs. Claude R. Stone Jr. and Mrs. George Wilson were hostesses to members of the Friendship Class of the First Methodist Church Tuesday evening in the Fellowship Hall of the church.

Tables were centered with pink crepe paper runners, and Easter arrangements nestled with eggs and bunnies were placed at intervals along the tables where the pot supper was served. Mrs. E. B. Underwood, president, conducted the

GIVE YOUR LAWN A CHANCE
 Use **AIR-AIDING MACHINE**

This machine punches holes four to five inches deep allowing air to get to the roots and does not tear up the turf.

We have operator and cost for the average yard is—
\$12.50

Max McCrary, Sr.
 PHONE 6235
 Max McCrary, Jr.
 PHONE 6935

LOW COST PERSONAL LOANS

Pay Cash for Your Needs.
 You Can Borrow **\$50.00 or More** on Your **SIGNATURE**

See the **CITIZENS LOAN SERVICE** in the Sheppard Bldg.

Ballinger Club Women Attend Sixth District Convention

Mrs. J. B. Dankworth, president of the Ballinger Shakespeare Club, Mrs. Edgar Boelsche and Mrs. John Miller members of the club; and Mrs. J. Dexter Eoff, incoming president of the Fannie Stephens Study Club, attended the Sixth District, Texas Federation of Women's Club, 41st annual convention which convened at San Angelo Monday and Tuesday.

Mrs. L. E. Dudley, state TFWC president and chairman of the district nominating committee, presented the new slate of officers, which were elected by acclamation. They included Mrs. Gilbert Theriot of San Angelo, president; Mrs. Richard Moseley of Rochelle, first vice-president; Mrs. O. M. McGinty of Abilene, second vice-president; and Mrs. Edgar Boelsche of Ballinger, third vice-president.

Abilene was selected as the city to host the 1957 spring convention.

The Ballinger Shakespeare Club was awarded the third place in USO scrap books.

Three speakers were featured at the Monday sessions. Miss Elene Westinoreland of Mexia,

Acapulco Cafe
 The main dining room, which has been closed for repairs, will be open
FRIDAY, MARCH 30
 SPECIAL DINNER for **Easter Sunday**

FOR YOUR Easter Feast!
HAM and all the TRIMMIN'S
 at **PIGGY WIGGLY**

Ready-Thrilling—and STABLE!

Dual Stabilizer Actor doubles your riding comfort!

SOLID... STEADY... STABLE! That's the feel of Oldsmobile's ride for '56! The dual stabilizer action of Oldsmobile's Safety-Ride Chassis gives you a new sense of control and security... doubles your riding pleasure!

This is no "shock-and-roll" ride! Stabilizer bars, both front and rear—part of Oldsmobile's sturdy six-point suspension—keep you "rooted" to the road, even on the sharpest turns. The extra-heavy, extra-rigid frame resists twisting and bounce. This accounts for Oldsmobile's handling stability. And when you add the "muscles" of a host of power features, you have the ultimate in motoring ease.

RATE THE ROCKET ON THE ROAD! This ride's got plenty of "get-up-and-go", too. The 9.25 to 1 compression of its Rocket Engine means swift, fleet acceleration... power to spare. And Jetaway Hydra-Matic*, with two fluid couplings, provides a whole new measure of smoothness.

ONE LOOK and you know... Oldsmobile's styling is as advanced as the mechanical features. Look, for example, at the "Integrille" front bumper. It's two bumpers in one for extra-depth protection and new beauty. We have an Olds ready for you—plenty willing... mighty able! See it! Drive it! At our showroom, today!

Solid Foundation for That Smooth Rocket Ride!

NEW SAFETY-RIDE CHASSIS for easier handling—superior roadability!

It's built to handle the high horsepower, high torque of the Rocket Engine! Rugged frame has an X-shaped center member and 5 cross members riveted and welded into a single unit.

Pineapple	DEL MONTE SLICED	No. 1 1/4 Can	23c
Preserves	KIMBELL'S APRICOT OR PEACH	20 Oz. Jar	32c
Margarine	BANNER	Lb.	21c
Biscuits	BALLARD	2 Cans	23c
Green Beans	DIAMOND No. 303	9 for \$1	
Peaches	DEL MONTE CLING No. 2 1/2	Can 3 for \$1	
Corn	DEL MONTE GOLDEN CREME STYLE No. 303	Can 6 for \$1	
Cake Mixes	PILLSBURY 6 FLAVORS	3 Pkgs. \$1	
Eggs	FRESH COUNTRY	3 doz. \$1	
Lemonade	KEITH'S FROZEN Makes 1 quart	6 Oz. Can 16c	
Strawberries	THOMAS FROZEN FRESH	10 Oz. Pkg. 27c	
Green Peas	KEITH'S FROZEN FRESH	10 Oz. Pkg. 20c	
	OREO		
	NABISCO		
	Oreo		
	CREME SANDWICH		
	7 1/4 Oz. Package		25c
	NABISCO		
	Cameo		
	CREME SANDWICH		
	8 1/4 Oz. Package		25c

Swifts Premium HAM for your EASTER DINNER
 49c lb.

Loin Steak	lb.	53c
Seven Steak	lb.	39c
Ground Meat	4 lb.	\$1
Bologna ALL MEAT	3 lb.	\$1
Bacon SLICED	3 lb.	\$1

Hams	SWIFT'S Fully Cooked HALF or WHOLE	Lb.	59c
Picnics	CURED HALF or WHOLE	Lb.	49c
	CURED	Lb.	29c
Carrots	2 pkgs.	15c	
Onions YELLOW	Lb.	5c	
Radishes	Bunch	5c	
Bananas GOLDEN	2 Lbs.	25c	

OLDSMOBILE
 ROCKET 'ROUND THE BLOCK... AT YOUR OLDSMOBILE DEALER'S!

NIX OLDS-CADILLAC CO.
 Ninth and Hutchings Phone 9141

GET OUT OF THE ORDINARY... INTO AN OLDS! GET TOP VALUE TODAY... TOP RESALE TOMORROW!

We are now giving S & H GREEN STAMPS
 With each purchase Save with our every day low prices and S & H Green Stamps

DEATHS

Mrs. Lela Scarborough
Mrs. Lela Rose Scarborough, 70, died at 4:25 p. m. Friday at the Ballinger Clinic-Hospital after a short illness.
Funeral services were held at the Kasper-Maxon chapel in El Paso at 4:30 p. m. Monday.
Decedent was born January 19, 1885 at Merit and came to Runnels County in 1921 to make her home at Norton. After her husband died in 1940 she moved to Ballinger and has resided

here since that time. She was a member of the Baptist Church and belonged to the Eastern Star chapter at Norton.

Survivors include four sons, Ivan Scarborough, Albuquerque, New Mexico; Erwin Scarborough, El Paso; Samuel Scarborough, Silver City, New Mexico; Maurice Scarborough, Port Lavaca; five daughters, Mrs. Clyde Gabbert, Ballinger; Mrs. B. H. Gabbert, Eureka; Lela Mae Clifton, Silver City; Mrs. Bill Hendricks, Winters; Mrs. Max Templeton, Oklahoma City; 20 grandchildren and 8 great-grandchildren.

The Bible Teaches:

NO. 4 IN A SERIES. SAVE EACH ONE. YOUR QUESTIONS AND COMMENTS INVITED.

THE GOSPEL OF CHRIST, NO. 2

This week's lesson is planned to further define our subject: The Gospel of Christ. In general terms we could say it is the message of the New Testament. To be more specific, the gospel includes first of all:

1. FACTS TO BE BELIEVED

Paul said in 1 Corinthians 15:1 "... I declare unto you the gospel ..." In verses 3 and 4 he declares the FACTS of the gospel: the DEATH, BURIAL, and RESURRECTION of Christ. (See also 2 Timothy 2:8) and then proved the resurrection.

Christ said: "... believe the gospel ..." (Mark 1:15) and "... if ye believe not that I am he, ye shall die in your sins ..." (John 8:24).

In lesson 5 you will note that we referred to God as the creator of the universe (Genesis 1:1) and to Christ as the divine Son of God (John 3:16) born of the Virgin Mary (Luke 1:27). Also in that lesson, 2 Peter 1:20-21 was cited to show (there are many other scriptures, 2 Timothy 3:16 for example, and proofs which could be given to prove) that the Bible is inspired of the Holy Spirit. Lesson 2 stated that one of the purposes of this column is to reveal some of the teachings of the Church of Christ. This lesson includes a reference to the bodily resurrection of Christ. These truths—the divinity of God, the virgin birth of Christ, his miracles, resurrection, etc., and the divine inspiration of the scriptures—are fundamental doctrines of the Church of Christ. We firmly oppose the false and dangerous theories of evolution, modernism, and all other forms of infidelity. Those modernists and all others who would deny the divinity, resurrection, and miracles of Christ (no matter how sincere or religious they might be) are modern day examples of men who do not believe the FACTS OF THE GOSPEL.

The gospel includes also:

2. COMMANDS TO BE OBEYED

In 2 Thessalonians 1:8-9 Paul gave the fate of those who "OBEY NOT THE GOSPEL of our Lord Jesus Christ." (See also 1 Peter 4:17). In 1 Corinthians 15 Paul declared the facts of the gospel. In 2 Thessalonians 1 he warns those who would not obey the gospel. Can you obey facts? Can anyone obey the death, burial and resurrection of Christ? No, those are facts to be BELIEVED. COMMANDS are to be OBEYED. When the FACTS of the gospel are BELIEVED and the COMMANDS of the gospel are OBEYED, what is the result? We receive the:

3. PROMISES TO BE ENJOYED

Remission of sins and the gift of the Holy Spirit (Acts 2:38), rejoicing (Acts 4:38, 16:34), peace (Philippians 4:7), membership in the body (or church, Ephesians 1:22-23) of Christ (1 Corinthians 12:13; Galatians 3:27); membership in the family of God (John 3:5; Romans 8:14); newness of life (Romans 6:3-4), answer to prayer (John 15:7; John 9:31; 1 Peter 3:12), the hope of heaven (John 14:1-3), and many, many other promises; in short "all spiritual blessings" (Eph. 1:3) are the PROMISES OF THE GOSPEL to be enjoyed by those who obey the commands of the gospel and are faithful until death (Revelation 2:10).

Briefly then the Gospel of Christ includes: 1. facts to be believed, 2. commands to be obeyed, and 3. promises to be enjoyed. The Gospel of Christ is the message of the New Testament.

YOU ARE ALWAYS WELCOME TO THE EIGHTH STREET CHURCH OF CHRIST

NOW GIVING

S. & H. GREEN STAMPS

Your Home Owned



Starting Thursday, March 29, 1956

We will give S & H Green Stamps with each purchase

M. L. Leonard
Minter Lee Leonard, 70, died at 9:10 a. m. Monday in the Ballinger Clinic-Hospital.

Decedent was born July 29, 1885 in Gonzales County and came to Runnels County in 1921. He made his home in the Norton community until 1951 when he moved to Ballinger to make his home. He was married in 1908 to Victoria McDaniels.

Funeral services were held at 2 p. m. Tuesday at the First Methodist Church with Rev. Wayne Reynolds officiating. Burial was in Evergreen Cemetery.

Survivors are his wife, five sons, Aubrey and Hollis Leonard, Big Spring; Alvis Leonard, San Antonio; Billy Leonard, Fort Worth; James Leonard, Eunice, New Mexico; one daughter, Miss Juanita Leonard, San Angelo; and three brothers.

Mrs. George Beard
Mrs. George M. Beard, 65, died at 7:30 p. m. Tuesday in the Hendricks Memorial Hospital at Abilene after an illness of three days.

Decedent was born August 29, 1890 in San Antonio and was married there to George M. Beard in 1920. The couple moved to Ballinger 12 years ago and have made their home here since that time.

Funeral services were held at 4:00 p. m. today at the First

Methodist Church with Rev. Wayne Reynolds officiating. At the close of the church service, the Eastern Star rites were performed. Burial was in Evergreen Cemetery with Newby-Davis Funeral Home in charge.

Survivors are the husband, one son, Ardis D. Beard, Houston; one sister, Mrs. Mary E. Flettman of Weatherford, Oklahoma; a sister-in-law, Mrs. Ruth Beard, Abilene and three grandchildren.

Out-of-town week-end visitors in the home of Mrs. Tom Crockett were her sister, Mrs. M. E. Casey of Lubbock, Mr. and Mrs. Walter E. Crockett and children of San Angelo, Mr. and Mrs. Bill Warren and children of Paint Rock, Mrs. Bert Fletcher of Maverick and Ralph D. Crockett of Midland.

Miss Charlene Evans and her fiancé, Scotty Drew Caperton, both students at the University of Texas, Austin, arrived in Ballinger Tuesday night. The couple will be married at 10:00 a. m. today in the First Methodist Church, followed by a reception in the church parlors. They are visiting in the home of the bride-elect's parents, Mr. and Mrs. Douglas Black.

Mrs. Fred Holiday and son, Robert Holiday, will leave Saturday for Panama City, Florida, for a visit with Lt. and Mrs. Wayne Fowler, Jr. and family. They will be accompanied by Mrs. S. W. Bryan, who will visit Lt.-Col. and Mrs. E. J. Bryan in Pensacola, Florida.

Card of Thanks
Our heartfelt thanks to all who extended comforting sympathy and help in our recent sorrow. For the beautiful service, floral offerings, and other kindnesses, we are deeply grateful. Especially do we thank Rev. Reynolds for his prayers and words of kindness and Dr. Green for his services.

Mrs. M. L. Leonard and family

China marking pencils, 20 cents each. Ballinger Printing Co.

HOSPITAL NOTES

Patients dismissed from the Ballinger Clinic-Hospital the past week were:

Mrs. Anna Havlak, Rowena, medical, Thursday
Crescencio Lira, surgical, Thursday
Mrs. M. E. Sweeney, medical, Thursday
Mrs. Carron C. Easterly and daughter, Winters, Tuesday
Mrs. Chester Afferbach and daughter, Thursday
Anne Wilbanks, surgical, Saturday
Mrs. Harry Patino and daughter, Thursday
Mrs. Ed Hugill and daughter, Monday
Judy Garrett, medical, Monday
Daniel Knight, surgical, Wednesday
W. T. Hill, Talpa, medical, Wednesday
Mrs. John Cosgrove, medical, Tuesday
C. W. Tabor, medical, Tuesday

Births reported the past week were:

Mr. and Mrs. James Mueller, a son, born March 23
Mr. and Mrs. Trisda Gonzales, a son, born March 25
Patients in the hospital at this time are:
Mrs. D. E. Moody, medical
Mrs. Hilton Morgan, medical
Mrs. O. K. Jacob, medical
Mrs. J. K. Simco, medical
Mrs. R. R. Dancer, San Angelo, medical
Mrs. W. A. Forgy, medical
R. T. Cope, Norton, medical
Patty Fisher, Winters, medical
Miss Mary F. Halfmann, surgical
Mrs. Neuman Smith, surgical
R. W. Bruce, surgical, broken hip.

Index cards, 3 by 5, 4 by 6 and 5 by 8, plain or ruled. Ballinger Printing Co.

HILLCREST DRIVE-IN Theatre

TONIGHT—2 BIG FEATURES
—60c CARLOAD—
MA and PA KETTLE AT WAIKIKI
PLUS
THE SCARLET COAT
STARRING
CORNEL WILDE and ANNE FRANCES

FRIDAY AND SATURDAY

1st Run Double Feature



SUNDAY, MONDAY, TUESDAY
First Ballinger Showing
"AT GUN POINT"
STARRING
FRED McMURRAY and DOROTHY MALONE

NAPKINS for every occasion. Cocktail and luncheon sizes. All colors. Special designs. Anniversary celebrations a parties. These can be bought with printed names and designs in all colors of ink including silver and gold. Ballinger Printing Co., Phone 6522.

Order book in triplicate, cents. Ballinger Printing Co.

Sold

on better
SANITONE
Dry Cleaning



Our miracle Sanitone Dry Cleaning makes clothes look new... last longer, too. Spots out, perspiration gone, no cleaning odor, better lasting press and it costs no more than ordinary dry cleaning. Call or come in today!

Wrightway Cleaners
Phone 8000

At GEORGE'S

It's Dress Up Time. This Store is all dressed Up---Now We are Ready to Dress You Up

Loads of beautiful Easter apparel for the ladies and misses have been received in every department, from Fred Block Dresses down to our lowest priced dress up cottons.

Smart linen sheath dresses starting at

\$10.98

Shop our mezzanine floor for smart Easter togs for the kiddies.

gay gibson

serves up candy cottons for spring!

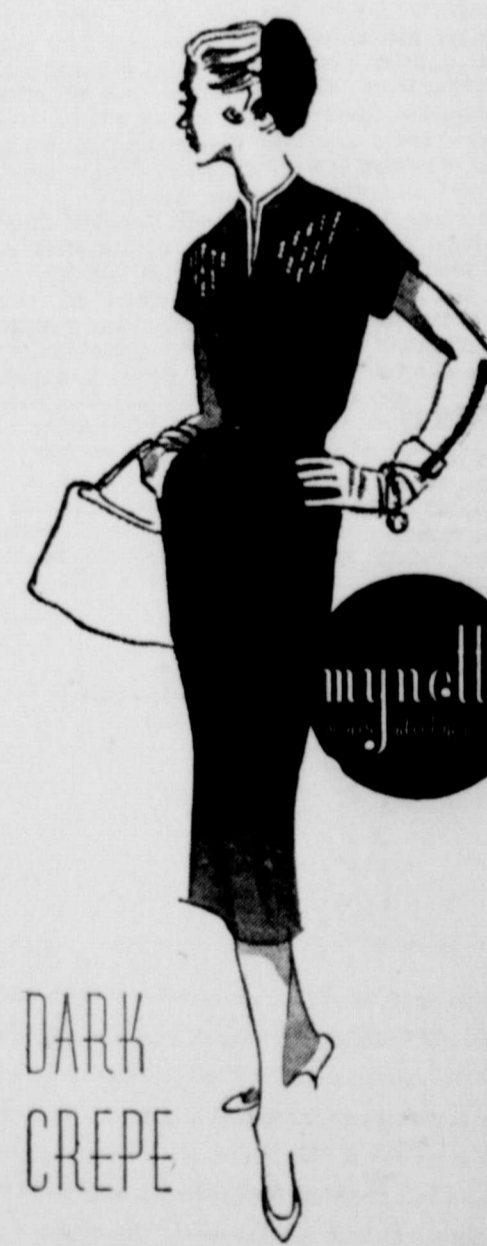


Three bits of fashion sweetness to give you a taste of the way you can look come warm weather! The Gay Gibson at left—stripes and woven dots for this scoop-necked dress with princess torso. Blue, pink or green. Center. Floral stripe checked gingham with bateau neck and tucked bodice. Pink, blue, green or yellow. Right. Coin dot checked gingham with trim of daisy Venice lace. Green, pink, blue or yellow. All, Sanforized... in sizes 5 to 15. Each, \$12.95.

Many Gay Gibson to choose from Starting at **10.98**

Presenting our
EASTER "PREDICTION GROUP"
of
Glorious Easter Hats

by *Howard Hodge*



DARK
CREPE

for a woman's fashionable spring!

Our new dark basic... designed to be the backbone of your new spring wardrobe... designed to give a flattering illusion of height and slenderness... designed to fit, without costly alterations! Of rich rayon-acetate master-type crepe with bodice enriched with pin-tucks, nailheads and covered studs; the neckline finished with removable white hook trim. Navy or black, sizes 12½ to 22½.

FEATURING THE FABULOUS "FULL LOOK"

—the entirely new hat fashion

that is sweeping America

Easter Time is Hat Time—George's Have Them

Every Type, Style and Price. From—2.98 to 26.50

\$14.98

Ballinger Ledger

Published Every Thursday by The Ballinger Printing Co.
Publication Offices, 711 Hutchings Ballinger, Texas
Entered at the post office in Ballinger as second-class mail matter
Subscription, the year.....\$1.50
Telephone 6523



WEST TEXAS NOTES

The foundation for the Rowena "All-Purpose" hall was poured last Thursday afternoon, which will serve as a fire hall, Boy Scout hall and city hall. Construction was primarily sponsored by the fire department and the Rowena Lions Club but the building has become a community project with many men not connected with either organization donating time and labor.

Mrs. Ima Printz, chairman of the Miles Red Cross drive, has announced that \$180.70 has been raised in the drive. She was assisted in the drive by Mrs. Gus Beckmann, Mrs. Lonnie Rankin, Mrs. Buck Schovajasa, Mrs. Jerry Baca and Mrs. M. O. Weatherly.

Richard Wayne Rees of Bronie was first place winner in the annual Coker County Soil Conservation District essay contest, the subject for this year's essay being "Why Soil Conservation is Important to Everyone." Second and third place winners were Caroline Elliott of Robert Lee and Alta Eubanks of Robert Lee. Attractive plaques were presented Rees by C. N. Webb and D. K. Glenn and A. V. Sheppard and C. N. Webb presented the awards to the girls.

Work began last week on the remodeling of the Main Drug Company building in Winters, and in the meantime business will be conducted in the building formerly occupied by the City Drug Store on the corner of North Main and West Dale Avenue. Extensive changes will be made in the building purchased by Ralph and Raymond Lloyd, owners of the drug store. Work on the building will require about two months and new fixtures will be installed. Ralph and Raymond Lloyd have owned and operated the Main Drug Store in Winters for the past thirty years.

In the 1956 school census the past week, a drop in the number of scholastics was indicated in Comanche County, which were released by County Superintendent Eino B. Brinson. The census gave a total of 2214 pupils of school age as compared to 2307 for 1955. The census included all children who will be six years of age before September 1, and who have not attained their 18th birthday. Gustine was the only school to show a gain, showing a gain of 15. Largest loss of scholastics in the county was De Leon with 49. Comanche showed a drop of 25, while Sidney lost 24 and Proctor lost 19.

Coleman Board of Community Development launched a membership drive last Monday with C. L. Newman as chairman. The goal is to secure 100 percent membership by Coleman business firms. Prospect cards

county chapter office at Ballinger and also has another established at Winters. Part of the money raised in the county will go to national headquarters and the rest will remain with the two county chapters.

were handed out to workers and Newman pointed out that every firm and individual is invited to become a member of the BCD.

Red Cross workers launched their drive in Melvin last week with Mrs. Bill Hutto chairman. Quota for McCulloch County is \$5,878.00 with \$300.00 being asked from Melvin citizens. The drive is to be completed by April 1. Melvin met their quota for the bloodmobile, but if they fail to meet the designated amount of money in the Red Cross drive, they will lose the blood bank. Assisting Mrs. Hutto is Mrs. Bobby Appleton and Mrs. Walter Murray.

The traditional Easter sunrise services for Colorado City will be conducted again this year in the Ruddick Park's amphitheatre. This is an interdenominational service and youths of the city will participate in the services. The message will be delivered by Rev. Earl Clary, pastor of the First Presbyterian Church, and Rev. Jack Selraig of the First Baptist Church, and president of the ministerial alliance, will be officiating minister. Rev. C. C. Campbell, of the Christian Methodist Church, will speak in the invocation. Rev. Tommy Nelson, of the St. Luke Methodist Church, is committee chairman. Services will start at 6:00 a. m. on April 1.

Western Hatcheries of Dallas announced last week that a new egg depot will be established in Brady at the old POW camp. A cold storage building, with three coolers and an office, has been rented at the camp and the depot will serve as a collection point for eggs within a 75 mile radius. During the peak production period the depot will handle 1,800 to 2,000 cases of eggs per week. This is being planned for a year around operation.

Plans for the coming baseball season were discussed at a meeting of the Eden Chamber of Commerce last week and last year's committees were re-named for the coming year. Clarification of the uses of the two baseball fields was made by President Frank Hogue, as approved by the membership of the Chamber. It was decided that all Little League activities would be held on the new ball grounds in the east part of the city, and the field west of town would be used for the Pony League and all other baseball activities. Improvements of the two fields will include the erection of new back-stops on the diamond west of town and on the north diamond of the Little League field.

The 1956 Erath County Red Cross Fund Campaign had reached \$1,649.00 last Saturday, according to Chairman Brad Thompson, but is still far short of their quota. Nine community chairmen had made final or preliminary reports on collections and Thompson urged that the drive workers speed up their activities in order that the drive may be completed as soon as possible. He reminded people that the American Red Cross has been quick to act in local emergencies in the past and



EARLY PICKIN'—Smart apples in Wenatchee, Wash., believe that an apple a day—until May—is good advance publicity for the 37th annual Washington State Apple Blossom Festival. They've picked their fairest blossom well ahead of time—as Apple Blossom Queen, She's Jolly Ann Sachs, 18-year-old high school senior.

that local citizens should lend their wholehearted support.

Are All Cold Remedies Alike?

No! For example, 666 is the wide-activity medicine, which combines 4 of the most effective, widely-prescribed drugs known, to relieve all cold miseries sooner. 666 is more potent and gives positive, dramatic, rapid relief from miseries of all kinds of colds. That's why 666 is unsurpassed in effectiveness. Try it.

No other cold remedy can match 666 liquid or 666 Cold Tablets.

666

Easter Comes Again

Each year at Easter time life is resurrected in a mysterious symphony of Nature. The trees bud and then blossom; the birds return; the days grow brighter and winter's gloom is dispelled. It is the joyous season when we know that God's wonders will everlastingly be done.

It is because of an abiding faith in the message of Easter that our hope is renewed. It is a holy day, but also a happy day. It brings us the assurance that springtime will follow every winter and that truth and right will finally prevail.

The message of Easter is for everyone. Be sure to attend the church of your choice.

The Winters State Bank

Winters, Texas
Capital Accounts Over \$300,000.00
Member Federal Deposit Insurance Corporation and Federal Reserve System

Due to a riot at Western State Penitentiary, Pittsburgh, some 200,000 Pennsylvania motorist license plates on the 1952 expiration date. were temporarily without 1953

Never because you pay less . . . only because you get

more!



It isn't the low price that makes Chevrolet the most popular car going. It's the looks and quality—the ride and roadability—the championship power and performance.

Sure Chevrolet's low price is important. It saves you plenty, when you consider what most other cars cost.

But even more important to you are the qualities you get in a new Chevrolet. Like its record-breaking performance (up to 225 h.p.) and nailed-down stability.

These are just two of the many things that go to make driving more satisfying—and safer—in a Chevy. Driven one yet? We'll be happy to arrange it.



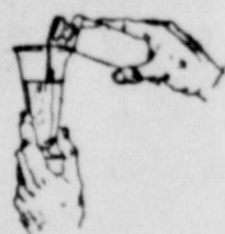
Air conditioning—temperatures made to order—at new low cost. Let us demonstrate!

123 GLAMOROUS PRIZES IN THE "SEE THE U.S.A. IN YOUR CHEVROLET" CONTEST. ENTER NOW—AT YOUR CHEVROLET DEALER'S.

Ray Fuqua Chevrolet Co.

"Pyorrhoea" May Follow Neglect
Did you ever see an attractive person with irritated "GUMS"? Druggists refund money if first bottle of "LEFO'S" fails to help. Pearce-Bailey Drug

Don't Be Confused



IF YOU LISTEN carefully to radio commercials on medicinal agents, you will find that they suggest much but promise little. The glib announcement will tell you that such and such a product can, may, or should help do this or that, but it will never say it will. Notice, also, the newspaper insertions on hair restorers, flesh reducers, and the like. Many of them will bear the statement, "Never sold by mail." Why? Is there danger of Federal prosecution for using the mails to defraud? If you are feeling "out of sorts," consult your physician. He, and he alone, is qualified to diagnose and prescribe treatment.

PEARCE-BAILEY DRUG

Where Pharmacy is a Profession

XXXXXXXXXXXXXXXXXXXXXXXXXXXX

Save on Safeway's Big Easter Values!

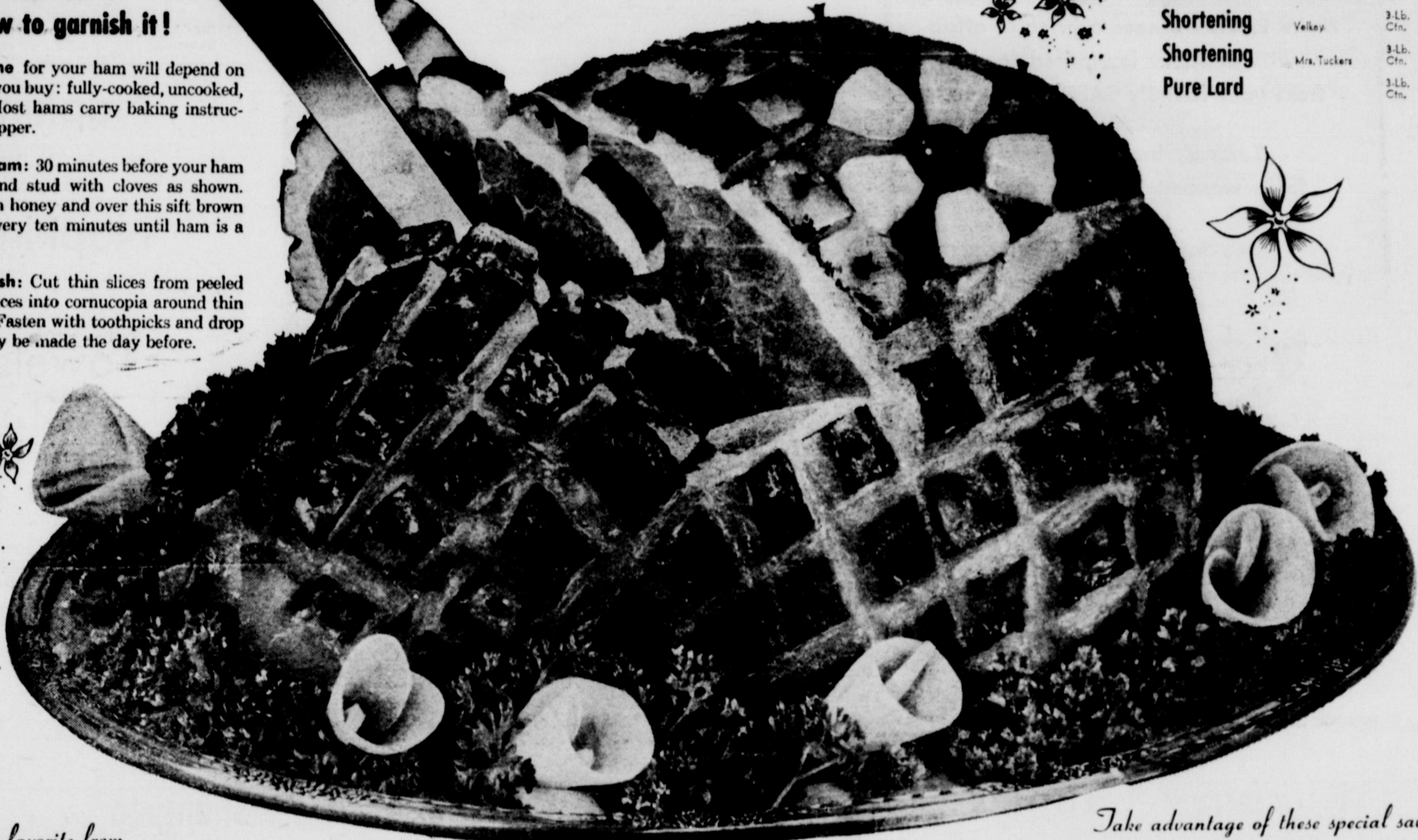


Your Easter Ham:
how to bake it, how to
glaze it, how to garnish it!

Total baking time for your ham will depend on the kind of ham you buy: fully-cooked, uncooked, or tenderized. Most hams carry baking instructions on the wrapper.

To glaze your ham: 30 minutes before your ham is done, score and stud with cloves as shown. Drizzle ham with honey and over this sift brown sugar. Repeat every ten minutes until ham is a glossy brown.

Calla Lily Garnish: Cut thin slices from peeled turnips. Form slices into cornucopia around thin sticks of carrot. Fasten with toothpicks and drop in ice water. May be made the day before.



Breeze	Detergent	Large Pkg.	28¢
Breeze	Detergent	Giant Pkg.	67¢
Airway Coffee		1-Lb. Pkg.	79¢
Nob Hill Coffee		1-Lb. Pkg.	85¢
Edwards Coffee	Reg. Drip or Fine Grind	1-Lb. Can	89¢
Tea Bags	Canterbury Orange Pekoe	16-Ct. Pkg.	21¢
Tea	Canterbury Orange Pekoe	1/4-Lb. Jar	32¢
Lipton Tea	Orange Pekoe	1/4-Lb. Jar	35¢
Instant Coffee	Maxwell House	2-Oz. Jar	49¢
Instant Coffee	Maxwell House	6-Oz. Jar	1.43
Apple Butter	Bama	29-Oz. Jar	28¢
Peanut Butter	Real Roast	12-Oz. Jar	36¢
Peanut Butter	Peter Pan Plain or Crunchy	12-Oz. Glass	41¢

Honey	Burleson Strained	1-Lb. Jar	36¢
Syrup	Karo White	1 1/2-Lb. Bot.	25¢
Salad Dressing	Miracle Whip	32-Oz. Jar	49¢
Salad Dressing	Kraft	8-Oz. Jar	22¢
Sweet Pickles	Zippy Sweet Midgets	8-Oz. Jar	31¢
Sweet Pickles	Zippy Sweet Chips	12-Oz. Jar	29¢
Dill Pickles	Zippy Sherkins	12-Oz. Jar	25¢
Sweet Relish	Zippy	12-Oz. Jar	29¢
Ripe Olives	Ebony Large Pitted	9-Oz. Jar	35¢
Stuffed Olives	Holsum "On-A-Trees"	3-Oz. Jar	39¢
Mustard	French's	24-Oz. Jar	33¢
Table Sauce	A-I	6-Oz. Bot.	35¢

Ketchup	Heinz	14-Oz. Bot.	23¢
Lima Beans	Sunny Hills Large	2-Lb. Bag	35¢
Rice	Show Boat Long Grain	1-Lb. Bag	18¢
Raisins	Sunmaid Seedless	15-Oz. Pkg.	23¢
Dried Apples	Glenview Selected	8-Oz. Pkg.	30¢
Cookies	Jane Arden Fancy Mix	7 1/2-Oz. Pkg.	29¢
Sugar Wafers	Melrose	12-Oz. Pkg.	35¢
Pecan Halves	Woodies	4-Oz. Pkg.	41¢
Pecan Halves	Woodies	8-Oz. Pkg.	79¢
Salad Oil	Meydey	Qt. Bot.	55¢
Salad Oil	Weston	Qt. Bot.	58¢
Shortening	Velky	3-Lb. Ctn.	59¢
Shortening	Mrs. Tucker	3-Lb. Ctn.	69¢
Pure Lard		3-Lb. Ctn.	39¢

Choose your favorite from our selection of famous brands!

HAMS

Hickory-smoked, sugar cured, with an incomparable tenderness and flavor. Whole hams, 12 to 16 lb. av. Half or whole, no centers removed.

lb. 49¢

Additional Easter Dinner Suggestions

Hams	Swift's Prem or Armour's Star	Lb.	59¢
Hams	No. 1 Grade, Half or Whole	Lb.	55¢
Smoked Picnics	6 to 10-Lb. Avg. Whole Only	Lb.	29¢
Sliced Bacon	Thick, 2-Lb. Pkg. Rodeo Ranch Style	Lb.	69¢
Canned Hams	4-Lb. Can Each, Hormel's	Each	3 ⁹⁹
Turkeys	8 to 14-Lb. Avg. Ready to Cook Manor House Hams	Lb.	55¢

Round Steak	Heavy Beef Top Boneless U.S. Choice Grade	Lb.	73¢
Round Steak	Bottom Boneless Heavy Beef U.S. Choice Grade	Lb.	69¢
Ground Beef	Economy	Lb.	29¢
Chuck Roast	Calf U.S. Gov't. Graded	Lb.	35¢
Sirloin Steak	Calf U.S. Gov't. Graded	Lb.	63¢
Sausage	Pork Reg. or Hot Wings	2-Lb. Roll	45¢
Pork Roast	Boston Butt	Lb.	41¢
Pork Spareribs	Fresh Small-Lean	Lb.	39¢
Fully-Cooked Picnic	3 to 5-Lb. Avg. No. 1 Grade, Half or Whole	Lb.	45¢
Ready To Eat Hams	10-14-Lb. Avg. No. 1 Grade, Half or Whole	Lb.	65¢
Canned Hams	4 1/2-Lb. Each, Pear-Shaped Can	Each	6.25
Canned Picnics	4 1/2-Lb. Can Ready to Eat	Each	2.49
Frankfurters	3-Lb. Package, Skinless		1.00
Fancy Tom Turkeys	10-24-Lb. Avg.	Lb.	49¢
Beltsville Turkeys	Small 4-8-Lb. Avg. Ready to Cook	Lb.	69¢

Take advantage of these special savings!

Juice	Grapefruit, Town House, Natural	46-Oz. Can	20¢
Juice	Orange, Highway, Sweetened	46-Oz. Can	27¢
Apples	Sliced, Lakeland Fancy	No. 2 Can	25¢
Cherries	Empress, Red Maraschino	8-Oz. Bot.	28¢
Pears	Bartlett, Libby	No. 2 1/2 Can	45¢
Pineapple	Sliced, Lakeland	No. 2 Can	31¢
Pineapple	Chunk, Lakeland	2 1/2 Can	21¢
Applesauce	Lakeland	303 Can	17¢
Asparagus	Libby, All Green	300 Can	43¢
Beans	Green, Briargate, White Jumble Pack	303 Can	20¢
Beans	Lima, Del Monte, Early Garden	303 Can	27¢
Beans	Butter, Seaside, Cooked	303 Can	10¢
Beets	Sliced, Garnet, Fancy	303 Can	10¢
Corn	Garnet Whole, Kernel Golden	12-Oz. Can	16¢
Mushrooms	Dave Fresh in Steak Sauce	6-Oz. Can	10¢
Peas	Del Monte, Early Garden	303 Can	22¢
Peas	Blackeye, Libby, Fresh	300 Can	10¢
Potatoes	Sweet, Country Home, Whole	3-Lb. Can	27¢
Spinach	Gardenside	303 Can	10¢
Flour	Kitchen Craft	10-Lb. Bag	93¢
Tuna	Torpedo Grated	No. 1/2 Can	23¢
Canned Milk	Cherub	3 1/2-Oz. Cans	35¢
Canned Milk	Carnation or Pet	3 1/2-Oz. Cans	39¢
Powdered Milk	Leo-Mix, Chocolate Dairy Drink	1-Lb. Pkg.	43¢
Dog Food	Ideal	2 1-Lb. Cans	27¢
Scott Towels		2 Rolls	35¢



Safeway Values

Fruit Cocktail	Hostess Delight	303 Can	25¢	Cherries	Towle Maraschino	2 1/2-Oz. Bot.	10¢
Peach Nectar	Heart's Delight	2 12-Oz. Cans	27¢	Peaches	Free Stone Halves O'Gold or Slices O'Gold	2 1/2-Oz. Can	41¢
Prune Juice	Westfair	24-Oz. Can	30¢	Pink Salmon	Prince Leo	No. 1 Can	59¢
				Soap	White Magic, Rik-Rak Cleaner Free	Giant Pkg.	53¢

Make EASTER dinner a brighter affair with delicious low-priced food from your friendly SAFEWAY Store.

Safeway has everything for a wonderful EASTER dinner.

Shop Safeway and SAVE.



Fill Your Easter Baskets at **SAFEWAY**

Roxbury Candies

Choc. Drops	8-Oz. Pkg.	24¢
Choc. Mints	10-Oz. Pkg.	37¢
Mellow Creams	13-Oz. Pkg.	25¢
Jelly Eggs	16-Oz. Pkg.	25¢
Eggs Speckled Jelly Bird	16-Oz. Pkg.	25¢
Easter Eggs Marshmallow	13-Oz. Pkg.	29¢
Easter Eggs Marshmallow Jumbo	28-Oz. Pkg.	53¢
Choc. Cream Eggs	8-Oz. Pkg.	29¢
Orange Sticks Chocolate Covered	8-Oz. Pkg.	37¢

Pineapple Juice	Libby	2 No. 2 Cans	29¢
Fruit Salad	Libby	303 Glass	39¢
Deviled Ham	Libby	No. 1/4 Can	18¢
Chopped Bif	Wilson	12-Oz. Can	35¢
Corned Beef Hash	Libby	16-Oz. Can	31¢
Baby Meats	Gerbers, Strained or Chopped	3 1/2-Oz. Can	19¢
Fruits & Veg.	Gerbers, Strained	4 4 1/2-Oz. Cans	33¢
Fruits & Veg.	Gerbers, Junior	2 8 1/2-Oz. Cans	21¢
Cereal	Gerbers, 1c-14-Oz. Oatmeal	8-Oz. Pkg.	15¢
Rinso Blue	Detergent	Lrg. Pkg.	29¢
Tea	Lipton Bags	16-Ct. Pkg.	23¢
Italian Dressing	Kraft	8-Oz. Bot.	30¢
Salad Mustard	Kraft	6-Oz. Jar	10¢
Dental Cream	Colgate	Lrg. Pkg.	29¢

Liquid Bleach	Clorox	Qt. Bot.	17¢
Liquid Bleach	Clorox	1/2-Gal. Bot.	30¢
Toilet Tissues	Zee, Ass't. Colors Family Pak	4-Roll	35¢
Toilet Tissues	Zee, White Family Pak	4-Roll	35¢
Napkins	Zee, Colored	80-Ct. Pkg.	14¢
Napkins	Zee, White	80-Ct. Pkg.	14¢
Napkins	Zee, Large Dinner	40-Ct. Pkg.	14¢
Towels	Zee	2 Rolls	35¢
Sandwich Bags	Zee	30-Ct. Pkg.	10¢
Lunch Bags	Zee	20-Ct. Pkg.	10¢

Shampoo	Halo	Lrg. Bot.	53¢
Shampoo	Lustre Crema	Med. Jar	49¢
Shampoo	Lustre Crema	Lrg. Jar	85¢
Shampoo	Lustre Crema Lotion Form	2 1/2-Oz. Bot.	47¢
Shampoo	Lustre Crema Lotion Form	7-Oz. Bot.	85¢
Skin Cream	Pacquin, Purple Label, Tax Incl. Jar	2 1/2-Oz.	52¢
Skin Cream	Pacquin, Red Label, Tax Incl. Jar	2 1/2-Oz.	53¢

APRIL Family Circle MAGAZINE 7¢

Shop SAFEWAY

Prices Effective March 29, 30, 31 in Ballinger

Ball...
Publi...
Publicat...
Entere...
Ball...
will pro...
program...
months...
getting...
provide...
gram to...
soon be...
ming pe...
ment an...
of the...
Little a...
operate...
vide ba...
young b...
special...
in scout...
which w...
gram th...
with spe...
camps...
programe...
youngste...
programe...
should fi...
ing the...
operatio...
grams re...
of adult...
ple are...
operatio...
other ad...
who work...
are anxio...
of the jo...
possible...
help giv...
There is...
register...
secure 19...
These nu...
ears by...
officers...
to driv...
that date...
final date...
checked...
speciati...
patrolme...
ings to...
to this...
small pe...
vehicles...
displayed...
Items as...
The ann...
campaig...
quota of...
raised in...
part of...
pleted and...
are runni...
been one...
another...
November...
many re...
to get th...
during...
make the...
for many...
has taken...
to raise...
past year...
requests...
gram and...
in many...
eases and...
many sect...
and each...
has been...
those in...
hall storm...
early last...
established...
help with...
the Red Cr...
"Pyorrh...
F...
Did you...
person with...
bruggists...
bottle of "L...
Pearce...
By you...
agents...
little...
each...
but it...
inserti...
Many...
mail...
using...
sorts...
lied to...
PEA...
Wh...
BERRE...

G...
T...
C...
K...
USE...
RCA...
AU...
CUSTOM...
MODEL...
NEW 19...
COME IN...
TODAY...
Ballin...
W...
a...
But ye...
that p...
wheel...
It will...
the id...
Just n...
and y...
with...
you...
Just fi...
out th...
the pi...
at full...
never...
And...
whisp...
powe...
smoot...
Series...
Then...
and fi...
There...
sweet...
Enjoy...
for les...
AIR...
It's a...

**Giant Merchants
Television Crossword**
\$1000.00
CASH PRIZE EVERY WEEK
DEPOSIT ENTRY WITH
KEEL DRUG STORE

**USERS WILL TELL YOU,
RCA WHIRLPOOL**
... IS THE FINEST
AUTOMATIC WASHER



299.95
Your old
Washer **50.00**
ONLY 249.95

BALANCE EASY TERMS

IT FEATURES

- Money-saving Suds-Miser.
- 7 water-saving rinses.
- 2-Temp water selection.
- Big, family-size capacity.
- 5-Year parts warranty on sealed-in transmission.

NEW 1956 MODEL
COME IN AND SEE
TODAY

Ballinger Truck & Tractor Co.

Horseshoe

THURSDAY, FRIDAY, SATURDAY

Double Feature
COLUMBIA PICTURES presents
VICTOR MATURE · MADISON · PRESTON
Van Law
CINEMA SCOPE
Color by TECHNICOLOR
in story by JAMES WHITMORE · AND DIRECTED BY ROBERT COOPER

SUNDAY, MONDAY
SPECIAL EASTER PROGRAM
Double Feature
JACK WEBB as PETE KELLY
PETE KELLY'S BLUES
JANET EDMOND · PEGGY LEIGH · EDMOND O'BRIEN · LEE MARVIN · ANDY DEVINE · LEE MARVIN · ELLA FITZGERALD
A STORY BY THE AUTHOR · DIRECTED BY ROBERT COOPER
Color by TECHNICOLOR
CINEMA SCOPE

TUESDAY, WEDNESDAY
60¢ Carload Nites
1st Run
VIVIAN LEIGH · KENNETH MORE
THE DEEP BLUE SEA
CINEMA SCOPE
Color by TECHNICOLOR
A STORY BY ERIC PORTMAN · EMILY WILLIAMS
A FILM BY ROBERT COOPER

At the Horseshoe . . .

James Whitmore, co-starred as a frontiersman in Columbia Pictures' "The Last Frontier," starring Victor Mature, Guy Madison and Robert Preston at the Horseshoe Drive-In Theatre Thursday, Friday and Saturday in CinemaScope and color by Technicolor, is a husky ex-Marine, a veteran of some of the heaviest action in the Pacific theatre during World War II. As an Indian scout in "The Last Frontier," Whitmore probably sees more all-out conflict than ever he dreamed of in the worst of his Marine service. "The Last Fron-

"Pete Kelly's Blues," which is to show Sunday and Monday at the Horseshoe Drive-In Theatre. Starring in the CinemaScope and Warner Color production are Janet Leigh, Edmond O'Brien, Peggy Lee, Andy Devine, Lee Marvin and Ella Fitzgerald. "Pete Kelly's Blues" depicts a story of violence during the most violent years of contemporary history, the roaring 20's. The story is told as it happens to Pete Kelly, a cornet-playing jazz man from Kansas City. Pete and his Big 7 Dixieland band are playing at a "speakeasy" called Rick's, and when he meets the fun-loving and lovely Ivy, Pete begins to live the blues. Then, to add to Kelly's troubles a big-time mobster named McCraig decides to make Kelly and his boys jump. When Pete decides not to jump for McCraig, the action begins in true roaring 20's style. Andy Devine casts aside comedy for his part as a detective in "Pete Kelly's Blues"

Small dogs, tall dogs, gay dogs and sad ones have leading roles in Walt Disney's first feature-length cartoon in CinemaScope, "Lady and the Tramp," to show at the Horseshoe Drive-In Theatre Sunday and Monday. In addition to Lady, the film is peopled—or dogged—with a chihuahua, a Russian wolfhound, a Scotch terrier, a bloodhound, a Pekinese, an English bull and a dachshund. Other animals who figure in the feature are a beaver, a hyena, a crocodile, Siamese cats and a few twoglegged creatures called "people."

Anatole Litvak's CinemaScope production of "The Deep Blue Sea," which is to show at the Horseshoe Drive-In Theatre Tuesday and Wednesday, is one of the most powerful and memorable adult love dramas registered on film in years, and both the illustrious Vivian Leigh, never more beautiful, and the relative newcomer, Kenneth More, are superb in it. As for the acting, it is simply brilliant. Vivian Leigh, off the screen for four years—for which her fans from "Gone with the Wind" through "A Streetcar Named Desire," may well weep—comes back triumphantly as the rich and admired wife of a respected and eminent judge, who throws away all caution and position to live passionately with a breezy, dashing, weak young man with a good war record in a mad, unstable infatuation.

The eye of CinemaScope sweeps across the broad expanses of South Africa in Twentieth Century-Fox's thrilling adventure drama, "Untamed," due at the Horseshoe Drive-In Theatre Tuesday and Wednesday both the story and the scenery give the new enlarged screen some magnificent material that had been hitherto too costly for film companies to undertake. In a story of an Irish girl's pursuit of a young Boer fighter, the film reveals "The Great Trek" with its battle scenes between wild Zulus and miniscule bands of settlers, bull-whip fights for the love of the flame-haired beauty, and the natural dangers of an unexplored world. Tyron Power, Susan Hayward and Richard Egan star in the Bert Friedlob-William A. Bacher production which was directed by Henry King.

At the Texas . . .
The Old West when guns roared and a gang of desperadoes were apt to take over and run a town unless there were men brave enough to stop them is told in the exciting new western, "Top Gun," a United Artists release opening at the Texas Theatre Friday and Saturday. Sterling Hayden has the starring role as a gun fighter come back to warn his home town of an impending raid by a gang of marauders, against whose vicious tactics the little village is ill-equipped. Since Hayden's behavior in that town (he was reputed to have killed several men—which later turned out to be in self-defense) is suspect, his help is not only refused, but he is given just a few hours to get out of the city.

Storming into town on an avalanche of unrestrained praise from every critic and audience it has played to, William Wyler's "The Desperate Hours" will begin its eagerly awaited and historic engagement Friday and Saturday at the Texas Theatre. Hailed as a powerfully compelling human drama with the heart-warming qualities of "The Best Years of Our Lives" and the relentless tension of the greatest tales of crime and terror, Paramount's distinguished film combines the superb talents the best movie talents have to offer.

Humphrey Bogart and Frederic March hold the top starring roles: Bogart as a deadly and merciless escaped convict who chooses a peaceful home for a refuge, and March as the tormented father of the family. Bogart and his sadistic companions hold captive. Co-starred with them are Arthur Kennedy, Martha Scott, Dewey Martin, Gig Young and Mary Murphy.

Popular Rock Hudson, who stars with Cornell Borchers and George Sanders in Universal-International's Technicolor romantic drama, "Never Say Goodbye," to show at the Texas Theatre Easter Sunday, Monday and Tuesday, would be unceasingly busy before the cameras for the next three years if his home studio consented to each loan-out thus far requested. The handsome young leading man, who reached a new pinnacle of acclaim for his work with Jane Wyman in "Magnificent Obsessions," is currently achieving the status of the "most asked for star" in Hollywood.

TEXAS theatre
BALLINGER TEXAS
Effective April 1st . . . Opening Week Days 7:00 p. m.
Saturday, Sunday, Holidays 2:00 p. m.
FRIDAY, SATURDAY
TOP GUN
STERLING HAYDEN
Released thru United Artists
ALSO LATEST NEWS — COLOR CARTOON

EASTER SUNDAY—MONDAY, TUESDAY
The only way she could win back her daughter's love... was in the arms of the man who had shamed her!
Never Say Goodbye
TECHNICOLOR
A Universal-International Picture starring
ROCK HUDSON · CORNELL BORCHERS · GEORGE SANDERS
From the Play "Come Prima Meglio di Prima" by Luigi Pirandello

WEDNESDAY, THURSDAY, APRIL 4-5
M-G-M's TECHNICOLOR TRIUMPH!
SPENCER TRACY · ROBERT YOUNG
NORTHWEST PASSAGE

Although Hollywood cameras have captured many a spectacle shot, none has ever surpassed the terrific realism and suspense of the memorable scenes in "Northwest Passage" in which the band of intrepid Indian fighters, known as Rogers' Rangers, carry huge whaleboats over a mountain top, struggle through miles of swamp, cross a river torrent by forming a human chain, and wipe out an Indian village by a surprise attack. These are some of the high-light thrills in the spectacular Technicolor "picturization" of Kenneth Roberts' noted historical novel, to show at the Texas Theatre Wednesday and Thursday as an M-G-M masterpiece reprint. Spencer Tracy as the dauntless Major Rogers, a role which helped make this Academy Award star one of the screen's outstanding personalities, heads the cast, with other top roles played by Robert Young, Walter Brennan and Ruth Hussey. A Harion, III, dairy has replaced milk trucks with horses, claiming that horses are cheaper and behave in traffic better than most truck drivers.



YOU'LL GET A REAL BOOT OUT OF THIS BEAUTY
(Just switch the pitch and see)

We'll grant that you'll get a kick from just looking at a new Buick—it's that kind of automobile.

But you'll have to take the wheel, turn the key and press that pedal before you get any idea what this sizzler on wheels can do to your spirits and well being.

It will take you only a handful of happy minutes to get the idea.

Just nudge the pedal—no more than a gas-saving inch—and you'll feel the instant new getaway that's yours with the new Variable Pitch Dynaflo* even before you switch the pitch.

Just find a spot where you can safely and legally call out the reserves—then floor the pedal. That switches the pitch instantly—and in the same split-second you're at full-power acceleration and sweeping ahead like you never did before in any other earth-bound vehicle.

And all the while, just lend an attentive ear to the whispered might of that big 322-cubic-inch V8 that powers this spectacular performance. For that's the smoothest, the quietest and the highest-powered engine, Series for Series, in all Buick history.

There's more, of course, to make the thrills come thick and fast when you're bossing the best Buick yet.

There's the deep, soft comfort of big interiors—and the sweet and solid steadiness of that great Buick ride.

There's the grace of line you can see stretching before you—and the sure and nimble way this beauty handles and corners and tracks and targets to the road.

So come be our guest at the wheel of a spanking-new Buick—just for fun and kicks and a new excitement. And if you feel this is the car for you, we'll show you prices and a deal that say it's yours for sure. Drop in today or tomorrow, won't you?

*New Advanced Variable Pitch Dynaflo is the only Dynaflo Buick built today. It is standard on Roadmaster, Super and Century—optional at modest extra cost on the Special.

BEST BUICK YET
Join Buick's "Thrill-a-Minute Club"
Just drop in and drive a 1956 Buick. Discover the new thrills in ride, handling, power and switch-pitch performance to be had in the Best Buick Yet.
SEE JACKIE GLEASON ON TV Every Saturday Evening



GIANT TRY—Bob Lennon is after more than the ball as he anticipates arrival of a hot liner at Phoenix, Ariz., where the New York Giants are in spring training. Lennon appeared in three games with the Giants in 1954. He spent last year with the Minneapolis Millers. Despite a shoulder separation he belted 31 homers in 114 games and hopes to up the score in his new go-round with the Giants.

HOME HUNTING?

THERE'S A CAMERON HOME IN YOUR PRICE RANGE

The smart, easy way to solve the home-hunting problem is to select your new home from our many plans. Bear in mind: "Cameron-Built Homes Are Well-Built Homes! They're good looking, inside and outside. See us about desirable lots. VA, FHA or Conventional Financing

IMPROVE YOUR HOME WITH
ASBESTOS CEMENT SIDING
First quality No. 1 grade, straight edge or wave-line. Choice of grey, green, brown, coral, yellow or white. Applied over present siding. Have us do the complete job. Nothing down. Up to 3 years to pay.

THIS WEEK ONLY
SPECIALS

VALSPAR VALASTIC
BLISTER PROOF
HOUSE PAINT

VALSPAR VELVET
Enamel for Interior Walls
You'll love the ease of applying Velvet with roller or brush, and the uniform, soft, glare-free finish of your walls. All of Valspar's delightful colors are washable, even scrubbable.
\$510 GAL

VALSPAR SUPER VARNISH
Matchless for furniture, floors, boats, many other uses. Valspar is known the world over as the varnish that won't turn white, won't stain, spot or blister.
\$629 GAL

Colorful Asphalt SHINGLES
Fire-resistant, enduring. Solid colors or mottled blends, posets. Have us apply them or "do it yourself." Nothing down. Up to 3 years to pay.
GET A 10-YEAR GUARANTEED CAMERON ROOF
Roof for avg. 5-room house
\$655 per sq. ft. NOTHING DOWN
Ask about the fully guaranteed Cameron 9-Point Roof. Our thrifty prices include vent flashings, ridge, valley and edging.
PRICES ARE ALWAYS RIGHT AT
Wm. CAMERON & Co.
BUILDING MATERIALS AND SERVICES

Enjoycooled, filtered air for less than you think with Buick's AIRCONDITIONER
It's a genuine Frigidaire
UNDERWOOD BUICK CO.
Tenth & Hutchings Phone 6491

THE BALLINGER LEDGER

BALLINGER, TEXAS, THURSDAY, MARCH 29, 1956

NO. 23

Conservation Practices Approved For Past Year

The Runnels County Soil Conservation district's annual accomplishment report was approved at the last monthly meeting of the supervisors on March 9.

Kirby Robinson, chairman of the board, stated that this report showed 219 farmers and ranchers signed a working agreement with the district last year. He added that these agreements covered 70,099 acres.

To date, 633 farmers and ranchers on 332,775 acres are operating with the district in applying a conservation plan on their places. It was further pointed out that these plans were developed by the landown-

ment crops were grown on 1,882 acres. Blue Panicum grass was reported to be up on 390 acres. A total of 8,958 acres of rangeland was rested three months or more and 5,917 acres of rangeland was reported to have been properly grazed. Pitting of rangeland was carried out on 1,798 acres. Brush was controlled properly on 1,222 acres. Division terraces constructed totaled 7 miles. Improved water application was reported on 70 acres. A total of 54 tanks for livestock water were constructed during the year.

The chairman of the board stated that the report included the board's selection of a business man who had contributed most to the district's program, and the outstanding conservation farmer, James Glen, ginier at Winters, was selected as the business man and Lawrence Jacob, who farms east of Winters, was nominated the out-

standing conservation farmer. Both of these men were selected for the work they had done with composted gin trash and the use and promotion of other conservation measures.

Robinson reported that the drought did not affect the application of conservation practices in 1955. He said that the dry weather has made people more aware of the importance of applying practices that will make effective use of rainfall, such as stubble mulching, cover crops, range deferral, pitting and terracing.

SOCIAL SECURITY MAN WILL BE HERE TUESDAY

Any person receiving social security checks may now earn up to \$1,200 a year without losing the right to any of his or her checks, E. M. Bowers, district manager of the San Angelo social security office announced today.

"Under the old law, the 'earnings limit' was \$75 a month from wages and \$900 a year from self-employment. The new provisions, however, permit earnings of \$1,200 a year without giving up any checks, whether the money is earned from employment, self-employment, or both. For each \$80 or fraction thereof over \$1,200 one check must be withheld. For example, if a beneficiary earned \$1,280 a year he would give up only one check and receive the other eleven monthly checks. Earnings from work not covered by social security as well as work under social security is counted in applying this rule. Investment income, however, is not counted and has no effect on the receipt of benefits. Once a person reaches age 72, the 'earnings limit' does not apply. A person age 72 or over may earn any amount and still receive regular monthly retirement checks," said Mr. Bowers.

Bowers stated that further information may be secured by contacting John Dickinson of the San Angelo social security office.

LEE ALLEN FUNERAL AT WINTERS SUNDAY

Funeral services for Lee Allen, 56, a former mayor at Winters, were held at 2:30 Sunday afternoon at the First Baptist Church. Rev. B. T. Shoemaker was in charge and burial was in the Lakeview Cemetery.

Decedent died at 6 a. m. Saturday at the Municipal Hospital where he had been confined since Thursday, when he suffered a heart attack.

He was born at Cameron on October 29, 1899 and moved to Ballinger with his parents in 1904. After graduating from high school at Ballinger he served in the navy during World War I, spending 13 months overseas. He was discharged in 1919 and lived in Oklahoma for a time, returning to Ballinger in 1930. During World War II he served as a guard at Bruce Field.

After the war he moved to Winters and operated a laundry to work for the city. He served in the city office and was on the police force before he was elected mayor in 1953.

He was a member of the First Baptist Church, American Legion, Veterans of Foreign Wars,

Odd Fellows Lodge, Masonic Lodge and served as assistant chief of the fire department.

Survivors are his wife, step-mother, Mrs. B. F. Allen, San Angelo; two sisters, Mrs. H. B. McAden and Mrs. L. H. Briant, San Angelo; one step-son, A. L.

Roper, San Antonio. The Statue of Liberty weighs 225 tons.

IT LOOKS LIKE

Beautiful Easter

and Lintz's have

the very blouse

you'll want to wear with your Easter Suit



Such a Happy Partnership . . . Your new Spring blouse and your EASTER suit. We've so many beautiful blouses, and the prices are so modest you'll want more than one . . . to wear with suits or skirts from now through summer.

Pictured: Beautiful no-iron cotton with embroidery trim front. White only. Sizes 30 to 36.

\$3.98

IT TAKES MORE THAN ONE PAIR OF STOCKINGS TO MAKE A SPRING & EASTER WARDROBE

You'll want colors to coordinate with your costumes. Styles to suit your shoes.

The More You Buy the More You Save!

buy 1 pair	buy 6 pair	buy 12 pair
Pay 97c pr.	Pay 87c pr.	Pay 77c pr.

ALL FIRST QUALITY FULL FASHIONED NYLONS

Willy's	Regular \$1.35 to \$1.95
of Hollywood Calif.	66 Gauge 12 denier
SIZES 8 1/2 to 11	60 Gauge 15 denier
Colors:	60 Gauge STRETCH
Allure beige	54 Gauge 15 denier
Glamour taupe	51 Gauge 30 denier
Temptation tan	



Easter Parades! of Shoes



The prettiest feel in the Easter Parade will be wearing Black Patent from this fresh-as-spring collection.

Patent Pumps \$6.95

Sizes 5 1/2 to 9 . . . B to AA

Choose high or medium heel.

Gay Companions for Spring!

Handbags

Fashion plays into your hand for Easter in new shapes . . . and a beautiful new shape, they are too . . . a pleasant variety of sizes

Black Patent The most wanted bag for Easter

From 2.98 plus tax



Honor The Risen Lord! EASTER

SUNRISE SERVICE

Sponsored by

Ballinger Ministerial Alliance

Hillcrest Theatre

Sunday, April 1, 6:15 a. m.

MASSED CHOIR---Directed by J. C. Chapman

EASTER MESSAGE, C. B. Orahood

The Ballinger Ministerial Alliance and churches represented in the alliance extend an invitation to everyone to join in this Sunrise Easter Service. Park your car at one of the speakers and remain in it if you wish. Honor the Risen Lord with your presence at this service—then attend Sunday school and Easter services at the church of your choice.

FREE COFFEE

In case of bad weather services will be held in the First Methodist Church.

LIMITED TIME ONLY

springtime special

DESERT FLOWER

HAND and BODY LOTION and TOILET WATER



1.50 value . . . 1.00 plus tax

NOW . . . SHULTON offers you these two Desert Flower luxuries—Petal-pink Hand and Body Lotion to make "winter-weary" skin soft and lustrous—Plus, the exquisitely fragrant Desert Flower Toilet Water to make you sparkle with elegance this spring. Don't wait—Buy yours today!

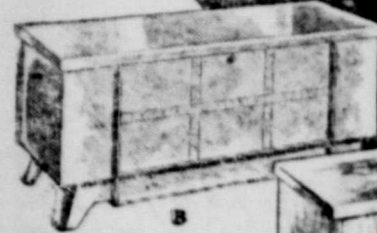
Keel Drug

for GRADUATION

NEW
SPRING
MODELS!

LOW,
LOW,
PRICES!

LANE
CEDAR
CHESTS



A—Modern blond oak chest—self-rising tray inside. Available in other finishes. No. 8201-02 \$49.95

B—Seafoam Mahogany—self-rising tray inside—drawer in base. Also available in other finishes. No. 8172-11 \$69.95

C—Softone Walnut chest—self-lifting tray inside. Parquet front panel. Also available in lighter finishes. No. 8071-16 \$59.95

D—Modern lowboy in Seafoam Mahogany—drawer in base. Available in other finishes. No. 8128-10 \$89.95

CHEST ABOVE
Only
\$49.95

\$1.00
DOWN
DELIVERS!
Small Weekly
Payments

Parents
Give YOUR graduate the gift that is sentimental and practical, too—a Lane Cedar Chest. A Lane is the gift that gathers gifts—offers moth-free storage for those precious belongings.

Higginbotham Bros. & Co.

SOCIETY

Presbyterian Women of Church Present Gifts to Mrs. Keys
Mrs. Estes M. Lynn was program leader at the general meeting of the Women of the Church of the First Presbyterian U.S. held in the church parlors Monday afternoon.
The program was taken from the study, "Forward in Family Life," and the lesson subject was "Crating a Christian Atmosphere in the Home." Others assisting Mrs. Lynn in presenting the lesson were Mrs. B. W.

Claunch, Mrs. Q. V. Miller, Mrs. R. T. Hall, Mrs. Alex Saunders, and Miss Ann Stasney. Mrs. Ida Guion played the accompaniment for the program hymns.
Mrs. R. R. Mizell and Mrs. William Hodges were hostesses at the social hour. The refreshment table in the dining room was linen laid and centered with an arrangement of tulips. Small baskets of eggs and grass along with bunnies reflected the Easter season. A salad plate was served with cake and punch.

Mrs. Alex McGregor read an original poem and presented gifts to Mrs. Felix Keys from members of the Women of the Church. Those presenting gifts were: Mmes. Warren Lynn, B. W. Claunch, Chester Cherry, Estes Lynn, Bill Stultz, Saunders, Hall, M. B. Wardlaw, Joel Bates, L. W. Henniger, Elmer Batts, H. F. Demmer, E. S. Malone, J. M. Pyburn, F. M. Pearce, E. W. Stasney, W. B. Woody, K. V. Northington, Paul Trimmer, Harry Lynn, Paul Petty, Orland Middleton, Malcolm McGregor, Grace Thomas, Guion, Mizell, Hodges, and Miss Stasney. Children were Donna Trimmer and Bill Hodges.

"Ventures in Discipleship" W.S.C.S. Program
At regular circle meetings of the Methodist Woman's Society of Christian Service, held Monday afternoon in homes, the study, "Ventures in Discipleship," was the program lesson.

SEW AND
SAVE
FOR
EVERY
AGE

with our
fabrics,
sewing aids
and notions



Higginbotham Bros. & Co.



UGH—No Little Miss Muffet, she Lillemor Knudsen, dancer, wears this on-the-shoulder horror as decoration (?) during her act at a night club in London, England.



TOPKNOT—So brimful of style is this hat that there's no room allowance for a crown. Hair is worn in a chignon to hold the cocktail number in place. It's a Paris creation, fashioned of velvet and styled by Laud Sinko.

Eighth Street. Mrs. C. P. Shepherd, chairman, directed the business, and gave the prayer. Mrs. Joe Forman gave the devotional and played hymns for the group to sing which were fitting for the subject. Mrs. Bill Witter gave the lesson.

A sandwich plate was served with frosted punch to visitors. Mrs. M. C. Broussard, president of W.S.C.S., and Mrs. R. W. Earnshaw Other members were Mmes. T. L. Hebert, Herbert Tickle, Bob Crockett, O. R. O'Neill, C. R. Stone, A. J. H. Borders, Lee Evans and Tom Caudle.

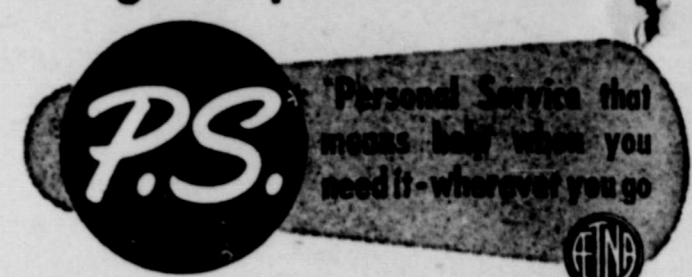
The same devotional and lesson were given by Mrs. J. W. Barr and Mrs. Felix Itz when the Ida Campbell Circle was entertained in the home of Mrs. Jack Seales on Eighth Street. Mrs. Marion Hays gave the opening prayer and Mrs. Tom Agnew, chairman, presided for the business.

A refreshment plate was served to Mmes. Hattin Laxson, Agnew, Barr, Itz, Hays, Sam Behringer, Sid Caskey, L. T. Allen, Jack Nixon and W. R. Clark.



CAPE—Two-piece black flannel jumper, white blouse and elbow-length cape of British tweed are combined for spring and early summer wear. Ensemble is being seen these days in New York City.

For insurance protection at its best
get the policies with the



Call 3481
J. W. Purifoy Albert C. Purifoy
Purifoy and Company
Representing Aetna Casualty and Surety Company

Mrs. Hamp Byler was host of the Sally Odom Circle in her ranch home. Mrs. D. L. Vestal, chairman, presided for the business after Mrs. A. O. Strother gave the opening prayer. Mrs. C. L. Howell brought the devotional and Mrs. Lemmie Davis presented the lesson.
Following the program, the hostess served a salad plate with sandwiches and cookies with coffee. Others present were Mmes. John Loveless, Ewing Holt, E. L. Rumpy, Sally McShan, B. C. Colton, Arch Brookshier, R. D. Midgley, Oliver Cochran and Troy Simpson. Mrs. P. R. Dietz was a visitor.
Mrs. W. E. Midgley was hostess to members of the Ettie Gressett Circle in her home on



... attend Church **EASTER**



To our friends and members
Blessings of the Season

We invite you to bring your family and friends and hear again the wonderful story of Christ's resurrection, His victory over death, and His promise to all of life everlasting.

9:30 a. m. CHURCH SCHOOL
Our Goal For EASTER 500

10:50 a. m. MORNING WORSHIP
"If A Man Die, Shall He Live Again?"

7:30 p. m. EVENING WORSHIP
"Victory Over Death"

7:30 p. m. Thursday—LORD'S SUPPER

8:00 p. m. Friday Easter Cantata—by Choir

BRUCE WILLIS, Conducting
MRS. BOB BARTLETT, Organist

A CORDIAL INVITATION TO ATTEND ALL EASTER SERVICES

FIRST METHODIST CHURCH

Dr. Wayne Reynolds, Pastor

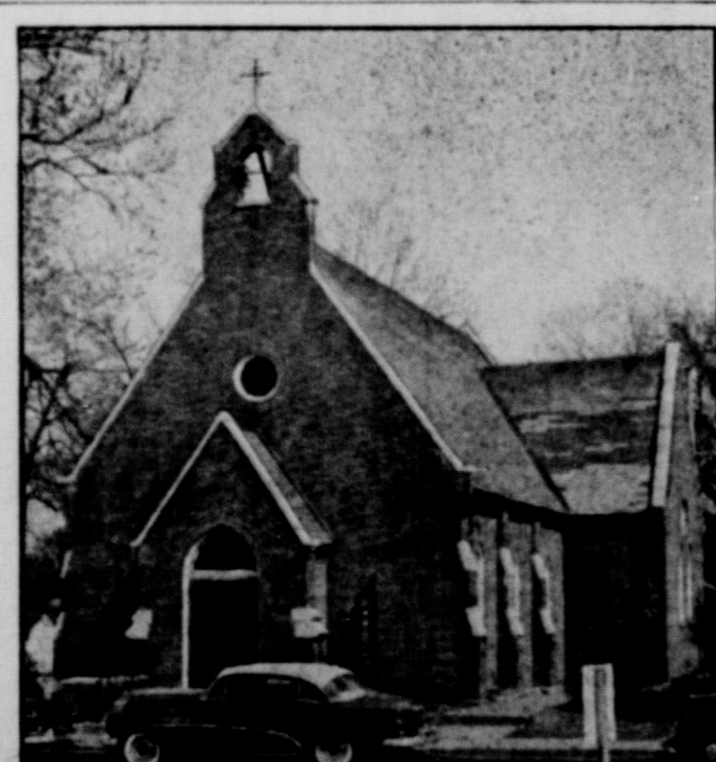
LET Your LAWN BE THE JUDGE!

We want you to see for yourself how quickly and easily a Jacobsen Power Mower will bring your lawn to its ultimate beauty. There's an easy starting, quiet running Jacobsen for every size and type of lawn. And the Jacobsen name is your guarantee of quality, respected by generations of professional gardeners and discriminating householders for economical, trouble-free service.



The Jacobsen 18 inch Power with quiet, easy starting Jacobsen engine, only \$119.00
Easy Terms

Dallinger Hardware Co.



WHERE MARGARET WILL MARRY — Pictured, above, is Trinity Episcopal Church, Independence, Mo., where Margaret Truman, 32, will marry newsman Clifton Daniel, 43, on April 21. Ceremony planned by the daughter of the former president is to be a simple one. She will have only two attendants. Members of the immediate families only will be admitted to the church, which seats but 200.

Shop SAFEWAY

Happy Easter! . . . and happy eating, too . . . with a festive table laden with the season's finest, from Safeway! As your Easter dinner's star attraction choose a magnificent ham, rosy-pink and tender. Surround it with succulent fruits and luscious vegetables . . . the best of field and orchard.

And, of course, the eggs! . . . fresh as dawn, snowy-white, just begging to be colored! To help you plan your Easter feast we've assembled all these traditional Easter foods—plus some taste surprises we think you'll like . . . values that will make your Easter dinner perfect in appearance, eating enjoyment, convenience and economy.

Dental Cream	Colgate	Large Tube	29¢
Shampoo	Halo	Large Bot.	53¢
Margarine	Sunnybank	1-Lb. Ctn.	23¢
Margarine	Nucoa	1-Lb. Ctn.	25¢
Margarine	Coldbrook	1-Lb. Ctn.	19¢
Cheese Whiz	Kraft	8-Oz. Pkg.	33¢
Cheese	Cracker Barrel Sharp	8-Oz. Pkg.	43¢
Chee-Zip		8-Oz. Pkg.	29¢
Cream Cheese	Kraft Philadelphia	8-Oz. Pkg.	33¢
Cheddar Cheese	Wisconsin Sharp	Lb.	65¢

Eggs	Breakfast Gems Grade A Large Mixed	Doz.	53¢
Pineapple Juice	Dole Frozen	2 6-Oz. Cans	31¢
Green Beans	Bel-Air, Frozen, French Style	10-Oz. Pkg.	21¢
Lima Beans	Bel-Air, Fordhook Frozen	10-Oz. Pkg.	23¢
Brussel Sprouts	Bel-Air, Frozen	8-Oz. Pkg.	27¢
Peas	Bel-Air, Frozen	10-Oz. Pkg.	19¢
Strawberries	Bel-Air, Frozen	3 16-Oz. lbs.	1.00
Peaches	Bel-Air, Frozen	10-Oz. Pkg.	21¢
Cocoanut Cake	Blaines	20-Oz.	59¢
Cloverleaf Rolls	Skylark 12's, Brown 'N Serve	12-Oz. Pkg.	23¢

LOOK! NEW WAYS TO BRIGHTEN YOUR EASTER TABLE:



1 Easter Bunny Salad
Mold fruited lemon gelatine in 9" round pan. Cut 4 faces with round cutter and arrange on lettuce cups lined with cottage cheese. Cut 8 ears. Eyes are cherry halves; noses are candy hearts, whiskers are coconut.



2 Sweet Potato Crunch
Add a few thin slices of unpeeled orange to boiled, peeled sweet potatoes. Top generously with coarsely chopped peanuts. Pour syrup over all and bake according to your favorite recipe.



3 Mustard Cheese Sauce
(Fine on asparagus, and broccoli, too!) To 1½ cups medium white sauce add ½ cup shredded sharp cheese, 1 tsp. prepared mustard, ½ tsp. Worcestershire sauce. Pour over asparagus, garnish with egg slices.



4 Walnut-Cheese Sticks
Delicious served with fruit juice or fruit cocktail. Roll pastry, cover half with shredded sharp cheese. Fold and re-roll. Cover top with chopped walnuts. Roll lightly, cut in strips, bake 'til golden.



5 Easter Egg Chocolate Pie
Drop spoonful of sweetened whipped cream on each wedge of pie, top with green-colored coconut. (Shake coconut in jar with drop of food coloring and water.) Fill nests with small jelly beans.

... rushed straight from the growing fields!

Potatoes	Russet	10-Lb. Econ.	49¢
Lettuce	Crisp, Firm Heads	Lb.	15¢
Apples	Red Delicious, 125's and 138's	Lb.	15¢
Texas Yams		Lb.	8¢
Potatoes	New Florida	2 Lbs.	17¢
Beans	Kentucky Wonder	2 Lbs.	35¢
Carrots	Cello	2 1-Lb.	15¢

Guaranteed Fruits and Vegetables!

Bananas		Lb.	14¢
Lemons	Sunkist, 300's	Lb.	15¢
Oranges	Sunkist, Navel, 88's and Larger	Lb.	12¢
Cabbage	Texas	Lb.	5¢
Grapefruit	Marsh Seedless Florida	8-Lb. Bag	47¢
Oranges	Florida	8-Lb. Bag	55¢
Pears	Anjou	Lb.	15¢
Onions	Texas White	2 Lbs.	13¢
Celery	Pascal	Lb.	12¢
Avocados	24's	Each	27¢
Onion	Green	2 Bunches	15¢

Squash Yellow Lb. 19¢

Mrs. Wrights	Reg. Sliced, White Bread	24-Oz. Loaf	21¢
Mrs. Wrights	Sandwich Sliced, White Bread	24-Oz. Loaf	21¢
Dinner Rolls	Skylark, Brown 'N Serve, 12's	11-Oz. Pkg.	17¢
Biscuits	Buttermilk Skylark, Brown 'N Serve, 12 Ct.	9-Oz. Pkg.	20¢
Homo Milk	Lucerne	½-Gal. Ctn.	43¢
Buttermilk	Lucerne	½-Gal. Ctn.	40¢
Whipping Cream	Lucerne	½-Pt. Ctn.	27¢

Complete your menu with these Easter Values!

Flour	Kitchen Craft	5-Lb. Bag	49¢
Tomatoes	Standard	303 Can	10¢
Flour	Harvest Blossom	5-Lb. Bag	39¢

WHITE EGGS

Breakfast Gems, Grade A Large

Doz. 55¢



Brown Sugar	Light or Dark	2 1-Lb. Boxes	25¢
Cocoanut	Bakers Premium	4-Oz. Pkg.	17¢
Cocoanut	Eggers Premium	4-Oz. Tin	19¢
Marshmallows	Snow Clouds	2 8-Oz. Pkg.	25¢
Marshmallows	Fluffiest	1-Lb. Pkg.	29¢
Paprika	Crown Colony	½-Oz. Can	17¢
Onion or Garlic Salt	Crown Colony	2½-Oz. Bot.	17¢
Bay Leaves	Crown Colony	Whole ½-Oz. Pkg.	11¢
Cloves	Crown Colony	Whole ½-Oz. Pkg.	20¢
Food Coloring	Crown Colony, All 'n Color	4½-Oz. Pkg.	22¢
Egg Dyeing Kit	Pass		15¢
Egg Dyeing Kit	Pass		39¢
Flour	Harvest Blossom	10-Lb. Bag	71¢
Flour	Light Crust	5-Lb. Bag	49¢
Flour	Light Crust	10-Lb. Bag	91¢
Flour	Gladole	10-Lb. Bag	79¢
Cake Mix	Betty Crocker Devil Food or White	20-Oz. Pkg.	31¢
Cake Mix	Pillsbury Yellow or Orange	17-Oz. Pkg.	31¢
Cake Mix	Dromedary White, Yellow or Devil Food	19-Oz. Pkg.	31¢
Corn Meal	Mammy Lou White	10-Lb. Bag	65¢
Cane Sugar		10-Lb. Bag	93¢

These prices effective until close of business, March 29-30-31.

Ballinger

Shop SAFEWAY

METHODISTS ANNOUNCE SERVICES FOR EASTER
 Rev. Wayne Reynolds has announced a number of special programs for the Easter season at the First Methodist Church, which will be climaxed with the regular 10:50 a. m. service Sunday morning.

At 7:30 tonight the Lord's Supper will be administered in a special service in the church auditorium.
 At 8:00 Friday evening the choir, under the direction of Bruce Willis, will present the Easter Cantata, "The Crucifixion," by John Stainer. The

choir members have been working for several weeks to get this rendition ready for the public.
 The Sunday morning goal in the Sunday school has been set at 500 in attendance.
 Rev. Reynolds will bring his special Easter message at the morning worship hour Sunday

and a large class of boys and girls will be received into the church. For the past week he has been meeting members of this class daily to prepare them for church membership.
 India Ink, 40 cents per bottle Ballinger Printing Co.

SPECIAL FEATURES ON BAPTIST SERVICE
 The First Baptist Church will have special features on their Easter services Sunday morning and evening.
 At the morning worship service a special musical number will be presented by three choirs

of the church. This will include the regular church choir, the Concord choir and the Carol choir. The number will be under the direction of Bob Allford, minister of music.
 Dr. LeRay Fowler will use as his morning subject for the Easter message, "The Triumph

of God."
 At the evening service the pastor will bring a short message and at the conclusion of the service a sound picture in color, "The Lord Is Risen," will be shown.
 Rev. Fowler announced that the evening service would start

at 8 p. m. Sunday and that all other evening services would be 30 minutes later than the schedule in the past. This new schedule will be followed all during the spring and summer months.
 Order book in triplicate, 40 cents. Ballinger Printing Co.



Giant WHITE SWAN DOLLAR SALE

Free White Swan Coffee
 All Day Saturday
 Free Balloons---Free Suckers
 For the Kiddies

White Swan Juices

GRAPEFRUIT JUICE	46-Oz. Can	4 for \$1
GRAPE JUICE, 24-Oz. Bottle		3 for \$1
ORANGE JUICE, 46-Oz. Can		3 for \$1
PINEAPPLE JUICE, 12-Oz. Can		9 for \$1
PINEAPPLE JUICE, 46-Oz. Can		4 for \$1

MUSTARD GREENS, White Swan, 303 Can	10 for \$1
TURNIP GREENS, White Swan, 303 Can	10 for \$1



No. 2 1/2 Can 79¢
 2 for 79¢

PINEAPPLE, White Swan, Sliced, Flat Can	6 for \$1
PINEAPPLE, White Swan, Crushed, Flat Can	6 for \$1
PINEAPPLE, White Swan, Crushed, No. 2 Can	4 for \$1
CATSUP, White Swan, 14-Oz. Bottle	5 for \$1
LUNCHEON CORN, White Swan, 303 Can	5 for \$1
CORN, Golden Cream Style, W. Swan, 303 Can	5 for \$1
CORN, Whole Kernel, White Swan, 12-Oz. Can	6 for \$1
SWEET POTATOES, White Swan, No. 2 Can	3 for 79¢



No. 303 Can \$1
 9 Cans for \$1

PEAS, White Swan, Tiny Tot, No. 303 Can	3 for 89¢
PEAS, White Swan, Luncheon, 8-Oz. Can	9 for \$1
PEAS, White Swan, Tiny Tot, 8-Oz. Can	6 for \$1
PEAS, White Swan, Luncheon, 300 Can	5 for \$1
GREEN BEANS, White Swan, Whole, 303 Can	4 for \$1
PORK & BEANS, White Swan, 24-Oz. Can	6 for \$1
PINTO BEANS, White Swan, 300 Can	10 for \$1
BLACKEYED PEAS & BACON, W. S., 300	10 for \$1
RANCH STYLE BEANS, W. S., 300 Can	9 for \$1
SPAGHETTI, Ranch Style, White Swan, 300	8 for \$1
HOMINY, White Swan, White, 300 Can	10 for \$1
HOMINY, White Swan, Golden, 300 Can	10 for \$1
HOMINY, White Swan, Pimpep, 300 Can	10 for \$1
MILK, White Swan, Tall Can	11 for \$1
VANILLA EXTRACT, White Swan 1/2 Oz. Bot.	6 for \$1
BLACK PEPPER, White Swan, 1 1/2 Oz.	9 for \$1
BLACK PEPPER, White Swan, 4-Oz.	4 for \$1
MUSTARD, White Swan, 9 Oz.	9 for \$1
MUSTARD, White Swan, 16 Oz.	6 for \$1

White Swan Pickles

SWEET DILL	16. Oz. 2 for 79¢
HOT GARLIC, 16-Oz.	4 for \$1
WHOLE DILL, 16-Oz.	4 for \$1
WHOLE SOUR, 16 Oz.	4 for \$1
WHOLE SWEET, 16 Oz.	3 for \$1

Whipped Cream Pt. Ctn. 29c

GLADIOLA FLOUR	10-Lb. Bag	79¢
SHORTENING, Swift's Jewel	3-Lb. Ctn.	69¢
CAKE MIX, Betty Crocker, All Flavors	3 for \$1	
ANGEL FOOD CAKE MIX, Dromedary	Box	39¢
COFFEE, White Swan	1-Lb. Can	89¢
COFFEE, White Swan	2-Lb. Can	\$1.69
COFFEE, Ranch Style	Lb.	77¢

White Swan Preserves

APRICOT, Decorated 12-Oz. Glass	4 for \$1
BLACKBERRY, Seedless, Dec. 12-Oz. Glass	4 for \$1
PEACH Decorated 12-Oz. Glass	4 for \$1
PEACH Decorated 20-Oz. Glass	3 for \$1
PLUM, Decorated 12-Oz. Glass	5 for \$1
PLUM, Decorated 20-Oz. Glass	3 for \$1
TOMATO, Decorated 12-Oz. Glass	3 for \$1
PINEAPPLE, Decorated 12 Oz. Glass	4 for \$1
PINEAPPLE, Decorated 20-Oz. Glass	3 for \$1
BOYSENBERRY, Decorated 20 Oz. Glass	3 for \$1

TEA, White Swan	1/2-Lb.	69¢
TEA, White Swan	1/4-Lb.	3 for \$1
MARC. CHERRIES, White Swan	8-Oz.	4 for \$1
MARC. CHERRIES, White Swan	4-Oz.	6 for \$1
OLIVES, White Swan, Stuffed, No. 1 1/2	10 for \$1	
OLIVES, White Swan, Stuffed, No. 12	3 for \$1	
OLIVES, White Swan, Stuffed, No. 16	2 for \$1	

Frozen Foods

Strawberries	10-Oz. Box	19¢
Cream Cheese	KRAFT'S-Philadelphia	2 for 25¢
Big Dip	FOREMOST 1/2-Gal. Ctn.	49¢
Melon Balls	FROZEN 1-Lb. Box	2 for 25¢

PRODUCE Big Selection

BANANAS, C. A.	Lb.	10¢
FRESH GREEN BEANS	Lb.	19¢
FRESH GREEN ONIONS	Bunch	5¢
SQUASH, Yellow, Good Tender	Lb.	18¢
CELERY, Large Crisp Stalks	Lb.	15¢
CABBAGE, Real Good for Salad	Lb.	9¢
FRESH TOMATOES	1-Lb. Ctn.	29¢
FRESH STRAWBERRIES	Pint Box	39¢
CANTALOUPE, Size 45	Lb.	18¢
SPUDS	10-Lb. Mesh Bag	49¢
ORANGES, Florida, Good Juicy	Lb.	9¢

Bell's Market--Choice Meats--Lowest Prices

Fryers	FRESH DRESSED	Lb.	39¢
Leg of Lamb	ARMOUR'S STAR 4- to 6- Lb. Avg.	Lb.	69¢

Hens	FRESH DRESSED	Lb.	43¢
Hot Barbecue	GOOD LEAN BONELESS	Lb.	49¢

Roasts

CHUCK, Choice Beef	Lb.	37¢
SHOULDER ROUND	Lb.	45¢
RUMP ROAST, Well Trimmed	Lb.	45¢

Steaks

ROUND, Choice Cuts	Lb.	59¢
CLUB, Center Cuts	Lb.	45¢
VEAL CUTLETS, Good Tender	Lb.	69¢
SEVEN, Good Tender	Lb.	35¢

Hams

SHANK CUTS	Lb.	39¢	BUTT CUTS	Lb.	43¢
SWIFT'S FULLY COOKED	Half or Whole	Lb.	69¢		
PICNIC, Gooch's or Swift's, Cooked	Lb.	39¢			
Boneless Stew Meat	GOOD LEAN	Lb.	29¢		

Bacon

Worthmore or Korn Kist	1-Lb. Pkg.	3 Lbs.	\$1
ECONOMY PACK	2-Lb. Pkg.		79¢
Ground Meat	GOOD QUALITY	5 Lbs.	\$1

Hamburger Steak Extra Lean Lb. 39c

BELL'S Grocery & Market