

The Carbon Messenger

Volume 47

Carbon, Eastland County, Texas, Thursday, February 5, 1959

Number 46

Personals

Mickey Rogers, son of Mr. and Mrs. Cullen Rogers, suffered a heart attack while visiting in Rising Star Tuesday night. He is resting well in the Gorman Hospital at this time.

The following FFA boys, accompanied by their teacher, G. W. Moser, attended the Fat Stock Show in Fort Worth Saturday: Larry Morrow, Jerry Laster, Don Guy, Weldon Cook, Charlie Stephenson, Charles Carraway, Eldon Maynard and Delvin Caudle. They also attended the Junior Hog judging.

Mrs. Iva Burnett, who had been confined to the Eastland Hospital for about two weeks after suffering a heart attack, was able to be moved to the home of her son-in-law and daughter, Mr. and Mrs. Mack Stubblefield, Saturday.

Charles Petree of Breckenridge visited his parents Oscar Petree and wife, Tuesday.

Bill Wyatt and family visited relatives in Fort Worth last weekend.

Elmer Bethany and family of Moran visited relatives here last end.

and wife of Frederick's parents, Mr. and Mrs. D. H. this week.

Reese and wife and her and wife of Dublin and their sister, Mrs. Laura Foley, Sunday.

Kenneth Rogers and family of Wichita Falls spent the week end with his parents, Cullen Rogers and wife.

School Election

Trustees of Carbon Independent School District declared an election to fill two places on the school board. This election will be held the first Saturday in April.

Candidates filing for these places must do so at least thirty days prior to election.

Crawford Knox Stationed In R. I.

Quonset Point, R. I. (FETNG) Crawford W. Knox, chief aviation structural mechanic, USN, son of Mrs. Austin M. Knox formerly of Carbon, and husband of the former Miss Claire North of Island Park, N. Y., returned to the Naval Air Station, Quonset Point, R. I. Jan. 24, with Air Anti-Submarine Squadron 52 after spending two weeks at the Naval Air Station, Key West Fla., undergoing anti-submarine warfare training.

Instead of enduring the normally frigid weather of Rhode Island, the Squadron's personnel had the opportunity to go deep sea fishing, sight seeing in Key West and sun-bathing, tropical style in the middle of January.

License Plates Went On Sale In Eastland Monday

New license plates for 1959 went on sale Monday at the County Tax Assessor-Collector's office in Eastland.

The new license plates are the reverse of 1958 plates, having black letters and numerals on a white background.

Registration deadline is April 1, and vehicle owners were urged by Collector J. C. Allison not to put off buying the plates until the last minute.

To register a vehicle the law requires that a certificate of title and last year's registration receipt be shown. No plates will be issued unless these two requirements are met, Allison said.

Issue Dates For Surplus Food Given

The next issue date for the surplus foods for Rising Star, Okra, Carbon, Gorman and Deddemon is Tuesday, Feb. 10, according to an announcement by J. J. Porter, administrator.

M. L. Gilbert and wife visited relatives in Abilene Saturday.

Religious Census To Be Taken

The Baptist Church of Carbon is cooperating with the Baptist Churches of the association in taking religious census. For the next two Sundays visitors will call at the homes for the information. When all the information is gathered, it will be shared with all the churches of the area. Those of other denominations will be given to the church of their choice.

Basketball News

The high school basketball boys and girls played in Gorman Friday night. The Carbon boys won an easy victory by the score of 80 to 25. Don Underwood was high pointer with 27. This is the 4th conference game our boys have won without a defeat and are now in first place in the district.

The girls lost to Gorman by the score of 57 to 17. Several of our girls were handicapped by minor injuries sustained in previous games. Gorman has a real good team and is expected to win the district. Our girls are now in second place in the district.

Both teams play Olden there Friday night.

March Of Dimes Is Continued

Mrs. C. G. Stubblefield, local chairman of the March of Dimes, has announced that the Mothers March on Polio would be continued through this week or until the March was completed. This drive was to have ended January 31, but due to bad weather and illness of some of the workers of their families, it was necessary to continue longer. She also stated that you will be given a chance to donate to this important drive at all the churches Sunday.

Farm Program Is Given Approval By Commissioners

County Agent J. M. Cooper presented his department's 1959 farm program at the regularly scheduled meeting of the Commissioners Court Monday morning.

Mr. Cooper outlined the agricultural agency's schedule of demonstrations and meetings which will benefit Eastland County farmers and ranchers. Each month will feature a meeting of the Veterans Land Board and various pest control or farming demonstrations.

The Court approved a recommendation of Mr. Cooper to pay the expenses of each member driving to Eastland for the monthly meeting of the Veterans Land Board.

Other action of the Court was to accept the resignation of the Gorman Justice of the Peace who retired because of ill health. On a recommendation from the Cisco commissioner, Carl Lamb, the Court elected to refinance \$9,000 worth of road equipment with the First National Bank in Cisco, saving the county a considerable amount of interest.

Others who appeared before the Court were County Clerk Johnson Smith, County Auditor Earl O'Brien, Sheriff J. B. Williams and the new assistant to the county Home Demonstration Agent.

The Commissioners Court will meet again on Monday morning, February 9, at 9 a. m. in the county courthouse.

Satisfactory Year Is Reported In Soil Conservation Program

The supervisors of the Upper Leon and Palo Pinto Soil conservation districts regard the application of conservation practices in the Eastland Work Unit area as satisfactory for 1958, according to reports here. The local work unit area includes approximately two-thirds of Eastland County with the Rising Star Work Unit serving the southwest portion of the county.

Generally speaking the application of conservation practices such as cover cropping, rotation hay and pasture, strip cropping, crop residue utilization, deferred grazing and proper use, show a favorable increase over prior years, while permanent type practices such as field terraces, diversion terraces, waterways and farm ponds show about normal or less than normal rates of application. It is felt that this condition is the result of the extended drought which greatly lowered the farm and ranch incomes of land owners for the past several years.

Permanent type practices normally require a cash expenditure, such as contractor services, whereby many of the vegetative and management practices can be applied by the land owner with his facilities involving limited or no cash expenditures.

Interest in conservation by the land owners of this area is very good and with a favorable farm income last year, the new year, 1959, promises to be one of maximum application, the report said. For example, since Jan. 1, 1959, nine land owners are in process of constructing farm ponds, five men are now having over ten miles of terraces constructed and one man has recently established a farm waterway.

Soil conservation practices applied in 1958 on the land in Eastland Work Unit area of the Upper Leon and Palo Pinto Soil Conservation Districts showed a substantial increase in vegetative conservation work over 1957. During this period 6,983 acres of rangeland were deferred from grazing during the growing period of better grasses, another 18,372 acres of rangeland was properly grazed.

There is approximately 375,000 acres of rangeland in the work unit area, all of which needs a range management program in order to maintain a cover of better grasses to insure soil, water and plant conservation and maximum safe returns. Sixty-two land owners constructed farm ponds for livestock water and better distribution of grazing.

Crop residues were left on or near the top of the soil on an estimated 6,356 acres of cropland for soil protection and improvement.

District cooperators planted 2,524 acres of strip crops to protect their peanut fields from wind erosions. Cover crops were planted on 3,308 acres of cropland on

district cooperators farms. Cover crops help hold soil and water in place and serve as an excellent soil improvement crop. These acreages do not include land on which practices were applied in prior years.

Many conservation practices such as terraces, diversion terraces, farm ponds, waterways, range seeding, cover cropping, brush control, and deferred grazing are County Agricultural Program Practices as selected by the County ASC committee, Soil Conservation District, County agricultural agencies and others. Necessary site selection, layout, supervision of construction and final checks and certification of practices are made by Soil Conservation Service technicians. These practices are certified to the County ASC Committee for cost share payments as set forth in the Eastland County A.C.P. handbook for 1959.

Dirt moving contractors have constructed a high percent of all mechanical practices for land owners. These men have made a fine contribution and in a true sense of the word are conservationist, anxious to help apply conservation practices in keeping with the needs of the land.

The County has a good ACP program for 1959, such practices as deferred grazing, terrace and diversion terrace construction and waterway development are timely practices. Local landowners are encouraged to apply needed conservation practices and receive the benefits and satisfaction of doing an important job. Productive soil cannot exist for long without conservation protection.

Federal Income Tax Requirement Given For Farmer

Federal income tax return filing requirements for farmers and ranchers were outlined here today by A. E. Fogle, Administrative Officer of Internal Revenue Service, Abilene.

If you had gross income of \$800 or more during your taxable year and you are a citizen or resident of the United States, you must file a Federal income tax return, even though no tax is due. This also applies to minor children.

"There's one exception to this rule," Mr. Fogle says, "If you're 65 years of age or over at the end of your taxable year, you needn't file a return unless your gross income is \$1,200 or more."

For decades, newspaper circulation has kept pace with the increasing number of U.S. households. Since 1920, the number of U.S. households has more than doubled; newspaper circulation also has more than doubled.

A General Store

Make Our Store Your Shopping Center

Our efforts are to have what you want when you want it, At competitive prices, in each department;
Groceries, Market, Feed, Drygoods,
Notions, Hardware, Electrical,
Paints, Glass, Etc.

Carbon Trading Company

Specials

Friday and Saturday

Crisco 3 lb	79c
Folgers 1b	75c
Tide, Giant	69c
Kimbell Olee 1b	19c
Kim Dog Feed 3 for	19c

Carbon Trading Company

FHA Ups Interest Rate To Lenders In Farm Program

Farmers Home Administration has increased its interest rate to private lenders under the insured farm loan program from 3 1/2 to 4 percent. Walter T. McKay, the Agency's State Director, advised that this change was made to encourage more lenders to advance funds for insured loans in order to meet the needs of qualified applicants throughout the nation. The insured farm loan program encourages the use of private capital in place of direct government loans. Through this program private lenders can advance funds to eligible farmers for the purchase of land, for building and land improvement, and for domestic and irrigation water systems. In addition to the 4 percent paid the lender, the borrower pays the government 1 percent for insuring and servicing the

loan. Although the mortization period of the loan may be up to 40 years depending on the purpose for which the loan was advanced, the lender, at his option, may have the note redeemed by the government at any time after five years. The note, held by the lender, is negotiable and may be assigned to another investor at any time.

"The insured farm loan is an attractive investment for private lending institutions and individuals and has been well received here in Texas," McKay stated. "In fact, 928 of our more recent real estate loans totalling \$3,926,000 were made from funds provided by private credit sources. We anticipate that raising the rate of interest to lenders to 4 percent will result in a substantial increase in lender participation and thereby enable Farmers Home Administration to meet the credit need of more farm families."

St. George is the patron saint of England.

For Sale

Duroc Jersey Gilts. Pairs with papers. Also steel tanks and water pumps for sale — Waverly Massengale, ph. 755w, Eastland.

The Hall of Fame for Great Americans was established in 1900

Connecticut was the first state to have a written constitution.

Ships sailing from the Atlantic to the Pacific Oceans via the Panama Canal travel from north to south.

Notice

Our Mobile Feed Mill is in the Carbon community every Tuesday. We grind all kinds of feed. Kincaid Feed Store Eastland Phone 73

Basketball Schedule

Conference Games
Jan 8, 9, 10, Early tournament
Jan 13, open
Jan 16, Priddy here
Jan 20, Olden here
Jan 23, Desdemona here
Jan 27, Rising Star here
Jan 30, Gorman here
Feb 3, Gustine here
Feb 6, Olden there
Feb 10, Desdemona there
Feb 13, Rising Star here
Feb 17, Gorman here

See Us

For Your

Cleaning & Pressing Needs

Expert and Courteous Service At All Times

Pool's

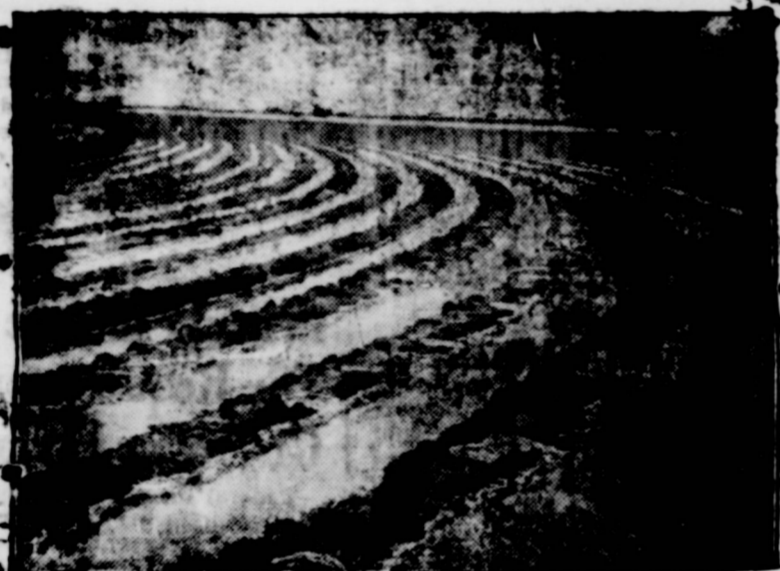
Dry Cleaners

Eastland, Texas

When You Jine Out

Think of the Connelles Coffee Shop in Eastland. special Sunday dinners.

Contour Farming



Contour farming on terraced lands holds the maximum rainfall in place for crop production and reduces soil loss resulting from run-off. A good vegetation program makes the above practices more effective.

First National Bank
Member F. D. I. C. Gorman

Just Arrived

Carload of Armstrong Tires
All sizes of Farm Tractor Tires
Also new unconditionally
Guaranteed Passenger Tires
Your New Direct Factory
Armstrong Tire Distributor

W. V. Gardenhire Oil Co.

Phone HI-2-1125 Box 126 Cisco Texas



Never again!

No more carrying heavy baskets of wash when you have an Electric Clothes Dryer



LIVE BETTER ELECTRICALLY — Dry clothes for an average of 1 hour in an Electric Clothes Dryer.

Eliminate washing's hardest job . . . carrying clothes to and from the clothesline. Switch to an Electric Clothes Dryer and let electricity do the job . . . automatically! All you do is put in freshly-washed clothes, set the controls and your Electric Dryer does the rest. You can relax or busy yourself with other things while your clothes dry sunshine-fresh in clean, gentle, electric heat. You save hours of ironing time, too, because electrically-dried clothes have fewer wrinkles and no "boosaph" cars" to iron out.

See Your Electric Appliance Dealer

TEXAS ELECTRIC SERVICE COMPANY
R. J. HALLMARK, Manager

Be Sure To Get Our Prices On Admiral Freezers

Serviceable And Dependable

Several sizes to choose from
Come in and see these new
Freezers and Refrigerators
And Get Our Low Prices

Cisco Locker Plant
Locker Rental & Meat Processing
Cisco, Texas

Spring Millinery
Sensibly Priced
AT FARIGS
Mrs. W. A. Cox
904 West 6th St
Cisco, Texas

Notice Of Selection of Depository

Notice is hereby given that the Commissioners' Court of Eastland County, Texas will receive applications to be made in accordance with law, by any interested banks in Eastland County for designation as the county depository for county and school funds for the ensuing two years.

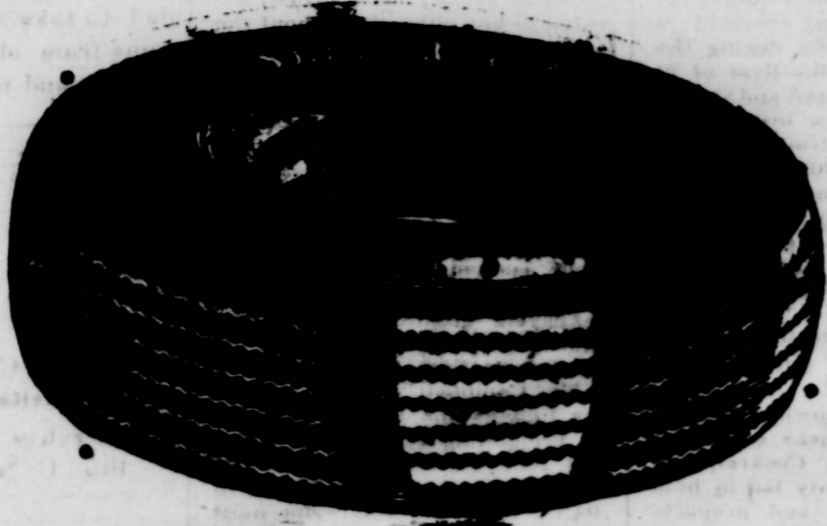
Said applications will be considered by the court at its regular place of meeting in the Court House at Eastland, Texas on February 9, 1959 at 10:00 a. m., and will at such time let a contract therefor; all such applicants to be made as required by law.

John S. Hart, County Judge of Eastland County, Texas

Your Old Tires

Will Make The Down Payment On A Set of First
Line Seiberling Super Service Tires

670-15 Rayon 15.58 670-15 Nylon 17.08



(Black Tube Type -- plus tax and exchange)

All other sizes and types at equally low prices. Road hazard guarantee. All tires you buy from us are mounted and balanced at no extra cost to you.

A short drive to Eastland will save you money when you trade tires.

24 hour or less service on tire vulcanizing. Prices Reasonable. Guaranteed work. Bring your flats to us. Fast service.

Jim Horton Tire Service

Your Seiberling Dealer

East Main St.

Eastland Texas

Piece Goods

Just arrived a new selection of Spring Piece Goods
Beautiful Patterns in Pampered Cotton Drip Dry
New Spring Blouses just arrived 2.95 & 3.95

See our Bargain Counter of Odds and Ends

Men's Slacks 2.55 up Men's Work Shoes 5.95
Men's Sport Sox 4 pr 1.00 Boys Caps 49c
Men's Belts 1.50 value 50c Boys Khaki Shirts 49c

See our new Mens Fall Felt Hats from 3.95 up
Carpeting installed ever 40 ounce Rad 4.95 up per
sq. yd. Laid by experienced workmen
Sun-Ran Floor Covering 6-9-12 ft widths

You will find outstanding Specials
Throughout Our Store

Higginbotham

Gorman, Texas

If you find life is empty, try putting something in it.

The English Channel lies between Great Britain and France.

B & G Butane Co

Wants to service and install your Butane System in your home, on your tractor or pickup. Thomas Butane Co in DeLeon now owns interest in Butane Co in Gorman and invites their old customers to call 91 in Gorman.

Laundry Service

Automatic coin operated washers and dryers open 24 hours every day

WASHERS 20c per load
DRYERS 25c for 2 washer loads

LAUNDROMAT

In Old Tip Top Cafe Bldg.
Eastland, Texas

For Your Furniture Needs

Fine furniture, Floor coverings, G. E. appliances. Free delivery and convenient terms. Good Trade-ins, too!

Coats Furniture and Carpet Ltd.

- Eastland -

Used Cars

See us for the best Used Car

Buy In Town

Also expert mechanics in our Shop

King Motor Company

Eastland, Texas

EASTLAND NATIONAL BANK

"On The Square"

Member F. D. I. C.

Eastland, Texas

For Your Tractor

A complete stock of front and rear tires at lowest prices plus over 100 used tires
Jim Horton Tire Service

The Carbon Messenger
Dated Thursday At Carbon
Eastland County, Texas

Entered as second class matter at the Post Office at Carbon, Texas as under the act of Congress March 3rd 1879
W. M. Dunn, publisher

Butane Service

Red Nelson is now employed by Graves Butane Co. and will deliver your Butane or Propane any time. They now have two-way Radio Contact System. Phone 2371, Carbon or HI 2-1010, Cisco.

A ship weighs the same, or less than the water it displaces.

The average weight of the human brain is 48 ounces.

Three hundred constitutes a perfect score in bowling.

Ambulance Service

Air Conditioned by Refrigeration

Wylie Funeral Home

Dial HI 2-2333

Cisco

Complete Modern Funeral Home

Including New Chapel

Available Day or Night

Higginbotham Funeral Home

Day Phone 21 Night Phone 263

Gorman, Texas

Did You Know

You Could Get Your Home
Or Barn Remodeled
No Down Payment 5 years to Pay
Paints, Wallpaper, Lumber
All Building Material

Higginbotham Bartlett Co.
Eastland, Texas

A Good Resolution For You

Why take chances? See us for all your home needs. You will find what you need here.

Cisco Lumber And Supply
Cisco, Texas

Daffin Feedmobile

Fresher Feed

Made right at the bin-door - but just where you want it without fuss or muss.

No Hauling

We bring the concentrate - or you furnish your own grain and roughages go into the mill from bin or mow.

No Wasted Time

You don't have to load up and haul the grain - wait for it to be ground and mixed - then haul the feed home and unload it.

Molasses Blended

We blend any amount of fresh molasses into your feed without lumps.

Dependable Service

We're now establishing routes so our new Daffin can call at your farm regularly for prompt, sure service.

See our New Daffin in Operation
On YOUR Farm - - - Call us today!

Kincaid Feed Store

Eastland, Texas

303 North Seaman - Phone 78
Phone Cisco HI 2 1200 Phone Ranger No. 1

Builders Supplies

We have everything for your building needs. Get our prices before you buy. Folks, Cisco in just 15 minutes drive!

Rockwell Bros & Company
Cisco Texas

Eastland County Leads District In Highway Mishaps

A total of \$107,189 in property damage occurred in Eastland County in 1958 as a result of highway accidents, according to the final report issued by Highway Patrol Sgt. C. A. Cockrell Jr., head of the Eastland sub-station.

The report reveals that the seven accidents that resulted in deaths in the county during the past year claimed the lives of 14 persons. One hundred and thirty-five accidents were investigated by Highway Patrolmen Les Strawn and Al White. In 40 of the accidents, 67 persons were injured and property damage resulted in 88 of the wrecks.

In Texas in 1958, 2,329 persons died in traffic accidents, a decrease in deaths over 1957, but in Eastland County deaths were at an all-time high, Sgt. Cockrell stated.

In charge of Brown, Coleman, Shackelford, Stephens and Eastland Counties, Sgt. Cockrell said that Eastland County led in both number of deaths and property damage losses for 1958.

Watch Repair

Let me repair your watch or jewelry. Parts for most any make of watch, also a large selection of jewelry.

The Time Shop
Oran Justice, Owner Gorman

Notice

Good, clean used Tires with high tread from \$3 to \$6 each. Plenty of miles left in these tires. See us for new and used tractor tires, all sizes. We can put a stem in your tractor tube while you wait.

Jim Horton Tire Service
East Main St Eastland

CHAIR-CHAIRS - Over 500 various types of straight chairs, with and without arms. Mattresses, tarpaulins, Field jackets, Overcoats, work pants, Gadgets Gizmos, all at low prices while they last. Army Surplus Store, Northeast corner of square Eastland, Texas

CITATION by PUBLICATION THE STATE OF TEXAS

County Sheriff or Coroner within the State of Texas, certifying: Ethel E. Taylor, Administratrix of the estate of John R. Taylor,

deceased, having filed in our County Court his final account of the condition of the estate of said John R. Taylor, deceased

numbered 5923 on the probate docket of Eastland County, together with an application to be discharged from said trust.

You are hereby commanded, that by publication of this writ one time and said publication shall be not less than ten days before the return day hereof, same being February 9, 1959 in a newspaper printed in the County of Eastland you give due notice to all persons interested in the account for final settlement of said estate, to appear and contest the same if they see proper so to do, on Monday the 9th day of February A. D. 1959 at the court house of said county, in Eastland Texas, when said account and application will be acted upon by said court.

Given under my hand and seal of said court at my office in the city of Eastland, this 26th day of January A. D. 1959
(Seal) Johnson Smith
Clerk County Court Eastland County
By Gail Parsons Deputy

I hereby certify that the above and foregoing is a true and correct copy of the original writ now in my hands.
J. B. Williams
Sheriff Eastland County.
By Guy Bredgen Deputy

Assistance Day For Taxpayers Is Being Continued

The Internal Revenue Service is continuing its program of setting aside every Monday morning as Taxpayer Assistance Day throughout the Dallas District covering the Northern half of Texas.

There are 20 local offices located in key cities throughout the northern half of Texas. District Director Ellis Campbell, Jr., explained that the Internal Revenue employees must spend a large part of their time out of the office working with taxpayers at their homes or businesses. By having a special day (Monday morning) Internal Revenue Service can keep competent technical personnel in the office to answer taxpayers' questions and to show the taxpayer where to put the tax information on the tax forms.

Mr. Campbell advised taxpayers to take the following action in completing their tax returns: (1) read the instruction booklet received in the mail. This will be all that is necessary for most taxpayers; (2) if the taxpayer has questions after reading the simple instructions received in the mail he may want to send \$5 for a 118-page book called "Your Federal Income Tax", which discusses all of the common tax questions. This book may be obtained by mail from Internal Revenue Service, 2101 Pacific Avenue, Dallas, Texas; (3) call the local office of Internal Revenue Service by telephone on Monday morning to receive the answer to your tax question; and (4) visit the Internal Revenue Service office on Monday morning for the answer to your question or for other help.

The Internal Revenue Service does not ordinarily complete the tax return for a taxpayer, however, they do show the taxpayers where to put the information on the return and make every attempt to render all assistance that each taxpayer visiting the office actually needs.

Mr. Campbell pointed out that many parents will be able to get help on preparing their tax returns from the 75,000 high school and college students who are en-

First Baptist Church

Rev. Robert Butler Pastor
Sunday School 10:00 a.m.
J. L. Jackson, Superintendent
Morning worship 11:00 a.m.
Training Union 7:30 p.m.
Evening worship 8:30 p.m.
W. M. U. Monday 2:00 p.m.
Prayer meeting Wed. 7:30 p.m.

Note: The Brotherhood will be glad to take the elderly people home from church morning and night.

Church of Christ

Bible Study 1:00 a.m.
Prayering 11:00 a.m.
Lord's Supper 11:00 a.m.
Prayering 7:30 p.m.
Wed. Bible Class 7:30 p.m.
You are invited to be with us at these services.
Wilton Underwood, Minister

Meth dist Church

Rev. John Wylie, pastor
Services each 2nd and 4th Sunday
Sunday School 10:00 a.m.
Morning Worship 11:00 a.m.
Youth meeting 6:30
Evening Services 7:30 p.m.
W.S.C.F. 2:30 p.m. Men

Notice

See me for satisfactory barber work, Your business is appreciated.

Floyd Jay, Gorman, Texas

rolled in the Internal Revenue Service Teaching Taxes income tax course at 771 schools in the northern half of Texas. The boys and girls who have completed this course during the past year have made only one as many errors as their parents and fathers.

Safe at 403 Miles
PER HOUR



DUNLOP TIRES

Indep. Auto Club testing
world's highest speed record

Lowest tread-including the world's
lowest tread for the world's longest
trip Dunlop built passenger car-tires
that outlast

• SAFER
• SILENT
• SMOOTH

Use your Credit to 5 months
to Pay for Tires
O. K.
Rubber Welders

Your Dunlop Dealer

R. A. Burns - Owners - Dawson
Corner 8th & Ave. D Cisco Phone HI 2-2277