

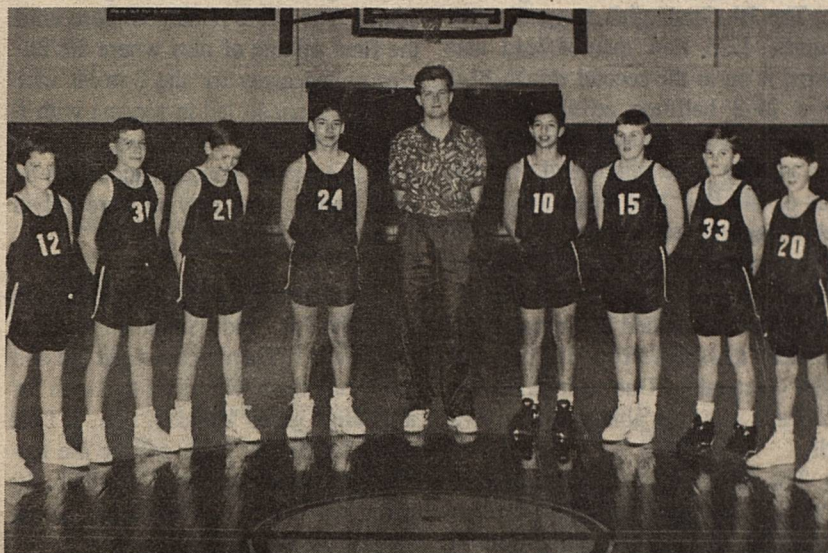
# THE PLAINS PRIDE

PLAINS, YOAKUM COUNTY, TEXAS

VOLUME 7, NUMBER 44

SUNDAY, FEBRUARY 2, 1992

30¢



7TH GRADE BASKETBALL BOYS - left to right, Casey Forbus, Marte Pierce, Jacob Lester, Adrian Garcia, Coach Michael Davis, Stephen Bitolas, Wayne Willett, Yancey House and Allen Ward.



7TH & 8TH GRADE BASKETBALL GIRLS - left to right, are Joyce Pierce, Kristi Guetersloh, Kristy McClure, Bridget Bernal, Mary Morales, Robin Squyres, Tessa St. Romain, Shawn Massey, Becky Coronado, Sylvia Tarango, Kyley Bearden, Amanda Koncaba and Samantha Blake.



8TH GRADE BOYS BASKETBALL BOYS - standing, Jeremy Dearing, Steve Vasquez, Kirk Parrish, Coach Evertt McAdams, Jamey Garland, Johnny Davis and Chase Clanahan; kneeling, Brad Seaton, Jason Robertson, Edward Escobar, Chris Payne and Ralph Ramirez.

## Plains Seventh Grade Girls Win First In Tournament

Plains hosted its annual Jr. High Wrangler Tournament this past weekend and had an impressive showing. The 7th Grade girls won the 7th Grade division and the 8th grade won the third place trophy.

The 7th grade dominated the tournament with their closest game being a 21 point victory in their final game. In the opening game, they defeated Sundown by a 25 point margin, 36-11. The first half was no indication of how the game would finish as the Wranglers struggled in the early part. A slim 6-3 lead the first quarter was pushed to just a 15-9 halftime lead. The second half was all Wrangler ball as the Plains team outscored Sundown 21-2 the last two quarters for the win. Kyley Bearden led in scoring with 12 points followed by Robin Squyres with 10 and Bridget Bernal with 9. Tessa St. Romain hit 3 points and Kristy McClure added 2 to the total. Plains met Tatum next and again a slow start saw just a 10-6 first quarter lead. Holding the Coyotes scoreless the second quarter, Plains hit 8 for an 18-6 lead. Once again, a big second half was the difference as the Wranglers racked up 36 points in the last two stanzas and held Tatum to 15 for the 54-21 win. Robin led in scoring with 16 points followed by Kyley with 13. Bridget had 10, Tessa hit 8, and Kristy made 7 for the total. The final game saw the Wranglers go up against the Eagles of Seagraves. Plains wasted no time asserting themselves in this game as they jumped out to a 12-3 first quarter lead. Pushing to a 19-6 lead by half, they increased their lead in each quarter thereafter for the 37-16 win. Robin led in scoring with 18 points followed by Kyley and Bridget with 8 each. Kristy made 3 to round out the scoring.

The 8th Grade girls also played well in the tournament as they took home the third place trophy. In the first game, they played one of two teams from Seagraves. Holding a slim 4-2 lead at the end of the first quarter, the Wranglers held the Eagles scoreless in the second stanza for a 10-2 lead at

halftime. A big third quarter for Plains saw them hit 13 points to Seagraves' 4 for a 23-6 lead entering the last quarter. In the 25-11 win, Becky Coronado led in scoring with 10 points followed

by Amanda Koncaba with 5. Sylvia Tarango and Shawn Massey each hit 4 points followed by Mary Morales with 2. In their second game, Plains met Tatum, but were defeated 41-23. The Wranglers were unable to keep up with the fast breaking Coyote squad as Tatum jumped out to a 16-7 first quarter lead. A 26-11 halftime score was cut slightly in the third stanza as Plains outscored their opponents 8-7. Plains played part of the last quarter with just four players as Becky fouled out and Plains had just five players to begin with. Amanda led in scoring with 11 points followed by Becky with 10. Sylvia added the final 2 points for the total. The final game for Plains saw them go against the eventual tournament winner, Seagraves. The extremely tall and talented Eagles were too much for the Wranglers in the 48-13 loss. Amanda led in scoring with 5 points followed by Becky with 4. Sylvia and Shawn each added 2 points to the total. In the round robin format, Plains finished in third place, behind Seagraves and Tatum.

## Early Voting Begins Feb. 19

Early voting by personal appearance for the March 10, 1992 General Primary Election begins Feb. 19, 1992 and ends March 6, 1992, Monday through Friday. Hours are from 8:00 a.m. to 5:00 p.m. Any qualified voter is eligible to vote early by personal appearance.

Under certain conditions a qualified voter is eligible to vote early by mail if: (1) the voter is or expects to be absent from the county of the voter's residence on election day, (2) the voter has a sickness or physical disability that prevents him/her from appearing at the polling place on election day, (3) the voter is 65 years of age or older on election day, or (4) the voter is confined in jail.

For more information on requirements for voting by mail or application for ballot by mail call the County Clerk's office \*06-456-2721. The application for ballot by mail must be received in the County Clerk's Office on or before March 3, 1992 to be eligible to vote in the General Primary Election on March 10, 1992.





## Plains Independent School District

'Home of the Cowboys & Cowgirls'

### Community Education

BY BRENDA CANADA

Community education courses will begin on Monday, January 30, 1992 for adults wanting to take these courses. This spring Plains Independent School District is offering several courses that we hope you will take time to attend. The courses range from one to three hours in length and they are taught by teachers that we feel are experts in their area.

Our woodworking course is taught by Robert Canon. He works with the beginner, intermediate, and advanced woodworker. One of the first things that he does is to teach the safety of each machine in the industrial arts building. Robert is willing to help you with any project you are willing to undertake. This course starts Thursday, January 30, 1992, in the high school industrial arts building from 6 to 9 p.m. and the maximum number of students is 15. The course will last for 10 weeks and the fee is \$30.

Jimmie Bayer is looking forward to teaching beginners, intermediate, and advanced oil painting. She prefers to teach landscapes and can also do flowers. You will need the following items: 1 canvas, any size; 2 or 3 brushes, sizes 2-7; #2 fan brush; liner brush; #2 or 4 flat brush; various oil colors; palette; paper towels; old newspapers; and paper bags. Lessons will begin Tuesday, February 4, 1992, in the high school art room #413 from 6 to 9 p.m. It will last for four weeks and the cost is \$30.

If you would like to learn to use the word processor which is like typing on a typewriter, AppleWorks word processor would be fun to learn. In this course you will learn to insert and delete a word or groups of words, move and copy text, and search and replace text. This course is one that can be useful whether or not you own a computer. Once you learn to use one word processor, most of the commands are the same for all word processor programs. It is offered on Mondays beginning February 3, 1992, from 6 to 8 p.m. in the Junior High Apple Lab. It will be taught by Tricia Allman for a fee of \$15 and will last for four weeks.

Tricia is also teaching Turbo Tax which is a computerized tax return program. If you are planning to do your own taxes, you might want to checkout Turbo Tax. This program allows you to answer a short series of questions that you enter into the computer and then it will print out your 1040 form, Schedules A-F, and various other forms for you. Please bring all information that you will need to fill out your tax return. This course is offered Thursdays beginning February 6 from 6 to 8 p.m. in the High School IBM Business Department Lab for three weeks and the cost is \$15.

Calligraphy instruction will be given for three weeks under the instruction of our Librarian, Mary Pettigrew. It will begin Monday, February 3, 1992, from 5 to 7 p.m. in the Resource Center. Mary tells me that this beautiful handwriting is easy to do but takes practice. The cost of this course is \$10.

Low impact aerobics is what Teresa Bell will be teaching on Tuesday and Thursday evenings beginning February 4, 1992, for eight weeks from 6 to 7 p.m. in the Junior High Commons area. She also wants to work on hip and thigh exercises. If you have been wanting to exercise but have been putting it off, now is the time to sign up and lose an inch or two while exercising with others. The fee for this course is \$20.

If you have any suggestions of courses you would like to take in the fall, please let me know.

### School Events

MONDAY - Basketball - Anton - There - 7th/8th Girls - 5 p.m.; 7th/8th Boys - 5 p.m.	FRIDAY - School Holiday - Stock Show; Basketball - O'Donnell (District Game) - Here - JV/V Girls & JV/V Boys - 5 p.m.
TUESDAY - Basketball - Loop - Here - V Girls & V Boys - 6:30 p.m.	SATURDAY - Stock Show Buyers' Lunch - Cafeteria; Math/Science Meet - Monterey High School
THURSDAY - Stock Show - Early Release	

## Service Center

Phone 592-9603 or 456-2981

Heating & Air Conditioning

Appliances:

Microwaves; Refrigerators;  
Dishwashers; Ranges; Washers;  
Dryers; Garage Door Openers

### Junior High Girls Play O'Donnell

The O'Donnell Eagles came to town Monday night for games with the Wranglers and left with a loss and a win. Plains 7th Grade girls team defeated the Eagles by a whopping score of 61-9, while the guests left with the 8th Grade win in a close 21-13 game.

The 7th Grade girls jumped out to a quick 12-3 first quarter lead and poured it on in the second stanza 17-0 for a 29-3 halftime advantage. The second half was no better for the Eagles as they were dominated on both ends of the floor and outscored 32-6. Robin Squyres led in scoring with 24 points followed by Kyle Bearden with 18 and Tessa St. Romain with 17. Kristy McClure added the remaining 2 points to the total. Also playing was Kristi Guetersloh. Due to injuries, the 7th Grade was only able to suit up five girls.

The 8th Grade also were able to field only five girls and got down to four before game's end. Still it was a

close battle up until the end. O'Donnell held a slight edge the first quarter 6-4 and stretched their lead to 10-6 by halftime. The third quarter, the Wranglers held O'Donnell to 2 points while hitting 5 of their own to narrow the margin to 12-11 entering the last stanza. The game remained close until the final minute of play where the Eagles pulled away for the 8 point win. Becky Coronado led in scoring with 6 points followed by Shawn Massey with 5. Amanda Koncaba added the final 2 points. Also playing were Sylvia Tarango and Samantha Blake.

Next game for the 7th Grade will be in the 7th Grade Sundown Tournament Feb. 1. Then a combined 7th and 8th Grade team will travel to Anton for a Jr. High game Monday, Feb. 3. Last game for the Jr. High will be the following Monday at home. The Feb. 10 game will have the Wranglers going against the Bobcats of Smyer.

### Congratulations...

to the 7th Grade Girls for their tournament win: Robin Squyres, Kyle Bearden, Kristy McClure, Tessa St. Romain, Bridget Bernal and Kristi Guetersloh...and to the 8th Grade Girls for their third place trophy: Amanda Koncaba, Becky Coronado, Sylvia Tarango, Samantha Blake, Shawn Massey and Mary Morales!

We Are  
**Full Of Ideas**  
For Your  
**Valentine**  
**Stop In Soon**  
and we'll get the ball rolling  
for your  
Greatest Valentine Day Ever!

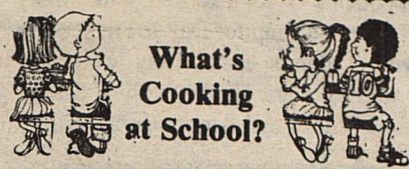
Flowers-Corsages-Plants-Gifts

## Yoakum County Floral & Gifts

Hwy. 214 & Broadway 592-8067

We are now accepting applications for employment





**What's  
Cooking  
at School?**

**BREAKFAST**

**MONDAY** - Toast, oatmeal, raisins, grape juice and milk.

**TUESDAY** - Toast, donuts, apple juice and milk.

**WEDNESDAY** - Toast, apricot preserves, orange juice and milk.

**THURSDAY** - Waffles, syrup, butter, tomato juice and milk.

**FRIDAY** - STOCK SHOW.

**LUNCH**

**MONDAY** - Fish w/tartar sauce, mashed potatoes, hot rolls, green peas, peaches and milk.

**TUESDAY** - Nachos, lettuce/tomatoes/cheese, pinto beans, Kosher spears, combread, peach cobbler and milk.

**WEDNESDAY** - Hamburgers, lettuce, pickles, onion rings, fruit, date cookies and milk.

**THURSDAY** - Frito pie, lettuce, tomatoes, onions, cheese, corn, crackers, strawberry shortcake and milk.

**FRIDAY** - STOCK SHOW.

**Support Group  
To Meet Tuesday**

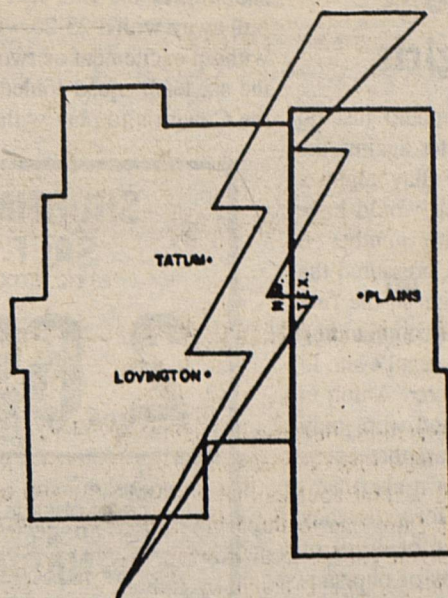
The Clara Williams Support Group will meet Tuesday, Feb. 4 at 7 p.m. in the First Baptist Church parlor.

Everyone is welcome. For more information call 456-2825.

**Chamber Meeting  
Slated Feb. 4**

The Plains Chamber of Commerce will meet Tuesday, Feb. 4 at 7 a.m. at Johnnie's Restaurant.

Interested persons are invited to attend.



**OTHER ENERGY POSSIBILITIES - HYDROGEN FUEL**

Water can be separated into hydrogen and oxygen. The hydrogen can be used as a fuel; to generate heat for electricity. Years of research and testing lie ahead to make this potential alternative commercially attractive.

LEA COUNTY ELECTRIC COOPERATIVE, INC.

Lovington/Tatum, NM

Plains, TX

**MISC. FOR SALE**

Winter Sale: J&L DRAPERIES 25% off Carole drapery fabrics, 35% off vertical blinds, 40-60% off mini blinds and micro blinds. Also now available - custom wood shutters and custom bedspreads. Call for free estimate. 456-6012 or 8902. 42/2tc

Income Tax Preparation  
Electronic Filing  
Refund Anticipation Loans  
You Get Your Money Fast!  
Margaret Novak 592-8368  
Denver City  
Se Habla Espanol

**“Count on  
me to provide  
the best  
Homeowners  
insurance value  
in town.”**



CALL ME.

AGENT  
NAME  
ADDRESS  
PHONE

State Farm  
Fire and Casualty Company  
Home Office: Bloomington, Illinois



Like a good neighbor,  
State Farm is there.

**STOCK SHOW SPECIALS**

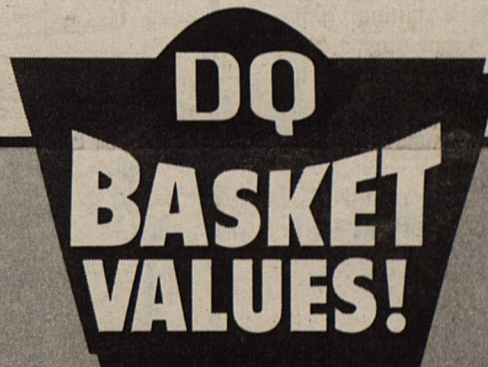
**8" SCRUB BRUSH \$1.75**

**20" SCRUB BRUSH \$2.75**

**3 GALLON GALVANIZED PAIL  
\$4.99**

**16" IRRIGATION BOOTS  
\$10.95 PAIR**

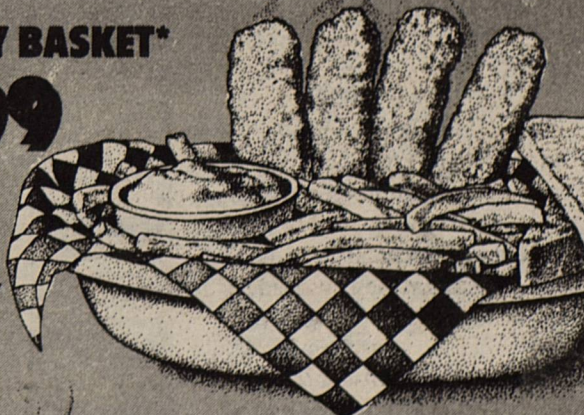
**BAYER LUMBER AND HARDWARE  
PLAINS, TEXAS  
456-4800**



**ON SALE FEBRUARY 3 - 23, 1992**

**COUNTRY BASKET\*  
\$1.99**

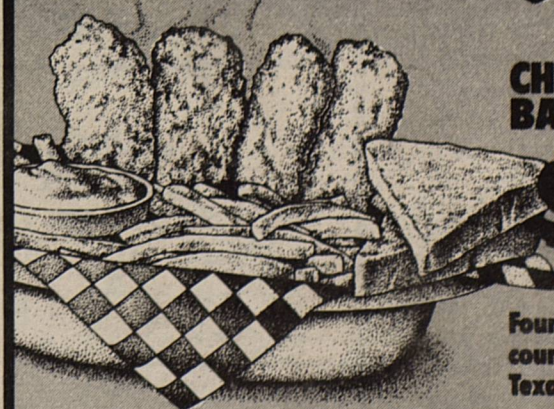
Four beef  
steak fingers,  
country gravy,  
fries,  
Texas toast



**CHICKEN FILLET  
BASKET**

**\$2.99**

Four chicken fillet strips,  
country gravy, fries,  
Texas toast



**DQ IS VALUE COUNTRY**

At participating Dairy Queen stores.  
© Reg. U.S. Pat. & Tm. Off. Am. D.Q. Corp. \*TM Reg. U.S. Pat & Tm. Tx. D.Q. Op. Coun. © Tx. D.Q. Op. Coun.



## Anton Bulldogs Defeat Cowgirls

If Plains Cowgirls could just do away with the first quarter against the Anton Lady Bulldogs Friday night, a very respectable showing would have taken place. Anton, the number 6 ranked team in the State, pressured the Cowgirls into 11 turnovers in the first stanza, jumping out to a commanding 21-5 lead. After that, it was all even. In fact, the Cowgirls outscored Anton in the second half 26-25 and were only outscored 40-37 in the last three periods combined. Free throws also hampered the Cowgirls' efforts as they could only connect on 14 of 30; 9 of them being the front ends of one-and-one situations. Plains forced the Lady Bulldogs into 27 turnovers but it was not enough as Anton's 6'2" Kelly Tyler pounded the Cowgirls inside and all-state guard Jill Williams hurt them outside. Still it was a good effort by the Cowgirls in their first meeting with a top 10 team this year. Rhonda Cowart led in scoring with 9 points, seven coming in the last quarter. Oglia Ramirez hit 8 followed by Ashlee Winn and Amy Crutcher with 7 each. Daphne Lowe and Heather Bowlin each had 4 and Rena McElroy added 3 for the total. The sophomore duo of Rhonda and Amy tied for honors in field goal percentage hitting 100% each, Rhonda 4 of 4 and Amy 3 of 3. Oglia led in free throw percentage with 80%. Rena led in rebounds with 7, followed by Amy with 5. Daphne led in assists with 2 and Amy led in steals with 4. The Cowgirls record now stands as 13-8 on the year and 1-2 in district play.

## Cowgirls Drop District Contest To Smyer Bobcats

Plains traveled to Smyer Tuesday night and came away with one win and a loss. Plains dropped the varsity game 48-38 to the host Lady Bobcats, but won the JV game 23-20.

All four quarters of the varsity game were close but Smyer used a second and third quarter edge to pull out a win. A basket at the first quarter buzzer gave Smyer a 12-10 lead. A 12-8 second stanza edge gave them a 24-18 halftime advantage. Another 12-8 third quarter was too much to overcome by the Cowgirls as they played even in the fourth 12-12. Rena McElroy led in scoring with 14 points followed by Ashlee Winn with 7. Daphne Lowe and Oglia Ramirez each had 6 followed by Amy Crutcher and Heather Bowlin with 3 and 2 respectively. Amy led in field goal percentage, hitting 100% in her only attempt. Rena followed with 50%. Amy and Oglia tied in free throw percentage with 100% each. The team shot a very respectable 80%, but only attempted 5 free throws. Rena led in rebounds with 13 followed by Rhonda Cowart with 5. Rhonda led in assists with 5. Rena led in steals with 3 followed by Ashlee and Rhonda with 2 each.

The JV overcame cold free throw

shooting in the first half to gradually pull away with a 23-20 win. It was not without excitement as two members of the six team squad fouled out, leaving the Cowgirls to play with four players

in the last four minutes. Trailing 5-4 the first quarter, Plains came back to take a 12-9 halftime lead. Trailing by one point entering the last quarter 15-14, the Cowgirls hit 9 points to their

opponents 5 to take the win. Misty Willett and Jennifer Day led in scoring with 7 points each. They were followed by Kara Holder with 4, Stacey Jones with 3, and Amber Bryan with 2.

PRICES EFFECTIVE FEB. 2-8, 1992  
PLAINS, TEXAS  
BROWNFIELD HWY

<p><b>SHURFINE SALT</b> 26 OZ. BOX</p> <p><b>2 69¢</b> FOR</p>	<p><b>SAUSAGE-ON-A-STICK</b> EACH</p> <p><b>99¢</b></p>																																		
<p>TOM'S PUFFED &amp; CRUNCHY CORN CHEESE, CHEESE POPCORN OR</p> <p><b>NACHO RINGS</b> PKG.</p> <p><b>99¢</b></p>	<p>HAM &amp; CHEESE, BAR-B-Q, BEEF &amp; CHEDDAR OR PEPPERONI</p> <p><b>HOT POCKETS</b> EACH</p> <p><b>99¢</b></p>	<p>ALL TYPES <b>PEPSI-COLA</b></p> <p>12 PAK CANS <b>\$3.69</b></p>																																	
<p><b>SPECIALS GOOD WHILE SUPPLIES LAST.</b></p> <div style="text-align: center; border: 2px solid black; padding: 10px; margin: 10px auto; width: 80%;"> </div>																																			
<div style="border: 2px solid black; border-radius: 50%; padding: 10px; width: 150px; margin: 0 auto;"> <p><b>BREAKFAST BURRITOS</b> EACH</p> <p><b>89¢</b></p> </div>	<div style="border: 2px solid black; border-radius: 50%; padding: 10px; width: 150px; margin: 0 auto;"> <p><b>GRANULATED SHURFINE SUGAR</b> 4 LB. BAG</p> <p><b>\$1.49</b></p> </div>	<div style="border: 2px solid black; border-radius: 50%; padding: 10px; width: 150px; margin: 0 auto;"> <p><b>RUFFLES® POTATO CHIPS</b> REGULAR \$1.49</p> <p><b>99¢</b></p> </div>																																	
<table border="1" style="width: 100%; border-collapse: collapse;"> <thead> <tr> <th colspan="2" style="text-align: left;">COOKED FRESH 24 HRS. A DAY <b>HOT FOODS MENU</b></th> <th style="text-align: right;">AVAILABLE AT ALL ALLSUP'S LOCATIONS</th> </tr> </thead> <tbody> <tr> <td>BARBECUE BEEF SANDWICH</td> <td style="text-align: right;">99¢</td> <td>9 PIECE BOX CHICKEN \$4.99</td> </tr> <tr> <td>BARBECUE PORK RIBS (LB.)</td> <td style="text-align: right;">\$3.99</td> <td>BEEF &amp; CHEESE CHIMICHANGA \$1.19</td> </tr> <tr> <td>BARBECUE WHOLE CHICKEN</td> <td style="text-align: right;">\$3.99</td> <td>(MEAD) CORN DOG 69¢</td> </tr> <tr> <td>ALLSUP'S BURRITO</td> <td style="text-align: right;">79¢</td> <td>DELICIOUS HAMBURGER 59¢</td> </tr> <tr> <td>BREAKFAST BURRITO</td> <td style="text-align: right;">99¢</td> <td>WILSON HOT LINKS 99¢</td> </tr> <tr> <td>BURRITO BEEF &amp; SALSA</td> <td style="text-align: right;">\$1.19</td> <td>SAUSAGE ON A STICK \$1.59</td> </tr> <tr> <td>DELICIOUS CHEESEBURGER</td> <td style="text-align: right;">79¢</td> <td>SAUSAGE &amp; BISCUIT 79¢</td> </tr> <tr> <td>CHICKEN FRIED STEAK</td> <td style="text-align: right;">\$1.59</td> <td>SAUSAGE, EGG &amp; BISCUIT \$1.09</td> </tr> <tr> <td>3 COUNT CHICKEN STRIPS</td> <td style="text-align: right;">\$1.49</td> <td>SAUTEYEA SAUSAGE \$1.09</td> </tr> <tr> <td>W/POTATO WEDGES/CHICKEN (2 PCS) BISCUIT</td> <td style="text-align: right;">\$1.99</td> <td>4 COUNT STEAK FINGERS \$1.00</td> </tr> </tbody> </table> <p style="text-align: center; font-weight: bold;">CALL-IN ORDERS WELCOME      CHECK OUR WEEKLY SPECIALS</p>			COOKED FRESH 24 HRS. A DAY <b>HOT FOODS MENU</b>		AVAILABLE AT ALL ALLSUP'S LOCATIONS	BARBECUE BEEF SANDWICH	99¢	9 PIECE BOX CHICKEN \$4.99	BARBECUE PORK RIBS (LB.)	\$3.99	BEEF & CHEESE CHIMICHANGA \$1.19	BARBECUE WHOLE CHICKEN	\$3.99	(MEAD) CORN DOG 69¢	ALLSUP'S BURRITO	79¢	DELICIOUS HAMBURGER 59¢	BREAKFAST BURRITO	99¢	WILSON HOT LINKS 99¢	BURRITO BEEF & SALSA	\$1.19	SAUSAGE ON A STICK \$1.59	DELICIOUS CHEESEBURGER	79¢	SAUSAGE & BISCUIT 79¢	CHICKEN FRIED STEAK	\$1.59	SAUSAGE, EGG & BISCUIT \$1.09	3 COUNT CHICKEN STRIPS	\$1.49	SAUTEYEA SAUSAGE \$1.09	W/POTATO WEDGES/CHICKEN (2 PCS) BISCUIT	\$1.99	4 COUNT STEAK FINGERS \$1.00
COOKED FRESH 24 HRS. A DAY <b>HOT FOODS MENU</b>		AVAILABLE AT ALL ALLSUP'S LOCATIONS																																	
BARBECUE BEEF SANDWICH	99¢	9 PIECE BOX CHICKEN \$4.99																																	
BARBECUE PORK RIBS (LB.)	\$3.99	BEEF & CHEESE CHIMICHANGA \$1.19																																	
BARBECUE WHOLE CHICKEN	\$3.99	(MEAD) CORN DOG 69¢																																	
ALLSUP'S BURRITO	79¢	DELICIOUS HAMBURGER 59¢																																	
BREAKFAST BURRITO	99¢	WILSON HOT LINKS 99¢																																	
BURRITO BEEF & SALSA	\$1.19	SAUSAGE ON A STICK \$1.59																																	
DELICIOUS CHEESEBURGER	79¢	SAUSAGE & BISCUIT 79¢																																	
CHICKEN FRIED STEAK	\$1.59	SAUSAGE, EGG & BISCUIT \$1.09																																	
3 COUNT CHICKEN STRIPS	\$1.49	SAUTEYEA SAUSAGE \$1.09																																	
W/POTATO WEDGES/CHICKEN (2 PCS) BISCUIT	\$1.99	4 COUNT STEAK FINGERS \$1.00																																	
<p><b>BETTY CROCKER CAKE MIX</b> DEVIL'S FOOD OR YELLOW</p> <p><b>99¢</b></p>	<p><b>CARNATION HOT CHOCOLATE MIX</b></p> <p>10 OZ. <b>\$1.29</b></p>	<p><b>LITTLE SIZZLERS SAUSAGE</b></p> <p><b>89¢</b></p>																																	
<p><b>CHARMIN BATHROOM TISSUE</b></p> <p><b>99¢</b></p>	<p><b>DEL MONTE GREEN BEANS OR CORN</b></p> <p><b>2/89¢</b></p>	<p><b>SHURFINE FROZEN LEMONADE</b></p> <p>12 OZ. <b>2/\$1</b></p>																																	