

Plains Library
Box 419
Plains, TX 79355



The Plains Pride



PLAINS, YOAKUM COUNTY, TEXAS

VOLUME 3, NUMBER 45

SUNDAY, FEBRUARY 14, 1988

30¢

36th Annual Livestock Show Begins Weigh-In Thursday



SEEKING TO BECOME QUEEN -- Selling memberships in Yoakum County Livestock Association (at \$5 per person), these three pretty young ladies are vying for the title of Yoakum County Livestock Queen. To be announced Saturday, Feb. 20, the 1988 Rodeo Queen will be determined by the candidate selling the most memberships. Shown left to right are Sally Burrus, sponsored by Plains FFA; MaDawn Sherrin, sponsored by Plains 4-H Club and Michelle Lowe, sponsored by Plains Greenhand Chapter.

Services Held For Ethel Craker

Services were held Monday afternoon in First Baptist Church for Ethel Craker, 85. Officiating was the Rev. Ken Horn, pastor.

Burial was in Meadow Cemetery under direction of Brownfield Funeral Home.

Mrs. Craker died at 9:45 p.m. Friday in her home after a lengthy illness. Justice of the Peace A.G. Brantley ruled natural causes.

Born Sept. 14, 1902 in Prairieville, she married James H. Craker April 15, 1933 in Farmersville. He died in 1961.

She had lived in Meadow and Seagraves before moving to Plains in 1975. She was a Baptist.

Survivors include two sons, A.C. Freeman of Austin and Walter Craker of Lone Star; two daughters, Odessa J. McDonnell of Plains and Helen Compton of Irving; a brother, J.W. Cryer of Sulphur Springs; a sister, Arzella Chennault of Dallas; six grandchildren; 17 great-grandchildren and 10 great-great-grandchildren.

Pallbearers were great-grandsons, Danny Bell, Alan Bell of Waco, Cory Bell of Lubbock, Roger Tucker of Sundown, Shanon Watkins of Garland and a nephew, Thomas Maynard of Wylie.

Thirty-sixth annual Yoakum County Junior Livestock Show and Sale will get underway Feb. 18 and climax Saturday, Feb. 20 with the presentation of awards and premium sale.

Weigh-in begins Thursday with swine from 9 a.m. to 12 noon; lambs, 1 to 4 p.m. and steers, 4 to 5 p.m. Judging is scheduled for 8 a.m. for barrow classes; 1 p.m. for lambs and 6 p.m. for beef cattle.

Saturday's events will be launched with the Parade of Champions and Reserve Champions at 10:30 a.m. Saturday. Buyer's Luncheon will be from 11:30 a.m. to 12:30 p.m. in the school cafeteria.

Presentation of Queen Awards is slated for 12:15 p.m. Cowpatty Bingo will follow. Presentation of awards will precede the sale which is set to begin at 1 p.m.

Trophies will be awarded for the Grand Champion steer, lamb and barrow and Reserve Grand Champion steer, lamb and barrow. Sponsored by Eddie's Cowboy Store of Levelland, a weight gain contest will also be culminated with the presentation of a trophy.

The Rusty McGinty Award, the "grand champion" Showmanship Award, will be presented to the exhibitor selected on the basis of showmanship, sportsmanship, neatness of individual, grooming of animals, appearance of animal quarters and cooperative attitude. Judges will include the three superintendents of the show, a young farmer and another individual chosen by the three superintendents. The award will be presented by Mrs. Alma McGinty and girls.

Donors of other showmanship awards are Wilma Powell, steer showmanship; Kenneth McGinty, barrow showmanship; Farm Bureau, lamb showmanship; Yoakum County Adult Leader's Association, 4-H Management Award; Jerry Faught, heifer showmanship and Yoakum County Livestock Association, herdsman award.

Hwy Construction To Start Feb. 18

Highway construction will begin Feb. 18 on US Highway 380 from the New Mexico State Line east to Plains. Construction is expected to be complete by May 1989.

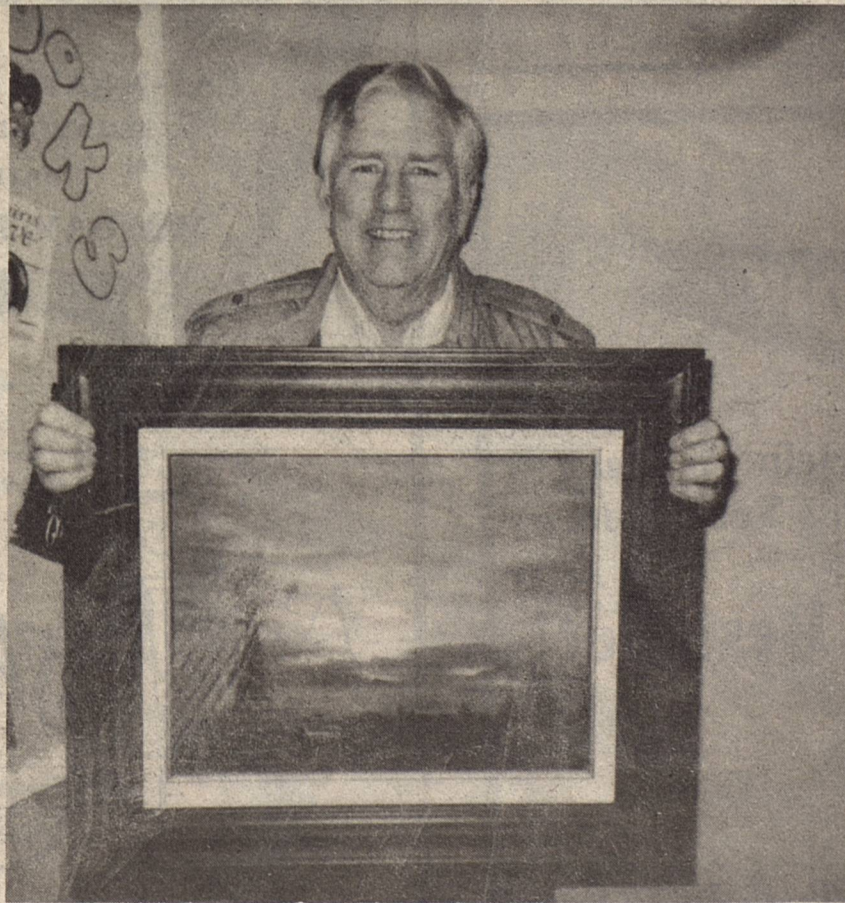
According to a spokesperson with the Highway Department, the driving lanes will be widened to two twelve foot lanes and shoulders to eight feet on each side. The 14,542 miles of construction is projected to run \$2,951,398.80.

Tax Seminars Set Feb. 24-25

Representatives of the Texas State Comptroller's Tax Policy System in Austin and the Lubbock Audit Office have scheduled tax seminars to be held at 2 p.m. Feb. 24 in the American Legion Hall in Brownfield and 9 a.m. Feb. 25 in the Denver City Community Building.

Persons wishing to attend should contact Myrl Slentz, (806) 592-5424 no later than Feb. 22. A catered steak lunch will be available for \$10. Time will be allotted for questions at the end of each day's presentation.

These seminars are directed specifically toward taxpayers who are involved in the oil well servicing industry.



LUCKY WINNER -- T.J. Miller displays an oil painting by Melba Fitzgerald which he won in a drawing at the Feb. 4 meeting of Plains Lions Club. The Plains Mayor commented over his good fortune, "I have dealt with windmills all my life...and I recognize Melba's painting as an excellent painting of a windmill."

New Arrivals

Gilbert and Clara Garza announce the arrival of a daughter, Morgan Alyse, born Jan. 29 in St. Mary of the Plains Hospital in Lubbock. The little lass weighed seven pounds 12 ounces and measured 20 and a half inches long. She has a sister, Briana Rae. Grandparents are Richard and Eremenia Garcia of Plains and Prudencio and Juanita Garza of Seagraves. Great-grandparents are Mr. and Mrs. Willie Garcia and Mr. and Mrs. Louis Trevino, all of San Antonio.

Billy and Mindy Smith of Levelland are the proud parents of a daughter born in St. Mary's Hospital recently. Weighing eight pounds three ounces and measuring 22 and a quarter inches long, she has been named Lauren Elizabeth. Grandparents are Mr. and Mrs. Donald Moreland and Mr. and Mrs. Glen Smith. Great-grandparents are Mr. and Mrs. Buck Moreland.

Royal Bounders To Compete

Plains Royal Bounders competed in their first novice meet of the season Jan. 16 in Crane. The team will host the District STTA Qualifying Meet Feb. 27 in Plains and invite the public to attend.

First place medal winners were Kimbe Jones, Kimberly Martinez, Brad Seaton and Lyndi Rowe. Second place ribbons were earned by Leslie Rowe, Ashlei Mason and LaCresha Johnson.

Others placing were Nancy Koncaba, Jared Bell and Colt Winn, third place; Amanda Koncaba and Josh Bell, fourth and Candace Bowers, fifth.

Tandi Jones, competing in trampoline, won first. She is coached by Ashlei Winn. The Royal Bounders are coached by Pat Green.

Plains Royal Bounders Advance Tumblers have competed in two meets this season, Dec. 12 in Brownfield and Jan. 30 in Hobbs, N.M.

Team members placing were Misty Willett, first and second place; Amber Bryan, second and eighth place; Tandi Jones, seventh and second place and Linzie Rust, seventh.

The team will compete March 12-13 in Lubbock. Persons in the community are invited to attend this meet and support these young athletes.

THE PLAINS PRIDE

The Plains Pride (USPS 757-130) is published weekly at 716 Main Street, Olton, Lamb County, TX 79064. Second Class Permit paid at Olton, TX 79064. POSTMASTER: Send address changes to THE PLAINS PRIDE, P.O. BOX 774, OLTON, TEXAS 79064-0774.

Any erroneous reflection upon the character or standing of any person or firm appearing in this paper will gladly and promptly be corrected, upon being called to the attention of the management.

telephone no. (806) 285-3177

Yoakum County & Surrounding Counties, tax included \$15
Elsewhere, tax included \$16

Free Booklet

For a free brochure "Today's Woman" write Metropolitan Life Insurance Company, Dept. N23, One Madison Ave., New York, NY 10010.

'We Don't Sell Service — We Give Service'

T-Tex Fertilizer Goodpasture Elevator

Roswell Highway

Days
456-8833

Bruce Lester/Mgr

Nights
456-6575

HOMESTYLE
"Full Meal Deal"™
only — **\$2.59**
Sunday, Feb. 14 thru Sunday, Mar. 6

The sweetest deal in town is the Dairy Queen Full Meal Deal. With a juicy quarter-pound Homestyle Hungr-buster. Golden french fries. Your favorite ice-cold soft drink. And a creamy 5-ounce Dairy Queen sundae with your choice of topping. The \$2.59 Full Meal Deal. It's a steal.

FARMERS INSURANCE GROUP
Symbol of Superior Service

RICHARDSON INSURANCE AGENCY
Box 558, 503 3rd St.
Plains, Texas 79355
A. C. 806 456-8888

AUTO • FIRE
• LIFE • COMMERCIAL



Plains Independent School District

From The Superintendent's Desk

DEAN ANDREWS



The effects of Judge Harley Clark's ruling on public school finance continues to be felt as Texas Legislators face the next session. I recently received the following from Bill Kennedy, Superintendent of Schools at Goose Creek.

"Depending on the outcome of litigation, Texas legislators in the next system unconstitutional, top state leaders agreed to name a special committee to determine the fairness (or unfairness) of school finance.

Meanwhile, the far-reaching decision handed down by District Judge Harley Clark, is now before the 3rd Court of Appeals in Austin, but arguments are not expected to be heard until later in the year.

The central theme of Judge Clark's ruling is that the Texas school finance system favors rich school districts at the expense of poorer ones. He agreed with poorer districts, whose officials brought the suit, that Texas' three million school children are not being treated equally because they lack the same access to state funding.

The issue boils down to a question of deciding whether to take from the rich and give to the poor. And if such a conclusion is reached in the courts, the second question is how best to achieve the division equitably.

Judge Clark's decision, announced last April, brought immediate rejoinders from state officials, including Lt. Gov. Bill Hobby and House Speaker Gib Lewis. Hobby defended the school system, saying the State has made many improvements in equity in school finance.

Lewis pointed out that House Bill 72, the 1984 school reform measure, was directed toward achieving equity in school finance.

To meet Judge Clark's requirements, Texas Education Agency officials said it would not only require spending increases, but in all probability consolidation of school district and redrawing district boundaries."

I will continue to inform you of further developments as they arise. Many decisions must be made as state officials continue in their efforts to resolve this situation.

What's Cooking At School?



BREAKFAST

MONDAY - Toast, oatmeal, grape juice and milk.

TUESDAY - Donuts, apple juice and milk.

WEDNESDAY - Cinnamon toast, orange juice and milk.

THURSDAY - Pancake, syrup, butter, tomato juice and milk.

FRIDAY - School Holiday.

LUNCH

MONDAY - Taco w/taco sauce, pork 'n beans, lettuce and tomatoes, crackers, strawberry shortcake and milk.

TUESDAY - Spaghetti w/meat sauce, blackeyed peas, okra, hot rolls, peanut butter and honey, and milk.

WEDNESDAY - Hamburgers, lettuce, pickles, onion rings, corn chips, fruit, brownies and milk.

THURSDAY - Beef and vegetable stew, pinto beans, col-eslaw, cornbread, cherry cobbler and milk.

FRIDAY - School Holiday

Channel 3 KPLN

Monday, Feb. 15 at 2 p.m. Plains Girls vs. Wellman
 Tuesday, Feb. 16 at 2:30 p.m. Plains Boys vs. Wellman
 Wednesday, Feb. 17 at 2:30 p.m. Plains Boys vs. Loop
 Thursday, Feb. 18 at 1:15 p.m. SCHOOL DISMISSES
 Friday, Feb. 19 - School Holiday

School Events

MONDAY: TEAMS testing 3rd, 5th, 7th & 9th Grades
 TUESDAY: TEAMS testing 3rd, 5th, 7th & 9th Grades
 WEDNESDAY: TEAMS testing 3rd, 5th, 7th & 9th Grades
 THURSDAY: School Dismisses at 1:15 p.m.
 FRIDAY: SCHOOL HOLIDAY (Yoakum County Stock Show)
 SATURDAY: UIL Math/Science Meet at San Angelo Lakeview; Stock Show continues

Best of Luck



To The Exhibitors Who Have Worked So

Hard To Make This Year's Stock Show A Success!!!

Plains Appliance Center



we're for you



We are Proud of our Young People...

And the fine work they have done to prepare for this show...

Visit The Annual Livestock Show!!!

Pay-N-Save



**ON THE
HARD COURT**

VARSIITY

Lydia Jimenez recorded 14 points in the Cowgirls' 50-32 victory over Union last Friday night. Karen Cobb added 12 points. Bertha Gonzales and Heather McGill finished the game with 10 and 8 points respectively.

The Cowgirls hosted O'Donnell Tuesday night in the final game of their 1987-88 basketball season. The Eagles won the game 72-49. Leading scorers for the Cowgirls were Lydia Jimenez, 18 points; Karen Cobb, 10 points; Lynda Jimenez, 7 points; and Melissa Green, 7 points.

JUNIOR HIGH

The Seventh Grade girls ended their basketball season with the Sundown Invitational Tournament last Saturday. The Wranglers lost a close game with Sundown 28-26 in their first game of the tournament. Scoring for the Wranglers were Brandi Lester, 11 points; Monica Flores, 9 points; and Oglá Ramirez, 6.

Sudan defeated the Wranglers 36-25. Brandi Lester recorded 11 points; Monica Flores, 7; and Oglá Ramirez, 6.

**School Trustees
Renew Contracts**

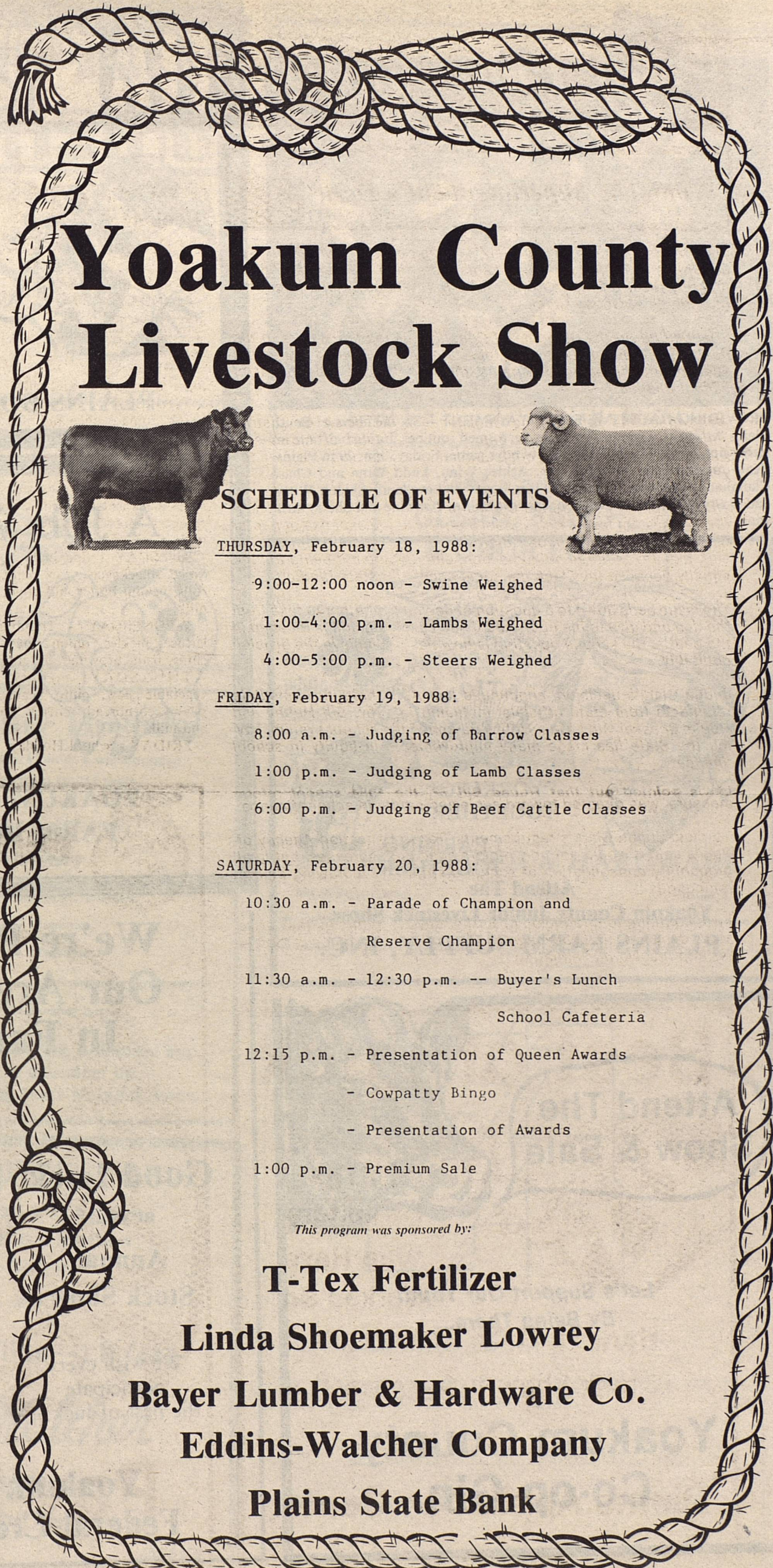
School board members in regular session Monday evening called for a trustee election to be held in accordance with Texas election laws. Announcement was made by Melvin Lowrey, president, that all board members have met minimum State Board Training requirements set forth by the Texas Education Agency.

School calendar for 1988-89 was adopted as presented. School board policy was updated.

Approval was given for the purchase of a 15 passenger school bus. January bills were approved for payment and the 1987-88 school calendar amended to change the approved make-up snow day from March 14 to May 22 and making Saturday, May 28 a teacher work day.

Superintendent Dean Andrews gave financial reports for the areas of operating, cafeteria, tax and transportation. He also presented control information on asbestos and UIL realignment appeal.

The board entered into executive session to discuss professional staff evaluations and administrative staff contracts. Resuming open session, the board unanimously approved awarding new two year contracts to Wanda Ashburn, business manager; Robert Parks, high school principal; Jimmy Connor, junior high school principal; John Nance, elementary principal; Arlon Alexander, counselor and Larry Devitt, curriculum director. Contracts will be effective through the 1989-90 school year.



**Yoakum County
Livestock Show**



SCHEDULE OF EVENTS

THURSDAY, February 18, 1988:

- 9:00-12:00 noon - Swine Weighed
- 1:00-4:00 p.m. - Lambs Weighed
- 4:00-5:00 p.m. - Steers Weighed

FRIDAY, February 19, 1988:

- 8:00 a.m. - Judging of Barrow Classes
- 1:00 p.m. - Judging of Lamb Classes
- 6:00 p.m. - Judging of Beef Cattle Classes

SATURDAY, February 20, 1988:

- 10:30 a.m. - Parade of Champion and Reserve Champion
- 11:30 a.m. - 12:30 p.m. -- Buyer's Lunch
School Cafeteria
- 12:15 p.m. - Presentation of Queen Awards
- Cowpatty Bingo
- Presentation of Awards
- 1:00 p.m. - Premium Sale

This program was sponsored by:

T-TEX Fertilizer

Linda Shoemaker Lowrey

Bayer Lumber & Hardware Co.

Eddins-Walcher Company

Plains State Bank



PROVIDING HALFTIME ENTERTAINMENT -- Six members of South Plains Acrospirit Gymnastics Team performed routines during halftime intermission of the Plains-Loop varsity boys game, Friday, Jan. 29 in Plains. Team members are back row, ltr, Ashlee Winn, Ladd Winn and Chase Clanahan; front row, ltr, are Melissa Boggs of Levelland; Shyloh Winn; and Dusty Hill of Seagraves. Coaches are Shirley Arnwine and Sherry Arnwine.

Attend The
Yoakum County Junior Livestock Show
PLAINS FARM SUPPLY, INC.

Attend The Show & Sale

*Let's Support Our Youth
 By Being There...*

**Yoakum County
 Co-op Gin**

**Building Tomorrows
 TODAY!**

Our wish for your every success... during this show and also your future...

PLAINS BODY REPAIR

A Job Well Done!

*Good Luck!
 to all who
 have worked
 so hard on
 their projects.*

**YOAKUM COUNTY
 FARM BUREAU**

**We're Proud Of
 Our Area Youth
 In Farming!**

Good Luck
 at your
**Annual
 Stock Show**

We wish every participant the best of luck...

**Yoakum County
 Federal Credit Union**

CLASSIFIED ADVERTISING

NOTICE

WINTERTIME SALE -- 25% off Carole Drapery Fabrics, 35% off vertical drapes, 50% off mini blinds, and 40% off micro mini blinds. Call J & L Draperies for a free estimate. 456-6012 or 456-8902. 41/F

FEBRUARY Expirations

Joe Ancinec
Danny Bell
Buddy's Auto Parts
Ace Hamm
David Kight
Darrel Lowrey
Neal Newsom

Two J-S Flying Service

Aerial Applicators



806/456-3580

Jack Cobb
456-7452

Yoakum Co. Airport

Plains, TX
79355

Yoakum County Hospital

Providing the people of Yoakum County a well-rounded, modern health care program for 33 years

*Quality Care For Neighbors,
Not For Numbers*

- Physical Therapy
- Surgery, Recovery & Critical Care
- 24 Hr Emergency Department
- Obstetrics
- Respiratory Therapy
- Radiology, to include:
 - Diagnostic
 - Ultrasound
 - C.T. Scanning (by arrangement)
 - Laboratory Service

YOAKUM COUNTY HOSPITAL is licensed by:
The State of Texas; is a member of:
American Hospital Assoc. & Texas Hospital Assoc.

OIL DISTRIBUTORS FOR

- ★ Amoco ★ Exxon ★ Texaco ★
- ★ Shell ★ Chevron ★ Mobil ★
- ★ Cato ★ Sun ★

Diesel—Gasoline—LP Gas

Eddins-Walcher

"FIRST IN SERVICE"

Celebrating Our 50th Anniversary

ROSWELL RD.

456-5199

Tri State Management

ALL NATIVE GRASSES - PRICE ON REQ.
ERMELLO LOVEGRASS - \$2.75 PLS LB.

CONTACT:

Bill Cheek - Lamesa
(806) 872-7290 - Day
(806) 872-5211 - Night

Carpet Looking Bad?

Get Carpets CLEAN, FRESH, & ODOR FREE

RENT RINSEVAC

Now, you can Deodorize
while cleaning

RINSEVAC's Odor Neutralizer
combines with the RINSEVAC
cleaning solution to remove dirt,
grime, residues . . . and at the
same time eliminate pet and other
objectionable odors.

*Cleans—and deodorizes—
the way professionals
do, at a
fraction of the
cost*

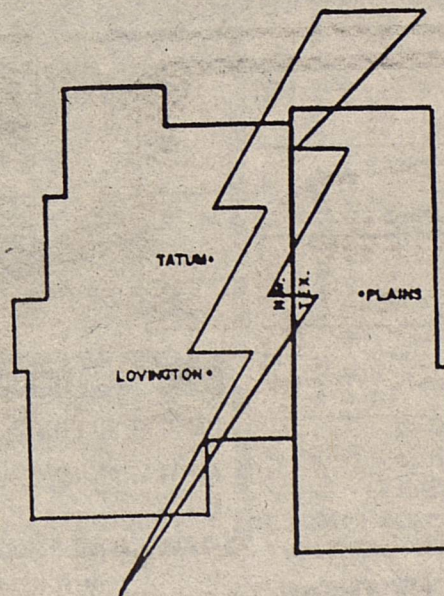


BAYER LUMBER & HARDWARE

Milton Bayer/Owner

456-4800

Plains, TX



ELECTRIC SAFETY AND YOU....

NEVER USE ANY ELECTRIC APPLIANCES WHILE IN THE TUB
OR SHOWER. SHOCKS CAN BE FATAL.

LEA COUNTY ELECTRIC COOPERATIVE, INC.

LOVINGTON/TATUM, NM

PLAINS, TX

"OWNED BY THOSE WE SERVE"



Dr. Pepper
\$1.99
16 OZ 6 PAK



Ruffles
ALL TYPES
REG. \$2.49
\$1.59



Folger's
COFFEE-ALL GRINDS
1 LB. CAN
\$2.69



Bread
TENDERCRUST SPLIT TOP
1 1/2 LB. LOAVES
2\$1 FOR



MASA HARINA
5 LB. BAG
\$1.89

Trigo
4 LB. BAG
\$1.39

DIAPERS - ULTRA
Pampers
66 SM/48 MED/32 LG
\$9.69



PAPER TOWELS
Bounty
JUMBO ROLL
69¢



BATH TISSUE ASSTD.
Charmin
4 ROLL PKG.
99¢

GROCERY SPECIALS
PURINA REG/SMALL BITE
DOG CHOW
5 LB. BAG
\$2.49

SUPER FOOD SPECIALS


FROZEN FOOD & DAIRY
BANQUET PEACH/APPLE/CHERRY
FRUIT PIE
20 OZ. PKG.
99¢



IVORY LIQUID
32 OZ. BTL.
\$1.49

WE WILL NOT INTENTIONALLY SELL ANY GROUND BEEF UNDER 80% LEAN & WE PLEDGE TO MAKE OUR GROUND BEEF AT LEAST TWICE A DAY.

BORDENS
ICE CREAM
5 QT. BUCKET
\$4.19



FAB 1 SHOT
12 CT. PKG.
\$1.29

HEAVY GRAIN FED BEEF BONELESS
Round Steak
\$1.99 LB.



BORDENS TURTLE
ICE CREAM BARS
4 CT. PKG.
\$1.39



KLEENEX BOUTIQUE
100 CT. BOX
79¢

BORDENS REG/LITE
COTTAGE CHEESE
24 OZ. CTN.
\$1.35



45° OFF LABEL
BOUNCE SHEETS
50 CT. PKG.
\$2.69

HEAVY GRAIN FED-WHOLE IN THE BAG-
BEEF BRISKET
PACKER TRIM 8 TO 11 LB. AVG.
\$1.19 LB.



BORDENS
BUTTER-MILK
1/2 GAL. CTN.
\$1.05



COMSTOCK REG/LITE
CHERRY PIE FILLING
21 OZ. CAN
\$1.19

KRAFT SOFT PHILADELPHIA
CREAM CHEESE
8 OZ. CTN.
99¢



HALVES/PIECES
PLANTERS PECANS
10 OZ. PKG.
\$1.49

KRAFT SOFT
PARKAY MARGARINE
2.8 OZ. TUBS
99¢



BAMA
GRAPE JELLY
2 LB. JAR
\$1.19

NEW FREEDOM
SUPER MAXI
NEW FREEDOM
30 CT. BOX
\$3.99



FUDGE COVERED
OREO COOKIES
14 OZ. PKG.
\$2.19

MEAT SPECIALS

SHURFINE QUALITY HICKORY SMOKED BACON	1 LB. PKG.	\$1.59	CHEF PANTRY PRE-COOKED CHICKEN FRIED	LB.	\$1.29
SHURFINE QUALITY MEAT FRANKS	12 OZ. PKG.	99¢	GOOCH'S GERMAN BRAND SMOKED SAUSAGE	12 OZ. PKG.	\$1.59
SHURFINE SLICED MEAT BOLOGNA	12 OZ. PKG.	\$1.09	GOOCH'S MEXICAN STYLE HOT LINKS	LB.	\$1.29
			OSCAR MAYER SLICED MEAT/BEEF COTTO SALAMI	8 OZ. PKG.	\$1.29



Alka-Seltzer
Plus Cold Medicine
REG/EXTRA DRY
JERGENS LOTION
6 OZ. BTL.
\$1.39



CRUNCH NUT OH'S/OH'S HONEY NUT
QUAKER CEREAL
12 OZ. BOX
\$1.59

PRICES EFFECTIVE FEBRUARY 15-20, 1988



CRUNCH BERRY/PEANUT BUTTER CEREAL OR REGULAR
CAPTAIN CRUNCH
15 OZ. BOX
\$1.79



PLAIN/PEANUT
M & M CANDIES
16 OZ. BAG
\$2.19

ALL PURPOSE RUSSET
Potatoes
79¢ 10 LB. BAG



CALIFORNIA FRESH NAVEL
ORANGES
3 \$1 LBS.



PRODUCE SPECIALS

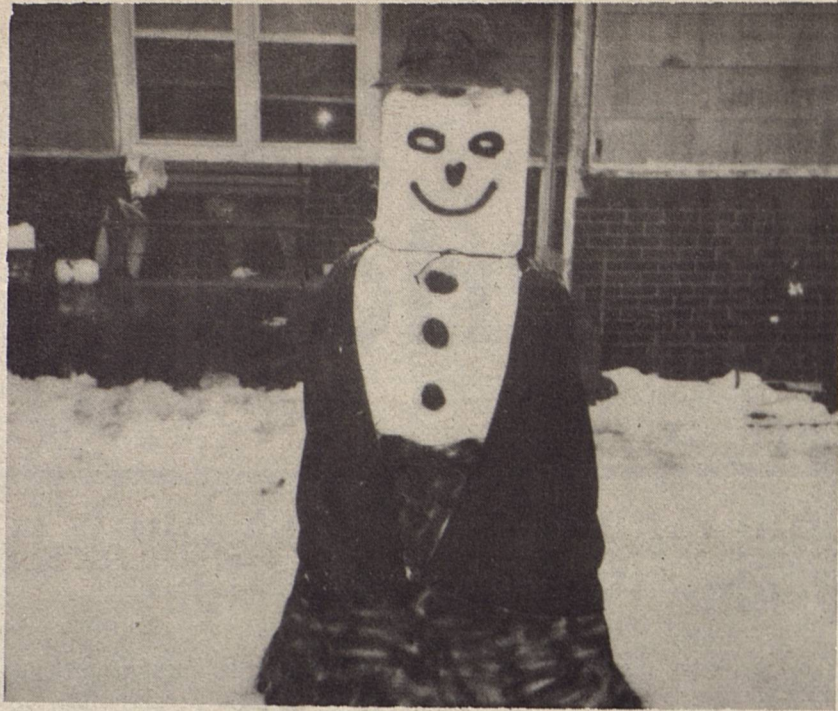
EXTRA LARGE BELL PEPPERS	LB.	49¢
FRESH HOT JALAPENOS	LB.	59¢
4 COUNT CELLO PACKAGE TOMATOES	EA.	89¢

AMERICAN OWNED AND OPERATED




Pay-n-Save
QUALITY AND SERVICE
WE RESERVE THE RIGHT TO LIMIT QUANTITIES





A REAL BLOCK-HEAD -- This snowman created out of last week's snowfall, a little spray paint and 90° angles could be found greeting passersby at the home of Lourie and Frank Garza, Janice, Trisha and Frankie.

The family of Tom Barnes would like to express sincere thanks and appreciation to everyone who sent flowers, cards, food and other donations. We would also like to say thanks for all the phone calls, visits and prayers, for all the kindness shown us during the loss of our husband, father and grandfather. We feel very fortunate to have so many wonderful friends and neighbors.
 Shirley, Steve, Garry, Jeff, Randy
 Sandi, Somer & Eric



PERSONAL LIFE INSURANCE

- *Life
- *Health
- *Retirement Income
- *Educational Funds
- *Major Medical
- *Hospitalization
- *Cancer
- *Surgical
- *Mortgage Cancellation

— **BUSINESS LIFE INSURANCE** —

- *Key-Man
- *Partnership
- *Group Insurance
- *Corporation
- *Pension Plans

L. CALVIN STEWART, CLU
 Chartered Financial Consultant
 Denver City, Texas
 Phone: 592-2878

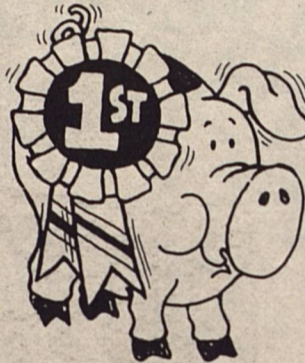


**Help To Make
This Year's Show
The Best Yet!**

Plains Insurance Agency
Jim Warren

SEE YA'

AT THE STOCK SHOW



Plains
 Chamber
 Of
 Commerce


19

WALLET SIZE
 COLOR PHOTOS

WE USE
 KODAK PAPER


99¢

No limit on this offer



AT
PAY-N-SAVE GROCERY
 BROWNFIELD HWY

DATE:
MONDAY, FEB. 22



Ask about our FREE
 8 x 10 offer

Shugart's inc.

Group charge
 99¢ per person
 per 19 wallets

Shugart's STUDIOS CREATIVE COLOR

Kodak paper. For a Good Look at the Times of Your Life. TM