

## FB Directors Meet Tonight

Regular monthly meeting of Coleman County Farm Bureau directors will be held tonight (Thursday) at 7:00 o'clock at the Coleman Rodeo Grounds.

Several items are on the agenda, as well as discussion of resolutions officials will offer to the Texas Farm Bureau Resolutions Committee in October.

All interested parties are invited to attend, and each family is asked to bring a salad and sweet or a vegetable and meat dish for the covered dish supper.

## Bob Barkley Gets Pharmacist Degree

Bob Barkley is now on duty at Phillips Drug, assisting his father in the operation of the business.

Bob received his degree in pharmacy from the University of Texas College of Pharmacy in August. He and his family are presently living in Brownwood, but plan to move to Santa Anna in the very near future to make their home. The Barkleys have two children, ages 5½ years and 9 months.

David Barkley, who has been assisting in the operation of the business, has enrolled in the UT College of Pharmacy where he plans to receive his pharmacist's degree. He and his family moved to Austin some two weeks ago.

## Public Hearing Set For Property Owners On Proposed Improvements

A hearing for property owners in the City of Santa Anna, regarding certain permanent improvements ordered by the City Council, will be held at the City Council Chamber in the City Hall at 10 o'clock a.m. Thursday, October 6th.

Parties owning property abutting the said improvement units may appear before the Council and offer testimony as to the assessments and the amount proposed to be assessed against said property, if they so desire.

Ordinance passed by the Council orders permanent improvement of the following units: portions of Avenue C; Willis Avenue; Lee Street; Fourth Street and Fifth Street, within the limits as stated in a properly published notice.

Further details concerning the Ordinance may be found on page 7 of The News this week. The notice has also been published the preceding two weeks.

## Sgt. Curtis Shields Serving in Viet Nam

Staff Sergeant Curtis L. Shields, son of R. C. Shields of Santa Anna, is now serving in Vietnam in the fight against Communist aggression, according to word received here this week.

Sergeant Shields, a weapons mechanic with the U. S. Air Force, is married to the former Effie Calder of Coleman. His mother, Mrs. C. J. Strength, resides at Cross Plains.

## Freshman Class Elects Queen Representative

Diana Blackwell was elected as the Santa Anna high school freshman class homecoming queen representative at a meeting of class members last Wednesday.

Miss Blackwell is the daughter of Mr. and Mrs. Howard Blackwell of Rockwood. She will be escorted by Don Fitzpatrick, son of Mr. and Mrs. Graham Fitzpatrick of Whon.

## OUR THANKS . . .

We want to express our sincere thanks to the wonderful lady who brought the tasty Brownies to The News office last week.

They were simply delicious and enjoyed by the entire crew, although there was considerable bickering among workers about "who ate Brownies last and how many they ate."

By the way, we saved the containers, expecting to have them re-filled one of these days SOON!

## RECENT VISITORS

Recent visitors in the home of Mr. and Mrs. Homer Goodgion were their granddaughters and husbands, Mr. and Mrs. Eddie Lampman and Mr. and Mrs. Gary Moresco. Mrs. Lampman is the former Brenda Shaw and Mrs. Moresco is the former Linda Shaw. They came Sunday morning and returned to their homes in Alvarado Sunday afternoon. Brenda and Linda are former students in Santa Anna high school, and graduated from Alvarado High the past spring.

# Santa Anna News

One Section -- 8 Pages

"He Profits Most Who Serves Best"

Single Copy—10c

VOLUME LXXX

SANTA ANNA, COLEMAN COUNTY, TEXAS, SEPTEMBER 22, 1966

NUMBER 38

## Presbyterians Call New Pastor

Beginning Sunday, Sept. 25, worship services at the United Presbyterian Church will begin at the usual 11 o'clock time, officials have announced. Sunday school will convene at 10 o'clock.

The Rev. Everett B. King of Fort Worth will preach at the regular services Sunday.

It was also announced that a call had been extended to Rev. Richard Wood to serve as pastor of the church. The Rev. Wood will be on the field October 1.

## McCulloch Singers To Meet Sunday

The McCulloch County Singing Convention will meet at 2 o'clock Sunday at the Gospel Tabernacle in Brady, according to announcement this week.

The public is cordially invited to attend.

R. W. Matthews returned home Wednesday after visiting in Monahan for two weeks with Mr. and Mrs. Billy Wood and family.

## Final Rites For W. E. Stepp, 65, Held Saturday

Funeral services for W. E. Stepp, 65, of this city were held at 10:30 a. m. Saturday in the Stevens Memorial Chapel in Coleman with Dr. Ben Moore, former pastor of Santa Anna Presbyterian Church, and Rev. George Herrscher, pastor of the First Presbyterian Church of Coleman, officiating. Burial was in Coleman City Cemetery.

He passed away at 1:10 p. m. Thursday in a Coleman hospital.

Mr. Stepp, a public accountant was born Nov. 30, 1900 in Young County and moved to Coleman in 1926 where was a partner in the Stepp and Mercer accounting firm.

Some two years ago he married Mrs. Helen Turner Goodloe and moved to Santa Anna where he had made his home since that time.

Mr. Stepp was a graduate of Decatur Baptist College and attended North Texas State. He was a member of the United Presbyterian Church of Santa Anna.

Survivors include his wife of Santa Anna; a daughter, Mrs. David Mercer of Coleman; his step-mother, Mrs. Rosa Stepp of Bowie; a half-sister, Mrs. R. L. Brown of Bowie; and a half-brother, Marshall Stepp of Nebraska.

## JR. HIGH GRIDDERS CORRAL EARLY 14-0

The Santa Anna Jr. High gridders corralled the Early Shorthorns, 14-0, in a game played there Tuesday night.

Next Tuesday night the locals will host the Cross Plains Jr. High team.

The Jr. Mounties now own a 2-0 record, having defeated the B'anket Cubs a week earlier.

## Mountaineers Scalp Jim Ned Indians 30-0; Host Bangs Dragons Friday

The Santa Anna Mountaineers rolled on to their second win of the season Friday night by scalping the Jim Ned Indians, 30-0, in a non-conference game.

The Mountaineers appeared to have trouble defending the Indians' single wing formation. Although the Indians were soundly whipped they were an explosive unit each time they had possession of the pigskin.

The Mounties were on the scoreboard within two minutes of the opening gun when quarterback Roy Joe Harvey unlimbered his throwing arm and hit end Davy Beal with an aerial that netted 50 yards and a TD. Fullback Eddie Jones booted the pigskin through the uprights for an early lead of 7-0.

The Indians' lone marker came late in the first period when halfback David Aldridge broke through for a 64-yard touchdown run. Try for extra point failed, and thus ended the Indians' scoring for the night.

With 23 seconds left in the first stanza fullback Jones hit paydirt again for the Mounties with a 44-yard gallop. Halfback Butch Makuta lugged the ball across for two extra points, making the score 15-6.

Late in the second period quarterback Harvey again hit Beal with a 52-yard pass for a TD. Makuta again carried across for two, and the Mounties held a commanding 23-6 halftime lead.

The third period was played on fairly even terms with the Mounties in possession on the Indians' 14 as the quarter ended. The Mountaineers cranked up from there and racked up seven more points with halfback Dickie Horner plunging across the double stripe from four yards out. The score climaxed a 60-yard drive in 12 plays. Jones again kicked a perfect placement and ended the scoring for the night with the Mounties out front 30 to 6.

Leading ground-gainer for the Mountaineers was Fullback Jones with 126 yards rushing, and Aldridge garnered 98 yards for Jim Ned.

## Other Area Games

Hamilton 50—Cross Plains 0  
Clifton 21—Goldthwaite 14.  
Gorman 8—Rising Star 9  
Bangs 36—Early 9.

Mrs. R. W. Matthews is visiting in California with Mr. and Mrs. Gene Rice.

Cows have four stomachs.

## 'BONANZA DAY' HERE SATURDAY

### LIONS TO CONDUCT LIGHT BULB SALE

John McDaniel, president of the local Lions Club, announced Tuesday that the organization would conduct a light bulb sale Tuesday, Oct. 11.

McDaniel said that the sale would be kicked-off immediately following the noon luncheon. Members will be divided into groups and assigned working areas within the city. He also stated that Lions would be selling candy at the same time.

Proceeds from the sale will be used for the club's charity projects.

### School Officials To Austin Meet

Members of Santa Anna School Board and Supt. Cullen Perry will be in Austin Sunday and Monday for a joint meeting of Texas Association of School Administrators and Texas Association of School Boards, it was announced this week.

Planning to attend the two-day session are board members Mrs. Bess Gill and Mrs. Tom Kingsbery, and Supt. Perry.

The session will get underway at 3:30 p.m. Sunday with registration and terminate at 4 p.m. Monday.

Bud Wilkerson, former head football coach at Oklahoma University, will speak to the gathering Sunday afternoon, a banquet is scheduled Sunday night with Dr. Cecil Hannah, NEA representative, as guest speaker. Work sessions are on tap for Monday.

## Coleman Masonic Lodge To Receive Honor Roll Award

Coleman Lodge 496 will be honored during a workshop to be held at 7:30 p.m. Monday, September 26, in the Masonic Temple in Coleman.

Coleman Lodge will receive an Honor Roll Award, which is given by the Grand Lodge of Texas in recognition of outstanding attendance at the Spring series of Masonic workshop programs.

The award will be presented by M. V. Baker of San Angelo, who is chairman of the seven-county Masonic Workshop Area F-3. He will also conduct the meeting.

Nearly 200 such meetings are held twice a year for officers and members of over 970 Masonic Lodges in Texas. The Masonic Fraternity is the state's largest fraternal group with nearly 250,000 members.

## Banks Largest Lenders To Farmers; Credit Needs Increasing, Survey Shows

Texas banks were serving farms and ranches with more credit and other financial services than any other lenders at the beginning of this year, according to a concerted effort through improved lending programs to meet these changing credit demands of the state's farmers and ranchers.

The increased use of credit by farmers and ranchers, according to Johnson, has been accompanied by a substantial gain in the total assets of farm and ranch families. Therefore, in the aggregate, the equity position of farmers and ranchers contrary to public opinion, is being maintained at a satisfactory level. Nationally, farm and ranch families have \$212 billion of their own funds invested in agriculture. This represents 84 per cent of the total capital requirements of farmers and ranchers.

Johnson stressed the importance of farmers, ranchers and bankers working closely together to improve farm and ranch financial arrangements. He reported that nearly 89 per cent of the banks in Texas were extending credit to farm people.

David Livingston's body was carried through Africa for ten months so that he might be buried in England.

Pygmies are natives of Africa.

A "Big Bonanza Day" celebration will be observed by local merchants Saturday with individual store drawings and special prices on gobs of merchandise, climaxed with a big street drawing at 5 p.m.

Most all local merchants are participating in the event with drawings scheduled every fifteen minutes throughout the day. At 5 p.m. all registration tickets will be taken from stores and placed in a container in front of the bank building where drawings will be held for merchandise being given by

### Social Security Representative Talks to Lions

Don Austin, a representative of the Social Security office in Abilene, was guest speaker at the Santa Anna Lions Club meeting Tuesday noon.

Austin's remarks dealt with Social Security benefits after reaching retirement age. He also explained different phases of the medicare program and conducted a question and answer period.

Arrangements for Mr. Austin to speak here were made by Mrs. Bessie Parker, Coleman County Home Demonstration Agent, who was a guest at the meeting.

## Local TSTA Unit Leaders Attending B'wood Workshop

A workshop for local unit leaders of District XI, Texas State Teachers Association, is scheduled to begin at 4:30 p.m. today (Thursday) at Brownwood Senior High School, according to District XI president, Miss Marguerite Ross of Comanche.

Registration for the workshop will last from 4:30 - 5:30 p.m., with a banquet and opening general session running from 5:30 - 7:30 p.m. in the school cafeteria.

The invocation for the opening session will be given by Mrs. Anna Currin of Priddy.

A report on TSTA membership will be given by Mrs. Fred Salling of Miles, and Mrs. Patricia Robertson of San Angelo will give a talk on the NEA. S. H. Fletcher, superintendent of schools at Comanche, will introduce the keynote speaker, Sam M. Anderson, Big Spring, vice-president of TSTA. He is superintendent of schools at Big Spring, and will be installed as head of TSTA at its November meeting in Austin.

Discussion group meetings will get underway at 7:15 p.m. and will continue until 8:30. Miss Blanche Shear of Brownwood will be chairman of the group or local unit presidents, and Cullen Perry of Santa Anna will be chairman for the program chairman section.

The closing general session is set for 8:30-9:00 p.m. and will include reports from all discussion groups.

## Numerous Items Discussed At 4-H Council Meeting

The 4-H Council met Saturday, Sept. 17, in the hospitality room of the First Coleman National Bank. The meeting was called to order by vice-president, Dickie Horner. The 4-H pledge and motto were led by Debra Sparks. The roll was called, followed by the reading of the minutes by Sandra Hemphill. Communications were read by Miss Sandra Duke, assistant home demonstration agent. The communications were discussed about putting displays for National 4-H Week in vacant store windows in Coleman.

Business began with Dickie's report on the district record book judging. Charlotte Faubion gave a report on the panel discussion held at the leader training meeting. A report from Scott Beaver stated that the Talpa Club had elected their officers.

Ann Davis was appointed to give spots on KSTA with Cindy Beck and Vickie Skelton. Don Fitzpatrick, Ann Davis, Vickie Skelton, Cindy Beck, and Debra Sparks were appointed to decide whether or not to put displays in windows in Coleman. Plans were made for the Awards Banquet.

Everyone was then introduced to Mr. Rusty Jones, the new assistant county agent.

District Council meeting was announced to be October 1. Cindy Beck gave a summary of the present meeting. The recreation was led by the county agents. The meeting adjourned.

Don Fitzpatrick, reporter.



BOBBY MORGAN

Airman Bobby E. Morgan, son of Mr. and Mrs. Garland Morgan, has been selected for training at Sheppard AFB, Wichita Falls, as an Air Force communications wiring specialist.

The airman, a 1964 graduate of Santa Anna High School, recently completed basic training at Lackland AFB, San Antonio. He attended Palm Beach (Fla.) Junior College prior to enlistment in the air force.

## Peace Corps Worker To Speak at School

Miss Marianne Hernandez, a Peace Corps representative of Austin, will speak to the local high school student body today (Thursday), according to announcement this week. The event is being sponsored by the F.H.A. chapter.

Miss Hernandez recently returned from the Philippines where she was employed as a teacher.

## Happy Birthday . . .

SEPTEMBER 23  
Barbara Faye Lovelady  
Mrs. S. C. Carter

SEPTEMBER 24  
Roy Haynes  
Mrs. Delia Bradley  
Timmy Bengé

SEPTEMBER 25  
C. W. Rasberry  
Mrs. Clifford Stephenson  
Shirleya Minyard

SEPTEMBER 26  
Sandra Lewis  
Mrs. W. P. Aldridge  
Van Aldridge

SEPTEMBER 27  
Mrs. M. A. Richardson  
Darrell Wright  
Daymond Jackson  
Mrs. Ethel Harris

SEPTEMBER 28  
Mrs. Sam Moore  
Clifford Stephenson  
Mrs. M. L. Guthrie Jr.  
Dale Wayne Herring

SEPTEMBER 29  
J. W. Lewis  
Tommy McIntire  
Leta Pollock  
Clleta Pollock

Misses Allene Jones and Carol Oetting of Austin spent the week end with Mr. and Mrs. Ed Jones.



# State Capitol NEWS

Austin—Far-flung operations of the Texas Parks and Wildlife Department have been placed under new administrative leadership.

Commissioners have named J. R. (Bob) Singleton as executive director. He replaces J. Weldon Watson who resigned last June. Singleton had been serving as director of Region IV with headquarters in La Porte.

He picked Robert G. Mauermann, Regional V director at Rockport, as his chief deputy.

In his first press conference, Singleton said he is considering recommending a change in the Commission's controversial policy on shell dredging.

He did not disclose exactly what he has in mind but said any such proposal would be "in the field of broad policy." His own close observation of dredging operations, he added, have convinced him that the Commission's 1963 and 1964 orders permitting shell dredging up to 300 feet of live reefs under close department supervision result in "extremely insignificant" oyster kill.

This issue has been heatedly debated between dredgers on one hand and fishermen and conservationists on the other side since the old 1,500-foot-minimum-distance-from-reef policy was abolished.

A statewide tour of department facilities, particularly the parks, is planned by Singleton

in order to familiarize himself first-hand with problems and needs.

Singleton declined to express his views on "closed door" meetings of the three-member P-W Commission. However, he did say "The commission sets policy... My duty is to implement and carry out that policy."

### ATTORNEY-GENERAL RULES

Not only may a county cut its tax rate when the reason for the tax disappears, but, according to Attorney General Waggoner Carr, it must. He pointed to the law which prohibits the use of tax funds for any purpose other than for which it was levied.

Carr also held that, while a city may prohibit the sale of alcoholic beverages at any time, it may not prescribe a lesser penalty for such an offense than is provided by state law.

A district court has exclusive jurisdiction over all suits on behalf of the state and county for the collection of penalties on delinquent personal property taxes, although the county court may have the power to share jurisdiction in a suit against property for the actual taxes, Carr ruled.

### BIG BEND AIRPORT PLANNED

Federal money will be available for building an airport adjacent to Big Bend National Park for commercial and general aviation, confirms Charles Murphy, Texas Aeronautics Commission director.

Daniel Beard, National Park Service Southwest regional director, said \$450,000 is expected to be provided by the U. S. government.

Money will go to land acquisition, planning and designing and actual construction. T.A.C. will supervise the work, including awarding of contracts, Murphy said. State will have to pay the cost of constructing terminal facilities and auto parking accommodations, as well as airport operation.

Texas funds are not now

available and will require legislative appropriation or transfer from other source. Arizona's share of the Grand Canyon airport constructed under similar terms was about \$160,000.

### STUDY RESULTS

Attorney General Carr reports that a two-month study of Texas Highway Department records reveals no indication or evidence of price fixing among asphalt producers' sales to the state.

Carr's staff made the study at the request of DeWitt C. Greer, state highway engineer. Request followed the filing of lawsuits in other states alleging anti-trust violations by asphalt producers.

### PROGRAM HAS BOOST

Texas' marketing program got a big boost when John C. White, Commissioner of Agriculture, received more than \$45,000 in donated equipment to be used as traveling showcases.

These contributions from farm commodity groups, individuals and industry signaled a "new era in Texas agriculture, marketing and education," White said.

Gifts included two large trucks two power generators, two mobile trailers, exhibit materials and operational funds.

### SHORT SNORTS

Gov. John Connally approved Neighborhood Youth Corps projects for Canutillo Independent School District, El Paso; City of Snyder; and Advance, Inc., in San Antonio.

State will earn about \$2,000,000 more interest on its time deposits this year due to a one-half per cent increase, State Treasurer Jesse James estimates. James said interest collections under the 1 1/2% rate should be \$10,600,000, compared to \$3,700,000 for the fiscal year which ended August 31.

Texas' oil production allowable was boosted for October to 33.5 percent of potential. Raise was first in five months. October percentage allows maximum oil production of 3,154,384 barrels a day, compared to September allowable of 3,125,028 under a 33 per cent factor.

State Board of Health has withheld action on 80 requests for federal hospital construction funds until Congress appropriates money for distribution. Since only about \$17,500,000 in federal funds will be available for Texas, State Board will have to sift through all the applications to find the most pressing ones.

Auto inspection period for 1967 has officially opened, says Col. Homer Garrison, Jr., Department of Public Safety director. Inspections will continue at 5,500 official inspection stations through next April 15 when 5,500,000 Texas vehicles must display new green and white stickers.

## Vets Reminded Of Liability On Home Loans

Texas veterans who have received GI loans for the purchase of homes were reminded today that they remain personally liable on their note and mortgage when they sell their homes if the new buyer merely continues the payments on the GI loan.

Jack Coker, manager of the Veterans Administration Regional Office advised veterans that liability continues until the loan is paid in full or until veterans are personally released by the VA on the obligation.

"The VA has guaranteed and approved many home loans in the area under our jurisdiction," Coker said. "We have experienced cases where veterans have sold their properties and were led to believe they had no further responsibility for the mortgage debt."

He warned veterans who may be behind in their payments due on GI loans to be careful before agreeing to offers by strangers to make up their back payments if the veteran will sign contracts.

Coker said if such a proposition is made, veterans should ask the holder of their mortgage or the Loan Guaranty Division of the VA Regional Office for advice on the validity of the offer.

He stressed that the veteran remains personally liable for the payment of his GI loan if it is not paid by someone else. Even though the buyer takes over the mortgage and agrees to make the payments, until the VA provides a written release from liability, the veteran is held responsible.

The Veterans Administration's program to rehabilitate handicapped veterans makes it the nation's foremost pioneer in research and development of artificial limbs and other appliances.

## AS IT LOOKS FROM HERE...

Omar Burlison, M. C. 17th District, Texas

Washington, D. C.—The concentration of great power and authority in the Federal Government is an accomplished fact. For the past several years, the issue of Federal controls, particularly as it applies to our schools, has been an issue, but this is no longer the paramount question.

The question now is how much control is to be applied in the administration of the many Federal programs.

The one single legislative enactment which has granted the most power to Washington is not contained in any of the grant-in-aid programs and, in fact, in the case of Federal Aid to Education, certain sections of the Law disclaims the intent to control.

The key to the power of control is contained in Title VI of the 1964 Civil Rights Act. This Section authorizes the withholding of funds under all programs if the local authorities fail to comply with conditions laid down by the Federal Government. This section of the law becomes the silent partner to Federal grant-in-aid programs but has only been applied thus far to any considerable degree, to public education.

Title VI of the 1964 act gives broad powers to any Agency of the Federal Government which approves funds in support of state and local programs. Local administrators who fail to comply with directives called "guidelines" in the administration of such programs can have funds withheld or withdrawn. The authority is in the Law for Agency officials to actually exercise dictatorial powers not envisioned by many when the law was passed.

Direction and "guidelines" are issued from Washington purportedly for the purpose of assisting local officials in the drawing up of plans for compliance. It is a simple matter of saying to officials that they will follow directives issued by Washington officials as if they had the force and effect of law. The directives are not, in fact, spelled out in the law, but are derived from such phrases as "under such rules and regulations as may be formulated." This simply means that local officials must follow the rules and regulations to be able to secure Federal funds.

Guidelines have been issued to school officials as to what they must do if they are to receive funds, and unless they can comply, funds will be cut off.

There are signs that more stringent and exacting directives will be forthcoming in the not too distant future.

The Education and Labor Committee of the House of Representatives recently held a series of hearings which point to greater demands from Washington that certain things be changed to conform to the Federal view and contrary to local

custom and state law.

The hearings before the committee were presumably to investigate the extent to which textbooks and library materials used in public schools failed to accord proper reflection for minority groups. It is plain that the hearings began under the assumption that not enough emphasis and credit has been placed upon the contribution of various minority groups to our society. The real purpose was to conclude that ways should be devised to rewrite textbooks for public schools in such a way as to change meaning and impressions from those now being used.

This would seem to be a sort of reverse book-burning proposition. Apparently there is no real difference between burning books for what they contain, and burning books for what they do not contain.

There have been those in the past who have made great issue of eliminating books and literature because of their content, but nothing has yet been heard from these same people on eliminating texts which do not express a certain viewpoint.

If books can be banned for these reasons, they can be banned for other reasons. Textbooks can be changed because of the interpretation of history or because they teach an "outmoded" variety of economics, or because of the treatment of alien philosophy, such as Communism. Some in our intellectual community have been saying that we dwell too much on the bad aspects of these alien ideas and do not present a "balanced" picture for students.

Now that we have the many and varied programs of Federal Aid, we can only hope and insist that the planners here in Washington will apply reason, respect, and moderation to control of local affairs.

### TAX MAN SAM SEZ:

Preparing an income tax return is a very important job for any farmer. The Internal Revenue Service has a free publication that helps farmers solve their tax problems. This publication is called the "Farmers' Tax Guide" and is written in plain language that a farmer can understand. You may find it profitable to study this important publication. You can get the Farmers' Tax Guide from your county agent or from the local Internal Revenue Service office.

SPECIALS FOR SAT., SEPT. 24, ONLY

WINTER COATS ... 15% discount

Be Sure to Register

LADIES SHOP

## Every Bank Service

... for everyone

CHECKING Accounts, both regular and special, to meet your individual needs. Enjoy the greater convenience and safety of paying by check, starting now!

LOANS of all kinds: auto, personal, farm, home, business, home improvements, etc. All at low-cost, all on convenient terms.

MANY other services to smooth your way financially...

WE WILL GIVE AWAY A \$25 SAVINGS BOND AT THE DRAWING SATURDAY

YOUR FRIENDLY

Santa Anna National Bank

Member FDIC and Federal Reserve Bank Of Dallas



## Best Prices On Floor Coverings

Carpet - Linoleum We Also Do Carpet Cleaning

M. L. Marrs

Phone 625-5322

Coleman, Texas

## SAVE MORE ON LUMBER AND BUILDING SUPPLIES

SEE J. C. HALMON AT

COLEMAN VENETIAN BLIND HOME IMPROVEMENTS

715 South Concho

625-5320

## Scottie Stamps Low Food Prices

MAXWELL HOUSE COFFEE	1 lb. can	79c
LIGHT CRUST FLOUR	5 lb. box	52c
WOLF BRAND — 300 SIZE CAN TAMALES	2 for	59c
MOUNTAIN PASS — PEELED TOMATOES	303 can - 2 for	39c
ROSE DALE PEARS	No. 2 1/2 can	39c
SOUTHERN MAID TISSUE	10 rolls	69c
KRAFT OIL	quart	65c
KRAFT'S TASTY CHEESE SPREAD	2 lb. box	79c
HAMBURGER	1 lb.	39c
BEEF ROUND STEAK	lb.	89c
DECKER'S QUALITY FRANKS	1 lb. pkg.	59c
DECKER'S QUALITY BACON	1 lb. sliced	79c

REGISTER ONCE DAILY FOR FREE GIFT SEPT. 24TH

Double SCOTTIE STAMPS Every Wednesday, With Purchase of \$2.50 or More

Hosch Grocery

TIRES ARE ALWAYS A BARGAIN at RUDOLPH'S Coleman, Texas



## THE FAMILY LAWYER

No. 1 Man In Court

Not the scientist, not the sociologist, not the philosopher is the most-cited-expert in today's courtroom. Far more influential is a fictitious fellow known as the Reasonable Man.

Created by an English court more than a century ago, the Reasonable Man has become a basic yardstick for measuring right and wrong. To avoid being held negligent, you are expected to drive like the Reasonable Man, shave like the Reasonable Man, golf like the Reasonable Man, and drink like the Reasonable Man.

Then what sort of person is he?

In the purely physical sense, he looks very much like you. If you have only one leg, so does he. The law would expect you to cross the street as fast as a Reasonable One-Legged Man. In this way, when judging your conduct, the law makes fair allowance for personal handicaps which you simply cannot help.

But in the mental sense, the Reasonable Man generally resembles not you but the average man — which is quite a different matter:

Thus:

Suppose you are a person who is forever overlooking traffic signals or dropping lighted cigarette butts. You cannot expect other people to suffer, without complaint, the consequences of your absent-mindedness. For this is a handicap which, presumably, you can overcome if you really try.

So the Reasonable Man has the average degree of alertness to danger, the average degree of consideration for the safety of others. He also has, broadly speaking, an average memory, average bravery, average judgment, and an average amount of useful information in his head.

Thus the Reasonable Man knows (even if you, personally, do not) that hay will burn, that a wet floor is slippery, that worn tires may blow out, and that a loaded gun is dangerous.

In other words, the Reasonable Man is a composite — partly like you, partly like the average person. He has your built-in defects, but not your defects that could and should be corrected.

## FAIR WEATHER AHEAD! AND FUN FOR YOUNG AT FFA CHILDREN'S BARNYARD



All the animals will be there—and so will the youngsters who like to get a close-up look at all types of animals and their youngsters. Time and place will be the 1966 State Fair of Texas, Oct. 8-23 in Dallas, at the Future Farmers of America Children's Barnyard, located in the big red tent adjacent to the Livestock Coliseum.

### NEWS FROM

## RANGER PARK INN . . .

Ben Vinson visited during the week with his sister-in-law and husband, Mr. and Mrs. Floyd Reynolds.

D. H. Moore spent several hours with his mother, Mrs. Sam Moore, on Sunday.

Mr. and Mrs. Douglas Peavy visited her mother, Mrs. Sam Moore, last week.

Mrs. Henry Doss of Fort Worth visited with her parents, the George Simmons. Mrs. Doss also visited with Mrs. Eula Mitchell while in Santa Anna.

Mr. and Mrs. Pleas Ellis and Brenda Sue of Brownwood visited his mother, Mrs. Mattie Ellis.

But isn't that a pretty loose standard for deciding legal issues in the courtroom? True enough. Yet, experience has shown it to be a wise and workable compromise between the rights of the individual and the rights of society.

By using this compromise, the law itself has acted like the Reasonable Man.

Mrs. John Bray and Miss Ruby Harper visited a number of friends at the Inn last week.

Mrs. Mabel Fitzgerald, her daughter and Mary Jones visited Mrs. McCoy and Mrs. Lillie Archer.

Mrs. Hulda Johnson is in Santa Anna hospital. All wish her a speedy return to the Inn. Cecil Cannon of Midland came to see his uncle, Thomas Baird, and Mrs. Lillie Archer.

Mrs. Mildred Cammack and J. McCoy and Norma visited on Sunday with his mother and Mrs. Lillie Archer.

Miss Ann Stiles, a friend Mrs. F. Baker, of Amarillo visited several days with Ann's mother, Mrs. Ella Stiles. Mrs. Blanche Grantham and Mrs. Joe Baker also visited Ella.

Mrs. Lillie Brown, Mrs. Myrtle McDonald, and Mrs. Clara Kryder have returned to the Inn after several days in the hospital.

Mrs. Lula Harvey celebrated her birthday on Friday, Sept. 16, with a cake, candles and gifts. She also received many cards.

E. K. Wooster conducted the church services on Sunday afternoon.

Mrs. M. L. Guthrie Sr. visited friends at the Inn.

Mrs. Dovie Chapman visited her sister-in-law, Mrs. Sam Moore, and others.

Mrs. C. T. Burk of Brownwood has visited at the Inn.

Mr. and Mrs. Walter Dibrell of Coleman visited with Mrs. Dera Dibrell.

Visitors of Mrs. Lula Harvey last week were her children, Mrs. Mabel Burrage of Santa Anna, Mr. and Mrs. James Holcomb of Denver City, Mr. and Mrs. James Harvey, granddaughter Mrs. Elgean Harris and children, Mrs. Myrtle Smith, Mrs. Edd Jones, and Mrs. Tex Collins of Coleman.

Mrs. H. A. Burden visited her father-in-law Homer.

Mrs. Carl Buttry visited her mother, Mrs. Lee McMillan.

Mr. and Mrs. Cal Fuller Jr., and Bobby visited his parents, Cal Fuller Sr., and his mother, Mrs. Cal Fuller Sr. who is in Santa Anna Hospital.

Mrs. Blanche Boyd attended church at United Presbyterian Church on Sunday.

Mrs. Hattie Leach attended the Seventh-day Adventists Church services on Saturday.

Miss Leanna, Clea and Leta Pollock entertained a large group of the residents on Monday afternoon with piano solos, duets and trios. Leanna gave "The Ruste of Spring," Clea and Leta played "March Militia."

On Tuesday, Sept. 13, Earl Ray showed a film, "Hope."

Wednesday afternoon the Santa Anna Firemen's Auxiliary had a "sing-a-long."

Thursday, Sept. 15, Mr. and Mrs. Ford Barnes showed pictures of their travels, including Virginia, Colorado, Rio Grande Valley, Big Bend Country, and New Mexico.

On Friday, the 16th, the Sunshine Band came to sing, and Robert Wooster gave a sermonette.

On Sunday Elmer Wooster gave sermon on Romans 12.

On Tuesday, the 20th, Mrs. Morris and Jeff Coats conducted a sing-song.

On Wednesday, the Get-together Club will meet on the patio and play games and have refreshments.

Thursday, Mr. and Mrs. Merl Roller will show films on the Rose Festival in California.

Friday, the Sunshine Band will return and Sidney Wooster will have a seminar.

## MEDICARE

### QUESTIONS AND ANSWERS

Q. What is the limit on how many illnesses medicare will cover? I mean, will my medicare coverage be cancelled if I have to go to the hospital too often?

A. There is no limit on the number of spells of illness that will be covered under medicare, except for stays in a psychiatric or tuberculosis hospital. There is a lifetime limit of 190 days of hospitalization in a psychiatric or tuberculosis hospital.

Q. I've heard that the social security hospital program is really socialized medicine. Will I have to go to a doctor or hospital that the government picks for me?

A. No, you choose your own doctor just as you have always done. And if you require hospital care, the choice of a hospital will be a matter for you and your doctor to decide.

The law specifically guarantees freedom of choice to the patient and to the doctor. In addition, it contains a broad provision prohibiting Federal interference in the practice of medicine in carrying out the provisions of the social security hospital program.

The Federal Government won't be employing your doctor and it will not own or operate the hospital that treats you under the hospital insurance program. The only thing that is involved is paying the bills for the covered services you receive.

Q. I am 67 and didn't hear about medicare until just recently. Can I still sign up for medicare?

A. You are still eligible for hospital insurance and you should get in touch with your nearest social security office immediately. However, the deadline for the supplementary doctor bill insurance was May 31 for people 65 or over before March 1, 1966. Unless you can show good cause for missing the deadline, your next chance to sign up for the supplementary medical insurance is October 1, 1967. You will probably have to pay slightly higher than the \$3 monthly premium, too.

Q. I am in the hospital now and expect to go to a nursing home after I am discharged from here. If I am still in the nursing home on January 1 when medicare starts to pay for nursing home care, will my bill be paid?

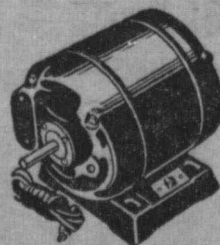
A. Only if you are transferred to the nursing home within 14 days of being discharged from the hospital after a stay of at least 3 days. The nursing home must also be certified for participation in medicare and you must be there for continued medical treatment, not just custodial care.

Q. What other types of services are covered under the medical insurance plan?

A. Diagnostic X-ray and laboratory tests, electrocardiograms, basal metabolism readings, electroencephalograms, and other diagnostic tests; X-ray, radium, and radioactive isotope therapy; Ambulance services where normal transportation would endanger health; Surgical dressings and splints, casts, and other devices for reduction of fractures and dislocations; rental of medical equipment such as iron lungs, oxygen tanks, and wheel chairs to be used in the patient's home; prosthetic devices, such as artificial legs, braces, and replacements for all or part of an internal body organ.

### SERVICE CALLS ANYWHERE - ANYTIME

Electric Motor  
Refrigeration  
Water Pump  
SERVICE



Prompt, Expert Service  
On All Your Electrical  
Needs. Give Us A Call.

**Bozeman**  
Electric Shop and  
Refrigeration  
Service

513 Park St.  
Coleman, Texas

Service Calls 625-4623  
Night: 625-4037 or 625-5144

## TODAY'S Meditation



THE WORLD'S MOST WIDELY USED DEVOTIONAL GUIDE

Read Hebrews 10:16-25

Jesus came to Nazareth, where he had been brought up, and went to the synagogue on the Sabbath day as he regularly did. (Luke 4:16, NEB)

Why do so many people attend church regularly? I believe it is to hear what God has to say to them. On entering the church, we breathe the word Father and listen to His voice.

Church attendance affords a special opportunity for us to thank God for His mercies, to ask for grace, and to gain help in fighting life's battles.

Charles H. Spurgeon, noted English Baptist preacher of the nineteenth century, once visited a man who had quit attending church. Nothing that was said persuaded him to resume attendance. Finally, Spurgeon took the tongs and lifted a live coal from the fire. The man sat in silence as they watched the coal lose its glow and become a black cinder. The man saw the point and promised to be back in his place in the church.

We should prize the blessing derived from fellowship with other believers in a church service.

PRAYER: O God, we welcome opportunities to worship in Thy house, for we know Thou art there. May a sense of Thy presence strengthen the faith and gladden the souls of our fellow worshippers and ourselves. In Jesus' name. Amen.

THOUGHT FOR THE DAY  
What are my main reasons for attending church?

Thomas Watson (Scotland)

In China, a dinner begins with the dessert course

## Santa Fe Offer Reduced Fare Rates

Reductions averaging about 20 per cent will be made in round-trip passenger fares by the Santa Fe Railway during the off-season September 15, 1966 through May 15, 1967.

Tickets sold under the bargain fares will be good on all trains every day of the week, and will be available between most points on the railroad. Such tickets will have a 30-day return limit. This marks the fourth consecutive season that Santa Fe has made bargain fares available.

Amelia Earhart was the first woman to address the graduating class of the U. S. Naval Academy.

### Expert Service

—WITH—

## PREMIER PRODUCTS

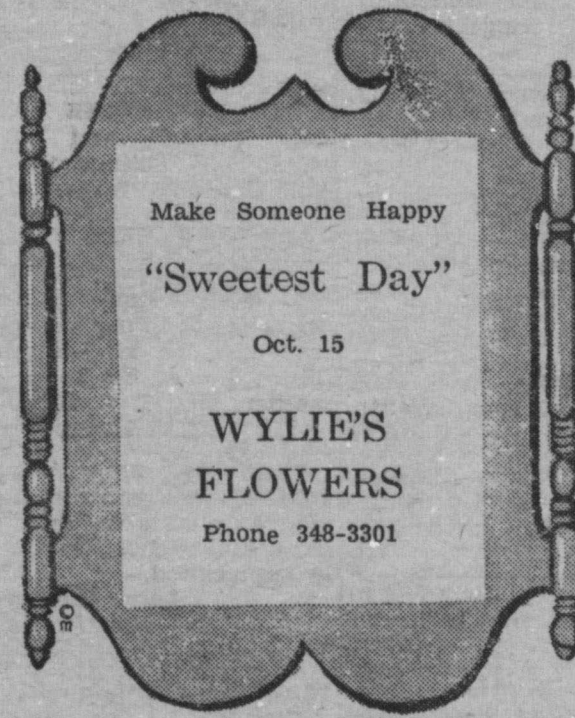
### Good Year Tires

We Appreciate Your Patronage

## MCCRARY

### Premier Station

We Give S.&H. Green Stamps



Make Someone Happy

"Sweetest Day"

Oct. 15

WYLIE'S  
FLOWERS

Phone 348-3301

VISIT US DURING OUR

# BIG BONANZA DAY

SIDEWALK SALE — SEPT. 24

SPECIALS SATURDAY ONLY

ASSORTED PLASTIC Dish Pans, Buckets, Waste Baskets and Laundry Baskets

Regular 98c for ..... **39c**

ASSORTED PYREX Loaf Pans, Casseroles, 1 Qt. Measure, 9 x 9 Cake Pan

& Utility Dishes ..... **88c**

3 PIECE SET COLORED PYREX MIXING BOWLS. REG. 2.98 ..... **1.49**

4 PIECE CANNISTER SET REG. 2.98 for ..... **1.95**

OBLONG LAUNDRY BASKETS REG. 1.95 for ..... **98c**

REGISTER DAILY FOR ELECTRIC PERCOLATOR To Be Given Away Saturday at 10:30 A. M.

## G & E Hardware

### SHOP AT

## White's Variety

for your everyday needs.

Register Daily for Drawing Saturday, September 24

By Vanity Fair



Designed with you in mind

Personalized fit, and fashion flattery in a slender lace lavished petti of laundry-loving nylon tricot. You won't believe how pretty you look, how feminine you feel... Just try it and see. Sizes XS, S, M, L in Short and Average \$6. Also in Petite sizes

## GRAMMER'S



**THE SANTA ANNA NEWS**

Established January 1, 1886

Business Address Telephone  
607 Wallis Ave.—Box 337 348-3545  
Santa Anna, Texas 76878

PUBLISHED EVERY THURSDAY AT SANTA ANNA,  
COLEMAN COUNTY, TEXAS 76878

SEPTEMBER 22, 1966

**—STAFF—**

John C. Gregg ..... Publisher-Manager  
Clyde Bunnell ..... Editor-Mechanical  
Billie J. Gregg ..... Advertising  
Grady H. Steen ..... Mechanical

**SUBSCRIPTION RATES**

One Year in Coleman County	\$3.00
One Year in Texas (Outside Coleman County)	\$5.00
One Year Outside State of Texas	\$7.00
One Year Outside United States	\$10.00
Service Personnel Anywhere, Per Year	\$3.00
Single Copies	10 cents

The publisher is not responsible for copy omissions or typographical errors that may occur, further than to correct them in the next issue. All advertising orders are accepted on this basis only.

**NOTICE TO THE PUBLIC:** Any erroneous reflection upon the character, standing or reputation of any person or firm appearing in these columns will be gladly and promptly corrected upon calling the attention of the editor or publisher to the article in question.

Second Class Postage Paid at Santa Anna, Texas

DISPLAY ADVERTISING RATES ON REQUEST

**CLASSIFIED ADVERTISING**

**CLASSIFIED ADVERTISING RATES**

First Insertion — Per Word	4c
Each Additional Insertion — Per Word	2c
<b>MINIMUM CHARGE — 50c PER WEEK</b>	
<b>COPY DEADLINE — 10:00 A. M. WEDNESDAYS</b>	

**FOR SALE OR TRADE**

**FOR SALE:** Good Quality Used Cars at a Fair Price. Mark Coleman Auto Sales, 702 N. Fisk, Brownwood, Tex. Marcel Coleman, owner. (tfc-31)

**FOR SALE:** Good Frigidaire with deep freeze compartment. See Kate Holmes, South 5th. 1tp

**FOR SALE:** 2 bedroom house, new carpet throughout. 124 Roselawn, Coleman, Texas. tfc37

**FOR SALE:** Arkwin Oats, best for grazing and combining. \$1.00 bu. C. E. Kingsbery. 35tfc

**FOR SALE:** Chevrolet Pick-up, 4-speed transmission, good condition. \$80.00. Jerry Clark 1tc

**FOR SALE:** Good used refrigerators, automatic washers, wringer washers, clothes dryers and gas cook stoves. Terms to suit YOU. Geo. D. Rhone Co., Coleman, Texas. 48tfc

**FOR SALE or lease:** Brick bldg. 107 West 8th, Coleman, Texas. tfc37

**FOR SALE:** A Noblet Clarinet, repadded and in good condition. Bobbie Niell, phone 348-3511. 1tp

**FOR SALE:** Several used TVs in good condition. Geo. D. Rhone Co., Coleman, Texas. 48tfc

**GARAGE SALE**

Friday - Saturday, Sept. 23-24 C. D. Bruce Home  
Toys, books, games, household goods, furniture, clothes, antiques, miscellaneous items. 1p

**FOR SALE:** Five room house to be moved. I. V. Sewell, Talpa, Texas. 37-40p

**WE BUY and sell used furniture.** 602 South Houston. Phone 348-3802. 24tfc

**FOR SALE:** 10 acres, near school; 100 acres, 95 cultivation, best of land; 130 acres, 1/2 cultivation; 35 acres with big rock house, big tank, close in. Small down payment, good terms on balance. M. L. (Rat) Guthrie, Phone 348-3391, Box 354, Santa Anna. 26tfc

**FOR SALE:** Taggart and Cimarron oats. Ben Wilson, Coleman, Texas. Phone 625-2572. (tfc-35)

**LOST AND FOUND**

**LOST or Strayed:** Red cow with white face and calf. Brand M on left hip. or —M on right hip. Luther McCrary. 36-39c

**MISCELLANEOUS**

**FOR RENT:** Furnished apartment. See Byrd Arnold. 37-38p

**APPLICATIONS**

are being taken for Hospital Kitchen and Housekeeping Department.

Either men or women.  
Apply at

**SANTA ANNA HOSPITAL**

**Regular Medical Check-ups Advised For Teenagers**

The forgotten years in the medical profession might well be the teen years, says Mrs. Patsy R. Yates, Extension family life specialist at Texas A&M University.

Pediatricians care for the child until he or she is 10 or 12. Specialists in various diseases or in fields such as gynecology, geriatrics and surgery take over when the person becomes an adult.

Does this mean the teenager doesn't need medical attention? Quite the contrary, says Mrs. Yates.

The adolescent period of life is one of rapid growth spurts, both physically and emotionally. The teenager is torn between feelings he had as a child, and these feelings now expected of him as he takes his place in the adult world. It is often a period in which malnutrition causes problems such as anemia, sight difficulties, acne, and emotional depression. These problems often have led to teen suicides, the fourth leading cause of teenage deaths in this country.

It is too easy for parents to pass off irritable, moody behavior or complaints about ill health as a stage or "just a period he's going through." Maybe it is, but a friendly competent family physician is one of the people every teenager should know well. He is often an emotional outlet as he plays his role of teen confidant.

Frequent physical check-ups can reassure both the young person and the parents that all is well. It may also point up the cause of emotional or psychological problems. Good health is vital to a happy, successful adjustment to any stage of life. It could be all important to your youngster.

**Non-stick Finishes In Cookware Need Gentle Treatment**

Nonstick finishes being applied to every type of cookware available have revolutionized cooking today.

So says Mrs. Wanda Meyer, Extension home management specialist at Texas A&M University.

Mrs. Meyer points out a few facts, based on recent research, about the nonstick finishes.

The new nonstick finishes are safe to use. The U.S. Food and Drug Administration says that the nonstick finishes are safe for food and conventional kitchen use.

Nonstick finishes require gentle treatment. They are made of material softer than the surface to which they are applied and are highly susceptible to scratching. Foods should never be cut with a metal knife in a nonstick coated utensil. Use tools of nylon, rubber, plastic or epoxy-coated when stirring food in a nonstick coated utensil. You may get some scratches, and if they bother you, colorless repair products are available.

The nonstick finishes are easy to clean, but this has been over-emphasized. A swish and a rinse is not enough for cleaning — it takes hot suds and scrubbing to get rid of grease. If cleaning isn't thorough, you'll get a buildup of greasy film. This affects nonstick qualities and leads to discoloration of all colors except very dark ones. The nonstick coated utensils can be put in the dishwasher, but never use steel wool, metal pads or cleansers because they damage the finish.

Then a little work with a hand axe will prepare an excellent fish cleaning surface.

Just cut two notches about two inches deep and 18 inches apart, in the side of the log, or the top of the stump. Chop out the wood between the notches, the wood between the notches, and you have a table that's renewable.

Then when the day's job is done, whittle away the stained, bloody surface, and you'll have a new surface for next day's cleaning.

**Hedging Against Winter Oat Kill Urged By Expert**

It's a smart move for farmers to hedge against winter killing of oats planted for temporary grazing, according to M. J. Norris, agronomist at Texas A&M University's Livestock and Forage Research Center at McGregor.

Oats are the most popular small grain for winter temporary pastures but they have the disadvantage of not being very winter hardy, says Norris. When grazed to maturity, they are more palatable than any of the small grains.

One way to hedge against winter killing, says Norris, is to sow part of winter pastures to the more winter hardy varieties of small grains: wheat, barley or rye. Another way is to plant a mixture of oats and wheat, or oats and barley, rye or ryegrass.

Norris says to plant oats early in the fall for plenty of early grazing. From early September to the middle of October is best. If armyworms become a problem he advises an application of Sevth at 1 pound active ingredient per acre.

He recommends a seeding rate of 90 to 100 pounds of oats per acre to get plenty of early grazing. And begin grazing the oats when they are 6-8 inches high.

He says grazing results at the A&M McGregor field station indicate 2 to 3 acres of oats are needed per animal for feed during the winter and 1 to 2 acres in the spring.

There's no forage growth below 40 to 45 degrees F., he says, so have a surplus of forage by about January 1 to carry cattle through until the oats begin growing again.

Medical research at Veterans Administration hospitals has developed useful surgical techniques involving low temperatures of minus 170 degrees Fahrenheit in surgery, to the intense heat of the laser beam used in the controlled removal or destruction of infected tissues.

**"RED" TAPE SLOWS ARRIVAL OF MAGAZINE IN MOSCOW**

Relations between the Soviet State of Texas and the USSR are not about to be disturbed. But that fellow in Moscow paying for a subscription for Texas Parks & Wildlife Department magazine is slightly unhappy.

Through the proper periodical channels, he has advised that the magazine has been arriving late. The New York City export subscription agency passed along the "observation."

The other 52,304 subscribers to the magazine, many of them in foreign areas, have not been heard from.

For eleven cents postage, prepaid, plus the home front news, the global reception elsewhere might be happier. The Department noted, however, there may be some RED tape involved.

**EAGER BEAVER, NO DOUBT!**

A Texas highway patrolman stopped a car on a routine check in Anderson county, near Tyler. Game warden supervisor Charles Burnette, of the Texas Parks & Wildlife Department, reported the patrolman quickly turned the suspect over to the local game warden.

The man had two dressed deer, plus three squirrels and 15 doves.

The suspect also had a pistol and a sawed-off shotgun.

He went to jail under \$2,500 bond on the game cases.

**Fast Efficient Service**

Joe K. Cervenka  
Electric  
111 Commercial - 625-4212  
Coleman, Texas

**QUICK**

Pest Control  
Bruce Cleveland  
BROWNWOOD, TEXAS  
P. O. BOX 115  
PHONE 645-9049

**CLEANING SURFACES —**

Sometimes flat surfaces on which to clean fish are hard to come by. Cutting boards do fine, but in lieu of such a convenience, go out and find a downed log or stump.

**SPECIAL NOTICES**

**NOTICE**  
BEAT BANGS  
Joe's Pharmacy

**WHEN YOU THINK** of grinding, mixing and pelleting think of Hollingsworth Feed Mill, Coleman, Texas. 50tfc

**CARD OF THANKS**

We wish to express our sincere appreciation to our many friends who were so kind during the illness and at the death of our mother, Mrs. T. L. Huggins.  
The Huggins Family

Your kindness with gifts of food, flowers, cards and letters of good wishes during my stay in an Abilene hospital are greatly appreciated.  
Leroy Stockard III and family

**Former Rockwood Resident Dies**

Graveside services for Mrs. W. C. Stobaugh of Lorenzo were held at 4 p.m. Monday, Sept. 12, at Coleman Cemetery with Stevens Funeral Home in charge of rites.

She passed away at 3:00 a.m. Sunday in Lubbock, with funeral services being conducted in Lorenzo at 10:00 a.m. Monday.

Mrs. Stobaugh, born Sept. 26, 1879, in Missouri, was a former resident of Rockwood. She was a sister of Mrs. Eules Maness of Brownwood.

**India To Get 350 Tons of Fertilizer**

Church World Service has just shipped three hundred and fifty (350) tons of fertilizer from the port of Galveston destined for India to help that country's struggle against starvation, according to Norman A. Sundwall, Texas Field Representative for CWS.

CROP, the community resources program of Church World Service, will be providing approximately one-fourth of the cost of this shipment and an additional fifteen hundred (1500) tons to follow in about thirty days. The balance is being provided by other resources of Church World Service, the Protestant relief agency of twenty-four denominations in the U.S.

**USING SOFT BAIT —**

Surf, salt water, and even fresh water fishermen often find it difficult to keep soft bait such as shrimp, liver, crab, etc., from coming off the hook.

Get rid of this worry by tying such bait to the hook with a thread.

Carry a spool of strong thread in your pocket, then, if rushing water tends to wash away your offering, you have the remedy at hand.

**Our food buys are big**

Center Cut <b>Pork Chops lb. .69</b>	Gooch <b>BOLOGNA lb. .29</b>
<b>DECKER'S FRANKS 12 OZ. PKG. .49</b>	
Armour Columbia <b>BACON lb. .59</b>	Choice Round <b>STEAK lb. .69</b>
<b>Hungry Jack Pancake Mix 2 lb. pkg. .49</b>	
Maxwell House <b>COFFEE 1 LB. .79</b>	Maxwell House <b>COFFEE 2 LBS. 1.49</b>
<b>CLOROX - - - 1/2 GALLON .35</b>	

**BIG 10 O'CLOCK DRAWING ON SAT. MORNING, SEPT. 24**

FRESH BARBECUE DAILY

**WE GIVE FRONTIER TRADING STAMPS**

**Harvey's Grocery**

MEMBER INDEPENDENT GROCERS, INC. PHONE F18-3632



# Social Activities

## Mrs. Jack McSwane Leads WSCS Meeting

Mrs. Jack McSwane directed the program, "Mission to Six Continents," at the Woman's Society of Christian Service meeting Monday at the Rockwood Methodist Church.

Mrs. Lester Bryan was at the piano for a group singing.

A social was planned for Monday, Sept. 26, at 2:30 p.m. in the Community Center, with Mrs. Jack McSwane and Mrs. John Hunter serving as hostesses. Each one attending is asked to bring a gift for exchange.

Participating in the program were Mrs. A. L. Crutcher, Miss Hicks Whitfield, Mrs. John Hunter, Mrs. Aubrey McSwain, Miss Bernice Johnson, Mrs. W. D. Whittenberg and Mrs. Lester Bryan and Paul.

## Grammond-Stearns Marriage Told

Miss Dorothy Monyene Grammond and Sherman C. Stearns were united in marriage in a double ring ceremony, performed September 14 in Weatherford, Texas.

Parents of the bride, Mr. and Mrs. Frank Grammond, reside in Lexington, Kentucky. The groom's parents, Mr. and Mrs. G. K. Stearns, reside in the Trickham Community, south of Santa Anna.

The newly-weds are students at Texas Christian University in Fort Worth, where she is a Home Economics major and a

member of the Phi Beta, honorary home economics society. The groom is a government-journalism major. He is an officer in the Army Reserve Training Corps, a member of Phi-Sigma Alpha government fraternity, and Sigma Delta Chi journalism fraternity.

The bride is a graduate of Bossier City High School, and the groom is a graduate of Santa Anna High School.

## Delta Omicron Sorority Meets

First meeting of the Delta Omicron Sorority was held at 7:00 p.m. Monday, Sept. 12, in the City Library Building with Mrs. Billie Guthrie, president, in charge.

During the business session, plans for the year were outlined and rush parties scheduled. The model meeting was announced and the group voted to assist the West Texas Rehabilitation Center in Abilene as their philanthropic project for this year.

Sandwiches, cookies, mints, coffee and cokes were served to nine members by Mrs. Guthrie and Mrs. Gail Allen.

## WSCS Members Begin New Study

The Woman's Society of Christian Service of the First Methodist Church began a new study Monday afternoon, Sept. 19. The study, "Christian Being and Doing," based on James and I Peter, is being taught by Mrs. Hardy Blue.

The devotion was given by Mrs. Dale Smith, and all members present participated in a quiz knowledge of the Bible.

The program was under the direction of Mrs. Tom Hays, Mrs. Bobby Weathers and Mrs. O. A. Ethridge.

Other members present were Mrs. Rex Golston, Mrs. John Bray, Mrs. Ora Hunter, Mrs. Connie Ladd, Mrs. Jack Mobley, Mrs. Dale Smith, Miss Ruby Harper, Miss Xuma Myers, Mrs. Joe Baker, Mrs. Carol Kingsbery, Mrs. O. L. Cheaney, Mrs. Jessie Upchurch, Mrs. W. B. Griffin, Mrs. Arch Hull and Mrs. Maud Harris.

## Sherman Heilmans Attend Reunion

Mr. and Mrs. Sherman Heilmann of Rockwood met with their children, relatives and friends for a family reunion at the Replica Building in the Coleman City Park Sunday.

Attending the affair were Mr. and Mrs. Cecil Harnes and Gaye of Lamesa, Mr. and Mrs. Sonny Heilmann, Susie and Jimmie of Eureka, Mont., Mr. and Mrs. Hilary Rutherford, Rocky and Dena, Mr. and Mrs. John Fulbright and D. L. of Coleman, Mr. and Mrs. Denny Harnes of Lubbock, Mrs. Joe Langhennig, Elicia and Denise of Lamesa, Mr. and Mrs. Denver Ellis of

Austin, Mr. and Mrs. Ercell Ellis of Cross Plains, Mr. and Mrs. Ed Farris and Mr. and Mrs. A. J. Farris, Sandra and Dennis, and Mrs. Bob Johnson of Coleman. Visitors were Johnny and Joe Harris of Tulla.

The Fulbrights son, J. W., who has been on a tour of overseas duty, will be home this week, and D. L. will leave October 4 for basic training in the army.

## Self Culture Club Opens Activity With Brunch

The Self Culture Club opened the club year with a brunch Friday morning in the home of Mrs. Hardy Blue. Mrs. W. B. Sparkman president at the business session, and programs for the year were announced. Mrs. 3. S. Winger was voted into the club as a new member. Mrs. C. L. Eeds was presented as "Woman of the Year."

Assisting Mrs. Blue in serving refreshments of coffee, pastries, and fruits was her daughter, Mrs. Oran Henderson of Snyder.

Others attending were Mes. Roy Stockard, W. F. Barnes, J. L. Harris, J. F. Goen, Preston Bailey, J. C. Matthews, Tom Kingsbery, Norval Wylie and Miss Mary McCorkle.

## Hospital News

### ADMISSIONS:

Sept. 11 through Sept. 17 Mrs. Cora Lewis, Coleman Wm. Harvey McIntire, Rockwood

Mrs. Myrtle McDonald, City Lemuel White, Bangs Mrs. Ramon Cervantes, San Angelo

Elijah Fenton, Coleman Mrs. Bertha Grisham, Coleman

Mrs. J. D. Estes, Rockwood Mrs. Phillip Schulle, City Mrs. Maria Escobar, Ballinger

Elgin Talley, City Mrs. Ada Deakins, City Mrs. Laura Fuller, City Mrs. Annie Knox, City

Mrs. Lige Fenton, Coleman Claud Alvey, City Mrs. Zemer Griffin, Coleman Mrs. Clara E. Haywood, Melvin

Mrs. Wilhemina Faught, Merton Henry O. Newman, City Mrs. Hulda Johnson, City Mrs. J. P. Dean, Coleman

George Garrett, Stacy

**DISMISSALS:** Mrs. T. L. Huggins (deceased) City Harvey C. Mathews, Bangs Mrs. O. A. Flynn, Bangs Mrs. Garfield Fennell, Lampasas

Mrs. Ernest Eldred, Coleman Joe O. Beal, Coleman Mrs. Lige Brisby, Coleman Mrs. Alma Cannon, City Ezra Beal, Coleman

Mrs. W. F. Fenton, Gouldsbush Raymond Machen, Gouldsbush Bud Thomas, City Wm. A. Sutherland, May Mrs. Joseph Foley, Jacksonville, Fla.

Mrs. Cora Lewis, Coleman Wm. Harvey McIntire, Rockwood

L. H. White, Bangs Mrs. Ramon Cervantes, San Angelo

Mrs. J. D. Estes, Rockwood E. F. Talley, City Mrs. Wilhemina Faught, (deceased), Merton Henry O. Newman, City

## Parks Boom Now Pushing \$5,000,000

State parks improvements, including those begun during the state fiscal year ending August 31 and those begun or committed during the calendar year ending December 31, will approximate \$4,250,000.

Will Odom, chairman of the Texas Parks and Wildlife Commission, said the "catch-up program" is just beginning. He added that the Commission's efforts to provide long needed outdoor recreational facilities had been accelerated by Federal grants expected to total \$3,000,000 for both state and local projects by December 31.

Bulwark of the broad recreational improvement movement are the combined state and federally financed park undertakings.

## GULF RYEGRASS FOR WINTER PASTURE

This grass makes a top-notch winter pasture, providing grazing during the lean months of winter and early spring. It will grow in the same area of the state where common ryegrass grows and is more rust resistant, says Al Novosad, Texas A&M Extension pasture specialist.

It should be planted between September 15 and 30 at the rate of 5 to 10 pounds of seed per acre on a well-prepared seedbed. The grass can utilize large amounts of potash and phosphorus.

Attend church regularly.

## "YOUNG IS A FEELING!" FASHION SHOWS SET FOR 1966 STATE FAIR OF TEXAS IN DALLAS



Exposition of Young America will be theme of the 1966 State Fair of Texas Oct. 8-23 in Dallas, with "Young Is A Feeling!" carrying out the idea in the popular free fashion shows daily in the Women's Department. Left, Phil-Mode's Sir James Coats foretell a bright fashion future in a petit version of the fur-collared plaid for busy juniors. Center, Justin McCarty does a mandarin collared knit in flashing shades of rust and olive. The brilliant rust is used again in the tall cloche by Asbury Millinery Co., and a real emerald centers the pin from Zales. At right, Donovan-Galvani's pale lettuce knit is done with a slim skirt and diagonal swirls across the overblouse bodice. The Carnaby cap is a paisley print in lettuce, ice blue and violine.

## THDA Meeting In Corpus Christi

Between 800 and 1,000 members of the Texas Home Demonstration Association, state homemakers' organization, are expected to take part in the association's 40th annual meeting in Corpus Christi, Sept. 21-22, says Mrs. C. R. Berkley of Odessa, president.

Ben Barnes, Texas' Speaker of the House of Representatives, will address the opening convention session.

A special recognition ceremony is planned for 40-year club members, Mrs. Berkley says. Officers of the 36,000-member homemaker organization also will be named.

Mrs. Maynard Gaines of Coleman is vice president and public relations director of the state organization.

## Medicare, Social Security Claims Need Early Filing

"Filing social security claims promptly has never been more important than it is now," R. R. Tuley, Jr., District manager of social security in Abilene, said today.

"While benefit claims may be retroactive for a year or more, the enrollment period for medical insurance is greatly restricted," he said. "Protection under the 'doctor bill' part of medicare can start on the first day of the month you attain age 65 only if you apply for it in one of the three months before the month you reach 65."

"This restriction, incidentally, does not apply to hospital insurance; it applies only to medical insurance," he added.

The first enrollment period set by law covers seven months: the three months immediately before the month of attaining age 65, that month, and the three months immediately thereafter. However, if the application is filed in the month of attainment or later, the effective date is postponed one to three months.

If application for medical insurance is not filed during the first enrollment period, protection cannot be obtained until the next general enrollment period, which will be the last three months of odd-numbered years. Premiums for these delayed enrollments will be higher, and coverage is not effective until July 1 of the following year.

Even though the applicant is still working, a claim for hospital and medical insurance can be approved whether or not any retirement benefits can be paid. Moreover, with the increase in allowable earnings, many applicants will receive some cash benefits as soon as a claim is filed.

Information and help in preparing the necessary application forms may be had from the social security office at Room 2321 Federal Building, Abilene, or check the schedule of visits posted at your post office to see when a representative will be near you.

Winston Churchill, the American author, was born three years before the English statesman.

## HERRING JEWELER

SELECTED DIAMONDS REASONABLY PRICED 209 Commercial — Coleman

## O.E.S. Honors 50-Year Member

Mrs. Tena (Taylor) Wheeler was honored at a meeting of the Santa Anna Chapter Order of the Eastern Star Monday night, Sept. 19.

Mrs. Wheeler, a 50-year member, was presented a 50 year emblematic pin from the chapter and a 50 year certificate from the Grand Chapter of Texas. The presentation was made by Mrs. Blanche Grantham.

Following the business session the program committee of Mrs. Montie Guthrie Jr. and Mrs. Murray Cooper presented a "Friendship" program, with Mrs. Roy West, Mrs. Pat Walton, Mrs. Henry Newman, Mrs. Frances Green and Mrs. H. W. Gray assisting. All wore their respective star point colors.

A social hour was held in fellowship hall with Mr. and Mrs. Jack Bostick and Mrs. Murray Cooper serving homemade ice cream, cake, nuts and mints.

The hall was decorated with an arrangement of gladioli,

candles, red roses and autumn flowers in shades of yellow to deep brown. The table was laid with a white cutwork cloth and centered with an arrangement of fall colors.

During the social hour Mrs. Wheeler was presented with a cake decorated with a large sugar-spun emblematic star in the center. The cake was baked and decorated by Mrs. Grantham.

"Mahatma" means "great souled."

Benito Mussolini played the violin for relaxation.

## VOLUME SELLING

3-pc. Bedroom Suite With box springs and mattress. Regular \$259.85  
**Special \$149.95**  
Coleman Furniture  
313 Commercial  
Coleman, Texas

## Week-end Specials

MARYLAND CLUB		
COFFEE	lb.	79c
DECKER'S QUALITY		
BACON	lb.	79c
DECKER'S ALL MEAT		
FRANKS	12 oz. pkg.	49c
GANDY'S		
FROZAN	3 1/2 gals.	1.00
WHITE		
KARO SYRUP	pt.	33c
6 OZ. LOUISIANA		
HOT SAUCE	2 bottles	15c
SUPREME & NABISCO		
CRACKERS	lb. box	35c
RUSSET POTATOES	10 lbs.	49c
REGULAR 98c		
Vicks Formula 44	now	69c
FRESH		
WHITE EGGS	doz.	49c
California Nuts	3 lb.	1.00

New Mexico Delicious & Johnathan Apples  
New Seeds Have Arrived

## Williams Food Store

MEDIUM FIRM famous for that "WAKE UP AND SING" feeling

Nationally Advertised MORNING GLORY "CHAMPION"



Restful sleep on the Champion Dream Team restores energy—makes you feel better, look better, enjoy life more.

Only \$59.50 \$1 Down Twin or full size. Matching box spring, same price.

HOSCH

Furniture Co.

We Give and Redeem SCOTTIE STAMPS

Weah McCulloch, Sec.-Treas. Bettie McCulloch, Mgr.

Standard Abstract Co.

City & County Maps For Sale 405 Bank Bldg. Coleman

# BIG BONANZA DAY

Saturday, September 24

OUR FREE GIFT WILL BE

2500 Scottie Stamps

Be Sure To Register Daily

WE ARE PRESCRIPTION SPECIALISTS

JOE'S PHARMACY



### Shield News

By Mrs. E. S. Jones

On account of the barbecue for members and families of the Co-Op Gin at Santa Anna Saturday evening, Sept. 17, the monthly supper was postponed and will be held at the Community Center Saturday - 24th. Everyone is invited to attend.

Mr. and Mrs. Bill Johnson of Ft. Worth spent Saturday night with Mr. Dan Wheatley, and visited Sunday with Mrs. Ura Dillingham. Other visitors were Mr. and Mrs. Riley McFarlin and Mr. and Mrs. Geo. Wheatley and boys.

Mr. and Mrs. Floyd Shelton Mike and Randy of Abilene visited Sunday with Mr. and Mrs. Edgar Shelton.

Matt McIntire of the Seminary in Fort Worth preached Sunday at the Baptist Church and was dinner guest of Mrs. E. S. Jones. In the afternoon they visited Matt's parents, Mr. and Mrs. Bill McIntire at Rock-

wood. Mrs. W. A. Williamson of San Antonio spent Sunday night with Mr. and Mrs. McFarlin. A-3c Larry Fowler has finished his basic training at Lackland AFB, San Antonio, and has been transferred to Keesler Field, Biloxi, Miss., for training in aircraft electronics.

Glenn Scarborough was in an Abilene hospital from Tuesday to Saturday for treatment of an infection. He is improving.

Tuesday Mr. and Mrs. Otis Bivins attended the funeral of Mike Shamblin, son of Mr. and Mrs. Dale Shamblin, at Lubbock, Mike, age 18, was killed in a car wreck.

Mrs. Larry Fowler of Ft. Worth and Mr. and Mrs. John McClelland of San Antonio visited during the week end with Mr. and Mrs. Bert Fowler.

Mrs. Booker Watson of Coleman, Mrs. Owens of Fisk and Mrs. Dillingham visited Wednesday afternoon with Mrs. E. S. Jones.

### Trickham News

By Mrs. J. E. York

Mrs. Oscar Boenicke returned home on Tuesday from San Angelo where she had undergone surgery at the Shannon Hospital, and reports she is feeling fine. Recent visitors with Mr. and Mrs. Boenicke have been Mr. and Mrs. Floyd Eoff of Blanket, Mr. and Mrs. Carl Harris, Mr. Bernice McIver, Mr. and Mrs. Grady McIver, Mrs. Lor Vaughn, Mr. and Mrs. Marvin Whitley, Mrs. Bond Featherston, Mr. A. J. Martin, Mrs. Russle James and Rev. Bob Brandt.

Mr. and Mrs. Howard Cravens of San Marcos and Mr. and Mrs. Earl Lindley of Menard visited last week with Mr. and Mrs. Bond Featherston.

Mr. and Mrs. Marvin Whitley were Sunday dinner guests of Mr. and Mrs. J. Y. Seward in Brownwood.

Miss Martha Watson of Coleman was a Sunday dinner guest of Mr. and Mrs. Jack Dockery and John Wesley.

Mr. and Mrs. Fred Haynes re-

### 1966 STATE FAIR FASHION SHOWS DISPLAY MINI-SPLENDORED LOOK



Tedda Togs' silver lame military suit, combining a modified mini-skirt and shoulder epaulettes, will fit right in with the theme of the daily free fashion shows in the Women's Department at the 1966 State Fair of Texas Oct. 8-23 in Dallas. At the right, Lorch's three-piece "vested" interest alaskine costume done in milk and honey tones also fits the theme—"Young Is a Feeling." The military cap is in a celery shade with a deep honey band, by Asbury Millinery Co.

turned home on Thursday after spending five days with their son and family, Mr. and Mrs. Jerry Haynes and children in Farmington, New Mex. Mr. and Mrs. Haynes were getting acquainted with a new little granddaughter. The baby has been named Marylene Michele.

Mr. and Mrs. Bill Vaughn attended funeral services of Mrs. Tom (Myrtle) Guthrie of Abilene at Brownwood Friday afternoon. Mrs. Guthrie's husband and Mr. Vaughn were first cousins. The Guthries were former residents of this community.

Mr. and Mrs. Terry McIver and friends, Mr. and Mrs. Tim Markham, students at McMurry College in Abilene, visited Sunday afternoon with Mr. and Mrs. Grady McIver.

Mr. and Mrs. H. B. Dockery of Brownwood and Mr. and Mrs. John Haynes visited Sunday afternoon with Mr. and Mrs. Fred Haynes.

Mr. and Mrs. Roy Miller of Coleman and Mr. and Mrs. Grady McIver were Sunday dinner guests of Mr. Rankin McIver and Sherrie.

### Rockwood News

By Mrs. John C. Hunter

The sixth annual Homecoming for the Rockwood Community will be held Sunday, October 9. All former residents and friends are invited to attend church services, followed by registration and basket lunch at the Community Center. Meat and drinks will be furnished.

Mrs. Drury Estes was dismissed from the Santa Anna Hospital Friday. Mr. and Mrs. Clinton Estes of Houston and Mrs. Robert L. Estes of McGregor spent the week end in the Estes home.

Mrs. M. D. Bryan visited Tuesday to Friday with Mr. and Mrs. Joey Bryan and children in Abilene. They brought her home and visited to Sunday.

Mr. and Mrs. Johnnie Steward visited Friday to Sunday with Mr. and Mrs. Olin Horton, Johnnie Wayne and Denise at Andrews. Grandson, Johnnie Wayne suffered a broken leg in a football game Thursday night.

Mrs. Bill Rehm, Mr. Buttry and Mrs. John Hunter enjoyed a fish fry Sunday evening with Mr. and Mrs. Carl Buttry.

Mrs. Bob Steward was dismissed from the Brady hospital Saturday. Daughters, Mrs. Ted McCarthey of Dallas, and Mrs. Ray Caldwell, are with her.

Mrs. A. L. King visited Sunday with Mrs. A. L. Crutcher and Miss Hicks Whitfield.

Lightning struck the Lester Bryan home Saturday night, burning out some electrical appliances. Mrs. Bryan received treatment for shock.

Claud Box is a patient in the Memorial Hospital in Brownwood, having received eye surgery last Thursday.

The Woman's Society of Christian Service will hold a social meeting Monday, Sept. 26, at the Community Center. Mrs. Jack McSwane and Mrs. John Hunter will host the social.

Cadets Juan and Fernando Martinez of Monterrey, Mex., and Jerry C. Halmon, students in San Marcos Academy in San Marcos, accompanied by Leroy Casey, who is employed in Crystal City, visited Saturday afternoon with Mr. and Mrs. Carl Buttry. They were en route to San Angelo to spend the week end with Mrs. Casey and Lana. Mr. and Mrs. Johnnie Steward

### Whon News

By Mrs. Tom Rutherford

We continued to receive rain during the past week. Our last rain was Saturday night. With so much thundering and lightning, we received about one inch of rain. Pastures and fields are really looking green for which we are thankful.

Mrs. Hettye Truney and son Rex were on their farm Monday looking after things and moving the sheep. Mrs. Truney is staying at present with her son and family, Mr. and Mrs. Rex Truney in Santa Anna.

Thomas Switzer was assisting Rex Truney with the chores Monday, while Mrs. Switzer visited with Mrs. Truney.

Mr. Fred Shields and Mr. Sammie Shields spent several days last week cleaning the Whon Cemetery. Hard work sure does change the looks of the cemetery.

Mr. James Avants and son Jimmy of Santa Anna spent Saturday and Sunday night with his parents, Mr. and Mrs. Aaron Avant.

Mr. Tom Rutherford and Mr. Sammy Shields were transacting business in Brownwood, Santa Anna and Coleman Wednesday.

Mr. Warren Gill and Mr. Munger Kemp of Brownwood were looking after ranch activities Monday, and visited the Thomas Switzer family.

Lynda Rutherford of Abilene spent Saturday night and Sunday with her parents, Mr. and Mrs. Tom Rutherford.

Mr. and Mrs. Snowden visited their daughter and husband, Mr. and Mrs. Graham Fitz-

patrick and children, one afternoon the past week.

Mrs. Micky Clifton of Arlington spent a day or more with her mother, Mrs. Bert Turney, last week. They spent some time during Monday on Mrs. Turney's farm here.

Mr. and Mrs. Graham Fitzpatrick are very proud to report their son-in-law, Jacky Boulton, who is coach at Yorktown has played two football games and won both. Good luck to Jacky during the school term and football season.

The Titanic, when sunk on April 14, 1912, was on her maiden voyage from England to America.

### TOMLINSON

BOOT AND SADDLE SHOP

Boot Making

Shoe Repairing

Saddle Making

Saddle Repairs

217 Commercial

Coleman, Texas

### DR. M. O. SOWELL

CHIROPRACTOR

Phone 625-4824  
615 Commercial, Coleman

### WATER SYSTEMS

Pumps, Filters, Softeners, Chlorinators, Planning Help, All Available Now. Come In Or Call —

### Weakley-Watson

Brownwood  
100 Fisk — 645-2421

### REG'S TRADING POST

118 E. Pecan

Coleman, Texas

### PRESCRIPTIONS

## Owl Drug Store

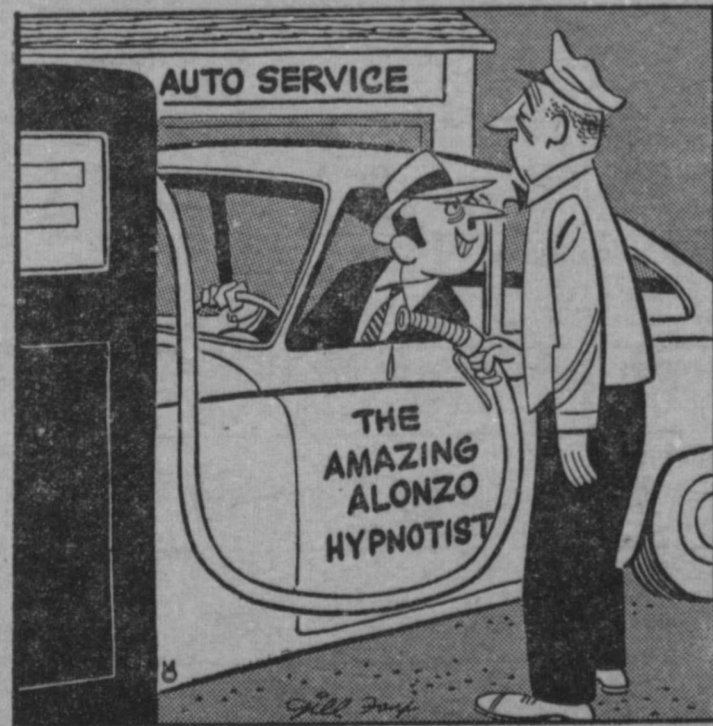
"Where Friends Meet"

Telephone 625-4514

312 Commercial Ave.

Coleman

### CAR-TUNES



There Is No Charge For The 20 Gallons of Gas, Sir ...

Frankly, we have never been on the receiving end of a hypnotist's spell, so we don't know how we'd react. However, we do know this: You don't have to be a hypnotist to get us to hop to any job of car service fast ... and give you alert, heads-up attention always.

We Give SCOTTIE STAMPS

### Burden Mobil Station

510 Wallis Ave.

Phone 348-3191

## GET "REDDY" FOR WINTER

with

# Flameless electric heating

...the HEART of total electric living!

Your present electric cooling system may be the basis for adding a flameless electric heating system. If not, West Texas Utilities can put you in touch with Reddy Kilowatt recommended dealers to show you the many choices of electrical heating equipment. Another advantage of electric home heating—economy! During the winter months, when you heat electrically, you only pay WTU's low 1¢ per kilowatt hour rate. After the first basic step of 500 KWH, all the electricity you use for all purposes costs only 1¢ per kilowatt hour plus taxes and fuel adjustment.

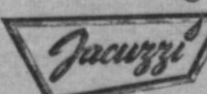
Now is the time to get ready for this economical home heating to avoid the rush! Live better and heat better—electrically!

### JACUZZI Sales & Service

FORGET ALL THE PROBLEMS YOU'VE EVER HAD WITH CONVENTIONAL WATER SYSTEMS!

(thanks to a revolutionary new and better method for pressurizing water systems from Jacuzzi)

Introducing



### HYDROCEL

ELIMINATES WATERLOGGING... FOREVER!  
ELIMINATES HYDRO PNEUMATIC TANK  
ELIMINATES AIR CHARGING DEVICES  
ELIMINATES TANK HOUSE  
ELIMINATES TANK PITS  
ELIMINATES FREEZING DAMAGE



... AND PUTS THE WATER PRESSURE SYSTEM IN THE HOUSE WHERE IT BELONGS!  
No matter what type or make of pump is used, Hydrocel will pressurize the system. And the compact Hydrocel will go anywhere on the service line, 10 feet or 100 feet from the pump... in the basement, closet or utility room. Let us give you the facts now!

HYDROCEL is the best choice for a new water system and is the ideal replacement for rusted out pressure tanks

## Gray Mercantile Co.

109 W. Pecan — Phone 625-2226  
Coleman, Texas



West Texas Utilities Company

an investor owned company



**NOTICE**

Notice is hereby given to the real and true owners, whether hereinafter named or correctly named or not, of property abutting upon certain portions of Avenue C; Willis Avenue; Lee Street; Fourth Street and Fifth Street, within the limits herein defined, in the City of Santa Anna, Texas, and all persons owning or claiming any such property, or any interest therein, and to all others claiming, or interested in any of said property, or any of the proceedings, contracts and matters herein mentioned, that:

The City Council of the City of Santa Anna, Texas, by duly enacted Ordinance, has determined the necessity for, and ordered the permanent improvements of, the following described streets within the following limits, in the City of Santa Anna, Texas, to-wit:

**UNIT 1: AVENUE C**

From the intersection of Second Street and Avenue C west on Avenue C to the intersection of Third Street and Avenue C.

**UNIT 2: WILLIS AVENUE**

From the intersection of First Street and Willis Avenue west on Willis Avenue to intersection of Fifth Street and Willis Avenue.

**UNIT 3: FIFTH STREET**

From the intersection of Willis Avenue and Fifth Street north on Fifth Street to the intersection of Willis Avenue and Fifth Street.

**UNIT 4: FOURTH STREET**

From the intersection of Willis Avenue and Fourth Street South on Fourth Street to the intersection of Fourth Street and G. C. & S. F. RR. Co. tracks; thence turn east on north side of said tracks and continue to intersection of Third Street and said tracks.

**UNIT 5: LEE STREET**

Commencing at the southeast

corner of Lot no. 13 of Block No. 45 Original Town of Santa Anna, Coleman County, Texas, on Lee Street; thence north on Lee Street to intersection of Lee Street and G. C. & S. F. RR. Co. tracks; thence turn west on the south side of said tracks and continue west to the intersection of First Street and said tracks.

The City Council of the City of Santa Anna, Texas, has ordered each and all of said streets, within the limits indicated, to be improved by excavating, grading and paving the same by the installation of drainage facilities and by constructing curbs and gutters, where adequate curbs and gutters are not now in place, together with other drains, incidentals and appurtenances thereto; said paving to consist of two coats of paving, the first coat being one-fourth inch of asphalt and one-fourth inch of crushed rock, the second coat being one-fourth inch of asphalt and one-fourth inch of crushed rock, type and width as provided for in the plans and specifications heretofore prepared by C. W. Stephenson, Superintendent of the City of Santa Anna, and heretofore approved and adopted by the City Council, all of said improvements to be done and constructed in the manner and of the materials as provided for in said plans and specifications.

The said City Council has caused the said C. W. Stephenson, Superintendent of the City of Santa Anna, to prepare and file the hereinafter set out estimates of the cost of such improvements and has heretofore duly enacted Ordinances determined the necessity of levying assessments for a portion of the cost of the construction of said improvements against the property abutting upon said streets in the limits above defined, and the real and true owners thereof, and did adopt and determine that the hereinafter set out proposed apportionments of the costs of said improvements between the City and the said abutting property, and the real and true owners thereof, and that the portion of said costs proposed to be assessed against the said abutting property, and the real and true owners thereof, will be in accordance with the FRONT-FOOT RULE or PLAN and did further adopt the following proposed rates and estimates of said costs in reference to and for said streets within the limits above defined and indicated in the following schedule by the Unit Number, which uniformity pertains to all units, to-wit:

**UNIT 1:**

Front-Foot cost per curb and gutter:	\$1.00
Front-Foot cost for paving:	\$3.00
Front-Foot cost to owners:	\$2.00
Front-Foot cost to City of Santa Anna:	\$2.00
<b>TOTAL ESTIMATED COST OF UNIT 1:</b>	<b>\$2,240.00</b>

**UNIT 2:**

Front-Foot cost per curb and gutter:	\$1.00
Front-Foot cost for paving:	\$3.00
Front-Foot cost to owners:	\$2.00
Front-Foot cost to City of Santa Anna:	\$2.00
<b>TOTAL ESTIMATED COST OF UNIT 2:</b>	<b>\$9,280.00</b>

**UNIT 3:**

Front-Foot cost per curb and gutter:	\$1.00
Front-Foot cost for paving:	\$3.00
Front-Foot cost to owners:	\$2.00

Front-Foot cost to City of Santa Anna: \$2.00

**TOTAL ESTIMATED COST OF UNIT 3:** \$3,840.00

**UNIT 4:**

Front-Foot cost per curb and gutter:	\$1.00
Front-Foot cost for paving:	\$3.00
Front-Foot cost to owners:	\$2.00
Front-Foot cost to City of Santa Anna:	\$2.00
<b>TOTAL ESTIMATED COST OF UNIT 4:</b>	<b>\$3,840.00</b>

**UNIT 5:**

Front-Foot cost per curb and gutter:	\$1.00
Front-Foot cost for paving:	\$3.00
Front-Foot cost to owners:	\$2.00
Front-Foot cost to City of Santa Anna:	\$2.00
<b>TOTAL ESTIMATED COST OF UNIT 5:</b>	<b>\$3,720.00</b>

The cost of paving all intersections in each Unit is to be borne by the City of Santa Anna.

Each portion of said street hereinabove described and designated by Unit numbers constitute a separate independent unit of improvements and the improvements constructed therefrom as separate and independent from each and every other unit of said street, and the assessments to be levied for said improvements in each unit or portion of said street shall be although together separate and independent of and from the assessments to be levied in every other of said units or portions of said street, and in making and levying said assessments against the property abutting upon one of said units, no matter or circumstance in connection with any other of said units shall be considered or have any effect upon another, all as fully and to the same extent as if separate proceedings and contracts had been executed with reference to the improvements to be made in each of said units.

A hearing will be given and held by and before the City Council of the City of Santa Anna on the 6th day of October, A. D., 1966, at 10 o'clock A. M., in the City Council Chamber of the City Hall of the City of Santa Anna, Texas, to the real and true owners, whether named or correctly named herein or not, of all property abutting upon said street within the limits above defined, and to all persons owning or claiming any such abutting property, or interest therein, and to all other owners, claiming or interested in said abutting property or any of the proceedings, contracts or matters and things herein mentioned or incident to said improvements or contract herein described.

At said time and place all such persons, firms, corporations and estates, and their agents and attorneys, shall have the right to appear and be heard and offer testimony as to the said assessments, and to the amount thereof, proposed to be assessed against the said property and the real and true owners thereof, the lien and

charge of personal liability to secure payment of said assessments, the special benefits to accrue to each such abutting property and the owner and owners thereof by virtue of said improvements, if any, or concerning any error, invalidity, irregularity or deficiency, in any proceeding or contract in reference to said improvements, and said proposed assessments, and concerning any other matter or thing as to which hearing is a constitutional prerequisite to the validity of said assessment, proceedings and improvements and on which they are entitled to a hearing under the Constitution and laws of the State of Texas and the proceeding of the City Council of the City of Santa Anna, Texas.

Following such hearing, assessments will be levied against each and every parcel of property abutting upon said street, within the limits above defined, and the real and true owners thereof, for that portion of the costs of said improvements determined by the City Council to be payable by such abutting properties, and the real and true owners thereof, and said assessments shall be and constitute a first and prior lien upon said abutting property, from the date of filing of notice with the County Clerk of Coleman County, Texas, in the Deed of Trust of said County as provided by Article 1220 Revised Civil Statutes of the State of Texas and shall be a personal liability charged against the real and true owners thereof, as of said date, whether such property be described or correctly described, or such real and true owners be named or correctly named, in such proceedings or not, and no error or mistake or discrepancy in the names of such owner or owners or in describing said property in this notice or in any of said proceedings with reference to said improvements shall invalidate any assessment or certificate issued in evidence thereof, but nevertheless, each parcel of property abutting upon said streets, and the real and true owners or owner thereof, shall be charged with, and liable for, said assessment which shall be valid whether or not such owner or owners be named or correctly named, or such property be described or correctly described, all as provided for under the Acts of the 40th Legislature of the State of Texas, First Called Session, Chapter 106, known and shown as Article 1105-B Vernon's Annotated Civil Statutes

of Texas, as amended, under which said improvements, proceedings and assessments are being constructed performed and levied.

Of all said matters and things, all owning or claiming any such abutting property or any interest therein, as well as all other in anywise interest or affected by the things and matters herein mentioned, will take notice.

Done by Order of the City Council of the City of Santa Anna, This the 2nd day of September, A. D., 1966.

S/ W. F. Barnes  
Mayor of the City of Santa Anna

ATTEST:

S/ Pauline Garrett

City Secretary of the City of Santa Anna.

36-39c

Original research leading to the successful development of renal dialysis — the purification of blood by an artificial kidney — was accomplished at the Seattle, Wash., Veterans Administration hospital.

Nacre is mother-of pearl.

**TAKE THE MISSUS WITH YOU —**

Many sportsmen miss out on a lot of fun by leaving the little lady at home.

It is surprising how adaptable women are on the trail. Seldom do you have to baby them, or grant any special privileges.

One man we know takes his frau on nearly every trip he makes. He is an international hunter, but admits his wife is a better shot, more intrepid, and more enthusiastic than he. Furthermore, she provides plenty of charm in the drawing room.

**OPTOMETRIST**  
Dr. E. H. Henning, Jr.  
117 Commercial Avenue  
Coleman, Texas  
Phone 625-2228

OFFICE HOURS  
9:00 A. M. to 5:00 P. M.  
SATURDAYS, 9 to 12

**SEE US FOR YOUR UPHOLSTERY NEEDS**  
Free Pickup and Delivery  
Work Guaranteed  
**SHIRLEY UPHOLSTERY**  
1504 N. Nueces  
Coleman, Texas

**ENCO**  
Sign of Happy Motoring  
Complete One-Stop Service  
CRUSHED OR BLOCK ICE  
Horner Humble Service Station  
WE GIVE S.&H. GREEN STAMPS

GIVE PORTRAITS THIS CHRISTMAS




ORDER EARLY

**10 PERCENT DISCOUNT**  
— ON —  
CHRISTMAS PICTURES  
Made Before Oct. 15th  
USE OUR LAY-AWAY PLAN

**Hugh Capps Studio**  
218 West Pecan  
Coleman  
Phone 625-5317

**JANE'S Beauty Shop**  
MERLE NORMAN COSMETICS  
Telephone 348-3444

**Big travel bargains are back on the Santa Fe!**



**What's the gimmick?**

Simple. It's the off-season. From September 15th through May 15th, you can save up to 20% (sometimes even more) on round-trip rail fare.

First class or coach, either way it's a travel bargain. And not just on special days, but any day of the week. Your return ticket is good for 30 days—on any Santa Fe train. There's no tax on Santa Fe tickets.

So you see, there's really no gimmick. Just savings. This time, why not take a vacation on the way? Travel Santa Fe. And save.

Ask your local Santa Fe agent for full details on Bargain Fares—and other Santa Fe travel bargains.

TAKE CARE OF YOUR NEXT **SUMMER'S COMFORT NEEDS**

With This Year's CLOSE-OUT SPECIALS On Carrier Room Window AIR CONDITIONERS

19500 BTU — Reg. \$395.00	Close-Out 239.00
13500 BTU — Reg. \$249.95	197.00
8100 BTU — Reg. \$199.95	154.95
5500 BTU — Reg. \$119.95	99.50

Summer Close-Out on GAFFERS & SATTLER EVAPORATIVE UNITS

4600 CFM — Reg. \$149.95	Close-Out 114.38
3000 CFM — Reg. \$129.95	99.75

In the Room or in the Window Coolers  
2500 CFM — Reg. \$63.00 Now Only 47.50

SEMI-COOL WALL HEATERS  
Season Special  
Reg. \$27.50 17.95

SEE OUR SPECIALS ON BICYCLES  
3 Speed — Front and Rear Wheel Brakes

**Carrier** room air conditioner  
Why buy TWO when ONE will do! Carrier's high capacity is only 1/2 the story when it comes to wall to wall, room to room cooling. Ask about our new "Golden Silence" blower that puts the cooling where the people are... even in the farthest corner... and with amazingly silent operation!

- Choice of four king sized units
- Lowest prices in Carrier history
- Generous allowance for old units

**75 Years In Coleman**

**J. E. Stevens Co.**  
HARDWARE DEPARTMENT  
Coleman, Texas



**3 1/2 LB. BOY BORN TO THE TRUMAN MATTHEWS**

Mr. and Mrs. Truman Matthews of Fort Worth are the proud parents of an 8 pound eight ounce boy, born Tuesday, Sept. 20.

Paternal grandparents are Mr. and Mrs. R. W. Matthews of this city.

Recent visitors with Mr. and Mrs. Ed Jones have been Mrs. Nye Reil and daughter, Barbara, of Austin, Mr. and Mrs. Johnnie Jordan and son Vernon of Ingle-side. They reported J. W. Jordan as doing well for his age. His daughter, Mrs. Pearl Harris, who has been living with him, fell and broke a leg but is improving at this time.

John Quincy Adams was the only ex-president to return to Washington as a representative in Congress.

**SINCE THE WORLD BEGAN**

Of all the people who ever reached the age of 65 since the world began, more than one-fourth are alive today. In fact, there are more people over 65 today than ever before in history. Here is dramatic evidence of the power of modern drugs to keep people alive and healthy. That's why we say . . .

**TODAY'S PRESCRIPTION IS THE BIGGEST BARGAIN IN HISTORY!**



**Phillips Drug**

"Prescription Specialists Since 1886"

**Cole - Anna**

Drive-In Theatre Coleman, Texas

THURSDAY - FRIDAY AND SATURDAY SEPTEMBER 21-22-23-24

STUART WHITMAN SARAH MILES

MEN IN THEIR FLYING MACHINES

—PLUS— VINCENT PRICE TAB HUNTER

"WAR-GODS OF THE DEEP"

SUNDAY - MONDAY AND TUESDAY SEPTEMBER 25-26-27

GREGORY PECK SOPHIA LOREN

"ARABESQUE"

**O A K**

Drive-In Theatre Coleman, Texas

FRIDAY - SATURDAY AND SUNDAY SEPTEMBER 23-24-25

DOROTHY McGUIRE AND FESS PARKER IN

"OLD YELLER"

—PLUS— AUDIE MURPHY

"APACHE RIFLES"

**Heavy Milkers Raise Bigger Calves Faster**

Cows that give more milk, wean bigger calves.

Agriculture researchers at Texas A&M University report their findings show the amount of milk produced by a cow has the single most important effect on weaning weight of the calf.

Recent tests at Texas A&M's agricultural experiment stations give some insight into milk production of various breeds and crossbred cattle, according to J. K. Riggs, professor in the Department of Animal Science at A&M.

In the A&M tests, Hereford cows bred by Hereford bulls, gave just over 7 pounds of milk a day and weaned calves averaging 408 pounds. Brahm cows bred to Brahma bulls gave nearly 9 pounds of milk a day and weaned calves at 370 pounds.

Santa Gertrudis cows bred to a Santa Gertrudis bull gave over 13 pounds of milk a day and weaned calves at over 500 pounds — and Riggs points out these calves were slightly younger than the other calves at weaning.

On the crossbred side of the fence, when Hereford-Brahman cows were bred to a Brahma bull, the cows gave over 13 pounds of milk and weaned calves at 422 pounds.

When Hereford-Brahman cows were bred to Hereford bulls, the cows gave nearly 13 pounds of milk and weaned calves that averaged 489 pounds.

According to Riggs, research has brought out the following:

Milk yield is significantly affected by breed or cross of cow, age of cow, and sex of the calf nursing the cow.

Mature cows produce the most milk and wean the heaviest

**HEALTH AND SAFETY TIPS FROM THE AMERICAN MEDICAL ASS'N. NIGHT DRIVING**

With the onset of the fall season, the days continue to get shorter and the nights longer. Later dawns and earlier dusk bring an added problem to auto drivers.

Safety experts report that driving at night is more than twice as dangerous as driving during the day, says Today's Health, the magazine of the American Medical Association. Last year there were 10 persons killed for every 100 million vehicle miles traveled in darkness . . . four dead for every 100 million miles traveled in daylight.

Here are 10 vital night-driving tips from Today's Health to help you increase your chances of avoiding night accidents.

\* Slow down after dark. Even the legal speed limit may be too fast for safety on a dark night.

\* Check your lights. Keep your headlights as clean as your windshield. Be sure your tail-lights work.

\* Use your headlights at dusk and when visibility is poor, regardless of the clock time. Tilt your lights to avoid blinding the approaching driver.

\* If the auto ahead of you starts to weave, making you suspect that the driver is drowsy, flick your lights quickly several times. Head for the right hand lane and slow down.

\* Drunken drivers. Don't be one. Don't ride with one. Don't wear sunglasses when driving at night.

\* In winter, turn down the heater so that the interior of the

calves. First-calf heifers produce the least milk and wean lighter calves.

Cows with bull calves produce more milk than cows with heifer calves. Bull and steer calves are heavier than heifer calves at weaning time.

**WATER TOLL TOTALS 214 TO TOP 1965**

The Labor Day weekend water recreational fatalities helped to raise the Texas 1966 toll to 214 as recorded by the Texas Parks and Wildlife Department.

Last year's toll of an even 200 deaths was not reported by the Department until almost two months later.

Twenty persons perished during the last two weeks as noted by the Department's monitoring routine.

Eleven drowned in swimming accidents, six were victims of boating mishaps and three succumbed while fishing.

Galileo invented the thermometer.

car is cool. It will help keep you awake. Open the windows occasionally for a blast of cold air.

\* Don't follow too closely. For every 10 miles per hour of speed allow at least one and a half car lengths between you and the car ahead.

\* If your car breaks down, get as far off the road as possible. Place warning flares 100 yards down the road. If you have only a flashlight, signal by pointing the light toward the stalled car.

\* Concentrate on paying attention at all times. This, of course, is also important in daylight. In darkness, it's even more important, because of the reduced field of vision.

**For Finer Monuments COLEMAN MONUMENT WORKS**

1301 East 9th St. Coleman, Texas

**THE WAY OF INVENTIONS —**

Many great inventions have been made by individuals who were able to see the relationship between something casually observed and something they were trying deliberately to do. Whether or not these legends are true, there is an element of truth in all of them.

Eli Whitney was struggling with the problem of an easier way to get the seeds out of the cotton boll than by hand picking. Looking out a window he saw a fox trying to get his dinner out of a chicken coop in the yard. The fox clawed at the wire and pulled out plenty of feathers but no chicken.

Whitney saw the beginning of the answer to his problem — a claw or rake that would pull the cotton fibers through a grid and leave the seeds behind.

**PREVENT CHOPPING —**

To keep your boat from pounding in rough water (which makes for mighty rough riding), change the tilt of your outboard.

Bring the motor shaft closer to the stern.

This keeps the boat bow low in the water, no matter what the speed, and cuts out the wham-bang of high waves.

**Open 24 Hours**

For Your Convenience

DIESEL FUEL Wholesale and Retail

ICE - MILK - BREAD

Truck Harbor Service Station Phone 348-9143

Steak House Call 348-9118 For Special Orders

**FISH CLEANER THAT CLEANS**

Sneak away your wife's nylon hairbrush. If she acts suspicious go out and buy one at any department store.

Such brushes, if stiff, make excellent tools to clean out the abdominal cavities of fish after the entrails are removed. They do a far better job than most other methods.

Joe Watson and Claude Collier of Irving were here Thursday night and Friday visiting Mrs. W. E. Vanderford and Mr. and Mrs. Warren Aldridge. They also went dove hunting while here.

Attend church regularly.

**TIRES ARE ALWAYS A BARGAIN at RUDOLPH'S Coleman, Texas**

**CHECK OUR BIG BONANZA DAY SPECIALS**

Have You Tried Our SONIC TIRES Best Tire Buy on the Market Today!

**BURDEN'S MOBIL STATION**

REGISTER DAILY Drawing At Our Station At 3:45 P. M. Saturday

**SANTA ANNA**

**PIGGLY WIGGLY**

**\$10 Worth FREE Groceries - Come in and Register - Nothing to Buy!**

<p>TOPPY SLICED <b>BACON</b> lb. <b>.79</b></p> <p>FRESH <b>FRYERS</b> lb. <b>.29</b></p> <p>END CUT <b>PORK CHOPS</b> lb. <b>.65</b></p> <p>NEW CROP <b>Apples</b> 10 lbs. <b>.98</b></p> <p>NEW CROP — LARGE SIZE <b>Pears</b> 10 lbs. <b>.98</b></p> <p>FORREST <b>APRICOTS</b> gal. <b>.98</b></p> <p>29-OUNCE DEL MONTE <b>PINEAPPLE-ORANGE DRINK</b> can <b>.29</b></p>	<p>BEEF <b>CUTLETS</b> lb. <b>.59</b></p> <p>CLUB <b>STEAK</b> lb. <b>.79</b></p> <p>Owen's or Lee's FRESH PORK <b>SAUSAGE</b> lb. <b>.79</b></p> <p><b>Misson SWEET POTATOES</b> 2 1/2 can <b>.25</b></p> <p>LARGE GIANT SIZE <b>Tide</b> pkg. <b>.69</b></p> <p>3 POUND CAN <b>Crisco</b> <b>.79</b></p> <p><b>Giant 46-oz. can</b> <b>.29</b></p> <p>W. P. SLICED <b>PEACHES</b> gal. <b>.98</b></p>
---	---