



Santa Anna News

One Section — 8 Pages

"He Profits Most Who Serves Best"

Single Copy — 5c

VOLUME LXXIX

SANTA ANNA, COLEMAN COUNTY, TEXAS, OCTOBER 7, 1965

NUMBER 40

Community Chest Drive To Start Here Monday



COMMUNITY CHEST TEAM—Officers and area chairmen in the 1965 Precinct 2 Community Chest campaign include (left to right): H. R. Cupps, Ford Barnes, Dick Baugh, Rankin McIver, Harold Martin, William Brown, and Mrs. Curtis Bryan.

The Precinct 2 Community Chest, which combines the drives for a number of worthy causes and charities into one drive will get underway on Monday, October 11 and continue for two weeks. Campaign workers will make their reports on Thursday, October 21.

A goal of \$3,300 has been set for the 1965 version of the Community Chest. This is an average of slightly more than one dollar for each resident of the precinct. Community Chest drive leaders pointed out that a gift of five dollars from those solicited would be less than 50 cents for each of the charities included in the drive, much less than the donor would give if each of these charities put on its own drive.

New officers were elected for the local Community Chest at a meeting on Tuesday, October 5. New president of the combined drive is Harold Martin, with Rankin McIver as vice president, Ford Barnes as secretary, and O. L. Cheaney as treasurer. Local chairmen were named for the various communities in the precinct. Chairman for Santa

Anna is John McDaniel, with Elgean Harris as vice chairman. Mrs. Curtis Bryan will be in charge of the campaign in the Rockwood area, with Mrs. Bert Fowler as chairman at Sheld, Mrs. Buck Jamerson at Red Bank, John Hensley at Plainview, Dick Baugh and Tom Kingsbery at Leedy, Mrs. Charles Bengel at Liberty, William Brown and Garland Powell at Buffalo, Mr. and Mrs. Lester Freeman at Mayo, R. W. Cupps at Cleveland, Mrs. Graham Fitzpatrick at Whon, and the Trickham chairman is still to be appointed.

Eleven separate charities are benefited by donations to the Community Chest, including the Red Cross, the Salvation Army, the Boy Scouts and Cub Scouts, the summer recreation program (the swimming program and other activities), the Quarterback Club (for the Little League program), Boys Ranch, the local school milk fund, the Texas rehabilitation Center at Gonzales, the national Cancer Fund and the national Heart Fund.

By combining all of these campaigns into one drive, the overhead for each drive is lessened, allowing more of the money donated to go to actual charity work, a spokesman for the Precinct 2 Community Chest pointed out, while saving local citizens from the inconvenience of numerous charity drives and appeals.

Santa Anna P-TA Meeting Tuesday

The Santa Anna Parent Teacher Association will meet on Tuesday, October 12 in the Santa Anna Elementary School cafeteria, beginning at 2:30 p.m.

The fifth grade class of Mrs. J. A. Harris will be in charge of the program.

All current members are urged to attend this meeting, a spokesman for the organization said. Nonmembers who are interested in joining are also invited.

One of the decisions to be made at the meeting will be the setting of a new meeting date.

J. L. BOGGUS SELLS REGISTERED ANGUS CATTLE

J. L. Boggus, Santa Anna, recently sold an Aberdeen-Angus bull and two registered Angus cows to J. E. Richey, Goldsboro, Texas.

May Reunion Set For Next Saturday

The annual homecoming for former students in the May schools will take place on Saturday, October 9 beginning with registration and coffee in the school homemaking cottage. Lunch will be served at 11:30 a.m. through 1:00 p.m. A parade is scheduled for the afternoon, followed by a meeting and program, election of officers and a homecoming queen, and a bonfire. The homecoming football game will pit the May Tigers against the B team from Brownwood. A dance will follow the game.

Oldest House In Santa Anna Area To Be Saturday Tour Site To Benefit Library

Another project in the fundraising work of the Santa Anna Library Board will be the showing to the public of the pioneer rock cabin located one and one half miles west of the city on the Coleman highway. The old stone cabin is located on the C. D. Bruce place. The event is scheduled for Saturday, October 9.

Built in 1873, near a strong running spring by a man named Brewster, the house has been a landmark since that time. The house has walls about 18 inches thick, and a ceiling 10 feet high. An addition was made about 1885 of one room, and two more were put on about 1890, all of frame, part of the lumber being raw and of odd dimensions.

Restoring the house presented some problems, as the window openings were of an odd size, the chimney top had fallen down inside and the mantel had been on fire at one time. All the frame part of the house was taken away, and the rock part has been completely restored, using the original stones. Where possible, the decking and eaves were mended with the old lumber and the original floor and ceiling were left in place. A new shingle roof, new windows made in Waco, and a mantel of the old lumber were put on.

The house has been awarded a Texas historical medallion and plaque, and it is hoped they will arrive this week.

Mrs. Elgean Harris is president of the Library Board, and in showing the house she will be assisted by Mrs. Bruce Cammack, Mrs. Tom Kingsbery, Carol Kingsbery, Kelley Cammack, and Debbie and Sandra Harris all of whom will lend color to the occasion by wearing calico-type dresses in the style of the 1890's. The ordinary work of a pioneer

home will be going on throughout the day, including clothes boiling in the iron washpot, lye soap on the rubboard, and milk in the old pottery churn, crocheting and quilt piecing, and carrying water from the pond in a bucket.

For the one day the house will be completely furnished in pioneer style. The Bruces had an old-fashioned eating table made, and benches made from the old lumber. There are rawhide covered chairs, a spinning wheel, a roundtopped trunk, and kerosene lamps. A kitchen cabinet brought to Santa Anna in 1892, and not new at that time, will have a red plaid oilcloth covering, as will the table. Iron cooking pots will be at the fireplace, which has handmade andirons and shovels, and antique schoolbooks and muzzle-loading guns will be shown.

Every article in the house will be of 1900 or earlier vintage.

The house will be open to the public from 8:00 a.m. until 6:00 p.m., Saturday, October 9. The Library Board is making a charge of 50 cents for adults and 15 cents for students, and Mrs. Harris and other members of the Library Board have extended a welcome to the public to attend this unusual display depicting the pioneer way of life as it was lived in this part of Texas.

Rabies Shots To Be Available Tuesday

Dr. J. Ray Martin, of Coleman, will be in Santa Anna on Tuesday, October 12, to vaccinate local dogs and cats against rabies. According to city ordinance, any pet not so vaccinated is subject to being picked up. Dr. Martin will be in Santa Anna beginning at 1:00 p.m., in the vocational agriculture building, at Santa Anna High School.

Well, the big news this week is the announcement that Lyndon will undergo an operation Friday to have his gall bladder removed. This announcement caught most people by surprise, but we have heard some that contend that it is long overdue—that LBJ has had too much gall for a long, long time.

We have participated in sports for quite some time, and have covered sporting events for news media quite a bit in addition to that, and we have seldom seen such a poor excuse for officiating as we did at the Santa Anna and Bronte game, Saturday.

Officiating of this poor quality defeats the whole purpose of schoolboy sports—which is supposed to be the teaching of the principles of good sportsmanship. But when an official in a game is such a poor sport as to penalize a football team for an innocent remark made by a public address announcer, then it is difficult to see how such an example will go very far toward improving the understanding of good sportsmanship by the teenage players.

We hope the local school is never in such a bind for football officials that they find it necessary to use these four officials here again.

Of course, we may be penalized 15 yards for stating this opinion. If you walk in our office and find us sitting about 15 yards from our desk, you will know what happened.

We have heard a little comment about Coach Rufus Cobern going on the field to discuss matters with the officials some people seeming to think that this might not be quite proper. We would like to take this opportunity to compliment the coach on having the courage to stand up for his players when they are obviously getting a raw deal. We are sure it would be easier for Cobern to sit on his hands and look the other way in such circumstances, and we think that Santa Anna is lucky to have a coach who will follow a course he knows might cost him a little criticism in order to stand up for his players.

We heard from one source that the official who penalized the public address system Saturday pulled an even wilder stunt last year, penalizing a band 15 yards. Seems the band kept on playing "Three Blind Mice," so the selfrighteous official stepped off the penalty against the home team.

Since we are on the subject of sports, we might as well make our World Series prediction. We will go against the experts and pick Minnesota, in about six games. We just can't pick a team whose leading hitter is one of the pitchers (Don Drysdale), even if they did win their league pennant.

Coleman's Judge Joe Dibrell, who presides in 35th District Court, was the subject of a feature writeup in last Sunday's version of the Abilene daily.

Judge Dibrell is noted for his work in juvenile cases. Maybe he is sympathetic to the cause of youngsters who get in minor troubles because he remembers what might have happened as a result of his hobby of collecting highway markers and other such public signs while he was a high school student. (We even have inside information on the local judges.)

Speaking of signs, have you ever noticed that the city limits signs on five of the highways leading into Santa Anna list the population as 1,320, but the one on the San Angelo highway says that Santa Anna has 1,605 people.

Maybe young Joe Dibrell made off with the other 1,605 signs.

A few months ago we carried an item in this column about the decision (or order, depending on your point of view) to place large photos of President Lyndon Johnson and Postmaster General Robert Grounouski in all Post Offices in the nation, at a cost to the government of one half million dollars. Now Grounouski has been appointed the new ambassador to Poland, and we have a new Postmaster General.

There goes another \$250,000.

Homecoming Brings Many Former Students Back To Santa Anna Saturday

Several hundred former students of Santa Anna Schools and visitors attended the annual Homecoming, Saturday, October 2.

Attending from farthest away was Mrs. Billie Steward Porter, who came from Bozeman, Montana. Mrs. Porter was Coming Home Queen. She graduated from Santa Anna High School in 1945. Mrs. Jennie Boyd Oakes, who finished in 1898, and her sister, Blanche Boyd, who graduated one year later, were the oldest grads to attend this year's Homecoming.

Hayden Goodgion, who graduated in 1934, was selected Ex-Student of the Year. Goodgion is superintendent of schools in Dennison. He spoke during the afternoon program, delivering a speech he was invited to give at a recent education conference in New York City.

Melba Keeney, senior class representative, was selected as Homecoming Queen for 1965, and was presented during halftime ceremonies at the Santa Anna-Bronte football game, Saturday night.

Newly elected officers of the

Santa Anna Ex-Students Association include Felton Martin, president; Gale Collier Allen, first vice president; Oma Dean McDonald Horner, second vice president; Kathryn Manly Horner, secretary-treasurer; and directors Brown Brooke, Verna Kirkpatrick Newman, and Max Eubank.

Those attending the 1965 Santa Anna Homecoming, as listed on the registration rolls, are given below, with city of residence and year graduated:

Ruby Harper, Santa Anna, 1915; Elsie Lee Harper, Santa Anna, 1914; Verna Kirkpatrick Newman, Santa Anna, 1912; Henry Newman, Santa Anna; Cullen Perry, superintendent; Francis Gene Smith, Tyler, 1948; Neva Rehm Smith, Tyler, 1954; Mattie Goodson Carlock, Fort Worth, 1915; L. R. Carlock, guest; Howard Kingsbery, Santa Anna; Blanche Boyd, Santa Anna, 1899; Emzy Brown, Santa Anna, 1915; Gladys Caton Brown, Santa Anna, 1916; Wanda Duggins, Santa Anna, 1948; Alvin Burden, Santa Anna, 1929; W. C. Burden, Lubbock, 1936; Lois Ann Shields Harper, Moore, Oklahoma, 1955;

Sharon Gilbreath, Abilene, 1964; Nancy Wylie Tillman, Abilene, 1955; Alvin Bostick, Fort Worth, 1945; Viola Bostick, guest; Ora Harper Hunter, Santa Anna, 1919; Willard Stephenson Cheaney, Santa Anna, 1922; Jennie Boyd Oakes, Santa Anna, 1898; Oscar Cheaney, Santa Anna, 1919; Hugh Davaney, Baytown, 1906; Mrs. Hugh Davaney, guest; Lura Vinson Williamson, San Angelo, 1917; Elbert Vinson, New London, 1928; Mrs. Elbert Vinson, guest; Joe Bell, Eules, 1938; Lila Burk Bowers, Coleman, 1905; Cora Bowers, guest; Era Weaver Strozler, Coleman, 1905; Dr. A. B. Strozler, guest; Evans Burden, Elgin, 1932; Jack Mobley, Santa Anna, 1924; Faye Routh Mobley, Santa Anna, 1936; Roy Holt, Copperas Cove, 1915; Mildred Pearce Holt, Copperas Cove, 1918; Harper Hunter, Dallas, 1945; Thelma Lowe Lowry, Santa Anna, 1937; Modora Kirkpatrick Gilmore, Santa Anna, 1923; Sally Kirkpatrick Snook, Santa Anna; Mace Blanton Jr., Fort Worth, 1938; Basil Gilmore, Santa Anna; Jewel Brown Schreuder, Santa Anna, 1919; Virgie Guthrie, Santa Anna, 1911; Billie Guthrie, Santa Anna; Lane Guthrie, Santa Anna; Virginia Holt Austin, Fort Worth, 1938; Frankie Holt Swafford, ex-teacher, Abilene; Sam Swafford, visitor; Suzanna Smith, Santa Anna, 1952; Clara Wright Gipson, 1962; Bill Gipson, visitor; Gale Collier Allen, Santa Anna, 1938; Jack Allen, guest; Sammie Allen; Lilly Stewardson King, Rockwood, 1915; A. L. King, visitor; Howard Welch, Fort Worth, 1916; Oma Dean McDonald Horner, Santa Anna, 1944; Richard Horner, Santa Anna, 1941; S. E. Weaver, Brownwood, 1907; Vivian Mitchell, Brownwood, 1924; Leonard Johnson, Fort Worth, 1955; Anne Louise Watkins Smith, Odessa, 1934; Audas Smith, Odessa, 1931; Cecil Curry, Santa Anna, 1907; John David Harper, Abilene, 1934; Patsy Scott Granad, Santa Anna, 1956; Max Eubanks, Santa Anna, 1951; Shirley Eubanks, guest; W. D. Ashmore, 1937; Helen Ashmore and four children, guests; Coyita Griffin Bowker, Santa Anna, 1948; William Brown, Santa Anna, 1933; Hays Hefner, Lubbock, 1929; Vada Horner Smith, Livingston, New Mexico, 1929; Thomas Wristen, Jr., Santa Anna, 1938; Lynn Wristen, Santa Anna; Burney Wright, Cooper; Louis Newman, San Angelo, 1911; Beverley Stockard McFadden, Abilene, 1949; Virginia Stockard Powell, Abilene, 1945; Ruby Vanderford Pritchard, Santa Anna, 1931; Doris Jane Henderson Bell, San Angelo, 1945; Allyn Gill Santa Anna, 1944; Fannie Blanton Anderson, 1940; Nell Blanton Rainey, Lubbock, 1932; Shirley Blanton Phillips, 1933; Nora

(See HOMECOMING On Page 5)



TIE—'Doc' Barker gives duplicate first place gift certificates to Henry Smith and Margie Martin, who tied for the top spot in last week's competition.

Margie Martin, Henry Smith Tie For Top Spot In Weekly Football Contest

For the first time two contestants in the District 9A football contest tied for first place, Margie Martin and Henry Smith, both picked all five games right, and they put down identical scores in the tie-breaker portion of the entry blank. Their total of points came closest to the actual score, and they win duplicate prizes of five dollar gift certificates at Phillips Drug, where

boht entered. The entry blank carried in this week's edition of The News contains two games that do not involve District 9A teams. The Coleman and Bangs games are included. Sponsors of the continuing contest are Horner Premier Station, The Steak House, and Phillips Drug. Entries may be placed in boxes provided for this purpose in any of these firms.

FOOTBALL

SANTA ANNA MOUNTAINEERS

VS.

DUBLIN

LIONS

At Dublin
Game Time 8:00 P. M.

Friday, Oct. 8
1965

SUPPORT THE MOUNTAINEERS

SANTA ANNA HIGH SCHOOL FOOTBALL SCHEDULE

September 3 — Baird 6; Santa Anna 14
Sept. 10 — Cross Plains 20; Santa Anna 0
September 17—Clyde 14; Santa Anna 8
September 25—Bangs 42; Santa Anna 0
October 2—Bronte 18; Santa Anna 0
October 8: Dublin, there
October 15: Burnet, here *
October 22: Marble Falls, there *
October 29: Goldthwaite, here *
November 5: Open
November 12: Early, there *

* District Games

SANTA ANNA JUNIOR HIGH SCHOOL FOOTBALL SCHEDULE

September 7: Open
September 14 — Blanket 6; Santa Anna 14
September 21—Early 16; Santa Anna 6
Sept. 28—Cross Plains 20; Santa Anna 0
October 5: Bangs, there
October 12: Goldthwaite, here
October 19: Rising Star, there
October 27: Open
November 2: Open



Santa Anna Medical Center
ALL THE WAY, MOUNTAINEERS!

Taylor Motor Company
DODGE, PLYMOUTH, CHRYSLER, RAMBLER

Coleman County Electric Cooperative, Inc.
OWNED BY THOSE WE SERVE

Coleman Butane Company
SERVING THE SANTA ANNA AREA

West Texas Utilities
REDDY KILOWATT BACKS THE MOUNTAINEERS

Santa Anna Jaycees
YOUNG MEN FOR A BETTER SANTA ANNA

Radio Station KSTA
YOUR COLEMAN COUNTY STATION

The Ladies Shop
BEHIND THE MOUNTAINEERS

Wylie's Flowers
FOR YOUR GAME CORSAGES

Candler Feed & Seed
SEED FOR YOUR FALL PLANTING

Coleman County State Bank
THE FRIENDLY COLEMAN COUNTY BANK

R. T. Caperton Chevrolet-Cadillac
CHEVROLET & CADILLAC IN COLEMAN COUNTY

Speck's Barber Shop
BACKING THE MOUNTAINEERS

Santa Anna Co-op Gin
SUPPORTING THE MOUNTAINEERS

Smith Humble Service Station
GO TO THE GAME WITH ENCO

Clark's Auto Parts
108 EAST PECAN COLEMAN

Tradewinds Restaurant
COLEMAN — OPEN AFTER THE BALL GAME

Santa Anna National Bank
YOUR FRIENDLY HOMETOWN BANK

Santa Anna Lions Club
SUPPORT THE MOUNTAINEERS

Western Auto Associate Store
SPORTS SUPPLIES AT WESTERN AUTO

Burden Mobil Service Station
ALL THE WAY WITH THE MOUNTAINEERS

Herring Flower & Gift Shop
FOR YOUR GIFT AND FLORAL NEEDS

Poco, Incorporated
WORKING FOR A BETTER SANTA ANNA

Coleman Gas Company
SERVING COLEMAN AND SANTA ANNA

Bob Turner's
GOOD MERCHANDISE — GOOD PRICES

Santa Anna Cable TV
THERE'S MORE TO SEE ON CABLE TV

Mathews Motor Company
FOR MORE THAN 40 YEARS

Santa Anna Quarterback Club
ALL THE WAY WITH THE MOUNTAINEERS

Coleman County Telephone Co-op, Inc.
OWNED BY THOSE WE SERVE

G&F Hardware & Appliances
HARDWARE HEADQUARTERS IN SANTA ANNA

CLASSIFIED ADVERTISING

CLASSIFIED ADVERTISING RATES

First Insertion - Per Word 4c
 Each Additional Insertion - Per Word 2c
MINIMUM CHARGE - 50c PER WEEK
COPY DEADLINE - 10:00 A. M. WEDNESDAYS

FOR SALE OR TRADE

FOR SALE: Good used refrigerators, automatic washers, wringer washers, clothes dryers and gas cook stoves. Terms to suit YOU. Geo. D. Rhone Co., Coleman, Texas. 48tfc.

FOR SALE: Several used TVs in good condition. Geo. D. Rhone Co., Coleman, Texas. 48tfc.

FOR SALE: Arkwin Oats, best for grazing and combining. test 36 pounds after cleaning Carroll Kingsbery. 36-39p-tfc

FOR SALE: 2 wheel stock trailer, good condition. \$75. Russell Stevenson, FI8-3538. 38-39p

FOR SALE: Two Bedroom House, with two large lots—small down payment and monthly payments. Five room house, large lot, small down payment and monthly payments. Both extra nice houses. M. L. (Rat) Guthrie 40tfc

HUGE NEW STOCK of winter caps, priced right. Bob Turner's 40c

MISCELLANEOUS

IF YOU ARE thinking about improving your home ask us for free estimates on the following: Insulation to make your home easier to heat and cool; all types of siding including the new plastic, insulated, asbestos and aluminum in lovely colors and quality roofing to top it all. Call 643-4314 Collect. Smith Roofing Company, Brown-Wood. 51tfc.

WHEN YOU THINK of grinding, mixing and pelleting, think of Hollingsworth Feed Mill, Coleman, Texas. 50tfc.

CARD OF THANKS

To express our deepest appreciation and thanks to all the wonderful friends for every kind-

ness shown during the illness and death of our loved one. May God bless each one of you
 C. M. (Red) Barrington and children. 37c

TIRES ARE GUARANTEED

at **RUDOLPH'S**
 Coleman, Texas

Weah McCulloch, Sec.-Treas.
 Bettie McCulloch, Mgr.

Standard Abstract Co.

City & County Maps For Sale
 405 Bank Bldg. Coleman

Small Appliance Repair

Is A Specialty In Our Shop
 And - for skilled, expert repair of Frigidaire and Maytag appliances - call 625-2226 Coleman.

Our Servicemen Are
 Factory - Trained

Gray Mercantile Co.

Rockwood News

By MRS. JOHN C. HUNTER

The Rockwood community will have a Hallowe'en supper Saturday, October 16, from 6:00 p.m. to 8:00 p.m., at the Community Center. Tickets may be bought at the door, or from Mrs. Curtis Bryan Mrs. Jim Rutherford, Mrs. Rodney Dean, or Mrs. Marcus Johnson. This is an annual event to raise funds for maintenance of the Community Center.

The Rockwood fifth annual homecoming, Sunday, was a huge success, with some 112 registered.

Mr. and Mrs. A. L. King were in Santa Anna Saturday, for the homecoming and attended the reunion of the class of 1915, on the 50th class anniversary. The class met at the grade school building for visiting, and then to the Clover Grill for lunch. To Miss Ruby Harper's for coffee and cake squares. Eight of the original class were present. Two of the teachers were with the class Miss Jettie Kirkpatrick and Hugh Devaney. Mrs. Devaney was an invited guest. They came from Bay City. He taught in Rockwood in 1910-1911-1912.

The Rockwood Cemetary Association reports with appreciation the following contributions: Mrs. Rosa Belle Hellman, \$5.00; Mrs. Hal Haines, \$5.00; and Carl Ashmore, \$5.00.

Mrs. Elec Cooper was a patient in a Brady hospital, Tuesday to Saturday.

Dee Dee McAllister of Coleman, spent the weekend with her grandparents, Mr. and Mrs. Bill Bryan and Auntie Serena. Mr. and Mrs. McAllister were Sunday guests.

Mr. and Mrs. Lige Lancaster, of Trickham, were among those at the homecoming, and visited in the A. L. King home.

Mrs. R. J. Deal, Lon Gray, and Mrs. Bill Bryan were in Glen Cove Tuesday to attend the County Women's Missionary Union meeting.

Mrs. Dean Ward, of Midland, spent last Tuesday with Mrs. Carl Buttrey.

Mr. and Mrs. Bob Nixon of Valera, were Friday guests with Mr. and Mrs. Liefel Estes and Geneva. Boss, Weldon, and Gordon Sam Estes were Sunday morning callers. Mr. and Mrs. Cecil Day, Ricky and Shawn, of Coleman, were Sunday dinner guests.

Picks of the Week

The Prophet Corps is in fine fettle this week, after compiling an outstanding record last week, two pickers got four of five correct, and the other two got three of the five games right.

This 700 percentage for last week brings the company average to .625. Prophet Horne leads the pack with a percentage of .682, followed by the Old Prophet and Minyard, with .636, and Guthrie in fourth place with .545 but gaining.

Last Week's Results: Burnet loses to Del Valle, picked correct-

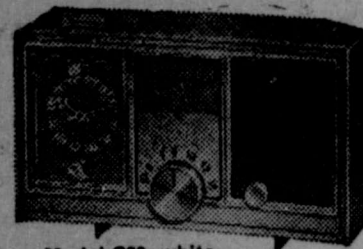


We Invite Your Patronage And Assure You Of Satisfaction.

McKee
 CLEANERS

DR. M. O. SOWELL
 CHIROPRACTOR
 Phone 625-4824
 615 Commercial, Coleman

Model Number
 AC 41 AN



Model C39, white, blue, beige, pink

MOTOROLA

VISILITE CLOCK-RADIO

Superb radio with deluxe clock features... Visilite electrically lighted clock face lets you tell time in the dark... tiny Visialarm signal lights when the alarm is set and ready to function... sleep switch that turns radio off after you fall asleep... Lazalarm® that lets you get an extra forty winks... and buzzer alarm for those who need it.

SPECIALLY PRICED

\$19.95

Gray Mercantile

TIRES ARE ALWAYS A BARGAIN
 at **RUDOLPH'S**
 Coleman, Texas

Mens and Boys Sport Shirts

In All The New DARK COLORS

MOORE MERCANTILE

Mountaineer Lineman Of The Week

Game Of October 2, 1965
 This Recognition of Outstanding Mountaineer Players Sponsored by

Santa Anna Insurance Agency



Jackie Walker

KEEN PLUMBING AND ELECTRIC Heating and Air Conditioning

Free Estimates . . . Quick Service
 Phone FI8-3410

PICK UP and DELIVERY

MONDAY—WEDNESDAY—FRIDAY
 From Your Home or McKee Cleaners
 For Home Pick Up — Call Collect
 Coleman 625-4121
COLEMAN STEAM LAUNDRY

Be sure you are getting a quality roof by a reliable and qualified roofer. You are sure if you have a

15 YEAR BONDED ROOF
 BY **SMITH ROOFING CO.**

See Our ad In Your Phone Directory

Call 643-4314 Collect Brownwood Free Estimates

Commercial and Residential Roofing
 All Types of Siding and Insulation

NEW CAR FEVER

For Money In A Hurry, Get A Low Cost Loan From Us.



From Fast Financing For A New Car To Cash For Speedy Payment Of All Your Debts. We Make Loans At Low Bank Rates For Any Reasonable Purpose. Cast Aside Financial Worries... Make Your Happiest Dreams Come True. . . . See Us For A Bank Loan. Courteous Service Always.

YOUR FRIENDLY

Santa Anna National Bank

Member FDIC and Federal Reserve Bank Of Dallas

WINTERTIME IS HEATER TIME

We Have Deaborn Heaters In All Sizes—For Natural Or Butane Gas— Cool Cabinet— Easy To Install
 Hang-On-The-Wall Heaters—Prices From \$19.95 ★ Hearth Glo Heaters In All Sizes—For Natural Or
 Butane Gas—Priced From \$13.95 ★ We Have A Few Good Second Hand Heaters - Come By Today

We Give And Redeem Scottie Stamps—Redeem Your Stamps For Christmas Now— Good For Merchandise

★ **HOSCH FURNITURE COMPANY** ★

—Homecoming

(Continued From Page 1)

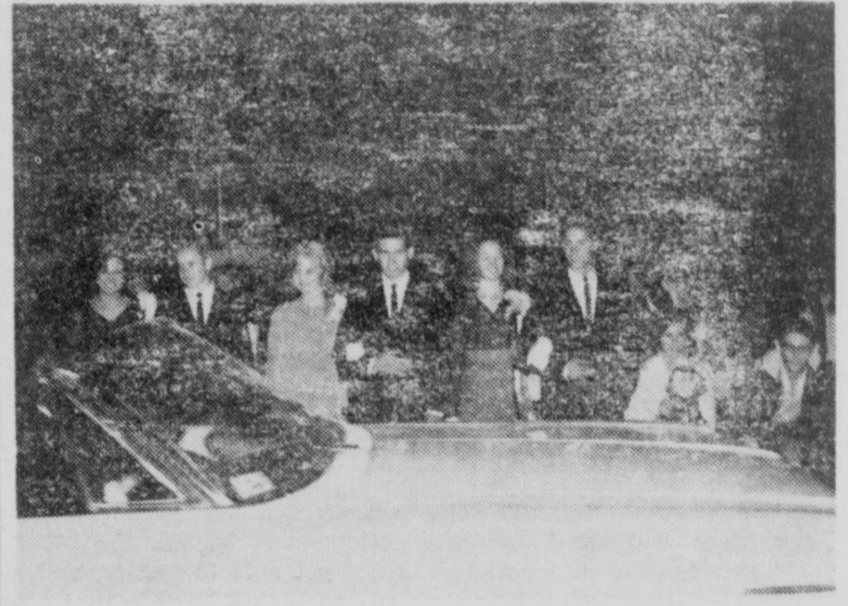
Scott Blanton; Charline Herring Schulle, Coleman, 1955; Carl Langford, Plano, 1955; Jean Langford, guest; Virginia Pieratt Curry, Fort Worth, 1929; Maurice Curry, Fort Worth, 1930; Wilburn Bible, 1935; Mary Ellen Bible, guest; Wanda Bible, visitor; Gene Bible visitor; Kate May Shore, Brownwood, 1915; Edith Brannon, Brownwood, 1915; Leona Banister Bruce, Santa Anna, 1916; Jennie Banister Seddon, Houston, 1914; Henry Lobstein, MD, Brownwood, 1915; Juanita Riordan Williams, 1934; Mrs. Dale Ireland, guest; Mrs. Bessie Brandon McDonald, Santa Anna; Alton Brandon, Fort Worth, 1934; Vi Brandon, guest; Jettie Kirkpatrick, Santa Anna, 1903; Billye Steward Porter, Utopia, 1945; J. E. Porter, guest; Tommy R. Pollock, Abilene, 1961; Anita Pollock, Abilene, 1961; Ruby Moore Hartman, Santa Anna, 1938; Ed Hartman, Santa Anna 1942; corine Eubank, Santa Anna; 1945; Richard Dillingham, San Antonio, 1934; Hayden Goodgion, Dennison, 1934; Mrs. Hayden Goodgion guest; Lula Hamey Holcombe, Denver City, 1927; Del Ray Stacy, Midland, 1948; Mildred Wagner Ford, Santa Anna, 1945; Mrs. Charlie Evans, Santa Anna; Besse Evans Goodenough, Killeen,

1932; Fred H. Goodenough, guest; Mary Whetstone Irick, Santa Anna, 1918; Fannie Whetstone Bryan, Rockwood, 1912; Winnifred Whetstone Stark, Brownwood, 1924; Felton Martin, Trickham, 1940; M. L. Guthrie Jr., Santa Anna, 1938; Les Guthrie, Santa Anna 1965; Myrtle Burk Curry, Santa Anna, 1908; Estelle Scarborough Milligan, Santa Anna, R. A. Milligan, visitor; Charles Walker, Big Spring, 1961; Aurelia Tweedle Brown, Santa Anna, 1935; Linton Oakes, Brownwood, 1933; Beulah Parker Sparkman, Santa Anna, 1907; Pearl Parker Abernathy, Santa Anna; Sue Holmes King, Brownwood, 1947; Cecil King, guest; Carmilla Flores Baugh, Santa Anna, 1934; Billie Faye Lewellen McDonnell, 1944; Geraldine Lewellen Kimmey, Fort Worth, 1951; Carl Ray Cowen, Santa Anna, 1962; Jerry Johnson, Abilene; Gene Rice, 1948; Virginia Day Rice, 1949; Belinda Rice; Weldon Estes, 1949; Gordon Estes; Mrs. E. W. Gill, Brownwood; Mattie Ella McCreary Gray, Rockwood, 1923; Barbara Bruce Kingsbery, Santa Anna, 1949; Ruth McGahey Campbell, Santa Anna, 1934; Mary Louise Curry Ogle, Lubbock, 1939; Joyce Mavis Early, Santa Anna, 1953; Lorene Featherston Rice, Santa Anna, 1942; Jewell Hosch, guest, Santa Anna; Dessa Rushing, Santa Anna, 1965; Patsy Drake, Santa Anna, 1965; Bill Williams, Irving, 1962; Lomita Williams, visi-

Guyrene Cobb, guest; Billie 1955; James Perry, Odessa, 1956; Joyce Woodarw Perry, Odessa, Lucille Kirkpatrick Wylie, Santa Anna, 1919.



COMING HOME QUEEN, Mrs. Billie Steward Porter, is flanked by her escorts in the above photograph. Mrs. Porter graduated in 1945. Below, the three runnerup Homecoming Queen candidates watch as the Queen leaves the field in a brand new automobile.



THE QUEEN AND HER COURT, shown above and below. Below, Homecoming Queen Melba Keeney, representing the senior class, is escorted by Gary Rider and Gary Williams. And above, the three members of the court, representing the freshman, sophomore, and junior classes, wait on the sidelines with their escorts.



Mountaineer
 Back Of The Week
 Game of
 OCTOBER 2, 1965
 This Recognition of Outstanding
 Mountaineer Players Sponsored
 by
 Santa Anna Tile Co.
 Butch Makuta

SPECIALS

ROUND STEAK lb. 89c

T-BONE or LOIN STEAK lb. 79c

Deckers Quality BACON 75c

Deckers All Meat BOLOGNA 39c

303 Del Monte ENGLISH PEAS 4 for \$1.00

303 Del Monte GREEN BEANS 4 for \$1.00

303 Del Monte SPINACH 3 for 49c

Morton's Frozen Fruit or Cream PIES 3 for \$1.00

Hi C DRINKS 3 for \$1.00

One pound Nabisco HONEY GRAHAMS 39c

Seven ounce Supreme TOWNHOUSE CRACKERS 25c

Fireside CRACKERS lb. 23c

LEMONS 3 for 10c

TEXAS ORANGES 5 lb. 59c

FRESH CRANBERRY'S box 29c

FRESH COUNTRY SAUSAGE

We give Key Stamps. DOUBLE Stamps on Wednesday with Purchase of \$3.00 or More.

Williams Food Store

MEMBER INDEPENDENT GROCERS, INC.

State Fair of Texas!
 EXPOSITION OF THE AMERICAS
 ROYAL CANADIAN MOUNTED POLICE "MUSICAL RIDE" Oct. 9-17
 DANZAS Y CANTOS DE MEXICO — Oct. 15-21
 DEEP RIVER FIFE & DRUM CORPS — Oct. 16-24
 BROADWAY MUSICAL HIT "FUNNY GIRL" — Oct. 8-24
 THE EXCITING WORLD OF ICE CAPADES
 COLOSSAL FREE CIRCUS
 MARK WILSON AND HIS MAGIC LAND OF ALLAKAZAM
 FREE FASHION SHOW & WOMEN'S EVENTS
 FREE COTTON BOWL SPECTACULARS: Mon. Oct. 11
 — TEXAS MUSIC FESTIVAL, fireworks, 8 p.m.; Thurs. Oct. 14 — MEXICO DAY PROGRAM, featuring Danzas y Cantos de Mexico, fireworks, 8 p.m.; Fri. Oct. 15 — DALLAS SYMPHONY SPECTACULAR, fireworks, 7 p.m.; Sat. Oct. 16 — MILITARY TATTOO, fireworks, 8 p.m.; Tues. Oct. 19 — EAST TEXAS ON PARADE, fireworks, 8 p.m.
 PAN-AMERICAN LIVESTOCK EXPOSITION • HORSE SHOWS
 AGRICULTURE SHOW
 TEXAS INTERNATIONAL TRADE FAIR
COMING OCT. 9-24

Fresh Shipment
 Just Arrived
 always appreciated...
Russell Stover CANDIES
 for
 BIRTHDAYS
 GET WELL
 ANNIVERSARY
 BON VOYAGE
 HOSTESS
 THANK YOU
 Fresh, delicious
 Russell Stover Candies
 are the perfect gift!
Phillips Drug
 WE GIVE S&H GREEN STAMPS

THE SANTA ANNA NEWS

Established January 1, 1886

Published by
PARKER PUBLISHING COMPANY

Post Office Box 697 Dial F1reside 3-3545

PUBLISHED EVERY THURSDAY AT SANTA ANNA,
COLEMAN COUNTY, TEXAS 76878

OCTOBER 7, 1965

SUBSCRIPTION RATES

One Year in Coleman County	\$2.50
One Year in Texas (Outside Coleman Co.)	\$4.00
One Year Outside State of Texas	\$5.00
One Year Outside of United States	\$8.00

Second Class Postage Paid at Santa Anna, Texas

DISPLAY ADVERTISING RATES ON REQUEST

STAFF

Bob Parker Editor
Nora Robinson Advertising Manager
Ken Minyard Floorman



EDITORIAL

Murder Is Legal In Alabama

The Declaration of Independence of the United States of America states the right of all citizens to "certain inalienable rights, among which are life, liberty and the pursuit of happiness." This guarantee is generally considered to be valid throughout this country, but events of the past week prove that the right to life, to the expectation that the state will protect its citizens against outright murder, is no longer valid in one of our states.

Some time ago, a young seminary student, studying to become an Episcopal minister, was murdered in Hayneville, Alabama by an erstwhile deputy sheriff, because the gunman objected to the civil rights position advocated by the ministerial student. A Roman Catholic priest was seriously wounded in the same shotgun blast, in what was one of the most blatant examples of cold-blooded murder to come to national attention in a long, long time.

Instead of being charged under an indictment for murder, as would have occurred in any civilized portion of this country, the killer was charged with the relatively minor crime of manslaughter. When the state attorney general, with great political courage, attempted to obtain a murder indictment, he was refused by the judge in charge of the case. And when he refused to prosecute the case, under circumstances that would stack the cards against the prospect of justice, the judge, in an unprecedented action, removed him from the case and ordered the local prosecuting attorney to proceed with the action, even though the principal witness for the prosecution was not yet able to testify, and even though it had been shown that any such case tried in that county would result in a whitewash.

The case was tried, and last Thursday the travesty of justice predicted by the state attorney general was realized, as a quick verdict of not guilty was rendered.

No matter how one feels about the civil rights movement, it is obvious to anyone with the slightest degree of human decency or concern for justice, that people cannot be allowed to go around murdering anyone with whom they may disagree. This apparently is not the case in Alabama. Just as Adolph Hitler legalized the murder of Jews on the grounds of religious and racial prejudice, so the state of Alabama, by last Thursday's decision, has legalized the murder of anyone who does not agree with the popularly accepted position on racial matters. Voltaire has been credited with the famous statement that "I can never agree with what you say, but I will defend to the death your right to say it." This concept has long been pointed to as the basis of the freedom and democracy we enjoy in this country. But this idea has been changed in Alabama to "I can never agree with what you say, and I may cause your death if you exercise your right to say it."

What occurred last week in Alabama should make every true American sick at his stomach.

The figure often used to symbolize justice is a woman with balances in her hand and a blindfold over her eyes. This can be modernized for the state of Alabama. The symbol of justice in that state needs no blindfold over her eyes, since justice is obviously already blind in Alabama.

Hesterday's News

FIVE YEARS AGO

The 1960 version of the annual Christmas program sponsored by Santa Anna merchants will get underway next Saturday, says the lead story in the paper for September 30 of that year.

Mrs. C. D. Bruce was guest speaker at the regular meeting of the Santa Anna FHA chapter on Thursday. LaQuinn Cooper is president.

TEN YEARS AGO

The News for October 7, 1955 tells of the arrival of the new minister of First Baptist Church Rev. A. G. Purvis, who is coming to Santa Anna from Freeport. The new First Baptist pastor is from Cross Plains originally, and held his first pastorate at Whon.

Wes Wise, of Santa Anna, had the grand champion lamb at the Heart of Texas Fair, in Waco, this week. Three other Santa Anna exhibitors, Wilburn Anderson, Kenneth Herring, and Bobby Densman, placed in the lamb competition at the Waco fair.

TWENTY YEARS AGO

Leland Thompson and Lemeul White have purchased the service station formerly operated by Pat Earnhart, located between the Banner Ice Company and Jordans Cafe and Grocery in the east part of town, reports the paper for October 5, 1945.

Santa Anna schools were ordered closed for one week as a precautionary measure following

the death of Edna Ruth Townsley of polio.

TWENTY FIVE YEARS AGO

The current fishing contest being sponsored by the Santa Anna Jaycees is nothing new, as the paper for October 4, 1940 carries the rules for a fishing contest being sponsored by the Santa Anna Sportmen's Club.

A saddle, awarded to Emzy Brown at the Santa Anna Rodeo, was recovered this week after having been missing for some time. Two men were charged with theft of the saddle and placed in Coleman County Jail.

THIRTY YEARS AGO

Dr. R. R. Lovelady, Hardy Blue, W. R. Mulroy, George M. Johnson, and J. C. Scarborough were appointed to a committee to work with Scout leaders as the Santa Anna Lions Club agreed to sponsor a Boy Scout troop in the Mountain City, according to the paper for October 4, 1935.

Mary McCorkle is in Santa Anna from Dallas, visiting with her sister, Mrs. Melvin Lamb and family.

FORTY YEARS AGO

Plans are being made to enlarge Santa Anna Hospital, says the paper for October 2, 1925. Dr. T. R. Sealy announced hopes that the Hospital might be enlarged, and the paper comments on the progressive attitude of the people of Santa Anna in supporting these plans.



Help Your Community Chest Help Your Community

LETTERS

Your "Point Rows" column in Texas' prize winning newspaper, the pride of Santa Anna, continues to maintain its first class rating.

The September 30 issue, with the little girl reciting "one and one eagles two" and so forth reminded me of the little first-grader who was busy reciting his arithmetic homework one night. This is what his horrified mother heard him saying: "One and one, the s.o.b. is two; one and two, the s.o.b. is three; and so on. (Editor's note: We are substituting the abbreviation 's.o.b.' so as not to be banned in Boston and elsewhere.)

When she shook him good, he insisted the teacher had taught it that way, his mother almost jerked the receiver off the hook as she called the teacher, to find out about this new math her son was being taught.

Said the teacher: "I'm so glad Robert is reciting his homework. Listen to him carefully and see whether he is getting it right. It goes this way: One and one, the sum of which is two; one and two, the sum of which is three; and so on. And thank you for calling."

Pierre Rowe would like that story, which is almost as good as the ones he tells.

Shield Brown
209 East 33rd Street
Austin, Texas

Don't take guesswork about the changes in Social Security; see your Social Security representative when he's in your community.

Stamp pads at the Santa Anna News office.

Attend church regularly

Happy Birthday

"Happy Birthday" to all who have birthdays during the next week. Below are listed the birthdays we have for this week.

OCTOBER 7
Carolyn Carpenter
J. A. Fleming

OCTOBER 8
Mrs. Tom Rutherford
Mrs. Henry Goodwin
Melvin Pollock

OCTOBER 9
Celia Ann King
Mrs. Dee Yancy
Mrs. J. W. Montgomery
Carol Ann Roberts, Corpus Christi

OCTOBER 10
Betty Jewell Lee
Cindy England

OCTOBER 11
Dorthea Carpenter
Mrs. Lillie Cole
Mrs. Mena V. Shuford

OCTOBER 12
Dayton Jackson
Tony Tucker
Vickie Lynn Lee
R. B. Rutherford, Fort Worth

OCTOBER 13
Robbie Miller
Beverly Baker
Bob Knox, San Angelo

Would you like your name to be published on your birthday? Or do you know someone with an upcoming birthday? If so, please be sure to let us know about it. Next week, we will publish the names of those having birthdays between October 14 and October 20.

COTTON REPORT

Three factors—color, leaf, and preparation—are considered in determining the grade of American upland cotton, according to B. B. Manly, Jr., at the United States Department of Agriculture Cotton Classing Office, in Abilene.

Color is usually the most important grade factor of Abilene Classing Area cotton, especially since gin equipment used today is very effective in removing leaf and other foreign matter from short staple cotton. "The predominant color of our cotton is light spotted," says Manly. "However, the other colors—white, light gray, gray, spotted, tinged, and yellow stained—do appear according to insect and weather conditions."

The grade assigned a sample is based on a comparison of the sample with the Official Standards, and is the lowest of the three factors, except when two factors are two standards (two grades) higher than the third. Then the grade assigned is raised one grade. It cannot be raised more than one grade.

Cotton harvested damp, from rain or dew, does not have much chance to gin out clean and smooth. Damp cotton does not release dirt and trash as easily as dry cotton. The same is true of green cotton, only sap from it is sticky and more likely to cause low grades.

We cannot expect miracles from the dryers in a gin. Too much drying is as bad as too little. When cotton is harvested wet from dew, part of the load may be wet, and other parts harvested later in the day completely dry. If enough heat is applied to dry the wet cotton or cracked green bolls, the dry cotton may be scorched. Scorching cotton may change it from white to light spotted, or from light spotted to spotted. This is a loss to the producer that might be avoided if the cotton is harvested when dry.

Manly said classing gained momentum last week, with 4,407 samples classed through September 29. The season total, 8,739, remained considerably lower than the 40,885 samples at the corresponding date last year.

The Cotton Classing office at Munday, Texas will open October 4. A. D. Peebles will be in charge. This is the latest opening date for the Munday office since 1958.

About 3,980 samples were received from District 2 (the area bounded by Coleman, Mitchell, Dickens, Baylor, and Jack Counties) last week.

Grades declined from the previous week. Twenty five percent of the samples were white, 73 percent light spotted, and two percent spotted. Predominant grades were: Seventeen percent Middling White; 12 percent Middling Light Spotted; and 58 percent Low Middling Light Spotted.

Staple lengths were: One percent, 7/8 and shorter; seven percent, 29/32; 55 percent, 15/16; 20 percent, 31/32; three percent, one inch; one percent, one and 1/32; three percent, one and 1/16; seven percent, one and 3/32; and three percent, one and 1/8 inch.

Micronaire readings were: One percent, 3.2 and lower; two percent, 3.3 to 3.5; 83 percent, 3.6 to 4.8; 11 percent, 4.9 to 5.1; and three percent, 5.2 and higher.

Pressley readings for the area were average to strong, with 13 percent in the 75 to 79 range; 31 percent, 80 to 84; 50 percent, 85 to 89; and six percent, 90 to 94.

The market remained slow, with most white cotton held or placed in the CCC loan. Sales of light spotted qualities were light. Prices ranged from even loan on Strict Middling Light Spotted cotton, to 100 points over loan value for Strict Low Middling Light Spotted cotton.

State Capital NEWS

A governor's committee will soon embark on the most ambitious effort yet undertaken in Texas to find what is wrong with the public schools and make them better.

Governor John Connally rapidly is completing appointments to his 15 member committee on public school education, which was authorized by the 59th Legislature. It is expected to be in operation within the next month.

Activities, to a large extent, parallel those of the earlier Governor's Committee on Education Beyond The High School, which probed needs of higher education. However, this new assignment is necessarily more massive.

A three year study of the public school system and formulation of a longrange plan to make Texas "a national leader in educational aspiration, commitment and achievement" was directed by the Legislature. Connally insisted the study requirement be made part of the school teacher pay act of 1965.

State financing to the tune of \$100,000 this year and \$150,000 next year is provided for—with additional funds expected from Federal sources.

Every state agency and institution, and all state and local school officials, are directed by the Legislature to cooperate with the committee in a "pervasive inquiry into every facet of Texas public elementary and secondary education."

Meanwhile, the Coordinating Board for Texas Colleges and Universities—a product of the earlier higher education study—has set October 18 for its next meeting here. Sessions will be the powerful board's first real chance to get down to planning for higher education needs since its organizational meeting September 20.

ATTORNEY GENERAL RULES
A person placed on probation for first offense driving while intoxicated is not subject to automatic suspension of drivers license, Attorney General Waggoner Carr has ruled.

In an opinion requested by Fort Bend County Attorney R. A. Stallings, of Richmond, Carr concluded that since a probated sentence is not a final conviction, there is no automatic license suspension. If probation is revoked and judgement becomes final, the license would be suspended at that time, Carr said.

Opinion settled widespread speculation on terms of the new Misdemeanor Probation Law.

In separate opinion, Carr held a newspaper printed by contract and mailed in one county for distribution in another county is legally eligible to publish state constitutional amendment advertising. Secretary of State Crawford C. Martin requested the opinion, referring specifically to the Ganado Tribune, circulated in Jackson County, but printed and mailed in Lavaca County.

PERMIT CANCELLATION SOUGHT

Colorado City and Mitchell County filed suit in 53rd District Court, in Austin, to cancel the permit for the Robert Lee dam project on the Colorado River.

Contention is that it precludes the construction of a dam to supply Mitchell County needs, and hurts their hopes for future development.

APPOINTMENTS ANNOUNCED

Glenn Biggs, Abilene realtor, now is administrative assistant to Speaker of the House Ben F. Barnes.

Biggs' main responsibility will be management of activities involving interim legislative committees, and implementing work of the Texas Legislative Council, research arm of the Legislature.

Barnes also appointed five lawmakers to the important committee to study criminal law revision. They are State Representatives Dudley Mann, of El Paso, Walter Knapp, of Amarillo, Rayford Price, of Frankston, Joe Shannon, of Fort Worth, and Jack Woods, of Waco. Group will study punishment, penalties, sentencing, probation and parole, and definition of crimes. Also, it will review related Federal laws, and laws of other states.

COMMUNICABLE DISEASE

As the state's population increases, the number of communicable disease cases increase. Gonorrhea accounts for more illness than any other disease plaguing the state's inhabitants, says the State Department of Health, and this year's total tops last year's by almost 1,000.

Strep throat is second, behind gonorrhea, in the number of cases each year. Only last week, 631 cases were reported, as compared with 759 cases of gonorrhea. Syphilis is third, with 140 cases noted last week.

Texas retail sales for August totalled nearly \$1,300,000. This is a record for August, seven percent above August of 1964. So states the University of Texas Bureau of Business Research.

Bureau reported "general optimism" for a high sales level throughout 1965. Christmas shopping season volume is expected to top the 1964 record by five to 10 percent. Automobiles, major items of household equipment, color television sets, and other leisure goods are major contributors to the sales boom.

BIG GAME SEASON ON

Hunting season for big game opened—for bow and arrow hunters and antelope shooters—last weekend.

Regular season begins November 13 for counties under regulatory responsibility of Parks and Wildlife Department, and November 16 in those functioning under separate laws.

Park and Wildlife Commission has held hearings and is setting, bag limits, and methods of taking wildlife resources in 35 counties newly placed under its responsibility.

Free hunts of wildlife management areas will accommodate 2,680 hunters this season. Hunters have until October 25 to apply to Parks and Wildlife Department. A public drawing will determine participants.

AGRICULTURE MEET

Representatives of the Texas and United States Departments of Agriculture are planning a meeting with Mexican agricultural officials to discuss international pest control problems, mainly pink bollworm.

Mexican violations of the 12 year old international planting and plowup agreements on cotton have caused serious problems in insect control. Meetings have been set to get working agreements back into effect as a protective measure for the Texas cotton industry.

SHORT SNORTS

District Judge John F. Onion, Jr., of San Antonio, who helped draft the new state criminal code, predicts its provisions will not affect pretrial news coverage practices.

Parks and Wildlife Commission has amended its July 29 South Texas order prohibiting the possession of more than 50 catfish, none of which can be less than 11 inches long, but exempts catfish produced in private waters, so as not to outlaw operations of catfish farmers.



The Upper Room
© THE UPPER ROOM, NASHVILLE, TENNESSEE

Read Matthew 7:21.

Not with eyeservice, as men-pleasers; but as the servants of Christ, doing the will of God from the heart. (Ephesians 6:6)

Several years ago some friends of mine prepared to go to the foreign mission field. Their application had been accepted, the date set for their departure, and preparations almost completed.

Then came the disappointment. For reasons never fully explained, they were told they could not go.

I would have been tempted to accept the rejection grudgingly. But they accepted it in faith, and began seeking God's will for their lives. They found wide open doors for service among the needy near at hand. In the isolated country schoolhouses, still existing on the Alberta prairies, they ministered the word of God. Many of the children as well as their parents had never attended a Sunday school. Here my friends have served the Lord wholeheartedly.

In all circumstances, Jesus' faith in God should be an example to us. With his whole heart, He was obedient to the Father's will.

PRAYER

Heavenly Father, help us to accept and gladly obey Your will for our lives. May we humbly serve you wherever the Holy Spirit lead. Keep us consecrated and submissive, desiring only to walk in Your ways. Amen.

THOUGHT FOR THE DAY

God's blessing is always upon those who accept His will wholeheartedly.

Olive W. Mumert (Canada)

SPORTS

Officials Are Leading Ground Gainers As Mountaineers Lose To Bronte, 18-0

In a game marked by descension and penalties, including one 15 yarder against the public address system announcer, the Santa Anna Mountaineers kept alive the string of homecoming game losses by dropping a Saturday night tilt to the Bronte Longhorns by an 18-0 score.

In a game which the officials allowed to get completely out of control, and which saw two players from each side ejected, the Mountaineers outscored their opponents by a total of 133 yards to 114, only to see that advantage go down the drain as they were penalized a total of 152 yards on 15 penalties. The visitors garnered 70 yards worth of penalties, for a game total of 222 penalty yards.

Bronte's first scoring was a gift from the Mountaineers, as a bad pitchout on the first play from scrimmage for the home team went awry. Halfback Gary Rider was tackled in the endzone for a safety, giving the Longhorns two points. There then followed a comedy of errors, as the Mountaineers kicked to the Bronte footballers on the home team's 47 yard line. On the first play from scrimmage, the Longhorns fumbled, with Santa Anna recovering. On the Mountain-

eer's first play following recovery of the Bronte bobble, the Santa Annans tried a pass, which was promptly intercepted by Bronte. With the ball on their own 37, the Longhorns tried to get rolling, only to fumble again on the first play, with the Mountaineers again recovering. Both teams then settled down to play a little football, with the outstanding feature of the remainder of the first quarter being a 41 yard punt by Bronte that died on the Santa Anna one yard line. The quarter ended with the Mountaineer on their own six, trying to get out of the hole in which they had been placed by the Bronte kick.

The second period was marked by defensive play and penalties, mostly penalties. A fumble recovery late in the quarter and deep in Santa Anna territory set up Bronte's next score. Holding the ball on the Santa Anna 19, it took the Longhorns three plays and a penalty against the home team to tally, scoring on a five yard plunge by fullback Doug McCrutchen. The conversion attempt, on a pass from quarterback Cecil Glenn to halfback Royce Lee, was good, and the score stood at 10-0 with 51 seconds in the first half.

The third quarter was about

the same as the first two, only more so. On one series of downs, including a total of 10 plays, seven penalties were called. The Santa Anna offense completely bogged down during this period, never penetrating deeper than the Bronte 45 yard line. The only real threat of the quarter was furnished by the Longhorns, who moved to the Santa Anna 15, where the alert Mountaineer defense pounced on a fumble to end the threat.

After a Santa Anna punt, which was run back to the local 45, the Longhorns began their final scoring drive, moving on the running of McCrutchen and Lee, with the touchdown coming on a 22 yard pass play from Lee to end Davis Corey. Another pass added the extra two points with Lee catching this one, thrown by Glenn.

Final score—Bronte 18, Santa Anna 0.

In the statistics, the officials were the leading ground gainers, racking up a total of 222 yards, while Santa Anna could gain only 133 on the ground and the Longhorns gained only 114. In the air, Bronte held the edge, picking up 70 yards on eight completions out of 15 passes thrown. The Mountaineers got 27 yards through the air, completing a pair of aerials out of the nine that they tried. Bronte racked up 17 first downs on the way to their victory, while Santa Anna made eight. The Longhorns snagged four Santa Anna passes, and the Mountaineers made two interceptions. Each team lost the ball three times by the fumble route. Santa Anna punted four times for an average of 25 yards, while Bronte kicked twice for a 38 yard average. The locals were penalized 152 yards on 15 penalties, while Bronte was assessed 70 yards for eight infractions.

Next game for the Mountaineers matches them against the Dublin Lions, in Dublin. The Lions are rated in the top ten, statewide, in most class AA polls.

FOOTBALL CONTEST

THIS IS A WEEKLY FOOTBALL CONTEST SPONSORED BY THE MERCHANTS LISTED BELOW. PICK THE WINNERS IN EACH WEEK'S DISTRICT 9A GAMES, AND WIN VALUABLE PRIZES.

Each contestant must select the winner in each game listed on the entry form in this advertisement. Indicate the team you think will win each game by circling or underlining the winning. DO NOT MARK OUT THE LOSING TEAM—UNDERLINE OR CIRCLE THE WINNING TEAM.

All entry forms must be placed in the collection boxes provided for this purpose in the four businesses listed below. No mail entries can be accepted. Each entry must be on an entry form from this newspaper.

In addition to selecting the winning teams, contestants must predict the score of the Santa Anna game in the space provided. This will be used to decide ties in case two or more contestants select the same number of winners. In such case, the contestant coming closest to actual score of the Santa Anna game will be declared winner.

First prize in each week's competition will be a \$5.00 gift certificate from one of the sponsoring merchants. Second prize will be two reserved seat tickets to the next Santa Anna Mountaineer home game. Third prize is a one year subscription to The Santa Anna News.

No employees of the sponsoring merchants or of The Santa Anna News, or of their immediate families, will be eligible to compete.

Entry forms will be collected from the collection boxes at 5:00 p.m. on the Friday of the games, and no entries can be accepted after that time. Only one entry per person.

OFFICIAL FOOTBALL ENTRY FORM

Pick the winner of each District 9A game by circling or underlining the team you think will win. Then write in your prediction of the score of the Santa Anna game to be used in case of ties.

Name _____

Address _____

Phone _____

GAMES OF OCTOBER 15, 1965

- ★ Burnet at Santa Anna
- ★ Goldthwaite at Early
- ★ Bangs at Lometa
- ★ Breckenridge at Coleman

TIE BREAKER:

Santa Anna _____

Burnet _____

DEPOSIT IN COLLECTION BOX AT ONE OF THE SPONSORING MERCHANTS BEFORE 5:00 P.M., FRIDAY, OCTOBER 15, 1965.

Sponsored By These Merchants

Phillips Drug Store
This Week's Football Special
\$39.95 Electric Timex
Wristwatch Special for \$29.95

The Steak House
Open 24 Hours A Day
COME BY AFTER
THE GAME

**Richard Horner
Premier Station**
Premier Products
Premier Service

The Santa Anna News
Coleman County's Award
Winning Weekly Newspaper

PRESCRIPTIONS
Owl Drug Store
"Where Friends Meet"
Telephone 625-4514
312 Commercial Ave. Coleman

miracle
Pest Control Termite Control
Division of Miracle Laboratories, Inc.
2415 Vine St.
Termite & Pest Control
Ph. 642-9575
Brownwood, Texas

R.T. Caperton Chevrolet Company

PRESENTS THE

Favors and Refreshments For Everyone

Drawing For Two Door Prizes Daily At 10:30 a.m. and 4:30 p.m.

Transistor Radio In A "Miniature Sports Impala"

Six Given Away In All

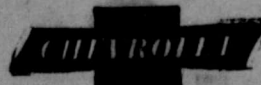
Live Broadcast On KSTA Daily 10:30 a.m. and 4:30 p.m. From R. T. Caperton Showroom



GRAND PRIZE

\$100.00 Cash To Be Given Away Saturday, October 9, 1965 at 4:30 p.m. You Do Not Have To Be Present To Win

Don't Miss The Fun And A Chance To Win These Prizes



OF THE ALL NEW

1966 CHEVROLETS

★ Thursday

★ Friday

★ Saturday

October

7 - 8 - 9

Santa Anna
JAYCEES
MEETING TONIGHT
LIONS CLUB BUILDING
Thursday, 8:00 p.m.



Protect Against
Disease Loss!

Authorized Dealer
FRANKLIN
VACCINES
and SUPPLIES
for CATTLE, SHEEP
HORSES, HOGS and POULTRY
Our Livestock Supply Department is Designed
to Serve You - Visit Us Today.

Owl Drug Store

312 Commercial Ave.
Coleman, Texas

USE



- Clean and Safe
- Best For Heating
- Higher BTU Rating
- Best For Cooking
- Approved By Architects
- No Mess
- No Fuss

PHONE 625-2925

Night Pho. 625-2849



Prompt Delivery

Coleman

Butane Gas Co.

Cole-Anna

Drive-In Theatre
Coleman, Texas

Thursday - Friday - Saturday

October 7, 8, 9

John Wayne Dean Martin

The Sons Of
Katie Elder

Anne Baneroff

The Pumpkin Eater

Sunday - Monday - Tuesday

October 10, 11, 12

Rick Nelson

Love and Kisses

OAK

Drive-In Theatre
Coleman, Texas

Saturday - Sunday

October 9th and 10th

Brian Epstein presents

"Ferry Cross
The Mersey"

Jim Davis

Lust To Kill

Piggly Wiggly



SHOPPING LIST
SPECIALS!

Lean and Tender

Chuck Roast lb. .49

Tall Korn Sliced

BACON lb. .69

Swift Premium

FRANKS lb. .59

Kraft Tasty

CHEESE 2 lb. Box .69

Club

STEAK lb. .79

Seven

STEAK lb. .49

Extra Lean Center Cut

PORK CHOPS lb. .79

Home Made

CHILI lb. .79

Choice Loin, T-Bone or Round

STEAK lb. .99

Three pound Can

CRISCO .79

22 ounce Giant

THRILL .59

Large 26 ounce

DOG FOOD .17

300 Kimbells

PINTO BEANS 2 for .27

12 ounce

SPAM .49

One quart Kimbell

SALAD DRESSING .39

303 Mission

PEAS 2 for .35

29 ounce Del Monte Pineapple-Grapefruit

DRINK .25

303 Double Luck Cut Mixed

GREEN BEANS 2 for .25

Giant Size

TIDE .69

Big 2½ Western Gold

PORK & BEANS .21

SUNSHINE 1¼ Tru-Blu Sandwich Cookies 39¢

NABISCO 14½ oz. Cinnamon Almon 49¢

SUPREME 1 lb. Chocolate Fudge 39¢

S.W. GREEN STAMPS AT PIGGLYWIGGLY