

Santa Anna News

One Section — 8 Pages

"He Profits Most Who Serves Best"

Single Copy — 5c

VOLUME LXXVIII

SANTA ANNA, COLEMAN COUNTY, TEXAS, THURSDAY, NOVEMBER 19, 1964

NOVEMBER 19, 1964

Point Rows

Sports are primarily means of recreation. But they can be demonstrations of courage too. We have seen two examples of this in recent weeks. Sports competition is a reflection of the battle of life, and just as courage is often necessary in life, so it often becomes necessary in sports.

The sports pages carried the news last week that Fred Hutchinson, manager of the Cincinnati Reds in the National League, had died of cancer. Hutchinson had known for some time that he was suffering from cancer of the chest, had undergone treatment in the Seattle hospital where his brother was a doctor. Although he knew that the chances were not good, he never gave up, never asked for sympathy, but rather asked only the opportunity to continue doing his job as long as possible. When the cancer was discovered and treatment was begun last winter, Hutchinson said that he would be back with his team for spring training, and he was. He stayed with the team until late in the season, when his illness became too severe to allow him to continue.

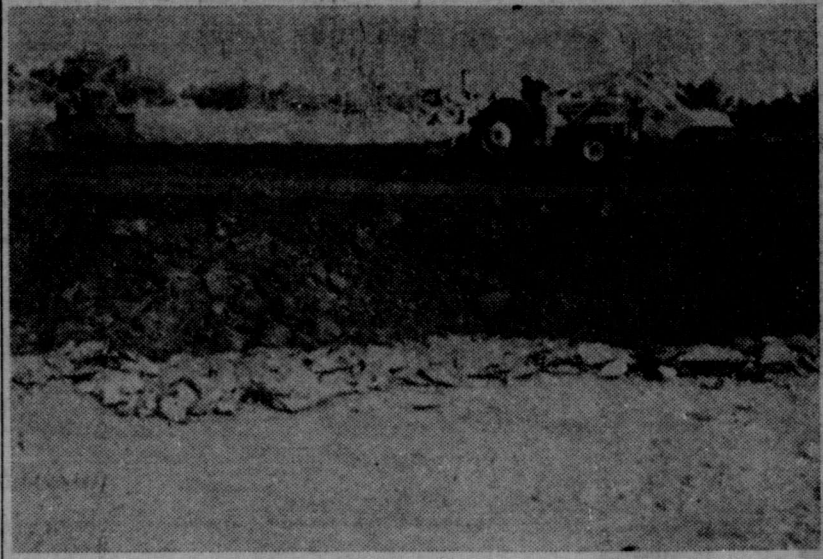
Hutchinson was known as a man with a heart of gold who tried to hide it behind a gruff exterior. Joe Garagiola once described Hutchinson as being a "nice guy, but his face just hasn't found out about it yet." He was remembered as a fierce competitor, was a member of one of the best pitching staffs since the World War II, teamed with Hal Newhouser, Virgil Trucks, and Art Houtemann on the Detroit Tigers in the 1940's and early 1950's.

Hutchinson proved, in his last illness, to be the sort of person William Shakespeare described in the lines from "Julius Caesar": "In him were the elements so mixed, that all nature might stand up and say, 'Here was a man.'"

The other example of courage in sports we find much closer to home. This was conduct of our own Santa Anna Mountaineers during the football season just passed. It would have been easy, and few would have blamed them, if the Mountaineers had let down during the season, had taken the easy way, accepting defeat with the least possible expenditure of effort. Instead, they fought as hard against teams like Dublin and Goldthwaite, powers in the state football picture, as against teams like Early and Bangs, against whom they might have had some chance. And they tackled as hard, tried as hard, and put out as much effort when they tailed by 40 points, late in the game, and with no chance of winning, as they did early in the contest. This is the sign of the true champion. Anyone can play competitively when things are going well, when they have the advantage, but the true test of sportsmanship comes when the going is rough, when the advantage lies with the opposition. This is when the true sportsman keeps going, and when the fair weather soldier quits.

The coaching staff at Santa Anna High School is to be commended for the job they have done with the football team this season. The sports program in high school is not the principle purpose for the school's existence, but should be a tool in building character and good sportsmanship. We feel that the administration and coaching staff at Santa Anna High School have been much more successful in this endeavor this year than in many schools with much better won-lost records. There is no comparison between the quality and benefits of the football program here in Santa Anna and that in, for instance, Albany, where a lack of emphasis on the basic purposes and principles in the high school sports program has resulted in a sordid situation that will be a blot on that school's reputation long after the Mountaineers' losing football season has been forgotten.

We think that the Mountaineers had a successful football season this year, and that Santa Anna had a football team of which to be proud.



GROUNDWORK BEGINS on the new rest home, first unit of the proposed Santa Anna Medical Center, in part of old Ranger Park on the east edge of Santa Anna. With all legal snarls untangled, construction will start on the rest home in the near future.

Santa Annans Turn Out In Large Numbers To Support Labor Survey, Double Coleman's Record In One Day

Santa Anna did it again. In the first day that the Texas Employment Commission survey office was open in Santa Anna, Monday, November 15, almost twice as many persons showed up for interviews as were processed through the Coleman office during the entire first week of operation.

In Coleman, 29 persons showed up during the first week that the office there was open. In Santa Anna, on the first day the Mountain City office was open, 55 persons were processed.

Texas Employment Commission workers, who were glum following the poor turnout in Coleman, were gleeful over the large Santa Anna attendance. "This is really going to make a good report, and will look very good for Santa Anna," said one member of the three-man staff in the Santa Anna office.

The local office is open on Monday and Wednesday of each week during the survey, from 9:00 a.m. to 5:00 p.m. All persons in Santa Anna and the surrounding area, employed or not, whether they are seeking employment or not, are urged to visit the office for a 15 minute interview. Information from these interviews is tabulated and published in book form, showing the labor force potential in the

Band Tops In Inspection, Does Well In Marching

The Marching Mountaineers from Santa Anna took a first place in the inspection portion of the regional band competition in San Angelo Saturday, November 14, scoring a 98 out of a possible 100.

The band received a rating of 1, highest possible, in the inspection category.

In the marching portion of the competition, the Mountaineer musicians rated a 3. Bands are rated from 1 through 5, with 1 being the highest and 5 the lowest.

Santa Anna band director Fred Gray said he was "quite happy" with the ratings earned by the Mountaineer aggregation, mentioning that judging was unusually strict this year.

Dr. Rudisalle To Have Open House

Dr. Stanley E. Rudisalle, Santa Anna's new dentist, will hold an open house in his new offices, 210 North Second Street, Sunday, November 22, from 4:00 to 6:00 p.m.

Dr. Rudisalle issued an invitation for all residents of Santa Anna and the surrounding territory to stop by Sunday and get acquainted. The old Coleman County Telephone Cooperative building has been remodeled, and the latest dental equipment installed.

area. This book is circulated among businesses and industries looking for sites for new or relocated locations.

Job placement and counseling and aptitude testing are also included in the services offered in the local office. This office will be open on the two designated days during the survey, but it is not a permanent office, and all persons planning to stop by should do so as early as possible.

The Santa Anna office will be open on certain evenings, not yet announced, for the benefit of workers who cannot attend during the day.

Although the Coleman office has been open about two weeks and is open five days a week, and the Santa Anna office opened for the first time Monday and is open only two days a week, Santa Anna is running neck and neck with Coleman for total attendance. By continuing to turn out in large numbers, Santa Annans can demonstrate in black-and-white figures that theirs is the most progressive city in Coleman County.

Local Scout Troop Attends Camporee

In its first troop activity since being reorganized, Boy Scout Troop 30, of Santa Anna, attended the Chisholm Trail Council Camporee, at Hubbard Creek Lake, near Breckenridge, Saturday and Sunday.

Approximately 500 Scouts and leaders were present at the Camporee from throughout the Council.

Although the local Troop met with transportation difficulties both going and coming, their first camping trip since reorganization was a success.

Plans are now being made for next month's outing, which will be a combination hike and overnight camp, on a troop level.

Troop 30 is still in the process of being organized, and any boy aged 11 through 18 who is interested in joining is invited to attend one of the weekly meetings. Next meeting will be Thursday, November 19, in the Lions Club Building. Meeting time is 7:30 p.m.

WOMEN'S COUNCIL OF CHURCHES MEETING

The Women's Council of Churches will have their regular meeting, Monday, November 30, at 2:30 p.m. in the Christian Church, with the ladies from the Christian Church in charge of the program.

Mr. and Mrs. Richard Smith spent last week in Tyler with their son, Mr. and Mrs. Gene Smith and got acquainted with their new grandson, Richard Todd, who arrived November 7. The parents have two other sons, Jeffrey and Gregory.

Carbon paper and sales pads at the News office.

Santa Anna Silica Sand Firm Sold To Arkansas Company

NOTICE

In order to provide our advertisers with a medium for advertising their Thanksgiving specials, and to provide our readers with the information about these specials before Thanksgiving, The Santa Anna News will be published early next week. Instead of printing the paper on Wednesday and issuing it on Thursday, it will be printed on Monday and issued on Tuesday. Publication date will be on November 17 rather than November 19.

Deadlines for next week's paper will be noon Saturday. The News office will be open all day Saturday this week.

In order to give members of the staff of The News a Thanksgiving holiday, the office will be closed Tuesday, November 17 through Sunday, November 22. The News will be open for business as usual on Monday, November 23.

All persons submitting news for the paper next week are urged to do so before noon Saturday. Advertisers wishing to have ads in this issue should have their copy prepared early also.

Farm-City Week Observance Set

Rural and urban Texans as never before need to understand each others problems and the dependency each has for the other, explains John G. McHaney, a member of the Texas Farm-City Week Committee, and economist for the Agricultural Extension Service, in announcing plans for the November 20-2 observance in Texas.

Farm-City Week is now 10 years of age; is national in scope and each year it gains in significance, says McHaney. Last year some 10,000 US communities planned and carried out local observances. Kiwanis International serves as the coordinating agency. Participation is open to every segment of the population, says McHaney, since all have a vital interest in the well-being of rural as well as urban America.

A primary purpose of National Farm-City Week is to promote better understanding between rural and urban peoples, and to increase the knowledge and appreciation of each other for the American way of life, the state committeeman said.

McHaney says that many Texans may feel that agriculture is a declining industry since the number of actual producers has been dwindling for many years. Nothing could be further from the truth, he adds. Only one raw material, oil, he says, produces a larger annual dollar value than does agriculture. Too, about 40 percent of all Texans depend upon agriculture either directly or indirectly for their livelihood. About 20 percent are engaged in processing and distributing farm products; another 12 percent keep the farmer and rancher supplied with production items, and eight percent do the producing.

The efficiency of our great agricultural industry has been a major factor in making the American level of living the highest the world has ever known and Americans the best fed and clothed in the world, the economist said.

The growth of urban areas has brought on many problems that need for solution the best leadership in rural and urban communities and McHaney believes a good starting time is Farm-City Week.

The Santa Anna Silica Sand Company has been sold to Silica Products Company, Incorporated, of Guion, Arkansas, it was announced late last week.

According to Bob Markland, manager of the Santa Anna firm, the sale was made necessary by geographical factors. The Santa Anna deposits are too far from the users to allow the sand to be shipped economically, he said. Discovery and development of a large deposit of silica sand near Kosse, Texas, about 60

miles east of Waco, made it impossible for the local company to meet price competition with the large sand users in Waco. Although the local company's price for sand, FOB the plant, was lower than its competitors, the freight costs added so much to the total cost as to make the local sand uneconomical for the users.

Plans for the local operation are not settled at the present time. Officers of Silica Products Company are expected in Santa Anna next week, and decisions about the future of the Santa Anna operation may be announced then, Markland said.

The Santa Anna Silica Sand Company was founded by H. L. Markland, in April of 1944. Bob Markland has managed the Company since the death of his father in 1958. The local sand company had an annual payroll in the neighborhood of \$125,000 to \$135,000.

Extensive efforts were made to allow the Santa Fe Railroad to lower freight rates for the Santa Anna Silica Sand Company. These rates are set by joint agreement of all railroads in this part of the country, and any change must be approved by all. Two different hearings were held in an attempt to get permission for Santa Fe to lower the rates, but some of the railroads involved voted against the rate change each time.

Markland estimated that at present rate of use, enough high grade silica sand remains in the west half of Santa Anna Mountain for about 50 years of mining operations.

The sale of the local sand mining firm is effective December 1, 1964. Amount involved in the sale was not announced.

Santa Annans In Air Force Game

Staff Sergeant Jasper W. McClellan Jr., son of Mr. and Mrs. Jasper W. McClellan Sr., of Santa Anna, is a member of the US Air Force Military Air Transport Service elements providing strategic airlift services for exercise Gold Fire I in the Ozark Mountains of south-central Missouri.

SSgt. McClellan, an aircraft and equipment maintenance technician, is one of more than 20,000 men participating in the joint Air Force-Army training exercise being conducted by the US Strike Command.

Gold Fire I is being held at the direction of the US Joint Chiefs of Staff to evaluate Air Force concepts for improving the use of tactical airpower in support of ground forces. The exercise ran through November 13.

The sergeant is a graduate of Santa Anna High School. His wife, Clara, is the daughter of Mr. and Mrs. George Stewardson, of Santa Anna.

Santa Anna Yule Program Progresses

The Santa Anna Christmas Program is well underway, with participating merchants giving tickets to their customers, with one ticket due for each dollar of purchase. The tickets are to be filled out and placed in boxes located in all participating businesses. On December 24, a grand drawing will be held, with four big prizes to be awarded, including a color television set, a black-and-white portable television, a set of ceramic cookware and a service of fine china. The prizes are now on display in the window of the Western Auto Associate Store, in Santa Anna.

Plans for the big Christmas parade, an annual event, are progressing. Local clubs have made plans to decorate windows in downtown Santa Anna for the Christmas season.

Precinct 2 Community Chest Campaign Scheduled, Chairmen Named This Week

Chairmen for the 1965 edition of the Precinct 2 Community Chest campaign have been named. The Precinct 2 Community Chest is a chartered and incorporated organization taking in all of Coleman County Precinct 2.

Chairman for this year's campaign is County Commissioner Thomas Wristen, Jr., and co-chairman is John McDaniel, manager of the Santa Anna office of West Texas Utilities.

Area chairmen have also been selected. They include: Santa Anna, Zone 1: Freddie Dodson; Santa Anna, Zone 2: Mrs. Paul Pembroke; Santa Anna, Zone 3: Mrs. Dutch Campbell; Santa Anna, Zone 4: Mrs. Lera Guthrie and Mrs. Donnie Clifton; Santa Anna, Zone 5: Brown Brooks; Santa Anna Independent School District: Cullen Perry; Santa Anna Business District and Special Gifts: Roy Horne; Santa Anna Hospital and Clinic: Fred Murray; Santa Anna, Zone 6: Raymond DeLeon and Joe Guerrero; Santa Anna, Zone 7: Pearl Wilson; Coleman

TSCRA Directors Meeting Monday Set In Amarillo

Cattlemen from Texas and surrounding states will meet in Amarillo, November 23 for the quarterly director's meeting of the Texas and Southwestern Cattle Raisers Association.

Headquarters will be the Holiday Inn West, according to Joe S. Fletcher, TSCRA secretary-general manager. The general session will begin at 9:00 a.m. It is open to the public.

The market inspection committee and others to be announced later will meet the preceding afternoon.

The TSCRA director's meeting will be followed on Tuesday by the Fourth Annual Southwestern Cattle Feeding Conference.

County Telephone Cooperative: Allyn Gill.

Goal for this year's drive is \$3,000. The funds are used to assist in beneficial projects, assistance for needy persons, and support of qualified nonprofit organizations.

The campaign will get underway on Monday, November 23, and is projected to last one week.

Ken Minyard Added To Staff Of Paper

The Santa Anna News has added another member to its staff this week. Kenneth Minyard, of Santa Anna, formerly Augusta, Georgia, has been employed in the production department.

Minyard, who has lived in Santa Anna about four years, is married to the former Shirley Little, daughter of Mr. and Mrs. A. B. Little, of Santa Anna. They have two children, Lisa, 6, and David, 2.

The Minyards live on Mountain Road in Santa Anna.

FOOTBALL

SANTA ANNA MOUNTIES

District 9-A Records

1964



SANTA ANNA HIGH SCHOOL FOOTBALL SCHEDULE

September 4: Santa Anna 12, Baird 45
 September 11: Santa Anna 0, Cross Plains 13
 September 18: Santa Anna 0, Clyde 27
 September 26: Santa Anna 0, Bangs 20
 October 2: Santa Anna 6, Bronte 23
 October 9: Santa Anna 0, Dublin 50
 October 16: Santa Anna 0, Burnet 48
 October 23: Santa Anna 0, Marble Falls 40
 October 30: Santa Anna 0, Goldthwaite 44
 November 6: Open
 November 13: Santa Anna 8, Early 16
 * District Game

DISTRICT 9A SEASON STANDINGS

Team	Won	Lost	Tied	Pct.
Marble Falls	6	4	0	.600
Goldthwaite	5	4	0	.556
Burnet	3	7	0	.300
Early	2	6	2	.300
Santa Anna	0	10	0	.000

DISTRICT 9A DISTRICT STANDINGS

Team	Won	Lost	Tied	Pct.
Goldthwaite	4	0	0	1.000
Burnet	3	1	0	.750
Marble Falls	2	2	0	.500
Early	1	3	0	.250
Santa Anna	0	4	0	.000

SANTA ANNA JUNIOR HIGH SCHOOL FOOTBALL SCHEDULE

September 15: Santa Anna 0, Blanket 18
 September 22: Santa Anna 0, Early 0
 Sept. 29: Santa Anna 6, Cross Plains 14
 October 6: Santa Anna 14, Bangs 6
 October 13: Santa Anna 6, Goldthwaite 8
 October 20: Santa Anna 0, Rising Star 30
 October 27: Open
 November 3: Open



SUPPORT THE MOUNTAINEERS



G&E Hardware & Appliance
 HARDWARE HEADQUARTERS IN SANTA ANNA

West Texas Utilities Company
 SUPPORTING THE FIGHTING MOUNTAINEERS

Santa Anna Hospital
 ALL THE WAY, MOUNTAINEERS!

Western Auto Associate Store
 SPORTS SUPPLIES AT WESTERN AUTO

Speck's Barber Shop
 CLIP 'EM, MOUNTAINEERS

R. T. Caperton Chevrolet-Cadillac
 CHEVROLET and CADILLAC in COLEMAN COUNTY

Fairy Williams Barber Shop
 BACKING THE MOUNTAINEERS

Coleman County Telephone Co-op., Inc.
 OWNED BY THOSE WE SERVE

Central Medical Clinic
 SUPPORT YOUR TEAM

Santa Anna Co-op Gin
 SUPPORTING THE MOUNTAINEERS

Coleman County State Bank
 THE FRIENDLY COLEMAN COUNTY BANK

Cliff & Ruth Grill
 STOP BY AFTER THE GAME

Mrs. J. R. Gipson, Florist
 FOR YOUR GAME CORSAGE

The Man's Shop
 EVERYTHING FOR MEN AND BOYS

Radio Station KSTA
 PLAY-BY-PLAY EVERY SATURDAY MORNING

The Ladies Shop
 BEHIND THE MOUNTAINEERS

Coleman Gas Company
 SERVING COLEMAN AND SANTA ANNA

Taylor Motor Company
 HOME OF THE 50,000 MILE or 5 YEAR WARRANTY

Burden Mobil Service Station
 ALL THE WAY WITH THE MOUNTAINEERS

McKee's Cleaners
 WHERE CLEANING IS AN ART

Santa Anna Silica Sand Company
 WITH THE MOUNTAINEERS ALL THE WAY

Phillips Drug Store
 WIN WITH THE MOUNTAINEERS

First Methodist Church
 THE CHURCH OF THE OPEN DOOR

McCrary Premier Station
 YOUR FRIENDLY PREMIER DEALER

Baker's Gulf Service Station
 HOME OF THAT "GOOD GULF"

Santa Anna Quarterback Club
 BACKING THE MOUNTAINEERS ALL THE WAY

Coleman Butane Gas Company
 SERVING THE SANTA ANNA AREA

Santa Anna National Bank
 YOUR FRIENDLY HOMETOWN BANK

Horner Humble Service Station
 GO TO THE GAME WITH ENCO

Coleman County Electric Cooperative, Inc.
 OWNED BY THOSE WE SERVE

Whon News

By MRS. TOM RUTHERFORD

We are sorry to report this week that Mrs. Darwin Lovelady is a patient in the Medical Arts Hospital, in Brownwood. We are wishing Billie a speedy recovery.

Mr. and Mrs. Leonard Matasie and boys, Martin and Danielle, of Dallas, were weekend visitors with her parents, Mr. and Mrs. Bert Turney. Mr. Doc Gill of Brownwood visited the group Saturday afternoon.

Lynda Rutherford of our community, accompanied the Santa Anna Band to a marching contest in San Angelo Saturday.

Mr. and Mrs. John David Morris of Coleman spent the weekend with his parents, Mr. and Mrs. Floyd Morris and his brother, Jamie Lee. The men went deer hunting, but reported no luck.

Mr. and Mrs. James Avants and daughter, Pat, of Santa Anna, visited with Mr. and Mrs. Aaron Avants Saturday. Their son, Jimmy, returned home following a weeks visit with his grandparents.

Mr. and Mrs. John Hunter of Rockwood visited Mr. and Mrs. Bert Turney Tuesday afternoon.

There will be a Community supper at the Whon Community Center Friday night, November 20. Everyone come and enjoy the supper and an evening of

thankfulness and fellowship together.

Mr. Troy Avants, of Coleman and Mr. Warnel Avants, of Dallas, visited with Mr. and Mrs. Bert Turney Friday afternoon. Mr. and Mrs. Troy Avants and son, Lanton, returned Sunday for a day of visiting with the Turneys.

Mr. and Mrs. Graham Fitzpatrick and Mr. and Mrs. Floyd Morris visited Mr. and Mrs. Bert Turney Thursday afternoon.

Mr. and Mrs. Douglas Avants and children, of Brady, visited his parents, Mr. and Mrs. Aaron Avants, Sunday afternoon.

Becky Wolfrum, of Abilene, accompanied Cheryl Fitzpatrick home Friday returning to Abilene Saturday. Cheryl Fitzpatrick spent Sunday in San Antonio.

Mr. Warren (Doc) Gill of Brownwood was looking over ranch activities Monday here on the Gill Ranch.

Mrs. Floyd Morris and daughter in law, Mrs. John David Morris, visited in the Bangs Rest Home Saturday afternoon.

Mr. and Mrs. Randy Brown of Zack Bible Thursday. On Friday the group visited relatives in Comanche.

Leon Carter visited in the Santa Anna were Sunday guests of her parents, Mr. and Mrs. Cleburn Stanley.

Mr. Bal Peeples and Mrs. Edna Smith visited with Mr. and Mrs. Tom Rutherford home briefly Monday night.

Shields News

By MRS. E. S. JONES

Everyone is invited to attend the annual Thanksgiving Supper at the community center Saturday night, November 21. Hostesses are Mrs. Dock Skelton and Mrs. George Cobb. Bring food, card tables and dominoes.

Friday Mr. O. C. Yancy went to Gillespie County to hunt deer. He returned Saturday with a six point and eight point kill before nine o'clock.

Mrs. W. J. Steward of San Angelo spent Sunday and Monday nights with Mrs. E. S. Jones and visited with Mrs. Ione Caton in the Santa Anna Hospital Monday.

Mr. Jim Williams of Houston visited Thursday and Thursday night with Mr. and Mrs. Leonard Williams and with other relatives during the weekend.

The Santa Anna High Band was in San Angelo Saturday for contests and won I in inspection and III in marching. Donna and Larry Williams are members of the band.

Sunday, Gerald Harper, minister of the Church of Christ, and Miss Judy Crawford, of San Angelo were guests of Mr. and Mrs. Jess Fryar.

Essye Ashford of San Angelo and Mabel Williams of Coleman visited during Tuesday afternoon and evening with the Grady Williams family. They also visited Mr. and Mrs. G. C. McDonald and Mrs. E. S. Jones.

Mr. and Mrs. Sam Cobb of Fort Worth spent the weekend with Mr. and Mrs. George Cobb and Mr. and Mrs. Bert Fowler.

Mr. and Mrs. Bill Price visited in Santa Anna Sunday with Mr. and Mrs. Buster Woodard.

Mr. and Mrs. Edgar Shelton were in Lubbock Saturday and Sunday visiting with Mrs. Virgil Arrant and family and with Brother and Mrs. Colton Parker.

Mr. and Mrs. Booker Watson of Coleman were guests of Mr. and Mrs. G. C. McDonald Sunday afternoon.

Cleveland News

By Mrs. Sid Blanton

Mr. and Mrs. Brown Brooke and Susan visited Mr. and Mrs. R. W. Cupps Saturday night.

Mrs. Tommy Blanton and family spent the weekend with Mrs. Nora Blanton. Tommy and Sid Blanton were deer hunting at Doss. Tommy returned Sunday night, with Sid remaining until Monday. They reported some good luck.

Mr. and Mrs. Edd Hartman and family of Santa Anna and Eddie W. Hartman were Sunday visitors with Mr. and Mrs. C. T. Moore, Terry and Mrs. Melvin Pollock and children.

Mrs. Clara Cupps visited Mrs.

Toni Watson Saturday afternoon.

Mrs. Sid Blanton and Tammy had the pleasure of getting acquainted with Terry's roommate at college, Joe Wheelers and his family, of White Deer, were passing through Santa Anna Saturday morning and called on her.

Mr. and Mrs. John Howard spent Saturday at Lometa with Mr. and Mrs. Tom Howard.

Mrs. Jimmy Schulle and children visited Mr. and Mrs. Casey Herring and family Sunday night.

Mr. and Mrs. V. E. Penney came home Saturday after visiting Mr. and Mrs. Doug Penney at Crane.

Mr. and Mrs. Tom Moldin, of Fort Worth, were visiting her parents, Mr. and Mrs. C. W. Fleming, over the weekend. Mrs. Fleming has been recovering from surgery in the Santa Anna Hospital, but is at home now and doing fine.

Trickham News

By Mrs. J. E. York Telephone DU2-3336

Mr. and Mrs. Buck Cartwright of Colorado Springs, Colorado, visited Monday afternoon with Mrs. Minnie Wilson and Grey Laughlin.

Visitors during the weekend with Mr. and Mrs. Fred Haynes were Mr. and Mrs. G. K. Stearns, Mr. and Mrs. Joe Morris, of Brownwood, Mr. and Mrs. Jerry Haynes and Davie, of Coleman, and Mr. and Mrs. Clark Miller of Santa Anna. Miss Pearl Ford of Brownwood spent Sunday night with Mr. and Mrs. Haynes.

Mrs. O. J. Martin spent Saturday night with her daughter, Mrs. Jack Dockery. Mr. Martin, Jack, John and Tinker were hunting during the weekend near San Saba.

Virgil Lancaster and Robert Earl Lancaster of Woodville, visited their parents, Mr. and Mrs. Lige Lancaster recently. Mr. and Mrs. O. L. Oakes and Mrs. Nita Williamson of Brownwood spent Wednesday with the Lancasters.

AUTOMATIC CAR WASH

25¢ 5 Min.

Open Day & Night

On Needham Street West of T. L. Sparkman's Wash-A-Matic

Coleman, Texas

ALL BUSINESS APPRECIATED

T. L. Sparkman, Owner and Operator

TIRES ARE GUARANTEED at RUDOLPH'S Coleman, Texas

DR. M. O. SOWELL CHIROPRACTOR Phone 625-4824 615 Commercial, Coleman

Give Your Clothes Nine Lives

Bring Them To Switzer's Laund-O-Mat

Today



It's The Cat's Meow!

NOW! Big travel bargain for cities along Santa Fe

It's Chico Bargain Fare time again on the Santa Fe—through April 30, 1965.

For example, a regular round-trip ticket costing \$100 will be sold at the off-season bargain fare of \$80. Round trips costing \$75 now will be only \$60, and similar reductions will apply for round-trip tickets from all stations except for local trips within the State of California.

No matter where you travel on Santa Fe trains, round-trip bargain fares will save you approximately 20%. Tickets on sale every day with a return limit of 30 days. Yes, bargain fares apply for both round-trip coach and first-class tickets.

Now you can leave the car at home and save money traveling by Santa Fe.

See the Santa Fe Agent in your home town for complete information!



Santa Fe



Monument at San Jacinto Battleground by E. M. Schwetz

SAN JACINTO . . .

in 18 Minutes—Blessed Freedom!

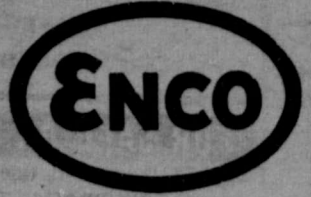
At 3:30 P.M. on April 21, 1836, General Sam Houston launched his attack. So sure was Mexican Army Commander Santa Anna of his troops' superiority that he did not even post sentries during the customary afternoon siesta.

The freedom-inflamed Texans, shouting "Remember the Alamo!", sprang upon the enemy. In the incredibly short space of 18 minutes Texas' freedom was won.

Santa Anna was captured. Six hundred and thirty officers and men were killed; the rest taken prisoner. Texas lost only nine men killed or mortally wounded, with 30 less seriously wounded. When the captured Santa Anna ordered his troop commanders to leave Texas, the last threat to peace was removed. Texas was free!

U. S. SAVINGS BONDS YOUR FRIENDLY

Santa Anna National Bank Member FDIC and Federal Reserve Bank of Dallas



Sign of Happy Motoring Complete One-Stop Service

CRUSHED OR BLOCK ICE

Horner Humble Service Station

WE GIVE S.H. GREEN STAMPS

Announcing A New Service

We Have Just Completed Installation Of

Pelleting Equipment

Adding to our regular service of custom crimping, grinding, mixing and processing of feeds with molasses.

Bring In Your Grain and We Will Process It Into Cubes or Mixed Feed, To Fit Your Needs

OFFERING

Wilco 3/4 and 1/2 inch Breeder, Range and Economy cubes with top quality concentrates.

Wilco 1/4 inch Creep Feed for calves, hogs or lambs. Wilco Calf or Lamb feed (sweet feed—for growing and fattening.)

Wilco H.M.M. (20-80) with molasses.

Wilson Grain Co.

Coleman, Texas

CLASSIFIED ADVERTISING

CLASSIFIED ADVERTISING RATES

First Insertion — Per Word 4c
 Each Additional Insertion — Per Word 2c
MINIMUM CHARGE — 50c PER WEEK
COPY DEADLINE — 10:00 A. M. WEDNESDAYS

FOR SALE OR TRADE

FOR SALE: Good used refrigerators, automatic washers, wringer washers, clothes dryers and gas cook stoves. Terms to suit YOU. Geo. D. Rhone Co., Coleman, Texas. 48tf.

FOR SALE: Used Furniture and Antiques. W. M. Morgan, 602 South Houston, phone FI8-3802. 25tf.

FOR SALE: Two bedroom house on pavement on Avenue A. See Walter Holt. 45-47p.

FOR SALE: Several used TVs in good condition. Geo. D. Rhone Co., Coleman, Texas. 48tf.

SINGER ZIG ZAG SELECT-O-MATIC

Buttonholes, sews on buttons, embroiders, fancy patterns, ect. Need party with good credit to assume payments of \$7.75, or \$68.48 cash. Still under guarantee. Write Department 11, in care of The Santa Anna News, Post Office Box 697, Santa Anna, Texas. 39tf.

REAL ESTATE BEST BUYS

FOUR ROOM HOUSE: With bath, on pavement, a bargain with small down payment. Also, two large lots located on pavement.

ANOTHER FOUR ROOM HOUSE: This one is a real bargain. Close-in and on pavement, this four room with bath, house can be purchased with a very low down payment, with the remainder in low monthly payments, like rent.

M. L. (RAT) GUTHRIE 45tf.

LIFETIME TANK COAT: Stops all leaks. Prevents rust forever. For Steel, Concrete, and Wood. Three quarts, \$11.00, three gallons, \$39.00. Virden Permabilt, 4014 Bowie, Amarillo, Texas. 47-50c.

WANTED—TO BUY

WANTED: All kinds of sacks, burlap or cotton feed bags. Top market prices. Coleman Bag & Burlap Co., phone FI8-3604, Santa Anna. 4tf. Use the News want ads. They get results.

FOR RENT

FOR LEASE: The Kelley farm. See Ross Kelley. 46-49c.

SPECIAL NOTICES

REGISTERED SHETLAND Stud ready for service. Arthur Talley, Phone FI8-3130 or FI8-3354. 40tf.

MISCELLANEOUS

IF YOU ARE thinking about improving your home ask us for free estimates on the following: Insulation to make your home easier to heat and cool; all types of siding including the new plastic, insulated, asbestos and aluminum in lovely colors and quality roofing to top it all. Call MI5-8596 Collect. Smith Roofing Company, Brown-Wood. 51tf.

WHEN YOU THINK of grinding, mixing and pelleting, think of Hollingsworth Feed Mill, Coleman, Texas 50tf.

UPHOLSTERING

Shirley Upholstering Co. 1504 North Nueces, Coleman

Wright's tree acacia is the largest of Texas acacias.

Typewriter paper at the Santa Anna News.



Protect Against Disease Loss!

Authorized Dealer FRANKLIN

VACCINES and SUPPLIES for CATTLE, SHEEP HORSES, HOGS and POULTRY

Our Livestock Supply Department is Designed to Serve You — Visit It Today.

Owl Drug Store

312 Commercial Ave. Coleman, Texas

Rockwood News

By MRS. JOHN C. HUNTER

Mrs. Lee Miller has been dismissed from the Coleman Hospital and is recuperating at Holiday Hill Rest Home before returning home.

Mr. and Mrs. R. S. Whitfield of Eola visited Sunday with Mrs. A. L. Crutcher. They brought Miss Hix Whitfield to visit with Mrs. Crutcher. They all visited Sunday afternoon with Mr. and Mrs. Lester Bryan. Mr. and Mrs. Drury Estes called on Mrs. Crutcher one afternoon.

Mrs. Mena Shuford was admitted to the Santa Anna Hospital Saturday.

Mr. and Mrs. John Hunter vi-

sited with Mr. and Mrs. Bert Turney at Whon Tuesday afternoon. Bill Nevans of San Angelo was at his farm this weekend and visited with the Hunters.

Mr. and Mrs. John X. Steward were business visitors in San Angelo Tuesday and again Saturday. George Steward of Mozelle accompanied them on Thursday when they met Mr. and Mrs. Aaron Steward of Eldorado and attended the Ice Capades.

Mrs. Era Blackwell came home Sunday from Houston, where she has been receiving treat-

ment at M. D. Anderson Hospital. Mr. and Mrs. Cecil Richardson and boys were Saturday supper guests with Mr. and Mrs. M. A. Richardson.

Mountaineer Lineman Of The Week

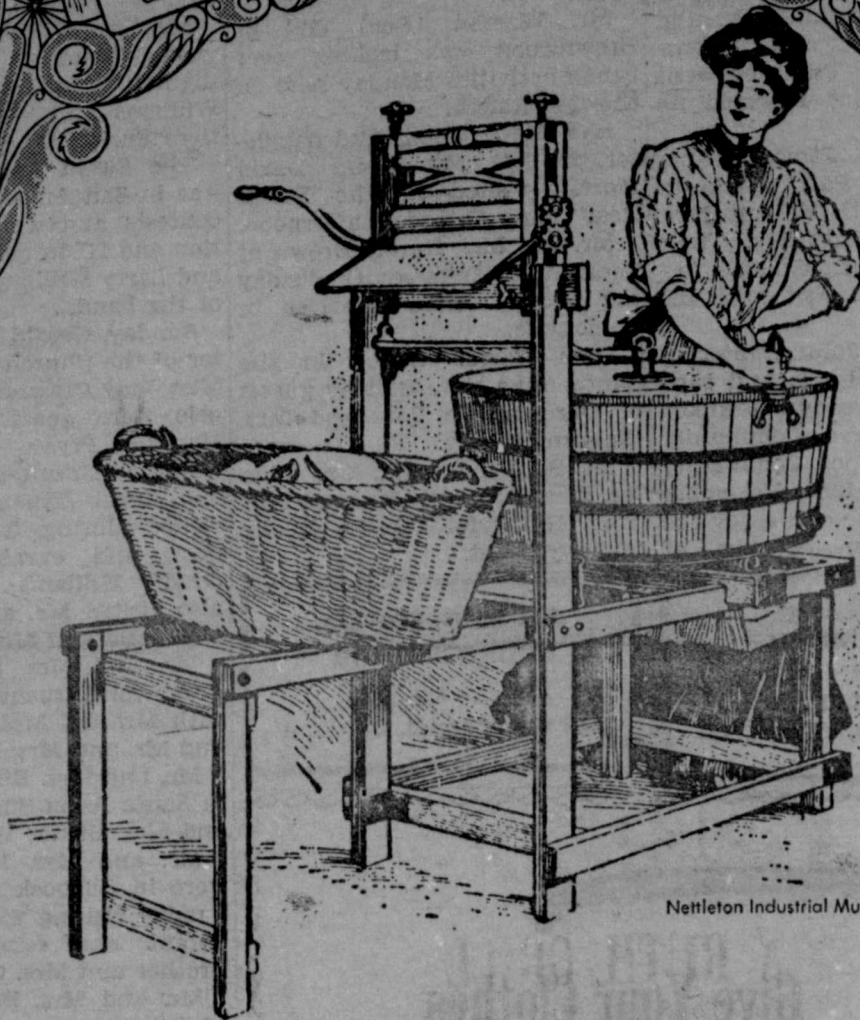
Game of NOVEMBER 13, 1964
 This Recognition of Outstanding Mountaineer Players Sponsored Every Week By



Billy Don Cupps

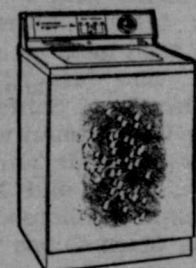
Santa Anna Insurance Agency

REMEMBER WHEN?



Netleton Industrial Museum

"If you're under 40 you won't remember your grandmother straining her back over this old fashioned washing apparatus. It's hard to believe that a washing machine like this actually existed and yet this 1905 model was the first one put on the market. In only 59 years, washing machines have improved to the point of complete automation. All the modern young housewife of 1964 does is put the clothes and detergent in her automatic, press a button, set a dial, and forget it. Isn't modernization remarkable? You too can gain the pleasure and satisfaction of push button washing. See your local appliance dealer right away."



Raddy Kilowatt



West Texas Utilities Company

an investor owned company

SPECIALS

NO. 1 GRADE — 10 to 12 Lb. Average
TURKEY HENS pound 39c

Fresh Home Killed Pork
SPARE RIBS pound 39c

FRESH CENTER CUT
PORK CHOPS pound 49c

FRESH
PORK LIVER 2 pounds 25c

FRESH SEMI-BONELESS
PORK ROAST pound 35c

OCEAN SPRAY — 300 CAN
Cranberry Sauce 2 for 49c

MORTON CREAM — 16 OZ.
PIES each 29c

Keith Cut Frozen — 10 Oz. Pkg.
CORN 2 for 25c

DEL MONTE — 303 CAN
Fruit Cocktail 2 cans 39c

IMPERIAL PURE CANE
SUGAR 10 lb. bag 97c

HOME MADE PIES
 BY MRS. TOM RUSHING

Harvey's Grocery

MEMBER INDEPENDENT GROCERS, INC.
 PHONE FI8-3632

ALL WAYS BEST

Russell Stover CANDIES



\$1.60 1 lb.
 2 lbs. \$3.15

MANY ASSORTMENTS TO GIVE AND ENJOY

Phillips Drug

WE GIVE S.&H. GREEN STAMPS

GOOD VISION IS VITAL TO YOU



Regular check-ups make sure you're not neglecting eye defects you may be unaware of. Don't delay... make an appointment with us, soon.

Dr. E.H. Henning Jr. Optometrist



117 Commercial Avenue
 Coleman, Texas
 Phone 625-2228

OFFICE HOURS

9:00 A. M. to 5:00 P. M.
 Saturdays — 9 to 12

1 DAY SALE

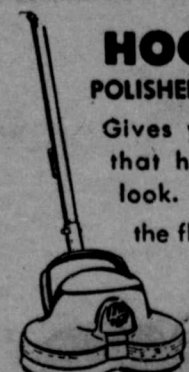
FRIDAY, NOVEMBER 20



HOOVER CONVERTIBLE

It Beats, as it Sweeps, as it Cleans

\$57.88
 Attachments Extra



HOOVER POLISHER-SCRUBBER

Gives your floors that handrubbed look. Also scrubs the floor.

\$21.88

HOOVER Steam/Dry Iron

The only iron with a stainless steel soleplate. Glides easier. Stain and scratch resistant.



only \$14.88

All HOOVER Products Drastically Reduced, For ONE DAY While Our Factory Representative Is Here. If You Got A Cleaning Problem Come In and ASK ABOUT IT!!!

HOSCH FURNITURE

Santa Anna, Texas

SOCIAL NOTES

Henderson-Blaine Marriage Vows Said At Northside Baptist Church Saturday

Miss Barbara Blaine and Billy Earl Clary served as pianist, and Henderson were united in marriage Saturday, November 7, at 7:30 p.m. Miss Blaine is the daughter of Mrs. Vernell Blaine, of Coleman; Henderson, is the son of Mr. and Mrs. Payne Henderson, Jr., of Coleman.

The Rev. Raymond Gary performed the wedding ceremony, in the Northside Baptist Church, of Santa Anna, before an arrangement of white gladiola flanked by white candles. Mrs. Earl Clary served as pianist, and accompanied Miss Connie Wall, who sang "Because."

A reception was held immediately following the ceremony, in the educational department of the church. The bride's table was laid with white net over blue and centered with a four tiered wedding cake, decorated with sugar bells, roses and topped by a miniature couple. Serving in the houseparty were Madames Zuda Henderson,

Charles Bell, and Van Copeland. The couple will make their new home in Abilene.

Santa Anna P-TA Holds Tuesday Meet

The Santa Anna Parent-Teachers Association met at the Elementary Auditorium Tuesday, November 10, for a business meeting led by the president, Mrs. Curtis Bryan. It was voted to enter a float in the Christmas parade on December 4, and Mrs. Cullen Perry will be in charge of decorating a downtown window for the Holiday season. It was also decided to organize a community theatrical group, assisted by local teachers.

The third grade class of Mrs. Harry Crews presented the program on the history of Thanksgiving, and the story of corn. Preceding the meeting the

P-TA group attended the production of scenes from MacBeth, given by the senior English class, taught by Mrs. Wana Lou Lloyd.

The room count award was won by the third grade. The next meeting of the group will be held on Tuesday, December 8.

Mrs. Claude Langford returned home Sunday, from Dallas, after spending a week getting to know her new granddaughter, Donna Sue, born November 7, to Mr. and Mrs. Carl Langford. They have two other daughters, Pamela and Cindy. Grandparents are Mr. and Mrs. Claude Langford, Santa Anna, and Mr. and Mrs. D. Bouchillon, of Coleman.

A Thanksgiving lunch will be served at the Annex of First Christian Church Sunday, im-

mediately following the morning services. All members are urged to attend and visitors are welcome.

Mr. and Mrs. Tony Rehm were in Tyler Saturday and Sunday to visit with Mr. and Mrs. Gene Smith and children. Mrs. Rehm remained for a longer visit.

Santa Anna Chapter 247, Order of Eastern Star, will meet Monday, November 23, at the Masonic Hall. Meeting time will be 7:00 p.m.

Report from the Grand Chap-

ter will be presented and other business will be transacted. Host and hostesses for the meeting will be Mr. and Mrs. Monte Guthrie, Jr., and Mrs. J. W. Taylor.

Typewriter paper at the Santa Anna News.

Weah McCulloch, Sec.-Treas.
Bettie McCulloch, Mgr.
Standard Abstract Co.
City & County Maps For Sale
405 Bank Bldg. Coleman

Two New Features

Fresh Doughnuts - 10¢ Each
\$1.00 Per Dozen

— To Go —

Seafood Platter

\$1.35

CLIFF & RUTH GRILL

Orders To Go

Brownwood Hiway

FI8-9150

Mountaineer Back Of The Week

Game of NOVEMBER 13, 1964

This Recognition of Outstanding Mountaineer Players Sponsored Every Week By

Santa Anna Tile Co.



Eddie Jones

Weekend Specials

EGGS 3 dozen 1.00

SWIFT'S MELLORINE 3 1/2 gals. 97¢

3 1/2 OZ. ANGEL FLAKE COCONUT 2 for 39¢

DOTTIE LEE BISCUITS 12 cans 98¢

46 OZ. DEL MONTE Pineapple Juice 3 for 1.00

NO. 303 DEL MONTE Sweet Peas 4 for 1.00

NO. 300 OCEAN SPRAY Cranberry Sauce 2 for 49¢

Table Napkins - Zee 2 for 25¢

YAMS 3 lbs. 25¢

LEMONS dozen 35¢

VINE RIPE TOMATOES 2 lbs. 35¢

Home Made Sausage and Chili

Williams Food Store

MEMBER INDEPENDENT GROCERS, INC.

Light Wrecker Service

24 Hours a Day

WALLACE COLLINS, Jr., GARAGE
Guaranteed Used Cars

CAR-TUNES



"My Motor Keeps Over-Heating"

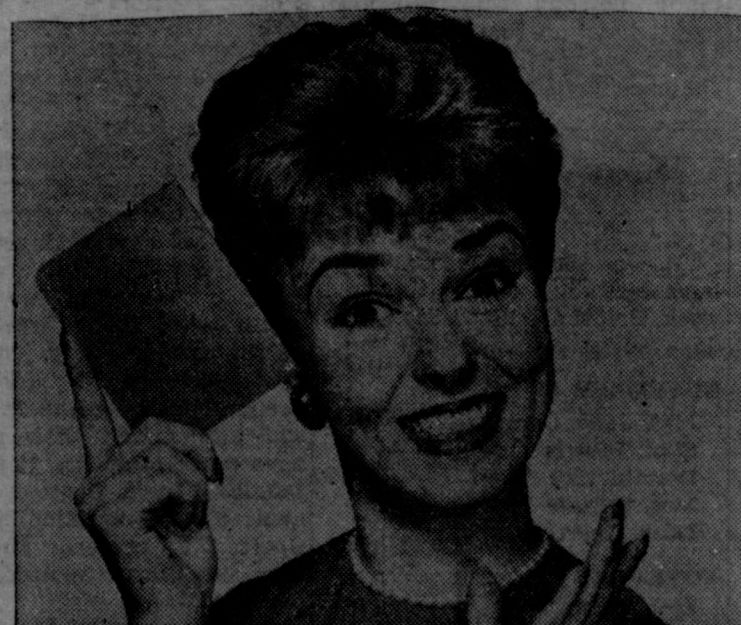
This fellow is certainly dressed right for the occasion! But why did he get in such a fix in the first place? A check-up of his motor here would have kept it on the cool side. We stop car troubles before they start!

We Give S.&H. Green Stamps

Burden Mobil Station

510 Wallis Ave.

Phone FI 8-3191



What magic this little book has!

"It's a record of my own bank savings account...an account that grew bigger faster than I realized because I added to it regularly, every payday. Now, when I want 'extras' for myself or the house, I have the money to spare. It's magic!"

FULL-SERVICE BANKING

Savings • Checking • Business Loans • Auto Loans
Personal, Farm & Home Loans • Financial Counsel

Coleman County State Bank

Member FDIC

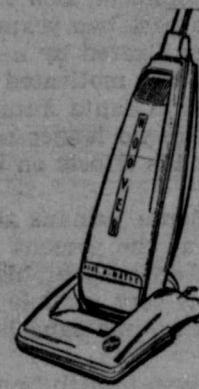
118 West Pecan, Coleman

HOOVER SERVICE CLINIC

One Day Only
Friday, November 20
9:00 a.m. to 4:30 p.m.
"BRING IT IN"

GET THIS 6-POINT TUNE-UP

FOR ONLY 99¢



- Agitator Lubricated
- Belt Checked
- Brushes Checked
- Fan Checked For Cracks
- All Wiring Checked
- Bags Checked For Leaks

Genuine parts available if needed. All work performed by factory representative.

Hosch Furniture
Santa Anna

Specials

IMPERIAL PURE CANE SUGAR 10 lbs. 98¢

KIMBELL'S CAKE MIX 4 for 1.00

OCEAN SPRAY Cranberry Sauce 2 cans 49¢

OUR DARLING - 303 CAN CORN 19¢

Crushed Pineapple 303 can 19¢

KIMBELL'S - Sour or Dill PICKLES quart 29¢

POWDERED or BROWN - 1 LB. SUGAR 2 for 35¢

SNOW FLAKE - Large 7 oz. Bag COCONUT 35¢

Walnuts -Diamond lb. 45¢

FOLGER'S INSTANT - Large 10 oz. Jar COFFEE 1.39

TALL KORN THICK SLICED BACON 2 lbs. 98¢

FRESH and LEAN HAMBURGER pound 35¢

Beef Chuck Roast pound 39¢

GANDY'S - 1/2 GALLON MELLORINE 3 for 1.00

Hosch Grocery

NOVEMBER 19, 1964
SUBSCRIPTION RATES
 One Year in Coleman County \$2.50
 One Year in Texas (Outside Coleman Co.) \$4.00
 One Year Outside State of Texas \$5.00
 One Year Outside of United States \$8.00

Second Class Postage Paid at Santa Anna, Texas
DISPLAY ADVERTISING RATES ON REQUEST

STAFF
 Bob Parker Editor
 Nora Robinson Advertising Manager
 Morey Mast Production Supervisor
 Ruth Poldrack Compositor



EDITORIAL

Of Sand, Cities, And Boll Weevils

News that the Santa Anna Silica Sand Company, an important part of the local economy for the past 20 years, has been sold to sand mining interests in Arkansas came as a shock to the city this week.

According to officials of the Santa Anna firm, their competitive position become impossible with the discovery and development of silica sand deposits much nearer Waco, location of the local company's principle customers. The Santa Fe Railroad worked closely with the Santa Anna Silica Sand Company in an attempt to get freight rates lowered for the local firm, so that they could sell their product competitively (prices of local sand FOB the point of origin were lower than those of competing firms), but some of the other railroads, all of which must okay the rate change, refused to agree.

The News would like to make three observations about this situation:

In the first place, we would like to commend Bob Markland, who has put out great efforts during the past two years to keep the local firm afloat. Naturally, he was motivated by a desire to keep his company going, but even more he was motivated by a desire to keep the sand company in operation in Santa Anna, for the benefit of the people here, even if he were no longer connected with it. He should receive great credit for his efforts on behalf of our City.

Secondly, we would like to remind Santa Annans that even though it may not be actively exploited at the present time, we still have a great potential asset in the deposits of high grade silica sand in the Mountain, and that it is very possible that future developments may again put the Santa Anna sand in a competitive position.

And thirdly, we would point out that even though Santa Anna may have temporarily lost this round in the progress of the City, one battle never made a war, unless the soldiers on one side gave up. The possible loss of the sand operation should spur us all on to greater efforts to obtain additional, and more diversified, industry for Santa Anna.

In one city in the South, there is a monument on the town square to the boll weevil! Because the damage caused by the cotton pest forced the local farmers to diversify their crops—which they would not have done otherwise—bringing agricultural prosperity to the region for the first time. These people recognized in a handicap a spur to greater progress. Santa Anna can do the same.

Yesterday's News

FIVE YEARS AGO
 According to the paper for November 20, 1959, the first Cemetery Working at Santa Anna Cemetery was a success, with between 80 and 90 people turning out.

Detailed surveying and core drilling has begun on Muke-water Creek flood control projects 1,5 and 7.

Mrs. M. L. Guthrie, Mrs. M. L. Guthrie, Jr., and Miss Patricia Davis were hostesses for a shower honoring Miss Carol McClellan, bride-elect of Donnie Simmons.

TEN YEARS AGO
 There was a new arrival in The News office this week in 1954. The new Heidelberg job press had just been installed—the same highspeed press still in use today.

The Santa Anna Pastry Shop had just opened next door to The News office.

A drought-breaking rain fell in Santa Anna and the surrounding area the past Sunday. The rainfall ranged from one to two inches in most of Coleman County.

TWENTY YEARS AGO
 Remodeling of the old State National Bank Building in Santa Anna has been completed, and the new hotel now occupying the building will open for business this week, the paper for November 23, 1944, reports.

PFC. Elvin L. Pennington, of Santa Anna, was killed when his parachute failed to open during a practice jump in New Guinea. Memorial services were held at First Baptist Church here last Sunday.

A-13 coupons in the A ration stamp book are good for four gallons of gasoline each.

TWENTY FIVE YEARS AGO
 Ford Holt, Carroll Holt, H. W. Norris, and Bob Pearce, all of Santa Anna, were injured in two separate automobile accidents last week, according to The News for November 24, 1939.

A. D. Pettit, Hardy Stewardson, Teddy Stewardson, Carl Wil-

liams, John Will Vance, J. K. McClane, and Benny Carrol went deer hunting this week in Mason County, and all brought home at least one buck. Top hunter was Pettit, who bagged two deer within two hours after leaving camp.

From an item in The News this week: "Fine hosiery, knit goods, and fabrics are now being manufactured from textile filaments derived basically from coal, water, and air!" These "textile filaments" become known as nylon.

THIRTY YEARS AGO
 W. R. Kelley & Company, of Santa Anna, advertises the new Coleman electric iron, with the new development, a thermostat to control the heat.

From the "Mountaineer" section of the paper, a portion edited by and for Santa Anna High School students: Mr. Prescott (in general science class): "Augusta, what do you know about nitrates?" Augusta: "They're a lot cheaper than day rates."

Bacon is 26 cents a pound this week.

FORTY YEARS AGO
 Miss Edna Williamson, Mrs. Ford Barnes, Miss Lydia Gresham, and Mr. Cameron Marshall presented a concert in the auditorium of First Baptist Church this week in 1924.

Miriam A. (Ma) Ferguson filed the report of the finances of her recent successful campaign for the Governorship. Total expenses were \$4,661.

The St. George Hotel, in Dallas, advertises in The News for November 21, 1924, that it has 170 rooms and 60 baths. Apparently it has 110 dirty guests.

An Oakland touring car is offered for sale in the classified ads this week.

Miss Ruby Harper has been elected secretary of the Self Culture Club.

The new 1925 Ford coupe is advertised this week in the paper for \$525. Accessories like a starter are \$85 extra.

KNOW OUR TEACHERS



VIRGINIA RUTH SIKES

Virginia Ruth Sikes is a second-year teacher in the Santa Anna Independent School District, teaching business courses and freshman English in Santa Anna High School.

Like several of the personnel of the local school system, Miss Sikes is a native of Bangs. She attended McMurry College and Howard Payne College, graduating from the latter summa cum laude in May of 1963. Her major was business, with minors in English and education.

With a year of teaching behind her, Miss Sikes finds the greatest satisfaction in the occasions when former students return to tell her how much they are benefiting from knowledge gained in her classes. Like most teachers, she finds lack of time to adequately fulfill all the requirements of the job the greatest drawback.

As sponsor of the junior class at Santa Anna High School this year, Miss Sikes is familiar to many persons who otherwise might have no contact with her as the young lady who operated the cash register in the concessions stand during home football games this season. She was a senior class sponsor last year.

Business courses offered at Santa Anna High School include typing, shorthand, and bookkeeping. The Santa Anna business teacher tries to keep the courses interesting by relating them to practical applications. For instance, in the bookkeeping class, the student spend some time on the proper methods of preparing income tax returns. Other emphasis is placed on bookkeeping for personal and household purposes.

Miss Sikes is the daughter of Mr. and Mrs. Lonnie Sikes, of Bangs. During the school year she resides in Santa Anna.

Happy Birthday

"Happy Birthday" to all who have birthdays during the next week. Below are listed the birthdays we have this week.

- NOVEMBER 21**
 Mrs. Jane Campbell Sybil Morris
 Donald Ray Owen
 Mrs. Winnie McQueen
 Dora Guerrero
- NOVEMBER 22**
 Mrs. W. F. Trull
 Milton Drake
- NOVEMBER 23**
 Verma Nell Talley
- NOVEMBER 24**
 Dena Kay Anderson
 Georgia Eppler
- NOVEMBER 25**
 Mrs. Norval Wylie
 Mrs. Richard Horner
 Mrs. A. D. Eppler
- NOVEMBER 26**
 O. V. Rutherford
 Mrs. R. B. Rutherford, Fort Worth
 Barbara Jackson, Rockville, Maryland

Would you like your name to be published on your birthday? If so, please be sure to let us know when it is. Next week we will publish names of those having birthdays between November 28th and December 4th.

GLAUCOMA
 SNEAK THIEF OF SIGHT



More than 1,300,000 Americans over age 40 have this blinding eye disease — and half don't know it!

SIGNS AND SYMPTOMS SUGGESTING CHRONIC GLAUCOMA...

- Frequent changes of glasses, none of which is satisfactory.
- Inability to adjust the eyes to darkened rooms, such as theatres.
- Loss of side vision.
- Blurred or foggy vision.
- Rainbow-colored rings around lights.

International attention came to Austin as President Lyndon B. Johnson carried on the nation's business while resting from his campaign.

President-elect Gustavo Diaz Ordaz, of Mexico, flew in for informal discussions at the LBJ Ranch. President and Mrs. Johnson arranged a barbecue in appreciation of the strong support given his candidacy by Americans of Mexican ancestry.

Latin American leaders from Texas, New Mexico, California, Kansas, Oklahoma and Louisiana were invited to the affair. Heaviest representation came from the cities of South Texas where huge LBJ majorities were rolled up.

Top business leaders from Houston, Dallas, San Antonio and Los Angeles also were on the select list of guests. All were entertained by Milton Berle, Eddie Fisher and Gene Autry. Also by Clint Harlow's sheepdog troupe and a bevy of Mexican musicians and singers.

There was talk of a possible change in a cabinet post vital to Texas, that of Secretary of Agriculture.

If Orville Freeman should be named Senator from Minnesota to replace Vice President-elect Hubert Humphrey, Johnson may choose a secretary from Texas.

Among those considered on the list are Dolph Briscoe Jr., Uvalde rancher, and Sterling C. Evans, Houston farmer and rancher who heads the Texas A&M University board of directors.

LATE INAUGURAL
 Governor John Connally may have a late inauguration.

Ceremonies likely will be postponed from January 19, when he normally would take oath of office, to January 16.

Postponement, ramrodded by the State Democratic Executive Committee, is aimed at helping Texans arrange their schedules so they can attend inauguration ceremonies for both President Johnson and Governor Connally.

Presidential inauguration is fixed at January 20 and thousands of Texans plan to attend. Many prominent political figures would have to pass up Connally's swearing in to reach Washington on time for Johnson's ceremonies.

Besides, the President wants Governor and Mrs. Connally there.

SDEC will call on members of the Legislature to cosponsor a joint resolution to postpone the Governor's inauguration.

If a majority of lawmakers sign, the Texas inaugural committee will go ahead with its plan to push back the Connally swearing-in date. A vote of the Legislature would make the change official after lawmakers convene here on January 12.

Texas constitution provides that the Governor shall be installed on the first Tuesday after organization of the Legislature, "or as soon thereafter as practicable."

SLANT-WELL SUITS
 Filing of two civil penalty suits in the 53rd District Court in Austin, for alleged slant-well activity, were made by Attorney General Waggoner Carr.

First to be filed against were J. C. Stroud and W. V. Stroud, both of Rusk County and G. M. Jordan of Kilgore. Suit involves one well in Rusk County.

Named as defendants in the second suit were the Strouds and M. M. Harding of Kilgore. Second suit involves two wells in Rusk County.

VALLEY MENTAL FACILITY FLEDGED
 State Hospital Board was informed that a new in-patient mental treatment facility, for the Lower Rio Grande Valley, will be provided in the near future.

Dr. C. J. Rullman, director of mental health and hospitals, said such a service is under consideration. It is to be patterned after the local-participation "contract care" recently made available in Beaumont, El Paso and Lubbock.

Board members accepted a \$225,000 grant by the Moody Foundation of Galveston to construct a regional diagnostic center for mentally retarded children at new Richmond State School. Center was acclaimed by Board Chairman Howard T. Tellespen as a "major breakthrough in cooperation between state and private agencies to combat mental retardation."

CARR TO WASHINGTON
 Attorney General Carr made

State Capital NEWS

the latest in a series of appearances before the US Supreme Court in Washington, DC, this week, when he argued for the State of Texas in the hearing on John William Stanford Jr., versus the state.

Stanford is the San Antonian who was ordered last December by the Subversive Activities Control Board in Washington to register as a Communist. He is appealing that order in another court.

HUNTING SEASON HINTS
 Parks and Wildlife Department has prepared a new hunting digest. It includes a Texas hunting map which shows where to hunt what and when. The digest, available at most places where hunting licenses are issued, also is available, free, by writing the department in Austin.

Parks and Wildlife Department is advising hunters to fill out their deer tags carefully and attach securely to the deer killed.

SHORT SNORTS
 Highway Commission Chairman Herb C. Pety Jr., told the 800-plus delegates to the Texas Public Employees Association convention in Austin that they have 10 million bosses — namely all the citizens of Texas....

State Selective Service Director Colonel Morris S. Schwartz announced that the state draft quota for December is only 280, compared to 307 in November....

State's General Revenue Fund still is \$22,400,000 in the black....

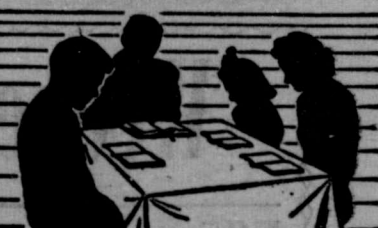
State Board of Education voted 14-6 to place the protested biology textbooks on the list from which local district can choose texts....

State Savings and Loan Commissioner James O. Gerst turned down application for a new savings and loan association at DeSoto in Dallas County....

District Judge Herman Jones of Austin upheld the State Banking Board in granting a charter to a new bank at Yorktown, in DeWitt County....

Jack Cox, who has campaigned for Congress, Governor and US Senator, now is executive vice president of the South Padre (Island) Investment Corporation, with offices in Austin.

Today's MEDITATION
 from
 The World's Most Widely Used Devotional Guide



The Upper Room
 THE UPPER ROOM, NASHVILLE, TENNESSEE

Read Acts 16:6-15.

During the night a vision came to Paul: a Macedonian stood there appealing to him and saying, "Come across to Macedonia and help us." (Acts 16:9. NEB.)

On his second missionary journey, Paul had reached the port of Troas in Asia Minor. It was here that his vision of the Macedonian convinced him that the Holy Spirit was calling him to cross the sea. At Philippi, he spoke to a group of devout women who gathered by the riverside, and a church was established in that city.

In a later day, Francis Asbury headed a similar call and crossed the Atlantic Ocean to spend almost half a century ministering along the American frontier.

Our own "Macedonia" may be closer home. It may be a worthwhile cause in need of volunteer helpers. It may be a needy family or some individual—and the need could be spiritual as well as material. Whatever the appeal, let us always pay heed when the Holy Spirit calls us to serve our fellowmen.

PRAYER

We pray, our Father, that we may hear Thy call when it comes to us and be ready to serve Thee by serving our fellowmen in their need, whatever that need may be. In the name of Christ, who taught us to pray, "Our Father, who art in heaven. ... Amen."

THOUGHT FOR THE DAY

Our love for Christ is measured by our response to His call to service.

—Cameron F. McRae (Michigan)

SPORTS

Miscues Cost Mountaineers Game With Early Longhorns In Final Contest

Inexperience — the Mountaineers' biggest problem all season — resulted in three miscues that cost the local team the game Friday night, as they dropped a heartbreaker to Early, 16-8.

Both Longhorn touchdowns came as a result of Mountaineer errors, and the best chance Santa Anna had of tying the score was erased on another bobble.

The game gave local supporters something they had been lacking all season — a close game in which the Mountaineers had a fighting chance. With a young and inexperienced team, and a schedule that many larger and more veteran teams would have found difficult, the Mountaineers seldom managed to remain in contention long. But in the last home game, the locals were in the contest right up to the end.

Late in the first quarter, a Dickie Horner fumble gave the ball to the Longhorns from Early on the Santa Anna 34 yard line. Ten plays, and two first downs, later, the Longhorns scored, with the tally coming on a pass from quarterback Glenn Fortner to end Mike Whiteley.

The Early passing game functioned well all evening, and was a big factor in the Longhorn victory. Halfback Chuck Pruett carried the ball over for a two point conversion.

Facing a third down and nine yards to go situation in the second period, the Mountaineers elected to kick from their own 25 yard line. The pass from center went high over the head of quarterback Gary Williams however, and the best Williams could do was to cover the ball on the Santa Anna nine yard line, where the Longhorns took over on downs. Despite a determined goalline stand by the Mountaineers defense, quarterback Fortner scored the second and final Longhorn TD from the one yard line, on fourth and goal to go. Douglas Jones toted the extra point attempt successfully, to bring the score to 16-0.

During halftime, the Mountaineer band put on an outstanding demonstration of precision marching, previewing for the hometown folks the show they had prepared for regional marching competition.

In the third quarter, following a 45 yard drive by the Longhorns, the Santa Anna defense held for downs on the Mountaineer 11 yard line. On the first play from scrimmage, Eddie Jones, running on the dive play series, broke into the open and went 89 yards for the Santa Anna tally. High point of the run, and one of the best plays turned in by a Mountaineer all season, was Billy Don Cupps' perfectly timed and perfectly executed block of the only Longhorn defender with a chance of pulling Jones down.

Frank Valdez, as usual a stalwart on both offense and defense, tallied the two points on a running conversion.

With about two minutes and 30 seconds to go in the game, the Mountaineers again threatened. Marching from their own 32 yard line, the Santa Anna squad utilized the running of Valdez, Williams, and Horner to

move the ball to within the Longhorn 10 yard line, picking up four first downs in the process. Then, on second down with five yards to go for the first down, and six to go for the touchdown, Valdez attempted to skirt right end, was hit very hard at the line of scrimmage, and fumbled, with recovery being made by Early. The Longhorns ran out the clock and the Mountaineers never got another chance at the ball.

Santa Anna gained five first downs while Early was racking up 14. The Mountaineers tried six aerials, completing three, for 40 yards; and the Longhorns went to the air 17 times, completed eight, for 99 yards. The Santa Anna defense intercepted three Longhorn passes, while the Mountaineers lost none of their own. Early recovered two Santa Anna fumbles, keys to the game, and lost the ball not one time by miscues themselves. On the ground, the Longhorns held a 21 yard edge over the Mountaineers, gaining 193 yards rushing to 172 yards for Santa Anna. The Mountaineers kicked twice, averaging 16 yards per boot, and Early punted once for 34 yards. Santa Anna drew five penalties totalling 25 yards, while Early was set back 45 yards, also on five penalties, in a cleanly-played game.

Picks of the Week

With one for two last week, we end the regular District 9A season with a percentage of .757, in 28 correct picks out of 37 contests.

With bidistrict play coming up, and with Goldthwaite, District 9A champs, meeting Baird, winners of District 10A, in Coleman, we have only the one game to pick this week. Here is how we see it:

Goldthwaite and Baird in Coleman: Santa Anna played both these teams this season, and on the basis of this comparison, we pick the Eagles from Goldthwaite over the Bears from Baird by about eight points.

Stapling machines at the News Office.

1964 Basketball Schedule

November

- 20: Ballinger, there
- 24: Cross Plains, here
- 28: Blanket, there

December

- 1: Cross Plains, there
- 3-4: Cross Plains Tournament
- 8: Talpa-Centennial, here
- 10-11: Santa Anna Tournament
- 15: Talpa-Centennial, there
- 18: Open
- 29: Blanket, here
- 31-Jan. 1: Early Tournament

January

- 5: Bangs, here
- 8: Bangs, there
- 12: Open
- 15: Open
- 19: Goldthwaite, here*
- 22: Burnet, there*
- 26: Marble Falls, there*


29: Early, here*

February

- 2: Open
- 5: Goldthwaite, there*
- 9: Burnet, here*
- 12: Marble Falls, here*
- 16: Early, here*
- * Denotes District Game

Texas is 620 miles wide.
Hand punches at the News office.

El-Food Products



BROWN'S GROCERY
HARVEY GROCERY
WILLIAMS FOOD STORE

PRESCRIPTIONS Owl Drug Store

"Where Friends Meet"
Telephone 625-4514

312 Commercial Ave. Coleman

They'll Treasure



YOUR FAMILY Portrait

Please friends and relatives with the gift only you can give! Have your family photograph taken now so it will be ready in plenty of time for Christmas giving.

CALL 625-5317

FOR APPOINTMENT

Hugh Capps Studio

213 West Pecan
Coleman, Texas

Typewriter paper at the Santa Anna News.

Y'all Come To Rummage And Bake Sale

In Old Owl Drug Bldg.
Sponsored By Coleman Band Booster Club

TOMLINSON BOOT AND SADDLE SHOP

Boot Making
Shoe Repairing
Saddle Making
Saddle Repairs

In Our New Location
217 Commercial
Coleman, Texas

Double Top Value Stamps Every Wednesday With \$3.00 Purchase or More.

Brown's Grocery

MEMBER INDEPENDENT GROCERS, INC.

Prices Good Friday and Saturday, November 20 and 21

<p>Decker's Korn Kist — 2 lb. Thick Sliced BACON 69¢</p> <p>GOOCH'S Beef Cutlets lb. 59¢</p> <p>FRESH and LEAN Hamburger lb. 35¢</p> <p>FROZEN COLONIAL Pound Cake each 69¢</p> <p>FROZEN 6 OZ. CAN Orange Juice 4 for 1.00</p> <p>GANDY'S QUALITY Ice Cream 1/2 gal. 59¢</p>	<p>10 LB. BAG SUGAR 97¢</p> <p>MEDIUM WHITE EGGS dozen 35¢</p> <p>SUNSHINE NABISCO SUPREME CRACKERS lb. box 29¢</p> <p>Bananas 2 lbs. 19¢</p> <p>1 LB. CELLO BAG CARROTS 2 for 17¢</p> <p>5 LB. BAG ORANGES OR GRAPEFRUIT .49</p>
---	---

Home Baked Pies By Mrs. Tom Rushing

CHEVROLET / CHEVROLET

BEST SELLER EVERY YEAR

COME SEE US AND SEE WHY

R. T. Caperton Chevrolet-Cadillac

114 East College — Phone 625-4145 — Coleman, Texas

SANTA CLAUS SAYS: SHOP SANTA ANNA

Get Hometown Service, Top Quality, and Rock-Bottom Prices, Plus a Chance at Fabulous Prizes —



- 1st Prize — 21 Inch Color TV (\$550 Value)
- 2nd Prize — 16 Inch Portable TV (\$150 Value)
- 3rd Prize — 58 Piece, 8 Place American Dinnerware Dishes (\$40 Value)
- 4th Prize — Corning Ware Set (\$40 Value)

Tickets Available With Purchase of \$1.00 or More From Any Participating Merchant. Drawing Thursday, December 24.

SPONSORED BY THESE PARTICIPATING MERCHANTS

<ul style="list-style-type: none"> Phillips Drug Brown's Grocery Cliff & Ruth Grill Williams Fruit Stand Modern Way Laundry The Santa Anna News Western Auto Associate Etheridge Texaco Station Santa Anna Insurance Agency Sam H. Collier Insurance Agency West Texas Utilities Company Santa Anna Tile Company Santa Anna Lions Club Coleman Gas Company Linnie's Beauty Shop Moore's Mercantile Harvey's Grocery G&E Hardware Ladies Shop 	<ul style="list-style-type: none"> Clover Grill Truck Harbor McKee Cleaners L. A. Welch Garage White's Variety Store Burden's Mobil Station McCrary's Premier Station C. F. Campbell Gulf Station Coleman County Telephone Co-op Santa Anna Silica Sand Company Santa Anna Lumber Company Santa Anna National Bank Horner's Humble Station Talley's Sinclair Station Santa Anna Co-op Gin Baker's Gulf Station Hosch Brothers Rider's Garage Piggly Wiggly
---	---

BIG CHRISTMAS PARADE - FRIDAY, DECEMBER 4

Attendance At Church Services

NORTHSIDE CHURCH OF CHRIST
 Bible School (9:30) 46
 Morning Worship (10:20) .. 72
 Evening Worship (6:30) .. 50

NORTHSIDE BAPTIST CHURCH
 Sunday School Attendance .. 56
 Morning Worship 75
 BTS Service 21
 Evening Worship 35

Joe C. Mathews Dies In Temple

Joe C. Mathews, a long time resident of Santa Anna, passed away at the Veterans Hospital, in Temple on November 18. Mathews had been in ill health for some time. Funeral arrangements are incomplete at present, but will be held sometime Friday afternoon.

Mathews operated a garage and automobile service, in Santa Anna for several years.

Church Class Holds Meeting Tuesday

Mrs. Keetie Haynes was hostess in her home Tuesday to the TEL class, of the First Baptist Church. A covered dish luncheon was served to 10 class members and one visitor.

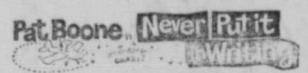
The meeting was called to order by the president, Mrs. Hallie Williams. Mrs. Keetie Haynes was recognized as having a birthday, with the group singing "Happy Birthday" and a reading dedicated to Mrs. Haynes. Devotion was given by Mrs. Byrd Arnold. A Bible reading and a Thanksgiving poem rounded out the meeting. Plans were also made for the annual Christmas program. The closing prayer was voiced by Mrs. Dovie Chapman.

TIRES ARE ALWAYS A BARGAIN at RUDOLPH'S Coleman, Texas

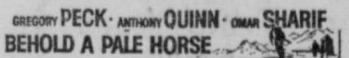
Cole-Anna

Drive-In Theatre Coleman, Texas

THURSDAY - FRIDAY AND SATURDAY
 NOVEMBER 19-20-21



SUNDAY - MONDAY AND TUESDAY
 NOVEMBER 22-23-24



WEDNESDAY & THURSDAY
 NOVEMBER 25 & 26



OAK

Drive-In Theatre Coleman, Texas

THURSDAY - FRIDAY AND SATURDAY
 NOVEMBER 19-20-21



"Three Stooges Meet Hercules"

SUNDAY and MONDAY
 NOVEMBER 22-23



ARCH HALL Jr. in "Wild Guitar"

Thanksgiving

Order your **TURKEY** NOW!



IS JUST AROUND THE CORNER!

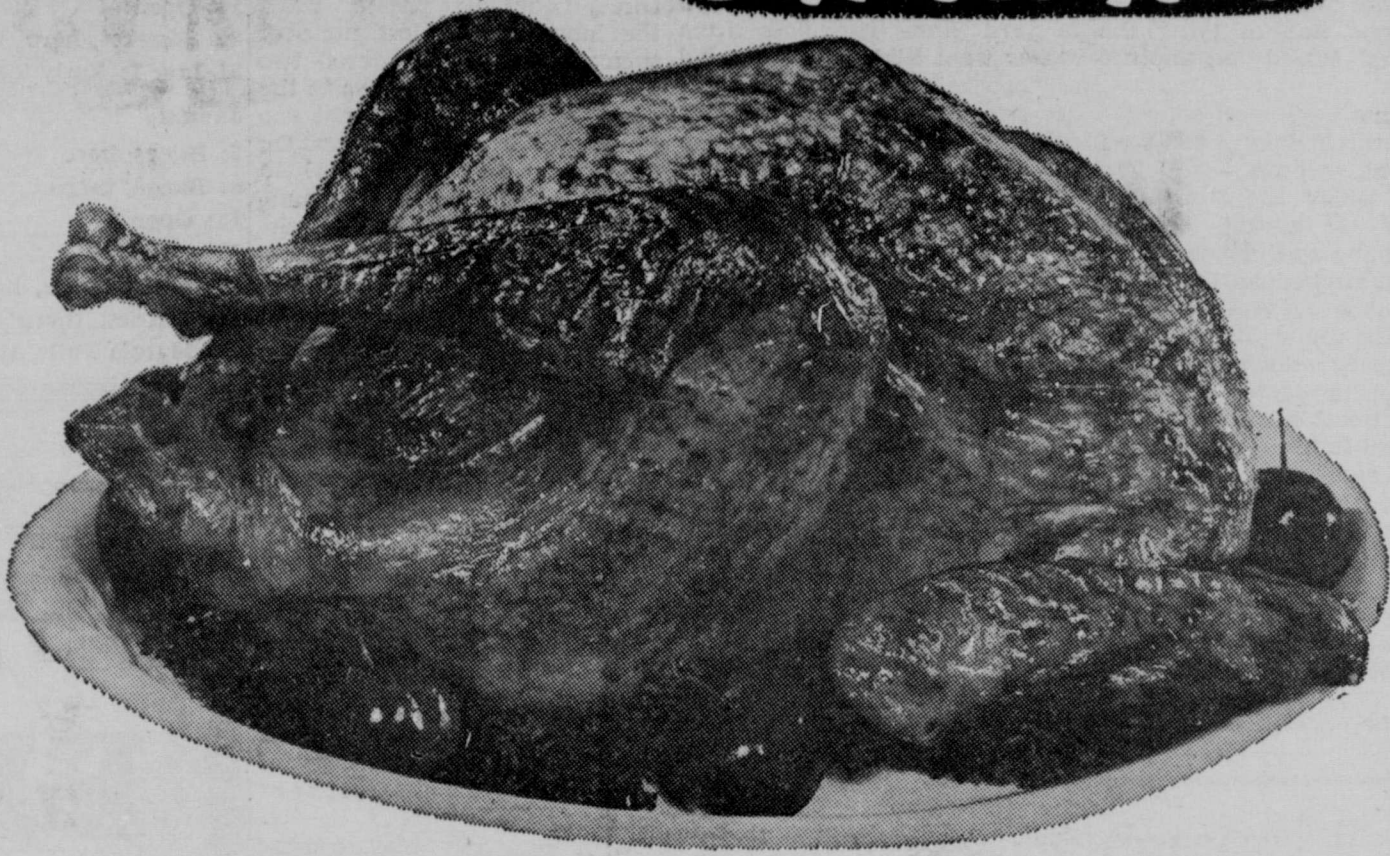
at.... **Piggly Wiggly**

8 to 12 Lb. Average

TURKEY HENS

LB.

34¢



HAMS HALF OR WHOLE LB. .49

Swift's Premium Thick Sliced **BACON** 2 lb. box .98

HAMBURGER PATTIES lb. .49

CENTER CUT **PORK CHOPS** lb. .59

PICNICS lb. .27

Delicious Rome Beauty **10¢ lb. APPLES lb. 10¢**

FROZEN — LARGE SIZE **PUMPKIN PIES** EACH .39
 FROZEN — LARGE SIZE **MINCE PIES** EACH

NEW CROP **SHELLED PECANS** SPECIALLY PRICED

10 OZ. KRAFT **MARSHMALLOWS** bag .24

GOLDEN RIPE **BANANAS** lb. .12

LARGE STALK **CELERY** each .12

GRAPEFRUIT ORANGES 5 lb. Bag .49

-- FRUIT CAKE INGREDIENTS --

FRUIT CAKE MIX lb. 59¢

Red Cherries Orange Peel
 Pineapple Lemon Peel
 Dates Green Cherries **Specially Priced**

PIGGLY WIGGLY BALLARD BISCUITS 3 cans 25¢