

A BIG CIRCULATION.

We now have about 500 regular subscribers to the Texas Spur. Let us send the paper to you Price \$1

THE TEXAS SPUR

Spur is the Youngest and Most Rapid Growing Town in Texas.

ADVERTISING MEDIUM

As an advertising medium The Texas Spur recognize no superiors. We reach the people of the country.

Volume One

SPUR, DICKENS COUNTY, TEXAS, MARCH 11 1910,

Number Twenty

SCHOOL MATTERS.

Spur Should Incorporate For School Purposes at the Earliest Time.

Having had more or less experience in helping to incorporate and organize Independent School Districts in Texas towns, I trust that the people of Spur will pardon me for offering a few suggestions relative to the importance of incorporating for school purposes at Spur as early as it can be done legally.

In view of the embarrassment under which newly created independent districts labored during the year 1909 in the sales of bonds and the collection of their taxes, it is suggested, by the State Department of Education that all districts hold elections early this year as is convenient to authorize the levy of taxes and the issuance of bonds in such districts.

It will be an easy thing for the people of Spur, in their mad rush for industrial supremacy, to overlook the matter of making adequate preparation for a good public school for another year. The thing we want to do is to incorporate for school purposes, issue bonds for the erection of a handsome public school building, and levy of a special tax for the proper maintenance of a good public school, and do this early enough to apply the proceeds to the 1910-1911 term.

Our forefathers, recognizing the value of individual worth in a complex social and political organization, have established our system of public free schools and made them accessible to every child, to the end that the individual might be trained and fitted for the various responsibilities of citizenship. The public school stands paramount to every other institution of man as a means of education and training and is designed to elevate the intellectual and moral status of the individual and to protect the state thereby from evils of illiteracy among its citizens. Our hope is in the public schools, for there, more than anywhere else, are the ideals formed and characters moulded. Invest your money and brains in public schools and declare dividends in brains and character. Let every citizen contribute something to a progressive school sentiment at Spur. Throw away the petty differences that arise over the school administration of your town, but with a compromising spirit, throw your influence and co-operation with majority and thereby give evidence of your intelligence and fidelity to your community's interests. Every citizen should join a move for a first class school for next term. Incorporate for school purposes,

issue bonds and erect a building we would be proud of and levy a sufficient tax to support a fine school, and thereby guarantee that the future of Spur, morally and intellectually, shall be worthy of its proud and matchless growth, industrially.

M. H. HERRING.

ENTERTAINMENT.

At the home of Mr. and Mrs. Arber Tallie the following guests were entertained: Fred Stacey and Miss Roberts, Mr. Ellis and Miss Powel, A. Johnston and Miss Neeley, R. E. Edwards and Miss Attebury, Burley Griffin and Miss Walthall, J. G. Johnson and Misses Walthall, Walker and George, W. F. Godfrey, Miss Ellis, Ed Ray, Miss Reavis.

After entertaining games and a contest the guests were invited into the dining room where the table was beautifully decorated and were served with delightful refreshments. The evening was enjoyed to the full extent by each of the guests.

R. L. COLLIER INJURED.

Thursday of last week R. L. Collier, of the Croton neighborhood several miles east of Dickens was in Spur and hauled out a load of lumber. After passing through Dickens and in driving down a long hill in what is known as the breakers east of Dickens, the wagon brake being not in good order and the lumber not well loaded Mr. Collier was unable to manage the team of four horses. In going down the hill too rapidly the lumber slipped in the wagon and striking one of the horses caused it to kick and turn out of the road, and at this time a sack of something loaded on top of the lumber fell against Mr. Collier, knocking him off the wagon in front of the wheel which ran over him. Although severely injured, Mr. Collier crawled quite a distance to the top of the hill where he soon attracted attention. He was carried back to Dickens for treatment, and although one leg is badly mashed Mr. Collier is reported to be doing nicely.

Mr. Collier is an old time citizen of this section and has many friends here who join the Texas Spur in wishing a speedy recovery from the injuries received.

IN THEIR NEW BUILDING

The Bryant-Link Company moved this week to their new brick building and when their stock is arranged it will be one of the most handsomely furnished and well equipped mercantile firms in Western Texas.

DEVELOPING.

Spur And The Spur Country Attracting Attention of Outsiders.

The Texas Spur has received numerous letters of inquiry about Spur and the country, parties wanting to know if there are openings here for various businesses and if the country is being settled up rapidly. A number of these letters we have given a personal answer and to others we referred the writers to the Texas Spur and especially its advertising columns which show the principal business concerns established.

Although Spur is little older than four months the town now has about seventy-five business concerns and professional men established here, and all doing a profitable business in their various lines. The townsite company is preparing to put in a sewer system, water works and has under construction a forty thousand dollar hotel. An artesian well is being drilled and is now more than one thousand feet deep. A big gin will be in operation to care for the fall cotton crop. An electric light plant will be in operation within the year and various other public enterprises and institutions will be located here within the year.

The most important item in making Spur prosperous is the settlement of the country with substantial and industrious farmers, and which is being done every day in the week. The prosperity of Spur depends on the prosperity and development of the surrounding country, and we had rather see farmers come in than to see the town overcrowded with a single business concern. There are farmers here who have been tilling the soil twenty years, during a time when the nearest market place was from one hundred to a hundred and fifty miles distant, and yet these same farmers made a success of the business and prospered from the sale of the products of their farms and are today among the most prosperous and well fixed men of the country. Farming in this country is no experiment, but it is a demonstrated fact that the Spur country will grow as much stuff and in as great variety as any country. The farmer who comes here, rolls up his sleeves and goes to work will not only prosper but become independent if not rich within a very few years. The old settlers here say that one man can cultivate twice as much land with half the labor required in other sections and that acre for acre this land will grow more than many sections of the country.

We want to see the Spur farm lands fully developed and the man who passes up this section will overlook an opportunity to secure a desirable home, an independence and contentment for the declining years of life.

ANOTHER BANK FOR SPUR.

This week E. C. Edmonds, cashier of the First National Bank of Eastland, was in Spur looking over the city with a view of establishing another bank here in the near future.

Mr. Edmonds was well pleased with the prospects of Spur and the surrounding country, and before leaving stated that he would make a favorable report to the promoters of the proposed bank.

The bank, if established will have a capital of \$50,000 and backed up by men of large capital and long experience in financial affairs.

A BIG PIE.

Last week as we were going to press with the last two pages of the paper in some way the forms fell from the bed of the press and as a result we had the biggest pie this writer ever saw during twenty years experience in a print shop.

As a result two pages of the paper were left out and since then we have been busy trying to get things straight in the shop. In our present temporary, shaky and crowded quarters we are and have been for some time almost handicapped, but have patiently, laboriously and to the very best of our ability overcome all the obstacles and published the paper in some manner. Our new concrete print shop is now under construction, and W. H. Morrison, the contractor, says it will not only be substantial and handsome but complete by the first of April provided weather does not interfere. When we get into this new building we expect to have less pie and more agreeable work and as a result have more time to get news and entertain patrons, visitors and the public.

Wants Mail Line Extended.

W. J. Clark, a prosperous citizen of near Dickens, was in Spur Monday and was a very pleasant caller at this office. Mr. Clark has the mail contract from Dickens to Afton and Matador and said that at the expiration of the contract an attempt would be made to secure a daily mail line from Spur to Dickens and to Afton. The Dickens and Spur daily mail route could be extended to Afton and give the contractor not too many miles for a daily service, and also greatly convenience the people of Afton as well as Dickens with a direct and daily mail service. In public affairs the greatest good to the greatest number of people should prevail, and in extending daily mail service to Afton would serve a large number of people who are entitled to consideration.

Mr. Clark reports that things are getting dry in his section and that he will devote his time now to killing prairie dogs, and carried out a load of oats and poison for that purpose.

RAILROAD COMING.

Quanah Acme & Pacific Railway Company to Extend Line Through Dickens County.

A call has been made to the stockholders of the Quanah, Acme & Pacific Railway Company for a meeting to be held at Quanah on the 19th day of April for the purpose of asking authority to extend its railway from Paducah, its present terminus, through the counties of Cottle, Motley, Dickens, Crosby, Floyd, Hale, Lamb, Lubbock, Hockley, Cochran, Bailey, Lynn, Terry and Yoakum to the boundary line of New Mexico.

We have heard considerable talk the past several days of this road coming to Spur, but the above is the only authoritative statement concerning the new railway that we know of at the present time. However, the road will no doubt be built through Dickens county, and when it does we are also sure that Spur will get it. Spur is the most important point in the county, its business men and citizens are wide-awake and alive to the interests of both town and country and will see that we get not only the railroads building through this section but every public enterprise and institution that not only passes this way but that can be persuaded to investigate the possibilities here and the inducements offered.

Many other points are making a big roar about wanting a railroad and this thing and that, but Spur is in a class all to itself. We are making no big hswel about anything but are doing business every day in the week, building, improving and establishing strong concerns, and when the proper time arrives Spur will announce the arrival of another railroad among other things desirable in building a modern city.

PLANT A TREE.

There is no more noble work than planting a tree. He who plants a tree raises a living monument that will survive when all his other deeds are forgotten. If we build a fine barn, or erect an elegant residence, we may live to see it decay, but a tree grows from year to year, beautifies the landscape and refreshes by its shade, and perhaps by its fruit.

There is no better way to commemorate a great event than to plant a tree. The anniversary of the wedding or the birthday celebrations may be made more impressive and its memory more sacred by planting a tree.—Farm and Ranch.

Barber & Hancock

Dealers in

Hardware, Stoves, Cans

The famous Sampson Windmill, Pipe Pipe Fitting Cylinder, Succor Rods, Garden Hose

Oliver Plows, Etc.

O. V. B. Cutlery, the best on earth

When in need of anything in our line give us a call and get our prices for the are always right

TEXAS SPUR

PUBLISHED EVERY FRIDAY

Entered as second-class matter November 12, 1909, at the post office at Spur, Texas, under the Act of March 3, 1879.

ORAN McCCLURE, Editor & Prop.

Subscription Price \$1.00 a Year.

FOUR ISSUES ONE MONTH

T. H. Harkey went over to Dickens Saturday in response to a telephone message informing him that his son, Dennis Harkey, had been seriously injured. Dennis Harkey attended a dance in Spur Friday night, and in driving home Saturday morning he dropped one of his lines and in attempting to jump out of the buggy before the horses stopped his foot in some way hung in the harness or single tree. This frightened the horses and they ran, dragging Mr. Harkey a considerable distance. A young lady was in the buggy and with one line she circled the team until they were stopped. It is not known how serious are the injuries of Mr. Harkey, but it is hoped that he will soon be able to be about.

Luther Matsler, who had been in Sweetwater and other points the past three weeks, returned Monday to Spur. He will be employed in the building of the new \$40,000 hotel now under construction.

M. C. Bughan, of near Girard, was in the city last week on business.



LIVE STOCK NOTES.

Do not sell half fattened hogs. "Pigs is pigs" at present prices. At present prices hogs offer a mighty good market for corn.

The character of the feed determines the character of the meat.

Stinting the brood sow often results in stunting the pigs.

Fully developed breeding stock brings the strongest offspring.

The hog appreciates a clean, dry bed. Change the litter frequently.

Many a farmer wishes now that he had not sold his stock hogs off so close.

Field peas have been made to take the place of corn in the cornless sections.

Many mares are unable to supply their colts with sufficient milk, particularly when hard worked. In such cases they should be helped out.

If you cannot afford to buy pure-bred mares at the start, buy the best you can, then trade and buy until you can get the real article.

See that the colts get exercise every day. Feed them oats, bran and clover hay. If you have any roots an occasional feed of them will be beneficial.

Do not always be obliged to go to some other farmer for improved blood, seed grains, etc. Provide some of the best yourself and thus reap the first profit.

Are the calves kept in a warm stable? This is important. It should not freeze in their quarters, and it should be dry under foot at all times. Bed them well and change it often.

Feed the live stock a mixed ration at all times. Do not feed one kind of grain or one kind of forage until it is all gone and then begin on another. Aim to give variety and to balance the ration in the elements of animal growth.

Oats, clover hay and corn fodder make an excellent combination for breeding ewes during winter. They should not get much corn. A little will do no harm with the oats. A little wheat bran added is also excellent.

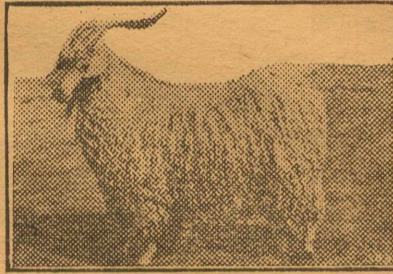
F. C. Gipson was in the city this week on business and also in the interest of his candidacy for the county Judge's office.

USEFULNESS OF THE ANGORA

Goats Are Perfectly at Home on a Diet of Rose Brier, Wild Cherry and Other Undergrowth.

Finding themselves in possession of a large tract of Yakima river bottom land covered for the most part with brushy thickets almost impenetrable, and finding the cost of clearing, grubbing and plowing this to be about \$40 per acre, we were forced to some slower and cheaper method of clearing and improving it. We are yet in the process.

We bought a small band of sheep and a few head of pure-bred Angoras for the purpose of cleaning out the undergrowth of rose brier, buck brush, service berry, thorn, wild cherry, currant and sprouts of willow, alder,



An Angora Buck.

quaking aspen and balm, says a writer in Breeder's Gazette. The sheep could do no good in producing wool, mutton and lambs on these rations and required pasture additional, but the goats are perfectly at home, contented and prosperous on this diet.

We have now had three years of experience with them and pronounce them the most economical and effective remedy for such a situation as described. Their increase and fleeces have paid well. We have not lost one from disease or sickness of any sort; have had money enough from prizes, sale of bucks and fleeces to pay all first costs, including bucks purchased for breeding, and our flock is three times the original number at present. The brush is a little hard on their fleeces, but it is good for the goats and the brush, too.

They hold down the sprouts and the everlasting browsing winter and summer kills them off. We feed in winter alfalfa hay and grain and at kidding time a little grain. They are good leaders for the sheep both outward and homeward bound. They never have shown any disposition to be ugly toward the small children, but now and then give the dogs a gentle reminder and fight quite a little among themselves when closely confined. They are quite sociable in their work afiel, half a dozen combining to ride down and strip some conifer or willow. Their enterprise is remarkable. Always they are on the move and in the direction of least resistance and largest prospect for feed.

FEED BUNK FOR CORN FODDER

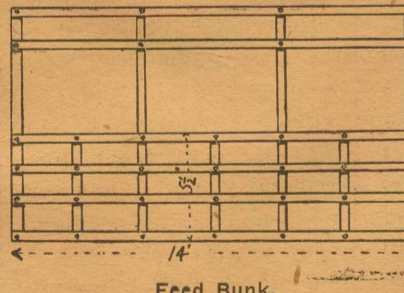
Illustration Shows How One Can Be Erected and Used for Cattle Feeding.

(By W. H. UNDERWOOD.)

In the accompanying illustration is shown a feed bunk in which to feed corn fodder to cattle. It is 14 feet long, 7 feet wide and 5½ feet deep. The sketch will give an idea of its construction. The four corner posts are 4x4's. The sides and ends are made of 2x4's and a space of two feet wide is left for the cattle to feed through.

The 2x4's are spiked or bolted on to 4x4 pieces. Two upright pieces of 2x4's are on each side equal distance from the corner. Between these are two stub 2x4's coming up to the space left for the cattle to feed through.

There are six cross 2x4's on each side, four below the feeding space and two above. Across the top are 2x4's nailed as a brace to stand the strain



Feed Bunk.

when the bunk is being upset and the rubbing and pushing of the cattle. It has no bottom.

The bunk is light and two boys can move it easily by simply upsetting it.

Every day or two the bunk should be turned over once or twice to a new place and the stalks left to be gleaned over by the hogs and serve as a bedding for the steers until they are worked up, ready to be hauled to the field as manure.

Mrs. F. A. Kreiner and daughter arrived in the city this week from Iredell to join Mr. Kremer here who is engaged on the construction work of the big hotel.

Luzon Telephone Co.

Spur, Texas.

Best Local and Long Distance Service and Connections

THE VERY BEST SERVICES EXTENDED TO PATRONS AND THE PUBLIC.

Let us put a 'phone in your home or place of business.

Bargains In Lands

905 A. near Wake, Crosby Co., 80 a. in cultivation, good house, well, windmill, all good smooth land, \$16.00 per a., bonus, part cash, balance terms.

200 A. 16 miles north of Dickens, 100 a. in cultivation, one wells and windmills, good 4-room house 3 a. in orchard, all fenced with 4-wire, \$23 per acre, \$1000 cash, bal. to suit purchaser.

160 A. sandy loam, 75 a. in cultivation, 100 a. more tillable, balance pasture, 2 a. in orchard, 4-room house, good barn, well, windmill, smoke house, buggy house, \$25 per a., \$2000 cash, balance in 3 equal annual payments, 8

per cent. 6316 A., Shackleford Co., river bottom, 3-4 of tract agricultural land, balance fine grass, well watered, large two story, stone residence, fine stone barn, extensive lots and carrolls, tennant houses, \$12-50 per acre; part cash, bal. terms.

36-section-ranch, 14-section-school land, 22-section-railroad, \$15,000 improvements, 300 acres in cultivation. \$6.00 per a. 4 section all in a body, Gaines county, fenced on three sides. \$4 per acre bonus, 4 per acre due State 39 years 3 per cent. Will trade equity for other Texas property worth the money.

H. T. BURGOON,
Spur, Texas.

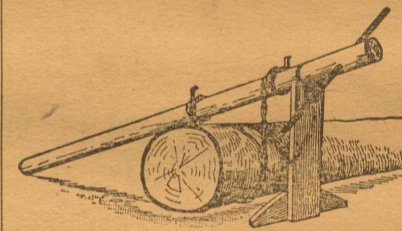
WOOD FOR SALE.

See Fred O. McFall 3 miles northeast of Spur.

DEVICE FOR LIFTING LOGS

Contrivance Consists of Round Stick, Six Inches in Diameter and Ten Feet Long.

This log lifting device consists of a round straight stick, 6 inches in diameter and 10 feet long, writes H. L. Crockett of Syracuse, N. Y., in Popular Mechanics. The upper end is banded with iron to prevent splitting and a 1½ inch hole bored through it, 3 or 4 inches below the band. Two



Capstan for Raising Logs.

large spikes are driven into one side about 3 feet apart. A heavy plank support is made about 4½ feet high with a half-round notch in the top and a crosspiece at the bottom. A groove is cut in the circumference of the capstan stick so that the notched upper end of the plank support will fit it loosely. Put a chain under the log and draw both ends up tight on the same side of the capstan piece and slip a link of each end over each one of the spikes. Run a common iron bar through the hole in the capstan piece, grasp the bar and turn the capstan as if screwing up a bench vise, thus winding the chain upon the wood and lifting the log.

YOU get what you BUY at RICHARDSON LUMBER Co.

J. B. GEORGE

Contractor
&
Builder

Plans and specifications furnished on application Office at Richardson Lumber Co.

Separate the Brood Sow.

The brood sow should early be separated from the herd which is to be sent to market; she is to serve a vastly different purpose and should receive a correspondingly different treatment. Corn, which is probably the most cheaply produced of all cereals, must continue to be an important food-stuff for swine. It is rich in fat and carbohydrates, and as such is especially adapted for fattening purposes.

Proper Ration of Feed.

It is not the worth of food that stock eats that gives the most profit. If first-class hay is fed a ration of roots that cost only half as much as a ration of grain will oftentimes give more profit than a ration of grain by aiding a more perfect digestion of the hay.

White Mountain Ice Cream Freezers. Barber, Hancock and New.

T. H. Ellis

Farms Ranches and City Property

Office in White Front Grocery.

CALL IN AND SEE ME. I MAY HAVE JUS WHAT YOU WANT.

Are You Going to Build?

There are a number of things to consider when you go to build a house. The first thing to consider is the place to get lumber, and your selection of a place to purchase material should always be from the very best and most reliable lumber men, a firm that will give you what you need and want. The next consideration is the price, and in price and quality of material we can not be beat anywhere by any firm. We have a large stock of lumber and building material of all kinds and will be glad to supply you in our line and will at all times give the very best service, the very best material and the very best prices.

CAYLOR-LEARD LBR. CO.

DO CLOTHES MAKE THE MAN?

EASILY ASSURED "NO" BUT THEY HELP HIM MAKE HIMSELF.

THE Clothes worn by a man this day and age represent his thriftiness, to a great extent. We don't suggest to a man who toils in the daily walk of life to buy high priced Clothes to labor in. But we say to him that it is essential



for him to wear good, well made and well designed Clothes in his assembly with those who do.

WE are preparing the strongest campaign to sell clothes in the history of "LAMB DIN" business. We are fortified with Best Known Brands Sold In America, and the Prices are in reach of Purchasers who comes to Spur. In connection to selling we carry in stock the Best known makes and Values

STETSON HIGH GRADE SHOES AND OXFORDS
\$500 to \$6.50

PACKARD "UNION MADE" SHOES
For Men Only
\$3.50 and \$4.00

Other Cheaper Makes \$1.50 to \$3.00

QUEEN QUALITY SHOES AND OXFORDS
In Ladies Only

2.50 to 3.50 In Low Shoes And
\$3 to \$4 In High Cut

New Oxfords are arriving for the Ladies and Children. IN LADIES DEPARTMENT our showing in LADIES TAILORED SKIRTS AND WAISTS fills the wants of conservative buyers. New Muslin Underwear, Embroideries and other interesting Items await your coming.



SEE US FOR STETSON HATS
Prices And All Shapes
Shown

J. A. Lambdin & Co.

We Handle the best Line of
Corsets Shown in Spur; All
Lengths and Models Carried.

SHOW THE NEW

Editor Crawford Cobb was in the city Saturday from Dickens.

J. P. Higgins was in from his ranch on Cat Fish Tuesday. Mr. Higgins has been sick the past week of la grippe and said that he thought at one time his call had come to the great beyond. However, we are glad to see him able to again navigate. He said he suffered of a complication of neuralgia of the heart and la grippe.

The Spur people are builders.

Rev. Mike M. Young was in the city and preached at the tabernacle Sunday.

We have a telephone in the Texas Spur office and if you have a visitor or know of a local news item we will appreciate it if you will call us up and tell us about it.

Mrs. H. T. Burgoon and children, of Grapevine, are in the city to spend a few weeks with Mr. Burgoon.

Clay Smart is planning to make a business trip Saturday and remain over Sunday at Rotan.

G. I. Hext was here Tuesday from Afton with cotton. Spur merchants continue to pay the very top prices for cotton and all other farm products, butter, eggs, etc. If you have anything to sell come to Spur and get the top price, and if you want to buy anything the Spur merchants can supply your every want.

Newt Bittick and family moved this week to a residence in the northwest part of the city.

Sampson Wind mills, the best on earth. Barber, Hancock and New.

Miss Elizette Reede, teacher of Piano and Elocution. Terms, \$4.00 per month. Phone 52. 1 t p

THE BIG SALE.

Last week the Dixie Store turned in copy for circulars and advertising for the three days sale on Saturday, Monday and Tuesday, had signs painted and made other arrangements to put on the sale at scheduled time, but an accident pieing two pages of type in the Texas Spur office caused a delay not only in the Dixie Store sale but also in the paper. However, the sale will begin Saturday morning, (tomorrow), and our readers are requested to read their ad and note the prices being quoted, and also to visit the Dixie Store.

A CORRECTION.

In last week's issue of the paper we published the fact that we had been informed that Jim Walker and Miss Alpha Fox went over to Clairemont Friday and were married. This report was a mistake and we are glad to make the correction and hope that such misinformation will not again get into our colums. In Publishing a paper our aim is to get as much news of the country as possible and in the work it is impossible to verify every item we hear. However, we desire not to injure any one and when an item of that character creeps into the columns of the Texas Spur we are glad to make the due correction.

A Full Line Of Ladies' and Children's OXFORDS

At Right Prices

It's A Pleasure To Show The Goods

B. SHACKLETT

East Of Post Office

SPUR, -

- TEXAS.

LOCAL CLIPPINGS.

Ned Richards of Spur, was in Dickens last Wednesday night on business.

Miss Lillian Denton of Spur, was in town visiting friends Sunday night.

Mrs. John Penny and Miss Clara Locket visited friends at Spur Saturday and Sunday.

Rev. Buck Hardin who has been selected by the Methodist Conference to fill this charge, preached at the M. E. church Sunday and Sunday night, and left an appointment for this place every fourth Sunday.

J. E. Murphey passed through Dickens Wednesday enroute from Spur. He purchased a fine hog while down there, from W. A. Johnson. Mr. Murphey says he has decided to try stock. This is a step in the right direction and as hogs are now nearly to the ten cent mark, we think it will be profitable, and we wish Mr. Murphey success in the hog business.—Dickens Item.

S. A. McCombs was up from Luzon looking after the telephone business at this place.

Election Precinct No. 10.

Now, came on to be considered the necessity of the establishment of a voting Precinct so as to include the new town of Spur and it appearing to the Court that many persons entitled to vote will be deprived of their vote in the event of an election held prior to the General Election in November of this year unless a voting precinct be created for them.

It is therefore, considered, ordered and adjudged that a new election Precinct be created and established to be known as Election Precinct No. 10 with metes and bounds as follows, to wit:

Beginning at the N. E. corner of section 319, Cert. 10 | 2055, Block 1 H. & G. N. R. R. Co.; thence east with the north line of sections 318, 317, 316, 315, and 314 to the N. E. cor. of No. 314, H. & G. N. R. R. Co.; thence south with east line of sections 314, 302, 279, 264, 242, 227, 206, 189, 170, 151, and 134, H. & G. N. R. R. Co., to the Kent county line; thence west with county line to east line of section 139; thence north with east lines of sections 139, 146, 175, 184, 211, 222, 247, 259, 284, 297, and 319, H & G. N. R. R. Co. to place of beginning.

That the voting place of said Precinct be the School House in the town of Spur and the Clerk is hereby directed to have the foregoing order published in paper published in Dickens County, Texas, immediately hereafter for three consecutive weeks.

NOTICE.

Have party that will build brick business house for tennant. See H. T. Burgoon.

Clarence Young was over from Afton this week and visited his sister and family, Mr. and Mrs. Hugh Squires.

Mrs. Dave Gray has been suffering of rheumatism the past several weeks and at this time is reported in a critical condition. Her mother, Mrs. Piercy, came in this week and will remain indefinitely. We hope soon to report that Mrs. Gray is completely recovered.

Prof. Nat Patton, of the afton country, was a recent visitor to the city.

G. L. Barber, Mr. Eby and others made a trip last week to the Plains country on a duck hunt. Mr. Barber says he knows where to find the game.

Join the procession and build something.

J. A. Murchison, of near Casco, was here Saturday circulating among the people in the interest of his candidacy for the Tax Assessor's office.

D. C. Abney, of three or four miles southeast of town, was a pleasant caller at the Texas Spur office Monday. Mr. Abney recently moved to his present home from the Tap country and in making a report of the move the Texar Spur stated that he would go into the hog business which Mr. Abney says he is sorrow was a mistake and that it required considerable capital to properly manage a hog ranch. However, he said that he had three fine sows from which he expected to raise some fine hogs. As said before, this hog business, considering the price of meat, should be very alluring to a number of citizens, and the farmer who is in a position to raise a few surplus pigs and fails to do so overlooks a proposition of advantage to the purse.

Barber, Hancock & New, sells Sampson Wind mills.

Just Received a big shipment of White Mountain Ice Cream Freezers. Barber, Hancock and New.

Sowing of Acorns.

Regarding the sowing of acorns foresters sow them in narrow beds, broadcast, transplanting them when two years old.

POULTRY THRIVE ON ALFALFA

Experiment Demonstrates That it is Excellent as Green Feed for the Growing Chickens.

(BY MRS. E. ROBERTSON.)

I have demonstrated to my satisfaction during the past year, that alfalfa excels clover both as a green food for growing chicks, and a winter relish for adult fowls.

We have a field of ten acres sown to alfalfa stretching just below the colony coops and pens where I raise my chicks.

A year ago last summer I noticed that as soon as I gave the chicks free range they would seek this field and spend hours in the growing alfalfa, particularly when it blossomed ready for cutting.

By close observation I found that they ate the tender tops and purple buds ravenously and certainly seemed to thrive on the food.

I tried sowing some seed in my nursery pen, and it was wonderful to see how the chicks enjoyed it—wee, fluffy fellows just from the incubator. This set me to thinking.

When last winter came on I housed 100 pure Buff Cochins pullets in a fairly roomy and comfortable house. The large hay barn was stored to the roof with alfalfa and millet hay. From the former the leaves and dried blossoms, still green in hue, fell in masses of fine fragrant litter, useless to the cattle and horses which only ate the bulkier stems.

All winter long I used this alfalfa chaff for litter in my houses, bedding the floor deep every day. The hens scratched in it for their grain and ate every available bit they could pick up.

By night the floor would be bare and a fresh supply was thrown in ready for the morning meal.

My hens have always done well as winter layers, but last season they outdid themselves and made a record



POULTRY NOTES.

Gather the eggs several times a day. Clean out the nest boxes and burn the old straw.

The heavy laying hen usually lays a normal, medium sized egg.

Start right by getting better hens; end right by keeping them better.

Cull the surplus poultry. Keep only such fowls as you are assured are money-makers.

Do not try to start a new breed. There are plenty now, and you would be sure to get nothing but scrubs for your pains.

Lime is a great cleanser. Hens must have lime or they cannot manufacture eggshells. Lime is very useful about the poultry premises.

If your flock of hens does not produce a good average of fertile eggs, better introduce new blood. Secure some healthy males from another flock.

One necessity for the turkey raiser on the average farm is a tree for roosting purposes. A turkey does not like a house, but much prefers an open place to roost.

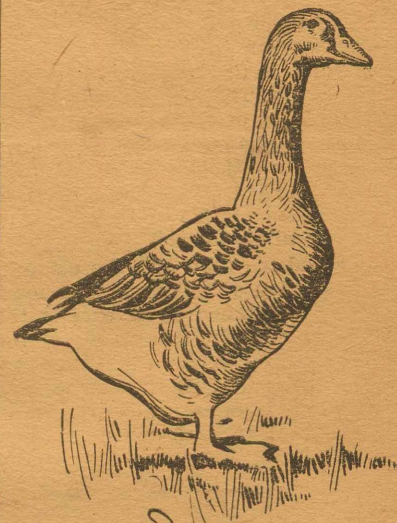
Many who keep the poultry houses clean overcrowd their chickens and then wonder why they lose their fowls. Let the chickens have plenty of rooms and fresh air.

Keep your chicks tame. It is a nuisance to have to use a shotgun to catch a chicken. Insulator chicks have this advantage, they are accustomed to being handled and are never rendered unmanageable through fright.

PREPARE GEESSE FOR MARKET

First Object is to Make Them as Heavy as Possible and in Shortest Possible Time.

Geese being prepared for the market should be grown to large size and then finished for the market in the shortest possible time. It is a



Toulouse Goose.

good plan to shut them up in a limited inclosure and feed them to the limit for about two weeks, selling them as soon as possible after this. In many markets the heavier a goose weighs the more it brings per pound. So it is an object to make them as heavy as possible.

Tree Grows a Needle.

It take all kinds of trees to make a world, and some of them are very curious. The Mexican maguay tree is said to furnish a needle and thread all ready for use. At the tip of each dark green leaf is a slender thorn needle that must be carefully drawn from its sheath; at the same time it slowly unwinds fiber attached to the thorn, and capable of being drawn out to a great length.

Work for Frosty Weather.

Manure teaming, breaking up land for the frost to penetrate, burning up rubbish and screening ashes for various uses are all good, healthy work for frosty weather.

See us for Posts, Sash, Doors, Lime, Cement

AND HIGH GRADE LUMBER

Richardson Lumber Com'y

J. V. McCORMICK, Manager

Sheriff Cole was in the city Monday on official business. Since there had been some speculation as to whether or not Mr. Cole intended to announce for reelection to the sheriff's office he stated that he would at the proper time make his announcement as a candidate for the office.

Rev. Mark Hardin requests us to state that he will preach at Croton the second Sunday of each month at eleven o'clock, and in the afternoon of the same day at Wichita.

The only knockers here build something.

KIND OF PIG LITTERS

Sow with Ordinary Care Cannot Properly Nourish More Than Eight or Ten—Six Is Better.

(By A. J. LEGG.)

It is customary with hog raisers when selecting a brood sow to want one with a large number of teats in order to accommodate a large litter of pigs. I had an inquiry from a customer some time ago for two sow pigs, and the buyer said that people told him that a sow should have 14 teats.

There are few sows with so many teats, and really the very large litter is not, in my opinion, the most profitable one, anyway. A sow with ordinary care cannot properly nourish more than eight or ten pigs, and I am not sure but six or seven is better than ten.

I have had sows with ten and eleven pigs, but there are always some runts which do not grow fat. It takes just about all that the sow can digest to keep the pigs making satisfactory growth. The sows with six or eight pigs will keep them growing rapidly and I believe, making as many pounds of pork as the large litters, and there is not such a strain on the sow's system to provide food for the pigs.

Corn Silage.

Corn silage is about the cheapest and most efficient to supplement the winter rations for dairy and beef cattle, horses, calves and sheep. It is cheaper to handle the corn crop in the form of silage than any other way. And should there be another summer of little rain the well-stocked silo furnishes succulent green feed and comes as a great relief to the husbandman.

The Telephone.

The telephone on a farm cannot take the place of a hired man, but it helps wonderfully.

Spur Grain & Coal Co.

DEALERS IN

Grain, Hay, Coal and Cotton Seed Products

Highest Prices Paid for

Hides and Furs

WALKER'S

Bakery

J. D. WALKER, Prop. and Baker

BREAD

Fresh Bread, Rolls, Buns and Cakes baked every day in back of Spur Meat Market.

There is a Watch Repairer in Spur.

I have located in Spur a branch jewelry store. It is my intention to put in a first-class stock of watches and jewelry in Spur and it will be my endeavor to all times to give you the best quality in jewelry at the lowest prices. We repair watches, clocks and jewelry of all kinds. All work guaranteed. My business here will be in charge of Mr. W. C. Gruben, a first-class watch repairer.

GRUBEN JEWELRY CO.,
Located in Lambdin Dry Goods Store. W. G. GRUBEN, Mgr.

HUMANE HARNESS FOR OXEN

In Many European Countries Crusade of Considerable Extent Exists Against Yoke.

In many countries of Europe, where oxen are still used to a great extent in farm work, a crusade of considerable magnitude has been started against the ancient practice of harnessing the animals together by a



Loin Strap Used for Yoking.

heavy wooden yoke, and in France such a device as shown in these drawings is recommended in its stead.

It is a bar of curved wood or of flexible steel, provided with soft pads and made fast to the forehead just between the roots of the horns, thus transferring the pulling strain from the neck and shoulders to the head, says Popular Mechanics. Leather straps or iron chains lead from the head yokes to the implement or wagon being pulled. The arrangement allows of the yoking of one animal or a pair of them to shafts or poles of the nature used in attaching horses to vehicles, or the pairing of them together side by side or in file without shafts or poles, for tilling the soil.

It is claimed that with the old-fashioned wooden yoke the ground must be level and the oxen of exactly the same size and strength or one or the other of the animals will suffer torture in pulling. With the new method the pulling force is claimed to be always normal for each animal, no mat-



Forehead Yoke and Harness.

ter what may be the condition of the ground or the difference in the power and size of the animals yoked together. Experiments show that oxen so hitched together can do double the work possible with the cumbersome yoke ordinarily used.

Good Butter in Winter.

Good butter can be made in cold weather, but the cream should not be kept too long. Add a little buttermilk or sour milk to ripen it and do not keep it longer than four or five days. Do smaller churnings and have better butter. Turn the cream crew to run a heavier cream in the winter and the churnings will gather more quickly.

Air Shaft Costs Little.

An air shaft can be built in the dairy barn at very little cost, that will ventilate the stable perfectly and do away with the dampness and heavy air so noticeable on winter mornings. One man installed two ventilators which ran from near the floor to well above the roof for \$20.

Crop Correspondents.

Of the 2,685 county correspondents who report crop conditions to the bureau of statistics of the department of agriculture 194 have served in that capacity more than 20 years. One correspondent has served since 1861.

Crops for Cutover Lands.

Observations of the sandy pine cutover lands in Michigan, Wisconsin and Montana have been continued by the department of agriculture and work begun in the growing of hairy vetch as a seed and forage crop. The light, sandy soils of the north promise to be well adapted to this crop.



FARM NOTES.

Now plan a good garden. Bought your clover seed yet? Send for needed plow-irons now, so as to be ready.

Remedies for San Jose scale are now confined largely to winter applications.

A farmer should use common sense in spreading manure, just as in any other operation.

Straw is of practically no value to feed to cows or other animals that are making flesh.

The desire to earn money seems to be just at this moment the uppermost impulse in the mind among women.

Most soils, naturally well drained, seem to be suitable for alfalfa, provided their physical condition is good.

There is a man who operates a serpent farm in Texas for the hides which are tanned into belts, purses, etc.

Ten cents' worth of preservative treatment will often extend the life of a fence post from 2 to nearly 20 years.

Broom corn is bringing prices this year that will cause many a southwestern farmer to wish he had planted more or less acreage.

On the average, the hay produced on an acre of land in five years will contain 16.5 per cent of protein, or an equivalent of 2.65 per cent of nitrogen.

Pasturing the rye will cause it to "stool," and thus the crop is improved—making a gain in two ways. Do not allow it to be eaten too closely.

Seed corn, to be properly dried, should be placed in a warm, dry, well ventilated room where there is an even temperature which does not go below 35 degrees.

W. C. BOWMAN

Lumber Comp'y

LUMBER, SASH
DOORS, PAINT,

And All Kinds Building Material

FIRST FIRE LOSS IN SPUR

Was insured in the Phenix of Brooklyn, and was adjusted three days after the fire and paid fifteen days thereafter. This is our method of doing business.

E. J. COWAN, Agent.

The Man for the Farm.

The ideal hired man on the farm is one who farms because he is in love with the work, and who studies the best methods of agriculture, both by observation and books and papers, and who prefers the cleanly, orderly and healthy occupation of farm life to the squalid and disturbing influence of the city.

The hired man who receives from \$30 to \$40 per month and his board the year around, is better off financially and more often becomes independent than many city workmen whose wages are three times as much.



FARM NOTES.

The maintenance ration produces no profits.

Land worth \$100 should not have \$25 care.

Now is the time to plan and get ready for next season's work.

There are few farms but would be benefited by carrying a flock of sheep. All kinds of forage are high, and will be still higher before another crop can be made.

If the home is cheerful and attractive the young folks will be more willing to stay there.

The farm that is upon a good highway is much nearer the market than one on a poor road.

Soil holds moisture better when plowed early, and gumbo, especially, should be turned under one year before harvest.

Musty or moldy hay is harmful as a feed, and the one who feeds such to his stock will be rewarded by cases of sickness, paralysis and sometimes death.

Many farmers are buying gasoline engines for pumping. The points to be demanded are compactness, simplicity, economy, effective cooling and durability.

In the New England states the winter vegetables are mostly raised in hot houses. Hot water is preferred to either steam or hot air, giving an even, moist temperature, most favorable to healthy plant growth.

A new weed destroyer for gardeners combines a narrow spade with a pair of jaws, operated from the handle in such a manner as to lift weeds which the spade has loosened.

When everybody owns an airship we won't have any need for good roads; till then it is better policy to use the split-log drag and to vote a few " " then to build

MURRAY BROS.

ARTISANS

BUILD ANYTHING YOU WANT
FROM BRICK, STONE OR CEMENT

Houses, Culverts, Chimneys, Cellars, Flues, Cesspools, Sidewalks, Cisterns
Sewers, Grain Bins, Silos, Henhouse, barns, etc.

WE BUILD THE BEST SIDE WALKS "THAT IS" LET US SHOW YOU

The DAIRY



DAIRY NOTES.

Milk cans should never be filled in the stable.

The man with a fine herd of dairy cows didn't know there was a panic last year.

An evaporated milk plant to cost \$150,000 is soon to be built in North Yakima, Wash.

Between the two we would choose fall calves and get the most profit from the cows.

The old belief that a calf needed whole milk in order to thrive has been exploded.

Between raising meat for market and producing butter the buttermaker has the edge.

The cows should be milked at regular intervals, quietly and with as much dispatch as possible.

The calf that is born in May comes at a time when all nature is prepared to help it live and thrive.

Milking is not woman's work, but when it comes to attending to the milk and butter making she can beat man every time.

Success in dairying means constant care of our animals, a catering to their individuality, and a careful handling of the milk.

The manure product from a single cow, according to figures of the department of agriculture, ranges in value from \$30 to \$40 per year.

Storing Echeverias.

Store echeverias in any shed or building from which severe frost is excluded. Sun shining on the plants after freezing does more harm to them than the actual frost.

Wages for Farm Workmen.

Government reports show that the average prices paid farm workmen have risen from an average of \$10.43 per month in 1870 to \$17 in 1906. The next census is expected to show a very much larger increase.

J. B. CONNER,

Dealer in Grain
And Hay

WAGON YARD IN CONNECTION. SPUR, TEXAS

M. H. HERRING

HANSON WOMACK

M. H. HERRING & COMPANY

LAW, LAND AND INSURANCE

Write Deeds, Examine Titles, Make Contracts, With All kinds of Insurance and Look After Rentals. Agency for the American Bond & Surety Company.

OFFICE UPSTAIRS IN JONES NEW BUILDING

Simmons AND Williams

SAFE MOVING AND HEAVY HAULING

A SPECIALTY

Agents for Waters-Pierce Oil.

TAILORING TO YOUR MEASURE

WITH Easter so near we advise those of you who have failed to see the lines we represent in Tailoring to do so. We are exclusive Agents for ROYAL TAILORS also ROSE & CO. Come in and view through the samples: we stand back of the value and guarantee the fit or no sale

J A Lambdin & Co

SELL THE BEST CLOTHES

SPUR FARM LANDS

We Offer You a Choice From 673 Square Miles of Texas' most Productive Territory

Sold direct to the homeseeker, perfect title, no selling commission. We give full value for every dollar.

\$12 to \$17.50
Per Acre

With some additions when close to town

THE FARMERS' OPPORTUNITY.

To Secure a **HOME.**

STATE EXPERIMENTAL FARM STATION AT SPUR

Recognizing the great possibilities and wonderful future of Spur Farm Lands, the state has decided to place an Experimental Farm Station at Spur. This will be a great benefit to the settlers in this region, showing them by actual demonstrations on the lands what crops can be most profitably raised; best methods of cultivation, and assisting in all the problems of the farm. This decision was reached after a visit to the lands by Judge Ed. R. Kone, Commissioner of Agriculture, and Dr. H. H. Hsrrington, Director of Experimental Stations, who recognize the unusual farming value

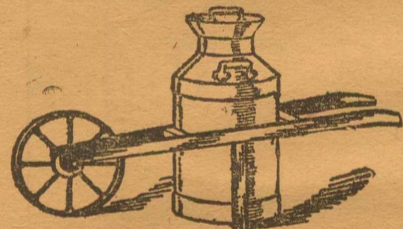
To the first comers, ready to develop, we are willing to sell one-half our holdings of 673 square miles on easy terms and reasonable prices. We reserve the other half for big increase sure to come with development. We stand shoulder to shoulder with the homeseeker. Cotton, no boll weevil, corn, alfalfa, all feed stuffs, grains, fruits, melons, vegetables. Great hog country—no cholera ever known. The hog farmer is king, and nowhere can hogs be matured so cheaply. Quick run to Fort Worth market. Delightful, healthful climate—altitude 2000 to 2,500. The great extent and variety of land insure the homeseeker such range of selection that the man early on the ground can find exactly what he wants. For further information as to land and lots, with free illustrated pamphlet, see

Chas. A. Jones, Manager for S. M. Swenson & Sons,
SPUR, DICKENS COUNTY, TEXAS.

HANDY TRUCK FOR MILK CAN

Illustration Shows How Old Wheelbarrows May Be Used for Carrying Large Utensils.

Charles J. Allen, an eastern contributor, recently had this idea printed in



Can in the Truck.

Popular Mechanics. It shows how an old wheelbarrow may be converted into a truck for carrying large milk cans. The body of the wheelbarrow is removed and pieces put in to hold the can. One man can handle a 100-pound can with this truck much easier than two men in the usual way.

Profit on Dairy Farms.

The key to profit on some dairy farms is a better handling of the skim milk. Cold, sour stuff fed in fowl dishes or troughs is a disease breeder and responsible for much of the lack of appreciation of what sweet, warm skim milk can be made to do if fed regularly to the right animals. A fat calf to sell every week or so and a good flock of June broilers at 25 cents a pound, live weight, are among the best possibilities. But what a difference in the returns from skim milk that goes to keep alive a stunted, alling calf or runty, unthrifty pigs, and

that which makes 25-cent chicken meat or six-cent veal. Of course it's a bother to handle the milk just right, but it adds to the steady income, and that's what counts.

Certified Milk Pays Best.

Certified milk sells in all large cities for about twice the price of other milk. It is absolutely clean, no impurities being allowed to get into the milk. A layer of fine cheesecloth is stretched over the milk pail, a layer of absorbent cotton is placed upon that, then another piece of cheesecloth. There is no sediment in the bottom of the milk vessels of milk treated in this way. It's not expensive, either.

Composition of Milk.

The average percentage composition of milk is: Water, 87 per cent.; fat, 4 per cent.; casein, 87 per cent.; milk sugar, 4.9 per cent., and ash, 7 per cent. The milk should be weighed and the amount of butter fat determined by the use of the Babcock test, by which every per cent. recorded will represent one pound of butter fat in 100 pounds of milk.

Success Depends on Cow.

Don't forget that dairy success depends much upon the individuality of the cow. With the same feed and care in every way, one cow may bring her owner a clear profit of \$30 a year, while another will not pay expenses.

Producing Profit Maker.

The breeding of a bull whose dam and grandam were great producers to a cow known to be a producer and with a like ancestry is pretty sure to produce a profit maker.

A WELL POSTED FARMER

L. G. Crabtree, of the Croton county, east of Dickens, was in Spur Monday and was a pleasant visitor at this office, leaving with us a big dollar to keep the Texas Spur coming to him. Mr Crabtree said that he had lived in this country too long to get uneasy on account of the temporary dry spells, and that a month or more of dry weather would not materially affect crops. However, the new comer here wants to see it rain about the time he has been used to planting and plowing crops in the East. Seasons here are later than elsewhere and those who know the the situation suffer little uneasiness. Mr. Crabtree says he has been farming in this section during the past twenty years. He says he grows as fine maize, Kaffir, corn and feed stuff as can be found anywhere. He says he has grown fine oat crops, and while he never threshed the grain, he is confident his crop would make from fifty to seventy-five bushels per acre. The soil of this country he says is adapted to small grain. Mr. Crabtree was glad that an experimental farm would be established here and said that if the farmers of the country notice the methods and results of this institution he thought they would learn something to their advantage. He said in his own experience he had found

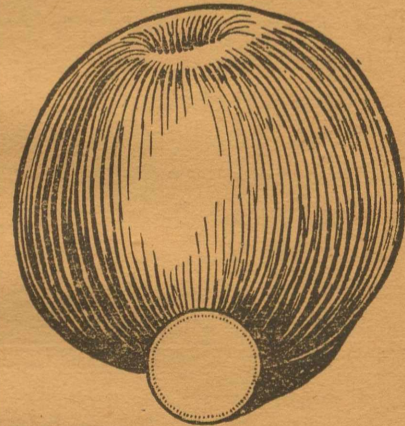
that a man must progress in farming methods as well as other lines of business, that he kept his eyes open he would learn something of benefit. As an illustration he said that in shocking grain he had always practiced what is known as the bridle method of shocking the grain until a fourteen-year-old boy taught him a faster and better method which he has since practiced to advantage. There is no doubt the state experimental farm established here will be of great advantage to farmers and farming interests, and the farmer who will take notice to what it is doing may learn methods in one visit to farm that years of practice and labor alone would fail to reveal, and when it is in working order this paper will publish the result and methods practiced for the benefit of its readers.

Mr. Olson was here last week on business from Floydada.

UNCLE SAM'S PRIZE APPLE

One Shown at Spokane Measured Seventeen and One-Half Inches in Circumference.

The apple which took the prize at the Spokane apple show measured 17½ inches in circumference and weighed 31 ounces. The picture will give some idea of its size, as the coin leaning against it is a half dollar. This apple has been cased in bronze,



Uncle Sam's Prize Apple.

thickly plated with gold and given to the exhibitor as his prize.

More than five million apples were exhibited and the prizes amounted to \$35,000.

The displays sold at high prices and were distributed through the United States for exhibition purposes, sometimes being sent to London, Berlin and Paris.

Bartley Feed and Fuel

Grain, Hay and All Kinds of Feed and Fuel

North Side of the Street One-half Block West of

CALL IN AND SEE US. WE WILL TREAT YOU RIGHT.

F. C. GIPSON

Dickens, Texas.

Drugs, Medicines Patent, Varnish, Toilet Articles, Syringes, Soaps, Perfumery and Oil.

IF YOU WANT WHAT YOU WANT WHEN YOU WANT IT, COME HERE

A CAR LOAD OF THE CELEBRATED "ECLIPSE" WINDMILLS

Will Arrive Next Week

OUR second car of P. & O. Implements is already here. Buy the Windmill and Implement that have given satisfaction for more than 40 years; whose merits are already established. You take no chances in getting ECLIPSE Windmills, CANTON Cultivators and Planters, and SUCCESS Sulkies. WE SELL THEM.

SPUR HARDWARE COMPANY

THE VALUE OF TIME AND KNOWLEDGE.

Paper read by Mrs. Sam Smith at Red Mud Literary Society.

Let me call your attention to the importance of occupying your time, the infinite value of time is not realized, it is the most precious thing in all the world, the only thing of which is a virtue to be covetous.

In the first place then, reading is a most interesting and pleasant method of occupying your leisure hours, all young people have or can have time enough to read, the difficulty is they are not careful to improve it, their hours of leisure are either idled away or talked away or spent in some other way equally as vain and useless, and then they complain that they have no time for the cultivation of their minds and hearts. Time is so precious that there is but one moment in the world at once and that is always taken away before another is given, only take care to gather up the fragments of time and you will never want leisure for the reading of useful books, and in what way can you spend your unoccupied hours more pleasantly than in holding converse with the wise and the good through the medium of their writings. Books form an inexhaustible source of enjoyment.

It is a consideration of no small wright that reading furnishes material for interesting and useful conversation, those who are ignorant of books, must of course, have their thoughts confined to very narrow limits, what occurs in their immediate neighborhood, the idle reports, the foolish stories, these make up the circle of their knowledge and furnish the topics of their

conversation, they have nothing to say of importance because they know nothing of importance.

Taste for useful reading is an effectual preservative from vice, next to the fear of God implanted in the heart, nothing is a better safeguard to character than the love of good books. They quicken our sense of duty,

unfold our responsibilities, strengthen our principles, confirm our habits, inspire in us the love of what is right and useful and teach us to look with disgust upon what is low and degrading.

The high nature of mental cultivation is another mighty motive for giving attention to reading. What is it that mainly

a careful improvement of the means of knowledge you enjoy, the public mind is awake and society in general is fast rising in the scale of improvement; the road to wealth, to honor, to usefulness and happiness is open to all and all who will may inter upon it with almost certain success. In this free community there are no privileged orders, every man finds his level, if he

not called to cultivate their minds, to improve their talents and to acquire the knowledge which is necessary to enable them to act with honor and usefulness the part assigned them. A diligent use of the means of knowledge accords well with nature as rational and immortal beings, God has given you mind which is capable of improvement, he has placed you in circumstances favorable for making such improvements and help you mount the shining course before you, He points you to the prospect of an endless existence beyond the grave. If you who possess these powers had nothing in you which death can not destroy nor the grave cover there would indeed be but little inducement to cultivate your minds. But you have minds which are capable of endless knowledge, supreme intelligence, successful objects of new interest will be forever opening before you, what prospects are presented to our view, what strong inducements to cultivate our minds and hearts, to enter upon that course of improvement here which is to run on brightening in bliss ages without end.

Do Your Building With Concrete!

W. H. MORRISON, The Concrete Man of Spur, Builds Anything of Concrete; Churches, Schools, Stores, Residences, Bridges, Piers, Sewers, Chimneys, Flues. All work guaranteed. Estimates Free.

Let Me Figure Your Building

SPUR FLOAT LINE.

All kinds of dray work on short notice, heavy hauling a speciality. We came here to stay and we solicit a share of your patronage.

ROSS & POLLOCK, Proprietors.

E. J. COWAN

Fire Insurance & Notary Public

LEGAL CONVEYANCER

Office next door to New Nat'l Bank Building PHONE 36.

C. E. House left last week for Childress where he will look after his business at that place.

distinguishes a man from a brute? Knowledge. What makes the vast difference there is between Savages and civilized

has talents he will know and estimated and rise in respect of confidence of society.

Added to this every man here

H. K. PRAKS

Up-to-Date Livery and Feed Stable...

SPUR, TEXAS

B. F. Brock

RESTAURANT AND CAFE...

First-Class Meals 25 cts. East side of Square, Dickens, Texas.

R. R. Morrison came up from Rotan and spent several days in the city looking after his business interests here. He reports that things are pretty dull at Rotan at this time.

TO THE PEOPLE OF SPUR

and surrounding country we wish to thank you for your liberal patronage and solicit a continuance of same.

We keep everything in Drugs and our prices are right.

COME TO SEE US IF YOU NEED ANYTHING IN OUR LINE

Dr. Meers and Morris office with us

Also

Dr. Bachelor, Dentist.

Yours for Pure Drugs,

THE SPUR DRUG STORE.

nations? Knowledge. What raised Franklin from the humble station of a printer's boy to the first honors of his country?

Knowledge. What took Sherman from his shoemakers bench and gave him a seat in Congress and there made his voice to be heard among the wisest and best of his compeers? Knowledge. What raised Simpson from the weavers loom to a place among the first of mathematicians and Herschel from being a poor pipers boy to a station among the first of Astronomers? Knowledge. Knowledge is power, it is the scepter that gives us our dominion over nature, the key that unlocks the storehouse of creation and opens to us the treasurer of the universe, the circumstances in which you are placed as the members of a free and intelligent community demand of you

is a free man, he has a voice in the election of rulers in making and executing the laws, and may be called to fill important places of honor and trust in the community of which he lives. What then is the duty of persons in these circumstances? Are they

A New Grocery Store

WE have just opened up a grocery business first door east of post office on Fifth street and will carry a complete line of Staple Fancy groceries. Call in to see us, we will treat you right, and solicit a share of your patronage.

HISEY GROCERY CO.

BRYANT-LINK COMPANY

Headquarters for Everything

SPUR, TEXAS.

MILLINERY!

New Spring Millinery, latest designs and shapes just arrived at the

LADIES BAZAAR

A nice line of Oriental Jewelry—the latest fad—on display. Also Novelty Belt Pins, Barrettes, Combs, Hair Goods, etc.

Mrs. Nelle Robertson

Proprietress

IMPROVING THE CLAY SOILS

This Can Profitably Be Done by the Liberal Applications of Ground Limestone.

(By PROF. CYRIL G. HOPKINS.)

The clay soils can be very markedly and profitably improved by the use of liberal applications of ground limestone, preferably at least four or five tons to the acre, and by the growing of legume crops, provided these crops are in large part returned to the soil by plowing under or at least in the form of manure.

It should be kept in mind that one ton of dry clover hay or of dry cow pea hay if plowed under directly will add about three times as much organic matter to the soil as will be recovered in the manure that can be made from the same amounts of clover or cow peas, and organic matter is the greatest need of the worn hill lands.

Of course a large proportion of the nitrogen can be recovered if care is taken to save all of the liquid manure by means of liberal amounts of absorbent bedding.

On the university experiment field on this type of soil near Vienna, Johnson county, Ill., as an average of the last four years the yield of wheat has been four bushels per acre on untreated rotated land.

Where legume crops have been grown and turned under the average yield of wheat has been 7½ bushels per acre. Where ground limestone has been applied and legume crops or larger crops have been turned under, the average yield of wheat has been 15 bushels per acre.

The corresponding yields of corn have been 31 bushels, 34 bushels and 48 bushels, respectively. In 1907 the untreated land produced 16.7 bushels of corn, 4.3 bushels of wheat, and .65 ton of weedy clover. Where cow peas had been turned under (scant growth) the yields were 17.8 bushels of corn, 6.1 bushels of wheat and .81 ton of weedy clover, but where ground limestone had been applied and legume crops turned under (larger crops of course), the yields were 30.3 bushels of corn, 13 bushels of wheat and 1.92 tons of clean clover hay.

Separate the Brood Sow.

The brood sow should early be separated from the herd which is to be sent to market; she is to serve a vastly different purpose and should receive a correspondingly different treatment. Corn, which is probably the most cheaply produced of all cereals, must continue to be an important food-stuff for swine. It is rich in fat and carbohydrates, and as such is especially adapted for fattening purposes.

Plows from Canada.

According to Consul General James W. Ragsdale of Halifax, a Canadian plow company has, during the past few months shipped from Brantford, Ont., eight carloads of traction plows to the United States and has received definite specifications for 75 carloads more for shipment before April 1. This is probably the first time that a Canadian manufacturer in this line has successfully entered the United States market.



FARM NOTES.

Never disturb the bees in cold weather.

Spring is the best time to make a start in bee-keeping.

Never approach the bee hives from the front if you would keep peace with the inmates.

You can breed the nubbins out of the corn just as easy as you can breed the scrub cows out of the dairy herd.

Isn't it a shame that the wheat lands of this country produce an average of only about 12 bushels per acre?

The hired man who shirks or dodges his work to save a backache will never be anything but a hired man.

Gardening time will be here before you are ready for it, if you are not careful, regardless of the cold winds to-day.

While you are backed up to the big stove in the grocery store, don't leave your team shivering in the cold unblanketed.

The gasoline engine, valuable as it is, will never entirely take the place of really good horses on the farm or anywhere else.

It is not good policy to keep a boy on the farm if he has the ability to earn the wages of a dozen hired men in the city. Let him go.

The seeds of all kinds should be selected and the cleanest and best of the different varieties. If possible none other should be used.

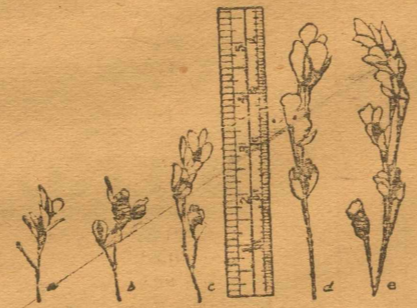
Select for fall plowing the stubborn, refractory clay soil, and on all fields not fall-plowed have cover crops growing, to be plowed under in spring.

Bees are very susceptible to odors and that of a dog or horse which may cling on the garments of some one near the hives will rouse their anger.

GOLD MINE FOR A DAIRYMAN

Alfalfa Is Solution of Protein Question and Furnishes Feed to Secure Good Milk.

The successful dairymen of the future will be those who are the most successful in raising on their own farms the greater part of the feed necessary to maintain the largest flow of



Value of inoculation.

milk. It is an easy matter to raise corn for silage, which gives us all the carbohydrate we need, writes C. I. Hunt of Lexington county, New York, in Farm and Home. For some years back we have had to pay very high prices for protein, and the price is now up in the air.

We have in alfalfa the solution of the cheap protein question. W. S. Barrager of this county sowed a field to alfalfa with barley as a nurse crop. This was cut four times last season. I purchased the first crop at ten dollars per ton cured hay, I to cut and draw. Every load was weighed, and the yield was 5,408 pounds cured hay to the acre, making \$27.04 an acre for first crop and no expense to Mr. Barrager. The next two cuttings equalled the first in value, making the whole crop worth \$54.08 an acre.

If we figure the alfalfa as equal to bran we have a feeding value of \$68.31 for the first cutting. Mr. Barrager's field is a rich black loam. He is a believer in intensive farming and saves all manure and allows no weeds to steal fertility from his crops.

FAMILY GROCERIES

We carry a complete Line of Fresh & Staple GROCERIES

Mrs. W. B. GILPIN

Located Just North of Elm Park, 3rd Street and Parker Ave.

T. H. ELLIS

Farms, Ranches and City Property

Call in and see me. I may have just what you want. Office in White Front Grocery.



LIVE STOCK NOTES.

Good care of the ewe may save the lamb.

Moldy corn is dangerous feed for the horses.

Heavy horses are not calculated for hard driving.

Never feed corn alone to hogs. It is false economy.

Carelessness in handling pigs is a bad habit to acquire.

Sheep are excellent farm cleaners, weed killers and fertilizers.

Does the barn smell stuffy these mornings? Fix that ventilator.

Even on cold days hogs should have plenty of good fresh air.

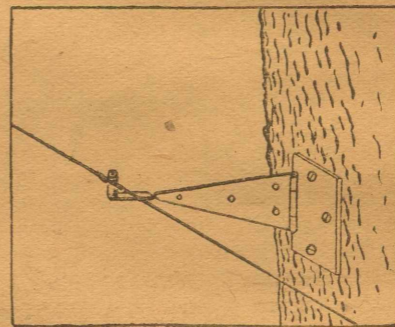
The idea that anything is good enough for a pig is a mistaken one.

Blanket your horses during the sleet storms as well as when it is extremely cold.

VENTILATING THE HEN HOUSE

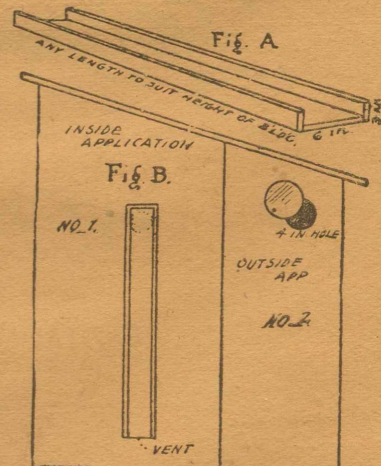
Illustration and Detailed Instructions for Providing Fresh Air Without Draughts.

Take a six-inch board, nail a three-inch strip on either side and box up one end. Make a four-inch hole in siding, near the roof, place boxed end of trough over hole on the inside of building with vent end down and fasten by toe nailing or with cleats. This is for in-coming fresh air. Take



Wire Attached to Tree.

common danger of breaking the wires through the swaying of the trees during the winds, is obviated. A T-hinge, ten or 12 inch size, is used for the purpose.



To Avoid Draughts.

Explanation: Fig. A, ventilating shaft; No. 1, Fig. B, shaft as applied on inside; No. 2, Fig. B, ventilator regulator on outside.

a piece of galvanized iron six inches in diameter and screw on the outside of hen house over one edge of hole. Use the ventilator regulator according to outside temperature and direction of wind. To provide for the release of impure air use the same device but reverse the application, making holes in bottom of siding with boxed end of trough down and vent end up. This will ventilate without draught.

The RED FRONT DRUG STORE

Has A Complete Line of

Drugs, Jewelry, Toilet Articles, Paints, Wall Paper. All the Latest Magazines and Post Cards

AT YOUR SERVICE

Eastman Kodaks

Spur, Texas

Eastman Kodaks

Wall Paper

A Complete Stock of Wall Paper is now on the road to Spur. Will be located until January 1st in Barber & Hancock grocery store.

Scotfield Paint & Wall Paper Co.

W. F. Godfrey.

C. C. Tyler.

GODFREY & TYLER Realty Company.

We always have a bargain for the prospector.

CALL AND SEE US BEFORE YOU BUY

WATER

When you want water hauled I will be glad to serve you. I give prompt service and will appreciate any and all favors shown me in the water supply business.

W. M. KIRKPATRICK

T. A. HART

Will give close estimates on painting and paper hanging
First Class Work Guaranteed

DRS. MEERS, & MORRIS,
PHYSICIANS & SURGEONS
Calls answered promptly day or night.

DR. G. M. BACHELOR,
DENTIST
Office at Spur Drug Company.

T. T. Bouldin P. C. Maynard
BOULDIN & MAYNARD,
ATTORNEYS-AT-LAW
Special attention given to examination of titles.
SPUR, - - - TEXAS

B. F. EDWARDS,
VETERINARY SURGEON & DENTIST
Will be in Spur 2nd Saturday of each month. Bring your horses and have teeth worked over. Examination free. At livery stable or wagon yard. Work guaranteed

DR. T. E. STANDIFER
PHYSICIAN & SURGEON
Diseases of women and children and Electrotherapy a specialty.

Local Surgeon for Wichita Valley Railroad.
Residence 'phone 49. Office 39.

DR. ALECK SPENCER
Specialist
Practices Eye, Ear, Nose and Throat. Glasses correctly fitted. Abbott Building, Stamford, Tex.

The Spur National Bank

CAPITAL STOCK \$100,000
FULLY PAID

OFFICERS:

R. V. Colbert, President, C. A. Jones, Vice, President.
W. G. Sherrod, Cashier, C. G. Chandler, Asst. Cashier.

DIRECTORS:

E. P. Swenson, of New York, C. A. Jones, P. P. Berthelot,
F. S. Hastings, W. T. Andrews, A. J. Swenson, R. C. Forbis, W. G. Sherrod, R. V. Colbert.

TAP TELLINGS.

We have had growing weather the past few days and one must think spring is here, and to watch the cattle they run for the ponds near the noon hours one would think Heel Flies were after them, but above all, the carol of the tuneful bird as he sits on the bough near your window and warbles forth his sweet notes for man and maiden as a reminder that God is good.

We attended services at Red Mud Saturday night and Sunday at eleven, conducted by Rev. J. V. Billberry. His subject was 'Jonah and the Prayer,' discussed by the preachers and was well received by the audience after which a collection was taken for State Missions. We have known Bro. Billberry for a number of years and are always made to rejoice when we get to hear him preach as he preaches the old time gospel pure and simple.

Prayer meeting Sunday night at Red Mud was well attended and these people all seem to be working for the upbuilding of God's cause irrespective of creed

his Shoo-fly song.

The Red Mud Literary Society was well attended Friday night and was conducted in a superb manner by President T. S. Lambert and Secretary Miss Cordie Harrall. The renditions were excellent and especially praise the duet by S. S. Alcorn and wife and the journal by Miss Emma Benson. Variety being the Spice of life. We surly had it there, many others acquiting themselves creditably.

R. E. Scales, of Crosbyton, bought cotton seed of J. O. Greer of our community. We are glad to tell the people up there that the people down here can furnish not only cotton seed but other farm products. Come a-

ANNOUNCEMENTS.

The Texas Spur is authorized to announce the following candidates for office, subject to action of the July Democratic primary.

For District Attorney:

ISAAC O. NEWTON

B. D. GLASGOW, (Re-election)

For County and District Clerk:

CEPHUS HOGAN

For County Judge

F. C. GIPSON

For Tax Assessor

E. L. HARKEY

J. A. MURCHISON

For County Attorney

ELLSWORTH HAM

EMMETT LEE

Carpenter & Contractor..

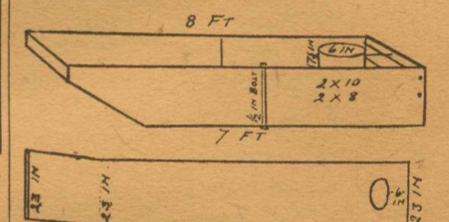
WORK GUARANTEED

Plans and Specifications Furnished

SCALDING PAN IN BUTCHERING

Detailed Instructions Are Given for Its Construction, with an Illustration.

The dimensions are 8 feet 6 inches top length, 7 feet lower length, width 23 inches in clear, height 18 inches. Two-inch lumber 18 inches. Two-inch lumber 18 inches wide is used for sides, with a 2x4 across each end at top. Ends and bottom are of galvanized iron, 18 inch gauge, 28 inches wide, writes C. N. Snyder of Effingham, Kan., in Missouri Valley Farmer. Pan is braced with iron rod at top of each end and down center of each side.



Showing Construction.

A galvanized iron pipe 1 7/8 inches high runs through within 6 inches of the back end. Pipe is braced at back and both sides, and is re-enforced with three joints of stovepipe. The pipe aids circulation and carries off smoke. To use this pan a trench must be dug 8 inches deep, 14 inches wide and 8 feet long.

J. Derrick was in Spur last week to meet his family who came in on the train. Mr. Derrick and family will locate at Emma, where he has a position with the telephone company.

The Royal Hotel

East Side Burlington Ave Powers and Son, Proprietors

NOW OPEN FOR BUSINESS

Table Board \$4.00 a Week
Board & lodging \$5 a Week

Confectioneries.

We have not only the swellest Soda Fountain in Western Texas but serve the very best drinks, the best cigars, tobacco, candies and confectioneries.

which is right.

Emory Stovall, of Coleman county, passed here this week enroute for Dickens city. He stayed at our camp Wednesday night telling some wonderful stories of his life and the happy school days he spent in his youth in Coleman county.

This writer spent Saturday night at the home of S. D. Smith of Tap. Mr. Smith owns a very fine farm and has it very well improved with a substantial five roomed residence and a good well of water. He says he hauled his lumber from three railroad stations and each was far enough, too. S. D. is the affable gin man at Tap and reports having ginned over 250 bales for the 1909 crop.

Prof. B. O. Greenwade is anticipating going to Merkel to a business college. Merkel is an excellent town and we have some home folks there we would dearly love to see and we commend Mr. Greenwade to the good people of Merkel.

The exercise at our school Friday was of the rare and sublime quality well calculated to please the most fastidious. An excellent program was rendered and when the encore was called for R. D. Greer blushingly sang

gain Mr. Scales.

Mrs. J. I. Greer has been on the sick list but is now convalescent.

E. E. Turner took his daughter to town yesterday to a physician. We understand she is still in town no better.

PENCIL PUSHER.

C. B. New purchased recently a one-third interest in the Barber & Hancock hardware business. We wish the new firm success and the continued liberal patronage heretofore enjoyed. Mr. New is a fine business man and in connection with Barber & Hancock will be an advantage and strength to the business.

P. H. MILLER

Lumber Company

CARRY AT ALL TIMES A FULL LINE OF

L U M B E R

AND ALL KIND OF BUILDING MATERIAL

We want to figure your bills.

We sell the Devco Paint

The trade of Spur and the surrounding country is solicited and will be appreciated. We carry a large stock in our line and can supply your needs.