

# The Memphis Democrat

Hall County Herald, Established May 3, 1890, Absorbed by Purchase August, 1928



MEMPHIS, HALL COUNTY, TEXAS, THURSDAY AFTERNOON, NOVEMBER 25, 1976 \*\*\* 20c (Inc. 1c Sales Tax) \*\*\* NUMBER 30

## Memphis Cyclones, Hart Longhorns Meet For Region Play-Off



ON OCCASION—Captain Pete Salinas holds the Bi-District trophy aloft as the Cyclones cheer following the Bi-District victory over Stratford. From right, players recognizable are: Kirk Fields, Eddie Braidfoot, Steve Fleming, Tracy Galloway, Pete Salinas, Steve Browning, Don Cofer, Ricky Guy and Shahan. Other players are clustered in the background.

### Patton Guessing Contest To Close Saturday, December 4

Annual cotton guessing sponsored by the Democrat, will close Saturday, December 4. Bill Combs, editor, is the contest judge. Readers are urged to enter before the closing date of the contest.

### Cotton Harvest Is At 310-Bale Mark

Harvesting of Hall County cotton crop is in full swing now, as twelve gin plants Tuesday afternoon reported the receipt of 310 bales for the season. On Nov. 27, only 200 bales had been ginned ahead of last year. Weather conditions about the season, the crop is a difficult one to predict. The yield was hurt by early freeze coming on Oct. 10 of this year. Survey of several gins indicated that ginning is staying well up with harvesting operations, primarily last week's cold wet weather allowing gins to run while farmers were out of their fields. Farmers in the Estelline area have been harvesting their crop and placing the cotton in modules in their fields.

Classing Report  
The local market was light last week according to James A. McFall, in charge of the Memphis Cotton Classing Office. Prices of new crop cotton were limited as inclement weather hampered harvesting. Prices were in mixed lots of new crop cotton. The price on the few bales ranged generally from 2500 to 2550 points over the old crop. Physical prices ranged from 68.00 to 70.00 per pound for lots consisting mostly grades 42, 32, and 31, staple 30 and 31, and premium mikes. A lower grade, shorter staple with various micro readings brought 64.00 per pound. The average was approximately 22,000 sam-

### Chamber Members Vote On Directors

Members of the Memphis Chamber of Commerce have received official ballots for the election of four new directors to serve three-year terms. Ballots are to be returned to the Chamber Office by mail on or before Saturday, Dec. 4. The Chamber has gone to a system whereby a nominating committee selects six names, and the ballot contains four write-in lines. The six persons recommended by the nominating committee include: Gayle Greene, Peggy Odom, Lois Ann Monzingo, Leon Davis, John Chamberlain and Grady Simpson. Retiring directors are Mike Branigan, Jerry Burleson, Don Cockrell and Gayle Greene. Directors with one year left are Hubert Dennis, Don Long, Mike Vacca and Len Simpson. Two-year directors include: Loyd Elliott, Dale Lawrence, Bill Leslie and Bill Collier. An open membership meeting will be held Tuesday evening, January 11, 1977 for the election of Chamber Officers for 1977. Officers will be selected from the 1977 Board of Directors for the position of President, Vice President, Secretary - Treasurer and Executive Vice-President. The meeting will be held in the Council Room of the Community Center at 7:30 p.m. on Jan. 11.

### Valley's Teams Defeat Motley Co. In Finals Of Estelline Tourney

The Valley High boys and girls Patriots won first places in the Red River Invitational Cager tournament in Estelline Saturday night, both winning games over Motley Co. The Valley girls won 63 to 20 in a one-sided contest. Valley's Sheriff Price was high point with 23 while Motley's Campbell was high with 8 points. The boys game was an exciting affair which Valley won 54 to 47 as Ron Eudy with 33 led his team to victory while Motley County's Dempsey and Brown each scored 12 points. The Samnorwood girls defeated Estelline 76 to 60 to win third place as Miss Schaub had 34 points and Estelline's Hedrick 28 points. The Norwood boys defeated Estelline boys 81 to 52 to also win third. Norwood's R. Lee had 26 while Terry Easley had 12 for Estelline. The Lakeview girls defeated Patton Spring 41 to 29 as Leslie Cofer had 24 points to win consolation in the tourney. Patton Spring boys defeated Lakeview 61 to 32 in consolation finals in the boys division.

### Graveside Rites For L. A. Gilchrest Held Here Nov. 16

Graveside services for Leonard Andrew Gilchrest, 55 of Borger were held at 2 p.m. Thursday, Nov. 16, in Fairview Cemetery by a Borger mortuary. Funeral services for Mr. Gilchrest were held at 10 a.m. Tuesday in the Borger Bible Baptist Church with the Rev. Leonard Forsythe, pastor, officiating. Mr. Gilchrest was born in Snyder and passed away Sunday, November 14. He was a member of the First Baptist Church here and a veteran of World War II. Survivors include: his mother, Mrs. Dora Gilchrest of Borger; three brothers, Jack, Albert and W. C. Jr., all of Borger; and one sister, Mrs. L. L. McClanahan of Lubbock.

### Mother Of Local Woman Buried At Turkey Nov. 16

Funeral services for Mrs. Martha Heley Lipscomb, 90, of Turkey were held at 3 p.m. Tuesday, Nov. 16, in the Turkey First Baptist Church with the Rev. Melvin Clinton, pastor, officiating. Burial was in Dreamland (Continued On Page 6)

### Mrs. W. Goffinet, Longtime County Resident, Dies

Funeral services for Mrs. Elizabeth A. Goffinet, 87, were held at 3 p.m. Saturday, Nov. 20, in the Church of Christ with Minister Jesse Wade and Tom Anderson, minister of the Wellington Church of Christ, officiating. Burial was in Fairview Cemetery under the direction of Spicer Funeral Home. Mrs. Goffinet passed away Thursday, Nov. 18, in Hall County Hospital. Elizabeth Herd was born June 16, 1889, in Roxton and had lived in Hall County since 1894. She was united in marriage to William Joseph Goffinet Sept. 27, 1910, here in Memphis. Mrs. Goffinet was a member of the Church of Christ. Survivors include: three daughters, Mrs. Woodrow Floyd of Memphis, Mrs. Joe Neal Berry of Lakeview and Mrs. Elizabeth Hodgson of Des Peres, Mo.; three sons Frank of Memphis, George of Llano and W. J. of Grand Prairie; 15 grandchildren; and 19 great-grandchildren. Pallbearers were Dwight and Duaine Floyd, Dan Goffinet, Gary Hodgson and John Murray.

### Lakeview School Releases Honor Roll For Quarter

The Lakeview School released the honor roll for the first quarter this week. Included on the honor list were students who had an A average for the quarter, Supt. Royce Whiteley, stated. Students listed were as follows: Karen Cofer and Faye Owens, 12th grade; Rachelle Barbee, 10th grade; Debbie Ariola, 9th grade; Pam Pate, 8th grade and Angie Ariola and Brent Molloy, 7th grade. Marian Davis is principal of the high school.

### Children Invited To Mail Santa Letters To Democrat

Christmas is just around the corner, and all children are invited to send their letters to Santa Claus in care of the Memphis Democrat, Box 190, Memphis 79245. The first letter to Santa Claus arrived in the mail Tuesday morning and was sent in by Leslie Graham of Lakeview. Letters to Santa Claus will be printed in the special Christmas edition.

### Kick-Off At Canyon Is At 8:00 P.M. Friday

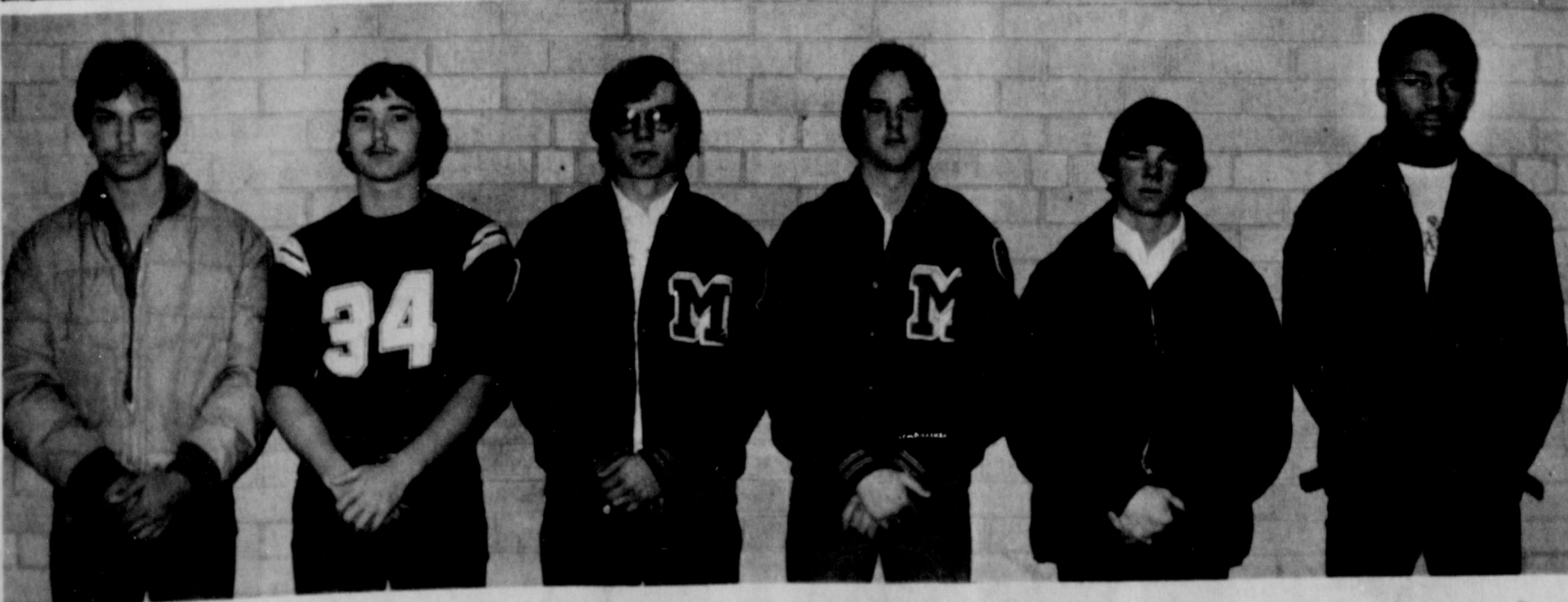
The Memphis Cyclone will be meeting the Hart Longhorns in Class A Region Play-off at 8 p.m. in Kimbrough Memorial Stadium in Canyon Friday night, Nov. 26. Memphis downed Stratford 34 to 15 last week and Hart edged Petersburg 14-7 in Bi-District games. Both team's support 10-1 records, with Memphis' only loss to undefeated Childress and Hart's only defeat to Petersburg in regular season, a team they defeated in Bi-District. Cyclone fans are urged to attend a Pep Rally at 2:30 p.m. Friday at Cyclone Stadium (parking lot) just before the Cyclone team boards a chartered bus to make the trip to Canyon. Since school will be out for the Thanksgiving Holidays, this booster event would be most beneficial to get the team's spirits in high gear before leaving on the trip, if a large crowd will assemble. The Cyclone, in Regional Play-off, will be facing a team which has been in post season play-offs the last three years. "This year's Longhorns have a 10-1 record and have proved they can come up with the winning plays in clutch situations as they did in the final minute of play against Petersburg," Coach Clyde McMurray said. About Bi-District Coach Clyde McMurray said Monday, "We felt our team played well against Stratford last Friday both offensively and defensively. Stratford is a good ball club with fine players. Our offensive blocking from both the line and the backfield certainly contributed to our victory. "Our defense as a whole played well. We gave up the first score because we were in the wrong defensive set. Although we wouldn't take a thing away from Stratford's fine play for they executed well", the coach said. "We ran a safety blitz which caused the fumble which killed their long third quarter drive and we had four defenders on the fumble. "We were exceptionally pleased with our lads for their fine play, especially considering that this was the first play-off game most of them have been a part," Coach McMurray said.

### Estelline Plans Homecoming For Ex-Students

The Estelline Ex-Student Association will hold its annual Homecoming Saturday, Nov. 27, at Estelline High School. Registration begins at 9:00 a.m. at the high school. A full day of activities has been planned for the occasion. Danny Davidson, president of the organization, stated. All ex-students and teachers are urged to attend the annual meeting.

### Memphis Firemen Answer Alarms

Both trucks of the Memphis Volunteer Fire Dept. answered a call to the residence of Mrs. Roy Ammons, 604 N. 12th St., shortly before 4 a.m. Tuesday morning, according to Bob Hutcherson, Fire Chief. Mrs. Ammons summoned the fire department after a fire broke out in a double closet which was badly burned. The rest of the home also suffered heavy water and (Continued On Page 6)



OUTSTANDING CYCLONES—Pictured above are the six Memphis Cyclones recognized by their coaches for outstanding play against Stratford in Bi-District last Friday. From left to right are: Rodney Hall, "sky hawk" certificate; Steve Browning, defensive lineman; Ricky Bloxom, offensive lineman; Randy Orcutt, "sky hawk" and "big lick" certificates; Kenny Martin, defensive safety; and Kirk Fields, offensive back.





**ALL-TOURNAMENT**—Pictured above are the basketball girls named all-tournament at the Red River Tourney in Estelline Saturday night. From the left are: Estelline's Tammy Bates, Motley County's Gloria Sims and Laura Grundy and Valley's Joana Parsley, Joana Turner, Darlene Hendrix and Sherice Price. Not pictured is Sammorwood's Mabel Bryant.



**TOURNAMENT SELECTIONS**—Pictured above are five of the seven players selected all tournament at the Estelline tournament last weekend. They are, left to right, Estelline's Tim Altman, Motley County's Turner and Dempsey, and Valley's Kenny Chandler and Ron Eudy. Not pictured are Patton Spring's Jack Cole and Sammorwood's Clinton Oldham.

**GI Bill Will Not Be Available to Veterans After Dec. 31, 1976**

The nation's third GI Bill, which has provided educational assistance for 6.6 million veterans and active-duty members with military service since February 1, 1955, will not be available for persons entering the armed services after December 31, 1976. Coker, Veterans Administration Regional Office Director, said today.

The Veterans Education and Employment Assistance Act of 1976 (PL 94-502) was signed into law by President Jimmy Carter on October 15, 1976, setting the termination date for GI Bill eligibility. It also designated December 31, 1976, as the closing date for all training for those already eligible under this program, Coker said.

Offsetting the end of GI Bill eligibility, the new law provided a voluntary contributory educational assistance program for persons initially entering military service after December 31, 1976. Jointly operated by the Veterans Administration and the Department of Defense, the program will offer 36 months of educational assistance entitlement with a 10-year delimitation date.

Participants in the new program may contribute \$50 monthly from their salaries, up to a maximum of \$100. The contributions will be matched by the VA at the rate of \$2 for every \$1 made by the service members.

The new law also provided for an 8 percent increase in monthly allowances for all training offered by the GI Bill, except flight training, retroactive to October 1. The basic entitlement for trainees was extended from 36 to 45 months.

Payment of the monthly allowance was eliminated, effective June 1, 1977. Also, on June 1, advance payment at the start of training will be permitted only at the request of the trainee and approval of the school agrees to comply with the requirements of the law.

**Key Features Of The New Law Include:**

- Increased maximum amount for education loans from \$600 to \$1,500.
- Terminated enrollment and commitments by current academy members in pre-discharge education program (PEP) after October 31, 1976.

1976. PEP will be available during last six months of first enlistment for service members who participate in new voluntary contributory education program.

Removed delimiting date for seriously disabled and blinded veterans enrolled in vocational rehabilitation training.

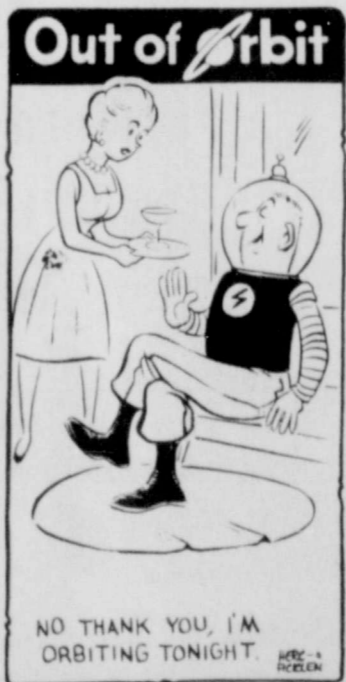
Prohibits an attorney-in-fact from negotiating benefit check as such action is considered an assignment.

The current GI Bill was effective June 1, 1966, providing educational assistance for eligible veterans who served on active duty after January 31, 1955. When all training under the bill has been terminated, its 23 1/2 year life span will have almost doubled that of each of its predecessors.

The World War II GI Bill ended July 25, 1956, after 12 years. Lifetime of the Korean Conflict GI Bill was 12 1/2 years, ending January 31, 1965.

Parents should be careful not to compare their child to their neighbor's child. While all children develop in the same sequence, the rate of development varies with every child, reminds Debby Johnson, family life education specialist.

**Local**



**NOTICE**

Jan Hudlow Bell will be sketching charcoal portraits Saturday, November 27.

The Christmas special price is \$15.00.

She will also be accepting other portrait commissions.

**WE HAVE DISCOUNTED THE PRICE ON MANY OF OUR PAINTINGS.**

**Hudlow Art Gallery**  
Estelline Ph: 888-2411


**BYBLOW FOOD STORE**

**SUPER DISCOUNT SPECIALS**  
WITH FILLED **Buccaneer** DISCOUNT BOOKLETS

 <p><b>Coffee</b> 1 LB. <b>\$1.48</b></p> <p>WITH EACH FILLED <b>Buccaneer</b> DISCOUNT BOOKLET</p>	 <p><b>CRISCO</b> 3 LB. CAN <b>\$1.09</b></p> <p>WITH EACH FILLED <b>Buccaneer</b> DISCOUNT BOOKLET</p>	<p>GOLD MEDAL <b>Flour</b> 5 LB. <b>19¢</b></p> <p>WITH EACH FILLED <b>Buccaneer</b> DISCOUNT BOOKLET</p>	<p>BORDEN'S <b>Ice Cream</b> 1/2 GAL. <b>75¢</b></p> <p>WITH EACH FILLED <b>Buccaneer</b> DISCOUNT BOOKLET</p>
--	--	---	--

BORDEN'S <b>Ice Cream</b>	1/2 GALLON <b>1.25</b>
BORDEN'S <b>Buttermilk</b>	1/2 GALLON <b>79c</b>
BORDEN'S COTTAGE <b>Cheese</b>	22 OZ. CRT. <b>99c</b>
BORDEN'S SOUR CREAM <b>Or Dips</b>	8 OZ. CRT. <b>39c</b>
BORDEN'S WHIPPING <b>Cream</b>	8 OZ. CRT. <b>39c</b>
BORDEN'S <b>Half &amp; Half</b>	PINT CRT. <b>39c</b>
M. J. B. <b>Coffee</b>	1 LB. CAN <b>1.98</b>
MARYLAND CLUB FREEZE DRIED <b>Coffee</b>	4 OZ. <b>1.69</b>
DEL MONTE CUT, 16 Oz. <b>Green Beans</b>	3 FOR <b>79c</b>
DEL MONTE, 16 Oz. <b>Spinach</b>	3 FOR <b>79c</b>

**5 Lb. Sack**

 **69¢**

WHITE SWAN WHOLE NEW, 16 Oz. 3 FOR  
**Potatoes 79c**

WHITE SWAN BLACKKEYED 15 OZ.  
**Peas 4 for 99c**

**CRISCO**  
SHORTENING


 **\$1.59**

3 LB. CAN

LIQUID  
**Palmolive**

22 Oz.  
**75c**

10c OFF LABEL



HI-DRI 85.00 St. Ft.  
**Towels 2 for 89c**

**FROZEN FOOD**

BLUE MORROW BREADED	16 OZ.	<b>99c</b>
KEITHS FRENCH FRIED	2 LB.	<b>49c</b>
SENIOR BLUES		<b>89c</b>
<b>BURRITOS</b>		
<b>PRODUCE</b>		
<b>Avocados</b>	EACH	<b>29c</b>
<b>Bananas</b>	LB.	<b>19c</b>
<b>Grapefruit</b>	2 FOR	<b>35c</b>
COLORADO RED ROME	LB.	<b>25c</b>
SWEET	LB.	<b>25c</b>
<b>Potatoes</b>		<b>25c</b>
RUSSET	10 LB.	<b>69c</b>

**We've got MEATY SAVINGS**

**Club Steaks 99c**

 **GROUND BEEF 69c**

**Chuck Roast 69c**

**Beef Ribs 59c**

Sliced Slab  
**BACON 99c**

**WISHING WELL WINNERS**

RUBY HOFFMAN  
MABLE LAVENDER  
KAREN CRISMAN



### Mail Domestic Parcels Dec. 3, Cards Dec. 10

The Postal Service today advanced its suggested Christmas mailing deadlines for domestic parcels and letters mail to December 3 and 10, respectively, in anticipation of an exceptionally high mail volume.

Citing the impact of greatly increased mail volumes generated by the 15-state United Parcel Service strike in the East and South, and its residual effect on other parts of the country, the Postal Service said it is compelled to ask the public to mail even earlier than normal.

The Service said that because of the dedication of its employees, many of whom have been working long hours, it has had little trouble handling the increased mail volume since the parcel strike began in mid-September. It expressed confidence it will continue to be able to cope with the increase, with the cooperation of the public and major mailers.

Parcel volume has already more than doubled in the strike area and is up significantly nationwide, and letter mail is also on the rise, the Postal Service said. It said most of the increase, to date, has been from large volume business mailers, who pre-sort their mail and deposit at scheduled, non-peak hours in plants prepared to handle it. For example, the Service said it is working closely with shippers of perishable goods to handle millions of gift packages normally moved by other shippers.

As Christmas nears, however, more and more of the mail will be from the general public, deposited at neighborhood post offices, branches and stations, on top of the already unprecedented business mail volume, the Postal Service said.

### Robert Huffman Attends Forum In Amarillo Wed.

Robert C. Huffman of Memphis was among persons from over the Panhandle attending "The Generation Connection," a public forum, in Amarillo Wednesday called to consider solutions to various problems of the elderly.

Resolutions endorsing a protective service law for the elderly, removal of employment barriers, ways of improving housing conditions and transportation resources, improved health services, and other proposals were approved by those attending.

The forum was co-sponsored by public and private groups to assist communities

As a result, the Service said, while priority will be given to letter mail, many postal facilities normally dedicated to letter mail may have to be used to prevent an unmanageable backlog of parcels.

Therefore, the Postal Service said, it strongly urges the public to deposit their parcels by December 3 and their letters and greeting cards by December 10 to assure delivery by Christmas.

It asked that customers mail as early as possible, use proper packaging materials and techniques, and properly address and ZIP Code their mail.

The previous suggested mailing dates had been December 10 for domestic parcels and December 17 for letter mail.

Suggested mailing dates for international mail are unchanged. However, customers were strongly urged by the Postal Service to deposit overseas packages and greetings immediately, and to send them by airmail if they want to assure delivery by Christmas.

to respond to local needs of the aging population.

Potter County Judge Branch Archer, keynote speaker, said the elderly in the Panhandle are proud independent, and familiar with a time when neighbor helped neighbor.

"These qualities were required for survival in pioneer times, as well as during the depression and dust bowl days," he said. "Many times now these people are hesitant to make their needs known, because they do not seek charity. But they are the ones who made our area great, and they are deserving of our best efforts."

State Sen. Max Sherman served as master of ceremonies. Guest speakers included Texas First Lady, Mrs. Dolph Briscoe; State Welfare Commissioner Raymond Vowell; Vernon McDaniel, director of the Governor's Committee on Aging; and Roy

May Jr., assistant director of the First Lady's Volunteer program, all of Austin.

### LEGAL NOTICES

**LEGAL NOTICE**  
Sealed bids are being accepted by Lakeview Independent School District on a 1968, 36 passenger, Dodge School Bus being offered for sale.

Bids will be accepted by Supt. R. W. Whiteley until the closing date of Feb. 1, 1977, Box 48, Lakeview, Texas 79239.

The board of trustees reserves the right to reject any or all bids. 30-2c

Tom Greene, student at the University of Houston Optometry School, arrived Sunday to visit with his parents, Mr. and Mrs. Gayle Greene, during the Thanksgiving holidays.

### Cafeteria Menus Memphis Public Schools

**Monday, November 29**  
Italian Spaghetti, green beans, salad, hot rolls with butter, apricots and milk.

**Tuesday, November 30**  
Chicken pot pie, sweet peas, new potatoes, fruit and milk.

**Wednesday, Dec. 1**  
Hot dogs with chili and cheese, pork and beans, salad, strawberry cake with whipped topping, and milk.

**Thursday, December 2**  
Fish portions, blackeyed peas, tartar sauce, corn bread jello with fruit and milk.

**Friday, December 3**  
Hamburger on bun, lettuce and pickles, onions, mustard and catsup french fries, cobler and milk.

### State Sales Tax For Cities Is Up 13 Percent

AUSTIN — Comptroller Bob Bullock announced that his office mailed checks totaling \$13.2 million Monday to 640 Texas cities as their November rebate of the one-cent city sales tax.

Bullock said this raises to \$252.2 million the amount that the cities have received in rebates this calendar year, an increase of \$28.5 million—or nearly 13 percent—over the same period a year ago.

"This increase in consumer spending is a good sign that the Texas economy is on the right track," Bullock said. The rebate checks ranged from \$2,532,776 for the City of Houston to \$501.38 to Springtown.

### Beef Producer Profits Hinge On Prices

COLLEGE STATION — A livestock marketing specialist for the Texas Agricultural Extension Service says that beef producers shouldn't worry too much about the amount of beef they supply to consumers, but neither should they expect profits to increase unless retail prices go up.

Dr. Ed Uvacek points out

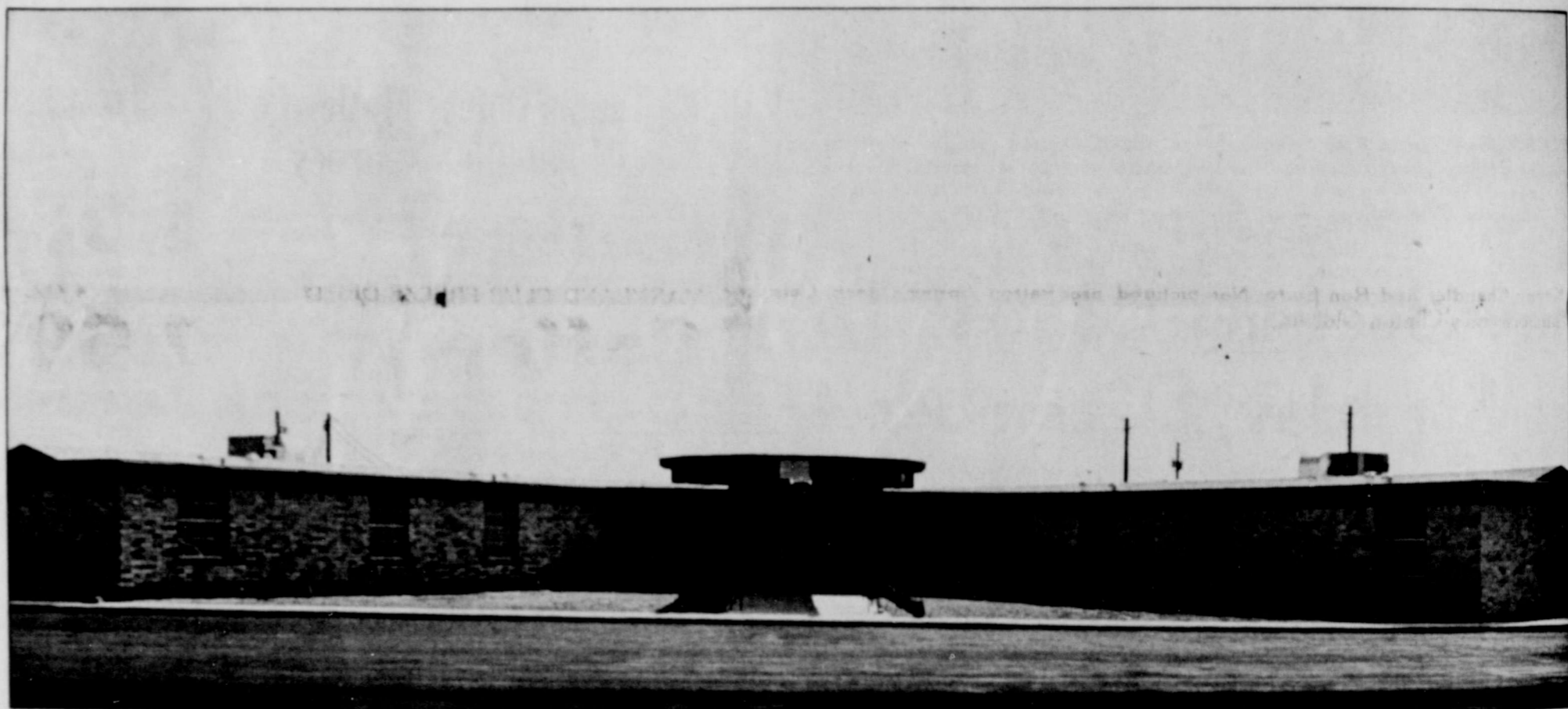
The city sales tax is collected along with the state sales tax by retailers. The Comptroller's Office rebates to the cities their share on a monthly basis.

According to the report, the City of Memphis received \$4,067.74 net payment.

that beef per capita consumption in several foreign countries is considerably higher than that of the U.S. and therefore, are probably where near our ultimate beef consumption. Uvacek notes that prices paid for beef by consumers do not necessarily constitute a profit for producers unless consumer levels are maintained or increased. "Producers can only come from the consumer demand for and higher retail prices points out the economist by Uvacek as a key inhibiting producer price will continue to increase a fantastic rate. That dollars cannot be returned to the producer until the dollars spent are increased. The specialist says S. consumers will eat all beef this nation can produce."

# Meet new friends, enjoy life more at the beautiful Leisure Lodge Nursing Center of Childress.

Ardella Lorene Benson: Administrator.



Who says a nursing home has to be dark, stuffy, cramped and no fun? At Leisure Lodge Nursing Center, we certainly don't think so! As a matter of fact, we've gone all-out to make our home a place to LIVE. You'll love the bright, cheerful colors, the drapes, pictures, furniture and home-like surroundings. But most of all, you'll love our people — because they'll love you!

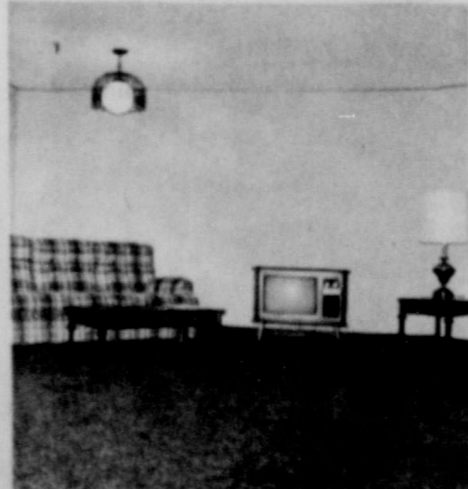


Guest rooms in Leisure Lodge Nursing Centers are large, comfortable, well-furnished, light and cheerful.



Compassionate, conscientious nurses who truly care about our guests are a trademark of every Leisure Lodge Nursing Center.

We have everything you'll find at any nursing home, plus a whole lot more. First of all, we have Licensed Nurses on duty around the clock. The regulations don't require us to have a Nurse on duty at night, but we want it that way. We have good food, and plenty of it. If your doctor says you need a special diet, we see that you get it. Our guests eat together, at regular dining tables, in a regular dining room, and enjoy the fun and fellowship of people their own age. We have planned and supervised activities, scheduled by a full-time Activities Director. And we have religious services, too. But what we have the most of, is FUN, and that's why our guests like it so well here.



At Leisure Lodge, spacious and well-appointed living rooms are a center of activity, where guests gather to visit, read, watch television.

It doesn't cost any more to live at Leisure Lodge than any other home. Don't let our nice building and grounds and our pretty decor fool you. It may look like an expensive place to live, but it isn't. In fact, it doesn't cost a bit more to live here than at any other nursing home. We're approved by the State Welfare Department, licensed by the State Department of Health, and we're approved for Medicaid. Regardless of where you live now, you can easily move to Leisure Lodge Nursing Center. And we know you'll like it here!



Anyone who has ever eaten a meal at a Leisure Lodge Nursing Center knows that the food is good, lovingly prepared, and that there's plenty of it.

We'd love to have you visit our home anytime, at your convenience. We're proud of Leisure Lodge Nursing Center, and we'd like for you to see it anytime. And especially, if you are in need of professional care; if you are living by yourself or with some family member who is unable for any reason to give you the attention and help you need; if you're just lonely for companionship; or if you know anyone in one of these categories — call or come by Leisure Lodge Nursing Center. Find out how much FUN living can be. You'll be glad you did!



Handcrafts and other activities are a large part of the program of rehabilitative care which is typical of every Leisure Lodge home.



## LEISURE LODGE NURSING CENTER

1200 7th St., N.W., Telephone: 937-8668

after you see your doctor . . .

bring your prescription to  
**Lockhart PHARMACY**  
MEMPHIS PH. 259-1574

Elizabeth Arden Cosmetics in Stock

World Wide Pictures presents  
**Corrie**  
Behind the Scenes with  
**THE HIDING PLACE**  
in Color

Executive Producer William F. Brown  
Produced by Frank R. Jacobson  
Conceived and Directed by James Collier  
Music Tedd Smith

Sunday, Nov. 28, 7:00 p.m.  
**FIRST BAPTIST CHURCH**  
8th and Noel Memphis



# Gracious THANKSGIVING DINING Begins Here!

HI DRI  
**PAPER TOWELS**  
**39¢**  
JUMBO ROLL

SHURFRESH GRADE A SELF-BASTING  
**TURKEYS 49¢**  
18-22 LB. AVERAGE



PREMIUM BRED, POP-UP TIMER, AND BROAD BREASTED



GRADE A Baking Hens	LB.	59¢
KAHN-CENTER SLICES Boneless Ham	LB.	\$1.89
U.S.D.A. CHOICE BEEF STANDING Rib Roast	LB.	\$1.19
FRESH-LEAN SEMI BONELESS BOSTON BUTT Pork Roast	LB.	89¢
RUDY'S FARM WHOLE HOG-HOT OR MILD Sausage	1 LB. ROLL	\$1.29
RUDY'S FARM WHOLE HOG-HOT OR MILD Sausage	2 LB. ROLL	\$2.57

SHURFRESH VAC PAK SLICED **BACON 99¢**  
KAHN'S BONELESS FULLY COOKED **HAMS \$1.59**  
HALF OR WHOLE WATER ADDED

**TOTAL SAVER**

SHURFRESH GRADE A SELF-BASTING HEN **TURKEYS 59¢**  
12-16 LB. AVG.

**TOTAL GROCERY SAVERS**

CARNATION **Evaporated Milk 3 TALL CANS \$1.00**

ADAMS EXTRACT **"ADAMS BEST" VANILLA \$1.49**  
Texas Favorite for 60 Years  
8 OZ.

MAXWELL HOUSE **Instant Coffee 10 OZ. JAR \$3.19**

SWEETENED CONDENSED **Eagle Brand Milk 15 OZ. CAN 59¢**

HEINZ WITH OR WITHOUT BEANS **CHILI FIXINS' 15 OZ. JAR 69¢**

**HEALTH & BEAUTY AIDS**

FOR UPSET STOMACH **Alka Seltzer 25 CT. BTL. 79¢**

SKIN CARE **Rose Milk Cream 8 OZ. BTL. 99¢**

NEW! HILLS BROTHERS **GROUND COFFEE \$1.89**  
1 LB. CAN

PURE VEGETABLE **WESSON OIL \$1.69**  
1 1/2 QT. BTL.

SALAD DRESSING **MIRACLE WHIP 99¢**  
QUART JAR

DETERGENT **TIDE \$1.29**  
GIANT SIZE

GOLD MEDAL KITCHEN TESTED **FLOUR 69¢**  
5 LB. BAG

PRINGLES POTATO **CHIPS 9 OZ. TWIN PACK 79¢**

PURE VEGETABLE SHORTENING **CRISCO \$1.49**  
3 LB. CAN

Bright, beautiful desserts  
Dream Whip  
JELL-O  
JELL-O

GELATIN DESSERT **JELLO 5 \$1.00**  
3 OZ. BOXES

TOPPING **DREAM WHIP 6 OZ. BOX 99¢**

INSTANT PUDDING **Jello Pistacho 2 3/4 OZ. BOXES 39¢**

**FROZEN FOOD CASE BUYS**

MINUTE MAID FROZEN **Orange Juice 3 6 OZ. CANS 79¢**

SHURFINE FROZEN SPEARS OF **Broccoli 10 OZ. CTN. 39¢**

SHURFINE FROZEN HALVES **Strawberries 16 OZ. CTN. 69¢**

**Fox Pizzas 79¢**

OCEAN SPRAY **Cranberries 39¢**  
**8 \$1**  
1 LB. PKG.

COUNTRY STYLE OR BUTTERMILK **PILLSBURY BISCUITS 8 OZ. CANS \$1**

REG. \$39.95 FIRESIDE **FAMILY BIBLE \$11.95**  
EACH  
NOW WE HAVE BOTH PROTESTANT OR CATHOLIC EDITIONS

**TOTAL SAVER**

CALIFORNIA Green Pascal Celery	LB.	19¢
NEW CROP Sunkist Navel Oranges	LB.	29¢
CENTRAL AMERICAN Golden Bananas	LB.	17¢
MARYLAND SWEETS Portales Yams	LB.	25¢
SWEET Yellow Onions	LB.	10¢

# THRIFTWAY

SPECIALS GOOD NOVEMBER 22-27, 1976



### Travis Baptist Women Meet For Study Tuesday

The Baptist women of Travis Baptist Church met Tuesday, November 23 at 9:30 a.m. at the church for Bible study.

Mrs. Lynn B. Jones presided over the meeting. Mrs. J. I. Herndon read Ezekiel 7: 14-22 and the prayer calendar. The missionaries were remembered in prayer led by Mrs. T. C. Stevens.

Mrs. W. S. McQueen taught the Bible Study, "Messengers for the Mission," from Math. 9:35 to 10:33; Luke 9:46 to 10:20, discussing "How Do We See the World", "Principles of Effective Good News Sharing", "Denying the Validity of our Witness" and "The Kind of Help Jesus Wants."

Mrs. Grace Richardson led in the closing prayer.

Attending were Meses. Lynn B. Jones, W. S. McQueen, J. I. Herndon, T. C. Stevens, Grace Richardson, Myrtle Dunn, G. W. Wiggins, A. L. Rogers and Miss Joyce Richardson.

### Delphians Enjoy Conservation Program Nov. 16

The Delphian Club met Nov. 16 at the Big O Restaurant with Mrs. Dean Yarbrough as hostess. Refreshments of pie and coffee were served to the members.

The meeting was called to order by President Martha Clark and all members recited the pledge to the flag. Minutes of the last meeting were read by Mrs. Kenneth Dale and the treasurer's report was given by Mrs. Ben Moss.

Mrs. Leon Davis introduced the program on "Conservation." Mrs. Moss followed with a timely devotional on Thanksgiving.

Mrs. Davis gave an interesting talk on "Pesticide Safety in Your Home." She brought out several important points that everyone should know about pesticides, such as knowing what you are buying, correct storage of pesticides and disposal of pesticide containers.

Mrs. Chappell gave a report on "Three Leaves Mean Poison Ivy." She reported that poison ivy is the cause of nearly 2 million cases of skin poisoning a year. Everyone should be aware that poison ivy always occurs in groups of three leaves, she said.

Members present at the meeting were Meses. L. F. Jones, C. L. Smith, Wayne Sweatt, Leon Davis, Ben Moss, Robert Clark, Norman Archer, E. L. Kilgore, Kenneth Dale, James Chappell, Jessie Wood, Henry Hays, R. L. Duncan and Sim Reeves.

### Band Boosters To Meet Monday

A special Band Booster meeting will be held Monday night, Nov. 29, at 7 p.m. at the band hall, it was announced today.

All members of the Band Booster are urged to be present.

Mr. and Mrs. Holmes Posey and Albert Gerlach; Mr. and Mrs. Jack Wolf of Vega and Mrs. Jack H. Wolf of Ft. Worth attended revival services at the United Methodist Church in White Deer last Saturday night. Bro. Jack H. Wolf of Ft. Worth was preaching. Wolf is an associate evangelist for the Jack Gray Association of Dallas.



MRS. HARVEY LeROY HARMON, JR.

### Karlie Kenyon - Harvey Harmon, Jr. Wed In Oklahoma City Nov. 12

In a double ring ceremony in the home of the parents of the bride, Miss Karlie Kay Kenyon became the bride of Harvey LeRoy Harmon, Jr., Friday evening, Nov. 12, in Oklahoma City with the Rev. Robert M. Shaw officiating.

Parents of the bride are Dr. and Mrs. Rex Kenyon (Mr. Kenyon being remembered as the former Frances Joy Capp of Lakeview) and the grandparents of the bride are Mr. and Mrs. John Capp of Lakeview. The groom's parents are Mr. and Mrs. Harvey LeRoy Harmon, Sr.

The bride wore a gown designed by Bianchi. It was fashioned of white silk organza with Alencon lace shaping the bodice. The skimmer silhouette had a scooped neckline and appliques of Alencon lace bordered the hem line. She wore an illusion veil.

### Plaska Sewing Club Meets In Crisman Home

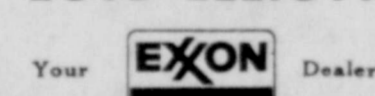
The Plaska Sewing Club met Thursday, November 18 at 1:30 p.m. with Mrs. Odessa Crisman.

The afternoon was spent weaving place mats and piecing on a quilt.

Plans were made for the Plaska 42 Club and sewing club to hold a Christmas dinner December 11 at the Big O Restaurant. Following the meal, the group will go to the home of Mrs. Odessa Crisman to exchange gifts and play 42.

Lovely refreshments were served to Meses. Elam Orrutt, Harvey Wines Has Murdock, Brown Smith, Hub Holt, Lynn B. Jones, Vera Orr and the hostess, Mrs. Crisman.

### LOYD ELLIOTT



Your EXXON Dealer

Wants, needs and appreciates your business!

### Culture Club Enjoys Program On Texas Homes

The Woman's Culture Club met November 17 in the home of Mrs. Ward Gurley. The meeting was called to order by the president, Mrs. L. A. Stilwell.

The invocation was given by Miss Alma Bruce. The club members sang "The Yellow Rose of Texas". Following the reading of the minutes by Sylvia Lewis, there was a brief business session.

Mrs. Frank Ellis, as program chairman, introduced the program entitled "Texas Homes."

In the absence of Mrs. Theo. Swift, Mrs. Ellis discussed "Texas Homes". She stated, "When we examine the houses of the nineteenth century Texas, we find that they fall into three stylistic groups which correspond generally to the historic periods in the settlement and growth of the state. The first period called frontier settlement architecture; the second anti-bellum South; and the third, the American Victorian."

"Texas Homes of the Nineteenth Century" by Drury Blakely Alexander is the first publication to result from the Texas architectural survey, sponsored jointly by the Amon Carter Museum of Art in Fort Worth and the School of Architecture of the University of Texas. Its purpose is to preserve its fast disappearing record of the state's visual history, she said.

Todd Webb of Santa Fe, N. M., a free-lance photographer, has contributed portraits of Texas homes that capture the beauty of line, building material, etc., which make them worthy of being lived in and loved as "home", she concluded. Mrs. Ellis showed pictures of a number of these homes in central and south Texas which were familiar to several club members.

During the social hour, refreshments were served to the following club members. Meses. Robert Moss, L. G. Rasco, Audrey Foster, Sylvia Lewis, A. W. Howard, Hester Bownds, R. E. Clark, L. A. Stilwell, Frank Ellis, Alvin Fyeatt, Meses Alma Bruce and Esta McElrath.

Rev. and Mrs. Ken Metzger have returned home from Farmington, N. M. where they attended funeral services for his father, Verlin Metzger. Services were held on Wednesday of last week.

Pre-nuptial parties for the couple included a cocktail supper hosted by Dr. and Mrs. Richard A. Clay and Dr. and Mrs. Everette E. Cooke where guests were contemporaries of the bride-elect and the prospective bridegroom, and a kitchen shower and luncheon at which Mrs. William J. Sutton and Mrs. Robert Finley were hostesses.

A rehearsal dinner was held in the Regency Room at the Oklahoma City Golf and Country Club the evening before the wedding hosted by Mr. and Mrs. Harvey Harmon, Sr. parents of the bridegroom.

**CARE**  
FOR THOSE  
YOU LOVE  
Cousins Home, Inc.  
520 North 18th St.  
Phone 259-2767  
Memphis, Texas

**Rolfs I.D. Tri-Fold**  
For the practical man.

The sensible billfold. Because it says function throughout. An open window for instant identification. Two indexed credit card pockets for those "often used" cards. 8 windows to keep credit references fully protected and in full view. A full length currency compartment keeps his bills safe. Super slim too. And it's available in a wide variety of fashion colors and leathers.

Rolfs I.D. Tri-Fold. It makes a lot of sense.

**Fowlers Drug**

### Friendly Sewing Club Enjoys Holiday Dinner

The Friendly Sewing Club met Tuesday, November 19, at 5:00 p.m. in the home of Mrs. Jean Lamb for the Thanksgiving dinner.

Members brought covered dishes and a delicious meal was served including baked hen and all the trimmings.

Mrs. Lynn Jones offered the blessing.

After dinner the members enjoyed visiting.

Present were Meses. L. G. Yarbrough, Amanda Simpson Emma Lee Nabers, Estelle Barber, Eula Moreland, Matye Orak Jones, Myrtle Hammons, Ethel Pepper and Emma Stevens.

Mrs. D. L. C. Kinard, who has been in Abilene for the past month, where she received medical therapy, returned home with a companion, Gertrude Cornelius, who will be with her for some time.

### Atalantean Club Meets Wed., Nov. 3 at Big O

The Atalantean Club met Wednesday, November 3, at Big O Restaurant with Miss Imogene King serving as hostess.

Mrs. Adams gave the invocation. The president called the meeting to order and presided during the business meeting.

For the program, the members answered roll call with quotable quotes about the presidents of the United States. The members gave very interesting facts about the president and things they had said that have become famous quotes.

Delicious refreshments were served to Meses. Bryan Adams, James Davis, W. C. Dickey, Robert Montgomery, Dub Parker, Kenneth Metzger, Clinton Voyles, Winfred Wilson, W. R. Scott and hostess, Miss King.

**CRADLE ROLL CALL**

Mr. and Mrs. Ricardo Martinez of Lakeview are the parents of a son born Nov. 21. He weighed 6 pounds, 14 ounces and has been named Rolando.

Mr. and Mrs. Julian Torrez, Jr. of Wellington announce the birth of a son on Nov. 23. He weighed 7 pounds.

**Hospital News**

**Patients**

Jemie Carbajal, Redonna Jones, Rugena Torrez, Myrtle Crabb, John W. Smith, Emma Smith, Gabrell Smith, Ruby Richardson, Ila Turland, Hulien Clifton, Ewald Geissler, Trudie M. Britt, Love Sasser, Wayne Johnson, Tommie S. Greene, Joe McWhorter, Tommy Evans, Landrum W. Stanford, Eula Russell.

**Dismissed**

Dorothy Wheeler, Eugne Ferguson, LaWayne Brown, Wilbur Brown, Ida Brown, A. R. Henson, Frank Henson, Doris Ingram, Chris Taylor, Minnie Mae Adams, Velma Collins, Leda Hays, Hilda Martinez and Dwight Tant, P. A. Covington, Virginia Holton, Mann, Myrtle Bess, Jones, Charles Proctor, Hutcherson.

**CARD OF THANKS**

May we take this way of thanking each of you for your prayers, visits, and other evidences of concern during the death of our loved one. We especially want to thank Dr. Clark and the nurses at Hall County Hospital. May God bless you of you.

Mrs. W. E. Williams and Family

Miss Carol Moore, student at Texas Tech, Lubbock, arrived here Sunday to spend the Thanksgiving holidays with her parents, Mr. and Mrs. Clarence Moore.



**Hear The 40-Voice Youth Choir Leading In Worship At First Baptist Church, Memphis, This Sunday, 11:00 a.m.**

*Where The Youth Are!*

**At Thanksgiving We Are Grateful to Our Members**

Rural and urban Americans once considered electricity a luxury. Now it is simply a vital necessity of day-to-day living

While we are pleased by this attitude, we do not forget for a moment the responsibility it entails. Our rural electric system assures a dependable, efficient supply of electricity to our consumer-owners at the lowest possible cost consistent with reliable service. And we are at work constantly to assure that this trust develops no broken link.

Our constant vigilance is even greater because of our direct responsibility to our consumers who are our member-owners, and elect from among themselves a Board of Directors to see that their electric system is properly guided. This is the cooperative way—one of the tried and proven ways of conducting private business under our diversified economic system.

One result of our direct responsibility to our members is an active attentiveness to the needs, electric and otherwise, of our consumers. We strive to help in the development of our service area in as many ways as possible.

We are gratified by this opportunity to be of service. We realize that a strong rural America benefits all America.

**Hall County Electric Cooperative, Inc.**

MEMPHIS, TEXAS

**ASK US ABOUT 100% TAX DEDUCTIBLE RETIREMENT PLANS IRA AND KEOGH**

For Both Individuals & Self Employed

*Vernon Savings & Loan Association*

Offices in Vernon, Paducah, Memphis, Childress and Frederick, Oklahoma

**ESLIC**



### Public Invited To See Corrie Ten Boom At First Baptist Church Sun.

"CORRIE: Behind the Scenes with The Hiding Place", a new full-length color release from World Wide Pictures, will be shown at First Baptist Church, Eighth and Noel on Sunday, November 28. A single showing is scheduled to begin at 7:00 p.m.

"The Hiding Place", a true story filmed in Holland and other European locations, is based on the experiences of Corrie ten Boom, who, with her father, and brother, provided refuge for countless Jewish families. A secret room was constructed in their home as a hiding place for use during Gestapo raids. The ten Boom's activities were discovered, and they were sent to prisons and concentration camps.

According to Kenneth Bliss, Director of Distribution for World Wide Pictures, "The Hiding Place has been extremely well received, both by audiences and film critics. "Corrie" was produced to give people who have seen "The Hiding Place" or read her best-selling books an opportunity to hear her share many of her memories about her life in Holland, her family, and her lifetime of service to others."

Bliss added that the film "offers a great lesson in the perseverance of a personal faith in a very dark and trying period of world history. "Corrie Ten Boom", now in her eighties, has a tremendous vitality, a deep spiritual commitment, and a profound love for her fellow man. We believe we have succeeded in transmitting a part of her zest, personality, and source of strength through this film."

Bliss noted that the film includes "interesting sidelights on the experiences of the cast and crew during the filming of "The Hiding Place".

### Mother Of

(Continued From Page 1)

Cemetery there, Mrs. Lipscomb passed away Sunday in Plainview.

She was born in Center Point, Ark., and was a member of the First Baptist Church. Her husband, Charlie Lipscomb, preceded her in death in 1958.

Survivors include: four daughters, Mrs. Gussie Williams and Mrs. Jimmie Weatherly, both of Memphis, Mrs. Luker Johnson of Alvaredo and Mrs. Duncan Henderson of Harrison, Ark.; one son, Charles of Plainview; 22 grandchildren; 38 great-grandchildren and 18 great-great-grandchildren.

### Ex-Students To Hold Banquet In Hedley Saturday

The Hedley Ex-Student and Teacher's Association will hold its annual banquet on November 27 at 7:30 p.m. in the High School Cafeteria. All ex-students and ex-teachers and their guests are urged to attend.

A barbecue dinner will be served and tickets are \$3.00 per plate. The graduating class of 1929 is planning a reunion at this time.

After dinner, a short business session will be held. Officers are Fred Watt, Pres.; Joe Neal Beavers, vice president; Dorothy Martin, secretary; treasurer and Geneva McAfee, decorations.

**Ella Mentru**  
WHAT ANIMAL POSSESSES THE HEAVIEST FUR?  

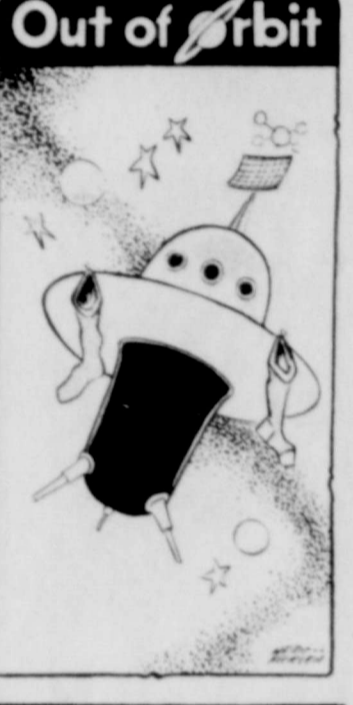

Everything A Property Owner Possesses, Can Go "Up In Flames". Without Enough Fire Insurance And Extended Coverage To Protect Against Heaviest Loss... Check With Us Today!  
The answer is The Eskimo Dog.  
**FISHER-RED RIVER AGENCY**  
Life Casualty  
Fire Crop-Hail  
259-3430  
605 MAIN ST. MEMPHIS

### Cotton Guessing

(Continued From Page 1)  
60,963; Mrs. Paul Whitten, 78,250; M. A. Wiley, 50,124; Lettie Goodnight, 55,000; W. H. Goodnight, 56,500; Susan Goodnight, 57,000; C. J. Nail, 58,500; John Nail, 59,000; Jane Ann Nail, 60,000; John D. Nail, Jr., 60,500; Mrs. A. J. Fowler, 57,250; Mrs. Lorcan Saunders, 62,513.

Also H. W. Wolf, 66,666; Mrs. H. W. Wolf, 68,777; Glen Cope, Cordiff by the Sea, Calif., 50,999; Eula Cope, Cordiff by the Sea, Calif., 52,176; C. B. Craghead, 57,121; Ada Ruth Craghead, 58,011; L. M. Basden, 59,240; Herlie Moreman, 58,756; Mrs. Herlie Moreman, 59,998; Evelyn McWhorter, 42,892; Homer Tribble, 48,296; Audrey Tribble, 53,292; Ruth Hawthorne, 51,000; W. M. Kilpatrick, Jr., 49,959; Merle Kilpatrick, O'Donnell, 51,325; Teresa Fincher, Wellington, 52,484; Terry Fincher, Wellington, 45,501; Bill Kilpatrick, 45,976; Ethel Kilpatrick, 42,899; C. A. Hightower, 51,025; D. B. Koen, 53,333; Mrs. D. B. Koen, 49,999.

Also Woodrow Farris, 70,385; Ora Pearl Farris, 64,444; Roy Howard, 48,418; Dee Dingham, 65,400; M. D. Kennard, 55,400; Nolan Salmon, 64,220 and Becky Bruce, 67,689.



### Memphis Firemen

(Continued From Page 1)

smoke damage. At 12:30 p.m. Tuesday, fireman answered a call to the Farmers Union Co-Op Gin here to put out a burr and lint fire both inside and outside the gin. Firemen were on the scene there for about an hour.

**Don G. Cockrell Co.**  
HWY 287 NORTH (806) 259-2931  
P. O. Box 67  
MEMPHIS, TEXAS 79245

2,158 Acres Memphis	525 Cultivated, 1633 grass, 150 Cotton allotment, excellent fences, 3 sets pens, drive all over ranch, immediate possession.
960 Acres N. Lakeview	150 acres cultivated, 810 grass, city water. Good Stock farm.
244 Acres S. Clarendon	104 cultivated, 100 native grass, 40 acres improved pasture. Very nice 2 BR. Home.
161 Acres SW Memphis	100 cultivated, 61 grass, tested for irrigation water.
70 Acres Memphis	Edge of Memphis, some cultivated, live water, cottonwood trees, beautiful for home and horse ranch. Future development property.
160 Acres Hedley	120 cultivated, 40 pasture, 4" well, love, bermuda, and native grass.
32 Acres Lake Lake	Nice home, 6" well irrigation. Large garden plot.
Old Train Depot	Partially remodeled, excellent location on hwy. 287. Could be tourist attraction.
160 Acres SW Lakeview	2 Irrigation Wells, almost all in cultivation.
160 Acres SW Lakeview	Almost all in cultivation.
160 Acres N. Memphis	All grass - some was in cultivation. Well located on 287.
4 1/2 Sections SW Memphis	450 acres cultivated, City water, house, Four miles highway frontage, Excellent improvements, 29 percent down, Immediate Possession.

Let us sell your ranch, farm, home or business!

### CLASSIFIED AD INFORMATION

Rates On Classified and Legal Notices Advertising  
Display in Classified Section, per col. in. 1.05  
Minimum Charge 1.50  
Per word, first insertion 10c  
Per word, following consecutive insertions 5c

### For Sale

FOR SALE — You can take up payments on late model Kirby. Will allow trade-in. Call James Canada 259-3449. 24-tfc

FOR SALE — Three Bedroom house, two baths, double car garage, central heat and air. Large storeroom, carpeted throughout and built-ins. Call 259-2804. 41-tfc

FOR SALE — Two-bedroom, two bath house, carpeted, refrigerated air, fenced yard, patio, cellar, fruit trees, garage. Priced right. Call 259-2615, 817 South 6th. 24-pp

FOR SALE — Dickson's Analytical Bible, or Christian Book of knowledge. Ideal Gifts. J. D. Rothwell, 259-2118. 27-4c

FOR SALE — 1964 Pickup, 6 cylinder, 3-speed, good tires \$475.00 715 S. 9th. 28-tfc

FOR SALE — 3-bedroom home, carpeted throughout, priced reasonably, 715 S. 9th. 28-tfc

FOR SALE — Household furniture couch, dinette suits, coffee table, end tables, refrigerator, gas range, washer and gas dryer, office desk and chair, all in good condition Lowry Organ, 715 S. 9th. 28-3c

FOR SALE — 14 inch cotton trailer tires. Dwayne Floyd or G. W. Lockhart, 259-3259 or 259-2730. 28-tfc

FOR SALE — Galvanized metal 3,600 gal. water tank. Used very little \$250.00. Call 817-937-2561 or 937-3448. 28-4c

FOR SALE — Four bedroom, two bath house in Memphis. J. D. Rothwell, 259-2118. 29-tfc

FOR SALE — New Custom First Flight Irons, 2-Iron three Pitching Wedge, "76 models. Call 259-2063 or 259-3109. 29-4c

FOR SALE — New trundle beds and Love Seats. Memphis Upholstery. 29-tfc

FOR SALE — Model 1100 12 ga. Remington; Model 22 250 HDL Remington. Call 259-2465 after 5:30. 29-tfc

**SPERRY**  
Shamrock Service  
Is the Dealer For  
Valley Tow-Rite  
Trailer Hitches A Acces.  
In Stock...We Install  
Hwy. 287 N.  
Phone 259-2771

**AUTOMOTIVE Detail**  
Clean Engines, Polish and Wax Shampoo Interior  
**ROY RICHARDSON**  
Phone 259-2765 18-tfc

Bring Your Slaughtering And Processing To  
**BUTLERS - GILMORE LOCKER**  
Wellington, Texas  
New Prices Effective 3-1-76. For Beef Slaughters, \$6; Processing 13c lb. No extra charge on anything except patties, if cut and double wrapped to your specification.  
We Also Have Choice Grain Fed Freezer Beef Cut and Wrapped 79c per lb.  
Call 447-5660 14-tfc

FOR SALE — 1974 Kawasaki 250 Enduro. Good condition. Call 259-2335 or 259-3370. 27-tfc

FOR SALE — Newly redecorated house in Lakeview, five rooms and bath. Call 867-2502. 13-tfc

FOR SALE — 1973 Plymouth Honey - winterized and inspected, Eddie Gable, 1321 Dover St., Phone 259-3079 nights. 25-tfc

FOR SALE — 16 ft. Hale Stock Trailer with half top. Carpenter power tools. Call after 5:30 evenings. 259-2463. 24-tfc

FOR SALE — 1967 1/2 ton Chevrolet Pick-up, 48,000 miles. Shall side pack tool boxes, 3/4 ton Electric Winch, A frame and 20' extension ladder. 259-2202. 29-2c

FOR SALE — 1964 10 x 50 two-bedroom Mobile Home, carpeted, \$2800. Call 874-2615. 29-2c

FOR SALE — Beautifully marked cowdog puppies. Some blue-eyed. Tom Cope 888-2967. 29-tfc

SILVER FOR SALE — Service for 8 with additional pieces, Community. Mrs. H. W. Spear Lakeview, Texas. 29-2p

**GODFREY PEST CONTROL**  
Licensed and Insured  
Call 259-2766 27-tfc

**Spraying & Seeding**  
See or Call  
**GLENN CALLAHAN**  
Memphis, Texas  
I want and need your business and I appreciate every customer. 26-tfc

**BOBBITT'S T.V. Service**  
1904 Palo Duro  
Call Emmett Bobbitt 24-tfc

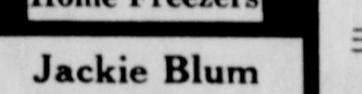
**4-COUNTY MEAT CO.**  
Hinds, Halves  
25 lb. Freezer Wrap  
Custom slicing  
Fresh Counter Meat  
Home Freezers  
**Jackie Blum**  
Ph: 259-3351  
120 N. 10th St. 9-tfc

**CAKES**  
FOR ALL OCCASIONS  
Decorated or Plain  
PARTY CATERING  
CALL ME  
J. ALLEN 18-tfc

**New, Used Furniture & Antiques Buy-Sell-Trade**  
Upholstery, Wood Finishing  
**MULLINS NEW & Used Furniture**  
615 Main - Memphis 12-tfc

**SEE US FOR**  
Stereos, CB, Tapes,  
Audios, Kits, Parts  
**Messer Electric & Radio Shack**  
622 Noel St. Memphis 11-tfc

**JAMES CANIDA**  
Only Authorized Kirby Dealer Sales & Repair  
S. 16th St., off Lakeview Hwy.  
MEMPHIS, TEXAS 13-tfc

**GOOD SERVICE!**  
Is what you'll find when you trade with me at  
**MEMPHIS**  
  
**STATION**  
George Armstrong  
All major oils, flats, lube jobs Plus Good Service 35-tfc

**Spicer Funeral Home**  
Phone 259-3535  
FLOWERS-PLANTS-GIFTS  
**Spicer's**  
600 Noel Phone 259-3331  
Nationwide plus Estelline Lakeview - Hedley Weddings - Anniversaries Birthdays  
Come In And Browse 43-tfc

**Leslie's Flowers**  
Your FTD Extra Touch Florist Serving  
**MEMPHIS, LAKEVIEW ESTELLINE, HEDLEY**  
With Guaranteed Quality Value, Service for Over 25 Years.  
Let Us Help You With All Your Floral Needs.  
**WILMA, BETTYE, BILL**  
710 Bradford 259-3591 30-tfc

FOR SALE — 320 acres, two miles west of Lakeview. Call 259-3323 or 259-2670. 29-tfc

FOR SALE — Baled Hay-Alfalfa or oats. Call Marion E. Posey, 259-2658, Memphis. 29-tfc

FOR SALE — One gas stove, one electric stove. Phone 259-3070. 27-tfc

FOR SALE — Wedding ring set, 1/3 carat, \$200.00. See Jerry Jaco or call 259-3249. 29-2c

FOR SALE — 1975 one-ton G. M. C. truck, cab and chassis. 454 engine. Call 259-2910 or 259-3351. 30-2c

**GARAGE SALE — 9 to 5 Friday**, weather permitting, lots of furniture 710 N. 10th. 30-1c

FOR SALE — Small two-bedroom house, 510 S. 10th. Call between 4 and 6 p.m. 259-3237 Monday thru Saturday. Memphis Country Club. 30-tfc

### Special Notices

**ABSOLUTELY NO Hunting** on my place, 2 miles north of Memphis, Russell Norton. 29-3p

HAS YOUR septic tank or cesspool shown any signs of sluggishness? Has there been any odor, back-up slow drain-off, bubbling in the toilet bowl, or overflow in the drainage field? If so, we recommend that you first use FA-11 to restore your system to normal. Thompson Bros. Co. 29-tfc

**REDEEM your Gold Bond Stamps** at Thompson Bros. Co. 21-tfc

**SHAKLEE Food Supplements and Lipsticks**  
See Virginia Crowder  
**THE GOLDEN CROWBEE**  
413 Main Street  
Memphis, Texas 79245 28-3d

**TYPEWRITER & ADDING MACHINE REPAIR**  
Have several used Typewriters and Adding Machines for Sale. Electronic Calculators With Printed Tape  
**ROY M. HORN**  
Typewriter Repair Service  
Wellington, Texas 79095  
Phone 447-2580 16-tfc

**Painting & Dashing Drywall Textures Accutastal Spray Paneling Wall Papering Call**  
**Lawrence Thompson**  
Phone 874-3756  
Clarendon, Texas 30-6c

**Archer's Redi-Mix Concrete**  
Contact Norman Archer or Call 259-2682 1-tfc

**FOSTER ELECTRIC**  
Shop Is Now Open  
All types electric work  
Heating and Cooling  
N. Hwy. 287  
259-3316 Day  
259-2570 Night 5-tfc

**WELLS - FELLOW BR GRANITE QUARRY GRANITE, OKLA.**  
Phone 535-2184 Collected 25-10

**MONUMENTS AT FACTORY PRICES**  
WILLIS - FELLOW BR GRANITE QUARRY GRANITE, OKLA.  
Phone 535-2184 Collected 25-10

**Weil Bros. Cotton, Inc.**  
205 N. 5th — Memphis, Texas  
Ph: 259-3566  
Ph: 259-3567  
Warren Donaldson  
Kathryn Waddill  
ESTABLISHED 1876 25-10

**LOOK TO 4 COUNTY TRACTOR & EQUIPMENT**  
FOR ALL YOUR SERVICE NEEDS  
ALL WORK FULLY GUARANTEED  
ALL PARTS GENUINE JOHN DEERE 100 PER CENT WARRANTY  
MOST MODERN EQUIPPED SHOP IN THE PAMPHANDLE AREA  
DYNAMOMETER RUN-OUTS UP TO 350 HP ENGINES  
RADIO CONTROLLED SERVICE FLEET DISPATCH  
TECHNICAL SERVICES PROVIDED BY JOHN DEERE ENGINEERING  
SPECIALIZED SHOP EQUIPMENT  
PARTS SERVICE AVAILABLE 24 HRS. EVERY DAY  
THE PROFESSIONALS SERVING ALL FARMING NEEDS FOR DONLEY, COLLINGSWORTH AND CHILDRESS COUNTIES

**JOHN DEERE DEALERSHIP**  
Hwy. 287 North  
Memphis, Texas Phone 259-3514

**ANNOUNCING OPENING**  
NEWLY REMODELED  
**MOVIE HOUSE THEATER**  
UNDER NEW OWNERSHIP  
We invite you to be with us December 1 when we open at 7:30 p.m.; you will enjoy our family movie, "JOE PANTHER."  
Mr. and Mrs. Lyndon Craven

**Movie House**  
WILL OPEN DECEMBER 1  
Box Office Open 7:00 p.m.  
Show Starts 7:30 p.m.  
Wednesday Through Saturday "Joe Panther"  
Rated G, suggested by state PTA for family entertainment.  
Sunday Afternoon, Dec. 5 2:00 p.m. Show Time  
Box Office open 1 p.m.  
Spanish Show  
Juan Gabriel  
In "Nobleza Ranchera"  
Sun., Mon., Tues, Dec. 5, 6, 7 "Don't Open the Window" R  
Wed., till Sat., Dec. 8-11 "Survive!" R 14-tfc

**Spicer Funeral Home**  
Phone 259-3535  
FLOWERS-PLANTS-GIFTS  
**Spicer's**  
600 Noel Phone 259-3331  
Nationwide plus Estelline Lakeview - Hedley Weddings - Anniversaries Birthdays  
Come In And Browse 43-tfc

**Leslie's Flowers**  
Your FTD Extra Touch Florist Serving  
**MEMPHIS, LAKEVIEW ESTELLINE, HEDLEY**  
With Guaranteed Quality Value, Service for Over 25 Years.  
Let Us Help You With All Your Floral Needs.  
**WILMA, BETTYE, BILL**  
710 Bradford 259-3591 30-tfc

**WELLS - FELLOW BR GRANITE QUARRY GRANITE, OKLA.**  
Phone 535-2184 Collected 25-10

**MONUMENTS AT FACTORY PRICES**  
WILLIS - FELLOW BR GRANITE QUARRY GRANITE, OKLA.  
Phone 535-2184 Collected 25-10

**Weil Bros. Cotton, Inc.**  
205 N. 5th — Memphis, Texas  
Ph: 259-3566  
Ph: 259-3567  
Warren Donaldson  
Kathryn Waddill  
ESTABLISHED 1876 25-10

**LOOK TO 4 COUNTY TRACTOR & EQUIPMENT**  
FOR ALL YOUR SERVICE NEEDS  
ALL WORK FULLY GUARANTEED  
ALL PARTS GENUINE JOHN DEERE 100 PER CENT WARRANTY  
MOST MODERN EQUIPPED SHOP IN THE PAMPHANDLE AREA  
DYNAMOMETER RUN-OUTS UP TO 350 HP ENGINES  
RADIO CONTROLLED SERVICE FLEET DISPATCH  
TECHNICAL SERVICES PROVIDED BY JOHN DEERE ENGINEERING  
SPECIALIZED SHOP EQUIPMENT  
PARTS SERVICE AVAILABLE 24 HRS. EVERY DAY  
THE PROFESSIONALS SERVING ALL FARMING NEEDS FOR DONLEY, COLLINGSWORTH AND CHILDRESS COUNTIES  
**JOHN DEERE DEALERSHIP**  
Hwy. 287 North  
Memphis, Texas Phone 259-3514



# Cyclone Defeats Elks 34-15 In Bi-Dist.

Memphis Cyclone advanced a step closer to a shot at a Class A State title Friday with an impressive 34-15 victory over the Stratford in Kimbrough Memorial stadium in Canyon under weather conditions.

The Cyclone was keyed up for the encounter which became evident on the opening drive when Captain Salinas came close to breaking through the way. This sparked the offense into driving for a touchdown on first possession in eight

The Cyclone offense, led by running, passing and blocking of QB Cofer, a tremendous performance by back Kirk Fields, the game rushing by TB Salinas along with outstanding blocking, and sure hands of passes by Rodney Hall, Anthony Johnson, Ricky Guy and Pete Salinas, rolled to 27 first downs, 326 yards rushing and passing for a total of 414 yards. All of this was possible to a large extent by brisk blocking for Cyclone offensive line which has continued to drive into a well disciplined season.

Defensively, the Cyclone was equally up to the task, forcing Stratford to six turnovers, four lost fumbles and two interceptions, allowing only three completions of the 14 punt up, holding the Elks talented backs to 183 yards on the ground, the lowest of the season.

The Bi-District tussle was an offensive show all night as Memphis was forced to punt twice, as Ricky Guy kicked a 41 yarder, and QB Joe Pete Albert rolled in his punting powers for times averaging 39.3 per kick.

The Cyclone advances to the Regional Play-off against Hart Longhorns, who will play in the final seconds of the Bi-District game in Plainsville to defeat Petersburg 14-10.

The Cyclone, 10-1 for the season, opened scoring with a 39-yard pass from Cofer to Albert on the kickoff. Stratford territory, but a call moved Memphis back to the Cyclone 46. The Cyclone offense got going as QB Don Cofer carried 18 yards on a keeper on the right end and first down on the Elks' 36. The drive carries by FB Fields for 12 yards to the 24 and the first Next TB Fete did a nifty bit of work as he popped through a good hole and raced to the Stratford 5, a 12-yard gain.

Fields plowed into the end on two consecutive plays and picked up four of the 11 for the touchdown. Then, QB Cofer faked a handoff and raced over standing up for the touchdown. The Cyclone offense came in and



**KIRK FIELDS SCORES**—Fullback Kirk Fields is pictured above as he scored the Cyclone's second touchdown on a sweep around left end in the first quarter against Stratford Friday. Other Cyclones pictured are No. 80 Anthony Johnson, Don Cofer (behind Fields) No. 61 Randy Orcutt and on the ground Kenny Martin.

kicked the point after off the hand of holder Tracy Galloway and the score was 7 to 0 with 8:16 left in the first quarter.

Stratford took possession on their own 36 following the kickoff. The Memphis defense was ever bit as fired up as the offense, as Joe Pete Albert was stopped for one, and 190-lb. fullback Leonard Duncan was downed after three. QB Will Allen on the next play tried a pitchout on the option but the football got loose and Defensive End Randal Shaban recovered for the Cyclone giving Memphis the ball on the Stratford 35.

It was TB Salinas that got things going on this scoring drive with a 14 yards pick-up to the Elks 21. In the next series, Fields was stopped for no gain, and a pass went incomplete setting up a third and 10. Then, QB Cofer rolled out and hit WB Hall for a 14-yd. gainer via the airways and Hall was downed on the Elks 7-yd. line.

FB Fields swept the end, had the blocking and knifed his way over for the touchdown with 5:37 left on the first quarter clock. The try for extra points was no good as kicker Flemmons had to pick up a loose football and try to run it over. His try fell only a yard or two shy.

The Elks got a great kickoff return from Albert who raced to the Elks 41 where Pete Salinas made a score saving tackle by wrapping Albert up.

The Elks made a first down when 15 yards were paced off against Memphis, moving the ball to the Memphis 31. Then, QB Allen went to the

air on a pass down the middle but Linebacker Randy Orcutt intercepted the pass and returned it to the Memphis 28.

The Cyclone moved for a first down as Kirk Fields picked up 13 yards on two carries to the Memphis 41. Then, however, the ball popped out of QB Cofer's hands on the exchange from center and Cofer dived for the pignskin but Elk Linebacker Leonard Duncan was just a fraction quicker and recovered on the Memphis 38.

QB Allen took the snap from center, started down the right side, drew a crowd and pitched out to trailing back Albert and the Elk speedster raced all the way down, the west sideline in front of the cheering Stratford stands for the touchdown. QB Allen kicked the point after and it was 13-7 with 0:47 left in the first quarter.

The Elks attempted an on-side kick, a maneuver which has been successful in every game they have played this season, but Memphis front line was ready all night and the Cyclone took possession on the Memphis 47.

Salinas gained four and Fields added 10 more moving into Elk territory, to the 39. Then, QB Cofer found 6-foot 4-inch Ricky Guy with a 12-yard pass and Memphis was on the 27.

Fields added seven yards on two carries, and Salinas made a first down to the 17. But here, the Elk defense rose up and dropped Cofer

on two plays and Memphis turned the football over on the 29.

The Elks got a drive going, marching with carries by Duncan to the 50, but then lost the football on a recovery by Rodney Hall. But when Cofer went to the air on the first down, throwing to Center Linebacker Kenny Martin, who had been giving QB Allen trouble all night on stunts. The fact that the Elks came up dry after a fine drive certainly took the momentum from their team.

Memphis was quick to take advantage of Stratford's disappointment and Memphis good fortune after the fumble recovery on the Memphis 35. Memphis defense held, forcing Albert to punt, and Anthony Johnson raised his hand to fair catch the punt on the Memphis 30.

This began a 70-yd. scoring drive which took 12 plays and ate up most of the second quarter clock. The drive started slowly, as Salinas managed only one yard, then a pass went incomplete. WB Hall snagged a third down pass from Cofer for 8 yards and the Cyclone faced a fourth and one on their own 39. The decision to go for the first down was the right one as FB Kirk Fields plowed through the line for two yards and a first down on the 41.

QB Cofer rolled out on the next play, saw an opening and raced up the field for 12 yards to the Elks 47. In the next series, a first down pass went incomplete, but then Pete Salinas was only inches shy of first down yardage on a pop up the middle, and QB Cofer raced 22 yards down the sidelines to the Elks

15. The next pass play was nightmare for Elk fans as TB Salinas took a Cofer pass along the sidelines and dodged several Elk defenders as he weaved his way to the four-yard line before finally being dropped.

FB Kirk Fields carried for three straight plays and scored from one-yard out with 0:36 left on the second quarter clock. Memphis went for the two-point conversion and QB Cofer took it in on the belly-option to make it 21-7 at halftime.

**Second Half**  
Cyclone Steve Flemmons kicked off to Stratford's Taylor Johnson starting the second half and a good return gave Stratford the ball on the 39. The Elks couldn't manage a first down so Albert punted 43 yards to the Memphis 11.

The Cyclone came out of their end of the field running, as Cofer made two, then Fields added 10 more on two carries. WB Rodney Hall made first down yards on a key third down 9-yard pass catch in the crowd to the Memphis 36. Then Fields made first down yards to the Memphis 47 on carries.

Here, however, three plays netted only three yards, so Punter Ricky Guy got off a 41-yard high sailing punt and the Elk who caught it on the 9 yard line was dropped immediately.

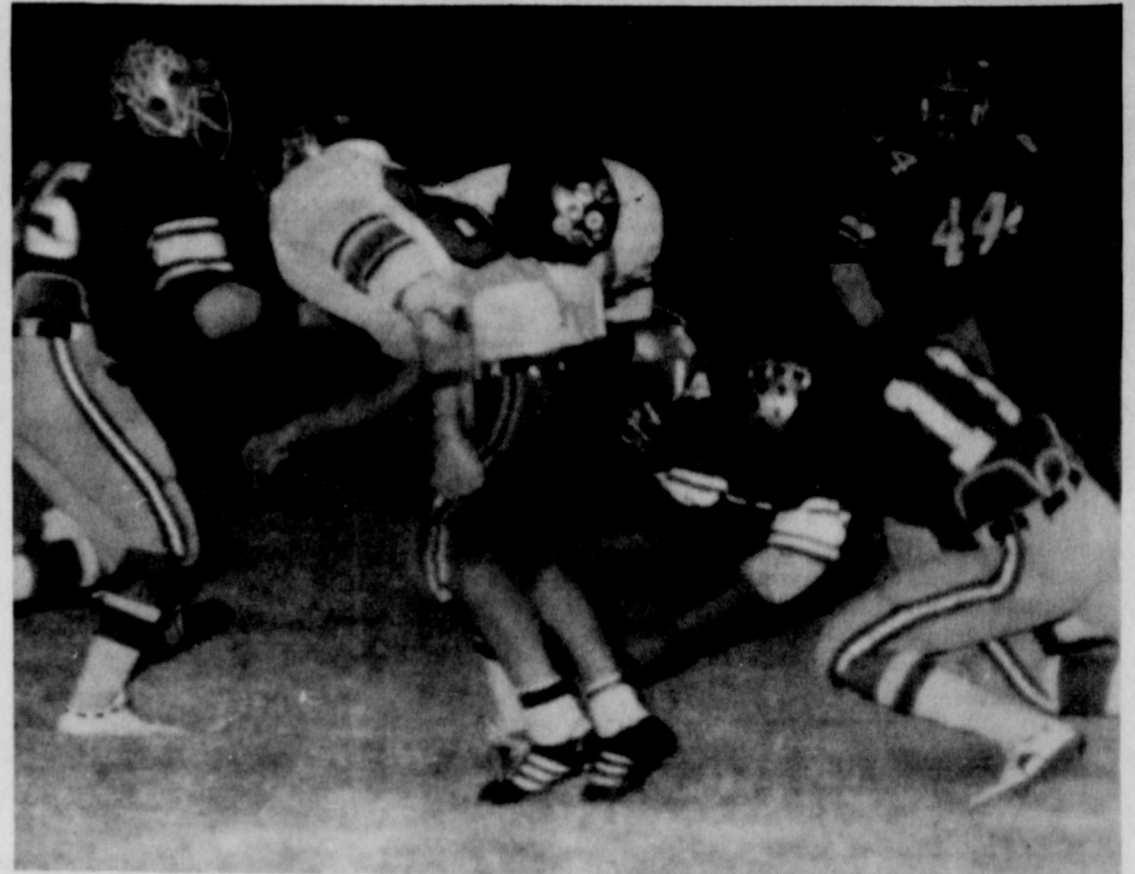
The Elks got their offense untracked at this point marching 85 yards, only to lose the football on a fumble to Center Linebacker Kenny Martin, who had been giving QB Allen trouble all night on stunts. The fact that the Elks came up dry after a fine drive certainly took the momentum from their team.

Memphis was quick to take advantage of Stratford's disappointment and Memphis good fortune after the fumble recovery on the Memphis 35. Memphis defense held, forcing Albert to punt, and Anthony Johnson raised his hand to fair catch the punt on the Memphis 30.

This began a 70-yd. scoring drive which took 12 plays and ate up most of the second quarter clock. The drive started slowly, as Salinas managed only one yard, then a pass went incomplete. WB Hall snagged a third down pass from Cofer for 8 yards and the Cyclone faced a fourth and one on their own 39. The decision to go for the first down was the right one as FB Kirk Fields plowed through the line for two yards and a first down on the 41.

QB Cofer rolled out on the next play, saw an opening and raced up the field for 12 yards to the Elks 47. In the next series, a first down pass went incomplete, but then Pete Salinas was only inches shy of first down yardage on a pop up the middle, and QB Cofer raced 22 yards down the sidelines to the Elks

15. The next pass play was nightmare for Elk fans as TB Salinas took a Cofer pass along the sidelines and dodged several Elk defenders as he weaved his way to the four-yard line before finally being dropped.



**DON COFER SCORES**—It was in the fourth quarter when QB Don Cofer tucked the football and drove in for the Cyclone's final touchdown. Cofer, shown avoiding two Elk defenders collided with Guard Kenny Martin at the goal line and both went into the endzone. Cofer scored the first TD for the Cyclone. This 4-yd. TD came after Tracy Galloway recovered an Elk fumble on the 4-yd. line.

the point after the score was 28-7 with only seconds remaining in the third period. The Elks seemed to go flat after that, as they were held and punted to the Memphis 38. Memphis began another drive, as Cofer made eight and Fields added 10 more to the Elk 44.

Then, QB Cofer carried and a red flag was thrown against Stratford and 15 yards stepped off moving the football to the Elk 31.

The Cyclone had Woodrow Richardson and Steve Flemmons as running backs, and Richardson carried for six yards on two plays, then, Cofer hit End Johnson on the look in for eight yards to the 17 and a first down.

Cofer passed to End Ricky Guy on the next play, the pass was tipped into the air, but Guy caught it anyway for a seven yard gain. Cofer carried on the keeper for five giving Memphis a first down on the Elk five.

But then, Memphis fumbled the football and Stratford recovered on the six.

Stratford lost two yards as Rodney Hall knifed through to grab Albert's foot on a pitch-out. Then a fumble was recovered by Tracy Galloway

for Memphis on the 4-yard line.

QB Cofer carried on the option and scored from four yards out. Flemmons' point after kick was blocked by Elk Tommy Carter and the score was 34 to 7.

The Elks managed to score once more, coming into possession on a fumble recovery on their own 33. The big play was a 39-yard pass from Allen to Taylor Johnson moving to the Memphis 23. Here, two carries by Albert moved to the Memphis 12. FB Leonard Duncan scored threading the sideline around left end and diving over. QB Allen added the two-point conversion on the option play with 1:53 left in the game.

Memphis had possession when the game ended after Rodney Hall intercepted an Elk pass and returned it to the Stratford 33.

Statistics:

Memphis	Stratford
27 First Downs	16
326 Yards Rushing	118
9 for 88 Yds. Passing	3 for 63
7 Incomplete Passes	9
2 Passes Inter. by	1
1 for 41 Punt Aver.	3 for 39.3
6 for 60 Yds. Pen.	3 for 57
3 Fumbles Lost	4
Kirk Fields carried	24

times for 185 yards averaging 7.7 yards per tote. Don Cofer rushed 15 times for 79 yards averaging 4.7 yards. Pete Salinas carried 11 times for 57 yards averaging 5.2 yards. Rodney Hall carried twice for 8 yards and Woodrow Richardson carried three times for six yards.

Rodney Hall caught four passes for 40 yards, Anthony Johnson caught two passes for 18 yards, Ricky Guy caught two passes for 19 yds. and Pete Salinas caught one pass for 11 yards.

Stratford's Joe Pete Albert rushed 13 times for 81 yards averaging 6.2. Leonard Duncan carried 14 times for 78 yards averaging 5.6 yds.

**Foxhall Motor Co.**  
We Replace  
**AUTO GLASS**  
while you wait!  
or while you do your shopping.  
Every job guaranteed

Beginning Thursday, Dec. 2 - 12:45 p.m.  
**Pastors Bible Study**  
First Baptist Church of Memphis  
You are invited to study the Book of Acts every Thursday during the noon hour. Bring your lunch and enjoy the fellowship!

**TIRE SALE**  
4-Ply Poly Whitewall  
275 x 14 ..... \$34.00  
275 x 15 ..... \$34.00  
275 x 15 ..... \$36.00  
275 x 15 ..... \$37.50  
Price includes F. E. T.  
Not included 5% Sales tax  
Gary's Texaco Service Center  
—One-Stop Service—  
415 North Boykin Drive  
Phone 259-2707  
Gary Alexander

**All Mountain King  
Scotch Pine  
Christmas Trees**  
Why Not Have A Beautiful Tree That Will Last For Years And Years?  
Come in now and see our Artificial Christmas Trees and make your selection early — and save! They are flame and tarnish resistant — natural upswep and downswep styles.  
Many Sizes and Prices to Choose from!  
3 foot table tree ..... \$8.50  
6 foot trees ..... \$24.20—\$34.50—\$46.50  
7½ foot trees ..... \$49.95—\$54.90  
DON'T WAIT TO BUY . . . USE OUR LAY-AWAY PLAN  
**Thompson Bros. Co.**

Be Your Own Boss!  
Own Your Own Business!  
Own A WESTERN AUTO Associates Store!  
In one of the following communities:  
Memphis, Texas  
Aspermont, Texas  
Own your own business in a community, where a Western Auto store is needed and where there is a good income potential for the investment. No experience necessary. We train you. Minimum \$20,000 cash investment. Other locations available. No franchise fee. For full details, mail this coupon today.  
E. S. Ortega  
Western Auto Supply Co.  
P. O. Box 1348  
Temple, Texas 76501  
(817) 773-0181  
Name \_\_\_\_\_  
Address \_\_\_\_\_  
City \_\_\_\_\_ State \_\_\_\_\_  
Location preferred \_\_\_\_\_

HELP CUT HIGH UTILITY COSTS  
INSULATION FOR YOUR HOME OR BUSINESS  
We will put in new insulation where none exists now or add to the present insulation where needed.  
FREE ESTIMATES  
**MESSER ELECTRIC**  
622 Noel Ph: 259-3329

Leslie's Flowers  
**CHRISTMAS OPEN HOUSE**  
SUNDAY, NOVEMBER 28th  
(2:00 Till 5:00 p.m.)  
Monday, Tuesday, Wednesday (9:00 Till 5:00)  
Door Prizes Refreshments



# The Memphis Democrat

Published on Thursday of each week at  
617 Main Street, Memphis, Texas by  
**MRS. HERSHEL COMBS** Publisher  
**BILL COMBS** Editor

(Hall County Herald absorbed by purchase August 7, 1928)  
Subscription Rate: In Hall, Donley, Collingsworth, and Childress Counties, per year — \$6.00  
Subscription Rate: Outside Hall, Donley, Collingsworth, & Childress Counties, per year — \$8.00  
Member of TEXAS PRESS ASSOCIATION and PANHANDLE PRESS ASSOCIATION  
Entered at the post office at Memphis, Tex., as second-class matter under Act of March 3, 1979. Second Class Postage paid at Memphis, Texas. Telephone 258-2441.

**NOTICE** — Any erroneous reflections upon the character, standing or reputation of any person, firm or corporation which may appear in the columns of The Memphis Democrat will be corrected gladly upon its being brought to the attention of the publisher.

Postmaster: Send Form 3579 to Memphis Democrat: Box 190, Memphis, 79245

## EDITORIAL

### Reflections At Thanksgiving - - 1976!

The United States of America will be pausing Thursday during a national holiday, which bears the name "Thanksgiving", one of the few holidays unique to this nation. This holiday has its origin deeply rooted in religious belief in a Superior Being, A Living God!

An entire nation of people, all pausing together with their families, on a single day to give thanks for their blessings and re-dedicate their lives to their families and life's individual goals is certainly commendable.

It is not uncommon when families have come together during holiday reunions for problems to be discussed, solutions analyzed, and encouragement given. While in college, this editor remembers several times that students would be planning to drop out of school, even to the point of cleaning out dorm rooms, but after confrontations at home with parents, many would be back to try again after the holidays.

Even in later life, after taking off from the problems of work and life, for a holiday, spirits seem to be renewed.

This being the Bi-centennial year of the founding of this nation, we can all be proud of our accomplishments during the past 200 years, and look forward to the remainder of our lives with renewed hope for the future.

The elections of 1976 is over now, a new man, President-Elect Jimmy Carter will be shouldering the responsibilities for directing the destiny of this nation. This decision may go down in history as one of the most important made during the Bi-Centennial year by the citizens of this nation.

What the future holds is a matter of much discussion across the nation for the President-Elect has promised to bring about changes.

One of the changes being advanced by President-Elect Carter is his stand in favor of abolishing the postal corporation and turning the postal service back to Congress and a postmaster general. We have been on record in favor of this for we hold to the belief that mail service is not a business. It is a service, just like the public schools, the highway system, and other services.

The public mail service was one of the first begun back in the early days of the founding of this nation. Sure, it has had a stormy history of public trust. We've seen how service has deteriorated when it was run as a corporation despite skyrocketing costs.

One really bright spot is the larger than expected number of Americans exercising their right to vote this year. The popular vote was close, 51 per cent to 49 per cent. But it isn't unusual for voting to be close. Richard Nixon defeated Hubert Humphrey 31,785,480 to 31,275,168. George Wallace received 9,906,473 votes that year. John Kennedy defeated Richard Nixon 34,227,096 to 34,108,546. Remember Harry Truman received less popular vote than did Tom Dewey, 24,105,812 to 21,970,065.

We dislike generalities concerning elections. One we heard was that Jimmy Carter was elected by Negroes, Mexicans and other persons with foreign backgrounds and the very, very poor. With Hall County, and many others like this county, giving Mr. Carter a large percent of the vote, statements like this just don't ring true.

We feel the reason for Mr. Carter's election lies closer to realities of declining farm prices for the third straight year, small business bankruptcies at a new high, real wages of workers continuing to decline while consumer prices continue to rise.

We can all be thankful that farmers have an average crop to harvest and a good market for it. Let's all be thankful.

**DR. JACK L. ROSE**  
OPTOMETRIST  
— Contact Lenses —  
Closed Saturdays  
415-A Main Phone 259-2216

### PUBLIC NOTICE

Lone Star Gas Company, in accordance with Section 43(a) of Article 1446c V.A.T.C.S., hereby gives notice of the Company's intent to implement a new schedule of rates for natural gas service to be charged to the industrial consumers in the

City of Lakeview, Texas  
effective December 30, 1976.

It is anticipated that the increased cost of service under Schedule of Industrial Rates-N, Rate Schedule For Public Free Schools-N and Schedule For Industrial Rates-N for Agencies of the State or Federal Government will result in \$79.00 additional annual revenue to Lone Star Gas Company in the City of Lakeview, Texas

A Statement of Intent has been filed with the City of Lakeview, Texas and is available for inspection at the Company's business office located at  
515 Main  
Memphis, Texas  
**Lone Star Gas Company**



## ACROSS THE DESK

### What Other Editors Say

#### A MODERN FABLE!

Simon Snow, a middle-aged cetter and gnashing his teeth in his study, smoking cigarettes and gnashing his teeth as he filled out his 1974 federal income tax form.

"The heck with this," he said. "I'm sick of answering questions. It's about time the government started answering some questions."

Snow set aside his tax forms, took out his typewriter, grabbed a few sheets of typing paper and wrote:

"Dear-Uncle Sam:  
"Here is your income tax justification sheet for 1974.  
"If you have spent more than \$10 of my money during 1974, please fill out the attached form and send me by April 15 (see attached).  
"Form 1346 — This form must be filled out if the government operated at a deficit during the past fiscal year. (Please round off to the nearest million.)  
"If the deficit was greater than \$25 million you must use form 1346-A and itemize deficits. (If the total of lines 1-15 and 16 is greater than the national debt, please explain.)  
"Form 1347 — You may claim taxes from me if: A. You constructed a new highway in my neighborhood (up to \$100); B. You turned back enemy forces within 100 miles of my home (up to \$500); C. You increased federal funding for school in my neighborhood (up to \$200); D. You protected me from the SLA (\$2.50); E. You helped improve the crop in my vegetable garden (15.); Or F. Abandoned the Selective Service System (up to \$500.)  
"Note — If the cost of living rose during the year, subtract the percentage of increase from the above amounts."

"You may not claim taxes from me to pay for: roads that lead to nowhere, household servants for generals, junkets for congressmen, studies on the effect of billboard posters on farm animals or military invasions.

"You should calculate your tax justification claim from the tax table on page four and enter that amount on line 17, page six. If the dollar has been devaluated, you must reduce your claim by the percentage of the devaluation. (Enter that amount on line 18, page six, and subtract it from line 17.)  
"Instructions for schedule B-(form 1346): If you submit a claim for taxes to cover the expenses of the Watergate investigations, hearings and trials, you must submit a notarized statement listing the sentences given, times served and fines paid by defendants. (The above claim is nullified if I have been investigated by the FBI during the year.)  
"Failure to file your tax justification forms by April 15 will result in penalty of 5 to 24 percent."  
Snow sent off this letter to Uncle Sam and about a week later Internal Revenue Service agents arrived at his home and took away his typewriter.  
(From the San Rafael, Calif., Independent Journal)

#### NEW PRESIDENT

Big oil, big cities . . . and farmers anxiously await the beginning of a new President and Congress. If the President and Congress will only take time to look at the profit and loss statements of big oil and the farmer . . . they will very readily see the farmer needs the priority of attention.

Big city financial problems can be solved largely by putting a lot of unemployed people to work. In my book welfare is for the aged, blind and disabled (and a lot of these people make their own living) . . . welfare is not for the able bodied. So . . . a lot of big city's problems can be solved when they put the lazy people to work and get them off welfare.

If able bodied persons are going to receive welfare checks, they at least could do the needed jobs around the city.  
The Floyd County Hesperian

Members of the Memphis Fire Department attended a fire drill in Childress last Monday night, where Frank Williams, state fireman, conducted a drill on the use of hand tools and hose coupling and hook-ups. Attending were Thomas Clayton, Frank Ritchie, Henry Stunnett, Doc Saye, Bill George Kesterson, Hooper Shaw, Odie Sturdevant, Earl Brisco, Tom Vickers and Harry Aspreen.

Locals: Robert Hanvey, Jr., returned Saturday from Houston where he had been attending an embalming school . . . E. E. Cudd, Leo Fields and T. D. Weatherly returned recently from Lamar, Colo., where they had been pheasant hunting. They reporter a successful trip as each man bagged his limit.

20 YEARS AGO  
November 28, 1956  
Cotton ginning in Hall County for the 1956 season totaled 24,826 bales, a telephone survey of gins revealed Tuesday afternoon.

Members of the senior class have begun serious work on the annual Senior Play, "Time Out For Giner" by Ronald Alexander. Members of the cast include Jan Goodnight, Iola Robertson, Bill Morgan, Linda Fields, Beverly Bowermon, Jean Foxhall, John Binkley, Tommy Greene, Truman Smith, Dan Durham, Ed Hoffman, and Mike Montgomery.

Miss Jean Foxhall, popular member of the senior class, was crowned Band Sweetheart of Memphis Cwclone Band during half-time at the Memphis - Canadian football game.

Specials: Lean Pork steak, 39 cents lb; Borden's biscuits, 2 for 25 cents; Good value bacon, lb. 45 cents; Fleming coffee, 87 cents.

Mrs. Linton Gardenhire was complimented recently with a lovely bridal shower in

the home of Mrs. Lyman Daventport in Lakeview.

Twelve Scouts of Troop 35 appeared before a Board of Review at the regular meeting Monday night, Scoutmaster Ted Myers, said this week. Boys who appeared before the board were John Guthrie, John Lavender, Ronnie George, Jerry Jeffries, Phill Duncan, R. B. Sprull, Dale Kilgore, Bob Alewine, Perry Wright, Larry Craig, Allyn Harrison and Warren Graham.

10 YEARS AGO  
December 3, 1966  
The 1966 Christmas season will get off to a big start Saturday afternoon as Santa Claus will pay his official visit to Memphis and this area.

The harvest of the 1966 cotton crop continues at a pace this week with farmers enjoying the harvest through next week. Estimates it is possible that entire crop will be harvested before Christmas as the acres rose to 25,284 bales a day.

Twenty-six members of Memphis Cyclone band leave Saturday for Pankton where they will participate in tryouts for the All-Region band. Director Darryl Phillips has released a list of 13 seniors who will receive jackets. These include Dwight Alewine, David Whit, Randy Driver, Lisa Johnson, Kathy Jones, Gene Knight, Vicki Jones, Ann Lemons, Kenneth Kown, David Rose, Sam Smith, Sport Weddel, Alvie White.

### PUBLIC NOTICE

Lone Star Gas Company, in accordance with Section 43(a) of Article 1446c V.A.T.C.S., hereby gives notice of the Company's intent to implement a new schedule of rates for natural gas service to be charged to the industrial consumers in the

City of Memphis, Texas  
effective December 30, 1976.

It is anticipated that the increased cost of service under Schedule of Industrial Rates-N, Rate Schedule For Public Free Schools-N and Schedule For Industrial Rates-N for Agencies of the State or Federal Government will result in \$418.00 additional annual revenue to Lone Star Gas Company in the City of Memphis, Texas

A Statement of Intent has been filed with the City of Memphis, Texas and is available for inspection at the Company's business office located at  
515 Main  
Memphis, Texas  
**Lone Star Gas Company**

## Proper Energy Management Can Save You Money!

### ON ELECTRIC COOKING



- Make double use of your oven by preparing an extra dish or planning meals ahead; or prepare total oven meals.
- Start foods cooking on a high heat and reduce heat when the foods reach boiling. Use just enough heat to maintain the desired rate of cooking. Turn off controls before cooking is completed; use retained heat to finish cooking.
- Cook vegetables in a small amount of liquid to conserve energy and vitamins.
- Select pans with flat bottoms for best contact with heating units, and match pan size of surface unit or cooking area for efficient heat transfer.

Pick up your FREE copy of "ENERGY CONSERVATION" Booklet from



Home Environment Division of General Motors.

## Happy Thanksgiving



Wishing you and your family peace and joy and countless blessings throughout the year. May your day be filled with happiness.

**First State Bank**  
Each depositor insured to \$40,000  
**FDIC**  
Memphis, Texas

### LEGAL NOTICES

#### NOTICE OF PUBLIC HEARING

The City of Memphis, Texas will hold a public hearing at 7:30 p.m. November 23, 1976, the Community Building at Eighth and Robertson Streets in regard to the possible submission of an application to the Department of Housing and Urban Development for a Community Development Block Grant to partially finance improvements to the community.


The purpose of the meeting is to provide citizens with adequate information concerning the amount of funds available (\$50,000 to \$250,000) for proposed community development and housing activities including Land Acquisition, Rehabilitation of Public Facilities, Citizen Centers, Street and Drainage Improvements, Sewer Mains, Parks - Playgrounds, Code Enforcement, Clearance and Demolition, Public Services and other work. This meeting is to provide citizens an adequate opportunity to participate in the development of the application. The Housing Assistance Plan shall be discussed as it pertains to this area.

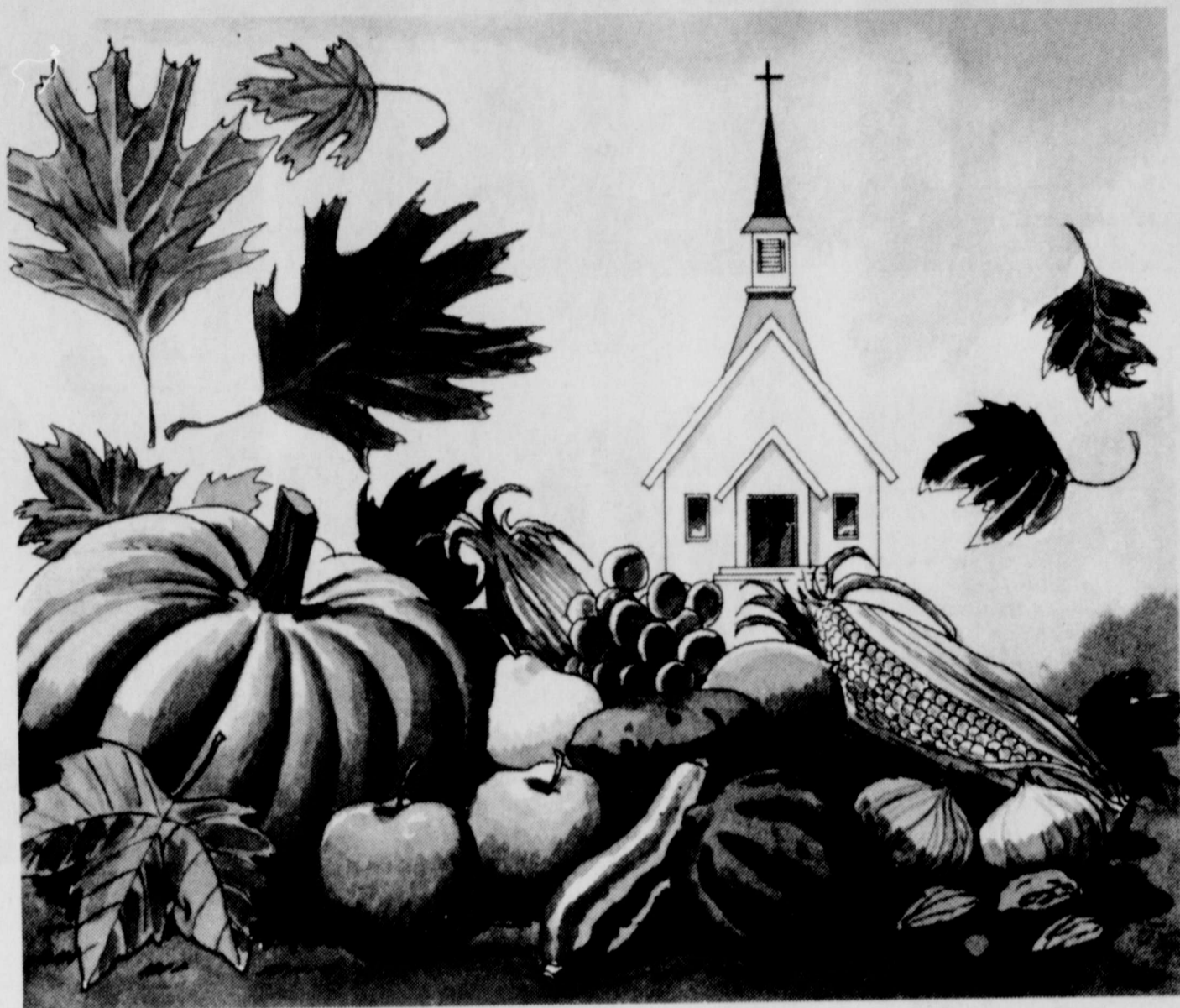
Another public hearing on the same subject and for the same purpose will be held at Community Building, Memphis, Texas on November 30, 1976 at 7:30 p.m.

By KENNETH DALE  
(Mayor)



# FAITH Shows Us How Much We Can Be Thankful For!

 Thanksgiving Day is an event celebrated by more than one nation, and aside from being a traditional family feast day, it is intended for those of us who are more inclined to dwell on our misfortunes than on our advantages, because we are naturally more conscious of them. For example, sickness is more likely to command our attention than a state of good health. Regardless of our circumstances, we must remind ourselves of all the good things that have happened to us, and also, of all the misfortunes that we have been spared; and we should do this every day of our lives, rather than wait for a special occasion such as this. By attending the Church of your choice you will learn to recognize and be grateful for your many blessings, and thereby be better able to cope with your problems, whatever they may be.



## THE FOLLOWING MERCHANTS URGE YOU TO GO TO CHURCH

O Lord! that lends me life,  
Lend me a heart  
replete with thankfulness!  
—William Shakespeare

**Nell and Jim Beeson**

**O. R. "Doc" Saye**  
Mobil Products Consignees

**Dairy Queen of Memphis**

**Spicer Funeral Home**

**Fowlers Drug**

**Simpson's Men & Boys Wear**

**Kinard-Gailey Agency**

**First State Bank**

**Campbell Insurance Agency**

**Clent's Barber Shop**

**Memphis Lumber Company**

**Cablecom-General, Inc.**

**Dr. Jack L. Rose**

**Ann's Shoppe**

**Smith's Auto Store**

**Lockhart Pharmacy**

**Caprock Translator System**

**Patrick Chemical Company**

**287 Restaurant**

**Hall County Farm Supply**

**Hall County Electric Co-Op., Inc**

**First National Bank**

**Ward Motor Company**

**Greene Dry Goods Co.**

**Brown Auto Supply**

**The Lady Fair**

**Ferrel's  
Memphis Tire and Supply**

**Bruce Bros. Mobil**

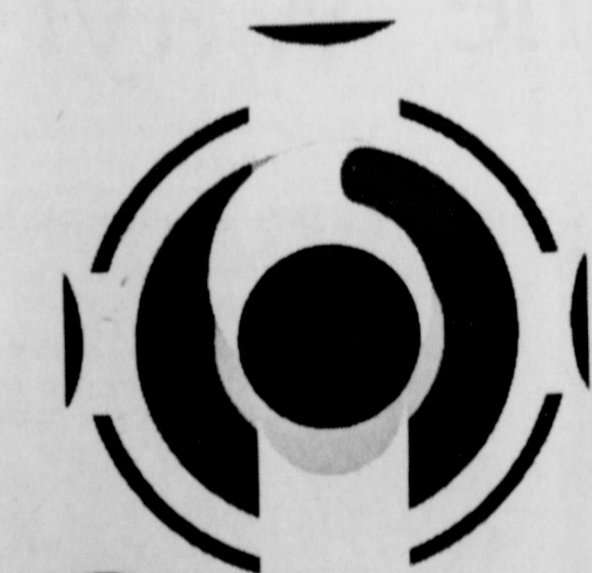
**Branigan Jewelry**

**Williams Oil & Gas Co.**

**Dunbar and Dunbar**

**Foxhall Motor Company**

**Memphis Compress Company**



"Enter into his gates with thanksgiving, and into his courts with praise: be thankful unto him, and bless his name."  
—Psalms 100:4

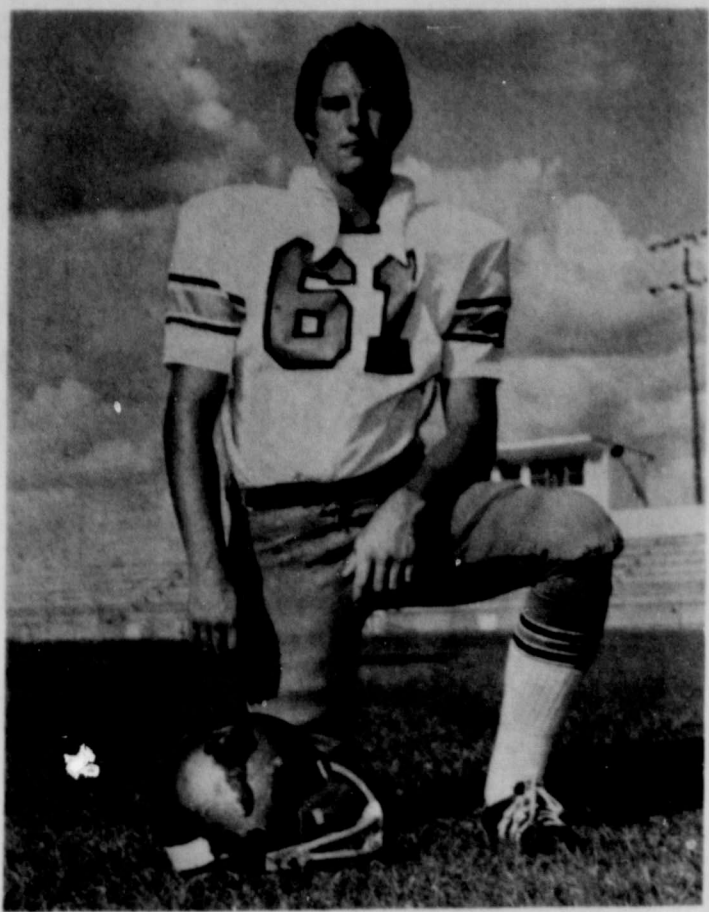
...ATTEND CHURCH

THIS SUNDAY





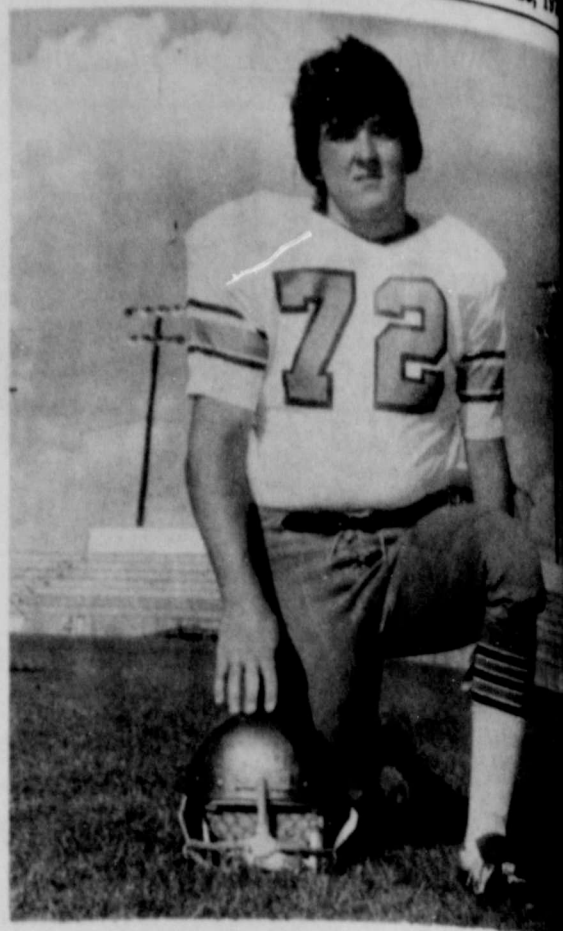
RICKY BLOXOM



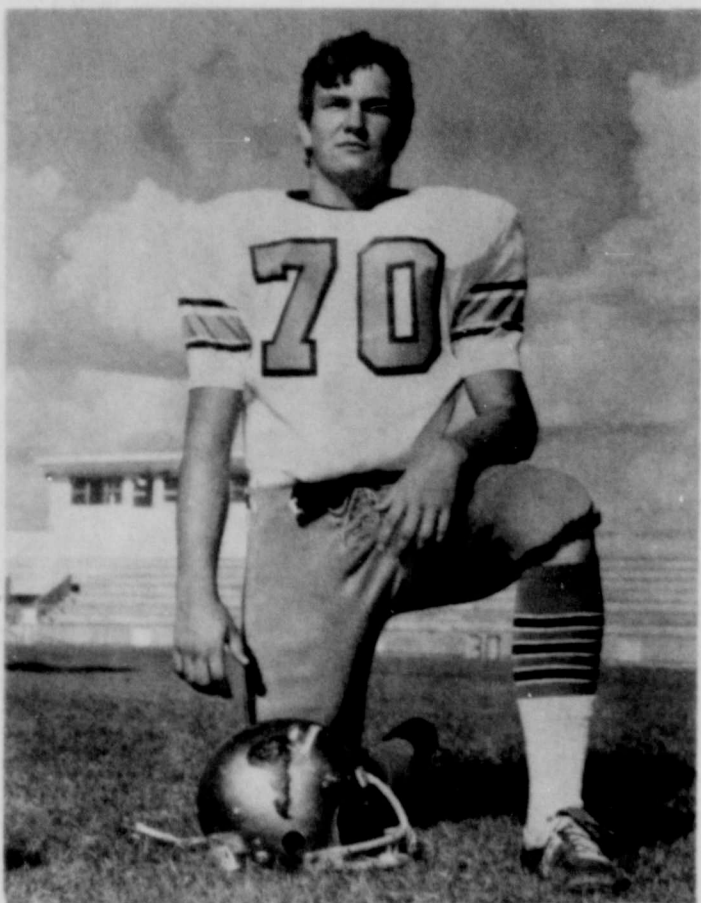
RANDY ORCUTT



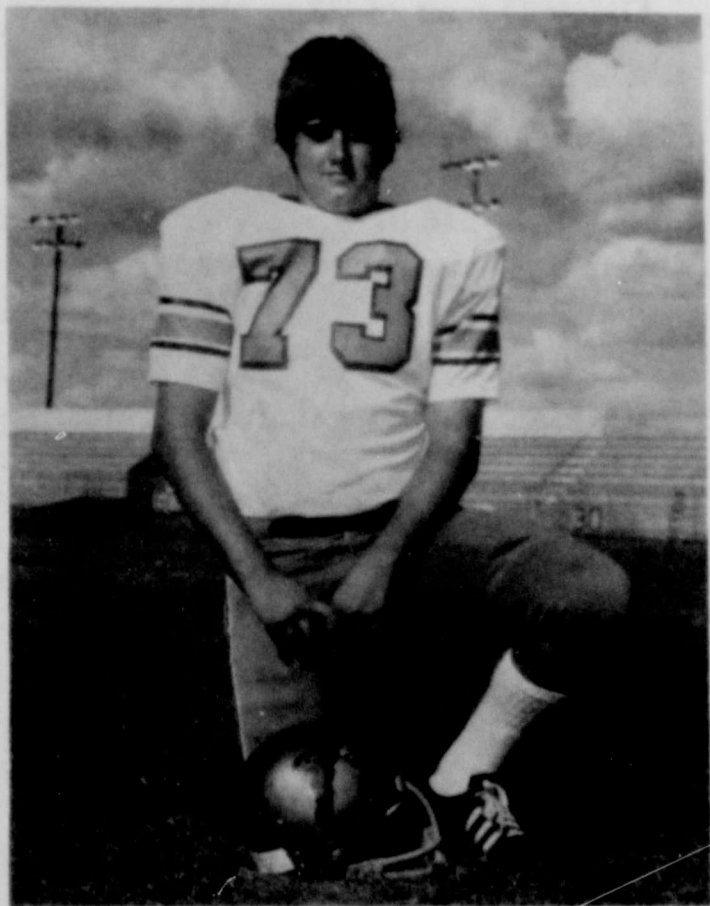
KENNY MARTIN



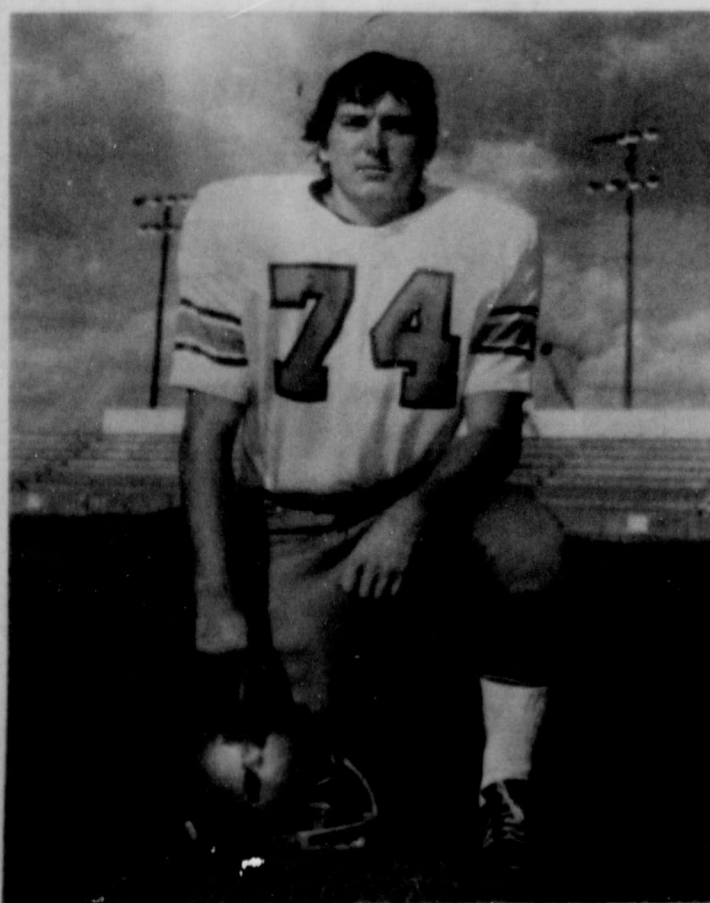
DOUG MORGAN



VAL STONE



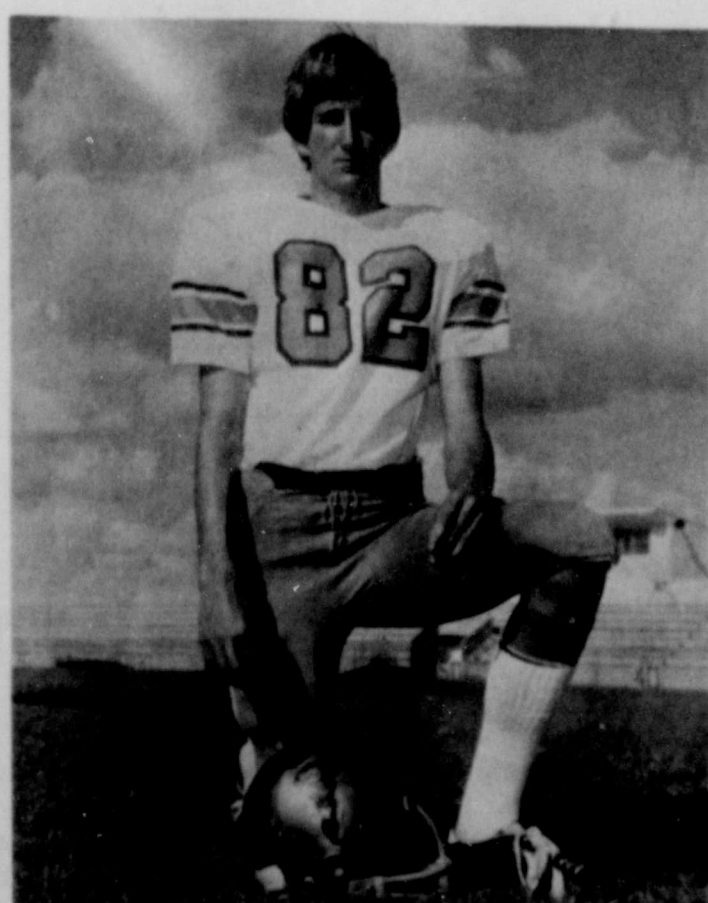
EDDIE BRAIDFOOT



STEVE BROWNING



ANTHONY JOHNSON



RICKY GUY



DOUG HINDMAN

*it's kick off time!*

**CLASS A REGION**

**Memphis Cyclones**

**VS.**

**Hart Longhorns**

**8:00 P. M. Friday, Nov. 25**

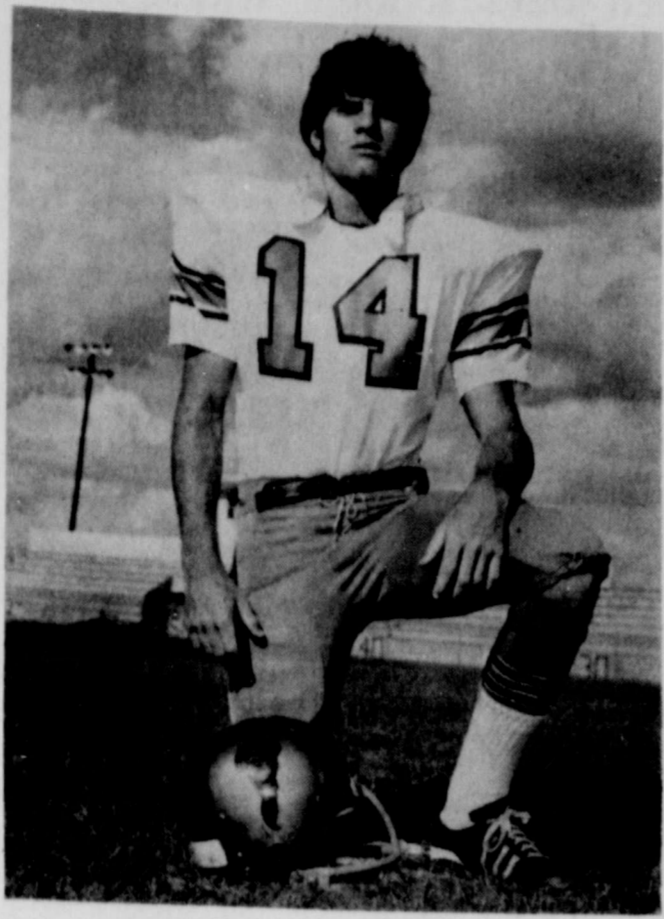
**Kimbrough Memorial Stadium - Canyon**

**Go, Cyclones, All The Way!**





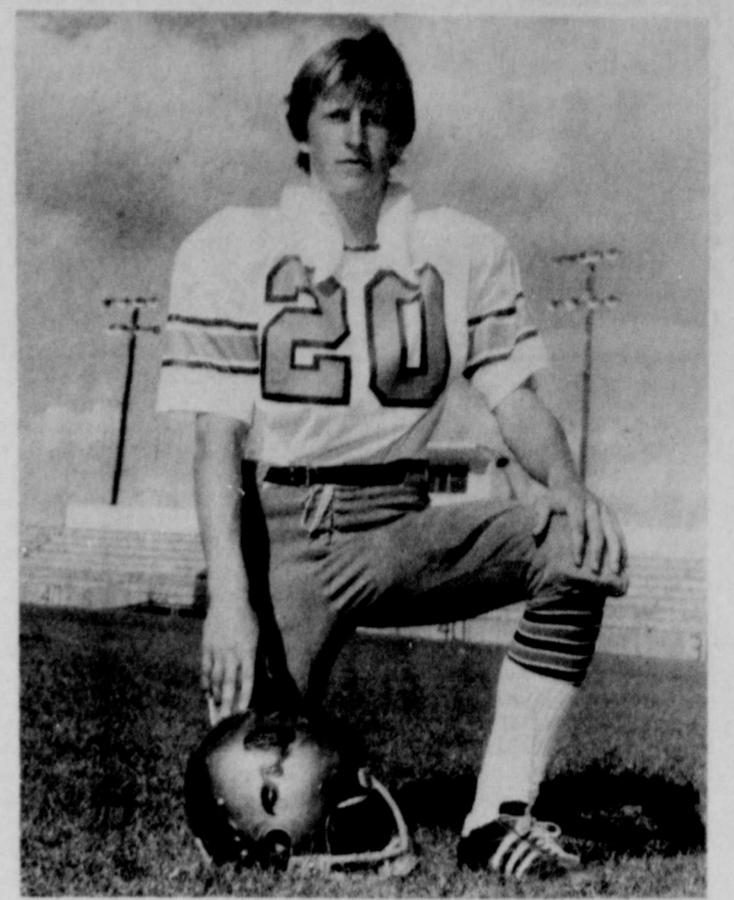
STEVE FLEMMONS



RANDAL SHAHAN



DON COFER



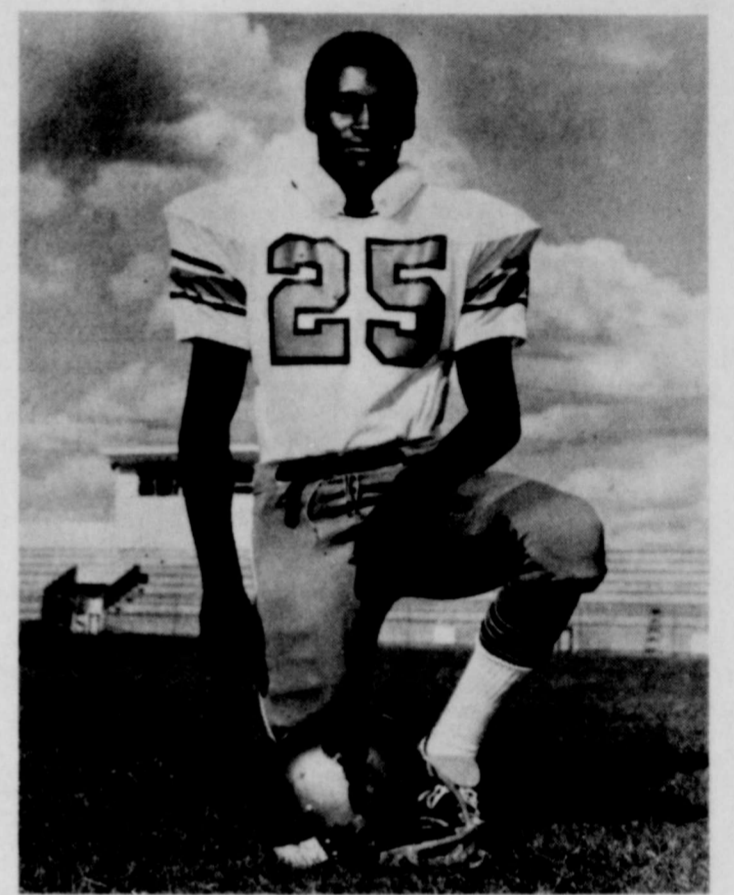
TRACY GALLOWAY

- MEMPHIS 12 - CHILDRESS 20
- MEMPHIS 13 - CROWELL 0
- MEMPHIS 34 - ROOSEVELT 7
- MEMPHIS 42 - QUANAH 7
- MEMPHIS 56 - RIVER ROAD 0
- MEMPHIS 31 - HOOKER, OKLA. 6
- MEMPHIS 48 - SHAMROCK 0
- MEMPHIS 12 - WELLINGTON 0
- MEMPHIS 26 - CLARENDON 0
- MEMPHIS 47 - CLAUDE 14
- MEMPHIS 34 - STRATFORD 15 (Bi-Dist.)

# 10 & 1



CAPTAIN PEDRO SALINAS



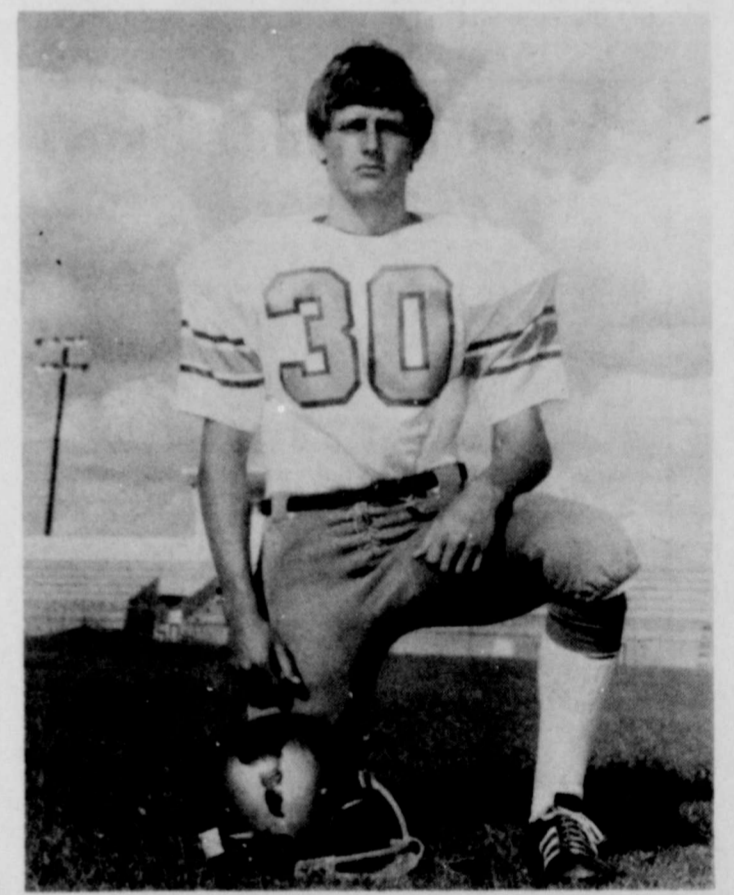
KIRK FIELDS

**We Are Proud Of This Year's Team And Urge Everyone To Support The Players By Attending Every Game**

- BRANIGAN JEWELRY
- THE LADY FAIR
- FERREL'S
- MEMPHIS GLASS & SUPPLY
- TRIBBLE CLEANERS
- ANN'S SHOPPE
- DAVIS IRRIGATION CO.
- BROWN AUTO SUPPLY
- GARY'S TEXACO
- DEVILLE MOTEL
- GOLDEN CONOCO SERVICE
- DEVILLE RESTAURANT
- DAVIS MOTOR CO.
- DIXON'S
- LUSK CLEANERS
- MEMPHIS COMPRESS CO.
- OLIVIA'S READY-TO-WEAR
- SPICER FUNERAL HOME
- WILLIAMS OIL & GAS CO.
- DR. JACK L. ROSE
- HARD MOTOR COMPANY
- THE COTTON BOLL
- "287" RESTAURANT
- FOXHALL MOTOR CO.

- FIELD'S MOTOR CO.
- HARVEY'S SERVICE CENTER
- MEMPHIS DELICATESSEN
- BRUCE BROS. MOBIL SERVICE
- HIGHTOWER TEXACO
- SHIELDS IMPLEMENT CO., INC.
- FIRST NATIONAL BANK
- GREENE DRY GOODS
- SIMPSON'S MENS & BOYS WEAR
- WANDA'S BEAUTY SALON
- SMITH'S AUTO STORE
- JIM'S MOBIL SERVICE
- TOWN & COUNTRY FURNITURE
- DAIRY QUEEN
- DUNBAR & DUNBAR INSURANCE
- SPICER FLOWERS
- LESLIE'S FLOWERS
- FIRST STATE BANK
- O. R. (Doc) SAYE
- MEMPHIS LUMBER CO.
- BIG O RESTAURANT
- MESSICK EQUIPMENT CO.
- ELLIOTT EXXON

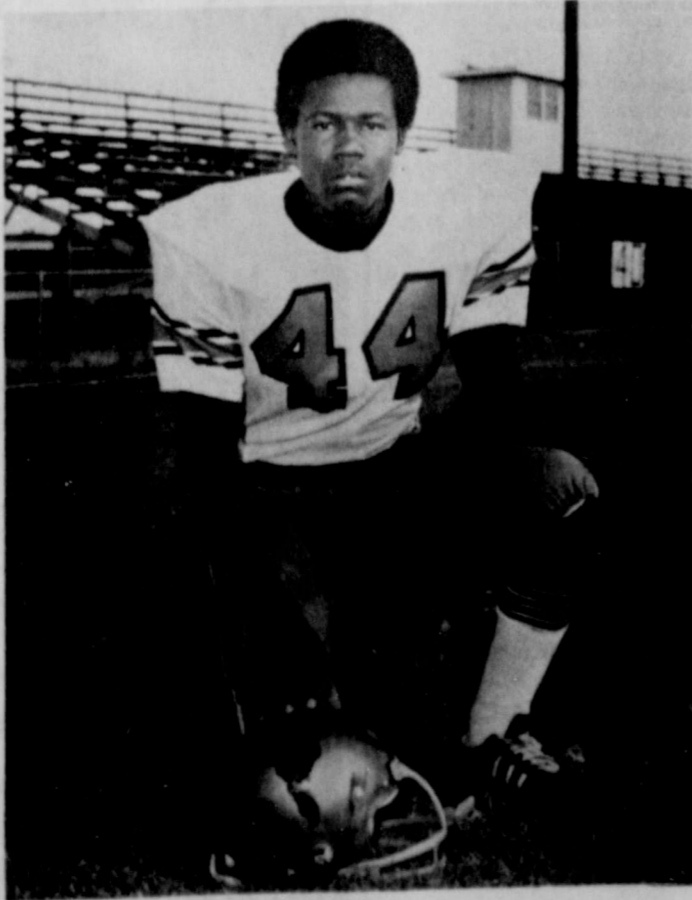
- MEMPHIS OFFICE VERNON SAVINGS & LOAN
- WHITE AUTO STORE
- MESSER ELECTRIC & RADIO SHACK
- FARMER'S UNION CO-OP GIN
- KINARD-GAILEY AGENCY
- SEARS AUTHORIZED CATALOG SALES MERCHANT
- ANDY GARDENHIRE INSURANCE AGENCY
- STONE MACHINERY CO.
- ADDIE LOU'S TERRACE BEAUTY SALON
- CAMPBELL INSURANCE AGENCY
- LOCKHART PHARMACY
- GENE CORLEY'S BARBER SHOP
- GOLDEN SPREAD IRRIGATION SUPPLY
- 4 COUNTY TRACTOR & EQUIPMENT INC.
- HALL COUNTY FARM SUPPLY
- JIM BEESON
- THOMPSON BROS. CO.
- HALL COUNTY ELECTRIC CO-OP, INC.
- FIRST FEDERAL SAVINGS & LOAN
- HALL COUNTY FARM BUREAU
- FOWLERS REXALL DRUG
- MEMPHIS FARMERS CO-OP GIN



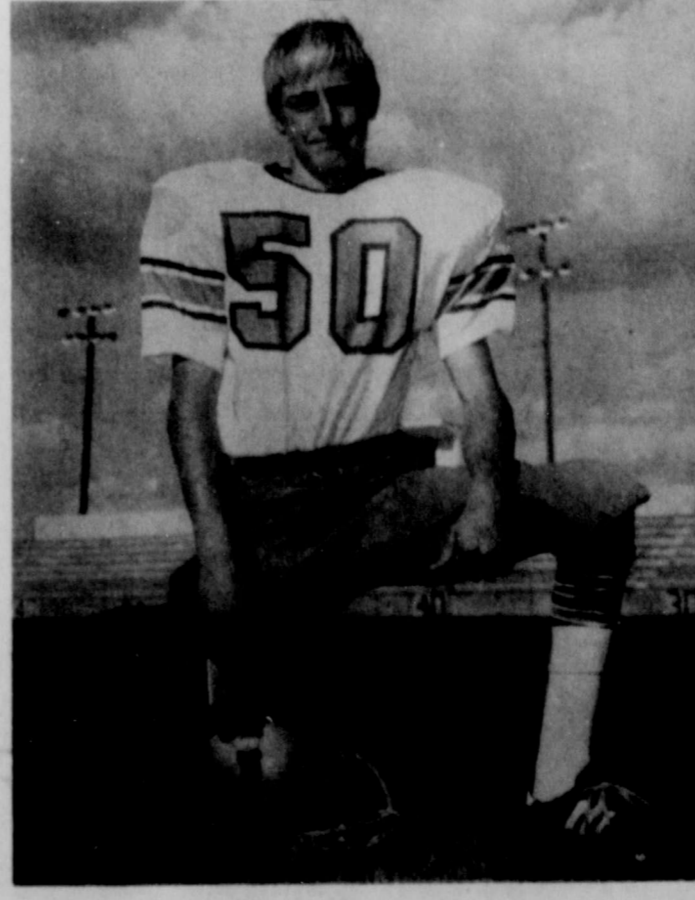
TERRY ALLARD



RODNEY HALL



WOODROW RICHARDSON



DANNY MURDOCK



EDDIE WILLIAMS



### B. B. Shots

By BYRON BALDWIN



As quoted in the Dallas News, most of the 2200 men and women in government posts listed in the Political "Plum" Book are reconciled to their imminent departure as the new president-elect will start on his pledge to reorganize 1700 departments and agencies into 200. This is liable to raise the percentage of the unemployed. However, there may be a lot of chances to go into the peanut business as quoted from New York, "Jimmy Carter's election as president ain't just peanuts to retailers"; as quoted from the J. C. Penney Stores who said, "Grow your own peanut plant kits; Carter neckties bearing the picture of peanuts and president-elect and the peanut jewelry is only a start." The Bloomingdale Department Store in New York which has a reputation for tooling up quickly to new trends, said they expect the shower of attention on the south as a result of the election may popularize the gauzy "garfen - type party dresses" "Gone With the Wind" designers are already showing this fall. Already Bloomingdale is offering their customers white paper bags full of peanuts from Carter country in their specially food department. Recently Quaker Oats Co., cashing in on promotion of Carter's Southern image, used a "Dixieland Party" in New York to introduce its newest food product which was cheese flavored grits. The new scientific Co. of East Garden, Calif., which describes itself as America's biggest wholesaler of household peanut plant seed — Their biggest seller is a Spanish peanut seed in a small plastic cup which the company claims will yield up to 100 peanuts if given the right light, heat and water. Buyers for the so called "Nut Trees" include Penney, Safeway Stores, F. W. Woolworth and Hallmark Cards. As stated, "Retailers are cashing in on this current 'cash crop' by selling everything that has a Southern flair."

Another heading in the news item was "Everybody is Going Peanuts". It might be we could start a wholesale

house to supply these large retail stores with gilded corn maize heads, tumble weeds and our bales of cotton as that would give more southern atmosphere. We could also have chuckle burr cuff links and goat-head tie-tacks, also, make gold horned frogs that would bring a fancy price and also some wild cactus plants for the house plants to go along with peanut plants.

If Mrs. Starr Johnson could load and ship a train car load of Pumpkins like the one we had from her, she would be in the money with the pretty pumpkins!

Some other work that is coming up might help the unemployed, as I noticed this heading in a newspaper article a few days ago which was as follows: "New Courses in College" — Atlantic Community College says it may institute two courses, "To tune with the times, Card Dealing and Slot Machine Repair." New Jersey voters approved casino gambling for Atlantic City in the November election, and one of the college officials says the school wants to cash in on the "Share Resort", a new business. The official said they might not be able to give degrees in casino gambling, if they did, I imagine there would be a rush on for the Masters Degree.

I did get in touch with one of my teenage friends a few days ago who has reached my age about 65 years ago when we were singing in a quartet (we thought we could sing). I reminded him of the fact that he was one quarter of that quartet. This famous quartet was composed of Otis Jones, Cooper Stout, Chas. Read and myself. We would go to different home and serenade the people. As Chas. stated in his letter, "Mrs. Dial and others would serve us pie or cake, which showed their appreciation, and also, we would move on to the next neighbor. No one ever doused us with a bucket of cold water. In Chas.' letter, he stated that he thought he was only a pint in the singing but could share in a full quart or one-half gallon on the rewards. In fact, I now know that we all



**SOMETHING NEW**—Mickey Mouse, who has been many things to many people has assumed still another role: He is a telephone! Now available through General Telephone of the Southwest, it was first introduced several months ago through GTE Phone Marts, and is now available at the Memphis Phone Mart, located at the General Office on Highway 287, north.

were probably a 1/2 pint in singing and we were probably overpaid in refreshments for the concert they heard. Chas. Read, brother of Lottie Kinard and Lucile Wright, graduated from Memphis High School in 1913. One of his class he lost contact with was James Stephens, who after graduating from M.H.S., went to a dental school and has been practicing in Jacksboro, Texas, for the past 55 years, who has now retired, will be remembered as the brother of Floyd McIntush and this family lived on West Brice Street across the street from Lr. Durham.

In writing about the quartet of the teenagers, memories were brought back of about 20 years ago when the B&FW Club had Tommie Potts and me on their program in the Travis School. After giving our little Abbott and Costello talks, the program chairman was short on a musical number so Tommie and I were asked to sing a duet. We tried to be prepared for all occasions. In fact, I think we sang two duets, as they cheered us so the first song which was "Sweet Adeline" and the second number of course was

our favorite "Little Liza Jane." We were real proud of ourselves after the performance with all of the clapping. Well, Broadway, New York or Hollywood were very disappointing as they did not send out talent scouts. In fact the B&FW girls never asked us to sing again, so I guess our "self evaluation" was not so good with too much inflation. Anyway, we had a good time practicing our singing on a live audience.

"Early Bird" Martin Johnson got started on his Christmas Decorations the past week. He always has an outstanding home on Bradford Street with his decorations.

We have a picture in Heritage Hall of Jet Fore (now deceased) with Jana Withers (with her rabbit ears when she was about 5 years old) and another picture of Jane with Jet when she was about 20 years old. These pictures were made at the gate of the movie studio where Jet served for a number of years before retiring. He will be remembered as the son of early pioneers Mr. and Mrs. W. M. Fore. They operated a general store in Memphis in the early days. Mrs. Jet Fore, who now

## Oren Jones Honoree At Gala Dinner Atalantean Club Party on 80th Birthday Thursday Meets In Home of Mrs. Spicer

By VIRGINIA BROWDER

The home of Mr. and Mrs. Hubert Jones, 1516 N. 18th St., was the setting for a festive occasion when twenty-six adults and one little girl, Stephanie McCravey, gathered last Thursday evening to celebrate the eighth birthday of their kinderman, Oren Jones.

The guests were treated to a buffet supper from an array of delicious goodies following the invocation by the honoree. During the meal, there was much laughing, joking and gaiety among the relatives who hadn't been to-

gether in some time. After the supper, the honoree, Mr. Jones, was represented some gifts which promised not only to make him look better (2 pair of pretty trousers) but smell sweeter (after-shave lotion and bath soap). Nor was a pretty shirt and tie omitted.

Of course the highlight of the evening was the birthday cake set before the honored one. Made by Ruth Jones, the cake was beautifully decorated by her daughter, Malissa Linder, to simulate a golf course, knowing as she did that Oren is a golf buff. On a grass - green icing was a little golf figurine shooting for the greens. And besides a "Happy Birthday" written across the cake, there were two numerical candles, an '80'. Some facetious guest asked Oren if that were his age or his score on nine holes. Everyone thoroughly enjoyed the evening's food and fellowship and parted hoping Oren Jones would live to be a hundred so we could have more such gala celebrations.

Those attending from out of town were: Mrs. Camey Terry from Skellytown; Mr. and Mrs. Frank Carder and Mr. and Mrs. Tom Draper from Amarillo; Mr. and Mrs. Clyde Drake from Wellington, and Mr. and Mrs. Herlie Moreman from Heddy. Those attending from Memphis included Mrs. and Mrs. Oren Jones; Mrs. D. S. Johnson, her daughter Jana McCravey and

The Atalantean Club met Wednesday, November 17, with Mrs. Robert Spicer.

Mrs. Bryan Adams was in charge of the Thanksgiving program. She told the story, "Five Grains of Corn" and read a poem, "Thankful People," by Minnie Lee Thomas. She then introduced the guest for the day, Daniel Shaeffer, Associate Pastor of the First Baptist Church. He sang "Eless This House" and "Come Ye Thankful People" accompanied at the piano by Miss Gertrude Rasco.

Mrs. Clinton Voyles then closed the program by reading the poem, "Help Us To Be Thankful" by Helen Steiner Rice.

Mrs. Parker presided during a short business meeting following the program.

Delicious refreshments were served to Daniel Shaeffer, guest, and the following members: Mmes. Bryan Adams, W. C. Dickey, Andy Gardenhire, W. R. Scott, Dub Parker, Glen Thompson, Winfred Wilson, Clinton Voyles, Misses Imogene King and Gertrude Rasco and hostess, Mrs. Parker.

## Rickey Douthitt Selected For Who's Who IN TEXAS

Ricky Don Douthitt has been selected to be in "Who's Who Among American High School Students", 1976-77. This is the second year for this honor for Ricky, having been selected for the 1974-75 school year also.

Rickey has served as club president for two years, named to Who's Who his Sophomore and Junior year. He lettered in track his Freshman year and was alternate on the Cyclone team that went to State in May 1974. He was a member of the State Champion Track Team of Oklahoma his Junior and Senior Year. Rick was selected as "Athlete of the Year" on the Track and Field Magazine his Junior Year.

His Senior year he presented an All Star jacket for his achievements in track and football. He was member of the Letterman Football Club in Purcell his Senior year. "Mr. School Spirit" his Senior Year.

He maintained a B average his four years in High School and is now a Freshman at Oklahoma University in Norman, Oklahoma. He is the son of Mr. and Mrs. Douthitt of Purcell, Oklahoma former Residents of Memphis.

Mr. and Mrs. Orville Good pasture were in Dallas last week visiting relatives and while there attended the Dallas Cowboys football game.

UNCLE SAM HAS AN ESTATE PLAN FOR YOU!!

IT'S CALLED AN

# AUCTION!!!

Everyone Knows Estate Sale Means Discount Prices!!

WE WANT TO OFFER YOU AN

# ALTERNATIVE

FOR ESTATE PLANNING

CALL

## Andy Gardenhire & Associates

259-3441 OR 259-3327

LAYAWAY FOR CHRISTMAS LAYAWAY

# Toys

for BOYS of ALL AGES and GIRLS of All Ages

Yes, we have the Toys . . . Toys of all kinds and for all ages!

Why Shop Elsewhere When One Stop Will Do? We Have Gifts For Everybody

-ALL GIFTS BEAUTIFULLY WRAPPED FREE-

We Give and Redeem GOLD BOND STAMPS. Your Stamps Are Good for Anything in Our Store

## Thompson Bros. Co.

"Let's Talk Memphis Cotton Capital Of The Panhandle"

LAYAWAY FOR CHRISTMAS LAYAWAY

### PUBLIC NOTICE

Lone Star Gas Company, in accordance with Section 43(a) of Article 1446c V.A.T.C.S., hereby gives notice of the Company's intent to implement a new schedule of rates for natural gas service to be charged to the industrial consumers in the

City of Estelline, Texas effective December 30, 1976.

It is anticipated that the increased cost of service under Schedule of Industrial Rates-N, Rate Schedule For Public Free Schools-N and Schedule For Industrial Rates-N for Agencies of the State or Federal Government will result in \$4.00 additional annual revenue to Lone Star Gas Company in the City of Estelline, Texas.

A Statement of Intent has been filed with the City of Estelline, Texas and is available for inspection at the Company's business office located at 515 Main Memphis, Texas

Lone Star Gas Company

## STATE TAX HOTLINE

If you have a state tax problem or question, the Comptroller's Office wants to help. That's why we have a toll-free tax information hotline. Call us without charge from anywhere in Texas.

1-800-252-5555

We want to save time, money, and trouble for Texas taxpayers.

Bob Haddock  
Comptroller of Public Accounts

The Comptroller of Public Accounts

### 4-COUNTY MEAT CO.

Hinds, Halves  
25 lb. Freezer Wrap  
Custom slicing  
Fresh Counter Meat

Home Freezers

Jackie Blum  
Ph: 259-3351  
120 N. 10th St.  
9-tfc

you can BANK on it!

Don Long  
President

### FIRST STATE BANK

Substantial tax savings as well as just plain good planning for the future are the two considerations which often lead to the establishment of an Individual Retirement Account (IRA).

Tax benefits of the account occur because an individual can deduct from gross income whatever is deposited in the IRA each year (up to 15% of the gross or \$1,500, whichever is less).

Taxes will not be paid on this income until the money is withdrawn from the account. Normally, IRA contributions are made during the years when an individual is experiencing the highest earning levels. Therefore the deductions from the gross income occur at times concurrent with the highest tax brackets.

With the money deposited in an IRA account the taxes are deferred through the years until the person contributing to the account actually begins using the IRA funds set aside for retirement. By that time, most of us will be in a much lower tax bracket . . . because for nearly everyone, gross income is lower after retirement . . . and the income tax paid will be based on gross taxable retirement income. Tax savings and good planning . . . a winning combination.

"The more you know about our business, the more we can help you!"

True Value HARDWARE STORES

## PONG home video game

ATARI Innovative leisure

FOR YOUR HOME TV

## Thompson Bros. Co.

# NOTICE

Memphis Delicatessen will Be Closed Thursday, Friday & Saturday.

The Meat Market will be open Friday Morning and all day Saturday.

HAPPY THANKSGIVING

From The Staff At

## Memphis Delicatessen

220 S. 10th Memphis





**GIBSON'S**  
DISCOUNT CENTER  
MEMPHIS, TEXAS — CORNER 5th & NOFI

SAVE VALUABLE COUPON SAVE

**GIANT SIZE**  
49 OZ. (3 LB. 1 OZ.)

**Tide ONLY \$1.09**

WITH THIS COUPON  
PRICE WITHOUT COUPON

GOOD ONLY AT OFFER EXPIRES

SAVE LIMIT 1 COUPON PER PURCHASE SAVE

**Remington Shot Gun Shells**  
\$1.00 OFF REGULAR PRICE  
Per Box

SHURFINE CORN  
4 For -- \$1.00

CARNATION MILK  
3 TALL CANS  
**89¢**

SPRAY 'N WASH  
16 Oz. LIMIT 2 **99¢**

ASSORTED COLORS FULL SIZE  
**BLANKET**  
"Slumber" solid color Blanket.  
72" X 90" Size  
**\$5.44**  
Reg. \$6.97 By Bibb

RAY O VAC C OR D CELL  
**Batteries**  
**2 49¢**  
HEAVY DUTY

Morton House Chili without beans 15¢ 49¢  
Morton House Stew 24¢ 69¢  
Morton House Oven Baked Beans 3 for 1.00

SHURFINE GREEN BEANS 4 FOR \$1.00  
CRISCO SHORTENING 3 LB. \$1.39

cream 16 oz. 97¢

LADIES' TERRY CLOTH SLIDES  
**\$1.97**  
Reg. \$2.97  
Pair

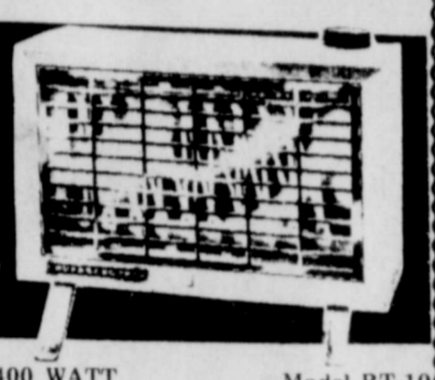
Morton House JOES 15 oz. 69¢

4.10 Value  
**OIL OF OLAY BEAUTY LOTION**  
Protects From Dryness And Beautifies Without Leaving A Greasy Surface  
Makes An Excellent Foundation  
4-Oz. Bottle  
**2.33**  
Gibson's Special

Washable Terry In Assorted Prints And Colors  
Molded Sponge Rubber Matching Sole — Elastic Gore  
Sizes S-M-L-XL  
**\$1.97**  
Gibson's Special Pair

Norelco MAGICUBES  
3 Cubes, 12 Flashes. For Use With all X-Type Cameras.  
**1 39**  
SPECIAL!  
Reg. \$1.99

6-PACK CANNED COCA-COLA  
12 ounce Cans. LIMIT 1  
**99¢**



1400 WATT Model RT-10  
TITAN FAN FORCED  
**ELECTRIC HEATER**  
Reg. \$15.97  
**\$11.88**  
Gives you instant fan-forced heat. Features overhead safety control, tip-over switch and a low Gibson price. UL listed.

Enjoy the "brisk" flavor of Lipton 24 Bags **1.19**  
Flo-Thru Tea Bags

Enjoy the "brisk" flavor of Lipton tea 1/2 Lb. **1.19**

Refresh... Relax... Save!!  
Lipton 100% instant tea 3oz. jar **1.29**

WELLA BALSAM SHAMPOO  
**1 29**  
Reg. \$3.49  
Gives shine and body.  
8 oz.

Refresh & Relax  
Lipton 24 Oz. **1.49**  
LEMON FLAVORED ICED TEA MIX

BOUNCE Fabric Softener  
**\$1 49**  
40 oz.

tabby TENDER BITS platter 8 For **1.00**

ELLIS Or GERBHARDT'S TAMALES  
30 Oz. Can 79¢ Value  
**49¢**

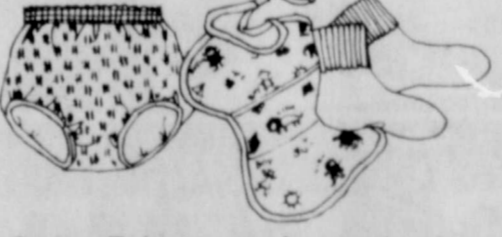
NEW! clairol short & sassy the protein-enriched conditioner for short hair.  
7 oz. **\$1 19**  
Reg. \$1.59  
In 2 formulas—Regular for normal to dry, or hard to manage hair. Extra Body Building for fine, thin or limp hair.

# New arrival in town, Gerber Babywear.



New Gerber Stretch Terry Coverall. Available in yellow and blue.

We're introducing a complete new line of baby clothes—undershirts, vinyl pants, socks, sleepers, coveralls, training pants and bibs.



Gerber Babywear is designed with two people in mind—you and your baby. Comfortable for the baby. Practical for you.

Quality is a lot of things.

When you spend your time creating products for babies, you learn how important being careful is. So—before we put the Gerber label on these baby clothes—we tested them thoroughly. Including the final Gerber test: actually working in the home with

mothers and their babies, to get the benefit of a mother's practical insight. It was time well spent.

Because now we put a triple layer of material under the snaps of our sleepers and coveralls, so they're less likely to pull out.

And we've put snaps all around the diaper area so you don't have to remove the garment.

We took the guesswork out of sizing.

Babies just don't come in standard sizes. And that's why we took special care in developing our new sizing system, based on both weight and age.

It means you'll always be sure of a good fit with Gerber Babywear.

SIZE	AGE	WEIGHT
6 MONTHS	TO 6 MONTHS	UP TO 18 POUNDS
12 MONTHS	TO 9 MONTHS	19 TO 22 POUNDS
18 MONTHS	TO 12 MONTHS	23 TO 26 POUNDS
24 MONTHS	TO 18 MONTHS	27 TO 30 POUNDS
36 MONTHS	TO 24 MONTHS	31 TO 34 POUNDS

Size chart for pull-on baby shirt.

And we've even made shopping a little easier for you, too—because our new Gerber Babywear is sold at a convenient location near you. Next time you're in one of the stores listed below, pick up a copy of our free booklet, "How to Choose Baby Clothes." It has 16 pages of helpful hints.



New Gerber Babywear





5 P.C. GAME SETS HIDE-A-BEDS TABLE LAMPS PICTURES CURIOS SWAGS GRANDFATHER CLOCKS WALL UNITS MIRRORS

Our 2nd

# JANUARY CLEARANCE

In December  
Just in time for Santa

WILKINS FURNITURE of WELLINGTON agrees with you, the buyer that the time to have a sale is when you want and need gifts. So we at Wilkins Blow the Lid Off Prices in time for Christmas Giving. We have the largest selection of Quality Home Furnishings in the Panhandle. Here are samples of the bargains you can find. Remember, these are just a few samples - every item in the store is marked down.

Quality  
Home Furnishings  
at  
Unheard of Prices

Buy Now at  
Savings of

20% - 30% - 40% - 50%

**SAVE NOW!**



Every Item in the Store Marked Down

King Size Reg. \$169<sup>95</sup>

Recliners Now



**\$97<sup>00</sup>**

Maple or Pine Reg. \$99<sup>95</sup>

Boston **ROCKERS** Now



**\$47<sup>00</sup>**

Firm Sleep Reg. \$169<sup>95</sup> per set

Mattress & Box Springs



**\$119<sup>00</sup>**

8 Ft. Reg. \$589<sup>95</sup>

Kitchen Cabinets Now

**\$377<sup>00</sup>**

Beautiful Pecan Finish 4 pc.

Bedroom Suite Reg. \$299<sup>95</sup> Now

**\$233<sup>00</sup>**



Console-AM/FM Radio, Tape Deck, Turntable

STEREOS Reg. \$299<sup>95</sup> Now

**\$233<sup>00</sup>**

Southland Reg. \$499<sup>95</sup>

Velvet Sofa 1 only - Now

**\$288<sup>00</sup>**

Reg. \$69<sup>95</sup>

BOOK SHELVES Now

**\$37<sup>00</sup>**

Beautiful Nylon Reg. \$459<sup>95</sup> 1 Only

Spanish Sofa Now

**\$266<sup>00</sup>**



Reg. \$169<sup>95</sup>

Maple or Rustic Oak

Roll Top Desk Now **\$99<sup>00</sup>**

**CARPET CARPET CARPET**

Quality



Buy a ROLL or a ROOMFULL

PRICES START

**\$3<sup>88</sup>**

Sq. Yd.

Won't Last Long 3 only Now

Hide-A-Beds Reg. \$249<sup>95</sup> **\$249<sup>95</sup>**



Dining Room Suite

All 9 Pieces Now

**\$688<sup>00</sup>**

Beautiful Basset 9 pc. Lighted China, Table, 6 Chairs Oak, Fruitwood or Pine Finish Reg. \$899<sup>95</sup>

## WILKINS FURNITURE

WELLINGTON, TEXAS

WE TRADE — WE FINANCE  
DRIVE A LITTLE AND SAVE A LOT

907 West Avenue 806/447 5681

We love to lay Carpet and Vinyl No job too large or too small

If you want the best home furnishings at bargain prices, NOW is the TIME. Some Items Limited Quantity. We will be closed until Monday, Nov. 29 to prepare these bargains. Be one of the first bargain hunters on Monday, Nov. 29. Doors open 8 a.m.

FREEZERS REFRIGERATORS STOVES SWIVEL ROCKERS CHINA CABINETS CORNER CABINET