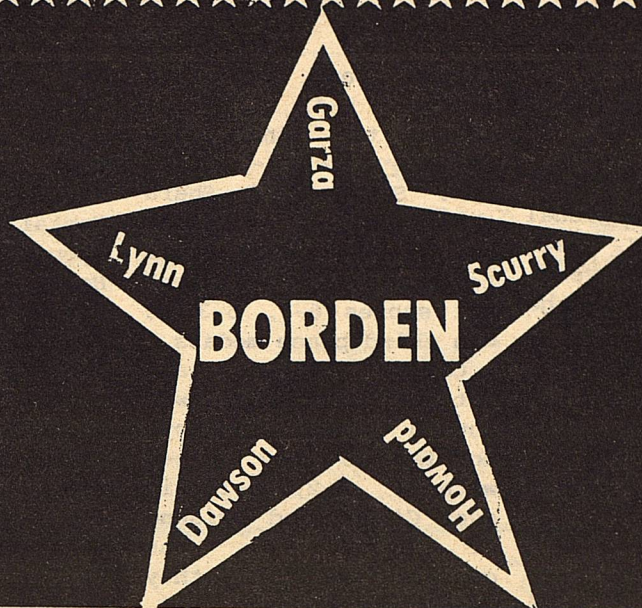


THE

VOLUME XIV



STAR

APRIL 12, 1989

Serving the Counties of Borden, Dawson, Garza, Howard, Lynn & Scurry

ANOTHER SUCCESSFUL BARN DANCE

Another successful evening for the American Cancer Society happened in the form of the annual Barn Dance. It was held in the show barn in Gail, April 7th. Approximately five hundred people were in attendance to dance to the music of Jody Nix and The Texas Cowboys.

With advance tickets sales of \$2,024.00; "at the door" receipts of \$3,633.00 and concession stand sales of \$150.00; a grand total of \$5,807 was reached.

While Jody and the band took a well deserved break from two hours of continuous playing, Lisa Ludecke, President of the Borden County Cancer Society, stepped up to the microphone to announce some winners. Joe

Roberts of Big Spring, won the beef and Steve Hess of the Plains Community, was the winner of the pig.

Lisa announced Larry Rogers and Carla Coffey winners of the jitterbug contest and Vernon and Ruby Miller winners of the waltz contest.

In the sales contest, Shaina Isaacs was first. She sold \$342.00 worth of tickets, Carrie Hart was second with \$316.00 and Thad Isaacs, third with \$154.00.

There were three American Cancer Society representatives in attendance as special guests. They were Adriene Barker, Field Services Director, Area 1 from El Paso; Melissa Null, Field Representative, District 2 from Midland and Elizabeth



Lisa Ludecke with two special guests.

Hophins, Field Representative, District 1 from Odessa.

Be sure and remember the celebrity auction that is to be held August 5th.

APRIL IS PREVENTION OF CHILD ABUSE MONTH

In the past year, the media has been filled with reports of horrible and often unforgettable incidents of child abuse. While we have all heard of children being grossly mistreated physically, even beaten to death, there is a form of child abuse just as debilitating: verbal abuse. It can leave scars just as deep.

I. What is Verbal Abuse?

As surely as one can break a child's bones, one can break a child's spirit. Constant belittling, insulting, criticizing and demeaning undermine a child's sense of self-esteem and well-being. Verbal abuse is just that -- the continuous name-

calling, ignoring or rejecting of a child. "I wish you were never born." "You're so stupid." "You're worthless." These are words that children can believe when they hear them from parents or teachers or others whom they love and trust. While children are resilient enough to bounce back from the occasional insult or criticism, the constant barrage can damage a child's personality. Regardless of whether verbal abuse occurs simultaneously with physical and sexual abuse, or on its own, the effects can be devastating.

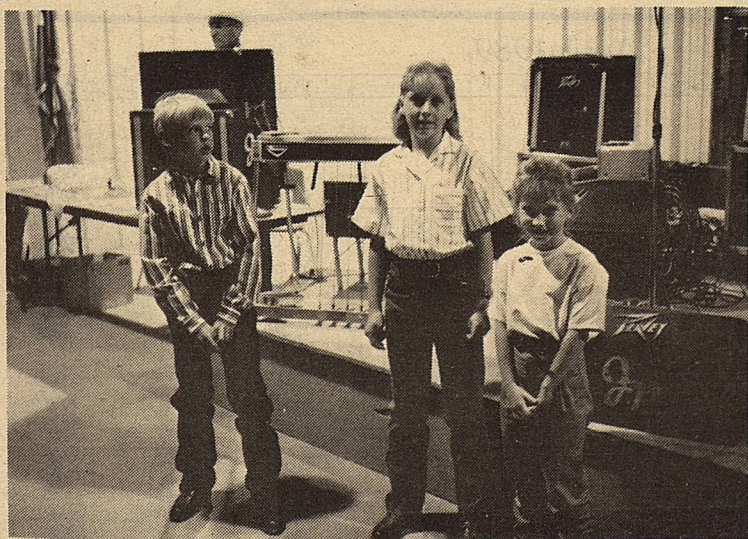
II. How Big a Problem is Verbal Abuse?

There are no good statistics on how large a problem verbal abuse is. In the last year, in the U.S., approximately 225,000 cases of emotional maltreatment were reported to the authorities. This is probably a great underestimate of the size of the problem since verbal abuse is seldom reported.

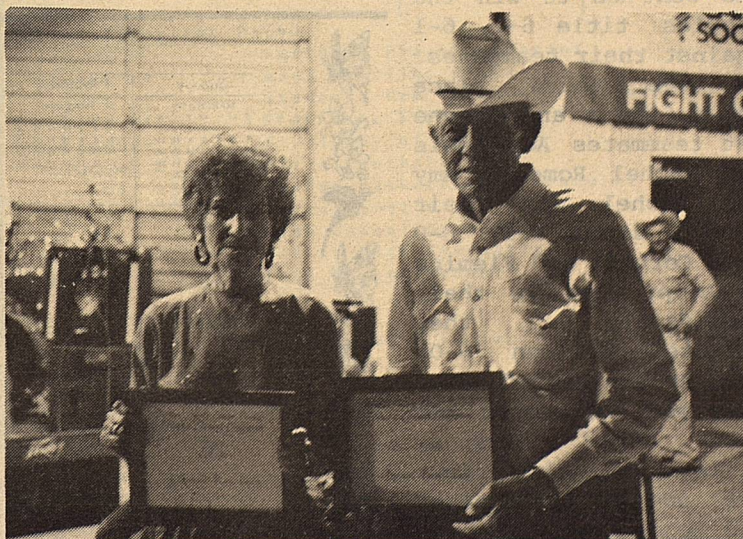
III. Why Be Concerned about Verbal Abuse?

The effects of verbal abuse are considerable.

cont. to pg. 4



"TOP SALESPERSON" Winners for the American Cancer Society. L-R Thad Isaacs, Carrie Hart and Shaina Isaacs. (Staff Photo)



Ruby and Vernon Miller were selected as the best waltzers from a dance floor filled with very good competitors of all ages and sizes. (Staff Photo)

Amanda Anderson Wins District Tennis Championship

Amanda Anderson, a freshman in her first year of high school tennis, won the singles championship at the District 6A tennis tournament in Plains. She came into the tournament as the number three seed, but upset the number one seed in the finals in straight sets. In the first round, Amanda defeated Christy Parker of O'Donnell 6-0, 6-1. Then in the quarter finals she met Mary Olivas of Union, who had eliminated Loop in her first round. Amanda did not drop a game in moving to the semi-finals with a 6-0, 6-0 score. In the semi-finals, she met Angie Patton of Plains, who had upset the number two seed from Klondike in their quarter-final match. Amanda fell behind 2-1 in the first set but then reeled off eleven unanswered games for a 6-2, 6-0 win and a trip to the regional tournament. In the finals, Amanda met Heather McGill of Plains. McGill was the number one seed, due to her

reaching the regional tournament last year and met once this year, that being in the semi-finals of the Plainview tournament. There, McGill won by a 7-6, 6-1 count. This time, things would be different, as Amanda jumped out to a 4-1 lead on her opponent before capturing the first set 6-2. In the second set, Amanda led 4-2 before Heather came back to tie things up at 4 all. Amanda then won the next two games for a 6-2, 6-4 win and the singles title. She will play in the regional tournament April 27-28 in Levelland.

Shayne Hess and Shara Dee Woodward, also freshman, were the next highest place finishers, as they won their first match 6-0, 6-1 over Caballero and Munoz of New Home. In the quarter-finals they met Garza and Olvera of O'Donnell, who eliminated Meadow in their first match. Shayne and Shara won that match 6-4, 6-2, to put them in the semi-finals against the number one seed from Plains. Borden would repeatedly come up with an advantage point in a game, only to see the more experienced seniors from Plains erase it with fine play. Plains won the match 6-0, 6-0 and went on to win the doubles title 6-1, 6-1 against their teammates.

In the third place match, Shara and Shayne met teammates Amy Lewis and Rachel Romero. Amy and Rachel won their first match 6-1, 6-0 over Cornett and Fleming of Loop. Then in their semi-final, they defeated Wellman 6-0, 6-2. In the semi-finals, they met the number two seed from Plains. Plains won the first set in a tie-breaker and Borden came back to win the second set 7-5. Plains then jumped out to a 5-1 lead in the third set before

Borden came back to within 5-4, before losing the final game and the match 7-6, 5-7, 6-4. Shayne and Shara then took a straight set decision over their teammates with identical set scores 6-3, 6-3 to win third place medals.

Chris Kilmer and Patrick Herridge won fourth place in boys doubles as they opened with a 6-2, 6-1 win over Gibson and Briseno of Grady. In the quarter-finals, they defeated Wellman 6-1, 6-1, to reach the semi-finals. There, they met the number three seed from Sands, Zarate and Franco. Sands took the match by scores of 6-2, 6-2, moving Borden to the third place game against New Home. There, Chris and Patrick lost a 6-2, 6-3 game to finish in fourth place.

Brian Bond reached the quarter-final round as he started out the tournament with a bye. In the second round, he defeated Brad Snellgrove of O'Donnell in split sets. Brian lost the first set 6-3, but came back to win the second 6-2. Trailing 5-3 and Love-40 on serve, Brian erased the three match points and came back to win the third set 7-5. In the quarter-finals, Brian met the eventual tournament champion from Wellman, Robert Mercado. Mercado won the match 6-3, 6-2 to advance to the semi-final round. He defeated Plains #1 in the semi-final 7-6, 6-3 and won

over Plains #2 in the final 6-1, 6-3.

Also playing in boys' doubles were Shane Kemper and Cole Vestal. They lost their opening round to New Home 7-6, 6-1. Kandy Belew also lost her opening round to Wellman 7-5, 6-1.

This year, there was a J.V. division at the district tennis tournament. Kristin Kilmer won the singles title, starting out with a 6-1, 6-0 win over Morris of Dawson. In the semi-finals, she defeated Gonzales of Union by an identical 6-1, 6-0 score. Then in the final, she met Gonzales of Plains, and came away with a 6-1, 6-2 win to capture the singles title. In girls' doubles, Kristin Monger and Jo Barnes placed second. They won their first match 6-2, 7-5 over Escabedo and Deanda of Meadow. This put them into the finals against Cole and Winn of Plains. Kristin and Jo won the first set 6-3 but lost the next two sets 6-4, 6-2, giving them second place. In boys' singles David Buchanan won third place. He won his first match 6-0, 6-1 over Carr of Sands. In the semi-finals, he lost to Lowrey of Plains 6-1, 6-3. Then he met Cowart of Plains and won third place with a 6-1, 6-1 score.

This year, there were 105 entries in the District tournament and Borden players are to be commended on

WTC Rodeo

Western Texas College will host its annual intercollegiate rodeo April 13-16 in the Scurry County coliseum and invites rodeo fans to attend.

Performances will be at 8 p.m. on April 13-15 and at 2 p.m. on April 16. Tickets will be \$4 for adults and \$3 for students.

WTC competes in the Southwest Region of the National Intercollegiate Rodeo Association (NIRA). Bob Doty is in his tenth year as coach of WTC's men's and women's rodeo teams.

The 1986 WTC men's team won the national NIRA championship. The men's team finished seventh in the nation in 1988. The men's teams have qualified for the College National Finals Rodeo for eight consecutive years and hope to qualify again this year.

Other colleges and universities competing in the Southwest Region of the NIRA include Sul Ross State University, Tarleton State University, Odessa College, Vernon Regional Junior College, Texas Tech University and Howard College in Big Spring.



their fine play, finish, and sportsmanship. Congratulations to Amanda Anderson on what possibly is her first of many tennis titles and good luck in the regional tournament.

The Borden Star
Publication No. 895520
(USPS 895-520)

CO-EDITORS

Verna Adcock
Clarajane P. Dyess

Published weekly, except for Christmas and New Years, on Wednesday at Gail, Borden County, Texas 79738, Box 137 Kincaid Street Second Class postage paid at Gail, Texas.

Any errors that we make reflecting on the reputation or standing of any firm, corporation or individual that may appear in the columns of the Borden Star will be gladly corrected when called to the attention of the staff.

Subscription Rates:
\$8.00 per year

Borden Star Owners:
James McLeroy, Barbara Anderson, Doris Rudd, Pat Porter, Bob Dyess, Edna Miller, Ruth Weathers, Mrs. Nathan Zant, Sonny Tucker, Eddie Simer, Loreen Jones, Martin Parks, Dan Turner, Lela Porter, and Marge Toombs.

April 1989

Sunday	Monday	Tuesday	Wednesday	Thursday	Friday	Saturday
MARCH 1989 S M T W T F S 1 2 3 4 5 6 7 8 9 10 11 12 13 14 15 16 17 18 19 20 21 22 23 24 25 26 27 28 29 30 31	MAY 1989 S M T W T F S 1 2 3 4 5 6 7 8 9 10 11 12 13 14 15 16 17 18 19 20 21 22 23 24 25 26 27 28 29 30 31					1
2	3	4 1st Day High School Tennis Plains	5	6 2nd Day High School Tennis Plains	7	8 High School Regional Track - Klondike Area One-Act Play O'Donnell
9	10 Junior High Tennis HW - Plains	11 Band Concert 9:30 - Lamesa	12 Golf -Borden- Play at Lamesa Country Club	13	14 High School Track Sands	15 Area II Juggling-Tech Junior High Track HW - Wellman SE - Grady
16	17 1st Day Elementary Literary HW - Wellman SE - Klondike	18 2nd Day Elementary Literary HW - Wellman	19	20 2nd Day Elementary Literary SE - Klondike	21 2nd 5th six-weeks Regional Academic	22 State Invitational Horse Juggling-Tech Junior High Tennis SE - O'Donnell Play in Lamesa Meet Levelland
23	24	25	26	27	28 Regional Academic	29 State Juggling Contest-AM Regional Athletics- Levelland
30						



Boys and Girls Compete At Cougar Relays In Klondike

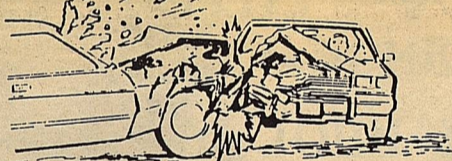
Sandy Buchanan was Borden County's ribbon winner at the Cougar Relays last Saturday. Sandy won fourth place in the shot put with a toss of 29 feet 10 1/4 inches and she made the finals in the discus with a toss of 90'10". Also competing for the girls team were Elana Himes in the shot, 400 meter relay and 100 meter dash.

Elana ran the 100 meters in 15.3 seconds. Elvira Balaque, Kate Phinizy, and Kristi Adcock were members of the relay team they ran a time of 61.4. Kate ran the 100 meters in 13.9 but failed to make the finals. In the girls 200 meter Kristin Monger ran 36.7. Heather Armstrong ran a 33.3, and Felicia Vasquez ran 33.8. Heather also ran the 400 meters in a time of 86.0 and A'Lise ran it in 85.1. Felicia

Vasquez also was entered in the discus throw and had a toss of 85'5". The boys squad consisted of Juve Balaque, Clint Bray, Shane Kemper, Cole Vestal, Marc Latimer, Lance Latimer and Cody Cooley. Lance Latimer ran the 100 meter in 11.7, the 200 meter in 24.5, and long jumped 17'10". Shane Kemper ran the 100 in 12.5 and had a 27.3 in the 200 meters. Marc Latimer also had a 12.5 in 100 meters and a 26.7 in the 200 meters. These three were teamed with Juve Balaque in the 400 meter relay and ran a 51.3. In the 400 yard dash, Cole Vestal ran a 67.9, Juve Balaque a 63.3, and Clint Bray had a 62.3. In the shot Cody Cooley had a toss of 35'9 1/2". Also making the trip were the two managers Charlotte Ball and Kristin Kilmer.

Introducing the Number One Killer

of Young Americans



Improve Your Odds. Wear Your Safety Belt.



SCHOOL LUNCH MENU

April 17 - 21, 1989

Monday	Sliced Ham Cheese Tater Tots Fruit Bread Milk	Salad Bar
Tuesday	Fish Nuggets Tarter Sauce Pinto Beans Fruit Hot Rolls Milk	Salad Bar
Wednesday	Turkey and Gravy Cranberry Sauce Mashed Potatoes English Peas Jello Hot Bread Milk	Salad Bar
Thursday	Meat Sauce & Spaghetti Vegetable Salad Buttered Corn Fruit Hot Bread Milk	Salad Bar
Friday	Hamburgers and the trimmings French Fries Desert Milk	Salad Bar



DISCIPLE'S NOW

May 5-6

Conducted by Sheppard Ministries
Jr. High & High School Age Groups

Two well trained leaders from Lubbock & Irving
\$20.00 per person

Price includes meals & study booklet.
Sponsored by The First Baptist Church of Gail

More information will be given at a later date.

Borden County Independent School District
School Calendar-1989-1990

1989

JANUARY	FEBRUARY	MARCH	APRIL
S M T W T F S 1 2 3 4 5 6 7 8 9 10 11 12 13 14 15 16 17 18 19 20 21 22 23 24 25 26 27 28 29 30 31	S M T W T F S 1 2 3 4 5 6 7 8 9 10 11 12 13 14 15 16 17 18 19 20 21 22 23 24 25 26 27 28	S M T W T F S 1 2 3 4 5 6 7 8 9 10 11 12 13 14 15 16 17 18 19 20 21 22 23 24 25 26 27 28 29 30 31	S M T W T F S 1 2 3 4 5 6 7 8 9 10 11 12 13 14 15 16 17 18 19 20 21 22 23 24 25 26 27 28 29 30
MAY	JUNE	JULY	AUGUST
S M T W T F S 1 2 3 4 5 6 7 8 9 10 11 12 13 14 15 16 17 18 19 20 21 22 23 24 25 26 27 28 29 30 31	S M T W T F S 1 2 3 4 5 6 7 8 9 10 11 12 13 14 15 16 17 18 19 20 21 22 23 24 25 26 27 28 29 30	S M T W T F S 1 2 3 4 5 6 7 8 9 10 11 12 13 14 15 16 17 18 19 20 21 22 23 24 25 26 27 28 29 30 31	S M T W T F S 1 2 3 4 5 6 7 8 9 10 11 12 13 14 15 16 17 18 19 20 21 22 23 24 25 26 27 28 29 30 31
SEPTEMBER	OCTOBER	NOVEMBER	DECEMBER
S M T W T F S 1 2 3 4 5 6 7 8 9 10 11 12 13 14 15 16 17 18 19 20 21 22 23 24 25 26 27 28 29 30	S M T W T F S 1 2 3 4 5 6 7 8 9 10 11 12 13 14 15 16 17 18 19 20 21 22 23 24 25 26 27 28 29 30 31	S M T W T F S 1 2 3 4 5 6 7 8 9 10 11 12 13 14 15 16 17 18 19 20 21 22 23 24 25 26 27 28 29 30	S M T W T F S 1 2 3 4 5 6 7 8 9 10 11 12 13 14 15 16 17 18 19 20 21 22 23 24 25 26 27 28 29 30 31

1990

JANUARY	FEBRUARY	MARCH	APRIL
S M T W T F S 1 2 3 4 5 6 7 8 9 10 11 12 13 14 15 16 17 18 19 20 21 22 23 24 25 26 27 28 29 30 31	S M T W T F S 1 2 3 4 5 6 7 8 9 10 11 12 13 14 15 16 17 18 19 20 21 22 23 24 25 26 27 28	S M T W T F S 1 2 3 4 5 6 7 8 9 10 11 12 13 14 15 16 17 18 19 20 21 22 23 24 25 26 27 28 29 30 31	S M T W T F S 1 2 3 4 5 6 7 8 9 10 11 12 13 14 15 16 17 18 19 20 21 22 23 24 25 26 27 28 29 30
MAY	JUNE	JULY	AUGUST
S M T W T F S 1 2 3 4 5 6 7 8 9 10 11 12 13 14 15 16 17 18 19 20 21 22 23 24 25 26 27 28 29 30 31	S M T W T F S 1 2 3 4 5 6 7 8 9 10 11 12 13 14 15 16 17 18 19 20 21 22 23 24 25 26 27 28 29 30	S M T W T F S 1 2 3 4 5 6 7 8 9 10 11 12 13 14 15 16 17 18 19 20 21 22 23 24 25 26 27 28 29 30 31	S M T W T F S 1 2 3 4 5 6 7 8 9 10 11 12 13 14 15 16 17 18 19 20 21 22 23 24 25 26 27 28 29 30 31
SEPTEMBER	OCTOBER	NOVEMBER	DECEMBER
S M T W T F S 1 2 3 4 5 6 7 8 9 10 11 12 13 14 15 16 17 18 19 20 21 22 23 24 25 26 27 28 29 30	S M T W T F S 1 2 3 4 5 6 7 8 9 10 11 12 13 14 15 16 17 18 19 20 21 22 23 24 25 26 27 28 29 30 31	S M T W T F S 1 2 3 4 5 6 7 8 9 10 11 12 13 14 15 16 17 18 19 20 21 22 23 24 25 26 27 28 29 30	S M T W T F S 1 2 3 4 5 6 7 8 9 10 11 12 13 14 15 16 17 18 19 20 21 22 23 24 25 26 27 28 29 30 31

Some Important Dates

August 9	Football Practice Begins
August 14	Band Practice Begins
August 25	Students New to Borden Schools Register
August 31	Freshmen, Sophomores, Juniors & Seniors Register
September 1	First Day of School
September 8	First Football Game
Dec. 14, 15, 16	Borden Basketball Tournament
May 27	Baccalaureate Services
May 31	High School Graduation
June 1	Junior High Graduation
June 1	Last Day of School

Early Dismissal

School will dismiss at 2:30 p.m. on the following days:

Nov. 21
Dec. 15
March 16, 19 or 20th
April 12
June 1

Loss of School Days:

Bad Weather Days are March 19 and 20. If school is not closed for bad weather, those days will be part of the spring break. The Optional bad weather day will be April 13. If only one day is needed for bad weather, April 13 will be used.

In-Service

- August 23, 24
Caprock Reading
- August 28, 29, 30
Herman Reading
(All Workshops at Borden)
- August 28, 29, 30
(Also Comp.)

Workdays

- August 25
- August 31
- January 22
- June 2

Holidays

- Nov. 22, 23, 24
Thanksgiving Holidays
- Dec. 20 - Jan. 1
Christmas Holidays
- Jan. 26 - Ski Day
- Mar. 2 - Stock Show
- Mar. 21, 22, 23
Spring Break
- April 13 - Good Friday

Semesters

- Sept. 1 - Jan. 19 - '89
 - Jan. 23 - June 1 - '86
- Total Days 175

Six Weeks

- Sept. 1-Oct. 13=31 Days
 - Oct. 16-Nov. 21=27 Days
 - Nov. 27-Jan. 19=31 Days
 - Jan. 23-Mar. 1=27 Days
 - Mar. 5-Apr. 20=29 Days
 - Apr. 23-June 1=30 Days
- Total 175 Days

Semester Exams

- January 18, 19
- May 31 and June 1

Key

- [] Holidays
- () In-Service
- < > Six-Weeks
- Bad Weather Days

THANK YOU!

The annual Borden County Cancer Society's Barn Dance was once again a big success. Its success is due to everyone's support of this special fund raiser event. A special thanks to these folks who helped me out in putting on this event:

CLEAN UP BEFORE AND AFTER: Jerry Stone, Dennis Poole, Hurston Lemons, Dan Copeland, Larry Smith, Tommy Cooley, Edward Zepeda, Gae Ludecke, Jerry Kincheloe, J.J. Kincheloe and Jana Kincheloe.

WORKING AT THE DOOR: Rube & Sue Smith and Jerry & Carolyn Stone
DONATIONS: Vestal Meat Co., Lamesa, donated the beef processing; Jerry & Carolyn Stone,

donated the pig.

TICKET SALES: Sue Smith (Committee Head), Gae Ludecke, Hailey Adcock, Joe Gene Benavidez, Tammy Cooley, Rebecca Copeland, Carey Cox, Morgan Dyess, Shawna Ellison, Carrie Hart, Rende Herring, Shaina Isaacs, Thad Isaacs, Mandi Lance, Jennifer Larue, Brenda Loya, Leticia Lozano, Julie Mayes, Katy Merritt, Ky Merritt, Clint O'Brien, Staci O'Brien, Ramon Perches, Shalina Reyes, Preston Sharp, Lindsey Smith, Brandy Smithie, Amanda Watts and Foston Wilson.

CONCESSION: Dorothy Browne (Chairman), Nicole Lackey, Cookie Dyess, Barbara Farmer, Joyce Herridge, Juanda

Hancock, Carolyn Stone, Sheri Poole and Joyce Kincheloe.

ICE: Borden Co. School
BAND: Jody Nix and The Texas Cowboys.

Thanks again to everyone. The above people were listed with a risk of someone being left out. If I missed you, please accept my apology and my thanks.

I look forward to working with each of you next year.

/s/ Lisa Ludecke
President
Borden Co. Cancer Society

****FOUND****

Lady's gold bracelet. Lost at the Barn Dance. To claim, call Lisa Ludecke, (915)856-4386 or 4463.

PREVENT CHILD ABUSE

cont. from pg 1

A child's emotional and psychological development can be dramatically hindered. Children can experience a lifelong pattern of alienation, self-depreciation, depression & failure--growing up to become those awful names they were called when young. Children who have difficulty establishing trusting relationships with others, who have difficulty in school,

who get into trouble with drugs and alcohol, and those who seriously consider suicide are often those who have suffered from verbal abuse. The same is true of those adults who verbally abuse -- the cycle repeats itself.

IV. How Can Verbal Abuse Be Prevented?

Verbal abuse occurs for many of the same reasons physical abuse occurs.

Parents feel isolated, under stress, unable to cope. A troubled childhood characterized by abuse & low self-esteem contribute to a parent's abusive behavior.

What sets verbal abuse apart from physical abuse is parents' lack of awareness of how damaging their words are. Parents who verbally abuse typically do not understand the impact of their words. Thus, one primary prevention strategy is to educate parents that words can hit as hard as a fist.

For more information on Child Abuse, Please Contact:

National Committee for Prevention of Child Abuse
332 S. Michigan Avenue
Suite 950
Chicago, Illinois 60604
(312)663-3520



Say the word and you can break a child's spirit.

Words that demean and insult a child can hit as hard as a fist. And leave scars you can't see. Stop using words that hurt. Start using words that help.

stop using words that hurt.



For helpful information, write: National Committee for Prevention of Child Abuse, Box 2866E, Chicago, IL 60690.



HOGG

FLYING



Spraying

Seeding

SERVICE
Defoliation
Dry or Wet

Fertilizer Application

Owner

GLENN W. HOGG

Phone: Business 806/872-9696

872-7617

Residence 872-8274

FAST

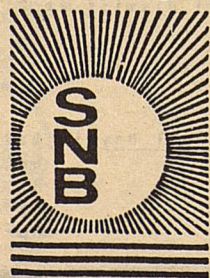
PROFESSIONAL SERVICE

P.O. Box 281

Lamesa Airport

Lamesa, Texas

We're proud to be a part of the area since 1905.



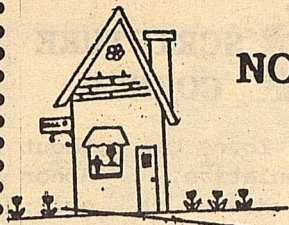
Snyder National Bank

We take Snyder to Heart!



Member FDIC

1715 25th
573-2681



NOTES FROM HOME

By Debra Pollard

Home Demonstration/CEA

Credit Repair

We live in a credit card and other consumer credit greet us on the television screen, on billboards and in magazines.

Getting credit is easy, or so it seems. But it is just as easy to get into credit problems as it is to get a credit card. So, now consumers are being offered easy "credit repair."

But beware! Offers of credit repair are only money in the hand of those offering the service. It is nothing that you can't do for yourself.

What credit repairmen do is invoke federal legislation that allows consumers to protest items in their personal

credit record at a credit bureau. A credit bureau must reverify the disputed item within a "reasonable" time of else delete it.

The repair company floods the credit bureau with protest letters with the expectation that the bureau cannot respond to all of them in the time allowed. So your record will be temporarily clear.

Once a creditor proves that your bill is correct, you will again have the delinquent item on your record. You will not get a refund from the credit repair company; it probably isn't even in business any more.

You can check your record yourself. Find out which credit bureau is used by the business where you plan to apply for credit. Contact the credit bureau to find out their procedure for obtaining a copy of your credit report. Some will only read out the record; others will provide you with a photocopy of the record. Some will only allow you to review the record at their office. You can get a free copy if you were denied credit in the past 30 days, or you may have to pay \$10 or more.

If you find an error and can prove that it is an error, put the complaint in writing to the credit bureau. The bureau must correct mistake at no charge.

The Time & Place for Susie & Paul Luchsinger to perform in Gail, will be announced at a later date.



Susie and Paul Luchsinger
**SCHEDULED TO SING
IN GAIL APRIL 24th**

"THE TRADING POST"

LOAD UP YOUR WAGON AND COME ON DOWN TO THE BEST LITTLE TRADING POST AROUND. IT'LL BE FUN AND PROFITABLE TOO. JUST BRING ME YOUR GOODS, I'LL SELL THEM FOR YOU.

WE HAVE A LOT BUT WE NEED MORE. JUST ACROSS FROM THE COYOTE COUNTRY STORE.

CIRCLE 4 FARM & RANCH STORE

HOME OWNED AND OPERATED

WE CARRY JOHN BLUE PUMPS AND FITTINGS

and a

COMPLETE LINE OF BCA BEARINGS



QUALITY FEED
MAKES THE
DIFFERENCE

ACCO FEEDS

FEED

AND

FERTILIZERS



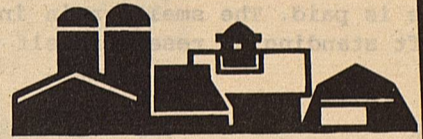
with our

BULK GARDEN SEED AND

PREPACKAGED SEEDS

Travis and Kay Mires
Ralph Mires
Teri Mires

O'DONNELL, TEXAS



Spruce Up Your



**BLEND OWN
FERTILIZERS**

**IT'S TIME TO
PLANT!**

Bedding plants
arriving daily

ASCS NEWS BY Jerry Stone

1989 FARM PROGRAM SIGN-UP PERIOD

Friday, April 14, 1989 is the last day to enroll farms in the 1989 wheat, feed grains, and cotton programs. It is the farm operator's responsibility to ensure that the farm is enrolled and all landowner signatures have been obtained. Landowners have until April 28 to sign the contract.

Advance payments must be requested by April 14. Before the advance payment may be made, the producers, this includes landowners, must be determined "actively engaged" and a "person" for the \$50,000 payment limitation. All members of an entity, such as corporation, estate, trust, etc., must designate to receive their portion of the entity's payments or that portion will not be paid. It is the entity's responsibility to ensure that all members have designated their eligible permitted entities. Advance payments will be issued shortly. Thanks for your patience.

CERTIFICATION OF SMALL GRAINS

May 1 is the final date to report acreages of fall seeded small grains such as wheat, oats, and rye. Any acreage of small grains must be reported regardless of intended use. After May 1, unreported acreages of small grains will be considered the grain crop which could cause limited cross compliance problems for cotton participants. Small grains destroyed by plowing prior to May 1 need not be reported.

Producers with wheat or oats bases must certify to zero acres if the crop was not sown. As in the past, small grains may be left standing past May 1 and not be considered the grain crop if it is reported prior to May 1 and a \$10.00 field visit fee is paid. The small grain in this case must be left standing to reseed itself until July 1.

ACR

Land designated or to be designated as ACR (set-aside) or CU for Pay must not have any livestock on it at this time. April 1 was the pull off date for these acres. You may plan to hay or graze these acres beginning September 1.

ACR land must have a history of being planted to a row crop, small grain, or ACR in 2 of the last 3 years. Plots of ACR must be at least 1 chain wide and 5 acres in size. Terraces used as ACR must also be 1 chain wide and at least 5 acres. Skip rows of 4 rows or more, at least 160", in a uniform pattern across the field are allowed as ACR.

A cover is required on ACR. Acceptable covers are prior year hay stubble, sudan, haygrazed, lefumes, or perennial grass. Use of chisels or sweeps, or chemical weed control, in lieu of a planted cover must be requested in writing and have prior county committee approval.

ACR covers must be maintained and weeds must be controlled through December 31.

LIMITED CROSS COMPLIANCE

Limited cross compliance is still in effect for

all crops except oats. Producers may have no more acreage planted to a program crop than the permitted, if participating; or the base is not participating. Planting more than the allowable acreages will make all other crops on that farm ineligible for program benefits.

FAILED WHEAT

Wheat for grain that has been disaster affected must be treated as follows in order to receive proper credit. Wheat for grain must be certified by May 1 and prior to making other use of it. All livestock should have been removed from wheat grain acres by March 15. Once the disaster affected wheat acreage is certified, a 574 may be filed for disaster credit.

1988 GRAIN SORGHUM

The final 1988 grain sorghum deficiency rate has been announced as .48 cents. If you received the advance the balance will be only 4.8 cents. Participants in the 0/92 program were guaranteed a final payment of .68 cents. Amounts over \$200 will be issued in certificates. These will be mailed shortly.

FOREIGN INVESTORS

Foreign investors who acquire or transfer any interest other than a security interest in agricultural land must report the transaction within 90 days to the ASCS office. Failure to do so could result in possible penalties.

Branon Funeral Home

Service in this area since 1922.

Phone: 872-8335 403 N. Austin - Lamesa

☆☆☆☆☆☆☆☆☆☆☆☆☆☆☆☆☆☆☆☆☆☆☆☆☆☆☆☆☆☆

HOWDY NEIGHBOR --

Is your computerized Workhorse on its last leg? Don't Shoot It! For honest and reasonable repairs on V.C.R. V.H.S. players, microwave ovens, DEPENDABLE I.B.M.-Commodore, Apple Computer Sales and Service: See the Pros at L.A.S.E.R. ACADEMY: James and Sean.

L.A.S.E.R. ACADEMY
1712 25th Street
Snyder, Tx 79549
After 5 PM: (915)573-9686

☆☆☆☆☆☆☆☆☆☆☆☆☆☆☆☆☆☆☆☆☆☆☆☆☆☆☆☆☆☆



THE FIRST NATIONAL BANK

The Symbol of Banking in Big Spring



FULL SERVICE BANKING

400 Main Street

267-5513

Member F.D.I.C.

BIG SPRING, TEXAS



SCRIPTURE CORNER

Let love be without dissimulation. Abhor that which is evil; cleave to that which is good.

Be kindly affectioned one to another with brotherly love; in honour preferring one another;

Not slothful in business; fervent in spirit; serving the Lord;

Rejoicing in hope; patient in tribulation; continuing instant in prayer;

Distributing to the necessity of saints; given to hospitality.

Romans 12:9-13 (KJV)

Classified

GENISIS SEAFOOD INC.

Stanton, Texas

FRESH FROZEN SHRIMP

SIZES: Small to Jumbo
1 lb. or 2 lb. boxes

Call: Tana May
856-4419

.....

* * FOR SALE * *

HOUSE IN GAIL
3 Rooms & Bath

Call Madge Hendricks
806-495-2745

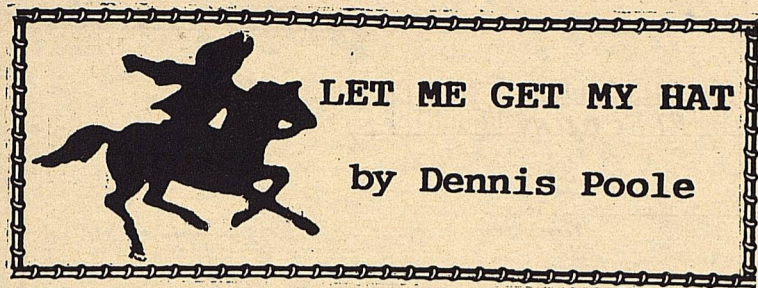
.....

BORDEN COUNTY

HOUSE FOR SALE

3 bedroom, 2 bath,
Fireplace
10 Acres with
Barns and Arena

Contact: Rex Cox
915-573-0724 or
856-4481



Tornado Season At Hand

The next few months are "tornado season" in Texas, so a few pointers and safety tips on tornadoes may be in order.

Here are a few general facts about tornadoes:

--Tornadoes normally move from southwest to northeast although their direction of travel can be erratic and change suddenly.
 --Tornadoes are often spawned in thunderstorms that have accompanying large hail.
 --Most tornado damage is caused by violent winds but most tornado injuries and deaths result from flying debris.

--Tornado winds may produce a loud roar similar to that of a train or airplane.
 --Tornadoes can occur with little or no warning although most occur during the mid-afternoon or early evening hours.

Stay tuned to weather forecasts during times of unsettled weather. When a tornado or severe thunderstorm "watch" is issued, it means that tornadoes or severe weather are possible in the area designated. On the other hand, a tornado or severe thunderstorm "warning" means that tornadoes or severe weather are occurring.

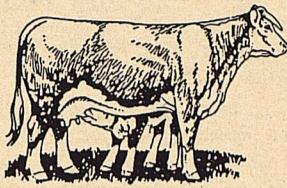
Persons in or near the storm path TAKE COVER IMMEDIATELY.

Remember these precautions if a tornado or severe thunderstorm warning is issued:

--Stay away from windows, doors and outside walls.
 --In small buildings or homes, go to a basement or an interior part of the lowest level. Closets, bathrooms and interior halls offer the best protection in many cases. Seek cover under something sturdy.
 --In schools, factories, hospitals and shopping centers, go to a pre-designated shelter area. Interior hallways on the lower floor are usually best.
 --In high-rise buildings, go to interior small rooms or hallways on the lowest floor possible.
 --In mobile homes or vehicles, leave and take shelter in a substantial structure. If none is available, lie flat in the nearest ditch or ravine and shield your head with your hands.

The key to surviving severe weather such as a tornado is prior planning. All family members should know where the safest areas of the home are in event of threatening weather.

Cow-Calf Clinic

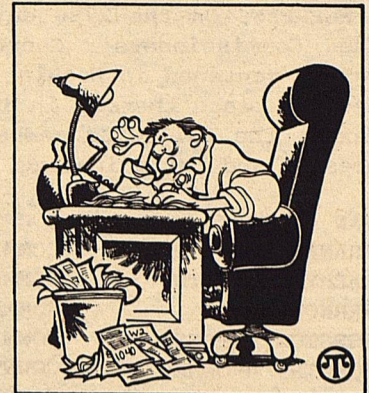


There will be Multi-County Cow-Calf Clinic, April 19th in the Scurry County Coliseum.

Registration will begin from 8:30 to 9:00 a.m. Then educationally

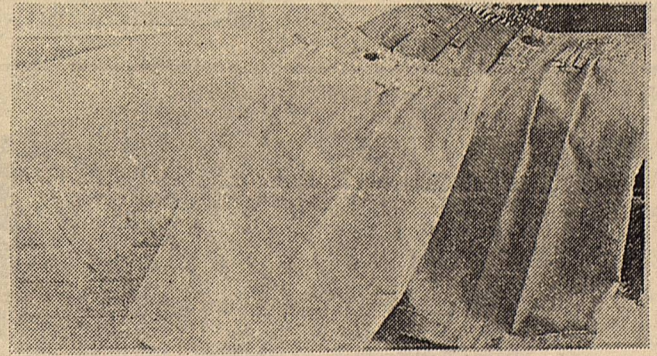
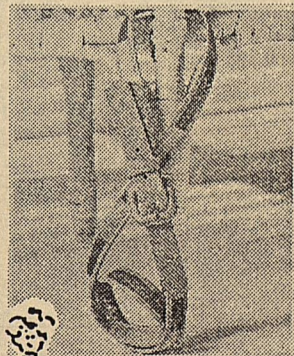
and economically beneficial information will be presented. It is hoped that all participants will be able to use this clinic in the management and decision-making tasks involved with the production of beef cattle.

The coordinating counties for the clinic are Borden, Dawson, Lynn, Garza and Scurry.



The best way to make your taxes simple is to choose an Enrolled Agent to prepare them for you.

Shorts & Tees for Summer



—H— Western Wear
 College Heights Shopping Center

WESTERN SEED & DELINTING Certified Cotton Seed

Acid	Paymaster 145,303,404,792	Cotton
Delinting	Coker 3131, S110,500	Planting
	Terra 383, SR-10, SR-482	Seed
	SP-21, SP-215, CAMD-E, CAB-CS	

Ray Grazer Grain Sorghum Wheat

Wheat & Oats Cleaning

Lamesa, Texas
 RON BUTLER

BUSINESS PHONE
 (806) 872-8896
 (806) 872-5388

RESIDENCE PHONE
 (806) 872-5271

COURTHOUSE NEWS

WHEREAS, On the 27th day of March, A.D. 1989, the Commissioners' Court of Borden County, Texas, convened in Regular Session at the Regular meeting place thereof in the Courthouse at Gail, Texas, the following members of the Court being present and participating, to-wit:

VAN L. YORK	COUNTY JUDGE, Presiding
FRANK CURREY	COMMISSIONER, Precinct # 1
LARRY D. SMITH	COMMISSIONER, Precinct # 2
VERNON WOLF	COMMISSIONER, Precinct # 3
HURSTON LEMONS, JR.	COMMISSIONER, Precinct # 4
DOROTHY BROWNE	COUNTY CLERK AND EX-OFFICIO CLERK OF THE COMMISSIONERS' COURT

constituting a quorum, when the following proceedings were had, to-wit:

MINUTES APPROVED

Minutes of the meeting of March 13th, A.D. 1989 were read. Commissioner Wolf made a motion to approve said minutes as read. Commissioner Lemons seconded the motion.

Voting For: Commissioners Currey, Smith, Wolf and Lemons

Voting Against: None

COMMISSIONERS' COURT MEETING

A motion was made by Commissioner Wolf to change the date of the Commissioners' Court Meeting of May 22nd to May 19th, 1989. Motion was seconded by Commissioner Smith.

Voting For: Commissioners Currey, Smith, Wolf and Lemons

Voting Against: None

POLICY MANUAL

Personnel Policy Manual discussed. No action taken.

ACCOUNTS ALLOWED

Current accounts were examined. Commissioner Smith made a motion to pay said accounts. Motion was seconded by Commissioner Wolf.

Voting For: Commissioners Currey, Smith, Wolf and Lemons

Voting Against: None

Commissioner Smith absent after 10:55 A.M.

ADJOURN

A motion to adjourn was made by Commissioner Wolf. Motion was seconded by Commissioner Currey and approved unanimously.

THE FOREGOING MINUTES READ AND APPROVED THIS THE 10th DAY OF APRIL, A.D. 1989.

Claiborne's

THRIFTWAY

HOME OWNED & OPERATED BY
JESS & CAROLYN CLAIBORNE
OPEN: 7 AM - 9PM

WE ACCEPT FOOD STAMPS

710 N. 4th
Lamesa, Texas

NOTICE OF TRUSTEE ELECTION (AVISO DE ELECCION REGENTES)

To the Registered Voters of Borden County, Texas:
(A los votantes registrados del Texas)

Notice is hereby given that the polling places listed below will be open from 7:00 a.m. to 7:00 p.m., on May 6 19 89, for voting in a Trustee election, to elect 3 trustees.
(Notifíquese, por las presente, que las casillas electorales sitados abajo se abrirán desde las 7:00 a.m. hasta las 7:00 p.m. el 6th de mayo de 19 89 para votar en la Elección para elegir tres regentes.)

LOCATION(S) OF POLLING PLACES (DIRECCION(ES) DE LAS CASILLAS ELECTORALES)

School District Election Precincts	Polling Places	Election Officers
Box No. 1	Plains Community Center Community of Plains	Clarajane Dyess Presiding Judge Bob Dyess Alt. Presiding Judge
Box No. 2A	Borden County Courthouse South Gail	Jean Taylor Presiding Judge Cindy Ball Alt. Presiding Judge
Box No. 2B	Precinct 2 Election House Vealmoor	Mrs. Pat Porter Presiding Judge Susan Stephens Alt. Presiding Judge
Box No. 3A	Murphy Election House Murphy	Melton Davis Presiding Judge Martha Davis Alt. Presiding Judge
Box No. 3B	Fairview Election House Fairview	Mary Ruth Gray Presiding Judge Cindy Reyes Alt. Presiding Judge
Box No. 4A	Exhibit Building North Gail	Joyce Herridge Presiding Judge Donna Hendricks Alt. Presiding Judge
Box No. 4B	Hurston Lemons, Jr. House Snelling	Jacquelyn Wills Presiding Judge Don Wills Alt. Presiding Judge

Absentee voting by personal appearance will be conducted each weekday at
(La votación en ausencia en persona se llevará a cabo de lunes a viernes en)

Superintendent's Office - Borden County School

(location) (sitio)
between the hours of 8:00 a.m. and 5:00 p.m. beginning on April 17, 1989
(entre las 8:00 de la mañana y las 5:00 de la tarde empezando el 17 de abril 1989)
(date) (fecha)

and ending on May 2, 1989
(date)

(y terminando el 2 de mayo 1989)
(fecha)

Applications for ballot by mail shall be mailed to:
(Las solicitudes para boletas que se votarán en ausencia por correo deberán enviarse a)

Barbara York
(Name of Absentee Voting Clerk)
(Nombre del Secretario de la Votación En Ausencia)
P. O. Box 95
(Address) (Dirección)
Gail, Texas 79738
(City) (Ciudad) (Zip Code) (Zona Postal)
Recommended but not required

Applications for ballots by mail must be received no later than the close of business on
(Las solicitudes para boletas que se votarán en ausencia por correo deberán recibirse para el fin de las horas de negocio el)
April 28, 1989
(date) (fecha)

Issued this the 27th day of March, 19 89.

(Emitida este día 27th de marzo, 19 89.)