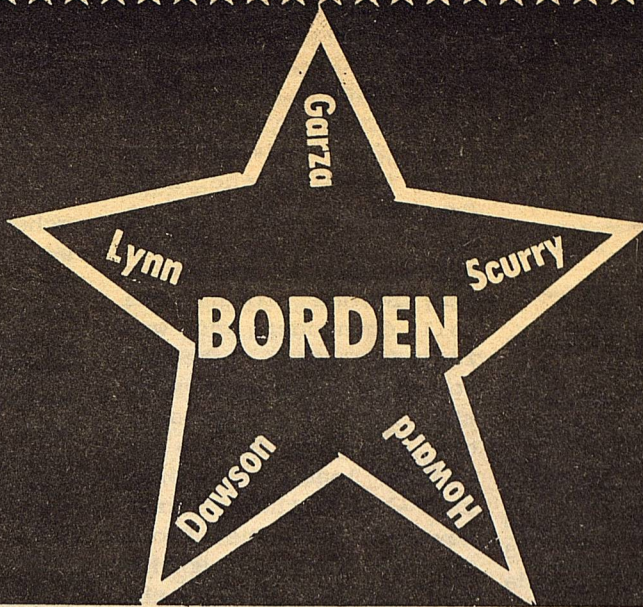


# THE

VOLUME XIV



# STAR

JANUARY 11, 1989

Serving the Counties of Borden, Dawson, Garza, Howard, Lynn & Scurry

## Former Borden County Resident

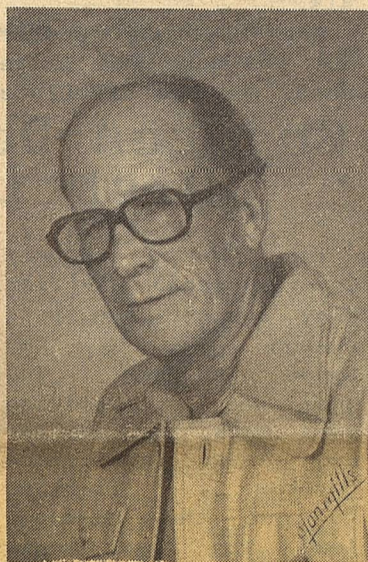
### Dies

Services for Vernon Todd, 70, a former Borden County resident were held at 2 p.m. Wednesday, Dec. 28, 1988 in the Second Baptist Church with the Rev. Clifton Igo, retired Baptist minister officiating. He was assisted by the Rev. Sly Moore, pastor.

Burial was in Lamesa Memorial Park.

He died at 5:17 p.m. Monday, Dec. 26, in Lubbock's Methodist Hospital after a lengthy illness.

He was born in on Dec. 23, 1939 in Crowell and moved to Lamesa. He was a farmer in Lamesa in 1939. He and member of the married Tharon Dugger Second Baptist Church



Vernon Todd

and Masonic Lodge No. 909.

Survivors include his wife; four daughters, Lanis Ramsey of Lubbock, Linda Dove of Midland, Verna Adcock of Gail, and Janice Hogg of Lamesa; three sisters, Ruth Black and Nita Monthey, both of Lamesa and Eloise Jones of Hobbs, N.M.; 13 grandchildren; and 7 great-grandchildren.

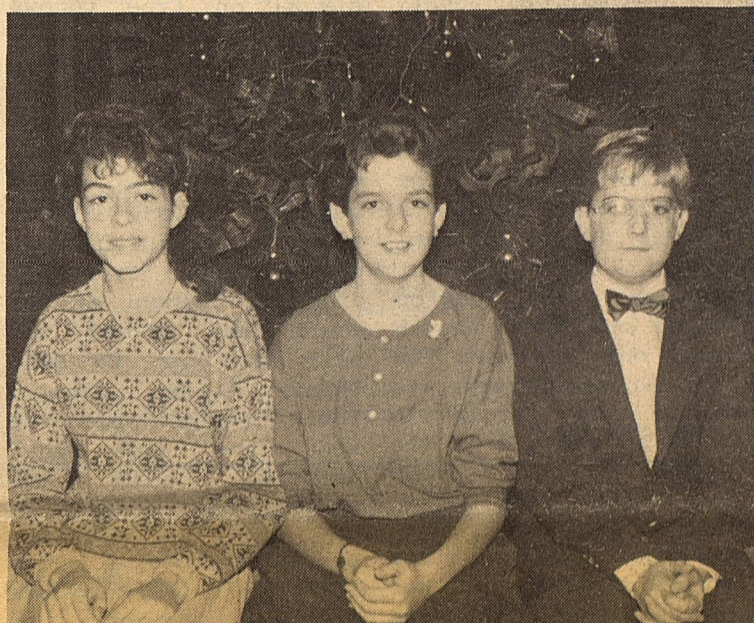
Vernon and his family moved to Borden County in 1952, where he farmed land on the north side of Lake Thomas in the Murphy Community.

He was elected to the Borden County School Board in 1960 and served 9 years before resigning due to health problems in 1969. Upon retiring from farming, he and his wife moved to Lamesa where he resided until his death.

While in Borden County all four of his daughters attended school at Borden County I.S.D. along with two of his son-in-laws.

Three of his grandchildren are students at Borden County I.S.D. and he enjoyed coming and watching them participate in sports and other activities.

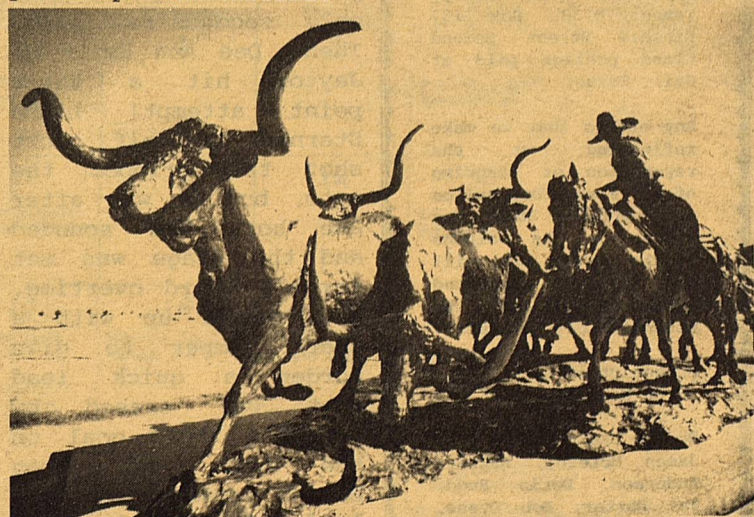
Even though he had not lived in Borden County the past 20 years, he still always considered it home, and dearly loved his Borden County friends and neighbors.



## District II 4-H Food Show Participants

Mendy Hensley, Laura Hensley, and Roy Clayton traveled to Lubbock on December 10 to represent Borden County at the District II 4-H Food show.

Mendy participated in the Jr. II Fruits and Vegetables category. Laura competed in the Jr. I Main Dish Category and Roy competed in the Jr. I Breads and cereals category. All three received participation ribbons.



A life-sized sculpture of a longhorn trail herd stands at the entrance to the Stockyards District in Fort Worth, in remembrance of days past when trail drives thundered through this part of Texas. The feel of the Old West is captured here in Western style stores, restaurants and honky-tonks, and even a hotel done in all-Western motifs. The Stockyards district is located just north of downtown Fort Worth. Tourism Division, Texas Department of Commerce photo.

## Local Firm Adds New Attorney



Troyce G. Wolf

Troyce G. Wolf has joined the Bancroft-Mouton law firm in Big Spring and will special-

ize in civil practice, personal injury law.

He graduated from Borden County High School in 1980 and attended Texas Tech University from 1980 through 1984, graduating in December.

He then attended Southern Methodist University law school, from which he was graduated in May. Having opted out of the state oath of office ceremony in Austin, Wolf took his oath Nov.

23 from District Judge James Gregg, enabling him to practice in any Texas state court.

# Basketball News

## Lady Coyotes Win 84-82 Triple Overtime Thriller

After a long Christmas break, the Borden County Lady Coyotes basketball team needed a good game to prepare for district play. For the Lady Coyotes and for the spectators, it couldn't have gotten any better than last Tuesday night's game with the Jayton Lady Jays. Just three weeks ago, Borden met Jayton in the Borden County Tournament with the Gail girls taking a two point win, 40-38. This time it took three overtimes and you can more than double the score for both sides.

In the first quarter, Borden started out sluggish as Jayton jumped out to a quick lead, only to have the hosts come back to narrow the margin to 20-18 at the end of the stanza. Both teams battled even the second quarter, 15-15, with starting post Elana Himes picking up her fourth foul in the quarter. Amy Lewis entered the game and

held her own against the taller Lady Jays, as did Randi Woodward, coming in for Kristi Adcock, who also got into foul trouble in the first half. Behind Kate Phinizy's two 3 point shots and Vida Balaque's one 3 point shot, Borden grabbed a 50-46 lead entering the last quarter. Jayton came back in the last stanza on free throws after starting posts Elana and Kristi fouled out early. The Lady Jays seemed to have the game won with a comfortable three point margin with only seconds remaining. But then Lisha Sternadel drove the length of the court and passed the ball back out to Kate Phinizy, who hit a three point shot to send the game into overtime, with the score being 69-69. In the first overtime, Borden grabbed a quick lead 72-71, only to see Tiffany Bryant of Jayton tie it up on a free throw with only seconds remaining to send the game into a second overtime. In the second extended period, Lisha Sternadel connected on two field goals and Kate hit two crucial free throws and Borden held a three point lead, 78-75, with only seconds remaining. Then Dee Ann Smith of Jayton hit a three point attempt! Lisha Sternadel's half court shot then ripped the nets, but it was after the horn had sounded and the stage was set for the third overtime. Amy opened up with a short jumper to give Borden a quick lead that was erased by Bryant's field goal on the other end. Then Borden again got the lead on Lisha's free throw in the last minute. Jayton regained the lead on Smith's goal. Amy was then fouled and walked to the line with a one-and-

one, seconds remaining, and Borden trailing by one. She calmly sank both to give the Lady Coyotes a one point lead. After a rebound by Amy on the defensive end, Borden brought the ball downcourt and was fouled. Randi stepped to the line and made the first of a one-and-one and gave Borden an 84-82 lead. Jayton's shot at the buzzer bounced off the front of the rim and Borden had its 15th win of the season!

Eight total players from both teams hit in double figures. Borden was led by Lisha Sternadel's 24 and Elana Himes' 19. Also in double figures were Amy Lewis with 13 and Kate Phinizy with 12. Vida Balaque hit 8, Kristi Adcock made 5, and Randi Woodward connected on three free throws to round out the scoring. Amy led in field goal percentage with 50% followed by Lisha with 45%. Borden shot an excellent 71% from the line as a team. They were led in that category by Kristi with 100%, hitting all three of her attempts. She was followed by Elana with 88% and Kate and Lisha with 75% each. Kate led in steals with 4 and Vida had 3. Amy led in rebounds with 11 and Kristi was next with 8. Elana added 6 to the total. Lisha led in assists with 5 and Kristi was close behind with 4.

The Varsity game was preceeded by the Freshmen girls team against Jayton's J.V. The freshmen showed definite signs of a two week layoff as they struggled to an 8-8 first quarter. Taking an 18-12 half-time lead, Borden could only increase their lead by one 27-20, entering the last stanza. There, the Coyotes held Jayton to only two points for a 32-22 win. Amanda Anderson led in scoring with 9 points followed by Kristin Kilmer with 7. Shayne Hess and Kelly Jo Ogden each added 6 to the total

cont. to pg. 3

## Coyotes Clipped By Jaybirds 53-57

The Borden County Coyotes resumed their schedule after a two week Christmas vacation from the courts. The Jayton Jaybirds led the entire game but the Coyotes kept the game close with their pressure zone press. With the press, the Coyotes made 7 more steals than they gave up to turnovers. Cool shooting, especially at the freethrow line, hurt the offensive effort. The Coyotes made 21 of 56 attempts for 37 % from the field. From the charity line we only connected on 11 out of 27 attempts for 41%.

The leading scorer for the game was Brian Bond, who had 31 points

while shooting 13 of 26 from the field and 5 of 6 from the freethrow line. He also made 6 steals and had 6 rebounds. Cole Vestal made 10 points and had a steal and 5 rebounds. Paul Sturdivant made 4 points and had 3 rebounds.

Jimmy Rios scored 3 points. Jimmy came off the bench to spark the defensive effort with 6 steals 6 rebounds, and 2 assists. Shane Kemper also scored 3 points and had 2 steals, 3 rebounds and had 2 assists. Lance Telchik scored 2 points. Lance Latimer didn't score, but he made 1 steal. Cody Stone had 1 steal and 1 rebound. Eric Lusk made 2 assists.

## Coyotes Defeated In District Opener

The Borden County Coyotes opened district play against the pre-season favorite the Sands Mustangs. The game was an exciting game with the smaller and less experienced Coyotes fighting to cut the Mustangs lead. The final score was 61 to 47, but the Coyotes cut the lead to 8 points mid-way thru the fourth quarter. Late in the fourth quarter a series of poorly chosen shots and poor defense let the Mustangs increase their lead.

The Coyotes showed improvements in several areas. They had 10 assists and several attempts but a good defensive effort stopped them. Their turnovers were also reduced from previous games. The Coyotes also made 15 steals with their full court pressure defense. In the area of rebounds, the Coyotes was at a disadvantage. The Mustangs with their 6'4" senior postman dominated the boards on both ends.

Cole Vestal was the Coyotes leading scorer as he connected on 6 field goals in the fourth quarter. 1 of the 6 was for a 3 point

shot. He scored 21 points as he connected 8 out of 16 attempts from the field and was 2 for 2 at the free throw line. He also had a steal, 10 rebounds, and an assist. Brian Bond scored 18 points and had 4 steals, 2 rebounds, and 2 assists. Shane Kemper scored 4 points and had 1 steal, 3 rebounds, and 3 assists. Paul Sturdivant scored 2 points and had the game high 6 steals, 3 rebounds, and 2 assists. Jimmy Rios also scored 2 points. Jimmy was slowed by an ankle injury and only had 1 steal, 1 rebound, and 1 assist. Cody Stone had 1 steal, 5 rebounds, and 1 assist. Lance Latimer, Lance Telchik and Eric Lusk saw action, but they did not score.

The Lubbock A.J. had the Mustangs ranked as number 10 in our area, so the young Coyotes played a very respectable game with them. If a few more shots had fallen, the game would have been much closer. The Coyotes connected on 17 of 47 attempts from the field for 36%. At the free throw line they were 7 out of 12 for 58%.

The Borden Star  
Publication No. 895520  
(USPS 895-520)

CO-EDITORS

Verna Adcock  
Clarajane P. Dyess

Published weekly, except for Christmas and New Years, on Wednesday at Gail, Borden County, Texas 79738, Box 137 Kincaid Street Second Class postage paid at Gail, Texas.

Any errors that we make reflecting on the reputation or standing of any Firm, Corporation or individual that may appear in the columns of the Borden Star will be gladly corrected when called to the attention of the staff.

Subscription Rates:  
\$8.00 per year

Borden Star Owners:  
James McLeroy, Barbara Anderson, Doris Rudd, Pat Porter, Bob Dyess, Edna Miller, Ruth Weathers, Mrs. Nathan Zant, Sonny Tucker, Eddie Simer, Loreen Jones, Martin Parks, Dan Turner, Lela Porter, and Marge Toombs.

# Lady Coyotes Start Out With District Win

For a while it looked like Borden County girls were suffering from winter inside the gymnasium as they found their shooting extremely cold against Sands in Tuesday night's district opener. But things sure warmed up in the second half, especially in the last quarter where the Lady Coyotes outscored the Lady Mustangs 21-3 to take their District 16A opener 57-34. Hitting only 5 of 17 in the first quarter, Borden found itself behind 13-12 at the end of the first quarter, and still trailed by a point at half 24-23, as they could only connect on 5 of 21 in the second stanza. But Gail outscored the Ackerly girls 13-7 in the third and then hit their first seven shots of the fourth quarter to extend their lead on the way to their initial district win.

Elana Himes led in scoring with 22, 10 of it coming in the crucial third period where she hit 5 of 7. Kate Phinizy, Vida Balaque, and Lisha Sternadel all hit in double figures also as each made 10 points.

Amy Lewis made 3, and Kristi Adcock connected on 2. Elana led in field goal percentage with 42% followed by Kate with 40%. Lisha led in free throw percentage with 100% making 2 of 2. Elana led in steals with 7 followed by Kate, Kristi, and Lisha with 6 each. Elana also led in rebounds with 11 and Kristi next with 5. Vida led in assists with 5 and Kate added 4.

The J.V. girls were also victorious as they defeated Sands 51-35. Holding a 6 point lead their first quarter, 12-6, they extended their lead to 10, 27-17, by half time. A one point margin more was added in the third quarter with a 10-9 scoring, before settling for the 16 point win. Amanda Anderson was top scorer for Borden with 23 points followed by Shayne Hess with 11. Kelly Jo Ogden hit 7 for Borden and Kristin Kilmer chipped in 6. Shara Dee Woodward and Kristin Monger each added 2 to the total. The Varsity raises their record to 16-1 on the year, but more importantly, 1-0 in

district play. Their next game will be this Friday, January 13, at Grady. Then they will be at home Tuesday, January 17 against Dawson. Both games will start at 6:30. The J.V. record goes to 7-3 for the year. They will not play again until January 24, at Sands.

## REVISED TIMES

### Borden County I. S. D. BASKETBALL SCHEDULE 1988-89

Jan. 10	*O'Donnell	O'Donnell	A&B	A	5:00
Jan. 13	*Grady	Grady	A	A	6:30
Jan. 17	*Dawson	Gail	A	A	6:30
Jan. 20	*Klondike	Klondike	A	A	6:30
Jan. 24	*Sands	Sands	A&B	A	5:00
Jan. 27	*O'Donnell	Gail	A&B	A	5:00
Jan. 31	*Grady	Gail	A	A	6:30
Feb. 2-4	Forsan J. V. Tournament		B	B	TBA
Feb. 3	*Dawson	Dawson	A	A	6:30
Feb. 7	*Klondike	Gail	A&B	A	5:00

\* DENOTES DISTRICT GAMES



### BORDEN COUNTY JUNIOR HIGH 1988-89 Basketball Schedule

DATE	OPPONENT	PLACE	GIRLS	BOYS	TIME
Jan. 16	O'Donnell	Gail	A	A	6:00
Jan. 23	Grady	Gail	A	A	6:00
Jan. 30	Dawson	Dawson	A	A	6:00
Feb. 6	Klondike	Gail	A	A	6:00



## Lady Coyotes Win

cont. from pg. 2 and Shara Dee Woodward made 4. Also playing were Kristin Monger, A'Lise Lloyd, and M'Lys Lloyd.

Next game for the Varsity girls will be at Grady, January 13, starting at 6:30. The J.V. girls will play their next game on Tuesday, January 24, at Sands. The Varsity will play Dawson on January 17, starting at 6:30.

## REGULAR BOARD MEETING December 15, 1988

The Board of Trustees of the Borden County Independent School District met in regular session on December 15, 1988 at 8:00 p.m.

Board members present were Jack McPhaul, Joel Dennis, Jon Monger, Tom Ed Vestal, Bill Phinizy, Scott Clayton and Steve Hess.

Administrator present was James McLeRoy.

Jack McPhaul, Board President, called the meeting to order.

### Minutes

The Minutes of the previous meeting of November 21, 1988, were read. A motion was made by Steve Hess and seconded by Tom Ed Vestal to approve minutes as read. Motion carried unanimously.

### Visitors

No visitors were present.

### Bills

The Board reviewed the bills as presented in the meeting. A motion was made by Bill Phinizy and seconded by Tom Ed Vestal to approve bills for payment.

### Superintendent's Report

The Superintendent gave a year-to-date financial report. The financial statement reflected an ending balance of \$1,666,920.10 with approximately 87% of the 1988 taxes collected.

Attendance was reported at 153 in elementary and 67 in high school. (Total of 220).

No changes in personnel were reported in the monthly personnel report.

A motion was made by Joel Dennis and seconded by Scott Clayton to approve the Superintendent's Report.

### Superintendent's Annual Evaluation

The Board evaluated the Superintendent in the following categories:

- I. Personal Competence
- II. Professional Competence
- III. Board-Superintendent Relations
- IV. Personnel Management
- V. Business and Financial Matters
- VI. Community Relations

A motion was made by Bill Phinizy and seconded by Tom Ed Vestal to approve the Superintendent in all categories. Motion carried Unanimously.

## COACHES' CORNER

Joe Bond

Bill May

The Coyotes have had more than their share of close games during the past few weeks, but unfortunately they have come out on the short end in most of the games. Don't lose

heart, Coyotes. Keep working hard and things will get better. Use these experiences to make each team member a better player in the future.

Coach Joe Bond



## SCHOOL LUNCH MENU

January 16 - 20, 1989

Monday	Corn Dogs Cheese Pork and Beans Fruit Milk	Salad Bar
Tuesday	Oven Cooked Chicken Mashed Potatoes English Peas Jello Hot Rolls Milk	Salad Bar
Wednesday	Cheese and Bean Nachos Vegetable Salad Fruit Cake Milk	Salad Bar
Thursday	Hamburgers French Fries Lettuce & Pickles Cookies Milk	Salad Bar
Friday	Teacher's Workday (No School)	

## January 1989

Sunday	Monday	Tuesday	Wednesday	Thursday	Friday	Saturday
1	2	3	4	5	6	7
8	9	10	11	12	13	14
15	16	17	18	19	20	21
22	23	24	25	26	27	28
29	30	31				

DECEMBER 1988  
S M T W T F S  
1 2 3  
4 5 6 7 8 9 10  
11 12 13 14 15 16 17  
18 19 20 21 22 23 24  
25 26 27 28 29 30 31

JANUARY 1989  
S M T W T F S  
1 2 3 4  
5 6 7 8 9 10 11  
12 13 14 15 16 17 18  
19 20 21 22 23 24 25  
26 27 28

No. 100 Series  
© Copyright 1987  
Southwest Company  
New Springfield, MA 01100

## Texas Tech Graduate

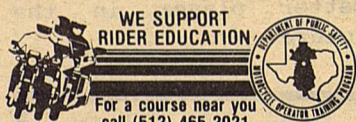
Roxie Wolf, daughter of Mr. & Mrs. Vernon Wolf, graduated cum laude from Texas Tech University December 17, 1988. She received a bachelor of science degree in accounting. Roxie is employed with the Grant Thornton accounting firm in Midland. She is a 1984 graduate of Borden County High School.

## Motorcycle Operator Safety Course

Texas has over 70,000 persons licensed to ride motorcycles. To sharpen riding skills, the Department of Public Safety (DPS) provides motorcycle operator training courses throughout the state to beginning and experienced riders in major urban areas. In addition, a mobile motorcycle operator training program is available for areas of the state that cannot support a permanent training site.

Since September 1, 1981, young adults age 15 through 17 are required to take a motorcycle operator training course in addition to the classroom portion of a regular driver's education course in order to get a motorcycle license.

If you are a beginner or an old-timer wanting to improve your riding skills, call (512)465-2021 for information on the course nearest you.



## WTC Registration

SNYDER--Western Texas College will hold registration for spring semester classes on Jan. 16 and 17. Classes for day and evening students will begin on Jan. 18.

Sophomore students will register on Jan.

16 and freshmen on Jan. 17.

Dormitories will open at 10 a.m. on Jan. 16.

Information about courses on the spring schedule and registration can be obtained by calling the college at 915/573-9511.



The reason there are so many surnames of Smith today is that during the Middle Ages the name was used for all metalworkers, or smelters, which means "to beat."

## HEY KIDS!

MAKE PLANS TO ENTER THE  
THIRD ANNUAL LITTLE  
INTERNATIONAL GOAT SHOW,  
HELD DURING THE 1989  
BORDEN COUNTY STOCK SHOW.

**Jana & Ed Emerison**  
announce the birth of  
their daughter

**J' Lyn**

Born: Dec. 19, 1988  
Weight: 8 lbs. 4 oz.  
Length: 21 inches  
Brother: Eric

Maternal Grandparents:  
**Jarrell & Nancy Edwards**

## Thank You

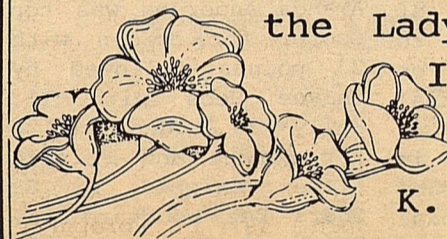
We wish to express our heartfelt appreciation and thanks to our dear friends and neighbors for all the comforting words spoken, the kindness shown, the food and beautiful floral offerings extended to us in the loss of our beloved one. A special thanks to Dennis White and his crew, the doctors and nurses in ER and especially Bros. Moore, Igo and Luck. May God bless each of you.

*The Family of Vernon Todd*

## Thank You

Thanks for all the help and offers of help, the visits, food, and cards during my illness and surgery.

A special thanks to the Lady Coyotes. I'll be back soon.



K. T. Reddell



CONFIDENTIAL

COMPUTERIZED BOOKKEEPING  
BUSINESS COMPUTER

FARMING

RANCHING

INDIVIDUAL

JOYCE KINCHELOE  
915-856-4438

P.O. Box 71  
Gail, Texas 79738

Steve & Diane  
McMeans of Post are  
the proud parents of

**Macy Dyan**

born Dec. 28,  
1988 at 7:03 a.m.

Maternal Grandparents:

Rev. & Mrs. Troy Cartmill of Baytown

Paternal Grandparents:

Mickey & Shirley McMeans of Gail

Maternal great grand-

Mother is Eunice Sales of Slaton

Paternal Great-grand-

mother is Genevia

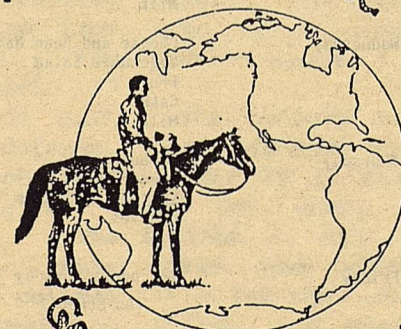
McMeans of Aspermont



**Willard Moody**  
will be teaching  
**God's Uncompromising Word.**  
**January 16-17**  
**Monday-Tuesday**  
**7:00 p.m.**

Union Community Center  
5 Miles West of Snyder on Lamesa Hwy.

Worship & Praise Service  
New Creations



*Willard Moody  
Ministries*

*Go Into All The World*

## COURTHOUSE NEWS

WHEREAS, On the 21st day of December, A.D. 1988, the Commissioners' Court of Borden County, Texas, convened in Special Session at the Regular meeting place thereof in the Courthouse at Gail, Texas, the following members of the court being present and participating, to-wit:

VAN L. YORK	COUNTY JUDGE, Presiding
FRANK CURREY	COMMISSIONER, Precinct No. 1
LARRY D. SMITH	COMMISSIONER, Precinct No. 2
HURSTON LEMONS, JR.	COMMISSIONER, Precinct No. 4
DOROTHY BROWNE	COUNTY CLERK AND EX-OFFICIO CLERK OF THE COMMISSIONERS' COURT

with Mr. Vernon Wolf, Commissioner Precinct No. 3, absent, constituting a quorum, when the following proceedings were had, to-wit:

### MINUTES APPROVED

Minutes of the meeting of December 12th, A.D. 1988 were read. Commissioner Smith made a motion to approve said minutes as read. Commissioner Currey seconded the motion.

Voting For: Commissioners Currey, Smith and Lemons  
Voting Against: None.

### WATER SYSTEM

The repairs needed on the water tank and water line were discussed. No action taken.

### ACCOUNTS ALLOWED

Current accounts were examined. A motion was made by commissioner Lemons to pay said accounts. Motion was seconded by Commissioner Currey.

Voting For: Commissioners Currey, Smith, and Lemons  
Voting Against: None

### ADJOURN

A motion was made by Commissioner Smith to adjourn. Motion was seconded by Commissioner Lemons and approved unanimously.

1 pkg. Peanut brittle pieces  
Oranges & pineapples)  
Put the oranges and

Melt coating in microwave oven. Dip marshmallows in coating. Sprinkle with brittle

### EASY FRUIT SALAD

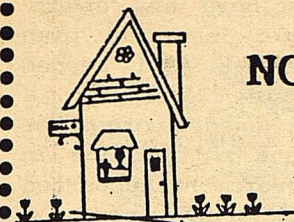
Shaina Isaacs

- 1 Box Orange Jell-o
- 1 Small Carton Cottage Cheese
- 1 Small Carton Cool Whip
- 1 Small Carton Cool Whip
- 2 Cans Mandarin Oranges
- 1 20 oz. Can Crushed Pineapples ( drain

## NOTES FROM HOME

By Debra Pollard

Home Demonstration/CEA



### Weeding Out The Records

Winter is a good time to re-assess your financial habits because of a year the just ended. Like most people, your financial papers and records could probably stand a little overhauling.

But before you begin a reorganizing, consider what you really need and what you can prune out. Most of us save more paperwork than necessary and it just takes up a lot of space.

Start by setting out boxes and files to hold three types of records: those you can toss, those you need to keep six or more years, and those you need to keep for the rest of your life.

**THINGS YOU CAN TOSS.** If you don't need the record for tax purposes or if you are sure it can easily be replaced, don't save it.

Receipts for small daily purchases do not have to be saved, especially if they have no tax consequences. But keep receipts for expensive items to settle insurance claims in the case of loss, theft or damage.

It isn't necessary to keep monthly mutual fund and brokerage statements once a comprehensive year-end statement is issued. However, you should save trade confirmations and dividend-reinvestment statements. This information is needed to determine your cost basis when you sell a security. Without it, you may overpay taxes when you sell the security.

You can safely discard most business receipts for less than \$25 and your credit card bills after your bank returns the cancelled check verifying that you paid the bill. However, if you need your credit

card statement for analyzing itemized deductions at tax time, keep those statements with your tax records.

**RECORDS TO KEEP SIX OR MORE YEARS.** Plan to keep tax records for as long as they are important for any Internal Revenue law. Keep records that support an item of income or a deduction appearing on a return until the statute of limitations for the return runs out. Usually this is 3 years from the date the return was due or filed or 2 years from the date the tax was paid, whichever date is later.

Sometimes you may have to keep tax records for a longer period, such as in property transactions, when the basis for the new or replacement property depends on the old property's basis. Keep those records for as long as they are important in figuring your property's basis.

**RECORDS TO KEEP FOREVER.** These records include birth and death certificates, list of financial assets, medical records, powers of attorney, trust agreements, wills and W-2 statements. Also keep divorce decrees and custody agreements, military papers, naturalization papers and prenuptial agreements.

Getting a handle on your paper trail will take a little time and effort, but will be worth it. Once you've accomplished this task, you'll be able to find every paper you need.

### FOOD SHOW RECIPES

CHOCOLATE COVERED MARSHMALLOWS

Leslee Hunt

- 1 pkg. Candy Coating
- 1 pkg Large Marshmallows

pineapples in a bowl. Sprinkle Jell-o over mixture and stir. Add cottage cheese and carton of cool whip. Stir and mix together. Set in refrigerator to chill. Serves 6-8

\*\*\*\*\*

Jan. 20-22 -- Laurence Lukinbill as *Lyndon Johnson*, Paramount Theater, Austin. The one-man show, first seen on National Public Television, is touted as a tour de force which gets to the soul and marrow of the dynamic President and Texan. Lukinbill captures the power, complexity and agony of an enigmatic and driven American. Performances each evening plus matinees on Sat. & Sun. Admission: \$10.80 - 21.60. Tickets and information from Paramount Theater, Box 1205, Austin 78767 (512/472-5470).

### -CLASSIFIED-

GENISIS SEAFOOD INC.

Stanton, Texas

FRESH FROZEN SHRIMP

SIZES: Small to Jumbo  
1 lb. or 2 lb. boxes

Call: Tana May  
856-4419

### \* HELP WANTED \*

GET PAID  
for reading books!  
\$100.00 per title.  
Write: PASE-J6095,  
161 S, Lincolnway  
N. Aurora, IL 60542

# Claiborne's

## THRIFTWAY

**GREEN SEALS**  
50

**GREEN SEALS**  
50

**HOME OWNED & OPERATED BY**  
**JESS & CAROLYN CLAIBORNE**  
**OPEN: 7 AM - 9PM**

**GREEN SEALS**  
50

WE ACCEPT FOOD STAMPS.

710 N. 4th
Lamesa, Texas

## Security State Bank

Big Spring, Texas

Member F.D.I.C.
1411 Gregg

## ASCS NEWS BY Jerry Stone

### 1989 FARM PROGRAM SIGNUP PERIODS

Continuation for the 1989 Acreage Reduction Programs (ARP) through April 14. Except for a few with problems all base and yield notices have been mailed. Cotton has a requirement of a 25% reduction from the base. A 50/92 option is available for cotton and may be designated at the time the crop acreage is reported. Wheat and feed grains have a 10% reduction from the base except for oats which has only a 5% reduction. A 0/92 option is available for wheat and feed grains and may also be designated when the acreage is reported.

The signup process is similar to last year, but due to the new payment limit determination, advance payments will be slower in coming. Be prepared, when you file your CCC-477, contract to participate, to obtain all owners signatures, and update the ASCS-1026 Sodbuster rules. This will include filing these forms for landlords. The County Committee has to make actively engaged and person determinations for all person receiving a payment for 1989 crops. Even after all signatures and information are obtained, it will take a while to process payments. Please be patient because everyone needs his payment just as soon as possible.

### 1988 FINAL PAYMENT

The final payment rate for 1988 cotton deficiency will not be announced until late January. After the rate is announced, we should begin processing final payments in early February.

### CCC-182

Farm program payment earnings for calendar

year 1988 will be reported to in January on form CCC-182. Upon receipt, check it carefully against your records. Most likely, it will reflect payments received for both 1987 and 1988 crops. If you have problems reconciling your payments, we will be glad to help.

### COC ELECTION

The results of the county committee election are as follows:

Kenneth Williams was elected to the County Committee for a three year term, Joe Pat Harding and Dan Shortes was elected 1st and 2nd alternate to the committee.

We would like to thank Jim Mac Burkett for his years of dedicated service to the producers in the county.

### CHANGES

Please report changes

of ownership, address, operator, etc. as soon as possible. If land is to be divided or combined, we need to know quickly so we can initiate a farm reconstitution.

### COMMODITY CREDIT CERTIFICATE HOLDERS (CCC-6's)

If you are holding a certificate you need to keep a close watch on the expiration date. The certificate can be exchanged for cash if submitted to the issuing office during the cash redemption period which begins 90 days prior to expiration.

If the certificate has expired it can be exchanged for cash, based on 85% of the face value, if presented to the issuing office within six months of the expiration date. If more than six months and less than eighteen months the certificate may be exchanged based on 50% of the face value.

### WOOL AND MOHAIR

Wool and Mohair producers are reminded to bring original sales documents on wool, unshorn lambs, and mohair to the county office no later than January 31, 1989.

### CONSERVATION PLANS

Producers who plan to plant a program crop for harvest in 1990 crop year, must have a conservation plan. Planting without an approved conservation plan prepared by the Soil Conservation Service (SCS) would make you ineligible for all USDA program benefits for that year.

If you have any highly erodible land and plan to plant a fall seeded crop in 1989 or a spring seeded crop for 1990 and participate in any government supported program, you need a conservation plan in effect before planting the crop.

### HOLIDAY

This office will be closed Monday, January 16, in observance of Martin Luther King Day.

THE AMERICAN HEART ASSOCIATION MEMORIAL PROGRAM.

WERE FIGHTING FOR YOUR LIFE

American Heart Association  
Texas Affiliate

NON DEDUCTABLE HOME INSURANCE

IF YOUR DEDUCTABLE IS EATING YOU UP AND YOU THINK YOU ARE PAYING TOO MUCH FOR YOUR HOME INSURANCE CALL ME FOR A RATE QUOTE, I THINK I CAN HELP YOU.

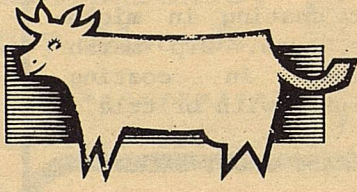
FARMERS MUTUAL PROTECTIVE ASSOCIATION OF TEXAS

RAY AGENCY  
612 No. 2nd.  
806-872-3869 Ronnie Ray or Dawn Ray Lamesa, Texas

**BIG SPRING LIVESTOCK AUCTION**

915/267-5881  
915/267-3664  
915/267-3665

P.O. BOX 102  
BIG SPRING, TEXAS 79720



**WESTERN SEED & DELINTING**

**Certified Cotton Seed**

Paymaster 145,303,404,792  
Acid Coker 3131,S110,500 Cotton Planting  
Delinting Terra 383, SR-10,SR-482 Seed  
SP-21,SP-215,CAMD-E,CAB-CS

Hay Grazer Grain Sorghum Wheat

**Wheat & Oats Cleaning**

Lamesa, Texas  
RON BUTLER

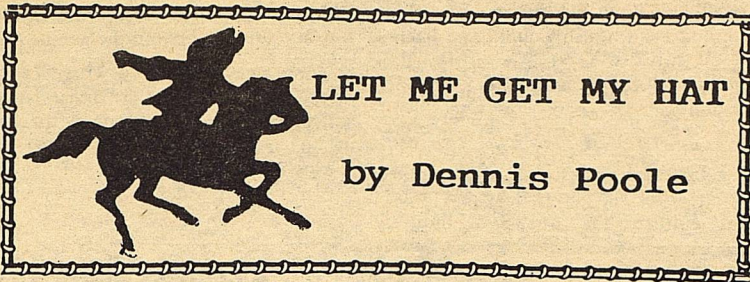
BUSINESS PHONE (806) 872-8896  
RESIDENCE PHONE (806) 872-5388 (806) 872-5271

**LYNTEGAR ELECTRIC COOPERATIVE, INC. TAHOKA, TEXAS**

**Statement of Nondiscrimination**

Lyntegar Electric Cooperative, Inc. has filed with the Federal Government a Compliance Assurance in which it assures the Rural Electrification Administration that it will comply fully with all requirements of Title VI of the Civil Rights Act of 1964 and the Rules and Regulations of the Department of Agriculture issued thereunder, to the end that no person in the United States shall, on the ground of race, color, or national origin, be excluded from participation in, be denied the benefits of, or be otherwise subjected to discrimination in the conduct of its program and the operation of its facilities. Under this Assurance, this organization is committed not to discriminate against any person on the ground of race, color or national origin in its policies and practices relating to applications for service or any other policies and practices relating to treatment of beneficiaries and participants including rates, conditions and extension of service, use of any of its facilities, attendance at and participation in any meetings of beneficiaries and participants or the exercise of any rights of such beneficiaries and participants in the conduct of the operations of this organization.

Any person who believes himself, or any specific class of individuals, to be subjected by this organization to discrimination prohibited by Title VI of the Act and the Rules and Regulations issued thereunder may, by himself or a representative, file with the Secretary of Agriculture, Washington, D.C. 20250, or the Rural Electrification Administration, Washington, D.C. 20250, or this organization, or all, a written complaint. Such complaint must be filed not later than 180 days after the alleged discrimination, or by such later date to which the Secretary of Agriculture or the Rural Electrification Administration extends the time for filing. Identity of complainants will be kept confidential except to the extent necessary to carry out the purposes of the Rules and Regulations.



## LET ME GET MY HAT

by Dennis Poole

### Grazing Management For Winter Pastures

Because of the dry fall weather this year, proper management of winter pastures is more critical than ever.

Winter pastures must be used efficiently, that means some type of grazing management.

Which system is used dictates the degree of management required.

A simple rotation grazing system with two or more pastures is easy to implement. All animals are put on one pasture while the other pastures grow more forage. When the first pasture has been fairly well grazed, the herd is moved to a second pasture for grazing, and so on. With total rest, a grazed pasture should produce some regrowth for later grazing.

For a more intensive grazing management system, a type of limited grazing may be a good choice. Dry cows can be grazed for two for four hours every other day on winter pastures. Some other forage like hay would be necessary while animals are off pasture. In effect, winter pasture would be the protein supplement for these animals.

Cows with calves, steers or growing heifers should be allowed to graze high quality winter pasture every day, for about two hours.

With such a system, weight gains will not be great but should occur. The important feature is that grazing days per acre can be increased by limited grazing.

Livestock will become trained to the type of grazing management selected. Under rotation grazing, livestock will be more than willing to change pastures once

the pasture they are on is grazed down.

Under any form of limited grazing, live-stock become trained in about two weeks. After being herded off pasture regularly for several weeks, they become trained and start leaving on their own accord. Thus, actual work involved becomes minimal.

Between rotation grazing and several variations of limited grazing, some type of grazing management can be adapted to anyone's use. It may stretch winter pastures enough to last the season.

### Practice Electrical Safety On The Farm

Electricity is a hard worker on the farm, but it's also a killer if safety is disregarded.

Electrical shock, including lightning, causes nearly 1,000 deaths and many disabling injuries each year in this country. Additional injuries and property damage result from fires caused by faulty wiring or elec-

trical equipment. Lightning, downed power lines or a faulty extension cord can each kill or maim with equal speed.

Most electrical accidents can be prevented without undue difficulty or inconvenience by following these suggestions:

--Install adequate wiring according to established codes.

--Employ only qualified people to make changes or additions to wiring systems.

--Do not overload circuits. Plug high-wattage appliances into unused circuits or consider adding new circuits to meet growing power needs.

--Never bypass circuit protection or increase fuse sizes. Overloaded wiring can overheat and cause a fire.

Do not remove the grounding prong from three-wire power cords to fit a two-slot outlet. Use a 3/2 adapter, then attach the adapter's "pigtail" to the screw that holds the face plate to the outlet box.

--Make certain outlet boxes are grounded. If your system isn't three-wire grounded, choose double-insulated tools.

--Keep electrical tools and appliances in good condition. Repair

or replace frayed power cords. Examine motors powering farm equipment. Service them as directed in the instruction manuals and keep them free of excess dust, chaff and grease.

--If electrical equipment fails to work, sparks, smokes or makes unusual noises, switch it off and pull the plug. Don't attempt to use the equipment until it has been fixed.

--To eliminate shock hazard, pull the plug before you attempt to repair or open up an electrical tool or appliance.

--Install ground-fault circuit-interrupters (GFCIs) to help prevent shocks at such set locations as milk houses, heated stock

watering tanks and bathrooms.

--Don't stand in water or on wet surfaces when using or touching electrical equipment.

--Be wary of overhead power lines when using ladders, carrying long metal pipes, installing antennas, or moving such tall equipment as augers, elevators and boom trucks.

--Provide adequate lightning protection for your property. Take appropriate cover during thunderstorms.

--Learn cardiopulmonary resuscitation (CPR), the best hope you have of reviving or maintaining life in a shock victim until professional help arrives.

## Branon Funeral Home

Service in this area since 1922.

Phone: 872-8335

403 N. Austin - Lamesa

## Public Notice

On December 30, 1988, Southwestern Bell Telephone filed tariff revisions with the Federal Communications Commission (FCC) to institute the last scheduled increase in the FCC-approved customer line charge. This monthly charge appears on the Detail of Charges page of your Southwestern Bell Telephone bill.

If approved, the charge will increase on April 1, 1989.

Residence and single-line business customers will incur a 30-cent increase, bringing their monthly FCC-approved customer line charge to \$3.50.

Business customers who have Centrex service will realize a 50-cent increase on each line installed or ordered before July 28, 1983. This will bring their monthly FCC-approved customer line charge to \$5.50 per line.

Other multi-line business customers will incur a 10-cent increase. This will bring their monthly FCC-approved customer line charge to \$5.50 per line as well.

This charge is part of a nationwide plan originated by the FCC so local telephone customers would more directly contribute toward the costs of providing the local portion of their long distance telephone service.

Specifically, revenues from the FCC-approved customer line charge reduce the costs long distance companies pay Southwestern Bell Telephone to provide interstate long distance services to our customers. Historically, these cost savings have been passed on to our customers in the form of decreased interstate long distance charges.

If you have any questions or need additional information, please contact your business office at the number listed in the front of your White Pages directory.



Southwestern Bell  
Telephone

## The First National Bank of O'Donnell

We want to meet the financial needs of this community.

Come in and visit with us.

We now have safety deposit boxes.

MEMBER FDIC

## Texas' first pinto bean plant going up in Perryton

(PERRYTON)--"Texans are champs when it comes to baking, boiling, refrying or even marinating pinto beans. We've got a thousand delicious recipes. Only recently, however, has Texas been growing pinto beans commercially, and today we take a giant step forward into the commercial processing of the simple frijole," Deputy State Agriculture Commissioner Mike Moeller said here.

Moeller made the comments at the groundbreaking ceremony for the new pinto bean processing plant being constructed 2 1/2 miles northwest of Perryton. Moeller was joined for the ceremony by the plant's owners, Gary and Vicky George, and State Senator-elect Teel Bivins.

"Frijoles have long been a staple in Hispanic, Black and Southern Anglo diets, and Texans consume between 140 million and 150 million pounds of pinto beans each year. However, most of the pinto beans we eat are imported from other states--mainly Colorado. We Texans pride ourselves on being fairly self-sufficient, and it just does not make sense to depend on others for a food item that is so important to so many of us," Moeller said.

"The Georges' pinto bean cleaning and processing plant will go a long way towards the development of a home-grown pinto bean industry. This facility will cost nearly \$700,000 to construct. The project is being funded in part with a \$298,000 grant/loan from the state Commerce Department's Texas Capital Fund. The rest of the funding comes from loans from the Production Credit Association.

"Once completed, this facility will be able to process 20.8 million pounds of beans each year, sold in two-, 10- and 50-pound bags. TDA estimates that the plant can expect first year sales of nearly \$460,000 while creating up to 12 new jobs for this Panhandle community. The plant also creates a new source of income for Panhandle farmers. We estimate that the area's pinto bean production will need to increase from the present 500 acres to 14,000 acres to keep this plant busy.

"This pinto bean plant also represents a commitment by TDA to help producers diversify their production and become food processors as well. TDA began working over three years ago with Gary George in his effort to launch into pinto bean production. He was having trouble making ends meet on his large cotton and grain operation,

and pinto beans started out as little more than an experiment. This year, George had more than 300 acres of beans in production, a crop worth roughly \$50,000. Earlier this year, George sold 315,000 pounds of beans to Fleming Foods in San Antonio at a price of 20 cents per pound. In addition, George will market another 155,000 pounds of beans to their wholesale and retail customers in the Panhandle," Moeller said.

"The best news about pinto beans is that Texas is just starting to take advantage of this crop's market potential. TDA estimates that about 50,000 acres of pinto bean production is needed just to satisfy current in-state demand for the beans. Texas producers could earn an extra \$17 million a year by growing pinto beans and the construction of additional processing facilities like this one at Perryton could increase the farmers share of the bean market to \$22 million.

"This pinto bean processing facility is just one of 108 TDA-assisted agricultural diversification and processing projects which have the potential to produce over \$720 million in first year sales and create 8,300 jobs across Texas. These new projects include a rabbit processing plant in Central Texas, a vegetable oil processing facility in South Texas and a veal operation in East Texas. These ventures, along with new cash crops like blueberries, wine grapes and bean

sprouts, can pump tens-of-millions of dollars back into the economy of rural Texas.

"Here in the Panhandle, the Texas Department of Agriculture is working with 18 different groups and individuals on projects which have the potential to achieve first years sales of over \$124 million and create over 1,000 new jobs. These projects range from a beef

slaughter plant in Childress to a flour mill in Deaf Smith County and from a feed mill in Castro County to a proposed popcorn facility in Moore County.

"All of these practical, commonsense projects are further proof that agriculture is far from a dying industry

**KEEP YOUR LIVESTOCK IN !!!**

(or your neighbor's out)

with

GALLAGHER-SNELL FENCH CHARGERS,

110 & 12 volt

For more information call

Rube Smith - 806-439-6645

## Winter Clearance Sale

All Ladies

**Fall Sweaters & Blouses**

**1/2 Price**

All Ladies

**Fall Skirts & Colored Pants**

**1/2 Price**

Men's

**Sweaters**

and

**Sport Shirts**

**Buy 1 - Get 1 Free of Equal or Lesser Value**

**Levi's**

**Denim Coats**

**30% Off**

Large Group

**Western Shirts Only**

**\$19<sup>95</sup>**

Reg. \$30-\$40

All Boys' & Men's

**Goose Down Coats**

**40% Off**

All Sales Final  
No Exchanges - No Layaways



**—H—**  
**Western Wear**



College Heights  
Shopping Center

in Texas. If we in state government will put our support behind the genius and enterprise of hardworking Texas farmers, ranchers and business enterprises, we can speed up the day when true prosperity will return to rural Texas," Moeller said.

### Our Advertisers Need Your Support

### PUBLIC NOTICE

On November 23, 1988, Tenaska III Texas Partners and Texas Utilities Electric Company (TU Electric) filed a joint application with the Public Utility Commission of Texas (the Commission) for certification of a cogeneration agreement entered into by Tenaska III, Inc. and TU Electric on January 26, 1988, which has been subsequently amended and assigned by Tenaska III, Inc. to Tenaska III Texas Partners, which provides for the purchase by TU Electric of approximately 213 MW of capacity and associated energy from a cogeneration facility to be constructed by Tenaska III Texas Partners at a Campbell Soup Company food processing facility located near Paris, Lamar County, Texas. The joint application was filed pursuant to Section 41A of the Public Utility Regulatory Act, Tex. Rev. Civ. Stat. Ann. art. 1446c and seeks determinations by the Commission that (1) the payments provided for in the cogeneration agreement are equal to or less than TU Electric's avoided costs as established by the Commission and in effect at the time the cogeneration agreement was signed; and (2) the cogeneration agreement provides TU Electric the opportunity to acquire the cogeneration installation before the installation is offered to another purchaser in the event of its abandonment, or provides other sufficient assurances that TU Electric will be provided with a comparable supply of electricity, if Tenaska III Texas Partners ceases to operate the installation. The joint application has been docketed by the Commission as Docket No. 8434. A copy of the joint application is on file at the Commission.

Persons who wish to intervene in the proceeding or comment upon action sought, should contact the Public Utility Commission of Texas at 7800 Shoal Creek Boulevard, Suite 400N, Austin, Texas 78757, or call the Public Utility Commission Consumer Affairs Division at (512) 458-0223 or (512) 458-0227, or (512) 458-0221 for teletypewriter for the deaf within 15 days of this notice, provided that any motion to intervene must be filed on or before January 18, 1989.

TENASKA III  
TEXAS PARTNERS  
**TUELECTRIC**