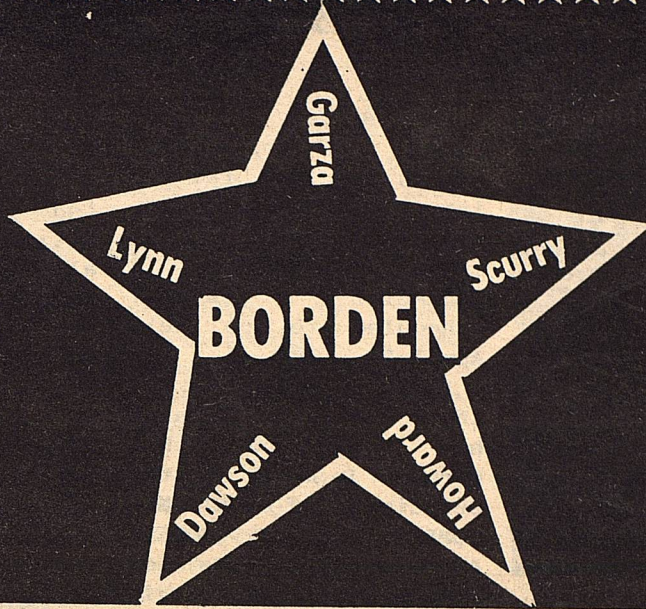


# THE

VOLUME XIV



# STAR

April 6, 1988

Serving the Counties of Borden, Dawson, Garza, Howard, Lynn & Scurry

## Cancer Society preparing for Crusade

"The breakdown of how American Cancer Society funds are spent in Texas represents one of the best returns on the dollar that I know of," said Wendell Burnside, chairman of the 1988 educational and fund raising crusade in Lamesa.

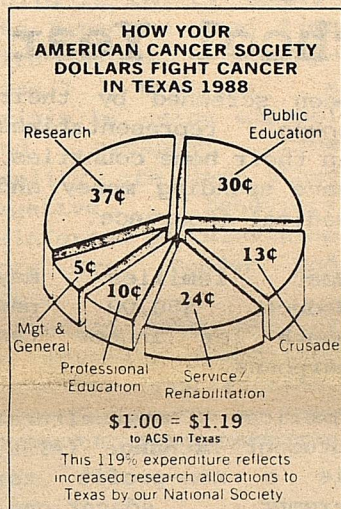
In preparing for the April Crusade, Burnside said he believes it is important for the community to realize ACS expenditures. "It is one part of the ACS we're most proud of and I think our friends and neighbors will be more willing to give to cancer control if they know how well their money is being spent," he said.

The following represents the breakdown of how each dollar raised in 1986-87 by the ACS was invested during the last fiscal year (Sept. 1, 1987-August 31, 1988) in Texas:

Cancer Research.....	\$ .37
Professional Ed.....	\$ .10
Public Education.....	\$ .30
Service/Rehab.....	\$ .24
Program Development	
Administrative.....	\$ .05
Crusade.....	\$ .13
Total.....	\$ 1.19

This 119% expenditures reflects increased research allocations to Texas by the National Society.

"The ACS is currently sponsoring research investigations in 11 major Texas hospitals,



medical schools and universities totaling over \$6.9 million", said Burnside. "Because Texas has so many research institutions, the National society allocates additional funds here."

"Programs that help people are our priority. We keep a tight control over our administrative costs and keep them within acceptable limits as this breakdown indicates," Burnside commented.

ACS programs such as patient service and rehabilitation (Research to Recovery, volunteer transportation, etc.), public education (films, pamphlets, exhibits, the Great American Smokeout) and professional education for the medical community are mainly administered through the Society's volunteer system. "Volunteers help maintain these impressive figures," said Burnside.

## ONE VOTE!

One Vote made Texas a part of the United States.

One vote saved President Andrew Johnson from impeachment.

One vote elected Rutherford B. Hayes to the presidency. And the man in the electoral college who cast the vote was an Indian congressman elected by one vote.

One vote made Adolph Hitler head of the Nazi party.

One vote is extremely important.

Tuesday is election day, and one might question the importance of his vote--a single vote among millions.

You might recall that one vote made Oliver Cromwell Lord Protector of the Commonwealth.

One vote decided that Americans speak English rather than German.

One vote kept Aaron Burr, later charged with treason, from becoming president.

One vote elected Marcus Morton governor of Massachusetts.

## DIETARY HABITS MAY REDUCE CANCER RISKS

Risk for colon, breast and uterine cancers increases for obese people. According to studies conducted by the American Cancer Society, a high-fat diet may be a factor in the development of certain cancers such as breast, colon and prostate.

To combat the risk factors, high-fiber foods may be a wholesome substitute for high-fat diets. Foods rich in vitamins A and C can help lower risk for cancers of the larynx, esophagus, stomach and lung. The ACS states that eating cruciferous vegetables may also help individuals protect themselves against certain cancers.

In addition, salt-cured, smoked and nitrite-cured foods have been linked to esophageal and stomach cancer. The heavy smoking or chewing tobacco, increases the risk of cancers of the mouth, larynx, throat, esophagus and liver.

## NATIONAL CANCER AWARENESS MONTH

The American Cancer Society has designated April as National Cancer control Month. To increase public awareness about cancer, the Hodges Cancer Center is hosting special events.

Each Wednesday during April, from 8 a.m. to 4 p.m., volunteers from the cancer center, hospital auxiliary and the American Cancer Society will staff a booth in the main lobby of Methodist Hospital.

Volunteers will answer questions and individuals can pick up literature about various types of cancer. Staffers will also provide breast and testicle models for individuals

to examine and learn to recognize lumps.

In addition, Doris Scales, R.N., A.S.N., oncology nurse specialist, will discuss "Pain Management in the Chronically Ill Cancer Patient at 3 p.m. April 20. the program is designed to assist patients or family members in coping with chronic pain. Participants will learn two different types of pain, identify and report causes of pain to health care professionals and discover different ways to relieve pain.

Call the HCC at (806) 793-4214 for more information. The class is free and open to the public.

THERE WILL BE ONE BOX AT THE COURTHOUSE FOR THE REPUBLICAN PARTY RUN-OFF.





**BARBARA MASSINGILL** received the **BOBBIE BRIGGS MEMORIAL Award** at the 1988 FHA & FFA Banquet last Monday night.



## U.I.L. ONE ACT PLAY

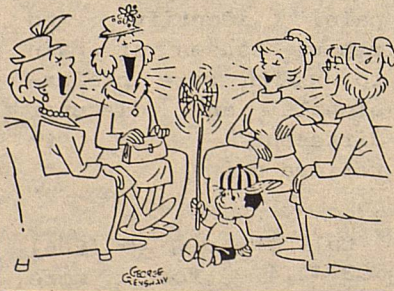
Shannon Bond received All-Star Cast honors in both Zone and District One Act Play competition as the Borden High School One-Act Play, Harvey, garnered six individual honors and advanced from zone competition. Cindy Lewis was honored at zone as the Best Actress of the competition and

## FFA-FHA Banquet

Also winning Step One Awards at the FHA and FFA banquet along with Jo Barnes and Patsy Underwood, was Tracy and Charoltt Ball.

.....

was placed on the Honorable Mention All-Star Cast at district competition. D'Lyn Lloyd was honored both at zone and district by being placed on the Honorable Mention All-Star Cast. Kate Porter, Cody Stone and Rachel Romero were placed on the Honorable Mentioned All-Star Cast at zone competition. The company of sixteen giving the two productions of Harvey included senior, Shannon Bond, Cindy Lewis, Robert Buchanan, Felicia Romero, Ray Martinez, Donna Massingill and Harold Barnes; junior, D'Lyn Lloyd, Kate Porter & Sandi Buchanan; sophomores, Lance Telchik, Cody Stone, Chad Williams, Julie Harris, Kristi Adcock and Rachel Romero; and director, Jan McCathern.



## BBB Issues CAUTION on Dreamgirl Pageant

The Better Business Bureau of the South Plains has been receiving calls from parents, school counselors and others concerning a DREAMGIRL PAGEANT scheduled to be held April 24, 1988.

In its investigation, the BBB/South Plains has found out that Michael Dismond is the principal of NATIONAL COMPETITIVE MODELS ASSOCIATION, out of Albuquerque, NM. (This is the name being used with the Allen Theatre) BBB/Albuquerque states

that Mr. Dismond has been known to their files since 1980. Names that he has used include National Models; National Models Unlimited; National Competitive Models Association. His principal type of business is a modeling agency. According to BBB/Albuquerque, he has no city license in Albuquerque and is registered with the State of New Mexico as a non-profit business. According to inquiries to the BBB/South Plains,

young girls, usually ages 13 and up, have been approached either in shopping malls or in the local high schools to enter this pageant for a \$30 entry fee. This fee is non-refundable and the girls must sell 400 'raffle tickets' or they are disqualified. One inquirer told the BBB that the winner of the 1988 Dreamgirl Pageant wins a trip to the Virgin Islands, cash, and a sports modeling contract.

The Better Business Bureau of the South Plains advises CAUTION in getting involved with this company specifically because, #1) nationally-rated and known beauty pageants do not approach young girls in shopping malls to get them involved; #2) selling 400 'raffle tickets' may be a violation of the State Laws regarding gambling; #3) the \$30 up-front entry fee is non-refundable; #4) the Allen Theatre is only reserved for April 24 pending the necessary sponsorship and financial liability papers that need to be filed by DREAMGIRL; and #5) the company's unauthorized use of local celebrities' names in order to gain credibility in the community. If you have any further questions regarding DREAMGIRL PAGEANT, please call the Better Business Bureau at 763-0459.

## Exchange Students need Host Families for 1988-89 School Year

American Intercultural Student exchange is seeking families to host high school students from the following countries: Sweden, Norway, Denmark, Finland, W. Germany, France, Holland, Switzerland, Austria, Italy, Spain, Brazil, Ecuador, Japan and Australia.

The students, age 15 through 18, will arrive in the United States in August 1988, attend a local high school, and return to their home countries in June 1989. The students, all fluent in english, have

been screened by their school representatives in their home countries, have spending money and medical insurance.

Host families may deduct \$50.00 per month for income tax purposes.

\*\*\*  
American Intercultural Student Exchange (AISE) is a non-profit tax exempt educational organization dedicated to fostering international understanding. AISE has 13 regional offices and over 700 area representatives throughout the United States.

## 369 College Scholarships Open To Top Texas Students

The U.S. Department of Education has awarded \$591,175 to fund 369 Robert Byrd Scholarships in Texas.

The funding will be provided to the Texas State Education Agency.

This is a program under which individual states can provide college scholarships to promote student excellence and achievement.

The Byrd scholarships recognize exceptionally able students who can demonstrate bright

promise.

The Byrd scholarship program, named after Senator Majority Leader Robert Byrd, will be administered in the state by Texas Education Commissioner W.N. Kirby.

Students seeking further information should contact their school guidance counselor or the Texas Education Agency, 1701 North Congress Avenue, Austin, Texas 78701-1494.

## PSYCHOLOGY



If you're a very active person, it might be a good idea to learn the art of loafing. Psychologists say that even a few minutes a day of doing nothing may help you tackle your work with renewed enthusiasm. A refreshing cup of hot tea may be just the right accompaniment for this type of break. By slowing down just a bit, you'll be surprised how you'll suddenly find the time to more fully enjoy your family relationships.

The Borden Star  
Publication No. 895520  
(USPS 895-520)

Editor  
Barbara Anderson

Published weekly, except for Christmas and New Years, on Wednesday at Gail, Borden County, Texas 79738, Box 137 Kincaid Street Second Class postage paid at Gail, Texas.

Any errors that we make reflecting on the reputation or standing of any Firm, Corporation or individual that may appear in the columns of the Borden Star will be gladly corrected when called to the attention of the staff.

Subscription Rates:  
\$8.00 per year

Borden Star Owners:  
James McLeroy, Barbara Anderson, Doris Rudd, Pat Porter, Bob Dyess, Edna Miller, Ruth Weathers, Mrs Nathan Zant, Sonny Tucker, Eddie Simer, Loreen Jones, Martin Parks, Dan Turner, Lela Porter, and Marge Toombs.



# TELEVISION A POSSIBLE HEALTH HAZARD TO CHILDREN

3...The Borden Star, Wed., April 6, 1988

Television can be hazardous to your child's health, according to the March issue of Texas Medicine.

Alcohol abuse, obesity and violence, are just some of the behaviors children learn through television characters, according to authors Drs. Stephen W. Ponder, Fellow, and Patricia S. Beach, Assistant Professor of Pediatrics, The University of Texas Medical Branch at Galveston. Physicians can play an important role in raising parents' awareness of the potential risks of uncontrolled television viewing by children, they write. Parents can minimize these risks by discussing programs and commercials with children, being aware of what they watch, and making program recommendations, among other things, say the authors.

Television viewers model their behavior after what they have seen on television when they find themselves in similar circumstances, according to the article.

"Television advises our youth that violence can be an acceptable method of problem solving," when adventure programs are resolved with the predictable chase scene or the hero emerges victorious after a shootout, writes Drs. Ponder and Beach.

Misuse of alcohol is another negative behavior reinforced on television. The authors write, "the implied message is that alcohol can enhance the enjoyment of social interaction and reduce tension. Another suggested message is that drinking is common and even proper in everyday life." They add, "Drinking is glamorized...the child is led to associate having a good time with alcohol consumption." Managing a crisis by using alcohol and escaping from reality are two other negative behaviors reinforced on television note Drs. Ponder and Beach.

Studies show obesity is strongly associated with watching television, according to the article.

in the official journal of the Texas Medical Association. Watching television uses less energy than playing, and eating while watching television is encouraged by food advertisements and references to food in programs, write the authors.

Commercials also are the culprits in leading children to believe that "people are frequently sick and require medicine..." write Ponder and Beach.

Sexual encounters, such as teen pregnancy and venereal disease, rarely are portrayed as negative on television. "Soaring rates of both of these consequences would seem to indicate that children need more role models for responsible sexual activity," advise the authors.

While the authors recognize the potential teaching role of television through educational and other programs, they believe, "currently the balance of its influence is negative." Pediatricians should help minimize the negative effects of television by identifying high risk families and counseling them on how to encourage early healthy viewing habits. Parents should restrict overall television viewing to when homework and chores are done, and limit the amount of snack foods allowed during viewing, suggest the authors.

## NOTICE OF TRUSTEE ELECTION

The Borden County Independent School District Board of Trustees hereby gives notice of an election to be held on May 7, 1988, for the purpose of electing two trustees for full three year terms.

Absentee voting by personal appearance will begin on the 18th day of April, 1988, from 8:00 a.m. to 5:00 p.m. and continue through the 3rd day of March, 1988 on each day which is not a Saturday, Sunday or an official holiday.

Absentee voting in person shall be conducted at Borden County School. Applications for absentee ballots by mail should be mailed to Barbara York, P.O. Box 95, Gail, Texas 79738 and should be received by April 29, 1988.

The polling places designated below will be open from 7:00 a.m. to 7:00 p.m. on the day of the election:

School District Election Precincts	Polling Places	Election Officers
Box No. 1	Plains Community Center Community of Plains	Melba Vaughn Presiding Judge Silvia Rios Alt. Presiding Judge
Box No. 2A	Borden County Courthouse South Gail	Jean Taylor Presiding Judge Cindy Ball Alt. Presiding Judge
Box No. 2B	Precinct 2 Election House Vealmoor	Mrs. Pat Porter Presiding Judge Susan Stephens Alt. Presiding Judge
Box No. 3A	Murphy Election House Murphy	Melton Davis Presiding Judge Martha Davis Alt. Presiding Judge
Box No. 3B	Fairview Election House Fairview	Mary Ruth Gray Presiding Judge Cindy Reyes Alt. Presiding Judge
Box No. 4A	Exhibit Building North Gail	Joyce Herridge Presiding Judge Donna Hendricks Alt. Presiding Judge
Box No. 4B	Hurston Lemons, Jr. House Snelling	Jacquelyn Mills Presiding Judge Don Mills Alt. Presiding Judge

### NOTICE!

Do you have accumulated clutter? Have you started your spring cleaning? Get busy and come to downtown Gail on April 23. The Senior Class is having a flea market; you may donate your "treasures" to the seniors or have your own selling area.

On the same day, the seniors will have a car wash, so save up your dirt and grime!

And in case you're hungry, they'll be having a bake sale also.

"One man's trash is another man's treasure," so get ready for the flea market. Support the seniors.



The top money prize in a radio contest went to a 15-year-old from Cincinnati. She won \$25,000 a year for 40 years in 1980.

## LUNCH MENU

April 11 - 15, 1988

Monday	Fish Nuggets Tartar Sauce Vegetable Salad Hot Bread Fruit Salad Bar
Tuesday	Green Enchilada Casserole Buttered Corn Fruit Salad Hot Bread Milk Salad Bar
Wednesday	Pizza Fruit Green Beans Milk Salad Bar
Thursday	Lasagna Buttered Mixed Vegetables Potatoes Jello Hot Bread Milk Salad Bar
Friday	Hamburgers French Fries Lettuce-Tomatoes-Pickles Cookie Milk Salad Bar

SUNDAY	MONDAY	TUESDAY	WEDNESDAY	THURSDAY	FRIDAY	SATURDAY
March 1988 S M T W T F S 1 2 3 4 5 6 7 8 9 10 11 12 13 14 15 16 17 18 19 20 21 22 23 24 25 26 27 28 29 30 31	May 1988 S M T W T F S 1 2 3 4 5 6 7 8 9 10 11 12 13 14 15 16 17 18 19 20 21 22 23 24 25 26 27 28 29 30 31				1 09/27/88 GOOD FRIDAY -No School- Bad Weather Day Tennis Jr. High & H.S.	2 09/3/27/88 PASSOVER Jr. High & H.S. Tennis
3 09/4/27/88 EASTER SUNDAY	4 09/5/27/88 -No School- Bad Weather Day	5 09/6/27/88 District Tennis	6 09/7/26/88	7 09/8/26/88 District Tennis	8 09/9/26/88	9 10/0/26/88 Area OAP O'Donnell H.S. Track Meet Klondike
10 10/1/26/88	11 10/2/26/88 District Golf Loop	12 10/3/26/88 Jr. Hi. Girls Tennis-Sands-H Band Clinic-H	13 10/4/26/88	14 10/5/26/88 Jr. Hi. Boys Tennis-Sands-T	15 10/6/26/88 End 5th 6 weeks District Track Plains-T	16 10/7/25/88 Area FFA Judging Contest-Tech Dist. Track-Plains
17 10/8/25/88	18 10/9/25/88 Elem. UIL Litera at Dawson	19 11/0/25/88 Concert Sightreading Coronado H.S. Lubbock	20 11/1/25/88	21 11/2/25/88 District Jr. Hi. U.I.L. Dawson	22 11/3/25/88 H.S. Regional Literary Meet State FFA Convention	23 11/4/25/88 Dist. Jr. High Tennis-Lamesa
24 11/5/25/88	25 11/6/25/88	26 11/7/24/88	27 11/8/24/88	28 11/9/24/88	29 12/0/24/88 State Judging Regional Athletics Band Trip - Sandylake Park	30 12/1/24/88 Contest - A & H

APRIL 1988



## EMS MEMORIALS

IN MEMORY OF:

ALTON BRIGGS

Jim Mac & Frances  
Burkett  
Bob & Teri Buchanan

ETHEL HALL

Juanda & Bannie Hancock

L.D. JACKSON

ara, Ross & Jason Sharp

ERMAL H. HENDERSON

Buddy & Margaret Sharp  
and Children  
Nicki & Jeff Lackey

TATE LAMB

Bob & Sue Beal  
Garland & Eva Doyle  
Ross, Sarah & Jason  
Sharp  
Jim Mac & Frances  
Burkett  
May Stephens

TERRY MILLER

Bob and Sue Beal

WADE TERRY

Danny & Cam Stone

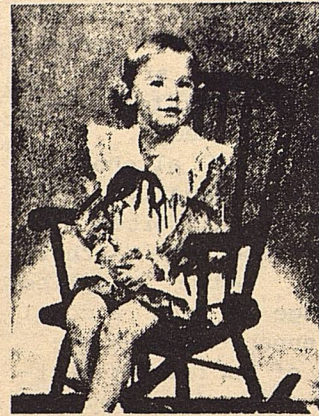


Items to be sold at the CELEBRITY AUCTION, April 8, at the Borden County Show Barn.

and May 1, 1988.

The show will be held at the Rodeo Bowl in Big Spring, Texas, starting at 9 A.M. Books open at 8 A.M. They will have 52

classes, including 25 halter classes, 37 performance classes, 11 youth classes, 10 amateur classes, and 10 adult classes. Concession stand will serve food and drinks.



*Thank You*

A simple thank you is not enough to say for each kind deed shown us during our baby Roxie Lee's recent ordeal. The phone calls, hospital visits, gifts and cards were so very gratefully appreciated.

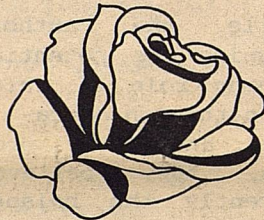
We are so deeply grateful for the many hours spent in prayer for Roxie. With our precious baby lying so close to death, the Lord placed his healing hands on her. The support from this community for the Special Medical Fund has been unbelievable. The generosity of each individual and each business will never be forgotten. We feel so very fortunate to be part of a community that has given of itself so unselfishly, and its only concern was the health and well-being of our little one. Keep Roxie in your prayers, she has a long road ahead of her, but she's going to make it.

With Deep Heartfelt Thanks,

The Roxie Turner Family

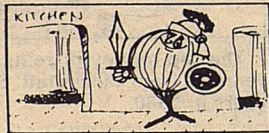
Janette, Bric & Kim Turner  
Dan & Ouida Turner

Dolois & Helen Scitern  
Jackie Turner



### West Texas Classic PAINT HORSE SHOW

The Howard County Horsemen Club will have a Approved Paint Horse Show on April 30, 1988,



The onion was worshipped in ancient Egypt and regarded by the Romans as a God who guarded the kitchen and guided the healing of battle wounds and skin diseases.

**AA HOME & LAND REALTY**  
Jerry Adams Norma Adams  
Office 806-872-9071  
Residence 872-3261

**BORDEN COUNTY HOME**  
3 bd, 2 ba, Yellow frame w/siding, includes 1 ac. waterwell & nice pump house, good septic system.  
From Gail, 8 miles West on Hwy. 180, 9 miles North on FM 1054.  
\$22,500.00

### Classified

**CRUISE SHIP JOBS**  
\$10,345 to \$47,819  
Managers, Chefs, Bartenders, Mechanics & More  
NOW Hiring!  
CALL (Refundable)  
1-518-459-3734  
Ext. 06634D  
24 HRS.

### WESTERN SEED & DELINTING

#### Certified Cotton Seed

ACID DELINTING

Paymaster 145, 303, 404, 792  
Coker 3131, S110, 500  
Terra 383, SR-10, SR-482  
SP-21, SP-215, CAMD-E  
CAB-CS

COTTON PLANTING SEED

Hay Grazer Grain Sorghum Wheat

#### Wheat & Oats Cleaning

LAMESA, TEXAS  
RON BUTLER

BUSINESS PHONE  
(806) 872-8896  
(806) 872-5388

RESIDENCE PHONE  
(806) 872-5271

### Branon Funeral Home

Service in this area since 1922.

Phone: 872-8335

403 N. Austin - Lamesa

### ROYALE (R. D.) LEWIS

Candidate for

#### Sheriff - Tax Assessor and Collector

Borden County, Texas

Your Vote and Influence Will Be Appreciated

Subject to Action of the Democratic Primary  
PAID FOR BY R. D. LEWIS.

VOTE APRIL 12,

### The First National Bank - of O'Donnell

We want to meet the financial needs of this community -

Come in and visit with us

We now have safety deposit boxes.

MEMBER FDIC



## ASCS NEWS

By Jerry Stone

### 1988 FARM PROGRAM SIGN-UP DEADLINE

Final date to enroll into the 1988 Wheat, Feed Grain, and Cotton Program is APRIL 15, 1988. All owners and other producer signatures must be on the contract by April 29th. Failure to obtain all necessary signatures will result in an invalid contract.

### LTA SIGN-UP (LONG TERM AGREEMENT)

There are limited funds available in Texas for Conservation Program Long Term Agreements (LTA'S). If you are interested in this 3 to 5 year program you may sign up between now and April 20th.

This program is designed to provide cost share assistance for extensive conservation work on partial farms or ranches. If you are interested, come by during this sign-up period.

### FEDERAL CROP INSURANCE

The final sales closing date for cotton, corn, and grain sorghum in Borden County is April 15, 1988. You need to contact your insurance agent if interested in coverage for the 1988 crop.

### 1988 SMALL GRAIN CERTIFICATION

The final date to certify your small grains (wheat, barley, oats, ray, etc.) is Monday, May 2, 1988. You must certify all small grains that are planted, regardless of their intended use (grain, cover, grazing, baling, etc.)

If you have a wheat, barley, or oat base you must certify your crop acres, even if their are zero, by May 2, 1988.

### HAYING GRAZING ACR & CU

The non-grazing period for ACR and paid CU acreage began April 1 and goes thru August 31st. As it stands right now, you will not be allowed to graze or bale any cover from the designated area during this period. ACR and paid CU acreage may be baled beginning September 1, 1988.

### DATES TO REMEMBER

•April 1 - Began non-grazing period for ACR  
•April 15 - Last day to sign up into 1988 farm program  
•April 20 - Last day to sign up for LTA  
•MAY 2 - Final certification date for 1988 small grains

## FDIC AUCTION

The Federal Deposit Insurance Corporation, Midland, Texas, is conducting its first auction of 1988, Tuesday and Wednesday, April 12 and 13, at the auction facility at 9900 County Road 125 West--just off Highway 80-- between Midland and Odessa.

This auction includes any and almost everything banks have loaned money to purchase--aircraft, Mercedes, boats motor homes, motorcycles, assorted trucks, retail businesses, oil-field equipment, jewelry, furniture, fixtures and office equipment.

The public is welcome--there is something for everyone. Inspection 8:00 A.M. to 6:00 P.M. Monday, April 11.

For more information call 501/774-0777.

Lost and found: In the tropical forests of eastern Brazil, a biologist recently rediscovered an unusual animal known as the thin-spined porcupine. The species was previously feared extinct because scientists had not seen it for 30 years. According to International Wildlife magazine, the animal is of particular interest because it appears to lie somewhere between the porcupine family and spiny rats.



LUBBOCK, Friday, April 1, 1988

The 300,000 square foot Lubbock Memorial Civic Center April 7, 8 and 9 will literally teem with cotton ginners, producers, oil millers, warehousemen, agricultural suppliers of all descriptions and wives and families.

The 81st Texas Cotton Ginners Association Convention and Trade Show kicks off with a grand opening at the Center's north entrance at 9:00 a.m. April 7, followed by the 31st annual meeting of Plains Cotton Growers, Inc. from 9:30 to 12 noon in the east end of the Banquet Hall.

By far the largest gathering of cotton people in Texas, the TCGA multi-purpose event annually draws in excess of 6,000, most from Texas but some from virtually every section of the Cotton Belt.

The cotton trade show, consisting of over 125 exhibits supplied by gin machinery manufacturers, seedsmen, chemical dealers and other ag support industries will be open from 9:00 a.m. to 4:30 p.m. Thursday and Friday and until noon on Saturday.

Preceding the convention proper, there'll be a golf tournament at Hillcrest Country Club beginning at 8:00 a.m. Wednesday, April 6, and a safety caucus for key gin employees beginning at 1:30 that afternoon in USDA's Ginning Research Laboratory north of Lubbock.

Exhibit visitors Thursday will be treated to a welcome party with free food, refreshments and entertainment at 4:30 p.m. Highlights on Friday include a 9:30 a.m. complimentary continental breakfast, a "Ginners on the Go" fashion show, and a workshop to demonstrate the National Cotton Council's Telecommunications Network from 1:30 to 4:30 p.m., room 103.

Concluding Saturday activities will be the ginners' annual business meeting and luncheon, with 19th District Congressman Larry Combest of Lubbock and National Cotton Council President William B. Dunavant, Jr. of Memphis, Tennessee, as speakers.



Mark Walker  
TEXAS MORTGAGE  
EQUITIES  
1113 University Ave.

CROP INSURANCE Available  
All New Business Will Be  
Eligible For Our "Community  
Reinvestment Program".

Call For Details

### OFFERING:

Life, Health, and Crop  
Insurance  
Real Estate, Mortgages  
Student Loans For College  
Lubbock--806/765-6340

## HOGG FLYING SERVICE

Spraying & Seeding  
Defoliation

Dry or Wet Fertilizer Application

GLENN W. HOGG

Owner  
Phone:

Bus. 806-872-9696 - 872-7617

Res. 872-8274

FAST PROFESSIONAL SERVICE  
Lamesa Airport P.O. Box 281  
Lamesa, TX 79331



## BEAUTIFYING TEXAS HOMES

Texans spend millions of dollars every year beautifying their homes with trees, shrubs, vines and flowers. With proper planning, many of those dollars can be recovered through reduced utility bills. Studies have shown that shading walls from direct sunlight in the summer can reduce wall surface temperatures by as much as 29 degrees. This can make a big difference in the cost of air conditioning the home. And while it may take many years for trees and hedges to mature, certain vines planted now may be trained on trellises to provide relief from the heat, and from high utility bills, this summer.

When planting trees, homeowners should also consider the potential for saving on heating bills in the winter. For the east, west, and especially the south side of the house, choose trees that will lose their leaves in the fall, allowing the sun to

strike walls and windows. The sun is too often ignored as a source of free light and heat on cold days. On the north side of the house, plant evergreen trees and bushes that can act as windbreaks, diverting blasts of cold air away from doors and windows.

## TOLLS ON YOUR BODY

The Body of the average office employee who sits behind a desk six hours a day may show the effects of exclusively exercising the brain and not the whole body.

That below-the-belt spread is actually untuned leg, hip and buttocks muscles that tend to grow flabbier as you continue to log about 1,500 a week in your office chair.

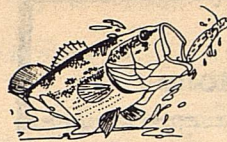
According to the American Hospital Association, preventing or eliminating this condition which plagues

sedentary workers is possible if you add daytime routines to your regular exercise regimen. (Performing some form of aerobic exercise for 20 to 40 minutes three to five times a week is a healthy fitness schedule to keep after hours.)

The following inconspicuous exercise to try while seated is to tighten buttocks muscles, count to eight and then release. Do this effective exercise 20 times a day. Stand while handling busy work that doesn't require the concentration that sitting affords you.

Opt for the stairs rather than the elevator or escalator. Your choice to climb rather than ride will result in tighter thighs, calves and buttocks.

Walk rather than sit during your lunch hour. One brisk, 45-minute session of leg-powered exercise like walking releases back tension acquired from sitting and job-related stress, and also burns 300 calories.



## D&B Fish Farms

D&B Fish Farms has successfully spawned hybrid striped bass months earlier than any private fish hatchery has before.

The Crockett hatchery, a division of Fin Feather Farms, spawned over 500,000 hybrid stripers February 19. Past spawnings have been successful only during special conditions usually occurring only in late March or April. The fast-growing hybrid is created by crossing striped and white bass under controlled hatchery conditions.

"This spawn proves that, by manipulating a variety of variables, we can extend the hybrid spawn from a few weeks to months, maybe even all year.

The number one problem with hybrid stripers has been that you only had a few weeks each year to make or break the year's production. If you failed, you were out of the hybrid business for the year.

In 1987 D&B became the first private fish hatchery in Texas to successfully spawn hybrid stripers. Previously, only a few state hatcheries had been able to spawn the fish.

This means we should be able to dramatically increase our hybrid production, possibly up to 100-fold.

For a fish with all the potential both as a sport and a food fish

of the hybrid striper, that will make an incredible difference in the supply of hybrids available for private stocking.

The hard-fighting, fast-growing hybrid stripers are highly prized as put-and-take sport fish and as an aggressive predator to thin out lakes overpopulated with small fish. Hybrid stripers share many of the desirable traits of both parent fish. Like the scrappy little white bass, they are aggressive and relatively easy to catch. Like the giant striped bass, they grow much bigger than white bass, to 18 pounds or more.

Hybrids also readily eat commercial fish food, which make them far easier to raise in small ponds and lakes. Hybrids are generally believe to not compete with largemouth bass in the same lake.

They have orders right now for over 300,000 fingerlings. The good news is that these fish, while extremely difficult to spawn, are also very prolific.

Our fingerlings are reaching one pound the first year, three pounds the second year, then up to six the third. Very few fish offer such fast growth.

For more information on D&B's hybrid stripers Call Mike Baughman, D&B Fish Farms, 1-800-544-7465

**DON'T JUST SET THERE!**

**COME TO THE CELEBRITY AUCTION**

**FRIDAY, APRIL 8**

**7:00 p.m.**

**COUNTY BARN GAIL, TEXAS**

**SPONSORED BY:**

**THE BORDEN COUNTY**

**CANCER SOCIETY**



We're proud to be a part of the area since 1905

**Snyder National Bank**

*This is your Bank*

Member **FDIC**

1715 25th  
573-2681

**Claiborne's**  
**THRIFTWAY**

WE ACCEPT FOOD STAMPS



HOME OWNED & OPERATED BY  
JESS & CAROLYN CLAIBORNE  
OPEN: 7AM - 9PM

710 N. 4th

Lamesa, Texas





### State Funds Depleted For Calhooed Vaccinations

State funds for brucellosis calhooed vaccinations are expected to be depleted sometime in May.

During the current fiscal year ending Aug. 31, \$450,000 was appropriated by the Legislature for calhooed vaccinations. Commissioners of the Texas Animal Health Commission voted to pay \$1 per head for vaccinations in 211 of the state's 254 counties.

It is anticipated that the \$1 payment fee will be reinstated at the beginning of the 1989 fiscal year on Sept. 1, 1988.

In the meantime, federal funds will

continue available in the 43 highest incidence counties of Texas. Counties continuing to receive federal funds include Anderson, Aransas, Austin, Bee, Brazoria, Brazos, Calhoun, Chambers, Colorado, DeWitt, Fayette, Fort Bend, Freestone, Galveston, Goliad, Goliad, Gonzales, Grimes, Hardin, Harris, Houston, Jackson, Jefferson, Karnes, Lavaca, Leon, Liberty, Limestone, Madison, Matagorda, Moantgomery, Orange, Polk, Refugio, Robertson, San Jacinto, San Patricio, Trinity, Tyler, Victoria, Walker, Waller, Washington, and Wharton.

### MULTI-COUNTY PECAN SHORTCOURSE

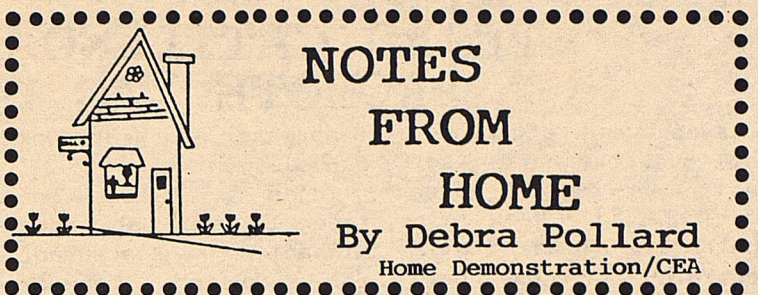
The 1988 Pecan Management Shortcourse will be held April 19, 1988 at the Dawson County Community Building in Lamesa, Texas.

Registration will begin at 8:30 a.m. with the program beginning at 9:00 a.m.- 10:30 a.m. Followed by a 15 minute break. At 10:45 a.m. we will go on a tour of local orchards. The morning session will be over at 12:00 noon, there is no charge for the morning session.

At 1:30 p.m. we will build pecan variety boards. The cost for these boards will be \$15.00 per person. If you would like to attend and construct a pecan variety board that afternoon you must call no later than April 14th and let us know your intent. This will allow time for boards to be cut and secured prior to our meeting. Please call 915/856-4336 if you would like to participate in building a variety board.



Many mutual funds let you open a no-minimum account if it's for an IRA.



### Getting The Most Out of Your Clothing

To get the most out of your clothing dollar, you probably will plan to wear most of your clothes for two or three years.

The amount of wear you actually get from an item of clothing, depends on the care it receives. It's possible to ruin the appearance and wearability of clothing at any step in the cleaning process.

As the price of clothing increases, damage becomes increasingly costly. Even if a garment is damaged after several wearings, it still means a significant loss to your clothing investment. For example, if a \$40 sweater which would normally be worn over three years is damaged

after one year, it represents a loss of \$24, or 60% of the original value.

While some damage to clothing is due to poor manufacture, much of it is also due to faulty care procedures, stains and other problems. If you have a stain in your favorite garment and need information on the procedure for removing the stain, call or come by your local Extension Office. We'll analyze the stain and assist you with stain removal procedures.

Making the most of your clothing investment makes more sense than ever. Take a little extra time to care for your clothing properly, it will save you money in the long run.

## FABRICS

The Borden County 4-H FABRIC SALE  
May 3,  
9:00 a.m. to 6:00 p.m.

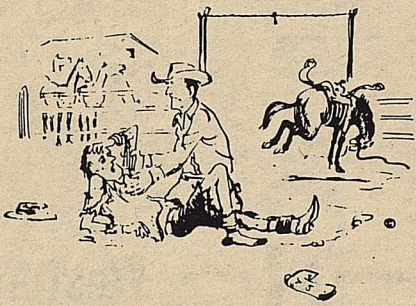


4-H Exhibit Building

Co-Sponsored By: Borden Co. 4-H Adult Leaders Assoc. 4-H Youth Committee

Proceeds assist with Borden Co. 4-H Program

### COWPUNCHERS



"I SPENT THE FIRST MINUTE TRYIN' TO HOLD ON ... AND THE NEXT 10 TRYING TO LET GO."

1988 APRIL 1988						
SUN	MON	TUE	WED	THU	FRI	SAT
	Full M. 2nd	Last O. 9th	New M. 16th	First O. 23rd	1	2
3	4	5	6	7	8	9
10	11	12	13	14	15	16
17	18	19	20	21	22	23
24	25	26				30

DON'T FORGET VOTE

APRIL 12

PATRICK TOOMBS  
SHERIFF-TAX ASSESSOR  
AND COLLECTOR



Security State Bank

Big Spring, Texas

Member F.D.I.C.

1411 Gregg



## TEJAS CATTLEWOMEN PROMOTE AG DAY

Every year CattleWomen all over the nation set aside one day in March during Ag Week to celebrate Ag Day (Agriculture Awareness Day) by promoting programs to make the public more aware of the importance of agriculture in our daily lives. March 20th thru 26th was Ag Week for 1988. For several years, and again this year, Tejas CattleWomen have sponsored a farm field trip of fourth grade students at Coahoma to the farm of Paul Allen. On this trip the students witnessed the environment of different kinds of farm animals (cattle, horses, sheep and swine); heard reports of how the different farm crops are seeded, fertilized, irrigated and harvested; and saw demonstrations about the effects of wind and water on different soil conditions. Upon their return to school they were shown a film strip narrated by John Wayne, and produced by the Texas & Southwestern Cattle Raisers Association, about the history and heritage of the Cattle Raisers Association, about the history and heritage of the Cattle Industry. This year, Tejas is introducing a new project to promote awareness of beef and agriculture. "Beef By-Products" Coloring Books will be distributed in one class of third grade students in Big Spring, Gail, Ira, Snyder,

Sweetwater and Westbrook Schools.

Tejas CattleWomen recently met at Mac-Michael's Restaurant for their regular meeting with President Yvonne Nunn presiding. Adele Ginzal gave the opening prayer. Sue Guelker gave a oral report of the February meeting that was held in Big Spring at Furr's Cafeteria, at which time Libbi Garnett, the Mitchell County Extension Agent gave a very interesting and informative program on "Stress."

Texas CattleWomen's Legislation chairman, Lucille Sterling, reminded all members to write to their congressmen urging their support for the repeal of the Diesel Fuel Tax and heifer Tax Provisions. Also, all CattleWomen are to continue to support the vote for the Beef Referendum on May 10th at their respective County Agent's Office.

The Texas Beef Cook-Off will be held in Austin on April 18th and 19th at the Embassy Suites-Airport Hotel, with Maralee Miller as Chairman.

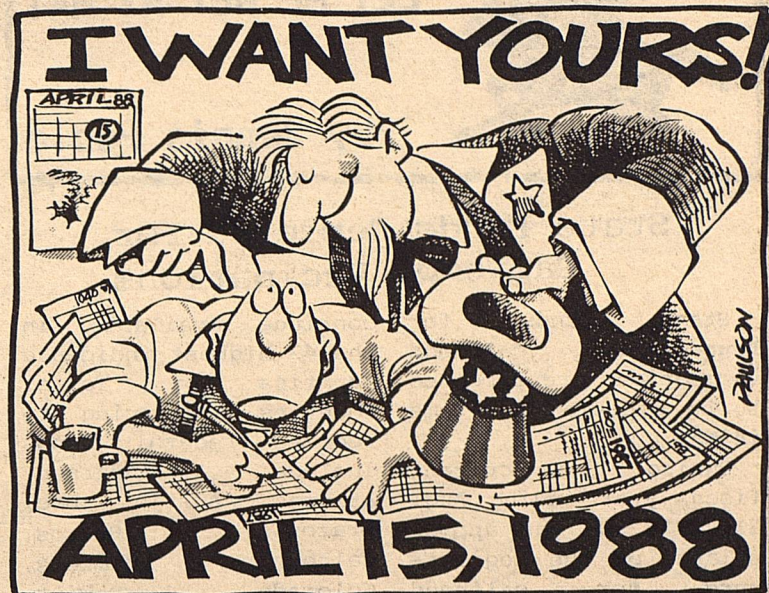
Maureen Morris, past president, read several letters from members of the staff and the girls at Girlstown thanking the Tejas members for the gifts sent to them at Christmastime. Each girl expressed her thanks, wished each one a special wish for a happy holiday, and extended an invitation

to visit them at Girlstown.

Sue Guelker, Program Director, introduced Mrs. Roland (LaRue) Powell the guest speaker for the day. Mrs. Powell is a Vice-President of City National Bank of Colorado City, where she has been employed for over (30) thirty years. She stressed the importance of every one acquiring and establishing their own individual credit in their own name. Since 1974, when the Equal Opportunity Credit Act was introduced, there has been an increase of 76% of women working in public. The importance of women being informed of the family's financial position cannot be over emphasized; especially in the event of a death or tragedy where she is forced to make many important decisions and continue the family business.

Carolyn Walker, President of Texas CattleWomen, of Mirando City will be guest speaker for Tejas CattleWomen at their meeting on April 14th to be held at the Golden Corral in Snyder. All women who are interested in promoting beef are encouraged to attend.

Those attending were: Guest, LaRue Powell, and members Yvonne Nunn, Adele Ginzal, Sue Guelker, Maureen Morris, Lucille Sterling and Minnie Boyd.



## BARN DANCE

FRIDAY, APRIL 8

8:30 p.m.



Music by:

JODY NIX

&

THE TEXAS COWBOYS

COUNTY BARN

Sponsored by:

BORDEN CO.

CANCER SOCIETY

GAIL, TEXAS