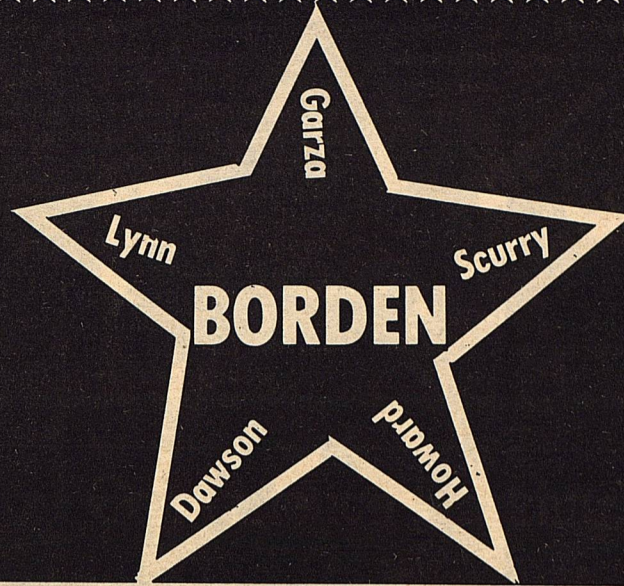


THE

Volume XLII.

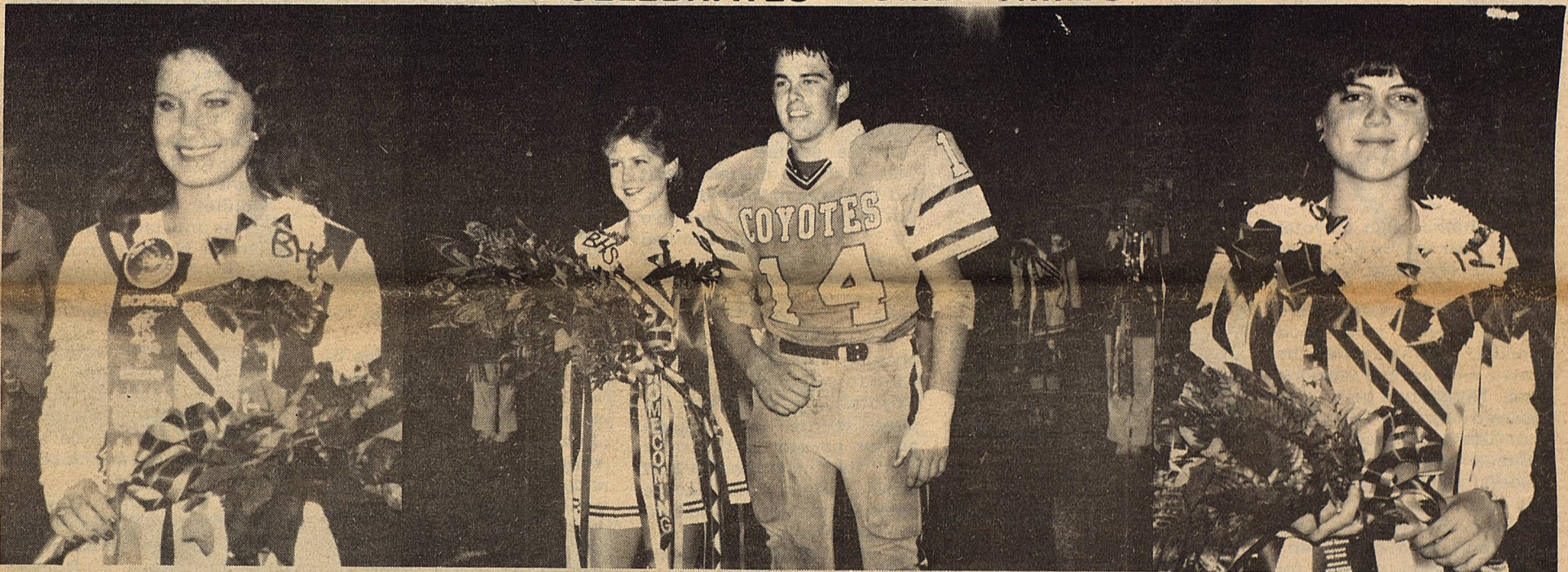


STAR

October 29, 1986

Serving the Counties of Borden, Dawson, Garza, Howard, Lynn & Scurry

BORDEN COUNTY CELEBRATES HOMECOMING - 1986



KELLI WILLIAMS-Homecoming Queen

KATE PHINIZY-Football Sweetheart

MICKEY BURKETT-Pep Squad Beau

FELICIA ROMERO-Band Sweetheart

Festivities Include, Bonfire, Supper, Pre-Game and Halftime Activities, Ballgame and Reception

County residents, friends and Borden County Ex'es returned to celebrate homecoming at Gail, Friday, October 24.

The celebration began at 5:00 with the bonfire and pep rally. The bonfire was one of the largest in history, garnished with several outhouses (traditional). Cheerleaders, Ralynn Key, Kelli Williams, Kate Phinizy, Elvira Balague, Felicia Romero and Rachel Romero led chants and cheers as the Coyote team, band and spectators crowded nearer. Each senior Coyote took his turn giving a short pep talk. Mickey Burkett, Michael Murphy, Rockie Harber, Gerry Smith, John Stephens and Brice Key attended their last Homecoming pep rally as football players for BHS. The pep rally skit back-fired much to the dismay of teachers

Copeland, McCathern, Wallace, Lewis, Mayes and Cooper. Cheerleaders were blindfolded and were suppose to sit on the pie, but the whole thing turned into a pie throwing contest with teachers the losers.

The Booseter Club held the annual stew supper in the cafeteria. Homemade pies were served and everyone enjoyed visiting with friends and relatives.

The Ball game began at 7:30 after pre-game activities. Senior parents of the football boys were recognized. Receiving roses and a kiss from their sons, the mothers were proud along with the fathers. Being honored were Mr. and Mrs. Edward Smith, Mr. and Mrs. Roland Key, Mr. and Mrs. Gary Thurman, Mr. and Mrs. Brent Murphy Mr. and Mrs.

con't to 5

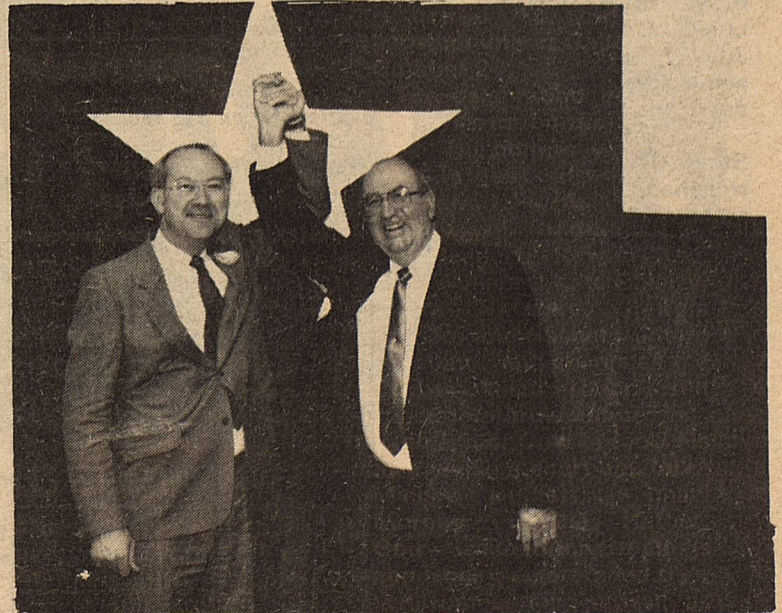
Gramm Says Rich Is Best Candidate Running

"A remarkable man with broad-based experience that can work for all of us in Texas." That is how Senator Phil Gramm (R-Texas) describes John R. "Rich" Anderson, the republican candidate for state representative in the 69th District.

Senator Gramm was in Big Spring Wednesday, October 22nd, to lend his support to the Anderson campaign. He spoke to a breakfast crowd of 300 well wishers in the East Room of the Dorothy Garrett Coliseum. Senator Gramm lists Anderson's accomplishments as a national spokesman for the cattle industry, his direct involvement in education as a twelve year member of the Borden County School Board, ten years as the president of that board, as a proven leader in agriculture

and as a proven business leader. Gramm says, "One of our biggest problems in

politics, one of the most difficult things in making our CON'T on PG. 12



Phil Gramm & Rich Anderson at a Breakfast held in Rich's honor last week.



Rene Telchik



B. G. Kropp



Kelli Williams and escort,
Michael Murphy

HOMECOMING QUEEN CANDIDATES

JUNIOR HIGH
COYOTES END
SEASON
WITH WIN

The Junior High Coyotes ended their season on a good note by defeating Dawson 27-6 to finish 5-2 for the season. The Coyotes were led by some very good running. Jimmy excited the crowd with several weaving runs. The ground game also received help from Clint Bray and Juevy Balague.

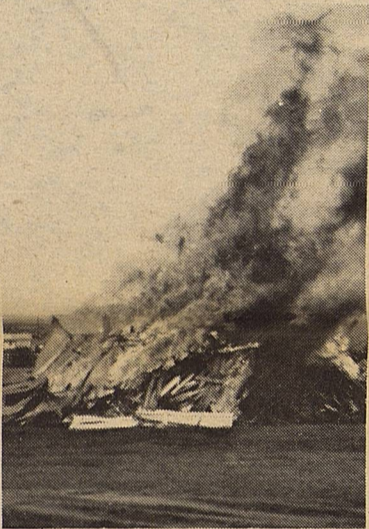
Shane Kemper had a successful passing game and was able to complete passes to Paul Sturdivant, Cole Vestal and David Buchanan. Eric Lusk also passed for several PAT's and Shane Kemper ran for 1 PAT.

The defense played maybe it's best defense of the year, and held Dawson to just one touchdown. Standouts on defense were Jimmy Rios, Paul Sturdivant and Clint Bray. Shane Kemper, Eric Lusk, Cole Vestal, and Juevy Balague also made some key tackles to shut down the Dawson offense.

Heith Gammons, Steve Thurman, and Rich Holzmann and saw some action in the 4th quarter. The second team offense and defense had several exciting plays.

Good job Junior High Coyotes. We're looking for a great effort from you now in basketball. Remember that you have to bounce that round ball, and you can not hit your opponent if "ole one-eyed zebra" is looking.

Coach Brown, I can tell you right now that you will have to turn the boys yeyes away from the stands during timeouts. Several of those boys can't keep their eyes off the girls. Good Luck!



1986 Homecoming Bonfire

THE BORDEN STAR
Publication No. 895520
(USPS 895-520)
Publication No. 895520

Editor
Barbara Anderson

Published weekly, except for Christmas and New Years, on Wednesday at Gail, Borden County, Texas 79738, Box 137, Kincaid Street, Second Class postage paid at Gail, Texas.

Any errors that we make reflecting on the reputation or standing of any Firm, Corporation, or individual that may appear in the columns of The Borden Star will be gladly corrected when called to the attention of the staff.

Subscription Rates:
\$8.00 per year

Ad. rate: \$2.00 a column inch
Classified ads: 15 cents a word
Legal Notices: 20 cents a word

Borden Star Owners:
James McLeroy, Barbara Anderson, Doris Rudd, Pat Porter, Bob Dyess, Edna Miller, Ruth Weathers, Mrs. Nathan Zant, Sonny Tucker, Eddie Simer, Loreen Jones, Martin Parks, Dan Turner, Lela Porter, Marge Toombs.

COYOTES SQUEEK OUT VICTORY

The Borden County Coyotes started the game with a couple mistakes that led to Dawson touchdowns, but the Coyotes did not give up. The Coyotes showed great determination and desire, and they came back in the second half to win the game.

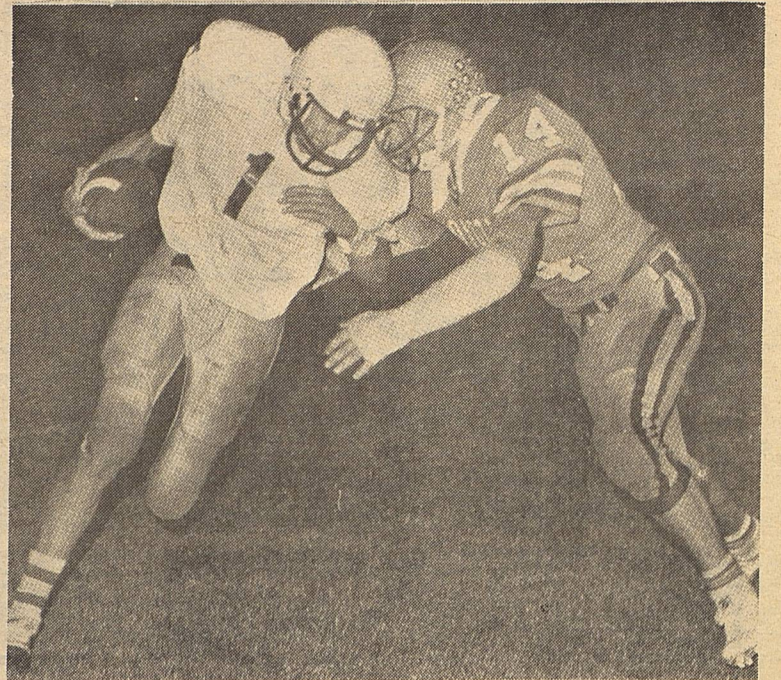
The Coyotes received the opening kickoff, but they were forced to punt. As the Coyotes dropped back for the punt return, the Dragon punter passed to the right end that gave them a first down. Again the Coyote defense did their job and held the Dragons to-2 yards on 3 attempts. When the Dragons punted the Coyotes fumbled the ball on their 28 yard line, and the Dragons recovered it.

On the next play, Junior Morales raced 28 yards for pay dirt. The kick for PAT was good and the Coyotes were down 8-0 with 4:32 left in the first half.

After taking over the ball on 20 yard line because of a touchdown, the Coyotes had an incomplete pass on first down. On second down the Coyotes gave the Dragons their second gift of the first quarter by way of a fumble on their 16 yard line. It only took the fired up Dragon 3 plays to



Mrs. Carol Lewis-Pie in Your Eye?



BUTTING HEADS-Borden County's Mickey Burkett introduces himself to Dawson's quarterback Kurt Coor. The Coyotes made it two in a row in the win column keeping their play-off hopes alive with a 15-14 win over the Dragons. (Photo by Dave Green-Lamesa Press Reporter)

get on the score board again. Kurt Coor passed to Rudy Rodriques who raced into the endzone. The one bright spot for the Coyotes in the first half occurred when Ray Martinez blocked the Dragon's kick for their PAT. That blocked PAT proved to be the winning margin for the Coyotes.

Neither team was able to move the ball with much success until the Coyotes scored in the third quarter. Just prior to the Coyotes score, Michael Murphy stopped a Dragon drive with an interception. The Coyotes were unable to move the ball for a first down and turned the ball over on downs, but on the next play John Stephens intercepted a Kurt Coor pass.

After an exciting halftime with all of the homecoming activities out of the way. How about that kiss Brice gave the Football Sweetheart Kate Phinizy! Maybe we should have let Kate kiss the Coyotes before the game. On the Coyotes first possession of the second half, Brice caught a pass from Shannon Bond and weaved 34 yards for his first touchdown of the night. Randel Hollis kicked the PAT to bring the score to 14-8.

The Dragon's next drive was halted by a Mickey Burkett fumble recovery, but the Coyotes were again forced to punt. The Coyotes defense stiffened and forced the Dragons to punt. Michael Murphy put the Coyotes in good field possession by returning the punt 15 yards to the Dragon's 35 yard line. Two plays later Shannon Bond found Brice Key going across the middle for another 31 touchdown. With the

score tied 14-14 Michael Murphy took a high snap and passed to John Stephens for 1 point.

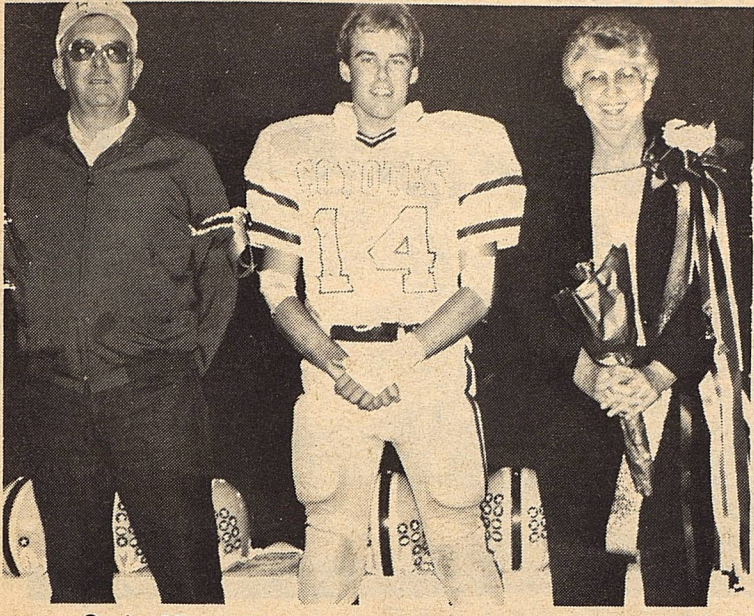
Neither team had much success until late in the game when the Dragons moved to the Coyote 9 yard line. On 4th down and needing 7 yards for a first down, the Dragons attempted a 26 yard field goal. The kick was just a little wide to the right. The Coyotes took over the ball on their own 9 yard line with 50 seconds left in the game, and they just ran out the clock to preserve a victory.

Brice Key led the Coyote offense with 41 yards on 8 carries and 84 yards on 5 pass receptions. Rockie Harber had 20 yards on 6 carries and 6 yards on 1 pass.

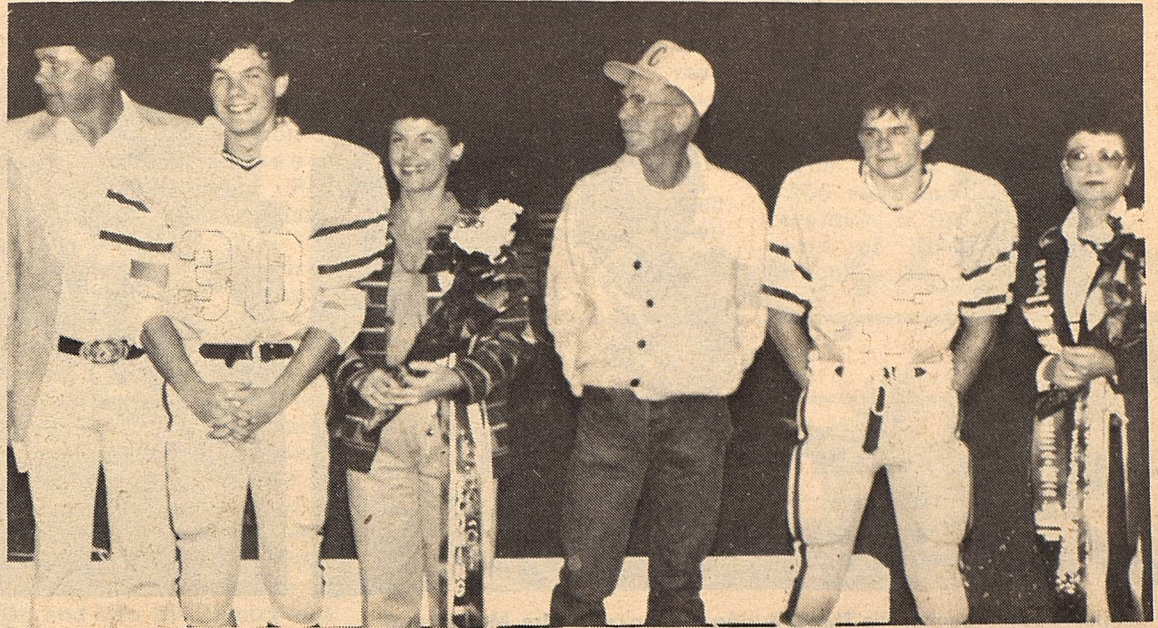
Mickey Burkett led the defensive effort with 13 tackles and 1 fumble recovery. Michael Murphy had 9 tackles and a pass interception. John Stephens also had a pass interception. Other Coyotes that made tackles were: Harold Barnes 8, Ray Martinez 4, Shannon Bond 2, Rockie Harber 5, John Stephens 1, Brice Key 8.

Gerry Smith had a good game and made several key blocks that allowed Shannon to scramble for extra time to pass. The boys on the sideline came through again with great encouragement when things looked bad. These boys are working very hard and will do a good job when called upon to fill in. Good job boys, Kerry Fryar, Randell Hollis, Lance Telchik, James Smith, and Brian Bond.

Congratulations to Kate Phinizy, who was selected Football Sweetheart. Those football boys aren't as blind as I thought they were.



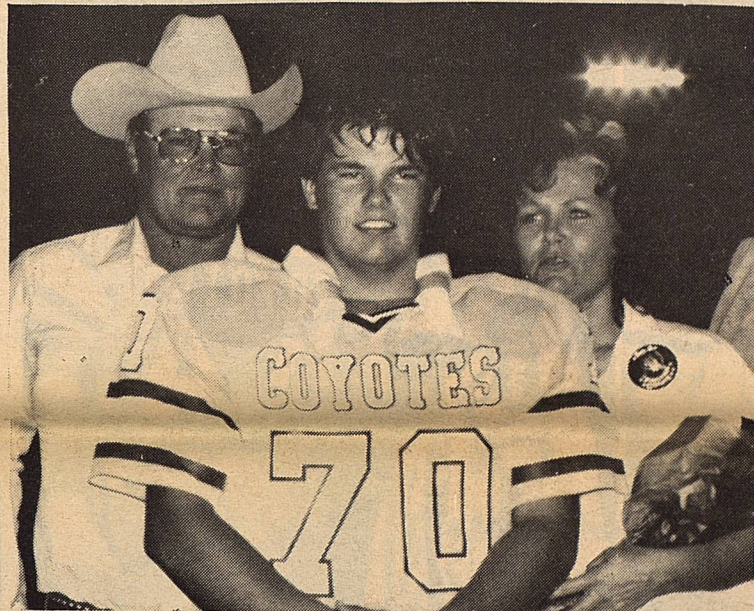
Senior Mickey Burkett and parents , Jim Mack and Frances



Seniors Brice Key and Michael Murphy with parents Roland and Karen Key and Brent and Pat Murphy.



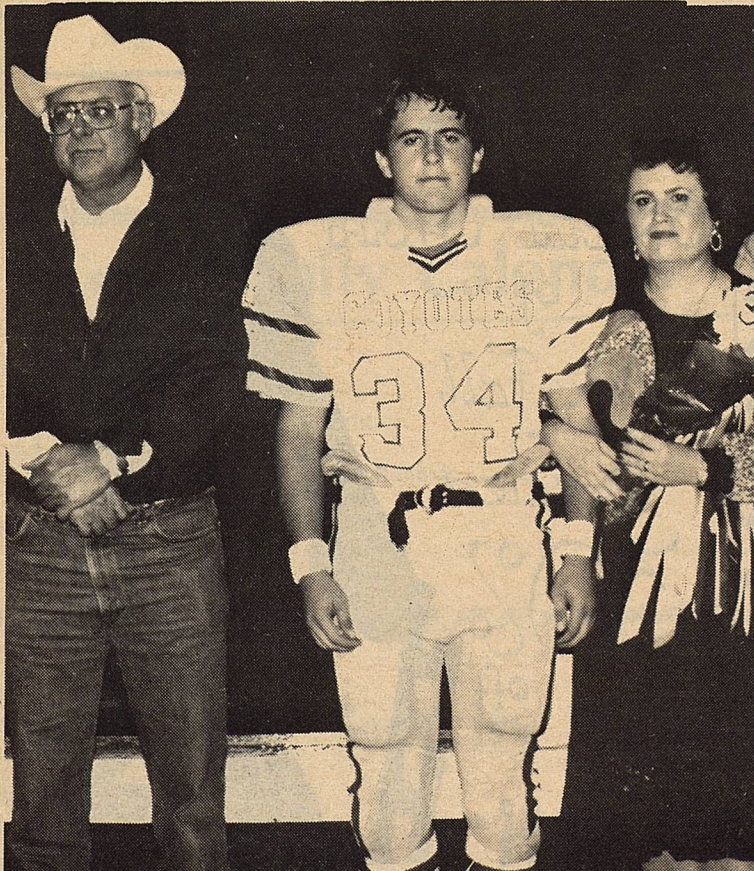
Senior Rockie Harbor with parents , Gary and Sharon. Thurman



Senior Gerry Smith with parents, Edward and Terry Smith



Mr. Jarrett after being trampled by 6 photographers at the Homecoming half-time festivities.



Senior John Stephens and parents, Steve and Carolyn.



Members of the Class of 1976 attended Homecoming at Gail last Friday were-(Maiden Names) Donelle Jones, Mary Ledbetter, Patsy Rich, Creighton Taylor, Kendall Davis, Philip Boyd. Seated-Patsy Lockhart, Philena Farmer, Deidre Tucker and Debbie Herring.



Cheerleader-Teacher Pie Throw during the pep rally. Mrs. McCathern, Joe Copeland and Kate Phinizy



Coyote Marching Band During Pep Rally



CANDIDATES FOR FOOTBALL SWEETHEART AND PEP SQUAD BEAU
Kate Phinizy and Brice Key



CANDIDATES FOR FOOTBALL SWEETHEART AND PEP SQUAD BEAU-Kelli Williams and Mickey Burkett

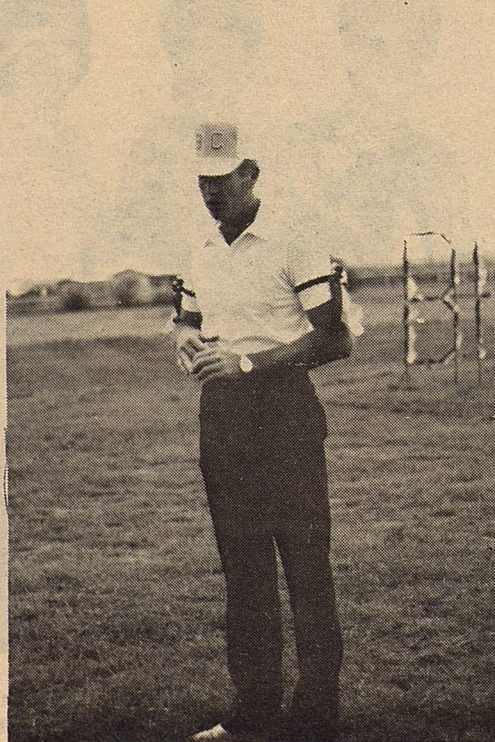
School Menu

November 3-7, 1986

Monday	Burritos Pinto Beans Fruit Milk	Salad Bar
Tuesday	Steak Fingers Green Beans Potatoes Fruit Hot Rolls Milk	Salad Bar
Wednesday	Pizza Vegetable Salad Fruit Cookie Milk	Salad Bar
Thursday	Frito Pie Cheese Vegetable Salad Fruit Crackers Milk	Salad Bar
Friday	Hamburgers French Fries Lettuce & Pickles Brownies Milk	Salad Bar



CANDIDATES FOR FOOTBALL SWEETHEART AND PEP SQUAD BEAU
Ralynn Key and Michael Murphy



COACH BOND gives the pep talk before a blazing BHS.

Special Group
of
New Fall
Sweaters
30%
off



Snyder

-H-
Western Wear

3205 College Ave.



OPEN LETTER

Well the campaign is about over and in just a few days we will know who our representative from the 69th district will be.

I want to urge everyone to be sure and vote for this could be one of the most critical elections in Texas history. Thank all of you who have been so generous in your support of Rich Anderson. Let's don't take this election for granted, I feel that if we can get out the voters, Rich will win.

In closing this letter I don't want to forget to thank Larry Don Shaw. Unknowing, he has been most helpful.

Sincerely, Joe M. Canon

**Vote
November 4!**

Basic Nutrition For Livestock Course

A Basic Nutrition Course for Livestock owners will be offered by the Continuing Education Department of Western Texas College on Monday night beginning November 3 and ending December 1. Classes will meet from 6:30 - 9:30 p.m. Instructor for the course will be Kent Mills, sales representative for Ezell-Key Grain Company.

Mills says that the course will be especially beneficial to those who are feeding 4-H and FFA animals and it will benefit farmers and ranchers as well. Fee for the course is \$25. For more information, call the Continuing Education Department at WTC -573-8511 or call Mr. Mills at home 573-1308.

HOMECOMING

con't from 1
Jim Burkett and Mr. and Mrs. Steve Stephens

Halftime activities included the presentation of Homecoming Queen, Football Sweetheart, Pep Squad Beau and Band Sweetheart.

Receiving the most prized honor, was Kelli Williams, daughter of Mr. and Mrs. Kenneth Williams. Kelli received a kiss and bouquet of roses from escort, Michael Murphy. Other candidates for Homecoming Queen were Rene Telchik and B.G. Kropp. B.G. was escorted by Brice Key and Rene was escorted by Mickey Burkett.

Kate Phinizy, daughter of Mr. and Mrs. Bill Phinizy was presented as Football Sweetheart. Kate received roses and a big kiss from escort, Brice Key. Other candidates for Football Sweetheart were Ralynn

Key, escorted by Michael Murphy and Kelli Williams, escorted by Mickey Burkett. Felicia Romero was presented as Band Sweetheart and received roses and a kiss from Rockie Harber.

Mickey Burkett received the honor of Pep Squad Beau and received a kiss from

Homecoming Queen, Kelli Williams.

The Homecoming Game Resumed and the Coyotes beat Dawson by one point in a very exciting and rewarding game.

The Class of 1976 and 1966 were honored with a reception in the conference room of Borden County School.

Elect

John R. Anderson

STATE REPRESENTATIVE

69th Dist. Republican

"With his state and National posture, Anderson is the best candidate in the State running for the Legislature..."

Sen. Phil Gramm

The Man Who Will Represent West Texas Best.

Pd. Pol. Adv. Anderson Camp, Jerry Worthy, Treas., P.O. Box 136, Gail, Tx. 79738

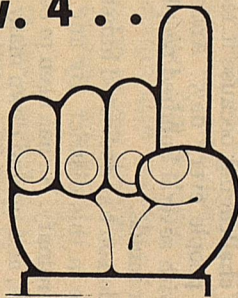
NOVEMBER 1986

Sunday	Monday	Tuesday	Wednesday	Thursday	Friday	Saturday
OCTOBER 1986 S M T W T F S 1 2 3 4 5 6 7 8 9 10 11 12 13 14 15 16 17 18 19 20 21 22 23 24 25 26 27 28 29 30 31	DECEMBER 1986 S M T W T F S 1 2 3 4 5 6 7 8 9 10 11 12 13 14 15 16 17 18 19 20 21 22 23 24 25 26 27 28 29 30 31					1
2	3	4 6:00 p.m. H.S. Basketball Scrimmage (girls) Coahoma - There	5	6	7 7:30 p.m. H.S. Football Wellman - There	8
9	10	11 VETERANS DAY	12	13 4:30 p.m. H.S. Basketball Scrimmage (girls) Tahoka - There	14	15
16	17	18 5:00 p.m. H.S. Basketball Boys & Girls Ira - There	19	20 End of Six Weeks	21	22 Sands J.H. Basketball Tournament
23	24	25	26	27	28	29
30	31 6:30 p.m. H.S. Basketball Boys & Girls Hermleigh - Here	← THANKSGIVING HOLIDAYS →				

Community Calendar

- October 31
Halloween
4-H aftergame party-Exhibit Bldg.
- November 15
County 4-H Food Show-Exhibit Building
- December 6
District 4-H Food Show, Lubbock

Nov. 4 . . .



Visit Our Deli

Party Trays Pastries Custom Cakes

710 N. 4th

Lamesa

THE BORDEN STAR

1 year Subscription \$8.00

BOX 137 GAIL, TEX. 79738

Name

Street

City State Zip



Security State Bank

1411 Gregg

Big Spring, Texas

Member F.D.I.C.

The Proven LEADER

**John R. Anderson
Will Be An Effective
State Representative
For Our District**

CAMPAIGN NEWS

Democrats, Republicans & Independents Strongly Supporting John Anderson

Anderson Knocks On Over 10,000 Doors

John Anderson has gone directly to the people in his campaign for State Representative. He has been seeking their ideas and listening to their concerns.

"Running for public office is challenging because it requires getting out and meeting lots of people every day," Anderson said. "After you've met and talked with several hundred people in a day, you really know what's on their minds."

For the past six months, Anderson has dedicated himself to meeting as many people as possible in this district. By any standards, that dedication has been extraordinary. He has been to some 10,000 homes, stores and meeting halls, and up and down many sidewalks.

As a citizen and voter himself, Anderson believes votes must be earned, and that people must never be taken for granted. The last poll taken showed that Democrats, Republicans and Independents are strongly supporting Anderson.

WHICH TEAM?

**DO YOU THINK WILL BE
THE BEST FOR OUR DISTRICT**

ON THE LEFT

TED KENNEDY

TIP O'NEIL

WHITE

SHAW

ON THE RIGHT

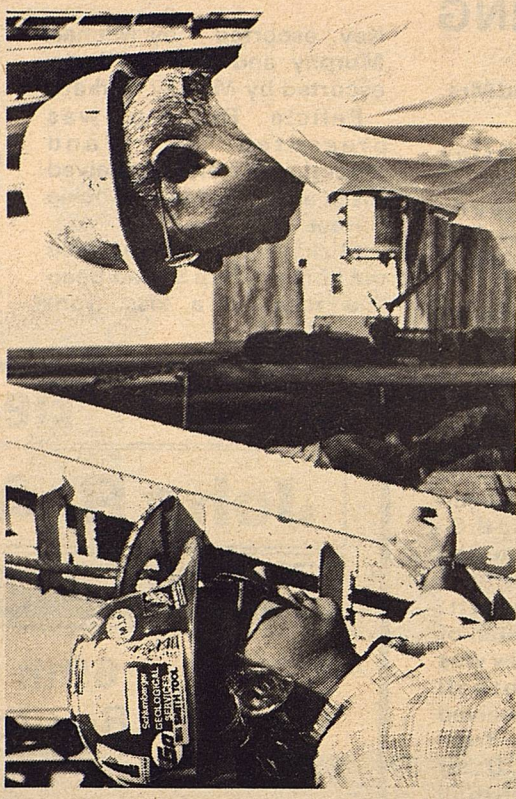
REAGAN

BUSH

CLEMENTS

ANDERSON

**ANDERSON HAS TAKEN HIS
CAMPAIGN TO THE PEOPLE**



Anderson does his homework. He thinks for himself, but is always ready to listen and learn. He will speak out. Importantly, he understands the value of teamwork and cooperation to get things done.

If you have met Anderson, you know he is the kind of guy that won't be afraid to stand up and fight for what he believes in. He will be a strong voice in state government who will strive to represent us in a responsible, effective way.

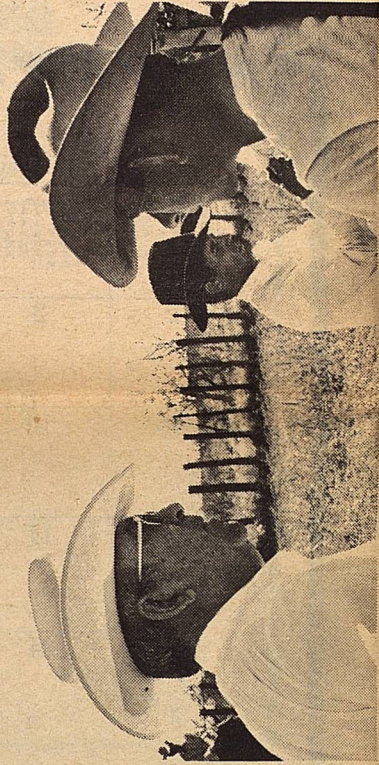
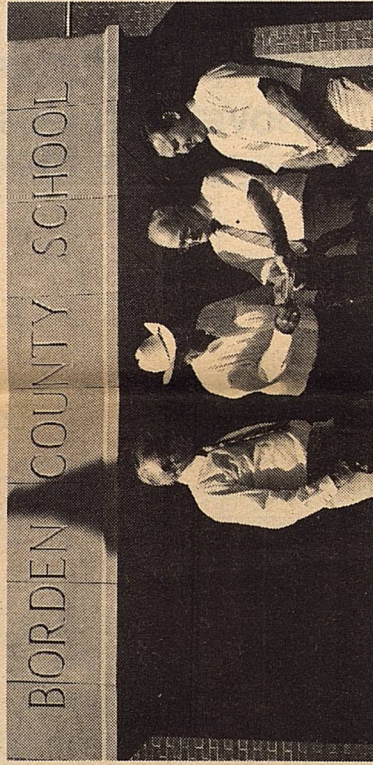
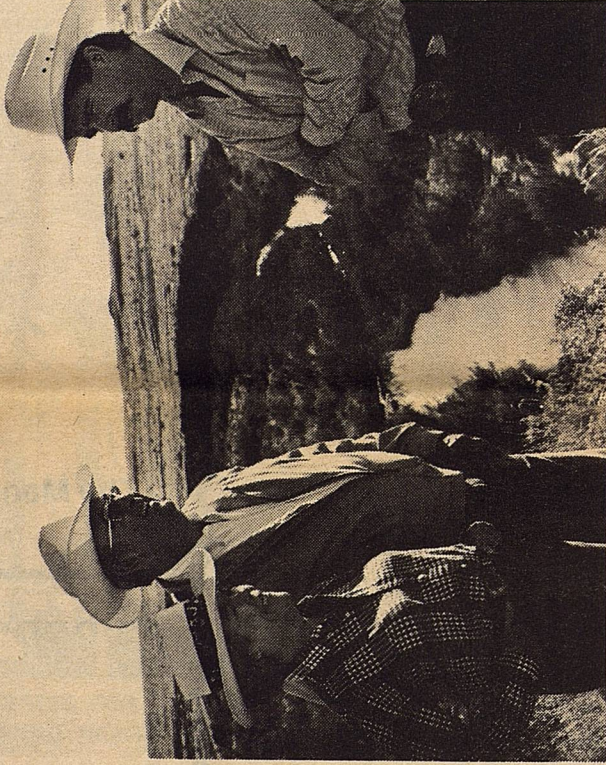


The Anderson Family

Anderson and his wife, Barbara, have been going door-to-door. And the rest of the family, including his four children, have been pitching in, too.

Anderson, 57, is a true West Texas farmer and rancher. He has owned and successfully managed a ranch in this district for 34 years (4th generation Texas rancher). His wife, the former Barbara Clayton, is a member of an old West Texas family.

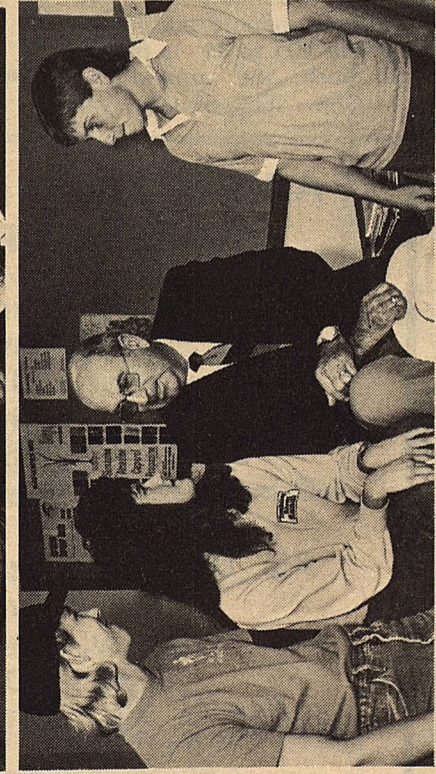
The Andersons understand well the people and problems of West Texas.



THE FACTS

Shaw had the 5th MOST LIBERAL voting record in the House (out of 150 members) in the 1983 session. This was documented by the respected organization Concerned Citizens for Tax Relief, Texas 13.

Shaw had the 11th MOST LIBERAL voting record in the House (out of 150 members) in the last session. This was recorded in the Conservative Report, published by the Free Market PAC.



In The Best Texas Tradition

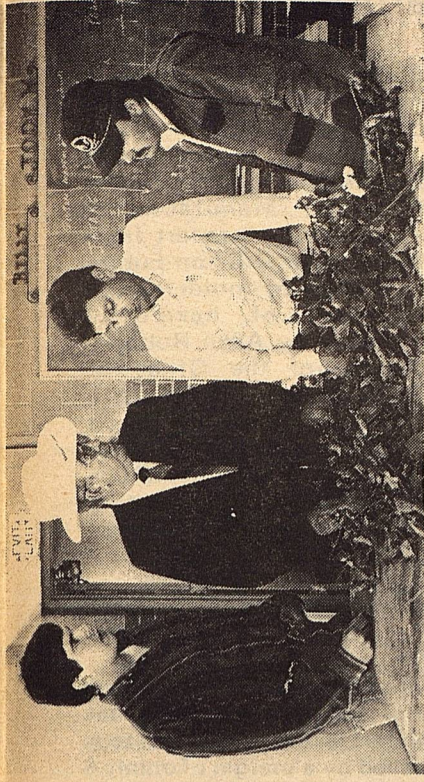
Anderson was born in Midland. Naturally, he has a special love for the land and its people. Those who have met him know that his friendliness and sincere dedication will be an asset for the people of this district. In addition, Anderson brings to the race proven leadership abilities evidenced by a wide range of experience and activity

Anderson Is A Proven Leader

- ★ Served for 10 years as the President of the Borden County School Board.
- ★ Served as a director of the Malone-Hogan Hospital and as a director of the Dora Roberts Rehabilitation Center in Big Spring.
- ★ Served as Chairman of the Ranching Heritage Association.
- ★ Serves as director of the Texas and Southwest Cattle Raisers Associations.
- ★ Has been cited many times for his work in soil and water conservation in West Texas.
- ★ Is a dedicated leader in his church and community.

Anderson Stands For:

- ★ Right-To-Work
- ★ Tough on Criminals
- ★ Effective, Efficient Government
- ★ Local Control
- ★ Property Rights
- ★ Keeping Taxes To A Minimum



PRIME TIME OR ANY TV --

is out. It is too expensive. Anderson is the underdog in this race, however, because of his vigorous shoe-leather campaign in all 13 counties he has a good chance to win.

I Am Committed . . .

I am not a professional politician, and never will be. I would like to give something back to this special area of Texas which has been so good to my family and me.

I have committed to take my campaign to the people of this district. In the past six months, I have knocked on over 10,000 doors, walked up and down the sidewalks, and attended more dinners and meetings than I can count.

It sounds like a lot of work, but it actually has been a most gratifying experience that has allowed me to meet so many wonderful people in this district and — importantly — to *listen* to them. I want to hear what the people have to say about what our priorities should be, where they see problems, and what they think can be done to solve them.

What I'm finding is that my views are very much like yours. We share deep concerns about crime, the rising cost of living, water resources, energy, health care and education.

I am not going to make unrealistic promises. No one person



can do it alone, but I can and will work and fight with everything I have to do my part to change things for the better and to be an effective state representative for you.

I would appreciate your vote on November 4th.

Sincerely,

John R. Anderson

The Record	Anderson's Stand	Shaw's Vote
1. (HB 20-Waldrop Amend.) Shaw voted against this amendment to cut state spending.	FOR	AGAINST
2. (SB 1-Schoolcraft Amend.) Shaw voted against this amendment that would have scaled down a "new" state welfare program.	FOR	AGAINST
3. (HB 2129 - Morales) Shaw voted against this bill to tighten the parole process for inmates with stacked sentences.	FOR	AGAINST
4. (HB 763) Shaw voted against allowing local school boards to contract for lower transportation costs.	FOR	AGAINST
5. (HB 360) Shaw voted against this bill which would have allowed law enforcement officials to install and monitor electronic surveillance equipment to combat illegal drug trafficking.	FOR	AGAINST
6. (HJR 62) Shaw voted for eliminating the cap on annual welfare payments.	AGAINST	FOR
The Conclusion	ANDERSON IS THE CONSERVATIVE	SHAW ?

ON NOVEMBER 4th, DEMOCRATS, REPUBLICANS & INDEPENDENTS CAN VOTE FOR JOHN ANDERSON
Anderson ★ Strong & Truthful Leadership

Anderson's Reception A Big Success

The breakfast reception in the Dorothy Garrett Coliseum for Rich was attended by 250-275 people from several counties in the 69th district.

The main speaker, Senator Phil Gramm, was greeted very warmly as he challenged all of us to get out and work very hard for one of the best qualified candidates to come along in many years. He commended Rich for being a leader in his community for many years as well as being

involved in the National Cattleman's Association, as a very effective spokesman on many issues. One of the main topics covered by Rich was Shaw's contention that we do not need a change in Austin during this critical time in Texas. The main problem with this change from Shaw is the voting record he has in Austin should be a big concern to us all since it does not reflect the views of his constituents from the 69th. Definitely not a conservative approach that we desperately need in Austin.

Rich needs all our support. Please get out and vote on November 4th.

Emergency Medical Service News

Memorials

The regular monthly meeting of the Borden County Emergency Medical Service will be held Monday, November 3, 1986, at 6:30 p.m. in the Ag Building.

MEMORIALS

In Memory of Mary Nell Courville:
Blanche Wilson
Ioleita Mitchell
Mrs. P. C. Mitchell

In Memory of Beno Hendricks:
Mrs. Laura Boubek
Mary Cathey
Bess Smith and Families

In Memory of Elvert Lewis:
Gae and Lisa Ludecke

In Memory of Corky Ogden:
Frank and Wilma Currey

In Memory of Roy Reeder:
Bert and Dorothy Dennis
Mrs. Joe York
Mr. and Mrs. Roland Hamilton
Mary Cathey

In Memory of Edward Rinehardt:
Gail Friends
Larry and Wanda Smith
Perry and Kelly Smith
Kristy and Kurt Pierce
Gae and Lisa Ludecke
Sterling and Gladys Williams
Garland and Eva Doyle
Mr. and Mrs. Jeff Lackey
Mr. and Mrs. Vernon Wolf
Jim, Frances and Mickey Burkett
Mr. and Mrs. K. T. Reddell
Donna, Bo and Jacque Hendricks
Mary Cathey
Ross, Sarah and Jason Sharp
Mr. and Mrs. O.D. Jackson
Mr. and Mrs. Joe Canon
Bess Smith and Families
Bill and Sadie Ludecke
Bannie and Juanda Hancock
Hurston Lemons
Frank and Wilma Currey

In Memory of Bill Stephens:
Mr. and Mrs. Bob Dyess
Mr. and Mrs. Joe Canon

Plains Community Center Donations

A donation was made to the Plain's Community Center by Bill and Sadie Ludecke in memory of Mr. E. L. Lewis, Seagraves, Texas. Mr. Lewis was the Father of Marie Reagan.

Last Date To Plant Barly and Wheat

Big Spring, Texas-November 30 is the final palanting date for insured Barley and Wheat in Borden County, Texas, according to Dottie Sampley, a representative for the Federal Crop Insurance Corporation (FCIC).

Insured barley and wheat planted by November 30 must be reported by December 15 in order to receive full crop insurance coverage. The acreage report reflects the actual acreage planted and reported by the farmer.

"During ther growing season, if damage occurs, notice should be given

Seminar on Transportation of Hazardous Materials

(Austin)--In an effort to take a comprehensive look at the transportation of hazardous materials and to seek ways to ensure safety on this state's highways, the Texas Motor Transportation Association is co-sponsoring a conference on this topic October 27 and 28 at Texas A & M University.

"The Conference on Safe Transport of Hazardous Materials by Motor Carriers" is being co-sponsored by Texas Transportation Institute, the Bureau of Motor Carrier Safety (BMCS), the Texas Oil Marketers' Association, the Texas Council of Safety Professionals (TCSP), Texas Tank Truck Carriers Association, Texas Safety Association, the Texas Police Association, the Sheriff's Association of Texas, and the Texas Chemical Council.

Henry Lewis, safety director of Central Freight Lines, Waco, and Dr. C. V. Wootan, director of Texas Technical Institute, will open the seminar at 1:15 p.m. Monday, October 27. They will be followed by L.D. Friesen, BMCS director, who is scheduled to discuss his bureau's investigation of hazardous materials incidents involving motor carriers. A report on the

Council of Government's study on hazardous routes in Texas will be presented by Dan Kessler, North Texas Council of Governments, Arlington, TX.

Conferees will also be able to inspect Central Freight Lines Inc. Emergency Response Unit, a converted trailer which can be used in the event of a hazardous materials spill. Western Emergency Services, Inc. will also be on hand to display its emergency clean-up equipment and procedures.

Monday afternoon participants will review the

Texans Against State Income Taxes Endorses Anderson

Dallas, Texas, October, 1986...Texans Against State Income Taxes Election Fund, a project of the Free Market PAC, today endorsed John R. Anderson in his campaign for the District No. 69 seat for the House of Representatives.

Anderson has made a firm commitment to not only vote for a constitutional amendment to prohibit a state income tax, but has also promised to be a co-sponsor and to fight for the amendment's passage.

Richard Ford of Dallas, Chairman of the group, said "The reason we require an all out commitment to the income tax prohibition before we give an edndorsement is because, in the recent special session, the amendment narrowly missed becoming a part of the tax bill when some previous supporters of the amendment abandoned their commitment at the last minute."

During the special session, the House of Representatives passed a constitutional ban on state income taxes by a vote of 101 to 31. In frorder to push the amendment through the Senate, an

motor carrier surveys recently compiled by the chemical industry.

Tuesday's program will include a presentation by the Chemical Manufacturers Association; a report from Washington D.C. on Future regulation of motor carrier transport of hazardous materials by Allen Roberts, director of the Office of Hazardous Materials Transport; and a discussion by media representatives on the news media's responsibility in reporting hazardous materials incidents.

attempt was made to attach the amendment to the tax increase bill. This strategy failed by a margin of ohlny 6 legislators. Of the 101 previous supporters of the amendment, 34 weakened in their resolve; if only 6 of these had not weakened, the amendment would have been attached to the tax bill.

"A great opportunity has been lost for rhe people of Texas to be protected against a state income tax," Ford emphasized. "It is for this reason we are pleased to endorse John R. Anderson as we believe he could provide that noarrow margin which could make the difference between whether or not Texas will have a state income tax."

Washer & Dryer
Repairs
Parts & Service
Call James L. Seals
495-3190
or come by
508 So. Ave N
Post

FARMERS and RANCHERS RALLY FOR RICH

You are invited to have coffee and donuts with JOHN R. (Rich) Anderson Candidate for State Representative at Rip Griffen Truck Stop Meeting Room Friday, October 31 7:30 - 9:00 a.m.

No charge No solicitation

WESTERN SEED & DELINTING

Certified Cotton Seed

COTTON PLANTING SEED

Paymaster 145, 303, 404, 792
Coker 3131, S110, 500
Terra 383, SR-10, SR-482
SP-21, SR-215, CAMD-E
CAB-CS

ACID DELINTING

Wheat
Grain Sorghum
Hay Grazer

Wheat & Oats Cleaning

LAMESA, TEXAS
RON BUTLER

BUSINESS PHONE
(806) 872-8896
(806) 872-5388

RESIDENCE PHONE
(806) 872-5271

Louise Mandrell In Concert

Louise Mandrell's talent, personality and boundless energy have already won her a legion of fans, unparalleled reviews, a string of hit records, a best-selling book, numerous commercial endorsements, and her own nationally-syndicated television special. By any standards, Louise Mandrell is one of the hottest of the new breed of Nashville stars.

Louise leaped into the national spotlight in the fall of 1980 as one of the talented siblings on the NBC Television show, "Barbara Mandrell and the Mandrell Sisters." In the nation's eyes, Louise became somewhat of an "overnight sensation."

Because of her recent accomplishments and successes, Louise's early career is rarely noted, but her performing background is definitely worth looking into. Louise was born in Corpus Christi, Texas on July 13. When she was a junior in high school, she had become her older sister's first full-time bass guitar player and one of the original "Do-Rites." Before her sixteenth birthday, she worked every major city in the United States, Canada and had even performed in clubs and on military bases all over Europe.

While still a teenager she became a fixture on the Grand Ole Opry with the Stu Phillips Show. Later, she both toured and recorded

with entertainment legend, Merle Haggard. When barely out of her teens, the petite musician had become a well-respected Music City instrumentalist.

Louise's ability to relate to and reach her audience may be her single greatest attribute. She seems to become all things to all people. She is sexy and vibrant with a mischievous country charm. Her fans and critics see her in all these ways because her stage show, her records, and even her television appearances contain these qualities.

When Louise walks out on a stage, she literally owns it! She combines bluegrass traditions with pure country harmonies. She incorporates Broadway-perfect dance steps with an unsurpassed fluency on several musical instruments for one of the most energetic and entertaining shows anywhere. Her beauty, warmth, and talent have both dazzled and electrified audiences from the main show rooms of Vegas to the heartlands of the Bible-belt. Louise is accompanied by one of the most talented team of stage musicians in the business, "Spellbound." They are an entertainment treat all by themselves. When Louise is added to their mix, the combined energy literally explodes with exuberant excitement under the spotlights.

Since joining RCA in 1982, Louise has had an equally successful impact on the recording industry. With a string of hits that include, "Some of My Best Friends Are Old Songs," "Save Me," "Too Hot To Sleep," "I'm Not Through Loving You Yet," "I Wanna Say Yes," "Maybe My Baby," and her current hit, "I Wanna Hear It From Your Lips," her recording career is definitely on an upward spiral. Her four solo albums on RCA, "Close-Up," "Too Hot To Sleep," "I'm Not Through Loving You Yet," and "Maybe My Baby" have garnered both impressive reviews and sales. Her hit singles and albums have spotlighted the wide range and variety of her vocal talents. The summer of 1986 will see her combine forces again with producer-husband R.C. Bannon on the release of her fifth RCA album.

Few entertainers seem to be so comfortable with the medium of television as Louise. She is constantly in demand for guest appearances. Her credits include almost every major syndicated country show, "Barbara Mandrell and the Mandrell Sisters," her own two-hour, star-studded special, "Louise Mandrell--Diamonds, Gold and Platinum," the daytime soap, "Another World," "The Tonight Show," "The Richard Simmons Show," "Austin City Limits," "Solid Gold," "Hee Haw" and a guest appearance on the CBS TV series "Crazy Like A Fox."

When not recording, performing or doing interviews regarding her musical career, Louise's passions include working toward goals that she has set for her favorite charity, Easter Seals, by hosting her own annual celebrity golf benefit in Paducah, Kentucky. In pursuit of her writing skills, her first book, The Mandrell Family Album was a 90,000 word autobiography published by Thomas Nelson. It became an immediate "Best Seller" when released in July of 1983 and was released in paperback in July of 1984. Adding to her heavy schedule this year are her duties as Vice President of the Country Music Association's Board of Directors. Here, Louise is combining her eighteen years of performing experience with her level business head in helping decide issues which will determine the future directions of country music.

Another recent creative endeavor is the "Louise Mandrell Country Music Trivia Game." The idea for the game originated because of her love and respect for

country music. The success of the game is due to its historical accuracy and overwhelming popularity at radio stations, coupled with Louise's desire to share her enthusiasm for country music. She also directed her own television commercial for the game. Louise continues to be spokesperson for White Rain products, a division of the Gillette Company, and for Miss Goldy's Chicken, a product of Sanderson Farms. She worked with both of her sisters, Barbara and Irlene in a national commercial for Swifts Premium Brown & Serve Sausage.

One of the areas which is often called unique to the country music industry is the relationship between star and fan. In Louise's case, there seems to be a bridge between the entertainer and her public that brings out a love and respect that reaches beyond her music. People who see her in concert and talk to her after shows seem to believe that they are seeing an individual who cares as much about them as they do about her. The end result that

the Louise Mandrell International Fan Club has become one of the largest. Her annual Fan Fair dinner combines an atmosphere of church picnic-country fair-family reunion, and is considered one of "the" places a country music fan should be in June. With this kind of personal attention, it is little wonder that her fans keep selling out concert after concert across the country.

Home for Louise is a lakefront house in Hendersonville, Tennessee. She shares it with her husband, one of Nashville's finest songwriters, R.C. Bannon. She loves skiing, fishing, swimming, cooking, cards, and almost any type of athletic competition. This middle Mandrell is a natural-born competitor who plays even the simplest games to win.

Perhaps it is this winning attitude that creates the drive and desire to be the best. Most entertainers give you a performance that showcases their talent. Louise Mandrell does not leave the stage or the recording studio until she has given you her heart.

The First National Bank - of O'Donnell

We want to meet the financial needs of this community -

Come in and visit with us

We now have safety deposit boxes.

MEMBER FDIC

-Support Our Advertisers-

Branon Funeral Home

Service in this area since 1922.

Phone: 872-8335

403 N. Austin - Lamesa



Louise Mandrell

Concert
Benefitting
United Way
of
Big Spring
Saturday



Also Appearing

MAINES BROTHERS BAND

November 8, 8 p.m.

Dorothy Garrett Coliseum

1001 Birdwell Lane
Big Spring, Texas

Tickets In Advance

\$9.50 Adult
\$7.50 Senior Citizens
\$4.50 Children 12 & Under

Day Of Show

\$10.00 Adult
\$8.00 Senior Citizens
\$5.00 Children 12 & Under

Tickets may be purchased at--

- ODESSA AMERICAN
- WOODS BOOTS
- ENDLESS HORIZONS
- RECORD BAR

Coyote Country Store, Gail



Extension Home Economics Report

By: Kandy K. McWhorter

GETTING THE MOST NUTRITION FROM CEREAL

Americans spend over a billion dollars a year on cereals. What consumers get for their money depends, in part, on how carefully they read the nutrition labels on the cereal boxes.

Nearly all breakfast cereals are grains, such as corn, wheat, rye, oats or barley. In their natural state, grains contain vitamins, minerals and fibers. But during the processing of grains into cereal products, many nutrients are lost.

Most cereal manufacturers restore the lost nutrients by fortification. Some ready-to-eat cereals are fortified with more vitamins and minerals than the grains contain in their natural state.

The Food and Drug Administration requires that fortified foods which provide fifty percent or more of the U.S. Recommended Allowance of one or more nutrients be labeled with the terms "dietary supplement," and "multivitamin and iron supplement."

Stenholm Honored For Small Business Support

Washington, DC--Rep. Charles W. Stenholm, by voting in favor of American small businesses 82 percent of the time, has earned the indss" award from the National Federation of Independent Business.

"Congressman Stenholm has demonstrated his support for the most important segment of our nation's free enterprise system," NFIB President and CEO John Sloan said on announcing the award. "Small business is on the economic cutting edge of America's future and Charles Stenholm's voting record is a tribute to his unswerving dedication to entrepreneurship."

NFIB, the nation's largest organization representing small business, selects the "Guardian" winners on the basis of their favorable votes on issues deemed crucial by its 500,000-plus members across the country. There are 43,964 NFIB members in Texas.

If you really want to know that you are getting in a cereal, read the label. All packages have a list of ingredients in order of predominance by weight. Cereals also have nutrition labels that tell you what percent of the daily requirement for basic nutrients is provided.

By comparing labels you can select a cereal which is high in a particular nutrient, such as iron. Or you can check the labels to avoid buying cereal high in sugar, sodium or preservatives.

As you read the nutrition labels, remember that they are based on a one-ounce serving. Since cereals vary in bulk and consistency, an ounce of one kind might make one-fourth cup, while one ounce of another cereal could be one and one-fourth cups.

If your customary serving size is more or less than the one ounce standard, you will want to take that into account when figuring the cereal's nutritional value.

Rated on 17 recorded votes during the 99th Congress, members of the House of Representatives faced a wide range of key small-business issues including: tax reform, balanced budget amendment to the Constitution, repeal of contemporaneous record-keeping requirements for auto use, deficit reduction, and improving access to federal contracts. To qualify for the award, a Member of Congress had to vote favorable on at least 70 percent of the issues rated.

NFIB is a non-profit, non-partisan organization lobbying federal and state elected officials on issues affecting the nation's small businesses. Its more than half-million members come from all segments of American business, from family farmers to neighborhood retailers, from manufacturers to service companies.

Serve Garden Vegetables Before Frost Gets Them

College Station--You can beat Mother Nature to the punch by freezing the peppers, onions and tomatoes in your garden before the first frost damages them.

"Produce which is slightly frost damaged can be salvaged, but the quality will be better if you process them before the tender plant tissues are frozen," says Marilyn Haggard, a Texas A&M University Agricultural Extension Service specialist.

She points out that peppers and onions are the easiest to process because they don't have to be blanched, and can be frozen using the following simple procedure:

-Wash peppers and remove the membrane and seeds, then dice or slice as you would if preparing them for casseroles or soups.

--Freeze in a single layer on a baking sheet.

-When frozen solid, place in moisture-vapor resistant packaging such as freezer bags, rigid containers or glass jars with airtight seals. Onions are best stored in glass containers because their odor easily transfers to other foods in the freezer and is difficult to remove from plastic containers.

The specialist says that Anaheim peppers, often used for chiles rellenos, can also be frozen for later use if the skin is removed first.

Haggard advises removing the skin by blistering over a gas flame, roasting in a very hot oven or heating in a small amount of oil in a very hot skillet. Then remove the stems and seeds along with the skin.

Flatten each pepper to remove air and place in

National Weather Service Seeks Reports From Public

The National Weather Service is seeking the public cooperation to help them with timely reporting of storms and severe weather events. Reporting of this information helps the weather service with collection of vital weather information and verification of warnings.

The National Weather Service uses radar, computers and other sources to detect storms and severe weather, but the bulk of the information must come from the public and other branches of the community. Ground reports from human eyewitnesses verify severe weather.

Severe weather reports from the public also aids the public in filing insurance claims. If severe weather isn't reported to the National Weather Service, then the service can't provide that information to the public.

Therefore, the weather service is asking the public to take an active part in reporting severe weather events. Severe weather should be reported as soon as possible to the Midland

National Weather Service by calling (915) 563-2509 collect, or by calling the nearest police department and asking them to relay the report to the NWS.

The following information should be reported.

-Hail that is dime size or larger, along with the size, such as dime, quarter, half-dollar, golfball, baseball, etc., and the time and location.

-Tornado or funnel cloud, along with location, movement and time.

-Wind damage, giving extent of damage, estimated wind speed, location and time.

-Flooding or flash flooding, time, and location, plus the extent of damage if the event is over.

-Flooding or flash flooding, time, and location, plus the extent of damage if the event is over.

The National Weather Service needs this information to issue timely and accurate severe weather warnings that may save lives.

Reports following storms will gladly be accepted even if a few days old.

moisture-vapor resistant packaging. Wax paper, freezer paper or plastic wrap placed between peppers before freezing will make them easier to handle when thawing, she adds.

When the first killing frost of winter approaches and you still have green tomatoes on the vine, Haggard suggests testing them for maturity.

Cut a couple of tomatoes that you aren't certain will ripen. If the knife cuts through the seeds, the tomato is not mature and will not ripen. Use these tomatoes for relish or green tomato pickles.

If the seeds move away from the knife and are not cut, the tomato is mature and will ripen indoors. The mature tomatoes can be made into tomato sauce or picante sauce or frozen for later use.

Caprock Theater Will Produce Dracula

The Post Caprock Theater will welcome its audience back to an early 20th century style of theater with its production of Dracula to be presented in the Post Art Center located in the old Algerita Hotel on East Main Street in Post, October 30-31 and November 1 at 7:45 p.m. each evening.

The production has been designed by actor-director Will McCrary to feature a troupe of actors as if they were touring West Texas with their comic "tongue in check" melodrama version of the classic horror story.

Preceding the rather short two act play will be several acts of vaudeville, featuring area favorites in old fashioned songs, reditation and dramatic sketches.

The Algerita Hotel is located at 131 East Main Street in Post.

The Caprock Theater box office at 226 East Main Street opens daily except Sunday from 10 a.m. to 2 p.m. and telephone reservations are available by calling 806-495-4005.

Tickets are \$6 for adults and \$3 for children under 12.

Briggs Welding & Muffler Service

267-1488
267-1380
Big Spring, TX 79720

501 N. Birdwell
Across From
Auction Barn

THE FIRST NATIONAL BANK

The Symbol of Banking in Big Spring



FULL SERVICE BANKING Member F.D.I.C.

400 Main Street 267-5513 BIG SPRING, TEXAS

COUNTY AG-AGENT REPORT

By DENNIS POOLE

CULLOPEN, LATE-CLAVING COWS

Farmers and ranchers who haven't already culled open, late-calving and poor performing cows should do so soon.

There's no need to put expensive winter feed into cows that are unproductive and inefficient. Culling the cow herd now will also help you more effectively plan on feed supplies for the winter months.

The culling process should also "weed out" cows with bad eyes, udders or feet and legs.

Also, pregnancy testing cows this fall may be a more profitable management tool than ever before.

Since it's difficult for a cow to produce a calf large enough to pay her annual maintenance bill and leave some profit for the producer, an open cow is surely losing money. In addition, cows calving late and during the summer months wean calves 30 to 90 pounds lighter than

their herd mates which calve at earlier times. For this reason it's advisable to cull cows which will calve late next year and possibly purchase pregnant replacements which will calve early.

Whoever does the pregnancy diagnosis (usually your veterinarian) will be able to estimate the calving date on each animal and make it easy to identify next year's late-calving cows. Work toward a 60-day calving season or one that's certainly no longer than 90 days.

Removing barren and late-calving cows from the herd will increase both the herd's reproductive potential and pounds of calf weaned.

LUSH FALL PASTURES CAN CAUSE FOG FEVER IN CATTLE

Recent rains have changed many dry pastures to lush forage, and that rapid change in grazing conditions can cause fog fever or acute

pulmonary emphysema in cattle.

Fog fever or acute pulmonary emphysema is a respiratory distress syndrome that usually occurs in the fall in adult cattle five to ten days after a change to a lush, green pasture from dry, sparse grazing.

Fog pastures have regrowth or foggage of grasses and weeds after rains or irrigation and provide an excess of tryptophan amino acid which is converted to a toxic compound in the lungs of hungry cattle.

Cattle with mild emphysema may go unnoticed and recover spontaneously within days. However, animals with severe emphysema show extensive respiratory distress with mouth-breathing, extension of the tongue, and drooling of saliva.

Cattle with these symptoms must be handled cautiously to prevent immediate deaths. All cattle should be removed from the pasture involved, handled quietly, and examined by a veterinarian for therapy. Up to 30 percent of the severely affected cattle will die. After a week cattle may be gradually reintroduced to the pasture.

The best preventive measure is to keep hungry adult cattle from sudden contact with lush pastures. This can be done by moving cattle onto a new pasture before it becomes lush by strip-grazing, by restricting grazing time, or by providing hay or grain. The changeover period is three weeks; fog fever rarely occurs in cattle that have been on a pasture more than three weeks.

Christmas In November

The Post Gamma Mu Sorority will sponsor a craft Bazaar on November 8 from 9:00 a.m. until 4:00 P.M. in the Post Community Center. The public is invited.

Good Health Habits

Your mother always told you not to eat or drink from anyone else's utensils to avoid getting disease germs. But an often overlooked health habit that may do even more to prevent the spread of germs is a simple task--washing your hands.

If more people took the short time to wash their hands after coming into contact with others or with materials that might contain germs, fewer infections would spread. Donna Snow, R.N., nurse epidemiologist at Methodist Hospital, points out that both soap and warm water should be used to

effectively wash off germs, and friction should be applied to all hand surfaces. She even suggests turning off the water faucet with a paper towel to keep from putting germs which may be on the faucet back on your hands.

These tips apply not only at work but also at home, where illnesses can strike an entire family. Snow says that putting a roll of paper towels in the bathroom when a family member is sick can go a long way in preventing germs from being passed as they would be though a cloth towel.

NOTICE OF PROPOSED REDUCTION IN AT&T'S TEXAS RATES

The Public Utility Commission of the state of Texas has entered orders in two recent cases that would substantially reduce the charges which AT&T pays to the state's local telephone companies and which could allow AT&T to reduce prices for most of AT&T's customers on calls placed within the state of Texas.

The total amount of the reduction to AT&T's customers is expected to be between \$115.3 million and \$120.6 million. This is in addition to the \$19.8 million reduction in AT&T's Texas basic long distance prices that went into effect on March 1, 1986 and is in addition to the approximately \$2 billion in AT&T interstate price reductions that took effect earlier this year.

If the changes are approved, all of AT&T's direct dialed long distance, directory assistance, WATS and 800 service customers would be affected, and would experience a decrease in their prices for these services when calling within the state of Texas. The following tables show the anticipated impact of the changes on AT&T customers by service category:

Class of Service	Approximate Overall % Reduction	Approximate Overall Dollar Reduction (in millions)
Long Distance	9.2	\$ 68.4
Directory Assistance	20.0	1.0
WATS	29.1	29.7
800	19.9	21.5

The rate reductions are presently anticipated to occur in two phases on or about October 22, 1986 and November 12, 1986. The matter has been assigned as Docket Nos. 6926 and 7113. Persons who wish to intervene or otherwise participate in these proceedings should notify the Commission as soon as possible. A request to intervene or participate or for further information should be mailed to the Public Utility Commission of Texas, 7800 Shoal Creek Blvd., Suite 400N, Austin, Texas 78757. Further information also may be obtained by calling the Public Utility Commission Consumer Affairs Division at (512) 458-0223 or (512) 458-0227 or (512) 458-0221 teletypewriter for the deaf. A complete copy of the tariffs reflecting the potential rate reductions will be on file with the Commission on or before October 23, 1986.



Contracts For '86 Cotton



Underwood Cotton Co.

Buying Cotton Equities AND Certificates

For more Information call 872-3048 or come by Broken Bell Bldg. and talk to Jimmy Williams.

Lubbock Hwy.

PROPOSED CONSTITUTIONAL AMENDMENTS

(ENMIENDAS PROPUESTAS A LA CONSTITUCION)

INSTRUCTION NOTE: (NOTA DE INSTRUCCION:)

Place an "X" in the square beside the statement indicating the way you wish to vote. (Marque con una "X" el cuadro al lado de la frase que indica la manera en que quiere usted votar.)

- NO. 1
- FOR (A FAVOR DE)
- AGAINST (EN CONTRA DE)

"The constitutional amendment to allow the legislature to provide by general law for the apportionment of the value of railroad rolling stock among counties for purposes of property taxation." ("La enmienda a la constitución para permitir que la legislatura disponga por ley general el repartimiento del valor de los materiales móviles de ferrocarril entre los condados a propósito de imponer impuestos sobre bienes.")

- NO. 3
- FOR (A FAVOR DE)
- AGAINST (EN CONTRA DE)

"The constitutional amendment allowing political subdivisions the opportunity to engage in and transact business with authorized mutual insurance companies in the same manner as with other insurance companies." ("La enmienda a la constitución permitiendo que las subdivisiones políticas tengan la oportunidad de comprometerse en y tramitar negocios con las compañías de seguros mutuos que están autorizadas del mismo modo que se comprometen en y tramitan negocios con otras compañías de seguros.")

- NO. 2
- FOR (A FAVOR DE)
- AGAINST (EN CONTRA DE)

"The constitutional amendment requiring each house to include in its rules of procedure a rule that each bill contain a title expressing the bill's subject, and providing for the continuing revision of state laws." ("La enmienda a la constitución que requiere que cada cámara de la legislatura incluya en sus reglas de procedimiento una regla declarando que cada proyecto de ley incluya un título expresando el tema del proyecto de ley, y que dispone que se revisen continuamente las leyes del estado.")

- NO. 4
- FOR (A FAVOR DE)
- AGAINST (EN CONTRA DE)

"The constitutional amendment to provide that a bank may offer full service banking at more than one location within the city or county where its principal facility is located, subject to limitations and restrictions provided by law." ("La enmienda a la constitución disponiendo que un banco pueda ofrecer todos los servicios de banco en más de un sitio dentro de la ciudad o del condado donde se encuentra el banco principal, sujeto a las limitaciones y restricciones provistas por ley.")

SAMPLE

ASCS NEWS BY Jerry Stone

COUNTY COMMITTEE ELECTION

Please remember the county committee election. The County committee election will be held on December 8, 1986

ACP MONEY

We still have some ACP money, if you are interested in doing a Conservation Practice please come by the office and sign up.

FAILED ACRES

Just a reminder that if you have any crops that have failed because of a disaster, you must file an ASCS-574 before you can destroy the crop. If you fail to file the 574 before you plow the crop up, this could cause you to be out of compliance and lose all program payments.

COTTON PRODUCTION

In years past we have always required you to turn in cotton production which would be used to compute the next years payment yield for your farm. Not this year.

POLITICAL CALENDER

U.S. CONGRESS 17th District

Charles Stenholm (D)

STATE LEGISLATURE

(69th District)
RichAnderson (R)

COUNTY JUDGE

Van York (D)

COUNTY CLERK

Dorothy Browne (D)

COUNTY TREASURER

Lisa Ludecke (D)

COUNTY COMMISSIONER

Precinct 2

Larry Smith (D)

Precinct 4

Buck Lemons (D)

JUSTICE OF THE PEACE

Carolyn Stone (D)

CLASSIFIED

MINATURE STUD COLT FOR SALE

6 months old-Kids will love him

Call 915-356-4434

SUSAN STEPHENS is looking for Ranch Day Work and outside horses.

Beal Ranch, South of Gail.
Call 915-6399-4511

HORSESHOEING
For ALL your horseshoeing and trimming needs call TERRY VOSS
915-856-4361.

As it stands now, yields are frozen and we will not be sending out production cards. If for some reason you want to turn in this information to us, stop by and we will furnish you a card for this purpose.

1987 PROGRAM PROVISIONS

A. An acreage reduction requirement is in effect for 1987. Reductions are as follows: Wheat-27.5 percent; feed grains-20 percent; upland cotton-25 percent.

B. Eligibility for program benefits is limited to program participants for the applicable crop, with corn and grain sorghum combined and barley and oats combined as in previous years.

C. The signup period for wheat began on October 1, 1986. The signup period for the other program crops will be announced later.

D. Liquidated damages will apply for noncompliance with program provisions.

E. Limited cross compliance requirements will be in effect for the 1987 crops of wheat, feed grains and upland cotton. To be eligible for benefits for a participating program crop, the acreage of a nonparticipating program crop planted for harvest and the acreage approved as prevented planted may not exceed the farm's Crop Acreage Base for the crop.

F. Actual crop yields for 1987 and later years will not be used to establish 1988 and future farm program payment yields.

Life in the fast food lane.



It can be a slow death if you're loading up on high-cholesterol, high-fat foods that may eventually choke your arteries and damage your heart. If you're a teenager, slow down on fast food that's high in fat. Chances are it'll catch up with you someday if you don't.



American Heart Association

WERE FIGHTING FOR YOUR LIFE

Best Candidate

Con't. from Pg. 1

great democracy work is getting quality people to run for office. Very seldom does somebody like Rich come along and run for an office like the state legislature."

Anderson and Gramm have worked together on many issues vital to West Texas. Most recently the Stacy Dam Project and the stumbling block caused by the Concho River snake. They share the same fiscal philosophy of

Public Notice

Poka Lambro Telephone Cooperative, Inc. hereby gives notice it has filed with the Public Utility Commission of Texas for authority to detariff mobile telephone (radiation telephone) equipment, establish unbundled rates for mobile service, offer mobile service in the Southland Exchange and offer wide area mobile service. The changes are proposed to become effective 35 days after filing, which will be approximately November 5, 1986. These changes will eventually affect all of the approximately 380 mobile customers of the Cooperative.

Within this filing the Cooperative is proposing to detariff mobile equipment. The result of this change will be that the Public Utility Commission will no longer set rates or other regulations for this equipment.

The proposed detariffing will cause a reduction in regulated revenues of approximately \$67,000 per year. Revenues to be generated from the new services are not known. Rates and services to local exchange members will not be affected by this filing. Persons with questions or who desire more information about the requested rate changes are encouraged to contact the Cooperative at (806) 924-7234 or at P.O. Box 1340, Tahoka, Texas 79373. A complete copy of the filing is available at the offices of the Cooperative.

Persons who wish to intervene or otherwise participate in these proceedings should notify the Commission as soon as possible. A request to intervene, participate or for further information should be mailed to the Public Utility Commission of Texas, 7800 Shoal Creek Blvd., Suite 400N, Austin, Texas 78757. Further information may also be obtained by calling the Public Utility Commission Consumer Affairs Division at (512) 458-0223, (512) 458-0227, or (512) 458-0221 teletypewriter for the deaf.

limited government spending.

The senator is campaigning for only a handful of candidates this year including Gov. Bill Clements. John R. "Rich" Anderson is proud to be among the few to get Gramm's personal endorsement. According to Senator Gramm, "Rich Anderson is not simply another candidate running for office. He's one of the best qualified people that we've ever had run for the legislature, and I think that it's vitally important that

people who can bring this wealth of experience, this know-how, this proven leadership on key issues that are going to face the state, be elected."

**VOTE
November 4**

Convenience Banking?

What's So Convenient About:

PAYING

higher interest on your loans?

EARNING LESS

interest on your savings?

PAYING HIGHER

service costs at banks?

LOSING

local control over banking?

SACRIFICING

service to the big banks' benefit?

YOU WILL HEAR A LOT FROM THE SO-CALLED CONVENIENCE BANKERS ABOUT PROPOSITION FOUR BUT YOU PROBABLY WILL NOT HEAR THIS:

The big banks of Texas hope to create a bank monopoly at your expense. Proposition Four has disguised branch banking as "full service banking". Whatever they call it - Branch Banking is a bad idea for Texas, and Texans will end up footing the bill for the big Texas bank holding companies to get bigger.

You especially don't want this to happen now since the Texas Legislature just passed a law permitting the large banks of New York City to purchase some or all of the large Texas bank holding companies. Not only can this legally happen now, but is almost certain to take place in the immediate future.

For all these years, Texans have never wanted or allowed the big banks of New York City to own and control the Texas Banking Industry. We are sure that this position by the people of Texas still has never changed.

Protect Your Interests And Your Pocketbook On Nov. 4.

VOTE NO ON PROPOSITION FOUR.

Paid for by Independent Bankers for Texas.
P.O. Drawer B, Fredericksburg, Texas 78624
Randy Lefeste, Treasurer

HOME PLATE

"HOME STYLE COOK'IN"

- SUPER SALAD BAR
- HICKORY SMOKED BRISKET
- CHAR BROILED HAMBURGER
- GIANT STEAK FINGER DINNERS
- CHICKEN FRIED STEAK

ALL HOME MADE

872-3221

708 NORTH 1ST

LAMESA