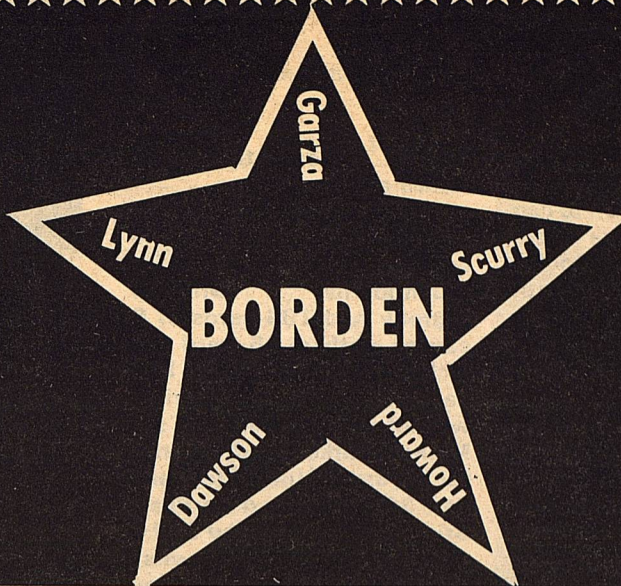


THE

Volume XLII.



STAR

October 22, 1986

Serving the Counties of Borden, Dawson, Garza, Howard, Lynn & Scurry

Services Held For Commissioner Ed Rinehart

Services for Norman Edward "Ed" Rinehart, 54, of Gail was held at 3 p.m. Tuesday in the Gail Cemetery with the Rev. Pat Ray, pastor of Gail Baptist Church, officiating.

Burial was under direction of Bell Cypert-Seale Funeral Home.

He died at 11:45 a.m. Monday in Hendrick Medical

Center after a lengthy illness.

He was born August 8, 1932, in Scurry County. He was a Borden County commissioner for the past eight years. He was a veteran of the U.S. Navy. He was active in the Borden County Junior Livestock Association and the 4-H Club. He married Melba Boggan July 25, 1955, in Hobbs, N.M.

Survivors include his wife; three sons, Travis of Snyder, and Eurdist and Jym, both of Gail; his mother, Ellen Rinehart of Snyder; three sisters, Genelda Pollen of Houston, Janis Brown of Germany and Toby Morris of Snyder; four brothers, Snooky of Midland, Doc of Whitehouse, Z.B. of Big Spring and Neil of Snyder; and a granddaughter.

Hobby

"I am proud to be represented in your county by such an outstanding leader" Hobby said. "We will run an aggressive, low budget campaign."

"The two special sessions kept me in Austin and away from campaigning. I will be counting on the campaign coordinators to represent me in your area," Hobby said.

Hobby is the most experienced statewide office holder in Austin today, having served as Lieutenant Governor for 13 years.

Speaking of the current budget crisis, Hobby explained, "The decline in oil and agriculture prices, reduced federal contributions, and increased population have combined to confront the state with its first budget deficit in years."

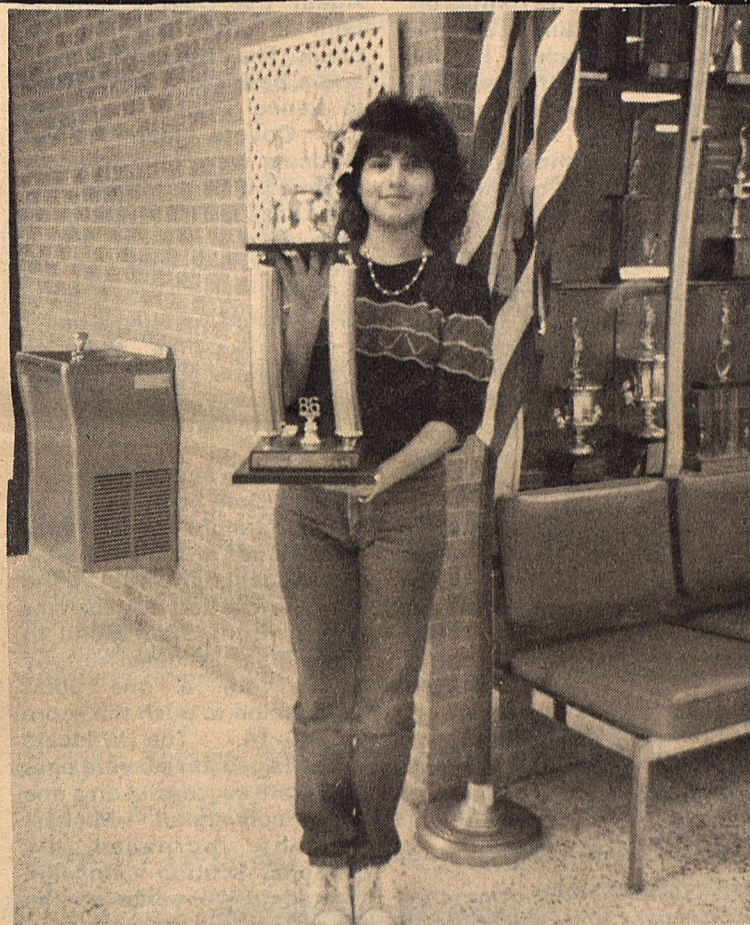
"Since most of the state's budget is dedicated by the Constitution and laws to specific uses, only a small percentage is available for legislators to cut," Hobby said.

The Lieutenant Governor explained, "The state's revenue base has changed from one based on oil and agriculture to more of a service economy."

"We're facing readjustments that other areas--New England, the smokestack states, the Pacific Northwest--have faced. They have all come through it stronger than before. With courage and vision, we too can rise to the challenge and be stronger for it," Hobby stated.

"I'm proud of our record on education reform, on highways, on water, and on basic health care. Now we have to protect our gains," Hobby said.

When you study the problem carefully, when you care about our future, the choice is clear. We have to do what is right for Texas," he said.

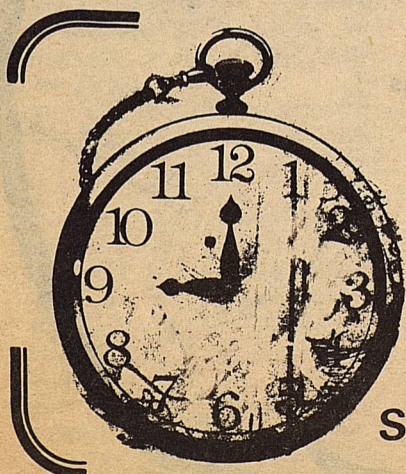


THE COYOTE MARCHING BAND WINS 2nd PLACE in the Klondike Invitational Band Contest. The Coyote band with it's 52 members played against three other bands Saturday. They placed second after Garden City and before Klondike 3rd, and Loop, 4th.

The band will be playing in the District UIL Contest at Jones Stadium in Lubbock at 9:50 A.M. Saturday. Everyone is urged to come watch and applaud after our band plays.

Felicia Romero, Drum Major with Trophy

HONORING THE CLASS OF 1976



DON'T FORGET

SET YOUR CLOCK BACK AN HOUR

SATURDAY NIGHT, OCTOBER 25

HOME COMING

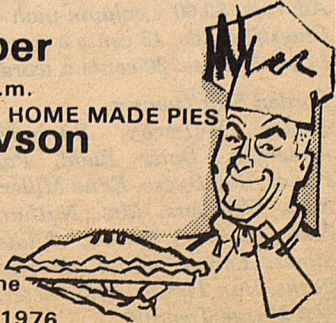
Pep Rally-Bonfire
5:00 p.m.

Stew Supper
5:30 p.m. - 7:00 p.m.

BHS vs Dawson
7:30 p.m.

Introduction of Senior Football players & parents-7:00 p.m.

Reception After the game
HONORING THE CLASS OF 1976



Coyotes Back On Track

The Borden County Coyotes resumed their winning ways in a lopsided victory over Grady 78-28. Rocky Harber started the scoring machine with a 46 yard run with only 21 seconds into the first quarter. The try for extra point failed. The Grady Wildcats ran only two plays before the Coyotes struck again. Michael Murphy intercepted a Walton Stone pass and returned it 73 yards for a touchdown. Again the point after touchdown failed, but the score was 12-0 with less than 90 seconds into the first quarter. Once again the Wildcats received the ball only to lose it on a fumble on their 26 yard line. On the next play Rockie Harber raced 26 yards for his second score on his second carry. Randell Hollisc' kick for PAT was good and the score was 20-0 with only one minute and fifty-two seconds into the quarter.

The Coyote reserved quickly got into the action, and they failed to score on their first possession. The Coyotes finally gave up a touchdown pass with 3:39 remaining in the first quarter. They also passed on their PAT to bring the score to 20-7.

The lightning flashes on the horizon were good indications of what was to come. After a 30 yard kickoff return by Brice Key, the

Coyotes took only 4 plays to score again. Brice Key scored on a 4 yard run to cap the drive. A pass from Michael Murphy to Rockie made the score 27-7 with 2:02 still remaining in the first quarter.

The Coyote defense then forced the Wildcats to punt and the next scoring drive began on the 9 yard line. An illegal procedure backed the Coyotes to the 4 yard line, but Brice Key found an opening created by Gerry Smith, Mickey Burkett, and John Stephens. Brice ran 76 yards for his second score of the game, and Randell Hollis made good on his PAT. Again the Coyote defense bent a little, but did not break. The offense took over, and a pass from Brian Bond to Lance Telchik increased the Coyote lead. The Wildcats were able to score again on a 58 yard pass, and their pass for PAT was good to bring the score to 35-14 with 5:57 remaining in the quarter. The next Coyote drive stalled, and just when it looked like the Wildcats would score again, Michael Murphy stole another Walton Stone pass and raced into the endzone on a 77 yard interception and ran. Randell Hollis kicked his 3rd PAT. to bring the score to 43-14 with 16 seconds left in the half.

A Wildcat fumble set up the next Coyote score which was a pass from Brian Bond to Kerry Fryar. Michael Murphy passed for a one point conversion to push the score to 50-14. The Wildcats scored again on a 5 yard pass and were successful on a one point conversion. Michael Murphy increased his personal scoring campaign by racing 46 yards on the Coyotes next possession. The kick failed.

The Wildcats scored again on a 40 yard pass and their one point PAT try was good. The Coyotes struck again behind hard running by John Stephens and Rockie Harber who finished the drive on a 4 yard run. Randell Hollis kicked the PAT.

The Coyote defense took over again and provided the final score on a Mickey

Burkett interception and return of 43 yards.

Rockie Harber finished the night with 82 yards on 4 carries, 3 of which were for touchdowns. Michael Murphy had 104 yards of 6 carries with a 46 yard TD included in this. Brice Key had 87 yards on 3 carries, two of which were TD's. Mickey Burkett had one run for 9 yards. John Stephens had 38 yards on 4 carries. Brian Bond completed 3 of 6 passes and two touchdowns. Gerry Smith caught one pass for 9 yards. Kerry Fryar caught a 4 yard TD pass and Lance Telchik caught a 7 yard TD pass.

The Coyotes host Dwawson this Friday in our Homecoming game.

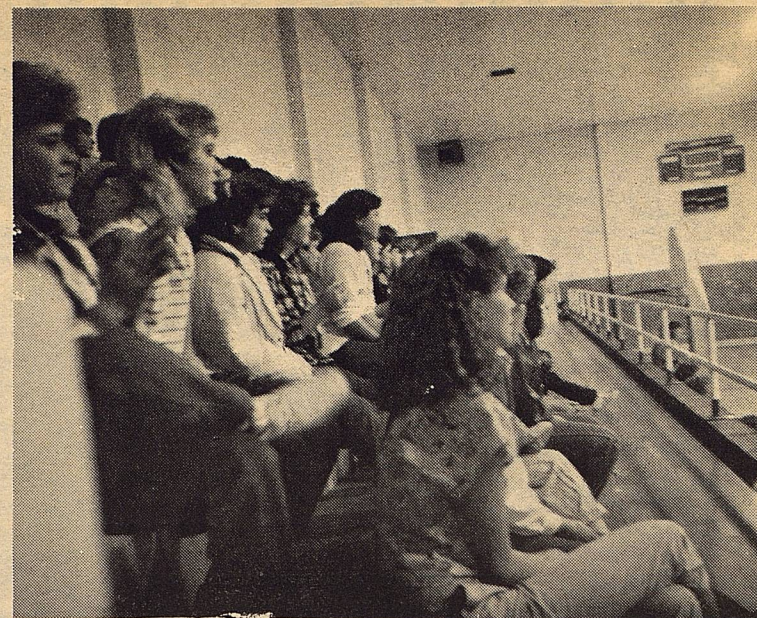
Directories To Go On Sale

School directories will be on sale October 20. These directories have been compiled by the Borden County Parents Club and will be sold by club members.

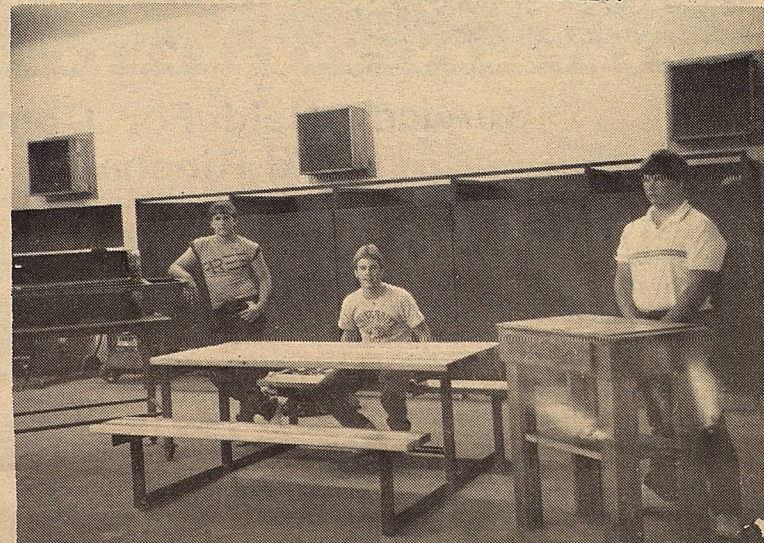
Directories will include each currently enrolled students name, address, phone number and parents name listed in his or her class; a list of faculty names, addresses and phone numbers and bus drivers.

Directories may be purchased during lunch October 24 in the school cafeteria for \$1.50 or from any club member after the 24th for \$2.00.

Pom poms will also be sold 2 for \$1.00 by club members.



STUDENTS WATCHING THE PEP RALLY.



The Senior Ag. Mechanics Class has been very busy during the past six weeks with their projects. Gerry Smith constructed a butcher block (right), while DMickey Burkett built a picnic table (center). John Stephens is currently constructing a large barbeque pit (left). Anyone wishing to see the Vo. Ag. Shop projects are welcome to stop by the Vo. Ag. Shop at any time.

Glasses Needed

Anyone having extra drinking glasses they might wish to donate to the 7th grade dime toss for the Fall Carnival should call Charlotte Bray (915) 439-6323 or contact any 7th grade class member.

THE BORDEN STAR
Publication No. 895520
(USPS 895-520)
Publication No. 895520

Editor
Barbara Anderson

Published weekly, except for Christmas and New Years, on Wednesday at Gail, Borden County, Texas 79738, Box 137, Kincaid Street, Second Class postage paid at Gail, Texas.

Any errors that we make reflecting on the reputation or standing of any Firm, Corporation, or individual that may appear in the columns of The Borden Star will be gladly corrected when called to the attention of the staff.

Subscription Rates:
\$8.00 per year

Ad. rate: \$2.00 a column inch
Classified ads: 15 cents a word
Legal Notices: 20 cents a word

Borden Star Owners:
James McLeroy, Barbara Anderson, Doris Rudd, Pat Porter, Bob Dyess, Edna Miller, Ruth Weathers, Mrs. Nathan Zant, Sonny Tucker, Eddie Simer, Loreen Jones, Martin Parks, Dan Turner, Lela Porter, Marge Toombs.

Booster Club Plans Homecoming

Borden Booster Club is sponsoring a stew supper for Homecoming Oct. 24, 1986.

The prices for 5th grade and under are \$1.00. For 6th grade and over \$2.00. Boosters Club is asking to please bring 2 desserts, either pies, cakes, or cookies.

Welcome ex'es

Welcome
CLASS OF 1976

FALL CARNIVAL

October 25, 1986
6:00 - 10:00 p.m.
County Barn - Gail, Texas

Concession Stand
Bingo
Cake Walk
Country Store
Gun Raffle
4-H Shooting Sports Club
Basketball Shoot
Pie Walk
Dime Toss
Duck Pond
Dunkin Booth
Coca Cola Toss
Ginger Jar Raffle
Donated by Grey Feather
Petal Tractor Raffle
Donated by Bowlin Implement
Dart Throw
Spookhouse
B.B. Shoot
Fish Pond
Baseball Throw
Bean Bag Toss

SCHOOL BOARD MEETING

The Board of Trustees of the Borden County Independent School District met in regular session on October 20, 1986 at 8:00 p.m. Minutes were approved as read and bills were approved for payment for October.

1987 Crown Victoria
 1986 Pontiac Parisienne
 1987 Caprice Chevrolet
 1987 Caprice Chevrolet
 1987 Mercury Grand Marquis
 1987 Chrysler Fifth Avenue
 1987 Chrysler Fifth Avenue
 1987 Plymouth Gran Fury
 1987 Caprice Chevrolet
 1987 Crown Victoria
 1987 Mercury Grand Marquis
 1987 Crown Victoria
 1987 Crown Victoria
 1987 Caprice Chevrolet
 1987 Crown Victoria
 1987 Crown Victoria
 1987 1987 Olds 88 Royale
 1987 Pontiac Bonneville

The annual audit report was presented by Dale Newberry, C.P.A., with Wilson, Newberry, and Heidel of Lamesa. The audit was approved as presented.

Sealed bids were opened for the purpose of selling and purchasing of the school car.

Gene Messer Ford \$13,157.51
 Logan Buick-Pontiac-GMC 12,277.00
 Mal Donelson Chevrolet 11,058.00
 Modern Chevrolet 11,339.54
 Pioneer Lincoln-Mercury 14,890.58
 Fenner Tubbs Company 16,800.00
 Fenner Tubbs Company 16,150.00
 Fenner Tubbs Company 12,500.00
 Neal Echols Chevrolet 12,083.29
 Ed Mosley Ford 14,172.20
 Ed Mosley Ford 14,661.76
 Smith Ford, Inc. 12,894.00
 Bob Brock Ford 12,386.01
 McAdoo Chevrolet 12,750.00
 Tornado Ford 12,343.51
 Wilson Motors 12,117.51
 Bob Brown Motors 13,240.00
 Frank Brown Pontiac-Honda 13,873.00

The bids for selling the car were as follows:

Snyder Motor Company \$7000.00
 George Williams 9001.00
 George Williams 9010.00

Bids for purchasing a car were as follows:

The Board sold the school car to the highest bidder (George Williams) in the amount of \$9010.00 and purchased a Caprice Chevrolet from Mal Donelson, the low bidder, in the amount of 11,058.00.

The implementation of the teacher appraisal system was approved as recommended by the superintendent.

IMPLEMENTATION OF TEXAS TEACHER APPRAISAL SYSTEM 1986-87

I. Appraisal Period I will begin on October 17, 1986 and end on December 12, 1986. Appraisal Period II will begin on January 7, 1987 and end on April 30, 1987.

II The three appraisers in the district that are certified by the state are James McLeroy, Ben Jarrett, and Mickey McMeans. Other appraisers will be chosen from these three people. The only exception to this policy will be in Special Education whereas Mary Ann Murphy is qualified for Special Education personnel.

III. There will be three appraisers used for regular education teachers in the district. There will be four appraisers qualified for Special Education teachers.

IV All 45 minute classroom visits related to teacher appraisals shall be scheduled visits. Other types of observations such as walk throughs and short visits may be unscheduled.

V. Domain I-V will be used for career ladder discussion plus other decision making considerations, specifically contract renewals and staff development.

VI. Teachers will be responsible for all policies in the personnel handbook which relate to indicators in Domain V.

VII. Local district procedures for documentation of cumulative data will be the same as that used in the Texas Teacher Appraisal System Manual. Copies shall be available to all teaching personnel.

VIII. All records and forms related to teacher appraisal shall be kept by the supervising principal. The principal shall file

with the superintendent a copy of the Professional Growth Plans, Observation Evaluation Record, Teacher Self-Appraisal, and Appraisal Record by the end of each appraisal period.

IX. Any teacher wishing to present a grievance regarding the evaluation process may do so by filing their grievances with their respective principals within ten (10) days of their post conference with their appraiser. The grievance must be filed in writing and shall follow the same procedure of appeal that any other complaint would follow. If the person filing the grievance is not satisfied with the outcome on level one (principal), the appeal may be filed at level two (superintendent). If the appeal has been denied on level one and level two and in the opinion of the teacher, the evaluation process has not been handled fairly, the teacher may then appeal to the board (level three). If the first three appeals have been denied, the teacher may then appeal to the Commissioner of Education (level four). Each appeal must be filed in writing and shall be filed within ten (10) days of the time of notification.

Grounds for a grievance to be filed by a teacher can only pertain to the evaluation process. Decisions made on any level shall not be reversed unless a decision was arbitrary and capricious or made in bad faith.

X. All professional teachers shall be evaluated with the Texas Teachers Appraisal System. Counselors and librarians shall be evaluated with the five point evaluation instrument adopted by the district. Appraisers shall be trained to use the five point evaluation system.

XI. The superintendent shall have the responsibility of designating the teacher supervisor for the purpose of appraisal.

The superintendent shall also have the responsibility of designating the teacher supervisor for the purpose of appraisal.

The superintendent shall also have the responsibility of

distributing Teacher Orientation Manuals, arranging for appraisal candidates to complete field practice required for certification as an appraiser, and submit field practice verification forms and completed field practice OR-ER to education Service Center-Region XVII.

XII. The Borden County Independent School District will not go beyond the minimum requirements on Professional Growth Plans and Conferences.

If the teacher should need to take the option for the waiver of the 45 consecutive-minute requirement, he or she should contact the superintendent at the beginning of the appraisal period.

XIII. Student progress records including test scores shall be made available to teachers upon request to their respective principals.

The Board approved James McLeroy, Mickey McMeans, and Ben Jarrett as the three teacher appraisers for regular education and James McLeroy, Mickey McMeans, Ben Jarrett, and Mary Ann Murphy for special education.

The Textbook Committee was approved for the 1986-1987 school year as follows:

James McLeroy, Chairman
 Mickey McMeans
 Ben Jarrett
 Duke Frisbie
 Beverly Copeland
 Doris Steadman
 Ann McLeroy
 Shirley McMeans
 Dorothy Gray
 Dorores Wolf
 Peggy Westbrook Rita Kilmer
 Julie Johnson Mike Brown
 Joe Copeland Netta Jarrett
 Kristen Wallace Dave Briggs

In other action the Board elected to send out bid invitations for the purpose of purchasing two small school buses.

A year to date financial report was given by the superintendent. Attendance was reported as 152 in elementary school and 63 in high school for a total of 215 students.



THE OLDEST AND YOUNGEST SPECTATORS AT THE PEP RALLY. Coach Bond Holds Trent May (The youngest spectator) and Coach Frisbie (Ahem, The Oldest Spectator) watches.

Junior High Coyotes suffer Second Loss

In a very exciting see-saw game the Coyotes lost to the Grady Wildcats 33-26. The lead changed hands several times during the game, and a key injury to Jimmy Rios spelled doom for the Coyotes. After scoring to go ahead 26-18, Jimmy was injured out the kickoff and was forced to sit out the rest of the game. The Wildcats scored to tie the game at 26-26 with 3:00 remaining in the game. The Coyotes moved the ball about 25 yards before the drive failed. The Wildcats moved down the field and scored again with time running out. The

Coyotes made several attempts to score, but they were not successful as the clock clicked down to 0:00.

The offense was led by Jimmy Rios, Monty Garrett, and Clint Bray running tough.

The passing attack was headed by Shane Kemper and Eric Lusk who completed passes to Paul Sturdivant, David Buchanan and Cole Vestal. The defense was led by Sturdivant with help from Rios, Kemper, Lusk, Bray, Vestal, and Garrett.

The Coyotes finish their season this Thursday at Dawson.

Your Vote Will Be Counted if you vote a Split Ticket, regardless of in which primary you voted.

School Menu	
October 27-31, 1986	
Monday	Tuna Casserole Buttered Corn Fruit Hot Rolls Milk Salad Bar
Tuesday	Meat Loaf Fried Okra Blackeyed Peas Jello Cornbread Milk Salad Bar
Wednesday	Oven Fried Chicken Mashed Potatoes English Peas Hot Rolls Fruit Milk Salad Bar
Thursday	Tacos with Cheese Pinto Beans Shredded Lettuce Fruit Milk Salad Bar
Friday	Hamburgers French Fries Lettuce & Pickles Cookies Milk Salad Bar

Community Calendar

October 21-25
State Fair of Texas-Dallas Livestock Exhibits for 4-H

October 24
Borden County School Homecoming
4-H Aftergame Party-Exhibit Bldg.

October 25
Parent's Club Fall (Carnival-County Show Barn

October 27
H.F.T. Weight Control Class; Pat Dennis Studio on West 30th St., Snyder, evening classes; 6 p.m.; new members welcome. Register 30 minutes before class. For more information, call 573-9888.

October 31
Halloween
4-H aftergame party-Exhibit Bldg.
November 15
County 4-H Food Show-Exhibit Building

December 6
District 4-H Food Show, Lubbock

4-H Homecoming Party

The Borden County 4-H Clubs will be sponsoring a party after the Homecoming Football Game on Friday, October 24, 1986 for all 4-H'ers, their families and friends, and former 4-H'ers in the 4-H Exhibit Building.

Everyone is invited to attend this special activity.

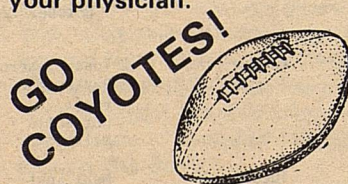
4-H Horse Club Alumni Support Endowment

The Texas 4-H Horse Club Alumni, organized at the recent State 4-H Horse Show in Abilene, is working hard to garner support for the 4-H horse program conducted by the Texas Agricultural Extension Service, The Texas A&M University System. A major part of this effort is a special endowment honoring B.F. Yeates, long-time Extension horse specialist. Yeates has been instrumental in developing the horse project into the strong program it is today with an enrollment of some 13,000 4-H members.

Cold or Flu?

As cold and flu season approaches, questions may be asked about how to tell the differences between the two illnesses. Both are viral infections of the upper respiratory tracts, but each has its individual characteristics.

Cold victims rarely have fever, while people with flu may have a sudden onset of high fever (102-104 degrees) that lasts three to four days. Flu carriers also are candidates for headaches, general aches and pains, and fatigue and weakness not usually found in people with colds. While sufferers of both illnesses may have the usual symptoms of runny noses, sneezing, sore throat and coughs, chest discomfort in flu victims can become severe. Complications from flu may vary from bronchitis to pneumonia and can be life-threatening. While no prevention method is available for colds, vaccines are available to ward off an attack of the flu. Check with your physician.



Briggs Welding & Muffler Service

267-1488
267-1380
Big Spring, TX 79720

501 N. Birdwell
Across From
Auction Barn

Branon Funeral Home
Service in this area since 1922.

Phone: 872-8335 403 N. Austin - Lamesa

Miss US Teen Pageant

Applications are now being accepted from girls 13 through 19 for the 1987 Miss Texas U.S. Teen Pageant.

The Texas winner will receive \$300 in cash, partial 4 year college scholarship, all expense paid trip to the national pageant including airfare, watch, diamond pendant, color portrait, crown, banner, trophy, and a host of gifts and products.

In addition to the state title, awards will be given in the leadership, scholarship, friendship, and photogenic categories.

The Texas pageant will be held in Dallas at the airport Amfac Hotel. Judging is based on poise, personality, and school and community involvement.

Over \$100,000 in cash and tuition scholarships will be offered at the national pageant. Miss U.S. Teen will receive a \$5,000 cash scholarship, a 4 year college scholarship, including 1 week Caribbean vacation at Frenchmen's Reef Resort in St. Thomas, Virgin Islands, watch, fur coat, diamond pendant, perfume, thousands of dollars in



1986 Miss U.S. Teen
Cris Zukauckas
Hollywood Personality
John Stamos

products and gifts, complete modeling portfolio, wardrobe, T.V. and personal appearances, crown, banner, trophy, and a year of travel and excitement. The national pageant will be videotaped for television.

For further information, contact: Carole Clements, National Director, Miss U.S. Teen, P. O. Box 1229, Auburn, AL 36830 or call (205) 745-6875.

Have Your Pies and Cakes Baked

Need help with your Carnival Cakes or Pies?
If so, call Tharon Todd (806) 872-6105
or contact Verna Adcock at School or call (915) 399-4461

ALL THAT GLITTERS!

Fabulous SWEATSHIRTS jeweled with rhinestones or silvery conchos - made to order and starting at only **\$25!**

Peggy has just returned from market with gorgeous and reasonable fashion jewelry and belts for the perfect accessories with your fall wardrobe.

FASHION | CROSSROADS

WHERE FASHION AND VALUE MEET

409 S. 1st

872-7159

New Arrival

Coach and Mrs. Doug (Joann) Jones of Van Horn are the parents of another daughter. Sarah Elaine was born October 16, 1986 in Carlsbad, New Mexico. She weighed 5 lbs and was 19 inches long. Sarah was born at 10:00 p.m.

Paternal grandparents are Ann Jones of Midland, Texas and Keith Jones of Earth, Texas. Maternal grandparents are Mr. and Mrs. Ralph Martin of O'Donnell, Texas. Sarah has a sister, Lea.

POLITICAL CALENDER

U.S. CONGRESS 17th District
Charles Stenholm (D)
STATE LEGISLATURE (69th District)
RichAnderson (R)
COUNTY JUDGE
Van York (D)
COUNTY CLERK
Dorothy Browne (D)
COUNTY TREASURER
Lisa Ludecke (D)
COUNTY COMMISSIONER
Precinct 2
Larry Smith (D)
Precinct 4
Buck Lemons (D)
JUSTICE OF THE PEACE
Carolyn Stone (D)

WESTERN SEED & DELINTING Certified Cotton Seed

Paymaster 145, 303, 404, 792
Coker 3131, S110, 500
Terra 383, SR-10, SR-482
SP-21, SR-215, CAMD-E
CAB-CS

COTTON PLANTING SEED ACID DELINTING

Wheat
Grain Sorghum
Hay Grazer

Wheat & Oats Cleaning

LAMESA, TEXAS
RON BUTLER

BUSINESS PHONE
(806) 872-8896
(806) 872-5388

RESIDENCE PHONE
(806) 872-5271

Mexican Diet Is Risky Even Deadly

The person who wants to lose weight fast, relatively cheaply, without exercise or attention to nutrition may think his dream has come true on hearing about the "Mexican diet." Unfortunately, the rumors about this popular weight-loss plan from across the border often neglect to say that some people may have died from it, according to the Texas Department of Health (TDH).

Bob Henna, Director of the TDH Food and Drug Division explained that the plan actually is not a "diet," since the Mexican doctors who prescribe the plan seldom, if ever, discuss nutrition. What thousands of Texans pay for, Henna said, are prescriptions from the doctors in Mexico, and pills from Mexican pharmacies. Patients have to buy the pills in Mexico since the drugs are not FDA (federal Food and Drug Administration) approved in this country.

The cost for prescriptions and a month's supply of pills is between \$20 and \$25.

With some variations, the drugs are a mixture of stimulants, antihistamines, depressants, laxatives, diuretics, and a thyroid-type hormone. They usually are combined in three pills. Most often prescribed are the

Mexican brand names Redotex, Ponderex, and Moduretic. The predictable effects are loss of appetite, increased metabolism, and more frequent elimination--all leading to rapid weight loss. The unpredictable side effects can be extremely high blood pressure, irregular heart beat, drug dependence, diarrhea, cramps, or metabolic upsets which can be lifethreatening.

"Some people who were lucky enough to have had no other effects than loss of appetite and unwanted weight have made this plan popular. They are the ones who urge their overweight friends to try the plan, not realizing that another person, maybe one who already has heart trouble, diabetes, allergies to some drugs, or any of a number of other illnesses, might die from taking the pills," Henna said.

At least three deaths in Texas have been associated with the drugs, he said.

The doctors in Mexico are under no legal obligation to screen patients for dangerous conditions before prescribing the drugs, which are legal in Mexico. "Some of (the doctors)," Henna said, "require the patient to bring results of a physical exam from his own U.S.

physician, but whether the results of that physical are heeded is sometimes questionable. We have reports of some doctors writing prescriptions for whole waiting rooms full of people at one time, without even talking to individuals," he added.

Quality control of both the suitability of the drugs for a given patient and the condition of the drugs at purchase are outside the jurisdiction of U.S. authorities. There have been reports of parasites found in some pills patients have brought back to Texas. And although some of the drugs are manufactured by American-based companies in Mexican plants, FDA standards do not apply.

"Opinions over whether it is legal to bring the drugs into the United States vary," Henna said. "To our (TDH's) knowledge no one yet has been charged with possession of illegal drugs in connection with the weight-loss plan, but that doesn't mean it won't happen." The non-English packaging of the drugs is, by itself, a violation of FDA regulations, and at least one of the drugs is classified as a controlled substance.

"Legality is not the issue now," Henna said. "What matters is that some people become very sick and even die after trying this weight-loss plan. The least of a victims' worries would be prosecution, but for them it is too late. The Mexican diet can be dangerous, and persons wanting to lose weight should follow their own doctors' advice, which is likely to mean a more healthy routine of exercise and eating the right foods."

WORD SEEK

National Forests
 A S E P B S C H N C R U E H L A M C
 W L I O A E D R T N A M E N I W A T
 R K L M S B O I S E F O N S E R S T
 E H U E A H T I O O S O Y N I T G N
 E L T T G O Z A R K M S I B G D A S
 P S N I I H O P E N I N O H M T I H
 I I B S L F E N A O E U I E A I I A
 U K T F A R I N I P O N W O N S L S
 E P R A E B G M Y C A N R L I H N T
 G A I A A A E E O A R E C O N C Z E A
 D N C S L Y E L A G I A H T O F S S
 O R U E O C A P S D T C S E L M S O
 L T S O L M A U H R I H A L E C A T
 R O T N O H B U L E E E E R T I L N
 E T E E O E R A E N L C I Y S B R O
 E N R I L O T E Y X O E Y D P O B M
 D O E X N L T A H D I A N L T L N E
 W T A I E D W T O M E G C A N A W R
 B R I D G E R M T Z N I F T O N G F

Answers: Allegheny, Angeles, Apache, Arapaho, Ashley, Bighorn, Boise, Bridger, Coche, Caribou, Carson, Cibola, Clark, Croatan, Custer, Deerlodge, Delta, Dixie, Fremont, Gila, Helena, Huron, Inyo, Lassen, Lolo, Malheur, Modoc, Nicolet, Ocala, Ozark, Pike, Plumas, Sabine, Shasta, Tonto, Uinta, Wayne, Winerna

Calling All Sul Ross Exes

Never again should Sul Ross State University be required to prove its need for existence as it did during the summer of 1986. A very large amount of negative publicity about Sul Ross during the early summer rapidly evolved into a massive amount of good publicity after July 10. Enrollment is now up more than 10 percent. Now is the time for us to move forward.

Many of us feel that there is only one way to prevent a reoccurrence of the summer of 1986, and that is a continued increase in enrollment. We feel that Sul Ross needs 2,300 to 2,500 students on campus in Alpine and another 500 to 700 at Uvalde to be secure. We also feel that a strong and vocal Sul Ross Ex-Student Association can do much to achieve this goal.

Many excellent West Texas students are being lured away from Sul Ross simply because other universities

have more scholarship dollars to offer. A strong Ex-Student Association can improve this situation. Our goal is a tenfold increase in membership within the year, and it will be done.

The dues are now \$15 for a single Sul Ross Ex or \$20 for a Sul Ross couple. The benefits include an annual subscription to the Sul Ross SKYLINE, quarterly issues of the Sul Ross Ex-Student Association Newsletter, and regular newsletters from the office of President Jack Humphries. In addition, each new member will enjoy a great deal of satisfaction in knowing that he or she is helping in some small measure a college that has helped so many of us in the past.

-s- Robert P. Cross, President
 Sul Ross Ex-Student Association
 Box C-179
 Alpine, Texas 79832

WHITE FUNERAL HOME

"We care for yours as we would have ours cared for"

O'DONNELL TAHOKA
 510 8th 428-3313 1821 Main 998-4433
 Owners-Billie & Donnie Everett, Gail, Tx

1981 Oldsmobile Delta 88 4 dr. diesel	\$3,150.00
1981 Volkswagon Dasher station wagon diesel	4,750.00
1982 Chevrolet pickup	3,500.00
1980 GMC 1 ton truck w/26' tongue type equip. trailer	7,500.00
1977 Hobbs 32' tandem dual gooseneck equip. trailer w/rolling tailboard	3,500.00
1970 Ford 2 ton truck	3,000.00
1979 International Traveltop 4 whl dr.	3,850.00
1982 Oldsmobile 4 dr Firenza	4,150.00
1985 H&H tongue type equip. trailer	2,500.00
1986 Chevrolet 4 whl dr pickup	9,950.00

FEAGINS IMPLEMENT

A fresh team for today's farmer



HWY. 87 NORTH
 915-263-8348

BIG SPRING, TEXAS
 915-267-1953

We're proud to be a part of the area since 1905

Snyder National Bank

This is your Bank



1715 25th
 573-2681



Visit Our Deli

Party Trays Pastries Custom Cakes

710 N. 4th

Lamesa

Extension Home Economics Report

By: Kandy K. McWhorter

FIBER IS MORE THAN JUST BRAN

To listen to the television commercials or read the magazine ads, you would think the only way to get adequate fiber in your diet is to eat bran cereal and fiber supplements.

In fact, legumes and some fruits and vegetables supply more dietary fiber per serving than bran cereal. One cup of bran flakes cereal contains about five grams of fiber, while one tablespoon of the average fiber supplement contains about one gram. By comparison, one-third cup of baked beans contains seven grams and one-half cup of stewed prunes has eight grams of fiber.

Kidney beans, red beans, dried fruits and nuts and fresh fruits and vegetables are all excellent sources of fiber. Eating the skins of fruits or vegetables when

possible will also increase your fiber intake.

The new Dietary Guidelines for Americans, published this year by the U.S. Department of Agriculture and the U.S. Department of Human Resources, recommend that we eat foods with adequate starch and fiber.

But that does not mean we need to go overboard, or rush out and buy special fiber supplements. Eating too much fiber may increase the excretion of some vitamins and minerals and deplete those nutrients in your body.

THE SAFETY OF ALTERNATE SWEETENERS

There has been much controversy surrounding cyclamates, saccharin and now aspartame as sweeteners.

After a great deal of research, the experts agree that if you are using alternative sweeteners in moderation in a proper diet, there is little need to worry.

But, there is still some disagreement as to whether the sweeteners pose a risk when consumed in high amounts or whether they pose special threats to pregnant women, young children and people with certain medical conditions.

FHA Processing Returning To Normal

"It's getting better," reports Betty Dickens, a Fort Worth REALTOR, concerning the length of time to complete the processing of an FHA loan. "They were sitting on FHA loans and it would take close to three months to close them. Now its about two months."

The average time to close an FHA loan in Texas according to a recent spot check of REALTORS around the state is now 7.5 weeks, down from a high this past July of as much as six months in some places. The most commonly quoted processing time for FHA loans in July, according to a survey by the Real Estate Center at Texas A&M University, was two to four months. This was at the height of the refinancing trend.

The processing time varies around the state with the longest times in the largest metropolitan areas (Houston, 12 weeks) and rural areas (Center, 13 weeks). Mid-sized areas stayed close to the average -- Lubbock, 7 weeks; Austin, 6 weeks; Longview, 7 weeks; San Angelo, 7 weeks; El Paso, 9 weeks; and San Antonio, 6.5 weeks.

App-raisals are also taking less time, with a average around the state of 2.75 weeks, down from 4 weeks average in July.

"FHA oappraisals are taking around three weeks, unless of course you are working with a lender who has 'in-house' capability," according to Hal Downing, a San Antonio REALTOR, "In-house appraisals can be done in less than a week." He also reports that the fee charged for FHA appraisals in his city has increased about \$25, but most of those Texas REALTORS contacted reported that the fees for both FHA and conventional appraisals have remained the same.

GUIDED TROPHY HUNT FOR WHITE TAIL DEER on November 14, 15 and 16, 1986

To be given away at the Fall Carnival Saturday, October 25, 1986 County Show Barn -- Gail, Texas

Hunt Donated By:
MILLER RANCH BIG GAME OUTFITTERS
Ben and Paula Miller
Star Route, Box 28
Fluvanna, Texas 79517
915/573-6004

Chances are available from any Borden County 4-H Trap and Skeet Club Member or their Leaders for \$5.00 each or 6 for \$25.00

Proceeds go to the Borden County 4-H Trap and Skeet Program

#####

REMINGTON MODEL 66 NYLON 22 LONG RIFLE
50 POUNDS PECANS
50 POUNDS PECANS
Leather & Suede Gun Case
Donated by GREY Feather

To be given away at the Fall Carnival Saturday, October 25, 1986 County Show Barn -- Gail, Texas

Chances are available from any BORDEN COUNTY 4-H TRAP AND SKEET CLUB MEMBER or their LEADERS for \$1.00 each or 6 for \$5.00

Proceeds go to the Borden County 4-H Trap and Skeet Program

Washer & Dryer
Repairs
Parts & Service
Call James L. Seals
495-3190
or come by
508 So. Ave N
Post

RE - ELECT

Dorothy Browne
District and County Clerk
Borden County
YOUR VOTE AND INFLUENCE APPRECIATED

Pd. Pol. Adv. By Dorothy Browne, Gail, Texas

HOME PLATE

" HOME STYLE COOK'IN "

- SUPER SALAD BAR
- HICKORY SMOKED BRISKET
- CHAR BROILED HAMBURGER
- GIANT STEAK FINGER DINNERS
- CHICKEN FRIED STEAK

ALL HOME MADE

872-3221

708 NORTH 1ST

LAMESA

BALLOTS BY MAIL

Applications for a ballot by mail to be voted in the General Election to be held November 4th, 1986 are now available at the County Clerk's Office.

You may come by the office and pick up an application or one can be mailed to you.

Write Dorothy Browne, County Clerk, Borden County, Box 124, Gail, Texas 79738 or call 915-856-4312 for an application.

1983 Case 4890, 20.8 x 38 duals, 3 pt, PTO, 4 remotes	\$42,500.00
1982 Case 4890, 20.8 x 34 duals, 3 pt, 2 remotes	32,500.00
1980 Case 4690, 20.8 x 34 duals, 3 pt, 4 remotes, PTO	29,500.00
1980 Case 2590, 20.8 x 38 duals	18,500.00
1983 Case 2390, 20.8 x 38, cab, air	21,500.00
1977 Case 1570, 20.8 x 38, cab, air	9,250.00
1976 Case 1270, 18.4 x 38, cab, air	7,500.00
1978 Case 1175, 18.4 x 38, cab, air	8,250.00
1976 IHC 4166, cab, air	7,500.00
1985 Case 1194, 675 hrs, new front loader	10,500.00
1979 Allis Chalmers 7060, cab, air	10,500.00
1975 IHC 1066	4,750.00
IHC 826 w/Hesston Stripper	5,250.00
IHC 1400 stripper, cab, air	13,000.00
IHC 95 stripper	5,250.00
NEW Big 12 super boll buggy	8,500.00
Lamesa built module builder	5,500.00

NEW CRUSTBUSTER & TYE DRILLS

1968 HD16 AC crawler w/12' dozer & root plow	\$12,500.00
1973 Gallion Motor Grader	10,500.00
1983 Case 450B crawler dozer, 2020 hours	18,500.00
1984 Case 580D loader backhoe w/cab, air, 650 hours	23,500.00
1984 Case 480D loader backhoe, 575 hours	15,500.00
1985 Case 480D loader landscaper, 200 hours	18,000.00
1978 Case 580C loader backhoe	11,000.00
1972 Mack truck w/1985 cab & Tulsa winch	12,000.00
1978 Tech Steel 25 ton haul trailer	6,000.00

FEAGINS IMPLEMENT

A fresh team for today's farmer



HWY. 87 NORTH
915-263-8348

BIG SPRING, TEXAS
915-267-1953

COUNTY AG-AGENT REPORT By DENNIS POOLE

TIPS OFFERED ON BUYING STOCKER CATTLE

Stocker cattle operators will soon be buying calves to put on winter pasture, and the type of animals they buy will go a long way in determining whether or not they will reap a profit.

The stocker operator must buy cattle that grow fast, be efficient in feed conversion, and sell for top dollar.

Since most calves from

your operation will be going to feedlots next spring, the stocker operator must also consider the value of these animals to the feeder. The cattle feeder is interested in rate of gain in the feedlot, carcass cutability or yield, and carcass quality.

Stockers that have the potential for performing efficiently in the feedlot and producing a Choice carcass in the 1 to 2 yield grade class will demand a top price. Buyers will often pay \$3 to \$5 more per hundredweight for calves with that kind of potential compared to those that might only produce a Good grade carcass with a

yield grade of 4 or 5.

This means that stocker and feeder cattle buyers must use their knowledge and experience to determine which calves will ultimately excel in feed efficiency, average daily gain, and quality and cutability grades. Visual evaluation of frame size, muscling and breed characteristics help determine the economic outcome of the calf.

Frame size refers to the animal's skeletal size--its height and body length--in relation to its age. These evaluations in feeder calves are directly related to differences in mature sizes of cattle and therefore have an important bearing on the animal's performance in the feedlot. Frame size specifications are large, medium, and small.

Muscling in feeder cattle refers to the development of the muscle system in relation

to skeletal size. Feeders of the same age and frame size vary in thickness due to differences in bone structure, muscling and degree of fatness.

Animals with a greater muscle thickness will normally produce a higher yield carcass than an animal of the same frame size that is narrow throughout. Muscle thickness is classified as to three levels--No. 1, Now. 2 and No. 3--with No. 1 being tops.

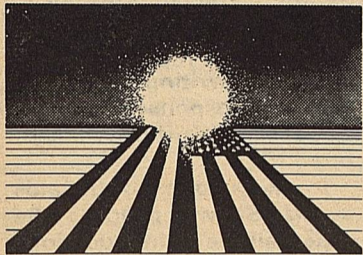
As far as breed characteristics are concerned, buyers usually pay the highest prices for crossbred feeder calves that contain traditional, exotic and Brahman breeding.

Again, feeder cattle buyers select animals on the basis of how they think they will perform in the feedlot. Ideally, they want an animal that will produce a Choice

The Borden Star, Wednesday, October 22, 1986...7 carcass with a No. 2 yield grade. That's the target that cattlemen might need to shoot at.

Ag Workers To Meet

A view of the agricultural climate of West Texas--along with a tour of area agricultural businesses--will be a special feature during the 60th Annual Conference of the Professional Agricultural Workers of Texas Oct. 29-31 at the Sheraton Inn in San Angelo. Speakers will address farm credit, programs of the Soil Conservation Service and Vocational Agriculture Teachers Association, and West Texas agriculture, including water concerns. Also, numerous key leaders will be recognized for their contributions to Texas agriculture at a banquet on Oct. 30



From sunrise to sunset all across the nation...

40,000 cooperatives work hard for their member-owners and their communities.

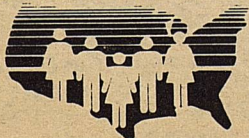
In big cities, small towns and rural areas, cooperatives owned and operated by 60,000,000 people provide a tremendous variety of goods and services--electric and telephone service, farm credit, credit unions, farm marketing and farm supply, food, health and day care, and insurance.

Cooperatives work because they meet people's needs efficiently and economically. That's why co-ops have scored high marks for quality goods and services for more than half a century all across America.

Co-op people point with pride at what their cooperatives have achieved for their friends, neighbors and communities. Co-ops are true American success stories.

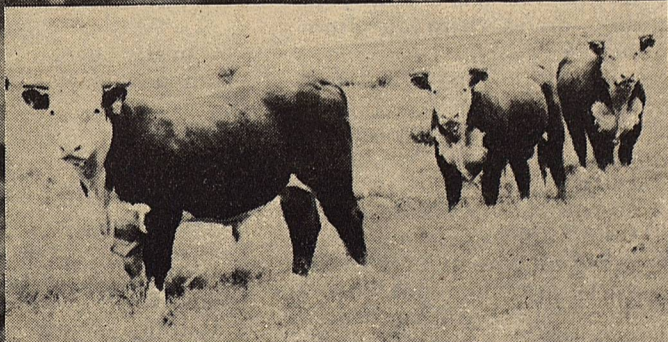
When cooperatives work, all America benefits.

COOPERATIVES



WORK!

We'll Be Looking For You October 28, 1986



These good bulls are a sample of the kind you'll find at our sale October 28. You're welcome to come early and look them over.

YOUNGBLOOD RANCH
"Registered Herefords Since 1937"

MRS. F. A. YOUNGBLOOD KENT & SHARON YOUNGBLOOD
Sole Day Phone 806/497-8414

ARLAN & AVIS YOUNGBLOOD TOM & KELLI MERRITT
806/497-8412 806/497-8423

HCR 7, BOX 160 • LAMESA, TX 79331

Write or call for sale catalog.

at Grandpa's

ANNUAL SALE

He says he's selling

84 Bulls

Big bulls, ready to go to work - Mostly two's plus

50 Heifers

A good set - all open and calfhooed vaccinated. He says they're better this year than ever, so they must be. Grandpa always knows.

P.S., You can come have lunch with us if you want. I know it will be good 'cause Grandpa says so.

Lunch 12 Noon
Sale 1:00 P.M.



SCS Notes

By Ricky Linex
Range Conservationist

What is Rangeland?

Rangeland may appear to be unmanaged wildland that in many cases may appear to be unproductive; but rangeland is:

Land that provides grazing for millions of cattle, sheep, goats and horses....

Land that provides food and shelter for numerous wild animals....

Land where hundreds of birds spend much of their lives....

Land that provides millions of people with 365 days of recreation opportunity each year....

Land that provides water for livestock, wildlife, and humans....

Land that provides energy in the form of oil, coal, natural gas, uranium, sun, wind, and water....and finally....

Land that supports a renewable natural resource-range vegetation.

Rangeland in Texas is as big as the states of Maine, Massachusetts, New Hampshire, New York, Vermont, Connecticut, Delaware, Maryland, New Jersey, and Rhode Island combined. Rangeland occupies 90 million acres in Texas on 59 percent of the state's land area.

The facts presented above all released by the Society for Range Management - Texas Section. The Society for Range Management is a professional organization composed of individuals with a common interest in the study, management, and rational use of rangeland and related ecosystems.

The Society's objectives are:

to develop an understanding of range ecosystems and of the principles applicable to the management of range resources;

to assist all who work with range resources to keep abreast of new findings and techniques in the science and art of range management;

to improve the effectiveness of range management to obtain from range resources the products and values necessary for man's welfare;

to create a public appreciation of the economics and social benefits to be obtained from the range environment of its members.

For more information on Texas Rangelands, contact the Snyder SES Field Office located at 3423 Avenue T.

LETTERS TO THE EDITOR

Concerning the Halloween controversy, I find it real interesting that most all concerned, professed a belief in a real and living God, but preferred to thin, satan, demons, witches, gouls and goblins are just make-believe and harmless. But God's word says in I Peter 5:8 Be sober, be vigilant because your adversary the devil walks about like a roaring lion seeking whom he may devour.

Halloween has been celebrated in one way or another for 2000 years. It's been evil just as long and because everyone is doing it doesn't make it right. God's word says in Romans 12:2

And do not be conformed to this world, but be transformed by the renewing of your mind, that you may prove what is the good and acceptable and perfect will of God.

God also says in Matt. 7:13 & 14

Enter by the narrow gate; for wide is the gate and broad is the way that leads to destruction, and there are many who go in by it. Because narrow is the gate and difficult is the way which leads to life, and there are few who find it.

Specifically on the subject of Halloween, God's word says in Deut. 18:10

There shall not be found among you anyone who makes his son or daughter pass through the fire, or one who practices witchcraft, or a soothsayer, or one who interprets omens, or a sorcerer "or one who conjures spells, or a medium, or a spiritist, or one who calls up the dead. 12. For all who do these things are an abomination to the Lord, and because of these abominations the Lord your God drives them out from before you.

And in I Thess. 5:22 God says:

Abstain from every form of evil. You know we're not held responsible for something we don't know. Luke 12:48

But he who did not know, yet committed things worthy of stripes, shall be beaten with few. For everyone to whom much is given from him much will be required; and to whom much has been committed, of him they will ask the more.

I just think it's important to know what the Bible says on these things. Some of us for many years. We're blinded and didn't care either way, but Jesus Christ himself in Rev. 3:15 and 16 says:

I know your works, that you are neither cold or hot. I could wish you were cold or hot. 16 So then, because you are lukewarm, and

neither cold or hot, I will spew you out of My mouth. And God's word says in II Timothy 1.7

For God has not given us a spirit of fear, but of power and of love and of a sound mind.

These are shy we stood against a spook house, witches, demons and the very appearance of evil. I realize this letter won't change anything and I know we all have a right to our own ideas. But if I can't convince you and God's word, taken from the New King James version of the Holy Bible, can't. If you still can't believe it's evil, maybe a quote made by Mike Warkne; former Satanic High Priest for 7 years; that Halloween is recorded in the Satanic Bible as it's second most important holiday; and the start of their year. Satan thinks it's pretty important to him and we all have been deceived for thousands of years.

I realize until God reveals this to you; you will go on being deceived as we all were. Even some of our churches. But Praise God we came against the stronghold of Satan concerning Halloween. To me all the other arguments are irrelevant where the powers and principalities of Satan are concerned. If nothing else you now can't say you didn't know. God gave you free choice and I respect that. But God's word has been, even before the world was created. Even longer than Halloween.

John 8:32 "And you shall know the truth, and the truth shall make you free."

If you have any arguments with what I've written you can take it up with God because these are not my words but His.

-s- In His Love,
Donna Nehring

LETTER TO THE EDITOR:

Edward and I farmed in Borden County for the last sixteen years. We have had some good years and some bad ones, but we would not take for any of them after all, this is home.

Over the years I have come to realize that the two most important factors in farming are the weather and our Government.

This really hit home last year when we had a problem with our ASCS office not excepting a lease that the FmHA requires you to have. These are both offices of the Department of Agriculture.

I decided it was time for our public officials to become aware of this little matter of government.

I started placing phone calls and writing letters. I received responses from all of our elected officials except one.

I talked to one of the aids in Mr. Shaw's office. She asked all the right questions and agreed that we had a problem. and that Mr. Shaw's grassroots were with the Farmers and that they (The Farmers) should be made aware of the Government's Policy. After answering all of the ladies questions all that I received from the conversation was a huge phone bill.

Mr. Shaw did not return my call. He did not acknowledge it with a letter or a down home howdy-do. He also acted in a like manner when local officials contacted him a few years back to help citizens of this county fight a nuclear waste dump. He also ignored teachers's cry for help over Housebill 72.

So Mr. Shaw if this is the way you take care of your constituents, why not pack your little brown bag, come on back to your grass roots with all of your experience and let's see what we can do about this rain and leave Austin in the hands of someone else.

-s- Terry Smith

CLASSIFIED

SUSAN STEPHENS is looking for Ranch Day Work and outside horses.

Beal Ranch, South of Gail.
Call 915-6399-4511

HORSESHOEING
For ALL your horseshoeing and trimming needs call TERRY VOSS
915-856-4361.



Western Wear

3205 College Ave.

Why Pay \$80.00
For A Name?

Lots
Of
New
Colors



WINE

TEAL

PURPLE

DUSTY ROSE

GREY

BLACK

TAUPE

NAVY

BABY BLUE

BROWN

49⁹⁵ & 59⁹⁵

All Leather
1st Quality

Excellent Fit
Durable

LETTER TO THE EDITOR:

I represent a large number of people who have weighed the pros and cons of the Spook House and feel that it is no more harmful than the other chance related concessions. We intend to make it one of the best Spook Houses we have ever had. There will be no compromise. The Spook-house will be put on by private individuals. The profits will go to the Ambulance Fund. If you are not for the Spook House do not waste my time but if you would like to help physically or financially, please contact me.

Work - 439-6357 Home
439-6323
Sincerely,
Charlotte Bray