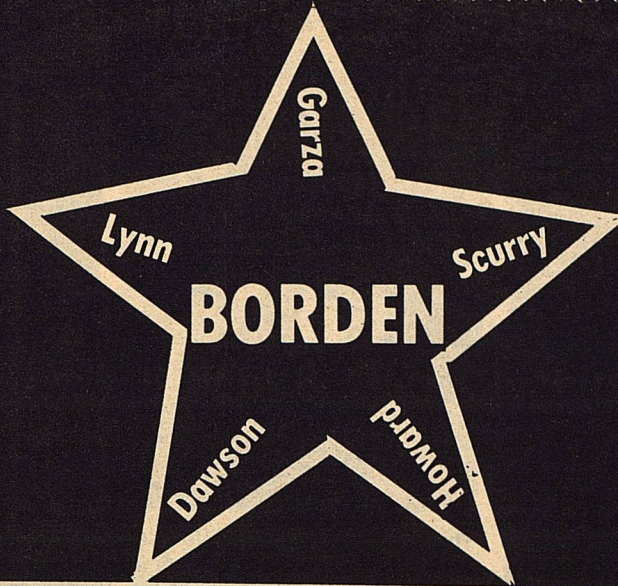


THE

Volume XLII



STAR

April 23, 1986

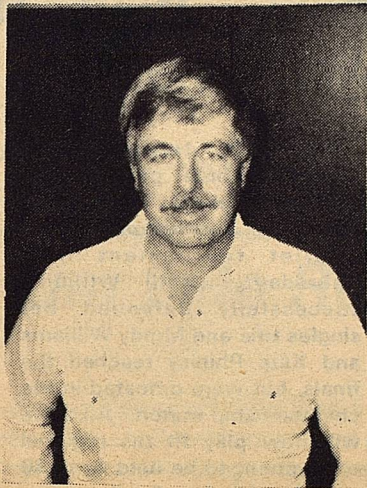
Serving the Counties of Borden, Dawson, Garza, Howard, Lynn & Scurry

Candidate For Commissioner Precinct 2

R. D. (Dan) Shortes, a farmer in southwest Borden County for the past 20 years, announced his candidacy for Commissioner Precinct 2.

Dan, 43 and his wife, Kokie, a former barber shop owner and operator in Lamesa, Texas, are the parents of 4 children. Russ and Danae live in Lubbock, Kama 14 and Kyla age 6 of the home. They attend First Baptist Church in Ackerly. He has been involved in farming and lived in Borden County all of his life, except when in college in Lubbock. He was a member of the ASCS Committee until he resigned to run for the office of Commissioner.

"I don't mind hard work. I would try to listen to the people



DAN SHORTES

and their problems. If elected to this office, I would welcome any phone calls to our home concerning a problem. I would appreciate your support in this election," said Shortes.

GOP CANDIDATE WITHDRAWS

Last week one of the Republican candidates for the State Legislature of the 69th legislative district drew out of the race. Mr. Travis Floyd announced his withdrawal as a candidate. He gave a reason as health problems and endorsed no candidate. The announcement came after the ballots had been printed and absentee voting opened.

When contacted for his response to Floyd's withdrawal, John R. (Rich) Anderson, the other Republican candidate,

said "It makes no difference to me. My plan is still intact and I continue to develop an organization not only to win the primary but to win the general. I never felt that Floyd was a viable candidate but in politics you never take anything for granted."

Mr. Anderson has been enthusiastically received and endorsed through out the 13 county district. His most recent endorsement has been from The Young Conservatives of Texas.

GOOD NEWS: Loves You

America, God

First Baptist Church, Gail, will be participating in the simultaneous revivals going on in the area. The dates will be April 25, 26 and 27. The services will be held at 7:30 p.m. nightly and 11:00 p.m. on

Sunday morning. Rev. Clifton Igo and Jerry Luck, both from Second Baptist in Lamesa, will be doing the preaching and singing. A nursery will be provided.

New Board Members Note—Intentions

Letters to the Editor

Rumors have been flying thick and fast in Borden County. We feel it is time to clarify our position as newly elected school board trustees. The rumors that we intend to fire maintenance personnel, cut the wages of the teachers, and cancel the Sr. Trip are absolutely false. Since the money for the Sr. Trip is raised by the efforts of the Sr. Class and their parents, we cannot possibly see how this rumor was started because it is absolutely false.

The Borden County School System is in for some difficult financial times because of the oil

devaluation. We have at least a 60 percent devaluation of oil since January 1, 1986.

Nintety-seven percent of our school's tax base is oil. The only solution to this is a possible countywide tax increase of a substantial proportion. We feel we cannot ask the taxpayers of Borden County to absorb such a substantial tax increase unless the school budget is tightened as much as possible, but not to the point of decreasing the educational standards in any way. We pledge to maintain the educational standards we have all grown accustomed to and to maintain our schools facilities of

which we are proud. We feel we have excellent teachers and administrators in our school system and we see no need for any changes at this time.

Furthermore, if any person wishes to discuss any problem or rumor, we will be glad to have them come to any of the open school board meetings or contact the undersigned school board members individually.

We all have personal ties to the school and the community. It is not our intention to harm Borden County I.S.D. or the community which it serves.

-s- Steve Hess, Kent Holmes,
Tom Ed Vestal

Citizen Speaks Out

to the public and always have been. Each meeting there is a place on the agenda for guest in case someone comes. It is also very easy to call and request to meet with the board.

The dope and alcohol rumors were some of the worst. If these problems actually existed then why didn't concerned citizens go to the board or to the Sheriff. As a matter of fact, I don't know why the Sheriff didn't run an investigation on this problem. If so many citizens knew about the use of drugs and alcohol, surely the law should have been concerned. A full report and the evidence of the Post arrest has been in the Borden County Sheriff Department, yet I don't believe anyone inquired there.

Of course, the problem of drugs and alcohol did not exist in the school. "A tip of the old sombrero" to the young men and women in the Senior Class for calling to task those people who unjustly accused the school and the school children. The Senior Class is to be commended.

There were many more rumors that I looked into, and I'm satisfied that none of them are

true. One thing I would say about this is that I don't have any use for any politician or anyone running for a public office that has to resort to lies and character assassination in order to win. If a man or woman can't get elected on their own merits and programs, then they don't deserve the position.

The tax situation is going to become very tough and important to deal with. Someone was quoted as saying their taxes had been increased by 25 percent. We have had 2 appraisals in the county and although my taxes were increased both times, I can state that our taxes have not gone up over 15 percent in 34 years. The oil companies have paid more than 95 percent of the taxes in Borden County, so up to now property taxes have not been an issue. It is necessary that the Board continues to work with the oil companies.

However, with the passage of H.B. 72, the legislature passed a tax increase which has yet to be felt. With the loss of our oil tax base, along with this new

to pg 6



CINDY BALAGUE-CHOSEN DISTRICT SWEETHEART-Cindy Balague, daughter of Juventino Balague and wife of the Plains Community competed in the Lone Wolf District Sweetheart Contest last week, bringing home the top honor in her FFA District. Cindy was chosen by the FFA Chapter earlier in the year.

District Sweetheart

Several members of the Gail FFA Chapter attended the Annual District meeting and banquet at Colorado City on Monday, April 15. Members attending were Gerry Smith, Michael Murphuy and Mickey ~~Burkett~~. Others attending were Cindy Balague, Kristen Wallace, and the Vo. Og. instructor, Buddy Wallace.

The banquet consisted of a meal, judging and leadership awards, district sweetheart competition, and district officer elections. Gerry Smith was elected district reporter for the

1986-87 year. Gerry was elected after competing with 3 other candidates in the district. Cindy Balague, who was elected as Sweetheart earlier in the year, represented the Gail FFA Chapter in the district sweetheart election. She was elected Lone Wolf District Sweetheart competing with 6 other sweethearts from the district.

Cindy will now travel to the area FFA Convention and represent the Lone Wolf District in the Area Sweetheart Competition. The convention will take place on May 16-17 at the A.S.U. campus at San Angelo.



The Kindergarten Class, with the help of Mrs. Copeland pin up a map of Texas during a party last Friday. The Class celebrated the Birth of Texas. The class studied the early pioneer days.



THREE-LEGGED RACE-Winners of the race were Preston Sharp and Tammy Cooley. Runners-up were Charlie Luise and Rende Herring



REGIONAL QUALIFIERS-TENNIS- Kate Phinizy, Mindy Williams, and Kelli Williams qualified for Regional Competition in Tennis last week. Seated-B.G. Kropp qualified for District Competition.

Borden Sends Three To Regional Tennis Meet

Borden's tennis team advanced three girls to the Regional Tennis Tournament with the conclusion of the district tournament held Thursday. Kelli Williams successfully defended her singles title and Mindy Williams and Kate Phinizy reached the finals, but were defeated in the championship match. All three will now play in the regional tournament to be held April 30 and May 1 in Levelland.

Kelli received a bye first round by virtue of her win in the zone tournament. Then in the semi-finals she defeated Carol Madrigel of Union in straight sets 6-0, 6-1. In the final, she again met Stacie Bessire of DO'Donnell. Last week, Bessire extended Kelli to split sets before DKelli took the hard earned victory in the Zone Final. In the District Final, Kelli wasted no time in securing her third district championship 6-2, 6-3. This was her first step towards her third consecutive

appearance in the State Tournament in Austin.

The young team of Mindy Williams and Kate Phinizy surprised a field of twelve schools in reaching the district finals. Mindy, a sophomore, and dKate, a freshman, teamed together for the first time in doubles and swept to the Zone and District runner-up places. In the opening round of district, they defeated Shawna Addison and Jana Cline of Dawson by scores of 6-2, 6-4. Then in the semi-finals they defeated Lori Shults and Kara Hale of Union by scores of 6-4, 6-4 to earn them a berth in the regional tournament. In the final, they again met O'Donnell and were defeated by a score of 6-1, 6-1. They had earned their spot in the district tournament with last week's zone wins over

hland and O'Donnell. Kropp also had earned a in the district tournament was defeated by Union's

The Borden Star
Publication No. 895520
(USPS 895-520)
Publication No. 895520

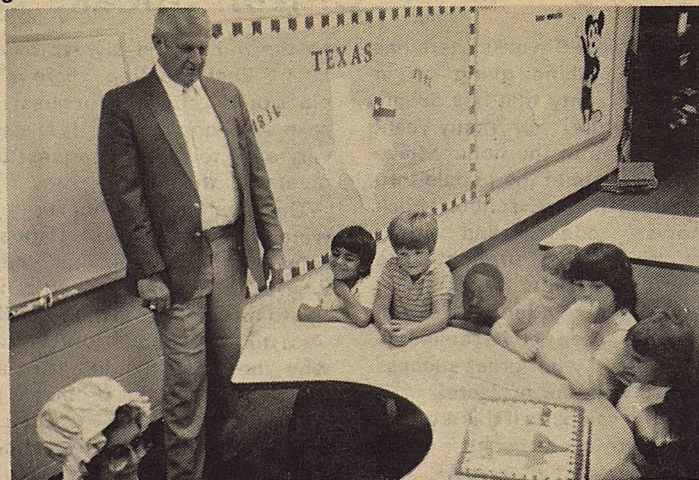
Editor
Barbara Anderson

Published weekly, except for Christmas and New Years, on Wednesday at Gail, Borden County, Texas 79738, Box 137, Kincaid Street, Second Class postage paid at Gail, Texas.

Any errors that we make reflecting on the reputation or standing of any Firm, Corporation, or individual that may appear in the columns of the Borden Star will be gladly corrected when called to the attention of the staff.

Subscription Rates:
\$8.00 per year

Borden Star Owners
James McLeroy, Barbara Anderson, Doris Rudd, Pat Porter, Bob Dyess, Edna Miller, Ruth Weathers, Mrs. Nathan Zant, Sonny Tucker, Eddie Simer, Loreen Jones, Martin Parks, Dan Turner, Lela Porter, and Marge Toombs.



HAPPY BIRTHDAY, TEXAS---The Kindergarten Class sing "Happy Birthday, Texas." during a party last week. Leading singing were Mr. McLeroy and Mrs. Copeland. cake was donated by Debbie Brummett.

Claiborne's
THRIFTWAY

Visit Our Deli

Party Trays Pastries Custom Cakes

710 N. 4th

Lamesa

MENU

April 28-May 2, 1986

Monday	Burritos Pinto Beans Vegetable Salad Fruit Milk	Salad Bar
Tuesday	Vegetable Soup Pimento Cheese Sandwich Fruit Milk	Salad Bar
Wednesday	Green Enchilada Casserole Mexican Bean Salad Mixed Vegetables Fruit Cobbler Milk	Salad Bar
Thursday	Pigs in a Blanket Pork & Beans Vegetable Salad Jello Milk	Salad Bar
Friday	Hamburgers French Fries Lettuce & Pickles Cookies Milk	Salad Bar



PLACES IN DISTRICT-Angela Evans placed 3rd in the Daytime Tailored Junior 2 Division at the recent District 2 4-H Fashion Review held at Texas Tech. This is Angela's 4th year in the sewing project, her 3rd year to compete in District.

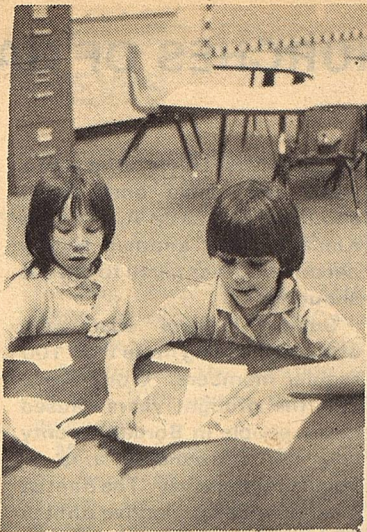
Preschool Day is May 2

Pre-school Day will be held May 2 for those students who will attend kindergarten next year. Children may ride the bus by calling Mr. Jarrett

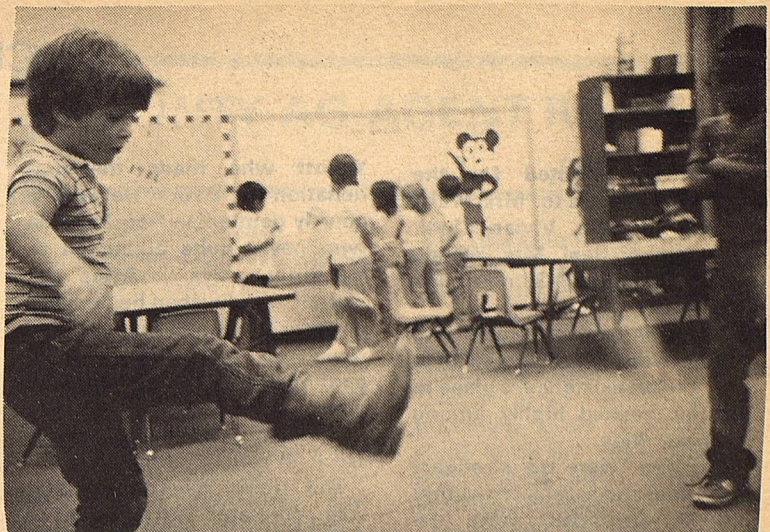
SCOTTS AUTOMOTIVE
For All of Your Automotive Needs
 Transmission
 Brakes-Tune Ups
 Air Contionting

Phone 872 5782
 Night 872-5001

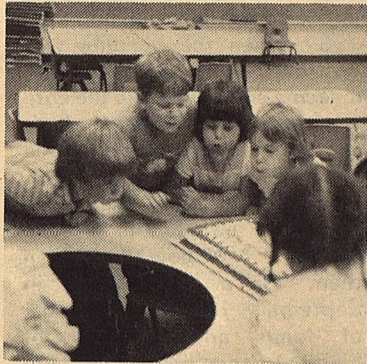
805 N Lynn, Lamesa



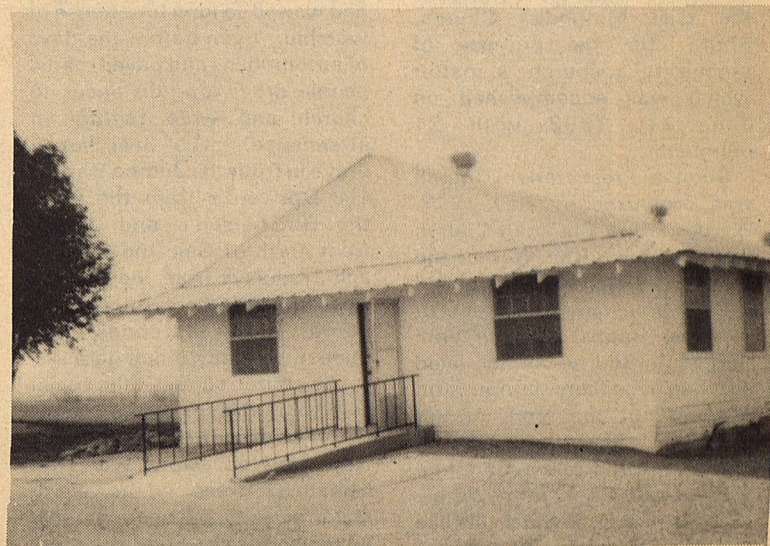
SALINA REVES AND RENDEE HERRING PUT TOGETHER A PUZZLE OF TEXAS.



HACK-A -SACK- Lucas Rice is playing HACK★A Sack-an old Indian game passed down to settlers.



TEXAS' BIRTHDAY CANDLES.



The State of Texas has required all voting boxes be equipped with ramps for invalid voters. Pictured are completed ramps in South Gail (Exhibit Building) and the Courthouse. All Polling places must be equipped with the ramps by the end of this year.

Anyone can vote Republican

If you have always voted in Democratic Primaries, it does not mean you are registered as a Democrat. Your voter identification card is stamped "Democrat" or "Republican" in May simply to prevent voting in the other party's runoff elections in June. It does not mean you are registered as a member of either party.

VOTE REPUBLICAN MAY 3

If West Texans ever had a chance to take a single action that would immediately improve our economy, attract new jobs, and bring new business and industry to our area, that chance will come on Saturday, May 3, when we can vote for Kent Hance in the Republican Primary. Kent is the only candidate who can carry the cities and the rural areas of Texas to beat Mark White in November.

Kent was born and raised here, operated businesses here and practiced law here. He represented us well in the State Senate and in the Congress where he passed the largest

tax cut bill in history. He is the answer for us and for all of Texas in these tough times. Kent Hance is the only candidate for Governor who has the leadership experience to meet our problems. and he will listen.

West Texans know first hand how progress comes from having a governor who knows and understands this area. Another great West Texan helped us become a major medical center, an educational center, and provided a climate that attracted new business and industry to West Texas with thousands of new jobs for our people. We can do it again.

Vote Saturday, May 3
REPUBLICAN PRIMARY

KENT
HANCE
FOR GOVERNOR



Pd. Pol. Ad. By the Committee to Elect Kent Hance Governor.

FISH

Now is the time for Spring Stocking Hybrid Bluegill, Florida-Hybrid Bass, Channel Catfish, Fathead Minnows, Hybrid Grass Carp.

The Hybrid Bluegill will REACH the weight of 2½ to 3 lbs. We furnish your Hauling Containers. We guarantee live deliver.

Delivery will be Saturday April 26, at the times listed for the following towns and locations.

Snyder-Upper Colorado Soil and Water Conservation District 8:00-11:00 a.m. 915-573-1268
 Sweetwater-Kessler's Farm and Ranch 1:00 -2:00 p.m. 235-5474
 Abilene-D&D Feed and Supply 3:30-4:30 p.m. 676-3302.

Call your local Feed Store to place your order or call collect: 405-777-2202

Fishery Consultant and Pond rotenoning available. Special Deliveries on large ponds and lake orders



CHURCHES OF GAIL

We are indebted for the following records to: Mrs. Frank Miller, Sr., Mrs. Vivian Clark, Mrs. Homer Beal, Mrs. Wanda Smith, Mrs. Sybil Gilmore, and Mrs. Buster Taylor

As early settlers moved into Borden County and struggled to eke out an existence, a place to worship ranked highly among their priorities.

Baptists were the strongest in number and organized the first church in 1889 with 14 members. Bro. J. A. Petty was their first pastor.

On Dec. 1, 1891, Rev. T. L. Adams was appointed pastor of the Gail Methodist Church, South, for the purpose of organizing a church, a matter which was accomplished on Jan. 31, 1892 with 21 members.

Soon a Presbyterian Church was organized by Rev. W.W. Werner and a Christian Church By Rev. Pruitt. Rev. Werner and Rev. H. C. Kelly, who was one of the old time early preachers for the Gail Baptist Church who settled in Scurry County, lived out their lives there, farming and carrying out the work of the church. The Gail Church presented Bro. Kelly with a fine horse and he immediately purchased a two wheel cart like the one Bro. Werener drove to make the circuit of his churches.

Pastors of these churches held services on alternating Sundays in the school house and later in the Courthouse with people of all denominations attending. A Sunday School was organized with Mr. Nix the first Superintendent.

In August, 1900, through the effort of Rev. H. S. Jolly, a revival was held at the Methodist Church and new members added to the church rolls, resulting in its reorganization in Nov., 1900.

Even with four organized churches, Gail still had no church building. The movement to build a church was started by a man who belonged to no church, County Attorney E. R.

Yellott who made the first donation of \$15. He was a courtly gentleman from Virginia who never quite adjusted to frontier ways. After the church was finished he donated an Altar Cloth and Pulpit Bible. Most of the men of the community donated money, labor and material for this church which, for a time, was to serve all denominations.

The Union Church Building was completed in the Spring of 1901. The first service held in the new church was a prayer meeting which was well attended by these people who had waited so long for a house of worship. Even before the days of automobiles and paved roads, people drove long distances to church and were faithful in attendance. The Beal family drove in from the Jumbo Ranch, The Dorward's from the 49's, the Hutcherson's and Jolly's from north of Gail, the Orsen's and Tredways from the Plains. How many others must have come such distances and opened so many ranch gates!

The church supplied the social as well as the spiritual needs of the community. What wonderful occasions were the Christmas trees where every child received a Christmas gift, however simple, and little girls' arms cradled the most beautiful doll she had ever seen. The community Christmas tree is still an annual treasured tradition in Gail, alternately hosted between the Baptist and Methodist churches since 1901.

The revivals were events long anticipated and attended by all denominations. Ethel Morrow Everett has written of a Union Revival held in 1902 when services were held three times each day and no one watched the clock. She says, "Grandma Morrow, with her stiffly starched white bonnet, as staunch a Methodist as Susanna Wesley, shouted extra good when she saw me profess Christ but I was terribly disappointed

because Mrs. Doyle, who was a most dependable one, didn't shout at all. Little Aunt Lizzie Kincaide was another saintly person who was given to devout shouting."

Sunday School was well attended, having more than 100 regular members. World War I and the drought years caused many people in Borden County and the surrounding area to begin moving away. The Baptist Church became inactive until in 1922, when a revival held by Rev. Humphreys, brought 22 new members into the fold. All the churches continued meeting in the community building until 1937 when the building was destroyed by fire. Looking back, it seems somewhat like the Lord had to set a fire under them to get them moving and revitalized because now the Baptists were motivated to build their own church on the two lots in Block 92 that J. I. Wilbourn had given them for a church site in September, 1893. Due to a lack of funds and scarcity of materials, they had let the land lie fallow. Money for the building was given by individuals both near and afar, even from other denominations. Concrete blocks were made on the site by the men of Gail. Mr. A. J. Cantrell was hired as carpenter.

The first service was held in the new building June 29, 1938. Rev. Forrest Huffman conducted the service. Dedication services were held July 29, 1945 with Rev. J. W. Arnett, District Missionary, giving the dedication sermon. In 1951 the church voted to have a pastor half-time and in September, 1958, changed to full-time preaching services.

By December, 1960 while Rev. Arthur Thomas was serving as pastor, it was found that major repairs on the building were needed. An unofficial report of the poor condition of the building was brought before the congregation and their course of action was narrowed to three possibilities: Complete renovation but needing more space; Leaving building as it was for classroom use with minor repairs done and another building of suitable size moved in and remodeled to serve as an auditorium or; tear down present building and build a new one meeting present needs.

It was a stroke of good fortune con't to 7



Pictured above is the Centennial Committee of St. Mary the Virgin Episcopal Church. Seated left to right are Rich and Barbara Anderson, Jerry and Louise Worthy, and Billie and Ralph McLaughlin.

CENTENNIAL CELEBRATION

The Episcopal Church of St. Mary the Virgin in Big Spring has been celebrating it's Centennial during the month of April

Following events through out the month, last week drew the celebration to a close.

On April 18 yhr the Episcopal School hosted an all day Open House. The McDowell Chuch Wagon was placed on the grounds for everyone to enjoy. Rich Anderson, of Gail, and other caowboys demonstrated branding on blocks of weood for the children to take home.

Saturday, April 19, the church had "A Family Affair". Morning prayer service was held followed by an old fashioned dinner of the grounds with frock coats and "Dusters" in abundance.

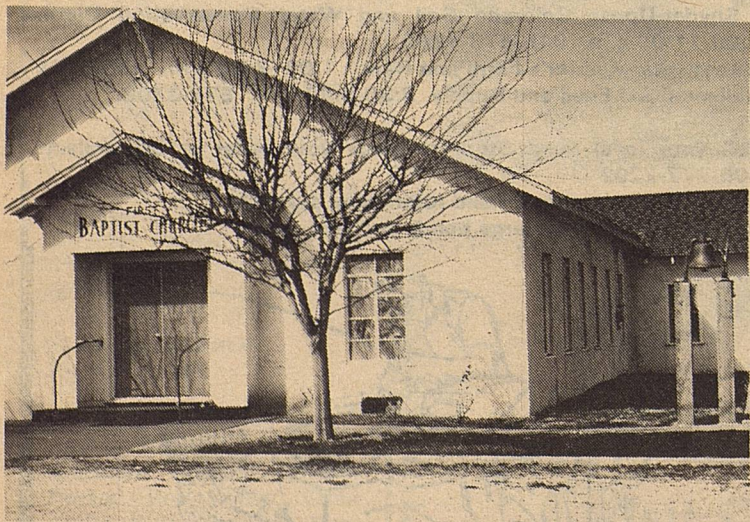
A reunion for parishinors and out of town guest was held Sat. night. Rev. Bill Boyd who served St. Mary's from 1950 through '509 from Washington state was

recognized as having come the farthest.

Holy Eucharist was celebrated on Sunday with Bishop Hulsey officiating.

The first Episcopal Church in Big Spring was built in 1886. Te, the second oldest church of that town. The railroad crossing West Texas was primarily built and financed by men of English descent. It was only natural that the Church of England or the Episcopal Church, as it is called in Ameriaca, followed closely the event of the railroad.

The early church was edestroyed "by cyclone" in 1897. The second church was erected in 1900 and served the Episcopal community until 1957 when the present facilities were dedicated. Although very much of the 20th century, the church was sdesigned after the monasteries of the Middle Ages around a central courtyard.



1st BAPTIST CHURCH

The bell, shown at the right, was a gift to the church in 1979 in loving memory of Dorothy (Dottie) Sue Wills.



1836-1986

RE-ELECT JUSTICE

ROBERT M. CAMPBELL SUPREME COURT

TEXAS WESLEYAN B.S. DEGREE

TEXAS CHRISTIAN GRADUATE SCHOOL

BAYLOR UNIV. LAW SCHOOL-JURIS DOCTOR DEGREE



REARED ON FARM-RANCH CORYELL CO.

FORMER SCHOOL TEACHER

2 TIME VETERAN U.S. ARMY

TEXAS NATIONAL GUARD-10 YEARS

AUTHOR OF 126 SUPREME COURT DECISIONS

PROVEN ABILITY & INTEGRITY

Paid for by the Robert M. Campbell Campaign, P.O. Box 8418, Big Spring, Texas 76714.

Extension Home Economics Report

By: Kandy K. McWhorter

QUICK BREADS FOR A CHANGE OF PACE

Do you get tired of the same old refreshments at every meeting or party you go to? If you do, why not try one of the recipes below the next time you are asked to provide refreshments?

LEMON BREAD

1 cup margarine
3 cups sugar
4 eggs
½ teaspoon salt
½ teaspoon soda
3 cups flour
1 cup buttermilk
1 cup chopped nuts
10 tablespoons lemon juice
Cream margarine and 2 cups sugar; add eggs one at a time and blend. Sift together salt, soda and flour and add to creamy mixture alternately with buttermilk. Fold in chopped nuts. Pour into two (2) 8" x 4" loaf pans. Bake at 350 degrees for about one (1) hour. While bread is baking, combine lemon juice and remaining sugar and let stand to dissolve, stirring occasionally. When bread is done but still warm, drizzle on lemon glaze.

Yield: 2 loaves

APRICOT-NECTAR BREAD

2½ cups flour
2 teaspoons baking powder
1 teaspoon baking soda
¼ teaspoon salt
½ cup sugar
¾ cup finely chopped dried apricots
1 egg, room temperature
2 tablespoons butter, melted
1 12 ounce can apricot nectar (1 ½ cups)
½ teaspoon vanilla extract
½ cup toasted chopped walnuts

Grease an 8" x 4" or 9" x 5" loaf pan; set aside. Preheat oven to 350 degrees. In a large bowl,

combine flour, baking powder, baking soda, salt, sugar and apricots; set aside. In a medium bowl, lightly beat the egg. Stir in butter, apricot nectar and vanilla. Stir into flour mixture only until dry ingredients are moistened. Stir in nuts. Turn into prepared pan; smooth top. Bake 60 to 65 minutes or until wooden pick inserted in center comes out clean. Let stand in pan 10 minutes. Turn out onto rack to cool.

Yield: 1 loaf

STRAWBERRIES 'N CREAM BREAD

3½ cups flour
1 teaspoon baking powder
½ teaspoon baking soda
1 teaspoon salt
½ teaspoon ground cinnamon
1 cup butter, room temperature
1½ cups sugar
4 eggs, room temperature
1 cup dairy sour cream, room temperature
2 teaspoon vanilla extract
2 cups coarsely chopped fresh strawberries
1½ cups toasted chopped nuts, if desired

grease two 8" x 4" loaf pans; set aside. In small bowl of electric mixer, cream butter. Gradually add sugar; beat 1 minute or until light and airy. Beat in eggs one at a time. Beat in sour cream and vanilla. Stir into flour mixture only until dry ingredients are moistened. Fold in strawberries and nuts. Turn into prepared pans; smooth tops. Bake 60 to 65 minutes or until wooden pick inserted in center comes out clean. Let stand in pans 10 minutes. Turn out onto racks to cool.

Yield: 2 loaves

PRESCHOOL DAY IS MAY 2

Pre-school Day will be held May 2 for those students who will attend kindergarten next year. Children may ride the bus by calling Mr. Jarrett

HOME PLATE

802 N. 4th Lamesa 872-3221

Hickory Smoked Brisket
Char Broiled Burgers
Tacos
Steak Finger
Salad Bar

8 delicious Flavors Dipped Ice Cream
GO COYOTES

Open 10 a.m. - 10 p.m.

COURTHOUSE NEWS

THE STATE OF TEXAS COUNTY OF BORDEN

The Commissioners' Court of Borden County convened in Special Session at the regular meeting place March 24th, 1986. All members of the Court were present and participating.

Minutes of the meeting of March 10th, were read and approved.

Mr. Rex Beck, representative of American Equipment and Trailer, Inc., visited with the Court regarding trucks and equipment.

Voting booths for elections were discussed. A motion was made by and approved to purchase a set of 5 voting booths.

Current accounts were examined and approved for payment.

A motion was made and passed to give Van L. York, County Judge, authority to sign division orders on Martin County oil production for the Permanent School Fund from Estep and Gay Wade A leases.

There being no further business, the meeting was adjourned.



NOTICE OF APPLICATION FOR FLUID INJECTION WELL PERMIT

Texaco Inc. P. O. Box 1270 Midland, Texas 79701 has applied to the Railroad Commission of Texas for a permit to inject fluid into a formation which is productive of oil or gas.

The applicant proposed to inject fluid into the Lower Spraberry, Jo Mill Unit, Well Number 7124. The proposed injection well is located 8 miles North Vealmoor, Texas in the Jo Mill (Spraberry) Field, in Borden County. Fluid will be injected into strata in the subsurface depth interval from 7544 to 7594 feet.

LEGAL AUTHORITY: Chapter 27 of the Texas Water Code, as amended, Title 3 of the Natural Resources Code, as amended, and the Statewide Rules of the Oil and Gas Division of the Railroad Commission of Texas.

Requests for a public hearing from persons who can show they are adversely affected, or requests for further information concerning any aspect of the application should be submitted in writing, within fifteen days of publication, to the Underground Injection Control Section, Oil and Gas Division, Railroad Commission of Texas, Drawer 12967, Capitol Station, Austin, Texas 78711 (Telephone 512-445-1373).

COUNTY AG-AGENT REPORT

DENNIS POOLE

DISEASE CLINIC

A plant disease clinic will be held May 8, 1986 at the county extension office.

Drs. Bob Berry and Pat Morrison will be on hand from 9:00-11:30 A.M. to assist you with any problems you may have related to horticultural plants.

This will include potted plants, flower beds, gardening, and landscape trees. If you have a sickly potted plant and would like to bring it by the office for inspection on this day - give us a call and we'll be glad to assist you. Also if you have plants you would like to have these gentlemen inspect give us a call ahead of time so we can be sure and plan for this.

Dr. Berry is an Extension plant pathologist and Dr. Morrison is our Extension Entomologist serving District 2.

Don't forget the Pecan & Fruit Tree Shortcourse to be held April 29, 1986 at the Dawson County Community Building in Lamesa, Texas at 2:00 p.m.

LONE STAR TICKS INFESTING LIVESTOCK

Lone Star tick populations are increasing in Texas livestock with the warm spring weather.

The Lone Star tick is so-named because the adult female is dark colored with a distinctive white spot or "star" on its back.

Lone Star ticks attack almost all kinds of warm blooded animals, including birds, small rodents, deer, livestock and even man. Their long puncturing mouthparts cause deep irritating wounds.

Female ticks lay up to 10,000 eggs each, mainly in brushy areas. These eggs hatch into small "seed" or larval ticks. The nymphal stage is next, followed by the adult state.

Adult ticks usually reach maximum levels in March or April, larval or "seed" ticks in May or June and nymphal ticks in March or April and again in August and September. Usually only one generation of ticks occurs per year.

Lone Star tick control on livestock requires repeated applications of insecticides. Most insecticides will control ticks no longer than one to two weeks, after which additional applications must be made to maintain control in tick infested pastures.

Some breeds of cattle naturally carry greater loads of Lone Star ticks, with breeds containing some Brahman breeding usually having the fewest.

Insecticides which effectively control ticks include delnav (Deltax), stirofos (Rabon), Ciodrin, malathion, Co-Ral and pyrethroids (Extrin, Vet Shack WDL, Atroban and Permetrin). Use of pyrethroids for tick control in areas which have had problems with hornfly resistance is discouraged. Ivomec, an injectable drug for controlling internal and various external parasites, provides effective Lone Star tick control for about two weeks.

When spraying cattle for ticks, use high pressure sprays (250-350 psi) at a total volume of 1 gallon per head. Thorough coverage is important. Check the insecticide label for restrictions on spraying young calves as well as other precautions.

The information given herein is for educational purposes only.

Coyotes

THRIFTWAY

A FRIENDLY Supermarket serving West Texans with Quality Foods at Competitive Prices.

We give S&H Green Stamps Double on Tuesday after 1 p.m. All Day Wednesday.

35th and College Ave.
Snyder, Texas

GARRISON SEED DEALER

Cotton Seed Sorghum Seed
Forage Seed

Native Grass Seed

Billy Ray Mayfield

806-872-2476

ASCS NEWS BY JERRY STONE

SIGN-UP DEADLINE

Farmers who have not signed up for the 1986 farm programs still have time to do so. The Sign-Up deadline has been extended to April 25, 1986.

Farmers who do not enroll will not be eligible for price support loans, deficiency payments and land diversion payments for wheat and feed grains.

Acreage reduction requirements are 25 percent for wheat and upland cotton and 20 percent for feed grains.

To avoid having to make a separate trip to the county ASCS office to report small grains planted last fall, producers may file fall-seeded crop reports during the 1986 farm program sign-up period. Wheat, Oats, Barley, Rye and other small grains which are not reported by May 1st will be ineligible for program benefits.

NEW REVISIONS IN THE FARM PROGRAM

Authorizes additional yield payments in the form of certificates for the 1986 Deficiency and diversion payments if the 1986 payment yield for a crop is reduced by more than 3 percent from the 1985 program payment yield. For example, if the 1985 payment yield was 600 lbs, 1986 is 500 lbs., 97 percent of 600 is 582 lbs., 500 lbs will be paid in check and 82 lbs will be given in commodity certificates. The additional yield payments authorized by the 1986 Act are intended to ease the transition from the previous formula for yields to the formula prescribed by the Food Security Act.

COTTON & GRAIN SORGHUM LOANS

May 31st is the final date to make a 1985 cotton and grain sorghum loan.

ACR ACRES

The ACR acres for Cotton cannot be grazed until September 1, 1986. All ACR (lay out land) must be cropland that has been planted to a row crop or small grain in at least two of the last 3 years. It is recommended that adequate cover be established and maintained to keep wind and water erosion at-or below soil loss tolerance levels. The cover should be established on ACR acreage no later than June 30, 1986.

The final date to report small grains (wheat, rye or oats), ACR acreage with a small grain cover and Conserving Use Acreage and Non-Program Crop acreage with a small grain cover is May 15th. This applies to farms not participating in the 1986 Program as well as farms that are participating.

CROSS COMPLIANCE

Cross compliance is not in for the 1986 program year. This means that you can be in the program on one farm and not on another, or you can be in the program for 1 commodity and not another on the same farm.

CROP ACREAGE BASES

We have mailed all the bases and yield notices out to all of the known operators. If your bases exceed the farms cropland, you must request to reduce what base or bases you want, before you enroll in the program.

Also a new provision on adjusting bases. This applies only if you have changed your farming operations in the last two or three years, such as not planting cotton and planting wheat or grain sorghum and in that case you may appeal before the end of the signup period and we might be able to adjust or change part of the base. This must be done before April 25th.

GRAMM-RUDMAN-HOLLINGS BILL

A 4.3 percent reduction will apply to all 1986 CCC Program Payments. The 4.3 percent will be held out of the advance and final payments. Commodity certificates received for PIK will not be subject to the reduction

SOD BUSTER PROVISION

Under the Food Security Act of 1985, any person who, after December 23, 1985, brings into production new, highly erodible land is affected by this provision.

If you have broken out new land, contact the Soil Conservation Service before you plant any crops.

Violation of this act will cause a producer to be ineligible for any program payments, which includes FmHA Loans, Federal crop insurance, Conservation Reserve Program annual payments.

LOAN INTEREST RATE

The regular loan interest rate on loans disbursed during April is 7.25 percent, which is subject to adjustment each succeeding Jan. 1.

"Obstnacy in a bad cause is but constancy in a good."
Sir Thomas Browne

Letter

con't from 1

legislation, you "ain't seen nothing yet". If, as one school board member has been saying, the school budget can be cut by 50 percent, then the tax bite won't be so bad. I, along with the oil companies are largely awaiting his plan.

If the new board members or the ones left on the board think that they have local control or any power, then I suggest they read H. B. 72. You are about to become a rubber stamp for the appointed State Board of Education.

If you think that the budget can be reduced, I have a list of approximately 30 items mandated by H. B. 72 that are going to cost more money. By the time you on the board figure out how to comply with this bill and raise the money (ie. a tax raise) for implementation, the school board might not be such a prestigious place to serve. I'm sure the rest of the county will agree with me, we don't want a tax raise, especially in the '87-'88 school year.

This election turned friend against friend, neighbor against neighbor, and even pitted parent against child. I would hope after the run-off is over, somehow, someway we can pull our little county back together. The Bible warns us again and again how poisonous the tongue is and of course, this is true and obvious.

I support the teachers, the administration, and the school board and I'm certainly proud of the students. These children are our heritage and we should set a good example for them to follow. I would also advise talking to either candidate that is in the run-off and get their opinions about H. B. 72 and the solutions that they will offer for the coming 3 years.

Thank you,
Rich Anderson

POLITICAL CALENDAR

GOVERNOR
Kent Hance (R)

U.S. CONGRESS-17th District
Charles Stenholm-D

STATE LEGISLATURE (69th Dist.)
Rich Anderson (R)

COUNTY JUDGE
Van York (D)

COUNTY CLERK
Dorothy Browne (D)

COUNTY TREASURER
Lisa Ludecke (D)

COMMISSIONER
Precinct 1
Larry Smith (D),
Dan Shortes (D)

Precinct 2
Ed Rinehart (D)
Buck Lemons (D)

JUSTICE OF THE PEACE
Carolyn Stone (D)

Notice of Primary Election

The Democratic and Republican Primaries will be held May 3, 1986. Absentee voting is now underway for both parties in the courthouse in Gail. Absentee voting will continue through April 29th. Republican Primaries will be held in the courthouse and in the Plains Community Center. Jack and Marilyn McPhaul will preside over the Plains Voting Box and Dave and Joan Briggs will preside over the Courthouse Box.

Democratic Primary will be held in the following boxes.

Election Precincts	Polling Places	Election Officers
Box No. 1	Plains Community Center Community of Plains	Debbi Isaccs Presiding Judge
Box No. 2A	Borden County Courthouse South Gail	Margaret Sharp Presiding Judge
Box No. 2B	Vealmoor Teacherage Vealmoor	Lela Porter Presiding Judge
Box No. 3A	Murphy Election House Murphy	Donna Nehring Presiding
Box No. 3B	Fairview Election House Fairview	Lyndell Koonce Presiding Judge
Box No. 4A	Exhibit Building North Gail	Lorene Jones Presiding Judge
Box No. 4B	Marge Toombs House	Mike Toombs Presiding Judge.

FISH ORDER DEADLINE

The Upper Colorado Soil & Water Conservation District, serving Borden and Scurry County, would like to remind everyone of the upcoming fish sale. The following prices are now in effect per hundred: 4-6 inch channel catfish, \$40; 6-8 inch channel catfish, \$60; 1-3 inch hybrid bluegill, \$40; 3-4 inch hybrid bluegill, \$60; 1-2 inch hybrid (Florida X Native) black bass, \$60; and fathead minnows (425 per pound), \$8

per pound.

Delivery date is set for Saturday, April 26 from 8 a.m. to 11 a.m. at the Soil Conservation Service office in the Snyder Shopping Center. Plastic bags will be provided for hauling the fish. They can be kept in the bags for up to two hours, but should be placed into ponds as soon as possible.

Additional information can be obtained by calling 573-1268.

RE-ELECT VAN YORK COUNTY JUDGE Borden County

Subject to Action of Democratic Primary

Your Vote and Influence Will Be Appreciated

PAID FOR BY: By Van York, Gail Texas

bob
bob brown
olds cadillac gmc

202 SOUTH THIRD
LAMESA, TEXAS 79331
(806) 872-2144

Churches

con't from 4

when they learned that Five Mile Church (near Lamesa) was being disbanded and the former members desired to give the facility to a church where it would remain in the Southern Baptist Convention. Meetings were held between both groups and the Gail Church voted to accept the facilities of Five Mile Church if they were offered. On Nov. 18, 1964, it was announced that the Five Mile Baptist Church building and parsonage, along with the furniture, two pianos and an air conditioner had been given

Mr. Aubrey Rogers donated a lot for the parsonage. It is interesting that one month later a financial report of the church treasury disclosed the balance in the treasury was \$495.29 and the buildings were still to be moved and a foundation set! With an estimate of \$4,514 needed to finish the project, they

obtained a loan of \$5,000 from the West Texas State Bank of Snyder and completed the job.

Bro. Thomas had resigned on July 19, 1964 and it was not until October 4, 1964 that the church called Bro. Robert Hardin and it was he who was at the helm during the moving and remodeling. It was through his stimulating enthusiasm that the seeds of progress were sown and the project completed. On May 30, 1965, Bro. Hardin resigned to enter Wayland College in Plainview, Texas, in order that he might devote his full-time efforts toward completing his education.

On June 20, 1965, Bro. Roy Haynes was called as pastor. Under his inspired leadership, the church grew in spirit and influence in the community. All donations and volunteer labor of both members and non-members, labored together with one purpose....to glorify God.

In 1973, as the First Baptist

Church, the organization became a member of the Lamesa Association and Bro. Pat Ray became pastor, a post he still holds. At present there are 63 resident members on the church roll. Present deacons are James McLeroy, Mickey McMeans, Ben Jarrett, Ralph Martin, Church Treasurer, Larry Smith; Church Clerk, Wanda Smith; S. S. Director, Larry Smith and Assistant S. S. Director, J. Pat Porter. The church has constantly updated its facilities throughout the years and today is a modern, outreaching beacon in a Christian community.

Records of former pastors and deacons, too numerous to mention here, can be found in the church office.

This is the first of a two part series concerning the churches in Gail.

Notice of Trustee Election

The Borden County Independent School District Board of Trustees hereby gives notice of a tie breaker election to be held on May 10, 1986, for the purpose of electing one trustee for full three year term.

Absentee voting by personal appearance will begin on the 22nd day of April, 1986, and continue through the 6th day of May, 1986, from 8:00 a.m. to 5:00 p.m. on each day which is not a Saturday, Sunday or an official holiday.

Absentee voting in person shall be conducted at Borden County School. Applications for absentee ballots by mail should be mailed to Joan Briggs-P.O. Box 95-Gail, Texas 79738.

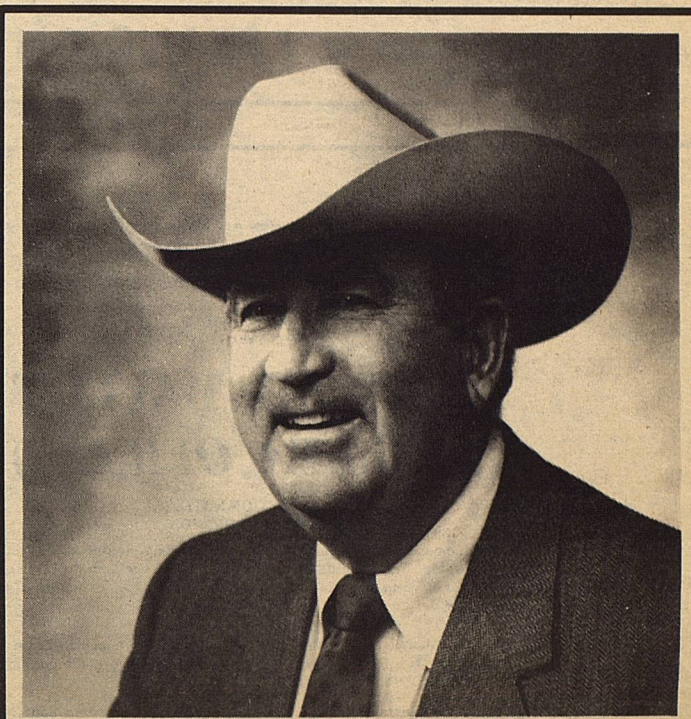
The polling places designated below will be open from 7:00 a.m. to 7:00 p.m. on the day of the election:

School District

<u>Election Precincts</u>	<u>Polling Places</u>	<u>Election Officers</u>
Box No. 1	Plains Community Center Community of Plains	Melba Vaughn Presiding Judge Charla Vaughn Alt. Presiding Judge
Box No. 2A	Borden County Courthouse South Gail	Lisa Ludecke Presiding Judge Carolyn Stone Alt. Presiding Judge
Box No. 2B	Vealmoor Teacherage Vealmoor	Lela Porter Presiding Judge Debra Brummett Alt. Presiding Judge
Box No. 3A	Murphy Election House Murphy	Melton Davis Presiding Judge Martha Davis Alt. Presiding Judge
Box No. 3B	Fairview Election House Fairview	Dorothy Buchanan Presiding Judge Mary Ruth Gray Alt. Presiding Judge
Box No. 4A	Exhibit Building North Gail	Lorene Jones Presiding Judge Joyce Herridge Alt. Presiding Judge
Box No. 4B	Hurston Lemons, Jr. House Snelling	Buck Lemons Presiding Judge Trina Lemons Alt. Presiding Judge

John D. Anderson

will be a strong, effective
independent State Representative.



The Man Who Will Represent West Texas Best

- ★ Anderson is a family man. He and his wife, Barbara, have four children, Sally, Martha, Mary and John.
- ★ Anderson is a farmer/rancher businessman who has an outstanding record of getting things done, both in business and community affairs.
- ★ Anderson served for 10 years as President of the Borden County School Board.
- ★ Anderson served as a director of the Malone-Hogan Hospital and of the Dora Roberts Rehabilitation Center in Big Spring.
- ★ Anderson has been cited many times for his work in soil and water conservation in West Texas.
- ★ Anderson served as chairman of the Ranching Heritage Association and is a director of the Texas and Southwest Cattle Raisers Associations.

Anderson stands for:

- ★ Local control and property rights.
- ★ Being tough on criminals and drug pushers.
- ★ Keeping Texas a pay-as-you-go state with no state income tax.
- ★ Improving the statewide water plan.
- ★ Making our educational system one of the best while assuring that it is fair both to teachers and students.
- ★ Protecting the rights of individuals and fighting against government control and bureaucracy in our lives.

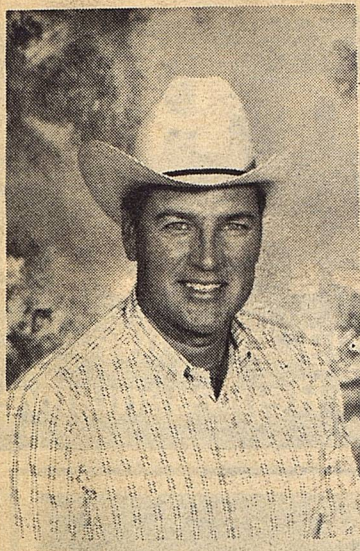
REPUBLICAN PRIMARY, MAY 3rd

Anderson

Strong leadership.

FOR A CHANGE

Pd. Pol. Adv. Anderson Camp. Jerry Worthy, Treas. P.O. Box 136, Gail, Tx. 79738



Re-elect

LARRY SMITH
Commissioner Precinct II

"I'll continue to do the very best I can for Precinct II and the people of Borden County as a whole."

I STAND ON MY RECORD

WESTERN SEED & DELINTING

Certified Cotton Seed

Paymaster 145, 303, 404, 792
 Coker 3131, S110, 500
 Terra 383, SR-10, SR-482
 SP-21, SP-215, CAMD-E
 CAB-CS

COTTON
 PLANTING SEED

ACID
 DELINTING

Wheat
 Grain Sorghum
 Hay Grazer

Wheat & Oats Cleaning

LAMESA, TEXAS
 RON BUTLER

BUSINESS PHONE
 (806) 872-8896
 (806) 872-5388

RESIDENCE PHONE
 (806) 872-5271

DEMOCRATIC PARTY PRIMARY ELECTION
 (ELECCION PRIMARIA DEL PARTIDO DEMOCRATICO)
 (CONDADO DE) BORDEN COUNTY, TEXAS

MAY 3, 1986
 (3 DE MAYO DE 1986)

OFFICIAL BALLOT
(BOLETA OFICIAL)

INSTRUCTION NOTE:
 (NOTA DE INSTRUCCION:)

Vote for the candidate of your choice in each race by placing an "X" in the square beside the candidate's name. (Vote por el candidato de su preferencia en cada candidatura marcando con una "X" el cuadro al lado del nombre del candidato.)

I am a Democrat and pledge myself to support the nominees of this primary. (Yo soy Demócrata y comprometo mi apoyo a los candidatos nombrados de esta primaria.)

United States Representative, District 17
 (Representante de los Estados Unidos, Distrito Num. 17)

Charles Stenholm

Governor
 (Gobernador)

Sheila Bilyeu
 Andrew C. Briscoe III
 Ron Slover
 A. Don Crowder
 Mark White
 Bobby Locke

Lieutenant Governor
 (Gobernador Teniente)

David Young
 Bill Hobby

Attorney General
 (Procurador General)

Jim Mattox

Comptroller of Public Accounts
 (Contralor de Cuentas Publicas)

Bob Bullock

State Treasurer
 (Tesorero Estatal)

Ann W. Richards

Commissioner of General Land Office
 (Comisionado de la Oficina General de Terrenos)

Garry Mauro

Commissioner of Agriculture
 (Comisionado de Agricultura)

Noel S. Cowling
 Jim Hightower

Railroad Commissioner
 (Comisionado de Ferrocarriles)

W. A. (Bill) MacNaughton
 John Sharp
 P. S. (Sam) Ervin
 John C. Poulard

Justice, Supreme Court, Place 1
 (Juez, Corte Suprema, Lugar Num. 1)

Sears McGee
 Oscar H. Mauzy
 Shirley Butts
 Hugo Touchy

Justice, Supreme Court, Place 2
 (Juez, Corte Suprema, Lugar Num. 2)

Jim Brady
 Ted Akin
 Robert M. Campbell
 Colin Kelly Kaufman

Justice, Supreme Court, Place 3
 (Juez, Corte Suprema, Lugar Num. 3)

Jim Wallace

Justice, Supreme Court, Place 4
 (Juez, Corte Suprema, Lugar Num. 4)

Raul A. Gonzalez
 David M. Ivy
 John E. Humphreys
 Jay Gibson

Judge, Court of Criminal Appeals, Place 1
 (Juez, Corte de Apelaciones Criminales, Lugar Num. 1)

Paul R. Reagan
 George (Jorge) Martinez
 Preston Dial
 Rusty Duncan

Judge, Court of Criminal Appeals, Place 2
 (Juez, Corte de Apelaciones Criminales, Lugar Num. 2)

Mike McCormick

Judge, Court of Criminal Appeals, Place 3
 (Juez, Corte de Apelaciones Criminales, Lugar Num. 3)

Marvin O. Teague

State Representative, District 69
 (Representante Estatal, Distrito Num. 69)

Larry Don Shaw

Justice - Court of Appeals, 11th Judicial District
 (Juez, Corte de Apelaciones, Distrito Num. 11)

Bob Dickenson

County Judge
 (Juez del Condado)

Van York

District and County Clerk
 (Secretario del Distrito y Condado)

Dorothy Browne

County Treasurer
 (Tesorero del Condado)

Melissa (Lisa) Ludecke

County Commissioner, Precinct 4
 (Comisionado del Condado, Precinto Num. 4)

Hurston (Buck) Lemons
 Ed Rinehart

County Commissioner, Precinct 2
 (Comisionado del Condado, Precinto Num. 2)

Dan Shortes
 Larry Smith

Justice of the Peace
 (Juez de Paz)

Carolyn Stone

County Chairman
 (Presidente del Condado)

Sandra Evans

Precinct Chairman
 (Presidente del Precinto)

No.

REPUBLICAN PARTY PRIMARY ELECTION
 (ELECCION PRIMARIA DEL PARTIDO REPUBLICANO)

(CONDADO DE) BORDEN COUNTY, TEXAS

MAY 3, 1986
 (3 DE MAYO DE 1986)

BALLOT
(BOLETA)

INSTRUCTION NOTE:
 (NOTA DE INSTRUCCION:)

Vote for the candidate of your choice in each race by placing an "X" in the square beside the candidate's name. (Vote por el candidato de su preferencia en cada candidatura marcando con una "X" el cuadro al lado del nombre del candidato.)

"I am a Republican and understand that I am ineligible to vote or participate in another political party's primary election or convention during this voting year." ("Yo soy Republicano y comprendo que no estoy elegible para votar o participar en la eleccion primaria o la convencion de algun otro partido politico durante este ano electoral.")

Governor
 (Gobernador)

Kent Hance
 Bill Clements
 Tom Loeffler

Lieutenant Governor
 (Gobernador Teniente)

David Davidson
 Glenn Jackson
 Virgil E. Mulanax
 Aaron L. Bullock

Attorney General
 (Procurador General)

Ed Walsh
 Roy R. Barrera, Jr.
 John Roach

Commissioner of General Land Office
 (Comisionado de la Oficina General de Terrenos)

George Collis
 M. D. Anderson, Jr.
 Grady T. Yarbrough

Commissioner of Agriculture
 (Comisionado de Agricultura)

Bill Powers
 Charles F. "Farmer" Trompler

Railroad Commissioner
 (Comisionado de Ferrocarriles)

Milton E. Fox
 John Thomas Henderson
 Ralph E. Hoelscher
 Ed Emmett

Justice, Supreme Court, Place 1
 (Juez, Corte Suprema, Lugar Num. 1)

Nathan Lincoln Hecht
 Charles Ben Howell

Justice, Supreme Court, Place 2
 (Juez, Corte Suprema, Lugar Num. 2)

Nathan E. White, Jr.

Justice, Supreme Court, Place 4,
 (Juez, Corte Suprema, Lugar Num. 4,

John L. Bates
 Bill J. Stephens

State Representative, District 69
 (Representante Estatal, Distrito Num. 69)

Travis C. Floyd
 John R. (Rich) Anderson

County Chairman
 (Presidente del Condado)

Jack McPhaul

Precinct Chairman, Precinct
 (Presidente del Precinto, Precinto Num.)

.

Sample