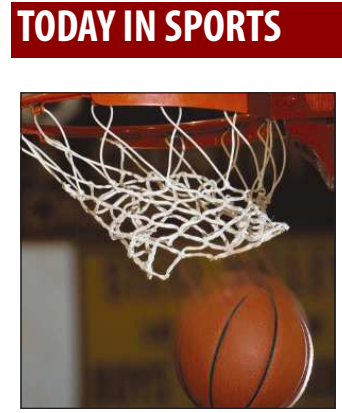


CHILDERS BROTHERS INC.
HOUSE LEVELING
 Uneven Floors
 Floor Bracing
 Cracks In Bricks
 Sticking Doors & Windows
 Interior Wall Cracking
FREE ESTIMATES
1-800-299-9563
 WWW.CHILDERSLEVELING.COM

Reward your graduate!
DOUG BOYD MOTOR CO.
 Celebrating 55 Years
 Corner of Hwy 60 & 70
806-669-6062
 Buy Here, Pay Here,
 No Credit Check
 See our great selection of cars, trucks and SUVs at www.DougBoydMotors.com

Month Long Sale!
\$3 off /yd any carpet
50¢ off /sq ft any in-stock hard surface
1/2 off any in-store laminate
 install only, no carry out
Premier Floor Warehouse
 301 S. Cuyler, Pampa TX • 669-7001

The PAMPA NEWS



Wednesday, June 25, 2014 www.thepampanews.com Volume 110 • No. 57

75¢ Viewpoints: Museum Musings | CC names new women's basketball coach
 \$1.50 weekend | Hump Day with Humphrey, LTE | p4 | Optimist tournament champions | p12
 38¢ subscription

School board views finishing touches on budget before June 30

■ Pampa ISD also revised its 2014-15 calendar, will purchase land and make repairs on Pampa Junior High School.

By JOHN LEE
 jlee@thepampanews.com

The Pampa Independent School District board of trustees held a special meeting Monday evening which served as a final look at the proposed budget before the Board votes on it at next week's meeting.

While the primary purpose was about the budget, the Board also addressed a few other items.

The first was a revision made to the 2014-15 calendar which the Board approved a couple of months ago.

Pampa ISD superintendent, Dr. David Young, presented the Board with a revised calendar placing graduation to be on June 6.

This year, graduation was May 31 and students, other than seniors, had to return to school for three more days.

The revised calendar also spread out the "bad weather" student holidays. One in April on the Monday following Easter and one on June 4.

The revised calendar was approved.

The next item on the agenda was the damage done to Pampa Junior High School following storms on June 6. Chief financial officer Danny Seabourn suggested the

PISD cont. on page 2

Count the Cost of the Affordable Care Act by County

SUBMITTED BY THE OFFICE OF MAC THORNBERRY (R)

WASHINGTON, D.C. – Newly-released data shows that people in the 13th congressional district are facing steep increases in their individual health-care premiums.

A nationwide study released last week estimates that in our area, men of all ages face significant cost hikes for health insurance – some as high as 95 percent – with young men facing the steepest increases. On average, young men are paying 74 percent more for their health insurance this year than last year.

In fact, a 27-year-old male in Randall county is paying 85 percent more for his individual policy in 2014 than he paid in 2013, while in Gray county, he will face an 84 percent increase. In Wichita county, he will pay 73 percent more, and in Cooke county, 68 percent. Not one county had an average increase lower than 54 percent.

Locally, women also face increased costs. On average, women in their mid-twenties are paying 28 percent more for their health insurance in 2014 than in the previous year.

"The bottom line is the Affordable Care Act has failed to make good on its promise to decrease healthcare costs for everyone," says Rep. Mac Thornberry. "Instead, it's done the opposite, leaving Americans with higher costs and fewer choices. This report is the latest evidence that the law

COST cont. on page 2

Another stop on the Water and Garden Tour



Photo by John Lee
 Above, The Nobles, Theresa and Butch, have been on the pond tour seven times in eight years. Right, this will be the third year using their current pond.

By JOHN LEE
 jlee@thepampanews.com

This Saturday the 17th Annual Water & Garden Tour, sponsored by the Las Pampas Koi & Water Garden Society, will kick off as members of the community will open their back yards for the public to come and take a look at their gardens and ponds.

Butch Noble and his wife, Theresa, have listed their address in the program for seven years and have owned a pond for eight years.

They have used their current pond for three years, which replaced a smaller one they had for several years.

"The first one was a lot smaller, it didn't have the stream, it just had a waterfall where the cat tails are now," Butch said. "It was about a third the size of this one."

The Nobles said they were inspired to own a pond when they went on the tour many years ago. Since then they have loved their garden and spend several afternoons and evenings during the summer in their backyard.

"When we moved into this house this patio and shop was already here," Theresa said. "We had a couple trees that died and we cut down, but we enjoyed being out here. Now, with the pond, we like to sit out here; listen to the water, it's very soothing."

The Nobles have an arbor added to their garden which was used when their daughter, Aleah, got married this summer to her husband Sean Beedy. Butch and his father



built it themselves.

Their latest pond has a stream connected to and features several stones and a variety of plants around it. Inside of it, they have koi, goldfish and shubunkins.

"We had talked about expanding our pond," Theresa said. "But we weren't being too ambitious about it. Some friends of ours were moving, and they wanted us to have their fish, and they were some big fish, and we didn't have room for that, so that's what talked us into enlarging it at the time."

Koi are an ornamental time of carps and are distinguished by their coloration, patterning or scalation. They usually come in white, black, red, yellow, blue or cream. Their prices vary from seller to seller.

Butch said that they don't take much up-keep.

NOBLE cont. on page 2

One found dead, one still missing in horseback riding incident

SUBMITTED BY THE HEMPHILL COUNTY SHERIFF'S OFFICE

At approximately 6:15 p.m. on Monday, June 23, the Hemphill County Sheriff's Office was notified of two people who had been riding a horse near the Canadian River northeast of Canadian and had been missing since shortly after noon.

A search of the area was launched with the aid of volunteers, members of the Canadian Volunteer Fire Department, Hemphill County EMS and a local helicopter pilot. Additional resources were provided by the Texas Parks & Wildlife.

At approximately 8:20 p.m., the pilot located the

MISSING cont. on page 2

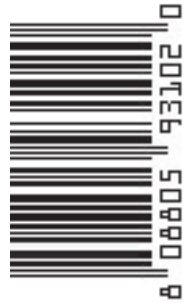
Malcolm Hinkle
 Refrigeration Co.
 Texas Lic # TACLA40021C
 • Heating & Air
 • Rooftop Units
 • Indoor Air Quality
 • Refrigeration
 • Ice Makers
 Commercial & Residential
 Sales & Service Since 1952
806/665-1842

Total Care Health
 Caring & Effective Health care
 for Your Entire Family
(806) 688-2273
 • Family Care • Urgent Care
 (Insurance, Cash, and Medicare)
 Loree Adams, FNP-BC
 701 N. Price Rd.
 Pampa, TX 79065

New Name.....
 Same Great Service!
PANHANDLE PLAINS REALTY
 Linda Laycock – Broker 806.662.1312
 Tisha Holman, REALTOR® - 806.440.4153
 Larry Hadley, REALTOR® - 806.662.2779
 Pampa MLS & Amarillo MLS

IN THIS ISSUE:

Obituaries	3	Comics	8
Weather	3	Classifieds	9-11
Viewpoints	4	Puzzles/Dear Abby ..	10
Church Page	6	Sports	12
Religion Page	7		



TO DIG SAFELY calling 8-1-1 IS JUST THE BEGINNING

It's when you call. It's how long you wait. It's how you dig after your yard is marked. It's easy to dig safely. You just need to know how.



xcelenergy.com/Safety © 2014 Xcel Energy Inc.

Find out at xcelenergy.com/Safety.

PISD

Continued From Page 1

Board approve emergency repairs, which forego the bidding process that takes roughly two weeks. In doing so, this ensures that the repairs are completed before school starts in the fall.

On June 6, when Pampa was receiving heavy rainfall, two roof drains which carry water to the perimeter of the building collapsed, flooding six classrooms. The repairs are being done in two phases, clean-up and repair.

Although the crews cleaned up the water fairly quickly, mold was still a risk. A restoration crew came in and did a cut into the walls and pulled out the insulation and materials at risk of molding.

The next phase is the reconstruction of cabinets and sheetrock which were damaged in the flooding.

The Board's next agenda item was the potential purchase of land close to Pampa High School. The Board approved Dr. Young to enter into negotiations for land located at 1425 N. Charles Street not to exceed \$15,600.

The Board also approved for Dr. Young to assign a gift value to the property which will be comparable to the difference between what the district paid and the value of the property.

Onto the final budget workshop, Seabourn presented the Board with a balanced budget. Between the funds set aside for instruction and instructional support, instruction makes up 64 percent of the budget. The Board applauded Seabourn's work on the budget.

"I can vouch that whether it was five in the morning or five in the evening," Dr. Young said. "I would walk in Danny's office and he would have spreadsheet among spreadsheet on his

computer or on his TV in his office. He has been working tirelessly on this."

The Board will meet at 7 p.m. Monday, June 30, to discuss and vote on the final proposed budget.

Seabourn also presented the Board with a rough draft of the plans for the \$5.4 million the district recently received from Gray County. The allotments go as follows: buildings \$1,648,000, technology \$1,566,350, facilities \$1,011,000, transportation \$485,000, instructional materials \$458,585 and \$250,000 for academic programs.

These are still estimated amounts as the final plan for the money is still in the works. Seabourn emphasized that PISD is treating the funds as a one-time occurrence and using it for projects that have needed to be completed.

The Pampa ISD board of trustees will meet for their regular session at 5:45 p.m. on Monday, June 30.

Cost

Continued From Page 1

is a failure and a complete mess. And that is why the House continues working to repeal, dismantle, and defund it."

The report analyzed the county by county cost of the Affordable Care Act

based on age and gender. According to the report, the Affordable Care Act increased the cost of 2014 individual healthcare premiums by 49 percent nationally.

Across Texas, the Affordable Care Act has caused healthcare costs to skyrocket, especially for young men (see chart below). For the average 27-year-old male, premi-

ums increased by 79 percent where costs increased by 29 percent for women of the same age. Statistically, men in their twenties and thirties have the least healthcare needs of all demographics. Yet, regardless of the need, they are forced to pay the same amount for coverage – essentially higher fees for less service.

Missing

Continued From Page 1

rider less horse a short distance southeast of the US 60/83 highway bridge. Approximately 15-20 minutes later, the pilot and volunteers on horseback

located one of the missing riders in a semi-flooded area approximately 2-3 miles south of the bridge.

The victim, 7-year-old Emily Purcell, was deceased. The other rider, 24-year-old Marquita Medrano, has still not been located.

A DPS helicopter out of

Amarillo also assisted using FLIR, but the search was suspended around 10:30 p.m. and resumed this morning at 7 a.m.

Wheeler County Justice of the Peace Mark Brown pronounced the child deceased. The body was taken to Lubbock, where an autopsy will be performed.

Noble

Continued From Page 1

"I have a filter that I clean daily, I pull it out and hose it off," Butch said. "I spent a lot of time on it in preparing for the tour. But I feed the fish twice a day this time of year, but in the winter they hibernate starting in September or October, and then we start feeding them again about March."

For those who may not own a pond, Butch said when the fish hibernate they go to the bottom of the pond and sleep. They could be touched and they won't move. But during the summer, the warmer the weather the more active the fish are.

The 17th Annual Water & Garden Tour kicks off Saturday, June 28, with the day tours starting at 10 a.m. The day tours will run till 4 p.m. with the twilight tours run-

ning from 7:30 to 11 p.m. "I have tiki torches and we also have lanterns that we hang around the fence," Butch said.

"To me, that's the best time. Once the sun starts going down," Theresa added.

The Tour is sponsored by Las Pampas Koi & Water Garden Society and is free to the public, but donations are welcome. Donations and proceeds go to a random community service.

AAA Texas offers lifesaving tips for kids and pets during summer heat and travel

SUBMITTED BY AAA TEXAS

IRVING – Now that summer is officially here, AAA Texas reminds drivers about the dangers of leaving children and pets in vehicles during the summer heat. Temperatures inside a car, even on a mild and sunny day, can rise 20 degrees in just 10 minutes. Children are particularly susceptible to heatstroke because their bodies can heat up five times faster than adults. Heatstroke deaths have been recorded in 11 months of the year in nearly all 50 states.

More than half of heatstroke deaths occurred when a distracted caregiver forgot a quiet child was in the vehicle.

During 1998-2013: 606 children died nationwide:

- Ages ranged from 5 days to 14 years
- More than half the deaths were children under the age of 2
- Most of these circumstances were preventable:
 - 52 percent – child "forgotten" by caregiver
 - 29 percent – child playing in unattended vehicle
 - 18 percent – child intentionally left in vehicle by adult
 - 1 percent – circumstances unknown

Animals are equally impacted by summer heat. Dogs are not able to sweat like humans do, but instead cool themselves by panting and by sweating through their paws. If they have only overheated air to breathe, they can collapse, suffer brain damage and die of heatstroke.

Prevention is the best way to keep heatstroke at bay. Just remember to ACT.

Avoid heat stroke-related injury and death by never

leaving your child or pet in a vehicle, even for a minute.

Create reminders and habits that give you and caregivers a safety net. Leave an item needed at your next stop in the back seat so you don't forget about your loved one.

Take action if you see an unattended child or pet in a vehicle. Dial 911 and follow the instructions of emergency personnel.

In addition, when traveling with children and pets during the summer, make sure both are safely secured.

Motor vehicle crashes are the leading cause of death and injury for all children. Child safety seats, or car seats, reduce the risk of injury by 71 percent to 82 percent and reduce the risk of death by 28 percent in comparison to children in seat belts alone. Booster seats reduce the risk of non-fatal injuries by 45 percent among 4-to-8-year-olds.

All vehicle occupants need to be properly restrained by seat belts or child safety seats to prevent injury in case of a sudden stop, swerve or crash. Seat belts and car seats contact the strongest parts of the body, spread crash forces over a wide area, help the body slow down and protect the brain and spinal cord.

three out of four car seats are installed incorrectly

Before you install your car seat, be sure to read both the car seat instruction manual and your vehicle owner's manual. Also consider having an expert check the seat. The service is free and only a step away. To find a certified technician, call (866) SEAT-CHECK or visit

<http://www.seatcheck.org>.

The best car seat is one that:

1. Fits your child.
2. Fits the vehicle.
3. One that you will use correctly every trip!

Pets can be great traveling companions but animals that aren't contained can be a major distraction to drivers. A recent survey found 65 percent of dog owners admitted to engaging in a distracting activity while driving such as petting their dog, using hands or arms to keep a dog from climbing from the back seat to the front seat, allowing a dog to sit in their lap while driving, giving food or treats to a dog or playing with a dog.

Beyond distraction, unrestrained pets can become projectiles in a vehicle crash, injuring or killing occupants in the car or truck. If you're in a collision at just 10 miles per hour, a 40-pound unrestrained dog in the vehicle could hit occupants with a crash force of 400 pounds.

AAA Texas recommends drivers use pet restraint systems or pet carriers that limit a pet's movement and that use vehicle seatbelts to mitigate crash forces. Additional tips for traveling with pets can be found in Traveling With Your Pet: The AAA PetBook.® This complete planning guide for travelers who embrace pets as part of the experience can be found at your nearest AAA Texas branch or at www.aaa.com/pet-book.

As North America's largest motoring and leisure travel organization, AAA provides more than 54 million members with travel, insurance, financial and automotive-related services. Since its founding in 1902, the not-for-profit, fully tax-paying AAA has been a leader and advocate for the safety and security of all travelers. AAA Texas can be visited on the Internet at AAA.com.

Send Us Your Church News

- Events • Special Services
- Charity Drives • General News

jclee@thepampanews.com iktomaschik@thepampanews.com



Easy's Pop Shop 1&2

Easy & Convenient! Drive-up Window

Buy one ICEE – any size, Get one FREE

WITH COUPON Expires 6-30-14

719/729 N. Hobart

GOT A HOT TIP?

EMAIL IT TO US!

jclee@thepampanews.com

iktomaschik@thepampanews.com

Brown Recluse Spider



Great Plains Pest Control

www.yourbugman.com

806-669-2411

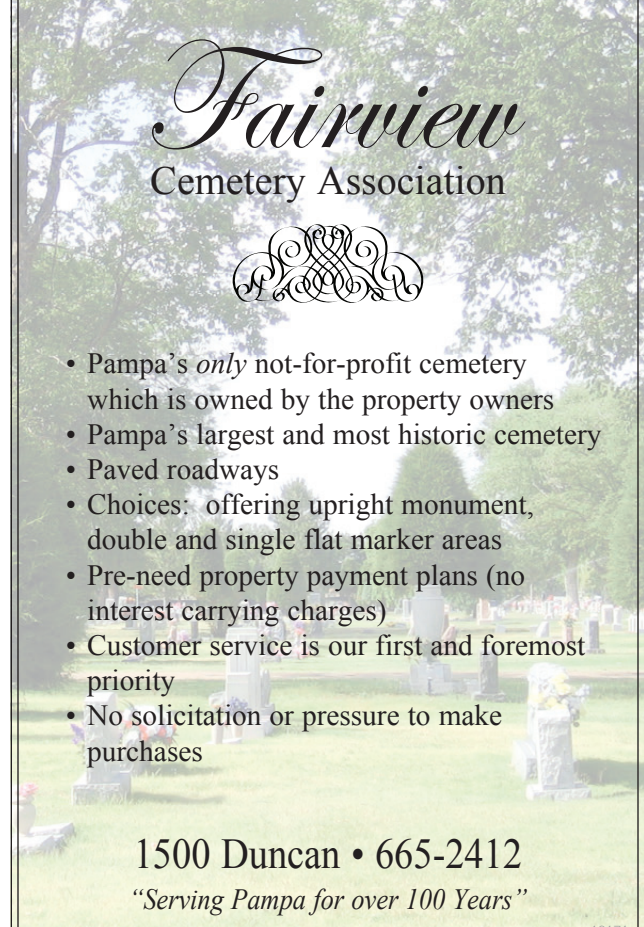
The brown recluse is ¼ to ½ an inch long, and are yellowish-tan to dark brown in color. Their legs are dark grayish brown and covered with short dark hairs. The brown recluse is a nocturnal insect. It is also non aggressive and will only bite when bothered either in it's secluded area or while it is hunting. When the recluse does bite it can be very dangerous to humans, causing sickness, skin lesions, and permanent scars. They are found mostly in wood piles, sheds, and dark corners within people's homes.



Jeanne Swires
806-662-1926

Great Plains Pest Control - Genuine People - Genuine Care

Fairview Cemetery Association



- Pampa's only not-for-profit cemetery which is owned by the property owners
- Pampa's largest and most historic cemetery
- Paved roadways
- Choices: offering upright monument, double and single flat marker areas
- Pre-need property payment plans (no interest carrying charges)
- Customer service is our first and foremost priority
- No solicitation or pressure to make purchases

1500 Duncan • 665-2412

"Serving Pampa for over 100 Years"

SUBSCRIBE TODAY!

1 month - \$9.50

3 months - \$28.50

6 months - \$57.00

1 Year - \$114.00

The Pampa News is delivered through the Mail daily Tuesday through Saturday. No papers are issued on Holidays.

Get The E-Edition too for an extra \$5 A month

CALL BEVERLY!
806-669-2525

PAMPA FORECAST

Today	Thursday	Friday
High 87 Low 65	High 89 Low 67	High 90 Low 68

Today: Scattered thunderstorms with a high of 87. Chance of rain: 60 percent. Winds south at 16 mph. Sunrise at 6:30 a.m.

Tonight: Thunderstorms with a low of 65. Chance of rain: 80 percent. Winds south-southeast at 16 mph. Sunset at 6:08 p.m.

Thursday: Mostly cloudy and windy with a high of 89. Chance of rain: 10 percent. Winds south at 20 mph. Sunrise at 6:30 a.m.

Thursday night: Mostly clear with a low of 67. Winds south at 18 mph. Sunset at 9:03 p.m.

Friday: Partly cloudy and windy with a high of 90. Winds south at 24 mph. Sunrise at 6:30 a.m.

Friday night: Partly cloudy and windy with a low of 68. Chance of rain: 10 percent. Winds south at 21 mph. Sunset at 9:03 p.m.

Magnitude 7.9 Alaska quake spawns tsunami

ANCHORAGE, Alaska (AP) — A strong earthquake near Alaska's Aleutian Islands triggered a tsunami warning Monday, but only small waves measuring several inches hit coastal communities.

The National Tsunami Warning Center canceled all tsunami warnings late Monday afternoon, about four hours after the earthquake struck.

The magnitude-7.9 earthquake was centered about 13 miles southeast of Little Sitkin Island, or about 1,400 miles southwest of Anchorage.

There were no reports of damage, said Jeremy Zidek, a spokesman for the Alaska Department of Homeland Security and Emergency Management. Residents in some communities like Adak, which were first in line for the tsunami, did evacuate.

chitka Island, Zidek said. The wave diminished the further it traveled, reaching only a couple of inches at Adak and Shemya.

But the earthquake was widely felt in Adak, one of the largest cities in the affected area. Shaking could also be felt in Shemya and other villages along the island chain.

Lockett said the prolonged shaking from the temblor put it in the top 10 of those felt recently.

"Everybody in our building went out, watching the vehicles shake and waiting for it to end," he said.

Shemya Island is where the U.S. military operates Eareckson Air Station, which serves mainly as an early warning radar installation. Air Force officials said there was no damage

to the air station. Amchitka Island is where the government tested nuclear weapons underground in the 1960s and 70s. The tests included one of the United States' largest nuclear explosions.

Monday's earthquake was initially reported with a magnitude of 7.1, but that was upgraded to 8.0, said Natasha Rupper, a seismologist with the Alaska Earthquake Center. In the review of data hours after the quake, the magnitude was downgraded to 7.9.

There were several strong aftershocks, with magnitudes reaching 5.9. Dave Nyland, a geophysicist at the National Tsunami Warning Center, said those would be too small to trigger a tsunami.

Abbott pans BLM response to Red River questions

BY JIM MALEWITZ
The Texas Tribune

After a two-month lag, the U.S. Bureau of Land Management has responded to Greg Abbott's questions about the federal government's claim to a disputed strip of land along the Red River.

The Texas attorney general was not impressed with the bureau's answers. "The BLM's recent letter fails to answer the questions that I and many Tex-

ans have about the BLM's seeming land grab along the Red River," Abbott said in a statement emailed to The Texas Tribune. "The BLM's inadequate response will force Texas to pursue other options to obtain the needed information — including litigation if needed."

Neil Kornze, the bureau's director, signed the June 19 letter to Abbott. In it he discussed the bureau's still-vague plans for the roughly 90,000 Red River acres — some of which were long ago deeded to Texans who have raised crops and cattle and paid taxes on them — and how the land fits into the bureau's plans

to update its resource management plans for federal land in Kansas, Oklahoma and Texas.

Confusion about who owns the land is rooted in two centuries of litigation and the river's ever-changing path. The story made national headlines in April when Abbott — backed by Gov. Rick Perry and a host of Texas Republicans — disputed the bureau's legal interpretation of its ownership of the land and challenged the federal government to "come and take it."

Abbott, the Republican candidate for governor, had fired off a litany of questions to the bureau, including those related to its long-winding process for determining what it will do with the land, how it will treat Texans who have managed the land and the bureau's legal analysis of the dispute. Abbott also asked the bureau to "delineate with specificity" the amount of Texas territory that would be affected.

The bureau's response focused solely on the questions about its bureaucratic process and its legal claim to the land, which is rooted in a 1920s U.S. Supreme Court ruling on a clash between Texas and Oklahoma. The letter presented little, if any, information not already reported in the media.

"We have, through the years, had a good relationship with Texas, and

I would like to reiterate the BLM's commitment to maintaining these relationships with the citizens, industry and other interested groups," the letter said.

The bureau did not address the key question of the precise borders of the federal government's claim. It has not fully surveyed the area, so it is not clear how many acres the locals have managed and how many have sat largely untouched.

"It is still unclear what area along the Red River the BLM is attempting to lay claim to, under what authority and how the BLM intends to treat the Texans who have for generations considered the land private property," Abbott said in his statement.

The bureau's draft resource management plan is due within two years. At the earliest, it says it will finalize the plan by 2018. Meanwhile, locals are still receiving tax estimates on the disputed land — regardless of whether they technically own it.

The BLM has not decided whether it will close off parts of the land or make it open to the public. One option would be to let Texans continue using it, though they would then be subject to federal regulations. Another option would be to sell it. Or Congress could tell the agency to do something else with the land.

CITY BRIEFS

The Pampa News is not responsible for the content of paid advertisement

\$500 COULD be yours! Pampa News will have a drawing for \$500, when we reach 100 new subscribers! Subscribe or Re-Renew today and tickets will go in the basket for the drawing (need name & phone number on back of ticket). 1 mo. \$9.50-1 ticket, 3 mo. \$28.50-3 tickets, 6 mo. \$57-6 tickets, 1 yr. \$114-12 tickets. For every person you (the subscriber or new subscriber) refer to subscribe to the Pampa News, you will receive 5 tickets, and the referred person will receive tickets for signing up. So pass the word and win!!! Need 66 more New Subscribers to be able to have the \$500 drawing!!

TILE-BACKSPASHES, Counter-Tops, Tub Surrounds, Showers & Floors. Ceramic or Tumbled Stone. Call Keith Taylor, hm. 874-1779 leave message.

BANANAGRAMS!

There is one letter that, when added to all of the six-letter words below, can be used to form new seven-letter words. Find the letter that works for all four words, add it to each word, and then rearrange each set of letters to form a new word.

LEVEL

COMMON LETTER

DIAPER

AUNTIE

COILED

POSTAL

Yesterday's Answer: VENOM, OVEN, ONE, EN 6.25



Greg Abbott

DEFEVER MONUMENT COMPANY

MONUMENTS + BENCHES + VASES

806.669.4495

A NAME YOU KNOW, AND A NAME YOU CAN TRUST

High-Speed Internet

\$35/mo*

for 30 Mbps for the first 3 months

This spring, think fast. Think High-Speed Internet.

No contract. No bundle.

Don't settle for slow Internet from CenturyLink. Experience the difference that 50 Mbps can make for just \$35/mo. It's the blazing speed you need for the best streaming of all your movies and videos. All with no data plans and no overage fees. Cable ONE High-Speed Internet is way faster than Internet from the phone company for about the same price. Plus we give you reliability and 24/7 support.

CALL TODAY! | 1-855-CABLE-ONE | cableone.net

CABLE ONE

*Offer expires 06/30/2014. Promotional rate quoted good for the first three months when customers subscribe to our 50 Mbps Internet service. After 3 months the promotional rate increases to the regular a la carte rate in effect at that time. Equipment, taxes and fees are not included in above rate. In compliance with the Fair Credit Reporting Act, you may be required to authorize and agree that Cable ONE may obtain a consumer report about you from a consumer reporting agency in order to verify your eligibility to receive this and other offers as well as determining deposits and install fees required, if any. Full discounted installation could require enrolling in our Cable ONE Easy Pay program. Customers are required to purchase or lease an approved eMTA capable of DOCSIS 3.0 in order to receive the full benefit of Internet services listed. Other levels of service are available. Cable ONE manages bandwidth consumption of Internet services to provide the best experience for all customers. Peak speed 50 Mbps. Speeds may vary. Speed comparison of CableONE Streaming Internet service to 1.5 Mbps speed from DSL competitors. Call for details. Please visit <http://www.cableone.net/Pages/Internet.asp> for Internet plan specifics by reading our Acceptable Use Policy. Additional information can also be found at <http://support.cableone.net>. All services are not available in all areas. Money-back guarantee: May only be used within the first 30 days of new service and only once for a particular service by any customer. Refunds will consist of the money paid for the service(s) cancelled as well as applicable taxes and fees but does not include pay per view purchases or long distance phone charges. Current Cable ONE Internet customers are not eligible to receive this offer. Restrictions apply.

Shear Elegance

AND **A Perfect 10**

IN ONE LOCATION!

111 WEST FOSTER 669-1901 662-4267

HAIRCUTSCOLOR

PERMSMANICURES

PEDICURESACRYLICS

REGINA WOODS OWNERS • DEBBIE SCOBEE

THIS AD HAS BEEN SEEN BY OVER 7,000 PEOPLE TODAY

ADVERTISE HERE GET NOTICED

THE PAMPA NEWS (806)-669-2525

Cinema 4

www.cinema4pampa.com

For show times call **688-9192** or **688-9229**

Located in the Corondo Shopping Center behind Hastings 1201 N. Hobart Pampa, Texas

Viewpoints

The PAMPA NEWS
SERVING THE TOP O' TEXAS SINCE 1906

403 W. Atchison • Pampa, TX 79065
806-669-2525 • Fax: 806-669-2520
www.thepampanews.com

This newspaper (UPS 781-540) is published daily, except Sundays, Mondays and all national holidays by The Pampa News, 403 W. Atchison. Periodicals postage paid at Pampa, Texas. Postmaster: send address changes to The Pampa News, P.O. Drawer 2198, Pampa, Texas 79066-2198.

Publisher ReDonn Woods	Subscription Rates – Mail Delivery
Managing Editor John Lee	1 year \$114.00
Sports Reporter John Lee	6 months \$57.00
Reporter Lindsey Tomaschik	3 months \$28.50
Advertising Director Callie Odell	1 month \$9.50
Business Manager Carrie Hair	Single Copies
Circulation Beverly Taylor	Daily 75¢/Sunday \$1.50
Classifieds Ellen Tyre	Miss Your Paper?
Member Associated Press and Texas Press Association	Circulation department hours of operation are 8 a.m. to 5 p.m. weekdays.
	Copyright Notice
	The entire contents of The Pampa News, including its logotype are fully protected by copyright and registry and cannot be reproduced in any form for any purpose without written permission from The Pampa News.

Museum Musings

Why V instead of U on the courthouses?

A few people here in Pampa have raised the question, “Why V instead of U on the courthouses?” So this week the White Deer Land Museum answers that question.



COURTNEY OXLEY

While Jon McConal was writing columns for the Fort Worth Star-Telegram, he was asked why the letter V instead of the letter U is sometimes inscribed on county courthouses. Not knowing the answer, McConal asked his readers for information.

John Rollins of Southlake wrote: We can thank the ancient Romans for the fact that we have ‘covnty covtr-houses’ instead of ‘county court-houses.’ The alphabet that most of the world uses today was developed by the ancient Romans, except that it did not contain J, U or W as separate

letters. “This situation changed in medieval times, when the consonant value of I became its own letter. Three and V was divided into U, V and W. Hence, ILIVS means Julius, and as you have guessed COVNTY is how the Romans would have spelled county. “This is yet another one of the endless examples of Roman influences on Western language, architecture, law and culture. And to think that some people called Latin a dead language.” This explanation came from Ken Bickley of Mineral Wells: “According to my ancient Britannica, the two letters were interchangeable in Latin, and the letter U didn’t actually come into wide-spread use in English until the 18th century. Old Latin used V for capitals and U for lower case. Thus all Roman buildings were inscribed with V in place of U. Texas courthouses designed in the neoclassical style used the V. I suppose it’s sort of an affectation, but it suits the building.” Pampa

has another building on which the name was inscribed with V instead of U. Constructed about the same time as GRAY COUNTY COVRT HOVSE, the ROSE BVILDING at 2Q~. North Cuyler was for many years the location of J.C. Penney, and there were offices on the second floor. The original inscription of the name of the building on Cuyler has since been covered.

The “Remembering D-Day” temporary exhibit is still at the museum. We hope you all stop by the museum to see the wonderful exhibit honoring that day and those who served.

Please visit the White Deer Land Museum in downtown Pampa. Regular tours are offered Tuesday through Saturday from 1-4pm. If you would like to schedule a special or group tour, please call or email the museum at (806)669-8041 or email courtney.oxley@graycch.com. The Museum will be closed July 4th and 5th. Sources: Eloise Lane, Jon McConal.

Republicans won't pass immigration reform

The New York Times reports that House Majority Whip Kevin McCarthy is considered “the best hope” to win passage of a comprehensive immigration reform bill in Congress after he becomes majority leader in July. It’s sort of quaint how the Gray Lady wants to believe in miracles.



DEBRA SAUNDERS

If a comprehensive bill — such as the Senate bill that set a path to citizenship for undocumented immigrants — had a chance of passing, then it was in 2009 and 2010, when Democrats controlled the White House, Senate and House of Representatives. President Barack Obama had promised a bill in his first year in office. If Democrats wouldn’t deliver when they owned Washington, Republicans have little reason to do their heavy lifting.

The timing for advocates could not be worse — and not just because the current House majority leader, Eric Cantor of Virginia, lost his primary election bid after his GOP opponent hit him for supporting a comprehensive immigration bill.

This year, thousands of unaccompanied minors and mothers with young children have crossed the U.S.-Mexico border with the expectation that they will be allowed to stay. Some blame Obama’s policy to not deport undocumented immigrants who came here illegally when they were children. The White House blames a “misinformation” campaign by opportunistic human smugglers. Either way, the situation is so dire that Democrats are calling the new influx a “humanitarian crisis” that requires a quick and dramatic response.

Rep. Henry Cuellar, D-Texas, told the Houston Chronicle last week that he believes that the administration has to

allow more deportations — and quickly. Also, Hillary Clinton told CNN last week, “They should be sent back.” That’s how ugly the border is.

McCarthy is a true son of Bakersfield, California. Rather than become a creature of Washington, he sleeps in his Capitol Hill office and flies home every weekend. He hears from the Republican base, which opposes amnesty. He was true to that base in 2008, when he was chairman for the Republican National Committee platform, which threatened financial penalties for sanctuary cities.

McCarthy also hears from employers who depend on immigrant labor and California Republicans eager to court Latino voters. Last year, he met with the Coalition for Humane Immigrant Rights of Los Angeles after these advocates occupied his Bakersfield office.

On “Fox News Sunday,” Chris Wallace pressed McCarthy on whether he’ll support a comprehensive immigration reform bill. McCarthy is on record for supporting a path to legalization, but he told Wallace: “I don’t believe there should be citizenship. I believe in the rule of law.” At the moment, he added, the border is not secure because the government is not enforcing the law.

The forces of idealism are experiencing the blunt trauma of reality. The promise of a path to legalization, coupled with lax law enforcement, has produced unintended, if inevitable, consequences. If there was any doubt that changing the law might result in waves of more illegal immigration, the answer should be clear.

Quoth McCarthy: Until the border is secure, “you can’t have an immigration debate.”

Email Debra J. Saunders at dsaunders@sfchronicle.com. To find out more about Debra J. Saunders and read features by other Creators Syndicate writers and cartoonists, visit the Creators Syndicate Web page at www.creators.com.



How To Write Us

The Pampa News welcomes letters to the editor. When submitting a letter, please include the writer’s name, address and signatures.

We reserve the right to edit letters or not to publish certain letters.

By Fax:
806-669-2520

By U.S. mail:
Letters
The Pampa News
403 W. Atchison
Pampa, Texas
79065

By E-mail:
jclee@thepampanews.com

Humphrey and the indestructible toy

I stopped by to visit my parents on Monday evening after work, and there is



LINDSEY TOMASCHIK

where I realized what I was going to write about dear old Humphrey for today’s paper.

As I sat complaining about his most recent toy and his extreme love for the thing, I thought it may be a good thing to expand on.

On Saturday I was in Amarillo, and I wanted to find Humphrey some toys that would take him more than 20 minutes to destroy, as I’m tired of picking up stuffing off my living room floor after he is finished ripping apart his latest victim. Humphrey is so stubborn, and some people, my boyfriend Kyle included, take that for him just not being smart.

I, on the other hand, know better than this. Humphrey is a smart dog. He just uses his brain for the wrong things. He can figure out how to destroy his toys faster than any dog I’ve ever seen. Last week, I bought him two new toys, one of which I thought for sure he wouldn’t rip up, and the other one, I just should have

known better.

Needless to say, by the time Humphrey the Destroyer was finished playing for the day, he had ripped the arm off of the stuffed monkey (the one I should have known better than to get him) and was working on ripping the other one up to get the squeaker out of it.

I have since sworn myself not to buy him any more toys with stuffing inside of them, as I am still finding little pieces of fluff in some places.

Anyway, back to the second set of new toys. While we were in Amarillo, we stopped by PetSmart with the goal of finding an indestructible toy. I am partial to the Kong brand, so that was my first stop.

Kyle picked up a solid rubber tug of war toy that he thought Humphrey would like because they always play tug of war (which is how Humphrey ends up destroying most of his toys, stuffed monkey included). I ended up settling on a big solid rubber beehive-looking toy that I was sure he wouldn’t be able to tear up. The plus side to both of these toys: no squeakers!

When we got to the register, the cashier told us that all dog toys were buy two get one free, so naturally I headed back to the toy aisle for another toy that

I had seen while browsing. I really don’t even know how to describe this one, but I’ll give it a shot. It’s a lime green plastic toy with a black rubber outline that looks like a spider web. I thought it looked pretty cool and thought Humphrey might too. Kyle was convinced that he had picked the end-all be-all of toys, and that Humphrey would not even play with mine.

I received temporary bragging rights when I got home with the toys and saw that Humphrey went straight to both of the toys that I picked out and wanted nothing to do with Kyle’s.

I ended up feeling bad about buying the tug of war toy if Humphrey wasn’t even going to play with it, so the next day I figured I

would show him what it’s used for. That could possibly have been the single greatest mistake I’ve ever made. Since figuring out the toy, Humphrey wants absolutely nothing to do with any of his other toys.

To top that off, he doesn’t know how to initiate play with the toy, so he will just stand next to it, look at me and cry until I pick it up and play with him. I’m going to have forearms of steel by the end of the week. I would take the annoying squeaky toys over this thing any day, and what’s worse is now Kyle ended up being right. I’ll never hear the end of it from either of them.

Reporter Lindsey Tomaschik can be reached at ltkomaschik@thepampanews.com.



Photo by Lindsey Tomaschik

Here is a picture of the lime green and black toy I attempted to describe. This is his Humphrey the Destroyer pose. He will gnaw on toys lying like this until they are shredded.

Letter to the Editor

Pampa MOW thanks food drive helpers

June 14 was a very busy day in Pampa, with a car show, a garage sale at The Pampa Mall and the Meals on Wheels food drive. We, the Meals on Wheels employees and board of directors, would like to

thank those who made the food drive a success.

The United Family Supermarket, Fiesta Foods and Walmart, thank you for allowing us to take up a lot of your space so we had a place to distribute food

lists and information about our organization.

Those who volunteered did the work of collecting the food and especially the wonderful, generous people who donated canned food, meat and/or money.

Pampa MOW appreciates the generous support of the community. Without these people, Meals on Wheels would cease to exist.

Jeane Autry Pampa

Community Calendar

City Commission meetings

The Pampa City Commission meets at 4 p.m. the second and fourth Tuesday of each month. The meetings are held on the third floor of City Hall.

School board meetings

The Pampa Independent School District board meets at 5:45 p.m. on the fourth Monday of each month at the new administration building on North Hobart Street.

Immunization clinic 3 times a month

The Texas Department of State Health Services (DSHS) hosts an immunization clinic in Pampa three times a month. The clinics are held from 9:30 to 11:30 a.m. and from 1 to 3 p.m. on the first

three Wednesdays of each month. The first 10 people in line for the morning and first 10 in the afternoon will always receive shots. However, if there are more than 10, they still may be able to accommodate the patients, or ask them to come back at another time. For more information, call 665-4752 or 806-874-3211. The clinic is located at 736 S. Cuyler St.

PAWS meets first Tuesdays

Pampa Animal Welfare Society meets the first Tuesday of each month at the Pampa Animal Shelter, 811 S. Hobart St. The meetings are at 6:30 p.m. and are open to the public.

There is a desperate need for more members. PAWS members are needed to

work at the shelter from 3 to 5:30 p.m. each day and to work adoption days or take animals to the vets when needed, but mostly people are needed to love and work with the animals where they will be more adoptable.

For more information, call the shelter after 3 p.m. at 669-5775 and ask for the PAWS volunteer.

County Commission meetings

The Gray County Commission meets at 9 a.m. on the first and 15th of each month. If the date falls on a Saturday, the meeting will be held on Friday. If the date falls on a Sunday, the meeting will be held on Monday. The meetings are held on the second floor of the Gray County Courthouse.

TOT Republican Women's Club

Top O' Texas Republican Women's Club meets at noon on the third Wednesday of every month at the Pampa Senior Citizens Center, 500 W. Francis St. For more information call 806-669-1990.

Jam sessions every Friday night

The Woody Guthrie Folk Music Center has a jam session every Friday night starting at 6:30 p.m. Everyone is welcome to play or listen. The center is located at 320 S. Cuyler St. For more information, call 806-664-0824.

Meredith House presents live music

Meredith House, an assisted-living facility at

812 W. 25th Ave., has a band performing at 6:30 p.m. every Tuesday and Saturday night. Join them for Western music, gospel and the classics. For more information, call 806-665-5668.

Monday night dance club

The Monday night dance club meets from 7 to 9 p.m., each Monday, in the Pampa Chamber of Commerce building on the corner of Ballard and Kingsmill. Admission is \$3.50. Cold drinks and coffee are offered. The club plays country music. For more information, call Della at 806-663-1136.

PPQG Meets fourth Thursdays

Panhandle Piecemakers Quilt Guild meets the fourth Thursday of each

month, January through October, at the Pampa Senior Citizens Center at 500 W. Francis St.

The meetings are held at 6:30 p.m. and membership is open to adult quilters of all ages. Dues are \$15 annually. Meetings consist of a short business discussion followed by a program featuring quilting techniques. For more information, call 806-662-2909.

Editor's note: Email submissions to jclee@thepampanews.com. Submissions should be 100 words or less and written in the third person. Please include the title of the event, the date and time, physical address, the admission cost or whether it is a free event and a contact number and/or email address for the public.

Rep. King appointed to committee

SUBMITTED BY THE OFFICE OF REPRESENTATIVE KEN KING



Rep. Ken King

Texas House Speaker Joe Straus announced last week that he has appointed Representative Ken King to the Joint Inter-

im Committee to study education policy for a skilled workforce. This committee will study how career and technology education (CTE) programs can better align with those offered in Texas colleges and with the needs of Texas employers.

"There are many jobs that do not require a college degree but do require some post high school education and training. Currently the United States lags behind other countries in linking

postsecondary education with the needs of the labor market. In order for Texas to close this gap, it is necessary to explore opportunities for education and workforce partnerships. I am honored that Speaker Straus has given me the opportunity to serve on this committee." Representative King

served on the House Public Education Committee during the 83rd Session.

Area Support Groups

The following is a list of support groups that meet regularly each week in Pampa. Information for each meeting is submitted to The Pampa News office and may not be completely updated or accurate. Please notify the newsroom if a change is necessary.

The Pampa News welcomes all submitted materials for area support groups. Please include the meeting time, date and location and, if applicable, provide a contact number for each group.

■ **Victims of domestic violence and sexual assault**, meet at 6 p.m., Thursdays, starting June 26 at the Tralee Crisis Center, 308 S. Cuyler St. For more info, call the Center at 806-669-1131.

■ **Narcotics Anonymous — The Pampa Group** meets at 7:30 p.m., Tuesdays, and at 6 p.m., Saturdays, at 805 N. Gray St. **Narcotics Anonymous — Rufe Jordan Unit** also meets at 6 p.m., Mondays, and at 5:30 p.m., Wednesdays, at 1992 Hilton Road.

■ **Cancer Support** meets from 12-1 p.m. on the fourth Tuesday of each

month at Central Baptist Church. For more info, contact Beth Kean at 800-274-4673

■ **Alcoholics Anonymous** Open Door Club meets daily at noon and 8 p.m. at 910 W. Kentucky Ave. **Al-Anon** meets at noon on Mondays. For more information, call 665-9072.

■ **Alcoholics Anonymous** Primary Purpose meets daily at noon and 8 p.m. at 112 W. Foster Ave.

■ **Alcoholics Anonymous** Keep It Simple meets Thursdays at 6 p.m. at the Methodist church in White Deer.

■ **Pampa Caregiver Support** meets at the Pampa Nursing Center on 1321 W. Kentucky Ave. at 6 p.m. on the second Tuesday of each month. For more information call 806-669-2551.

■ **Accolade Home Care** sponsors a **Parkinson's Support Group** the second Thursday of each month at 6 p.m. The group meets at Accolade at 1313 N. Hobart St. For more information, call Lindsey Presson at 806-665-9700 or 806-324-3230.

Let your elected leaders know what you think

U.S. Rep. Mac Thornberry

905 South Fillmore Street, Suite 520
Amarillo, Texas 79101
Telephone: 806-371-8844
Fax 806-371-7044
Office Hours: 8:30 a.m. to 5:30 p.m.
<http://thornberry.house.gov/>

State Rep. Ken King

P.O. Box 507
Canadian, TX 79014
(806) 323-8870
Capitol Office:
E2.402
Capitol Phone: (512) 463-0736
Capitol Fax: (512) 463-0211
Ken.King@house.state.tx.us

State Sen. Kel Seliger

Physical Address:
410 S. Taylor, Suite 1600
Amarillo, TX 79101
806-374-8994
806-374-4607 fax
Mailing Address:
P.O. Box 9155
Amarillo, TX 79105
www.seliger.senate.state.tx.us/dist31.htm

U.S. Sen. Ted Cruz

Austin Office
300 E. 8th., Suite No. 961
Austin, TX 78701
Phone: 512-916-5834
www.cruz.senate.gov/index.cfm
U.S. Sen. John Cornyn
West Texas
Wells Fargo Center
1500 Broadway, Suite 1230
Lubbock, TX 79401
Main: 806-472-7533
Fax: 806-472-7536
www.cornyn.senate.gov/public/

Gov. Rick Perry

Office of the Governor
P.O. Box 12428
Austin, Texas 78711-2428
Information and Referral Hotline [for Texas callers]:
800-843-5789
Information and Referral and Opinion Hotline: 512-463-1782
Office of the Governor Main Switchboard: 512-463-2000
www.governor.state.tx.us/

HERBS • VITAMINS • WEIGHT LOSS • ENERGY
WOMEN'S & MEN'S NEEDS

Herbs Etc.

Weekly Herb Talks!

109 W Kingsmill . Pampa
(806) 665.4883
www.panhandlesunshine.com

GOT A HOT TIP?
CALL 669-2525

THIS AD HAS BEEN SEEN BY OVER 7,000 PEOPLE TODAY

ADVERTISE HERE GET NOTICED

THE PAMPA NEWS
(806)-669-2525

SUBSCRIBE TODAY 669-2525

Sunday School
9:15 a.m.
Sunday Worship
10:30 a.m. and 6 p.m.
Wednesday Activities
(Children, Youth, Adult Bible Study)
7 p.m.
Nursery provided for all services

Highland Baptist
1301 North Banks Pampa, Texas 79065

WESTERN FINANCE

WHERE SERVICE COUNTS
LOANS up to \$1300
We Specialize in Helping People Who Have NO CREDIT OR BAD CREDIT

- LOANS ON CLEAR CAR TITLE
- Loans repaid in installments with no pre-payment penalties
- NO TITLE? We also offer
- COLLATERAL & SIGNATURE LOANS
- CREDIT STARTERS

2115 N Hobart • Pampa
806-665-0970
Apply by Phone Today!
All loans are subject to our liberal credit policy and credit limitations, if any.
www.WesternShamrock.com

SERVICES

Center-based Program

Serving children from birth to five years

- High quality infant, toddler and child care in licensed facilities.
- A ration of one teacher for every four children
- Child-care teachers who stay with the same four children throughout.

Community Day Care Center, Inc.
1100 W. Gwendolen Ave.
916 W. Kentucky
(806)221-2720
pampadaycare.com

United Way

PampaFaith

Who is the 'watcher' in your family?

Every family needs a "watcher" who is willing to be a "warner." In the Bible that person is actually called a "watchman." Check out Ezekiel 3:16-21 and 33:1-9.



MIKE SUBLETT

In ancient times when cities were under construction, most built a tall tower, called a watchtower, somewhere near the wall or sometimes even as part of the wall for the purpose of watching for approaching enemies. When enemies were spotted, the people were warned of the approaching danger so that they could prepare to fight. That made the position of "watchman" critical to every family's survival.

Today I believe that many "church going" families are in need of a watchwoman or a watchman who is willing to be the one who speaks up and speaks out with truth. Not just the preacher at church, but someone within every family; willing to warn when the preacher isn't anywhere around.

Too many half-hearted believers toy around with deadly sins, not realizing that they are playing with a lethal spiritual viper, hoping that God won't expect a holy life from them. Too many foolish believers think that they can play games with God, giving Him only the leftovers of their time and energies and resources, believing that He will be happy that they gave anything at all. Too many cheap imitation believers live as though Father God is blind to who really owns their heart, thinking that He will rejoice in the piddling offerings of affection that they give from time to time.

These people do not know God at all. Because if they knew Him, they would surely be terrified to live this way. That is why we need more watchmen and watchwomen in fam-

ilies professing to be Christians.

But a "watcher" has to be qualified. What are those qualifications?

- A "watcher" must love Father God more than any relative or friend. How else will they be willing to risk the relationship or friendship of those they warn?

- A "watcher" must be best friends with their Bible. How else will they recognize the enemy's attacks, know what dangers to warn others of?

- A "watcher" must ask God to be their "watcher" and to create in them a clean heart.

- A "watcher" must believe in the power of prayer, willing to be a true intercessor for those they warn.

- A "watcher" must never be silent for long; willing to hear the angry words "This is none of you business," knowing that they are their brother/sister's keeper.

- A "watcher" must be willing to live without the relationship or friendship should the one in danger choose to end things to escape the warnings.

- A "watcher" must never assume responsibility for the results of their warnings, knowing that the outcome is ultimately between God and His troubled child.

Are you willing to be the watchman or the watchwoman in your family?

If you aren't qualified already, are you willing to get qualified?

Are you willing to pay the price for being God's watchwoman or watchman?

Our churches need more watchers who are willing to warn fellow church goers who are in trouble. Love them? Absolutely. Warn them? Only if we really care about the eternal home of their soul. God bless. Mike

Mike Sublett is a pastor at Hi-Land Christian Church, 1615 N. Banks St., Pampa, Texas 79065. Email him at pawdad@nts-online.net.

CHURCH SPOTLIGHT

Escuela Bíblica de Vacaciones En la Iglesia Bautista Emanuel

PRESENTADO

La Iglesia Bautista Emanuel invita a los niños/niñas escolares de Pampa a la Escuela Bíblica de Vacaciones (Vacation Bible School). Tendremos la escuela Junio 29-Julio 2, 2014, desde las 6:00 -8:00 p.m.

El Domingo, Junio 29 entre las 6 to 8 p.m. es un tiempo de actividades recreacionales para los niños. Tendremos globos brinca brinca, pinta cara, "hot dogs", y más actividades.

Será un tiempo de compañerismo para introducirnos a los niños y a los adultos que les

acompañan.

El tema de la escuela es Agencia D3. Los niños se convertirán en agentes especiales en una oficina de investigación llamada Agencia D3: Descubre-Decide-Defiende. Ellos reunirán y anotarán evidencias acerca de Jesús. La escuela será presentada en inglés y tendremos maestros de la Iglesia First Baptist Pampa para ayudarnos.

Así que padres, anime y traiga a sus niños a este buen estudio bíblico, la Escuela Bíblica de Vacaciones.

Church Calendar

First Presbyterian holds Summer Worship Experience

First Presbyterian Church of Pampa will be holding their Summer Worship Experience at the Norris Pavillion in Recreation Park.

The worship will be at 10:45 a.m. on Sunday, June 29.

Should it rain the worship will be inside the church's parlor.

Reverend Jim Friedewald, pastor for First Presbyterian Church, said that this event is more informal than their normal Sunday service and a great opportunity for families to meet each other.

For those who don't have a church home, this is a great opportunity to join.

First Presbyterian is located at 525 N. Gray in Pampa and can be reached at 665-1031.

McLean Cowboy Church

McLean Cowboy Church is a non-

denominational spirit-filled Christian church. The pastor is Ronnie Ferguson.

Sunday worship is at 10:30 a.m. and children's ministry is Sunday at 10:30 a.m. and Wednesday at 6:30 p.m.

The ages for the children's ministry are nursery through fifth grade. The church is located at the intersection of state Highway 273 and Interstate 40 in McLean. For more information, call 806-779-0260.

Southside Church of Christ

Southside Church of Christ is located at 11923 W. McCullough Ave. in Pampa. The church extends an open invitation to all to come and worship where the gospel, "God's Word," is always taught and preached.

Regular worship services are: Sunday morning Bible study, 9:30 to 10:30 a.m.; morning worship begins at 10:45 a.m. to noon; Wednesday night Bible study is from 5 to 6 p.m.

Pampa Church Directory

Bible Baptist Church
500 E. Kingsmill Ave.
Pampa TX 79065
669-7830

Briarwood Full Gospel Church
1800 W. Harvester Avenue
Pampa TX 79065
665-7201

Calvary Assembly of God Church
1030 Love Street
Pampa TX 79065
669-7207

Calvary Baptist
900 E. 23rd Street
Pampa TX 79065
665-0842

Carpenter's Church
639 S. Barnes
Pampa TX 79065
669-2720

Central Baptist Church
513 E. Francis
Pampa TX 79065
665-1631

Church of Christ
1342 Mary Ellen
Pampa TX 79065
665-0031

Church of Christ Somerville
500 N. Somerville
Pampa TX 79065
665-0004

Church of God
Gwendolen & Sumner
Pampa TX 79065
669-6372

Church of Jesus Christ of the Latter Day Saints
411 East 29th Ave.
Pampa TX 79065
669-2967

Church of the Nazarene
500 N. West
Pampa TX 79065
669-3144

Community Christian School
409 N. Frost
Pampa, TX 79065
665-3393

Cornerstone Baptist Church
2410 W. 23rd Ave.
Pampa TX 79065
669-6509

Crosspointe
711 E. Harvester
Pampa TX 79065
665-2480

Faith Bible Church
110 W. Kingsmill
Pampa TX 79065
688-9266

Faith Tabernacle UPC
610 Naida
Pampa TX 79065
665-3676

Fellowship Baptist Church
1936 N. Wells
Pampa TX 79065
665-2747

Fellowship Baptist Church
622 E. Francis
Pampa TX 79065
665-5976

First Assembly of God
500 S. Cuyler
Pampa TX 79065
665-5941

First Baptist Church
203 N. West
Pampa TX 79065
669-1155

First Christian Church
1633 N. Nelson
Pampa TX 79065
669-3225

First Freewill Baptist Church
731 Sloan St.
Pampa TX 79065
665-2545

First Pentecostal Holiness
1700 Alcock
Pampa TX 79065
665-8192

First Presbyterian
525 N. Gray
Pampa TX 79065
665-1031

First United Methodist
Foster & Ballard
Pampa TX 79065
669-7411

Grace Baptist Church
824 S. Barnes
Pampa TX 79065
669-7967

Harvest Fellowship Baptist Church
2700 W. Kentucky Ave.
Pampa TX 79065
665-4922

Harvest Bible Church
300 W. Browning Avenue
Pampa TX 79065
669-2923

Hobart Baptist Church
1100 W. Crawford
Pampa TX 79065
669-3212

Hi-land Christian Church
1615 N. Banks
Pampa TX 79065
669-6700

Highland Baptist Church
1301 N. Banks
Pampa TX 79065
665-3300

Iglesia Bautista Emanuel
1021 S. Barnes
Pampa TX 79065
665-4330

Iglesia Casa Del Alfarero
500 N. Duncan
Pampa TX 79065
665-5898

Iglesia Cristiana Canaan
905 E. Beryl St.
Pampa TX 79065
669-3330

Iglesia Nueva Vida
New Life Church
1200 S. Sumner
Pampa TX 79065
665-8331

Jehovah's Witnesses
1701 Coffee
Pampa TX 79065
669-9355

Kentucky Ave. Church of Christ
1612 W. Kentucky
Pampa TX 79065
665-2572

Lighthouse Baptist Church
725 W. Brown
Pampa TX 79065
665-0262

Lighthouse Covenant Fellowship
1733 N. Banks St.
Pampa TX 79065
669-6915

Macedonia Baptist Church
441 Elm
Pampa TX 79065
665-4926

New Hope Baptist Church
404 Harlem
Pampa TX 79065
665-4044

New Hope Missionary Baptist Church
912 S. Gray St.
Pampa TX 79065
665-4044

New Life Assembly of God
1435 N. Sumner
Pampa TX 79065
665-0804

Open Door Church of God in Christ
402 Oklahoma
Pampa TX 79065
665-6132

Priest Park Church of God
731 N. Faulkner
Pampa TX 79065
688-0174

Primeria Iglesia Bautista Mexicana
541 Hamilton
Pampa TX 79065
665-8347

Redeemer Pampa
225 N. Cuyler
Pampa, TX 79065
665-8951

Salvation Army
701 S. Cuyler
Pampa TX 79065
665-7233

Seventh Day Adventist Church
421 N. Ward
Pampa TX 79065
665-4492

Southside Church of Christ
11927 McCullough
Pampa TX 79065
665-2183

St. Paul United Methodist Church
511 N. Hobart
Pampa TX 79065
665-8951

St. Mark CME Church
406 Elm Ave
Pampa TX 79065
665-6743

St. Matthews Episcopal Church
727 W. Browning
Pampa TX 79065
665-0701

St. Vincent de Paul Catholic Church
810 W. 23rd Ave.
Pampa TX 79065
665-8933

Straight-Up Fellowship
400 N. Wells
Pampa TX 79065
664-0096

Trinity Fellowship Church
2225 N. Hobart
Pampa TX 79065
665-3255

United Methodist Church
201 E. Foster
Pampa TX 79065
669-9371

Zion Lutheran Church
1200 Duncan
Pampa TX 79065
669-2774

Send Us Your Church News

• Events • Special Services • Charity Drives • General News
jclee@thepampanews.com lktomaschik@thepampanews.com



One STOP Flooring
1533 N. HOBART • 806-665-0995

PARSLEY'S SHEET METAL & ROOFING
214 E. Tyng
669-6461
Pampa, Texas

ENGINE PARTS & SUPPLY
416 W. Foster 669-3305
Local Company Serving Local Needs

J.C. CARLSON, INC.
669-7171
Borger Hwy.- Pampa
Jerry E. Carlson, Pres.

New Life Wellness Center
Dr. Mark W. Ford, Jr.
701 N Price Rd • 806-665-7261

Heard-Jones
114 N. Cuyler
669-7478

NATIONAL BANK OF COMMERCE
an office of First National Bank, Waupaca, WI
Member FDIC
1224 N. Hobart Pampa, TX 806-665-0022
501 Commerce St. Childress, TX 940-937-2514
305 N. Main Shamrock, TX 806-256-2181

Culligan
314 STARKWEATHER 665-5729

KEYES PHARMACY
"Your Key To Better Health"
928 N. Hobart - Pampa, Texas
669-1202 - Emergency 669-3559
Merlin Rose R. Ph. - Owner - Pharmacist

Century 21 Pampa Realty Inc.
SMARTER. BOLDER. FASTER.
806-669-0007
312 N Gray Pampa, TX
Each Office Independently Owned and Operated

Texas PRINTING company
PHONE (806) 669-7941
319 N. BALLARD PAMPA, TEXAS

HUNTING
11785 Hwy. 152
Pampa, Texas
Hunting Titan 665-3781

Sheila Webb State Farm
State Farm Insurance
North Side of Las Pampas Square
669-3861
"Like a good neighbor, State Farm is there."

LARRY BAKER PLUMBING HEATING & AIR
11780 HWY 152 TACLA003191 665-4392

Clarendon COLLEGE
1601 W. Kentucky Pampa, Texas 806.665.8801
Unleash your potential! www.clarendoncollege.edu

ANYTIME FITNESS
211 West 30th Ave • (806) 665-3333
www.anytimefitness.com

MoJo's Sports Bar & Grill
113 S. Cuyler
665-2928
Sun-Fri: 11-Midnight
Sat: 11-1 am

KINGDOMKEYS.ORG
CHRISTIAN RADIO NETWORK
90.3 FM 800-525-5737

THE PAMPA NEWS 403 W. ATCHISON 669-2525

PICTURES FROM SUNDAY'S STORM



Submitted photos

Sunday's storm has been a big topic of conversation amongst the people of Pampa this week. The storm came and went fairly quickly, but many people are still cleaning up the destruction it left behind. Top left, this is one of the trees that simply split in half due to the high winds. Top right, this giant tree narrowly missed a car in the driveway when it toppled in the wind. Bottom left, central park was full of downed trees and limbs after the storm rolled through town. Bottom right, some were not as fortunate as others when it came to falling trees and limbs. This huge branch fell directly on a truck bed, damaging it significantly.

Got A Sports Story or Photo?

Send them to us!
 jclee@thepampanews.com
 or bring it to the paper!

If you don't see it after a week, call us!
 669-2525 ext 209

W BUSINESS & SERVICE DIRECTORY

FIND A PRO FOR EVERY PROJECT

Advertise in the Business & Service Directory to help get the customers you are looking for. Call CALLIE or REVELLE (806)669-2525 today to find out more.

The **PAMPA NEWS**
 403 West Atchison Ave (806) 669-2525
 M-F 8 am - 5 pm

D-Bar Lawn Care
 Basic Lawn Care | Yard Clean Up
Blake Howell Owner | Operator
 Call or Text
 806. 231.2732
 Blakehowell87@gmail.com
 Facebook.com/Dbarlawncare14

PRESTIGE
 Autobody & Accessories

We feature name brand car and truck accessories and a state-of-the-art collision center. Whether it's repairing your vehicle back to its factory look or adding automotive accessories, our professionally trained staff will take care of you.

(806) 665-3500 101 S. Hobart Pampa, TX

ALL AMERICAN PEST CONTROL
RICK PEARSON
 PAMPA, TEXAS

OFFERING
 Residential and commercial pest control
 Yard treatments for ticks, fleas & mosquitoes

Call to schedule your appointment
806-440-6105

Earning your business one treatment at a time!

plexus WORLDWIDE!
 Independent Ambassador

Plexus isn't just about losing weight, it's about getting healthy! Take control of your life again, it's NEVER been so easy! Ask me today how Plexus can change your life and make that extra income you've been waiting on!

Vickie Long
 Independent Ambassador #191635
 cwuavickielong@yahoo.com
 vickielong.myplexusproducts.com
 call or text 440-9099

Lazy Cat Landscaping
 Landscape Design
 Patios & Outdoor Kitchens
 Fountains & Ponds
 Decorative Concrete
 Plantings & Flower Gardens
 Everyday & Holiday Lighting

123 Main St. (806)669-1111
 lazycatlands.com

HANK'S PAINTING SERVICE
 (806)669-0000
 hankspaint.com

THREE STRAND THREADS
 clothing & accessories

313 Main Street
 Canadian, TX
 806-323-8221
 Tues-Sat 10 am-5 pm

Jewelry | Purses | Wallets | Scarves | Gift Items
 Women | Men | Children | Infants | Plus Sizes | Justin Boots
 We've got ALL your fashion need covered!
 Cyrena Albert~Owner · Like us on Facebook

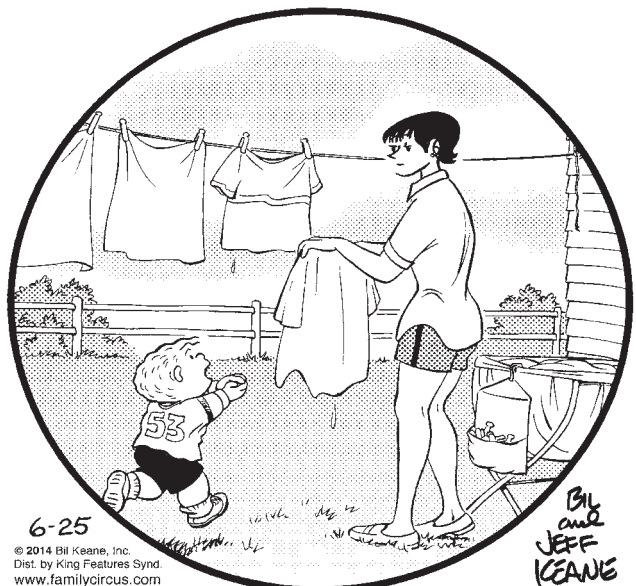
YOUR AD RUNS WEDNESDAY & FRIDAY EVERY WEEK!

2 column x 2 inch ad \$100/month

1 column x 2 inch ad \$50/month

comics PAGE

THE FAMILY CIRCUS By Bil Keane



6-25 © 2014 Bil Keane, Inc. Dist. by King Features Synd. www.familycircus.com

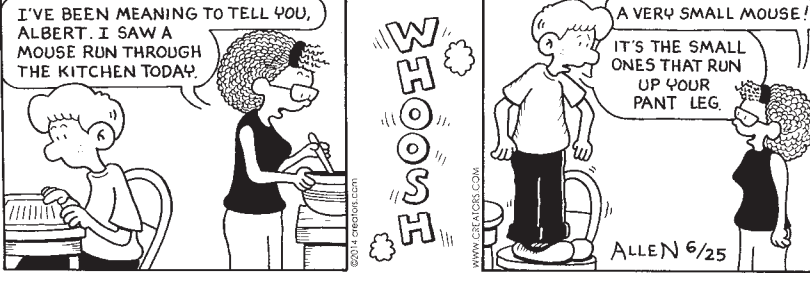
"Mommy, I hafta go to the bathroom. Will you hold my bugs for me?"

Non Sequitur



© '10 WILEY (L)K, (L)C. 6-25 DIST. BY UNIVERSAL UCLICE WILEY(L)K@ARTLIVE.NET 60COMICS.COM

Nest Heads



© 2014 WILEY (L)K, (L)C. 6-25 DIST. BY UNIVERSAL UCLICE WILEY(L)K@ARTLIVE.NET 60COMICS.COM

daily horoscope

HAPPY BIRTHDAY for Thursday, June 26, 2014:
 This year you need to pull back and listen to yourself more often. You are full of questions, nearly like a child seeking answers. To others, your questioning could be worrisome or exhausting. Try to center yourself, and you might get a better reception. If you are single, you could meet someone of interest after July. Let a new relationship flow naturally. If you are attached, the two of you start acting like two peas in a pod. You will enjoy each other's company more than you have in a long while. PISCES is a good listener.
 The Stars Show the Kind of Day You'll Have: 5-Dynamic; 4-Positive; 3-Average; 2-So-so; 1-Difficult

ARIES (March 21-April 19)
 ★★★★★ Others could find you to be unusually inquisitive, as you seek out many answers. You might get a lot more information than you originally had anticipated. Some of what is shared could be significant at a later point. Tonight: Make it an early night.

TAURUS (April 20-May 20)
 ★★★★★ You might be trying to solidify a money matter. You could feel out of sorts when dealing with someone who does not understand the liabilities of a situation, but who considers him- or herself an expert. Move on, and you will be happier. Tonight: Your treat.

GEMINI (May 21-June 20)
 ★★★★★ Find out what is happening with someone who might be intentionally avoiding you. Consider an opportunity elsewhere. Let go of the present problem, and make it a non-issue. You will be valued more if you leave this situation behind. Tonight: Buy a token of affection.

CANCER (June 21-July 22)
 ★★★★★ You might feel overwhelmed by a situation. Recognize that you have been overthinking it. Listen to news with a more open mind, as you will need to gain a different perspective. Talk to others, and curb a need to always be right. Tonight: Nap, then decide.

LEO (July 23-Aug. 22)
 ★★★★★ Someone will be very inquisitive, and he or she could evoke your suspicions. This person doesn't have a deep motive, but is simply curious. You might not be aware of the impression you make on others. You are far more intriguing than you realize.

VIRGO (Aug. 23-Sept. 22)
 ★★★★★ You will want to rethink a decision with an eye on expenses. You have the capacity to want to spend, but you also are able say "no." A parent might share his or her opinions and put you in a difficult situation. Make plans later in the day. Tonight: Where your friends are.

LIBRA (Sept. 23-Oct. 22)
 ★★★★★ You could be overwhelmed by an option that you had not even considered. Reach out for more information, and touch base with someone at a distance. This person has a lot of questions for you that you will need to answer. Tonight: Consider a unique idea.

SCORPIO (Oct. 23-Nov. 21)
 ★★★★★ You might be confused by what someone is saying. Understand that this person has difficulty relating to others. Try to help him or her focus on the main issues. You also could decide not to deal with this situation right now. Tonight: Go along with a suggestion.

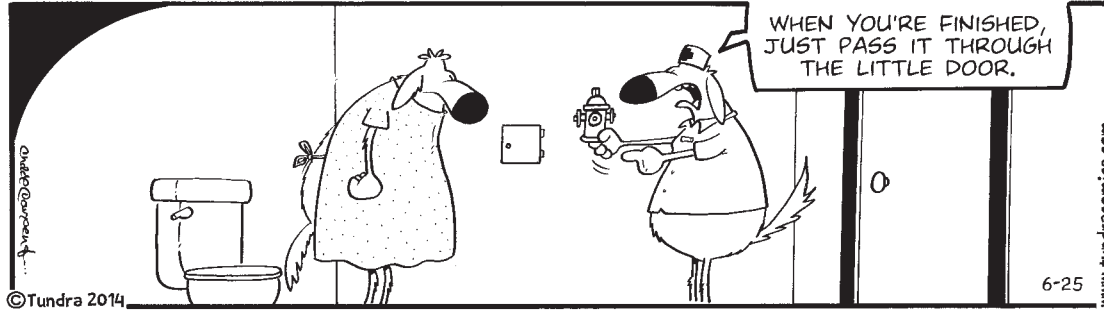
SAGITTARIUS (Nov. 22-Dec. 21)
 ★★★★★ You might want to allow someone who feels as if he or she has the most understanding to come up with an idea. Listen to news with an open mind. Others keep seeking you out; let them take the lead. Tonight: Go with the best idea!

CAPRICORN (Dec. 22-Jan. 19)
 ★★★★★ Pace yourself, and complete as much as you can. A brainstorming session could throw you off schedule, but it will be worth it. What emerges as a result of this conversation could lead to a great idea. You will want to mull this conversation over several times. Tonight: Play it relaxed.

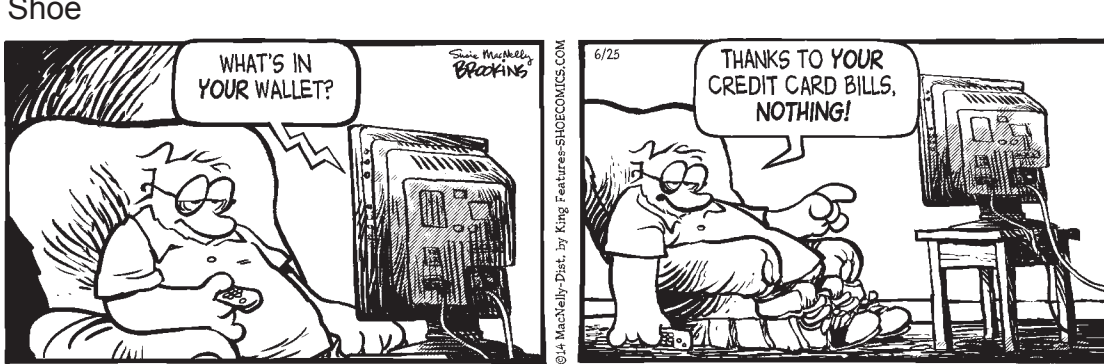
AQUARIUS (Jan. 20-Feb. 18)
 ★★★★★ Allow your ingenuity to come out. Listen to news, even if you do not think you will like what you hear. Do not forget about a loved one -- your calls mean a lot to this person. Your advice is likely to help him or her get past a hassle. Tonight: Slow down just a little.

PISCES (Feb. 19-March 20)
 ★★★★★ Stay more centered with a family member. A real estate matter might come to the forefront. You could hear a lot of good news when you decide to open up a conversation. Your authenticity marks your interpersonal interactions. Tonight: Head out on the town.

Tundra



Shoe



Mother Goose and Grim



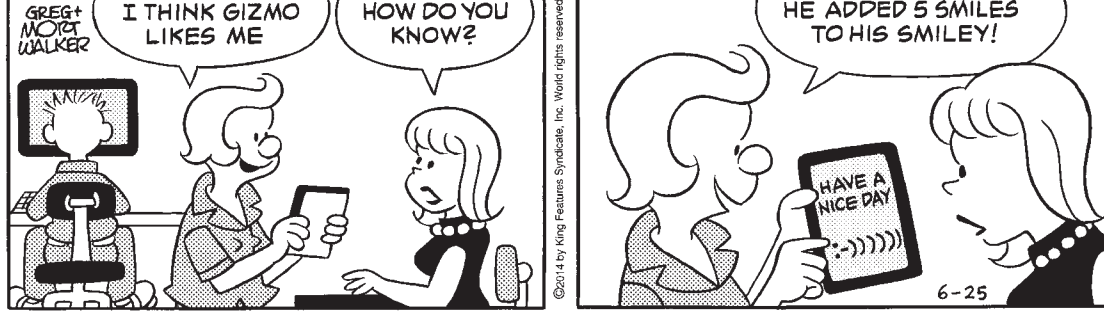
Zits



Garfield



Beetle Bailey



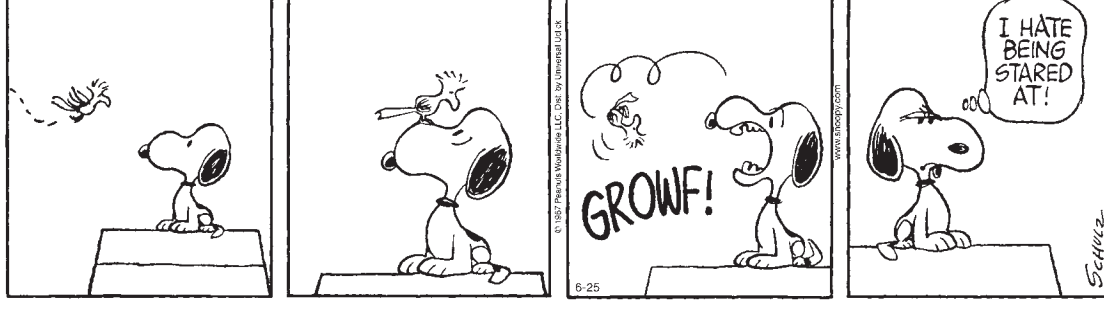
Marvin



Hagar The Horrible

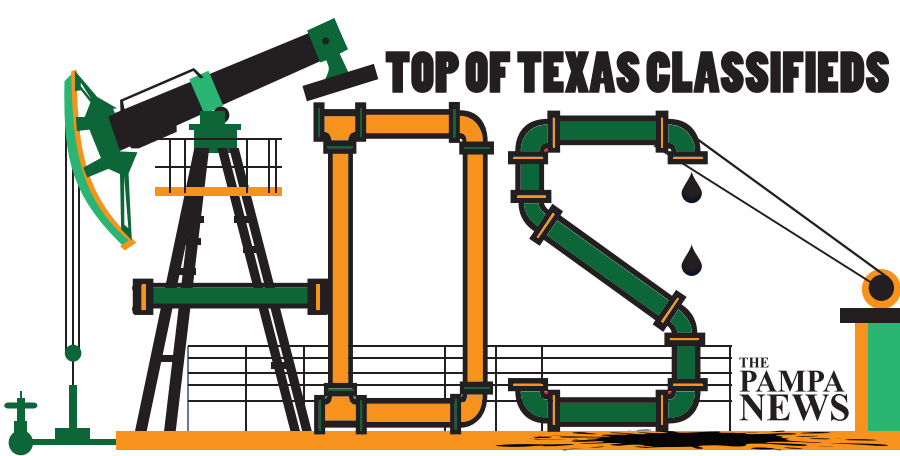


Peanuts



Blondie





ADS For Sale Call Us today For Details!

ADS Jobs Call Us today For Details!

ADS Services as low as \$69 per month see display

ADS Happy Ads FREE \$3 with photo

Say Happy Birthday to friends for FREE

5 Lines for 7 days \$37.50

7 Lines for 7 days \$47.50

Reaching over 12,000 readers daily • Call Us at (806) 669-2525

Lost & Found
LOST Black male poodle with blue collar. Answers to "Pepper." 2500 block of Evergreen. 669-4386

Carpentry
CUSTOM Building & Remodeling: Kitchens, Bathrooms & Additions. Shawn Deaver Construction, 662-2977

CUSTOM Play Houses, dog houses, storage houses, etc. Any cartoon designs. Call 806-662-5185

DOOR REPAIR. Kidwell Construction. Call 669-6347, 806-663-0192.

Carpet Service
NU-WAY CLEANING SERVICE Bob Marx Owner-Operator. Call 665-3541.

Situations
HOUSECLEANING. Se Limpian Casas. Excellent references. Have openings now. 806-440-4735

Help Wanted
CATERING / KITCHEN Help. Must be 18 yrs. old & have valid driver's license to apply. Apply in person Mon.-Sat. 11am.-9pm. Dyer's BBQ.

ASSISTANT DIRECTOR OF NURSING
Skilled Nursing Facility seeks exper'd ADON responsible for scheduling, maintaining systems, overseeing CNA staff, etc. TEXAS state license required. Competitive salary and benefits available. EOE. Send letter/resume, call our Administrator, 806-665-5746 or apply at:
CORONADO HEALTHCARE CENTER 1504 W. Kentucky Ave. Pampa

CEMENT Supervisors, Bulk Equipment Operators and Pump Truck Operators needed. Must have current CDL. Blue Cross/Blue Shield Ins, 401K. Apply in person to O-TEX Pumping, LLC, 1865 W. McCullough, Pampa, TX Mon - Fri 8am to 5pm

CNAs LVNs TREATMENT NURSE
Join Our Team! Various Shifts Available Requires TEXAS state license or certification. Competitive rates and full time employees eligible for benefits. EOE. For more info, please call our Administrator 806-665-5746 or apply at:
CORONADO HEALTHCARE CENTER 1504 W. Kentucky Ave. Pampa

Texas Panhandle CENTERS Behavioral & Developmental Health Making Lives Better

ASCI Pampa Therapist Tech I - \$9.07/hr.

Direct care of persons with Intellectual Disabilities in a day habilitation setting.

Apply at 1301 W. Somerville, Pampa, TX 806.669.3371 Or at 901 Wallace Blvd Amarillo, TX • 806.358.1681

Full-time positions offer a paid benefit package for the employee including health, dental, life, retirement and Paid Time Off. An Equal Opportunity Employer. Drug Free & Tobacco Free Workplace, Pre-Employment Drug Screening Required.

More Jobs @ www.texaspanhandlecenters.org/employment

Help Wanted
EZMONEY, A leader in the payday loan industry, is in search of a Store Manager. The right person will enjoy interacting with people and will have exp in retail or service industries. Better than typical retail hrs. Closed on Sundays. We offer up to \$30k/year and generous bonus potential. APPLY ON LINE at www.ezmoneyjobs.com or email Danelle_miller@ezcorp.com

CNAs LVNs Weekend RN
Immediate openings for professional CNAs and LVNs on various shifts & weekends for RN. State certification or license needed. Competitive rates and benefits available for FT employees. EOE. For more information, call our DON (806) 273-3785 or apply in person Mon-Fri-9-4.
BORGER HEALTHCARE CENTER 1316 South Florida Borger

HANDYMAN / Yardman needed, part-time. Call 886-1674 for appt.

JOB OPPORTUNITY
First Baptist Child Development Center is looking to hire a Pre K Teacher starting this fall.
*Teaching exp. required, Early Childhood certification preferred.
*Must be able to follow Texas Pre Kindergarten Guidelines
*Small classroom ratios
*Benefits
*Great work environment
*Fill out application at 203 N. West St., Pampa.

LIFEGUARDS needed at Pampa Country Club. Drug free work environment. Apply in person. NO PHONE CALLS

NOTICE
Readers are urged to fully investigate advertisements which require payment in advance for information, services or goods.

OUTREACH Health Services has opening for providers in the PAMPA area to care for the elderly and disabled in their homes. Must be 18+ Will train the right candidate. Please call Mary at 806-373-0986 or 1-800-800-0697. EOE

Pharmacy Clerk/Tech Trainee Needed
HS diploma or equivalent, must be 18. Apply in Person at Keyes Pharmacy, 928 N. Hobart

Help Wanted
SCHWAN'S Home Service now hiring for Route Sales Reps. We are looking for High Energy Individuals with good work ethics. \$40-50K potential 1st year salary. Full benefit package. No CDL req'd. Please apply on-line at www.schwansjobs.com Keyword : Pampa. EOE

TEXAS Rose Steakhouse is hiring Hostesses, Servers. No phone calls. Apply at 2841 Perryton Pkwy.

COOK DIETARY
For meal prep. Prefer exper'd person, but will train qualified applicant to prepare meals for special diets. Must be reliable & dependable. EOE. Call Administrator 806-273-3785 or apply in person Mon-Fri-9-4.
BORGER HEALTHCARE CENTER 1316 South Florida Borger

TOP PAY For Maintenance Man. Must have valid Driver's License. Apply at 800 N. Nelson. 665-1875

Miscellaneous
FOR SALE: Double Lawn Crypt in Memory Gardens. Call 806-898-2451

NEW Queen Mattress Set \$246. All sizes on sale. Red Barn 1424 S. Barnes. 665-2767.

Professional Tree Trimming. Cheapest In Town. Licensed and Bonded. Call 886-1162

ADVERTISE HERE GET NOTICED
THE PAMPA NEWS (806) 669-2525

AXYDLBAAXR is LONGFELLOW
One letter stands for another. In this sample, A is used for the three L's, X for the two O's, etc. Single letters, apostrophes, the length and formation of the words are all hints. Each day the code letters are different.

6-25 CRYPTOQUOTE

IX ZHI CJKK ZHDB H RLBHA
KBHPBL CSX CHIAW AX PX JA
HKK SJZWBKO XL RBA HKK
ASB NLBPJA OXL PXJIR JA.

— HIPLBC NHLIBRJB
Yesterday's Cryptoquote: ALL I ASK IS THE CHANCE TO PROVE THAT MONEY CAN'T MAKE ME HAPPY. — SPIKE MILLIGAN

Keagy-Edwards Inc. Quentín Williams REALTORS

2208 Coffee & Perryton Pkwy. (806)669-2522 www.quentin-williams.com

Mike Keagy-Broker Owner- 665-1449
Maxine Watson-Broker Owner - 662-9052
Joan Mabry 669-3201
Christy Parker 898-8542
Roberta Babb 665-6158
Becky Baten 898-7240
Rod Donaldson 663-2800
Heidi Chronister 665-6388
Darrell Sehorn 440-1000

Farm Animals
13 MONTH to 2 year old purebred Angus bulls for sale. \$2000 each. Call Frog's Angus at 806-662-4861

Pets & Supplies
Free to good home 2 female pit mix puppies, 5 weeks old, weaned. Call 662-4875

Wanted to Buy
LOOKING for small pump jack for yard ornament, ALSO old porcelain oil & gas lease signs. 432-967-2833

Furnished Apts.
All real estate advertised herein is subject to the Federal Fair Housing Act, which makes it illegal to advertise "any preference, limitation or discrimination because of race, color, religion, sex, handicap, familial status or national origin, or intention to make any such preference, limitation or discrimination". State law also forbids discrimination based on these factors. We will not knowingly accept any advertising for real estate which is in violation of the law. All persons are hereby informed that all dwellings advertised are available on an equal opportunity basis.

Unfurnished Apts.
CAPROCK APTS. 1, 2 and 3 bedrooms with rent starting as low as \$450/mo. Pool and on-site laundry, W/D hookups in all 2 and 3 bdms. 665-7149.
Schneider Apartments: Call for special rates. Short term lease. Business people welcome. 665-0415

TEXAS SIZE APTS. 1 and 2 bdr. apts. Largest in Pampa. Plus Homes too! Great Value! 665-1875 or 881-8518

Furnished Houses
3 bedroom furnished or unfurnished house, 1 3/4 baths. Central heat & air. 662-9669

Unfurnished Houses
\$395/mo. and up!! 2 & 3 Bdrm Houses for rent. 665-1875 or 881-8518

LEASE 936 Terry Rd. 3 bdr., 1 3/4 ba. Fpl. Dbf. carport. \$750 mo., \$400 dep., \$375 (1/2 last mo. rent). 663-9232

Unfurnished Apts.
APTS. Houses Duplexes. K&B Properties. Ref. & dep. req. Lakeview Apts. 665-0995

Now Accepting Applications!
PAMPA MANOR APARTMENTS
TDD: 1-800-735-2989
Elderly (62 years of age) Handicapped/ Disabled of any age
Some Rental Assistance Is Available. This institution is an equal opportunity provider and employer. Apply Today!
2700 N. Hobart Street 806-665-2828

Unfurnished Houses
PICK up rental list in the Black Box at 125 S. Houston, Pampa.

Business Rent. Prop.
DOWNTOWN Properties: Service Station, Retail, Restaurant / Bar, etc. 665-1875, 881-8518

DOWNTOWN office space for rent. Utilities & cleaning service provided. Ample parking 669-6823

OFFICE space for rent. Ask about 3 months free rent. 669-6841

STORE FRONT Building for rent, 206 N. Russell, 1,843 sq. ft. \$24,000 remodeling allowance subtracted from rent of \$1,500/month. Inq. 669-6841 Mon-Fri 9:00am-5:00pm

Homes for Sale
2408 DOGWOOD: 4 bdrm, 2 bath, fireplace, 2472 sq ft. Priced to buy! Call Jimmy at 806-570-9924

912 CRANE RD. 3 bdrm., 2 ba., fireplace, upgrades. 1600 sq. ft. 2008, \$165K. Call Mark 806-595-0754

Homes for Sale
TRUSTAR Real Estate for all your complete real estate needs. Show, list, property mgmt. 665-4595

Commercial Property
GREAT OPPORTUNITY! Restaurant fully equipped. Call 806-665-1875 or 806-881-8518

Commercial Property
RETAIL and Garage Space. Centrally located. Great value! 665-1875 or 881-8518.

Murphy-Brown LLC

Smithfield Premium Genetics Group

Maintenance, Sanitizers, and Herd Techs

Smithfield Premium Genetics, the live production company for Smithfield Foods, Inc., has several openings in Pampa, TX. Excellent benefits, including health, dental and vision insurance, 401k, pension, and paid time off. Career opportunities are available for the right individuals.

Farm Maintenance- Starting pay is commensurate with experience

- Plumbing, welding, and electrical experience required
- Routine and annual maintenance Sanitizer- Starting pay is \$10.50
- Pay increase within 6 months
- Loads, unloads, and cleans hog trailers
- Miscellaneous other farm duties

Herd Technician- Starting pay is \$10.50

- Pay increase within 6 months
- Cares for the pigs and other animal husbandry type duties

You can apply in person @ Smithfield Premium Genetics located 11 Miles East of Pampa on Hwy 60 between 10:00am □3:00pm or at the Texas Workforce Office in Amarillo or Borger.

Equal Employer/Affirmative Action Employer m/f/d/v

AUTOMOTIVE DETAILER

Culberson Stowers, Pampa's GM and Toyota dealer has an immediate employment opportunity for a Automotive Detailer . We have been proudly serving our Pampa and the surrounding area for 87 years.

PRINCIPAL DUTIES AND RESPONSIBILITIES

- ★ Must Be 21 or older
- ★ Must be willing to take and pass a drug test
- ★ Make sure that service loaner, rental and courtesy vehicles are ready before the start of business each day.
- ★ Make sure each vehicle is clean inside and out and fuel and fluids are full.
- ★ Make sure vehicle is operating normal. Notify the service manager of any problems.
- ★ Remove all traces of any protective film or coverings
- ★ Wash and detail each vehicle.
- ★ Work with members of the Service Department and other dealership staff toward the common goal of providing excellent customer service to all
- ★ Maintain professional appearance and demeanor at all times
- ★ Must be dependable and punctual.

EDUCATION - SKILLS EXPERIENCE

- ★ Applicants must have good communication skills including the ability to effectively communicate.
- ★ Applicants must have the ability to meet deadlines and prioritize assignments.
- ★ High School diploma or equivalent.
- ★ Experience in similar positions preferred but not necessary.
- ★ Training Available.

COMPENSATION AND BENEFITS

- ★ Competitive pay
- ★ 401(k) Retirement Plan with company match
- ★ Group Health Plan with optional Family coverage
- ★ Life insurance
- ★ Group accident and disability insurance options available
- ★ Paid vacation and sick time
- ★ Professional uniforms
- ★ Employee Vehicle Purchase program

If you are ready to step into a rewarding career path and share our core values of integrity, professionalism and teamwork, please come by and ask for Chris Pope.

CULBERSON-STOWERS
805 North Hobart Street • 806-665-1665

Sudoku

Answer to yesterday's puzzle:

3	2	5	9	8	4	1	6	7
9	4	7	6	1	5	8	2	3
6	8	1	7	2	3	4	5	9
7	3	9	2	4	6	5	1	8
8	1	4	3	5	9	6	7	2
2	5	6	8	7	1	3	9	4
5	9	8	4	6	7	2	3	1
4	6	3	1	9	2	7	8	5
1	7	2	5	3	8	9	4	6

9	5			8				2
8		4		5				
	3							7
7			6		4			2
	5	1						9
				2				
4			1	2	5			
	9			7				
								8

Level: Intermediate

jejee@thepampanews.com
vkomaschik@thepampanews.com

HERBS • VITAMINS • WEIGHT LOSS • ENERGY
WOMEN'S & MEN'S NEEDS

Herbs Etc.

Weekly Herb Talks!

109 W Kingsmill • Pampa
(806) 665-4883
www.pamhandlensunshine.com

Trailer Parks

Tumbleweed Acres: storm shelters, fenced, stor. bldg. avail. 665-0079, 886-2230

Autos

IDEAL FOR COLLECTORS! 1979 Pontiac TransAm. White / blue. lrg bird on hood. One owner! 24,500 actual miles. 6.6 L, 403 eng. Auto transmission. All original. Good price \$21,900. Call 806-665-4836.

TRY M&S Auto for all your auto repair needs. Call Ray or Mike, 120 N. Gray, 669-6990.

Say I Love You!

With a Classified Happy Ad for FREE

5 Line Classified Ad that runs for 1 week

to \$3 add a photo

Call Today! 669-2525

General Services

CERAMIC tile work, stucco, cement, remodeling, floor, shower, kitchen. Texture, painting, dry wall. Free estimate. New # 440-0239, leave msg, Jesus Baraza.

COX Fence Company. Repair old fence or build new. Free estimates. Call 669-7769

HOUSE cracking? In bricks or walls? Childers Brothers, Inc. 800-299-9563, 806-352-9563.

JH CONCRETE all types of concrete incl stamp, fence, pools. Free est, financing available. 806-382-5408.

FREE ADS

for Free Items!

Call Ellen Today! 669-2525

General Services

Ogle Fence Company Free Estimates Repair & New Const. 665-1712

Legals / Pubic Notice

LEGAL NOTICE: This Texas Lottery Commission Scratch-Off game will close on July 18, 2014. You have until January 14, 2015 to redeem any ticket for this game: #1520 \$1,000,000 Jackpot (\$20 overall odds are 1 in 2.88. These Texas Lottery Commission Scratch-Off games will close on August 27, 2014. You have until February 23, 2015 to redeem any ticket for these games: #1624 Scoop the Cash (\$1 overall odds are 1 in 4.52, #1614 On the Money (\$2) overall odds are 1 in 4.38, #1579 Hearts on Fire (\$5) overall odds are 1 in 3.70. The odds listed here are the overall odds of winning any prize in a game, including break-even prizes. Lottery retailers are authorized to redeem prizes of up to and including \$599. Prizes of \$600 or more must be claimed in person at a Lottery Claim Center or by mail, with a completed Texas Lottery claim form; however, annuity prizes or prizes over \$1,000,000 must be claimed in person at the Commission Headquarters in Austin. Call Customer Service at 1-800-37LOTTO or visit the Lottery Web site at txlottery.org for more information and location of nearest Claim Center. The Texas Lottery is not responsible for lost or stolen tickets, or for tickets lost in the mail. Tickets, transactions, players, and winners are subject to, and players and winners agree to abide by, all applicable laws, Commission rules, regulations, policies, directives, instructions, conditions, procedures, and final decisions of the Executive Director. A

Legals / Pubic Notice

Scratch-Off game may continue to be sold even when all the top prizes have been claimed. Must be 18 years of age or older to purchase a Texas Lottery ticket. PLAY RESPONSIBLY. The Texas Lottery supports Texas education. © 2014 Texas Lottery Commission. All rights reserved.

NOTICE TO CREDITORS: All persons having a claim against RICHARD ALBERT WILSON's Estate must present them to the Executor of his Estate, James A. Wilson. These notices MUST be sent to James A. Wilson, 502 W. Montgomery, Box #139, Willis, TX 77378. G-17 6/25/2014

Legals / Pubic Notice

Scratch-Off game may continue to be sold even when all the top prizes have been claimed. Must be 18 years of age or older to purchase a Texas Lottery ticket. PLAY RESPONSIBLY. The Texas Lottery supports Texas education. © 2014 Texas Lottery Commission. All rights reserved.

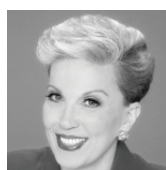
find us on Facebook

To find Breaking News Briefs, Event Photos, and Video Clips.

facebook.com/thepampanews

Dear Abby...

By Pauline & Jeanne Phillips



DEAR ABBY: I met a guy four months ago. Our relationship is new and pretty casual for the most part. We like each other's company and spend nights together, but when we're intimate, he keeps his clothes on — boxers and all. He is only 26, but he has told me about past relationships, so I know he has had experience.

Over the past two years he has lost almost 100 pounds. He looks great now — healthy and toned. I have seen him get in and out of the shower. (I noticed a little excess skin on his stomach, but not much.) It's really weird. I don't feel comfortable taking my own clothes off when he doesn't.

This isn't exactly a deal breaker for me, as I obviously am attracted to him. I just would like him to be comfortable with me. Should I address this with him, and if so, how? Or should I just leave it be for now? — AWKWARD SITUATION IN GEORGIA

DEAR AWKWARD: It's apparent that he still has body issues having to do with his extreme weight loss. If you know him well enough to spend nights at his house, you should be able to communicate with him about sex on a mature level and tell him the experience would be more satisfying for you if there was less between you when you are in his arms.

DEAR ABBY: My fiancée and I work full time. We are trying to save for our wedding and a deposit for a house. The trouble is, after

paying rent, bills and day-to-day expenses, we are left with next to nothing.

I played poker when I was in college, which generated a nice income during my late teens and early 20s. A few months back, I decided to pick it up again and found a group of people who like to play. Since then, I have been playing four hours two or three nights a week, and it has generated an extra monthly income of \$1,000 to \$1,500. Our finances have improved a lot.

There are nights my fiancée wants me to stay home. She says if I had a part-time job, she would understand why I couldn't stay home on the days she asked. But to me, poker IS a part-time

job, and it pays more than anything else I could find in this area. I play the same set schedule every week, so she should know what nights I need to go in to "work." What do you say? — ALL-IN IN VIRGINIA

DEAR ALL-IN: You appear to be a skillful card player or a very lucky one. Assuming that the games in which you are participating are legal, I see nothing wrong with what you're doing. Because your fiancée feels lonely when you're not with her, suggest that she do something with friends or take up a hobby. After all, you're doing this for the both of you, aren't you? And this "part-time job" isn't

going to be forever. *****

Dear Abby is written by Abigail Van Buren, also known as Jeanne Phillips, and was founded by her mother, Pauline Phillips. Contact Dear Abby at www.DearAbby.com or P.O. Box 69440, Los Angeles, CA 90069. *****

Good advice for everyone — teens to seniors — is in "The Anger in All of Us and How to Deal With It." To order, send your name and mailing address, plus check or money order for \$7 (U.S. funds) to: Dear Abby, Anger Booklet, P.O. Box 447, Mount Morris, IL 61054-0447. (Shipping and handling are included in the price.)

CROSSWORD

By THOMAS JOSEPH

- ACROSS**
- 1 TV ad
 - 6 Dune makeup
 - 10 Flatten
 - 11 Court listener
 - 12 Improve, in a way
 - 13 Select group
 - 14 Parachute part
 - 15 Wakes
 - 16 Genesis woman
 - 17 Pinnacle
 - 18 Twisty turn
 - 19 Complete tie
 - 22 Rating unit
 - 23 Borders
 - 26 One who's got no hope
 - 29 Relaxing resort
 - 32 Like some humor
 - 33 Word on a bill
 - 34 Chatty bird
 - 36 Balled hand
 - 37 Parting word
 - 38 Old Testament book
- DOWN**
- 39 Pick up the tab
 - 40 Wise saying
 - 41 Vend
 - 42 Raft pilot
 - 1 Situated
 - 2 Takes out
 - 3 Be a glutton
 - 4 Patch up
 - 5 Antique
 - 6 Enterprise crewman
 - 7 Spring up
 - 8 Jottings
 - 9 Attire
 - 11 Danger
 - 15 Surgeon topic
 - 17 Trashed
 - 20 June honoree
 - 21 Singer McGraw
 - 24 Insurance category
 - 25 Salami, for one
 - 27 Museum topic
 - 28 Tie up
 - 29 Petty quarrels
 - 30 San Diego player
 - 31 "The Tempest" sprite
 - 35 Authentic
 - 36 Traditional dog name
 - 38 Atlas page

L	A	R	V	A	S	A	V	E	R
A	L	I	E	N	A	L	I	C	E
C	O	T	T	O	N	B	A	L	L
E	N	E	M	A	E	L	I	P	
D	E	S	P	A	I	R	A	P	E
			A	L	L	D	I	S	C
S	A	D	L	I		M	O	N	E
I	V	E	S		G	A	P		
L	O	P		D	R	I	E	D	U
I	C	E		O	I	L		U	N
C	A	N	N	O	N	B	A	L	L
O	D	D	E	R		A	L	L	I
N	O	S	E	S		G	I	S	T

Yesterday's answer

NEW CROSSWORD BOOK! Send \$4.75 (check/m.o.) to Thomas Joseph Book 1, P.O. Box 536475, Orlando, FL 32853-6475

1	2	3	4	5		6	7	8	9
						11			
						13			
						15			
				17				18	
		20				21			
						23		24	25
				26		27			28
29	30	31		32				33	
				35				36	
								38	
								40	
								42	

6-25

DOUG BOYD MOTOR CO.

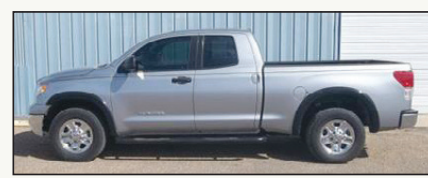
Three words...

Summer. Road. Trip.

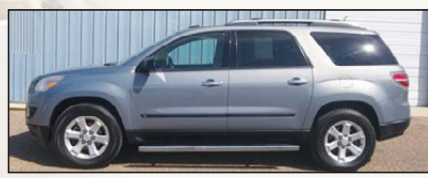
*** Buy Here, Pay Here, No Credit Check



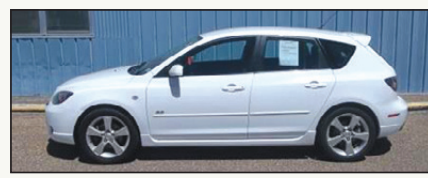
2008 JEEP PATRIOT P3867 \$16,995



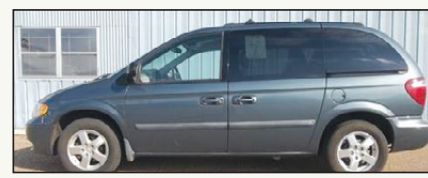
2010 TOYOTA TUNDRA P3835 \$24,995



2007 SATURN OUTLOOK P3921 \$15,995



2004 MAZDA MAZDA3 P3859 \$8,995



2006 DODGE CARAVAN P3171 \$10,995



Steve

Mike

Hwy 60 @ Hwy 70 • Pampa • 669-6062
Open 9:00 am - 6:00 pm Monday - Saturday

www.DougBoydMotors.com



TOP OF TEXAS CLASSIFIEDS

Reaching over 12,000 readers daily • Call Us at (806) 669-2525

June Featured Leases



LEASE A
NEW 2014 **COROLLA LE** 1

\$169 Per Month
24-Month Lease
\$999 Due at Signing



LEASE A
NEW 2014.5 **CAMRY LE** 2

\$199 Per Month
24-Month Lease
\$999 Due at Signing



LEASE A
NEW 2014 **RAV4 LE** 3

\$199 Per Month
24-Month Lease
\$999 Due at Signing



LEASE A
NEW 2014 **Prius Liftback** 4

\$199 Per Month
24-Month Lease
\$999 Due at Signing



LEASE A
NEW 2014 **TUNDRA Double Cab** 5

\$269 Per Month
24-Month Lease
\$2,499 Due at Signing

1. Lease a new 2014 Corolla LE: \$169 a month / for 24 months / with \$999 DUE AT SIGNING. Based on MODEL 1852, TOTAL MSRP \$19400, & NET CAPITALIZED COST of \$17416. LEASE END PURCHASE OPTION is \$13359 plus tax, title and license. Customer is responsible for disposition fee of \$350 (or less if required by state law), and excess wear & tear and 15 cents per mile over 24,000 miles. Dealer participation may affect final negotiated price and applicable taxes. NOT ALL CUSTOMERS WILL QUALIFY. Payments are calculated using TFS tier 1+ rate. Other tier credit payments are higher. Special financing available for a limited time to qualified buyers through Toyota Financial Services and participating Toyota dealers. Toyota Financial Services is a service mark of Toyota Motor Credit Corporation. Offers available in TX, OK, AR, MS, and LA only. Special Lease offer requires application of \$1100 GST Corolla lease subvention cash. Offer valid 06/03/14 - 07/07/14

2. Lease a new 2014.5 Camry Gas LE: \$199 a month / for 24 months / with \$999 DUE AT SIGNING. Based on MODEL 2532, TOTAL MSRP \$24449, & NET CAPITALIZED COST of \$20424. LEASE END PURCHASE OPTION is \$15652 plus tax, title and license. Customer is responsible for disposition fee of \$350 (or less if required by state law), and excess wear & tear and 15 cents per mile over 24,000 miles. Dealer participation may affect final negotiated price and applicable taxes. NOT ALL CUSTOMERS WILL QUALIFY. Payments are calculated using TFS tier 1+ rate. Other tier credit payments are higher. Special financing available for a limited time to qualified buyers through Toyota Financial Services and participating Toyota dealers. Toyota Financial Services is a service mark of Toyota Motor Credit Corporation. Offers available in TX, OK, AR, MS, and LA only. Special Lease offer requires application of \$2600 GST Camry lease subvention cash. Offer valid 06/03/14 - 07/07/14

3. Lease a new 2014 Rav 4 LE: \$199 a month / for 24 months / with \$999 DUE AT SIGNING. Based on MODEL 4430, TOTAL MSRP \$24940, & NET CAPITALIZED COST of \$22765. LEASE END PURCHASE OPTION is \$17998 plus tax, title and license. Customer is responsible for disposition fee of \$350 (or less if required by state law), and excess wear & tear and 15 cents per mile over 24,000 miles. Dealer participation may affect final negotiated price and applicable taxes. NOT ALL CUSTOMERS WILL QUALIFY. Payments are calculated using TFS tier 1+ rate. Other tier credit payments are higher. Special financing available for a limited time to qualified buyers through Toyota Financial Services and participating Toyota dealers. Toyota Financial Services is a service mark of Toyota Motor Credit Corporation. Offers available in TX, OK, AR, MS, and LA only. Special Lease offer requires application of \$1200 GST Rav 4 lease subvention cash. Offer valid 06/03/14 - 07/07/14

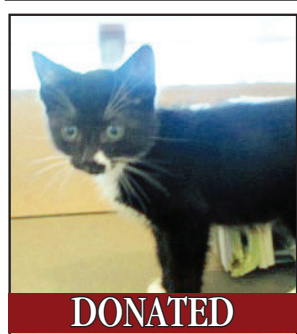
4. Lease a new 2014 Prius Liftback: \$199 a month / for 24 months / with \$999 DUE AT SIGNING. Based on MODEL 1223, TOTAL MSRP \$25695, & NET CAPITALIZED COST of \$21940. LEASE END PURCHASE OPTION is \$17182 plus tax, title and license. Customer is responsible for disposition fee of \$350 (or less if required by state law), and excess wear & tear and 15 cents per mile over 24,000 miles. Dealer participation may affect final negotiated price and applicable taxes. NOT ALL CUSTOMERS WILL QUALIFY. Payments are calculated using TFS tier 1+ rate. Other tier credit payments are higher. Special financing available for a limited time to qualified buyers through Toyota Financial Services and participating Toyota dealers. Toyota Financial Services is a service mark of Toyota Motor Credit Corporation. Offers available in TX, OK, AR, MS, and LA only. Special Lease offer requires application of \$2880 GST Prius lease subvention cash. Offer valid 06/03/14 - 07/07/14

5. Lease a new 2014 Tundra Dbl Cab: \$269 a month / for 24 months / with \$2499 DUE AT SIGNING. Based on MODEL 8240, TOTAL MSRP \$31714, & NET CAPITALIZED COST of \$28273. LEASE END PURCHASE OPTION is \$21834 plus tax, title and license. Customer is responsible for disposition fee of \$350 (or less if required by state law), and excess wear & tear and 15 cents per mile over 24,000 miles. Dealer participation may affect final negotiated price and applicable taxes. NOT ALL CUSTOMERS WILL QUALIFY. Payments are calculated using TFS tier 1+ rate. Other tier credit payments are higher. Special financing available for a limited time to qualified buyers through Toyota Financial Services and participating Toyota dealers. Toyota Financial Services is a service mark of Toyota Motor Credit Corporation. Offers available in TX, OK, AR, MS, and LA only. Special Lease offer requires application of \$500 GST Tundra lease subvention cash. Offer valid 06/03/14 - 07/07/14



CULBERSON-STOWERS TOYOTA

805 North Hobart Street • Pampa • 806-665-1665



DONATED

"Cliff"
Kitten Male

#13711



DONATED

"Carla"
Calico Female

#13744



FOUND

"Woody"
Small Chihuahua Male

#13933



FOUND

"Frasier"
Cocker Spaniel Found

#13914



FOUND

"Rebecca"
Collie Puppy Female

#13912



DONATED

"Diane"
Shnauzer Female

#13887

**Donations needed:
Wet & Dry Cat Food, Paper Towels**

Monetary Donations may be made Online at
www.pampaanimalwelfaresociety.com

Sponsored by:

BOURLAND & LEVERICH

an Edgen Group Company



FOUND

"Coach"
Heeler Male

#13886



DONATED

"Sam"
Terrier Mix Male

#13873



DONATED

"Lillian"
Dachshund Puppy Female

#13859

For more info about these pets or for any other questions, call 806-669-5775.

PampaSports

Lees to lead women's basketball program at CC

SUBMITTED BY CLARENDON COLLEGE

Addie Lees has been selected to lead the Clarendon College women's basketball team.

Lees, a graduate of Plainview High School, was recently hired as head coach of the Lady Bulldogs and is most excited to work with the young ladies who are joining the basketball program this fall.

"I am also looking forward to working in the positive environment," Lees said. "There are many people on campus and in the community who support the athletic teams and coaches."

Lees started playing basketball in grade school and says she loved the challenge and truly wanted to improve her game.

"Each year I looked forward to attending Plainview High School, where it would count."

While at Plainview HS, she helped lead the team to three state championship games, coming away with a pair of

titles in 2002 and 2003 and runner-up in 2004.

"I played the point guard position," she said. "After high school I had the opportunity to play college basketball at Midland College."

After earning an associate's degree at Midland, Lees went on to play basketball at the University of Arkansas at Monticello.

She earned a bachelor of arts degree in health and physical education at UAM, graduating Magna Cum Laude, and earned a Master of Science in Sport Administration from Eastern New Mexico University in 2011.

"My coaching career began immediately after receiving my Bachelor's degree," she said. "I worked as a graduate assistant for two years at Eastern New Mexico University before becoming the assistant and then the Associate Head Coach at Howard College. I spent two seasons with the lady hawks before coming to Clarendon College."

Lees believes believe that both her playing and coaching experiences have most prepared her for this position.

"From a young age I always took something away from each coach," Lees said. When asked who has in-

spired or mentored her, Lees said the person who has taught her much about basketball and running a program is the Head Coach at Howard College, Earl Diddle.

"His knowledge of basketball cannot be compared to most," Lees said. "He's a phenomenal teacher of the game and has proven that over many decades."

She said Diddle gave her insight each season and set a great example.

"Coach Diddle brought a competitive spirit to every single practice and game," Lees said. "He gives his all to improving the skill of athletes both on and off the court. He gave me the opportunity of a lifetime, and for that I am forever grateful."

Clarendon College Athletic Director Brad Vanden Boogaard said Coach Lees comes to Clarendon with a background of the conference and region from her playing days and time as an assistant.

"Coach Lees is an energetic and confident individual," he said. "I feel she will be very demanding of our athletes and give them great guidance in representing our college on and off the court."

Optimist Tournament Champions



Submitted Photo by Lori Waggoner

One Stop Flooring won the 7-8 year old Optimist Club League and Tournament. Pictured are (front row, from left): Zanden Salazar, Corbin Wood, Brant Hill, Jarrett Waggoner, Bryce Lynn. (Back row, from left): Judd Garth, Zander Cruz, David Cerventes, Landon Mcullar, Alex Passini. The team is coached by Brandon Hill and Jonathan Waggoner

US-Portugal game scores viewership goal

NEW YORK (AP) — The United States' 2-2 World Cup draw with Portugal is almost certainly the most-watched soccer game ever in the U.S., an emphatic confirmation of the sport's rising popular-

ity in a country slower to embrace it than the rest of the world.

The Nielsen company said that Sunday's gripping game was seen by an average of 24.7 million viewers on ESPN and

Univision. That matches it with the 24.7 million U.S. viewers who watched the 2010 World Cup final between Spain and the Netherlands.

ESPN said an additional 490,000 people streamed coverage of the game on their mobile devices through the company's app. Streaming numbers for 2010 weren't immediately available, but it's very unlikely they were that high because streaming apps were not as sophisticated then.

Many factors were in place to make it so popular: It was an exciting game, interest in the U.S. team was high because of the first-game victory against Ghana and World Cup viewing in general has been high. The Sunday evening time slot also meant many Americans were available to watch.

Follow Us On @thepampanews

Come try the Double Pak-a-Burger

C'mon, admit it! Your mouth just watered a little bit!

NOW SERVING FRIED PICKLES!

Pak-A-Burger 1608 N Hobart • Pampa 669-2865 • Mon-Sat 11-9

You've tried the rest, Now Taste The Best!

Drive-up Window

Watch the Pros

Baseball
Cards/Rockies or Nationals/Brewers.....MLBN 2 p.m.
Detroit Tigers at Texas Rangers.....FSSW 7 p.m.

World Cup Soccer
Nigeria vs. Argentina.....ESPN 10:30 a.m.
Bosnia vs. Iran.....ESPN 2 10:30 a.m.
Ecuador vs. France.....ESPN 2:30 p.m.
Honduras vs. Switzerland.....ESPN2 2:30 p.m.

Tennis
Wimbledon.....ESPN 6 a.m.
Wimbledon.....ESPNEWS 10:30 a.m.
Wimbledon.....ESPN2 1 p.m.

Golf
Professional National Championship....GOLF 1 p.m.

College Baseball (If Necessary)
Virginia vs. Vanderbilt.....ESPN 7 p.m.

The Ones to Trust

TRUSTSTAR REAL ESTATE

1712 N. Hobart • (806) 665-4595
Ron Lilley, Broker

HARNESS THE THRILL OF PLAYGROUND EARTH™

BUY FOUR TIRES AND GET **\$70** via Reward Card

BFGoodrich

After submission* when you buy a set of 4 new BFGoodrich® brand passenger or light truck tires. (Excludes BFGoodrich® Advantage T/A®, Radial T/A®, Traction T/A® and Winter Slatom® KSI tires, which qualify for \$50 Reward Card.)

Offer Valid June 16 - July 12, 2014

* See redemption form for qualifying tires eligible for either the \$50 or \$70 Reward Card promotional offer. Offer expires 07/12/14. Void where prohibited. The Reward Card cannot be reloaded with additional funds, nor can it be used at an ATM. Copyright © 2014 MNA, Inc. All rights reserved.

INDEPENDENCE SPECIALS

JUNE 27TH THROUGH JULY 5TH

30 PK CANS
• Coors, Coors Light, Budlight, Bud, Miller, Miller Light, Miller 64
\$23.49

CANADIAN MIST
• 1.75 ML
\$17.99

MALIBU
• 1.75 ML
\$24.99

30 PK CANS
• Keystone, Keystone Light, Natural Light
\$19.99

SMIRNOFF VODKA
• 1.75 ML
\$20.99

SEAGRAMS 7
• 1.75 ML
\$21.99

20 PK CANS
• Bud, Bud Light, Coors, Coors Light, Coors Original
\$17.99

OLE SMOKY MOUNTAIN MOONSHINE
• 750 ML
\$19.99

JIM BEAM
• 1.75 ML
\$24.99

NEW ITEM JONES SODA
• Orange & cream soda, Berry lemonade, Root beer, Cream soda

TASTING FRIDAY - 6/27 - 4-7PM

MIKEY'S LIQUOR STORE
1222 Price Rd. • 806-665-9662 • M-S 10am - 9pm
WE ICE DOWN COOLERS WITH BEER PURCHASES!

Services:

- Alignment
- Brakes
- Oil Changes
- Tires
- Custom Wheels
- Shocks & Struts
- Much More!

WARRANTIES HONORED AT OVER 30,000 LOCATIONS NATIONWIDE

HUDSON TIRE & SERVICE TIRE PROS

1800 N. Hobart St. • Pampa
806-665-5302
www.HudsonTirePros.com