

CHILDERS BROTHERS INC.
HOUSE LEVELING
 Uneven Floors
 Floor Bracing
 Cracks In Bricks
 Sticking Doors & Windows
 Interior Wall Cracking
FREE ESTIMATES
1-800-299-9563
 WWW.CHILDERSLEVELING.COM

Reward your graduate!
DOUG BOYD MOTOR CO.
 Celebrating 55 Years
 Corner of Hwy 60 & 70
806-669-6062
 Buy Here, Pay Here,
 No Credit Check
 Steve Mike
 Visa & Mastercard Accepted See our great selection of cars, trucks and SUVs at www.DougBoydMotors.com

Month Long Sale!
\$3 off /yd any carpet
50¢ off /sq ft any in-stock hard surface
1/2 off any in-store laminate
 install only, no carry out
Premier Floor Warehouse
 301 S. Cuyler, Pampa TX • 669-7001

The PAMPA NEWS

TODAY IN SPORTS



Tuesday, June 10, 2014 www.thepampanews.com Volume 110 • No. 46

75¢ Viewpoints: Dennis Palmitier | p4
 \$1.50 weekend Lovett Memorial summer reading | p5
 38¢ subscription Extra Innings: World Cup preview
 Junior Golf Clinic photos | p7,9

Alzheimer's support group in early stages

STAFF REPORT

Accolade Home Health Care will be holding an Alzheimer's support group meeting to check for the interest in the community.

The meeting will be at noon on June 23 at the First United Methodist Church located at 201 E. Foster. Attendees are encouraged to bring their own lunches.

For more information, contact Lindsey Presson, account coordinator for Accolade Home Health Care, at 806-665-9700.

Keeping the landscape in shape; there's an app or device for that

SUBMITTED BY TEXAS A&M AGRILIFE EXTENSION

DALLAS – Many tools are available for turf managers to help monitor soil or weather conditions, diagnose turf problems or even take the guesswork out of selecting the best-suited grass type for the shade environment, according to a Texas A&M AgriLife Research turf expert.

Dr. Ben Wherley, an assistant professor for turf-grass science/ecology with AgriLife Research and the Texas A&M University soil and crop science department in College Station, demonstrated some of the new tools and technologies available to attendees of the turf and landscape industry at the recent Turf, Landscape and Irrigation Expo at the Texas A&M AgriLife Research and Extension Center in Dallas.

Whether it is shade, pH, salinity, soil compaction, air circulation, soil type, spray application, lawn size or soil moisture, Wherley said there are an increasing number of helpful apps and tools available for professionals, such as landscapers, golf course superintendents and athletic field managers, as well as homeowners, since most of the devices are reasonably priced.

Some iPhone or iPad apps that are handy, he said, are:

- Sunseeker app allows a person to enter any date and determine the exact trajectory of the sun for that date, helpful in determining how many hours of direct sunlight will reach a given area. Wherley said it also is used for tree pruning and planting, allowing landscapers to identify the problem trees when they have shade issues and determine where the shade pattern will fall when a new tree is planted.

- Planimeter app allows a landscaper to pull up a GPS map of a client's home and drop pins on the corners of their property to get a quick, accurate estimate of the size of their lawn. "You could literally do a bid remotely or at the customer's doorstep without having to walk off or measure the site," Wherley said.

- Landscape and Garden Calculator app helps the landscaper or do-it-yourselfer calculate the quantity of materials, such as fertilizer and mulch needed for any given area, as well as fence lengths, spaces between items and angles if needed.

- Turfgrass Management app is designed for the southern U.S. and has pictures and information for all types of insects, pests and diseases – "things you might want to be looking out for on your site and it gives you an alert on your phone," Wherley said.

AGRILIFE cont. on page 2

White Deer Land Museum opens D-Day exhibit



Photos by John Lee

Friday, June 6, marked the 70th Anniversary of D-Day. To commemorate the Normandy Invasion, the White Deer Land Museum opened up a special exhibit in the annex wing of the museum. More pictures can be found on page 6. The exhibit features information which includes a time-line of events, the commanders of the war, a wooden hedgehog to replicate it's steel predecessors, a mini-theater of D-Day clips and other memorabilia pertaining to D-Day. The exhibit will be open through the summer.

LOVETT MEMORIAL KICKS OFF SUMMER READING PROGRAM



Photo by Lindsey Tomaschik

The Lovett Memorial Library started its summer reading program on Monday morning. The program will be on Mondays and Wednesdays from 10-11:45 a.m. until July 2. The program is for infants and children in eighth grade or younger, and children under the age of six must be accompanied by an adult. For more pictures from opening day of the program, turn to page 5.

Texas seen as "kind of an electoral wasteland"

By ROSS RAMSEY
 The Texas Tribune

Voter turnout in Texas is indisputably awful.

The March primaries drew 1.9 million, with only 560,033 voting in the Democratic contest and the rest voting in the more competitive Republican races. According to the Texas secretary of state's office, there were 18.9 million adults in the state in March, and 13.6 million of them were registered to vote.

Texans did even worse in the runoff last month. Only 951,461 voted — 201,008

in the Democratic primary. The competitive pickings were admittedly slim on that side of the ballot, but there is no way to spin Texas voters' anemic level of interest into a positive commentary on civic engagement.

"It is kind of an electoral wasteland — not a lot of competition, not a lot of motivation for the parties to get out and mobilize," said Michael P. McDonald, associate professor of government and politics at George Mason University. "If there is no battle, they just sit back and become weak and flabby."

In years when voters are not driven to the polls by presidential races — those always inflate the numbers — Texas is one of the worst places in the country for voter turnout and engagement.

In 2010, 32.1 percent of the state's eligible adults voted in the general election, according to the United States Elections Project maintained by McDonald. Only one place was worse: the District of Columbia, with 28.9 percent. The national rate was 41 percent — still lousy, but much better than in Texas. Minnesota was at the head of the class that year, turning

out 55.4 percent of its eligible population.

By the Elections Project's calculation, 15.5 million Texans were eligible to vote that year. Fewer were registered to vote, but the state had that many adults who were both citizens and non-felons (along with nearly three million adults who were not eligible). Most of them could have voted if they had wanted to vote.

Competition motivates voters, McDonald said: "They will think their votes matter, and the campaigns will work hard to get people to vote."

Malcolm Hinkle
 Refrigeration Co.
 Texas Lic # TACLA00021C
 Heating & Air
 Rooftop Units
 Indoor Air Quality
 Refrigeration
 Ice Makers
 Commercial & Residential
 Sales & Service Since 1952
806/665-1842

Total Care Health
 Caring & Effective Health care
 for Your Entire Family
(806) 688-2273
 Family Care • Urgent Care
 (Insurance, Cash, and Medicare)
 Loree Adams, FNP-BC
 701 N. Price Rd.
 Pampa, TX 79065

New Name.....
Same Great Service!
PANHANDLE PLAINS REALTY
 Linda Laycock – Broker 806.662.1312
 Tisha Holman, REALTOR® - 806.440.4153
 Larry Hadley, REALTOR® - 806.662.2779
 Pampa MLS & Amarillo MLS

IN THIS ISSUE:

Local Record	3	Classifieds	11-13
Weather	3	Puzzles/Dear Abby..	13
Viewpoints	4	Comics	14
		Sports	16



AgriLife

Continued From Page 1

• SoilWeb app allows anyone to access the GPS-based system, identify their location and determine what soil type is there.

The tools or devices Wherley demonstrated and his comments about each include:

• A wind meter – “Very helpful when a turf manager needs to make spray applications. When spray technicians go out and make an application, they need to be sure and document that the application was made under a minimal wind speed to avoid off-

target movement of the application. This device can be picked up for less than \$100.”

• Daily light integral or DLI meters – “Think of them as a rain gauge for light. They can be turned on and put anywhere on the landscape and you come back 24 hours later. It will register the amount of photons in a 24-hour period that that given spot has received – and ultimately that is what plants respond to.

“In recent years, we have begun to get a pretty good idea of the minimum DLI requirements for maintaining acceptable quality of different turf species and cultivars. It measures moles of light. By taking

a quick 24-hour measurement of your landscape – both in full sun and shade – you can get an idea of how a given turf species or cultivar will perform before you invest money in that sod.”

• Soil stick pH meter – “Designed to take readings in the field, you just press the tip of the unit onto the soil and you can get a reading instantaneously. If the soil is not wet, it will just need to be moistened slightly.”

• Quantum light sensor – “Light is a big issue, and this tells how much photosynthetic light is hitting a spot. Homeowners want to know ‘If I get X amount of shade in a spot, will a certain turf grow there?’

These are a little more expensive, about \$200 to \$300, so probably will be used by a professional rather than a homeowner.”

• Soil profile sampler – “This provides you an undisturbed soil profile sample 6 inches deep, which is good if you want to show a customer they have a thatch problem.

Or maybe they laid sod and they are watering and it is still wilting. You dig down and find out they have soil layering issues and the water can’t get down through the clay to the sand. You can learn a lot about a system by looking at the soil profile.”

• Soil moisture meters or soil probes – “These are utilized to monitor

moisture level in the soil profile. Many golf courses have begun to use these daily on greens for determining precisely where and how much to hand water, allowing the course to save water by not using the automatic irrigation system until the entire green has dried down.”


• Turf thermometer – “This can give you an idea early on of whether your turf is becoming water stressed. There can often be as much as a 20 degree difference between a watered lawn and a dry lawn, and as much as a 50 degree difference between the lawn and pavement or stone.”

• Electrical conductivity meter – “If you think salts

might be the reason for turf decline, this will help you test. Wherever the tip is will be where you measure salinity. Salt tends to accumulate at the surface or at the waterline, so you don’t stick this too deep into the soil. The device also allows you to track where salts have moved following rain or irrigation events, allowing managers the ability to know when they’ve effectively ‘flushed’ salts below the roots of their turf.”

“These are just a handful of some of the latest tools and technologies that have enhanced the capacity of today’s turfgrass professional to more effectively diagnose issues and better manage high quality green-scapes,” Wherley said.

Pantex Federal Credit Union is approaching 75 years of doing business with our members and celebrating early by giving back to our membership. From now until July 31st we are offering a discounted rate on new and used autos. These rates only apply to new and used autos.



AUTO LOANS
rates as low as


2.20%
Up to 36 months
New, used autos

2.30%
37 to 48 months
New, used autos

2.60%
49 to 60 months
New, used autos

2.80%
61 to 72 months
New, used autos

3.65%
73 to 84 months
New Autos Only



807 N. Sumner Pampa, TX
806-665-4212
www.pantexfcu.com
Federally Insured by NCUA

* Your rate is based on your individual credit score and the term of the loan. All rates are quoted "as low as" with approved credit. Rates are for new money only or non Pantex preexisting loans.

www.thepampanews.com

Daniel Boone Pellet Grill

\$100 OFF

for a limited time exp. June 15

Makes a great gift for Dad!



Features:

Digital Control	Thermal Sensor	Front Casters
Meat Probe	Durable Baked-on Finish	Stainless Steel Grate
Efficient Firebox	Peaked Lid	Front Casters

Fireside Comfort

665-9333

530 West Brown (Hwy 60) Pampa
Open Wednesday – Friday: 11 am - 5 pm

Morgan Stanley

Anupam “AJ” Johri
Named to The Financial Times’ “Top 400 Financial Advisors”



Dallas, TX, March 25, 2014 – Morgan Stanley announced today that Anupam “AJ” Johri, a Senior Vice President, Wealth Advisor in the Firm’s Plano Wealth Management office, has been named to The Financial Times’ 2014 list of America’s Top 400 Advisors.




The “Financial Times’ Top 400 Financial Advisors” is a select group of individuals who have a minimum of \$250 million in assets under management (AUM) and ten years of industry experience. Qualified Financial Advisors were scored on six attributes: AUM, AUM growth rate, compliance records, experience, industry certifications and online accessibility. Financial Advisors also had to commit to complete anonymous quarterly sentiment surveys for the FT.

“I am pleased that AJ is representing Morgan Stanley Wealth Management on this list,” commented Chris Barton, Complex Manager of Morgan Stanley’s Dallas East complex. “This is a well-deserved recognition of AJ’s experience, professionalism and dedication to the needs of his valued clients.”

Morgan Stanley Wealth Management, a global leader, provides access to a wide range of products and services to individuals, businesses and institutions, including brokerage and investment advisory services, financial and wealth planning, banking services, annuities and insurance, retirement and trust services.

Source: The Financial Times Top 400 Financial Advisors is an independent listing produced by the Financial Times (March, 2014). The FT 400 is based in large part on data gathered from and verified by broker-dealer home offices, and, as identified by the FT, reflected each advisor’s performance in six primary areas, including assets under management, asset growth, compliance record, experience, credentials and accessibility. The rating may not be representative of any one client’s experience and is not indicative of the Financial Advisor’s future performance. Neither Morgan Stanley Smith Barney LLC nor its Financial Advisors or Private Wealth Advisors pays a fee to The Financial Times in exchange for the rating.

PAMPA FORECAST

Today	Wednesday	Thursday
		
High 81 Low 59	High 90 Low 63	High 82 Low 62

Today: Sunny with a high of 81. Winds north-northwest at 13 mph. Sunrise at 6:28 a.m.

Tonight: Mostly clear with a low of 59. Winds south at 12 mph. Sunset at 8:59 p.m.

Wednesday: Isolated thunderstorms with a high of 90. Chance of rain: 30 percent. Winds south at 21 mph. Sunrise at 6:28 a.m.

Wednesday night: Partly cloudy with a low of 63. Chance of rain: 10 percent. Winds south at 14 mph. Sunset at 8:59 p.m.

Thursday: Isolated thunderstorms and wind with a high of 82. Chance of rain: 30 percent. Winds north-northeast at 20 mph. Sunrise at 6:28 a.m.

Thursday night: Partly cloudy with a low of 62. Chance of rain: 10 percent. Winds east-southeast at 10 mph. Sunset at 9 p.m.

For the record

Several arrested on alcohol, drug charges

STAFF REPORT

- Travis Heath Carr, 29, Pampa, was arrested Friday by the Department of Public Safety for possession of marijuana.
- Dakota James Lindsey, 20, Pampa, was arrested Friday by the Gray County Sheriff's Office for failure to identify fugitive with intention to give false information, four capias pro fine charges.
- Ramon Paul Ontiveros, 20, Amarillo, was arrested Friday by GCSO for motion

- to revoke probation — driving while intoxicated.
- Ronald David Dodd, 41, Pampa, was arrested Friday by GCSO for credit or debit card abuse.
- Michael Montgomery, 34, Pampa, was arrested Friday by DPS for driving while intoxicated, possession of a dangerous drug.
- David J. Recovo, 24, Albuquerque, was arrested Saturday by DPS for public intoxication.
- Jorge Cruz Quezada Martinez, 22, Pampa, was arrested Saturday by DPS

- for possession of marijuana.
- Fernando Martinez, 20, El Paso, was arrested Saturday by DOS for possession of marijuana, capias pro fine — speeding, capias pro fine — violation of promise to appear.
- Randon Highes, 29, Carlsbad, N.M., was arrested Saturday by the Pampa Police Department for public intoxication.
- Ashton Halie Sackett, 20, Pampa, was arrested Saturday by PPD for possession of drug paraphernalia, driving while license is

- invalid.
- Bradley Lee Davis, 21, Pampa, was arrested Saturday by GCSO for violation of probation — possession of a dangerous drug, insufficient bond — tampering with or fabricating physical evidence.
- Kyle Brit Woods, 43, McLean, was arrested Saturday by GCSO for evading arrest or detention with a vehicle.
- Michael Harding, 29, Liberal, Kan., was arrested Sunday by DPS for driving while intoxicated.

CITY BRIEFS

The Pampa News is not responsible for the content of paid advertisement

\$500 COULD be yours! Pampa News will have a drawing for \$500, when we reach 100 new subscribers! Subscribe or Re-Renew today and tickets will go in the basket for the drawing (need name & phone number on back of ticket). 1 mo. \$9.50-1 ticket, 3 mo. \$28.50-3 tickets, 6 mo. \$57-6 tickets, 1 yr. \$114-12 tickets. For every person you (the subscriber or new subscriber) refer to subscribe to the Pampa News, you will receive 5 tickets, and the referred person will receive tickets for signing up. So pass the word and win!!! Need 73 more New Subscribers to be able to have the \$500 drawing!!!

BURNING THE BRICKS Gearing up! Saturday, June 14th. Downtown Pampa. 806-662-9892

CLOSE OUT Sale buy 1, get 1 for 1/2 Price. Still have good selections! Hobart Gardens, 529 N. Hobart.

FREE TO Good Home- 2 box trained 10 year old cats: Very gentle / sisters / spayed. Owner passed away. Call (806)662-9781 or (806)665-3788.

THE ULTIMATE Garage Sale at the Pampa Mall has spots available. Sign up at SugarSkullz until Wed. Inside Space \$15, Outside Space \$20.

WELCOMING YOU to all "Burning the Bricks" activities in downtown Pampa, Sat. June 14th, ONLY the Burn-Out at Recreation Park has been canceled due to several complications. 662-9892.

Pieces of Pampa



Here is your clue for June 10's Pieces of Pampa:

"I am a bakery but I also serve non-breakfast items. There are two of me in town."

Bergdahl's return causes clash in US values

WASHINGTON (AP) — We never leave troops behind. We don't negotiate with terrorists.

Those core U.S. commitments, to the soldier, the country and the world, came into conflict when Sgt. Bowe Bergdahl fell into the hands of the Taliban and the government saw only one way to get him back: in essence, make a deal with terrorists.

The debate over Bergdahl rages on multiple fronts, touching on whether the U.S. came out on the short end in a bargain that freed five Taliban captives, whether the soldier who walked away from his

post was disloyal to country, whether adversaries will see more gain in capturing Americans, whether the administration was justified in acting without notice to Congress, and more.

What's clear in the complexities is that the age-old vow to retrieve the captured or the fallen proved more potent than the refusal to make deals with those who don't fight by the rules.

Each ethos runs deep in the American conscience, yet has been violated through history, notably in the age of terrorism, where traditional standards of warfare, spying and negotiating are run through a hall of mirrors.

Bergdahl and the five Guantanamo Bay, Cuba, detainees traded for his freedom were captives in an undeclared, unconventional and open-ended war that never fit neatly into the Geneva Conventions, U.S. military doctrine or slogans about how to behave.

The Soldier's Creed

History is replete with extraordinary acts to bring home the lost and fallen.

The U.S. Army's Warrior Ethos and the Sol-

dier's Creed both swear, "I will never leave a fallen comrade," and all the services place a premium on returning the missing, captured and dead. Often this comes at great cost, as in the 1993 Black Hawk Down battle in Somalia in which 18 U.S. servicemen were killed in the attack on U.S. helicopters and the subsequent rescue attempt.

And a soldier need not be a hero to qualify for a rescue mission or prisoner swap. Republican Sen. John McCain of Arizona, tortured as a captive in the Vietnam War, says Bergdahl was just as entitled as himself, no matter what the soldier was up to when he vanished.

McCain's quarrel was over the risk that he said the deal poses for others. "We have the obligation to do whatever we can to bring any of our captured service men and women back," he said on CNN's "State of the Union." "But the question is at what cost, whether it would put the lives of other American men and women who are serving in danger? And in my view, clearly this would."

To be sure, such risk as-

sessments are not new.

The debate over Bergdahl picked up as world leaders and ordinary citizens commemorated the 70th anniversary of D-Day. The legions storming the beaches of Normandy, France, from the sea and dropping behind German lines from the sky faced snap decisions under withering fire about what to do with the wounded or trapped.

Army history tells of wounded paratroopers left behind for the sake of the mission or the survival of their units. Sometimes medics were left behind, too, because they insisted on staying with the injured.

When the Korean War ended in 1953, thousands of missing and dead American soldiers were left behind, as well as POWs, as U.S. forces retreated from North Korea. Not all the missing and dead were returned after the truce and there was strong evidence some POWs were not handed over. Today the Pentagon is still trying to retrieve remains through a process, currently stalled, of paying North Koreans to support field excavations.

AUTO • HOME • BUSINESS • LIFE
JOHNSTON
 INSURANCE AGENCY
 Not The Largest...
 Not The Smallest...
 But The Best Rates & Service!
 1712 N. HOBART
 665.4133 (866) 665.2788

Retirement: Ready or not. Ready is better.



Duane Harp, AAMS®
 Financial Advisor
 1921 N Hobart
 Pampa, TX 79065
 806-665-6753
 www.edwardjones.com

Edward Jones
 MAKING SENSE OF INVESTING Member SIPC



For show times call
688-9192
 or **688-9229**

Located in the
 Corondo Shopping Center
 behind Hastings
 1201 N. Hobart
 Pampa, Texas

Have an Event? tell us about it!

Email us jclee@thepampanews.com

BIG
 time allergies?
Sneezing? Wheezing? Coughing? Itching?

We're here to help...
 with prescriptions
 or
 over the counter medications.

B&B Pharmacy
 300 N. Ballard
 665-5788

Free Delivery • Drive-up Window
 Nighttime: 665-2892


RED RIVER STEAKHOUSE
 McLean, Texas

WE CATER!
 Let us cater your next event,
 holiday meal or work party!
 Call us today to find out more.



Exit 141-143 • 101 W. HWY 66
 Open 11am-9pm Tue. - Sat. • (806)779-8940
"Best Steak You'll Ever Eat"

From OW to WOW!



Having an accident is always an inconvenient and emotional time. Our staff will assist you with filing your claim, dealing with your adjustor and finding a comfortable rental vehicle while we repair yours.

PRESTIGE
 AUTOBODY & ACCESSORIES

101 S. HOBART 806-665-3500

www.thepampanews.com

The PAMPA NEWS

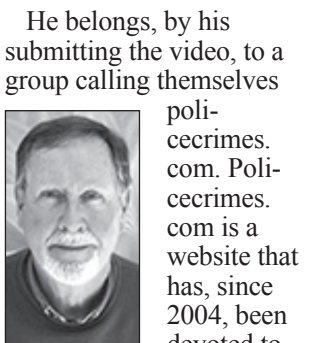
SERVING THE TOP O' TEXAS SINCE 1906
 403 W. Atchison • Pampa, TX 79065
 806-669-2525 • Fax: 806-669-2520
www.thepampanews.com

This newspaper (UPS 781-540) is published daily, except Sundays, Mondays and all national holidays by The Pampa News, 403 W. Atchison. Periodicals postage paid at Pampa, Texas. Postmaster: send address changes to The Pampa News, P.O. Drawer 2198, Pampa, Texas 79066-2198.

Publisher ReDonn Woods	Subscription Rates - Mail Delivery
Managing Editor John Lee	1 year \$114.00
Sports Reporter John Lee	6 months \$57.00
Reporter Lindsey Tomaschik	3 months \$28.50
Advertising Director Callie Odell	1 month \$9.50
Business Manager Carrie Hair	Single Copies
Circulation Beverly Taylor	Daily 75¢/Sunday \$1.50
Classifieds Ellen Tyre	Miss Your Paper?
Member Associated Press and Texas Press Association	Circulation department hours of operation are 8 a.m. to 5 p.m. weekdays.
	Copyright Notice
	The entire contents of The Pampa News, including its logotype are fully protected by copyright and registry and cannot be reproduced in any form for any purpose without written permission from The Pampa News.

Prairie Plains Perspective

Rights violated or looking for trouble?



DENNIS PALMIER

He belongs, by his submitting the video, to a group calling themselves poli-
 cecrimes.com. Poli-
 cecrimes.com is a website that has, since 2004, been devoted to videotaping, for the sole purpose of exposing law enforcement personnel across this country in acts of brutality or oppression, whether it be against a citizen or a member of their group, and placing those videos with hopes of going viral, on YouTube.

In April, a person calling himself a photographer video taped Gray County deputy sheriffs and Pampa policemen performing routine duties at a traffic stop on Cuyler Street. Photographer he is not. He is nothing but a yahoo walking around chosen city streets using a video camera with hopes of luring law enforcement personnel into his trap. He goes by the username andrewwake58

on his YouTube channel, and he is the owner of the viral video 'Rights Violated in Pampa, Texas,' or by another title, 'Small Town Hick Cops Hate to be Videotaped — Man Assaulted.' Small town hick cops? Give me a hick cop in Pampa, Texas versus living in crime-ridden cities such as Chicago, Detroit, New York City, Los Angeles, etc.

Policecrimes.com's website touts the groups knowledge of the First, Fourth, and Fifth Amendments of our Constitution. What the group doesn't tout about their videos is the fact their 'photographers' are schooled with what to say to an inquiring law enforcement officer, and that a goodly portion of law enforcement officers across this nation are not up on the Constitution. Am I endorsing policecrimes.com's motive? Hell no! I think their motive is reprehensible, like slime.

Make no mistake, what policecrimes.com and andrewwake58 are about. Their sole purpose is to make law enforcement come across as untrained, not knowledgeable on law,

and specifically, abusive. In filming this nonsense and promoting such in the media, they do everything possible with their videography to bait law enforcement going about their day to day tasks into overreacting to their 'photography.'

This particular video begins by showing a Gray County Sheriff's Deputy approaching andrewwake58 while he is narrating the scenario. What caught my attention is the deputy sheriff acknowledges to andrewwake58 that members of the Sheriff's Office had earlier noticed him walking about filming the police station, court house and Sheriff's Office — while not filming any other place of interest that say, tourists normally do. And, it's not rocket science to come to this conclusion when you hear the deputy sheriff ask for identifying information and andrewwake58 replies that he isn't required by law to do such, unless he is being arrested. I knew the first two minutes where this video was going. Andrewwake58's bait was bobbing in the water.

News editor, John Lee, this past Friday to discuss this video. Before we could converse, he was having to listen over the phone to some yokel calling from God knows where inquiring if The Pampa News was going to do a feature article based on the video's content. I liked what I heard John say. 'Twas a "No, no I am not."

God, how would this earth be if every single soul including those endeavoring in law enforcement were perfect? We sometimes make mistakes. Mankind learns from such. Here in my hometown, when I see standing in a courtroom awaiting a jury's verdict an entire sheriff's department and police department in a show of support and strength for the family of a murder victim, I know where my allegiance lies.

Pampa resident Dennis Palmier is a regular contributor to the opinion page on issues that affect Pampa and Gray County. He can be reached at denpalm1949@yahoo.com. Anyone wishing to respond to Palmier's viewpoints in the form of a letter to the editor can email Editor John Lee at jcllee@thepampanews.com.

ROBERT'S AUTO SERVICE
FREE WASH & VACUUM AFTER 9 OIL CHANGES
 Bring this card in with every oil change visit to receive punch. Fill card with punches and after 9 oil changes receive a free wash & vacuum.
300 N. Hobart 806-669-1117

- All types of minor repair
- Brake pads
- Oil change/full service
- Strut
- Tune-up
- Heat/air
- Tire rotation
- Shocks
- Water pump
- State inspection
- Wash/vac
- Full detail

ROBERT'S QUALITY REPAIRS AUTO SERVICE
 300 N. Hobart
 806-669-1117
 Hours: Mon-Fri 7-7 Sat 8-4

Disclaimer:
 The Pampa News welcomes the opinion of anyone who would like to contribute to the publication. Any thoughts and opinions expressed on our opinion page are those of the writers, not of The Pampa News. Any response to a column or opinion piece is welcomed in the form of a "Letter to the Editor" and can be sent to jcllee@thepampanews.com.

Have an Event? tell us about it!
 Email us jcllee@thepampanews.com
Submissions should be 100 words or less and written in the third person. Please include the title of the event, the date and time, physical address, the admission cost or whether it is a free event and a contact number and/or email address for the public.

Discover for yourself why Germania is The Insurance Texans Trust.®

Taylor & Miller Insurance Agency
 120 East Browning
 806-669-3062
Germania INSURANCE
 HOME • AUTO • LIFE

The real estate business can be risky if you don't have the right tools

Re/Max Hometown - (806)665-7355 - www.pattisellspampa.com

Check out our In-stock Merchandise

Finish up those small projects around the house and have your home ready for summer guests!

One STOP Flooring
 1533 N. Hobart • (806) 665-0995
 Mon-Fri 9am - 5pm • Sat 10am - 1pm
 GOD BLESS!

EITHER A SIMPLE REPAIR OR BATHROOM MAKEOVER

We have tools, the skills, and the time to help you with all those odd jobs you've been planning to do.

COME SEE THE CHIEF

CHIEF PLASTICS PIPE & SUPPLY INC.
 1237 & 1240 S BARNES PAMPA, TEXAS
 806.665.6716 OR 800.649.6716

Just because you don't live in town doesn't mean you should do without fast Internet!

Recommended Speeds for:

Make Your Favorite Apps Work the Way They're Intended!

3 Mbps

6 Mbps

What Speed Do You Need?

Services not available in all areas. Some restrictions apply.

GET FIRST 12 MONTHS of any speed up to 6 Mbps for only \$29.99 per month!

Sign up or Upgrade to PTCI Rural Internet Today!

222 S. Amherst Perryton, TX 721 W. 7th Spearman, TX 1-800-562-2556 ptci.net

CHIEF PLASTICS PIPE & SUPPLY INC.
 1237 & 1240 S BARNES PAMPA, TEXAS
 806.665.6716 OR 800.649.6716

LOVETT MEMORIAL LIBRARY SUMMER READING PROGRAM



Follow Us On

 @thepampanews

Resolve to...

 ...Be Sweet
BRANDON'S
 Flowers & Fine Gifts
 Sweet Shop Truffles Available at Brandon's
 123 N. Cuyler 665-5546 brandonsflowers.com

Now on Tuesdays
 Home of the OLD FASHION Greasy Burger and Cowboy Burger

Mexican Buffet
 11am-2pm
 Includes
 Tacos . Meat Enchiladas
 Cheese Enchiladas . Spanish Rice
 Pinto Beans . Chips and Salsa
 Good Food . Good Coffee . Good Friends

Granny's Home Cookin'

Breakfast Served ALL Day, EVERYDAY
 Lunch Buffet - Sun-Fri 11am - 2pm
 Evening Specials

Open 7 Days a Week . 5:30am - 9:30pm
 328 Frederic Ave . Pampa, Texas
806-669-6237
 Smoking Room Available

JUST for DAD

MENS SIEKO WATCHES
25% OFF

MENS CITIZEN WATCHES
25% OFF

CROSS PENS

MONEY CLIPS

MENS FOSSIL WATCHES

KEY RINGS

DAD JEWELRY

HAPPY Father's Day

RHEAMS
 DIAMOND SHOP
 111 N. CUYLER | 806-665-2831

Happy Father's day to the

BEST DAD

IN THE WORLD!

SURPRISE DEAR OLE' DAD WITH A NEW CROWN!
BUY ONE GET ONE FREE - SELECT CIGARS

DITCH THE TIES GET DAD WHAT HE REALLY WANTS!

CAPTAIN MORGAN 1671

CROWN ROYAL Monarch - 75th Anniversary

WOODCHUCK HARD CIDER

RODEO GOLD Lager

HIJOS DE VILLA Tequila Gift Set - \$21.99

HORNITOS Tequila Gift Set - 750ML - \$19.99

Patron Reposado - 750ML Gift Set - \$48.99

CASA NOBLE Anejo - Reposado Blanco

Mikey's Liquor Store 1222 N Price Rd (806) 665-9662

SUBSCRIBE TODAY!

CALL BEVERLY 806-669-2525

WHITE DEER LAND MUSEUM D-DAY EXHIBIT



**PAMPA, TEXAS
1944**

As the war raged in Europe and the troops from home began preparing to travel overseas for battle, the war was also in full effect in Pampa. The war effort was stronger than ever with everyone pulling together to support the troops. From buying war bonds and using ration stamps to feed the family, it was an unstoppable effort.

TAKE A LOOK INTO PAMPA IN 1944. YOU WILL SEE THEIR PUSH FROM THE HOMEFRONT AND A CITY UNITED IN A TIME OF WAR AND STRUGGLE.

2 GREAT OFFERS EVERY WEEK AT 

SPECIAL OFFER MONDAYS ONLY

2-PIECE MEAL \$2.99

plus tax | no substitutions lunch or dinner | no limit

leg and thigh
Individual mashed potatoes with brown gravy
1 freshly prepared biscuit

SPECIAL OFFER WEDNESDAYS ONLY

CHICKEN FRIED STEAK MEAL \$1.99

plus tax | no substitutions lunch or dinner | no limit

chicken fried steak with white gravy
individual mashed potatoes with gravy
individual cole slaw | 1 freshly prepared biscuit

DINE IN - DRIVE THRU - CARRY OUT

PAMPA 2201 N. Hobart St. 665-2766 17291

Commanders

Franklin D. Roosevelt (1882-1945)

Born in Hyde Park, New York, Roosevelt served four consecutive terms as President of the United States beginning in 1932. When Hitler attacked Poland in 1939, FDR stated that, although the nation was neutral, he didn't expect the U.S. to remain inactive in the face of Nazi aggression. With the fall of France in 1940, he signed the "lend-lease" bill in 1941 to enable the nation to furnish aid to nations at war with Germany and Italy. With the attack on Pearl Harbor four days later, FDR used his powers as Commander in Chief. He worked with and through his military advisers, overriding them when necessary, and took an active role in choosing the principle field commanders and in making wartime



IntegraCare Home Health

An Affiliate of Kindred at Home

Our patients quickly discover that skilled care, compassion and honor are at the very core of everything we do and everyone we touch.

Pampa

806.665.0301
www.integracarehh.com 15676

Delivery Service Available

We offer FREE citywide delivery!

Keyes Pharmacy
928 N. Hobart • 806-669-1202

Monday - Friday 8:30 a.m. - 6:00 p.m. Saturday 8:30 a.m. - 12:00 p.m. 18282a

find us on Facebook

To find Breaking News, Event Photos, & Video Clips.

facebook.com/thepampanews

Follow Us On

Twitter

@thepampanews

i ♥ You DAD

Donuts for Dad Friday, June 13

CABOT & NOI EMPLOYEES CREDIT UNION

806-665-0847
1063 N. Sumner Pampa, Texas
www.cabnoiecu.org

Lobby Hours: M-F 9am-5pm
Drive-Up Hours: M-F 7:30am-6pm

CRL Pump & Supply

24 HOUR SERVICE

Complete Line of Oil Field Supplies
New Location • Larger Selection of Inventory
All Major Manufacturers
Quality Down Hole Pump Repair
Just opened Goodyear Hydraulic Hose & Fittings Shop

503 Industrial Blvd. Borger, TX 79007 806-274-2692

1019 W. Alcock Pampa, TX 79065 806-665-0947

www.crlpump.com 6468

PAMPA Chamber of Commerce

(806) 669-3241
200 N. Ballard
www.pampachamber.com

The Pampa Chamber of Commerce will be hosting it's monthly luncheon on Tuesday, June 17th, 2014 at Noon. Please RSVP by Monday, June 16th, 2014.

Cost is \$10.00

Workforce Solutions will be the Program.
National Bank of Commerce will be Sponsoring.

When You NEED A Tow... BIG or SMALL

CALL US FIRST WE'LL BE THERE!

806-669-3481

Bonded • Insured • Experienced

Bob Douthit Autos
Parts & Auto Sales
Wrecker Service

1432 S. Barnes • Pampa

PLUS Parts New/Used

"We do Auto Lock-out"

MasterCard VISA American Express Discover

Ceramic Tile & Tumbled Stone
Showers, Countertops, Floors, Tub Surrounds.

Over 25 years Experience

Keith Taylor
Home 874-1779 lv. msg.

EXTRA INNINGS

World Cup action begins Thursday.

First off, I want to apologize to those that look forward to my weekly column. I decided during the slow sports season and increased youth group activities I would only be writing a column every other week during the summer. I will get back to the weekly columns sometime in August. I am going to be talking about a sport that isn't too popular here, but it is the most popular sport as a whole worldwide. That is the sport of soccer, futbol or football as it is also known by.

Thursday will mark the start of the 2014 Fédération Internationale de Football Association (FIFA) World Cup in Brazil. It is like the Olympics and only occurs every four years. It is a time where all participating countries get their best players together in hopes to bring home bragging rights for a year.

The first stage is a group stage. Groups are made up of four teams and everyone plays everyone in the group. Points are given based on a scale of three points for a win, one point for a draw and no points for a loss. It is important to score as many goals as possible because one of the tiebreakers is the goal differential in the games played. And another tiebreaker is the most goals scored in the group.

Only two teams advance from each group to bring the tournament to a Round of 16. From that point on the tournament turns into

knockout rounds with the championship on July 13 in Rio de Janeiro.

So if you're like me and watch the United States to root them on in any worldwide competition, let's check out the USA match-ups.

The USA is in Group G and it is a very tough draw. They get Germany, Portugal and Ghana. Germany is currently ranked No. 2 in the world by FIFA and finished third in the 2010 World Cup. Portugal is currently ranked No. 4 in the World by FIFA. Portugal was knocked out in the round of 16 in 2010 by the eventual champion, Spain. Ghana is ranked No. 38 by FIFA. Ghana knocked out the United States in the round of 16 in 2010. The United States is ranked No. 13 in the world by FIFA.

As you can tell this is a very tough draw with Germany, who is looking to possibly win the World Cup after coming up short in the last one. The USA is a better squad than Ghana so if they can beat them soundly and at least tie either Portugal or Germany, they might be able to advance to the knockout stage.

All 64 World Cup matches will be televised on ABC, ESPN or ESPN2. The United States kicks off against Ghana next Monday at 5 p.m. on ESPN.

If you are a soccer fan it is sure to be a very exciting month of football. Even if you aren't a soccer fan it could provide a break from the dog days of summer in baseball.

Zac Green is an avid Oklahoma State fan and youth minister at Mary Ellen and Harvester Church of Christ. He can be reached at zac.green@sbc-global.net.

Got A Sports Story or Photo?

Send them to us!
jcllee@thepampanews.com
or bring it to the paper!

Watch the Pros

- Baseball**
LA Dodgers at Cincinnati Reds.....MLBN 6 p.m.
Miami Marlins at Texas Rangers.....FSSW 7 p.m.
- Basketball**
San Antonio Spurs at Miami Heat.....ABC 8 p.m.

Four Harvesters named to All-District team

STAFF REPORT
The District 1-3A All-District teams for baseball were announced recently, and four Pampa Harvesters were named to the team.

Taking first-team honors at pitching is senior Ryan Powell. Powell's best game came on April 15 at Dalhart when he pitched a no hitter in the Harvesters' 11-0 victory over the Golden Wolves. The win was also the Harvesters' eventual playoff-clinching game.

Also taking first-team honors is fellow senior Ethan Hunt. Also in the win at Dalhart, Hunt had a home run which was his second in two games.

The first of two Harvesters named to second-team All District, freshman Brendon Woelfle was named at second base. Woelfle was impressive at the plate and second base where he always seemed to find a way to get the big play.

The other Harvester, sophomore Adam Zuniga, was a difference-maker on the mound and playing defense. He played well at River Road in a game that went to extra innings and showed ability to find the ball and get it where it needed to go to get the out.

The Pampa News would like to congratulate all of these players on their All-District honors.

Tech heads to first CWS

LUBBOCK, Texas (AP) — Two days. Two games. No runs allowed.

Dylan Dusek turned in his fourth consecutive scoreless start and Texas Tech advanced to the College World Series for the first time with a 1-0 victory over the College of Charleston on Sunday.

Dusek (8-0) worked five-plus innings, gave up three hits and walked one as Texas Tech (45-20) swept the best-of-three series with back-to-back 1-0 triumphs over the Cougars. Cameron Smith, Dominic Moreno and Jonny Drozd combined to work the final four innings for the Red Raiders.

"When I get home later this evening, I'm sure it will hit me," second-year Texas Tech coach Tim Tadlock said.

Adam Kirsch's RBI double in the fourth inning was the game's lone run. It marked the Raiders' third straight shutout in the postseason and fourth in their past five outings.

Bailey Ober (10-3) took the loss for College of Charleston (44-19), scattering six hits in eight innings.

"This was another tough loss, especially to end the season," College of Charleston coach Monte Lee said. "Give Texas Tech a lot of credit. Dusek and their bullpen and one of the best catches I've seen in 14 years as a head coach was the difference."

In the fourth, Tyler Neslony led off with a single to center. With one out, Kirsch laced a double down the right-field line that brought Neslony home.

Port-A-Cool

portable evaporative cooling units



Frank's **Do it Best** Hardware

401 N Ballard • 665-4995

JUNE 13 AND 14 BURNIN' THE BRICKS SPECIAL

Free order of onion rings with adult entree

LIMIT ONE PER TABLE
MUST PRESENT COUPON

DYERS BBQ

HWY 60 W. • PAMPA, TEXAS • (806) 665-4401

Pak-A-Burger

Taco Tuesday!

NOW SERVING FRIED PICKLES!



1608 N Hobart, Pampa
669-2865 • Mon-Sat 11-9
Drive-up Window

You've tried the rest, Now Taste The Best!

QUALITY COLLISION REPAIR

Put your car in our hands for expert collision repair at a fair price.

- Frame Straightening
- Fiberglass Repair
- Complete Overall Refinishing
- ASE Certified
- Down-Draft Spray Booth
- Free Estimates



CULBERSON-STOWERS BODY SHOP

805 North Hobart St. 665-1665
www.culbersonautos.com

Committed to Community



As a community bank with 29 years in this area, we're committed to meeting your needs both today and in the future. Our exceptional service and friendly staff will help you with your banking needs!

National Bank of Commerce

An Office of First National Bank Waupaca, WI
1224 N. Hobart (806) 665-0022



Childress
501 Commerce
(940) 937-2514

Shamrock
305 N. Main
(806) 256-2181

Community Calendar

IGLESIA BAUTISTA EMANUEL

Servicios de Domingo

Escuela Dominical: 10:00am
 -Adoración: 11:00am
 -Servicio de noche: 6:00pm
 Servicio Miércoles: 6:00pm



¡Jesus Vive!

Venga ver
 1021 S. Barnes
 665-4330
 Pastor
 Willy Jaramillo

7236

City Commission meetings

The Pampa City Commission meets at 4 p.m. the second and fourth Tuesday of each month. The meetings are held on the third floor of City Hall.

School board meetings

The Pampa Independent School District board meets at 5:45 p.m. on the fourth Monday of each month at the new administration building on North Hobart Street.

Immunization clinic 3 times a month

The Texas Department of State Health Services (DSHS) hosts an immunization clinic in Pampa three times a month. The clinics are held from 9:30 to 11:30 a.m. and from 1 to 3 p.m. on the first three Wednesdays of each month. The first 10 people in line for the morning and first 10 in the afternoon will always receive shots. However, if there are more than 10, they still may be able to accommodate the patients, or ask them to come back at another time. For more information, call 665-4752 or 806-874-3211. The clinic is located at 736

S. Cuyler St.

PAWS meets first Tuesdays

Pampa Animal Welfare Society meets the first Tuesday of each month at the Pampa Animal Shelter, 811 S. Hobart St. The meetings are at 6:30 p.m. and are open to the public.

There is a desperate need for more members. PAWS members are needed to work at the shelter from 3 to 5:30 p.m. each day and to work adoption days or take animals to the vets when needed, but mostly people are needed to love and work with the animals where they will be more adoptable.

For more information, call the shelter after 3 p.m. at 669-5775 and ask for the PAWS volunteer.

County Commission meetings

The Gray County Commission meets at 9 a.m. on the first and 15th of each month. If the date falls on a Saturday, the meeting will be held on Friday. If the date falls on a Sunday, the meeting will be held on Monday. The meetings are held on the second floor of the Gray County Courthouse.

TOT Republican Women's Club

Top O' Texas Republican Women's Club meets at noon on the third Wednesday of every month at the Pampa Senior Citizens Center, 500 W. Francis St. For more information call 806-669-1990.

Jam sessions every Friday night

The Woody Guthrie Folk Music Center has a jam session every Friday night starting at 6:30 p.m. Everyone is welcome to play or listen. The center is located at 320 S. Cuyler St. For more information, call 806-664-0824.

Meredith House presents live music

Meredith House, an assisted-living facility at 812 W. 25th Ave., has a band performing at 6:30 p.m. every Tuesday and Saturday night. Join them for Western music, gospel and the classics. For more information, call 806-665-5668.

Monday night dance club

The Monday night dance club meets from 7 to 9 p.m., each Monday, in the Pampa Chamber of

Commerce building on the corner of Ballard and Kingsmill. Admission is \$3.50. Cold drinks and coffee are offered. The club plays country music. For more information, call Della at 806-663-1136.

PPQG Meets fourth Thursdays

Panhandle Piecemakers Quilt Guild meets the fourth Thursday of each month, January through October, at the Pampa Senior Citizens Center at 500 W. Francis St.

The meetings are held at 6:30 p.m. and membership is open to adult quilters of all ages. Dues are \$15 annually. Meetings consist of a short business discussion followed by a program featuring quilting techniques. For more information, call 806-662-2909.

Editor's note: Email submissions to jcllee@thepampanews.com. Submissions should be 100 words or less and written in the third person. Please include the title of the event, the date and time, physical address, the admission cost or whether it is a free event and a contact number and/or email address for the public.

RASCO CONSTRUCTION & PAMPA
 GLASS & SUPPLY ARE NOW...



HIGH PERFORMANCE
 Exterior • Coatings • Glass



ARE YOU READY FOR A NEW GARAGE DOOR?
 ASK US ABOUT FINANCING OPTIONS!

1432 N BANKS | PAMPA, TX 79065
 PH 806.665.8100
 HIGHPERFORMANCEEXTERIORS.COM



WESTERN FINANCE

WHERE SERVICE COUNTS
LOANS up to \$1300

We Specialize in Helping People Who Have NO CREDIT OR BAD CREDIT

- LOANS ON CLEAR CAR TITLE
- COLLATERAL & SIGNATURE LOANS
- CREDIT STARTERS

2115 N Hobart • Pampa
 806-665-0970

Apply by Phone Today!
 All loans are subject to our liberal credit policy and credit limitations, if any.
www.WesternShamrock.com

12949

FROZEN?



CALL THE EXPERTS!

PC DREAMS

Computer Repair Done Right At Affordable Prices
 2100 N. Perryton Pkwy. • 688-7817

16488C

CARPET

- Large Selection TO FIT YOUR TASTE & BUDGET
- Free Estimates
- Professional Installation

WITT FLOORING CENTER

806 N. Main • Borger, TX
 806.273.9488

MON-FRI 8-5:30 SAT 9-3
 WWW.BORGER.BUYABBEY.COM

13215

ATTENTION ALLERGY SUFFERERS!!!

Total Care Health,PA of Pampa is offering:
Allergy Testing
Allergy Immunotherapy

Call to make an appointment today!
 Pampa's Local & Convenient Allergy Testing Center



Total Care Health,PA
 Located at New Life Wellness Center

701. N. Price Road
 Pampa, TX 79065
 (806) 688-CARE (2273)

17566



We will help you buy or sell your home!

Gary Winton: Realtor/Office Manager
 806-440-1698
 1712 N. Hobart • (806) 665-4595



New Name..... Same Great Service!

PANHANDLE PLAINS REALTY
516 Russell | Pampa, Tx
PanhandlePlainsRealty.com



Linda Laycock
Broker
BROKER®, GRI
(806) 662-1312



Tisha Holman
Associate
(806) 440-4153



Larry Hadley
Associate
(806) 662-2779

2014 Junior Golf Clinic at Hidden Hills



**Kelley's
Chevron**
Best Burgers in Town!

**Come
try
us for
breakfast**
1020 E. Frederic
806-665-5800



CUSTOM T-SHIRTS
RANDY HOLMES IS BACK!
Designing shirts at Outlaw Custom T's. Come by and place your order today!

Inside Lick's Feed Store
11668 W. HWY 60 Pampa, TX
806.290.7730 806.663.1341

HARNESS THE THRILL OF
PLAYGROUND EARTH™

BUY FOUR TIRES AND GET
\$70 via Reward Card
BFGoodrich

After submission* when you buy a set of 4 new BFGoodrich® brand passenger or light truck tires. (Excludes BFGoodrich® Advantage T/A®, Radial T/A®, Traction T/A® and Winter Slatom® KSI tires, which qualify for \$50 Reward Card.)
Offer Valid June 16 - July 12, 2014

* See redemption form for qualifying tires eligible for either the \$50 or \$70 Reward Card promotional offer. Offer expires 07/12/14. Void where prohibited. The Reward Card cannot be reloaded with additional funds, nor can it be used at an ATM. Copyright © 2014 MNA, Inc. All rights reserved.

Expect More
From Your Local Furniture Store
Fine Home Furnishings & Appliances for Any Room.

Living in Harmony

**When it matters most,
count on us.**

**HOME CARE, PALLIATIVE CARE
AND HOSPICE**

Physician Recommended
HealthCare 24 hours/day 7 days/week
Skilled Nursing & Physical Therapy Services
Interdisciplinary Team Approach
Physicians, Nurses & Social Workers
Spiritual & Bereavement Counselors
Telemonitoring
Specialized Therapy Programs & Services
KCI Wound Vac/Wound Care

Services:

- Alignment
- Brakes
- Oil Changes
- Tires
- Custom Wheels
- Shocks & Struts
- Much More!

**WARRANTIES
HONORED AT OVER
30,000 LOCATIONS
NATIONWIDE**

**HUDSON
TIRE & SERVICE
TIRE PROS**

1800 N. Hobart St. • Pampa
806-665-5302
www.HudsonTirePros.com

Johnson Home Furnishings
801 W. FRANCIS PAMPA, TX (806)665-3361
MONDAY-SATURDAY 9AM - 5 PM

**Interim
HEALTHCARE**
HOME CARE AND HOSPICE

Phone: 806.665.1445
Fax: 806.688.0186
www.interimhealthcare.com

17317

Send Us Your Church News

- Events • Special Services
- Charity Drives • General News

jclee@thepampanews.com lktomaschik@thepampanews.com



CULLIGAN GIFT CARD GIVEAWAY WINNER



Submitted photo
 Tex Jenkins is the winner of the Culligan Gift Card Giveaway. Participants were entered by updating their customer records. From left, Sue Fatheree, Tex Jenkins, Lidia Tinajero and Mary Lee Bolin.

HIGH PLAINS CRUISERS 11TH ANNUAL

BURNIN' THE BRICKS IN JUNE

PAMPA TEXAS

June 14, 2014
 Downtown Pampa, Texas

CAR SHOW - \$25

Sponsored by the High Plains Cruisers
 Saturday - Registration 8am - 12
 Judging from 10am - 2pm
 Cars & Trucks Only
 Trophies Awarded at 3pm

Proceeds to fund an Auto-Tech Scholarship

FLAG CEREMONY

at 12 Noon • 200th Anniversary of the National Anthem

BURN OUT CONTEST - \$15
 Canceled due to several complications
 Registration 8am - 12
 Recreation Park
 Please NO Motorcycles

Classes are subject to change, be added or deleted as needed

CRUISE - OLD PAMPA DRAG - \$10

Sponsored by the High Plains Cruisers & 99.3 KEFH-KOOL
 7pm - 9 pm
 All entries must be street legal, closed headers, and liability insurance
 Please NO Motorcycles

FRIDAY NIGHT DANCE

Sponsored by The Pampa News
 Norris Pavilion at Recreation Park
 Friday, June 13, 2014 at 7pm

for more info call Randy @ 806-662-9892

Refresh YOUR SUMMER LOOK

Start the summer with a new cut and color. Our pro stylists will create the look you want and send you home with the right styling tips to keep your hair looking gorgeous.

\$5 OFF Any Chemical Service

PERMS/COLOR/FOILS

Expires June 30th, 2014. Must present coupon to receive discount. Not valid with any other offers.

COME SEE THE NEW CREW!

Meet our experienced and helpful staff

NEW BARBER

Come say Hi to our new Barber Ricky

Tammy's Cut Ups

816 N. Hobart (806)665-6558 [Like us on facebook](#)

PROCEEDS TO BENEFIT FRITCH FIRE RELIEF

FIERY FRIDAY SPECIAL EVENT SERIES

PRESENTED BY: **THE PAMPA NEWS**

SUMMER CONCERT SERIES

WILLIAM CLARK GREEN BAND

LIVE IN CONCERT

WITH SPECIAL GUEST: **SALT CEDAR REBELS**

FRIDAY NIGHT @ 7pm

NORRIS PAVILION

JUNE 13th 2014

GRAB COOL FAN MERCHANDISE FOR THE BIG SHOW
williamclarkgreen.bigcartel.com/

PAMPA TEXAS

TICKETS AVAILABLE AT
fieryfridaypampa.ticketbud.com

\$10 ADVANCE/\$15 DOOR

SPONSORED BY:
 SWM • PAMPA CHAMBER OF COMMERCE
 HOUSEHUNTERS • MIKEY'S LIQUOR STORE
 HAMPTON INN • THE PAMPA NEWS • LINEAGE

WILLIAM CLARK GREEN

[YouTube](#) [f](#) [t](#) [i](#)

VISIT FIERY FRIDAY ON FACEBOOK FOR UP TO DATE CONCERT SERIES & EVENTS FOR SUMMER FUN IN PAMPA, TX.

LIFEWAY'S

Agency D3

DISCOVER DECIDE DEFEND | PETER 3:15

Vacation Bible School 2014

First Baptist Church
 Pampa
 June 16th-20th
 9am - 12pm

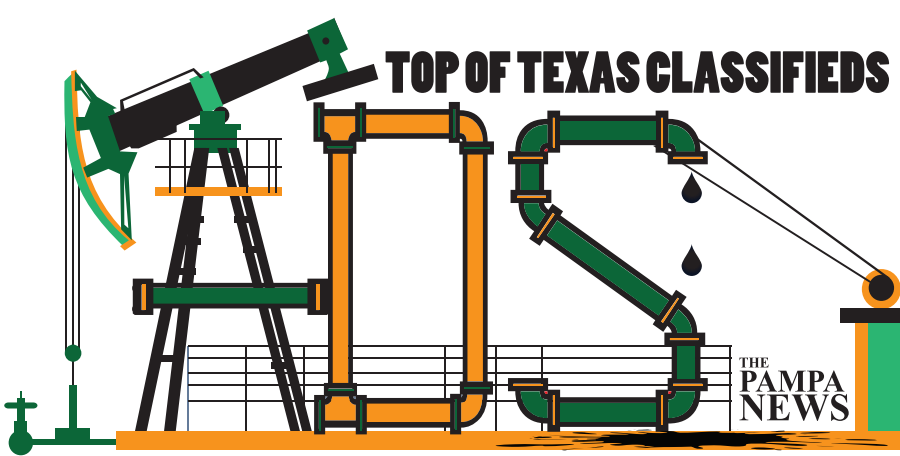
Ages 4 yrs - 5th Grade

Call 669-1155 for information or if you need transportatin to Vacation Bible School.

SUMMER KID & FAMILY ACTIVITIES

- MAY 16 - AMARILLO SOX
- JUNE 16-20 - VBS
- JUNE 18TH - VBS WATERPARK @ H2O
- JUNE 25 - FAMILY MOVIE @ FBC
- JULY 7-10 - KIDS CAMP (\$140/CAMPER)
- JULY 23 - ROLLER SKATING IN BORGER
- JULY 30 - FAMILY MOVIE @ FBC
- AUG 17 - BACK TO SCHOOL @ H2O

203 N. West St. (806)669-1155
Firstpampa.org



ADS For Sale

Call Us today For Details!

ADS Jobs

Call Us today For Details!

ADS Services

as low as \$69 per month see display

ADSHappy Ads FREE \$3 with photo

Say Happy Birthday to friends for FREE

5 Lines for 7 days \$37.50

7 Lines for 7 days \$47.50

Reaching over 12,000 readers daily • Call Us at (806) 669-2525

Carpentry

CUSTOM Building & Remodeling: Kitchens, Bathrooms & Additions. Shawn Deaver Construction, 662-2977

OVERHEAD DOOR REPAIR. Kidwell Construction. Call 669-6347, 806-663-0192.

Carpet Service

NU-WAY CLEANING SERVICE Bob Marx Owner-Operator. Call 665-3541.

Situations

House Keeper Looking for Houses and Businesses to clean. Very good references. Call 806-662-0309 in the morning.

Help Wanted

CEMENT Supervisors, Bulk Equipment Operators and Pump Truck Operators needed. Must have current CDL. Blue Cross/Blue Shield Ins, 401K. Apply in person to O-TEX Pumping, LLC, 1865 W. McCullough, Pampa, TX Mon - Fri 8am to 5pm

EAMH has openings for LVN, CNA, dietary & housekeeping. Competitive wages/benefits. Apply at 803 Birch, Canadian or call 806-323-6453.

FAMILY Owned local business is looking for a full-time customer service, sales and general duties person. Must be flexible, versatile and able to keep up with the demands of a busy work environment that changes daily. Must be able to lift 25 pounds. Paid medical insurance, holidays and vacation included. Ref. req. Send resume to Box 33, c/o The Pampa News, P.O. Box 2198, Pampa TX 79066-2198.

STEAMER Operator Needed. Experience required, benefits provided. Apply in person, 408 S. Price Rd.

TEXAS Rose Steakhouse is hiring Hostesses, Servers. No phone calls. Apply at 2841 Perryton Pkwy.

FLOGISTIX LP, a growing company in the oil and gas service industry has openings for ASME code welders & welder fabricators. We offer competitive pay and benefits including health insurance, 125(c), 401k, incentive bonus plan, paid holidays and vacation. Physical and drug test required. Applications may be picked up at 2538 W. Kentucky. Fax resume to 888-812-4114, email to jobs@flogistix.com or mail to P.O. Box 501, Pampa, TX 79066-0501.

HELP Wanted at Jay's Drive-In, 924 Alcock, St. Apply in person only, after 3pm. All shifts needed. ONLY SERIOUS applicants apply!

JULIE'S Hallmark now hiring. Apply in Person, 125 W. Kingsmill

LIFEGUARDS needed at Pampa Country Club. Drug free work environment. Apply in person. NO PHONE CALLS

MOJO's is taking applications for cooks. Apply in person 113 S. Cuyler. NO phone calls, please.

FREE ADS for Free Items! Call Ellen Today! 669-2525

Help Wanted

NATIONAL BANK OF COMMERCE is looking for a Bank Teller. Banking/Money handling experience required. Good personality is a Must! Good benefits include Insurance, Personal Days, Vacation, Bonuses, 401K Plan. Please apply at 1224 N. Hobart, Pampa, Texas.

NOW HIRING Front Desk Agents. Apply in person at AmericInn of Pampa, 1101 N. Hobart. NO phone calls!

Office Assistant/Receptionist needed. Knowledge of Microsoft Office a must, 30 hrs/week at \$11/hr. Please apply in person at CoreTerra Operating, LLC. 2601 W. Kentucky Ave.

Pharmacy Clerk/Tech Trainee Needed HS diploma or equivalent, must be 18. Apply in Person at Keyes Pharmacy, 928 N. Hobart

PHARMACY Tech - MUST be good at math. MUST have excellent 10 key & keyboarding skills. Must have PROFESSIONAL APPEARANCE! Apply in person AFTER 4pm at Heard Jones, 114 N. Cuyler. RESUME REQUIRED

SALES ASSOCIATE: Sherwin-Williams, a leader in the paint and coatings industry, has an opening at our Pampa, TX store for a (part-time) Sales Associate. In this position you will assist customers, stock and price products, maintain store displays and tint/mix paint. Competitive salary, vacation pay, growth opportunities, company-paid pension (min hours req to be eligible), company-paid training and employee discounts. High school diploma or equivalent, ability to work all scheduled hours, valid TX driver's license and appropriate vehicle insurance required. Apply at: The Sherwin-Williams Company, 2109 N. Hobart, Pampa, TX.

We are looking for a self-motivated individual to perform the duties of a loan processor. Qualified candidate must be outgoing, detail oriented and have excellent communication skills with members and co-workers. Please send resumes to P.O. Box 920, Pampa TX 79066-0920

Miscellaneous

For Sale 30" HUSQVARNA riding lawn mower w/catcher, 2 mo. old. New \$1650 sell for \$1000. Call 886-0146.

FOR SALE: Double Lawn Crypt in Memory Gardens. Call 806-898-2451

LIKE NEW!! ELECTRIC WHEELCHAIR \$1000 CALL 669-6979

Miscellaneous

NEW Queen Mattress Set \$246. All sizes on sale. Red Barn 1424 S. Barnes. 665-2767.

Farm Animals

13 MONTH to 2 year old purebred Angus bulls for sale. \$2000 each. Call Frog's Angus at 806-662-4861

Pets & Supplies

FREE 10 yr. old female black Lab-not spayed and 5 lb. tan female Chihuahua-spayed. 806-665-5680.

FREE TO GOOD HOME- 2 box trained very sweet adult cats: Very gentle/sisters/spayed. Owner passed away. (806)662-9781 or (806)665-3788.

Wanted to Buy

NEED money now? We Buy & Sell Houses & pay TOP \$\$\$ Call today! 665-1875

Unfurnished Apts.

\$350/mo and up. Large 1 bdr. apts. w/ app. are in walking distance to things you need. 665-4274, 663-2579, 881-8518

APTS. Houses Duplexes. K&B Properties. Ref. & dep. req. Lakeview Apts. 665-0995

Now Accepting Applications!

PAMPA MANOR APARTMENTS TDD: 1-800-735-2989
Elderly (62 years of age) Handicapped/ Disabled of any age
Some Rental Assistance is Available. This institution is an equal opportunity provider and employer.
Apply Today!
2700 N. Hobart Street
806-665-2828

CAPROCK APTS. 1, 2 and 3 bedrooms with rent starting as low as \$445/mo. Pool and on-site laundry, W/D hookups in all 2 and 3 bdms. 665-7149.

Duplex-1005 N. Wells, 3 bd, with garage, \$750 mo., Available Aug. 1st. Call 936-242-6926.

Schneider Apartments: Call for special rates. Short term lease. Business people welcome. 665-0415

TEXAS SIZE APTS. 1 and 2 bdr. Apts. Largest in Pampa Plus Houses Too! Great Value! 665-1875 or 881-8518

Furnished Houses

3 bedroom furnished or unfurnished house, 1 3/4 baths. Central heat & air. 662-9669

Unfurnished Houses

\$395/mo. and up!! 2 & 3 Bdrm Houses for rent. 665-1875 or 881-8518

PICK up rental list in the Black Box at 125 S. Houston, Pampa.

Business Rent. Prop.

DOWNTOWN Properties: Service Station, Retail, Restaurant / Bar, etc. 665-1875, 881-8518

DOWNTOWN office space for rent. Utilities & cleaning service provided. Ample parking 669-6823

OFFICE space for rent. Ask about 3 months free rent. 669-6841

Homes for Sale

Rod Donaldson Agent 663-2800
Quentin Williams Realtors

NEW LISTING! 1529 N. Christy MLS# 14-10050 3 bdr, 2 ba 1558 sq. ft. NICE!

PRICE REDUCED! 1527 N. Faulkner 3 bdr, 1 1/2 ba 1276 sq. ft. \$71,900

NEED LISTINGS!! www.rod-findahome.com

Anyone can find you a house, let me find you a home!!

2408 DOGWOOD: 4 bdrm, 2 bath, fireplace, 2472 sq ft. Priced to buy! Call Jimmy at 806-570-9924

3 Bedroom 806-886-1893 House Auction June 14 @ 10 am Elk City, OK 73644 GRANTS AUCTION.COM

912 CRANE RD. 3 bdrm., 2 ba., fireplace, upgrades. 1600 sq. ft. 2008, \$165K. Call Mark 806-595-0754

Homes for Sale

TRUSTAR Real Estate for all your complete real estate needs. Show, list, property mgmt. 665-4595

Trailer Parks

Tumbleweed Acres: storm shelters, fenced, stor. bldg. avail. 665-0079, 886-2230

Autos

IDEAL FOR COLLECTORS! 1979 Pontiac TransAm. White / blue, lrg bird on hood. One owner! 24,500 actual miles, 6.6 L, 403 eng. Auto transmission. All original. Good price \$21,900. Call 806-665-4836.

TRY M&S Auto for all your auto repair needs. Call Ray or Mike, 120 N. Gray, 669-6990.

THEY AD HAS BEEN SEEN BY OVER 7,000 PEOPLE TODAY
ADVERTISE HERE GET NOTICED
THE PAMPA NEWS (806)669-2525

JW POWER COMPANY
114 WESTERN P.O. BOX 2215 PAMPA, TX 79066-2215
SEEKING SELF MOTIVATED INVENTORY ASSISTANT
CLEAN DRIVING RECORD
DRUG TEST/PHYSICAL REQUIRED
EXCELLENT BENEFIT PACKAGE AVAILABLE
FAX RESUME TO 866-743-3194 AND APPLY ON LINE AT WWW.JWENERGY.COM

Trucks

03 Dodge 1500, HEMI, Quad Cab, 1 Owner, Power Seat/Windows/Locks, Towing Pkg. \$7,900. Call 898-7145.

Motorcycles

2000 Honda Valkyrie Interstate has: Faring Hard Bags Red & Black In Excellent Condition! \$6500 806-662-4909

2005 EXTIOX CYCLE VISION Replica of Easy Rider 6 spd 124cc S&S Lots of Chrome \$11,500 OBO 806-662-1985

2005 Yamaha Royal Star with trike kit. 10,000 miles, black with silver, back rest & windshield. Mint condition. Asking \$9,000. Call 662-3497

Motorcycles

2007 HARLEY SPORTSTER 1200 4900 Miles White Gold Pearl Excellent Shape!! \$7500 Call 663-6317

General Services

CERAMIC tile work, stucco, cement, remodeling, floor, shower, kitchen. Texture, painting, dry wall. Free estimate. New # 440-0239, leave msg, Jesus Baraza.

COX Fence Company. Repair old fence or build new. Free estimates. Call 669-7769

HOUSE cracking? In bricks or walls? Childers Brothers, Inc. 800-299-9563, 806-352-9563.

Texas Panhandle CENTERS Behavioral & Developmental Health Making Lives Better
ASCI Pampa Therapist Tech I - \$9.07/hr.
Direct care of persons with Intellectual Disabilities in a day habilitation setting.
Apply at 1301 W. Somerville, Pampa, TX 806.669.3371 Or at 901 Wallace Blvd Amarillo, TX • 806.358.1681
Full-time positions offer a paid benefit package for the employee including health, dental, life, retirement and Paid Time Off. An Equal Opportunity Employer. Drug Free & Tobacco Free Workplace, Pre-Employment Drug Screening Required.
More Jobs @ www.texaspanhandlecenters.org/employment

HERBS • VITAMINS • WEIGHT LOSS • ENERGY • WOMEN'S & MEN'S NEEDS
Herbs Etc. Nature's Sunshine Herbs & Vitamins 109 W Kingsmill, Pampa (806) 665.4883 www.panhandlesunshine.com

Murphy-Brown LLC
Smithfield Premium Genetics Group
Maintenance, Sanitizers, and Herd Techs
Smithfield Premium Genetics, the live production company for Smithfield Foods, Inc., has several openings in Pampa, TX. Excellent benefits, including health, dental and vision insurance, 401k, pension, and paid time off. Career opportunities are available for the right individuals.
Farm Maintenance- Starting pay is commensurate with experience
• Plumbing, welding, and electrical experience required
• Routine and annual maintenance Sanitizer- Starting pay is \$10.50
• Pay increase within 6 months
• Loads, unloads, and cleans hog trailers
• Miscellaneous other farm duties
• Herd Technician- Starting pay is \$10.50
• Pay increase within 6 months
• Cares for the pigs and other animal husbandry type duties
You can apply in person @ Smithfield Premium Genetics located 11 Miles East of Pampa on Hwy 60 between 10:00am - 3:00pm or at the Texas Workforce Office in Amarillo or Borger.
Equal Employer/Affirmative Action Employer m/f/d/v

Your Dream Home is Waiting
HOME FOR SALE
2408 Dogwood
4 Bedroom 2 Bath, Master has Garden Tub with 2 Sinks, Living Area has Fireplace, Formal Dining or Office kitchen is spacious with large breakfast Nook. This Property is Priced to Buy.
Call Me Today for your Showing!
Jimmy - 806-570-9924.

SUBSCRIBE TODAY! Get The E-Edition too for an extra \$5 A month
1 month - \$9.50
3 months - \$28.50
6 months - \$57.00
1 Year - \$114.00
CALL TODAY! 806-669-2525
The Pampa News is delivered through the Mail daily Tuesday through Saturday. No papers are issued on Holidays.



TOP OF TEXAS CLASSIFIEDS

Reaching over 12,000 readers daily • Call Us at (806) 669-2525

General Services	Legals / Public Notice	Legals / Public Notice	Legals / Public Notice	Legals / Public Notice	Legals / Public Notice	Legals / Public Notice	Legals / Public Notice	Legals / Public Notice	
<p>JH CONCRETE all types of concrete incl stamp, fence, pools. Free est, financing available. 806-382-5408.</p> <p>Ogle Fence Company Free Estimates Repair & New Const. 665-1712</p>	<p>Texas Cause No: TAX-3446 Gray County vs. HENSLEY, KOLEEN Lots Forty-One (41) and Forty-two (42), in Block Three (3), Floral Addition to the City of McLean, Gray County, Texas Cause No: TAX-3458 Gray County vs. CRUZ, GERARDO & DIONICIA The North twenty-five feet (N 25') of Lot Seventeen (17), and all of Lot eighteen (18), Block Nine (9), Finley Banks, an Addition to the City of Pampa, Gray County, Texas Cause No: TAX-3489 Gray County vs. MORGAN, BILLY W & H MICHELLE HUTCHISON The East 89.95 feet (E 89.95') of Lot Seven (7), in Block Seven (7), Crawford Addition to the City of Pampa, Gray County, Texas Cause No: TAX-3507 Gray County vs. BRUNSON, ANN & EUNICE BRUNSON Lot Twelve (12), in Block Twenty-two (22), Talley Addition to the City of Pampa, Gray County, Texas Cause No: TAX-2788 GRAY COUNTY, ET AL vs. WAITE, GARY Lot Ten (10), in Block Ten (10), North Crest Section 1, an Addition to the City of Pampa, Gray County, Texas Cause No: TAX-3080 GRAY COUNTY, ET AL vs. BURR DEWEY & JOAN Lot Five (5), in Block Twenty-five (25), Jarvis Sone West, an Addition to the City of Pampa, Gray County, Texas Cause No: TAX-3170 GRAY COUNTY vs. COOPER, GENEVA ESTATE Tract 1: Lot Eighteen (18), in Block One (1), Parkhill Annex, an Addition to the City of Pampa, Gray County, Texas Cause No: TAX-3199 GRAY COUNTY, ET AL vs. WRIGHT, PATRICIA Tract 1: Lot Three (3), in Block One (1), Hyatt, an Addition to the City of Pampa, Gray County, Texas Cause No: TAX 3249 GRAY COUNTY, ET AL vs. COMBS, DENNIS ESTATE Tract 2: A tract of land out of Plat 162, Suburbs of Pampa, Gray County, Texas, abutting 112.1' on the Northeast side of Carr Street, and being described by metes and bounds as follows: Beginning at a point in the Northwesterly right of way line of Carr Street 150' Northwesterly from its intersection with the northwesterly right of way line of Short Street; Thence 112.1' in a Northwesterly direction along the Northeastly right of way line of Carr Street; And going back between parallel lines a sufficient distance to encompass all of what is shown as Tract 162-A-8 and the South 39.35' of Tract 162-A-2 on the plats and/or records of the Tax Assessor of the City of Pampa. Cause No: TAX-3387 MIAMI INDEPENDENT SCHOOL DISTRICT vs. GATLIN, SAM Lots Four (4), Five (5), and Six (6), all in Block Five (5), East Laketon, Gray County, Texas Cause No: TAX-2403 GRAY COUNTY, ET AL vs. SMITH ANN Lot Three (3) in Block Two (2) Broadmoor Addition to the City of Pampa, Gray County, Texas Cause No: TAX-3436 GRAY COUNTY vs. ALLISON, STEVEN Lot One (1), in Block Three (3), Finley Banks, an Addition to the City of Pampa, Gray County, Texas</p>	<p>MARTIN, ELLA S CASTLEBERRY Tract 1: .0069450 Royalty Interest in Section Seven (7) Block Thirty (30), H&GN Survey, Castleberry #1 Lease Number 13300, RRC 23697, Cimarex Energy of Colorado, Operator Tract 2: .0286460 Royalty Interest in Section One (1) BS&F Survey, Wilson #2 Lease Number 21800, RRC Number 23757, Cimarex Energy of Colorado, Operator Tract 3: .0052100 Royalty Interest in the Castleberry #3, Lease No. 205881, RRC No. 184070, located in Section 7, Block 30, H&GN Survey, Gray County, Texas, Cimarex Energy of Colorado, Operator Cause No: TAX-3615 Gray County vs. MARTIN, JEFF & MANDI Lots Four (4) and Five (5), in Block Twenty-seven (27), Talley Addition to the City of Pampa, Gray County, Texas Cause No: TAX-3618 Gray County vs. STINNETT, RICHARD Tract 3: Lot Two (2), in Block Three (3), Cole Addition to the City of Pampa, Gray County, Texas Cause No: TAX-3537 GRAY COUNTY, ET AL vs. OXLEY, EMMALINE F ESTATE Lot Eighteen (18), in Block Five (5), Finley Banks, an Addition to the City of Pampa, Gray County, Texas Cause No: TAX-3573 Gray County vs. KELLEY, KEITH & ELIZABETH Lots Twenty (20), Twenty-one (21), Twenty-two (22), Twenty-three (23), and Twenty-four (24), all in Block Forty (40), Wilcox Addition to the City of Pampa, Gray County, Texas Cause No: TAX-3589 Gray County vs. KIRBY, INOCENCIA G Tract 7: A 0.0037326 Royalty Interest in Lot Seventy-six (76), Block B2, H&GN Survey, Gray County, Texas; Kirby Lease, Well C 3, RRC Number 46531, Kimbrel Oil Corporation, Operator. Tract 2: A 0.0037327 Royalty Interest in Lot One-Hundred Four (104), Block B2, H&GN Survey, Gray County, Texas; Kirby Lease, Well B 1, RRC Number 23058, Kimbrel Oil Corporation, Operator. Tract 5: A 0.0037330 Royalty Interest in Lot Seventy-five (75), Block B2, H&GN Survey, Gray County, Texas; Kirby Lease, Well C 3, RRC Number 46531, Kimbrel Oil Corporation, Operator. Tract 2: A tract of land out of Plat 162, Suburbs of Pampa, Gray County, Texas, abutting 112.1' on the Northeast side of Carr Street, and being described by metes and bounds as follows: Beginning at a point in the Northwesterly right of way line of Carr Street 150' Northwesterly from its intersection with the northwesterly right of way line of Short Street; Thence 112.1' in a Northwesterly direction along the Northeastly right of way line of Carr Street; And going back between parallel lines a sufficient distance to encompass all of what is shown as Tract 162-A-8 and the South 39.35' of Tract 162-A-2 on the plats and/or records of the Tax Assessor of the City of Pampa. Cause No: TAX-3387 MIAMI INDEPENDENT SCHOOL DISTRICT vs. GATLIN, SAM Lots Four (4), Five (5), and Six (6), all in Block Five (5), East Laketon, Gray County, Texas Cause No: TAX-2403 GRAY COUNTY, ET AL vs. SMITH ANN Lot Three (3) in Block Two (2) Broadmoor Addition to the City of Pampa, Gray County, Texas Cause No: TAX-3436 GRAY COUNTY vs. ALLISON, STEVEN Lot One (1), in Block Three (3), Finley Banks, an Addition to the City of Pampa, Gray County, Texas</p>	<p>Six (6), Finley Banks, an Addition to the City of Pampa, Gray County, Texas Cause No: TAX-3685 GRAY COUNTY, ET AL vs. MASSEY, BOBBY J & ELLA M Lots One (1), Two (2), Three (3), Four (4), Five (5), and Six (6), all in Block M, AB Woods Subdivision, Gray County, Texas Cause No: TAX-3693 Gray County vs. KOEHLER, LEE ERIN STUBBS Tract 3: .007609 Royalty Interest in the Stubbs, Lease No. 21000, RRC No. 23752, located in B&B Survey, Section 9, Block 3, Gray County, Texas Tract 5: .007609 Royalty Interest in the Stubbs, Lease No. 200673, RRC No. 218485, located in B&B Survey, Section 9, Block 3, Gray County, Texas Tract 6: .007609 Royalty Interest in the Stubbs, Lease No. 200674, RRC No. 224128, located in B&B Survey, Section 9, Block 3, gray County, Texas Tract 1: A one-third (1/3) interest in the two (2) acre tract in Abstract four hundred ninety-six (496), Section Nine (9), Block Three (3), B&B Survey, Gray County, Texas Tract 4: .007609 Royalty Interest in the Stubbs, Lease No. 991273, RRC No. 171565, located in B&B Survey, Section 9, Block 3, Gray County, Texas Tract 2: A one-third (1/3) interest in the 118.44 acre tract located in Tracts One (1) and Two (2), Abstract four hundred ninety-six (496), Section Nine (9), Block Three (3), B&B Survey, Gray County, Texas Cause No: TAX-3706 Gray County vs. PENDLETON, ALBERT & VICKEY Lot Ten (10), in Block FDiv (5), Hillcrest Terrace Subdivision to the City of Pampa, Gray County, Texas Cause No: TAX-3619 GRAY COUNTY, ET AL vs. PEREZ, ANTONIO & ESPERANZA Lot Six (6), in Block Five (5), Crawford Addition to the City of Pampa, Gray County, Texas Cause No: TAX-3654 GRAY COUNTY, ET AL vs. LOSURE, KEN Tract 2: .8470000 WI IN THE WILLIAMS M G #1 LEASE NUMBER 68200 RRC #24402 LOCATED IN DISTRICT 10 B2 121 H&GN SURVEY, GRAY COUNTY, TEXAS Tract 4: 1.0000000 WI IN THE PURVIS LEASE NUMBER 976245, RRC #164563 LOCATED IN DISTRICT 10 S C CASE #24345 LOCATED IN DISTRICT 10 B2 153 H&GN SURVEY, GRAY COUNTY, TEXAS Tract 3: .8470000 WI IN THE EVANS C E #1 LLEASE NUMBER 66500, RRC #24345 LOCATED IN DISTRICT 10 B2 153 H&GN SURVEY, GRAY COUNTY, TEXAS Cause No: TAX-3670 GRAY COUNTY, ET AL vs. THROCKMORTON, ERNESTINE ESTATE Tract L, Suburbs 179, Gray County, Texas Tract K, Suburbs 179, Gray County, Texas Cause No: TAX-3677 GRAY COUNTY, ET AL vs. MITCHELL, BRANDON Lot Eight (8), in Block</p>	<p>Lot Ten (10), in Block One (1), J Bradley, an Addition to the City of Pampa, Gray County, Texas Cause No: TAX-3757 Gray County vs. GRANILLO, JOSE D & ESTELLA & RAYMOND ZUBIA Lot Thirty-four (34), in Block Twenty-two (22), Wilcox, an Addition to the City of Pampa, Gray County, Texas Cause No: TAX-3765 Gray County vs. MC CLELLAN, JAMES Lots One (1), Two (2), Three (3), Four (4), Five (5), Six (6), Seven (7), Eight (8), Nine (9), and Ten (10), all in Block Twenty-nine (29), Original Town of McLean, Gray County, Texas Cause No: TAX-3780 GRAY COUNTY, ET AL vs. PHILLIPS, DEVENA G ESTATE Lot Eight (8), in Block Two (2), Alexander Addition to the City of Pampa, Gray County, Texas Cause No: TAX-3788 GRAY COUNTY, ET AL vs. POLK, VIRGINIA ESTATE Tract 1: Lots Fifteen (15) and Sixteen (16), in Block Four (4), Seeds Subdivision, an Addition to the City of Pampa, Gray County, Texas Tract 2: The North ten feet (N 10') of Lot Thirteen (13), and all of Lot Fourteen (14), in Block Four (4), Seeds Subdivision to the City of Pampa, Gray County, Texas Cause No: TAX-3789 GRAY COUNTY, ET AL vs. WHITE, MICHAEL Lot Five (5), in Block One (1), Hyatt Addition to the City of Pampa, Gray County, Texas Cause No: TAX-3818 GRAY COUNTY, ET AL vs. CARTER, JOHN JR Tract 2: Lots Nineteen (19) and Twenty (20), in Block One (1), Hunter Addition to the City of Pampa, Gray County, Texas Tract 1: Lot One (1), in Block Two (2), Bethume Heights, an Addition to the City of Pampa, Gray County, Texas Cause No: TAX-3830 GRAY COUNTY, ET AL vs. GIDEON, WILLIE L MRS TRUST ESTATE All of Lots One (1) and Two (2), and the North ten feet (N 10') of Lot Three (3), in Block Ninety-seven (97), Original Town of McLean, Gray County, Texas Cause No: TAX-3725 Gray County vs. WILLIAMS, DANNY Lot Eleven (11), in Block Ten (10), Prairie Village, an Addition to the City of Pampa, Gray County, Texas Tract E3, Plot No. 62 of Suburbs of Pampa, Gray County, Texas Cause No: TAX-3727 GRAY COUNTY, ET AL vs. SMITH, MARGARET K Lot Three (3), Plot Sixteen (16), Suburbs, an Addition to the City of Pampa, Gray County, Texas Cause No: TAX-3747 Gray County vs. CHAPMAN, VICTOR Tract 2: .033333 Overriding Interest in the Brown Dolom Unit Tr #3, Lease No. 108500, RRC No. 2699, located in Section 34, Block B2, H&GN Survey, Gray County, Texas Tract 1: .033333 Overriding Interest in the Brown Dolom Unit Tr #2, Lease No. 108400, RRC No. 2699, located in Section 57, Block B2, H&GN Survey, Gray County, Texas Cause No: TAX-3748 Gray County vs. CHENNAULT, SHEELAH</p>	<p>all of the North eighty-eight and one half feet (N 88.5') of the East one hundred feet (E 100') of Lot Seven (7), all in Block C, Industrial Subdivision, Gray County, Texas Cause No: TAX 3889 Gray County vs. BRYANT, BOBBY Lot Five (5), in Block Four (4), Prairie Village, an Addition to the City of Pampa, Gray County, Texas Cause No: TAX-3901 Gray County vs. STONE, MIKE R Tract 59-H-1, Suburbs 132, Gray County, Texas Lot Fifteen (15), in Block Twenty-eight (28) Talley Addition to the City of Pampa, Gray County, Texas Tract 59-F, Suburbs 132, Gray County, Texas Cause No: TAX-3903 GRAY COUNTY, ET AL vs. PETTENGILL, JOHN C ESTATE Tract 1: Lot Fourteen (14), in Block One (1), Hansen's Second, an Addition to the City of Pampa, Gray County, Texas Tract 3: Lot Sixteen (16), in Block One (1), Hansen's Second, an Addition to the City of Pampa, Gray County, Texas Tract 4: The west 3.5 feet (W 3.5') of Lot Two (2), and all of Lot Three (3), in Block Two (2), Mathews-Thornton, an Addition to the City of Pampa, Gray County, Texas Tract 2: Lot Fifteen (15), in Block One (1), Hansen's Second, an Addition to the City of Pampa, Gray County, Texas Cause No: TAX-3906 GRAY COUNTY, ET AL vs. COLLIER, RUSSELL & BELINDA Lot Ten (10), in Block Four (4), North Addition to the City of Pampa, Gray County, Texas Cause No: TAX-3914 Gray County vs. MOORE, LONNIE JR Tract 2: Lot Seven (7), in Block Five (5), Prairie Village, an Addition to the City of Pampa, Gray County, Texas Tract 4: Lot Two (2), in Block A, Schultze Annex, an Addition to the City of Pampa, Gray County, Texas Tract 3: Lot Eight (8), in Block Five (5), Prairie Village, an Addition to the City of Pampa, Gray County, Texas Cause No: TAX-3924 Gray County vs. STRUP, GINA MARIE Tract 5: .008680 Royalty Interest in the Kersey, Lease No. 122600, RRC No. 5256, located in Section 180, Block 3, I&GN Survey, Gray County, Texas Tract 4: .008681 Royalty Interest in the Abersold, Lease No. 91400, RRC No. 24021, located in Section 180, Block 3, I&GN Survey, Gray County, Texas Tract 2: .008681 Royalty Interest in the Nora-B-, Lease No. 4360, RRC No. 5831, located in Section 180, Block 3, I&GN Survey, Gray County, Texas Tract 7: .008681 Royalty Interest in the Abersold #A3, Lease No. 91300, RRC No. 24022, located in Section 181, Block 3, I&GN Survey, Gray County, Texas Tract 3: .008681 Royalty Interest in the Georgia, Lease No. 46200, RRC No. 5269, located in Section 180, Block 3, I&GN Survey, Gray County, Texas Tract 6: .013020 Royalty Interest in the Abersold, Lease No. 122250, Alternate Lease No. 98000, RRC No. 4904, located in Section 181, Block 3, I&GN Survey,</p>	<p>Gray County, Texas Tract 1: .008681 Royalty Interest in the Nora, Lease No. 4350, RRC No. 5777, located in Section 180, Block 3, I&GN Survey, Gray County, Texas Cause No: TAX-3928 Gray County vs. STURGILL, FRANK G Lot Thirty-one (31), in Block Eight (8), Prairie Village, an Addition to the City of Pampa, Gray County, Texas Cause No: TAX-3932 Gray County vs. STEVENS, RUSTY D Tract 3: Lots One (1), Two (2), Three (3) and Four (4), all in Block Fourteen (14), Original Town of Pampa, Gray County, Texas Tract 4: Lots Twenty (20), Twenty-one (21), Twenty-two (22), Twenty-three (23), and Twenty-four (24), all in Block Fourteen (14), Original Town of Pampa, Gray County, Texas Tract 1: Tract 3, Turtle Creek Estates, an Addition to the City of Pampa, Gray County, Texas Tract 5: A part of Plot No. 138 of Suburbs, an Addition in Gray County Texas, described by metes and bounds as follows: Beginning at the Northeast corner of said plot; Thence South 89°16' West along the North line 232.6 feet; Thence South 0°8' East 125' feet; Thence South 89°16' West, 234 feet; Thence South 0°8' East 470' for the Southwest Corner in the Northerly right of way line of the railroad; Thence North 60°30' East along right of way line, 534.4' for the Southeast Corner; Thence North 0°8' West 345.6' to place of beginning, containing 4.41 acres more or less. Cause No: TAX-3935 GRAY COUNTY, ET AL vs. BRITTON, HERRING SHELLEY The North fifty-five feet (N 55') of Lot Eight (8), and the South seven feet (S 7') of Lot Nine (9), all in Block Seven (7), Jarvis Sone Addition to the City of Pampa, Gray County, Texas Cause No: TAX-3946 GRAY COUNTY, ET AL vs. BLAYLOCK, THELMA JO ESTATE Lots Seven (7), Eight (8), Nine (9), and Ten (10), all in Block Ninety-one (91), Original Town of McLean, Gray County, Texas Cause No: TAX-3959 GRAY COUNTY, ET AL vs. CHURCH OF THE GOOD SHEPHERD Lots Fourteen (14) and Fifteen (15), in Block Three (3), Haggard, an Addition to the City of Pampa, Gray County, Texas Cause No: TAX-3961 Gray County vs. GEE, CHARLIE The East 221.1 feet of Lot Ten (10), in Block One (1), Smith Addition to the City of Pampa, Gray County, Texas Cause No: TAX-3962 Gray County vs. MEDINA, JOHNATHAN Lots One (1), Two (2), Three (3), and Four (4), all in Block Six (6), Original Town of Pampa, Gray County, Texas Cause No: TAX-3966 GRAY COUNTY, ET AL vs. NASH, MARY MARGUERITE ESTATE Lot Sixteen (16), in Block Eight (8), Finley Banks, an Addition to the City of Pampa, Gray County, Texas Cause No: TAX-3967 Gray County vs. DAVIS, JAMES EDWARD Lot Three (3), in Block Three (3), Hindman Addition to the City of Pampa, Gray County, Texas Cause No: TAX-3968 GRAY COUNTY, ET</p>	<p>associated transmission facilities and lines, and operations facility by Grandview Wind Farm II, LLC, and consists of the following: All of Sections 104, 105, 106, 107, 108, 109, 110, 111, 112, 126, 127, 128, 129, 130, 131, 132, 133, 134, 135, 136, 137, 138, 139, 140, 141, 142, 143, 144, 145, 146, 156, 157, 158, 159, 160, 161, 162, 163, 164, 165, 166, 167, 168, 169, 170, 171, 172, 173, 174, 175, 176, 177, 178, 183, 184, 185, 186, 187, 188, 189, 190, 191, 192, 193, 194, 195, 196, 197, 198, 199, 200, 201, 202, 203, 204, 205, 206, 207, 208, 210, 211, 212, 213, 214, 215, 216, 217, 218, 219, 220, 221, 222, 223, 224, 225 and 226 Block B2, H&GN RR CO. Survey, Gray County, Texas. The Southwest Quarter (SW/4) of Section 85 Block B2, H&GN RR CO. Survey, Gray County, Texas. The West Half (W/2) & Southeast Quarter (SE/4) of Section 96 Block B2, H&GN RR CO. Survey, Gray County, Texas. The East Half (E/2) of Section 114 Block B2, H&GN RR CO. Survey, Gray County, Texas. The South Half (S/2) of Section 155 Block B2, H&GN RR CO. Survey, Gray County, Texas. All of Sections 1, 17, 18, 19, 35, 36, 37, 38, 52, 53, and 54 Block B3, H&GN RR CO. Survey, Gray County, Texas. The North Half (N/2) & Southeast Quarter (SE/4) of Section 20 Block B3, H&GN RR CO. Survey, Gray County, Texas. All of Section 180 Block 3, I&GN RR CO. Survey, Gray County, Texas. All of Section 1 and the West Half of the West Half (W2/W/2) of Section 2, BLK C2, CCSD Survey, Gray County, Texas. All of the NA Steed, AN Hunt Railroad and DB Hill Survey, Gray County, Texas. In determining whether to designate the Reinvestment Zone, the Commissioners Court will consider whether such designation would contribute to the retention or expansion of primary employment or would attract major investment in the Zone that would benefit the land to be included in the Zone and would contribute to the economic development of the County. If created, the real property would become "Grandview II Reinvestment Zone." The public hearing will take place at 9:00 AM on June 18, 2014, at the Commissioners' Courtroom of Gray County, Texas, 205 N. Russell, Pampa, Texas 79065. All interested persons may appear and present testimony regarding designation of the Reinvestment Zone. If further information is needed, please contact the office of the County Judge, Gray County, Texas, 205 N. Russell, Pampa, Texas 79065: (806) 669-8007. G-08 6/10/2014</p>	<p>AL vs. MORGAN, VIOLET ESTATE Lot Twenty-nine (29), in Block Thirteen (13), Prairie Village, an Addition to the City of Pampa, Gray County, Texas Cause No: TAX-3969 GRAY COUNTY, ET AL vs. WOODWARD, LEE ESTATE Lots Four (4) and Five (5), in Block Three (3), Woods Addition to the City of Pampa, Gray County, Texas Cause No: TAX-3978 GRAY COUNTY, ET AL vs. TURNUPSEED, WINNIFRED ESTATE .002604 Royalty Interest in the Carpenter, Lease Number 11120, RRC Number 149601, located in Section 37, Block 25, H&GN Survey, Gray County, Texas Cause No: TAX-4031 Gray County vs. PANACI, MARY H ESTATE .0019530 Royalty Interest in the J E Williams, Lease No. 148100, RRC No. 655, located in Section 6, Block 1, ACH&B Survey, Gray County, Texas Cause No: TAX-4032 Gray County vs. THOMPSON, WILFIE FOSTER Lots Ten (10), Eleven (11), Twelve (12), and Thirteen (13), all in Block Two (2), Cohen Addition to the City of Pampa, Gray County, Texas BIDDERS MUST COMPLY WITH SECTION 34.015 OF THE TEXAS PROPERTY TAX CODE. Levied on the 27 day of May, 2014 as the property of said Defendants to satisfy the judgments rendered in the above styled and numbered causes, plus all taxes, penalties, interest, and attorney fees accrued to the date of sale and all costs recoverable by law in favor of each jurisdiction. GIVEN UNDER MY HAND THIS 3rd day of June, 2014. Don Copeland SHERIFF, GRAY COUNTY, Texas By Joe B. Hoard Deputy The minimum bid for a person owning an interest in the property or for a person who is a party to the suit (other than a taxing unit) is the aggregate amount of the judgment(s) against the property plus all costs of suit and sale. THERE MAY BE ADDITIONAL TAXES DUE ON THE PROPERTY WHICH HAVE BEEN ASSESSED SINCE THE DATE OF JUDGMENT. For more information, contact your attorney or the tax collector. G-02 6/10,17,24/2014</p>	<p>Notice of Public Hearing The Gray County Commissioners Court will conduct a public hearing at a meeting on June 18, 2014 to consider (1) the application of Grandview Wind Farm II, LLC, for designation of certain property located in Gray County as a Reinvestment Zone eligible for property tax abatement under Chapter 312 of the Texas Tax Code, (2) the application of Grandview Wind Farm II, LLC for tax abatement, and (3) Grandview Wind Farm II, LLC's proposed tax abatement agreement. The real property designated by Grandview Wind Farm II, LLC is intended for use as a wind power generation facility, electrical substation,</p>

Discover for yourself why Germania is The Insurance Texans Trust.®



Taylor & Miller Insurance Agency

120 East Browning
806-669-3062



We will help you buy or sell your home!

Gary Winton: Realtor®/Office Manager
806-440-1698
1712 N. Hobart (806) 665-4595



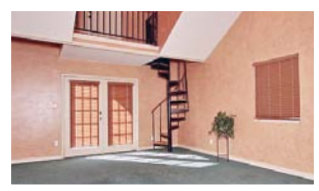
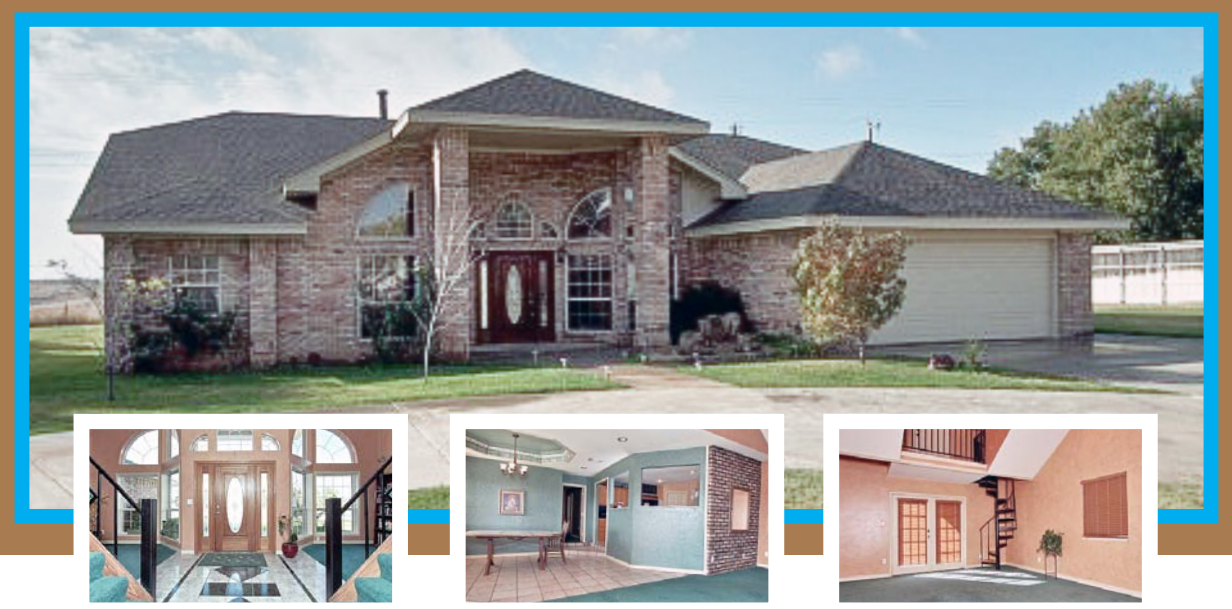
TOP OF TEXAS CLASSIFIEDS

Reaching over 12,000 readers daily • Call Us at (806) 669-2525



PANHANDLE PLAINS REALTY

516 S. Russell, Pampa, Tx | PanhandlePlainsRealty.com



117 Walnut Dr, Pampa

5 bedrooms 2.75 bathrooms, with an Open Floor Plan, 2 separate Bedrooms Upstairs with their Own Private Staircase, Master Bedroom has a Balcony on Top Floor. Located in a Fantastic Area with Wonderful Views - TOO Much to List, Come See Today

Looking for a 3 Bedroom, 1.5 Bath, Good Location? Call for details!



Linda Laycock
Broker
BROKER®, GRI
(806) 662-1312



Tisha Calhoun
REALTOR®
(806) 440-4153



Larry Hadley
REALTOR®
(806) 662-2779

AXYDLBAAXR
is LONGFELLOW

One letter stands for another. In this sample, A is used for the three L's, X for the two O's, etc. Single letters, apostrophes, the length and formation of the words are all hints. Each day the code letters are different.

6-10 CRYPTOQUOTE

ZAZHS CUDMPJ MJ PFH OMAZV

DPFUIZV PJ VPBZ UIPHY DICD

RMOO AMLHCDZ MJ ZDZHJMDS.

— ZYRMJ IFL LZO UICEM J

Yesterday's Cryptoquote: A HOUSE IS NOT A HOME UNLESS IT CONTAINS FOOD AND FIRE FOR THE MIND AS WELL AS THE BODY. — BENJAMIN FRANKLIN

Answer to yesterday's puzzle:

6	9	3	2	4	5	7	8	1
4	1	8	7	6	3	5	9	2
2	5	7	8	9	1	4	3	6
3	6	1	9	5	4	8	2	7
5	2	4	3	8	7	1	6	9
7	8	9	1	2	6	3	5	4
9	7	5	6	1	8	2	4	3
8	3	6	4	7	2	9	1	5
1	4	2	5	3	9	6	7	8

SUDOKU

4	1	9						
3				7			8	4
			6				3	
5	4				6	2	7	9
	3				5			
9			8	2	4			
	6		4		3			7
1		3					4	
7					2	1	5	

Level: Beginner

Dear Abby...

By Pauline & Jeanne Phillips

DEAR ABBY: As the executive director of the Hearing Loss Association of America, may I suggest that "Mortified at the Dinner Table" (March 2), who wrote about her in-laws' poor hearing even with hearing aids, connect with one of our 200-plus local HLAA chapters at www.hearingloss.org? These member-led groups offer emotional support, camaraderie, communication strategies and techniques for living with hearing loss, both for people who have hearing loss as well as their families and friends. Most chapters also share information about assistive listening devices that link via a telecoil found in most modern hearing aids that could greatly enhance her in-laws' hearing around the dinner table.

"Mortified" might also want to accompany her in-laws to a hearing aid evaluation visit at an audiologist's office to learn more about their particular hearing difficulties. There is more to correcting hearing loss than buying hearing aids. Some users benefit from assistive listening devices or from listening training that can be done at home with a personal computer.

By joining HLAA, "Mortified" can receive Hearing Loss Magazine and get the latest information about hearing loss and how to live well with it. — ANNA GILMORE HALL

easier.

(1) Test hearing annually so hearing aids can be reprogrammed to current hearing levels if necessary.

(2) Follow up with the audiologist for regular hearing aid maintenance and care.

(3) In restaurants, ask to be seated away from high noise level areas; preferential seating may help.

(4) Reserve confidential discussions for another time and location, which would make them easier for people with hearing loss to understand. — AUDIOLOGIST IN PENNSYLVANIA

DEAR ABBY: My 91-year-old mother is hard of hearing. I take her out to dinner once a week.

I don't worry about what people around us are thinking. It doesn't matter what she wants to talk about. I'm just glad she's able to get out and converse with others. The conversations at tables near us are sometimes so obnoxious that I'm GLAD my mother can't hear them.

People are normally very courteous about helping me with her, and many have told me they wished their parents were still alive and able to have dinner with them. —

JUDY IN ARIZONA

DEAR ABBY: Your advice to "Mortified" was certainly not taking into account the other diners' feelings that this writer was so admirably describing! Everyone around that table paid for — and deserves — to have a pleasant dining experience too. This includes not being subjected to others' cellphone conversations, unruly children or excessively loud conversations regardless of their content. — MARIANNE IN WASHINGTON

Dear Abby is written by Abigail Van Buren, also known as Jeanne Phillips, and was founded by her mother, Pauline Phillips. Contact Dear Abby at www.DearAbby.com or P.O. Box 69440, Los Angeles, CA 90069.

To order "How to Write Letters for All Occasions," send your name and mailing address, plus check or money order for \$7 (U.S. funds) to: Dear Abby — Letter Booklet, P.O. Box 447, Mount Morris, IL 61054-0447. Shipping and handling are included in the price.

BANANAGRAMS!

Use the 15 tiles in this bunch to create words that fit into the grids below. The BANANA BITES provide hints. Reuse the tiles for each grid.

LEVEL

D R U I D J E
E T C A T W X T

BANANA BITE: Broad

BANANA BITE: Precise

Yesterday's Answer: PEACE, SHOW; SPRING, MEAL; DINNER, LIFE; DOWN, SOME

CROSSWORD

By THOMAS JOSEPH

L	A	T	H	E		F	E	T	C	H		
E	L	I	O	T		O	M	A	H	A		
T	E	E	T	H		R	U	M	O	R		
					R	A	G	E		E	W	E
A	S	T	O	N	I	S	H					
C	L	O	D		S	T	O	L	E	S		
T	E	N	D	S		S	T	O	R	E		
S	W	E	E	P	S		D	O	I	N		
					R	E	A	S	O	N	E	D
C	A	T			L	O	N	G				
R	U	R	A	L		O	G	L	E	S		
O	R	A	T	E		R	E	E	V	E		
P	A	P	E	R		T	R	E	A	T		

YESTERDAY'S ANSWER

1	2	3	4	5	6	7	8	9	10	
11						12				
13						14				
			15							
	16	17				18		19	20	
21					22				23	
24				25				26		
27			28				29			
	30						31			
				32		33				
34	35	36						37	38	39
40						41				
42						43				

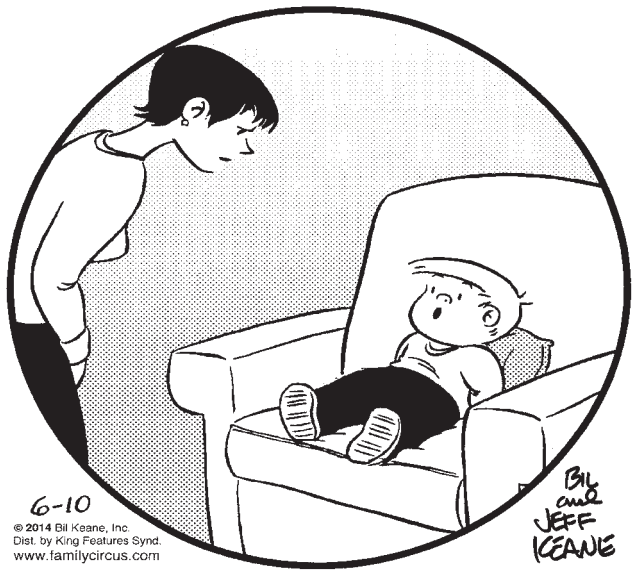
NEW CROSSWORD BOOK! Send \$4.75 (check/m.o.) to Thomas Joseph Book 2, P.O. Box 536475, Orlando, FL 32853-6475

DOWN
1 Golf goal
2 Commotion

comics PAGE

THE FAMILY CIRCUS

By Bil Keane



6-10
© 2014 Bil Keane, Inc.
Dist. by King Features Synd.
www.familycircus.com

Bil and
JEFF
KEANE

"Yes, I'm bored, but not so bored that you need to think of something for me to do."

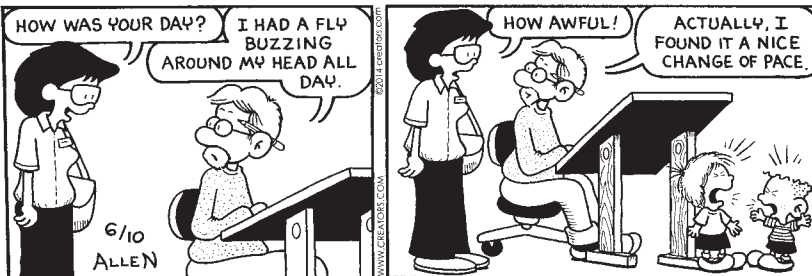
Non Sequitur

HE LIVED BY THE BELIEF THAT IF YOU REPEAT SOMETHING OFTEN ENOUGH, IT'LL BECOME A REALITY



© 2014 WILEY INK, INC. 6-10
DIST. BY UNIVERSAL UCLICK WILEYINK@EARTHLINK.NET GOCOMICS.COM

Nest Heads

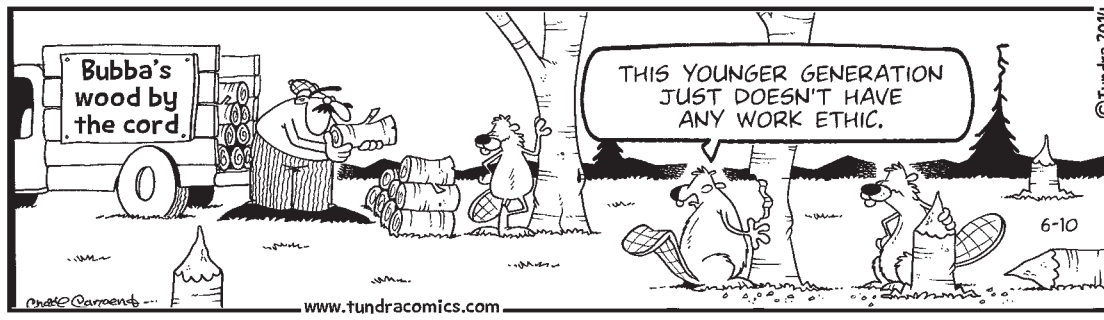


daily horoscope

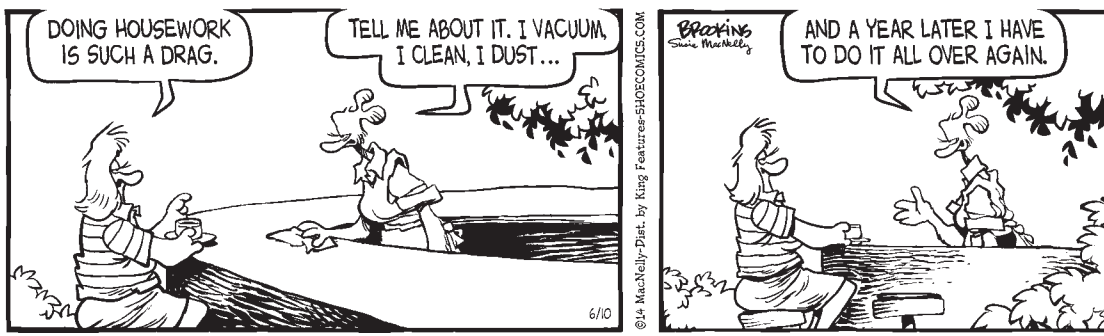
HAPPY BIRTHDAY for Wednesday, June 11, 2014:
This year you open up to many new ideas, mainly because of someone's influence in your life. This person could be a life partner, a dear friend or possibly a new friend. This person sorts out different ideas and presents them to you in a new way. If you are single, you are likely to meet your next sweetie in a unique way. This person will add a lot of zip to your life. Do not commit too quickly. If you are attached, the two of you open up to many new ideas. A new level of excitement flows into your relationship. **SAGITTARIUS** matches your energy.
The Stars Show the Kind of Day You'll Have: 5-Dynamic; 4-Positive; 3-Average; 2-So-so; 1-Difficult
ARIES (March 21-April 19)
★★★★ In the morning you will need to brainstorm with someone. In the afternoon, take a look at the big picture. In a way, you might feel as if you have to compromise beyond your comfort level. Back off for a while in order to gain a perspective. Tonight: Let your mind wander.
TAURUS (April 20-May 20)
★★★★★ Others could be stubborn in the morning. Let go of your frustration by the afternoon, when you finally can hash out recent ideas and developments. You will feel better dealing with someone on an individual level as you go over each idea. Tonight: Make it cozy.
GEMINI (May 21-June 20)
★★★★ You could be overtired and not recognize it. By the afternoon, the number of people who seem to appear in your life will perk you up. The excitement of the moment and the rich personalities around you are likely to energize you. Tonight: Say "yes" to an offer.
CANCER (June 21-July 22)
★★★★ Allow greater creativity to flow, as your imagination has no limits. Listen to news with openness. The combination of ingenuity and new facts could result in a dynamic idea. Pressure builds around a child's health or someone at a distance. Tonight: Get some extra R and R.
LEO (July 23-Aug. 22)
★★★★ Your imagination knows no limits, yet there could be some physical restrictions that stop you from reaching your goal. You might want to get more information about a partner. The unexpected could occur with a

domestic matter. Tonight: Let the good times roll.
VIRGO (Aug. 23-Sept. 22)
★★★★ Keep communication flowing, no matter what occurs. Make calls in the morning. By the afternoon, you will have to pull back and do some thinking. A partner might ask you to play devil's advocate while he or she presents some ideas. Tonight: At a favorite spot.
LIBRA (Sept. 23-Oct. 22)
★★★★ Be aware of what you spend in the morning. The unexpected might occur when dealing with your finances. You could discover that there is a problem surrounding a daily matter. Open up to new ideas, especially an off-the-wall suggestion. Tonight: Go with the moment.
SCORPIO (Oct. 23-Nov. 21)
★★★★ Use the morning to the max, when your powers of persuasion are at their peak. Do not underestimate the ramifications of mixing your personal life with your professional life. A radical change could head your way. Choose to go with the moment. Tonight: Go shopping.
SAGITTARIUS (Nov. 22-Dec. 21)
★★★★ Use the morning to open up a discussion with a close associate. You will feel much better once you clear your chest. Use a second wind of energy in the afternoon in a way that benefits you. Try not to be frivolous. Tonight: Make the most of the moment.
CAPRICORN (Dec. 22-Jan. 19)
★★★★ Zero in on what you want without any hesitation. You could be taken aback by all the choices that surround you in the morning. In the afternoon, retreat and think through your options. Make a call to a trusted friend or loved one. Tonight: Time to relax.
AQUARIUS (Jan. 20-Feb. 18)
★★★★ You could feel pressured by a situation and how it develops. You might want to rethink a decision more carefully that could affect a friendship. Pace yourself, and maintain a level head. Note a tendency to overspend. Tonight: Where the action is.
PISCES (Feb. 19-March 20)
★★★★ You might be in a position where you see a situation differently from how you have in the past. As a result, you will want to head in a new direction. Have a discussion with an important friend or loved one before revealing your thoughts. Tonight: Work as late as need be.

Tundra



Shoe



Mother Goose and Grim



Zits



Garfield



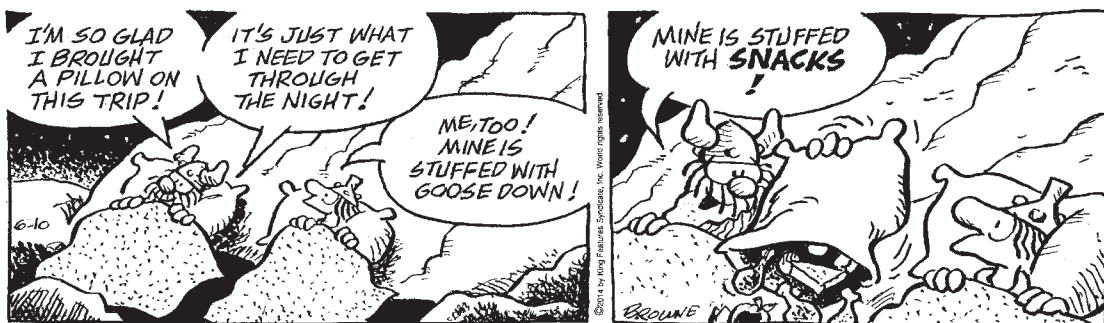
Beetle Bailey



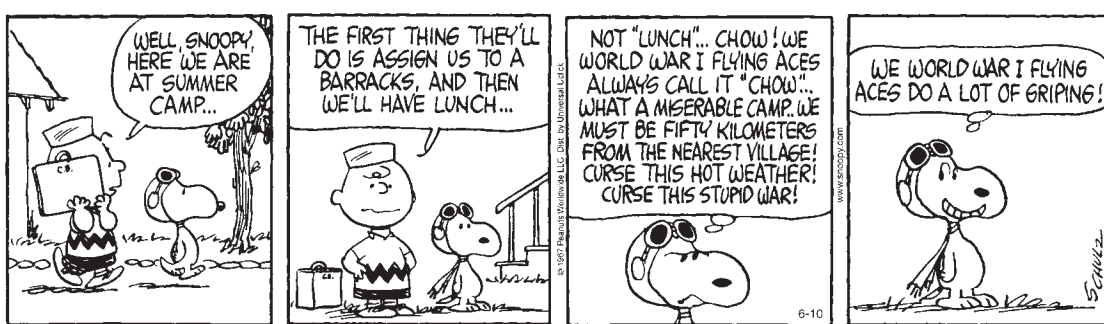
Marvin



Hagar The Horrible



Peanuts



Blondie



PAMPA REGIONAL MEDICAL CENTER

Obstetrics/Gynecological Services

Pampa Regional Medical Center features a full-service OB/Gyn department equipped with the latest technology and highly trained, motivated and compassionate staff. We have board-certified physicians with years of experience in the field.

Look no further than Pampa Regional for the care you need to make sure Mommy and Baby receive the best care in the Panhandle.

**Contact us today to inquire about our services:
(806) 663-5671**

Medicaid Accepted



**PAMPA REGIONAL
MEDICAL CENTER**

PRMCTX.COM

TRUVEN HEALTH ANALYTICS

**15 TOP
HEALTH SYSTEMS**

2013

01352.090313

Shear Elegance
AND A Perfect 10
 IN ONE LOCATION!

111 NORTH CUYLER 669-1901 662-4267

HAIRCUTSCOLOR
PERMSMANICURES
PEDICURESACRYLICS

REGINA WOODS OWNERS • DEBBIE SCOBEE

CUSTOM SHIRTS



**IF YOU GET EM' ANYWHERE BUT HERE -
 YOU PAID TOO MUCH
 PERIOD!**

T-SHIRTS & MORE
 111 W. KINGSMILL • 806-665-3036

Follow Us On

 @thepampanews

 find us on Facebook

To find Breaking News, Event Photos, & Video Clips.

facebook.com/thepampanews

Advertise with
 The Pampa News



Callie Odell
 Sales Rep - (806)662-8595
 Ellen Tyre
 Classifieds - (806)669-2525

texas
 FURNITURE



summer sleep sale


 YOUR BEST NIGHT'S SLEEP STARTS HERE

TEMPUR-PEDIC
 tempur-cloud prima

QUEEN SETS **\$1999**
 KING SETS **\$2599**

In stock for express delivery
 Set-up and removal of your old bed

**COOL SUMMER SAVINGS
 ON FAMOUS
 SEALY MATTRESSES**

SEALY "Posture Premier"

TWIN SETS **\$299** FULL SETS **\$379** QUEEN SETS **\$399**

**CLOSE-OUT SPECIAL
 SEALY Plush Euro
 Pillow-top**

QUEEN SETS **\$599**

**SEALY "Renforth"
 Plus Euro-top**

TWIN SETS **\$399**
 FULL SETS **\$479**
 QUEEN SETS **\$499**

SEALY POSTUREPEDIC
 Choose plush or firm support

FULL OR QUEEN SETS **\$699** KING SETS **\$999**

SEALY POSTUREPEDIC GEL SERIES

Plush EURO PILLOW-TOP QUEEN SET **\$999** KING SET **\$1299**

QUEEN ADJUSTABLE BED \$999 ONE ONLY
 with memory foam mattress


CLASSIC SERIES

Posturepedic® Classic Coil
 Titanium alloy coils provide a reliable balance of cozy comfort and deep down support.

CoreSupport Center™
 The center third of the mattress is power-packed with memory foam to support the heaviest part of your body and extend the life of the mattress.

ActiveFlex™ Comfort Layers
 3" of exclusive pre-compressed foam cradles your body in consistent, long-lasting comfort.

Texas
 FURNITURE

MON-SAT 9 AM TO 5:30 PM

 6 MONTHS NO INTEREST FINANCING WITH APPROVED CREDIT

665-1623
 1415 N. Hobart

Proudly serving Pampa since 1932