

CHILDERS BROTHERS INC.
HOUSE LEVELING
 Uneven Floors
 Floor Bracing
 Cracks In Bricks
 Sticking Doors & Windows
 Interior Wall Cracking
 FREE ESTIMATES
1-800-299-9563
 WWW.CHILDERSLEVELING.COM

DOUG BOYD MOTOR CO.
 Celebrating 55 YEARS
 Corner of Hwy 60 & 70
 806-669-6062
 Buy Here, Pay Here,
 No Credit Check
 www.DougBoydMotors.com
Great Selection! Cars, Trucks and SUVs
 Steve Mike
 Visa & Mastercard Accepted

Month Long Sale!
 \$3 off/yd any carpet
 50¢ off/sq ft any in-stock hard surface
 1/2 off any in-store laminate
 install only, no carry out
Premier Floor Warehouse
 301 S. Cuyler, Pampa TX • 669-7001

The PAMPA NEWS



Saturday, February 8, 2014 www.thepampanews.com Volume 109 • No. 216

\$1.50 Viewpoints: Bouncin' Around
 75¢ weekdays 38¢ subscription
 Pastor's Point, Letter to the Editor | **p4A**
 Pampa basketball seeing production from bench
 Tuesday: Results from Pampa-Perryton game | **p1-3B**

Stolen work truck found in Amarillo

BY TIMOTHY P. HOWSARE
 thowsare@thepampanews.com

The white 2011 GMC pickup truck stolen from the Walmart parking lot Tuesday was found abandoned at a motel in Amarillo Thursday night.
 "We are working with Amarillo PD in identifying a suspect at this time," said Officer Jason Collier, a spokesman for the Pampa Police Department.
 The truck is owned by Larry Baker Plumbing in Pampa.
 Collier provided no other details. An employee at Larry Baker Plumbing confirmed the truck has been recovered, but also could not provide details because "everything is still unfolding at this time."
 The theft was recorded on a Walmart surveillance video that has been posted on several web-

FOUND cont. on page 9



Submitted photo

At press time police were still seeking the suspect seen in this screen capture from a Walmart surveillance video.

No trial date yet in baby slaying

Capital murder suspect still at Hutchison County Jail.

BY TIMOTHY P. HOWSARE
 thowsare@thepampanews.com

Nearly 10 months after his arrest, a trial date has still not been set for Andrew Shane Johnson, who was indicted in July on a capital murder charge for killing 11-month-old Jax Covalt, an employee with the 84th District Court said Thursday.
 Johnson, a former Pampa resident, was arrested in Pampa on April 19 on unrelated charges and held at the Gray County Jail, where he was served the murder warrant and then transferred to Hutchison County Jail.
 Johnson was in a relationship with the child's mother, according to authorities. The killing happened in Spearman, which is about 70 miles northwest of Pampa.
 The infant was taken to the Hansford County Hospital by his mother the evening prior to his death before being airlifted to a hospital in
TRIAL cont. on page 9



Andrew Johnson

OLD MAN WINTER DOESN'T CHILL BOOK FAIR



Photo by Lindsey Tomaschik

Austin Elementary School held its annual book fair this week. The theme this year was fiesta. Even throughout the week with the hectic schedule caused by the snowy tundra, staff and parent volunteers made the event a success. From left, Tyler Stone, Janelle Guymon and Joshua Guymon paused from their shopping to pose for a picture.

Candidate wants your vote for ag job

Johnson County cattle farmer says action, not rhetoric, will fix state's water shortage.

BY TIMOTHY P. HOWSARE
 thowsare@thepampanews.com



Jim Hogan

Though he doesn't have the notoriety the comes with being a former gubernatorial candidate, advocating the decriminalization of marijuana or hawking his own brand of tequila and gourmet coffee over the Internet like one of his opponents in the Democratic primary for Texas agriculture commissioner, Johnson County cattle farmer Jim Hogan believes he still has a shot at getting elected.
 "The job requires a leader who is a farmer and not an entertainer or career politician," Hogan said Thursday in a phone interview with The Pampa News. "The agriculture commissioner

is supposed to be a farmer."

In the March 4 primary, Hogan faces Richard Samet "Kinky" Friedman, a country music singer and former author from Austin who says legalizing pot will neutralize Mexican drug cartels while bringing in more tax revenue, and Hugh Asa Fitzsimons III of Carrizo Springs, who operates a grass-fed bison ranch on his family's property in the South Plains and served as a commissioner on the Wintergarden Water Conservation District.
 Both Friedman and Fitzsimons have colorful websites, but Hogan, who said he is paying for his campaign out-of-pocket, has neither a website nor a press kit.
 Instead, Hogan prefers to contact newspapers directly and give his stump speech over the phone. He con-

tacted The Pampa News Thursday by sending a Facebook message with his phone number and a request to speak with someone in the editorial department.

Besides, why pay for a fancy website when anybody who wants to know about you can simply Google your name?

"You can find out about anybody who's running for office on the web, right?" Hogan asked rhetorically, adding that this is his first time running for office.

Why a Democrat?

The incumbent ag commissioner, Republican Todd Staples, is running for Texas lieutenant governor, so now the Republican field for Staples' job is crowded with five candidates. It is partly because of that overcrowding that Hogan said he decided to run as a Democrat. Another reason, he said, is the Republicans have so much money.

Running for state office as a Demo-

HOGAN cont. on page 9

Poll: Texas Hispanics are more Republican than Hispanics in other states

BY CORRIE MACLAGGAN
 The Texas Tribune

Texas Hispanics lean Democratic, but they are more likely to be Republican than Hispanics elsewhere in the country, according to a new Gallup poll.

Democrats hope that the state's rapidly growing Hispanic population — now 38 percent of residents — will help them win the Republican-controlled state. But the poll suggests that the Lone Star State is likely to stay red.

"Texas remains a Republican-leaning state because its white residents are becoming increasingly Republican and its large Hispanic population, though solidly Democratic, is less so than Hispanics nationally," the Gallup website says.

Texas Hispanics have become increasingly Republican since 2008, according to Gallup. In 2013, 27 percent of Texas Hispanics preferred the GOP, compared to 21 percent of Hispanics in other states, the largest gap in six years.

Among non-Hispanic white Texans, 61 percent identified as — or leaned — Republican, compared to 48 percent of non-Hispanic whites in other states.

The poll was based on telephone interviews with people across the country throughout 2013.

As groups such as Battleground Texas — founded by former Barack Obama national field organizer Jeremy Bird — seek to turn out Democratic voters in a state where the party hasn't won statewide of-

fice in 20 years, they face a major obstacle in Hispanic voter participation.

Just 19 percent of Texas adults who said they were registered to vote are Hispanic, 13 percent are black, and 64 percent are white, according to the poll.

"The biggest challenge for Democrats hoping to turn Texas blue may be in registering and turning out minority voters in that state," Andrew Dugan of Gallup wrote on the polling organization's website.

Malcolm Hinkle
 Refrigeration Co.
 Texas Lic #TACLA40021C
 Heating & Air
 Rooftop Units
 Indoor Air Quality
 Refrigeration
 Ice Makers
 Commercial & Residential
 Sales & Service Since 1952
806/665-1842

Total Care Health
 Caring & Effective Health care
 for Your Entire Family
(806) 688-2273
 Family Care • Urgent Care
 (Insurance, Cash, and Medicare)
 Loree Adams, FNP-BC
 701 N. Price Rd.
 Pampa, TX 79065

Fall in love with a new home!
HouseHunters Realtor
 Linda Laycock - Broker
 806.662.1312
 Larry Hadley Associate
 806.662.2776
 Tisha Holman Associate
 806.440.4153
 Pampa MLS & Amarillo MLS

IN THIS ISSUE:

Obituaries 3A, 11A	Comics 8A
Weather 3A	Sports 1B-3B
Viewpoints 4A	Classifieds 4B-12B
Lifestyles 6A	Puzzles/Dear Abby . . 9B



HAPPY Valentine's Day

- Bath & Body Products
- Candles
- Chocolates



BRANDON'S
Flowers
& Fine Gifts
123 N. Cuyler | 665-5546

brandonsflowers.com

17161

Sweet Savings



Hot Diamonds
Heart Necklace & Heart Earrings

Kameleon
Heart Necklace
& Popper Heart
\$99⁹⁹



24 Karat
Red Roses
\$89⁹⁵



Free
Valentine's
Chocolate
with each purchase



Ladies & Men's
Seiko and
Citizen Watches

25%-50% off

Diamond Heart
Pendant

Save
25%



Large selection of
Sterling Silver
Heart Necklaces



Men's
Crosses



Diamond
Earrings **Save**
25%



Follow the red brick road to
savings for your sweetheart this
Valentine's Day
for **FREE GIFTS**
from your downtown merchants.



RHEAMS

DIAMOND SHOP

N. CUYLER | 806-665-2831

17129

Obituaries

Mandy Lynn Thomas Medley

Mandy Lynn Thomas Medley, 34, was granted her angel wings on Feb. 1, 2014 in Houston, with her family by her side.



Mandy Lynn Medley

Memorial services will be at 3 p.m. Saturday, Feb. 8, 2014 at Cornerstone Baptist Church with Mr. Don Summers, family member, and Rev. Rodney Weatherly, interim pastor, officiating. Cremation arrangements are under the direction of Carmichael-Whatley Funeral Directors.

Mandy was born Dec. 15, 1979 in Pampa to her loving parents, Timothy and Debbie Thomas. She graduated from Pampa High School in May of 1998 and married Jeremy "Newt" Medley on July 4, 1998 in Pampa. She was the manager of Jay's Drive Inn for 12 years. Mandy was preceded in death by her grandparents, Joy and Vesta Thomas; great-grandmother, Clarabell Williams; father-in-law, Bill Medley; aunt, Caroline Smith; God daughter, Lynnzy Standerfer; and cousin, Bethany Caviness.

She is survived by her husband, Jeremy Medley of the home; daughter, Korina Dean Medley of Pampa; parents, Timothy and Debbie Thomas of Pampa; brother, Clint Thomas and wife Jessica of Pampa; grandparents, Alvin and Wilma Helms of Pampa; mother-in-law, Jeannette Medley of Pampa; and several aunts, uncles, cousins and nieces.

Sign the online guest register at www.carmichael-whatley.com.

Mildred Evelyn Wilkie

Mildred Evelyn Wilkie, 88, of Georgetown, passed away Feb. 6, 2014 in Park Place Care Center, Georgetown with a loved one by her side.



Mildred Evelyn Wilkie

Services are pending with Carmichael-Whatley Funeral Directors of Pampa.

Mildred was born Sept. 4, 1925 in Norman, Okla. to Irvin and Beulah Fulkerson. She was a 1944 graduate of Pampa High School. She married Glenn Wilkie, the love of her life, July 6, 1947 in Pampa.

Mildred worked at The Department of Human Resources as a clerk and office manager until she retired in May, 1986.

Glenn and Mildred moved to Georgetown, Texas in 1987. They were members of Crestview Baptist Church for over 24 years. Her greatest joy was spending time with her family. She also enjoyed reading and doing crossword puzzles.

Mildred is preceded in death by her husband Glenn, her parents Irvin and Beulah and her sister Nadine Jemison.

She is survived by her daughter Cathy Harkins and her husband Joe of Lubbock; son Edward Wilkie of Corsicana; daughter-in-law Sherry Wilkie-Conway of Georgetown; four grandchildren Matthew Wilkie and his fiancé Jessica McCasland, Amy Minze and her husband Rory, Celeste Harkins and Kayla Wilkie; and four great grandchildren Tripp and Mattie Wilkie and Rody and Rylie Minze.

The family wishes to extend their gratitude to Girling Hospice for their care in her final days and to Clarissa Gaytan for her loving friendship and care she provided while in the nursing home.

Sign the online guest register at www.carmichael-whatley.com.

OBITUARIES cont. on page 11

PAMPA FORECAST

Today	Sunday	Monday
High 48 Low 24	High 31 Low 12	High 29 Low 11

Today: Mostly sunny with a high of 48. Winds west at 10 mph. Sunrise at 7:38 a.m.

Tonight: Partly cloudy with a low of 24. Chance of rain: 10 percent. Winds west-southwest at 13 mph. Sunset at 6:19 p.m.

Sunday: Partly cloudy with a high of 31. Chance of precipitation: 10 percent. Winds north-northeast at 12 mph. Sunrise at 7:37 a.m.

Sunday night: Cloudy with a low of 12. Chance of precipitation: 20 percent. Winds southeast at 11 mph. Sunset at 6:20 p.m.

Monday: Partly cloudy and windy with a high of 29. Chance of precipitation: 10 percent. Winds south-southeast at 20 mph. Sunrise at 7:36 a.m.

Monday night: Cloudy with a low of 11. Chance of precipitation: 10 percent. Winds east-northeast at 9 mph. Sunset at 6:21 p.m.

This information brought to you by...

PRESTIGE
OUTDOORS DIVISION

101 S. HOBART 806-665-3500

Find that special Valentines gift at our outdoor shop

Come In Or Call For A Quote
AUTO • HOME • BUSINESS • LIFE

Gray County Insurance Doing Business As
JOHNSTON INSURANCE AGENCY

1712 N. HOBART PAMPA, TEXAS
806.665.4133 • 866.665.2788

Not The Largest...Not The Smallest...
But The Best Rates & Service!

GOT A HOT TIP? CALL 669-2525

CITY BRIEFS

The Pampa News is not responsible for the content of paid advertisement

CLOTHING ROOM at Mary Ellen & Harvester Church of Christ will be open Feb. 11th from 9:30 - 11:30 am.

GOSPEL SINGING will be held at the Pentecostal Holiness Church, 1700 Alcock, from 2-4 Sunday afternoon. Everyone welcome.

LOOSE DIAMOND Special of the week: Round diamond, 1.51 carat H color, I-2 quality \$2800; round 1.50 carat diamond F color I-2 quality \$3000. Rheams Diamond Shop, 111 N. Cuyler, Pampa.

MASSAGE THERAPY Valentine Special: Call Cathy Potter's Massage Therapy, 669-0013, 1224 N. Hobart Suite 9.

NEED SOMEONE 1-3 days a week. Must be able to pass a drug test. Carousel Expressions, 113 N. Cuyler.

THIS AD HAS BEEN SEEN BY OVER 7,000 PEOPLE TODAY

ADVERTISE HERE GET NOTICED

THE PAMPA NEWS (806)-669-2525

Estate Jewelry • Sterling • Art

Continental Est. 45 Years
281-229-1166

Antiques Sale!

Amarillo Civic Center • 401 S. Buchanan St.
Feb. 14, 15, & 16 • Fri & Sat 10-6, Sun 11-4
Region's Oldest & Finest Show

Free Appraisals All Weekend!

\$1.00 OFF *With Ad

Silver expert on site buying, paying resale prices!
Art Restorations & Silver Polished on site!

\$1.00 OFF *With Ad

Furniture • Glassware • Prints • Primitives

We are passionate about your health.

THE POWER OF **ONE Mammogram**
... can save your life.

Mobile Digital Mammography Screening

HARRINGTON Breast Center

Call Today: 800-377-4673

Early detection can SAVE YOUR LIFE.

Yearly Peace of Mind – If you're over 35 and have been putting off your annual mammogram...call today for an appointment that could save your life.

Digital mammography Close to Home.

APPOINTMENTS AVAILABLE FOR THIS MOBILE LOCATION

Shepherd's Crook Nursing Thursday, February 20
916 N. Crest Rd., Pampa 8:30 a.m. - 5:30 p.m.

CALL NOW 1-800-377-4673

Call 1-800-377-4673 to schedule your mammogram the next time our mammography coach comes to your city or for an appointment at the Harrington Breast Center in Amarillo.

Businesses, clinics and hospitals throughout the region are encouraged to invite the Mobile Mammography Coach to come to their location to offer breast screening services.

HARRINGTON Breast Center

A Department of **HBSA** Hospital

1310 Wallace Blvd. • Amarillo • harringtonbreastcenter.org
806-356-1905 • 800-377-4673

Like us on Facebook! facebook.com/HarringtonBreastCenter

New Certificate of Deposit

15 month

\$1,000 – \$99,999..... 1.00%

\$100,000 and up..... 1.05%

First State Bank of Miami

Miami Bank 806-868-2771 PO Box 8

Pampa Bank 806-665-3669 120 W. Kingsmill

Member FDIC

GREAT PLAINS PEST CONTROL

www.yourbugman.com
806-669-2411

"We are pleased to welcome Charles Lowry to our service team. Charles moved to Pampa in 1999 and has served in Church pastoral positions throughout his years in the community. He will continue to serve as Pastor at Cross Point Church Pampa while employed as a Technician with our company. Charles has developed an honorable reputation in the community and we are confident he will serve our customers with the dependability and genuine integrity they desire."

Owners — Jay and Deborah Henson

17163

www.thepampanews.com

Viewpoints

The PAMPA NEWS

SERVING THE TOP O' TEXAS SINCE 1906

403 W. Atchison • Pampa, TX 79065
806-669-2525 • Fax: 806-669-2520
www.thepampanews.com

This newspaper (UPS 781-540) is published daily, except Sundays, Mondays and all national holidays by The Pampa News, 403 W. Atchison. Periodicals postage paid at Pampa, Texas. Postmaster: send address changes to The Pampa News, P.O. Drawer 2198, Pampa, Texas 79066-2198.

Publisher ReDonn Woods	Subscription Rates — Mail Delivery
Managing Editor Tim Howsare	1 year \$114.00
Sports Reporter John Lee	6 months \$59.00
Reporter Lindsey Tomaschik	3 months \$28.50
Advertising Director Callie Odell	1 month \$9.50
Business Manager Carrie Hair	Single Copies
Circulation Beverly Taylor	Daily 75¢/Sunday \$1.50
Classifieds Ellen Tyre	Miss Your Paper?
Member Associated Press and Texas Press Association	Circulation department hours of operation are 8 a.m. to 5 p.m. weekdays.
	Copyright Notice
	The entire contents of The Pampa News, including its logotype are fully protected by copyright and registry and cannot be reproduced in any form for any purpose without written permission from The Pampa News.

Pastor's Point Revival

There is little doubt that our great nation is in deep trouble and in need of revival. We cannot continue to break God's Laws and His heart without paying a very high price. We have not learned

from history. Sodom and Gomorrah, Rome and many other formerly great nations had their turn at ruling the world and now lie buried in rubble. It takes a pick and shovel to find their artifacts.

We cannot take the lives of more than 55 million innocent unborn children since 1973, trash God's design for marriage, medicate our children into compliance and have an ever increasing addiction to illicit drugs or prescription medications that destroy the will of so many without bringing judgment upon ourselves.

We cannot continue the immoral values that have resulted in some 25 sexually transmitted diseases which have infected 110 million Americans and will infect nearly 20 million more every year. More could be said. If we do not repent, we will certainly bring the wrath of God upon us. We need revival.

What is revival? How does it happen? What can we do to bring revival to a great nation that is teetering on the brink of self destruction? Can we stop the moral decay? Will God forgive and restore us?

Notice the words of the Psalmist in Psalm 85.

- You forgave the iniquity of your people and covered all their sins.
- You set aside all your wrath and turned from your fierce anger.
- Restore us again, O God our Savior, and put away your displeasure toward us.
- Will you be angry with us forever? Will you prolong your anger through

all generations?
• Will you not revive us again, that your people may rejoice in you?

• Show us your unfailing love, O Lord, and grant us your salvation.

Only God can bring about a revival. It cannot be planned. It cannot be packaged and purchased. It cannot be produced in an "Ole Time Gospel Meeting" with the most popular preacher on earth preaching. We cannot make revival happen; we need God to bring it.

Throughout Biblical history, one thing is certain. When God's children became disobedient, God brought punishment upon them. When God's children humbled themselves, prayed and repented, God rescued them. Remember these words... "If my people, who are called by my name, will humble themselves and pray and seek my face and turn from their wicked ways, then will I hear from heaven and will forgive their sin and will heal their land." (2 Chronicles 7:14)

If we will humble ourselves, pray, seek God's face and cease to do evil, God will bring revival. Remember the great city of Nineveh and how from the King to the lowest person repented and called on God. (Jonah 3:8) God had compassion on them and did not destroy them. God specializes in revival and

He longs to bring revival to His people. Question is, do we want revival in our lives, in our town, in our nation and in the world? If we do, we must humbly pray and seek God and cease to do evil. It is up to us.

Whether we believe that God does exist or not, one day, everyone will believe and we will all bow before Him. (Romans 14:11) What will He say to us? Will He say "well done" or "depart from me?" (Matthew 25:21, 41)

Keith Feerer is pastor at Mary Ellen and Harvester Church of Christ in Pampa.

HERBS • VITAMINS • WEIGHT LOSS
ENERGY • WOMEN'S & MEN'S NEEDS

Herbs Etc.

- Nature's Sunshine Herbs & Vitamins
- Weekly Herb Talks
- Chewable and Liquid Supplements
- Non-GMO Protein Supplements
- Essential Oils (Aromatherapy)
- 20 Years Experience
- Se Habla Espanol
- BioEnergetic Needs Assessment
- Green Coffee Bean, Garcinia, and more for Weight Loss!

109 W Kingsmill • Pampa
(806) 665.4883
www.panhandlesunshine.com

Bouncin' Around

Who would you like to chat with on a park bench?

Recently, a friend posted a picture on Facebook. In the picture was an empty park bench, perhaps in a park or rural area. My friend posed the question from the viewpoint of an English teacher, "With whom would you want to sit and talk on this bench?" As a Christian, I naturally would love to sit and talk with Jesus.



JUDITH SMITH

Giving the question more thought, I tried to answer it from different angles — whom would I choose from the literary world, from the world of entertainment, from people who were famous for any reason, or from my own personal life (dead or living.) From the literary world, I would love to meet Agatha Christie, one of my favorite mystery authors from the past, or one of my contemporary favorites,

Cleo Coyle.

I have read almost every book that Christie wrote, and never have been able to figure out "whodunit" before she reveals that person. I would love to know how she came up with my two favorite characters, Miss Marple and Hercule Poirot.

Given my love of coffee and all things related, I'd like to have the chance to meet Cleo Coyle in person and thank her for many hours of enjoyable reading. Being a member of the "mature adult" category, my choices from the world of entertainment would have to include James Stewart and Cary Grant; for the more current male actors, I'd happily spend time with Harrison Ford or Patrick Stewart.

As for women from the past — Lucille Ball and Rosalind Russell would be most welcome on my park bench. Both women were extremely funny and extremely versatile actresses whom I have always

admired. Without seeming greedy, could I also have a visit with Audrey Hepburn and Katharine Hepburn? As for current female stars, my hands-down favorites would be Dame Judi Dench, Maggie Smith and Meryl Streep.

Long before I was born, my mother had the opportunity to meet Albert Einstein when Mom was invited to a house party at the Einstein home. I think I'd be in over my head with Einstein on that bench because I probably wouldn't be able to speak intelligently with him on his level. I would be honored to have the chance to chat with the recently-passed Nelson Mandela, and I would also love to speak with Edward R. Murrow, a newsman and journalist from the 1940s and '50s. The late Israeli Prime Minister Golda Meir would top my list of female non-entertainment women, and also Eleanor Roosevelt.

CHAT cont. on page 7



How To Write Us

The Pampa News welcomes letters to the editor. When submitting a letter, please include the writer's name, address and signatures.

We reserve the right to edit letters or not to publish certain letters.

By Fax:
806-669-2520

By U.S. mail:
Letters
The Pampa News
403 W. Atchison
Pampa, Texas
79065

By E-mail:
thowsare@thepampanews.com

Letter to the Editor

A Clear water plan for all Texans

It's no secret that Texas has a water problem. The Texas Legislature finally took a step last session toward funding our statewide water plan.

Far too often, government just throws money at a problem and walks away. That's why Texas needs strong leadership that will make sure that we use those funds wisely and develop our water resources for the long term.

The Texas Agriculture Commissioner is the only statewide elected official directly charged with development of rural water infrastructure, and we

need a commissioner who will take a leadership role in dealing with the water issues facing our state. That's one of the reasons I'm running to be your next Ag Commissioner.

As a fifth-generation rancher as well as an attorney, I've dealt with our drought's impact on my own land and also represented landowners seeking to protect their water rights. Texas needs a clear plan. Here's mine:

- Restore rural representation on the Texas Water Development Board. Agriculture and rural Texans provide a quarter of the

funds for new water infrastructure under Proposition 6, and are the most hurt in times of drought. They need to have a seat at the table.

- Prioritize spending projects to address critical needs first. Rural areas only receive 10 percent of infrastructure funds, but have greater need. We also lose 12 percent of our water statewide to system loss. What good will new reservoirs serve us if our pipes are broken? We need to prioritize funding to repair our failing water infrastructure first.
- Repair our water law to

better protect water rights. Private property rights are the cornerstone of our liberty. All of Texas has needs, but those needs must take into account the property rights that Texans hold so dear.

It's time for leadership in Austin on the issue of water to make sure our tax dollars are not wasted and our water plan includes all Texans.

Eric Opiela
Republican Candidate for agriculture commissioner
Karnes City

Lent: why bother?

Lent begins on Ash Wednesday each year, exactly 40 days before



MIKE SUBLETT

Easter, not counting the Sundays; 46 days before Easter, counting the Sundays. It is not just a Catholic observance, it is a Christian observance. More specifically it is a season of repentance, a special time to draw near to God with a humble heart, a chosen time to meditate on the sacrificial price paid by Jesus for our sins.

Most notably it is accompanied by the "giving up" of something that is good and that the believer has the perfect right to, so

that they may focus on the sacrifices and sufferings of Jesus even more intensely than usual. The "giving up" is normally for the 40 days of repentance, not for the six Sundays.

Most Christians ignore Lent, not seeing the personal significance that it can have in the life of every believer. And yet some Catholics and Protestants who do observe Lent make it trite, almost a game, by giving up something incredibly trivial, something that makes no impact on their personal life.

The key to Lent is giving up something that is "very significant in the individual believer's life" so that they will be constantly reminded to prayerfully draw near to the Lord in a special way.

At our church we have many believers who have adopted Lent with all their hearts and have given up some very peculiar things. I know someone who gave up "eating out at fast food restaurants." That sounded kind of trivial when I first heard it, but not when I realized that her work schedule was so tight that "fast food" was the only way she normally got any lunch. It almost became a kind of fasting time for her. It wouldn't have been significant for me, but it surely was for her.

Others in our church have given up thing like: trivial spending, soda pop, wearing a watch, coffee, ice, all sweets, all food, 30 minutes of sleep, candy, meat, etc. In each of these cases the things given up were personally chosen by believers who knew them-

selves well and picked something that would impact and alter their lives on every single day of Lent.

So with Lent at hand, please think about participating in this special "season of repentance." Do it for the Lord! Do it for yourself! 20 years ago I didn't have a clue about Lent, and now I can't imagine my walk with God without it.

What should you give up? Think of what would really impact your life and make you think each day of what Lent is really all about. So begin praying now for a special time with the Lord next Lent.

Mike Sublett is a pastor at Hill Land Christian Church, 1615 N. Banks St., Pampa, Texas 79065. Email him at pawdad@nts-online.net.

JEEP ~ FORD ~ DODGE ~ LINCOLN ~ MERCURY ~ JEEP ~ FORD ~ DODGE ~ LINCOLN ~ MERCURY ~ JEEP ~ FORD ~ DODGE ~ LINCOLN

NEW



FENTON PRICE
\$53,500

2014 FORD F250 SUPER DUTY LARIAT
#A47509 - MSRP \$57,675. PLUS TTL

NEW



FENTON PRICE
\$59,500

2014 FORD F250 SUPER DUTY LARIAT
#B06911 - MSRP \$63,875. PLUS TTL

NEW



FENTON PRICE
\$54,453

2014 FORD EXPEDITION LIMITED
#F12084 - MSRP \$57,715. PLUS TTL

SHOWROOM SPOTLIGHT



FENTON PRICE
\$23,565

2014 FORD FIESTA
#176984 - MSRP \$24,565. PLUS TTL

NEW



FENTON PRICE
\$35,995

2014 FORD EXPLORER XLT
#B52273 - MSRP \$38,180. PLUS TTL

NEW



FENTON PRICE
\$42,275

2014 FORD F150 4X4 SUPERCREW
#A44242 - MSRP \$45,710. PLUS TTL

NEW



FENTON PRICE
\$72,870

2014 FORD F250 SUPER DUTY LARIAT
#A42038 - MSRP \$72,870. PLUS TTL

LIFTED

NEW



FENTON PRICE
\$33,336

2014 FORD ESCAPE TITANIUM
#B08141 - MSRP \$36,330. PLUS TTL

NEW



FENTON PRICE
\$28,795

2014 FORD MUSTANG GT
#284491 - MSRP \$32,890. PLUS TTL

NEW



FENTON PRICE
\$28,400

2014 FORD EDGE
#C70271 - MSRP \$32,265. PLUS TTL

ASK ABOUT SPECIAL FINANCING

ZERO DOWN
Sign & Drive

NEW



FENTON PRICE
\$17,675

2014 FORD FOCUS
#196670 - MSRP \$19,675. PLUS TTL

NEW



FENTON PRICE
\$15,245

2014 FORD FIESTA
#168960 - MSRP \$16,245. PLUS TTL

NEW



FENTON PRICE
\$41,000

2014 LINCOLN MKZ HYBRID
#808253 - MSRP \$42,075. PLUS TTL

NEW



FENTON PRICE
\$39,480

2014 LINCOLN MKX
#L60888 - MSRP \$41,730. PLUS TTL

NEW



FENTON PRICE
\$36,750

2013 DODGE 1500 QUAD SLT 4X4
#D5726377 - MSRP \$42,045. PLUS TTL

NEW



FENTON PRICE
\$25,055

2014 DODGE CHARGER SE
#EH180621 - MSRP \$29,485. PLUS TTL

NEW



FENTON PRICE
\$23,584

2014 DODGE AVENGER SXT
#EN234208 - MSRP \$26,275. PLUS TTL

NEW



FENTON PRICE
\$17,549

2014 DODGE DART SE
#ED695885 - MSRP \$18,385. PLUS TTL

JEEP ~ FORD ~ DODGE ~ LINCOLN ~ MERCURY ~ JEEP ~ FORD ~ DODGE ~ LINCOLN ~ MERCURY ~ JEEP ~ FORD ~ DODGE ~ LINCOLN ~ MERCURY



Fenton
motors.com
PAMPA, TX

123 North Hobart
(806) 688-6888
www.fentonpampa.com

JEEP ~ FORD ~ DODGE ~ LINCOLN ~ MERCURY ~ JEEP ~ FORD ~ DODGE ~ LINCOLN ~ MERCURY ~ JEEP ~ FORD ~ DODGE ~ LINCOLN ~ MERCURY

SHOWROOM SPOTLIGHT



FENTON PRICE
\$35,594

2014 DODGE 2500 CREW TRADESMAN
#EG141092 - MSRP \$42,865. PLUS TTL

NEW



FENTON PRICE
\$21,577

2014 DODGE DART GT
#ED716044 - MSRP \$23,730. PLUS TTL

NEW



FENTON PRICE
\$32,322

2014 DODGE 1500 TRADESMAN
#ES192753 - MSRP \$36,905. PLUS TTL

NEW



FENTON PRICE
\$47,176

2014 DODGE CHARGER SRT8
#DH635157 - MSRP \$48,930. PLUS TTL

NEW



FENTON PRICE
\$34,029

2014 DODGE TOWN & COUNTRY
#ER168851 - MSRP \$37,810. PLUS TTL

NEW



FENTON PRICE
\$23,944

2014 DODGE 1500 TRADESMAN
#EG139031 - MSRP \$26,620. PLUS TTL

NEW



FENTON PRICE
\$53,549

2014 DODGE 3500 LARAMIE CREW CAB
#EG108130 - MSRP \$62,050. PLUS TTL

NEW



FENTON PRICE
\$42,948

2014 DODGE 1500 LARAMIE CREW CAB
#ES153002 - MSRP \$48,955. PLUS TTL

NEW



FENTON PRICE
\$25,930

2014 CHRYSLER 200 LIMITED
#EN151664 - MSRP \$28,430. PLUS TTL

NEW



FENTON PRICE
\$37,990

2014 JEEP WRANGLER SAHARA
#EL184242 - MSRP \$40,570. PLUS TTL

USED



FENTON PRICE
\$28,230

2011 CHEVROLET AVALANCHE
#BG107680 PLUS TTL

USED



FENTON PRICE
\$31,380

2011 JEEP 4DR RUBICON
#BL600511 PLUS TTL

NEW



FENTON PRICE
\$38,600

2013 FORD F150 SUPERCREW
#E10743 - MSRP \$41,700. PLUS TTL

NEW



FENTON PRICE
\$23,261

2014 DODGE JOURNEY SXT
#ET170788 - MSRP \$25,285. PLUS TTL

USED



FENTON PRICE
\$23,810

2013 NISSAN MAXIMA
#DC801886 PLUS TTL

USED



FENTON PRICE
\$21,067

2011 CHEVROLET TRAVERSE
#BJ106950 PLUS TTL

USED



FENTON PRICE
\$28,982

2012 DODGE CHARGER RT
#CH248173 PLUS TTL

USED



FENTON PRICE
\$18,921

2007 DODGE 1500 4X4
#7C102648 PLUS TTL

USED



FENTON PRICE
\$22,710

2010 CHEVROLET CAMARO
#A9212925 PLUS TTL

USED



FENTON PRICE
\$19,600

2008 HUMMER H3
#88169302 PLUS TTL

USED



FENTON PRICE
\$53,950

2013 F250 PLATINUM
#DEA03325 PLUS TTL

USED



FENTON PRICE
\$12,950

2009 NISSAN CUBE
#9T109528 PLUS TTL

BAD CREDIT? NO PROBLEM

WE FINANCE

NO CREDIT? NO PROBLEM

*TAX, TITLE, LICENSE AND DEALER FEES EXTRA. PHOTOS FOR ILLUSTRATION PURPOSES AND MAY NOT REPRESENT ACTUAL VEHICLE. SEE DEALER FOR DETAILS.

LINCOLN ~ MERCURY ~ JEEP ~ FORD ~ DODGE ~ LINCOLN ~ MERCURY ~ JEEP ~ FORD ~ DODGE ~ LINCOLN ~ MERCURY

Lifestyles

www.thepampanews.com

Weekly Menus

Pampa Independent School District

MONDAY, February 10
Pig in a blanket or chicken nuggets, whipped potatoes, steamed broccoli, peaches
Breakfast- Breakfast pizza
TUESDAY, February 11
Popcorn shrmip or chef salad, spinach, carrot sticks, fresh fruit
Breakfast- Donut, sausage patty
WEDNESDAY, February 12
Spaghetti or popcorn chicken, green beans, tossed salad, mixed fruit
Breakfast- Waffle sticks
THURSDAY, February 13
Egg rolls or pizza, corn, broccoli florets, juice
Breakfast- Biscuit, sausage patty
FRIDAY, February 14
Chicken fajitas or hamburger, pinto beans, french fries, fresh fruit
Breakfast- Cereal, toast

Pampa Senior Citizens Center

MONDAY, February 10
Chicken fried steak or oven fried chicken, mashed potatoes, corn, beets, northern beans, slaw, tossed salad, Jell-O, German chocolate cake, banana pudding, fruit cup, hot roll, cornbread
TUESDAY, February 11
Chicken spaghetti or Salisbury steak/gravy/onions, sour cream potatoes, green beans, carrots, pintos, slaw, tossed salad, Jell-O, ugly duckling cake, chocolate pie, fruit cup, hot roll, cornbread
WEDNESDAY, February 12
Roast beef brisket/brown gravy or cook's choice, mashed potatoes, peas, fried squash, butter beans, slaw, tossed salad, Jell-O, devils food cake, lemon pie, fruit cup, hot roll, cornbread
THURSDAY, February 13
Chicken strips or meatloaf, boiled potatoes, Italian bland, spinach, pintos, slaw, tossed salad, Jell-O, spice cake, cherry cobbler, fruit cup, hot roll, cornbread
FRIDAY, February 14
Cod fish filet/hushpuppies or taco salad, potato wedges, broccoli casserole, beans, slaw, tossed salad, Jell-O, turtle brownies, apple pie, fruit cup, garlic breadstick, hot roll, cornbread

Pampa Meals on Wheels

MONDAY, April 1
B.b.q. meatballs, potato salad, baked beans, apricots
TUESDAY, April 2
Hamloaf, hominy casserole, zucchini/tomatoes, pineapple
WEDNESDAY, April 3
Chicken nuggets, baked potatoes, peas/carrots, peaches
THURSDAY, April 4
Shepherd's pie, corn, pickled beets, Jell-O
FRIDAY, April 5
Chicken breast, bread sticks, green beans, apple-sauce

AUSTIN ELEMENTARY CAMP READ ALONG



Submitted photo

The attached pictures are of Specialists Ovalie with the US Army's 974th Quarter Master Reserve out of Amarillo. Austin Elementary would like to thank him for attending Austin's Camp Read Along in which he read to students.

Pampa native receives high honors

SUBMITTED

Texas A&M University — Commerce (Honors College) has announced Hannah "Terra" Truitt a recipient of the President's scholars Award for the first semester.



Hannah Truitt

To receive this award, the student must have a grade point average of 4.0.

In addition, Hannah "Terra" has been inducted into three Honor Sororities: National Society of Leadership and Success, Phi Eta Sigma and Alpha Lambda Delta.

Hannah "Terra" has been invited to present her research from the past semester to two conferences this spring. They are the South Popular Culture Conference from Feb. 22-29 in Albuquerque and the Great Plains Honors Council Conference from March 28-39 in Fort Smith, Ark. She was one of five first-year students from Texas A&M — Commerce chosen to represent the university at these conferences.

Hannah is a 2013 graduate of Pampa High School and Salutatorian of her class. She is the daughter of Valerie Halvorson, of Pampa and the granddaughter of Frank and Donna Anderson, of Pampa.

25% off
men's and women's bath & body products

BRANDON'S
Flowers & Fine Gifts

123 N. Cuyler
665-5546

(expires 05/31/14)

The family of Delbert Barker would like to express their appreciation for all the wonderful cards, letters, visits and phone calls expressing prayers and concern. The great food, flowers and memorials are much appreciated.

Thank you to the First Baptist Church family for the dinner they provided. Thanks also to Rev. Byron Williamson, pastor, Rev. Barry Owens, associate pastor, and my niece Lacie Habekott, missionary with CRU military, Colorado Springs; Carmichael Whaley Funeral Directors; and BSA Hospice.

Thanks to all those who attended the great tribute to Delbert.

Shirley, Jim, Lori, Braydon, Brittnee & Brooklyn

Daniel Boone Pellet Grill

Grilling is Good!

Features:

Digital Control	Thermal Sensor	Front Casters
Meat Probe	Durable Baked-on Finish	Stainless Steel Grate
Efficient Firebox	Peaked Lid	Front Casters

Fireside Comfort
665-9333
530 West Brown (Hwy 60) Pampa

find us on **Facebook**

To find Breaking News, Event Photos, & Video Clips.

facebook.com/thepampanews

"I want a floor that invites my family to hang out in the kitchen and talk about their day while we fix a meal together."

Come by Witt Flooring Center and let Victor or James help you pick out flooring that is perfect for your home.

WITT FLOORING CENTER

806 N. MAIN BORGER, TX
806.273.9488
Mon-Fri 8-5:30 Sat 9-3 | www.borger.buyabbey.com

Trust Me!

The friendly staff at Keyes can recommend over-the-counter cold and flu remedies that will take care of the worst cold and flu symptoms!

KID APPROVED

Keyes Pharmacy
928 N. Hobart • 806-669-1202
Monday - Friday 8:30 a.m. - 6:00 p.m. Saturday 8:30 a.m. - 12:00 p.m.

Carousel Expressions

On Eagle's Wings

Take an

ADDITIONAL 40% off

Clothing that is already on sale

113 N Cuyler | 665-0614

Chat

Continued From Page 4

The Dali Lama would be a wonderful person to listen to, and he could do all the talking. I'd like to visit with Queen Margrethe of Denmark, because she really is a cool woman, and extremely interesting. I would like to meet my late great grandfather Smith on the bench, and find out why he left Scotland for America, and why he took his own life on a barrel of dynamite.

I never met my father-in-law Bill, since he passed away before I met my husband, but I already know he was a wonderful man. Naturally, my own mother would be my first and only choice from my pool of deceased female relatives. I'd like her to know about her youngest grandchild and her great-grandchildren. So that is my list of park bench visitors. Who would be on your list?

Judi Smith resides in Pampa and can be reached at jsmith46@aol.com.

Cargill adds 'textured beef' wording to labels

LINCOLN, Neb. (AP) — Cargill has added wording to its ground beef package labels to say whether they include the product that's been called "pink slime."

The Lincoln Journal Star says the company announced in November that it would be adding the labeling. Cargill says bulk packages and some ground beef chubs bear labels that say, "Contains Finely Textured Beef."

Another company that makes the product, Beef Products Inc., sued ABC news in September 2012 after ABC aired a story that used the phrase "pink slime." The company says ABC's story misled consumers into believing the product is unhealthy and unsafe. The company says it lost business and had to close plants in Texas, Kansas and Iowa. It kept open a Nebraska plant.

Beef Products Inc. is based in South Dakota.

Girl taken from Detroit is found in Texas

DETROIT (AP) — Police say a 5-year-old girl who was taken from a Detroit school by a parent who didn't have legal custody has been found safe in Texas.

Police say the girl and her 37-year-old mother were found Thursday night in Dickens, Texas, during a traffic stop. The mother was detained without incident.

The girl is being cared for by child protective services workers until family can travel to Texas to pick her up. She's reported in good health.

The girl was missing since being picked up from school earlier this week in Detroit. Police at the time said it was believed the mother was heading out of state.

Come In Or Call For A Quote
 AUTO • HOME • BUSINESS • LIFE
JOHNSTON INSURANCE AGENCY

Not The Largest...
 Not The Smallest...
 But The Best Rates & Service!

1712 N. HOBART
 665.4133 (866) 665.2788

sunday horoscope

A baby born today has a Sun in Aquarius and a Moon in Gemini if born before 10:33 p.m. (PST). Afterward, the Moon will be in Cancer.

HAPPY BIRTHDAY for Sunday, Feb. 9, 2014:

This year you could go from being intellectual and innovative to emotional and unstructured. This seesaw effect could take a toll on your immediate circle. Be understanding if they lose it at times. If you are single, traveling will pave the way to you meeting a new person and possibly beginning a new relationship, especially after June. If you are attached, you need to remain sensitive to your significant other. This person might be having strong reactions to your newfound duality. **CANCER** is moody yet changeable.

The Stars Show the Kind of Day You'll Have: 5-Dynamic; 4-Positive; 3-Average; 2-So-so; 1-Difficult

ARIES (March 21-April 19)

★★★ You won't be able to change someone's mood, even as determined as you are. Use your high energy to help this person revitalize him- or herself. Some of you might start a mock fight, just to get this person going. Tonight: Head home, then decide.

This Week: You might have difficulty getting the week started, but you will have no choice.

TAURUS (April 20-May 20)

★★★ Stay alert with regard to spending, as you easily could go overboard. You might want to funnel some frustration into whatever you are doing. Watch how competitive you become with someone. A brisk walk would work, too. Tonight: Catch up on a pal's news.

This Week: Reach out to others, get their opinions and schedule meetings.

GEMINI (May 21-June 20)

★★★★ You could be more in tune with a situation than you realize. Your drive to help someone loosen up might cause him or her to close down. Make a point to have such a great time that the other party can't resist joining in. Tonight: A little out of control.

This Week: Listen to your gut about money matters.

CANCER (June 21-July 22)

★★★★ You might want to hear more of what is going on later in the day. You'll need downtime, as you have pushed very hard and could be tenser than you realize. Take an extra nap and/or re-energize in a different

way. Tonight: Join others. This Week: You hit your power days Monday and Tuesday.

LEO (July 23-Aug. 22)

★★★★ You might want to discuss a personal matter with a loved one. You'll want the right mood and setting, but you won't need to go through this effort -- this person knows that you want to talk. You could be more off-kilter than you realize. Tonight: Not to be found.

This Week: You perk up midweek.

VIRGO (Aug. 23-Sept. 22)

★★★ Check in on a loved one. This person depends on you and your attention more than you realize. Take your time with this person. Ultimately, you know what you need to do. Plan some frivolous fun later on today. Tonight: So what if tomorrow is Monday?

This Week: Use Monday and Tuesday to the max. Lie low from that point on.

LIBRA (Sept. 23-Oct. 22)

★★★★ Understand that someone might not see eye to eye with you. Take a drive to a favorite spot, and you will relax by the time you return. Realize that you are part of the problem. Respect differences rather than try to get others to agree with you. Tonight: Get a head start on tomorrow.

This Week: Count on assuming more responsibility than you want.

SCORPIO (Oct. 23-Nov. 21)

★★★★ You might be pleasantly surprised by a loved one's offer. Don't ask any questions; just go with the flow, and you will be much happier as a result. One-on-one relating could be very different and more rewarding than it has been in the past. Tonight: Let the party go on.

This Week: You have a goal in mind.

SAGITTARIUS (Nov. 22-Dec. 21)

★★★★ You seem to drop in on a fun happening wherever you go. Realize that people naturally relax around you. Join a friend or loved one, and go watch a game somewhere. Others seem to gravitate toward you, no matter what you are up to. Tonight: Where the gang is.

This Week: Work with individuals, not groups. You will see the rewards.

CAPRICORN (Dec. 22-Jan. 19)

★★★★ Get involved with a project that you have been putting on the back burner. A friend might be disappointed that you are not up for getting together right

away. Respond to this person with care, if you find them to be irritating. Tonight: Accept an invitation.

This Week: Others act like you.

AQUARIUS (Jan. 20-Feb. 18)

★★★★ Let your imagination run wild as you schedule your day. You will see plans change as a result. Look at these adjustments as an opportunity to incorporate more fun into your life. You could be delighted with life's challenges right now. Tonight: Go to bed early if you can.

This Week: Get as much done as possible early on.

PISCES (Feb. 19-March 20)

★★★ You might want to encourage a family member or roommate to hang out, order in food and watch movies with you. What evolves will be a fun, lazy day together. You could invite others over and expand this event to a pajama party. Tonight: Till the wee hours.

This Week: Tap into your imagination.

BORN TODAY

Actress Mia Farrow (1945), actress Zhang Ziyi (1979), poet Amy Lowell (1874)


Cinema 4

Visit us at www.cinema4pampa.com to see what's playing now!

Located in the Corondo Shopping Center behind Hastings 1201 N. Hobart Pampa, Texas
 For show times call 688-9192 or 688-9229

SUBSCRIBE TODAY!
 CALL BEVERLY!
 806-669-2525

You're invited to the
2nd Biennial Texas Panhandle-High Plains Water Conservation Symposium:



The Dollars and Sense of Water Conservation

WEDNESDAY, FEBRUARY 12, 2014

8:30 A.M. - 4:30 P.M. - AMARILLO CIVIC CENTER

Tickets are \$35 each, lunch included. Register at the Texas Water Foundation: <http://www.texaswater.org>

For more information, call
 Panhandle Groundwater Conservation District
 at 806-883-2501

Just because you don't live in town doesn't mean you should do without fast Internet!

Recommended Speeds for:

Make Your Favorite Apps Work the Way They're Intended!



3 Mbps



6 Mbps



What Speed Do You Need?

Services not available in all areas.

Some restrictions apply.

GET FIRST 3 MONTHS of any speed up to 6 Mbps for only \$29.99 per month!



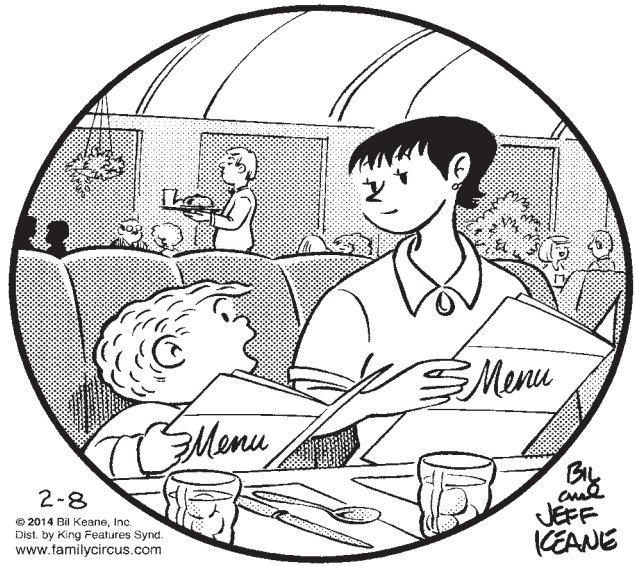
Sign up or Upgrade to PTCI Rural Internet Today!

ptci.net

222 S. Amherst Perryton, TX 721 W. 7th Spearman, TX 1-800-562-2556

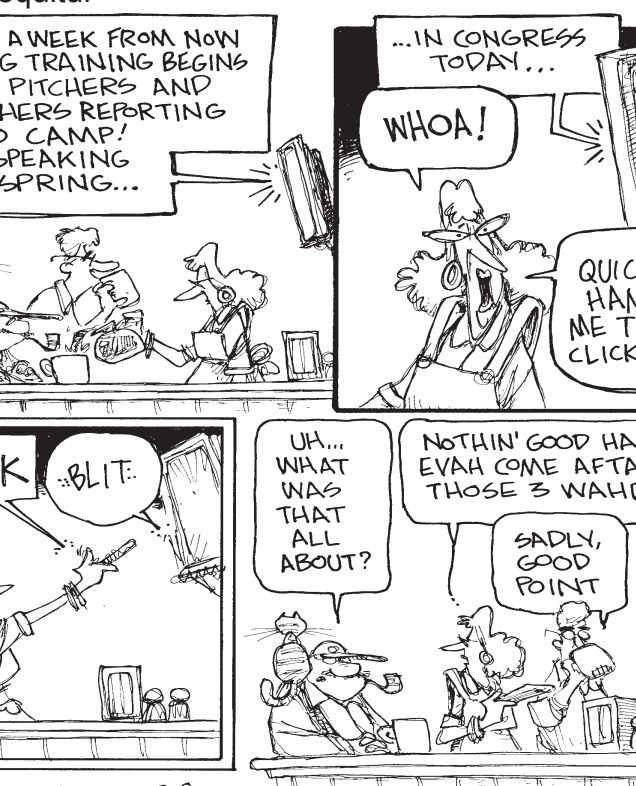
comics PAGE

THE FAMILY CIRCUS By Bil Keane



2-8
© 2014 Bil Keane, Inc. Dist. by King Features Synd. www.familycircus.com
Bil and Jeff Keane

Non Sequitur



© 1994 WILEY-INTERSCIENCE, INC. 2-8
DIST. BY UNIVERSAL UCLICK WILEY-INTERSCIENCE, INC. WWW.COMICS.COM

Nest Heads



© 2014 KING FEATURES SYNDICATE, INC. WWW.KINGSFEATURES.COM

daily horoscope

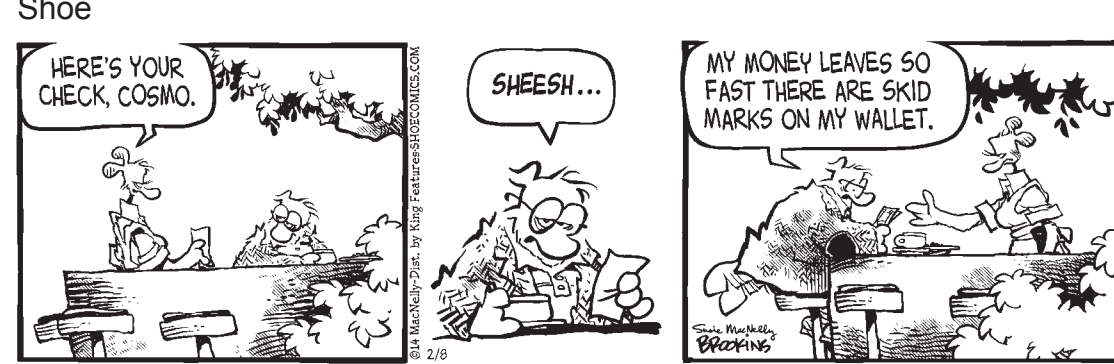
HAPPY BIRTHDAY for Monday, Feb. 10, 2014:
This year you toss yourself into your day-to-day life with the objective of becoming more efficient and fulfilled. You also will be open to learning more, which could lead to transforming your life or your health habits; however, you might not be thinking long term. If you are single, you could be witnessing substantial change in your daily life. The person who appeals to you today might not catch your eye in a few months. Be open and kind to potential suitors -- get to know them better. If you are attached, the two of you will be more upbeat than you have been if you make an effort to make each other's life easier. Let a new hobby evolve. Surprises seem to mark your life together this year. **CANCER** is far too emotional for you.
The Stars Show the Kind of Day You'll Have: 5-Dynamic; 4-Positive; 3-Average; 2-So-so; 1-Difficult
ARIES (March 21-April 19)
★★★ You will tap into your intuitive feelings in the morning. As a result, a far-out idea is likely to surface. You will want to work with it, yet you might realize that it could take you down a strange path. No matter what, you will land on your feet. Tonight: Happily head home.
TAURUS (April 20-May 20)
★★★★ You need to understand what is happening behind the scenes with a friend. You will get a better sense of that when in a meeting with this person. Idealism is wonderful, but it needs to be anchored. You could be shocked by some of the ideas being shared. Tonight: Catch up on news.
GEMINI (May 21-June 20)
★★★★ Your finances are more important than you might realize. You understand money and its power well, but you probably have never seen someone look at it the way an associate does. Money could be the driving force behind this person's decisions. Tonight: Treat yourself.
CANCER (June 21-July 22)
★★★★ You might feel as if you can't easily be stopped, no matter what you do. Consider your alternatives in a difficult situation. You are likely to succeed in whatever you do, as you seem to be carrying a lucky rabbit's foot in your back pocket. Tonight: As you like it.
LEO (July 23-Aug. 22)
★★★ You might sense that a low profile will work better for you in increasing your efficiency. A partner

could feed you some interesting ideas. Tap into your creativity, and you'll come up with unique solutions. You will know when you hit the right one. Tonight: Call a favorite person.
VIRGO (Aug. 23-Sept. 22)
★★★★ A positive attitude will point to success. You could find that several meetings will give you a lot of feedback. Defer to a partner, and let this person know that you have confidence in his or her abilities. A goal is more attainable than you realize. Tonight: Where your friends are.
LIBRA (Sept. 23-Oct. 22)
★★★ You must step up to the plate to hit a home run. Others will follow your lead and succeed. You might be overly concerned about your responsibilities, as they seem to find their way to you. Know which duties to say yes or no to. Tonight: A must appearance.
SCORPIO (Oct. 23-Nov. 21)
★★★★ You need to reach out to someone at a distance. Your creativity will flourish if you follow your feelings. Know that you will land on your feet. An unexpected development in your daily life could force you to re-group. Tonight: Make it an early night.
SAGITTARIUS (Nov. 22-Dec. 21)
★★★★ Work with a partner or an associate directly. You might need to switch gears in order to deal with a problem that arises. Others will see you in a special light. Opportunities could arise from out of the blue. Be ready to jump on a good idea. Tonight: Say "yes" to an offer.
CAPRICORN (Dec. 22-Jan. 19)
★★★★ Be more forthright with an opportunity involving someone you care a lot about. Communication is likely to excel. You seem to know who is on the phone before you even pick it up. Your sensitivity will be at its peak. Tonight: Go along with someone's request.
AQUARIUS (Jan. 20-Feb. 18)
★★★ "All work and no play" doesn't suit you. You'll need to maintain a positive attitude in order to make a dream a reality. You will need time to consider your various options. Make it OK to head down a new path. Tonight: Buy a favorite treat on the way home.
PISCES (Feb. 19-March 20)
★★★★ Your creativity will appear to be endless, which could excite many people. You know what is going on behind the scenes. Confirm what you think is true, but try not to be overconfident. Tonight: Kick up your heels.

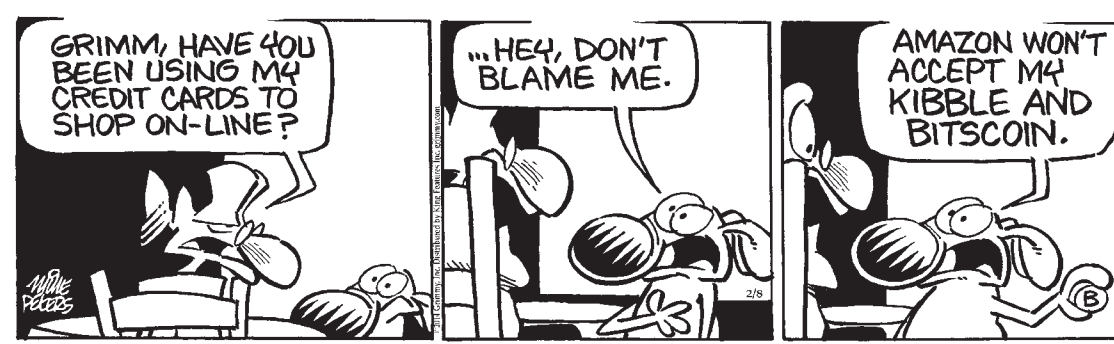
Tundra



Shoe



Mother Goose and Grim



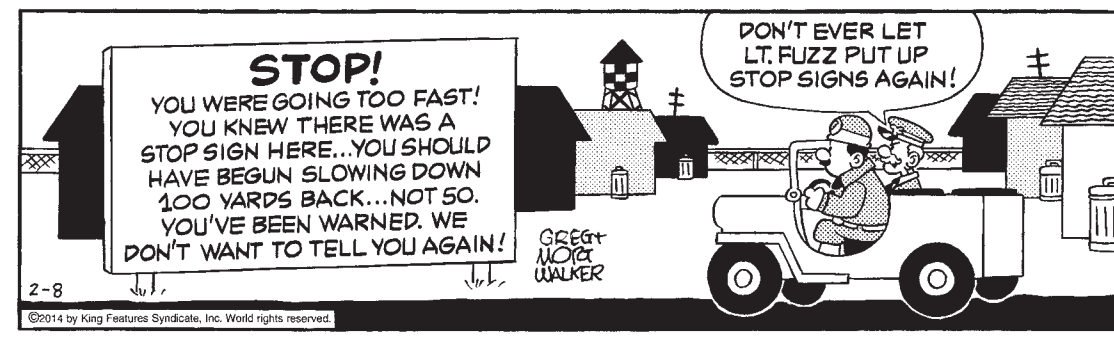
Zits



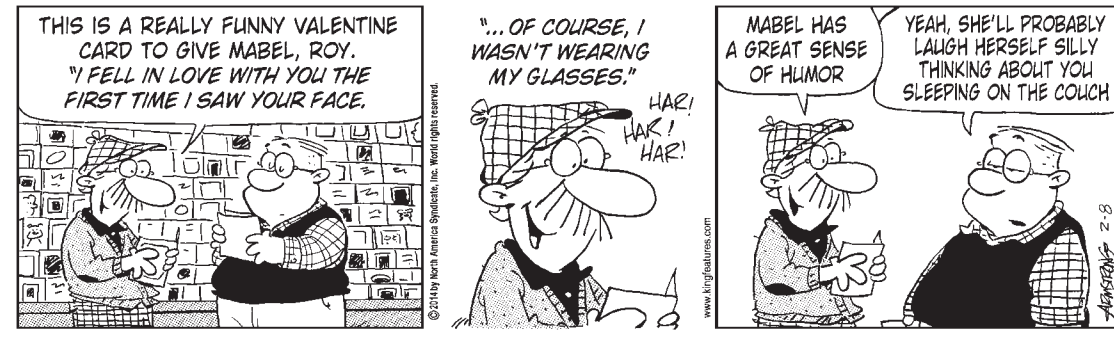
Garfield



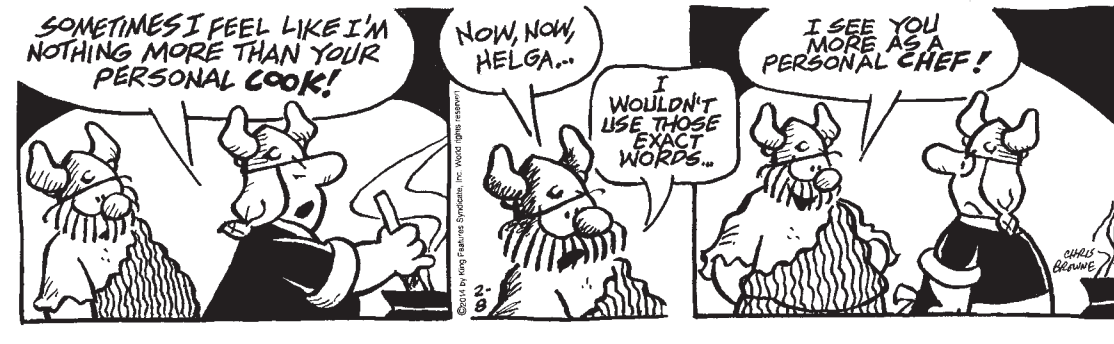
Beetle Bailey



Marvin



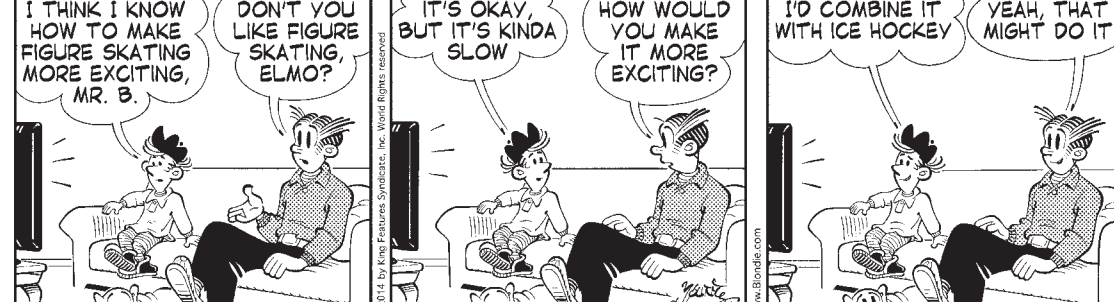
Hagar The Horrible



Peanuts



Blondie



Hogan

Continued From Page 1

crat in the staunchly Republican Lone Star State has been a challenge all its own, Hogan indicated.

Aside from a story in his hometown paper, the Cleburne Times-Review, Hogan said he hasn't had much luck with getting press coverage.

"One newspaper told me 'We don't cover Democrats,'" he said. "They drop me like a hot potato when I say I'm a Democrat."

Why he is running

Hogan said the campaign is not about Democrats or Republicans, but about people and who is the best person for the job.

Hogan said he has studied the job for the past six years in preparation for his campaign and, if elected, only plans to serve for one term.

The cattle farmer said he

reads constantly, and especially enjoys learning about people who have become successful in their chosen fields.

He believes that most people — including newspaper reporters — don't understand what the Texas Department of Agriculture does.

"It's about your food and where it comes from," he said.

As described on its website, the agency's responsibilities include protecting agricultural crops from harmful pests and diseases, facilitating trade and market development of agricultural commodities ranging from livestock to crops, providing financial assistance to farmers and ranchers in the form of loan guarantees and administering grant funds for agricultural research to develop new technologies.

It also advocates for policies at the federal, state and local level that are beneficial to the \$106 billion

agriculture sector, which comprises 10 percent of the Texas economy.

The department also does things most people wouldn't associate with agriculture, like regulating all fuel pumps in Texas to ensure drivers get the correct quality and amount of fuel, and regulating all weights and measures devices, such as grocery store scales and retail price scanners, to ensure consumers are charged advertised prices.

And the list goes on and on.

The water shortage

One of the big issues at the Statehouse is water, or more precisely, the lack of it.

Hogan said politicians in Texas have been bantering on the issue for years and years, but nothing ever gets accomplished.

"They all say the same things over and over again but nobody can bring you a glass of water," Hogan quipped. He proposes bringing

water in from the Gulf of Mexico to desalination plants to augment the state's water supplies.

"We've got water all the way from Galveston to the end of Texas," he said.

He then joked about seeing California politicians on TV pontificate about the water shortage in that state, while all the while you could see the ocean in the background.

It's good to be Irish

Hogan said he "shoots straight from the hip" and that his "Irish temper" is kept in check by his good sense of humor.

Hogan, 63, started his own dairy farm in 1973, operating it successfully until 2005 when he switched to a cow-and-calf operation.

He said his cattle operation is on the same property as the former dairy farm, he just switched from milk cows to Angus cattle.

His wife, Tracy, died of cancer in August 2010.

Found

Continued From Page 1

sites and Facebook pages.

The PPD said the truck had been left unlocked with the keys in the ignition.

Another stolen vehicle

seen in that video, a white Buick van, was recovered by the GCSO on Wednesday, said Lt. Zach Kidd, a spokesman for the Gray County Sheriff's Office.

All four vehicles have now been recovered.

Kidd had no details about the other two recovered vehicles, except that both were found aban-

doned. One was stolen from Lefors, and Kidd said the Lefors city marshal is handling that case.

Authorities believe all of the vehicle thefts are connected.

Gray County Crime Stoppers is offering a cash reward of up to \$1,000 for information that leads to the arrest or filing of crim-

inal charges against the individual or individuals responsible for these crimes.

If you have any information regarding this crime, or know the identity of those responsible, call Crime Stoppers at 806-669-2222, visit www.pgcstips.com or text "pampa" along with your tip to 274637.

Trial

Continued From Page 1

Amarillo. The child suffered multiple wounds due to blunt force head trauma.

Johnson was charged with capital murder because the victim was under the age of 10.

If convicted, he could be sentenced to life in prison without the possibility of parole. If the state seeks the

death penalty, a jury could sentence Johnson to die by lethal injection.

He is still being held in the Hutchinson County Jail on a \$1 million bond.

Last week at the Gray County Courthouse, an-

other area man indicted for murder, Joshua Keith Rigo, was convicted by a jury and sentenced to 90-years in a state penitentiary. Rigo was arrested last January for killing Lefors resident Kristi Dawn Slatten.

LIKE A BEACON IN A WINTER STORM



Photo by John Lee

In his song "Water Tower" on his 2012 album "Night Train," Jason Aldean alludes to the small-town staples as beacons in a storm of discomfort. Well, Pampans and residents of the Texas Panhandle have experienced bone-chilling freezing temperatures that is clearly visible to those driving on U.S. Highway 60 right outside of Pampa at National Oilwell Varco.

Oklahoma has 2013's second-highest twister total

NORMAN, Okla. (AP) — Oklahoma had the second-highest number of tornadoes in 2013, behind Texas, as well as the nation's strongest storm of the year and the widest twister on record.

Statistics prepared ahead of next week's National Tornado Summit showed Oklahoma's 79 tornadoes were well above the average of 57. Texas had 81 tornadoes last year.

Oklahoma typically ranks fourth in the number of tornadoes, behind Texas, Florida and Kansas.

Greg Carbin, the warning coordination meteorologist with the Storm Prediction Center in Norman, told the Tulsa World

newspaper the national total of 898 tornadoes was well below the normal amount — about 1,000.

"It was a well-above-average year for Oklahoma," Carbin said. The state had 145 tornadoes in 1999, its most since official records started in 1950.

The May 20 tornado in Moore killed two dozen people, and was the year's only storm rated EF5, the highest on a scale of tornado damage. The widest storm on record — 2.6 miles across — was recorded at El Reno 11 days later. It had winds approaching 300 mph but its damage was rated at EF3 because it tracked mainly in rural areas.

10% OFF

1 Item
With This Coupon
**Excludes Tobacco

Good Now thru March 8th, 2014.
* Cannot be combined with any other offer.

Lowest Prices In Town!
Beer • Liquor • Wine • Cigarettes • Lotto • ATM

1222 Price Rd. • 806-665-9662
M-S 10am - 9pm

Mikey's

Liquor Store

16974

OIL CHANGE EXTRAVAGANZA

ROBERT'S AUTO SERVICE

FREE WASH & VACUUM
AFTER 9 OIL CHANGES
Bring this card in with every oil change visit to receive punch. Fill card with punches and after 9 oil changes receive a free wash & vacuum.
300 N. Hobart 806-669-1117

- All types of minor repair
- Brake pads
- Oil change/full service

- Strut
- Tune-up
- Heat/air
- Tire rotation
- Shocks

- Water pump
- State inspection
- Wash/vac
- Full detail

GIFT CERTIFICATES AVAILABLE

ROBERT'S QUALITY REPAIRS AUTO SERVICE
300 N. Hobart
806-669-1117
Hours:
Mon-Fri 7-7
Sat 8-4

RASCO CONSTRUCTION & PAMPA
GLASS & SUPPLY ARE NOW...

HIGH PERFORMANCE

Exterior • Coatings • Glass

BUILDING SYSTEMS

CAR PORTS

ASK US ABOUT FINANCING OPTIONS!

1432 N BANKS
PAMPA, TX 79065
PH 806.665.8100

HIGHPERFORMANCEEXTERIORS.COM

Woman gives 3 Illinois waitresses \$5,000 each

ROCKFORD, Ill. (AP) — Three waitresses at an Illinois restaurant say they could only stare in disbelief when a woman over the weekend handed them each a \$5,000 check.

The owner of the Boone County Family Restaurant in Caledonia, Matt Nebiu, said business was slow Saturday when the customer handed checks to 25-year-old Amy Sabani, 23-year-old Sarah Seckinger and 28-year-old Amber Kariolich.

Sabani told the Rockford Register Star that she first thought her check was for \$500. But on closer inspection she saw its actual value and refused to take it.

ICE MELTERS

Spray On Before

Perfect for driveways, sidewalks, parking lots & other concrete surfaces.

Frank's
Do it Best
Hardware

401 N Ballard • 665-4995

16942

You provide the LOVE...

...we'll help you find the perfect place for the seat.

Re/Max Hometown - (806)662-4896 - www.pattisellspampa.com

Clarendon College announces fall 2013 graduates

SUBMITTED

Clarendon College held commencement ceremonies for the Fall 2013 graduating class on Friday, December 6, with 51 students honored.

A total of 10 students were awarded associate degrees and 41 students were awarded certificates of completion.

The Fall 2013 graduates are listed below by hometown:

Brittany Ann Balay, Amarillo, Certificate of Completion in Cosmetology; Betsy Beltran, Amarillo, Certificate of Completion in Vocational Nursing; Joel Anthony Britten, Amarillo, Associate of Applied Science majoring in RFO; Natalie M. Moreno, Amarillo, Certificate of Completion in Vocational Nursing; Margie Sanchez, Amarillo, Certificate of Completion

in Vocational Nursing; Lionel Benavides III, Childress, Associate of Applied Science majoring in Wind; Alison Lynn Britten, Childress, Certificate of Completion in Vocational Nursing; Stormy Burrows, Childress, Certificate of Completion in Vocational Nursing; Michelle Garcia, Childress, Certificate of Completion in Cosmetology; Chelsey Ann Garno, Childress, Certificate of Completion in Cosmetology; Destiny Marie Dann, Childress, Certificate of Completion in Cosmetology; Tabitha LeAndra Noelle Pena, Childress, Certificate of Completion in Cosmetology; Meagan Leianna Weaver, Childress, Certificate of Completion in Vocational Nursing; Kelsey Blake Mullins, Clarendon, Certificate of Completion in Vocational Nursing; Tamra Renee Bur-

nam, Hedley, Certificate of Completion in Vocational Nursing; Neva Marie Corely, McLean, Associate of Science; Samantha Renee House, Memphis, Certificate of Completion in Vocational Nursing; Monica Miller, Memphis, Certificate of Completion in Vocational Nursing; Dana Michelle Waller, Memphis, Certificate of Completion in Vocational Nursing; Sally Frawner, Paducah, Certificate of Completion in Vocational Nursing; Angie A. Holly, Paducah, Certificate of Completion in Vocational Nursing; Emily Lauren Barrett, Pampa, Certificate of Completion in Vocational Nursing; Theresa Daniels, Pampa, Associate of Science; Kimberly Darnell, Pampa, Certificate of Completion in Cosmetology; Kristen Doyetes, Pampa, Certificate of Completion in Vocational Nursing;

Chad Epperson, Pampa, Certificate of Completion in Welding; Meganne Briar Fraser, Pampa, Certificate of Completion in Vocational Nursing; Susette Stubbs Howard, Pampa, Associate of Science; Pamela R. Mathis, Pampa, Certificate of Completion in Vocational Nursing; Erika Mauricio, Pampa, Certificate of Completion in Cosmetology; Karen McGahen, Pampa, Associate of Science; Kendra Marie Ruth Myers, Pampa, Certificate of Completion in Cosmetology; Kayla Lynn Parker, Pampa, Certificate of Completion in Vocational Nursing; Ashlee Nicole Patton, Pampa, Certificate of Completion in Cosmetology; Brenda Reed, Pampa, Certificate of Completion in Cosmetology; Bryan Roberts, Pampa, Certificate of Completion in Vocational Nursing; Verona Ballard

Shook, Pampa, Certificate of Completion in Vocational Nursing; Cassie Nicole Solis, Pampa, Certificate of Completion in Vocational Nursing; Jessica L. Gutierrez, Pampa, Associate of Science; Elena Leigh Mercado-Valdez, Pampa, Certificate of Completion in Cosmetology; Shaley Lanae Smith, Pampa, Certificate of Completion in Vocational Nursing; Tiffany Thomas, Pampa, Certificate of Completion in Vocational Nursing; Judy Janean Whitten, Pampa, Associate of Science; Shanna Segura Smith, Panhandle, Certificate of Completion in Vocational Nursing; Alex Stephens, Panhandle, Certificate of Completion in Vocational Nursing; Chancy Dowd, Quitaque, Certificate of Completion in Vocational Nursing; Kelly Ann Lowery, Vega, Certificate of Completion in Vocational

Nursing; Shayla Villalon, Wellington, Certificate of Completion in Vocational Nursing; Delta Hartwig, White Deer, Associate of Science; Kenley R'Nae Loveless, White Deer, Certificate of Completion in Cosmetology; Bridgett Parks, White Deer, Associate of Science.



SO MANY PROJECTS SO LITTLE TIME

We have tools, the skills, and the time to help you with all those odd jobs you've been planning to do.

COME SEE THE CHIEF



CHIEF PLASTICS PIPE & SUPPLY INC.
1237 & 1240 S BARNES
PAMPA, TEXAS
806.665.6716 OR
800.649.6716

Panhandle ranch management event on Feb. 28

SUBMITTED BY TEXAS A&M AGRILIFE

AMARILLO—The Texas A&M AgriLife Extension Service will host a special meeting, "Panhandle Ranch Management: Assessing where we are and evaluating strategy for the future," on Feb. 28 at the Texas A&M AgriLife Research and Extension Center, 6500 W. Amarillo Blvd. "We haven't had a string of years this bad since probably at least the 50s," said Tim Steffens, AgriLife Extension range management specialist, Amarillo. "And with the predictions for the foreseeable future from climatologists, we certainly may need to adjust management to allow rangelands to improve. If it stays in this kind of weather pattern, we may need an entirely different management system."

Registration will begin at 9:30 a.m., with the program at 10 a.m. There will be a \$30 fee and lunch is included.

Those planning to attend should RSVP by Feb. 25 to Nathan Carr, AgriLife Extension agriculture and natural resources agent for Potter County, at 806-373-0713 or nrcarr@ag.tamu.edu.

Speakers and topics will be:

- Clint Rollins, U.S. Department of Agriculture Natural Resources Conservation Service grazing lands specialist, Amarillo – Current status of Panhandle rangelands: What we are seeing across the region following the past drought years.

- Brian Bledsoe, Meteorologist/climatologist, Brian Bledsoe WX.com, Colorado Springs, Colo. –

Current climatic conditions and near- and mid-term climatic trends to consider.

- Steffens – How to assess rangeland conditions on your property, manage for recovery and future forage production risks.

- Stan Bevers, AgriLife Extension economist, Vernon – Restocking strategies for your ranching operation, including financial considerations and what to look for and what to evaluate.

A panel discussion wrapping up the day will include: Dr. Ted McCollum, AgriLife Extension beef cattle specialist, Amarillo; Ken Cearley, AgriLife Extension wildlife specialist, Amarillo; Doak Elledge, Elledge Cattle Co., Pampa; Joe VanZandt, VanZandt Ranch, Mobeetie; and John Welch, Spade Ranches, Lubbock.

Send Us Your Church News

• Events • Special Services • Charity Drives • Gen. News
jcllee@thepampanews.com thowsare@thepampanews.com



ALL YOU CAN EAT CATFISH

WEDNESDAYS



BEGINNING AT 4:30

DYERS BBQ
HWY 60 W. • PAMPA, TEXAS • (806) 665-4401

THIS AD HAS BEEN SEEN BY OVER 7,000 PEOPLE TODAY

ADVERTISE HERE GET NOTICED

THE PAMPA NEWS (806)-669-2525

Ceramic Tile & Tumbled Stone
Showers, Countertops, Floors, Tub Surrounds.

Over 25 years Experience

Keith Taylor
Home 874-1779 lv. msg.

Easy's Pop Shop 1&2
Easy & Convenient! Drive-up Window

Buy Any Size Fountain Drink & Get One **FREE**

WITH COUPON Expires 2-28-14

719/729 N. Hobart

Your life may change... marriage ...

...new house

children ...

...but we will still be here for you!

Call on your friends & family who will support all of life's little changes!

NATIONAL BANK OF COMMERCE
An Office Of First National Bank Waupaca, Wisconsin

PAMPA • 1224 N. HOBART • 665-0022
SHAMROCK • 305 N. MAIN • 256-2181
CHILDRESS • 501 COMMERCE • 940-937-2514

www.fnbwaupaca.com Member FDIC

CULBERSON'S Spotlight



Jesse Thomas

Jesse Thomas, graduate of Balko Highschool in Oklahoma, is the newest technician at Culberson Stowers. He has over 10 years experience in the automotive industry. Jesse and his wife Tiffany (Perryton HS alumni) lived in Houston area for 8 years. They chose to move back to Pampa, where their heart is. Tiffany works for DPC in Borger. They have a 3 year old son. When asked why he enjoys this line of work he said, "This is what I know. I enjoy working with my hands and the interaction with people. I also have the opportunity to train and that is very enjoyable."

Richard Stowers said, "Jesse is a great addition to our technician team. He is a hard worker and very knowledgeable."

Bring your car or truck into Culberson-Stowers and be sure and welcome Jesse to Pampa!

CULBERSON-STOWERS
805 North Hobart Street 806-665-1665
www.culbersonautos.com

Heard-Jones 114 N CUYLER • 669-7478

Sweet Specials
February Savings!

Valentine's Day Special

Introducing... Bonus Coupons!

Each month our coupon book will have 4 BONUS COUPON items **HUGE SAVINGS!**

Here are this month's BONUS COUPON items:

- Palmolive dish soap 14 oz. **49¢**
- Children's Valentine Cards 32 ct., asst. **49¢**
- Barbasol Shave Cream 10 oz. **49¢**
- Glad Trash Bags asst. counts & sizes ... **\$1.99**

Remember to bring in your coupon, or you can pick one up at any register.

Limit 1 item per coupon while supplies last

Great selection of Valentine Sweets from Russell Stover
Whitman's
Hershey
Lindor
Dove
and more

HERSHEY'S POT of GOLD
Chocolates • 8.9 oz.
pink or red heart box

\$8.99

RUSSELL STOVER CHOCOLATES
Red foil heart • 14 oz.

\$8.99

WHITMAN'S CHOCOLATES
Red foil heart • 14 oz.

\$8.99



PALMOLIVE
Dish Detergent
14 oz. **99¢**

COTTONELLE ULTRA
bath tissue
12 pk • big roll **\$5.99**

50 ct. **PUFFS**
facial tissue
\$1.19
with coupon

3 pk choose-a-size **VIVA**
paper towels
\$4.88

DEL MONTE
Sloppy Joe Sauce
15 oz. **97¢**
with coupon

KELLOGG'S
Raisin Bran
13.7 oz. **\$2.88**
with coupon

KELLOGG'S
Corn Flakes
12 oz. **\$2.88**
with coupon

50% OFF JEWELRY & HANDBAGS

Watch for our Heart of Values Coupon Book in your mail this week!

HEARD JONES FAMOUS .99 HAMBURGER SATURDAY
Dine-in Fountain Special Every Saturday!
Hamburger & Chips **\$.99**
Cheeseburger & Chips **\$1.49**
To-go orders welcomed - chips not included

Heard Jones HealthMart
NOW OVER 3000 STORES

- Locally owned
- Caring for panhandle families for over 81 years
- Accepts all prescription plans
- 24-hour emergency prescription service for established customers
- Free citywide prescription delivery
- Fast, friendly service by people who care about you!

Obituaries

Continued From Page 3

Mae Louise Franklin

Mae Louise Franklin, 96, died Thursday, Feb. 6, 2014 in Pampa.

Services will be at 10 a.m. Monday, Feb. 10, 2014, at Carmichael-Whitley Colonial Chapel with Rev. Rick Parnell, associate pastor of Central Baptist Church, officiating. Burial will follow in Groom Cemetery under the direction of Carmichael-Whitley Funeral Directors.

Mae Louise was born May 16, 1917 in Groom to Floyd and Avarilla Lewis. She graduated from Groom High School. She married W. O. "Orville" Franklin on March 12, 1936 in Groom. He preceded her in death on Sept. 5, 2003. She had been a resident of Pampa since 1978, moving from White Deer. Mae Louise was a former mem-



Mae Franklin

ber of the United Methodist Church of White Deer where she taught Sunday school and was a current member of First United Methodist Church of Pampa. She was a homemaker and a volunteer for Pampa Meals on Wheels. She was preceded in death by her parents; a son, Larry Ross Franklin in 1948; a grandson, Johnny Bruce Young in 1985; by two sisters, Neva Peters in 2003 and Marguerite Collins in 1990; and by two brothers, Alvin Lewis in 1996 and Floyd Lewis in 2003.

Survivors include a daughter, Sue Young and husband Allen of Lubbock; three sons, Darrel Franklin and wife Ann and Jerry Franklin and wife Robyn, all of Pampa, and David Franklin and wife Trish of Amarillo; a sister, Barbara McRae and husband Gale of Fritch; nine grandchildren and 18 great-grandchildren.

The family would like to extend a special thanks to Virginia, Wendy, Christy, Amelia, and the entire staff at the Meredith House. They would also like to extend a special thanks to Deborah, Carla, Sue, and the staff at Interim Hospice.

Memorials may be made to First United Methodist Church, P.O. Box 1981, Pampa, Texas 79066-1981, Interim Hospice, 2217 Perryton Pkwy., Pampa, Texas 79065, Alzheimer's Association, 415 W. 8th Ave., Suite 300, Amarillo, Texas 79101, or a charity of choice.

Sign the online guest register at www.carmichael-whatley.com.

Would-be burglar apparently scared by singing fish

ROCHESTER, Minn. (AP) — Big Mouth Billy Bass apparently got the best of a would-be burglar in Minnesota.

Authorities in Rochester say the motion-activated singing fish apparently scared off an intruder who tried to break into the Hooked on Fishing bait and tackle shop.

The novelty bass had been hung near the door and would start singing "Take Me to the River"

whenever someone entered the shop.

The Olmsted County Sheriff's Office says the fish was found on the floor after the intruder knocked it down while breaking the door to get in late Sunday or early Monday.

Sgt. Tom Claymon tells the Star Tribune (<http://trib.mn/1itbp3W>) the would-be burglar left without stealing anything, including cash that had been left in "a very visible spot."

Obama signs farm bill that trims food stamps

EAST LANSING, Mich. (AP) — President Barack Obama on Friday signed into law an agriculture spending bill that will spread benefits to farmers in every region of the country, while trimming the food stamp program that inspired a two-year battle over the legislation.

As he penned his name on the five year measure at Michigan State University, Obama said the wide-ranging bill "multitasks" by helping boost jobs, innovation, research and conserva-

tion. "It's like a Swiss Army knife," he joked.

But not everyone is happy with the legislation and Obama acknowledged its passage was "a very challenging piece of business."

The bill expands federal crop insurance and ends direct government payments that go to farmers whether they produce anything or not. But the bulk of its nearly \$100 billion per year cost is for the food stamp program that aids 1 in 7 Americans.

The bill finally passed with

support from Democratic and Republican lawmakers from farming states, but the bipartisan spirit didn't extend to the signing ceremony where Obama was flanked by farm equipment, hay bales and Democratic lawmakers. White House press secretary Jay Carney said several Republicans were invited, but all declined to attend.

Conservatives remain unhappy with the bill and its generous new subsidies for interests ranging from

Southern peanut growers and Midwest corn farmers to the Northeast maple syrup industry.

They also wanted much larger cuts to food stamps than the \$800 million Congress finally approved in a compromise. Agriculture Secretary Tom Vilsack told reporters he did not expect the cut of about 1 percent of the food stamp budget to have a significant impact on recipients.

Obama promised in his State of the Union address

last week to make 2014 a year of action, using his presidential powers in addition to pushing a Congress that usually is reluctant to go along with his ideas. In that spirit, he's coupling the signing of the farm bill with a new administration initiative called "Made in Rural America" to connect rural businesses with federal resources that can help sell their products and services abroad.

Obama's trip was a reward for Sen. Debbie Stabenow,

D-Mich., who as chairwoman of the Senate Agriculture Committee helped broker the hard-fought farm bill compromise after years of setbacks. Michigan State, a leading agricultural research school, is Stabenow's alma mater.

Obama also squeezed into his three-hour visit to Michigan a lunch with Detroit Mayor Mike Duggan. Duggan took office last month as the city is going through the largest municipal bankruptcy in U.S. history.

massage therapy

BETTER THAN

chocolate...

FOR YOUR VALENTINE!

\$55.00 -1 Hour Advantage Massage

\$45.00 -1/2 Hour Advantage Massage

\$45.00 ea.*
Six 1 Hours

\$35.00 ea.*
Six 1/2 Hours

...guilt free & zero calories.

SAVE \$10.00/EA. WITH THE ADVANTAGE MASSAGE 6 PACKS.

*All massages expire 12 months from date of purchase. All massages are transferable to other parties, but non-refundable. Not redeemable for cash. Additional restrictions may apply. No membership required.

PURCHASE ONLINE NOW!

Purchase online or in-clinic:
Massage Advantage located at New Life Wellness Center 701 N. Price Rd., Pampa, TX 79065
Scheduling: (806) 665-7261 • www.MassageAdvantage.com

Valentine's Day Gifts • Call: (806) 665-7261

SNOW DAY IN PAMPA



Submitted photos

Several of our Facebook readers emailed photos of family and friends from Tuesday's snow day. From top to bottom, Raquel Ramirez shot this photo of her little snow bunny, Mariah Andrea Organ, in their front yard on West Somerville. Are there three or two little girls in this picture taken by Alecia Weaver? Three if you count the princess made out of real snow in the middle. The two human princesses are Weaver's daughters, Kaylee and Reese. The photo was taken on Mary Ellen Street.

Angie Ridener shot this photo of her children, Austin, Jazlyn, Jacob and Anabelle, with their new friend, Miss Snow Lady.

Andrea Perales shot his picture of BAY LTD workers at the G2X Energy construction site along U.S. Highway 60.

TEXAS FURNITURE WINTER CLEARANCE SALE

BIGGEST savings of the year
on America's top brands



**RECLINING SOFA or
RECLINING LOVESEAT with console \$799**



Receive a \$300 Texas Furniture Gift Certificate when you purchase a Queen or King Set, including adjustable models.

**model
closeout
EVENT**



TEMPUR-Cloud[®]
COLLECTION
SAVE UP TO \$300*
Available while supplies last

*See store for details. © 2014 Tempur-Pedic Management, LLC. All rights reserved.

**LA-Z-BOY
recliners**



Buy One
Get One
FREE

Prices
low as **\$699**

Ashley Sofas

plenty of sofas in stock

sale
priced at **\$499 and \$599**



**Sealy
mattress sets**

TWIN SETS **\$299**
FULL SETS **\$379**
QUEEN SETS **\$399**

Sealy Posturepedic

QUEEN SETS **\$699** KING SETS **\$899**

Sectionals \$999
as low as

Ashley \$499
5 pc. dinettes

wide-screen
TV Consoles \$399

swivel
Plush Rockers \$299
by Best Chair Co.

Love Seats
clearance
savings **\$399**

Just Arrived...

**Dancing
Diamond
Necklace**

1/2 Carat
14 Karat White Gold
~~\$1595~~

\$1196⁰⁰

only 2 available

**RHEAMS
DIAMOND SHOP**
N. CUYLER | 806-665-2831

17203

Proudly serving Pampa since 1932
**Texas
FURNITURE**

save
hundreds on
discontinued
items
throughout
the store

665-1623 • 1415 N. Hobart

MON-SAT 9 AM TO 5:30 PM

VISA DISCOVER
6 MONTHS NO INTEREST
FINANCING WITH APPROVED CREDIT

16859

PampaSports

From the Press Box

■ Bench players for the Harvesters just as important as basketball district wraps-up and playoffs start.

The Pampa Harvesters have one game remaining after last night's game at Perryton before they learn their fate in bi-district playoffs. The Lady Harvesters finished 4-4 and third in their district and already know they will be playing Levelland in the bi-district round. The time and place is still undetermined as of Friday morning.



JOHN LEE

Both teams have been the beneficiaries of great bench play as of late. The Lady Harvesters' bench actually rallied over the last two weeks and helped create comebacks at River Road and versus Borger. Lady Harvesters' head coach Gene Valentine acknowledged this after the Borger game.

"We had a couple of people who were unexpected," Valentine said. "Raven (Neal) played good again and Keisha (Daniels) came in and had eight points, with a couple of buckets and a couple of free throws. It kind of gave us a contribution that we hadn't been getting and that took pressure off us."

With senior Hayley Burnett (more than 400 points this season) graduating this spring, it will leave a huge void for the Lady Harvesters in terms of scoring, offense and defense. The only spot it doesn't impact that much is rebounding, where juniors Madison Brown and Caragan Niccum are strong.

While no one is going to replace Burnett, who is truly a unique talent, she isn't the only talented member on that team. As far as varsity is concerned, junior Raven Neal (61 percent FT%) was great for rebounding and free throws. Sophomores Reata

Collins and Megan Brock certainly have the potential to become great point guards. Both hit 3-pointers in recent weeks and filled in nicely while giving the starters some rest. Juniors Keisha Daniels and Tiah Brown filled in nicely during the resting time for the starters.

I didn't get to see many junior varsity games, and when I did I did see more girls than guys junior varsity so I am a little more familiar with them. Some girls who impressed me and at least passed the eye test (meaning they looked good at first watch) that stood out to me every time I watched was Darian Harkcom, Elise Kennedy and Cameron Shaub. Harkcom and Kennedy had 10 and six points respectively against River Road. Gracie Brown and Shaub each contributed with five points in that contest.

Other contributors in the match, Angel Brumfield with three points, Ailene Cobrales with three, Kristen Robinson with two and Kathlyn Cummins with four points.

Judging by the amount of growth I saw by the girls through the various times I got to see them throughout the season, I feel very comfortable to say that the varsity will be just as, if not more, competitive as they were last year.

Now to our Hustlin' Harvesters. This team is deep. Unfortunately, some of their depth is also made up of seniors. Seniors Gabe Garcia (110 pts., 61 FT%), Alex Marrufo (21 pts., 50 FT%), Blayne Troxell (49 pts., 55 FT%) and Trey Miller (21 pts., 31 FT%) are all leaving this squad at the end of the year along with three starters. But sophomore Kambrin Scott (171 pts., 73 FT%, 32 3-pointers) will most likely take over for senior Cory Ponce.

Harvesters' head coach Matt Embry

is excited about this sophomore and thinks once he masters defense, he will be a very large shooting threat for the Harvesters.

Fellow sophomore Cade Engle and junior Jonathan Stevens already start for the Harvesters and put up a ton of points for this team. Brandon Sieck, who was brought up from the junior varsity team, while limited in time on the court, has been effective, hitting 3-pointers and perimeter 2-pointers already.

If there is one thing I have noticed in the few times I have seen the boys junior varsity team, it's that they are tall and they are big. In a game against Randall a while back, two high-scorers were Jett Gibson and Colton Thompson with nine and seven points each. Nick Stevens and Bryson Burrell had four points each, while Brandon Woelfle and Kolten Jefferies had two points each. Dante Jordan even had five points in that game.

The junior varsity squad is a team that can put up points. The JV team smashed Borger 71-38 when they got them at home Tuesday, Jan. 28.

So as you watch the Harvesters on Tuesday and the Lady Harvesters (whenever their bi-district game is) for their home and season finale against River Road, be sure to check out the players who don't get as much attention and put up all the points. Watch the ones who pass the ball to the scorers like Hayley Burnett and Cade Engle. Or watch the re-bouncers, they are crucial to a complete game of basketball.

And if you have the extra time, watch the junior varsity games, many of them will be varsity starters next season.

John Lee is the sports editor of The Pampa News. He can be reached at jlee@thepampanews.com

Sochi Olympics kick off with grand opening

SOCHI, Russia (AP) — Music, dance and plenty of Russian bravado unleashed the ultimate achievement of Vladimir Putin's Russia on Friday — a Winter Olympics to showcase the best athletes on ice and snow that the world has to offer.

The opening ceremony on the edge of the Black Sea and subsequent games are Russia's chance to tell its story of post-Soviet resurrection to the world, and dispel the anger, fear and suspicion that has marred the buildup to these most expensive Olympics ever.

Just after the sun set over the Caucasus Mountains and along the seashore just outside Fisht Stadium in the wet-paint-fresh Olympic Park, Russian TV star Yana Churikova shouted to a crowd still taking their seats: "Welcome to the center of the universe!"

For the next two weeks, it certainly is for the 3,000 athletes who will compete in 98 events, more people

and contests than ever at the Winter Games.

American snowboarder Shaun White is certain to wow crowds in the Krasnaya Polyana resort halfpipe. On the ice, Canadian hockey players Sidney Crosby and Jonathan Toews will try to add another gold medal to their collection of Stanley Cups. In the rink, Americans Ashley Wagner and Gracie Gold will try to dethrone South Korean marvel and defending gold medalist Yuna Kim.

But every athlete who makes it to Sochi is honored with the title Olympian, and a satellite image of the earth was projected on the floor of Fisht Stadium as they entered during the parade of nations, the map shifting so the athletes emerged from their own country. The athletes from the Cayman Islands even arrived in shorts!

After Greece, traditionally first as the birthplace of Olympic compe-

tion, the teams marching into the stadium in Russian alphabetical order, putting the U.S. between Slovenia and Tajikistan.

The ceremony was crafted as a celebration of Russia and is presenting Putin's version: a country with a rich and complex history emerging confidently from a rocky two decades and now capable of putting on a major international sports event.

And it didn't take long for that classic Russian pride in their nation to come shining through.

As Churikova rallied the crowd to scream "louder than ever," she told the 40,000 fans in their cool blue seats their keepsakes from the night would last 1,000 years. When explaining the show would be hosted in English, French and Russian, she joked that it didn't matter, because in Sochi, everyone "speaks every language in the world."

Vikings detail new Minn. stadium seating fees

MINNEAPOLIS (AP) — Fifty yard-line season tickets in the new Minnesota Vikings stadium come with an upfront licensing fee of \$4,500 to \$9,500. A seat in the nosebleeds will set loyal fans back a \$500 fee.

That's according to a new pricing structure the team and the public stadium authority announced Friday. Those one-time charges are on top of the annual price of buying a ticket.

Stadium builder's licenses average \$2,500, but most run lower. Three-quarters of the stadium's 65,000 seats will have a license fee attached.

Officials say the one-time assessment can be paid interest free over three years.

Vikings ownership is using seat license proceeds to cover one-fifth of the \$500 million private share for the \$1 billion stadium. It is due to open in time for the 2016 season.

Watch the Pros Sunday

College Football	
(9) Michigan St. at Wisconsin	CBS noon
Temple at Houston	ESPN 1 p.m.
Charlotte at Southern Miss	CBSSN 1 p.m.
Massachusetts at Rhode Island	CBSSN 3 p.m.
Clemson at (1) Syracuse	ESPNU 5 p.m.
(22) Connecticut at UCF	ESPN2 5 p.m.
(12) Creighton at St. John's	FOXSN 6 p.m.
Washington at Colorado	ESPNU 7 p.m.

Basketball	
New York Knicks at Oklahoma City Thunder	ABC 1 p.m.
Chicago Bulls at L.A. Lakers	ABC 2:30 p.m.
Dallas Mavericks at Boston Celtics	NBATV 5 p.m.

Women's Basketball	
Louisville at Connecticut	ESPN noon
Creighton at DePaul	FS1 noon
Memphis at Temple	ESPNU 12:30 p.m.
Penn St. at Ohio St.	ESPN2 1 p.m.
Stanford at Washington	ESPNU 2:30 p.m.
Oklahoma St. at Baylor	ESPN2 3 p.m.

Olympics	
Women's Hockey: Sweden vs. Japan	NBCSN 2 a.m.
Men's Cross-country skiing and women's speedskating	NBCSN 4:30 a.m.
Men's Luge	NBCSN 7:30 a.m.
Women's Hockey: Russia versus Germany	MSNBC 7 a.m.
Figure Skating	NBCSN 9 a.m.
Men's Ski Jumping	NBCSN noon
Women's biathlon, figure skating and women's speedskating	NBC 1 p.m.

Golf	
Joburg Open	Golf 4:30 a.m.
PGA Tour: Pebble Beach Nat'l Pro-am	Golf noon CBS 2 p.m.
Allianz Championship	Golf 2 p.m.

Soccer	
Tottenham vs. Everton	USA 7 a.m.
United vs. Fullham	USA 10 a.m.
Toluca vs. Jaguares (Espanol)	UNI 11:50 a.m.

College LaCrosse	
Ohio St. at John's Hopkins	ESPNU 10:30 a.m.

Bullriding	
PBR in Anaheim	CBS 11 a.m.

Gymnastics	
Georgia at Alabama	ESPN2 11:30 p.m.
Check your local listings for channel number	
Times may vary and blackouts may apply	

THIS AD HAS BEEN SEEN BY OVER 7,000 PEOPLE TODAY

ADVERTISE HERE GET NOTICED

THE PAMPA NEWS (806)-669-2525

find us on **Facebook**

To find Breaking News Briefs, Event Photos, and Video Clips.

facebook.com/thepampanews

Start The New Year With Great Savings!

We have several pallets of new in stock ceramic and porcelain tile to choose from at blowout prices! Supplies are limited. Get them while they are hot!

10% OFF

any in stock material!

Bring this ad in by February 14th to Save!

Discount good for cash and carry as well as installed flooring. Does not apply to special order material. Installed flooring discount for new jobs only.

A Valentine's Gift for the man in your life

- Ammo
- Hand Warmers
- Gloves
- Yeti Cooler
- Grill Guard
- Nerf Bars

PRESTIGE
OUTDOORS DIVISION

PRESTIGE
AUTOBODY & ACCESSORIES

101 S. HOBART 806-665-3500

Bling TEES

SUPPORT YOUR FAVORITE PLAYER

BASKETBALL SHIRTS

T-SHIRTS & MORE

111 W. KINGSMILL • 806-665-3036

PampaSports

Pampa Junior High falls to Bushland

SUBMITTED
Monday night, the Pampa Junior High School boys traveled to Bushland to play their last game of the season.

The seventh grade A team lost 37-18. Robert Botello led the team in scoring with 6 points. The boys ended the season with a 3-9 record, losing seven of those nine games by eight points or less.

The eighth grade A team lost what Pampa Junior High coach Brittin East called, "an offensive show-down" 62-52. They managed to stay within five points for most of the game, but in the end, Bushland's offense was too much to handle. Brandon Steward led the team in scoring with 27 points. Brady Porter followed with 14 points and a monstrous 15 rebounds. The boys finished the season 7-5, beating every team in their district except Perryton. Both games against Perryton were 2 point losses.

Thursday Nets pull away to beat Spurs, 103-89

NEW YORK (AP) — They were bloodied and eventually beaten, though not before delivering the type of effort Gregg Popovich always expects of his San Antonio Spurs.

His team is so banged-up that it had two guys in protective facemasks on the court at the same time — and one of them broke his nose again, anyway.

"I know we didn't look pretty," Popovich said. "I'm more interested in results than how we look. So I thought they performed well."

The short-handed Spurs hung in, but Alan Anderson scored 19 of his 22 points in the second half to lead the Brooklyn Nets to a 103-89 victory Thursday night.

Despite playing without Tony Parker, Tim Duncan, Manu Ginobili and Kawhi Leonard, their top four scorers, the Spurs were still within five points early in the fourth quarter before the Nets pulled away for good.

Deron Williams added 16 points and eight assists as Brooklyn ended a six-game losing streak to San Antonio with its first victory since March 29, 2010.

The Spurs overcame all their challenges to pull out a 125-118 double-overtime victory at Washington on Wednesday, but didn't have enough to beat an improving Brooklyn team and fell to 2-1 on their nine-game rodeo trip.

Rangers reach stadium naming deal with Globe Life

ARLINGTON (AP) — The Texas Rangers reached a 10-year deal Wednesday to immediately change the name of their 20-year-old stadium to Globe Life Park in Arlington.

Rangers Ballpark is being renamed under an agreement with Globe Life and Accident Insurance Co. of Oklahoma City. Globe Life, which began operations in 1951,

is a wholly owned subsidiary of Torchmark Corp. in McKinney, which is in the Dallas area.

Financial terms weren't disclosed.

"Globe Life is the perfect partner — a Texas-based company that has been helping families with their insurance needs for more than 60 years," Rangers co-owners Ray Davis and Bob Simpson said in a statement.

Volleyball Standings Mens & Womens 4v4 Winter 2014		
Mens		
	Conference	Overall
RE/MAX	3-0	6-0
Robert's Quality	2-1	2-4
Domino's	1-2	3-3
Alpha Kenny One	0-3	1-5
Womens		
	Conference	Overall
Victorious Secret	2-0	6-0
Quality Sales	2-0	4-2
City of Pampa	1-1	3-3
Bomb Squad	0-2	1-5
G.I. Janes	0-2	1-5

Mixed Volleyball Standings 4v4 Winter 2014		
Competitive		
	Conference	Overall
Kool Arrows	6-0	7-1
RE/MAX	5-1	6-2
Westside Pkg.	4-2	6-2
Safe-Vac	2-4	3-5
Temple Builder	1-5	2-6
Domino's	0-6	0-8
Recreational		
	Conference	Overall
SWM	5-1	7-1
Taylor Insurance	5-1	7-1
S*M*A*S*H	4-2	4-4
Briarwood Church	2-4	2-6
Xtra Auto	1-5	3-5
Utility Tire	1-5	1-7

Watch the Pros SATURDAY

College Basketball	
Eastern Kent. v. Morehead State.....	ESPNU 10 a.m.
St. Anselm v. Southern New Hampshire.....	CW 11 a.m.
(3) Florida v. Alabama.....	ESPN 11 a.m.
Georgetown v. Butler.....	CBS Noon
Wright State v. Cleveland State.....	ESPN2 Noon
Northwestern v. Nebraska.....	ESPN2 Noon
Kansas State v. (15) Texas.....	FOX 12:30 p.m.
(17) Iowa v. (20) Michigan.....	ESPN 1 p.m.
Maryland v. Florida State.....	ESPN2 2 p.m.
Xavier v. Providence.....	FOX51 2 p.m.
Tennessee v. South Carolina.....	ESPN 2 p.m.
(8) Kansas v. West Virginia.....	ESPN 3 p.m.
(16) Iowa State v. TCU.....	FOX 3 p.m.
Army v. Navy.....	CBSSN 3 p.m.
La Salle v. (13) Saint Louis.....	ESPN2 4 p.m.
Arizona State v. Oregon.....	FOX51 4 p.m.
Mississippi v. Missouri.....	FSSW 4 p.m.
Boston College v. (11) Duke.....	ESPN 5 p.m.
Utah State v. Boise State.....	CBSSN 5 p.m.
(21) Oklahoma v. Baylor.....	ESPN2 6 p.m.
SMU v. (7) Cincinnati.....	ESPNU 6:30 p.m.
South Florida v. Rutgers.....	ESPN 7 p.m.
Saint Joseph's v. VCU.....	CBSSN 7 p.m.
Northern Iowa v. (4) Wichita State.....	ESPN2 8 p.m.
(24) Memphis v. (23) Gonzaga.....	ESPN 8 p.m.
Texas Tech v. (19) Oklahoma State.....	ESPNU 8:30 p.m.

Olympics	
Women's Hockey: United States v. Finland.....	NBCSN 2 a.m.
Women's Cross Country skiing.....	NBCSN 4:30 a.m.
Men's speed skating.....	NBCSN 4:30 a.m.
Women's Hockey: Canada v. Switzerland.....	MSNBC 7 a.m.
Figure Skating.....	NBCSN 8:30 a.m. and 10 a.m.
Men's Ski jumping.....	NBC 1:30 p.m.
Men's biathlon.....	NBC 1:30 p.m.
Men's speed skating.....	NBC 1:30 p.m.
Women's Hockey.....	NBCSN 5 p.m.
Figure Skating.....	NBC 7 p.m.
Men's Snowboarding.....	NBC 7 p.m.
Women's Freestyle Skiing.....	NBC 7 p.m.
Figure Skating.....	NBC 11 p.m.
Men's luge.....	NBC 11 p.m.

Golf	
Joburg Open.....	GOLF 4:30 a.m.
Pebble Beach National Pro-Am.....	GOLF Noon
Pebble Beach National Pro-Am.....	CBS 2 p.m.
Allianz Championship.....	GOLF 2 p.m.

NBA	
Detroit Pistons v. Denver Nuggets.....	NBATV 6:30 p.m.

NHL	
Philadelphia Flyers v. Calgary Flames.....	NHL Noon
Toronto Maple Leafs v. Vancouver Canucks.....	NHL 5 p.m.

Women's College Basketball	
St. John's v. Providence.....	FOX51 11:30 a.m.
TCU v. Texas Tech.....	FSSW Noon
North Texas v. Old Dominion.....	FSSW 2 p.m.

Soccer	
Liverpool v. Arsenal.....	USA 6 a.m.
Chelsea v. Newcastle United.....	USA 9 a.m.
Swansea City v. Cardiff City.....	NBC 11:30 a.m.

College Hockey	
Notre Dame v. Maine.....	NBCSN 7 p.m.

Got A Sports Story or Photo?

Send them to us!
jclee@thepampanews.com
or bring it to the paper!

If you don't see it after a week, call us!
669-2525 ext 209

When You NEED A Tow... BIG or SMALL

CALL US FIRST
WE'LL BE THERE!
806-669-3481

Bonded • Insured • Experienced

Bob Douthit Autos
Parts & Auto Sales
Wrecker Service
1432 S. Barnes • Pampa

PLUS Parts New/Used

"We do Auto Lock-out"

12106

Kelley's Chevron

Best Burgers in Town!

Come try us for breakfast

1020 E. Frederic
806-665-5800

17057

CHECKING
YES, WE DO THAT

Free Personal Checking Direct Deposit
 Online Banking Mobile Banking

Since 1940, Pantex Federal Credit Union has given its members the benefits of belonging to a credit union, with all the traditional services of a bank. Stop by today and find out why our members think traditional banking is no longer for them.

Pantex
Federal Credit Union
Either new or existing members. We are here to serve you, in Pampa.

807 N. Sumner Pampa, TX
806-665-4212
www.pantexfcu.com
Federally Insured by NCUA

16605

HERBS • VITAMINS • WEIGHT LOSS • ENERGY
WOMEN'S & MEN'S NEEDS

Herbs Etc.

- Nature's Sunshine Herbs & Vitamins
- Weekly Herb Talks
- Chewable and Liquid Supplements
- Non-GMO Protein Supplements
- Essential Oils (Aromatherapy)
- 20 Years Experience
- Se Habla Espanol
- BioEnergetic Needs Assessment
- Green Coffee Bean, Garcinia, and more for Weight Loss!

M-F 10-5:30

109 W Kingsmill . Pampa
(806) 665.4883
www.panhandlesunshine.com

ATHLETES OF THE WEEK

The **PAMPA NEWS**
made fresh daily
669-2525
WWW.THEPAMPANews.COM



Blayne Troxell



Megan Brock

PampaSports

Golf Thought of the Week

Where do you want to improve?

If you ranked the golf clubs in your bag by use, then the putter surely must be the most used. The second most used club in your bag will be either the driver (you may well use that club 14 times in a round) or the wedge. Which club it is could well be down to your handicap.

The wedge, for most tour professionals, gets used about four times per round. The reason is that they hit so many greens in regulation. Their No. 8, No. 7 or No. 6 iron approach shot hits the green time after time. What a lot of fun they're having! Most amateur golfers are taking more club than that and rarely hitting the green in regulation.

Courses are not set up in a way that allows a decent amateur's drive to get as close to the green as a tour professional's tee shot would take them, leaving the amateur with a No. 6, No. 5 or No. 4 Iron approach. And the regular amateur's precision with those clubs means they rarely hit the green, leaving them a wedge shot onto the green.

So, I figure there are three routes to improvement for you:

- a) find a way to hit it longer off the tee;
- b) spend the time improving your golf swing so that you can hit No. 5 irons with precision; or
- c) tool up and add to your skills so that you can get up and down in two strokes more often and never more than three strokes.

Which of those three options will give you the quickest and highest chance of improvement in 2014?

Tim Stadler is the PGA professional at Pampa Country Club. He can be reached at 665-8431.

Texas Tech gets Mahomes, top in-state QB

LUBBOCK (AP) — Texas Tech shored up its thin roster at quarterback Wednesday by signing one of the state's best high school players in 2013.

Coach Kliff Kingsbury added 25 players, including three junior college players who enrolled last month.

Quarterback Patrick Mahomes, the son of a former pro baseball player, threw for 4,619 yards with 50 touchdowns and just four interceptions his senior year. He also ran for 15 touchdowns. In December, he was named the Texas Associated Press Sports Editors football player of the year.

Mahomes also plays baseball — his father Pat Ma-

homes played with six teams in an 11-year career — and basketball at Whitehouse in East Texas.

"I really think he's just scratching the surface (as a quarterback) with the time he played different sports throughout the year," said Kingsbury, who said he assumes Mahomes will be Davis Webb's backup. "When he really focuses on football the majority of the time I think you're really going to see him take off in that position."

Quarterbacks Baker Mayfield, Michael Brewer and Clayton Nicholas have left the program. Mayfield and Webb, who looks to be the top quarterback going into

spring, split starts last season.

Texas Tech was also looking to bolster its defense after giving up more than 200 yards rushing per game in 2013. The junior college players will provide immediate help.

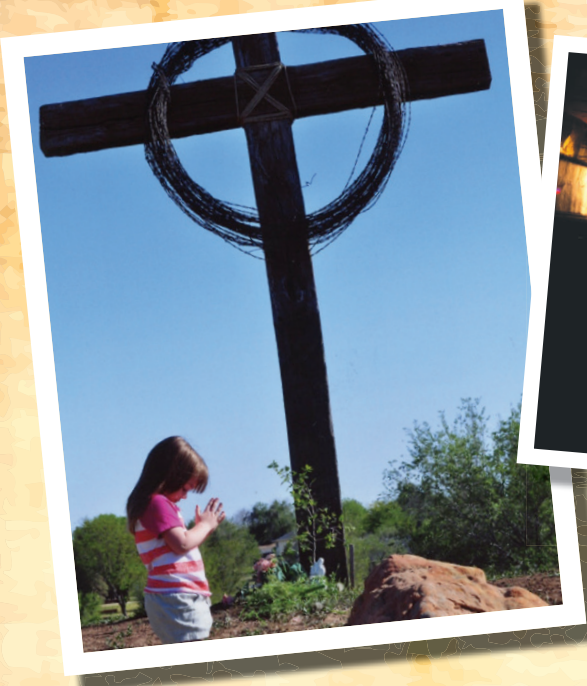
"We signed four junior college defensive linemen to come in right away and expect them to have an immediate impact," Kingsbury said. "That was a big focus of this class."

Mahomes likely will play baseball for Texas Tech, Kingsbury said. Pro baseball scouts already know about the 6-3, 215-pounder, and that causes the second-year coach some concern. "With his dad having that

history of being a professional player it does, but we'll see how it shakes out," Kingsbury said. "He wants to come to college, but you never know how the money is going to be."

With the Red Raiders penchant to pass Kingsbury brought in someone that reminds him of Wes Welker, a Texas Tech alum who plays for the Denver Broncos. Ian Sadler from Argyle rushed for 1,001 yards and 23 touchdowns and had 665 yards receiving with 12 TDs. He "has the same elite level soccer background that Wes had, and very similar in persona and does some things that look a lot like him," Kingsbury said.

Your favorite snapshot could be worth \$100!



This year the theme of *The Pampa News'* annual photo contest is "**People and Places.**" Submitted photos will be judged by our staff based on creativity and general appeal.

- First Place - \$100**
- Second Place - \$50**
- Third Place - \$25**

There is no limit on the number of entries. All contest entries must be received in our office or be postmarked by 3 p.m. Friday, February 28, 2014.

Kids can participate, too!

There will be a separate category this year for young photographers. Photos taken by kids ages 12 and under will be judged separately. Other contest rules apply.

- First Place - \$50**
- Second Place - \$40**
- Third Place - \$20**

Entry Form

Please attach the following form to your photos. Photos submitted without this information will not be considered. Include a self-addressed stamped envelope if you wish your photos returned. Mail completed form and photos to Photography Contest, The Pampa News, 403 W. Atchison, Pampa, TX 79065.

Name _____

Age (if submitting a photo in the 12 and under category) _____

Mailing Address _____

Telephone # (____) _____ - _____

The names of people in the photo (if any) from left to right, front row to back row _____

Description of photo _____

Submission by email: Send the form information with the photo(s) attached to thowsare@thepampanews.com. Photos should be sent in high resolution, .jpg format.

Contest rules—Each photo submitted to the contest must be taken by the person submitting it and must have been taken since Jan. 1, 2013. The photos cannot have appeared previously in any other publication or contest. The Pampa News will publish all the winners, and many of the other submissions in our annual Pride issue in March.

Cornhole Standings Winter 2014	
Doubles	
The Hole Enchilada	11-1
The Portillo's	10-2
The Tuttle's	10-2
The Cornholios	9-2
Corn Stars	6-6
Hole in One	5-6
Hole Patrol	5-6
K Squared	3-8
The Cornhuskers	1-10
Team Bolton	0-11

Got A Sports Story or Photo? Send them to us!
jclee@thepampanews.com
 or bring it to the paper!

Don't forget to make your 2013 IRA contribution.

Duane Harp, AAMS®
 Financial Advisor

1921 N Hobart
 Pampa, TX 79065
 806-665-6753
www.edwardjones.com

Edward Jones
 MAKING SENSE OF INVESTING Member SIPC

WESTERN FINANCE

WHERE SERVICE COUNTS

LOANS up to \$1300

We Specialize in Helping People Who Have NO CREDIT OR BAD CREDIT

- LOANS ON CLEAR CAR TITLE
- NO TITLE? We also offer
- COLLATERAL & SIGNATURE LOANS
- CREDIT STARTERS

2115 N Hobart • Pampa
 806-665-0970
 Apply by Phone Today!

All loans are subject to our liberal credit policy and credit limitations, if any.
www.WesternShamrock.com

Sweetheart of a Deal!

Move your car loan to Cabot & NOI Employees Credit Union

1.00% off your current rate!

Floor Rate 2.99% APR w/approved credit or the Cabot & NOI Employees Credit Union rate you qualify for—whichever is lower.

No payment for 60 days

And to SWEETEN the deal, a Giant Hershey's Kiss

Offer good 2/1/2014 thru 2/28/2014

806-665-0847
 1063 N. Sumner, Pampa

Lobby Hours: M-F 9am-5pm
 Drive-Up Hours: M-F 7:30am-6pm

www.cabnoiecu.org

NCUA

FOLLOW THE RED BRICK ROAD TO FIND THE BEST GIFTS IN TOWN

START

SAVINGS AHEAD
SKIP 2 BRICKS

SPARROW'S
NEST

RHEAMS
DIAMOND
SHOP

25% OFF
Diamond Jewelry
RHEAMS
DIAMOND SHOP
N. CUYLER | 806-665-2831

FORGOT FRIENDS BIRTHDAY
GO BACK 1 STORE

25% Off
1 Voluspa Candle
The Sparrow's Nest
120 N. Cuyler (806)669-1900
*Some exclusions apply. See store for details. Expires 2/18/14

20% Off
Cleanses, weight loss, & protein shakes
10% Off
Bioscan
\$15
(Regularly \$25)
Storewide

Herbs Etc.
109 W. Kingsmill, Pampa
(806) 665-4883
www.ganhandseminsha.com

**FREE 30 DAY
SUBSCRIPTION**
ONLINE OR PRINT
#iLOVethePAMPAnews

FREE SUBSCRIPTION LIMITED TO
NEW CUSTOMERS WHO HAVEN'T HAD A
SUBSCRIPTION IN THE PAST 3 MONTHS.
EXPIRES 2/18/2014.
CALL OFFICE FOR DETAILS.
403 W. ATCHISON AVE.
PAMPA
NEWS
(806)669-2525

THE
PAMPA
NEWS

20% OFF
ANY 1 ITEM
Carousel Expressions
On Eagle's Wings
113 N. Cuyler | 665-0614
*Must present coupon at time of purchase.
Not valid with any other offer. Expires 2/18/14

CAROUSEL
EXPRESSIONS

LEFT-OVER CHANGE
GO BACK 4 BRICKS

SAVINGS AHEAD
SKIP 2 BRICKS

HUNGER PAINS
SKIP 6 BRICKS

Be sure to come pick up your
punch card from one of these
featured businesses to WIN.
SHOP PAMPA FIRST!



PAMPA
CHAMBER OF
COMMERCE

Free Pair
of Solid Leggings
with a \$50 Purchase.
Shabby Creeks
209 N. Cuyler • 806-440-1144
*Some Exclusions Apply.
See Store for Details.
Expires 2/15/14.

SHABBY
CREEK

HEARD N
JONES

50% OFF
Any 1 Regular
Priced Item
Heard Jones HealthMart
114 N. CUYLER • 669-7478
*Excludes Rx, Furniture,
Oversize, & Special Order
Whimsical Candy. Coupon
must be present at time
of purchase. Expires 2/14/14.

SAVINGS AHEAD
SKIP 8 BRICKS

Herbs Etc.

CHEVY'S ZERO DOWN EVENT

CHEVY'S ZERO DOWN EVENT

BANKRUPTCY • BAD CREDIT • DIVORCE
I T ' S O K A Y !



STOCK #C3223
NEW 2014 CHEVROLET CAMARO

\$0/DOWN \$399/MONTH
MSRP \$28,480 + \$500 REBATE. 72 MONTHS @ 2.9% *WITH APPROVED CREDIT
ZERO DOWN + T.T.&L. Extra *PLUS \$50 Dealer Fee.



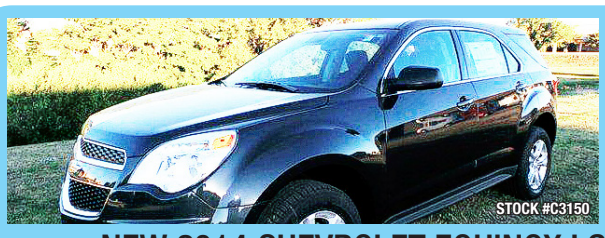
STOCK #C3139
NEW 2014 CHEVROLET CRUZE 1 LT

\$0/DOWN \$289/MONTH
MSRP \$21,530 + \$500 REBATE. 72 MONTHS @ 2.9% *WITH APPROVED CREDIT
ZERO DOWN + T.T.&L. Extra *PLUS \$50 Dealer Fee.



STOCK #C3246
NEW 2014 CHEVROLET SONIC

\$0/DOWN \$259/MONTH
MSRP \$18,290 + \$500 REBATE. 72 MONTHS @ 2.9% *WITH APPROVED CREDIT
ZERO DOWN + T.T.&L. Extra *PLUS \$50 Dealer Fee.



STOCK #C3150
NEW 2014 CHEVROLET EQUINOX LS

\$0/DOWN \$359/MONTH
MSRP \$25,295 + \$1,000 REBATE. 72 MONTHS @ 2.9% *WITH APPROVED CREDIT
ZERO DOWN + T.T.&L. Extra *PLUS \$50 Dealer Fee.



STOCK #C3243
NEW 2014 CHEVROLET SILVERADO

\$0/DOWN \$399/MONTH
MSRP \$29,015 + \$2,500 REBATE. 72 MONTHS @ 2.9% *WITH APPROVED CREDIT
ZERO DOWN + T.T.&L. Extra *PLUS \$50 Dealer Fee.

CULBERSON-STOWERS
CHEVROLET • GMC • BUICK

FEBRUARY

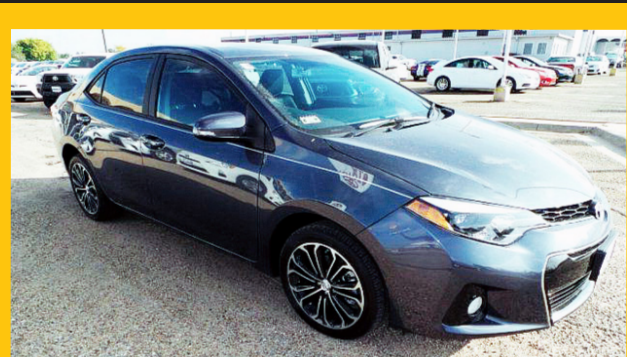
Tax Sale

 2011 BUICK Regal #4027A SALE PRICE \$16,325	 2010 Cadillac CTS #B4009A SALE PRICE \$22,980	 2006 CHEVROLET Corvette #B4009B SALE PRICE \$26,880	 2012 CHEVROLET Cruze #4052A SALE PRICE \$14,880	CULBERSON STOWERS <i>Previously - Owned Super Center</i>	
 2012 CHEVROLET Malibu #C3227A SALE PRICE \$16,880	 2012 FORD Edge #G3068A SALE PRICE \$22,880	 2007 INFINITI G35 #4030C SALE PRICE \$13,880	 2005 TOYOTA Matrix #4032C SALE PRICE \$7,995	 2001 TOYOTA Tundra #B4001A SALE PRICE \$7,995	 2001 TOYOTA Sienna #4048A SALE PRICE \$16,280
 2009 TOYOTA Camry #T3164A SALE PRICE \$14,980	 2010 TOYOTA Prius #T3205A SALE PRICE \$13,880	 2013 TOYOTA Tacoma 4x4 #C3244A SALE PRICE \$25,880	 2009 CHEVROLET 2500 Crew Cab #C3188A SALE PRICE \$15,880	 2012 JEEP Grand Cherokee #4054A SALE PRICE \$24,880	 2012 JEEP Patriot #C3150A SALE PRICE \$15,800

EASY FINANCING FRESH UNITS DAILY INTEREST RATES AS LOW AS 1.9% W.A.C.



NEW 2013 TOYOTA PRIUS
C TWO STOCK # T3145
\$0 DOWN \$309 A MONTH
MSRP \$21,837. \$1,000 REBATE. 72 MONTHS @ 2.9% WAC. ZERO DOWN PLUS TTL & \$50 DEALER FEE.



NEW 2014 TOYOTA COROLLA
STOCK # T3181
\$0 DOWN \$319 A MONTH
MSRP \$21,188. 72 MONTHS @ 2.9% WAC. ZERO DOWN PLUS TTL & \$50 DEALER FEE.



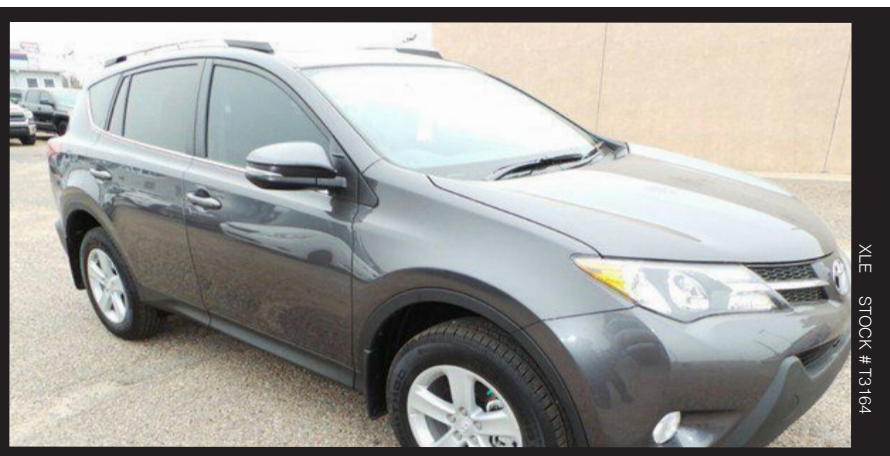
NEW 2013 TOYOTA YARIS
LE STOCK # T3049
\$0 DOWN \$259 A MONTH
MSRP \$17,329. 72 MONTHS @ 2.9% WAC. ZERO DOWN PLUS TTL & \$50 DEALER FEE.

TOYOTA ZERO DOWN EVENT

90 DAYS NO PAYMENTS - EASY FINANCING



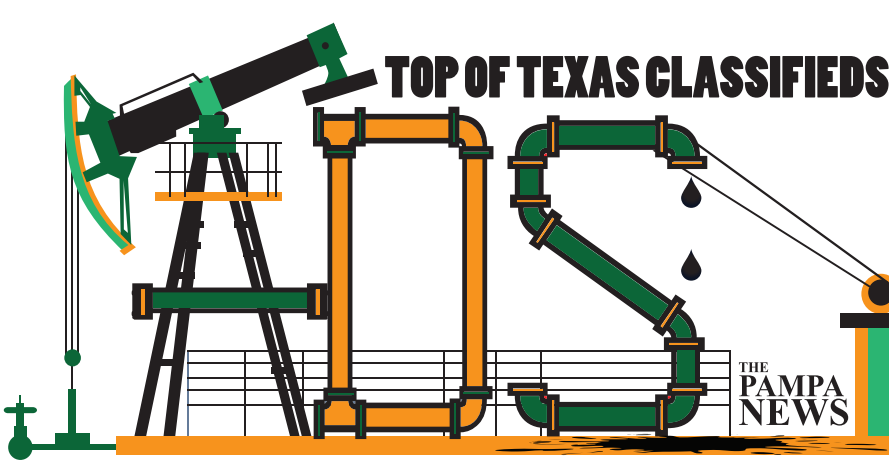
NEW 2013 TOYOTA CAMRY
STOCK # T3171
\$0 DOWN \$349 A MONTH
MSRP \$27,545. REBATE \$500. 72 MONTHS @ 2.9% WAC. ZERO DOWN PLUS TTL & \$50 DEALER FEE.



NEW 2013 TOYOTA RAV4
STOCK # T3164
\$0 DOWN \$399 A MONTH
MSRP \$27,545. REBATE \$500. 72 MONTHS @ 2.9% WAC. ZERO DOWN PLUS TTL & \$50 DEALER FEE.

ALL PRICES ARE PLUS TAX, TITLE, & LICENSE. PLUS \$50 DEALER FEE. PICTURES FOR ILLUSTRATION ONLY. ALL TOYOTA FINANCING THROUGH TOYOTA FINANCIAL SERVICES. MUST APPROVED CREDIT. PLUS \$50 DEALER FEE- NOT INCLUDED. *60 MONTHLY PAYMENTS OF PAYMENTS OF \$16.81 FOR EACH \$1,000 BORROWED AT 0%. 60 MONTHLY PAYMENTS OF \$17.92 FOR EACH \$1,000 BORROWED AT 1.9%.

CULBERSON-STOWERS TOYOTA
805 North Hobart Street 806-665-1665
www.culbersontoyota.com



ADS For Sale Call Us today For Details!

ADS Jobs Call Us today For Details!

ADS Services as low as \$69 per month see display

ADS Happy Ads FREE \$3 with photo

Say Happy Birthday to friends for FREE

5 Lines for 7 days \$27.50

7 Lines for 7 days \$32.50

Reaching over 12,000 readers daily • Call Us at (806) 669-2525

Herbs Etc.

HERBS • VITAMINS • WEIGHT LOSS • ENERGY • WOMEN'S & MEN'S NEEDS

- Nature's Sunshine Herbs & Vitamins
- Weekly Herb Talks
- Chewable and Liquid Supplements
- Non-GMO Protein Supplements
- Essential Oils (Aromatherapy)
- 20 Years Experience
- Se Habla Español
- BioEnergetic Needs Assessment
- Green Coffee Bean, Garcinia, and more for Weight Loss!

109 W Kingsmill . Pampa (806) 665.4883 www.panhandlesunshine.com

M-F 10-5:30

First Landmark Realty
(806) 665-0717

MUST SEE

Nice 2 bedroom brick in Austin School District. Very unusual floor plan. Huge living and dining combination and large sunken den. Enormous walk-in closet in master bedroom. Excellent location. Must see! Call Irvine.

GREAT FLOOR PLAN

Darling 3 bedroom, 2 bath, 2 car garage, isolated master, lots of newer amenities including: sprinkler systems, storage building, garage door & many others. Call Irvine to see. 9830

EXCELLENT INVESTMENT

Tumbleweed Acres mobile home park on Kentucky Street. Utilities in good condition. Paved streets, curbs and gutters. Community storm shelter. Property includes 49 developed lots, 60 platted lots and much more. Call Irvine. 9748

EXCELLENT LOCATION

Don't miss seeing this one. Extremely lovely 3 bedroom, 2 bath home with lots and lots of updates. Large living room with fireplace, Formal dining room, sunroom & beautiful landscaping. Call Irvine to see. 9834

MUST SEE

First time buyer/retirees dream

Nice 3 bedroom, 1 bath home located in Austin School District. Some updates, good condition and move-in ready. This home won't last long! Call Irvine to see. 9788

- Bobbie Nisbet BKR 662-8118
- Irvine Riphahn GRI 665-4534
- Chris Moore GRI 665-8172
- Lilith Brainard 898-0247

Call First Landmark First

FOR ALL OF YOUR REAL ESTATE NEEDS. WE APPRECIATE YOUR BUSINESS.

Carpentry

CUSTOM Building & Remodeling: Kitchens, Bathrooms & Additions. Shawn Deaver Construction, 662-2977

OVERHEAD DOOR REPAIR. Kidwell Construction. Call 669-6347, 806-663-0192.

Help Wanted

CULBERSON STOWERS, Inc. is looking for highly energetic and motivated individuals to join our Sales Staff. Group Health Insurance, 401K plan, Paid vacations, 3 month guarantee. Log on to CulbersonAutos.com and follow the Now Hiring tab to apply. NO phone calls!

Help Wanted

DRAFTSMAN wanted for natural gas compressor design position at Flogistix in Pampa, TX. 3D Cad software exp. req. Oil/Gas Industry design exp. pref. Pre-employment drug screening /background check req. Competitive pay and benefits. Fax resume 888-812-4114, email: jobs@flogistix.com or mail to P.O. Box 501, Pampa, TX 79066-0501.

HOLIDAY Inn Express is looking for housekeepers. Experience a plus. Apply in person only at 3119 Perryton Parkway in Pampa. No phone calls, please.

THIS AD HAS BEEN SEEN BY OVER 7,000 PEOPLE TODAY

ADVERTISE HERE GET NOTICED

THE PAMPA NEWS (806) 669-2525

Help Wanted

HOLMAN Well Service - Yard 1 is looking for Exp Lead-Off Roustabout Hand. Application available at 11701 Highway 152 West. NO Phone Calls.

Job Opportunity: National Bank of Commerce, Pampa, TX is taking applications for

TELLER Apply at 1224 N Hobart, Pampa, TX. National Bank of Commerce is an Equal Opportunity Employer.

Local Business looking for delivery and office personal. Fax resume to 806-665-7391.

Help Wanted

MAINTENANCE TECH Needed for a 150 unit Apt. Community. HVAC certification helpful but not req'd. Salary DOE. Apply 1601 W. Somerville, or call 665-7149.

NEED Someone to work 1-3 days a week. Must be able to pass a drug test. Carousel Expressions, 113 N. Cuyler.

OTR Truck Driver needed. Oversize & heavy haul freight. 2 years verifiable exp. Apply in person at Koyote Trucking, 734 S. Cuyler, Pampa, TX.

Help Wanted

PAMPA ISD is now accepting applications for Bus Drivers and Sub drivers. Please apply online at www.pampaisd.net or come by 1233 N. Hobart to pick up an application. Pampa ISD is an EOE.

PART-TIME Maintenance Person needed for small apartment complex. Exp. preferred. 806-665-2828.

SEEKING energetic, full-time team member to assist with rehab exercises. Willing to train. Experience a plus. Fax resume to (806) 665-0537.

Miscellaneous

FOR SALE: Double Lawn Crypt in Memory Gardens. Call 806-898-2451

NEW Queen mattress set. Save \$200. On sale \$246. King set sale \$426. Red Barn. 1424 S. Barnes, 665-2767.

Feed & Seeds

HAYGRAZER for Sale Large Round Bales Delivery Available Call 806-278-0383 or 806-845-2700

Pets & Supplies

FREE to good home: 2 yr. old female red and white rat terrier. Spayed and shots current. 806-207-0458 after 5:00 p.m.

Send Us Your Church News

- Events • Special Services
- Charity Drives • Gen. News

jdlee@thepampanews.com
thowsare@thepampanews.com

FIRST CONVENIENCE BANK
A division of First National Bank Texas

7-DAY BANKING
Mon. - Fri. 9 a.m. - 7 p.m.
Sat. 9 a.m. - 6 p.m.
Sun. 11 a.m. - 4 p.m.

First Convenience Bank invites you to visit us and meet Branch Manager and hometown Pampa product Amber Cochran. A 1999 graduate of Pampa High, Amber has been an active member of the Pampa community most of her life. Whether playing in the park's rec softball league or volunteering at her son's school, Amber is deeply committed to the welfare of the Pampa community. Amber also serves on the Board of Directors for the United Way. She and her staff recently participated in conjunction with Walmart to raise funds for the Children's Mirade Network. We'd like to invite you to visit our branch and get to know Amber and her award-winning team of personal bankers, who are ready to serve all your financial needs. Stop by and cash your income tax refund check for FREE!

AMBER COCHRAN
Branch Manager
2801 Charles St. - Inside Walmart

www.1STCB.com ★ 800-903-7490
Certain conditions or restrictions may apply. See a personal banker for details.

Murphy-Brown LLC

Smithfield
Premium Genetics Group

CDL DRIVER
\$2000 Sign On Bonus

Details

- M-F Day trips
- Occasional overnight travel with additional mileage paid
- Pay increase after 90 days and Driver Bonus after 6 months

Requirements

- Valid Class A CDL
- Acceptable Driving record
- Solid Work History
- Tractor/Trailer experience (at least one year)
- Ensure adherence to Animal Handling, DOT and Safety Regulations.

Maintenance, Sanitizers, and Herd Techs

Smithfield Premium Genetics, the live production company for Smithfield Foods, Inc., has several openings in Pampa, TX. Excellent benefits, including health, dental and vision insurance, 401k, pension, and paid time off. Career opportunities are available for the right individuals.

Farm Maintenance- Starting pay is commensurate with experience

- Plumbing, welding, and electrical experience required
- Routine and annual maintenance

Sanitizer- Starting pay \$10.00

- Pay increase within 6 months
- Loads, unloads, and cleans hog trailers
- Miscellaneous other farm duties

Herd Technician- Starting pay \$10.00

- Pay increase within 6 months
- Cares for the pigs and other animal husbandry type duties

You can apply in person @ Smithfield Premium Genetics located 11 Miles East of Pampa on Hwy 60 between 10:00am - 3:00pm or at the Texas Workforce Office in Amarillo. Contact Robert Peffley at 806-663-7672 for more information.

Equal Employer/Affirmative Action Employer m/f/d/v

A XYDLBAAXR is LONGFELLOW

One letter stands for another. In this sample, A is used for the three L's, X for the two O's, etc. Single letters, apostrophes, the length and formation of the words are all hints. Each day the code letters are different.

2-8 CRYPTOQUOTE

AGOQXMY VMELSRXORQ,
WODJVU SIWZLFKRVRVMRV
OMU IVKRXREVM DV, XR ELV
PSOGXEZ ELOE QFRE
AKVPSVMEGZ QOJVR AFK
RSDDVRR. — UOGV DOKM VYXV

Yesterday's Cryptoquote: IT IS ONLY NECESSARY TO HAVE COURAGE, FOR STRENGTH WITHOUT SELF-CONFIDENCE IS USELESS. — CASANOVA

FREE ADS for Free Items!

Call Ellen Today!
669-2525

The Best Stuff Sells in P.A.S.

FEBRUARY Tax Sale

CULBERSON STOWERS Previously - Owned Super Center

 2011 BUICK Regal #4027A SALE PRICE \$16,325	 2010 Cadillac CTS #B4009A SALE PRICE \$22,980	 2006 CHEVROLET Corvette #B4009B SALE PRICE \$26,880	 2012 CHEVROLET Cruze #4052A SALE PRICE \$14,880
 2012 CHEVROLET Malibu #C3227A SALE PRICE \$16,880	 2012 FORD Edge #G3068A SALE PRICE \$22,880	 2007 INFINITI G35 #4030C SALE PRICE \$13,880	 2005 TOYOTA Matrix #4032C SALE PRICE \$7,995
 2009 TOYOTA Camry #T3164A SALE PRICE \$14,980	 2010 TOYOTA Prius #T3205A SALE PRICE \$13,880	 2013 TOYOTA Tacoma 4x4 #C3244A SALE PRICE \$25,880	 2009 CHEVROLET #C3188A SALE PRICE \$15,880
 2001 TOYOTA Tundra #B4001A SALE PRICE \$7,995	 2001 TOYOTA Sienna #4048A SALE PRICE \$16,280	 2012 JEEP Grand Cherokee #4054A SALE PRICE \$24,880	 2012 JEEP Patriot #C3150A SALE PRICE \$15,800

EASY FINANCING FRESH UNITS DAILY INTEREST RATES AS LOW AS 1.9% W.A.C.



TOP OF TEXAS CLASSIFIEDS

Reaching over 12,000 readers daily • Call Us at (806) 669-2525

Ceramic Tile & Tumbled Stone

Showers, Countertops, Floors & Tub Surrounds

Over 25 years Experience

Keith Taylor Home 874-1779 lv. msg.



HOUSEHUNTERS Realtor

Your Dream Home is Waiting



PAWS
weekly picks



NEW LISTING

2613 N Fir St

14-9979

**3 Bedroom
1.75 Bath
1,775 sqft**



REDUCED

8075 FM 749

13-9936

**3 Bedroom
1.75 Bath
1,845 sqft**

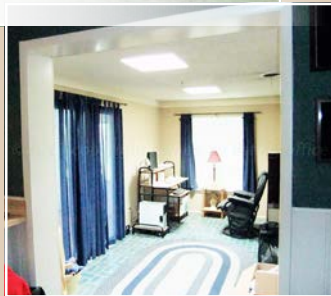


REDUCED

1710 Evergreen

13-9855

**3 Bedroom
1.75 Bath
1,582 sqft**

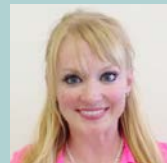


HOUSEHUNTERS Realtor

516 S. Russell



Linda Laycock
Broker
BROKER®, GRI
(806) 662-1312



Tisha Holman
Associate
(806) 440-4153

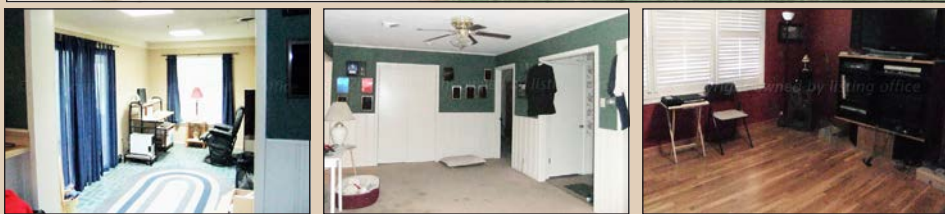


Larry Hadley
Associate
(806) 662-2779

We Can Help

Your Dream Home is Waiting

REDUCED



1710 N Evergreen

MLS #13-9855

Great Neighborhood, 3 Bedroom 1.75 Bath, Brick Home with attached 2 Car Garage that a 4 Door long bed pickup can reside in-Sun Porch-Both Baths have been updated. Central Heat and Air-Condenser 1 year old. Look at this one today!



Linda Laycock
Broker
BROKER®, ABR, GREEN, SRES, e-Pro
(806) 662-1312



Larry Hadley
Associate
(806) 662-2779



Tisha Holman
Associate
(806) 440-4153

Finding what is best for your family.

HOUSEHUNTERS Realtor



RE/MAX Hometown
"Your Hometown Team"

2200 COFFEE	LOT	\$10,000
701 NELSON.....	3/1/1	1845 SQFT..... \$45,000
1405 FRANCIS.....	2/2/3	1302 SQFT..... \$68,000
5 LOTS ON BANKS.....		\$75,000
437 JUPITER.....	3/1.75/2.....	1728 SQFT..... PENDING
1036 CRANE RD.....	3/1.5/CP	1561 SQFT..... PENDING
1101 HARVESTER.....	2/2/1	1479 SQFT..... PENDING
2208 EVERGREEN.....	3/1.75/1	1318 SQFT..... \$82,500
1122 ALCOCK.....	commercial.....	3360 SQFT..... \$92,500
1224 KINGSMILL	3/1/1	1360 SQFT..... PENDING
2319 NAVAJO	3/1.75/2.....	1898 SQFT..... \$100,000
321 FROST & 309 BROWNING		2750 SQFT..... \$99,000
1921 ZIMMERS	3/1.75/2.....	1345 SQFT..... \$99,500
33 GREENBELT	4/2.75/2.....	2384 SQFT..... \$125,000
1932 ZIMMERS	3/1.75/2.....	2150 SQFT..... \$135,000
134 GREENBELT	3/1.75/0.....	1497 SQFT..... \$145,000
1819 RUSSELL	3/1.75/2.....	2285 SQFT..... \$149,000
1701 HOLLY	3/1.75/2.....	2493 SQFT..... \$149,997
1237 CHRISTINE	4/2.75/2.....	2872 SQFT..... PENDING
1821 HOLLY LN.....	3/2.5/2.....	1840 SQFT..... \$157,500
1405 DWIGHT	3/2/2	1767 SQFT..... PENDING
2325 BEECH.....	4/2.75/2.....	2993 SQFT..... \$219,000
1707 MARY ELLEN	3/1.75/2.....	3025 SQFT..... \$229,000
132,133GREENBELT	7/5/0	3118 SQFT..... \$233,000
12060 BERRY	4/2.5/2.....	2519 SQFT..... \$340,000

Patti Hudson, Bkr 662-4896

Roy Devoll 896-0000 Linda Burt 664-3931

Scooter Hutchison 440-6061 Dennis Edmondson 662-7503



TOP OF TEXAS CLASSIFIEDS

Reaching over 12,000 readers daily • Call Us at (806) 669-2525



Dear Abby...

By Pauline & Jeanne Phillips

DEAR ABBY: My best friend, "Kyra," has joined the drama department at our school. She has made a lot of theater friends now and hangs out with them every day after school. She used to meet me occasionally at my locker after school, but no longer does so. The only time I see her, she's with her theater friends, and I'm uncomfortable because I don't know them and I'm shy. I'm trying to make friends with Kyra's friends, but when I'm with her, she kind of ignores me and doesn't try to include me as much as she could. It's depressing that my best friend would rather hang out with other people than me. I'm missing her. What do I do? — **CAST-OFF IN CALIFORNIA**

DEAR CAST-OFF: Kyra's behavior is insensitive, but I don't think you can change her. So the solution will be for you to become less emotionally dependent upon her. A way to do that would be to develop some outside interests of your own and start cultivating them.

While Kyra might have a flair for drama, perhaps you might be more interested in sports, art, computers, etc. If you start to explore what activities are available, it will provide you with a larger circle of acquaintances, and you'll miss your friend less because you are filling your time with other things. Please give it a try.

DEAR ABBY: Three times in the last week I have been hugged by people who then informed me that they were sick. At dinner last night, one friend blew his nose throughout the meal and then wanted to shake hands. Yuck!

A little reminder during cold season: If you are sick, "coming down with something" or even just "fighting off a little bug," don't hug others! Don't give a little peck on the cheek or shake hands. You can politely mention that you are "a bit under the weather and don't want to share." Other people won't be offended or think you are being standoffish. They will be grateful for your thoughtfulness. — **TRYING TO STAY HEALTHY**

DEAR TRYING: That's good advice, if folks are willing to heed it. I can only add that flu vaccinations, frequent hand-washing and a small bottle of hand sanitizer can lessen the chances of getting these viruses when our friends are in a state of denial, and it wasn't

"an allergy." **DEAR ABBY:** I'm not particularly attractive, pretty or girly. I don't think I'm what boys are looking for, so I tend to not be too involved with them. I have a lot of male friends, but I have never had a first kiss, a first date, etc.

Yesterday, a guy friend asked me out. I was shocked. I saw him as only a friend and never thought of him as a boyfriend, so I said no. He acted like it wasn't a big deal. Things aren't awkward between us, but I think I may have hurt his feelings or his self-esteem.

After school — he'd asked me out after my third class — I couldn't stop thinking about him. I don't regret my decision, but I'm worried about him. Can

you help me? — **CONCERNED IN EUGENE, ORE.**

DEAR CONCERNED: It might help to recognize that people ask each other out for a variety of reasons — which can include needing a date for an event, romantic interest or just wanting to hang out with someone who is good company. Not knowing your friend, I can't guess what his reason was when he asked you out.

Because you think you may have hurt his feelings, make a point of telling him that you hope you didn't. And mention that since you are new to the idea of dating, you think you may owe him an apology because you care about him as a friend.

BANANAGRAMS!

For each bunch below, rearrange the letters to form two intersecting words that fit into the corresponding grid.

LEVEL

Bunch 1: H, L, B, I, T, L, I, H, P, L, U, N, I

Bunch 2: T, C, A, U, N, T, H, T, C, U, I

© 2014 Bananagrams, dist. by King Features Syndicate • www.worlftom.com/bananagrams

Yesterday's Answer: Common B; CAPABLE, CARBINE, ENABLED, BEDEVIL 2-8

Sudoku

Answer to yesterday's puzzle:

9	6	3	7	2	4	8	5	1
4	1	5	8	9	6	2	7	3
7	2	8	1	5	3	9	4	6
1	7	9	6	3	8	4	2	5
6	8	4	5	1	2	3	9	7
5	3	2	9	4	7	6	1	8
8	9	6	4	7	1	5	3	2
2	4	1	3	6	5	7	8	9
3	5	7	2	8	9	1	6	4

		6		8	9			
	7			5		6		1
8								
		8		2				
1	2			3				
		9					3	
	9	6		8				
	1			7	6	4	5	
		4					1	

CROSSWORD

By THOMAS JOSEPH

- ACROSS**
- 1 Zhivago's part
 - 7 Luggage accessories
 - 11 Eastern temple
 - 12 Foot or hand
 - 13 Stood for
 - 14 Church part
 - 15 Church doings
 - 16 Office clerk, at times
 - 17 Band-leader Kenton
 - 18 Re-nounce
 - 19 Chris Hems-worth role
 - 21 Empty talk
 - 22 Simple
 - 25 Barber's offering
 - 26 Monument Valley sight
 - 27 Conve-nient
 - 29 British stables
 - 33 Senses
 - 34 Small-scale
 - 35 Jazz combo
 - 36 Poplar's kin
- DOWN**
- 1 Prepares for a fight
 - 2 Wont
 - 3 Heartburn
 - 4 Marmots and muskrats
 - 5 Mid-month day
 - 6 Mania
 - 7 North African capital
 - 8 Counter-parts
 - 9 Collapse
 - 10 Boat backs
 - 16 Forest worries
 - 18 Under sedation
 - 20 Church songs
 - 22 Muse of music
 - 23 Church eschewer
 - 24 Eeyore's creator
 - 25 Beach cover-up
 - 28 African lilies
 - 30 Showy display
 - 31 Penned
 - 32 Gardener, at times
 - 34 Vein setting
 - 36 Humorist

M	I	S	T	S		R	A	F	T	S
I	M	P	E	L		E	G	R	E	T
S	P	A	D	E		R	E	E	S	E
T	A	N		E	M	U		E	T	A
E	L	I		P	A	N		W	E	D
R	A	S	H	E	R		M	A	R	Y
			H	E	R	S	H	E	Y	
A	C	H	Y		H	O	N	O	R	S
T	O	A		B	E	T		F	A	T
O	R	R		U	S	B		L	I	E
M	O	L	A	R		E	R	O	D	E
I	N	E	P	T		D	O	V	E	R
C	A	M	P	S		S	E	E	D	S

Yesterday's answer

NEW CROSSWORD BOOK! Send \$4.75 (check/m.o.) to Thomas Joseph Book 2, P.O. Box 536475, Orlando, FL 32853-6475

1	2	3	4	5	6		7	8	9	10
11							12			
13							14			
15						16				
17						18				
			19	20				21		
	22	23					24			
25				26						
27			28				29	30	31	32
33							34			
35							36			
37							38			
39							40			

2-8

CHECKING THESE VITAL SIGNS CAN SAVE A LIFE.

Drive FRIENDLY. Drive SAFE.



Slow down & watch for detours in work zones. On highways, know the posted speed & drive to road conditions. And always watch for cyclists & pedestrians. Thanks, you're a lifesaver.

Save a Life™ Texas Department of Transportation

Have an Event? tell us about it!



Email us thowsare@thepampanews.com

Submissions should be 100 words or less and written in the third person. Please include the title of the event, the date and time, physical address, the admission cost or whether it is a free event and a contact number and/or email address for the public.

Fall In Love Again With A Forever Friend

Will You Be My Valentine?



I WILL LOVE YOU all the end of time

Adopt Me Today!  **Russian Blue Male**
#11969

752 Municipal Drive in Hobart St. Park 806-669-5775
Open M- F 12pm-6pm Sa-Su 3pm-5pm Closed holidays
See More about me, my friends, or to donate <http://www.pampaanimalrescue.org/index.html>

Will You Be My Valentine?



I WILL LOVE YOU all the end of time

Adopt Me Today!  **Collie Mix Male Puppy**
#11932

752 Municipal Drive in Hobart St. Park 806-669-5775
Open M- F 12pm-6pm Sa-Su 3pm-5pm Closed holidays
See More about me, my friends, or to donate <http://www.pampaanimalrescue.org/index.html>

Will You Be My Valentine?



I WILL LOVE YOU all the end of time

Adopt Me Today!  **Calico Female**
#11757

752 Municipal Drive in Hobart St. Park 806-669-5775
Open M- F 12pm-6pm Sa-Su 3pm-5pm Closed holidays
See More about me, my friends, or to donate <http://www.pampaanimalrescue.org/index.html>

Will You Be My Valentine?



I WILL LOVE YOU FOREVER

Adopt Me Today!  **Shepherd Mix Male Young**
#12017

752 Municipal Drive in Hobart St. Park 806-669-5775
Open M- F 12pm-6pm Sa-Su 3pm-5pm Closed holidays
See More about me, my friends, or to donate <http://www.pampaanimalrescue.org/index.html>

Will You Be My Valentine?



I WILL LOVE YOU all the end of time

Adopt Me Today!  **DSH Tabby Male**
#12024

752 Municipal Drive in Hobart St. Park 806-669-5775
Open M- F 12pm-6pm Sa-Su 3pm-5pm Closed holidays
See More about me, my friends, or to donate <http://www.pampaanimalrescue.org/index.html>

Will You Be My Valentine?



I WILL LOVE YOU all the end of time

Adopt Me Today!  **Boxer Mix Female**
#12058

752 Municipal Drive in Hobart St. Park 806-669-5775
Open M- F 12pm-6pm Sa-Su 3pm-5pm Closed holidays
See More about me, my friends, or to donate <http://www.pampaanimalrescue.org/index.html>

Will You Be My Valentine?



All I need is YOU

Adopt Me Today!  **Older Siamese Female**
#11687

752 Municipal Drive in Hobart St. Park 806-669-5775
Open M- F 12pm-6pm Sa-Su 3pm-5pm Closed holidays
See More about me, my friends, or to donate <http://www.pampaanimalrescue.org/index.html>

Will You Be My Valentine?




I WILL LOVE YOU all the end of time

Adopt Me Today!  **Pit Male Puppy**
#11985

752 Municipal Drive in Hobart St. Park 806-669-5775
Open M- F 12pm-6pm Sa-Su 3pm-5pm Closed holidays
See More about me, my friends, or to donate <http://www.pampaanimalrescue.org/index.html>

Will You Be My Valentine?



I WILL LOVE YOU all the end of time

Adopt Me Today!  **5 Month Old Orange Tabby Female**
#11979

752 Municipal Drive in Hobart St. Park 806-669-5775
Open M- F 12pm-6pm Sa-Su 3pm-5pm Closed holidays
See More about me, my friends, or to donate <http://www.pampaanimalrescue.org/index.html>

Will You Be My Valentine?



I WILL LOVE YOU FOREVER

Adopt Me Today!  **Lab Mix Female**
#12000

752 Municipal Drive in Hobart St. Park 806-669-5775
Open M- F 12pm-6pm Sa-Su 3pm-5pm Closed holidays
See More about me, my friends, or to donate <http://www.pampaanimalrescue.org/index.html>

Will You Be My Valentine?



I WILL LOVE YOU all the end of time

Adopt Me Today!  **DSH Torti**
#11850

752 Municipal Drive in Hobart St. Park 806-669-5775
Open M- F 12pm-6pm Sa-Su 3pm-5pm Closed holidays
See More about me, my friends, or to donate <http://www.pampaanimalrescue.org/index.html>

Will You Be My Valentine?




I WILL LOVE YOU all the end of time


Adopt Me Today!  **Dachshund Female**
#12065

752 Municipal Drive in Hobart St. Park 806-669-5775
Open M- F 12pm-6pm Sa-Su 3pm-5pm Closed holidays
See More about me, my friends, or to donate <http://www.pampaanimalrescue.org/index.html>

Will You Be My Valentine?



I WILL LOVE YOU FOREVER

Adopt Me Today!  **DSH Orange Tabby Male**
#11684

752 Municipal Drive in Hobart St. Park 806-669-5775
Open M- F 12pm-6pm Sa-Su 3pm-5pm Closed holidays
See More about me, my friends, or to donate <http://www.pampaanimalrescue.org/index.html>

Will You Be My Valentine?



I WILL LOVE YOU FOREVER

Adopt Me Today!  **Lab/Boxer Mix Male**
#11981

752 Municipal Drive in Hobart St. Park 806-669-5775
Open M- F 12pm-6pm Sa-Su 3pm-5pm Closed holidays
See More about me, my friends, or to donate <http://www.pampaanimalrescue.org/index.html>

Will You Be My Valentine?



I WILL LOVE YOU FOREVER

Adopt Me Today!  **3 Month Old Grey Tabby Female**
#11976

752 Municipal Drive in Hobart St. Park 806-669-5775
Open M- F 12pm-6pm Sa-Su 3pm-5pm Closed holidays
See More about me, my friends, or to donate <http://www.pampaanimalrescue.org/index.html>

Will You Be My Valentine?



I WILL LOVE YOU all the end of time

Adopt Me Today!  **Terrier Mix Male**
#11995

752 Municipal Drive in Hobart St. Park 806-669-5775
Open M- F 12pm-6pm Sa-Su 3pm-5pm Closed holidays
See More about me, my friends, or to donate <http://www.pampaanimalrescue.org/index.html>

Will You Be My Valentine?



I WILL LOVE YOU FOREVER

Adopt Me Today!  **DSH Female Cat**
#11589

752 Municipal Drive in Hobart St. Park 806-669-5775
Open M- F 12pm-6pm Sa-Su 3pm-5pm Closed holidays
See More about me, my friends, or to donate <http://www.pampaanimalrescue.org/index.html>

Will You Be My Valentine?



I WILL LOVE YOU all the end of time

Adopt Me Today!  **Chihuahua Male**
#11916

752 Municipal Drive in Hobart St. Park 806-669-5775
Open M- F 12pm-6pm Sa-Su 3pm-5pm Closed holidays
See More about me, my friends, or to donate <http://www.pampaanimalrescue.org/index.html>

 find us on **Facebook** To find Breaking News Briefs, Event Photos, & Video Clips.

facebook.com/thepampanews

Your Dream Home is Waiting

OPEN HOUSE SATURDAY FEB 8 1-3

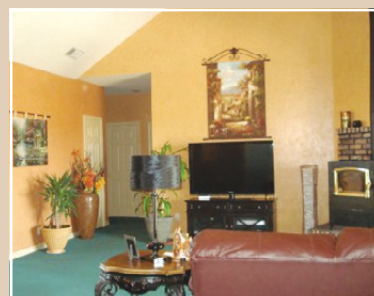
8075 FM 749



**3 Bedroom
1.75 Bath
1,845 sqft**

HERE IT IS—3 bedroom, 1.75 bath brick home with a 2 car attached oversized garage. There's also a storm cellar, a new 40 x 50 metal building with electricity, water and heat, plus a 10x20 metal building. New roof on home in June 2012, septic is 5 years old, well is 6 years old. Stock pond and 8 acres of alfalfa planted—all situated on 20 ACRES!

117 Walnut



**5 Bedroom
3 Bath
3,162 sqft**

CHECK THIS OUT—Walnut Creek Estates with beautiful views! This home features 5 or 6 bedrooms, 3 bathrooms, 2 living areas and 2 car garage. There's also a small front office and formal dining room. The isolated master bedroom has a private deck. Brick shop/storage. Sprinkler system in front and back yards.

Hosted by Teresa Cruz

1145 Seneca



**3 Bedroom
1 Bath
1,302 sqft**

TAKE A LOOK—This adorable 3 bedroom home has a formal dining area and a breakfast bar. Open floor plan with central heat & air on a large corner lot! Some updates. Covered back patio in a good size backyard



516 S. Russell

Finding what is best for your family.



Linda Laycock
Broker
BROKER®, GRI
(806) 662-1312
www.househunterspampa.com



Tisha Holman
Associate
(806) 440-4153
www.househunterspampa.com



Larry Hadley
Associate
(806) 662-2779
www.househunterspampa.com

HOUSEHUNTERS Realtor

We Can Help

**Celebrating
55
years**

DOUG BOYD MOTOR CO.


**No Credit
Check**



2009 BUICK ENCLAVE
P3998 \$23,995

2007 JEEP COMMANDER
R3903 \$17,995

2013 CHRYSLER 300
P4086 \$29,995



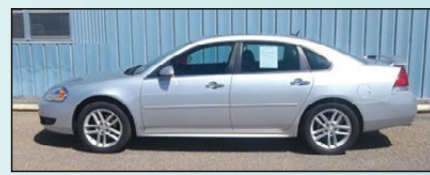
1997 CHEVY 1500 SWB
P3819A \$5,995



2006 CHEVY MALIBU
P3440 \$6,995



2007 CHEVY TAHOE
P3850 \$24,995



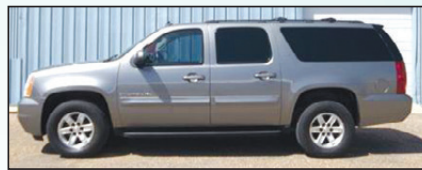
2012 CHEVY IMPALA
P3864 \$22,995



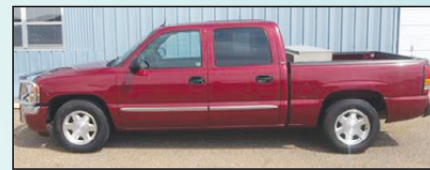
2002 CHEVY SILVERADO
P3885 \$10,995



2006 CHEVY HHR
P2922a \$8,995

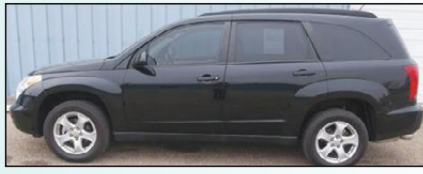


2007 GMC YUKON XL
P3356 \$27,995



2005 GMC SIERRA
P3887 \$15,995

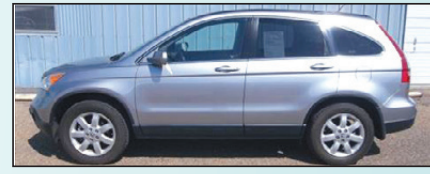
**All Vehicles
Clearly Priced**



2008 SUZUKI XL7
P4022 \$11,995



2003 HUMMER H2
R3449 \$21,995



2007 HONDA CRV
P3472 \$16,995



2008 HONDA PILOT
P4043 \$18,995



2010 KIA SOUL
R3762 \$19,995



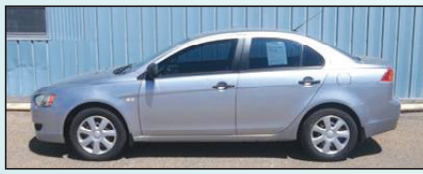
2008 JEEP PATRIOT
P3867 \$16,995



2005 JEEP GRAND CHEROKEE
R3852 \$10,995



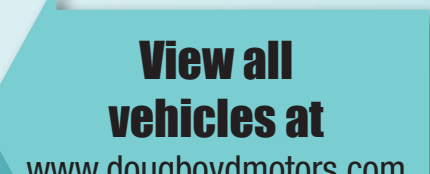
2007 PONTIAC G6 GT
P3933 \$15,995



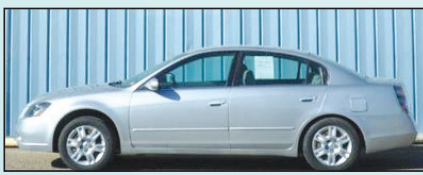
2009 MITSUBISHI LANCER
P3871 \$11,995



2004 MITSUBISHI MONTERO
P3990 \$9,850



2005 NISSAN FRONTIER
P4034 \$10,995



2006 NISSAN ALTIMA
P3533a \$8,995

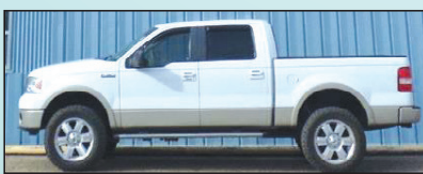


2006 MINI COOPER
R3647 \$9,850



2007 FORD ESCAPE
P3425 \$8,995

**Buy Here
Pay Here**



2007 FORD F-150 4WD
P4016 \$19,995



2005 FORD EXCURSION
P4038 \$15,995



2007 FORD FUSION
P4062 \$19,995

**View all
vehicles at**
www.dougboydmotors.com



Mike



Steve

No Gimmicks • No Games • No Fine Print

**Hwy 60 @ Hwy 70 • Pampa • 669-6062
Open 9:00 am - 6:00 pm Monday- Saturday**