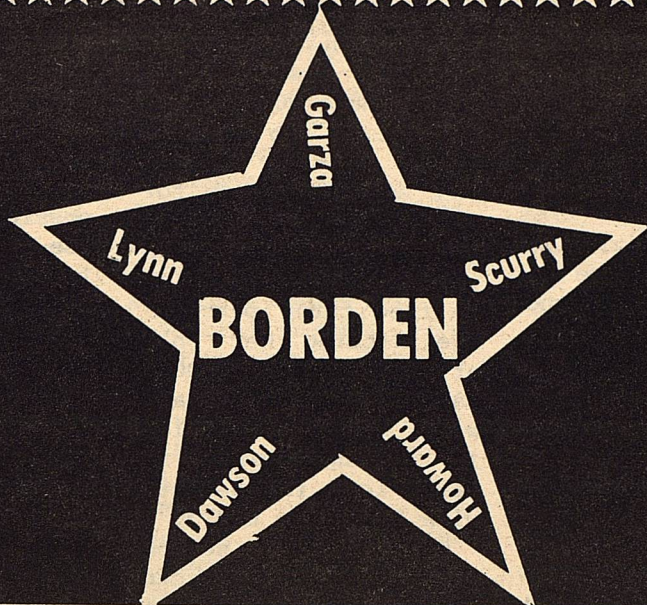


THE

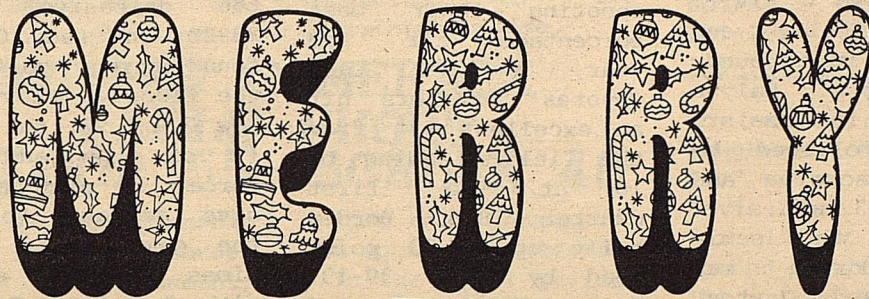
VOLUMN XIV



STAR

DECEMBER 23, 1987

Serving the Counties of Borden, Dawson, Garza, Howard, Lynn & Scurry



HOLIDAY TRADITION HAS HIT AGE 80

Eighty years ago it started as a simple idea: sell a few pretty stamps at a penny a piece to save lives from the dreaded disease tuberculosis. Today, Christmas Seals are a holiday tradition that help fight lung diseases through the activities of the American Lung Association.

Thanks to the public's support of Christmas Seals, the ALA is able to fund public health education, biomedical research and public advocacy activities to protect the public's lungs.

In Texas, several programs and activities are provided throughout the state free of charge as a Christmas

Seals service. Family Asthma Programs help children and their families learn to control asthma episodes and understand the disease. Persons with breathing problems and chronic lung diseases such as emphysema and bronchitis have opportunities to meet monthly at Better Breathing Clubs to learn how to cope with their disease. Thousands of school children annually receive information on the dangers of cigarette smoking and air pollution. Funds collected through Christmas Seals also support research to find cures for lung disease and comfort those already afflicted.

Back in 1907, public health pioneer Emily

Bissell sat in the lobby of a Wilmington, Delaware, post office and asked a penny a piece for the first U.S. Christmas Seals. She was seeking to raise enough money to save a small tuberculosis hospital--TB was then the most dreaded disease in America. A Philadelphia newspaper publicized the cause and Miss Bissell raised \$3,000--ten times the original goal.

Today, the American Lung Association mails Christmas Seals to nearly 40 million households nationwide--including one and half million in Texas--in the hope of

cont. to pg. 8

The Borden Star will be closed for the next two weeks. Our office would like to take this opportunity to wish you and yours a very happy and safe holiday season. Look for us to return to publishing, January 13, 1988.

CURREY FILES FOR SECOND TERM

I would like to announce my candidacy for re-election as Commissioner of Precinct 1 subject to the action of the Democratic Primaries.

The past three years have been a real learning experience and I have enjoyed serving the people of Borden County.

Due to some drastic decline in oil prices and production, we are operating on a reduced budget and therefore we have had to cut back on some services, such as paving and extra labor.

I would like to

express my appreciation for everyone's cooperation in helping to



FRANK CURREY

maintain our roads and dump ground.

I would appreciate influence on March 8th.

TOURNAMENT LADY COYOTES IN BORDEN TOURNAMENT

A heartbreaking six point loss in the semi-finals to top 10 state ranked Jayton ended an eight year string of championship final appearances. But it was book ended by two excellent games as the Lady Coyotes finished third in the tournament and tied a tournament record for most points scored in three games. The 191 points ties the record by Sands set in the 1981 tournament.

The first game of the tournament for Borden saw everybody but the five starters get in on four quarters of action. In the lopsided 77-15 win over Westbrook, eleven people scored, no one making more than 12. The team came up with an excellent 32 steals and 45 rebounds.

The scoring column was led by Ralynn Key and Elana Himes with 12 points each followed by Amy Lewis with 10. Lisha Sternadel and Rachel Romero each had

9, Kate Phinizy 7, Randi Woodward made 5, Felicia Romero and Kristi Adcock each hit 4, Elvira Balaque made 3, and Shelly Lewis made 2. Ralynn led in field goal percentage making 83% (5 of 6), followed by Elana with 67% (6 of 9). Kristi led in free throw percentage with 100% making 2 of 2 followed by Ralynn with 66% hitting 2 of 3. Ralynn led in steals with 8 followed by Elvira with 6. Shelly and Elana tied in rebounds with 7 each. Ralynn also led in assists with 5, followed by Elvira, Rachel, and Randi with 3 each.

Then in the semi-finals, Borden met state ranked Jayton. It was a battle in the forrest as Jayton towered over the Lady Coyotes with starters of 5'10", 5'10", and 5'11" with two 5'9" players coming in off the bench. Still Borden led throughout much of the first half until Borden's Elana Himes had to sit down in foul trouble. Jayton then went to work inside on the shorter Lady Coyotes and built up a 24-18 half-time lead. Elana then fouled out early in the third quarter and Jayton built up as much as a 12 point lead. Then Borden aggressively fought back into the contest and tied the score up 41 all with two minutes remaining. Then Jayton regained their composure and calmly sank free throw that iced the game away for the Lady Jays. Free throws were the difference as Borden outscored Jayton from the field 41-38 but hit fewer free throws, 5-14 to decide the difference. The three point goal got Borden back into the game as Kate Phinizy made four for her attempts. Kate led in scoring with 15

points followed by Lisha with 10. Kristi followed with 7, Elana made 6, Elvira hit 5, and Amy made 3. Elana, Kate, Elvira, and Amy all tied for top honors in field goal percentage as each hit 50%. Amy led in free throw percentage hitting her only attempt for 100%. Ralynn led in steals with 3 and Elana led in rebounds with 5. Kate led in assists with 5 and Amy had 3.

Then for the second time this year, Borden met Klondike in a tournament. This time was even better than the first as Borden took a 68-37 win, shooting their best percentage for the year, as the Lady Coyotes' starters hit an excellent 64% from the field. Leading by 10 at the first quarter 18-8, Borden built up a 20 point lead by half, 39-19. Borden's subs started coming in the second quarter and continued the hot scoring pace as 12 players got into the scoring column. Elana led all scorers with 20 points followed by Lisha with 12. Kate had 7 points, Rachel hit 6, Kristi Randi, and Amy added 4 each. Shelly and Elvira hit 3 each, and Felicia and Julie hit 2 apiece. Amy and Julie hit their only attempts to lead in field goal percentage with 100% followed by Elana with 75% (9 of 12), Kristi with 67% (2 of 3), and Lisha with 56% (5 of 9). Rachel led in free throw percentage with 100% hitting 2 of 2 and Shelly hit 60% making 3 of 5.

Elana led in steals with 3 and Kate led in rebounds with 7 followed by Elana with 6. Lisha led in assists with 7 and Ralynn had 5.

This year was an excellent tournament for the girls with the finals being Jayton against undefeated (11-0) Loop. Jayton won 38-35 after trailing the entire game until the last two minutes. Bobbie Brown, from Jayton, won free

LADY COYOTES IN SANDS TOURNAMENT

Borden's Lady Coyotes played probably as two opposite games as could possibly be played in the Sands Tournament last weekend. In the first, they shot the lowest percentage they have shot for the year, and the second, shot the highest they had shot for the year. The results showed, with a nine point loss to Stanton and a 26 point win over Klondike.

In the opening game against Stanton, both teams failed to put many points on the board as Stanton, won the defensive battle 29-20. The Lady Coyotes found things cold from the floor as they hit a low 22% from the field (9 of 41) and were forced to play aggressive defense to keep the game close. Elana Himes led in scoring with 8 points followed by Lisha Sternadel with 6, Kristi Adcock with 4, and Kate Phinizy with 2. Elana led in field goal percentage with 29% and Kristi led in free throw percentage with 100% hitting 2 of 2. Lisha led in steals with 9 and Elana led in rebounds with 7 followed

by Lisha with 6. Ralynn Key and Kristi each had 2 assists.

After receiving a bye to consolation finals, Borden met up with District rival Klondike. In this game, unlike the first, Borden had the hot hand as six people hit at least 50% or better from the field. In the 56-30 win, Lisha led in scoring with 14 points followed by Kate with 12 and Elana with 11. Kristi made 8, Elvira Balaque hit two three pointers for 6 points, Felicia and Rachel Romero each had 2 points, and Amy Lewis had 1. Elana and Amy each hit 50% from the free throw line making 1 of 2. Kate and Lisha each had 5 steals and Elana led in rebounds with 9 followed by Amy with 5. Kate led in assists with 5.

Due particularly to her excellent defensive play in both games, Ralynn Key was selected to the All Tournament team. Congratulation to Ralynn for her individual honor and another fine showing by the Lady Coyotes!

LADY NIP ROBERT LEE IN OVERTIME

Last Tuesday night, Borden nearly let a close game get away but closed with an exciting finish to edge Robert Lee in overtime. In the 44-40 win, Lisha Sternadel hit a baseline jumper, off the assist

throw trophy for the girls, twice hitting 9 of 10 attempts. Borden girls tied the tournament record for most points in a game as they defeated Loraine in consolation 85-17. The Lady coyoted raised their record to 11-4 on the season. Next game will be after Christmas break against Midland Christian. The game will be at home on January 5, starting at 5:00 with the J.V. girls and the varsity girls to follow.

of Ralynn Key, with only seconds remaining to send the game into overtime. In the overtime period, Borden outscored the Steers 5-1 to take the close victory. Borden had let a ten point half-time lead slip away as Robert Lee outscored the Lady Coyotes 13-4 in the third quarter to pull to within 1. Borden was delt misery all night by Robert Lee's version of the twin towers as 5'11" Rachel Metcalf hit 17 points and 6'1" Brooke Boone hit 14 to account for 31 of Robert Lee's 40 points.

Leading in scoring for Borden was Lisha Sternadel with 17 followed in double figures by Elana Himes with 11 and Kate Phinizy

cont. to pg. 4

The Borden Star
Publication No. 895520
(USPS 895-520)
Publication No. 895520

Editor
Barbara Anderson

Published weekly, except for Christmas and New Years, on Wednesday at Gail, Borden County, Texas 79738, Box 137, Kincaid Street, Second Class postage paid at Gail, Texas.

Any errors that we make reflecting on the reputation or standing of any Firm, Corporation, or individual that may appear in the columns of the Borden Star will be gladly corrected when called to the attention of the staff.

Subscription Rates:
\$8.00 per year

Borden Star Owners
James McLeroy, Barbara Anderson, Doris Rudd, Pat Porter, Bob Dyess, Edna Miller, Ruth Weathers, Mrs. Nathan Zant, Sonny Tucker, Eddie Simer, Loreen Jones, Martin Parks, Dan Turner, Lela Porter, and Marge Toombs.

COYOTES DEFEAT WESTBROOK

The Borden County Coyotes trailed at half-time 20-18, but they came from behind to defeat Westbrook 56-13. The Coyotes had difficulty shooting in the first half, but they were able to get things going in the second half.

This game was the first game for the Coyotes in the Borden County Tournament. The win sent the Coyotes against the Jayton Jaybirds.

Shannon Bond led all scorers with 26 points. Brian Bond was next with 13 points. Will Phinizy contributed another 9 points. Jimmy Rios scored 6, and Kerry Fryar scored 2 points.

The Coyotes poor showing was reflected in the statistics. The Coyotes only had 22 rebounds. Shannon pulled down 6 rebounds, Kerry 5, Jimmy 3, Will 2, Brian 2, Chris Kilmer 1, Randell Hollis 1, Cole Vestal 1, Patrick Herridge 1.

The Coyotes had 11 recovered balls. Shannon and Jimmy had 3 each. Kerry had 2, Will 1, Brian 1, Chris 1, and Wayne Wilson 1. Shannon led in the assist category with 6, Brian 3, Will 1, Kerry 1, Jimmy 1, and Chris 1.

HOT SHOOTING COYOTES DEFEAT JAYTON 55-36

In the second round of the Borden County Tournament, the Coyotes used some hot shooting in the first 3 quarters to coast to a 55-36 win over the two-time state 6-Man football champions Jayton Jaybirds. The Coyotes made 23 out of 41 attempts through the 3rd quarter. Even with some cold shooting and substituting late in the 4th quarter, the Coyotes shot 50% from the field.

Brian Bond was the leading scorer for the Coyotes with 13 points. Kerry Fryar and Shannon Bond each scored 12 points. Will

Phinizy scored 10 points. Jimmy Rios scored 8 points.

Shannon led the Coyotes rebounders with 6, Kerry 5, Jimmy 3, Will 2, Brian 1, and Chris Kilmer 1.

Several Coyotes came up with steals. Shannon and Jimmy had 3 apiece. Kerry had 2, Will 1, Brian 1, and Wayne Wilson 1.

Shannon led in assists with 6, Brian 3, Will 1, Kerry 1, Jimmy 1, and Chris Kilmer 1.

This win matches the Coyotes with only twice defeated Loop Longhorns in the Championship game.

COYOTES COMEBACK FALLS SHORT LOOP 55 BORDEN 48

In the Championship game of the Borden County Tournament, things looked real bad for the Coyotes throughout the first half. The Coyotes trailed 37-19 at halftime. At one time they trailed as much as 21 points, but then the turnaround began.

After halftime, the Coyotes came out determined to do a better job on defense, and they did. The Loop Longhorns only scored 18 points in the

second half because of the aggressive defense.

In the final period, the Coyotes closed the scoring gap to only 3 points on a basket by Will Phinizy, and a foul was also called on a Longhorn trying to position himself for a rebound. With an opportunity to make a 1 and 1 foul shot to close the scoring gap to only 1 point, the first and only shot missed its mark.

In the second half, the Coyotes were able

COYOTES WIN BIG OVER IRA 81-61

The Borden County Coyotes traveled to Ira last Tuesday and easily defeated the Ira Bulldogs. The second quarter was the big quarter for the Coyotes as they outscored Ira 31-9 to gain a 47-22 half-time lead. The Coyotes cooled off some in the second half, but they still looked impressive.

For the first time all year, the Coyotes had four players in double figures in scoring. Shannon Bond had 22 with 20 of those in the first half. Brian Bond scored 18 points. Will Phinizy and Kerry

Fryar added 14 points each to the final score. Jimmy Rios scored 6 points. Chris Kilmer scored 4 points. Patrick Herridge scored 2 points, and Cole Vestal scored 1 point.

The Coyotes also had one of their better rebounding games. Shannon pulled down 11, Will 10, Kerry 6, Brian 4, Jimmy 4, Wayne Wilson 1, Patrick 1, and Cole 1.

The Coyotes also gathered in 17 steals. Will, Brian, and Jimmy had 4 each. Chris had 3 and Kerry 2.

The Coyotes also had a large number of assists. Shannon led with 7. Chris, Jimmy, and Brian had 3 assists each. Will had 1 assist.

LADY COYOTES HAMMER IRA

It was a slow start by the Lady Coyotes against Ira Tuesday night, but it was an awfully strong finish as Borden fell behind at the end of the first quarter 10-12 to Ira but came back to take a 30 point win, 69-39. It was a night for fouling also as Borden had two starters foul out of the contest and the other three starters finished with four fouls each. A strong second quarter, where Lisha Sternadel hit 11 points, enabled Borden to take a 33-21 edge into the dressing room at half. Then the Lady Coyotes outscored Ira 19-4 in the third quarter to take a comfortable 52-25 lead entering the last stanza.

Lisha led in scoring with 14 points followed by Kate Phinizy with 9 and Elana Himes with 11. Kristi Adcock made 6, Elvira Balaque made 15, Ralynn Key hit 4 points, Felicia Romero made 7, and Shelly Lewis made 2. Elvira led in field goal percentage hitting 6 of

to shut down the Longhorns except for 6'3" senior post David Davis who accounted for 12 of their 18 second half points. The Coyotes almost pulled off a very big comeback. It did prove that the talent is there and hopefully the desire will be there from now on through the season.

The Coyotes scoring was led by Shannon Bond and Will Phinizy who made 11 points each. Jimmy Rios added another 10 points. Kerry Fryar scored 8 points. Brian Bond only scored 6 point, but it appeared as if his defensive hustle inspired the other Coyotes to also try a little harder on defense. Chris Kilmer also played well, and he scored 2 points.

Until the 4th period the Coyotes only managed to make 6 steals. In that quarter they made 12.

Brian led the Coyotes rebounders with 7. Will had 4, Shannon 2, Jimmy 2, and Chris 2. Kerry had 1 rebound.

Shannon came off the bench for the 4th. quarter and made 5 steals. Will had 4, Jimmy 4, Brian 3, Kerry and Chris 1.

Chris Kilmer led in assists with 5. Shannon had 3, Will 2, and Brian 1.

December 1987

Sunday	Monday	Tuesday	Wednesday	Thursday	Friday	Saturday
NOVEMBER 1987 S M T W T F S 1 2 3 4 5 6 7 8 9 10 11 12 13 14 15 16 17 18 19 20 21 22 23 24 25 26 27 28 29 30	JANUARY 1988 S M T W T F S 1 2 3 4 5 6 7 8 9 10 11 12 13 14 15 16 17 18 19 20 21 22 23 24 25 26 27 28 29 30 31	5:00 p.m. 1 H.S. Basketball A Girls, A-B Boys Loop - There	2	4:00 p.m. - Girls 5:30 p.m. - Boys Garden City - Garden City Tournament - Dec. 3, 4, 5 A Girls - A Boys	4	5 FFA STATE LEADERSHIP CONTEST Dec. 3, 4, 5
6	7 5:00 p.m. J.H. Basketball A-B Girls, A Boys O'Donnell - There 2:30 p.m. Basketball Pictures	8 6:30 p.m. H.S. Basketball A Girls, A Boys Robert Lee-Here	9 District Junior High One-Act Play Here - 1:00 p.m.	10	11 -Sands Tournament Dec. 10, 11 & 12 A-Girls, A-Boys	12
13	14 5:00 p.m. Jr. High Basketball A-Girls, A-B Boys Grady - Here	15 5:00 p.m. H.S. Basketball A-B Girls, A Boys Ira - There	16	17	18 - BORDEN COUNTY TOURNAMENT - December 17, 18, & 19	19
20	21 Christmas Band Concert - 8:00 p.m.	22 Dismiss for Holidays 2:00 p.m.	23 Christmas Holiday	24 Holidays Dec. 23	25 - Jan. 1 Christmas Holiday	26
27	28 Happy Holidays	29 Happy Holidays	30 Happy Holidays	31 Happy Holidays		

**BOARD MEETING
December 17, 1987**

The Board of Trustees of the Borden County Independent School District met in regular session on December 17, 1987 at 12:00 noon.

Minutes

The minutes of the previous meeting were read. A motion was made and seconded to approve the minutes. The motion carried unanimously.

Visitors

There were no visitors present.

Bills

December bills were reviewed. A motion was made and seconded to approve the bills for payment. The motion carried unanimously.

Superintendent's Report

Superintendent James McLeroy made a year-to-date financial report, a personnel report, and a report on the fire. It was reported that Richard Smith had resigned. It was also reported that Debbie Isaacs was hired and Dorothy Wilson was employed to take the position previously held by Patricia Gass.

It was reported that damages from the fire could run as high as \$50,000.00. Replacement of the buildings and equipment was discussed. Further decisions will be scheduled for the January Board Meeting.

A motion was made and seconded to accept the Superintendent's Report. The motion carried unanimously.

Annual Performance Report

The Annual Performance Report for the 1986-1987 school year was reviewed and approved as presented. A motion was made and seconded to approve the Annual Performance Report. The motion carried unanimously.

Dual Residence

The Dual Residence Committee made up of board members Joel Dennis, Jon Monger and Kent Holmes brought their respective reports to the Board. After a thorough discussion, all families claiming dual residence within the boundaries of the Borden County Independent School District were approved with the exception of two. A motion was made and seconded to deny enrollment of any student at the beginning of the semester who's family has not met full requirements of either being a legal transfer or maintain a legal residence within the boundaries of the Borden County Independent School District. Also as a gesture of fairness, the Board extended the final date for all families to comply to January 14, 1988. The motion carried unanimously.

Change 30: Career Ladder

The Superintendent presented change 30 in the Board Policy Book. The career ladder policy was presented as follows:

Each teacher shall be assigned to a career ladder level based on performance, experience, job-related education, advanced academic training, and job assignments, in accordance with State Board rules and local policy.

Assignment to a career ladder level shall be neither a property right nor the equivalent of tenure.

A teacher in the first year of teaching shall demonstrate satisfactory performance in every appraisal category in order to receive the District's recommendation to enter Level I in the second year of teaching.

To qualify for Level II assignment, a full-time teacher shall have at least:

1. A bachelor's degree and three years of teaching experience or a job-related master's degree in an approved field and two years of teaching experience.
2. A performance appraisal rating of "exceeding expectations" for the immediately preceding year and at least "satisfactory" ratings for the other years of experience.

A teacher who has not earned a master's degree shall also have nine semester hours of higher education course work above the bachelor's degree or 135 advanced academic training (AAT) hours above the bachelor's degree or an equivalent combination (15 AAT hours equal one semester hour). All training hours shall have been approved by the District for topic, level, and individual needs in order to be creditable for career ladder purposes.

To qualify for Level III assignment, a full-time teacher shall have at least a Level III certificate or its equivalent as approved by the State Board and one of the following combinations of appraisal ratings, experience, and education:

1. At least performance "exceeding expectations" during three of the preceding four years and at least "satisfactory" performance during the other year, five years of teaching at Level II, and six semester hours of higher education course work or 90 hours of advanced academic training or an equivalent combination (15 advanced academic training hours equal one semester hour).
2. "Clearly outstanding" performance during two of the preceding three years and at least "satisfactory" performance during the other year, three years of teaching at Level II, and three semester hours of higher education course work or 45 hours of advanced academic training or an equivalent combination (15 advanced academic training hours equal one semester hour).

To qualify for Level IV assignment, a full-time teacher shall have at least:

1. A master teacher certificate.
2. Demonstrated mastery on the master teacher examination.
3. One of the following combinations of appraisal ratings, experience, and education:
 - a. "Clearly outstanding" performance during two of the preceding three years and at least "satisfactory" performance during the other year, three years of teaching at or above Level III, and six semester hours of higher education course work or 90 hours of advanced academic training or an equivalent combination (15 advanced academic training hours equal one semester hour).
 - b. "Clearly outstanding" performance during three consecutive years, two years of teaching at or above Level III, and three semester hours of higher education course work or 45 hours of advanced academic training or an equivalent combination (15 advanced academic training hours equal one semester hour).

A teacher shall be reassigned from Level II or Level III to Level I if the teacher's performance during the preceding year is "below expectations" or if the teacher fails to achieve performance evaluations specified by any District stricter performance criteria for maintenance.

A teacher shall be reassigned from Level III to Level II if the teacher demonstrates less than "exceeding expectations" performance at Level III for two consecutive years or fails to achieve performance evaluations specified by any District stricter performance criteria for maintenance.

A teacher is entitled to transfer a career ladder level assignment between districts, but may waive entitlement to a particular level when changing employment from one district to another.

All training hours to be applied for career ladder credit shall be related to the job assignment in one or more of the following ways:

1. A subject taught or for which certification is held; a state or locally designated field of acute teacher shortage for which certification is being pursued; a state-approved endorsement or delivery system.

At least one-half of the required coursework or AAT hours shall be in this category, unless the District specifies other priority areas identified through appraisal as needing improvement.

2. Methods of teaching special student populations; teaching-learning theories and strategies; evaluating and reporting student achievement.
3. Classroom management; teacher excellence training; using instructional media and high technology in the classroom.

If the funds allotted for the career ladder salary supplement are not sufficient to fund the supplement at the maximum rate for all teachers who meet minimum eligibility requirements, the Board may take either or both of the following actions:

1. Reduce the supplement as permitted by law.
2. Provide for stricter performance criteria than the minimum under law. Stricter performance criteria may be required in one or more of the following areas:
 - a. A higher category of performance for each of the years for placement on or maintenance of a career ladder level.
 - b. A greater number of years with specified high performance.
 - c. A higher level of performance within a category.

The District shall not deny a teacher career ladder advancement because of the teacher's absence from school for observance of a religious holy day observed by a religion whose places of worship are exempt from property taxation under Tax Code 11.20.

A motion was made and seconded to approve change 30 for the Board Policy Book. The motion carried unanimously.

Superintendent's Evaluation

The Board made the annual evaluation of the School Superintendent. Criteria used to evaluate the Superintendent is:

- I. Personal Competence
 - II. Professional Competence
 - III. Board - Superintendent Relations
 - IV. Personnel Management
 - V. Business and Financial Matters
 - VI. Community Relations.
- (Thirty indications are listed under these criteria).

A motion was made and seconded that the Superintendent be given an A in all 30 indications. The motion carried unanimously.

Adjournment

A motion was made and seconded to adjourn the meeting. The motion carried unanimously.

WIN OVER IRA
cont. from pg. 3

10 for 60% followed by Lisha with 50% making 7 of 14. Shelly led in free throw percentage making 2 of 2 for 100% and Kristi followed by making 4 of 6 for 67%. Elana led in steals with 7 and Elvira had 6. Ralynn led in rebounds with 8 and was followed by Elana and Kristi with 7 each. Ralynn also led in assists with 6 and Kate had 4.

The J.V. game was a blowout from the beginning as Borden opened up a 20-6 first quarter lead and then the defense proceeded to hold Ira to 2 points total in the last three quarters for a 55-8 victory. Amy Lewis and Randi Woodward drilled away inside as they combined for 37 points scoring 22 and 15 respectively. Rachel Romero hit 8 followed by Kandy Belew and Mary Ann Garcia with 4 each. Julie Harris rounded out the scoring with 2. This raises the J.V. record to 4-0 on the year with the next game being January 5, at home against Midland Christian. Game time will be at 5:00. The J.V. is having an excellent season, even though they are short on numbers. With six players making up the squad, they are averaging 25 points per game to their opponents 10!

"For even the Son of Man [Jesus] did not come to be served, but to serve, and to give His life as a ransom for many" (Mark 10:45)

**"MY MOTHER
COULDN'T
DO IT"**

Early this year, sixteen senior teacher education students from Concordia Lutheran College, under the direction of concordia Vice President, Fred Bleeke, surveyed 1,500 Texas high schools in search of the MOST CREATIVE EXCUSES given by students for tardiness, absence and missed homework.

Secondary teachers and attendance officers in each school were asked to reply to a brief questionnaire. 300 replies were received during the survey period.

The empirical data collected served to prove that high schools students are still very creative and their excuses will change to meet the available situations.

Consider the following deemed by professional Texas teachers to be THE MOST CREATIVE EXCUSES.

"Someone super-glued my car tires to the

ROBERT LEE
cont. from pg. 2

with 10. Kristi Adcock made 4 and Shelly Lewis hit 2 to round out the scoring. Shelly Lewis led in field goal percentage with 100% hitting her only attempt followed by Kristi with 67%. Lisha led in free throw percentage with 75%. Ralynn Key led in steals with 7 and Elana led in rebounds with 11 followed by Kate and Kristi with 7 each. Kate led in assists with 7 and Ralynn had 4.

Branon Funeral Home

Service in this area since 1922.

Phone: 872-8335

403 N. Austin - Lamesa

**WHITE MORTUARIES,
INC.**

"We care for yours as we would have ours cared for"

O'DONNELL

TAHOKA

510 8th

428-3313

1821 Main

998-4433

Owners-Billie & Donnie Everett, Gail, Tx

**THE
L E D
BETTER
PECAN Co.**

Herman and Christeen Ledbetter
Route 1 Box 148
O'Donnell, Texas 79351
(806) 439-6653

NEW CROP PECANS
In shell, cracked
or shelled.

IN SHELL \$1.25

CRACKED \$1.50

SHELLED \$4.00

cont. to page 6



LUBBOCK, Friday, December 18, 1987

The Lubbock and Lamesa classing offices December 18 estimated total 1987-crop classings of 2,395,000 running bales.

Wendell Wilbanks, head of the Lubbock office, now estimates 1,775,000 bales, up from his previous guess of 1,650,000. Don Lewallen of the Lamesa office expects a season total of 620,000.

Current receipts and classing totals for both offices are well past the halfway mark, Lubbock at 1,060,000 and Lamesa at 407,000.

Officials of Plains Cotton Growers, Inc., Lubbock, using the classing office estimates to project 1987 production for the 25 PCG counties, point out that some cotton from PCG counties is classed at Abilene and Altus offices. Also, both area offices class a small amount of cotton from outside PCG territory. The Lubbock office classes cotton from eastern New Mexico, and Lamesa in recent years began classing cotton from Reeves, Pecos and Upton Counties, none a part of the PCG "family" of counties.

In its projections PCG has compared the two classing office running-bale totals to the official 480-pound production figure for its 25 counties over the past five years.

After adjusting classing figures for New Mexico cotton and for Reeves, Pecos and Upton County classings, PCG calculations show 25-county 480-pound bale production over the 1982 through 1986 years at an average 108.8 percent of the running bales classed at Lubbock and Lamesa. The percentages have ranged from 105.4 percent in 1986 to 112.7 percent in 1982.

If the classing office estimates prove accurate, which both Wilbanks and Lewallen concede may or may not be the case, the average five-year percentage figure projects to a 25-county production of 2,605,760 statistical bales. Using the high end of the percentage range the projection comes to 2,699,165, while the low end yields only 2,524,330.

Only the high figure, notes PCG Executive Vice President Donald Johnson, comes close to the most common 2.7 million bale estimate, and casts even greater doubt about some estimates as high as 2.9 million.

* * * * *

(NOTE TO EDITORS: The next issue of "Cotton Talks" will be January 8, HAPPY HOLIDAYS!)



Dear Betty Crocker

Q. Can pumpkin pie be stored safely at room temperature?

A. Pumpkin pie is made with both eggs and milk, as are cream pies. To minimize risk of harmful bacteria growth, cover them and store in refrigerator. You can store fruit pies such as apple, blueberry or peach at room temperature.

Q. What are the basics for adapting a recipe from conventional directions to microwave directions?

A. Pay attention to the cooking utensil, power level and cooking time. It will help to compare the recipe to a similar recipe from a reliable microwave cooking source. A general rule is that at high power, a microwave recipe will take about 1/4 to 1/3 less time than if cooked conventionally.

Q. After the holidays, there is an assortment of breads left over. What are some delicious ways to use them?

A. slice into cubes and saute in herb butter for croutons. Layer cubes with cheese and milk for baked strata. Stir cubes together (especially fruit and nut breads) with raisins, milk and eggs for bread pudding. Butter the slices and season with cinnamon-sugar or with garlic and bake them until golden brown for rusk. Or simply toast the bread, crumble and use as bread crumbs in your favorite recipes.



CHRISTMAS TEA

Borden County Home Economics department presented a Christmas Tea for the Borden County School teachers and employees on Monday, December 21. The theme of this year's Tea was a Musical Christmas. The students planned all of the decorations, and the theme and menu. Each class served the guests the goodies they had prepared. The students also made and presented to each guest recipe books of holiday

treats. Miss Joan Gray is the Home Economics teacher.

Merry Christmas



Christmas Tea 1987

The First National Bank - of O'Donnell

We want to meet the financial needs of this community -

Come in and visit with us

We now have safety deposit boxes.

MEMBER FDIC

-CLASSIFIED-

HOMEWORKERS WANTED!

TOP PAY! C.I.
121 24th. Ave., N.W.
Suite 222
Norman, Oklahoma 73069

*** FUR BUYER ***
Will be in Gail at the Coyote Country Store, every Sunday from 3:15 p.m. till 3:45 p.m.

COWBOY BAKER
PAYS CASH

*** FOR SALE ***

House and 2.75 acres
2 bedroom - 1 bath.
Roping Arena and Horse Stalls
Located in Gail
CALL REX COX
(915) 573-0724

* WANTED TO LEASE *

RANCH LAND
IN BORDEN COUNTY

CALL: B.W. Edwards
806-428-3809
O'Donnell, Texas



We're proud to be a part of the area since 1905

Snyder National Bank

This is your Bank

Member
FDIC

1715 25th
573-2681



COW'S PERFORMANCE RELATED TO HER NUTRITIONAL STATUS

The way a cow is handled during the winter will have an influence on a calf's future and next year's calf crop.

The cow's reproductive performance and the health and weaning weight of her calf is greatly influenced by her nutritional status throughout the year.

If a cow is allowed to calf in a poor or thin body condition, the odds are against her to maintain a 12-month calving interval.

Cattle are usually fed hay during the winter, but if not enough energy is supplied by the hay, additional grains should be given.

Ranchers should have their hay tested to obtain the real protein content. This enables the producer to feed cattle without over or under feeding.

Producers also should make allowances consi-

dering the weather conditions and realize that as temperatures drop and wind and rain increases, nutritional needs of cattle increase as much as 20 percent.

A dry pregnant cow can usually live on 20 pounds of average quality hay per day during the winter. If the quality of hay is less or it is a cold wet winter, an additional 2-3 pounds of supplement should be fed daily.

A cow nursing a calf needs about 5-6 pounds of supplement with 22 pounds of hay per winter day. If weather conditions are bad, the supplement should be increased to 7-8 pounds per day.

Shelter may be considered when cattle have to face severe winter conditions. A windbreak may be sufficient, but overhead cover is important during heavy rains.

AMPLE SUPPLY OF REAL TEXAS CHRISTMAS TREES EXPECTED

Growers in the Lone Star state will market more than 500,000 Texas-grown Christmas trees this season.

In the early 1970's, Extension forestry specialists conducted demonstrations in East Texas to select best adapted trees and study cultural practices.

Today, about 25 years later, the estimated value of the crop to Texas producers is \$8 million and the economic impact to the state is more than \$25 million.

Approximately 44 percent of this year's crop will be choose-n-cut, while 50 percent will be wholesale and

6 percent will be retail lots operated by growers.

Eighty-six producers in 27 counties of Extension Districts 5 and 9 have tree farms. Most of these farms are choose-n-cut operations and owners also sell some trees wholesale.

Consumers nationally should benefit this year from increased Christmas tree plantings of five and six years ago. Prices are expected to remain near last year's retail level.

Generally, U.S. consumers should have an excellent tree selection in all species and sizes. This is good

news for the real Christmas tree enthusiasts.

Last year, a total of 32.7 million trees were sold, and 1987 sales are expected to be about 33.3 million Christmas trees.

Consumer surveys also show that natural and artificial trees have about an equal share of users. But, real trees led slightly with 38 percent of the market share, compared to 35 percent of the market for artificial trees. About 27 percent of homes use no tree at all.

COULDN'T DO IT

cont. from page 4
ground," claimed one student.

A note brought to class by another student read, "Mary was out of school for a reason I cannot mention in this note. But she was not playing hooky." The note was signed.. "my Mother"..

Using inescapable logic, a student said, "I would have been on time but the bell rang." Another just asked, "Have you ever tried to find toilet tissue in this school?"

The modern age has brought new excuses. "I had jet lag," said one. "MY water bed leaked and I spend two hours mopping up water," said another. By far the most used of the new excuses was "My garage door opener broke and I couldn't get my car out of the garage."

Students have strange illnesses, report the teachers. One boy claimed "morning sickness" and another had

an "uncontrollable stomach." A girl said she was absent because she had "hot contacts", her teacher was uncertain if it was a medical or a business-related excuse.

In a case of betrayal by an inanimate object, homework can disappear because "my locker ate it." Also the favorite, "My truck drove itself into a pothole and couldn't get itself out," asserted a student.

"My cat snatched my car keys and ran under the couch and I couldn't make it come out," said a student. He had to spend the entire day coaxing the cat out.

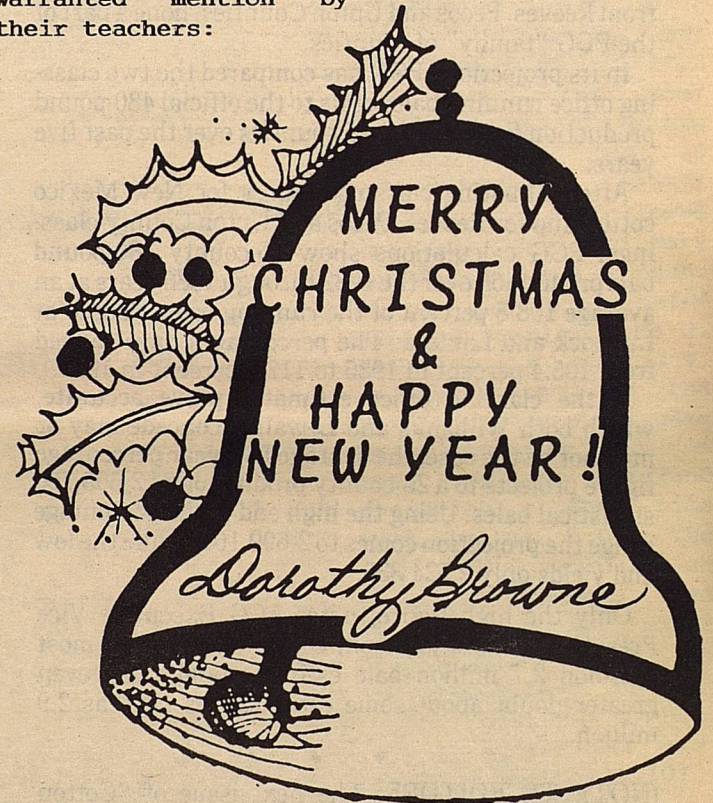
Three students were so completely honest that their explanations warranted mention by their teachers:

For being tardy: "Total irresponsibility on my part."

For being absent: "Just Lucky"

For missed homework: "My mother couldn't do it."

"We've learned in education classes that a sense of humor is necessary for teachers," says Donna Menzel, a Concordia student teacher who helped compile the test results. She went on to add "It's been fun ... and educational ... to be forwarned about the kinds of excuses we will be getting."



TOP DOLLARS PAID
For Oil and Gas Minerals
Producing and Non-Producing
Write: MINERALS P. O. Box 7522,
Midland Texas 79708 Or Call: (915) 684-4110

POLITICAL CALENDAR
DISTRICT JUDGE
Gene Dulaney
SHERIFF
R.D. Lewis
Warren Beaver
Frank Menix
COMMISSIONER
Vernon Wolf,
Prec. 3
Frank Currey,
Prec. 1

WESTERN SEED & DELINTING
Certified Cotton Seed
Paymaster 145, 303, 404, 792
Coker 3131, S110, 500
Terra 383, SR-10, SR-482
SP-21, SP-215, CAMD-E
CAB-CS
COTTON PLANTING SEED
Hay Grazer Grain Sorghum Wheat
Wheat & Oats Cleaning
LAMESA, TEXAS
RON BUTLER
BUSINESS PHONE (806) 872-8896
(806) 872-5388
RESIDENCE PHONE (806) 872-5271



LET ME GET MY APRON

Home Economics News

BY DENNIS POOLE, COUNTY AGENT

FACTS AND MYTHS FROM "AGING AMERICA"

MYTH: Milk is only for children and pregnant nursing women.

FACT: Everyone needs calcium throughout their lives, and milk is one of the best sources of this nutrient. Calcium is needed for healthy bones and teeth, and small amounts of it help muscle tone, blood clotting, and normal nerve function.

MYTH: Skim milk is less nutritious than whole milk.

FACT: Skim milk contains the same nutrients as whole milk, but less fat and fewer calories.

MYTH: Natural vitamins are nutritionally better than synthetic vitamins.

FACT: The body can't

tell the difference between synthetic and natural vitamins because they are identical, and the body gets the same benefits from both.

MYTH: The more vitamins the better.

FACT: Taking too many vitamins is not only a waste of money and effect, it can also be harmful.

MYTH: Conventional food don't provide enough vitamins.

FACT: A reasonable varied diet of wholesome foods should provide enough vitamins, without supplements. However some people, especially the elderly, don't get enough vitamins in their daily diet and may require supplemental vitamins and minerals.

STOCKING YOUR MEDICINE CHEST

Medicine chests often contain a variety of odd things from old toothbrushes to razor-blades and safety pins. Unfortunately, this clutter often replaces the useful items that should be present in a well-stocked medicine cabinet.

The first thing many people put in their medicine cabinets are medications, but there are better places for those. Some medications lose their effectiveness after being exposed to constant moisture and heat, and they are accessible to children.

Store all drugs where children can't get at them - - preferable in a locked cabinet or drawer. Separate pre-

scription drugs from nonprescription medicines and make sure they are labeled prominently.

The medicine cabinet is an ideal place for first aid supplies and emergency phone numbers. A thermometer, bandaids, gauze bandages, medical tape, scissors, tweezers, cotton swabs and anti-bacterial ointment are a few of the things that should be kept together in a cabinet.

If you don't have young children, you may wish to store some nonprescription medications that are often used to cure minor ills in the medicine cabinet. Aspirin, antacids, laxatives, antidiarrheals, antihistamines,

cough medicine, nasal decongestant, sore-throat lozenges, petroleum jelly, hydrocortisone cream, insect repellent, sunburn spray and sunscreen, and antifungal powder may come in handy.

Once your medicine cabinet is properly stocked, don't forget about it. It's important to check it periodically to keep it well supplied and to get rid of any medicine that is unlabeled or has expired.

CEREAL STRATEGY

If your kids "love" the highly presweetened cereals they see advertised on television, consider a compromise. Buy it occasionally as a treat. Then serve the presweetened cereal with milk as a "dessert" after a meal. The milk makes the "dessert" more nutritious and the highly sweetened cereal doesn't take the place of other more nutritious foods.

MCMEANS GRADUATES TECH

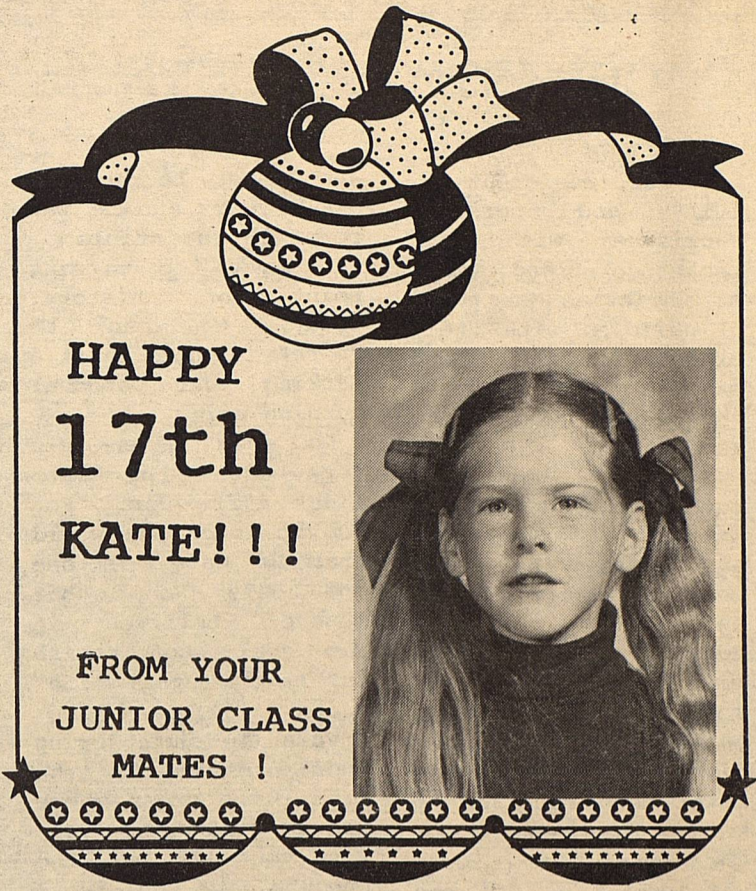
More than 1,300 Texas Tech University students crossed platforms on Saturday as mid-year commencement exercises were held for students in seven colleges and the School of Law.

For one graduate, completing an education at Texas Tech is a family affair.

Bart McMeans, who earned a dual degree in physical education and political science, said his parents, brothers, sisters-in-law and wife have all graduated from Texas Tech.

Without a doubt, McMeans said, Texas Tech would be the university of choice if he had to do it again.

In fact, he added, continuing education work has already begun. Bart is a 1981 graduate of Borden County School and is the son of Mr. and Mrs. Mickey McMears, of Gail.



HAPPY 17th KATE!!!

FROM YOUR JUNIOR CLASS MATES !



"She [the virgin Mary] will give birth to a son, and you are to give Him the name Jesus, because He will save His people from their sins" (Matthew 1:21)

"I [Jesus] have come into the world as a light, so that no one who believes in Me should stay in darkness" (John 12:46).



COMMUNITY CHRISTMAS TREE

GAIL BAPTIST CHURCH

DECEMBER 24th. AT 6:00 p.m.

There will be a program

LOOK FOR SANTA CLAUS to arrive



Visit our Deli

Party trays

Pastries

Custom cakes

710 N. 4th Lamesa

CHRISTMAS COSTS

Greg Escher

It inspires creativity and personal sacrifice with our pocketbooks and time. At Christmas we think of children with their expectations and parents with gadgets that never seem to match them.

Still, somewhere beyond the wrappings, trimmings, presents, and fun is the real meaning of Christmas. And that meaning doesn't lie in what will be given or received this year, but rather in what was given long ago and has never been received by many. The meaning of Christmas if found within the word itself - CHRIST.

What father would not like to give the world to his son? Yet the Heavenly Father gave His son to the world.

"But that wasn't on the list of things we wanted."

God decided on the very first Christmas to give us what we NEEDED, not what we expected. He decided to give us a gift that would keep on giving - that gift was a person.

It was the most precious gift the Creator of the universe could give without ceasing to be Himself. This was sacrificial giving; and that's exactly what Jesus Christ was - a sacrifice. He came and lived; but His purpose in coming was to die - to die in our place.

There's a tree we don't pay too much attention to at Christmas. There are no bright lights on it and no ornaments to make it pretty. But the greatest Christmas gift of all, Jesus Himself, was placed on that tree - the cross of Calvary.

Not what you expected is it? But Christ's death is what we need. His gift to us is forgiveness for our past and a promise for our future.

As with any gift,

Jesus must be received. 2000 years ago He was born in a stable - that marks the turning point of history. Today, He can be "born" in your heart, a marking your personal turning point.

God has given His very best - the costliest gift ever. "For God so loved the world that He gave His one and only Son, that whoever believes in Him shall not perish but have eternal life" (John 3:16).

This Christmas bring your presence to the tree - the cross where Jesus died for you. Give your life to the One who gave you His.

HOLIDAY TRADITION HAS HIT AGE 80

cont. from pg. 1
spurring donations to continue its campaign against lung diseases, including lung cancer. Persons wishing to re-

ceive Christmas Seals may write to the American Lung Association of Texas at 3520 Executive Center Drive, Suite G-100, Austin, Texas 78731-1698 or call 1-800-252 LUNG.

Shake the habit.



Salt. It's responsible for a lot more than seasoning your food. It can also contribute to high blood pressure, a risk factor for stroke and heart attack. It's a habit you can't afford not to shake.



American Heart Association
WE'RE FIGHTING FOR YOUR LIFE

According to the American Heart Association, high blood pressure is particularly prevalent in middle-aged and elderly people, blacks, obese people, heavy drinkers, women who take oral contraceptives, and people with diabetes mellitus, gout or kidney disease. High blood pressure is also more prevalent among men than women.

NOTICE TO CONTRACTORS OF PROPOSED

TEXAS HIGHWAY MAINTENANCE WORK

A pre-bidders' conference concerning contract mowing on highway right-of-way will be held at the District Headquarters building, State Department of Highways and Public Transportation, 4250 South Clack, Abilene, Texas, at 10:00 a.m. January 12, 1988. All prospective bidders are encouraged to attend.

Sealed proposals for contract mowing on various tracts will be received, publicly opened, and read on January 20, 1988, at the following respective time schedules: Borden, Howard, and Mitchell Counties, 9:00 a.m.; Fisher, Noland and Stonewall Counties, 9:30 a.m.; Calahan, Shackelford, and Taylor Counties, 10:00 a.m.; Kent and Scurry Counties, 10:30 a.m.; Haskell and Jones Counties, 11:00 a.m.

Each completed proposal shall be placed in a separate sealed envelope so marked to indicate its contents, and submitted to Mr. William G. Burnett, District Engineer, State Department of Highways and Public Transportation P.O. Box 150, Abilene, Texas 79604; or, it may be hand delivered to Room 225, District 8 Headquarters Building, 4250 South Clack, Abilene, Texas.

The specifications and proposals are available at the District Maintenance Office, Abilene, Texas

Usual rights reserved.

Saddle Up For Christmas Savings

At

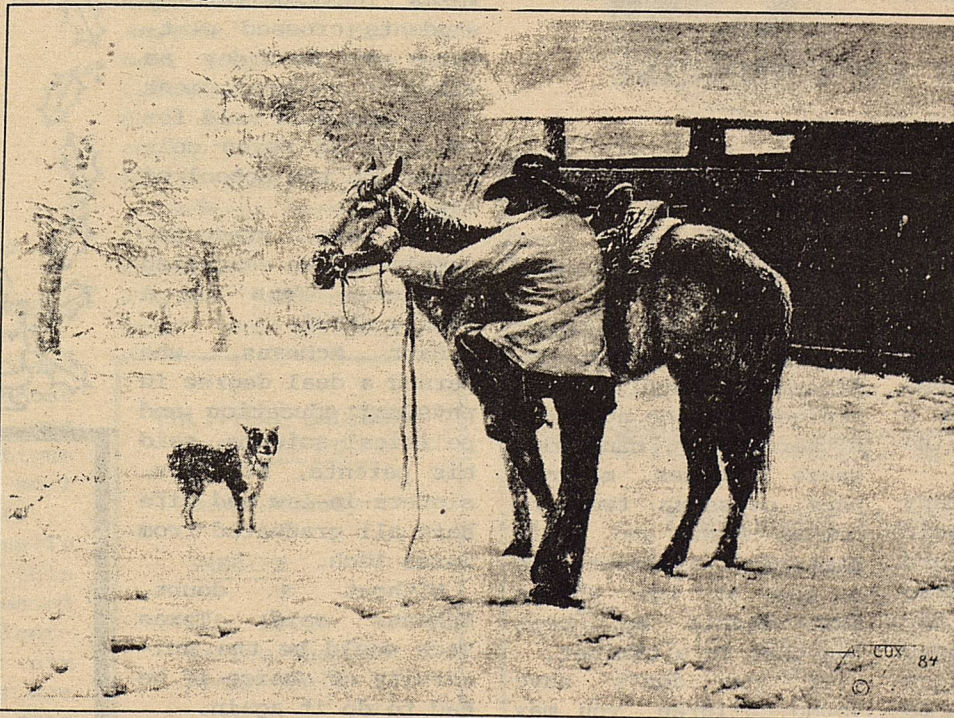


Western Wear
College Heights Shopping Center

Comfy
Down Coats
30% Off

Ropers
\$39⁹⁵-\$59⁹⁵
All Leather
First Quality

All
Sportcoats
30% Off



Black

Levi's

501's

reg. \$27.95

\$16⁹⁵

Belly Ostrich
Ropers

reg. \$215.00

\$119⁰⁰

Handmade
Rios Mercedes Boot
Full Quill Ostrich
Save \$100⁰⁰

We would like to take this opportunity to wish you a

Merry CHRISTMAS



Open Sunday 1:00-5:00 p.m.
Monday & Tuesday Nights till 8:30 p.m.

FREE
Gift Wrapping