

**CHILDERS BROTHERS INC.**  
**HOUSE LEVELING**  
 Uneven Floors  
 Floor Bracing  
 Cracks In Bricks  
 Sticking Doors & Windows  
 Interior Wall Cracking  
 FREE ESTIMATES  
**1-800-299-9563**  
 WWW.CHILDERSLEVELING.COM

**DOUG BOYD MOTOR CO.**  
 Corner of Hwy 60 & 70  
 806-669-6062  
 Buy Here, Pay Here, No Credit Check  
 www.DougBoydMotors.com  
 Great Selection! Cars, Trucks and SUVs  
 Visa & Mastercard Accepted

**Fall into savings!**  
 We will beat any legitimate bid by **10%** on any product that we carry!  
**Premier Floor Warehouse**  
 301 S. Cuyler, Pampa TX • 669-7001

# The PAMPA NEWS



Saturday, November 2, 2013 www.thepampanews.com Volume 109 • No. 149

**\$1.50** Viewpoints: Bouncin' Around | p4  
 75¢ weekdays | Amnesty is Republican suicide | p4  
 38¢ subscription | Harvesters ended regular season last night  
 Big League predictions | B section

## Dialysis center to expand hours



Photo by Timothy P. Howsare  
 Ivonne Granados, clinic manager; Consuelo Perez, patient care technician (PCT); Amber Brown, PCT; Ellen Palmitier, secretary; Jera Salazar, R.N. and Ivonne Soto, PCT. Not pictured is Patrice Newton, PCT.

BY TIMOTHY P. HOWSARE  
 thowsare@thepampanews.com

Starting Monday, Pampa Dialysis Center will literally double its operating hours. Located on the south end of the Pampa Mall for almost 20 years, the center's 12 dialysis machines remove waste and excess water from the blood of patients who have lost their kidney function. The center's hours are 5:30 a.m. to 8 p.m. Monday, Wednesday and Friday. From now on, the center will operate six days a week — Monday through Saturday — 8 a.m. to 5:30 p.m. Pampa Dialysis Center is operated by Fresenius Medical Care, which is based in Waltham, Mass. and operates more than 2,100 dialysis centers in North America, including two in Amarillo. Center manager Ivonne Granados said the increase in hours is a direct response to an increase in demand. She said right now they are seeing about 36 patients three times a week, each for an average of four hours per treatment. With expanded hours, they have the capacity to treat up to 72 patients three times a week, she said. "We have had about eight or 10 patients waiting for the last five months," she said. Along with increasing hours, Granados said she has

hired new employees, but it takes about six months to train someone as a patient care technician because the skills are highly specialized. She's not exactly sure why their demand has increased so much, but she guesses it's a combination of more people needing dialysis with more patients finding out they can get treated in Pampa instead of having to travel to Amarillo. "We have patients from Pampa, Perryton, Borger, Wheeler, Shamrock, Stinnett and Fritch," she said. The center takes many insurance plans along with Medicare and Medicaid. Granados said kidney failure has many causes. A large percentage of her patients are diabetics who have failed to control their blood sugar (high blood sugar overworks the kidneys), while others are people with high blood pressure who have let their condition go untreated. Injuries, diseases and damage from medications and poisons also are causes. If you are prescribed high-blood pressure medication, she stressed the importance of taking it. Many patients will neglect taking their meds but will tell their doctors otherwise. "Some people don't like the medication because it can make them feel dizzy," she said. "But it takes two or three months for your body to get adjusted to the medication." **DIALYSIS** cont. on page 2

**daylight saving time ends**  
 Don't Forget To Change Your Clocks Back  
 Sunday, November 3

## PRMC does mammos

Recent addition of mammography machine puts PRMC on-par with Harrington in Amarillo.



BY JOHN LEE  
 jlee@thepampanews.com

Having a population of more than 190,000 people, it is easy to believe that Amarillo has several advantages for medical services that Pampa doesn't. But in the case of breast cancer awareness and prevention, that is not necessarily the case. The Pampa Regional Medical Center has had equipment installed within the last two years that is just as accurate and reliable as what is offered in Amarillo. "We have the state-of-the-art digital mammo unit, the Siemens Mammomat Inspiration unit. We have had it since April of 2012," LaNona Wright, lead Mammographer at PRMC, said. The Siemens can be upgraded to tomosynthesis in seven years. Tomosynthesis is a combination of mammography and CT which puts the image of the breast into slices, rather than a two-dimensional image. Other benefits of the Siemens include that it is completely digital. Data can be transferred over the Internet and put on a CD if patients need to take it to other specialists in different cities. "We can also make film copies but CDs are a lot more manipulatable," radiology director Mary Booth said. The images are also more manipulatable and the machine itself gives off less radiation to the patient. "The radiologist can manipulate those easier," Booth said. "They can make the settings

PRMC cont. on page 2

## NEWS Briefs

### PISD Education Showcase on Monday

STAFF REPORT

Pampa Independent School District will hold its fourth annual Educational Showcase from 5:30 to 7 p.m. Monday, Nov. 4. The event will feature students K-12 and be held at Pampa High School, 111 E. Harvester Ave. Those who attend can visit academic exhibits, listen as students showcase lessons, enjoy student art work and attend fine arts and physical education performances. There will be iPad exit surveys and door prizes. For a complete schedule and list of all the exhibit booths, visit www.thepampanews.com.

## Meals on Wheels' 'Music and a Meal' beginning Nov. 5



Photo by Timothy P. Howsare  
 From left, Becky Watson, Jeane Autry, executive director, Teresa Conners, Amy Devers, Olivia Luna, Doris Stevens and Cindy Flaharity.

SUBMITTED

Pampa Meals on Wheels is a non-profit organization established in 1978 with the goal of preparing and delivering a noon meal to Pampa citizens 55 years and older who are homebound and/or handicapped. The organization also serves people who are younger than 55 who otherwise fit the criteria and have a letter from their doctor or disability papers from the Social Security office. The number of people being served by Meals on Wheels fluctuates between 150 to 170 daily.

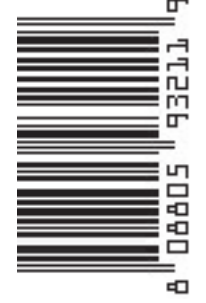
There are a minimum of 16 volunteers Monday through Friday, four in the kitchen and 12 to deliver the meals. The cooks prepare the meals and volunteers put the food into individual trays or desert cups. Many who deliver like to do so in pairs, so there are several husband and wife teams. There are six employees on the Meals on Wheels payroll and one who came to them through the Motivation, Education and Training (MET) program and is paid by the Senior Community Services Employment Program (SCSEP). **MEALS** cont. on page 2

**M & H Leasing**  
**TOP OF TEXAS**  
 Good Luck Harvesters!  
 1945 N. Hobart • 665-2061

**Total Care Health**  
 Caring & Effective Health care for Your Entire Family  
**(806) 688-2273**  
 Family Care • Urgent Care  
 (Insurance, Cash, and Medicare)  
 Matthew Gill, RN, FNP-C  
 701 N. Price Rd.  
 Pampa, TX 79065

Fall is house hunting time!  
**HouseHunters Realtor**  
 Linda Laycock - Broker  
 806.662.1312  
 Larry Hadley Associate  
 806.662.2779  
 Tisha Holman Associate  
 806.440.4153  
 Pampa MLS & Amarillo MLS

**IN THIS ISSUE:**  
 Obituaries ..... 3A  
 Local Record ..... 3A  
 Weather ..... 3A  
 Viewpoints ..... 4A  
 Lifestyles ..... 7A  
 Sports ..... 1B, 2B, 4B  
 Comics ..... 3B  
 Classifieds ..... 2C-7C  
 Puzzles/Dear Abby .. 7C  
 PRMC special section 1D-4D



# Dialysis

Continued From Page 1

ation.” She also stressed the

are also anemic and need to take medications to help their bodies produce red blood cells, which are necessary for carrying oxygen. A common issue with



Photo by Timothy P. Howsare

The Pampa Dialysis Center has been located in The Pampa Mall for almost 20 years.

importance of eating a healthy diet and drinking plenty of water.

Granados said drinking too many sodas and/or energy drinks can be bad for your kidneys.

The kidneys are important not just for filtering toxins from your blood, but also regulating blood pressure and producing red blood cells, she said.

Many dialysis patients

kidney failure is the inability to urinate.

“Some of our patients can’t urinate at all,” she said.

The four-hour visits on the machines reduce the fluid levels in the patients’ bodies. However, only so much fluid can be taken from the blood in four hours, so patients must monitor their fluid consumption. They can only consume 42 ounces of flu-

id every 24 hours. This not only includes what they drink, but whatever liquids that are in the foods they eat. An apple, for instance, is about 80 percent water.

A kidney transplant can take someone off a dialysis machine, but Granados said for most that solution is only temporary.

And, of course, there are waiting lists for a transplant.

A transplanted kidney from a cadaveric (deceased) donor can last for 15 years.

Some transplants only last for a few weeks while a transplant from a living donor, in particular a family member with a close match, can last for 20 years.

In her six years working at Pampa Dialysis, she has seen seven patients get transplants.

The best advice is take care of your kidneys so you never have to use dialysis.

But if you should ever need treatment, you can get it right here at home at Pampa Dialysis Center.

The address is 2545 Perryton Parkway and the phone number is 806-665-

# Meals

Continued From Page 1

Meals on Wheels helps the elderly remain in their home instead of going into a nursing home. Along with providing a hot meal to people in the community Monday through Friday, it gives the volunteers an opportunity to become a friend to each person on his or her route and check up on them on a daily basis.

Meals on Wheels is dependent on the United Way, grants, fundraisers and donations to continue with its daily meal program.

The employees and the board of directors feel blessed to live in a community that supports them, not only with their donations, but also by giving their time through volunteer work.

The organization has three

different ways of raising funds. “Music and a Meal” is the first three Tuesdays in November. The second is the food drive, which is held as needed. The third is “Adopt a Friend,” which is not formally scheduled but is usually associated with Thanksgiving and Christmas. The latter is where a donor pays for patron’s meal for a week, month or year.

The meals cost a little more than \$4 to prepare and there is a return of 53 cents per meal.

There are many patrons who cannot pay anything and many who pay only 25 cents. Therefore, it is appreciated when someone “Adopts a Friend” and pays for their meals.

If someone wants to pay for a month at a time, the suggested donation is \$80, which pays for \$4 per meal for 20 days.

Meals on Wheels is always in need of volunteers.

If anyone has an hour that they could give each week and wants to receive a blessing in return, call 806-669-1007 or come by the office at 302 E. Foster Ave. between 8 a.m. and noon.

The schedule for the seventh annual “Music and a Meal” is:

• Nov. 5 — Panhandle Sage. Menu: Pinto beans, corn bread, chili, Frito pie, apricot cobbler.

• Nov. 12 — Crafts sale with Tommy Henson. Menu: Roast, mashed potatoes with brown gravy, green beans, tossed salad, hot rolls, cherry or apricot pie.

• Nov. 19 — Back sale with North Fork Band. Menu: Chicken strips, mashed potatoes with cream gravy, corn, hot rolls, white cake with fruit salad.

Time: 11:30 a.m. to 1 p.m.

Cost: \$8 for all you can eat.

# PRMC

Continued From Page 1

lighter or darker, they can also magnify, which means they (the patients) don’t have to be called back.”

There aren’t any new risks with this machine, despite a myth about compression.

“There is a myth out there that since it is digital you don’t have to be compressed,” Wright said.

Harrington Breast Center in Amarillo uses a Hologic mammography machine, but PRMC preferred the Siemens because of the benefits to the patient.

“Ours has the backlight that changes colors so it helps takes your mind off of what is actually happening at the moment,” Booth said.

Wright also debunked another myth that ultrasound is just as good as mammo.

“Ultrasound is used in conjunction with diagnostic studies when something is abnormal on a mammogram,” Wright said.

PRMC is still trying to get the word out they do mammograms, but they have always done them. They also offer Saturday clinics, one Saturday a month.

Next week, Nov. 3-9, is RadTech Week, or Radiology Technologist Week, where it is encouraged to show appreciation for the radiology technicians such as Wright.

Wright got her degree with X-ray technology through U.S. Army Academy in November of 1989. She learned mammography on the job in 1992 at Reese Air Force Base in

Lubbock. She and the other technician Betty Collins, who has been doing radiology since 1980, have extensive experience in the field.

Booth and Wright encourage doctors, patients and community members to thank their radiologists for the hard work that they put in.

The next Saturday clinic is on Nov. 16.

For more information on PRMC, the radiology department, or RadTech Week, call PRMC at 806-665-3721.



Submitted photo

The radiology staff and Pampa Regional Medical Center. Front, Heather Castillo. Middle, Tammy Snow, LaNona Wright, Mary Booth, Cindy Bias and Cheryl Weeden. Back, Mike Veal, Linda Paterson and Erin Trammell.

[www.thepampanews.com](http://www.thepampanews.com)

## Try Sweet Shop

Brandon's has Wonderful Handmade Gourmet Chocolates. 25 Different varieties!

**Discounts** On Fall Decor & Silk Arrangements

Mark Your Calendar! **Christmas Open House** November 16th

**BRANDON'S** Flowers & Fine Gifts  
123 N. Cuyler 665-5546  
[brandonsflowers.com](http://brandonsflowers.com)



# You talkin' to me?

When cold or flu symptoms strike, we're here to help you fight back!

# Keyes Pharmacy

**928 N. Hobart**  
**806-669-1202**

Monday - Friday 8:30 a.m. - 6:00 p.m.  
Saturday 8:30 a.m. - 12:00 p.m.

Ron Lilley, Broker

**Gary Winton: Realtor®/Office Manager**  
806-440-1698  
1712 N. Hobart • (806) 665-4595

*We will help you buy or sell your home!*

**Have an Event?**  
tell us about it!

**Email us**  
[thowsare@thepampanews.com](mailto:thowsare@thepampanews.com)

Submissions should be 100 words or less and written in the third person. Please include the title of the event, the date and time, physical address, the admission cost or whether it is a free event and a contact number and/or email address for the public.

## PC DREAMS

*Computer Repair Done Right At Affordable Prices*  
2100 N. Perryton Pkwy. • **688-7817**  
*Se habla español*

**WESTERN FINANCE**

*WHERE SERVICE COUNTS*  
**LOANS up to \$1300**  
*We Specialize in Helping People Who Have NO CREDIT OR BAD CREDIT*

- LOANS ON CLEAR CAR TITLE
- Loans repaid in installments with no pre-payment penalties.
- NO TITLE? We also offer
- COLLATERAL & SIGNATURE LOANS
- CREDIT STARTERS

2115 N Hobart • Pampa  
**806-665-0970**  
*Apply by Phone Today!*  
*All loans are subject to our liberal credit policy and credit limitations, if any.*  
[www.WesternShamrock.com](http://www.WesternShamrock.com)

# LOANS

YES, WE DO THAT

- New & Used Auto Loans
- Motorcycles
- Recreational Vehicles
- Real Estate
- Boats




Since 1940, Pantex Federal Credit Union has given its members the benefits of belonging to a credit union, with all the traditional services of a bank. Stop by today and find our why our members think traditional banking is no longer for them.

**Pantex**  
Federal Credit Union

Either new or existing members.  
We are here to serve you, in Pampa.

807 N. Sumner Pampa, TX  
**806-665-4212**  
[www.pantexfcu.com](http://www.pantexfcu.com)  
Federally Insured by NCUA

## PAMPA FORECAST

Today	Sunday	Monday
		
High 64 Low 40	High 65 Low 41	High 65 Low 27

**Today:** Sunny with a high of 64. Winds southwest at 13 mph. Sunrise at 8:07 a.m.

**Tonight:** Clear with a low of 40. Winds south at 17 mph. Sunset at 6:47 p.m.

**Sunday:** Partly cloudy and windy with a high of 65. Winds south at 27 mph. Sunrise at 7:08 a.m.

**Sunday night:** Mostly clear with a low of 41. Winds south at 17 mph. Sunset at 5:47 p.m.

**Monday:** Showers with a high of 65. Chance of rain: 30 percent. Winds west-northwest at 16 mph. Sunrise at 7:10 a.m.

**Monday night:** Clear with a low of 27. Winds north-northwest at 12 mph. Sunset at 5:45 p.m.

This information brought to you by...

### PRESTIGE

#### AUTOBODY & ACCESSORIES

101 S. HOBART 806-665-3500

**Now in all colors**

**.22 Cricket rifles-great for Christmas**

## CITY BRIEFS

The Pampa News is not responsible for the content of paid advertisement

**1974 PHS Graduates** please join us Wed. Nov. 13th, 6:30pm, at The Coffee Shop, for an organizational meeting to prepare for the 40th Class Reunion in 2014. All 1974 graduates are encouraged to attend. Any questions call Joe Curtis 806-669-8774 or Teresa Bruce 806-665-1336. Hope to see you there!

**CLOTHING ROOM** at Mary Ellen & Harvester Church of Christ will be open Nov. 5th from 9:30-11:30am

**GOT A GOOD Recipe?** We're looking for a selection of recipes from our community to publish in The Pampa News Holiday Recipe Book. Send to [classified1@thepampanews.com](mailto:classified1@thepampanews.com) and include your neatly typed recipe, your name & town, and your phone number in case we have questions. Deadline to submit is Nov. 8th.

**JULIE'S HALLMARK,** 125 W. Kingmill in Pampa: part-time job available.

**LET'S MAKE A Deal!** Any Reasonable Offer will not be refused! Holmes Gift Shoppe & Sports Center, 304 S. Cuyler.

**PHS CHOIR** Dept. is needing help getting silk plants, silk greenery, silk flowers of all colors & silk trees. If you would like to donate, please contact Stacie Martindale at 806-595-0216, Kathy Bagley at 806-663-1134, or Sarita Reeve at 806-662-0292. This is for our musical this year which is "The Wizard of Oz" on Nov. 21st - 25th. Thank you for always supporting our kids!

**RV STORAGE** Spaces. 1st mo. discount. 669-3626

# Obituaries

## Linda Gail Davis

Linda Gail Davis, 71, died Oct. 30, 2013. Memorial services will be at 10 a.m. Saturday, Nov. 2, 2013 at Cox Funeral Home Benton Chapel with Charlie Cox officiating



Linda Davis

Linda was born on March 22, 1942 in Kingsville to Leon and Mary Fain. She was raised in Pampa where she graduated from Pampa High School. After graduating high school, she attended North Texas State University in Denton. She has been a resident of Amarillo for 48 years. She married Joe Davis on March 11, 1983 in Amarillo. Linda worked as a secretary in Amarillo for many years, first for Gilvin & Terrill Construction and then for Southwest Pre Stress Concrete. She was a loving wife, mom and Grandma.

She was an avid gardener and had a gift for making things grow. She loved antique shopping, buying as well as selling. She had her space in the antique mall and took great pride in making sure she had the prettiest items. She loved going to garage sales and traveling.

Even on vacations, she insisted that they stop and shop for antiques. Most of all, Linda loved being Ninny to her three grandchildren. She was preceded in death by her daughter, Keitha Jo Davis, one son-in-law, Trent Scott and her parents.

Survivors include her husband Joe Davis of Amarillo, two daughters, Laurie Callen and husband Ross of Coppell and Janan Scott of Lubbock, three grandchildren, Tyler Scott, Shelby Scott and Preston Callen.

Memorials should be sent to Baptist St. Anthony's Hospice and Life Enrichment Center in Amarillo. Please sign our on line guest book at [www.coxfuneralamarillo.com](http://www.coxfuneralamarillo.com).

## Dr. Charles Onis Price

Dr. Charles "Charlie" Onis Price peacefully went to be with his Heavenly Father on Oct. 30, 2013 at the age of 67 in San Antonio after a three and a half year battle with cancer. Charlie trusted Jesus Christ as his Lord and Savior at Pan Fork Baptist Encampment at age 12 and was baptized at the First Baptist Church in Pampa. He felt God's call to Christian Ministry at age 17 and formed an evangelistic team leading youth revivals in the Southwest. He graduated from Pampa High School in 1964.

He attended Howard County Junior College on a basketball scholarship and was also a leader in the Baptist Student Union Ministry. He graduated from Hardin-Simmons University in 1968 and Southwestern Baptist Theological Seminary in 1973 with a Master of Divinity and in 1976 with a

Doctor of Ministry. His Christian Service includes the pastorate of several churches in Texas and New Mexico including Trinity Baptist Church, Dallas; Freeman Heights Baptist Church, Garland, Texas; First Baptist Church, Santa Fe, N.M.; First Baptist Church, Las Cruces, N.M.; and First Baptist Church, Canyon. As a pastor, he focused heavily on evangelism, church growth and loving God's people. For the past 13 years he served as the Executive Director of the San Antonio Baptist Association where he led initiatives in new church starts, discipleship, evangelism, church revitalization, unity, community ministries, missionary support and ministry training. It was a wonderful fit for utilizing his skills of leadership and creativity through mentoring and loving Christian ministers and churches of all ethnic backgrounds to reach the San Antonio area for Jesus Christ.

Charles married his partner in ministry, Sharon "Sheri" Martin. Honoring this union, the Lord blessed Charlie and Sheri with two boys, Martin Lee and Judson Charles. He was a faithful, supportive, and loving husband, father, grandfather, brother and son.

Charles is preceded in death by his mother, Sarah Joy Price. He is survived by his wife, Sheri, of 42 years, their two sons, Lee and wife, Jana, and grandchildren, Jaelyn and Jack of New Castle, Colo.; Judson and wife, Lynde, and grandchildren Bella, Danner, and Creed of Borger, his father, Onis Price; brothers Harold Price and wife, Kim, Pampa; Larry Herman and wife, Jenelle, Omaha NE, sisters Ellen Sharpley, Carrollton Texas; Charlotte Atkinson and husband, Ray, Austin; Jo Carter and husband Rob, Canyon and nine nieces and nephews.

There will be a Celebration of Life Memorial Service at First Baptist Church in San Antonio on Saturday, Nov. 2, 2013 at 2 p.m. with Pastor Don Guthrie officiating.

In lieu of flowers, the family requests memorials be sent to Advance Him Missionary Support Fund, 14759 Hillside Ridge, San Antonio, Texas 78233; Lone Star Church Starting Offering, San Antonio Baptist Association, 5807 Interstate 10 West, San Antonio, Texas 78201; or Charles Price Associational Leadership Endowment, Baptist General Convention of Texas, 333 N. Washington, TX 75246.

## Mary Wright Gilliland

Mary Wright Gilliland, 85, died Thursday, Oct. 31, 2013 in Amarillo.



Mary Gilliland

Services will be at 11 a.m. Monday, Nov. 4, 2013, at Carmichael-Whately Colonial Chapel, with Rev. Aaron Giesler, her grandson and assistant pastor of Grace Church of Albuquerque, N.M., officiating. Burial will follow at Memory Gardens Cemetery under the direction of Carmichael-Whately Funeral Directors.

Mary was born July 27, 1928 in Wheeler to Leonard and Zelma Reid and was a graduate of Wheeler High School. She received a B.A. degree in education from West Texas State Teachers College in Canyon. She married Billy Ray Wright in 1950 in Clovis, N.M. She later married Cody Gilliland on Oct. 20, 1972 in Clovis N.M. Cody preceded her in death on Aug. 5, 1989. Mary taught high school English and Spanish for 27 years in Gruver and Pampa. She was a member of First Baptist Church. She was preceded in death by her parents, a sister, Ruby Francis, a grandson, Chris King, and a great-grandson, Aiden Marshall.

Survivors include two daughters, Anne Gomez and husband Al of Amarillo, and Sue Giesler and husband Mike of Fritch, two stepdaughters, Nita Aderholt and husband Pat of Pampa, and Nancy Rice and husband Emmett of Amarillo, two sisters, Gena Zybach and husband Bob of Briscoe, and Sally Dillman of Carrollton, 11 grandchildren and several great-grandchildren.

Memorials may be made to First Baptist Church, P.O. Box 621, Pampa, Texas 79066-0621.

OBITUARY cont. on page 5

### Cinema 4

Showing Now!  
Friday November 1 –  
Thursday, November 7

**Last Vegas (PG-13)**  
Fri 7:30 9:45  
Sat 2:00 4:30 7:30 9:45  
Sun 2:00 4:30 7:30  
Mon through Thurs. 7:30 only

**Free Birds (PG) in Real D 3D**  
Fri 7:00 9:15  
Sat 2:00 4:30 7:00 9:15  
Sun 2:00 4:30 7:00  
Mon through Thurs. 7:00 only

**Bad Grandpa (R)**  
Fri 7:30 9:45  
Sat 2:00 4:30 7:30 9:45  
Sun 2:00 4:30 7:30  
Mon through Thurs. 7:30 only

**Ender's Game (PG-13)**  
Fri 7:15 9:45  
Sat 2:00 4:30 7:15 9:45  
Sun 2:00 4:30 7:15  
Mon through Thurs. 7:15 only

www.cinema4pampa.com  
Coronado Shopping Ctr.  
688-9192 / 688-9229

# WAREHOUSE SALE

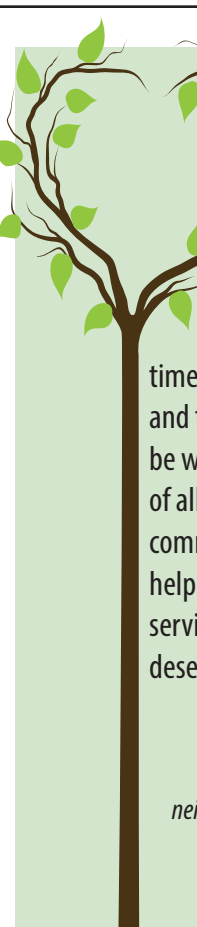
## today only

- tile
- carpet
- wood
- laminate

Lots to choose from!  
Tile starting at 50¢/sq ft, laminate \$1/sq ft

**One STOP Flooring** | 1533 N. Hobart  
(806) 665-0995

GOD BLESS! Mon-Fri 9am - 5pm • Sat 10am - 1pm




The Regalado family would like to express our sincere gratitude to everyone who helped and supported our family and showed their grace in our time of sorrow. Thank you to our family and friends who traveled a distance to be with us in our time of sorrow. Most of all we would like to thank the community of Pampa who with y'all's help we were able to give Raul the services and funeral he so truly deserved. **Raul will truly be missed.**


*"He does a kindness who lends to his neighbors and he fulfilled the precepts who holds out a helping hand."*  
Sirach 29:1-3

## We Believe

# In Our Community



WELCOME TO  
**PAMPA**



**EMPLOYEES  
CABOT  
&  
NOI  
CREDIT UNION**

**806-665-0847**

Lobby Hours: Mon-Fri 9-5  
Drive-Up Hours: Mon-Fri 7:30-6

**NCUA**

[www.cabnoiecu.org](http://www.cabnoiecu.org)

Not The Largest...  
Not The Smallest...  
But The Best Rates & Service!

1712 N. HOBART  
665.4133 (866) 665.2788

AUTO • HOME • BUSINESS • LIFE  
**JOHNSTON**  
INSURANCE AGENCY

# Viewpoints

**The PAMPA NEWS**  
SERVING THE TOP O' TEXAS SINCE 1906

403 W. Atchison • Pampa, TX 79065  
806-669-2525 • Fax: 806-669-2520

This newspaper (UPS 781-540) is published daily, except Sundays, Mondays and all national holidays by The Pampa News, 403 W. Atchison. Periodicals postage paid at Pampa, Texas. Postmaster: send address changes to The Pampa News, P.O. Drawer 2198, Pampa, Texas 79066-2198.

**Publisher:** ReDonn Woods  
**Managing Editor:** Tim Howsare  
**Sports Reporter:** John Lee  
**Reporter/Intern:** Lindsey Tomaschik  
**Advertising:** Callie Odell  
**Business Manager:** Carrie Hair  
**Circulation:** Beverly Taylor

**Subscription Rates — Mail Delivery**  
1 year ..... \$114.00  
6 months ..... \$59.00  
3 months ..... \$28.50  
1 month ..... \$9.50

**Mail Subscriptions — Outside of Gray County**  
1 year ..... \$114.00  
6 months ..... \$65.00  
3 months ..... \$35.00

**Single Copies**  
Daily 75¢/Sunday \$1.50

**Miss Your Paper?**  
Circulation department hours of operation are 8 a.m. to 5 p.m. weekdays.

Member Associated Press and Texas Press Association

## Bouncin' Around Grandchildren are a treasure

When I was a child, my grandparents were not your stereotypical grandparents.



**JUDITH SMITH**

The Smith grandparents didn't live nearby, and Grandfather was not tolerant of children at all, especially young, active, sometimes messy ones. His attitude wasn't helped by a stroke that left him partially paralyzed. My Grandpa Miller died when I was 7, and Gram lived with us. She wasn't blessed with a lot of patience, and my oldest brother moved out when he was 17. My other brother joined the Army out of high school.

Circumstances were such that there were no sports or other extracurricular activities in which I could participate. Fast forward a few decades, and I had a daughter who was the apple of both her grandmothers' eyes. My husband's father died years before we married, and my father was not in the picture. Unfortunately, both our mothers passed away when our

daughter was only 6, but Catherine spent as much time as she could with both of them before they passed away. Grandma Oline (Ron's mother) would take her out to lunch and for ice cream after church on Sundays, and we usually spent one evening a week at her house. Grammie Ardy (my mother) would spend hours at her apartment entertaining her youngest grandchild. They played dress-up, painted pictures and sometimes walked to a local restaurant for lunch.

As our daughter grew, I felt bad that she didn't have grandparents to watch her become a principal violist, a singer and a first-rate badminton player on her high school varsity team. Since we moved to Pampa, many people have asked us why we would move to this small town in the Texas Panhandle. Besides the fact that the winter weather is a lot more tolerable than in northern Illinois, there is the fact that our daughter and her family live here. The oldest grandson TJ is 13, a member of the Pampa Junior High School band and a football player. He is also

going to be dancing in this year's presentation of the Nutcracker. The triplets are ten, and involved in their own activities. Allan plays football (his team, the Cowboys, just completed an undefeated season!), and is learning guitar. Randy and Rebekah take piano lessons, and Rebekah is a dancer. The triplets will also be performing in the Nutcracker. I like to think that my husband and I are an important part of our grandchildren's lives. Going to concerts, recitals, school programs and sports events is important to us, and we truly enjoy it. OK, we mostly enjoy it. The 100-degree days on which the boys have played football were a bit challenging, and yesterday's 60-degree raw, windy, rainy day football game was a bum-numbing experience. The numb buns were forgotten, however, when the team won, and the joy was contagious. Grandchildren really are a treasure, and I feel blessed to be able to watch ours grow and to see all the wonderful things they are learning.

Judi Smith resides in Pampa and can be reached at nonny46@yahoo.com.

## Americans moving to states with low taxes and housing costs

Where are Americans moving, and why? Timothy Noah, writing in the



**MICHAEL BARONE**

Washington Monthly, professes to be puzzled. He points out that people have been moving out of states with high per capita incomes — Connecticut, New York, Massachusetts, Maryland — to states with lower income levels.

"Why are Americans by and large moving away from economic opportunity rather than toward it?" he asks.

Actually, it's not puzzling at all. The movement from high-tax, high-housing-cost states to low-tax, low-housing-cost states has been going on for more than 40 years, as I note in my new book *Shaping Our Nation: How Surges of Migration Transformed America and Its Politics*.

Between 1970 and 2010, the population of New York state increased from 18 million to 19 million. In that same period, the population of Texas increased from 11 million to 25 million.

The picture is even starker if you look at major metro areas. The New York metropolitan area, including counties in New Jersey and Connecticut, increased from 17.8 million in 1970 to 19.2 million in 2010 — up 8 percent. During that time, the nation grew 52 percent.

In the same period, the four big metro areas in Texas — Dallas, Houston, San Antonio, Austin — grew from 6 million to 15.6 million, a 160 percent increase.

Contrary to Noah's inference, people don't move away from opportunity. They move partly in response to economic incentives, but also to pursue dreams and escape nightmares.

Opportunity does exist in the Northeastern states and in California — for people with very high skill levels and for low-skill immigrants, without whom those metro areas would have lost, rather than gained, population over the last three decades.

But there's not much opportunity there for people with midlevel skills who want to raise families. Housing costs are exceedingly high, partly, as Noah notes, because of restrictive land use and zoning regulations.

And central city public schools, with a few exceptions, repel most middle-class parents.

High taxes produce revenues to finance hand-

some benefits and pensions for public employee union members in the high-cost states. It's hard to see how this benefits middle-class people making their livings in the private sector.

Moreover, Noah's use of per capita incomes is misleading, since children typically have no income and many in the Northeast and coastal California are childless. If you look at household incomes, these states are far closer to the national average.

As economist Tyler Cowen points out in a *Time* magazine cover story, when you adjust incomes for tax rates and cost of living, Texas comes out ahead of California and New York and ranks behind only Virginia and Washington state (which, like Texas, has no state income tax).

Critics charge that Texas's growth depends on the oil and gas industries and is weighted toward low-wage jobs. But in fact, Texas's low-tax, light-regulation policies have produced a highly diversified economy that from 2002 to 2011 created nearly one-third of the nation's highest-paying jobs. In those years, its number of upper- and middle-income jobs grew 24 percent.

Liberals like Noah often decry income inequality. But the states with the most unequal incomes and highest poverty levels these days are California and New York. That's what happens when high taxes and housing costs squeeze out the middle class.

As Noah notes, "Few working-class people earn enough money to live anywhere near San Francisco."

This leaves a highly visible and articulate upper class willing, in line with their liberal beliefs, to shoulder high tax burdens and a very much larger lower class — many of them immigrants — available to serve them in restaurants, landscape their gardens and valet-park their cars.

There's nothing wrong with living in a high-rise, restaurant-studded, subway-served neighborhood (I do). It's great that America offers more such options than one and two generations ago.

But it's foolish to try to cram everyone into such surroundings, as the Obama Department of Housing and Urban Development (as Terry Eastland reports in the *Weekly Standard*) and California Governor, Jerry Brown, are trying to do.

*Michael Barone, senior political analyst for The Washington Examiner (www.washingtonexaminer.com), is a resident fellow at the American Enterprise Institute, a Fox News Channel contributor and a co-author of The Almanac of American Politics.*



### How To Write Us

The Pampa News welcomes letters to the editor. When submitting a letter, please include the writer's name, address and signatures.

We reserve the right to edit letters or not to publish certain letters.

**By Fax:**  
806-669-2520

**By U.S. mail:**  
Letters  
The Pampa News  
403 W. Atchison  
Pampa, Texas  
79065

**By E-mail:**  
thowsare@thepampanews.com

## Amnesty is Republican party suicide

Most Americans believe that the United States of America is an exceptional country. The "borders test" proves that people are coming to America, not fleeing from America to exit to other countries.

Republicans and conservatives recognize that the principal reason for our unique abundance is our constitutional restraints on the power of government, separation of powers, balanced budgets, and a minimum of government supervision and interference in our daily lives. America offers a remarkable opportunity for foreigners; no matter what socioeconomic rank they were assigned in their native country.

Most of the millions of immigrants we have welcomed came from countries where the only government they knew was one that made all decisions about economic and social policy. The current level of legal immigration to America adds thousands of people every day whose views and experience are contrary to the conservative value of limited government.

The influx of these new voters will reduce or eliminate Republicans' ability to offer an alternative to big government, increased government spending, and favorite liberal policies such as Obamacare and gun control. New voters will lean on our hard-pressed health care system and overcrowded

public schools to demand more government services.

Amnesty advocates point to the assimilation of large numbers of immigrants in the early years of the 20th century. But that was followed by a national pause and slowdown of immigration from the 1920s to the 1960s, which allowed newcomers to assimilate, learn our language, and adapt to our system of government.

Under current law, 1.1 million new legal immigrants come in every year. The Congressional Budget Office projections indicate that amnesty, plus its scheduled increases in legal immigration, will add an additional 4.6 million new voters by 2014.

An enormous body of survey research shows that large majorities of recent immigrants, who are mostly Hispanic and Asian, hold liberal views on most policy issues and therefore vote Democratic two-to-one. Their motivation is not our immigration policy; it is economic issues.

The 2008 National Annenberg Election Survey found that 62 percent of immigrants prefer a single government-run health care system. The 2010 Cooperative Congressional Election Study found that 69 percent of immigrants support Obamacare, and the Pew Research Center found that 75 percent of Hispanic and 55 percent of Asian immigrants support bigger government.

A Harris poll found that 81 percent of native-born Americans believe the schools should teach students to be proud of being American, compared

to only 50 percent of immigrants who had become naturalized U.S. citizens. Only 37 percent of naturalized citizens (compared to 67 percent of native-born citizens) think our Constitution has a higher legal authority than international law.

The Pew Research Center reported in 2011 that, of all groups surveyed, Hispanics have the most negative view of capitalism in America — 55 percent. This is even higher than the supporters of Occupy Wall Street.

The data do not support the notion that immigrants are social conservatives. Heather MacDonald of the Manhattan Institute points out that, "It is not immigration policy that creates the strong bond between Hispanics and the Democratic Party, but the core Democratic principles of a more generous safety net, strong government intervention in the economy, and progressive taxation."

The current level of immigration, even without amnesty, will add nearly 15 million new potential voters by 2036, a large share of whom will favor the left. To allow this to happen will make Republicans a permanent minority party.

Looking at the political motivation of the groups pushing higher immigration and amnesty, it's obvious that the Democrats promote large-scale immigration because it produces more Democratic votes. But why are some prominent Republicans pushing amnesty?

The pro-amnesty New York Times gleefully reported on Oct. 26 the front-page news that big-business

leaders and Republican big donors are gearing up for a "lobbying blitz," backed up by money threats, to get Congress to pass amnesty. Big business wants amnesty in order to get more cheap labor and keep wages forever low, and that is a gross betrayal of the legal immigrants who hope to rise into the middle class and achieve the American dream.

The big donors poured \$400,000,000 into the campaigns of losing establishment-backed Republican candidates in 2012. They would rather elect Democrats than conservative, social-issue Tea Party-type grassroots Republicans who don't take orders from the establishment.

If the Republican Party is to remain nationally competitive, it must defeat amnesty in every form. Rep. Raul Labrador, R-Idaho, summed it up: "I think it would be crazy for the House Republican leadership to enter into negotiations with (Obama) on immigration, and I'm a proponent of immigration reform. ... He's trying to destroy the Republican Party, and I think that anything that we do right now with the president on immigration will be with that same goal in mind, which is to destroy the Republican Party and not to get good policies."

*Phyllis Schlafly is a lawyer, conservative political analyst and author of 20 books. She is the co-author, with George Neumayr, of the New York Times Best-Seller titled "No Higher Power: Obama's War on Religious Freedom." She can be contacted by e-mail at phyllis@eagleforum.org.*

## PJHS BOOK FAIR



Submitted photo  
Cindy Spiller, Pampa Junior High School volunteer, selling books to Jackie Spiller at the PJHS Book fair recently.

## For the record

### Pampa man arrested for numerous warrants

**STAFF REPORT**

Dustin Lee Miller, 20, Pampa, was arrested Wednesday by the Department of Public Safety for *capias pro fine* — failure to appear, *capias pro fine* — failure to maintain car insurance, *capias pro fine* — expired insurance.

• Brittani Lajuan McQuarters, 21, Manteco, Calif., was arrested Wednesday by the Gray County Sheriff's Office for possession of marijuana, possession of a prohibited substance in a correctional facility.

• Alan Wesley Layton, 33, Amarillo, was arrested Thursday by the Pampa Police Department for driving while license is invalid with a previous conviction.

• Michelle Russell, 46, Pampa, was arrested Friday by PPD for expired insurance, failure to maintain car insurance, failure to appear.

## Obituary

Continued From Page 3

### Iris Jean Parks

Iris Jean Parks, 77, died Oct. 30, 2013 in Pampa.



Iris Parks

Services are pending with Carmichael-Whitley Funeral Directors.

Mrs. Parks was born Sept. 12, 1936 in McAlester. She married Frank M. Parks on August 7, 1952 in Carlsbad, N.M. He preceded her in death on Aug. 24, 1994. She had been a resident of

Pampa since 1954, moving from Anson. Iris was a cook for the Black Gold Restaurant for many years. She was the housekeeping supervisor at Pampa Nursing Center and sold Avon for many years. Iris was a Baptist and was a former member of the Moose Lodge, as well as serving as a Brownie leader. She was preceded in death by a sister, Sandra Whitmarsh, and two brothers, Jeff Hawthorne and Leroy Hawthorne.

Survivors include a daughter, Angela Simmons and husband Pete Garcia of Pampa, three sons, John Parks and wife Donna Hood of Skellytown, Tommy Parks and wife Sherry of Pampa, and Timothy Parks of Amarillo and wife Dawn Stevens of Pampa, 12 grandchildren, four great-grandchildren, and her sister, Mary Lawler and husband J. D. of Amarillo.

*Sign the on-line guest register at [www.carmichael-whitley.com](http://www.carmichael-whitley.com).*

Come In Or Call For A Quote  
AUTO • HOME • BUSINESS • LIFE

**JOHNSTON INSURANCE AGENCY**  
1712 N. HOBART PAMPA, TEXAS  
806.665.4133 • 866.665.2788




CJ Johnston, Agent Betty Johnston, Agent

# Kelley's Chevron

Best Burgers in Town!

**Featuring:**  
Philly Cheesesteak  
Chicken or Steak Quesadillas

Now selling beer  
Sundays after noon

1020 E. Frederic  
806-665-5800

Dine-in or carry out

## Your Headquarters

Introducing Mr. Bar B Q...High Quality Innovative Tools, accessories and gear to make your next cookout effortless!

**CHIEF PLASTICS PIPE & SUPPLY INC.**  
1237 S BARNES - PAMPA, TEXAS  
806.665.6716 OR 800.649.6716  
1240 S BARNES - 806.669.2755

Home of the **BIG KAHUNA** of Spatulas

When You NEED A Tow... BIG or SMALL

**CALL US FIRST WE'LL BE THERE!**

**806-669-3481**

Bonded • Insured • Experienced

**Bob Douthit Autos**  
Parts & Auto Sales  
Wrecker Service  
1432 S. Barnes • Pampa

**PLUS**  
Parts New/Used

"We do Auto Lock-out"

# Heard-Jones

114 N CUYLER • 669-7478

Watch for our Holiday Coupon Book in your mailbox or pick one up in store!

**We're now on Facebook!**

## Check out these new specials!

**GREAT DEALS!**

<p><b>CHARMIN BASIC</b> bath tissue 4 pk Double Roll</p> <p><b>\$2.19</b></p> <p>4 pk double roll = 8 rolls 27¢ per roll!</p>	<p><b>CHARMIN BASIC</b> bath tissue 12 pk Double Roll</p> <p><b>\$7.99</b></p> <p>12 pk double roll = 24 rolls 25¢ per roll!</p>	<p><b>SCOTT</b> mega roll paper towels choose-a-size 2 pk</p> <p><b>\$2.19</b></p> <p>2 pk mega roll = 3 regular rolls 73¢ per roll!</p>	<p><b>SCOTT</b> mega roll paper towels choose-a-size 8 pk</p> <p><b>\$7.99</b></p> <p>8 pk mega roll = 12 regular rolls 67¢ per roll!</p>
---	--	--	---

**COUPON SPECIALS**

<p><b>PALMOLIVE</b> dish soap 14 oz.</p> <p><b>89¢</b> with coupon</p>	<p><b>KLEENEX</b> facial tissue 210 ct • family size</p> <p><b>\$1.99</b> with coupon</p>	<p><b>PUREX</b> laundry detergent 15 oz • asst types</p> <p><b>\$6.99</b> with coupon</p>	<p><b>ULTRA PUREX</b> fabric softener 44 oz • asst types</p> <p><b>\$2.99</b> with coupon</p>
--	---	---	---

**It's not too early to order your Thanksgiving pies! Call 669-7478**

**ORDER BY MONDAY, NOVEMBER 25**  
(complete list of pies available at the fountain)

## OH Christmas Tree, OH Christmas Tree

Great specials to help decorate your home

**Canadian pine tree**  
**\$9.99**  
240 tips • 4 ft with stand

**\$4.99 Canadian pine wreath**  
with coupon  
1800 tips • 20 in

**Christmas lights \$3.19**  
indoor & outdoor  
100 ct • asst. colors  
with coupon

**\$2.99 Ornaments boxed sets**  
asst. sizes & colors

**Heard Jones Famous**  
Dine-In Fountain Special  
Every Saturday!

Hamburger & Chips ..... \$ .99  
Cheeseburger & Chips ... \$ 1.49

To-go orders welcomed - chips not included

**Heard Jones HealthMart**

NOW OVER 3000 STORES

**It's important to trust your pharmacy**

With all of the uncertainty in healthcare these days, it's nice to know that there is still a place you can trust when it comes to your prescription and over the counter medications. That place is Heard Jones Healthmart. Unlike the Big Chain pharmacies, we build a relationship with our customers. We will answer any questions they may have regarding their medications. We are there for our customers, day or night, seven days a week. You won't find that at any of the chain pharmacies in town.

Our customers are the reason we've been in business for 86 years. At Heard Jones Healthmart you're more than just a prescription to be filled, you're family. **And we take care of our family.**

# DAYLIGHT SAVINGS TIME

ENDS 2 AM,  
NOVEMBER 3, 2013



REMEMBER TO SET YOUR CLOCKS  
BACK ONE HOUR TONIGHT.

**NATIONAL BANK OF COMMERCE**  
 An Office Of First National Bank Waupaca, Wisconsin  
**PAMPA • 1224 N. HOBART • 665-0022**  
**SHAMROCK • 305 N. MAIN • 256-2181**  
**CHILDRESS • 501 COMMERCE • 940-937-2514** Member FDIC

**LEFORS FEDERAL CREDIT UNION**  
**835-2773**  
 117 W. 2ND STREET • LEFORS TEXAS

**PARSLEYS**  
 SHEET METAL AND ROOFING  
 214 E. TYNG AVENUE  
 800-442-4668 • 806-669-6461

The  
**PAMPA NEWS**

**Century 21** SMARTER. BOLDER. FASTER.  
**806-669-0007**  
 312 N Gray Pampa, TX  
 Each Office Independently Owned and Operated  
 Pampa Realty Inc.

# Lifestyles

## Weekly Menus

### Pampa Independent School District

**MONDAY, November 4**  
Pig in a blanket or chicken nuggets, whipped potatoes, steamed broccoli, peaches, fresh fruit, cookie  
**Breakfast-** Breakfast pizza  
**TUESDAY, November 5**  
Popcorn shrimp or chef salad, spinach, broccoli florets, fresh fruit, juice  
**Breakfast-** Donut, sausage patty  
**WEDNESDAY, November 6**  
Spaghetti or popcorn chicken, green beans, tossed salad, mixed fruit, fresh fruit  
**Breakfast-** Waffle sticks  
**THURSDAY, November 7**  
Egg rolls or pizza, corn, broccoli florets, fresh fruit, juice  
**Breakfast-** Biscuit, sausage patty  
**FRIDAY, November 8**  
Chicken fajitas or hamburger, french fries, burger salad, pinto beans, fresh fruit  
**Breakfast-** Cereal, toast

### Pampa Senior Citizens Center

**MONDAY, November 4**  
Chicken fried steak or chicken/broccoli/noodles, mashed potatoes, spinach, beets, northern beans, slaw, tossed salad, Jell-O, strawberry cake, cherry cobbler, fruit cup, hot roll, cornbread  
**TUESDAY, November 5**  
Beef enchiladas or chicken ala king/cornbread, scalloped potatoes, peas, carrots, pinto beans, slaw, tossed salad, Jell-O, ugly duckling cake, chocolate pie, fruit cup, hot roll, cornbread  
**WEDNESDAY, November 6**  
Roast beef brisket/brown gravy or cook's choice, mashed potatoes, squash casserole, green beans, butter beans, slaw, tossed salad, Jell-O, cherry chocolate cake, lemon pie, fruit cup, hot roll, cornbread  
**THURSDAY, November 7**  
Chicken strips or bar-b-que'd beef/onion rings, potato, salad, corn, California blend, pinto beans, slaw, tossed salad, Jell-O, carrot cake, bread pudding, fruit cup, hot roll, cornbread  
**FRIDAY, November 8**  
Cod fish filet/hush puppies or stew, potato wedges, fried okra, beans, slaw, tossed salad, Jell-O, brownies, butterscotch icebox pie, fruit cup, garlic bread, hot roll, cornbread

### Pampa Meals on Wheels

**MONDAY, November 4**  
Chicken pot pie, pickled beets, salad, pineapple  
**TUESDAY, November 5**  
Lasagna, green beans, garlic bread, salad, pears  
**WEDNESDAY, November 6**  
Eggs/sausage, hashed brown, biscuit, peaches  
**THURSDAY, November 7**  
Sloppy Joe, tater tots, cole slaw, mixed fruit  
**FRIDAY, November 8**  
Salmon patties, macaroni/cheese, pickled beets, apricots

## ENDURING LOVE

Darrin and Jody Clendennen



Darrin and Jody Clendennen of Pampa are celebrating their 25th wedding anniversary. The couple were married on November 5, 1988 at the First Christian Church in Pampa, with Brother Ellis of Hedley, Texas officiating. The couple have four children, all of Pampa: Kenzie, Keziah, Channar and Jake. There will be a dinner and dance at the Sportsman Club on Saturday, November 2 for family and friends to celebrate this special occasion.



Submitted photo  
From left, ASTRA member Emily Terry and Altrusan Rochelle Lacy collect food items for Tralee Crisis Center in recognition of Make a Difference Day. Altrusans also assisted Tralee with the Duck Dynasty event on the same day.

[www.thepampanews.com](http://www.thepampanews.com)

RASCO CONSTRUCTION & PAMPA  
GLASS & SUPPLY ARE NOW...



**HIGH PERFORMANCE**  
Exterior • Coatings • Glass

SPECIALIZING IN  
CUSTOM FRAMING



GET A FREE  
IN STOCK MAT  
WITH THE PURCHASE  
OF A FRAME  
(expires November 30, 2013)

1432 N BANKS  
PAMPA, TX 79065  
PH 806.665.8100

[HIGHPERFORMANCEEXTERIORS.COM](http://HIGHPERFORMANCEEXTERIORS.COM)

12988

find us on  
**Facebook**

To find Breaking News  
Briefs, Event Photos,  
and Video Clips.

[facebook.com/thepampanews](http://facebook.com/thepampanews)

Send Us Your  
**Church News**

• Events • Special Services • Charity Drives • Gen. News  
[jclee@thepampanews.com](mailto:jclee@thepampanews.com) [thowsare@thepampanews.com](mailto:thowsare@thepampanews.com)



**GOT A HOT TIP?**

CALL 669-2525 OR  
EMAIL IT TO US!  
[jclee@thepampanews.com](mailto:jclee@thepampanews.com)  
[thowsare@thepampanews.com](mailto:thowsare@thepampanews.com)

**Easy's Pop Shop 1&2**

Buy Any Size Fountain Drink  
& Get One **FREE**  
WITH COUPON  
Expires 11-30-13  
719/729 N. Hobart Drive-up Window

Our clients' interests come first.

**Duane Harp, AAMS®**  
Financial Advisor  
1921 N Hobart  
Pampa, TX 79065  
806-665-6753  
[www.edwardjones.com](http://www.edwardjones.com)

**Edward Jones**  
MAKING SENSE OF INVESTING  
Member SIPC

**CULBERSON'S Spotlight**

**Chuck Bailey**

Chuck Bailey is one of the newest Body Shop Repairmen. He comes from Oklahoma where he lived close to his daughter and granddaughter. Chuck has 30 years of experience in the auto-body shop. He was trained at Vortec school for auto-body. When asked why he chose this profession, he said, "Since I was a kid, I had always wanted to work on cars." Richard Stowers said, "We are excited to have Chuck join our team. He's proving to be a true asset."

So, look for Chuck when you come to Culberson-Stowers, he will get your car or truck back on the road!

**CULBERSON-STOWERS**  
805 North Hobart Street 806-665-1665  
[www.culbersonautos.com](http://www.culbersonautos.com)

Are you ready for winter?

**We Have Fireplace Accessories & Pellets**

4 Panel Fireplace Screen  
Complete Hearth Set  
3 Panel Fireplace Screen  
5 pc. Fireplace Tool Set  
3 pc. Tool Set & Log Rack Combo

**Frank's Do it Best Hardware**  
401 N Ballard • 665-4995

## KIRK CEREMONY AT FIRST PRESBYTERIAN



Photos by Judi Smith

John Brewer, a bagpiper from Amarillo, performed Sunday at First Presbyterian Church in Pampa in observance of Reformation Day. Tartan banners were carried in by congregations members and the choir sang a Scottish anthem.

After the service, the congregation enjoyed a buffet of Scottish and American dishes. The significance of the tartan plaids at church services dates back hundred of years. After the ill-fated attempt to regain the Scottish throne for the Royal Stuart clan in the 1700s, the King of England outlawed the wearing of the tartan plaids that represented each clan. Punishment for defying the ban could be severe, but the stubborn Scots hid small pieces of their tartans in their pockets and took them to "Kirk" (church) on Sunday. From this practice, American Presbyterian churches adapted the "Kirk" ceremonies that are currently observed. Today, American Christians give praise to God for those who sacrificed so that we may worship freely.



## Veterans Day calendar of events

### Friday, Nov. 8

At 1 p.m., Travis Elementary School is holding its 15th annual Veterans Day Celebration at the M.K. Brown Memorial Auditorium. For more information call 806-669-4950.

There will be a Veterans Day meal at the VFW from 5 to 7 p.m. The meal will include turkey, dressing and all the trimmings. The meal is free to all veterans and their families. Donations will be accepted and there will be a silent auction. For more information, call 806-664-4500.

### Saturday, Nov. 9

Shepard's Helping Hands and the Ladies Auxiliary Pampa VFW Post 1657 are inviting everyone to participate in their Veterans Day Parade, which starts at 10:30 a.m. To register, visit [www.thepampanews.com](http://www.thepampanews.com), download the attached PDF and mail it in. Later in the day there will be a dance at the Pampa Chamber of Commerce. For more information, call 806-665-0356.

### Monday, Nov. 11

There will be a Veterans Day luncheon at the Meredith House, 812 W. 25th St., from noon to 1 p.m. Please RSVP by Nov. 4 to partake in this lunch. For information or to RSVP, call 806-665-5668.

# the Victorian Rose

A WHIMSICAL EMPORIUM, WEDDING REGISTRY & GIFT STORE

---

## ★ NOW FEATURING ★

### Hen House LINENS Holiday Linens

Come See *Liana* with  
"Simply Said" Today!

119 W. Kingsmill | Pampa Tx | 806.688.5372 | M-F 10-5:30 • Sat. 10-4

16542

**Chicken EXPRESS**

669-CHIC (2442)

32 oz. drinks

\$.92+ tax

ALL DAY - EVERY DAY

(limited time)

**We also have:**

- Catering service
- Catfish
- Hot rolls
- Chicken E Sweet Tea
- Chicken Tenders, Chicken on the Bone, Hot Wings, Chicken Livers & Gizzards, Fried Okra, Fried Pickles, Jalapeño Poppers, Corn Nuggets, and More!
- Variety of Dipping Sauces

*Like our facebook page to see our weekly specials:*  
[www.facebook.com/ChickenExpressPampa](http://www.facebook.com/ChickenExpressPampa)

2201 Perryton Pkwy • Pampa, Texas  
 Seth and Leslie Haynes

13135

# OIL CHANGE

# EXTRAVAGANZA

We are giving away a FREE OIL CHANGE Everyday to the 10th Oil Change Customer.

(excluding diesels)



(L-R) Robert Chavarria, Jessalyn Abad and Luis Sanchez

**LUIS is back!**

**ROBERT'S AUTO SERVICE**

**FREE WASH & VACUUM**  
**AFTER 9 OIL CHANGES**

Bring this card in with every oil change visit to receive punch. Fill card with punches and after 9 oil changes receive a free wash & vacuum.

300 N. Hobart 806-669-1117

- All types of minor repair
  - Tune-up
  - Water pump
  - Brake pads
  - Heat/air
  - State inspection
  - Oil change/full service
  - Tire rotation
  - Wash/vac
  - Strut
  - Shocks
  - Full detail

ROBERT'S

QUALITY REPAIRS

AUTO SERVICE

300 N. Hobart

806-669-1117

Hours: Mon-Fri 7-7; Sat 8-4



# PampaSports

## Pampa Harvesters finish season against Dalhart

■ Harvesters special teams miscues lead to fall to Dalhart in 47-20 loss. Playoffs next.



Photos by Charla Shults  
Above, (12) Tyler Hooper and (10) Daymon Flores celebrate the first quarter touchdown. Below (17) Joseph Radke secures a touchdown catch.



By JOHN LEE  
jlee@thepampanews.com

The Pampa Harvesters hosted the final game of their regular season against the district-leading Dalhart Golden Wolves. Though losing to Dalhart 47-20, the Harvesters had already secured a spot in bi-district play because of their win two weeks ago against River Road.

It was senior night and there was plenty of plays made by the seniors.

"This group of seniors has always tried as hard as they can to do everything they have been asked to do," head coach Heath Parker said. "They show up every day and they work hard and it was an honor to coach these guys. We had a really good game going in the first half and against a really good team. They are a one-loss team ranked 10th in the region. We were playing them toe-to-toe. We know it would be an offensive battle. They are a team that is tough to stop offensively. No one really has."

Dalhart received the ball first, and used their running game that had taken them to a 7-1 overall record to drive down the field. Carries by junior Val Diaz, one for 37 yards, had taken the Golden Wolves down into the Harvester red zone. A 20-yard pass from senior quarterback Ben Allen to sophomore run-

ning back Conner Smith had secured the touchdown and put Dalhart on the board first at 7-0.

After a long return, Pampa set up shop at their own 41-yard line. After an 8-yard run from junior Brycen McClenon, the Harvesters switched up the pace, handing off to senior Daymon Flores, who carried it for 33 yards. Being halted to a fourth down, the Harvesters rolled the dice and went for a screen pass from Hooper to Flores. The move paid off and Flores took it 30 yards for a Harvester touchdown. After a blocked point after attempt, the Harvesters trailed by only a point at 7-6.

Dalhart took over at their own 24-yard line and continued to run the ball with hand-offs to junior running back Jacob Harris. While exchanging the carries between Harris and Diaz, the Golden Wolves marched down the field and ate up the clock into the second quarter. A Diaz touchdown capped off the drive, and gave the Golden Wolves the 13-6 lead after the failed conversion attempt.

The Harvesters didn't let the run game keep them from making noise of their own. Flores ran for 17 yards, and received a pass from Hooper for another 10. Once in the red zone, Hooper was hit when he threw, and sophomore Joseph Radke

received the 23-yard throw for a touchdown. The extra point from sophomore kicker Trevor Turner tied the game up at 13 all.

"Dalhart is a straight man-coverage team, we worked all week long on man-coverage routes," Parker said. "We knew that was something we would need in our favor because with a man-coverage team you have more de-

fenders in the box than you can block. So we are going to throw and catch more. I thought the receiving corps and quarterback certainly executed there part and obviously the offensively line held together enough against a team that wants to provide pressure."

Dalhart answered the score

FOOTBALL cont. on page 4

**TUESDAY NIGHT SPECIAL**  
AFTER 5 pm  
Free child's plate with the purchase of an adult meal  
{12 & UNDER}  
AMARILLO & PAMPA LOCATIONS  
**Dyers BBQ**  
HWY 60 W • Pampa, Texas  
(806) 665-4401

**Watch the Pros SATURDAY**

**College Football**  
(18) Okla. St. at (15) Texas Tech.....FOX 6 p.m.  
(24) Wisconsin at Iowa.....ABC 11 a.m.  
(8) Clemson at University at Virginia.....ESPN 2:30 p.m.  
(21) Michigan at (22) Michigan St.....ABC 6:30 p.m.  
Navy at (25) Notre Dame.....NBC 2:30 p.m.  
(11) Auburn at Arkansas.....ESPN2 5 p.m.  
Tennessee at (9) Missouri.....ESPN 6 p.m.  
Colorado at (20) UCLA.....FS1 6:30 p.m.  
(7) Miami at (3) Florida St.....ABC 7 p.m.  
UTEP at Texas A&M.....ESPN2 8 p.m.  
Nevada at (16) Fresno.....ESPNU 9:30 p.m.  
West Virginia at TCU.....ESPNU 3 p.m.  
Pittsburgh at Georgia Tech.....ESPNU 6 p.m.

**Hockey**  
Chicago Blackhawks at Winnipeg Jets.....NHLN 2 p.m.  
Toronto Maple Leafs at Vancouver Canucks.....NHLN 6 p.m.  
or  
Pittsburgh Penguins and Columbus Blue Jackets...NHLN 6 p.m.

**Auto Racing**  
NASCAR Nationwide Series from Texas....ESPN2 2:30 p.m.

**Basketball**  
Chicago Bulls at Philadelphia 76ers.....NBATV 6:30 p.m.  
Memphis Grizzlies at Dallas Mavericks.....FSSW 7:30 p.m.  
\*\*Check your local listings for channel number\*\*  
\*\*\*Times may vary and blackouts may apply\*\*\*

**CONSIDER YOUR MAN CARD REISSUED**

**FULL LINE OF BOW HUNTING EQUIPMENT & SUPPLIES**

**PE ESTIGE** 101 S. HOBART  
OUTDOORS DIVISION 806-665-3500

**HOT HOT HOT**

Happy Hump Day!  
Nothing screws up your FRIDAY like finding out it's WEDNESDAY...until you realize it's HUMP DAY

Guess What Day It Is?

**Hump Day Tees**  
ONLY \$15.99

While Supplies Last!

**T-SHIRTS & MORE**  
111 W. KINGSMILL • 806-665-3036

### Baylor women will look different without Griner

WACO (AP) — There is one thing Baylor needs senior guard Odyssey Sims to do less of this season: all those lob passes she is so good at.

As for everything else, the Lady Bears will need all they can get from Sims since two-time AP Player of the Year Brittney Griner will no longer be under the basket to catch those passes while towering over opponents.

"It's a lot different, just being used to having her down there for three years," said Sims, also an All-American last season and Baylor's only returning starter. "But I like how this year we can prove how good our guard play is, and we'll be able to run a lot more. So that's what I'm more excited about than anything this season."

**Low Back Pain? Sciatica? Disc Herniation?**

If you suffer from the above... **DECOMPRESSION** therapy may be the treatment you are looking for!

Whether you are suffering from acute or chronic low back pain, sciatica, disc herniations, leg pain, numbness, tingling, post-surgical low back pain or a variety of other symptoms, Decompression Therapy is an effective non-surgical treatment that may help you. If you are tired of suffering with the pain day after day, want wellness treatment or are curious if it can help you, please give us a call today!

Call **806-665-7261** for an appointment today!

**Live Well Chiropractic**  
Live Well . Be Well .

Located at  
701 N. Price Rd.  
Pampa, TX 79065  
[www.LiveWellChiropractic.org](http://www.LiveWellChiropractic.org)

# PampaSports

## From the Press Box

### What is the measure of greatness?

Wednesday night, after giving up six runs to the Boston Red Sox, who went on to win the World Series at home for the first time since 1918, Michael Wacha was pulled from the sixth game of the Fall Classic. Upon leaving the diamond, the Cardinals' ace pitcher Adam Wainwright pulled him aside and gave him a pep talk to encourage the young pitcher.

"I told him he's amazing," Wainwright said. "I told him we would never be in a situation we were in right now, playing in a World Series, without his effort down the stretch and in the postseason. He's just a great, great guy with great, great stuff and great ability and a great future."

So often in sports, we get caught up in who has won the big one. We do so for good reason, though.

Ask any professional sports player, and they want to win their respective World Series or Super Bowl. But to judge a player by whether or not they win the big one is an insult to that player's talent.

Up until two years ago, Miami Heat LeBron James supposedly had no business even talking about himself in the context of NBA legend Michael Jordan. LeBron James is his own athlete and plays completely different from Jordan.

In 2007, in his ninth season in the NFL, former Colts quarterback and current Broncos quarterback Peyton Manning won his first Super Bowl. If Bears QB Rex Grossman had outplayed him would we not be talking about how great all of Manning's seasons were before and after that, or the big one

that got away. Legendary Dolphins quarterback Dan Marino never won a Super Bowl, but did he not make the Pro Football Hall of Fame?

Let's take it down to us normal folk. If we don't reach the highest pinnacle in our fields does that mean we weren't good at what we do.

Greatness to me is not winning the big one, but being consistently successful. What if every athlete and every person was like LSU's former quarterback JaMarcus Russell.

Russell was the No. 1 pick in the 2007 NFL Draft. He had so much talent, but figured that the rest of success would come to him, then got cut by the Raiders and is still out of football work.

What Russell lost was the desire to keep getting better. The desire to keep striving for bigger things.

Perhaps this is why winning the big one is so important. In sports, there is more to it than just hard work, luck is figured into it.

So back to Wacha and Wainwright. For Wainwright to tell Wacha what he did was very classy. But now Wacha will have to avoid the dreaded sophomore slump of sports, and giving up six runs in what ended up being the final game in of the World Series isn't going to help. He can go two directions from here. He can continue to work at his craft and end up back at the World Series next year, or he can get comfortable knowing he was in the World Series and not try to get better.

Greatness should not be measured by how many times you win the big one. It should be measured by how hard you worked to win the big one.

*John Lee is the Sports Editor of The Pampa News. He can be reached at jlee@thepampapnews.com.*



**JOHN LEE**

## Jordan: Tanking games no way to build a franchise

CHARLOTTE, N.C. (AP) — As frustrated as Michael Jordan has been over the Charlotte Bobcats' lack of success, it's just not in his competitive DNA to tank games.

Forget that the NBA would likely hand down a hefty fine and fans would probably boycott if a team admitted to doing that, Jordan said purposely losing games in hopes of getting a top pick in the draft is no way to fix a rebuilding franchise.

The Bobcats owner scoffed at the idea Friday, telling The Associated Press, "I don't know if some teams have thought of that. That's not something that we would do. I don't believe in that."

He then laughed heartily and said, "If that was my intention I never would have paid (free agent) Al Jefferson \$13 million a year."

Jordan, 50, hasn't been able to translate his on-court success to winning as an

NBA owner and executive.

He won six NBA titles as a player, but Charlotte is just 62-168 in his three full seasons as majority owner. The Bobcats were 21-61 last season.

Still, he doesn't believe there are shortcuts to winning.

While the 2014 NBA draft offers hopes to fledgling teams with talented players like Andrew Wiggins at Kansas and Duke's Jabari Parker, Jordan made it clear he isn't thinking about losing.

"It's not guaranteed (the player) you are going to get is going to be that star anyway," Jordan said.

"I did read that certain teams are thinking about doing it. But I'm not one of them. So let's alleviate that conversation."

Jordan, who was in a re-

laxed mood at the Bobcats headquarters before his team's home opener, has been widely criticized for his failures with the Bobcats and for his struggles in the front office with the Washington Wizards.

He said some of that comes with the territory.

"It's somewhat unfair, but you come to expect it," said Jordan, who became the majority owner of the Bobcats in 2010.

"You set certain standards as a player that transcend whatever you do. It goes where you go. You will be wearing that around your neck so that when people see the name they expect the results."

"It's somewhat unfair but it is what it is. I don't let it define me."

However, Jordan said he

remains committed to the Bobcats and said he's tried to be transparent with the fans about the direction of the team.

This past offseason he used the amnesty clause on forward Tyrus Thomas, a move that took his hefty contract off the books.

Jordan still has to pay Thomas \$18 million, but the move freed up that money under the salary cap as part of a one-time policy under the new collective bargaining agreement.

The Bobcats used that money to sign Jefferson to a three-year \$41 million contract and to re-sign guard Gerald Henderson for \$18 million over three seasons.

"I mean, that was a statement," Jordan said of his commitment to the Bobcats. "I still have to pay more than \$17 million, but it was a move that we needed to make to build and go get a guy like Big Al."



**Michael Jordan**

## sunday horoscope

**HAPPY BIRTHDAY** for Sunday, Nov. 3, 2013:

This year you will have unusual energy swings. A realization will occur involving your career or a relationship that will point you in a new direction. The whole saga will take a year to complete. You often push very hard to have your way. In the next 12 months, you will see the futility of that behavior. If you are single, you could meet someone quite spectacular. Take your time getting to know this person. If you are attached, the two of you will see a life goal manifest itself. The path to your desire might be very different from what you had anticipated. **SCORPIO** might be far more intense than you realize.

The Stars Show the Kind of Day You'll Have: 5-Dynamic; 4-Positive; 3-Average; 2-So-so; 1-Difficult

**ARIES** (March 21-April 19) **★★★★** You can express your feelings any way that you want, but ultimately a friend will respond only when he or she is ready. Look at the issue at hand, and see if there is a more effective way of handling the problem. If so, follow through. Tonight: Chat with loved ones.

This Week: Be willing to break past a self-imposed restriction.

**TAURUS** (April 20-May 20) **★★★★** You might sense that there are changes ahead, and you might not have as much control as you would like. Know that you only have control over yourself. Honor where someone is coming from,

and don't try to change this person's mood. Tonight: Go along with someone's wishes.

This Week: Good news heads your way.

**GEMINI** (May 21-June 20) **★★★** You might want some kind of change to happen in your life in order to feel reinvigorated. You could be looking at making an adjustment to your schedule, trying a new exercise program or learning a new sport or hobby. Avoid creating uproar. Tonight: Slow down.

This Week: Weigh the pros and cons of a risk that could hit your wallet hard.

**CANCER** (June 21-July 22) **★★★★** Your creativity is high, yet your nurturing qualities and emotional nature seek self-expression. Make time for your family, and pursue an activity that they would love. If you are single, you might be seeing a change in status. Tonight: Only with someone you love.

This Week: An event midweek could have you heading in a new direction.

**LEO** (July 23-Aug. 22) **★★★★** You might look back on this period and realize that you made some important decisions regarding real estate and your home. Make sure you are not overreacting and making snap judgments. Allow yourself a lot of space to evaluate each decision. Tonight: Order in.

This Week: Let your creativity emerge. Take a risk if you feel good about it.

**VIRGO** (Aug. 23-Sept. 22) **★★★★** You could be out of sorts and wonder-

ing what is important. You might feel drained by today's eclipse. As a result, you could be somewhat accident-prone. Try not to put yourself in a situation where you could cause yourself a problem. Tonight: Hang out with a friend.

This Week: You could find a long-term desire that is worth evaluating.

**LIBRA** (Sept. 23-Oct. 22) **★★★** You can't be too careful with your finances. Hold off on making any commitments or purchases for a while. You easily could make a mistake or buy a faulty item. You might not like restrictions, but that would be best for now. Tonight: Whatever makes you happy.

This Week: Be ready for feedback about a job or your career.

**SCORPIO** (Oct. 23-Nov. 21) **★★★★★** Today's eclipse might be making you feel hyper. Know that the element of instability that might result from your energy is likely to be elsewhere, too. Enjoy yourself, but remember that nothing is set in stone. Make no agreement at this moment. Tonight: Till the wee hours.

This Week: Look beyond the obvious.

**SAGITTARIUS** (Nov. 22-Dec. 21) **★★★★** You could be ready for a swift change or a new development. However, for right now, it would be best to play it low-key. Keep a discussion tame. If you lose control, there could be long-term ramifications. A partner will come through for you. Tonight: Get some extra

zzz's.

This Week: You are on a roll this week.

**CAPRICORN** (Dec. 22-Jan. 19) **★★★★** A loved one is the bearer of good news. Don't hesitate to get together or have a chat with this person. A group of friends could be changing. Understand that you might be changing, too. What seemed OK before might not be the case anymore. Tonight: Where the fun is.

This Week: Say "yes" to a friend. This person needs your attention.

**AQUARIUS** (Jan. 20-Feb. 18) **★★★** A situation demands all of your attention. You might feel like you have no choice as long as you want the status quo to continue. Do you? You are in a period of hard reflection. When an opportunity arises, you will know what to do. Tonight: Could go till the wee hours.

This Week: An opportunity drops on you.

**PISCES** (Feb. 19-March 20) **★★★★** Jump in your car, and take a day drive or go visit a friend in the country. You'll feel re-energized once you move out of your immediate area. When you detach, you will start changing your opinions and gain a new perspective of your life. Tonight: Continue the escape.

This Week: Your creativity adds to a relationship. Go with the moment.

**BORN TODAY** Comedian Dennis Miller (1953), journalist James Reston (1909), politician Michael Dukakis (1933)

**Watch the Pros SUNDAY**

**Football**  
Minnesota Vikings at Dallas Cowboys.....FOX noon  
Kansas City Chiefs at Buffalo Bills.....CBS noon  
Pittsburgh Steelers at N.E. Patriots.....CBS 3:25 p.m.  
Indianapolis Colts at Houston Texans..NBC 7:30 p.m.

**Auto Racing**  
NASCAR Sprint Cup from Texas.....ESPN 2 p.m.

**Basketball**  
Phoenix Suns at Oklahoma City Thunder.....NBATV 6 p.m.

**\*\*Check your local listings for channel number\*\*  
\*\*\*Times may vary and blackouts may apply\*\*\***

find us on **Facebook** To find Breaking News Briefs, Event Photos, and Video Clips.  
facebook.com/thepampapnews

**AIRLINE CAREERS BEGIN HERE**

Become an Aviation Mechanic. FAA approved training. Financial aid if qualified - Housing available. Job placement assistance  
CALL Aviation Institute of Maintenance  
Dallas - 800-475-4102  
or Houston - 800-743-1392

**Propane bills too high?**  
Stop feeding the pig and get Geo.

**Bosch geothermal heating and cooling systems can save you up to 70% on your home energy bills.** With an additional 30% federal tax credit, these systems are now more affordable than ever!

Visit our site to find out how much you can save.  
**BOSCH**  
Invented for life  
BoschGeo.com/PropanePig

**dish** AUTHORIZED RETAILER **800-315-3973**

**MORE WAYS TO WATCH. MORE WAYS TO SAVE.**

**FREE HOPPER UPGRADE!**  
**FREE PREMIUMS FOR 3 MONTHS!**  
**FREE INSTALLATION IN UP TO 6 ROOMS**  
**FREE HD FOR LIFE \$120/YEAR VALUE**

**ORDER NOW \$19.99 MO**  
For 12 months with the SMART PACK with 24-month commitment. Restrictions Apply. Call for details.

Looking for good Christian fiction to read? Try New York Times Bestselling Author Dee Henderson

**UNSPOKEN**

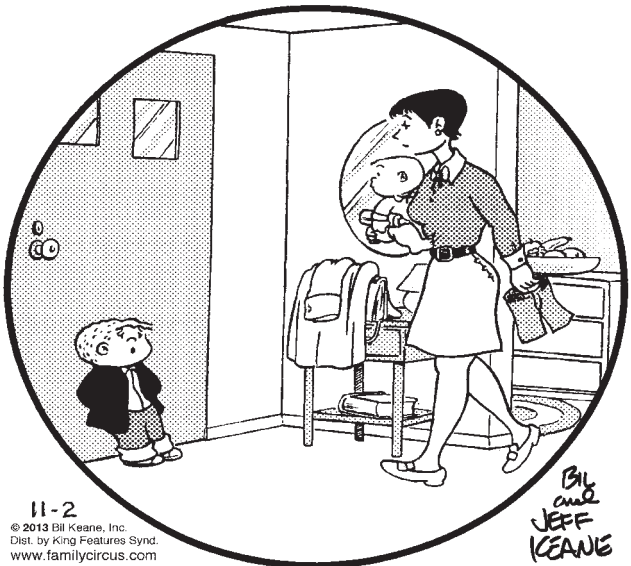
"A rip-roaring good read. Old fans and new readers alike will be delighted"- Publisher's Weekly

Read the first chapter at **www.DeeHenderson.com**

# comics PAGE

## THE FAMILY CIRCUS

By Bil Keane

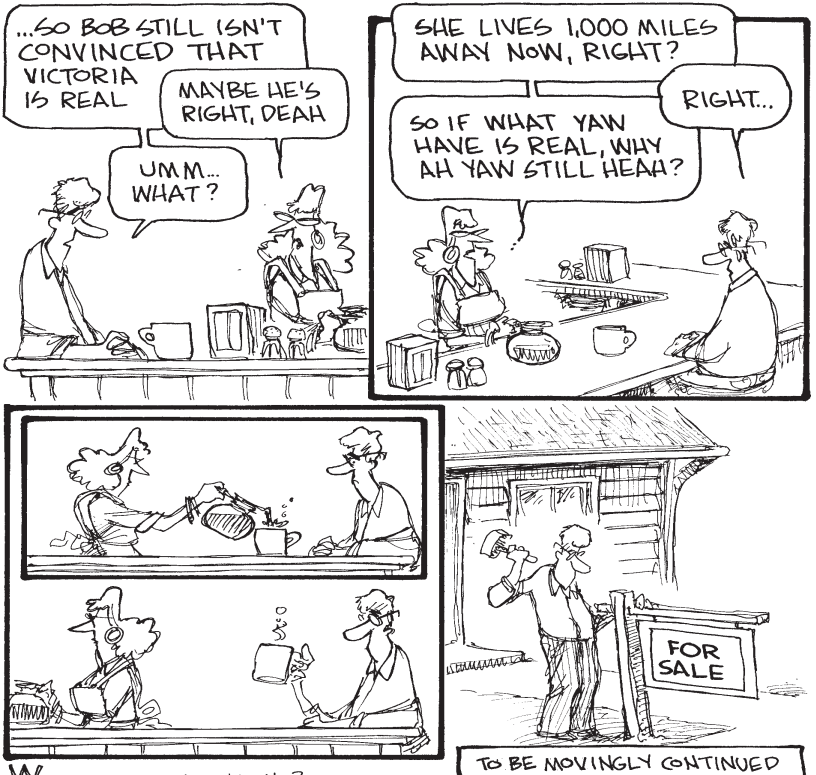


11-2  
© 2013 Bil Keane, Inc.  
Dist. by King Features Synd.  
www.familycircus.com

Bil and Jeff KEANE

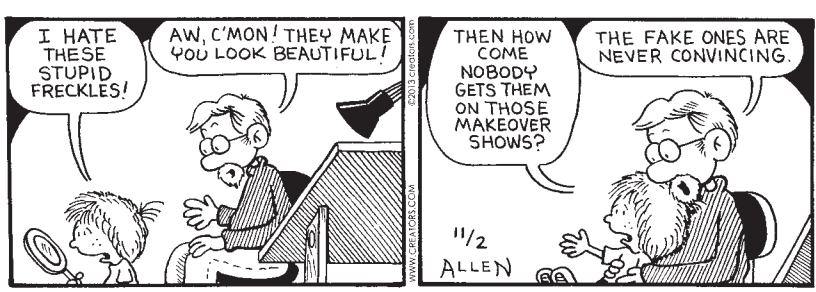
**"C'mon, Mommy, which 'soon' is it till we leave — 'pretty' or 'not too'?"**

## Non Sequitur



© 2013 WILEY INK, INC. 11-2  
DIST. BY UNIVERSAL UCLICK WILEYINK@GARTHINK.NET GOCOMICS.COM

## Nest Heads



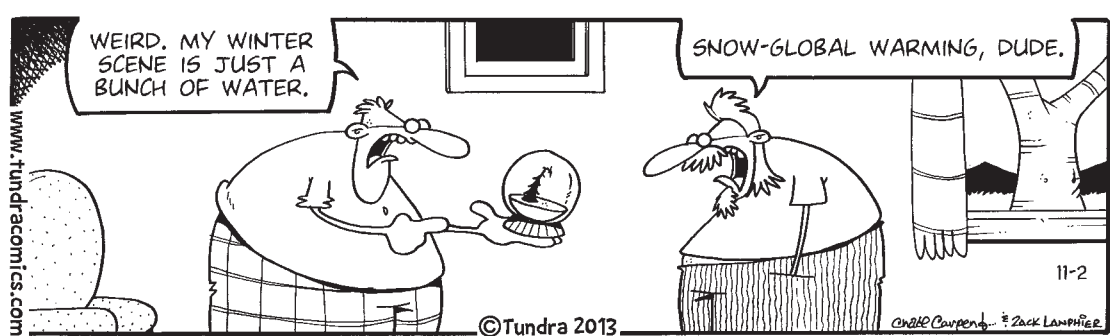
© 2013 WILEY INK, INC. 11-2  
DIST. BY UNIVERSAL UCLICK WILEYINK@GARTHINK.NET GOCOMICS.COM

## daily horoscope

**HAPPY BIRTHDAY** for Monday, Nov. 4, 2013:  
This year you often feel as if you are navigating in a fog, not exactly sure of where you are heading. Nevertheless, you will make many friends. Your ability to detach yet empathize becomes stronger. If you are single, you might meet someone quite unique and different. You could learn a lot by relating to each other. If you are attached, the two of you often have silly misunderstandings. Just maintain a sense of humor and be willing to open up. Tune in to your psychic ability when dealing with others. **SAGITTARIUS** can be extremely irritating, especially when you are in one of your deep, reflective moods.  
The Stars Show the Kind of Day You'll Have: 5-Dynamic; 4-Positive; 3-Average; 2-So-so; 1-Difficult  
**ARIES** (March 21-April 19)  
★★★★ You'll want to be more in sync with someone. Realize that you might have to initiate a conversation with this person. It could seem as though neither of you is getting the whole story. Maintain a sense of humor, and the process will be a lot easier. Tonight: Surf the Web.  
**TAURUS** (April 20-May 20)  
★★★★ Deal with a partner or key person directly in the afternoon. You tend to be on different pages, and you need to bridge the gap. Try to understand the logic behind his or her thinking. This person might wonder where you are coming from, too. Tonight: Opt for dinner for two.  
**GEMINI** (May 21-June 20)  
★★★★ Listen to others, but ultimately know that you need to make your own decision. How you handle a personal matter could change once you clear up an assumption that you and someone else made. If need be, bring in an expert for another opinion. Tonight: Say "yes" to an offer.  
**CANCER** (June 21-July 22)  
★★★★ Your creativity soars early in the day. Funnel your high energy into some task that could be made better through an infusion of this trait. Detaching from a situation will help you choose the right direction for you to head in. Tonight: As early as you can, go off and have some fun.  
**LEO** (July 23-Aug. 22)  
★★★ You might move slowly, but once you get going, your creativity seems to soar. Apply some of your imagination to the tasks at hand. You will find that they are more interesting and allow

greater flexibility. Tonight: Tap into a loved one's way of thinking.  
**VIRGO** (Aug. 23-Sept. 22)  
★★★★ Go with the flow, and honor what is happening with someone in your daily life. You might want to stay close to home or make contact with that special person in your life. Don't assume that you know what a close friend or loved one is feeling. Tonight: Open up to a suggestion.  
**LIBRA** (Sept. 23-Oct. 22)  
★★★★ Handle a financial matter in the morning. Later, you will want to check in with a key person you really care about. You might be confused or overwhelmed by everything this person shares. Encourage a discussion with a new associate in the afternoon. Tonight: With friends.  
**SCORPIO** (Oct. 23-Nov. 21)  
★★★ You are in your element in the morning, so use that time to do anything important. In the afternoon, you will not have the same energy or charisma to argue your case or make a good impression. You also will be more biased. Tonight: Do some shopping on the way home.  
**SAGITTARIUS** (Nov. 22-Dec. 21)  
★★★ Know that your strong suit is not dealing with real estate or any matter involving your home. There is an underlying theme of confusion present in one of the abovementioned areas. It would be best to play it low-key today. Tonight: Be spontaneous, and you'll have more fun!  
**CAPRICORN** (Dec. 22-Jan. 19)  
★★★★ Though you might feel you are being clear and receptive, you will find out otherwise. You easily could misread someone's message as well. Use care in your conversations. You don't want to be misunderstood or misunderstand someone else. Tonight: Return calls.  
**AQUARIUS** (Jan. 20-Feb. 18)  
★★★★ Friendship is more important to you than nearly anything else. Use care if you find yourself mixing money and friendship in an unconventional manner. Pull back and try to separate the two. This disengagement could be touchy. Tonight: Join some friends.  
**PISCES** (Feb. 19-March 20)  
★★★★ Getting a clear vision, much less being able to verbalize the idea, takes talent. You could feel as if you have to take a stand and lead others with a project. If you can't establish clear communication, let the chips fall as they may. Tonight: Up till the wee hours.

## Tundra



©Tundra 2013

## Shoe



SHOECOMICS.COM

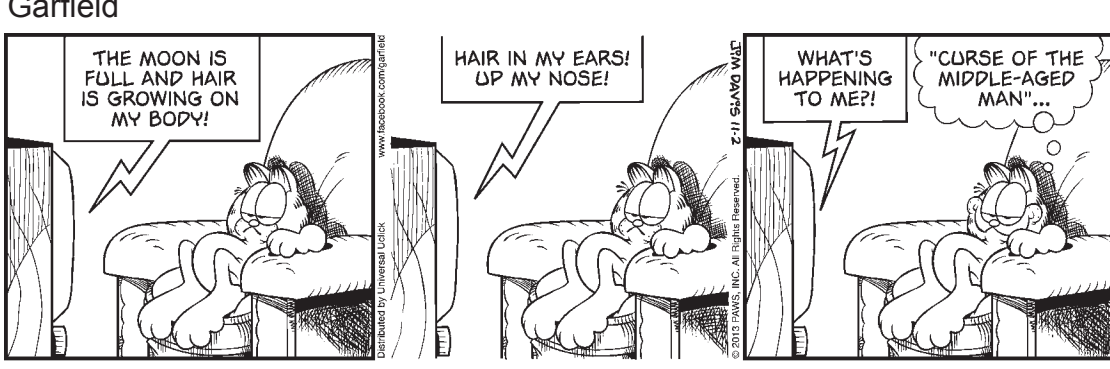
## Mother Goose and Grim



## Zits



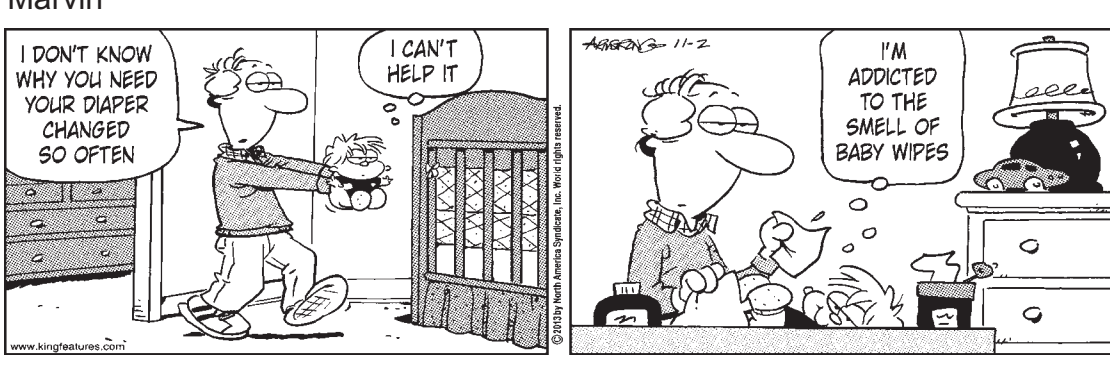
## Garfield



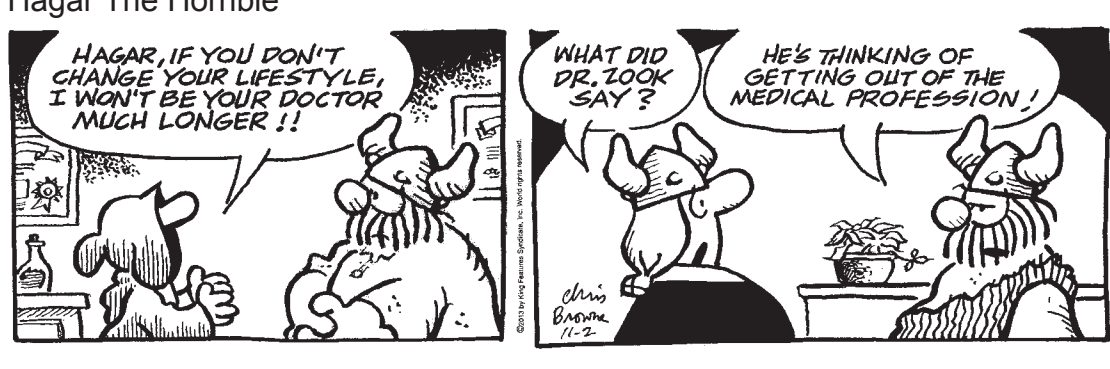
## Beetle Bailey



## Marvin



## Hagar The Horrible



## Peanuts



## Blondie



# PampaSports

## Football

Continued From Page 01

with more running. This time handing off to junior running back Guillermo Davila. Gashing the Harvester defense with runs of 17 yards twice, Davilla carried the of-

fense all the way into the end zone for a touchdown, giving the Golden Wolves the 19-13 lead after the missed after point.

After a Harvester three-and-out, Dalhart was able to extend their lead after another Davilla touchdown, making the score 26-13. After another stalled Harvester

drive, the Golden Wolves drove attempting to extend their already 13-point lead. Allen went deep but under threw his receiver and Radke, on defense, made a great play at the ball, intercepting the throw. With 38 seconds left to try to score. Hooper connected with Radke for a 38-yard throw. This set up

the Harvesters near the goal line, where McClendon carried the ball into the end zone from two yards out, making the score 26-20 after the Turner extra point.

The third quarter was a different story for the Harvesters. After consecutive fumbles on kick returns, Dalhart was able to score on both turnovers, giving them the 40-20 lead.

The Harvesters struggled to muster any offense after the special teams miscues, and Dalhart continued to do what they did well, run the ball and eat up clock. The final score was 47-20.

The Harvesters are on a bye next Friday and will await their fate heading into the bi-district playoffs.

"Right now we haven't had a day off since Aug. 5 and we are the first team into the clubhouse," Parker said. "We are the first to play a complete district schedule. Everybody we have played but two teams are going to playoffs as well, we played a tough and physical schedule. The first we need to do is heal up a little bit.

"Then certainly we'll have some things we need to work on. I am just looking forward to giving these guys a couple

days off to recover emotionally, physically and spiritually.

"Then we are going into the playoffs. Whether people want us to be in the playoffs or don't want us to be in the playoffs we were given a five-team district and we knew what we needed to do to get into the playoffs.

"We qualified for the playoffs and the winner advances and the loser is done. Until that scoreboard says it's over we are playing for a state championship."

Other District 1-3A scores: Perryton 61, Borger 21 River Road 49, Claude 10

## Big League predictions

Records:

John — 74-46 Zac — 80-40 ReDonn — 74-46 Tyler — 75-45



John's Picks



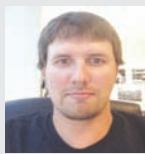
ReDonn's Picks

**Cincinnati Bengals** at Miami Dolphins  
**Minnesota Vikings** at **Dallas Cowboys**  
**Indianapolis Colts** at Houston Texans  
**Kansas City Chiefs** at **Buffalo Bills**  
**Tennessee Titans** at St. Louis Rams  
**New Orleans Saints** at New York Jets  
**San Diego Chargers** at Washington Redskins  
**Atlanta Falcons** at **Carolina Panthers**  
**Philadelphia Eagles** at **Oakland Raiders**  
**Tampa Bay Buccaneers** at **Seattle Seahawks**  
**Baltimore Ravens** at **Cleveland Browns**  
**Pittsburgh Steelers** at **New England Patriots**  
**Chicago Bears** at **Green Bay Packers**

**Cincinnati Bengals** at Miami Dolphins  
**Minnesota Vikings** at **Dallas Cowboys**  
**Indianapolis Colts** at Houston Texans  
**Kansas City Chiefs** at Buffalo Bills  
**Tennessee Titans** at **St. Louis Rams**  
**New Orleans Saints** at New York Jets  
**San Diego Chargers** at Washington Redskins  
**Atlanta Falcons** at **Carolina Panthers**  
**Philadelphia Eagles** at **Oakland Raiders**  
**Tampa Bay Buccaneers** at **Seattle Seahawks**  
**Baltimore Ravens** at **Cleveland Browns**  
**Pittsburgh Steelers** at **New England Patriots**  
**Chicago Bears** at **Green Bay Packers**



Zach's Picks



Tyler's Picks

**Cincinnati Bengals** at Miami Dolphins  
**Minnesota Vikings** at **Dallas Cowboys**  
**Indianapolis Colts** at Houston Texans  
**Kansas City Chiefs** at **Buffalo Bills**  
**Tennessee Titans** at St. Louis Rams  
**New Orleans Saints** at New York Jets  
**San Diego Chargers** at **Washington Redskins**  
**Atlanta Falcons** at **Carolina Panthers**  
**Philadelphia Eagles** at **Oakland Raiders**  
**Tampa Bay Buccaneers** at **Seattle Seahawks**  
**Baltimore Ravens** at **Cleveland Browns**  
**Pittsburgh Steelers** at **New England Patriots**  
**Chicago Bears** at **Green Bay Packers**

**Cincinnati Bengals** at Miami Dolphins  
**Minnesota Vikings** at **Dallas Cowboys**  
**Indianapolis Colts** at Houston Texans  
**Kansas City Chiefs** at Buffalo Bills  
**Tennessee Titans** at **St. Louis Rams**  
**New Orleans Saints** at New York Jets  
**San Diego Chargers** at **Washington Redskins**  
**Atlanta Falcons** at **Carolina Panthers**  
**Philadelphia Eagles** at **Oakland Raiders**  
**Tampa Bay Buccaneers** at **Seattle Seahawks**  
**Baltimore Ravens** at **Cleveland Browns**  
**Pittsburgh Steelers** at **New England Patriots**  
**Chicago Bears** at **Green Bay Packers**

## Pick the Perfect Loan...

...car, boat, home, vacation.  
 No matter what kind of loan you need, come in and talk to one our loan officers today.

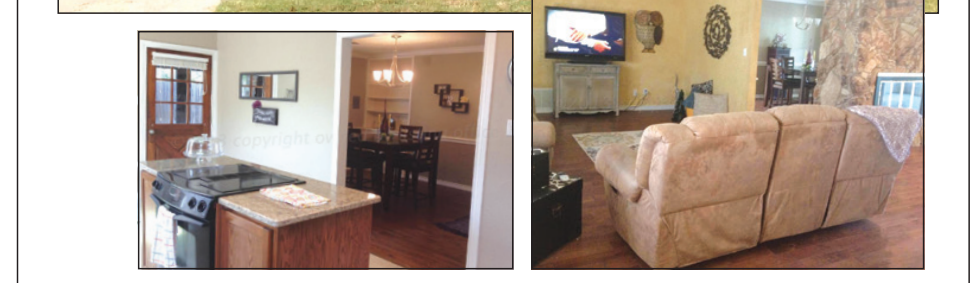
## National Bank of Commerce

An Office of First National Bank Waupaca, WI

Member FDIC

1224 N. Hobart · Pampa · 806.665.0022  
 305 N. Main · Shamrock · 806.256.2181  
 501 Commerce · Childress · 940.937.2514

## Homes of Distinction



### 2325 Beech Ln

Beauty on Beech! Come take a look at this 4 bedroom, 2.75 bath home with lots of room. Home has many updates and is ready for a family. MLS 13-9892

### RE/MAX Hometown

**Patti Hudson**  
 806.662.4896  
[www.pattihudson.remastexas.com](http://www.pattihudson.remastexas.com)

THE RE/MAX COLLECTION  
 Fine Homes & Luxury Properties

## Something New at RHEAMS DIAMOND SHOP

### Camo Collection wedding bands

Save 25%

### Hot Diamonds sterling silver and diamonds

\$59<sup>95</sup> to \$194<sup>95</sup>

### Rocking Diamonds earrings and pendants

Save 25%

Layaway Now for Christmas Diamond Earrings and Pendants

Save 25%

111 N. CUYLER | 806-665-2831

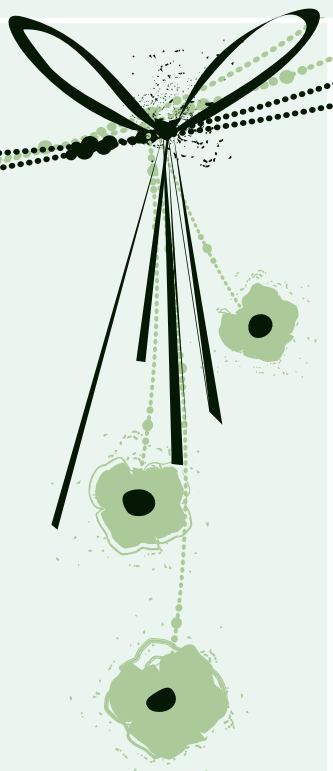
# HAUNTED RUN



Photos by Timothy P. Howsare

Clowns and zombies alike came together for the Pampa United Way's Haunted Run on Tuesday evening.

**GOT A HOT TIP?**  
**CALL 669-2525** OR  
**EMAIL IT TO US!**  
 jclea@thepampanews.com  
 thowsare@thepampanews.com



# Happy double nickels!

We love you Linda!

Mom, Dad,  
 Blackie,  
 and friends  
 & family



# FIND YOUR STYLE

at **TEXAS FURNITURE**

**LA-Z-BOY,  
 Lane  
 recliners**



**\$299**

Orig. up to \$699

**5 Piece  
 Room  
 Group**

**\$999**



sleep better tonight

Twin Sets

Queen Sets

**\$299**

**\$399**

Discontinued Sealy Sets

save now up to

**\$300 OFF**

**\$500 OFF**

Queen Sets

King Sets



Reclining Sofas

**\$799**



YOUR BEST NIGHT'S SLEEP STARTS HERE



Proudly serving Pampa since 1952

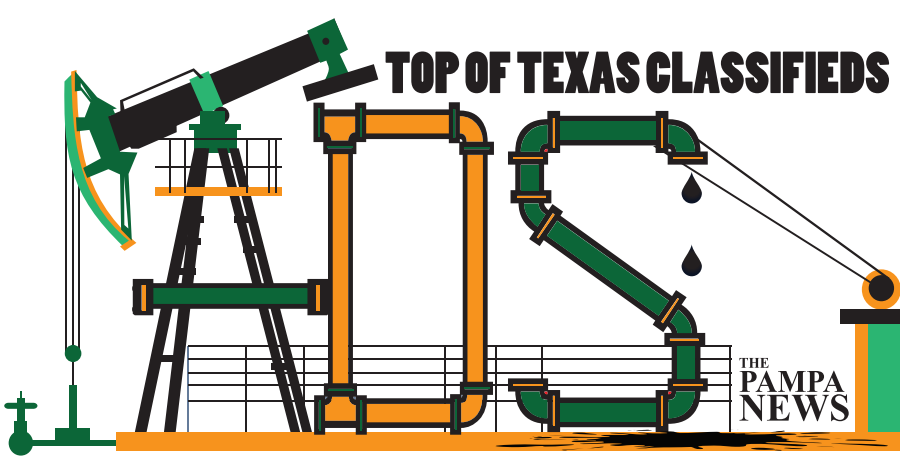
MON-SAT 9 AM TO 5:30 PM



6 MONTHS NO INTEREST FINANCING WITH APPROVED CREDIT

**FURNITURE**

665-1623 • 1415 N. Hobart



**ADS For Sale**

Call Us today For Details!



**ADS Jobs**

Call Us today For Details!



**ADS Services**

as low as \$69 per month see display

**ADSHappy Ads**

FREE \$3 with photo

Say Happy Birthday to friends for FREE

5 Lines for 7 days \$27.50

7 Lines for 7 days \$32.50

Reaching over 12,000 readers daily • Call Us at (806) 669-2525

<b>Carpentry</b> CUSTOM Building & Remodeling: Kitchens, Bathrooms & Additions. 662-2977	<b>Carpet Service</b> NU-WAY CLEANING SERVICE Bob Marx Owner-Operator. Call 665-3541.	<b>Situations</b> I will take care of elderly in their home. For more information call Jenny Adair at 669-6649	<b>Help Wanted</b> ADMINISTRATIVE Assistant - Mitsubishi Power Systems, White Deer, TX Wind Site. Excel experience is a must, with at least 2 years' experience in administrative positions. Qualified Candidates may email their resume to lahr@mpshq.com	<b>Help Wanted</b> COMPRESSOR Test Loop Tech: Testing of gas & electric driven compressors. Exp with modern engines, motors & electric driven compressors used in natural gas compression industry. Computer exp. 3+ yrs equivalent work exp in related field. Physical & drug test required. Competitive pay & benefits. Fax resume to 888-812-4114, email to jobs@flogistix.com or mail to P.O. Box 501, Pampa, TX 79066-0501.	<b>Help Wanted</b> CULBERSON Stowers, Inc. is now hiring motivated and energetic sales people to join our professional sales staff. 5 day work week, 3 month guarantee, training provided. Click on the "Now hiring tab" on the top of our webpage at culbersonautos.com	<b>Help Wanted</b> HAMPTON Village Apartments seeking maintenance person. MUST have experience in plumbing, painting, electrical & apartment turns. HVAC preferred but not required. Must pass background & drug screenings. 806-440-0054.	<b>Help Wanted</b> JULIE'S Hallmark, 125 W. Kingsmill in Pampa: part-time job available. Apply in person.	<b>Help Wanted</b> SMITHFIELD Premium Genetics has an opening for a sanitizer and a herd technician. Qualified applicants should possess a good work record. A sanitizer cleans the inside of the hog trailers, loads & unloads hog trailers, among other duties. A herd technician provides care to the pigs & has a number of other animal husbandry type duties. We offer excellent benefits incl. health, dental & vision ins., 401K & pension, & paid time off. Interested candidates should apply at Smithfield Premium Genetics located 11 miles East of Pampa on Hwy 60 between 10am-3pm or at the Texas Workforce Office in Amarillo.
---	---	---	---	---	---	---	--	---

**Plumbing & Heating**

JACK'S Plumbing  
715 W. Foster  
665-7115

**JOB OPENING**  
**Deputy Sheriff**

The Ochiltree County Sheriff's Office has immediate openings for the position of Deputy Sheriff. The starting salary range is \$3442.10 to \$3901.03 monthly depending on certification. This position includes insurance, retirement, family gym membership, uniforms and a take home vehicle.

Each unit is equipped with mobile data units, AR-15, shotguns, PBT's, radars, and in car video. Ochiltree County issues each Deputy a side arm (Glock 31) and a Taser X-26. The duty gear is also issued to each Deputy by the department. Ochiltree County Deputies work 16 - 10 hour shifts per 28 day pay period.

Every Deputy gets 8 straight days off once a year in addition to their vacation. The patrol units are replaced every three years and currently the oldest unit is a 2010.

If interested contact Sheriff Terry L. Bouchard txsheriff@ptsi.net (806-435-8000) or Chief Deputy Wayne Floyd wfloyd@ptsi.net or (806-435-8000)

**CLARENDON COLLEGE**

Clarendon College invites applications for the following position:

**Certified Nurse Aide Instructor**  
(Childress and Pampa Centers)

Must be a licensed nurse (LVN or RN); have a minimum of 3 years of nursing experience in a facility; and have completed a course that focused on teaching adult students or have experience teaching adult students or supervising nurse aides.

**Phlebotomy Instructor**  
(Pampa Center)

Must have 3+ years of experience as a Phlebotomist; ASCP Board Certified; Average proficiency in Microsoft Office Word, Excel, and PowerPoint; Must have good social and customer focused skills; Documented successful classroom teaching experience at the post-secondary level, or equivalent private industry experience

Application forms can be found at www.clarendoncollege.edu under "Employment Opportunities." Please send completed application, resume, college transcripts, and references to:

**Darlene Spier,**  
Assistant to the President,  
Clarendon College,  
Box 968, Clarendon, TX 79226.

Clarendon College is an equal opportunity employer and does not discriminate on the basis of race, color, national origin, sex, disability or age in its programs or activities.

**WEEKLY SPOTLIGHT**

**NEW LISTING**

**1527 Faulkner** MLS #13-9928  
3 BED - 1.5 BA **\$79,900**

**LARGE DEN**

**2233 N. Zimmers** MLS #13-703  
3 BED - 2 BA **\$89,500**

**2 LIVING AREAS**

**1824 BEECH** MLS #12-9530  
3 BED - 1 BA **\$105,000**

**2 BEDROOMS**

**2224 Evergreen** MLS #13-9832  
2 BED - 2 BA **\$102,900**

Visit us at [www.quentin-williams.com](http://www.quentin-williams.com)

**Quentin Williams REALTORS**

Becky Baten ..... 669-2214  
Heidi Chronister 665-6388  
Darrel Sehom..... 669-6284  
Rod Donaldson . 663-2800  
Roberta Babb..... 665-6158  
Joan Mabry ..... 669-3201  
Sandra Bronner. 665-4218  
Maxine Watson... 662-9052  
Christy Parker.... 898-8542

2208 Coffee & Perryton Pkwy.  
**669-2522**

**COOK** for meal prep. Prefer experienced individual, but will train qualified applicant to prepare meals for special diets. MUST be reliable & dependable. Apply in person, **BORGER HEALTH CARE CENTER**, 1316 South Florida, Borger, TX 79007. EOE/MFHV.

**AXYDLBAAXR**  
is LONG FELLOW

One letter stands for another. In this sample, A is used for the three L's, X for the two O's, etc. Single letters, apostrophes, the length and formation of the words are all hints. Each day the code letters are different.

**11-2 CRYPTOQUOTE**

VFT PLZ 'A BJRBP A F MWA  
AMB DLPXRFA WE VFT GFZ 'A  
RTA L EBU ZWPXBCH WZ AMB

NLP MWZB. — ECWR UWCHFZ  
Yesterday's Cryptoquote: THE WILL TO SUCCEED IS IMPORTANT, BUT WHAT'S MORE IMPORTANT IS THE WILL TO PREPARE. — BOBBY KNIGHT

**Production Foreman - Oil & Gas**

Vernon E. Faulconer Inc., an Independent Texas Oil & Gas Company with over 35 years in the business has an opportunity for a hands-on, detail oriented Production Foreman located in the Spearman, TX area. Position has direct responsibility for the day-to-day business management and planning of all aspects of production from critical operations.

Position requires ten (10+) years of hands-on oil and gas operations experience with a minimum of three (3) years in a supervisory role in down-hole and surface production equipment, plunger lift, compression and gas production enhancement. Send, fax or email resume to: Attn: Human Resources, P.O. Box 7995, Tyler, TX 75711 or fax (903) 581-2111 or email to [careers@vefinc.com](mailto:careers@vefinc.com). EOE

**Weekend RN \$30/HOUR CNA/LVN PRN**

Immediate openings for state licensed or certified prof's. Competitive rates. EOE. For more information, call our DON (806) 273-3785 or apply in person Mon-Fri-9-4.

**BORGER HEALTHCARE CENTER**  
1316 South Florida  
Borger

**NOTICE**  
Readers are urged to fully investigate advertisements which require payment in advance for information, services or goods.

**NOW HIRING** Housekeepers. Apply in person at AmericInn of Pampa, 1101 N. Hobart. NO phone calls!

**NURSES** Unlimited, Inc. is seeking enthusiastic attendants to assist clients in the home with personal care, meal prep & light house-keeping PT. E.O.E. Call 1-888-859-0631

**OPPORTUNITY** at National Bank of Commerce, Pampa, Texas: Applications being accepted for a **New Accounts/Loan Processing Secretary**. Prior bank experience preferred. Apply in person at 1224 N. Hobart in Pampa. National Bank of Commerce is an Equal Opportunity Employer.

**PART-TIME** Maintenance Person needed for small apartment complex. Exp. preferred. 806-665-2828.

**Herbs Etc.**

HERBS • VITAMINS • WEIGHT LOSS ENERGY • WOMEN'S & MEN'S NEEDS

- Nature's Sunshine Herbs & Vitamins
- Weekly Herb Talks
- Chewable and Liquid Supplements
- Non-GMO Protein Supplements
- Essential Oils (Aromatherapy)
- 20 Years Experience
- Se Habla Espanol
- BioEnergetic Needs Assessment
- Green Coffee Bean, Garcinia, and more for Weight Loss!

109 W Kingsmill . Pampa  
(806) 665.4883  
[www.panhandlesunshine.com](http://www.panhandlesunshine.com)

*Your Dream Home is Waiting*

**2001 N. Christine**



MLS #13-9816  
This home has 3 car garages—2 on the side and one attached. NEW updates include doors, gas lines, fence, windows, front porch column, siding on eaves and overhang for easy care exterior and some interior paint. All this plus a corner lot!

**HouseHunters REALTOR**  
516 S. Russell

*Finding what is best for your family.*

**HOUSEHUNTERS Realtor**

**Linda Laycock**  
Broker  
BROKERS, ABR, GREEN, SRES, e-PRO  
(806) 662-1312

**Tisha Holman**  
Associate  
(806) 440-4153

**Larry Hadley**  
Associate  
(806) 662-2779

*We Can Help*



# TOP OF TEXAS CLASSIFIEDS

Reaching over 12,000 readers daily • Call Us at (806) 669-2525

<b>Household</b> SOUTHWESTERN Style all wood 8' dining table w/8 chairs, matching hutch w/stand. \$2250 OBO. 662-0220	<b>Unfurnished Apts.</b> 2 BEDROOM, 1 Bath, appliances furnished. Covered parking, safe location. Call 806-440-2866.	<b>Unfurnished Apts.</b> CAPROCK APTS. 1, 2 and 3 bedrooms with rent starting as low as \$445/mo. Pool and on-site laundry, W/D hookups in all 2 and 3 bdrms. 665-7149.	<b>Unfurnished Apts.</b> Schneider Apartments: Call for special rates. Short term lease. Business people welcome. 665-0415	<b>Unfurnished Houses</b> 3 BDRM, 2 BA, Williston St. 1900 sq ft. Liv. large den, eat-in kitchen, dining room, double wide carport, fenced yard. 440-5704.	<b>Unfurnished Houses</b> PICK up rental list in the Black Box at 125 S. Houston, Pampa.	<b>Homes for Sale</b> BY Owner 3/2.5/2, new fence. Built-ins, huge game room w/ bar. Fpl. Study. 2728 sq. ft. + oversize gar. 2132 Mary Ellen. \$155,000. 806-663-2867, 663-2014.	<b>Commercial Property</b> RETAIL and Garage Space. Centrally located. Great value! 665-1875 or 881-8518.	<b>Autos</b> TRY M&S Auto for all your auto repair needs. Call Ray or Mike, 120 N. Gray, 669-6990.
<b>Miscellaneous</b> FOR SALE: Double Lawn Crypt in Memory Gardens. Call 806-898-2451	APTS. Houses Duplexes. K&B Properties. Ref. & dep. req. Lakeview Apts. 669-4386	<b>Now Accepting Applications!</b> <b>PAMPA MANOR APARTMENTS</b> TDD: 1-800-735-2989 Elderly (62 years of age) Handicapped/ Disabled of any age Some Rental Assistance Is Available. This institution is an equal opportunity provider and employer. <b>Apply Today!</b> 2700 N. Hobart Street 806-665-2828	TEXAS SIZE APTS. 1 and 2 bdr. apts. Largest in Pampa. Plus Homes too! Great Value! 665-1875 or 881-8518	936 S DWIGHT - 3 bdrm. 1-1/2 ba, \$700/month, \$700/deposit, water paid. 806-898-0049	<b>Business Rent. Prop.</b> DOWNTOWN office space for rent. Utilities & cleaning service provided. Ample parking 669-6823	LEFORS - 3 bdrm brick home, 1.75 bath, 2 car garage, water well. Large lot, 200 E. 8th, \$74,900. Call 662-1554 to see. NO owner financing.	<b>Trailer Parks</b> Tumbleweed Acres: storm shelters, fenced, stor. bldg. avail. 665-0079, 886-2230	<b>Motorcycles</b> 2000 Honda Valkyrie Interstate has: Faring Hard Bags Red & Black In Excellent Condition! \$6500 806-662-4909
<b>Garage Sale</b> SALE on mattresses. Queen set \$246, Full \$180-236, King \$436. 1424 S. Barnes. Country Red Barn 665-2767	BentCreek Apartments Lovely 2 & 3 Bdrms * Single Story Units * Electric Range * Frost-Free Refrig. * Blinds & Carpet * Washer / D. Conn. * Central Heat / Air * Walk-in Closets * Exterior Storage * Front Porches HUD Accepted 1400 W. Somerville Pampa, TX 806-665-3292	Some Rental Assistance Is Available. This institution is an equal opportunity provider and employer. <b>Apply Today!</b> 2700 N. Hobart Street 806-665-2828	<b>Furnished Houses</b> 3 BDRM, 1 ba, C H/A, 1 car garage, shop/craft room, large fenced backyard. Nice neighborhood. Furn or unfurn. Avail Nov. 1st. 806-336-5516.	LARGE 4 Bdrm, 2-1/2 ba, 2 car garage, 2 living areas, quiet neighborhood. \$1200/month. 806-662-5002.	FREE RENT! Downtown Properties: Service Station, Retail, Restaurant / Bar, etc. 665-1875, 881-8518	TRUSTAR Real Estate for all your complete real estate needs. Show, list, property mgmt. 665-4595	<b>Autos</b> IDEAL FOR COLLECTORS! 1979 Pontiac TransAm. White / blue, lrg bird on hood. One owner! 24,500 actual miles, 6.6 L, 403 eng. Auto transmission. All original. Good price \$21,900. Call 806-665-4836.	2005 EXTOIX CYCLE VISION Replica of Easy Rider 6 spd 124cc S&S Lots of Chrome \$11,500 OBO 806-662-1985
<b>ESTATE Sale:</b> 311 Cedar, McLean. Sat & Sun, 10am. Entire household of the Mertels. Blue Willow of England, Fostoria, Fenton, quilts, Tony Lama boots, knives, furniture, collectibles, and more! 713-385-1726.	<b>SUBSCRIBE TODAY!</b> CALL BEVERLY! 806-669-2525	LARGE 1 bdr. apts. w/app, are in walking distance to things you need. 665-4274, 663-2579, 881-8518.	<b>Unfurnished Houses</b> 2 bdr., 1 ba., 2 liv., \$625 mo. 3 bdr, 1 ba, 2 liv., \$725 mo. Jan Phillips, 469-647-8552	LEASE: Xnice. br 3/2/2, cov. patio, fenced, spr system. 1628 Zimmers. \$1400 + dep. 663-2867 or 663-2014.	OFFICE space for rent. Ask about 3 months free rent. 669-6841	TRUSTAR Real Estate for all your complete real estate needs. Show, list, property mgmt. 665-4595	<b>Feed &amp; Seeds</b> HAYGRAZER Large Round Bales For Sale Delivery available. Call 806-278-0383.	<b>Pets &amp; Supplies</b> 3 FREE kittens, 2 calico and 1 cream color, to good homes only. Call 440-0155
<b>FOSTER Care</b> needed. Express Medical Dog Training, 709 N. Wilson, Amarillo, TX 79107. Call 806-373-4930								
FREE to good home male Australian Shepherd. 1 1/2 yrs old. He's a real good dog. I just can't keep him any more. Call 662-8977.								
<b>Furnished Apts.</b> All real estate advertised herein is subject to the Federal Fair Housing Act, which makes it illegal to advertise "any preference, limitation or discrimination because of race, color, religion, sex, handicap, familial status or national origin, or intention to make any such preference, limitation or discrimination". State law also forbids discrimination based on these factors. We will not knowingly accept any advertising for real estate which is in violation of the law. All persons are hereby informed that all dwellings advertised are available on an equal opportunity basis.								
LARGE eff. apt in Panhandle, newly remodeled. New appl. incl. washer/dryer, lots of storage. NO smoking or pets! Utilities paid. Deposit required. 806-570-5617								

## First Landmark Realty

### (806) 665-0717

**MUST SEE**

**First time buyer/retirees dream**

Nice 3 bedroom, 1 bath home located in Austin School District. Some updates, good condition and move-in ready. This home won't last long! Call Irvine to see. **9788**

**NEW LISTING**

Nice 2 bedroom brick. Extra large living and dining combination. Huge sunken den. Too many amenities to mention. Nice location.

**NEW LISTING**

Don't miss seeing this one. Extremely lovely 3 bedroom, 2 bath home with lots and lots of updates. Large living room with fireplace, Formal dining room, sunroom & beautiful landscaping. Call Irvine to see. **9834**

**EXCELLENT INVESTMENT**

Tumbleweed Acres mobile home park on Kentucky Street. Utilities in good condition. Paved streets, curbs and gutters. Community storm shelter. Property includes 49 developed lots, 60 platted lots and much more. Call Irvine. **9748**

**GREAT FLOOR PLAN**

Darling 3 bedroom, 2 bath, 2 car garage, isolated master, lots of newer amenities including: sprinkler systems, storage building, garage door & many others. Call Irvine to see. **9830**

Bobbie Nisbet BKR . . . . . 662-8118  
 Irvine Riphahn GRI . . . . . 665-4534  
 Chris Moore GRI . . . . . 665-8172  
 Lilith Brainard . . . . . 898-0247

**Call First Landmark First**

FOR ALL OR YOUR REAL ESTATE NEEDS. WE APPRECIATE YOUR BUSINESS. 15214

## "Your Hometown Team"


# RE/MAX Hometown

2200 COFFEE	LOT	\$10000
3337 ANNE	3/1/1	1125 SQFT. \$45000
400 DOUCETTE	4/1.75/0	1176 SQFT. \$53000
311 E. 2ND, McLEAN	3/2	1469 SQFT. \$55000
1405 FRANCIS	2/2/3	1302 SQFT. \$70000
1105 CHARLES	3/1.75/0	1240 SQFT. \$67500
5 LOTS ON BANKS		\$75000
437 JUPITER	3/1.75/2	1728 SQFT. PENDING
1124 TERRY	3/2/CP	1636 SQFT. \$67500
205 W. 4TH, McLEAN	3/1.75/1	1856 SQFT. PENDING
1101 HARVESTER	2/2/1	1479 SQFT. \$81000
2208 EVERGREEN	3/1.75/1	1318 SQFT. \$85000
1122 ALCOCK	commercial	3360 SQFT. \$92500
2319 NAVAJO	3/1.75/2	1898 SQFT. \$100000
1319 MARY ELLEN	3/1.75/1	1708 SQFT. \$99500
321 FROST & 309 BROWNING		2750 SQFT. \$99000
1921 ZIMMERS	3/1.75/2	1345 SQFT. \$110000
615 CEDAR, McLEAN	3/2.75/1	2002 SQFT. \$115000
2113 LYNN	4/1.75/2	2007 SQFT. \$114500
1513 CHRISTY	3/1.75/2	1604 SQFT. PENDING
33 GREENBELT	4/2.75/2	2384 SQFT. \$125000
130 E. 28TH	3/1.75/2	1634 SQFT. \$133500
1932 ZIMMERS	3/1.75/2	2150 SQFT. \$143000
134 GREENBELT	3/1.75/0	1497 SQFT. \$145000
1819 RUSSELL	3/1.75/2	2285 SQFT. \$149000
1227 CHRISTINE	3/1.75/2	1904 SQFT. \$145000
1701 HOLLY	3/1.75/2	2493 SQFT. PENDING
2604 COMANCHE	4/1.75/2	2205 SQFT. PENDING
2241 CHARLES	3/2/2	2688 SQFT. \$172000
950 CRANE RD.	3/2/2	1775 SQFT. \$163000
1938 EVERGREEN	4/2/2	2049 SQFT. \$169500
701 GROVE, McLEAN	4/5/2	4360 SQFT. \$185000
2400 CHEROKEE	4/2.75/2	2599 SQFT. \$190000
1405 DWIGHT	3/2/2	1767 SQFT. \$199500
2607 FIR	3/2/2	2611 SQFT. PENDING
2325 BEECH	4/2.75/2	2993 SQFT. \$225000
132,133 GREENBELT	7/5/0	3118 SQFT. \$233000
12016 WHITE AC	3/2/3	2441 SQFT. PENDING
12060 BERRY	4/2.5/2	2519 SQFT. \$350000

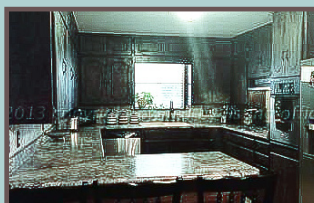

Patti Hudson, Bkr 662-4896  
 Roy Devoll 896-0000 Linda Burt 664-3931  
 Scooter Hutchison 440-6061 Dennis Edmondson 662-7503 15212

## Your Dream Home is Waiting

# 2625 Cherokee



Classy on Cherokee-This 3 Bedroom, 1.75 Bath, 2 Car Attached Garage, Storm Cellar, Extended Drive, Fireplace, New Spacious Storage Building in Back, Updated Spa Bath, New Sod and Sprinklers, Designer Paint Colors. A Beautiful and Tastefully Done Home Ready for you to Move In TODAY

## HouseHunters REALTOR

516 S. Russell

*Finding what is best for your family.*

**HOUSEHUNTERS Realtor**



**Linda Laycock**  
 Broker  
 BROKER, ABR, GREEN, SRES, e-PRO  
 (806) 662-1312



**Tisha Holman**  
 Associate  
 (806) 440-4153



**Larry Hadley**  
 Associate  
 (806) 662-2779

**We Can Help**



# TOP OF TEXAS CLASSIFIEDS

Reaching over 12,000 readers daily • Call Us at (806) 669-2525

**Motorcycles**  
2005 Yamaha Royal Star with trike kit. 10,000 miles, black with silver, back rest & windshield. Mint condition. Asking \$9,000. Call 662-3497

**2007 HARLEY SPORTSTER 1200**  
4900 Miles  
White Gold Pearl  
Excellent Shape!!  
\$7500  
Call 663-6317

**General Services**  
CERAMIC tile work, stucco, cement, remodeling, floor, shower, kitchen. Texture, painting, dry wall. Free estimate. New # 440-0239, leave msg, Jesus Baraza.

COX Fence Company.  
Repair old fence or build new. Free estimates. Call 669-7769

HOUSE cracking? In bricks or walls? Childers Brothers, Inc. 800-299-9563, 806-352-9563.

JH CONCRETE all types of concrete incl stamp, fence, pools. Free est, financing available. 806-382-5408.

Ogle Fence Company  
Free Estimates  
Repair & New Const.  
665-1712

**Legals / Public Notice**  
**Application has been made with the Texas Alcoholic Beverage Commission for a BEER RETAIL DEALER'S LICENSE, by WELDON BLACK dba HIDE A WAY LOUNGE, to be located at 112 E. CRAVEN, PAMPA, GRAY COUNTY, TEXAS. OWNER being WELDON BLACK.**  
E-98 Nov. 1, 2, 2013

**In the District Court of the Twenty-Third Judicial District, Lincoln County, State of Oklahoma, Juvenile Division.**  
**IN THE MATTER OF THE STATE OF OKLAHOMA IN THE INTEREST OF: R.M., DOB: 04-24-1998**  
**AN ADJUDICATED DEPRIVED JUVENILE AS DEFINED BY THE LAWS OF THE STATE OF OKLAHOMA.**  
**Case No. JD-2011-31 SUMMONS AND NOTICE BY PUBLICATION**  
THE STATE OF OKLAHOMA TO: TERESA MUNDELL, RESPONDENT  
MOTHER LINCOLN COUNTY NEWS, CHANDLER OKLAHOMA 74834 THE PAMPA NEWS, 403 W. ATCHISON, PAMPA, TEXAS 79065  
PUBLICATION  
You are hereby notified that a Motion to Terminate Parental Rights has been filed herein in the above-styled and numbered cause, praying that the Natural Mother Teresa Mundell, be located in and to the

**Legals / Public Notice**  
respondent Juveniles, R.M. and alleging certain acts and omissions which would constitute a basis for Adjudication, as particularly set forth in the Motion filed in the District Court Clerk's office in Lincoln County.  
The Motion further prays that the above-named juvenile be dealt with according to law, and for all proper orders and relief; and that said matter will be heard in District Courtroom No. 2, in the City of Chandler, Lincoln County, Oklahoma, on the 3rd day of December, 2013, at the hour of 9:00 a.m., at which time and place you may appear and show cause, if any you have, why Order and judgment in said proceedings should not be entered as in said Motion prayed, and you are hereby summoned and notified to be present at said time and place, and you and each of you will in no wise omit, under penalty of law.  
Further, the Natural Mother **Teresa Mundell**, is hereby given notice that his failure to appear at the hearing hereinabove stated shall constitute a denial of interest in the minor child which shall result in the termination of parental rights and transfer of custody of said minor child to the Department of Human Services for further proceedings.  
You are advised that you are entitled to be represented by an attorney at each and every stage of the proceedings and if you are unable, because of lack of present financial resources to obtain an attorney, you are entitled, upon demonstrating this fact to the Court's satisfaction, to a Court Appointed Attorney at no expense to you.  
You are further advised that the Respondent Juvenile and parent are entitled to a Trial by Jury upon demand.  
**IN WITNESS WHEREOF, I have hereunto set my hand this 29th day of October, 2013.**  
SHEILA G. KIRK, ASSOCIATE DISTRICT JUDGE  
E-99 11/5,12/2013

**NOTICE OF SHERIFF SALE**  
THE STATE OF TEXAS COUNTY OF GRAY  
By virtue of Orders of Sale issued out of the Honorable 223RD DISTRICT COURT OF GRAY COUNTY in the following cases on the 30th day of September, 2013, and too me, as Sheriff, directed and delivered, I will proceed to sell at 10:00 AM on the 5th day of November, 2013, which is the first Tuesday of said month, at the Official door of the Court-house of said GRAY County, in the City of PAMPA, Texas, the following described property, to wit:  
Cause No: TAX-2896 GRAY COUNTY, ET AL vs. TYLER, ANN .0019530 Royalty Interest in the Vaughn M, Lease No. 00121900, RRC No. 572, located in the Southwest quarter (SW/4) of Section 138, Block 3, I&GN Survey, Gray County, Texas

**Legals / Public Notice**  
Cause No: TAX-3064 GRAY COUNTY, ET AL vs. RODRIQUEZ, JOSE  
All of Lot Five (5), and the South ten feet (S 10') of Lot Six (6), all in Block Three (3), Cole Addition to the City of Pampa, Gray County, Texas  
Cause No: TAX-3080 GRAY COUNTY, ET AL vs. BURR, DEWEY & JOAN  
Lot Five (5), in Block Twenty-five (25), Jarvis Sone West, an Addition to the City of Pampa, Gray County, Texas  
Cause No: TAX-3230 GRAY COUNTY, ET AL vs. KANE, DONNA J  
Lots Fourteen (14) and Fifteen (15), in Block One (1), Vicars Addition to the City of Pampa, Gray County, Texas  
Cause No: TAX-3297 GRAY COUNTY, ET AL vs. RUSSELL, CHERI  
Lots eight (8), Nine (9), Ten (10), and Eleven (11), in Block Six (6) Thut Heights, an Addition to the City of Lefors, Gray County, Texas  
Cause No: TAX-3355 GRAY COUNTY, ET AL vs. GREEN, SCHANDA MAHLEY  
Lot Ten (10), in Block Ten (10), Original Town of Pampa, Gray County, Texas  
Cause No: TAX-3362 GRAY COUNTY, ET AL vs. BROWN, BILLY R  
Lot One (1), in Block Four (4), Finley Banks, an Addition to the City of Pampa, Gray County, Texas  
Cause No: TAX-3380 GRAY COUNTY, ET AL vs. JOHNSON, JOHN  
Tract D, Block One (1), Crawford Addition to the City of Pampa, Gray County, Texas  
Cause No: TAX-3403 GRAY COUNTY ET AL vs. SMITH, ANN  
Lot Three (3), in Block Two (2), Broadmoor Addition to the City of Pampa, Gray County, Texas  
Cause No: TAX-3420 GRAY COUNTY, ET AL vs. SALAZAR, MIGUEL & NOHEMI  
Lot Four (4), in Block Seven (7), Original Town of Pampa, Gray County, Texas  
Cause No: TAX-3436 GRAY County vs. ALLISON, STEVEN  
Lot One (1), in Block Three (3), Finley Banks, an Addition to the City of Pampa, Gray County, Texas  
Cause No: TAX-3448 GRAY County vs. JACKSON, EARLIE JR  
Lot One (1), in Block One (1), Hyatt, an Addition to the City of Pampa, Gray County, Texas  
Cause No: TAX-3452 GRAY County vs. BOLAND, JOHNNY  
The South 28.4 feet (S 28.4') of Lot Two (2), and all of Lot Three (3), all in Block One (1), Harvester Park, an Addition to the City of Pampa, Gray County, Texas  
Cause No: TAX-3503 GRAY County vs. WILLHITE, LARHONDA  
Lot Eighteen (18), in Block One (1), Littleton, an Addition to the City of Pampa, Gray County, Texas  
Cause No: TAX-3610 GRAY COUNTY, ET AL vs. PAMPA ACAD, EMY OF CHRISTIAN EDUCATION  
Lot One (1), in Block Six (6), Hillcrest Terrace, an Addition to the City of Pampa,

**Legals / Public Notice**  
SENEZ, MARCOS  
Lot Fourteen (14), in Block Two (2), Benedict Addition, an Addition to the City of Pampa, Gray County, Texas  
Lot Thirty-four (34), in Block One (1), Laven, an Addition to the City of Pampa, Gray County, Texas  
Cause No: TAX-3537 GRAY COUNTY, ET AL vs. OXLEY, EMMALINE ESTATE  
Lot Eighteen (18), in Block Five (5), Finley Banks, an Addition to the City of Pampa, Gray County, Texas  
Lot 36-L, in Suburbs 132, an Addition to the City of Pampa, Gray County, Texas  
Cause No: TAX-3552 GRAY COUNTY, ET AL vs. MORSE, JAMES T  
Lot Fourteen (14), in Block Nine (9), Cook Adams, an Addition to the City of Pampa, Gray County, Texas  
Cause No: TAX-3558 GRAY COUNTY, ET AL vs. ANDERSON, DONNA ESTATE  
Lots Forty-two (42) and Forty-three (43), all in Block Forty-one (41), Wilcox Addition to the City of Pampa, Gray County, Texas  
Cause No: TAX-3552 GRAY COUNTY, ET AL vs. MORSE, JAMES T  
Lot Fourteen (14), in Block Nine (9), Cook Adams, an Addition to the City of Pampa, Gray County, Texas  
Cause No: TAX-3580 GRAY County vs. Goad, Mike  
The East forty-five feet (E 45') of the West Ninety-five (W 95') of the South Forty-six (46') of Lot Eleven (11), and the East forty-five feet (E 45') of the West Ninety-five feet (W 95') of Lot Twelve (12), all in Block Seven (7), East End, an Addition to the City of Pampa, Gray County, Texas  
Cause No: TAX-3590 GRAY County vs. SAMPLE, CONSTANCE THOMPSON  
A 0.005787 Royalty Interest in Lot One (1), Block One, B&B Survey, Gray County, Texas; E-Key Lease, RRC Number 245, Grand Petroleum Co., Operator.  
A 0.005787 Royalty Interest in Lot One (1), Block Three (3), B&B Survey, Gray County, Texas; Key, E. Lease, RRC Number 644, XTO Energy Inc., Operator.  
A 0.00868 Royalty Interest in Lot One (1), Block One (1), B&B Survey, Gray County, Texas; E-Key Lease, RRC Number 245, Grand Petroleum Co., Operator.  
A 0.0086805 Royalty Interest in Lot One (1), Block Three (3), B&B Survey, Gray County, Texas; Key, E. Lease, RRC Number 644, XTO Energy Inc., Operator.  
Cause No: TAX-3608 GRAY COUNTY, ET AL vs. ROBERTS, JIMMY D ESTATE  
The West One hundred twelve (W 112') of Lot Twenty-seven (27), in Block One (1), Blackwell Addition to the City of Lefors, Gray County, Texas  
Cause No: TAX-3610 GRAY COUNTY, ET AL vs. PAMPA ACAD, EMY OF CHRISTIAN EDUCATION  
Lot One (1), in Block Six (6), Hillcrest Terrace, an Addition to the City of Pampa,

**Legals / Public Notice**  
Gray County, Texas  
Lots Two (2) and Three (3), in Block Six (6), Hillcrest Terrace, an Addition to the City of Pampa, Gray County, Texas  
Cause No: TAX-3637 GRAY COUNTY, ET ALL vs. KLUGE, WALTER H  
Lots Fourteen (14), Fifteen (15), Sixteen (16), Seventeen (17), and Eighteen (18), all in Block Sixty-three (63), Original Town of Alanreed, Gray County, Texas  
Cause No: TAX-3651 GRAY COUNTY, ET AL vs. BECK, ROBERT J. ESTATE  
.0121520 Overriding Interest in the Sullivan #3, Lease No. 070710, RRC No. 156701 Located in District 10, Lot 135 Section 3, I&GN Survey, Gray County, Texas  
Cause No: TAX-3653 GRAY County vs. BREWER AND TAYLOR CO LTD  
A strip of land located in Section 37, Block R of the R.H. Alexander Survey, Gray County, Texas which strip of land contains 1.49 acres, more or less  
Cause No: TAX-3666 GRAY COUNTY, ET AL vs. LOPEZ, MARIA ELIZABETH  
Lot Twenty-six (26), in Block Two (2), Prairie Village, an Addition to the City of Pampa, Gray County, Texas  
Cause No: TAX-3678 GRAY COUNTY, ET AL vs. CHRONISTER, ROY ESTATE  
The North twenty feet (N 20') of Lot Eighteen (18), and all of Lots Nineteen (19), and Twenty (20), all in Block Seven (7), Original Town of McLean, Gray County, Texas  
Cause No: TAX-3682 GRAY COUNTY, ET AL vs. CALLAN, HAROLD D ESTATE  
Lot Ten (10), in Block Three (3), Broadmoor Addition to the City of Pampa, Gray County, Texas  
Cause No: TAX-3683 GRAY COUNTY, ET AL vs. NEWMAN, JERRY W ESTATE  
The West Forty-five feet (W 45') of Lot Seven (7), and the West Forty-five feet of the North Forty-six feet (W 45' of N 46') of Lot eight (8), all in Block Twenty-nine (29), Original town of Pampa, Gray County, Texas  
Cause No: TAX-3702 GRAY County vs. MASON, WILLIAM  
.0078130 royalty Interest in the Burger #A1, Lease No. 00124800, RRC No. 24761, located in Block B2, Section 77, H&GN Survey, Gray County, Texas  
.0104160 Royalty Interest in the Nova #1, Lease No. 00133900, RRC No. 25056, located in Block B2, Section 106, H&GN Survey, Gray County, Texas  
Cause No: TAX-3728 GRAY COUNTY, ET AL vs. JPMORGAN CHASE BANK  
Lots Forty-five (45) and Forty-six (46), in Block Thirteen (13), Keisters, an Addition to the City of Pampa, Gray County, Texas  
Cause No: TAX-3729 GRAY COUNTY, ET AL vs. MAXWELL, STEVEN & DEBRA  
Lot Twelve (12), in

**Legals / Public Notice**  
Block One (1), Channing Addition to the City of Pampa, Gray County, Texas  
Cause No: TAX-3731 GRAY COUNTY, ET AL vs. KUPEC, KAROL  
Lot Ten (10), in Block Three (3), Hindman, an Addition to the City of Pampa, Gray County, Texas  
Cause No: TAX-3732 GRAY COUNTY, ET AL vs. FREE, WILLY & JOHANNAK  
Lot Fourteen (14), in Block Four (4), Parkhill Addition to the City of Pampa, Gray County, Texas  
Cause No: TAX-3735 GRAY COUNTY, ET AL vs. ROBLES, JAMES T  
Lot Two (2), in Block Thirty-five (35), Talley Addition to the City of Pampa, Gray County, Texas  
Cause No: TAX-3738 GRAY COUNTY, ET AL vs. ABBOTT, LESLI  
Lot Eight (8), in Block Nineteen (19) Jarvis Sone 2nd, an Addition to the City of Pampa, Gray County, Texas  
Cause No: TAX-3746 GRAY County VS. CARTER, JIMMY COY  
Lot Thirty-three (33), in Block Thirty-two (32), Wilcox Addition to the City of Pampa, Gray County, Texas  
Cause No: TAX-3811 GRAY COUNTY, ET AL vs. SILVA, GUDELIA ESTATE  
Lot Five (5), in Block Thirteen (13), Wilcox Addition to the City of Pampa, Gray County, Texas  
Cause No: TAX-3836 GRAY COUNTY, ET AL vs. WINBORNE, JOHN & SHARON  
Lots Eleven (11) and Twelve (12), in Block Four (4), Hillcrest Terrace, an Addition to the City of Pampa, Gray County, Texas  
Cause No: TAX-3787 GRAY COUNTY, ET AL vs. BELL, SAMUEL  
Lots Thirty-nine (39) and Forty (40), in Block Eleven (11), Finley Banks, an Addition to the City of Pampa, Gray County, Texas  
Cause No: TAX-3792 GRAY COUNTY, ET AL vs. COOPER, LEONARD WAYNE  
Lot Eight (8), in Block Thirty-three (33), Talley, an Addition to the City of Pampa, Gray County, Texas  
Cause No: TAX-3814 GRAY COUNTY, ET AL vs. MITCHELL, HOWARD  
Lot Five (5), in Block Thirty (30), Wilcox Addition to the City of Pampa, Gray County, Texas  
Cause No: TAX-3816 GRAY COUNTY, ET AL vs. PENNINGTON, WM E  
The North thirty feet (N 30') of the East fifty feet (E 50') of Lot One (1), and the East fifty feet of Lot two (2), all in Block Three (3), Broadmoor Addition to the City of Pampa, Gray County, Texas  
Cause No: TAX-3821 GRAY COUNTY, ET AL vs. DUNSON, THURMAN ESTATE  
Lot Twenty (20), in Block Two (2), Hind

**Legals / Public Notice**  
man, an Addition to the City of Pampa, Gray County, Texas  
Cause No: TAX-3822 GRAY COUNTY, ET AL vs. BULLICK, EARL E ESTATE  
Lot Twenty (20), in Block Forty-two (42), Wilcox Addition to the City of Pampa, Gray County, Texas  
Lots Twenty-one (21) and Twenty-two (22), in Block Forty-two (42), Wilcox, an Addition to the City of Pampa, Gray County, Texas  
Cause No: TAX-3826 GRAY COUNTY, ET AL vs. CACY, CH  
Lot One (1), in Block Ninety-nine (99), Original Town of Alanreed, Gray County, Texas  
Cause No: TAX-3905 GRAY COUNTY, ET AL vs. BOWIE, LEN-ROYEL ESTATE  
Lots Thirty-two (32), Thirty-three (33), and Thirty-four (34), all in Block One (1), Hunter Addition to the City of Pampa, Gray County, Texas  
Cause No: TAX-3927 GRAY County vs. PHILLIPS, CHARLENE MARIE  
Lot Twenty (20), in the replat of Blocks Eighty-one (81) and Eighty-two (82), Original Town of McLean, Gray County, Texas  
**ALL BIDDERS MUST COMPLY WITH SECTION 34.015 OF THE TEXAS PROPERTY TAX CODE.**  
Levied on the 1st day of October, 2013, as the property of said Defendants to satisfy the judgments rendered in the above styled and numbered causes, plus all taxes, penalties, interest, and attorney fees accrued on the date of sale and all costs recoverable by law in favor of each jurisdiction.  
GIVEN UNDER MY HAND THIS 10TH DAY OF OCTOBER, 2013.  
Don Copeland SHERIFF, GRAY County, Texas  
by Joe B. Hoard, Deputy  
E-84 10/15,26 and 11/2/2013

**NOTICE TO BIDDERS**  
Gray County will receive request for proposals on the following insurance: A. Comprehensive General Liability B. Property C. Public Officials and Employees Liability D. Airports - General Liability, Lessor's Interest E. Heavy Equipment Floater F. Business Auto Insurance County Law enforcement Professional Liability Coverage G. Workers Compensation  
Proposals should be submitted to the Gray County Judge's Office, 205 N. Russell, Pampa, Texas 79065, no later than 10:00 a.m. December 2, 2013. Proposals should be submitted in a marked, sealed envelope. Specifications may be picked up in the County Auditor's Office. Gray County reserves the right to reject any or all bids.  
E-89 10/19/ and 11/2/13

**REQUEST FOR BID (SHERIFF'S DEPARTMENT)**  
The Roberts County Commissioner's

**Legals / Public Notice**  
GRAY COUNTY, ET AL vs. SMITH, ROSE  
MRS ESTATE Tract Four (4), in Block R, Wilson Strip - McLean, Gray County, Texas  
Cause No: TAX-3852 GRAY COUNTY, ET AL vs. CARLTON, WALTER LEE ESTATE  
Lots Three (3), Four (4), Five (5), Six (6), Seven (7), Eight (8), Nine (9), Ten (10), Eleven (11), Twelve (12), Thirteen (13), Fourteen (14), Fifteen (15), Sixteen (16), and Seventeen (17), all in Block Ninety-six (96), Original town of Alanreed, Gray County, Texas  
Cause No: TAX-3905 GRAY COUNTY, ET AL vs. BOWIE, LEN-ROYEL ESTATE  
Lots Thirty-two (32), Thirty-three (33), and Thirty-four (34), all in Block One (1), Hunter Addition to the City of Pampa, Gray County, Texas  
Cause No: TAX-3927 GRAY County vs. PHILLIPS, CHARLENE MARIE  
Lot Twenty (20), in the replat of Blocks Eighty-one (81) and Eighty-two (82), Original Town of McLean, Gray County, Texas  
**ALL BIDDERS MUST COMPLY WITH SECTION 34.015 OF THE TEXAS PROPERTY TAX CODE.**  
Levied on the 1st day of October, 2013, as the property of said Defendants to satisfy the judgments rendered in the above styled and numbered causes, plus all taxes, penalties, interest, and attorney fees accrued on the date of sale and all costs recoverable by law in favor of each jurisdiction.  
GIVEN UNDER MY HAND THIS 10TH DAY OF OCTOBER, 2013.  
Don Copeland SHERIFF, GRAY County, Texas  
by Joe B. Hoard, Deputy  
E-84 10/15,26 and 11/2/2013

**NOTICE TO BIDDERS**  
Gray County will receive request for proposals on the following insurance: A. Comprehensive General Liability B. Property C. Public Officials and Employees Liability D. Airports - General Liability, Lessor's Interest E. Heavy Equipment Floater F. Business Auto Insurance County Law enforcement Professional Liability Coverage G. Workers Compensation  
Proposals should be submitted to the Gray County Judge's Office, 205 N. Russell, Pampa, Texas 79065, no later than 10:00 a.m. December 2, 2013. Proposals should be submitted in a marked, sealed envelope. Specifications may be picked up in the County Auditor's Office. Gray County reserves the right to reject any or all bids.  
E-89 10/19/ and 11/2/13

**REQUEST FOR BID (SHERIFF'S DEPARTMENT)**  
The Roberts County Commissioner's

**Legals / Public Notice**  
Court will accept bids during their November Regular Commissioner's Court Meeting, November 13, 2013, for the purchase of two vehicles in accordance with the following specifications:  
1) 2013 or 2014 3/4 ton Extended Cab 3.73-1 axle 6.0 Lite V8 6-speed automatic transmission Skid plates HD Trailing Locking differential Power windows and locks Brake controller Speed and cruise control Texas Inspection 4 Wheel Drive  
2) 2013 or 2014 1/2 ton Extended Cab or Double Cab 5.3 V8 engine 6-speed automatic transmission Locking differential Trailing package Bucket seats No center console Speed and cruise control 4 Wheel Drive  
Bids should be submitted to the Roberts County Commissioner's Court, Attention: Vernon H. Cook, County Judge, Box 478, Miami, Texas, 79059, by 9:00 A.M. on November 13, 2013.  
Roberts County hereby reserves the right to reject any or all bids presented.  
F-02 11/2/2013

**SURPLUS EQUIPMENT SALE**  
Bids will be received by the Roberts County Judge's Office until 9:00 AM, November 13, 2013. Bids will be considered during the November Regular Meeting of the Commissioners Court. Surplus items may be viewed at the south side of the Roberts County Road Department Equipment Yard. Questions may be directed to the Judge's Office at 806-868-3721. Roberts County reserves the right to refuse or negotiate any or all bids.  
-1981 R Model Mack Truck (Parts Truck) Cab, broken hood, chassis, 6 speed transmission, steering axle, complete rear axles & miscellaneous parts. ID #2993  
-1982 R Model Mack Truck, E6-300, 6 speed transmission, batteries are dead, truck runs. ID #6753  
-1983 Mack Truck Cab & Chassis, 3208 CAT, 3 speed automatic transmission, (surplus from fire department), aka "The Turtle". Truck runs - batteries are dead. ID #4925  
-1993 Chevy 3/4 ton Pickup, runs, has a 2003 pickup bed setting on chassis but is not bolted down. ID #7275  
1 - Dodge pickup bed trailer  
1 - Pickup bed trailer with six cylinder Ford motor set up for pumping water  
1 - Broke Aluminum Tank that came off of Turtle. 8'4" x 20'  
1 - Steel flatbed off of a truck 8' x 12'10"  
1 - Aluminum Tank 7'9" x 18'6"  
F-01 11/2/2013

Advertise with  
The Pampa News



Callie Odell  
Sales Rep - (806)662-8595  
Ellen Tyre  
Classifieds - (806)669-2525



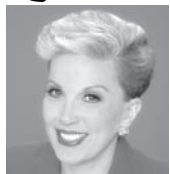


# TOP OF TEXAS CLASSIFIEDS

Reaching over 12,000 readers daily • Call Us at (806) 669-2525



Jim Davidson (BR/OWH) .....662-9021  
 Linda Lapacka, (BR/Asoc, GR, ePro).....662-9611  
 Andrea Walling.....664-6227  
 Zeb Sailors.....664-0312  
 Donna Courter.....595-0779  
 Katrina Bigham.....898-8510  
 John Goddard (BR/Asoc).....595-1234  
 Sandra Schuneman (BR/Asoc).....662-7291  
 Lilly Price.....595-0458  
**Pampa MLS & Amarillo MLS**



## Dear Abby...

By Pauline & Jeanne Phillips

**DEAR ABBY:** I am 19 and a new bride. My husband is in the Army. We're very happy, but I just found out that I'm pregnant — I'm not sure how far along yet — and I feel torn about what to do.

My husband wants a child very badly, but he did say he would support whatever decision I make. While I have no objection to having a child, I know my family will make me feel guilty if I do by saying they are disappointed, that I should have waited and that I'm "throwing my life away."

Abby, I am so confused. I don't know what to do. I want my family to support me and be there when I have our first child. — **PRES-SURED AND CONFUSED**

**DEAR PRESSURED:** Was your family disappointed and saying you were throwing your life away when you married your husband? If the answer is no, then why would they accuse you of doing so because you are pregnant? You are an adult, albeit a young one, and a wife. The first thing you need to do is see a gynecologist and find out how far along you are. Your next step is for you and your husband to decide if you are emotionally and financially ready to be parents.

No one can decide this for you, but your family's possible "disappointment" should not enter into your

decision. If they are not supportive, your in-laws might be.

**DEAR ABBY:** Before my son met his fiancée of five years, "Shelby," he went with another girl, "Dana," for three years. During that time we became good friends with Dana's parents (the "Smiths"). After the breakup, we stayed in touch with the Smiths and go out occasionally.

Recently, Mrs. Smith invited us to her husband's retirement party. When we told our son we were going, he mentioned it to Shelby, who told us we were being disrespectful to her by continuing our relationship with the Smiths.

Shelby's position is that all ties to Dana and her family should have been severed when the boyfriend/girlfriend relationship ended. Our position is the Smiths became friends of ours before Shelby was in the picture, and we don't think we are being disrespectful to anyone by continuing our relationship with this couple. Are we wrong? — **JIM IN CALIFORNIA**

**DEAR JIM:** Of course not. Your son's fiancée appears to have serious insecurities. I sincerely hope you won't allow her to control your lives and your relationships, because if for you, but your family's beginning of how she will try to control you — and your

son. This is Shelby's problem. SHE will have to deal with it. Please do not make it yours.

**DEAR ABBY:** I have friends who exclude me or take off with other friends before I can get to where they are meeting. What can I do to get them to call me? Why am I their whipping post? — **FRIEND-CHALLENGED IN OVERLAND PARK, KAN.**

**DEAR CHALLENGED:** Friends don't treat friends the way you are being treated. There is nothing

you can do to get them to behave differently. You are letting them do this because you're hoping that if you ignore their insensitivity and rudeness, they will accept you.

Please stop trying to cling to them. Join activities where you'll meet people with whom you REALLY have something in common. If you do, you will be much happier than you are today.

**DEAR READERS:** Once again, here is my "timely" reminder that daylight saving time ends at 2 a.m. Sunday — so don't forget to turn your clocks back one hour before bedtime.

## BANANAGRAMS!

For each phrase below, rearrange the letters to spell two new words related to traveling. For example: SUITOR CUSS VENOM can be rearranged to spell CUSTOMS and SOUVENIR.

**LEVEL**

**I ENLIST SAUCES**  
 [ ] [ ] [ ] [ ] [ ] [ ] [ ] [ ] [ ] [ ] [ ] [ ]

**LEVIATHAN COOT**  
 [ ] [ ] [ ] [ ] [ ] [ ] [ ] [ ] [ ] [ ] [ ] [ ]

**PITTED RACKET**  
 [ ] [ ] [ ] [ ] [ ] [ ] [ ] [ ] [ ] [ ] [ ] [ ]

**SHE CLUTCHED SOLE**  
 [ ] [ ] [ ] [ ] [ ] [ ] [ ] [ ] [ ] [ ] [ ] [ ]

Yesterday's Answer:

**AUSTIN SCHOOL DISTRICT** North and Northeast

1821 Holly Ln	\$165,000	3/2.5/2	1840SF/GCAD
2417 Comanche Trl	\$154,900	4/1.75/2	1778SF/GCAD
1810 Beech Ln	\$154,500	3/1.75/2	2014SF/GCAD
12240 E Hwy 60	\$149,900	3/2/2	2632SF/GCAD
1701 Evergreen St	\$138,000	3/1.75/2	2104SF/GCAD
2417 Navajo Rd	Call Agent	3/1.75/1	2100SF/Owner
2320 Christine St	Pending	3/2/1	1234SF/GCAD
2212 Chestnut St	\$113,000	3/1.75/2	1686SF/GCAD
2236 Charles St	\$110,000	3/2/2	2142SF/GCAD
2227 Christine St	Pending	3/1.75/1	1718SF/Appraiser
106 27th Av	\$98,500	3/1.75/1	1612SF/GCAD
2145 Dogwood Ln	\$79,000	3/2/2	1346SF/GCAD
1510 Williston St	\$60,000	4/1.5/1	1404SF/GCAD
2114 Williston St	Pending	3/1/1	1176SF/GCAD

**LAMAR SCHOOL DISTRICT** Southwest

801 Frost St	\$65,000	2/1/2	1580SF/GCAD
--------------	----------	-------	-------------

**TRAVIS SCHOOL DISTRICT** West and Northwest

1035 N Wells St	\$165,000	3/2/3	2224SF/GCAD
1424-1426 Dwight	\$149,000	2704	SF/GCAD Duplex
2120 Lynn St	Pending	3/1.75/2	1872SF/GCAD
2228 Sumner St	\$116,900	4/1.75/0	1895SF/GCAD
1519 N Wells St	Pending	3/1.75/2	1585SF/GCAD

**WILSON SCHOOL DISTRICT** Southeast Pampa

524 Wynne St	\$59,900	4/1.75/2	1326SF/GCAD
1109 Starkweather St	Pending	3/1/1	1072SF/GCAD
1033 E Browning St	\$35,000	1/1/1	1032SF/GCAD

**OTHER AREAS** Outside Pampa City Limits

702 Waldron St, McLean	\$199,900	4/2/2	1862SF/GCAD +/- 1.12acres
1404 Bluebonnet St, Borger	Pending	3/2/2	2473SF/HCAD
306 Galahad St, Borger	\$79,900	3/1.5/2	1827SF/HCAD

Office Hours: M-F 8-5, Sat. 9-2, Sun call our agents.  
 Visit our web page at: [www.pamparealtor.com](http://www.pamparealtor.com)

**Sudoku**

Answer to yesterday's puzzle:

5	6	9	8	2	1	7	3	4
3	4	8	6	9	7	1	5	2
1	2	7	5	4	3	6	9	8
2	9	1	3	7	5	4	8	6
6	8	3	4	1	9	2	7	5
7	5	4	2	8	6	3	1	9
8	1	6	9	3	2	5	4	7
4	3	5	7	6	8	9	2	1
9	7	2	1	5	4	8	6	3

					7			
	4		6		2		1	
7					2			5
	9			3				1
5							4	6
				5	8			
8	5						2	
9			7				4	
6				2				9

Level: Advanced

# SUBSCRIBE TODAY!

Get The E-Edition too for an extra

**\$5** A month

1 month - \$9.50  
 3 months - \$28.50  
 6 months - \$59.00  
 1 Year - \$114.00

CALL TODAY!  
**806-669-2525**

The Pampa News is delivered through the Mail daily Tuesday through Saturday. No papers are issued on Holidays.

## "Forever Friends" hoping to find a new warm home this Fall.

"Larry" Boxer Young Male, Docked Tail #11145	"Bud" Basset Male #11148	"Ozzy" Young Dachshund Mix #11014	"Dawn" Pit Bull Female Puppy #11189	"Mary" Collie Female Puppy #11173	"Chico" Chihuahua Mix Male #11172
--	--------------------------------	---	---	---	---

**Donations needed: Wet Cat Food & Paper Towels**

Monetary Donations can be made Online at [www.pampaanimalwelfaresociety.com](http://www.pampaanimalwelfaresociety.com)

Sponsored by:

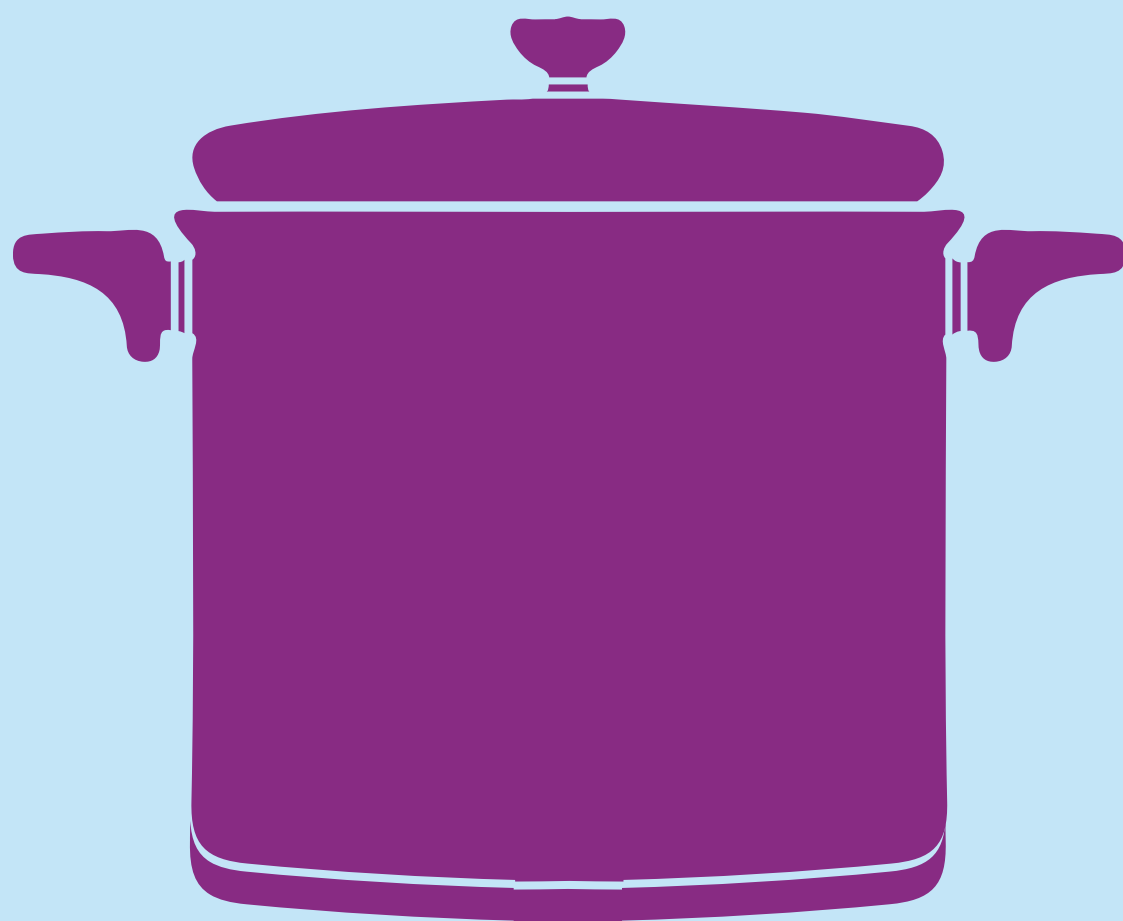
# BOURLAND & LEVERICH

an Edgen Group Company

"Ray" Terrier Male Puppy #11170	"Lane" Abyssinian Male #11050	"Jane" DSH Kitten Female #10930
---------------------------------------	-------------------------------------	---------------------------------------

For more info about these pets or for any other questions, call 806-669-5775.

2013



Pampa News Holiday  
*Recipe Book*

**Got A Good Recipe?**

**You Could Be Our Winner!**

**Your Recipe Submission Enters You  
For A Chance To Win Kitchenaid  
Mixer (a \$300 Value)**

We're looking for a selection of fantastic recipes from our community to publish in our Pampa News Holiday Recipe Book!

Every Recipe is an entry for a chance to win!

**Send recipes to [classified1@thepampanews.com](mailto:classified1@thepampanews.com)**

**Please include the following:**

- 1. Your recipe, neatly typed**
- 2. Your name & town**
- 3. A phone number, in case we have questions**

Deadline for Recipe Submissions is November 8th.

Please note- Employees of The Pampa News and their families may submit recipes but can't be entered to win contest.

For questions please contact **The Pampa News at 669-2525**



# TOP OF TEXAS CLASSIFIEDS

Reaching over 12,000 readers daily • Call Us at (806) 669-2525

## PROPERTY SHOWCASE



**413 S Horn St - White Deer** 13-9799  
3 Bedroom, 2 Bath 1,464 sqft



**737 Bradley** 13-9749  
4 Bedroom, 2 Bath 1,918 sqft



**712 Magnolia** 13-9628  
2 Bedroom, 1 Bath 1,272 sqft



**1044 W Crane** 12-9446  
3 Bedroom, 1.75 Bath 1,379 sqft



**2370 N Beech** 13-9762  
4 Bedroom, 2.5 Bath 2,424 sqft



**#31 4800 LL - Greenbelt** 12-9608  
2 Bedroom, 1.75 Bath 1,618 sqft



**#20 LL - Greenbelt** 13-9813  
4 Bedroom, 2 Bath 2,562 sqft

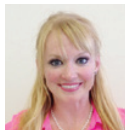
[www.househunterspampa.com](http://www.househunterspampa.com)



**Linda Laycock**  
Broker  
BROKER\*, ABR, GREEN,  
SRES, e-Pro  
(806) 662-1312



**Larry Hadley**  
Associate  
(806) 662-2779



**Tisha Holman**  
Associate  
(806) 440-4153

**HOUSEHUNTERS Realtor**

## CROSSWORD

By THOMAS JOSEPH

### ACROSS

- 1 Gusted
- 5 Some college students
- 10 Debussy work
- 12 Put a cap on
- 13 Rust, for one
- 14 Vibrant
- 15 Musician's job
- 16 Rotter
- 18 Wee bite
- 19 Try hard
- 21 Addition column
- 22 Imminent
- 24 Enticed
- 25 All set
- 29 Burger joint supply
- 30 Staircase posts
- 32 Leaf lifter
- 33 Pricing word
- 34 Gloss spot
- 35 Trombone part
- 37 "— at the office"
- 39 Asian peninsula
- 40 Consumed
- 41 Adorable
- 42 Cruise stop

### DOWN

- 1 Online journals
- 2 Loose-ness
- 3 Asylum seeker
- 4 Tie the knot
- 5 Not naked
- 6 Motor need
- 7 "Lose Yourself" rapper
- 8 Heavenly
- 9 Flight units
- 11 Spoke from memory
- 17 Pain reliever
- 20 Travel aid
- 21 Thus far up the sun
- 23 Clique
- 25 Near depletion
- 26 Complete
- 27 Frozen dessert
- 28 Twist of fiction
- 29 Soaks up the sun
- 31 Wasn't thrifty
- 33 Natural fuel
- 36 Scottish river
- 38 Opening

L	A	S	T	S	V	A	S	E	S
E	M	A	I	L	I	S	A	A	C
S	P	I	N	E	C	H	I	T	A
T	E	N	P	R	E	E	N	E	R
A	R	T	T	I	C	T	R	Y	
T	E	L	L	B	O	B	B	Y	
			A	I	R	P	R	O	
	S	W	E	E	P	A	N	T	S
P	E	R	G	U	M	I	R	A	
O	R	E	G	A	N	O	F	A	B
P	E	N	A	L	P	E	A	C	E
U	N	C	L	E	U	L	C	E	R
P	E	E	L	S	P	I	E	R	S

Yesterday's answer

NEW CROSSWORD BOOK! Send \$4.75 (check/m.o.) to Thomas Joseph Book 2, P.O. Box 536475, Orlando, FL 32853-6475

1	2	3	4		5	6	7	8	9
10				11		12			
13						14			
15				16	17			18	
19			20				21		
	22					23			
			24						
	25	26					27	28	
29					30				31
32				33				34	
35			36			37	38		
39						40			
41							42		

11-2

## ADOPT A FOREVER FRIEND TODAY!



Chi. Mix Male

#1172



Chihuahua Terrier Mix Male

#10790



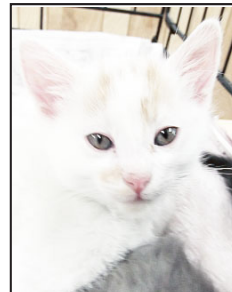
Chihuahua Mix Male

#10699



DSH Kitten Female

#10930



Kitten Male

#10718



Kitten Female

#10927

Donations needed: Paper Towels & Dry Kitten Chow

Monetary Donations may be made Online at [www.pampaanimalwelfaresociety.com](http://www.pampaanimalwelfaresociety.com)

752 Municipal Drive in Hobart St. Park 806-669-5775  
Open M- F 3pm-6pm Sa-Su 3pm-5pm Closed holidays

# FALL FLOORING SALE

*This isn't a one day sale  
this is a month long sale!*



**install only  
no carry out**



**\$3 off  
per yard  
any carpet**



**50¢ off  
per sq ft  
any in stock  
hard surface**

***Premier Floor  
Warehouse***

**301 S. Cuyler, Pampa TX  
669-7001**

# PRMC

## a year in review

A partial sampling of events in the last 12 months at PRMC  
...more has happened and expect more to come



PAMPA REGIONAL  
MEDICAL CENTER

Pampa Regional Medical Center recently received unconditional accreditation from the Joint Commission on Healthcare Accreditation.

File photo

## PRMC earns national accreditation

■ State-of-the-art patient care information system installed.

SUBMITTED

Pampa Regional Medical Center earned national recognition recently, continuing its resurgence under a new chief executive officer and a new owner.

The Joint Commission on Healthcare Accreditation awarded the medical center a full unconditional accreditation after it demonstrated that it met the commission's rigorous national standards for health care quality and safety.

The Joint Commission, the largest healthcare accreditation in the country, bases this recognition on a hospital's compliance with state-of-the-art patient care and strict safety standards.

"Our approval by the Joint Commission exemplifies the quality of the physicians, nurses and employees at our facility," said Brad Morse, CEO of PRMC. "But we wouldn't be where we are with-

out Prime Healthcare's expertise."

Prime Healthcare Services acquired PRMC in June 2012. Prime Healthcare owns 23 hospitals across the country, including four in Texas. The health system was named as one of the top 15 systems in the nation, based on quality of care and patient satisfaction.

"The medical center is creating new benchmarks for quality health care in a very short period," said Dr. Prem Reddy, chairman, president and CEO of Prime Healthcare Services.

"We sincerely thank all the physicians, nurses and employees for achieving this coveted recognition."

An independent, nonprofit organization, The Joint Commission is the nation's oldest and largest standards-setting and accrediting body in health care.

It evaluates and accredits more than 20,000 health care organizations and programs in the United States, including



more than 10,600 hospitals and home care organizations, and more than 6,600 other health care organizations that provide long term care, behavioral health care, laboratory and ambulatory care services.

"We welcome the Joint Commissions' accreditation as a strong statement of our commitment and efforts in improving the patient care quality and safety," said Luis Leon, president of operations for Prime Healthcare Services. "Change is always difficult but along with our commitment, I hope to see the local community embrace Pampa Regional Medical Center with the knowledge that quality and safety remain our utmost priority."

Dr. Bob Julian, chief of the medical staff at PRMC, said the real winners are the patients who come through the door needing care.

"As members of the community and as your physicians, we are delighted at the most recent results of this extensive

Joint Commission survey as it serves as a validation of the excellent medical care delivered here," Julian said.

Full accreditation by the Joint Commission reassures the community that the medical center organization provides the highest quality of patient care to the residents of Pampa and the surrounding areas, added Twilla Thomas, PRMC's director of nursing.

"We have set a high bar for quality standards," Thomas said. "We welcome our friends, neighbors, and colleagues to be a part of the future of this medical center, a strong hospital dedicated to community needs."

In efforts to make sure the quality of patient care is maintained and in compliance with national standards, the hospital also has installed a state-of-the-art patient care information system that assures quick and accurate information for health care providers.

"All of this is great," Morse said. "But without the support of our local physicians, the new physicians and talented employees and their willingness to train, none of this would have been possible."

“We welcome our friends, neighbors, and colleagues to be a part of the future of this medical center, a strong hospital dedicated to community needs.”

## PRMC affiliates with Family Med Now Clinic

Brad Morse, CEO of Pampa Regional Medical Center, did the honors of carrying the closing bell at a recent Pampa Rotary Club meeting. Morse was the guest speaker on "eight minutes notice" when the scheduled speaker was unable to attend. Morse said PRMC

is now affiliated with Family Medicine Center of Pampa, which is now called Family Med Now Clinic. The practice includes an urgent-care clinic. Since PrimeCare of California bought the hospital in June 2012, the hospital staff has increased from about 200 to

300 and employee morale has improved, Morse said. New physicians have been added to the staff, including recently hired pediatrician Jeff Kuo, who had attended an earlier Rotary meeting. He said PRMC is now working on providing pulmonary care physicians.

## The beginning of a beautiful, medical friendship

■ PRMC and Borger's Golden Plains Community Hospital start partnership.

By JOHN LEE

jlee@thepampanews.com

When Pampa Regional Medical Center Chief Executive Officer Brad Morse came to town, his first order of business was to make the medical situation in Pampa even better. With Borger a half hour drive away from Pampa, he decided to see if there was any way for the medical centers of Pampa and Borger to work together.

"When I first got here I went over to Borger and said 'Is there anything we can do together,'" Morse

said. "We are only 30 miles apart so it makes sense to at least try to be friends. So we talked about possibly sharing an ear/nose/throat doctor.

"There wouldn't be enough work in just Pampa or just Borger to have that specialty and keep them 100 percent busy. So we decided to start searching for a doctor like that."

The partnership between the medical centers of Borger and Pampa are in no way a merger and there is not a financial

combination. The only sharing in the costs will come with the paying for a shared physician.

"We found someone who is amiable to both places, we decided to split the expenses bringing that person here and keeping them here," Morse said. "When he is starting out he is going to work two and a half days in Borger and two and a half days here. Then as time goes on we (Pampa and Borger) will see if there are other things we can do together."

Morse said that the benefits from this partnership are not limited to just the hospitals, but to patients and physicians. Bringing

physicians to Pampa and Borger keeps patients in the proximity of the aforementioned towns and keeps them from traveling to Amarillo for their appointments with specialists.

"The patients benefit from it because they can get the care here," Morse said. "They don't have to drive to Amarillo to get the care they need. They get in quicker and don't have to wait several weeks. The physicians benefit because they have that specialist here that they can consult with. The hospitals benefit because it is a new line of business for both of us."

Morse said there are

several other undisclosed aspects to the partnership yet to be announced that he is excited about.

Morse also stressed that the type of physicians being brought to the hospitals are "top-flight" and will accept most, if not all, of the insurance providers. This helps not just the hospital, but the city of Pampa as well.

"Economically is will be a great boost for us (the city of Pampa)," Morse said. "When I said it will benefit the hospital we will be able to work cases here and make money off them like we haven't been able to before."

The inspiration for the partnership came from

Morse and he hopes to reach out to other hospitals to have similar relationships.

"I just thought if there was a hospital that close (in Borger) why not go knock on their door and see if there is anything we can do together," Morse said. "Just like I did with Texas Tech (University Health Sciences Center in Amarillo). I've reached out to the hospital in Canadian and Spearman. We small hospitals need to work together. If we can help each other let's be good neighbors."

Morse encourages readers to come see the hospital and look at the changes that have taken place.



**PAMPA REGIONAL  
MEDICAL CENTER**



*We are fully  
Joint Commission Accredited*

**Bringing Life to Pampa**

---

**One Medical Plaza**

**(806)665-3721**

**prmctx.com**

# New doctors hired at PRMC

## New pediatrician at PRMC

By **TIMOTHY P. HOWSARE**  
thowsare@thepampnews.com

Dr. Jeff Kuo M.D. started as a pediatrician at Pampa Regional Medical Center in late July.

Kuo worked at Indiana University Health LaPorte Hospital in LaPorte, Ind., where he provided both inpatient and outpatient pediatric services since January 2008.

LaPorte is a city of 22,000 in Northwest Indiana about 70 miles southeast of Chicago.

Kuo, who grew up in Diamond Bar, Calif. about 50 miles east of Los Angeles, said he is excited about his new job.

“My wife Aiko and I are both looking forward to moving to Pampa,” he said. “Pampa reminded me of the place where I grew up. It has what I always seek in a place

to stay — small town atmosphere with friendly people. In addition, the big skies overlooking the sweeping Great Plains surrounding Pampa makes everything even more memorable. The proximity to other surrounding cities like Amarillo is also nice.”

As a professional, Kuo said he looks forward to the opportunity to help provide much needed comprehensive pediatric care in Pampa, so parents won't have to travel 60-plus miles for the same service.

Kuo is an advocate of healthy living and preventative care.

“I would like to bring to Pampa my strong belief in a healthy lifestyle and living life to the fullest,” he said. “My philosophy of care is this: Treat other people the way you want to be treated, and that is how I approach all

my patients as well as everyone around me. As a result, my belief in a healthy lifestyle combined with preventive care plays a large part in how I approach their care.”

Kuo is a 2002 graduate of the St. George's University School of Medicine in Grenada, West Indies.

He received a bachelor's of science in chemistry with a minor in psychology in 1997 from University of California, Riverside.

He did clinical fellowships at Louisiana State University at Children's Hospital in New Orleans and did his residency at Children's Hospital of New Jersey at Newark Beth Israel Medical Center.

He also did an internship in pediatrics at Mt. Sinai School of Medicine at Jersey City.

From 2005 to 2006, he worked as research assistant with Robert Olympia, M.D.,

Children's Hospital of New Jersey at Newark Beth Israel Medical Center.

Among his academic awards are Dean's List and Distinctive Academic Performance at the University of California.

He is a member of the American Academy of Pediatrics.

Kuo said he wants to be available to the community.

“Please feel free to swing by and visit the pediatric office next to PRMC regardless of what language you speak,” he said. “If you cannot come in person, please do not hesitate to call because I'm open to any questions and suggestions. “I look forward to being able to make a positive impact on the health of people at Pampa by advising ways to stay healthy and helping those who are ill to recover from illnesses.”

## New cardiologist at PRMC

STAFF REPORT

Dr. Jack C. Smith III is a new cardiologist at Pampa Regional Medical Center.

Smith comes to Pampa from the Lubbock Cardiology Clinic. He graduated from Texas A&M University in 1995 with a major in biology and minor in chemistry. Smith received his Doctor of Medicine degree from Texas Tech University in 2000. He graduated in the top one-third of his medical school class. He is fluent in Spanish.

Smith is a member of the Texas Medical Association, American Medical Association, American College of Physicians and the American College of Cardiology. He received his Texas State Medical License in 2001.

He was born in Brooklyn, N.Y., in 1969. Smith is engaged to Natasha Sowell. He has four daughters, Madison Grace, 10, Zoey Katherine, 8, Olivia Day, 5, and Sydney Noel, 2.

Smith enjoys spending quality time with his finance and four daughters. He also enjoys playing golf, weightlifting, racquetball and chess.

## Adams hired as new family practice doctor

By **TIMOTHY P. HOWSARE**  
thowsare@thepampnews.com

Dr. Gretchen Adams is a new family practice physician at the Pampa Regional Medical Center.

She moved to Pampa from Maysville, Ken., which is

about an hour north of Lexington and an hour east of Cincinnati. She joins her husband, Brad Morse, who was hired as CEO of Pampa Regional Medical Center in May.

Adams said a family physician is a practitioner who can see the whole family -

infants, children adults and grandparents.

The advantage to that, Adams said, is “you get to know the whole family. You get to know what is happening at home. If a grandparent has cancer you can see how that affects the whole family and know who can bring the

grandparent to the doctor's office and who can't.”

Adams is from a small farm community in northeast Pennsylvania called Mehopany. Her father is a retired farmer and her mom is a retired secretary.

She received her bachelors degree from Bloomsburg

University in Pennsylvania and her doctor of medicine from the Medical College of Pennsylvania.

She did her residency at Maine Dartmouth Family Practice Residency Program. After her residency, she served as a doctor in the U.S. Air Force from 2001 to

2006. Growing up in small town, Adams said she feels at home living in Pampa.

“I like that the people here are so down to earth,” she said. “I love the area and the people and their jobs. Everybody has been very welcoming.”

## OFF TO THE RACES



Photo by Dana Whinery

Hospital staff and community members line up at the starting line in May for a stick horse race at Pampa Regional Medical Center. In the spirit of that “real” horse race at Churchill Downs, the first-ever event was called the Kentucky Derby. The 13 competing teams raised \$623 for the 2013 Relay for Life. Along with the horse race, there was a contest to decorate your thoroughbred and another for the most unusual hat.

## Women's Expo leaves them pampered — and informed

By **SASHA HELLER**  
sheller@thepampnews.com

In April, M.K. Brown Memorial Auditorium's Heritage Hall became a luxury mall, where more than 1,000 community members gathered for a Women's Expo for shopping, pampering and some valuable information of women's health.

Around 70 vendors displayed an assortment of clothing items and fashion accessories, body lotions and oils, scented candles, fruits, nuts and other healthy edibles.

Attendees surveyed each vendor's wares, sometimes striking up a casual conversation with a friendly face before maneuvering on to the next vendor's display table.

Pampa Regional Medical Center (PRMC) was very visible at the expo and hosted multiple info booths, including an interactive, surgical remote arm video device used in gall bladder surgeries.

PRMC Surgical Services Director Dr. Denise Daves explained that the device is a teaching box that shows how each instrument works when performing surgeries.

She said advancements in medical science have made gall bladder surgery more efficient and easier on both the surgeon and patient. In the past, surgeons would have to remove other organs that sit

on top of the gall bladder in order to operate on the affected area. Patients would usually be required to rest in the hospital post-surgery for three to four weeks.

However, using the remote arm video device, surgeons can reach the gall bladder directly and repair as necessary. Daves said gall bladder surgery patients now leave the hospital on the day of the surgery.

Daves noted that medi-

cal techs have found, through utilizing information booths like the one on Saturday that feature robotic arm devices, that children and teens are especially successful at immediately picking up the technique. Daves said the youths have mastered the skill through years of playing video games, which have the unintended benefit of increasing hand-eye coordination, timing and space differential. Daves said a generation of bril-

liant surgeons have been raised on Zelda, Call of Duty and Halo, and they don't even know it yet.

Jason “J.C.” Rowe, 12, is one of those examples. Jason “J.C.” Rowe, 12, is one of those examples. wowed Daves and the surgical techs present with his perfect scores on the remote arm device. Maybe J.C.'s mom will go easier on him the next time he asks for an extra half-hour of video games.

PRMC also operated a sonogram booth at Saturday's event.



Photo by Sasha Heller

Jason “J.C.” Rowe, 12, wows surgical techs from Pampa Regional Medical Center with his impressive display of hand-eye coordination while operating a remote arm surgical device at the Women's Expo.

## PRMC now a clinic site for Texas Tech's Amarillo residency program

SUBMITTED

Pampa Regional Medical Center is now a clinical site for Texas Tech University Health Sciences Center's Family Medicine Residency Program in Amarillo.

The program, which began in 1972 as one of the first residency programs at Texas Tech University Health Science Center, offers resident physicians the opportunity to become Board Eligible in Family Practice by training with Pampa's Physicians and offer the Pampa area the benefits of an academic medical center.

“I believe the family practice residency will give our community access to young physicians who might want to permanently locate in Pampa, provide a base for new medical services and help our current Medical Staff with ongoing medical education,” said Brad Morse, CEO of Pampa Regional Medical Center.

“I also want to thank Dr. Kevin Sieck, a graduate of the Texas Tech Medical School, who was extremely helpful in making sure Tech understood what our hospital has to offer and how we can help their program expand”

Texas Tech offers excellent resources, technologies and research opportunities, as well as training opportunities with clinical faculty in different subspecialties. The Amarillo health care community services neighboring parts of four states and the Texas Panhandle

through the Texas Tech University Family Residency Program.

“It is the perfect place to learn, grow and serve a great community,” said Dr. Jerry Kirkland, program director for Texas Tech's Family practice residency program. “We will have access to all aspects primary care including Pediatrics, Family Medicine, Emergency Medicine, Internal Medicine, Hospital Medicine, Geriatrics, Psychiatry, OB/GYN, Surgery, Gastroenterology, Cardiology, Urology, Orthopedics, Critical Care and this is just to start.”

The founder of Prime Healthcare Services, which owns Pampa Regional Medical Center, praised the agreement.

“This relationship highlights how hospitals and academic institutions can partner in order to support the critical goal of increasing physicians in rural communities,” said Prem Reddy, MD, FACC, FCCP, chairman, president and CEO of Prime Healthcare. “Prime Healthcare is honored that Texas Tech has recognized the quality of Pampa Regional Medical Centers Medical Staff to help train their medical residents.”

As part of this effort, community leaders also stepped forward. The Pampa Industrial Foundation headed by Dick Stowers and a local philanthropist Don Fletcher paid for the first year of the program.



# PAMPA REGIONAL MEDICAL CENTER

Pampa Regional Medical Center is part of the Prime Healthcare Services family of hospitals, a “Top 15 Health System in the Nation” as rated by Truven Health Analytics. We are proud of this national distinction, and we believe that it is a true reflection of what we stand for.

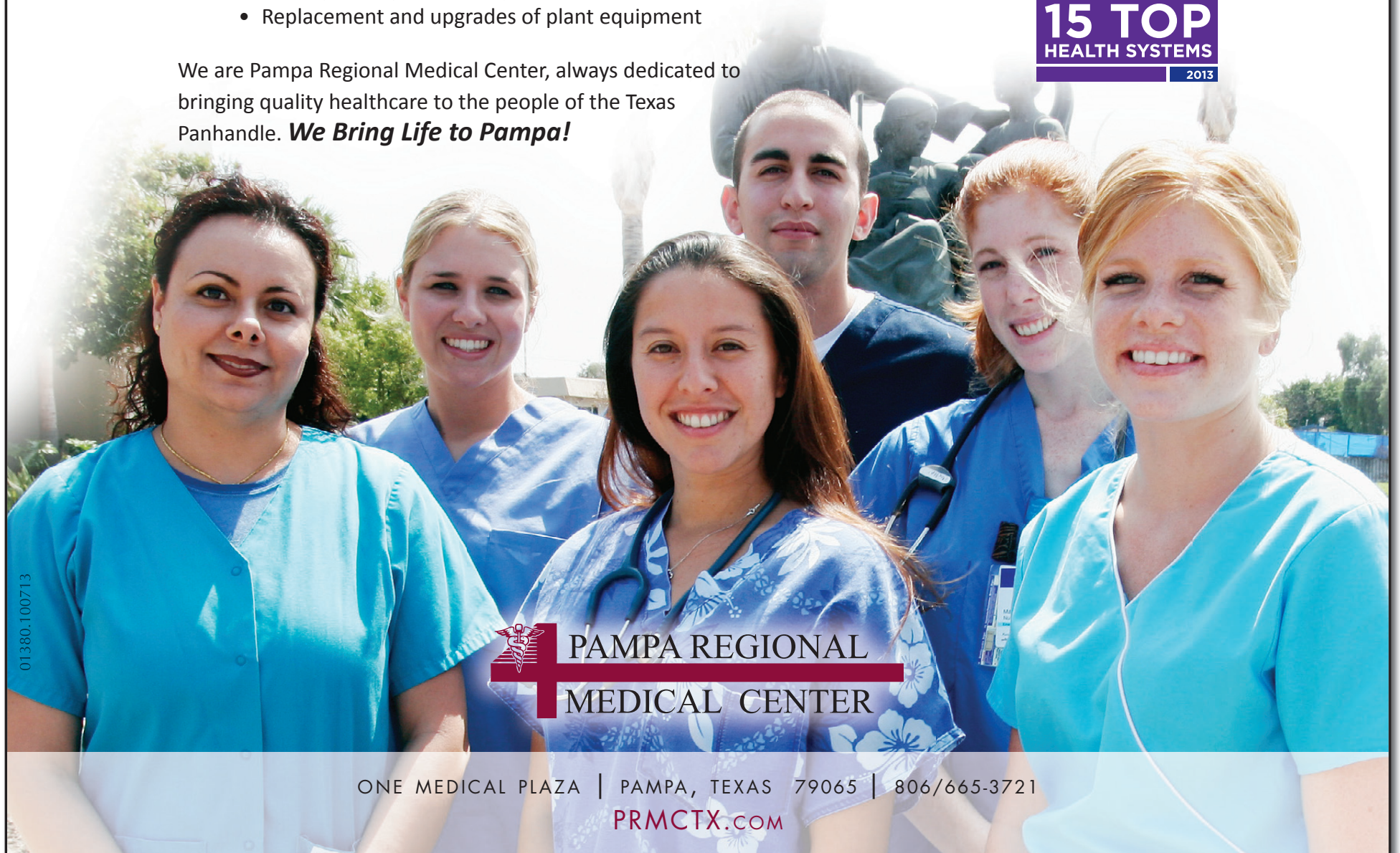
Continuing in this tradition of excellence, Pampa Regional has also recently been fully accredited by The Joint Commission, a nationally recognized accrediting body of healthcare facilities in the United States. The hospital will never stop in its pursuit of professional excellence and self-improvement. Since we have joined Prime Healthcare, we have invested in purchasing new medical equipment such as:

- \$10 million of new equipment, plus...
- Maternal/Fetal Monitor system
- UltraSound Equipment and stretcher
- Computerized supply dispensing systems through out the hospital
- Software upgrade to Radiology examination images
- ER Patient Monitoring System
- Bariatric Patient Beds
- Labor & Delivery Patient Beds
- BladderScan System
- Glidescope Adult/Pedi

We have also made capital investments in our facility that include:

- Paving and Concrete replacement of parking lot
- Replacement of department doors
- Renovation of multiple departments
- New operating software systems
- Replacement and upgrades of plant equipment

We are Pampa Regional Medical Center, always dedicated to bringing quality healthcare to the people of the Texas Panhandle. ***We Bring Life to Pampa!***



 PAMPA REGIONAL MEDICAL CENTER

ONE MEDICAL PLAZA | PAMPA, TEXAS 79065 | 806/665-3721

[PRMCTX.COM](http://PRMCTX.COM)

01380.100713

