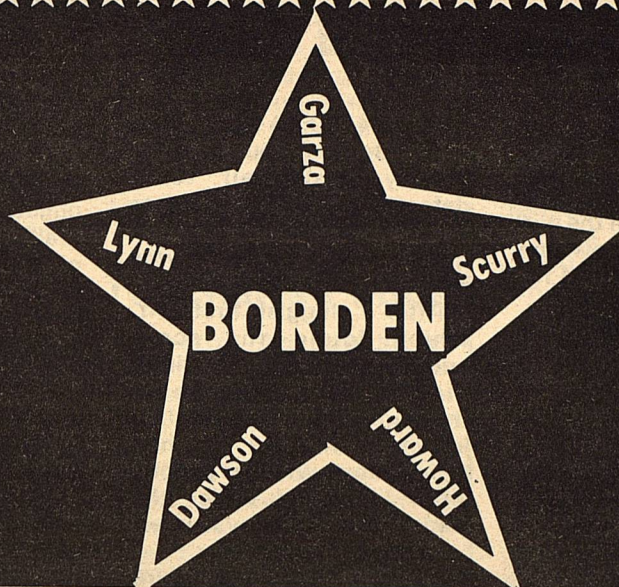


THE

Volume XLII



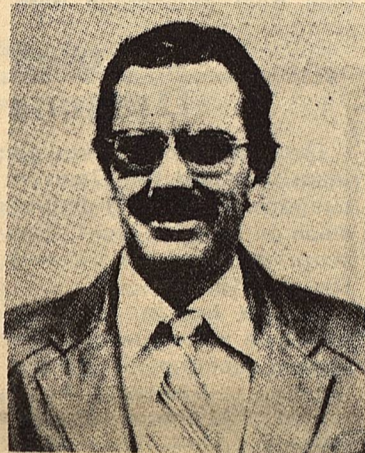
STAR

February 11, 1987

Serving the Counties of Borden, Dawson, Garza, Howard, Lynn & Scurry



JON MONGER



JACK MCPHAUL

TWO FILE FOR SCHOOL BOARD

Two candidates have filed for two places on the Board of Trustees of the Borden County Independent School District. Jack McPhaul, an incumbent, is seeking his

fourth term on the Board. Jon Monger, also an incumbent, is seeking his second term on the Board. The Trustee Election is scheduled for April 4, 1987.

AREA MEN NAMED

Thirteen Texas cotton men have been named to key leadership positions in the National Cotton Council.

Lloyd B. Cline, Lamesa cotton producer, is the Council's new board chairman. Serving with him as directors on the 35-member board are: Frank B. Jones, Lamesa producer; Jerry Harris, Mesa Gin, Inc., Lamesa; warehouseman F. A. Underwood, The Trinity Co., Lubbock; merchants Raymond V. Cooper, Volkart Taylor Cooper, and Eduardo Esteve, Esteve Brothers & Co., Inc., both of Dallas; cottonseed crusher Ernest C. Inmon, Jr., Anderson Clayton Co., Lubbock; and Wayne Martin, Plains Co-Op Oil Mill, Lubbock.

Herman Propst, Abilene, Tex., producer, was elected first vice president of the Council's overseas arm, Cotton Council International, and Esteve

was chosen treasurer. Named CCI directors were Albert S. Kyle, III, Plains Cotton Cooperative Association, Lubbock; Allen Ater, Anderson Clayton, Houston; Raymond V. Cooper, Dallas, and Jerry Harris, Lamesa.

Frank Jones of Lamesa also was re-elected chairman of the Council's Producer Steering Committee and Wayne Labar, Rio Hondo grower, was named to serve on the committee as state producer chairman.

Hollis G. Sullivan, Valley Co-Op Oil Mill, Harlingen, was chosen chairman of the Council's state unit. Named vice chairman was Raymond Cooper and secretary Ernest Inmon, Jr.

The Texans were elected to office during the industrywide organization's 49th annual meeting Jan. 25-27 in San Diego.

County Historical Commission Appointed

County Judge Van York, on behalf of the Commissioners Court of Borden County, has announced the official appointment of members to the county Historical Commission.

The county commission is the agency charged with the responsibility of surveying, marking and preserving the county's heritage, and is to be engaged in numerous activities and projects recommended by the Commissioners Court and the Texas Historical Commission.

Mrs. Warren Beaver and Mr. Van York will be Co-Chairmen of the group.

Other members are Mrs. Dorothy Browne, Mrs. Marge Toombs, Mr. Larry Smith, Mr. C. C. Nunnally, Mrs. C. C. Nunnally, Mrs. Norman Sneed, Mr. Doug Isaacs, Mrs. Rube Smith, Mr. Bill Phinizy, Mrs. Bill Phinizy, Mr. Mike Toombs, Mr. Joel Dennis, Mrs. Joel Dennis, Mrs. Edna Miller, Mr. Ralph Miller, Mr. Buster Taylor, Mrs. Borden Gray, Sr., Mr. Vivian Clark, Mrs. Vivian Clark, Mrs. Ruth Weathers, Mrs. Joe Gilmore, Mrs. Doris Rudd, Mrs. Bill Stephens, Mr. Aubrey Rogers, Mrs. Roy Reeder, Mrs. Oscar Telchik, Mrs. Frances Bennett, Mrs. Bert Dennis and Mrs. Irene

Creighton.

The 64th Legislature amended the statute which authorizes the appointment of county historical commissions and in so doing, broadened the scope of activities and responsibilities of the group.

In addition to the activities outlined in the statute, the county commission is to develop local history as a scholarly resource as well as a tourist attraction. Borden County has a unique heritage of which every citizen should be justly proud and all citizens are asked to support the goals and objectives of the county historical commission.

Emergency Loans Available

Craig Simpson

Emergency loans for farmers, ranchers or aquaculture operators are available through county offices of the Farmers Home Administration (FmHA), D. Craig Simpson, FmHA County Supervisor, said today.

Simpson asked that those who need farm credit as a result of excessive rain and flooding make their needs

known at the Farmers Home Administration office at 109 NE 14th Street in Lamesa, Texas.

Applications for assistance in the disaster stricken counties will be accepted by Farmers Home until September 9, 1987 for physical and production losses.

FmHA loans covering actual physical and production losses may be

used to replace installations, equipment or buildings (including homes) lost through this disaster. Funds may be used to buy feed, seed, fertilizer, livestock or to meet interest and depreciation payments on current real estate and chattel debts.

"Funds can be used for essential operating and living costs," Simpson said.

Gramm Opposes Pay Raise for Congress

U.S. Sen. Phil Gramm of Texas has vowed to oppose a pay raise for members of Congress, saying that "part of leadership is setting a good example."

"We cannot maintain an example for the American public by working to balance the budget and, at the same time, voting to give ourselves big pay increases," the senator said.

"The issue at stake here

isn't money. The issue is leadership by example," Gramm said.

Gramm also said, however, that he will back a modest salary increase for the federal judiciary as a necessary means of attracting and holding top-flight attorneys on the federal bench.

"We have reached the point where a young lawyer with two year's experience as

a law clerk can match the salary earned by a U.S. district court judge," Gramm said.

"If we fail deal with this inequity, the quality of our judiciary will be eroded. Given the power of that federal judges exercise over the lives of individual citizens, America cannot afford second-stringers on the federal bench," Gramm said.

Lady Coyotes Clinch Playoff Spot

For the third time in four years, the Borden Lady Coyotes will move into the bi-district round of the basketball playoffs. With Friday night's 62-34 win over Grady, and O'Donnell's win over Klondike, Borden clinches a playoff spot, despite one game remaining at Sands.

In the Grady game, the Lady Coyotes opened up a 17-12 first quarter lead and by outscoring the Wildcats in the second stanza, held a slim 35-26 lead. But then Borden held Grady to eight total second half points, four in each of the two quarters, while scoring 27 of their own for the 28 point victory. Kelli Williams led three double figure scorers with 19 points followed by Elana Himes with 18 and Lisha Sternadel with 11. Kate Phinizy scored 6, Tammy Johnson and Lynn Herridge each had 2, and Linda Sternadel and Shelly Lewis each had 1. Kelli led four of the five basic categories starting with field goal percentage with 58 percent, making 7 of 12. Lynn was next with 50 percent. Kelli led in free throw percentage with 83 percent making 5 of 6 followed by Lisha with 5 of 7 for 71 percent. Elana hit 2 of 3 for 67 percent. Kelli was tops in steals with 5 followed by Lisha with 4. Elana led in rebounds with 12 followed by Lynn with 7 and Kelli with 6. Kelli led in assists with 4

and Tammy had 3. As a team, Borden had the fewest turnovers in a game for the year with 11. Another contributing factor in the win came as the free throw line where Borden hit 14 of 21 for 67 percent.

Five seniors played their last game in Borden Gymnasium. They were: Tammy Johnson, daughter of Mr. and Mrs. Wendell Johnson; Linda Sternadel, daughter of Mr. and Mrs. Ed Sternadel, Lynn Sternadel Herridge, daughter of Mr. and Mrs. Ed Sternadel and Mr. and Mrs. Frank Herridge; Kristi Stone, daughter of Mr. and Mrs. Jerry Stone; and Kelli Williams, daughter of Mr. and Mrs. Kenneth Williams.

The Lady Coyotes will be open Friday night before playing their bi-district game Tuesday. They will meet the winner of District 14A, which is in a district playoff situation between Sanderson and Grandfalls Royalty. Game time and site has not yet been set but will be determined February 13 after the district playoff. As the Lady Coyotes enter the U.I.L. playoffs, they would like to thank all their fans who have supported them this year and would like to ask everyone to follow them as they move into bi-district.

O'Donnell Defeats Borden

The O'Donnell Eagles defeated the Borden boys varsity basketball team in a key district 13-A game on Tuesday night. The score was O'Donnell 78 and Borden 49.

The score at the break was O'Donnell 33 and Borden 31. At this time it appeared Borden might make a game of it. However, O'Donnell outscored the Coyotes 23 to 6 in the 3rd quarter, and never looked back. The victory clinched the district championship for the excellent O'Donnell squad. They will now play the runner-up in district 14-A in the first round of playoffs on February 17th.

Scoring: S. Bond-13, Key -12, Burkett-9, Fryar-7, B. Bond,-6, Phinizy -2. J.V. score O'Donnell 50, Borden 36.



The first concrete road in the U.S. was laid in Detroit in 1908.

THE BORDEN STAR
Publication No. 895520
(USPS 895-520)
Publication No. 895520

Editor
Barbara Anderson

Published weekly, except for Christmas and New Years, on Wednesday at Gail, Borden County, Texas 79738, Box 137, Kincaid Street, Second Class postage paid at Gail, Texas.

Any errors that we make reflecting on the reputation or standing of any Firm, Corporation, or individual that may appear in the columns of The Borden Star will be gladly corrected when called to the attention of the staff.

Subscription Rates:
\$8.00 per year

Ad. rate: \$2.00 a column inch
Classified ads: 15 cents a word
Legal Notices: 20 cents a word

Borden Star Owners:
James McLeroy, Barbara Anderson, Doris Rudd, Pat Porter, Bob Dyess, Edna Miller, Ruth Weathers, Mrs. Nathan Zant, Sonny Tucker, Eddie Simer, Loreen Jones, Martin Parks, Dan Turner, Lela Porter, Marge Toombs.

Lady Coyotes Fall To O'Donnell

In what started out to be an ideal night for Borden turned out to be the same story, second verse as O'Donnell's intense pressure defense pulled out a 63-51 victory. Trailing by only one at the end of the first quarter, 10-11, Borden scored successive baskets at the start of the second and held the lead until two minutes remained in the half. At 21-18, O'Donnell scored 10 unanswered points for a 28-21 lead they never relinquished.

Leading scorer for Borden was Kelli Williams with 20 points followed by Kate Phinizy with 11. Lisha Sternadel had 8, Tammy Johnson and Elana Himes each hit 4, and Ralynn Key and Shelly Lewis each made 2. Ralynn and Shelly led in field goal percentage with

100 percent followed by Lisha with 67 percent and Kate with 57 percent. Tammy led in free throw percentage with 2 of 2 for 100 percent followed by Kelli with 6 of 7 for 86 percent and Lisha with 4 of 5 for 80 percent. Kate led in steals with 5 and Kelli led in assists with 6. Elana led in rebounds with 15 and Lisha had 10. As a team Borden hit 44 percent from the floor and 68 percent from the line.

This clinched the District 13A championship for O'Donnell for the third straight year. Borden, which finished second in the first half of district play, still is in the running for the other playoff position. Season record for the Lady Coyotes stands at 20-4 with second half district record at 1-1.

Coyotes Defeat Dragons

The varsity boys basketball team defeated the Dawson Dragons in a non-district clash on Tuesday night. The score was Borden 52 and Dawson 42.

Borden had a balanced offensive attack, with three players scoring in double figures. Shannon Bond scored 17 points, Mickey Burkett added 14 points, while Brian Bond pumped in

12 points. A good pressure defense was, once again, the key to the victory. The Coyotes were able to force 33 turnovers, while committing only 17 miscues themselves.

The victory moved the boys season record to 13 wins versus 9 losses.

Scoring: Bond S. 17, Burkett 14, Bond B. 12, Key 6, Kilmer 2 and Murphy 1.



Security State Bank

1411 Gregg
Big Spring, Texas
Member F.D.I.C.

February 1987						
Sunday	Monday	Tuesday	Wednesday	Thursday	Friday	Saturday
1	2 6:00 p.m. J.H. Basketball Boys & Girls Grady - Here	3 5:00 p.m. H.S. Basketball Boys & Girls O'Donnell - There	4	5	6 5:00 p.m. H.S. Basketball Boys & Girls Grady - Here	7 UIL Literary Meet Plains I.S.D.
8	9 6:00 p.m. J.H. Basketball Boys & Girls Sands - There	10 5:00 p.m. H.S. Basketball Boys & Girls Sands - There	11	12	13	14
15	16	17	18	19	20	21
22	23	24	25	26	27	28
						End of 4th Six Weeks
			<small>JANUARY 1987</small> <small>S M T W T F S</small> <small>1 2 3 4 5 6 7</small> <small>8 9 10 11 12 13 14</small> <small>15 16 17 18 19 20 21</small> <small>22 23 24 25 26 27 28</small> <small>29 30 31</small>		<small>MARCH 1987</small> <small>S M T W T F S</small> <small>1 2 3 4 5 6 7</small> <small>8 9 10 11 12 13 14</small> <small>15 16 17 18 19 20 21</small> <small>22 23 24 25 26 27 28</small> <small>29 30 31</small>	

Junior High Girls End Season With Win

The Borden Junior High girls basketball team ended its season Monday night as they defeated Sands on their home court by a score of 38-26. The game remained close through the first half until Borden dominated the third quarter. Holding a slim 11-10 first quarter lead, Borden trailed the Mustangs much of the second quarter until less than one minute remained in the half. Then Borden's offense came to life as they scored seven unanswered points to hold a 20-15 lead at intermission. Shara Dee Woodward and Amanda Anderson combined for 12 third quarter points as

the defense held Sands to 6 for a 32-21 lead entering the last stanza. Amanda had her best offensive night of the year as she poured in 23 points to lead all scorers. Shara Dee had 6 followed by Kristin Monger with 4, Shayne Hess and A'Lise Lloyd made 2, and Leslie Fryar had 1. This completes the Junior High season with a record of 4-6. They finished third in district behind Grady and O'Donnell. The bright side is that everyone returns next year as this year's team has no eighth graders. Season stats for the year for Junior High will be in next week's paper.

percent and free throw percentage - 44 percent.

The "B" team score was Borden 22 and Sands 11. The B team finished with a record of 2 wins and 4 losses.

Will Prisons Get Teacher's Funds

Austin--A proposal to divert \$83 million in teacher retirement funds to finance prison improvements could cost the state's retired teachers the chance for a much needed increase in pension benefits., officials of the Texas State Teachers Association said Tuesday.

TSTA Executive Director James T. Butler and TRTA Executive Director E. L. Galyean urged lawmakers to oppose legislation that would reduce the state's contribution to the Teacher Retirement System and, instead, use the money to boost monthly retirement benefits for some of the state's oldest retired teachers.

"It is unconscionable that Gov. Bill Clements and the Legislature would try to bail out the state's overcrowded prison system at the expense of elderly retirees who are barely making ends meet," Butler said. "The state has got to stop using the Teacher Retirement System as an

avenue to balance the budget during hard times."

Lawmakers voted to lower the state's contribution to TRS during the 1984-85 biennium. In 1986 they voted to borrow funds from the retirement system to help reduce the state's multi-billion dollar budget deficit.

"We believe it is bad policy to continue to dip into reserve funds dedicated to the welfare of these older teachers," Galyean said. "It's happening every session."

Butler and Galyean said these diversion of funds from TRS could negatively impact the soundness of the system, which has been one of the soundest retirement systems in the country.

A reduction in state contributors would deprive retirees of actuarial gains made because of exceptional investment performance in 1986. Those high investment yields, however, already have begun to decline and cannot be counted on in the future, the officials said.

"The TRS Board of Trustees had adopted a position that these investment gains should be used solely for the benefit of TRS members and we agree," Galyean said. "We believe that money should be put into increased monthly benefits for retirees, especially older retirees, many of whom are subsiding on monthly checks of \$400 to \$500, and are not eligible for Social Security or

Medicare."

TRTA has proposed legislation that would provide benefit increases ranging from 3 percent for the most recent retirees to 15 percent for those who retired prior to Sept. 1, 1966. TSTA also has endorsed improved retirement benefits for the state's teachers.

"It is ironic that Gov. Clements, who supported increased teacher retirement benefits during his first term, would attempt to take money away from teachers to bail out a prison system that is full of school dropouts," Butler said. "If the state put more money into ensuring a quality education for all our children, maybe our prison system would not be bursting at the seams today."

Junior High Boys Clinch District

The Junior High boys basketball team defeated the Sands Mustangs in Monday night cage action. The score was Borden 53 and Sands 32.

The victory moved the Coyotes record to 8 and 2 on the year, and 7 and 1 in district. The 7 and 1 mark was good enough to clinch a Co-District Championship with Grady.

The statistical leaders for the '86-'87 season were as follows:

Scoring: Jimmy Rios, 17.2 ave.; Shane Kemper, 11.4 ave. and Cole Vestal, 4.1 ave.

Rebounding: Jimmy Rios, 7.1 per game, Shane Kemper, 6.5 per game, Cole Vestal, 6.1 per game.

Assists: Eric Lusk, 2.6 per game; Jimmy Rios, 2.1 per game; and Shane Kemper, 1.3 per game.

Overall team statistics were: 40.5 ave. per game, 28.6 rebounds per game, field goal percentage -38

Before you buy a product . . .



- ✓ Read the label
- ✓ Check the package

If *anything* seems wrong, tell the store manager.

✓ When you open it, CHECK IT OUT again. If it looks or smells wrong, take it back.

— A message from this newspaper and the Food and Drug Administration



MEN!
Don't Be
In the Doghouse!



**REMEMBER
VALENTINE'S DAY!**

Saturday, February 14

**Fall Clothing 1/2 Price
Fresh New Spring Clothing**

(It's Closer than You Think!)



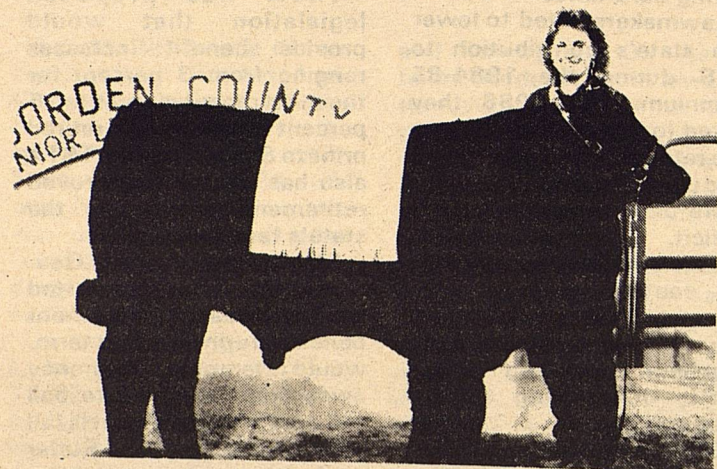
**Snyder
Western Wear** College Heights
Shopping Center

SCHOOL MENU

February 16-19, 1987

Monday	Enchiladas with Chili Vegetable Salad Fruit Hot Bread Milk	Salad Bar
Tuesday	Hamburger Steak with Gravy Mashed Potatoes English Peas Jello Hot Bread Milk	Salad Bar
Wednesday	Meat and Cheese Nachos Mexican Bean Salad Fruit Cake Milk	Salad Bar
Thursday	Hamburgers French Fries Lettuce and Pickles Cookies Milk	Salad Bar
Friday	Holiday - no classes	

OSTEOPOROSIS-CRIPPLER OF WOMEN



KRISTI STONE WAS AWARDED THE BORDEN GRAY SENIOR MEMORIAL PLAQUE DURING THE STEER SHOW LAST WEEK. The Memorial is presented by the Gray Family.

Youngblood Top 6 in Nation

Youngblood Hereford Breeders of Lamesa has ranked 2nd in the state and 6th in the nation, according to a survey including Hereford Breeders in the nation and were broken down in groups from 1-25, 25-50, and 75-100.

Other ranches and their placings are as follows: Lonestar Ranch of Heneretta - 1; OCHS Brothers of Gunnison Colorado, 2nd; CK Ranch of Brookville, Kansas, 3rd; Jamison Herefords of Keunter, Kansas, 4th; Oregon Hermston of Of Oregon, 5th; and Youngblood Herefords of Lamesa, 6th.

This was quite an accomplishment for our neighbors to the West. We congratulate them

EMS News

Donation:
Mr. and Mrs. Ralph Martin

Prayer Corner

HEAVENLY FATHER
We come to you in Jesus name. With grateful hearts, Thanking You for your will and testament that we have in your word, The Bible.

It is our prayer that you will develop in us a hunger for it's teachings, so much so, that we will come to feel YOUR SON, Jesus Christ, in our hearts.

-s- Amen
"All scripture is God breathed, and is useful for teaching, rebuking correcting and training. In righteousness so that the Man of God maybe throughly equipped for every Good Work."

II Tim. 3...16 and 17
-s- a Reader

CLASSIFIED

HELP WANTED

Job Applications are being taken for clerk. Hours will be from 4-8 on weekdays and all day Sunday.

Some experience would be helpful. Must Be Willing To Work. Cash register experience helpful.

Send applications to Box 297, Gail, Texas 79738.

SEALESPERSON WANTED

We need a hard-working person to sell our Goodyear roof products. Write Ed Mahon, Consolidated Companies, 1801 East 9th Street, Cleveland, Ohio 441414.

COSMETICS

Christi Harris Cosmetics - Shirley Kountz - His N Hers Hair Design, 607 N. 4th. Stop and Shop for all your cosmetic needs! THANKS! 872-3471 or 462-7638
MAKE-OVER 1/2 Price in February.

One out of every four American women is now, or will be, a victim of osteoporosis, a disfiguring disease. If you are a fair-skinned woman with ancestors from northern Europe, the British Isles, Japan, or China, you are genetically predisposed to osteoporosis.

Until early adulthood, more bone is built than is absorbed.

But by the mid-30s, both men and women begin to experience a slight and gradual loss of bone mass. After menopause, women lose bone mass much more rapidly--six times more rapidly than men. Then, around age 65, the rate of bone loss slows.

Bone is made up of calcium and phosphorus crystals, imbedded in a matrix of protein fibers. The calcium gives the bone its strength and rigidity, while the protein - collagen, mostly - makes the bone somewhat flexible. Other materials present in bone include fluoride, sodium, potassium, magnesium, and citrate.

These other elements help hold the calcium and phosphorus crystals together.

Bone is living tissue, and is constantly being broken down and reformed, like all tissue in the body. Bone formation is needed for growth, for repair of microscopic fractures that result from everyday stress, and for the replacement of worn-out bone.

It begins with bone breakdown. Bone-absorbing cells called osteoclasts dig cavities in the inner surface of the bone - microscopic cavities. Next, bone-building cells called osteoblasts begin filling in these cavities with new bone cells. These cells begin the bone rebuilding process by first producing the collagen matrix. This is followed by a laying down of the calcium and phosphorus crystals within the matrix-a process called bone mineralization.

Each year, between 10 percent and 30 percent of your entire skeleton is remodeled in this way.

Calcium is essential for muscle contraction, blood

clotting, plus brain and nerve function, as well as being a key ingredient in the bone mineralization process. If you don't get enough calcium, your body is in negative calcium balance. To correct this imbalance, the body's hormones will release calcium from the skeleton into the bloodstream to make calcium available for nerves and muscles. If there is a long-term deficiency, the skeletal storage depot can become depleted of its calcium, leaving porous, brittle, breakable bone-the condition known as osteoporosis.

Although osteoporosis is usually discovered in persons in their sixties, the disease begins between age 30 and 35. The best way to prevent osteoporosis is to build strong bones before age 35, so you can keep a heavy bone mass through your menopausal years and beyond. To prevent osteoporosis or halt its progression, exercise, begin a calcium-rich diet, calcium supplements and in some cases your physician may recommend estrogen replacement therapy.

THANK YOU

To the donors of the David Holmes Memorial Champion Duroc Award:

I thank you for this honor and beautiful plaque. David was my friend and I loved him, so this award is very special to me and I am sure it meant a lot to the Holmes family, too.
-s-Leslie Fryar

UNDERGOING FACELIFT

BIG SPRING LIVESTOCK AUCTION
P.O. BOX 102
BIG SPRING, TEXAS 79720

OWNERS	Donald Airhart-General Manager
Ranell Sherrod	Debra Borchardt-Office Manager
J.E. Airhart	
Gayland Airhart	915 - 267 - 5881
Quinton Airhart	915 - 267 - 3664
Alex Fry	915 - 267 - 3665



Visit Our Deli

Party Trays Pastries Custom Cakes

710 N. 4th Lamesa

Briggs Welding & Muffler Service

267-1488
267-1380
Big Spring, TX 79720

501 N. Birdwell
Across From
Auction Barn

SHERIFF'S NOTICE OF SALE

THE STATE OF TEXAS
COUNTY OF BORDEN

WHEREAS by virtue of Writ of Execution issued out of the District Court of Borden County, Texas, on the 13th day of January 1987, in Cause No. 881, where Quality Truck Tires, Inc. was Plaintiff, and Bill Flint dba Flint Construction was Defendant, on a judgment rendered in said Court against Defendant and in favor of the said Plaintiff, for the sum of Seventeen Thousand Two Hundred Eighty five Dollars, with interest thereon at the rate of Nine (9) per cent per annum, from date of judgment, together with all costs of suit; I did on the 14th day of January, 1987, at 3:00 o'clock P. M., levy upon the following described lots, tracts and parcels of land situated in Borden County, Texas, as the property of Bill Flint dba Flint Construction to-wit:

Lot 1 (one), Lot 2 (two), Lot 3 (three), Lot 4 (four), Lot 5 (five), Lot 6 (six), in Block 97 (ninety seven) Townsite of Gail, Texas Borden County.
Lot 1 (one), Lot 2 (two), Lot 3 (three), Lot 4 (four), Lot 5 (five), Lot 6 (six), Lot 7 (seven), Lot 8 (eight), Lot 9 (nine), Lot 10 (ten), Block 98 (ninety eight), Townsite of Gail, Texas Borden County.
Lot 11 (eleven), Lot 12 (twelve), Lot 17 (seventeen), Block 39 Townsite of Gail, Texas Borden County.
Lot 7 (seven), Lot 8 (eight), Lot 9 (nine), Block 40 Townsite of Gail, Texas Borden County.
Lot 10 (ten), Lot 11 (eleven), Lot 12 (twelve) Block 26 Townsite of Gail, Texas Borden County.

and on the 3rd day of March, 1987, being the first Tuesday of said month, between the hours of 10 o'clock A.M. and 4 o'clock P.M. on said day, at the courthouse door of said County, and I will offer for sale and sell at public auction, for cash to the highest bidder, all the right, title and interest of Bill Flint dba Flint Construction in and to said above described property.

Witness my hand this the 23rd day of January, 1987
Norman Sneed Sheriff,
Borden County, Texas

COUNTY AG-AGENT REPORT

DENNIS POOLE

Plant That Pecan Tree Properly

One of the keys to growing pecans, whether in the backyard or in a commercial orchard, is to plant the trees properly so that they get off to a good start.

Tree planting time is at hand -- January and early February are the best times-- and below are a few guidelines.

To begin, select a tree 4 to 8 feet tall as soon as nurseries get supplies. Plant as soon as possible, using care not to let roots dry out or freeze.

Dig the hole only as large as the tree's root system. If the hole is too deep, the tree will settle and this can cause poor growth or death.

The taproot should sit in the bottom of the hole. If the hole cannot be as deep as the length of the roots, cut back the taproot to fit the hole.

Pack original soil around roots as tightly as possible. Packing the soil in 2 to 3-inch layers is better than watering to pack the soil. Use adjacent soil to complete filling the hole, not light soil, sand or potting soil. The tree can

drown in rainy weather if light fill soil is used on clay land.

Plant the tree at the same depth it grew in the nursery row. Look at the colors to determine the soil line: the bark is gray and the root is dark brown.

Cut off the top half of the tree at planting to balance the stem and roots and to force growth close to the soil line.

Wrap the lower 18 inches of the trunk with aluminum foil to prevent side shoots, sun scald and rabbit damage. On large plantings, use a mixture of white latex paint and pwater (one part paint to three parts water).

Build a basin around the tree to hold water and give each tree five gallons of water immediately after planting. Make sure trees do not go longer than 14 days without water.

These are some basic steps in planting pecan trees that can lead the way in getting them into production in a few years.

Borden County Exhibitors In Ft Worth

Several Borden County youth traveled to Fort Worth last week to compete in the stock show. Every Borden County exhibitor did very well and placings were as follows:

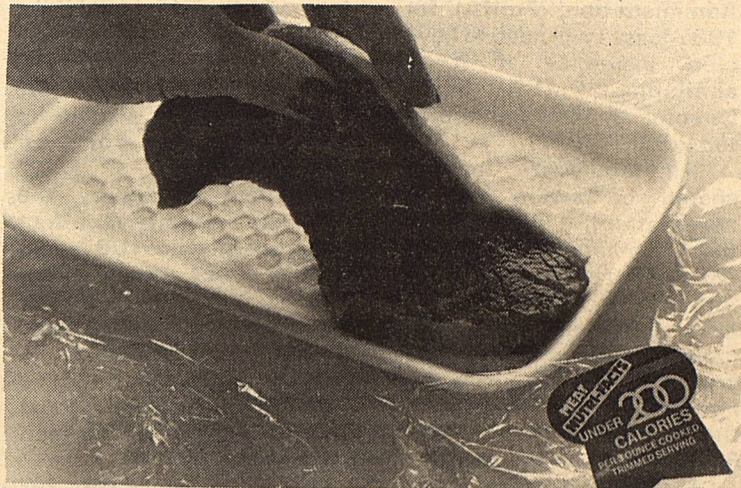
- 3rd Medium Weight American Steer-Kristi Stone
- 7th-Light Weight American Steer-Alise Lloyd
- 8th Medium Weight Angus Steer-Justin Cox
- 10th Light Weight Hereford Steer-Gerry Smith
- 11th Heavy Weight Polled Hereford Steer -Ralynn Key

Also exhibiting steers were M'Lys and D'Lyn Lloyd, Cody Stone, Dana Douglass and did a real good job exhibiting their animals.

Also attending from Borden County were Rex and Teresa Cox, Don Cox, Karen Key, Doug and Donna Nehring, Carolyn Stone, Weldon and Sue Lloyd, Sheri, Kaci and Tanner Poole and Dennis Poole, C.E.A.

Extension Home Economics Report

By: Kandy K. McWhorter



NOT ANOTHER DIET!!!

So you have tried the grapefruit diet, the Scarsdale diet, the low carbohydrate diet, the Beverly Hills diet, not to mention a score of others you can not even remember. And still that bikini is stuffed into the darkest corner of the closet, safely tucked away from painful sight and reminders of diets that promised the moon and delivered the craters.

If gimmick diets have left you irritable and hungry with little or nothing to show for the agony, why not return to the basic equation of weight loss? To lose weight you must lower caloric intake and increase physical activity. It is not glamorous, but it is effective.

The biggest stumbling block to dieters is simple hunger. And it trips up even the most determined dieter at one time or another. But wait! Who says dieters must relegate themselves to dietary boredom and suffer the pains of hunger mere minutes from the table? Why not partake of a little steak and keep the hunger pains at bay for hours rather than moments? Believe it or not, three ounces of broiled,

trimmed top loin contain only 182 calories. And those three ounces of lean meat are stuffed with nutrition like protein, iron, zinc, thiamin, niacin and vitamin B-12.

It is a dieter's paradise and today, it is more convenient than ever before. Beef Nutri-Facts, sponsored by the Beef Industry Council, can be found in almost every retail grocery chain in the nation. Thirty-two different cuts of red meat are conveniently tagged with nutrition and caloric information. Support materials such as low calorie recipes are also available.

The best part is that you do not have to go to Peking to look for an obscure food item or enroll in a culinary college to learn how to prepare it. Just throw it under the broiler and succulent, savory steak is only seconds away from the plate. It is perfect with just a little salt and pepper, if you are cutting down on salt, try a little squeeze of fresh lemon.

Balance out the meal with selected foods from the other three food groups and enjoy! Beef really is good news for people who eat!!!

-AUCTION-

Due to the death of Ed Rinehart, we will sell his farming equipment at auction February 28 at Borden County School Yard. This will be good clean equipment and we will take consignments of trucks, tractors, farming equipment and construction equipment.

To consign equipment call Don Massingill (915) 856 4489 in Gail.

Auctioneers Sales Manager
Plummer Auction Inc.
P. O. Box 926
Henderson, Texas 75652
Lic. TXE-037-0480

WESTERN SEED & DELINTING

Certified Cotton Seed

Paymaster 145, 303, 404, 792
Coker 3131, S110, 500
Terra 383, SR-10, SR-482
SP-21, SR-215, CAMD-E
CAB-CS

COTTON
PLANTING SEED

ACID
DELINTING

Wheat
Grain Sorghum
Hay Grazer

Wheat & Oats Cleaning

LAMESA, TEXAS
RON BUTLER

BUSINESS PHONE
(806) 872-8896
(806) 872-5388

RESIDENCE PHONE
(806) 872-5271

Disaster Loan Recipients should Have Crop Ins.

Farmers seeking disaster emergency loans from the Farmers Home Administration (FmHA) for 1987 losses will need to have crop insurance if it is available, FmHA State Director, J. Lynn Futch said today.

"All family-size farmers should be aware that a newly-effective provision of the 1985 farm bill prohibits our making emergency loans for crop losses that could have been insured under multiple-peril crop insurance programs sponsored by the Federal Crop Insurance Corporation (FCIC)," said Futch.

"Therefore I urge every family-size farmer in the State of Texas to seriously take into account this new relationship between insurance coverage and emergency-loan eligibility."

Federally-subsidized multiple-peril crop insurance is now available for all wheat, corn, barley, grain sorghum, oats, upland cotton and rice, plus an additional 35 specialty crops in most growing areas. The government subsidy reduces the program costs by about 50 percent, Futch said, making crop insurance a worthwhile option to consider regardless of the

newly-required tie-in with emergency loan eligibility.

If a farmer obtains the insurance required, and if the value of his crop loss is still 30 percent or more after the insurance payment, the operation will be eligible for consideration for an emergency loan.

Effective in January, the new requirement will affect crops planted in 1987, and thus will not affect winter wheat or other winter-seeded crops planted in 1986 and harvested in 1987. Insurance must be multiple-peril, covering most forms of disaster, rather than hail-only.

The closing date for insurance sales on spring-planted crops in the State of Texas will vary. Closing date for insurance sales in the coastal and South Texas Areas in February 15th; East Texas and Blackland Areas is March 31st; and the Rolling Plains and High Plains areas is April 15th. Because of these dates and the fact that a prevented-planting endorsement for eligible crops must be elected 45 days prior to sales closing, Futch urged farmers to contact their local insurance agents promptly.

PROSM TEXAS A NEW OPTIONAL CALLING PLAN FROM AT&T

On November 13, 1986 AT&T Communications of The Southwest, Inc. ("AT&T") filed with the Public Utility Commission (PUC) of Texas to introduce a new intrastate, optional calling plan, PRO Texas. A comparable interstate plan, known as PROSM America, is currently available to Texas customers.

PRO Texas gives Texas consumers an opportunity to save money on direct dialed in-state long distance calls. Customers who choose this new AT&T plan will receive a 10% discount on all AT&T intrastate direct dialed station calls by paying a monthly charge of \$15.00.

The PRO Texas discount applies to calls placed during all rate periods and all days. The discount is in addition to the AT&T intrastate evening discount of 25% and the night/weekend discount of 40%. A one time charge of \$6.00 will be billed to initiate the service. However, this charge will be waived during the first 90 days that the offering is available.

PRO Texas will be available to all Message Telephone Service customers in Texas. AT&T estimates that it will generate revenues in the first year of almost \$8 million, which is .7% of AT&T's annual revenues for all Texas intrastate service.

The PUC has assigned Docket No. 7194 to this proposed service offering. The proposed effective date for PRO Texas is March 16, 1987. Persons who wish to intervene or otherwise participate in these proceedings should notify the PUC as soon as possible. A request to intervene, participate, or for further information should be mailed to the Public Utility Commission of Texas, 7800 Shoal Creek Boulevard, Suite 400N, Austin, Texas 78757. Further information also may be obtained by calling the Public Utility Commission Consumer Affairs Division at (512) 458-0223 or (512) 458-0227, or (512) 458-0221 teletypewriter for the deaf.



SMService Mark of AT&T

HAPPY VALENTINES DAY BARBARA

Get Well Soon!!!!

Those who love you

**GOLDEN
CORRAL**

Family Steak House

Snyder

What Makes Golden Corral America's Favorite Steakhouse...

1. U.S.D.A. Choice Aged Beef

Any steak you order at Golden Corral Steak House is aged, U.S.D.A. choice, grain-fed beef. In today's times while so many restaurants are trying to "save money" by switching to lower grades of beef, Golden Corral recognizes you don't save money by cutting corners. We continue to purchase only U.S.D.A. choice beef, and always will.

2. Never Frozen

Aged to our exacting standards, hand cut daily at the restaurant by Buddy Brumit, Jr., U.S.D.A. choice and nothing but. That goes for every steak on our menu - sirloin, filet & ribeye. Chopped sirloin, too!

3. Giant Baked Potatoes

We use only U.S.D.A. No.1 Northwestern Russet potatoes - the biggest we can get! Just ask our customers.

4. Best Salad Bar & Potato Bar Around

We offer a 60 plus item salad bar and a 12 item potato bar stocked with what our customers say is the freshest, biggest and best selection available.

5. Never An Extra Charge For Our Potato Bar With The Purchase Of A Meal Including Baked Potato

6. Free Beverage Refills

At Golden Corral ALL beverages are refilled free with a smile...Just a little extra we provide for our customers.

7. Fast and Friendly Service

Our co-workers are the "cream of the crop" when it comes to service.

If This Didn't Answer All Your Questions, Stop In, Check Us Out, And See What Makes Us America's Favorite Steakhouse.

**VALUABLE
COUPON**

Two 7 oz.
Ribeye Steak
Dinners

Each dinner includes a 7 oz. USDA choice ribeye steak, served with your choice of large stuffed baked potato or french fries and Texas toast. Coupon good for all members of your party. Not valid in conjunction with any other discount offer. Tax payable by bearer. Offer expires Feb. 15, 1987.

Only \$9.99

**VALUABLE
COUPON**

Two Deluxe
Chopped Sirloin
Dinners

Each dinner includes a deluxe chopped sirloin steak, served with your choice of large stuffed baked potato or french fries and Texas toast. Coupon good for all members of your party. Not valid in conjunction with any other discount offer. Tax payable by bearer. Offer expires Feb. 15, 1987.

Only \$5.99

**VALUABLE
COUPON**

Two Chicken
Fried Steak
Dinners

Each dinner includes our delicious chicken-fried steak, served with your choice of large stuffed baked potato or french fries and Texas toast. Coupon good for all members of your party. Not valid in conjunction with any other discount offer. Tax payable by bearer. Offer expires Feb. 15, 1987.

Only \$5.99

ASCS NEWS BY Jerry Stone

FOURTH CRP SIGN-UP

Producers who want to enter their highly erodible land into the 10 year CRP may do so during the program's fourth sign-up period which begins February 9th and continues thru February 27th. You have the option to enter into a CRP contract beginning with either the 1987 or 1988 crop year.

1987 contracts will go into effect the latter of the date your 1986 crop is harvested or the date the County Committee approves your contract. 1988 contracts go into effect the latter of October 1, 1987, the late your 1987 crop is harvested, or the date the Committee approves your contract. Once the contract is accepted, you will not be allowed to graze or harvest any crop from the designated area for 10 years.

Crop bases will be reduced proportionately to amount of cropland entered into contract.

If interested, contact this office for more information.

1987 FARM PROGRAM

Sign-up for the 1987 wheat, cotton, and feed grain program is underway and will continue thru March 30, 1987. Don't wait till the last minute.

1986 FINAL COTTON DEFICIENCY PAYMENTS

Final deficiency payments for 1986 crop cotton will be made around the last of this month. The rate is 26 cents per pound and payment will be made in check less Gramm-Rudman-Hollings.

REPORT OF ASCS EARNINGS

Report of ASCS payments, CCC 182's, have been mailed to all local producers. These reports are to assist you in doing your income tax. The Gramm - Ruddman

-Hollings reduction that was in effect does not show up on these reports. The amount shown is the net amount of all checks and certificates paid to you in the calendar year 1986. If you have any questions about this form or feel it is incorrect, contact this office and we will try to straighten it out.

HAYING AND GRAZING PROVISIONS

For 1987 Conserving Use (CU) acres may be hayed or grazed with no restrictions. ACR (setaside) cannot be baled anytime but may be grazed except for a five month non-grazing period. This period is April 1, through August 31, 1987 in Terry County. If you farm in other counties, please check these dates there since each county can set different dates.

PAYMENT LIMIT DETERMINATIONS

Payment Limitation determinations are made based on conditions in effect March 1, 1987. The basic limitation is \$50,000 per "person". There is an overall limitation of \$250,

PAYMENT LIMIT DETERMINATIONS

Payment Limitation determinations are made based on conditions in effect March 1, 1987. The basic limitation is \$50,000 per "person". There is an overall limitation of \$250,000 per "person" for other program benefits.

HOLIDAY

This office will be closed on Monday, Feb. 16, 1987 in observance of President's Day.

Kanaly on Money

Q. How can I protect my income and my assets if I become disabled?

A. There are only three ways: With insurance; with sufficient assets to generate the cash flow you need to live comfortably; and with a combination of the two.

Disability of the breadwinner can be devastating. The emotional adjustment is difficult at best, even more so if it is accompanied by financial problems. Medical insurance is always a good backstop, but the need for disability coverage will diminish as your assets grow. At some point, your assets may yield enough cash flow without your having to touch the assets themselves. Most employers provide disability income protection. Realizing that living costs are lower at home, employers usually protect only about 50 to 60 percent of your salary with this kind of policy.

Whether you are self employed or employed by someone else, total your fixed and variable expenses separately to see how much reduction in income you can tolerate; then, buy enough additional coverage to make up the difference, if any. Your insurance agent can help you arrange your policy to eliminate further premiums, yet continue in force, while you are disabled. Many people overlook the possibility that they may become incapacitated, not just unable to work. It is wise to give your spouse—or someone else you trust—the authority to conduct your affairs during your disability. This is done by executing durable powers of attorney.

Make sure your agent knows where to locate important documents. Establish a revocable trust to receive assets during your disability. An independent trustee would relieve your spouse of the burden of managing your assets, yet would follow your predetermined instructions to the letter.

E. Deane Kanaly, chairman and CEO of Kanaly Trust Company in Houston, is author of The Kanaly Concept, Keys to Understanding, Accumulating, Preserving and Enjoying Your Money.

NATIONAL ANXIETY REGISTERED HEREFORD SALE

Featuring 40 bulls, mostly coming two year-olds, and 40 females — pairs, bred heifers and open heifers.

Monday, MARCH 2
Snyder Ag Complex
SNYDER, TEXAS

For catalog contact:
LELAND WALLACE
Rt. 2, Box 91, Big Spring, Texas 79720
(915) 399-4370

Branon Funeral Home

Service in this area since 1922.

Phone: 872-8335

403 N. Austin - Lamesa

BOB BROWN MOTORS
202 S. Third
Lamesa, Texas
806 872-2144



Oldmobile - Cadillac
GMC
Buick - Pontiac

Gene Heald
Lyn Ronson
Kelli Merritt

6 Reasons Why NOW is the perfect time to purchase from BOB BROWN MOTORS

6 Reasons Why nwnow is the perfect time to purchase a new vehicle from BOB BROWN MOTORS

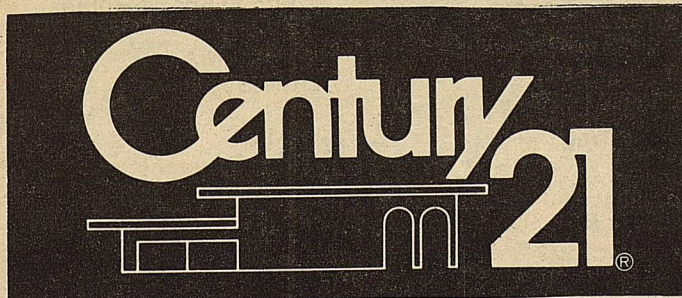
1. Great Selection of 1986 cars and pick-ups -All with year-end discounts - some over \$4,000 below list.
2. When you purchase a 1987 1/2 or 3/4 ton pick-up with 4 speed manual or 4 speed manual overdrive, you receive free air conditioning, tinted glass, cruise and tilt wheel
3. 3.9 Percent APR on two year financing of 1986 and 1987 SIT 15 -pickups and Jimmys.
4. Up to \$1200 cash back on most Buick, Pontiac, and Oldsmobile. (Keep cash or use it on your down payment).
5. GMAC first time new car buyers financing plan.
6. Bob Brown Motors' guarantee of great service after the sale. Se really care about your satisfaction.

Dealer participation may affect final negotiation price of vehicle. Rebate amount determined by dollar amount of factory installed optional equipment.

Mr. Goodwrench



GENERAL MOTORS CORPORATION



ALDRIDGE REALTORS
206 North Austin
Lamesa, Texas 79331-5430
806 872-2545



RESIDENTIAL COMMERCIAL
FARM & RANCH

® and ™—trademarks of Century 21 Real Estate Corporation. Equal Opportunity Employer. EACH OFFICE IS INDEPENDENTLY OWNED AND OPERATED.

THANK YOU

TO ALL THE BUYERS FOR THE BORDEN COUNTY JUNIOR LIVESTOCK SHOW

BORDEN COUNTY

Muleshoe Ranch
Rich Anderson
Everett Land & Cattle
Mr. and Mrs. Billy Wills
Mr. and Mrs. Van York
Mr. and Mrs. Joe Belew
Bill & Mary John Phinizy
Frank Currey
Two Friends
Miller Ranches
Rocker Ranch
Fannie Flint
Mr. and Mrs. V.L. Clark
Dempsey Gin
Mr. and Mrs. V.L. Clark
Dempsey Gin
Mr. and Mrs. V. I. H. N. Zant
Vernon Wolf
Buck Lemons
James & Ann McLeroy
Larry & Wanda Smith
Steve & Pam Hess
Burl Belew

Melba Rinehart
Herman Ledbetter
Mr. & Mrs. Edward Smith
Brent Murphy
Flying D. Ranch
Borden County Spade
Ray Herring
Coyote Country Store
Pat Hensley
E. L. Farmer
Ben & Paula Miller
Ben Jarrett
Mr. & Mrs. Larry Fryar
Tom Ed & Barbara Vestal
T & B Kuntree Shoppe
Mr. & Mrs. Kent Holmes
Kandy McWhorter
Dorothy Browne
Everett Ranch
Williams Systems
Danny Stone
Mr. & Mrs. Guy Zant
Joe Don Zant

SNYDER

Line & Line Oil Co.
Marvin Key
Snyder Savings & Loan
Snyder National Bank
Everybody's Grocery
Key Bros. Implement
Scurry Ag. Center
Bill Burns Oil Co.
Ezell Key Feeds
Kinney Hart
Buddy Skinner
Bruce Kallemeyn
Rex Robinson
Scurry Co. Jr. Livestock Assn
Dr. Charles Church
West Texas Animal Clinic
West Texas State Bank
American State Bank
Craig Merritt
Scurry Co. Rodeo Assn.
Mr. Joe Ellington
Perry's
Travis Flowers
Jack's Roadboring
San Andres Co.
Price Bros. Construction
The Shack
Snyder Farm & Ranch
Marlin Terrell
Stinson Drug
Snootie Fox
Patterson Petroleum
Steve Talbott
Snyder Truck & Tractor
McWhorter's Tire
McCormicks, Inc.
Higginbotham-Bartlett
Bar H Bar Western Wear
Margaret's
Blankenship Packer Service
D & D Auto
McDonald's Welding
Southern Electric
Eddie Petersons Pharmacy
Clark Lumber
Anderson & West
New Car Dealer
Tim Riggins
Koda Kountry
Buchanan Printing
AASA Exterminating

Grimmitt Bros.
Snyder Drug
Sweetwater Production
Credit Assn.
Von Roeder Seed
Snyder Laundry
Bell -Cypert -Seale
Mildred's Dress Shop
Showcase Video
C. R. Anthony's
Haney's Jewelry
Snyder Daily News
Fruid Transport
Lota' Burger
Snyder Insurance
Scurry Abstract
Dryden's Shoes
Snyder Janitorial Supply
Mr. & Mrs. J. R. Meadows
Chiropractic Arts Center
Stuf - n-Such
Clark Propane
Pro Parts
Williamson -Steakley
Insurance
Wayne Moore Exxon
Dr. Bid Cooper
Dr. James Burleson
Kincheloe Livestock Hauling
Treatolite Chemical Co.

VEALMOOR
Williams Oilfield
Construction

DRAW
Paymaster Gin

FORT WORTH
Pritchard & Abbott

TAHOKA
Bryant Seed
Walker-Soloman Ins.
Poka-Lambro
J. A. Pebsworth Ins.
Lyntegar
White Funeral Home

LUTHER
Luther Gin Company

LAMESA

Hughes Plumbing
Tornado Ford
Automated Controls
Bob Brown Olds
Collins
First National Bank
Porter Lumber
Lamesa Savings & Loan
A. G. Waugh
Motor Machine
Britt Trucking
Griffin Farms
N.J.N. Cotton Co.
USA Fertilizer
Grissom Hamps
Barrington Pump
Hughes Fertilizer
Terra Chemical
Vestal Meat
Dean's Farm Store
The Country Store
Gebo's
John Saleh
Goolsby Bros.
Case Power & Equipment
Wilston Newberry
Jones-McCall
Mary Ann's
Layton True Value
Key Caprock Gin
Quinton Airhart
Lasater Pump
Roy Motor
Lamesa Delinting
Sam Stevens
Branon Funeral Home
Federal Land Bank
David Geeslin
Hester Cotton Co.
Lamesa Cotton Oil Mill
Higginbotham-Bartlett
Kid's Shop
Cope Sand & Gravel
K'-Bob's
Tune Electric
Lamesa Printing
B & J Welding
Bray Implement
Nix Implement
McCormick Oil
Claiborne's
Franks Oil
Davis Furniture
Lamesa National Bank
Girbet Spurlock
Bizzell-Stephens-Pinkerton
Daswson Co. Farm Bureau
Western Seed & Delinting
Midway Gin

LUBBOCK
Yellowhouse Equipment
Duncan Press
West Texas Equipment
Brunken Chevrolet
Godbold, Inc.
Pharr RV's

COLORADO CITY
Colorado City Livestock
Auction
Woods Boots

ROBERT LEE
Mr. and Mrs. J. C. Wallace

ROPESVILLE
Big Blue Club Lambs

BIG SPRING

Parks Oil Co.
Security State Bank
E.P. Driver Insurance
Johnny Stanley, DDS
Diamond Seed Delinters
New Car Dealers
McMahon Concrete
Nalley-Pickle-Welch Funeral
Home
Cowper Clinic
Western Hills Animal Clinic
Allstate Insurance
Blum's Jewelers
H.D. Fowler Insurance
Feagins Implement
First National Bank
Weaver & Ferguson
Jan's Grocery
Big Spring Farm Supply
Burleson Machine
Photo Magic
Sherry Wegner Insurance
Fina Oil & Chemical
Pollard Chevrolet
Sidney Clark
Powell Grocery
Hollis & Mildred Puckett
First Federal
Mr. & Mrs. S. C. Rhoton, Jr.
John & Eunice Choate
Caldwell Electric
Clifton & Helen Clanton
D
DGwen Fryar
Dorothy Ragsdale
The Tom Boy
Avant Grocery
G. C. Broughton Implement
Hubbard Packing Co.
Southwestern Crop Ins.
Coop Gins
Delta Commodities
Wards's Western Wear
Big Spring Livestock Auction
Downtown Barber Shop
Loray Jeffercoat
Southwestern A -1 Pest
Control

POST

Weldon's Construction
Bryan Williams Insurance
Higginbotham-Bartlett
Lumber
Victor Ashley
Dr. Charles McCook
Wallace Lumber
Blair Printing
D & W Auto Parts
Well's Pharmacy
Windham Butane
Collier Drug
Edith's
Garza Co. Jr. Livestock Assn.
Jackson Bros. Meat
KPOS
Post Citizens Group
Caprock Texaco
Caprock Liquor
Palmer Well Service
BJB Roustabouts
Mr. and Mrs. Albert Stone
Mr. and Mrs. James Stone
First National Bank

Harris Lumber Co.
Wheat Furniture Co.
Big Spring Video
Grady Walker Gas Co.
Higginbotham-Bartlett
Jabor's Rentals
Walker Tractor Co.
Neal's Pharmacy
Big Spring Tire
Newsom's
T. Marquez Jr. & Sons
Firestone
Wilson Auto Electric
Richards Sporting Goods
Southwest Tool Co.
Champan's Meat Market
Big John's Feedlot
Gregg St. Cleaners
Brown's Shoe Co.
Rockwell Bros.
Terry Carter's Furniture
Medical Arts Clinic
Big Spring Cable
Faye's Flowers
Family Practice Clinic
M. C. Grigsby
Mr. and Mrs. P.E. Moore
Big Spring Health Food
John H. Myers
Shoe String Ranch
Perco Car Care
Skipper Travel
Derrington Auto Parts
State National Bank
Leonard's Pharmacy
Lusk Paint & Frame Center
Ultra Video
John Davis Feed Store
Phillips Tire
Harold Rosson
Highland Bowling Lanes
D. J. Gale Kilgore
Winchester's Steaks &
Seafood
Herman's Restaurant
Pat Walker's Figure Salon
Son-Shine Bible Bookstore

O'DONNELL

O'Donnell Oil & Butane
Billy Harburger
First National Bank
Woolam Gin
Moore Insurance
Farmer's Coop
White Funderal Home

COAHOMA
Little Sooper Market

IDALOU
White Funeral Home

JUSTICEBURG
Fort Justice

MIDLAND
B & L Equipment
Omega Chemical

ACKERLY
Farmer's Coop Gin

SLATON
Dick Davis