

FIRST TWO BALES COTTON GINNED HERE SATURDAY

Despite the inclement weather and retarded crops over the Plains, because of the heavy rains, two bales of cotton were ginned here Friday by the Davanay gin.

The initial bale of the season was brought in by Calvin Patterson, who lives nine miles west of Littlefield. It was a 408 pound bale and was ginned from 1230 pounds of seed cotton.

W. E. Lacey, who resides three miles south-east of Littlefield was the owner of the second bale, which weighed 440 pounds and was ginned from 1520 pounds of seed cotton.

Both bales were bought by R. D. Bourough, paying 20 1-2 cents for the first bale and 23 cents for the second, the price being in line with other markets of this vicinity.

In all probability the cotton yield in this section will exceed any section in the state, with practically no distraction caused by rainfall or insects, and with the enormous acreage the yield promised to be very favorable.

The large fields of cotton taking the place of vast acreage formerly used for grazing contributed greatly to the harvest and even the great bodies of sod land promises to produce an unusual yield, making practically as much cotton to the acre as the old land in previous years, since the beginning of the cotton industry on the Plains.

With the fair weather of the past week cotton is opening rapidly and numbers of farmers are gathering their crop.

It is generally believed that no difficulty will be encountered in securing pickers, as people are steadily drifting in this direction from the drouth stricken sections to take advantage of the opportunity the Plains has to offer.

BUILDS \$10,000 HOME

R. A. Parker has just closed a contract with Mrs. R. A. Threadgill, of Taylor, for the erection of a \$10,000 residence in the Whitharral community, and construction began this week.

Mrs. Threadgill will move into her new home as soon as it is completed.

RADIOLA

Super-Heterodyne



With no antenna—no ground—no connections. And with the tone that is true and clear. A fine musical instrument. And a joy for the "radio bug." Yet simple!

For service—for expert advice—and for payments that suit your conveniences—get your "Super-Het" at

BARRIER BROTHERS Music Department

Lubbock, Texas

MISS NELL RUTH EARNEST,
Littlefield Representative

You Can Get IT HERE

WHAT? Nearly anything you need in the Hardware and Furniture line. We make it a point to keep what the trade demands, and if we do not happen to have it, we can get it for you promptly.

We have cotton Sacks, 7 1-2 feet long, for \$1.75; 9 feet long for \$2.00. Wagon Sheets, plain white, \$10.00; waterproofed, \$12.00. Tents, 10x12, for \$25.00; 12x14, waterproof, \$30.00. "Tector" waterproofing, \$1.75 per half gallon. Knee Pads, \$1.00 per pair.

We have Maize Knives, the best of metal and as keen as a razor.

We have all kinds of Shot Guns, Rifles and Ammunition. We repair all makes of guns and pistols.

See our Family Scales—weigh up to 60 pounds—just the thing for weighing your country produce. We also have the Steelyards for cotton weighing.

See our line of Boys Wagons—various sizes.

We have a nice line of Electric Toasters, Grills, Irons, Percolators, Table Stoves, Bulbs of all sizes, Fuses and Double Sockets.

Just received a nice assortment of Wm. Rogers 1847 and Community Silverware—Buffet sets ranging in price from \$15.00 to \$19.00. We also have all kinds of Steel Cutlery.

Stoves Are Coming

We have a big shipment of Heating Stoves, Ranges and Small Cook Stoves in transit. They will arrive soon, and will be priced right. Don't buy until you see them.

J. W. Robertson

Littlefield, Texas

Miss America for 1933



Miss Pay Lamphier, of Alameda, California, sent by Oakland and as the State's first choice was crowned America's most charming girl at the annual Atlantic City Beauty Show last week. She is nineteen years old—described as an ash blonde. She is 5 ft. 6 inches, weighs 138 and is a stenographer. She helps support her mother and five younger brothers. She studied art and wants to be a cartoonist. "Too busy for love," she says.

FINANCIER COMING HERE

Prominent Fort Worth Citizen To Organize Local Church Finances.

Dr. L. L. Cooper, of Fort Worth, will arrive in Littlefield in the near future to conduct a financial and educational campaign for the Baptist Sunday school.

Dr. Cooper has been very successful in his previous work as director, and holds the distinction of assisting in making the Sunday school class, of the First Baptist church, at Fort Worth, of which Rev. J. Frank Norris is at the head, the largest class in the world. He also placed the large Sunday school class of the First Baptist church, of Houston, on its present basis and comes to Littlefield from the Trinity Street Baptist church of Fort Worth, which also has a large attendance.

PERSONAL ITEMS

K. L. Crosser, of Morton, transacted business in Littlefield Saturday.

Messrs. Stanford, Kay and Homan Arnett attended the fair at Abernathy Saturday.

H. B. Brannen, of Baileyboro, transacted business in Littlefield last Friday.

Charlie Harless spent the first of the week in Fort Worth attending the Fort Worth-Atlanta baseball series.

R. O. Hamil is having a modern residence built in the Whitharral community this week.

Messrs. J. L. and Ira Alsop, of Kopperl, were here the first of the week prospecting.

Mesdames A. C. Chester, N. H. Walden and Miss Catherine Grier made a trip to Lubbock Wednesday.

Mr. and Mrs. A. R. Lee attended church services in Amherst Sunday.

Rev. and Mrs. Payne, of Sudan, were guests of Mr. and Mrs. A. R. Lee Monday.

Miss Dona Harden, of Crosbyton, was the guest of Mr. and Mrs. J. E. Brannen Sunday.

C. O. Stone is having a modern residence built in the east part of town this week.

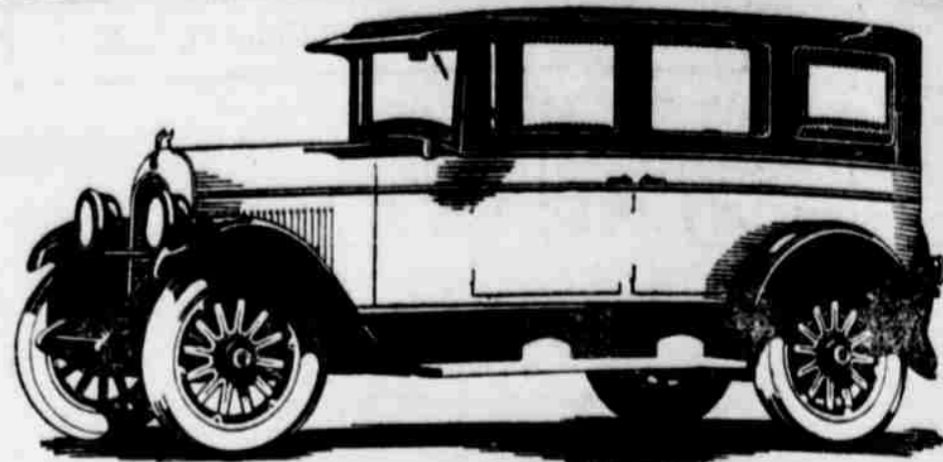
W. E. Ferguson, of Enid, Oklahoma, is here this week making adjustments for local insurance agencies.

J. S. Hillard returned last Friday from Davis, Oklahoma, where he was called on account of the sudden death of his brother, W. B. Hillard, who expired suddenly from complications of kidney and heart trouble. He was

in Littlefield about a month ago. His sudden death was unexpected.

Mrs. C. A. Luck and little daughter, Mary Ada, accompanied by the former's father, C. M. Burton, of

Blum, passed through Littlefield day enroute to Levelland, where will join Mr. Luck, to make the future home there. While here were guests of Mr. and Mrs. Brannen.



CHRYSLER

The Car of Supreme Quality, New Performance Results, Advanced Engineering and Superior Workmanship

For the buyer who wants a four cylinder car the Chrysler "Favored Four" is the best buy on the market today. It is a fine car—fine in principle, materials, standards of manufacture and assembly.

It is built with painstaking care, and to a degree of accuracy and precision, heretofore unknown among cars of its price—in the most modern and scientifically equipped manufacturing plants.

Obviously, when such quality is combined with the unusual roadability which results from Chrysler designed spring suspension and balloon tires; with low center of gravity; pivotal steering and the option of Chrysler hydraulic four-wheel brakes to give utmost safety; and with Fisher bodies for maximum comfort—the result is unapproached motor car value in the thousand dollar class.

For the buyer who wants a six cylinder car, the Chrysler six has no superior. It is the most beautiful car on the market today. It has every accessory desired, every convenience imaginable, every comfort to be considered, which, together with a flexibility of maneuver, quick get-away and exceptional smooth road speed gives it a popularity unprecedented in the history of the automobile world.

CHRYSLER SIX

The Phaeton\$1395
The Coach\$1445
The Roadster\$1625
The Sedan\$1895
The Royal Coupe\$1795
The Brougham\$1995
The Crown-Imperial\$2095

CHRYSLER FOUR

The Touring Car\$ 850
The Club Coupe\$ 995
The Coach\$1045
The Sedan\$1095
Hydraulic 4-wheel brakes at slight extra cost.	
All prices f. o. b. Detroit, subject to current Federal excise tax.	

LET US DEMONSTRATE A CHRYSLER TO YOU!

CLAYBORNE HARVEY, Dealer

Littlefield,

Texas

The Retail Merchants Association

The Retail Merchants Association is a number of men identified with the wholesale and retail interests of this city, who have organized to fight the man who constantly abuses his credit by imposing upon "the faith man has in the integrity of his fellowman."

The Retail Merchants Association was also organized to help the man who not fully aware of the value of credit, is letting himself slowly but surely slip in the bad credit class.

By an injection of honor it is, most time possible to prevent a man from becoming a bad credit risk. That is one object of the Retail Merchants Association.

This association has established a clearing house.

Any time a member of this association can upon a minute's notice learn just what each individual owes to the various merchants of this association.

If the credit a man has at a certain store is abused—if the account is not paid promptly—the association will from this date on report to other members. If a merchant refuses to sell a man on credit, because of a faulty record, that information is also given to every member of the association.

In a "nut shell" the association was formed to prevent the ABUSE OF CREDIT.

The Retail Merchants Association

OVER FIFTY BUSINESS FIRMS IN LITTLEFIELD EXCHANGING CREDIT INFORMATION

—This is the first of a series of advertisements to encourage the prompt payment of bills and stimulate interest in the maintenance of good credit records



We Watch Your Credit Record

NOTICE OF SALE

County of Texas, County of Lamb, Texas, by virtue of an order of the District Court of Lamb County, Texas, on a judgment rendered in said court, on the 11th day of June, A. D. 1925, in favor of J. W. Winfield, against J. W. Winfield, in cause No. 854 on the 11th day of said court for the sum of \$600.00, plus interest at the rate of six per cent per annum, which said judgment was a foreclosure of a vendor's lien on the tract of land hereinafter described, as said vendor's lien was recorded on the 11th day of September, 1922. I did on the 3rd day of October, A. D. 1925, at 6 o'clock p. m., give notice of the following description of land, situated in the County of Lamb, Texas, as the property of J. W. Winfield, to wit: A certain tract of land, the North 1/4 of Block No. Eighteen, (18) Lamb County School Lands, situated in the County of Lamb and State of Texas, as shown by the plat of divisions of said land, recorded in Volume No. 3, page 380 et seq. of the Records of Lamb County, Texas, and on the 6th day of October, 1925 being the first Tuesday of the month, between the hours of 10 o'clock a. m. and four o'clock p. m., at the court house of said County of Lamb, in Texas, I will offer for sale and public auction, for cash, all the title and interest of the said J. W. Winfield, as it existed on the 11th day of September, A. D. 1922, to said J. W. Winfield, at Otton, Texas, this the 3rd day of October, A. D. 1925.
LEN IRVIN,
Sheriff, Lamb County, Texas
A. D. 17, 24, Oct 1.

Blackwater Draw

This community was visited by another rain this week. The farmers are needing some dry weather for gathering crops.
H. W. Qualls and family have returned from a two weeks visit to relatives and friends at Rochester. He says Lamb county looks good to him.
Mrs. Munk Singer is in a Lubbock sanitarium this week undergoing an operation. It is sincerely hoped her recovery will be rapid.
King Chaney is building a new house on his farm.
Miss Lola Willis visited her sister, Mrs. Blair, of Amherst last week.

CARD OF THANKS

We wish to thank our friends and neighbors of Littlefield for their aid and kindness during the illness of our son, George Clarence. Words cannot express our sincere thanks.
24-1tp Mr. and Mrs. L. A. McIntire.

ONE ON VAN

Sheriff Len Irvin was kept busy several hours Monday night in an effort to locate the missing Ford coupe, owned by C. E. Ellis. After word had been circulated B. A. Vann discovered he had mistakenly taken the Ellis car instead of his own which was parked nearby.

JERSEY CATTLE FOR SALE

We have more than one hundred head to select from. All young and well bred. Some registered cows. We will trade for your fat cattle. Don't do without a good cow—we have them for sale at all times.
24-tfc Mid Seale Jersey Cattle Co.
Help keep Littlefield clean!

METHODIST MISSION MEET

Budding Poets Will Describe Arduous Labor For Church.

Mesdames Burns, Barton, Gillette and Grier will be joint hostesses to the Methodist Missionary Society next Monday afternoon at 3:30 o'clock, at the home of Mrs. O. F. Grier in the Southmoore addition.
Each lady of the society has taken it upon herself to earn a dollar for the local work at this meeting. She will tell in rhyme how she made it.
Every member of the society is urgently requested to be present.
—Reporter.

THE TEN COMMANDMENTS OF THE MAIL ORDER HOUSE

1. You shall sell your farm produce for cash, where you can for we buy nothing from you.
2. You shall believe in us, and best because we do not know you personally.
3. You shall send your money to us in advance, so we can buy the goods from the factory with your money; you may have to wait a few weeks, but that is our method.
4. You shall get help from your nearest city or village to build good roads, so you may easily haul our goods from the depot, but do not ask help from us—we don't help to build good roads.
5. You may buy church bells and altar utensils from us, and send the money in advance—that's our rule.
6. You shall get all the help you can from the business men in your neighborhood; although we may have more profit from you than we have, it is against our rules to give to your churches.
7. You shall convert your neighbors also to your faith in us, for we have room for more money.
8. You shall look at the pretty pictures in your catalogue as often as you can, so as to strengthen your desire for things you do not need, but which you may order with other goods to save freight. Send us all your ready cash so that you may not have any left to buy necessities from your home dealers.
9. You shall believe us rather than your home merchant for we want your trade. We get to be millionaires on your support. Don't be bluffed.
10. You shall call on the business people of your own vicinity for help and credit if you meet with hard luck and sickness. It's your money we want; we don't know you unless your orders are accompanied by cash.—

AT THE CHURCHES

METHODIST SERVICES
Sunday school, 10:00 a. m.
Preaching, 11:00 a. m., and 7:30 p. m.
Epworth League, 6:30 p. m.
Prayer meeting and choir practice, Wednesday evening, 7:30 p. m.
—Silas Dixon, Pastor.

PRESBYTERIAN SERVICES
The First Presbyterian church, the "home folks church," extends a cordial welcome to all worshipping Christians to come and worship with us.
Sunday school, 10:00 a. m.
Morning worship, 11:00 a. m.
Evening worship, 8:00 p. m.
H. J. JORDAN, Pastor.

BAPTIST SERVICES
Sunday school at 9:45 a. m.
Preaching at 11:00 and 8:30 p. m.
B. Y. P. U., at 6:30 p. m.
Prayer meeting, Thursday, 8:30 p. m., followed by a business meeting. Please be on time.
W. M. U. meets Tuesday at 3:00 p. m.

CHURCH OF CHRIST
Bible Study every Lord's Day, beginning at ten o'clock. Preaching services upon announcement until regular pastor is secured.

LUTHERAN SERVICES
English service every 1st and 3rd Sunday evening at 7:30 o'clock.
German service every 1st, 3rd and 5th Sunday at 10:30 o'clock.
A hearty welcome is extended to all.
C. Scheidter, Pastor.

Church of Christ
Cor. 9th & Park Ave.
Preaching at 11:00 A. M. on every Lord's day. Everybody invited.

Whitharral.
Sunday school each Sunday. Everybody invited to attend and take part. Preaching twice each month, at 3:00 p. m. Rev. W. B. Phipps will preach every fourth Sunday and Rev. Silas Dixon every second Sunday at this hour. Everyone invited to attend these services.

Progressive Christian Church
Meets every Sunday morning at 10:00 o'clock in the Grammar school building for Bible study.

COTTON CONTEST RULES

Dallas News Makes Additional Requirements on Acreage.

Information has been received from Victor H. Schoffelmeyer, agricultural editor of the Dallas News, and editor of the Cotton Contest, as follows:
"In order to safeguard the claims made by entrants in the cotton contest, we are asking each entrant to keep six average stalks of cotton from his five acres, and to leave the entire five acres intact after it has been picked; to allow no stock to graze on it; nor to plow up the stalks, so that in case of dispute a field inspection of the burr on the stalks can be made.
"The weights of both seed and lint cotton of each contestant are to be supported by the ginner's affidavit."

NOTICE TO FARMERS

Our gin is in readiness and we are now open for business.
24-ltc. ADAMS-BIGHAM GIN.

FIGURE THIS OUT

"I was early of late, behind before and now I am first at last."

ITCH!
Money back without question if HUNT'S GUARANTEED SKIN DISEASE REMEDIES (Hunt's Salve and Soap), fail in the treatment of Itch, Eczema, Ringworm, Tetter or other itching skin diseases. Try this treatment at our risk.
SADLER DRUG STORE
Littlefield, Texas

BLUE MONDAY!

—Don't dread wash day any longer, but send us your laundry. We'll do it like it is done at home, and we never lose a piece. Special pains taken with fine linen goods. PHONE 150
AND WE'LL DO THE REST.

CITY LAUNDRY

HOUSE MOVING

—AND—
HEAVY HAULING
Nothing Too Big Nor Too Heavy
Prices Reasonable
A. M. DUNAGIN

AMALIE OIL
Dispensed from the original containers and plainly stencilled
100 Per Cent Pure Pennsylvania Oil
Certainly is a more dependable purchase than oil that bears no label or stencil showing the quality of the crude oil from which it is made.
TEXHOMA OIL & REFINING CO.
L. R. CROCKETT, Agent
Littlefield, Texas

Wanted
To lease some sod land broken this summer to plant wheat on. Will turn land back to owner as soon as wheat is threshed.
P. W. Walker
Grain and Seed Co.
Littlefield, Texas

Professional Cards :-:

P. O. Box 2113
JOE SEALE
—AUCTIONEER—
Specialize on Farm and Stock Sales.
LUBBOCK, TEXAS

T. WADE POTTER
Attorney at Law
Office in the new Hopping Building.
Littlefield, Texas

B. B. LILES
Physician & Surgeon
State Bank Building
Office in Littlefield
Phone 147

E. S. ROWE
Attorney
General Practice In All Courts
Office in Thompson Land Co. Building.
Littlefield, Texas

R. R. H. PERKINS
—DENTIST—
Attention given to treatment of Pyorrhea and Extractions, using Block anesthesia in new Duggan Building.

E. A. BILLS
Attorney and Counselor at Law
Littlefield, Texas
Office with Green Line Land Company, Across Street From Post Office
General Practice in all Courts. Special Attention given to Land Titles.

(BERT) DRYDEN
Attorney
Sudan, Texas

J. D. SIMPSON
PHYSICIAN
Simpson Sanitarium
Phone 131
Littlefield - - - Texas

W. H. Harris
Physician & Surgeon
Office at
ADAMS-BIGHAM'S DRUG STORE
Phone 49, Littlefield

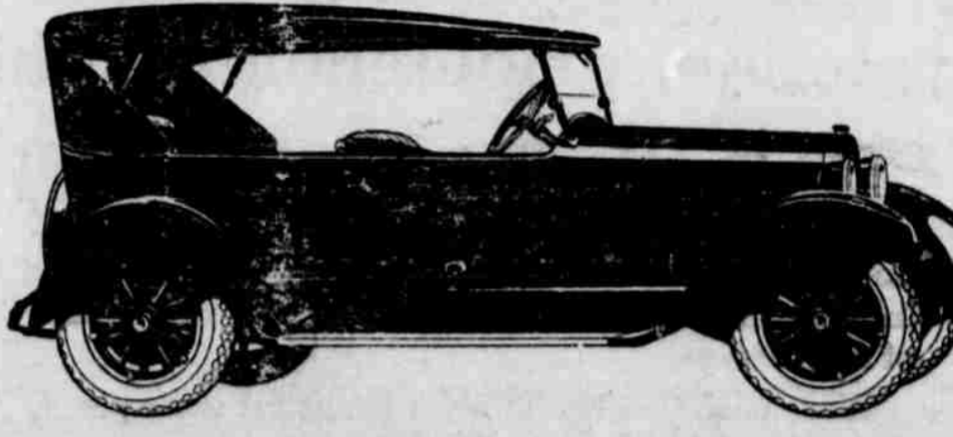
C. C. CLEMENTS
Dentist
Office in Littlefield State Bank Building.

W. H. WOOD
Attorney at Law
General Practice
Amherst, Texas

Arthur Mueller
Representing
SOUTHWESTERN LIFE INSURANCE COMPANY OF DALLAS
Office: Room 8, Duggan Bldg. Littlefield, Texas

D. L. LOVLACE
Teacher of Piano
Studio at
Grammar School Bldg.

DR. THOMAS D. COX
Registered Optometrist
Exclusive Optical Office
Balcony Shepherd Smith Drug Co. 918 Main St. Lubbock, Texas
Office With Dr. C. C. Clements Littlefield State Bank Bldg.

Dodge Brothers Car

The purchase of an automobile is a serious and important business. The time has passed when transient novelties can lead a thoughtful buyer to overlook the great essentials of motor car worth.
Dodge Brothers car possesses all the qualities required in a car—Appearance, Power, Comfort, Durability—the rock-bottom essentials necessary for perfect satisfaction to the car owner.
Dodge Brothers have been building automobiles for eleven years—90 per cent of which are still in service today. This is indeed a high tribute to the value of the Dodge car.
Let Us Give You a Demonstration!
Smith and Roberts
Garage
Littlefield, Texas

writing to use phone—"Say, been in that booth twenty minutes haven't said a word!" "Wait just a little while long—talking to my wife!"



HOME DAIRY
Sanitary and Wholesome Products
Popular Prices
Service our Specialty
Help Us By Setting Out Your Empty Cans.
B. Moulton, Prop.
East of Littlefield

GO TO—
LITTLEFIELD WRECKING CO.
—for—
USED CAR PARTS
Nearly All Makes of Cars
Any Parts Good as New
East of East Side of Town

STAR CAFE
Meals and Short Orders
Service You Will Always Appreciate
M. Maude Foster
Proprietor

Some Killed Meats Range Raised
THE STAR CASH MARKET
FRED HOOVER, Proprietor
Where Quality Tells and Price Sells
Littlefield, Texas

Grandma Walked

Consider your life with Grandma's as to ease, comfort and convenience. The urgent need of even a yard or two of calico entailed no end of trouble for her—whereas—you today—with a telephone in your home have available the greatest step-saver ever perfected by man.

Running a home—or a business—should be done in the most efficient and labor-saving manner. The telephone is essential. Either in the home or place of business you are cheating yourself if you fail to take advantage of the efficient methods a telephone makes possible. The cost is so small that it cannot be considered a luxury.

Panhandle Telephone System
Littlefield, Amherst, Sudan

NO MARRIAGE—NO CAREER

Miss Fay Lanipher, young California girl, who "easily and naturally" won the beauty crown of "Miss America" says, "Marriage won't interfere with my career." Of course not. The real business of human beings on this earth is to make it a little better while they are here, and hand on what ability they have to future generations, that they also may work.

Good qualities, as heredity proves, are handed on by women. And the woman whose programme does not include marriage can't possibly have a complete career, no matter what the feminists may say. In a chain, the link that breaks is not the successful link.

THE TRUTH—NOTHING BUT

Mandy:—"Is that Rastus Brown fast?"
Lindy:—"Nothing but his color."

A SPLENDID FEELING

That tired, half-sick, discouraged feeling caused by a torpid liver and constipated bowels can be gotten rid of with surprising promptness by using *Herbine*. You feel its beneficial effect with the first dose as its purifying and regulating effect is thorough and complete. It not only drives out bile and impurities but it imparts a splendid feeling of exhilaration, strength, vim, and buoyancy of spirit. Price 60c. Sold by

STOKES & ALEXANDER DRUG CO.

**FRESH BREAD
HOT ROLLS
AND PIES**

Whole Wheat Bread
Every Thursday.

**The Littlefield
BAKERY**

Have Vegetables in Winter by Storing

Possible to Keep All Roots in Fresh Condition.

Few people realize the number of vegetables that may be kept in the fresh state for winter use.

The essential conditions for the storage of all root crops including such vegetables as potatoes, beets, carrots, horse radish, parsnip, winter radish rutabaga, squash, turnip, kohlrabi and also cabbage, are that they be kept cool and moist, away from air currents. Storing should be done as late as possible, avoiding freezing.

These conditions may be met in several ways. The simplest for home use where only a few of each are to be stored, is to place them in a box of moist sand or soil in layers and leave in a cool part of the cellar.

Where larger quantities are to be kept, they may be put in what is known as an out-of-door pit. Only whole specimens free from disease should be used. The method is as follows: The vegetables are placed in a conical pile on the surface of the ground in a well drained location. A covering of six to eight inches of straw or litter is then placed over them, and a covering of as much soil, commencing at the bottom and working toward the top. In severe climates a later covering of manure may be necessary as soon as the soil freezes. In this way, vegetables may be kept in perfect condition until well along in the spring.—J. J. Gardner, Colorado Agricultural College, Fort Collins, Colorado.

Fall Plowing Best Plan for Eradicating Garlic

That the fall plowing or cultivation method of destroying wild garlic is successful in practically all cases in which the work is carefully done, was further indicated by a recent check-up among farmers who have practiced this method in Knox county, Indiana, according to a statement recently issued by A. A. Hansen of the Purdue university agricultural extension staff.

J. B. McCarty started the method three years ago on a 22-acre field heavily infested with garlic. In spite of the fact that the work was seriously interrupted one season on account of weather conditions, most of the garlic has been eradicated. McCarty plowed the infested field during the fall of 1921, plowing again the following spring. This was followed by corn and the fall plowing was continued during 1922. At present the field is in soy beans.

Nolan McClure succeeded in eradicating a bad stand of garlic by two years of fall and spring plowing, using cowpeas during the summer and rye in the fall. His results were exceptional since at least three years are usually required to destroy wild garlic by this method. The cultivation method consists essentially of fall plowing during November in such a manner as to turn the garlic plants completely upside down, followed by spring plowing and a cultivated crop such as corn, cowpeas, or soy beans, either in rows or broadcasted.

Feed Liberally to Get Profitable Flow of Milk

"Liberal feeding must be practiced if profit is expected from dairy cows," says R. W. Clark of the Colorado Agricultural college. "A large portion (50 to 75 per cent) of the food given a cow is required for maintenance, the remainder being required for the manufacture of milk. With a scant feeding, the whole amount given may be used for maintenance, leaving nothing for milk production.

"In feeding for large returns, a variety of foods gives better results than a single diet. Such a ration is better digested, relished longer, and is more likely to meet all the requirements of the body. Large consumption of food is important and this will be accomplished with a mixed diet. If certain needs of the body are not supplied, the animals will develop a depraved appetite, leading them to eat bones, leather, paper and similar materials to satisfy the craving which arises because the ration is lacking in some particular nutrient."

FARM NOTES

Poultry records pay. So do dairy records.

Keep watch of your bees to prevent robbing.

Save good small grain seed for fall planting and store carefully.

Oyster shell is good, but it won't take the place of grit for hens.

Harvest lima beans as fast as they mature and save for winter use.

Do not cut corn roots; cultivate shallow, and one middle at the time.

Cows cannot give powdered milk; better let them have plenty of water.

Dust for Mexican bean beetle where it is injurious—calcium arsenate one pound, hydrated lime nine pounds.

A persistently broody hen ought to mean a culled hen—unless you like to feed boarders that don't pay their board. "Loafers" is a better term.

Paris Suits Reveal Chic Elaboration

The French, with their talent for ingenuity, find opportunity for exercising it in all the modes for fall. Here is a formal two-piece suit of smooth-faced cloth, embellished with embroidery and fur. Its outstanding features are the huge collar and the short coat length that distinguish the design; in these particulars it is exceptional.

LUM'S CHAPEL

Health in our community is fine at this writing.

Bruce Wren, wife and children are visiting relatives and friends at Brady.

Several are breaking sod, getting ready for a crop next year.

The Misses Ramseys and brother, Addie, were guests in the Pierce home Sunday.

Mrs. Fred Newsom and children are visiting her parents in east Texas.

Several from here attended church at Littlefield Sunday.

Rev. Hendricks has been helping in a meeting at Whitharrell the past week.

Bill Tyroan, who has been visiting his parents, has returned to his home at Sweetwater.

The Bryant Brothers and others went to Sudan to the Singing Convention Sunday.

All the children are smiling again, as most of them are in school. Some going to Littlefield and some Whitharrell.

John Munn of Cisco, is visiting his brother, Pat Munn.

We have Sunday School every Sunday morning. B. Y. P. U. Sunday night and singing every other Sunday.

Rev. Dickson, of Amherst, preaches every first Sunday. Everyone is invited to attend.

Mr. Humphries' s having a nice new house built.

OH VERY WELL

First Young Business Gent.—"By the way, Harry, where do you buy your typewriter ribbons?"

Second Y. B. M.:—"Oh, Calvin, I don't—and besides—I am married now."

THERE IS NO QUESTION

—The well dressed man is he in the well pressed clothes—and regularly cleaned and pressed clothes wear longer—more than paying the difference of the cost of the valet service we offer.

—Clothes-care is our specialty—whether ladies or gents. Let us call for yours.

—Our new samples of Fall and Winter Suitings are now here—they are beauties—come examine them.

CITY TAILORS
J. H. POPE, Prop.
Phone 48 Use It

O. K. Transfer
SMALL OR BIG HAULS
EXPRESS, FREIGHT OR BAGGAGE
Phone 22, or Leave Order with Butler Lumber Co.
O. K. Yantis
Littlefield, Texas

DEERING—THE STANDARD TWINE FOR ONE-HALF CENTURY

The outside cover of the ball is specially trussed to guard against tangling, thereby insuring you the use of every foot of the twine.

For Sale By
Blair Implement Co.
Littlefield, Texas

DRINK

NuGrape

Reg. U S Pat Off
IMITATION GRAPE—NOT GRAPE JUICE

Favorite Beverage

—of—
West Texas

For sale at all Soda Fountains, Restaurants
Cold Drink Stands
Once You Try It You'll Always Like It

Nu Grape Bottling Co
Allen Building Littlefield, Texas

Make This Bank YOUR BANK

—The better the opportunity is that comes to you, the more inquisitive it usually is about your bank account. Plan to have more money in the bank for your own needs this year. We are here to help you prosper.

The Littlefield State Bank
LITTLEFIELD, TEXAS

**French Blouses Follow
New Fall Style Points**



Fashion's edict for long sleeves, higher neck lines and flaring lines, are all evidenced in this blouse of black panne velvet, with emplacements of green and white flannel overlaid with black soutache braid. It is one of those pretty affairs to be worn in afternoon or evening with a black satin skirt. For those who cannot wear the very high collar, there are other pretty neck treatments.

WEST TEXAS NEWS

San Saba.—Election to confirm the organization of San Saba Irrigation district carried in all precincts. U. S. Hydraulic Survey has already completed its work and reports ample water can be economically stored to irrigate fifty thousand acres. The election culminates a thirty five year fight for organization of irrigation district.

Stamford.—Stamford Inn, one of the finest fireproof hostleries in West Texas has been completed and opened for business.

Miami.—The first bale of cotton ever marketed in Miami was ginned and sold here. On October 9 this city will hold a big celebration com-

memorating the completion of the first gin ever to operate here.

El Paso.—H. P. Hadfield of this city was re-elected president of the Texas Association of Real Estate Board at the Galveston meeting. Wichita Falls will have the next meeting of the association.

Colorado.—Bonds have been sold for Colorado's \$30,000 City Hall. Plans are already complete for the new structure and the contract will be let at once. The new building will be two stories and will be modern. The bonds brought a premium of \$651.50 which speaks well for Colorado's financial integrity.

Dimmit.—The first cement sidewalks have been laid in this city. It is planned to push a campaign of sidewalk construction for the town.

Hereford.—Construction of a new \$50,000 ice plant has been started here by the West Texas Utilities Co. A celebration was held in honor of the event. Mayor Ireland pressed the button starting the construction machinery and a large gathering of citizens were present.

Childress.—Plans are complete for

the new \$150,000 depot for Denver road here. In addition to providing accommodations for the traveling public the building will contain rooms for the division offices.

The collapse of the evolution trial may have been a sad disappointment to the monkey tribe and it may have not. For ought we know the monkeys may feel as much ashamed of the folks who hang from a tree by their neck as the folks do of the monkeys who hang from a tree by their tail.

It's an ideal marriage if she can read the love letters he sent her ten years before without him wanting to go out and get gloriously drunk. Some of those who were at the head of their class in college wear a dunce cap in the school of experience.

YE BO

Cynic—"The modern flapper's clothes remind me a great deal of the Liberty Loan speeches."
Fallguy—"How so?"
Cynic—"Just long enough to cover the subject and short enough to be interesting."

Buy it in Littlefield!

PREVENTS INFECTION

The greatest discovery in flesh healing is the marvelous Borozone, a preparation that comes in liquid and powder form. It is a combination treatment that not only purifies the wound of germs that cause infection but it heals the flesh with extraordinary speed. Bad wounds or cuts which take weeks to heal under ordinary liniments mend quickly under the powerful influence of this wonderful remedy. Price (liquid) 30c, 60c and \$1.20. Powder 30c and 60c. Sold by Stokes & Alexander Drug Company

Daugherty's Business College

Abilene & Wichita Falls, Texas
A Good Position—a big salary is what counts on the road to success. We quickly train you for a good position in a bank, wholesale house, mercantile establishment, and the like and secure position for you. Coupon will bring SPECIAL information. Mail it today.
Name Address

ATTENTION

Oliver and Moline Implements

and Springfield Wagons.
Full Line of Both Makes also Good Line Oliver Repairs
SEE US BEFORE BUYING

Duncan & Pennington

Near Davanay Gin
Littlefield
We Carry Massy-Harris Row Binders

THE LEADER, YOUR HOME PAPER \$1.50

Chili King Cafe

Where Everybody Eats
Try Our Plate Lunches
You Will Like Them
We sell CHILI, the best
V. A. VALLES, Prop

QUESTIONS AND ANSWERS ABOUT THE BLEDSOE DISTRICT BY THE WHICKER LAND CO

- Where is the Bledsoe district?**
The Bledsoe district embraces a large area of good agricultural cat-claw land located in the central west portion of Cochran County.
- Where is Bledsoe?**
Bledsoe is the terminus of the Santa Fe Railroad running west from Lubbock. It is a beautiful town site and is from ¼ to 7 miles distant from the Whicker Land Co., holdings.
- What is the nature of the soil?**
The soil is very rich. It is from 3 to 6 feet deep, and varies from a chocolate color to a red sandy loam with a clay subsoil. There is just enough sand in the loam to scour a plow. There are absolutely no rocks or gravel.
- What is the altitude of the Bledsoe district?**
It averages about 3300 feet above sea level.
- Is it hot there in summer?**
No. According to Government statistics the AVERAGE TEMPERATURE through a period of ten years for June is 72 degrees; July 79.1 degrees; August 76.4 degrees. There is no humidity and the sensible temperature is less than the thermometer indicates. In this thin atmosphere the summer nights are always cool and invigorating, cover being necessary for comfortable sleeping.
- Are your winters long or severe?**
For this altitude the winters are exceptionally short. They may be considered mild, since a winter seldom contains more than 48 hours altogether, of weather as cold as 10 degrees above zero. The thermometer rarely reaches zero, and then only for a few hours. There is occasionally some snow, but it has never covered the ground more than a day or so that stock could not graze.
- What is the length of your growing season?**
Six to eight months.
- Is your section generally healthful?**
Remarkably so. But few sections of the country have as low a death rate. The sanitary conditions are such that there is practically no danger of any epidemic.
- Do you have malaria, tuberculosis or asthma?**
The only cases are those which have come here from some other locality to be cured, and they are usually successful.
- Do you ever have cyclones in the Bledsoe district?**
Not within the memory of the oldest inhabitants.
- What are the disadvantages of this country, if any?**
The only one that could be found is perhaps 10 to 15 windy days in February, March and April, when the wind blows sufficiently hard to make it disagreeable to work in the fields. With over 325 sunny days every year this small discomfort amounts to nothing.
- What is your rainfall, and when does it come?**
Twenty-two inches per annum for a period of the last 25 years. Most of the rain comes between April and October, during the growing season.
- What is the depth of your water?**
One hundred and fifty to two hundred and forty feet.
- Is there any alkali in the soil or water?**
None.
- Have you good drinking water?**
The water both from the shallow wells operated by windmills and the deeper wells is approximately 90 per cent pure. It is soft, cold and practically the same as rain-water.
- Can fruit be raised on your land, and what varieties?**
This section is ideal for fruit growing. Practically all the leading commercial varieties of apples, peaches, plums, pears, pecans, cherries, berries, grapes, prunes and apricots flourish here.
- Do vegetables do well there, and if so, what kinds?**
Experienced truck growers get almost incredible yields from such crops as strawberries, cantaloupes, water-melons, pumpkins, asparagus, beans, peas, cabbage, sweet and Irish potatoes, beets, parsnips, carrots, turnips, onions, tomatoes, celery, pepper, cauliflower, artichoke, rhubarb, cucumbers, eggplant, radishes, kale, lettuce,

- Do you grow any corn or cotton?**
Both make very satisfactory yields. Indian corn has averaged 40 to 75 bushels per acre—1 to 1½ tons of maize or kaffir are not uncommon. Especially adapted to cotton growing and wonderful possibilities for this crop. Owner of this land will make affidavit to the fact that there has not been a crop failure on his farm of 250 acres for the past TEN years.
- Have you a successful stock raising country?**
This section has always been famous in that respect. Feed is plentiful, horses, mules, cattle, hogs and sheep are extremely healthy, and they neither suffer from heat in summer nor do they have to be housed during our mild winter months. Every well-rounded farm contains sufficient live stock to consume the surplus and waste from truck, fruit and general farm crops.
- Do hogs have cholera in the Bledsoe district?**
No case has ever been known here. Should infected hogs occasionally get through Texas' strict quarantine laws, the disease can easily be stamped out, as the health conditions are as near perfect as possible.
- Have you the dairy cow in your country?**
Within the past few years large numbers of fine dairy cows have been imported, and dairying is becoming one of our most important industries. Tuberculosis never bothers the herds.
- Does poultry do well in the Bledsoe district?**
This is one of the most profitable poultry raising sections of the United States. Poultry is practically free from disease, and all varieties of fowls thrive here.
- Have you good railroad and marketing facilities?**
The best there is, as we are on the Santa Fe Railroad.
- What is the nature of the country roads?**
The Bledsoe district has the best natural roads in the United States. They are kept in perfect condition by the county.
- How are your farms located with reference to railroads?**
Every farm offered for sale by the Whicker Land Company, is situated from ¼ to 7 miles from the railroad depot.
- How about rural schools and churches?**
The township of Bledsoe is donating land for the purpose of churches and independent schools. Both will be developed to the high standards of Texas people.
- Are your lands increasing in value?**
At the present rate of increase, land here should double in price in less than 5 years.
- What are some of the popular varieties of shade trees?**
Locust, maple, elm, walnut, cottonwood, poplar and cedar.
- How is this land divided?**
Surveyed in tracts of 128 acres each. One to four tracts make a fine farm.
- What are the prices and terms?**
\$30.00 to \$35.00 per acre. Some few pieces at \$25.00. Cash payment \$10.50 per acre. Balance of consideration divided into 14 equal notes. First note due two years after cash payment, and one note due each year for 13 more years. Each note due December 1st, at 6 per cent interest, on or before. This gives a chance for TWO crops before a payment is due. Cheaper than rent.
- Can a man pay in full for his farm at any time?**
Yes. All notes are payable "on or before."
- Are there any livery charges while inspecting your lands?**
No, we have a number of good automobiles free for your service, and will be glad to meet you at the train if you will notify us as to the date of your arrival. We raise more cattle, sheep, hogs and poultry at less expense than any state. Texas land never decreases in price. Why not get the increase which is sure to come soon.

"NO MINERAL OR OIL RIGHTS RESERVED"

WHICKER LAND COMPANY

Home Office—Littlefield Hotel, Littlefield, Texas
Land Office—Bledsoe, Texas

"There is But One Crop Of Land—There Will Never Be Another"

MARLIN HOT WELLS

WHERE LIFE GIVING WATERS FLOW
Come to Marlin, the year-round health resort, for rheumatism, neuritis, stomach trouble and all chronic diseases. Modern up-to-date hotels, clinics and bath houses. Golfing and dancing. Ask your neighbor who has been here or write.
THE MARLIN CHAMBER OF COMMERCE
MARLIN, TEXAS

GATES TIRES



The place to buy them
CITY GARAGE
LITTLEFIELD, TEXAS

FURNITURE

Everything for the New Settler
We specialize in furniture needs for the folks just moving into this new country. At our store you will find everything needed to begin your housekeeping in this new section—and at "live and let live prices."
The general assortment of furniture we carry covers both the staple and finer kinds. We have everything in home equipment from the finest parlor to the plainest kitchen, and at prices that prove you are getting your money's worth.

LITTLEFIELD FURNITURE COMPANY
N. B. GUSTINE, Proprietor

Blacksmith and Machine SHOP

All Kinds of Blacksmith & Woodwork
Equipped for Machine Work of Any Kind
Have Largest Turning Lathe on South Plains
Oxy-Acetylene Welding
Auto Batteries Repaired & Recharged
ALL WORK TO YOUR SATISFACTION

Beisel Brothers

Littlefield, Texas

PUBLIC SALE

WEDNESDAY, OCTOBER 7th.

Having decided to quit farming, I am offering for sale to the highest bidder, at my place two and a half miles east of Littlefield, on Oklahoma Avenue, the following property, to-wit:

DAIRY COWS
 These cows are all good for dairy purposes. Some of them are pure bred Gurnsey, some are now registered, others subject to register, and still others of high grade. You will make no mistake in buying them.
 Gurnsey Bull, registered 5 years old.
 Gurnsey Bulls, good grades.
 Cow ----- 10 years old
 Cows ----- 7 years old
 Cow ----- 9 years old
 Cows ----- 2 years old
 Heifers ----- 2 years old
 Heifers ----- 1 year old
 Spring Calves.
 Steer Calves.
FARM IMPLEMENTS
 P. & O. Lister. 1 Two-row Go-devil. three-section Harrow.
 Five Tooth Cultivator.
 Riding Cultivator. 1 Hay Rake.
 Mowing Machine.

HORSES
 1 Black Horse ----- Smooth mouth
 1 Bay Horse ----- Smooth mouth
 1 Black Mare ----- 10 years old
 1 Bay Horse ----- 8 years old
 1 Black Horse ----- 6 years old
 1 Bay Horse ----- 6 years old
 1 Black Mare ----- 3 years old
 1 Mare Mule Colt ----- 4 months old
HOGS
 2 Brood Sows ----- 2 years old
 3 Shoats ----- 12 weeks old
HARNESS, ETC.
 2 Sets good Breeching Harness.
 1 Set good open Harness.
 6 Good Leather Horse Collars.
 1 Saddle and Bridle.
 1 Cream Separator.
 5 Cream Cans. 5 good Milk Pails.
 About 3,000 bundles good Higari Feed.
 Many other articles too numerous to mention.

Sale Begins Promptly at 10:00 O'clock A. M.

FREE LUNCH AT NOON

BRING YOUR CUP

TERMS OF SALE: All sums of \$10.00 and under, cash. All sums over \$10.00, three per cent discount for cash, or bankable note due within 60 days without interest, same to carry eight per cent interest after due date until paid.

C. C. TREMAIN, Owner
 H. SEALE, Auctioneer, C. C. CUNDIFF, Clerk

Baileyboro Buzzings

The baseball game Saturday between Rogers, New Mex., and Baileyboro on the Baileyboro diamond resulted in a victory of 10 to 8 for the visiting team.
 Jack Henderson returned to Ralls Sunday in company with Ben Clark of Rogers, New Mexico.
 Linnie Hulse spent Saturday night in the Blackwell home.
 Mrs. Claud Coffman and Ellen Coffman were Saturday evening visitors in the George Henderson home.
 Mr. and Mrs. C. C. Ragsdale and Mrs. Luther Ragsdale were Sunday callers in the H. B. Brannen home.
 Mr. M. J. Jackson of Roaring Springs visited his daughter, Miss Edith Jackson, here Sunday.
 Mr. and Mrs. T. W. Coffman spent Sunday with Mr. and Mrs. Joe Young.
 Trixie Henderson and Mabel Gould visited Alene Garth Sunday.
 Noble Blackshear left Tuesday for Mare Island, California, where he is stationed in the Naval training camp, after spending a month's vacation with his parents, Mr. and Mrs. G. L. Blackshear.
 Trixie and Bosie Henderson, Mabel Gould and Charlie Coffman attended the Cooper Bros. Animal Show, in Sudan Monday.
 Several people from here attended the Ringling Bros., Barnum and Bailey circus, in Clovis, New Mexico, last Friday.
 A number of folks from this community are visitors to the Lamb county fair at Sudan this week.

DUMB DAN SAYS

"I've often heard the wealthy Mr. Jones is very Democratic, but I'll be darned if he looks like a politician to me."
 To you—your home town should be the very best town in the world.

WHAT THE LITTLE "AD" DID

Advertising has made the Victrola Dog famous. "It has put Castoria down your throat, left bristles in your gums, and then come along with a Rubberset and taken them out."
 "It has put Sozodont, Pebecco, and Pepsodent on your teeth."
 "It has put a Gillette against your hayfield."
 "It has put the Maurine in your eyes, sold you Cuticura for pimples,

Pears' for the bath, and Ivory for the tub.
 "It has put Arrow collars around your neck and ingesolls around your wrist."
 "It has jammed your feet into Hole-proof sox, put Paris garters on your legs and Tiffany rings on your fingers."
 "It has worn out your jaws on Wrigley's and posted you on what to buy to cure corns, warts and bunions and ingrowing toe-nails."
 "Go anywhere you want to, do anything you wish, and advertising had a hand in it—absolutely."
 "And then some people ask—Does advertising pay?"—Ex.

WANTED

—To buy Gin with 1500 bale run, or more. Give full description and price in first letter.

Address Box 22
 Maypearl, Texas

Stoves—Stoves—Stoves

All Kinds of Stoves

We have just unloaded two cars of Stoves, containing a full and complete assortment of

Heaters, Cook Stoves and Ranges

Cold weather will soon be upon us, and now is a good time to anticipate your requirements in this line, while our stock is complete

Lamb County Mercantile Co.
 Littlefield THE PIONEER STORE Texas

**Sale Will Open
Saturday Morning
October 3rd at 9 a. m.**

**We Have Come Here To
Stay**

We have leased our building for 40 months and we have come here to stay and cast our lot here with you in this splendid community.

We have heard of the splendid growth of Littlefield from small beginnings to its present size and have come here to grow up with the community and to do our share in helping Littlefield to keep growing and prospering.

We are going to give to Littlefield the best quality merchandise obtainable together with the most courteous and efficient service of which we are capable.

Come in and get acquainted. We want to know you all and be your friends.



**Hart Schaffner & Marx
Suits**

Offered During this Opening Sale at a Sacrifice

- \$50.00 Models, will go at... **\$39.50**
- \$42.50 and \$45.00 Suits will go at... **\$34.50**
- \$37.50 and \$40.00 Suits will go at... **\$30.00**
- \$35.00 Suits will go at... **\$27.50**

ALL WOOL GUARANTEED SUITS

- \$30.00 all wool fine Serge... **\$22.95**
- \$40.00 all wool fine Serge... **\$29.50**
- \$30.00 all wool Suiting mixed... **\$22.95**
- Young men's Suits with two pair of pants... **\$25.00**
- Boys' Serge Suits, one pair knickers... **\$7.50 to \$12.50**
- Boys' grey wool Suits, two pair knickers... **\$12.50**
Worth \$15.00

- Boys' Suits with vest and long pants... **\$12.50 to \$15.00**
- Men's extra trousers... **\$2.50 to \$8.50**

MEN'S WORK CLOTHING

- Fincks "Detroit Special" high back, heavy union made Overalls, special per pair... **\$1.95**
- Union made blue Overalls, suspender back, each... **\$1.85**
Coat to match above.
- Boys' blue Overalls, made like daddy's... **\$1.00 and \$1.25**
- Men's blue work Shirts, the best on the market today for \$1.00, opening price... **89c**
- Extra heavy blue coat Shirts, two pleated pockets... **\$1.50**
- Men's Fincks snag-proof khaki belt pants, special... **\$2.95**

**We Open Saturday
All New Stock**

OPENING

We bought \$35,000.00 worth of fresh, new fall merchandise for our McGraw-Hill merchandise must be sold, regardless of its price. In order to do this we women's and children's apparel, shoes, hosiery, millinery, men's and boys' outings, blankets, sweaters, will be sold in this big sale at prices that will **MUST BE PAID!** Come now and save money on all of your fall and winter

SHOE DEPARTMENT

Howard & Foster Men's Shoes in Oxfords and high tops, in black and tan kid, in tan calf, oxfords, etc. Howard & Foster's shoes are the best value by far of any shoes selling from \$10.00 and over. We are offering them for opening sale, per pair... **\$8.45**

W. L. Douglas light tan oxfords, \$8.00 values for... **\$7.45**

W. L. Douglas light tan oxfords, \$5.50 values for... **\$4.95**

\$7.50 tan oxfords, opening sale price... **\$6.45**

\$2.50 Men's dark Elk scout or outing shoes, opening special, per pair... **\$1.95**

\$3.50 chocolate glove outing shoes, opening special... **\$2.95**

\$5 Thorogood and Comflex Good-Year work shoes... **\$4.50**

Ladies oxfords, strap slippers, pumps, etc., kid and patent, light tan and dark tan, high and low heels... **\$3.50 to \$8.50**

Children's shoes and oxfords... **\$1.50 to \$5.00**

Felts and House Slippers... **\$1.00 to \$2.50**

Boys shoes, Men's bootees, etc.

MEN'S HATS

Rothschild young men's Hats, silk lined, late shade of tan and gray... **\$5.00**

Stetson Fancy Hats... **\$5.95**

Staple hats, Stetson and Rothschild brands **\$3.50 to \$12.50**

Young men's caps made of fine quality all wool materials, in the wanted light shades and the correct shapes, from... **\$1.50 to \$3.00**

Boys' caps... **\$1.00 to \$1.50**



Dress Goods and

54 inch French Flannels in wanted regular \$3.50, opening sale, yard...

44 inch Sport Flannels, all wool, \$3.50 opening sale, yard...

54 inch Gray Check Suiting, \$3.50 opening sale, yard...

44 inch all wool Crepe, in bright shades, opening sale, yard...

36 inch Suiting, prices ranging from \$3.50 to \$5.00, opening sale, yard...

36 inch Cotton Suiting, in small checks, opening sale, price per yard...

36 inch Heavy Cotton Suitings, stripe, 50c values, special yard...

36 inch guaranteed Dress Linens, per yard...

36 inch half Linen Suiting, 75c regular price, yard...

36 inch fast Suitings, special opening price, yard...

SILKS

40 inch flat Crepe in wanted shades, yard...

40 inch Crepe de Chine... **\$1.25**

40 inch Canton Crepes in black, blue, brown shades, yard... **\$3.50**

WE SELL FOR CASH ONLY

We Have No Books, Make No Tickets, Therefore Eliminating Extra Expense, Hence The Saving To The Public



PAY CASH AND SAVE MONEY

9-4 Brown Pepperell Sheeting, yard... **35c**
Only 5 yards to customer

40 inch Sea Island Brown Domestic... **18c**
18c value, opening special, yard...

CUENOD'S

Littlefield Across Street From

With Our Big Merchandise

SALE

Realized that the drouth was upon us and that our crops would fail. This price reductions in all lines including the latest styles in men's, furnishings. All new fall silks, woolens, dress goods, gingham, percales, **EVERYTHING MUST BE SOLD! WE MUST HAVE CASH! OUR BILLS** sale is in progress.

Department

..... 25c, 35c and 50c
 yard 50c
 Satinette, yard 50c
 27-in. width special yd. 15c
 Dress Gingham, Fall Patterns, 20c, 25c and 30c
 Cheviots in solid and stripes, 15c
 Challies for quilts, yard 18c
 Cretonnes, yard 20c-25c
 Scrim, opening price, yd. 10c
 a beautiful array of Curtain
 traperies.
 bed sheets, opening price \$1.29
 Domestic, light weight, special 9c
 Bleached Domestic, special 13c
 Outings, special, yard 18c
 Solid Outings, special, per 18c
 Solid Outings, special, per 25c
 kinds of articles that we are
 glad to show you.

Domestic, "Good as Gold,"
 opening special, per yard 15c

SWEATER DEPARTMENT

All wool Coat Sweaters, heavy knit, used by men and women, boys and girls—comes in all colors, the biggest Sweater value on the market, opening sale price...**\$4.50**
 Men's office coat Sweaters, each **\$3.00**
 Standard shape knit, all wool, heavy coat Sweaters, any color, special opening sale price **\$8.95**
 No. 918 standard knit finest coat Sweaters, this is the biggest value in the Sweater line, priced at **\$12.50**

BLANKETS AND COMFORTS

64x76 plain gray and tan Blankets, good weight, regular \$2.50 value, opening sale price **\$1.95**
 64x76 fine plaid cotton Blankets, you must see this blanket to appreciate it, opening sale special **\$3.45**
 66x80 heavier plaid Blankets, beautiful shades and plaids, a regular \$5.00 value, opening sale special **\$4.45**
 Large Comforts, cotton filled, good linings, opening sale special at **\$3.50, \$3.95 and \$4.95**
 66x88, all wool plaid Blankets, a \$12.50 value, opening sale special **\$8.95**

Millinery Department

Felts and Street Hats in assorted bright shades
\$2.50 \$3.50 \$4.50



Trimmed Hats, a beautiful assortment bought for this opening sale, values up to \$9.00, special **\$5.00**

64x76 Gray and tan 3-pound Blankets, a bargain at the regular price of \$2.50, opening special **\$1.95**

**Sale Will Open
 Saturday Morning
 October 3rd at 9 a. m.**

We Want To Be A Part of Littlefield

We want to take a part in Littlefield's activities; to be one of its institutions and to do everything that we possibly can to further the growth and prosperity of this splendid city and community.

We have come here, not only to sell our goods, but to become a part of the community. We want you to come to our store at any time, whether you are in need of anything we have to sell or not; just come in and get acquainted—we will always be glad to see you and talk with you.



Ladies Ready-to-Wear Late Styles

Ladies wool dresses made of navy blue Poiret Twill, embroidery trimmed, \$15.00 value, opening special...**\$10.00**
 Sport dresses, everyone new and snappy, special...**\$15.00**
 Another lot of Sport dresses at **\$19.95**
 Silk dresses, a beautiful array of the newest with circular skirts, long sleeves, all beautifully trimmed, opening sale price from **\$15.00 to \$30.00**
 Ladies Gingham Bungalow Aprons, regular \$1.25 value, special this sale **98c**
 Ladies long sleeve Gingham dresses, assorted patterns, all nicely trimmed, regular \$2.50 value, special **\$1.98**
 Ladies Outing Gowns, made of good quality Outing Flannel, hemstitched neck, trimmed in blue, special **98c**
 White Outing Flannel Gowns, hemstitched neck and shoulders, splendid quality, special **\$1.25**
 Heavier Gowns in fancy Outing Flannel, trimmed with fancy tape, special at **\$1.50**
 Outing Flannel Children's Pajamas, in sizes 10 and 12, finished and trimmed in pink and blue, a bargain...**\$1.50**

LADIES FUR TRIMMED COATS

Fine quality materials, silk lined, coats with fur collars and some with sleeve fur trimmed, special at **\$35.00**
 Another lot of fine Coats, fur trimmed, a good assortment of sizes and styles, at **\$25.00 and \$27.50**
 A few Princess Coats at **\$39.50 and \$49.50**
 Cheaper Coats at **\$12.50, \$15.00, \$17.50**
 Children's Coats, choice from **\$5.00 to \$15.00**

WE SELL FOR CASH ONLY

Pay Cash And Save Money

We Have No Books, Make No Tickets, We Have Only

ONE CASH PRICE TO ALL. TRY US



GOODS CO.

Mercantile Co. Bldg.

Texas

THE LEADER, YOUR HOME PAPER, \$1.50 A YR.

The Diversified Store

It has been the aim of the management of the Little Drug Store to put in here a diversified and well assorted stock of Drugs, Drug Sundries and Accessories that would meet the wide demand of patrons of every class. That we have largely succeeded in this attempt is evidenced by a visit to our establishment, where one will find practically everything desired. You will like our lines of Fine Stationery and Correspondence Accessories, our Toilet Articles, embodying a choice selection of the most favorable brands and modes, and our line of Hair Tonics, meeting every requirement of the most exacting.

Our drugs are as chemically pure as the market affords. We have a good line of proprietary and patent medicines. Don't overlook our line of good School Supplies for the children.

We have a well selected line of Candies and Chewing Gum, Cigars and Cigarettes, Smoking and Chewing Tobaccos.

Your Patronage will be Appreciated

The Little Drug Store

First National BANK

OF LITTLEFIELD, TEXAS

—Takes this opportunity of expressing his heartfelt and sincere appreciation for the fine patronage accorded this new institution on its opening day last Saturday. It is speaking mildly, when we say that the confidence accorded this concern is far beyond our most sanguine expectations. It will be our earnest desire to at all times, make the relations between this bank and its present and future patrons the most cordial and satisfying.

—We solicit your business, and assure you there is no account, whether large or small, that we are unable to handle, and which will always receive our most careful and considerate attention.

—At any time we may be of service in assisting you in the solution of any business plans or the handling of any of your funds, our experience and very best judgment is at your command. Our motto is—

FRIENDLINESS AND ACCOMODATIONS

OFFICERS
 W. O. STEVENS, President
 JESS MITCHELL, V-President
 W. L. ELLWOOD, V-President
 E. L. MAXEY, Cashier

DIRECTORS
 E. A. BILLS
 J. T. ELMS
 CHAS. L. HARLESS
 A. NEUENSCHWANDER

50,000 Acres

Choice land, good, sandy cat-claw soil. Sold on crop payment plan. Better than paying rent. You pay what you would pay as a tenant on your own land. Fine water, good schools, close to market and railroad. It will pay you to investigate.

Yeager-Chesher Land Company

The Land Men of Lamb County

Littlefield

Texas

Mannish Note Appeals in Fall Utility Coats



Trim lines, new style points and warmth commend this model to those in quest of a coat for all-round wear. It envelops the figure, has a semi-slung adjustment and is cut with a slight flare in the skirt portion. Bone buttons and a velvet inlay on the collar strike a popular mannish note that is evident in utility coats.

Ample exits for public buildings are not only desirable in case of fire, but also when some orator doesn't know when to stop.

Some four-flushers have never learned the truth of the last sentence in Lincoln's truism—"You can't fool all the people all the time."

Be proud of your home town.

PLUMBING

Do all kinds of Plumbing and Heating Installation and Repair Work. See me for estimates and material prices. All work to your satisfaction.

J. H. McGEHEE

At Higginbotham-Bartlett Lumber Yard
 Littlefield, Texas

ROSS

Meat Market

A good line of meats—choice juicy and tender cuts—the kind you like.
 Fish and Oysters
 Every Friday



Phone 81
 We Deliver

In Model Grocery

The DAIRY

FALSE ECONOMY IN RATIONS FOR COWS

It is common practice among many farmers who feed dairy cows to feed liberally of ear corn or a plain mixture of corn and cobmeal and ground oats, thinking that if they feed enough of it there will be no necessity of buying so-called expensive protein feeds. These practices are seldom given much attention until they come into the range of cow-testing associations.

When such men do become members of some cow-testing association, it is often difficult to induce them to decrease the total amount of grain fed and add a high protein feed to their present ration, says a writer in the Successful Farmer. Their argument is usually that the feed will cost too much. The following illustration was used by the writer quite recently to prove that such is not the case:

A member of the Jefferson county, Iowa, cow-testing association was feeding his cows a ration of 300 pounds of corn and cobmeal, and 200 pounds of ground oats. The average monthly production of his herd was 470 pounds of milk and 24 pounds of butterfat. His ration was costing him \$1.04 per 100 pounds. To 18 cows he was feeding 7,200 pounds of grain during the month at a cost of \$74.88.

A suggested ration of 400 pounds of corn and cobmeal, 300 pounds of ground oats, 300 pounds of bran, 100 pounds of cottonseed meal and 200 pounds of oil-meal would cost him \$1.73 per 100 pounds. This ration is considerably more expensive per 100 pounds but at the rate his cows were producing, 3,300 pounds of the suggested ration would have been sufficient to keep up the cows' production during that month. However, 3,750 pounds were suggested to allow for putting some of the cows in a little better condition. This amount of grain would cost \$64.89. Here is a saving of \$14.49 for the month.

Apart from this saving, the fact should not be overlooked that the suggested ration contains more protein, consequently an increase in production can reasonably be expected. The owner's ration contains only about 7 per cent protein, which is altogether too little for large and economical production. The suggested ration will contain about 12.3 per cent protein. The pasture which these cows were getting was not abundant and a little supplementary roughage would have improved conditions considerably.

Another member was feeding, along with fair pasture, 15 pounds of ear corn to cows quite recently fresh. At 50 cents per bushel this feed would cost him \$3.87 for each cow per month. Ear corn is not an economical feed at any time because of the quite large percentage that is not digested. Seven pounds of the same ration, as was advised in the previous case, would cost \$3.63 for each cow per month. This would be a saving of 24 cents on each cow. Apparently this is only a small saving but the higher protein content of the suggested ration would, no doubt, bring about an advance in production which would indirectly be a further saving.

It should be easy to see from these illustrations that what appears to be a saving in refusing to feed high protein rations is simply false economy. In many cases less pounds of grain in a balanced ration will bring more economical results than a liberal amount of feeds deficient in that absolutely necessary milk-making food, protein.

If the conditions in that first illustration had been the same for the entire year, a saving of \$173.88 could have been effected and it costs only about \$40 to be a member of a cow-testing association for a year.

Big Cows Produce More Milk, Declare Experts

The cow producing 100 pounds of butterfat a year on the average returns \$5 to her owner above cost of feed, and the cow producing 400 pounds returns \$99. With four times the production, over 12 times the return above feed cost is secured.

It is significant also that Dana of Vermont, Pearson of Illinois, and others have furnished evidence from which the conclusion can be drawn that large cows produce more, make more efficient use of feed and produce more economically when all items of cost are considered than do smaller ones. In this way the size of the cow is one factor that influences milk costs. Again mature cows between the ages of five and eight as a rule produce more efficiently. This is shown by McCandlish, of Iowa, who after making a study of over 10,000 official records, concludes that milk is produced in larger quantities at a lower cost by cows between five and eight years of age.—H. R. Lascelles of the Colorado Agricultural College.

Soy Beans for Cows

Soy bean meal proved to be fully as valuable as oilmeal as a feed for dairy cattle in an experiment conducted recently at South Dakota State college. Feeding soy bean meal in moderate quantities did not have a damaging effect on the butter made from the milk, although if fed in excess it has a tendency to produce a soft, salty butter. There is no reason why farmers should not cut down the feed bill by raising their own high-protein feeds.

SUBSCRIBE TO THE LAMB COUNT LEADER, NO

SHOE REPAIRING AND HARNESS OF ALL KINDS

I am this week opening a Shoe and Harness Repair Shop in the building just west of the Main Garage and across the street from the new brick garage building now being erected.

I will handle all kinds of Harness, including accessories, and will make all kinds of repairs. I am an expert shoe man of several years successful experience and can do all kinds of boot and shoe repair work.

I guarantee the satisfactory quality of my workmanship. "Service at the right price," is my motto.

LILLY'S SHOE SHOP

J. A. Lilly, Proprietor

Littlefield, Texas

Fire Prevention Week, October 4th-11th

Bridge the Chasm Caused by Property Destruction with Policies in Reliable Companies

Strong-Duggan Insurance Agency

M. D. Strong

C. J. Duggan

All Kinds of Insurance

Notary in Office

MAGNOLIA GASOLINE

Magnolene Oils and Greases

The Dependable Lubricant
 Real Quality Products
 Demand them from your Dealer

Magnolia Petroleum Company

G. W. Hargrove, Agent. Littlefield, Texas

SERVICE Our Motto

We keep our force large enough to give service all times. Badger Guaranteed Tires—Adjustments made here.

Amalie Oils, Auto Accessories

LITTLEFIELD SERVICE STATION

Our Cuts always the CHOICEST

—Fresh and Tasty, too. Come in and see yourself what splendid meats we carry. You find here the best in steaks, roasts and chops.

—We also carry a choice line of Staple and Fancy Groceries—the best the market affords.

—Our place is always headquarters for Fresh Vegetables—you can depend on us!

—We deliver Ice to your Home or Business.

HOUK'S CASH GROCERY AND MARKET

"Service and Courtesy"

Real Estate

Improved and Unimproved We Buy, Sell And Trade List Your Property With Us!

Harless Bro

Littlefield, Texas

AND FIGURE THIS OUT
Sen—"How is it Dad, that night falls—but it is the day that Dad—"In the sunset of day, it hasn't yet dawned on



For Parties—For Dinners—For evening refreshment—you will find our Ice Cream the delectable morsel you can serve. To make the evening drive complete—come by our place for Sodas—Sundaes and all Fountain Service.

SCHOOL SUPPLIES
A New and Complete Stock

The Latch String
Always
Hangs Out

La Nell
Nell Ruth Earnest, Prop.

LAUGH THAT OFF
One of those high-powered super salesmen entered an office, and, seeing a freckle-faced office boy guarding the manager's door, attempted to strike up a friendly conversation.
"Your potted plant over there looks kinda yellow," said the salesman.
"At's alright," said the boy, "Maybe it's an orange tree."
"I don't think you'll get much of a crop," said the salesman.
"Don't expect to," said the boy. "It's a century plant less than one year old."
"Boy," said the salesman, "There isn't much difference between you and a fool."
"Only this desk," said the boy.



Before You Know It
Last spring when you hung it away you thought you would "One day soon" send it to be cleaned—pressed—and have it ready for fall wear.
Well, Fall is almost here—and before you know it a brisk, cool breeze will be blowing—and you haven't yet sent us that suit for needed work.
We will make it look like new. Our prices for cleaning and pressing are very low, and we have as fine equipment as may be found anywhere in West Texas. Let us call for your work
Phone
Littlefield Tailor Shop
C. E. WILLIS, Prop.

COTTON CROP IS 13,931,000 BALES IN U. S. REPORT

Cotton production this year forecast from the condition of the crop on September 16, is indicated as 13,931,000 equivalent 500-pound bales, the Department of Agriculture Wednesday announced. A fortnight ago 13,740,000 bales were forecast. Last year's crop was 13,627,936 bales.
The number of bales of cotton ginned from the growth of 1925 prior to September 16, was 4,275,928 running bales counting round as half bales the Census Bureau announced. To that date last year 2,665,793 running bales were ginned.
The condition of the crop on September 16 was 53.8 per cent of normal, indicating a yield per acre of about 144.5 pounds compared with a condition of 56.2, indicating an acre yield of 141.5 pounds on September 1 this year and 55.4 on September 16 last year, when the final yield was 157.4 pounds per acre.
Condition by States
The condition of the crop and the production indicated therefrom by states follow:
Virginia condition 64 per cent and production 45,000 bales.
North Carolina 62 and 1,103,000.
South Carolina 43 and 837,900.
Florida 75 and 32,000.
Missouri 64 and 239,000.
Tennessee 60 and 425,000.
Alabama 64 and 1,063,000.
Mississippi 73 and 1,447,000.
Louisiana 70 and 729,000.
Texas 42 and 3,873,000.
Oklahoma 55 and 1,471,000.
New Mexico 85 and 58,000.
California 90 and 113,000.
Arizona 92 and 94,000.
Alabama 510,355, Arizona 9,729, Arkansas 284,162, California 3,309, Florida 22,404, Georgia 601,482, Louisiana 412,360, Mississippi 573,084, Missouri 21,238, North Carolina 110,035, Oklahoma 110,478, South Carolina 301,750, Tennessee 32,260, Texas 1,282,080, Virginia 112, all other states 1,090.
The total ginnings include 53,277 round bales counted as half bales.
About 76,000 bales additional in California, old Mexico.
Buy it in Littlefield!

Daddy's Evening Fairy Tale
By Mary Graham Bonner

MRS. CUCUMBER GREEN



A Play Kitchen.
She always did the speaking for them and so they never made mistakes in her name.
Her big home was in a big house but her special home was back of the bed. There was a space between the back of the bed and the wall, quite a long, and quite a wide space. She called this Number Four Green Lane.
On the wallpaper were little painted houses and her "pretend" neighbors lived in these. They used to talk to her. She changed her voice so they could do this.
"How-do-you-do, Mrs. Cucumber Green?"
Then she changed her voice so it was just like her own.
"Very well, indeed, I thank you," she answered.
"And are the children quite well, Mrs. Cucumber Green?"
"Quite well, I thank you," she answered again. "Only," she added, "I am a little bit worried about Robbie. He caught a cold yesterday and I do hope it don't get worse."
"Dear me, that is too bad," the neighbor said, sadly, shaking her head.
"Well, I do hope I won't have to give the dear child a dose of castor oil," Mrs. Cucumber Green said. "If I have to do that I have two chocolates to give him for taking it. But I shall not give it to him, unless I have to do so. I always think it is so unkind to give a child castor oil unless he is very, very sick."
"Just the way I feel about castor oil," said the neighbor.
"And are the other children well? I think you said they were?"
"Oh, very well," said Mrs. Green.
Now Mrs. Cucumber Green was just four years old. It was a most perfect age. It was such a nice, round, complete age. Next year she would be five. She was "going on" five now.
She had been given a set of pink dishes for her birthday, and a big cloth cat. The cat had to be leaped up against something or he would fall down. She had already given the cat a fine name.
"Lucifer was the cat's name, named after a big cat who lived across the street. The big cat's mistress used to call out for him.
"Lucifer, Lucifer, Lucifer, Luc-i-fer!"
She was going to have a party in the afternoon so she was very busy dressing the children during the morning. It was hard to decide just which clothes they should wear as they had quite a few nice clothes.
Of course Gyp, the darling little gray dog stuffed with sawdust, didn't need to be dressed, except that there was a blue ribbon to tie around his neck.
Neither did Johnny Naples have to be dressed. He always wore the same suit, summer and winter, for best and for every day. His suit was a bright worsted one of many colors and as he had come all the way from Naples, which was way across the sea, she had given him the name of Naples.
Her uncle Johnny had given him to her and so she called him Johnny, too.
But most important of all was the dressing of Allie Baa. Allie Baa was a rag doll, the most adorable, wonderful rag doll in the world. Her body was just the right size for hugging, and though her painted face was kissed until it was quite dull, still every year or so Allie's face could be re-painted.
That was not her whole name. Her whole name was Alice Gustava Ariel Star Jewel Bright Carol Carmen Cucumber Green, but it was easier to call her Allie Baa for short.
With grown-up mothers it was much nicer that they didn't have favorites with their children. Grown-up mothers should never have favorites and so they were very good about this. But when you are a "pretend" mother you can have favorites. That is one of the nice things about being a "pretend" mother.
Allie Baa was Mrs. Cucumber Green's favorite child. The others were very kindly treated, and they were loved, as all children should be. Mrs. Cucumber Green knew that.
But Allie she adored!


LAUGH THIS OFF

Loud Talker—"I wish I was boss at our place. I'd show 'em how to run the business."
Other Fellow—"Alright—Let's assume that you are: Now answer me this. If you were trying to build up 'loyalty' would you hire yourself for your present job—if you were boss?"

Don't be disappointed with small order houses. Trade at home—
SPRAINS
This soothing, healing, penetrating remedy takes all of the smarting pain out of sprains, bruises, cuts, sprains, etc., and quickly heals the injury. Get a 50c bottle at drug stores today.
HUNT'S LIGHTNING OIL
SADLER DRUG STORE
Littlefield, Texas.

EAT AND DRINK
At Conklin's Sandwich Shop
Sandwiches of all kinds—Cold Drinks—Candy—Cigars—Cigarettes

Ford
Ford Products of All Kinds
Genuine Ford Parts
Expert Mechanics & Ford Work a Specialty
Charging and Repairing of Batteries
An Expert Man in Charge
Gas, Oil & Accessories
JOHN H. ARNETT MOTOR CO.

What about your COAL?

The days are pleasant now, but—winter always comes sooner than expected in homes with empty coal bins. Now is the time to place your order for next winter's coal. We sell only first-grade coal. Ours is a year round service—but as you know—we are at the mercy of the weather and strikes—and railroad tie-ups when blizzards begin to blow. It's always better to be safe than sorry.
ORDER YOUR COAL NOW!
Littlefield Coal & Grain Company
Claud Holcomb A. W. Hall C. W. Phillips



"I will find a way or make one."
63,387 ACRES SOUTH PLAINS LAND IN ANY SIZE FARMS \$2.50 to \$5.00 Per Acre Down No More Payments To Us Until Next Year Then 1/3 and 1/4 of Crops
The Blalock Company
Littlefield, Texas

NOW OPEN!
Second Subdivision
FAMOUS SPADE RANCH LANDS
Ellwood Farms
In Lamb County on the South Plains of Texas
—Fifty thousand acres being surveyed into 160 acre farms, 20,000 acres of which are now available for immediate sale and settlement.
—All fine Cat-Claw land, lies rich and level in a well proven agricultural section, where climate is ideal, water pure and abundant, rainfall sufficient and diversified crops assured annually.
—The first subdivision of this well known ranch, consisting of 45,000 acres, was thrown open for settlement October 6th, last year, and by the first of the following January was practically all sold out. This second subdivision is the same kind of land, just as favorably located, and will be sold as quickly.
RESERVATIONS NOW BEING MADE
—This land is being sold at the very reasonable price of \$35.00 per acre; \$5.00 per acre cash payment, balance due in fifteen years—fourteen years at \$1.00 per acre, and last payment of \$16.00 per acre due the fifteenth year—six per cent interest on deferred payments.
—In this proven agricultural country that is now attracting such wide attention, a man with small means can easily buy and pay for a home. After the first payment is made, the annual crops received from off the land insure all future obligations. There is no reason for anyone being a hireling to some landlord when a home of their own may be secured so easily.
—Write or see us for further detailed information.
Ellwood Farms Company
R. C. Hopping, Sales Mgr. Littlefield, Texas

Favorite Child.

Allie Baa was Mrs. Cucumber Green's favorite child. The others were very kindly treated, and they were loved, as all children should be. Mrs. Cucumber Green knew that.
But Allie she adored!

CHEVROLET
SERVICE and REPAIRS:
—In our own garage located in the rear of our sales rooms, equipped with all the necessary tools and machinery and in charge of competent workmen who will make any repair or adjustment to your entire satisfaction. Flat rate charges and all work guaranteed. Repair all makes of cars.
FULL LINE OF CHEVROLET PARTS
BELL-GILLETTE CHEVROLET CO.
Littlefield, Texas

CANNON BALL STAGE

Leave Estillene 10:00 a. m.—Arrive Plainview 2:30 p. m.
 Arrive Clovis 6:30 p. m.—Leave Clovis 8:00 a. m.
 Arrive Estillene 8:00 p. m. via Turkey, Quitaque, Silverton,
 Lockney, Olton, Littlefield, Sudan, Amherst, Muleshoe and Texico.
 Make all train connections at Estillene.
 Notify your friends whom you are expecting.
 Save time and money.

THE LEADER, YOUR HOME PAPER \$1.50 A YR.



Money Spent For
INSURANCE
 Is An Investment

—Whether for Life or Fire Insurance, money expended in this
 cause should never be charged on the debit side of the ledger—for
 it is invariably a good business investment.
 —For the comparatively small amount insurance costs, no man
 can afford to be without it. Both property and life should al-
 ways be kept well insured.
 —We have known instances where fire has reduced a man to
 poverty, and within a very short time afterward he died, leaving
 his family penniless. Insurance would have averted such a
 calamity.
 —We represent leading strong companies of America. Better
 drop into our office immediately and talk the matter over with us.

A. G. HEMPHILL
 State Bank Bldg. Littlefield, Texas

Farm and Ranch Loans 6 per cent
 Improved City Loans 7 per cent

ON EASY TERMS

LITTLEFIELD TOWNSITE LOTS
 LOTS IN SOUTHMOOR ADDITION
 ACREAGE TRACTS IN BROAD ACRES
 CONVEYANCING & NOTARY WORK
C. J. DUGGAN, LITTLEFIELD, TEXAS



JUST RECEIVED
 A Nice Stock of New
 Tires and Casings
 INVITE US TO YOUR
 NEXT BLOWOUT
 Quick Service Station
T. C. & R. M. SMITH
 Proprietors

THE LEADER, YOUR HOME PAPER, \$1.50 A YR.



The Controllable Beam
 on the Better Buick

Night driving strain, the blind insecurity
 when you dim to keep glare out of the eyes
 of an approaching driver—both have been
 eliminated by the Controllable Beam Head-
 light, a feature of the Better Buick.

Daytime visibility every inch of the way!
 Bright light all the time! A simple control
 on the steering wheel lowers the beam when
 you near another car.

And this is only one of many 1926 im-
 provements which Buick engineering has
 given to the Better Buick. 75 horsepower
 and more; Duotone in Duco finish; Triple
 Sealed Valve-in-Head engine; light-pedal-
 pressure clutch; approved mechanical 4-
 wheel brakes; and many other exclusive ad-
 vancements now make the Better Buick the
 better car to own and drive.

BUICK MOTOR CO., FLINT, MICH.
 Division of General Motors Corporation



HARRY WISEMAN, Dealer

Littlefield, Texas

Twelve Links in Clean Milk Chain

Healthy Herd and Careful
 Attention to Details
 Quite Important.

Contrary to a somewhat common be-
 lief, it does not require expensive
 equipment, high priced cows, or much
 extra work to produce clean milk.

With a healthy herd, kept in a clean
 stable and yard which can be kept
 clean easily, and with careful atten-
 tion being given to details a milk can
 be produced, according to E. H. Farr-
 ington and L. C. Thompson, dairy
 specialists at the Wisconsin College
 of Agriculture, which is both highly
 nutritious and wholesome.

Since the reputation of many a farm
 and factory is based on the purity
 of its products it is quite important
 that all of the aids to clean milk
 production be known. The first consid-
 eration, the experts point out, is that
 of a clean herd. Good milk cannot be
 produced from diseased cows. A clean
 stable also aids immensely in the pro-
 duction of clean milk.

Must Exercise Care.

Good ventilation is also an impor-
 tant factor. It is quite important that
 animals secure plenty of pure fresh
 air since tuberculosis spreads faster
 and gains an easier foothold where
 fresh air is not provided in abun-
 dance. A dry barnyard and the re-
 moval of the manure some distance
 from the barn will aid greatly in re-
 ducing the number of flies which, in
 the summer, annoy the cows and the
 milkers.

The value of pure water, abundant
 sunlight, and careful feeding cannot
 be overemphasized according to the
 specialists. The matter of clean milking
 and clean utensils are intimately
 associated; for great numbers of bac-
 teria may be introduced into milk
 from the bodies of the cows and from
 unsterilized utensils. Quick cooling of
 milk to lower temperatures prevents
 bacterial growth and aids in the pro-
 duction of better milk which will keep
 longer and make finer dairy products.

Prompt Delivery Necessary.

After the milk has been produced
 under conditions which are as near
 ideal as possible it is important that it
 be delivered promptly to careful cus-
 tomers. Farrington and Thompson de-
 clare. They report that milk should
 be kept in cold water until it is loaded
 onto the wagon to go to the station
 or receiving plant.

Clean milk means fewer complaints,
 a better class of patrons, and a steady
 market for the product, the specialists
 conclude.

Various Crops Injured by Tiny White Maggots

Carrots, parsnips and celery are in-
 jured by tiny white maggots that bore
 in the roots and sometimes in the case
 of carrots completely honeycomb them
 with their burrows. Unfortunately we
 know very little about this pest, be-
 cause it is a European insect that has
 lately come into this country, writes
 Glenn W. Herrick in the Rural New
 Yorker. In England a quart of kero-
 sene thoroughly mixed with a bushel
 of wood ashes and distributed along
 both sides of each row of carrots has
 given fairly good protection, it is said.
 After the ashes have lain two days
 the oil is washed into the soil with
 water from a hose. It is doubtful if
 this remedy is always practicable in
 gardens in this country and it is some-
 what doubtful if it will prove success-
 ful. It is, however, worth trying in a
 garden. It is also reported that Dutch
 gardeners in Holland are able to se-
 cure protection from this maggot by
 planting onions among the carrots.

The writer would suggest the use of
 tobacco dust containing at least 1 per
 cent of nicotine. Such tobacco dust
 can be obtained now from reputable
 manufacturers. It should be dis-
 tributed along each side of the plants
 in a row, using about one pound to 25
 or 30 feet of plants. It should be ap-
 plied as soon as the plants are two or
 three inches high.

Alsike Clover Pastures Unfit for Some Animals

Most farmers know that white-
 skinned animals pastured on alsike
 clover are apt to develop sores on the
 nose, ears and legs. Why this is,
 science has not been able to definitely
 determine, the nearest they can come
 to it is to say that it is a type of
 poisoning, says the Indiana Farmers'
 Guide. This poisoning seems worse
 when hot sunny weather follows a
 heavy dew. Professor Hansen, the
 weed expert of Purdue, advises that
 when it is noted that the sores are ap-
 pearing, the affected animals should be
 immediately taken off the clover and
 put on grass.

While the danger of alsike poisoning
 is not sufficiently great to warrant
 farmers to avoid the growing of this
 valuable crop in areas where it is
 adapted, it behooves those who keep
 white-skinned stock to use care and
 judgment in pasturing it.

Sweet Clover Hay

Sweet clover hay that is well cured
 and not too coarse and stemmy is
 equal to alfalfa hay as feed for dairy
 cows and since it is generally con-
 ceded that alfalfa hay is superior to
 red clover hay for dairy cows sweet
 clover hay must be considered better
 than red clover hay. It must be re-
 membered, however, that sweet clover
 hay must be well cured and not too
 coarse; the cutting from the first
 year's growth is most satisfactory.

THAT'S THE QUESTION

Dickson:—"Boy-oh-boy—I've got
 the automobile at last. You orta see
 her take a hill."
 Friend:—"Up or down?"

Don't be deceived by mail order
 houses. Trade at home.

THAT'S DIFFERENT

Girl:—"Will you please turn on the
 radio, Jack."
 Harold:—"Why do you keep on
 calling me Jack?"
 She:—"Oh, I'm sorry. I keep
 thinking this is Wednesday instead
 of Tuesday."

ONE OUTTA FIVE

Statistics say that one out of
 five owns an auto—guess the
 four still owe for theirs.

YES—ONCE IN A WHILE
 Once in a while we hear that
 ministers were too good to be

FIRST & LAST CHANCE Service Station



Prompt Courteous Service is
 what you receive day or night at
 this station.

We handle a good line of the
 very best oils and gas the market
 affords.

We can make repairs and ad-
 justments on all makes of cars.
 Storage by day, week or month.

You will appreciate our business
 methods and we will appreciate
 your patronage.

HALT!

At The—

FIRST AND LAST CHANCE GROCERY

You should not pass it by either way you may be
 traveling. If you do it means you are passing by an
 excellent opportunity to supply your needs in this
 line and you may regret it.

We carry a complete line of Staple and Fancy
 Groceries. Lunch goods of All Kinds—Let us serve
 you!

Just like the well known shoe polish, ours is a man and machine concern.
 We take care of both the needs of yourself and car. Drive by and let us "fill
 you up".

HENRY STALLO, Proprietor

Littlefield

Texas

The Texas Utilities Company

It Supplies Light and Power
 Without Effort on Your Part

That is one of the reasons why service of electricity is growing so fast
 It meets the definition of "an essential public service."

No community that expects to grow can get along without electric light
 and power. No community can grow unless its electric service grows ahead of
 it to make its growth possible.

Supplying electric power and light is not selling a commodity. It is doing
 service. This service must be ready every minute of the day. It must be ample
 to meet all demands. It must be supplied to all alike.

These things about this service lend it the great public interest that attend
 it. They are the things that make it desirable for the community and its people
 and electric utility management to understand each other fully and be per-
 fectly frank with each other.

This company seeks that kind of co-operation with the people that it ser-
 ves.

The TEXAS UTILITIES CO.

R. E. McCASKILL, Manager

Littlefield, Texas

"COURTESY AND SERVICE"

HADDAWAY SELLS THE SCHOOL LAND OF HALE COUNTY

That Haddaway ranch, located west of Sudan, is the latest of the ranches to be entirely sold out to settlers. As an indication of the interest displayed in that section, it is well to note the localities from which the settlers came. Among the buyers 15 Texas counties were represented, viz: Eastland, Dickens, Lampasas, Lubbock, Garza, Lamb, Limestone, Wichita, Wilbarger, Gray, Haskell, Hardeman, Bailey and Collingsworth. Oklahoma was represented with settlers from four counties, Tillman, Greer, Harmon and Jefferson. The long distance buyer hailed from California, who bought the block adjoining the Fairview school, and in addition to farming, he will put in a store, filling station and cotton gin.

The settlers are already breaking sod, putting down wells and starting vigorous development.

Mr. Haddaway is one of the earliest investors in the Sudan section, having made his first purchase there in 1910, before it was known that there was to be railroad facilities through this county. After 15 years experience in this part of the Plains, he is more convinced today than ever before, that this is one of the richest and safest farming sections of Texas. During his residence in Lamb county he has handled the sale of 18,000 acres, on a part of which the town of Sudan is now located.

Being loth to leave this section, Mr. Haddaway has, in conjunction with M. C. Vaughan, recently secured the exclusive sale of the Hale county school lands, west of Sudan. It is the last of the unsold school land in this section, and is considered exceptionally high grade stuff. It is surrounded by a well settled county, and a peculiar feature of the selling will be the fact that deeds are to be issued direct to the buyers from the county, which so far is known, is the first time such has ever been done.

ORGANIZE S. S. CLASS

Young Folks Adopt the "Win One" Plan For Attendance.

The young people's class of the First Presbyterian Sunday School, of which Judge E. A. Bills is teacher, organized Sunday and elected officers, namely: Arthur Mueller, president; Luther Hargrove, vice-president; Miss Lois Glee Graham, secretary and treasurer and Miss Nell Ruth Earnest, reporter.

The purpose of the organization was to do active work for the Sunday School and stimulate an interest in the class, whereby a duty is placed upon each member to invite and bring others to Sunday school.

At present fourteen members are enrolled and a goal of twenty-five is hoped to be reached next Sunday.

There are many in Littlefield who do not attend Sunday school and those are especially urged to be present next Sunday.

FIELDTON FACTS

J. Pickerall and wife returned Wednesday from O'Brien, where they have been visiting for the past week.

S. F. Elliott and sons have bought a new truck in which to haul off their cotton crop. A gin is needed in this community very badly.

L. Wells and family visited in the Hale Center community last Sunday.

Misses Clara and Vetsa Pearl Jorman spent Saturday night with Mrs. H. C. Pickerall.

Day and night now the tractors may be heard running in the Fieldton vicinity. Some of the farmers are cutting hay and feed now. What everybody now wants in this section is clear weather for the next 90 days.

TO ORGANIZE BASKETBALL

A meeting will be held Monday evening at 8 o'clock at La Nell Confectionery, for the purpose of organizing a girl's town basketball team.

All girls who are interested in basketball are requested to be present.

"Banking" System Old

The Roman emperors lent money upon land. The lending of money on the security of movable articles, which were said to be pledged, became common in European countries during the fifteenth century. Out of this grew the system known as pawnbroking, which was specially regulated in England in 1756, and 27 years later the business of pawnbroking was licensed.

Idea Was Napoleon's

The first abattoirs were organized near Paris in accordance with a decree for their establishment signed by the Emperor Napoleon in 1810. They were not put in operation, however, until eight years later, in 1818.

The Leader for printing.

Whitharral Items

Probably the largest crowd that has ever been gathered at Whitharral attended church and Sunday School here Sunday.

Rev. Silas Dixon preached a splendid sermon. At the close of the singing service little Victoria Hendricks sang a solo, "The Old Rugged Cross."

Efforts are being made to arrange a Methodist church here. We hope and believe that courtesy toward each other and mutual helpfulness will characterize the work of both Baptist and Methodist churches here.

Lee Brownover was summoned on the grand jury this week.

C. B. Edgar went to Lubbock Saturday after a load of groceries. The hungry farmers around Whitharral keep Mr. Edgar on the road most of the time.

Miss Vivian Jordan who is teaching our primary grades in school, spent the week-end with her mother and brother at Littlefield.

Our school opened Monday with an enrollment of 75 pupils. Several have been enrolled since. The school work is somewhat hampered by the pupils being crowded in the old school building and also a shortage of text books, but our capable teachers and patrons are putting forth every effort to meet these emergencies. Two closed in and upholstered school trucks driven by Messrs. Ramsey and Lawson, transport the children. If all of the improved farms in this district are occupied next year other trucks will be necessary before the term closes.

W. D. Armstrong took his brother, the train for their home at Mineral Gus Armstrong and family, to Lubbock Saturday, where they caught Wells.

Cotton is beginning to open. Ed Smith is picking a bale this week. Some damage done by leaf worms is reported.

Dee Armstrong returned to Hollis, Oklahoma, last Friday after spending several days here with his father, W. D. Armstrong and family.

Grandpa Mankins who has been quite sick for the past week is improving.

Messrs. Joe and Monroe Woodruff, Ed Langford, Paul LaRue, Fred Walcott and Earl Yardly are breaking land 10 miles southeast of here this week.

Earl Edgar left Friday for Hollis, Oklahoma, after spending several days with relatives and friends.

Little Adele Walcott met with a painful, though not serious, accident Thursday when she cut her eyelid almost off on an old tub.

HOW SYSTEM HELPS

The word system has a strong sound, like the name of a taskmaster who keeps our noses constantly at the grindstone. But its mission is really just the opposite.

It steps into our chaotic day and smooths out the wrinkles, and culls for us an hour of ease. It organizes our myriad tasks and brings order out of our haphazard methods. It makes head save heels and one motion do where two were required before. It is as much needed in a home as in a factory.

To install system in your home, first make a definite plan of your work. Know what you want to do this day, this week, this month, this year.

System will help you discover how corners may be cut, how duties often separate may be combined. It will teach you to place the kitchen table near the sink and the stove; to keep brooms, kettles and paring knives where they are most frequently used to do several upstairs jobs while you are in that part of the house; to make fewer trips to the cellar; to order groceries for several days with one phone call; to make ironing board and work table the convenient height; to plan menus for several days ahead; and to prepare dishes for two meals with one "session" in the kitchen.

System saves money by means of the budget; and by the purchase of one article which will serve various purposes, and which requires least effort to keep it in order. It saves the time we waste in wondering where we are "at" now, and what to do next. It divides the words among the members of the family and gives each one a fair share trough making each appreciate home more.

System gives the children a regular hour for going to bed and for getting up, for work and play, for washing, brushing teeth, and combing hair. With regular hours and regular habits they do not have to be told every time and this makes them responsible individuals and saves irritation.

If your life is rather hodge-podge, give your attention to organizing it. See if you cannot practice system in the arrangement of the house; in the daily routine; in buying; in planning; in saving money; and physical care of the family. This will oil the wheels of your home life and make it run smoothly.—Plainview News.

We Thank You

Our Reorganization Sale to date has been one Grand success. Our store has, at all times during this sale, been thronged with eager buyers, taking advantage of the many bargains which have been offered.

We Thank You

If you will help us make the closing days of this sale as big a success as the beginning was. We are going to do our part by putting on additional Bargains. You do your part and visit our store the last 3 days of our sale.

We Thank You

To Take Advantage of These
—REAL BARGAINS—

32 inch Ginghams, Yard

15¹/₂c

7 Spools Thread

25c

27 inch Ginghams, Yard

13c

Men's Tar Heel Socks, Pair

12c

We Thank You

If you will take advantage of the extremely low prices that prevail in our Ready-to-Wear and Millinery Department.

We Thank You

Shaw-Arnett-Tolbert Co.

Telephone 123 LITTLEFIELD, TEXAS

Mail Orders Filled

known—
Freed-Eiseman Radios
In Littlefield and vicinity. Call and see them.

Prices run from
\$45.00 to \$86.30
Complete
We also carry a full line of Perfection Repairs and Accessories.

Dealers in
Quality Furniture At
"LIVE AND LET LIVE PRICES"
We have just taken over the furniture stock of the Shaw-Earnest Company, and can make you some exceptionally good prices.

Bed Room Sets
Dining Room Sets
Kitchen Cabinets
Tables
Dining Chairs
Rockers—all kinds

Littlefield for a single piece of Furniture.
We have anticipated your needs and can meet your requirements.

Bill Kerr spent the week-end in Amarillo, where he attended the Canyon-Clarendon foot ball game. He was accompanied on his return by Tonie Vaughn, of Kress, who will spend the week here.

G. A. Morton, of Briggs, was here last week looking after business interests. He has purchased land in this vicinity and lots in Littlefield, and is contemplating putting up a nice residence soon.

LOCAL HAPPENINGS

G. E. McCelvey made a business trip to Lubbock Saturday.

Cyrel Wheelock, of Lubbock, was here on business Saturday.

Mrs. A. H. McGavock spent Friday in Lockney.

J. L. White, of Lubbock, spent the week-end in Littlefield.

Mr. and Mrs. Clayborne Harvey made a trip to Lubbock Sunday.

Mr. and Mrs. Sam Dickey, of Amarillo, were in Littlefield Saturday.

Harold Barry of Baileyboro, transacted business in Littlefield Friday.

Bob Simmons attended the county fair at Sudan Saturday.

Pat Boone left Monday for a brief trip to Roswell, N. M.

Judge J. H. Moore, of Lubbock, was here on business Tuesday.

J. M. Musser is reported to be very ill this week.

Mr. and Mrs. R. S. Thomas returned from a trip to Denver, Colorado, Friday.

Mrs. A. P. Duggan and Miss Nannie Thelma Warlow made a trip to Plainview Saturday.

Rev. J. W. Saffle passed through Littlefield Monday enroute to his home at Plainview, after filling his regular appointment at the Baptist

church, at Sudan, Sunday. He was accompanied by Rev. W. W. Williamson.

Messrs. E. A. Logan and A. C. Chester made a business trip to Amarillo Saturday, returning Sunday.

F. G. Sadler purchased the lot south of the First National Bank building last week, of Pat Boone.

Mr. and Mrs. E. L. Maxey and children attended the fair at Sudan Friday.

Mr. and Mrs. H. P. Webb and daughter, Miss Rilla, left Sunday for a visit to points in Oklahoma.

Messrs. T. W. Barnes and R. Q. Barnes transacted business in Amarillo the first of the week.

Mesdames C. R. Spann, Charlie Harless, Jim Harless and Miss Soloma Cox made a trip to Lubbock Saturday.

Mr. and Mrs. G. W. Blackshear, of Baileyboro, were in Littlefield Monday.

Miss Mary Parker, of Lamesa, was here the first of the week visiting homefolks.

Mr. and Mrs. C. D. Smith and little daughter, Charline, attended the county fair at Sudan Saturday.

Miss Annie Mae Brannen returned Thursday from Dickens City, where she has been spending several weeks.

Mrs. S. M. Davis left Saturday for her home at Mineral Wells, after a brief visit with her brothers, Jim and Charlie Harless.

Mr. and Mrs. Dock Lewis and daughter, Evelyn, and son, J. C., at-



COAL

Time to Put It In

As the season advances so does the price of coal. Each month it takes a rise in price. It is good business policy for you to lay in your coal now.

We have a good supply in our bins at present, but it is going out rapidly. There is no better coal ever came out of the earth than that which we handle. It is noted for its lasting qualities, its heat giving units and its complete combustion. You pay for no lignite, slate nor rock—but PURE COAL when you buy from us.

Phone in your order now—we can make prompt delivery.

Cicero Smith

LUMBER COMPANY
QUALITY Phone 8. SERVICE

OPPORTUNITY Of a Life Time

Consider the Location of Our Yellow House and Spade Lands.



Lying between Littlefield on the north, Levelland on the south, and Anton on the east, with railroad, school and highway facilities already equal to older settled countries.

The fertility of the soil and location makes this one of the most attractive propositions to be found anywhere on the South Plains.

PRICES: \$30 and \$35 per Acre. Long Time, Low Interest Rate of Six Per Cent. All Notes Payable On or Before.

Between Four and Five Hundred Farms in the best of location now on the market and selling rapidly. It will pay you to investigate and make your selection early.

YELLOW HOUSE LAND COMPANY

Littlefield,



Texas

Want Ads.

Want ads, Rentals, Lost and Found, Exchanges, Lands and Stock, Miscellaneous, etc. RATES: Classified, first insertion, 10c per line; minimum 25c; subsequent insertions, 7 1/2c per line. Unless advertiser has an open account, cash must accompany order.

FOR SALE

FOR SALE: Delco light plant, cheap, good condition, will take in Ford roadster. Will also sell Dodge speed wagon, Dempster windmill with steel tower, Fairbanks-Morse 3, 6 and 10 horse power engines.—P. W. Walker. 17-17c

FOR SALE or Trade: 320 acres good unimproved land in Roosevelt County, New Mexico, for property in Littlefield or Sudan or farm land in this vicinity. Address, Leader office. 3-1f.

FOR SALE—L. C. Smith typewriter, in good running condition. Will sell worth the money. Leader office. 19-1f

FOR SALE:—One 1924 model Chevrolet, sport touring, full equipment, practically new, first class condition. One 1925 Chevrolet roadster, practically new, excellent condition, balloon tires and equipment. Will sell at easy terms. One 1925 model Ford, two door Sedan, full equipment, perfect condition practically new. One 1924 Willys Knight coach, god condition, full equipment, excellent value. Monthly payment plan. See Clayborne Harvey-Crysler Agency at City Hall. 21-1f

FOR TRADE—Three room house and 3 lots near high school in Slaton, for equity in Littlefield land. J. G. Levey, Slaton, Texas. 23-2tp.

FOR SALE—160 acres, near Spring Lake, Texas, Lamb county. Write R. H. Irminger, Kearney, Mo. 23-5tp.

PHONE 134 for day police, or 170 for night police service. 24-11fc.

tended the fair at Amarillo the first of the week.

D. L. Woods, of Morton, was here on business Saturday.

Miss Ezra Grimes made a trip to Lubbock Tuesday.

Harless Brothers report the sale of lot 14 block 30 to John Blair, lot 16 block 30 to Fred Dodd and lot 12 block 40 to F. G. Sadler.

R. D. York returned today from Detroit, Michigan, and will have charge of the mechanical department of the Smith-Roberts garage.

J. T. Cunningham, of Bula, was in Littlefield Tuesday on business. He reports crops in his section to be in excellent condition.

L. W. Jordan is having a set of improvements built on his farm, eight miles northwest of Littlefield, this week.

Mrs. C. H. Singer, who underwent an operation in Lubbock the first of the week, is reported to be doing nicely.

Messrs. R. E. McCaskill, C. E. McGavock and John Pope attended the Fort Worth-Atlanta base ball series in Fort Worth the first of the week.

Clyde Arnold, who has been in charge of the Park Store Grocery is back again at the Model Grocery, his place being filled at the former place by Jess Seals.

Misses Thelma Barnes and Nell Ruth Earnest attended the county fair, at Sudan, Friday and Saturday. Miss Nell Ruth was one of the judges in the woman's department.

Mr. and Mrs. J. E. Brannen and little daughters, Margaret and Sue, were guests in the home of Mr. and Mrs. Bill Walker, who live three miles south of Sudan, Sunday.

Mrs. J. H. Trimble, who underwent a successful operation at a Lubbock sanitarium last week, has sufficiently recovered to be able to return home. She is reported convalescing nicely.

Mr. and Mrs. John Younkins and two sons, of Riverside, Iowa, were last week the unexpected guests of Mr. Younkins' sister, Mrs. H. L. Smith and family. They had not seen each other for about fifteen years. H. L. stated his brother-in-law became "zymotic" over this country, which term, we understand in common parlance means "intoxicated."

Two 11-acre tracts, five brick school houses. \$1500. cash. Cundiff.

GOOD LAND sold by Brothers at Pep. Liberal cash paid Real-estate dealers. Of Pep, seventeen miles south Littlefield. Phone 4-2 rings.

FOR SALE: Classified ads per line for first issue, 10c per line for each subsequent issue. Unless you have an account office, cash must accompany all ads will be taken of specified time.

FOR SALE: 2 residences, each, one extra nice finished room house completed in week. L. R. Crockett.

FOR SALE—Good used Ford and Touring car, 1925 model 1925 sport model Dodge car. Smith & Roberts Garage.

WANTED

WANTED: Clean cotton rations, hooks and other necessities must be removed. Office.

WANTED: To lease and lease on this summer to plant. Will turn land back to owner as wheat is threshed.—P. W. Seed and Grain Co.

WANTED—Girl or woman house work. Apply to G. at Shaw-Arnett-Tolbert Co. PLACE your orders early for Christmas greeting cards. Leader has a nice line of cards.

WANTED TO EXCHANGE: Leader will run free of advertisements in this department who want to exchange pure with Lamb county farmers. have used your sire until you to change, and will exchange with some farmer in the county the facts and we will advise you free.

MISCELLANEOUS

WHICKER Land Co., Has Littlefield Hotel, Littlefield Land Office, Bledsoe, Texas. nus of Santa Fe west from Fine cat-claw land.

Carbon paper at the Leader. TYPEWRITING for the Lorena Barber, at C. J. Duffice.

Green's Cafe—where eat.

Advertise when busy to advertise when not busy to BUY your fresh meats and the Littlefield Supply Co.

You should see the crop Bledsoe, Texas.—Whicker Littlefield.

HEMSTITCHING and Mrs. John Blair.

FURNISHED ROOMS for rent or without board, to ladies without children. Phone 25.

Batteries recharged at Motor Co.

Bargains in used cars of makes. Cash or terms.—Be Chevrolet Co.

IF YOU need any light J. W. Robertson. Every guaranteed.

LEGAL BLANKS: Chattage, Vendor's Lien and Notes, at Leader office.

Carbon Paper and Second the Leader office.

Come to Pep, where Brothers sell GOOD LAND.

Green's Cafe—where eat.

SEE our Massy-Harris Row before buying—Duncan & Littlefield.

GOOD LAND sold by Brothers at Pep. Liberal cash paid Real-estate dealers. Of Pep, seventeen miles south Littlefield. Phone 4-2 rings.

CALUMET Baking Powder lb. Why 35c. Porter's store.

OUR AUTO repair shop is ready and ready for service. We have class workmen and skilled mechanics.—Littlefield Service Station.

WATCH for our display of week—Hudson, Essex and Littlefield Service Station.

LOST

LOST: Suit case, at baptism day. Finder please return to N. Renfro.