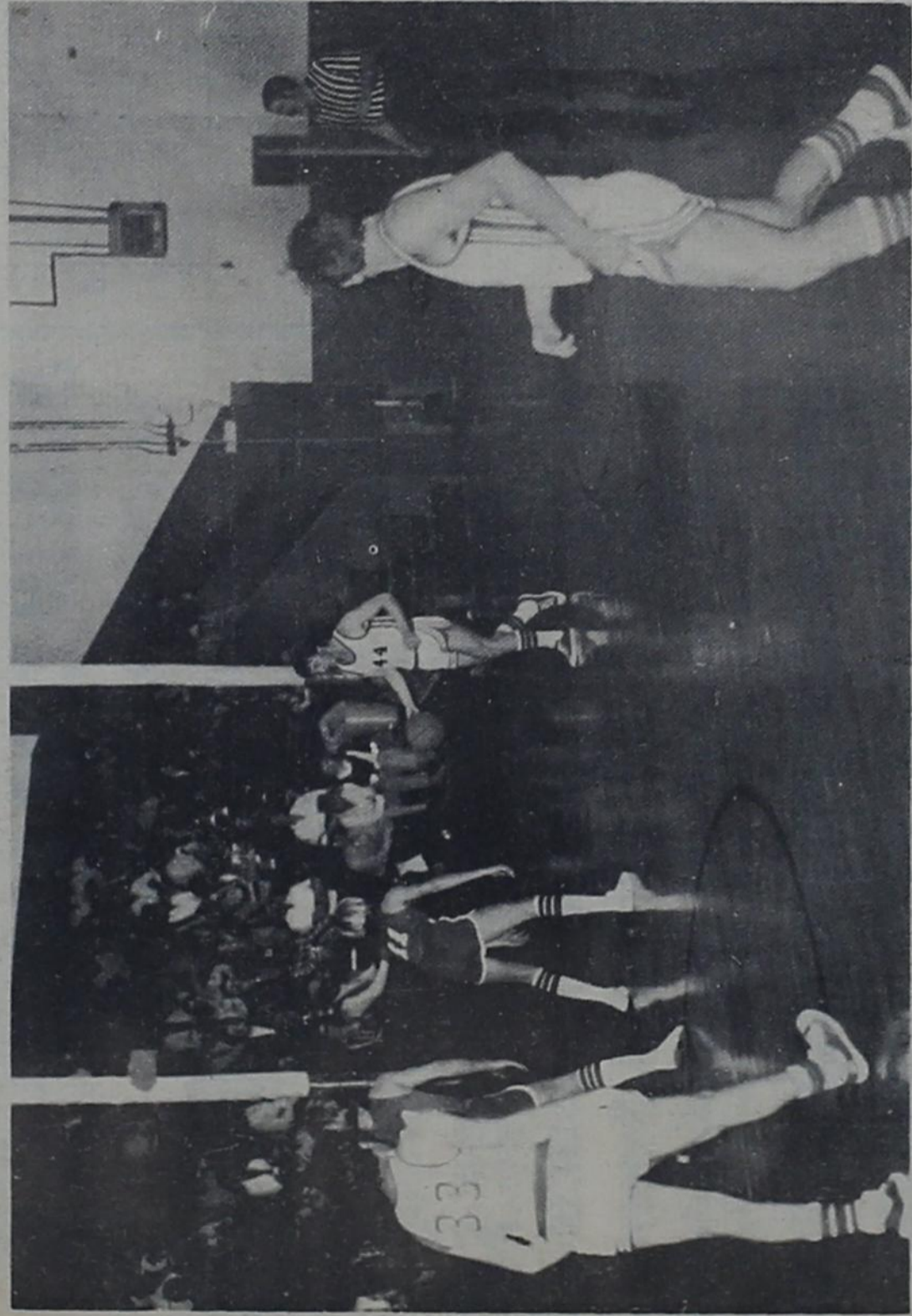
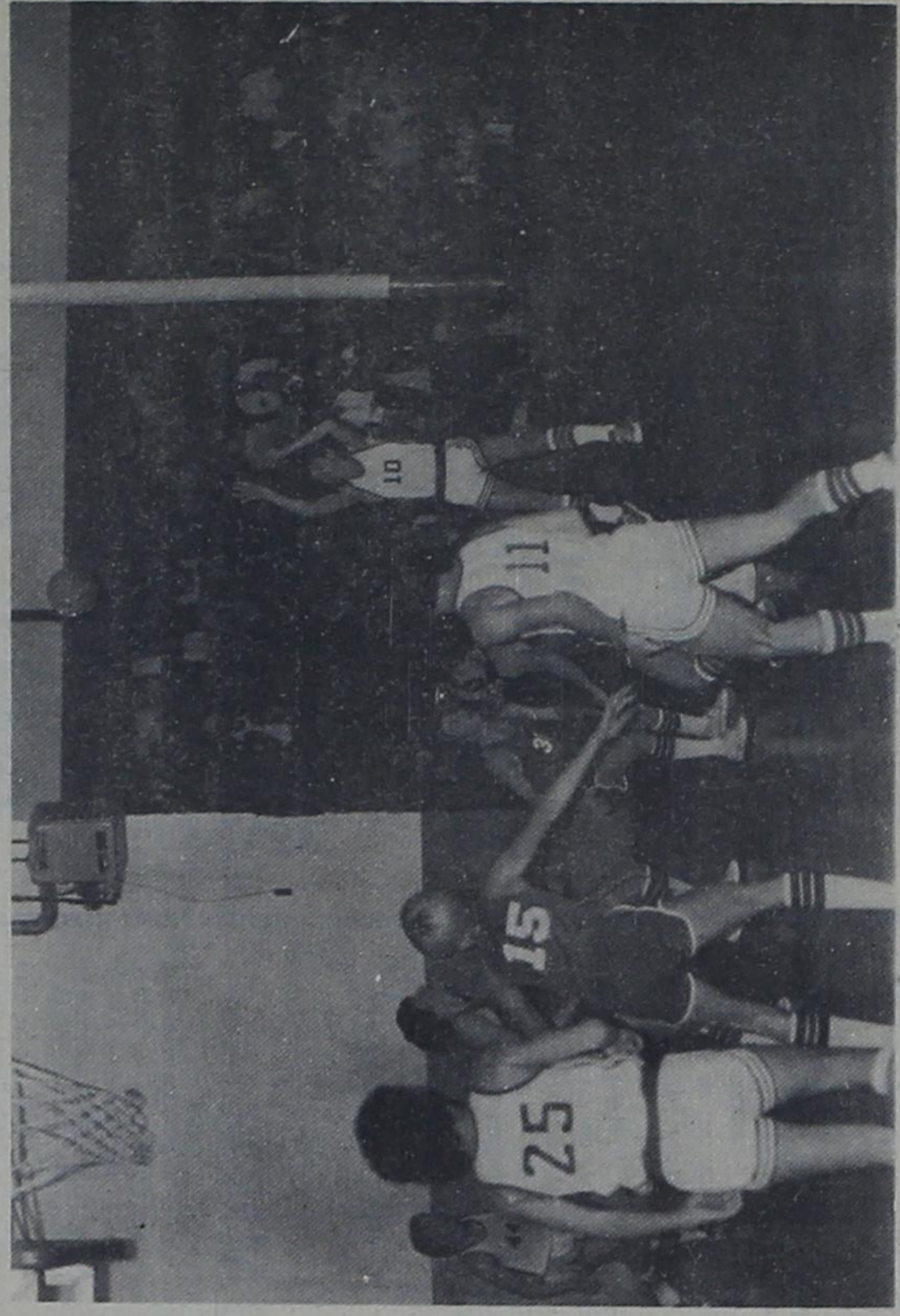


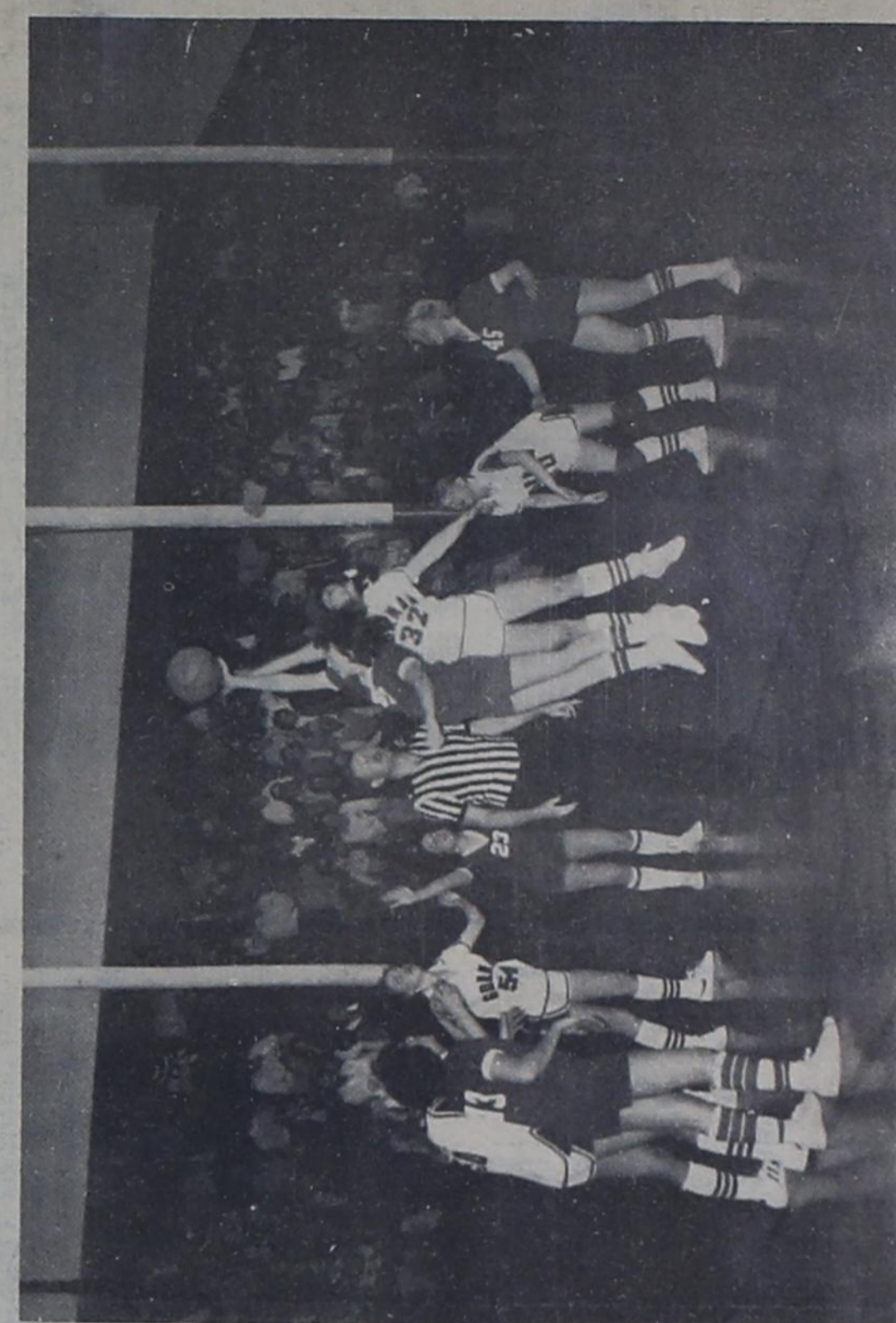
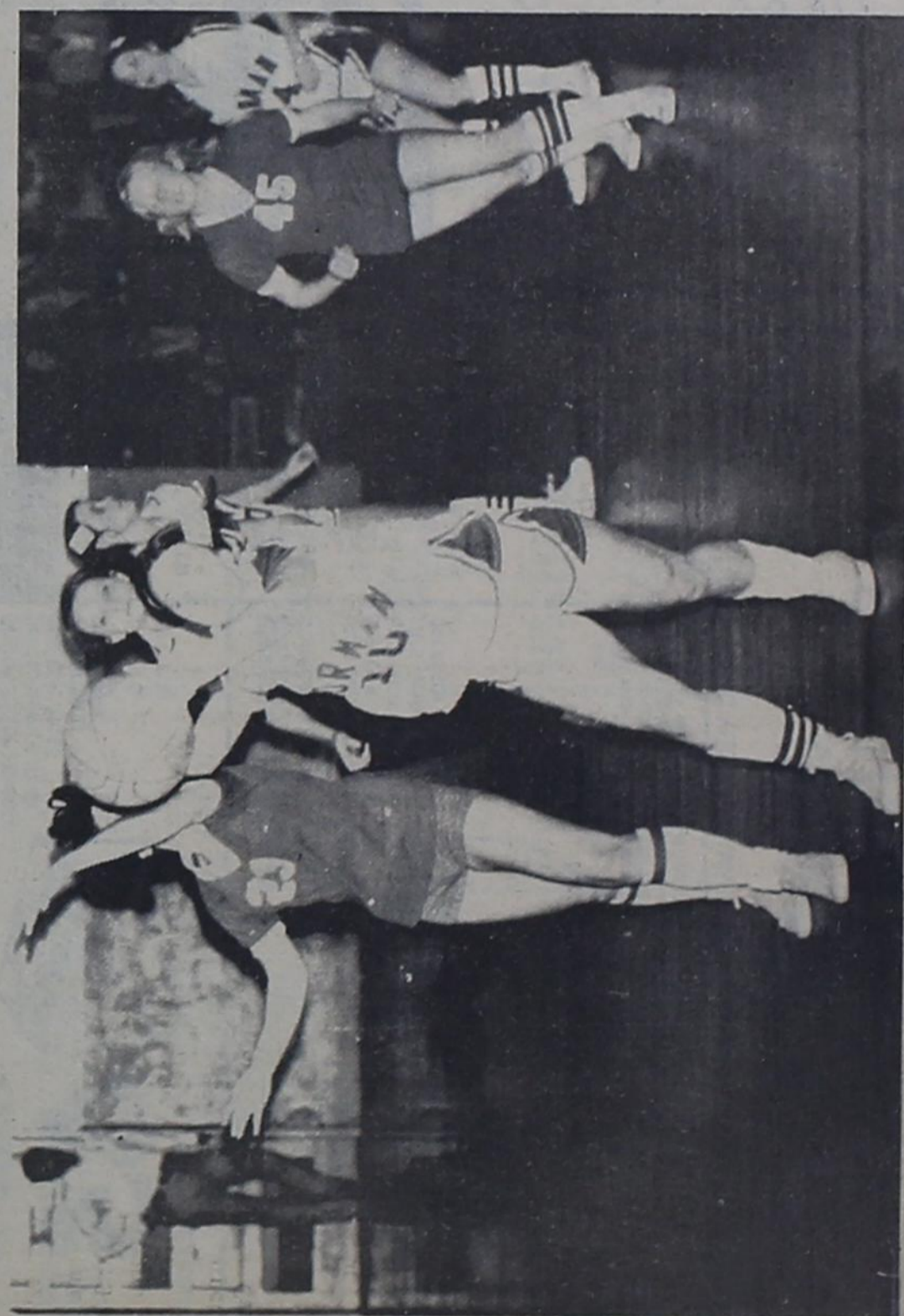
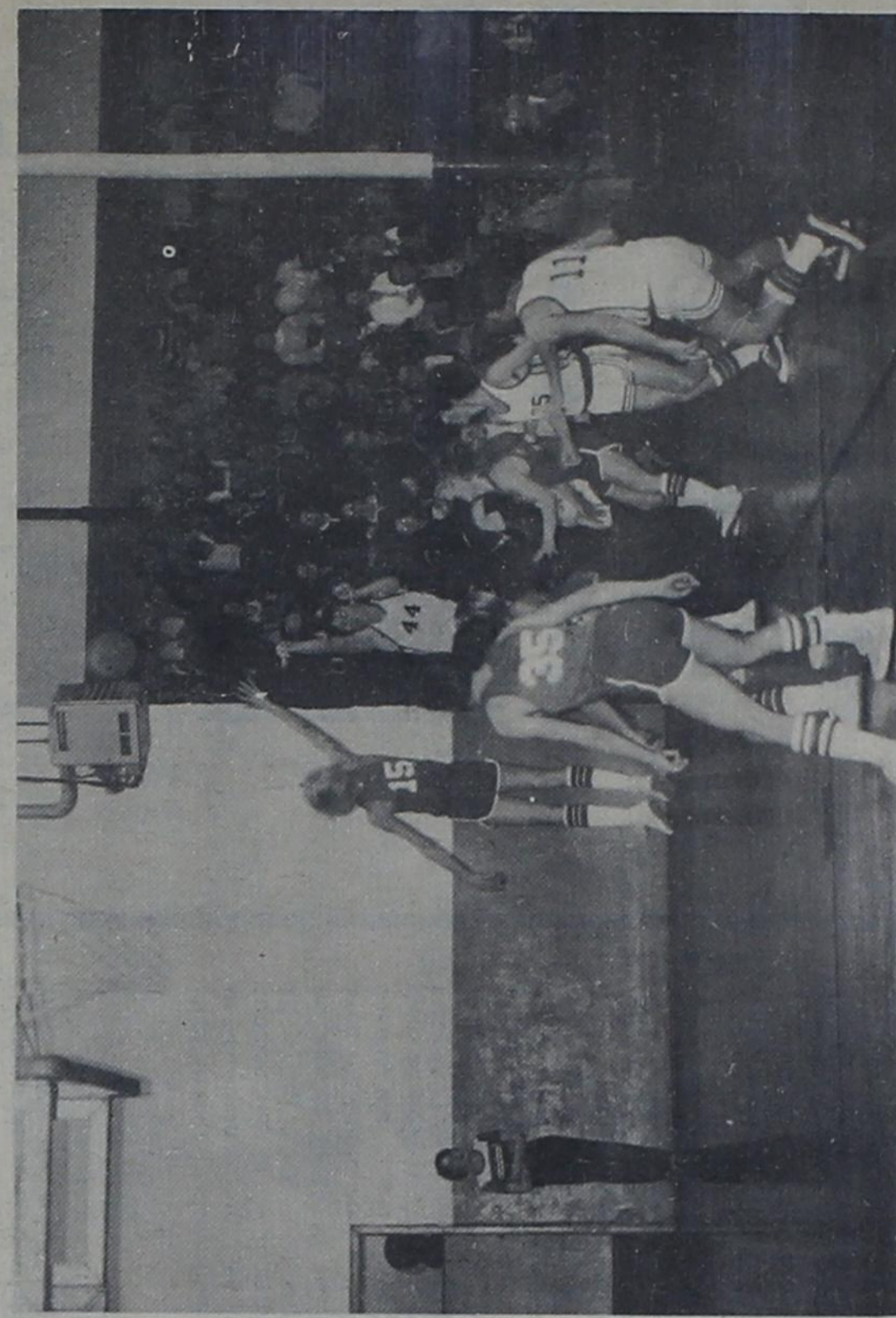
SCENES AT BASKETBALL GAME AGAINST CARBON



LARGE AREA



WIDE SHOT



Lawndale News

By Jettie Daniels

We had many visitors in our home this past week. Thanks for coming by and making your loved one's day a much more pleasant one. Tuesday, is our Bingo day. Hope to have a lot of players

present. Our winners last week were, Clara Collins, Enice Clemmer, Nancy Holloway, Blackout Winners were Mary Timmons, and Nattie Watts.

Had a nice group for our Birthday Party on Thursday afternoon. Our Birthday Ladies and Gentlemen were: Cora Patterson, Georgia Leonard, Bessie Jennings, and Bessie Rhodes, and Otis

GORMAN PROGRESS, FEBRUARY 7, 1980

Thompson.

Thanks very much to Ava Rodgers, Zelda Jordan and Nancy Hendricks for their help.

We missed many of our Singers Thursday night. We are grateful though for those who braved the cold weather to be with us. Our residents enjoy the gospel singing very

much and we do appreciate all the folks who have been so faithful through the years. To this we say a sincere "Thank You".

If you have never been, then we extend a hearty invitation for you to join us. You will certainly receive a blessing by being here.

Everyone here at Lawndale is excited about our new Activities room. It is now being painted and prepared for the residents to use for Arts and Crafts. We have never had group arts and crafts in our home before but Mrs. Yardley and I have been visiting other Nursing Homes and getting ideas and assistance in this endeavor. If you enjoy crafts, come join us in the near future. Let's have fun together and give our residents an opportunity to do things they enjoy. When we got things in full swing we will be calling on you to save "odds and ends" for us, such as scraps of material, wood scraps, tobacco cans, baby food jars, etc. Right now we would like your suggestions and perhaps, patterns for craft projects.

We are also excited about having a family night. And we are planning one for the near future. Hoping to bring a sunny spot into the lives of all our residents. Hope each of you will help us do this. Watch for date and time in next weeks news.

—GP—

1980 CROP SUPPORT LEVELS AND SALES POLICY ANNOUNCED

Washington—National average support levels of \$455 per short ton for 1980 crop quota peanuts and \$250 per short ton for 1980 crop additional peanuts have been announced by Secretary of Agriculture, Bob Bergland.

The \$455 support level is \$35 above the 1979 level of \$420 per ton, Bergland said.

Bergland said the increase in the quota support price is due to rising production costs. The additional support level is based on estimated demand for peanut oil and meal and on export demand, he said.

Bergland said it was necessary to lower the support level for additional peanuts by \$50 per ton from the 1979 level of \$300 per ton because USDA expects 1980 peanut oil and meal prices to be somewhat lower.

Quota peanuts are those grown within the poundage quota established for the 1980 marketing year. Additional peanuts for the 1980 marketing year are those grown in excess of quota, but produced on allotted acreage.

Sales of quota and additional peanuts for domestic edible use, including use for seed, will be made by CCC at not less than 105% of the quota loan rate, plus costs, if sold on or before December 31, or 107% of the quota loan value plus costs if sold after

that date.

The exception for this policy is that sales of additional peanuts for domestic edible use, if sold and paid for during the harvest season at the time of delivery by the producer, will be made at no less than 100% of the quota loan value, plus costs.

Farmers stock peanuts will be sold by CCC for edible export at no less than \$455 per ton, plus costs, for quota peanuts and no less than \$435 per ton for additional peanuts.

On export sales of 1980 crop sold for crushing only, the CCC sales price will be at no less than \$455 per ton, plus costs, for additional peanuts, and no less than \$250 per ton plus costs, for additional peanuts. Peanuts sold for export crushing must be fragmented before export.

Sales of quota and additional 1980 crop peanuts for domestic crushing only will be made by CCC at competitive prices. Use of oil produced from these peanuts will be restricted to domestic markets if the price of peanuts from which the oil is produced is less than the applicable \$455 or \$250 per

Tarleton State ranks low in cost

STEPHENVILLE — Tarleton State University, part of The Texas A&M University System, is on a Bottom Ten list — but glad to be there.

According to the National Association of State Universities and Land-Grant Colleges, Tarleton State is ranked among the least expensive colleges in the nation in terms of tuition and required fees.



You can stop splatters by inverting a colander over the pan when frying.

Tarleton required a median charge of \$374 per student this year, the survey indicated.

WELCOME TO SERVICES of the GORMAN CHURCH OF CHRIST

SCHEDULE OF SERVICES

BIBLE CLASS	10:00 A.M.
MORNING WORSHIP	10:45 A.M.
EVENING WORSHIP	6:00 P.M.
THURSDAY LADIES CLASS	10:00 A.M.
WEDNESDAY EVENING	7:00 P.M.

SALE

FEB. 7-11 4 DAYS

THURSDAY, FRIDAY, SATURDAY AND MONDAY

ASSORTMENT OF Buttons - Metal Zippers
10¢ each

Polyester Thread
5 for \$1

SIMPLICITY & KWIK-SEW Patterns
25% Off

FUSIBLE (IRON-ON) Interfacing
2 yds. \$1

DOUBLE KNIT - SHEERS & INTERLOCHING PRINT MATERIAL
\$2.22 per yard

GROUP OF SEWING NOTIONS
Snaps, Pin Cushions
Tape Measures, Seam Rippers
50% OFF Many Other Items
Suggested Retail

Sew-in INTERFACING
3 yards \$1.00

RONALD'S VARIETY STORE
DE LEON, TEXAS

DRIVELINE

The Return of The Hawk . . .

When winter winds whistle across Lake Michigan, Chicagoans often say "The Hawk is flying." In Texas it's a icy Road and bad driving weather. Icy spots are ten times more slippery than dry pavement, so watch out, especially on curves and hills. Bridges and overpasses are especially dangerous, because they are up in the air and more exposed to the cold, so they freeze faster. Often, as the temperature plummets below freezing, bridges and overpasses develop icy spots even though the rest of the highway is still unfrozen . . . so don't be lulled into a false sense of security.

Amazing fact: The number of injuries from traffic accidents in America dropped by 400,000 a year after the 55 mph speed limit became law.

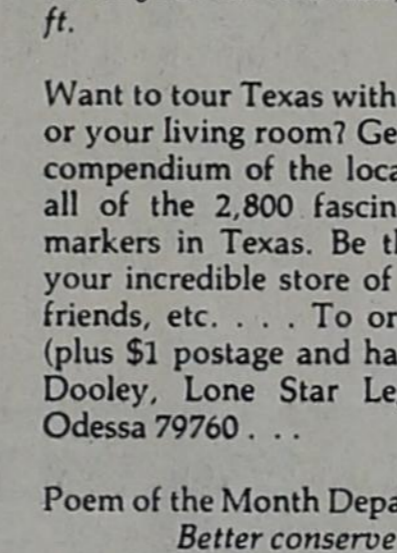
There's a lesson there somewhere . . . maybe it's that you're better off with more time to react, turn, stop and dodge. At 55 you need 215 feet to brake your car to a halt; at 70 mph you need 328 ft.

Want to tour Texas without ever leaving your car, or your living room? Get "Why Stop," a 547 page compendium of the locations and inscriptions of all of the 2,800 fascinating roadside historical markers in Texas. Be the life of the party with your incredible store of knowledge. Amaze your friends, etc. . . . To order the book send \$7.95 (plus \$1 postage and handling charge) to Claude Dooley, Lone Star Legends, P.O. Box 1646, Odessa 79760 . . .

Poem of the Month Department:
Better conserve
And take up the slack,
Or we'll be commuting
On camel back.

— 55 saves!

Thirty seven percent of all auto deaths involve only one driver alone in his or her car . . . Research shows that if you take three drinks close together before you drive, your chances of having an accident are 1,000 percent greater . . . Share your questions, anecdotes and observations with us. Write to:
Texas Traffic Safety Section
State Department of Highways
and Public Transportation
Austin, Texas 78701



Rawlins Monuments
— SINCE 1884 —
A Shrine of Memory
Our Reputation Has Been Built
On Customer Satisfaction -
If we may assist you
Please Call Collect --
Estelle Craddock
734-2410 - GORMAN, TEXAS

DUBLIN ZERO LOCKER

Dublin, Texas 76446 Phone 817-445-2424

Custom Slaughter And Processing

CHOICE FED BEEF FOR SALE

WHOLE - HALVES - QUARTERS
Jerry Westmoreland, Manager

Unvented gas area heater of contemporary styling spreads "carpet of warmth" corner to corner. Call now for more about the

Dearborn Crest

Unvented gas area heater

You may find it an answer for those "cold spots" in your home or office. You may also find it an answer to some high utility bills. You may be glad you called.

Jones-Blair Paint

Harvest of Colors.

Satin-X Latex WALL PAINT
• One coat coverage
• Washable
• Dries 30 min., no odor
• Clean up with water

\$9.90

Polyflex Latex HOUSE PAINT
• Top quality latex house paint
• Dries in 30 min.
• Sunfast colors cover wood, brick and other masonry surfaces

\$11.30

The beauty is...the beauty lasts.

HIGGINBOTHAM'S

18 FRIENDLY LOCATIONS TO SERVE YOU

734-2227 - GORMAN

CARQUEST AUTO PARTS STORES

PRICES SLASHED ON DELCO FREEDOM BATTERIES

FREEDOM 30 30-month warranty.* For the value-conscious consumer with moderate starting needs who wants FREEDOM on a budget.	SALE PRICED
	37.87 Exchange
FREEDOM 40 40-month warranty.* Fits replacement needs in most ordinary applications.	FROM
	42.29 Exchange
FREEDOM 50 50-month warranty.* Designed for strong performance in all but the most demanding situations.	FROM
	43.97 Exchange
FREEDOM 60 60-month warranty.* Top of the Delco line. High capacity for quick starts in any weather. Excellent for big cars with heavy accessory loads.	FROM
	48.98 Exchange

*Nationwide 30-, 40-, 50-, 60-month limited warranty. Free replacement first 3 months. Pro rata exchange thereafter based on suggested list then in effect. Proof of purchase and warranty certificate required. Applies to all batteries in private passenger car and light truck use.

Johnny Rutherford
Two-time Indy 500 Winner

WE KNOW WHAT YOU MEAN WHEN YOU'RE TALKING PARTS.

GORMAN AUTO PARTS

PHONE 734-2900 HWY. 6 EAST
GORMAN, TEXAS

Good at all participating CARQUEST Auto Parts Stores thru Feb. 24, 1980.

SCHOOL HILL NEWS

By Oma Lee Riddell

Helen Mendeboure of Bakersfield, California returned to her home after being here for three months with her son Shorty Stokes. Shorty is doing better and has returned to work. Jane and Tommy Musick and Shorty were in Ft. Worth on Monday to see a Doctor about a prothesis for Shorty.

Jeane Grimshaw took Niki and Will to the Doctor for a checkup on Wednesday. Got a good report on both of them. Gues ole Nick will be glad to be back in school after missing two weeks.

Ralph and Aline Elston, were visiting on Wednesday with Roder and Joan Elston of Lingleville. They like everyone else were out replenishing their larder after the cold spell.

The Staudes were gone last week doing in the fat stock show. They had a very nice time.

Those spending Sunday with us were Gene, Jeane, Will and Niki Grimshaw of Howard Community, Tommy and Jane Musick of Lingleville, and Jack Blackwell of Ranger.

Here is a new set of Commandments. We call Commercial Commandments. Blessed are the meek, for they have to pay taxes;

He who cast the first stone had better have some big rocks hand;

Do unto others before they do unto you

Ask, and if you receive - it shall truly be a miracle;

The wages of sin will get you five mink coats;

Blessed are the poor in spirits, for they have no money to buy booze

Love thy neighbor but be sure her husband isn't home

Pity the poor athiest, He feels grateful but has none to thank.

DESDEMONA NEWS

By Vonnie Guthery

Helen Grimshaw spent several days in Estland Hospital following surgery.

Attendance at the First Baptist Church on Sunday was good. Special music was by the "Young Life" singers-Risa Ruke, Melinda Buckley and Sherry Riggs with Karen Creed at the piano.

Our regular "Friendship Club" social will be in the home of Mrs. Annie Collum on Monday February 11th starting at 9:00 A.M. Visitors are welcome.

Mrs. Sylvia Ross returned to her home in California on Tuesday after an extended visit with her brother, Glyn and Alpha Thieboud and a nephew the Darryl Thieboud family.

Bill and Helen Collum and

boys visited the weekend with his sister, Jack and Pat Rann'e of Alvarado. They attended the stock show.

Bernard, Ann and Brad Keith of Odessa visited the weekend with the Pug Guthery's.

Lonnie and Zelma Williamson have a new great-grandson, Justin Wade born January 30 in Stephenville Hospital. Parents are Jerrell and Debbie Burleson and a brother Nicholas. Grandparents are Bob and Flo Burleson of Stephenville and other great-grandmother is Alice Burleson of Gorman.

Bob and Dolores Tuckers and boys visited in Coleman over the weekend with their son Randall and family and her parents.

FROZEN BANANA PIE

- 1 package (3 oz.) cream cheese, softened
 - 2 tablespoons sugar
 - 1/2 cup milk
 - 2 medium ripe bananas, cut in chunks
 - 1 container (8 oz.) frozen whipped topping, thawed
 - 1 baked 9-inch graham cracker crumb crust, cooled
- Combine cream cheese, sugar, milk and bananas in electric blender container. Cover and blend at medium speed for 30 seconds or until smooth. Fold into whipped topping. Spoon into crust. Freeze until firm, about 4 hours. Let stand at room temperature 5 minutes (or longer for softer texture) before cutting. Store any left-over pie in freezer. Garnish with chocolate-dipped banana slices, if desired.

KOKOMO NEWS

By Zelda Jordan

What a beautiful day the Lord blessed us with on Sunday.

Mr. and Mrs. Ottis F. Griffith of Lake Leon and Alissa Burgess of Granbury were visitors at the Kokomo Baptist Church on Sunday morning.

Mr. and Mrs. Randy McDonald of Duncanville visited on Wednesday and Thursday with Mr. and Mrs. Glenn Jordan, Mr. Jim Jordan, Mrs. Berniece Rodgers an Mr. and Mrs. Larry Morrow and boys. Mrs. Clifford Nelson visited with the Jordans and McDonalds on Wednesday.

Mr. and Mrs. Durwood Burgess visited in Granbury on Friday with Mr. and Mrs. Billy Burgess and Alissa and with Mrs. Kenneth Pence, Lisa and Jody and Mrs. Modess Burgess who was visiting with the Pence family. Mr. Pence is ill in All Saints Hospital in Ft. Worth. Get well wishes go out to him.

Mrs. Modess Burgess returned to her home in Gorman, and Allissa came home with her grandparents, the Durwood Burgesses, for a weekend visit. Mr. and Mrs. Billy Burgess came for Alissa and visited with them on

Sunday.

Mr. and Mrs. Jerry Hallmark and family of San Angelo and Mr. and Mrs. Jimmy Little and James visited with Mrs. Dora Garrett on Sunday. Mrs. Veran Lasater of De Leon spent Sunday night with Mrs. Garrett and they visited in Eastland on Monday with Mrs. Rozelle Caraway. Mr. and Mrs. George Norris, and Mr. and Mrs. Lon Norris, Mrs. Tranny Lasater and Mrs. Rosa McNeely.

Mmes. Nancy Hendricks, Ava Rodgers, and Zelda Jordan of the Kokomo Extension Homemakers club, and Mrs. Velma Bennett served birthday cake and punch to the residents and visitors at the monthly Birthday Party at the Lawndale Home for Senior Citizens at Gorman on Thursday January 31. Those celebrating birthdays in January were Cora Patterson, Bessie Jennings, Georgia Leonard, Bessie Rhodes and Otis Thompson.

—GP—

But thanks be to God, which giveth us the victory through our Lord Jesus Christ.
1 Corinthians 15:57



Considering A New Automobile?

Then you should also consider car insurance! Enjoy your new car knowing you're safe from financial loss.

GORMAN INSURANCE AGENCY

MARY JEFFS
734-2312

GIVE YOUR VALENTINE Chocolates



BOXES \$1.25 to \$8.95

VALENTINE CARDS Say it for you

Walt Disney & Hallmark Individual & Boxed Boxes of 28 - 79¢ Boxes of 17 - 59¢

GORMAN PHARMACY
George Simmons, Pharmacist
734-2859 GORMAN

HIGHWAY WILDLIFE SERIES No 3

BEN SARGENT © 1980

INVASION OF THE BOOZOIDS

THEY ROAM THE STREETS BY NIGHT! ORDINARY HUMAN BEINGS TRANSFORMED INTO PUBLIC MENACES! CAREENING THROUGH THE FEAR-WRACKED STREETS OF THE CITY IN TWO-TON AUTOMOBILES!

THEY CAN'T SAY NO TO ONE MORE FOR THE ROAD!

HELP WANTED NOW!
Free Blue Cross Insurance Plan
Vacation - Overtime

MEN MUST BE ABLE TO HANDLE 100 POUNDS
WOMEN MUST BE ABLE TO HANDLE 40 POUNDS

See Bill Slaton
PEANUT CORPORATION OF AMERICA
Hwy. 6 West - Gorman
No Phone Calls Please

BUYING SILVER AND GOLD
TOP PRICES PAID

WE PAY: \$19.00 AND UP FOR SILVER DOLLARS (1965 and before)

16 TIMES FACE (\$16 per \$100) For Pre 1965

SILVER COINS

\$8 FOR SILVER HALF DOLLARS

\$4 FOR SILVER QUARTERS

\$1.60 FOR SILVER DIMES

30¢ FOR EACH WAR NICKEL (1942-45)

\$2 EACH FOR CLAD HALF DOLLARS (1965-70)

WE ALSO BUY GOLD AND SILVER IN ALL FORMS.

COINS-SCRAP-OLD JEWELRY-INDOTS-MEDALLIONS.

CLASS RINGS-DENTAL GOLD-STERLING AND FLAT WARE, ETC.

SEE US BEFORE YOU SELL

REMEMBER PRICES HAVE NEVER BEEN HIGHER

CALL 629-8372 Or 629-8849

WE WILL PICK UP

for your Valentine **flowers**

What a wonderful way to say Happy Valentine Day! Serenade her with flowers and her heart will sing a song of love.

FOSTER FLORAL
Mr. and Mrs. Gene Foster
PHONE 734-2515 GORMAN

MEAT Specials

 **FRESH GOOCH'S GROUND BEEF** lb. **\$1.39**

ROAST GOOCH Chuck lb. **\$1.39**

ROAST GOOCH ARM lb. **\$1.49**

STEAK GOOCH Round lb. **\$1.89**

GOOCH FRANKS **\$1.19**

BACON  12 OZ. **\$1.19**

OLEO **KRAFT SQUEEZE** **1 POUND PKG.** **89¢**

POTATOES

RUSSETT Lb. **19¢**

GLADIOLA WHITE OR YELLOW CORNBREAD MIX 6 OUNCE PKGS. **5 FOR \$1**

DOLE BANANAS  Pound **29¢**

COLORADO RED DELICIOUS APPLES Lb. **39¢**

LIPTON LEMON TREE 32 OZ. **\$2.29**

TANGELOS CALIFORNIA SUNKIST Lb. **39¢**

KRAFT PHILADELPHIA CREAM CHEESE 12 OZ. **\$1.19**

TOMATOES HUNT'S WHOLE NO. 300 SIZE **2-99¢**

Vanilla Wafers KEEBLER'S 12 OZ. **69¢**

HI DRI TOWELS LIMIT 3 **49¢**

LITTLE BROWNIE COOKIES 6 OZ. PKG. **3-\$1.09**

JENO'S PIZZA Assorted Flavors 12 OZ. **1.29**

Folgers Coffee 1 lb. can **\$2.89** Limit 1

Jay's Grocery & Market **LEMONS SUNKIST EACH 10¢**
PRICES GOOD THURSDAY THRU SATURDAY
PHONE 734-2316 -- GORMAN

GORMAN PROGRESS, FEBRUARY 7, 1980

Wildcat Set For Eastland

An Eastland County Regular Field project will be drilled five miles east of Carbon as E. B. Burelsmith, Levelland, No. 1 Joe Bond.

The planned 2,000-foot venture is located on a 160-acre lease. It spots 175 feet from the south and 2,465 feet from the west lines of Section 23, Block 1, H&TC Survey.

Louisiana Crude Oil & Gas Co., Eastland, spotted No. 1 A. Love as a proposed 3,800-foot wildcat. Location is seven miles northwest of Desdemona on a 105-acre lease.

It spots 2,929 feet from the north and 1,145 feet from the west lines of G. W. McGrew Survey, A-371.

Cabola Oil & Gas Corp., Tyler, will drill No. 1 Tinkler as a proposed 3,300-foot test five miles north of Gorman.

Location is on a 99-acre lease, spotting 330 feet from the north and east lines of Lot 9, Theresa Tyler Survey 51, A-492. It will be drilled as a southeast offset to European Southwest Co. No. 1 Slampa, a recent Caddo Sand discovery well.

Texon Petroleum Corp., Midland, will drill No. 1 Den in the Lee Ray (Duffer Line) Field five miles north of Cisco.

The planned 4,000-foot venture spots on a 227-acre lease. Site is 1,217 feet from the north and 1,980 feet from the east lines of Section 483, SP Survey, A-457.

Two miles northeast of Desdemona, Texcolada Oil Co. of Austin will drill No. 1 D. S. Howard in the Tin Cup (Caddo) Field.

Location is on an 80-acre lease, spotting 470 feet from the south and east lines of Victor Sanza Survey, A-443. Permit depth applied for is 3,200 feet.

New Test Sites Set

Roadrunner Oil Co., Wichita Falls, will drill two Comanche County projects in the Beattie (Marble Falls) Field three miles southeast of Duster.

Each try has a proposed depth of 2,900 feet. No. 1 Lee will be drilled on a 40-acre lease. It spots 853 feet from the north and 1,787 feet from the east lines of Section 27, Block 2, H&TC Survey, A-465.

Ridgeway Petroleum Inc., Abilene, will reenter two abandoned wildcats four miles north-east of Cisco in Eastland County.

Each project was originally drilled in 1977 by Kahan Energy Corp.

No. 1-A R. P. Morton is located on a 189-acre lease, spotting 2,402 feet from the north and 467 feet from the east lines of Section 59, Block 4, H&TC Survey.

Other project is No. 3-A Morton, located 467 feet from the north and 2,239 feet from the east lines of Section 59.

EASTLAND - A wildcat, producing from the Caddo Sand, has been completed eight miles north of Gorman.

The discovery is European Southwest Co. No. 1 Slampa, spotting 1,070 feet from the north and 4,050 feet from the west lines of Theresa Tyler Survey 51, A-492.

Daily potential was 40 barrels of 40 gravity oil, flowing through a 12-64-inch choke with 60 pounds tubing pressure.

Production is from perforations at 2,898 to 2,904 feet with the 4 1/2-inch casing set at 3,040 feet.

The hole was drilled to a total depth of 3,391 feet and plugged back to 3,040 feet. Gas-oil ratio was 125-1.

Adobe Oil & Gas Corp. of Midland will drill No. 1 Sneed as an Eastland County wildcat four miles southeast of Cisco.

Location is on a 160-acre lease, spotting 2,173 feet from the north and 1,787 feet from the west lines of Section 23, Block 3, H&TC Survey.

Permit depth applied for is 3,880 feet.

GORDON SPOT

By DeMarquis Gordon

It's gardening time again and many home gardens in Eastland County are getting a good start. We have noticed a lot of people have already set out onion plants.

Some are thinking about weed control. We have had several requests this last week concerning chemical herbicides that may be used effectively in the garden.

Weed control in the home garden depends on garden size, kinds of vegetables being grown, and types of weeds.

Weeds (any unwanted plants) compete with vegetables for soil moisture and nutrients. They have extensive root systems and flourish under a variety of conditions.

Effective control of weeds depends on how they spread. Crabgrass and other annual

weeds survive by seeds. Perennial weeds such as bermuda grass and johnson grass survive both by seed and underground plant parts.

Seeds are transmitted by wind, water or animals. They may also reach the garden in improperly prepared compost manure or other organic matter added to the soil.

Some weed seeds remain viable in the soil for years. They and underground storage parts contain stored food reserves to support weed seedlings until they emerge or are exposed to sunlight.

Herbicides or chemical weed killers are the least desirable home garden weed control. While they are a necessity in commercial crop production to reduce

Other venture is No. 1 Matthews, located on a 40-acre lease. Drillsite is 467 feet from the north and 853 feet from the east lines of Section 27.

TEXAS FARMERS AND RANCHERS

feel that the federal government cannot be the total answer to the problems facing the agriculture industry, and it certainly must not be a source of difficulties. Agriculture Commissioner Reagan V. Brown testified recently.

His statements were contained in testimony submitted at a regional hearing in Wichita Falls conducted by Secretary of Agriculture Bob Bergland and other U. S. Department of Agriculture officials. The Wichita Falls hearing was one of 10 held throughout the country to initiate a dialogue on agriculture, farm policy and rural life.

"In deciding or modifying

labor and achieve maximum yield, there are not enough chemicals with a wide enough margin of error to be used safely and successfully in home gardens. Also, most herbicides are effective on specific weeds in specific crops, and most gardens contain a variety of vegetables. Furthermore, herbicides are expensive; a garden can cost \$70 or more.

farm policy, we should not assume that government is the answer to all our problems," said Brown. "In fact, over the years many farmers and ranchers have come to distrust any government involvement in their business.

"The difficulties facing our farmers and ranchers can never be solved until answers are found to a variety of deeper, underlying problems in our economy," he said. "We must realize that every government policy affects the farmer and rancher - from economics and transportation to foreign and monetary policy. All of these, in one way or another, are farm policies."

As world food demand doubles in the coming decades, America will increasingly be called upon to help feed a growing population, Brown stated. "We can no longer afford to gamble with one of this country's great remaining strengths."

Frozen carrots and broccoli are increasing in popularity. According to a U.S. Dept. of Agriculture report, we ate 21 percent and 16 percent more of each between 1970 and 1977.

Effective Feb. 7 - 13

10.65% rate **11.985%** yield
On the \$1,000 minimum, 2 1/2 year C.D.

Effective Feb. 7 - 13

11.985%

On the \$10,000 minimum, 6-month C.D. Come see us soon. Or call and we'll come see you. 'Cause it's the Olney way to save.

Everything's going to be all right, with the Money Market C.D.'s.

RANGER SAVINGS  **EASTLAND SAVINGS**
Both divisions of Olney Savings

This is an annual yield. The rate is subject to change at maturity. And federal regulations prohibit the compounding of interest during the term of the account.



Keep your home up and help keep electric bills down.

A large part of saving energy - and money - is simply a matter of cutting waste. In these days of "scarce" energy and inflation it's important to all of us to conserve. You can start by maintaining your own home.

Seal cracks around doors and windows with caulking and weatherstripping to stop heating and cooling leaks.

Check to ensure that ductwork is well insulated and sealed. If this is not done right, much of the heating and cooling escapes into your attic.

Consider installing storm windows in your home. They save energy by creating an insulating layer of air between

the temperature outside and temperature inside your home.

For the full story on saving energy - and energy dollars - get our Unhandy Person's Guides. Just call Texas Electric or ask for them on the comments section of your next electric bill. They'll help even the most unhandy person tighten up his home.

At Texas Electric, we want to help you keep your electric bill down.



D. R. ARMSTRONG, Manager, Phone 893-2266