

**OLD FASHIONED BAKE SALE:
RAISES SPIRITS AS WELL AS FUNDS**

As everyone knows, an annual bake sale is often a social event as well as a fundraiser. Home-baked goods have long been a universal favorite, and bake sale shoppers as well as organizers enjoy munching on home-baked treats as they prepare for the sale or browse during it.

Should your organization begin planning a bake sale, here are some inspiring adaptations of classic home-baked favorites. Peanut Spice Cake and Viennese Apple Pie, featured here, are variations on the classic home-baked sweets—chocolate cake and apple pie. Made with Planters Cocktail Peanuts, they provide a sizeable portion of protein and minerals as well as a chewy texture that so many people love in their home-baked treats.

- PEANUT SPICE CAKE**
1 package (18-1/2-ounce) devil's food cake mix
3/4 teaspoon ground cinnamon
3/4 teaspoon ground allspice
1/4 teaspoon ground cloves
1-1/2 cups water
2 eggs
2 tablespoons Fleischmann's soft margarine, melted
1/3 cup Planters creamy peanut butter
3 tablespoons Fleischmann's soft margarine
1/4 cup milk
3/4 teaspoon vanilla
2 cups unsifted confectioners sugar (about)
1 cup Planters cocktail peanuts
- In a large mixer bowl combine cake mix, cinnamon, allspice, cloves, water, eggs and melted margarine; blend until moistened. Scrape sides of bowl and beaters. Beat as package directs. Pour into 2 well-greased and floured 8-inch square cake pans. Bake in a moderate oven (350° F.)



about 35 to 40 minutes, or until done. Cook in pans on wire rack 10 minutes. Remove from pans; cool thoroughly on wire rack.

Meanwhile, blend creamy peanut butter and soft margarine. Mix in milk and vanilla. Add enough confectioners' sugar to make a soft, spreadable frosting. Beat until smooth. Frost tops and sides of cooled cake layers. Chop 2/3 cup cocktail peanuts and decorate sides of cake. Decorate center-top of cake with remaining peanuts. Makes one 8-inch cake.

VIENNESE APPLE PIE
Pastry for 2-crust pie
1/2 cup sugar
3 tablespoons flour
3/4 teaspoon ground cinnamon
1/8 teaspoon ground nutmeg
1/8 teaspoon ground cloves
3 cups shredded pared baking
1/2 cup dark seedless raisins
1 tablespoon lemon juice
2 tablespoons grated lemon peel

In a large bowl mix together 1/2 cup sugar, flour, 1/2 teaspoon cinnamon, nutmeg and cloves; stir in apples and raisins and then lemon juice and lemon peel. Pour into pastry-lined pie plate. Dot with margarine. Roll out remaining pastry and cut into strips. Arrange in criss-cross fashion over apple mixture. Seal to bottom pastry and flute edge. Mix together cocktail peanuts, remaining 1 tablespoon sugar and 1/4 teaspoon cinnamon. Sprinkle over top of pie. Bake in a hot oven (400° F.) for 40 to 45 minutes, or until done. Serve warm or cold. Makes one 9-inch pie.

LITTLE KNOWN FACTS ABOUT FOOD

A PLUM OF A PUDDING
Crown a Christmas meal with Christmas Pudding, a delicious and nourishing holiday dessert from England. The Rainbow Room, one of New York's most festive dining spots, prepares the pudding the traditional way—one year in advance. Tony May and Brian Daly, co-owners of the Rainbow Room, share their prized recipe which, prepared just a week or two in advance, yields a Christmas Pudding with richness and texture to delight the most discriminating palate.

OPTIONAL: 1/2 cup brandy, for flaming

In a large bowl combine: currants, seedless raisins, white raisins, fruit peel, cherries, almonds, apple, carrot, orange and lemon peel and beef suet. Mix well. Stir in flour bread crumbs, brown sugar, allspice and salt.

Beat eggs in a separate bowl, until frothy. Stir in: 1 cup brandy, orange juice and lemon juice. Combine this mixture with the fruit mixture. Knead vigorously and beat until all ingredients are blended. Cover bowl with a damp towel and refrigerate for at least 12 hours.

Spoon mixture into four 1-quart pudding molds to within 2 inches of the top of the mold. Cover each mold securely with a strip of buttered foil. Wrap molds in a damp towel and secure the towel with string. Place molds in a large pot and fill with boiling water, covering about 3/4 of the molds. Bring



CHRISTMAS PLUM PUDDING
1 1/2 cups dried currants
2 cups seedless raisins
2 cups white raisins
3/4 cup candied fruit peel, finely chopped
3/4 cup candied cherries, finely chopped
1 cup sliced blanched almonds
1 medium tart apple, peeled and coarsely chopped
2 tablespoons grated orange peel, finely chopped
2 teaspoons grated lemon peel, finely chopped

the water to a boil, cover the pot, reduce heat. Steam the pudding for 8 hours. (NOTE: if the water boils away, additional water should be added.)

Remove puddings from water and let them come to room temperature. Remove towels and buttered foil; re-cover molds with fresh foil. Place puddings in refrigerator for at least 1 week. (Traditionally, plum pudding is made 1 year in advance to enhance flavor.)

To serve: Again place

GORMAN PROGRESS, DECEMBER 18, 1980

edges of the mold, the pudding should slide out.

About 12 million enthusiasts use 5 million motorcycles off-highway for economical recreation and competitive purposes every year.



A forerunner of the modern computer was created in 1642 when Blaise Pascal built for his father a small machine that could add and subtract and was worked by geared wheels.

GORMAN HIGH SCHOOL Basketball Schedule 1980-1981

DATE	TEAM	BOYS A-AB	GIRLS A-AB	TIME	PLACE
18-19-20 - Lingleville Tournament					
*JAN. 9	- Rising Star	*	*	7:00	Here
* 13	- Eula	*	*	7:00	There
* 16	- Cross Plains	*	*	7:00	There
* 20	- Moran	*	*	7:00	Here
* 23	- Carbon	*	*	7:00	Here
* 27	- Rising Star	*	*	7:00	There
* 30	- Eula	*	*	7:00	Here
*FEB. 3	- Cross Plains	*	*	7:00	Here
* 6	- Moran	*	*	7:00	There
* 10	- Carbon	*	*	7:00	There
JAN. 15-16-17 - Tolar J. V. Tournament					
*District					

GORMAN JUNIOR HIGH SCHEDULE 1980-1981

JAN. 5	- Carbon			6:30	There
12	- Rising Star			6:30	Here
19	- Eula			6:30	There
26	- Cross Plains			6:30	There
FEB. 2	- Moran			6:30	Here
9	- Carbon			6:30	Here

JAN. 6-8-10 - GORMAN TOURNAMENT
29-30-31 - CARBON TOURNAMENT

- NOTICE -
CHRISTMAS SPECIAL
FRESH OIL ROASTED AND SALTED
PEANUTS
5 Lb. Box \$7.00
CALL 734-2776

Only 7 Days 'Til Christmas

WELCOME TO SERVICES of the GORMAN CHURCH OF CHRIST

ODELL CARTER, Minister
SCHEDULE OF SERVICES

BIBLE CLASS	10:00 A.M.
MORNING WORSHIP	10:45 A.M.
EVENING WORSHIP	6:00 P.M.
THURSDAY LADIES CLASS	10:00 A.M.
WEDNESDAY EVENING	7:00 P.M.

GIFTS · GIFTS · GIFTS

BOOK SPECIAL
ON DOWN THE ROAD
(THE WORLD OF THE RODEO COWBOY)
BY BOB SAINT JOHN
FORWARDS BY LARRY MAHAN AND WALT GARRISON
REG. \$19.95 - SALE **\$10.95**

JUSTIN ROPERS
\$79.95

DURANGO WORK BOOTS
\$39.95 - \$49.95

CHILDREN'S BOOTS
BROKEN SIZES **\$15.95**

MISS CAPEZIO DESIGNER BOOTS
\$89.95 and \$94.95

YOU CAN'T GO WRONG WITH A **Gift Certificate**

BIG J'S BOOTS
(Downtown) GORMAN, TEXAS.
OPEN THURSDAY THRU SATURDAY 9 A. M. To 6 P. M.
JOLENE GILLILAND, Owner
PHONE 734-2840

Dirt can hurt

...in your filter, on your bill.

The filter in your heating and cooling unit is there to collect dust and lint. But when the filter's full, the unit has to work longer to force air through. And that forces up your energy bills.



It's a good idea to check your filter once a month. A dirty filter should be cleaned if it's a permanent filter or replaced if it's a disposable. And that's an easy job ... to overlook.

To help you remember when you checked your filter, we've included a filter checklist with your December bill. You can tape it right to your unit.

At Texas Electric, we think the more you know about using —and saving—energy, the better.

Texas Electric Service Company

D. R. ARMSTRONG, Manager, Phone 893-2266

B.B.A. Degrees From Tarleton

STEPHENVILLE, TX — State senator-elect Bob Glasgow told the winter graduating class at Tarleton State University on December 14, 1980 that the education you have received here at Tarleton is equal to or better than you could have received at any other college or university. Walk with your head high and tell the people that you are a graduate of Tarleton State University.

Get involved with the alumni association... you have the opportunity and ability to help direct the course this university will take in the future. The former Tarleton student body president continued, "You are the best trained and best educated students we've ever produced and we've got to rest the challenges and burdens of responsibility on you to pro-

GORDON SPOT

By DeMarquis Gordon

Last summer when the weather got very hot many of the garden vegetables died even though they were watered. When you examined the roots you found damaged, decaying roots and they usually had large knots on the root system. This is typical of nematode damage. Nematodes cause a lot of problems to Eastland County crops.

Nematodes are microscopic, worm-like animals that feed on plant roots. Damaged plants have decayed spots and stubby roots or enlarged root tips. While several types of nematodes can infest a garden, the root knot nematode is the most damaging. Plants infested with root knot nematodes will have galls or swellings on their roots, are usually

duce the food, fiber and energy for this nation. Degrees were conferred on 164 undergraduate and 34 graduate students at the commencement exercise by TSU President Dr. W. O. Trogdon. Prior to the start of the commencement program Dr. Trogdon told the students the university had just been reaffirmed by the Southern Association of Colleges and Schools for full accreditation for another 10 years.

In a history-making event at commencement, Robert Sims Gilbert, Brownwood, became the first student in the history of the university to receive three degrees simultaneously. The Air Force veteran received bachelor degrees in Industrial Education, Government, and History.

Two students, Paul Philip Madella del Rosa of Dallas and Karen Lavern Arsenault of Mineral Wells, were commissioned 2nd lieutenants in the U. S. Army. Glynda Marie Bond of Gorman and Donna LaNelle Hagood Lewis of Desdemona both received a B.B.A. Business Administration Degree. Both students graduated with honors.

stunted and yellow in color, and may die prematurely. Gardeners can use several methods of control to get rid of or at least lessen the number of nematodes. Using nematode-resistant varieties of plants helps as does rotating crops of corn, onions and garlic.

Also, using a cover crop such as cereal rye, not common ryegrass, during the winter months, helps trap nematodes. Nematodes will enter rye roots, but because of the physiology of the roots, the nematodes cannot undergo further development and will die. Working the cover crop into the garden area a month before planting increases, organic matter and at the same time causes an organic acid to develop which is toxic to nematodes.

While controlling nematodes by chemical means is not always effective. We do not recommend one method. Apply Vapam with a hose-on sprayer at the rate of one quart per 100 square feet of ground area. Then immediately wash the chemical into the soil with a one-half application of water. Soak the treated area twice during the next 48 hours and then leave it alone for seven days before tilling.

Wait at least two weeks after applying Vapam before planting. Also, if the temperature is high, additional watering may be needed to keep the soil below 90 degree F. for the chemical to be effective. Check the price before you decide to use Vapam, because it is expensive.

Of course, the best method

of controlling nematodes in your garden is to never let them get started. Be careful adding topsoil or any organic matter such as peanut hulls which might be infested with nematodes.

Remember the difficulty you had deciding to purchase that \$10-25 garden sprayer? Well, suppose next spring you discovered this once good sprayer to be clogged, corroded and in need of repair. Not only would you be disappointed, but meanwhile those garden insect pests would be that much further ahead in doing their own thing.

You can avoid this careless and costly inconvenience by spending a little time now cleaning and inspecting your spray equipment before storing it this winter.

Clean equipment in good repair is also safe equipment. Clogged nozzle parts can result in uneven droplet sizes, causing poor coverage and possible plant damage. A damaged hose or other spray parts can also cause toxic chemicals to leak onto the operator's clothes and skin.

Here are some suggestions for cleaning spray equipment:

1. Drain all spray material from the sprayer tank and hose in a safe place where children, pets or livestock will not contact them. Dispose of pesticides according to the product label.
2. Fill the spray tank with clean water and add a liquid detergent soap. Flush this solution back through the pump, hose and nozzle in a safe place.
3. Fill the spray tank with a mixture of one-half cup of ammonia to 3 gallons of water and let stand for 18-24 hours. Spray part of this mixture through the pump hose and nozzle at the begin-

The Happy Cooker

Deck the halls with boughs of holly! Why not give a Happy Cooker™ covered kettle barbecue grill for Christmas?



Unique gifts are always welcome, like a sparkling new grill for that cookout enthusiast who barbecues year-round, no matter what the weather.

Because of the kettle's dome lid, you can grill roasts, turkeys, and other large meats. The heat reflected by the lid allows even cooking without the use of a rotisserie. Kettle-cooked steaks, chops and hamburgers also barbecue quickly without annoying flare-ups.

Who would like a covered kettle grill for Christmas? Anyone who loves to barbecue.

It's a natural gift for the man of the house and wonderful for families. Singles love the versatility; it's great for entertaining.

So tie a colorful bow to a kettle cooker and put one under the tree.

ning and end of the soaking period.

4. Disassemble the nozzle and dry all parts.
 5. If the tank is susceptible to rust, coat the interior with a water soluble oil or other rust inhibitor.
 6. As you clean your equipment, check for worn parts and leaks. Order any needed parts so that the sprayer will be ready to go as soon as you need it next spring.
- Remember, a sprayer will have a much longer life if it is thoroughly cleaned and maintained after each use.

From the TAP Kitchen



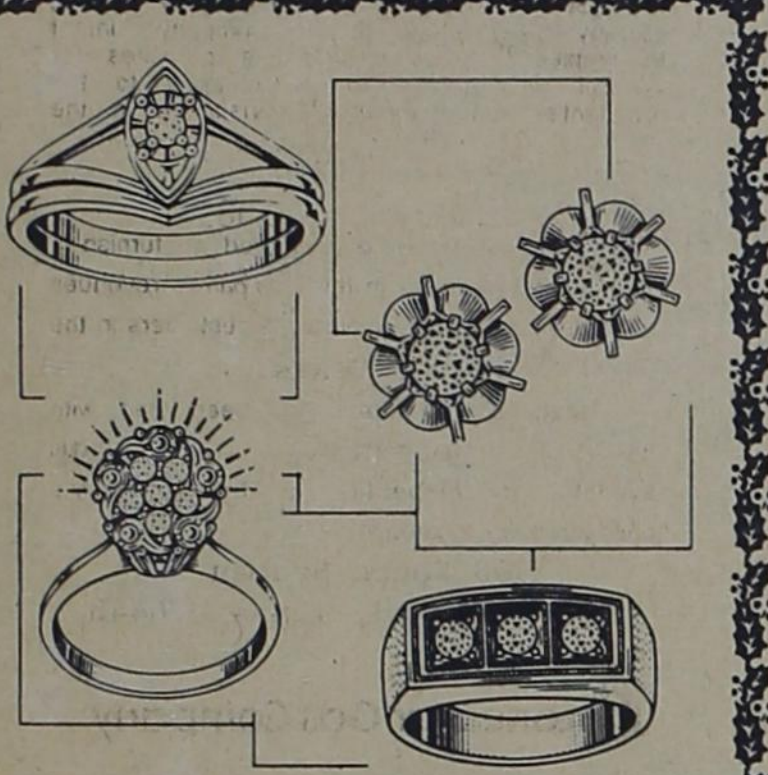
PEANUT CRUNCH--This chocolaty, crunchy dessert is simple to prepare and makes for a flavorful treat, notes the Texas Department of Agriculture home economist. The peanuts provide an excellent source of protein as well.

PEANUT CRUNCH

- 1 C. sugar
- 1/2 tsp. salt
- 1/2 C. butter
- 1/4 C. water
- 1/2 tsp. vanilla flavoring
- 1 C. chopped peanuts (divided)
- 1 (6 oz.) pkg. semi-sweet chocolate pieces

Butter a 15x10-inch cookie sheet and set aside. In a medium saucepan, combine sugar, salt, butter and water. Cook until mixture reaches 240 degrees F. (132 degrees C.) on a candy thermometer. Add vanilla flavoring; stir in 1/2 cup chopped peanuts. Pour mixture onto buttered cookie sheet and spread to 1/4-inch thickness. Sprinkle 1/2 cup peanuts over top. Let mixture cool. Melt chocolate and spread over cooled candy mixture. Let cool and break into small chunks.

For additional recipes, write: Commissioner Reagan V. Brown, Texas Department of Agriculture, P.O. Box 12847, Austin, Texas 78711.



GIFTS FOR SOMEONE IMPORTANT IN YOUR LIFE



Isn't Christmas the right time?

We Do Engraving and Jewelry Repair.

We have 14 KT. DIAMOND EAR STUDS from \$29.95 UP & 14 KT. NECK CHAINS from \$29.95 UP

Craig's Jewelry

Phone 893-2522 - DE LEON, TEXAS

The Consumer Alert

by Mark White
Attorney General

AUSTIN--The Christmas gift-buying season inevitably is followed by the post-Christmas gift-returning season, and most consumers expect to be able to return or exchange gifts with little or no trouble beyond, perhaps, the inconvenience.

The fact is that stores are not legally required to refund money, exchange merchandise, or accept goods for store credit unless the item is defective or is not as represented.

Most merchants, though, are very agreeable about adjustments since this is a form of customer service which encourages repeat business.

However, sometimes, certain stores may be unable to cooperate fully with the post-Christmas gift returner because they operate under more restrictive adjustment policies than other establishments. Some stores will not accept merchandise back for a full refund but will issue a credit or allow an exchange for other merchandise. They may rightfully do this, so it is important for shoppers to check on store policy before buying gifts that may need to be returned or exchanged.

There are certain instances in which a store is legally required to make adjustments, however. For example, if a store advertised car coats with sheepskin linings, but you discover the lining is actually acrylic pile, you have the right to return the coat for an adjustment.

Or perhaps you ordered a size 12 dress, but the store sent a size 14. Or you specified a green table lamp, but got a blue floor lamp. The store must correct its error or make some satisfactory adjustment in such cases.

It's important to remember that if a store has advertised goods for a special sale, there

may be a "no return" policy on that particular merchandise. Other items, such as pierced earrings, swim suits, undergarments, and other intimate apparel, may always be sold on an "all sales final" basis for the customer's protection. Once again, the shopper should inquire about the store's return policy on such merchandise.

Just as most stores try to cooperate in making adjustments when possible, most consumers are careful to ask for an adjustment only when it is needed. A few individuals, however, may attempt to return merchandise that is worn or used, that they damaged themselves, or that they purchased months earlier. In such cases, merchants may rightfully refuse to make an adjustment.

If you find you must return merchandise to a store, you should:

- Take all tags, price labels, and all sales or charge receipts with you. A store that might otherwise give a full refund may only offer a credit or exchange or refuse any adjustment without proof of purchase.
- Return goods in their original containers, including all packing materials and papers, such as warranties and instructions.
- Return goods in their original condition.
- Return goods to the department where they were purchased or to the adjustment desk if there is one.
- Explain the reasons for the return.
- If you have a problem with an adjustment you think is deserved, try to settle it with the manager of the store. If that doesn't work, contact the Attorney General's Consumer Protection and Antitrust Division in Austin, Houston, Dallas, El Paso, Lubbock, McAllen, or San Antonio.

THIS WEEK'S SPECIAL SUNDAY

BUY ONE - GET ONE FREE

PRICES GOOD DECEMBER 18 THROUGH DECEMBER 23.

PHONE ORDERS WELCOME

WE WILL BE CLOSED AT 7 P. M. SUNDAY, DECEMBER 21 IN ORDER FOR OUR EMPLOYEES TO HOLD THEIR ANNUAL CHRISTMAS PARTY.

DAIRY QUEEN

PHONE 734-2450
HWY. 6 WEST GORMAN

ANNOUNCING

OPENING OF THE HEAD SHED

THURSDAY, DEC. 18

BILLIE LIGHTFOOT, Owner
VICKI LOVE, Barber

SPECIALIZING IN ALL TYPES OF HAIR CUTS AND STYLING

Phone 734-2779 Gorman

BEGINNING JANUARY 2, 1981 THE FIRST NATIONAL BANK of GORMAN will offer N.O.W. ACCOUNTS (Negotiable Order of Withdrawal)

A Checking Account That Earns You **5 1/4 % INTEREST**

First Nat'l Bank
Gorman, Texas Member FDIC

Eastland Pecan Show Winners Are Announced

EASTLAND — Judging for the 28th annual Eastland County Pecan Show, the largest county pecan show held in Texas this year, was held Friday at the Eastland County Courthouse.

Charles Walker of Eastland won the champion in-shell pecan. Rex Hudson of Rising Star was awarded the champion shelling award for his Sioux pecans and James Alexander of Rising Star had the champion native pecans.

The reserve champion in-shell pecans were Comanches exhibited by E.A. Walker of De Leon. Jon Brumley of Rising Star had the reserve champion shelling pecans, and the reserve champion native pecans were shown by Acre of Joy Pecan Orchard of Rising Star.

The first place entries in each class will compete in the Central Texas Regional Pecan Show at the Redbird Mall in Dallas next week.

They were: Hudson, Apache, Shoshoni and Sioux; Dan Childress of Cross Plains, Barton, Caddo; E.A. Walker, Burkett; T.E. Robertson of Breckenridge, Choctaw; Charles Walker, Comanche; Alexander, Desirable, John Garner, Kincaid, San Saba improved, native, Schley and

other in-shell pecans; Acres of Joy, Gra-Bohl, Cherokee, Chickasaw and variety seedlings; Howard Maynard of Eastland, Mahan and largest pecan Brumley, Wichita and Cheyenne; Charles Walker, variety seedlings; Mrs. C.E. Smith of Rising Star, Brake; Southern Star Pecan Orchard, Halbert and Western; Scott Gordon of Eastland, Shawnee and Texas; Dale Walker of Carbon, Texas Prolific.

At the pecan bake show, Mrs. Charles Walker of Eastland was named grand champion. Mrs. Glenn Jordan of Kokomo was named reserve grand champion and Mrs. Ora Mae Jordan of Eastland won the centerpiece competition.

Other adult winners were: Mrs. Glenn Jordan, cakes and snacks; Mrs. Charles Walker, cookies and pies; Mrs. M.D. Lee of Nimrod, nut bread; and Mrs. Albert Hendricks of Kokomo, candies.

In the youth division, Robin White of Eastland was named grand champion and Leann Brown of Eastland was named reserve grand champion. Miss White also took top honors in pies and Miss Brown placed first in nut bread. Shirley Kidd of Eastland won the cookie competition.

The show was sponsored by the Eastland County Pecan Growers Association and the Eastland Chamber of Commerce.

A BARBERSHOP SHAVE AT HOME

Many modern Americans consider it a sharp idea to shave the old-fashioned way. That's the idea behind the new line of professional-style Barbershop shave products. The ceramic mug is oversized, wide-mouthed and barrel-shaped. The shave soap—a king-size cake molded of natural ingredients and skin conditioners—comes in herbal, musk and regular scents. And the brush, made of natural bristles with a man-sized solid beechwood handle, is ideal for whipping up a generous, hot lather.

Made by Franklin Toiletry Co. of New York, and available at gift shops and men's wear sections of leading department stores, Barbershop shave products make ideal gifts for Dads, grads and anyone who wants to enjoy the nostalgic feeling of shaving the Barbershop way.

Vinegar is a natural meat tenderizer.

Homemaking Hints

By Janet Thomas

Holiday entertaining is a special time for all. Baking our favorite foods for holiday meals and parties brings joy to every home.

As we entertain, often we have to cope with fabric stains. In my column this week, I would like to mention some of the common types of stains that most often occur at the holiday season and some stain removal methods.

Most stains can be easily removed when they are fresh, but become difficult or impossible to remove later.

Start to remove stains before washing, since hot water can set many stains permanently. Cool water pre-soaking is a safe and effective procedure.

Always identify the stain, if possible. If you can't determine what caused the stain, it will help if you can tell whether it is a greasy stain, a non-greasy stain, or a combination of the two.

Here are some simple stain removal methods for different types of holiday stains:

Candlewax, Paraffin: To remove as much as possible, lift wax off fabric with knife. Then place the stain between clean white blotters or several layers of facial tissue and press with warm iron. To remove remaining stain, sponge with a grease solvent. Buy grease solvents that contain perchloroethylene or trichloroethylene. NOTE: Never use carbon tetrachloride, gasoline, or lighter fluid due to the extreme dangers involved.

Chocolate, gravy and sauces, Butter and Mayonnaise Stains: Soak stain in cold water for 30 minutes. Work detergent into stain. Rinse and dry (do not dry in dryer for heat may set stain). If stain remains, sponge with a grease solvent and dry. Repeat if necessary.

Fruit and Berry Stains: Sponge immediately with cool water. If safe for fabric, stretch the stained portion of the fabric over a bowl and fasten with an elastic band or string. Pour boiling water through the stain, then launder in suds. For pear, peach, cherry and plum stains, sponge immediately with cool water and rub with glycerine. After two hours, apply a few drops of vinegar for a minute or two, then rinse and launder in warm suds.

Coffee and Tea (no cream): Sponge stain with cold water. Then soak 30 minutes in water before laundering.

Beverages (alcoholic and soft drinks): Sponge in cool water and glycerine. Soak for 30 minutes. Then sponge with alcohol if safe for fabric. (If your beverage stain is on an acetate fabric, dilute to two parts water for one part rubbing alcohol.)

RECIPE FOR THE WEEK

For something special for the holidays, try this recipe

CITATION BY PUBLICATION

THE STATE OF TEXAS

TO: Adaline B. Graf and each of the unknown heirs, beneficiaries, spouses, executors, administrators, successors and assigns of Adaline B. Graf, Defendant.

Greeting: YOUR (AND EACH OF YOU) ARE HEREBY COMMANDED to appear before the 91st District Court Eastland, Texas of Eastland County at the Courthouse thereof, in Eastland, Texas, by filing a written answer at or before 10 o'clock A.M. of the first Monday next after the expiration of forty-two days from the date of the issuance of this citation, same being the 5th day of January A.D. 1981, to Plaintiff's Petition filed in said court, on the 30th day of September A.D. 1980, in this cause, numbered 28,914 on the docket of said court and styled Charles L. Hough, Et Al, Plaintiffs, vs. Adaline B. Graf and each of the unknown heirs, beneficiaries, spouses, executors, administrators, successors and assigns of Adaline B. Graf, Defendant.

A brief statement of the nature of this suit is as follows, to-wit: This suit is for partition of land described as the West one-half (1/2) of Section 3, Block 3, H&TC RR Co. Survey, Abstract 261, Eastland County, Texas, containing 331 acres of land, more or less.

If this citation is not served within ninety days after the date of its issuance, it shall be returned unserved.

The officer executing this writ shall promptly serve the same according to requirements of law, and the mandates hereof, and make due return as the law directs.

Witness, Roy L. Lane, Clerk of the 91st District Court of Eastland County, Texas.

Issued and given under my hand and the seal of said court at Eastland, Texas, this 18th day of November A.D. 1980.

Roy L. Lane, Clerk, 91st District Court Eastland County, Texas Mary Jane R. Welch, Deputy 4-12-18 C.

for strawberry bread. For party sandwiches, spread thin slices of the moist strawberry bread with softened cream cheese.

STRAWBERRY BREAD
1/2 cup (1 stick) butter or margarine
1/2 cup sugar
1 teaspoon vanilla extract
2 eggs
2 cups sifted all-purpose flour
1/2 teaspoon salt
1 cup strawberry preserves
1/2 cup buttermilk
1/2 cup chopped nuts

Heat oven to 325 degree. (If using glass loaf pan, heat oven to 300 degrees.) Grease bottom of an 8 1/2 x 4 1/2 x 2 1/2 inch loaf pan. Cream butter. Add sugar and vanilla, beat until fluffy. Add eggs, one at a time, beating well after addition. Sift dry ingredients together. Combine preserves and buttermilk. Add flour mixture alternately with



Rabbits and cats both wash their faces with their paws, but a rabbit uses both paws at once and the cat only uses one paw at a time.



When extra ice cubes are needed for punches, or ice buckets at parties, use muffin tins instead of buying new ice cube trays. The big ice cubes will last longer.

Any goods found in English waters or goods that have floated onto an English shoreline belong to the crown.

PUBLIC NOTICE

Lone Star Gas Company, in accordance with Section 43(a) of Article 1446c V.A.T.C.S., hereby gives notice of the Company's intent to implement a new schedule of rates for natural gas service to be charged to the residential and commercial consumers in the

City of Gorman, Texas effective January 15, 1981. The rate schedule is expected to furnish a 17.29 percent increase in the Company's revenues from Residential and Commercial customers in the City of Gorman, Texas.

A Statement of Intent has been filed with the City of Gorman and is available for inspection at the Company's business office located at

308 South Seaman Eastland, Texas 76448

Lone Star Gas Company



Gifts to put stars in her eyes...



to carry your Christmas wishes

Bags

GIVE HIM A GIFT CERTIFICATE

Christmas Gifts for Men

big selection! great values!



LASATER'S

DEPARTMENT STORE
GORMAN, TEXAS 76448

GIFTS WRAPPED FREE

LET ME HELP YOU SHOP EARLY!

When the news breaks we put it together.

Your home town newspaper is perfect for the local news you want to know. But for sports, state, national and world news, you need The Dallas Morning News delivered to you. Get that extra edge. Contact your Dallas Morning News distributor or fill out this coupon today.

The Dallas Morning News Circulation Department Communications Center, Dallas, TX 75265

Please start my subscription to The Dallas Morning News at once. Understand that the price is \$6.25 monthly by carrier, or \$7.75 per month by mail inside Texas, \$8.65 outside Texas.

NAME _____
ADDRESS _____
CITY/STATE/ZIP _____
HOME PHONE _____
WORK PHONE _____

The Dallas Morning News
THAT EXTRA EDGE

1980-81 TEXAS ALMANAC A MATTER OF FACT

Turn to the Texas Almanac, published by The Dallas Morning News, for a wealth of valuable, updated data on Texas: population, politics, agriculture, history, government, transportation, sports, schools, weather, recreation, elections, geography, business and industry. And much, much more.

Pick up your copy today for home, office, or classroom. Available at bookstores, newsstands, drug stores, or wherever quality reading material is sold. Or order by mail from The Dallas Morning News.

As a matter of fact, it's Texas' best reference book.

Mail to: The Dallas Morning News
Texas Almanac Division
Communications Center
Dallas, Texas 75265

Enclosed is \$ _____ for _____ paperbound copies at \$4.95 each
\$ _____ for _____ hardbound copies at \$7.05 each

Mail prices include tax, packaging and postage to any point in the U.S.A.

Name _____
Address _____ Apt. No. _____
City/State/Zip _____

The Dallas Morning News
THAT EXTRA EDGE

MEAT Specials



GOOCH'S FRESH
GROUND BEEF

POUND
\$1.39

GOOCH'S HALF or WHOLE

HAMS lb. **\$1.29**

STEAK GOOCH'S Round lb. **\$1.98**

ROAST GOOCH'S CHUCK lb. **\$1.49**

ROAST GOOCH'S ARM lb. **\$1.59**

HONEYSUCKLE BASTED TURKEYS LB. **99¢**

CRISCO 3 LB. CAN Limit 1 **\$2.19**

POTATOES

RUSSETT'S 10 lb. bag **1.69**

BANANAS DEL MONTE GOLDEN RIPE Lb. **29¢**

CALIFORNIA SUNKIST
ORANGES POUND **39¢**

GLADIOLA FLOUR 5 Lb. Bag **89¢** Limit 1



MIX OR MATCH 303 CANS **3 \$1** FOR 1

TOMATOES lb. **39¢**

JOHNSON GRAHAM CRACK PIE CRUST **79¢**

CREAM OF CHICKEN CAMPBELL SOUP **3.\$1**

EXTRA FANCY WASHINGTON **APPLES** RED DELICIOUS lb. **49¢**

USDA "1" YAMS LB. **39¢**

Jay's Grocery & Market
SHOP ONE STOP
PRICES GOOD THURSDAY THRU SATURDAY
PHONE 734-2316 GORMAN



GORMAN PROGRESS, DECEMBER 18, 1980

Lawndale News

By Jettie Daniels

It won't be long until Santa will be coming to pay a visit to all good boys and girls. Hope every one has been good. We here at Lawndale have really been good and we're looking forward to Christmas very much.

Bet let's don't forget the True meaning of Christmas. Let us keep it as the Angels kept it. By expressions of Joy and Gladness. Let us Keep it as the Stable kept it. By making Room for Jesus.

We wish to thank each of our visitors for coming our way and for making our residents happy once again. Hope each of you have a safe journey home.

Last Tuesday, we had a

very nice lady come in and help us with Bingo. I'd never seen her before but was very glad to see her that day. She is, Sue Keese, and we do indeed appreciate her very much. Hope she'll be with us again today for Bingo.

Also our thanks to Kent Bridges for his faithfulness.

Those winning in Bingo last week were: Nattie Watts Game No. 1; Nancy Holloway, Game No. 2; Shirley Trigg, Game No. 3; and Beluah DeGuire, Game No.

4. Blackout Winner was Sadie Russell.

Also our appreciation to the following Ladies and the children for decorating our Nursing Home for us. They were a great help and a great bunch of children. We hope to see them again soon. Thanks to all.

The Ladies were Pat Caraway, Marceil Laminack, Tonya Caraway, Shannon and Shane, Becky Underwood, Shana Savage, Stacey

Slampa, Custin Underwood, Stephen and Allan Scitern, Billy Young, Doug Webb, Beverly Underwood, Nell Laminack, Olin Harrington and Becca Scitern.

To all of these, we at Lawndale, say thanks and wish each of you a Very Merry Christmas.

We will have Singing this Thursday night at 7 p.m. in the front lobby. Hope to see you then.

Also Sunday the 21st we

DESDEMONA NEWS

By Vonnie Guthrie

The Faithful Workers Sunday School Class of Desdemona First Baptist Church held their Christmas Party in the fellowship room of the church with Evelyn Hammond and Flora Singleton as hostesses. In lieu of a gift to the Class Teacher, Evah Sparkman, Love gifts to the Lottis Moon Foreign Mission offering was given.

The Devotional was brought by Eloise Lewis, and secret pals were revealed. A delicious meal was enjoyed by everyone present.

Presents which had been made to give to friends and neighbors in the various nursing homes was also brought. Those attending were: Mrs. Annie Collum, Mrs. Flora Singleton, Mrs. Evelyn Hammond, Mrs. Evah Sparkman, Mrs. Alpha Thiebaud, Mrs. Winnie Rainey, Mrs. Myrt Reid, Mrs. Neta Gee, Mrs. Johnnie Koonce, Mrs. Leota Powers, Mrs. Myrtle Moore, Mrs. Nona Grimshaw, Mrs. Eloise Lewis and Mrs. Gussie Ragland.

Skinnie and Eloise Lewis attended mid-term graduation at Tarleton University last Sunday, of their daughter-in-law Donna, wife of Phillip Lewis was one of the many students graduating.

The Homemakers Sunday School Class of Desdemona First Baptist had their Christmas Party last Monday night in the home of Bob and Dolores Tuckers. Gifts were

will have our Residents Christmas Party at 2 p.m.

There will be no Church Service at this time.

The Methodist's were to have had the Church Service.

—GP—



IN THE 15TH CENTURY LEONARDO DA VINCI FORESAW THE ADVANTAGE OF AN ARMORED VEHICLE WHEN HE DEVISED THE COVERED CHARIOT. BUT HIS IDEA WASN'T USED AGAIN UNTIL THREE CENTURIES LATER!



TODAY, THE U.S. ARMY ABRAMS (XM-1) TANK WEIGHS 65 TONS, TRAVELS UP TO 60 M.P.H., AND USES A 105 MM GUN. SOME PEOPLE ARE JUST AHEAD OF THEIR TIME!

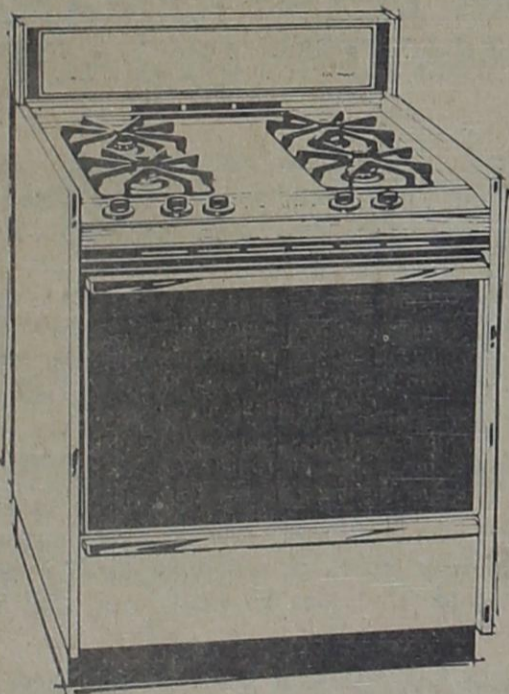
Gailey, Jerry and Pat Buckley, Darryl and Care Ruth Thiebaud, Dorothy Roberts and the hostesses.

Mrs. Fairy Belle Holley is now a patient in the De Leon Rest Home.

A miscellaneous shower for Steve and Mylissa Nicholson was given last Tuesday night in the home of Dorothy Roberts. This couple lost their home and everything by fire last week. Steve is the son of Ralph and Shirley Nicholson.

CHRISTMAS GIFT SPECIALS

THE GRILLER
BY REGAL
Regular \$25.95
Only **\$12.88**



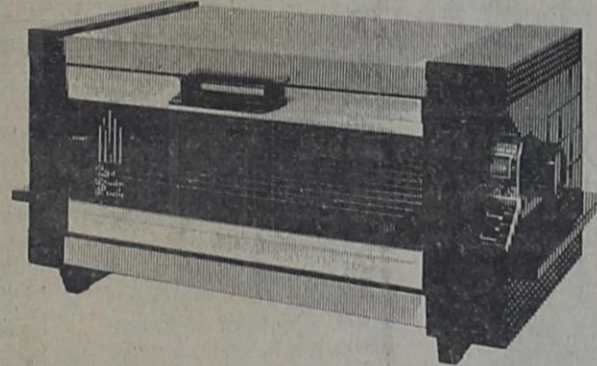
CALORIC
RLP340—30" Gas Range

- Continuous Cleaning Kit Option
- Keep-Warm Oven System
- Full Black Glass Oven Door
- Lift-Off Oven Door
- Separate Broiler
- Safety Controls
- Deluxe Tempered Glass Backguard
- Tilt-Top Cooktop

349.95

All colors not available at all locations.

Munsey



Deluxe Family-Size Unit

Extra size, full range of deluxe features make this the most versatile baker-broiler available. Pushbutton functions, rotary temp selector and viewing window. Two-position, easy-slide tray. Bakes, toasts, top-browns, warms and broils. Model 7650.

49.50

1-4 CUP COFFEE MISER
REGULAR \$15.95
Now **\$10.88**

MANY OTHER FINE GIFT ITEMS

HIGGINBOTHAM'S
18 FRIENDLY LOCATIONS TO SERVE YOU

734-2227 - GORMAN

FLOWERS for the Holidays

POTTED **Poinsettias**

CHRISTMAS **CORSAGES**

ELEGANT **Floral Centerpieces**
DRESS UP HOLIDAY TABLES

Wreaths



Santas' GIFT SPECIALS

Figurines
Candle Arrangements
Cut Arrangements
FOR CHRISTMAS
Silk Poinsettias
Christmas Greens

Many Other Gift Items

FOSTER FLORAL

Mr. and Mrs. Gene Foster

PHONE 734-2519

GORMAN