



The Spearman Reporter

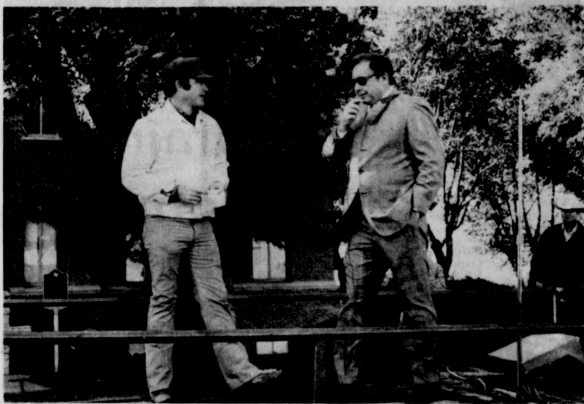
ROTARIANS -- Tickets for the car and bicycle sale are available at J. L. Brock office on Main.

VOLUME 68, NO. 28

THE SPEARMAN REPORTER, SPEARMAN, TEXAS 79081

THURSDAY, MAY 26, 1977

WIFE Gets A Big Send Off



Chamber of Commerce President, Jerry Gee (left) looks on as Mayor Ralph Blodgett speaks to the WIFE ladies and those there to see the women off.

The wind started blowing harder and it had been raining all morning on the day the WIFE women had planned to depart for Washington D.C. Their time of departure was to be 9:30 a.m. At 9:00 the clouds parted and the rain ceased. Approaching the Court House, one who didn't know what was happening may have thought the carnival

had already come to town. There was a good crowd on hand as the ladies gathered to make up their caravan. The Rev. Russell Pogue was on hand to deliver an invocation. Jerry Gee ascended to the portable stage which had been provided by the Chamber of Commerce to say a few words, and then he handed the microphone to Judge

Johmie Lee. Judge Lee expressed hope that the ladies would be able to educate some of those Washington people. Mayor Blodgett then addressed the crowd. He said that the WIFE ladies should carry our message to Washington. The WIFE women have a tentative appointment with President Carter Tuesday

evening. Georgia Holt said that she was beginning to get nervous. An exciting atmosphere prevailed as the ladies formed their caravan behind a city patrol car which would escort them out of town. Nolan Holt had a look of despair across his face as the women left. He told this reporter, "I've never cooked a meal in my life."

Two Students To Boys State



RANDY REID

Two boys from Spearman High School have been selected to represent Hansford County Legion Post #154 in the American Legion Boys State 1977.

The objective of the Boys State is to "educate our youth in the duties, privileges, rights and responsibilities of American citizenship." In Boys State, the young citizen has the opportunity to learn for himself that his government is just what he makes it. Here each boy "learns to do by doing." The entire program is non-partisan.

The American Legion Boys State will be held on the campus of the University of Texas, June 8-14.

To be eligible for Boys State, each boy must be a Junior classification in school. Selections are made on the basis of scholarship, loyalty to his country, high



JIM JONES

character, ambition, leadership ability, and the ability to get along with fellow students are important qualifications. Selections are made on the following basis: Leadership 50%, and an emphasis on physical fitness.

This year's delegates are Jim Jones and Randy Reid.

Jim Jones is the son of Mr. and Mrs. Hershel Jones of Spearman. Jim has been active this year as a member FCA, National Honor Society, is currently President of the Student Council, participated in football, basketball and track. He represents his class as Junior favorite this year.

Randy Reid, son of Mr. and Mrs. David Reid of Morse has been active this year in FCA, participated in football, basketball and track. He is President of the Junior class.

Annual Bake-Off Set

All the good cooks in Hansford County are encouraged to enter the 2nd Annual Hansford Bake-off to be held in front of the old Lyric Theatre on June 4th during the Hansford Roundup. Any age or sex may enter any category any number of times. Ribbons will be given in each category: Yeast Bread and Rolls; Sweet Breads; Cookies; Cakes; and Pies.

The Hansford County Commissioners, Veneman, Renner, Lowe and Head along with County Judge Lee will be the judges. The

judging will begin at 9:30. All items will be sold at 10:30 and proceeds will go to the Home Demonstration Council. Coffee will also be sold. Entrants are asked to bring items from 8:30 to 9:30 in a disposable container.

Winners of the bake-off last year were Pies, Lisa Pipkin; Cookies, Linda Close; Cakes, Sherlene Hayes and Bread and Rolls, Joy Henderson.

If there are any questions contact Penny Ralston 659-3328.

Beauty Pageant

Contestants for the Miss Hansford County Pageant are being sought by the sponsoring Lions Club. The contest is planned for June 4 in the high school auditorium. Girls from the ages of 16 to 21 are eligible to enter the contest. They must be residents of Hansford County.

The contestants will rehearse Thursday and Friday, June 2 and 3, and ride in the parade Saturday.

They will also visit with Miss America of '75, Shirley Cothran and judges at a tea Saturday afternoon.

They will appear in street dresses, formals and will perform in jeans shorts and Western blouses Saturday night at the pageant.

They will also meet a "famous" bull whip artist

and most of all have a good time.

The theme for the pageant this year is "Rodeo & Fun" for the contestants.

The girls will have an opportunity to perform as a group, with instruction from a professional instructor.

Entertainment will be provided by known performers, from Dallas, Denton, Argyle, Gruver and Spearman.

Applications to enter may be obtained from any Lion's Club member or you may fill out the application printed

elsewhere in this newspaper.

Miss America of '75, Shirley Cothran will emcee the pageant again this year. She was here for the pageant last year and was a big attraction and the Lion's Club feels fortunate to have her coming again this year.

Grand Opening Successful



Several Chamber of Commerce representatives were on hand for the Excel Chevrolet-Olds Grand Opening, as J. L. Brock (right) proudly presented Gerald Heinrich (left, smiling with appreciation) with a mounted dollar bill, representing the first buck taken in.

Grand opening activities May 19-21 at Gerald Heinrich's Excel Chevrolet-Olds, Inc. on State Highway 207 South in Spearman was a success.

Heinrich described it as being "fantastic." All three days we had lots of people, sales were good, and we had a chance to visit with a lot of people. And I want to thank everybody for coming in and helping make the event the success it was."

During the three days, visitors could register for giveaways which were handed out. Entrants could register as many times as they wanted but did not have to be present to win. The boots given on Thursday, May 19, went to Gertrude Jones of Spearman. The 40-channel CB radio Friday went to O. C. Rogers of Parnsworth. Ruth Car of Spearman

received the 100 gallons of gasoline which was the Saturday offering.

Heinrich also mentioned that one of the winners bought a new Chevy vehicle, one of the many such vehicles which were grand opening specials and were sold during the three days.

PO Closed Memorial Day

The Spearman Post Office will be closed Monday, May 30, in observance of Memorial Day.

No deliveries will be made on rural or city routes. Due to a change in the

arrival time of our holiday mail, incoming letter mail will not normally be boxed before 10:00 a.m.

Daily papers will normally be boxed on holidays by 8:30 a.m.

Morse Graduation Exercises Held



Wayne Forston

Glenda Pierot

The Morse Junior High School honor graduates for the 1976-77 school year are Wayne Forston, valedictorian with a grade point average of 90.56. Salutatorian is Glenda Pierot, with a grade point average of 85.90.

Both of these young people's parents are Mr. and Mrs. Glen Pierot.

The graduation exercise was held Monday evening, May 23 at 8 p.m. in the school auditorium.

Other students graduating are Ricky Jones, Lenny Poley, Billy Wyrick, Danny Jones and Scott Davis.

Teen Disco Dance One Of The Hansford Roundup Activities



"The Country Doctor", Doc DeWeese from KDJW Radio in Amarillo, will be at the Teen Disco Dance.

The Teen Disco Dance will be held in the Community Building, on Friday, June 3 from 8:30 to 12:00 p.m. All those from age 13 through 18 are invited.

"The Country Doctor", Don DeWeese from KDJW Radio in Amarillo with his "traveling disco system"

will spin the discs. There will be lots of music, on request, with many surprises in store for all. Doc has worked disco for several years and is a well qualified professional in his field. He offers a variety of music whatever they want to hear. If you're between 13 and 18

and like to have a good time, you're invited. The dance will be well sponsored, and concession stands will be sponsored by the Town & County Home Demonstration Club and Hansford Historical Commission. Admission will be \$2.00.

Hackley Memorial Tourney Held

The Hansford Golf Club hosted the Dr. Hackley Memorial Tournament Sunday, May 22, 1977 with Martin Hendricks of Perryton, formerly of Spearman, winning 1st place in the Championship flight.

Beautiful weather made this an enjoyable tournament for the 67 entries. Town represented were Gruver, Spearman, Perryton, Dumas, Stratford, Borger, Phillips, and Hooker, Okla-

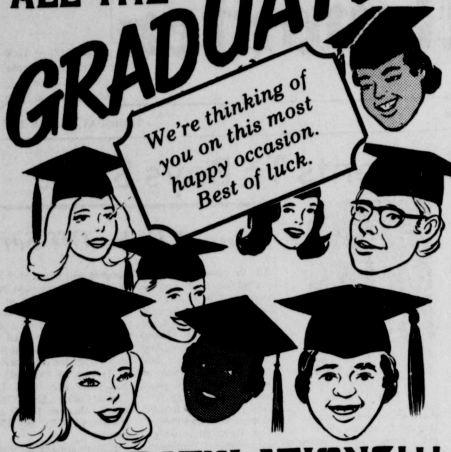
homa, \$60 for 1st, \$40 for 2nd, and \$24 for 3rd were given in 5 flights. The longest drive in No. 1 was won by Russell Ratglaw on Borger. That prize was a cooler donated by High Plains Auto. Closest to the pin on No. 4 was won by Tom Spuchler of Hooker, Okla. He won a putter. Durwood Johnson made a hole in one on No. 11. The winners as listed below were:

- Championship
- 1. Martin Hendricks - Perryton
- 2. Jim Holloway - Hooker, Oklahoma.
- 3. Durwood Johnson - Dumas.

- A Flight
- 1. Bill Clemmons - Phillips
- 2. Ken Blewett - Borger
- 3. Don Smith - Spearman
- B Flight
- 1. Don Bishop - Perryton
- 2. Danny Wombie - Spearman

OUR VERY BEST WISHES TO ALL THE GRADUATES

1977



We're thinking of you on this most happy occasion. Best of luck.

CONGRATULATIONS!!!

Artbreaker

Homecoming Events Planned

Class of 1977

Senior Year



...the person... Rusty Riddell for the... pointer making it 16-7... at the time. I felt the... conversions might... two-point make the difference... only make the difference... head

RECEIVING

SPEARMAN SENIORS 1977

MONDAY, SEPTEMBER 27
Crazy Day - Any crazy outfit goes
F.T.A. - 7:30 p.m.

TUESDAY, SEPTEMBER 28
Girls - LaVern & Shirlev
Boys - Fonz look-alike
Band

Homecoming - Spearman vs. Shamrock
Homecoming Dance - High School Gym
(10:00 to 1:00 a.m.)

Also on Thursday is the annual bonfire and pep
v which will be held after the 8-team game.
Jents will gather at the west parking lot.
There will be a contest between the Soph. and
juniors against the Juniors and Freshmen. The
students will begin their bonfires Monday. The
classes with the biggest bonfire will receive the
spirit stick.
Friday night will be the crowning of the
homecoming queen.
Cheerleaders won't be taking orders for mums,
but those interested in purchasing one may do so
through one of the florists.

FHA NEWS

The Big and Little Sister Chapter of FHA met at the High School Monday at 7:00 p.m.
One of the things done was the drawing of secret grandmothers. After this was finished, the girls were given packets and instructions on selling Stanley Products to raise money.
The two Chapters then... The Big Chapter... Parents...

Girl Of Month

students in School select Spearman Study Girl of the Month. Raymie has received math awards at West Texas meet and at the Goodwell contest, science awards at Goodwell, and academic awards in English II, English III, Physics and others.
He participated in the U.I.L. Science Contest and he received a letter of Commendation and National Merit Scholarship.
He plans to attend Wheaton College in Illinois.

Smooth Sailing GRADS

"We're People Like You"



Serving People Like You"

Student Council Plans Dance & Carnival

The S.H.S. student council had a meeting to plan the Homecoming Dance to be held Oct. 1st and the Halloween Carnival to be held Oct. 2nd. The Homecoming program will be in the Gym from 7:00 to 9:00 p.m. The program will include music and dancing. The date and time of the dance will be announced later.

at Dalhart

You might call it a demerol derby, or you might call it a "most debate" when the Dalhart getting the home-field nod, if there is any advantage to that! The Wolves are undefeated and the Lynx are lost only one game to date.

You're Over a Big Hurdle!

NICE GOIN' GRAD.

First National Bank

We know you will continue to score high marks in the future

WANTED ADS

Boxwell Bros.
Funeral Home and Flower Shop
FUNERAL HOME—659-3802
FLOWER SHOP—659-2212

Hansford County Planned Parenthood
26 S. Haney
659-2483
Spearman, Mon.-Fri.
8 a.m. to 12 noon
305-rtn

SERVICES
Hansford Lodge
1040
A.F. & A.M.
Officer Election June 13, 8 p.m.
W.M. George Young Sec. Cecil Biggers
2nd & 4th Mondays

JOHN'S PLUMBING AND HEATING—repair, remodel, sewer service. 435-4528. Perryton. 24-Rtp

CARMON LAIRD
ALL BREED GROOMING & BOARDING
118 N. James - 659-2105
135-rtn

Now open
B & J. Trading Post
301 Collard
Spearman
We buy and sell used furniture

YOUR LOCAL USED COW DEALER: SPEARMAN BI-PRODUCTS.
Seven days a week dead stock removal. Please call as soon as possible. 659-3544. 8-rtn

SERVICE: Pits cleaned, wet or dry. Dragline or loader. Also, dozer, grader, carry-all service. LeRoy Mitchell, 806-733-2384, Grover, Texas, 79040. 9-rtn

KIRBY SALES & SERVICE of Spearman, 912 S. Bernice. 659-2797. 30-rtn

Have ditch digger, roto-roter, will dig and install gas water and sewer lines, odd jobs. Don Cates, 3671. 27-2tp

For **ROTARY DRILLED SAND FREE DOMESTIC WELLS.**
Also Spudder Deepening Call 935-4088 nights
Dumas, Texas
W.V. Block
Are you interested in Bible truths? Tune in KDDO 8:30 and 9 a.m. Sundays

BARGAIN RATES
\$10 per day for STEAM BINSERVAC April thru June. Call Gordon's Drug for reservations. After 7 p.m. and Sunday call Freddie Largent, 2437. 30-40rtn

Calloway's House of Flowers
State Highway 207 South
Spearman 659-2958
Gift plants, hanging baskets
Many, many other items
27-21 only

PORTABLE DISC ROLLER
call
DAVID MCINTYRE
659-3782
319 South Endicott
Spearman, Texas 79081
145-rtn

Scissors & Clipper Blade Sharpening
RICHARD LAIRD
118 N. James
659-2105
275-4c

Miscellaneous FOR SALE

FOR SALE: Westinghouse Washer & Dryer, good condition, \$225.00. Call 659-3384. 25-rtn

FOR SALE: Extra good hegarri bales, Ernest Wilhelm, 659-2406. 26S-0c

HAY FOR SALE: Baled wheat hay. Contact J.W. Whitaker, 733-2129, Grover. 28-2tc

FOR SALE: 1957 Metropolitan parts, call 659-2914, Wallace Price. 28-2tc

FOR SALE: 1-3-ton ref. air condition complex with ducts for truck home, \$300.00. J. C. Jackson, 659-3372. 28-1c

FOR SALE: Avanti beam antenna plus rotor and coax. \$200. 200 S. Snider, 659-3526. 28-rtn

FOR SALE: Kenmore washer-dryer. One year old. Call 659-3667 or 659-2117. 28-1c

FOR SALE: 1967 15 ft. Trailblazer camping trailer. Good condition, well cared for. Phone 659-3686. 275-rtn

FOR SALE: 1965 Scotty Camper Trailer 13 foot Cookstove and Ice Box. \$500.00 708 Townsend. 275-2tc

Real Estate For Sale

FOR SALE: 22 W. 3rd, between Berntson and Haney. 5 room, 2 bath, 2 story, central heat, stucco. Redecorated 2 years ago. 109 Barkley, stucco, beautiful newly decorated and remodeled completely, 2 bedroom, built-in cook top and oven, central heat and air conditioning carpet, lots of built-ins. Harold Groves 659-3367 275-rtn

FOR SALE: Trailer Court 100'x150'. Call 3529. 19-rtn

ED WHEELER REAL ESTATE Homes - Farms Commercial

659-2613 Days
659-2951 Nights

Large lot with nice two bedroom home in front, nice one bedroom house in the back. Double garage with efficiency in the rear. One year rental on one bedroom house paid at time of sale.

3 bedroom corner lot large fenced yard. 911 Haney.

3 bedroom, brick house, attached single garage, 1 bath, 309 W. 12th.

Four unit apartment complex. Two, two bedrooms and two, one bedroom. Good rental property.

One three bedroom, one two bedroom older homes.

3 bedroom, brick, attached garage, central heat and air.

FOR SALE: Delightful 3 bedroom, 2 bath brick home, large den with fireplace, super storage wall, new carpet throughout, electric kitchen with dishwasher and disposal, breakfast bar, attached garage, patio, big toothbrush. Shown by appointment only. Emmett R. Sanders, Realtor, 659-2516, nights 659-2601.

John Mayfield - Broker
435-6528
Ruby Lair - Salesperson
659-2188

3 bedroom, 1 1/4 baths completely redecorated inside and out, nice yard in Glover Terrace Addition. 28-rtn

2, two bedroom, 1 bathroom fully carpeted homes on one lot. Good location. 28-rtn

2125X180 feet lots for sale in Crawford addition. 28-rtn

2 acreage for sale east of Waka. 28-rtn

Good Commercial site on Highway 15, with 2,190 sq. ft. metal building, office space, 2 baths and metal shed. Lot size 186X295 ft. 28-rtn

1973 model trailer house & 14X62 2 bedroom, some furniture, washer & dryer. Call Mayfield Real Estate. 659-2188. 28-rtn

205-rtn

FOR SALE: Two new 3 bedroom brick homes, closing costs paid by builder. Each house has double garage, refrigerated air, carpets throughout, built-in dishwasher, disposal, range, beautiful kitchen cabinets, marble vanity tops in baths. Emmett R. Sanders, Realtor, 659-2516, nights 659-2601. 275-rtn

OFFERED BY: Emmett R. Sanders Realtor

Price cut 10% for 3 bedroom, 2 bath home, den & office, nice carpets, paneling, E. Kenneth St.

Older 3 bedroom house with basement on 2 lots. 28-rtn

Choice Glover Place home, building site. 28-rtn

220 acre irrigated land 3 miles southeast of Spearman. 27-1c

EMMETT R. SANDERS REALTOR
659-2516
659-2601 (nights)

FOR SALE: House to move out. Contact 659-3051 mornings and afternoons. 27-rtn

FOR RENT

LBL Trailer Spaces: 540 monthly. 50' x 150' lots. Trailers also for rent. Call Manager, 659-3551, 206 S. Bernice. 40-rtn-Tonly

FOR RENT: One and Two Bedroom Apartments. Furnished. 313 Davis or 22 Townsend. 26S-rtn

FOR RENT: VA approved trailer space. 659-3000 after 5:00. 39S-rtn

Automobiles For Sale

FOR SALE: 1976 Chevy Malibu Classic four-door Chevys fully loaded. Cruise control, 350/2 barrels. Still in warranty. Call 659-3351. 28-3c

FOR SALE: '62 Ford Fairlane, new tires and new clutch. Dean Groves, 302 E. 11th, 659-3027. 27-rtn

MOBILE HOME FOR SALE

FOR SALE: 14x63 3 bedroom, 2 full bath Trailer. 659-3532 after 6:30. 275-rtn

Help Wanted

WANTED: Equipment operators for oil field service company. Truck driving experience preferred, but will train. Free hospitalization, time after a half \$800 plus. Contact 435-6588. 22S-rtn

WANTED: Middle-age lady for motel work. Inquire at Patton Motel. 275-2tc

NEEDS 2 mechanics, guaranteed salary plus commission, 5 1/2 days a week. Call R.L. Wyatt, Excel Chevrolet, Olds, 659-2541. 28-rtn

WANTED
Need your lawn mowed? Call Jimmie, 4092. 28-4c

LEGAL NOTICE

OFFICIAL NOTICES OF CANADIAN LAND UNPAID TAX SALES

Sheriff's notices of land and properties (many with buildings) to be sold by PUBLIC AUCTION for UNPAID TAXES plus cost. CLEAR DEEDS, some now as \$50.00 full price. Vacation property City & Town lots, houses, farms, many to choose from. Good investment opportunities. WE LIST FULL DETAILS of property location, total amount owing for unpaid taxes and where to buy. NEW SPRING 1977 EDITION now available, copies limited... Send \$6.00 for your copy to: Canadian Publications, P.O. Box 712, Belleville, Ontario, Canada. 26S-8tc

Card of Thanks

We wish to express our most sincere appreciation to everyone who helped us during the illness and death of our mother. Thank you for your prayers, cards, flowers, visits, and the many kindnesses we've shown her and us. Thanks to all the nurses and Dr. Kleiberger for all the special care you gave her. May God Bless All of You The Family of Susan Wagon

Too Late To Classify

FOR SALE: 1974 Yamaha 360. Less than 1,000 miles. Show room condition. 806 733-2904. Grover, evenings. 27-1c

County Agent News

Anhydrous ammonia is used extensively as a source of nitrogen. It can also be a source of damage if used carelessly, says Jim Kaykandal, county agent with the Texas Agricultural Extension Service.

An accident with the pressurized gas can kill or inflict injuries. Ammonia inflicts a dehydration or water-absorbing burn, and only water flushing in the eyes or on the skin can deter its effect. Flush for at least 15 minutes and do not apply ointments to the burn. Kuykendall also urges farmers to take a quart container of water along when applying anhydrous ammonia.

Wear rubber gloves, chemical splash goggles and a face mask approved by the Occupational Safety and Health Administration (OSHA) when working with anhydrous ammonia, cautions Kuykendall. Always wear clothing which covers the entire body and be certain to wear a full face mask when working around the nurse tank.

Be especially careful when filling the nurse tank and never leave the equipment during the filling operation, kuykendall advises. Also stay clear of the bladder since many eye injuries have resulted from facing the bladder valve.

Farmers should check tank valves, hoses, safety equipment continuously. Corroded and worn valves and tanks, along with dry rotting hoses are dangerous. Failure of equipment is a major cause of accidents, notes Kuykendall.

Federal standards covering design, construction, location, installation and operation of anhydrous ammonia systems are in effect, and farmers should be familiar with them. Information on the proper use of anhydrous ammonia can be obtained from the county extension office. Copies of OSHA standards on anhydrous ammonia can be obtained by writing OSHA, 555 Griffin Square, Room 602, Dallas, Texas 75202. 28-rtn

Notice Clean-up and Work day Holt Cemetery May 28th

Complete Hansford Round-Up Days Agenda
May 30 through June 4.

Rodeo-8:00 p.m. Monday, Tuesday and Wednesday Rodeo Headquarters - Phone 806-659-3330. Books Open - Friday, May 27 - 9 a.m. - 5 p.m. Cash or Money Order (No checks accepted) Try Fee Must be in before 7:00 p.m. BEFORE ADE PERFORMANCE or will be scratched. No exceptions.

Carnival All Week

Teen Disco Dance-8:00 - 12:00 Friday 13-18 Year olds. Community Building \$2.00 per person. "The County Doctor". Doc DeWeese - KDJW Amarillo.

Sidewalk Sale-8:30 - 4:00 - Saturday. Hansford County Home Demonstration Council Bake-Off, 9:30 a.m. Saturday in front of the Ole Saturday in front of the Old Lyric Theatre.

Old Timer Reunion-9:30 Saturday - Register at Joy Traylor Farm.

Form Parade - 10:00 Form - 7th Street South of Shopping Center

Parade-11:00 Saturday

Bar-B-Q-Catered by Harvester Pit Bar-B-Q - Pampa Noon Saturday - Downtown \$3.50 adults \$2.00 Child. Tickets may be purchased at Chamber of Commerce office or obtained from any club or organization in town. The Bar-B-Q will be after the parade.

Square Dance-1:30 Saturday - Main Street

Fiddlers Contest-Saturday High School Auditorium - 2:30 - 4:30 p.m. \$1.50 per person. Entertainment after contest with Buck Anthony who played with Bob Wills

Miss Hansford County Pageant-8:00 p.m. Saturday Miss Shirley Cothran - Former Miss America, 1975 will Em Cee

Rodeo Dance-9:00 p.m. - 1:00 a.m. Saturday Community Building Eloy & the Troubadours - Clayton, New Mexico \$5.00 per head - \$8.00 per couple. Tickets may be purchased from Reagan Baker at 3402, Johnny Pate at 3151, or by contacting Mike Cook, and are also available at the Chamber of Commerce office.

Big Week

The annual Hansford Roundup will be held in Spearman May 30, 31, June 1, 2, 3, and 4.

The theme for the parade is "It's a Child's World". Prizes will be \$75, \$50, and \$25 for 1st, 2nd, and 3rd place floats. No entry fee will be required. Everyone is urged to enter a float, as this is what makes a successful parade. RHO RHO is in charge of the parade, and you should contact Marsha Pipkin or the Chamber of Commerce office if you plan on entering a float.

The Mid-America Midway Shows will bring their carnival to Spearman May 31 thru June 4. They have game concessions available, but have no one to man them. They will set up the booths and furnish the prizes. If any non-profit organization is interested in some booth, call the Chamber office and make your reservations. It will cost your organization \$10, they will charge you for the merchandise given away at their cost, and then they will split the profit 50-50. This is an excellent money raising project for your organization and you could have the booth all week. For more information call 3330. First come, first served.

The Hansford Roundup Association will need four ticket takers a night. The money from the carnival will go in the pot to be divided between the clubs that provide manpower to make this celebration a success.

MI ZETA in charge of the Bar-B-Q. They will be contacting the clubs to help sell advance tickets. The club or organization that sells the most tickets will win \$25.

The Rodeo will be held the nights of May 30, 31, and June 1 (Monday, Tuesday, and Wednesday) at 8:00 p.m. in the Oscar Archer Arena.

Friday night a Teen Disco Dance will be held in the Community Building from 8:00 p.m. until Midnight with the "Country Doctor", Doc DeWesse of KDJW, Amarillo running the disco. The cost is \$2.00 per person and it will be for kids aged 13 - 18.

Both the sea horse and the chamberlain can move one eye without moving the other, and they can move both eyes in opposite directions.

TEXAS PRESS MEMBER 1977 ASSOCIATION

VOLUME 68, NO. 28

SPEARMAN, TEXAS 79081
213 Main Box 458 659-3434
Published Weekly at 213 Main Street
Spearman, Texas 79081

Owner-Publisher.....William M. Miller
Second Class Postage Paid at Spearman, Texas

ANY ERRONEOUS REFLECTION UPON THE CHARACTER OF ANY PERSON OR FIRM APPEARING ON THESE COLUMNS WILL BE GLADLY AND PROMPTLY CORRECTED UPON BEING BROUGHT TO THE ATTENTION OF THE MANAGER. SUBSCRIPTION RATE-Hansford, adjoining counties, combination with the Hansford Plainsman, \$10.92 Tax included. Other points \$15.12 Tax included.

FOR THE ULTIMATE IN STORM DOORS
CUSTOM BUILT, DESIGNED, AND IN COLORS TO FIT YOUR HOME.....

CONTACT
HOWARD MOYER AT ONLY ALUMINUM INDUSTRIES
405-338-6966 or 338-6170
P. O. Box 471
GUYMON, OKLAHOMA 73942

Governor Endorses Beef Referendum

Texas Governor Dolph Briscoe today easily slipped into his role as a leading cattleman as he announced his support of a National Beef Referendum.

"This self-help program for cattlemen is the most bold and far reaching program in my memory...and possibly in the history of the cattle industry. I plan to register and vote 'Yes' in the upcoming Beef Referendum, furthermore I urge all cattlemen in Texas to inform themselves on the merits of this program. Then register in June and vote 'Yes' in July."

Briscoe pointed out in a special capitol news conference that the national program would raise an estimated \$30-\$40 million annually for research, education and promotion of beef.

"As a cattlemen," Governor Briscoe pointed out, "I have long had an interest in beef research, consumer education and promotion. Six years ago I was chairman of the National Livestock and Meat Board, an organization that had a great program but always was under financed."

More than 120 of his fellow cattle producers from around the State were on hand today to hear the official endorsement. The producers represent the Texas Beef Development Taskforce, a statewide group working for passage of the Referendum.

The Texas Governor is recognized as a leader in the cattle industry and has served in various leadership positions in the cattle business.

go to their local ASCS office to register between June 6 and June 16 and then go back between July 5 and July 15 to vote.

MR. FARMER-RANCHER

We have Goulds Submersible Pumps in stock-These pumps have a 5-year guarantee.

We want to install your Submersible pumps, complete stock of pipe time clocks, fittings, pressure tanks.

All accessories for your domestic water pump needs.

Also wind mill supplies

Buck Tucker Water Well Service

PHONE 659-3013 ----- 1100 W. 7TH

HOME 659-3061
SPEARMAN, TEXAS



Servitors' new officers

The "Servitors", a new young women's organization had their installation at their regular meeting on Thursday, May 19. Those elected were President, Candy DeLozier; Vice President, Risa...

Courtesy Honors Tammy Reid

Miss Tammy Reid, bride-elect of Jimmy Kenney, was honored with a bridal shower Saturday morning at the Morse Community Building. The serving table was laid with a white tablecloth trimmed with lace and was centered with an arrangement of aqua silk flowers with aqua and white baby's breath and lilies in a milk glass bowl.

New Club Installs Officers

Alexander, 2nd Vice President, Susan Pearson; 3rd Vice President, Rita Holmes; Corresponding Secretary, Wanda Jones; Recording Secretary, Michelle Davis; Parliamentarian, Jackie Pearson; and Treasurer, Terry Thomas. Mrs. Paula Britt of Wheeler, installed the officers. She is the District Membership Chairman for the Top 'o' Texas Federation of Women's Clubs.

HD Club News

Serendipity Home Demonstration Club met Thursday, May 19 for a salad luncheon at the Home Demonstration Club Room. Miss Peggy Marrs, county agent, gave the program on making different kinds of bread.

Rotarians Discuss Business

Spearman Rotary Club met at Martini Steak Gardens Monday, May 23, for group singing and discussion of club business. No meeting is scheduled May 30.

Members present were Mesdames: Adalyn Barnes, Rose Cummings, Nan Nicholson, Gwen Younger, Joyce Byers and newest member Sherlene Dennis. The next meeting will be August 18.

Las Amigas Home Demonstration Club met Friday, May 20 at the Hansford County Library Meeting Room at 7:00. Minutes were read and approved. Mrs. Francis Ortega presided over the meeting. Mrs. Janie Flores read the devotional.

The program was on "Whole Grain Goodness" and given by Miss Peggy Marrs. She brought samples of bread in which they all tasted. Members present were Mesdames: Francis Ortega, Mrs. Lopez, and Janie Flores. Mrs. Ortega served the refreshments. The next meeting will be August 18.



The children of Mr. and Mrs. Harvey R. Holt of Gruver are honoring their parents of the fiftieth anniversary of their marriage, Sunday, May 29, 1977 from three until five o'clock at the Holt's residence, 708 King Street. You are cordially invited to attend and they ask that you not bring gifts.

Union Bible School Set

The Union Church has scheduled their Vacation Bible School for May 30 through June 3 from 9 a.m. to 11:30 a.m. The theme for the school year is "Lord Jesus Teach Me". Everyone 4 years old through 8th grade is invited to attend. A surprise is planned for each day. The church buses will run each day. Anyone needing a ride may call the Union Church parsonage 659-2644.

Former Resident Visits Here

Mr. and Mrs. Bill Pharies of Whittier, California visited in the home of Mr. and Mrs. H.P. Cates Thursday. Mrs. Pharies is the former Anta Clea Reed of Spearman. They had been to Houston to see her mother, Mrs. Pearl Reed, and came back through here to visit. Mrs. Reed is a former longtime librarian for the City of Spearman.

1927 — 1977 THE CHILDREN OF MR. & MRS. HARVEY R. HOLT REQUEST THE PLEASURE OF YOUR COMPANY AT A RECEPTION IN HONOR OF THE FIFTIETH ANNIVERSARY OF THE MARRIAGE OF THEIR PARENTS ON SUNDAY, MAY TWENTY-NINTH NINETEEN HUNDRED AND SEVENTY-SEVEN FROM THREE UNTIL FIVE O'CLOCK HARVEY HOLT RESIDENCE 708 KING STREET GRUVER, TEXAS NO GIFTS PLEASE

FIRST STATE BANK In Spearman WILL Be Closed Monday, May 30, For The Observance Of MEMORIAL DAY Normal Business Hours Resumed Tuesday 30 SW COURT 659-2526 Member FDIC

OPEN 24 HOURS ALLSUP'S CONVENIENCE STORES OPEN 24 HOURS ALLSUP'S PICNIC HEADQUARTERS OPEN ALL DAY MEMORIAL DAY!

Peggy's Pointers Women's special problems with high blood pressure (hypertension) make them prime targets for its dangerous threats—especially during pregnancy. High blood pressure is a disease which may lead to crippling or stroke, heart disease and kidney failure. Currently 23 million Americans have high blood pressure. Pregnancy is a time that women who have never had high blood pressure may develop it, according to statistics. So it's important for both the mother and her developing baby that the pressure remain in the normal range as pregnancy progresses. If pressure gets too high, blood vessels may be constricted—and it would seriously reduce the blood supply from mother to baby. Sometimes blood pressure will return to normal after delivery—but if it does not, the woman should follow her doctor's advice and treatment for controlling it. During May—National High Blood Pressure Month—women are urged to begin having blood pressure checked regularly—and to make sure the entire family, even young children, have their blood pressure checked. BEWARE! When signing a sales contract, especially for door-to-door sales, check the number of carbon copies you are signing. Be sure all are identical. If they are not, do not hesitate to drop the sale completely and destroy whatever you may have signed. Make sure all blank spaces in the contract are filled before you sign. CLEAN AIR - A clean, well-maintained air conditioner means more efficient cooling—and comfort—for the family. Regular inspection and cleaning of filters and grills in home air conditioner units keeps the house cooler—and saves fuel. Filters are traps for the almost invisible impurities in the air and regularly build up an accumulation of dirt. Air conditioner filters in most units—and those in air conditioning ducts—require washing and warm-water vacuuming monthly. Shake off excess water, dry and replace filter. An alternative to that is the disposable filter—available in various sizes, usually easy to change, and inexpensive. New homes—or recently remodeled homes—may need more frequent filter changes, or cleanings, during the first cooling season, because of extra dust in the system. For cleaning room grills, use a cloth, mild soap and warm water—not waxes or cleaners. If the system seems sluggish after cleaning, call a service man certified by the manufacturer of the air conditioner—or an electrician. Since cleaning filters and grills is relatively simple, someone in the family should be responsible for giving them a frequent check. Ag Credit Agricultural credit conditions in the northern High Plains of Texas have deteriorated substantially during the past year, according to an April survey of area bankers by the Federal Reserve Bank of Dallas. Repayment of loans has slowed, renewals are up sharply, and bankers report a large drop in the availability of funds to service credit requests. Growth in loan demand now exceeds the inflow of deposits. Rising production costs and low prices for wheat and cattle have caused reduced cash flows and farm incomes. Moreover, operating lines of credit to cover rising irrigation costs have increased substantially. Crop storage loans have also increased as many farmers are withholding corn, grain sorghum, and wheat crops in hopes of higher prices. Loans averaged 64 percent of deposits at survey banks in April, compared with 57 percent a year earlier. A decline in farm income caused year-to-year deterioration in several key indicators of agricultural credit conditions, report Carl G. Anderson and Alan M. Young, agricultural economists for the Federal Reserve Bank of Dallas. Where last year 3 percent of the banks surveyed said loan repayments were less than usual, this year 76 percent did. Where 30 percent reported loan renewals were greater than usual last year, this year 88 percent did. Where no respondents indicated less than usual availability of funds a year ago, this year 41 percent did. 88 percent of the bankers indicated they were not looking for new customers. 35 percent of the respondents in the April survey indicated they had to reduce or refuse a farm loan because of a shortage of funds. Average interest rates reported were 9.28 percent for feeder cattle loans, 9.35 percent for operating loans, and 9.29 percent for intermediate-term loans (1 to 7 years). Bankers estimated that the price of "good" farmland and ranchland in the area increased 4 to 5 percent during the past year—slightly higher rates of increase had been reported in previous quarterly surveys. Stable land values were foreseen in coming months by nearly three-fourths of the respondents. TORPEDOES Artificial skins are being used on some torpedoes to give them more speed, since it was discovered that the dolphin's skin reduced turbulence in the water. FPC Plans 2 Sewing Classes The Continuing Adult Education department at Frank Phillips College will present two sewing classes this summer. The first, Drapery Making and Installations, will begin class June 23 and end August 29. Classes will meet on Mondays and Thursdays from 7 to 10 p.m., for 12 weeks, giving a total of 72 classroom hours. Fee for the course is \$20. Enrollment is limited to 12 students. Deadline for registration is June 9. The second course, Sewing, Dress Making and Alterations, will begin June 27, meeting on Mondays from 9 to 12 a.m. for 10 weeks, with a total of 30 hours of instruction. Fee for the course is \$15, and deadline for registration is June 9. Classes will be held at Madellene's Sewing Room, 1704 Boy. Persons interested may call Madellene's Sewing Room, or Andy Hicks at Frank Phillips College.

ICE CREAM 89¢ BORDEN'S CHEESE 59¢ ENERGY CHARCOAL 10 LB. BAG \$1.49 BREEZE DETERGENT \$1.19 BURRITOS 3 \$1 CHINET PLATES 15 CT. PKG. \$1.59

You are cordially
invited to a
bridal shower honoring
Cindy Steele
bride-elect of Ken McClellan

Saturday, May 28
3:00 to 4:30
First Baptist Church
Fellowship Hall

Hostesses:
Frankie Sloan
Virginia Head
Loree Booth
Zetha Blackburn
Ruth Mary Whitson
Betty Uptergrove
Wren Holt

Event:
Evelyn Hiller
Betty Thomas
Virginia White
Donna DePece
Barbara Patterson
Betty Porter
JoAnn Lee

Former Reporter Staffer Retires

Paul (Preach) A. Loftin, son of Mrs. A. F. Loftin, (and the late Rev. A. F. Loftin) 804 South Evans, retired May 31, after having served 18 years as an employee of the State in Austin. He was director of the Comptroller's Support Services Division in charge of 100 persons in various support work such as purchasing, leasing, facilities, printing, supply and communications.

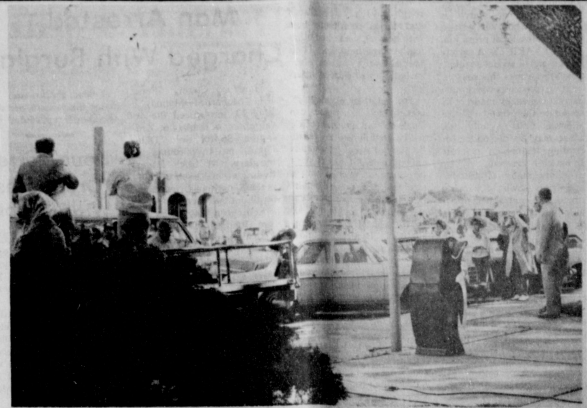
At one time Loftin was an assistant to the late W. J. Miller, Reporter publisher. He succeeded Miller as editor when the "Don't Name It" columnist volunteered for active duty during World War II.

The Loftins had moved to Spearman in June, 1933 from Carmen, Oklahoma, where Bro. Loftin had been pastor of the Baptist Church. Paul and Wren (now Mrs. Fred Holt, Route 1, Spearman) resided with their parents for a number of years in Spearman. Paul married Lois Hale in June 1938. Lois (Mrs. Pork) taught first grade in Spearman from 1936 until she joined Paul at Fort Hill, Oklahoma, during World War II in 1943. Paul and Lois remained at Fort Hill until July, 1946 when they moved to Perryton where Paul was a member of the Herald staff and Lois taught first grade. During World War II Paul was a Sergeant in the Army and was editor of the Fort Hill Army News. This newspaper won second in a world-wide armed services contest and he was cited for meritorious service. The Army News under his leadership, won several other armed services awards. Paul Timmons, presently one of the senior editors of the Amarillo News and Globe Times, was also a member of the Army News Staff. In fact Timmons "taught" Paul some of the finer things about newspapering.

Lois died in January 1966 from breast cancer. Paul married Barbara Newell Peck, who was a former writer and editor for a group of business management consultants. Barbara had been a member of the Standard Oil of New Jersey (Exxon) industrial relations group for a number of years before she joined the Austin, Texas management firm. The couple was divorced in October, 1976.

Later in 1976 Paul and Elizabeth Ferguson were married by former governor and present Associate Justice of the Texas Supreme Court, Price Daniel. Liz and Paul have two children by her former marriage, Edward, 10 and Theresa, eight. They reside at 9909 Oak Hollow, Austin, 78758.

Many old-timers in Spearman, will remember Paul



Pictured are some of the crowd listening to Mayor Blodgett, before WIFE's departure. WIFE President, Georgia Holt (middle of photo) and some of the other WIFE representatives (to the right) hold their hat's in Saturday's strong wind.

Young Gruver Boy Services Held

Memorial services were held Tuesday, May 24, for Richard Todd Duncan, 6, who died Sunday from injuries suffered in a boating accident at Lake Meredith, at 2 p.m. in the First Baptist Church of Gruver. The Rev. Bill Butts, San Angelo, and former pastor of the church, and the Rev. John Denton, pastor, officiated. Burial was in the Gruver Cemetery by Boxwell Brothers Funeral Directors of Spearman.

The youngster, the son of Mr. and Mrs. Jerry J. Duncan, was born in Perryton and had lived most of his life in Gruver.

Survivors other than the parents are a brother, Thomas Tracy of the home; grandparents, Mrs. Joyce Duncan of Gruver and Mr. and Mrs. Berry Powers of Spearman; a great-grandmother, Mrs. Rosie Farmer of Spearman.

Casket bearers were Greg Stork, Russ Castor, Coy Winder, Dale Gable, Larry Don Mitchell, Melvin L. Mitchell, Tommy Boone, Jim McManahan, John Boney, and Larry Batenhorst.

Honorary pallbearers were Lee Roy Mitchell, Kermit Boone, Roy Thomas, L. L. Finley, Joe Baleshorst, Oliver Wallin, Roy Riley, E. J. Riley, Gordon Gross, Richard Fletcher, and C. C. Heath, Sr.

Hospital News

Patients in Hansford Hospital are Ellen Groves, Oscar Donnell, Emma Lopez, Clara Shipp, Addie Novak, Jessie Stroud, Don Head and Gordon Parrish.

Dismissed were Laura Mackie, Micky Nobles, George Blythe III, Opal Jones, William L. Payne Cudd, and Rhoner Johnson.

Our Heritage of Faith

Summer vacation is here for all our students. All those planning to be making for the summer are about to become reality. Let's all try to take care and make this not only a fun summer but a safe one as well. The congregation at Faith Lutheran has plans for the summer, too.

Many of our young people and Pastor Andersen and Harvey Falisak will be attending the Summer Camp June 11-17. The Camp will be held at Ceta Canyon which is about midway between Amarillo and Lubbock. Those eligible to attend are the young people who have completed the 4th grade this year all the way up through those who have completed the 12th grade. There are separate groups and activities for each age division but all will be staying in the same camp. Anyone who hasn't signed up yet but would like to do so is encouraged to do so immediately. Contact either Pastor Andersen or intern Harvey Falisak.

Faith Lutheran and the First Presbyterian Church have again joined together this year for their Vacation Bible School Program. The Bible School will be for one week only, June 13 - 17. Classes will be provided for all youngsters from the age of 3 up through those who have just completed the 7th grade. The theme for this year will be "Reaching Out" and we will study and talk about the many ways in which God has reached out to His people throughout the history of the world.

The congregation of Faith Lutheran Church rejoices in learning of the approaching ordination into the ministry of last year's Juniors, Bruce Loewenhausen. Bruce will be ordained on June 5, 1977, at Our Savior's Lutheran Church in Racine, Wisconsin. Pastor Andersen and family will be attending. Bruce has accepted a call to two congregations at Soldiers Grove and Gays Mills, Wisconsin. We rejoice with Bruce and his wife Linda and wish them God's blessings as they start out in this new part of their lives.

The District Convention of the Southern District of The American Lutheran Church will be held June 10 - 12 at Texas Lutheran College in Seguin, Texas.

The Southern District of TALC is comprised of Texas, Louisiana, Arkansas, and the eastern edge of New Mexico. Clergy and lay delegates from this entire area will be attending the three day convention and will be busy setting up the agenda, officers, and finances of the District for the next year.

This Sunday we celebrate the Day of Pentecost. This is the day when the Holy Spirit came upon the apostles of our Lord Jesus Christ and inspired them to begin their great mission of spreading the good news of His salvation of mankind to others. They opened their hearts, minds, and bodies to the Holy Spirit and accomplished great works for the glory of God. Let us do the same!

If you have no home church or would like to visit with us here at Faith we warmly invite you to do so. Sunday morning worship begins at 9:30 a.m. and Sunday School begins at 10:30 a.m. The Sacrament of Holy Communion is celebrated the second Sunday of each month.

Bankers Association Has Meeting

The North Canadian Banker's Association held its annual meeting at the Perryton Club in Perryton, Texas on April 28, 1977. The meeting was hosted by First National Bank, Darrouzett and Follett National Bank, Follett.

This meeting marks the beginning of the second year of the organization. Board of Directors were elected as follows: President-B.A. Donelson, the First State Bank of Stratford, Stratford, Texas. Vice President-Ray Koehler, Citizens State Bank, Dalhart, Texas. Secretary-Treasurer - Ann Steward, The First State Bank of Stratford, Stratford, Texas. First National Bank - Higgins, Texas. First National Bank - Perryton, Texas. First State Bank of Spearman - Spearman, Texas. The First State Bank of Stratford - Stratford, Texas. Sunray State Bank - Sunray, Texas. First National Bank - Stinnett, Texas.

This association was formed to enable the member banks to better serve their customers and communities.

The association hopes to provide the best information available on subjects of current interest in the banking profession and to provide a medium for the discussion and solution of common problems relating to our trade area.

Shriners Enjoy Fun Evening

Hansford Shrine Club met Thursday, May 19 at the Clay Gibner ranch home for their last meeting until this fall. Hosts for the elaborate dinner were Clay Gibner, Pope Gibner and Jim Shisley. They served to the 21 members present and to guests and now members of the Khiva Temple Wilton Greene of Spokane, Washington and Wallace Price of Albuquerque, New Mexico of the Ballute Aiyad Temple; and visitor Don Hicks, from the Amarillo Temple.

The fellowship was delightful with everyone talking and the music entertainment was by stereo.

There will be a ladies night at the Joel Lee Lackey Ranch, west of Spearman. On September 15 they will have a picnic.

All shriners are invited for their fall meeting.

Club Plans Roundup Dance

Spearman Spinners Square Dance Club met Thursday, May 19 with Paul Lopez calling at the County Barn.

Five squares were dancing at one time.

The Spinners plan the square dance on Main Street on June 4 after the barbecue for the Hansford County Round-Up Celebration.

There were guests from Gruver and Stinnett.

The next meeting will be June 2 at the County Barn with guest caller J. D. Wilbanks.

Area Airports To Be Discussed

A Texas Airport System Plan regional planning meeting will be held at 10 a.m., Wednesday, June 8, in Perryton in the City Council Meeting Room, 110 South Jail Street.

Airport development needs of Hansford, Lipscomb, and Ochitree Counties will be discussed. The meeting will be conducted by the Texas Aeronautics Commission.

All area citizens with an interest in air transportation and airport development are invited to attend. Participating in the meeting will be city and county elected officials, airport board members, airport managers, representatives of the Panhandle Regional Planning Commission, and other citizens.

During the meeting, the airport development needs currently identified in the Texas Airport System Plan for area airports will be reviewed. Airport pavement maintenance and rehabilitation programs will be covered.

The availability of state and federal funds for airport development will be discussed. Information on area economic development, community goals and objectives, and other factors will be requested.

The Texas Airport System Plan, developed for Texas and the Federal Aviation Administration, by the Texas Aeronautics Commission was published in January 1976.

Bridge Club

Blue Monday Bridge Club met Monday, May 23 at the home of Mrs. Bill Gandy.

Mrs. Mildred Daily won high and Mrs. Emma Seitz, second high.

Refreshments were enjoyed by Members, Mesdames: L. S. McLean, Deta Blodgett, Willie Seitz, Sam Graves, Pope Gibner, Fred Daily and guests, W. P. Grigsby and Preston Scott.

They will not meet until this fall.

MARKETS

Wheat	\$2.08
Corn	\$2.18
Milo	\$3.10

Special Floor Display Sale

Hurry! Only One of Each!

- BLACK & WHITE
Portable T.V. WAS \$110.00 NOW \$91.95
- COLOR
Portable TV WAS \$329.00 NOW \$299.95
- Trash Compactor WAS \$260.95 NOW \$199.95**
- Upright Freezer WAS \$467.95 NOW \$399.95**
- Frostless Freezer WAS \$436.95 NOW \$379.95**
- Gold Refrigerator WAS \$568.95 NOW \$499.95**
- UNDER COUNTER
Dishwasher WAS \$292.95 NOW \$242.95

SEARS, ROEBUCK AND CO.
SPEARMAN 659-2573

LEISURE-TIME SHOPPE

STOREWIDE 1/2 PRICE SALE

SALE STARTS AT 9:00 FRIDAY, MAY 27th, 1977

CAMPING SUPPLIES
WATER SPORTS
POCKETKNIVES
GUNS & AMMO
TEAM SPORTS EQUIPMENT
GOLF SUPPLIES
SNOW SKI EQUIPMENT
BILLIARDS ACCESSORIES
OUTDOOR GAMES

RELOADING EQUIPMENT
FISHING EQUIPMENT
HEAD WEAR
SHOES
ARCHERY
TENNIS SUPPLIES
SPORTSWEAR
GYM WEAR

DON'T MISS THIS SALE - 50% SAVINGS ON EVERY ITEM IN THE STORE. ALL MERCHANDISE MUST GO TO MAKE WAY FOR A COMPLETELY NEW SPORTING, GOODS CONCEPT SPECIAL STORE HOURS FOR THIS EVENT - 9:00A.M. THRU 8:00 P.M. DON'T DELAY.

Do-it-Yourself

Do-it-yourself drycleaning depends on several guidelines for the best results. Coin-operated drycleaning uses the same cleaning method as professional cleaners but the consumer does part of the work.

Loads are usually determined by weight, but bulk is also important. Since clothes need room to tumble freely, do not overload the machine. When cleaning large bulky items, reduce weight per load.

Check labels (or hang tags) to be sure the garment is drycleanable. In most cases, garments can be successfully drycleaned, unless the label specifically advises against it.

Garments which should not be cleaned in self-service machines include leather and suede, vinyl, genuine fur garments, fabrics containing rubber coating or rubber core yarns, metallic cables, fabrics, and fibreglass or saran draperies and bedspreads. For best results, turn some garments—such as velvets

and knits—inside out, or place them in a net bag. Separate garments according to color (light from dark) and weight (fragile or sheer from heavy clothing).

Before cleaning, brush lint from cuffs and pockets. Remove any undecantable buttons, belts, or trims as well as articles from pockets. Repair tears, rips, and broken seams. Pretreat spots or stains.

When the drying cycle ends, promptly remove articles from the machine—and hang them immediately to prevent wrinkling. If steam equipment is available, steam press while hanging.

Remember, too, that some coin-op drycleaners have attendants on duty to assist with proper procedures—or do the entire cleaning process for the customer.

For special needs, however, use professional drycleaners.

Use professional drycleaners for cleaning garments which cannot be cleaned in coin-op machines, for

stubborn spots and stains, when sizing or starch is needed or when you want a good, professional press job. BELT VARIETY—A variety of belt styles accent fashionable slim waists this season. Style conscious consumers can choose ready-made belts or create their own. Some belts simply tie, these may be in solid color, corded, leather, or in fabric to match a garment. Others made of ribbons and trims sewn to backing give a different and fashionable touch to a simple dress or top.

Both wide and narrow belts with buckles—or other types of fasteners—are popular, too. On many wide belts, especially the waist-cincher types, we're seeing interlocking closures in interesting texture or color. On narrower belts, the buckle may be a disc or other decorative shape with a hidden that matches the garment or simple leather belt.

For belts with rich detail, however, simpler buckles are more attractive. Also, some buckles have a rough-and-ready appearance and these coordinate best with heavier suede and other leather-type beltings. Their special waist accent gives casual clothes a lot of interest.

For another exciting effect, today's belt wearer can "pair up" an unusual buckle with a complementary fabric for the belt—such as a nautical buckle over fabric of stars or anchors printed in a straight line to make the belt. 4-H CLOTHING projects are about to begin for all youth who are interested, age 9-19. Participants learn grooming, selection and buying practices, as well as basic sewing skills, through group participation under the direction of adult and junior leaders.

These projects will begin the first of June and be completed in mid-July. 4-H activities are open to all youth between the ages of 9-19 without regard to race, color, sex, religion, or economic circumstance.

If you are interested in participating call the Extension Office (659-2030 or 733-2901).

Man Arrested, Charged With Burglary

Hansford County Sheriff R.L. McFarlin, Monday, May 23, announced the arraignment of Bobby Lee Redington, 36, of Enid, Oklahoma, on two counts of burglary. A truck driver, Redington had been working in the Spearman-Gruver area for about two months.

Redington was taken before Justices of the Peace J.P. Vernon on charges in connection with tools and other property having a total value of \$800 taken from a feed yard near Gruver and from a barn northeast of Spearman.

Bond of \$3,000 on each count was set and Redington was remanded to the custody of the sheriff and placed in jail pending further proceedings in connection with posting the \$6,000 total bond. Redington was arrested May 20 for the burglaries which occurred during the 10 days prior to that date.

Tools, chains and other items taken were recovered, the sheriff reported.

Doug Porter Graduates With Honors

Douglas C. Porter received the bachelor of arts degree with a major in physical education at the 18th May commencement of Wheaton college, May 23.

Dr. Hudson T. Armerding, Wheaton College president, conferred the 340 baccalaureate and 66 master degrees. Doug was graduated with honor. He also toured with the Wheaton College Men's Glee Club.

He is the son of Mr. and Mrs. R.C. Porter, Spearman, and is a graduate of Spearman High School.

Spearman Native Named Manager Of Krueger Office

The 1967 Spearman High School graduate will replace named office manager of Darryll Grubbs of San Antonio, who plans graduate work at the University of Texas at Austin.

Robertson attended West Texas State University two years and was then employed by Western Electric in Austin.

Robertson attended West Texas State University two years and was then employed by Western Electric in Austin.

Robertson attended West Texas State University two years and was then employed by Western Electric in Austin.

Robertson attended West Texas State University two years and was then employed by Western Electric in Austin.

Robertson attended West Texas State University two years and was then employed by Western Electric in Austin.

Robertson attended West Texas State University two years and was then employed by Western Electric in Austin.

County Gross Sales Reported

State Comptroller Bob Bullock has reported that gross sales in Hansford County for the last three months of 1976 amounted to \$11,397,638 of which \$2,961,501 was subject to tax.

The information about gross sales in Hansford County was contained in a release from Austin in which Bullock reported that gross sales in Texas for the last three months of 1976 exceeded \$43.3 billion, raising the total for the year to \$142.4 billion.

This is \$27.5 billion more than the total for calendar 1975, an increase of 23.9 per cent, Bullock noted.

The computer analyses released by Bullock break down reported gross sales by county and by Standard Metropolitan Statistical Area (SMSA).

Harris County, the state's most populous, again led the state with gross sales totaling \$11.2 billion. Dallas County recorded sales of \$7.7 billion and Tarrant \$2.5 billion. Bexar County recorded sales of \$1.9 billion.

The figures are based on reports from 287,672 business outlets in the state holding sales and use tax permits.

Retriever Club Sets May Trials

The Texas Panhandle Retriever Club is holding its May Fun Trial and training session May 28th and 29th at the Turkey Track, East of Stinnett. Saturday's training session starting at 10 a.m. would be an ideal time for the new retriever owner to get his dog out and started for the up and coming hunting season or to sharpen up the older, more experienced retriever. Training will be conducted by trainers from local area as well as Oklahoma and New Mexico; experienced in all areas of field training as well as field trials. This would be a perfect opportunity to get advice as well as help correcting any problem areas a person might be having training a retriever.

On Sunday the Field Trial will start at 9 a.m. and also give valuable experience to the handler as well as his retriever under in the field conditions. Order of stakes will be: QUALIFYING, for dogs of all ages but generally for dogs over two years of age, DERBY, for dogs six months to two years; GUN DOG, open to dogs of all ages; and PUPPY, for one year. Trophy will be awarded for first place in each stage and ribbons for all other places.

All are welcome with camping available on the grounds or accommodations in Stinnett and located from the South on Hwy 207, by turning East at the first stop light in Stinnett, then look for the signs. For additional information contact Terry Cooke, Amarillo, 353-3866.

BULLETIN: An all time record attendance was on hand at Spearman hi school graduation services Tuesday evening. Complete details in Sunday paper.

the home of THRIFF-1-Prices

IDEAL

FOOD STORES

MON.-SAT. 8:00 a.m.-9:00 p.m.

SUN. 10:00 a.m.-7:00 p.m.

WE WILL BE OPEN MEMORIAL DAY FOR YOUR SHOPPING CONVENIENCE.

SUMMER SUN COLLECTION STONWARE

FEATURED THIS WEEK:

DINNER PLATE REG. 99¢ NOW 59¢

COMPLETER PIECE OF THE WEEK:

Coffee Server REG. 99.99¢ NOW 87¢

STOP BY IDEAL AND GET ALL THE PICNIC SUPPLIES THAT YOU'LL NEED FOR YOUR HOLIDAY OUTING!!



KRAFT ... SALAD DRESSING

Miracle Whip 32-OZ. JAR 98¢

Vienna Sausage 3 3-OZ. CANS 89¢

CAMELOT HAMBURGER

Dill Pickles 32-OZ. JAR 78¢

KRAFT ... ALL FLAVORS

Bar-B-Que Sauce 18-OZ. BTL. 49¢

MISSION ... ALL FLAVORS

Canned Pop 8 15-OZ. CANS \$1

Potato Chips 74¢

Paper Plates 84¢

Cold Cups 88¢

HUNT'S

Ketchup 64¢

FRASER'S

Mustard 85¢

LINDSEY ... LARGE PITTED

Ripe Olives 2 5-OZ. CANS \$1.00

NORTHERN ASSORTED

Aluminum Foil 29¢

32-PT. ROLL 41¢

YOU COULD WIN UP TO

Hudson's Higrade ... FRESH FROZEN

WHOLE FRYERS 39¢ LB.

CUT-UP FRYERS 49¢

FARM-FRESH

Box-0 39¢

CHICKEN 73¢

U.S.D.A. CHOICE BUTCHER BLOCK BEEF

Chuck Steaks 74¢

FRESH ... EXTRA LEAN

Ground Chuck 89¢

U.S.D.A. GRADE A ... SWIFT PREMIUM

Cornish Hens 1.19

BLUE MORROW CORNED

Beef Fritters 1.09

KOEDO MEAT

Skinless Franks 69¢

CTN. OF 6

Coca-Cola \$1.28

CAMELOT ... HAMBURGER OR

Hot Dog Buns 28¢

MEADOWDALE

Potato Chips 56¢

9-OZ. BAG

VAN CAMP'S

PORK and BEANS 4 16-OZ. CANS \$1

HEALTH AND BEAUTY AIDS...

Toothpaste 67¢

Suntan Oil 8-OZ. BTL. \$1.99

PAIN RELIEF Tylenol Tablets 1.63

4.8-OZ. TUBE

CAMELOT Baby Oil 79¢

KINGSFORD

Charcoal 94¢

10-LB. BAG

MILE HIGH ... CUT

Green Beans 4 16-OZ. CANS 89¢

NIBLET'S ... WHOLE KERNEL

Golden Corn 3 16-OZ. CANS 83¢

CAMELOT

Fruit Cocktail 16-OZ. CAN 39¢

KRAFT ... JET PUFF

Marshmallows 3 18-OZ. PKGS. \$1

GULF ... CHARCOAL

Lighter Fluid 69¢

MACARONI and CHEESE

Camelot Dinner 5 7.5-OZ. BOXES \$1

HANDY CAN ... ALL FLAVORS

KOOL-AID \$1.68

MAKES 1 QT.

WE GIVE GUN BROS. STAMPS TO HELP SAVE

SBA Action To Help Farmers

Congressman Jack Hightower today announced an action by the Small Business Administration that should help ease the credit crunch confronting so many farmers in the 13th District.

The agency notified Hightower late last week that it plans to publish sometime this week in the FEDERAL REGISTER proposed regulations that would raise the size standard limitation from its current \$275,000 to \$1 million. Any agricultural producer whose annual gross receipts exceed \$275,000 will be ineligible for SBA assistance until the new standard becomes effective.

"Although this action does not solve the most difficult problem, assuring higher prices for the farmer's products, it should enable many farmers and bankers to work together to ride out this period of low market prices and unfavorable weather," Hightower said.

Hightower explained that legislation was implemented

during the past session of Congress that provided for the Small Business Administration to begin assistance in the agricultural sector of the Panhandle and North West Texas area.

It became evident, according to the 13th District Congressman, that the agency's understanding of farming operations was not clear enough to make the congressional mandate effective. The SBA proposed rules for the gross receipts eligibility limit be \$275,000. This would exclude many of our average sized farmers from the program.

This and problems with refinancing of loans prompted Hightower to request the Small Business Committee of Congress to hold hearings in Texas. A hearing was held in Dallas-Fort Worth Airport last month in which Hightower testified along with several farmers and bankers from the 13th Congressional District. Congressman Neal Smith of Iowa, Chairman of

the Committee, and other committee members were impressed with the testimony. This action along with the contact Hightower has had with the agency has played a major role in this change.

Hightower concluded by stating, "it is gratifying for me to see positive results from efforts to redirect rules of a federal agency."

Savings Bond Sales Noted

April sales of Series E and H United States Savings Bonds in Hansford county were reported today by County Bond Chairman C.A. Gibner. Sales for the four-month period totaled \$35,337 for 39% of the 1977 sales goal of \$90,000.

Texas sales during the month amounted to \$27,174, 422, while sales for the first four months of 1977 totaled \$94,926,317 with 34% of the yearly sales goal of \$276.9 million achieved.

FPC Sets Summer Session

Registration for the first summer session of classes at Frank Phillips College has been scheduled for Tuesday, May 31, from 6:7 p.m.

Classes will begin on Wednesday, June 1. Courses offered will include English, typing, basic accounting, shorthand, biology, math, government, chemistry, biology, history, sociology, and reading.

The last day to register will be Friday, June 3. No person will be admitted to class after that day.

No classes will be held on July 4. Final examinations will be of on July 6, and the first summer session will end on July 7.

Blue, black and green inks are used in printing a U.S. one dollar bill.

Close Receives Commemorative Gavel



House Speaker Bill Clayton has presented Representative Bob Close with a commemorative gavel, acknowledging the Perryton representative's work as vice chairman for appropriate matters of the Natural Resources Committee during the 65th session of the Texas Legislature.

Within the House, the Natural Resources Committee considers all legislation on conservation of the state's natural resources, control and development of land and water resources, irrigation, and matters pertaining to the Texas Water Development Board, Texas Water Rights Commission and the Soil and Water Conservation Board.

The vice chairman for appropriate matters has responsibility for presenting the recommendations of the committee to the Appropriations Committee.

Rep. Close, serving his second term in the House, was lauded by Clayton for his efforts on behalf of the committee leadership that our system of government can work effectively and efficiently. Rep. Close is representative of the type of leaders we have in the House," Clayton said.

The Natural Resources Committee has taken action on 119 bills during the session. The total pieces of legislation introduced by both Houses of the Legislature is about 4,000.

\$1,000 CASH... ALL NEW GAME

CORN-KING ... FULLY COOKED

BONELESS HAMS

WHOLE ... 14 to 17-LB. AVERAGE.

99¢

LB.

ASSORTED

Pork Chops

PORK LOIN **\$1.19**

LB.

CORN-KING ... FULLY COOKED HALVES ... \$1.09

Boneless Ham ... WHOLE ... \$1.19

Boneless Ham ... Sliced Avg. ... \$1.09

DAK BRAND ... FULLY COOKED ... \$1.09

Sliced Ham ... \$1.09

FRESH ... COUNTRY STYLE ... \$1.19

Pork Loin Ribs ... \$1.19

CASH-KING

OVER **\$160,407⁰⁰** HAS BEEN GIVEN AWAY BY IDEAL IN CASH-KING PRIZES ...

SERIES

CK - 1

CK - 22

CK - 35

PRIZE VALUE	NUMBER OF PRIZES	ODDS FOR ONE GAME TICKET	ODDS FOR 10 GAME TICKETS	ODDS FOR 100 GAME TICKETS	ODDS FOR 20 GAME TICKETS PLUS 10 GAVEL PRIZES
\$100,000	1	1:162,000	1:16,200	1:1,620	1:162
10,000	10	1:16,200	1:1,620	1:162	1:16.2
1,000	100	1:1,620	1:162	1:16.2	1:1.62
500	500	1:324	1:32.4	1:3.24	1:0.324
100	1,000	1:32.4	1:3.24	1:0.324	1:0.0324
50	5,000	1:6.48	1:0.648	1:0.0648	1:0.00648
25	10,000	1:3.24	1:0.324	1:0.0324	1:0.00324
TOTAL NO. PRIZES	24,010	1:67.5	1:6.75	1:0.675	1:0.0675

FRESH DAIRY

CAMELOT MILD

Longhorn Cheese 16-OZ. **\$1.58**

DARICRAFT

Whipping Cream 1/2-PINT CTN. **38¢**

HYDE PARK

Fruit Drinks ALL FLAVORS GALLON **85¢**

HYDE PARK

Onion Dip 8-OZ. CTN. **43¢**

MEADOWDALE ICE CREAM

1/2-GAL. CARTON

78¢

NORTHSTAR

TWIN POP POPSICLES

76¢

BOX OF 12

FROZEN FOODS

BANQUET

Fried Chicken 2-LB. BOX **\$1.84**

5-VARIETIES

Jeno's Pizza 13 1/2" - OZ. **68¢**

THIRST QUENCHING

Camelot Lemonade 8-OZ. CANS **7¢**

CAMELOT

Corn-On-The-Cob 4-EAR PKG. **85¢**

SPARKLING

Crushed Ice 16-LB. BAG **53¢**

RED-RIPE

California Strawberries 2 PINT CTNS. **79¢**

CALIFORNIA PASCAL

Celery LB. **25¢**

GREEN... SOLID HEAD

Cabbage LB. **17¢**

FLORIDA

Orange Juice 1/2-GAL. BTL. **1.09**

VINE-RIPENED

Cantaloupe EACH **59¢**

GREEN MARKET STREET

ASSORTED VARIETIES

Cactus Plants 4-INCH POT **1.98** | 2 1/2-INCH POT **89¢**

DASH LAUNDRY DETERGENT 100-OZ. BOX **\$2.38**

SHOP IDEAL FOR SUPERLATIVE SAVINGS, 7-DAYS A WEEK ... WE WELCOME FOOD STAMP CUSTOMERS.

IDEAL FOOD STORES

WE GLADLY ACCEPT U.S.A. FOOD STAMPS

Residents On Camp Faculty

Two former Spearman residents are listed on the faculty of McMurry College Music Camp which has been announced for June 20 through July 1 for public school students.

Elsa Porter of West Texas State University will be on the voice faculty teaching alto and Joe Mack Hill of Abilene Madison will be teaching trumpet and french horn.

Miss Porter is the sister of Frank and Chalmers Porter of Spearman.

Joe Mack Hill is the son of Mrs. Vester Hill and the late Vester Hill of Spearman.

Both teachers are graduates of Spearman High School.

Mrs. Nina Bennett Miller

Mrs. Nina Bennett Miller, 87, of 2103 S. Hayden, died yesterday.

Services are pending with Boswell Brothers Funeral Directors.

Mrs. Miller, born in Missouri, moved to Amarillo from Santa Paula, Calif., two years ago. She was a member of First United Methodist Church of Spearman.

Survivors include a daughter, Mrs. Maxine Bannister of Amarillo; a son, Don Bennett of Santa Paula; a sister, Mrs. Madolin Gordon of Hardman, Kan.; 11 grandchildren; 23 great-grandchildren and one great-grandchild.

The family will be at 717 Steele Drive in Spearman Thursday evening. Services will be at 10 a. m. Friday morning, at First Christian Church, conducted by Don Wiresdorfer.

JOJOBA BEEDS

A desert plant called the jojoba is rich in oil that almost matches that of the sperm whale. Bees are used in various that can be used in hundreds of products as lubricants, waxes and polishes.

Summer City Recreation Program

The City of Spearman will sponsor a summer recreation program once again this year. This program will include activities for men, women, and children of all ages. Registration will be held

June 2, at 9:00 a.m., in the High School Field House. If there are any questions concerning the summer program, Coach Greg Sherwood or Coach Ed Moore may be contacted. Below is an

application form. It may be clipped from the paper, filled out, and turned into the sponsors at the registration.

SUMMER CITY RECREATION PROGRAM Application

Name _____ Address _____ Phone _____
 Age _____ Birthday _____ Sex _____ Grade _____

Activities interested in: _____

PARENTS: I understand that the sponsors or anyone working with this program do not assume responsibility for accidents which occur.

 (Parents' or Guardians Signature)

CALENDAR OF EVENTS

- June 6 - July 16 AAU Track, ages 6-17, 9:00 a.m. Mondays and Fridays (boys and girls)
- June 10-July 8 Basketball, 8:00 p.m., Tuesdays and Fridays, Varsity Gym
- June 15-July 1 Childrens Programs (low organized games) High School Cafeteria, Monday thru Friday, 9:00 - 11:30 a.m.
- June 16-July 22 Women's Volley Ball 8:00 p.m., Tuesdays and Thursdays Old Gym
- June 20-July 18 Adult Tennis, 8:00 p.m., Mondays
- 1st Tournament June 20, 8:00 p.m., (Men and Women's doubles)
- 2nd Tournament, June 27, 8:00 p.m., (Men and Women's singles)
- July 5-Aug 5 Weight Lifting, 6-10 p.m., Field House, Monday thru Friday (all ages)
- July 11-July 15 (1 week) Tennis Clinic, Coach Steele, 8:00 a.m.-12:00 (all ages, must furnish own tennis racket and balls), Mondays thru Fridays
- July 18-July 22 (1 week) Golf Clinic, Coach Hamilton, 8:00 a.m.-12:00 (all ages, must furnish own golf clubs), Mondays thru Fridays
- Aug 1-Aug 5 (1 week) Gymnastics Clinic, Miss Mollie Holton, Old Gym, (boys and girls, grade school and junior high ages), Mondays thru Fri.

First Presbyterian Church News

Sunday, May 29 is Pentecost, which commemorates the birth of the Christian Church when the Holy Spirit descended upon the waiting believers fifty days after Jesus' resurrection from the dead and ten days after His Ascension to be at the right hand of God the Father.

There is a Sunday Church School class for everyone every Sunday at 9:45 a.m.

"Pentecost" will be the subject of Pastor Edward D. Freeman's sermon at the service for the public worship of God at 11:00 a.m. In honor of Pentecost everyone is requested to wear something red to the service, the seasonal color of Pentecost.

Vacation Church School teachers of First Presbyterian and Faith Lutheran Churches will have a meeting to receive materials and instructions and assignments on Thursday, June 2 at 7:30 p.m. at the First Presbyterian Church.

People without a church home are especially invited to sample the warm, Christian fellowship of the First Presbyterian Church.

Arts & Craft Guild Met

Arts and Crafts Guild met Friday, May 20 at the home of Mrs. Guy Fuller.

Delicious refreshments were served to members. Mesdames: Joe Traylor, P. A. Lyon, Sr., C. A. Gibber, Bruce Sheets, Deta Blodgett, W. L. Russell and Garrett Allen.

The next meeting will be May 27 at the home of Mrs. W. H. Gandy.

You are cordially invited to a

bridal shower honoring

Miss Tami Farr

bride-elect of Randy Janzen

May 28, 1977

2 to 4 p.m.

Hospitality Room of

First State Bank

Hostesses: Mmes.

Jim Nicholson Joe T. Venneman

Darrell Harvey George Rook

Harold Howerton Harry Stumpf

C. A. Davis Don Allen

Dwight Sumner Bill Edder

Dick Hudson Andy Bort

Jesse Lira Paul Stavio

John Venneman E. J. Callaway, Jr.

Everett Sullins N. F. Renner

Paul Garza Roger Odegaard

David Rasor

UMW Meets

Susannah Wesley Circle of the UMW met Wednesday, May 18 at the church with devotional given by Mrs. Virginia Head.

A short business meeting was held with Vice President Mrs. Bob Pearson presiding. Everyone was reminded of the meal that the UMW had served. All members were to bring a covered dish.

The group listened to the

3rd series of tapes on "The Maximum Marriage" by Tim Timins and then discussed it with the benediction.

The general meeting of the Susannah Wesley and the Mary Martha Circles will be held May 25. The next regular meeting will be June 3 in which they will listen to the 4th tape of the series.

Looking for an energy-efficient home?



Look for this landmark



The Energy Checked Efficiency Home sign tells you that a home has been checked by one of our representatives for those features so important in helping to keep operating costs down. Proper insulation, weatherstripping, proper size air conditioning and heating units, distances from water heaters to points of use, and many other features are included in the Energy Checked Efficiency Home program. Before a home can qualify, it must meet certain energy saving standards... and when you save energy in your home, you're saving money. Before you buy a home, look for the sign that lets you know it has been inspected for energy saving features... the Energy Checked Efficiency Home sign.

COMMUNITY PUBLIC SERVICE
 West Electric Light & Power Company

63177

FRANK PHILLIPS COLLEGE

On Roosevelt, Borger, Texas Ph. 274-5311

Offers you a Quick and Economical Means of Preparing for a Pleasant and Profitable Career as a

VOCATIONAL NURSE

Licensed Vocational Nursing Program includes 5 months of Pre-Clinical instruction at Frank Phillips College and 7 months of Clinical at either Highland General Hospital in Pampa, or at North Plains Hospital in Borger.

APPLY NOW APPLICATION DEADLINE IS JULY 15

- Student Loans
- Student Grants
- Scholarships

TO APPLY, CONTACT:

Sandra West, R.N., Highland General Hospital, Pampa
 Ella Weeter, R.N., Frank Phillips College
 Box 311
 Borger, Texas 79007

STATEMENT OF FINANCIAL CONDITION OF HANSFORD COUNTY

1. RECONCILIATION WITH DEPOSITORY BANK AS OF MAY 1, 1977

Funds	Book Balance	Outstanding Checks	Bank Balance
Jury	1,047.79	476.68	1,524.47
General	31,583.49	9,855.03	41,438.52
Cemetery	1,789.88		1,789.88
Road & Bridge, General			
Precinct No. 1	40,838.40	1,554.60	42,393.00
Precinct No. 2	27,913.33	2,330.08	30,243.41
Precinct No. 3	47,861.08	2,462.08	50,323.16
Precinct No. 4	51,107.80	1,726.82	52,834.62
Road & Bridge, Sinking			
Precinct No. 1	16,487.75		16,487.75
Precinct No. 2	8,778.74		8,778.74
Precinct No. 3	8,868.65		8,868.65
Precinct No. 4	21,885.38		21,885.38
Social Security	21.55		21.55
Revenue Sharing	40,523.38	550.00	41,073.38

2. SUMMARY OF RECEIPTS AND DISBURSEMENTS

Funds	Balance Feb. 1, 1977	Receipts	Disbursements	Balance May 1, 1977
Jury	7,965.55	1,188.23	8,105.99	1,047.79
General	65,443.88	61,807.09	95,667.48	31,583.49
Cemetery	609.31	1,180.57		1,789.88
Road & Bridge, General				
Precinct No. 1	31,582.04	39,858.45	30,602.09	40,838.40
Precinct No. 2	24,828.53	38,948.87	35,864.07	27,913.33
Precinct No. 3	31,904.39	38,045.45	22,068.76	47,861.08
Precinct No. 4	31,419.89	39,242.91	19,555.00	51,107.80
Road & Bridge, Sinking				
Precinct No. 1	14,684.96	1,802.79		16,487.75
Precinct No. 2	7,381.84	1,396.90		8,778.74
Precinct No. 3	7,804.05	1,064.60		8,868.65
Precinct No. 4	20,246.80	1,638.58		21,885.38
Social Security	21.31	10,554.19	10,553.95	21.55
Revenue Sharing	44,242.11	23,587.50	27,306.23	40,523.38

3. INVESTMENTS

Hansford County General Fund 2	\$100,000.00
Hansford County Precinct 2, Fund 9	20,000.00
Hansford County Precinct 4, Fund 11	25,000.00
Hansford County Precinct 2, Fund 13	12,000.00
Hansford County Precinct 4, Fund 15	25,000.00
Hansford County Revenue Sharing Fund 25	30,000.00

HAVE A HAPPY . . . MEMORIAL DAY WEEKEND WITH BACKYARD FIXIN'S!

FINE FARE FRANKS
MEAT OR BEEF
59¢
12 OZ. PKG.

"UNITED'S TRU-TENDR BEEF!"
BLADE CUT
CHUCK ROAST..... LB. **58¢**
CUBED
STEAK..... LB. **1.68** WASTE FREE BEEF
BONELESS STEW
MEAT..... LB. **1.09** "EXTRA LEAN" CUBES OF BEEF



PEPSI COLA
32 OZ. BTL.
6 BOTTLE CRTN. **99¢**
PLUS DEPOSIT

ECKRICH SMOKED SAUSAGE
1.38
MEAT OR BEEF LB.

LITTLE PIG
SPARE
RIBS
UNDER 3 LBS. **1.19**
..... LB.

"LEAN" CHUCK QUALITY
GROUND
BEEF
LB. **88¢**

NORMEL
MIDGET LINK
SAUSAGE
LB. **1.39**

UNITED HOT DOG OR HAMBURGER BUNS
3 8 CT. PKGS. **1.00**

FINE FARE BELTSVILLE
GRADE "A" SELF BASTING
TURKEYS
5 TO 7 LB. AVG. **59¢**
..... LB.

FULLY COOKED
RANCH BRAND
BONELESS
HAMS **1.78**
WATER ADDED LB.

KRAFT BAR-B-QUE
SAUCE
18 OZ. BTL. **49¢**

"ICE CREAM FIXIN'S"
BORDEN
ICE CREAM ALL FLAVORS 1/2 GAL. **1.09**

SMUCKER'S ICE CREAM
TOPPING • CHOC. FUDGE • STRAWBERRY • PINEAPPLE 12 OZ. CAN **59¢**

MORTON'S ICE CREAM
SALT 4 LB. CRTN. **25¢**

BELL 8 OZ. CRTN. WHIPPING
CREAM OR HALF & HALF 16 OZ. **39¢**

MORTON
HONEY BUNS
9 OZ. PKGS. **3.00**

"FROZEN FOODS"
LYN FARM CHINKLE CUT
POTATOES 2 LB. BAG **49¢**
MINUTE MAID REG. OR PINK
LEMONADE 5 4 OZ. CANS **1.00**

UNITED
POTATO CHIPS
8 OZ. TWIN PACK **59¢**

BIC DISPOSABLE
BUTANE LIGHTERS REG. 98¢ **79¢**
JUDSON'S
CANDIES 3 16 OZ. BAG **1.00**
ORANGE SLICES
FRUIT SLICES
JUNIOR JELLYS
JELLY FINGERS

UNITED
GRADE "A" **EGGS**
LARGE
CAGED DOZ. **59¢**

FLOUR
GLADIOLA 5 LB. BAG **59¢**

PLANTATION BRIQUETTES
CHARCOAL 10 LB. BAG **99¢**

TOP DOG
DOG FOOD 8 15 1/2 OZ. CANS **1.00**

OUR DARLING
CORN WHOLE KERNEL OR CREAM 4 17 OZ. CANS **1.00**

FINE FARE CUT GREEN
BEANS BLUE LAKE 3 16 OZ. CANS **1.00**

DAYTIME
PAMPERS 30 COUNT BOX **2.39**

GLADIOLA POUCH
MIXES • CORN BREAD • WHITE OR YELLOW • PASCAL • BISCUIT 6 4 OZ. POUCHES **1.00**

PLOCHMAN'S 8-OZ.
MUSTARD 29¢
HEINZ • HOT DOG • HAMBURGER

RELISH 39¢
• INDIA • SWEET 9 1/2 OZ. JAR

HOLSUM SALAD
OLIVES 10 OZ. BTL. **89¢**

CONTADINA TOMATO
SAUCE 6 8 OZ. CANS **1.00**

REALEMON LEMON
JUICE 24 OZ. BOTTLE **59¢**



PLAY SPOT CHECK
WIN CASH!
WIN
STAMPS!

WE RESERVE THE RIGHT TO LIMIT QUANTITIES **U** PRICES GOOD THRU MAY 28TH

CALIF. ICEBERG
LETTUCE LB. **29¢**
MEXICO CRYSTAL WHITE
ONIONS MEDIUM STRAIGHT NECK YELLOW LB. **29¢**
SQUASH LB. **29¢**
PASCAL
CELERY STALK **39¢**
D'ANJOU
PEARS 5 FOR **39¢**

UNITED SUPER MARKETS
WE GIVE **BY** GREEN STAMPS



Beauty pageant application

I, _____, of _____, request entry in the Miss Hansford County Pageant to be held in Spearman, Texas, during the annual Hansford County Roundup on

ENTRIES MUST BE RECEIVED BEFORE JUNE 1

PERSONAL INFORMATION:

Age _____ Weight _____ Height _____

Education _____

Schools _____

Hobbies _____

Other Activities _____

Parents _____
(Name) (Mailing Address) (Town) (Phone)

Sponsor _____
(Name) (Mailing Address) (Town) (Phone)


I agree to appear in the Beauty Pageant _____, to ride in the Parade, also attend a tea and meet with the judges for an interview. I understand the contestants are judged equally on Beauty, Personality, Poise and Figure and will appear on stage in streeed dress and later in formals

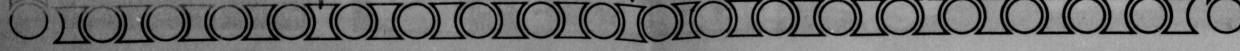
Signed _____

For information you may call
Claude Newell 659-2797
Sue Woolley 659-3121

Troy Sloan 659-2954
Teresa Hargis 659-2665



<p>Jr. Lusby "Cats" 659-3766 W. Gruver Hwy. Spearman, Texas</p>	<p>Speartex Grain Co. 659-3711 514 Collard</p>	<p>Consumer Sales Co. 421 W. Kenneth Ave. Spearman, Texas</p>	<p>Gruver John Deere Service Center 733-2043 Gruver Tex.</p>
	<p>Hansford Implement Co. Hwy. 207 659-2712 Spearman, Texas</p>	<p>Equity Elevators 659-2420 104 Collard</p>	<p>Hergert Pontiac Buick GMC So. Hwy. 207 Phone 659-3733 Spearman, Texas</p>
<p>White House Lumber Co. 306 Davis 659-2818</p>		<p>Boxwell Bros. 519 Evans Phone 659-2212</p>	<p>The Hansford Plainsman</p>
<p>First State Bank 30 SW Court 659-2526 or 659-2888 Spearman</p>	<p>BE SURE AND ATTEND THE SPEARMAN-GRUVER-MORSE CELEBRATION THIS YEAR--- Parade, dances, rodeo, and Beauty contest-----</p>	<p>The Spearman Reporter</p>	<p>The Statesman</p>



Blodgetts Attend Postal South Meeting

Mayor and Mrs. Ralph Blodgett of Spearman were among the 1,244 postal customers and postal managers who participated in the three day National Postal Forum South hosted by the Southern Region of the United States Postal Service at the Hotel Fontainebleau in Miami Beach, Fla., April 17-19.

The theme for the forum for government and business executives was "Working Together for a Better Postal Service".

The Miami Beach forum was the first of five regional ones to be held in 1977.

Spearman Postmaster Ray Robertson said that on behalf of the Postal Service, he wanted to thank the Mayor and Mrs. Blodgett for taking their own time, providing their own air transportation and paying their own expenses to attend the forum.

The program was designed to focus on the unique needs and problems of postal customers in the 11-state Southern Region. The overall objective of the forum was for postal customers and postal managers to discuss mutual postal problems and to explore ways to improve mail service.

Speaking at the opening session of the forum, Regional Postmaster General James J. Symbol, co-chairman, said the South's rapid population growth is challenging the postal system to dramatically expand its service capabilities and "still meet the urgent national requirement for a cost-effective operation."

Sunday, April 17, was devoted to registration and a "Newcomers Workshop" for first time forum delegates.

The conference began with a breakfast meeting on Monday, April 18. John F. McNair III, vice chairman of the board, Wachovia Bank, Winston, Salem, N.C., and co-chairman of the forum, then welcomed the delegates and spoke on the state of the Southern Region.

The remainder of the morning was devoted to panel workshop sessions and lectures with all participants assembling for lunch to hear Dr. Noah Langdale, Georgia State University President of Atlanta, speak.

The afternoon session continued with more workshop sessions and lectures.

Tuesday morning session opened with an address by Co-chairman McNair in which he stressed the importance of the Postal Service to the banking industry.

The next feature of the morning was a symposium on "Forecast Business Trends Through '85" moderated by Dr. Ronald Carrier, President, Madison College and Management Consultant, Harrisonburg, VA.

Climaxing the day and the conference was the noon luncheon at which Postmaster General Benjamin F. Bailar gave the keynote address on the Postal Service.

The efforts of everyone in the postal system. It was brought about by the diligent work of our field managers, by streamlining our services, by cutting out unnecessary costs, by greater cooperation from our customers and by the improved efficiency and productivity of our employees.

In his remarks, Symbol said that the 11-states served by the Southern Region will add 8.9 million residents during the current decade - a growth rate of more than double the U.S. average.

"This explosive growth is putting heavy pressure on the postal system for new facilities, new mail-processing equipment and new additions to our delivery routes."

The cost of serving each new delivery stop, or address, can run as high as \$49 per year and the Region has added 681,000 in the 2 1/2 year period ending last October. The total number of stops in the 11-state region now exceeds 14 million, he pointed out.

McNair noted "The mail system is the lifeblood of the banking industry."

"Without a viable and dependable mail system," he said, "the financial institutions that must handle the day-to-day business transactions in our society would soon be inundated in a sea of lost and unposted checks."

As things stand today, he said, the banking industry is in danger of drowning in a sea of paperwork.

In its struggle to cope with the paper tide, the banking community is investigating new methods of doing business, he added.

The National Postal Forum South is unique in that it is the first in the eleven year history of the National Postal Forum that the forum is being held in five locations - one in each postal region - instead of one location, Washington, D.C.

The first National Postal Forum was called in 1967 so that local

Mail Users Councils might extend to a national level their efforts for a better postal system.

Peggy's Pointers

Do you plan to preserve some of your family food supply at home? Do you know how much you want to preserve? When should you start planning? A good time to start planning is before the harvest season starts, whether you grow your own food or plan to buy it.

Consider the amount of freezer space you have whether it is a chest type, upright or a part of your refrigerator. If you freezer space is limited, you may want to preserve part of the food you family need by canning.

Consider the jars and other canning supplies which you have on hand. Will you need to purchase some new supplies? (Remember you can reuse undamaged jars and rings but always replace used lids.)

And how much space do you have for storage of canned foods? Do you need to consider adding some new cabinet or shelf space for these extra canned foods?

Be ready for the season and preserve the foods at the peak of quality and when they are plentiful or lowest in price.

Fruits that grow well in this area are strawberries, pears, peaches, watermelon and cantaloupe.

How can they be preserved? Is there anyone who doesn't like strawberry preserves? Pears and peaches make excellent preserves. Or freeze or can peaches and pears. They will taste just like fresh. Watermelon rind pickles and preserves colored green, red and yellow are a real conversation piece for any special meal.

Watermelon and cantaloupe fruits grown, give variety to fruit salads-as well

as give that needed vitamin C important to the health of every cell in the body.

How can you learn to conserve these fruits? Enroll in the mailout series offered by the Texas Agricultural Extension Service.

How can you enroll? Write Peggy Marrs, your local County Extension Agent, Box 997, Spearman or call her at 659-2030 or 733-2901.

With good planning you can stretch your family food dollar by preserving some of your food at home and assuring your family of garden fresh foods the year round.

This can help you to provide your family with the needed food nutrients for good health.

City Council Session Held

City Council met in regular session May 24, with all members present for the discussion of several agenda items including appointment of a member to the Parks and Recreation Board and an executive session for discussion of personnel.

Council approved the recommendation of the Parks and Recreation Committee and named Billy Haden to a term of three years, the term to expire in 1980.

Council spent two hours and 37 minutes in an executive session at the conclusion of which Mayor Ralph Blodgett announced that no business was transacted and no votes taken.

HIGHTOWER WASHINGTON HIGHLIGHTS

from Congressman Jack Hightower

Congressman Jack Hightower announced that an early morning meeting with United States Special Representatives for Trade Negotiations, Bob Strauss clearly revealed the United States is heading for increasing agricultural exports.

In the meeting with a Congressional delegation made up of Hightower, George Mahon, and Bob Kruger of Texas and Ron Marlene of Montana, Strauss reported that he has had two discussions in the last months with officials in the Japanese government in regard to beef exports.

President Carter and Prime Minister Takeo Fukuda discussed the matter with the Japanese Vice-Premier for Agriculture.

States has about 12 percent of the beef import market in Japan. Our 1976 trade deficit with Japan is in the neighborhood of five billion dollars.

United States beef can be shipped to Japan and sold for a profit at the price level of \$3.50 per pound. While the Japanese consumer pays around \$10 to \$15 per pound. Presently Japanese import quotas prevent more American beef from being sold in that country.

Strauss expects bilateral discussions to begin in late summer or early fall.

The Special Trade Negotiator restated his commitment that in all trade negotiations will be treated on a par with industrial needs.

This is in direct contrast with the pro-cedures in the past. A prime example of the past policy was the Kennedy rounds when agriculture was taken up at the conclusion of the talks after all other issues had been resolved.

Both Strauss and the Congressional Delegation agreed that this consideration alone will make a significant difference.

Congressman Hightower expressed the concern of many Congressmen from agricultural areas when he stated "depressed beef markets for the past three years and grain prices that are dropping every day has put our agricultural economy in a depressed state that desperately needs a boost. The export market can and should be that boost to both the producer and the taxpayer."

Mount Everest has never been climbed.

Largest of the Egyptian pyramids has an estimated weight of 5 million tons.

"Gin" as used in Cotton Gins is an abbreviation for engine.

Interstate Savings & Loan Assn.

in Spearman
WILL BE CLOSED MONDAY
For Observance Of
MEMORIAL DAY
Normal Business Hours Resumed Tuesday

322 MAIN SPEARMAN 659-2344

Our Mediterranean is calling you!

We've got the phone to match your Mediterranean mood, for any room in your home. Our elegant Mediterranean crystal telephone is dark grained polywood and black with 23K gold-plated trim. To order, call our business office. Ask about our other decorator phones and low monthly rates.



We have an eyelid for your ears
GTE
GENERAL TELEPHONE

PERRYTON EQUITY EXCHANGE

58th Annual STOCKHOLDERS MEETING

WILL BE HELD THURSDAY, MAY 26, 1977

IN THE PERRYTON HIGH SCHOOL AUDITORIUM

REGISTRATION AND FREE BARBECUE DINNER

Registration Begins at 6:30 p.m. - Meeting Convenes 8 p.m.

All Equity stockholders are cordially invited and urged to attend.

REGISTER FOR EARLY BIRD PRIZE

DOOR PRIZES TO BE GIVEN AWAY

ONE PRIZE PER FAMILY ONLY

HELEN DRY
TAX ASSESSOR - COLLECTOR
HANSFORD COUNTY
SPEARMAN, TEXAS 79081

TELEPHONE
OFFICE 659-2371

LIVESTOCK ASSESSMENT

While there is often a question as to the fairness, tax laws in the State of Texas are very definite as they pertain to livestock. Thus, we have no alternative but to adhere to the laws as they now exist.

Livestock is assessed for tax purposes according to its location on January 1st, regardless of the owners residence. All livestock in Hansford County on January 1st then must be rendered by the owners or those in charge or possession. Taxes will be due the following Fall and payment should be made to this office.

PERSONAL PROPERTY IN THE CHARGE OR POSSESSION OF SOMEONE OTHER THAN THE OWNER SHALL BE ASSESSED TO THE PERSON HAVING IT IN CHARGE OR POSSESSION. (Arts. 7160, 7152.) Therefore, if you have cattle on your property or if you are looking after someone's cattle you are responsible to this office for the owner's name and address and the number of cattle. And if ownership is not confirmed, then these may be charged to you.

Since by law, the rendering of property is the responsibility of the owner, it is hoped that livestock will be properly rendered to the Hansford County Tax Office by all owners. A 100% count is expected.

WHENEVER THE TAXPAYER REFUSES TO MAKE RENDITION OR TO SUBSCRIBE TO THE OATH, THE ASSESSOR SHALL PROCEED TO ASSESS THE PROPERTY OF SUCH TAXPAYER, AND THE ASSESSMENT SO MADE SHALL BE AS LEGAL AND BINDING AS IF RENDERED BY THE TAXPAYER. (Art. 7193.)

An intense effort has been made by the Hansford County Tax Office Personnel this year, to count the livestock on every section of Hansford County. Naturally there will be human error, so the correct rendering of livestock, by the owners, will greatly reduce this occurrence.

Unused Glasses Can Help



There may be a pair of dusty, unused eyeglasses in your home that can mean the difference between sight or impaired vision for millions of poverty-stricken people in this country or overseas.

New Eyes for the Needy, a non-profit, non-sectarian agency based in Short Hills, N.J., converted used eyeglasses into thousands of dollars for new prescription glasses - even artificial eyes, if necessary - for impoverished, poor-of-sight children and adults in this country, or ship those eyeglasses which are reusable to the needy overseas.

And the process is simple - simple, at least, for the donor. All it requires is mailing the eyeglasses by prepaid parcel post, wrapped with proper protection, to New Eyes for the Needy, Short Hills, N.J. 07078.

For those who do not have discarded glasses to donate, you can still help by sending precious metal scrap such as old watches, real, costume or antique jewelry - even one cufflink, a single earring or a broken chain, dentures with gold bits, or silverware.

A corps of more than 250 volunteers test and sort the eyeglasses at the organization's headquarters. Metal framed glasses and metal scrap are sold to a refinery.

The redeemed cash is used to purchase new prescription glasses and artificial eyes for the needy in the United States.

With this cash, New Eyes for the Needy has established funds for new glasses and artificial eyes in 63 hospitals in 34 states, the District of Columbia and Puerto Rico. Quotas of new glasses are guaranteed to 250 agencies in 33 states and the District of Columbia.

Also, New Eyes pays for glasses in 48 states for screened patients to whom no other private or public funds are available.

Throughout Africa, Asia and Latin America, New Eyes for the Needy ships reusable plastic-framed eyeglasses to medical missions and relief agencies for distribution, free of charge, to their needy patients.

In the 45 years since New Eyes for the Needy was established, over a million visually impaired persons have been assisted by New Eyes - all made possible because others were concerned enough to send their discarded eyeglasses or un-

Cost Of Local Accidents Noted

For the average car operator in Hansford County, what are the odds against his having an accident of some sort in a given year? When accidents do occur in the local area, what do the costs amount to, on average? The accident and cost records vary widely from one part of the country to another.

According to the National Safety Council, about two out of every three motor vehicle deaths occur in places classified as rural. The victims, in such cases, are usually occupants of the cars. In urban areas, on the other hand, two out of five victims are pedestrians. Insurance statistics indicate that one car in every ten is involved each year in a traffic accident. The result, in 1976, was a loss of 47,100 lives. In addition, over 1,800,000 people received disabling injuries. How does Hansford County figure in this picture? According to the Government's last few annual re-

ports, motor vehicle fatalities in the area have averaged 5 per year. And, for every local resident who was killed, approximately 40 others sustained serious injuries. As to the overall cost of automobile accidents, the latest figures from the Highway Users Federation and others show that it amounts to about \$20 billion a year nationally. Included are

medical expenses, loss of earnings, loss of production and property damage. For the State of Texas, the total is given as \$1,250 million, equivalent to \$155 per registered motor vehicle. This compares with \$144 per vehicle throughout the United States. The annual cost in Hansford County, for the 3,430 passenger cars in operation

locally, is estimated at \$532,000. In order to cut down on the accident rate, the Government is urging better enforcement of the 55-mile-per-hour speed limit, which is now being disregarded by many drivers. It also favors mandatory state belt-buckling laws or the installation of air bags on all cars produced after September, 1980.

TG & Y
family centers
521 HWY. 207 S. SPEARMAN OPEN 9 A.M. to 9 P.M.
PRICES GOOD THURS. 26th thru SAT. 28th

CHARCOAL BRIQUETS
Stock up for summer cookouts. 20 lb. bag.
LOW LOW PRICE
\$1.57 LIMIT 2

PAPER PLATES
100 COUNT
67¢

COLD DRINK CUPS
7 OZ.
100 COUNT
CANDY STRIPE DESIGN
77¢

JUMBO PAPER TOWELS
TG & Y SOFT ABSORBENT TOWELS
120 Ct. 2-ply sheets. Ass'd. colors
3 FOR \$1
LIMIT 6

CHARCOAL STARTER
1 Qt.
57¢

HAVOLINE MOTOR OIL
NO. 30
LIMIT 24 FOR \$2.15

Coleman FUEL
ONE GALLON
\$1.57

GARDEN TOOLS
Cultivator • Weeder • Transplanter • Trowel CHOICE
2 FOR 1.00

FOAM ICE CHEST
MOLDED HANDLES. NICE FOR TRIPS 28 QUARTS
77¢

FILL "N" SWIM POOL
6 x 15
PRINTED WALL NO ASSEMBLY
\$10.88

GARDEN TOOLS YOUR CHOICE
RAKE
HOE
SHOVEL \$4.44

TROT LINE
120 FT. NYLON 173 LB. TEST WITH 20 TINNED HOOKS
\$1.99

Turtle Wax CAR PASTE WAX KIT
14 OZ. CAN MAKE THE OLD CAR LOOK LIKE NEW
REG. \$2.00

GARDEN HOSE
1/2 IN. x 50 FT. RIBBED VINYL NON-REINFORCED
\$2.44

Frank Phillips College
BORGER, TEXAS
Invites you to spend the summer in the "Fastest Growing College in West Texas".
Registration for first summer session May 31. Classes to begin June 1.
Course offered include Biology, Math, Business, English, Govt., Chemistry, History. Additional courses to be offered if demand is sufficient.
COSMETOLOGY open for registration at Any time.
LVN Classes to begin August 22; Deadline for LVN Registration July 15.
Two beautiful dorms, scholarships, grants, loans, and college work-study programs.
For further information write to Registrar, Box 311, Borger, Texas.

ZEBCO 202
SPINCAST REEL MONOLINE EQUIPPED
\$2.99

Walker
Bait holder or Aberdeen Gold Hooks Size 1/0, 2, 4, 6, 8
SNAP SWIVELS Size 6, 7, 10, 12
PINCH ON BINKERS Size 1, 3, 5
SPLIT SHOT BINKERS Size BB, 4, 7.
YOUR CHOICE
\$.19 Walker

ZEBCO 33
SPINCAST REEL STAINLESS STEEL COVER FILLED WITH 100 YDS. OF NO. 10 MONOLINE
\$9.97

MEMORIAL WREATHS AND SPRAYS GOOD SELECTION
ALL SIZES RANGING IN PRICE FROM \$2.47 TO \$7.88
We Will Be Happy To Refund Your Money If You Are Not Satisfied With Your Purchase