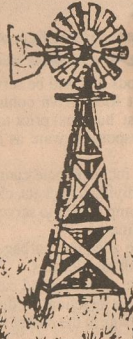


SOUTHWEST COLLECTION
TEXAS TECH UNIVERSITY
LUBBOCK, TEXAS 79409



NC SYLVAN DIRECTOR SW DUNN
COLLECTION TEXAS TECH
BOX 4090, LUBBOCK, TX
79409+

Voice of the Foothill Country

Matley Co. Tribune

35¢
PER COPY

97TH YEAR

THURSDAY, DECEMBER 6, 1990

ISSUE NO. 49

Amelia Bishop to Speak at Ladies' Night Out



Amelia Bishop

graduate of University of Texas at El Paso, and Southwestern Baptist Theological Seminary, Ft. Worth. Married to J. Ivylo Bishop has two children, Dan, an attorney in Austin, and Judi Lee, Texas Woman's Missionary Union Language Consultant.

Mrs. Bishop has served Texas WMU in many capacities, including Vice-President, 1980-84, and President, 1984-88. She also served as National WMU Vice-President, 1984-88. Recipient of the 1989 Texas Baptist Elder Statesman Award.

Mrs. Bishop is a free-lance writer, and the author of two books, THE GIFT AND THE GIVER and THE FLAME AND THE CANDLE.

Mrs. Bishop also spoke for the 1987 Ladies' Night Out, and many favorable comments were made about her presentation.

Amelia (Millie) Bishop, of Plainview, will be the speaker for Ladies' Night Out, Monday, December 10, at 7:00 p.m., at First Baptist Church, Matador. Mrs. Bishop, a native of Dallas, is a

Although prior reservations are required for the 7:00 p.m. Salad Supper, all women of the community are invited to attend the program following in the auditorium at approximately 8:00 p.m.



City Sidewalks...
Busy Sidewalks...
Dressed In Holiday Style...

Matador City Streets are dressed in holiday style with decorations adorning light poles downtown.

Take a drive and see the wonder of Christmas all over town!

Roaring Springs Post Office To Honor Customers

The Roaring Springs Post Office would like to say "Thank You" to each patron and to the community by honoring them on Customer Appreciation Day, Wednesday, December 19th. The Post Office will be open for visitors to observe the operational method used in the delivery of their mail. Refreshments will be served

and there will be a drawing for prizes. Children will be able to have their pictures taken in Santa's sled. Their letters can be left with the special "Santa" in the lobby.

The Postal Service would like to thank our customers for their patronage and cooperation.

GFWC Eternas Study Club would like to thank everyone that came out last Saturday for Old Fashioned Christmas. The following merchants also deserve a big thank you for their generous donations of prizes to be raffled off and won by these winners: Guys and Gals (5 sessions on Solo-Firm Exerciser), Carolyn Ewing; Pay N Save (Coleman Lantern) Barbara Garman; Stanley Pharmacy (Can Opener), Kelli Jackson; First State Bank (Savings Bond), Geneva Martin; Cowboy Boot

Shop (Leather Wallet), Jeannie Moore; West Texas Utilities (Lamp), Dick Van Hoose; Matador Variety (\$25 Shopping Spree) Reneigh Burns; Higginbotham-Bartlett (Car Vac) Debra Scott; Pizza Box (large, one topping pizza) Kathy Shorter; Matador Floral (Southwest Wedding Vase) Kathy Shorter; Billie Dean's (dinner for four) Elaine Hart; Matador Motor (Booster Cables) Wilda Dixon; Davis Fuel & Parts (1 gal. Thermos jug), Tom Bowman; Texas T's &

Floral (Poinsettia) Fay Dirickson; Mary Kay Cosmetics/Armentha Martin (Powder and Brush Set) Kelli Jackson; Windmill (Country Carousel Horse) Betty Bearden; Stockman's Supply (Gas Container) Rocky Vinson; Cooper Oil (2 gal. antifreeze) Sarah Hurt and James Bearden; Kathy's Beauty Shop (Travel Bag) Sarah Hurt; Allsup's (1 case Cokes) Sarah Hurt; and Noilene Bowden (Cookie House) Dusty Jackson.

Those of you that did not attend the

concert missed some very good entertainment. Those singing were Carolyn Ewing, Kathy Shorter and Sharon Van Hoose and accompanied by Gerald Pipkin; Terree and Billy Donaldson and then Mrs. Van Hoose sang a solo. Those that attended thoroughly enjoyed all of the singers and musicians.

The club members would also like to thank Santa and Mrs. Claus for dropping by Matador for a short visit so the children could give Santa their wish lists. We would also like to thank the parents that brought their children to see Santa and shop at the Kiddie Store. Without the people attending these events, we would not have the fun of preparing all the gifts and the meal. Thank you Motley County!

Meeting Planned To Discuss Centennial

Centennial Celebration time will be here before we know it. A meeting scheduled for Tuesday, December 11 at 7:00 p.m. at the Motley County Library.

All clubs and organizations represent-

atives and anyone interested from Roaring Springs, Flomot, Northfield and Matador are asked to attend this planning session.

Let's have a great 100th Birthday, Motley County!

Community Chest To Raise Money For County's Needy

Community Chest board members have begun their annual drive for funds for the needy. The drive began December 1 and will continue through January 1, 1991.

Donations may be mailed to Motley County Community Chest, P.O. Box 789, Matador, Texas 79244.

Funds received are directed to activities of the county, American Red Cross, Salvation Army and the U.S.O. At this time, these organizations are helping in foreign countries with Desert Shield.

Board members are Larry Hoyle, President; Gerald Pipkin, Vice President; Forest Campbell, Glenn Woodruff, Joe Campbell, Billy Wason, County Judge-elect, Boyce Hart, Shane Jones, Donnie Jackson and James Stanley.

Christmas Gift Package for Operation Desert Shield

In lieu of gift exchange, the staff of Motley County Clinic will be sending a gift package to a service man/woman in Operation Desert Shield. They will welcome any contributions from others.

A box and list of acceptable items are on display at the Clinic.

The package will be mailed on Monday, December 10th in order for it to reach Arabia in time for Christmas.

Hospital Board Meeting Report

The Motley County Hospital board met Tuesday, December 4 at 6:30 a.m. at Billie Dean's Restaurant with members Larry Hoyle, H.C. Smith, James Stanley and Bob Davis. Ruth Lee was absent. Also present was Tony Rose.

Hoyle reported the Collins Type II extended Van Ambulance was ordered for \$41,934.39, it should be ready by February.

The minutes and bills were read with November bills for \$4,573.26, leaving a balance of \$488.02.

The Board had a request from KJTV-34 for rent payment to now be paid to them for the Translator Tower, west of Matador.

Rose explained he was comparing radios to be purchased for the new ambulance. These will be purchased in Plainview or Lubbock, so they can be serviced.

Also discussed was where to purchase basic life support supplies for the new ambulance.

Meeting adjourned.

Commissioners Meet For Called Meeting

Motley County Still Has No Judge

Motley County Commissioners met for a called meeting, Wednesday morning, December 5, at 10:00 a.m., to discuss appointing a County Judge. Commissioners J.M. Russell, Bill Dean Washington, Fraiser Watson and Franklin Jameson, Sheriff Alton Marshall, DPS

Officer Dude Speed, Sharon Pigg, Special Prosecutor for Motley County, Boyce Hart and some Motley County citizens were present.

Sheriff Alton Marshall explained to the Commissioners that he had six cases continued on page 3

Extension Service Highlights Program of Past Four Years

Motley County Extension Service has just completed a four year educational program which began in 1986. In the beginning of the program citizens of Motley County were asked to identify issues of concern to Motley County. The four year plan was then developed to address the critical issues. Highlights of the programs are listed below.

In agriculture issues included Soil Conservation, Irrigation Management and Agricultural Profitability. Educational events and activities which addressed these issues were planned by the Extension Agriculture Committee and the County Agent. A peanut production Field Day has been held each year to give peanut producers the latest information on production systems, conservation, varieties, irrigation management and disease, insect and weed control. Cotton farmers have been given information on managing insect and weed pests, soil and water conservation, as well as improved varieties and cultural practices.

Through Extension Education, Motley County ranchers have kept in pace with beef production technology including record and budget keeping, reproductive efficiency, feed efficiency, and herd health management.

Gardeners and lawn keepers have obtained information on fertility, varieties, water management and pest management.

In the area of Home Economics, Health was identified as a major issue. Several residents in Motley County are diabetics and have asked for training in preparing diets for diabetics. Plans are in the making for a health fair to be held in January 1991. Knowledge gained from health fairs has been used to save costs in health care. Wellness is being targeted as a savings for senior citizens. A series of programs on cholesterol and food preparation of low fat diets has been promoted.

During the past 4 years 4-H has provided educational, as well as recreational programs for the youth in Motley County.

The traditional projects in agriculture and home economics were provided, along with programs such as leadership, citizenship, and public speaking. 4-H'ers

have represented Motley County in District, State and National events. The 4-H youth have an outstanding record in Method Demonstration and Illustrated Talk competition. In 1990 there were 28 participants in the County Food Show, which was a substantial increase. There was also an increase in Fashion Show participants with 13 youth.

The Motley County Extension Service will have an information booth at the First State Bank of Matador on Wednesday, December 12, 1990 from 11:00 a.m. to 2:00 p.m. This booth will have information describing Extension program in agriculture, home economics, 4-H, and community development. We will also introduce educational plans for the next four years.



Lions Club Report

The Matador Lions Club enjoyed Turkey and Dressing prepared by Lou Bennett of the Kountry Kitchen Cafe in Roaring Springs for the meeting, Tuesday December 4. There were 27 Lions and one guest attending.

Lion Jesse Turner introduced the program, a film "Big Fears and Little Risks."

Boss Lion Billy Denison made announcements as follows:

The Centennial Planning meeting will be held December 11 at 7:00 p.m. at the Library.

The Christmas House and Business Lighting Contest judging date will be announced later.

Meeting adjourned.

Local Cowboy to be featured on "Texas Country Reporter"

Dennis Gaines, local Matador Ranch Cowboy and Author, will be featured on the "Texas Country Reporter" show, which will air Saturday night on channel 13 at 6:30 p.m. Dennis' book, *New Tradition: Western Verse*, has become a best seller among cowboy poetry fans. The book is for sale at the Motley County

Tribune and The Windmill in Matador and Thacker Supply and City Grocery in Roaring Springs. The book is also selling in major bookstores all over Texas.

Also featured on Saturday night's program will be the Hotel Turkey in Turkey, Texas and Patton Springs School in Afton.

Christmas Paper Deadlines

The Motley County Tribune's special Christmas edition will be out on December 20. We will, again this year, offer our special Christmas greetings, which will be printed in a separate section of the paper. Deadline for these greetings will be Friday, December 14. We will be calling all the businesses, but if you are an individual and would like a special greeting, please call our office at 347-2400 or 347-2774, and we will be glad to help you select one.

All Santa letters will also need to be in our office no later than Friday, December 14.

Thank you for your cooperation.

Santa Letters

The Motley County Tribune has received special permission from Santa Claus to receive letters to him, here at the Tribune office. We will print as many letters as possible in the paper, and then send them right off to Santa at the North Pole.

Letters may be mailed to: Motley County Tribune P.O. Box 490 Matador, Texas 79244

Paducah Post Has New Owner

Owners of the Paducah Post for the past several years, Frank and Patty Adams, have announced that the paper has been sold to Jimmie Taylor, longtime employee of the Post. Mrs. Taylor will become editor and publisher.

The Adams' have also sold their Radio Shack dealership, which was housed at the paper office, to Hall-Scruggs in downtown Paducah. Radio Shack is now located inside the store.

The Adams' will be moving to Ennis, where they open a Radio Shack dealer store.



Motley Co. Tribune

ISSN: 0897-4322

Barbara B. Jameson, Publisher/Editor
 Carla M. Jones, Associate Editor, Ad. Mgr., Typesetting
 Amy Woolsey, Proof Reading, School Reporter, Composition
 Sherry Rose, Mailing Clerk
 Jan Jones and Mary Renfro, Photo Developing



The Motley County Tribune, purchased on Feb. 1, 1986 is the successor to the Matador Tribune and is published weekly each Thursday, except Christmas week, at Matador, Texas. The office is located on Highway 70 East (1/2 block east of Main Street). Telephone number 806/347-2400. Second-class postage paid at Matador, Texas.
 Postmaster: Send address changes to Motley County Tribune, Box 490, Matador, Texas 79244-0490.

NOTICE: Any erroneous reflection upon the character, firm or corporation, which may appear in the columns of the Motley County Tribune, will gladly be corrected upon being brought to the attention of the publisher. Only signed letters to the editor will be considered for publication and should not exceed 250 words in length. (Letters may be subject to editing)
 PUBLICATION NO. 333700

SUBSCRIPTION RATES: Motley \$13.00; All others, \$15.00
 Students, 9 months, \$12.00
 Persons over 60 years of age may take a \$1.00 discount
 P.O. Box 490 Matador, Texas

In The Rough

by Hazel



GOLF LUNCHEON

The last luncheon of the season was Thursday, November 29, 1990 at Billie Dean's.

Those present were Loys Campbell, Geneva Wilson, Louise Barton, Mary Jones, Judy Cartwright, Olivia Barton, Winifred Darsy and Hazel.

Olivia presided at the business meeting and awarded the winners in the several tournaments of the season.

Dorthea Grundy won the "Play Yourself" tournament in 9 hole afternoon play.

Olivia won "Play Yourself" in 18 hole play.
 Judy C. won low putts in 9-hole afternoon players. Geneva and Olivia tied in low putts for 18-hole players.

Dr. L.W. McClendon of Childress died Monday, November 19. He was husband of Sis McClendon, one of our longtime golfing friends. She died September 9, 1990, at age 85.

Holiday Greetings From The North Pole

Want to add some Christmas cheer to your holiday cards this year? Why not get your Christmas cards specially postmarked from the North Pole, Alaska? This year - like every year - the North Pole, Alaska Post Office is postmarking thousands of cards and holiday letters with their special town cancellation. Cards are already starting to arrive from around the world.

To get your North Pole postmark, insert your holiday envelope or envelopes, addressed and stamped, inside another envelope or container. Include a note to have the mail inside be either machine or hand canceled with the North Pole postmark. Then send it to the following address:

Mark Lamoureux
 United States Postal Service
 North Pole Branch
 500 E Fifth Ave.
 North Pole, AK 99705-9998

Cards and letters must be received at the North Pole by December 10 for delivery before Christmas.

If you want a container of cards postmarked and returned to you, and not entered into the mainstream, include sufficient return postage and your return mailing label. Indicate this with a note and make sure each envelope inside is stamped and addressed. Because of the North Pole's high volume of Christmas mail and the distance involved, it's best to send your box of cards there by priority or express mail to ensure ultimate delivery before Christmas.

Live as if Christ died yesterday, rose this morning, and is coming back today.



By Wilda Dixon

Sultina Andrews of Havre de Grace, Maryland and Teresa Hart of Lubbock, TX have been the only visitors that came by and signed the guest book. We appreciate all our visitors whether or not they sign the book and we also appreciate the locals that come in with visitors, because that shows how proud our community is of the Library.

I would like to remind the folks in the Flomot community that there are still books at the Gins and currently the following books may be checked out from the boxes at the Gins: Uncovered Wagon by Stillwell; Moonshine Light, Moonshine Bright by Fox; Moonraker's Bride by Brent; Midsummer Morning and The Marquis and Miss Jones by Ashfield; Cowboys & Cattle Kings by Sonnichson;

The Time It Never Rained by Kelton; Selena by Brawley; Night of the Fox by Higgins; and Down Home Stories by Scott. For the children and teenagers the following books are available: ABC by Dr. Seuss; The Sesame Street Bedtime Storybook: What Do I Say: Hunches In Bunches by Dr. Seuss; N.J. Room for Sarah by Greenleaf; Luke and the Van Zandt County War by Alter; Stories for

Nine Year Olds by Corrin; The Cat Who Sniffed Glue by Brown; Winter of the Wolf by Wisler; and Ella of All of a Kind Family by Taylor. There are also several paperbacks and other books that I did not list. We hope that you will take advantage of this outlet for library material closer to home. These books will be available until January 2, 1991 at both Gins in Flomot.

FINE FREE MONTH AT THE LIBRARY UNTIL DECEMBER 31

Some more books that are missing from the Library shelves are: Last One

Home by John Ehle; Firecloud by Lynn Erickson; Longarm & The Dragon Hunters by Tabor Evans; Why Do Clocks Run Clockwise by David Feldman; Twice in the Lifetime by Rebecca Flanders; Grandpa's Ghost Stories by James Flora;

The Kid With the Red Suspenders by L.B. Gaeddert; Green Eggs & Ham by Seuss; Wuzzles by Mel Gilden; Back to the Future by George Gipe; The White Wave by Griffin; The Big Sky by A.B.

Guthrie; Brown Bear In A Brown Chair by Irina Hale; The Rich & Beautiful by Harris; The Distance Man by Samantha Harvey; Having A Baby; Raggedy Ann & The Cookie Snatcher by Barbara Hazen; The Most Wonderful Egg in the World by Helme Heine; Rumble Fish by S.E. Hinton; Sow Not In Anger by Hofenber; Night Marshall by L.P. Holmes; Mistress of Mellyn by Holt; The Rebels by John Jakes; Unconditional Love by C. Jameson; Bitter Trail by E. Kelton; Without A Doubt by Risa Kirk; Too! Too! by Steven Kroll; A Swiftly Tilting Planet by

Madeleine L'Engle; Come Over To My House by LeSieg; and The Wild Baby Goes to Sea by Barbro Lindgren. PLEASE CHECK YOUR SHELVES AND UNDER THE FURNITURE AND BRING THESE AND OTHER OVERDUE LIBRARY BOOKS BACK TO THE LIBRARY.

REMINDERS

No fines on overdue books brought in through December.

Dues for the Friends of the Library are being accepted at the Library.

LIBRARY SCHOOL will be held Tuesday, December 11 at 10:00 a.m. for their Christmas films, songs and stories.



Home Economically Speaking

by Beverly Thomas, Home Extension Agent - Home Economics

SAFETY FOR POT LUCK DINNERS

"Pot Luck" dinners can represent a public health hazard because a large variety of foods, mainly casseroles, are served - a high amount of handling of ingredients during preparation - and inadequate storage temperatures of the food.

In spite of these problems, pot-luck dinners do not have to be banned. Observation of the following health recommendations should offer a solution:

- * Keep menus simple; avoid an elaborate variety of foods.
- * Avoid serving low-acid foods such as creamed dishes, meats, stews, cream-filled pies and pastries.
- * Stress that food must be cooked thoroughly.
- * Keep time between cooking and serving foods to a minimum.
- * If prepared foods must be stored overnight, place them in small quantities in a reliable refrigeration unit.
- * Keep hot foods hot (above 140 Fahrenheit) and cold foods cold (below 45 F).
- * Use chilled ingredients in the preparation of foods that will be served cold.

ration of foods that will be served cold.
 * Protect foods from contamination (insects, dust, humans) prior to serving.
 * Use disposable ware as a sanitary measure.

* Do not include home-canned items.
 * Use individual packets, closed containers or pump bottles to serve sweeteners or condiments.

* Provide adequate garbage containers lined with plastic bags.

* Because of timing and casual serving, it is most practical to discard any leftover garbage at the end of the dinner.

People have a high regard for neighbors, friends, and co-workers and appreciate their efforts and good intentions. By following the above recommendations, pot luck dinners can continue to be successful without any unhappy aftermaths.

Educational programs conducted by the Texas Agricultural Extension Service are for people of all ages regardless of socioeconomic level, race, color, sex, religion, handicap or national origin.

Thought for the Day:
 Fear knocked at the door. Faith opened it to find no one there.

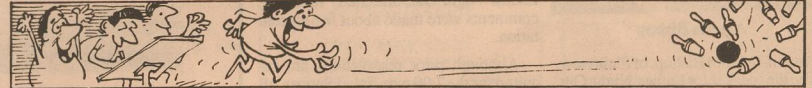
Arrival Announced

Congratulations to Mr. and Mrs. Scott Nichols, Denver City, on the birth of twins, November 6, 1990 in St. Mary of the Plains Hospital, Lubbock, Texas.

Calvin Chance weighed 7 lbs. 2 oz. and Kirstyn Brooke, 7 lbs. 1 oz. Proud grandparents are Mr. and Mrs. H.C. Brown of

Brownfield, Mrs. Bob Nix, Locust Grove, Okla., and Ned Nichols of Buchanan. Great-grandparents are Mr. and Mrs. J.D. Craven, Matador and Mr. and Mrs. E.J. Nichols, Dickens.

The father is assistant golf pro at Yoakum County golf course. His wife is the former Sharon Brown of Brownfield.



California has the greatest number of bowling leagues in the U.S.

Motley County Appraisal District

Matador, Texas 79244

Representing
 County of Motley
 Motley County Independent School Dist.
 Motley County Hospital District
 City of Matador
 City of Roaring Springs

WILL MEET IN COMMISSIONERS COURTROOM

DECEMBER 14, 1990
 2 P.M.

PROPOSED EXPENDITURES FOR 1991

Appraiser salary:	\$12,000
Travel Allowance	\$ 1,500
Medical Allowance	\$ 3,376.56
Social Security	\$ 1,836
Registration and Dues	\$ 400
Extra Labor	\$ 725
Appraisal Review Board	\$ 500
Appraisal Review Board (school)	\$ 500
Board of Directors (school)	\$ 400
Employee Schooling Expenses	\$ 1,000
Office supplies and Postage	\$ 2,000
Office Equipment and Maintainance	\$ 500
Legal Notices	\$ 800
Audit and Lawyer Fees	\$ 1,200
Thomas Y. Pickett co.	\$ 2,250
Telephone	\$ 400
Computer, rent	\$ 9,000
Contingency Expenses	\$ 500
TOTAL	\$ 38,887.56
PROPOSED FUNDS AVAILABLE FOR 1991	\$

MOTLEY COUNTY	% Share .383	\$14,894
MOTLEY COUNTY I.S.D.	.497	\$19,327
MOTLEY CO. HOSPITAL DIST.	.055	\$ 2,139
CITY OF MATADOR	.045	\$ 1,750
CITY OF ROARING SPRINGS	.02	\$ 778
TOTAL EXPECTED FUNDS AVAILABLE FOR 1991		\$ 38,888

It's the night before Christmas and the house needed lights To make it look festive, cheery and bright, But cards must be checked with the greatest of care To look for frayed wiring and bulbs that aren't there; The tree must be fresh and to keep it that way, You should stand it in water and out of the way; Check safety to make the holidays bright, For a Merry Christmas to all and to all a good night!

WEST TEXAS UTILITIES COMPANY
 An Equal Opportunity Employer
WTU
 A Member of The Central and South West System

Remember REDDY Supplies the energy - but only YOU can use it wisely!

Motley County School News

Amy's Anecdotes

by Amy Woolsey



SCHOOL LUNCH MENU

MONDAY, DECEMBER 10
Breakfast: Cereal, Buttered Toast, Fruit.
Lunch: Spaghetti, Meat Sauce, Garden Salad, Whole Wheat Rolls, Apricot Cobbler.

TUESDAY, DECEMBER 11
Breakfast: Biscuits, Bacon, Scrambled Eggs, Orange Juice.
Lunch: Fish, Tartar Sauce, AuGratin Potatoes, Coleslaw, Cornbread, Cowboy Cookies.

WEDNESDAY, DECEMBER 12
Breakfast: Hot Cereal, Buttered Toast, Fruit.
Lunch: Turkey, Dressing, Gravy, Sweet Potatoes, Cranberry Sauce, Green Beans, Hot Rolls, Red Velvet Cake.



Letters to Santa

Dear Santa,

Dear Santa,

My name is Colby Ashley. I am two years old. I have been a good boy this year. For Christmas I want a Bicycle, and batteries for my jeep, a writing tablet and a My Buddy Doll. Don't forget all the other little girls and boys.

I am almost 5 years old. I have been a good girl this year, so please bring me a Baby Bubbles doll with her carriage, a Snoopy Snow Cone machine and a My Little Pony Sleeping Bag with pillow and lots of goodies for my stocking. Be sure to remember all the other boys and girls.

Love, Colby

Love you, Kourtney Dunnam
 11505 Laurie Ln.
 Amarillo, TX 79119



Dear Santa,

I am 3 years old. The things I'd like for Christmas are: Bubbles Baby, Rubber Dubber Baby, a Bear and a Barbie Car. Please bring some things for sisters, too.

Love, Kittie Douglas Campbell

Dear Santa,

I want a Barbie Car, Cabbage Patch doll, soft bear.

Love, Mont

Cassie Campbell

Dear Santa Claus,

Thank you for the cassette recorder last year. I have been a good boy and hope you will bring me a Suzuki 4-Wheeler and Lite Brite.

Please bring my brother Bert a 12-speed all terrain bike. Except for aggravating me, he has been pretty good. We will leave cookies and milk in the kitchen.

What's up, and what's down. Now read this carefully, this is what I want for Christmas, I want clothes, more Nintendo games, and whatever else you want to give me. Don't worry I've been as good as usual. Tell Ms. Claus to have a good one!

Sincerely, Jodi Boykin

Dear Mr. Claus,

For Christmas this year I want a bunch of clothes. I want contacts, too. Also, a bean bag would be nice. I also want some new jewelry.

I want to thank you for all the gifts you gave me last year. I have enjoyed them.

Sincerely, Nancy Martin

Dear Mr. Claus,

How's it going up your way. Well, now for business. For Christmas I want a rifle with scope, a set of compact binoculars, and a watch. A new wardrobe wouldn't be too bad either. Well, till XMAS, later.

Sincerely, Lee Jones

Dear Mr. Claus,

Yo! What's up? I have written you to wish you a Merry Christmas. I don't want much but I do want a pair of blue jeans. I also want to have fun at Christmas with my family. After all Christmas is not

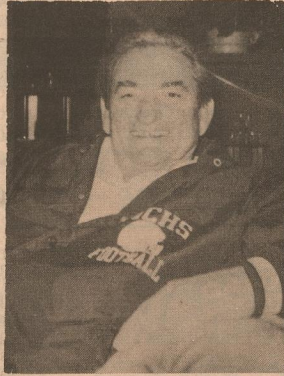
Sincerely, Salvador Sanchez

SCHOOL CALENDAR

Thursday, December 6: ACT Tests, 8:30-12:30.
Friday, December 14: Space Bubble from Science Spectrum in old Gym, all day.
Tuesday, December 18: School dismisses for Christmas holidays at 1:30 p.m. Resumes Wednesday, January 2.

Teacher Profile

by Amy Woolsey



Maurice Hodges

Coach Maurice Hodges is the Head Football Coach and the Boys and Girls Golf coach, and helps Mr. Van Hoose with administrative duties at Motley County High School. He is originally from Monahans, Texas and attended school there.

He attended college and received his Bachelors degree from Eastern New Mexico University. He received his Masters Degree at Sul Ross State University.

He taught at Midland ISD before coming to Motley County.

Coach Hodges hobbies include golf, bridge, and working crossword puzzles. His goals for the 1990-91 school year is to help everyone in Motley County Schools to be a better Student and Citizen.

When asked what he thinks of the students at Motley County, Mr. Hodges stated, "They're the best." Coach Hodges is the featured PTO Teacher of the Week.

Believe

by Amy Woolsey

Tomorrow is our destination. We never know what will happen. We just use our imagination. We never think about the consequences. We just go on... and we don't use our senses. Time goes on forever, there's never a day when it dies. Except when the Lord takes us and forgives of our lies. God sent Christ to us, so we could love, But we didn't believe, so he died on the cross above! He died because he loved us and to forgive us of our sins, But if you don't trust now, you won't get into Heaven at the end!

So believe in the Lord all you can,
 And when in time you need it,
 He'll reach out a helping hand!
 Whatever may happen, don't worry, it'll be alright,
 Because the Lord is there for you, yes, there by your side!
 Rejoice in the Lord always, yes, Rejoice, I say,
 Because the Lord is with you
 Forever and a day!!

No Judge

continued from page 1

which need to be filed. These cases cannot be filed without a Judge. Sharon Pigg explained that if these cases were processed in December, they can be heard in January, which will mean money coming in in January. She also explained that they already have the expense of Sheriff, Probation Officers, herself, and others, which the county is paying out for, with no extra money coming in, without a Judge.

Sheriff Marshall and Commissioner Jameson asked the other Commissioners that if an emergency situation arose, what would the county do without a Judge present. Other Commissioners did not reply.

No decisions were made, because Commissioner Russell stated that according to State Law, Section 81.005, this was not a legally called meeting.



With God all things are possible! Mark 10:27

Matador Floral

Our Shipment of fresh Poinsettias have arrived!

Poinsettia Pans
 5 1/2" Poinsettias — 3" Desktop Poinsettias

Open Friday until 9:00 p.m.

Stop by and see...
 Christmas Arrangements & Wreaths
 Teacher's Gifts — Fruit Baskets,
 Homemade Gingerbread Houses & Treats

With each \$5.00 purchase receive one chance on a \$50 Christmas Wreath to be given away Friday, December 7th at 9:00 p.m.

Remember we're now accepting Mastercard — Visa — Diners Club American Express & Carte Blanche

Happy Holidays
 Debra Garrison Scott
 806-347-2241

Special Christmas Bazaar

Late Night Shopping
 Friday, December 7

Handmade Items
 Rompers, Bows,
 Wooden Jewelry
 Homemade Candies & Jellies
 Unique Fashion Jewelry
 Imported Linens
 and more.....

American Legion Building
 4:00 p.m. - 8:00 p.m.

SAVED UP TO 50%

Dorothy's

Holiday Specials

Shop Now For Christmas

*Dresses, Leather Jackets & Skirts
 Leather trim blouses*

Ladies panties — \$3.00 a pair or 3 pair for \$7.99

*Sweaters & Sportswear
 Jackets, Blouses, Skirts, Slacks*

Jewelry, Belts, Purses & Gift Items

Gabriel Shopping Center Plainview

Stanley Pharmacy

will serve Stew & Nachos
Friday night, 5:30 - 8:00

LOTS OF UNADVERTISED SPECIALS

For Late Night Shopping
Friday, December 7
See our insert for Specials



Enjoy
Coca-Cola
Dr. Pepper

**Coca-Cola
Dr. Pepper**
6 PK CANS
\$1.59



Tostitos
Traditional Flavor
TORTILLA CHIPS
Tostitos®
REGULAR \$2.79
\$1.99



ASST. PAPER TOWELS
Hi-Dri
JUMBO ROLL
59¢



AUTO. DRIP/PERK COFFEE
Folgers
39 OZ. CAN
\$4.99



LUCKY LEAF APPLE
Juice
64 OZ. JUG
\$1.19



ANGEL SOFT BATHROOM
Tissue
4 ROLL PKG.
89¢




ASST. VARIETIES
SPAGHETTI SAUCE
Prego
30 TO 32 OZ. JAR
\$1.29



AMERICAN BEAUTY
ELBO RONI/RONI MAC/SHELL RONI
LONG SPAGHETTI/THIN SPAGHETTI
Pasta
24 OZ. PKG.
89¢


GROCERY SPECIALS



GIANT
REYNOLDS FOIL
Reynolds Wrap 200' 30 FT. ROLL
\$4.39



ZIPLOC QUART STORAGE BAGS
\$2.69 50 CT. BOX
ZIPLOC QUART FREEZER BAGS
\$2.69 40 CT. BOX



ALPINE REGULAR OR SUGAR FREE
INSTANT SPICED CIDER MIX
\$1.49 10 OZ. BOX



GLAD LARGE KITCHEN GARBAGE BAGS
\$2.29 30 CT. BOX



MIX-N-EAT
CREAM OF WHEAT
\$2.19 12 OZ. BOX



SHORTENING
BAKE-RITE
99¢ 42 OZ. CAN



DISHWASHING DETERGENT
DAWN
\$2.09 42 OZ. BTL.



REGULAR OR UNSCENTED
ULTRA TIDE
\$6.99 98 OZ. BOX



REGULAR OR LEMON
DISHWASHER DETERGENT
CASCADE
\$1.99 50 OZ. BOX



FAMILY SIZE BOX PUFFS OR PUFFS PLUS
\$1.39 150 TO 250 CT. BOX



ASSORTED RICE & SAUCE OR NOODLES & SAUCE
LIPTON SIDE DISHES
69¢ 4.4 TO 5.2 OZ. PKG.



WATERMAID RICE
\$2.19 5 LB. BAG



STAIN REMOVER
SHOUT STICK
\$1.69 2.8 OZ. STICK



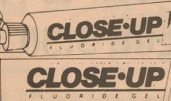
GLADE ASSORTED
CARPET & ROOM DEODORIZER
\$1.69 16 OZ. CAN



GLADE ASSORTED
POTPOURRI
97¢ 7 OZ. CAN



GLADE ASSORTED NON-AEROSOL
AIR FRESHENER
\$1.09 3 OZ. PUMP
GLADE ASSORTED
AIR FRESHENER
99¢ 7 OZ. CAN



ASSORTED
CLOSE-UP
\$1.49 4.6 OZ. TUBE



SCOPE
\$2.19 12 OZ. BTL.



KOTEX REGULAR OR THIN
MAXI PADS
\$2.89 27 CT. PKG.



HOT MEDICATION
TYLENOL COLD & FLU
\$5.79 12 CT. BOX



EXTRA STRENGTH OR ADVANCE FORMULA
ALKA SELTZER
\$2.59 24 CT. BOX



FUJI FILM
\$2.99 24 EXPOSURE ROLL

BUDGET FOODS



WRIGHT'S HICKORY SMOKED
Sliced Bacon
\$1.39 12 OZ. PKG.

MARKET CUT RED RIND LONGHORN WISCONSIN CHEESE	\$2.49 LB.	ADVANCE CHICKEN FRIED BEEF FINGERS	\$1.39 LB.
RAMIREZ FLOUR TORTILLAS	69¢ 10 CT. PKG.	DELI MAKER SLICED CHICKEN	\$2.39 1 LB. PKG.
ADVANCE CHICKEN FRIED BEEF PATTIES	\$1.39 LB.	CORN KING MEAT FRANKS	89¢ 12 OZ. PKG.



Gift Boxes for the Holidays

NEW CROP RUBY RED
Grapefruit
APRX. 20 LB. BOX
\$6.79

WASHINGTON EXTRA FANCY RED DELICIOUS
Apples
APRX. 14 LB. BOX
\$5.99



Pay-n-Save
QUALITY AND SERVICE

DEL MONTE SPECIALS



Del Monte
Ketchup
32 OZ. BTL.
\$1.07



DEL MONTE CHUNK/CRUSHED/
SLICED IN HEAVY SYRUP
OR
CHUNK/CRUSHED/SLICED/SPEARS/
TIDBITS IN NATURAL JUICE
Pineapple
15 TO 15.25 OZ. CAN
57¢



DEL MONTE NATURAL
FRUIT COCKTAIL/MIXED FRUIT/
SLICED YEL. CLING PEACHES/
PEAR HALVES
Fruits
16 OZ. CAN
87¢



DEL MONTE
CUT GREEN BEANS-REG. OR NO SALT,
FRENCH SLICED GREEN BEANS, REG.,
WHOLE KERNEL GOLD CORN, REG. OR NO SALT,
CREAM STYLE GOLD CORN, REG. OR NO SALT,
EARLY GARDEN BLEND SWEET PEAS, REG. OR NO SALT,
SPINACH, REG. OR NO SALT
Vegetables
15 TO 17 OZ. CANS
2.87¢



DEL MONTE ALL GREEN
MARTHA WASHINGTON
ASPARAGUS TIPS
\$1.29
10.5 OZ. CAN



DEL MONTE
PINEAPPLE JUICE
\$1.17
46 OZ. CAN



DEL MONTE
MADARIN ORANGES
77¢
11 OZ. CAN



DEL MONTE
TOMATO SAUCE
5.97¢
8 OZ. CANS



DEL MONTE
SEEDLESS RAISINS
97¢
15 OZ. CTN.



DEL MONTE
PITTED PRUNES
\$1.99
24 OZ. PKG.



DEL MONTE ASSORTED
TOMATOES
67¢
14 TO 14.5 OZ. CAN



DEL MONTE
TOMATO PASTE
37¢
6 OZ. CAN

GOOD PRICES

Save FRESH FAMILY PACK

SMALL PACKS **\$1.39** LB.

Ground Beef

\$1.29 LB.



SUPER SAVINGS



SWANSON WHITE & DARK
CHUNK CHICKEN
\$1.09
5 OZ. CAN



SWANSON CHUNK
MIXIN' CHICKEN
89¢
5 OZ. CAN



CAMPBELL'S BEEF OR
CHICKEN BROTH
49¢
10 OZ. CAN



CAMPBELL'S OLD FASHIONED CHICKEN/
CHICKEN CORN CHOWDER/CHICKEN NOODLE/
NEW ENGLAND CLAM CHOWDER
CHUNKY SOUPS
79¢
10 TO 11 OZ. CAN




CAMPBELL'S
TOMATO JUICE
\$1.33
12 OZ. CANS



CAMPBELL'S REGULAR OR SPICY
V-8 COCKTAIL JUICE
2.87¢
12 OZ. CANS

Holidays



NEW CROP CALIFORNIA NAVAL
Oranges
APRX. 14 LB. BOX
\$7.69

JUICY SWEET
PINEAPPLE EACH **89¢**

RED RIPE
TOMATOES **2.89¢**
4 CT. CELLO PACK


FRESH SPICY HOT
JALAPENOS **89¢**
LB.

SWEET
RED ONIONS **35¢**
LB.


SHELF SPECIALS

25¢ OFF LABEL
MRS. BUTTERWORTH'S
SYRUP
\$2.19
24 OZ. BTL.

HERDEZ RED OR
GREEN SAUCE **59¢**
7 OZ. JAR



DOLE CHERRY OR PEACH
PURE & LIGHT JUICE
\$1.59
40 OZ. BTL.



DOLE CHUNK/CRUSHED/
SLICED/TIDBITS IN JUICE
PINEAPPLE
79¢
20 OZ. CAN



MINUTE MAID
ORANGE JUICE
4 PACK **\$3.99**
12 OZ. CANS

PET RITZ PET RITZ APPLE/
PEACH/CHERRY
FRUIT COBBLER **\$1.69**
26 OZ. PKG.

FIVE ALIVE FIVE-ALIVE
CITRUS **99¢**
12 OZ. CAN

MINUTE MAID
APPLE JUICE OR
FRUIT PUNCH **99¢**
12 OZ. CAN

BLUEBERRY PANCAKES/
BTRMLK. PANCAKES/CIN. FR. TOAST/
OAT BRAN FR. TOAST
KRUSTEAZ **\$1.39**
20 OZ. PKG.

VAN DE KAMP VAN DE KAMP
FISH FILLETS/LIGHT & CRISPY
FISH STICKS **\$2.09**
13 OZ. BOX

VAN DE KAMP VAN DE KAMP MINCED
FISH STICKS **\$3.09**
26 OZ. BOX

SHURFINE BUTTERMILK **\$1.19**
1/2 GAL. JUG

SHEDD'S SPREAD
COUNTRY CROCK **\$1.59**
3 LB. TUB

Our Best to you!
-The Grocery Gang

Money Orders Safeguard

Prices effective Monday - Saturday, December 10-14

DOUBLE COUPONS ON MONDAY AND WEDNESDAY

Every Monday and Wednesday your manufacturers "cents off" coupons are worth double at Pay-N-Save No. 21. Limit one coupon for any particular item. No cigarette coupons. Offer limited to manufacturers coupons of \$1.00 value or less. Coupons over \$1.00 will be redeemed at face value. Amount cannot exceed retail of the item. Subject to certain in-Store Policies concerning coupons. Not doubled on advertised specials.

Social Security Tips

by Mary Jane Shanes

BENEFITS NOT REDUCED DURING TRIAL WORK PERIOD

People who receive Social Security checks because of a disability and who have what we call a trial work period can have unlimited earnings during that time without a reduction in their benefits. The trial work period, which lasts up to 9 months, allows the disabled person a time in which to test his or her ability to work productively and become self-supporting.

It's a type of buffer period which eases the transition from disability and dependency to productivity and self-support. We encourage all persons who feel that a trial work period would help them to contact Social Security.

The person's earnings will not affect their disability status until after the trial period has ended as long as he or she is

still disabled. At that time, Social Security will decide whether he or she is still disabled under Social Security law.

Wages averaging more than \$500 (\$780 for blind people) usually indicates substantial gainful work. Other factors, such as job duties, hours worked, and expenses necessary for employment may also be considered. For the self-employed, their participation in and management of the business are important factors.

If Social Security decides that the individual is still disabled, benefits will continue as before. If no longer disabled, the person will not be eligible for benefits and monthly checks will stop 2 months following the last month of eligibility.

For more information about the trial work period and how a person may participate, call Social Security's toll-free number 1-800-234-SSA (1-800-234-5772) or visit the Social Security office.

Letter to the Editor

Dear Editor,

It's been a month now since my mother died and I am still getting notices of memorials that have been sent to different organizations, The Texas Boys Ranch in Lubbock, The Senior Citizens in Roaring Springs and Matador, The Roaring Springs Cemetery Fund, The Roaring Springs Park Fund and The First Baptist Church in Roaring Springs in Mama's name. I have tried very hard to send thank you notes to everyone who sent these-

memorials, flowers, food or helped in any way, but there have been so many I have surely missed someone so please print my thank you again to everyone and my apology to anyone I have missed.

I sure miss Mama, but I know she is in Heaven and I am very happy for her. God

gave me the following poem that keeps me in my time of loneliness. I would like to pass it on to your readers that it might help someone else who is experiencing loneliness from the loss of a loved one.

A NEW STAR IN HEAVEN

by Corky Marshall

On October the twenty-seventh nineteen ninety,

A decision was made by God almighty,

He spoke to St. Peter with Love and Grace,

The Light seems dim up here, let's brighten up the place.

Make a suggestion, that's what I have you for,

Yes Master, I think we need a new star.

I know a grand Lady, whose been on earth a great while, who brightens everyone around her, with her beautiful smile. She would brighten up Heaven, tho they would miss her on earth, speak and she will be here, like you did at her birth.

So God spoke His word on His throne from afar, now Mama is with Jesus and Heaven has a new Star.

God Bless You!

Will Give Away — Dec. 7

Western Print by Renown Texas Artist — Kathy Whitley

Must Register at THE WINDMILL

Texas T's & Floral Open House
All Day Friday
 We will be serving Hot Spice Cider
 Come by and register for drawings for Christmas Arrangement and Balloon Bouquet

Many Specials for Late Night Shopping
 5:30 p.m. - 8:30 p.m.

Special Honey Items — Gift Baskets
 Poinsettias — Many Gift Items
 Homemade Goodies & Gift Baskets
 Outdoor Wreaths

Let Us Do Your Christmas Gift Wrapping With Our Special Balloon Wrap

Lifestyles™

THE DIET COOKIE

- * Satisfying
- * 8 Delicious Flavors
- * Rapid Weight Loss
- * Convenient
- * Nutritious
- * Low Cost

10 days: \$38.33 — 7 days: \$30.00

Loose 2-6 lbs. or more 1st week!
See Jim or Judy Perryman or call 806-689-2251 (leave message)



In late October the casual High Plains visitor with even an ounce of poetry in his soul saw a beautiful sight — field after field of cotton shimmering whitely under the autumn sun as far as the eye could see.

Now, proving beauty truly is in the eye of the beholder, that scene has been lost to the visitor and has become something even more beautiful to High Plains producers — a sea of murky brown dotted by tons and tons of "white fold" stored in the relative safety of eight to ten-bale modules.

The prevalence of the latter sight means most producers in the area have now won the harvest race against the threat of losses to winter weather. And one by one they are finding time to mull over plans for 1991. However, according to Charles Cunningham, Chief of the U.S. Department of Agriculture's Program Analysis Division, completion of such plans faces what may be a protracted delay pending top-level decisions on details of the 1991 government program. Fortunately, he adds, one of the most important announcements, the size of the acreage reduction program (ARP), may be out by mid-December. Other details, he says, will be slow in coming.

Although the new flexibility feature of the 1990 farm act adds another dimension to the always difficult projections required to determine the ARP, Cunningham says his division has completed the initial number-crunching. A few weeks ago he and others in USDA and in the industry had talked of an ARP in the range of 10 to 15 percent. But that talk has subsided of late and Cunningham declines to even hint at what size ARP may be indicated by his latest projections. All he will say is "Somewhere between zero and 25 percent." Assuming the Secretary's office has no problem making its decision or with getting the required approval from the Office of Management and Budget, which Cunningham says would be a rarity, an announcement could come as early as the first week in December.

Meanwhile, judging from questions being fielded by Lubbock-based Plains Cotton Growers, Inc., most producers still lack a clear understanding of the new law. Especially confusing is the law's so-called "triple-base" flexibility plan which along with cutting the number of payment-eligible acres of each commodity, grants unprecedented planting options. "Admittedly these are uncharted waters," says PCG Executive Vice President Donald Johnson. "And on balance they'll no doubt make for an unpleasant experience." However, Johnson adds, by taking advantage of new planting freedom, some

producers should be able to at least mitigate the adverse effects.

Born of budgetary restrictions, the foundation of the whole triple-base concept, PCG explains, is the removal of payment eligibility on an acreage equal to 15 percent of the crop acreage base for each commodity. It's important to understand, Johnson notes, that 15 percent of the full acreage base, to 15 percent of permitted acres, is the acreage ineligible for payment. Put another way, the maximum acreage for payment will equal base acreage minus the ARP minus 15 percent of the acreage base. Thus a 100-acre cotton base and a 1-percent ARP would yield 75 payment-eligible under the 1985 act. With a 25 percent ARP, it's easy to see that the reduction in payment-eligible acres would climb to 20 percent.

The 15 percent of crop acreage base that cannot under any circumstances draw a payment is known as the MNA or Maximum Non-payment Acres. At the producer's option, MNA acreage may be "flexed", or shifted, or any other program or non-program crop, excluding fruits and vegetables.

Then there's the Optional Non-payment Acreage, or ONA, which equals another 10 percent of each commodity's base acreage. The ONA also may be flexed to other crops, bringing the total flex acres to 25 percent of all crop acreage bases on a given farm.

None of the acres flexed from one program crop to another will be eligible for payment, but all will be eligible for loan programs.

For one oversimplified example, assume a 15 percent ARP for cotton, 15 percent for feed grain and 15 percent for wheat, on a farm with a 100-acre base for each crop. On such a farm a producer could plant a maximum of 135 acres to cotton (85 permitted acres + 25 flexed from feed grain + 25 from wheat. Only 70 acres (85 permitted - 15 MNA) would be eligible for payments, but all 135 would be eligible for the loan. On the same farm if the producer didn't want to voluntarily sacrifice payment-eligible acres of any crop, he could plant a maximum of 115 acres to cotton (85 permitted + 15 MNA from feed grains + 15 MNA from wheat).

In either case, if the full ARP for all crops is met, all bases are protected. However no base building for any crop can occur on any farm with any crop enrolled in the program. For other purposes, both cross and offsetting compliance are banned as conditions of program eligibility.

PCG invites questions at its office, 4510 Englewood, Lubbock, telephone 792-4904.

Barbara's Bylines

Wow! How exciting and fun it is to win. I was the winner Monday of the Christmas Cash Call on KSRW-FM. The DJ picked my name and called at a time while I was in the office alone, so I was excited all by myself! I won \$104.64 gift!

certificate to Guys and Gals. Thanks KSRW for helping 'hometowns'.

I heard....."I'm buying at home this year." "I like shopping at home, you don't have to fight the traffic and stand in line." So let's all SHOP AT HOME!

Trophy Whitetail Deer Is Bagged In Motley County



Todd Box of Mt. Pleasant displays the antler spread on this ten point whitetail he shot last week near Roaring Springs. The buck dressed out at 119 pounds, which is larger than the average taken in this area of the state.

Photo from Floyd County Hesperian

NOTE: The following article was taken from the *Floyd County Hesperian* and was written by Bill Gray. If you are aware of news of this sort, we would appreciate it if you let our office know.

A deer hunting venture was successful for a Mt. Pleasant man last week as Todd Box dropped a large whitetail while hunting on private land ten miles southeast of Roaring Springs in Motley County. The ten-point buck dressed out at 119-

Using a Savage 270, Bushnell scope, and 130-grain "warm" hand-load ammunition, Box shot the buck in the heart from a distance of about forty yards. The deer was taken to Caprock Meat Company in Floydada for processing.

According to Caprock's owner Bill Hicks, "It was one of the larger whitetails I've seen taken from this area." As deer season continues, there are reports of a number of large trophy class mule deer in the Quitaque-Turkey vicinity. The season ends on January 8.



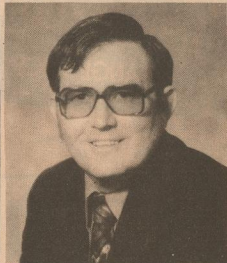
Clay Jameson of Matador killed a Whitetail Deer on the Bird Ranch December 3. The deer is a 10 point buck with a 17" spread, weighing 90 pounds dressed out.

Late Night Shopping Specials 20% off Everything

5:30 - 8:30 p.m. Friday, Dec. 7

Be sure to register for a \$25.00 Gift Certificate

Guys & Gals



THE TEACHER

The success of life is to be measured by its secret fidelities and not by its popular triumphs.

"...the multitudes were astonished at his teaching: for he taught them as one having authority, and not as their scribes." (Matthew 7:28-29)

When we examine the teaching of the Lord Jesus we find all of His basic

principles impart equality in every area of life. Our Lord's teachings spurned the established boundaries of His day. They crossed existing gulfs which yawned between race and race, between the classes and the masses, between male and female, and between religious sects.

Examine any commandment. What person is outside the range of its decree? Look to Beatitudes of Matthew 5. Who is omitted from the reach of their boundaries?

Every race and all peoples are of equal value. Character if far more important than talent. Responsibility is measured by endowment. Neighborliness, from Him on would be defined by the circle of necessity rather than by the limitations of race.

Nearly two thousand years have passed since "Never man so spake," (John 7: 46). Two thousand years, and still millions of followers quote His words. His teaching started like small ripples upon a pool and became tidal waves that would engulf the whole world.

MATADOR CHURCH OF CHRIST Michael G. Crowley, Sr.

SHOP LATE
 Friday, Dec. 7
 Draw for a discount as you check out.
 Save 10-20-30-40 or 50% on all purchases after 4:30 PM
 LUCK OF THE DRAW
 Everyone wins!!
 MATADOR VARIETY

FISH FRY

Catfish — Farm Raised

Fillets, Hush Puppies, Coleslaw, French Fries
ALL YOU CAN EAT!!

\$6.95

Tuesday, December 11,
 5:00-9:00 pm

Pizza Box

