

Howard G. Garnett . . .

1937 Grad Serves His Country

Howard G. Garnett is a 1937 graduate of Spearman High School who left Spearman and went on to a career in the United States Navy, then as a government advisor in undersea warfare.

Garnett, presently a resident of Poughkeepsie, N.Y., recently retired from the Vitro Corporation.

Though he left the community to pursue his career, Garnett still has family here in Spearman. His brother, Wesley Garnett, and his son Mike Garnett, still live in Spearman. Estella Morris, a sister, lives in Amarillo. Garnett is planning to come to the Panhandle area in April to visit the hometown and his family still here.

He is an Industrial Engineering graduate of Oklahoma State University with continued education in mathematics at Northwestern University and Business Administration at the University of Virginia. He and his wife Sarah have a daughter living in Nashville, Tenn. and a granddaughter in college in Boston, Mass.

He was formerly Program Chairman, Undersea Warfare Systems Division, American Defense Preparedness Association. He currently serves as a technical advisor to this division. He is also national Secretary for the Naval Undersea Museum Foundation and is a member of the Navy League.

Garnett joined the Vitro Corporation in August 1972 and was assigned to the Systems Technology Department as a Senior Engineer. His first assignments were in Undersea Warfare related programs. In 1974 he headed a Vitro engineering team whose responsibility was to make technical inputs into the TRIDENT submarine program. In this capacity, he coordinated the technical

efforts of four other corporations involved in the TRIDENT project.

Later he was assigned to the Navy's Defense Exchange Agreement program which involved the exchange of research and development data between the U.S. Navy and NATO navies. In 1979 he was assigned as Facility Manager for the Vitro's Kitsap Facility located in Silverdale, Wash. With this assignment, he was promoted to a department head status with the Vitro Corporation.

In 1984 Garnett was assigned as Director of Western Operations Undersea Warfare. His areas of responsibility included the West coast and Hawaii operations. In 1987 he was promoted to Vice President of the Kitsap Branch. In this position he was responsible for both technical and logistics services in support of the Navy's undersea warfare programs. The Kitsap Branch is composed of 850 engineers and logisticians.

Prior to joining Vitro, Garnett completed 28 years in the U.S. Navy. His Navy career encompassed World War II and both Korean and Vietnam conflicts.

He was commissioned in 1943 as an Ensign. Following Advanced Torpedo School and abbreviated submarine and PT schools, he was assigned various duties as a Torpedo Officer during World War II. As a part of his basic training as a torpedo officer, he was assigned to the submarine SKATE and later the light cruiser OAKLAND.

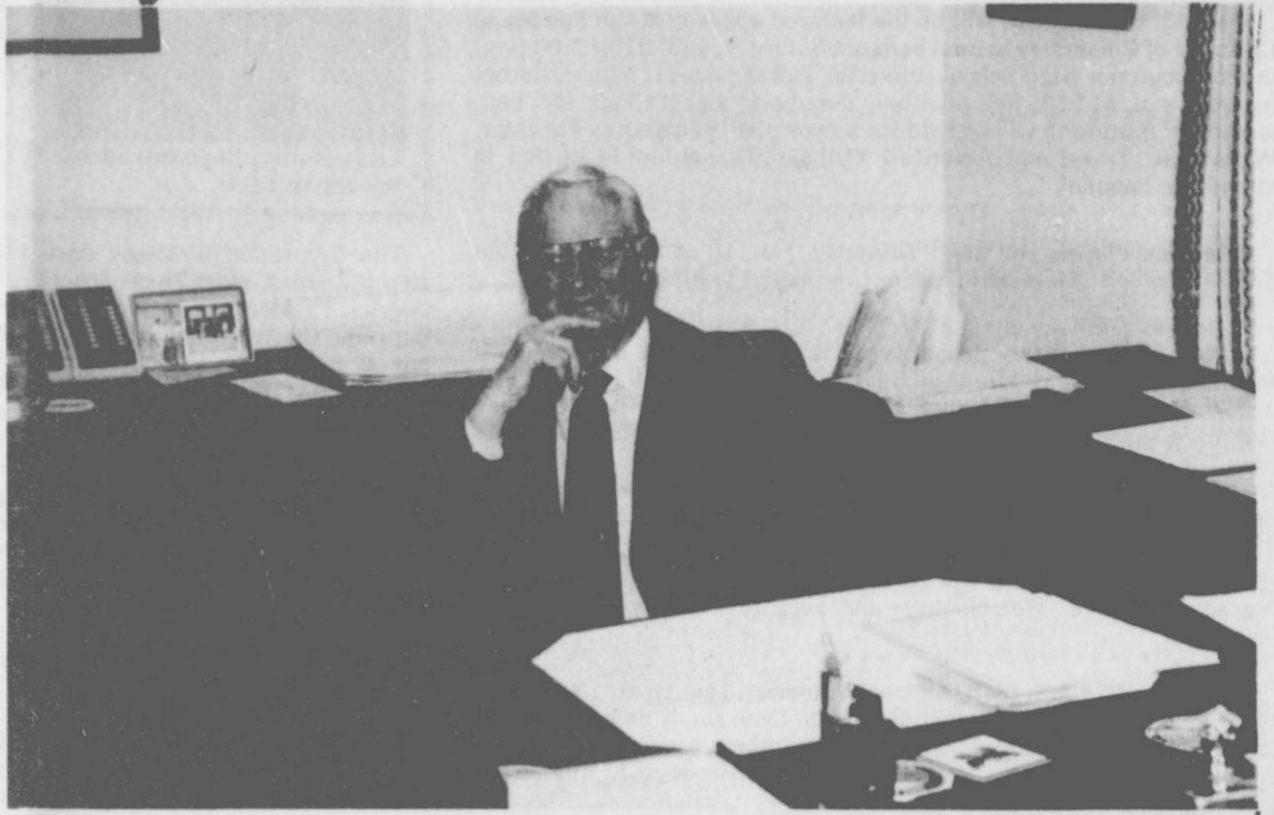
Following WW II, Garnett was converted from a torpedo officer to a Naval Ordnance Engineer. In this capacity he was assigned to various activities with responsibilities including production engineering, research and development, and test and evaluation of

undersea warfare systems. Specialized Navy training included Naval Electronics, Industrial Management, Guided Missiles and Nuclear Weapons.

On his last tour of Navy duty he was Commanding Officer of the Naval Undersea Warfare Engineering Station, Keyport, Wash. He is a retired Navy Captain. Prior to his last tour of duty he was assigned to the Naval Ordnance Systems Command, Washington, D.C. where he directed the research and development of undersea warfare missile systems. He also participated in the Navy's deep submergence project for a four year period.

In the coming years, Garnett plans to remain active as a consultant to the Vitro Corporation and several national organizations. He will continue to serve as National Secretary for the Naval Undersea Foundation, which is attempting to maintain an \$11 million museum at the Naval Undersea Warfare Engineering Station at Keyport, Wash.

Garnett is and will be a technical advisor to the American Defense Preparedness Association. He will continue his activities as a member of the Navy League.



1937 Spearman High School graduate Howard G. Garnett relaxes behind his desk on one of his last days at Vitro Corp. in Washington state before retiring the first of January.

The Hansford **Plainsman** 25¢ Per Copy 4 Pages

Volume 21, No. 11 YOUR HOMETOWN NEWSPAPER Sunday, January 14, 1990

Howard G. Garnett: High School Highlights for a 1937 Graduate

Best-remembered event: Quality of the teachers. They were very good, and inspiring. Playing center on the football team as a second-year letterman.

Favorite teacher or class: Mrs. Deacon as a math teacher, and science as a class.

High School activities: Football, track and the Senior Play.

High School jobs: I worked for Dr. Daily, the dentist.

Something learned not found in a book or classroom: Number one was getting along with people. The second was how to inspire people to do better, which in turn inspires yourself.

Pros and cons on Spearman High School: Spearman High School provided a very good background and inspiring teachers. I have no cons. All my memories are very pleasant ones.

| WEATHER | | | |
|---------|------|-----|---------|
| Day | High | Low | Precip. |
| Wed. | 77 | 37 | none |
| Thur. | 50 | 36 | |

Heart Association Sets Banquet

The Hansford County Chapter of American Heart Association is busy planning activities for February, which has been designated "Heart Month" by the AHA.

One of the activities scheduled is the Hansford Heart Association's banquet, set for Friday, Feb. 16 at 7:00 p.m. in the fellowship hall of the First Baptist Church in Gruver.

There are several committees

involved in preparations for this year's Heart Fund Raiser. Mary Dixon is serving as General Chairman for the event. The Food committee consists of June Barkley and Carla Gumfory. Tim Barkley is in charge of entertainment, and Steve Gaines will oversee the setting up of tables.

Invitations committee members include Teresa Barkley, Dorothy Haner, Margaret Ralston, Steve Gaines and Jim Brown. In charge of decorations are Judy Nelson

and Elaine Odegaard.

Auction items committee members are Sandy Russell and Don Smith, Spearman; and Tommy Joe and Charlotte Bergin and Corky Chapman, Gruver. The fund raiser is being underwritten by Teresa Barkley, Jim Turner and Mary Dixon.

All the hard working people in the Hansford Heart Association urge the residents of Hansford County to take part in Heart Month activities.



Kenneth Irwin of Gruver [right] became the first Gold Star Sponsor for the Hansford Heart Association's upcoming banquet by presenting a donation to Don Smith of Spearman [left], member of the Hansford Heart Association Board of Directors. Irwin, president and CEO of Gruver State Bank, and Smith both suffered serious heart attacks and recovered, prompting them to take particular interest in helping the Hansford Unit of the American Heart Association. At his doctor's insistence, Irwin had been hospitalized and was in an intensive care unit in Amarillo at the time of his massive heart attack. His presence in the hospital, coupled with the availability of a newly-developed drug, stopped the attack "in midstream." Irwin

was the first resident of Hansford County to reap the benefits of the new drug, and was the third patient in Amarillo to ever have received the drug, which is credited with saving his life. Smith was the recipient of a replacement aortic valve following his heart attack. Both men urge everyone to take care of their hearts, follow their doctor's advice and don't ignore warning signals of an impending heart attack. Hansford Heart Association's banquet is set for Friday, Feb. 16 at 7:00 p.m. at the First Baptist Church in Gruver. Other Hansford County residents interested in becoming either Gold Star or Silver Star Sponsors can contact Teresa Barkley at 733-2395, or Mary Dixon at Speartex Grain, 659-3711, during business hours.

Spearman Gets New Dog Pound

The Spearman City Council awarded a contract for construction of an animal control shelter and purchased a portable defibrillator at its Jan. 9 meeting.

Four bids were received for construction of the animal control shelter. The contract was awarded to the low bidder, Goff Construction of Amarillo, in the amount of \$66,000.

Expressing concern about the cost, Mayor Bob Pearson asked if any items could be omitted from the bidder's cost breakdown sheet. Tom Lavin, architect for the project, explained that Goff Construction's bid was modest and the only thing that could be cut would be some of the concrete work in the parking area.

Joe Raper, director of public safety, stated that the standards of the proposed animal shelter were those set by the Humane Society of the United States and recommended by the city council's ad hoc committee on the design of

the facility.

Jim Murray, city manager, stated that the construction cost would be financed on a lease purchase agreement through the First National Bank of Spearman. Projected completion date for the new "dog pound" is June 15, 1990.

At the previous council meeting, all bids for the purchase of a portable defibrillator had been rejected. Three bids were received by the council for the purchase of a "Life-Pak 10" defibrillator, which included one quote from Physio Control that was supplied by Al LaRochelle, hospital administrator.

Since the amount was lower than any of the bids that were previously rejected, the council decided to buy the defibrillator from Physio Control for a purchase price of \$7,613.00.

In other business, Mayor Pearson noted that the Spearman Independent School District had

requested financial support in defraying the maintenance cost of the tennis courts, since they are used by city residents. After discussion, the council decided to provide \$2,000 to the Spearman ISD to be used in maintaining the tennis courts.

Approval was given to minutes of the Dec. 12 and Dec. 18, 1989 city council meetings; to monthly fire, ambulance, police, municipal court and animal control reports for December; monthly bills payable in the amount of \$352,818.47; and to the October 1989 revenue and expense report.

Attending the meeting were Mayor Bob Pearson, Aldermen Wilson McClellan, Bob Boxwell, Mike Cudd, Burl Buchanan and Don Reed, City Manager Jim Murray, City Secretary Cheryl Gibson, Director of Public Safety Joe Raper, H&S EMS Director Michele Davis, Dwight L. Brandt of Brandt Engineers Inc., Tom Lavin of Lavin Associates and Jeff Lackey.

School Board Accepts Resignation

The Spearman school board accepted a resignation and extended an employment contract at its Jan. 8 regular meeting.

The Spearman Independent School District Board of Trustees accepted the resignation of Billie Haden, effective Friday, Jan. 19. The board also extended a three year contract to the Superintendent of Schools, Larry Butler.

In other business, the board approved minutes from the previous meeting, approved payment of bills and met in executive session to discuss personnel matters. No action was taken during the executive session.

Board members and officers attending the meeting included Phillip Renner, president; Charles

Shieldknight, vice president; Joe

Clement, secretary; and members Don Townsend, Mike Garnett, Tom Latta and Carolyn Gressett.

School officials attending were Larry Butler, superintendent; Allen Alford, business manager; Jim Kirkland, high school principal; Donnie Mitchell, C.T.A. representative; and Richard Olsen, middle school principal.

Phillip Renner, president; Charles

Oil, Gas Figures Announced

Oil and gas production figures for Hansford County during the month of October have been released by the Texas Railroad Commission.

According to RRC figures, Hansford County produced a total of 3,214,557 mcf (thousand cubic feet) of natural gas and 32,408 barrels of crude oil during October.

Statewide, Railroad Commission Chairman Kent Hance announced that Texas oil and gas wells produced 457,118,507 Mcf (thousand cubic feet) of gas in October, compared to the September gas production total of 438,178,660 Mcf. October's production was down three percent compared to October 1988's production of 471,678,212 Mcf. The state's top producing coun-

ties, rank ordered by preliminary October production were: Pecos, 26,724,693 Mcf; Webb, 24,196,041 Mcf; Zapata, 23,330,434 Mcf; Panola, 13,896,891 Mcf; Hidalgo, 13,594,557 Mcf; Crane, 12,856,603 Mcf; Hemphill, 9,407,440 Mcf; McMullen, 9,143,781 Mcf; Crockett, 8,168,155 Mcf; and Moore, 7,350,291 Mcf.

Texas gas production in October came from 185,763 oil wells and 46,055 gas wells.

Texas crude oil production averaged 1,738,774 barrels daily in October, according to preliminary figures. October 1988 preliminary crude production averaged 1,867,181 barrels daily.

This figure compares with preliminary September production of

1,744,425 barrels daily. Final production reports for September indicated average production at 1,757,707 barrels daily.

Hance said the preliminary Texas oil production figure for October is 53,902,002 barrels, up from 52,332,761 barrels in September. October 1988's preliminary Texas oil production was 57,882,623 barrels.

According to Hance the state's top producing counties, rank ordered by preliminary October production, were: Gaines, 3,625,827 barrels; Andrews, 3,248,510 barrels; Ector, 3,210,896 barrels; Yoakum, 2,868,321 barrels; Hockley, 2,659,053 barrels; Pecos, 2,513,171 barrels; Gregg, 2,402,613 barrels; Crane, 1,602,653 barrels; Scurry, 1,298,718 barrels; and Kent, 995,953 barrels.

Hansford Happenings

Stan White, humorist, will be the featured speaker at the **Spearman Chamber of Commerce annual banquet** Saturday, Jan. 27 at 7:00 p.m. in the Spearman High School cafeteria. Ticket prices for the chamber banquet are \$12.50 for chamber members and \$15.00 for non-members. A drawing will be held for a door prize donated by Pat Dear, Wheatheart Travel and American Airlines. The public is invited to attend the banquet.

Palo Duro Players will meet Thursday, Jan. 18 at 7:30 p.m. at the Activity Center. Interested persons are invited to attend.

Spearman Elementary School is starting the 1990-91 Kindergarten Students list. These children will be invited to visit school in April. It is important that next year's students be known now in order that they may be given information on the immunizations and other planning which is necessary. If you have a child or know of a child whose birthdate was prior to Sept. 1, 1985, and who will be 5 years old on or before Sept. 1, 1990, please contact the Spearman Elementary School

The **Hansford Gun Club** will have a meeting at Spearman City Hall Tuesday, Jan. 16. Memberships and keys to the new locks will be available.

The **Morse B.A.S.S. Club** will meet Thursday, Jan. 18 at 7:00 p.m. in the Morse Community Building. President Lynn Davis noted this is an important meeting and all B.A.S.S. Club members are urged to attend. He extended an invitation for all interested fishermen to attend the meeting.

Hansford Heart Association will host its annual fund raising banquet Friday, Feb. 16 at 7:00 p.m. at the First Baptist Church in Gruver. Anyone interested in becoming a Gold Star or Silver Star Sponsor for the Hansford Heart Association is encouraged to contact Teresa Barkley at 733-2395, or Mary Dixon (during office hours) at 659-3711.

Square dance lessons will begin Thursday, Jan. 18 at 8:00 p.m. at the county barn, sponsored by the Rainbows and Ranglers Square Dance Club of Spearman. Murry Beasley of Texhoma, Okla., club caller, will serve as teacher for the lessons, which are designed for beginners and for those who would like to refresh their dancing technique. At 7:00 p.m. each Thursday, experienced square dancers will have a chance to take "plus" lessons, which are more advanced patterns. More information is available from Joe and Wanda Archer at 659-3519 or Sorren and Marlane Nollner at 659-3465.

Hansford Activity Center will start men's basketball competition Jan. 22, 1990. Interested persons can call 659-2591 for more information, or go by the Activity Center.

Club News

SPEARMAN FFA NEWS

by Bob Shields

The first semester in the Spearman FFA Chapter has been very exciting.

The Chapter first sold sausage as a fund-raising project. Then the Chapter sold fruit as another fund-raiser. The sixth-period greenhand class helped the Chamber of Commerce replace light bulbs in the new Christmas ornaments downtown.

The Spearman FFA Chapter also attended the National FFA Convention in Kansas City, Missouri.

The Spearman Chapter has planned a ski trip to Red River, New Mexico at the Red River Ski Resort. The Chapter will leave January 12 and return on Monday, January 15.

FFA members are already looking forward to attending and showing animals at the Houston Livestock Show and Rodeo in Houston, Texas. The stock show is

sometime during Spring Break.

The Spearman FFA recently attended a horse judging clinic in Lubbock at the Texas Tech University campus. Those attending were Mark Eakin, Shanna DeArmond, L.I. Haubour, and Michael Close.

The Chapter would like to thank everyone for supporting the Spearman FFA Chapter in their fund-raising projects.

4-H CLUB

by Kevin Williams, Reporter

On Wednesday, Dec. 20, 1989, the Spearman and Gruver 4-H clubs held their annual joint Christmas party. At the start of the party, refreshments were served and the members enjoyed visiting with one another.

After everyone finished eating, the members went to the back of the barn and were divided into teams to play volleyball. They played volleyball until about 5:00, then everyone went to the Hansford Manor and sang Christmas carols for the residents.

The group was then dismissed after the caroling.

Jo's This 'N' That

Open Wed. - Sat.

1:00 to 4:00

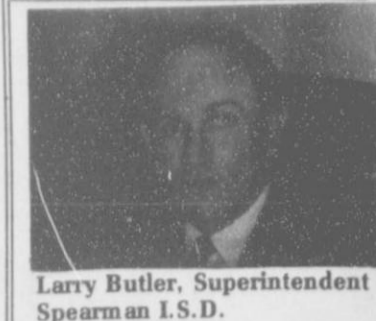
Something New

Every Day

All Hand Made

PHONE 659-3589 after 4:00

218 Main



Larry Butler, Superintendent Spearman I.S.D.

SISD Sayso

The Edgewood v. Kirby decision will affect every Texas school district. The decision by the Texas Supreme Court is fair in that it is our responsibility as school districts and citizens of Texas to ensure that every student has an opportunity to learn.

There are three basic issues that emerge from the court decision regarding the financing of public education. The first issue is that of equality. In this sense, it will bring a downgrading of existing innovative programs currently operating in many districts. Another concern is that equality funding will place additional economic burdens on districts and taxpayers. The third issue is that of possible consolidation of countywide tax bases, which could ultimately lead to the consolidation of school districts. A closer look at each of these issues will possibly shed light on what may eventually transpire.

The word equality throughout the legal process has created emotional and conflicting controversy. Very few educators in the state will tell you that equality is not necessary. The confrontation evolves when funds are extracted from some districts in order to provide additional funds to property poor districts. For many years school districts which have valued the education of their children have taxed accordingly to develop and maintain programs that produce educational excellence. Spearman I.S.D. is a good example of this approach. Now, there is a possibility funds received from the state to supplement the operation of such districts will be reduced to allow additional funding of districts such as Brownsville. This sounds very much like a Robin Hood approach! Our recourse will be to reduce programs or increase local taxes. Neither is a very palatable solution.

This now brings focus to the

second point, that of economic hardship on the local taxpayers. Approximately one-third of the Spearman I.S.D. budget comes from state funds. The other two-thirds comes from local taxes on oil, gas, minerals and pipelines, businesses, farms and ranches, and yes, homeowners. With the state leaders proposing plans that call for no new state monies, where do you suppose these funds for equality will be derived? Once again, locally, either through reducing our state funds or by forcing local taxpayers to bear the burden. This is the political way-out, not the statesman approach. Political offices become more important than what is right and democratic.

Spearman I.S.D. is not considered an extremely wealthy district, nor is it considered a poor district. Therefore, as the norm goes, the middle-class or those falling in the center of the controversy, will be the districts who receive the blow from Robin Hood (the state politicians). With formulas being developed as they currently are, Spearman I.S.D. will probably see a reduction in state funds. The reduction in state funds will come at a time when the district has dipped into the reserves for four consecutive years in an attempt to ease the burden on taxpayers. The bad news is that the reserves are drying up! To continue to provide the quality education the patrons of this community have provided will require yet another probing question. Are we willing to take on the burden of additional taxes for this purpose? The answer will come within the next few months!

Until that moment, be aware of what is taking place regarding financing public education. Communicate with our elected officials regarding your concerns and the approach many are taking in striving for the equality demanded by the courts.

Retired School Employees Meet

The Hansford County Retired School Employees Association members met Tuesday, Jan. 8 at 6 p.m. in the Spearman High School Library for a regular business meeting and a special slide presentation on Panhandle flora and fauna.

After a brief business meeting, during which the last meeting's minutes were read and approved and a treasurer's report made, guest speaker Rita Sell of Ochiltree County was introduced by James Cunningham. Sell is an amateur photographer who lives with her family along Wolf Creek and has a hobby of observing and photographing wildlife, flowers and trees on the land where she and her husband, Richard, have a cattle ranch.

Narrating her own slides, Sell showed pictures of animals, trees and wildflowers "to make others aware of and appreciate the beauty that is all around right here." Sell's slideshow opened with photographs of sunrise on Wolf Creek and closed with sunsets. Her text for both was scripture.

Some of the animals shown

included lark sparrows, blue quails, hawks, roadrunners, armadillos, Canadian geese, snakes, deer, a porcupine and buffalo. Sell had slides of rock formations called "Comanche Chief," "Indian Princess" and "Grandma Grundy." Some of the wildflowers in the slides were Indian blankets, Ingleman daisies, winecups, Mexican hats and tansy asters.

The next meeting of the Hansford County Retired School Employees Association will be Tuesday, Feb. 13 at 6 p.m. at Spearman High School. Visitors are cordially invited to attend.

Those present at last week's meeting included: President Orv Latham, Vice President Norma Holland, Secretary-Treasurer Wilma Clark, Program Chairman James Cunningham, Mr. and Mrs. G.W. Robinson, Mr. and Mrs. Stanley Freiks, Mr. and Mrs. Joe Traylor, Mr. and Mrs. Raymond Birchfield, Dorothy Roden, Olga Gafford, Altha Kirk, Worley Smith, and Faye Cunningham. Guests were Mr. and Mrs. Richard Sell, Myrna Biggers, Jean Ann Behney and Carol Short.



Mr. and Mrs. Don Dillow of Gruver announce the engagement and approaching marriage of their daughter, Rebecca Ann, to Jack Linnebur, son of Mr. and Mrs. Marvin Linnebur of Strasburg, Colo. The couple plans to exchange vows Saturday, Feb. 10 at 6:00 p.m. in the United Methodist Church of Gruver. A miscellaneous bridal shower is planned for Saturday, Jan. 20 from 2:00 p.m. to 3:30 p.m. in the home of Melba Rasor, 105 Van Kurt, in Gruver.

Crisis Center Reports

by Mary Frances Ellzey

You readers familiar with us may skip this paragraph, and start with the next one. The PCC offers services to men or women who are victims of domestic violence, whether verbal or physical. We give counseling, support and information to these victims, plus a shelter to those who feel themselves to be in danger at home. These services are free of charge. If you want information only, call us at the office from 9:00 a.m. to 5:00 p.m. We are also available for help at any time, 24 hours a day. Our number is 435-5008.

Hear ye! We now have a toll-free number: 1-800-753-5308. You can use this number any time of the day or night.

All right, are you ready for the year-end statistics? During 1989 we had 89 face-to-face clients; 39 clients, with 57 children at the Shelter; and 148 information and referral calls. For the five years of our existence, we've had 476 face-to-face clients; 156 clients with 235 children in the Shelter and 713 information and referral calls. Though not drinking rum from a coconut shell, we are certainly alive and well!

Our Mexican Pile-on will be

held Friday, Feb. 2 at the high school cafeteria, from 5:30 to 8:00 p.m. Be sure to attend this affair, for in addition to the delicious meal, you'll be helping us raise the money for financing the Panhandle Crisis Center. Without our fund raisers, we couldn't provide so many services.

Speaking of services - be sure to take advantage of the Parenting Classes. The second series of classes is already in operation, and had an excellent turnout for its beginning. A father who had attended the first series told us that he has been telling every father he meets about the excellence of the classes. The fathers who attended this first class of the second series said that it was the most profitable two hours they had spent in a long time.

John and Theresa Copeland, the counselors at the high school and the elementary schools, respectively, are planning to begin yet another series to be held at the Baptist Church in mid-February, complete with baby-sitting services. Be sure to call the PCC as soon as possible so appropriate arrangements can be made. Use the 800 number if you are outside Ochiltree County. Otherwise use the local number.

You'll be glad you did!

Reed Honored

Hadley D. Reed of Spearman was singled out by his major professor as an Outstanding Departmental Graduate at Tarleton State University in Stephenville, Texas.

Reed was one of only seven members of the December 1989 graduating class at Tarleton State University recognized during commencement exercises held Saturday, Dec. 16, 1989. Reed received the honor for his academic performance in the Animal Sciences department.

In addition to being named as the Departmental Outstanding Graduate, Reed was graduated with honors and has been named to **Who's Who Among Students in American Universities and Colleges**.

At the graduation exercises, Reed received a Bachelor of Science degree in Horse Production and Management.

Travis Earl Patterson, also of Spearman, received a Bachelor of Science degree in Agricultural Business during the December graduation exercises.

THANK YOU

To the wonderful caring people of the Spearman and Gruver Area, Dr. Behney and the staff at Hansford Hospital who did everything they could, and to the ambulance crew, who stayed with us until Kathy was no longer here, we would like to say "Thank You."

Words cannot express how we feel about all of you whose caring phone calls, beautiful flowers, and lovely cards with comforting words made our burden a little easier to bear. We will always remember the many kindnesses as we will always remember our wonderful Kathy.

Johnny and Ann Stepp
Cheryl and Terrell Evans
Lisa and D'Wayne Cross
Carla Camper



People believe if you sprinkle salt on the tail of a bird, you will have good luck.

Ms. P's Boutique

601 W. 3rd
Borger, Texas



BETTER SERVICE FOR YOUR HEARING AID...

...MEANS BETTER HEARING FOR YOU.

Ask For FREE Hearing Test

Be sure to visit our next Service Center.

Thursday, Jan. 18, 1990

Hansford Nursing Center
707 S. Roland
Spearman, Texas
10:00 a.m. - 12:00 Noon

Golden Spread Hearing Aid

Formerly Beltone
27-B Medical Dr
Amarillo 352-8961

Senior Citizens \$1 Hearing Test

Thursday, January 18

Testing - 11 a.m. to 4 p.m.

If you have trouble hearing or understanding, this Test [which uses the latest electronic equipment] will determine your particular loss. Test is performed by State Licensed Hearing Aid personnel. You will see a hearing Aid so tiny it fits totally within the ear.

West Texas Miracle-Ear Center
Corner Drug
122 South Main Perryton
435-3637 Call for Appointment to Avoid Waiting

The Hansford Plainsman

Your Hometown Newspaper

USPS 2346-6000
213 Main, Box 458, 659-3434
Spearman, TX 79081

Published Weekly at
213 Main, Spearman, Texas

Owned and Operated by:
Texas Independent Newspapers, Inc.
19906 Encino Grove
San Antonio, TX 78259
Second Class postage paid at
Spearman, Texas 79081.

Any erroneous reflection upon the character of any person or firm appearing in these pages will be gladly and promptly corrected upon being brought to the attention of the management.

Publisher - Robert M. Hulett
Copy Editor - JoAnn Morton
Bookkeeper - Cayla Eaton

Subscription Rate: Hansford County, combination with the **Spearman Reporter** \$19.95; out of county, \$24.95 annually.

Postmaster: Send address changes to **Hansford Plainsman**, Box 458, Spearman, TX 79081.

The publisher reserves the right to revise or reject at its option any advertisement which it deems objectionable, either in subject or phraseology, or which it may deem detrimental to its business.

Advertising and Story Deadlines: Monday 12:00 p.m. for **Spearman Reporter**, Thursday 12:00 p.m. for **Hansford Plainsman**.

TEXAS PRESS ASSOCIATION MEMBER

CLASSIFIEDS School Lunch Menu

HIGH SCHOOL MENU
January 15 - January 19

JR. HIGH-ELEMENTARY MENU
January 15 - January 19

MONDAY NO SCHOOL
TUESDAY PIZZA
FRIED ZUCCHINI STICKS
SALAD BAR
SPICE CAKE
MILK
WEDNESDAY HAMBURGER
FRIES
SALAD BAR
COOKIE
MILK
THURSDAY FISH NUGGETS
BUTTERED FLORENTINE MIX
SALAD BAR
YEAST BATTER BREAD
FRUIT
MILK
FRIDAY FOOT LONGS
BUTTERED BABY LIMA BEANS
SALAD BAR
FRUIT COBBLER
MILK

MONDAY NO SCHOOL
TUESDAY PIZZA
FRIED ZUCCHINI STICKS
LETTUCE SALAD
SPICE CAKE
MILK
WEDNESDAY HAMBURGER
FRIES
LETTUCE - TOMATO
PICKLE - ONION
COOKIE
MILK
THURSDAY CREAMED TURKEY OVER NOODLES
CUT BROCCOLI
PICKLED BEETS
YEAST BATTER BREAD
FRUIT
MILK
FRIDAY CHILI DOG
GRATED CHEESE CUP
DICED ONIONS
BUTTERED BABY LIMA BEANS
FRUIT COBBLER
MILK

Basketball Roundup

VARSITY LYNX

The Spearman Lynx varsity boys basketball team lost their first district game Jan. 9 against Boys Ranch. Final score in the game was 54-69. Scoring for the Lynx varsity were
Chad Riggins 12
Shawn Tanner 8
Brian Beck 6
Alan Howell 6
Timmy Kizziar 5
Cody Pipkin 4
Dallas Trospen 4
Clint DeArmond 4
Joel Shields 3
Chris Strawn 2

JV LYNX
The JV Lynx were defeated by Boys Ranch JV Jan. 9, by a score of 53-68. Lynx junior varsity team members scoring included
Russell Shaver 18
Ross Jarvis 13
Justin Boyd 8
Darian Hawkins 7
Kris Kelp 5
Brian Kidder 2

LYNXETTE JV

The junior varsity Lynxette basketball team defeated the Guymon, Okla. JV girls by a score of 31-22. JV Lynxettes scoring were
Cindy Melton 9
Michelle Garnett 8
Lori Lieb 4
Melody Schumann 4
Gwen Benson 2
Sonya Nitschke 2
Shannon Holton 2

VARSITY LYNXETTES

The Lynxette varsity girls basketball team defeated the Guymon girls varsity team by a score of 40-36. The victory brings the Lynxette season record to 13-9. Scoring for the Lynxettes against Guymon were
Vonda Benson 14
Michelle Cook 13
Jill Lusby 4
Kyla Nelson 3
Bonnie Thompson 3
Mendy Lasater 2
Tamri Townsen 2

REAL ESTATE

FOR SALE 3 bedroom, 2 bath home Fireplace, large living area, drapes, mini-blinds, completely remodeled and large deck patio. Nice neighborhood. 1110 S. Barkley. Call 659-3800. S36-rtm

FOR SALE: 3955 Sq. ft. beautiful country home, 3 BR, office, lots of built-ins, fireplace, double car garage, work bench, landscaped yard, sprinkler system. Call 659-2881 or, if no answer, call 659-3151. S07-8tp

FOR SALE: 3 bedroom, 2 bath home. Sunken living room, parquet floors, fireplace, covered patio, 2 car garage, sprinkler system, 2193 sq. ft. living space, excellent location. Call 659-3587 or 659-5022. S33-RTn

FOR SALE: 1 Metal Building and Property 35' x 50' - 1 Large Cinder Block Building and Property 3000 sq. ft. Contact: First State Bank, Box 247, Spearman 659-5565. S29-RTN

HOUSE FOR SALE 3 Bdr., 2 Bath, Central Heat & Air, Call 659-3096. S07RTN

MISC. FOR SALE

FOR SALE: 1980 Amberbrook 12 x 60 2 bedroom Mobile Home, Central Heat and Air. Skirted, front porch, Nice Home. \$5,950.00 Call (806) 352-8380. S11S-3tp

PIANO FOR SALE
Wanted responsible party to assume small monthly payments on piano. See locally Call Credit Manager at 1-800-233-8663 S07S-9tp

PETS

FOR SALE: Registered male Lhasa Apso. 8 months old. Call 659-3944 after 5 p.m. S11S-2tc

BUSINESS OPPORTUNITIES

AVON PRODUCTS
NO TERRITORY REQUIRED
\$5 INVESTMENT
FREE KIT - FREE GIFT
CALL 806-373-AVON
S44 1tc RTN (Sunday only)



NOTICE
Wallace Monument Co.
Monuments, Curbings,
Grave Covers
Local Representative
LEONARD JAMESON
Spearman, Texas
35s-rtm

OSGOOD MONUMENT CO.

Amarillo, Texas
Dealers of Rock of Ages
Granite, as well as all colored
granites, marble and bronze
memorials.

represented by
BOXWELL BROS.
FUNERAL HOME

519 S. Evans
659-3802

LOST & FOUND

LOST: Black miniature poodle. Responds to the name of Kashus. If found please call 354-0634 or local 659-2765. S11-2T N/C

FOR RENT

TRAILER SPACE FOR RENT: in Spearman, \$50 a month. Call 435-5080. S43S-RTN

HELP WANTED

HELP WANTED: Maintenance Supervisor for Spearman Independent School District. Experience in trades is necessary. Salary negotiable. Contact Spearman I.S.D., 403 E. 11th Avenue, Spearman, Texas 79081. (806) 659-3233. S11S-4tc

HELP NEEDED - Four workers to clean brick. Call 806-374-1481 collect. Tascosa Brick. S10-4tc

NEED 3 PERSONS THAT WANT to work to replace 3 that didn't. Up to 50% commission. No initial investment. No Quotas, territory or non-territory. Avon representatives NEEDED NOW. Call: Billie 857-3772. S10S-7tc

HELP WANTED: Full time parts man wanted. Experience required Apply in person at High Plains Auto Supply, 118 Main. S11 RTN

SALES PERSON WANTED

THE SPEARMAN REPORTER HANSFORD PLAINSMAN, AND GRUVER STATESMAN NEED A SALES PERSON. FOR MORE INFORMATION CONTACT THE REPORTER AT 659-3434.

SERVICES

Are You A Victim of Physical Abuse?

Call Toll Free
1-800-753-5308
Trained counselors can help you on the road to an abuse-free life. We also operate a safe place for victims and their children to stay in times of crisis.

Panhandle Crisis Center
Serving Lipscomb, Hansford and Ochiltree Counties
315 1/2 S. Main
SUNGLY Perryton, TX. RTN

DPS Gives Accident Stats

Capt. Rusty Davis, District Supervisor of the Amarillo Highway Patrol District comprised of 31 counties said, "For the month of November, our troopers investigated five fatal accidents, 55 personal injury accidents, and 91 property damage accidents. There were 5 persons killed and 89 persons injured in these accidents."

Sgt. Timothy Thompson of Berger stated, "In Hansford County, our troopers investigated no fatal accidents, one personal injury accident, and no property damage accidents in the month of November. No persons were killed and two persons were injured in these accidents."

TRANSPORTATION SERVICES

PHONE: 659-3866

- *SHOPPING & PERSONAL
- *MEDICAL
- *SOCIAL
- *SENIOR CENTERS
- *SPECIALIZED SERVICES



PANHANDLE TRANSIT
PANHANDLE COMMUNITY SERVICES
1-800-727-2778



First Christian Church

Spiritually Speaking

by Sandy Russell
First Christian Church

It may be hard for an egg to turn into a bird. It would be a jolly sight harder for it to learn to fly while remaining an egg. We're like eggs. We can't go on indefinitely being just an ordinary, decent egg. We must be hatched or go bad, says C.S. Lewis.

And so it is with Christians. It is not enough for us to say WE ARE ... we must do what Christians do. We must fulfill the ultimate goal for which we were created. We must not remain ordinary "eggs" in our Christian life, we must mature and become what God created us to become.

Luke closes his gospel by recording the risen Christ as saying, "You are witness of these things." The word witness may be used with two obviously different meanings. If you go to a courtroom tomorrow where a trial was in progress, you could take your seat in the spectators' section and thereby become a witness of the trial. But up near the judge's bench and the jury box is a seat reserved for those who give testimony. It is called the witness chair. Those who take that seat are not mere witnesses of the trial. They are witnesses at the trial! They are, in the words of the risen Christ, witnesses, who testify. That is the word our Lord would say to us today. Testify of God's Presence in your life and in our world.

"If we want our neighbors to see what God is like, let them see what He can make you like." - C. Kingsley. Perhaps that is the truest witness we can make for or against Christ. No one is truly won to Christ unless his personality is reaching out to bring others into the experience of also knowing God through Christ. It is incredible that we can possess the real thing and keep it as dark as some of us keep our religion. A chill falls upon the Spirit if one contemplates what would have happened if the earliest Christians had done no more to spread this experience than we have done, says Leslie D. Weatherhead.

"All Christians must be in the ministry, whatever their occupation, because a non-witnessing

follower of Christ is a contradiction in terms." - Elton Trueblood.

With our lives we must witness for Christ. We must love as Christ loved. Christian love is not something vague and general, but specific and practical. It is not love of an idea or principle. It is love of people, not people in general, but individuals one by one. The good Samaritan did not go home and form a committee or write a letter to the local newspaper or call one of the organized charities. He changed his own plans, interrupted his journey, and used his own resources to put his love into action right then. Perhaps we may think that an act of this kind is a little thing, but such an act as this is contagious and spreads like wild fire in dry grass. The story of the Good Samaritan is probably one of the first Bible stories you can remember. It's one of the first "be likes" that we are taught, "Be like the Good Samaritan." "Do unto others, as you would have them do unto you." And we can be sure our acts of kindness, of concern, of love, are truly a witness for Christ. Every word of encouragement is a witness for Christ. Each "second mile" effort for others is a witness for Christ. And by the same token, every kind act not committed, every word of encouragement not spoken, gives its own witness, not of Christ but of selfish mankind. It has been said, "It is never too soon to do a kindness, you never know how soon it will be too late."

In this New Year, bright with promise, let us resolve to be witnesses for Christ. Let us not be spectators of the events of Christian history, let us be witnesses of it and of the present and of the future filled with the promises of our Lord. Let us share, not only stories we have heard and read, but let us share prayers answered, days lived in the strength of God, promises fulfilled in our lifetime, hope and assurance of our future with Christ.

May we not be content to be just ordinary, decent eggs, but let us "hatch" and mature into what God would have us become ... followers, Disciples of Christ, who worship and witness to His Presence in our daily lives.

HINTS FOR HOMEOWNERS

Pleasanter Pools
Anyone who's been near a pool knows what chlorine smells like. The strong odor is the result of waste products which combine with chlorine to form compounds called chloramines.



Most people believe that chlorine odor, plus skin and eye irritation, are a "necessary evil" that comes with the enjoyment of swimming in a sanitized pool. That, however, is not the case.

Now, due to the development of bromine-base sanitizers, swimming can be the pleasure it's meant to be. Recently-developed bromine pool and spa chemicals provide all the sanitizing benefits of chlorine, yet are odorless and don't irritate the eyes or sinuses. Brominated sanitizers containing Clorfree™, a new additive introduced by Hydrotech Chemical Corporation, have been demonstrated to be one of the most effective and easiest ways available today of keeping pools sanitized.

Obituary

Ray Henry Dunaway
DECATUR, Texas - Ray Henry Dunaway of Alvord, father of Ronald Dunaway of Spearman, died Monday, Jan. 8 at a Bowie, Texas hospital. He was 78.

Mr. Dunaway was born in Belcherville, Montague County, and had lived in Alvord for many years. He was retired and was a member of Alvord First United Methodist Church.

In addition to his son Ronald, he is survived by his wife, Victoria

Dunaway of Alvord; two other sons, Kenneth Dunaway and Leonard Dunaway, both of Alvord; two sisters, Laura Ellen McMahan of Waxahachie and Lucille Huffman of Wichita Falls; nine grandchildren; and three great-grandchildren.

Funeral services were conducted Wednesday, Jan. 10 from Alvord First United Methodist Church. Burial was in Alvord Cemetery.

FEET HURT?

Dr. Patrick Crawford
(Podiatrist/Foot Specialist)

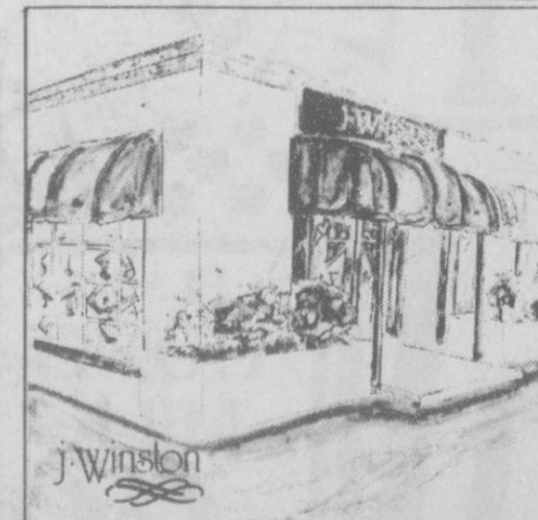
Now treating all types of foot disorders including:

- CORNS HEEL PAIN NAIL PROBLEMS BUNIONS
- CALLUSES FOOT INJURIES WARTS HAMMERTOES

2913 S. Georgia AMARILLO 1-800-658-2006

Offices also in BORGER and PAMPA

\$10 OFF WITH THIS AD



J. Winston
Women's Fashion
2701 Paramount
Amarillo, 358-2457
Mastercard and Visa Welcome

Fall & Winter Sale

30-75% Off



January BONUS

PRICES GOOD THRU JAN. 20TH IN PERRYTON

Grocery

DEL MONTE VEGETABLES
 • GOLDEN CORN WK OR CREAM
 • CUT GREEN BEANS REG. OR FRENCH

2 16-17 OZ. FOR **.89**

PEPSI
 ALL VARIETIES 6/12 OZ. CANS **\$1.49**

FINE FARE VANILLA WAFERS
 12 OZ. **.69**

FINE FARE GRAPE JAM OR JELLY
 32 OZ. **\$1.29**

KELLOGG'S FROSTED FLAKES
 25 OZ. **\$2.99**

the personal touch
KRAFT MIRACLE WHIP
 ASST. 32 OZ. **\$1.59**

NO SALES TO DEALERS • QUANTITY RIGHTS RESERVED

FINE FARE SHELLS & CHEESE DINNER
 10 OZ. **.99**

PREGO SPAGHETTI SAUCE
 ASST. 32 OZ. **\$1.29**

DEL MONTE FRUIT
 • FRUIT COCKTAIL • PEARS
 • YELLOW CLING PEACHES SLICED OR HALVES
 REG. OR LITE 16-17 OZ. **.79**

GOLD MEDAL FLOUR
 REG. 5 LB. BAG **.99**

Nonfood

BOUNTY TOWELS
 JUMBO ROLL **.79**

CHARMIN BATH TISSUE
 ASST. 4 ROLL **.99**

CREST TOOTHPASTE
 6.4 OZ. TUBE **\$1.59**

MANAGER SPECIAL

DISTILLED OR DRINKING WATER
 YOUR JUG **.39** GAL.
 FROM PURE WATER MACHINE

Frozen BANQUET DINNERS
 • CHICKEN • SALISBURY STEAK • MEAT LOAF
 • TURKEY • ITALIAN • WESTERN • CHOPPED BEEF

.99

HORMEL BLACK LABEL BACON
 • REG. • LOW SALT • MESQUITE

1 LB. PKG. **\$1.78**

Produce

SWEET YELLOW ONIONS
5 LBS. **\$1.19**

TONY'S PIZZA
 ASST. 15.3 - 17.5 OZ. **\$1.89**

HORMEL LITTLE SIZZLERS
 12 OZ. PKG. **.79**

WASHINGTON D'ANJOU PEARS GREEN
2 LBS. **\$1.19**

Dairy PLAINS HOMO MILK
 1/2 GAL. **.99**

FINE FARE BISCUITS
 SWEET OR BUTTERMILK 7.5 OZ.
6 FOR **\$1.19**

HORMEL OLD SMOKEHOUSE SMOKED SAUSAGE
 REG. OR MESQUITE
 LB. **\$1.98**

HORMEL PILLOW PAK PEPPERONI
 8 OZ. PKG. **\$1.98**