

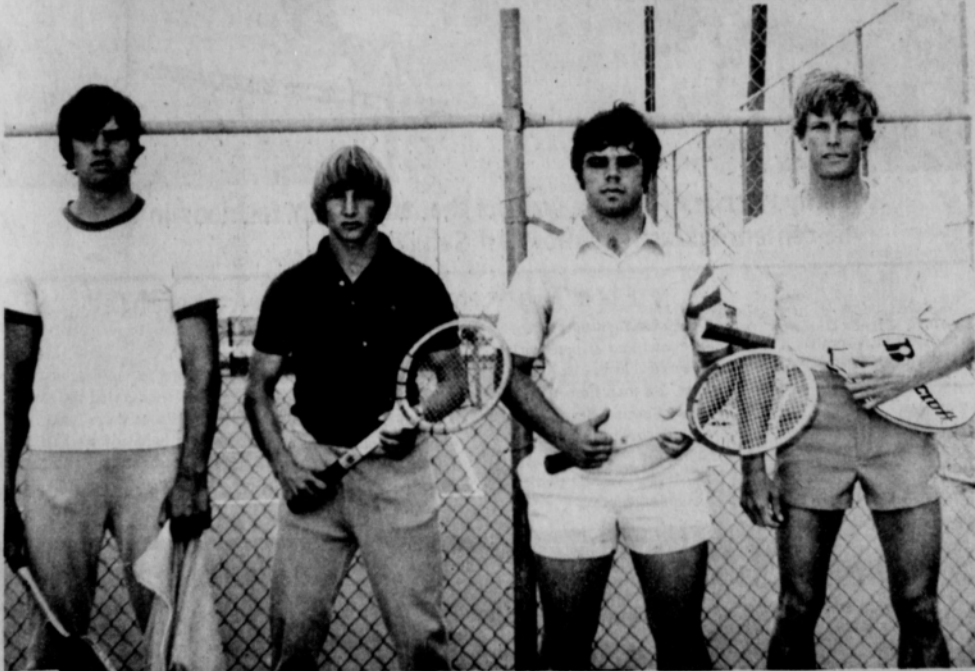
News

The Hansford Plainsman

VOLUME 7, NO. 24

THE HANSFORD PLAINSMAN, SPEARMAN, TEXAS 79081

SUNDAY, APRIL 11, 1976



The Doubles Champs, Jeff Beedy and Mark Cunningham, won their district 1-AA championship 6-1, 6-3, in a rather easy win over Jim Bob Matthews and Lawrence Loveday of Dalhart. Alternate for first place doubles player is Terry Latham. Singles champion is Artie Leubetter of Dalhart, who defeated Ronnie Ramirez of Dalhart 6-2, 6-3. Alternate singles representative for district 1-AA is Darrel Downey of Phillips or Tony Bonner of Panhandle.



Doubles champions, Shelly Schuman and Janyth Lackey are pictured above, as they won the district 1-AA girls doubles championship. Alternate for first place doubles is Glenda Cook. Alternates for second place doubles are Teresa Booth and Lori McAdams, with Anette Littlejohn second place doubles alternate.



Singles champion of the district 1-AA girls division is Rajan Martin. Miss Martin won the championship with a 6-1, 5-7, 6-3 battle over Lynn Bryan of Panhandle. Alternates for the district 1-AA singles include Connie Chilton of Phillips or Glenda Cook of Spearman.

HUD Turns Down Funds For City

An application by the City of Spearman to the Department of Housing and Urban Development (HUD) funds in the amount of \$100,000 has been turned down.

According to acting city manager Mark Neff, the application was made in an attempt to help finance the additional \$217,800 needed for the city's portion of the Economic Development Authority grant to be used to rework

the gas system and drill additional water wells for the city.

The EDA grant will be for \$322,200 and the city will need to finance an additional \$217,800.

Neighboring cities of Gruver and Perryton were one of five towns whose applications to HUD were approved. Gruver had applied for \$100,000 for street improvements and Perryton applied for \$150,000 for street and utility system improvements.

K.I.D.S. Preparing For All Day Relays

K. I. D. S. is now preparing for the All Day Relays to be held in Amarillo April 24th.

The boys and girls are all registered and have been given their K. I. D. S. tee shirts, bearing the KIDS emblem and a number.

Leaders of K. I. D. S. would like to have more children participate in the activities offered. It is NOT late to sign up.

Also anyone interested in helping or coaching is asked to contact Captain Charles Littlejohn.

K. I. D. S. meet Mondays and Fridays in hour long meetings for different age groups between 3:00 P. M. and 5:00 P. M. with the exception of Kindergarten and first grade girls, who meet Mondays and Thursdays between 3:00 and 4:00 P. M.

FUND STARTED AT BANK FOR JOHN COOK

A fund for John Cook, of Spearman, son of Mr. and Mrs. Carroll Cook, has been started at the First State Bank. The young Spearman boy is awaiting surgery, at High Plains Baptist in Amarillo. Several people in town have expressed a desire to help with the medical and personal expense that will incur in the near future. Anyone interested in donating to the John Cook Fund, contact Paul Hazelwood at the bank, or Susie Hand, 659-3311.

Fire-Ettes Plan Country Store

The Spearman Volunteer Fire-ettes held their regular meeting Tuesday night, April 6, in the home of Nancy Phillips. Treasurer's report was given showing a balance of \$949.84 in the fire truck fund.

Fire-ettes decided to keep their volleyball team in the event that another tournament will be held in Spearman. The possibility of forming a pump-truck for the Amarillo Fire-ettes was discussed, but no action was taken at this time. The main item of business was discussion of the

Country Store to be held at the end of the month. This will include baked goods, hand-made items, and a rummage sale. Work days were set up during the month to prepare for the Country Store. Refreshments were served by hostess Nancy Phillips to members: Peggy Woodington, Kathy Brown, Shirley Messer, Vicki Bullard, Kathy Slater, Sherry Brand, Bev Antalek, Priscilla Rigdon and Jimmie Riggins. Next meeting will be held May 4 in the home of Jimmie Riggins.

Presbyterians Plan Holy Week Services

Special Holy Week services will be held at the First Presbyterian Church, Palm Sunday through Good Friday, even night at 8:00 p.m. The Rev. pastor, the Rev. Edward D. Freeman, will be speaking each evening. All services are open to the general public.

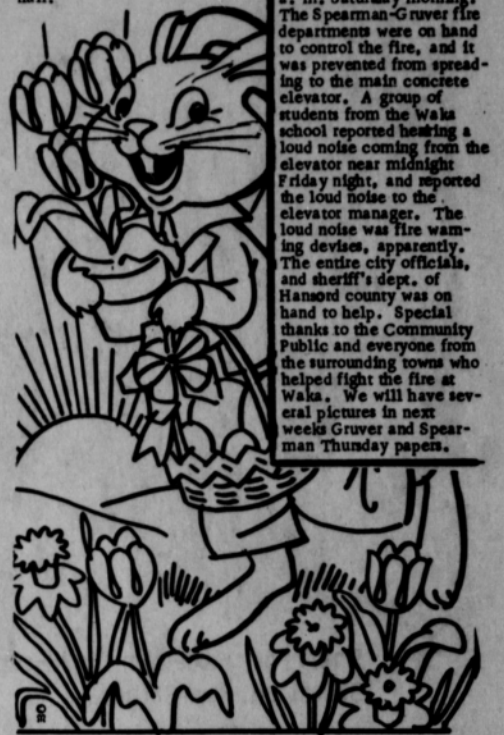
Wednesday evening's service will be a preparatory for communion. The Lord's Supper will be celebrated at the Maundy Thursday service. The Good Friday service will include some original music.

C of C Fun Breakfast Thursday

Have you got the IRS Blues??? Attend the Chamber "Fun" Breakfast, Thursday, April 15 at the County Show Barn and laugh your troubles away. The breakfast will be served from 6:30 to 7 a.m. and fun, games and entertainment will be from 7 to 8 a.m.

The Easter Bunny will be present to give away Lucky Eggs to those attending. If you are a member of the Chamber and your name is drawn you will win \$75.00.

BULLETIN: Swearing in ceremonies for the newly elected city officials will be Monday night at city hall.



Early Easter morning, and well on his way, Hops Mr. Bunny with goodies for the day.

The Spearman Jaycees will sponsor an Easter Egg Hunt Saturday morning, April 17th. The Hunt will begin at 9:30 A. M. The Hunt will be held at the Fred Groves home one and one half miles West of Spearman, on the Gruver highway.

There will be 2 age groups in the Hunt; pre-schoolers and 1st to 4th grade. There will be prizes for each age group.

Community Musical Rehearsal Scheduled

The Spearman Ministerial Association set Monday, April 12 at 8:00 pm as the first meeting for a community musical choir to sing the program "I Love America" at our July 4th Bicentennial. Glen Harris, Gruver, who is the musical director at the First Baptist Church here in Spearman will direct the musical.

The meeting will be held at the First Baptist Church in order to organize the group and begin the work of learning the music. The books are to be bought by

those who sing and will cost \$3 each. We know that not all who wish to sing will be able to be at the first practice, so you will have to watch this paper for the schedule of further practices. The exact day of practice for each week will have to be determined by the group as they meet. This is not limited to members of choir groups in Spearman, but is open to all who wish to have a part in this special Bicentennial Musical which will be presented during the day on Sunday, July 4th.

Community Good Friday Service Set

One of the most important events in the life of Jesus took place on this day many years ago. He placed His whole life in the trust of God as He went to Calvary. He expressed love at its fullness by dying on the cross for the sins of the world.

The Good Friday Service for this community will be held April 16 at 1:00 p.m. in the First Christian Church. This is an effort on the part of the Spearman Ministerial Alliance

to show the real meaning of this day and the season of the year. We encourage everyone to come partake of the Word.

Members of the Alliance will lead the worship service.

The Chamber of Commerce has asked all local merchants to close their businesses during this hour of worship and to come share in the service.

Won't you take time to remember Good Friday?

Former Resident Dies In California

Funeral services for James Floyd May, 81, of El Cajon, California were held March 21.

Floyd May was well known in this community. He was a native Texan but had been a California resident 23 years.

Mass was said in the The Lady of Perpetual

Help Roman Catholic Church at El Cajon, California.

He was a Veteran of World War I and a member of Woodmen of the World.

Survivors include his widow Julia, a daughter, Mrs. Sammy McNulty of El Cajon, a brother, Lewis of San Diego, two sisters, Mrs. Gertrude Hogan of Hesperia, California and Mrs. F. O. Crawford of Spearman.

Services Held For Former Teacher

Services were held at 2 p.m. Saturday at Lemons Memorial Chapel in Plainview for Miss Sammie E. Roach, 80, a former school teacher in Spearman Schools.

Dr. Carlos McLeod, pastor of First Baptist Church, officiated. Burial was in Plainview Cemetery.

Miss Roach was a native of Alabama and a retired school teacher. She moved to Plainview from Dumas in 1943 and taught in the Hale Center schools many years. She was a member of First Baptist Church.

Survivors include two brothers, Paul of Plainview and C. L. of Texhoma, Okla.; one sister, Mrs. Evelyn Barker of Plainview; and several nieces and nephews.

LL Ladies Auxiliary Plans Meet

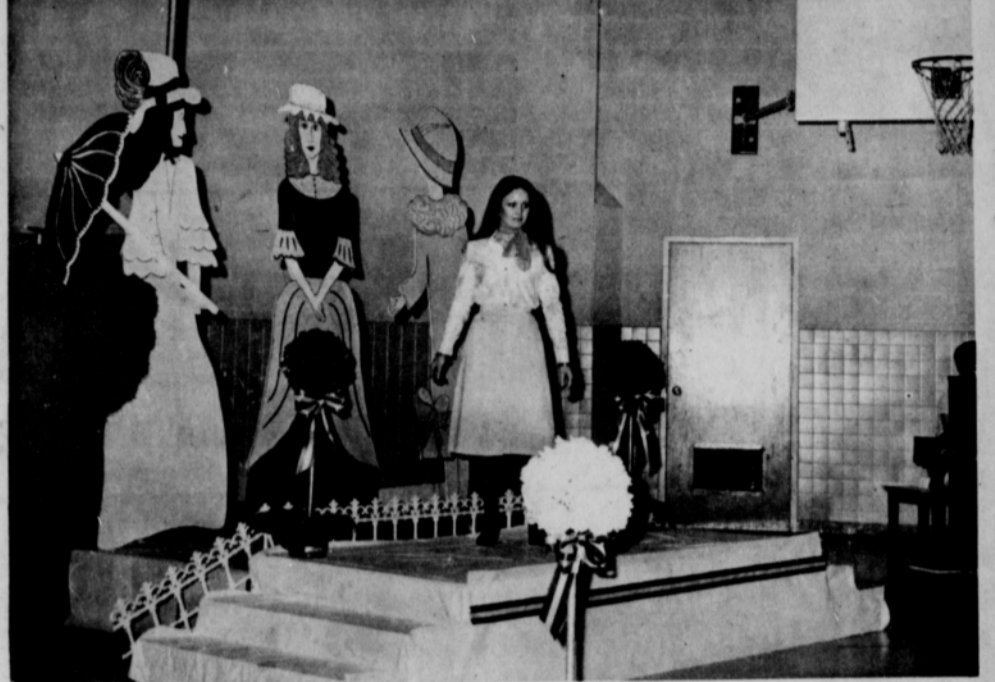
The Little League Ladies Auxiliary will meet Monday, April 12th at 7:00 P. M. in the home of Vicki Bullard, 210 E. 3rd Street. Anyone interested in Little League and especially mothers of the players are asked to attend. If unable to attend but you are interested or if you have any questions, please call Vicki Bullard, 659-3319.

MARKETS

WHEAT	\$5.60
CORN	2.58
MLO	4.15



Shari Fox, models in the bi-centennial fashion show, held in Spearman, last Saturday.



Kathy Harrison, models some of the latest TG&Y fashions in the bi-centennial fashion show last Saturday.

Style Show & Luncheon Well Attended

The Spearman Study Club hosted a Bi-centennial Style Show and Luncheon Saturday, April 3rd in the High School Cafeteria.

Stores furnishing clothes and models for the style show were: Baker's Department Store, Bunkhouse, Cates Men's Wear, Chambers, Lady Fair, L.I. Lynx, Massads, Sacks and TG&Y.

Bi-centennial fashions were furnished by Mrs. F. J. Hoskins, Vera Campbell, Mrs. Tom Sutton, Mrs. F. J. Dally, Mrs. George Buzzard, Lucille Crawford, Gwendolyn Lackey and Hester Crawford.

Door prizes, furnished by participating merchants were won by: Joan Parker, Shirley Bell, Elizabeth Holton, Mrs. Byron Kenney, Mrs. Troy Sloan, Mrs. Olin Sheets, Nellie Buchanan, Joyce Shield-knight and Velma Shoemaker.

The style show and luncheon was well attended

DALHART GIRLS WIN DISTRICT I-AA TITLE

The Dalhart girls won the District I-AA girls title. First and second place medalist winners, however, went to Spearman, as Carla Harper shot a 357, and Willetta Shelton a 427.

Members of the Spearman girls golf team are Cindy Crawford, Paula Hunter, Carla Harper and Willetta Shelton.

Members of the championship Dalhart team are Debbie Tow, Kay Carter and Lolly Gossett.

Other Spearman team members are Stephanie Floyd, Jan Buchanan, Sherisse Partridge and Rene Combest.

by 170 to 200 persons. A delicious luncheon of salads, casseroles and home-made rolls was furnished by members of the Spearman Study Club. Approximately \$600.00, before expenses, was taken in. The money will be used for Spearman activities.

The club would like to thank all the stores and their models who participated, and also the school and employees for the use of the school and for the janitorial services.

DISTRICT I-AA TENNIS MEET

In the boys singles meet, Troy Rojas of Dalhart won the singles Junior championship. Winners in the girls singles was Pam Largent of Spearman who won over Tina Cochran of Spearman in a thriller, 6-7, 7-5, 7-5! These two Spearman girls were just terrific!

Equally impressive were the girls doubles champions, Vernon-Oakes, of Spearman. They won over another great team of girls, Flowers-Shepard of Spearman, 6-1, 6-1.

DISTRICT I-AA JUNIOR TENNIS

The boys district I-AA tennis meet, held at Spearman Thursday, was exciting to watch despite some rain, and threats of rain.

Players in the "A" boys singles included the following: Ronnie Ramirez of Dalhart; Darrell Downey of Phillips; Kevin Lewis, Spearman; Jimmy Vernon, Spearman; Tony Bonner, Panhandle; and Gary Black of Panhandle. Artie Ledbetter of Dalhart won the singles I-AA championship.

In the "A" boys doubles,

Spearman's doubles threat of Beedy and Cunningham, were sensational as they won the championship over a great team from Dalhart. Players in the boys doubles included the following: Beedy-Cunningham, Spearman; Fisher-Gose, Phillips; Lamb-Stephen, Panhandle; Keel-McEvers, Dalhart; Davis-Earles, Phillips; Latham-Porter, Spearman; Mathews-Lovelady, Dalhart; Cassiday-Bulla, Panhandle. Beedy and Cunningham defeated Mathews and Lovelady for the championship. Latham and Porter of Spearman could have had a crack at the championship but lost a tough double-set to the Dalhart finalists.

Spearman's pretty Rajan Martin proved her prowess as a tennis player by winning the girls singles Championship for district I-AA. The all-state basketballer won the finals in a thrilling 6-1, 5-7, 6-3 play-off against Lynn Bryan of Panhandle. Players in the girls singles division, included Rajan Martin, Spearman; Susie Stanley, Dalhart; Debbie Walker, Panhandle; Connie Chilton, Phillips; Leanne Seitz, Dalhart; Glenda Cook, Spearman; Kim W'seman, Phillips and Lynn Bryan, Panhandle.

Spearman's "doubles champions" consisted of Lackey-Schumann who defeated Booth-McAdams, Spearman, in a thriller, 3-6, 6-4, 6-3! Members of the girls A doubles were: Lackey-Schumann, Spearman; Betweller-Spivey, Dalhart; Lewis-Eagle, Panhandle; Koffman-Poulain, Phillips; Booth-McAdams, Spearman; McAfee-Mann, Panhandle; Burkhalter-Hancock, Dalhart.

COME SEE THE "BUNNY" GIVE AWAY LUCKY EGGS

I.R.S. BLUES????? ATTEND THE CHAMBER BREAKFAST AND FORGET YOUR TROUBLES!

COME TO THE BREAKFAST!!!!

CROSSWALK PATROL SCHEDULE FOR APRIL 12-16
April 12, Morning, Vicky Bullard; Afternoon, Mrs. Roy Saldavar;
April 13, Morning, Winnie Carol Urban; Afternoon, Carol Stumpf;
April 14, Morning, Carmon Laird; Afternoon, Gladys Dunaway;
April 15, Morning,

Elaine Odegaard; Afternoon, Glenda Guthrie.
April 16, Morning, Orlene Martin; Afternoon, Marilyn Groves.

Ryde

MAY 8th, 1976


Fire Fighting Equipment Augmented

Two firefighting pieces of equipment are presently in service in the Gruver area, on loan from the Texas Forestry Service, one a four-wheel drive rural fire fighting truck and the other an 800 gallon tank truck for fire emergencies.

These trucks, on loan, will be replaced in the near future by the truck now being built expressly for the Gruver Fire Department which was purchased by the 4,000 tickets sold by the Volunteer Fire Department for chances on a half a

beef. At the recent drawing Wilburn Webster and the Holt Brothers were the lucky ticket holders for a half a beef each on the large beef donated by Caprock for the drawing.

A COMPLETE PRINTING SERVICE



Expert Printing at Your Disposal

Sharp, hard-selling mailing pieces, exquisitely printed wedding invitations and social stationery... whatever you need, we can print it expertly.

Top Quality Work on Every Job

- INVOICES ● LABELS & TAGS ● LETTERHEADS ● OFFICE FORMS ●
- ANNOUNCEMENTS ● BOOKLETS ● BUSINESS CARDS
- CATALOGS ● DISPLAYS ● BUSINESS CARDS

We have the worlds finest printers, Eugene Yarbrough, Charles Gates, ready to serve you...

Spearman Reporter

We print everything but stamps and money, and if it don't rain, we may start doing that...



The editors friend, Tim Yarbrough, is getting ready for the Easter egg hunt, to be sponsored by the Jaycees, 9:30 a. m., April 17th. Barber Bob is also ready for the big hunt...

WANTED

Boxwell Bros.
Funeral Home and Flower Shop
Day-Night Phone 659-2212
Spearman, Texas

For your Shaklee Products call Eileen Sutherland at 659-2062 after 5:00.

GENERAL PLUMBING
Phone 733-2912
Gruver
Steve Phillips
"Licensed"
10 Yrs. Experience

Emie's Plumbing
659-3781 Spearman
733-2938 Gruver
195-rtn

All Type Building Remodeling and Roofing.
659-2118. 15-24tp

GENERAL FIX-IT SHOP
Minor repair, will fix faucets, hot water heater, roto roofer, floor furnaces, wall heaters
LAWTON GUTHRIE
659-2487

SEWING MACHINE REPAIR. All makes & Models. 408 E. Kenneth 659-2415. Electrolux and Necchi.
21-rtn

CAKES DECORATED FOR ALL OCCASIONS. CALL 659-3579.
21-8tp

Miscellaneous For Sale

FOR SALE One regulation size pool table, 1 yr. old and in good condition. For more information call 659-2352 after 3:00 P. M.
21-2tp

FOR SALE: 5 piece Drum Set; 1961 International Scout Pickup. Call after 5:00. 659-3528.
21S-2tp

FOR SALE: Dressmaker "Deluxe" Zig Zag Sewing Machine in cabinet. Used very little. In excellent condition. Call 659-2062.

FOR SALE: 1964 Cadillac. Clean and reasonably priced. See at 22 Townsend or call 3792.
17S-rtn

FOR SALE: Gas Cook Stove with deep well. Call 659-2940 or 659-3330
19S-rtn

Reduce safe & fast with GoBese capsules & E-Vap "water pills" Spearman Drug.
19-8tp

FOR SALE: Honda XL100 659-2000. Chuck Eaton.
21-2tp

FOR SALE: 750 Honda motorcycle. 659-2684 or see at 207 W. 12th.
21-rtn

"OPEN HOUSE" 708 So. Townsend - Real Bargains. Sunday: 12-5.
21-rtn

FOR SALE: 5 Bedroom house. 2 Full Baths. Fenced yard with metal storage building. Built in dishwasher, cooktop, oven, wall to wall carpet. Central heat and air. Perry Dixon. 659-3024.
19S-rtn

FOR SALE: 2 Baby Cribs, includes 2 almost new mattresses. Linda Davis, 2266 or 733 Cotter Dr.
21S-1tc

FOR SALE: 15.6 cu. ft. frostless freezer. Like new. 733-2483, Ext. 55 or after 5:00 P. M., 733-2853.
21S-1tc

FOR SALE: Early American golden brown sofa, \$50.00. Swivel rocker, \$25.00; Early American Coffee Table, \$20.00; 2 Early American end tables, \$20.00 each. Call 659-2276.
21S-4tc

FOR SALE: 3 Bedroom, living room, dining room, bath, garage with storage room. Call 659-3304.
213 Bernice.
21-8tp

FOR SALE: 3 Bedroom, living room, dining room, bath, garage with storage room. Call 659-3304.
213 Bernice.
21-8tp

FOR SALE: 3 Bedroom, living room, dining room, bath, garage with storage room. Call 659-3304.
213 Bernice.
21-8tp

Crawford Addition 250 Front Feet by 180 feet Lot.

In Gruver: 508 Cluck St. 4 bedroom, 2 baths. Reduce price.

404 Endicott: Large home on 3 lots, will accept an offer.

In Oldham County, one section dry land.

In Waka, 21 acres, east edge of Waka.

100 Acres Dryland. Out of S 1/2 of Section 6 Blk. 45, H & TC RR Co. Survey Hansford County. Can buy with or without 1/2 of Minerals. Call Perryton, Mayfield Real Estate 435-6528 or Ruby Lair, Salesperson, Spearman 659-2188.

WANTED

WANTED: Babysitting done in my home; hot lunches and good care.
659-2067
20S-rtn

EQUIPMENT OPERATORS
Time & 1/2, hospitalization, retirement. Contact Jim Foley, Perryton, Texas. 435-5904.
20-rtn

HELP WANTED: Responsible man for year round employment. Yearly bonus and mobile home furnished. Irrigation experience helpful. References required. 659-3134. evenings.
21-rtn

WANTED: Farm Job. Experienced. 25 years on one job. Write Rt. 1 Box 248, Spearman, W. H. Brownlee.
21S-4tp

FOR RENT
FOR RENT: Fumished Apartment. 303 Davis. Phone 659-3792.
51S-rtn

FOR RENT: Trailer Space. 213 S. Endicott. Call 2404.
17-rtn

LBL Trailer Spaces -\$40 Monthly. 50' x 150' Lot. Call Manager, 659-2617.
48S-rtn T only

FOUND
FOUND: One ladies wedding band in the Ideal Parking lot. Enquire at Ideal Food Store and identify.
21S-6tp

Card of Thanks
I would like to thank everyone for their expressions of concern while I was in the hospital. Your visits, prayers, calls, cards and flowers are gratefully appreciated. A special thanks to the Hospital Staff and Dr. Kleeberger for the excellent care they gave me. Sincerely,
Avo Topc

Mr. and Mrs. Jess French and Mrs. Kessie Richardson have been visiting relatives in San Angelo the past week.

Political Announcements

The Reporter-Plainsman is authorized to announce the candidacy of the following candidates for public office, subject to the action of the voters in the May Primary Elections. FOR COUNTY COMMISSIONER

PRECINCT 1
Garland Head
Roscoe Nelson
James Kenney
Ray Phelps

PRECINCT 3
B. J. Renner
Dan Desimone
R. C. (Bob) Ferguson
L. M. Womble
FOR SHERIFF

R. L. McFarlin
Lee Phillips
FOR STATE REPRESENTATIVE 64th DISTRICT
G. R. (Bob) Close
M. Leo (Daisy) Moore
Bill Jackson



Teresa Barkley models the "latest" in the bi-centennial fashion show, held here last Saturday.

Local Men Participate In EMT Course

Ten Gruver men are participating in the Emergency Medical Technician Course being offered by Amarillo College in Spearman. The 130 hour course which began March 1st and will be concluded June 4th involves 40 hours of actual experience in the Hansford County Hospital in Spearman; 16 hours experiencing actual emergency case treatment at the Emergency Center of Northwest Texas Hospital in Amarillo as well as classroom instruction.

Be aware and most grateful that these men along with others in the area are giving up many hours that they may be in a position to better qualify themselves to help you when help is needed. The Statesman salutes them for taking the step beyond the call of duty.

The men involved, all volunteers who receive no remuneration for their efforts, will be equipped to provide better emergency care for area residents upon completion of this most time-consuming and valuable para-medical course.

SPECIAL SERVICES MONDAY EVENING

Ralph Blodgett will be sworn in as Mayor Monday night; Brad Beedy and Bill Pittman will be sworn in as new Aldermen Monday, also.

Liebs To Celebrate

The children of Mr. and Mrs. C. E. Lieb invite friends and relatives to their 65th wedding reception on April 18, 1976 from 2 to 5 p.m. at the Morse Community Building, Morse, Texas. Ernest Lieb and Ruby Forester were married April 19, 1911 at Hansford, Texas by Judge Beck. Mr. Lieb has farmed and ranched in the Pringle area since 1900. Mrs. Lieb came to this area in 1905. Mrs. Clara Lieb of Monahan, W. M. Lieb and Mr. and Mrs. A. A. Lieb of Pringle are hosts for the reception. No gifts please.

FOR SALE
Used T.V.'s
Call 659-2663
or 659-3363
Color or B&W

Martin's Steak Garden
Full time or parttime HELP NEEDED. Apply in person to Eddle Martin at Martin's Steak Garden Hiway 207 South, in Spearman, Texas....
MARTIN STEAK GARDEN
Spearman, Tex.

YORK ELECTRIC
PHONE 659-3625
WE DO ALL TYPES OF ELECTRICAL WIRING....
WE WANT YOUR BUSINESS....
Downtown Spearman
SPEARMAN, TEXAS

The Hansford Plainsman
Spearman, Texas 79081
213 Main Box 458 659-3434
Published Weekly at 213 Main Street
Spearman, Texas 79081
Owner-Publisher..... William M. Miller
Second Class Postage Paid at Spearman, Tex.
Any erroneous reflection upon the character of any person or firm appearing in these columns will be gladly and promptly corrected upon being brought to the attention of the management.
SUBSCRIPTION RATE -- Hansford, adjoining counties, combination with the Spearman Reporter, \$10.92 Tax included.
Other points \$15.12 Tax included.
MEMBER
TEXAS PRESS ASSOCIATION



"Just another one of those days, for Waterdog Platt, as he checks one of the local irrigation wells..."



The scene at the Waka fire which happened at 1 a.m. Saturday morning.

BIRTHS
Mr. and Mrs. Gary Evans of Gruver are the parents of a son, William August, born Wednesday, April 7 at Ochiltree General Hospital in Perryton. The baby weighed 6 lbs. 8 oz. at birth.
Maternal grandparents are Mr. and Mrs. August Albrecht of Tullia and paternal grandmother is Mrs. A. W. Evans of Gruver.

THE NATIONAL CORN GROWER CHAMP
O'S GOLD
For the third year in a row O'S Gold SX5500 has placed in the top 2 places of the National Corn Growers Association. This points out one thing -- O'S Gold's consistency. Dealership inquiries are welcome. A limited number of bags are left of this single cross at \$40.75 per bag.
Your distributor & dealer is Tom Butler
Rt. 3 Box 25
Perryton, Texas 79070
Call collect: 806-435-2503

YOU'VE GOT A DISPOSABLE LAWN MOWER...
GET A JACOBSEN?
All Makes of LAWN MOWERS REPAIRED ... at PORTER BAKER 7th & Ash
Briggs & Stratton and Techumseh Parts Dealer...

O. J. ROOK
PHONE 274-4968
PAINTING-INDUSTRIAL RESIDENTIAL
FREE ESTIMATES
ACOUSTICAL CEILINGS
CARS AND TRUCKS

YOUR LOCAL USED COW DEALER: Spearman Bi-Products. Seven days a week dead stock removal. Please call as soon as possible. 659-3544. 8-rtn

Hansford Lodge
1040
A.F. & A.M.
Regular Meeting 2nd & 4th Monday 8 P.M.
Dan Faries, W.M.
Cerril Batton, Secy.

SERVICES

Hansford County Planned Parenthood
26 S. Haney
659-2483
Spearman
Mon. - Fri.
8 A.M. to 12 Noon
30S-rtn

Custom fertilizing and any type of farming.
W. B. Barnes
659-3493

Alcoholics Anonymous Meeting every Tuesday, 8:00 P.M. at the Girl Scout Little House, 22 S. Endicott. Call 3394 or 2762 for information.
4S-rtn

KIRBY SALES & SERVICE of Spearman, 912 S. Bernice. 659-2797.
30-rtn

GRADER, Dozier, and Drag Line work. Call Lee Roy Mitchell, Gruver, 733-2384.
28-rtn

RAWLEIGH SALE-Vanilla. Janie Kunselman. 659-2631.
18S-8tc

SEAMLESS REINFORCED CONCRETE Storm Shelters & Basements
Northwest Oklahoma
Storm Shelter Co

LL BREED GROOMING, Boarding & Dog Supplies. Call Carmon Laird, 2105 for appointment. 118 N. James. Will pick up & deliver.
20S-4tp

Custom Farming. Reasonable Rates. Call Jack McWhirter, Phone 659-2249 or 659-3308.
18S-rtn

PORTABLE DISC ROLLING call DAVID MCINTYRE 659-3782
1181 N. James
Spearman, Texas 79081
19-rtn

Holt News

Debbie Reger, student at Amarillo College, spent the week end with her parents, Mr. and Mrs. Travis Reger.

Messrs. & Mmes. Owen Pendergraft and C. W. Kirk saw the Harlem Globe Trotten at the Amarillo Civic Center.

Mr. and Mrs. Phil Jenkins were guests of her sister and husband, Mr. and Mrs. Wally Pearson in Amarillo Sunday.

Ed Berner spent Friday visiting his sisters, Denise Berner and Mr. and Mrs. Ronny Smith, in Canyon. Denise brought Ed home Saturday evening and spent the week end with her parents, Mr. and Mrs. Wallace Berner and Ed.

Rev. E. W. Dickson of the Holt Community is attending a three day Ministers Seminar at W. T. S. U. at Canyon. Rev. Dickson is the father of Mrs. Wallace Berner.

Mr. Ed King of Washburn, Texas, 81, long time friend of the Ira Harbours, passed away Monday morning. Funeral services were conducted at 2 p.m. Wednesday. Mr. and Mrs. King were long time residents of Pringle and will be remembered by many in this area.

A birthday dinner honoring Mrs. Harold Ottoway at Tyrone, Oklahoma was enjoyed recently in the home of Mr. and Mrs. Eugene Ottoway at Tyrone, by Mr. Harold Ottoway and children, Sydney, Tracy and Randy of Tyrone, Mr. and Mrs. O. K. Pendergraft of the Holt Community, Mr. and Mrs. Gerald Gray from Ulysses, Kansas, Mrs. Lurita Sears and daughter Vanessa, Mr. and Mrs. Frank White and Mrs. Letha Heath all of Wichita, Kansas. Mr. and Mrs. Kenneth Wolf from Pueblo, Colorado and Mr. Rich Ottoway from Garden City, Kansas. The afternoon was spent visiting.

Mr. and Mrs. Richard Gaines of Holt and Mr. and Mrs. Allen Vamon from Pampa spent Saturday and Sunday with their daughter and family, Mr. and Mrs. Garland Tucker and Freddie in Amarillo.

Mr. and Mrs. Travis Reger was in Amarillo Monday on business.

Mr. and Mrs. C. W. Kirk spent Sunday night with Mr. and Mrs. Max Robinson in Pringle. The Kirks accompanied Mr. and Mrs. Robinson to Amarillo Monday where he saw his doctor. Mr. Robinson underwent heart surgery recently.

Messrs. & Mmes. Owen Pendergraft, Doyle Jackson, Raymond Kirk, Wesley Jenkins and Phil Jenkins drove to Borger Wednesday, April 7 and had dinner at the Pizza Hut honoring Raymond Kirk on his birthday. The group enjoyed visiting and fellowship.

Jaycee Corner

The Spearman Jaycee met Wednesday, April 7th at the Community Building.

President, Fred Groves presided over the meeting. Discussion was held on the possibility of buying more chairs for the Jaycees.

Some cable spoofs have been given to the Jaycees to make tables. The Jaycees now need a plow disc and 2" pipe for the center leg.

Discussion was held on having a work day to clean up and work on the yard at the Stationmaster House Museum.

Discussion was held on the celebration and committees were appointed for the cow chip throwing contest, the bean cooking, barbecue cooking, digging a pit for the barbecue and for the Teen Dance Friday night and the adult dance Saturday night.

The Jaycees voted to incorporate the Chapter under the Texas law for non-profit organizations. Discussion was held on the possibility of an Easter egg hunt for pre-school through kindergarten and for the first grade through fourth grade. Tentative plans were made.

A scholarship committee was appointed to find two deserving seniors in Spearman High school to

present scholarships on the basis of need and sincerity in their desire to attend college.

A report was given on the Jaycee Work Forum last Thursday in Pampa.

The Jaycees voted to pay for linoleum for the concession stand at the Jaycee Park.

The meeting was adjourned to play volleyball.

Those present at the meeting were Rusty Tindell, William King, Ronnie Bullard, Keith Kelp, Robbie Shields and Fred Groves.

Next meeting will be April 14th at 7:30 P. M. at the Community Building.

BREAKFAST - THURSDAY - APRIL 15 "BUNNY"

Hansford County ACS Crusade In Full Swing

The 1976 educational and fund-raising Crusade of the American Cancer Society was kicked off in Hansford County the 5th of April on a most hopeful note: "We want to wipe out cancer in your lifetime".

President Gerald Ford and Governor Dolph Briscoe have proclaimed April "Cancer Control Month" and the U. S. Congress has passed a similar reso-

lution. "Great strides have been taken in the march against cancer," said Mrs. James Stedje of Gruver, Hansford Unit American Cancer Crusade Chairman.

But much remains to be done. When ACS volunteers appear at your door in April, we hope everyone will respond with generous donations. It's the only way we can conquer cancer," she said. ACS funds are channeled

in three directions: cancer education, patient services, and medical research. As the United States celebrates its 200th birthday this year, the American Cancer Society is nearing its goal set four years ago for every woman in the country susceptible to uterine cancer to have a Pap test by 1976.

Today, about one cancer patient in three is saved, Mrs. Stedje said. "If more people took simple precautions such as getting health checkups and stopped smoking, more cancer could be prevented and diagnosed in its early, treatable stages. There is a real potential to save one patient in two, instead of one in three.

That's another 11,000 lives each year," she said. Assisting Mrs. Stedje in the Hansford Unit Crusade are many volunteers throughout the County.

Little Miss Liberty Bell of '76 Contest To Be Held

Rho Rho Sorority will host a Little Miss Liberty Bell of 1976 Contest to be held May 22nd at 7:30 P. M. in the High School Auditorium.

There will be a Miss Tiny Bells Contest for girls three years of age through six years of age. Entrants must have been three by January 1st, 1976. There will also be a

That's another 11,000 lives each year," she said.

Assisting Mrs. Stedje in the Hansford Unit Crusade are many volunteers throughout the County.

Miss Little Bells Contest for girls seven years of age through twelve years of age. The Miss Little Bells competition will also include talent competition. Entry fees are \$10.00 and anyone is welcome to sponsor a girl. Deadline for entries is May 3rd.

Entry forms may be obtained from Teresa's Dance Studio, Chamber of Commerce, Lili Lynx Shoppe in Spearman or Messrs in Gruver.

For more information, call 659-2773 or 659-2665. BREAKFAST - THURSDAY - APRIL 15 "BUNNY"

Prices good in Perryton's United Super Market!

QUANTITY RIGHTS RESERVED **PRICES GOOD THRU APRIL 14TH** **SHOP UNITED SUPER MKTS.**

UNITED CARTFUL OF

BEAUTY BAR DOVE SOAP 4' OFF LABEL 3 BATH BARS \$1

LIQUID FOR DISHES DAWN 20¢ OFF LABEL LARGE 32 OZ. BOTTLE 98¢

KRAFT REAL MAYONNAISE QT. JAR 98¢

HEINZ, SWEET HAMBURGER RELISH: HOT DOG 9 1/2 OZ. JAR 39¢

PASCAL GREEN CELERY LARGE STALK 2/48¢

HI DRI TOWELS JUMBO ROLL 2 FOR 89¢

NICE 'N SOFT BATH TISSUE 4 ROLL PACK ASSORTED COLORS 69¢

BLUE BONNET SOFT MARGARINE 16 OZ. TUB 59¢

HEINZ DILL PICKLES KOSHER OR HAMBURG SLICED 32 OZ. JAR 69¢

SCILLING BLACK PEPPER 4 OZ. CAN 69¢

UNITED GRADE "A" EXTRA LARGE EGGS CAGED DOZ. 59¢

GOLD MEDAL FLOUR 5 LB. BAG 79¢

COOKIES 5 12 OZ. CANS \$1.00

"FINE FARE MIX OR MATCH"

SAUERKRAUT 3 \$1

WHOLE GREEN BEANS 303 CANS

SWEET PEAS WHOLE PEELLED 303 CANS

TOMATOES

"UNITED FARM FRESH PRODUCE"

CHERRY TOMATOES PINT BOX 48¢

LARGE HEADS EACH CAULIFLOWER... 48¢

SUNKIST FANCY LARGE LEMONS 4 FOR 48¢

NEW CROP TEXAS WHITE ONIONS 3 LBS. 48¢

Beef Prices Are Lower

AMARILLO, TX.--If you're after a bargain at the supermarket--and who isn't--buy a supply of beef this week. Stock up, fill your freezer, get ready for the barbecue season, because beef is likely to be higher priced during the summer months, according to information provided by the Texas Cattle Feeders Association (TCFA). In mid-January, the average price of Choice beef stood at \$1.48 per pound, but this week, the average price of Choice beef dropped to a low of \$1.31 per pound--a 13% reduction in price. Why the sudden drop in price? "Cattle slaughter during the first quarter of

1976 is 11% above last year and calf slaughter is running 25% ahead of last year," says Jim Gill, market analyst for TCFA. But things don't look as rosy for the consumer during the second quarter of the year (April-June). "Fed cattle marketings during the second quarter will be sharply lower than the first quarter of this year," Gill added. Why? "Placements in feedyards last fall and winter dropped as much as 25% to 30%. Also fewer cows and calves will be moving to slaughter as pastures begin to "green up" and provide grazing," Gill says.

What about competition from other meat? Won't they bring the price of beef down? "Not likely," Gill explains. Pork production is nearing last year's level, but is not likely to show any added increases until next fall. Thus, there will not be any increased competition from pork during the second quarter of this year." Gill says there will be less beef on the market in the next few months and prices will begin a gradual upturn this week. So, now is the time to stock your freezer with Choice beef before prices begin their upward trend. "Beef prices may now have reached their low point for the entire year," Gill added.

HD Club News

The Old Hansford Home Demonstration Club met Tuesday, April 6th in the home of Mrs. L. W. Rosenbaum. President, Mrs. B. A. Byers presided over the meeting. Mrs. Rosenbaum gave the devotional, taken from Psalms. Roll Call was answered to "A Food My Grandmother Made". For the sock fund, each member paid for drawer

pulls and knobs. Mrs. Rosenbaum gave the Council Report and discussed the Bi-Centennial Luncheon. Also discussed was the Time For Fun Party May 4th at 7:00 P.M. in the Home Demonstration Club Room. The club is to furnish a card table for the Home Demonstration Club Room. Agent, Peggy Marrs presented the program on Early American Recipes. Refreshments of Hawaiian fruit salad were served by Mrs. Rosenbaum to members, Mesdames: Jim Strawn,

Elizey Vanderburg, Harold Howerter, Irvin Delk, Gordon Parrish, G. I. Brown, B. A. Byers, Virgil Floyd, Dan Sheets, H. M. She-deck and Roscoe Nelson. Next meeting will be May 4th in the home of Mrs. Jim Strawn. The Holt Home Demonstration Club met Tuesday, April 6th in the home of Mrs. Ray Moore. President, Mrs. Jon Jarvis presided over the meeting. Roll Call was answered with "A Scenic Spot in Texas". Minutes of the previous meeting were read by Mrs. Britt Jarvis and were approved. Additional checks were collected for the Cancer Fund.

There will be a Simplicity Fashion Show April 20th in Borger at the Buna Vista Cafeteria, featuring new patterns and styles. New Home Demonstration Agent, Kathy Volanty passed out program books and asked members to choose programs from the several listed. Mrs. Volanty also asked for quilts for the Show and Tell to be held May 13th in Borger. Mrs. Volanty then presented the program on Nutrition and Meal Planning. She passed out pamphlets on how to get the most nutrition for the least amount of money. Delicious refreshments were served by Mrs. Moore to guest, Agent Kathy Volanty, and to members, Mesdames: Wallace Berner, Doyle

Jackson, Fred Holt, Jon Jarvis, O. C. Holt, Phil Jenkins, Nolan Holt, Raymond Kirk, Randy Kirk, Britt Jarva, Verlin Beck, Larry Porter and Richard Kirk. Next meeting will be April 20th in the home of Mrs. Larry Porter, with the South western Public Service Company presenting the program on microwave ovens. The Town and Country Home Demonstration Club met Tuesday, April 6th in the Home Demonstration Club Room. President, Mrs. Phillip Renner presided over the meeting. Roll Call was answered to "A Food My Grandmother Made". Mr. and Mrs. Earl Goodheart presented a very interesting program on micro-wave ovens. Members voted to furnish card tables for the Club Room and voted on the budget for the next six months. Mrs. Bobby Evenson, Recreation Chairman gave a report on the Bicentennial Luncheon to be held April 27th. Mrs. Cecil Biggs gave a Council Report on the Bake-off to be held during the celebration. Delicious refreshments were served by hostess, Mrs. Charles Shieldknight to guests, Mr. and Mrs. Earl Goodheart, to new member, Mrs. Richard Pipkin and to members, Mesdames: Cecil Biggs, Bobby Evenson, Jerry Hayes, Darl Hergert, Vernon Pipkin, Phillip Renner, John Trimmell, Doug Holmes and Bob Pearson. Next meeting will be April 20th in the home of Mrs. John Trimmell.

Prices good in Perryton's United Super Market!

SAVINGS BY THE CARTFUL!

SAVIN'S!

COME CELEBRATE OUR BICENTENNIAL BONUS BONANZA

FILL YOUR CARD AND GET 1000 extra S&H Green Stamps

DOUBLE STAMPS WED. WITH A \$2.50 PURCHASE

"UNITED'S TRU-TENDR BEEF!"

RIB STEAK LB.	\$ 1.09
CUBED STEAK WASTE FREE BEEF LB.	\$ 1.69
STEW MEAT EXTRA LEAN CUBES OF BEEF LB.	\$ 1.09

SELF BASTING TURKEYS

GRADE "A" 8 TO 14 LB. AVG. 58¢ LB.

HOT OR MILD CARL'S TASTY SAUSAGE

MADE OF PORK LOINS, HAMS, SHOULDER

1 LB. \$ 1.39 2 LB. \$ 2.77

CHUCK ROAST 68¢

BLADE CUTS LB.

ROUND STEAK \$1.09 LB.

CHICKEN LIVERS 49¢

FRYING 12 OZ. CUP EACH

SPARE RIBS 98¢

LEAN & MEATY 3 TO 5 LB. SIDES

BONELESS FULLY COOKED FARMLAND HAMS \$4.98

3 LB. CAN

FINE FARE "MIX OR MATCH"

SPINACH 4

GOLDEN WHOLE OR CREAM

CORN 4

BLACKEYED FRESH SHELLED

PEAS 4

MIXED

VEGETABLES 4

303 CANS

TRACK II GILLETTE 9 CT. \$1.69

NEW BRECK ASSORTED REG. \$1.39

CLEAN RINSE VARIETIES \$1.07... 89¢

NEW BAN BASIC... NON AEROSOL DEODORANT \$1.29

EARTH BORN SHAMPOO REG. \$1.99 16 OZ. \$1.49

"UNITED FROZEN FOOD BUYS!"

BIRDSEYE SPEARS OF

BROCCOLI 10 OZ. PKG. 39¢

BIRDSEYE

CAULIFLOWER 10 OZ. PKG. 39¢

ORE-IDA REG. 89¢

TATER TOTS 32 OZ. PKG. 69¢

MINUTE MAID ORANGE

JUICE LARGE 12 OZ. CAN 55¢

WE RESERVE THE RIGHT TO LIMIT QUANTITIES

U PRICES GOOD THRU APRIL 14TH

UNITED SUPER MARKETS

WE GIVE S&H GREEN STAMPS

Twentieth Century Club News

The Twentieth Century Club met Thursday, April 8th in the home of Mrs. Fred Holt. President, Mrs. Coy Palmer gave the program with a short story on each country's National Anthem and what it means to that country. She also played records of National Anthems of France, France, Canada, Denmark, Sweden, Persia, and Spain. Also she gave an interesting program on International Fairs. Roll Call was answered by each member bring a show and tell from another country. Mrs. John Brown was elected official delegate to go to Lubbock April 27th through 30th. Delicious refreshments were served by Mrs. Fred Holt and Mrs. Frank Davis members, Mesdames: L. Anthony, John Bishop, John Brown, George Buzard, Ed Garner, Mike Holt, J. C. Holt, Woodville Jarvis, Claude Newell, Coy Palmer, C. U. Pope, Olin Sheets, John Trindle and Cecil Biggers. April 22nd the Club will meet at the Hansford County Library at 9:30 A.M. to travel to Panhandle to tour the Square House Museum here.

Bridge Clubs

The Tuesday Bridge Club met Tuesday, April 6th in the home of Mrs. Herb Butt. High was won by Mrs. Chalmers Porter. Delicious refreshments were served by Mrs. Butt to guest, Mrs. Max Baggerly and to members, Mesdames: Don McLain, Chalmers Porter, Bill K. Jackson, Joel Lackey, Garland Head and Gene Cudd. Next meeting will be April 20th in the home of Mrs. Gene Cudd. Mrs. Gertrude Archer was hostess for the Hi-Lo Bridge Club Thursday evening in her home. Mrs. Verna Gail Keim had high score and Mrs. Leonard Jameson had low. Enjoying a delicious meal and bridge were two guests, Mmes. Keim and Woodrow Gibner, and members, Mmes. R. E. Lee, John Berry, Jameson, Preston Scott, Faye Lynch and the hostess.

I.R.S. BLUES????? ATTEND THE CHAMBER BREAKFAST AND FORGET YOUR TROUBLES!

Barkley Named Chairman Of Ford Drive

Rick Barkley of Gruver is one of eight chairmen in the 13th Congressional District, named to head the Ford election drive in 10 counties.

Rick, a member of a pioneer farming and ranching family, is a graduate of Texas Tech University and is a member of the Technical Advisory Committee for Minority Employment for the U. S. Department of Agriculture. Earl Butz appointed Barkley to the committee two years ago. He is also chairman of the board of the Gruver United Methodist Church.

Army Is Still Recruiting

In response to numerous phone queries about the future status of Army recruiting in the Texas Panhandle, Captain Bob Perry, Commanding Officer of the Army Recruiters in the Amarillo Area, has issued the following statement:

"Although the District Recruiting Headquarters is being closed, the local Army Recruiters in the Panhandle area will continue to recruit for the United States Army. The recruiting stations in Amarillo, Pampa, Plainview, and Guymon are alive and well and are open for business".

BREAKFAST - THURSDAY - APRIL 1%



George Yancey, one of Spearman's finest artists, is pictured above with his latest painting. George has been painting only 1 year. George Yancey is the artist of the month for the Hansford Library.

Insurance Corner

Avoid Bicycle Fatalities

Last year there were about 800 fatalities and 38,000 injuries resulting from collisions between bicycles and motor vehicles. Many of these tragedies are avoidable. Here's some advice from the experts.

Don't buy a bike that is too big for a child and then provide blocks for the pedals. Children riding bikes too big for them are involved in far more accidents - due to falls - than children on correct-size bikes.

When riding a bicycle in traffic, ride on the right side of the road. WITH the traffic, not on the left against the traffic. Walk your bike across heavily-travelled intersections. If you ride in a group, travel single file. And, if riding at night, have a white front lamp and a red rear light in good working order. Reflective tape and light-colored clothing are also recommended.

This information has been brought to you as a public service by John R. Collard, Jr., your one stop answer to complete business and personal insurance protection. Life, home, auto, group insurance and profit-sharing plans. See John R. Collard, Jr., 406 Davis St., Telephone 659-2501.

Ryde
MAY 8th, 1976

Ryde
MAY 8th, 1976

Different-You Bet!

NC+ IS A FARMER-OWNED SEED COMPANY

Being a farmer-owned production-sales organization makes NC+ different from most seed companies. We understand your problems because we are farmer-oriented from seed production through sales, by farmer dealers and retailers.

Each year more farmers are also learning that NC+ means early seeding vigor, fast growth, standability and yield, in corn, sorghum, or forage hybrids, these characteristics add up to All Around Performance—the real Difference in NC+ Hybrids.

SEE THE DIFFERENCE ON YOUR FARM — PLANT NC+

Hybrid Corn—Hybrid Grain Sorghum
Hybrid Forage Sorghum
Sorghum Sudangrass Hybrids
Alfalfa—Soybeans

AGCO of Spearman
659-2417
NC+ — The Growing Name in Hybrids

Easter Seal Appeal

The 1976 Easter Seal Appeal, which is headed in Hansford County by Freeman Barkley, will extend through April 18. "Independence for the Handicapped in 1976" is the theme for the all important fund-raising campaign which benefits crippled children and adults of Texas.

Shirley Cothran of Denton, Miss America of 1975, who has been named the State Chairman of the 1976 Easter Seal Campaign in Texas (and who will be in Spearman Lions Club-sponsored Miss Hansford County

Beauty Contest in June) will lead volunteers in every county in Texas during this traditional appeal for adults to help provide direct services and a program of information, referral, and follow-up services to physically handicapped children and adults in Texas.

Easter Seal Children for 1976 are Steven Ray Cobb of Texarkana, Karin Lopez of Fort Worth, and Nicole Powell of Dallas. National Chairman for the Easter Seal Campaign is Wayne Rogers, formerly of TV's M*A*S*H. The Easter Seal Society nationally provides services and rehabilitation to nearly 300,000 disabled persons yearly through 2,000 local and state affiliates.

Anyone with a handicap who may be confused by the complexity of the many agency services and eligibility requirements can contact the Easter Seal Society through Mr. Barkley or through the Texas Easter Seal Society office at 4429 N. Central Expressway, Dallas, Texas 75205.

The Texas Easter Seal Society reports 338,352 units of service (actual number of treatments defined as a one-half hour session in appropriate therapy) were provided to 10,768 individual Texas men, women,

ATTENTION

Farmers Stockmen

PANHANDLE LIVESTOCK COMMISSION CO.

Would like to announce a change in sale date. Auction will be held every Friday, starting March 5th, 11:00 A.M. C.S.T. If you have any consignments or need information on special sales, contact Bill Blackmore, 338-3378, H.W.Y. 54 NE Guymon. Home phone 349-2583.

United States Department of the Interior
OFFICE OF THE SECRETARY
OFFICE FOR EQUAL OPPORTUNITY - WESTERN REGION
BUILDING 67, ROOM 880, DENVER FEDERAL CENTER
DENVER, COLORADO 80225

REGISTERED
RETURN RECEIPT REQUESTED

MAR 18 1976

Mr. R. Grady McCormack
Safety and Personnel Director
BAKER AND TAYLOR DRILLING COMPANY
P. O. Box 308
Spearman, TX 79081

Dear Mr. McCormack:

We have analyzed your report of applicants applying during the period of July 1, 1975 through February 17, 1976. Our analysis reveals a slight adverse effect of Spanish-surnamed American hires. You should monitor this closely to prevent any future adverse effect.

You may discontinue submitting reports at this time. However, since you have experienced no female "breakthroughs," i.e., females in jobs that were traditionally male only, we request that you take aggressive affirmative action to recruit females for the rigs and/or the yard. The action taken by you must be documented and will be assessed in a follow-up compliance review.

If you have any questions, you may contact Mr. A. Frank Antley at Area Code 303 234-2154.

Sincerely yours,
Acting
Gerald C. Williams
Gerald C. Williams
Western Regional Manager

IN REPLY REFER TO:
MC 3010
EO:WR
75-11

Baker & Taylor Drilling Company
POST OFFICE BOX 308
SPEARMAN, TEXAS 79081

Baker and Taylor Drilling Company takes this opportunity to invite applications for employment from any and all qualified persons regardless of race, sex, or creed. We especially desire applications from qualified women for positions as Diesel Mechanic, Welder, and Truck Driver.

An Equal Opportunity Employer

"We don't want to get bigger, we want to get better!"

Spearman Perryton
Canadian Amarillo
Cheyenne, Oklahoma

**DRILLING
BAKER & TAYLOR
COMPANY**

AMERICAN REVOLUTION 1776-1876

"We are proud of our country, and we want to help make America 'Better' for everyone...."

MEET THE SENIORS OF SPEARMAN AND GRUVER 19 HIGH SCHOOLS! 76



Bobby Snider



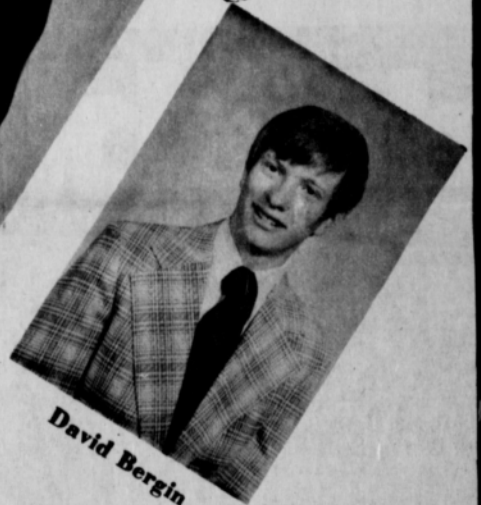
Betty Eoff



Jan Wysong



Johnette Lee



David Bergin



Laura Barnes



**White House
Lumber Co.**
of Spearman

**Gruver
State Bank**

**Daco Lease &
Well Service**
Spearman, Texas

THE SPEARMAN REPORTER

ALLSUPS
CONVENIENCE STORE
OPEN 24 HOURS

Tucker Water
Well Service


Hansford Implement
Spearman, Texas

**R. L. McClellan
& Sons**
Spearman, Texas

B J.L. BROCK AGENCY
GENERAL INSURANCE
Spearman-659-2514
Gruver-733-2981

Jr. Lusby Cats
823-5971 Canadian
869-2146 Spearman

Boxwell Bros.
Spearman, Texas

HANSFORD PLAINSMAN

Speartex Grain Co.
Spearman, Texas

York Electric
Spearman, Texas

Wardrobe Cleaners

Spearman Redi-Mix
Spearman, Texas



SUZY GATLIN

ROY HARBOUR

Boy & Girl Of The Month

Outstanding students in Spearman High School selected by the Spearman

Study Club as Boy and Girl of the Month for March are Suzy Gatlin and Roy Harbour.

Suzy Gatlin is the daughter of Mrs. Floydean Gatlin of Spearman. Her classes this year are Bookkeeping, Shorthand, English IV, Geometry, and Annual Staff. She is a member of the First Christian Church. She was reporter of the Spanish Club her Junior Year. She has been on the Annual Staff two years and is the Editor this year. She has been a member of the National Honor Society for two years and is Vice President this year. She participated in girls track this spring. She has been in U. I. L. Spelling for four years and will compete also in U. I. L. Ready Writing. Her plans for the future include attending West Texas State University in the fall.

Roy Harbour is the 18 year old son of Mr. and Mrs. Monty Harbour and lives southwest of Spearman. He is a partner with his daddy and older brother in the farming and ranching business.

Roy served on the Student Council during his Junior year. He has been active in F. F. A. and the Rodeo Club all four years. When he was a Sophomore he was an officer in F. F. A. and is the President this year. He has received several awards in F. F. A. and in 1975 he received his State Farmer Degree.

He was President of the Rodeo Club his Junior Year and is the President again this year. He is currently in the number 1 position in the Bull Riding in the Tri State Rodeo Association. This year he was voted the Favorite Boy by the Rodeo Club.

He attends the Church of Christ in Spearman. His hobbies include swimming, riding and snow skiing. His plans for the future include attending W. T. S. U.

He is a partner with his daddy and older brother in the farming and ranching business.

Rho Rho Sorority Met

Rho Rho Sorority met Thursday, April 8th in the home of Mrs. Pat Patterson. Mrs. Jack Lasater presided over the meeting. Mrs. Murphy Allen gave the program entitled "Never Underestimate the Power of a Woman".

An Easter Egg hunt will be held April 12th at the County Barn for children of members. Founders Day will be April 22nd at the First United Methodist Church.

The Sorority will sponsor a Little Miss Liberty Bell of 1976 contest May 22nd at 7:30 P. M. in the High School Auditorium. There will be a Miss Tiny Bells contest for girls three years of age to six years of age. Girls must be three by January 1st, 1976. There will also be a Miss Little Bells Contest for girls through twelve years of age. The Little Bells Contest will include talent competition. Anyone wishing to sponsor a girl may do so. Entry fee is \$10.00. Deadline for entries is May 3rd. Entry forms may be obtained at Teresa's Dance Studio, Chamber of Commerce, L11 Lynx Shoppe or Messers of Gruver. For more information call 659-2773 or 659-2665.

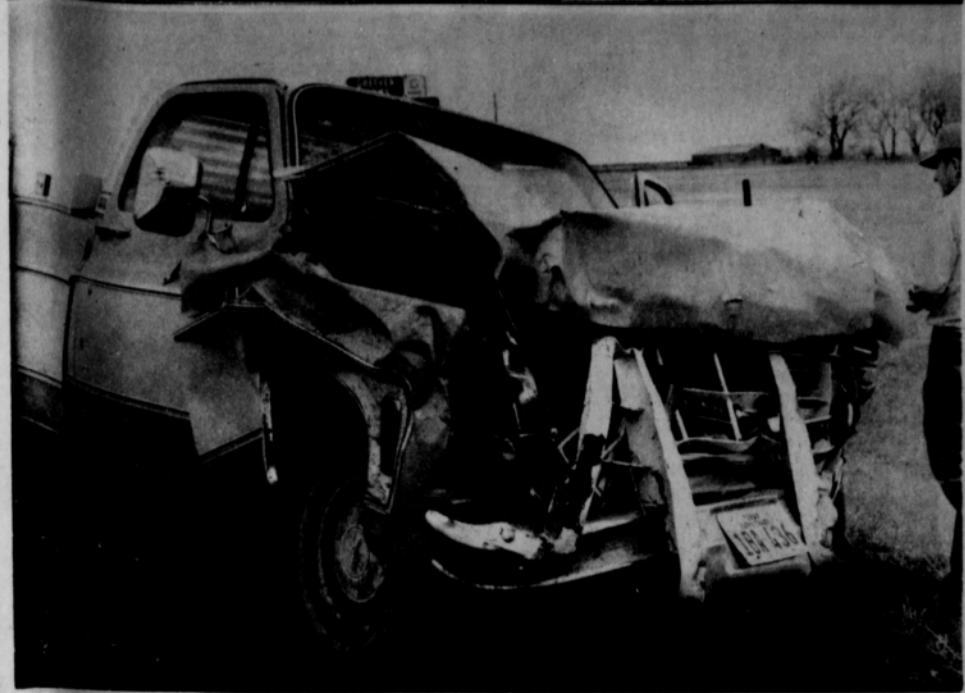
Delicious refreshments were served by Mrs. Pat Patterson to members, Mesdames: Billy DeArmond, Phillip Renner, Clark Mires, David Collins, Craig Schumann, Vernon Pipkin, Charles Shieldknight, Jack Lasater, Jerry Holton, Ken Schneider, Jim Evans, Jerry Hayes, Ronnie Lusby, Jim Eakin, Murphy Allen, Monty Lesly, Lynn Cook, Dan Ralston, Monty Blackman and Bob Peason.

Next meeting will be the Founders Day Luncheon April 22nd at the First United Methodist Church.

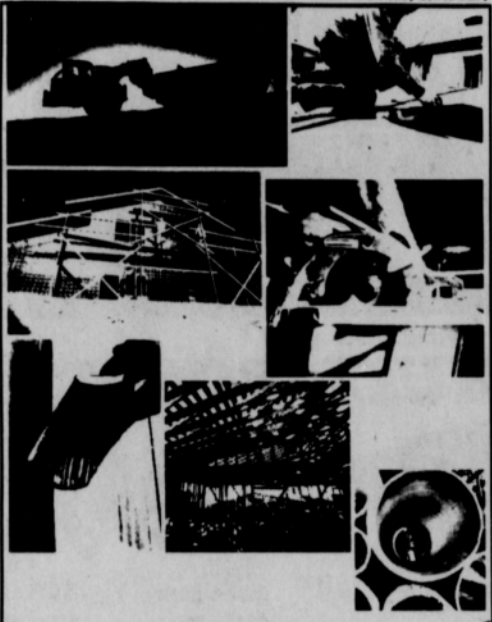
Enterprising Students Begin Business

Two enterprising high school students have gone into business repairing small motors, lawnmowers, etc. They are Kurtis Bynum and Robert Reed. They are open from 3 to 6 weekdays and on Saturday at the Groves farm South on Roland. They have been under the training of Fred Groves and attended a recent Briggs & Stratton Field School. Bynum also helped his father in his cycle shop.

WHO IS THE EASTER BUNNY?????



Jim Davis surveys damage to his pickup, after colliding with another pickup, East of Spearman near the Greever home.



Our commitment to housing helps your community grow... in the form of jobs, goods and services.

It's a fact The money you save with us goes right back into your community in the form of home loans. It's these home loans that generate so much economic activity which, in turn, improves both the neighborhood and community you live in. You'll be doing something for yourself and your community when you open up a savings account with us. Why not drop by today?

SPEARMAN, TEXAS

Interstate Savings & Loan Association



Member Federal Savings and Loan Insurance Corporation Member Savings and Loan Foundation, Inc.

Baptist Women "Our Heritage" Is Program Topic

The Baptist Women and Baptist Young Women met Wednesday, April 7th in a joint meeting at the First Baptist Church. Mrs. Russell Pogue presided over the meeting. The Prayer Calendar was read by Mrs. John Hutchison. Mrs. Altha Groves was in charge of the program entitled "A Missions Field Comes Home", concerning the Viet Nam Refugees. She was assisted by Mrs. Fred Holt, Mrs. J. L. Denman, Mrs. L. L. Anthony and Mrs. Arthur Addison. The meeting was closed with prayer by Mrs. Glen Hiller.

Members present were Mesdames: A. F. Loftin, Russell Pogue, Carl Kizzlar, Glen Hiller, F. W. Thomas, Fred Holt, J. L. Denman, L. L. Anthony, Arthur Addison, John Hutchison, Wesley Jarvis, Don Jones and Altha Groves. The Baptist Women Study Group will meet April 14th at the church. The Baptist Young Women will meet April 14th in the home of Mrs. Luke Stewart.

UMW NEWS

The Mary Martha Circle and Susannah Wesley Circle of the U. M. W. met Wednesday, April 7th at the First United Methodist Church in a joint meeting. The opening devotional was led by Mrs. Jimmy Shieldknight. Mrs. Kent Guthrie led the study on the culture of Southeast Asia. Delicious refreshments were served by Mrs. Jimmy Shieldknight and Mrs. P. A. Lyon to members, Mesdames: Kent Guthrie, Jim Eakin, Bob Peason, Gary Woolley, Monty Blackman, Jock Lee, R. E. Lee, L. W. Rosenbaum, Garland Head, George Buzzard, J. B. Buchanan, T. D. Sansing, Fendorf Schubert, Margaret Shedeck and Bruce Sheets. Next joint meeting will be April 14th at the church, with the study on the Religion of Southeast Asia.



Cadet Troop #3 met Wednesday, April 7th in the Girl Scout House with leader, Mrs. Curtis Davis. The girls held a party for six pre-school children at Womble Park. Games and refreshments of cookies and icedolids were enjoyed by the six pre-school guests and by members, Darla Moyer, Tonja McBride, Judy Shader, Marietta Davis, Theima McBroom and Rita Ring. Next meeting will be April 14th in the Scout House. The girls will begin work on their stamp collectors badge.



MONDAY, APRIL 12
Roast & Gravy
Buttered Rice
English Peas
Combination Salad-Dressing
Peanut Butter Blend
Hot Rolls-Butter
Milk
HIGH SCHOOL CHOICE
Chicken & Noodles

TUESDAY, APRIL 13
Comdogg-Mustard
Macaroni-Cheese Casserole
Buttered Carrots
Celery Sticks
Lime Fruit Gelatin
Yeast Batter Bread-Butter
Milk
HIGH SCHOOL CHOICE
Mexican Chicken Casserole

WEDNESDAY, APRIL 14
Swiss Steak
Buttered Potatoes
Seasoned Pinto Beans
Cole Slaw
Spice Cake
Cornbread-Butter
Milk
HIGH SCHOOL CHOICE
Frito Pie

THURSDAY, APRIL 15
Braised Ham
Candied Sweet Potatoes
Green Bean Casserole
Lettuce-Tomato Salad
Dressing
Applesauce
Hot Rolls-Butter
Milk
HIGH SCHOOL CHOICE
Hot Tamales

FRIDAY, APRIL 16
EASTER HOLIDAY

Newcomers

Newcomers to Spearman include Mr. and Mrs. Dennis Baker of 903 S. Drexler. They moved here from San Angelo. Dennis is employed by his father, Clois Baker and they are Baptists.

Mr. and Mrs. Johnnie Pate of Jackson Trailer Court moved here from Tyler. He is employed by Dairy Queen and they are Baptists.

Mr. and Mrs. Henry Dibben of 13 N. James are new residents from Topeka, Kansas. He is employed by Daco Lease & Well Service. Their church is the Church of Christ.

Mr. and Mrs. Charles R. Greenwood of 219 E. 6th, Apt. 1 moved here from Omaha. He is employed by Bennett & Carter and they are Lutherans.

Wayne West of 33 N. James and Curtis Henderson of 220 N. James are also newcomers to our city.

CFW NEWS

The C. W. F. met Wednesday, April 7th at 8:00 P.M. at the First Christian Church.

President, Mrs. Irvin Davis opened the meeting with a poem.

Mrs. Don Kunselman led the opening prayer.

The new slated of officers were voted on and accepted.

It was decided to give Bibles to the seniors again this year.

Mrs. Tommy Russell reported she had talked to Herb Miller concerning a donation to be given to a missionary.

Mrs. Joe Dan Bryan led the Worship on the Passover, followed by the lesson on Lent by Mrs. Dave Hand.

Delicious refreshments were served by Mrs. Carl Kunselman and Mrs. Darl Hergert to members, Mesdames: Charlie West, Kerry Henton, Candy Boxwell, Don Smith, Irvin Davis, Joe Dan Bryan, Don Kunselman, J. L. Brock, John Trimmell, Don Wirsdorfer, Tommy Russell and Marjorie Crockett.

SICK LIST

Patients in Hansford Hospital are Clarence Pettitt, Will Douglas, Colleen Jeffries, Peggy Carroll, Carl Hutchison, Alma Kennard, Homer Hart, Lola Reynolds, Clark Winkler, Lydia Holdeman, Dan Turnbough, and Debbie Esley. Patients dismissed were Janice Mayfield, Avo Tope, Allena Gould, Colleen Johnson, Ella Leat, Edward Mayfield.

Sears Spring lawn and garden VALUES



20-in. Dual Power Eager-1 Mower Now on sale \$99.99

It's eager to start because you're eager to finish. High torque power churns through tough, high grass. 5-position, quick-adjust wheel adjusters. 3.5 reserve power.



Self-propelled Eager-1 Mower With 4 Reserve Power engine. 2-speed transmission plus dual power for 4 forward speeds. 22 in. \$193.00

Sears has a credit plan to suit most every need. Prices are catalog prices. Shipping extra.

Satisfaction Guaranteed or Your Money Back Plains Shopping Center Spearman, Texas Open 9 a.m. - 5 p.m. Sears Catalog by Phone 688-2576

Congratulations to J. L. BROCK
Spearman's Citizen of the Year
....ONE OF OUR FAVORITE PEOPLE....
from the 'People-to-People' Bank in Borger
Panhandle Bank & Trust, Company

POWER UP
...to pump down deeper!
Cat Irrigation Engine performance, economy, reliability pay off on deep wells—big!
Caterpillar puts more into an engine... so you can get more out of it—year after year. Low-friction design results in high fuel economy whether you're burning natural gas or diesel. Best yet, West Texas CAT PLUS services make sure you get the right engine... make sure it keeps pumping. Let our irrigation specialists analyze your need... and recommend the Cat-built power unit to meet it. No obligation.
WEST TEXAS EQUIPMENT CO.
Caterpillar Power Headquarters
1-40E and 1912 • Amarillo • (806) 335-1511
Caterpillar, Cat and B are Trademarks of Caterpillar Tractor Co.

Sears
Catalog by Phone 688-2576



Engagement Announced

Mr. and Mrs. James Wright of 4235 Bemice announce the engagement of their daughter, Debbie Dianne to Mr. Steve W. Thomas, son of Mr. and Mrs. F. W. Thomas of 1014 Wilmoth Dr. The wedding will take place in the United Methodist Church May 29, 1976 at 7:00 P. M.

Debbie is a 1974 graduate of Spearman High School. She is employed in the office of Hansford Feedyard. Steve is a 1971 graduate of Spearman High School now stationed at Dyess Air Force Base in Abilene, Texas. He will be returning home from the Service in April.

APRIL	1976					
S	M	T	W	T	F	S
	1	2	3			
4	5	6	7	8	9	10
11	12	13	14	15	16	17
18	19	20	21	22	23	24
25	26	27	28	29	30	

Calendar Of Events

- MONDAY, APRIL 12**
 Rotary Club - Martin's Steak Garden
 Dahlia Flower Club - Home of Mrs. A. F. Loftin
 Hansford Lodge #1040 A, F, & A, M. - Hansford Lodge Hall
 Little League Ladies Auxiliary (7:00 P. M.) - Home of Mrs. Ronnie Bullard
 Weight Watchers - Home Demonstration Club Room
- TUESDAY, APRIL 13**
 Lions Club - Plains Restaurant
 Short Bridge Club - Home of Mrs. Tom Etter
 Library Board Meeting - Library Board Room
 Girl Scout Leaders Neighborhood Meeting - Girl Scout House
 Ruth Sunday School Class - Home of Mrs. D. H. Ball
 Night Owls Home Demonstration Club - Home Demonstration Club Room
 Spearman Music Club - Home Demonstration Club Room
 Union Church Missionary Ladies - Union Church
- WEDNESDAY, APRIL 14**
 Cadet Troop #3 - Girl Scout House
 Mary Martha Circle - Susannah Wesley Circle of the U. M. W. - First United Methodist Church
 Baptist Women Study Group - First Baptist Church
 Baptist Young Women - Home of Mrs. Luke Stewart
 Spearman Presbyterian Women - First Presbyterian Church
 Spearman Jaycees - Community Building
- THURSDAY, APRIL 15**
 Bid-A-Bit Bridge Club - Home of Mrs. Faye Lynch
 Grand Slam Bridge Club - Home of Mrs. Roy Flowers
 Happy Homes Home Demonstration Club - Home of Mrs. Richard Laird
 Hansford Shrine Club's Ladies Night - Martin's Steak Garden
- FRIDAY, APRIL 16**
 Arts and Crafts Guild
- SATURDAY, APRIL 17**
 Saturday Night Bridge Club - Home of Mr. and Mrs. Pat Cates

Church Easter Activities Planned

We would like to invite the community to share in the following events at First Christian Church during the Easter Season. Beginning on Wednesday, April 14, there will be a 24 Hour Prayer Vigil. From 6:00 p.m. on Wednesday until 6:00 p.m.

on Thursday there will be someone in prayer. On Thursday evening at 8:00 p.m. there will be a Celebration of the Lord's Last Supper. This will be a time of sharing with Christ in the Upper Room. A time spent in prayer, praise and meditation. Easter Sunday morning at 8:30 a.m. there will be a Sunrise Service on the lawn of the church. We would encourage everyone to come share this time of glorious Resurrection of Life. Following this service, coffee and doughnuts will be served in the Fellowship Hall. Easter Morning worship will begin at the regular worship hour 10:50.

Square Dance Club Will Organize Here

On Thursday evening April 15, at 8:00 P. M. in the Boy Scout Room at the Community Building, a Square Dance Club will be organized. Square Dance lessons will be given by Mr. Paul Lopez, Mr. Lopez is an experienced caller. Anyone interested in having a good time in this manner is invited to attend.

For more information call Jerry Hayes at 3643.

Mrs. Faye Christian has been a recent visitor of her daughter, Mrs. Harriet Watson and family of Milana, Texas.

Bake Sale April 14

The Sacred Heart Women's Guild will sponsor a Bake Sale April 14th at Thriftway. Anyone wishing to make special orders may call Clemmentine Renner at 2335 or Ruth Garza at 2859.

WHO IS THE EASTER BUNNY?????

CHAMBER "FUN" BREAKFAST
 THURSDAY, APRIL 15
 BREAKFAST SERVED FROM
 6:30 A. M. - 7:00 A. M.
 FUN - GAMES - ENTERTAINMENT
 7:00 - 8:00
 COME SEE THE "BUNNY"
 ???????????
 SPONSOR
 CUTRATE - THRIFTWAY

TO BE FOUND: \$75.00 if you are a member of the Chamber and your name is drawn, but you have to be present to win Thursday, April 15, 6:30 a.m. at the next Chamber FUN Breakfast at the County Show Barn.
 LOST: \$50.00 by Paul Garza Welding by not being present at the last Chamber Breakfast.
 COME SEE THE "BUNNY" GIVE AWAY LUCKY EGGS!

The children of Mr. and Mrs. C.E. Lieb invite friends and relatives to their 65th wedding anniversary reception
 April 18, 1976
 2 to 5 p.m.
 Morse Community Building
 Morse, Texas
 No Gifts Please!

Birthday Party Honors 3 Ladies
 A belated Birthday Dinner honoring Mae Leverton, Altha Groves and Mildred Chamberlain was enjoyed at the El Vaquero in Gruver Tuesday evening by Mabel Edwards, Rita Pettitt and Mrs. A. F. Loftin and the honorees Mae Leverton, Altha Groves and Mildred Chamberlain. The table was set and was graced by a beautiful birthday cake bearing the inscription "Happy Birthday, Altha-Mae-Mildred" and decorated by scrolls and rosebuds in white and pink. The ladies brought the cake back to Spearman to the home of Mrs. Mabel Edwards where pictures were made and the cake was served. The evening was fun and enjoyed by all.

Thirty Eagle Scouts To Be Honored
 Thirty Eagle Scouts of 1975 in the Adobe Walls Council will be honored Saturday evening, April 10, by the Silver Beaver holders of the Adobe Walls Council, B. S. A. The Recognition Banquet will be held in Pampa's First Christian Church at 7:00 P. M.
 Eagle Scouts will be the guest of Silver Beavers and will attend with their parents. C. W. Foote, Perryton business man and Silver Beaver, will present the Eagle Challenge, according to Warren Fatheree, Council President.

★ **LAWN MOWER REPAIR**
 ★ **SMALL MOTOR REPAIR**
 MINOR & MAJOR TUNE UPS
 ★ **BLADES SHARPENED**
 We can repair any small motor with a major overhaul or minor tune up after school and Saturdays....
The Shop
 659-2247 Robert Reed
 Spearman Kurtis Bynum

Here's the Ideal Place to Save Food Dollars!

IDEAL FOOD STORES
 The home of THIR-T-Prices

MATURE BUTCHER BLOCK BEEF RIB STEAKS
 LARGE END, BEEF RIB **98¢**

MATURE BUTCHER BLOCK BEEF CHUCK ROAST
 BLADE CUTS, BEEF CHUCK **69¢**

PRICES EFFECTIVE THRU WED., APRIL 14, 1976. NONE SOLD TO DEALERS. LIMIT RIGHTS RESERVED.
 MON. - SAT. 8:00-8:00 SUNDAY 10:00-7:00

Ground Chuck IN 3-LB. PKG. OR MORE **99¢**
Pork Chops **\$1.49**

Arm Swiss Steak BEEF CHUCK **98¢**
Chuck Steaks 7-BONE CUTS, BEEF CHUCK **89¢**

Blue Morrow, Pre-cooked Breaded Beef Fritters 1/2 LBS. **\$1.09**
Rodeo, Meat or Beef Skinless Franks 12-OZ. PKG. **69¢**
Smokey Canyon Sliced Meats 3-OZ. PKG. **49¢**
Rodeo, Assorted Varieties Luncheon Meats 12-OZ. PKG. **99¢**
Jimmy Dean Pork Sausage 12-OZ. PKG. **\$1.29**

KRAFT SALAD DRESSING
Miracle Whip QUART JAR **83¢**

MACARONI AND CHEESE
Kraft Dinner 3 7-OZ. BOXES **69¢**

VAN CAMP'S
Pork & Beans 2 20-OZ. CANS **77¢**

LIBBY'S LIMIT 2 WITH \$5.00 OR MORE PURCHASE.
Tomato Juice 46-OZ. CAN **44¢**

LIBBY'S WHOLE KERNEL OR CREAM STYLE
Golden Corn 16-OZ. CAN **31¢**

MILE HIGH CUT
Green Beans LIMIT 4 WITH \$5.00 OR MORE PURCHASE. 303 CAN **18¢**

DIXIE BELLE
Saltine Crackers 1-LB. BOX **38¢**

WILDERNESS
Cherry Pie Mix 22-OZ. CAN **58¢**

FOR SALADS OR COOKING
Crisco Oil 48-OZ. BTL. **\$1.44**

JIF SMOOTH OR CRUNCHY
Peanut Butter 18-OZ. JAR **88¢**

BETTY CROCKER BLUEBERRY
Muffin Mix 13 1/2-OZ. BOX **77¢**

ASSORTED COLORS
Gala Towels 3-ROLL PKG. **66¢**

KEN-L-RATION
Dog Food 4 15 1/2-OZ. CANS **88¢**

BAKERS CHOCOLATE FLAVORED
Baking Chips 12-OZ. PKG. **68¢**

REGULAR, UNSWEETENED
Kool Aid 5 PKGS. **49¢**

TOM THUMB Pecan Pieces 4-OZ. PKG. **\$1.09**
DAD'S Root Beer 6 12-OZ. CANS **\$1.50**

DIAL ASSORTED COLORS
Bar Soap BATH SIZE **37¢**

ANTI-PERSPIRANT DEODORANT
ARRID XX DRY 6-OZ. CAN **77¢**

CAMELOT
BATH OIL 44-OZ. BTL. **99¢**

DISH DETERGENT
Ivory Liquid 22-OZ. BTL. **84¢**

Fresh Fruits & Vegetables At Low Thrif-T-Prices on Green Market Street!
 WASHINGTON FANCY RED, OR GOLDEN
DELICIOUS APPLES
 3 LBS. **\$1.00**

RED, RIPE Salad Tomatoes 3 LBS. **\$1**
ARIZONA, WHITE Grapefruit 5 LB. BAG **79¢**

FAIRMONT VANILLA
Ice Cream 1/2-QUART PAIL **\$2.29**

THRIF-T Dairy Foods
VELVEETA KRAFT **\$1.58**
 2-LB. LOAF
 LIMIT - 1 WITH \$7.50 OR MORE PURCHASE.

THRIF-T Frozen Foods
POT PIES BANQUET, ALL VARIETIES 8-OZ. PKGS. **4 \$1**

MEL-O-CRUST REG. OR BUTTERMILK
Canned Biscuits 5 8-OZ. CANS **59¢**

MEL-O-CRUST
Cinnamon Rolls 1 1/2-OZ. CAN **44¢**

CAMELOT INDIVIDUALLY WRAPPED
American Slices 202 **66¢**

BANQUET, ALL VARIETIES
Cook'in Bags 4 5-OZ. PKGS. **\$1**

WELCH'S
Grape Juice 16-OZ. CAN **74¢**

American Studies: Title VII And Women

Title VII of the Civil Rights Act of 1964, "prohibits discrimination on the basis of race, color, religion, sex, or national origin in all employment practices". Since most women seem very serious about equal employment opportunity, it would be beneficial to them, as a protected class under Title VII, to know when and where some of the damaging yet subtle discrimination practices are continuing despite Title VII. Discrimination used to be easy to define and identify. It was called racial discrimination. Today, institutions are involved in another form of discrimination referred to as systemic discrimination. Systemic discrimination results from an institution's employment policies and practices, which may treat women differently from men.

Title VII, like any law, must be interpreted. Sections of it are very vague as to what exactly can and cannot be done. As EEOC (Equal Employment Opportunity Commission) Chairman Lowell W. Perry recently reported, "Although blatant overt discrimination against individuals has declined over the past decade - more subtle patterns and practices of discrimination on a systemic basis have become increasingly apparent." The legislative history of the statute is silent as to the Congressional intent on the subject of pre-employment inquiries concerning a job applicant's sex, marital status, etc., so it is a touchy area for both the employer/interviewer. However, one thing seems to be clear; men are not being asked the same questions that women are being asked during the interview - and that can be unlawful.

A word to the wise women - sex discrimination is not as overt as, "You are a woman, and you can't work the evening shift because all the other workers are males." It is more cunning, for instance, "This job involves late-night hours, it would be dangerous for a woman to work that shift."

Two practices that readily lend themselves to subtle discrimination are the questionnaire/application form and the formal interview. As Section 1604.7 of the EEOC Guidelines states, "A pre-employment inquiry may ask: male - female; or Mr. - Mrs. - Miss, provided that the inquiry is made in good faith for a non-discriminatory purpose." How can a woman prove that she was asked questions during the interview that male applicants were not asked? It is rather difficult to prove or disprove such "good faith" efforts on the part of the employer, so

a woman's best bet is to caution herself from providing information during the interview or on the written application that might give fuel to the fire of subtle discrimination!

The first step for decreasing the possibility of subtle sex discrimination during the pre-employment stage is to really know what should and should not be asked on a formal application form or during an interview. (NOTE: Title VII does not prevent an employer from recording such information under proper safeguards for Federal reports. In most cases this data should be indicated on a supplemental card, not on the actual employment application.) As long as women are aware of what is potentially discriminating concerning employment practices they can omit responses that might perpetuate sex discrimination. It is best to remember to watch for any question which directly or indirectly suggests or results in limitation of job opportunity, such as:

- indication of sex on application form (this could be an automatic limitation on a woman's opportunities because of antiquated stereotyping.)
- credit rating (because women have little or no credit compared to men, this inquiry could have an adverse effect on women)
- marital status (married women cannot be discriminated against unless the same restriction applies to married men.)
- number of children (an employer may ask a prospective employee about children and child care problems only if both men and women are queried and it can be shown the problems of both are given equal weight. Employers may not discriminate against unwed mothers, which has no relationship to a bona fide occupational qualification)
- physical facilities are not available for both sexes (unless the expense of providing facilities is prohibitive)
- the job involves heavy physical labor, manual dexterity late-night hours, overtime, or unpleasant surroundings.
- the job involves travel with members of the opposite sex

NOTE: (Jobs may be restricted to members of one sex for reasons of authenticity, e.g., actress, actor, model)

The second step to take for decreasing the possibility of subtle sex discrimination is to openly yet tactfully voice your objection to certain pre-

employment questions that you believe are only being asked of women. A woman seeking employment should be aware that these inquiries themselves are not unlawful, unless they are pointed selectively at women. For those women who might find themselves in the position of being asked these questions; think twice. There are two choices to be weighed here. 1-You may be discriminated against if you answer the question or 2-Your chance for the job may be in jeopardy by not answering the question. The only way to successfully handle this situation is to be prepared. Women need to take Title VII seriously, and as a result, most employers will do likewise. Know ahead of time what may and may not be asked of you. And plan ahead how you propose to handle an interview. Women can respond (tactfully) to such a question as, "Are you married, this job requires traveling away from the home?" with "Whatever my marital status is, it will not affect my job performance."

The third step is usually the last resort, and it takes more conviction to equal employment than do the first two steps; however, if the first two steps are experimented with and accomplished then the necessity for the third step might become obsolete. If a woman believes that she has been discriminated against in an employment situation on the basis of sex, she may request an EEOC form #6 from the Equal Employment Opportunity Commission. (Austin: Local EEOC Office housed with The Human Relation Dept. of Austin; District: San Antonio EEOC Office, 727 East Durango Street, Suite B-601; National: Washington, D.C., 1800 "G" Street, N.W., U.S. EEOC.)

The discrimination charge must be filed with one of these offices within 180 days after the alleged discriminatory act was committed. Action is not immediate. It may be months before any investigation is conducted by EEOC. Women need to keep in mind that it is unlawful for any employer,

employment agency, or labor organization to punish a woman because she files charges or speaks out against any employment practices made unlawful by Title VII. So don't be afraid to speak out if you feel you have a complaint. Perhaps in relation to Title VII, it is wise to keep in mind a quote made concerning laws in general: "Law is a reflection and a source of prejudice. It both enforces and suggests forms of bias." (Sisterhood is Powerful - Page 153)

hard work.

"Collections by the Amarillo office of delinquent taxes owed the state likewise increased to more than \$124,000 in the first three months of the year. Changes in the personnel and operation of the Amarillo Field Office will likely result in a 100 percent increase in the productivity of the office this year. That would mean an increase in audit-revealed tax debts of half a million dollars or more - money that will not come out of other taxpayers' pockets because some managed to avoid paying their fair share."

"The Comptroller's Office, with the help of personnel like Bill Teague and his Amarillo Field Enforcement Office staff, will continue to vigorously, but fairly, enforce the tax laws of this state to insure that every penny of taxes legitimately owed is paid and that no taxpayer pays any more than the law requires."

"I take pride in publicly commending the Comptroller's Amarillo Field Office on its vastly improved performance and record-breaking productivity during the first three months of this year."

The Amarillo Field Office serves Armstrong, Briscoe, Cason, Castro, Childress, Collingsworth, Dallam, Deaf Smith, Donley, Gray, Hall,

Hansford, Hartley, Hemphill, Hutchinson, Lipscomb, Moore, Ochiltree, Oldham, Parmer, Potter, Randall, Roberts, Sherman, Swisher, and Wheeler Counties.

CHILD PSYCHOLOGY



CHILD PSYCHOLOGISTS SAY THAT CHILDREN SHOULD BE ALLOWED TO LEARN TO BE INDEPENDENT. NO MATTER HOW YOUNG THEY ARE, THERE IS PROBABLY SOMETHING THEY CAN DO TO HELP AROUND THE HOUSE.



If you store potatoes in a cool, dark, moist place they should remain usable for up to three months.



V
O
T
E
FOR

ROBERT C. FERGUSON
CANDIDATE FOR

**COUNTY COMMISSIONER
PRECINCT 3**
*Your Vote And Influence
Will Be Appreciated!*

Pol. Adv. Paid For By Robert C. Ferguson

Women also need to be aware and alarmed when given the following excuses by interviewers and/or employers:

- co-workers prefer a man
- clients or customers prefer a man (unless preference is stated as community standard of morality or propriety, e.g., restroom attendant)
- physical facilities are not available for both sexes (unless the expense of providing facilities is prohibitive)
- the job involves heavy physical labor, manual dexterity late-night hours, overtime, or unpleasant surroundings.
- the job involves travel with members of the opposite sex

NOTE: (Jobs may be restricted to members of one sex for reasons of authenticity, e.g., actress, actor, model)

The second step to take for decreasing the possibility of subtle sex discrimination is to openly yet tactfully voice your objection to certain pre-

**ELECT AN
AGGRESSIVE
PROSECUTOR**

**ELECT
BRUCE ROBERSON
DISTRICT ATTORNEY**
AGGRESSIVE - PROVEN
Paid Political Advertisement
Paid for by Bruce Roberson, Box 494, Perryton

**To The
Voters Of
Precinct
One**



Ray Phelps

As a candidate for commissioner in your precinct I am taking this means of asking for your vote and support in the May 1st primary.

I have lived in Hansford County most of my adult life. I am a property owner here and my interests are for Hansford County to continue to develop in the future as it has done in the past.

In seeking this position I pledge my every effort to the duties of the office with fair and equal treatment to all.

With this brief statement I earnestly solicit your vote in the May first election.

Sincerely,
Ray Phelps

Political advertisements Paid for by Ray Phelps.

Invitation

I am pleased to bring the John Deere 4-Wheel-Drive Tractor Demonstration Program closer to your doorstep. I hope you are ready to see and hear the story of 4-Wheel-Drive Time Machines from John Deere.

John Deere Company representatives will present the inside story. Accompanying them are two John Deere Time Machine Trucks with a cutaway 4-Wheel-Drive Tractor inside.

This is your real opportunity to look inside an 8430 or 8630 and see why John Deere 4-Wheel-Drive Tractors are truly called "TIME MACHINES".

APRIL 29
8: 00 A.M. - 5 P.M.
Hansford Implement Co.

I will look forward to seeing YOU at our TIME MACHINE PROGRAM.

Sincerely,
Dave Cudd

Hansford Implement Co.

S. Hwy 207

Spearman



President Ford meets with three of his four delegate-candidates in the 13th Congressional District during his recent campaign swing through Texas. The Ford delegates, whose names will appear alongside President Ford's on the May 1 Republican Primary ballot are (L-to-R) Robert G. Holt and Don H. Reavis both of Amarillo and Zack B. Fisher of Memphis. Fisher is the son of Mrs. Helen Fisher of Spearman.

Our Heritage of Faith

notes from Faith Lutheran Church

May 2 at 2:00 the Luther League of Faith will have their regular monthly meeting. There are a number of important items to discuss, so please come if possible.

May 5 at 8:00 we will meet again for the class on Scripture. There will be only three more classes after this night. We will try to wrap up the Old Testament and put everything in a total picture. We hope that when we study the Old Testament again this class would have helped us find a deeper understanding to God's word which will then become more meaningful to us in our lives.

The ALCW of the Panhandle Conference is having their Spring Convention in Amarillo this coming Saturday the first of May. Myma Biggers and Linda Loewenhagen are representing Faith at this convention.

The 12th of May at 7:00 there will be a meeting for all those who wish to be involved in Vacation Church School this summer. We need many more people to become involved in this program. At the present time we only have three people. If we are to have our children's faith and grow in their faith we need people to help. You are needed please accept the call.

Now that Easter is over the spirit and joy that we received from the celebration of Easter need not be over. In fact in our faith everyday is Easter because Jesus Christ does live and is in the midst of us giving the faith, hope and love we need to live in this world. So everyday celebrate Easter in your hearts. Be faithful and give thanks to God for his great gift of life. Worship regularly and live in the relationship to a loving forgiving God.

If you have no home of worship we invite you to come to Faith and worship with us. Morning worship is 9:30 and Sunday School is 10:30.

Time For Fun Party Set

"TIME FOR FUN PARTY", May 4th, at 7 P.M., Home Demonstration Clubroom, Hosted by the Hansford County Home Demonstration clubs.

MEN-WOMEN, bring a friend or friends, come visit, play games, and have refreshments.


If you need a ride to the party, contact any H.D. Club member or call: Mrs. Judy Everson - 659-2462; Mrs. H. M. She-deck - 659-3429; Mrs. Rose Cummings - 659-2721; Mrs. Frank Davis - 659-2732; Altha Groves - 659-2478; Mrs. Fontella Mc-Kee - 659-2863; Mrs. Ce-

lestine Thompson - 659-2231. In Gruver, call: Mrs. Dick Spradlin - 733-2528 or Mrs. Mike Babbs - 733-2863.

SIX SITES
More than 60 percent of all cancer cases in the United States and over half the deaths begin with malignancies at six sites: breast, colon-rectum, lung, mouth, skin and uterus, the American Cancer Society says. Thousands of lives could be saved each year if more people would learn early warning signs of these cancers and have regular checkups.

Wallabys are baby kangaroos.

**VOTE FOR
LEE PHILLIPS
Candidate for
SHERIFF
of Hansford County**



Your vote and influence appreciated
Pd. for by Lee Phillips

Ryde
MAY 8th, 1976

Ryde
MAY 8th, 1976

Gifford-Hill Reports Income

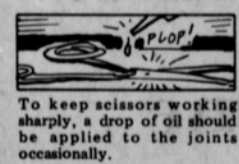
DALLAS, TEXAS, APRIL 21, 1976... Gifford-Hill & Company, Inc., reported net income of \$1,851,000, or 43 cents per share, on sales of \$56,327,000 for the three months ended March 31, 1976.

This compares with net income of \$1,811,000, or 43 cents per share, on sales of \$49,051,000 for the comparable quarter a year ago.

John R. Hill, Jr., President and Chief Executive Officer, said that this year's first quarter income, before equity in earnings of unconsolidated companies, is more than double that a year ago and offsets a drop in the Company's equity in earnings of Gifco Properties, Inc., which in 1975 included a net gain of \$1,004,000 realized in the sale of an oil and gas royalty interest.

Mr. Hill also stated that first quarter results represent a continuation of an upward trend of 1975's last quarter when stronger demand for most Gifford-Hill products and services was noted.

Gifford-Hill, whose shares are traded on the New York Stock Exchange under the symbol GFH, is involved in construction materials and concrete products; truck transportation; irrigation and industrial products; and real estate investment and development.



FIGHT GREEN-BUGS



PLANT ALL DEKALB

See me today for your sorghum seed. SEED IS NOW IN STOCK. TO ASSURE YOUR SUPPLY COME BY OR CALL FOR DELIVERY.


DAVIS OIL COMPANY
659-2025
SPEARMAN




DEPEND ON DEKALB

"DEKALB" is a registered brand name. Numbers designate hybrids. As a condition of sale, please note statement of limited warranty and remedy on DEKALB orders and tags.

Dread the Dream Castle Hunting Hassle?



...look for the **Energy Checked Efficiency Home Symbol**



Now is the perfect time to buy that new home your family has always dreamed of. This time of year there are more homes under construction which gives you a better choice. To make your new home selection easier, look for the Energy Checked Efficiency Home sign. It assures you that the house has passed Community Public Service Company's rigid energy inspection and that it has been constructed to utilize energy to the best advantage. Perhaps you're planning to remodel your present home. Existing residences can qualify as Energy Checked Efficiency Homes too. Multi-family residences and apartment complexes may qualify also. To check into all the advantages of an Energy Checked Efficiency Home, give us a call.

COMMUNITY PUBLIC SERVICE
Your Electric Light & Power Company
An Equal Opportunity Employer

Drive a non-stop mobile office



With a mobile dial telephone in your car, you can keep in touch with your office, customers, suppliers, and family right while you're on the go. No need to locate a phone, or even make an extra trip back to the office. Driving time becomes better business time. Really convenient, too, because our automatic mobile system lets you dial outside numbers (no push-to-talk buttons) while others call you by dialing your car telephone number. It's as quick and easy as your phone at home. Mobile service can pay for itself many times over. Get in touch with our Business Office today for full details on how to go... mobile.

GTE
GENERAL TELEPHONE

You are cordially invited to a
bridal shower honoring
Terry Leigh Johnston
bride-elect of Edgar Womble
First Christian Church
May 1, 1976 from 7 to 8:30 p.m.
Hostesses: Mmes.
Carroll Harper Louis Lemons
Herb Butt Jimmy Hester
Junior Lusby Edward Dear
Jimmy Shieldknight P.A. Lyon, Jr.

Happy Birthday

Happy Birthday for the month of May to:
Mart Gamett, Mm, Jim Crawford, Melodie Schumann, Mamba Shaver, Dalene Godfrey, Carolyn Gressett, Jan Oake, Bryan Jenkins, Hollie Riley, Cruz M. Garcia, Rita Reed, Patty Sheppard, Kinda Ivey, Dwayne Mitchell,

Melinda Cook, Pat Sutterfield, JoAnn Lee, Gary Pool, Minnie Weaver, Melva Nichols, Andrea Archer, Denise Blackbum, Richard Pipkin, Judy Friemel, Tammy Creamer, Sherry Shields, Don Schumann, Paul Garza, Jr., Diane McAtin, Scotty Evans, Francisco Ortega, Billie Haden, Hazel Shieldknight, Gary Gumfory, Debra Brock Brown, May Shaul, Linda Latta, Kurt Spoonemore, Bo DeArmond, Scott Boyd, Ruth Shaver,

Bryan Kenney, Debbie Greene, Freddie Shieldknight, Neta Burger, Wayne Ellsworth, Lori Short, Frankie Grange, Barbara Kenny, Michelle Smith, Ryan Curtis Beasley, Faye Schmehr, Karen Blogett, Marilyn Lewis, Kelly Mahanay, Kermit Mahanay, Gary Wyson, Amy Gumfory, Roy Collins, Kathryn Gumfory, Scott Alford, Jan Wyson, Suzan Pearce, Frances Loftin, Mark Cunningham, Kimberly Grows, Becky Brown, Alfonso Nunez, Garrett Gumfory, Phyllis Shedeck, Mike Owens, Roger Buchanan, Annette Faulkner, Julie Lata, Allen Alford, Debbie Sheppard, Lee Schubert, Kevin Nelson, Danny Dry, Wayne Groves, John Brinkley, Sharon Cook, Kimberly Nelson, Orville Brunnett, Ronnie Lusby, John Sutterfield, Mrs. Fred Hoskins.

Happy Anniversary for the month of May to:
Mr. & Mrs. Carroll Cook, Mr. & Mrs. Carroll Harper, Mr. & Mrs. Charles Shieldknight, Mr. & Mrs. Jack Oakes, Mr. & Mrs. Dennis Cline, Mr. & Mrs. Vernon Pipkin, Mr. & Mrs. Alan Davis, Mr. & Mrs. Sammy Don Jones, Mr. & Mrs. Gary Hamish, Mr. & Mrs. Michael T. Davis, Mr. & Mrs. Wayne Garrett.

TIPS ON LIPS

Lips must be kept moisturized and shielded to prevent drying by wind, sun or cold. The best skin moisturizers primarily contain waxes, which coat the lip skin and prevent moisture evaporation.



FOR BEAUTY'S SAKE-Lips need moisturizer to keep smooth and soft.

Lips do not tan, but they easily burn. So a lip care product containing a "sun screen," such as Blistik, should always be applied when lips are exposed to the sun for a prolonged time, and especially in the winter, at elevated areas and near the ocean.

If you're prone to fever blisters, a recurring condition that affects over half the adult population, a medicated lip care product such as Blistex should be applied at the first itching and tingling. Then massage it in thoroughly every half hour. Applied later, it also softens the sore and relieves pain and itching.

Lipstick users, to keep lips soft and smooth at all times, should use ointments or lip balms when not wearing lipstick.



What's invisible, usually doesn't hurt a bit, affects millions of Americans, is controllable, yet when left untreated can cause stroke, heart failure or kidney disease?

The answer, says the Texas Department of Health Resources is high blood pressure--or hypertension. The state health department is helping call attention to this problem in May, designated as High Blood Pressure Month.

Uncontrolled high blood pressure is a major national public health problem. It is the primary cause of 60,000 deaths in the United States each year. And, says the National Institutes of Health, it is a contributing factor in 1,500,000 heart attacks and strokes that occur each year in this country.

An estimated 23 million Americans, or about 15 percent of the adult population, have high blood pressure.

That's one in seven adults, not only in Texas but throughout the land.

The prevalence rates of high blood pressure rise steadily with advancing age, and in every age group the prevalence is higher for blacks than for whites.

Among American blacks, not only is the prevalence about twice as high as that among whites, but it is more severe and occurs at an earlier age. High blood pressure afflicts not only the elderly but also young and middle-aged adults in the most productive years.

Although detection is simple and painless--and drug therapy is practical and effective--the great majority of hypertensive people are not receiving satisfactory treatment.

Half of the estimated 23 million hypertensive Americans don't even know they have it, according to the National Institutes of Health,

Of those who do know, less than three million of those with high blood pressure are receiving adequate treatment--treatment to reduce their blood pressure within normal limits.

The Texas Dept. of Health Resources its local health units and regional offices are detecting high blood pressure in people throughout the state through the simple taking of blood pressure at clinics and in medical screening programs. In addition, they are cooperating with other agencies in health fairs and some open houses of local health departments to provide special screening.

How does high blood pressure affect your body?

Blood pressure varies among people, and in the same person at different times. It decreases during sleep and increases during exertion or excitement. There is a considerable range of normal pressure, which can be explained to you by your doctor. An important thing to know--and something your physician checks--is that when pressure goes above so-called normal limits and remains elevated, patients have high blood pressure or hypertension.

With high pressure in the arteries, the heart must pump harder. When high blood pressure is present for long periods, the heart enlarges. Eventually, under the continued extra burden, the heart weakens, loses efficiency and pumps less blood with each beat. The kidneys, unable to function effectively because of reduced blood flow, fail to excrete enough fluids, and tissues become waterlogged, adding still more to the burden of the heart.

Hardening of the blood vessels--or arteriosclerosis--is the major cause of high

blood pressure. The blood vessel changes may be a factor in stroke, kidney failure or heart failure.

Proper treatment reduces the danger. In most people, high blood pressure can be lowered and kept under control with continuing treatment. This greatly reduces the risk of serious complications.

Remember, the way to know whether your blood pressure is high is to go to your doctor and have the pressure taken. The fact that you feel fine is no assurance your blood pressure is okay.

It is important to have regular checkups to discover if you have high blood pressure. And there's one other point: carefully follow the instructions of your doctor. So have regular physical checkups and do your friends and family a favor by telling them of the dangers of high blood pressure.

Santa-Fe Reports Net Income

Santa Fe Industries, Inc., net income for the first quarter of 1976 was \$16.1 million, or 62 cents a share, nearly double the \$8.2 million, or 31 cents a share, earned last year, John S. Reed, chairman, announced today. Total revenues and sales for the first three months were \$327 million, compared with \$327 million for the same period in 1975, an increase of 15 percent.

Transportation revenues were up 16 percent to \$288 million, primarily due to freight rate increases and an increase of 3 percent in carloads handled by Santa Fe Railway. The increase in railway traffic reflected substantial gains in forest products, coal, motor vehicles and parts, and freight forwarder shipments, but these gains were partly offset by reduced loadings of grain, potash and certain other commodities. The transportation group incurred a pre-tax loss of \$8.0 million, as compared with

a loss of \$13.7 million during the first quarter of last year, with most of the improvement occurring in rail operations. This improvement occurred despite the fact that during the 1976 period the railway conducted an accelerated maintenance program involving the laying of 110 miles of new welded rail, as compared with none in the first quarter of 1975, and the inserting of 450,000 new cross-ties more than double that during the same period last year. Scheduling of this work during the first quarter has permitted completion of a significant portion of the year's maintenance program under advantageous conditions in contemplation of increased traffic during the balance of the year. The transportation group also benefited from an improvement in pre-tax income of \$1.7 million

from pipeline operations and from a \$4.4 million improvement in truck operations. The pre-tax contribution of the natural resources group was up \$2.8 million or 14 percent from last year, due principally to improved forest products operations resulting from higher plywood prices and sales. Petroleum production averaged approximately 47,000 barrels a day, the same as last year, and the average price of crude oil was up 9 percent. Increased exploration and production costs reduced the total contribution to slightly below that of 1975. The increase of \$2.3 million in "interest and other income-net" reflects a gain of \$1.5 million from the sale of approximately 12,000 acres of forest lands under threat of condemnation.

VICKI AND THE ROYALHEIRS
CREATIVE ★ EXCITING ★ UNFORGETTABLE



Audiences across the nation both young and old, express a feeling of spiritual renewal through the ministry of VICKI & THE ROYALHEIRS. Although having mastered a professional sound, and receiving favorable recognition from highly-regarded music critics, the depth of sound is not totally music. One experiences a feeling of warmth, love, vitality and spiritual impact. There is a smooth blend of favorite hymns as well as the contemporary gospel songs of our day. Hear this outstanding singing with an inspirational sound, uniquely submitted to the Lordship of Jesus Christ.

CHURCH OF THE BRETHREN

8:00 P.M. APRIL 29th
WAKA, TEXAS

To The Voters Of Precinct 3



B. J. RENNER

in Spearman at the COUNTY AGRICULTURAL BARN. Please turn out and vote

May 1, 1976

I am a candidate for your county commissioner. I live in Road District 3, and have worked on the roads and their construction. I am qualified to handle both this and the Administrative duties of commissioner.

Your vote will be appreciated... **B. J. Renner**

Pd. for by B. J. Renner



Send a
TOP MAN
from the
TOP TEN

DALLAM	SHERMAN	WINSFORD	OCUL TREE	LIPSCOMB
HARTLEY	MOORE	BUTCHERSON	ROBERTS	HEMPHILL

ELECT

Bill Jackson

OF CANADIAN
as your State Representative
from the

64th LEGISLATIVE DIST.

**Vote Saturday, May 1
Democratic Primary**

Pol. Adv. Paid for by Bill Jackson, 208 Main, Canadian, Texas

B

SPEARMAN
659-2514
GRUVER
733-2981

J. L. BROCK
AGENCY

It's
HAIL Insurance
Time

Federal Financial Aid Program for Education

Is lack of money stopping you from going to college or vocational school? Loan and grant money is available from the Federal Government and here's how to track it down.

Five different Federal financial aid programs are described in a new free pamphlet from the Department of Health, Education and Welfare. For your copy of Federal Financial Aid Programs for Education, write to Consumer Information Center, Dept. 11, Pueblo, Colorado 81009.

With the publication you'll receive an application for the Basic Grants Program. The program makes funds available for the school year, 1976-77, for students enrolled on at least a half time basis in a study program six months in length or longer. The amount of the grant depends on your eligibility and the cost of attendance at your school.

To apply for a basic grant, complete the application form. You should receive notification within four weeks of your eligibility.

To get information on the following loans and grants, talk with your school's financial aid officer, or if you're a high school student, your guidance counselor.

The National Direct Student Loan Program (NDSL) allows you to borrow up to a total of \$2,500 for a two year program; \$5,000 for a four year program; and a total of \$10,000 for undergraduate and graduate study.

The Supplemental Ed-

ucational Opportunity Grant (SEOG) is for students of exceptional financial need who, without the grant, would be unable to continue their education in an undergraduate, vocational, technical, or nursing program. **GRADUATE STUDENTS ARE NOT ELIGIBLE.**

If you receive a SEOG it can't be less than \$200 or more than \$1,500 a year. Normally you can receive a grant for up to 4 years. However, it may be made for 5 years when the training so requires. The total that may be awarded is \$4,000 for a four year study program or \$5,000 for 5 years.

The College Work Study (CWS) Program provides jobs for students who have great financial need and who must earn a part of their educational expenses.

The school arranges jobs for you on or off campus. If you're eligible, you may be employed for as many as forty hours a week.

The Guaranteed Student Loan Program enables you to borrow directly from a bank, credit union, savings and loan association, or other participating lender willing to make you an educational loan. The loan is guaranteed by a State or private non-profit agency or insured by the Federal government.

The maximum you may borrow is \$2,500 a year (in some States it is less). Your interest can't be more

than 7 percent.

The total amount you may borrow for undergraduate or vocational study is \$7,500. For graduate study alone or in combination with undergraduate school, the total is \$10,000.

If you get a loan instead of a grant, payments begin 9 to 12 months after you graduate or leave school. And you can take up to 10 years to pay. Your payments depend on the size of your debt,

but you must pay at least \$360 a year.

Federal Financial Aid Programs for Education (free) is one of over 240 selected Federal consumer publications listed in the Spring Edition of the Consumer Information Index. Published quarterly by the Consumer Information Center of the General Services Administration, the Index is available free from Consumer Information Center, Pueblo, Colorado 81009.

Textbooks Available For Review

AUSTIN--Copies of every book or teaching system submitted to the Texas Education Agency for the 1976 state textbook adoption will be available to all interested citizens for review at each of the 20 regional education service centers throughout the state beginning April 30, 1976.

Some 400 to 500 sample books and other materials will be on file in each center library during regular business hours, according to J. Henry Perry, Texas Education Agency textbook division director.

All major national publishers are expected to submit text materials for the Texas adoption in selected elementary and secondary school subject areas, Perry points out. The new materials may be adopted for a maximum of six years.

Books and comprehensive

teaching systems which may include tapes, filmstrips, and other materials will be studied in detail by members of the State Textbook Committee and their local advisors throughout the summer, Perry adds.

The 15-member committee, which includes public school administrators and teachers, will be appointed by the State Board of Education at its May 8 meeting in Austin. Committee members will also seek the views of other teachers in their own districts concerning each book or comprehensive system submitted for adoption.

A series of public hearings will be held in Austin in order to gather citizen viewpoints and opinion before the State Board of Education adopts textbooks at its November 13 meeting in Austin. The new materials

will be available for students on September 1, 1977.

Elementary subject areas scheduled to receive new books and other materials include: English as a second language (system), grade 3; basal readers in Spanish, supplementary readers in Spanish, mathematics in Spanish, science in Spanish, Spanish language development, all for grade 3 bilingual classes. Elementary English dictionaries, grades 3-6; spelling textbooks for grades 7 and 8, secondary dictionaries for grades 7-11, and English dictionaries for grade 12 are also included on the list.

High school subject areas to receive new textbooks include: journalism, algebra, geometry, trigonometry, mathematics for consumer economics, fundamentals of mathematics, chemistry I, physics I, marine science, biology I, geology, world history studies, French I and II, bookkeeping I and II, shorthand I and II, cosmetology, aerospace/aviation, and fundamentals of the free enterprise system.

Regional education service centers where the textbooks and supporting materials will be on display include: Region I, 1900 West Schunior, Edinburg; Region II, 109 North Chaparral, Corpus Christi;

Region III, 2710 Hospital Drive, Victoria; Region IV, 1750 Seamist, Houston; Region V, 2900 North St., Beaumont; Region VI, 2107 Avenue I, Huntsville; Region VII, Building C, Ross Avenue, Kilgore.

Also, Region VIII, 100 North Riddle Street, Mt. Pleasant; Region IX, 3014 Old Seymour Road, Wichita Falls; Region X, 400 E. Spring Valley Road, Richardson; Region XI, 2821 Cullen Street, Fort Worth; Region

XII, 401 Franklin Avenue, Waco; Region XIII, 6504 Tracor Lane, Austin; Region XIV, 3001 North Third, Abilene; Region XV, 100 North Magdalen, San Angelo; Region XVI, 1601 South Cleveland, Amarillo; Region XVII, 700 Texas Commerce Bank Building, Lubbock; Region XVIII, Pliska Drive, Terminal, Midland; Region XIX, 6611 Boeing Drive, El Paso; Region XX, 1550 N.E. Loop 410, San Antonio.

against 15.6 for men.

The loss in Hansford County, based upon the disability rate in its area, adds up to a total of 79,000 days for the year.

Least likely to have their activities curtailed by illness or injury, according to findings, are people living on farms, away from metropolitan areas.

PROTECTING YOURSELF AGAINST LOSS

TIPS TO HELP YOU
This information has been supplied by experts at The Society of Chartered Property & Casualty Underwriters, the national professional society whose members have earned the CPCU designation by meeting high educational, ethical and experience requirements.

Q. Do I have to be a homeowner to own a homeowner's policy? My sister and I rent an apartment but we'd still like to be covered in case any of our personal property is stolen or damaged.



A. You still can be. If you live in an apartment or rent the house you occupy, there's a homeowner's policy for you. It's called a "Contents Broad Form" or "Tenants Form." It insures your household against the same damages as your homeowner's policy and provides coverage for additional living expenses as well.

Health Status Of Local Residents

NEW YORK, Apr. 24 - How do residents of Hansford County compare with people elsewhere in the country in terms of health?

To what extent has the general health of the local population changed, if any, in recent years?

Some answers to these questions may be gleaned from the reports of the Health Resources Administration, a branch of the Department of Health, Education and Welfare, and the Health Insurance Institute.

Through annual surveys and studies of families in all parts of the country, they keep constant watch on the physical condition of the population.

The general health of a community is gauged by the degree to which its residents are able to pursue their normal daily activities without having them interrupted by illness or injury.

It is measured by what are called "disability days," which are days of restricted

activity, when people are unable, as a result, to go to work or to school.

In the regional area embracing Hansford County, on the basis of that yardstick, the health of the population is not as good as it was 10 years ago. That is true, also, of most other sections of the country.

People are taking more time off because of illness or injury than in former years.

The latest government figures indicate that local people are averaging 18.8 disability days per year per person, 7.5 of them confined to bed, as against 16.9 disability days in 1966, including 6.7 bed days.

By way of comparison, the average for the nation as a whole is 17.2 disability days, 6.7 of them in bed. School children are losing 5.6 days a year for health reasons.

The figures show also, that women are more likely to become incapacitated than men. They have 18.7 days of disability a year as

BRUCE ROBERSON

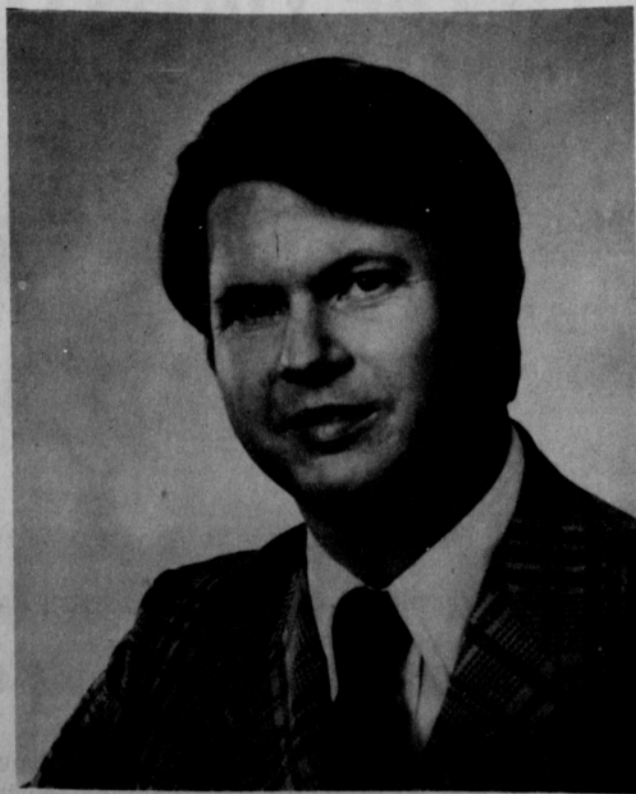
THE ONLY CANDIDATE WITH THE QUALIFICATIONS AND DESIRE TO ACT AGGRESSIVELY AS DISTRICT ATTORNEY

ROBERSON — An Experienced Trial Attorney

ROBERSON — An Aggressive Prosecutor

ROBERSON — Works Well With All Law Enforcement Agencies

ROBERSON — Recognizes Drugs as the Biggest Problem Facing Parents Today and as a Parent is Dedicated to Strict Enforcement on All Drug Laws.



ELECT

BRUCE ROBERSON



Nicotine comes from Jean Nico who introduced tobacco into France in 1560.

JON NEWTON

Texas Railroad Commission



JON NEWTON BELIEVES:

"Texans are going to get a handle on rising utility costs only when we reject phony political promises and attack the problem both here and in Washington."

LEADING JOURNALISTS AGREE:

"The public will expect and demand of the commission a performance more judicious and exacting than ever before in its 85-year history. Of all the candidates in this important race, we believe Jon Newton is best qualified to meet the needs of this new day for the commission." *Dallas Morning News, April 19, 1976.*

"Jon Newton is an unusually well-qualified candidate for this office which today is of tremendous and growing importance to our state and nation." *Kilgore News Herald, April 18, 1976.*

"He has worked successfully for consumer and environmental causes, he is for a realistic and wise use of our state's resources and he has spoken out in federal forums for adequate energy policies." *Port Arthur News, April 20, 1976.*

"If a voter wants to do something about solving energy and transportation problems, one effective way would be to vote for Jon Newton for Texas Railroad Commission." *Houston Chronicle, Feb. 15, 1976.*

"Newton talks common sense on energy and is ready to go to bat for all Texans... (his) views are sound, his goals admirable and his qualifications superior." *Victoria Advocate, Feb. 15, 1976.*

"We need men like Jon in every capacity in state government." *Beeville Bee-Picayune, Jan. 19, 1976.*

"Ask Jon Newton' is becoming the byword around the Capitol when it comes to energy and utility regulations." *Houston Post political column, Feb. 15, 1975.*

JON NEWTON HAS THE ANSWERS.

VOTE FOR THE RESPONSIBLE DEMOCRAT FOR THE TEXAS RAILROAD COMMISSION.

Pd. Pol. Adv., Jon Newton Campaign Committee, Tom Hagan, Treasurer, P. O. Box 1952, Austin, Texas 78767



Judging by television commercials, the average American housewife is obsessed with keeping her kitchen clean. But just how clean? Suppose a health department Food and Drug Inspector visited your kitchen. Would it pass the inspection?

According to the Texas Department of Health Resources, there's a good chance that it would not -- and that might be part of the reason that the incidence of food-borne diseases, such as food poisoning, is far more common in the home than in public restaurants.

Of course, how clean you keep your kitchen, and the sanitary practices you follow in your own home, are entirely your own business. But you might find it interesting to compare your own food-handling practices with the official rules that food service establishments are required to follow. So let's take a brief health inspection of your kitchen.

We'll start with the kind of food you serve your family. As a general rule, whatever you bought at the supermarket should be okay, since the supermarket itself must abide by similar health department rules. But there are some things you need to check.

Is every food item properly labeled to show both the contents and the source? Did you pick up some dented canned goods? If you did, throw them out -- you can't use them. The same is true of any food package that was accidentally broken or opened before you got it home.

You know that jar of home-made pickled peaches your neighbor gave you? And the home-canned tomatoes you bought at a little fruit stand on a back-country road? Throw them all out. Home-canned products can't be used in a restaurant; the danger of food-borne disease from improper processing is just too great.

What about the way you store your foods? Dry foods, such as cereals, bread, flour, sugar, and so on, must be stored in air-tight

containers once the original package has been opened. Out goes that half-empty cereal box in the pantry! Speaking of the pantry, you know that bag of potatoes sitting on the floor? That's against the rules: all foods must be stored up, off the floor.

Anything that might spoil at room temperatures must be either refrigerated or frozen -- of course. But is your freezer set to maintain zero Fahrenheit? And does your refrigerator keep everything -- top to bottom, front to back -- at no more than 45 degrees? You'd better check with a good thermometer. Incidentally, if you're concerned about wasting energy by setting the refrigerator temperature that low, look at it this way: you'll probably make up for the loss because your foods will stay fresh and enjoyable several days longer at 45 degrees than they would at 50 degrees or more.

One minor point to watch for: If you're in the habit of sticking fruit juice, or beer, or soda pop cans in an ice cube container to cool them down quicker, you'd better not plan on using the ice for anything else. In fact, the health inspector will frown on storing anything in ice.

There's one major problem in almost every kitchen. When you're preparing a complete meal for your family, what happens if the meat is done before the vegetables are ready? According to the health inspectors, you'd better keep the meat hot -- no less than 140 degrees Fahrenheit. The same rule applies to all cooked foods. If you ever let cooked food stand for more than a couple of minutes at temperatures below 140 degrees, you're not only breaking the rules -- you're openly inviting a serious case of food poisoning.

If there's one thing the average housewife probably thinks she's doing right, it's washing dishes -- especially if she uses an automatic dishwasher. Unfortunately, a health inspector probably wouldn't agree. Unless, of course, she uses a triple sink for hand-washing in three stages; washing in soapy water, rinsing in hot water, and a final sanitizing rinse in water that has been heated to 180 degrees or more, or in a sanitizing chemical. No washer in most American homes won't pass inspection either: it may do a good job of cleaning, but it probably doesn't sanitize.

If your kitchen falls a little short of these standards, you can be thankful that you're not in the restaurant business. This is just a brief sampling of the 118 items listed on a standard health inspection form. Of course, the law doesn't apply to your private kitchen, but there are good reasons for every one of these rules. You may find it comforting to know that the Texas Department of Health Resources and your local health department are doing their part to see that

the rules are observed wherever your family eat -- except in your own home.

Texas Highway Department Appear At Intersections

DALLAS, TX (UMN) -- Two faculty members from Perkins School of Theology located here, a Houston church youth choir, and a Spanish speaking task force from Texas and New Mexico are each expected to have featured roles in the quadrennial meeting of the United Methodist General Conference in Portland, Oregon.

Scheduled for April 27 through May 8, the top law-making body of the denomination will act on issues ranging from needs of ethnic minority local churches to a multi-million dollar request to fight world hunger to a resolution calling on United Methodists to observe two bi-centennials--one of their country in 1976 and the other of their church in 1984.

J.B. Holt, dean of admissions at Perkins School of Theology in Dallas, is the Secretary of the General Conference which represents 10 million members around the world. Elected at the last general conference in Atlanta in 1972, Dr. Holt has already accredited the 984 delegates representing some 70 U.S. annual conferences and another 35 annual conferences outside the U.S. Dr. Holt is responsible for the verbatim recording of the 12 day international conference, certifying the record for printing in the DAILY CHRISTIAN ADVOCATE and assisting the presiding officer in clarifying motions from the floor of the conference.

TWO BICENTENNIALS Soon after the opening of the evening session of the conference on Tuesday, (April 27) Albert C. Outler, research professor of theology at Perkins School of Theology in Dallas, is expected to present a resolution from the denomination's Bicentennial Committee declaring the 1976 U.S. Bicentennial observances "will be no more than ceremonial unless they prompt us to fresh and positive commitments."

The proposed resolution suggests three types of commitments, one of which is a "Thanksgiving season" in 1976 designated as a time of National Rededication. The draft resolution also looks toward the bicentennial of U.S. Methodism in 1984, which comes 200 years following the Christmas conference of 1784 when the Methodist Episcopal Church was born in Baltimore, Md. YOUTH CHOIR

Seventy-five members of the 100 member youth choir of Bellaire United Methodist Church in Houston will sing at the Portland conference on Saturday, May 1, during the morning worship. Selected in a nationwide audition, the youth choir is only one of two groups east of the Rockies invited to sing at the morning worship services.

The choir has used a series of car washes, garage sales, a musical play and concerts to earn air fare to Portland for themselves and their leaders, Mr. and Mrs. Earle B. Lowder.

SPANISH SPEAKING TASK FORCE The two member Spanish speaking delegation from the Texas and New Mexico based Rio Grande Annual Conference has an eleven member Spanish-speaking task force coming from the two-state region for support in Portland.

"This task force will be a catalyst to assist our delegation in unusual circumstances," said Simon Nieto, Albuquerque, New Mexico, a task force member. "We do not vote but we will be supportive, serving as diplomats and spokespersons for the Rio Grande Conference in the committees, the different caucuses, and meetings that go on everywhere."

One team member described the Spanish-speaking annual conference as a minority conference seeking improvement "and one of the ways to achieve it, is to have a larger numerical representation at General Conference."

DELEGATES Sixty-eight of the 984 delegates to the 1976 General Conference will come from the seven annual conferences of Texas and New Mexico. One half of the delegates are clergy and the other half are lay.

The four resident bishops of Texas and New Mexico will attend the conference. They may preside over the conference but do not have a vote, as do the delegates. Bishop O. Eugene Slater heads the San Antonio Area, Bishop W. McFerrin Stowe, the Dallas-Forth Worth Area, Bishop Alsie H. Carleton, the Northwest Texas-New Mexico Area, and Bishop Paul V. Galloway, the Houston Area.

SAMPLE OFFICIAL BALLOT BOLETA OFICIAL

DEMOCRATIC PARTY PARTIDO DEMOCRATICO

Vote for the candidate of your choice in each race by placing an "x" in the square beside the candidate's name (Vote por el candidato de su preferencia para cada candidatura marcando con una "x" el cuadro junto al nombre del candidato.)

Voting Precinct 3 (Precinto de votar 3)

I am a Democrat and pledge myself to support the nominees of this primary. (Yo soy Demócrata y me comprometo a apoyar a los candidatos nombrados de esta Primaria.)

DELEGATES TO NATIONAL PRESIDENTIAL NOMINATING CONVENTION (Delegados a la Convención Nacional que nombra el Candidato Presidencial)

VOTE FOR ANY 3 DELEGATES (VOTE POR CUALESQUIER 3 DELEGADOS)

- | | |
|---|---|
| Delegate Candidate (Candidato Delegado) | Presidential Candidate (Candidato Presidencial) |
| <input type="checkbox"/> David R. Matthis delegate for (delegado a favor de) | <input type="checkbox"/> JIMMY CARTER |
| <input type="checkbox"/> V. P. Perry delegate for (delegado a favor de) | <input type="checkbox"/> JIMMY CARTER |
| <input type="checkbox"/> Mary Simpson delegate for (delegado a favor de) | <input type="checkbox"/> JIMMY CARTER |
| <input type="checkbox"/> Max Sherman delegate for (delegado a favor de) | <input type="checkbox"/> LLOYD BENTSEN |
| <input type="checkbox"/> Jeanelle (Mrs. Travis) Spears delegate for (delegado a favor de) | <input type="checkbox"/> LLOYD BENTSEN |
| <input type="checkbox"/> Jim Lovell delegate for (delegado a favor de) | <input type="checkbox"/> LLOYD BENTSEN |
| <input type="checkbox"/> Bill Dwight delegate for (delegado a favor de) | <input type="checkbox"/> GEORGE C. WALLACE |
| <input type="checkbox"/> Ruben F. Brock delegate for (delegado a favor de) | <input type="checkbox"/> GEORGE C. WALLACE |
| <input type="checkbox"/> Becky Motley delegate for (delegado a favor de) | <input type="checkbox"/> GEORGE C. WALLACE |

Vote for the candidate of your choice in each race by placing an "x" in the square beside the candidate's name. (Vote por el candidato de su preferencia para cada candidatura marcando con una "x" el cuadro junto al nombre del candidato.)

For United States Senator (Para Senador De Los Estados Unidos)

- LEON DUGI
- HUGH WILSON
- PHIL GRAMM
- LLOYD BENTSEN

For United States Representative, 13 District (Para Representante De Los Estados Unidos, Distrito No. 13)

- JACK HIGHTOWER

For Railroad Commissioners (Para Comisionado de Ferrocarriles)

- R. R. WILLIAMS
- JERRY SADLER
- ROBERT "BOB" WOOD
- WOODROW WILSON BEAN
- TERENCE L. O'ROURKE
- LANE DENTON
- JON NEWTON
- DAVID FINNEY

For Associate Justice—Supreme Court, Place 1 (Para Juez Asociado, Corte Suprema, Lugar No. 1)

- JACK POPE

For Associate Justice—Supreme Court, Place 2 (Para Juez Asociado, Corte Suprema, Lugar No. 2)

- DON YARBROUGH
- CHARLES W. BARROW

For Associate Justice—Supreme Court, Place 3 (Para Juez Asociado, Corte Suprema, Lugar No. 3)

- JAMES G. DENTON

For Presiding Judge, Court of Criminal Appeals (Para Juez presidente, corte de apelacion criminal)

- JOHN F. ONION, JR.

For Judge, Court of Criminal Appeals (Para Juez, corte de apelacion criminal)

- JEROME CHAMBERLAIN
- TRUMAN ROBERTS

For Judge, Court of Criminal Appeals—Unexpired Term (Para Juez, corte de apelacion criminal, poroso servio)

- JIM VOLLERS
- W. T. PHILLIPS
- CARL DALLY

For State Senator, 31 District (Para Senador estado, 31 distrito)

- MAX SHERMAN

For State Representative, 64 District (Para Representante estado, 64 distrito)

- WILLIAM J. (BILL) JACKSON
- MRS. LEO "DAISY" MOORE
- LEON STAVLO

For Associate Justice, Court of Civil Appeals, 7 District (Para Juez asociado de la corte de apelacion civil, 7 distrito)

- CHARLES L. REYNOLDS

For District Judge, 84 District (Para Juez del 84 distrito)

- RICHARD N. (DICK) COUNTISS

For District Attorney, 84 District (Para Fiscal del 84 distrito)

- CECIL M. PRUETT
- BRUCE ROBERSON
- STEPHEN F. (STEVE) CROSS

For County Attorney (Para Procurador del condado)

- J. E. BLACKBURN

For Sheriff (Para Sherife)

- LEE PHILLIPS
- R. L. McFARLIN

For Tax Assessor-Collector (Para Asesor-Collector de Impuestos del condado)

- HELEN DRY

For County Chairman (Para Presidente del condado)

- CARL M. ARCHER

For County Commissioner, Precinct 3 (Para Comisionado del condado, Pct. 3)

- B. J. RENNER
- ROBERT C. FERGUSON
- L. M. WOMBLE
- DAN DESIMONE

For Precinct Chairman, Precinct 3 (Para Presidente del precinto, Pct. 3)

- TOMMY GUMFORY

For County Commissioner, Precinct 1 (Para Comisionado del condado, Pct. 1)

- RAY PHELPS
- ROSCOE L. NELSON
- J. E. KENNEY
- GARLAND HEAD

VOTE FOR

Our American Farmers and Ranchers This ballot compliments of

Speartex Grain Co.

No 1 514 Coltard 659-2521
No 2 Hwy 15 West 659-2549

Judge Truman Roberts

TRUMAN ROBERTS has established an outstanding record over the past five years as judge of the state's highest court in criminal matters. Before election to the Texas Court of Criminal Appeals he served 11 years as County Attorney and District Attorney, then 10 years as Presiding Judge of the 52nd Judicial District.

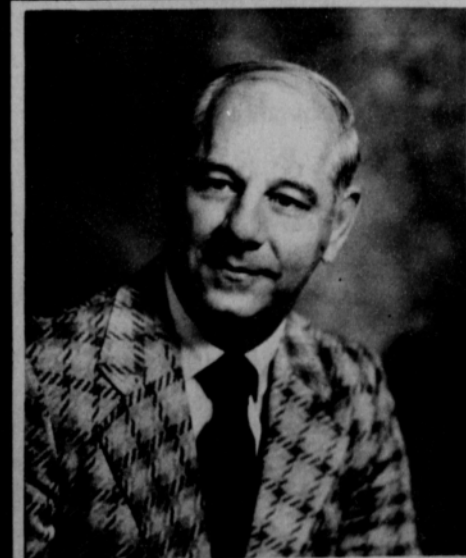
Judge Roberts has been endorsed in his race (over a Dallas opponent) by 76.4 percent of more than 11,000 attorneys voting in the State Bar of Texas poll.

Vote to keep a man with this excellent experience and recognized ability. Vote in the Democratic Primary on May 1 to re-elect Judge Truman Roberts to a second term on the Texas Court of Criminal Appeals.

Texas Court of Criminal Appeals



Pol. adv. paid for by Truman Roberts Campaign, Truman Roberts, Treasurer, 112 East 8th Street, Austin, Texas 78701



Vote For DAN DESIMONE

Candidate For County Commissioner Precinct 3

- ★ Experienced in Local Government
- ★ Sound Business Judgement
- ★ Open Mind

Paid Pol. Adv. Paid for by Dan Desimone

MEET THE SENIORS OF SPEARMAN AND GRUVER 19 76 HIGH SCHOOLS!



James Burch

Judy Reed

Cheryl Harris

Kathy Gilley

David Steele



Tina Clawson

White House
Lumber Co.
of Spearman

Gruver
State Bank

Daco Lease &
Well Service
Spearman, Texas

THE SPEARMAN REPORTER

ALLSUPS
CONVENIENCE STORE
OPEN 24 HOURS

Tucker Water
Well Service


Hansford Implement
Spearman, Texas

**R. L. McClellan
& Sons**
Spearman, Texas

B J. L. BROCK AGENCY
GENERAL INSURANCE
Spearman-659-2514
Gruver-733-2981

Jr. Lusby Cats
823-5971 Canadian
659-2146 Spearman

Boxwell Bros.
Spearman, Texas

HANSFORD PLAINSMAN

Speartex Grain Co.
Spearman, Texas

York Electric
Spearman, Texas

Wardrobe Cleaners

Spearman Redi-Mix
Spearman, Texas

REMEMBERING...

By BILL D. BROOKS

Fighting Wasps

A couple of our friends came over one day and we decided to clear all the wasps out of the barn. The only way I knew to fight wasps, until that day anyway, was to chunk the nest down with a big rock or clod and run like the dickens, hoping none could catch you. But our friends said no, that was not the way to do it, it had no style. One boy took charge and showed us how to make paddles from thin boards off of an apple box. We used the coping saw and a barlow knife to shape handles and we were in business. He said that it was sissy to chunk rocks at the nests from a long way off, said the best way was to take a stick and walk boldly up to the nest and just thump it down. He explained that wasps could tell if you were afraid of them and would attack you if you were but if you were brave they could sense it and wouldn't bother you.

He would go up to the nest, thump it down, back up a few paces and we would join him with our paddles, swatting the little creatures as they buzzed near us. When the nest hit the floor of the barn a cloudburst of yellow jackets was in the air going all directions so fast you couldn't see them, much less hit them with the paddles.

Mr. Brave who had told us how to do it was lying on the floor after he had tripped over his own feet running backward. Wasps were all around him, some were stinging, some were waiting their turn. Another kid had told us earlier that if you stood perfectly still they wouldn't bother you even if they were swarming all around. His theory had to be adjusted somewhat as he

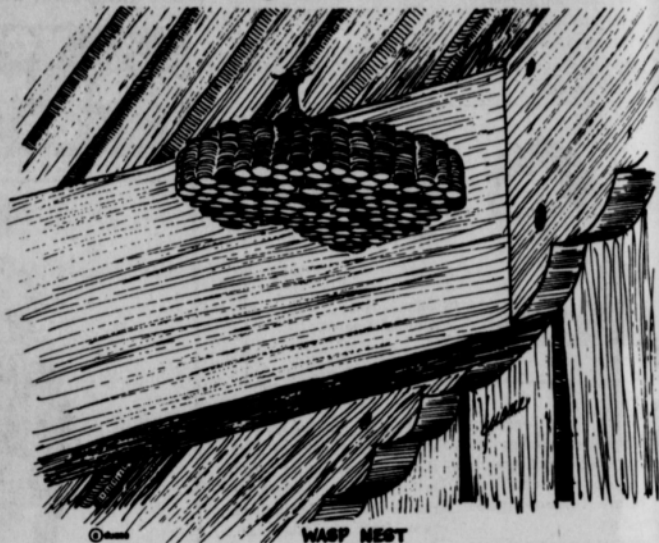
was standing perfectly still, holding his breath while three big ones were stinging him. He finally let out a holler and bolted for the door with a stream of them hot on his heels.

We regrouped our forces outside the barn and counted the casualties. On our side it was well above one hundred per cent and we didn't know how the wasps fared, since none of us wanted to go back into the barn to check.

Mom made a paste of baking soda and water and

applied it to our wounds. If you were out somewhere without baking soda, mud was a fair substitute. There were more exotic mixtures such as used chewing tobacco or snuff applied to the sting. I also heard of a cure for insect stings that was made of sheep pellets but fortunately I was never subjected to the use of it.

That wasn't the last time we fought wasps but it was the last time I ever believed anyone who said that wasp wouldn't bother you if you were brave.



WASP NEST

UMGC To Have Guests At Its Meeting

During the spring of 1974 Texas Highway Department cars and personnel began appearing at various intersections in Amarillo. Sooner or later they showed up a time or two at all 135 city intersections involved and the city traffic and planning offices to put in a computerized traffic control system. "We tried our best to keep debris off the streets during the construction period," said Thomas L. Armstrong, senior resident engineer in Amarillo with the state agency, which in June of 1975 became the State Department of Highways and Public Transportation. "But it was worth it," according to Armstrong, who is quick to point to immediate if not too obvious results of the \$2 million Sperry Rand Corp. system. Work on the system began on April

28, 1974, and was completed on Feb. 11, 1976.

Progression has improved. It takes less time now to travel from 11th to Amarillo Blvd. and back on the north-south dispersal streets--Taylor, Fillmore, Pierce and Buchanan--for instance, because of the new signal system.

"People don't realize it, but now you can drive from Amarillo College to 3rd on Washington without stopping at a red light once you make a green light and don't get caught up in traffic," Armstrong said. "Before you couldn't do that."

Armstrong supervised the installation of the system that was a TOPICS project (Traffic Operations Program to Increase Capacity and Safety). TOPICS, an expenditure of federal funds and matching state funds, was authorized by Congress in the Federal-Aid Highway Act of 1968.

Funds for the program, however, were discontinued in the 1973 Act. A similar program, but one laden with less tape, the Urban System Program, replaced TOPICS. Funds from this program are directed toward reduction of traffic congestion and facilitation of the flow of traffic within urban areas.

Projects include intersection improvements, elimination of railroad at-grade crossings and traffic bottlenecks, installation of impact attenuation devices (crash cushions), street extensions, pedestrian overpasses, freeway ramp metering and modification of parking to increase capacity and safety.

Computerized traffic control systems were a rear TOPICS project. On June 3, 1971, the mayor of Canton, Ohio, officially dedicated the control center for a new system, which marked the successful completion of the first phase of Canton's TOPICS program.

The Amarillo system was funded through TOPICS on a 50-50 basis by state and federal funds. The City

prepared plans and specifications.

The computer that controls the traffic signals, a keypunch machine, teletype writer and map display are all located in the present traffic control room in the city traffic and planning offices on the second floor of city hall.

The system now is in the hands of City Traffic Engineer Jim Lee and Ray Vartanian, a civil engineer employed by the city who operates the computer equipment.

What does the new system have over the old discarded setup? "The preciseness of timing is much improved," states Lee. "We can have a tremendous number of patterns, too."

Lee commented that in order to change a pattern with the old system each controller had a knob that had to be turned by hand. This is accomplished much more precisely--electronically--by the new system. Six to eight patterns are used on an average day, Lee said. The new system permits the city traffic office to furnish special timing patterns for big events at the civic center, football stadium and similar

sites where traffic flow is heavy. Other patterns accommodate the influx of traffic downtown weekday mornings, a lunchtime setup, a return-home-from-work-downtown pattern, night and early morning patterns. One used Saturdays Lee terms a "shopping pattern." Another is used on Sundays.

The system divides Amarillo into seven sections. New controllers were installed on the dispersal street system from NE 3rd to SE 11th and from Taylor to Cushman. Traffic signals on Washington from S. 3rd to 24th, on Georgia from 15th to 27th, the six-way interchange at IH 40, Julian and Pansamont, and on Western from Wolflin to Olsen, are tied in with the downtown computer.

Lee and Vartanian are working on locking two downtown sections together so that traffic progresses rapidly and safely east-west and north-south.

Vartanian said 135 signal intersections in the downtown and outlying areas are connected to the computer.

The new system gives a more definite way to set the timing of signals. Detectors spotted throughout the city feed information into the computer on number of cars and speeds at various locations.

Malfunctioning signals are reported on the computer, giving the exact time the signal failed.

"The new system isn't just pushing buttons," Lee said. "We are constantly working on updating patterns and new patterns."

"The new system has unlimited capabilities," according to Armstrong.



By David and Eunice Bigelow

It was the winter of 1800 when the White House was ready for occupancy. Abigail Adams had the honor and task of being the first First Lady. History reveals that in the bumpy ride from Philadelphia to Washington more than half of her china tea service had been broken en route. Mrs. Adams had to replace it in time for the official reception or face social disaster. Why not celebrate the Bicentennial year with a formal or informal tea party in your own home? Invite friends and neighbors over and serve Bigelow's Constant Comment, an adaptation of a colonial recipe blending fine tea with orange rind and sweet spices.

Parrots have no wishbones. Edison invented the flash light in 1914.

FIGHT GREEN-BUGS



PLANT ALL DEKALB

See me today for your sorghum seed.



DEPEND ON DEKALB

"DEKALB" is a registered brand name. Numbers designate hybrids. As a condition of sale, please note statement of limited warranty and remedy on DEKALB orders and tags.

MILFORD LAMBRIGHT

878-2765

Pringle

No. 1 S.A.M. OFFICIAL BALLOT BOLETA OFICIAL -REPUBLICAN PARTY PARTIDO REPUBLICANO

Vote for the candidate of your choice in each race by placing an "x" in the square beside the candidate's name.
(Vote por el candidato de su preferencia para cada candidatura marcando con una "x" el cuadro junto al nombre del candidato.)

No. 1
May 1, 1976
(1 de mayo de 1976)
CONDADO DE HANSFORD
COUNTY, TEXAS
REPUBLICAN PARTY
PRIMARY ELECTION
(ELECCION PRIMARIA DEL
PARTIDO REPUBLICANO)
NOTE: Voter's signature to be filed on the reverse side.
(NOTA: Firma del votante seré filed al lado reverso.)

I am a Republican and pledge myself to support the nominees of this primary. (Yo soy Republicano y me comprometo a apoyar a los candidatos nombrados de esta Primaria.)

DELEGATES TO NATIONAL PRESIDENTIAL NOMINATING CONVENTION
DELEGADOS A LA CONVENCION NACIONAL QUE NOMBRARA EL CANDIDATO PRESIDENCIAL

VOTE FOR ANY 4 DELEGATES
(VOTE POR CUALESQUIER 4 DELEGADOS)

Delegate Candidate (Candidato Delegado) Presidential Candidate (Candidato Presidencial)

- ROBERT C. HOLT delegate for (delegado a favor de) GERALD R. FORD
- DON H. REAVIS delegate for (delegado a favor de) GERALD R. FORD
- ZACK FISHER delegate for (delegado a favor de) GERALD R. FORD
- JOE B. MEISSNER delegate for (delegado a favor de) GERALD R. FORD

- JOE B. CURTIS delegate for (delegado a favor de) RONALD REAGAN
- ILA JO HART delegate for (delegado a favor de) RONALD REAGAN
- JOHN MARK GALLAWAY delegate for (delegado a favor de) RONALD REAGAN
- JAMES E. BRANDON delegate for (delegado a favor de) RONALD REAGAN

Vote for the candidate of your choice in each race by placing an "x" in the square beside the candidate's name.
(Vote por el candidato de su preferencia para cada candidatura marcando con una "x" el cuadro junto al nombre del candidato.)

(Para Senador de los Estados Unidos)
For United States Senator

- HUGH W. SWEENEY
- ALAN STEELMAN
- LOUIS LEMAN

For United States Representative, 13th District
(Para Representante Estatal, Distrito No. 13)

- BOB PRICE

For Railroad Commissioner
(Para Comisionado de Ferrocarriles)

- WALTER WENDLANDT

For State Representative, 64th District
(Para Representante Estatal, Distrito No. 64)

- G. R. "BOB" CLOSE

For County Chairman
(Para Presidente del Condado)

- GLENDON H. ETILING

For Precinct Chairman, Precinct No. _____
(Para Presidente del Precincto No. _____)

Place an "x" in the square beside the statement indicating the way you wish to vote. (Ponga una "x" en el cuadro al lado de la frase que indica la manera en cual usted quiere votar.)

The following are not binding. (Las siguientes no son obligatorias.)

- FOR (A FAVOR DE) } Do you favor a constitutional amendment or legislation to deny release or bail to repeat felons who are awaiting trial? (¿Apoyaría usted una enmienda constitucional o legislación que les negaría liberación o fianza a criminales repetidores?)
- AGAINST (EN CONTRA DE)
- FOR (A FAVOR DE) } Do you favor legislation which would require mandatory, non-parolable prison sentences for felony offenses involving the use of deadly weapons or resulting in bodily injury? (¿Apoyaría usted legislación que requeriría sentencias mandatorias y sin liberación condicional para delitos criminales en que se usan armas mortíferas o que resultan en lesión corporal?)
- AGAINST (EN CONTRA DE)
- FOR (A FAVOR DE) } Would you favor a constitutional amendment or legislation which would allow the use of oral confessions in a trial? (¿Apoyaría usted una enmienda constitucional o legislación que permitiría el uso de confesiones orales durante el juicio?)
- AGAINST (EN CONTRA DE)
- FOR (A FAVOR DE) } Do you favor a constitutional amendment allowing the use of electronic surveillance to fight organized crime? (¿Apoyaría usted una enmienda constitucional que permitiría el uso de vigilancia electrónica para combatir el crimen organizado?)
- AGAINST (EN CONTRA DE)
- FOR (A FAVOR DE) } Would you favor a constitutional amendment or legislation banning the use of forced busing of school children for the purpose of achieving racial balance? (¿Apoyaría usted una enmienda constitucional o legislación que prohibiría el uso de transporte mandatorio de niños escolares con el propósito de lograr el equilibrio de las razas?)
- AGAINST (EN CONTRA DE)

GRUVER STATE BANK

"The most Bank for your money"

Gruver, Texas

Phone 733-5061

B. J. Renner

IN the Democratic
Primary May 1st

COUNTY COMMISSIONER PRECINCT 3

B. J. is a Korean war veteran and a graduate of Abilene Christian College.

A man of honesty and integrity and a hard worker.

A man that has the ability to pull our county together and produce harmony.

He will take an active interest in all state and national issues affecting us as individuals and as a county.

A vote for B. J. is a vote for good government.

Paid for by supporters of B. J. Renner

2718



Man and Horse

BY EARL RICE

You've always wanted one. For as long as you can remember, it's been the number one topic of your conversation. So one morning you wake up, and standing in the back yard is your very own horse. How excited you are! You run up to your new found love and go to throw your arms around him. But he jumps away from you a little startled, not quite understanding your enthusiasm.

Now the maneuver your horse has just executed is just as startling to you, as your movements were to him. You love him, he is all you have ever wanted, how come he does not love you? Let's back up a minute and look through the eyes of the horse. Let us face it, you have accepted this beautiful animal as your own, in sickness and in health, as long as you both may live, but has he? He is a stranger to you, and likewise, you to him. He is in a strange environment and not completely able to understand your excitement, along with all that is new in his surroundings. In other words, slow down.

The horse's viewpoint of that which is new, is expressed in a totally different way than that of his human counterpart. He views the new with inquisitiveness and suspicion. You may have the same reaction, but you have the mental facility to reason, he does not. Why? Unlike us, his ability to focus on moving objects is very limited. We possess a facility which is known as stereoscopic vision, the ability to focus with two eyes to the front of us, and nearly 90 degrees to either side. The horse cannot do this, since his two eyes are on each side of his head, not in front. In fact, if you sit in the corner of his paddock or stall, you will be able to observe him moving his head and neck in a multitude of directions, to enable him to fo-

cus on objects. So, when you ran up to him with all your love and enthusiasm, you startled him, because he could not see you clearly as you approached. Since he does not possess reasoning power equal to that of human beings, his reaction was to move away from that which was threatening him. An example would be like someone sneaking up behind you, and your reaction. So don't worry, it was definitely not a lack of love on his part.

Now we have learned our first lesson about being around a horse, either old or new. Never approach a horse quickly or with exaggerated movements. He cannot see those movements clearly, and he will react in fear. Always

make your movements around a horse direct, firm, and not hurriedly.

Even though your horse's first reaction to you was not quite what you had expected, you still love him. What do you do next then, to make the two of you become friends, and make this a lasting relationship?

In most cases, the best approach to take with your new found friend is for you to realize that he out-weighs you probably ten to one, and although you do want to make him a friend and companion, you should never make him a pet like a dog. Horses do not react the same way as dogs to similar situations. Remember that that ten to one ratio can hurt if he accidentally steps on you. Let him get familiar with his new surroundings, before his new friends, for a couple of days. Once this is accomplished, you can begin to approach him and begin his, and your, training process.

Remember first, that your horse's physical environment in which he resides should be safe, uncluttered, and as clean

as you can make it. Since most horses would rather eat than do anything else, getting your horse used to you might be best accomplished during feeding and watering time. As you approach with his feed, he will learn that you are the provider of this most important commodity to him, and eagerly anticipating this event, will at this time, be more tolerant of your handling him. The one thing to remember is; never allow him to take his daily rations from your hand. Firmly place his feed in its respective feeding container before allowing him to eat. Allowing him to take feed from your hands will only instill a behavior pattern which will lead to a pushy horse, that may either inadvertently step on you in his enthusiasm to receive his feed, or accidentally nip your fingers, as you are trying to place his feed in its container.

This is the first article in a series that I hope we will all benefit from, in the long learning process of man and horse. Take note that the finest recognized method of training horses was developed at the Spanish Riding School in Vienna, Austria. These excellent Lipizzaner stallions are selected at birth to be trained, and then turned out to mature until their seventh birthday. At the age of seven, they begin their training, which encompasses an additional seven years. Not until the age of fourteen, are they first exhibited. Most of us in our society today, attend formal education through high school for about twelve or thirteen years, so consider your new found friend, and take time. Proper discipline, both for horse and rider, is the right hand of love; time and the application of correct methods of training allow you to become a better equestrian and sportsman, and your horse a better horse.

In future articles we will discuss: proper housing, grooming, health care, shoeing, proper dress, equipment, training and breeds of horses, and their uses. We will find out why the equestrian sport is quickly becoming one of the most popular participation sports in America.

Jimmy Rogers, son of the late Will Rogers, raises horses in Bakersfield, Ca., and his first love with the horse is polo.

Credit Association Board Members Attend Meet

Texas will gain at least one million jobs between now and 1985, predicts Texas Employment Commission chairman Harold K. Dudley.

"A preliminary trend projection shows that employment in Texas is expected to be over six million in 1985," Dudley said. "That's approximately one million more than are working now. Future developments could result in even greater gain."

"In my estimation, Texas has the best economic potential of any state in the nation," Dudley said. "With this situation, we can expect new job opportunities in the future."

The TFC chairman cited several indications that Texas is on the upswing!

--Bureau of Census figures show that Texas has moved from fourth to third position in population among the 50 states.

--A study made by the Illinois Manufacturers Association showed Texas leading the nation in new manufacturing jobs over a seven-year period.

--The Fantus Company, a subsidiary of Dun & Bradstreet, Inc., rates Texas as having the best business climate of any state in the nation. --THE FAMILY CIRCLE Magazine late last year listed 49 good places to live and work, and the first nine named were Texas cities.

"These are but a few of the many indications that this state can look forward to prosperity," Dudley observed. "Texas is in an enviable position, as it has four areas of powerful growth potential: industry, agriculture, energy resources, and the fact that it is a good place to live and work."

"Texas has the best industrial potential of any state in the nation," the TEC chairman declared, noting that while the present concentration is mainly in metropolitan areas, there is great opportunity for industry in other parts of the state. The absence of corporate income taxes and low unemployment insurance taxes--the third lowest in the nation--enhances business climate," he said.

"Then there are Texas' vast agricultural resources," he continued. "Governor Briscoe has wisely called for expansion of agricultural production. Not only is agriculture important to the state, but it is becoming increasingly vital throughout the world. It is our nation's only means of balancing foreign trade and is a key factor in our international diplomatic and political affairs. The number of Texas farm workers may not rise, but there will be additional jobs created as a result of expansion of agricultural production."

"For energy resources," Dudley said, "Texas is also fortunate. We have petroleum, sunlight, coal, winds, tides, and geothermal resources, all either present or future sources of energy. Texas has long been a leader in petroleum production, and this state has a preponderance of technical know-how in the energy field. With our potential energy resources, this state could well lead the nation in energy production."

"Broad scale expansion of industry, agriculture, and energy production--or any one of these--will bring new job opportunities and new technology to the state," the TEC chairman declared.

"In addition," Dudley continued, "Texas is a good place to live. A lot of people are realizing this, as there is a migration into the state. Houston, is the fastest growing of the 10

largest American cities. A number of other Texas cities, including Killeen, Belton, Fort Worth, Dallas, and Austin, are also showing rapid population gains. "In my estimation, Texas' time has arrived," Dudley declared, "and this situation should last as long as we maintain a good economic climate and properly plan to take care of the growth."



The Consumer Alert

by John L. Hill
Attorney General

AUSTIN—Our Consumer Protection Division has had numerous complaints recently about misrepresentations by home improvement contractors.

There are a number of ways an unscrupulous home repair or improvement contractor can take unfair advantage of consumers and also of other legitimate businessmen.

A reputable contractor won't make promises he can't keep, or give unbelievably low estimates for an expensive job. He won't tell you the job will be completed in two days when realistically it cannot be finished in two weeks, and he certainly won't agree to follow your specifications for materials and construction, then substitute cheaper products and cost-cutting assembly methods. He also won't give you a long-term guarantee if he plans to leave town the next day or so.

MISS AMERICA, Shirley Cothran, will be in Spearman for the Lions Club Beauty Pageant this year.. Shirley is the biggest attraction in the State of Texas and the Spearman Lions Club is honored to have her for the celebration June 5.

More is in present in the Atlantic than in the Pacific Ocean.

where your swimming pool was supposed to go.

—Instead of hiring a person who appears at your door, ask three reputable local businessmen to come by to check what you want to have done, then submit written estimates according to your specifications.

—Don't always select the lowest bid automatically. There may be other factors you should consider, such as experience, type of guarantee offered, quality of materials, etc.

—When you have selected the right contractor for your needs, be sure to get in writing the starting and completion dates for your project, along with the total cost, description of what is to be done, types of materials to be used, any guarantee, and how the bill is to be paid (lump sum upon completion, monthly payments, etc.).

VOTE FOR R.L. McFARLIN FOR SHERIFF

POL. ADV. PAID FOR BY R. L. McFARLIN



THE GOSPEL RELATIVES FROM COLORADO SPRINGS, COLO. WILL BE IN A GOSPEL MUSIC CONCERT AT FIRST ASSEMBLY OF GOD May 4 at 7:30 P.M. PASTOR KNUCKLES & MEMBERS INVITE EVERYONE TO ATTEND...

Re-Elect Steve Cross Your District Attorney



Pol. Adv. Paid for by Stephen F. Cross, 705 Montana, Borger, Texas

I would appreciate the opportunity to serve you in the office of Commissioner Precinct 3 of Hansford County

Please exercise your right to vote Saturday May 1st.

L. M. Womble

POL. ADV. PAID FOR BY L. M. WOMBLE