



WINNERS--High School debaters, D'dee Collard (left) and Judy Noel show the trophy the speech department won Saturday at the Spearman Speech Tournament. Mrs. Frank Porter is the speech teacher and debate coach.

Plainsman Photo

Turn Down Stadium

Voters Approve Two-Thirds Of School Improvement Bond

With a voter approval on two of the three questions in the bond issue Saturday, the Spearman School Board started making plans for the improvements to the two school plants.

Saturday a record number of voters went to the polls to approve \$242,000 of the requested \$360,000 bonds for school improvements. There were 681 voting in the election.

Voters overwhelmingly approved the first question on the ballot, \$180,000 for renovating the junior high school plant. The vote was 494 to 161 in favor of the action.

The second question, \$62,000 for improvements at the high school, was approved by a 118 vote margin, 383 to 265.

Again the voters turned down the request for a new athletic plant.

The question was for \$118,000 for a new field, curbed dirt track, stadium and field house with dressing room

facilities.

After canvassing the election and finding it in order, the School Board went ahead with the preliminary planning for the improvements.

Howard Kenyon of the bonding company worked out the maturity schedule for the bonds. The bonds will be paid off in 13 years and the tax rate increase will be 12 cents instead of the 13 cents for the \$360,000 bonds. The maturity schedule for the bonds was shortened from 15 to 13 years. The average interest rate on the bonds will be approximately 3.6 percent.

Architect John Work went over preliminary plans for the improvements on the two plants and discussed any changes to be made.

There is a 30 day waiting period required by law before any bonds can be sold or contracts let. This is to allow time for any possible legal litigation over the election.

However, during this 30 days the bondsman and architect can go ahead with the paper work and other preliminary work which must be done before the bonds are sold and the contracts let.

Science teachers Robert Barker and LaDwain Bowen appeared before to discuss the new biology textbooks and questions by a local minister that Darwin's theory of Evolution is being taught as fact in the school.

Barker told the board the book presents the Darwin's theory of evolution as a theory.

Also, Barker pointed out that before Darwin's theory is presented, a section of the book is studied so students will know the difference between a scientific theory and a scientific fact.

Barker told the board these textbooks are the best and most modern texts he has seen for high school biology and he recommended they be adopted by the school.

The schools have been adopted by a large number of states Texas and Arizona are the only states where they have been questioned.

Information teachers' pay raises were discussed. According to information received from the Texas State Teachers Association the Governor's proposed increase will give the teachers less of an increase and cost the districts twice as much.

The pay increase for teachers in the governor's bill is an increase in the amount of money each district will have to pay for textbooks and also matching funds going into the teachers' retirement program.

Under the Teachers' sponsored bill the additional expense for the school will be \$25,455.25 and each teacher will receive \$405 per year increase in salary. Under the current law the state will pay more of this and the net cost to the district will be \$13,142.80.

Under the Governor's proposed bill, the additional salaries will cost \$11,105.00. Teachers will get a \$185 per year raise and the additional costs shifted from the state to the districts will increase the net cost to this district to \$22,185.60 for next year.

HANSFORD COUNTY'S LEADING NEWSPAPER

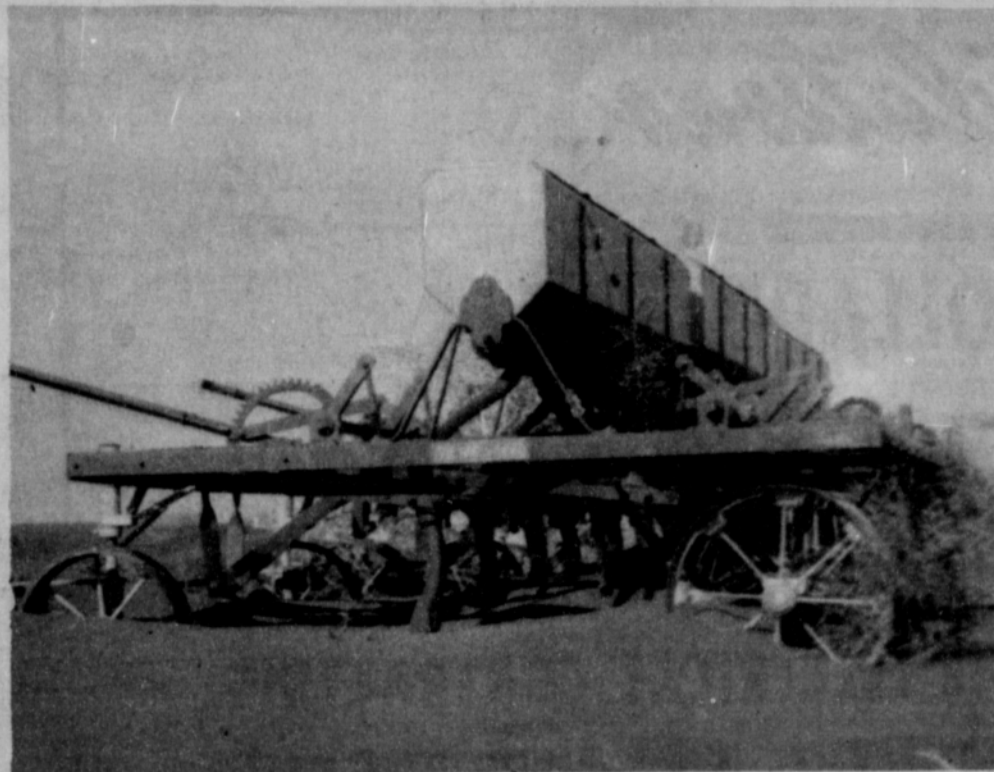
The Hansford Plainsman

VOLUME VI., NO. 36

SPEARMAN, HANSFORD COUNTY, TEXAS

THURSDAY, FEBRUARY 25, 1965

Blowing Dirt Damages 40,000 Acres of Wheat



DIRT DAMAGE--This dirt drift around a new grain drill in a wheat field was just one of the scenes of damage in the dirt storm which razed the county wheat crop this week. The drill was in a field of good wheat before the storm began.

Plainsman Photo

Approximately 40,000 acres of wheat was ruined or damaged in the 48-hour wind and "snust" storm which raked Hansford County Monday and Tuesday.

Hansford Soil District Conservationist Bob Crawford made the estimate Wednesday afternoon after making a tour of the county.

Crawford said some 12,000 acres of dryland wheat had been blown out and another 25,000 acres was damaged. He said the damage ranged from light to heavy.

Farmers battled the wind and blowing dirt until the zero weather froze them out of the fields early Wednesday morning.

The weather did just what all the farmers had been dreading since the earlier production producing snows. The wind came before any moisture fell to wet down the soft, fluffy topsoil.

Light snows and freezing weather of the past two months had made the top inch or two of soil just like powder and everyone knew it would blow if the wheat did not grow enough to hold it, or moisture come to soak it down.

Crawford said there is still good moisture in the soil. It is this submoisture which caused much of the wind erosion.

Farmers have been trying to get in the fields for the past month to begin plowing, but it has been too wet and farmers refrained from turning the soil because they would lose the moisture.

When the wind, light snow and dust started Monday, farmers took to the fields with tractors and chisels to try and hold the land. Many worked right on through Monday night, some Tuesday and Tuesday night. A low of 1 degree Wednesday morning froze the soil forcing them out of the fields.

One farmer said Wednesday that he chiseled until the land froze so hard it was breaking the chisel points. Crawford said the heaviest

damage was north and west of Gruver and also south of Hitchland. The fewer number of irrigation wells, the more the damage, he added.

Wheat seeded with deep furrow drills or on land with crop residue on top suffered the least damage Crawford said.

Irrigated wheat has been damaged mostly from dirt blowing in from non-irrigated fields, the SCS conservationists said. Some water furrows in irrigated wheat have blown full of dirt, he added.



GETTING READY--Spearman firemen fit an airpack on one of the firemen so he can enter a smoke filled room. This equipment enabled the firemen to quickly control a fire in the Mark Crawford home Wednesday.

Plainsman Photo

Bi-District Clash

Lynxettes Meet Iowa Park Tuesday

Two strangers will meet in Childress, Tuesday, March 2 at 7:30 p.m. to decide the bi-district champions of 1-AA and 2-AA in the girls basketball state play-offs.

The Spearman Lynxettes and Iowa Park will play the bi-district game in the Childress High School gym.

Lynxette Coach Dean Weese said Tuesday that he knew nothing about Iowa Park. It was the only team of the three in three in the district he did not get scouted before the team

finished its district play-off. Iowa Park, Olney and Electra, the only teams in the district ended the season tied for first place. Spearman had scouted Olney and Electra when

it appeared that Olney would win the title.

While Weese and the Lynxettes know nothing about their opponents, they will also be strangers to the Iowa Park six.

Band Accepts Invitation

The award winning Spearman High School band has accepted an invitation to appear in the Cotton Bowl Jan. 1, 1966.

The invitation was officially

accepted Monday night by the Spearman School Board on recommendation of Band Direct-

(Con't. on page 2.)

Of Interest to Women

At Library Meeting

Local Student Conducts State Workshop Session

A member of the Spearman Teen-Age Library Assistants organization conducted a workshop session at the State meeting of the group in El Paso last week.

Miss Dorothy Smith of Spear-

man conducted a workshop on Library Assembly Programs and



Dorothy Smith

Community Activities. She is a senior in Spearman High School. She was assisted by Carol Simmons and Linda Gilliam.

These students and Debbie Craig, Bonnie Pracher and Ann Jackson, accompanied by School Librarian Miss Dorothy Roden attended the state meeting.

Miss Jackson is District President and on the State Executive Council for the Teen Age Librarians.

Mr. and Mrs. L.S. McLain recently returned from San Angelo where they visited their daughter, Mr. and Mrs. Don May and family.

Miss Russell's Engagement Is Announced

Mrs. Henry Madeley Sr. of Temple announces the engagement of her daughter Rolinda Lois Russell to Mr. Hanes Hanby Brindley, Jr., the son of Dr. and Mrs. Hanes H. Brindley of Temple. The wedding ceremony will take place in the First Baptist Church in Temple on July 24.

Miss Russell is the daughter of Mr. William Lee Russell, Jr. of Bronco, and the granddaughter of Mr. and Mrs. W. L. Russell of Spearman.

Mrs. Row Is Honored At Farewell Coffee Friday

Mrs. Betty Row was honored with a farewell coffee Friday morning in the home of Mrs. Lee Keys. Mrs. Oscar Mullins and Mrs. Guy Remy were co-hostesses.

Mrs. Row is leaving Spearman to make her home in Ponca City, Okla.

Mrs. Row was presented with gifts from those attending.

The serving table was covered with a white lace cloth over pink and was centered with a bouquet of pastel sweet peas and greenery. Crystal and silver completed the setting. Louise Mullins served the coffee with an assortment of sweet rolls and coffee cake.

Invited to call during the coffee hours were Mmes. Mae Farren, Pat Denham, Florene Devers, Maude Mathews, Erma Miller, Alice Turnbull, Tro-

Speech Department To Present Scenes from 'Miracle Worker'

On March 15, at 7:30 p.m. the Spearman High School Speech Department will present a public performance of scenes from "The Miracle Worker" by William Gibson. This stirring dramatization is

the real life story of Helen Keller who was left blind and deaf by an illness at a very early age. She was placed under the care and tutelage of Annie Sullivan. The play is principally concerned with the

struggle of Miss Annie to teach Helen and to reach her mind that is in dark, tortured silence. Little Helen, trapped in her own secret world, is bitter, violent, spoiled, and at first, almost animal-like. Annie's eventual success with Helen comes only after some of the most turbulent, violent and emotion-packed scenes ever presented on the stage. It is a play filled with pathos and humor.

The cast of the play, directed by the High School Speech Director, Mrs. Frank Porter, consists of: Cloetta Fullbright-Kate Keller; Tim Lackey-Captain Keller; Donna Ownbey-Helen Keller; Judy Womble-Aunt Ev; Tony Hester-James Keller; Pat Massad-Annie Sullivan; Janie Kirkland-Vinney. Lights and stage crew are Bill McClellan and Clay Schnell. Sharon Cook is in charge of make-up and costumes.

Admission will be 50 and 25 cents.

for the women and Sonny Windom had high score for the men.

Attending were Messrs. and Mmes. Sonny Windom, Ed Dear, Bob Hohertz and the hosts.

Mr. and Mrs. Millard Stephenson spent the weekend at Shidler, Okla. They returned home Monday.

Pittman and Foshee Give City Government Program

The Happy Homes HD Club met Feb. 18 at 3 p.m. in the home of Mrs. Oscar Mullins.

Nell Cummings, president, presided at the business session.

The devotional was given by Dorothy Groves.

The program was given by Judge T.J. Pittman and new City Manager Darce Foshee on

City Government. A question and answer session followed.

The auction was brought by Marilyn Groves and was bought by Joan Gaither.

Attending were guests, Mmes. Grace Lovett of Perryton, John Brinkley, H.E. Jenkins and Miss Linda Webb, agent. Members attending were Maylynn Schubert, Wanda Schubert, Dorothy Groves, Rose Cummings, Nell Cummings, Adalyn Barnes, Katherine Patterson, Connie Vardell, Nina Hendricks, Margaret Adamson and the hostess.

The next meeting will be March 4 in the home of Mrs. Harold Groves.

Floyds Host Couples Bridge

Mr. and Mrs. Don Floyd were hosts to the Couples Bridge Club Friday night, Feb. 19.

Elaine Floyd had high score

Club Has Program On Conservation

The Home Science Division of the Twentieth Century Club met Feb. 18 in the home of Mrs. O.C. Holt.

Mrs. C.J. Renner presided at the business meeting. Mrs. Everett Tracy was in charge of the program "Why the Importance of Water Conservation". She introduced the guest speaker, Bob Crawford of the Conservation office in Spearman, who showed slides pertaining to soil conservation.

Present for the meeting were Mmes. Guy Fuller, Fred Holt, Dwight Hutchison, J.R. Keim, Wayne Hutchison, C.J. Renner, Everett Tracy, Raymond Kirk, Joe Trayler, H.H. Chevalier, the guest speaker and the hostess.

Circles Meet In Archer Home

The Kezzie Mae and Louise Mitchell Circle of the First Baptist Church met together Feb. 17 in the home of Mrs. Carl Archer.

Mrs. Marilyn Jackson presided at the business session. Eva Adkison read the prayer calendar and Viola Hutton led the prayer.

The program "Bible Study" was under the direction of Betty Uptergrove.

Meeting closed with prayer by June Conner.

Attending were Alma Bradford, Eva Adkison, Viola Hutton, Dana Hazelwood, Frances Kilgore, Edith Baley, Lorella Reed, Marilyn Jackson, Betty Thomas, Mary Tanner, June Conner, Marguerite Nelson and the hostess.

Future Readers of The Plainsman

Mr. and Mrs. John Darrel Fisher are the parents of a son, John Ezra, born Feb. 16 in Hansford Hospital. He weighed 6 lbs., 10 1/4 oz.

Mr. and Mrs. Robert Peyton Gibner are the parents of a daughter, Lea Ann, born Feb. 17 in Hansford Hospital.

Mr. and Mrs. Olin Sheets spent the weekend in Abilene visiting their daughter Nan, who attends Abilene Christian College. Nan had dental surgery while they were there. The Sheets attended Parents Day, a luncheon and football game. On Sunday and Monday they attended lectures at the college returning home Monday evening.

Mr. and Mrs. H.M. Shedeck were in Stillwater, Okla. Saturday and Sunday visiting their granddaughter, Mr. and Mrs. Dave Floyd. Mrs. Floyd will be remembered as the former Cynthia McWhirter.

Day by Day

You know, it may take another week to diet it all away, but that delicious Valentine candy was worth it all. I've had beautiful red roses and several other Valentine gifts in other years, but this was the first heart-shaped box of candy I'd ever received. The best part was not a single guilty feeling as I reached again and again for another chocolate. But, as always, there's a day of reckoning. There's just no getting away from that.

We've just unpacked a whole store full of new spring merchandise to make party-giving more fun. Particularly pretty and springy is Hallmark's new pink blossom design and there are other delightful new things for parties of all kind, juvenile and otherwise.

If you need birthday party supplies, or the fixings for bridge, do stop by and select them.

We also have Hallmark's newly designed stationery in several pastels both in plain and daintily patterned paper. These are very correct and especially pretty for your personal correspondence.

I've never been much for instant coffee and that television commercial that says "I like it even better!" leaves me cold. But, since I've found Spice Island's instant Antigua coffee, I will say it is by far the nearest to the real thing.

It also makes delicious Mexican chocolate by adding 1/2 teaspoon to a cup of hot chocolate and topping with whipped cream. (That's not exactly low-calorie, but it goes well with Valentine candy.)

Ever since we found out Linda and Jim will soon have twins, we've thought of an average of at least ten pairs of names every day. Everyone at the office has contributed to the list, most of which are real odd.

It's the funniest thing though, some of the names I was seriously submitted drew laughs from everyone else, so to compensate I had to act amused at their suggestions. (It usually wasn't hard either, like when Burl came up with Lem and Clem.)

I don't think any of us will be called on to help choose the names but I have been assured I can have my turn at babysitting along with Linda's mother and sister.

The way I figure it, I should have a couple of extra days off work every week just to be sure I'm available in case they call.

Dorcas Collard sent word to The Tall Texan last week that he was on her list. She wasn't protesting the snide remarks he made about my cooking but she was worried that the rest of the "Famous Texas Cookbooks" might not sell.

Turns out the books are all sold now anyway though, so I guess he didn't hurt sales Dorcas. Feelings, either. I'm used to seeing his complaints and observations set out for all the world to see.

Oh the life of a Super Texas Patriot's wife!

Club Meets In Graves Home

Blue Monday Bridge Club met Feb. 22 in the home of Mrs. Sam Graves.

Gwenfred Lackey had high score for the afternoon.

Lovely refreshments were served by the hostess to Mmes. Carrie Clements, Mildred Daily, Norman Gandy, Margaret Gibner, Ruth Hill, Lula Womble, Gwenfred Lackey, Deta Blodgett, Ada McLain, and guests, Ruth Lackey and Alice Lackey of Sunray.

Art Guild Meets With Mrs. Phelps

The Arts & Craft Guild met Friday, Feb. 19 in the home of Mrs. Ray Phelps for an afternoon of china painting.

Those attending were Mmes. C.A. Gibner, Guy Fuller, Joe Dan Bryan, Ned Turner, Freeman Barkley, a guest, Mrs. Reuben Hintergard of Gruver and the hostess.

The next meeting will be Feb. 26 with Mrs. Pope Gibner.

Mrs. Jack Lovett Attends Management Institute

Ludie Mae Lovett, manager of the Retail Credit Corp., has just returned from the Southwest Management Institute held Feb. 15-19 at the University of Texas at Austin. Sponsored jointly by the University, the Associated Credit Bureaus of Texas and the Associated Credit Bureaus of America, the institute is held annually to give credit bureau and collection service managers further professional training.

"In addition to the refresher course," said Ludie Mae, "there are classes in subjects such as personnel management, advertising, public speaking and bookkeeping. Since most of the students are in a position to go home and

Homemaking Notes

by Linda Webb
Home Demonstration Agent

With the first shirt-sleeve weather of the year comes the impulse to start pruning rose bushes and other shrubs. We should, however, resist the urge to start pruning trees and shrubs until we are relatively sure all danger of severe freeze is past.

Warm weather in January and February frequently forces the terminal buds to begin growing. If this growth is removed by early pruning, the lateral buds begin to grow during the next warm spell. Then, a late cold snap may cause serious damage to these buds.

The only justification for pruning plants is to remove dead or diseased wood; to repair storm damage or other injury; to balance the top with the root system when transplanting; to develop and keep a desired shape or size; to rejuvenate older plants; or, to improve or increase flowers and fruit.

Flowering trees and shrubs which bloom early in the spring, such as flowering quince, spiraea, forsythia, lilac, and redbud, should not be pruned until after flower-

ing. This is because flowering is produced on old or last year's woody growth.

Trees and shrubs which flower from early summer through the fall months, such as Crepe myrtle, hybrid tea roses, and shrub althea, usually produce their flower buds on new wood. They should be pruned in late winter or early spring after frost danger is over and new growth begins.

Complete information and illustrations on pruning trees and shrubs can be obtained from the County Extension Offices by requesting Extension bulletin B-977, "Modern Pruning Methods".

A new Southern chocolate pie creation is presenting to you and yours a new taste thrill for the making. Here it is for your recipe file:

Southern Sweet Chocolate Pie
1 pkg. (4 oz.) German chocolate
1/4 cup butter
1 2/3 cups evaporated milk
1 1/2 cups sugar
3 tablespoons cornstarch
1/8 teaspoon salt
2 eggs
1 teaspoon vanilla
1 unbaked 9 inch pie shell
1 1/3 cups (about) angle flake coconut
1/2 cup chopped pecans

Melt chocolate with butter in a saucepan over low heat, stirring until blended. Remove from heat, then gradually blend in evaporated milk.

Mix sugar, cornstarch and salt thoroughly. Beat in eggs and vanilla. Gradually blend in the chocolate mixture. Pour into pie shell.

Combine coconut and nuts; sprinkle over filling. Bake at 375 degrees F. until top is puffed and begins to crack--about 50 minutes. (Center of pie should be soft). Cool at least 3 hours before serving. Makes 8-10 servings.

Note: Since there is a generous amount of filling in this pie, the pie shell should be highly fluted.

The last note: Did you hear about the lady who dialed a ZIP code instead of an area code? The phone company billed her for three minutes worth of air mail special delivery.

Calendar of Events

Thursday, February 25, 1965

Business & Professional Womens Club meet at the Bank at 7:30. Speaker will be Gilbert Mize, Supt. of Schools at Perryton.

Friday, February 26, 1965

The Arts & Craft Guild will meet with Mrs. Pope Gibner.

Spearman HD Club meets with Mrs. W.H. Tarbox at 3 p.m.

Monday, March 1, 1965

Spearman Study Club will meet with Mrs. Marcus Larson. Jerry Day will speak.

Dahlia-Flower Club will have a Tea at the home of Deta Blodgett.

Tuesday, March 2, 1965

HD Council will be held at Club Room at 2 p.m.

Town and Country HD Club meets at 2 p.m.

Thursday, March 4

Happy Homes HD Club meets at 3 p.m. in the home of Dorothy Groves.

Rebekah Lodge meets at IOOF Hall.

Home Science Division of 20th Century Club meets with Mrs. Raymond Kirk.

Fine Arts Division of 20th Century Club meets with Mrs. W.J. Massie

Firemen Save Home

Quick work with the proper equipment by the Spearman Fire Department kept fire damage to a minimum Wednesday morning in the Mark Crawford home at 1111 S. Barkley.

A fire in a bedroom was quickly brought under control by city firemen using fire extinguishers and using the new airpracks.

The fire in a bed apparently started from an electric heater, firemen at the scene said.

The bed was burning when the firemen arrived. They tried to enter the room, but were driven back by the smoke.

Then a fireman wearing one of the new airpracks, recently purchased by the department and city, entered the room and controlled the blaze with the extinguisher.

The fireman then threw the smoldering bedding out a window and firemen outside soaked it with water.

The bed and electric heater were destroyed by the fire and the bedroom was heavily damaged by smoke.

The firemen said the airpracks worked well and enabled them to breathe in areas where they could not go earlier.

The house is owned by Lee Neimeyer of Perryton.

Seymour Gets New Contract

The contract for Spearman High School athletic director and head football coach Don Seymour was renewed this week by the Spearman School Board.

Seymour was given a one year contract in accordance with the school policy of giving only one year contracts to all faculty members below the administrative level.

Seymour has been in Spearman three years and rebuilt the Lynx into contenders in district 1-AA.

His first year here with a squad of 25 boys from the entire high school, most of them freshmen and sophomores, he had a 1-9 season. The second year the Lynx compiled a 3-7 record and this past season they were 7-3. This year there were approximately 60 boys for the varsity, B-team and freshmen squads.

Missionary Leads Revival

Alaska's Flying Missionary, The Rev. Robert G. Palmer of Spenard, Alaska, is conducting a series of revival services at the Union Church at 31 S. Endicott in Spearman.

The services opened Wednesday night and will continue until Sunday, March 14. Services begin each night at 7:30 p.m.

He and his wife went to Alaska as missionaries in 1947. They established a gospel radio program from Anchorage and also built the first church in Spenard, a suburb of Anchorage. He was the pastor until recently.

He has flown all over Alaska conducting services, many of which were the first ever held in parts of Alaska. Many of these services were for the Eskimo, Alut and Indian people, the three native groups of Alaska.

He has also traveled in Europe and the Holy Lands with a study group. Throughout his ministry and travels he has made a photographic record and shows these pictures at some of the services.

The Rev. Palmer and his

Hansford Plainsman

Hansford Plainsman Publishers Inc.

JIM O. DAVIS
BURL G. McCLELLAN



County-wide independent newspaper published every Thursday and Sunday at 209 Main in Spearman, Texas. Second class postage paid in Spearman, Texas. Editor . . . Burl McClellan
NOTICE: Any erroneous reflection upon the character, standing or reputation of any person, firm or corporation which may appear in the columns of The Hansford Plainsman will be corrected gladly upon its being brought to the attention of the publishers.

family were in the earthquake in Anchorage. In the services here he will tell of some of his experiences and also show slides of the devastation.

The Rev. Palmer will be assisted in the meeting by the Rev. William Largent of Houston, a tenor soloist and song writer.

The pastor of the church, the Rev. George Bollinger invites everyone to attend the services.

A budget has been defined as a scheme for going into debt systematically.

Holland and Mr. and Mrs. Sam Watson. Members present were Mmes. J.D. Wilbanks, Ray Robertson, Oscar Mullins, Jack Oakes, Coleen Schafer, Don Knox, Charles Gates, Tom Sutton and the hostesses Mmes. W.B. Barnes, Pat Cates and Miss Linda Webb.

American Music Recognized As Music Club Program

Music Club met Monday evening, Feb. 22 in the High School Band room.

The program was in recognition of American music and a special program was provided for associate members.

Sam Watson's swing band played three jazz numbers, followed by a piano selection "Twelfth Street Rag" played by Mrs. K.D. Clark.

Mrs. J.D. Wilbanks and Mrs. Tom Sutton played a piano duet "Colonel Boogy" which was taken from the show "Bridge On the River Kwai".

Mrs. Russell Townsend gave a short history of jazz music in which she told of the old jazz bands in New Orleans that are still available for hire to march and play at funerals, picnics, etc. Some of the

members are 78 years of age.

The story of the Hymn of the Month "Joyful, Joyful We Adore Thee" was given by Mrs. Charles Gates and sung by Mrs. Robert Adamson.

Present were associate members, Mmes. R.E. Lee, John R. Collard, Sr., F.J. Dally, Vester Hill, Deta Blodgett, and C.A. Kleeberger. Guests were Mmes. Robert Adamson, A.F.

Band . . .

(Con't. from page 1.)

or Sam Watson.

The 165 piece band will be one of five high school bands to participate in the pre-game and halftime shows at the New Years Day football game.

From cost information gath-

ered from Dimmitt and Phillips about their trips to the game, Watson told the board it would cost approximately \$5,000 to house, feed the band and pay drivers for the five buses required for the trip.

The board and band director will work out how the money will be raised to finance the trip.

Congratulations

TO JOHN R. COLLARD, JR.

ON THE OPENING OF HIS NEW OFFICES

WE'RE PROUD OF DOING ALL THE ELECTRICAL CONTRACTING, AIR-CONDITIONING & HEATING FOR THIS FINE NEW BUILDING.

We Join Him In Inviting You to Open House

Mon., March 1

9 A.M. to 5 P.M.

Anthony Electric

Plains Shopping Center

Cummings Refrigeration

March 1-5

Parents Invited to Eat With Students During Texas Public School Week

During Texas Public School Week Mr. Bramlett, Superintendent of Spearman Public Schools, cordially invites parents of school children to eat in the lunchroom with their

children. All friends and patrons of the Spearman Public Schools are extended an invitation to eat in the lunchroom during Texas Public School Week, whether you have a child in

school or not. Due to the schedule that has to be followed, the following schedule has been set up in order to take care of the number we do feed each day.

Monday, March 1, 6th and 7th at 11:55-12:15, 8th grade-12:50-1:20. Tuesday, March 2-4th, 5th grade 11:40-12:00, Wednesday March 3-3rd & 2nd grade 11:25-11:50, Thursday, March 4-1st Grade 11:00 to 11:30; Friday March 5-Anyone who would like to eat on this date 11:00-12:15.

If you plan on eating with your child, we would appreciate a two days notice in order that the dietician can plan the menu for that day. In the Jr. High grades 5 thru 8, call 2563. Grade one thru four the Home Room Teacher will be asking for the number that will be eating.

The cost of the meal will be 35¢.

Mr. Cockrell, Principal of the High School, cordially invites parents of High School students and patrons of the Spearman School district to eat in the lunchroom at High School any day during Texas Public School Week.

At Local Meet

Speech Students Win Sweepstakes Trophy

The Spearman High School Speech Department, with seven of its key individualists out with illnesses, was able to win the sweepstakes trophy at the local tournament held last weekend. With three schools entered, the Spearman group was able to place enough winners to gain 94 points. The second place school had 84 points.

The debate teams placed first and second. Ranking first was the girls' team made up of D'dee Collard and Judy Noel. The boys' team of Gary Bengel and Doug Lackey ranked second. Individualists placing were: Mike Morris, 2nd, boy's poetry interpretation; Rennie Berry, 2nd, boy's prose reading; Tony Hester, 3rd, boy's poetry interpretation; Debra Brock, 2nd, girl's prose interpretation; Lonnie Morris, 4th, boy's prose interpretation; David McClellan, 1st, boy's persuasive speaking; Paula Stout, 2nd, girls' persuasive speaking. These were the only students entered.

All of the events were judged by college faculty members and advanced college speech students from Panhandle A&M College, Goodwell, Okla. A one-act play festival was

planned but the judge cancelled at the last moment. A local judge was contacted and the Spearman play withdrew from the competition. However, two students in the play tied for the best actress award. They were Pat Massad and Donna Ownbey.

The next contest for the local speech students will be in Edmond, Oklahoma on Feb. 26 and 27. Then on March 5 and 6 they will be in Lubbock for their last tournament before district competition.

Party in Lawton

For Mrs. Walker

Mr. and Mrs. J.W. Walker of 1008 S. Barkley returned home this week after spending two weeks visiting relatives in Lawton and Oklahoma City. While there they attended the 95th birthday of J.W.'s mother, Mrs. Cynthia Walker of Lawton on Feb. 10. Mrs. Walker has 7 children and all were present with the exception of one daughter for the open house which was held in her home. Twenty-two members of her family attended church services with her on Sunday.

Sam Graves went to Raleigh, N. Carolina last week where he is visiting with his son and family. Mr. and Mrs. Albert Graves. The Albert Graves' recently moved from Manhattan, Kansas to Raleigh. Sam is expected home Thursday.

Mr. and Mrs. Everett Tracy and Richard went to Amarillo Sunday where they visited in the home of Mr. and Mrs. J.A. Tipton. Everett took the afternoon plane for Shreveport on company business.



COME TO CHURCH

Church Directory

Apostolic Faith Church
V. E. (Hap) Blythe, Pastor
Sunday School 10:00 a.m.
Morning Worship 11:00 a.m.
Evening Worship 7:00 p.m.

Assembly of God Church
Rev. Vance Barker, Pastor
Sunday School 9:45 a.m.
Morning Worship 11:00 a.m.
Evening Worship 7:30 p.m.
Wed. Bible Study 7:30 p.m.

Church of Christ
Charles Milner, Minister
Sunday School 10:00 a.m.
Worship 11:00 a.m.
Worship 7:00 a.m.
Wed. Ladies Bible Class 9:30 a.m.
Wed. Bible Study 7:30 p.m.

Fellowship Baptist Church
W. S. Herring, Pastor
Sunday School 10:00 a.m.
Preaching Service 11:00 a.m.
Sunday Evening Service 7:30 p.m.
Wed. Evening Service 7:30 p.m.

First Christian Church
Rev. W. Graham Pugh, Minister
Sunday School 9:45 a.m.
Morning Worship 11:00 a.m.
Youth Meetings 6:00 p.m.
Evening Worship 7:30 p.m.
Wed. Choir Practice 7:30 p.m.

First Baptist Church
Rev. Luther M. Berry, Pastor
Sunday School 9:45 a.m.
Morning Worship 10:45 a.m.
Training Union 5:30 p.m.
Evening Worship 6:30 p.m.
Wed. Evening Prayer Hour 7:30
Wed. Choir Rehearsal 8:45 p.m.

Oslo Lutheran Church
18 mi. N.W. of Gruver
Robert L. Cordes, Pastor
Sunday School 9:45 a.m.
(includes adults)
Worship Services 11:00 a.m.

First Methodist Church
Brother Charles Gates, Minister
Sunday School 9:45 a.m.
Morning Worship 11:00 a.m.
M. Y. T. 6:30 p.m.
Evening Worship 7:30 p.m.
Women's Society of Christian Serv. Wednesday 3:00 p.m.
Choir Rehearsal 7:30 p.m.

First United Presbyterian Church
Everett H. Cain, Jr., Pastor
Sunday Church School 9:45 a.m.
Morning Worship 11:00 a.m.
Evening Study Group 7:30 p.m.
Wed. Choir Practice 7:30 p.m.

Pentecostal Church
Sunday School 9:45 a.m.
Morning Worship 11:00 a.m.
Evening Worship 7:30 p.m.

Sacred Heart Catholic Church
Rev. Laudislaus Walko
Sundays 10:00 a.m.
Catechism Classes 11:00 a.m.
Week Days
Mon., Tues., Fri., Sat. 8:00 a.m.
Holy Days of Obligation 7:30 a.m.
First Friday of Month 7:00 a.m.

Spearman Lutheran Mission
Farm Bureau Bldg.
Robert Cordes, Pastor
Worship Services 9:00 a.m.
Sunday School 10:00 a.m.

Union Full Gospel Church
Rev. George R. Bollinger, Pastor
Sunday School 10:00 a.m.
Morning Worship 11:00 a.m.
Bible Classes, Sunday 6:45 p.m.
Evening Worship 7:30 p.m.
Wed. Bible Study 7:30 p.m.

Waka Church of the Brethren
Lawrence Lehman, Pastor
Sunday School 10 a.m.
Morning Worship 11 a.m.
Evening Service 7 p.m.
Choir Practice . . . Wed. 7 p.m.
Adult Bible Study . Wed. 8 p.m.



VISIT OUR BABY DEPARTMENT

You'll Find Such Needed Items As

Baby Carry-ette

Playtex Baby Pants
Adjustable Sleeper Bags
Diaper Bags



Stretch Booties
Combs & Brushes

Rexall Baby Care

Lotion, Soap, Oil & Powder

Carry Rexall Guarantee

SPEARMAN REXALL DRUG

Three Pharmacists To Quickly And Expertly Fill Prescriptions for Your Baby And your Whole Family.

Sponsored by These Progressive Merchants

R.L. McClellan Grain Co., Inc.

First State Bank

Member F.D.I.C.

B & B Grain Co., Inc.

During Heart Month

Local Heart Council Sends Letters Seeking Donations

Citizens of Hansford County will be well advised to give serious attention to a pamphlet which they have received through the mail, along with an informative letter, during the past week. This is from your local Hansford County Heart Council, in reference to National Heart Fund Contributions during the month of February, designated as National Heart Month. The pamphlet recommends these six simple safeguards which may help reduce the risk of heart attack:

1. Reduce, if overweight
2. Decrease saturated fats
3. Control high blood pressure
4. Stop smoking cigarettes
5. Exercise regularly
6. Shun needless tensions

"See your doctor," suggests the brochure. Do you have a family history of Heart Disease? Is your blood pressure too high? Do you know what fats to eat? Consult your doctor about these and other risk factors, and improve your

chances for longer life. With diseases of the heart and blood vessels accounting for 54 per cent of all deaths, and with heart attack alone being responsible for more than 25 percent of all deaths, the advice should be heeded. So should the Hansford County Heart Association's appeal for a generous gift to the 1965 Heart Fund. R.L. Kleeberger, M.D. President, Hansford County Heart Council

4-H'ers Have Demonstration

The 4-H Club met February 3 in the HD Club Room. For the demonstration, Connie Trindle made an angel food cake assisted by Betty Uptergrove. After the demonstration Pat Walls, Donna Walls, Cindy Hutchison, Janice Trindle, Connie Trindle and Mrs. Uptergrove sampled and scored the product.

Salvation Army Sets Fund Drive

The annual Salvation Army fund campaign for this area will be headed by J.L. Brock.

The date of Wednesday, May 12, has been designated by Brock as the kick-off breakfast and fund drive day. The kick-off breakfast will be held at 7 a.m. on that day at Grunewald's in the Plains Shopping Center.

Assisting J.L. Brock in this fund drive will be volunteer workers for the Salvation Army composed of your local friends and neighbors. Mr. Brock pointed out that most of the funds received stay right in Hansford County for the furtherance of the Salvation Army's Local Service Unit, which gives help to needy transients and local residents in distressed circumstances.

The Salvation Army also has a praise-worthy state and national program which includes emergency help for disaster victims, youth summer camps, rehabilitation centers in larger cities, etc.

The Salvation Army needs your financial help to carry out their worth-while activities.

Legal Ordinance

ORDINANCE NO. 303
An ordinance regulating the keeping of dogs and cats within the limits of the city of Spearman, making it unlawful to permit a dog or cat to run at large as defined; Prescribing sanitary conditions for pens and enclosures; Providing for a dog and cat catcher; Providing for licensing; Defining kennels and providing for license and inspection therefor; Prohibiting the keeping of vicious dogs and cats in the city of Spearman; Providing a savings clause; Providing a penalty; and Repealing all ordinances or parts of ordinances in conflict herewith and specifically repealing Ordinance No. 240.

Passed and approved this 15th day of February, 1965.

s/ R.E. Vaughn, Mayor
ATTEST:
s/ Darce Foshee
City Secretary

36-2c

Although there are about two dozen people named Sweet in the Manhattan telephone directory, there are only eight named Bitter, a researcher reports.

Reduce Your Risk of Heart Attack

<input type="checkbox"/> reduce if overweight 	<input type="checkbox"/> decrease saturated fats 
<input type="checkbox"/> stop smoking cigarettes 	<input type="checkbox"/> control high blood pressure 
<input type="checkbox"/> exercise regularly 	<input type="checkbox"/> shun needless tensions 

YOUR HEART ASSOCIATION recommends the above-listed precautions to reduce your risk of becoming a victim of heart attack. Dieting and control of high blood pressure are to be undertaken only under medical supervision. A seventh suggestion: Support the nationwide fight against heart and blood vessel disease by giving generously to the 1965 Heart Fund, which reaches its high point on the weekend of Heart Sunday, February 21, when more than 1,750,000 volunteers will visit their neighbors to distribute heart-guarding information and to receive Heart Fund contributions.

Riding Club Will Elect New Officers March 2

The Spearman Riding Club will elect officers for 1965 at their next meeting, Tuesday, March 2.

Also, at this meeting a part of the summer's activities for the club will be planned. This will include playdays, campouts, trail rides, etc.

All persons who enjoy horses and would like to help the young cowboys and cowgirls of their community are urged to join the Spearman Riding Club. The dues for belonging to the club are \$10 per family, plus \$5 for each child 12 yrs. or older. Any child under 12 years of age must have their parents consent and a

guardian who is a member of the Club, before he may join.

This is clean, wholesome, inexpensive fun for the entire family. Come join us in the dining room of Miller's Cafe, Tuesday, March 2 at 7:30 p.m.

Lieut. Wm. F. Barkley, who is stationed at Ft. Sill, Okla., spent Sunday night and Monday with his parents Mr. and Mrs. Freeman Barkley.

Mrs. L.C. Barnes and Pat spent Monday evening in Borger visiting Mrs. Barnes' sister, Rita Kirby.

We're Ready for Spring with a complete assortment of Hallmark Party Goods



Send a precious "Kitten Tale" card especially nice for kitten lovers . . . and who isn't !

THEY'RE NEW FOR BIRTHDAYS, GET WELL, JUST VISITING, ETC.

For Little Girls
"Little Red Riding Hood"

"The Hillbilly"
For any kind of
Real Fun Party

For Little Boys
"Howdy Pardner"

NEW HALLMARK NOTE PAPER

A Complete Selection of Hallmark's New Stationery

Beautiful Stationery in Solid Colors & Designs . . . a lovely gift

New "FRENCH LACE" DOILIES

4" through place mat size (round and oblong) WHITE, SILVER & GOLD

Plainsman Office Supply

Long Term Farm & Ranch Loans

By Life Insurance Companies



J. L. Brock Agency

206 Main

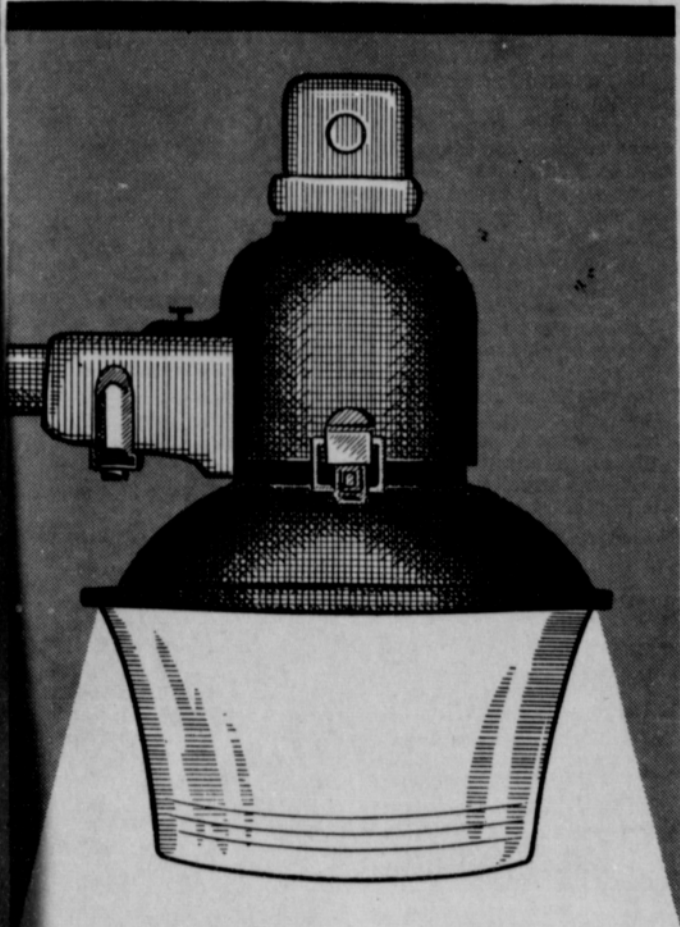
659-2514

**Porous Clay Pots
Help House Plants**

Most house plants need two periods of adjustment. They receive the first in quality growers' greenhouses, when they're professionally conditioned in porous clay pots.

The second period is in your hands. Since over-watering causes most failures, be sure your plants are bought and kept in porous clay pots that assure proper drainage and keep roots from "drowning."

Woman (waking husband at 3 a. m.): "John, I think I left the toothbrush on."



If you need big area outdoor lighting, you need the

NITE-LITER

For lighting up large outdoor areas around homes, farms, businesses and industries, nothing equals the Nite-Liter for economy and efficiency. The Nite-Liter is a pole-mounted mercury vapor light just like those on city streets and freeways. It provides effective illumination up to 150 feet away . . . turns itself on at dusk and off at dawn automatically. The Nite-Liter is ideal for lighting recreation areas, parking lots, drive-ins, used car lots, outdoor storage areas, farm and ranch yards, driveways and streets. And the cost per unit is . . .

Only \$4⁰⁰ per month

which covers everything — the Nite-Liter, installation on a wooden pole, maintenance, lamp replacement and electricity used. Call us soon for full information.



COMMUNITY PUBLIC SERVICE
Your Electric Light & Power Company

**Feed Grain Supplies Down
6 Percent From Last Year**

Feed grain supplies for the present marketing year are down six percent from last year; demand is expected to remain high and prices probably will average a little higher during the 1964-65 marketing year than for the year just passed, says John G. McHaney, Extension economist of Texas A&M University.

Supplies have dropped during three of the last four years and the carryover at the beginning of the 1965-66 marketing year is expected to be around the 58 million ton level. This compares with a carryover of 69 million tons at the start of the present marketing year and the record 85 million tons in 1961-62. The reduced carryover is the result of a 1964 feed grain crop estimated at 10 to 12 million tons below total disappearance.

Feed grain acreage, according to the economist, was down 5 percent from 1963 and 21 percent below the 1959-60 average, the base period for the Feed Grain Program. Fewer acres and lower yields in 1964 accounted for the 12 percent drop in total production.

Livestock feeding rates have been influenced by rising feed costs and declining prices for livestock and livestock products. Domestic use of feed grain is expected to drop slightly during the present marketing year. Exports, on the other hand, are expected

to equal or perhaps exceed last year's record of 18.7 million tons, says McHaney.

The economist believes prices will continue the general upward movement of the past three years. Prices received by farmers rose slightly in 1963-64 from the year before and were up about 10 percent above the post-war low of 1960-61.

The sorghum grain supply is about 8 percent below that of a year ago resulting from a smaller acreage harvested and lower per acre yields. Domestic use of sorghum grain is expected to show little change for the 1964-65 year but exports are expected to continue near the high level of the past two years, says the economist. Thus, he adds, the carryover into 1965-66 could be as much as 10 percent below the carryover of October 1, 1964.

HOT ITEM

Unless you're cooking at temperatures higher than 2,000 degrees Fahrenheit you can place hot pots and sizzling pans directly onto ceramic tile countertops in your kitchen. That's because ceramic tile is baked at that temperature during manufacture, so it is completely immune to heat. In addition grease and smudges will wipe right off with a cloth dampened by dish wash detergent.

**Rodent Control
Meeting Is Today**

Robert Adamson, Hansford County Agent, states that a demonstration on controlling prairie dogs and gophers will

be held Thursday, Feb. 25 at 2 p.m. The prairie dog control demonstration will be held 2 miles west and about 4 miles north of Spearman on the Guthrie place. This will be about 2 miles north of the golf course. The gopher control demonstration will be held on the Spearman golf course following the prairie dog demonstration. Cars will park at the windmill.

Tom Sparks, Field Assistant with the Rodent Control Service at Lubbock, will be present to demonstrate the use of the poisons used for control.

Poison grain no longer can be sold through the County Agent's office so it will be sold at these demonstrations. Persons wanting poison grain will need to be present to buy it. If you do not get the grain on this day, you will not be able to buy it until another demonstration day is set up at some later date.

Information on how to poison coyotes will also be presented on this day so ranchers interested in this phase should also be present.

**THE WAY
I SEE IT**

Robert Cordes, Pastor
Oslo Lutheran Church
Faith Lutheran Church

**WILL THIS MAKE ME
MORE MONEY?**

Today we do so much that can be translated into money instead of service to God.

We live in a nation and world that is money conscious. The Dollar becomes the social status, the thing that makes a family acceptable or even successful. Whenever a young man can go through life and command a high salary, we call him successful. But often God is left out of his life.

Our days time schedule and efforts are usually centered around what will make me more money. We eliminate those things that would not be profitable and add dollars to our bank account. Right? You bet! But where do we place doing something for another that will not yield us dollar returns?

True--we do live in a nation of economic gods. The Dollar is necessary in our pocket to pay the next person. And we need dollars for food, gas and cars. This isn't what I'm trying to say. We need to work to pay our bills.

But is the stress so much on what's in it for me and how can I gain more dollars and a bigger salary or more profit that we forget we can do things for our neighbor and thus to God?

Do you ever pause to think how can I offer service to my God and Savior Jesus Christ? Or is it all a one way street--what can I get out of it? And if no increase in economic value, than I don't do it.

Today we tend to do things that can be translated into money instead of service to God. Is this the way it should be? I doubt if God A mighty would have us live this way. I doubt if God would be having us forget service of love to others.

Pause and examine your life. Do you locate days and times when you forget service to others and God--and think only of yourself?

Bargains

**4 Re-Upholstered Hide-A-Beds — New
Mattresses, Matching Chairs With Some**

3 Studio Couches

Several Odd Chairs

New & Used Bedroom Suites

**Maple & Chrome
DINING ROOM SUITES**

For Best Results See

Reamy Upholstry

UPHOLSTRY, DRAPERIES & CARPET

311 Main

659-3391

TOP DRESS WHEAT

WITH



**GOLDEN
URAN**

WITH THE AVAILABLE MOISTURE

You Can Make Money By Top Dressing Your Dryland Wheat As Well As Irrigated Wheat!

All the grazed out wheat and late wheat need fertilizer to insure fast growth. We have the equipment to put

GOLDEN URAN

WHERE you want it . . . WHEN you want it !

STRAWN FARM & RANCH SUPPLY

Spearman

Gruver

**School
Lunch
Menu**

- MONDAY, MARCH 1
- Meat Balls and Spaghetti
- Seasoned Blackeyed Peas
- Buttered Spinach
- Dill Pickle Spears
- Fruit Cup with Pineapple
- Honey-Peanut Butter Spread
- Hot Rolls-Butter
- Chocolate or White Milk
- TUESDAY, MARCH 2
- Hot Dogs or
- Chicken Salad Sandwich
- Macaroni and Tomatoes
- Ham Seasoned Pinto Beans
- Potato Chips
- Cabbage, Pickle Relish Slaw
- Cherry Cobbler
- Chocolate or White Milk
- WEDNESDAY, MARCH 3
- Baked Turkey & Gravy
- Cornbread Dressing
- Mashed Potatoes
- Buttered Green Peas
- Celery Sticks
- Ambrosia Fruit Salad
- Bread
- Chocolate or White Milk
- THURSDAY, MARCH 4
- Baked Ham Slice
- Candied Sweet Potatoes
- Seasoned-Green Beans
- Citrus Gelatin Salad
- Date Cake
- Bread
- Chocolate or White Milk
- FRIDAY, MARCH 5
- Hamburger with Mustard
- or Pimiento Cheese Sandwich
- French Fries-Catsup
- Dill Pickle Slices
- Lettuce-Tomato Salad
- Peach Halves
- Spicy Apple Bars
- Chocolate or White Milk

Mrs. Evans Gives

C.W.F. Program

The general meeting of C.W. F. was held Wednesday, Feb. 17 at 2 p.m. in the church parlor. Meeting was opened with C.W. F. prayer.

Margarette Evans gave the program on "Young Peoples Choice."

Sandra Russell gave the devotional and closed with prayer. Mae Floyd served refreshments to Lucy Mundy, Kay Vernon, Dorothy Pugh, Mrs. Bert Briley, Betty Jean Davis, Eleanor Reed, Ada McLain, Lula Womble, Margarette Evans, Sandra Russell, Ruth Bryan and Dorothy Haner.

SURE SIGN OF
SPRING SAVINGS

SHURFINE SALE GOOD THROUGH MARCH 6

Shurfine **YOUNG MOTHER HUBBARD SALE**

NOW FILL YOUR BARE CUPBOARD FOR **LESS!**

sure sign of Spring **SAVINGS!**

Shurfine **YOUNG MOTHER HUBBARD SALE**

COFFEE

REGULAR or DRIP SHURFINE 2 LB. CAN \$1.39

SHURFINE **FLOUR** \$1.79

25 LB. PRINT BAG

SHURFINE 20 OZ.

CATSUP 4 FOR \$1.

15 OZ. WITH BEANS

SHURFINE

CHILI 5 FOR \$1.

SHURFINE CRUSHED 2 CAN

PINEAPPLE

4 FOR \$1.

SHURFINE 12 OZ. LUNCHEON

MEAT

3 FOR \$1.

SPAGHETTI OR MACARONI SHURFINE ELBO 12 OZ. 2 FOR 29¢

SHORTENING SHURFINE 3 LB. CAN 69¢ | **PEACHES** SHURFINE HALVES or SLICES Y.C. 2 1/2 CAN 4 FOR \$1.

SALAD DRESSING SHURFINE QT. 39¢

SHURFRESH SWEETMILK OR BUTTERMILK 8 OZ. 13 FOR \$1.

SHURFINE FROZEN CUT 10 OZ. 5 FOR \$1.

SHURFINE ASST'D. FLAVORS 19 OZ. 4 FOR \$1.

SHURFINE 303 CAN 5 FOR \$1.

SHURFINE CUT GREEN SPEARS 300 CAN 4 FOR \$1.

SHURFINE 303 CAN 7 FOR \$1.

SHURFINE 303 CAN 7 FOR \$1.

SHURFINE 4 OZ. 5 FOR \$1.

SHURFINE 12 OZ. 2 FOR 79¢

SHURFINE FRESH PACK 16 OZ. 4 FOR \$1.

Rayette Aqua Net

SHURFRESH 2 LBS. **CHEESE SPREAD** 69¢

SHURFINE FROZEN KRINKLE CUT 32 OZ. 2 FOR \$1.

SHURFINE 303 CAN 6 FOR \$1.

SHURFINE HALVES BARTLETT 303 CANS 4 FOR \$1.

SHURFINE 300 CAN 9 FOR \$1.

SHURFINE EARLY HARVEST SWEET 303 CAN 5 FOR \$1.

SHURFINE SOLID PAK 303 CAN 5 FOR \$1.

SHURFINE STRAWBERRY 18 OZ. 2 FOR 89¢

SHURFINE QUART 2 FOR 79¢

ROXEY TALL CANS 13 FOR \$1.

SHURFINE FROZEN CHOPPED 10 OZ. 7 FOR \$1.

SHURFINE TALL CAN 8 FOR \$1.

SHURFINE R.S.P. 303 CAN 5 FOR \$1.

SHURFINE 24 OZ. 3 FOR \$1.

SHURFINE VAC-PAK W. K. GOLDEN 12 OZ. 6 FOR \$1.

SHURFINE WHOLE 3 SQUAT CAN 3 FOR \$1.

SHURFINE CHUNK STYLE 6 1/2 OZ. 4 FOR \$1.

SHURFINE 18 OZ. 3 FOR \$1.

SHURFINE WHOLE SWEET 22 OZ. 2 FOR 89¢

ENERGY 1/2 GAL. 3 FOR \$1.

HAIR SPRAY Large Size... 59¢

SUGAR Holly Brand-Beet 10 lb. Bag... 99¢

E G G S J. & L. Grade A Large Dozen... 39¢

SALMON Humpty Dumpty Tall Can... 43¢

Mellorine Lanes Party Time Half Gallon... 43¢

Shurfresh Saltines

CRACKERS

lb. Box... 19¢

97¢

Gallon Carton...



Reduce
Sunkist Full-O-Juice lb. **Lemons** 17¢

Sweet and Juicy Navel lb. **Oranges** 17¢

Texas Cello Package **Carrots** 2 Bags 17¢

Large Thick Meated (try them stuffed) lb. **Bell Peppers** 17¢

Meats
Armour Star lb. **BACON** 59¢

Hickory Smoked lb. **Sliced Ham** 89¢

Boneless Rolled lb. **Beef Roast** 73¢

CUT RATE GROCERY

AFFILIATED

Historical Committee Honors Mrs. Josie Hays

February 20, 1965
 WHEREAS it has pleased the Creator in his great and infinite wisdom to take our beloved friend, Josie Cator Hays, from the pain and suffering of this world, to a heavenly home, and
 WHEREAS, the said Josie Cator Hays, daughter of a pioneer Hansford County family, had for many years been a moving force for good and forward looking projects for said Hansford County,
 NOW, THEREFORE, BE IT RESOLVED, that we the members of the Hansford County Historical Survey Committee,

do extend to the husband and family of said Josie Cator Hays, our most sincere sympathy in their bereavement.
 Be it further resolved that a copy of this resolution be mailed to the family, and a copy published in the county newspapers.
 Tom Jones
 Gertie Archer
 Lee McClellan
 Grace Lyon
 Johnnie C. Lee
 Olin Sheets
 Clementine Renner
 Verna Gail Keim

The Morse Code

Filing forms for candidates for the Morse School Board may be picked up at the office of the superintendent at Morse School.
 Candidates must file by March 3 which is 30 days prior to the election date.
 The Student Council of Morse School has been sponsoring a different type of day each Wednesday for the student body. Three different occasions have been observed so far and this Wednesday "Roaring 20's" day will be held.
 Winning the prize for their attire on Western Day were Suzanne Dixon, Micki Cook and Miss Elaine Behrens.
 Best dressed on dress up day were Don Cator, Sylvia Parks and Miss Behrens.
 Taking honors on "Hobo" day were Bob Womble, Carolyn Henderson and Mrs. Rufus Graves.
 Alan Dixon is in the Spearman hospital this week. He had the flu about two weeks ago and is now suffering from pneumonia.
 Mrs. Elva Evans, mother of Coach Rufus Graves, is visiting in the Graves home this week. She lives in Amarillo.
 Kay Baird of Amarillo was guest speaker for the Gideons at the Morse Community Church Sunday. He was a dinner guest of Rev. and Mrs. Harold Fleming.
 Mrs. Mack Dortch and Mrs. Desmond Kelly visited relatives in Dalhart Friday. Mrs. Dortch also visited with Mrs. Windsor, mother of Mrs. Erlis Pittman.
 Mrs. Desmond Kelly and Mrs. Kay Baird of Amarillo went to Texline Friday afternoon to present the work of Child Evangelism to a group of ladies there. While in town they visited with Mrs. Jim Hensley.
 Morse Lions Club will sponsor the annual queen's contest Thursday, March 11. All high school girls of Morse are eligible to enter.
 The committee working on the contest include R.C. Womble, chairman, assisted by Mmes. R.C. Womble, Lynn Davis, Don McCammond & Miss Elaine Behrens.
 The theme for this year's contest will be "A Pretty Girl is Like a Melody."
 This contest has always been one of the highlights of the Lion's activities. All eligible girls are urged to enter to help make this year's contest as successful as those in the past.
 Mr. and Mrs. A.C. Womble are in Hot Springs for a vacation.
 Mrs. Ella Parks spent the weekend visiting her daughter and family, Mr. and Mrs. Charles Thompson of Hugoton, Kans.

Holt News

Mr. and Mrs. Charles Davis recently visited relatives at Tucumcari, N.M.
 Mr. and Mrs. Walter Good, former Spearmanites, of Hereford, have been visiting Mr. and Mrs. Wesley Jenkins.
 Nancy Martin of Dallas and Armatia Stovall of Lubbock recently visited the Herbert Kirk's.
 Mmes. Raymond Kirk and Martha Batton were honored with a birthday party Friday afternoon, Feb. 19 in the home of Mrs. Kirk. Gifts were received by the honorees and refreshments were served to Mmes. Owen Pendergraft, Richard Gaines, Phil Jenkins, Bertha Jenkins, Berda Holt, Ethel Jones, C.W. Kirk, Janet Reger, Raymond Kirk, Martha Batton, Maude Rosson, Glenda and Peggy Gaines and Debra Gayle Reger.

Charlene Bulls

INTERIOR DECORATOR
 659-3202
 1105 Townsend
 Spearman, Texas

E. C. Greene & Sons Agency

Real Estate-Loans
 Insurance-Cattle
 Aluminum Pipes
 410 Davis, Spearman
 Phone 659-2587

KNAPP SHOES

KENNETH BAILEY
 212 N. James
 Phone 659-2458
 Spearman, Texas

Burton's T.V.

WE REPAIR COLOR & BLACK & WHITE T.V.'S AND ALSO, RADIOS
 659-2121

20 South Archer
 Spearman

McBRIDE ENGINE SERVICE IRRIGATION SALES & SERVICE

Oil Field Engine Service
 Located at Airport
 Hwy. 760 North
 Spearman, Texas
 - ROY MCBRIDE
 Phone 659-2750

Cummings Refrigeration

HEATING
 AIR CONDITIONING
 REFRIGERATION
 SPECIALIST
 SALES & SERVICE
 659-2721
 SPEARMAN

BUY WANT ADS SELL

FOR SALE SERVICES

DECORATED CAKES-For All Occasions. Call 659-2295. Mrs. J. V. Barker. 29-tfc
 FOR SALE-8 x 28 ft. 1957 Great Lake 2 bedroom trailer home. Call 659-2657. 36-tfc

FOR SALE-3 bedroom bath and half brick home at 1103 Dressen. Carpets, drapes, fenced, many other extras. Selling because we have purchased a larger home. Call Emmett Sanders, 2516 or 2601. 36-tfc

FOR SALE: 10 ft. windmill, 180 feet, 2 inch well casing, 1200 gallon storage tank, propane tank. Collard Real Estate. 23 tfc

FOR SALE-3 bedroom home. 623 S. Bernice. Call 659-2887. Daniel Sheets. 30-tfc

FOR SALE - Industrial lots and acreage. Financing available. Cecil Crawford. Two good lots in town. Phone 659-2409. T43-tfc

FOR SALE: New Lake Pump and Aluminum pipe, Pat Westfield, Gruver, F17-2700. S44-T43-tfc

FOR SALE-Four houses. Nothing down on two and small payment on two. \$50, \$60, and \$70 payments. Call at 206 Main or Phone 2464 at night. L.S. McLain. 32-8c

FOR SALE-1957 Ford Pickup. 4-speed, V-8, Western Auto. Phone 659-3344. 32-tfc

FOR SALE-Adorable white toy poodle puppies, 8 weeks, registered AKC, papers furnished. 428 S. Bernice. 34-tfc

FOR SALE-A 1962 Hay Baler with rake, mower and tractor. Rake like new. All John Deere equipment. \$2500.00. See or call Mrs. Cora Helton, Briscoe, Texas, Ph. DR5-2317. 34-6c

FOR SALE-3 bedroom brick. Available June 1. Phone 659-3459. 36-tfc

Walker's Brother Dies in Arkansas

Clayton B. Walker, 77 year old brother of M.W. Walker of Spearman passed away Feb. 15 at Little Rock, Ark. in the Veterans Hospital where he had been a patient for 43 years.
 He was buried in Eldorado, Okla. and all remaining members of his family were present.
 Pallbearers were 6 nephews of the deceased. Another nephew assisted with the service.

Part of all you earn — should be yours to keep. ED DEAR,



703 Cotton Drive
 Spearman, Texas
 Office 659-3444 Phone 659-3073

SERVICE-Ditches from 3-12 inches, any desired depth. S. D. Jones 659-2809. Harold Shaver 659-3474. T17-s18-tfc

POODLE GROOMING by appointment. See Mrs. Burks at 117 Townsend after 4 p.m. 11-tfc

Land Leveling to SCS specifications. General dirt work with Hancock carryalls. Willis Sheets, 659-2256. T46-S46-tfc

FOR RENT

FOR RENT-Nice redecorated apt. Carpeted. Large closet. Bills paid. Call 2082. 34-tfc

FOR RENT-New brick apartment, furnished. 6th & Hazelwood. Call Gus McLain at 2274. 36-tfc



6-YEAR-OLD Deborah Plaisance inspects evidence that her identical twin, Diane, right, has undergone successful open heart surgery. She and her brother, Jimmy, were booked for similar operations when photo was taken. (Five other children were born to the same Coon River, Minn., parents with normal hearts.) The entire family will be ringing doorbells on the week-end of Heart Sunday, February 21, climax of the 1965 Heart Fund Campaign.

WANTED

SPARE TIME INCOME-Refilling and collecting money from NEW TYPE high quality coin operated dispensers in this area. No selling. To qualify you must have car, references, \$600 to \$1900 cash. Seven to twelve hours weekly can net excellent monthly income. More full time. For personal interview write P.O. BOX 10573, DALLAS, TEXAS 75207. Include phone number. 36-1p

The Rev. Bill Masters who is minister of the First Christian Church of Ponca City made a short stop-over in Spearman Saturday afternoon. He was on a cross-country flight in training to receive his pilots license. He was met at the airport and taken to lunch by several of his former congregation of the Christian Church here. He was pastor of the local church in 1949.

FLOOR SETS SCHEME

Floor color can be the key to your home's decorating scheme. In the kitchen, for example, the color of the floor can be co-ordinated with color of countertops and back-splashes.

TELEGAGS by BOB NOBLES



Bob's SALES and SERVICE

WE SELL THE BEST and SERVICE THE REST
 SPEARMAN, TEXAS
 Phone 659-3222

TIRES

* Firestone Tires
 * Dunlop Tires

* Dayton Tires & Batteries
 * Firestone Tractor Tires

WE DO TUNE-UPS AND LIGHT MECHANICAL WORK

We appreciate your tractor tire business.

Snider Texaco

City Directory

CLEANERS

CLEANING
 PRESSING
 CARPET
 CLEANING SERVICE
 COIN OPERATED
 DRY CLEANING
 FREE
 PICK-UP & DELIVERY
 PHONE 659-2511
Wardrobe Cleaners
Oscar Donnell
 302 MAIN ST.
 SPEARMAN, TEXAS

DENTISTS

F. J. Daily D.D.S.
 16 SW COURT STREET
 SPEARMAN

PHYSICIAN

D. E. Hackley D.O.
 CLINIC
 702 S. ROLAND
 659-2556
 659-2385

ELECTRICIAN

Anthony Electric
 Industrial, Commercial
 and House Wiring
 Heating and
 Air Conditioning
 Contracting
 and Repairs
 Fully Insured
 PLAINS
 SHOPPING CENTER
 PHONE 659-2441
 BOX 727
 SPEARMAN TEXAS

Hansford Farm News

F.F.A.

Observes 36th Year in Texas

By: Clemon Montgomery
Executive Secretary
Texas Association, FFA

The Future Farmers of America organization is in its 36th year in Texas. There are 40,482 members studying vocational agriculture in 875 high schools in Texas. In these vocational agriculture classes students are provided an opportunity to secure technical and scientific training in agriculture as well as to receive training in leadership, citizenship and cooperation.

Texas membership has grown from 28,643 in 1950 to 49,482

in 1964. The largest growth has come in the last three years with an increase of over 3,500. In a recent study conducted by Mr. George Hurt, State director of Vocational Agriculture, it was found that 86 per cent of the vocational agriculture students who graduated from high school last year and were available for employment are now in full-time farming or in agricultural related occupations. Approximately one half of this number are in full-time farming.

Agriculture today is more than farming. It involves those who process and distribute ma-

ny agricultural goods. Many people are employed in agricultural occupations such as engineers, scientist, management personnel, sales and service personnel and educators. Also there are over 60,000 desirable openings each year for farm operators, farm engineers and full-time hired farm labor.

These people need a sound education and a continuing education to help keep them abreast of the rapidly changing technical and management aspects of farming.

Three Million Teenagers Are High School Dropouts

Three million of the nation's young people between the ages of 16 and 19 are school dropouts and the rural high schools have a higher percentage of dropouts, according to researchers of the Texas Extension Service.

Although the rate is high, the percentage of students dropping out of school has decreased by 11 percent in the last 14 years. In 1950 the figure was 41 percent and in 1964 it has dropped to 30 percent.

Patsy Reynolds of the Extension Service reports that most people think of dropouts as being juvenile delinquents or other misfits. However, she says, the boy or girl who drops out may be a nice young person, just bewildered, unsure of himself and his goal in life.

A comparison of the labor force status of young people 18 to 24 illustrates the problem of

school dropouts.

Seventeen percent of those with less than nine years of school were neither working nor looking for work.

More urban and rural graduates than dropouts were in white collar jobs.

Rural-farm dropouts with the least education were concentrated in farm occupations.

Unemployment was less prevalent among graduates than dropouts.

About one-third of the rural high school graduates and one-half of the urban graduates in 1960 enrolled in college. Higher rates of rural school dropouts, lower scores on aptitude tests, lower salaries and fewer facilities are among factors putting rural schools at a general disadvantage, the study showed.

The outlook for rural youth in the future includes: The im-

portance of social and economic influence on educational opportunities must be considered, for the most desirable and best paid occupations are generally in urban areas. The number of farms will continue to decline, along with employment on the farm. Rural residents from 14 to 24 years of age likely will need 1.1 million new jobs by 1970--thus, education beyond high school will become increasingly important.

Other implications of the outlook for rural youth are that major differences between urban and rural youth in school enrollment will be in the proportion entering college; the consolidation of rural schools will increase; and social problems associated with low levels of education will likely continue.

The Texas Safety Association reminds hunters to never climb or jump with a loaded gun. Never pull a gun toward you muzzle first. When going through fences, push your gun on ahead, or hand it to a companion with the breech open. And, don't set your gun against a tree or fence. It could fall and discharge.

News From The

County Agent

BY ROBERT ADAMSON

If the moon isn't made of green cheese, how come there's such a rat race to see who gets to it first?

RODENT CONTROL DEMONSTRATION

Don't forget the prairie dog and gopher control demonstration this Thursday, Feb. 25 at 2 p.m. 2 miles north of the golf course. If you need poison grain for prairie dog or gopher control you will have to be present to purchase it that day. The Rodent Control Service will not leave me any grain to sell at a later date.

SUGAR BEET SITUATION

Farmers are encouraged to make their decision concerning the sugar beet proposal and agreement. At the meeting last Thursday, Don Anthony reported that there was a good chance of getting the allotment and mill in this north plains area. They need more acres before they can go to Washington and ask for the allotment. The 280 dollars an acre will still be needed regardless what sugar company they deal with. They also said they were pretty certain of getting a holding company to take this 80% but they need the 22,500 acres signed up before they can go any further.

FARM AND RANCH MANAGEMENT TOUR

I will be out of the county March 1 through March 6 attending the Farm & Ranch Management tour to California and Arizona. I hope to bring back some information and color slides that will be interesting and beneficial to the farmers of Hansford County.

LAST LINE

"Does my practicing make you nervous?" asked the thoughtful but persistent saxophone player.

"It did when I first heard the neighbors talking about it" said the man next door, "but now I don't care what happen to you."

Party Honors Jett Nollner

Mrs. Bobby Nollner honored her son Jett on his 7th birthday with a party Friday evening Feb. 19.

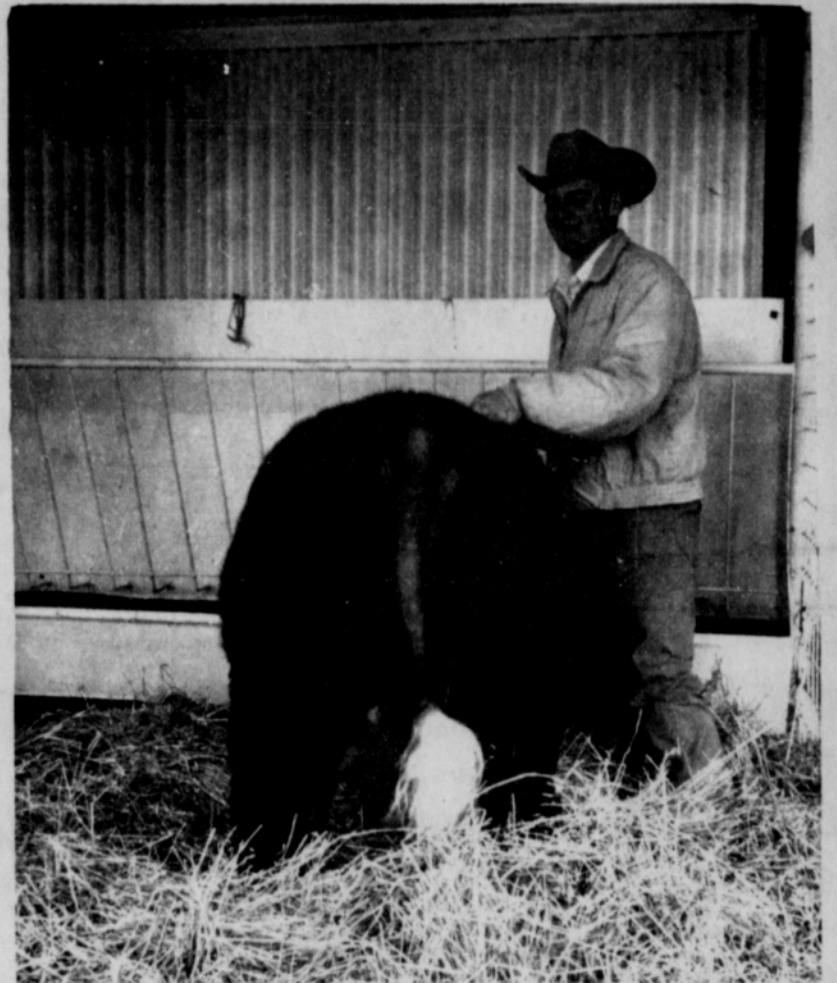
The guests came at 6 p.m. and were served hot dogs, cake and Kool Aid. After eating the group attended the picture show.

Those present were Mark Fox, Eldon Allen, Toby Kuehl, Jeff Beedy, Chris White, Dennis DeArmond, Brad Healer and Kyle Nollner.



We Believe In The F.F.A. Program

- * Promoting Good Citizenship
- * Encouraging Cooperation
- * Developing Leadership
- * Inspiring Patriotism
- * Teaching Sound Farming Methods



Therefore We Are Proud to Salute Our F.F.A. Members
And Advisors Jerry Jackson and Jerry Lelder.

On Their Outstanding Work

North Plains Truck & Implement Co., Inc.

ALASKAN EVANGELIST TO HOLD REVIVAL

The Rev. Robert
G. (Bob) Palmer



Rev. Robert G. (Bob) Palmer
Spenard, Alaska

Rev. Palmer will be accompanied by the Rev. William Largent of Houston, Texas. A tenor soloist & song writer.

Feb. 24 — March 14
7:30 P.M.
UNION CHURCH
George Bollinger, Pastor



SCATTER PIN LEAGUE

TEAM	WON	LOST
Equity	65 1/2	18 1/2
Miller's	56	28
Anthony Electr	53 1/2	30 1/2
G&G Foodliner	39 1/2	44 1/2
Floyd Locker	39	45
Gruver Agency	34	50
Grunewald	27	57
Bowl Mor	21 1/2	62 1/2

HIGH TEAM GAME

Anthony Electric	627
Millers	614
Anthony Electric	598

HIGH TEAM SERIES

Anthony Electric	1765
Equity	1732
Miller's	1660

HIGH INDIVIDUAL GAME

Gertrude Archer	176
Marcella Chisum	175
Charlene Jackson	169

HIGH INDIVIDUAL SERIES

Helen Dry	471
M. Nollner & E. Reynolds	449
Jane Meeck	448

PIN BENDERS LEAGUE

2-19-65

TEAM

TEAM	WON	LOST
Lyon Insurance	61	27
Lee Oil	52	36
McClellan Grain	47 1/2	40 1/2
Bowl Mor	45 1/2	42 1/2
First State Bank	40 1/2	47 1/2
Gruver Motor	37 1/2	50 1/2
Mall	37	51
Holiday Drive In	31	57

HIGH TEAM GAME

Bowl Mor	502
First State Bank	486
McClellan Grain	481

HIGH TEAM SERIES

Bowl Mor	1378
Lee Oil	1266
McClellan Grain	1260

HIGH INDIVIDUAL SERIES

Dorothy Baggerly	504
Gwen Smith	488
Mary Cornelius	471

HIGH INDIVIDUAL GAME

Vera Beth Hicks	191
Mary Cornelius	184
Gwen Smith	183

HIGH INDIVIDUAL SERIES

one Dutch received Dutch	214
Guiana (or Surinam) from Eng-	201
land giving what is now New	200
York State in exchange.	

HIGH INDIVIDUAL GAME

The sun travels through space in	545
a spiral path with other members	526
of the Milky Way system.	512

Cam McCloy Dies In California

Funeral services for R. C. (Cam) McCloy of Hemet, Calif., were held Wednesday morning at Hemet.

Mr. McCloy was a pioneer resident of Hutchinson County, having moved here in 1907. He married Lois Holliday, also a resident of Hutchinson County and in 1916 they moved to Hemet.

Mr. McCloy, 83, died Friday in a rest home in Hemet. He had been in ill health for a number of years.

Survivors include his wife of the home; one daughter, Mrs. Clyde McKay of Hemet; four sons, Martin of Brighton, Colo., DeWitt of San Bernadino, David Carson and Knox of Hemet, and a number of grandchildren, nieces and nephews. Survivors from Morse include three nephews, Thane, Wilson, and Willard McCloy.

Mr. and Mrs. Willard McCloy flew to Hemet Monday to attend the funeral.



PLANNING--John R. Collard Jr. and his secretary, Mrs. Francis Jones make plans for the open house for Collard's new office. It will be held Monday from 9 a.m. to 5 p.m. Plainsman Photo

Collard To Show New Offices

John R. Collard Jr., will have an open house Monday from 9 a.m. until 5 p.m. in his new offices at 407 Davis Street.

The enlargement and remodeling of the Collard offices were recently completed. The new suite of offices have a reception office, a library and conference room and Collard's private office.

Ed Mundy of Spearman was the general contractor for the work. Anthony Electric and Cummings Refrigeration handled the electrical contracting.

en, Leta Lawson, Nora Underwood, Glen Findley, Beulah Mae Redwine, Almeda Frische, Linda Turner and daughter, Mary Garcia, Ann Smith, Martha Jones and daughter, Harold Frost, Denise Rauch, Bob Hays, Bill Miller, Sr., Hazel Morton, Joe Novak, Victor Rook, Dr. Albert Rinker, David Jones, Arlene Fisher and son Frances Allison, Albert Mackie, Peggy Ferguson, Hody Porterfield, Jesse Womble, Vernie Rosson, Geraldine Kees, Lilly Sloan and Gordon Parrish.

air conditioning and heating. Connell Office Equipment of Dumas furnished the offices.

Collard said he was indebted to Mrs. Guy Fuller for the loan of some of her paintings to decorate the offices.

He also called attention to the bookends and penstaff holder which were made from an oil well core from the Midland area. It was given to Collard by a lodge brother, L.C. Lock of Midland.

Canada bought 13,700,000 tons of coal from the U.S. in 1963.

HANSFORD HOSPITAL NEWS

Patients in Hansford Hospital this week are L.D. Pierce, Willie Mathis, Albert Clerk, Georgia Horry, C.E. Blackburn, Angie Sheets, Yette Dodson, Homer Allen, Mary Ellen Chesser, James E. Johnson, Irene Close, Nelva White, Walter Good, Alan Dixon, Wayne Ellsworth, Nelda Jean Archer. Dismissed were Garrett All-

Everyone Is Invited To Attend Our

OPEN HOUSE
AT OUR NEW OFFICES

MONDAY, MARCH 1

9 A. M. Until 5 P. M.

407 Davis

John R. Collard, Jr.

-All Kinds of Insurance-

We'll Be Serving Coffee and Doughnuts and Giving Favors All Day