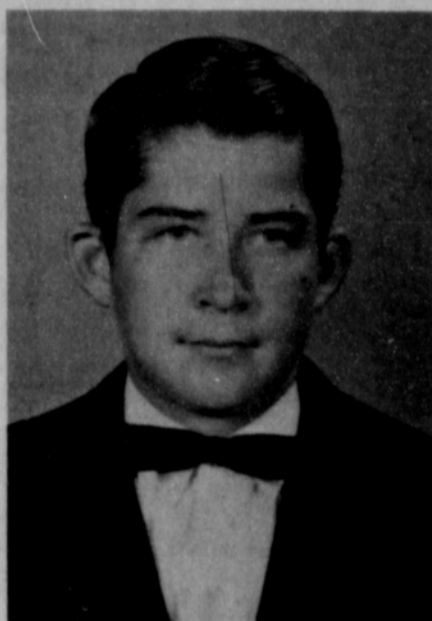




Pat Massad



Doug Lackey



Gary Bengé

Contestants Place In State Events

Spearman High School's entries in the state Interscholastic League literary meet won a second and advanced to the semi-finals in Austin Friday.

Miss Pat Massad won second in Poetry Interpretation and the boys' debate team got to the semi-finals.

Miss Massad placed second with her interpretation of "Lincoln, The Man of The People" by Edwin Marcum.

Contestants must have a poem for each of three categories. They do not know which category will be used until it is announced by the judges.

Spearman's contestant was the youngest of the four. There were two juniors and a senior in the competition, also.

Van beat the Spearman debate team of Doug Lackey and Gary Bengé. Bengé is a freshman and Lackey a sophomore.

For the fourth consecutive time Spearman has lost the toss of the coin and had to debate the negative side.

They have not won the toss since the district meet.

They lost on a split decision.

HANSFORD COUNTY'S LEADING NEWSPAPER



SUNDAY The Hansford Plainsman

VOLUME VI., No. 57

SPEARMAN, HANSFORD COUNTY, TEXAS, 79081

SUNDAY, MAY 9, 1965

Lack of Moisture Hurting Wheat Crop

Lack of effective moisture in the western wheat belt is causing a fast deterioration of the dryland wheat crop according to the Santa Fe Crop Report and the Texas Employment Wheat Harvest report.

Moisture is going to be required if the crop is to reach a 440 million bushel crop in Texas, New Mexico, Oklahoma, Kansas and Colorado. Should this figure be reached, it would be the fourth largest crop in the past 10 years. The larger crops were in 1958, 1960 and 1961.

From the Caprock east, recent moisture has been of benefit to the wheat crop and good harvests are predicted. Harvest in the Gainesville, Sherman, Denison area is expected to begin about May 25.

In the southern High Plains most dry land wheat has been abandoned because of dry weather, but irrigated wheat

above average.

A reduction in acreage of feed grains is being predicted by the Santa Fe Crop reporters in the states served by Santa Fe.

Farmers indicate they will divert the acres to soybeans.

Wet weather in much of the Texas, Oklahoma, Missouri, and Kansas had delayed land preparation by farmers and come crops are late.

SPEARMAN GETS

NEW BUSINESS

SEE STORY INSIDE



GIRLS OF THE MONTH - These young ladies were honored this year by the Kimberly Study Club as Girls of the Month. They are (front, left to right) Dorothy Smith, Linda Lesly, Donna Boyd and Gloria Ricketts, (back) Phyllis Patterson, Helen Collard, Nancy Wilmeth, Margot Kilgore and Carol Simmons.

PLAINSMAN PHOTO

Bands Win At Stinnett

Bands from the Spearman grade school and junior high took top honors at the Stinnett Music Festival Friday.

Spearman's sixth grade band earned a first in concert and sight reading. This gave them a sweepstakes award.

There are 67 members in the sixth grade band.

Not to be outdone, the junior high band also took a sweepstakes award with a first in concert and sight reading.

There are 105 students in the organization.

Frank Porter is director of the two bands.

Local Artist Is Winner

A semi-abstract still life painting by Mrs. Ray Phelps won a citation in the Texas Fine Arts Citation Show in Amarillo this week.

The show began Sunday and the pictures will be on display all week.

Eight pictures in the show received citations. They will be entered in state-wide competition in Austin in July. There were 81 entries from this region.

In Austin the region winners will be hung in the Laguna Gloria Art Museum as part of the Texas Fine Arts Show.

Winners in Austin will be made into a show. It will be a traveling show and tour the U. S. and Mexico for a year.

Contestants Entering Festival

Entries for the three big events of the Spearman Spring Celebration are beginning to

come in, according to Jaycee President Zack Fisher.

Six entries have been received for the Shindig, the first official entry for the Miss Hansford contest is in and the FFA is receiving entries for the rodeo.

The music and caller for the two dances are all set. Bob Parish of Sinclair, Wyoming will be the caller for the square dance Friday night. Steve Mathews and the Embers will be playing for the rodeo dance Saturday night.

Fisher is expecting 10 to 12 acts for the Shindig Friday night in the High School Auditorium.

The Jaycees have entries from Bruce Ayres, Leslie and Rod Barkley, Don and Darlene, the Mojoes, two groups known as the Rogues.

Rod Barkley will be the master of ceremonies.

Miss Bethany Donnell was the first official entry for the Miss Hansford Contest Saturday night in the school auditorium. She is sponsored by Excel Chevrolet-Oldsmobile.

Fisher said several businesses have indicated they will have their entries in Monday.

He said Mrs. Paul Gumfory of Gruver is helping get entries from the west side of the county.

This year's winner will represent the county in the Wheatheart of the Nation Contest in Perryton later this summer.

High School cowboys will be competing for glory Saturday and Sunday in the FFA High School rodeo.

Entries must be high school students, be passing their subjects and have written consent to enter.

FFA advisor Jerry Jackson said none of the awards will effect a boy's eligibility for Interscholastic League competition.

The Old Timers' reunion and barbecue usually held with the spring celebration will be part of a fall or late summer reunion planned by the Chamber of Commerce.

Sheets Visits With Connally

Steve Sheets and his parents, Mr. and Mrs. Willis Sheets, are guests of Gov. John Connally this week-end at the Governor's ranch near Floresville.

Steve was one of three winners in the Legal Secretaries Art Show in Amarillo recently. As a prize he is showing his painting in Austin and visiting on the governor's ranch.

There were three winners in Steve's age group selected to show in the state show. The entries in the Amarillo show were from this Texas Senatorial District.

Steve studies art under the guidance of his mother.



WINNERS - This group of young people won a top award at a Baptist Choir contest in Lubbock. The Junior Choir is under the direction of Richard Fancher, Music and Educational Director of the First Baptist Church.

PLAINSMAN PHOTO

Spearman Study Club Is Host For Friendship Coffee

The Spearman Study Club held a Friendship Coffee Friday morning May 7 at 9:30 in Fellowship Hall at the First Methodist Church. Invited guests were members of the Twentieth Century and Kimberly Study Clubs.

Mrs. Don DeArmond, president, opened the meeting with words of welcome to the guests.

The program was a short skit fashioned from the comic strip "Peanuts" by Shulz titled "Federation According to Peanuts" was narrated by Mrs. Bert Sheppard, assisted by Mmes. Ray Martin, Kenneth Evans and Don DeArmond.

Mrs. W. L. Bell of Stratford, District Director of Junior Clubs of the Top of Texas District addressed the group on "Federation" and complimented the club on its work during the year.

The serving table was beautiful with a green net cloth over white satin and centered with an arrangement of iris, snowball and fern. Crystal and silver completed the setting. Mrs. Don DeArmond presided serving rolls and coffee.

Present were Mmes. C. A. Kleeberger, Frank Davis, Guy Fuller, Joe Trayler, D. E. Spoonmore, T. D. Sansing,

C. U. Pope, Oline Sheets, Jack McWhirter, J. R. Keim, C. F. Renner, Woodville Jarvis, P. A. Lyon, Sr., J. R. Stump, Dick Kilgore, John Allen, O. C. Holt, Fred Holt, Johnnie Lee, George Buzzard, Sandra Ladd and Doyle Jackson.

Members of the Spearman Study Club were Mmes. DeArmond, Evans, Curtis Francis, Martin, Sheppard, Marcus Larson and James Pendergraft.

CD Booklet Available

Single copies of a new Defense Department publication, "New Buildings With Fallout Protection" (TR - 27), showing 34 new buildings with built-in fallout shelter, are available without charge by writing to U.S. Army AG Publications Center, Civil Defense Branch, 2800 Eastern Blvd., Baltimore, Md. 21220.

About Curtain Rods

A marble rolled through the casing of your freshly-ironed curtain will cause the curtain rod to go through easily.



THE MAN ON THE MOON may make this kind of a scene. The astronaut model is standing on a model of the lunar surface based upon the final closeup photograph taken by the National Aeronautics and Space Administration's Ranger VII before the spacecraft hit the moon on July 31, 1964. The surface shown here, as well as the astronaut model and model of the Lunar Excursion Module, were created through a special scaling process, with one inch representing one-and-two-thirds feet. The scaling technique was developed by Dr. E. M. Shoemaker of the United States Geological Survey's Astro-Geology Branch.



Big Yields

● Sure, you want big yields! That's what every sorghum farmer wants... and must have, to show a profit. DeKalb Hybrid Sorghums are bred to come thru with big yields. And DeKalb has other bred-in bonus features: seedling vigor and fast growth; disease resistance and strong stalks; big, open heads and early harvest, plus plump, sound, quality grain and easy combining. Next time, go with a winner—plant ALL DEKALB HYBRID SORGHUM.

DEKALB HYBRID Sorghum

Planted by More Farmers Than Any Other Brand

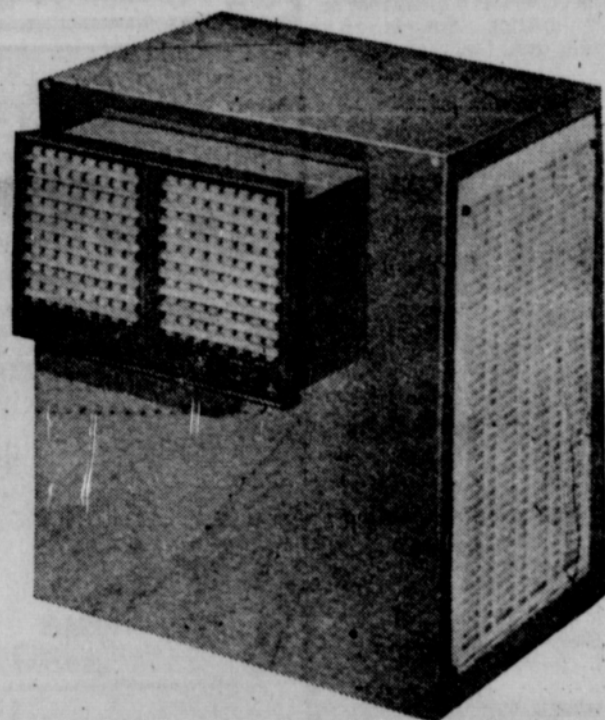
"DEKALB" is a Registered Brand Name. Members are variety designations.

DOUG MOORE

R. L. PORTER GRAIN CO.



TRUCK LOAD SALE PRICE...



4700 C. F. M.

EVAPORATIVE COOLER

DELIVERED & INSTALLED

\$139⁹⁵

4300 CFM EVAPORATIVE

COOLER

DELIVERED & INSTALLED

\$124.95

SEARS CATALOGUE SALES
Plains Shopping Center

SPEARMAN

PH. 659-2573



I Say, Podner,
It's A Shur
'Nuf Bargain!

SUBSCRIBE TO YOUR

HOMETOWN NEWSPAPERS

THE HANSFORD PLAINSMAN

THE SUNDAY PLAINSMAN

BOTH FOR JUST

\$3.50 PER YEAR

GIVE YOUR FAVORITE GRADUATE A gift they'll enjoy and appreciate all year

WE'LL SEND A GRADUATION CARD WITH AN APPROPRIATE NOTE ABOUT YOUR GRADUATION GIFT.

HANSFORD PLAINSMAN

Accent on Health

J. E. PEAVY, M.D., Commissioner of Health

Almost anyone with a lawn mower will admit that "man's best friend" in the summer time is a power lawn mower. Although power mowers are tops among labor saving devices, they pose some potential hazards. They can save you time, money and back-breaking efforts, but they can also kill and maim.

In a recent year, some 70,000 accidents involving power mowers were recorded. Lost in the carnage each year are approx-

imately 50,000 toes and 18,000 fingers, not to say anything about other injuries and the loss of life itself.

Perhaps we need to have power mower handling courses just as we have gun handling courses to promote safety.

A rotary blade on a mower—whirling at some 4,000 revolutions a minute—can hurl a hard object such as a nut or nail es, they pose some potential much like a bullet. The missiles can have the impact of a

22-calibre bullet, with enough force to kill anyone in its path.

Safety with a power mower—as in any event—lies with the individual. An understanding of the mower and a respect for its potential could save you a limb, or even a life.

Before you mow next time, make sure your mower is in good shape with all safety devices secured and all nuts and bolts properly tightened—especially the one holding the blade.

Check the fuel before starting the motor. And never add gasoline while the engine is running.

Clear your yard of all children and pets before you begin. If your neighbors are in a nearby yard, wait until they leave before you mow. You wouldn't schedule a shooting match with people standing about at random.

Protect yourself with proper clothing when you mow. Wear long trousers, shoes and work gloves.

Watch where you go, particularly for slopes and any objects ahead. And when you leave the mower, stop the motor.

Your power mower can be your best friend this summer, if you treat it with respect and handle it with care.

THE FAMILY LAWYER

"Why Pick on Me?"

You are driving along the street about 15 miles an hour faster than you should. But your conscience is eased by the fact that several other motorists are doing exactly the same thing.

Unhappily, when a motorcycle officer takes up the chase, he singles you out as his target. Result: a ticket for speeding.

"Why pick on me?" you may well ask in injured innocence. "I'm no more guilty than those other drivers, who are all getting off scot-free. The United States Constitution must have something to say about this."

If the officer singled you out because of some personal animosity, there may indeed be a constitutional issue. Laws should not be enforced,



the Supreme Court has warned, "with an evil eye and an unequal hand."

But if the discrimination was not intentional, you have no grounds for complaint. Your offense is not excused by the fact that other offenders are going unpunished.

Isn't that unfair? Certainly the law should be enforced alike against everyone—theoretically. But there are practical difficulties that must be faced.

Consider the findings of a traffic study made in a city of about 100,000 population. Based on surveillance of a typical intersection, the study indicated that there were no fewer than 3,000,000 traffic violations in the city every day.

Citing each violator would have required some 14,000 policemen—almost half of the adult male population of the city. And all 14,000 would be occupied with traffic full time, leaving no policemen to chase burglars, lead funerals, comfort lost children, or remove drunks from the city hall steps.

In short, a rule of "all or none" in law enforcement could mean that none—not all—would be punished. We forego what is perfect to achieve what is possible.

It is true that, with less-than-perfect enforcement, you run the risk of getting more traffic tickets than your precise mathematical share. But take heart. A veteran judge estimates that, for every offense you are caught at, you commit a hundred. A public service feature of the American Bar Association and the State Bar of Texas. Written by Will Bernard.

© 1965 American Bar Association

you can't Stop...

HAIL

But you can protect yourself against LOSS with a

Cimarron Hail Policy

I'll collect on my Cimarron Policy



CIMARRON INSURANCE CO., INC.
CIMARRON, KANSAS

Largest Writers of Crop-Hail Insurance in the Nation

Represented By

JAMES F. (JIMMY) GREENE

Phone 659-3196

Box 5 Spearman, Texas

Spearman Gets New Business

Another new business is opening in Spearman. It is an agriculture related business.

B and W engineering of San Angelo is opening a warehouse and will move one man here to operate the business.

This firm manufactures wheel weights for tractors, wheels, press wheels, plow-weights and other kinds of weights used on farms.

Chamber of Commerce manager Don Floyd said chamber members Gene Cudd and Doug Connelly did the groundwork in getting the firm to open a warehouse here.

Floyd said the warehouse manager will move here sometime this weekend.

The business will operate from the old Hughes Tool warehouse in the Crawford Industrial area west of Spearman.

Classified ads get results.

Beauty, comfort, strength and V-6 thrift isn't everything.



Buick Special. \$2277.00

Now you've seen everything.

See you soon?

* a perfect graduation gift!

- Heater, Radio
- Tinted Glass
- 3-Speed Transmission

- 155 H.P. Fireball
- Electronic Windshield Wipers
- Directional Lights

- Carpeted
- Seat Belts
- 4-Door Sedan

NORTH PLAINS TRUCK & IMPLT. CO.

Hansford Plainsman

Publishers Inc.

Jim O. Davis

Burl G. McClellan

County-wide independent newspaper published every Thursday and Sunday at 209 Main in Spearman, Texas. Second class postage paid in Spearman, Texas. Editor Burl McClellan

Charlene Bulls

INTERIOR DECORATOR

659-3207

1105 Townsend

Spearman, Texas

Decorate this MORNING



Entertain TONIGHT

use Super MASQUE a new ACRYLIC INTERIOR FINISH



SATIN FINISH
DRIES IN 20 MINUTES
SCRUBBABLE
16 COLORS
12 INTERMIXES
A STERLING 12 STAR PRODUCT

STERLING 12 PAINT

White House Lumber Co.



Count on PIONEER BRAND sorghum to put more grain across the scales for you!

In official 1964 Texas A & M sorghum tests in the High Plains, Pioneer brand hybrid sorghums proved they can help you put more grain across the scales.

- Hybrid 820, entered at 6 of the 8 test locations, ranked 1st in yield at 3 locations and 3rd at another. It made the highest yield among all hybrids tested by Texas A & M last year.
- HYBRID 844, An Earlier Short Stalk Variety has also proven itself to be a high yielder in this area

B & B GRAIN CO., INC.



PIONEER SORGHUM

514 COLLARD ST.

659-2551

Mrs. Wilmeth Is Bridge Hostess

Mrs. Bill Wilmeth entertained her bridge club Thursday afternoon in her home. High score was held by Linda Davis. Attending were Charlene Jackson, Linda Davis, Jackie Mathews, Texie Fisher, Ellie Douglas, Sherill Meek, Deloris Guthrie and the hostess.

Mr. and Mrs. Truitt Tarrent of Vernon are weekend guests of his sister, Mr. and Mrs. Loyd Carroll.

Miss Johnson Is Accepted As Intern

Miss Rita Ann Johnson, daughter of Mr. and Mrs. M. N. Johnson of Hitchland has been accepted for a year's internship at Mercy Hospital in Oklahoma City.

Miss Johnson is a medical technology student at Southwestern State College at Weatherford, Okla.

The Spearman High School honor graduate will begin the internship this September.

BUY WANT ADS SELL

FOR SALE

FOR SALE-Rebuilt lawn mowers also repairing and sharpening. 824 S. Haney. D.M. Jones. 54-8c

FOR SALE-8 x 48 ft. 1957 Great Lake 2 bedroom trailer home. Call 659-2657. 36-tfc

FOR SALE-3 bedroom home. 623 S. Bernice. Call 659-2887. Daniel Sheets. 30-tfc

FOR SALE-10' x 48' furnished trailer home, 2 bedroom, carpeted, washer and air conditioner. Call 2497. 47-tfc

FOR SALE-New Lake Pump and Aluminum pipe, Pat Westerfield, Gruver, F17-2700. S44-T43-tfc

FOR SALE-58 Chevrolet pickup 1/2 ton w/4 speed. Call 659-2684 after 5 p.m. 53-tfc-c

FOR SALE-95 acres southeast of Spearman, irrigation water, 1/2 minerals, industrial lots and acreage. Financing available. Cecil Crawford. Phone 659-2409. 49-tfc

FOR SALE-3 bedroom 1 and 3/4 baths, carpeted throughout, dishwasher, built-in range and disposal, corner lot and garage. Phone 2268. 57-tfc

FOR SALE-3 bedroom bath & half brick home at 1103 Dressen. Carpets, Drapes, fenced, many other extras. Selling because we have purchased a larger home. Call Emmett Sanders 2516 or 2601. 45-tfc

FOR SALE-1954 Buick Century 4 dr. sedan, 523 W. 5th. 56-2c

FOR SALE-Two party dresses and two formals. All size 12. 659-2857. 56-tfc

FOR SALE-3 bedroom brick home at 1017 S. Dressen. Carpet, drapes, fenced, patio. Asking way below actual equity. Low monthly payments. LaDwain Bowen. Phone 659-3459. 56-tfc

FOR SALE-Kenmore range, rotisserie, grill and clock. Large oven. Clean. Call 2142, or see at 201 W. 12th. 56-3c

FOR SALE-3 bedroom home, excellent location, carpeted and fenced. 904 S. Dressen. Call 659-2173. 56-tfc

FOR RENT

FOR RENT-New furnished brick apartment. Phone 2274. 46-tfc.

FOR RENT-Office in Wilmeth building. Inquire at Wilmeth Cattle Co. 315 S. Main. \$50 per month. 44-tfc

FOR RENT-Furnished three room house. Phone 2671. 57-2p

SERVICES

FOR LIFETIME MUFFLERS-Clarence Pettitt Garage. No premium prices.

Rotary tilling yards and gardens. Phone 659-3119. 42-tfc

Land Leveling to SCS specifications. General dirt work with Harcock carryalls. Willis Sheets, 659-2256. T46-S46-tfc

SERVICE-Ditches from 3-12 inches, any desired depth. S. D. Jones 659-2809. Harold Shaver 659-3474. T17-s18-tfc

Water will drilling service. Contact D.M. Sheppard. 659-2379, Spearman. 50-4p

New yards a speciality. Worked, leveled, seeded and fertilized. Phone 659-2850. 50-tfc

WANTED-Rototilling, yards or gardens. Call 2627. 42-tfc

Amarillo Daily News & Globe Times home delivery. Call 2685. T14-tfc

WILL KEEP CHILDREN up to four years of age, in my home by hour or week. Mrs. Milton Brown. 55-3p

CHAMPION stock black & white toy poodles for stud service. Studio Girl Cosmetics. Will knit guaranteed hosiery and lingerie Dressmaking and alterations. Caroline Billingsley, 415 W. 5th 55-3p

SPARE TIME INCOME-Refilling and collecting money from NEW TYPE high quality coin operated dispensers in this area. No selling. To qualify you must have car, references, \$600 to \$1900 cash. Seven to twelve hours weekly can net excellent monthly income. More full time. For personal interview write P.O. BOX 10573, DALLAS, TEXAS, 75207. Include phone number. 56-1p

REGISTERED Quarter Horse Sale, Monday, May 17. For catalogs, write or call Buddy

Roger, Box 564, or phone Alpine 4-2528, Woodward, Oklahoma. 56-1c

WANTED

WANTED-A good used pump jack. Box 791, Spearman. 56-1c

GA Focus Week Set May 9-15

Mrs. Ernestine Gray, director has announced May 9 to 15 as G.A. Focus Week. An Enlistment Supper for the G.A.'s of the First Baptist Church is being given by the WMU on Monday May 10 at 6 p.m. at the church. Each GA is to bring a guest who might be a prospective member. A program will follow the supper. Wednesday the G.A.'s will present a skit and show a film titled "Missions to Israel". Everyone is invited to attend this meeting.

Royal Service Program Held

The W.M.U. of the First Baptist Church met Wednesday morning May 5 for the Royal Service program. Mrs. Ray Devers, president, presided at the business session and the prayer calendar was read by Mrs. Don Jones followed with prayer. Mrs. Woodville Jarvis had charge of the program titled "The Book That Lives." She was assisted by Mmes. V.N. King, R.E. Bradford and Joe Cagle. Twenty six members attended the meeting.

Mr. and Mrs. Ray Lackey made a business trip to Pampa Thursday.

For Sale:
Chain Link Fences
Now Sale Priced
At
SEARS
FREE ESTIMATES
COMPLETE
INSTALLATION
Phone 2352
Plains Shopping Center
Spearman, Texas

We Have Used Six - Inch Gated Aluminum Pipe For Sale
B & B Grain Co., Inc.

TG&Y COUPON SPECIALS FOR WEEK OF MAY 10 to 15
T.G.&Y.
5¢ TO 50¢ STORES

COUPON SPECIALS
CLIP 'N SAVE

Spearman Store Hours:
Monday-Friday: 8:30 a.m.-6p.m.
Saturday: 8:30 a.m.-8 p.m.
We Reserve The Right To Limit Quantities

CLIP THIS COUPON
Reg. \$1.99 Limit One Per Coupon
Beach Towels ----- \$1.44
WITH COUPON

CLIP THIS COUPON
1/2" - Fifty Foot \$1.98 Value
Limit One Per Coupon
Garden Hose ----- \$1.00
WITH COUPON

CLIP THIS COUPON
Full Size Limit One Per Coupon
Reg. \$8.88
Bed Spreads ----- \$5.88
WITH COUPON

CLIP THIS COUPON
(5 only) Steel \$5.95 Value
Limit One Per Coupon
Steel Lawn Chair ----- \$2.99
WITH COUPON

CLIP THIS COUPON
Reg. \$1.17 Limit Two Per Coupon
Sofa Pillows ----- 81¢
WITH COUPON

CLIP THIS COUPON
Soft Sole Shoes Black Only Reg. \$2.99
Limit One Per Coupon
Mens Mesh Slippers ----- \$1.99
WITH COUPON

CLIP THIS COUPON
Seamless Micromesh or Plain Stitch
Two Pr. Per Package Limit One Pkg. Per Coupon
reg. 97¢
Ladies Nylons ----- 63¢
WITH COUPON

CLIP THIS COUPON
Reg. \$1.00 Plus Tax Plus Tax-With Coupon
Limit One Per Customer
Jergens Lotion ----- 67¢
WITH COUPON

Sign Castor Bean Contracts Now
Berry Grain Co. Of Waka Now Has
Contracts For The 1965 Castor Bean Crop.
Berry Grain Co. Is The Agent For
Baker Castor Oil Co. Of Plainview.
A GOOD SUPPLY OF CERTIFIED HINN SOYBEAN SEED
Box 25- Waka Phone 435-5377

Mr. and Mrs. W.E. Bratton were in Guymon May 1 to see the parade and attend the celebration.

Mrs. Don Denham was called to Pampa Thursday due to the illness of her father, H.D. Moran. Don and the children, Randy and Robin went to Pampa Friday evening to spend the weekend also.

Bridge-Buffer Dinner Honors Roy Wilmeth

Mrs. Roy Wilmeth honored her husband on his birthday with a bridge buffet Wednesday, May 5.

Attending were James P. Linn, Ralph Blodgett, J.D. Helms, Gene Cudd, Carl Archer, Herb Butts, Edward Dear, Dr. Damon Gregg, Sonny Windom, Jett Mason, Dayton Barkley and the honoree, Roy Wilmeth.

KNAPP SHOES

KENNETH BAILEY

212 N. James

Phone 659-2458

Spearmen, Texas

FOR CUSHIONED COMFORT

Gladiola Club Meets With Mrs. Davis

The Gladiola Flower Club met Thursday morning, May 6 with Betty Jean Davis as hostess.

Sherry Partridge, vice president, presided at the business session.

Betty Jean Davis won the borrowed flower arrangement and Sylvia Robertson won for her home grown arrangement and also the specimen.

Jerry Day, school counselor, gave the program on the function and aim of the school counselor.

Present were Dorothy Faye Baggerly, Dorothy Buzzard, Dorothy Haner, Jo Larson, Sherry Partridge, Sylvia Robertson, Barbara Schnell, Gwen Smith, Patty Spooenmore and the hostess.

The next meeting will be May 20 with Margaret Adamson.

Economist Explains Wheat Situation

The total supply of wheat in the U.S. for the 1964-65, July 1, 1964 to June 30, 1965 marketing year is now estimated at 2,195 million bushels, the smallest since the 1957-58 season, says John G. McHaney, Extension economist, Texas A&M University.

Total disappearance of wheat--food, seed, industrial, feed and exports--in 1964-65 is estimated at 1,290 million bushels or the same as the 1964 production but 150,000 bushels less than the 1963-64 disappearance. McHaney said this could mean a carryover on June 30, 1965, about equal to the 901 million bushels of a year ago, or it could go as high as 905 million bushels.

In discussing the export picture, McHaney said esti-

mates place the 1964-65 exports at 675 million bushels, a drop of 185 million bushels from 1964-65. Because of the recent dock strike, the economist says there is a possibility that the estimated export total may not be reached. And too, he adds, good crops in many exporting countries sharply restricted U.S. commercial exports from July 1964 to January 1965. Shipments under government financed programs comprised about 82 percent of the total wheat exports during that period, compared with 70 percent for the long time average, he said.

Maintenance of a high level of wheat prices, resulting primarily from the U.S. and Canada withholding their surpluses from the market, has encouraged increased wheat production in many countries, explains McHaney. He noted the U.S. sharply increased its export payments for both wheat and flour on January 25, 1965. This had the effect of lowering U.S. export prices and making U.S. wheat more competitive in world markets.

The nation's 1965 winter wheat crop on April 1 was estimated at 1,037 million bushels, one percent more than last year's crop. The estimated yield per seeded acre of 23 bushels compares with 23.7 for last year and a 1959-63 average of 22.8 bushels. Texas production, based on April 1 prospects was estimated at 66.6 million bushels, up 8 percent from last year.

Vera Wroten Accepts Award

Mrs. Vera Wroten was in Fort Worth May 1, to receive her plaque as the state's outstanding wildlife conservation worker.

The plaque was presented to her for her continuous work for the conservation of wildlife on her ranch.

This award was presented at the annual state conservation banquet sponsored each year by the Fort Worth Press.

Mrs. W.E. Bratton entertained Tuesday afternoon with a foursome of canasta. Those playing were Mmes. B.M. Maize, W.W. Cypert, H.W. Bagley and the hostess.

-FENCES-

- *Stockade
- *Picket
- *Red Cedar

Brick & Cinder-Block
Let Us Figure
With You

-FREE ESTIMATES-
Title 1 FHA Loans
Phone 659-3107

Bud King

"Better Food For Less"

IDEAL FOOD STORES

SHOP FOR A CART-FULL OF COMFORTABLE SAVINGS ...

SEE FOR YOURSELF HOW IDEAL'S EVERYDAY LOW PRICES MAKE A COMFORTABLE DIFFERENCE IN YOUR COST OF LIVING. SHOP TODAY AND SAVE!



FRESH LEAN GROUND BEEF 49¢ lb

FRESH, EXTRA LEAN GROUND CHUCK 65¢ lb	SWIFT'S PREMIUM SLICED BOLOGNA 49¢ 1-lb. PKG.	CHUCK WAGON BRAND SLICED BACON 59¢ 1-lb. PKG.	SWIFT'S BROOKFIELD LONGHORN CHEESE 59¢ lb
--	--	--	--

PRICES GOOD THURS. & WED. LIMIT RIGHTS RESERVED.

VALUABLE IDEAL COUPON
Your Choice of any 1 of 30 - 18-K Plated

GOLD CHARMS EACH ONLY 39¢

With this Coupon and \$5.00 or More Purchase
Limit One - Expires Sat. May 15, 1965

DARTMOUTH FROZEN **VEGETABLE SALE 15¢**

10-OZ. PEAS
10-OZ. CORN
8-OZ. CAULIFLOWER
8-OZ. BROCCOLI SPEARS

ROYAL PRINCE GOLDEN **CREAM CORN 2 303 CANS 25¢**

COLA • ROOT BEER • ORANGE • GRAPE • BLACK CHERRY • GINGER ALE

GAYLA BEVERAGES 2 29¢ 28-OZ. BTL.

NO DEPOSIT. NO BOTTLE RETURNS

FOOD CLUB DELUXE **CAKE MIXES 4 19-OZ. PKGS. 1.00**

DISINFECTANT • STAIN REMOVER • FOR WHITER, CLEANER, SANITARY WASHES

CLOROX BLEACH 19¢

NEW PLASTIC QUART BTL.

SEVEN SEAS **SALAD DRESSING 3 8-OZ. BTL. 1.00**

GUARANTEED FRESH!

DEL MONTE **PRUNE JUICE 39¢ QUART BOTTLE**

CRIMSON RED WASHINGTON STATE **RHUBARB 10¢ lb.**

FAIRY SLICING **CUCUMBERS 10¢ lb.**

CRISP RED **RADISHES 5¢ BUNCH**

IDEAL SLICED **WHITE BREAD 2 1-lb. LOAVES 43¢**

CAREFILLED **PURPLE PLUMS 25¢ NO 2 1/2 CAN**

DAILY SUN PINK GRAPEFRUIT **JUICE 3 46-OZ. CANS 1.00**

MAYFLOWER **MIXED FRUIT 25¢ NO 2 1/2 CAN**

FOOD CLUB SMOOTH & CRUNCHY **PEANUT BUTTER 49¢ 16-OZ. JAR**

IDEAL **Cherry Twists 19¢ PKG. OF 6**

STEAM CLEAN

Irrigation Engines, Tractors & Farm Equipment On The Farm

Portable Steam Cleaner

- See Us For Details -

SPEARMAN TEXACO

29 Highway 15
Phone 659-9973
- Murl Pearson -



Challenges of Growth

SOIL STEWARDSHIP WEEK
MAY 23-30, 1965

For The Best In Aerial Weed & Insect Control

We use modern equipment and are radio controlled

Phone Perryton Day 5-3727
Night 5-5213

or see Tom Penn or Buster Hendrickson

A Good Idea

JEST A MINUTE

Stop worrying about what Junior will do when he grows up—better go see what he's up to, now.—Pathfinder.

It's an expensive and complicated job trying to find ways to live the simple life.

The best time to learn from past experiences is always the present time.

A brigade is usually composed of three regiments.

Read The Want Ads!

HOOKER "TRITAC" WEED KILLERS

An Economical Way To Control

"BINDWEED"

CANADA THISTLE- RUSSIAN KNAPWEED AND OTHER DEEP ROOTED PERENNIAL WEEDS.

FOUR TO TEN GALLONS WILL TREAT AN ACRE. TRITAC LIQUID AND TRITAC 10-G GRANULES ARE BOTH ASC APPROVED, THEREFORE IN AREAS WHERE ASC PAYMENTS ARE OBTAINED, CONSULT YOUR LOCAL AGRICULTURAL AGENT FOR RECOMMENDED APPLICATION RATES.

TWO LIQUID FORMULATIONS-TRITAC FOR NORMAL CONDITIONS AND TRITAC "D" FOR QUICK COLIAGE TOP KILL. AVAILABLE IN ONE, FIVE AND 30-GALLON CONTAINERS. ALSO AVAILABLE 10% TRITAC GRANULES IN 25 LB. BAGS FOR DRY APPLICATION.

GOT BINDWEED-GETT'UM-TRITAC'UM

OTHER HOOKER PRODUCTS NOW AVAILABLE - MBC GRANULES IN 25 LB. BAGS - (A non-selective weed and grass killer) AND SODIUM CHLORATE IN 100 LB. DRUMS.

CONTACT YOUR LOCAL DEALER FOR ADDITIONAL INFORMATION AND ORDER YOUR SUPPLY TODAY!

Salvation Army Fund Drive Will Be Launched Thursday

The annual Salvation Army fund drive will be launched Thursday with a 7:00 breakfast at Grunewald's Restaurant. The goal is \$1,850.

The solicitation of funds will be under the direction of J.L. Brock, fund appeal chairman. Those assisting him are team captains, Mmes. Fred Groves, Tommy Jack Bruce, Claude Pearson, Johnny Gaither, J.L. Brock, and E.J. Copeland, Orville Brummett and Zack Fisher. Workers are Mmes. Verna Wood, Dorothy Groves, Vera Longley, Burton Schubert, Joy Apple, Patty Spoonemore, Frank Buzzard, Patsy Gates, Marilyn Jackson, Rita Reed, Ann Shelton, Tommy Russell, Georgia Gaither, JoAnn Gilley, Francis Hudson, Willa Faye Hand, Tot Rosenbaum, and Katherine Patterson, Wayne Pierce, Dale Hawkins, Don Hendricks, Robert Potts, James Cummings, Doris Beck, Betty Hazelwood, Mary Lou Wysong, Troy Sloan, Marcus Larson, Lucille Lewis, Velma Sanders, Don DeArmond, Johnnie Lee, and J.P. Vernon, D.A. Jackson, E.J. Callaway, Tommy Russell, Vance Snider, Don Schnell, Bill Partridge, Tommy Gooch, and John Brown.

J.L. Brock says the governor of the state of Texas has officially proclaimed the year of 1965 as Salvation Army year. When a worker contacts you

give generously to this worthy cause, J.L. also states that we are asking for funds now----- but would you believe that eighty five years ago a money gift was declined? The Army was conducting services in a theater in the United States, when the public was invited, by the theater owner for 25 cents admission. The crowd was overflowing the theater when the owner offered a share of the profits to the Army but the offer was declined.

At that time the Army had no social service centers, no hospitals, no childrens homes, no day nurseries, no camps, no clinics etc. But said J.L. "this is 1965, and today the Salvation Army has all of these and many, many more too numerous to mention. To support all of these many services requires money, we need your help and need it now."

The money raised in the drive will go toward the help for needy people. One third will remain in the county while the remaining two thirds will go to the State Salvation Army to support all of the aforementioned services that are available to the people of Hansford County through your local Service Unit Committee. If the county runs short of money between fund drives money will be sent back from the State Salvation Army headquarters

to continue the welfare program. If at any time a grant is made to the local service unit it is not repayable nor will it be charged to any future fund drive. Ninety cents of every dollar contributed in Texas, stays in Texas for actual welfare work.

prevent inhalation of toxic fume or mists. In using the chemical follow special instructions to the letter.

Store chemicals in their own labeled containers where they belong, and never in or near food containers. Keep them out of the reach of the children and pets, and under lock after use.

Get rid of empty containers right away. Destroy and bury them where they cannot contaminate food, people, animals or water supplies.

Compensation

Blessed are the poor, for they are not compelled to pronounce hors d'oeuvres.--Chicago Tribune

KIDS PLUS CHEMICALS MEAN DANGER

Kids and household chemicals are a deadly combination. Most parents realize this, but even so, many youngsters under five years old are accidentally poisoned every year.

It can happen to your own children if you're careless about handling household pesticides and underestimate your toddler's ability to seek out trouble, according to County Agent, L. M. McCarroll.

Those sprays and dusts you bring home to take flies, ants, roaches, and other pests out of circulation can also be a kiddie trap.

You can protect your children, and the rest of your family too, by chaining to your memory these four keys to pesticide safety----label, use, storage, and disposal.

Read the label on the chemical container carefully each time before using. The label gives specific instructions for proper use and important information for your safety.

Keep your children out of spraying and dusting areas to



First Things First...

Your good health is first with us. You can rely on our Rexall Pharmacist for prompt, personal service... backed by his specialized training as a Registered Pharmacist. He serves you in a professional capacity... as your doctor does—both are members of the community health team. Filling your prescription accurately and promptly is his most important responsibility.

YOUR Rexall PHARMACY
SPEARMAN REXALL DRUG

Research Shows

It Pays To Plant The Best

Quality Proven



B-52
HYBRID SORGHUM

We Also Have High-Yielding

FRONTIER

Hybrid Seeds.

* Certified 7078

* Other Open Pollinated Varieties

Excel B-52

Beat All The Rest in High Plains Research Production Tests of 4, 3 and 2 years.

* 505- A good producer on dryland

* 606- A good irrigated producer, immuned to head smut & has good standability

* 707- High-yielding irrigated hybrid sorghum comparable to Texas 660

*** Chowmaker-**

A sorghum sudan grass hybrid for grazing, silage & green chop

WE ALSO

HAVE THESE

OTHER VARIETIES OF EXCEL

—WE APPRECIATE THE OPPORTUNITY OF SERVING YOU—

R. L. McCLELLAN GRAIN CO., INC.

It Would Work If The Umbrella Was Big Enough!



The Next Best Protection Is Crop Hail Insurance

This Is Just Another One Of The Many Services You Will Receive When You Let An Experienced Agent Handle Your Insurance Needs.

John R. Collard, Jr.

Quitting Business Sale



Complete Liquidation Of Entire Stock

Quality

Western Wear For Entire Family.

Stock Up

For Rodeo Season At Reduced Prices

The Arena Western Wear

216 S. Main

Perryton

Plan Now For Future Use Of Leisure Time

Education in the future will need to place more emphasis upon wise use of leisure time," said Regan Brown, Extension sociologist, Texas A&M University.

He said it is estimated that the average person 35 years from now will have twice as much leisure time as the person of the present. "Either we start planning today for wise use of this time or we pay the consequences," he added.

Brown said that increasing concern for training of our citizens in wise use of leisure time is not just a desire to make people's lives more pleasant for them. Monotony in work and in off hours is a social danger no less than disease, disorder, and illiteracy.

"our failure to embrace this belief is raising the crime rate, increasing population in mental hospitals, multiplying physical and moral weaknesses rejected by the armed forces, and raising the percentage of youths who want security at the very onset of their careers and who are

afraid of trial and adventure," he stated.

Participation is most important and involves more than just being a spectator to a sport that offers only passive sideline involvement. In addition to what is commonly called physical recreation, participation may be in the form of civic affairs or social services which offer meaningful leisure time activity and satisfying personal experience Brown explained.

He said that this does not mean that one's work or profession will be neglected but that life will be looked upon as an entity and preparation for it will be treated as such.

American life in the future is going to be leisure time oriented in contrast to a work oriented past. How well and how soon we adjust to this change will have much to do with our country's future welfare, Brown concluded.

Club Plans Outdoor Luncheon

The Happy Homes HD Club met Thursday, May 6 at 3 p. m. in the home of Mrs. Margaret Adamson.

The devotional was given by Lenell Cummings and the roll call was answered by a hint on calorie counting.

The business session was conducted by the president Lenell Cummings. Members were reminded of the drivers course to be given May 13, 14 and 26, 27 at the clubroom. An outdoor luncheon was planned for May 20 and the group hopes to learn the scout method outdoor cooking. The council report was given by Marilyn Groves.

The Happy Homes Club will sponsor the Time for Fun Club in June.

The demonstration was given by Adalyn Barnes on Low Calorie Desserts.

Present were Adalyn Barnes, Lenell Cummings, Margaret Evans, Dorothy Groves, Nina Hendricks, Kathy Patterson, Maylynn Schubert, Connie Vardell, Wanda Schubert, Joan Gaither and the hostess.

CASE 40-INCH

threshing/separating width—
why it is
more important today than ever before

Why? Bigger yields! Crops like 150 bushel corn, 50 bushel wheat, 40 bushel soybeans, 100 bushel grain sorghum.

They need "elbow room" in your combine. Greater threshing and separating width to allow the crop to thin out and shake out every last kernel of grain.

And yet, most popular-priced, family-sized self-propelled combines still have 26- to 30-inch cylinders. Except the Case 600!

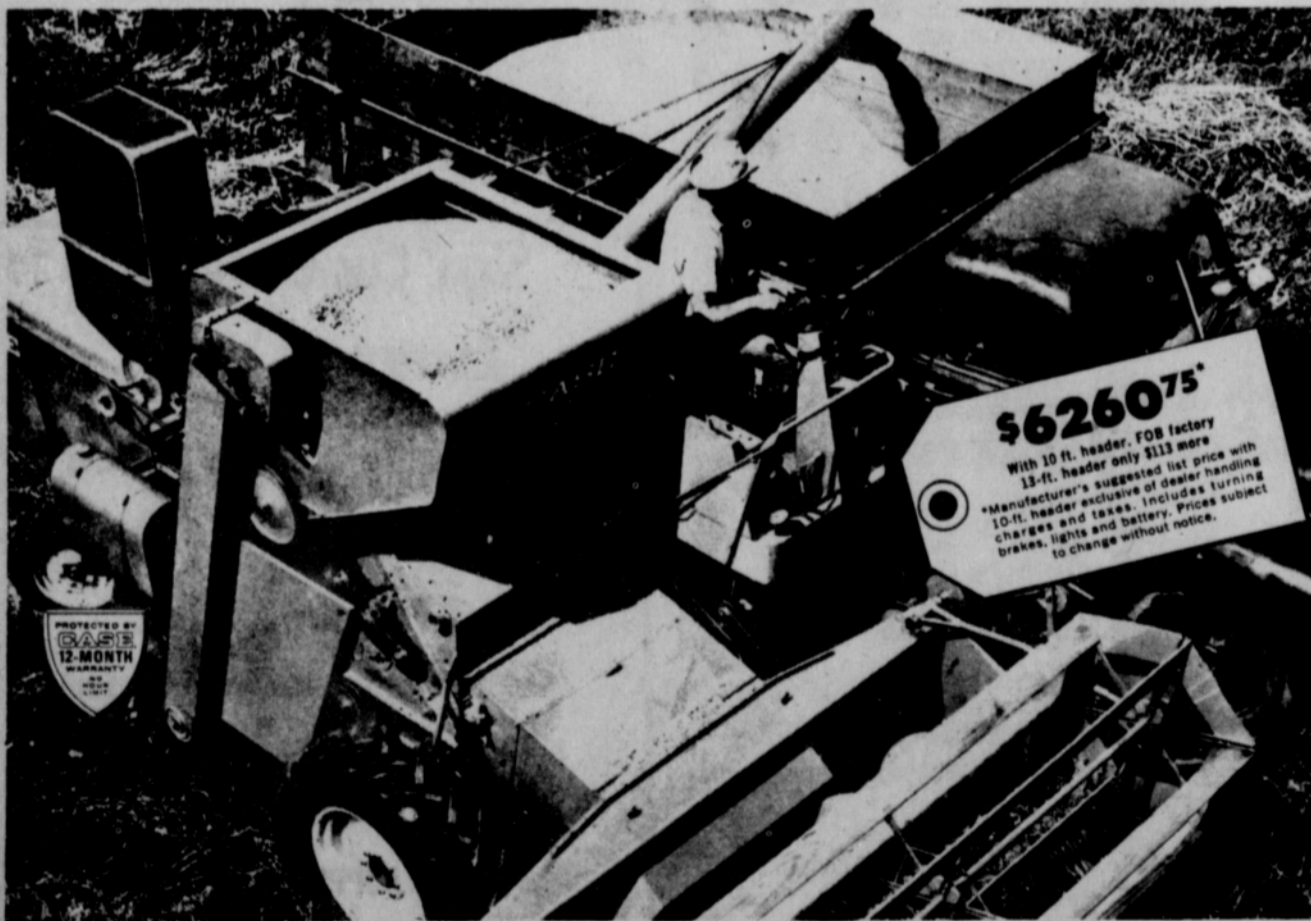
Its 40-inch cylinder is not only wider but heavier—develops the momentum to handle slugs without faltering. Add to this 40-inch wide separation with exclusive air lift action—4,480 square inches of it. And then top

it off with cleaning capacity to match. Result: maximum grain saved, minimum dockage.

Do you grow high bushel yield? Shouldn't your next combine be a 40-inch, high-yield Case 600 Self-Propelled? See your Case dealer. He'll widen your chances for saving more grain. J. I. Case Company, Racine, Wisconsin.



Five Case combines to choose from: Case 600 (illustrated), 400 pull-type, 900, 1010 and 98 Hillside Self-Propelled.



\$6260⁷⁵

With 10 ft. header. FOB factory
13-ft. header only \$113 more
*Manufacturer's suggested list price with
10-ft. header exclusive of dealer handling
charges and taxes. Includes turning
brakes, lights and battery. Prices subject
to change without notice.

GIFTS FOR THE GRADUATE



All Bulova
Watches
1/3 Off

We Have Added Jewelry
To Our Gift Items.

-Electric Razors-

For The Boy Or Girl Graduate

Lady Sunbeam
Cordless Sunbeam
Sunbeam Classic Traveler
Schick Eterna Power

A Gift to Remember!



KODAK
INSTAMATIC 100
CAMERA OUTFIT

Instant loading... no threading
of film, no rewinding. Just lift
out the cartridge. Outfit includes
1 cartridge of Kodak Verichrome
Pan Film 126, 4 AG-1 flash
bulbs, 2 AAA size batteries,
flashguard and instruction
booklet.

17.95 complete

Buxton Jewelry
Cases For Ladies
Buxton Accessory
Cases For Men
Beautiful Buxton
Billfolds

-Cosmetics-

• Max Factor
• Revlon
• Rubenstein
• Lenel

Sets for Boy & Girl Grads

Choose their
gifts here



**SPEARMAN
REXALL DRUG**



R. L. McCLELLAN & SONS



Miss Helen Collard

Collard Named Girl of Month

Miss Helen Collard has been selected as the Girl of the Month for May by the Kimberly Study Club.

Miss Collard is active in music organizations. She is in the band and choir. As a flute soloist she has won

five first places and is in state competition in June. In the choir she has been selected as Sweetheart and sings in the girls' ensemble.

While in school she has been a member of Future Teachers of America, the paper staff and pep squad.

She is also active in Girl Scouts. She was an alternate for Round-Up in 1962, in 1964 she went to All-State in Maryland and is an alternate on the adult staff of the 1965 Round-Up.

Miss Collard plans to enroll in West Texas University in Canyon and major in music and minor in history.

She is the daughter of Mr. and Mrs. John R. Collard Jr.

Big Draft Quota Listed For May

The state draft quota for May is the biggest monthly call in nearly a year and a half, Colonel Morris S. Schwartz, state Selective Service director, said Tuesday. The May quota of 639 men compares with 812 in January 1964 and 512 in April 1965.

The May call is the Texas share of a national quota for 15,100 men, all for the Army.

The state Selective Service director also announced that state draft boards will forward 3,626 males for Army mental-physical examinations in May, 1,791 of whom will be 18-year-olds.

These tests for 18-year-olds are the result of President Johnson's action in 1964 which ordered the Director of Selective Service and the Secretary of Defense to examine all newly registered men who are out of school and available for service. Males married at age 18 and those known to be in school at that age will not be examined.

Colonel Schwartz stressed that these youths will not be considered for the armed forces at this time. Normally, draft for service is about age 22.

The May quotas already have been figured and sent to the state's 137 local boards.



JUNIOR HIGH CHEERLEADERS - These junior high girls were recently elected cheerleaders and will be leading the cheering at next year's athletic contests.

ISRAEL IMPORT TRANSLATED

NEW YORK — A Talmudic allegory entitled "King Solomon and the Cobbler" is to be imported from Israel next season.

The English-language translation of the musical's story is being done by Zvi Kolitz, who will also produce. Still to be decided is whether Alexander Argov's score will be retained as performed last summer in Tel Aviv, or amended with new material.

-Mid Week Values For Tuesday & Wednesday May 11 & 12-

Double Buccaneer Stamps Wednesday

Early in-the-Week

FOOD SPECIALS

Liptons Reg. \$1.39 size

Instant Tea 98¢

Clorox Bleach Half Gallon 35¢

Lydia Grey 200 Count Boxes
Facial Tissue 2 for 19¢

Imperial Pure Cane 5 lb. Bag
(with \$5.00 purchase or over)

Sugar thereafter---55¢ 44¢

Van Camps Tall Can

Pork & Beans 10¢

All Flavors Geletin

Jello 3 for 23¢

Tendercrust Cluster Pak of 8 buns

Hamburger Buns 19¢

All Flavors 5¢ Pkg.

Kool Aid 6 for 19¢

Macaroni or Spaghetti 7 oz Boxes

Skimmers 2 for 25¢

Del Monte Whole Kernel Vac. Pac

Corn 12 oz. Cans 2 for 35¢

100 FREE Buccaneer Stamps

SHURFRESH MILK
AND COUPON FROM SHURFRESH PREMIUM CATALOG

50 FREE Buccaneer Stamps

TENDER CRUST BREAD
AND COUPON FROM TENDER CRUST PREMIUM CATALOG

FREE with three innerseals
3 PIECE Targetcraft KNIFE SET
STAINLESS STEEL DISHWASHER PROOF GET DRINK BLANK AT OUR STORE 10oz Jar...
INSTANT MAXWELL HOUSE COFFEE \$1.09

FRESH DRESSED WHOLE



FRYERS 29¢ LB.

Golden Bantam



U. S. No. 1

Corn

6 Ears 29¢

Shurfine 6 oz. Cans Frozen

Lemonade 3 for 25¢

TIDE Giant Size 59¢

Mortons All Varieties

Cream Pies 3 for 89¢ Frozen

Cut Rate