

HANSFORD COUNTY'S LEADING NEWSPAPER



The

SUNDAY The Hansford Plainsman



VOLUME VI, NUMBER 97

SPEARMAN, HANSFORD COUNTY, TEXAS 79081

SUNDAY, SEPTEMBER 26, 1965

Plane Crash Fatal to Two



HOMEcoming QUEEN - Miss Bette Brown, a senior, was crowned Spearman Homecoming Queen in halftime ceremonies Friday night. She was selected by the football team and crowned by Lynn Buzzard and Skipper Robinson. (More pictures and a story in the Thursday Plainsman.) Plainsman photo

Motion for Mistrial Filed by Defense

Action in the trial of John Lincoln Grissiam became fast just before the noon recess Saturday and a motion for a mistrial was filed by the defense council.

Grissiam is on trial for the Feb. 26 murder of P. H. Westerfield, a Gruver Merchant, who died in his store of a gunshot wound.

The motion for a mistrial was filed during the questioning of Sheriff J. B. Cooke about the arrest of Grissiam on Feb. 27 at the old Walker farm 12 miles northwest of Gruver.

Under questioning by District Attorney Bob Galloway, Sheriff Cooke said that he had questioned Grissiam in the sheriff's car at the Walker farm.

Galloway asked the Sheriff what Grissiam told him and the sheriff said Grissiam told him he shot Westerfield.

Judge Max Boyer immediately ordered the jury to

disregard the Sheriff's statement and the defense attorneys began objecting to the answer immediately.

Judge Boyer had the jury removed from the courtroom and the defense lawyers, Don Reavis and Charles Ballman immediately filed a motion for a mistrial.

In the motion the defense said the court had not ruled on the admission of an oral confession as evidence and even though the judge had instructed the jury to disregard the answer given by Sheriff Cooke, the information was so prejudicial that it made it impossible for the jury not to consider the infor-

The defense had continually objected to most every question and answer during the prosecution's questioning of Cooke.

After the jury was removed and the motion for a mistrial had been filed, the court had the prosecution to complete

(Con't. on page 7.)



Freddy Jackson



Wilburn McGuire

Freddy Jackson, Wilburn McGuire Victims of Crash

Two young Spearman men were killed Friday afternoon in a light plane crash on the Carl McDowell Ranch 12 miles southwest of Stinnett.

Funeral services for Fredrick Alvin (Freddy) Jackson, 22, and Wilburn Lee McGuire, 24, will be conducted Sunday and Monday in the Church of Christ and First Methodist Church of Spearman.

Services for Fred Jackson will be conducted at 4 p. m. Sunday in the Church of Christ. Ministers Charles Milner of the Church of Christ and Wesley Daniel of the Methodist Church will conduct the services.

Burial will be in Hansford Cemetery under the direction of Boxwell's.

Final rites for Wilburn McGuire will be conducted at 2:30 p. m. Monday in the First Methodist Church with the pastor, the Rev. Daniel conducting the services.

Burial will be in the Holt Cemetery with Boxwell's in charge.

The two men were flying an Aeronca plane rented from Thompson Flying service of Spearman. Both men were burned in the crash.

They had been to the ranch to help Danny Jackson check some cattle he had on the ranch. Danny Jackson told Hutchinson County officers they had taken off and were circling the area before starting to Spearman.

Jackson said he saw smoke rising from the open field and went to investigate. He found the burning wreckage and tried to put it out with a fire extinguisher from his pick-up and by throwing dirt on the fire with a shovel. He discovered the accident about 4:30 p. m.

He sent an employee to get help. Justice of Peace Jake Early of Stinnett, acting coroner pronounced the men dead at the scene.

Fredrick Alvin Jackson was born Feb. 5, 1942 in Borger. He had lived in Hansford County all of his life. He is a graduate of Spearman High School and married the former Miss Kay Dean Gamble of Spearman.

Wilburn Lee McGuire was born Oct. 18, 1940. He is also a graduate of Spearman High School and married the former Miss Patten Ann Archer of Spearman. He is a member of the Church of Christ.

Mr. Jackson was the owner and manager of the Western Auto Store in Spearman. He had operated the business for approximately one year.

Mr. McGuire was a farmer and rancher, having returned to Spearman this summer. He had worked as a district manager in the circulation department at the Amarillo Globe-News while living in Amarillo.

Both men are survived by wives and young children.

Surviving Mr. Jackson are his wife, Kay Dean; a daughter, Jodie Janean; his parents, Mr. and Mrs. Dee Jackson and his maternal grandmother, Mrs. Fred Brandt.

Mr. McGuire is survived by his wife, Patten Ann and a son,

(Con't. on page 2.)

(Con't. on page 2.)

OFFENSE SHINES.

Hustling Lynx Defense Blanks Favored Elks

A new brand of Spearman Lynx scored the first and last times they had the ball Friday night as they shutout the Stratford Elks 13-0.

In between the scoring efforts the Lynx played a lot of defense to keep Stratford outside the Lynx 20 yard line all night. To keep the territory inside the 20 untouched, the Lynx had to contain a fast ground attack mixed with a deadly passing attack by Charles Plunk.

A volleyball pass interception late in the second quarter by Gary Cates and Rennie Berry killed the first Stratford threat to penetrate the country inside the 20.

A Plunk pass was batted out of a receiver's hands by Cates and Berry grabbed it at the 14 and ran it back to the 19.

Early in the third quarter Plunk completed a 27 yard pass to Danny Brannon at the Lynx 20. On the first play Dave Clements and Jerry Holton stopped Donny Hawkins for no gain, then Plunk was dropped for a yard loss. Clements broke up the next pass play and on fourth down Plunk was dropped for a five yard loss.

A new defensive front wall gave the Lynx defense a new backbone. Skipper Robinson and Hal Shufeldt at guards along with Charles Shieldknight at middle linebacker stopped the middle cold. Tackles Clayton Cochran and Randy Moore with outside linebackers Clements and Lynn Buzzard added net strength to these slots.

The entire defensive unit kept up a good rush on Plunk all night and dropped him for numerous losses on his passing attempts. Buzzard was handicapped with a lame ankle, but looked right

at him at linebacker and his replacement Jerry Holton was strong on defense.

Plunk, a fast scrambler, was accurate with his passing and managed to elude the rush for several long gains when he was apparently trapped, but in the Lynx end of the field, he and his passes were contained.

Tall Walter Lasley found a

hole in the Lynx pass defense and caught several short passes for good yardage, but at critical times the Lynx secondary managed to break up the attack.

Spearman scored the first time they got the ball. After forcing Stratford to punt to the Lynx 26, Spearman drove 74 yards in 11 plays.

Clayton Cochran and Larry

Butts, running behind some good blocking in the line and down field, rolled the ball into scoring territory.

Coelran hit the middle on the first play for 28 yards. Four plays later on fourth and needing eight, Butts followed a wave of blocking for 16 yards and a first on the Elk 30.

Coelran and Butts punched it

down to the 11, where Shufeldt joined the running party on a sweep to the three. Cochran blasted at the middle again and managed to stretch over the goal for the score.

Butts held and Clements booted and Spearman led 7-0 with five minutes left in the quarter.

Stratford came out running and, aided with a 15 yard penalty against the Lynx, moved to the Lynx 31. Here Clement and Robinson dropped Plunk for a 17 yard loss, then Buzzard and Babbs stopped him cold. Stratford punted into the end zone and Spearman took over on its 20.

The Lynx came roaring out on what looked like a sure scoring drive. Butts and Cochran carried the ball on short bursts into the line. At the Elk 31 the defense tightened and on fourth and 11 Spearman tried to run a fake punt and failed.

Plunk took charge of the Elk offense and moved the ball to the Lynx 35 on six plays. He went to the air and Cates and Berry did their volley ball interception to stop the drive.

Early in the third quarter Stratford went to the air and at the Lynx 31 Plunk heaved one and Mike Babbs intercepted on the Spearman 22.

The next time Stratford got the football they went to the 20 on the Plunk pass to Brannon, but the defense rose up and threw them back.

Spearman drove from the Lynx 25 to the Elk 31 on what appeared to be a scoring drive. Cochran was punching the middle and Butts sweeping the outside. The drive was helped by a 15-yard piling penalty against



TURNING THE CORNER - Wingback Larry Butts (33) turns the corner after Clayton Cochran (31) cleared the way with a block. Butts was the leading rusher for the Lynx as Spearman upset Stratford 13-0. Plainsman photo

(Con't. on page 2.)

(Con't. on page 2.)

Future Readers Of The Plainsman

Mr. and Mrs. Steve Mathews are the parents of a baby girl born Sept. 14 at Northwest Texas Hospital in Amarillo. She has been named Robin Dawn and is the granddaughter of Mr. and Mrs. Virgil Mathews. Maternal grandmother is Mrs. Barbara Ward of Liberal.

Fair visitors in Amarillo Tuesday were Mrs. J.H. Martin, R.E. Martin, Orville Fullbright and Mr. and Mrs. Charles Lynn Martin. They attended the Hollywood Palace show at the Fair and heard the Blackwood and Statesman singers at the Municipal Auditorium that evening.

BOWLING BEAT

STRIKE-OUT LEAGUE

TEAM	WON	LOST
Corner Serv.	7	1
Ideal	5	3
Super Service	4	4
Behne Electric	4	4
B&B Sales	3	5
Berry Cleaners	1	7

HIGH TEAM GAME

Corner Service	849
Behne Electric	834
Ideal	829

HIGH TEAM SERIES

Ideal	2366
Corner Service	2288
Behne Electric	2279

HIGH INDIVIDUAL GAME

Herb Shields	255
Herb Shields	218
Jerry Frye	190

HIGH INDIVIDUAL SERIES

Herb Shields	634
Eddie Gates	531
Sid Beck	511

WEDNESDAY MIXED DOUBLES

TEAM	WON	LOST
Shurfresh Milk	9	3
Spearman TV	9	3
United Mud	9	3
Gordon's Drug	7	5
Wardrobe Cleaners	7	5
Spearman Rad	3	9
Gruver Farm Sup.	2	10

M&M Shamrock 2 10

HIGH TEAM GAME

Shurfresh 682

Gordon's Drug 578

Spearman TV 656

HIGH TEAM SERIES

Gordon Drug 1903

Shurfresh 1840

Spearman TV 1775

HIGH INDIVIDUAL GAME

Butch Butler 211

Bob Meek 203

Cecil Reynolds 198

HIGH INDIVIDUAL SERIES:

Bob Meek 514

Cecil Reynolds 509

Butch Butler 502

PINTOPPLER'S LEAGUE

9-21-65

TEAM WON LOST

Ivan's 91 2 21 2

Boxwells 9 3

Neely's 81 2 31 2

Bowl-Mor 6 6

Super Serv 5 7

Rexall Drug 3 5*

Massad's 3 9

Blodgett & Linn 0 8*

Games Pending

HIGH TEAM GAME

Bowl-Mor 726

Neely's 706

Ivan's 700

HIGH TEAM SERIES

Ivan's 1977

Neely's 1961

Bowl-Mor 1875

HIGH INDIVIDUAL GAME

Jane Meek 190

Sheryl Meek 174

Sheryl Meek 170

HIGH INDIVIDUAL SERIES

Sheryl Meek 500

Jane Meek 481

Tubby Hays 442

Waka P-TA Meets Monday

The Waka Parent-Teacher Association will meet Monday, Sept. 27 at 7:30 p.m. in the school cafeteria. Bob Mosier, president, urges all the parents of children in school and all others interested in the Waka School to attend this first meeting.

Two new faculty members, J.H. Jackson, Jr., superintendent, and Harold Marshall, will be introduced as well as the other members of the faculty: Glenn Truax, Larry Brummett, Mrs. Clyde Yeary, and Mrs. Neal Thompson. Mrs. Yeary, program chairman, will be the leader for the program.

The social committee is Mr. and Mrs. Bob Mosier and Mr. and Mrs. David Wilson. All those who can are asked to bring a freezer full of ice cream for the social hour following the meeting.

Mr. and Mrs. Orville Fullbright and Cloetta had as Sunday dinner guests, Mr. and Mrs. James Martin and Eddie Gale Martin. Added afternoon guests were Mr. and Mrs. Carl Scroggs and daughters of Waka, Mr. and Mrs. Ames Scroggs of Spearman, and Mr. and Mrs. Ernest Studer of Gruver.

Jimmy Greene Elected Young Farmer President

The Young Farmers and Ranchers Association met and elected officers Thursday night

in the high school ag building. Advisors are Harmon Boone and Jerry Felder.

Officers elected are President-Jimmy Greene, Vice-President-Larry Jennings, Secretary-Claude Pearson, Treasurer-Troy Sloan, Reporter-Fred Groves.

The club meets the second Thursday of each month at the high school and has guest speakers who are expert in some area of agriculture or agri-business. Anyone who is under 36 and interested in farming and ranching is invited to join and anyone over 36 is invited to attend the meetings.

Hat Party

Moved to Tuesday

The hat party sponsored by the Alpha Kappa Gamma Teachers Society scheduled for Monday, Sept. 27 has been changed to Tuesday, Sept. 28 at 6 p.m.

The party will be held at the Jr. High Cafeteria. Everyone is invited to attend, join the fun, and find the new fall hat of your choice.

KNAPP SHOES

KENNETH BAILEY

212 N. James

Phone 659-2458

Spearman, Texas

For Cushioned Comfort

YOUR PHILCO DEALER

Burton's T.V.

We Repair Color & Black & White TV's, And Also, Radios.

659-2121

318 Davis
Spearman

**Guaranteed
Watch & Jewelry
Repair**

Diamond Setting
Quick Service
At Reasonable
Prices.

HARPS JEWELERS
659-2711---310 Main

WE'RE CLEARING THE DECKS

1964 Pontiac \$2700
Star Chief 4-Door Sedan Power Brakes,
Steering & Air Low Mileage.

1963 Ford \$1600
Galaxie 500 4-Door Sedan, Air, Low Milage.

1962 Oldsmobile \$1500
Super 88, 4-Door, Power Brakes &
Steering, Air Cond., 6 Way Electric Seat.

1961 Buick \$1250
Le Sabre 4-Door Hardtop, Air,
Power Brakes & Steering

1959 Chevrolet \$500
Biscayne With Air

1959 Chevrolet \$350
4-Door, Standard Shift

**NORTH PLAINS
TRUCK & IMPLT. CO.**

Franciscan earthenware

DESERT ROSE

APPLE

TULIP TIME

SIERRA SAND OR MALIBU

HACIENDA (Gold or Green)

STARTER SET SALE

25% OFF

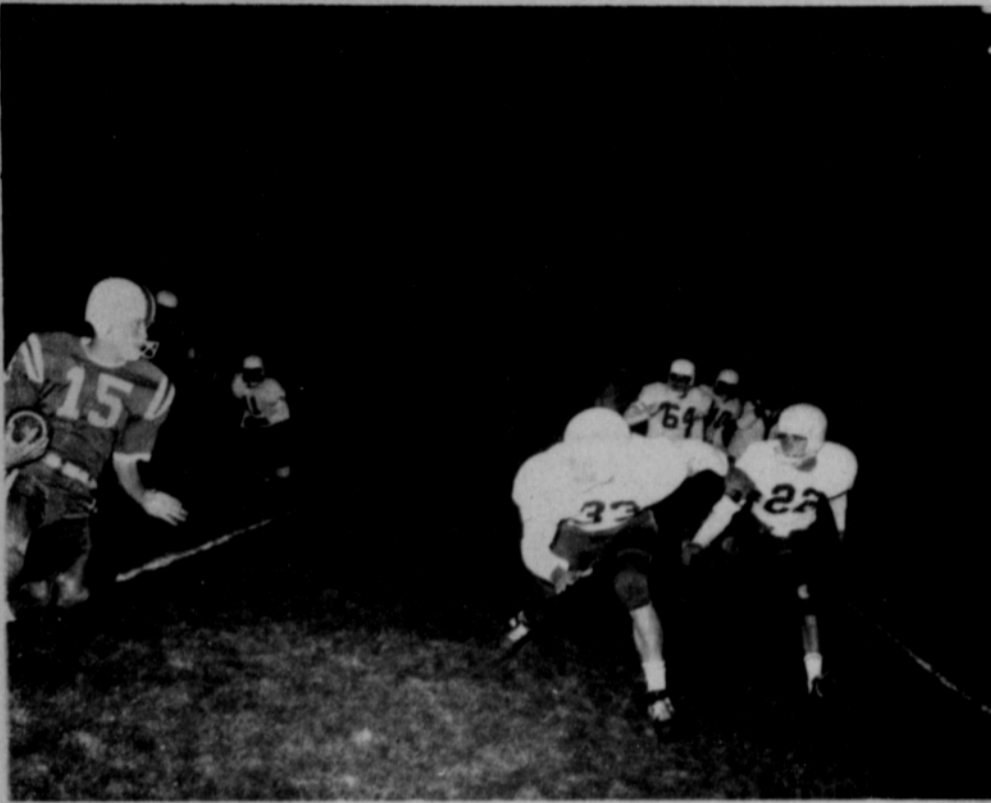
NOW 'TILL OCT. 9
SAVE \$5.00 ON
16 PC. STARTER SETS

Now - you can save \$5.00 on starter sets in America's favorite earthenware - Franciscan. Hand-crafted patterns, designed and made in California - are chip resistant, color fast, will never craze. Can be used safely in oven and dishwasher. All patterns offer you a wide choice of beautiful multi-use accessories. Each starter set includes four of each: dinner plate, bread/butter plate, cup and saucer. Enjoy substantial 25% off savings by starting your collection now. Sale ends October 9! Sierra Sand and Malibu \$12.95 - regularly \$17.95.

\$14.95 regularly \$19.95

FRANCISCAN FURNITURE CO.

PLAINS SHOPPING CENTER 659-3044
Spearman



Sub-Varsity Teams Win One, Tie One and Lose Two Games

Spearman's sub-varsity and junior high teams won one, tied one and lost two in games Thursday night.

Last week's lone loser, was the only winner this week. The Seventh grade team beat Gruver 18-0.

Three different backs scored for Spearman. Tommy Love-

day, Robert Archer and Phil Windom each scored six points. The coaches used all the Seventh Grade squad in the game.

The Freshmen tied Boys Ranch Freshmen 6-6 in Lynx stadium. This is the same Boys Ranch team that whipped Spearman by some 20 points last year when the teams were

Eighth graders. Wingback Bobby Smith scored on a reverse.

Spearman was playing without end Joe Vanderburg who collapsed in the whirlpool water treatment earlier in the week and has been undergoing medical tests.

Fullback Steve Holton saw only limited service in the game after being shaken up on the first play of the game.

Gruver took the measure of the Eighth grade 22-6. Spearman got its lone score on a pass from Randy Weston to Randy Foshee.

Coach Kenneth Thomas said Louis Conners ran well on offense and Tony Byres and Weston were standouts on defense.

Gruver ran up the yards on wide power sweeps. Thomas said Spearman had one good quarter, the third. He said the Eighth graders held Gruver and threatened once in the quarter.

Miami jumped off to a 24-0 first quarter lead before the Spearman B-team got started and went on to beat Spearman 32-6. The B-team was facing the Miami Varsity

Steve Jordan scored the lone Spearman score, but saw little action. He was injured and played only in spots.

With only 16 boys on the squad, Coach Larry Anthony said the loss of Jordan from his rover defensive position hurt the team.

Anthony said fullback Gary Faries ran well on offense and Chris Babbs, Monty Lusby and Carroll Day turned in good defensive efforts.

Miami was bigger than the B-team but slower. However, Spearman fumbled eight or nine times and lost six of the miscues.

Soil Conservation Tour Set Here Tuesday Morning

A soil conservation tour of seven different farms in Hansford County will be held Tuesday by the Hansford Soil and Water Conservation District and the Extension Service.

This tour will begin at 10 a. m. at the courthouse in Spearman.

There will be stops at these farms:

Wesley Garnett for soybeans, bench leveling and crop residue management.

Billy Boatwright, castorbeans. Lawton Guthrie, range seed-

ing. I. W. Ayers, Jr. Shaping Waterway and tailwater recovery system.

J. C. Harris, D. L. McClellan and R. D. McClellan, cooperative waterway recently seeded to Western Wheatgrass.

Ray Ralston, diversion terrace. Don Hart, waterway established to Western Wheatgrass.

There will be a free lunch courtesy of the soil and water

district. The tour will be completed about 2:30 p. m.

Crash . . .

(Con't. from page 1.)

Robert Barton; his parents Mr. and Mrs. Marvin O. McGuire; his maternal grandmother, Mrs. T. J. McGuire of Bonham, and his paternal grandparents, Mr. and Mrs. W. H. Bellows of Bonham.

A host of blue blockers in front of him and the purple ranks were getting thin.

At the 46 Berry came flashing through the Stratford crowd from the left flank and horse-collared Brannan before anyone saw what happened.

Stratford moved on to the Spearman 34 before Robinson and Moore dropped Plunk for a 10 yard loss. He then fumbled on fourth down and Spearman started their final scoring drive at the Lynx 46.

It was Cochran, Shufeldt and Butts on the ground. Shufeldt got the big gainer, a 20 yard gallop over two would-be tack-

lers. Cochran punched it to the one for a first down and there Clement, taking no chances on a fumble, bucked over the back of Skipper Robinson twice before getting the points. His try for the extra point was blocked.

The clock ran out with Stratford stymied deep in their own end of the field.

Hustling . . .

(Con't. from page 1.)

Stratford. At the Elk 31 Cochran was jarred from the ball and Vic Burkham recovered for Stratford.

In the fourth quarter Spearman drove to the Elk 36, but the drive died when Brannan intercepted a Clement pass on the Lynx 20. It looked like he was going to go all the way. He had

CHASING THE ELK - Larry Butts (33) and Gary Cates (22) are elk hunting as they go after the elusive Charles Plunk from Stratford. Plunk was an elusive runner and a deadly passer. Spearman won the game 13-0 in its last non-conference tilt this year. Plainsman photo

Public Invited to Space Lecture Monday Night

Everyone interested in the space program is invited to attend a lecture and slides show on the space program in the Spearman Junior High Auditorium at 8 p. m. Monday.

Dord Fitz, artist and teacher, will show slides on the space program and discuss the Apollo Moon Mission.

Fitz recently won a National Science Fair first place and the

prize was a trip to Houston to the space center for himself and his family.

Fitz will also discuss the relationship of science and creative art.

IRRIGATION MUNICIPAL
CHLOR-O-CLEAN
INDUSTRIAL PAT PENDING DOMESTIC

NORTH PLAINS WATER WELL CHLORINATION SERVICE
WATER WELL CLEANING — STERILIZATION

We Can Rid Your Well of All Organic Growths such as Algae to

INCREASE PRODUCTION

412 N. Dumas Ave.
P. O. Box 986
Phone 935-2929 •
Dumas, Texas

"Nelson"
Lewis N. Macarty
Manager
Res. Ph. 935-2055

Cummings Refrigeration

HEATING
AIR CONDITIONING
SALES & SERVICE
SPECIALIST
659-2721
SPEARMAN

T.G. & Y.

5¢ TO 10¢ STORES

FABULOUS COUPON SPECIALS CLIP 'N SAVE

Spearman Store Hours:
Monday-Friday:
8:30a. m. - 6p. m.
Saturday:
8:30a. m. - 8p. m.
We Reserve The Right To Limit Quantities

PRICES GOOD MONDAY, TUESDAY AND WEDNESDAY, SEPTEMBER 27, 28, 29

Anchor Hocking Reg. \$1.99
Refreshment Sets 7 pcs.
Limit One-With Coupon
\$1.27
Good Sept. 27, 28, 29

Square-1 Pt. Size
Freezer Containers
3 colors- 10¢ Values
25¢
With Coupon Good Sept. 27, 28, 29

Cannon-All Rayon
Sheet Blankets
Size 60" x 76" \$1.39 Value
Limit 2-With Coupon
97¢
Good Sept. 27, 28, 29

Anacin or Bufferin
100 Tablet Size \$1.29 Value
Limit One
77¢
Good Sept. 27, 28, 29

98.3 **kbfm-fm** 98.3
NEW!
FOREGROUND FEATURES Goin' Great!
MORNING 8:15 TO 8:45 AM
HINTS... HISTORIES, NEWS, QUOTES, AND A LITTLE BIT OF EVERYTHING - FOR EVERYONE!
YOUR COUNTY AGENT SPEAKS
6:35 TO 6:45 MONDAY THROUGH FRIDAY MORNING HELPFUL HINTS AND INFORMATION
TOWN AND COUNTRY SHOW WITH BIG JOHN MIKESIDE, THE BEST IN COUNTRY & WESTERN MUSIC FROM 1:00 TO 4:00 AFTERNOONS
TOP 40 HOUSEPARTY
THE TOP TUNES AND THE BIG BEAT!

RAMADA INN WEEK END

CONTEST RULES

- 1. Winner to receive a free week-end at participating Ramada Inns.
- 2. Week-end includes two nights lodging and food for an individual Family of up to five members. Meals include two Breakfasts, Saturday Lunch, Saturday Evening Dinner, and Sunday Dinner For each member of the party.
- 3. Winning family will provide own transportation to and from.
- 4. You may enter in as many stores as you wish each week. No purchase necessary.
- 5. Winner must be married or of legal age, and reside in trade area.
- 6. One preliminary winner will be drawn each week at each participating store. These winners from each store will then be placed in the final prize drawing that week. New contest each week.

NEW TRIP EACH WEEK

Winner in our Store
Gordon H. Cummings

Cates Men & Boys Wear

Shop Now For Those School
Clothes, Cool Weather Is Just
Around the Corner.

Everything For Men & Boys

in our Store
sie Tompkins

Hardware

B&PW CLUB WOMEN
CAMPAIGN TO BUY
SOLE T
THE HOSPITAL.

HERE

Winner in our Store Jimmie Hester

**Simmons Chevron
Service Station**

Quick, Courteous Service
& Top Quality Products

Winner in our Store Harry Reimer

**BUICK - PONTIAC
INTERNATIONAL TRUCKS,
TRACTORS & IMPLEMENTS.**

Let Us Put You In A New Car.

**North Plains
Truck & Implt. Co.**

Winner in our Store Fred Groves

B & B Sales Co.

Combine Parts-Belts-Feeder Chains-
Sickle Sections-Guards-Bearings-
Cylinder Bars-Roller Chains-Cabs

FOR ALL MAKES AT
DISCOUNT PRICES

Winner in our Store
Mrs. I.R. Tompkins

Brilliant True-to-Life
RCA VICTOR
Color Television

NOW IN YOUR CHOICE OF TWO PICTURE SIZES

Bob's Sales & Service
Come In And Compare

Winner in our Store P.A. Lyon, Jr.

**Case Farm Machinery
Gleaner Combines**

"Your Complete Farm Store"

**R. L. McClellan
& Sons, Inc.**

Our Winner W. C. Blevins

First State Bank

-Your Full Service Bank-

- *Loans
- * Savings Accounts
- *Checking Accounts
- *Safety Deposit Boxes
- *Drive-In Banking
- *Night Depository

Member F. D. I. C.

Winner in our Store
Jenna V. Ownbey

You'll Enjoy Delicious Food Everytime

You Visit

Grunewald's Restaurant

Plains Shopping Center

Winner in our Store Paul Hazelwood

ANTIQUING MADE EASY

Easy as "paint, glaze, wipe" to turn a marred, scarred attic relic into a handsome antique, a decorator accent piece! Now—antiquing made easy with Martin Senour's Provincial Color Glaze!

You don't even remove varnish, paint or stain! Forget about scars and scratches! Just paint, glaze, wipe!

For that single antique painted piece or even an entire bedroom or dining suite, lend new style and character to your nondescript furniture with Provincial Color Glaze. **12 beautiful colors**

White House Lumber Co.

WIN A FREE FUN-FILL



THIS WEEK'S WINNER:

Mrs. Darlene Howell

WAS THE FOURTH WINNER OF A RAMADA INN WEEKEND, HAVING REGISTERED AT CATES GROCERY. REMEMBER TO REGISTER .

THERE'LL BE SIX MORE WINNERS !

Winner in our Store Vonda Keim

Chambers Dept. Store

Play Pet Children's Sportswear & Car Coats
Toddlers to Age 14

Youngland dresses for Toddlers to Age 14

Winner in our Store
Mrs. John Berry

Excel Chevrolet Co.

CHEVROLET - OLDSMOBILE

Let's Talk Trade

You'll Be Surprised At How Easy It Is To Buy A New Chevy or Olds.

Winn Winner in our Store
Pete Fisher

Anthony Electric

Industrial, Commercial and House Wiring

GENERAL ELECTRIC Appliances Of All Kinds

Winner in our Store
Jessie To

Spearman H

HELP THE B&PW IN THEIR CAMP AN ISO FOR THE H

REGISTER

Winner in our Store Darlene Howell

You'll Enjoy The Friendly Atmosphere and Low Everyday Prices At

Cates Grocery

Winner in our Store Steve Mathews

Burton's T. V.

Be Colorful For Fall

PHILCO COLOR T. V.

Immediate Delivery


Wi Winner in our Store and Mrs. P. M. Chesser

Spearman Drug

For Livestock Medicine Use Franklin Veterinarian Supplies

...A SIMPLE, EFFECTIVE RANGE TREATMENT THAT...

stops pinkeye!



Winner in our Store Joel Lackey
Three Great Gasolines




ALTON'S GULF SERVICE

Phone 659-2422
Retail




ELLSWORTH OIL COMPANY

Phone 659-3033
Wholesale

Winner in our Store Ruth Morrow



twice as much for the money: SERVICE AND QUALITY!

Bill & Ed Egan

PLAINS SHOPPING CENTER CALL 659-2593



Winner in our Store
Mrs. Earl L. Goodheart

Edwards Fabric Shop

WE HAVE A NEW SHIPMENT OF FINE WOOLENS

A Wide Selection of Pretty Buttons

SIMPLICITY & McCALLS PATTERNS

Motion . . .

(Con't. from page 1.)
questioning of Sheriff Cooke and John Brown, who was then deputy Sheriff, about the arrest and the search for the pistol.

A .22 caliber pistol was produced and the officers said it was the one they found in a place where Grissiam told them to throw it.
Testimony started at 4:30 Friday and there was a night session Friday. Seven witnesses took the stand.

Roy Walker, a Gruver farmer testified to finding footprints outside the Westerfield store on the night Westerfield was killed and the next morning he followed them out a road west of Gruver.

He identified the print by a fingernail design in the heel and

said he had seen a similar track on the Ross Walker farm where Grissiam worked.

A telephone operator, Miss Judy Robertson of Amarillo testified she received a phone call from Gruver at 9:04 p.m. Feb. 26 and a male voice said "I have been shot." She said she could hear breathing on the open line, but it stopped while the line was still open.

Dr. E. Burns Gray who pronounced Westerfield dead at the scene, said death was from a gunshot wound.

It took five days to select a jury and some 180 persons were questioned. Lloyd Gilley was the last one selected late Friday. Others are Mrs. Russell Townsend, E. J. Callaway, Jr., J. R. Luttrell, D. D. Stalder, Lee Keys, Mrs. K. E. Shufeldt, Mrs. D. W. Miller, Everett Vanderburg, Bobby Archer and Mrs. Robert V. Skinner.

At 3 p.m. Saturday, the jury was still out of the courtroom and the court was hearing testimony on the written confession signed by John Grissiam after he was charged with murder.

Witnesses testified that Grissiam talked to a lawyer, then was warned by Justice of Peace J. P. Vernon and County Attorney Linn about his rights and that he did not have to make a statement.

WANT ADS

- FOR SALE -

FOR SALE-8 ft. Frigidaire deep freeze. Call 659-2350. 95-tfc

FOR SALE-95 acres southeast of Spearman, irrigation water, 1/2 minerals. Industrial lots and acreage. Financing available. Cecil Crawford. Phone 659-2409. 49-tfc

FOR SALE-3 bedroom home, excellent location, carpeted and fenced. 904 S. Dressen. Call 659-2178. 56-tfc

CRAZY DAY
OCTOBER 2

Softheat Kenmore dryer. Electric \$148.00. Gas \$188.00. Delivered and normal installation. Sears, 659-2573. 97-tfc

FOR SALE--One bedroom house and two bedroom house Reasonable-Choice Location. No down Payment. Pay like rent. Contact Raymond Sparks at Sparks Laundry. 77-tfc

FOR SALE -- 1963 Cushman Eagle motor scooter low mileage, excellent condition fully equipped. Phone 2458. Kenneth Bailey. 77-tfc.

Kenmore Double Needle Zig Zag Sewing machine, 28 designs, with case. \$109.95. Sears, 659-2573. 97-tfc

FOR SALE-1959 Gleaner Baldwin combine on butane with maize attachment. 1955 2 ton Chevrolet truck on butane, 9.00 x 20 rear tires, 8.25-20 front, 16 ft. steel bed and hoist. Clinton Nesmith, Phone-CH3-2048, Rte. 3, Mangum, Okla. 96-6p

WANTED-your old battery. \$2.50 trade in on the purchase of new battery for Fords, Chevrolets and Plymouths. Sears, 659-2573. 97-tfc

FOR SALE-One formica top dinette table with 4 chairs, in good condition. Call 3103 or 2754.

FOR SALE-3 bedroom brick, attached garage, low equity. 401 S.W. 12th. 96-tfc

FOR SALE-3 bedroom brick, 2 baths, large built-in kitchen and dining area, utility room and storage room, double garage, double lot, fenced, 301 W. 12th. Phone 659-2725. 92-tfc

NEED TIRES? for the price of 3, 7.50 x 14. 4 for \$78.00. plus tax, 33 mo. guarantee. Sears, 659-2573. 97-tfc

FOR SALE
480 acres land located east 1/2 and southwest 1/4 of Section 164, Block 45, HYTC Survey, Hansford Co. Write Box 615, Borger, 91-tfc

FOR SALE-7 year old Jersey milk cow. Will be fresh in approximately 45 days. \$250. Ray Moore, 659-2886. 94-tfc

HOMART-Gas Wall Furnace, 35,000 BTU \$94.95. Sears, 659-2573. 97-tfc

FOR SALE-Baby bed and mattress in good condition. \$12. Mrs. Ratzlof, 201 Cluck, Gruver, FI7-2128. 97-4c

SPARE TIME INCOME-Refilling and collecting money from NEW TYPE high quality coin operated dispensers in this area. No selling. To qualify you must have car, references, \$600 to \$1900 cash. Seven to twelve hours weekly can net excellent monthly income. More full time. For personal interview write P.O. BOX 10573, DALLAS, TEXAS, 75207. Include Phone number. 97-1p

FOR SALE-3 bedroom house, double garage, 165' front, 2 additional lots available, 118 N. James. Also 55 ft. lot plumbed for trailer. Call 659-2259. 92-tfc

FOR SALE-164 Impala Sport Coupe, V8, standard transmission, radio and heater, \$2200. Call 659-2057 or see at 514 S. Barkley. 96-tfc

- SERVICES -

For Borger News-Herald call Ricky Warren. 659-3170. 86-tfc

Amarillo Daily News & Globe Times home delivery. Call 2685. T14-tfc

Complete land leveling with Hancock Carryalls, Chibels and Land Plane. Land Plane for rent. Willis Sheets, 659-2256. 93-tfc

FOR LIFETIME MUFFLERS-Clarence Pettitt Garage. No premium prices.

SERVICE-Ditches from 3-12 inches, any desired depth. S. D. Jones 659-2809. Harold Shaver 659-3474. T17-tfc

- FOR RENT -

FOR RENT-New furnished brick apartment. Phone 2274. 46-tfc.

FOR RENT-Two bedroom house, 112 S. Endicott. Phone FL6-6574. Amarillo, Texas. 92-tfc

FOR RENT-Small 2 bedroom house. Call 2941. 94tfc

LEGAL NOTICE
ORDINANCE NO. 305
An Ordinance levying ad valorem taxes on all taxable property in the City of Spearman, Texas for the year 1965; fixing the due date and time of payment thereof; providing for discounts for prompt payment; finally applying a penalty of one-half of one percent (1/2%) per month on all past due taxes; and providing for the collection of taxes, and adoption of the emergency clause.
Passed and approved this the 30th day of August, 1965.

APPROVED:
s/ R.E. Vaughn
Mayor
ATTEST:
s/ Darce Foshee
City Secretary 97-2c

HANSFORD HOSPITAL NEWS

In the Hospital - Frankie Brandt, Charles Davis, Jake Lamb, Vera McClellan, Curtis Brooks, Pauline Blair, Roscoe Park, Betty Fancher, Nellie Brown and Irene Snider.
Dismissed - Elvira Raff, Otto Walker, Rhonda Roper, Debra McCreary, June Galbreath, Lena Schell, Maty Kathryn Parris, Marva Winger, Patty Latham, Joe Vanderburg, Rickie Rouch, George Warren, Tom Hudson, Evelyn Sasser & daughter, Dawnon Beaver, Bruce Lemons.

Hansford Plainsman

Publishers Inc.
Jim O. Davis
Burl G. McClellan



County-wide independent newspaper published every Thursday and Sunday at 209 Main St., Box 688, Spearman, Texas 79081. Second Class postage paid in Spearman, Texas 79081

Charlene Bulls

INTERIOR DECORATOR

Draperies Furniture
Carpet
659-3202
1105 Townsend
Spearman, Texas

MODEL K

SELECTATILTH® GEARBOX

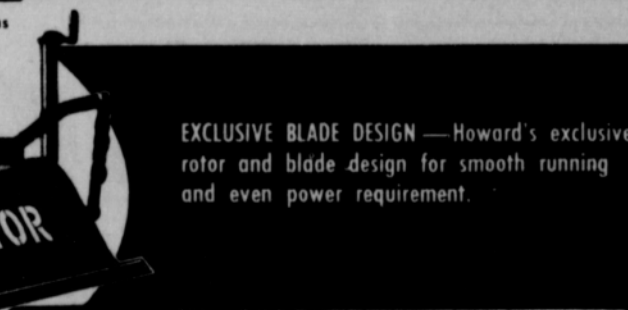
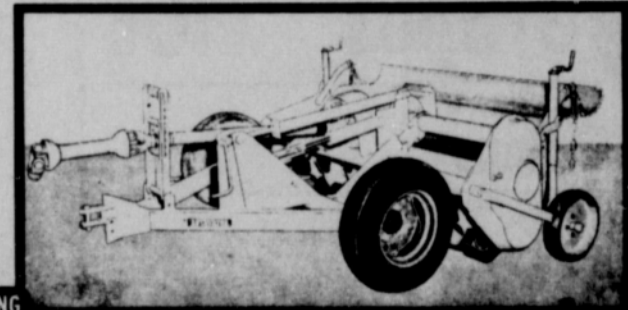
540 or 1000 P.T.O. for 5 PLOW TRACTORS
CENTRALLY MOUNTED
3 POINT, 2 POINT
OR TRAILER



K-80 MODEL—preparing corn ground for winter wheat.

HOWARD ROTAVATOR

● The Model K Rotavator, designed for today's 5 plow tractors, will handle all forms of tillage in a wide variety of soil types and crops. This model is mostly used in corn, beans, cotton, rice, alfalfa and other crops grown in large scale operations. A planter hitch is available to pull a planter or drill immediately behind the Rotavator for one pass, till and plant operations. Special shields available as extras enable it to be used for bedding and cultivating work.



K-80 MODEL TRAILING

The K-80 is available as a trailing unit (above, right) or for direct mounting.

EXCLUSIVE BLADE DESIGN—Howard's exclusive rotor and blade design for smooth running and even power requirement.



K-80 MODEL MOUNTED

R.L. McClellan & Sons, Inc.

"Your Complete Farm Machinery Store"

It's Here . . .
To Save Precious **WATER**

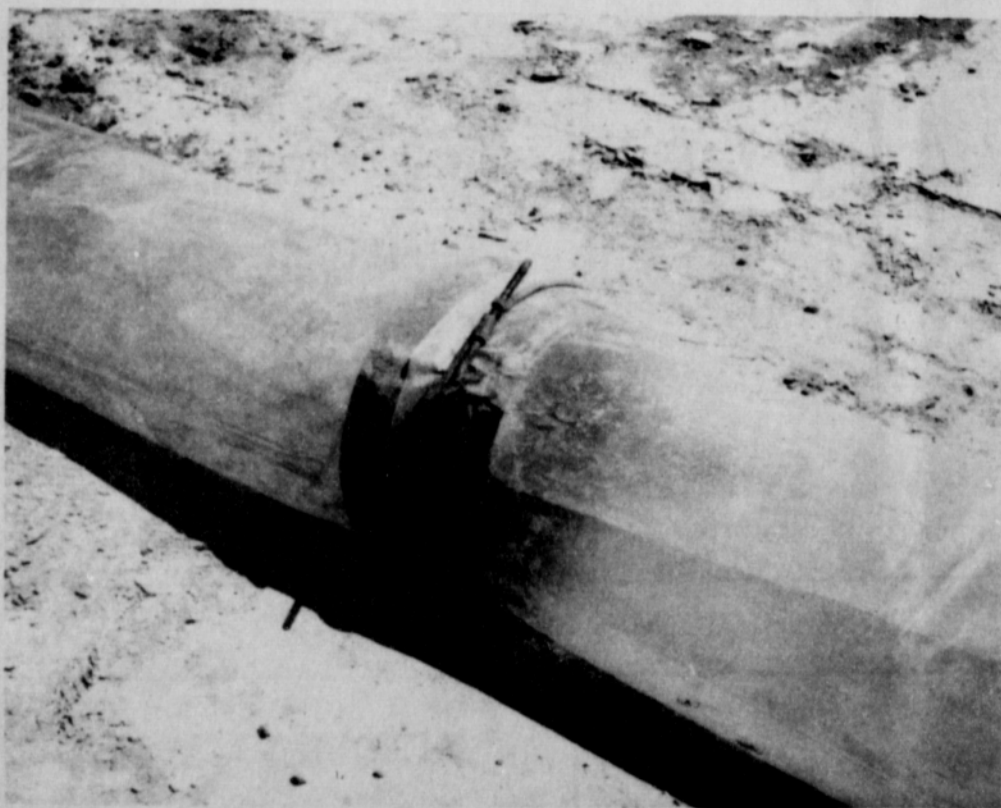
INSTALL

**IRRIGATION
TUBING**



- * Eliminates Seepage
- * Conserves Precious **WATER !**
- * Eliminates Ditch Erosion & Maintenance
- * Easy To Install by One Man

It Goes Anywhere . . .



Easy Installation



MAKE IRRIGATION
EASY
AND SAVE
MONEY

12 3/8" - 38¢ ft.

8 1/4" - 27¢ ft.

6 1/4" - 29¢ ft.

G. C. Irrigation Supply

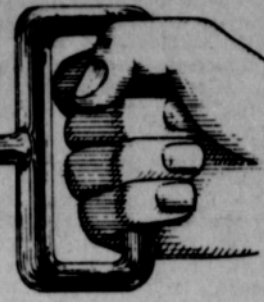
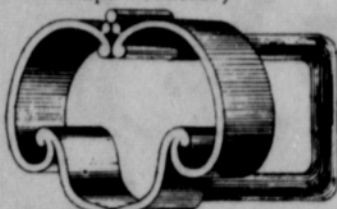
Double BUCCANEER Stamps Wednesday

DEL MONTE ROUND-UP

"No finer Quality at any Price" Sheer All Varieties

Ladies Nylons

Your Choice
Pair **79¢**



"ALL DEL MONTE PRICES GOOD ALL THIS WEEK"

Del Monte 303 size can

Fruit Cocktail 4 for \$1.

Del Monte Whole Peeled 303 size can

Tomatoes 2 for 59¢

Del Monte Clings Sliced or Halves Large no. 2 1/2 size cans

Peaches 4 for \$1.

Del Monte Seedless 2 for 59¢ 15 oz. Box

Raisins 2 for 59¢

Del Monte-Sliced or Crushed

Pineapple no. 2 Cans 3 for \$1.

Del Monte 46 oz. Cans

Pineapple Juice 3 for \$1.

Del Monte 46 oz. cans

PINEAPPLE - GRAPEFRUIT Drink 3 for \$1.

Del Monte Cream Style or Whole Kernel Golden 303 Size

CORN 2 for 39¢

Del Monte Whole **DILL PICKLES** 22 oz. Jar. **3 for \$1.**

Del Monte Fresh Pickle **CUCUMBER CHIPS** 15 oz. Jar. **3 for 79¢**

Del Monte Quarts **PRUNE JUICE** **2 for 89¢**

Shurfresh All Vegetable **SALAD** 38 oz. Bottle **49¢**

Arrow Brand 2 lb. Bag **PINTO BEANS** **23¢**

Shurfine Layer **CAKE MIXES** 3 for **79¢** Finest Quality



Smoked Polish **Link Sausage** **69¢ lb.**

Hickory Smoked lb. **Sliced Ham** **98¢**

Del Monte Bluelake Cut **Green Beans** 303 Size Cans **4 for \$1.**

Colorado Red McClure **Potatoes** 10 lbs. **49¢**

Sweet, Juicy Tokay **Grapes** lb. **10¢**

Yellow Spanish **Onions** lb. **5¢**

Fresh Prune **Plums** 2 lbs. **25¢**

A. F. Brand All Meat **Franks** lb. **53¢**

Del Monte Flat Can **Tuna** 2 for **59¢** Chunk - Style

Del Monte Early Garden 303 Size Cans **ENGLISH Peas** 4 for **\$1.**

SPINACH 3 for 49¢



Giant Size **79¢**

Del Monte Tomato **Catsup** 4 for **\$1.** Family Size 20 oz. Bottle

SWEET Del Monte Whole 12 oz. Jars **Pickles** 3 for **\$1.**

Nabisco Chocolate Creme Filled lb. Bag **OREO COOKIES** **49¢**

Soflin 10 roll Bag **BATHROOM TISSUE** **69¢**

Soflin 2 ply 200 Count **FACIAL TISSUE** 2 for **39¢**

Mid-Week Values for Tuesday & Wednesday September 28 & 29th

SHURFRESH MILK FOR GOODNESS SAKE



Cut Rate GROCERY

