



The Hansford Plainsman

Hansford County Library
City

VOLUME 4, NUMBER 25

SPEARMAN, TEXAS

THURSDAY, MARCH 28, 1963

Morse Defeats Consolidation

Voters in the Morse and Gruver school districts Saturday made official what most had predicted. The voters defeated the questions of consolidating the Morse and Gruver School districts.

Gruver voters showed very little interest in the election. Only 47 voters in the large school district went to the polls to register their feelings.

The vote in the Gruver district was 36 for consolidation and 11 against.

In the Morse district where the move to consolidate the districts started, the vote was heavy. At Morse 21 voters wanted the districts consolidated and 74 voted against the move.

A canvas of the voting by the County Commissioners Court this week showed that a total of 143 votes were cast in the two districts and a total of 57 persons favored consolidation and 85 opposed it.



HANSFORD COUNTY

WINNING DRAWING--This drawing by Ray Kelly of early County sites and happenings won first place in the county historical art contest. Kelly is a senior in Gruver High School. His drawing will be carved in stone and the plaque put in the Amphitheater in Palo Duro Canyon.

Two Elections Set Tuesday, Saturday

Hansford county city and rural voters go to the polls next week to elect school board members and city government officials.

There are contests in the city and school elections in Spearman and in Precinct three of the county school board race. All other offices have only the required number of candidates or no candidates.

In the Spearman city election five men are seeking three places on the council. Gruver voters will have to select a mayor and city commissioner without a list of candidates. No one filed for the two jobs.

In Precinct Four two men have filed for a place on the County School Board. Spearman Independent School District has three candidates for two places.

In the Spearman city race incumbents James K. Hicks and E. J. Callaway have filed for re-election. Others seeking a place on the ballot are Bob Skinner, Virgil Floyd and Frank Emerson. The Third incumbent, Jimmie Shieldknight did not seek re-election.

Gruver mayor Don Hudson

and commissioner Ted McClellan did not file for re-election. The new officers will be named by write-in votes.

In Precinct Four Chesta Lieb and Erlis Pittman have filed for the county school board from that precinct. Pittman is the incumbent.

Incumbent J. D. Helms has filed for re-election to the Spearman school board. Roy McClellan and Ira Harbour were placed on the ballot by petition. Incumbent Floyd (Slim) Cates did not file for re-election.

In the Gruver School District incumbents T. C. Harvey, Jr. and Eugene Fletcher have filed for re-election.

Morse has Robin Giblin, Jake Clifton and Perry Dixon on the ballot.

New Hope's Common School District has one candidate. Lloyd W. (Duke) Roberts has filed for the vacant place on the board.

Other candidates for the County Board are Bob Vaughn from Precinct One and Joe Walker from Precinct Three.

The city election in Spearman and Gruver will be Tuesday, April 2 at the City Halls of the two towns. The School Elections will be held at the schools in the various districts Saturday, April 6. The Gruver District will have a voting box in the Phillips Plant in the north end of the district.

10 Superior Ratings Won By SHS Band Members

The Spearman High School Band entered twenty-two events at the University Interscholastic League Solo and Ensemble Contest which was held in Canyon, Saturday March 23.

The following soloists received a superior (I) rating: Bonnie Driscoll, Alto Saxophone; Eddie Martin, Baritone Saxophone; Helen Collard, Flute; David Knox, Baritone; Skipper Campbell, Cornet; Mary Mathis, Clarinet; and Kenneth Faries, Trombone.

The following ensembles also received a superior rating: Brass Sextet; Wesley Jarvis, Bill Blackburn, Lynn Gibner,

Mac Crawford, Johnny Holland, and Mike Sanders; Saxophone Quartet; Bonnie Driscoll, Noreen Sutton, Paulede Hester, and Eddie Martin; Cornet Trio; Wesley Jarvis, Bill Blackburn, and Skipper Campbell.

A rating of excellent (II) was received by the following soloists: Patsy Kingsley, Clarinet; Bobby Campbell, Baritone; Margot Kilgore, Oboe; and Dariel Hollar, Trombone.

The following ensembles also received an excellent rating: Trombone Quartet; Mac Crawford, Johnny Crawford, Loyd McWhirter, and Kenneth Faries; Horn Quartet; Lynn Gibner, Marilyn Schubert, Mary Ellen Barkley, and Cindy Hoover; Clarinet Quartet; Patsy Kingsley, Vicki Kunkle, Stephanie Shaver and Hester Beck; Clarinet Quartet; Steve Simpson, Margaret Mullins, Mike Skinner, and Helen Greever; Flute Trio; Helen Collard, Mary Ellen Novak, and Sandra Kitchens; Baritone Trio; David Knox, Bobby Campbell, and Johnny Holland.

The following received a rating of good (III): Terry Hudson, Flute; Clarinet Quartet; Mary Mathis, Kate Kilgore, Nan Sheets, and Maybelle Witcher.

A total of thirty-eight students from Spearman participated in the contest. Mmes. Rue Sanders, Dick Hudson, Bob Meek, and Misses Ann Garnett and Mary Ellen Barkley accompanied the soloists.

See Subscription Contest Page 3

Fire Wednesday

The fire Wednesday morning was at the Homer Hart home at 112 S. Hazelwood. The fire was in the oven in the Hart kitchen.



MODELS--These three models, Pattie Simmons, (left) Verna Lee Schnell and Mickie Die, will be modeling in the Carousel of Fashions Friday night at the school cafeteria. The show and salad supper is sponsored by the First Christian Church. -Plainsman Photo

2 Convicted In DWI Cases

Two men were fined and given the automatic three-days in jail and six months automatic suspension of drivers license for conviction on driving while intoxicated charges in county court Tuesday.

Both offenses were first offenses and were misdemeanors.

One man entered a plea of guilty and was fined \$50 and court cost, plus the automatic jail term and suspension of license.

The second DWI case was tried before a jury and the jury found the offender guilty and set his fine at \$100 and cost, plus the automatic part of the punishment.

City Water

Is Expensive

Water from the city loading dock went up to \$25.25 a load for a man caught by city police this week.

The man was caught trying to trip the coin meter on the water loading dock behind the city hall. He was fined \$25 and then had to pay a quarter if he wanted a load of water.

Officers also arrested one driver for not having a safety sticker, one for speeding, two parking violations, one drunk, one driver for not having a license, two for running stop signs, one for an expired drivers license and one for an improper turn.

Tag Deadline Is Saturday

Hansford County residents who operate vehicles on the roads have until Saturday at 5 p. m. to get 1963 license plates for them.

The vehicles must be registered by midnight March 31, which is Sunday night.

NOTICE

PURSUANT TO AN ORDER issued by R. E. Vaughn, Mayor of the City of Spearman, Texas, by authority of the city council, notice is hereby given that a General Election will be held on Tuesday the 2nd day of April A. D. 1963, from 7:00 a. m. to 7:00 p. m., at the City Hall in Election Ward No. 2 & 10 in City of Spearman, Texas, for the following purposes, viz: Election of Three (3) Aldermen, For or against the City Council vacating that portion of Collard Street lying adjacent to Highway 15 and Outlot 40, from Bernice Street east to the east city limits. (That portion not claimed by the Highway Department for Highway right-of-way.
S/ R. E. Vaughn
Mayor,
City of Spearman, Texas
25-1p-S27

School Menus

- MONDAY, APRIL 1
Juicy Burgers
Tater Tots
Sliced Tomatoes
Pickles
Apple Cherry Cobbler
Milk
- TUESDAY, APRIL 2
Pork Sausage
Pinto Beans
Cabbage
Potato Salad
Jello Dessert
Corn Bread
Butter
Milk
- WEDNESDAY, APRIL 3
Roast with Gravy
Candied Yams
Green Peas
Tossed Salad
Fruit Cup
Bread
Milk
- THURSDAY, APRIL 4
Spanish Rice
Green Beans
Buttered Squash
Slaw
Peanut Butter and Honey
Hot Rolls
Milk
- FRIDAY, APRIL 5
Salmon Loaf
French Fried
Harvard Beets
Celery Sticks
Lemon Pudding
Bread
Milk

Too Late To Classify

WANTED-To buy used 500 gallon propane tank. 659-2619. 25-3c

FOR SALE-One 15 foot Mercury Camp Trailer in excellent condition. Call Ned Turner, 659-3148. 25-3, S27-3c

County Agent's Report

The only voice a man has in the furnishing of a home is the invoice.

How To Fertilize Your Lawn
Want to have a beautiful lawn this summer? Now is the time to start planning for it. Management of your lawn is the way to success.

For our area I recommend a fertilizer with a 1-1-0 ratio and use sufficient amount to supply two pounds of nitrogen per 1000 square foot. The fertilizer with the ratio available in this area will probably be 16-20-0. Approximately 12 pounds of this per 1000 square feet will supply two pounds of nitrogen. The 16 is the nitrogen and the 20 is phosphorus. Phosphorus stimulates early root, gives rapid and vigorous start to plants. This should be applied about the time the grass begins to grow in the spring. This should be done again in the fall, 30 days before frost.

Throughout the summer, at 30-40 day intervals, the lawn should be topdressed with nitro-

JEST A MINUTE

There's always a bright side. It now costs creditors five cents to mail us those bills.

Lions Have Ladies Night

Tom Peabody, Jr., Executive Director, Adobe Walls Council, Boy Scouts of America, from Guymon, Okla., was the speaker at the Spearman Lions Club Ladies Nite held Tuesday in the Spearman School Cafetorium.

Cafetorium.

Entertainment was furnished by Spearman Lions Club Explorer Post 51, D.D. S. Alder, Post Advisor.

Lion Ed Mundy introduced the speaker and dinner was served by Mrs. Jack Taylor and staff. Twenty-four Lions and Lionesses attended.

Get the The Most From Your IRRIGATED WHEAT Top Dress Now With Golden Uran

YOU'LL GET MANY DOLLARS IN RETURN FOR EVERY DOLLAR INVESTED IN GOLDEN URAN! WHEN YOU USE GOLDEN URAN YOU GET THESE ADVANTAGES: TOP DRESS WITH GOLDEN URAN . . . GET NITROGEN AT LOW COST PER POUND THAT COSTS LITTLE TO APPLY!

- | | |
|----------------------------|-----------------------------|
| Economical Nitrogen | Faster Crop Response |
| Easy Handling | Quick Acting |
| Non-Hazardous | Long Lasting |
| Fast Application | No Deep Digging |

TOP DRESS WITH GOLDEN URAN . . . GET NITROGEN AT LOW COST PER POUND THAT IS EXTRA EASY TO APPLY!

Strawn Farm & Ranch Supply

Spearman

Gruver



get ready for Easter in advance by having their best "bib and tucker" dry cleaned and ready.

Pick-up & Delivery

Phone 659-3122

Berry Cleaners

YOUR FAIR SHARE...

Most Texans, we believe, are fair-minded folks.

They believe in fair play, square dealing, and mutual respect for personal and property rights. Those who want to take advantage of their neighbors are the exception.

Sometimes it may be hard to define "a fair share." This can occur in dividing oil or gas production, when two or more landowners are involved.

As we all know, oil and gas don't pay any attention to fence lines.

Here in Texas many wells have been allowed to produce more oil or gas than they should have because they were drilled on very small tracts. That extra oil or gas came from under the neighbors' land.

Some oilmen made a regular practice of this type of operation. Obviously, one owner got more than his fair share—others, less.

People in 26 out of 29 oil-producing states have found a way to divide their oil and gas so that each owner gets what is rightfully his. They simply put their small acreage together and share the costs and income. This system is known as POOLING.

Such a system is needed in Texas. It is proposed in a bill now before the Legislature, HOUSE BILL 510. When the neighbors cannot agree, the Railroad Commission would set up a drilling block and see to it that the rights of all owners are protected . . . all costs and proceeds equitably divided.

Oilmen who have made fortunes at the expense of others could not be expected to support House Bill 510. They are bitterly opposing it. But the responsible oilmen of Texas are overwhelmingly for it. So are the informed citizens who want to see justice done.

Ask your Senator and Representative at Austin to support House Bill 510—so Texas, too, will have a reasonable and legal way to assure to each landowner his FAIR SHARE.

(This ad paid for by Committee for Equitable Development of Texas Oil & Gas Resources, 341 Mollie Esperson Building, Houston 2.)



GIGANTIC FOOD SAVINGS

SHOP AT IDEAL WHERE YOU RECEIVE VALUABLE GUNN BROS. STAMPS WITH EVERY PURCHASE!!!

- SWANSON FROZEN
T.V. Dinners PKG. 49c
- NORTHERN TOILET
Tissue 4 ROLL PKG. 33c
- REYNOLDS WRAP
Foil 18" ROLL 69c
- PUREX LIQUID
Bleach 1/2 GAL. 33c
- IDEAL ENRICHED
Flour 10 LB. BAG 59c
- PAR-T-PAK
Beverages 2 28 OZ. BTLES. 23c
- MANDALAY CRUSHED
Pineapple 2 303 CANS 35c
- MAYFLOWER SLICED CLING
Peaches 3 2 1/2 CANS 69c

- SWIFT'S PREMIUM PROTEN
Round Steak LB. 79c
- IDEAL'S THICK SLICED
Bacon 2 LBS. 79c
- SWIFT'S PREMIUM
Franks ALL MEAT LB. 49c
- WILSON'S
CORN KING CANNED
Ham 5 LB. CAN \$3.59
- WILSON'S SMOKED
Beef SLICED DRIED PKG. 29c
- ALLEN
Pork & Beans 12 300 CANS \$1.
- GRADE A LARGE
Eggs DOZ. 47c
- CHIEF BRAND
Charcoal 10 LB. BAG 49c
- BAKERITE
Shortening 59c
- PATIO FROZEN
Enchilada Dinner PKG. 49c

PRODUCE

- RED RIPE
Tomatoes 2 LBS. 29c
- FANCY GOLDEN
Corn 6 EARS 39c
- U.S. NO. 1
FLORIDA NEW RED
Potatoes 5 LBS. 45c

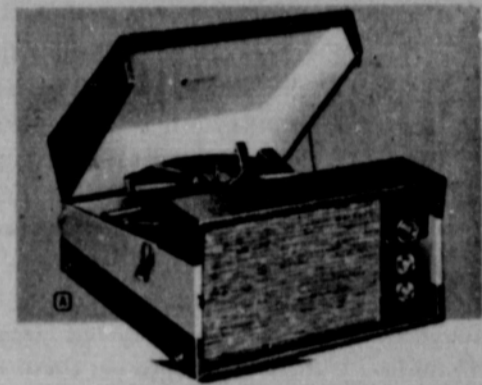
VALUES FOR FRIDAY AND SATURDAY MARCH 29-30

We Give Valuable GUNN BRO. STAMPS



LOOK

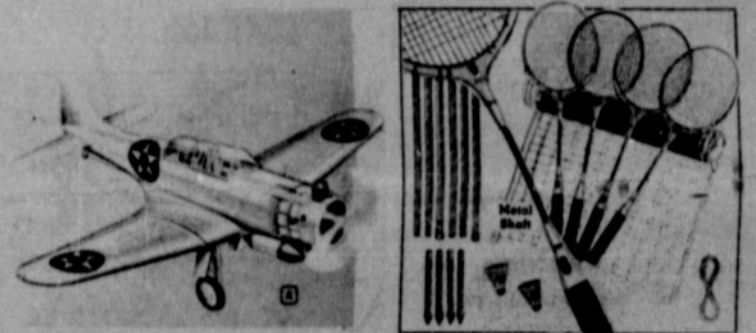
AT THE PRIZES



OTHER PRIZES NOT SHOWN



Boys or Girls Bicycle



YOU CAN WIN

In The Plainsman's Big SUBSCRIPTION CONTEST

TOP PRIZE Cabinet Model Stereo Valued At \$99.95

SUBSCRIPTIONS:

Texas		Out Of State	
1 Year - \$3.50 - 7 Points		1 Year - \$4.00 - 8 Points	
2 Years - \$7.00 - 14 Points		2 Years - \$8.00 - 16 Points	
3 Years - \$10.50 - 21 Points		3 Years - \$12.00 - 24 Points	
4 Years - \$14.00 - 28 Points		4 Years - \$16.00 - 32 Points	
5 Years - \$17.50 - 35 Points		5 Years - \$20.00 - 40 Points	
RENEWALS			
1 Year - \$3.50 - 5 Points		1 Year - \$4.00 - 5 Points	

Subscription Contest Lasts From April 1 to April 30.

Everyone Is Eligible

Prizes Are On Display In Western Auto.

Your total number of points can be redeemed for:

350 Points	Cabinet Model Stereo, a \$99.95 value.
210 Points	\$59.95 Record Player or \$59.95 Over-Under Rifle.
140 Points	Boys or Girls Bicycle valued at \$45.95 or \$49.95 Transistor Radio.
105 Points	Boys or Girls Bicycle valued at \$28.95 or \$29.95 22 Rifle or \$29.00 Record Player.
70 Points	\$19.95 22 Single Shot Rifle, \$19.95 Sleeping Bag or \$19.95 Transistor Radio.
35 Points	\$11.95 Model Airplane with motor, \$9.50 Baseball glove or \$9.50 Badminton Set.

STOP BY THE PLAINSMAN, 209 MAIN, & PICK UP YOUR SUBSCRIPTION BLANKS TODAY!

South American Scenes Described by Mrs. R. E. Lee

(EDITOR'S NOTE: This story of Mrs. R. E. Lee's South American tour is continued from a story in last Thursday's Plainsman.)

In Uruguay there are 10 million cattle and 29 million sheep. Because, of this the tour group enjoyed delicious meats during their stay there.

Uruguay, which has always been considered the Switzerland of South America, is now having internal problems and strikes are evident throughout the country. They have no income tax but a heavy inheritance tax.

In Monte Video, Uruguay, Mrs. Lee enjoyed seeing an opera in an opera house patterned after La Scala in Milan, Italy. As most of the group had seen the original opera house in Milan, they especially enjoyed this.

"Very few young marriages occur in South American countries," said Mrs. Lee, "schooling is free and they can have an education if they want it." Most of the young people are getting a higher education.

Sau Paulo is the fastest growing and largest city in Brazil. Its growth is attributed to the fact that inhabitants do not take the traditional siesta but work from 8 a. m. until dark. The manufacturing of cars has stimulated its growth.

Seven hundred flights per week are made from Sau Paul to Rio, the capital of Brazil. Freight, business, and tourists are all transported by air.

Sugar Loaf Mountain and the famous Statue of Christ the Redeemer were highlights of the flight into Rio. The statue is 120 feet high above the 2400 foot mountain.

In Rio, the largest stadium in the world was seen by Mrs. Lee and the tour members. Two hundred thousand people can be seated in the stadium with room for 50,000 to stand. When Billy Graham held a revival there, it is estimated that 350,000 people heard him because they allowed additional people to sit on the grass around the stadium.

In 1891 when the constitution of Brazil was drawn up, it stated that an inland capital must be built as soon as possible. Five years ago, a man ran for president of Brazil on the platform that he would build the inland capital.

The city of Brasilia is now under construction and in another 15 years should be ready for occupancy as the capital of Brazil.

This was a highlight of the trip," Mrs. Lee said "and a place to which I must go back."

The people are building the city in curves, underpasses and overpasses with no straight streets. The city of 300,000 will be built in communities of 12,000 each.

There are no houses at all in Brasilia at present. There are only enormous apartment buildings and fabulous skyscrapers. The landscaping is

"out of this world" according to Mrs. Lee.

Embassies are going up in Brasilia with the largest belonging to the Vatican. The United States Embassy is one of the three largest.

From Brazil the tour visited Port of Spain on the Island of Trinidad where they viewed the largest asphalt lake in the world. Eight million pounds of asphalt are exported each year and the source seems to be inexhaustible.

The majority of people there are negro but there are no integration problems. The West Indies negroes are well educated and speak English well.

On the last day of the tour, the group was in four different countries. That day they left Brazil, visited Trinidad, Venezuela, and landed in Miami.

"Traveling is wonderful and I enjoyed all the sights and experiences, but good old Uncle Sam is by far the best of all," Mrs. Lee concluded.

Notice

The Northern Natural Ladies Club will meet April 2 at 9:30 a. m. at 1113 Dessen with Alma Ricketts and Hazel Stump as hostesses.



ENGAGED-- Mr. and Mrs. Earl Phillips of Friona announce the engagement and approaching marriage of their daughter, Marion June, to Leroy Mitchell, son of Mr. and Mrs. Lee Roy Mitchell of Gruver. The bride-elect is a senior in Friona High School and the wedding will take place after her graduation.

Miss Griffin Tours with Choir

Miss Jane Griffin, daughter of the Rev. and Mrs. J. Waid Griffin, will be among the McMurry College Chanters when they sing Wednesday, April 3, at 8:00 p. m. at the First Methodist Church in Spearman. The 55 voice choir will be under the direction of Dr. Richard C. von Ende, well

known for musical direction and compositions.

Miss Griffin and John Edwards will be soloists for one of the numbers "Kingdom of God".

While on tour the Chanters will sing in Wichita Falls, Quanah, Memphis, Wellington, Shamrock, Borger, Gruver, Spearman, Stratford, Friona, Plainview and Post.



BANQUET HONOREES--Saturday night were these members of the Spearman Lynxette basketball team. Front row (l-r) Ann Garnett, Florence Entrekin, Sharion Close, Patti Simmons, Sue Hutchison, Vickie Wilde, Helen Greever, and Vickie Kunkle. Back row, Mrs. Dean Weese, wife of the coach, Shirley Ayers, Mary Ellen Barkley, Judabeth Lovett, Coach Dean Weese, Phyllis Patterson, Joan Hackley and Robbie Ownbey. The banquet was given by a group of mothers of the players. The team recently finished a successful season which saw them advance to the bi-district game.

PLAINSMAN PHOTO

Basketball Girls Honored At Banquet

Members of the girls basketball team, their parents and special guests were honored Saturday evening at a dinner in the Home Demonstration Clubroom.

Decorations were in purple and white with crepe paper forming a canopy over the room. The head table was decorated with a centerpiece formed to represent a basketball court. Purple and white pom poms surrounded the court. Tables were covered with

purple and white and centered with large white mum corsages tied with ribbons. Place cards were purple with gold basketballs for the girls, a gift of Ann Garnett.

The highlight of the decorations was a two tiered cake separated with columns and decorated with purple lilacs. Atop the cake was a sugar basketball confection decorated with a purple "SHS" and lilacs. Mrs. Josephine Gruver made the cake.

The program was opened with

the group singing "America" accompanied by Mary Ellen Barkley. Master of ceremonies was John Wilde. Short talks were made by Superintendent James Bramlett, High School Principal Frank Cockrell and Basketball Coach Dean Weese.

The menu consisted of tried chicken, salads, green beans, relishes, hot rolls, iced tea, coffee, cake and ice cream.

Hostesses for the occasion were a group of mothers of the basketball team.

Club Plans To Buy TV For Hospital

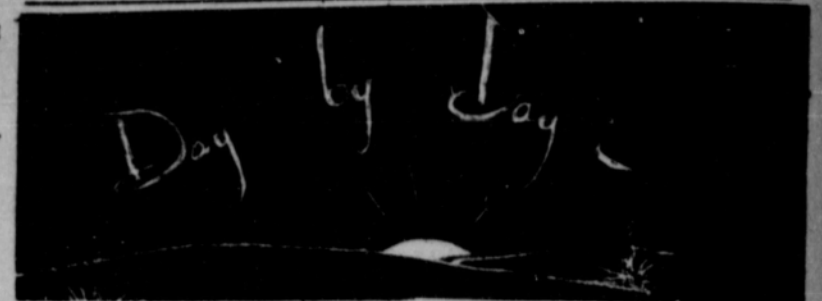
The Dahlia Flower Club met March 25 in the home of Mrs. Harry Shedeck with Mrs. E. D. Clement presiding at the business session. Plans were discussed for an All Game night to be held April 4 at 7:00 p. m. at the Home Demonstration Clubroom. Proceeds of this project will be used to buy a TV for the hospital.

Barbara Kenney gave the program entitled "The Care of Yards & Lawns".

Attending were Mmes. Annie Allen, Lida Allen, Ethel Cookston, Vera McClellan, Mildred Daily, Hollie Riley, Carrie Clement, Mattie Davis, Frank Davis, H. H. Crooks, Edith Sheets, Sada Hoskins, Ethel Baley, H. W. Bagley, I. P. Baggerly, Ethel Hester, Lula Womble, Barbara Kenney and the hostess.

Of Interest to Women

THE HANSFORD PLAINSMAN
Thursday, March 28, 1963



A real artist in our country is Mrs. Bubby (Josephine) Gruver who lives in Gruver.

Mrs. Gruver does her artwork on wedding cakes and cakes for other special occasions. Besides being almost too beautiful to cut, her cakes are delightfully moist and delicious.

I've seen some of her cakes at weddings now and then but this past weekend one of her confections really "stole the show".

A group of parents, headed by Aneita and Stanley Garnett, the John Wildes and others, entertained the girls' basketball team Saturday evening with a banquet. The dessert after the sumptuous meal was one of Mrs. Gruver's cakes.

This one was specially done in purple and white, naturally, with delicate lilacs shaded from a pale orchid color to deep purple. The tiers, separated by a colonade, were topped with a colonade made of sugar inscribed with "SHS", in Old English Script, no less.

White it is extremely hard to describe such an elaborately decorated cake, the fact that the girls hated to have it cut confirms the fact that it was really a work of art.

Among the many artists in our locality, Mrs. Gruver is surely one of the most talented and appreciated.

A lion's share of talent in

Mrs. Berry's Pupils Are Presented

Students of Mrs. John Berry were presented in two studio recitals March 24 in the home of Mrs. Berry.

Students appearing in the 2:00 p. m. recital were Thomas Collard, James Ray Lyon, Clay Schnell, David McClellan, Tim Fisher, Gary Evans, Michael Schnell, Bill McClellan, Randy Day, Arthur Lynch and Steve Sheets.

Playing at 3:00 p. m. were Becky McClellan, Katherine Lyon, Cheryl Montgomery, Deanna Sheets, Wanda Sue Greene, Karen Mathews, Donna Montgomery, Patty Buzzard, Becky Pieratt, Julie Davis, Marilyn Blodgett, and Patricia Schnell.

Other students will be presented at a later date.

Game Night Planned

The Dahlia Flower Club will sponsor an "All Game" night, Thursday, April 4 at 7:00 p. m. at the Home Demonstration Clubroom. Admission will be \$1.00 per person or \$2.00 per couple.

Proceeds will be used to help buy a TV for the hospital.

the decorating field should also be attributed to Mrs. C. E. Blackburn who operates Boxwell's Flowers. Seasonal decorations in Boxwell's window are always unique and many of Mrs. Blackburn's holiday decorations and centerpieces rival those big city florists.

Mrs. Blackburn stays up-to-date in her decorating and floral creations by attending workshops and schools periodically. She also has a terrific native talent for working with flowers.

These two women apply their talents differently, yet they are both creative, artistic and greatly appreciated by those they serve.

Bowling Party Honors SS Class

A bowling party Saturday from 3 until 5 p. m. was enjoyed by members of the Trusted, Tried and True Sunday School Class.

The group went bowling and then came back to the home of Mrs. Pete Fisher, their teacher, for the weiner roast.

Members of the twelve year old class who attended were Cynthia Cochran, Patty Gray, Bobbie Nell Grayson, Debra Hazelwood, Lynn Ann Robinson, Kathy Sue Mackie, Susan Uptergrove, Sue Crawford of Gruver and the teacher, Mrs. Fisher.

Mrs. Monzingo Is Honored With Shower

Mrs. Terry Monzingo of Memphis and Mrs. John M. Boney of Sunray were joint honorees Friday morning at a pink and blue shower given in the home of Mrs. Pete Cluck. Assistant hostesses were Mmes. T. C. Harvey, Jr., Gene Cluck, J. R. Morris, J. C. Harris and Sam Cluck.

Refreshments were served from a table laid with a pink cloth and centered with an arrangement featuring tiny cherubs amid pink and white rosebuds, Mmes. Bart Riley and A. D. Reed poured.

Clever pink, white, and blue corsages fashioned from lace-trimmed baby socks were presented to the honorees and to Mrs. John A. Boney.

Many lovely gifts were received by the honorees. About 30 guests registered.

Rummage Sale

Rho Rho Chapter of Beta Sigma Phi will have a rummage sale Saturday, April 6 from 9 till 2 in the Womble Bldg. formerly occupied by Panhandle Furniture Mart.

The Hansford Plainsman

Hansford Plainsman Publishers, Inc.
Jim Davis Burl McClellan

County-wide independent newspaper published every Thursday at 209 Main in Spearman, Texas. Second class postage paid in Spearman, Texas. Editor..... Burl McClellan Production Mgr..... Jim Davis

Subscription Rates
In Texas: \$3.50 Out of state: \$4.00
Classified advertising-4¢ per word

NOTICE: Any erroneous reflections upon the character, standing or reputation of any person, firm or corporation which may appear in the columns of The Hansford Plainsman will be corrected gladly upon its being brought to the attention of the publishers.



Morse Park Gets Play Equipment

Much progress was made on the Morse community park this week when a group of adults and youth gathered to work on this project. Willard McCloy, chairman of the project, took a group of 4-H boys, Bill McCloy, Monte and Delbert McCloy, to Oslo Saturday morning to move the playground equipment that had been purchased earlier. The equipment was installed Saturday afternoon. Another group of 4-H'ers, Allen McCoy, Allen Dixon, Wade Parks, Danny and Edgar Womble, Don Kelly, Mike and David Johnson assisted by J. H. Davis, Robert Jackson, Perry Dixon, Mrs. Willard McCloy, LaVerne and H. B. Parks, dug the trenches to set the windbreak and filled in low places in the park. The trees are expected to arrive Monday or Tuesday and the windbreak will then be planted. This is another of the pro-

Square Dance News

A graduation dance was held March 22 for the largest graduating class that the Square Dance Club has ever had. Jimmy Shieldknight was the instructor for this class. The regular club dance was held March 23 at the Community Building with Messrs. and Mmes. E. J. Callaway, Alton Ellsworth and Chester Barnes as hosts. Visitors from the Friendly Squares of Amarillo and from Guymon were present. A new set of lessons begin Friday night at the Community Building at 7:30 p. m. Lessons are free and the course will be taught by Pinky Pearson. There will be a Panhandle Jamboree in Perryton at the Armory Building at 8:00 p. m. March 30.

jects adopted by the Morse Junior Leaders' 4-H club in connection with the Texas Community Improvement program.

Mrs. Gibner Has Bridge Party

Mrs. Pope Gibner was hostess to the Blue Monday Bridge Club March 18 in her home. Attending were Mmes. E. D. Clement, F. J. Daily, Delon Kirk, Bill Miller, W. H. Gandy, a guest, Deta Blodgett, and the hostess. The next meeting will be in the W. H. Gandy home with Mrs. J. D. Hester as hostess.

Screwworm Program Discussed Tuesday

Several cattle owners from Hansford County met Tuesday to discuss the screwworm program. They agreed that Hansford County cattle owners should have an opportunity to donate to the screwworm eradication program and set a figure of \$10.00 for each cattle owner to contribute. Cattle owners can contribute any amount, but this \$10.00 figure was set as a guide. Anyone desiring to contribute should make checks payable to Southwest Animal Health Research Foundation and mail to County Agents Office, Box 115, Spearman, Texas. Cattle owners contributing are: R. P. Hintergardt, Harley Alexander, Robert Alexander, and Willard McCloy.

The NEW Santa Fe Trail

A report on some of Santa Fe's newest milestones
BY THE PRESIDENT OF THE SANTA FE

In 1963, Santa Fe is investing some 90 million dollars on new equipment and improvements. All this money is being used to keep the Santa Fe up-to-date in every way. As a matter of fact, so many new and exciting things are happening on the Santa Fe today that some people are calling it "The New Santa Fe Trail." Here are just a few highlights of the many improvements.

- 2548 new boxcars.
- 500 Mechanical Temperature Control cars.
- 550 covered hopper cars.
- 194 double and triple deck autoveyors.
- 181 flat cars.
- 58 new diesel locomotives.
- 24 hi-level passenger cars.
- 31 semi-lightweight mail and baggage cars.
- Increasing our microwave communication system to 2064 route miles.
- Experimenting with new and more efficient freight cars such as compartmentalized cars for automobile parts.
- Advancing our piggy-back operations to include joint rail-truck rates.

And we haven't been standing still until now. We've invested over a billion dollars in progress since World War II. For example:

- The new cut-off line into Dallas.
- Major line relocations in Arizona.

- Equipped 3560 new freight cars with "Shock Control" devices for damage-free shipment of fragile freight. (More of these cars are on order.)
- Equipped 7745 freight cars with roller bearings.
- Designed and built the first multi-level automobile transport cars—the autoveyors—which are now used by all the major railroads.

To keep pace with changing times and with the rapid growth of the areas we serve, we keep constantly on the move toward a better way to serve you and to strengthen a vital part of our national defense. It is our aim to keep the Santa Fe Trail always new.

Ed Marsh
President

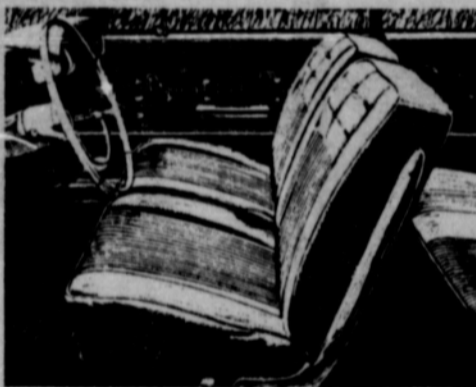


The railroad that is always on the move toward a better way

NOW SEE WHAT'S NEW AT YOUR CHEVROLET DEALER'S



CORVAIR MONZA SPYDER



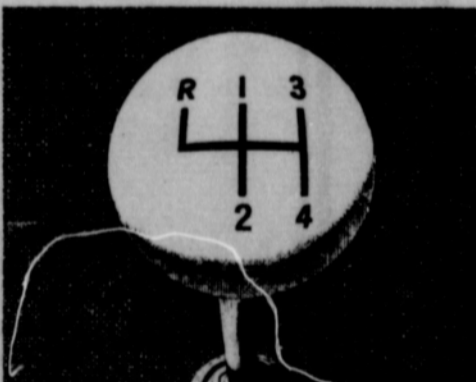
Snug twin bucket seats up front!



Turbo-supercharged 150-hp engine!



Sharp eyeful of special gauges!



Crisp 3 or 4-speed* floor shift!



Tachometer for split-second timing!

Spyder equipment is available on both Corvair Monza Convertible and Club Coupe (shown above). *Optional at extra cost*

See four entirely different kinds of cars at your Chevrolet dealer's... Chevrolet, Chevy II, Corvair and Corvette



CHEVROLET

EXCEL CHEVROLET COMPANY

120 MAIN SPEARMAN, TEXAS 659-2541

APPLY

PAX

Controls crabgrass and soli pests for 3 years. Kills 90% to 100% of crabgrass seed when used according to directions. Fertilizes your lawn. Pax also controls other common weed pests.

Strawn
Farm and Ranch
Supply

Spearman Gruver

THURS. ---SAT.

28 - 29 - 30

BOB HOPE



LUCILLE BALL



LYRIC THEATRE

BOWLING BEAT

Jane Meek	510	Wagon Wheel*	1309
HIGH TEAM GAME		HIGH TEAM GAME	
Ivan's	855	Lyon Insurance	529
Cut Rate Grocery	839	Lyon Insurance	515
Blodgett & Linn	796	Wagon Wheel	478
HIGH TEAM SERIES		HIGH INDIVIDUAL SERIES	
Ivan's	2328	Buena Lyon	549
Cut Rate Grocery	2294	Gwen Reed	467
Blodgett & Linn	2153	Virginia Head	459
		HIGH INDIVIDUAL GAME	
		Buena Lyon	210
		Buena Lyon	201
		Virginia Head	175
		ANNUAL FRIENDSHIP NIGHT	
		The Spearman Chapter of	
		Eastern Star will observe their	
		annual friendship night with a	
		salad supper and program Sat-	
		urday, March 30 at 7:00 p. m.	
		at the school cafeteria, All	
		members of Eastern Star are	
		urged to attend.	
		PIN BENDERS LEAGUE	
		Lee Oil	58
		Lyon Insurance	56
		McClellan Grain	55½
		Gruver Motors	55
		Bowl Mor	54
		First State	53
		The Malls	53
		Wagon Wheel	45½
		HIGH TEAM SERIES	
		Lyon Insurance	1450
		Lee Oil	1313
PINTOPPLERS LEAGUE			
Blodgett & Linn	35½	16½	
Boxwell's Flowers	34	18	
Jim Neely's	33½	18½	
Cut Rate Grocery	30	22	
Ivan's	29	22	
Berry's Cleaners	21	31	
Spearman Super S.	14½	37½	
S&L Motors	10½	41½	
HIGH INDIVIDUAL GAME			
Ruby McCullough	208		
Adalyn Barnes	197		
Jeanette Clements	192		
HIGH INDIVIDUAL SERIES			
Tubby Hays	526		
Ruby McCullough	513		

Gruver News

less. It will be built by Doc Tomlinson. Location is the 600 block of King St.

Rev. and Mrs. Charles Broadhurst and children are visiting Mrs. LaMoyné Cator. Rev. Broadhurst is holding a revival at Calvary Baptist Church in Borger.

Mr. and Mrs. Otho Gammit were honored with a surprise housewarming in the new home Tuesday of last week. Coffee and cookies were served by the hostesses Mmes. Ralph Reynolds, Perry Hawkins, Ed Pinkerton, Jr., Merle Delano, Roy Edwards, Ches Lieb, Roy Byrd, and Fred Womble.

Gruver High School is entered in the district one-act play competition at Stratford today. A preview showing was given yesterday at the Gruver Auditorium. The play is entitled "Shadow of a Dream". Included in the cast are Ray Kelly, Pam Cooksey, Glenda Purvis, Jim Cooksey, and LaNetta Blankenship. Student director is Bonnie Sullins assisted by Peggy Harvey.

Mr. and Mrs. Van Bradford are the parents of a son, Jody Michael born March 12 at Dumas Memorial Hospital. He weighed 6 lbs, 12 oz. Recent visitors were Van's parents, the Roy Bradfords of Roaring Springs. Mrs. Bradford is staying awhile. Van's aunt and uncle, Mr. and Mrs. W. T. Bradford visited the past weekend.

Greenland's lowest temperature, 87 below zero, was recorded Dec. 6, 1949.

Mr. and Mrs. Larry Linde of Okmulgee, Okla. are the parents of a new son, John Ross born March 17 and weighing 7 pounds. Proud new grandparents are Mr. and Mrs. Ross Walker of Gruver and great-grandparents are the O. V. Walkers, Sr.

Mr. and Mrs. Bill Lively and Mark are in East Texas. Bill is attending a church conference and they are visiting relatives in the Kileen area.

The final PTA meeting of the year will be April 1 at 7:30 p. m. in the school auditorium. The Executive board will meet at 7:00. Dan True will be guest speaker. Also on the program will be the 1st and 2nd grades under the direction of Mmes. Jeffie May Hoy, Nikki Cotter, Joy Ellison, Maude McClellan, Sonja Westerfield, and Luvesta Blankenship. Election of officers for the new year will be held.

The H. L. Boyds are traveling in Arkansas this week.

Guests at the C. W. Graham home the past weekend have been his brother and family, Mr. and Mrs. Vestal Graham and two daughters of Carlsbad, N. M.

Mr. and Mrs. J. D. McClure have returned to their home in Norman, Okla. after spending two weeks with Mary Fletcher.

They will be returning in a few weeks to see about business interests and to visit Mrs. Fletcher again. The group all had dinner Tuesday in the Clifford Voile home in Hooker. The Voiles returned the visit Friday and the group all had dinner together again. Mr. and Mrs. Gay Fletcher also joined them.

Mr. Roy Oliver has been dismissed from the hospital at Guymon and is doing well.

Several local people were involved in a wreck Saturday just this side of Guymon. In one car were Mrs. Perry Hawkins, her daughter, Mrs. Robert Dahl, her young son and also her mother-in-law, Mrs. Oscar Dahl. In another car was Dick Murrel. All are reported as doing fine now. Most seriously injured was Mrs. Oscar Dahl. She will have a stay in the hospital but is doing well.

Weekend visitors in the Dee Wilson home was Earline's brother and wife of Guymon, Mr. and Mrs. Marvin Castner.

A pleasant surprise for the Rex Kee's Monday when Mr. Kee's niece and her husband, Mr. and Mrs. Doug Thompson of Lubbock stopped for a short visit.

Mr. and Mrs. E. G. Garrett are moving into their new home.

Another new home just begun will be for the Leivs Bay-

SEE US FOR
COMPETITIVE PRICES
ON

Plastic Irrigation Gas Line

WE HAVE 2 INCH, 1 1/4 INCH
AND 1 INCH IN STOCK

We will sell you the pipe and you can install - or we will give you an attractive price installed by our crews.

FERTILIZERS

SEE US TODAY

ABOUT FERTILIZER TO TOP DRESS YOUR WHEAT AND TO APPLY TO YOUR MAIZE GROUND

WE FEATURE

URA 45 - 0 - 0

AMMONIUM SULFATE 21 - 0 - 0

AND THE COMBINATION FERTILIZERS

16 - 20 - 0

13 - 39 - 0

20 - 20 - 0

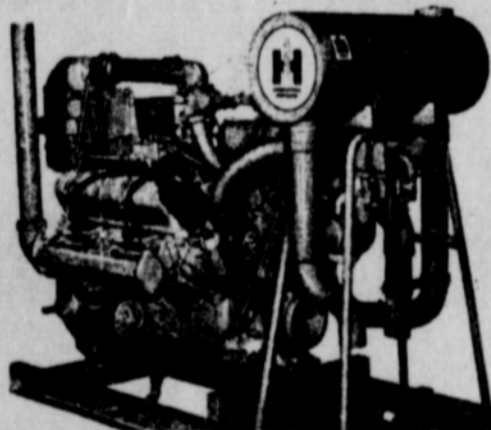
11 - 46 - 0

We will custom apply the fertilizer on your land at any Nitrogen - Phosphate - Sulfur analysis you desire.



Don't Gamble -

Buy Power That Pays



In the

INTERNATIONAL UV-549 ENGINE

The International UV-549 is a compact modernly designed V-8 valve-in-head engine built for heavy-duty work. It has the necessary weight and strength for dependable high performance with minimum operating cost.

You have a choice of gasoline, LP gas or natural gas engines, whichever gives you lowest cost power. You can also fit this big power to your installation at minimum cost, because the UV-549 is available with heavy-duty components from a complete engine to a complete enclosed power unit with power take-offs to suit your needs.

GET ALL THE DETAILS BEFORE YOU BUY.

North Plains Truck & Implt.
SPEARMAN

**MAIZE SEED
PAYMASTER
UTE
KIOWA
COMMANCHE
APACHE**

***Featuring the Sorgo-Sweet**

Sudan Hybrid Sweet Sioux—

NOTHING CAN COMPARE TO THIS FOR GRAZING AND HAY MAKING PURPOSES.

***Mexican June Corn and Funk's Hybrid**

Corn for your ensilage planting.

***Paymaster Aztec for high sugar content,**

BIG TONNAGE YIELDER, HYBRID SARGO TYPE.

COTTON SEED

We have an ample supply of good cotton seed including the new "RILCOT" variety.

The early purchase assures you of a good supply of good seed at cheaper prices.

B & B GRAIN CO., INC.

Shamrock Wins Contest

A football coach and one of his players were the winners in the One-Act play District 1-AA Contest held here Tuesday.

The Shamrock play, "The Bathroom Door", directed by assistant football coach Earl Simpson was selected as the first place play. All five schools in the district were competing.

Tommy Scrivner, cast as an elderly gentleman in the play, was selected as the best actor. Scrivner added to his

make-up for the part by removing a dental plate he wears to replace teeth he lost playing football.

The best actress in the contest was Jean Waller of Stinnett for her portrayal of the Dowager Empress in a scene from the play "Anastasia".

The second place play was White Deer's play, "Sham",

directed by Patricia Barnside.

Beside the best actor and actress, other members of the all-star cast were Diane Gragg and Sheryl Newkirk, both of Shamrock and Paullette Hinton and Dan Simmons of White Deer.

Other schools in the contest were Dalhart and Spearman.

State Bank No. 1763 Federal Reserve Dist. No. 11

**REPORT OF CONDITION OF THE
Gruver State Bank**

Of Gruver, Hansford County, In The State of Texas,

AT THE CLOSE OF BUSINESS ON

DECEMBER 28, 1962

Published in Response To Call Made By Comptroller Of The Currency, Under Section 5211, U.S. Revised Statutes

ASSETS

Cash, balances with other banks,	
cash items in process of collection....	\$ 343,292.87
United States Government obligations,	
direct and guaranteed.....	294,000.00
Obligations of States and political subdivisions.	15,265.59
Loans and discounts	
(including \$ 43,243.51 overdrafts).....	1,732,278.07
Bank premises owned \$ 31,493.49	
furniture and fixtures \$ 5,412.30.....	36,905.79
Investments and other assets indirectly	
representing bank premises or other	
real estate.....	500.00
Other assets.....	19.90
TOTAL ASSETS	\$ 2,422,262.22

LIABILITIES

Demand deposits of individuals,	
partnerships, and corporations....	\$ 1,953,266.33
Deposits of United States Government	
(including postal savings).....	919.49
Deposits of States and political subdivisions.	143,395.33
Certified and officers' checks.....	1,969.70
TOTAL DEPOSITS...\$	2,099,550.85
(a) Total demand	
deposits.....	\$ 2,099,550.85
TOTAL LIABILITIES.....\$	2,099,550.85

CAPITAL ACCOUNTS

Capital: (a) Common stock, total par	
value \$50,000.00.....	\$ 50,000.00
Surplus.....	100,000.00
Undivided Profits.....	\$ 172,711.37
TOTAL CAPITAL ACCOUNTS	\$ 322,711.37
TOTAL LIABILITIES AND	
CAPITAL ACCOUNTS.....\$	2,422,262.22

MEMORANDA

Assets pledged or assigned to secure	
liabilities and for other purposes.....	\$ 250,000.00
Loans as shown above are after de-	
ductions of valuation reserves of.....	\$ 17,115.52

I, Kenneth Irwin, Cashier, of the above-named bank do solemnly swear that this report of condition is true and correct to the best of my knowledge and belief.

s/ Kenneth Irwin

We, the undersigned directors attest the correctness of this report of condition and declare that it has been examined by us and to the best of our knowledge and belief is true and correct.

Directors:
A.R. Bort
R.L. Thom
J.C. Harris

THE MORSE CODE

Winner of the Morse Junior Leaders 4-H contest to give the community of Morse a motto was won by Mrs. A. F. West.

The motto is "TOGETHER WE STICK; DIVIDED WE'RE STUCK".

This sign will be placed in the community building. Plans call for a welcoming sign and the motto to be placed on signs on roads entering the community, next week.

The annual Lion's Club Queen will be selected Thursday evening when the club meets at the school cafeteria.

The contest will be held on the stage of the auditorium at about 8:15 p. m. The contest is open to all interested persons. All girls in Morse High School will be contestants.

The one act play, prepared by students in the Morse High School, was presented to the public Thursday night in the

school auditorium. Miss Gloria Price directed the play entitled "Married at Sunrise". Members of the cast were Ronnie West, Allen McCloy, Mary Lee Jackson, Patricia Henderson, Donna Cator, Sharon Parks and Joyce Schick as stage manager.

This play was presented at Miami Friday night. Ronnie West was named to the all-star cast.

Eliminations were held Friday afternoon for the declamation and story telling events of the Interscholastic League events. Rev. Harold Fleming, Mrs. Vance Zinn and Mrs. Hazel Simmons were judges for the contests.

First grade story telling was

won by Lynn Parks, Jimmy Hensley, second and Danny Nye, third; second and third grades, Suellen Womble, first, Karis Fleming, second; girls' declamation winners, Suzanne Dixon, first, Katharine Schmidt, second and Shirley Sue Pitts, third; A tie in the boys' division gave Don Kelly and Monte McCloy, first, and Bob Womble second.

HOLT NEWS

Mr. and Mrs. J. A. Brazeal from Mangum, Okla., Mr. and Mrs. Evert Faver from Cauplin, N.M. were Monday night guests of Mr. and Mrs. Owen Pendergraft, and visited with other relatives. They were enroute to Capulin for a few days before returning to Mangum.

Messrs. and Mmes. Don Chisum of Stinnett, Doyle Jackson, Ira Harbour and Dan Jackson attended the funeral of Mr. Winston Yeary on Wednesday at Levelland. Mr. Yeary was 74 years old and a brother of Mrs. Dan Jackson.

Terry Jackson has been visiting his grandparents, Mr. and Mrs. J.C. Gallaway at Kress. Carla Archer of Spearman and the Bill Sloans of Dumas were Saturday night guests of the Ira Harbours.

Anita Holt spent the weekend visiting her parents, the O. C. Holts. Anita attends Texas University.

Mr. and Mrs. John Campbell visited his sister Thursday, Mrs. Noah Holt at Mangum, Okla.

Mmes. Bertha Jenkins, Maye Board of Morse and Maude Rosson were Sunday afternoon callers of Mrs. Annie Harris, Lorene Williams and Vera Anderson of Morse.

Bruised Apples Costly

If apples are bruised, they may not be good buys because the bruised parts will have to be discarded. Small-size apples in good condition are usually economical.

FOOD BUDGET BOOSTERS

WITH LOTS OF MEAL APPEAL!

Pet Evaporated MILK	Tall Can	2 For	25¢
Gladiola FLOUR	10 lb. Bag		79¢
CRISCO	3 lbs. Tin		73¢
Del Monte CATSUP	14 oz. Bottle		19¢
Krafts Salad Dressing			
Miracle Whip	Quart		49¢
Arrow Brand PINTO BEANS	2 lb. Bag		19¢

CUT RATE GROCERY invites you to pick up your **Free GOLD SEAL GIFT CARD**

WINS!

... WIN A FABULOUS GOLD SEAL GIFT... NO PURCHASE OR CONSIDERATION NECESSARY... YOUR CARD WHEN COMPLETED MAY BE WORTH...

R.C.A. Console **COLOR TELEVISION**

OR A MAGNIFICENT **\$1,000 RING**

OR A FABULOUS **MINK STOLE**

Halter, Watch, Keds, Movie Camera, International Silver Coffee and Tea Service, Ladies' Hair Dryers by Remco and Universal and many other Fabulous Gold Seal Gifts on display in our store.

Every Card A Winner When Completed

YOU CAN NOT LOSE YOU MUST WIN

Here's How To Receive Your Gift

Visit our store anytime and get your FREE punch card. The validation of free punch section is in no way dependent upon the completion of the purchase section. See our Gold Seal Card and display for complete details.

PICK UP YOUR GOLD SEAL GIFT CARD NOW. WIN A FABULOUS PRIZE!

Virginia Extra Fancy York APPLES	2 lbs.	25¢
Fresh Red RADISHES	3 Bunches	19¢
Fresh Green ONIONS		
Large Firm AVOCADOS	each	9¢
Fresh Golden Cella CARROTS	2 Bags	19¢

Maryland Club COFFEE	1 lb. Can	69¢	2 lb. Can	\$1.29
Bordens Regular ICE CREAM	Half Gallon	69¢		
Bordens 12 oz. ctn. COTTAGE CHEESE		27¢		
Shurfresh Fancy MARGARINE	2 lbs.	35¢		

Breast O'Chicken in Corn Oil TUNA FISH	Flat Can	27¢
--	----------	-----

Wolfs CHILI	no. 2 Can	57¢
Shurfresh Saltines CRACKERS	lb.	19¢

NEW WHITE RAIN 15 oz. Size **Hair Spray 89¢**

Pork Steak	lb.	39¢
Pork Roast	lb.	35¢
Town & Country Fryers	Pan Ready lb.	39¢
Cape Ann Fish Sticks	8 oz. Pkg.	29¢

Shurfine 46 oz. Can PINEAPPLE JUICE	25¢
Shurfine Crushed PINEAPPLE	no. 2 Can 25¢
Shurfine GREEN BEANS	
And Potatoes	2 303 Can 29¢

Orange Drink Concentrate TANG	Big 21 oz. Jar	79¢
Shurfine "Tattered Toms" PEACHES	3 no. 2 1/2 Can	89¢
Zestee-Strawberry, Peach or Apricot PRESERVES	3 18 oz. Tumbler	\$1.
POWDERED OR BROWN SUGAR	Imperial lb. Box 2 For	27¢
Roxey DOG FOOD	4 Tall Can	29¢

VALUES FOR FRIDAY AND SATURDAY, MARCH 29-30

Cut Rate Grocery

A Buyer Is Waiting!

FOR SALE

FOR SALE: Industrial lots and acreage. Financing available. Cecil Crawford. Phone 659-2409.

FOR SALE: 10 X 50 Lakewood Trail House. Fence and foundation go with trailer. See Harry Masters, 210 1/2 S. Endicott.

25-2c

FOR SALE: Alfalfa or Prairie Hay. Delivered. See Ray McCammond. 659-3393.

FOR SALE: 100 ft. x 142 ft. lot with 3 houses on it. A. E. Townsend Place. 122 S. Endicott. Mrs. A. E. Townsend.

1-tfc

FOR SALE: Equity in 3 bedroom house. Low payments. 801 S. Dressen. Call 2634 after 6.

S24-4, 23-4c

FOR SALE: Tomatoes, Pansies and Bedding Plants. Wilcox Flowers, Greenhouse. 911 South Haney St.

25-8p

FOR SALE: 2 bedroom house. Call 659-2652.

19-2p

FOR SALE: 1956 Monterey Mercury. Phone 659-3259.

19tfc

FOR SALE: New baby blue floor length formal and hoop. Size 7. Call 659-2497.

23-tfc

For Lifetime Mufflers, Clarence Pettitt Garage. No premium prices.

FOR SALE: Spinnet Piano, new, located in your vicinity. Will sacrifice to party able to assume \$27.50 monthly. Write Channers, Box 1163, Sterling, Colorado.

Place your order now. Medlin Bermuda Grass Sprigs, Custom sprigging and sprigger available. See or call Vernon Crooks, 4 miles east, 2 south, Box 1107, Phone 659-2171, Spearman, Texas.

S24-T22July-c

FOR SALE: Equity in 2 bedroom house. 1100 S. Dressen. Phone 659-2048.

24-2p

WANTED: Ironing, \$1.50 mixed dozen. Baby sitting anytime. Dorothy Groves, 910 S. Bernice.

25-S27-tfc

Income Tax Service: Have just completed specialized course. Call 2307 after 5 weekdays. Nedra Hays, 322 S. Townsend.

20-tfc

FOR RENT

FOR RENT: 2 room furnished apartment. 504 Evans. Phone 3412.

20-tfc

FOR RENT: Sleeping rooms & apt. for men. 122 S. Endicott, Mrs. A. E. Townsend.

44-tfc

For Your
Easter Supplies
Shop At
**PLAINSMAN
OFFICE
SUPPLY**

WANTED

INCOME TAX SERVICE — Faye Lynch, 316 S. Bernice. Phone 3175 after 6 weekdays and weekends.

14-tfc

WANTED: Want to keep child by day, week or month. Phone 659-2090.

S23-1, 22-

WANTED: Someone with good credit rating to take up payments on a good '59 Chevrolet Impala. New tires. Call 659-2675 for details.

S26-tfc-25-tfc

Help Wanted: Luzier Cosmetics offers career as consultant to demonstrate Luzier Magic Hour as advertised in McCall. Edith Sim, 3609 Linda, Amarillo, Fl6-1411.

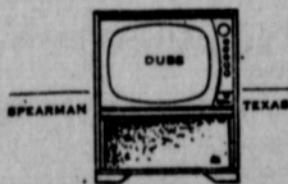
S25-2, 24-2p

E.C. Greene & Sons Agency

REAL ESTATE — LOANS
INSURANCE — CATTLE
ALUMINUM PIPE

418 Davis Spearman
Phone 659-2587

Dub's Radio & TV



Your
Philco Dealer
Sales & Service
20 S. Archer

City Directory CLEANERS

Cleaning
Pressing
Carpet
Cleaning
Service

Coin Operated
Dry Cleaning

Free Pick-up & Delivery

Phone 659-2511

Wardrobe Cleaners

Oscar Donnell

302 Main Spearman

DENTISTS

F.J. Daily D.D.S.

16 SW Court Street

Spearman

PHYSICIAN

D.E. Hackley, D.O.

Clinic

702 S. Roland

659-2556

659-2385

ELECTRICIANS

Anthony Electric
Industrial, Commercial
and House Wiring
Heating and Air
Conditioning
Contracting and Repairs
Fully Insured
Plains Shopping Center
Phone 659-2441
Box 727 Spearman

Attend Church



Church Directory

Apostolic Faith Church
Mrs. E. A. Greever, Pastor
Sunday School 10:00 a.m.
Morning Worship 11:00 a.m.
Evening Worship 7:00 p.m.
Thursday Fast and Prayer Service 9:30 3:00

Thursday Prayer Service 7:30 p.m.
Assembly of God Church
Rev. Vance Barker, Pastor
Sunday School 9:45 a.m.
Morning Worship 11:00 a.m.
Evening Worship 7:30 p.m.
Wed. Bible Study 7:30 p.m.

First Baptist Church
Rev. Luther M. Berry, Pastor
Morning Service 8:30 a.m.
Sunday School 9:45 a.m.
Morning Worship 10:45 a.m.
Training Union 6:30 p.m.
Evening Worship 7:30 p.m.
Wed. Evening Prayer Hour 7:30
Wed. Choir Rehearsal 8:45 p.m.

Fellowship Baptist Church
W. S. Herring, Pastor
Sunday School 10:00 a.m.
Preaching Service 11:00 a.m.
Sunday Evening Service 11:00 a.m.
Wed. Evening Service 7:30 p.m.

First Christian Church
Rev. John Waddell, Minister
Sunday School 9:45 a.m.
Morning Worship 11:00 a.m.
Youth Meetings 6:00 p.m.
Evening Worship 7:30 p.m.
Wed. Choir Practice 7:30 p.m.

Church of Christ
Glen Crowe, Minister
Sunday School 10:00 a.m.
Worship 11:00 a.m.
Worship 7:00 p.m.
Wed. Ladies Bible Class 9:30 a.m.
Wed. Bible Study 7:30 p.m.

Pentecostal Church
Sunday School 9:45 a.m.
Morning Worship 11:00 a.m.
Evening Worship 7:30 p.m.
5th & Hazelwood

Union Full Gospel Church
Sunday School 11:00 a.m.
Morning Worship 10:00 a.m.
Bible Classes, Sunday 6:45 p.m.
Evening Worship 7:30 p.m.
Wed. Bible Study 7:30 p.m.

First Methodist Church
Brother J. Waid Griffin, Minister
Sunday School 9:45 a.m.
Morning Worship 11:00 a.m.
M. Y. T. 6:30 p.m.
Evening Worship 7:30 p.m.
Women's Society of Christian Service Wednesday 3:00 p.m.
Choir Rehearsal 7:30 p.m.

First United Presbyterian Church
Home Demonstration Club Room
311 Bernice
Sunday Church School 9:45 a.m.
Adult Class meets at (Blodgett & Linn Bldg.)
Morning Worship 11:00 a.m.
Evening Study Group 7:30 p.m.
Meeting in homes of members as announced
Wed. Choir Practice 7:30 p.m.
Meets in home of members as announced

Sacred Heart Catholic Church
Father Edward Kieran
Sundays 10:00 a.m.
Catechism Classes 11 a.m.
Week Days
Mon., Tues., Fri., Sat. 8:00 a.m.
Holy Days of Obligation 7:30 a.m.
First Friday of Month 7 a.m.

Osle Lutheran Church
18 Mi. N.W. of Gruver
Robert L. Cordes, Pastor
Sunday School 9:45 a.m.
(includes adults)
Worship Services 11:00 a.m.
Women of Church meet 2nd Thursday of each month at 2 p.m.

R. L. McClellan Grain Co.

First State Bank
Member F. D. I. C.

B&B Grain Co., Inc.

HALLMARK CARDS FOR ALL OCCASIONS

Entertaining
Supplies
and
Decorations

Office Supplies

PLAINSMAN
OFFICE SUPPLY

209 Main

QUALITY
WATCH
REPAIR
In Our Shop

HENSON'S JEWELRY

Expert Work
PORTRAITS

For those special occasions

BEAUTIFUL
PICTURE FRAMES
C & B Studio
CALL 659-3081

Out WAKA Way

By Mrs. Carroll Ladd

Have you been "out" to Waka lately? We are not so far "out" as some people tend to believe. We are really "in" in the swing of things. You will definitely see a change in Waka. In the past year, all of the city streets have been ca- liche; a new school and church have been built; a new house has been built and another house has been moved in; and new residents have estab- lished their homes here. If you would come in at night, you might think you were com- ing into a small city, as we now have thirteen mercury street lights. We are adding another attraction to our fair city-- street signs-- more on that later on. We invite you to come out and drive around, you might be surprised at what you see.

Home for the weekend from West Texas State College, was Judy Stump. While she was here a dinner was given in honor of her birthday, March 26, in the home of her parents, Mr. and Mrs. J. R. Stump. Mr. and Mrs. Carroll Ladd and family were also guests.

Spending the weekend with Mr. and Mrs. Clyde Yeary, Kathy and Pat were Bobby and Verna Mosier.

Visitors in the Dean Leigh- nor home Sunday were Mr. and Mrs. J. R. Stump.

Weekend visitors in Amarillo were Mr. and Mrs. Bob Mosier

Scout Cookie Sale Is In Progress

The Girl Scout cookie sale will continue until April 6. The girls would like to thank everyone who has bought cook- ies for their patronage.

and Mr. and Mrs. Emmitt Drake. They also attended the car races Sunday afternoon.

Thursday night (tonight) Nina Shelby, daughter of Mr. and Mrs. Bill Shelby; Marcena Scroggs, daughter of Mr. and Mrs. Carl Scroggs; and Peggy Gurley, daughter of Mr. and Mrs. Eldon Gurley will repre- sent the Waka School at the Spelling Bee in Perryton.

Waka will be represented in the Regional Science Fair in Amarillo Friday. Nina Shelby, Sharon Burger and Burl Scroggs will be representatives in the junior division. In the inter- mediate division, will be Twi- la Wiebe, Patty Gurley, Suz- anne Clark and Sue Scroggs. Kenneth Ringo and Mrs. Roz- elle Shelby will accompany the group as sponsors.

Waka will soon have new res- idents as the David Wilsons will be moving into a house that is at present under con- struction. They will move from the New Hope commu- nity north of Spearman as soon as the house is finished.

Another house is being con- structed in Waka. B.J. Tur- ner is building a duplex which we are looking forward to its being finished.

Since this is a brand new col- umn in this paper, I would like the co-operation of the Waka Community to make it a suc- cess and would like any news you have to offer.

Baptist Circles Have Meetings

The circles of the First Bap- tist Church met March 20.

The Janette Junker Circle met in the home of Betty Gates with Mrs. Don Stone presiding. Mrs. Holt presented the program.

Attending were Mmes. A. F. Loftin, Fred Holt, Don Stone, J. D. Helms, Morris Driver, Don Jones and the hostess.

The Hazel Loftin Circle met at the church with Viola George and Joan Eaton as co- hostesses.

Pat Chapman gave the pro- gram and a film "Under the Shadows of Steel" was shown.

Attending were Mmes. Vio- George, Ruth Ringo, Betty Born, Pat Chapman, and one guest, Mrs. Jerry Jackson, president of the W. M. U.

The June Petty Circle met with Mrs. Roscoe Nelson. Mrs. John Brown was incharge of the lesson.

Attending were Mmes. John Wilde, R. L. Bailey, D. W. Hazelwood, J. L. Wagnon, Luther Berry, G. R. Kilgore, Granville Boyd, one visitor, Mrs. Jackson, W. M. U. pres- ident, and the hostess.

Moore Listed On Tech Honor Roll

Douglas Ray Moore, son of Mr. and Mrs. Ray Moore of Spearman, has been placed on the honor roll at Texas Tech.

Moore is a graduate of Spear- man High School and is a graduating senior majoring in agriculture economics.

Shower Honors Mrs. Graham

Mrs. C. W. Graham was hon- ored with a pink and blue show- er March 23 in the home of Mrs. Bill Etling.

Hostesses were Mmes. Fred Womble, Jerry Williams, Dean Cluck, Lee Roy Mitchell, E. G. Garrett, Grover Taylor, H. C. Batemen, Pete Cluck, D. G. Cluck, E. A. Williams, Hack Johnson, Dick Spradlin, Mary Fletcher, I. W. Ayres, Jr., Gay Fletcher, Oscar Gross, Bill Et- ling.

The serving table was laid with an ecru linen cloth centered with pink rosebuds and white button carnations in a white vase decorated with chenubs.

Mmes. Grover Taylor and Lee Roy Mitchell served coffee and white cake decorated with pink chenubs.

Mrs. Jerry Williams registered guests.

The honoree was presented a corsage of the same flowers fea- tured in the centerpiece.

Mr. and Mrs. D. W. Hutto of Tulia and Mr. and Mrs. Jack Middleton of Happy vis- ited Mr. and Mrs. David Hutto Sunday.

Mrs. Tip Collingsworth and family of Perryton were Sun- day dinner guests of Mr. and Mrs. Jake Lamb at Spearman.



Your side of the story is per- fectly simple. You want full protection at minimum cost. Collard Insurance will show you how to arrange a practi- cal insurance program and still stick to your budget.



Mr. and Mrs. Charles Davis were Sunday guests of Mr. and Mrs. Boss Davis of Morse.

Need Farm Equipment
Try
NORTH PLAINS
Truck and Implement
We buy, sell or trade.

Cummings Refrigeration
Heating
Air Conditioning
Refrigeration
Specialist
Sales - Service
Phone 659-2721
Spearman

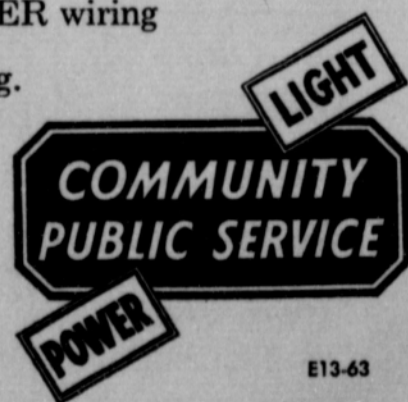
the home in your future is here today!



THE TOTAL ELECTRIC GOLD MEDALLION HOME

Wait no longer for your dream home! Total electric GOLD MEDALLION HOMES are available now. These ultra-modern homes are equipped with an electric range, electric water heater and at least three other major electric appliances. Flameless electric heating and air conditioning provide year 'round comfort. Modern lighting and Full HOUSEPOWER wiring complete the picture of up-to-date living.

No energy other than electricity is needed. For additional information, see your builder or call us today.



Beautiful Gardens Start Here



Scott's TURF BUILDER

FOR LAWN FERTILITY

BONUS KILLS WEEDS AS IT FEEDS GRASS

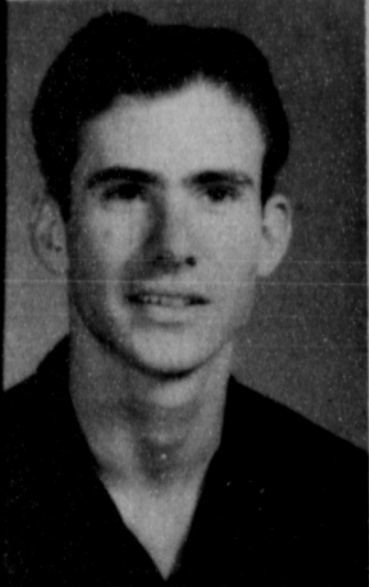
KANSEL

FOR

Chickweed, Clover & Oxalis

Scott's **HALT** For Crabgrass





Kelly Wins Art Contest

A Morse boy who is a senior in Gruver High School has been named county winner in a historical art contest conducted in the county by the Hansford County Heritage Committee in conjunction with the Texas Panhandle Heritage Foundation. Ray Kelly submitted the winning drawing. He did a pen and ink drawing of historical events

Library Is Growing Fast

The Hansford County Library is again growing out of its home.

Three years ago the library found minor relief for its growing pains when it moved from its old location in the city hall to the basement of the courthouse. Now, like a wild eating child, it is again "bursting its britches".

County residents probably get more for their dollar in the and places in the county.

Two other artists submitted drawings. They were Stephan Sheets and Margot Kilgore.

The winning drawing will be carved in stone and the stone plaques will be placed in the entrance-way to the Amphitheater in Palo Duro Canyon. There will be a carving from each of the 30 counties in the Panhandle.

The drawing will be framed and given to the Gruver school after the carvings are completed.

library than in any other public expenditure. It costs only \$2,454.94 to pay a librarian and operate the library last year.

The cost is not kept low by lack of use. Last year there were 6,820 books checked out of the library. Adults checked out 2,481 adult fiction books, and 502 non-fiction books. Children checked out 3,422 fiction and 415 non-fiction books.

The Librarian, Mrs. Gladys Richardson, has a total of 6,791 books in the library. Last year there were 335 books added to the library. The library bought 213 and 122 were presented as gifts.

Because of the crowded conditions, Mrs. Richardson has a storage problem. When books lost their popularity and are not checked out for several months, she takes them off the shelves.

"I don't want to get rid of the books, but now there is no place to store them."

The library board has added more shelf space to the li-

brary, but Mrs. Richardson said she would soon have it full of new books. She added that books must have some room of the shelf or the backs will stick together and damage the volumes when they are removed or returned to the shelves.

The county, city and Lions in Spearman help finance the operation of the library. Last year there was \$2,477.47 income to the institution. The county donated \$1400, the city of Spearman \$825, fees brought in \$82, fines \$117.74 and the Lions Club gave \$44.70. A refund on insurance added the last \$8.03.

The library is operated under the direction of an eight member board headed this year by Don Floyd. Helen Etter is secretary and members are Emmett Sanders, Mrs. Frank Davis, Mrs. R. W. Morton, Mrs. Joe Trayler, Mrs. Willis Sheets and James Bramlett.

This board recently set up a memorial fund to be used for the construction of a new library in Spearman. President Floyd said anyone wishing to

present a living memorial can send a check to the Library Memorial Fund and an appropriate card will be sent.

He also added that any business, club or individual who would like to help with this project is invited to do so.

PERRYTON STORM DOOR & WINDOW CO.

214 S. W. 3RD AVE. • MOLEC SHOPPING CENTER

OWNERS

ELBERT GRAHAM
PHONE 435-5629

LEROY BENNETT
PHONE 435-2447

ALCOA ALUMINUM DOORS AND WINDOWS

HASTINGS INSULATED ALUMINUM SIDING

Hastings Insulated Aluminum Siding carries a full 10-year factory warranty against peeling, blistering, checking or crazing.

Horizontal or Vertical Panels—Choice of 8 colors—Vinyl coated front and back—Heavy gauge aluminum—High Quality—Outstanding Features.

Phone 435 - 2408 - Perryton

NAVACO RIGID VINYL AWNINGS

16 different colors, unconditionally guaranteed for life, custom made for any window or any style. Carports and patio covers in aluminum or vinyl. Free estimate.

IMPORTANT

Check your copy of the

March-April issue of "Farm Profit"

YOU MAY BE THE WINNER

OF A

TRIP TO EUROPE

BRING THE COUPON LIKE THE ONE BELOW TO OUR STORE

Massey-Ferguson

BIG BUY-TIME...BIG PRIZE-TIME

\$100,000 WORTH OF PRIZES

• An all expense paid 15-day trip to Europe for two — see London, Paris, Frankfurt, Milan . . .

• One week's holiday in Mexico City or Acapulco for two

5 General Electric "Tomlinson Collection" Stereo Hi-Fi Phonographs

10 General Electric "Century" 19-in. Portable TV sets

25 Kodak Zoom "8" Movie Cameras

750 Bulova "30" Men's or Lady's Watches

THIS IS YOUR OWN LUCKY NUMBER

it's easy to win...
nothing to buy or try

1 Simply print your name and address on the attached post card. Detach and mail it on or before April 25, 1963.

2 Take this Lucky Number certificate to your Massey-Ferguson dealer. He has a list of winning numbers posted there now and will have a second list of winning numbers on May 1. You have two chances to win . . . so keep this certificate to check both lists! See reverse side of this lucky number certificate for complete rules.

MWD

No 88092

Two chances to win. See rules 2 and 3 on reverse.

STANLEY GARNETT

YOUR MASSEY-FERGUSON DEALER

LETTER TO VOTERS

OF SPEARMAN

INDEPENDENT SCHOOL DISTRICT

The past three years as a school trustee of the Spearman Independent School District have been educational as well as a challenge for me, and far from an easy task. In seeking re-election I ask for your vote and confidence. My purpose or aim is to:

- (1) Provide an educational system for all students which will develop each to the maximum of his ability, both mentally and physically.
- (2) Make the school attractive to the teaching profession in order to employ and retain the best qualified in each field.
- (3) Be a representative of the district rather than special groups or individuals.

The first two cannot be accomplished overnight; however, great strides have been made in the past year or two. Our teachers are paid better salaries than ever before; however, we must provide salaries sufficient to retain the qualified teachers now in the system as well as to secure new ones. Salary is not the only item of interest to teachers, and we must continue to seek ways and means of making the system desirable. If we are to train our children we must have qualified instructors and personnel.

It is imperative that we continue with all our efforts to improve the scholastic standing of our school. Approval has been given by the present board of trustees for employing a counsellor and teacher for special education. Additional courses have been and will continue to be made available. In September, we can begin classes with adequate facilities, with the high school being one of the finest in existence containing the most modern equipment.

Even though numerous changes have occurred which have improved the system, we cannot become complacent. We must at least attempt to prepare our children for the era in which they will live.

The enrollment of our school has steadily grown in the past few years, and all indications point to a continuation of this growth. A tremendous tax burden has resulted which is disliked by the board of trustees as well as all taxpayers. This is a further reason why we must produce a school system "second to none" in so far as being able to educate our children. No relief from the tax burden can be foreseen in the immediate future, but we must spend our money wisely in order to avoid additional taxes.

As a candidate for trustee I have dedicated and pledged myself to serve the Spearman Independent School District to the best of my ability. If you desire a superior school system then I solicit your vote and support on April 6th at the polls.

Respectfully submitted,

J. D. Helms

THE WAY I SEE IT

by Robert Cordes

Jesus Christ has told us "My peace I leave with you". To Christians, there is a certain joy and assurance that we are God's. No one outside of the Christian faith can experience this.

The storm struck. Lightning tore at the sky. Winds howled and blew rain hard against the windows. The black night seemed to be cracking up all around.

But on my arm the watch I wore kept ticking on undisturbed. Somehow it suggested God's part in life. His children are like watches in a thunderstorm. Hardships come, universal or personal; wars come, wars on a world-wide scale, or little, private wars inside people. The whole world may be cracking up, but those who really believe in Jesus as Savior tick on quietly, undisturbed, directed not by the world's frenzy but by His peace in their hearts.

Another picture that illustrates this view, is the stained glass window. The day may be very bright and sunny, but despite the brightness of it you cannot see the beauty of the church windows from the outside. You must be inside, and see the sun shining through the windows to appreciate the lovely patterns of light.

Christianity is certainly like that. You simply can't see the beauty of it from the outside--even if Christians are to so let their light so shine before men that they may see your good works and give glory to the Father in heaven. People who merely observe Christianity can never know the assurance of our sins covered by Christ's blood--or the promise of life eternal in Heaven with God Jesus.

Watches in a storm show God watches over us. Light through the window shows we on the inside know what it is to be a Christian.

What are you doing to give other persons this assurance of peace in a troubled world? Are you really doing all you can to help others see salvation from the inside of the church in Christ. What else are you to be living for? God grant you help to lead others to peace.

Girl Scouts Are Hostesses For Time-for-Fun Party

The Spearman Girl Scouts and Leaders were hostesses for the Time For Fun Party March 25 in the Home Demonstration Clubroom.

Table games were played and enjoyed by all present. Mrs. Rardin won the door Prize and Mrs. Jagers was the birthday lady.

The girls had made gifts and each guest drew a gift from the box.

Homemade cookies, baked by Mrs. Sheet's Senior Scouts were served with hot chocolate, punch and coffee.

At the close of the party Mrs. Jagers shared her birthday cake.

Guests were Mmes. Julia Rardin, Jessie Tompkins, M. E. Jagers, Nan Prutsman, D. W. Hazelwood, Myrtle Russell, and Mr. and Mrs. Carl Hutchison.

Hostesses were Jerri Hudson, Jerri Grange, Arbeta Tackitt, Mary Sue Johnson, Lynn Robinson, Judy Noel, Linda Hall, Rhonda Duryee, Cheryl Mont-

gomery, Carolyn Jones, Sandra Shufeldt, Pam Wyson, Frances Nollner and Glenna Sanders, and Leaders: Helen Sanders; Lillian Hooks, Joyce Crooks, Buena Lyon, Dorothy Tackitt, Rose Kunselman, Margaret Evans, Jackie Hall and Margaret Adamson.

Scouts To Have Lodge Meeting

The Chief Lone Wolf Lodge, Order of the Arrow, will hold its annual meeting and work day at Boy Scout Camp Kiowa at Canadian March 29-30.

During the meeting candidates elected in 1962 who missed the August 1962 Ordeal Ceremony, will be given the Ordeal Initiation.

Former lodge members are invited to attend the camp-out and to renew their membership.

The Order of the Arrow is the honor camper group of the



OPEN HOUSE---An open house from 2 until 5 p. m. Sunday will honor Mrs. Kate Gray on her 85th birthday. Her daughter, Mrs. Francis Sims will have the open house at her home at 317 S. Archer. All of Mrs. Gray's friends are invited.

Boy Scouts of America. Your contribution to the Adobe Walls Council, Boy Scouts of America, makes this and other activities of the council possible.

Glass is a poor insulator against sound.

Saturday Is Plow Day

C. C. Burnett of Dumas, Chairman of the Advisory Committee for the North Plains Agricultural Experimental Farm, announced today that this coming Saturday will be plow day at the farm.

All farmers in the area north of the Canadian River, which the farm will serve, are invited to participate. Anyone with a large chisel or disc is invited to bring it Saturday and help with this important operation.

The land is now in sod and will have to be broken before the experimental farm can begin to function. All workers will be feted at a barbecue luncheon at the location in Moore County.

Plans are also being made for an irrigation well to be drilled and underground pipe to be laid on the property. Anyone interested in further information may contact A. J. Harris of Dumas.

Mrs. Evans Has HD Club Meeting

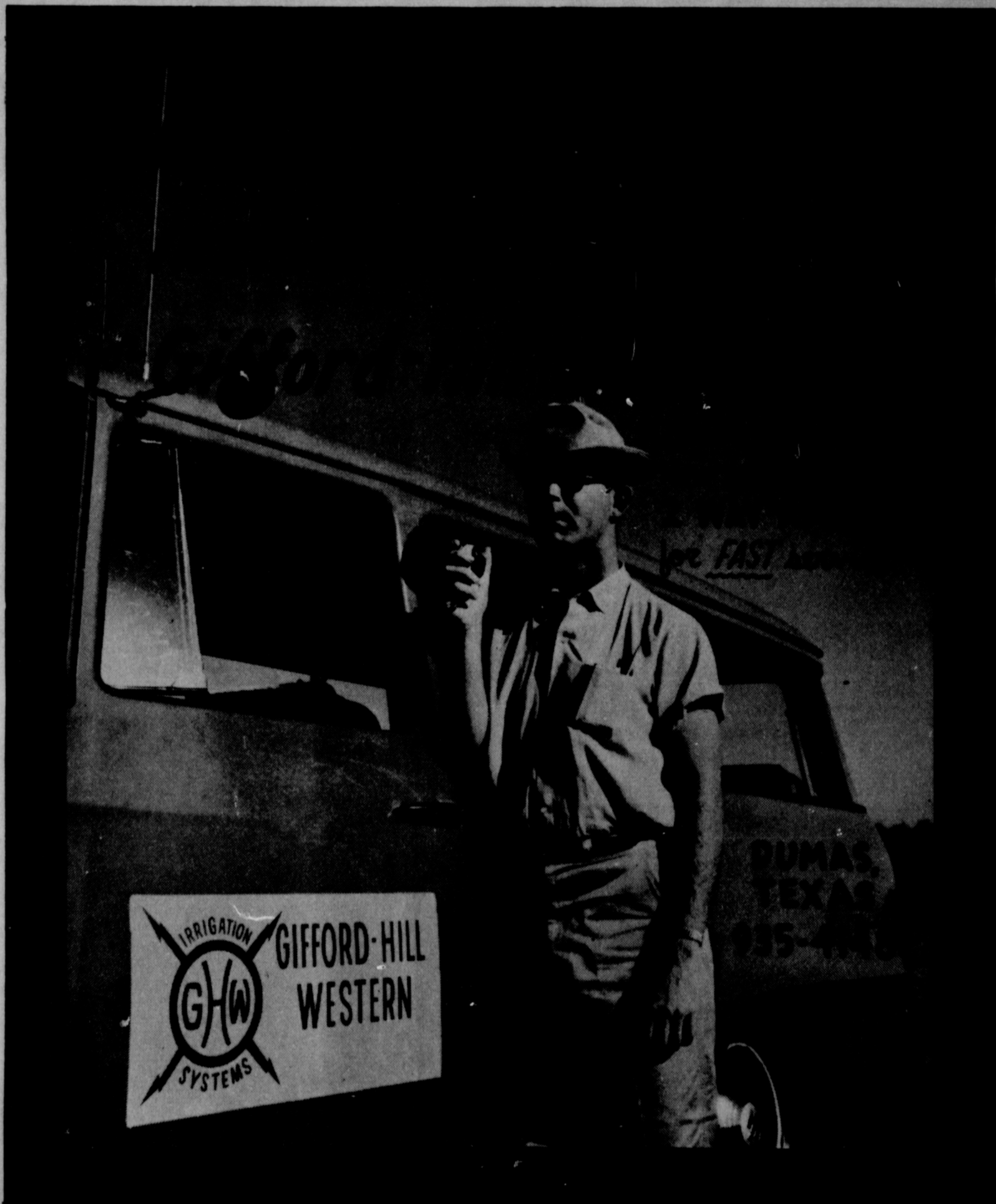
The Happy Homes Demonstration Club met March 21 in the home of Margaret Evans.

Devotional was given by Connie Vardell. Roll call was answered by ways to express sympathy. The club voted to buy a shirt for their adopted boy in the Travis State School at Austin, for his birthday. Dorothy Groves was elected candidate for County THDA chairman. Members were reminded of the rummage sale to be held in the Womble building Wednesday, March 27.

Margaret Evans gave the program entitled "Saving Time In The Kitchen".

Attending were Mmes. Margaret Adamson, Rose Cummings, Peggy Ellsworth, Joan Gaither, Dorothy Groves, Louise Mullins, Maylynn Schubert, Patty Sheppard, Connie Vardell, Anna Fullbright, Emma Leta Morse, and the hostess.

Florida's cultural climate shares honors with its sunny skies as a drawing card for visitors. In the 10 largest cities of the state there are nearly 300 organizations devoted to art, dance, dramatics or music.



15 FOOT CAPACITY

**FROSTLESS
TWO DOOR
WIZARD
REFRIGERATOR**

Reg. \$399.95

**NOW
\$299.95**

SPECIAL
FRIDAY
AND

SATURDAY

**WESTERN AUTO
ASSOC. STORE**