

# The McLean News

Price 15¢

Serving McLean and the Area Since 1903

VOLUME 73

McLEAN, GRAY COUNTY, TEXAS - THURSDAY, AUGUST 5, 1976

NUMBER 32

## 3-Day Youth Sponsored Community-Wide Revival to Begin (tonight)

The youth of McLean proudly announce the beginning of a city-wide youth sponsored crusade August 5, 6, and 7. The services will be held each evening at 7:30 in a tent in the McLean baseball park. Evangelist for the 3-day crusade will be Terry Hale, Director of Damascus, Minn. "Damascus" is a ranch designed to expose runaways, addicts, and other problem young people to the love and reality of Jesus Christ. Hale has an extensive ministry to youth realizing that today's adults are a decisive factor in the future of our young people.

Music Director for the crusade is Dan Booher, minister of music from Central Baptist Church in Pampa. Mr. Booher has a tremendous testi-

mony through song and lets the Spirit move freely.

Several events are planned during the course of the crusade. You are urged to attend and support the youth of McLean.

Should we be blessed with rain, the services will be moved to the high school auditorium via the northwest corner door.

## Homer Jefferson Gets Lion Of The Year Award

In ceremonies at the McLean Lions Club Monday night, Homer Jefferson was awarded a plaque designating him as Lion of the Year. Mr. Jefferson had served as Boss Lion the past term (75-76). New Boss Lion Darryel Herndon presented the award and praised Mr. Jefferson for his outstanding contributions to Lionism.

Lion Boyd Meador installed two new Lions: Rev. James Merrell and Kenneth Gabehart.

Key speaker for the evening was Rose Helen Dwyer who spoke on the Future Business Leaders trip to Washington D. C. Miss Dwyer, along with classmates, Cindy Sherrod, Lela Skipper, Halcyon Back, Natalie Morris, Scott Haynes and Glenn Oldham, won first place at Fort Worth on their project. The McLean FBLA Chapter was the only one in the state to receive the Gold Seal Award. Mrs. Jan Johnson is their sponsor.

## S.W.C.D. Slate Director Election

An election will be held August 14, at 7:00 p.m. in the Lefors City Hall Building for the purpose of electing a District Director of the Gray SW CD. A Director will be elected to serve Zone 3 of Gray County including an area commencing 4 miles N. W. of Lefors then East to the County line and South to 4 miles North of McLean and then West and North to the starting point. The Director will serve a 5 year term and is responsible for coordinating orderly conservation of soil and water in Gray County. Milton Carpenter is the present Director.

Prior to the election a program will be presented by Billy B. Davis

## McLean School Classes To Begin Wednesday, Aug. 18

The McLean Schools will begin classes at 8:45 Wednesday, August 18th for this school term, according to Homer Jefferson, school superintendent.

Students will register on Monday, August 16. The first thru fifth grades will register 9 to 12 a.m. and sixth thru eighth grades will register 1 to 3 p.m.

At the high school ninth grade will register 9 a.m. to 10:30 a.m., 10th grade at 10:30 to 12 a.m. The 11th grade at 1 p.m. to 2:30 p.m. and the 12th grade at 2:30 to 4 p.m.

The school buses will run their regular schedule on the 18th and the school cafeteria will be open.

The schedule for the 1976-77 school term will be as follows:

Aug. 12-13-Teacher in service day.

Aug. 16-17-Teacher Work Day.

Aug. 18-First day of school.

Sept. 6 - Labor Day Holiday.

Sept. 20-Small School in service day.

Oct. 1-Last day of six weeks.

Oct. 4-First day of six weeks.

Nov. 12-End of 2nd six week. End of first quarter.

Nov. 15-Work day for teachers.

Nov. 16-First day of 2nd quarter and first day of 3rd six weeks.

Nov. 23-26 - Thanksgiving holiday.

Nov. 29-Small school workshop.

Dec. 23-31-Christmas Holidays.

Jan. 7-Last day of 3rd six weeks.

Jan. 10-First Day of 4th six weeks.

Feb. 18th-end of 4th six weeks and end of 2nd quarter.

Feb. 21-Teacher work day.

Feb. 22-First day of 5th six weeks and quarter.

March 21-Small school workshop.

April 1-End of 5th six weeks.

April 4-8-Easter holidays and snow days.

April 11-First day of 6th six weeks.

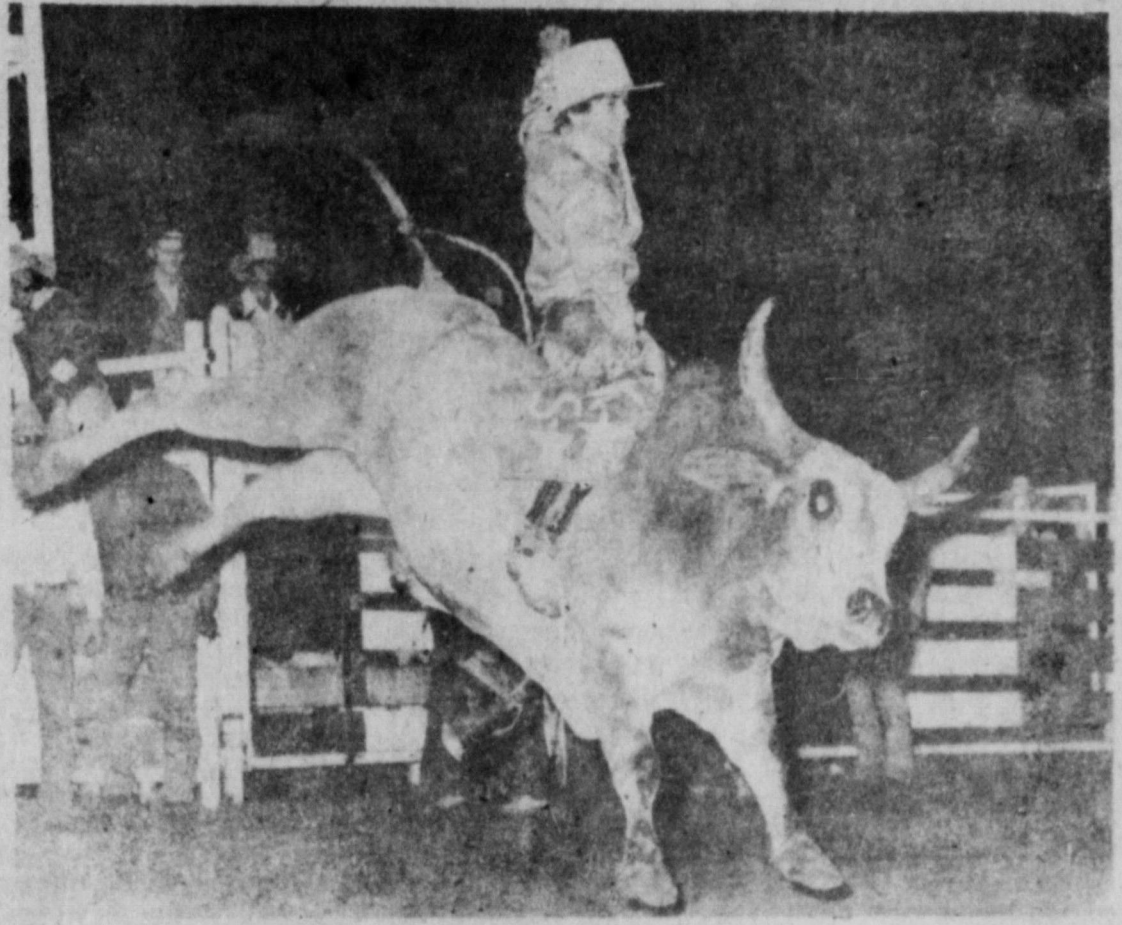
May 23-Jr. High Graduation.

May 24-High School Graduation and end of 6th six weeks and 3rd quarter.

May 25-Teacher work day.

of Pampa on the McClellan Creek Watershed Project.

Refreshments will be served.



Kevin Smith of Canton will be heading for Sulphur, La., on July 31 where he will participate in the National High School Rodeo

finals there Aug. 1-7. Smith, 18, took second place money on this Carpenter bucking bull at the Canton rodeo in 1975.

## Former Resident Earns Rodeo Finals Try

Kevin Smith of Canton placed third in the bull riding at the July 8-11 Oklahoma High School Rodeo finals in Oklahoma and earned a berth in the National High School Rodeo finals in Sulphur, La., Aug. 1-7.

Smith, 18, son of Mr. and Mrs. George Smith of Canton, will compete in the bull riding at the national event.

At the state rodeo finals, the teenager placed fifth in the bareback bronc riding, and blew a stirrup to goose-egg in the saddle bronc competition. Judging the Oklahoma State High School Rodeo finals were Freckles Brown, Soper, well-known bull riding champion in the Professional Rodeo Cowboys Association (PRCA); Bob Tedford of Enid, and Dale Johnson of Bessie.

Only the top four contestants in each rodeo event were eligible for

## McLean 4-H'ers Attend Camp

On July 17 the Gray County 4-H Club went to 4-H Camp at Brownwood. They returned July 19. Attending from McLean were the following: Chad Chambers, Deb Crockett, Mark Tate, Bryan and Beth Smitherman, Leiga, Lance and Greg Gabel, Allen Patman, and Susie Billingsley.

Adults going were Tony Smitherman of McLean, Layton Barton, Marilyn Shirley and Frank Morrison of Pampa.

the national competition. Smith has served as bull riding director of the Oklahoma High School Rodeo Assn. this year. During the 1975-76 school year he served the Canton High School as president of the senior class, football king, and FHA sweetheart. He was vice president of the Canton FFA chapter, president of the Science Club, co-captain of the football team and was

## Sorority To Have Car Wash Monday

Alpha Xi Upsilon chapter of Beta Sigma Phi will have a car wash Monday, August 9 at Stewart's Texaco. We will pick up and deliver or you can bring your car to Stewarts.

## Co. SWCD Board. Have Meeting

The Gray County Soil and Water Conservation Board met at 2:00 p.m. July 21 at the Gray County Courthouse Annex for their regular monthly meeting with Curtis Schaffer, Chairman, Ralph McLaughlin, Milton Carpenter, and Jim Allison present. The McClellan Creek Watershed easements status were discussed. The Red Deer Creek Watershed easements

were also discussed and landowners will be contacted.

Director election for Zone 3 was set for August 14, at 7:00 p.m. at Lefors City Hall.

They discussed the Panhandle SWCD Assoc-

among players in the all-star basketball team. He was also named to an FFA star farmer award. Smith has been offered several rodeo scholarships, but has not decided which college he will attend.

The Smiths are former residents of Alanreed.

## Former Resident Buried At Alanreed

Funeral services for Mrs. Vallie B. Jackson of Pampa were held at 10 a.m. Saturday in Duenkel Memorial Chapel in Pampa. Rev. George Warren, associate pastor of the First Baptist Church officiated. Burial was in the Alanreed Cemetery. She is a former resident of Alanreed.

## Blood Pressure Clinic Friday

A blood pressure clinic will be held Friday, August 13th from 1 to 4 p.m. Everyone is welcome to come and have your blood pressure checked.

The Young at Heart Hall will be open after nine p.m. Friday due to the youth sponsored revival at the baseball field.

Visiting Mr. and Mrs. Johnnie Mertel over the weekend were their daughter and granddaughter, Toni Patton and Wendy of Amarillo.

ational meeting to be held in Pampa, August 25th.

## Screwworms In Collingsworth Co.

Lab identification of Collingsworth County's first 1976 screwworm case today helped swell the year's Texas count to 6,398, says a U. S. Department of Agriculture (USDA) veterinarian.

Dr. M. E. (Cotton)

of the Screwworm Eradication Program, says these cases came from 135 counties. The Program is operated for USDA by the Animal and Plant Health Inspection Service (APHIS).

The Collingsworth County case was treated by Mark Fires, DVM, of Wellington. He collected the sample five miles west of Wellington from the navel of a calf owned by Travis McGuire of that community.

Screwworms are larvae (maggots) of the screwworm fly. Adult females of this species deposit eggs on wounds in warm blooded animals. As eggs hatch the tiny worms enter the wound to feed on live flesh, growing to about half an inch long within a week.

The APHIS program uses the sterile male principle in fighting this pest. Female screwworm flies mate only once in their lifetime.

Meadows asks livestock owners to carefully watch animals for signs of screwworm infested wounds. Free, self addressed, postage paid sample kits are available from County Agents, veterinarians, or livestock inspectors.



## CANCER ANSWER LINE

American Cancer Society  
M. D. Anderson Hospital  
and Tumor Institute

### Skin Cancer Treatments Offering Positive Results

"Like any cancer, the best time to treat skin cancer is the first time," says Dr. Don A. Gard, a surgeon at M. D. Anderson Hospital in Houston.

While superficial skin cancer remains the most common form of cancer in the country today, a number of treatment methods are available which make this form of cancer the most curable.

Common methods of treatment used alone or in combination include surgical removal, radiation therapy, chemical burning and "electric spark" techniques, cryosurgery (localized freezing) and use of drugs in the form of ointments, lotions or solutions.

"I don't think a new method of treating skin cancer is a particular need to us now," says Dr. Gard. "What is most important now is earlier diagnosis and better case followup once a cancer has been treated and the patient returns home," he notes.

Followup is important, he explains, because recurrent skin tumors tend to be a more serious problem and many times are more aggressive, often tending to spread widely.

He suggests that once a skin tumor has been treated, it is extremely important that the patient receive a routine, periodic skin check by his doctor. Any fair-complexioned person who has received extended exposure from the sun would also be wise, he adds, by having periodic skin checks and being observant to changes in the skin such as scaly skin thickenings or pale, waxy, pearly nodules which may ulcerate and crust.

While superficial skin cancers are basically easy to cure when treated promptly, another less common form of skin cancer known as melanoma or "black mole" cancer is much more aggressive. Melanoma often spreads from the

pigmented cells to other parts of the body through the blood or lymph nodes.

Although considered a skin cancer, melanoma can begin in any pigmented cells including the eye. Fortunately, it is considered a rare cancer, affecting only about 0.2 percent of the population.

The success record in treatment of melanoma is much lower than superficial skin cancers, with a cure rate of about 63 percent compared to the 95 percent for the more common skin cancers. The experts note that melanoma requires a very special treatment and must not be treated by "electric spark" or chemical burning techniques.

While changing moles — such as those exhibiting rapid growth, irregular pigment, bleeding or loss of hair — can be danger signals, it is important to remember that not every change in a mole means cancer, warns Dr. Gard.

In recent years the outlook for melanoma patients has dramatically improved through the use of aggressive treatments including new drugs and the growing understanding of human immunological systems.

As with any form of cancer, an early visit to a physician can clear up many uncertainties. In regard to all skin cancer, it is clear that using good sense in the sun, observing changes in the skin and promptly seeing your doctor when suspicions arise, are your best weapons against this most common form of cancer.

*Do you have further questions? Call your local unit of the American Cancer Society or write: Cancer Information Service, The University of Texas M. D. Anderson Hospital & Tumor Institute, Texas Medical Center, Houston, 77030.*

Showing New Line of Fall & Winter  
*Sarah Coventry*  
**JEWELRY COLLECTION**  
American Bank Hospitality Room  
**Thursday, Aug. 12 - 7 P.M.**  
ALL WOMEN AND GIRLS ARE INVITED.  
Bonnie Immel, Hostess

MODELS:

Toy Best, Regina Lamb, Cherry McDonald

Anyone interested in the McLean District sales lady, contact Bonnie Immel, 779-2086 after 7 p.m.

### Market Report

Meat economy at Texas grocery stores currently focuses on luncheon meats, wieners, ground beef, liver and the longer-cooking cuts—such as roast.

Poultry prices are reasonable on both chicken and turkey, and fish is another economy item, according to Gwendolyn Clyatt, a consumer marketing information specialist.

Mrs. Clyatt is with the Texas Agricultural Extension Service, The Texas A&M University System.

At dairy counters, some stores feature homogenized milk at reasonable prices, and they offer lower special prices on sour cream, whipping cream and a variety of cheeses.

Along grocery store aisles, features appear on canned vegetables, tuna fish and peanut butter.

Fresh fruit in good supply at most economical prices includes peaches, nectarines, cherries, bananas, plums, and Thompson seedless grapes — as well as watermelons, cantaloupes and Bartlett pears.

Fresh vegetables on shopping-economy lists are okra, blackeye and purplehull peas, cucumbers, carrots and eggplant—along with tomatoes, green peppers, squash and dry yellow onions.

CONSUMER WATCHWORDS: In choosing grapes, select those at just the preferred degree of ripeness.

Unlike some other fruits, grapes will not improve in either color, sugar or quality after they are harvested.

CALL 779-2447 TO REPORT YOUR NEWS

### Texas Weeds and Wildlife

The summer period is normally one of peace and plenty for Texas upland birds with rapidly growing food and cover, but landowners and sportsmen should start their winter wildlife assistance programs now.

All birds need cover for a variety of uses such as roosting, nesting, feeding, escape from their enemies, and rearing their young. Cover for each of these needs will vary throughout the year from sweet clover and harvested corn to grasses and weeds.

"Weeds cause many landowners problems especially when they grow where they are not wanted," said Richard DeArment, department extension biologist.

"Even clover or corn could be considered a weed if it grows in the wrong place," DeArment continued.

Many weeds are legumes. They fix nitrogen from the air, pass it into the soil, and eventually allow other plants to use it.

Primitive farmers often learned which weeds capture nitrogen, and actually introduced them into their grain fields.

Some of the more common wild plants that furnish seeds for birds include: ragweed, bindweed, smartweed, wild sunflower, Russian thistle, wild oats, broomweed, and croton. A few plants furnish both food and cover such as the Russian olive, aromatic sumac, and black locust.

As late winter rolls around, Texas birds find bare fields, over grazed playa lakes, and burned-out fence rows. Protection from enemies such as owls, hawks, and ground predators is re-

duced to such an extent that bird populations show a sharp decrease in most of the Panhandle and South Plains counties.

Most grass patches, whether near irrigation, surrounding playa lakes, or isolated near cultivation, furnish some protection if not overgrazed. A few turns with a disc along the edge of the grass will allow a patch of weeds to spring up this summer giving needed food and cover for the coming winter.

The next time you look at a weedy field, or even

contemplate spraying or chopping them down, stop and think for a moment that they could be the only thing left for wildlife this winter.

Clothing costs rose 3.1 percent between May, 1975, and May, 1976. This is only about half as much as national economists expected, reports Margaret Ann Vanderpoorten, clothing specialist with the Texas Agricultural Extension Service, The Texas A&M University System.

## CITY - WIDE YOUTH SPONSORED CRUSADE

August 5, 6 & 7

7:30 P.M.

Tent Meeting Baseball Park

TERRY HALE - Evangelist

Director of Damascus Christian Center, Channing, Texas

DAN BOOHER - Music Director

Minister of Music, Central Baptist Church, Pampa, Texas

Nursery - First Baptist Church

FOR FREE TRANSPORTATION CALL: 779-2128, 779-2737, 779-2598, 779-2096

Plan To Attend - Support Your Youth

(In case of rain, Meeting held in MHS Auditorium)

## WHEN YOU BUY OR BUILD A NEW HOME LOOK FOR THIS SIGN

It has been known for some time that methods existed to insure the building of ENERGY EFFICIENT HOMES. But inexpensive energy in the past made it logical to ignore the extra investment such a home would require. Now with energy costs rising, it becomes more and more important to use effectively every bit of energy we consume. The TOTAL ELECTRIC ENERGY EFFICIENT HOME has construction features which result in savings of 40% or more on heating and cooling costs when compared to previously accepted standards for total electric construction.

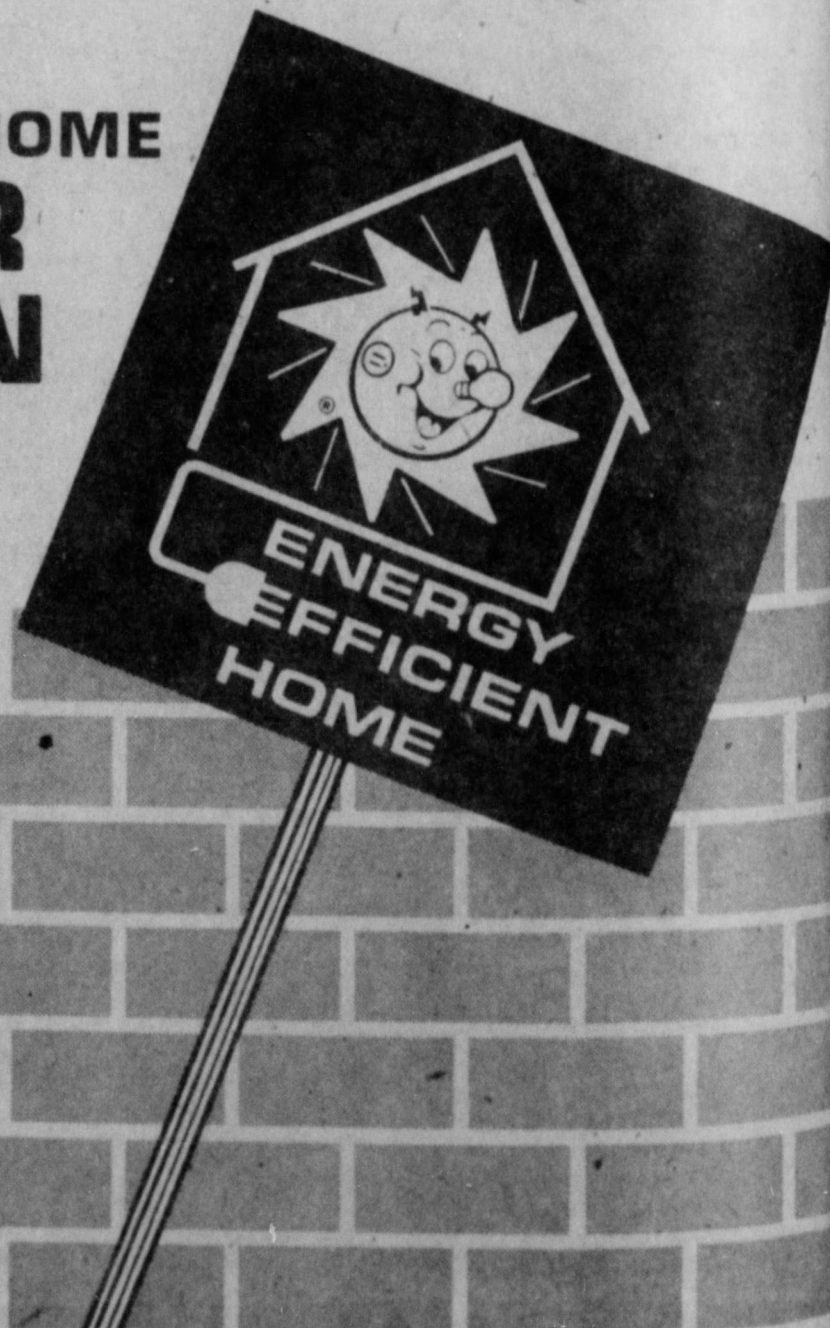
You'll be hearing more about the ENERGY EFFICIENT HOME. If you're considering a newly constructed home, let us work with you and your builder to assure that your new home is designed for maximum comfort and energy savings — the TOTAL ELECTRIC ENERGY EFFICIENT HOME.

And Save Over 40% On Heating & Cooling Costs



CALL US!

Equal Opportunity Employer







### Freeze Melons For Winter Treats

Freezing melons is easy and simple--and watermelon, cantaloupe, and honeydew melons are plentiful with low prices now, Mrs. Sally Coble, foods and nutrition specialist, says.

Consumers may find this is the best time to buy and freeze some for use the year around.

Mrs. Coble is with the Texas Agricultural Extension Service, The Texas A&M University System.

Use only top quality fruit. Remove seeds, peel and cut into slices, cubes or balls.

Cover with a cold sugar syrup, using two cups sugar to four cups water--or pack dry in bags using no sugar. Expel as much air as possible from the bag, seal and freeze immediately.

When using frozen melons, serve them partially thawed, especially those frozen without sugar. Melon slices frozen in a sugar syrup will maintain their texture better and be firmer after thawing.

### Young At Heart Have Meeting

The Young at Heart met Friday night for a pot luck dinner after which a business meeting was opened by the president, Lena Freeman. Minutes were read and approved and the financial report was given by Minnie Fulbright and Sue Simmons. Several items of business were discussed. Games were played by several.

Anyone wishing to join the club will be welcome.

## News From ALAN REED

Visiting Mrs. Jewel Warner over the weekend were Mr. and Mrs. LaVez Lingo and children and Mrs. Ruby Lingo of Amarillo.

Mr. and Mrs. Bill Crisp visited in Lockney this week.

Virginia Dalton of McLean and Lena Carter visited in Pampa Sunday with F. B. Carter and Brad Dalton and Cecilia.

Ty Hill of Lubbock spent the week here with his grandparents, the J. A. Hills.

Mrs. Margarite Burr has been visiting in El Paso these past few days.

Mrs. Edna Carter and daughter Imogene and Shirley Smith visited in Pampa last week with F. B. Carter.

Visiting Venice Wright on July 24 was all of her children and grandchildren. They were Mr. and Mrs. Bob Key and children, Robbie and Anita, Pam, Roland, Edna and Joel of Vernon; Mr. and Mrs. Clifton Wheeler and little son Wayne of El Paso; Mr. and Mrs. Doiel Wayne Wright of San Diego, Calif.; Rovena Colpetzer and children, Shatrel and Brandon of McLean. Doiel Wayne was on leave from the navy and Clifton Wheeler was on leave from the army. Doiel Wayne and wife left August 3 to go back to Calif.

Keep your piano free from dampness, away from steam pipes or stoves, and out of drafts.

### Clinic To Be Held In Hale Center

The Northwest Texas Chapter of the Myasthenia Gravis Foundation announces the date for the Melba Bandy Masters Memorial Clinic for Myasthenia Gravis patients. It will be held September 3rd and 4th, at the Hi-Plains Hospital in Hale Center. This free patient clinic has been funded by a trust set up by the E. E. Masters family of Cotton Center and Amarillo, in memory of Mrs. E. E. (Melba) Masters, who was a victim of myasthenia gravis. The fund is maintained through contributions, enabling the free clinic to become an annual affair. The time will be 10:00 a.m. each day.

The Northwest Texas Chapter supports free patient clinics and a Drug Bank where the myasthenia patient can buy the essential medicating at less cost. The Chapter also sends out educational literature to patients, and has available "A Nurse's Manual" which will be sent on request. They also handle many letters regarding myasthenia gravis problems.

Myasthenia Gravis is a neuromuscular disease, characterized by varying weakness of the voluntary muscles of the body. It is aggravated by exertion, emotion, infection, or stress. It is relieved, in part, by rest and anticholinesterase drugs. Onset may be insidious or sudden. The initial symptom may only be unusual fatigability, which may be accompanied by aching in the neck, back, or legs in milder



Joe and Kay Magee proudly announce the arrival of a baby girl named Mindy Jo on July 25, 1976, weighing 6 pounds, 6 ounces. Mindy has one sister, Misty Mae and one brother, Destry Zac. Her grandparents are Mr. and Mrs. Dent Bradley of Dimmitt, Mrs. Clyde Magee of McLean. Great-grandparents are Mr. C. W. Booth of Dimmitt and Mrs. A. G. Bradley of Tucumcari, N. M.

Rovena Colpetzer is announcing the arrival of a son born August 2. He weighed 6 pounds and 9 ounces and was named Trevor Share. Trevor has one sister Shatrel and a brother Brandon. Trevor was born in the Shamrock Hospital.

His grandmother is Venice Wright of McLean.

AVOID EXCESS NITROGEN ON LAWNS--Using too much nitrogen fertilizer on home lawns can cover up certain lawn problems such as weeds, diseases, insects or thatch buildup, says a turf grass specialist for the Texas Agricultural Extension Service. Adding nitrogen also increases the water requirements of a lawn. Nitrogen applications at the rate of one pound per 1,000 square feet in the spring and two pounds per 1,000 square feet in the fall are sufficient on St. Augustine grass lawns. An additional application will be needed if grass clippings are removed. Bermudagrass lawns require about twice as much nitrogen as St. Augustine lawns, but application rates should not exceed one pound per 1,000 square feet.

If a garment has more than one type of stain and one of them is oil, always treat the oil stain first, using dry cleaning fluid.

cases. Ptosis of one or both eyelids, blurred vision due to difficult focus, or actual diplopia are the most frequent early signs and symptoms. Slurring, nasal tones, jaw weakness, and fatigue on chewing may occur in early or more severe cases. Many complain of arm fatigue on reaching up, as in the care of hair or in shaving. Legs tire on stairs or short walks, or may collapse without warning.

Victims of Myasthenia Gravis, and interested persons are urged to attend the free patient clinic either September 3rd or 4th. Appointment may be made by calling Hi-Plains Hospital, Hale Center, 806-839-2471 extension 36.

DRESSINGS FOR FRUIT SALADS--To spark interest in fruit salads, the Texas Department of Agriculture home economist recommends trying Heavenly Cream Dressing, Citrus Peanut Dressing and Honey Fruit Salad Dressing. Although simple to make, the trio of dressings adds a dramatic flair to Texas watermelon, cantaloupe, strawberries and peaches.



#### HEAVENLY CREAM DRESSING

- 1 pkg. (3 oz.) cream cheese
- 1 Tbsp. lemon juice
- 2 Tbsp. sugar
- 1/4 tsp. grated lemon rind
- 1 Tbsp. rum flavoring
- 1/2 cup whipped cream

Blend cream cheese and sugar. Add rum, lemon juice and lemon rind and blend until smooth. Fold in the whipped cream. Serve on fruit salad. Yield: 1 cup.

#### CITRUS PEANUT DRESSING

- 2 Tbsp. orange juice
- 1/2 cup sour cream
- 1/4 cup peanut butter
- 1/4 tsp. grated orange peel

Blend together orange juice and peanut butter. Gradually add sour cream. Add grated orange peel. Yield: 1/2 cup.

#### HONEY FRUIT SALAD DRESSING

- 1/2 cup Texas honey
- 1/4 cup salad oil
- 1/4 cup hot water
- 1/4 tsp. salt
- 1/4 cup lemon juice
- 1/4 tsp. ground ginger

Combine all ingredients in small mixer bowl. Beat until well blended. Store in a covered jar in refrigerator. Shake well before using. Yield: 1-1/2 cups.

## WORTHY OF NOTE

(This article appeared several years ago in the French Communist publication, "Paix Et Liberte")  
"THE GOSPEL is a much more powerful weapon for the renovation of society than our Marxist view of the world. Yet it is we who shall conquer you in the end. We are only a handful but Christians are millions. Think of the story of Gideon and his 300 companions, and you will understand why I am right. We communists do not play with words. We are realists, and because we are determined to reach our end, we also know how to provide the necessary means. Of our salaries and wages we keep only what is absolutely necessary, and the rest we give up for propaganda purposes.

To this same propaganda we also devote our leisure time and part of our vacation. You, however, give only a little time and scarcely any money for the spreading of Christ's gospel. How can anyone believe in the all surpassing value of this gospel, if you do not practice it? Spread it? Sacrifice money or time? It is we who shall conquer; we are willing to sacrifice all, even life, so that social justice may triumph! You are afraid to soil your hands."

How sad it is that so many are willing to give so much for a cause that will ultimately end in total failure (2 Peter 3) and only a few are truly willing to give themselves (Rom. 12:1-2) for the glory of eternity in heaven (Matt. 7:13-14).

### CHURCH OF CHRIST

J. A. Farber, Evangelist  
4th and Clarendon  
McLEAN, TEXAS

### IT NEVER FAILS



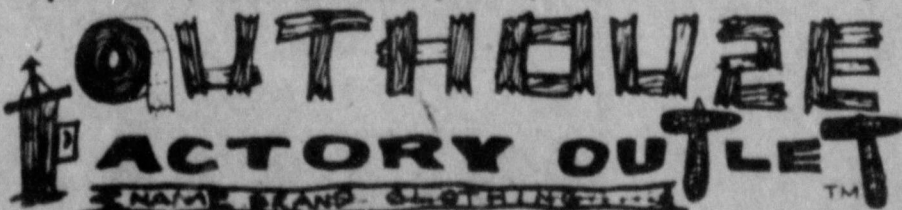
FANTASTIC SAVINGS ON ALL MERCHANDISE

SAVE 30% to 50%

On Name Brand Clothing. Direct Outlet For Several Major Name Brand Clothing Manufacturers.

- SHIRTS
- PANTS
- JACKETS
- RECYCLED JEANS

New Shipments Arriving Weekly Everyday Relief From High Prices



1534 N. Hobart

PAMPA, TEXAS

665-6431



**Wheeler Co. Rodeo Bull Test  
Begins August 13 Station To Begin**

The Wheeler County 4-H Junior Rodeo is scheduled for Friday and Saturday, August 13-14, at the Wheeler Riding Club Arena, Wheeler, Texas. The rodeo, which is sponsored by the Wheeler County 4-H Clubs and 4-H Texans Horse Club, is open to all youth who have not passed their 20th birthday at the time of the rodeo.

Entries are now being taken at the Wheeler County Extension office, Box 448, Wheeler (908/826-5243). Books will close at noon Tuesday, August 10 and no late entries will be accepted. For entry blanks or other information, contact Don King, CEA.

Stock for the rodeo is being furnished by Charlie Plummer of Elk City, Oklahoma. Buckles will be awarded for the first place in each event except pre-school and buckles will be awarded for all around in each division.

Clois Hanner, chairman of the rodeo committee has announced the following age classification and events:

Pre-school (under 1st grade) stick horse barrel race, boot scramble, goat ribbon race, sack race.

School age-9: barrel race, calf riding, pole bending, flag race.

Boys 10-13: Steer riding, breakaway roping, ribbon roping, barrel race and calf daubing.

Girls 10-13: Flag race, calf daubing, walking lead, barrel race and pole bending.

Boys 14-19: Calf roping, ribbon roping, bull riding, bare back riding and rescue race.

Girls 14-19: Rescue race, calf daubing, goat tying, barrel race and pole bending.

Oklahoma's pioneer beef bull test station at Panhandle State University, will begin the twenty-fourth year of testing when cattle are delivered to the test pens at Goodwell, Okla. on Saturday, September 11, 1976.

The Panhandle State station is open to all purebred beef cattle with a minimum of not less than 15/16 purebred breeding on new breeds. Prior cooperators, Oklahoma residents are accepted over out-of-state applicants at the same level; however, near all applicants have been accepted in recent years.

Bulls must have a delivery weight on Sept. 11 equal to 2.15 lbs. per day of age if calved during Oct.-Nov.-Dec. of 1975, and 2.25 lbs. WDA if calved during Jan.-Feb.-March of 1976.

Interested breeders should immediately contact, by letter, M. W. England, Test Manager, Box 186, Goodwell, Ok. 73939; stating number of head, breed, and age. Applicants will then be notified in late August as to pen space available to them.

20 YEARS EXPERIENCE  
**Ralph Alexander**  
OFFICE MACHINE SERVICE  
Personal & Business Machines  
PHONE 835-2997  
P. O. BOX 326  
LEFORS, TEXAS 79054

**AGONIZING PAIN FROM INGROWN TOENAIL?**

Get Outgro<sup>®</sup> for fast relief

Why suffer the agony of ingrown toenail pain when Outgro can give you fast, temporary relief? Outgro toughens irritated skin, eases inflammation, reduces swelling without affecting the shape, growth or position of the nail. Outgro gives you fast pain relief, and makes it easier to cut out the nail, cut out the pain caused by ingrown toenail. Stop ingrown nail pain fast with Outgro.

**Summer Clearance and BACK-TO-SCHOOL SALE**

LARGE TABLE OF \$2.00 ITEMS  
Values to \$12.00

- ALL JEANS & LONG SLEEVE SHIRTS 20% OFF
  - SWIM SUITS 40% OFF
  - Many Beautiful PICTURES 40% OFF
- MANY BARGAINS THROUGHOUT

**The Pot Pourri Shop**

CORN KING  
**BACON**  
LONGHORN PICNIC  
**SHOULDER**  
ALL MEAT  
**FRANKS**

2 LB. PKG.

**\$2.89**

LB.

**75**

12 OZ.

**73**

KELLY  
**COTTAGE CHEESE**

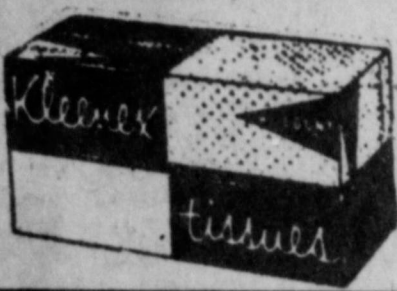
24 OZ

**89**

SPRING RIVER  
**OLEO**

1 LB. TUBS

**2 FOR 98**



200 COUNT

**2 FOR \$1**



9 OZ.

**69**

GRIFFIN  
**APPLE BUTTER**

18 OZ.

**2 FOR 89**

CANATION  
**TUNA**

FLAT CANS

**55**



10¢ OFF LABEL  
GIANT SIZE  
**\$1.39**



**JOY**  
GIANT SIZE  
**69c**



GRIFFIN

**GRAE**

**TOMATOES**  
CALIFORNIA  
**PEACHES**

LB.

**35c**

LB.

**29c**

U. S. NO. 1 NORGOLD  
**POTATOES**

10 LB. BAG

**69c**

WE ARE YOUR TOP STAMP REDEMPTION CENTER



NONE MORE VALUABLE



**SUGAR** 10 LB. BAG **\$2.79**

**CAKE MIX**  
**59¢**



**PEARS**  
2 1/2 CAN **59¢**

**PEAS** 303 CAN **3 FOR 89¢**

**ALOX** REG. \$1.98 SIZE **\$1.49**

**APPLE** NO. 2 CAN **2 FOR 89¢**

**SOUP** CANS **3 FOR 89¢**

**TEA BAGS** 48 COUNT **79¢**



**1 LB. BOX** **55¢**

**PER PLATES** 40 COUNT **\$1.29**

**STRAWBERRIES** 10 OZ. **3 FOR \$1**

**ORANGE JUICE** 12 OZ. **2 FOR 98¢**

**LEMONADE** 12 OZ. CAN **2 FOR 89¢**

**JELLY** 18 OZ. JAR **59¢**



Good Friday and Saturday, August 6, 7, 1976

**Truck Bags Bull Elk**

A truck driver was surprised last week as a large bull elk ran in front of his rig and was consequently killed five miles west of Amarillo. Texas Parks and Wildlife Department identified the huge animal as a three-point bull, western count. The front quarter of the elk was badly mangled and the truck sustained minor damage, but later continued on its way.

"We don't know where the elk came from or where it was going," said Ted Wheelis, regional law enforcement supervisor.

"The elk probably came into Texas from New Mexico either down the Canadian river or from the Raton area," Wheelis continued.

The only established elk herd in Texas is in the Guadalupe mountains of far west Texas where the population of these huge animals is estimated at 300.

It is not uncommon for elk to travel long distances due to drought such as New Mexico is experiencing at the present time. These same elk once roamed the plains with the buffalo, antelope and grizzly but civilization pushed the last remaining herds back into the foothills and mountains of the western states including New Mexico and Colorado.

A 600-pound bull elk is no match for an 18-

**4-H Members Prepare Books**

Gray County 4-H members have been busy preparing record books. They consist of all the records and pictures and a 4-H story. A 4-H member has compiled on his or her project for the year. They were to be turned in by July 26. The McLean 4-H would welcome new members.

**Area Gets Rain**

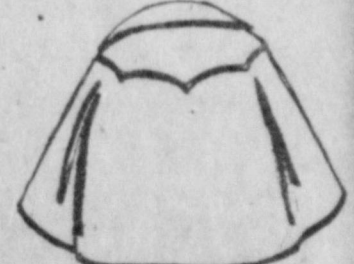
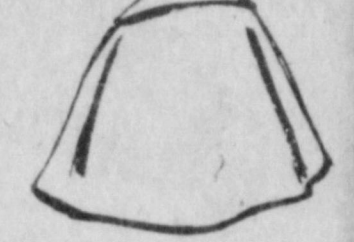
Monday night McLean area received a welcomed rain, which will help to overcome the drought conditions that prevail in the area. Reports of over an inch were received in most of the area.

wheeler crossing those same plains on today's modern highways.

**Belle's Patterns With A WESTERN Flair**



ONE SIZE FITS ALL \$1.25 1239



**Ladies' Cape**

Cape may be worn as a collared short cape or as a cape type vest. Design changes by the different ways the cape is worn.

Printed pattern #1239 in one size fits all. Send \$1.25 for this pattern . . . add 50¢ handling and postage. Send to:

Belle's Patterns P.O. Box 841 - Dept. 422 Hurst, Texas 76053

**Do you know your Blood Pressure?**

Thousands of Americans are suffering from Hypertension—high blood pressure—yet, they do not know it.

Hypertension kills. If not spotted, it can lead to strokes, damage to kidneys, and to the brain. But now, with the Home Blood Pressure Monitoring Kit, you can check your blood pressure at home. Quick and accurate, the Kit includes an American Heart Association booklet, recording forms, and an illustrated instruction booklet.

To order the Kit, fill out the form below and send it, along with \$19.99 plus \$1.59 handling and postage to:

Cardio Supply Company Box 114 Cooper Station New York, New York 10003

Keep tabs on your blood pressure, it's important.



Name \_\_\_\_\_  
Address \_\_\_\_\_  
City \_\_\_\_\_  
State \_\_\_\_\_ Zip \_\_\_\_\_

**Hint #1 How to cube Jell-O**

Dissolve gelatin in boiling water, add cold water, pour into shallow pan and chill 4 hours. Dip knife in warm water and cut into cubes. Dip pan in warm water and invert onto wax paper. For more tips send \$1.00 to: The New Joys of Jell-O® Recipe Book, Post Office Box 3168, Kankakee, Illinois 60901.

Jell-O is a registered trademark of General Foods Corporation. ©1976 General Foods Corporation.





Every year at about this time, the Texas Department of Health Resources issues a reminder that many children would prefer to forget: School will be starting in just a few weeks.

Even though most people are in the midst of enjoying their summer vacations, the personnel of the Bureau of Vital Statistics are preparing for the annual rush. They know that in another month or so, thousands of Texas families will suddenly realize that they're not quite ready for school. One thing they'll need, if they have children that are entering school for the first time, is a birth certificate.

This fall there will be some 230,000 new first graders in the schools throughout Texas, and proof of age is necessary for the first-timers--either in first grade or in public kindergarten. Total public school enrollment is likely to exceed three million children.

At the Bureau of Vital Statistics of the Texas Department of Health Resources, the requests for birth certificates are already beginning to arrive. It takes a sizeable staff just to open the

thousands of letters received daily, let alone search out the requested certificate, make a certified copy, and mail it. Over the years, the process has been refined to the point that most requests are filled within three or four days. After all, the Bureau of Vital Statistics has been handling birth records since 1903.

Last year, the Bureau received, reviewed, queried, and filed 559,000 records of births, deaths, fetal deaths, marriages, divorces, and annulments of marriage. Another 31,200 birth and death records were corrected.

More than 273,000 requests for certified copies of vital records were received, resulting in 386,000 searches of the files. In response to these requests, 254,000 certified copies were issued. In all, nearly three-quarters of a million pieces of mail were received and processed. Services of one kind or another were provided to more than 1.1 million people.

The problem, of course, is the individual who waits until the last possible minute before requesting a record that he needs. So many people make this mistake that the inevitable result, every year, is a log-jam of requests, with all of the delays, confusion, and possibility for error that naturally occur under those circumstances.

Parents can avoid those problems simply by tak-

ing a few minutes right now to request any birth records or other certified records they need. You can write directly to the Bureau of Vital Statistics, Texas Department of Health Resources, 1100 West 49th Street, Austin, Texas 78756. Or you can obtain a certified copy of a birth certificate from the city registrar in the city where the child was born, or the county clerk in the county of birth; duplicate records are maintained in each location. In many cases, a brief visit to the county courthouse will ensure that you have the proper record in the shortest possible time.

If you do write to the state office in Austin, don't forget to include your check or money order for two dollars, the fee for a certified copy of a record. If you don't include the two dollars with your request, that just means more correspondence, more delay, and more frustration for you. And, when you write, include the child's name, the place of birth, the date of birth, and the names of the parents--including the mother's maiden name. All of this information is necessary in order to make sure you receive the correct record you need.

Next year by this time, the experienced personnel of the Bureau of Vital Statistics will be even better equipped and prepared to handle the annual rush of birth certificate requests. This coming October, the

Bureau is moving into a new records facility designed specifically for the protection and handling of more than 20 million birth, death, marriage, and divorce records that are already on file--and the millions more that will be received in the future.

By using automated microfilm equipment and electronic data storage and retrieval, the Bureau is able to ensure that every record is protected from loss--and, just as important, that every record can be found when it's needed. Not only must individual records be retrieved, but as many as 700 requests every year are made for analyses and statistical summaries of the data contained in the records. This kind of information is absolutely essential to many public health programs.

In all of these ways, the Bureau of Vital Statistics exists to serve

### Suprise Birthday Party Is Held

On July 29 a surprise birthday party was held for Vela Corcoran in the home of Mr. and Mrs. Frank Reeves, with Marie Reeves and Bertha Smith as hostesses. Ice cream and cake was served to the following: Mr. and Mrs. Enloe Crisp, Myrt McCoy, Ruby Tibbets, Robin Griffin, Raymond Lane, Pete Rice, Verna Dorsey, Bertha Smith, Vela Corcoran and Frank Reeves of McLean and Pete Evans and Ed Haynes of Shamrock.

Everyone enjoyed games of eighty-eight.

the public. Right now, this important part of your Texas Department of Health Resources can serve you better if you'll take the time to ask for any records you will need in the next few weeks.

Visiting in the E. Bailey home last week were Mrs. Denise Valerie and Jennifer Amarillo and Mrs. Kay Southerland and Brad of Wellington.

### The Di-Ge Difference

Anti-Gas medicine Di-Gel adds to its soothing Antacids.



Freezone is for corns that Absolutely painless. No dangerous no ugly pads or plasters. In days, Freezone eases the hurt... safely helps ease corn. Drop on Freezone--take off!



Invest your Savings with us

We have a great interest in your future



## PANHANDLE SAVINGS & LOAN ASSOCIATION

AMARILLO - 7th & Tyler & Wolfline At Georgia

CANYON - 1901 4th Avenue

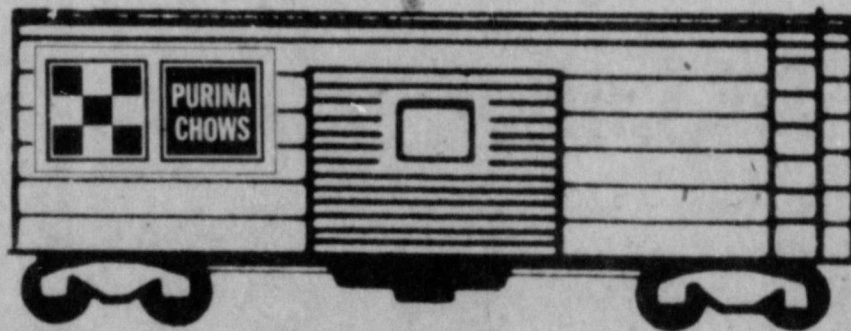
PAMPA - Hobart & Cook

Announcing

# NEW FEED SERVICE

In the McLean Area

David Haynes, working in Cooperation with the Ralston Purina Co., is bringing Top-Quality Purina Chows & Health Products to McLean, Texas.



We're Looking Forward to Serving you with All of Purina's Quality Products. Check with us for your WINTER FEEDS.

# HAYNES FEED SERVICE

Lefors Rt. Box 31

McLEAN, TEXAS

Ph. (806) 779-2087





# NEWS

\*\*\* County \*\*\*  
*Agricultural Agents*  
Texas A. & M. College  
Extension Service

lion head. Bulls over 500 pounds decreased 10 percent and number 2.7 million head.

Heifers, steers and bulls under 500 pounds declined 8 percent and total 39.3 million head.

With numbers on the decline, we are in the liquidation phase of the current cattle cycle. With the current cattle profit picture in the red and prices are depressed below cost of production, we can probably expect this decline in overall cattle numbers to continue for two to three more years.

The July 1 cattle on feed report for the 23 major feeding states totaled 10,035,000 head. This is 17 percent more than the low number of a year ago, but slightly less than July 1, 1974.

Placements of cattle on feed during the April-June 1976 quarter totaled 5,599,000 head, up 1 percent from 1975 and 18 percent above 1974. Marketings of fed cattle for slaughter during the quarter totaled 5,937,000 head, up 18 percent from the same quarter in 1975 but 5 percent below 1974.

I recently received application forms for windbreak seedlings from the Texas Forest Service. The cost of the seedlings have increased to \$10.00 per hundred, which is still a bargain.

Species available include: American Plum, Arizona Cypress, Austrian Pine, Chinese Elm, Honeylocust, Mulberry, Oriental Arborvitae, Osage Orange, Ponderosa Pine and Red Cedar.

The orders are filled on a first come, first served basis. The deadline for ordering trees is February 11, 1977 but I would suggest you come by the office and pick-up an application blank soon. Later in the Fall some species will be depleted.

These seedlings are not to be used for landscaping or ornamental purposes.

**RAIN CAN DAMAGE SORGHUM**--Recent periods of wet weather have caused extensive damage to maturing sorghum in parts of Texas, says an agronomist for the Texas Agricultural Extension Service. Wet weather can cause both loss of test weight and decreased yields. The closer the grain is to harvest when the rain occurs, the greater the damage. Wetting and drying of sorghum roughens the grain kernels and reduces their surface volume; this lowers the test weight. Rain also causes mold to grow on the grain in addition to causing head sprouting, all of which reduces the quality and yield of the crop.

Replacement heifers for beef cows are estimated at 6.5 million head, a decrease of 12 percent from last year. Milk cow heifer replacements remained the same at 3.9 million head. Other heifers increased 10 percent with a total of 8.4 million head.

Steers, 500 pounds and over increased 8 percent and total 18.7 million head.

## The McLean News

210 N. Main 779-2447  
Published every Thursday at McLean, Gray County, Texas. Second Class Postage paid at McLean, Texas 79057.  
Deloris and E.M. Bailey  
Owner and Publishers  
Subscription rates: \$5.78 per year in Gray and neighboring counties; and \$6.83 per year elsewhere.

by Joe VanZandt:  
The rain this week has sure been a nice change and relief to the hot, dry summer. Maybe this rain will end our real hot weather and start us on a set spell which we are long overdue on.

Ranchers need to keep a close look out for screwworms. I received notice that a screwworm case was identified from a calf's navel located 5 miles west of Wellington. Previously screwworms have been identified from Dalhart and the J. A. Ranch. If you suspect maggots of being screwworms, get a sample and submit them to the Screwworm Program at Mission, Texas. Free, self-addressed, postage paid sample kits are available from the County Extension Office in the Courthouse Annex.

As of July 20, Texas farmers and ranchers no longer have to pay sales taxes on certain purchases to be used in the production of food and fiber. To qualify a producer must file an exemption certificate with each firm or business with which he deals.

If you have questions you can call toll free 1-800-252-5555 or go by a field office in Amarillo at 1309 West 8th Avenue, Suite 101.

USDA recently released their cattle and calf inventory as of July 1, 1976. For the U. S. all cattle and calves are estimated at 133.5 million head, 5 percent less than a year earlier but 4 percent above July 1, 1974.

Calves born and to be born during 1976 are expected to total 46.9 million; a decrease of 7 percent from 1975.

Cows and heifers that have calved are estimated at 53.8 million head a decrease of 7 percent. Of this total beef cows declined 9 percent while milk cows decreased only 1 percent.

Replacement heifers for beef cows are estimated at 6.5 million head, a decrease of 12 percent from last year. Milk cow heifer replacements remained the same at 3.9 million head. Other heifers increased 10 percent with a total of 8.4 million head.

Steers, 500 pounds and over increased 8 percent and total 18.7 million head.

## Helps Shrink Swelling Of Hemorrhoidal Tissues

caused by inflammation  
Doctors have found a medication that in many cases gives prompt, temporary relief from pain and burning itch in hemorrhoidal tissues. Then it actually helps shrink swelling of these tissues caused by inflammation.  
The answer is Preparation H®. No prescription is needed for Preparation H. Ointment or suppositories.

**NEED A Babysitter.** 5 days a week. 7:30 a.m. to 4:00 p.m. Call Cowboy Drive-In. 779-2315. 32-1p

**WANTED Teacher's aid** for 1/2 day. File application with Homer Jefferson at the high school. 31-2c

### CARD OF THANKS

I want to thank all my friends for their cards, flowers, gifts and prayers while I was in the hospital. Especially I want to thank the Drs. and nurses for the good care. Thanks again.  
Ada Simmons

### CARD OF THANKS

We would like to take this opportunity to undertake the impossible task of expressing our gratitude to the people of McLean for the prayers, cards, flowers, donations and many kindnesses shown to us during our time of need, the people of McLean have proved once more, that they are the greatest folks on earth. We also appreciated so much the roping given last Sunday by the McLean Roping Club for our benefit. Thank you all very much, and may God bless all of you, as he has blessed us with so many wonderful thoughtful friends.  
Gene and Betty Nicholas

### BIRTHDAYS

- AUGUST 6  
Sidney Kunkel  
Vicki Jo Hill  
Eddie Bailey
- AUGUST 7  
Emory Crockett  
Nelson Christie  
Mrs. Howard Gipson
- AUGUST 8  
Fred Johnston  
Mrs. Charles Patton  
Gerald Tate  
Arthur Vineyard
- AUGUST 9  
Debbie Blackshear  
Lindsey Gilbreath
- AUGUST 10  
Jim Back
- AUGUST 11  
Bick Horn
- AUGUST 12  
Vernon King  
R. D. Patterson  
Billy Orrick  
Rebecca Orrick Bowman  
Joni Pat Myers  
Mrs. Kay Lacy

**PAMPA CHRYSLER**  
DODGE has large selection of trucks, pickups, Chryslers, Dodges, Plymouths, Ramcharger, 4 wheel drive pickups, large selection of good used cars and trucks. Pampa Chrysler Dodge 811 W. Wilks, Pampa, Texas, 665-5766.

**SEPTIC tank pumping** and cleaning, pit pumping, also do ditch digging work. Cleaning lines, all types. Shamrock, Texas. D. H. Sanford, 256-3117. 51-tfc

**NORMA Curry** will begin teaching music when school starts in her home. Please call early for appointments. Beginner and elementary. 779-2134. 32-2c

### WANTED

**ALL type Carpenter** work wanted. Contract or by hour. Write R. L. Leeder, Box 124, Alanreed or call 779-3130. 3-tfc

**HOMEMAKERS** earn those extras. Home party plan - Sell PLAYHOUSE toys and gifts. No collecting. No Delivering. 665-6058. 30-6c

**WILL DO housecleaning.** Can supply references. Call 779-3175. 31-2tp

**BULLDOZING Work** wanted. Britt Hathaway, 779-2585. 24-tfc

**HELP WANTED-Part or full-time dishwasher** at Dixie Restaurant. 29-tfc

**WORK wanted.** Carpenter, repair, remodel, additions. Ritchardson. 779-2013. 30-2p

**McLEAN School's needs** cook for school cafeteria. File application with Homer Jefferson at the high school. 32-1c

### DR. JACK L. ROSE

OPTOMETRIST  
121 Main Shamrock  
Phone 256-3203  
Tues.: 9-5 Fri.: 2-5

### EMBARRASSING, BURNING Itching?

ZEMO relieves itching fast because its special 'anti-itch' medication soothes inflamed surface tissues. Get relief with the first application of soothing, medicated ZEMO--Ointment or Liquid. **zemo**

Ruby Hill had as visitors last week her brother, Bob Glazner and wife from Houston; Mr. and Mrs. Enloe Crisp and Short Hill.

**120 DAY CORN FED BEEF**  
from Eschle Feed Yard, Inc.  
Groom, Texas

Cattle selected for quality and cutability by written guarantee for tenderness and packaging.

200-275 lb. halves .....79¢ lb.  
(Price does include processing)

Call for information:  
**CLARENDON MEAT COMPANY**  
CLARENDON, TEXAS  
806-874-2660

**10 ft. Camper** for wide bed pickup. Call 779-2973. 31-1tp

**FOR SALE - CF&I** and Sheffield baling wire. Phone 779-2017. 31-2p

**AUTHENTIC turquoise jewelry.** Contact Linda Littlefield, 779-2017. 31-2p

**MOBILE HOME** for sale. 14 x 65, two bedroom, two bath. 1975 model. Extra nice. Call 779-2296 after six p.m. McLean. 32-2p

**GUITAR** for sale. Gibson six string flat top. \$225. Brand new condition. Ph. 779-2296 after six p.m. McLean. 32-2p

**MOTORCYCLE** for sale. Honda CB-360T like new. 750 miles. Ph. 779-2296 after six p.m. McLean. 32-2p

**FOR SALE-1 cornet** and one clarinet. 779-2134. 32-1c

**FOR SALE-Ice Box,** two burner electric hot plate, maple dining table, chairs. Ruby Cook. 32-2c

### PUBLIC SERVICES

**ALCOHOLIC Anonymous** will meet each Thursday night at 8 p.m. at the Bank Room. For information call 779-2484 or 779-2507. 30-4c

**ERID your home** of termites, roaches, carpenter beetles. Free inspection. Work guaranteed. United Pest Control. Call Mrs. G. W. Humphreys 779-2743 or 323-6666. 7-tfc

**FOR your plumbing** and heating needs call Wallace Plumbing. 779-3125. 24-tfc

**RENT our Rinse-Vac** new portable steam carpet cleaning systems. McLean Hardware. 13-tfc

### WORMS CAN KILL YOUR PET.

Large roundworms (Ascarids) can kill your cat or dog. And he can pick them up any time—even be born with them. What can be done about the "worry of worms"? Sergeant's® Worm-Away® Capsules mix easily with pet food to rout roundworms. For other worm problems, get Sergeant's Sure Shot® Capsules, Puppy Capsules or Tapeworm Medicine.

### CLASSIFIED

Classified Ad Information  
Ads 6c per word  
Minimum Charge \$1  
Cash, unless customer established account with McLean News.  
Deadline for Want Ads — 5 p.m. Tuesday  
Phone 779-2447

### FOR SALE

**HOUSE FOR SALE-811** Walnut, 779-2049. 44-tfc

**FOR SALE - The Cliff** house, 911 N. Main the McAlister, 701 N. Gray. Both priced to sell. Meador 21-tfc

**FOR SALE - Okra, green** and cucumbers. McLean Plant Farm. Call 2168. 31-2p

**FOR SALE-14 x 68, 3** room, 1972 mobile home. Central air, water heater and skirting. In range and stove, refrigerator. Good condition. Call Cowboy Drive-In 779-2315. Ask Joe. 32-2p

### FOR CEMENT

**Drives-Patios-Walks**

**JIM BIBLE**  
779-2247

**C. MORGAN**  
INSULATION  
Electric & House Insulating  
Blown-in Rock Wool  
FREE ESTIMATES  
Shamrock 256-2708

### WALL MILLER RADIATOR SERVICE

"IS OUR BUSINESS" NOT A SIDELINE  
New & Rebuilt Radiators  
Gas Tanks & Heaters  
Repaired  
376-6666  
612 S JEFFERSON  
MARILLO, TEXAS

### A & B GMC TRUCK

We Have Qualified Technicians To Service All Heavy Duty Trucks, Trailers & Diesels  
801 N. Florida  
273-3771  
Berger, Texas

### WANTED

7 Homes in Need of Siding

Homeowners in this area will be given the opportunity to have their home restyled and rebeautified with the all new grained UNITED STATES STEEL siding, finished with MASOL VINYL U.S. Steel Vynasol siding can be applied to your home with optional decorative work at a very low cost. This amazing new product has captured the interest of homeowners throughout the United States who are fed up with constant painting and other maintenance costs. It is maintenance free, virtually indestructible, carries a 30-year guarantee, provides full insulation summer and winter as well as fire protection and is highly hail-resistant. Our new product can be applied to every type of home including frame, concrete, block and stucco with amazing beautifying results. It comes in several colors.

### WRITE: Siding

P.O. Box 15388 - Tulsa, Okla.

Special Discount Will Be Offered To a Few Houses

Selected For Promotional Purposes.





SOME MORE OF THEM THAR SAVINGS DURING OUR

# VITTLES 'N' VALUES SALE

IMPERIAL PURE CANE

## SUGAR

10 LB. BAG

\$2

DETERGENT

## DRIVE

GIANT SIZE

99

ORCHIDS COLORTOX

## BATHROOM TISSUE

8 ROLL PKG.

\$1

### Tony's PIZZA

FREE SAMPLING  
FRIDAY & SATURDAY.

CHEESE EACH **99c**

HAMBURGER-SAUUSAGE-PEPPERONI

EACH **\$1.19**

BUNTS CANDIES

### ORANGE SLICES

2 LB. BAG

### GUM DROPS

# 89

## COCA-COLA \$3.89

OR 7-UP CASE OF 24 CANS

### CALIFORNIA TOMATOES

LB.

29

### CENTRAL AMERICAN BANANAS

LB.

19

## EAGLE BRAND MILK

15 OZ. CAN

65

KINGSFORD

## CHARCOAL BRIQUETS

5 LB. BAG

69

AIR FRESHENER

## RENUZIT

SOLID

# 39c

FOLGERS INSTANT

## COFFEE

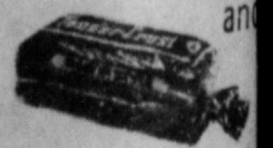
10 OZ.

\$2.99



**SIMPSON'S** LOWEST EVERYDAY FOOD PRICES MARKET

Tendercrust Brea...



Bakery Product

SPECIALS GOOD

Fri. & Sat., Aug. 6 & 7

VOLUME

P. C

Registr

Registr

976-77 f

rank Ph

The Fa

college in

as been

August 25

is will be

August 3

Evening

ents are

aking nig

ll eventn

rged to

vening o

6 betwee

m. Thos

ents who

ble to re

mes sho

he app

uring th

rned by

nitial.

Day stu

nation d

students,

art-time

ister wi

etical gr

ill not

register

of August

All per

o regist

cribed t

ndicated

ule abo

ort to t

office in t

ion Build

ossible

ration pr

The las

er is Sep

No per

mitted to

esday -

fter Sep

o a Tue

lass aft

4, witho

mission

emic De

Academ

transfer

more th

ields of

ng pre-

aw, engi

culture, a

psycholo

Vocati

programs

year cert

sociate de

clude anti

nology, w

ology, ai

technolog

secretari

Veteran

approved,

tial aid

welcomed

programs

and loans

to eligibl

the camp

ent - des

ories.

Further

may be c

acting th

Admission

ips Coll

311, Bc

79007, or

college.7

It is han

than obey."