

The McLean News

Serving McLean and the Area Since 1903

VOLUME 75 McLEAN, GRAY COUNTY, TEXAS THURSDAY, SEPTEMBER 7, 1978 PRICE 20¢ NUMBER 36

from the
distaff side
by Linda Haynes

The first football game I saw the Tigers play was against Telford in 1964. In that game, senior fullback, later All-starer Bob Patton ran 85 or 90 yards for a winning touchdown, and I was hooked on football.

I had seen many football games as a member of the band in high school, but I had never really liked or understood the game until I saw the McLean Tigers play. Knowing the young men on the team, I guess, made the difference.

And what a group of outstanding young men were on that team in 1964. In senior English I watched them struggle with literary heroes like Beowulf and Macbeth, and then to out on the field on Friday nights and become heroes themselves.

And in the intervening years, many young men have proudly worn the Tiger uniform. Outstanding players proved themselves on the football field and then went on to become outstanding young men in other pursuits.

If you missed the two scrimmages that this year's group of young Tigers played, you've missed a real treat. The experts say this is the year for the Tigers to rebuild, since so many lettermen graduated last year, but I guarantee, you've never seen a scrappier bunch than the Tigers of '78.

For as long as I have been an avid Tiger fan I have waited in vain for just one newspaper to pick McLean to win district, but I've never seen it. This year we are picked last by the Amarillo paper, and, of course, state champion Wheeler has been picked to win the district. But I've never paid much attention to the experts, and neither have the Tigers. So from a fan (not an expert) here are my picks for the district in 1978.

1. McLEAN, a young tough team will surprise the opposition this year and win the district crown, behind the adept quarterbacking of Tommy Eck. The Cinderella team of the district will depend heavily on football newcomer Randy Suggs as a receiver, and on quickness and agility of Steve Ellison and Chuck Pierce, Mike Reynolds, and Bick Horn will be the mainstay of the defense. Rex Morris, who suffered an ankle injury in pre-season play, and David Tolleason will add speed and enthusiasm to the Tiger offense. Other standouts on the team will be sophomores James Matheny and Mike McCowen, who began making a name for themselves as freshmen last year.

Other Tigers with great potential are Dick Hode, Johnny Day, Dudley Reynolds, Robert Robinson, Billy Joe Skipper, Spooky Smith, Theron Stubbs, John Curry, Darrell Davis, Matt Davis,

See DISTAFF, Page 2

McLean Weather

DATE	HIGH	LOW
8/30	82	61
8/31	86	64
9/1	89	66
9/2	92	72
9/3	78	68
9/4	88	66
9/5	91	68

PRECIPITATION
9/3 .19
AUGUST TOTAL
PRECIPITATION .79



1978 TIGER FOOTBALL TEAM: Front row: Bick Horn, Matt Davis, John Curry, Theron Stubbs, Spooky Smith, Bobby Sprinkles, Rex Morris, Mike McCowen. Second row: Pete Skipper, Steve Ellison, Billy Joe Skipper, Bill Hambright, Dick Hode, Chuck Pierce, Randy Suggs, David Tolleason, and Allen Mixon. Back row: Jack Dorsett, Joe Riley, Dudley Reynolds, Robert Robinson, Mike Reynolds, Billy Kincannon, James Matheny, Johnny Day, Tommy Eck, Vester Joiner, and Bill Coward. (Photo by Linda Haynes)

Tigers Tangle With Bucks In Second Scrimmage Of Season

The McLean Tigers traveled to White Deer Friday night for a two-part scrimmage against the White Deer Bucks.

The two teams fielded their B teams first, and the Bucks scored three touchdowns against I for the

Tigers. Some McLean players had to play on both the B team and the A squad.

In the junior varsity action, James Matheny scored the Tigers sole touchdown of the evening. Timmy Killiam and John Curry both intercepted passes, and Curry

recovered a fumble. In varsity play, quarterback Tommy Eck connected for several passes and made some

some running yardage. Steve Ellison also turned in a long run for the Tigers. Both varsities were scoreless, although the Tigers

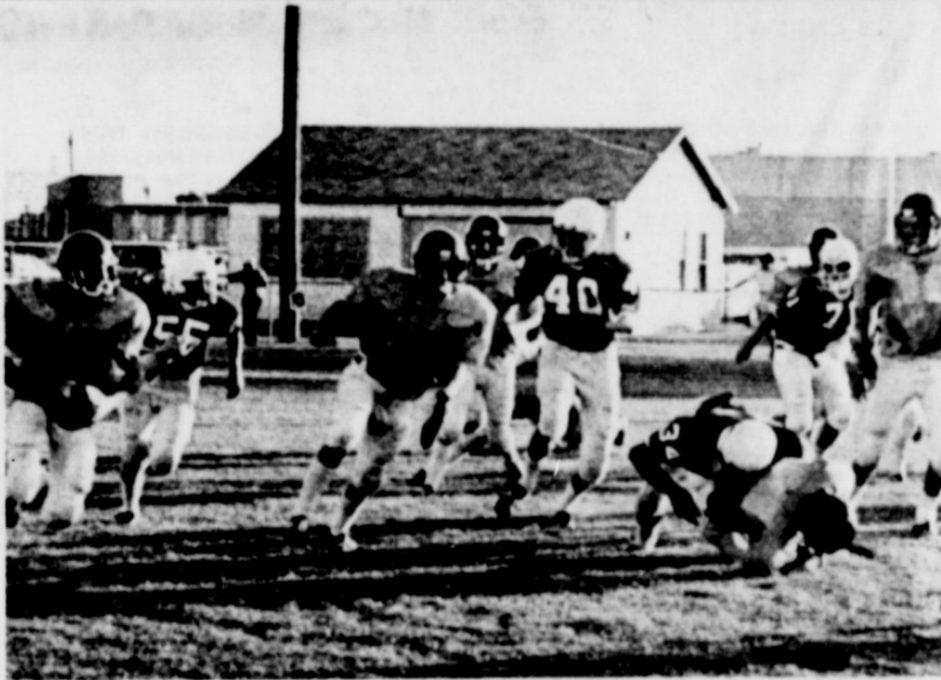
were on the Bucks one yard line before a fumble stopped the drive.

David Tolleason intercepted a pass during the varsity play.

Head coach Bill Coward said he was pleased with the play of the Tigers, al-

though he felt the defense was more polished than the offense. "That's not unusual for this time of the year," Coward said.

The Tigers will play their first game of the regular season Friday night at 8 p.m. against Chillicothe.



Tiger quarterback Tommy Eck carries the ball in a sweep around the right end in Friday night's scrimmage with White Deer. For more pictures, see page 4. (Photo by Linda Haynes)

Missionary To Address Methodists

Dan Lunow, a former German citizen who was a member of the Hitler Nazi Youth Corps, will speak at McLean United Methodist Church Sunday evening at 7 p.m.

Lunow came to the United States to study agriculture. He married an American girl. He worked with the Wycliffe Bible Translation Committee in New Guinea, and now works with the Evan-

gelical Alliance Mission. He and his wife, a registered nurse, have five children. He will speak at Wheeler United Methodist Church Sunday morning.

Reserved Seats Now On Sale

Reserved seats for the 1978 McLean football season are on sale at Parson's Drug. There will be four home games this year.

A chart with last year's ticket holders is on display at the store so that fans will be able to buy the same seats they had last year.

Trew Ranch To Sponsor Musical Show

A musical program featuring musicians from all over the area will be held at the Trew Ranch, west of Alabreed Sunday afternoon beginning at 8 p.m.

The outdoor program is free to anyone who wishes to attend. The Trew family will be among the musicians playing religious and country music.

The program will be cancelled in case of rain.

Hightower, Council Meet

Jack Hightower met with the McLean City Council Friday afternoon at the city hall to discuss the city's problems in securing a loan to replace the city gas system.

However, prior to Hightower's arrival, city secretary Stella Lee called Robert Keown, district supervisor for the Farmer's Home Administration, to check on the status of the loan which was applied for in Sept., 1977.

When told that Hightower was coming, Keown said he would return the call, and a few minutes later, called to say that he had received word that the chief office had agreed to go along on the loan.

The office had taken no action on the loan in several months.

Council members informally discussed the next steps to be taken to call a bond election for the gas system, but no

action was taken.

Hightower used his time with the council to discuss some national problems, and told the group that he would be returning to Washington Sept. 5, and expected that congress would stay in session until about Oct. 7.

He said that the first order of business for the congress would be the energy bill. He stated that in its present form, he would not support the bill as he felt that it would be detrimental to Texas by adversely affecting the state's intrastate gas.

After about an hour's meeting with the council, Hightower left for Wellington and Memphis.

Attending the meeting with Hightower were Mayor Sam Haynes; councilmen Miro Pagan, Dale Glas, Ruth Margo, George Terry, and Boyd Meador; city secretary Stella Lee; and Gray county commissioner Ted Simmons.

City Council To Remove Utilities Tax

At a session of the city council held recently the council voted to remove the city one-percent sales tax on all utilities. The cut will become effective Oct. 1.

The Texas Legislature passed a law during its recent special session repealing the four percent state tax on residential utility bills effective Oct. 1. That law also automatically repeals the one-percent city tax on residential utilities October 1, 1979, unless the city government votes to continue the tax.

Cities that wish, however, can by majority vote of the council repeal the city tax effective October 1, 1979. State Comptroller Bob Bullock said that 39 cities have informed his office that they intend to repeal the city tax, while another 45 said they will retain it.

Simpson, McCarty Place Second In Golf Tourney

Flea Simpson and Heis McCarty placed second in the Shamrock Country Club golf tournament last weekend.

In Saturday's action they were off the lead by two strokes, with a score of 82. Sunday afternoon they even with the tournament leaders throughout the day, but were unable to get the lead they needed to recoup

the two-stroke deficit from Saturday's play.

Although Sunday's action was a close one, Simpson and McCarty finished at 85 with the leaders, while the other two were still two strokes away from placing them in second place in the final tally with a 107.

Both Simpson and McCarty were presented new sets of woods for their second place

win. Simpson said the match was "nip and tuck all the way... a real tough battle."

Juniors To Have Chili Supper

The junior class will sponsor a chili supper at the elementary school cafeteria. Class members will begin serving at 8:30 p.m., Fri. Tickets will be on sale at the door.

McLean Reports One Accident During Weekend

The Labor Day weekend death toll was high, but here in McLean, only one accident occurred during the holiday period, according to John Holland, Texas Department of Public Safety trooper.

Holland, along with B.C. Parker, patrolled I-40 during the three-day holiday period.

Holland said speeding was the main problem, compounded by heavy traffic.

Approximately 20 citations were issued each day by the troopers.

The only Labor Day accident in the McLean vicinity occurred on Main Street at about 8 p.m. Monday.

Allen Roy Turpen of McLean had stopped his vehicle behind traffic at a red light, when he was struck by a car driven by Dale Ray Steel, also of McLean. See ACCIDENT, Page 2

Commissioners Approve Redistricting Proposal

The Gray County Commissioners' Court approved a redistricting proposal Thursday in their regular meeting in Pampa. The county had been given a deadline of Aug. 31 to redistrict by the 31st District Court.

The commissioners voted unanimously to approve a proposal which has been in the planning stages since April. Under the proposal precinct lines in Gray County will remain the same, but Pampa has been divided into four precincts.

Precinct 1 includes the northwest section of Pampa, and is bordered by the city limits on the north and west sides, and connected with the northeast section of Gray County.

Precinct 2 is now made up of the northwest part of Gray County and the southeast section of Pampa.

Precinct 3 consists of the southwest section of Gray County and the southwest section of Pampa.

Precinct 4 is comprised of the southeast part of Gray County and the northeast part of Pampa. It includes

McLean. The reason for redistricting the county in this manner is so that county maintenance bars will not have to be moved, according to Don Hinton, county judge.

The precinct lines were drawn based on an estimated population of Gray County of 31,000, according to Hinton.

County commissioners estimated the populations of their precincts by using estimates from the electric company and the telephone company, according to commissioner Ted Simmons.

The commissioners expressed displeasure with having to redistrict the county. Simmons commented that the cost of redistricting for the county would be high.

The new precinct boundaries will not take effect until 1980, according to Hinton. It will probably take until 1983 before the proposal is fully implemented, he said.

The proposal must now be sent to the U.S. Attorney General, the U.S. Bureau of Census and the Civil Rights Dept., according to Hinton.



U.S. Congressman Jack Hightower visits with McLean city councilmen George Terry and Boyd Meador during Friday's meeting at the city hall. (Photo by Linda Haynes)

The McLean News

LINDA HAYNES, editor and publisher

Lisa Patman, associate editor
210 North Main P.O., Box 11

Published each Thursday at McLean, Gray County, Texas, second class postage paid at McLean, Texas 75057. Subscription rates: \$8.00 per year in Gray County Outside Gray County \$9.00 Open retail advertising rate: \$1.15 National advertising rate: \$1.64 (800) 770-2417

McLEAN, TEXAS
POPULATION 189 (1970 census)

DISTAFF

Continued from Page 1

Bobby Sprinkles, Billy Kincaid, and Jimmy Killiam. The GROOM Tiger, still aching from the defeat by Wheeler last year, will beat the Mustangs, to secure second place in the district. The district crown will still be denied them, because they will lose a squeaker to McLean.

WHEELER, long a powerhouse in the district, will drop to third place this year, with losses to Groom and McLean.

MAHON, TEXLER, BOKER, and FOLLETT will battle it out for the bottom of the district list. To all our friends and subscribers in the area town listed here, please don't take offense! We just wanted to see McLean picked first, just one time!

Congratulations to Mrs. Virginia Holwick and the annual staff for the outstanding yearbook they produced. Highschool students received their 1978 annuals last week, and they are terrific.

This is beginning to sound like a school column, but our youngsters are an important part of our community. They learn so many lessons in extra-curricular activities

that can't be learned in a class room. Whether it is on the football field or the gymnasium or the band hall, they are learning what life is all about.

One of the most outstanding groups in the highschool last year was the Pride of the Tegen Band. This group began the year in 1977 with about 16 youngsters, and this year has 44 members. They received outstanding ratings in marching and concert work last year, even though it had been many years since the band had excelled.

They proved that it is possible to be a winner against tremendous odds. When you watch the band march, tell director Mike Lee and the youngsters in the band how much you appreciate the hours they put in. They represent our school and our town in an outstanding fashion.

A special thank you to Mrs. Frances Kennedy, who brought us another cookbook from the early days of McLean. This one is also undated but must be from the period of about 1910-1920. We will share some of the recipes with you later.

Birthdays

Fifth Grade Elects Officers

by Melanic Billingsley
This year the fifth grade class has 27 students. Thursday, the class elected officers. They are Justin Lilly, president; Lisa Littlefield, vice-president; Lee Ann Tate, secretary; Lee Ann Smith, assistant secretary; Melanic Billingsley, reporter.
In class work the class is learning the presidents, planets, and time tables. Twenty students are in beginning band, and will start learning to play horns this week.



It took astronauts about three days to get to the moon; at that rate, it would take 878,000 years to reach the closest star, Proxima Centauri.

DEATHS

L. H. Berryman

L. H. Berryman died recently in Ada, Okla. He was a school teacher in before for 20 years. He was born Sept. 14, 1902. He was a Methodist. Survivors include his wife, Stella of Ada, Okla.; one daughter, Bobbie Akers, of Stockton, England; two sons, Dr. Eddie Berryman of Lewisville; and Jerry Berryman of Las Animas, Calif.; one sister, Zora Lee of Ada; one brother, Jess Berryman of Ada; 11 grandchildren and two great-grandchildren.

Maggie Brown

Services for Maggie Brown a longtime resident of McLean, were held Friday in the First Baptist Church of McLean with the Rev. Buell Wells, officiating.

Mrs. Brown was born Jan. 25, 1897 in Tennessee. She moved to McLean from Dismitt in 1938.

She married M. E. Brown in Red Oak, Texas, Nov. 2, 1914. He died June 15, 1957. Survivors include four daughters, Mrs. Joe Brown and Mrs. A. J. Nicholas both of McLean; Mrs. Darlene Prince of Lubbock; and Mrs. Clayton Locke of Telford; three sons, R. L., L. B., and Morris, all of McLean; two sisters, Mrs. Mae Chapman of Temple and Mrs. Ira Warren of Washburn; three brothers, Elmer Smithson of Milton Free Water, Ore.; Marshall Smithson of Arcadia, Colo.; and Ben Smithson of Leonard, Tex.

Ruby Myrtle Hill

Services for Mrs. Ruby Myrtle Hill, 74, were held Tuesday at Alameda Baptist Church with the Rev. Buell Wells, pastor of McLean First Baptist Church, officiating.

Survivors included two sons, two daughters, a sister, a brother, 10 grandchildren and 15 great-grandchildren.

Harold Wayne Milam

Harold Wayne Milam, 36, died Saturday in Hereford. Services were held at 2 p.m. Monday at Kelton Baptist Church with the Rev. Gary Bandy of Greenwood Baptist Church of Hereford and the Rev. James Conner, pastor of Kelton Baptist Church, officiating.

Milam was in Hillcrest cemetery in McLean under the direction of Lamb Funeral Home. Milam was born in Arkansas. He lived in Hereford after moving from McLean in 1973. He was manager of H&R Manufacturing Co. five years and was a member of the Greenwood Baptist Church. Survivors include his wife Paula; one son, Jeff, of the home; and a brother, Steve of Canyon.

Blue Grass Music Festival Planned

The hospital guild of the Groom Memorial Hospital is sponsoring a blue grass music festival at St. Marys Hall in Groom Saturday, Sept. 16 from 8 p.m. to 10 p.m. The show will feature Clifford and Grubbs and the DeWoe two. Admission will be charged and the money raised will be used to buy equipment for the hospital.

ACCIDENT

Continued from Page 1. Steel apparently was unable to stop in time to avoid hitting the Turpen vehicle. Steel was issued a citation for failure to control speed. There were no injuries. In an accident on Tuesday, a gabover truck trailer semi-trailer, driven by Lynn Dale Dollins of Olustee, Okla., failed to negotiate a turn at 4-49 and Texas 70, and came to rest in the center of the intersection. Dollins, whose truck was carrying a load of liquid fertilizer, was issued a citation for driving at an unsafe speed.

ROGUE THEATRE
SHOW TIME
8:00 PM ALL THE TIME!
"BIG WEDNESDAY"
A day will come that is like no other.
Starring Jan-Michael Vincent
Sept. 1 through Sept. 14

Conservation Group Sets Meeting

The annual meeting of the North Rolling Plains Resource Conservation and Development Project will be held Sept. 20 at 10 a.m. in Pampa in the Flame Room of the Pioneer Natural Gas Co. Von Kleibrink, project co-ordinator for the 4-winds R.C.D.P. project, will be the speaker.

Samnorwood Revival Scheduled

The Samnorwood Baptist Church will stage its annual revival Sept. 10-17, with services beginning each evening at 7:30 p.m. Evangelist will be the Rev. Mickey Legitt. Charlie Day of Memphis will be in charge of the music.

'78 Yearbook Arrives

McLean's 1978 yearbook was distributed to high school students Friday. The yearbook features a cover designed by 1978 senior, Glenn Oldham. Editors for the annual were Glenn Oldham and Sammy Don Laynes. Business Manager was Brian Stokes, and faculty advisor was Mrs. Virginia Holwick.

Poisoning Results In Million Dollar Loss

Texas cattlemen have lost cattle valued at more than a quarter of a million dollars from prussic acid poisoning caused by drought conditions, reports the Texas Veterinary Medical Association.

Grazing drought-stressed pastures of Johnson grass, Sudan grasses or common sorghums offer the possibilities of prussic acid poisoning, a type of cyanide. Onset of the disease is very rapid with bloating and staggering often occurring within 15 minutes from the time cattle begin to graze on stressed plants. Death occurs shortly thereafter. While immediate treatment is begun, cattlemen are warned to be aware of grazing herds on milfields that did not "make" due to drought conditions. Farmers should let hay lie at least five days after cutting so the volatile cyanide gas can dissipate before baling. Rangelanders are advised to feed cattle hay before turning them into new pastures. The hay provides a diluting effect should the pasture grass contain excessive amounts of prussic acid. Since onset of the disease is so rapid, the cattle should be observed for about an hour. Symptoms will usually appear within that length of time if prussic acid content of the grass is high. Hot weather affects the respiratory system in cattle. Since they don't perspire, the cattle breathe more rapidly to expel body heat. An older animal who has had respiratory problems in the past is more susceptible to prussic acid poisoning because the cyanide derivative of hemoglobin prevents the transport of oxygen by the blood.

Some people once believed that shooting arrows under a fruit tree would cause the fruit to fall off the tree just as the arrows fell.

Helps Shrink Swelling Of Hemorrhoidal Tissues

caused by inflammation. Doctors have found a medication that in many cases gives prompt, temporary relief for hours from pain and burning itch in hemorrhoidal tissues. Then helps shrink swelling of these tissues caused by inflammation. The name: Preparation H. No prescription is needed. Preparation H Ointment and suppositories. Use only as directed.

IMPORTANT NEWS FOR BACKACHE SUFFERERS!
MOMENTUM Tablets are 50% stronger than Doan's.
Before you take Doan's Pills for muscular backache, remember this: MOMENTUM Tablets are 50% stronger than Doan's. That means MOMENTUM gives you 50% more pain reliever per dose to relieve backache. To reduce pain, soothe inflammation so muscles loosen—you can move more freely in minutes! There's no stronger backache medication you can buy without a prescription than MOMENTUM Tablets. Take only as directed.

'Stars In Palo Duro Canyon' On Stage

The walls of the Palo Duro Canyon near Canyon and Amarillo, Texas, will unfold new sights and sounds in September. STARS IN PALO DURO CANYON will run in Pioneer Amphitheatre in the Canyon, September 1-10 except for Wednesday the 6th, at 8:00 p.m., CDST. Led by soloists from Ballet West from New York City Ballet, the first movements against the great cliff behind the stage will be dances. After a few classic numbers there will be a section for children with dancing animals, "Alice in Canyonland," a jazz section, "Broadway Out West" and a western number "Westward Ho!"

Lovett Memorial Library Notes

THE MELODEON by Glendon Swarthout
his grandparents are very special people. Two events in the book bring the miracle of Christmas closer to the reader. The first is the birth of a Christmas lamb, an almost unheard of event in the annals of sheep production. The second is the gift of an antique Melodeon to the church at Clubb's corner. The struggle to get the church in a raging blizzard has an especially poignant ending. Swarthout has written a moving and tender tribute to a time gone by. "The Melodeon" is available at Lovett Memorial Library.

Fashion Forecasts

POPULAR POPLIN



WESTERN AND WONDERFUL is the latest look in pure cotton poplin fur-lined jackets like this one from Miyake.

A fine fabric that's popping up in all sorts of new places lately is cotton poplin in clothes designed for colder weather. One way to work it is the Western Ranch look designed by Miyake in 100 percent cotton poplin. The western hat and exaggerated shoulders are very big. The coat is luxuriously lined for extra warmth, and it's being greeted warmly by women of taste around the world.

AN ALL-WEATHER COAT



DIOR DESIGNED THIS PANTSUIT of shiny, polished, pure cotton poplin. button collar for a sensationally sophisticated look.

Dior has designed this ransuit of polished cotton—comfortable in all seasons. Chicly shiny, this suit shows its fashionably furry lining at cuffs and large lapels. The fuller pantanese under at the top and narrower at the bottom, the jacket is a little longer, and the boots both shorter and higher-heeled than in the recent past. Comfortable, pure cotton poplin can be fitting fashion whatever the weather.

The Stars will be backed by members of the School of American Ballet from New York and by the Lone Star Dancers, renowned for their dances on this same stage during the summer months in "TEXAS".

In the second part of the program, sights and sounds of a different kind will soar against the cliff. In a "Fantasy in Sound and Light" some of the sights and sounds of the past—in the Canyon—will be recreated.

For tickets to the September production, write "STARS", box 208, Canyon, Texas or call 800-555-2182.

Back-To-School Time Means Drive Safely

Major C. W. Bell, Regional Commander of the Texas Department of Public Safety at Lubbock, said today, "There are hundreds of thousands of good reasons why Texas motorists should use extra caution while driving near schools this month.

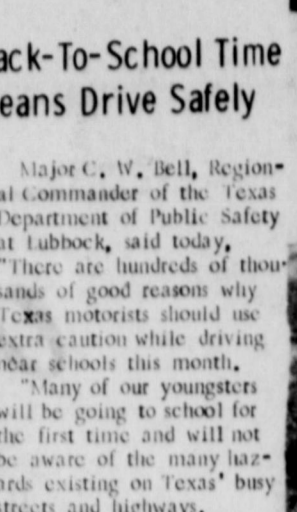
"Many of our youngsters will be going to school for the first time and will not be aware of the many hazards existing on Texas' busy streets and highways.

"Precautionary measures, such as traffic signs and signals, safety zones and pedestrian crosswalks, are virtually useless if your children have not acquired good pedestrian safety habits.

Children's responsibilities to and from school include: observing all traffic signs and signals, walking against the flow of traffic when no sidewalk is present, crossing streets at designated crosswalks, and maintaining orderly conduct while enroute to and from school.

"As parents, we must be absolutely sure our children have a clear understanding of traffic dangers. In addition, as drivers, we must always be on the lookout for school children. It's our responsibility—as a parent—as a motorist—as a citizen," said Major Bell.

In ancient Egypt, the pharaoh had to walk around the walls of a temple to make sure that the sun would continue his daily journey around the sky.



Harris D'Spain grew this 58 lb. watermelon in his home garden. (Photo by Linda Haynes)

School Menus

- Friday - 8
Chalupas
Lettuce & Tomato Salad
Sopapillas
Ranch Style Beans
- Monday - 11
B-B-Q Weiner
English Peas
Mashed Potatoes
Hot Rolls
Butter & Jelly
- Tuesday - 12
Roast Beef
Brown Gravy
Hot Rolls
Green Beans
Mashed Potatoes
- Wednesday - 13
Sloppy Joes
Pickles & Onions
Sliced Tomato
Melon Slices
French Fries
- Thursday - 14
Spaghet w meat
Tossed salad
Cream Corn
Garlic Toast
Fruit

Hospital Report

DISMISSED SINCE August 30:
Ramona Finley
Laine Sine
By a Body
Flaine Bentley
Colleen Nine
Fred Kay
Ethel Loter of Wheeler

IN THE HOSPITAL THIS WEEK:
Lloyd Bowen
Ruby Burroughs
Mary Perry
Lumnie Pruet



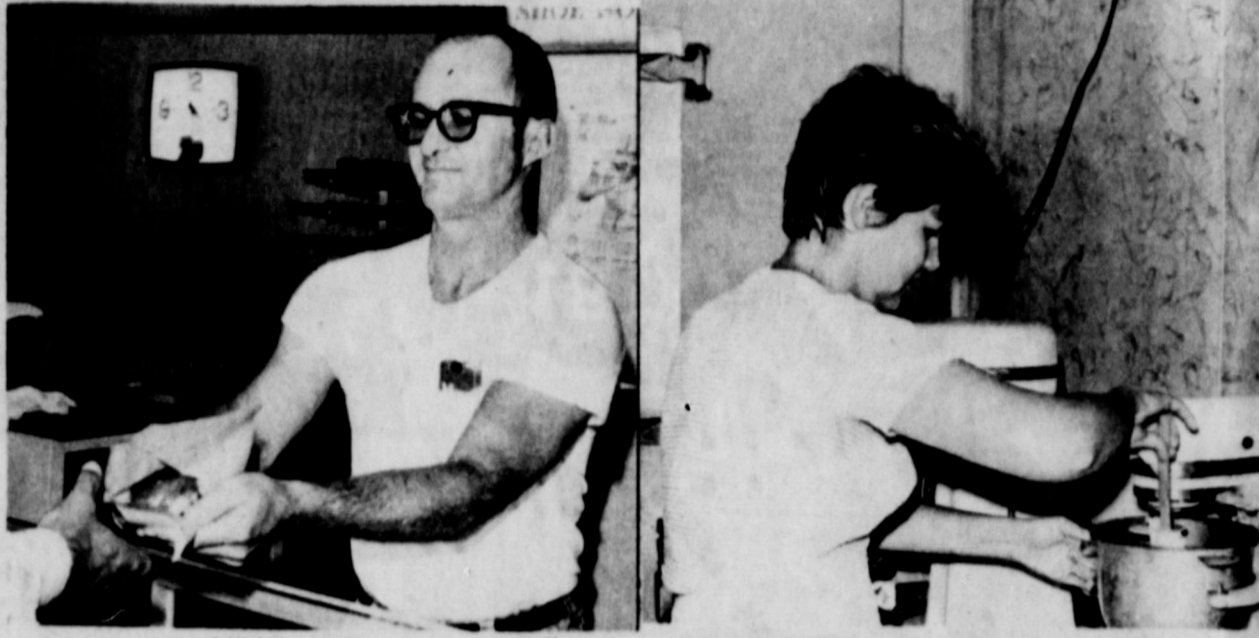
According to Aesop, bats fly at night to avoid their creditors.

Dr. M.V. Cobb
CHIROPRACTOR
Workmen's
Compensation And
Auto Injury Claims
Pho. 256-2133
310 S. Main
Shamrock, Texas

FIRST UNITED METHODIST CHURCH in McLean
Sunday School 9:45 a.m.
Worship 10:55 a.m.
UMYF 6:00 p.m.
Evening 7:00 p.m.
The best physicians are Dr. Diet, Dr. Quiet, and Dr. Merryman.

SUBSCRIBE TO The McLean News
1 year \$8.00 6 months \$4.50
Outside Gray County: 1 Year \$9.00 6 months \$4.75
You can subscribe by mail by completing the form below and mailing with check or money order to:
THE McLEAN NEWS
P. O. Box 11
McLEAN, TEXAS 75057
Name _____
Address _____
City _____ State _____
Zip Code _____

Go Tigers! Beat Chillicothe!
COWBOY DRIVE IN THE DONUT SHOP
'COME IN, PLEASE GO OUT PLEASED'
TRY OUR BREADS:
White, French, Whole Wheat, Banana Nut, Blueberry, Raisin-Cinnamon-Honey
Support The Tigers - Go Out And See The Game.



CHUCK YARNOLD (Photos by Lisa Patman) ESTELLE YARNOLD

Yarnold's McLean's Newest Business

Chuck and Estelle Yarnold, who operate The Donut Shop on I-40 east, have been hap-

py surprised by the success of the bakery, which they opened recently.

The Yarnolds and their two children, Tim and Anita, moved to McLean from Clinton, Okla., where they also operated a doughnut shop and bakery.

When the family first came to McLean, they tried their hand at the restaurant business, opening a cafe, but the results were unsatisfactory. It was only when they switched to the bakery business that the customers began swarming in.

The Donut Shop, which specializes in Mr. Treat doughnuts, also serves a variety of breads, cakes, cookies,

pies, rolls, and special order items.

Both Estelle and Chuck Yarnold said not only are they glad to be back in Texas, but that they are especially glad to be in McLean. They praised the townspeople for their friendliness and helpfulness.

The Yarnolds hope to add a recreation building onto the building. That facility would have pinball machines, pool tables, and a little bit of everything, according to the Yarnolds, who feel that their is a need for some kind of recreation for the young people in McLean.

SBA Opens New Office

Dallas, August 23rd... SBA Regional Director, Alicia Chacon, announced the opening of an office in Wichita Falls to handle the increasing volume of farm disaster loans in the North Texas area. "With 2% of the State declared disaster for farm crops for 1977 we have 13 offices open now scattered throughout the State where farmers and ranchers affected by the drought may apply for loans," said Chacon. The address of the new office in Wichita Falls is: SBA Disaster Office, P.O. Box 1800, Hamilton Building, 2nd Floor, 9th and Lamar, Wichita Falls, Texas, 76707. A loan officer will be at the office from 9:00 a.m. to 4:30 p.m. Monday through Friday. For farmers and ranchers who suffered drought damage and resultant financial hardship, the filing deadline is October 11, 1978, which is unchanged from the original date established when the disaster was declared.

In addition to the Wichita Falls Office the offices now

open in Amarillo, Lubbock, Dallas, and Abilene will continue to serve farmers and ranchers in the North Texas area. The Dallas Office is at 1109 Commerce Street, Room 3030; the Lubbock Office is at 1205 Texas Avenue, Room 422-B; in Amarillo Room 320, Federal Office Building, 205 East 5th Street; in Abilene at the old County Courthouse basement, 301 Oak Street.

SBA disaster office managers are recommending that the farmers come in person to pick up an application and then return it in person. This assures that the application is complete, which in turn expedites processing of the loan. The physical disaster loan program for farmers will include unrecovered production costs on 1977 crops at 3% for the first \$250,000, and 6 5/8% thereafter.

The following information should be submitted with applications for drought assistance:

- (1) A copy of the legal description of land, i.e.,

open in Amarillo, Lubbock, Dallas, and Abilene will continue to serve farmers and ranchers in the North Texas area. The Dallas Office is at 1109 Commerce Street, Room 3030; the Lubbock Office is at 1205 Texas Avenue, Room 422-B; in Amarillo Room 320, Federal Office Building, 205 East 5th Street; in Abilene at the old County Courthouse basement, 301 Oak Street.

(2) Copies of tax records. The applicant should keep the originals as file copies.

(3) A copy of the latest ASCS Notice (Form 476) for allotments and yields.

(4) If claiming a loss on pasture, indicate type of pasture (timber, blue grass, good improved, or excellent improved), and the number of months of normal grazing and pasture produced.

(5) If land is rented crop share, indicate percentage division (i.e., 50/50, 60/40, etc.), and list only your share among the share of the acres.

Chacon explained that there are other items required if the applicant is in a partnership or corporation, which is another reason why coming in person to the offices to initiate the loan application is recommended.

Tri State Fair Art Show Set

The Art Show at the 1978 Amarillo Tri State Fair, Sept. 18-23, promises to be one of the largest and also one of the richest in prize money. In addition to ribbons and awards, \$1020.00 in prize money will be awarded to winners in their respective categories.

The Art competition will be divided into five divisions: (1) Adults (2) Amateur Adults (3) College Students (4) High School (5) Junior (High School and under).

There will be three classes under each division: (1) Watercolor (2) Oil (3) Other Media. First, second and third place winners in the adult and college classes will be \$40.00, \$25.00 and \$15.00. The top winners in each class of high school students and under will be \$25.00, \$15.00 and \$10.00.

Exhibitors will be limited to two entries and will be accepted in the Art Building on the fairgrounds on Friday and Saturday, September 15th and 16th. Judging will be Saturday afternoon, September 16th and the Art will remain on display throughout the fair.

For additional information contact Art Show Superintendent Mrs. L. G. "Maggie" James, 2018 Crockett, Amarillo, Tx. Phone 355-8378 or the offices of the Amarillo Tri State Fair.

HAVE A BETTER SUMMER WITH DRISTAN.

DRISTAN

Today's Dristan relieves more hay fever misery than Contac, Allerest or A.R.M.

Compared to the other hay fever relief medicines:

- Allergies - Dristan relieves
- Sneezing - Dristan relieves
- Watery eyes - Dristan relieves
- Itchy nose and throat - Dristan relieves
- Runny nose - Dristan relieves
- Nasal congestion - Dristan relieves

a good reason to INSURE with US..

CANCER INSURANCE

NO AGE LIMIT

JANE SIMPSON INSURANCE AGENCY

Kiddies-Can-Do-It

A Clever Stunt that You Can Do

With Two Circles and Two Ovals

TWO little love birds, made from two circles and two ovals. You do not have to be an artist to be able to make them, for they are very easy to draw. Yet by starting on little simple drawings you may become a great artist.

Farmfest Scheduled

The second annual SPOT (Southern Plains Oklahoma-Texas) Farmfest will be held Oct. 13, 14, and 15, at the Frederick, Okla., Municipal Airport.

The southwest Oklahoma SPOT Farmfest location allows farmers and ranchers from the High Plains area to talk with major and short-line manufacturers of equipment and related products. A new exhibit hall has been constructed at the airport, containing more than 10,000 square feet of indoor exhibit space. Large implements and equipment will be displayed outdoors. The outdoor exhibit space covers more than 325,000 square feet of concrete. More than 200,000 free tickets

will be mailed to potential SPOT Farmfest visitors. After-show hours entertainment includes tractor pulls and hot air balloon races.

Show hours are Friday and Saturday, Oct. 13 and 14, 10 a.m. to 7 p.m., and Sunday, Oct. 15, noon to 7 p.m.

The Southern Plains Oklahoma-Texas Farmfest is sponsored by the Frederick, Okla., Chamber of Commerce.

The SPOT Farmfest is convenient for the flying farmer and rancher. The show is located on the airport, with plenty of tie-down space, within walking distance of the show, located on the west ramp of the Frederick Municipal Airport.

The Smith family held its 31st annual reunion at the Young-at-Heart Club last weekend.

Attending were Mr. and Mrs. Eddie Riemer, Towdy Casey of Pampa; Beck Fortin of Pampa; Margie Riemer of Pampa; Bertha Smith, Ruby Tibbets, Raymond Smith, Juanita Smith, all of McLean; Mr. and Mrs. Cecil Nicholas of McLean; Mr. and Mrs. Eldridge Atchley of Groom; Mr. and Mrs. Keith Riemer, Nita, Matt, and Keely of Dallas; Mr. and Mrs. Bobby Burgin and family of Groom; Gladys Stewart and Trudy of McLean; Irene Hunt, J.E. Smith of McLean; Marvin Atchley of Childress; Fruit Stewart of McLean; Cora Atchley of Borger; Patt Sutterfield of Spearman; Reba Phillips of Spearman; Juanita Boxford of Spearman; Mr. and Mrs. Bob Smith of Amarillo; Thelma To and Sandy Blaylock of McLean; Loretta Keener of Canadian; Billy Mohrweiser of Canadian; Kristina Mohrweiser of Canadian; and several visitors.

Smith Family Has Reunion

The Smith family held its 31st annual reunion at the Young-at-Heart Club last weekend.

Attending were Mr. and Mrs. Eddie Riemer, Towdy Casey of Pampa; Beck Fortin of Pampa; Margie Riemer of Pampa; Bertha Smith, Ruby Tibbets, Raymond Smith, Juanita Smith, all of McLean; Mr. and Mrs. Cecil Nicholas of McLean; Mr. and Mrs. Eldridge Atchley of Groom; Mr. and Mrs. Keith Riemer, Nita, Matt, and Keely of Dallas; Mr. and Mrs. Bobby Burgin and family of Groom; Gladys Stewart and Trudy of McLean; Irene Hunt, J.E. Smith of McLean; Marvin Atchley of Childress; Fruit Stewart of McLean; Cora Atchley of Borger; Patt Sutterfield of Spearman; Reba Phillips of Spearman; Juanita Boxford of Spearman; Mr. and Mrs. Bob Smith of Amarillo; Thelma To and Sandy Blaylock of McLean; Loretta Keener of Canadian; Billy Mohrweiser of Canadian; Kristina Mohrweiser of Canadian; and several visitors.

The games were led by Mrs. Margaret Chapman.

Mrs. Louise Dickinson was presented a birthday cake baked by her secret pal, and the class sang "Happy Birthday" to her.

Refreshments were served from a flower decorated table to Bonnie Bidwell, Loree Barker, Margaret Chapman, Louise Dickinson, Lucille Cullison, Verna Hudgins, Pauline Miller, Bea Lester, Nora Moore, Gladys Smith, Jessie Watson, Velma Willis, Lenic Smith, Dade Turner, Frankie Smith, Lilly May Williams, Mildred Mantooth, Pearl Lerner, the hostess and one visitor, Glenda Roundtree.

McLean Briefs

Mr. and Mrs. Billy Charles Eudey spent the weekend with his mother Mrs. Annie Eudey.

Mr. and Mrs. Carey Don Smith attended the Christmas market in Dallas this weekend. They also attended the Dallas Cowboy football game Monday night.

Larry Franklin was seen skulking around the streets of McLean this week, wearing a disguise of dark glasses and an obviously false moustache.

Mr. and Mrs. Edward Klecinski of Lancaster, Calif. and their daughter Irma Torrey of Palm Springs, Calif. visited with Mrs. Klecinski's sisters, Mrs. Stella Gibson and Mrs. Grace Window recently.

Visiting in the home of Oba Kinkel this weekend were Mr. and Mrs. Jerry Kinkel and Mike of Lubbock;

Mr. and Mrs. Claude Schaffer of Groom; Mr. and Mrs. Jack Hlick and Kay of Amarillo; and Mrs. Roy Brown of Pampa.

Mr. and Mrs. Robert Gibson, John and Robert Jr. visited last week with Gibson's mother Mrs. Stella Gibson.

Gibson recently retired from the Los Angeles Police Department after 31 years on the force.

Mr. and Mrs. Jerry Ball, Jeremy and Jamie of Amarillo visited with Mr. and Mrs. Sam Haynes and Mr. and Mrs. Thacker Haynes last weekend.

Mr. and Mrs. Norman Trimble from Ashland, Kan. and Mr. and Mrs. Jim Hamer and sons, Jason and Kevin visited in the home of Mrs. Corinne Trimble over the Labor Day holiday weekend.

Your HELPFUL HINTS ABOUT INFANTS

Q. How is formula different from ordinary cow's milk?

A. In a way that could be very important to your baby until he's at least a year old. Formula is designed to contain the same essential nutrients in the proportions that human milk has. Cow's milk is designed for calves and does not have the proper amounts of all the nutrients babies need.

Many minerals and vitamins are found in cow's milk in only very small amounts. Fat found in cow's milk are not easy for babies to digest. In addition, formulas such as Enfamil are heat-treated so that the protein they contain is more easily digested.

Knowing the difference between formula and plain milk may help make a difference between a child who's a little peaked and one who's at the peak of health.

In the Kitchen

Another recipe from the 1920's Methodist cookbook comes from Mrs. Rish Phillips. Mrs. Phillips is the mother of Leta Mae Hess, and resides at the Thomas Nursing Home in Wellington.

DATE CAKE

2 pkgs dates
2 cups sugar

DR. JACK L. ROSE

OPTOMETRIST

121 Main Shamrock

Phone 256-3203

Tues.: 9-5 Fri.: 2-5

Work Guaranteed

Today you can call Long Distance for a song.

WHAT ELSE IS SO NICE FOR THE PRICE (LONG DISTANCE) WHAT ELSE IS SO NICE FOR THE PRICE A

LONG DISTANCE CALL COSTS SO LITTLE YOU'LL AGREE COMPARED TO OTHER THINGS TO DAY SO YOU'RE LONG DISTANCE CALL CAN BE WORTH SO MUCH TO YOU FOR THE LITTLE THAT YOU SPEND

HEAR THE SOUND OF A GOOD FRIEND'S THOUGHTS THE CLOSE LONG DISTANCE WAY HOW'S IT BOUND TO SAY THERE'S NO CHEAPER WAY TO BE WITH FAMILY OR FRIENDS GEE I

GOING WAIT-LL YOU HEAR THIS I'VE GOT A LOT TO SAY TO YOU WHAT MISS YOU WHAT'S THE NEWS FROM HOME GREAT TO HEAR YOUR VOICE AGAIN WHAT

ELSE IS SO NICE FOR THE PRICE (LONG DISTANCE) WHAT ELSE IS SO NICE FOR THE PRICE A

ELSE IS SO NICE FOR THE PRICE (LONG DISTANCE) WHAT ELSE IS SO NICE FOR THE PRICE (LONG DISTANCE) WHAT

ELSE IS SO NICE FOR THE PRICE (LONG DISTANCE) WHAT ELSE IS SO NICE FOR THE PRICE

For less than the price of \$1.40 sheet music you can call clear across the country 3 minutes. Or call after 5 p.m. Sunday through Friday and talk 5 minutes to the tune of \$1.33! Dialed One-Plus, tax not included.

Long Distance.
What else is so nice for the price?

Southwestern Bell

WHY TAKE A CHANCE? OPEN A SAFE DEPOSIT BOX

Where do you keep your insurance policies, your stocks or contracts? Inside a safe deposit box is the best place for your valuables. Costs pennies per week!

Protect your valuables now.

Why take chances? A safe deposit box will protect all of your important papers.

THE AMERICAN NATIONAL BANK
in McLEAN

McLean ATLAS JIM KILLHAM

Plumbing & Heating Co. OFF. 779-2622

Box 464 McLean, Texas Licensed Plumbing

Work Guaranteed



FRANK SIMPSON (Photo by Lisa Patman)

Simpson Completes 30 Years

Frank Simpson, postmaster for the McLean Post Office, recently completed 30 years' service with the U.S. Postal Service.

Simpson graduated from McLean High School in 1944, then served in the Navy aboard ship from 1944 until 1946. He attended Texas Tech in Lubbock for one year, then worked in the oil fields at Borger and Keller, Texas until 1948, when he began his career with the McLean Post Office.

Simpson served as a postal clerk until 1964 when he was appointed Postmaster. He received an award in 1961 for a suggestion he submitted to the postal service. In 1973 he was given a certificate of appreciation for serving 25 years as an uncompensated member of the selective service.

Simpson, whose hobbies are playing golf and fishing,

said that the most rewarding part of his job was meeting people and getting to know them.

Simpson and his wife, Laura, have two children; Curtis, who is presently working at College Station, and Cynthia Gay, who works at the Roundrock Texas Baptist Children's Home.

Junk Food Ban Delayed

Final regulations to ban the sale of candy, soda water, frozen desserts and chewing gum in school cafeterias until after the last lunch period will not be implemented at the beginning of the coming school year, Assistant Secretary of Agriculture Carol Tucker Foreman announced today.

The Department delayed its plan to issue final regulations in time for the new school year in order to consider more fully the large volume of public comments, she said.

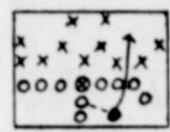
Public Law 95-160, enacted last November, authorized the Department to regulate the sale in schools of foods which compete with the school food program. Rules to implement the new provision of the law were proposed in April. The Department's Food and Nutrition Service received more than 2,100 comments from students, parents, teachers, school administrators, nutritionists, doctors, dentists, the food industry, concerned citizens and many others before the comment period closed on June 30.



A Tiger back gains yardage in the B-team section of the White Deer-McLean scrimmage Friday night. (Photo by Linda Haynes)

X's and O's

by BILL COWARD
Head Coach
McLean High School



It's good to be back writing this column after the summer break. Once again I hope I can help bring news of the entire school program to you. I know the emphasis of this column is athletic, but athletics is only a part of the entire program and our athletes are involved in many things other than just athletics.

I would like to welcome Mr. Carl Dwyer as our new superintendent. In the short time that I have worked with Mr. Dwyer I have found him to be extremely fair and though he may be a "new" superintendent, he is doing many things like a person of many years experience. I think McLean is very fortunate to have a man of Mr. Dwyer's quality.

If you haven't been to the high school since the remodeling began, you probably won't recognize it as being the same building. Despite the fact that there is still some minor work being done, you have provided the students of McLean High School with a first class building to attend school in. The lighting, the lowered ceilings, and the air conditioning have greatly improved the learning environment at M.H.S.

We feel very fortunate to have 26 young men out for football at McLean High School this year. With six seniors providing excellent leadership, we also have six juniors, seven sophomores, and seven freshmen. I have been very pleased with the performance of these players in our two scrimmages. Our defense has really improved and I think our offense will be ready by Friday night.

We open our 1978 season against Chillicothe here in Duncan Field. If you would like season tickets, you may purchase them at the drug store or they will be available at the gate Friday night. We also have parking spaces available for you and you may purchase them Friday night at the gate also.

There may have been some football players trying to sell you a bumper sticker. If so, please do not turn them down. This year's team is raising money to pay for a new weight machine and when you really look at it, the price is not that much. You are actually getting 10 bumper stickers for the price of one.

I'll close with this poem that was written by an unknown author. The title is: "To Any Athlete".

There are little eyes upon you,
And they're watching nig
night and day.
There are little ears that
quickly
Take in every word you say;
There are little hands all
eager

To do anything you do;
And a little boy who's
dreaming
Of the day he'll be like
you.

You're the little fellow's
idol;
You're the wisest of the
wise,
In his little mind about
you.

No suspicions ever rise;
He believes in you de-
voutly,
Holds that all you say and
do,
He will say and do, in
your way
When he's a grown-up like
you.

There's a wide-eyed little

**Powerful anti-itch
drug you can buy
without an Rx!**

Stop itching fast of external vaginal, rectal, and other skin conditions. Doctors find even severe itching can be treated with a special drug. You can now get this anti-itch drug ingredient with no prescription in BICOZENE. Use only as directed. The medically proven cream for itching.

BICOZENE

Tumbleweed Times

By Marvin C. Morgenstern

After the defeat at the state democratic convention in Fort Worth, the Executive Board of the West Texas Chamber of Commerce decided to take the A&M proposal to the 37th State Legislature to convene on the first Monday in January, 1981.

A major change from the original proposal was considered which would make a new proposal sound more attractive to lawmakers. West Texas A&M could be established as a subsidiary of Texas A&M having the same governing board for both schools. When West Texas A&M grew to reasonable size, then the school would gain independent status with a board of its own.

The bill fixed the boundaries within which the college should be located, Texas, west of the 98th meridian and north of the 30th parallel. This area encompasses almost half the state including 107 whole counties.

The area contained one fourth of the population and paid one third of the taxes in the state. A study showed that only one tax dollar out of five was returned to the West Texas area.

The bill passes the House and in the Senate was amended to include a co-educational status.

There were a few breath-taking moments before the final passage of the bill. The session was drawing to a close and many members of the House had already checked out of their hotels and bought tickets to return home.

When a rollcall was taken, it was found there was not a quorum present to do business. A "call of House" order was issued and the sergeant-at-arms was commanded to "arrest" and return enough House members to make a quorum.

Representatives Curtis of Tarrant and Baldwin of Lubbock, made the conductor promise to hold their train until they could return.

The bill was passed and given to Governor Neff for his signature. Thousands of letters and telegrams poured in urging Neff to pass the bill.

Neff vetoed House Bill 154 stating the condition of the state and treasury were the basic reasons \$50,000 could not be spent at the time to establish West Texas A&M.

CROSSWORD

1. Mother	2. Sandalac tree	3. Obey	4. Malt beverage	5. Entrust	6. Angry	7. Fortitude	8. Calm	9. A steersman	11. Miss Day	15. Also	17. Jingles (sym.)	18. Nickel	19. Small restaurant	22. Roman money	23. Lotter	24. Audience	26. Viper	28. Male goose	32. Solar duty (var.)	33. Be undecided	34. Chinese measure	35. A wrong	37. Storage battery plate	39. Worship	40. Dimes	41. Unusual	42. Plague	43. Agree (slang)	44. Marries
21. Sun god	22. Exist	25. Sale notice	26. Of a continent	27. Pek. ingese	29. Some African mammals (colloq.)	31. Soapy	32. A thick mountain soup	36. Jupiter	37. Departed	38. Peel	40. Crow's cry																		

WHERE ARE THEY NOW?

A brief look at some former McLean residents and where they are now.

Bill Eudey, a 1948 graduate of McLean High School has recently been promoted to store manager of Skaggs-Albertson Drug Center in Wolflin Village in Amarillo.

Eileen Beltz Marley, who graduated from McLean High School in 1965, lives in Laverne, Okla. She and her husband Ana Ray have two sons David and Jason. Marley works for an oil company, and she is an

Avon representative, SUMTER, S.C., U.S. Air Force Major Robert D. Weaver, son of Mr. and Mrs. Charles F. Weaver of McLean, has arrived for duty at Shaw AFB, S.C.

Major Weaver, an air operations officer with a unit of the Tactical Air Command, previously served at Maxwell AFB, Tex.

His wife, Sue, is the daughter of Mr. and Mrs. James H. Anderson of Huntsville.



Martin Van Buren was the first president to be born a U.S. citizen. He was born in 1782.

COME AND GET IT!

We specialize in old fashioned vittles for people with hearty appetites. You'll like our friendly service.

DIXIE RESTAURANT
OPEN SEVEN DAYS A WEEK
6 a.m. - 10 p.m.
Ask for your 10% Courtesy Card.
Owned and Operated by the Middleton Family.

MONARCH Mauldoone says...

"THERE ARE HUNDREDS OF REASONS WHY MONARCH GRAIN SYSTEMS ARE 'POPPIN-UP' ALL OVER...COUNT ON IT, POWDER!"

It's not magic...and there's no mystery why more and more people make the final decision and say, "I want a Monarch Grain System on my place."

- It's practically impossible to match the quality of Monarch engineering and manufacturing that goes into our products.
- Our systems perform as we say they will. For example, they're grain-safe, safe from rodents, pests and the weather because of superior construction.
- Our "Active Team" works with you from beginning to end...there's no "sell-in and forget-em" at Monarch Industries.

FINALLY, why not get the complete story and see for yourself!

CALL TODAY OR mail coupon

Rovar Industrial Park
P.O. Box 1788
Kearney, Nebraska 68847
Telephone 308-237-2134

A Division of Monarch Industries, Inc.

JIM BIBLE
Steel Building & Cement Work
779-2247
McLean

A queen termite has been known to lay eggs for 50 years!

DENTURE WEARERS

A major advancement
CUSHION GRIP DENTURE ADHESIVE
one application holds comfortably up to 4 days

The Di-Gel Difference
Anti-Gas medicine
Di-Gel adds to its soothing Antacids.

Di-Gel. The Anti-Gas Antacid.

HEAT PUMP

"THE ELECTRIC SAVINGS MACHINE"

SAVING FOR THE FUTURE

Coin banks help teach children how to save for the future. You can save for the future, too, with the electric heat pump. That's why we call it the electric savings machine. This efficient heating/cooling system can deliver as much as two units of heat for every one heat unit of electricity it uses. But the savings don't stop there. With fuel costs expected to rise during the next two decades, the electric heat pump is a smart investment that will save energy today and in the future.

It's never too soon to start saving...with the electric heat pump. Start today before your future gets here. You'll be glad you did.

CALL US ABOUT THE HEAT PUMP

SPS
SOUTHWESTERN PUBLIC SERVICE

Even well-fed dogs can need vitamins

Sargents
THE VITAMIN EXPERTS

© 1977 West-McCormick Company, a subsidiary of A. H. Robins Co., Richmond, Virginia 23298

McLEAN CATTLE
COMPANY, INC.

JOE'S SHAMROCK

Mc DONALD'S
GARAGE

CORINNE'S
STYLE SHOP

THE
POT POURRI
SHOP

CAREY DON, CHERYL,
STACIE AND DONNIE

CITY OF McLEAN

BENTLEY'S
FERTILIZER

ODELL'S CHEVRON

HAMBRIGHT'S
BUILDING SUPPLY

PARSON'S DRUG

AMERICAN
NATIONAL BANK
IN McLEAN

DOCTOR HEREFORD
THE HESSES

BOYD MEADOR
REAL ESTATE

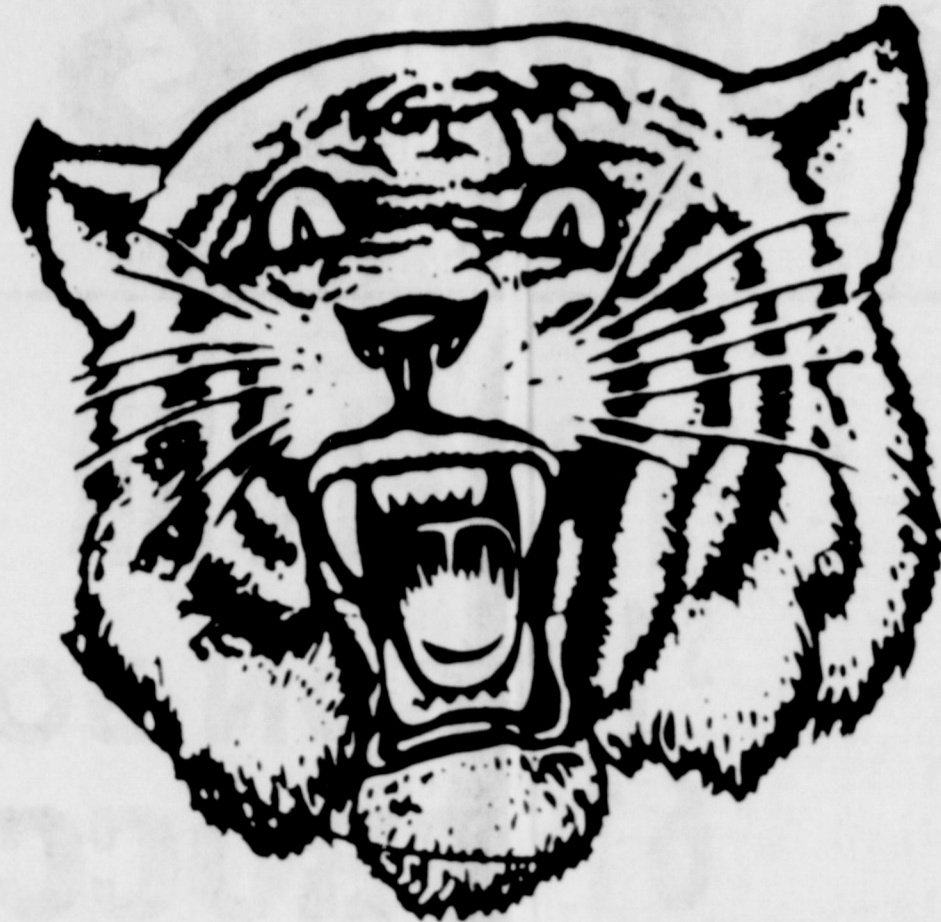
WILLIAMS
APPLIANCES

COWBOY DRIVE IN

GIPSON'S SERVICE
AND SUPPLIES

TERRY'S APPLIANCES

LAMB'S
FLOWER SHOP



THE McLEAN HIGH SCHOOL FIGHTING TIGERS VS. CHILLICOTHE FRIDAY NIGHT SEPT. 8 8 O'CLOCK AT DUNCAN FIELD

1978 FOOTBALL SCHEDULE

SEPT. 8	CHILLICOTHE	HERE	8 P.M.
SEPT. 15	SHAMROCK	THERE	8 P.M.
SEPT. 22	SILVERTON	THERE	8 P.M.
SEPT. 29	CLAUDE	HERE	8 P.M.
OCT. 6	OPEN		
OCT. 13	GROOM	HERE	8 P.M.
OCT. 20	BOOKER	THERE	7:30 P.M.
OCT. 27	TEXLINE (Homecoming)	HERE	2 P.M.
NOV. 3	MIAMI	THERE	7:30 P.M.
NOV. 10	WHEELER	HERE	7:30 P.M.
NOV. 17	FOLLETT	THERE	7:30 P.M.

WINDOM'S
AUTO SUPPLY

DIXIE RESTARANT

MORGAN'S
LAUNDRY

THE DONUT SHOP
CHUCK AND ESTELLE YARNOLD

McLEAN HARDWARE

COLLEEN
AND JOHNNIE F.
MERTEL

MULLANAX'S
MENS WEAR

CROSS WINDS
CERAMICS

JANE SIMPSON
AGENCY

STEWART'S TEXACO

HAYNES
TRIANGLE RANCH

BARKER'S REDI-MIX

CASH OIL CO.
DISTRIBUTOR OF
SHAMROCK GASOLINE

CURRY'S
PROCESSING

CONSUMER
SUPPLY CO.
ARTHUR DWYER

J.R. GLASS
OIL CO.

TEXACO SUPPLY
CUSTER AND RUTH LOWARY

WIL-MART

THE
McLEAN NEWS



Puckett's

FOOD STORES
McLEAN, TEXAS

SPECIALS GOOD THURSDAY THROUGH SATURDAY, Sept. 7-9, 1978



SUGAR 10 LBS.	\$1.89	Gold Medal FLOUR 5 lb.	89c
Lipton's INSTANT TEA 3 oz. jar	\$1.89	Brach's Coconut BON BONS 9 oz. pkg.	59c
Spring River Soft OLEO	61c	Surfine 10 oz. pkg. BROCCOLI Spears	2 for 89c
Lake Region Whole Kernel CORN 303 can	4 for \$1	Surfine CAULIFLOWER 10 oz. pkg.	2 for 89c
Borden's BUTTERMILK 1/2 gallon	79c	Keith Krinkle Cut Potatoes 2 lb. bag	2 for 89c
Borden's DIPS and SOUR CREAM	3 for \$1	Griffins Strawberry PRESERVES	79c
Lake Region PEAS 303 can	4 for \$1	ERA 64 oz. bottle	\$2.20
Shamrock 8 oz. can TOMATO SAUCE	5 for \$1	DAWN Liquid 48 oz. bottle	\$2.20
Griffins Blackeyed PEAS 300 can	3 for \$1	Betty Crocker POTATO BUDS 1 lb. box	95c
JELLO 3 oz. pkg.	4 for 89c	Griffins BAR-B-QUE SAUCE 18 oz.	59c
Lake Region Green Beans 303 can	4 for \$1	Post 40% BRAN FLAKES 16 oz. pkg.	79c
Betty Crocker Pudding CAKEMIX	69c	Nabisco OREOS 1 lb. pkg.	\$1.09
Swifts VIENNA SAUSAGE	2 for 79c	Frito-Lay FRITOS Corn Chips Reg. 83c	59c
Sunshine CRACKERS 1 lb. box	2 for 98c	LETTUCE head	29c
Del Monte PEACHES 303 can	59c	TOMATOES 3 lb. for	\$1
Surfine TUNA	79c	US #2 Norgold Potatoes 10 lb.	75
Sunshine VANILLA WAFERS 12 oz. pkg.	59c	Korn King BACON 2 lb.	\$2.98
OIL OF OLAY 4 oz. reg. \$4.50	\$2.47	Kraft Velveeta CHEESE 2 lb.	2.19
		FRANKS 12 oz. all meat	93c

Cottonelle or Charmin **BATHROOM TISSUE** 4 roll pack 89c

CLASS: Reade (1) Displ column Card All has a with Dead PHON EXT for 5 FOR kitel with Call FO coy an 661 FO mo day at 1 FO \$1, 23: B fi n Ji P D e C r w I u P 8 FC ar fo isl or ca Be Re

Classified Ads

CLASSIFIED AD INFORMATION
 Reader Ads 8¢ per word
 (Minimum Charge \$1.50)
 Display Classified \$1.60 per
 column inch, Rerun \$1.30
 Card of Thanks \$2
 All ads cash, unless customer
 has an established account
 with The McLean News
 Deadline for Want Ads--
 Noon-Tuesday
 PHONE 779-2447

FOR SALE: Two piece Kroehler
 living room furniture. In excel-
 lent condition, 701 N. Main,
 779-2657, 33-tfc.

PIANO IN STORAGE Beau-
 tiful spinet-concorte stored
 locally. Reported like new.
 Responsible party can take
 at big savings on low pay-
 ment balance. Write
 Joplin Piano, 1516 Valeska,
 Waco, Texas 76703.

"WORM GROWERS NEEDED!"
 Monthly Income! Buy back
 contract! Management oppor-
 tunities! "Free brochure"
 (Call toll-free 1-800-448-4511,
 operator 381.) Worms, Box
 4169, Jackson, Mississippi
 39216, 33-tfc

I WOULD LIKE to have a
 white Persian kitten. Call
 779-2196. 36-tfc

Public Notice

McLEAN LODGE 889 AM
 & PM will honor past masters
 of that lodge in open meet-
 ing, Thurs. Sept. 14 7:30
 p.m. Members are encour-
 aged to bring their wives. 36-tc

MISCELLANEOUS

There will be a new program
 from 5 - 6 p.m. every Tues-
 day evening on station 1580
 KBY T radio - Shamrock - The
 "Hour of Light" with Nina
 Hervey and Gladys Stewart
 Sponsored by Stewart's Reli-
 gious Book Store and Service
 Station. 33-tfc.

NOTICE
 THE CITY OF McLEAN,
 Texas will hold a public
 hearing for the budget of the
 city for the fiscal year
 1978-79 on Tuesday, the
 12th day of September, 1978,
 at 8:00 p.m. at the City
 Hall.

For Sale

EXTRA GOOD USED Saddle
 for Sale, 779-2534 35-2c

FOR SALE: 2 Bedroom, 1 bath,
 kitchen, living room, 5 lots
 with fruit trees, 308 N. Donley,
 Call 779-2530 35-2p

FOR SALE: STEEL traps for
 coyotes, bobcats, etc. Also
 an antique chifforobe, Call
 665-4480 35-2p

FOR SALE: TWO bedroom
 mobile home. Call 779-2521
 days or come by 230 N. Sitter
 at night, Reasonable. 35-2p

FOR SALE: 17 ft. horse trailer,
 \$1,000. Call George Eck, 779-
 2336. 32-tfc

BLACK-EYED PEAS and okra
 for sale, Call 779-2716. If
 no answer, call 779-2334.
 Jack Ayers. 34-4p

PAMPA CHRYSLER
DODGE has a large selec-
 tion of trucks, pickups,
 Chryslers, Dodges, Ply-
 mounts, Ramchargers, 4
 wheel drive pickups,
 large selection of good
 used cars and trucks.
 Pampa Chrysler Dodge,
 811 W. Wilks, Pampa,
 Texas 665-5766. 11-tfc

FOR SALE: MODERN 2 bedroom
 and 2 bathroom house priced
 for quick sale. Will sell fur-
 nished or unfurnished. Located
 on N. Donley St. Large loan
 can be assumed if needed.
 Boyd Meador
 Real Estate Broker 34-tfc

FOR SALE: 12" Paulin
 chain saw, 6 months old,
 779-2079 30-2p.

FOR SALE: RED and yellow
 delicious, winesap, and many
 other varieties of apples
 3 1/2 miles south of Alan-
 reed, W.O. Hommel Orch-
 ard 36-TFC

GARAGE SALE: TOOLS
 and miscellaneous, 517 Clar-
 endon Friday, Saturday, and
 Sunday. 30-1p

Wanted

MAD WANTED-PAID on per
 room basis, Apply Dixie Motel.
 35-2c

HELP WANTED - Cowman
 willing to work at building up
 an honest liquid feed business
 that has a good future.
 Loomix - Natural protein -
 Natural consumption control,
 Fully patented, Ted Nelson,
 The Cattleman Feed Service,
 Wheeler, Texas, (806)-826-
 3650, 33-4p.

"WORM GROWERS NEEDED!"
 Monthly Income! Buy back
 contract! Management oppor-
 tunities! "Free brochure"
 (Call toll free
 1-800-448-4511 Oper. 381)
 Worms, Box 4169, Jackson,
 Miss. 39216 34-4p

CARPENTER WORK
 wanted--will remodel,
 build additional rooms.
 R. L. Leeder, 779-3181.
 14-tfc

WANTED - ROOFING,
 CALL Coy Smith, 779-3137
 36-tfc

Southwestern Bell Granted Increase

Southwestern Bell Telephone
 Company's tariff, filed in com-
 pliance with the Public Utility
 Commission's final order issued
 on August 2nd granting SWB a
 \$24.5 million increase, has
 become effective. (SWB had
 requested \$214.3 million.)
 The tariff was filed with the
 Commission staff August 4th
 and approved on August 14th.
 This latest increase will NOT
 affect basic residential and
 basic business service rates.
 (Some optional business ser-
 vices may increase slightly.)
 There will also be NO increases
 in long distance rates, directory
 assistance charges, pay telephone
 or WATS service.
 The increase will however
 affect customers' moves,
 connections and/or changes in
 service.
 A new alternative rate system,
 referred to as Residential Meas-
 ured Rate Service, will be of-
 fered in portions of 15 exchanges
 on an OPTIONAL basis and will
 be available within six months.
 It will be priced between 60
 and 70 percent of single party
 flat rate in each exchange,
 with 25 free calls and a charge
 of eight cents per call for each
 call over the minimum.
 The new residential service
 will be made available in por-
 tions of the following exchanges:
 Austin Metro Exchange, Amar-
 illo, Beaumont, Corpus Christi,
 Dallas Metro, Fort Worth Metro,
 Galveston, Harlingen, Houston
 Metro, Lubbock, Midland, San
 Antonio, San Benito, Tyler and
 Wichita Falls.
 The new rates became effective
 August 14, 1978, with the
 exception of the residential
 measured rate service which will
 be implemented within six
 months, and any changes in
 billing will be reflected in cus-
 tomers' bills dated August 15th
 and mailed August 22, 1978.



Archie Dwyer, center, in his role as the father in Neil Simon's
 "Come Blow Your Horn."

Quarterly Tax Due Sept. 15

Taxpayers making estimated
 tax payments on their 1978
 income must pay the third in-
 stallment by Friday, Sept. 15.
 The tax installment should
 be paid using declaration-
 voucher 3 from the Form 1040-
 ES package, the Internal
 Revenue Service said.

Taxpayers whose anticipated
 income during 1978 has
 changed may have to file an
 amended declaration. Space
 appears in the estimated tax
 package to compute an a-
 mended estimate, the IRS
 said.

For more detailed informa-
 tion, taxpayers can obtain IRS
 publication 505, "Tax Withold-
 ing and Declaration of Estim-
 ated Tax," available free from
 local IRS offices. Supplies of
 the Form 1040-ES package are
 also available from these
 offices.

Since limited production and
 mailing capability make it
 necessary to limit the ordering
 period for these sets, Mrs.
 Hackel urged individuals in-
 terested in obtaining 1978 Un-
 circulated Coin Sets to order
 as soon as possible. Orders
 will be accepted for approx-
 imately two months, and the
 sets will be mailed by the end
 of December. The Mint must
 reserve the right to cancel any
 orders which exceed production
 capacity.
 The Director noted that
 those individuals already on
 the Mint mailing list would
 soon receive their order cards.
 Individuals not on the mailing
 list may order sets by writing
 to the Bureau of the Mint

Dwyer Stars In Simon Hit

A former McLean resident
 is currently starring in the
 Neil Simon comedy "Come
 Blow Your Horn" at the
 Country Squire Dinner
 Theatre in Amarillo.

Archie Dwyer, son of Mrs.
 Druce Dwyer, and brother of
 Carl Dwyer of McLean,
 plays the father of two sons
 in the laugh-provoking com-
 edy.

The Simon play is now
 on stage at Amarillo's
 Country Squire Dinner Thea-
 tre, 1-40 and Grand. Per-
 formances will be presented
 each evening Tuesday through
 Saturday through Sept. 16.

Duck Population Up

LUBBOCK--Recently complet-
 ed surveys in major breeding
 areas showed a teal breeding
 population 50 percent larger
 than that recorded in 1977
 and duck hunters should find
 ample shooting opportunities
 during the nine-day season
 set for Sept. 16-24, 1978.
 The higher counts in the
 northern nesting regions are
 the result of better prairie
 habitat and an increase in
 the number of ponds in the
 North-Central United States
 and Provinces of Canada.

Pond and playa conditions
 in the Texas Panhandle and
 on the South Plains are rated
 from dry to excellent by Max
 Traveck, waterfowl biologist.
 Several areas through the
 central part of the Panhandle
 received heavy rains this
 summer with most playas
 holding some water.

The daily bag limit will
 again be four teal with
 shooting hours from sunrise
 to sunset.
 Teal hunters will be requir-
 ed a federal migratory
 waterfowl stamp available
 at most U.S. Post offices.
 The stamp must be signed by
 the holder across the face of
 the stamp with ink or other
 waterproof liquid.
 Shotguns used to hunt and
 bag teal must be plugged to
 hold no more than three shells
 in the chamber and magazine
 combined. Rifles and pistols are
 illegal firearms while hunting
 any migratory waterfowl includ-
 ing the teal.
 The regular season for ducks,
 geese and cranes will be set in
 Austin August 31.
 "What I value more than
 all things is good humor."
 Thomas Jefferson

The McLean News Business Directory

<p>Addington's Western Store Complete Line Of Quality Brands Western Wear "Complete Ranch Outfitters" Where Your Search Ends And Hospitality Begins 669-3161 Pampa, Tex. 119 S. Cuyler</p>	<p>Carpet Cleaning Professional Carpet Cleaning Residential & Commercial - Free Estimates - Vernon Steam-Way Carpet Cleaners 779-2574</p>	<p>Blakemore FRESH PROTEIN FED CATFISH "Dressed While You Wait" BLAKEMORE MOTOR CO. BUILDING Phone 255-3287 400 North Main Shamrock, Texas 79079</p>	<p>Johnnie F. Mertel Boot Shop Tony Lama, Texas, Acme, Justin Leather Goods Shoe Repair phone 779-2161</p>	<p>PENNINGTON Car Sales We specialize in used cars and pickups 113 Commerce McLean 779-2535 779-2261</p>	<p>Need a plumber? new tires? a carpenter? Check the McLean News Business Directory for all your needs.</p>	
<p>Kirby Sales & Service NEW, USED, REBUILT PARTS & SERVICE FOR POPULAR BRAND 512 S. CUYLER 669-2990</p>	<p>Shamrock Auto Supply Lawnmowers, Delco Batteries, Shock Absorbers 312 N. MAIN 256-2129 SHAMROCK, TEXAS</p>	<p>BARKER REDI-MIX READY-MIX CONCRETE. BACK-HOE SERVICE PH. 779-2703 OR 779-2869</p>	<p>SCOTT'S THE LAWN PEOPLE Scotts Lawn & Garden Fertilizer "It's Guaranteed" Bentley's Fertilizer</p>	<p>Brannon's Decorator & Supplies CUSTOM DRAPERIES, RODS, GIFTS, CANDLES, SILVER, STATIONARY COOKWARE 218 N. Main Shamrock, Tex. 256-3652</p>	<p>National Auto Salvage 665-8222 or 665-3082 1 1/2 miles west of Pampa on highway 80 large selection of used auto parts We appreciate your business</p>	<p>Tech Steel Buildings MANUFACTURERS AND COMPLETE ERECTION ON JOB SITE 274-2562 SOUTH OF BORGER</p>
<p>RIDGWAY CONSTRUCTION CO. Remodeling; Cabinets; Repairs; Painting; Room Additions, PHONE 779-2618</p>	<p>McLean Hardware Complete hardware line -Dishes-Paint- Tools-Gifts 779-2591</p>	<p>SAFEMARK Safemark Tires & Batteries Bentley's Fertilizer 779-2209</p>	<p>Parson's Rexall Drug Rexall 24-Hour Prescription Service Shower Gifts Cosmetics</p>	<p>THE DONUT SHOP Doughnuts, Cookies, Cakes, Pies, Breads, 779-2212</p>	<p>RITCHEY'S PLUMBING SERVICE COMPLETE PLUMBING REPAIRS CALL ANYTIME I 779-2577</p>	<p>DOZER WORK MOTOR GRADER WORK Ponds, Levees, Fire Guards Feed lots, Drapings BRITT HATHAWAY 779-2585</p>
<p>CONCRETE FINISHER Over ten years experience Specializing in driveways, patios, sidewalks, porches. Call 665-8922 Pampa</p>	<p>SADDLE REPAIR Custom Saddles Triangle D Saddle Shop McLean, Texas Phone 779-2562</p>	<p>DON MILLER RADIATOR SERVICE "IS OUR BUSINESS" NOT A SIDE LINE • New & Rebuilt Radiators • Gas Tanks & Heaters Repaired 376-6666 612 S. JEFFERSON AMARILLO, TEXAS</p>	<p>LAWN MOWER and Air-Cooled ENGINE REPAIR 619 West First Street Phone 779-2877 PICK-UP AND DELIVERY</p>	<p>NEED CUSTOMERS? The McLean News Directory is the place to catch them! Ask about our rates.</p>	<p>BENTLEY'S FEED & FERTILIZER PURINA FEED FOR EVERY NEED Purina SUP-R-LIX LIQUID SUPPLEMENT WE DELIVER 779-2209</p>	

