

The McLean News

Serving McLean and the Area Since 1903

VOLUME 75 McLEAN, GRAY COUNTY, TEXAS THURSDAY, OCTOBER 12, 1978 PRICE 20¢ NUMBER 41

from the
distaff side
by Linda Haynes

This week is fire-prevention week throughout the nation. McLean is one of the most fortunate communities of its size in the country with an outstanding fire-department that is recognized throughout the area.

In Saturday's Amarillo Globe News, Paul Timmons wrote in his column "The Surveyor" about the recent difficulties Potter County and the City of Amarillo have had with fire protection for homes outside the city limits. He suggests that Potter County look at a piece of equipment operated by the fire department at McLean. It is a tank truck with a Bean System high pressure fog pump mounted on a platform on the front bumper. That rig can get in behind a grass fire and smother it in fog.

McLean's fire department has managed through the years to purchase good equipment, and it has been primarily through the sound financial management of the department that this has been possible.

One of the men who does not get enough credit for the many hours he devotes to the fire-department is Jim McDonald. Jim has served the department for many years as the fire-chief, and spends most of his spare time each week on department business. Jim receives a \$15 salary (the whole department is volunteer) but does the job because of his commitment to the community of McLean.

All the volunteers of the McLean Fire Department should get a special thank you from the people of McLean. You don't really appreciate these men until you need them. They are dedicated and concerned about our town. Take the time to say "Thank you" this week.

Speaking of the fire department, I have always thought it strange that the fire department has a picnic every year and honors the city and county employees. Don't you think the people of McLean should have a banquet and honor the members of the fire department??

McLean is an interesting place to live because it has so many interesting, unique, unusual, (even strange?) people!

I was driving past the school last week, and noticed three workmen putting a new roof on the old band hall. Since it was late Saturday afternoon, I thought it rather strange to see men working there. On looking closer, I discovered the three laborers were the superintendent of the school and the two principals!

Carl Dwyer, Ron Cummings, and Dorman Thomas decided the old band hall needed some work so that the art classes would have a place to meet, and rather than waiting for someone else to do it, volunteered for the job! (And I'll bet they didn't take any extra pay for it either!)

How many other administrators do you know that would do that kind of manual labor on their day off, just because it needed done?

Flame Queen Crowning, Homecoming Bonfire Tonight

Homecoming activities for McLean High School will begin tonight (Thursday) with a bonfire after the Cub-Miami game. The Flame Queen will be crowned during the activities at the bonfire. The Flame Queen is chosen by secret ballot by the members of the pep club.



The walls were raised on the Dairy Queen this week. Completion date for the new business is tentatively set for January 1. (Staff Photo)

Derby Town Jubilee To Present Dual Concert

By Betty Cunningham
The Derby Town Jubilee is presenting a dual concert featuring Chris Rogers of Abilene and Flatland Bluegrass of Lubbock at the McLean High School auditorium Saturday at 7:30 p.m.

The Chris Rogers and Friends group advanced to the finals in the Battle of the Bands competition for the World Music Festival last summer in the Cotton Bowl in Dallas. Rogers who plays in Abilene, sings largely original material backed by acoustic instrumentation. His repertoire includes several John Denver hits. He has appeared on the Jubilee several times previously.

The Flatlands Bluegrass Band has been featured entertainment for special Pop Nite concerts with the Lubbock Symphony and Midland-Odesa Symphony where they shared the billing with Darth Vader, the popular Star Wars character. They have performed at "Odessa's Brand New Opry," Bill Grant's Bluegrass Festival in Hugo, Okla., and recently appeared at Claude Hickman's Duncan Festival.

and recently appeared at Claude Hickman's Duncan Festival.

First Report Cards Go Home Monday

McLean students will receive their report cards for the first six weeks Monday. Grades 1-6 will receive report cards that need to be signed by their parents, according to grade school principal Dorman Thomas, but students in junior high and high school will receive a new type of report card that does not require the parent's signature.

Health Careers Assembly Scheduled For High School

The Texas Health Careers Program will present a health careers assembly for McLean High School on Oct. 17 at 1:30 p.m. The presentation by Steve Wilson, Director of



FLATLANDS BLUEGRASS Music Society, termed the group, "Sensational!" Tickets will be available at the door for this special Jubilee. (Photo by Betty Cunningham)

Cable Will Be Improved, Council Told

Wayne Steddum of the Pampa Cable TV system which serves McLean appeared before the McLean City Council at its regular monthly meeting Tuesday night at City Hall to answer questions about the cable system.

Steddum said that some old antennas have been replaced to improve the service to McLean customers and that the company plans to go through the entire system and replace materials as needed.

Museum Board Meets Monday

The board of directors for the Alamed-McLean Museum met Monday night with seven members attending. The group discussed the attendance at the museum, and Fayette Bell Barton reported that over 3,000 people had visited the museum since last year.

McLean Schools Protest State Tax Assessment

The McLean Independent School District filed a protest Friday with the School Tax Assessment Practices Board in Austin, protesting the assigned market value for the McLean school district.

The total market value assigned to McLean for 1979-80 and 1980-81 school years is \$115,364,279 as compared to \$47,877,720 for the last biennial term, a raise of over \$67 million in two years.

Shirley Johnson, MISD business manager, said Monday that the school filed the protest Friday with substantive data including charts of real estate transactions and census data, with the board. Mrs. Johnson said that the Austin group had McLean property valued at an average of \$23,525 for each single family residence and \$32,000 for each down-town building (the

amount does not include personal property or equipment.) The board set value on intangible property (which includes stocks, bonds, cash in the bank, and corporation interests) as over \$34 million.

The figures mean that each man, woman, and child owns over \$11,000 interest in a single family dwelling.

"We feel the board is way out of line," Mrs. Johnson said. "Most business in McLean are common-wall brick and could not possibly be

valued that high."

Mrs. Johnson explained that each year the school district sends a market evaluation to the state divided into 14 categories, which includes single-family residences, vacant lots, oil, gas, and minerals, vehicles, farm and ranch personal property, and several others.

During the last session, the Texas Legislature established the School Tax Assessment Practices Board to establish state-wide market values on which each school district receives funds.

The wealth of the district is calculated and the greater the wealth of the district the less school funds the district receives.

In previous years the state and federal government have supplied about 31 percent of the operating budget, which this year runs to \$558,827.

If the district does not win its appeal, the amount of funding from the state will be cut drastically, with local taxpayers forced to make up the difference, Mrs. Johnson said. First appeals will be heard October 23 in Austin.

Blood Drive Date Set

The Amarillo Coffee Memorial Blood Bank will conduct its annual blood drive in McLean Oct. 19 from 3-6 p.m. at the First United Methodist Church.

The blood drive is sponsored locally by the Lions Club. Donors may designate that it be added to the McLean account.

Lion Boss Jim Allison stressed the need for people in McLean to donate blood. "If we want a blood supply

available, we have to turn out for this drive," Allison said. He said that the blood mobile must get at least 50 pints of blood to make the trip worthwhile.

Allison said that the director of the blood bank said that the need for blood in the Panhandle was increasing every year. "With Amarillo becoming a well-known medical center, the need increases but the supply has been increasingly

hard to get," Allison said. He said that the director told him there had been instances of people in area hospitals who had to wait for vitally needed blood while donors were found.

Anyone wishing to donate blood should go to the First United Methodist Church Thursday, Oct. 19 from 3-6 p.m. where qualified attendants will be available to take the donations.

Board Discusses Tax, Insurance

Routine business was discussed at the regular monthly meeting of the board of trustees for the McLean Independent School District Monday night at the school business office.

Board members Darryl Herndon, Joe Billingsley, June Suggs, and Tony Smitherman listened to Mayor Sam Haynes and Councilmen Dale Glass and George Terry explain the pending vote in the Nov. 7 election to abolish the city tax for the school band.

Superintendent Carl Dwyer presented a letter of resignation from Doris McElroy who was the high school resource teacher. The board discussed finding a replacement for Mrs. McElroy, but Dwyer said he had no prospects at the current time.

Dwyer also told the board that the Blue Cross-Blue Shield insurance company has raised the rates for the group policy of the school personnel from \$23.80 per month for a single teacher to \$37.74. The

raise for a family is from \$64.98 to \$102.96. Dwyer said that the teachers pay their own premiums, but that he wanted the board to be informed of the raise. He said that the company paid out \$14,189 to employees of MISD last year, and collected \$9,217 in premiums.

Dwyer also read a letter from a Texas Education Agency consultant stating that MISD was in compliance with minority regulations, but that a few

items in the school's job application form needed to be changed. The requirement for a photograph should be optional, according to TEA, and questions dealing with physical defects, marital status, and belief in a supreme being should be deleted. The board authorized Dwyer to change the application to comply.

The board voted to raise the insurance on the newly-remodeled high school building. See SCHOOL BOARD, Page 2

Sherri Jones Receives Nursing Cap

Junior nursing student at West Texas State University, Sherri Jones, daughter of Clifford E. Jones, of McLean, recently received her nursing cap.

One hundred and nine nursing students of WTSU completed their uniforms Sept.

29 in a convocation ceremony.

The nursing cap signifies the completion of the first level of nursing school at WTSU. Upon completion of nursing school, the students will receive bars for the caps to signify graduation.



Lion Boss Jim Allison and Slick Boyd mark items for the Lions Club's annual boom and nightbulb sale. The sale continues through Saturday in the McLean Cafe building.

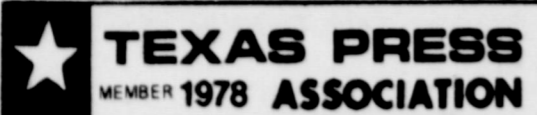
See a
**SALUTE TO THE
MCLEAN FIRE
DEPARTMENT**
Page Two

The McLean News

Linda Haynes
Owner and Publisher

Lisa Patman, associate editor
210 North Main P.O. Box H

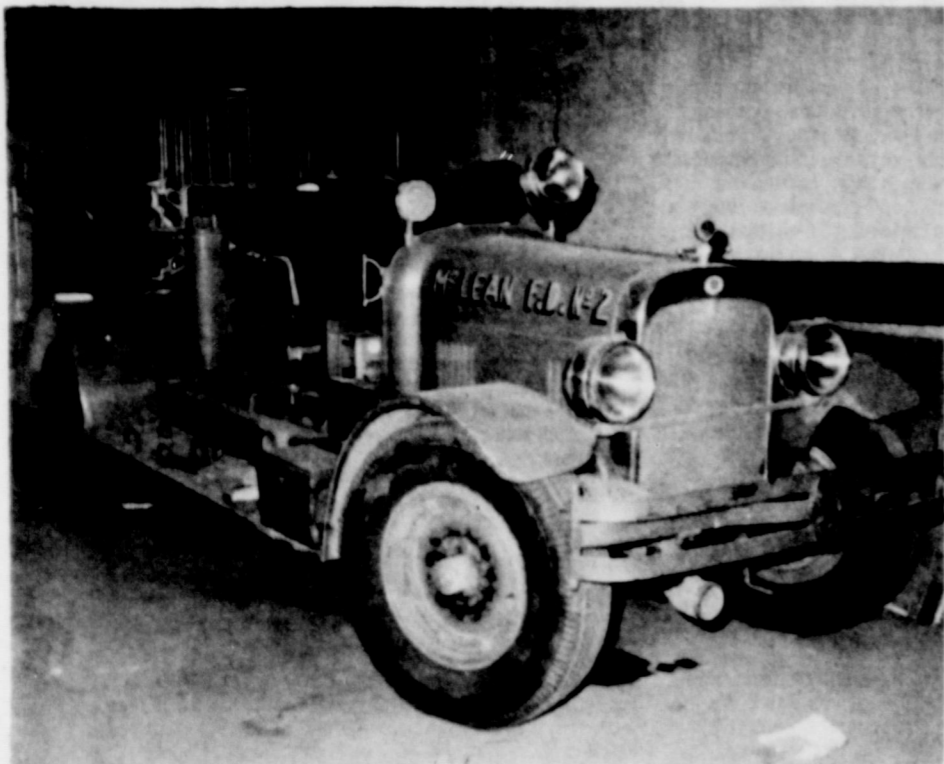
Published each Thursday at McLean, Gray County, Texas.
Second class postage paid at McLean, Texas 79057.
Subscription rates: \$8.00 per year in Gray County
Outside Gray County \$9.00
Open retail advertising rate: \$1.15
National advertising rate: \$1.64 (806) 779-2447
McLEAN, TEXAS
POPULATION 1183 (1970 census)



FIREMEN FIGHTING AUTO FIRE
(Photo Courtesy of McLean Fire Department)



FIREMEN FIGHTING BUSINESS FIRE
(Photo Courtesy of McLean Fire Department)



1925 SEAGRAVES FIRE ENGINE
(Staff Photo)



FIRE CHIEF JIM McDONALD AND FORMER CHIEF BOYD MEADOR
(Photo Courtesy of McLean Fire Department)



FIREMEN TRAINING FOR EMERGENCIES
(Photo Courtesy of McLean Fire Department)

McLean Fire Department — Service To The Community

By LISA PATMAN

The townspeople of McLean have been fighting fires since the city was founded.

One of the earliest and most spectacular fires occurred in 1910 when Biggers Grocery Store, which also housed McLean's first Masonic Lodge, burned.

The two-story structure, located on the site of the present City Hall, had been constructed entirely of wood. A bucket brigade was formed to fight the fire, bringing water from the town well in the center of town to the flaming building. Men, women, and children participated in the bucket brigade, but the building was totally destroyed.

In the early 1910s the McLean Volunteer Fire Department was formed. The first fire truck was a two-wheeled cart holding perhaps 500 feet of hose. The cart was pulled to and from fires by firemen.

The first motorized fire truck was a Ford Model-T purchased about 1916. Around 1925 a Seagraves fire truck was acquired. Although not in use today, the truck is in residence at the Alameda-McLean Area Museum, a valuable reminder of the city's past.

Many of the records of the McLean Fire Department were lost, ironically, in a fire which burned down

the City Hall in 1923.

Reportedly, one of the earliest Fire Chiefs was Tom Holloway. John Sparks served as Fire Chief until 1946, when Boyd Meador was elected to the office. Meador, who retired in 1969, was replaced by Jim McDonald, who has served in that capacity since then.

Today McLean has one of the most efficient and well-equipped volunteer stations in Texas. The station now houses three fire-fighting trucks, two water trucks and two ambulances which are equipped with sophisticated life-saving devices, including an EKG machine, a defibrillator, and I.V. apparatus.

McLean's fire and ambulance department has earned the respect and admiration not only of the people of McLean, but also of the surrounding area. A nurse at the Amarillo Emergency Receiving Center recently praised the McLean men, saying that she was always confident that emergency patients received prompt and correct treatment by the McLean volunteers. Paul Timmons, in his Amarillo Daily News column, "The Surveyor" suggested that Potter County officials should look at some grass-fighting equipment at the fire department in McLean, saying that the bean system high pressure fog

pump is "much better adapted to fighting grass fires than most conventional firetrucks."

McLean firemen spend an average of four to five hours a week on department business, maintaining equipment, reviewing training, and in meetings. This does not include fire or ambulance calls. Approximately 120 accident calls and 70 fire calls are answered each year.

The McLean Area Ambulance Service was established in 1972. Currently, McLean has five men who have completed the requirements for Emergency Medical Technician status: Jim McDonald, Clifford McDonald, Thacker Haynes, Jay Farber, and Neal Middleton.

Current officers of the unit are Jim McDonald, fire chief; Clifford McDonald and Lloyd Bybee, assistant fire chiefs; Carey Don Smith, secretary; Bill Heasley, drill master; and H.A. Pool, radio operator.

Other members are George Terry, Miro Pagan, Fire Marshal R.L. Brown, Clarence Pierce, W.A. Bentley, Glen Curry, Thacker Haynes, Neal Middleton, Mike Johnson, Jim Barker, Danny Rice, Randy Kennedy, Wendell Ridgway, Melvin Simpson, and Bill Thomas.

UNSUNG HEROES OF AMERICA

Junior Fire Marshals

Fire fighting may be grown-ups' responsibility, but many school children are gladly doing their part to make the fire fighter's burden easier by becoming Junior Fire Marshals.



The Junior Fire Marshal is a program of fire prevention and fire safety education for children in kindergarten through third grade. Junior Fire Marshals are taught a healthy fear of fire, what they can do to prevent it from happening and what to do in case a fire breaks out.

The program is conducted by elementary school teachers across the U.S. using materials supplied by The Hartford Insurance Group, sponsors of this program since its inception back in 1947.

One of the most valuable jobs performed by Junior Fire Marshals is inspecting their homes for fire hazards with the help of their parents and the program's "Home Fire Safety Check List."

The first bank run by women was founded in 1974 in New York City. Called the First Women's Bank and Trust Company, it has a woman president.

McDonald Is 'Spark' Of Fire Department

By LISA PATMAN

Jim McDonald has been described by one of his fellow firemen as the "sparkplug" of the McLean Fire Department.

Since his election to the office of fire chief on Dec. 4, 1969, he has put in an average of ten hours a week on department activities.

These duties, along with the hours he spends with the rest of the fire department responding to calls, earn him the total of \$15 a month, most of which he spends on postage for the many reports he must file.

McDonald has attended municipal fire-fighting courses at Texas A & M. Among the courses offered at the school are ladder training, housefire fighting, hazardous chemical control, and electrical fire control.

In addition to the courses he takes, for the past five years McDonald has taught at the Canyon fire school, which is also under the direction of Texas A & M. Under McDonald's guidance, firemen from the area learn pit-fire techniques. This method is

taught by filling large underground tanks with volatile liquids, setting them on fire, then controlling and extinguishing the flames.

McDonald began emergency medical training in 1973 and is one of five EMTs now in the McLean department.

In addition to his EMT training, he is now studying for his Paramedic certificate, for which he hopes to qualify by May of 1979. Paramedic training includes extensive courses in I.V. methods, intubation, EKGs, defibrillation, and respiratory therapy. McDonald has been president of the McLean Area Ambulance Association since its inception in 1972.

McDonald, who graduated from McLean High School in 1960, has worked as a mechanic since his graduation. After spending several years at the Pontiac garage, and then at the Chevrolet garage, he opened McDonald's Garage in 1970.

McDonald is married to the former Cherry Bernathy. The couple has two children, Paige and Trevor.

School Board

Continued From Page 1

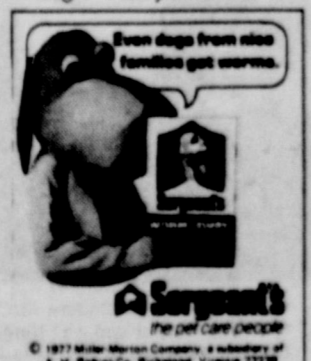
ing by \$100,000 and to insure the grade school boiler.

Dwyer presented a revised policy on graduation and transfer for McLean students for the board to study. The major change in the policy requires that students must attend McLean High School for the full four years to graduate. Also beginning with the 1979-80 senior class, there will be a minimum of 58 quarter credits required for graduation. The 1980-81 class will be required to have a minimum of 61 quarter credits, and the 1981-82 class and all subsequent classes will be required to pass a minimum of 64 quarter credits for graduation.

Board members were asked to study the proposal before the next meeting. High School Principal Ron Cummings told the board that

quarter tests now count one-third of a student's grade which he felt was too high. He recommended that the board change the policy so that quarter tests count one-fourth. The board approved the change.

Also attending the meeting were grade school principal Dorman Thomas and business manager Shirley Johnson.



STEWART'S TEXACO GREYHOUND BUS SCHEDULE

Please Clip And Save

EAST	WEST
6:30 a.m.	5:50 a.m.
9:45 a.m.	10:35 a.m.
3:05 p.m.	1:45 p.m.
6:05 p.m.	4:35 p.m.
9:25 p.m.	

No Passenger Tickets Sold—Freight Drop Only

TOMORROW IS NOW!

God promises no one tomorrow, only now! Thus it is that he says: "...now is the accepted time; behold, now is the day of salvation." (2 Cor. 6:2) Procrastination, "tomorrow" is one of Satan's greatest tools.

Tomorrow, he promised his conscience; Tomorrow, I mean to believe, Tomorrow I'll think as I ought to, Tomorrow my Saviour receive. Tomorrow, I conquer the habits that holds one from heaven's way; but his conscience repeated one word, and only one word, TODAY. Tomorrow, tomorrow, tomorrow - Thus day after day it went on, Tomorrow, tomorrow, tomorrow - Till youth like a vision is gone. Till age and his passions had written the message of fate on his brow, And forth from the shadows came death - with the pitiless syllable, NOW!!

CHURCH OF CHRIST
4th & Clarendon
McLean, Texas

WHERE CHRIST IS KING
AND A FRIENDLY WELCOME AWAITS ALL
SUNDAY
Bible classes: 10 a.m.
Worship assembly: 10:30 a.m.
Evening worship assembly: 6 p.m.

WEDNESDAY
Classes for all ages: 8:00p.m.

NOW THRU OCT. 31 / PLACE SETTING SALE

SAVE 40%

ON ONEIDA® HEIRLOOM® STAINLESS

Remarkable savings on Prestige® Quality Tableware you'll be proud to use for your finest occasions. Now is the perfect time to start or add to your service.



5-PC. PLACE SETTING

Contains: Salad Fork, Place Fork, Place Knife, Place Spoon, Teaspoon

\$15.90 Reg. \$26.50

Trademarks of Oneida Ltd.

ALSO SAVE 40% ON COMPLETER SETS

4-PC. HOSTESS SET

Contains: Plated Teaspoon, Gravy Ladle, Casserole Spoon, Cold Meat Fork

\$20.40
Reg. \$34.00

4-PC. SERVING SET

Contains: 2 Teaspoons, Butter Knife, Sugar Spoon

\$15.90
Reg. \$26.50

ONEIDA

PARSONS REXALL DRUG

New Arrivals

Mr. and Mrs. Guy V. Amerson are the parents of a boy, Jason Guy Amerson, born Sept. 22, at Carswell Air Force Base. He weighed 7 lbs. 9 oz. Jason has a sister, Beth Ann and a brother, Nathan Doyle. Grandparents are Mr. and Mrs. Herman L. Petty of Abilene, Texas (son of the late Mr. and Mrs. Luther Petty of McLean.)

Amendment Concerns Tax Exemptions

AMENDMENT NO. 1 - S.J.R. Proposing an amendment to Article XVI, Section 21, of the Texas Constitution to exempt certain products manufactured by handicapped persons from the requirement that purchasing by state agencies be done by competitive bidding.

ARGUMENTS For:

1. The social and economic value of employing otherwise unemployable handicapped individuals far outweighs any value of competitive bidding on products and services that can be supplied by them. The taxpayers would not suffer any loss because the law requires that the items be purchased at a fair market price. If an apparent loss were suffered, it would be offset by the individuals rather than their state-supported institutionalization.

2. The governor, the secretary of state, and the comptroller have many important duties and should not be burdened with the strictly storekeeping function of approving purchasing contracts. Approval of contracts by these officials has in actual practice become a mere formality and something of a nuisance. The "approval" is actually performed by ministerial subordinates, so that the requirement has in reality become so much "red tape."

Against:

1. Even though the legislature's policy of helping employ handicapped individuals is praiseworthy, the policy of competitive bidding established under Article XVI, Section 21, is also sound. Competitive bidding for these products and services insures that the state will receive the lowest possible price for what it purchases. The establishment of a "fair market price" under a statute is not assurance to the taxpayer that the government is operating in the least costly manner. This constitutional requirement is stronger than any statute enacted by the legislature since change requires an affirmative vote of the citizens. It is therefore the best protection of the taxpayer's dollar.

2. The action of the governor, the secretary of state, and the comptroller in approving purchasing contracts awarded by the board of control may be perfunctory, but nonetheless it serves as a check on those actually performing the function. Purchasing agents and officials exert more caution with knowledge that their actions are subject to review by high state officials. In addition, because the governor and the comptroller are elected officials, the voters have recourse if it becomes apparent that these contracts are being improperly awarded.

Fibrosis Drive Nets \$267

The Cystic Fibrosis fund drive was completed last week with a total of \$267.10 collected. Chairman Bonnie Fabian expressed her appreciation to the Beta Sigma Phi sorority for their hard work in collecting donations.

Hospital Report

IN THE HOSPITAL THIS WEEK:
Elmer Day
Evanella Franke
Linda Herndon
Pete Rice

DISMISSED SINCE OCT. 4
Louise Clawson
Lula Crisp
Mary Lou Throckmorton
Ann Griffin
Leonard Dawkins

Feed tea was invented in St. Louis, Missouri, at the 1904 World's Fair.



MRS. I. D. SHAW

Mrs. Shaw Celebrates Centennial Birthday

September 27, Mrs. I. D. Shaw, 82, of Clovis, formerly of McLean and Alanreed, celebrated her 100th birthday. Present for a party at the Retirement Ranch where Mrs. Shaw lives were four of her children: B. J. "Jenks" Shaw of McLean, Inez Fields of Bel Air, TX, I. D. Shaw, Jr. of Grady, N.M., and Wilson F. "Red" Shaw of McLean. Grand children attending were Mr. and Mrs. Cecil Stephens of Big Springs, Mr. and Mrs. Lowery Tillman of Ruidoso, N.M., and Mr. and Mrs. Jim Shaw and children of McLean. Etta Christine Hudgins Shaw was born in 1878 in Grapevine to Phillip and Mary Hudgins,

tenth in a family of eleven children. She finished school at Grapevine and studied piano at the Music Conservatory in McKinney. She was married in April, 1896 to I. D. Shaw. They moved to the Alanreed-McLean area soon after the marriage where they bought a farm. The Shaws had eight children. In addition to those attending her children are Wade Shaw of Lalunta, Colo., Jewel Aldrich of Virginia, and Josephine Stafford of Nevada. One son, Duke, is deceased. She has nine grandchildren, and 18 great-grandchildren. She moved from McLean to Clovis in 1969.

Homecoming

Continued From Page 1 will be escorted on the field by the senior members of the McLean football team. The McLean High School band and pep squad will also participate in the ceremonies.

Beta Sigma Phi To Sponsor Carnival

Alpha Xi Upsilon chapter of Beta Sigma Phi sorority is sponsoring a Halloween Carnival Oct. 28 in the McLean gym. Anyone interested in having a booth at the carnival should call Lynda McDonald at 779-2192 or Nancy Billingsley at 779-2370 or 779-2553.

Tree Seedlings Now On Sale

The Gray County Soil and Water Conservation District is now accepting orders for tree seedlings for wildlife food plantings, and for beauty of the countryside. Tree seedlings will be available in single species packets of 50 or 100 trees. Prices will range from \$20.00 to \$25.00 per 100 trees. Species available will be American plum, Black walnut, Green ash, Honey locust (thornless), mulberry (Russian), Red cedar, Cottonwood, Cottonwood, Apricot, American elm, and Osage orange. If you have a need for a specific species not listed, please call for information. To place your order please call the Gray County Soil and Water Conservation District at 685-1751 or write Star Route 2 Box 32. Your order should be in by October 27, 1978 as trees will be ordered in one group order. The tree seedlings should be delivered by early March 1979.

Community Action Awarded Contract

The Texas Department of Community Affairs (TDCA) announced that the Texas Paratransit Community Action Commission agency has been awarded a \$53,260 contract under the Weatherization Assistance for Low-Income Persons Program for eligible persons residing in the following counties: Armstrong, Briscoe, Carson, Castro, Childress, Collingsworth, Dallam, Deaf Smith, Donley, Gray, Hall, Hansford, Hartley, Hemphill, Moore, Hutchinson, Lipscomb, Ochiltree, Oldham, Parmer, Potter, Randall, Roberts, Sherman, Swisher, Wheeler, Ben F. McDonald, Jr., Executive Director of TDCA, indicated that funding for this 12-month contract which began September 1, 1978, is made available through TDCA's Economic Opportunity Division by the U.S. Department of Energy. Through this contract, homes of the elderly and handicapped low-income persons will be improved through the use of storm windows, caulking, insulation and wall repairs so that energy consumption is reduced and high energy costs to the home dweller are lessened. Additional information on the contract may be obtained by contacting the Economic Opportunity Division of the Texas Department of Community Affairs, Box 13166, Capitol Station, Austin, Texas 78711 (512) 475-6601.

Fall Offers Favorable Fishing

Autumn is for hunting, but the Texas Parks and Wildlife Department reminds outdoorsmen that it may well be the very best time of year for fishing as well. When the weather cools down it literally revives fishing both in fresh and saltwater - not to mention making the sport more comfortable for the fisherman. There are a number of theories as to why fishing picks up in the fall. In the opinion of Bob Bounds, inland fisheries management coordinator, fish start feeding heavily in the fall simply to store up body fat to get them through the lean winter period. "When the water temperature begins to drop, something tells the fish that winter is approaching," Bounds said. "In the case of bass, they will go on a feeding binge of a month to six weeks in the fall so when winter sets in and their metabolism slows down, they're able to get by on less food." "When this flurry of activity occurs depends on a number of factors, some of which remain a mystery to mortal man. But Bounds said it can happen anytime from about mid-September until November's first genuine cold snap. With really cold winter temperatures, bass head for the deep holes and - as bass fishermen know - won't strike at a lure unless it's dangled virtually under their noses. "Results of our Big Fish Award program will confirm that most trophy-sized largemouths are caught in the fall," Bounds noted, "and I believe these large fish generally are female which need to store up even more body fat than male fish because of the nutritional demands of egg development

during the winter." Bounds theorized that overall more smaller-sized bass are caught in the spring spawning time. "This is because male bass are smaller than females and you catch a lot of them aggressively guarding nests," he said. Fishermen also can catch trophy bass during winter's coldest weather by fishing deeply and slowly with worms, jigs and the like. "But as far as big bass are concerned, the fall still is the best," Bounds said. Striped bass are another fish affected by the change of water temperature, but in quite a different way. "In the summer, stripers keep on feeding, but you have to fish deep water to find them. But in the winter, they are less concentrated and are likely to be caught in shallow water chasing shad and other forage fish," Bounds said. "This might make them more difficult to locate, but it makes catching them more interesting for the light-tackle enthusiast." Even catfish, which customarily bite well through the summer, can be finicky about biting when the water is warm. The first cool fall rains can often spur them to a frenzy of feeding in channels and where creeks bring fresh rainwater into lakes. Saltwater fishing also picks up in the fall. Tom Moore, director of coastal fisheries, said redfish fishing is best then because the winds are lighter and the water clearer. Flounder fishing also is good in the fall, and for those who like saltwater catfishing, that's the time of year when the hardheads leave the bays and the more desirable gafftopsail cats come in from the Gulf.

McLean Briefs

Visiting the John M. Haynes family last weekend were Tina Slinker of Lockney, Elaine Shultey, and Jill Rankin. Miss Shultey and Miss Rankin are members of the Wayland Flying Queens basketball team.

Eula Morrow moved into her new home at 700 Rowe last week.

Visiting Mrs. Lena Bailey Freeman recently were her grandchildren who were on their way to California.

Mr. and Mrs. Don Shannon visited his grandmother, Mrs. Eula Morrow, last weekend.

Mrs. Vera Back and her sister-in-law Glenna Featherston of Wichita Falls left today for Washington, D.C., to visit the W.W. Rives family. Sunday they will attend an engagement announcement tea for the Rives' daughter Dianne.

Mrs. Back and Mrs. Featherston will return by way of Birmingham, Ala. to visit with Major and Mrs. Don E. Woods at Maxwell Air Force Base. Woods is Mrs. Back's grandson.

Visiting Mrs. Buelah Humphreys over the weekend were her sister, Mrs. E.W. Phipps, her niece Mabel Calbert of Vernon, Lettie Brock and Melba Carr of Chillicothe. Mr. and Mrs. Jack Humphreys of Pampa visited her Sunday.

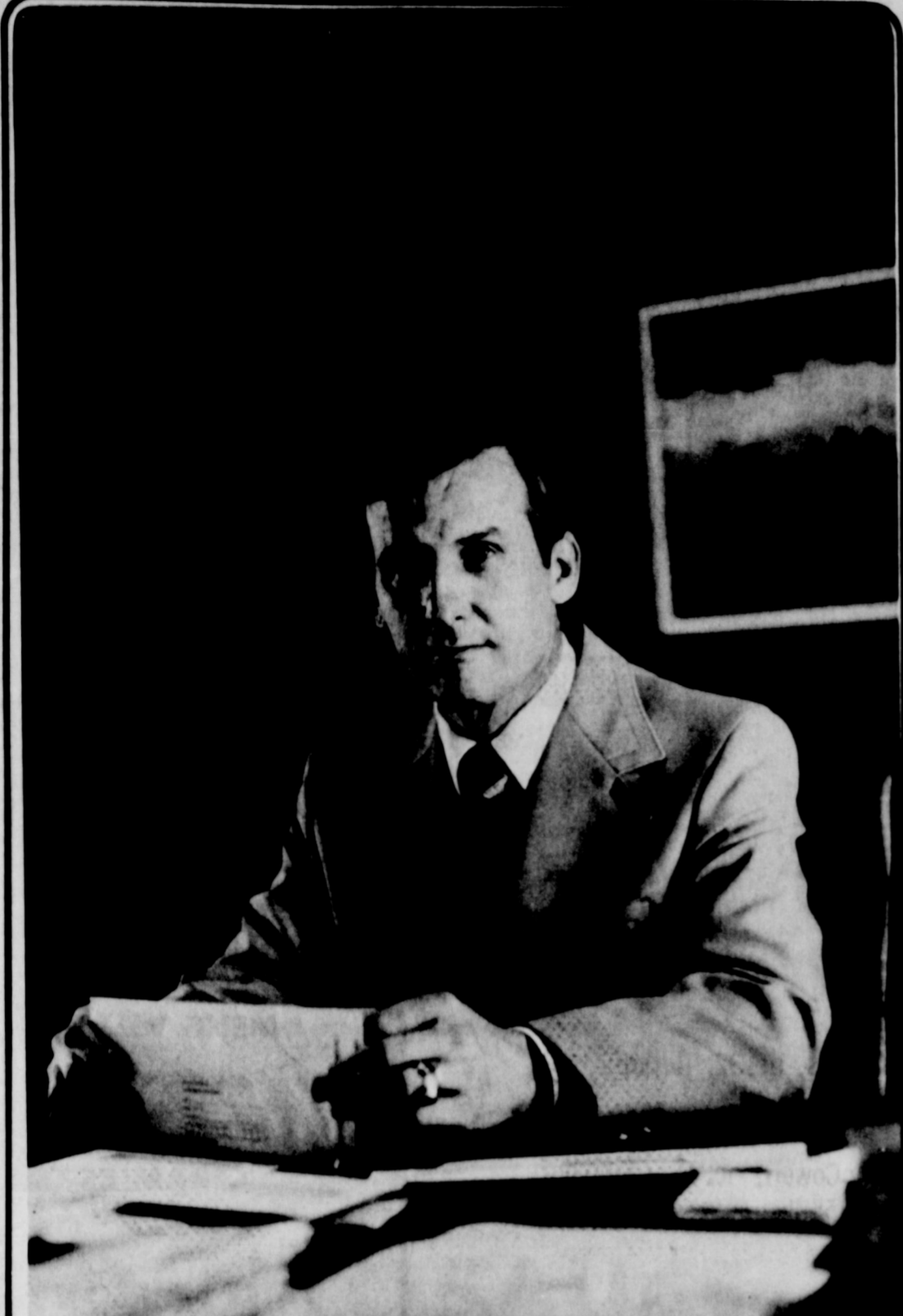
Donnie Smith, son of Mr. and Mrs. Casey Don Smith placed third in the 10 year-old division of the puna, pun, and kick contest held at Wheeler Saturday.

Political Calendar

Political announcements appearing in this column are subject to the action of the Democratic primary May 2, 1978. All announcement fees must be paid in advance.

JUSTICE OF THE PEACE DISTRICT 5
Dorothy Beck Patterson
GRAY COUNTY TREASURER
Earl Scott
GRAY COUNTY CLERK
Wanda Carter
STATE REPRESENTATIVE 6TH LEGISLATIVE DIST.
Foster Whaley
U.S. CONGRESS 13TH DIST.
Bill Hightower
DISTRICT JUDGE
Don Cain
DISTRICT CLERK OF GRAY COUNTY
John Sprinkle
GRAY COUNTY JUDGE
McHinson
Don Kennedy
COUNTY COMMISSIONER DISTRICT 4
Tom Simmons

Dr. M.V. Cobb
CHIROPRACTOR
Women's
Composition And
Auto Injury Claims
Pho. 256-2133
310 S. Main
Shamrock, Texas



FOR COUNTY JUDGE Kennedy

This is the most important political contest we have this fall. The race is not for the Presidency, the U. S. Senate or the U. S. Congress. It doesn't involve many thousands of voters or millions of dollars in campaign expenditures. It does involve honest, dignified and capable administration of local government and an outstanding candidate. This race is for Gray County Judge and the candidate is Carl Kennedy.

Carl Kennedy was born and raised in Pampa; was president of the student body in high school, fullback for the Harvesters and a member of the National Honor Society.

Carl Kennedy graduated from Texas Tech, with a degree in Business Administration, was president of the senior class and is listed in Who's Who in American Colleges and Universities.

Carl Kennedy served in the U. S. Air Force and as Captain received the very important experience as Purchasing Officer.

Carl Kennedy has had extensive experience in business and industry as well as administration and has a first hand working knowledge of ranching and farming.

Carl Kennedy married Patricia Reynolds in 1959 and they have 5 children and he is chairman of the board of the Bible Church of Pampa.

When we say this contest is the most important we face we do not diminish the vital choices we will make for national or state offices, but we have to solve our problems at home before we can make any headway in Austin or Washington.

Over the past years Gray County has been fortunate to have many qualified local office holders, representing both major parties. We are able to continue this tradition by having a fine man as a candidate for Gray County Judge.

We have the opportunity to vote FOR rather than AGAINST this Nov. 7th.

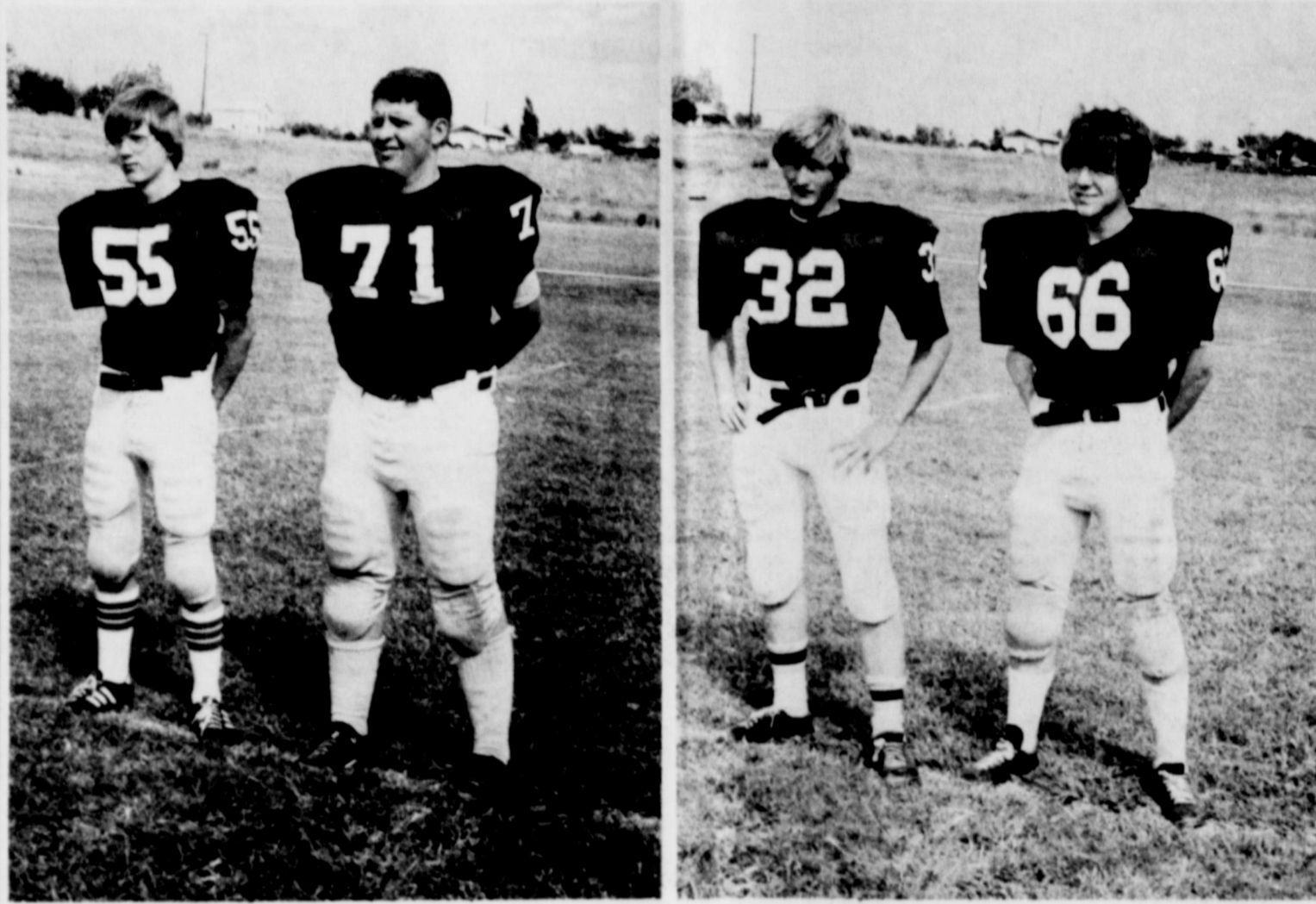


"I want to take this opportunity to tell you that I am sincere in my objective to seek the office and serve as Gray County Judge. "The knowledge I have gained working in business, industry, and agriculture during the past 23 years assure me that I can fulfill the Administrative responsibilities of the County Judge. My involvement with family and church, business and social associations provide the confidence that I can properly carry out the judicial responsibilities of the office."

FOR COUNTY JUDGE Kennedy

Paid for by the Kennedy For County Judge Committee, Bus Tarpley, Treasurer. A copy of our report is filed and is available from the County Clerk's office, Gray County Texas.

MEET THE TIGERS-



Darrell Davis, no. 55, junior center, 145 lbs.

Mike Reynolds, no. 71, junior tackle, 190 lbs.

Rex Morris, no. 32, junior halfback, 150 lbs.

Mike McCowen, no. 66, sophomore guard, 155 lbs.

THE McLEAN FIGHTING TIGERS VS. GROOM FRIDAY NIGHT OCT. 13 8 O'CLOCK AT DUNCAN FIELD

1978 FOOTBALL SCHEDULE

SEPT. 8	CHILlicoTHE	McLean 34 Chillicothe 6
SEPT. 15	SHAMROCK	McLean 20 Shamrock 25
SEPT. 22	SILVERTON	McLean 7-Silverton 15
SEPT. 29	CLAUDE	McLean 7 Claude 12
OCT. 6	OPEN	
OCT. 13	GROOM (Homecoming)	HERE..... 8 P.M.
OCT. 20	BOOKER	THERE..... 7:30 P.M.
OCT. 27	TEXLINE	HERE..... 2 P.M.
NOV. 3	MIAMI	THERE..... 7:30 P.M.
NOV. 10	WHEELER	HERE..... 7:30 P.M.
NOV. 17	FOLLETT	THERE..... 7:30 P.M.

McLEAN CATTLE COMPANY, INC.

JOE'S SHAMROCK

Mc DONALD'S GARAGE

CORINNE'S STYLE SHOP

THE POT POURRI SHOP

CAREY DON, CHERYL STACIE, AND DONNIE

CITY OF McLEAN

BENTLEY'S FERTILIZER

ODELL'S CHEVRON

HAMBRIGHT'S BUILDING SUPPLY

PARSON'S DRUG

AMERICAN NATIONAL BANK IN McLEAN

DOCTOR HEREFORD THE HESSES

BOYD MEADOR REAL ESTATE

WILLIAMS APPLIANCES

COWBOY DRIVE IN

GIPSON'S SERVICE AND SUPPLIES

TERRY'S APPLIANCES

LAMB'S FLOWER SHOP

WINDOM'S AUTO SUPPLY

DIXIE RESTARANT

MORGAN'S LAUNDRY

THE DONUT SHOP CHUCK AND ESTELLE YARNOLD

McLEAN HARDWARE

JOHNNIE F. MERTEL BOOT SHOP

COLLEEN AND JOHNNIE F. MERTEL

MULLANAX'S MENS WEAR

CROSS WINDS CERAMICS

JANE SIMPSON AGENCY

STEWART'S TEXACO

HAYNES TRIANGLE RANCH

BARKER'S REDI-MIX

CASH OIL CO.

DISTRIBUTOR OF SHAMROCK GASOLINE

CURRY'S PROCESSING

CONSUMER SUPPLY CO.

ARTHUR DWYER

J.R. GLASS OIL CO.

TEXACO SUPPLY CUSTER AND RUTH LOWARY

WIL-MART

THE McLEAN NEWS

Alanreed, McLean Farm Tour Slated Today

Plans are being developed to have a tour Oct. 12 in the Alanreed, McLean vicinity. The tour will begin at 1:30 p.m. on the Les Darsey farm, 5 miles North of Alanreed. The tour program includes

the following stops:

1. Les Darsey - Alfalfa Fertilizator - Dr. Bob Stewart, Director USDA Research Center, Bushland, results of research with manure applications.

2. County Road Right of Way - Johnson Grass control - Dr. Frank Petr, Agronomist, Texas Agricultural Extension Service, Amarillo, Result demonstration with herbicide.
 3. Tony Smitherman - Shin-oak control - Dr. Tommy Welch, Range and Brush Control Specialist, Texas Agricultural Extension Service, Vernon, result demonstration with herbicides.
 4. Jack C. "Butch" Turpin - Sand Sage Control - Dr. Tommy Welch, result demonstration with herbicides.
 5. Boyd Meador - Gold Aster Weed Control - Dr. Tommy Welch, research results of herbicides.
 6. Jim Allison - Lovegrass Fertility and Management - Dr. Frank Petr, demonstration results.
 7. Clyde Brown - Diagnosing Irrigation Well Problems - Leon New, Area Irrigation Specialist, Lubbock, possible solutions to increase pumping rate and efficiency.

In the Kitchen

By Linda Haynes

A favorite at our house on chilly Autumn evenings is old-fashioned stew. The secret of a good stew is slow-cooking and the right spices. The stew can be cooked by two methods, either in a slow-cooker or in a heavy aluminum pot in a slow oven. The only difference in the methods is if you use the slow cooker you do not need to brown the stew meat first.

OLD-FASHIONED STEW
 2 pounds stew meat (or leftover cooked roast)
 5-7 large Irish potatoes, peeled and sliced
 2 cans home-canned or "bought" tomatoes
 1 can tomato sauce (large)
 1-2 cups leftover roast gravy or canned beef broth
 1 large onion chopped
 Optional:
 If you have leftovers on hand you can use any or

all of the following: 1 cup fried okra, 1 cup canned corn, 1 cup green peas, or 1 cup cooked carrots.

If you're cooking the stew in the oven, coat stew meat with flour, seasoned salt, and pepper. Brown in hot oil. Add onions and brown until onions are clear.

If using one of the new slow-cookers, simply add all ingredients, and plug in to cook for about 12 hours.

If you are using the oven method, after the onions are browned, add peeled and sliced potatoes, tomatoes, tomato sauce, gravy and two or three cans of water.

Add one bay leaf and one tablespoon chili powder. Cover and put in oven at 325 degrees. Cook for about 10-12 hours, stirring occasionally.

Before serving, remove the bay leaf. Serve with crackers, sliced onions, and slices of a good sharp cheddar cheese.

Doll Show Set

The National Doll Show of Amarillo will take place Oct. 20-22. The show will be at Amarillo Federation of Womens Clubs, 2001 Civic Circle, Amarillo, Texas.

FIRE...AWAY



One of the best ways to protect your home from the ravages of fire is to install a smoke detector...and be able to put a fire out almost before it begins. The Hartford Insurance Group, sponsor of the Junior Fire Marshal Program, points out that a good smoke detector sets off an alarm at the first sign of fire. This gives you enough time to escape uninjured—if you and your family have made and rehearsed a home escape plan.



Leonardo da Vinci worked with his left hand.

a good reason to INSURE with US..

CANCER INSURANCE

NO AGE LIMIT

JANE SIMPSON INSURANCE AGENCY

LINES by LEM O'RICKK

The Dodgers and Yanks made a date To find out who really is great - But commercials we hear Pushing cars, blades and beer Make us wish we'd tuned in too late!

Lovett Memorial Library Notes
 by Lisa Patman

JUSTICE ENDS AT HOME
 By Rex Stout
 Edited by John McAleer
 This book is a must for all Rex Stout fans. It is a collection of early Stout stories, written between 1913 and 1917. It is a delightful collection of 16 crime stories, and the reader should be on the lookout for early signs of Wolfe, Archie, and other characters. There is also an occasional autobiographical note that slips through now and then. Included in the characters is Simon Leg, a wealthy leathargic lawyer who is coerced into defending a hopeless murder case, and Dall Willett, a sharply observant livery stable operator who, with his horse Machiavelli, has an unusual way of meting justice to extortionists. My favorite story is the one which gives the book its name, "Justice Ends At Home." It has an ingenious plot and some clever detective work. The book gets it overall appeal from the sense of reading of an older, quieter time. It is a true period piece. "Justice Ends At Home" is available at Lovett Memorial Library.

JUNIOR FIRE MARSHAL SAFETY TIPS



Sarah knows a smoke detector will protect her.

World Series Wonders

One of the many incredible-but-true moments in sports happened during the third game of the '32 World Series when Babe Ruth called his home-run shot. Ruth had good naturedly taken the Chicago Cubs' players' insults and even a pelting with lemons from Cub fans. Coming up to the plate in the fifth, the Babe felt it was time to get back at them all with his bat. He brazenly pointed to the center-field bleachers to indicate he was determined to hit a home run. Then promptly, on the very next pitch, he blasted the ball into the center-field stands for a home run.

HAVE A BETTER WINTER WITH DRISTAN.

Today's Dristan Tablets give you more colds relief than Contac or Aspirin alone.

DRISTAN

check! compare! save!

BORDEN'S ROUND CARTON ICE CREAM 1/2 gallon \$1.39

SHURFINE BARTLETT HALVES PEARS 16 oz. can 2 FOR 99c

SHURFINE TOMATO SAUCE 8 oz. can 5 for \$1

SHURFINE STRAWBERRY PRESERVES 18 oz. 89c

HUNT'S TOMATO CATSUP 32 oz. 89c

LUNCHEON MEAT SPAM 12 oz. can \$1.19

POP-RITE YELLOW POP CORN 2 lb. bag 69c

GLADIOLA YELLOW OR WHITE 7 1/4 oz. pouch CORNBREAD MIX 2 for 239c

BETTY CROCKER SUPREME BROWNIE MIX 23 oz. \$1.29

SHURFINE ASSORTED NAPKINS 16 count pkg. 59c

SHURFRESH CHEESE SPREAD 2 lb. box \$1.89

CELLO BAG CARROTS each 25c

LONG GREEN SLICERS CUCUMBER lb. 25c

U. S. NO. 1 RUSSET POTATOES 10 lb. bag 89c

GO Gunn-Ho FOR 1000 EXTRA GUNN BROS. STAMPS. Easy Way to Fill Books Fast!

SOLID HEADS LETTUCE each 35c

HILLS BROS. COFFEE lb. can \$2.29

SHURFINE TALL KITCHEN BAGS 15 count 99c

SHURFINE TRASH CAN LINERS 30 gallon 10 count \$1.19

SHURFINE COFFEE CREAMER 11 oz. jar 79c

KEEBLER ZESTA CRACKERS lb. box 65c

SHURFRESH MILK FOR GOODNESS SAKE

SIMPSON'S LOWEST EVERYDAY FOOD PRICES MARKET

Tendercrust Bread and Bakery Products Specials Good Friday and Saturday

COME AND GET IT!

We specialize in old fashioned vittles for people with hearty appetites. You'll like our friendly service.

DIXIE RESTAURANT

OPEN 6 DAYS A WEEK
 6 a.m. - 10 p.m.
 CLOSED SUNDAYS

Ask for your 10% Courtesy Card.
 Owned and Operated by the Middleton Family.

QUOTABLE QUOTES

An injured friend is the bitterest of enemies...
 ... Thomas Jefferson
 It is better to be alone than in ill company... Anonymous.
 What greater or better gift can we offer the republic than to teach and instruct our youth... Cicero
 The self-educated are marked by stubborn peculiarities... Disraeli
 But far more numerous was the herd of such who think too little and talk too much... Dryden

Man was created a little lower than the angels and has been getting a little lower ever since... Josh Billings
 The United States never lost a war or won a conference... Will Rogers.
 Slavery is but half abolished, emancipation is but half completed while millions of freedmen with votes in their hands are left without education... Robert Winthrop.
 Said the nice old lady to the Internal Revenue clerk: "I do hope you'll give my money to some nice country."

News from Alanreed

A meeting of the Alanreed 4-H was held recently. President Don Bode led the members in a discussion of ways to raise money, and the club voted to hold a family night Oct. 14 at the Alanreed school.
 The family night will feature a slave auction, games of dominoes and bingo, and a cake sale.
 The next meeting for the club is Nov. 12.
 Mrs. Ada Simmons of McLean and Granville Simmons and Brett were in Amarillo Saturday.
 Mr. and Mrs. Velton Cunningham and family of Amarillo visited here Sunday at Polly Harrison's.
 Visiting the P.M. Gibsons during the weekend were Mr. and Mrs. Charlie Vineyard and family of Glen Rose.
 The Leaders made a trip to Dallas last week.
 Mr. and Mrs. Robert Bruce and Shawn visited in Midland last week with the Jimmy Dewebbers. They celebrated Nickie Dewebbers third birthday.

The Skeet Lowerys have moved to McLean.
 Mr. and Mrs. Phillip Gibson were in Pampa on Wednesday.
 Woodrow Brown of El Monte, Calif., was here Thursday. Brown is a brother-in-law of Polly Harrison.
 The Alanreed Community Program met Oct. 7 in the school cafeteria for a covered dish supper. After supper, a business session followed and programs were outlined for the rest of the year.
 After the business session, games of 42 and 7 were enjoyed.
 Out of towners present were Mr. and Mrs. Larry Houston and daughters and Rena Belle Anderson of Pampa, Mr. and Mrs. J.D. Fish and Mr. and Mrs. Jay Dee Fish of McLean.
 Visiting the Marlon Hall's this past week was great-granddaughter Natasha Simmons.
 Mr. and Mrs. Larry Long and Brett were in Lubbock over the weekend for a follow-up on Brett's recent surgery.

Volunteers Needed

Volunteers will be needed in Pampa on Wednesday, Oct. 25, 1978, to work with Marjorie Holland, R.N., the State Health Department team that will be screening needy Gray County children for health problems, according to Larry Bobbitt, caseworker with the Texas Department of Human Resources (DHR).
 The clinic will be conducted from 8:00 a.m. to 5:00 p.m. at the Department of Health, 120 South Russell.
 Mr. Bobbitt explained that mothers need to be with the children who are receiving health checkups, and volunteers are needed to supervise small brothers and sisters during this time, as well as to provide transportation to and from the clinic site.
 Persons wishing to assist with the project are requested to call the local Pampa DHR office, 669-6807.
 Any Medicaid recipient under age 21 is eligible for the health screening, known as the Early and Periodic Screening, Diagnosis, and Treatment (EPSDT) program. Health Department nurses provide the service under contract with DHR.
 The way to prevent having big health problems is to catch them while they are still small, and any eligible individuals in the scheduled areas who do not already have an appointment are urged to contact the DHR office immediately to schedule a time to be seen.

HOMEMAKER NEWS

By ELAINE HOUSTON
 County Extension Agent

RETORTABLE POUCHES ARRIVE ON GROCERY MARKET SHELVES

Retortable pouches will arrive on grocery market shelves in the near future. This innovative new food packaging should change the complexion of grocery store shelves and food buying practices, and hopefully, reduce energy used by manufacturers and consumers in getting good on the family table.
 The pouch consists of three layers that provide the strength of a metal can and convenience of boil-in-bags. An outer polyester layer gives strength, the middle aluminum foil serves as a barrier against light, moisture and gas while the inner layer of polypropylene provides the heat seal and inner container for food.
 The advantages of this packaging innovation are numerous.
 --The pouch takes about 30-50 percent less time to reach sterilizing temperatures producing a product that has better color, firmer texture and fresher flavor.
 --Pouched products require no refrigeration or freezing and can be stored at room temperature as long or longer than canned items.
 --Pouched foods take less time to heat than frozen items, thus saving energy. Items can be heated in microwave ovens if removed from the package first.
 --The pouch opens easily by tearing across the top.
 --Campers can eat directly from the pouch to eliminate dish washing.
 --The pouches weigh much less than cans and take up less storage space than cans, jars or trays in storage and disposal.
 --Pouches require less energy to manufacture than cans, jars and trays.
 Estimates indicate that energy required from harvest to consumption will be 60 percent lower for a vegetable packaged in the retort pouch than for a frozen vegetable and about 16 percent lower than canned vegetables. Single serving portions may provide new diet alternatives for singles, COLORS EXPRESS MOODS, PERSONALITY TRAITS
 Color expresses moods and per-

sonality traits. Researchers say colors can signal feelings - not just the stop-and-go routine of traffic.
 According to research, color preferences and personalities team up like this:
 --Red portrays excitement, danger, defiance, rage, beauty, and courage. Those who choose red as a favorite color usually display a vitality for living, winning, and achieving results. They are usually athletic and vigorous, yet fickle and impulsive.
 --Yellow depicts light, glory, wisdom, wealth and cheer. Yellow lovers usually are intelligent, open-minded, creative, theoretical, and usually optimistic.
 --Blue denotes quiet, somber moods, divinity, honor, purity, innocence, peace and hope. Those who favor blue tend to be conservative, sensitive, pre-ceptive, rational and cautious.
 --Green is usually restful to the eye and nerves and expresses youth, prosperity, and a fresh, natural personality with broad interest. While usually tolerant, those who like green may be stubborn and opinionated and are usually ambitious.
 --Purple or violet expresses regality, sorrow, affliction, sadness, and solemnity. Those who favor purple usually have a flair for the mysterious, idealistic, aristocratic and artistic. Many are creative and innovative, but are often conceited.
 --Oranges express liveliness, joy, warmth, strength, endurance, and caution. Orange lovers usually show vitality and warmth. Many are jovial, friendly, and easy to get along with.
 --In general, extroverts - who are outward and gregarious - like many colors.
 --Introverts - who are shy or less sociable - like few colors.

October Is 'Farm Demonstration Month'

Gray County joins with others in Extension District 1 in observing "Farm Demonstration Month" in October as proclaimed by Governor Dolph Briscoe.
 The State-wide observance pays homage to all Texas farmers and ranchers who have "pioneered" in farm demonstration work, as well as current cooperators, says Joe VanZandt County Extension Agent.
 Local farm demonstrators are carrying out a practice -- a teaching technique -- that began 75 years ago at Terrell, Texas. Dr. Seaman A. Knapp, a special agent of the U.S. Department of Agriculture, was invited by local citizens to come to the area and show them how to do a better job of farming.

Knapp met with them in February of 1903, and agreed to conduct a farm demonstration, provided they would locate a farmer who would farm precisely as he directed. The other stipulation by Knapp was that local citizens pledge or contribute \$1,000 to cover any losses sustained by the farmer.
 A 70-acre tract on the Walter C. Porter farm near Terrell was selected as the farm demonstration site. Porter prepared his land and grew cotton and other crops as Knapp directed. When harvest time rolled around that October, Porter netted considerably more on his test acreage than on his other land. The indemnity funds were never needed!

The Smith-Lever Act of 1914 paved the way for establishment of the Cooperative Extension Service in every state. Local cooperators in farm demonstration work will be saluted Oct. 12. A crops-livestock tour will be held Oct. 12 starting at 1:30 p.m. at the Les Darsey farm, 5 miles north of Alanreed or 13 miles south of Lefors.

Rains Aid Texas Waterfowl Hunters


LUBBOCK -- Recent heavy rains over most of the Texas Panhandle and South Plains along with a higher breeding population in major nesting areas of the northern plains and Canada should furnish the Texas waterfowl hunter with plenty of targets this fall.
 Recent surveys in the duck producing areas showed an eight percent increase in the number of breeding populations of various species of ducks, Texas waterfowl hunters will have a chance to try their luck as the High Plains mallard management unit opens for both ducks and geese on Oct. 31 and continues through Jan. 21.
 Shooting hours for ducks and geese will be one-half hour before sunrise to sunset daily during this regular waterfowl season.
 Only shotguns no larger than ten gauge which are plugged permanently to a three-shell capacity and fired from the shoulder are legal.

ANBESOL KILLS MOUTH PAIN ON CONTACT

Denture pain, toothache, cold sores, teething pain, relieved for hours.

When minor mouth pain strikes use Anbesol. The pain killer Anbesol with three anesthetics soothes irritated nerve endings, reduces pain, helps prevent infection too. Use as directed for hours of relief.

WHY TAKE A CHANCE? OPEN A SAFE DEPOSIT BOX



Where do you keep your insurance policies, your stocks or contracts? Inside a safe deposit box is the best place for your valuables. Costs pennies per week!

Protect your valuables now.

Why take chances? A safe deposit box will protect all of your important papers.

THE AMERICAN NATIONAL BANK in McLEAN

IT'S THE MOST!



The largest gold nugget in the world was found in Australia in 1869 during that country's great gold rush. Rather appropriately named the "Welcome Stranger," it measured two feet long and weighed 200 pounds.

More than forty large mines in South Africa produce about three-quarters of the Western World's annual new gold supply, or approximately 700 metric tons. Russia does not disclose its gold production figures, but is estimated to produce over 400 tons annually. Some South African mines are so large, they produce individually more gold than the entire gold mining industry of the United States.



The London underground is the world's largest subway system. It covers a distance of 252 miles.



CLAY TABLET MAPS THE OLDEST WORLD MAP IN THE WORLD. IT SHOWS THE EUROPEAN RIVER NETWORK THROUGH MESOPOTAMIA.



MAP MAKING IS A MODERN CAREER OPPORTUNITY. YOU CAN GET TRAINING IN TOPOGRAPHIC ENGINEERING AND MAP MAKING IN THE UNITED STATES ARMY!

BILL CLEMENTS WILL CUT TAXES AND GOVERNMENT SPENDING

Texas was built by men with the vision to look ahead and the grit to get things done. Bill Clements is the man to keep this tradition alive for the future of Texas.

Bill Clements will bring a strong, fresh and tough approach to our government in Austin. He is a businessman, not a politician.
 Bill Clements started with nothing and built a successful, worldwide company with hard work and the skill to manage men and money. And now Bill Clements wants to preserve the future of our state and he wants the working people of Texas to have the same opportunities he had.

With his proposed "Taxpayers' Bill of Rights," Bill Clements is committed to protecting Texans from excessive taxation and runaway government spending. He is pledged to cutting taxes and returning that money directly to the taxpayers.

As former Chairman of the Southern Methodist University Board of Governors, Bill Clements knows how to make education in Texas the best in the nation. He's for discipline in the classroom and "back to basics" quality education.

As the son and grandson of farmers, Bill Clements knows the frustrations that an indifferent government can cause people who make their living off the land. He will use the strength of the State Government to fight burdensome Federal restrictions.

"I believe that Texas has always had more promise than problems."



but the balance is more delicate each year. We need to get to work now."

BILL CLEMENTS A GREAT GOVERNOR FOR TEXAS

Paid political advertisement by the Bill Clements for Governor Campaign Committee, Tom B. Rhodes, Treasurer, 1901 N. Akard, Dallas, Texas.

Birthdays

- October 12
 Vickie Sue Upton
 George Burrow
 Jay Dee Fish
- October 13
 Arndt Sharp
 Brock Scott Crockett
 Doris Locke
- October 14
 James Adams
- October 15
 Jess Ledbetter
 Jim Stevens
 Mrs. Paul Averitt
 Michael Simpson
- October 16
 Mrs. Rose Hall
- October 17
 Mrs. A. L. Grigsby
 Priscilla Dowis
 Mrs. O. N. Patterson
 Brenda Farler
 Jane Parkinson
- October 18
 Freddie Trout

Helps Shrink Swelling Of Hemorrhoidal Tissues

caused by inflammation
 Doctors have found a medication that in many cases gives prompt, temporary relief for hours from pain and burning itch in hemorrhoidal tissues, then helps shrink swelling of these tissues caused by inflammation. The name: Preparation H®. No prescription is needed. Preparation H Ointment and suppositories. Use only as directed.



Grandma Bell.

A real old-timer from the flapper era, the Candlestick® brings to life the good old days. Available in black, white, or stars and stripes, it's sure to enhance the decor of almost any room.
 Best of all, it's genuine Bell. Which means you're getting top quality and you never have to worry about repairs. Since the working components are owned by the Bell System, we'll fix them anytime there's a problem. Without additional charge.
 You'll find the Candlestick at your nearest PhoneCenter Store, where you can also choose from a variety of other colorful and attractive styles. Or call your local Southwestern Bell business office. Whether it's an old-timer like the Candlestick or an ultra-modern design, choose a phone that's genuinely you and genuine Bell.

The Candlestick. \$14 a month for five months or a one-time charge of \$70.
Prices do not include taxes or, if applicable, installation and recurring charges. If necessary, hearing aid adapters are available from your telephone company.

®Registered trademark of American Telecommunications Corporation.

Southwestern Bell

THE CHOICE IS YOURS. BE CHOOSEY.

TIGER RAG



Sponsor - Virginia Holwick
 Editor - Leslie Cunningham
 Assistant Editor - Becky Fish
 Reporters - Steve Ellison
 Cindy Adams, LaDonna

Keeton, Joel Kingdon,
 Randy Suggs, Brad Melton,
 Tom Eck, Beth Smitherman,
 Mark Bailey, Joe Lamb

Joiner Is Aide

By Becky Fish
 Mrs. Sandra Joiner comes to McLean from Higgins. She is a graduate of Seagraves High School and attended Sul Ross college.
 Mrs. Joiner served as teachers' aide with the special education in Higgins and is the librarian at McLean High School.

Drama Class To Present Play

By Brad Melton
 The Drama Class under the direction of Jacques Riley will present a play to the student body. The title of the play is "Shotgun Wedding." The cast and their characters include Rene Conner as Sue

Skinner, Leslie Cunningham as Jeb Larkin, Kara Daniels as Maw Larkin, Brad Melton as Randolph Powell, Kelly Moore as Ellie Carley, Glenda Pharis as Enoch Taylor and Trudy Stewart as Judy Larkin. Production date has not been set yet.

Groom Defeats McLean Cubs

By Leslie Cunningham
 The Groom Cubs defeated the McLean Cubs Thursday at Groom. According to Doyle Lee, a McLean Cub, the score was 0 - 0 at half-time. During the second half, however, Groom scored twice missing one extra point attempt and making the other. Brock Crockett scored the only touchdown for McLean with the extra point attempt missed. Final score was Groom 14, McLean, 6.

Six Weeks Tests Begin

By Joel Kingdon
 Six weeks test began this week with odd tests on Tuesday and even period tests on Wednesday. Students will receive report cards Monday.

Joiner Joins McLean Staff

By LaDonna Keeton
 Vester Joiner came to McLean from Higgins this year. He is a graduate of Sul Ross University in Alpine. He was head football coach and girls basketball coach in Higgins. He is girls basketball coach, assistant football coach, and teaches health and American History at McLean High School.

The Arctic tern flies about 11,000 miles migrating from the Arctic Circle to Antarctica twice a year, making it the bird with the longest migratory flight.

Tigers Meet Groom Friday

By Jeff Price
 The McLean Tigers play Groom Friday at 8 p.m. at Duncan Field. The Groom Tigers are 4-0 for the season and McLean is 1-3.

McLean Cubs To Go Against Miami

McLean Cubs will host Miami next Thursday night prior to the bonfire. The game will begin at 6 p.m.

Glass Is New Science Teacher

By Tom Eck
 McLean High School welcomes new teacher Bob Glass. Glass has the task of teaching all the science classes at McLean High School. Glass said, "My favorite classes are probably Biology II and Chemistry, but I like them all."

Glass graduated from McLean High School in 1967. He received his bachelor of science at West Texas State University. Glass and his wife Janet have a son Andy. His special interests are playing golf and the "ole six string" every now and then.

FFA Has Greenhand Initiation

By Creed Lamb
 The McLean chapter of Future Farmers of America held the Greenhand initiation Sept. 26 in the Ag building.

Thirteen candidates were accepted into the chapter. To qualify for the greenhand degree, one must learn guide lines from the FFA manual. They also discussed the horse-back camping trip which will be Saturday.

IMPORTANT NEWS FOR BACKACHE SUFFERERS!

MOMENTUM™ Tablets are 50% stronger than Doan's.
 Before you take Doan's Pills for muscular backache, remember this: MOMENTUM™ Tablets are 50% stronger than Doan's. That means MOMENTUM™ gives you 50% more pain relief per dose to reduce backache.
 To reduce pain, soothe inflammation, so muscles loosen—you can move more freely in minutes! There's no stronger backache medication you can buy without a prescription than MOMENTUM™ Tablets. Take only as directed.

COTTAGE OUTLET 911 N. MAIN

NOW OPEN 3 DAYS A WEEK!!!!
 THURSDAY THROUGH SATURDAY

9-5

Factory Seconds In Ladies Undergarments and Many More Useful Items

HAD ENOUGH?

GIVE 'EM HALE FOR A CHANGE!



IF YOU HAVE HAD ENOUGH OF

- ★ "CHEAP FOOD" Policies That Are Bankrupting Our Farmers
- ★ Give Aways Like The Panama Canal
- ★ State Department Interference In Africa
- ★ The Undue Influence Organized Labor Exerts On Our Government At All Levels.
- ★ "Big Brother" Government That Restricts Personal Responsibility And Initiative.

NOW LOOK AT WHAT THEY ARE TRYING TO DO

That same government wants to give Washington, D.C., - a CITY OF BUREAUCRATS, two Senators and Congressional Representation. The residents of Washington D. C. should be allowed to vote for US Senators in their State of Maryland, and elect Congressmen in proportion to population, as in other states.

Our State Legislature will be voting on this proposed constitutional amendment— Elect me your State Representative and I will vote NO on this amendment and will work unceasingly for it's defeat!

Elect BILL HALE Your State Representative

Bill Hale Campaign, Fred Thayer, Treas. 108 E. Calif. St., Floydada, Tex. 79235

Conference Set For Judges, Commissioners

Some 1,200 county judges and commissioners from throughout the state are expected at the annual conference of the Texas Association of County Judges and Commissioners here Oct. 17-19. Conference headquarters will be the Moody Conference Center, with registration beginning the first day at 1:30 p.m. City Auditor, El Paso County commissioner, is president of the association. Gov. Dolph Briscoe will head a list of speakers at the opening session of the conference on Oct. 18, notes Charles Lawrence, county officials program specialist with the Texas Agricultural Extension Service.

School Menus

Friday
 Lasagna
 English Peas
 Mashed Potatoes
 Peaches

Monday
 Salisbury Steak
 Green Beans
 Whole Potatoes
 Sliced Bread
 Peas

Tuesday
 Bar-B-Q Beef
 Potato Salad
 Pinto Beans
 Bread

Wednesday
 Spaghetti
 w/ Meat Sauce
 Garlic Bread
 Salad

Thursday
 Frito Pie
 Salad
 Beans
 Strawberry Shortcake

Cub Scouts Begin Regular Meetings

McLean's Cub Scouts have begun regular meetings, according to Den Leader Lisa Patman. The scouts meet every Thursday evening at 6:30. Any boy who is interested in joining the Cub Scout program is invited to attend the next meeting. Meetings are held in the scout hall, behind City Hall.

A study at Michigan State University revealed that people who ate two apples a day had fewer headaches.

High School Football Contest Announced

High School football is the king of sports in Texas - more than 1,000 schools participate, with thousands of players, coaches and fans taking part. And, under terms of a first-of-its-kind program this season, 21 Texas high schools will receive cash donations totaling \$6,000 for their athletic departments. For school to be eligible, football fans must enter school's name in the Texas-wide program which began Oct. 9. The top award is \$1,000 donated in the name of the winning fan to the high school athletic department of his or her choice. The fan receives a \$1,000 gift certificate good for sporting goods of his or her choice.

Twenty second prizes of \$250 each will also go to high school athletic departments chosen by winning fans. "We know how popular Texas high school football is," explained Bob Buckalew, promotions manager for Amalie Refining Company of Dallas, sponsor of the sweepstakes. "Texas has more high schools playing football than any other state," he said. "It's estimated that approximately 57,000 youngsters participate in high school football state-wide. To emphasize Amalie's interest in this great program, and

to offer high school football fan a chance to support the local team in a meaningful financial way, we originated this promotion for the first time this year." No purchase is necessary, Buckalew explained. "All a football fan has to do is fill in an entry blank, available from a participating Amalie retailer in your community, and mail it in. The program runs from Oct. 9 to Nov. 3. Winning fans and high schools will be notified by December 15. Winning fans also receive a year's supply of Amalie motor oil."

The more entries made in a high school's name, the greater the opportunity for the high school to receive a cash award. "Special point-of-purchase materials will be displayed at Amalie retailers so that local fans will know where entry blanks are available," Buckalew said. "To our knowledge, high school football fans have never before had the opportunity to make a substantial contribution to their favorite high school's sports program in this way. With the tremendous support that high school football in Texas enjoys we feel sure that there will be substantial support from students, players and coaches as well as the hundreds of thousands

of high school fans across the state."

Buckalew said Amalie expected to receive entries from throughout the state, including all high school football classifications - 4A, 3A, 2A, 1A and B. Amalie has created the program to involve Amalie distributors, distributor salesmen and retailers in their community's high school football activities. The 21 donations to high schools will be made by local Amalie retailers, it was explained.

During the promotion, retailers will feature special prices on Amalie oil, Amalie introduced football-related promotions to Texas motor oil sales in 1976.

"We also feel that the \$1,000 sporting goods gift certificate offered as the grand prize to the winning fan is ideal because Texans are so sports oriented," Buckalew explained.

Amalie Refining Company, a division of Witco Chemical Corporation, is a major manufacturer and marketer of motor oils and lubricants.

label and follow directions closely when applying any type of insecticide.

If insects are already inside the home, it is usually best to hire a certified pest control operator rather than to take care of the problem yourself.

SPS Accepts Rate Increase

Brac Biggers, Panhandle Division Manager for Southwestern Public Service Company, has announced that after considering all alternatives, SPS has decided to accept the \$15.9-million rate increase granted by the Public Utilities Commission of Texas.

"We feel that to pursue the matter further would be an unnecessary added expense to the cities, our customers and the company," Biggers said. "However, the \$15.9-million is not enough to cover our expenses as they were presented to the regulatory bodies. In order to continue to build coal-fired plants to take care of our customers' needs and comply with Texas Docket 600, I'm sure it will be necessary to request another adjustment to our rates in the near future."

Docket 600 mandates that SPS curtail its use of gas as a boiler fuel by ten percent by 1981 and twenty-five percent by 1985.

"Of course, we will make every effort, as we have in the past, to hold the line on expenses and continue providing the highest quality of service to our customers," Biggers concluded.

DEATHS

Carole Nan Burden

Carole Nan Burden, 48, died Tuesday at Groom. Services will be today (Thursday) at 4 p.m. at Robertson Chapel Of Memories, in Clarendon. Don Stone, minister of Clarendon church of Christ, and the Rev. Robert Brown Sr., pastor of First United Methodist Church of Clarendon, will officiate. Burial will be in Citizens Cemetery.

She was born at McLean and had been a resident of Clarendon six years. She moved from McLean where she had lived 42 years. She was a Presbyterian. Surviving are two daughters, Virginia Burden and Mrs. Kerry Pasco, both of Clarendon; a son, Phillip of Clarendon; her mother, Mrs. Inez Smith of Clarendon; and three grand-children.

You can be sure your asparagus is fresh if it snaps when broken.

The McLean News
 Peerless Prognosticator Predicts.....

PERCENTAGE LAST WEEK - 85.7%
 18 won
 2 lost
 1 tie
 SEASON PERCENTAGE - 75.3%

ALABAMA	27	Florida	14
SMU	28	Baylor	24
ARIZONA	21	California	14
COLORADO	32	Oklahoma State	7
LSU	21	Georgia	17
TEXAS A&M	28	Houston	21
NEBRASKA	45	Kansas State	0
KENTUCKY	28	Mississippi	7
MICHIGAN	42	Michigan State	14
MISSOURI	24	Iowa State	14
Notre Dame	17	PITTSBURGH	21
OHIO STATE	21	Purdue	14
OKLAHOMA	45	Kansas	7
Rice	14	TCU	21
STANFORD	28	Washington	21
TEXAS	28	North Texas	14
TEXAS TECH	20	New Mexico	14
UCLA	30	Washington State	6
WEST TEXAS STATE	27	Lamar	14
DALLAS COWBOYS	35	St. Louis	14

The Di-Gel Difference
 Anti-Gas medicine Di-Gel adds to its soothing Antacids.

Di-Gel. The Anti-Gas Antacid.

FIRST UNITED METHODIST CHURCH
 in McLean

Sunday School 9:45 a. m.
 Worship 10:55 a. m.
 UMYF 6:00 p. m.
 Evening 7:00 p. m.

Love is not one of the attributes of God, but the sum of them all.



The Pot Pourri Gift Shop completed remodeling this week. The shop now has a carpeted "baby" room (left), a new office area, and a new check-out counter. Owners Carey Don Smith and Cheryl Smith (right) said the new design will give a better display for their stock of baby clothing and accessories. (Staff Photos)

QUICK QUIZ

????????????????

1. If grease in your frying pan catches fire, you should (a) leave the house immediately (b) throw it in the sink and turn on the water (c) cover it with its own lid.
2. The best fire safety device for your home is a (a) fire extinguisher (b) smoke detector (c) escape ladder.
3. Children should be taught that if they are at home alone and suspect a fire, they should first (a) leave the house (b) call the fire department (c) attempt to extinguish the fire, if small, with a fire extinguisher.
4. If clothing catches fire, you should (a) get water fast (b) remove your clothing (c) drop to the ground and roll.
5. The major cause of home fire deaths is (a) cigarettes smoldering in overstuffed furniture (b) cooking grease (c) children playing with matches.

Highway Bids Received

The State Department of Highways and Public Transportation recently received bids on a highway construction project in Gray and Donley counties. This is the third stage of a three stage project on Interstate highway 40, a portion of the nationwide interstate system, reaching from Alamo to Lericho, Texas.

This project will consist of grading, structures, lime treated subgrade, asphalt stabilized base, marking continuously reinforced concrete pavement, delineation and thermal pavement.

The contract was awarded to Gilvin-Terrill, Inc., of Amarillo, Texas, and H.B. Zachary Company, of San Antonio, Texas, joint bidders. The successful low bid submitted by these firms was \$3,939,724.55.

The construction engineering

will be handled by the office of the state department of highways and public transportation in Pampa, Texas, under the supervision of Mr. T. R. Kelley, supervising resident engineer.

A preconstruction conference was held at the SDHPT office in Pampa on October 3, 1978. Various aspects of the project were discussed.

According to the schedule submitted by the contractor construction will begin by November 13, 1978, and be completed July, 1980.

Motorists passing through this area should be alert for warning signs and barricades that will be erected for their safety. Every effort will be made to promote safety for the traveling public. The cooperation of everyone traveling this route is sincerely requested.



Check Regularly For Dangerous Frayed Electrical Wires



An avocado will ripen faster if you wrap it in newspaper for a few days.



The largest feline is the tiger which reaches a length of nine feet and can weigh more than 300 pounds.

Mclean
ATLAS JIM KILLHAM
 Plumbing & Heating Co. OFF. 779-2822
 Box 464 McLean, Texas Licensed Plumbing
 Work Guaranteed
 RES. 779-2686

DENTURE WEARERS
 A major advancement
CUSHION GRIP
 DENTURE ADHESIVE
 one application holds comfortably up to 4 days

HAPPY
 30th BIRTHDAY,
 JAMES SMITH!!!

LOOSE MARBLES

BY LISA PATMAN

I don't know how the rest of the world feels about it, but as far as I'm concerned, this housewife stuff is for the birds. You cook, clean, wash dishes, make the beds, wash the clothes, and what happens? Two weeks later you have to do everything over again.

Of course, I'm probably not your normal, well-adjusted house person. Take last week for example.

Old Ed was rummaging in his closet for a clean shirt, grumbling something unpleasant under his breath, when I made a simple suggestion, "Why don't you wear that nice red shirt?" I asked in lovely dulcet tones.

"Because it only has one button!" replied the less-than-amiable O.E.

"Oh, if I had known, I would have been wearing it as a paint shirt," I noted thoughtfully.

A strange silence fell over him as he stared at me incredulously. After a few minutes he said slowly, "There is something wrong here. When a man tells his wife that his shirt needs buttons, she is supposed to hop up and say 'Oh, dear me, let me sew them on for you, my wonderful spouse,' not 'hand it over, I'll wear it myself.'"

I never have understood quite what he meant, because it did make a wonderful paint shirt, but I suppose he must have a point.

However, in defense of sloppiness, I must say this, it will keep you in good shape. Stepping over piles of dirty clothes is a wonderful for the thigh muscles.

FACTS & FIGURES

1946 6720012965678901234

In 1927, the average American consumed about 100 pounds of sugar (sucrose) per year, and just under 15 pounds of candy. Last year, each of us ate 95.7 pounds of sugar, and 15.4 pounds of candy. And the 50-year average has stayed in that range.

The Liberty Bell cracked in 1835 when it tolled during the funeral ceremony of Chief Justice of the Supreme Court John Marshall.

WE'VE REMODELED!

Come See The 'New' POT POURRI SHOP
 And Our Expanded Baby Department.
**BRING THIS COUPON AND RECEIVE
 10% OFF ANY ITEM IN STORE!**
 Offer Good Oct. 12 through Oct. 26
Limit One Coupon Per Customer

NOW THRU OCT. 31 / PLACE SETTING SALE

SAVE 40%

ON ONEIDA® HEIRLOOM® STAINLESS

Remarkable savings on Prestige Quality Tableware you'll be proud to use for your finest occasions. Now is the perfect time to start or add to your service. Or to save on a special gift! Stop in soon.

PATTERNS LEFT TO RIGHT: Michelangelo's American Colonial (with Place or Place Knives, W/O Wisp, Dover); Rembrandt; Shelley.



5-PC. PLACE SETTING

Contains: Salad Fork, Place Fork, Place Knife, Place Spoon, Teaspoon

\$15.90
 Reg. \$26.50

ALSO SAVE 40% ON COMPLETER SETS

4-PC. HOSTESS SET

Contains: Pierced Tablespoon, Gravy Ladle, Casserole Spoon, Cold Meat Fork

\$20.40
 Reg. \$34.00

4-PC. SERVING SET

Contains: 2 Tablespoons, Butter Knife, Sugar Spoon

\$15.90
 Reg. \$26.50

ONEIDA

Trademark of Oneida Ltd.

THE POT POURRI SHOP
 WE HAVE SAMPLES AND MERCHANDISE
IN STOCK!



PREVENT FIRES

Practice prevention and make it a daily routine. Fire related tragedies can be avoided when you are alerted to the possible hazards. In the home: Keep stoves and furnaces in good working order. Check electrical wiring regularly.

Do not smoke in bed. Outside: Keep storage areas free from clutter... gasoline and other "flamables" properly contained and handled with caution. Remember: **Prevention is Protection.** Avoid the grave consequences.

You are not alone!



Fire Prevention Week
 October 8-14

The Following Businesses Urge You To Support The McLean Volunteer Fire Department And To Practice Fire Prevention At Home.

- | | | |
|---------------------|--|----------------------|
| Parson's Drug | Carl's Barber Shop | Bentley's Fertilizer |
| Terry's Appliances | Jane Simpson Insurance Agency | Barker Redi-Mix |
| McLean Hardware | American National Bank | Williams Appliances |
| Simpson's Market | Joe's Shamrock #1 & #2 | Mullanax Mens Store |
| Triangle Ranch | Gipson's Service & Supplies | Stewart's Texaco |
| Puckett's Grocery | James Barker Oil Co. | Corinne's Style Shop |
| The Pot Pourri Shop | Johnnie Mertel Boot Shop | Wil-Mart |
| | Jim Bible Steel Buildings
And Concrete Work | The McLean News |

Classified Ads

CLASSIFIED AD INFORMATION
 Reader Ads \$4 per word
 (Minimum Charge \$1.50)
 Display Classified \$1.60 per
 column inch, Rerun \$1.30
 Card of Thanks \$2
 All ads cash, unless customer
 has an established account
 with The McLean News
 Deadline for Want Ads—
 Noon-Tuesday
 PHONE 779-2447

The McLean News cannot
 verify the financial potential
 of these advertisements.
 Readers are advised to ap-
 proach any "business opportu-
 nity" with reasonable cau-
 tion.

For Sale

'64 CHEVROLET PICKUP—
 Call Bill Heasley-779-2129
 40-2p

NEWLY ARRIVED - Halloween
 masks and gag gifts, Pot Pourri,
 41-3c.

FOR SALE: CUT VELVET
 COUCH and love seat, in good
 condition but needs cleaning,
 779-2447. After 6 p.m. call
 779-2818.

SWEET Potatoes for sale.
 See Jack or O.A. Ayres,
 41-4p.

GARAGE SALE Saturday. An-
 tiques, clothes, dishes, Dorman
 Thomas residence, east of town,
 41-1p.

QUALITY Upholstering,
 779-2302, Jones Upholstery,
 40-1c.

FOR SALE: RED and yellow
 delicious, winesap, and many
 other varieties of apples
 3 1/2 miles south of Alan-
 reed, W.O. Hommel Or-
 chard
 36-TFC

FOR SALE:
 3 Bedroom Modern house on
 Grove Street, Loan can be
 assumed.
 80 acres good grass land
 near Alanreed,
 See me for your Real Es-
 tate needs.
 Boyd Meador
 Real Estate Broker, 40-2p.

FOR SALE: 4 Bedroom, 2 bath
 living room, dining room, den
 and 3 car garage - 1 block
 from town, 779-3133, 41-2c.

FOR SALE: Red delicious apples
 from Hondo, N.M., at 617
 Clarendon Street or call 779-
 2705, 41-tfc.

FOR SALE: 3 Bedroom house
 carpeted through out. Plumbed
 for washer and dryer on 50' x
 75' lot. \$5,000. Call 779-
 2622. Also 3 room house on
 50' x 15' lot, 40-1p.

FOR SALE: MESQUITE fire
 wood, Call 779-3100, 39-4p

Wanted

LOST - REWARD OFFERED -
 Emerald cuff links, yellow
 gold wedding band with 4
 diamonds, 779-2564, 41-2p.

LOST: 1965 Senior ring, Lost in
 gymnasium. Has initials
 LSS engraved inside. Bring to
 McLean News Office and
 get \$5 reward, 40-tfc.

WANTED: Reliable Paint and
 Body man. Pennington's
 Garage, 779-2261, 40-tfc.

WANTED - ROOFING,
 CALL Coy Smith, 779-3137
 36-tfc

RETIRED COUPLE, NO child-
 ren or pets would like to rent
 furnished one bedroom house
 or small 2 bedroom, Phone
 779-2675, 39-4p

NEEDED: Reliable Mechanic,
 Good Pay, Good working con-
 ditions and opportunity for
 plenty of work, Pennington's
 Garage, 779-2261, 41-tfc.

Business

"WORM GROWERS NEEDED!"
 MONTHLY INCOME! BUY-
 BACK CONTRACT! MANAGE-
 MENT OPPORTUNITIES!
 "FREE BROCHURE" (CALL
 "TOLL-FREE 1-800-448-4511,
 Operator 381), WORMS, BOX
 4169 JACKSON, MS, 39216,
 41-1c.

Service Station dealer wan-
 ted in McLean, Contact
 Bridges Oil Co, Call
 665-1606, 40-2c.

DEALERS WANTED
 Men or Women to handle ma-
 jor lines of over 10,000 prod-
 ucts used daily by Farmers,
 Ranchers and Homemakers,
 Possible earnings of \$10,000
 to \$15,000 per year part-time,
 Tremendous full time earnings,
 No inventory required as we
 drop ship.
 Call 1-800-255-4208, Kansas
 call 1-800-432-3902 or write:
 Rural America Supply, P.O.
 Box 8304, Topeka, KS,
 66608 41-1p.

Cards of Thanks

I appreciate the cards and
 visits while I was in the
 hospital. A special thanks to
 the doctors and nurses for
 all their help, Vic Back,
 41-1p.

Dear Friends,
 I would like to thank every-
 one for their concern for me
 during my recent illnesses, I
 appreciate the cards, calls,
 and visits very much. Your
 thoughtfulness helped me
 more than words can express,
 Sincerely,
 Laura Cupell

I would like to thank my
 friends for their visits and
 expressions of interest during
 my stay in the hospital,
 Boyd Reeves, 41-1p.

Notices

GRAY COUNTY, TEXAS
 REPUBLICAN CANDIDATES
 November 7, 1978

CANDIDATE
 Carl Kennedy
 ADDRESS
 P.O. Box 496, Pampa, TX,
 79065

GRAY COUNTY, TEXAS
 DEMOCRATIC CANDIDATES,
 November 7, 1978

CANDIDATE
 Don Cain
 ADDRESS
 Box 2160, Pampa, TX 79065
 Don Hinton
 Box 2332, Pampa, TX 79065
 (Mrs.) Helen Sprinkle
 Box 1139, Pampa, TX 79065
 (Mrs.) Wanda Carter
 Box 1902, Pampa, TX 79065
 (Mrs.) Jean Scott
 Box 976, Pampa, TX 79065
 Gene R. Barber
 117 N. Froot, Pampa, TX
 79065
 Rt. 2, Box 89, Pampa, TX
 79065
 Ted Simmons
 Box 309, McLean, TX 79067
 Margie Prestidge
 Box 402, Lefors, TX 79064
 Otto Mangold
 2405 Navajo, Pampa, TX
 79065
 (Mrs.) Dorothy Beck
 Patterson
 Box 357, McLean, TX 79067
 Herman H. Klieh
 Courthouse, Pampa, TX
 79065 41-1c.

for or protest the proposed
 leasing of the said County
 hospitals.
 GIVEN UNDER MY HAND
 AND SEAL OF SAID COURT
 at office in Pampa, Texas,
 this 2nd day of October,
 1978,
 Wanda Carter
 Clerk of the County Court
 Gray County, Texas 41-2c

**BUILD ON A
 SOUND INVESTMENT.**
 As an Army Reservist, you're
 not only helping your country,
 but you're also building a
 sound part-time career. A
 career with regular raises, pro-
 motions, and retirement pay
 when you stay with it.



**THE ARMY RESERVE.
 PART OF WHAT YOU EARN
 IS PRIDE.**

How To Escape From A Fire

TO BE FOREWARNED IS TO BE FOREARMED

If each member of your family knows what to do in case a fire breaks out in your home—and knows so well that he can do it automatically—you have one of the best protections possible against needless suffering and tragedy.

The Junior Fire Marshal Program, sponsored by The Hartford Insurance Group, is teaching youngsters and their parents the following important lessons in fire escape.

It is vitally important for every household, especially those with children, to have home fire drills at regular intervals. The theory is that in a real fire, even with thinking impaired by lack of oxygen, drowsiness or panic, the individual would react instinctively and correctly.

It's a fallacy to assume a parent will be able to rescue a child. Many parents don't know how to get themselves out of a fire. And even when a parent does know what to do, he may not be able to reach the child—or the child may awaken first and try to hide from the flames. Yet even a five-



**DRILL EACH FAMILY
 MEMBER in home fire
 escape routes.**

While an adult has some capability to determine whether it's safe to call the fire department from a burning house, a young child should not be asked or expected to make that judgment. Remember: life safety always comes before property safety!

Club Activities

There will be a pot-luck dinner and quilting Friday, beginning at 9 a.m., at the Young-At-Heart's club building. Everyone is invited to attend.

The Pioneer Study Club met Oct. 5 at the church of Christ building. Hostesses for the meeting were Margaret Coleman and Mary Lou Glass. Vera Back presented a program on her Caribbean Cruise.

The Senior Tea was the main topic of discussion during the business meeting. The tea is scheduled for Oct. 15 at 2:30 p.m. in the church of Christ Annex.

The following members were present: Judy Orrick, Mary Emma Woods, Mary Dwyer, Katy Graham, Molly McDowell, Clara Hupp, Fayette Bell Barton, Margaret Coleman, Bonnie Fabian, Edna Merrill, Nancy Billingsley, Wanda Lamb, and Alice Short Smith. Guests present were Glemma Beck, Rena Belle Anderson, Druic Dwyer, and Oleta Harris.

Baptist women met for Japanese tea and a study of Japan. Tea was served from a Japanese tea table by members in kimonos. Attending were Elizabeth Kunkel, Wilma Mangum, Juanita Smith, Susie Trout, Doris Morgan, Melba Jordan, Chick Wood, Willie Nicklaus, Stella Gibson, and a new member, Margie Hale.

Beta Sigma Phi met Oct. 3. Jacqueline Riley was in charge of the program. Guest speaker was Carl Dwyer who gave a talk on "Learning to Earn." Mary Lou Glass served as hostess.

Attending the meeting were Linda McDonald, Billie Kingston, Susy Lee, Jean Smith, Nancy Billingsley, Mary Lou Glass, Sonie Heasley, Freda Holland, Sue Coward, Frankie Smith, Ann Pierce, Jacque Riley, Marie Cummings, Sandra Joiner, Margaret Millam, Kay Sprinkles, Jody Thomas, and Sue Marsh.

Cutlery Care Advised

Cutlery's "last stand" may be due to improper care. Knives in good condition are more efficient, and they are safer, advises Linda McCormack, a family resource management specialist with the Texas Agricultural Extension Service, the Texas A&M University System.

She offers these guidelines for knife care:

Store knives individually so blades do not contact other blades or other hard surfaces. A small block of wood fitted with slots for the blades is quite satisfactory.

Use a cutting board for chopping and slicing. Do not use knives to cut string or wire—or as a screw driver or lever.

Do not allow knives to soak in water. Do not clean any knife in a dishwasher, unless the label says dishwasher safe.

To sharpen a knife on a

sharpening steel, hold the steel horizontally—in the left hand, slightly slanted away from you. Hold the knife by the handle in the right hand by the handle.

Rest the blade edge—at the heel of the blade—lightly near the far end of the steel. The knife blade should be resting at an angle of about 20 degrees.

Then draw the blade toward you, letting the blade edge— from blade heel to point— move across the steel.

Use only light pressure. Three or four strokes are enough.

Repeat this operation on the other side of the blade edge. Clean the knife before and after sharpening.

Four knives will meet most cutting needs. They include a paring knife, utility knife, 8-inch narrow slicer and an 8-inch cook's knife.

THEN and NOW

THEN: The first home television set was demonstrated in 1928, in Schenectady, New York, by Dr. E.F.W. Alexanderson.

NOW: There's a new set with a 1,000-square-inch picture that's three times the size of the popular 25-inch diagonal screen.

Created by General Electric, the Wide-screen 1000 Home Television Theatre almost turns your living room into a movie

square inches wasn't introduced until 1931.

The McLean News Business Directory

Addington's Western Store
 • Boots By Tony Lama
 • Guns By Colt, Roger Smith & Wilson, Weatherby
 • Hats By Bradford And American
 • Tack
 • Western Apparel For The Whole Family
 Complete Line Of Quality Brands Western Wear
 "Complete Ranch Outfitters"
 Where Your Search Ends And Hospitality Begins
 119 S. Cuyler Pampa, Tex. 669-3161

Carpet Cleaning
 Professional Carpet Cleaning Residential & Commercial
 — Free Estimates —
 Vernon Steam-Way Carpet Cleaners
 779-2574

Blakemore
 FRESH PROTEIN FED CATFISH
 "Dressed While You Wait"
 BLAKEMORE MOTOR CO. BUILDING
 Phone 255-3287
 400 North Main Shamrock, Texas 79079

Jobnie F. Mertel
 Boot Shop
 Tony Lama, Texas,
 Acme, Justin
 Leather Goods
 Shoe Repair
 phone 779-2161

The McLean News—
 THE THRIFTY WAY
 TO ADVERTISE
Foshee's TEXACO
 Your full-service station
 Earnest & Maurine Foshee Owners
 779-2621

**THE CATTLEMAN'S
 FEED SERVICE**
LOOMIX
 Since 1905
 Liquid Feed Supplement
 • Natural Protein
 • Highest Energy
 • Consumption Control
 • Fully Patented
 Steve Rogers
 779-2907
 Ted Nelson
 828-5650

Kirby Sales & Service
 NEW, USED, REBUILT
 PARTS & SERVICE FOR
 POPULAR BRAND
 512 S. CUYLER 669-2990

Shamrock Auto Supply
 Lawnmowers, Delco Batteries,
 Shock Absorbers
 312 N. MAIN 256-2129
 SHAMROCK, TEXAS

BARKER REDI-MIX
 READY-MIX CONCRETE.
 BACK-HOE SERVICE
 PH. 779-2703 OR 779-2869

SCOTT'S Scott's Lawn & Garden Fertilizer
 "It's Guaranteed"
Bentley's Fertilizer

Brannon's
 Decorator & Supplies
 CUSTOM DRAPERIES, RODS,
 GIFTS, CANDLES, SILVER,
 STATIONARY COOKWARE
 218 N. Main Shamrock, Tex. 256-3852

National Auto Salvage
 665-3222 or 665-3962
 1 1/2 miles west of Pampa
 on highway 60
 Large selection of used auto part
 We appreciate your business

**DOZER WORK
 MOTOR GRADER WORK**
 Ponds, Fences, Fire Guards
 Feed Loads, Wrapping
 BRITT HATHAWAY
 779-2585

RIDGWAY CONSTRUCTION CO.
 Remodeling; Cabinets;
 Repairs; Painting;
 Room Additions,
 PHONE 779-2618

McLean Hardware
 Complete hardware line
 —Dishes—Paint—
 Tools—Gifts
 779-2591

SAFEMARK
Safemark
 Tires & Batteries
Bentley's Fertilizer
 779-2209

Parson's Rexall Drug
Rexall
 24-Hour
 Prescription Service
 Shower Gifts
 Cosmetics

LAMB FLOWER SHOP
 779-2611

THE DONUT SHOP
 Doughnuts, Cookies, Cakes,
 Pies, Breads,
 779-2212
J. R. GLASS OIL CO.
 217 W. 1st
 779-2181

RITCHEY'S PLUMBING SERVICE
 COMPLETE PLUMBING REPAIRS
 CALL ANYTIME I
 779-2577

BENTLEY'S FEED & FERTILIZER
PURINA FEED FOR EVERY NEED
Purina SUP-R-LIX
 LIQUID SUPPLEMENT
 WE DELIVER
 779-2209

CONCRETE FINISHER
 Over ten years experience
 Specializing in driveways, patios, sidewalks, porches,
 Call 665-8922 Pampa

PENNINGTON
 Garage and Car Sales
 113 Commerce
 McLean
 779-2535 779-2261

DON MILLER RADIATOR SERVICE
 "IS OUR BUSINESS" NOT A SIDE LINE
 • New & Rebuilt Radiators
 • Gas Tanks & Heaters Repaired
 376-6666
 612 S JEFFERSON AMARILLO, TEXAS

PAMPA CHRYSLER DODGE has a large selection of trucks, pickups, Chryslers, Dodges, Plymouths, Ramchargers, 4 wheel drive pickups, large selection of good used cars and trucks. Pampa Chrysler Dodge, 811 W. Wilka, Pampa, Texas 665-5766. 11-1c

LAWN MOWER and AIR COOLED ENGINE REPAIR
 619 West First St.
 Phone 779-2877
 PICK-UP AND DELIVERY

EVERYONE READS The McLean News WANT ADS

64 oz. no-return
COKE **79c**

CARNATION
TUNA **89c**

TROPHY 10 oz. pkg.
STRAWBERRIES
2 for **79c**

DEL MONTE 303 can
SPINACH 3 for **\$1**

GOOD OLE DAYS or PETER PIPER 303 can
TOMATOES 3 for **89c**

CHARMIN TOILET
TISSUE
4 pack **89c**

KRAFT
WRAPPLES **89c**

WOLF BRAND
CHILI 15 oz. **89c**

SPAM 12 oz. can **\$1.19**

LIPTON INSTANT
TEA 3 oz. jar **\$1.89**

BORDENS
DIPS AND SOUR CREAM
39c each


MEAT

CORN KING
BACON 2 LB. PKG. **\$2.89**

KRAFT VELVEETA 2 LB. PKG.
CHEESE **\$2.59**

DRY CURED PICNIC
SHOULDERS LB. **95c**

CRISCO

3 lb. can
 **\$1.89**

SUGAR

\$1.03
5 lb. bag


GOLD MEDAL
FLOUR

 **89c**
5 lb. bag

VAN CAMP
PORK & BEANS

3 FOR **89c**

LIPTON
TEA BAGS

24 count
 **\$1.49**

DEL MONTE
PEACHES

2 1/2 can **63c**

FRITO LAY REGULAR OR FLAVORED
POTATO CHIPS

 **59c**
REGULAR 83c

DUNCAN HE INZ LAYER and PUDDING
CAKEMIX **69c**

BORDENS HI-PRO
MILK 1/2 gallon **89c**

9 oz. carton
COOL WHIP **65c**

JOB SQUAD large roll
TOWELS **69c**

KEITH KRINKLE CUT
POTATOES
2 lb. bag for
2 for **89c**

GIANT SIZE
CHEER **\$1.39**

KING SIZE
TIDE 5 lb. 4 oz. **\$2.59**

LIQUID
IVORY **\$1.19**

GRIFFINS CRYSTAL WHITE
SYRUP 32 oz. jar **79c**

KEEBLER
CRACKERS
1 lb. box **65c**

SURFRESH 303 can
APPLESAUCE 3 for **\$1**

RANCH STYLE
BEANS

300 can 3 for **93c**

PRODUCE

NEW MEXICO RED DELICIOUS
APPLES 4 LBS. FOR **\$1**

BANANAS 5 LBS. FOR **\$1**

10 lb. bag U.S. NO. 2 NORGOLD WHITE
POTATOES **75c**

TOMATOES LB. **29c**



SPECIALS GOOD THURSDAY THROUGH SATURDAY OCT. 12-14

