

The McLean News

Serving McLean and the Area Since 1903

VOLUME 75 McLEAN, GRAY COUNTY, TEXAS THURSDAY, OCTOBER 5, 1978 PRICE 20¢ NUMBER 40

from the
distaff side
by Linda Haynes

There is a simple explanation why the post office has difficulty breaking even every year. Come to the News office some time and look at the piles and piles of "press releases" sent to all newspapers by elected officials, government offices, and government-funded agencies.

Some of the information is useful and needed by the public. For example the Texas Extension service provides a huge quantity of information about crops, hunting, and other matters of interest to an agricultural community.

But much of it, sent under a senator or representative's franking privilege, is nothing more than an inexpensive way (for the elected official) at least to get his name before the public.

We receive columns every week from various elected officials that I would almost bet that the official himself has never seen. They are undoubtedly written by some staffer to publicize the official's name.

We have developed a policy at this paper that if the person is running for office, we don't use his column. It has to be editorial judgment as to what is used in a paper, and I feel that a political "release" should either be news to McLean or it should be labeled "political advertisement."

So don't be surprised if you don't see some of the columns in this paper that you might see in others. To me it is a subtle form of propaganda that I don't feel should be used to influence you.

One of the best bulletins that we receive comes from the Texas Press Association. It always contains information that is helpful to us.

This week's bulletin had an item that I thought would be of particular interest to ranchers in this area.

It is a study done by Manplan Consultants of Chicago and was first run in the Chicago Daily News, to show what prices will be in 2001 if inflation continues at the rate it has from 1973 to 1977. Look at these figures and see what the cattleman has to expect (and the consumer, too!)

A low-priced car cost \$3,000 in 1973, \$5,000 in 1977, will cost \$17,700 in 1987, and \$105,000 in 2001!

The average house cost \$34,500 in 1973, \$54,000 in 1977, will cost \$191,000 in 1987, and \$1,134,000 in 2001!

A bar of soap cost 15¢ in 1973, 35¢ in 1977, will cost \$3.01 in 1987, and \$61.12 in 2001!

A rumprout cost \$1.49 in 1973, \$1.49 in 1977, will cost \$1.64 in 1987, and \$1.98 in 2001!

Coffee cost 70¢ a pound in 1973, \$3.25 in 1977, will cost \$163.86 in 1987, and \$39,642 in 2001!

A Sunday newspaper cost 30¢ in 1973, 60¢ in 1977, will cost \$4.38 in 1987, and \$70.92 in 2001!

If those figures don't scare you, you can't be scared!

While digging through the pictures at the Alan-reed-McLean Museum last week in preparation for last week's anniversary edition, the nostalgia but bit me!

I began thinking about the years that I spent growing up, and how much our lifestyles have changed since the forties.

Don't you feel sorry for

See DISTAFF, Page 2



Sheri Curry and Jodi Green assist as Cindi Hembree posts the colors at the Claude-McLean game Friday night. See page 3 for more pictures and story.

Commissioners Consider Lease Of Hospitals

Gray County Judge Don Hinton signed a letter of intent Monday with American Medical International, Inc. of Houston to begin procedures to investigate the possibility of leasing Gray County's two hospitals.

On a motion by Commissioner Ronnie Rice of Pampa, the Gray County commissioner's court authorized Hinton to sign the document.

AMI is an international company, owning or operating 17 hospitals in Texas and 55 hospitals world-wide.

In the letter of intent, AMI agreed to spend approximately \$750,000 to correct the plumbing and other plant deficiencies in the hospitals, repay \$483,278 owed by the hospitals on a Hill-Burton loan, and to maintain all equipment in the hospital, replacing equipment as needed.

The initial term of the lease would be five years, with AMI retaining an option to extend the lease for two additional five-year terms. After the first five year lease, AMI would pay the county \$150,000 per year to lease the hospital.

The letter of intent will allow the commissioners to have their legal counsel and counsel for AMI to begin negotiations on a final contract for leasing of the hospital.

The court authorized County Clerk Vanda Carter to post notices of two public hearings to be held on the subject on Oct. 19 and 26 at 7:30 p.m. in the courtroom.

Leasing the hospital can be decided by the commissioners court or can be put to a referendum by the voters of Gray County.

"We're faced with three alternatives," said Hinton. "We can call a bond election for needed repairs and expenses, create a hospital district as a new taxing entity and call for a bond election, or lease the hospital."

"Our primary objective is to insure good medical care for the future," Hinton added. If the county clerk receives a petition with the signatures of 10 percent of the voters of the county asking for a referendum, one will be called. The commissioners court can also vote to call a referendum following the public hearing if necessary.

AMI owns West Texas Hospital in Lubbock and representatives of the company offered to take the county commissioners, county doctors, and other interested parties to the hospital to look at the operation. AMI representatives attending the meeting were Joy Rubin, director of community relations, Dick Barkley, director of hospital development, and Gene Burleson, assistant vice-president of finance.

In other action of the commissioner's court, Commissioners Ted Simmons of McLean, Rice of Pampa, Jim McCracken of Pampa, and O. L. Presley of Lefors appointed Charles Buzzard as the director of the Gray County Civil Defense unit. He will work with an association of about 40 Emergency Medical Technicians in the area to help in times of natural disasters in the county. The commissioners also approved a pipeline easement

See COMMISSIONERS, Page 2



County Judge Don Hinton signs a letter of intent for American Medical International, as AMI representative Gene Burleson looks on. (Photo by Linda Haynes)



Commissioners Ted Simmons of McLean and Jim McCracken listen to the discussion of the hospitals at Monday's commissioners meeting.

Lions Schedule Bulb, Broom Sale

The McLean Lions Club will conduct an all-out drive from Oct. 9 - Oct. 16 to sell incandescent light bulbs, brooms, mops, rugs, and various other household items to residents, according to an announcement made this week by Club president Jim Allison. Every cent of the proceeds will go to different projects of the club.

The members of the club will man a store in the old McLean Cafe building each

day from 10 a.m. to 6 p.m. to sell items to the public. A door-to-door campaign will not be conducted as it has in the past.

Anyone wishing delivery of the various items can call 779-2461, 779-2447, 779-2591.

Lions Club members will also have eye-donor cards available for anyone wishing to sign one for the Eye Bank sponsored by the Lions Club.

Kennedy Announces For Gray County Judge Spot

Carl Kennedy, a Pampa native, announced this week that he has been selected by the Republican Executive Committee to run for county judge on the Republican ticket in the November 7 general election.

Kennedy, the son of Mr. and Mrs. Clarence Kennedy of Pampa, was born in Pampa and graduated from Pampa High School. He attended Texas Tech University, and received a bachelor of business administration in 1955. He has been engaged in farming, ranching and real estate in Pampa for several years.

Kennedy is married to the former Pat Reynolds daughter of Mr. and Mrs. Wiley Reynolds of Pampa. They have five children: Douglas, 18; Kendra, 15; Terecia, 14; Wiley and Worley, 11. The family are members of the Bible Church of Pampa. Kennedy is replacing the late Joe Curtis, who won the



CARL KENNEDY Republican primary in May. Curtis died shortly after the election.

John Hill Caravan To Visit McLean

Attorney General John Hill's campaign caravan will visit McLean Wednesday (Oct. 11).

Hill's son, Graham Hill, an attorney in Houston, will lead the 10-day caravan swing through 285 towns across the state.

Cubs Meet Groom Thursday At Groom

The McLean Junior High Cubs will travel to Groom Thursday night for a game with the Groom Cubs. Game time is 6 p.m.

Coach Jack Dorsett announced a change in the Cub schedule this week. On Oct. 12 the Cubs will play Miami in McLean, and on Nov. 14 the Cubs will travel to Miami.

Riley Named TSTA Prexy

Mrs. Jacque Riley has been elected president-elect of the Gray County Teachers Association. She will serve as president for the school year 1979-1980.

Mrs. Riley is an English and speech teacher in McLean High School. Other Gray County Teachers officers from McLean are Cecil Reynolds, treasurer, and William McElroy, president.

Tigers Lose Squeaker To Claude, 12-7

The McLean Tigers hosted the Claude Mustangs in a defensive battle Friday night at Duncan Field. Neither team was able to score until late in the second quarter when the Mustangs Palm Pritchett plunged across the goal line from one-yard out. Claude's kick failed and the score read 6-0 in favor of the Mustangs at half time.

The Tigers held Claude several times within their own ten-yard line, but each time the Tigers got the ball, their drive was stopped by fumbles or penalties. Rex Morris and Randy Suggs each intercepted a Claude pass but the Tigers were unable to convert the breaks into scores.

Early in the fourth quarter Mike Weatherly made an exciting 70-yard run for the Mustangs final tally of the game, but the extra point kick was not good.

With Claude leading 12-0 and four seconds left on the clock, Tiger quarterback Tom Eck threw a nine-yard pass to Randy Suggs in the end-zone. As Suggs caught

the pass, the buzzer rang to end the game. Steve Ellison's kick was good, making the final score 12-7. The Tigers have an open date this Friday.

STATISTICS
Score by quarters;
M -
C -

	1	2	3	4
M -	0	0	0	7
C -	0	6	0	6

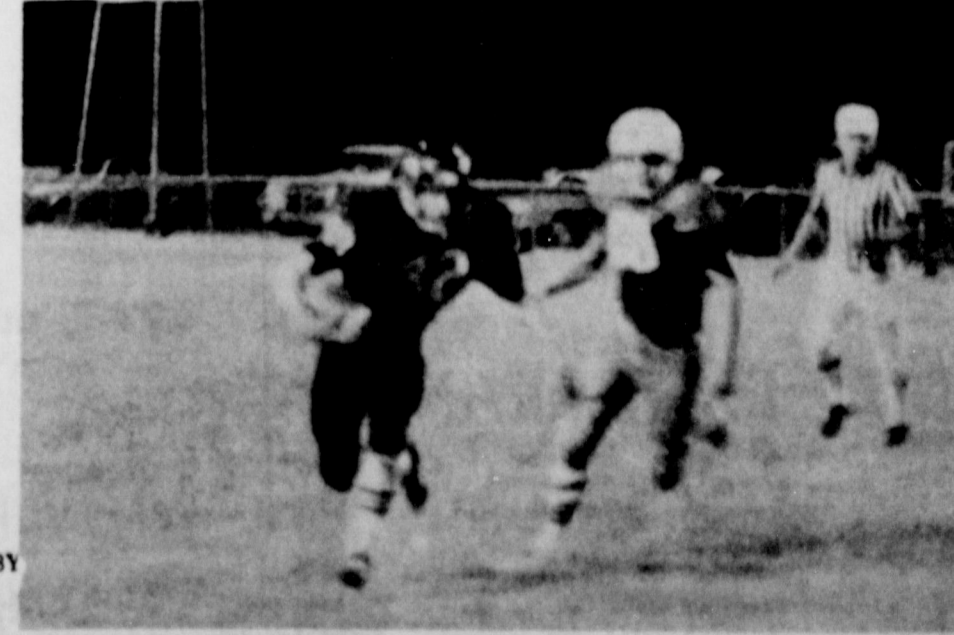
FIRST DOWNS
M - 8
C - 14
PENALTIES
M 5/65
C 11/145
PUNTS
M - 6 for 36 yd. avg.
C - 3 for 29 yd. avg.
PASSES ATTEMPTED
M - 10
C - 5
PASSES COMPLETED
M - 2
C - 0
PASSES INTERCEPTED BY
M - 2
C - 0
FUMBLES LOST
M - 3
C - 3

YARDS RUSHING
M - 154
C - 290
YARDS PASSING
M - 40
C - 0

SCORING
C - Palm Pritchett, 1 yd. run (kick failed)
C - Mike Weatherly, 70 yd. run (run failed)
M - Tommy Eck to Ram
M - Tommy Eck to Randy Suggs, 9 yd. pass (Ellison kick)



Punter Randy Suggs gears for a kick in Friday night's game.



Rex Morris races for extra yardage Friday night after intercepting a Mustang pass

SEE A SPECIAL PICTORIAL FEATURE ON THE TIGER BAND PAGE 6

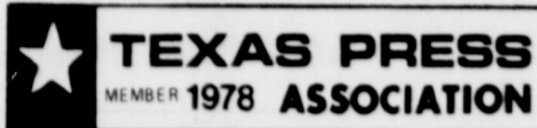
The McLean News

Linda Haynes
Owner and Publisher

Lisa Patman, associate editor
210 North Main P.O. Box H

Published each Thursday at McLean, Gray County, Texas.
Second class postage paid at McLean, Texas 79057.
Subscription rates: \$8.00 per year in Gray County
Outside Gray County \$9.00
Open retail advertising rate: \$1.15
National advertising rate: \$1.64 (806) 779-2447

McLEAN, TEXAS
POPULATION 1183 (1970 census)



DISTAFF

Continued From Page 1

kids today? They are so over-fed, over-protected, and over-entertained that their lives must be pretty dull.

Watch a kid watching television. He can sit through three robberies, two murders, and five beatings, and his expression never changes - blank - bland - blah!

Does anyone besides me remember what it was like to be a kid BT (Before Television)? Our only entertainment was books, our imaginations, and other kids.

I spent many summer days sprawled under a large old elm tree in our yard reading. King Arthur, Robin Hood, Huck Finn, Uncle Remus were my closest friends and I travelled to worlds that television with its million dollar productions could never duplicate.

And on those rare days when my best friend spent the day (I was a country girl with no brothers or sisters at home and no neighbors), there was no limit to the excitement we could find.

An old plank and a flowing irrigation ditch became a canoe and a mysterious African river and we fought crocodiles and boa constrictors and rescued lost princes. (I guess I was an early day woman's libber!)

Somedays my friend and I spent those long steamy summer afternoons rehearsing our act for the Broadway stage. Our play clothes became sequins and leathers and we took New York by storm as the singing "Brook Sister."

On Saturday afternoons we watched the Western serials at the Plaza Theatre, the only air-conditioned place in town, and yearned to meet Roy Rogers or Tim Holt or Gene Autry who were always clean and brave and strong and sang wonderful songs at the end of each movie.

What happened to the magic of childhood? Have we let our children see so much violence and glamour and sex on TV that they no longer have an imagination?

Or are we grown-ups excluded from the secret flights of imagination our children have, as our parents were excluded from our own dreams?

I hope they still have it. And, Paula Brock, wherever you are, I never made it to Broadway or the African jungle as a grown-up, but I wouldn't trade three Charlie Brown TV specials for all the times you and I sang to a puzzled audience of my dog and cat or rescued Taz from the natives!

Don't forget to send your ballot in for the McLean All Time Superstar Football team. We have received a few ballots, but we need more!

Some of the players who have been nominated for the team already are Cricket Christian, L.M. Watson, Leonard "Red" Brawley, Hooky Straton, Vernon "Dusty" King, Frank Kennedy

Nevil Back, Herschel "Red" McCarty, James E. Cooke, George McCarty, Tip Windom, Tommy Duniven, David Crockett, John Bond, Rodney Gunn, Bob Patton, Dickie Andrews, Red Jolly, Eddy Windom, Jim McCarty, Junior Windom, and Eddie Estes.

Vote for your favorites today!

I heard a compliment on a special group in McLean the other day and I think it should be passed on to everyone.

Betty O'Rourke, who oversees the Emergency Medical Service for the Panhandle, asked Mayor Sam Haynes recently if the people of McLean were aware of what an exceptionally fine ambulance service we have in McLean.

Haynes assured Mrs. O'Rourke that McLean citizens are appreciative of what a fine job the ambulance service does. Mrs. O'Rourke then went on to tell Haynes that the doctors at the Amarillo Emergency Receiving Center were highly complimentary of the McLean group following the recent explosion at the Warren Petroleum Plant.

One doctor told Mrs. O'Rourke that he had never seen burn patients any more perfectly handled and that the expertise of the McLean men probably saved the life of one of the burn victims.

Next time you see one of these hard-working men, who train on their own time, and accept very little pay for their services, tell them "Thanks" from all of us.

To freeze meat, use a moisture-vapor-proof wrap, such as heavy aluminum foil, heavily waxed freezer paper, or specially laminated papers.

Dr. M.V. Cobb
CHIROPRACTOR
Workmen's
Compensation And
Auto Injury Claims
Pho. 256-2133
310 S. Main
Shamrock, Texas

COME AND GET IT!

We specialize in old fashioned vittles for people with hearty appetites. You'll like our friendly service.

DIXIE RESTAURANT
OPEN 6 DAYS A WEEK
6 a.m. - 10 p.m.
CLOSED SUNDAYS
Ask for your 10% Courtesy Card.
Owned and Operated by the
Middleton Family.

COMMISSIONERS

Continued From Page 1

policy for the county which calls for all pipelines to be buried a minimum of 30 inches below the bar ditch, put in conduit if necessary, and maintained for 90 days at the company's expense.

The 1978 tax roll with an evaluation of \$131,211,490 for the county was approved. The evaluation is up almost \$8 million from last year.

The meeting adjourned, with the next meeting scheduled for October 13.

Birthdays

Oct. 5
Mrs. T. H. Andrews
Mrs. C. J. Magee
Gary Nicholson
Mrs. Bill Pettit

Oct. 6
Mrs. Faris Hless
Mrs. K. W. Hambricht
Forrest Switzer

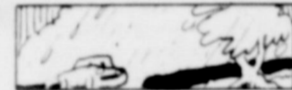
Oct. 7
Newt Barker
Bobby Joe Quarles

Oct. 8
Roy Richardson
Mrs. George Humphrey
Jim Goldston
Alicia Kathleen Hill

Oct. 9
Jerry Smith
Noah Smith
Dickie Crockett
Debra Kay Callahan
Dennis Duniven
Ronald Vernon Kennedy

Oct. 10
Mrs. Minnie Erwin
Linda Patterson
Renea Chilton
Larry Cunningham

Oct. 11
Mrs. Jesse Coleman
Judy Green
Mrs. Leslie Darsey
Sidney Morris



When driving in the rain, choose the driest lane. The right lane gets more traffic than the others and is generally the driest.



Mrs. Judy Easton demonstrates the proper way to paint a ceramic piece to students Tammy Melton and Mrs. Cecil Reynolds.

Ceramics Show Winners Named

McLean's first ceramic show was held Saturday and Sunday at the Crosswinds Ceramic Shop in McLean.

The display of ceramic art was the work of the students done over the past six months.

The displays were judged and ribbons were awarded. Refreshments were served to over 50 people who attended the event.

Those students receiving blue ribbons were Gayle Edwards, Linda McDonald, Elice Reynolds, Lucy Goldston, and Darren Johnson.

TREMENDOUS TRIFLES

THE BUBBLE-DANCERS' BALLOON AND ITS CONTRIBUTION TO SCIENCE

A bubble-dancer wanted a bigger balloon and the Weather Bureau and the armory services profited thereby.

It was back in the days when the government's main items of expense was relief for unemployment and the budgets of the Federal bureaus were trimmed to the bone. Nor were there in those days unlimited funds for the Navy. Both had good use for large balloons for aerial reconnaissance, the former for getting information from the stratosphere and the latter for use in aerial target practice. But the proper type of balloon was not then available. It was Sally Rand who provided it.

Sally could get all the fans she needed for her dancing but she could not get a balloon that was big enough (and, of course, transparent enough) for her special form of entertainment. She canvassed all the manufacturers of balloons and rubber products for a giant bubble to use in her dance but none was available. The manufacturers told her they could not

McLean Briefs

Mr. and Mrs. James Barker met recently at Quartz Mountain Lodge at Altus, Okla., with their daughter and her family, Mr. and Mrs. John R. Bible, Karie and Jason. After spending time there, they went to Hollis, Okla., to Mrs. Barker's family reunion.

Jimmy Hill, who operated the Hill's 66 Station in Alan-

reed for 25 years, moved to McLean this week. Hill, and his wife Gladys, live on Fourth Street.

Hill moved to Alanreed when he was five months old, and moved again in 1942 into the town of Alanreed. Hill, who is 73 years old, is retiring. This is the third time in his life that he has moved.

News from Alanreed

The Hartley Davises went to Groom Sunday to Mrs. Davis' mothers birthday. Mrs. Hattie Turbush is 94 years old. All of Mrs. Davis' children but one were there. Mrs. Turbush's sister from Oklahoma who is 86 also attended.

Polly Harrison left Thursday for a visit to son Robert and family of Houston.

The Alanreed Home Demonstration Club met Sept. 28 in the home of Anita Bruce with four members and one visitor present.

Officers were elected for 1978. The new president is Lena Carter; vice-president, Polly Harrison; secretary, Omie Gibson; and council delegate, Anita Bruce. Plans for future programs were discussed.

Refreshments were served to Lena Carter, Polly Harrison, Omie Gibson, the hostess and Shawn.

Betty Finley and Sue Crisp made a trip to Hereford last Wednesday.

Visiting the W. H. Davis' last week were Mr. and Mrs. Herman Tipton of Fort Worth. Mrs. Tipton is Mrs. Davis' sister. The Tipton's son, Leslie, also visited.

Mrs. Felton Connors honored her daughter Diana with a surprise party on her twelfth birthday last week.

Cake and punch and games were enjoyed by a number of her friends.

The Alanreed Community Improvement Association will meet Saturday in the school cafeteria with a covered dish luncheon. After a business session, games of 42 will follow. Anyone interested in the community is urged to attend.

Mr. and Mrs. Enloe Crisp accompanied the Bill Crisp to Amarillo for medical attention.

Mr. and Mrs. Dick Bode were in Amarillo Wednesday.

Mrs. Enloe Crisp of McLean was a Sunday visitor at First Baptist Church.

Savings Bonds Sales Totaled

August sales of Series E and H United States Savings Bonds totaled \$40,451 in Gray County, according to County Bond Chairman Floyd F. Watson.

Cumulative sales for the eight-month period totaled \$322,713 for 66 percent of the 1978 sales goal of \$490,000. Texas sales during the month amounted to \$24,834,922, while sales for the first eight months of 1978 totaled \$206,095,789 with 67 percent of the yearly sales goal of 306.6 million achieved.

Utilities Tax Cuts May Be Delayed

State Comptroller Bob Bullock Friday said Texas homeowners and renters should not be alarmed if their October gas and electricity bills continue to carry the state and local sales tax.

"Under the law, the utility companies will continue adding the tax on their October bills if their billing cycle begins before October 1," Bullock said.

The Texas Legislature voted in special session earlier this year to repeal the four percent state sales tax on residential gas and electric bills effective Oct. 1.

In addition, some 125 Texas cities have also eliminated the local option, one percent city sales tax on those bills effective the same time.

Under the law, the repeal of the sales tax actually is effective with the start of the utility companies billing period on or after Oct. 1.

This means, Bullock explained, that a customer whose billing period is October 3 through November 3 will get advantage of the tax break as of October 3.

A customer whose billing cycle is September 25 through October 25 will continue to pay the sales tax through October 25, he said.

Bullock said that homeowners and renters needn't jump on their utility companies about the sales tax on the October bills.

"They are only following the law," Bullock said. He said elimination of the state sales tax on gas and electric bills will save homeowners and renters \$150 million a year.

DENTURE WEARERS

A major advancement
CUSHION GRIP
DENTURE ADHESIVE
one application holds comfortably up to 4 days

PARSONS REXALL DRUG

INTRODUCING MERCHANDISE WE'VE NEVER STOCKED BEFORE !!!

WHITE SEWING CENTER—SCENTED CANDLES by GUILD HOUSE—CAPTAIN KELLY SMOKE DETECTORS—
THE SHRIMP DEEP FRYER by MASTER CHEF—NORELCO 8-cup COFFEE MAKER—VEG-O-MATIC FOOD CUTTER—
OSTERIZER IMPERIAL BLENDER—MICROETTE MICROWAVE OVEN COOKWARE—PYREX OVENWARE—
WARING COFFEE GRINDER—MANY, MANY NEW BUCK KNIVES—WEXFORD 10-piece CORDIAL SET—
DECORATIVE MUSIC BOXES—LIDDLE GRIDDLE by PRESTO—CAN OPENERS by DAZEY—
FIRE EXTINGUISHERS by KIDDE—A COMPLETE ASSORTMENT OF EXTENSION CORDS—TONKA TOYS—
MORE COLORING BOOKS THAN WE'VE HAD IN STOCK IN MANY YEARS
BABY GIFT SETS—BALLOON ASSORTMENT—A COMPLETE RACK OF SCARVES by JENA'S PRIDE—
TOYS, TOYS, TOYS

THIS WEEKS SPECIALS:

COOL-RAY POLARIZED SUNGLASSES—½ PRICE !!

Kaopectate 12 oz.—\$1.39

40's Tampax regular \$2.82 SPECIAL \$1.98

40's Tampax Super regular \$2.82 SPECIAL \$1.98

SUPER SPECIAL Sof Touch Skin Lotion ONE QUART 89¢

60's Rexall No Aspirin (same as Tylenol) 500 mg. regular \$1.49 SPECIAL 98¢

12's Dimacol regular \$1.39 SPECIAL 98¢

8 oz. Eyelo Eye Lotion regular \$1.82 SPECIAL \$1.29

8oz. Vicks Formula 44 Cough Mixture regular \$4.24 SPECIAL \$2.25

CHECK THESE SUPER SPECIALS, AND SEE OUR NEW GIFT ITEMS

TIGER RAG



Sponsor - Virginia Holwick
Editor - Leslie Cunningham
Assistant Editor - Becky Fish
Reporters - Steve Ellison
Cindy Adams, LaDonna

Keeton, Joel Kingston,
Randy Suggs, Brad Melton,
Tom Eck, Beth Smitherman,
Mark Bailey, Joe Lamb

High School Freshmen Are Initiated

Freshman initiation was held in the McLean High School, Oct. 2 - Oct. 5. Initiation began Monday morning with the freshmen dressed as trick or treaters. They participated in several events to test their speed, agility, and quickness before being sold to the sophomores, juniors, and seniors as slaves. These events included the

student council blindfolding a girl and a boy, seating them in chairs in the center of the auditorium stage and letting them feed each other peanut butter. The next event was the raw egg race. The boys raced the girls in a race around the auditorium. Freshmen dropping the eggs, both male and female were told to stand up

on the stage and jump off with an egg clenched between their teeth. Several eggs broke in the jump but no one suffered from a raw egg mouth-wash. The last event consisted of the seniors each receiving an egg to throw at the freshmen of their choice. Each freshman was then auctioned off separately to the remaining

student body. No one sold for less than \$4.00 and the most expensive freshman sold for \$25.00 with several going for upwards of \$15.00. Tuesday was kid day and Wednesday Tarzan and Jane day for the freshmen. Sherry Glass, Student Council president said, "The initiation went well and it was fun for all, even the freshmen."

Cubs To Meet Groom Thursday

By Beth Smitherman
The McLean Cubs will play Groom at Groom Thursday, Oct. 5 at 6 p.m. The next home game will be with Miami, Oct. 12 also at 6 p.m. The Cubs will travel to Lefors Oct. 19 to play Lefors.

Speech, Drama Classes Attend Show

By Brad Melton
Thursday night the Speech and Drama classes attended the Frenchy McCormick Dinner Theatre in Amarillo. Those going on the trip were Leslie Cunningham, Kara Daniels, Matt Davis, Jo Ann Durham, Brad Melton, Kelly Moore, Allen Mixon, Glenda Pharis, Brett Simmons, Trudy Stewart, and sponsors, Jacque and Joe Ray Riley. All were invited to dine while watching a play entitled "Harvey". Others who could not attend were Rene Conner and Joy Rhine.

Date Set For Homecoming

By LaDonna Keeton
Homecoming will be Oct. 13 when the McLean Tigers go against the Groom Tigers. The McLean High School Student body nominated 13 girls for football queen. Representatives from the senior class were Sherry Glass, Robin Smith, Kelly Moore, and Rachel Glenn. Juniors were Judy Trew, Sally Haynes and Ann Skipper. Sophomores were Rhonda Woods, Tammy Killham,

and Rozanna Eck. Freshmen were Donna McAnear, Susie Billingsley, and Leslie Skipper. The football boys then elected Sherry Glass, Robin Smith, Judy Trew, Rhonda Woods, and Donna McAnear as the five finalists. They will be escorted by their fathers at the game. The results will be announced prior to the game. The queen and her runners-up will preside during the game.

Class Officers Elected

By Jamie Trew
Class officers were elected Tuesday Sept. 12 from each of the high school classes. Senior class officers are: Steve Ellison - President; Tommy Eck - Vice-President; Diane McAnear - Secretary; Rachel Glenn - Treasurer. Junior Officers are: Joy Rhine - President; Elaine Bentley - Vice - President; Ann Skipper - Secretary;

Robin Stubbs - Reporter; Brad Melton - Treasurer. Sophomore officers are: Mark Morris - President; Billy Kincannon - Vice-President; Rhonda Woods - Secretary; Rozanna Eck - Treasurer. Freshman officers are: Leslie Skipper - President; Donna McAnear - Vice-President; Missy Billingsley - Secretary-Treasurer.

Juniors Order Senior Rings

By R. D. Suggs
The Junior class ordered Senior rings Thursday, the 28th in Coach Joiner's room. Jerry Behrons of Heff-Jones was there along with the Junior sponsors, Jan Johnson and Mike Lee, to help the juniors with their selection. The rings are scheduled to be in before Christmas.

FFA Elects New Officers

By Joe Lamb
The McLean Chapter of Future Farmers of America elected officers Tuesday, Sept. 26 in the Ag. building. Joe Creed Lamb was elected President; Tom Eck, vice-president; Joel Kingston, secretary; David Tolleson, sentinal; Rex Morris, treasurer; and Joe Mercer, reporter. A date was set for the Greenhand initiation which will be held the following Tuesday.

FBLA Members Attend Meeting

Five representatives of Future Business Leaders of America and their sponsor, Jan Johnson, will be leaving Thursday, Oct. 5, to attend the Mountain Plains regional meeting in Oklahoma City. The members who will be going are Steve Ellison, Randy Suggs, Sherry Glass, Judy Trew, and Ann Skipper. These students will be attending workshops and individual meetings to prepare for the Mountain Plains Regional meeting that will be hosted by the McLean chapter of the Future Business Leaders of America in Amarillo next year. The states that will be represented at this meeting are Oklahoma, Nebraska, Kansas, Colorado, Wyoming and Texas.



Pictured are the members of Girl Scout Troop #50 and the McLean Brownie Troop who formed the color guard for flag-raising ceremonies at the McLean-Claude game Friday night.

Girl Scouts, Brownies Perform At Game

Twenty-six members of the McLean Girl Scout troop #50 and of the McLean Brownie Troop provided the honor guard for the flag-raising ceremonies prior to the McLean-Claude football game Friday night. The Girl Scouts came to attention in the form of a horseshoe encircling the flag and honor guard and were led in the pledge of allegiance by Scout leaders Marie Cummings and Kathy

Reynolds. As the McLean High School band played the national anthem, the scouts stood at attention and saluted. Members of the McLean Girl Scout troop #50 are Traci Beck, Tanya Cummings, Sheri Curry, Diane Davis, Kathleen Davis, Angela Glass, Jodi Green, Francine Matheny, Shanna Lovitt, Cindy Hembree, and Sonja Ybarra. Members of the McLean Brownie Troop are Wendi

Smith, Tina Cummings, Deanna Sprinkles, Kellie Joe Beck, Christi Coward, Darla McA rear, Dollie Haynes, Deana Billingsley, Tammy Edwards, Linda Reid, Anita Yarnold, Carla Skipper, Roberta Matheny, Alisha Reynolds, and Angie Reynolds. The Scouts expressed their appreciation and thanks to those who assisted in the ceremony, with a special thanks to Mayor Sam Haynes for his assistance.

School Menus

Friday
Corn Dogs
Pork n Beans
French Fries
Rice Krispy Bars

Monday
Hot Dogs w/Chili
French Fries
Pudding

Tuesday
Baked Ham
Macaroni Salad
Baked Beans
Hot Rolls w/ Butter
Jelly

Wednesday
Tacos
Refried Beans
Salad
Sopapillas

Thursday
Sandwiches
Chicken Noodle Soup
Chocolate Cake

One inch of rain contains the same amount of water as 10 inches of snow!

WHERE ARE THEY NOW?

A brief look at some former McLean residents and where they are now.

Steve Thacker, a 1970 graduate of McLean High School, visited the Jim Barkers and Mrs. Vera Back last weekend. Thacker, a 1974 graduate of Cameron College, taught school for four years in Texas and Oklahoma before moving to Ponca City, Okla. where he is employed by Phillips Petroleum Co. He and his wife Kathy have two sons, Todd and

Kyle. When we presented the history of the class of 1938, one of the members who was not located was Morris Turner. Turner's aunt, Fayette Barton, lives in McLean, and she told us that Turner lives at Panhandle where he is an executive with Pantex. He has been with the company since it started. Turner's father was an early day blacksmith in McLean.

Hospital Report

IN THE HOSPITAL THIS WEEK:
Lula Crisp
Leonard Dawkins

DISMISSED SINCE SEPT. 27
Flora Humphreys
Evelyn Thompson
Boyd Reeves
Vic Back

THE LARGEST HOSPITAL IN TEXAS IN THE WORLD SPECIALIZES IN HAMBURGERS, SERVING ABOUT 4 BILLION OF THEM A YEAR!
THE U.S. ARMY SERVES AMERICAN SOLDIERS 250 MILLION COMPLETE MEALS A YEAR FROM A SINGLE MENU OF 400 DIFFERENT ITEMS!

Announcing

CARL KENNEDY

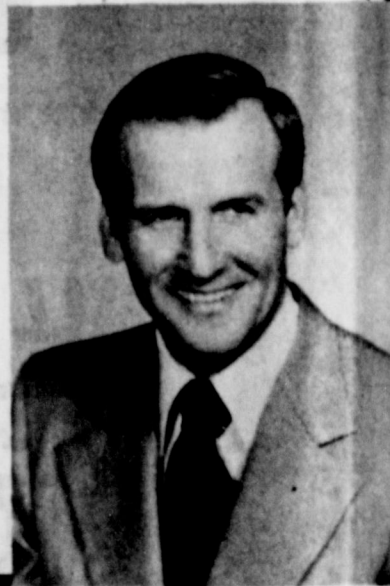
★★ REPUBLICAN CANDIDATE ★★

for

GRAY COUNTY JUDGE

Plan now to vote

in the election Nov. 7th



Political Advertisement
Paid For By Kennedy Campaign Committee, Buz Tarpley, Treasurer.

Eight Amendments To Appear On November Ballot

From the Texas Legislative Council
The 65th Legislature, in the 1977 session, proposed 15 amendments for voter consideration. Seven of the proposals were submitted at a special election on November 8, 1977. Texas voters adopted five of the seven.

The remaining eight are to appear on the general election ballot on Nov. 7, 1978. In addition, Texas voters will have the opportunity to adopt or reject "The Tax Relief Amendment" approved by the 65th Legislature in the 2nd Called Session.

Because of the variety of subjects covered by the "Tax Relief Amendment," the McLean News is presenting this evaluation prepared by the Texas Legislative Council with the "for" and "against" for each section of each amendment.

This week the arguments for and against the "Tax Relief Amendment" are given.

Taxation of Intangible Property
For: Intangible properties are almost impossible to assess and tax fairly. Removing them from the mandatory tax base would eliminate a major obstacle to achieving equitable property tax administration and public school finance.

Against: Although intangible assets may be difficult to assess and tax, they can be taxed fairly if the appropriate administrative procedures are provided. Eliminating them from the mandatory tax base will help wealthy persons and large corporations, who own the greatest portion of intangibles, at the expense of middle-class homeowners and other small property owners.

Personal Property Exemptions
For: The current \$250 limit on the tax exemption for household and kitchen furniture is unrealistically low in view of today's inflated property values. Exempting all household goods and personal effects not used to produce income is a more rational and workable approach. Permitting the legislature to further exempt property that is exempt from forced sale will, among other things, authorize legislation to exempt personal motor vehicles from property taxes, a form of tax relief that will help the average citizen most.

Against: Tying personal property tax exemptions to the statute exempting property from forced sale is unwise. Future legislature may broaden the coverage of the statute to permit tax exemptions for all sorts of personal property, and in doing so they would not only provide excessively broad tax exemptions but would also impair the ability of creditors to collect judgments against debtors.

Taxation of Agriculture
Land
For: The provision that requires the legislature to provide for taxation of farm and ranch land on the basis of productivity, rather than speculative market values,

would result in needed tax relief for the state's financially troubled farmers and ranchers.

Against: Under the amendment, timberland could also be taxed on the basis of productivity, rather than market value. It is doubtful that the timber industry needs this tax break, and its implementation by the legislature could seriously erode the tax base of many counties and school districts and result in a greater tax burden for the average homeowner.

Homestead Exemptions
For: A major tax break would be provided the state's overburdened homeowners with the mandated homestead exemptions of \$5,000 for school tax purposes. Homeowners over 65 or disabled, for whom the property tax is particularly burdensome in proportion to income, could also be provided an additional homestead exemption by the legislature.

Against: The amendment does not provide significant tax relief for the average citizen. The tax savings for an individual homeowner from the \$5,000 homestead exemption have been estimated to be only about \$30 a year for a \$40,000 home, based on a 60 per cent assessment ratio and a \$1 per \$100 school tax. In addition, the disability homestead exemption is tied to qualification under the federal Old-Age Survivors, and Disability Insurance program, and will exclude a great many of the state's disabled citizens.

Truth in Taxation
For: This provision would assure homeowners an adequate opportunity to voice their sentiments about property tax

increases and, therefore, should lead to smaller tax increases in the future.

Against: A constitution should be a flexible document in which the fundamental powers of government are established, limited, defined, and distributed. This provision is statutory in nature, and its inclusion in the constitution merely adds to the already excessive verbiage of one of the longest state constitutions.

State Spending Limitations
For: The provision restraining state spending increases should force the legislature in the appropriation process to be more conscious of the necessity of proposed government programs and the value of existing ones.

Against: The "limit" on state spending is meaningless and will be as ineffective as the "permanent" federal debt ceiling, which is continually raised by Congress. Only a majority of the state's lawmakers would be required to declare an emergency and authorize an appropriation in excess of the limit.

Property Tax Administration
For: Property tax reform has been stalled in previous legislative sessions partly because of fear that it might lead to statewide property tax appraisals. The amendment's prohibition of such appraisals should, therefore, eliminate a major obstacle to long-needed reform of property tax administration.

Against: The prohibition of statewide appraisals of real property and the requirement that enforcement of uniform appraisal standards must originate at the county level would perpetuate the current inequities in the administration of the state property tax and thwart meaningful tax reform in the future.

See AMENDMENTS, Page 4

LIONS CLUB ANNUAL BROOM SALE

MONDAY, OCT. 9 THROUGH SATURDAY, OCT. 14 10 a.m. - 6 p.m.

- BROOMS, FLOOR BRUSHES, BOTTLE BRUSHES, BOWL BRUSHES,
- MOPS, MOP REFILLS, SPONGE MOPS, WAX APPLICATORS,
- SQUEEGIES, IRONING BOARD COVERS, WASHING MACHINE BAGS,
- OVEN MITTS, POT HOLDERS, DUST PANS, GRASS MATS, RUBBER MATS,
- LAWN RAKES, DISH TOWELS, DUST CLOTHS, SCRUBBERS, MOPETTES,
- FLY SWATTERS, PET DISHES, RUBBER GLOVES, SCOURING PADS, SPONGES,
- LIQUID CRAYONS, DUST MOPS, LIGHT BULBS

FOR DELIVERY CALL McLEAN HARDWARE 779-2591, AMERICAN NATIONAL BANK, 779-2461, OR THE McLEAN NEWS, 779-2447

a good reason to INSURE with US..

CANCER INSURANCE

NO AGE LIMIT

JANE SIMPSON INSURANCE AGENCY

ANBESOL KILLS MOUTH PAIN ON CONTACT

Denture pain, toothache, cold sores, teething pain, relieved for hours.

When minor mouth pain strikes use Anbesol, the pain killer. Anbesol, with three anesthetics, soothes irritated nerve endings, deadens pain. Holds prevent infection, too. Use as directed for hours of relief.



The nine surviving children of Mr. and Mrs. M.H. Kinard, Sr. gathered with over 60 other members of their family recently at Ceta Glenn Canyon. Pictured from left are Gaylord of Lubbock, Mrs. Loree Barker of McLean, M.H. Jr. of Lubbock, Paul of Clovis, N.M.; Leora Rose of Pampa, Burette of McLean, Mrs. Ann Damron of Lubbock, Henry of Dalhart, Mrs. Bea Lester of McLean.

Death, Crime Increase

The director of the Texas Department of Public Safety today expressed "serious concern" over the state's rising traffic death toll and increasing rate of violent crime.

Colonel Wilson E. Speir said these trends are "symptomatic of the rapid population growth experienced in Texas during the last few years."

The DPS director observed that traffic deaths on the streets and highways of Texas are 11 per cent higher than at the same time in 1977.

"If this trend continues, we will for the first time kill over 4,000 people in Texas traffic in a single year," he said.

The all-time traffic death record was 3,698 killed in 1977. Deaths previously peaked at 3,692 in 1973 -- the last year of the 70 mile speed limit, but had been lower in the 1974-76 period.

Regarding crime, the DPS director noted that while the overall crime rate per 100,000 population was down by one per cent for the first six months of 1978, actual numbers of major crimes rose.

There were an estimated 336,302 major offenses in Texas during the first half of 1978, compared to 330,169 such crimes in the same months of 1977.

Looking specifically at violent crimes, Speir said reports submitted to DPS indicate these offenses soared during the first six months. The murder rate rose 14.7 per cent, rapes were up 15.2 per cent, and the rate for aggravated assaults climbed

6.2 per cent. "Part of the problem," said Speir, "is that growth in law enforcement just has not kept pace with the state's growing and increasingly mobile population. That certainly is true in the Department of Public Safety."

Speir observed that while the crime rate per 100,000 population has risen 32 per cent since 1973, the department's authorized criminal law enforcement strength has risen by only 10 per cent.

Regarding traffic enforcement, he said that California, Florida, Illinois, Michigan and Pennsylvania -- states with populations, vehicle registrations and licensed drivers comparable to Texas -- have an average of 2,043 High Patrol troopers per state while Texas has but 1,350.

"If we compare our strength to population, these states have one trooper per 6,083 people while we have one for each 9,504," Speir added.

The DPS director noted that the problem is further compounded by inadequate pay levels for law enforcement officers and essential support personnel.

"We have a department-wide annual turnover of 15 per cent, and our turnover in enforcement personnel is nearly 50 per cent more than just two years ago," he said.

"The DPS urgently needs additional personnel, and we need salary adjustments which are sufficient to permit retention of trained and productive employees," Speir added. "This is essential if we are to provide the proper response to these growing problems."

Club Activities

The Beta Chi Conclave of Kappa Kappa Iota met Sept. 25 at 7:30 in the Lefors High School Auditorium. They hosted Dr. David Albracht, a chiropractor from Amarillo, who spoke on nutrition and preventive health measures. In addition to the guests from the community and the Lefors Art and Civic Club, one prospective member, Mrs. Daphne Sullivan was in attendance.

The next meeting of the Beta Chi Conclave will be in the High School Library on Oct. 23 with guest speaker, Marilyn Tate, Assistant Home Demonstration Agent for Gray County. The program will be on inexpensive gift wrappings and ties. Hostesses for the meeting are Doris Kunkel, Rebecca Stroud, and Donna Collins.

The Baptist women met with Relia Ayers as hostess for Bible study last week. The lesson was brought by Mrs. Margaret Chapman. Refreshments were served to Chick Wood, Willie Nicholas, Juanita Smith, Doris Morgan, Wilma Mangum, Melba Jordan, Saronia Pettit, Louise Dickinson, Pauline Miller, and Mrs. Chapman.

New officers of the McLean Hospital Auxiliary were elected Sept. 23. President is Mrs. Farris Hess; first vice-president, Mrs. John Gull; second vice-president, Mrs. June Suggs; third vice-president, Mrs. Jerry Corbin; treasurer, Mrs. Custer Lowery; secretary, Mrs. Orphus Tate; and telephone secretary, Mrs. Beatrice Street. Mrs. Britt Hathaway will serve as president of the ways and means project, with Mrs. Loyd Burnett as co-chairman.

The purpose of the auxiliary is to promote and advance the welfare of McLean General Hospital. This shall be accomplished through service to the hospital and its patients, and through fund raising.

Membership in the auxiliary is open to all persons

who are interested in community health and welfare of the hospital and patients. Members of the auxiliary are asking that interested women come to the next meeting, which will be Thursday, Oct. 12, at 3 p.m. The meeting will be in Mrs. Winegeart's office in the hospital building.

Members attending the Sept. 23 meeting were Mrs. Hess, Mrs. Gull, Mrs. Burnett, Mrs. Corbin, Mrs. Street, Mrs. Suggs, Mrs. Hathaway, Mrs. Winegeart, and Mrs. Tate.

Foster Whaley was the chief speaker at the Lions Club meeting Monday night. Whaley is the Democratic nominee for state representative in the 66th district. He gave the current legislature a good overall rating and urged his audience to vote for the new tax legislation which will appear on the November 7 ballot.

Lions also discussed their current project of selling brooms, mops, light bulbs, and other items. The sale will be conducted from Oct. 9 - Oct. 14 at the old McLean Cafe building.

Mrs. Gladys Smith hosted the Mary Martha Sunday School class of First Baptist Church in the church fellowship hall on Sept. 30.

The opening prayer was offered by Mrs. Dede Turner. Mrs. Loree Barker, president, presided over the meeting.

The birthday girls were Mrs. Levia Smith and Mrs. Lucille Cullison.

Secret Pals for the past

year were revealed and members drew names for their new secret pals for the coming year. Refreshments of birthday cake, punch, coffee and nuts were served to Loree Barker, Bea Lester, Bonnie Bidwell, Louise Dickinson, Margaret Chapman, Verna Hudgins, Clara Maude Hupp, Dede Turner, Lilly Mae Williams, Pauline Miller, Lucille Cullison, Essie Howard, Nora Moore, Jessie Watson, Levia Smith, and Gladys Smith.

The next social will be held in the home of Mrs. Bea Lester.

AMENDMENTS

Continued From Page 3

"The Tax Relief Amendment"

For: The amendment is a balanced tax relief package that could total over one-half billion dollars in tax reductions over the next three years. More important, the amendment will have the long-range effect of preventing an increased dependence on property taxation for government revenue.

Against: The amendment is a hodgepodge of loosely-related proposals that should have been submitted separately to the voters, in addition, total government spending will not be substantially reduced by the amendment. Much of the revenue lost by local governments must be replaced by the state, a situation that could lead to a state sales tax increase within a few years.

In 1933, the per bushel prices of wheat and corn in America were lower than they had been 300 years before.

PUBLIC NOTICE

The Legal Services Corporation, a private nonprofit organization established by Congress to provide financial support for legal assistance to poor people in civil matters, will be allocating limited funds to establish new programs or expand existing programs, starting January 1, 1979 to serve eligible clients in various underserved counties throughout the United States. Counties in Texas under consideration for this purpose include:

- | | |
|---------------|------------|
| Anderson | Jasper |
| Andrews | Jeff Davis |
| Armstrong | Kaufman |
| Austin | Kendall |
| Bailey | Kerr |
| Borden | Kimble |
| Bosque | King |
| Brewster | Knox |
| Brown | Lamar |
| Burleson | Lampasas |
| Calhoun | Lavaca |
| Callahan | Liberty |
| Camp | Limestone |
| Carson | Lubbock |
| Castro | Lynn |
| Chambers | McCulloch |
| Childress | Madison |
| Cochran | Marion |
| Coke | Martin |
| Coleman | Mason |
| Collin | Matagorda |
| Collingsworth | Menard |
| Colorado | Miami |
| Comal | Miss |
| Comanche | Mitchell |
| Concho | Montague |
| Cooke | Montgomery |
| Correll | Moore |
| Cottle | Mulley |
| Crane | Navarro |
| Crockett | Newton |
| Crosby | Ochiltree |
| Culberson | Oldham |
| Dallas | Palo Pinto |
| Dawson | Panola |
| Delta | Parmer |
| Dewitt | Pecos |
| Dickens | Polk |
| Dorsey | Presidio |
| Eastland | Rains |
| Ellis | Reagan |

The views of and proposals from all interested groups will be considered. Grant application forms and additional information may be obtained by written request to Legal Services Corporation, Denver Regional Office, 1726 Champa Street, Suite 500, Denver, CO 80202. No funding decisions will be made prior to 30 days from the publication of this notice. The public will have an opportunity to review and discuss proposals at an open meeting. The time and place of which will be announced in the service area under consideration.



Five generations gathered last weekend in Altus for a family portrait. Pictured are on the back row, Mrs. Jim Baucum of Altus, Okla., her grand daughter, Kathy Carter, of McLean, her great-granddaughter, Kristina Diane Carter of McLean, and her husband, Jim Baucum. On the front row are Mr. and Mrs. Baucum's daughter, LaHoma Raines of Altus, Okla., and the Baucum's grandson, Ted Raines of Sulphur Springs.

Lovett Memorial

Library Notes

by Lisa Hatman

THE BAD LANDS

By Oakley Hall

Oakley Hall writes of the American West of the 1880's in this novel.

Hall depicts an era of conflicting emotions and ideas. The action is centered in the Dakota badlands where the well-entrenched large cattle ranches are fighting an invasion by smaller ranches and farmers.

The major characters are Lord Machray, a transplanted Scotsman who envisions a land of cattle-raising, meat-packing and cattle shipping; Andrew Livingston,

a young New York banker-politician who comes to the badlands to begin a new way of life; Yule Hardy, a rancher who opposes Machray's ideas for expansion; Mary Hardy, Yule's bitter daughter; Bill Driggs, an old hunter who remembers the old days and the grange wars; and Cora Benbow, a world-wise madam who is in love with Machray.

"The Bad Lands" depicts the hard life of the settlers, their struggle against nature and their problems with the large ranch owners.

"The Bad Lands" is available at Lovett Memorial Library.

QUOTABLE QUOTES

If there is no hell, a good many preachers are obtaining money under false pretenses... Billy Sunday
Many a man's reputation would not know his character if they met on the street... Elbert Hubbard
Old men are fond of giving advice to console themselves for being no longer in a position to give bad examples... La Rochefoucauld
A banker is a man who lends you an umbrella in fair weather, and takes it away from you when it rains... Anonymous.

If you want to get a sure crop and a big yield, sow wild oats... Josh Billings
A degenerate nobleman or one that is proud of his birth, is like a turnip, there is nothing good of him but that

which is underground... Butler
Old houses mended cost little less than new before they're ended... Colley Cibber



Several people gather each day at the Young-at-Heart club room for recreation. These women are enjoying a game of forty-two, while other women are quilting.

WATER FACTS AND FANCIES

A Water Thief In Your Home
Like a thief in the night, one fixture in your home can silently steal thousands of gallons of water.

Who's the thief? Your toilet bowl, a frequent felon who counts on time and carelessness to make his thefts possible. The American Water Works Association advises you to make at least occasional checks, because a huge quantity of water can be wasted every week.

The most frequent trouble spot is the plunger ball at the bottom of a toilet tank, although the overflow pipe can be a problem, too. The

Association suggests you open your tank and watch what happens during a flush so you'll better understand how to keep the system in watertight repair.

The water level should come up to a half inch or so below the overflow pipe. Gently bend the float arm



Even dogs from nice families get worms. Sergeant's the pet care people. © 1977 Miles-McKinnon Company, a subsidiary of A. H. Robins Co., Richmond, Virginia 23298.

McLean
ATLAS JIM KILLHAM
Plumbing & Heating Co. OFF. 779-2822
Box 464 McLean, Texas Licensed Plumbing
Work Guaranteed

WHY TAKE A CHANCE? OPEN A SAFE DEPOSIT BOX.

Where do you keep your insurance policies, your stocks or contracts? Inside a safe deposit box is the best place for your valuables. Costs pennies per week!

Protect your valuables now.

Why take chances? A safe deposit box will protect all of your important papers.

THE AMERICAN NATIONAL BANK
in McLEAN

McLEAN ALL TIME SUPERSTAR FOOTBALL TEAM OFFICIAL BALLOT

OFFENSE

1. Quarterback _____
2. Fullback _____
3. Halfbacks _____
4. _____
5. End _____
6. _____
7. Tackles _____
8. _____
9. Guards _____
10. _____
11. Center _____

DEFENSE

1. Ends _____
2. _____
3. Tackles _____
4. _____
5. Guards _____
6. _____
7. Line Backers _____
8. _____
9. Half Backs _____
10. _____
11. Safety _____

Place Kicker _____
Punter _____

YOUR NAME _____
ADDRESS _____

FOOD KING 1 lb. quarters
OLEO 2 for 95c

NESTEA INSTANT
TEA 3 oz. jar \$1.89

FOLGEP'S 1 lb. can
COFFEE \$2.48

CAPNATION
TUNA 89c

BETTY CROCKER 23 oz.
BROWNIE MIX \$1.29

ARMOUR REEF 24 oz. can
STEW \$1.19

ARMOUR
TRETT 12 oz. can \$1.09

LAKE REGION WHOLE KERNEL
CORN 303 can 4 for \$1

BORDENS
YOGURT 3 for \$1

WOLF BRAND 19 oz. can
CHILI \$1.05

LIPTON
TEA BAGS 100 count \$1.98

3 lb. can
CRISCO \$1.89

VAN CAMP 300 can
PORK & BEANS
3 FOR 93c

ELLIS
POTTED MEAT
5 for \$1

SUGAR 10 lb. bag \$1.95

SUNNY COAST OR DEL MONTE CUT 303 can
GREEN BEANS 3 for 93c

POST 40%
BRAN FLAKES 16 oz. pkg. 79c

SUPFINE
APPLE SAUCE 303 can 2 for 83c

WILDERNESS APPLE 21 oz. can
PIE FILLING 75c

DUNCAN HINES ANGEL FOOD
CAKE MIX 89c

GRIFFINS 18 oz. jar
APPLE BUTTER 2 for 89c

SUNSHINE
CHIP A ROOS
12 oz. pkg. 89c

GRIFFINS GRAPE 18 oz. jar
JELLY 59

GRIFFINS HONEY 8 oz. jar
JELLY 2\$1 for

KRAFT
MIRACLE WHIP 16 oz. jar 89c

BORDENS 12 oz. carton
COTTAGE CHEESE 59c

COTTONELLE TOILET 4 roll pack
TISSUE 89c

SCOTT'S VIVA PAPER large roll
TOWELS 69c

KING SIZE
TIDE 5 lbs. 4 oz. \$2.59

SUPFINE STEW 18 oz. bag
VEGETABLES 59

NABISCO PREMIUM 1 lb. box
CRACKERS 69c

MEAT

FOOD KING 2 lb. pkg.
BACON \$2.89

All Meat
FRANKS
12 oz. 95c



SPECIALS GOOD THURSDAY THROUGH SATURDAY, October 5-7, 1978

PRODUCE

LETTUCE head 39c

US #1 White 5 lb. bag
POTATOES 59c

Thompson Seedless
GRAPES 69c

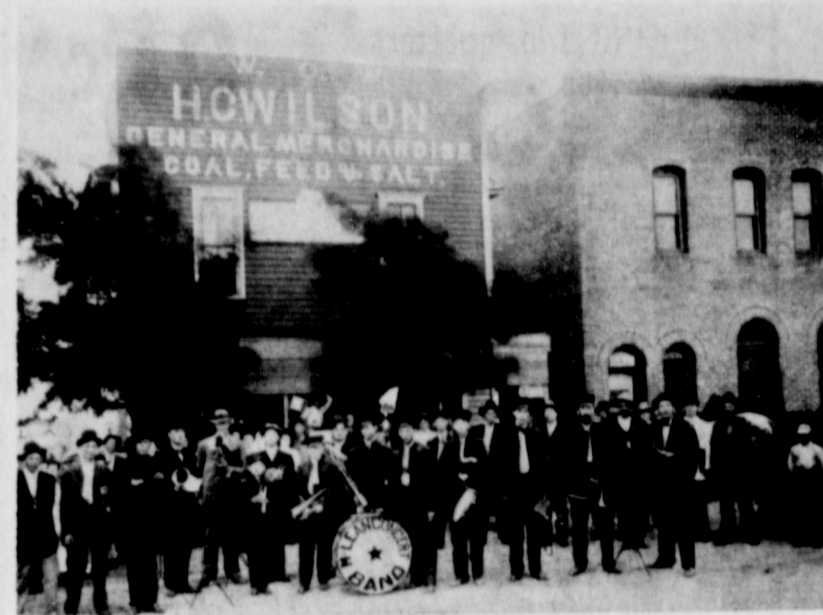




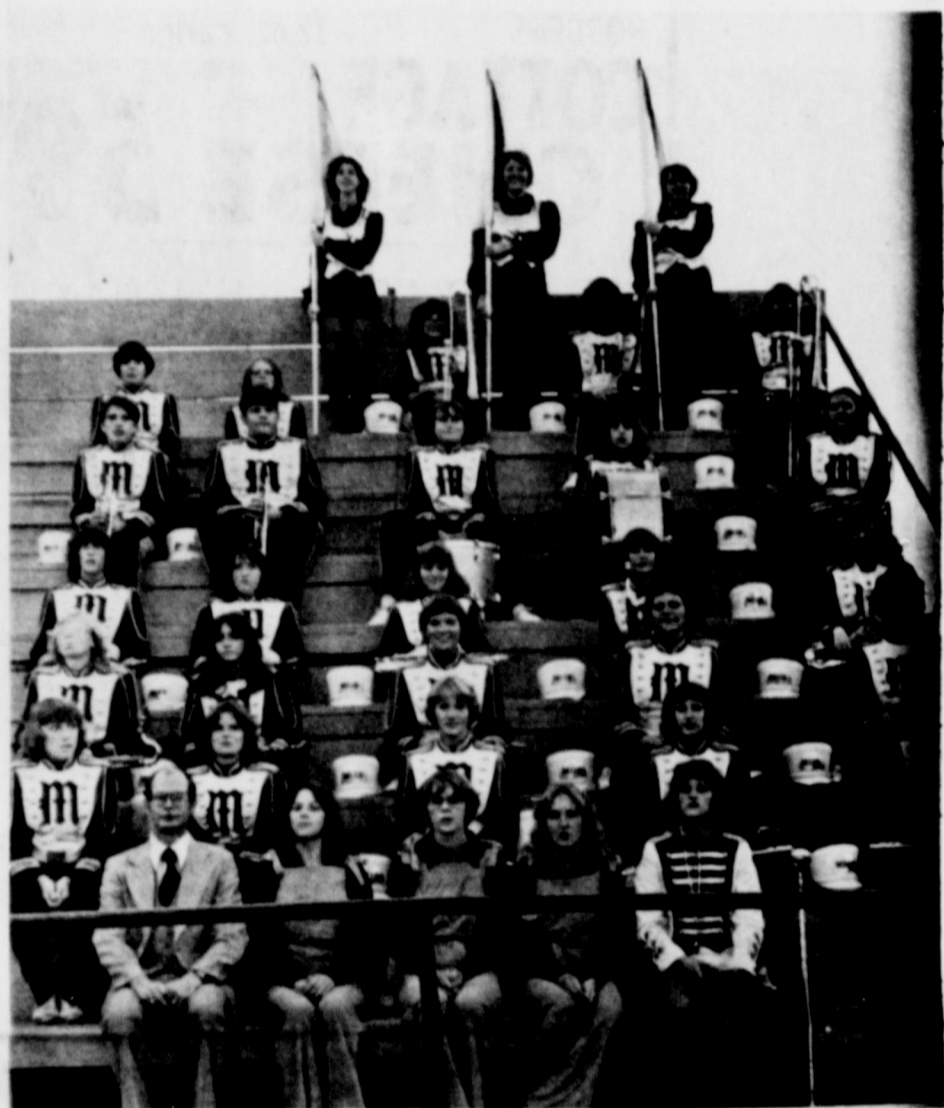
McLean's first High School Band was one month old when this picture was taken in 1927. The director was Professor Robert C. Davidson. The all-male band wore kilts in honor of the Scottish-sounding name of the town. (Photo courtesy of the Alanreed-McLean Museum.)



The early day McLean Town Band is pictured here in full uniform. The date is unknown. (Photo courtesy of the Alanreed-McLean Museum)



McLean had a city band many years before a school band was formed. This picture was taken following a concert that the band gave at Alanreed. The date is unknown. Some of the people in the picture are Elsie Hodges, Ross Collier, Zella Griven, Bart Hilton, Ruby Cook, and Mother Hodges. (Photo courtesy of the Alanreed-McLean Museum)



THE 1978 PRIDE OF THE TIGERS MARCHING BAND

McLean's Music Makers—

Then And Now



Sherry Glass, drum major for the 1978 Pride of the Tigers Marching Band, performs this acrobatic stunt at the beginning of each marching routine.

HOMEMAKER NEWS

By ELAINE HOUSTON
County Extension Agent

CHRISTMAS IN OCTOBER

The Gray County Home Demonstration Council Cultural Arts Committee is planning to have another "Christmas in October" program October 23 in the Heritage Room of M.K. Brown Auditorium. The program will be a come and go type program from 10 a.m. - 4 p.m. It will feature exhibits of Christmas gift ideas to make or buy. There will also be demonstrations on Christmas nappery, gift wrapping and sewing ideas. Mark your calendar for this special program. Watch this column and the News for more details.

HOME DEMONSTRATION MEETINGS

Home Demonstration Clubs are recruiting new members now. The Clubs meet once or twice a month to learn ways to improve family living. During October the club programs will feature Christmas gift-giving ideas and a suggested program from the Texas Home Demonstration Association recommendations.

Home Demonstration Club Membership is open to anyone regardless of race, sex, socio-economic level, color, religion or national origin. If you are interested in joining a club contact the County Extension Office. Or if you and five or six of your friends are interested in organizing a club contact the Extension Office at 669-7429.

HORSEPOWER HORSE SENSE



You can save gas—and so save money—by making sure your engine is in proper tune. Regular tuneups, as recom-

Helps Shrink Swelling Of Hemorrhoidal Tissues

caused by inflammation. Doctors have found a medication that in many cases gives prompt, temporary relief for hours from pain and burning itch in hemorrhoidal tissues. Then helps shrink swelling of these tissues caused by inflammation. The name: Preparation H®. No prescription is needed. Preparation H. Ointment and suppositories. Use only as directed.



Good News Dept.

Encouraging Ideas And Events

Making Golden Years Shine

Old age is a phenomenon that is happening to more of us all the time: in 1976, nearly 23 million Americans were over 65; by 1986, experts predict, there will be nearly 28 million elderly Americans.

Special problems come with these later years, but new friends, new ideas and new experiences are still possible. These years can be truly golden when they become the growing years.



Helping people achieve this is the aim of the Christian ministry of The Salvation Army's services to the aging. To do this it developed a

network of senior citizens clubs and drop-in centers, cheerful but modestly priced residences, summer camps and skilled sympathetic counselors. It helps people cope with the medical, social and financial problems of age. Trained and concerned counselors help elderly people with health, housing or employment problems. They know who to see and where to go for information on Social Security and Old Age Assistance. They can help young and old family members reach a better understanding of each other.

McLean Weather

TEMPERATURES

DATE	HIGH	LOW
9/27	79	57
9/28	79	59
9/29		
9/30		
10/1	86	62
10/2	80	54
10/3	74	53

COTTAGE OUTLET

911 N. MAIN
NOW OPEN 3 DAYS A WEEK!!!!
THURSDAY THROUGH SATURDAY

9-5

Factory Seconds In Ladies
Undergarments and Many
More Useful Items

THE CATTLEMEN FEED SERVICE

LOOMIX LIQUID FEED

NEW SERVICEMAN
STEVE ROGERS

LOCATED NINE MILES NORTH
OF McLEAN
PHONE 779-2907



A chameleon's tongue is as long as its body!

HEAT PUMP

"THE ELECTRIC SAVINGS MACHINE"



SAVING FOR THE FUTURE

Coin banks help teach children how to save for the future. You can save for the future, too, with the electric heat pump. That's why we call it the electric savings machine. This efficient heating/cooling system can deliver as much as two units of heat for every one unit of electricity it uses. But the savings don't stop there. With fuel costs expected to rise during the next two decades, the electric heat pump is a smart investment that will save energy today and in the future.

It's never too soon to start saving... with the electric heat pump. Start today before your future gets here. You'll be glad you did.

CALL US ABOUT THE HEAT PUMP



SOUTHWESTERN PUBLIC SERVICE

Classified Ads

CLASSIFIED AD INFORMATION
 Reader Ad 8¢ per word
 (Minimum Charge \$1.50)
 Display Classified \$1.60 per column inch, Return \$1.30
 Card of Thanks \$2
 All ads cash, unless customer has an established account with The McLean News
 Deadline for Want Ads - Noon-Tuesday
 PHONE 779-2447

FOR SALE: 1977 Honda XL-75 Dirt and Street bike. Low mileage, \$250.00. Call 779-2023. 39-2p

FOR SALE: MESQUITE fire wood. Call 779-3109. 39-4p

FOR SALE: 3 Bedroom Modern house on Grove Street. Loan can be assumed. 80 acres good grass land near Alameda. See me for your Real Estate needs. Boyd Meador Real Estate Broker, 40-2p.

FOR LEASE -- Grazing land for 10 head. Call 779-2902. 40-1p.

Wanted
 WANTED - ROOFING. CALL Coy Smith, 779-3137 36-tfc

WANTED: Reliable Paint and Body man. Pennington's Garage, 779-2261, 40-tfc.

LOS: 1965 Senior ring. Lost in gymnasium. Has initials LSS engraved inside. Bring to McLean News Office and get \$5 reward. 40-tfc.

RETIRED COUPLE, NO children or pets would like to rent furnished one bedroom house or small 2 bedroom. Phone 779-2675. 39-4p

For Sale

FOR SALE: 1973 1-bird good condition. Call 779-3115. 37-4p

'64 CHEVROLET PICKUP-- Call Bill Heasley-779-2129 40-2p

QUALITY Upholstering. 779-2922. Jones Upholstery, 40-tfc.

FOR SALE: RED and yellow delicious, winesap, and many other varieties of apples 3 1/2 miles south of Alameda, W.O. Hommel Orchard 36-tfc.

FOR SALE: 3 bedroom house carpeted through out. Plumbed for washer and dryer on 50' x 75' lot. \$5,000. Call 779-2622. Also 3 room house on 50' x 15' lot. 40-1p.

FOR SALE -- Blue Heeler and Cowdog cross male pup \$25. TO GIVE AWAY--Black and white kittens. 779-2902, 40-1p.

SAVE MONEY ON PRESCRIPTIONS

Send us your new prescriptions and lists of other drugs you are taking for our **PRICE QUOTATION**. Include names, strengths, and quantities for the other drugs. **YOU MAY SAVE up to 50% or more!** If you are not pleased with our quoted prices you may have your prescriptions return returned to you.

ECONOMY DRUG, INC. OFFERS YOU DRUG ECONOMY

ECONOMY DRUG, INC., P.O. Box 1063, Big Spring, Texas 79720

LOST: BLACK BULL, with green ear tag, #37. Call 779-2229. 39-2c

Business
 Service Station dealer wanted in McLean, Contact Bridges Oil Co. Call 665-1606, 40-2c.

Cards of Thanks

Thanks to all my friends for your cards, prayers, and words of encouragement since the accident. I will always remember your concern. Gary Fry

Card of Thanks - To all of McLean friends, Creed and Wanda Lamb, First Baptist Church, for kindnesses, food, and just love, prayers, and presence for the memory of our mother, Mrs. Luther Petty Francis L. Petty, Midland.

The McLean News
Peerless Prognosticator Predicts.....

ALABAMA	34	Washington	14
LSU	21	Florida	14
KENTUCKY	21	Penn State	17
TENNESSEE	34	Army	7
OKLAHOMA	35	Texas	14
NEBRASKA	28	Iowa St.	20
COLORADO	27	Kansas	13
MISSOURI	28	Illinois	10
West Tex. State	14	NORTH TEX. ST.	27
STANFORD	26	UCLA	14
ARKANSAS	45	TCU	7
TEX. A&M	27	Texas Tech	14
Ohio State	14	OHIO STATE	24
Baylor	14	HOUSTON	20
NOTRE DAME	20	Michigan State	17
MICHIGAN	42	Arizona	20
MARYLAND	32	North Carolina State	13
PITTSBURGH	35	Boston College	13
RUTGERS	20	Yale	14
NAVY	27	Air Force	20
DALLAS COWBOYS	28	New York Giants	10

CORRECT LAST WEEK 65%

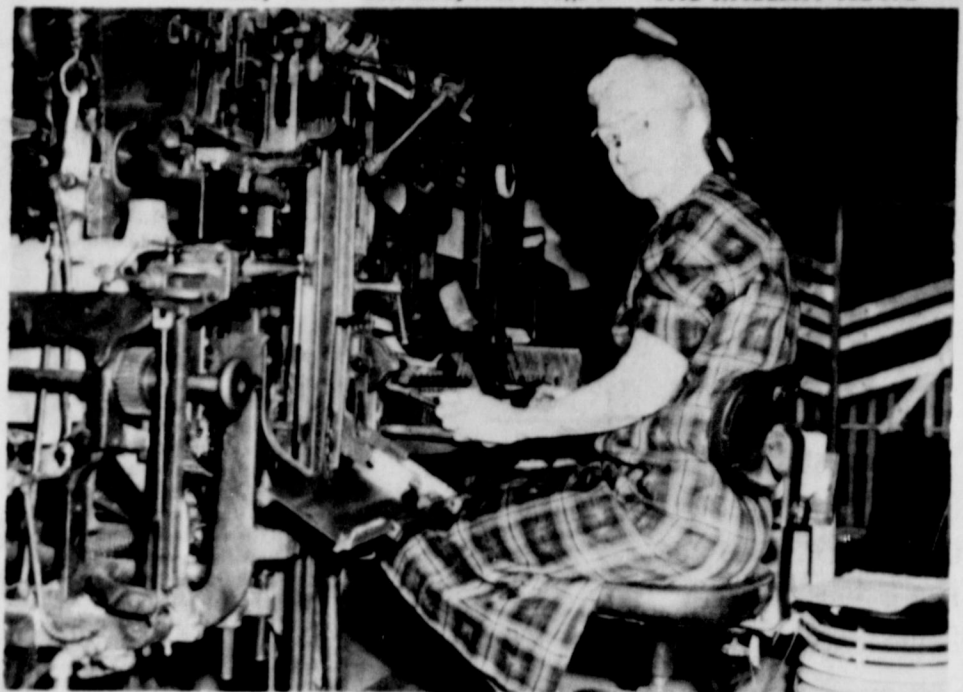
American Indians once believed that clouds were caused by bats smoking tobacco.

Bailey Named Spelling Director

Jack Bailey, principal of Travis Elementary School of Pampa, has been named as the director of Gray County's 1979 Spelling Bee. Bailey replaces Mrs. Rena Belle Anderson, who served from 1972 through the 1978 contest.

The date of the county competition will be announced later by the director, but will be held before April 1, 1979. The winner will compete in the Amarillo Globe-News-West Texas State University co-sponsored 31st annual regional competition on April 28 in Amarillo.

Steam heat has been around since 1845 when it was first installed in Boston's Eastern Hotel.



When The McLean News published its anniversary edition last week, a diligent search was made for a picture of Miss Eunice Stratton, who worked at the News office for so many years. This copy was found in the Alameda-McLean Museum.

News from your County Agricultural Agent

By JOE VAN ZANDT
 Texas A&M University Extension Service

CROP AND PASTURE TOUR
 The Gray County Extension Service Crops and Livestock Committees have planned a tour on Thursday, Oct. 12 in the Alameda, McLean vicinity.

The tour will start at 1:30 p.m. on the Les Darsey farm, 5 miles north of Alameda on Highway 291. Subjects to be observed and discussed on the tour include: Alfalfa fertilization, weed and grass control in alfalfa, johnsongrass control, shinnock control, Sand Sage control, Gold Aster weed control, Weeping lovegrass fertilization and management, irrigation well pump efficiency.

Speakers to discuss these various subjects include: Dr. Bob Stewart, Director, USDA Research Center, Bushland; Wayne Chenault, Research Associate, Texas Agricultural Experiment Station, Bushland; Dr. Frank Pett, Area Extension Agronomist, Amarillo; Dr. Tommy Welch, Area Extension Range and Brush Control Specialist, Vernon and Leon New, Area Extension Irrigation Specialist, Lubbock.

Farms and ranches to be visited on the tour include Les Darsey, Tony Smitherman, Dutch Turpin, Boyd Meador, Jim Allison and Clyde Brown.

The tour will be of interest to a lot of people and will be fast moving. Varied subjects will be observed and discussed by the various speakers. This will be an excellent opportunity to see the results of these research and demonstration plots. The tour should conclude around 4:45 p.m. at the Clyde Brown farm.

RUMENSIN FOR RANGE CATTLE
 Cattlemen now have available a product to help them to produce more beef per acre. Rumensin, an additive that improves feed efficiency 10 percent in feedlot cattle, has been approved by the Food and Drug Administration for use in range cattle.

Rumensin can now be fed to stocker, feeder and slaughter cattle weighing more than 400 pounds. According to the manufacturer, Elanco Product Co., a division of Eli Lilly and Co., the cost of Rumensin is only about a penny a day per animal, and research trials indicate a 10 percent faster rate of gain. Cattle on pasture fed 200 milligrams of Rumensin daily gained 0.2 pounds over those not receiving the additive.

Studies indicate the product is effective in both steer and heifers, in implanted or non-implanted cattle.

Rumensin may make continuous supplementation on poor quality pastures a more profitable practice, provided the feeding practice will insure a consistent intake of the material on a daily basis. Mineral blocks, molasses-type blocks or other supplement mixes or carriers may be used to control consumption if they do so at a low cost. The type of carrier will be important in the overall economics of pasture supplementation since the high cost supplemental feed or feeding system can easily offset the weight gain advantage of the additive.

TOMATOES CRACKING
 What causes a tomato to crack and is there anything that can be done to prevent it?

Cracking is a physiological disorder caused by soil moisture fluctuations. When the tomato reaches the mature green stage and the water supply to the plant is reduced or cut off, the tomato will begin to ripen. At this time a cellophane-like wrapper around the outer surface of the tomato becomes thicker and more rigid in order to protect the tomato during and after harvest. If the water supply is restored after the ripening process begins, the plant will resume translocation of nutrients and moisture into the fruit. This will cause the fruit to enlarge; which in turn splits the wrapper around the fruit and results in the cracking you observe.

The single best control for cracking is to assure that the water supply is constant and regular. It is helpful to apply a thick layer of organic mulch to the base of the plant, this serves as a buffer and helps prevent soil moisture fluctuation. Water your plants thoroughly every week. This is especially important when the fruits are maturing. Some varieties are resistant to cracking, but unfortunately their yield and quality are generally less than other varieties.

NEWS OF HEALTH

Scientists around the world are learning more about a little gland that can play a big role in a woman's monthly cycle.

The pituitary gland, a small organ attached to the brain, produces hormones, substances that affect most bodily functions.

Sometimes the pituitary gland secretes too much of a hormone called prolactin. This can cause women to develop amenorrhea (no menstruation) and galactorrhea (an inappropriate secretion of milk).

Fortunately, scientists have also found a drug that can be used to treat these problems. Called bromocriptine mesylate, it inhibits the secretion of prolactin. The drug has been introduced in the United States by Sandoz Pharmaceuticals as Parlodel, and scientists are currently looking into other uses for it, such as dealing with infertility, postpartum lactation, Parkinson's disease and aeromegaly.

The McLean News Business Directory

<p>Abington's Western Store Complete Line of Quality Brands Western Wear "Complete Ranch Outfitters" Where Your Search Ends and Hospitality Begins 119 S. Cuyler 669-3161 Pampa, Tex.</p>	<p>Carpet Cleaning Professional Carpet Cleaning Residential & Commercial - Free Estimates - Vernon Steam-Way Carpet Cleaners 779-2574</p>	<p>Blakemore FRESH PROTEIN FED CATFISH "Dressed While You Wait" BLAKEMORE MOTOR CO. BUILDING Phone 255-3287 400 North Main Shamrock, Texas 79079</p>	<p>Johnnie F. Mertel Boot Shop Tony Lama, Texas, Acme, Justin Leather Goods Shoe Repair phone 779-2161</p>	<p>The McLean News - THE THRIFTY WAY TO ADVERTISE Foshee's TEXACO Your full-service station Earnest & Maurine Foshee Owners 779-2621</p>	<p>THE CATTLEMAN'S FEED SERVICE LOOMIX Since 1905 Liquid Feed Supplement • Natural Protein • Highest Energy • Consumption Control • Fully Patented Steve Rogers 779-2907 Ted Nelson 826-6600</p>
<p>Kirby Sales & Service NEW, USED, REBUILT PARTS & SERVICE FOR POPULAR BRAND 512 S. CUYLER 669-2990</p>	<p>Shamrock Auto Supply Lawnmowers, Delco Batteries, Shock Absorbers 312 N. MAIN 256-2129 SHAMROCK, TEXAS</p>	<p>BARKER REDI-MIX READY-MIX CONCRETE. BACK-HOE SERVICE PH. 779-2703 OR 779-2869</p>	<p>SCOTT'S THE LAWN PEOPLE Scotts Lawn & Garden Fertilizer "It's Guaranteed" Bentley's Fertilizer</p>	<p>Brannon's Decorator & Supplies CUSTOM DRAPERIES RODS GIFTS. CANDLES SILVER. STATIONARY COOKWARE 218 N. Main Shamrock, Tex. 256-3682</p>	<p>National Auto Salvage 665-3222 or 665-3962 1 1/2 miles west of Pampa on highway 60 large selection of used auto parts We appreciate your business</p>
<p>RIDGWAY CONSTRUCTION CO. Remodeling; Cabinets; Repairs; Painting; Room Additions. PHONE 779-2618</p>	<p>McLean Hardware Complete hardware line -Dishes-Paint-Tools-Gifts 779-2591</p>	<p>Safemark Tires & Batteries Bentley's Fertilizer 779-2209</p>	<p>Parson's Rexall Drug Rexall 24-Hour Prescription Service Shower Gifts Cosmetics</p>	<p>THE DONUT SHOP Doughnuts, Cookies, Cakes, Pies, Breads, 779-2212</p>	<p>RITCHEY'S PLUMBING SERVICE COMPLETE PLUMBING REPAIRS CALL ANYTIME! 779-2577</p>
<p>CONCRETE FINISHER Over ten years experience Specializing in driveways, patios, sidewalks, porches. Call 665-8922 Pampa</p>	<p>PENNINGTON Garage and Car Sales 113 Commerce McLean 779-2535 779-2261</p>	<p>DON MILLER RADIATOR SERVICE "IS OUR BUSINESS" NOT A SIDE LINE • New & Rebuilt Radiators • Gas Tanks & Heaters Replaced 376-6666 612 S JEFFERSON AMARILLO, TEXAS</p>	<p>PAMPA CHRYSLER DODGE has a large selection of trucks, pickups, Chryslers, Dodges, Plymouths, Ramchargers, 4 wheel drive pickups, large selection of good used cars and trucks. Pampa Chrysler Dodge, 811 W. Wilks, Pampa, Texas 665-5766. 11-tfc</p>	<p>LAWN MOWER and AIR COOLED ENGINE REPAIR 619 West First St. Phone 779-2877 PICK-UP AND DELIVERY</p>	<p>EVERYONE READS The McLean News WANT ADS</p>

DOZER WORK
 MOTOR GRADER WORK
 Pumps - Turbines - In. Guards
 Feed - Fuel - Scraping
 BRITT HATHAWAY 779-2585

BENTLEY'S FEED & FERTILIZER
PURINA FEED FOR EVERY NEED
Purina SUP-R-LIX
 LIQUID SUPPLEMENT WE DELIVER 779-2209

LINES by LEM O'RICKK



The biggest shoot-out in the West
Gives Sooners and Longhorns the test.
Lone Star cynics may say
The October affray
Proves which Texas players are best!

LOOSE MARBLES

BY LISA PATMAN

Have you ever had one of those days when it seemed that the whole world was out to foul you up?

No?
Well, how about when you are driving to Aunt Mabel's house, the kids are in the back seat rubbing bubble gum into the carpet, the baby is screaming, your spouse is telling you how to drive, and you can't stand Aunt Mabel anyway.

You know what's going to happen, don't you?
Some suicidal insect is going to choose your windshield as the instrument of his destruction. And not just any old place on the windshield, either. No, sirree.

That kamikaze katydid is going to splatter right in your line of vision, right at the one spot that is absolutely the only place that you can't avoid if you want to drive and see at the same time.

It doesn't matter whether you are five feet or nine feet tall. That bug is going to calculate to the centimeter the exact place that, when covered with the bug's mangled body, will cause you to crane your neck and strain your eyes to the point that you will have a splitting headache. This in turn will make you surly to Aunt Mabel who will promptly write you out of her will.

Personally, one of my experiences with this type of disaster was a time when I was trying to be chic and suave, and, taking a sip of my drink, struck the swizzle stick up my left nostril. But that's what I get for trying to be chic and suave, since I probably was meant to be a corn-fed housefrau.

Here's another example: There you are, finally with enough time to sit down and relax. All you want to do is watch a little television.

Go ahead, turn on the TV, kick off your shoes, and get yourself comfortable in your favorite chair. Now reach for the TV Guide a.i.d., if the gremlins who steal TV Guides haven't spirited it away, try to turn to the listing for the day. No matter which day you are looking for, right in front of it will be a stiff piece of paper advertising the record or tape of your choice.

This stiff piece of paper

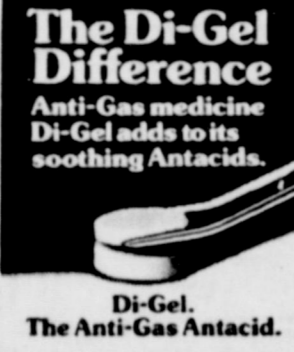
will invariably get in your way. You will be unable to find the evening program schedule because that obnoxious piece of paper is in the way. Going to try to rip the blasted thing out, are you? You can try it, but be forewarned that all the pages of the guide will come unstapled and you'll be left holding that stupid record ad, which is the only thing you didn't want.

When you feel one of these horrible events coming on, you might as well give up and go on to bed, or back to bed if it's early in the morning, because things are not going to get better. Mother nature, and the advertising media, have your number.

Political Calendar

Political announcements appearing in this column are subject to the action of the Democratic primary May 6, 1978. All announcement fees must be paid in advance.

JUSTICE OF THE PEACE PRECINCT 5
Dorothy Beck Patterson
GRAY COUNTY TREASURER
Jean Scott
GRAY COUNTY CLERK
Wanda Carter
STATE REPRESENTATIVE
66TH LEGISLATIVE DIST.
Foster Whaley
U.S. CONGRESS 13TH DIST.
Jack Hightower
223TH DISTRICT JUDGE
Don Cain
DISTRICT CLERK OF GRAY COUNTY
Helen Sprinkle
GRAY COUNTY JUDGE
Don Hinton
Carl Kennedy
COUNTY COMMISSIONER
PRECINCT 4
Ted Simmons



The Di-Gel Difference
Anti-Gas medicine
Di-Gel adds to its soothing Antacids.

Di-Gel.
The Anti-Gas Antacid.

INCONSISTENCY

Inconsistency in religion leads to hypocrisy and the greatest realm of this misconduct is in saying then not doing. In John, the apostle of love tells us in chapter one just what the consequences of inconsistency are.

1. A person who is inconsistent does not the truth.
"If we say that we have fellowship with him, and walk in darkness, we lie and do not the truth" (1:6).
 2. The truth is not in someone who professes one thing, contrary to practice. "If we say we have no sin, we deceive ourselves, and the truth is not in us" (1:8).
 3. Claiming to be pure whereas we are not, makes a liar of God. "If we say that we have not sinned, we make a liar and His word is not in us" (1:10).
 4. Inconsistency then makes one a liar (1:6) and God's word is not in him (1:10).
- In light of the foregoing, it behooves each individual to be consistent in word and action, or face the dire consequences of the wrath of God.

CHURCH OF CHRIST
4th & Clarendon
McLean, Texas

WHERE CHRIST IS KING
AND A FRIENDLY WELCOME AWAITS ALL
SUNDAY
Bible classes: 10 a.m.
Worship assembly: 10:50 a.m.
Evening worship assembly: 6 p.m.

WEDNESDAY
Classes for all ages: 8:00p.m.

PSYCHOLOGY

Many parents hesitate to alarm their children by discussing the possibility of an emergency situation with them. However, it is psychologically sound to prepare even a rather young child for emergencies. A dangerous situation may become lethal if an unprepared child panics and freezes.

An interesting example of emergency preparation psychology is being used in thousands of towns throughout the United States. The aim of the Junior Fire Marshal Program, sponsored by The Hartford Insurance Group, is to teach children both how to prevent fires and what to do if one occurs.

The theory is that in a fire, even with his thinking impaired by lack of oxygen, drowsiness or panic, a properly prepared child could react instinctively and correctly.

Through this Junior Fire Marshal Program, small children who have been properly trained have, in many cases, gotten themselves out of fires.



With elections just a few weeks away, several politicians have visited the area News offices. However, this one forgot to tell us his name, or what he was running for. Anyone care to guess?

Richards Earns Commendation Medal

CLEAR, Alaska--Meritorious service at Carswell AFB, Tex., has earned the U.S. Air Force Commendation Medal for Staff Sergeant Randall S. Richards, grandson of Mr. and Mrs. John Richards of Lefors Route, McLean, Tex.

Sergeant Richards, a recreational services supervisor, was presented the medal at


Clear Air Force Station, Alaska, where he now serves with a unit of the Aerospace Defense Command.

The sergeant, who graduated from high school in 1969 at Dumas, Tex., has studied at Amarillo (Tex.)

College. He is the grandson of Mr. and Mrs. Nevill Back of Lefors Route, McLean. Sergeant Richards' wife, Deborah, is the daughter of Mr. and Mrs. Wayne Quillin of 719 Texline St., Dalhart, Tex.

IMPORTANT NEWS FOR BACKACHE SUFFERERS!

MOMENTUM™ Tablets are 50% stronger than Doan's.
Before you take Doan's Pills for muscular backache, remember this: MOMENTUM™ Tablets are 50% stronger than Doan's. That means MOMENTUM™ gives you 50% more pain reliever per dose to relieve backache.
To reduce pain, soothe inflammation so muscles loosen—you can move more freely in minutes! There's no stronger backache medication you can buy without a prescription than MOMENTUM™ Tablets. Take only as directed.




**FIRST UNITED
METHODIST CHURCH**
in McLean

Sunday School 9:45 a.m.
Worship 10:55 a.m.
UMYF 6:00 p.m.
Evening 7:00 p.m.

Love is not one of the attributes of God, but the sum of them all.

HARVEST THESE SAVINGS

USDA CHOICE BONELESS ROUND STEAK \$1.89 LB.	USDA CHOICE BONELESS LOIN TIP STEAK \$1.89 LB.
--	--



SHURFINE
SUGAR
99¢
5 LB. BAG

PIKES PEAK OR RUMP BONELESS ROAST LB. \$1.39

GO Gunn-Ho
FOR 1000 EXTRA
GUNN BROS. STAMPS.

SHURFINE HAMBURGER SLICED DILL PICKLES 32 oz. jar 89¢	SHURFINE CUT GREEN BEANS 16 oz. can 3 for 89¢
---	--



SHURFINE
PORK & BEANS
16 oz. can
3 for 89¢

WELCH Grape Jelly 3 lb. jar \$1.59

BAMA STRAWBERRY JAM 2 lb. jar \$1.39



SHURFINE
FLOUR
5 lb. bag 79¢

SHURFINE DINNER 7 1/4 oz. MACARONI & CHEESE 2 for 49¢

PARKAY OLEO LB. 59¢

SHURFRESH CORN OIL OLEO LB. 69¢
--



SHURFRESH MILK FOR GOODNESS SAKE

SIMPSON'S

LOWEST EVERYDAY FOOD PRICES

MARKET

Tendercrust Bread and Bakery Products Specials Good Friday and Saturday