

Haynes 1
Box 300
McLean, Texas 79057

The McLean News

Serving McLean and the Area Since 1903

McLean, Gray County, Texas 79057

Price 25¢

Sept. 22, 1983

Volume 80, Number 38

Rocket-Carrying Truck Wrecks Near Shamrock Early Tuesday

According to one report, a cow which wandered on to Interstate 40 three miles west of Shamrock early Tuesday morning drew national attention to the McLean-Shamrock area. A semi-tractor trailer, loaded with unarmed rockets, hit the cow, and scattered its load across the heavily travelled roadway.

Law enforcement officers stopped east-bound I-40 traffic at the intersection of I-40 and U.S. 273 west of McLean. West-bound traffic was stopped at Shamrock and rerouted through Wheeler.

The Army's Explosive Ordinance Demolition team from Ft. Bliss in El Paso reached the crash

site about 11 a.m., and worked for about four hours before the rockets were safely deployed, and traffic was allowed to resume through the area.

According to an Army spokesman, the truck was carrying 864 of the 2.7 inch rockets from Pine Bluff, Ark., arsenal to Holloman Air Force Base, N.M. The rockets

do not carry warheads, but do contain fuel.

DPS spokesman Larry Todd said that one crate was damaged, but there was no damage to the rockets.

The truck was driven by Wendell Ray Williamson, 56, of Mobile, Ala. He was transported to Shamrock General Hospital by Wheeler County

Ambulance Service. He had minor cuts and bruises.

On the scene at the site of the wreck were Texas Department of Public Safety troopers from Shamrock, McLean, Childress, and Wellington; the Shamrock City Police; the Wheeler County sheriff's deputies; the Wheeler County

constable, and the Shamrock Fire Department.

Members of the Texas Highway Department were also helping reroute the traffic.

According to Steve Alesiani of the Shamrock Texan, the truck was heavily damaged. He said that he saw packing cases and mortar pallets

scattered on the highway at the wreck scene.

The wreck drew national attention to the

area, as news reports followed the handling of the incident through the day Tuesday.

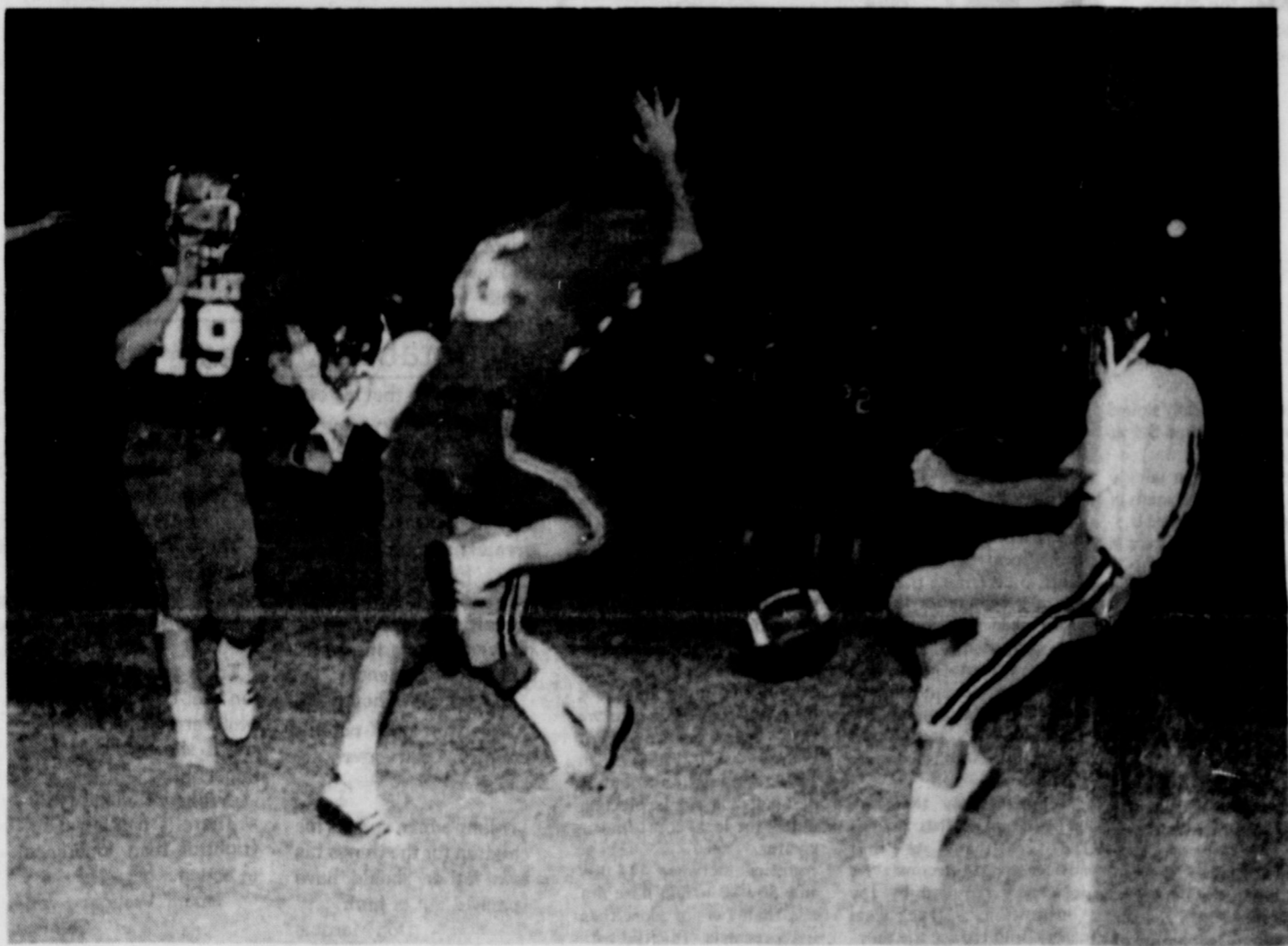
Tri State Rodeo Cancelled

The McLean Tri State High School Rodeo, originally set for Saturday night, has been cancelled, according to sponsor Jerry Billingsley.

"We are having an Open Jackpot instead," Mrs. Billingsley said.

See JACKPOT, Page 2

Patriots Capitalize On Tiger Errors To Topple McLean Friday Night



THIS BLOCKED PUNT told the story of McLean's defeat Friday night at the hands of the Valley Patriots. (Photo by Linda Haynes)

By Kathy Carter

The Valley Patriots, capitalizing on crucial Tiger errors, thwarted McLean's hopes Friday night to avenge last year's 54-3 loss. Valley won the game 34-0 and the Tigers came away frustrated, disappointed, and empty-handed.

"We have a much better team than the score indicates," said head coach Joe Riley. "Our boys are aware of the mistakes we made and are making the necessary changes."

McLean received the opening kick-off on their own 10-yard line, and returned it to their 29. After losing six yards in three plays, the Tigers fumbled the ball and Valley recovered it, taking possession on the Tiger's 10. With 8:09 left in the first quarter, the Patriots scored the first touchdown of the game. The PAT was good, making the score 7-0, Valley.

The Tigers, unable to get a drive going, punted the ball and gave the Patriots field possession at the Valley 48. The Patriots took seven plays before Valley's Jeeter ran the ball 43 yards for the

second Patriot touchdown. The PAT was good and with 6:33 left in the half, Valley was ahead 14-0.

McLean once again took possession of the pigskin, but Valley's Cox intercepted an Elson Rice pass on the Tiger 42 and ran to paydirt. The PAT was good and the scoreboard read 21-0.

With little time left in the first half, the Tigers took command of the ball on the Patriot's 49, and Tiger Randall Wynn, catching the Patriots flat-footed raced to the 3-yard line before he was tackled. McLean closed in on the Patriots, advancing to their one-yard line. However the sweet touchdown eluded them, as time ran out on the Tigers and the touchdown attempt.

In the third quarter, the Tigers wrestled with the Patriots over control of the ball, and, although unable to score themselves, kept the Patriots from crossing into touchdown territory.

With 6:10 left in the 4th quarter, Valley's Clardy made a 39-yard touchdown run, the PAT was successful and Valley led 28-0.

McLean was unable to move the pigskin and had to punt to Valley once again. This time the Patriots took over the ball on the McLean 36 and Morrison raced 30 yards for the final Valley TD. The PAT was not good, and with 1:58 remaining in the game, Valley led

34-0.

"The line of scrimmage was completely dominated by Valley," said Riley. "Their overall team quickness was tough to handle - we won't play another team this year with that type of overall speed."

"We had punts blocked, passes intercepted, fumbles recovered by Valley, and several yards lost because our quarterback or ball carrier was sacked behind the line of scrimmage," Riley added. "This game made us a better ball club. Because of it, we learned more about our weaknesses and this week, we will be working them out."

The Tigers' next battle will be with the Groom Tigers Sept. 30, 7:30 p.m. at Groom for the first district game.

According to Riley, Groom has several strong players. "Rex Ruthardt has proven himself to be a really good back, and Louis Leven, a 176 lb. senior is Groom's leading tackle. We will be up against some bigger players also. Rodney Head weighs in at 275 and David Henson at 253," he said. "We are going to take advantage of the open date this Friday, and work on basic football. We'll be ready to tangle with Groom when the time comes."

McLean's Junior Varsity will play Canadian's 9th grade tonight (Thursday) at 7:30 p.m. here.

McLean City Council Okays Trash Ordinance At Meeting Last Week

The McLean City Council passed a trash rate ordinance on its first reading at the council meeting Sept. 13 at the McLean City Hall. The ordinance sets new rates for trash pickup in the city limits and outside the city limits. Residents will pay \$5 per month for the service (an increase over the old rate of \$3.25).

Businesses, who have been paying a staggered rate, will pay \$10 per month for one pick-up per week (\$1 higher out of town), \$15 per month for two pick-ups per week, and \$32.50 for more than two pick-ups per week.

The council also discussed purchasing a sewer cleaning machine from Craig Thomas. The machine would handle the heavy duty cleaning of the sewers, but might not be needed very often, councilmen decided. At present the City has a machine to do cleaning, and a company in Amarillo is called in for extensive cleaning. The cleaning machine is priced at \$17,000. Councilmen took no action on the purchase.

The council voted to give \$1,000 to the Firemen's Retirement Fund. City Secretary Stella Lee explained that the money was necessary so that the

fire department can apply for matching funds from the state.

Wayne Bybee was present at the meeting, and requested a large water line to his business, which is just outside the city limits. The council took no action on the request, but promised to investigate the matter.

Women Injured In Wrecks Near McLean During Week

The McLean Ambulance transported a Chicago woman to St. Anthony's Hospital in Amarillo Sept. 14 following a one-car rollover on Interstate 40 two miles west of Alanreed.

Christine Kozij suffered multiple lacerations to the face and head and possible injuries to the neck and back and was reported in critical condition Wednesday night.

DPS trooper John Carter of Pampa said Kozij's 1982 Toyota Celica was eastbound on I-40 when she lost control of the vehicle and overcorrected, causing the car to overturn three times and roll down an embankment. It came to rest in the westbound lane of the highway.

An unidentified pas-

enger in the vehicle was not injured. Both the driver and the passenger were wearing seat belts.

Madeline Kanzler of Rio Rancho, N.M. was injured Sept. 13 when the car she was driving ran into the side of an embankment. The accident occurred about 2 p.m. 2 miles west of Alanreed on

Interstate 40. The Kanzler car, a 1979 Chevrolet, was travelling west when it crossed the median, crossed the west-bound lane, and ran into the earth embankment.

She was taken by McLean Ambulance to Shamrock for treatment. Her husband, Charles, a passenger in the car, was not injured.

Two reel hose connections for the fire department will be purchased by the City, councilmen decided also.

They approved the appointments of Mrs. Jim Allison and Mrs. James Hefley to the Lovett Memorial Library board. The two appointees are replacing Mrs. Nona Mann and Mrs. Bryan

Lane whose terms have expired.

The council will have a called session Sept. 27. Mr. and Mrs. Vernon Turner also attended the session to complain about

the dog problem in the city.

Attending the meeting were mayor George Terry; councilmen Bill Thomas, June Suggs, Loyd Bybee, Jim Barker,

W. A. Bentley; city secretary Stella Lee; city superintendent Bob Glenn; Wayne Bybee, Craig Thomas, Louise and Vernon Turner.

Weather forecasters

We all knew it was just a matter of time, and it finally happened. A truck load of explosives wrecked between McLean and Shamrock early Tuesday morning, and scattered lethal armaments across the busiest highway in the nation. This time we were lucky.

were predicting that the temperatures will gradually rise through the week, until more normal temperatures are reached.

The electricity in McLean was shut off about 4 a.m., but the loss of power was not weather-related, according to Southwestern Public Service's

Brad Dalton. "We had a transformer leak at a substation south of McLean," Dalton said, "and we had planned to repair it at that time of the

morning so we would cause as few problems as possible for our customers." The power outage lasted about 40 minutes.

Special Program Nets Gray County Drunk Drivers

The Department of Public Safety troopers in Gray County have arrested 94 persons for DWI (Driving While Intoxicated) in the county during the past three months, according to Sgt. Jim Powell of the Texas DPS.

The "Selective Traffic Enforcement Program" that allowed state troopers to work on their days off duty in Gray County has been effective. Powell said "Searching for the drunk driver in target areas has been very successful."

See DWI, Page 2

from the distaff side



by Linda Haynes

Only a few tourists were distressed because they had to drive several extra miles to get to their destination, but no one was injured, and no property (other than the truck) was destroyed. We all owe a special thanks to those hard-working members of the Department of Public

Safety, the Texas Highway Department, the Wheeler County deputies and constable, and the Shamrock Fire Department and police department who responded to the emergency in an efficient and capable manner. These men were dragged from their warm beds right in the middle of the first "norther" of the year to do what they could to protect the lives of the public. And they did a good job. But what happens next time? What happens

when another cow steps onto the road in front of another truck, this one carrying nuclear weapons?

I don't know the answer to this problem, but it is indeed a dangerous situation, and one which all of us across the nation face.

Is there a safe way to transport dangerous chemicals, nuclear weapons, explosives?

During those horribly hot, humid days of August, would you have be-

lieved that we would go from summer to winter in one day?

See DISTAFF, Page 2



Date	High	Low
9-13-83	75	57
9-14-83	82	56
9-15-83	89	65
9-16-83	93	61
9-17-83	97	67
9-18-83	96	64
9-19-83	94	66

Precio for period - 60'

Opinions

Let's Keep The Sober Drivers Off The Road

Perhaps the only solution to the drunk driver killers on our state's highways is to turn the roads over to them. Our law officers have tried stepped-up enforcement, the legislators have tried passing stiffer laws... and still the slaughter continues.

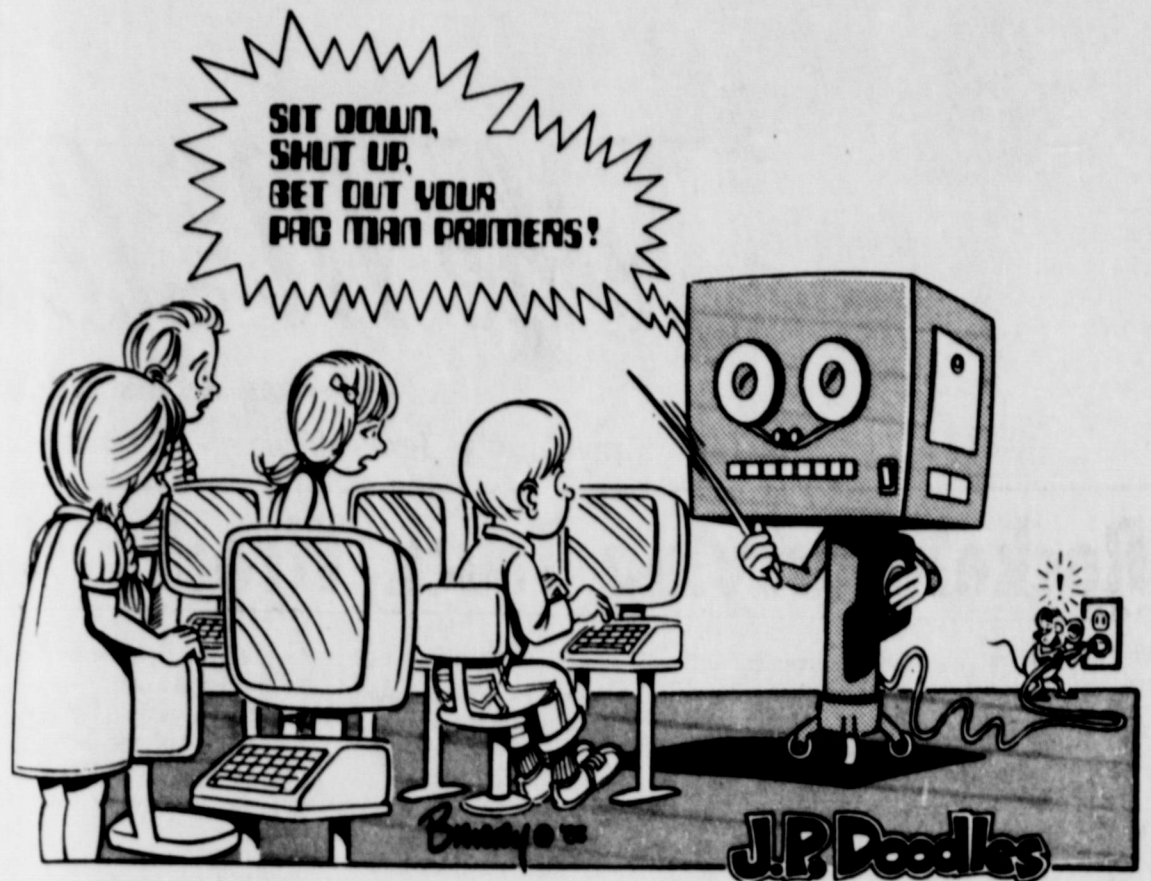
Again, this week I've heard stories of lives lost and lives ruined by the idiocy of the person who takes a drink and then gets behind the wheel of a car. A young man, father of two children, and the husband of a friend of mine, died horribly at the hands of a drinking driver last weekend.

When I think of that desolated young wife and the grief-stricken parents and the fatherless children, I get so angry I would like to take the law into my own hands, and start shooting drunk drivers!

More than 50 people attended the first meeting of MADD (Mothers Against Drunk Drivers) in Pampa Monday night. The large attendance at that first meeting shows how widespread the concern over this problem is.

But if we can't seem to keep the drunks off the road, then perhaps we should try another approach. Why don't we pass a law that forbids sober drivers on the roads from 11 p.m. until 5 a.m. each night? We could let all the drunks have the roads for six hours each night, and maybe they would eliminate each other.

Or better yet, we could demand the death penalty for a drunk driver who causes the death of another person in a car wreck. That would certainly be a just punishment for the selfish, sick individuals who are a danger to all of us.



JACKPOT

The Open Jackpot event will be Saturday night, beginning at 6 p.m. in the Felton Webb Arena, north of McLean. The books close for the event at 5:30 p.m. that day.

"This event is open to anyone who is 19 or under," Mrs. Billingsley said. "Participants do not have to be a member of the Tri State High School Rodeo Association to participate."

"Events have been scheduled for two age groups, 12 and under, and 13 through 19," she said.

Events planned are boys calf roping, ribbon roping, steer wrestling, and team roping; and girls barrels, poles, breakaway roping, and goat tying.

The entry fee for the 12 and under group is \$10, and the entry fee for the 13-19 group is \$20.

Mrs. Billingsley said that a first-place buckle will be given in each event, along with jackpot money. An All-Around buckle will in each age

group. To be eligible for All-Around buckle, the contestant must enter three events. Anyone who wants

DISTAFF

McLean residents went to bed Monday night, after a day where the temperatures reached into the 90's again. But Tuesday morning we got up to howling winds, and temperatures in the low 40's! According to the weathermen, who actually predicted this cold spell, our weather is sup-

Square Dance Lessons Set For Shamrock

Square dance lessons will begin at the Shamrock Armory Sept. 29 at 8 p.m. The Irish Do Si Doers are the sponsoring organization. Micky Boone is the instructor.

Those interested in the lessons can call 256-3135 for further information.

There are very few good judges of humor, and they don't agree. Josh Billings

posed to gradually warm during the week. Hopefully, we will have a few days of moderate temperatures before we go straight into the harsh days of winter. But in this country, who knows?

Senator Lloyd Bentsen Watching Washington

Mexico's devaluations of the peso last year dramatically slowed the flow of commerce across its border with the United States, devastating the border economy. Retail businesses in our border cities rely heavily on sales to citizens of Mexico. But because of the peso devaluations, many of them could no longer afford to buy goods and services in the U.S. As the effects of the peso devaluations spread, retail sales in cities from Brownsville to El Paso fell by anywhere from 27 to 79 percent. In Laredo, state sales tax receipts plummeted by 44 percent.

In July, the U.S. government launched an experiment that would have made it more difficult for those Mexican citizens who could still afford to shop in the United States to cross the border. The State Department and the Immigration and Naturalization Service singled out the Texas-Mexico border as the site for a pilot project to test a new policy on border crossings. I protested this decision and was able to help get it reversed.

Before the experiment began, Mexican citizens wishing to shop in the United States reported to U.S. immigration offices at each crossing point along the border to obtain a 72-hour border crossing card. The State Department also provided this service. Mexican citizens could go to American Consulates along the border to have their passports or other travel papers stamped with a 72-hour crossing permit that allowed them to make a limitless number of 72-hour trips to the U.S. border area.

Under the pilot project, only the State Department could approve border crossing documents. This created two problems. First, officials of our border communities were not consulted about the change. Notification of the pilot project was not even issued in time to let the people of the area know of the new procedures.

Secondly, along Texas' 900-odd mile border with Mexico, there are only three American consulates, at Juarez, Nuevo Laredo and Matamoros.

That left the Mexican citizens living along the vast bulk of our border at a tremendous disadvantage. In order to shop in the United States, citizens living across from Eagle Pass, Del Rio and Presidio, for example, had to travel 100 miles or more to get permission to enter the United States to shop.

Officials in those and other border cities were deeply concerned and I don't blame them. When notified of this project, I contacted both the State Department and the Immigration and Naturalization Service and repeatedly urged them to reconsider. The project now has been terminated and border crossings are being handled as they had been before.

This was a wise move. It made no sense for the U.S. government to place roadblocks in the way of those who in the wake of the peso devaluations could still afford to cross the border and shop in the United States.

Continued From page 1

Continued From Page 1

Nov. 8 when we vote on the constitutional amendments. The Lovett Memorial Library in McLean has been designated as the official polling place for elections in the future. Keep the change in mind as the election approaches.

McLean voters will go to a new polling place

Senator Bill Sarpalius Reports



Amendment No. 1

AUSTIN — There have been justices of the peace in Texas ever since Stephen F. Austin set up his colony in 1824 and every constitution since that time has provided for such an office. The office of constable has co-existed primarily to deliver legal documents and to assist the justice courts.

On November 8, Texas voters will be asked to allow their local commissioners court to determine the number of precincts for justices of the peace and constables. The proposed amendment to the constitution would allow the commissioners court to determine the number of JPs and constables within established state standards.

Proponents say there are many counties that do not need as many as four justices and four constables as is now required by the Constitution. The local court could reduce the number to as few as one justice and one constable.

Those who favor the amendment also say that paying the salaries of several JPs and constables when there is not a real need imposes an unnecessary financial burden on county taxpayers.

Those who oppose altering the Constitution say that if the number of justices and constables is reduced that other judges or some other county officials may have to perform some of the duties and that the county judicial system is already overburdened.

If the number is reduced, opponents say, people in those areas will be burdened with longer and more inconvenient trips to receive the services of the justice of the peace or constable.

Under the amendment, a county with a population of 30,000 or more may not have less than four or more than eight precincts. A county with less than 18,000 population would be designated a single precinct unless the local court finds a greater need.

Those counties between 18,000 and 30,000 would have not less than two or more than five precincts. In cities with 18,000 or more population, the amendment would call for two justices in each precinct.

If you have any questions about this or the other 10 amendments please contact me by writing Senator Bill Sarpalius, Box 12068, Austin, Texas 78711.

DWI

The program has produced 58 DWI arrests in addition to the regular number of DWI arrests while troopers were on routine patrol. Powell said, "State troopers have arrested 94 persons for DWI in Gray County during the past three months, and during the same time period last year, 24 drunk drivers were arrested."

ues to contribute to at least 50% of the fatal traffic accidents. At present, traffic deaths for this period are down by nine as compared to the same time last year." The death toll in Texas was 4,271 in 1982. The figure shows a 9.1 percent decline from 4,701 in 1981. The statistics show that 420 fewer lives were lost in motor vehicle accidents last year," Powell said.

Quotable Quotes

He travels the fastest who travels alone. Kipling
The action is best which procures the greatest happiness for the greatest numbers. Francis Hutcheson
Against a foe I can myself defend, -but Heaven protect me from a blundering friend. D'Arcy W. Thompson
He who loves not his country, can love nothing. Byron
Many a man spans his children for the things his own father should have spanked out of him. Don Marquis

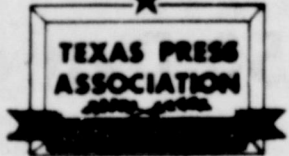
As I would not be a slave, so I would not be a master. This expresses my idea of democracy. Abraham Lincoln
The world is filled with willing people; some willing to work, the rest willing to let them. Robert Frost
Truth gets well if she is run over by a locomotive, while error dies of lock-jaw if she scratches her finger. William Cullen Bryant
There is nothing more fruitful than ignorance in action. Johann Wolfgang Von Goethe

On Your Payroll

SENATOR BILL SARPALIUS, P.O. Box 12068, Austin, Texas 78711 or P.O. Box 7926, Amarillo, Texas 79101, or call 512/475-3222
REPRESENTATIVE FOSTER WHALEY, Texas House of Representatives, P.O. Box 2910, Austin, Texas 78769, or call 1/800 692 1389
REPRESENTATIVE JACK HIGHTOWER, 13th District, Room 2348 Rayburn Building, Washington, D.C. 20515
SENATOR LLOYD M. BENTSEN, Room 240, Russell Building, Washington, D.C. 20510
SENATOR JOHN TOWER, Room 142, Russell Building, Washington, D.C. 20510

The McLean News

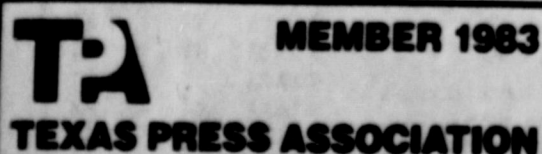
USPS 336-260
LINDA HAYNES
EDITOR AND PUBLISHER
201 N. Main P.O. Drawer H



1983
McLean, Texas 79057
McLean, Gray County, Texas
Published each Thursday
(except the last week in December)
Second class postage paid at McLean, Texas 79057
POSTMASTER: Send address changes to:
THE McLEAN NEWS
P.O. DRAWER H
McLEAN, TEXAS 79057

SUBSCRIPTION RATES:
\$12 per year in Gray County
\$14 per year outside Gray County
ADVERTISING RATES:
\$2.00 per column inch National Rate
\$1.85 per column inch Open Retail Rate
Advertising Manager: Kathy Carter
Circulation: Dottie Haynes, Grant Mann
Columnists: Sam Haynes, Lisa Patman
Stringers: Martha Parker, Lena Carter

McLean, Texas
Population 1160 (1980 Census)



QUOTABLE QUOTES

Never say you know a man till you have divided an inheritance with him. Johann Kaspar Lavater
Never does the human soul appear so strong as when it foregoes revenge and dares to forgive an injury. Edwin Hubbel Chapin
Innocence is like polished armor; it adorns and defends. Robert South
The pain of the mind is worse than the pain of the body. Pubillius Syrus
No man ever prayed heartily without learning something. Ralph Waldo Emerson
Sermons are like pie-crust, the shorter the better. Austin O'Malley

SUBSCRIBE TO

The McLean News

IN-COUNTY RATE-\$12 per year
OUTSIDE GRAY COUNTY-\$14 per year
SPECIAL 9-MONTH STUDENT RATE-\$9
You can subscribe by mail by completing the form below and mailing with your check or money order to:
THE McLEAN NEWS
P.O. DRAWER H
McLEAN, TX 79057

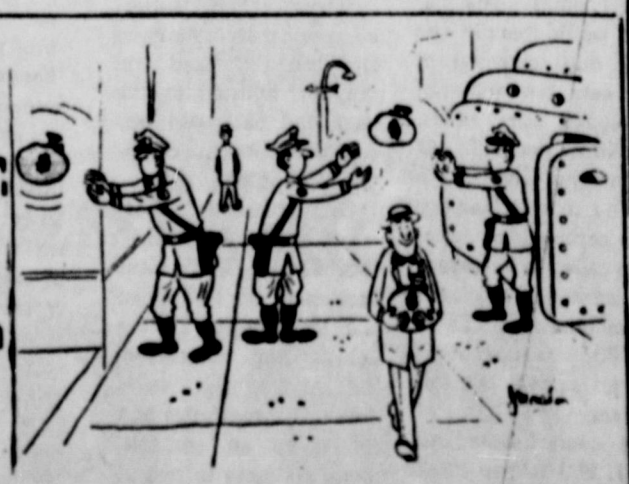
NAME _____
ADDRESS _____
CITY _____
STATE _____ ZIP CODE _____

LINES by LEM O'RICKK



We were tired of weather so hot,
Our goats they were already got;
But when tem'pratures drop,
Fifty degrees a hop;
It's really a little too lot!

American National Bank in McLean
FDIC
American National Bank in McLean
779-2461 201 N. Main
McLean, Texas



Mommy Marbles Not All-American

Sometimes it can be quite startling to find the images we have of ourselves do not faintly resemble the opinions others have of us. Those of us who occasionally think of ourselves as quietly creative are often surprised to realize that others are convinced we're just gazing off into space a lot. And those who think they're constantly busy, busy, busy, seem a bit slaphappy to those of us who take an hour to sharpen a pencil.

Perhaps nowhere else is this more repulsively pointed out than in the current flock of television commercials. One of my least favorite portrays a little girl who wants to "be the mommy," and consequently orders her own mother, who plays "the little girl," to brush her teeth, citing along the way the advantages of fluoride protection. I'm sure the advertising personnel behind this televised hawking thought they were creating a little girl who

was cute and informative at the same time, but the message I got from the commercial was that the kid should quit whining and go to bed, cavities or not. After all, what good is a healthy smile if your

LOOSE MARBLES

LISA PATMAN



mother has just knocked your teeth out? Of course, I may be overreacting, since I was not born with dental floss in my hand and therefore harbor a natural resentment toward cavityless people.

Perhaps the most personally alarming of these image-making commercials are the ones with the message, "My mommy uses..." In these we are inundated with information such as "My mommy

uses Flufup, and that's why our towels are so soft and smelly," "My mommy uses Skweekiekleen, and that's why I can use my dinner plate for a makeup mirror," or "My mommy uses Dripoff so our fried chicken has no nasty cholesterol." At the Marbles household we often find ourselves undermining the "Save the Trees" movement by resorting to drying off with paper towels, eating off paper plates, and, probably in the near future, gulping down paper chicken. Mommy Marbles obviously is not with the program of general America's mommy-image.

However, I did have hope that my family might have a different opinion of me, so I decided to conduct a small survey to see how I rated during the children's growing up years.

"What," I asked my beloved offspring "would be the one simple yet succinct statement you could

make about Mommy during those early years when you toddled so delightfully around the house? You know, those days filled with the smell of baking bread, the laughter from all the fun games we played, the pleasure of a good home with supportive parents. What would you say about Mommy?"

They looked at each other and said, in unison, "Mommy was asleep."

I'm sure it's the fluoride deficiency that was at fault.

Copyright 1983 Lisa Patman

You may write Lisa Patman %Loose Marbles, P.O. Drawer O, McLean TX 79057

Friends Of The Library Begins Membership Drive This Week

Several members of the Friends of the Library met for lunch Sept. 15 at the Lovett Memorial Library to discuss plans for the coming year.

President Charles Milam and past-president

Mollie McDowell will serve as a nominating committee to find candidates for offices in the group.

The Friends decided to begin their membership drive. Milam empha-

sized that anyone is welcome to join the group. Membership is \$1 for a regular membership, 50 cents for students, \$10 for organizations and for a sustaining membership, and \$100 for a life-

time membership. The group has several goals for the library for the coming year. They hope to add more shelving to the new room, help purchase a microcomputer, buy a copier, and

consider buying a video-cassette recorder and an overhead projector for the library.

Anyone who wishes to help support the programs at the library is urged to join the organization.

Engagement Announced

Mr. and Mrs. Art Britten of Groom recently announced the engagement of their daughter, Monica Kay, to Steven Craig Howard.

Howard is the son of Mr. and Mrs. Harris Howard of Groom.

The couple has planned their wedding for Oct. 29 at Immaculate Heart of Mary Church of Groom.

Howard is the grandson of Frank Howard and Mrs. Cleo Heasley, both of McLean.

Miss Britten is employed by her father at Lucky 13 in Groom. Howard is employed by his father at Groom Flying Service and by Malcolm Hinkle, Inc. of Pampa.



McLEAN BRIEFS

Lavern Carter of Palo Pinto has been visiting with relatives and friends in McLean.

Howard and Davie Gipson were in Winfield, Ks., last week to attend the Walnut Valley Music Festival. They were joined there by their daughter-in-law and her mother, Jaquie Gipson and Mrs. Rae Bulson, both of Trinidad, Colorado.

Among the McLean students attending classes at Clarendon College this fall are Missy Billingsley, daughter of Mr. and Mrs. Doyle Billingsley; Nancy Thompson, daughter of Mr. and Mrs. Bob Webb; and Mr. and Mrs. Tommy Gipson.

Commuting to West Texas State University to attend classes are Ida Hess and Charles Roberts.

Wallace Grimsley is a patient in Northwest Texas Hospital where he has been undergoing some tests.

R. C. Parker, local Justice of the Peace, attended school last week for Justices of the Peace in the West Texas region. All Texas J.P.s are required to attend a 20 hour in-service school each year.

Mrs. Delphia Carpenter has been dismissed

from Shamrock Hospital where she has been a patient for several days.

McLean High School Band hopes to have the new uniforms in time for the first home football game, Oct. 7. This will be the first time in several years that the Tiger Band has had new uniforms.

Lovett Memorial Library will be closed Tuesday Sept. 27. Librarian Martha Parker and Kay Hallum will attend a Texas Panhandle

Class For Horse Project Planned For McLean Arena

A special class for members of the 4-H Horse Project has been planned for Saturday, at the Felton Webb arena, north of McLean. The class will begin at 9:30 a.m. and end at 2 p.m. A fee will be charged for the class.

Doug Guthrie, who is the local leader of the

Lions Will Sponsor St. Jude Bike-A-Thon

The McLean Lions Club has agreed to sponsor the St. Jude's Children's Research Hospital Bike-A-Thon in McLean. The Bike-A-Thon, which raises money for the children's hospital, has been set for Oct. 1, with a rain date of Oct. 8.

Details of the event in McLean will be announced later by the McLean Lions Club.

Library System meeting in Amarillo.

Lucille Cullison returned from the Coronado Hospital last week. She underwent surgery, and is now at home recovering.

Sally Haynes and Beth Smitherman, both senior students at Texas Tech, attended the Valley-McLean game Friday night, and visited their parents, Mr. and Mrs. Sam Haynes, and Mr. and Mrs. Tony Smitherman, last weekend.

FRIENDS OF THE LIBRARY MEMBERSHIP FORM

Regular Membership - \$1 _____
 Student Membership - 50c _____
 Organization Membership - \$10 _____
 Sustaining Membership - \$100 _____
 Lifetime Membership - \$100 _____

NAME _____
 ADDRESS _____
 Phone Number _____

Return to: Martha Parker
 Lovett Memorial Library
 P.O. Box
 McLean, Texas 79057

Services In Oklahoma For Former Resident

Services for Freeda Sue Dunn, 89, were Sept. 17, at Strode Funeral Home Chapel in Stillwater, Okla. with David V. Fultz, minister of the Lefors Church of Christ, officiating.

Mrs. Dunn was born in Jackson County, Arkansas, Jan. 12, 1894. She was the daughter of Mr. and Mrs. Henry McFadden and lived there until her marriage to Jess B. Dunn, June 4, 1914. He preceded her in death in 1944.

She lived in Conway, Arkansas; Ada and Hobart, Okla., before moving to Stillwater in 1943.

In 1950, Mrs. Dunn moved from Stillwater to make her home with her daughters, principally in Dallas, Fort Worth, McLean, and Hooker, Okla. She entered the Christian Care Center in Mesquite in 1975.

She died at the Doctors

Hospital in Dallas, Sept. 14.

Surviving are four daughters: Opal Griffith of Arlington; Gerry Fultz of Lefors; Exa Roth of Poteau, Okla., and Elsie Prescott of Winnsboro; two sons, Quentin Dunn of Floresville and Royce Dunn of Edmond, Okla.; 20 grandchildren; 39 great-grandchildren; and one great-great-grandchild.

Never tell a secret to a bride or a groom; wait until they have been married longer.

Ed Howe

Quotable Quotes

To become a thoroughly good man is the best prescription for keeping a sound mind and a sound body.

Francis Bowen He stands erect by bending over the fallen. He rises by lifting others.

Robert Green Ingersoll The main object of religion is not to get a man into heaven; but to get heaven into him.

Thomas Hardy

Rodeo Club Elects Officers

The McLean Tri-State Rodeo Club met Sept. 6 to elect officers and discuss plans for the year. The meeting was at the Bill Billingsley home.

Billie Billingsley was elected president; Mark Tate, vice-president; Lee Ann Tate, secretary; and Kristie Thompson, reporter. Sponsors for the club this year are Bill and Jerry Billingsley, Lynn Holland, Lloyd Littlefield, and Clay and Carolyn Gabel.

The group discussed plans for the Open Jackpot Rodeo, and decided to ask ranches and businesses in McLean for donations for buckles.

Members of the McLean club have begun participation in Tri-State Rodeos. Billie Billingsley and Ray Mac Blaylock represented the club at the Memphis rodeo. Billingsley placed fifth in steerwrestling and re-

See RODEO, Page 7

ALANREED BRIEFS

Mr. and Mrs. Hartlay Davis accompanied two of their daughters to San Antonio last week after receiving word of the death of their son-in-law Gene Hechler, who died after a long illness.

Onie Gibson made a trip to Panhandle Saturday.

The Alanreed Homemaker's Club met Sept. 14 in the home of Lena Carter for their regular meeting. They agreed to have a covered dish luncheon and had a program on materials which Polly Harrison had picked up at the homemaker's meeting at Amarillo on Tuesday. Enjoying the luncheon and answering the roll call - "a money saving idea," were Anita Bruce, Lena Carter, Polly Harrison, Onie Gibson, and Ruth and Brenda McLain.

The R. D. McLains son Dean, who lives in Amarillo has been very ill recently. He has been helping them on their house here.

Mr. and Mrs. Putt Rawlings were in Pampa

on Tuesday.

Anita Bruce was in Pampa on Friday.

Lena Carter visited in Pampa during the weekend with the Jerry Carters.

Polly Harrison accompanied Donna Brauchi to Amarillo on Tuesday to the Homemaker's meeting.

Jack Standish and daughter Sheila were in Pampa on Friday for medical attention for Mr. Standish, who was hospitalized in Pampa.

HOW TO WIN AT THE LOSING GAME

DIET CENTER

YOU CAN LOSE 17 TO 25 POUNDS IN JUST 6 WEEKS!

AND WE'LL TEACH YOU HOW TO KEEP IT OFF!

412 W. Kingmill
 Pampa
 669-3851

Gately's

WILL BE

Closed

FOR ALTERATIONS

BEGINNING

Sept. 12

The add-on heat pump is an efficient air conditioner that cools your home when it's hot. But that's not all.

In cold weather, the add-on heat pump works with your present furnace to help heat your home.

Replacing your air conditioner could actually save you money.

If your air conditioner breaks down, you have several choices. Repair. Replace. Buy a whole new system. All major investments. Southwestern Public Service Company would like you to know about another option, a more efficient alternative: the electric add-on heat pump. The add-on heat pump is a very special air conditioner. It cools in the summer and helps heat in the winter for less than you'd spend on a new heating and cooling system. It works with whatever kind of furnace you have, to improve the performance of your furnace by keeping it off completely during a good portion of the winter. It will satisfy your home's heating requirements more economically while temperatures are above 30°. That's about 80% of our area's normal heating season. As one of the most efficient ways to heat and cool, the add-on heat pump can really make a difference. Helping you use electricity efficiently is another way we're working to justify your trust. Call us to see what your savings could be.

SPS

SOUTHWESTERN PUBLIC SERVICE COMPANY

DOWN MEMORY LANE

Compiled By Sam Haynes From The Files Of The McLean News

10 YEARS AGO...

E. M. Bailey, Ed.
Mrs. Lona Jones is in Muleshoe to visit her sister and husband, Mr. and Mrs. Muri Stevenson and her mother, Mrs. C. G. Nicholson on her 96th birthday anniversary party in a nursing home there.

†††

The seventh grade class of McLean Junior High met Monday, Sept. 10 and elected officers for the 1973-74 school year. The following were elected: President, Sherry Glass; Vice-President, Charles Pierce; secretary, Diane McAnear; reporter, Jeanette Hatfield; treasurer, Belinda Bradley.

†††

Mrs. Henry Roth and son Bill went to Eufala, Okla., Tuesday to visit her sick sister.

†††

Heald News... Friday evening visitors in the Ott Davis home were Mr. and Mrs. Leonard Hudson of Conway.

20 YEARS AGO... Jack Shelton, Ed.

Ronnie Hunt has been elected president of the McLean High School Future Farmers of America. Harry Tate was elected vice president; Lee Mays, secretary; Clovis Bible, treasurer; Doyle McCurley, reporter; and John Bible, sentinel.

†††

Carole Boston, daughter of Mrs. Bessie Boston of McLean, has been awarded a two-year scholarship at Northwest Texas Hospital School of Nursing in Amarillo.

†††

McLean's Tigers used the half-time rest to get control of themselves, then roared back to overwhelm the Panhandle Panthers there last Friday night 21-8. Fullback Dickie Crockett gained 142 yards on 20 carries and Bob Patton got six unassisted and 12 assisted tackles. In addition to the defensive work done by Patton, guards Ronnie Hunt and Mike Johnson looked fine on defense, as did centers Dwight Hathaway and Mike McCall, fullback Dickie Crockett and end Eddy Windom.

30 YEARS AGO... Lester Campbell, Ed.

The first bale of cotton from the local area was brought to McLean Monday by Eugene Bolin, who is farming on the C. P. Hamilton place south of Alanreed.

†††

The local F.F.A. chapter held a business meeting Monday at the high school to elect new officers for the year. Officers elected were Don Trew, president; Charlie Vineyard, vice president; Jerry Preston, secretary; Joe Glass, treasurer; Alton Carpenter, reporter; and Carl Lee Watson,

sentinel.

Mr. and Mrs. Ercy Glenn Fulbright of Searcy, Ark., are the parents of a girl born Sept. 12. She weighed 7 pounds, 12 ounces, and has been named Rachel Rebecca. The grandparents are Mr. and Mrs. Pete Fulbright of McLean and Mr. and Mrs. Wesley Floyd of Mayfield, Kentucky.

40 YEARS AGO... T. A. Landers, Ed.

The McLean Tigers will open the season with a game against Lakeview Friday night at Lakeview. Coach Denison says the probable line-up is: Centers - Donald Dowell, Frank Stewart, Johnnie Cubine; Tackles - Philip Lisman, Bob Evans; Guards - Don Steadman, John Dwyer; Ends - Kenneth Goodman, Doyle Batten, Johnny Chilton, Wayne Mantooth; Back - James Barker, Billy Pete Hughes, George Johnson, Bill Hill; Reserves - Kenneth Preston, Carl Dwyer, Quentin Brooks, Jim Carpenter, Frank Simpson, Raymond Smith, Bill Mounce, Bill Reeves, Joe Reeves, Joe Johnson, Bill Willingham, Joe Preston, Harold Richardson, Troy Bass, Derrell Landrum, Donald Davis and Otis Shelton.

†††

Mrs. Pearl Hindman and son Rob, of Pampa, visited the lady's sister, Mrs. Willie Boyett, and other relatives here Sunday.

†††

Jack Quarles, machine gun inspector of the Marine Corps, who has been overseas, visited home folks here last week.

†††

Cub Post... Miss Denison's first grade feel very much at home in school by now. We were very sorry Ruth Ann Parrish moved this week, but we had five new pupils, Harley Knutson, Billy Joe Washburn, Patsy Herndon, Joyce Hanner and LaRue Pettit. There are 35 in the first grade room now.

50 YEARS AGO... T. A. Landers, Ed.

Complaints are being made that some of the unemployed are refusing to pick cotton for farmers, preferring to receive government aid. This matter is being looked into by proper authorities and definite action may be expected in each case.

†††

Misses Margaret and Ruth Hess went to Lubbock Monday to enter college.

†††

The McLean Tigers bowled over the Wheeler Mustangs last Friday 70 to 0 in a one-sided fray in which the entire Tiger backfield shared in the scoring parade. Dowell, half, led with five touchdowns, C. Christian,

quarter and Crockett, half, each accounted for two, as Tolliver, fullback made one. Ellison, the scrapping left tackle, added seven extra point with place kicks, one on an end run, and scored a safety when he blocked a punt.

†††

Foney Biggers of Memphis visited his brother, W.D. Biggers, last week.

†††

E. J. Gething and fam-

ily have moved to McLean from the ranch for the school term.

†††

Misses Clara Anderson and Winnifred Howard were in Wheeler Friday.

60 YEARS AGO... T. A. Landers, Ed.

On Thursday evening of last week Miss Lillian Abbott gave a watermelon feast in honor of the teachers of the McLean school. Those who enjoyed the occasion were: Misses Margaret Miller,

Lois Taggart, Anne Rich-ey, Nela Norman, Sammie Roach, Altha Bridge, Nona Cousins, Myrtle Strong, Mellie Bird Richey, Louise Orr, Oma Arnold, Eunice Stratton, Ila Abbott, Mesdames Vigna Stuckey, S. A. Cousins and D. L. Abbott; Mr. and Mrs. S. M. Castleberry, Mrsrs. T. A. Gaggart, R. O. Dunkle and Homer Abbott.

†††

Curley Crockett and Hansel Christian left Thursday for Sayre, Oklahoma on business.

†††

John Hinciar of Slavonia was in the city Tuesday.

†††

The McLean Tigers will play the first game of the season today (Friday) when they tackle the McLean Cowpunchers, made up of former Tiger stars.

†††

It has rained over our territory almost every day this week, amounting at times to young floods. On Tuesday and Tuesday night rains fell that damaged the city streets to some extent and taxed the capacity of all culverts to take care of the excess water. It was reported that all bridges were washed out on the railroad in Oklahoma, and we have been without mail from that direction for several days.

70 YEARS AGO... A. G. Richardson, Ed.

Miss Mabel Upham and Lyman and Rhea Upham were over from Le-fors the latter part of last week visiting with friends.

†††

Miss Ruby Cook has gone to Waxahachie,

Nursing Center News

Delphia Carpenter has returned to the Home. We are happy to report she is doing fine.

...

Sunday at noon Gib Welch was here to sing and play his guitar. In the afternoon Brother Wells of the Baptist Church was here to conduct services.

...

Monday, residents playing Bingo were Buck Henley, Maggie Morris, Ruth Kemp, Annie Eudey, Bob Ford, Leon Burch, Bill Shaffer, Haze Mackie, Ruby Cook, Ruby Bidwell, Ethel Meador, Kittie Hessey, Earl Tolleson, Inez Fields, Alma Fandal and A. L. Welch. Annie Eudey was the winner of the day with four games won. Our helpers were Mildred Giesler, Bertha Smith, Ruby Boyd, Lena Bailey and Juanita Smith.

...

Friday, Jessie Bailey showed the movies to our residents.

LIBRARY NOTES

Motherhood, The Second Oldest Profession
by Erma Bombeck
Erma Bombeck has been writing about mothers and motherhood for twenty years. In this book Erma celebrates Motherhood -- the second oldest profession, and the biggest on-the-job training program ever.

Erma views with warmth, humor, insight, and compassion the variety of roles mothers play, and rescues motherhood from the unreal realm of cliché, myth, and make-believe. She tells of the joys and pangs, the fulfillment and the frustration, the poignancy and the pathos of being a mother.

In this new book, Erma spans the gulf between the mother who writes Christmas newsletters that rhyme, to the mother

who eats her children's Halloween candy and tells them the ants got it, and from the mom who alphabetizes her spices and can change the toilet tissue spindle without dropping the spring, to the one who puts her kids outside to play when the chill factor is 40 below.

"Motherhood: The Second Oldest Profession," is a work that breaks new ground for it's author as a satirist and social commentator. It is not a book for everyone - only for those who are mothers... or those who had one. Erma Bombeck is at her humorous best and will royally entertain anyone who takes the time to laughingly skip through the pages of this book. "Motherhood, the Second Oldest Profession," is now available at Lovett Memorial Library.



In the Seventeenth and Eighteenth centuries in Spain, the bath was forbidden as a heathen abomination.

Singing For Laughter And Worship

Arling and Jonelle Smith

SUCCESSFUL SINGERS BLENDING HUMOR AND WORSHIP INTO THEIR PROGRAM

This unique couple are faithful laymembers to their church in Amarillo when their singing schedule permits them to be home. They both have steady employment but their singing talent gets them many weekend programs as far away as New Mexico, Oklahoma and Louisiana.

HEAR THEM

Saturday night 7:30

Sunday at 11 a.m. and 7 p.m.

Pentecostal Holiness Church
NO ADMISSION FEE

603 N. Commerce ARCHIE COOPER, PASTOR

Yoon K. Kim, M.D.

Internal medicine and family practice

And
Tai Jung Kim, M.D.
(Internal Medicine and pediatrics)

Announce The Opening Of Their Medical Practice

EFFECTIVE SEPTEMBER 1, 1983
SHAMROCK CLINIC
1010 S. Main 806/256-2143
SHAMROCK, TEXAS
9-5 Mon - Fri
9-12 Wednesday and Saturday
9-5 Monday - Friday

The Dude
1.29 sale

For Texas Taste, DQ's the place for a Golden Chicken Fried, 100% Pure Beef Sandwich Served on a toasted bun with crisp lettuce and red, ripe tomatoes. So come on by...

Dairy Queen Monday thru Sunday, September 26-October 2.
...a Texas tradition that keeps on Getting Better.

© 1983 The D.Q. Co. All Rights Reserved. TM Trademarks of The D.Q. Co. All Rights Reserved. D.Q. Co.

- Coca Cola, Tab, Diet Coke 2 liter - 98c
- Easy Off Oven Pad 88c
- Zee Lunch Bags 40 ct. - 68c
- Generic Fabric Rinse 1 gal. - 88c
- Popsrite Popcorn 2 lb. white or yellow - 68c
- Breath Savers All Flavors - 6 for 98c
- Tide Laundry Detergent 171 oz. - \$6.88
- Ajax Liquid Dish Detergent 48 oz. - \$2.28
- Hefty Steel Saks 15 ct. - \$2.38
- Hefty Trash Bags 30 gal. - 20 ct. - \$1.98
- White Swan Tomato Sauce 8 oz. - 5 for 98c
- Starkist Tuna 6.5 oz. - 78c
- White Swan Sweet Peas 16 oz. - 3 for 98c
- White House Apple Juice 32 oz. - 78c
- Libby Sloppy Joe with Beef 15 1/4 oz. - 98c
- Lipton Instant Tea 3 oz. - \$1.78
- Garden Club Preserves Peach or Apricot - 18 oz. - 78c
- Wrigley Chewing Gum All Flavors - 10 pk. - 98c
- French's Mustard 24 oz. - 78c
- Generic Coffee Creamer 22 oz. - 98c
- White Swan Salt Reg. or Iodized - 26 oz. - 2 for 48c
- Van Camp Pork n Beans 16 oz. - 3 for 98c
- Van Camp Hominy 14 oz. - White or Yellow 3 for 88c
- Delta Tissue 4 roll - 88c
- Zee Towels Roll - 2 for 98c
- TV Cut Green Beans 16 oz. - 3 for 98c
- White Swan Corn Whole Kernel or Cream Style 17 oz. - 3 for 98c
- White Swan Macaroni & Cheese 7 1/4 oz. - 4 for 98c
- Cascade Automatic Dish Detergent 65 oz. - \$2.78
- Field Trial Dog Food 50 lb. - \$7.18
- Gladol All Purpose Flour 5 lb. - 88c
- Maxwell House Coffee 1 lb. - All Grinds - \$1.98

- Cattlemen's B.B.Q. Sauce 18 oz. - All Flvrs. - 98c
- Fresh Bread 1 lb. loaf - 3 for 88c

Buttercrust Raisin Danish Rolls \$1.28

DAIRY

- White Swan Biscuits
- Buttermilk or sweet milk - 8 oz. 6 for 98c
- Parkay Margarine 1 lb. qtrs. - 2 for 88c
- Borden Homogenized Milk 1 gal. - \$2.28
- Borden Hi Protein Milk 1/2 gal. - 98c

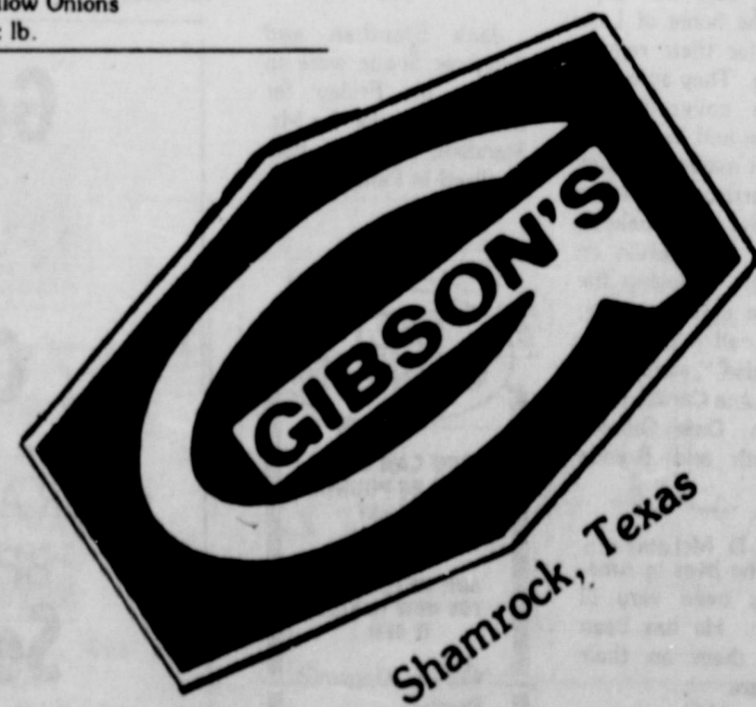
FROZEN FOOD

- Stilwell Breaded Okra 24 oz. - 98c
- Welch's Grape Juice 12 oz. - 78c
- Markee's Butcher Boy Burrito All Flavors - 3 for 98c
- White Swan Crinkle Cut Potatoes 2 lb. - 78c
- Mrs. Pauls Fish Fillet 16 oz. - \$1.88
- Eskimo Pies or Heath Bars 6 pack - 98c

PRODUCE

- Pomegranates 4 for 98c
- California Broccoli Bunch - 68c
- Valencia Oranges 4 lbs. for 98c
- Bananas 3 lbs. for 88c
- Tomatoes 2 lbs. for 88c
- Yellow Onions 18c lb.

- MEAT
- TV Brand Boneless Hams Whole only - \$1.49 lb.
- Super 95% Lean Ground Beef \$1.59 lb.
- OUR NEW EVERYDAY LOW PRICES ON BEEF & CHICKEN MAKES EVERY DAY BARGAIN DAY
- USDA CHOICE BEEF, USDA GRADE "A" FRYERS. "Always the BEST for LESS At Gibson's Meat Market WHY PAY MORE???"
- Round Steak \$1.98 lb.
- Lean Ground Beef \$1.39 lb.
- Club Steak \$2.98 lb.
- Sirloin Steak \$1.99 lb.
- T-Bone Steak \$3.29 lb.
- Boneless Chuck Roast \$1.79 lb.
- Family Pak Chicken Parts (2 each - breast quarters, leg quarters, wings, giblets) 63c lb.
- Fresh Fryer Breast \$1.39 lb.
- Fresh Fryer Drumsticks or Thighs \$1.09 lb.
- Fresh Dressed Country Style Cut Up Fryers with Wishbones 79c lb.



MEDICARE SUPPLEMENT POLICY

NEW MEDICARE PRODUCT AVAILABLE NOW



JANE SIMPSON AGENCY

106-A N. Main McLean, TX 779-2451

-BENEFITS IN MOST CASES WILL RESULT IN 100% COVERAGE

-SEE US-



CUB QUARTERBACK JIM Anderson [9] hands off to Loyd Morris [42] during an early play at the

McLean-Phillips junior high game Thursday night in McLean. [Photo by Linda Haynes]



CUB MATT SANDERSON [27] leans over the ball as he tries to elude a Phillips player during the

McLean-Phillips junior high game Thursday night at Duncan Field. [Photo by Linda Haynes]



CUB LOYD MORRIS crosses the goal line for the McLean's junior high team's first touchdown of the

season during the game against Phillips Thursday night. [Photo by Linda Haynes]



JUNIOR HIGH CHEERLEADERS kept the spirit high at the first game of the season for the Cubs Thursday night. [Photo by Linda Haynes]

McLean Cubs Lose Opener To Phillips Jr. High, 22-14

If the McLean Cubs' first football game of the season had ended at half-time, the junior high boys would have posted a victory, because they went to the dressing room with six points on the board, to zero for Phillips.

McLean's Loyd Morris, an eighth grader, broke an inside counter play to the outside in the second quarter for a 57-yard run to score the Cubs' first TD of the year. The try for two extra points was unsuccessful, but McLean was in the lead.

Phillips came back on the field at the second half buzzer, determined to change that lead. Number 30 for the Blackhawks scored at the beginning of the half on a 45-yard run, and Phillips jammed the extra point attempt across to take the lead 8-6. Later in the same quarter, the same player broke a 50-yard

run for a second touchdown, and the try for the extra points was good, giving Phillips a 16-6 lead over the Cubs.

At the beginning of the fourth quarter, number 20 ran for about six yards for the third and final TD of the evening for Phillips. Their try for extra points was unsuccessful, and the score was 22 to 6.

But not for long. Morris took Phillips kick-off after their score, and returned the ball 60 yards to score for McLean. Matt Sanderson ran across the line to add two points, and the game ended at 22 to 14, with Phillips the victor.

Coach Joe Riley said "Defensively, we did a good job most of the time. Offensively, we still have some work to do."

The Cubs play at Le-fors Sept. 22, with the game beginning at 6:30 p.m.

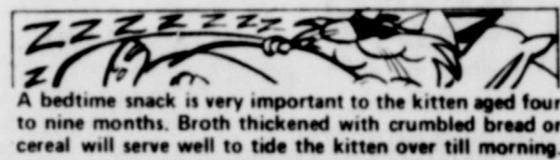
Riley's JV Tigers To Play Against Canadian Tonight

McLean High School's Junior Varsity football team will meet the Canadian Wildcat's 9th grade tonight (Thursday) at 7 p.m.

The game will be played in McLean's Duncan Field, according to coach Joe Riley. "We were unable to schedule a regular game for the varsity,

but we are anxious to play Canadian. This will give some of the younger members of our squad a chance to get some valuable experience and playing time," said Riley.

This will be the first game of the season for the Tiger Junior Varsity.



A bedtime snack is very important to the kitten aged four to nine months. Broth thickened with crumbled bread or cereal will serve well to tide the kitten over till morning.

Peerless Prognosticator Predicts

by Sam Haynes

Missouri	27	Utah State	10
Nebraska	33	UCLA	17
Oklahoma	31	Tulsa	17
Iowa	14	Ohio State	28
Michigan	30	Wisconsin	20
Boston Col.	17	W. Virginia	21
Navy	24	Lehigh	14
Arizona St.	31	Wichita St.	20
Oregon	10	Houston	30
S. California	31	Kansas	14
Washington	20	LSU	17
Alabama	35	Vanderbilt	0
Auburn	28	Tennessee	14
Georgia	26	S. Carolina	13
Arkansas	24	Mississippi	6
*Baylor	14	Texas Tech	28
Rice	28	SW Louisiana	13
SMU	20	TCU	13
Texas	30	N. Texas St.	10
WTSU	17	U. T. Arlingt	14
Dallas	24	New Orleans	14

*Upset Of The Week
LAST WEEK
won 14 - Lost 4
Tied 2
Pct. - .778
Season's Pct. - .710

CLEARANCE SALE 30% off DOLLS

STROLL ALONG
BABY N ROCKER
CURLY TOP
DOLL & CRADLE
2 SIZES OF WALKING DOLLS
BITTER SWEET



McLEAN VARIETY
207 N. Main 779-2681

THE COWBOY DRIVE IN



NOW HAS A SALAD BAR

\$2.49

COME TRY IT - YOU'LL LOVE IT!!!

SCHOOL DISTRICT: McLean Independent School District

NOTICE OF CALCULATION OF EFFECTIVE TAX RATE AND PUBLICATION OF ESTIMATED UNENCUMBERED FUND BALANCES

I, Shirley Johnson, Tax Assessor-collector for McLean, T. S. D., in accordance with the provisions of Sec. 26.04, Property Tax Code, have calculated the tax rate which may not be exceeded by more than three percent by the governing body of the McLean, T.S.D. without holding a public hearing as required by the code. That rate is as follows: \$.96237 per \$100 of value.
The estimated unencumbered fund balance for Maintenance & Operation fund: \$ 444,008.00
The estimated unencumbered fund balance for Interest & Sinking fund: \$ 2,825.86
Shirley Johnson, Tax Assessor-Collector
(Date) Sept. 20, 1983

CALCULATIONS USED TO DETERMINE EFFECTIVE TAX RATE

I. DATA	
1. 1982 Total tax levy from the 1982 tax roll	\$ 702,697.45
2. 1982 Tax rate (\$ 1.01 M&O and \$.95 I&S)	\$ 1.03 /\$100
3. 1982 Debt service (I&S) levy	\$ -0-
4. 1982 Maintenance and operation (M&O) levy	\$ 702,697.45
5. 1982 M&O taxes on property in territory that has ceased to be a part of the unit in 1983	\$ -0-
6. 1982 M&O taxes on property becoming exempt in 1983	\$ 3,131.90
7. 1982 M&O taxes on taxable value lost because property is appraised at less than market value in 1983	\$ 4,861.54
8. 1983 Total taxable value of all property	\$ 77,940,646
9. 1983 Taxable value of new improvements added since Jan. 1, 1982	\$ 4,824,865
10. 1983 Taxable value of property annexed since Jan. 1, 1982	\$ -0-
11. 1983 Tax levy needed to satisfy debt service (I&S)	\$ -0-
12. Rate to raise 1982 tax levy due to appraisal roll errors (rate that should have been less rate that was levied) (\$ /\$100 - \$ /\$100)	\$ NA /\$100
13. Rate to recoup taxes lost in 1982 due to appraisal roll errors (lost dollars divided by the difference of 1983 taxable values minus 1982 over-65 homesteads taxable value) (\$ /\$ - \$ /\$)	\$ NA /\$100
14. 1983 Taxable value of over-65 homesteads with frozen taxes	\$ 984,650
15. Frozen M&O levy of over-65 homesteads with frozen taxes	\$ 534.98
16. Frozen I&S levy of over-65 homesteads with frozen taxes	\$ -0-

* Steps necessary for appraisal roll errors (if more than 1% of net appraisal roll effective for taxing units on June 17, 1983)

II. CALCULATION

MAINTENANCE AND OPERATION (M&O) TAX RATE	
1. (A) 1982 Total tax levy (Data 1)	\$ 702,697.45
(B) Subtract 1982 Debt service levy (Data 3)	\$ -0-
(C) Subtract 1982 Taxes on property no longer in unit (Data 5)	\$ -0-
(D) Subtract 1982 Taxes on exemptions (Data 6)	\$ 3,131.90
(E) Subtract 1982 Taxes on productivity valuation (Data 7)	\$ 4,861.54
(F) Subtract frozen M&O levy of over-65 homesteads (Data 15)	\$ 534.98
(G) Adjusted 1982 M&O levy	\$ 694,169.03
(A) 1983 Total taxable value of all property (Data 8)	\$ 77,940,646
(B) Subtract 1983 Value of new improvements (Data 9)	\$ 4,824,865
(C) Subtract 1983 Value of annexed property (Data 10)	\$ -0-
(D) Subtract 1983 Value of over-65 homesteads (Data 14)	\$ 984,650
(E) Adjusted 1983 Taxable value for M&O	\$ 72,131,131
3. (A) Divide the adjusted 1982 M&O levy (1-G above) by the adjusted 1983 taxable value for M&O (2-E above) (\$694,169.03 / \$ 72,131,131)	\$.0096237
(B) Multiply by \$100 valuation	\$.96237
(C) Calculated maintenance and operation (M&O) rate for 1983	\$.96237 /\$100
INTEREST AND SINKING (I&S) TAX RATE	
4. (A) 1983 I&S levy needed to satisfy debt (Data 11)	\$ NA
(B) Subtract frozen I&S levy of over-65 homesteads (Data 16)	\$ -0-
(C) Adjusted 1983 I&S levy	\$ -0-
(D) 1983 Total taxable value of all property (Data 8)	\$ -0-
(E) Subtract 1983 Value of over-65 homesteads (Data 14)	\$ -0-
(F) Adjusted 1983 Taxable value for I&S	\$ -0-
(G) Divide the adjusted 1983 I&S levy (4-C above) by the adjusted 1983 taxable value for I&S (4-F above) (\$ / \$)	\$ -0-
(H) Multiply by \$100 valuation	\$ -0-
(I) Calculated interest and sinking rate (I&S) for 1983	\$ -0-
APPRAISAL ROLL ERROR RATE	
5. (A) Rate to raise 1982 levy due to appraisal errors (Data 12)	\$ NA /\$100
(B) Add rate to recoup taxes lost due to errors (Data 13)	\$ -0-
(C) Total rate to adjust for appraisal roll errors	\$ -0-
TOTAL EFFECTIVE TAX RATE FOR 1983	
6. (A) Calculated maintenance and operation (M&O) rate (3-C above)	\$.96237 /\$100
(B) Add calculated interest and sinking (I&S) rate (4-I above)	\$ -0-
(C) Add rate to adjust for appraisal roll errors (5-C above)	\$ -0-
(D) Calculated 1983 Effective Tax Rate	\$.96237 /\$100

CHILDREN'S WEAR

TINKUMS IN CORONADO CENTER HAS MATERNITY WEAR, CHILDREN'S WEAR AND SHOES, CHILDREN'S FURNITURE, AND LINGERIE



LAMPS



Casablanca Ceiling Fans, Lamps and Lampshades, Lighting Fixtures, Gift Items, Lamp parts, Bulbs, and Clocks

Lights and Sights

107 N. Cuyler Pampa, Texas 79065 Telephone 806/665-8341



DRY CLEANING

Expert DRY CLEANERS



One Hour

Martinizing

Bring your cleaning when you shop in Pampa... Pick it up the same day!!!

Two locations to serve you
1807 N. Hobart
1824 W. Francis
Pampa, Texas

The McLean News
BUSINESS DIRECTORY

PAINTING

Deluxe Painting Contractors Interior, Exterior, and Metal Roofs Dry Wall Free Estimates Wellington, Texas 806/447-2758

INCREDIBLE SAVINGS CONTINUE FOR OUR 28th ANNIVERSARY SALE
Graham Furniture

(Hundreds of Dollars in Merchandise. Drawing will be held Tuesday, Oct. 11. No Purchase Necessary. Need Not Be Present To Win.
1415 N. Hobart, Pampa
665-2232
9 a.m. to 5:30 p.m.

SALVAGE

NATIONAL AUTO SALVAGE

665-3222 or 665-3962
1 1/2 miles west of Pampa on Highway 60
Large selection of used auto parts
We appreciate your business

WESTERN WEAR

Western Wear

119 N. Main Friday -- 9-7
Mon-Thurs -- 9-5 Saturday -- 9-5

BUSINESS CARDS

The McLean News can help you design business card that is just right for your business.

Call Linda or Kathy At 779-2447



Quality Work!

Trust us to do any job exactly to your order!

McLean News

REGISTERED CATTLE

REGISTERED TEXAS LONGHORN CATTLE
Denworth Line Camp
Now Selling--
8 reg. heifers
12-16 months old
Reasonable
JOHN M. AND JOYCE HAYNES
806/779-2087
LEFORS ROUTE, BOX 31
MCLEAN, TEXAS 79057

MAGNETIC SIGNS

The McLean News is distributor for **Royal** MAGNETIC SIGNS
Let us help you design
•magnetic signs
•posters
•bumper stickers
•decals
•real estate signs
for your business or organization
fast service • reasonable prices

HAIR STYLING

DIANN DALTON'S Country Cut BEAUTY SHOP

Open Tuesday through Friday
1 mile south of McLean on FM 3143

Men's and Women's Hair styling

779-2413



GASOLINE

Foshee's Texaco Earnest & Maurine Foshee 779-2621



201 W Railroad

AUTOMOTIVE

Don Miller Radiator Service

Is Our Business
Not a Sideline
•New & Rebuilt Radiators
•Gas Tanks & Heaters
•Repaired
612 S. Jefferson AMARILLO, TEXAS
376-6666

INSURANCE

Germania Farm Mutual Insurance Don Wilson 779-3174

PEST CONTROL

Bug Baggers Pest Control

Complete Pest Control State Licensed Serving McLean For 8 years Call Collect 655-0090 Canyon, Tx.

655-0090

779-2447

GASOLINE

DALE'S SERVICE STATION



217 W 1st McLean, 779-2181

WESTERN WEAR

Johnnie F. Mertel Boot Shop

shoe repair 114 N Main 779-2161



HARDWARE



McLean Hardware 779-2591 115 N. Main McLean

STATIONERY

The McLean News is your headquarters for the finest in stationery
Engraved Embossed Printed
Prices range from moderate to expensive

ADVERTISE HERE AT OUR BEST RATES

Call Kathy Or Linda At 779-2447

RUBBER STAMPS



Prices range from \$3 up.

WATER WELL SERVICE

WATER WELL SERVICE Submersible Pump Sales & Service

DAVID BROWN 806-779-2678 Box 273

McLean, TX 79057 806/779-2678

If your ad was here, you'd be reading it! And so would two thousand other people.

PRINTING

The McLean News will print statements, tickets, advertising flyers envelopes any business form Call us at 779-2447

CONCRETE WORK

BARKER REDI-MIX Ready Mix, Concrete Back-Hoe Service And finishing work
PHONE 779-2703 or 779-2869



FLOWERS

Lamb's Flowers

779-2611

1009 N. Main McLean

ELECTRICAL WORK

Don't sweat out the summer Have your air conditioner repaired by Loyd Bybee

B&B ELECTRIC

Parts & Service PHONE 779-2601

Emergency 779-2517 2 blocks north of I-40 on Pampa Highway I appreciate your business



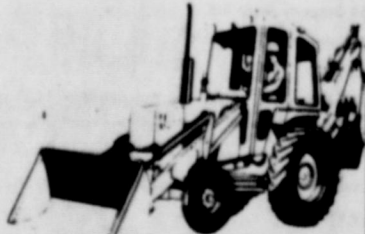
BACKHOE SERVICE

Glenn Hallum Backhoe Service

Commercial or Individual Fully Insured

SEPTIC TANKS, CESSPOOLS, BANK STOCK TANKS, STORM CELLARS, TREE REMOVAL, REPAIRS ROAD AND TERRACES* AND CLEAN CATTLE GUARDS

Alanreed, Texas 779-2907



FEED, FERTILIZER

For all your PURINA Feeds:



BULK FEED BAG FEED

BENTLEYS FERTILIZER

301 E. Foster McLean, Texas 779-2209

CARPENTRY

Carpentry, Room Additions

Panelling - Cabinets Painting Finishing

Stucco Masonry Plumbing - Electrical

JAMES L. CRONE

No job too small or too large

779-3204 McLean



PLUMBING

Call Jerry Cook at

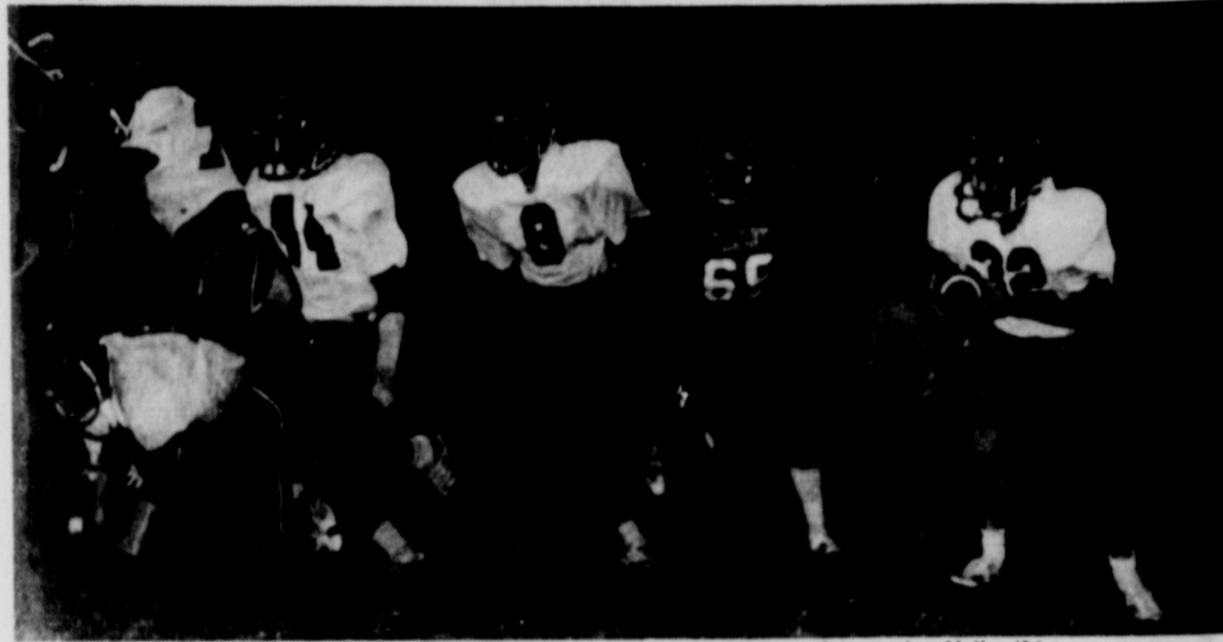
ATLAS PLUMBING 779-2784





QUARTERBACK ELSON RICE found Patriots starting in his face before he could make the hand-

off on several plays at the McLean-Valley game Friday night. [Photo by Linda Haynes]



TIGER KEVIN McDOWELL [32] looks for some

running room during the Valley/McLean game Friday night. [Photo by Linda Haynes]



THE PATRIOTS HELD the Tigers on the one-foot line as time expired in the first half of play. [Photo by Linda Haynes]

RODEO

Continued From Page 3
 ceived two points for the club.
 The McLean Tri-State Rodeo team entered the Pampa High School rodeo recently and Billingsley was fifth in steer wrestling, and also entered team roping. Blaylock entered bareback riding; Stephen McAnear entered team roping, and Preston West entered bull riding.
 Members of the 1983-84 rodeo club are Billie Billingsley, Elson Rice, Lance Stovall, Mark Tate, Carl Sherman, Darren Johnson, Darin Corley, Russell Littlefield, Wendy McDowell, Albert Stevens, Stephanie Rodgers, Stephen McAnear, Tim Hembree, Gregg Mann, Robert Swaner,

Continued From Page 3
 Ray Mac Blaylock, Preston West, Lee Ann Tate, Jem Ann Rice, Maria Eck, Kristie Thompson, Melanie Billingsley, Randall Wynn, and Kirk Anderson.

The road to hell is thick with taxicabs.
 Don Herold
 Wealth and want equally harden the human heart.

Theodore Parker
 Give me the ready hand rather than the ready tongue.
 Giuseppe Garibaldi

SEPTEMBER 13 WAS BRYAN BOCKMON'S BIRTHDAY

Saturday Final Challenge In Local Lions Ladder

Saturday is the final day for challenges in the annual Lions Ladder Golf Tournament, according to tournament officials. All challenges must be complete by Saturday night.
 On Sunday, the golfers on the ladder will play in a tournament beginning at 1 p.m. The top six golfers on the ladder will play medal play for three places. The golfers below the top six, and all others who have not participated in the ladder, will either be handicapped or play a scramble format, depending on the number of players who come for the tournament.
 Entry fee for all golfers is \$5. Prizes will be given for the longest drive on number 3 and number 9 fairway, and for the ball closest to the pin on number 5 and number 8.
 Lions will furnish soft drinks and cookies, and all golfers are asked to invite their families and bring sandwiches for supper following the tournament.
 Standings on the ladder as of press time this week are as follows: John M. Haynes, Alvin Danner, Casper Smith, Davey Haynes, Wayne Carter, Stacey Howard, Doyal Billingsley, Neal Middleton, Thacker Haynes, Sam A. Haynes, Roger King, Ed Patman, Morse Haynes, Bill Hambricht, Howard Williams, Bill Terry and Tim Killham.

SCHOOL MENU

FRIDAY, Sept. 23
 Hot Cereal, Biscuits, Jelly, Juice, Milk
 MONDAY, Sept. 26
 Scrambled Eggs, Toast, Juice, Milk
 TUESDAY, Sept. 27
 Hot Cereal, Biscuits, Jelly, Juice, Milk
 WEDNESDAY, Sept. 28
 Creamed Beef on Toast, Juice, Milk
 THURSDAY, Sept. 29
 Sausage, Biscuits, Gravy, Juice, Milk
BREAKFAST LUNCH
 FRIDAY, Sept. 23
 Fish Portions, Tarter Sauce, Cole Slaw, French Fries, Bread, Fruit
 MONDAY, Sept. 26
 Hamburgers, Lettuce/
 Tomatoes, Pickles/Onions, French Fries, Rice Krispy Bars
 TUESDAY, Sept. 27
 Corn Dogs, Tater Tots, Baked Beans, Salad, Cake
 WEDNESDAY, Sept. 28
 Ravioli Casserole, Tossed Salad, Buttered Carrots, Sopapillas w/ Honey, Fruit
 THURSDAY, Sept. 29
 Soup, Sandwiches, Crackers, Cheese Wedge, Peanut Butter Chewies



Bits of teak wood more than 2,000 years old have been found in Indian caves.

WIL-MART
 FOR PEOPLE ON THE GO
 END OF SUMMER FOOD VALUES OPEN SEVEN DAYS A WEEK 6:00 A.M.

FRESH BAKERY GLAZED Donuts EACH 19¢	BORDEN FRUIT Drink PT. CTN. 39¢	HOT AND CRISPY STRIPS Chicken EACH 39¢
BORDEN CHOCOLATE Milk ST. CTN. 79¢	4 PACK Pepsi Cola 12 OZ. CANS \$1.69	HERDY'S SANDWICH Ham & Cheese EACH \$1.39
DORITOS FRITO LAY Doritos 8 OZ. PKG. 99¢	MSA'S ROMAN NEAL Bread 1 1/2 LB. 99¢	

PRICES EFFECTIVE THRU SEPT. 24, 1983

19 Friday, Sept. 23
 KING SIZE WALLET CREATIVE COLOR PORTRAITS FOR ONLY **99¢**
 Kodak paper. For a Good Look at the Times of Your Life.
 NO LIMIT
 Extra Charge for GROUPS
 Shugart's inc. COLOR PHOTOS
 Williams Appliances McLean, Texas
 ASK About Our FREE 8 x 10 OFFER

SAVE OVER \$79...
 A 32 Pc.* Service for 8
FREE
 ON our plan
 Dinner Plates, Cups, Saucers, Dessert Dishes.
Sweet Flowers™ STONWARE 4-PC. PLACE SETTING FREE
 A delectable addition to your dining pleasure
 Sweet Flowers Stoneware is perfect for family meals or those important occasions. So sturdy you can pop it in the oven, microwave, freezer or dishwasher with complete confidence. Compare the quality, compare the price; you'll see why Sweet Flowers Stoneware is such an outstanding value!
START YOUR SET TODAY!
 D19K2 JNP Marketing, Inc.
PUCKETT'S
 With 1 filled CASH SAVER CARD (\$200 in purchases) All Cash Price \$9.99
 1 stamp -\$5.99 purchase
 2 stamps -\$10 purchase (excluding tax)

City or Special District: City of McLean

NOTICE OF CALCULATION OF EFFECTIVE TAX RATE AND PUBLICATION OF ESTIMATED UNENCUMBERED FUND BALANCES

I, Shirley Johnson, tax assessor-collector for the City of McLean, in accordance with the provisions of Sec. 28.04, Property Tax Code, have calculated the tax rate which may not be exceeded by more than three percent by the governing body of the CITY OF McLean, without holding a public hearing as required by the code. That rate is as follows: **\$.26098** per \$100 of value.

The estimated unencumbered fund balance for Maintenance & Operation fund: \$ 3,000.00. The estimated unencumbered fund balance for Interest & Sinking fund: \$ -0-

Shirley Johnson
 Shirley Johnson, Tax Assessor-Collector
 (Date) September 20, 1983

CALCULATIONS USED TO DETERMINE EFFECTIVE TAX RATE

I. DATA	
1. 1982 Total tax levy from the 1982 tax roll	\$ 31,892.62
2. 1982 Tax rate (\$.45 M&O and \$.00 I&S)	\$.45 /\$100
3. 1982 Debt service (I&S) levy	\$ -0-
4. 1982 Maintenance and operation (M&O) levy	\$ 31,892.62
5. 1982 M&O taxes on property in territory that has ceased to be a part of the unit in 1983	\$ -0-
6. 1982 M&O taxes on property becoming exempt in 1983	\$ 34.40
7. 1982 M&O taxes on taxable value lost because property is appraised at less than market value in 1983	\$ -0-
8. 1983 Total taxable value of all property	\$ 12,430,134
9. 1983 Taxable value of new improvements added since Jan. 1, 1982	\$ 223,179
10. 1983 Taxable value of property annexed since Jan. 1, 1982	\$ -0-
11. 1983 Tax levy needed to satisfy debt service (I&S)	\$ -0-
*12. Rate to raise 1982 tax levy due to appraisal roll errors (rate that should have been less rate that was levied) (\$ /\$100 - \$ /\$100)	\$.00 /\$100
*13. Rate to recoup taxes lost in 1982 due to appraisal roll errors (of dollars divided by 1983 taxable values) (\$ /\$100 - \$ /\$100)	\$.00 /\$100

* Steps necessary for appraisal roll errors (if more than 1% of total appraised roll, effective for taxing units on June 17, 1983.)

II. CALCULATION MAINTENANCE AND OPERATION (M&O) TAX RATE

1. (A) 1982 Total tax levy (Data 1)	\$ 31,892.62
(B) Subtract 1982 Debt service levy (Data 3)	\$ -0-
(C) Subtract 1982 Taxes on property no longer in unit (Data 5)	\$ -0-
(D) Subtract 1982 Taxes for exemptions (Data 6)	\$ 34.40
(E) Subtract 1982 Taxes for productivity valuation (Data 7)	\$ -0-
(F) Adjusted 1982 M&O levy	\$ 31,858.22
2. (A) 1983 Total taxable value of all property (Data 8)	\$ 12,430,134
(B) Subtract 1983 Value of new improvements (Data 9)	\$ 223,179
(C) Subtract 1983 Value of annexed property (Data 10)	\$ -0-
(D) Adjusted 1983 Taxable value for M&O	\$ 12,206,955
3. (A) Divide the adjusted 1982 M&O levy (1-F above) by the adjusted 1983 taxable value for M&O (2-D above) (\$ 31,858.22 ÷ \$ 12,206,955)	\$.0026098
(B) Multiply by \$100 valuation	\$ 260.98
(C) Calculated maintenance and operation (M&O) rate for 1983	\$.26098 /\$100

INTEREST AND SINKING (I&S) TAX RATE

4. (A) 1983 I&S levy needed to satisfy debt (Data 11)	\$.00
(B) 1983 Total taxable value of all property (Data 8)	\$ 12,430,134
(C) Divide the 1983 I&S levy (4-A above) by the 1983 total taxable value (4-B above) (\$ /\$100 ÷ \$)	\$.00 /\$100
(D) Multiply by \$100 valuation	\$ 0.00
(E) Calculated interest and sinking rate (I&S) for 1983	\$ 0.00 /\$100

APPRAISAL ROLL ERROR RATE

5. (A) Rate to raise 1982 levy due to appraisal errors (Data 12)	\$.00 /\$100
(B) Add rate to recoup taxes lost due to errors (Data 13)	\$ 0.00 /\$100
(C) Total rate to adjust for appraisal roll errors	\$ 0.00 /\$100

TOTAL EFFECTIVE TAX RATE FOR 1983

6. (A) Calculated maintenance and operation (M&O) rate (3-C above)	\$.26098 /\$100
(B) Add calculated interest and sinking (I&S) rate (4-E above)	\$ 0.00 /\$100
(C) Add rate to adjust for appraisal roll errors (5-C above)	\$ 0.00 /\$100
(D) Calculated 1983 Effective Tax Rate	\$.26098 /\$100

1983 Effective Tax Rate is the tax rate published as required by Sec. 28.04, Property Tax Code.

GOOD NEWS!
 There is a word of faith church in McLean!
 New Life Fellowship
 Corner 3rd & Gray Street
 Rev. Gene Shirk, Pastor

CLASSIFIED ADS

CLASSIFIED RATE:
\$2.00 minimum
15 cents per word
CARD OF THANKS-\$3
All ads cash, unless customer has an established account with The McLean News-Deadline for Want Ads-Noon-Tuesday. Phone 779-2447.

The McLean News cannot verify the financial potential of these advertisements. Readers are advised to approach any "business opportunity" with reasonable caution.

FOR SALE

NOW SELLING S&S FEED. 20% range and breeder cube natural protein. Special - \$215 (sacked, delivered) - [price subject to change]. Check for other feed prices.

PERRY GRAHAM
779-2089
BILL GRAHAM
779-2922

FOR SALE: 3-wheel bicycle, with new tubes and puncture-proof tires, new baskets. Make an offer. Bill Wilson - 779-2547 or 779-2337.

WANNA GET HOLD OF A TIGER and hug him to pieces? Come try one of ours. We have loveable, huggable, furry Tiger Puppets. Lambs Flowers.

ALL SILK ARRANGEMENTS are now 1/2 to 1/2 off. Come in and see our specials. Lambs Flowers.

FOR SALE: GOOD WEANER pigs. Call Bernard McClellan at 779-2935 or Kelly McClellan at 779-3172.

FOR SALE: LIKE-NEW GIRLS 26" bike; gas tank on stand; wagon with wood sides; 12" disk; pull-type maintainer. Call 779-2064.

FOR SALE: LIGHT-weight 12 gauge, gold trigger, Browning automatic shotgun. Can be seen at McLean Hardware. After 6 call 779-2795.

WE ARE NOW TAKING ORDERS ON CHRISTMAS WRAPPING PAPER AND RIBBON. Extra good prices on 25 ft or 100 ft. rolls.

NOW OUR FRIDAY SPECIAL IS GOOD SATURDAY, TOO! At Lamb's Flowers, you can buy 1 bunch of fresh daisies, for only \$5, or 1 dozen roses for only \$15. **FRIDAY AND SATURDAY** at Lamb's Flowers.

VEHICLES, BOATS & ACCESSORIES

FOR SALE: 1973 Chevrolet pickup. Makes a good work vehicle. Only \$950. Call Scott Raines at 779-2594.

FOR SALE: OLD International Farmall A with front blade, rear blade, breaking plow, sickle mower, etc. It's hard to start, but runs great. Price reduced this week to \$900. This tractor will do your work for a little investment. Call 779-2947 after five or 779-2447 during the day.

FOR SALE: 1975 Chevrolet pickup. 350-4 barrel. AM-FM 8-track. Spotlight. Headache rack. Small tool box. Propane system. \$1350 without propane system. \$1850 with system. Call 779-2784. Jerry Cook.

FOR SALE: 1980 Pontiac Phoenix. 4-speed, good gas mileage. \$4,000 or best offer. Chuck Pierce. 779-2822.

FOR SALE: 76 1/2 x 80 pickup topper. White. Call 779-2828.

HELP WANTED

THOMAS NURSING CENTER is now accepting applications for Nurses Aids - all Shifts. Contact the Director of Nursing in person.

HELP WANTED: STORE clerk. KOA campground. 248-5631.

HELP WANTED: PART-timer and full time. Farm or heavy equipment. Call Ken Everett at 779-2951.

LOST & FOUND

LOST: FAMILY DOG. REWARD. Blackish/Gray poodle-chihuahua. Answers to "Boots". Call 779-2146 or 779-2634.

LOST: BLACK TOM cat with blue collar. Vicinity of McLean. \$20 reward. Agnes Nelson, Box 81, Encino, New Mexico.

FOR RENT

HOUSES FOR SALE or rent. 779-2629.

WANTED

WANT TO BUY: a good used typewriter. Call 779-2570.

BABYSITTING WANTED. 779-2160.

NOTICES

MASONIC LODGE REGULAR MEETING second Thursday, 7:30 p.m. Practice nights First, Third and Fourth Tuesday at 7:30 p.m.

TO GIVE AWAY

TO GIVE AWAY: 7 week-old puppies. Half Blue Heeler and Half Collie. They're adorable and should be excellent cow-dogs. We had eight, but now there's only three left to give away. Call Wayne or Kathy Carter at 779-2447 during the day or 779-2975 after hours.

MOBILE HOMES FOR SALE

DEALER REPO! 3 bedroom, 2 bath, 14 x 80 mobile home. Wood siding, storm windows, garden tub, etc. Assume payments of \$292 with approved credit. **QUALITY AFFORDABLE MOBILE HOMES,** highway 60 west, Pampa, Texas, 665-0715.

FOR SALE: 14 x 70 mobile home, 3 bedroom, 2 bath. \$6,000 or best offer. 779-2951.

\$1,000 FACTORY REBATE! Name brand, 2 or 3 bedroom mobile home. If down payment is a problem, we can help! **WE TAKE TRADE - ANYTHING OF VALUE.** Large selection - E-Z terms! **QUALITY AFFORDABLE MOBILE HOMES** Highway 60 West, Pampa, Texas 665-0714.

REMODELING, CARPENTRY WORK OF all kinds - repair work, painting. Call 779-2988 or 779-2072.

PRIVATE LESSONS - I will take a limited number of students for private lessons in advanced leathercraft or basic saddlemaking through the fall and winter months. All lessons cash in advance. Students furnish all tools and supplies. Class will begin 1st week in October, 3 nights per week. We have 28 years experience in leathercraft, saddle and tack making. Write John Dickson, McLean Saddle Co., Box 663, McLean, Tx. 79057.

REMODELING, CARPENTRY WORK OF all kinds - repair work, painting. Call 779-2988 or 779-2072.

FOR SALE: 3 bedroom 1 1/2 bath mobile home, \$5,500 unfurnished or \$6,500 furnished. Call 779-2674 or 779-2771.

BUSINESS

NEED AMWAY? Call Amway Distributor Ailne Winegeart 779-2795

CUSTOM FARMING Plowing, Drillings, Hay-balling, combine, backhoe, dozer work. Call Butch Turpen & Kenneth Everett Day phone - 779-2641. Night phone - 779-2986.

REMODELING, CARPENTRY WORK OF all kinds - repair work, painting. Call 779-2988 or 779-2072.

EXPERIENCED CARPENTER - 18 years. Will do remodeling, roofs, plumbing, any concrete or carpenter work. Good references. Call Larry Swanson at 779-3101.

LESSONS

PRIVATE LESSONS - I will take a limited number of students for private lessons in advanced leathercraft or basic saddlemaking through the fall and winter months. All lessons cash in advance. Students furnish all tools and supplies. Class will begin 1st week in October, 3 nights per week. We have 28 years experience in leathercraft, saddle and tack making. Write John Dickson, McLean Saddle Co., Box 663, McLean, Tx. 79057.

REMODELING, CARPENTRY WORK OF all kinds - repair work, painting. Call 779-2988 or 779-2072.

sure to get results

REAL ESTATE FOR SALE

FOR SALE: 2 bedroom house. Three lots. 779-2153.

2 bedroom home on corner lot

Beautiful condo type property. 3 bedrooms, 1 1/2 baths, lower level living area, master bed and bath, greenhouse, redwood deck. Priced to sell.

111 Acres on I-40

3 bedroom, 1 1/2 bath, 2200 sq. ft. \$50,000 Owner will carry.

PIONEER REAL ESTATE
IDA HESS, BROKER 779-2641
108 N. MAIN McLEAN, TEXAS

JIM ALLISON REALTY
Farms, Ranches, Residential, Commercial, Oil and Gas

TWO nice two bedroom - Good Locations

239 Acres - 106 acres cropland - 133 acres lovegrass - cross fenced, priced to sell.

640 Acres with excellent Land Improvements. 331 Acres of Love grass in 10 pastures and 309 Acres Native Grass in 2 pastures. Partial financing available.

640 Acres Native grass cross-fenced - well water.

779-2461
779-2649

PUBLIC NOTICE

BRIEF EXPLANATORY STATEMENTS OF PROPOSED CONSTITUTIONAL AMENDMENTS

SPECIAL ELECTION NOVEMBER 8, 1983

PROPOSITION NO. 1 ON THE BALLOT

House Joint Resolution 91 proposes a constitutional amendment which requires a county with a population of 30,000 or more to be divided into not less than four nor more than eight justice of the peace precincts. A county with a population of 18,000 or more but less than 30,000 shall be divided into not less than two nor more than five justice of the peace precincts. A county with a population of less than 18,000 shall be designated as a single justice of the peace precinct or, upon a finding of necessity by the commissioners court, shall be divided into more than one justice of the peace precinct but not more than four. The amendment provides further, that in any precinct in which there is a city with a population of 18,000 or more, two justices of the peace shall be elected. The amendment allows a justice of the peace, constable or commissioner to continue in office until the expiration of his term, although a change in precinct boundaries results in the officer no longer being a resident of the precinct for which he was elected or appointed and allows a justice of the peace or constable to continue in office until the expiration of his term even though a change in precinct boundaries results in the abolition of the precinct or more than one justice of the peace or constable serving the precinct. Vacancies in the office of justice of the peace or constable that result from a precinct boundary change shall be filled by the commissioners court until the next general election. The amendment would take effect on January 1, 1984, and counties with populations of less than 30,000 and with more than four justice of the peace and constable precincts would have until January 1, 1987 to comply with the amendment.

The proposed amendment will appear on the ballot as follows: "The constitutional amendment authorizing fewer justice of the peace and constable precincts in counties with a population of less than 30,000 and providing for continuous service by justices of the peace, constables, and county commissioners when precinct boundaries are changed."

PROPOSITION NO. 2 ON THE BALLOT

House Joint Resolution 185 proposes a constitutional amendment which would limit a homestead in a city, town or village to a lot or lots amounting to not more than one acre of land, together with any improvements on the land. The constitutional require-

designating, an urban homestead not exceed ten thousand dollars in value without reference to the value of any improvements on the land would be eliminated. The proposed amendment will appear on the ballot as follows: "The constitutional amendment replacing the limitation on the value of an urban homestead with a limitation based on size."

PROPOSITION NO. 3 ON THE BALLOT

Senate Joint Resolution 1 proposes a constitutional amendment that authorizes the Legislature to enact legislation that permits representative associations of agricultural producers to collect refundable assessments on their product sales to be used solely to finance programs of marketing, promotion, research and education relating to those products. It provides, further, that adoption of the proposed constitutional amendment will bring into effect Senate Bill 607, Acts of the 68th Legislature, Regular Session, 1983, with rejection of the amendment resulting in Senate Bill 607 having no effect. The proposed constitutional amendment will appear on the ballot as follows: "The constitutional amendment providing for the advancement of food and fiber production and marketing in this state through research, education, and promotion financed by the producers of agricultural products."

PROPOSITION NO. 4 ON THE BALLOT

House Joint Resolution 38 proposes a constitutional amendment which authorizes the Legislature to enact laws to provide for the succession of members of the Legislature in the event of enemy attack and allows the suspension of procedural rules imposed by the Constitution in the event of, or immediate threat of, enemy attack. The amendment empowers the Governor, after consultation with the Speaker of the House and the Lieutenant Governor, to suspend the constitutional requirement that the Legislature hold its sessions in Austin and allows the suspension of procedural rules by the Governor issuing a proclamation in which the House of Representatives and Senate concur by resolution approved by a majority of the members present. Suspension of the constitutional rules may not exceed a period of two years under a single proclamation; however, the Governor may renew the suspension by issuing a new proclamation concurred in by the House of Representatives and the Senate through a resolution approved by a majority

ity of the members present.

The amendment will appear on the ballot as follows: "The constitutional amendment authorizing statutory provisions for succession of public office during disasters caused by enemy attack, and authorizing the suspension of certain constitutional rules relating to legislative procedure during those disasters or during immediate threat of enemy attack."

PROPOSITION NO. 5 ON THE BALLOT

Senate Joint Resolution 12 proposes a constitutional amendment that authorizes the Legislature to enact legislation providing for the use of the permanent school fund and income from the permanent school fund to guarantee bonds issued by school districts. The amendment provides, further, that the Legislature may appropriate part of the available school fund for administration of the permanent school fund or of a bond guarantee program established pursuant to the amendment.

The constitutional amendment will appear on the ballot as follows: "The constitutional amendment authorizing use of the permanent school fund to guarantee bonds issued by school districts."

PROPOSITION NO. 6 ON THE BALLOT

House Joint Resolution 1 proposes a constitutional amendment which would permit the Legislature to provide for the garnishment of wages to enforce court-ordered child support payments. The garnishment remedy would not be available for other purposes.

The proposed amendment will appear on the ballot as follows: "The constitutional amendment allowing the Legislature to provide for additional remedies to enforce court-ordered child support payments."

PROPOSITION NO. 7 ON THE BALLOT

Senate Joint Resolution 14 proposes a constitutional amendment that authorizes the Veterans' Land Board to provide for, issue, and sell general obligation bonds of the State of Texas in an amount not to exceed \$800 million to provide financing to veterans of the state. The amendment requires that three hundred million dollars of the state bonds be dedicated to the Fund. The Fund is to be used to purchase land to be sold to veterans under such terms, rules and regulations as may be authorized by law. The amendment creates the Veterans' Housing Assistance Fund and requires that \$500 million of the state bonds authorized by the amendment be dedicated to the Fund. The Veterans' Housing Assistance Fund will be utilized by the Veterans' Land Board for the purpose of making home mortgage loans to veterans for housing within the state and for the administration of

costs of administering the fund and issuing the bonds.

The amendment provides, further, that if there is not money in either the Veterans' Land Fund or the Veterans' Housing Assistance Fund available for payment of principal and interest on the general obligation bonds issued pursuant to the amendment, then money coming into the Treasury in each fiscal year is appropriated in an amount sufficient for payment of principal and interest due in that fiscal year.

The proposed constitutional amendment will appear on the ballot as follows: "The constitutional amendment for financial assistance to veterans and to authorize the issuance of \$800 million in bonds of the state to finance the Veterans' Land Program and the Veterans' Housing Assistance Program."

PROPOSITION NO. 8 ON THE BALLOT

Senate Joint Resolution 1 proposes a constitutional amendment that authorizes political subdivisions to exempt veterans' organizations from ad valorem taxation on their property. The amendment requires that the veterans' organizations be chartered by the United States Congress, be composed of members or former members of the United States Armed Forces, and be organized for patriotic and public service purposes. The amendment provides, further, that political subdivisions may exempt fraternal organizations from ad valorem taxation on their property. The amendment requires that the fraternal organizations be organized to perform and be primarily engaged in charitable or benevolent functions. The Legislature would be authorized to enact laws that prescribe eligibility requirements for fraternal organizations to benefit from the exemption and to pass legislation limiting the types or amount of property owned by a fraternal organization which may be exempted from ad valorem taxation.

PROPOSITION NO. 9 ON THE BALLOT

Senate Joint Resolution 14 proposes a constitutional amendment that authorizes the Veterans' Land Board to provide for, issue, and sell general obligation bonds of the State of Texas in an amount not to exceed \$800 million to provide financing to veterans of the state. The amendment requires that three hundred million dollars of the state bonds be dedicated to the Fund. The Fund is to be used to purchase land to be sold to veterans under such terms, rules and regulations as may be authorized by law. The amendment creates the Veterans' Housing Assistance Fund and requires that \$500 million of the state bonds authorized by the amendment be dedicated to the Fund. The Veterans' Housing Assistance Fund will be utilized by the Veterans' Land Board for the purpose of making home mortgage loans to veterans for housing within the state and for the administration of

PROPOSITION NO. 10 ON THE BALLOT

Senate Joint Resolution 17 proposes a constitutional amendment that authorizes the Legislature to enact laws which would allow a city or town to expend public funds to relocate or replace sanitation sewer laterals on private property if done in conjunction with the replacement or relocation of sanitation sewer mains serving the property. The amendment requires that the law authorize the city or town to affix a lien on the private property, with the consent of the owner, to cover the costs of the replacement or relocation of the sewer laterals on the property. The lien may be enforced until five years have expired since the date the lien was affixed. The amendment provides, further, that the law require that the costs of the replacement or relocation of the sewer laterals on the private property be assessed against the property with repayment to be amortized over a period not to exceed five years and at an interest rate provided by law.

The proposed amendment will appear on the ballot as follows: "The constitutional amendment to permit a city or town to expend public funds and levy assessments for the relocation or replacement of sanitation sewer laterals on private property."

jurisdiction and to county courts."

PROPOSITION NO. 11 ON THE BALLOT

Senate Joint Resolution 13 proposes a constitutional amendment that would change the Board of Pardons and Paroles from a constitutional agency to a statutory agency and would eliminate the Governor's power to revoke paroles. The Legislature would be authorized to establish the Board of Pardons and Paroles and to require it to maintain records of its actions and the reasons for its actions. The amendment would empower the Legislature to enact parole laws. Constitutional language specifying the qualifications and terms of office for members of the Board of Pardons and Paroles is eliminated. The constitutional language governing the composition of the Board of Pardons and Paroles and the manner of filling vacancies on the Board is eliminated. The proposed amendment will appear on the ballot as follows: "The constitutional amendment to change the Board of Pardons and Paroles from a constitutional agency to a statutory agency and to give the board power to revoke paroles."

PROPOSITION NO. 12 ON THE BALLOT

House Joint Resolution 79 proposes a constitutional amendment to authorize the Legislature to provide, by local or general law, a method by which judges of statutory courts with probate jurisdiction may be assigned to any other statutory court with probate jurisdiction and to any constitutional county court in any county in the state. The proposed amendment will appear on the ballot as follows: "The constitutional amendment providing for assignment of judges of statutory probate courts to other statutory county courts with probate

Estos son los informes explicatorios sobre las enmiendas propuestas a la constitucion que aparecen en la boleta el dia 8 de noviembre de 1983. Si usted no ha recibido una copia de los informes en español, podrá obtener una gratis por llamar al 1/800/258/9602 o por escribir al Secretario de Estado, P.O. Box 18887, Austin, Texas 78711.



Scientists have discovered growth rings in dinosaur teeth that probably resulted from seasonal temperature changes.



"I FEEL LUCKY TODAY."

Puckett's IGA Your Hometown Grocer

We Give TOP Savings Stamps

AD PRICES EFFECTIVE
SEPTEMBER 21 THRU
SEPTEMBER 27, 1983

PUCKETT'S
SAVINGS!
We give TOP Savings
Stamps!



Fresh
CABBAGE
LB. ONLY **.15**

Golden Ripe
BANANAS
3 LBS. ONLY **\$1**

6-PACK
DR. PEPPER
12-OZ. CANS **\$1.29**
BUY A CASE FOR ONLY '4"

Sunkist Bag
LEMONS 6-CY. BAG **.49**

Sunkist
ORANGES 10 FOR **\$1**

Fresh
CAULIFLOWER EACH HEAD **.89**

Post
TOASTIES CEREAL
18-OZ. BOX **.99**

Tall Korn Corn King
BACON
2-LB. PKG. **\$2.99**

RIB EYE STEAK
LB. ONLY **\$3.98**

Full Cut
ROUND STEAK
LB. ONLY **\$2.79**

BOUNTY
PAPER TOWELS
79

Mile High
GOLDEN CORN Whole Kernel Cream Style 303 CANS 3 **\$1**

Decker 12-OZ. PKG.
FRANKS **.88**

Half Round
ROUND STEAK LB. ONLY **\$2.09**

Festival
COTTAGE CHEESE
24-OZ. CTN. **.98**

Rainbow Golden
MARGARINE
1-LB. QTRS. 3 **.89**

MIRACLE WHIP
QUART JAR **\$1.39**

Maxwell House
COFFEE
1-LB. CAN **\$2.09**

Griffin's
BBQ SAUCE 18-OZ. BOTTLE **.98**

Kingsford
CHARCOAL 10-LB. BAG **\$2.39**

GROCERY

COFFEE MATE 22-OZ. JAR **\$2.39**

Dixie 9" White
PAPER PLATES 100-CT. PKG. **.79**

Ore Ida
FRENCH FRIES Regular • Krinkle Cut
2-LB. BAG **\$1.19**

New Breed
DOG FOOD
4-LB. BAG **\$1.69**

- Scrunge Heavy Duty 2 PAK. **.79**
- Dinty Moore Beef Stew 24 OZ. CAN **\$1.49**
- Watermaid Rice 1 LB. **.39**
- Kerr Regular Jars QUART **\$4.39**
- Sunshine Chip-A-Roos Cookies **\$1.59**
- Sunshine Krispy Crackers 1 LB. 2/ **\$1.50**
- Spray 'N Wash 32 OZ. BOTTLE **\$1.69**
- SOS Oven Cleaning Pads EACH **.89**
- Equal Packets 200 CT. BOX **\$4.99**
- Mile High Cut Green Beans 303 CANS **3/89**
- Kuner Tomatoes 303 CANS **2/89**
- Argo Peas 303 CANS **3/81**

Star-Kist
TUNA
6 1/2-OZ. CAN **.78**

Peter Pan
PEANUT BUTTER
18-OZ. JAR **\$1.39**

Kellogg's Strawberry
RICE KRISPIES 18 OZ. BOX **\$1.59**

(30 OFF LABEL)
PALMOLIVE LIQUID 12 OZ. BOTTLE **\$1.79**

Lipton
TEA BAGS 100 CT. BOX **\$2.15**

Kraft 10 oz. 2 for
Marshmallows **\$1**

Orange Juice
JUICES Florida Orange • Grape
6-OZ. CTN. **.39**

El Charrito
DINNERS
14-OZ. CTN. **.99**

FROZEN-DAIRY

- Frozen Bread Dough 32 OZ. PKG. **.79**
- Biscuits 8 OZ. TUBE **5/81**
- Farmland Link Sausage 12 OZ. PKG. **.99**

MEAT

- Wilson Bnls. Hams 32% Fat Free Regular or Honey lb. **\$2.69**
- Armour Chicken Fry Patties lb. **\$1.49**

Cheer
CHEER
171-OZ. BOX **\$6.59**

Purex
BLEACH
1-GAL. JUG **.79**