

# The McLean News

Price 10¢

Serving McLean and the Area Since 1903

VOLUME 71

MCLEAN, GRAY COUNTY, TEXAS - THURSDAY, FEBRUARY 14, 1974

NUMBER 7

## March 6-Deadline To File For City Alderman

The deadline for those wishing to file for the office of city alderman is March 6. There will be three aldermen elected on the April 6 election.

Aldermen whose terms are expiring are W.W. (Slick) Boyd, W. C. Kennedy and Glenn Curry.

Absentee voting will begin on March 18 and end on April 6.

The election will be held on April 6 at the City Hall from 8 to 7 p.m.

## Commissioners To Meet Today

The Commissioners Gray County will meet at 10:00 a.m. on Thursday (today), February 14, at its regular meeting place in the county courthouse, in Pampa. To pay bills approved by County Auditor, consider time deposits and transfers of funds as may be recommended by the County Auditor, Treasurer report, and other reports.

To consider bids for oil and gas lease of county school land minerals in Gaines County, fibrosis survey request of school minerals, consider authorization for bids for purchase of two 2-ton trucks with made-in of three 2-ton trucks for Prec. 4, to be paid from revenue sharing trust funds --

## Dept. Graduates 23 Game Wardens

AUSTIN--The Texas Parks and Wildlife Department's first Deputy Game Warden School graduated its first class of 23 commissioned officers in January, according to department law enforcement personnel.

Deputy game wardens, who receive no pay and must pay their own expenses, attended classes 12 hours per day for six days to complete the 72-hour course.

Deputy wardens are commissioned by the Parks and Wildlife Department and must complete the course, which is conducted in Austin, within one year of their commissioning in order to retain their commissions.

They are empowered to enforce game laws only and work under the close supervision of local game wardens.

The course includes orientation and organization, community relations, game and fish laws, patrol procedures, game preparation, firearms training, defensive driving, courtroom demeanor, the penal code and emergency traffic control.

## Skating Rink Opens

The skating rink at the American Legion Hall will open on Friday and Saturday from 7:30 p.m. to 10:00 p.m.

## Youth Banquet Set For Friday Night

Baptist youth will host other people of the Community at a banquet, to be held Friday, night in the fellowship hall of that church. The evening entertainment to begin at 7:30 p.m. will feature a vocal group from Shamrock known as the "King's Kids". Tickets for the event are still available through Baptist youth but should be purchased in advance.

## Ozella Hunt, 66 Killed In Accident

Funeral services for Miss Ozella Hunt, 66, of Denver City were held Feb. 3 at 2:30 p.m. in the First Baptist Church with Rev. John Ferguson, pastor, officiating.

Burial was in the Morton Cemetery.

Miss Hunt died about 7:15 p.m. Saturday in Lea county being pronounced dead on arrival at a Hobbs, N.M. hospital, shortly after a two-car collision about 12 miles north of Hobbs. Also killed in the accident was Alfons Fabin Tipshus, a 58-year-old Hobbs resident.

Miss Hunt was owner of an insurance and real estate agency in Denver City for 20 years. She moved to Denver City from Plains. Miss Hunt was home demonstration agent for Yoakum county 12 years. She was a member of First Baptist Church, the Tejas Study Club, Tsamoga Study Club, Plains, and Delta Kappa Gamma.

She was a native of Dodson. She is survived by a sister, Mrs. Glen Thompson of Morton; and two brothers, Lloyd Hunt of McLean and Cagle Hunt of Kilean.

## 256,200 Cotton Samples Graded At Memphis Office

Clear weather allowed cotton ginning to continue into the final stages over the Memphis area, according to W.E. Cain, in charge of the USDA, Agricultural Marketing Service Cotton Classing Office in Memphis, Texas. "Most of the cotton being ginned is ground stored, or ricked, cotton," said Cain.

The Memphis classed 16,200 samples this week to bring the season total to 256,200. This compares to 192,200 on the same date a year ago.

The predominant grade classed this week was grade 32 with 53 percent followed by grade 42 with 22 percent, grade 41 with 10 percent and grade 31 with five percent.

The predominant length classed this week was staple 32 with 58 percent followed by staple 31 with 38 percent.

Micronaire readings showed 69 percent miked in the desirable range of 3.5 to 4.9, 25 percent miked 3.0 to 3.4, and five percent miked 2.9 and below.



The Community Singing Convention will be held Sunday February 17, 1974 at 2:30 p.m. in the Presbyterian Church 401 N. Gray featuring the "Kings Kids" from Shamrock, Texas. This is a group of 8 dedicated young people from different denominations who with the leadership of Mrs. Billie Tsika and Mr. Micky Cannon go around this area and perform for various church functions. Everyone is invited to come and hear this group and also bring your own group of Solos, Duets, Trios, and quartets.

## VOTERS CAN SIGN UP BEFORE APRIL 4 TO VOTE IN PRIMARY

Many that have not signed up as registered voters have asked the question "can I register now to vote in May. You... Just sign up by April 4th if you have not registered any time in the past two years. To vote in the city and school elections you should register before March 6. If you signed up but have not voted thru this year, you will have to register again but if you have voted the past two years you are still registered to vote. All 18 or coming 18 can register now.

## March 4-8 Is Texas School Week

This year, March 4-8, Texas Public Schools Week will be observed throughout the state. This observance marks the 120th year of the public school system in Texas. Parents and others interested are invited to visit the public schools in their area to observe how the system works.

School officials and teachers believe that active parent and community participation in education will help to maintain the highest achievement on the part of students and faculty.

All grades -- elementary through high school will be open to the public. Special presentations by students, displays of art and other projects are planned. Some schools will send out invitations as a personal reminder to parents.

School officials are encouraging the public to visit their schools anytime during the year but most especially during the annual observance of Texas Public Schools Week, March 4-8.

Johnny Chilton and wife Bonnie of Hale Center visited last week with Mr. and Mrs. Josh Chilton.

Mr. W. R. Cullison returned home from the Veterans Hospital in Amarillo last Thursday.

## Sen Jack Hightower Introduces Two New Admendment

Senator-delegate Jack Hightower (d-Vernon) has introduced two Constitutional amendments to assure fairness to farmers and ranchers in the assessment of taxes and the appropriation of underground water resources.

Hightower proposes that the finance section of the new Constitution include a provision that the Legislature may provide methods of assessment that will promote the preservation of existing uses of land devoted to commercial agricultural purposes or which should be preserved as public recreation areas, scenic resources, nature preserves, or greenbelt areas or that will promote the preservation of historic sites.

He said the main purpose was to assure that rural land will be assessed on its production capabilities rather than its actual market value.

"There are just too many farmers and ranchers who are paying more taxes than they are earning income from their land," he said. "The production of food and fiber becomes more important every year to the American people for their own consumption and for trade overseas. We should not permit tax policies which discourage people from engaging in agriculture and meeting this great need."

Hightower's second proposal would exempt underground water districts from having to elect governing boards from separate geographical areas within the district under the "one man, one vote" requirement.

"This is totally unfair and impractical in rural area, we would have people who live in a town controlling the water appropriations for those who live on farms who live on farms and ranches and use the water," he said. "Those who create the district know best how to regulate water use."

Mrs. W. E. Kennedy returned home from the Highland General Hospital in Pampa last Sunday.

Mrs. Mary Dwyer and Jimmy McCracken, Gray County commissioners attended a workshop at A&M last week.

## Pentecostal Church To Have Revival

The Pentecostal Holiness Church will hold revival services beginning Feb. 18 thru Feb. 24 beginning at 7:30 p.m.

Rev. Santord Grigg will be bringing a series of evangelistic services. Rev. Grigg is presently pastoring in Kingston Okla. and is a very capable evangelistic preacher.

The public is invited to attend each service. There will be special music.

## S.W.P.S. To Have Oven Demonstration

There will be a demonstration on the care and use of microwave ovens at the Southwestern Public Service Company on Friday, February 15 from 2 to 5 p.m.

In charge of the demonstrations will be Mildred Prince, representative for Southwestern Public Service.

Mr. Jay Thompson, manager of the McLean Office, extends an invitation to everyone to drop in the office and see the oven in use and find out first hand the time and electricity it can save.

The average price paid farmers for cottonseed at the gin was \$100.00 per ton.



## McLean Has Telephone Growth

Despite recession clouds on the horizon, telephone growth in McLean is expected to remain healthy following a strong 1973, says Gary Stevens, manager for Southwester Bell.

"Telephones in the city total 1,200, a 4 per cent increase over 1972," said Stevens. "That's part of 300,000 telephones gained statewide in 1973."

Stevens said if the energy crisis doesn't cause a sharp decline in economic activity, "we may well need an 8 to 10 per cent increase in construction dollars for Texas in 1974 over what we spent in 1973. This year we'll be spending \$10 million a week in Texas to expand and improve telephone service, all of which can affect telephone service in McLean."

Daily calls in McLean in 1973 exceeded 4,000, a 17 percent increase over the previous year, Stevens said.

"We think this volume may increase this year, partly because of normal growth and partly because of the energy crisis. People may be calling more and driving less," the manager said.

## Caprock Baptist Have Revival

A revival began at the Caprock Baptist Church next Wednesday, Feb. 13 and will continue thru Sunday, Feb. 17th.

Rev. Joe Riggins, pastor, will be bringing the gospel messages each evening at 7:00 p.m.

About 1.5 million women were employed as private household workers in 1970.

## Joe Sherrod Wins 1st Place In V.F.W Contest

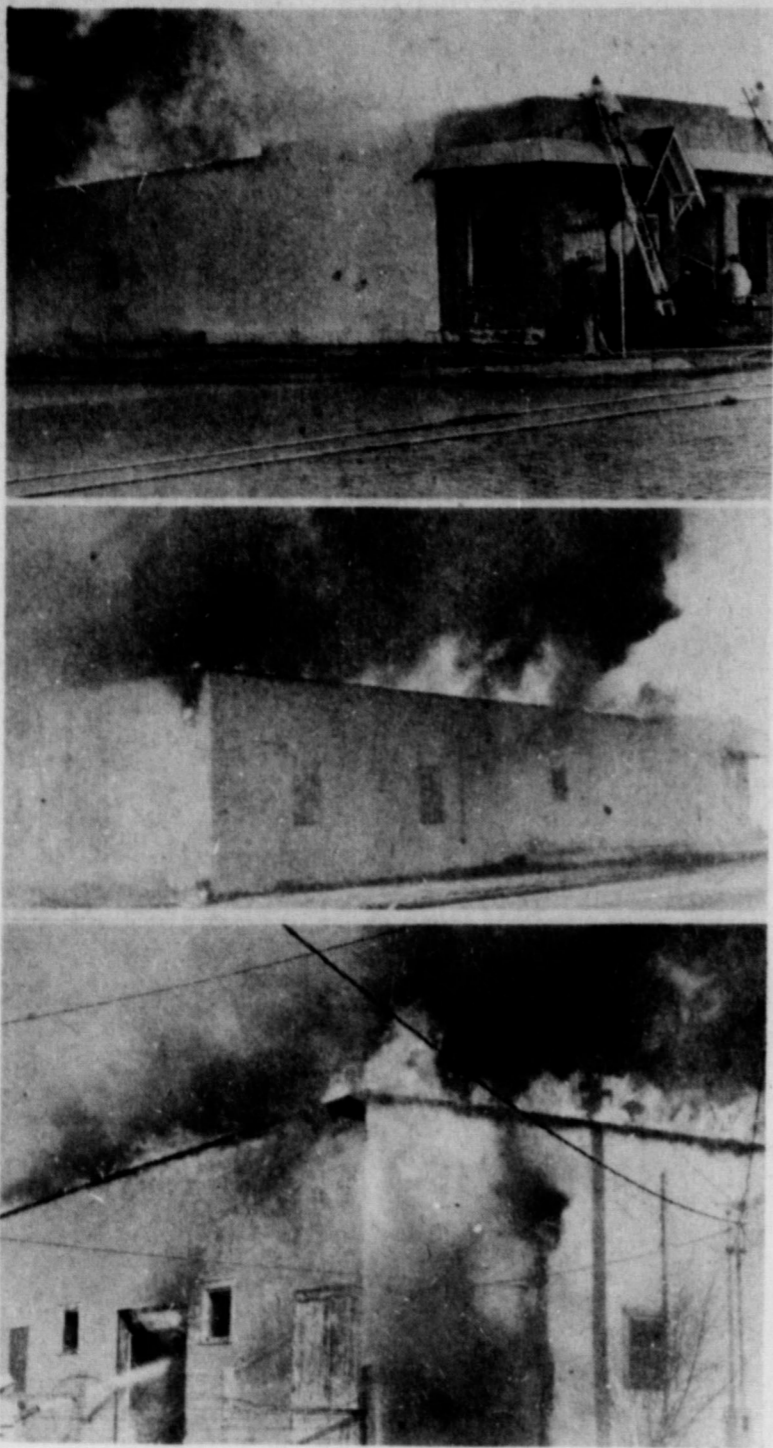
The McLean V.F.W. Post No. 8565 and the auxiliary has completed its Voice of Democracy program with the cooperation of the McLean school staff.

Dick Everett V.O.D. chairman for the V.F.W. post and Mary Dwyer V.O.D. chairman for the V.F.W. auxiliary presented the awards to the winners at the school assembly.

There were thirty students in the 10th, 11th and 12th grades submitting themes for judging. Titled "My Responsibility As A Citizen".

Nine of these students gave their presentations orally which was tap recorded for the final judging. With five finalists who were Wesley Brown, Sidney Morris, Judy Rhoten, Dian Diann Miller and Joe Sherrod. These five students received a Voice of Democracy patch. Wesley Brown was awarded a Voice of Democracy pin for winning second place. Joe Sherrod was awarded a plaque. For first place and his presentation was forwarded for entree in the district competition in which he won second place.





FIREMEN Battle hard to save Smith's Farm and Ranch Supply but despite all their efforts it was destroyed by fire last Friday morning.

**HIGHTOWER**

(Continued from Page 7) the image of a West Texan... with a personal code of conduct that is of the highest order."

Texas Monthly magazine noted recently that Hightower is "regarded as an expert and able leader" and said that he "performed his duties as chairman of the Administration Committee with rock-solid fairness; he continues to be among the most trusted and respected Senators."

Governor Dolph Briscoe, speaking at an appreciation dinner for Hightower in Plainview last month, declared that he "has established one of the finest reputations ever in the history of government in Texas as an outstanding official who gives true meaning to the term 'public service.'"

"He is a man who is intensely loyal," Governor Briscoe added, "and he has made tremendous contributions to what I see as a new era of fiscal responsibility in state government."

Briscoe also praised Hightower's work in restoration of the Capitol building: "Under his careful and conscientious guidance the beauty and heritage of the State Capitol has been preserved and has been put to full use."

More than a thousand people greeted Hightower at a reception in Wichita Falls on November 30 and his supporters in Childress sponsored an appreciation supper December 8. Hightower said that the outpouring of support he has received at these functions and in his travels throughout the district convinced him that "the 13th District is predominately Democratic and I believe the voters should have a clear choice on who can represent them most effectively in Washington."

Hightower, 27, ran his first race the year after receiving a law degree from Baylor University and won a

term (1953-54) in the Texas House of Representatives.

He was appointed and then re-elected twice as District Attorney of the 46th Judicial District, serving as president of the Texas District and County Attorneys Association and being named "Outstanding District Attorney of Texas" for 1959.

Hightower was appointed by Governor Price Daniel to the Texas Law Enforcement Commission in 1957 and has served as vice president of the Texas Junior Bar Association.

He was elected to the Senate from the 23rd District and two years later won the 30th District race against a fellow senator and another candidate without a runoff. He was unopposed for re-election in 1970 and 1972.

Hightower was vice chairman of the Board of Regents of Midwestern University and is currently a member of the Board of Trustees of Baylor University.

He served in the Navy during World War II before earning a BA degree at Baylor. In 1971 he was awarded an honorary LLD degree from Howard Payne College.

Born in Memphis to Walter (now deceased) and Floy Hightower, he graduated from Memphis High School with honors in 1944. His mother still lives here.

Hightower is married to the former Colleen Ward of Tullia. They have three daughters: Ann, 20, Amy 17, and Alison, 14.

**SANDERS SEWING MACHINE CENTER**  
 REPAIR ALL MAKES OF SEWING MACHINES  
 RENTAL MACHINE VACUUMS  
**KIRBY**  
 SALES AND SERVICE  
**200 Main 256-3640 Shamrock**  
 In McLean Call 779-2468

**did you know**



Not motorists, but bicyclists were the first to demand paved highways for faster, easier travel. History is repeating itself today as bicycle enthusiasts promote special bike lanes and trails for both pleasure and safety.

**JUBILEE**

(Continued from Page 1)

Norris T. Janningham, Jr. Brian Henry, who helps with stage and light.

If you have not signed up or know of someone that is interested contact George Terry or Conald Cunningham. By Carolyn Bailey

The McLean Jr. High Girls played their last game Monday at 6:00 p.m. against Memphis.

The top scorer of the game was Diane McAnear-9, Coy Nicholas-6, Twila Matheny-5, Terry Rollison-3, and Sherry Glass-1 making the final score 24-34.

**BASKETBALL**

(Continued from Page 1)

the Tigerettes assets is Sheri Haynes with a 30 point game average.

Tiger Coach Bill Nicholas said that due to adverse conditions underclassmen who might not have been in much play, had some valuable experience which would be important next year.

**Memphis Office Grade 249,000 Cotton Samples**

Cotton harvest over the Eastern Panhandle area is moving into the final stages, according to W.E. Cain, In Charge of the USDA, Agricultural Marketing Service, Cotton Classing Office at Memphis. "Most of the cotton is off the stalk and ginners report receipts are mainly ricked, or ground stored, cotton," said Cain.

The Memphis office classed 15,750 samples this week to bring the season total to 249,000. This compares to 169,200 on the same date a year ago.

The predominant grade classed this week was grade 32 with 43 percent followed by grade 41 with 21 percent, grade 42 with 19 percent and grade 31 with 12 percent.

The predominant length classed this week was staple 32 with 53 percent followed by staple 31 with 43 percent. Micronaire readings showed 77 percent miked in the desirable range of 3.5 to 4.9 and 21 percent miked 3.4 and below.

Pressley tests showed 92 percent tested 75,000 psi or higher. The average for the week was 82,000 psi.

The cotton market over the Memphis area continued a downward trend this week. Prices gained 100 to 150 points late in the week but still closed 100 to 275 points under prices quoted early in the week. Average prices paid Friday were: grade 31, staple 31-52, 10 cents per pound; grade 32, staple 31-51, 60 cents per pound; and grade 42, staple 31-50, 10 cents per pound. This was for cotton miking 3.5 to 4.9.

**NEWS**  
 \*\*\* County \*\*\*  
**Agricultural Agent**  
 Texas A. & M. College  
 Extension Service  
 By FOSTER WHALEY

**ALFALFA MEETING**

We would like to remind you of the meeting on Alfalfa production which will be held in the Casper Smith Building, starting at 2:00 p.m., Monday, February 11 in McLean.

We have three very well qualified specialists that should bring a very interesting program.

Dr. Bill Clymer, Insect Specialist, Amarillo, will discuss the latest control methods on insects.

Dr. Frank Petr, Area Agronomist, Extension Service, Amarillo, will talk on Weed and grass control, cultural methods, and new varieties.

Bill Masch, Economist-Management, will talk on the economic aspects of different harvesting methods, pricing of hay and the outlook on the price for alfalfa hay.

This will be a topnotch meeting that will be of help to those that are now in alfalfa hay business and those that are giving thought to going into the business.

**COYOTE CONTROL PROGRAM**

The Coyote situation is getting extremely bad. I've heard of them running in packs. As I understand it the Environmental Protection Agency has announced plans to approve the use of cyanide guns on an experimental basis in Texas.

Coyotes are not just a local problem. They are

becoming a serious problem nationwide. Here, a gain the Environmentalist, which represents a most insignificant percentage of our total population, have imposed their will over the masses. While the average person sat still complacently, the environmentalist were doing their political dirty work. However, we believe the environmentalist have had their hey-day. They are on the run. People are getting fed up with this group of star gazers. They will slapped in the face again as more shortages are...

The Federal Courts order to knock down their decision on Stilbestrol for cattle is another blow to this much unneeded movement.

**TRUCK STRIKE**

Because beef is both a valuable product and a perishable product packers are making a screeching halt to operations in fear they will get caught in transit with quantities of beef. Packers and Industries now have several truck loads of beef tied up in a truck stop here and Wisconsin at this writing.

The truckers have had a doubling in fuel costs some places. Many independent had parked their truck even before the independent strike began. They have a real problem. This does not lessen the adverse bad affect on the entire economy.

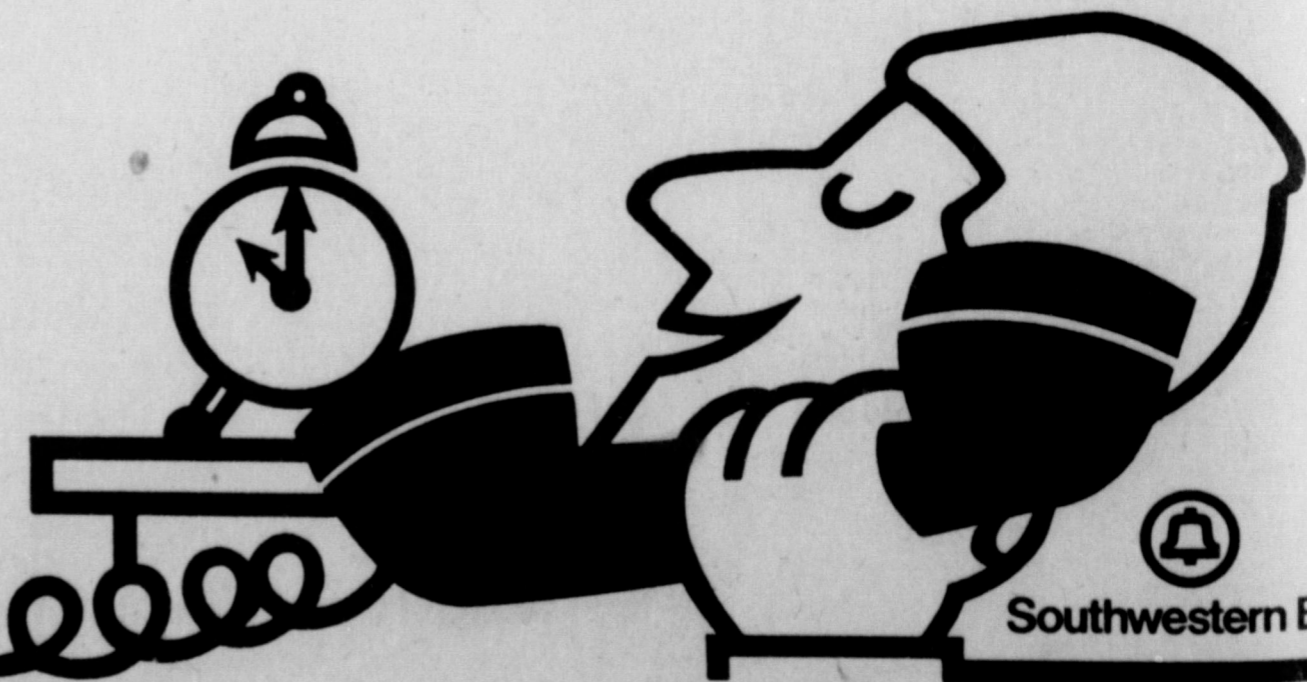
Most people are optimistic that the strike will be settled in the near future.

- Want to boil a cracked egg? Wrap it in foil.
- If you have homemade goodies to give as gifts, don't forget to tie them up in twine for safety's sake as well as prettiness.

**Talk is cheap.**

Especially between 11 p.m. and 8 a.m., seven days a week. That's when our one-minute rate is in effect on Long Distance calls you dial direct the One-Plus way. If you talk one minute, you pay for one

minute. Not the usual three. Coast-to-coast, the first minute costs just 35¢. And each additional minute is only 20¢. Phone someone who lives closer and rates can be even less.



Rates above do not include tax. One-Plus rates do not apply on calls made from coin telephones.



# The McLean News

Price 10¢

Serving McLean and the Area Since 1903

VOLUME 71

MCLEAN, GRAY COUNTY, TEXAS - THURSDAY, FEBRUARY 14, 1974

NUMBER 7

## March 6-Deadline To File For City Alderman

The deadline for those wishing to file for the office of city alderman is March 6. There will be three aldermen elected on the April 6 election. Aldermen whose terms are expiring are W. W. (Slick) Boyd, W. C. Kennedy and Glenn Curry. Absentee voting will begin on March 18 and end on April 6.

The election will be held on April 6 at the City Hall from 8 to 7 p.m.

## Commissioners To Meet Today

The Commissioners Gray County will meet at 10:30 a.m. on Thursday (today), February 14, at its regular meeting place in the county Courthouse, in Pampa. To pay bills approved by County Auditor, consider time deposits and transfers of funds as may be recommended by the County Auditor, Treasurer report, before report.

To consider bids for oil and gas lease of county school land minerals in Gaines County, school minerals, consider authorization for bids for purchase of two 2-ton trucks with trade-in of three 2-ton trucks or Prec. 4, to be paid from revenue sharing trust funds --

## Dept. Graduates 23 Game Wardens

AUSTIN--The Texas Parks and Wildlife Department's first Deputy Game Warden school graduated its first class of 23 commissioned officers in January, according to department law enforcement personnel.

Deputy game wardens, who receive no pay and must pay their own expenses, attended classes 12 hours per day for six days to complete the 72-hour course.

Deputy wardens are commissioned by the Parks and Wildlife Department and must complete the course, which is conducted in Austin, within the year of their commissioning in order to retain their commissions.

They are empowered to enforce game laws only and work under the close supervision of local game wardens.

The course includes orientation and organization, community relations, game and fish laws, patrol procedures, game preparation, firearms training, defensive driving, courtroom demeanor, the penal code and emergency traffic control.

## Skating Rink Opens

The skating rink at the American Legion Hall will open on Friday and Saturday nights from 7:30 p.m. to 10:00 p.m.

## Youth Banquet Set For Friday Night

Baptist youth will host other people of the Community at a banquet, to be held Friday, night in the fellowship hall of that church. The evening entertainment to begin at 7:30 p.m. will feature a vocal group from Shamrock known as the "King's Kids". Tickets for the event are still available through Baptist youth but should be purchased in advance.

## Ozella Hunt, 66 Killed In Accident

Funeral services for Miss Ozella Hunt, 66, of Denver City were held Feb. 3 at 2:30 p.m. in the First Baptist Church with Rev. John Ferguson, pastor, officiating. Burial was in the Morton Cemetery.

Miss Hunt died about 7:15 p.m. Saturday in Lea county being pronounced dead on arrival at a Hobbs, N.M. hospital, shortly after a two-car collision about 12 miles north of Hobbs. Also killed in the accident was Alfons Fabin Tipshus, a 58-year-old Hobbs resident.

Miss Hunt was owner of an insurance and real estate agency in Denver City for 20 years. She moved to Denver City from Plains. Miss Hunt was home demonstration agent for Yoakum county 12 years. She was a member of First Baptist Church, the Tejas Study Club, Tsamoga Study Club, 1 Plains, and Delta Kappa Gamma.

She was a native of Dodson. She is survived by a sister, Mrs. Glen Thompson of Morton; and two brothers, Lloyd Hunt of McLean and Cagle Hunt of Kileen.

## 256,200 Cotton Samples Graded At Memphis Office

Clear weather allowed cotton ginning to continue into the final stages over the Memphis area, according to W.E. Cain, in charge of the USDA, Agricultural Marketing Service Cotton Classing Office in Memphis, Texas. "Most of the cotton being ginned is ground stored, or ricked, cotton," said Cain.

The Memphis classed 16,200 samples this week to bring the season total to 256,200. This compares to 192,200 on the same date a year ago.

The predominant grade classed this week was grade 32 with 53 percent followed by grade 42 with 22 percent, grade 41 with 10 percent and grade 31 with five percent.

The predominant length classed this week was staple 32 with 58 percent followed by staple 31 with 33 percent.

Micronaire readings showed 69 percent miked in the desirable range of 3.5 to 4.9, 25 percent miked 3.0 to 3.4, and five percent miked 2.9 and below.



The Community Singing Convention will be held Sunday February 17, 1974 at 2:30 p.m. in the Presbyterian Church 401 N. Gray featuring the "Kings Kids" from Shamrock, Texas. This is a group of 8 dedicated young people from different denominations who with the leadership of Mrs. Billie Tsika and Mr. Micky Cannon go around this area and perform for various church functions. Everyone is invited to come and hear this group and also bring your own group of Solos, Duets, Trios, and quartets.

## VOTERS CAN SIGN UP BEFORE APRIL 4 TO VOTE IN PRIMARY

Many that have not signed up as registered voters have asked the question "can I register now to vote in May. You... Just sign up by April 4th if you have not registered any time in the past two years. To vote in the city and school elections you should register before March 6. If you signed up but have not voted this year, you will have to register again but if you have voted the past two years you are still registered to vote. All 18 or coming 18 can register now.

## March 4-8 Is Texas School Week

This year, March 4-8, Texas Public Schools Week will be observed throughout the state. This observance marks the 120th year of the public school system in Texas. Parents and others interested are invited to visit the public schools in their area to observe how the system works.

School officials and teachers believe that active parent and community participation in education will help to maintain the highest achievement on the part of students and faculty.

All grades -- elementary through high school will be open to the public. Special presentations by students, displays of art and other projects are planned. Some schools will send out invitations as a personal reminder to parents.

School officials are encouraging the public to visit their schools anytime during the year but most especially during the annual observance of Texas Public Schools Week, March 4-8.

Johnny Chilton and wife Bonnie of Hale Center visited last week with Mr. and Mrs. Josh Chilton.

Mr. W. R. Cullison returned home from the Veterans Hospital in Amarillo last Thursday.

## Sen Jack Hightower Introduces Two New Admendment

Senator-delegate Jack Hightower (d-Vernon) has introduced two Constitutional amendments to assure fairness to farmers and ranchers in the assessment of taxes and the appropriation of underground water resources.

Hightower proposes that the finance section of the new Constitution include a provision that the Legislature may provide methods of assessment that will promote the preservation of existing uses of land devoted to commercial agricultural purposes or which should be preserved as public recreation areas, scenic resources, nature preserves, or greenbelt areas or that will promote the preservation of historic sites.

He said the main purpose was to assure that rural land will be assessed on its production capabilities rather than its actual market value.

"There are just too many farmers and ranchers who are paying more taxes than they are earning income from their land," he said. "The production of food and fiber becomes more important every year to the American people for their own consumption and for trade overseas. We should not permit tax policies which discourage people from engaging in agriculture and meeting this great need."

Hightower's second proposal would exempt underground water districts from having to elect governing boards from separate geographical areas within the district under the "one man, one vote" requirement.

"This is totally unfair and impractical in rural area, we would have people who live in a town controlling the water appropriations for those who live on farms who live on farms and ranches and use the water," he said. "Those who create the district know best how to regulate water use."

Mrs. W. E. Kennedy returned home from the Highland General Hospital in Pampa last Sunday.

Mrs. Mary Dwyer and Jimmy McCracken, Gray County commissioners attended a workshop at A&M last week.

## McLean Has Telephone Growth

Despite recession clouds on the horizon, telephone growth in McLean is expected to remain healthy following a strong 1973, says Gary Stevens, manager for Southwestern Bell.

"Telephones in the city total 1,200, a 4 per cent increase over 1972," said Stevens. "That's part of 300,000 telephones gained statewide in 1973."

Stevens said if the energy crisis doesn't cause a sharp decline in economic activity, "we may well need an 8 to 10 per cent increase in construction dollars for Texas in 1974 over what we spent in 1973. This year we'll be spending \$10 million a week in Texas to expand and improve telephone service, all of which can affect telephone service in McLean."

Daily calls in McLean in 1973 exceeded 4,000, a 17 percent increase over the previous year, Stevens said.

"We think this volume may increase this year, partly because of normal growth and partly because of the energy crisis. People may be calling more and driving less," the manager said.

## Caprock Baptist Have Revival

A revival began at the Caprock Baptist Church next Wednesday, Feb. 13 and will continue thru Sunday, Feb. 17th.

Rev. Joe Riggins, pastor, will be bringing the gospel messages each evening at 7:00 p.m.

About 1.5 million women were employed as private household workers in 1970.

## Joe Sherrod Wins 1st Place In V. F. W Contest

The McLean V.F.W. Post No. 8565 and the auxiliary has completed its Voice of Democracy program with the cooperation of the McLean school staff.

Dick Everett V.O.D. chairman for the V.F.W. post and Mary Dwyer V.O.D. chairman for the V.F.W. auxiliary presented the awards to the winners at the school assembly.

There were thirty students in the 10th, 11th and 12th grades submitting themes for judging. Titled "My Responsibility As A Citizen".

Nine of these students gave their presentations orally which was tap recorded for the final judging. With five finalists who were Wesley Brown, Sidney Morris, Judy Rhoten, Dian Diann Miller and Joe Sherrod. These five students received a Voice of Democracy patch. Wesley Brown was awarded a Voice of Democracy pin for winning second place. Joe Sherrod was awarded a plaque. For first place and his presentation was forwarded for entree in the district competition in which he won second place.





# QUALITY • VALUE • SAVINGS

**BAKE-RITE** SHORTENING **3** LB. CAN **99¢**  
**PUNCH** DETERGENT GIANT SIZE BOX **59¢**  
**CORN** OUR DARLING 303 CAN **4** FOR **89¢**

SHURFINE WHOLE SWEET **PICKLES** 22 OZ. **69¢**

SHURFINE CUCUMBER CHIPS **PICKLES** 16 OZ. **39¢**

KEEBLERS LB. BOX **CRACKERS** **45¢**

BOUNTY SINGLE ROLL

**PAPER TOWELS** JUMBO SIZE ROLL **39¢**

SHURFINE

**HAMBURGER HELPER** BOX **49¢**

TEXAS RUBY RED **GRAPEFRUIT** EACH **10¢**

**BANANAS** 2 LBS. **25¢**

CALIFORNIA **CELERY** STALK **19¢**

ARMOURS LIMITED SUPPLY **TURKEYS** LB. **69¢**

BETTY CROCKER **BROWNIE MIX** 22 1/2 OZ. BOX **69¢**

SHURFINE FROZEN 10 OZ. PKG. **BRUSSELS SPROUTS** **39¢**

SHURFINE FROZEN **ORANGE JUICE** 12 OZ. CAN **49¢**

CHEF BOY-AR-DEE FROZEN **PIZZA** YOUR CHOICE EACH **95¢**

SHURFINE

**FLOUR** 5 LB. BAG **85¢**

SHURFINE

**WAFFLE SYRUP** QUART **65¢**

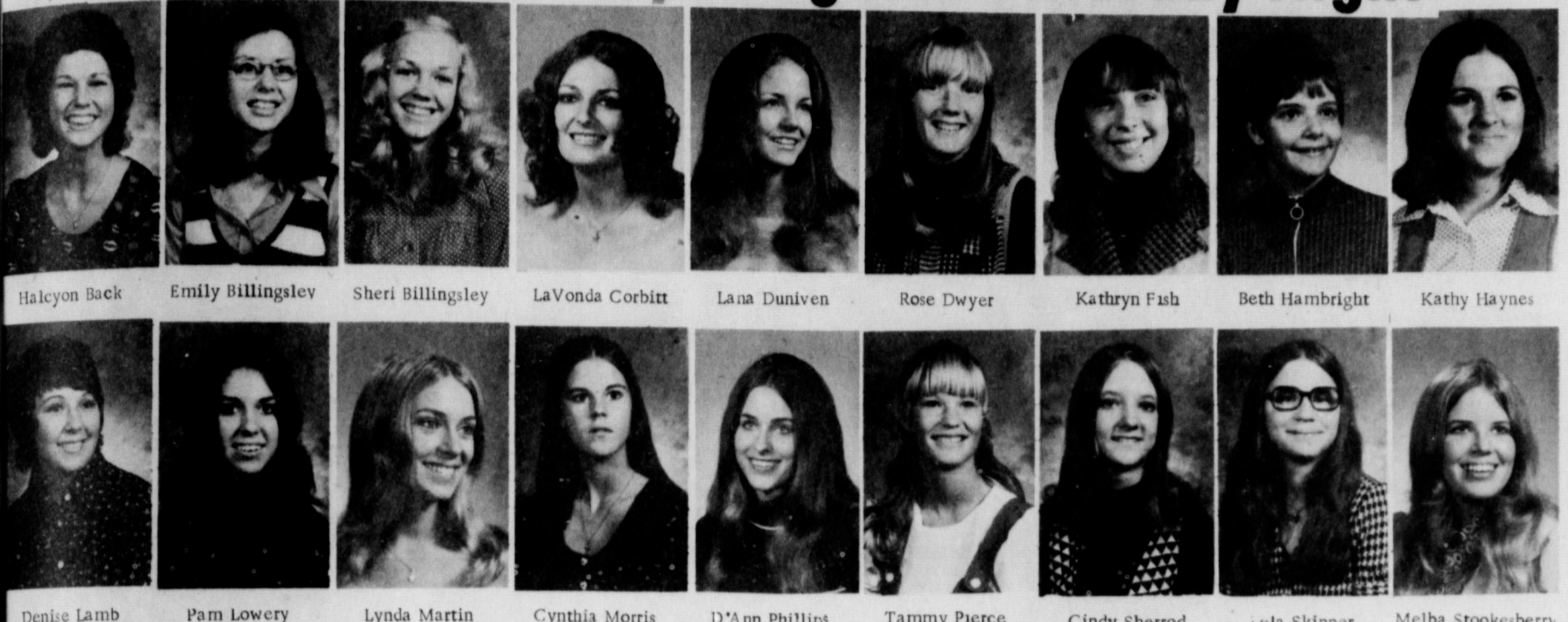


Tendercrust Bread and Bakery Products  
**SPECIALS GOOD**  
 Fri. & Sat., Feb. 15-16

Deni  
 Eight  
 re con  
 of Miss  
 Miss Mo  
 staged S  
 high sch  
 contest,  
 Mother'  
 at 7:30  
 Judge  
 look at  
 tea ther  
 individu  
 formal v  
 ection c  
 Laura C  
 holder,  
 or, Th  
 represen  
 the Miss  
 WEDDI  
 For S  
 Veral  
 Free C  
 WI  
 1. W  
 2. Thess  
 him? /  
 10:1-4  
 3. D  
 John 12  
 4. W  
 perien  
 5. V  
 Acts 9:  
 6. W  
 the Lore  
 7. H  
 10:13-1  
 8. D  
 9. D  
 Luke 24  
 10. I  
 10:9-10  
 11. E  
 Hebrews  
 12. D  
 6:16; A  
 13. I  
 contradi  
 Colossia  
 14. D  
 Romans  
 15. W  
 Christ's  
 16. W  
 life? Re



# Miss McLean Beauty Pageant Saturday Night



Halcyon Back Emily Billingslev Sheri Billingsley LaVonda Corbitt Lana Duniven Rose Dwyer Kathryn Fish Beth Hambright Kathy Haynes  
Denise Lamb Pam Lowery Lynda Martin Cynthia Morris D'Ann Phillips Tammy Pierce Cindy Sherrod Lela Skipper Melba Stookesberry

Eighteen high school girls are competing for the title of Miss McLean in the annual Miss McLean Pageant to be staged Saturday night in the high school auditorium. The contest, sponsored by the Mother's Inc., will begin at 7:30 p.m. Judges will take a close look at the girls at an evening tea then each girl will appear individually in school and formal wear. Prior to the selection of five finalists, Miss Laura Cox, the reigning title holder, will crown her successor. The pageant winner will represent the community in the Miss Irish Rose and the

Miss Top O' Texas contests. The contestants, their parents, and their local sponsors are as follows: Rose Dwyer, daughter of Mrs. Mary Dwyer, is sponsored by the McLean News. Rose, a freshman student, is involved in band, varsity basketball, and serves as class secretary. She also enjoys tennis, track, and playing the piano.

Pam Lowery, a sophomore, is the daughter of Mr. and Mrs. Sonny Lowery and is sponsored by Billie's Beauty Salon. Pam has been involved in track, basketball, and tennis. Her free time activities include cooking and care of her cars. Kathy Haynes, daughter of Mr. and Mrs. Sam Haynes, is sponsored by Corinnes. A sophomore, Kathy participates in basketball and track, and is active in FHA, FBLA, and band. She has been elected to a number of honors by classmates.

Sheri Billingsley, a freshman, is the daughter of Mr. and Mrs. Joe Billingsley and is sponsored by Simpson's Mar-

ket. Sheri is involved in FHA, FBLA, band, basketball, and track. This year she was elected wittiest in her class. Lana Duniven is a senior and the daughter of Mr. and Mrs. Bob Duniven. She is sponsored by Parson's Rexall. Lana, 4 years a cheerleader and now head, has been active in FBLA, FHA, and recognized in girls athletics. Among many school honors, Lana was chosen Miss MHS.

Halcyon Back, daughter of Richard and Laverne Back, is a sophomore and is sponsored by Alberta's Hair Fashion's. Halcyon, a cheerleader, is in basketball, tennis, track, and FHA and participates in UIL literary events. Elected offices include a position on the student council.

Cindy Sherrod, sponsored by Boyd Meador Real Estate and Insurance, is the daughter of Mr. and Mrs. Bob Sherrod. Cindy, a freshman, enjoys horsebackriding and rodeo sports. She is also active in basketball, track, FHA, and FBLA. Class honors include Most Beautiful and class treasurer.

LaVonda Corbitt is the daughter of Mr. and Mrs. M. F. Corbitt and is sponsored by J. R. Glass Oil Co. A senior, LaVonda has received recognition in basketball, track, tennis, and has been involved in FHA, FBLA, and Annual Staff. This year she was elected

Most Spirited. Lela Skipper, sponsored by Lamb Flowers, is a freshman and the daughter of Mr. and Mrs. Billy Joe Skipper. She is a member of FBLA, FHA, and band and is active in basketball and track. Lela enjoys horseback riding and swimming.

Lynda Martin is a senior, the daughter of Mrs. Lora Martin, and is sponsored by Ted Simmons Chevrolet. Lynda plays basketball, being named all-district for the past three seasons, and has participated in track, FHA, FBLA, and PepClub. This year she was named Wittiest by her class.

Emily Billingsley is the daughter of Mr. and Mrs. Clarence Billingsley and is sponsored by Veral Lynn's. A sophomore, she has participated in basketball, track, and FHA. In spare time, Emily enjoys horseback riding and photography.

Melba Stookesberry is sponsored by the Family Inn and is the daughter of Mr. and Mrs. Bill Stookesberry. Melba is active in basketball, track, FBLA, FHA, and Annual Staff. A senior she enjoys water sports and is certified as a water safety instructor.

Tammy Pierce, freshman, is the daughter of Mr. and Mrs. Clarence Pierce and is sponsored by Kiva Gifts and Salon. Tammy is active in band and basketball and represented her class as Harvest

Queen candidate. She also enjoys tennis, swimming, sewing, and cooking.

Cynthia Morris is a freshman and the daughter of Mr. and Mrs. Wayne Morris. Sponsored by Jane Simpson Agency, she is involved in FBLA, FHA, basketball, band, and is a student council representative. Cynthia enjoys cooking and sewing in her spare time.

Beth Hambright, the daughter of Mr. and Mrs. Kenneth Hambright, is a freshman and is sponsored by Williams Appliance. Beth plays basketball and takes part in FHA and band activities at McLean High School. Her hobbies are cooking and sewing.

D'Ann Phillips, sponsored by McLean Hardware, is the daughter of Mr. and Mrs. Warner Phillips. A senior, she is a cheerleader and class officer and is a part of basketball, track, and golf team. D'Ann also is an officer in FHA, and FBLA, and is on the Annual Staff.

Kathryn Fish is a sophomore and the daughter of Mr. and Mrs. Noble Fish of Alanreed. The Windi Inn sponsors Kathryn, who, is involved in basketball and has run in track competition. She enjoys horseback riding and swimming.

Denise Lamb is a sophomore, the daughter of Mr. and Mrs. Creed Lamb, and is sponsored by Johnnie Mertel Boot Shop. Denise is a member of FBLA and FHA and has been in the band. She also plays the piano and cooks and sews during free time.

## Easter Seal Appeal Chairman Named

Mrs. Betty Casey will head the 1974 Easter Seal Appeal in Gray County, it was announced by Thomas N. Jenness, Jr. Fort Worth, President of the Easter Seal Society for Crippled Children and Adults of Texas.

Resident of Gray County will receive the annual Easter Seal Appeal letters in the mail beginning March 1. The Easter Seal Appeal, conducted yearly to provide treatment and services to disabled persons and their families.

Mrs. Casey is one of 223 men and women throughout Texas who are serving in this capacity. The cost of the state wide Easter Seal program is over one million dollars, financed mainly by the Easter Seal Appeal.

## Off-Season Antelope Net Large Fine

Off-season antelope hunting has netted a Hudspeth County man the largest individual fine assessed in the Trans-Pecos in recent years.

Parks and Wildlife Department game warden Royce Wells of Fort Hancock filed the case during the latter part of January after becoming suspicious because of a "green" antelope hide he had found in the area.

Wells later noted blood and hair in the back of the poacher truck and found three antelope in his barn.

The individual was charged with three counts of possessing an antelope during a closed season and assessed \$607.50 in fines.

Antelope season in the Trans Pecos was Sept. 29-Oct. 7.

## The Kiva by Lou-Jay Chatter



Marriage teaches you loyalty, tolerance, understanding, perseverance, and a lot of other things you wouldn't need if you stayed single.

Give a cynic an inch, and he'll measure it.

It's been definitely proved that a college education adds thousands to a man's lifetime income -- which he then spends on sending his kids to college.

When a minister rehearses his Sunday sermon, he's practicing what he preaches.

If experience is the best teacher, why does the average husband continue to think he's the boss of the family?

Experience has taught us to make any woman more beautiful than when she came to us. Let us do as much for you. Come to

**The Kiva of L-J Beauty Salon & Gift Botique**  
105 N Main 779-2371  
McLean, Texas

and indulge yourself in a day of beauty.

**WEDDING GIFT REGISTRY**  
For Shower Gift Service  
Call 779-2251  
**Veral Lynn Gift Shop**  
Free Gift Wrap & Delivery

## What Is Your Bible I.Q.?

1. Will all men be saved? Titus 2:11, 1 Tim. 2:4; 2 Thess. 1:8f, Matt. 7:13f
2. Will the fact that a man is good be enough to save him? Acts 10:6; Acts 11:13f; John 14:6; Phil. 3:9; Romans 10:1-4
3. Does mere belief alone save a man? James 2:19; John 12:24f; James 2:24
4. Will a man be saved because he has had some "experience" with the Lord? Acts 22:6-10, 16; Acts 11:12-14
5. Will a man be saved on the basis of his prayers? Acts 9:5-11; 22:16
6. Will a man be saved who merely vocally "calls on the Lord"? Romans 10:13-15; Luke 6:46
7. How and when does one "call on the Lord"? Romans 10:13-17; Acts 22:16
8. Does grace play a part in our salvation? Eph. 2:8
9. Does repentance play a part in salvation? Luke 5:32; Luke 24:47; Acts 2:38; Acts 17:30; 2 Peter 3:9
10. Does confession play a part in salvation? Romans 10:9-10; Acts 8:37; Matt. 10:32
11. Does faith play a part in salvation? Rom. 5:1; Hebrews 11:6
12. Does baptism play a part in our salvation? Mark 16:16; Acts 2:38; Acts 22:16; 1 Peter 3:21
13. Does salvation by faith and salvation by baptism contradict or nullify one another? Galatians 3:26-29; Colossians 2:12; Romans 6:1-6
14. Does Christ's blood or death play a part in salvation? Romans 5:8-11; Heb. 9:14, 22
15. When and where does one find the benefits of Christ's death? Romans 6:3-7; Heb. 9:14; 1 Peter 3:21
16. What else must a man do to be assured of eternal life? Rev. 2:10

## CHURCH OF CHRIST

J. A. Farber, Evangelist  
4th and Clarendon  
McLEAN, TEXAS



AND SEND CARDS FROM

## Parsons' Drug

Phone 779-2442 McLean, Texas



**STATE CAPITAL**  
*Highlights*  
**AND Sidelights**  
 by Bill Boykin  
 TEXAS PRESS ASSOCIATION

AUSTIN, Tex. — Plenty of action for the May 4 Democratic primary developed just before last week's filing deadline.

Mrs. Frances "Sissy" Farenthold got into the governor's race against Gov. Dolph Briscoe, and promptly filed a \$3 million lawsuit, alleging he accepted illegal campaign contributions.

Houston lawyer Donald B. Yarbrough filed against State Treasurer Jesse James. Herbert "Peanut" Schroeder of Columbus challenged Agriculture Commissioner John C. White; and C. A. Kelly of San Antonio took on Railroad Commissioner Mack Wallace.

A three-way Democratic race of comptroller was on schedule long before the filing deadline, with Bob Bullock, and Howard Edburg of Austin and Buddy F. Kirk of Houston the candidates. Comptroller Robert S. Calvert is retiring.

Lt. Gov. Bill Hobby, Attorney General John Hill, Land Commissioner Bob Armstrong, Railroad Commission Chairman Jim C. Langdon and top appellate judges escaped Democratic opposition. But all incumbent statewide officials (except the judges) will get Republican opposition in November.

Republicans have contests for governor: Hank Grover of Houston, Jim Granbery of Lubbock and Odell McBrayer of Fort Worth; for lieutenant governor: Gaylor Marshall of Dallas and Troy Skates of Austin; and for railroad commissioner: Dale W. Steffes of Houston and John Hall of Weatherford.

Other Republican statewide candidates include Tom Cole of Houston for attorney general; Nicholas Rowe of McAllen for comptroller; Mrs. Mary Lou Grier of Boerne for land commissioner; Robert G. Holt of Amarillo for treasurer; Zack Fisher of Memphis for agriculture commissioner and Joe Cain of Houston for railroad commissioner against Langdon.

Raza Unida Party fielded Ramsey Muniz for governor and Fred Garza for Railroad Commissioner.

**CONVENTION MOVES ON** — Constitutional Convention delegates are making major decisions in committees as their work product nears the floor voting stage.

One of the big votes in the Education Committee was for retention of the \$680 million permanent University Fund for use of the University of Texas and Texas A&M University.

Voting rights (postponed due to a last-minute committee hangup) and education proposals are expected

to be considered by the full convention late this week.

Presiding Officer Price Daniel Jr. said the convention probably will be voting every day next week, and committees which have not finished their work will have to hold night sessions.

**TRUCKERS IRATE** — Unhappy Texas truck drivers called on Governor Briscoe for aid in getting diesel fuel prices rolled back.

In an effort to end their strike, Briscoe dispatched an aide to Washington to confer with Federal Energy Administrator William Simon on the situation.

The governor's aide, James Rose, said his mission was "simply to convey (the truckers') position to federal agencies and congressmen."

Texas truckers also demanded an increase in the speed limit between 10 p.m. and 6 a.m.

**COURTS SPEAK** — The State Supreme Court affirmed a trial court verdict that the City of San Antonio does not owe hotel operators damages because a parking garage hampered access to their hotel.

Former House Speaker Gus Mutchers' appeal from a bribery conspiracy sentence (five years probated) will be heard by Texas Court of Criminal Appeals April 10 or 17.

The Supreme Court threw out a 150-day sentence for contempt of court assessed Jody Martin Parr, wife of Duval County Judge Archer Parr, because the punishment was increased without hearing.

Testimony about a previous assault led to a Dallas man's winning retrial on rape charges.

**AID URGED** — Federal Aid has been urged for 10 Southeast Texas counties hit by rain, winds and flooding last month.

Governor Briscoe called on President Nixon for assistance through Small Business Administration, Farmers Home Administration and the Corps of Engineers.

Counties are Angelina, Hardin, Jasper, Liberty, Nacogdoches, Newton, Orange, San Augustine, San Jacinto and Shelby.


**VEGETABLE SEASON DISAPPOINTING** — Agriculture Commissioner John C. White

**THE MCLEAN NEWS**

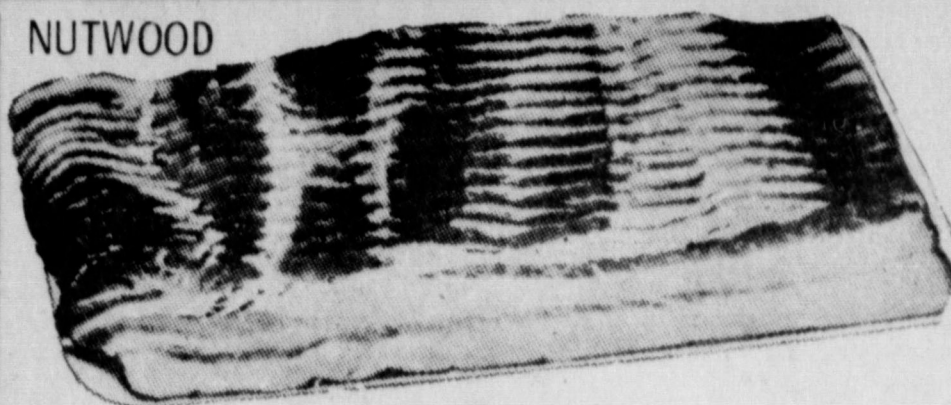
210 N. Main 779-2447  
 Published every Thursday at McLean, Gray County, Texas  
 Second Class Postage paid at McLean, Texas.

E. M. Bailey.....Publisher  
 Deloris Bailey.....Editor  
 Subscription rates \$4.50 per year in Gray and neighboring counties; \$5.50 per year elsewhere.

*Blakemore*  
 FRESH  
**PROTEIN FED CATFISH**



"Dressed While You Wait"  
**BLAKEMORE MOTOR CO. BUILDING**  
 Phone 253-3287  
 400 North Main Shamrock, Texas 79079



2 LB. PKG.

**\$2.09**

MINI

**HAMS**

LB.

**\$1.98**

COUNTRY STYLE

**SPARE RIBS**

LB.

**\$1.15**

MEADOLAKE SOFT

**MARGARINE**

LB.

**53¢**

HUNTS

**PEACHES**

NO. 2 1/2 SIZE

**43¢**

GRIFFINS

**SALAD DRESSING**

QUART

STAR OR TOP CREST

**GREEN BEANS**



CREAM STYLE  
 FAMILY STYLE  
 303 SIZE

**5 FOR \$1**

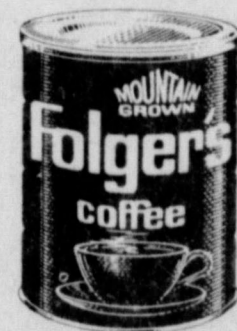


38 OZ.

**\$1.15**

PUCKETT'S FOOD STORE

**SAVE 43¢ WHEN YOU BUY A  
 2 LB. CAN of  
 FOLGER'S COFFEE**



SPECIAL PRICE  
 WITH THIS COUPON

**\$1.79**

Coupon cash value 1/20 of 1¢

GOOD THRU (2-22-74)

TEXSUN

**ORANGE JUICE**

46 OZ.  
 CAN

**45**

**Puckett's**  
 FOOD STORES  
 McLEAN, TEXAS

Specials Good Friday and Saturday, February 15, 16, 1974





**CA-COLA 6** 32 OZ. BOTTLES **\$1**  
Plus Deposit

53¢  
UPON WHEN  
LB CAN OF  
**HOUSE**  
FREE  
\$1.82 WITH  
COUPON  
OFFER EXPIRES 2-22-74



SHORTENING  
**3** LB. CAN **\$1.10**



**VEGETABLES 4** FOR **\$1**

**FRUIT 4** FOR **\$1**

**FRUIT 4** FOR **\$1**

**FRUIT 4** FOR **\$1**

**CRACKERS 1 LB. PKG. 35¢**

**MILK GALLON \$1.49**

**BLEENEX 200 COUNT 3 FOR \$1**

**CARROTS 1 LB. PKG. 10¢**

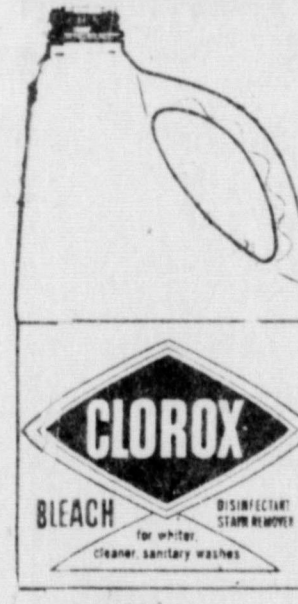
**APPLES 5 LBS. \$1**

**POTATOES 5 LBS. \$1**

**10¢ OFF**  
ALL TEMPERATURE  
**cheer**  
GIANT SIZE  
3 lb. 1 oz.



**79¢**



**39¢**

**WE ARE YOUR TOP STAMP REDEMPTION CENTER**



**NONE MORE VALUABLE**

said a winter freeze, strong competition and fall rains lowered prices on winter vegetables in South Texas.

The growers' loss is the consumer's gain, however, White said.

Spinach is an exception, Cabbage growers, said White, have been hit unusually hard — with prices dropping to seven cents a pound.

The truckers' strike threatens further complications, according to White, and shipments are not being accepted for delivery east of the Mississippi River due to trucking problems.

**COLLEGE TAX SNAGGED** — A proposed constitutional change to allow an increase in the property tax for broadened support of 21 public colleges and universities appears to be losing ground.

Constitutional Convention Education Committee Chairman Rep. Dan Kubiak of Rockdale indicated a new proposal will call for legislative appropriation to the institutions equal to revenue to The University of Texas and A&M University from the Constitutionally-dedicated Permanent University.

**LOBBY BILL CHALLENGED** — Austin District Attorney Robert O. Smith has called on Attorney General Hill for a ruling on constitutionality of the 1973 lobby control act.

Smith said the act may require lobbyists to incriminate themselves by reporting expenditures which could be held as bribery under a new statute effective January. The bribery law outlaws holding out "any benefit" to an official to influence his decision.

The district attorney has asked if the term "benefit" includes loans, political contributions, entertainment expenditures and gifts.

**Eastern Star Has Amarillo Visitors**

The McLean Chapter No. 239 Order of the Eastern Star, held its regular meeting Thursday, February 7.

Mrs. Ellen Dunn of Amarillo, Deputy Grand Matron, District 2, Section 2, of the Grand Chapter of Texas was welcomed by the member, Mrs. Elsie Abernathy, Amarillo, Past Matron and member of Educational Fund Committee, and Mrs. Jewell Murphy, Past Matron from Vega, were also visitors.

Regular business was conducted, then the meeting was turned over to the Deputy Grand Matron Mrs. Ellen Dunn, for her official visit.

Many past matrons have had their pictures made for the new picture gallery. The chapter voted to have Mr. Carl Baker make the frames. If you haven't had your picture made please do so as soon as possible.

The Worthy Matron reminded those there that the next stated meeting will be March 7, when she plans to honor her officers. The Chapter Mother, Fidelle Stubbs, will also be honored at this time.

A combination Friendship night and past matrons and past patrons night will be held Thursday, Feb. 28. A salad supper will be at 7:00 p.m. Members are asked to bring a favorite salad.

Many members were ill and unable to attend this meeting.

Those in attendance were, Veral Lynn Wood, Frank Rodgers, J. Boyd Smith, Mayme Hathaway, Frankie Smith, Clara Hupp, Fidelle Stubbs, Margaret Grogan, Myrt McCoy, Oma Lee Lisman, Vela Corcoran, Jack Lisman and Sue Cubine.

A salad supper was served prior to this meeting.

**Officers Elected At Dist. FBLA Meeting**

The Future Business Leaders of America held their first district meeting Feb. 7 at the West Texas State University Activities Center. FBLA is the national organization for all young adults in high school and post secondary institutions enrolled in business programs.

About 138 business-oriented students from high schools in McLean, Dumas, Canyon, Pampa, Amarillo, Hereford, Silverton, and Andrews participated in "rap" sessions, workshops, campus tours and contests.

Elaine Burgett of Palo Duro High School, Amarillo, and Scott Hutsell of Silverton were chosen Mr. and Mrs. FBLA of 1974-1975.

Students competed against each other in afternoon contests in typewriting, shorthand and public speaking.

Winners of the typing contest are Jana Apercrombie, first place; Jimmy Parrish, second, and Sandra Nesbith, third. All three contestants represented Palo Duro High School.

In the shorthand competition, Donna Ritchey received first place; Becky Robertson, second, both from Palo Duro; and Susie Parker, third place is from Silverton.

Palo Duro High School student Michele Clark, a native of Australia who has only been living in the United States about six months, won first place in the Public Speaking contest. Yvonne Reed of Dumas placed second in the tryouts.

The first FBLA district officers for 1974-75 are Mike Sanders of Palo Duro, president; Ronnie Heasley of McLean, vice president; Ruth Ann Cline of Silverton, secretary; Scott Hutsell also from Silverton, treasurer; Jan Bentley of McLean, parliamentarian; Dave Jefferson also of McLean, historian; and Mikel Griffin of Silverton, reporter.

*The Old Timer*



"A politician is a fellow who never met a tax he didn't hike."

**Political Announcements**

Political announcements appearing in this column are subject to the action of the Democratic Primary May 4, 1974. All announcement fees must be paid in advance.

- FOR GRAY CO. JUDGE Don Cain
- FOR GRAY CO. CLERK Wanda Carter
- FOR COUNTY TREASURER Jean Scott
- FOR COUNTY SCHOOL SUPT. Rena Belle Anderson
- FOR COUNTY COMMISSIONER Precinct 4 Mary Dwyer Ted Simmons John B. Guill Britt Hathaway
- FOR J.P. OFFICE PREC. 5 Earnest Beck
- FOR CO. DISTRICT CLERK Helen Sprinkle
- FOR CONGRESSMAN FOR 13th DISTRICT Jack Hightower





An appreciation and awards dinner was given by the V.F.W. Post 8565 and Auxiliary in honor of the coaches who volunteered and donated their time for the 1973 V.F.W. Pee-Wee football team. Appreciation plaques were presented to the four coaches. Above from left to right are Cecil Reynolds, Commander Jack Walker and Casper Smith. Brad Hunt and Burch Turpin were unable to attend.

### The Heavens Are Telling

By Jay Dodman  
Did you notice the fast disappearance of Venus and Jupiter from our western sky? Venus, which looks like a new moon through a telescope, has gone around the Sun and now appears as a brilliant morning star. As it was bright enough to be seen during the daytime in December, so is it now. Look about 30 degrees ahead of the Sun to see it. Jupiter will be in the morning sky soon. Mars is almost straight up over McLean at sundown; Saturn is about 30 degrees behind Mars, to the east, on the ecliptic.

Kohotec has left us. Perhaps it was a disappointment to many because it failed to appear as brilliant as first predicted. Nevertheless, we should praise the scientist who, at least, made us look upward.

### Rest Home Board Gives Report

To: The residents of the McLean Area  
From: Cypress Manor, Inc. (The McLean Rest Home)  
This is to advise that our rest home is still a possibility. Our Directors are still working on every lead they can get. At present, prospects are better than they have been for quite some time.

We are definitely in need of some financial assistance. We owe the American National Bank in McLean over Five Hundred Dollars, and in April we will have to pay Franchise Tax; also it takes money for telephone calls, etc.

If you want a rest home in McLean and would like to help, it would certainly be appreciated. Any amount that you are able to contribute would be used for a good cause and spent wisely. You may leave your donation at the American National Bank in McLean, or with any member of the Board.

Boyd Meador, Chairman  
Mrs. Alice Short Smith, Vice Chairman  
Mrs. Mary Dwyer, Secretary-Treas.  
Mrs. Wilma Hefner

Wilson Boyd  
Jakey Hess  
W. A. Bentley

### Paper Drive

The Pioneer Study Club are having a paper drive and appreciate any donation of papers or magazines.

They may be left on the porch of Miro Pagan's. They must be tied securely in 25 pound bundles.

Mr. and Mrs. O. C. Brock of Chillicothe spent Monday with his sister, Mrs. Beulah Humphreys.

### Claude 4-H Auction Sale To Be Held

Starting time is 10:30 a.m., Saturday, February 16, at Claude, for the annual 4-H Club Farm Machinery Sale. This will take place at the Legion Hall, in the southwest part of town.

Items offered are many and varied, and are not restricted to farm machinery. Other items are available.

Everyone is invited to participate, as a buyer, a consignee, or as both.

I didn't know how to tell Billy about the accident. How can you say your son that his mother is injured and there seems no hope?

I held him close, but could find no words of comfort. Suddenly I heard Billy start to pray softly. I had always left prayers and that sort of thing to Mary. I somehow felt it couldn't really help, but I felt myself kneeling with Billy.

Softly he prayed as his mother had taught him. To my surprise I heard no begging plea but rather earnest conversation like that with a trusted and loved friend. "Thy will be done," not hopelessly, but serenely acknowledging the goodness of God's will.

Miraculously, we brought Mary home yesterday, and I plan to spend the rest of my life praising God, not only for her recovery, but also for the faith I have learned from our son.

You can bet that when Mary and Billy go to church next Sunday, I'll be right there with them—singing, praising and believing.

## Thy Will Be Done



Sunday James 5:13-20  
Monday Psalms 34:1-10  
Tuesday Psalms 39:1-13  
Wednesday Psalms 42:1-11  
Thursday Psalms 73:21-28  
Friday Psalms 19:14  
Isaiah 26:3-4  
Saturday II Corinthians 10:1-5



Scriptures selected by the American Bible Society

Copyright 1973 Keister Advertising Service, Inc., Strasburg, Va.

## REVIVAL PENTECOSTAL HOLINES CHURCH

Feb. 18 thru 24  
7:30 P.M. Nightly

Evangelist Rev. Sanford Gregg  
Special Singing Each Evening  
Pastor - Rev. Forest Lawson

## Places of Worship

<b>ASSEMBLY OF GOD CHURCH</b> Z. A. Myers, Pastor Sunday School 9:45 a.m. Worship 11:00 a.m. Evening Worship 7:00 p.m. Wednesday Service 7:00 p.m.	<b>CAPROCK BAPTIST MISSION</b> REV. JOE RIGGINS Pastor Sunday 10:00 a.m. Morning Worship 11:00 a.m. Evening Worship 6:00 p.m. Wednesday Service 7:00 p.m.	<b>PENTECOSTAL HOLINES CHURCH</b> Forest Lawson, Pastor Sunday School 9:45 a.m. Worship 11:00 a.m. Evening Worship 7:00 p.m. Wednesday Service 7:00 p.m.
---	--	---

<b>HEALD UNITED METHODIST CHURCH</b> Robert W. Brown, Pastor Sunday Worship Service 9:30 a.m.	<b>TRINITY LUTHERAN CHURCH</b> Rev. Keith Kubitz, Pastor 900 South Main, Shamrock Sunday School 9:30 a.m. Worship Service 10:45 a.m.	<b>CHURCH OF CHRIST</b> Bible Study 10:00 a.m. Morning Service 10:50 a.m. Evening Service 6:00 p.m. Wednesday Ladies Bible Study 10:00 a.m. Midweek Worship 7:00 p.m.
---	--	--

### MESSAGE SPONSORED BY THE FOLLOWING

**AMERICAN NATIONAL BANK  
IN McLEAN**  
Member FDIC

**THE McLEAN NEWS**

**JANE SIMPSON AGENCY**


**CORINNE'S STYLE SHOP**

**TED SIMMONS CHEVROLET**

**FIRST UNITED METHODIST CHURCH**  
Robert W. Brown, Pastor  
Church School 9:45 a.m.  
Morning Worship 10:45 a.m.  
U.M.Y.F. 6:00 p.m.  
Evening Worship 7:00 p.m.  
Wednesday Choir 7:00 p.m.

**FIRST BAPTIST CHURCH**  
Rev. Herman W. Bell, Pastor  
Sunday School 9:45 a.m.  
Worship Service 10:50 a.m.  
Evening Worship 6:30 p.m.  
Wednesday Service 7 p.m.

**ALAN REED  
FIRST BAPTIST CHURCH**  
Sunday School 10:00 p.m.  
Church Services 11:00 p.m.  
Training Union 5:00 p.m.  
Church Services 6:00 p.m.



## YOUR SIX ACRES

You have six acres of farm and pasture land to sustain you! That's the average number of acres for each person in the United States. From this six acres comes most of the food you eat and many of the clothes you wear.

The farmer/rancher who tends that plot spends 31 hours per year working it. He has an investment of more than \$1,700 in that six acres. Normally, he can expect about a five percent return on his investment--not counting his labor. Some years he makes more... some less.

His profits are determined by a lot of things. Weather, management, production costs, prices. If the profit picture is good, he can afford to buy more efficient machinery, more fertilizer. He can produce more. The consumer is the ultimate beneficiary.

As the operator of that six-acre plot, the farmer/rancher is out there trying to produce all the food and fiber he can. If the weather is favorable, if government regulations on environment, etc., aren't too harsh, if prices are reasonable, he will see to it that you, as a consumer, will be well-fed and well-clothed from that six acres.

**TEXAS FARM BUREAU WEEK**  
**FEBRUARY 11-18**  
JOIN AND SUPPORT YOUR  
**Gray County Farm Bureau**



# CLASSIFIED \* ADS

## CLASSIFIED

Telephone 779-2447

**Classified Advertising Rates**  
 Insertion . . . . 4c per word  
 Additional Insertions 3c per word  
 (Same Copy)  
 Minimum per Insertion . . . . 50c  
 Daily Classified, per Inch . . . 85c  
 Ads cash, unless customer has established account with the McLean News.

**FOR SALE**-1959 Chevrolet pickup, 1961 Buick Lasabre, 1965 Chevrolet pickup. 779-2484. 7-2c

**FURNITURE** of all kind repaired. D. L. Jones, Rt. 1 McLean, 779-2992. tfc

**FOR SALE**-Travelers checks-Safe-Insured if lost. American National Bank in McLean. 69 BLUE Chevy Impala 2-door, excellent condition. \$900 James or Pat Barker. 7-1c

**RID your home** of termites, roaches, carpet beetles, Free inspection. Work guaranteed. Mrs. G. W. Humphries, 779-2743. 4-tfc

**FOR SALE**-Travelers checks-Safe-Insured if lost. American National Bank in McLean. tfc

**NOW AVAILABLE**-Plenty of new large and small safe deposit boxes. Loan annual rent rates- \$4.50 to \$6.00 per year. **PROTECT YOUR VALUABLES.** American National Bank. Tfc

**SAFE, SOUND, SATISFACTORY** Accommodations, Appreciate your business. American National Bank in McLean. Deposit Insurance Corporation. Tfc



**MCLEAN LODGES 889, A.F. and A.M.** Regular meetings second Thursday each month- 7:30 p.m. All members urged to attend. Practice first and third Tuesday nights each month.

**FLUFFY** soft and bright are carpets cleaned with Blue Lustre. Rent electric shampooer \$1. McLean Hardware.

**FOR SALE** In Shamrock: The Linda Kay Apartments; 10 rental units plus living quarters. This is a good buy for someone who would like a good place to live and have a good income also.

Have 5 lots in McLean; good location for a new home.

Also have some good two and three bedroom houses, priced to sell. Boyd Meador Real Estate Broker

**HAY GRAZER** for sale. \$1,000 bale. See Cecil Nicholas. 7-lp

### MISCELLANEOUS

**CHECKING** Accounts-Savings Accounts-All types of loans Full Service Bank, American National Bank in McLean. Tfc

### FOR RENT

**FOR RENT** four room furnished home with bath to one or a couple. J. E. Smith, 779-2307 5-tfc

### FOR SALE

**HOUSE** for sale-to be moved. 106 E. Line. 779-2675. 6-2p

**THE WILLIE BOYETT** Home. 3 room with three room apartment. Large studio. Call 405-332-5951 or write Maude Prefontaine, 1115 E. 34th St, Ada, Okla. 44-tfc

**SAVE** a few pieces 4X6-12 feet long, some 9 feet and some oak 8 feet. Have other lumber J. E. Smith, 410 W. 5-tfc

### WANTED

**WANTED** -Cattle guard. See Bob Massey, McLean Cafe. 6-2c

### CARD OF THANKS

**CARD OF THANKS**  
 I want to thank everyone for their thoughtfulness during my illness. The visits, gifts, flowers, cards, letters and telephone calls were greatly appreciated. I especially would like to thank the school employees and the students for being so thoughtful and kind. Mrs. Mary Lowder Fifth Grade teacher

**CARD OF THANKS**  
 Words can not express our deep appreciation to our friends who helped make our 50th Wedding anniversary a day we will always remember. The cards, gifts, visits, and words of congratulations were greatly appreciated. Mr. and Mrs. Clyde Willis

### BIRTHDAYS

**FEBRUARY 15**  
 Paul M. Bruce

**FEBRUARY 16**  
 G. C. Prock  
 Ricky Ronald Willis  
 Phillip Gibson

**FEBRUARY 17**  
 Mrs. F. E. Hambricht  
 Mrs. C. L. Woods  
 Michael Ernest Patterson  
 Sharon Barker  
 George Allen Bailey  
 Viola Holt

**FEBRUARY 18**  
 NONE

**FEBRUARY 19**

## News From ALAN REED

By Mrs. P. M. Gibson  
 Mrs. Faye Oakley is reported to be feeling better. She is a patient in the McLean Hospital.

Betty Simmons was in Highland General Hospital last week in Pampa, but was in church Sunday.

The Alanreed pastor Carl Neal was in a Pampa Hospital and Bill Clattenbough preached in his place Sunday.

Warner Phillips is leading the song service and doing a wonderful job of it.

Visiting Ruby Hill Sunday was her son, Mr. and Mrs. R. C. Hill from Amarillo. Everyone was saddened at the death of a former resident Melvin Willis.

Frank Worsham lost his love grass hay crop to a fire Tuesday afternoon.

Mrs. A. H. Moreman is still in McLean Hospital.

Mr. and Mrs. P. M. Gibson were in Pampa on Monday where they both received medical attention. Mr. and Mrs. Jerry Keller have moved into the Paul

Tonue Hathaway

**FEBRUARY 20**  
 Johnny Haynes  
 Fred Patterson

Rovema Colpezter

**FEBRUARY 21**  
 Gary Joe Graham  
 Linda Gail Taylor  
 Terri O'Neal  
 Deana Crow

Cooper house.

Mary Davis and a group of ladies from Church of Christ went to Groom on Tuesday to hear a speaker in the church there.

Mrs. Bill Tidwell flew to Denver this week to visit her husband who is working there.

It has been reported that the Earthman place sold to Don Dorsey of Letors.

### CARD OF THANKS

**CARD OF THANKS**  
 We want to express our appreciation for the card, flowers, visits and words of sympathy during our time of sorrow, upon the loss of our sister. Your kindness will always be remembered.

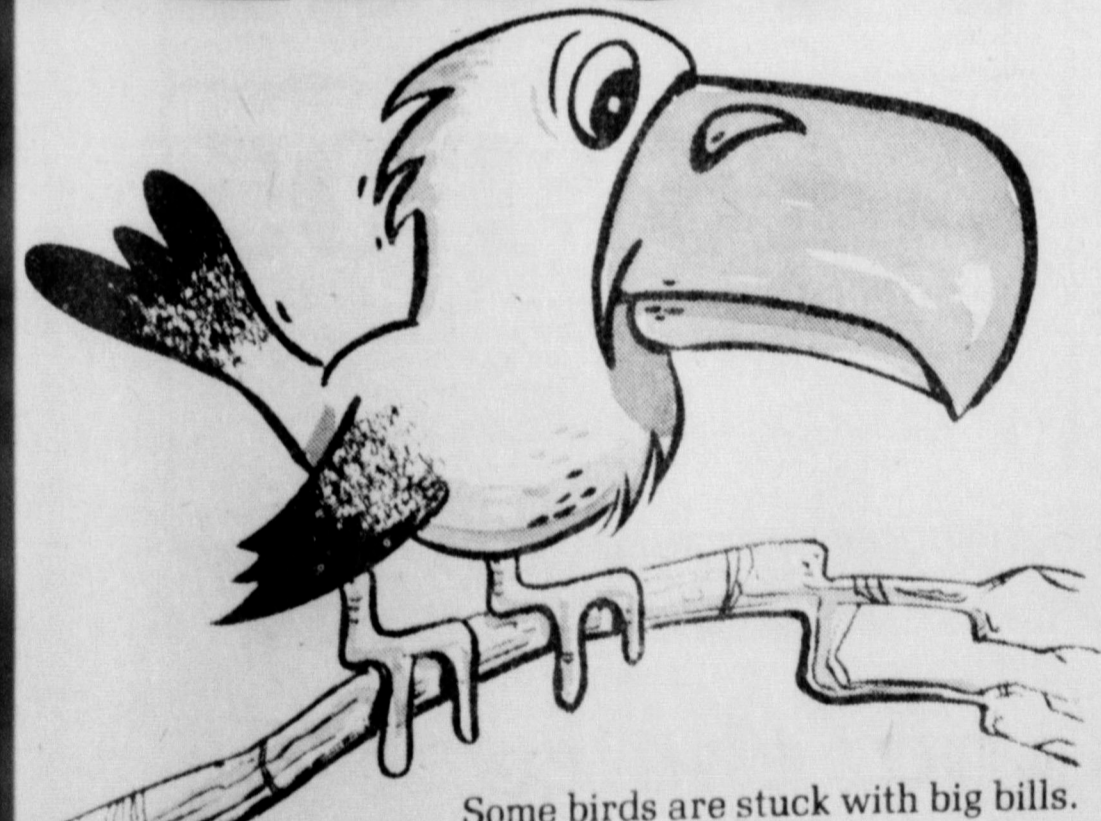
Alice Short Smith  
 Dora Sanders



## SANDERS SEWING MACHINE CENTER

REPAIR ALL MAKES OF SEWING MACHINES  
 RENTAL MACHINE VACUUMS  
**KIRBY**  
 SALES AND SERVICE  
**200 Main 256-3640**  
**Shamrock**  
 In McLean Call 779-2468

# Big Bills!?



Some birds are stuck with big bills. But that doesn't mean you'll be. The way to find out? Call the "wise birds" at the electric company for a free personalized electric heat cost estimate for your home.



EQUAL OPPORTUNITY EMPLOYER

## Financial Statement Gray County, Texas

FISCAL YEAR 1973

### SUMMARY OF BALANCES, RECEIPTS AND DISBURSEMENTS

	Balances 1-1-73	Receipts	Disbursements	Balances 12-31-73
General	\$ 10,512.67	\$ 351,001.52	\$ 278,449.19	\$ 83,065.00
Salary	18,878.64	240,677.00	209,640.94	49,914.70
Jury	659.14	15,626.78	7,770.00	8,515.92
CH & J	16,485.09	107.83		16,592.92
<b>Sub Total</b>	<b>\$ 46,535.54</b>	<b>\$ 607,413.13</b>	<b>\$ 495,860.13</b>	<b>\$ 158,088.54</b>
R&B	7,987.70	11,800.26	10,588.30	9,199.66
R&B No. 1	3,621.05	95,138.37	90,707.19	8,052.23
R&B No. 2	17,681.93	134,506.08	143,032.54	9,155.47
R&B No. 3	18,185.91	85,927.44	82,175.54	21,937.81
R&B No. 4	5,270.77	100,785.18	96,740.50	9,315.45
FM & LR	25,748.26	208,375.88	134,848.00	99,276.14
Lateral Road	757.38	25,001.56	25,000.00	758.94
<b>Sub Total</b>	<b>\$ 79,253.00</b>	<b>\$ 661,534.77</b>	<b>\$ 583,092.07</b>	<b>\$ 157,695.70</b>
Airport I&S	2,314.88	30,799.24	30,225.00	2,889.12
Hospital I&S	8,943.84	100,360.38	103,700.00	5,604.22
<b>Sub Total</b>	<b>\$ 11,258.72</b>	<b>\$ 131,159.62</b>	<b>\$ 133,925.00</b>	<b>\$ 8,493.34</b>
Special	660,521.94	897,725.06	775,387.65	782,859.35
Perm. School	1,823.71	19,421.26	19,421.26	1,823.71
H. G. H.	504,091.90	2,728,242.57	2,517,606.58	714,727.89
Social Sec.	50,027.86	209,628.90	199,789.47	59,867.29
Law Library	788.19	3,081.20	2,160.10	1,709.29
Airport Const.	808.22	2,000.00	2,125.00	683.22
Criminal Justice Planning	1,967.50	10,509.04	11,114.04	1,362.50
Revenue Sharing	89,597.00	246,018.80	244,121.47	91,494.33
<b>Sub Total</b>	<b>\$1,309,626.32</b>	<b>\$4,116,626.83</b>	<b>\$3,771,725.57</b>	<b>\$1,654,527.58</b>
<b>Total</b>	<b>\$1,446,673.58</b>	<b>\$5,516,734.35</b>	<b>\$4,984,602.77</b>	<b>\$1,978,805.16</b>
Less Transfers		981,758.71	981,758.71	
<b>Net</b>	<b>\$1,446,673.58</b>	<b>\$4,534,975.64</b>	<b>\$4,002,844.06</b>	<b>\$1,978,805.16</b>

### BONDED INDEBTEDNESS GRAY COUNTY, TEXAS

DECEMBER 31, 1973

Date	Interest Rate	Full Issue	Maturity Date	Outstanding	
Airport Bonds	2-1-68	3.80%	\$250,000.00	2-1-69/78	\$125,000.00
Hospital Bonds	4-1-68	4.00%	\$850,000.00	2-1-69/78	\$425,000.00
<b>Total</b>				<b>\$550,000.00</b>	

Attest: A. C. Malone  
 County Auditor

Signed: Don Cain  
 County Judge  
 Gray County, Texas





An appreciation and awards dinner was given by the V.F.W. Post 8565 and Auxiliary in honor of the coaches who volunteered and donated their time for the 1973 V.F.W. Pee-Wee football team. Appreciation plaques were presented to the four coaches. Above from left to right are Cecil Reynolds, Commander Jack Walker and Casper Smith. Brad Hunt and Burch Turpin were unable to attend.

### Rest Home Board Gives Report

To: The residents of the McLean Area  
 From: Cypress Manor, Inc. (The McLean Rest Home)  
 This is to advise that our rest home is still a possibility. Our Directors are still working on every lead they can get. At present, prospects are better than they have been for quite some time.

We are definitely in need of some financial assistance. We owe the American National Bank in McLean over Five Hundred Dollars, and in April we will have to pay Franchise Tax; also it takes money for telephone calls, etc.

If you want a rest home in McLean and would like to help, it would certainly be appreciated. Any amount that you are able to contribute would be used for a good cause and spent wisely. You may leave your donation at the American National Bank in McLean, or with any member of the Board.

Boyd Meador, Chairman  
 Mrs. Alice Short Smith, Vice Chairman  
 Mrs. Mary Dwyer, Secretary-Treas.  
 Mrs. Wilma Hefner

Wilson Boyd  
 Jakey Hess  
 W. A. Bentley

### Paper Drive

The Pioneer Study Club are having a paper drive and appreciate any donation of papers or magazines.

They may be left on the porch of Miro Pagan's. They must be tied securely in 25 pound bundles.

Mr. and Mrs. O. C. Brock of Chillicothe spent Monday with his sister, Mrs. Beulah Humphreys.

### The Heavens Are Telling

By Jay Dodman

Did you notice the fast disappearance of Venus and Jupiter from our western sky? Venus, which looks like a new moon through a telescope, has gone around the Sun and now appears as a brilliant morning star. As it was bright enough to be seen during the daytime in December, so is it now. Look about 30 degrees ahead of the Sun to see it.

Jupiter will be in the morning sky soon.

Mars is almost straight up over McLean at sundown; Saturn is about 30 degrees behind Mars, to the east, on the ecliptic.

Kohotec has left us. Perhaps it was a disappointment to many because it failed to appear as brilliant as first predicted. Nevertheless, we should praise the scientist who, at least, made us look upward.

### Claude 4-H Auction Sale To Be Held

Starting time is 10:30 a.m., Saturday, February 16, at Claude, for the annual 4-H Club Farm Machinery Sale. This will take place at the Legion Hall, in the southwest part of town.

Items offered are many and varied, and are not restricted to farm machinery. Other items are available.

Everyone is invited to participate, as a buyer, a consignee, or as both.

I didn't know how to tell Billy about the accident. How can you say to your son that his mother is injured and there seems no hope?

I held him close, but could find no words of comfort. Suddenly I heard Billy start to pray softly. I had always left prayers and that sort of thing up to Mary. I somehow felt it couldn't really help, but I felt myself kneeling with Billy.

Softly he prayed as his mother had taught him. To my surprise I heard no begging plea but rather earnest conversation like that with a trusted and loved friend. "Thy will be done," not hopelessly, but serenely acknowledging the goodness of God's will.

Miraculously, we brought Mary home yesterday, and I plan to spend the rest of my life praising God, not only for her recovery, but also for the faith I have learned from our son.

You can bet that when Mary and Billy go to church next Sunday, I'll be right there with them—singing, praising and believing.

## Thy Will Be Done



Sunday James 5:13-20  
 Monday Psalms 34:1-10  
 Tuesday Psalms 39:1-13  
 Wednesday Psalms 42:1-11  
 Thursday Psalms 73:21-28  
 Friday Psalms 19:14  
 Isaiah 26:3-4  
 Saturday II Corinthians 10:1-5



Scriptures selected by the American Bible Society Copyright 1973 Keister Advertising Service, Inc., Strasburg, Va.

## REVIVAL PENTECOSTAL HOLINES CHURCH

Feb. 18 thru 24  
 7:30 P.M. Nightly

Evangelist Rev. Sanford Gregg  
 Special Singing Each Evening  
 Pastor - Rev. Forest Lawson



## YOUR SIX ACRES

You have six acres of farm and pasture land to sustain you! That's the average number of acres for each person in the United States. From this six acres comes most of the food you eat and many of the clothes you wear.

The farmer/rancher who tends that plot spends 31 hours per year working it. He has an investment of more than \$1,700 in that six acres. Normally, he can expect about a five percent return on his investment—not counting his labor. Some years he makes more... some less.

His profits are determined by a lot of things. Weather, management, production costs, prices. If the profit picture is good, he can afford to buy more efficient machinery, more fertilizer. He can produce more. The consumer is the ultimate beneficiary.

As the operator of that six-acre plot, the farmer/rancher is out there trying to produce all the food and fiber he can. If the weather is favorable, if government regulations on environment, etc., aren't too harsh, if prices are reasonable, he will see to it that you, as a consumer, will be well-fed and well-clothed from that six acres.

**TEXAS FARM BUREAU WEEK**  
**FEBRUARY 11-18**

JOIN AND SUPPORT YOUR

**Gray County Farm Bureau**

## Places of Worship

<b>ASSEMBLY OF GOD CHURCH</b> Z. A. Myers, Pastor Sunday School 9:45 a.m. Worship 11:00 a.m. Evening Worship 7:00 p.m. Wednesday Service 7:00 p.m.	<b>CAPROCK BAPTIST MISSION</b> REV. JOE RIGGINS Pastor Sunday 10:00 a.m. Morning Worship 11:00 a.m. Evening Worship 6:00 p.m. Wednesday Service 7:00 p.m.	<b>PENTECOSTAL HOLINES CHURCH</b> Forest Lawson, Pastor Sunday School 9:45 a.m. Worship 11:00 a.m. Evening Worship 7:00 p.m. Wednesday Service 7:00 p.m.
---	--	---

<b>HEALD UNITED METHODIST CHURCH</b> Robert W. Brown, Pastor Sunday Worship Service 9:30 a.m.	<b>TRINITY LUTHERAN CHURCH</b> Rev. Keith Kubitz, Pastor 900 South Main, Shamrock Sunday School 9:30 a.m. Worship Service 10:45 a.m.	<b>CHURCH OF CHRIST</b> Bible Study 10:00 a.m. Morning Service 10:50 a.m. Evening Service 6:00 p.m. Wednesday Ladies Bible Study 10:00 a.m. Midweek Worship 7:00 p.m.
---	--	--

### MESSAGE SPONSORED BY THE FOLLOWING

**AMERICAN NATIONAL BANK IN McLEAN**  
 Member FDIC

**THE McLEAN NEWS**

**JANE SIMPSON AGENCY**

**CORINNE'S STYLE SHOP**

**TED SIMMONS CHEVROLET**

**FIRST UNITED METHODIST CHURCH**  
 Robert W. Brown, Pastor  
 Church School 9:45 a.m.  
 Morning Worship 10:45 a.m.  
 U.M.Y.F. 6:00 p.m.  
 Evening Worship 7:00 p.m.  
 Wednesday Choir 7:00 p.m.

**FIRST BAPTIST CHURCH**  
 Rev. Herman W. Bell, Pastor  
 Sunday School 9:45 a.m.  
 Worship Service 10:50 a.m.  
 Evening Worship 6:30 p.m.  
 Wednesday Service 7 p.m.

**ALANREED FIRST BAPTIST CHURCH**  
 Sunday School 10:00 p.m.  
 Church Services 11:00 p.m.  
 Training Union 5:00 p.m.  
 Church Services 6:00 p.m.



# CLASSIFIED \* ADS \*

**CLASSIFIED**  
Telephone 779-2447

**Classified Advertising Rates**  
First Insertion ..... 4c per word  
Additional Insertions 3c per word  
(Same Copy)  
Minimum per Insertion ..... 50c  
Display Classified, per Inch 85c  
Ads cash, unless customer has established account with the McLean News.

**FOR RENT**  
FOR RENT four room furnished house with bath to one or a couple. J. E. Smith, 779-2307 5-tfc

**FOR SALE**  
HOUSE for sale-to-be moved. 66 E. Line, 779-2675. 6-2p

THE WILLIE BOYETT Home, 3 room with three room apartment. Large studio. Call 405-332-5951 or write Claude Prefontaine, 1115 E. 11th st, Ada, Okla. 44-tfc

WE have a few pieces 4X6-12 feet long, some 9 feet and some oak 8 feet. Have other lumber. J. E. Smith, 410 W. 5-tfc

FOR SALE-1959 Chevrolet pickup, 1961 Buick Lasabre. 1965 Chevrolet pickup. 779-2484. 7-2c

FOR SALE-Travelers checks-Safe-Insured if lost. American National Bank in McLean. 69 BLUE Chevy Impala 2-door, excellent condition. \$900 James or Pat Barker. 7-1c

FOR SALE In Shamrock: The Linda Kay Apartments; 10 rental units plus living quarters. This is a good buy for someone who would like a good place to live and have a good income also. Have 5 lots in McLean; good location for a new home.

Also have some good two and three bedroom houses, priced to sell. Boyd Meador Real Estate Broker

HAY GRAZER for sale. \$1.00 bale. See Cecil Nicholas. 7-1p

**MISCELLANEOUS**  
CHECKING Accounts-Savings Accounts-All types of loans Full Service Bank. American National Bank in McLean. Tfc

FURNITURE of all kind repaired. D. L. Jones, Rt. 1 McLean, 779-2992. tfc

ERID your home of termites, roaches, carpet beetles. Free inspection. Work guaranteed. Mrs. G. W. Humphries, 779-2743. 4-tfc

FOR SALE-Travelers checks-Safe-Insured if lost. American National Bank in McLean. tfc

NOW AVAILABLE- Plenty of new large and small safe deposit boxes. Loan annual rent rates- \$4.50 to \$6.00 per year PROTECT YOUR VALUABLES. American National Bank. Tfc

SAFE, SOUND, SATISFACTORY Accommodations. Appreciate your business. American National Bank in McLean. Deposit Insurance Corporation. Tfc

MCLEAN LODGES 889, A.F. and A.M. Regular meetings second Thursday each month- 7:30 p.m. All members urged to attend. Practice first and third Tuesday nights each month.

FLUFFY soft and bright are carpets cleaned with Blue Lustre. Rent electric shampooer \$1. McLean Hardware.

## WANTED

WANTED -Cattle guard. See Bob Massey, McLean Cafe. 6-2c

## CARD OF THANKS

**CARD OF THANKS**  
I want to thank everyone for their thoughtfulness during my illness. The visits, gifts, flowers, cards, letters and telephone calls were greatly appreciated. I especially would like to thank the school employees and the students for being so thoughtful and kind. Mrs. Mary Lowder Fifth Grade teacher

**CARD OF THANKS**  
Words can not express our deep appreciation to our friends who helped make our 50th Wedding anniversary a day we will always remember. The cards, gifts, visits, and words of congratulations were greatly appreciated. Mr. and Mrs. Clyde Willis

## BIRTHDAYS

- FEBRUARY 15  
Paul M. Bruce
- FEBRUARY 16  
G. C. Prock  
Ricky Ronald Willis  
Phillip Gibson
- FEBRUARY 17  
Mrs. F. E. Hambright  
Mrs. C. L. Woods  
Michael Ernest Patterson  
Sharon Barker  
George Allen Bailey  
Viola Holt
- FEBRUARY 18  
NONE
- FEBRUARY 19  
NONE

## News From ALAN REED

By Mrs. P. M. Gibson  
Mrs. Faye Oakley is reported to be feeling better. She is a patient in the McLean Hospital.

Betty Simmons was in Highland General Hospital last week in Pampa, but was in church Sunday.

The Alanreed pastor Carl Neal was in a Pampa Hospital and Bill Clattenbough preached in his place Sunday.

Warner Phillips is leading the song service and doing a wonderful job of it.

Visiting Ruby Hill Sunday was her son, Mr. and Mrs. R. C. Hill from Amarillo.

Everyone was saddened at the death of a former resident Melvin Willis.

Frank Worsham lost his love grass hay crop to a fire Tuesday afternoon.

Mrs. A. H. Moreman is still in McLean Hospital.

Mr. and Mrs. P. M. Gibson were in Pampa on Monday where they both received medical attention.

Mr. and Mrs. Jerry Keller have moved into the Paul

- Tonue Hathaway
- FEBRUARY 20  
Johnny Haynes  
Fred Patterson  
Rovena Colpezter
- FEBRUARY 21  
Gary Joe Graham  
Linda Gail Taylor  
Terri O'Neal  
Deana Crow

Cooper house. Mary Davis and a group of ladies from Church of Christ went to Groom on Tuesday to hear a speaker in the church there.

Mrs. Bill Tidwell flew to Denver this week to visit her husband who is working there.

It has been reported that the Earthman place sold to Don Dorsey of Letors.

## CARD OF THANKS

**CARD OF THANKS**  
We want to express our appreciation for the card, flowers, visits and words of sympathy during our time of sorrow, upon the loss of our sister. Your kindness will always be remembered.

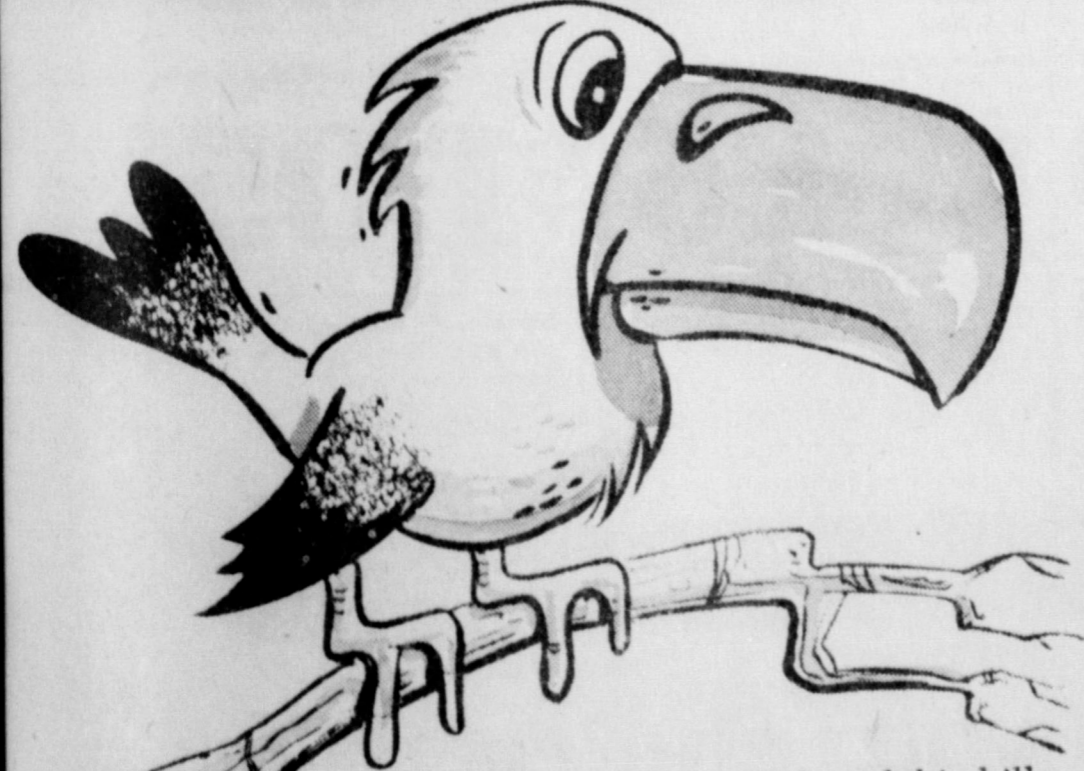
Alice Short Smith  
Dora Sanders



## SANDERS SEWING MACHINE CENTER

REPAIR ALL MAKES OF SEWING MACHINES  
RENTAL MACHINE VACUUMS  
KIRBY  
SALES AND SERVICE  
200 Main 256-3640  
Shamrock  
In McLean Call 779-2468

# Big Bills???



Some birds are stuck with big bills. But that doesn't mean you'll be. The way to find out? Call the "wise birds" at the electric company for a free personalized electric heat cost estimate for your home.



## Financial Statement Gray County, Texas

FISCAL YEAR 1973

### SUMMARY OF BALANCES, RECEIPTS AND DISBURSEMENTS

	Balances 1-1-73	Receipts	Disbursements	Balances 12-31-73
General	\$ 10,512.67	\$ 351,001.52	\$ 278,449.19	\$ 83,065.00
Salary	18,878.64	240,677.00	209,640.94	49,914.70
Jury	659.14	15,626.78	7,770.00	8,515.92
CH & J	16,485.09	107.83		16,592.92
<b>Sub Total</b>	<b>\$ 46,535.54</b>	<b>\$ 607,413.13</b>	<b>\$ 495,860.13</b>	<b>\$ 158,088.54</b>
R&B	7,987.70	11,800.26	10,588.30	9,199.66
R&B No. 1	3,621.05	95,138.37	90,707.19	8,052.23
R&B No. 2	17,681.93	134,506.08	143,032.54	9,155.47
R&B No. 3	18,185.91	85,927.44	82,175.54	21,937.81
R&B No. 4	5,270.77	100,785.18	96,740.50	9,315.45
FM & LR	25,748.26	208,375.88	134,848.00	99,276.14
Lateral Road	757.38	25,001.56	25,000.00	758.94
<b>Sub Total</b>	<b>\$ 79,253.00</b>	<b>\$ 661,534.77</b>	<b>\$ 583,092.07</b>	<b>\$ 157,695.70</b>
Airport I&S	2,314.88	30,799.24	30,225.00	2,889.12
Hospital I&S	8,943.84	100,360.38	103,700.00	5,604.22
<b>Sub Total</b>	<b>\$ 11,258.72</b>	<b>\$ 131,159.62</b>	<b>\$ 133,925.00</b>	<b>\$ 8,493.34</b>
Special	660,521.94	897,725.06	775,387.65	782,859.35
Perm. School	1,823.71	19,421.26	19,421.26	1,823.71
H. G. H.	504,091.90	2,728,242.57	2,517,606.58	714,727.89
Social Sec.	50,027.86	209,628.90	199,789.47	59,867.29
Law Library	788.19	3,081.20	2,160.10	1,709.29
Airport Const.	808.22	2,000.00	2,125.00	683.22
Criminal Justice Planning	1,967.50	10,509.04	11,114.04	1,362.50
Revenue Sharing	89,597.00	246,018.80	244,121.47	91,494.33
<b>Sub Total</b>	<b>\$1,309,626.32</b>	<b>\$4,116,626.83</b>	<b>\$3,771,725.57</b>	<b>\$1,654,527.58</b>
<b>Total</b>	<b>\$1,446,673.58</b>	<b>\$5,516,734.35</b>	<b>\$4,984,602.77</b>	<b>\$1,978,805.16</b>
Less Transfers		981,758.71	981,758.71	
<b>Net</b>	<b>\$1,446,673.58</b>	<b>\$4,534,975.64</b>	<b>\$4,002,844.06</b>	<b>\$1,978,805.16</b>

## BONDED INDEBTEDNESS GRAY COUNTY, TEXAS

DECEMBER 31, 1973

Date	Interest Rate	Full Issue	Maturity Date	Outstanding	
Airport Bonds	2-1-68	3.80%	\$250,000.00	2-1-69/78	\$125,000.00
Hospital Bonds	4-1-68	4.00%	\$850,000.00	2-1-69/78	\$425,000.00
<b>Total</b>				<b>\$550,000.00</b>	

Attest: A. C. Malone  
County Auditor

Signed: Don Cain  
County Judge  
Gray County, Texas

EQUAL OPPORTUNITY EMPLOYER



### Conservation Essay Contest May Help Future Problems

There are many things that make people think. But there are so many things that are there every day, no thought is ever given the subject. One such subject is conservation.

The Gray County Soil and Water Conservation District sponsors an essay contest every year. It is simple, and students in Pampa, Lefors and McLean schools are eligible according to Curtis Schaffer, Chairman of the Gray County SWCD.

So what? For one thing, the students think about conservation, a problem coming to light more and more. The real problem seems a long way off, but it is local in some form or fashion, and unless more thought is given in the future it will become a bigger problem.

The students writing may be getting their first touch in the conservation field, giving them an experience they will remember and hopefully like other lessons, will be carried for life and expanded upon now that the student is aware of the problem.

The essay that won the Gray County Soil and Water Conservation District contest for Art Rhine of McLean on the subject of "Our Soil--Our Strength" follows:

I am the Soil. I have been here ever since the beginning of time, without me it would be possible for you to have cotton to make clothes to wear nor would you have soil to plant crops to make food to meet our nations need. I happen to play a very important part in your life and every other life in the world. But I need you to help protect me from dust storms, erosion and loss of nutrients taken from me and not replaced. It will cause me to be worthless and crops will not grow and then you and I will grow weak.

Through the years man has used and abused me, then I turned on him to have a loss in crops and fiber. Through the use of conservation, such as soil banks, helps to let soil build up its strength over a number of years; rotating crops help to let soil build up its strength; terracing helps to hold water and stops valuable soil from washing away. Strip farming is important in helping to save soil from blowing or wind damage.

No matter where we live we need to be concerned about our soil. Because soils have many uses, many classifications of soils are in use. Among them are those that guide long range land use planning so good soil can be reserved for farming and soil poorly suited for farming can be put to other uses. Fifteen percent of our nations soils are covered with roads and highways, towns, and factories. We need to route these where we can save our best soils for crops. If you will protect me the soils will be your strength.

CALL 779-2447 TO REPORT YOUR NEWS.

**SMITH'S  
TAX SERVICE**

WILL DO TAX RETURNS  
Saturday's 9:00 - 7:00  
**207-B N. Main**  
Phone 779-2297 or  
779-2343  
McLEAN,

## NEWS

\*\*\* *County* \*\*\*  
*Agricultural Agent*  
*Texas A. & M. College*  
*Extension Service*  
By **FOSTER WHALEY**

If you are in the Production of Agricultural products and are having difficulty obtaining gasoline butane or diesel, we have placed a few forms for your convenience at the McLean News. This is a rather complicated form and four pages. You have to show the amount you used in 1972 by months. Also show how much you have used by month for the past 12 months. Then you must show your anticipated need by month for the coming year. A space is provided for you to justify any

increased needs for fuel. There is not supposed to be any limit on form needs if justified. Call me if they run out of forms. Your supplier will assist you in filling out the form. I will be happy to assist you but you will have to supply me with the data as outlined above. **COTTON HARVEST** - is over. I failed to get the final number of bales ginned locally, but it in in the neighborhood of 1400 bales.

**CATTLE MARKET** - It is difficult to say just how much affected the truck strike will have on the cattle market. The strike was not helpful since few cattle were marketed the past two weeks for fear of a big transportation tie-up.

We believe you would have seen \$55.00 fat steer by now had we not had the strike.

**SAIL TESTING** - Let me remind you now would be an excellent time for sail testing.

Since fertilizer is expensive and hard to get a person should be more accurate in the amount you place.

Fertilizer has gone up 300 percent on many types just in one year.

Had farm products not advanced in price - the inflationary trend on price farmers are paying would wipe out every farmer. Many farmers are having many anxious moments about expanding in fear over production would crumble price. You can be assured that price farmers pay for the inputs necessary to make a crop are not likely to drop.



In Southern Europe, garlic is used to combat witches!

### Susanna Circle Meet At Church

The Susanna Circle of the United Methodist Women met in the parlor of the church for their regular meeting. The ladies sang the song "Trust and Obey". Grace Glenn brought the program. Prayers were offered by Mrs. Cliff Day, Mrs. Glenn and

Mary Dwyer. There were ten present.

FOR BARGAINS TRY THE CLASSIFIEDS.

**DR. JACK L. ROSS**  
OPTOMETRIST

121 Main Shamrock  
Phone 256-3203  
Tues.: 9-5 Fri.: 2-5

**WANT TO BUY  
GOLD OR SILVER COINS**  
at Current Red Book Prices  
Call 779-2636

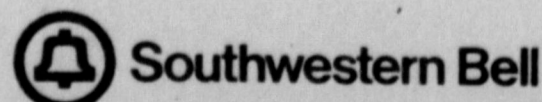
# You can make a five-minute call to New York for:

<h2>\$3.94</h2> <p>A three-minute person-to-person call costs the same, no matter when you phone. But rates for extra minutes are lower between 5 p.m. and 8 a.m. Monday through Friday and all hours Saturday and Sunday.</p>	<h2>\$2.54</h2> <p>That's the rate for a credit card, third number or collect call Monday through Friday, 8 a.m. to 5 p.m. The same rate applies on calls from coin phones or hotels.</p>	<h2>\$2.19</h2> <p>Dial your call One-Plus Monday through Friday between 8 a.m. and 5 p.m.</p>
<h2>\$1.80</h2> <p>Make a credit card, third number or collect call—or phone from a coin or hotel telephone—Monday through Friday, 5 p.m. to 8 a.m. or any time Saturday or Sunday.</p>	<h2>\$1.25</h2> <p>Just dial the One-Plus way Sunday through Friday evenings between 5 p.m. and 11 p.m.</p>	<h2>\$1.05</h2> <p>Rates are lowest when you dial One-Plus between 11 p.m. and 8 a.m. daily, Saturday between 8 a.m. and 11 p.m. or Sunday, 8 a.m. to 5 p.m.</p>

## Take your choice

Any way you go, it's a bargain. So travel by Long Distance . . . and stay awhile.

Like to have more information about Long Distance rates? Fill out and mail the coupon. We'll send you a free guide that shows you the best times to call and gives examples of rates to major cities.



Southwestern Bell  
P.O. Box 787  
St. Louis, Missouri 63188

Name \_\_\_\_\_

Address \_\_\_\_\_

City \_\_\_\_\_ State \_\_\_\_\_ Zip \_\_\_\_\_

One-Plus rates are not available on calls from coin telephones. Rates above do not include