

# ELDORADO SUCCESS

Schleicher's Leading And Most Widely Distributed Newspaper

VOL. XXXVII

Eldorado, Schleicher County, Texas, Friday, February, 26, 1937

NO. 9

## On The DIVIDE

### WHY THEY DO IT

"This is the first fire department I ever saw that went to a fire and then stood around with their hands in their pockets."

This remark was made, jokingly of course, by one of "Eldorado's own" this week. But men who would be members of Eldorado's fire department if we had such an organization do just that.

When they get to a fire, they find that there's nothing they can do except put their hands in their pockets and watch it burn. It's a pretty hopeless feeling to see valuable property destroyed and not be able to do anything to prevent the destruction.

When Eldorado gets her new water and sewer system, we shouldn't stop until we have organized a fire department and secured equipment to fight our fires. Let's get our hands out of our pockets.

### AN ILL WIND

"It is an ill wind that blows nobody good." This old quotation applies to Schleicher county as well as any place else.

J. M. Tuck is the only person we know of who benefitted from the wind Saturday and Saturday night. He was given the job of cleaning up the trash that collected around the court house grounds. He has the place looking like "somebody lives here" again.

### HAS TELEPHONE

A telephone was installed Monday for the use of the county agents. The phone, which was placed in the office of W. G. Godwin, is an extension to the one in the county judge's office.

No longer will the agents have to trek up and down the stairs when called on the telephone, and this arrangement is a convenience to the sheriff's office force as well as to the county agents.

When you want either of the county agents, call for 3 rings on 193. The county judge's "signal" to answer the phone is 2 rings on 193.

### THEY APOLOGIZE

The Spurgers singers feel that they fell below par in their number in the play, "Coast to Coast" last Friday night and want to apologize.

First, they were handicapped because one of the twins, Lloyd was so hoarse he couldn't sing at all; consequently he didn't appear in the number at all. This caused Floyd and Billie Louise to switch their parts in the song and they were unable to "carry on" as well as they could have if at hands had been on the job.

Personally we think they did fine, but they believe that they can prove to you that they can sing better. Anyway, we're glad to express their apologies to you

### FOUR OTHERS

Four of our readers have renewed their subscriptions during the past week, and we're mighty glad to continue sending the Success to them. They are L. Christian, Clyde Keeney, Judge J. A. Whitten and F. H. Watson.

## 186,153 Sheep In County Last Year, Tax Records Show

Faithful Horse On Downgrade In Schleicher County, 1,370 In 1936

While sheep have been gradually increasing in this county during the past ten or eleven years, "Old Dobin" the faithful horse, has been gradually on the decline. Records in the tax assessor's office show that there were only 1,370 horses rendered for taxation in 1936, whereas in 1925 there were 2,275.

The figures showing the number of animals in this county over a period from 1925 to 1936 were gleaned from the records recently by Judge J. A. Whitten and were handed to us for publication. These figures showing the number of sheep, goats, cattle and horses and mules are of interest to many people of the county. They are listed by years, as follows:

1925—127,688 sheep; 13,890 goats; 19,610 cattle; 2,275 horses and mules.

1932—224,471 sheep; 29,630 goats; 20,840 cattle; 1,140 horses and mules.

1933—226,819 sheep; 35,

(See No. 1 Last Page)

## LOCAL LADIES WIN SECOND PLACE IN PLAY CONTEST

Mrs. Jarvis Benton and Miss Frances Bowen returned home last Saturday from Sweetwater, where they attended a Dramatics School last week. While there, they studied pantomimes, spontaneous productions, and formal plays.

The delegates participated in a number of plays, with the agents directing them. On Friday morning a play contest was held. Five different plays were given.

Mrs. Benton took a part in the play, "Ladies Aid Social," which was directed by Miss Bowen, and this play was awarded second place in the contest. Other than Mrs. Benton, the cast consisted of delegates from Tom Green, Ward and Mitchell counties.

The play which was given first place was put on by delegates from Howard and Fisher counties, with Miss Velma Anderson of Gaines county as director. Miss Lora Farnsworth of Big Spring, former demonstration agent for this county, was one of the characters.

## ELDORADO TEAM HAD PRACTICE DEBATE WITH IRAA

The Eldorado boys and girls debate team debated a practice debate in Iraan last Tuesday. Due to this being the first time that the teams had debated it was not judged. The Iraan girls team was composed of Wyneta Dorris and Aline Mount, while Maxine Wilton and Marguerite Davis were the Eldorado team. The Iraan boys team was composed of Atlas Charles and Ralph Chalfant, and the Eldorado Team of Ed Meador and George Willams.

Iraan is to visit Eldorado soon for another practice debate. The Eldorado team plans to attend an invitation tournament at Abilene on March 6.

## A. L. BAUGH AND W. T. WHITTEN ARE NAMED COMMITTEEMEN SATURDAY AT MEETING, DISCUSS NEW PROGRAM

GODWIN BRIEFLY EXPLAINS PROGRAM, 20 SIGN UP TO PARTICIPATE

A. L. Baugh and W. T. Whitten were named as the range committee, with Bert Page as alternate, to enlist the services of a range inspector and to help carry out the range conservation program in this county. Approximately 60 interested ranchmen attended the meeting held last Saturday afternoon.

W. G. Godwin, county agent, briefly explained the new range program, giving as nearly as

possible the details as they may be applied to this county. Mr. Godwin stated that as soon as the program benefits are clearly understood, he expects a large number of ranchmen to participate.

Approximately 20 ranchmen signed applications to participate in the program at the meeting last Saturday. Mr. Godwin plans to work out practical problems as pertaining to this county so that those who do not clearly understand the program will be given a better idea as to how it will apply to this section.

## Road Machinery Is Put To Work On Roads Of County

NEW GRADER, MAINTAINER ARRIVE THIS WEEK FOR TRIAL IN COUNTY

A portion of new road machinery which the County Commissioners will likely purchase next month arrived here during this week, and has been placed on the county roads. The machinery has been sent here on trial and subject to the approval of the Commissioners Court.

The grader, an Almis-Chalmers, arrived Monday and was started to work on Tuesday. It is a large, sturdy-build machine, and comes equipped with a small gasoline engine which is used as power for making all necessary adjustments on the grader. This machine is doing much better work than any machinery of this sort that has ever been placed in the county. It is believed to be just what is needed for road construction in the county.

The maintainer arrived here late Wednesday and was started to work immediately. This machine will do the work of maintaining the roads much faster than the tractor and grader, and will also relieve this machinery for road construction work.

When this machinery is purchased, this county will be in a better position to get good roads than ever before.

## TYPING TEAM GOES TO SONORA

The Eldorado High School typing team went to Sonora Tuesday, February 23, 1937. The girls going were Genevieve Ramsey, Alice Mund, Billie B. Stewart, and Maude Brown. The girls took one 15 minute speech test.

Genevieve Ramsey won first with 7 errors, 40.4 words per minute, percentage of accuracy 89.6 a score of 130.

Jo Nell Miers won second with 5 errors, 35.9 words per minute, percentage of accuracy 91.5 a score of 127.4.

Billie B. Stewart won third with 10 errors, 35 words per minute, percentage of accuracy 85.3 a score of 123.8.

Alice Mund won fourth with 13 errors, 39.8 words per minute, percentage of accuracy 82.1 a score of 121.9.

Jo Ann Marion won fifth with 6 errors, 25.4 words per minute, percentage of accuracy was 86.4. See No. 2 Last Page

## Llano Pastor To Conduct Services At Bailey Ranch

Rev. Paul Ray, of Llano, Texas, will hold a series of services at the Baptist church of Bailey Ranch, beginning with the evening service next Sunday.

The services will continue through Wednesday night, with both morning and evening services being held each day. The public is cordially invited to attend this meeting and hear the splendid messages. Rev. Ray is an interesting and forceful preacher, and a good meeting is expected.

## CHARACTERS IN PLAY GUEST OF LIONS AT NOON WEDNESDAY

Ladies who aided the Lion's Club in the production, "Coast to Coast", last Friday and Saturday night, including the girls in the various choruses, were guests of the Lions Wednesday. After the luncheon, Lion President Whitten expressed the club's appreciation for the co-operation of these people in making the play a success.

Glenn Ratliff led the group in singing several popular songs, after which the girls were allowed to return to their duties at school, and the club completed the reading and adoption of its constitution and by-laws.

## Godwin Explains Benefits of Range Program In County

County Agent W. G. Godwin issued a statement Tuesday, explaining in detail the benefits to be derived from the range conservation program in this county. Mr. Godwin's statement gave an example of how the range building allowance may be secured through the range building practices.

"Payments will not be made in excess of the range building allowance," he said. "The range building allowance for any ranch shall be determined by multiplying \$1.50 by the grazing capacity."

Following is an example of how the range building allowance may be secured, taking a 10-section ranch as an example:

This ranch, we'll say, has a range grazing capacity of 60 animal units per section, at \$1.50 per unit. So \$1.50x60 equals \$90.00 per section for the range building allowance. For a ten-section ranch, \$900.00 will be the total range building allowance.

### Practice & Conditions

By deferred grazing (with holding 25 per cent from grazing for a period of six months beginning May 1, 1937) one-third of range building allowance, or \$300.00.

Rescuing range land from cedar—200 acres, heavy infestation—\$1.50 per acre, making a total of \$300.00.

Rescuing range land from prickly pear and cactus—300 acres, heavy infestation—\$1.00 per acre, making a total of \$300.00.

The range building allowance may be worked out to fit the individual ranch, especially that of rescuing range land from cedar and prickly pear. This allowance may be spent on any part of the ranch the owner or lessee sees fit.

(See No. 4, Last Page)

## City To Vote On Water And Sewer System March 15

CALL MEETING OF COUNCIL HELD WEDNESDAY WHEN DATE IS SET

March 15th has been set as the date for all qualified taxpaying citizens of Eldorado shall vote on whether or not they want the City Council to issue revenue bonds for the purpose of constructing a new water and sewer system in Eldorado. Notice of the election has been issued and will be found in this week's issue of the Success.

A call meeting of the City Council was held Wednesday morning, at which time all preparations for the election were completed. All members of the council were present except Geo. R. Long, alderman.

F. M. Bradley was appointed as presiding judge of the election, with J. H. Rodgers and W. N. Ramsay as clerks. The election will be held at the courthouse.

The City Council is calling this election because they want to know the desire of Eldorado citizens. They did not want to go ahead and issue warrants for this purpose unless it was the will of a majority of Eldorado's taxpaying citizens; therefore, it is important that all qualified voters voice their opinion of this matter in the coming election.

## Local Scouts To Demonstrate First Aid At Circus

First Aid—one of the many valuable things a Boy Scout learns will be demonstrated by Troop 18 of Eldorado and five other units at the first annual Boy Scout Circus of the Concho Valley Council to be staged in the municipal auditorium at San Angelo Friday evening, March 6.

Scouts here since last Saturday have been selling general admission tickets to the Circus at 25 cents. They will retain the proceeds to help defray expenses of the trip to San Angelo.

The Circus program, consisting of 18 numbers and lasting 1 3/4 hours, will present briefly all phases of the Scout character building and citizenship training program. Clowns and music will heighten the entertainment.

An impressive feature will be the investiture ceremony at which all boys present who have become Scouts since Jan. 1 will take the Tenderfoot oath.

## DEMONSTRATION CLUBS TO STUDY PLAYS AS PART OF ACTIVITIES

The teaching of pantomimes in all of the Schleicher county home demonstration clubs will begin within the near future, Miss Frances Bowen, agent, has announced. These courses will be taught by Mrs. Jarvis Benton, who studied this phase of the work at the Dramatics School in Sweetwater last week.

When all clubs have completed this work, a play tournament similar to the one held at Sweetwater will be given in this county, with each club producing a play.

## Santa Fe Engineer Dies When Train Hits Truck At Crossing

TRAIN STRIKES TRUCK AT CROSSING; ONLY SLIGHT DAMAGE IS DONE

Henry Delker, engineer for the Santa Fe Railway, died Thursday afternoon at about one-thirty o'clock of a heart attack, soon after the Santa Fe train struck a truck while on its return to San Angelo.

The accident occurred at the crossing about 3 miles north of town, near the T. K. Jones home. The truck, which was from Sweetwater, was damaged but its driver received only a few scratches about the face.

Delker, according to reports, left the train to investigate the accident. A few minutes later, he returned to the cab where he died of a heart attack. He was found dead by fellow employees who placed his body on the train carrying it to San Angelo.

## Trade Expansion Sale Is Announced By Ratliff's Store

The "Trade Expansion Sale," featuring many outstanding values in merchandises, opened at The Ratliff Store in Eldorado on Thursday morning of this week. Practically every article of merchandise in the store has been marked down for this sale.

Regardless of the general advance in prices, this store is offering real values in every department. These values are such as may never be offered in Eldorado again, because prices are rapidly advancing.

Mr. Ratliff has made special

(See No. 3, Last Page)

## BEGINS WORK ON GARDEN PROJECT

Pauline Jones, the Garden demonstrator of the Junior 4-H Club, has this week begun work on her hot bed in order that she may have early garden products.

The hot bed is made by piling well rotted manure in a pit and covering it with a 4 x 8 in layer of soil. The bed may be covered with a tight fitting cover of muslin, glass, or cello glass. The temperature is kept constant by opening and closing the cover.

Pauline will plant tomatoes, carrots, greens and lettuce in her bed and will transplant them to her garden after the danger of frost is past.

(See No. 4, Last Page)



**ELDORADO SUCCESS**  
PUBLISHED EVERY FRIDAY  
AT ELDORADO, TEXAS

**C. S. MCKINNEY** OWNER  
**AARON EDGAR** EDITOR

Entered as second class matter at the Post Office at Eldorado Texas under the Act of March 3, 1897.

Subscription \$1.50 per year, in advance. Subscription will be discontinued promptly on expiration.

**GETTING SOMEWHERE**

Contacts which have been made with district officials of the WPA indicate that a plan will be worked out whereby WPA labor can be used efficiently and effectively in this county. A district man was here Monday, and he stated that such a plan can and will be worked out.

Instead of the WPA labor being confined to any one project, it is believed that better results can be obtained by placing the WPA labor where it is mostly needed in the county. By this means, it is expected that Schleicher county will realize results of a more permanent nature from this labor.

When arrangements are completed whereby the WPA labor is brought to the county, and works in co-operation with the

county, instead of the county going to the WPA, you'll see better results. This, we believe, will be worked out for this county within the next few days. When it is worked out, this labor will be used to help in filling up the lakes, which is one of our most needed projects at this time.

We have always believed that the primary motive of the WPA was to be of benefit to each and every county applying for this labor. When it falls short of this, when it costs the county money and hinders her own work, then it's falling short of its purpose.

It is gratifying to know that, instead of the WPA being confined to one little project, this labor can be used where, in the opinion of our Commissioners Court, it can be of most benefit.

**A GOOD PROJECT**

Happy Herald, Feb. 4.—NYA work is one of the best projects that the New Deal has promulgated. That is saying a great deal for with all the different agencies the President has jerked the country out of one of the biggest depressions we have experienced.

But when one sees the students who are on NYA at work there is no mistaking its usefulness. The wholesome attitude and sincerity that has been aroused in these youngsters will live on long after NYA has ceased

to function. A good citizen is one of the best assets of a school or of a nation.

My sincerest wish is that the work may be continued on and on. The experience they are getting is a liberal education to them and the assistance they are giving the teachers and the school is worth a great deal more than it is costing.

**ASHES TO ASHES**

Many otherwise sane citizens become thoughtless fools when they get behind the wheel of an automobile. This paradox cost 38,500 lives in auto accidents last year. In the same period 10,300,000 were injured, of which number 400,000 were more or less permanently disabled.

Such a staggering slaughter of human life could not be much worse if the country were in a state of constant revolution. How can it be curbed? According to the Portland Oregonian there is no answer to the problem "except in more ruthless law enforcement, and that cannot be achieved this side of public indignation."

Safe driving campaigns, designed to appeal to the common sense of the individual, have apparently been of little benefit. Speeding, drunken driving, gross negligence in approaching crossings, and weaving in and out of traffic, are increasing every day. The only ones who have been thoroughly cured are the victims, and bitter experience cured them. Lying mangled in hospitals, perhaps clinging to this earth by a mere thread, they have come to realize how precious life is. But the dead will never have another chance. In that split second before oblivion they too realized—but too late!

The next time you hit a cross street at sixty miles an hour STOP AND THINK of what might have happened if you had not been alone in your foolishness. Picture yourself being lowered to your final resting place with the clods dropping on your coffin and the minister chanting "ashes to ashes, dust to dust." If you are blessed with the life loving instincts of the average individual you will approach the next cross street with due caution and trembling knees.

Miss Ardath Armstrong, who directed the play "Coast to Coast" here, went to Sonora last Monday to direct the same play which is being sponsored by the Ladies Missionary Society.

**"Nation's Fair"**  
**Their Objective**



Mrs. Vincent Astor  
Winthrop W. Aldrich

**NEW YORK (Special).**—Mrs. Vincent Astor, society leader and civic worker has been appointed Chairman of a National Women's Advisory Committee for the New York World's Fair of 1939. Winthrop W. Aldrich, Chairman of the Chase National Bank, is heading the men's National Committee. Together they will enlist more than 10,000 committee workers in a nationwide campaign to arouse interest in and create support for the New York Fair. Grover Whalen, President of the Fair Corporation, has announced that State Chairmen will be named later and that every state will be brought into active participation in the New York Fair, making it truly national.

**"A CHANGED FRONT FOR TEXAS"**

It appears to be dawning slowly upon some legislators that a new front is necessary if this State hopes to come into its just deserts in the matter of a nationally distributed prosperity. Several recently have voiced the need of legislative assistance in progressing from a strictly agricultural State to one with sufficient industries to convert its natural resources and raw materials into by-products and take them to the Nation's trade channels.

The first and foremost requirement from the lawmakers is a revision of the tax system and a modernized Constitution which will remove the handicaps imposed by a generation of Texans who were just emergent from the effects of "carpet-bag rule." The instinct of self-preservation played them false. They felt that Texas needed protection from invasion. They wrote a Constitution and went into the statute-passing business of defending Texas from the dangerous effects of outside capital and emigrants from above the Mason and Dixon Line. They served both purposes admirably. Some of the handicaps have been overcome but many remain to this day. Capital following the spouting of oil wells refused to be daunted, but many other varieties have been chary of Texas investments.

Texas is coming into the power that can easily mill every elemental product of the State. There easily can be attraction here for another 5,000,000 citizens and all of the dollars that are seeking lucrative abiding

**Less Monthly Discomfort**

Many women, who formerly suffered from a weak, run-down condition as a result of poor assimilation of food, say they benefited by taking CARDUI, a special medicine for women. They found it helped to increase the appetite and improve digestion, thereby bringing them more strength from their food.

Naturally there is less discomfort at monthly periods when the system has been strengthened and the various functions restored and regulated.

Cardui, praised by thousands of women, is well worth trying. Of course, if not benefited, consult a physician.

places. The requirements of taxation should be simplified, the statutes on corporation operation liberalized and provision made for adjusting the intrastate trade relations with those of other States.

Texas should present an inviting front to the continent of men money and commerce. Taking full advantage of its potentialities, the State can feed and clothe any 10 of the other 47 states strictly on a reciprocity basis. That it refuses longer to take up that easy potential will remain its most besetting sin of omission.—Ft. Worth Star-Telegram.

**PNEUMONIA OFTEN FOLLOWS A COLD**

Austin, Jan. 10.—Pneumonia is always a serious disease, and early treatment is of paramount importance to lessen the severity of the disease and prevent death, is the warning issued by Dr. George W. Cox, State Health Officer.

"A person previously well may develop pneumonia suddenly," he said, "but most often it occurs in persons who have, or who recently have had, a cold. Yet many people do not take the cold seriously enough. Suspect every cold. Go to bed immediately if you have fever with a cold, call your physician, and do exactly what he says. By intelligently following your physician's advice at the beginning of the attack, you may ward off the after effects which so often follow neglected colds—pneumonia among them."

"Almost any part of the air passage may sometimes be attacked by bacteria. When the nose is affected we call the condition a cold. The tissues of the nose react to such infection by a profuse mucous discharge or mucous liquid. This discharge is really an attempt on the part of the body to get rid of the germs and their poisons. If the infection is lower down, it causes a sore throat. If the voice box is affected, the condition is called laryngitis. If the germs reach the bronchi, the disease is known as bronchitis. If the germs get down to the lungs, the person affected has pneumonia. Thus it may be seen that the common cold may be the beginning of one of the most serious complications of the respiratory tract. "These respiratory diseases may be avoided many times by establishing individual health measures. Help prevent colds and pneumonia by proper per-

sonal hygiene. Eat moderately, drink plenty of pure water, and sleep 8 to 10 hours every night with windows open. Do not allow the temperature to your home or working place to exceed 70 degrees Fahrenheit. Wash your hands frequently, especially before eating. Take some exercise out of doors every day, but avoid fatigue and unnecessary exposure to cold weather and rain.

"Watch your health habits if colds develop, take care of them and avoid complications of and avoid a cold if possible—but pneumonia."

**Certificates, Pins Awarded Students In Shorthand Classes**

Several students in the secretarial training class recently received certificates and pins as shorthand penmanship awards.

Two awards are given by the Gregg Publishing Company—a pen for a satisfactory specimen in shorthand of the Junior Order of Gregg Artists plate, and a certificate for an acceptable specimen in shorthand of the Senior O. G. A. plate. The winning of the senior certificate requires a high degree of fluency and accuracy in reproducing the shorthand published each month in the shorthand magazine, The Gregg Writer.

Students winning the Junior O. G. A. pins were Elizabeth Stanford, Harmon Bodine, Paul Davis, Bonnie Mund, Ed Reynolds, and Eloise Whitten. Those winning the senior certificates were Johnnie Ferne Isaacs, Elizabeth Stanford, Raymond Rodgers, and Maxine Wilton.

The members of the class will soon begin working for pens and certificates in typewriting and shorthand speed work.

**INVITATION MEET**

Eldorado High School has received an invitation to attend a meet at the Edison High school in San Antonio, April 10, 1937. Eldorado plans to take one or two of the very best students in Declamation, Shorthand, Typing Track and Field events.

This will be a good trip for some student in each event! Who will it be?

Commissioner Henry Speck was a business visitor in San Antonio last Monday.

**THE PURPOSE OF A**

**Bank Account**

An account at this bank places you in the proper relationship to establish a "financial association" that will enable you to develop your plans most easily and successfully. Begin now to realize the satisfaction of having a dependable bank account.

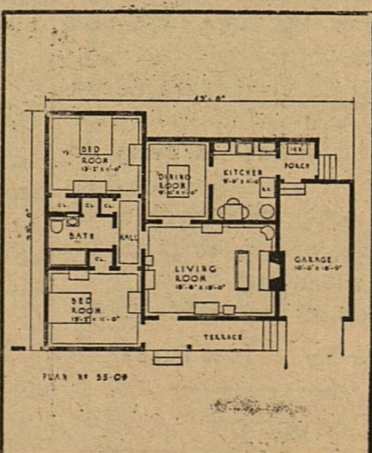
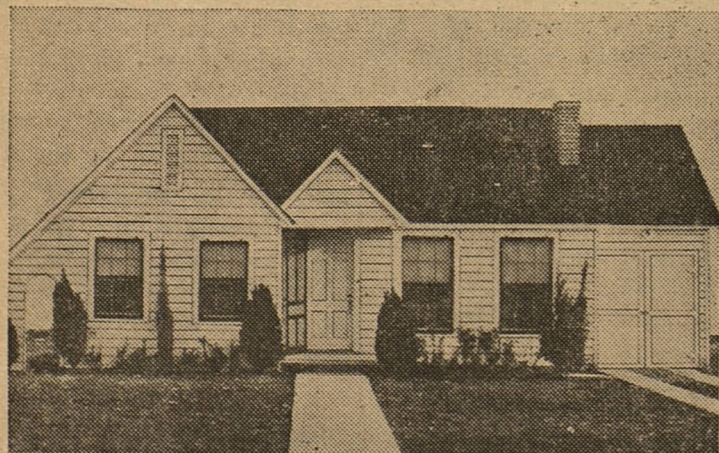
**First National Bank**

ELDORADO,

TEXAS

Member Federal Deposit Insurance Corporation

**Cameron's Home of the Month**



**A GOOD HOME AT LOW COST**

Plans and specifications meet the Federal Housing Administration's requirements as to quality materials and workmanship.

This home may be built for less money than the price quoted by changing the plans and specifications.

Detailed plans and specifications of hundreds of beautiful homes to choose from may be seen at our office.

**We Will Help You Finance Under F. H. A.**

*A New Home Each Month*

Complete, Ready To Move Into For **\$3579.80**

**Wm. Cameron & Co., Inc.**  
ELDORADO, TEXAS

Your Rent Money Will Buy a Home

**Remodel -- Repair**

All national signs point to the biggest building, remodeling and home modernizing year this country has ever seen.

We suggest an early start for all those planning construction of any kind. Let us assist you with your building or remodeling plans.

**MATERIALS OF ALL KINDS**

**WEST TEXAS LUMBER COMPANY**

A West Texas Institution  
Serving West Texas



## NOBODY'S BUSINESS

Austin.—Politics reared its head in legislative halls this week, as both houses of the 45th legislature began to make visible headway on the huge legislative program piled up by committees during the first five weeks of the session, and the senate, being older, wiser and more experienced in the ways of politics, took the spotlight.

Gov. Allred had told the solons he would veto appropriations if they were voted without accompanying tax measures to pay for them. Then the governor went to Washington for a week, to attend the Farley dinner, and the senate rushed thru the salary increase bill for district judges, previously passed by the house, and sped it along to Acting Gov. Walter Woodul, who quickly signed it and it became law. It will cost the taxpayers \$128,000 a year additional—providing \$5,000 a year, instead of the present \$4,000, for each of the state's 128 district judges. But it ought to make 128 politically powerful friends for Lt. Gov. Woodul, who is running for attorney general in 1937.

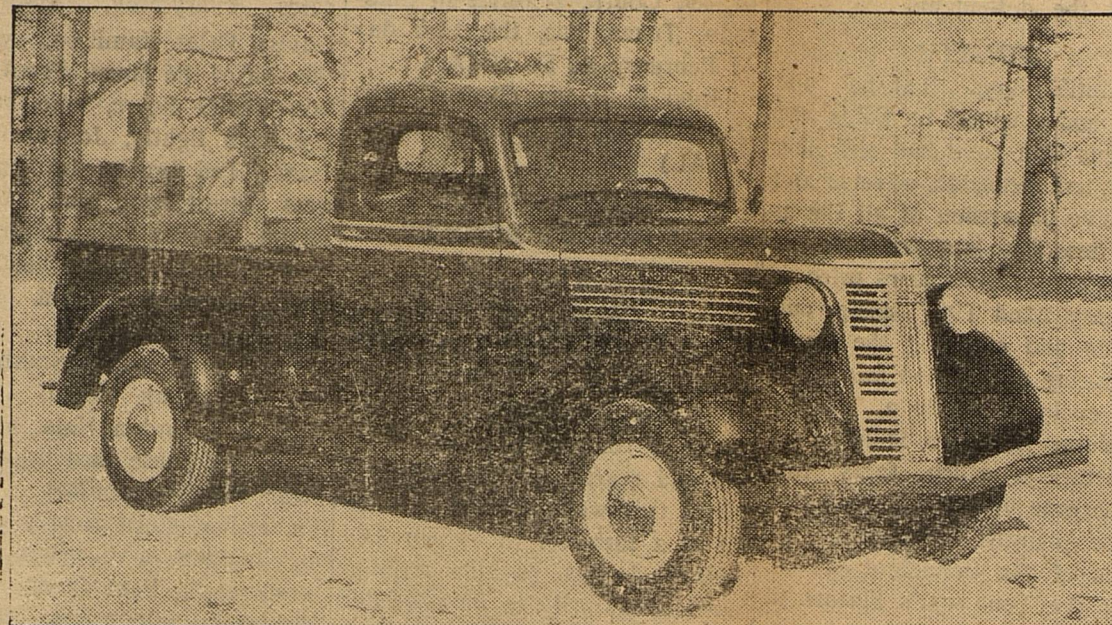
### Senate On Spot

The house put the senate on the spot, voting overwhelmingly to repeal the race-track gambling bill, and sending it to the senate, where the governor already has applied strong pressure for a record vote. Pro-race horse senators succeeded in obtaining a delay until next month, but it looks very much as if the august upper chamber is going to have to let the people know how each of its members stand on this issue with a record vote. The senate is expected to be very closely divided, and the ponies may quit running in Texas before the summer is over. Gov. Allred is so anxious to pass the repeal bill he is said to be considering taking the air for a series of radio speeches in its behalf, which would add still more pressure upon the senators.

### Carpenter Promoted

Orville Carpenter, pension director, moved up to a new place as director of the unemployment commission, when Bob Anderson, brilliant young chair man, quit to become attorney for the W. T. Waggoner oil interests at Vernon. Many persons thought Anderson, close administration friend, was hired as a pawn in the race-track fight (since the Waggoners are also the biggest track operators in Texas) but friends of Anderson declared he will take no part in the track battle, stipulating he would do no lobbying when he

## New Half-Ton General Motors Truck



Advance Stream-styling in addition to many mechanical refinements and improvements characterize the new GMC half-ton and 1 1/2-ton trucks which have recently been announced. Prices are exceptionally low—the 112-inch wheelbase 1/2 ton only \$395, chassis f. o. b. Pontiac, Michigan.

ook the new job.

The senate quickly confirmed Carpenter in the new job, several senators who have fought him bitterly as pension chief agreeing to his promotion to the new four-year \$7500 job, in order to get him out of the pension setup. Carpenter was down with the flu and was nominated and confirmed without ever being able to appear at the capitol.

### Proration Law Renewed

Most important piece of legislation finally enacted so far was the renewal for another two years of the oil proration code, which went thru the senate despite a lengthy and bitter battle by Joe Hill, of Henderson, to incorporate amendments relating to procedure in confiscating illegal oil. Hill filibustered a whole day, repeating and elaborating his charges that oil confiscation constitutes a "racket" but the senate refused to amend the bill already passed by the house, and quickly passed the bill. Meanwhile, Atty. Gen. McCraw filed 37 new suits, seeking to confiscate 1,750,000 barrels of alleged hot oil in East Texas tanks, said to constitute practically all the usable hot oil now above ground in the huge field.

### Child Labor Alibi

The senate drove ahead final passage of Ben O'Neal's state child labor bill which would prohibit the sale in Texas of goods made by children, and permit the state to confiscate and sell such goods. The bill is intended, those who favor ratification of the federal child labor amendment declare, to provide a political alibi for senators who oppose the latter, but plan to support the state bill. Allen Shivers, leader of the senate ratificationists, charged the state law would be an empty gesture, impossible of enforcement.

### News And Names

The visit of Secretary of the Interior Ickes, while ostensibly to inspect the Colorado river dams, turned out to be a red-hot campaign for the Roosevelt plan to curb the supreme court. Ickes delivered a masterful argument for the Roosevelt plan before the joint session, and won considerable applause, even from a senate which has condemned the plan, and a house that has declared itself neutral. Ickes further surprised the folks when he made a surprise visit to the monthly proration hearing of the Texas railroad commission, and where he praised the Texas commissioners highly for their conservative program, and declared the only interest of the federal government was to "co-operate" in protecting the industry. . . He predicted higher prices for crude oil, as Rail Commissioner Ernest Thompson called on major oil companies to show why gasoline price increases keep so far ahead of the crude price payment scale. Wallace Reilly's definite rejection by the senate for a two-year term as a member of the unemployment compensation commission is understood to be final, despite protests of labor unions thruout the state, and Trav Lewis, Fort Worth labor official, is being urged by some labor leaders here as a new nominee for the post.

### TEXAS LEADS IN PAYING PENSIONS

Austin — Commenting upon the Social Security Board report received late last week, Director Orville S. Carpenter of the Old Age Assistance Commission pointed out this week that Texas was paying more of its aged than any other state excepting Ohio, which has a larger population, that states the higher average grants had fewer recipients than Texas, that the average payment for this state was larger than that of any other southern state, that states with larger populations than Texas were paying fewer old people.

"Other large states, such as California, Illinois, New York, and Pennsylvania, have less old people on the rolls than we have. We are adding more nam-

es this month so that the February rolls will probably expand until we will be paying more aged individuals than even Ohio, although its population is larger than ours," Carpenter added.

### SELF CULTURE CLUB HAS TRAVEL STUDY

Continuing its travel course of study, the Self Culture Club met recently with Miss Pauline West as hostess. "Italy" was the subject of the program and Mrs. John Williams as leader discussed A Trip Through Southern Italy. Following this Mrs. O. E. Conner described the Art Galleries of Italy and Mrs. Reuben Dickens gave a description of Rome, the Eternal, Mrs. A. J. Quinn gave a paper on A Wayfarer in Northern Italy and Peoples of Sunny Italy.

Roll call was answered with current events. Mrs. Edga Spencer was elected to membership in the club.

Refreshments were served to the following: Mrs. Gordie Alexander, Mrs. Conner, Mrs. Joab Campbell, Mrs. Quinn, Mrs. L. M. Hoover, Mrs. Williams, Mrs. Bill McSwane, Mrs. Dickens, Mrs. Spencer, Mrs. Palmer West, Miss John Alexander, Miss Chris Enochs, Mrs. W. F. West, members

### 1939 World's Fair Has New Ideas About Amusement Features

NEW YORK (Special).—"Only seeing will be believing," says President Grover Whalen of the New York World's Fair 1939 Corporation, as he tries to envision what the Fair is planning, more than two years in advance, in the way of facilities for recreation, entertainment and amusement.

Every man, woman and child in the United States, he says, has an interest in the 1939 Fair and to some degree or other has a part in the building of that Fair. The exposition, therefore, will surpass all previous fairs, not only in the demonstration of the wonders of the world or present-day life and in the projection of the World of Tomorrow, but also in providing the utmost variety of entertainment and amusement for every man, woman and child.

The entire world will be tapped for every amusement possibility. The tiresome mediocrity of stunts and side shows—the stock-in-trade relics of the amusement world of yesterday—will give way to a new and modern standard of excellence. The plan of the New York World's Fair has anticipated the requirements for entertainment and is making them a part of the general scheme of the Fair, rather than allowing them to spring up as an appendage or an afterthought. Even the tiny children will have a playground reserved exclusively for their own use.

and Mrs. D. E. Hughes and Mrs. C. C. West, guests.

### RETURNS FROM HOSPITAL

Little Dorothy Daniel, daughter of Mr. and Mrs. Claude Daniel, was brought home from a San Angelo hospital last Tuesday. Dorothy underwent treatment there for several days, sub-

mitting to a blood transfusion, but is reported to be doing nicely now.

Rev. and Mrs. W. B. Wheeler went to San Angelo last Tuesday afternoon to take their son, Joe, for medical treatment. Joe is suffering ear trouble after an attack of flu.

## Blue Goose Coffee

Dinner Plate, Cup and Saucer, 3 lb can ..... 95c

GOLD MEDAL FLOUR, the kind that pleases you longer ..... 48 lb \$2.15

Wash Tubs, 3 sizes from ..... 55c to 75c  
Oil Mops, while they last ..... 30c  
Flashlight batteries, 2 for ..... 15c

Shoes for the whole family. Priced to sell. Others are pleased with them, let me show them to you. \$7.50 shoes for \$5.00.

See our 10c and 15c counters. They have bargains for you.

## Wright's CASH Store

EQUIP YOUR HOME WITH

**Ranchogas**  
TRADE MARK REG. U.S. PAT. OFF.

For Heating — Cooking — Refrigeration

L. B. McCLARY, AGENT  
ELECTROLUX REFRIGERATORS PHONE 200

## Milk Does It

Hearty young appetites demand nourishing food. Milk from SAMPLE'S DAIRY supplies that demand.

Milk contains more food elements necessary for a growing child than any other food. All milk from this dairy is handled under the most sanitary conditions—this is to guarantee purity when it reaches you.

SAMPLE'S DAIRY  
State Accredited Herd No. 419819  
Phone 8104

SEE US FIRST  
**A. J. BURK'S TRUCK LINE**  
(Bonded Trucks)  
Go Anywhere Day or Night  
See Us When You Need Anything Moved  
Prices Always in Line  
Phone 191 Eldorado, Texas

LET US MORFAK YOUR CAR  
It lasts twice as long as ordinary grease—and costs no more. Get your upholstery vacuum cleaned for the asking.  
Recharging, Rentals and New Batteries.  
Firestone Tires, Tubes, Batteries, Accessories  
Simonizing a Specialty Get Our Prices  
COMPLETE BATTERY SERVICE  
Recharging—Rentals, and New Batteries  
**TEXACO SERVICE STATION**  
Phone 95 Lum Davis, Mgr.

AUTOMOBILES ARE EXPENSIVE  
Thieves are expert  
If your garage can burn, your automobile can burn.  
You cannot control the irresponsible driver.  
PROTECT THIS INVESTMENT  
WITH SOUND INSURANCE  
W. O. ALEXANDER & SON  
General Insurance  
Telephone 163

SALT  
CAKE and MEAL  
Eldorado Wool Co



**CITATION BY PUBLICATION**

THE STATE OF TEXAS,

To the Sheriff or any Constable of Schleicher County—Greeting:

YOU ARE HEREBY COMMANDED, That you summon, by making Publication of this Citation in some newspaper published in the County of Schleicher if there be a newspaper published therein, but if not, then in a newspaper published in the nearest County to said Schleicher County, for four consecutive weeks previous to the return day hereof, Lonnie Murray and unknown heirs of Lonnie Murray, Col. Bramblett and unknown heirs of Col. Bramblett, John Bramblett and unknown heirs of John Bramblett, O. B. Bramblett and unknown heirs of O. B. Bramblett, Evelyn Bramblett Watson an unmarried woman formerly Evelyn Bramblett and the unknown heirs of Evelyn Bramblett Watson as defendants, and for cause of action plaintiff respectfully represents to the Court:

**FIRST**

That on the 22nd day of February 1937 plaintiff was the owner of the fee simple title to and was in possession of the following described tract of land situated partly in Schleicher County, Texas, and partly in Sutton County, Texas, to-wit:

All of Surv. No. 57, Cert. No. 1468 in Block K, in the name of G. H. and S. A. Ry. Co., and containing 640 acres more or less, said lands being of the reasonable and fair value of \$6,100.00.

**SECOND**

That thereafter on the 22nd day of February 1937, the said defendants unlawfully enacted upon the premises aforesaid and dispossessed the plaintiff therefrom: that the defendants, and each of them are making some claim to the title and right to possession of said lands, the nature of which is to the plaintiff's unknown; that the rental value of said land is 75c per acre per annum.

**THIRD**

Plaintiff further says that he and those under whom he derives title have had and held continuously the actual, peaceable, adverse and exclusive possession of all the above described lands for more than five consecutive years prior to the 22nd day of February 1937, owning and holding the same under deeds duly registered, and conveying the title thereto, and have and did, during said five years period, pay the taxes thereon as they accrued and before they became delinquent, by virtue of which the plaintiff's said title is vested and perfected in him under the Five Year's Statute of Limitation, as against

the defendants herein, which limitation title he now pleads against the defendants.

**FOURTH**

Plaintiff says that he and those under whom he holds and derains title have had and held the actual, peaceable, adverse and exclusive possession of all the above described land for a period of ten consecutive years prior to February 22nd 1937, using, cultivating and enjoying the same, and during said period said lands were enclosed within a pasture containing less than 5000 acres, by virtue of which facts title has become vested and perfected in the plaintiff as against the claims of the defendant herein, under the Ten Year's Statute of Limitation of this State, which Ten Year Limitation title plaintiff now pleads and relies upon as against the defendants herein.

**FIFTH**

Plaintiff further says that he and those under whom he derains title have had and held actual, peaceable, exclusive and adverse possession of all the above described lands, holding, using, and enjoying the same under a claim of title and color or title deraigned from the sovereignty of the soil, for a period of more than three consecutive years prior to February 22nd, 1937, and by virtue of which facts the title of this plaintiff has become vested in him under the Three Year's Statute of Limitation, which three years limitation title he now pleads and relies upon as against the defendants herein.

WHEREFORE, premises considered, plaintiff prays that citation issue to the defendants, commanding them to appear and answer herein, as required by law, and that upon the trial hereof, plaintiff have judgement against the defendants for the title and possession of said land, and a decree removing the claim of the defendants as a cloud from the title of the plaintiff to said land, and for his damages, costs, and such other further relief as the plaintiff may show himself entitled to in law or in equity.

Sam McCollum  
M. E. Sedberry  
Attorneys for plaintiff.

THE STATE OF TEXAS  
COUNTY OF SCHLEICHER  
I, John F. Isaacs, Clerk of the District Court in and for Schleicher County, Texas, hereby certify that the foregoing is a true and correct copy of plaintiff's Original Petition, filed in this Court on the 24th day of February, 1937, and styled on the Docket of said Court, VIRGIL J. POWELL Vs LONNIE MURRAY ET AL., as the same appears from the original petition of said cause filed among the papers of said cause.

Given under my hand and seal of said Court this the 24th day of February, A. D., 1937.

John F. Isaacs, Clerk District Court, Schleicher County, State of Texas.  
(SEAL)

HEREIN FAIL NOT, And have you before said Court, on the said first day of the next term thereof, this Writ, with your endorsement thereon, showing how

Given under my hand and seal you have executed the same.

of said Court, at office in Eldorado, Texas, this, the 24th day of February A. D. 1937.

John F. Isaacs, Clerk District Court Schleicher County, Texas.  
(SEAL)

**NOTICE TO BIDDERS**

Bids will be received by Schleicher County at the Court House at Eldorado, Texas, until 10 o'clock A. M. March 13th, 1937, for the purchase of one or more road maintainers, graders and scarifiers and notice is given that warrants will be issued in a sum not to exceed \$7,000.00 dollars, payable serially, the last maturity to be not later than February, 1946, bearing interest at the rate of not more than 5 % per annum, interest payable semi-annually, and for the provision of a tax levy to meet interest and sinking fund requirements for the payment of said warrants.

The right is reserved to reject any and all bids.

C. S. McKinney, County Judge, Schleicher County, Texas.  
(8-31)

**Cast Is Selected For Senior Play**

The cast for the senior play, "Why Shouldn't I?", has been selected by the director, Mr. Riddle. The characters are:

Cornelia Hamilton, who invents a lover, Mildred Mund; Penelope Hamilton, who inherited the house, Maxine Wilton; Rosamond Lee, who writes for every day people, Elizabeth Stanford; Mrs. Hamilton, who is the

real head of the family, Carmen Warren Katrina, who complicates everything, Marguerite Davis; Peter Hamilton, who is the son of the house, Frank Bradley; Cecily Sayre, who handles the truth lightly, Johnnie Ferne Isaacs; Ted Smith, who has great ness thrust upon him, Andrew Nixon; Regina Randolph, who makes a mysterious entrance, Helen Stanford; Gerald Jerome, who acts as chauffeur, Young Newsom; Theodore Smith, who is an unwilling victim, Johnny Clement; Gordon Hale, who inherits the house next door, Jack Hext; John Hamilton, who is the father, Cecil Newlin; Stephen Sheridan, who writes for the intelligensia, Paul Davis; Horace Haverhill, who sniffs, Harmon

Bodine; Allison Page, who has a particular mission, Leola Sauer; Spike Miller, Slaton Skinner; Myrtle, Nola Smith; Tootsie, Annie Mae Chadwick.

The play will be presented on April 2, 1937.

**ESSAY WRITERS**

**BEGIN WORK SOON**

Essay writers start practice for league work next week. They will use varied topics for practice periods at the seventh period for two days a week. Before the league meet, a final topic will be assigned and the essays will be judged by a committee to determine the representative from this school.

**ABSTRACTS**

We are prepared to make your abstracts, 16 years experience in the abstract business  
John F. Isaacs, Abstract Company

**After A Hard Day's Work**

Relax with a glass of that good, rich milk that comes from

**STANFORD'S DAIRY**

You receive courteous treatment and prompt deliveries, twice daily. Phone Stanford's Dairy for the best milk in town.

Phone 249

**RATLIFF'S TRADE EXPANSION SALE**

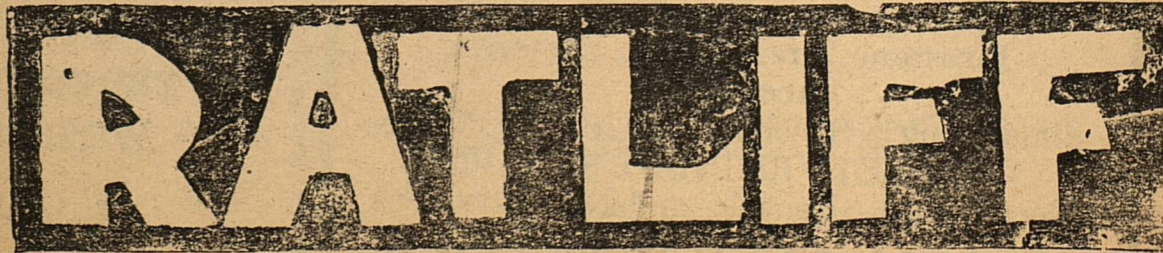
OFFERS REAL VALUES IN EVERY DEPARTMENT REGARDLESS OF THE GENERAL ADVANCE IN PRICES

- Guaranteed Fast Color 36 in. Prints ----- 10c
- Ladies Guaranteed Fast Color Wash Frocks ---- 49c
- Large Group Ladies Sport Oxfords, real bargain, 97c
- Large Group Ladies Dress Shoes, Ties, Pumps, \$1.49
- Mens Fast Color Full Cut Shirts ----- 89c
- A group of Khaki Shirts, An Unusual Value, ---- 94c
- Mens Fast Color Full Cut Shirts & Shorts ----- 22c
- A Two-Thread Full Fashioned Hose in new colors 97c
- A group of knee length Hose values to \$1.00 --- 64c

**Attention, Ladies!**

IT IS ALMOST UNBELIEVABLE, BUT SPECIAL ARRANGEMENTS HAVE BEEN MADE FOR ONE OF THE MOST COMPLETE STOCK OF SILK DRESSES EVER PRESENTED IN ELDORADO. DRESSES FROM \$3.95 TO \$16.75. THIS STOCK IS A SALE SPECIAL OFFERING SO MAKE YOUR SELECTION BEFORE THE STOCK IS PICKED OVER. THEY CAN'T BE DESCRIBED SO COME IN AND SEE THEM.

THE



STORE

**Reasons WHY--**

**(1) MODERN BUSES**

Old equipment is continually replaced with new equipment offering our patrons the utmost in travel comfort.

**(2) CONVENIENT SCHEDULES**

Schedules are set to afford our patrons the greatest convenience.

**(3) COURTEOUS OPERATORS**

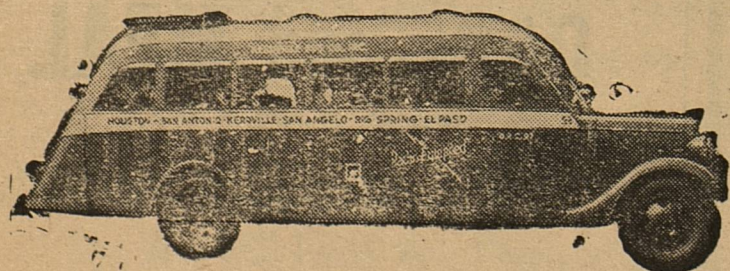
Our operators are not only trained for skillful operation but realize the paramount importance of patron satisfaction.

**(4) LOW FARES**

Cheaper than driving your car. Consult your agent for details.

**(5) SAFE TRANSPORTATION**

Statistics prove bus travel seven times safer than private car travel.



Consult Your Agent for Travel Information Everywhere.

**KERRVILLE BUS COMPANY, Inc;**

"Serving Texas"  
General Offices, Kerrville, Texas

**At Your Best!**

**Free From Constipation**

Nothing beats a clean system for health!

At the first sign of constipation, take Black-Draught for prompt relief.

Many men and women have said Black-Draught brings such refreshing relief. By its cleansing action, poisonous effects of constipation are driven out; you soon feel better, more efficient.

Black-Draught costs less than most other laxatives.





**ELECTION ORDER**

**THE STATE OF TEXAS  
COUNTY OF SCHLEICHER  
CITY OF ELDORADO**

On this the 24th day of February, 1937, the City Council of Eldorado, Texas, convened in Special session at the regular meeting place in the city of Eldorado, with the following members present, to-wit:

- A. T. Wright, Mayor
- J. L. Ratliff, Alderman,
- W. R. Jones, Alderman,
- L. L. Baker, Alderman,
- A. J. Roach, Alderman,
- A. J. Atkins, City Secretary

There upon came on for consideration the question of an election to be held for the purpose of determining whether or not the City Council of the City of Eldorado, Texas, should be authorized and empowered to issue revenue bonds of the City of Eldorado, Texas, for the following named purpose to-wit:

"For the building and purchasing and improving, enlarging extending, and repairing of a waterworks and sewer system in and for said City of Eldorado, Texas."

And it being considered to be to the best interest of said City of Eldorado, Texas, to issue said bonds, it was moved by Alderman J. L. Ratliff, seconded by W. R. Jones, and carried that said election aforesaid should be called for said purpose, in accordance with the following order:

WHEREAS, the City Council of the City of Eldorado, Texas, deems it advisable to issue bonds of said City for the purpose above set forth; therefore, IT IS ORDERED BY THE CITY OF ELDORADO, TEXAS:

I. That an election be held on the 15 day of March A. D., 1937, at the Court House in the City of Eldorado, Texas, said

date being not less than fifteen (15) days nor more than thirty (30) days from the date of this order, at which election the following proposition shall be submitted to the qualified voters of said City:

"Shall the City Council of the City of Eldorado, Texas, be authorized and empowered to issue bonds in the principal sum of One hundred twenty thousand, (\$120,000.00) dollars, to be payable serially over a period of not exceeding thirty (30) years from date, bearing interest at a rate of not exceeding four (4%) per cent per annum, and to mortgage, pledge and encumber the waterworks and sewer system in said City of Eldorado, Texas, and the franchise and income thereof for the payment of interest on said bonds and the creation of a sinking fund for the redemption thereof at maturity, for the purpose of securing funds for the building and purchasing and improving, enlarging, extending and repairing of a waterworks and sewer system in and for said City of Eldorado, Texas."

II. Said election shall be held at the Court House in said City of Eldorado, Texas, and the following named persons are hereby appointed officers of said election: F. M. Bradley, Presiding Judge, J. H. Rodgers, Clerk, W. N. Ramsay, Clerk.

III. Said election shall be held under the provisions of the Constitution and laws of the State of Texas, and only qualified voters who are property tax payers residing in the city limits of said City of Eldorado, Texas, and who have duly rendered their property for taxation shall be entitled to vote at said election.

IV. All voters desiring to vote in favor of the proposition to issue said bonds as above described shall have written or printed on their ballots the following words: "FOR THE ISSUANCE OF WATERWORKS AND SEWER SYSTEM REVENUE BONDS AND MORTGAGING AND ENCUMBERING SAID SYSTEM AND PLEDGING REVENUE THEREOF IN PAYMENT OF SAID BONDS."

And those opposed to the proposition of the issuance of said bonds shall have written or printed on their ballots the words:

"AGAINST THE ISSUANCE OF WATERWORKS AND SEWER SYSTEM REVENUE BONDS AND MORTGAGING AND ENCUMBERING SAID SYSTEM AND PLEDGING REVENUE THEREOF IN PAYMENT OF SAID BONDS."

The manner of holding said

election shall be governed by the laws of the State of Texas regulating general elections.

V. A copy of this order signed by the Mayor attested by the City Secretary of the City of Eldorado, Texas, shall be posted in each of the election precincts of said City and at the Court House and shall be published on the same day in each of two successive weeks in a newspaper of general circulation, published within said City, the date of the first publication being not less than fourteen (14) days prior to the date set for said election.

VI. The Mayor is hereby authorized and directed to cause said notices to be published as above set forth.

PASSED AND APPROVED this the 24th day of February, 1937.

A. T. Wright, Mayor, City of Eldorado, Texas.  
Attested:  
A. J. Atkins, City Secretary, City of Eldorado, Texas.

**REMODELING HOME**

Helen Thompson, a bedroom cooper of the Junior 4-H Club, is getting a brand new bedroom as a result of her interest in the demonstration.

Her family is remodeling their house that was damaged by the flood and Helen is going to choose her wall paper and all of the decorations for her room.

**HAS OPERATION**

Mrs. Geo. R. Long was taken to a San Angelo hospital the first of last week, where she underwent a major operation on Tuesday. She is reported to be getting along nicely.

Miss Billie Rae Bradley of Winters, Texas, spent the weekend here, visiting her mother, Mrs. Bradley, in the Dr. H. Z. Pennington home.

**Texas First To Ratify Roosevelt's Farm Tenacy Plan**

Dallas, Feb. 25—Texans were the first to suggest the program for remedying farm tenacy which President Roosevelt submitted to Congress last week, and Texas has already made definite progress toward putting this program into effect.

Texas has one-tenth of all the tenant farmers of the United States, and yet it has more virgin soil than all other Southern states combined, waiting to be broken up into fertile farms for sale to these tenants. There are 286,000 farm families in Texas who are working somebody else's land, but there are also seven and three-quarter million acres of undeveloped farm land in Texas, which these tenant families might be helped to own.

A. G. (Pat) Mayes, newspaper publisher of Paris, Texas, was the man who sixty days ago laid before President Roosevelt's special committee on farm tenacy the program which that commit-

tee later adopted, substantially as Mayes submitted it, and this was the report which the President submitted to congress last week with recommendations that "we can no longer postpone action." Marvin Jones of Texas in the national House of Representatives, and Tom Connally in the Senate have already presented legislation to put into effect certain provisions of these recommendations.

One group of former tenants have been established for more than a year on their own farms at Ropesville, near Lubbock, Texas. In a dozen other Texas counties, carpenters' hammers are busy today building houses on farms to be sold to tenants, and remodeling the present houses.

Fifty-nine farms covering 10,619 acres have been bought scattered over North and Central Texas, at a price of \$490-621. Tenant farmers are already located on these farms, having been nominated by local advisory committees who vouched for their ability and character. Another project, for 93 farms, is under construction on a block of irrigated land of the Wichita River Valley, near Wichita Falls

and contract is about to be let for construction of buildings for 83 farms on a 5,000-acre tract 20 miles east of Houston. The Ropesville Project, mentioned above, consists of 33 farms. Funds have been allocated for increasing it to a total of 100 farms, of 120 acres each. The other farms mentioned consist of 50 to 100 acres each.

One of the President's recommendations to congress covered, in substance, the kind of activities which are now being carried on by the Resettlement Administration's rural rehabilitation division, through which \$9,010,971 was loaned during 1936 to 29,653 Texas farm families. The President's recommendation was "to help the masses of tenants, croppers and farm laborers at the very bottom of the agricultural ladder increase their standards of living, achieve greater security and begin the upward climb toward land ownership." Loans made last year in Texas enabled such families to buy 26,569 horses and mules, 8,081 cows, and more than half a million dollars worth of farm machinery, in addition to financing them for their year's operations at a rate of five per cent, where

they had been accustomed to paying up to thirty or forty per cent.

This part of the President's recommendation also included "steps to prevent small owners from slipping into tenancy." Action taken by the Resettlement Administration in Texas to assist farmers in adjusting bad debts and preventing foreclosure has already resulted in helping 3,315 farmers to reduce an original indebtedness of \$11,649,376 by \$1,551,295, and to continue to operate in their own name a total of 857, 508 acres.

Charles Ratliff, who is attending Hardin-Simmons University at Abilene, spent the week-end here with his parents, Mr. and Mrs. J. L. Ratliff, and family.

**Your Success**

depends a lot on your personal appearance. For assurance of always being well-groomed, get your barber work at

**Post Office Barber Shop**  
W. M. Davis, Prop.

**GLOBE SORE MOUTH VACCINE**

Produced under U. S. Government supervision. Scientifically tested for purity and potency before reaching you. Marketed in stable form. Easy to use.


One million doses sold in 1936. Contracts for 2 1-2 million doses for 1937 delivery already on hand. Your druggist or wool and mohair warehouse can supply you. Write for latest pamphlet.

**GLOBE LABORATORIES**  
Fort Worth

**TIMES HAVE CHANGED**

No Longer Must a Person Know a Lonely Hour, or Miss Contacts Other People Enjoy In a Friendly Chat That Only A Telephone Brings.

**SAN ANGELO TELEPHONE CO.**

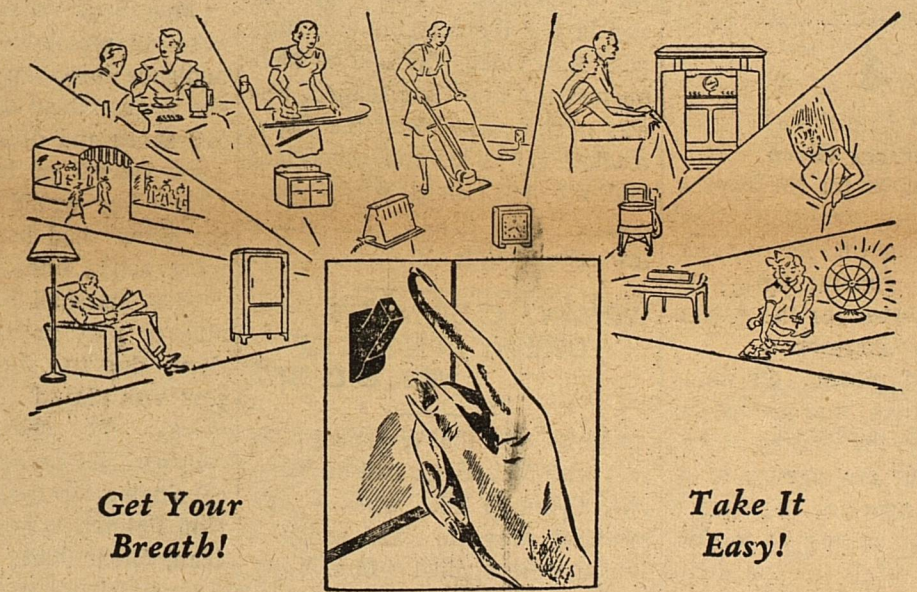


Imperfect vision is the cause of many of the discomforts and ills of humanity. How are YOUR eyes?

**OTIS L. PARRIS**

OPTOMETRIST & OPTICIAN  
San Angelo, Texas

**"Time On Your Hands"**



Get Your Breath!

Take It Easy!

**USE MODERN ELECTRIC SERVANTS**



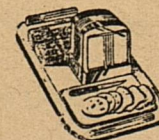
A Twist of the Wrist to Flip the Switch . . . That's How Simple It Is to Keep House With Electric Servants . . . Drudgery Is Unknown in Modern Homes.



A Twist of the Wrist Does the Washing, the Coffee, Sweeps the Wrist Into Crisp, Brown and a Multitude of Similar Jobs.



Wrist Does the Ironing, Percolates Floor, Turns Batter Into Crisp, Brown Waffles, and a Multitude of Similar Jobs.



A Twist of the Wrist Gives You Food Safety Through Electric Refrigeration . . . All this by Simply Flipping the Switch . . . All This at an average Unit Cost of Only 9 Cents a Day . . . All So Simple That a Child Can Flip the Switch in Complete Safety . . . "Time on Your Hands" Is Your Reward for Using Electric Servants.

Do you know that your increased use of Electric Service is billed on a surprisingly low rate schedule . . . and adds only a small amount to your total bill?

**West Texas Utilities Company**



**1**

(From Page One)  
 940 goats; 24,147 cattle; 1,362 horses and mules.  
 1934—251,180 sheep; 28,660 goats; 25,472 cattle; 4,493 horses and mules.  
 1935—220,230 sheep; 21,140 goats; 15,910 cattle; 4,420 horses and mules.  
 1936—186,153 sheep; 18,997 goats; 16,260 cattle; 4,370 horses and mules.

**2**

(From Page One)  
 a score of 109.2.  
 Kathryn Brown won sixth with 18 errors, 32.1 words per minute, percentage of accuracy 72.8 a score of 104.9.  
 Maude Brown won seventh with 22 errors, 33.6 words per minute, percentage of accuracy 69.9, a score of 103.5.  
 Emma Lou Logan won eighth with 16 errors, 21.9 words per minute, percentage of accuracy 67.3, a score of 89.2.  
 The girls enjoyed the trip very much and Sonora is coming up here Tuesday March 2.

**3**

(From Page One)  
 arrangements for a complete stock of silk dresses for the endurance of this sale. He urges the ladies of this territory to make their selections before the stock has been picked over.  
 The sale will continue through all of this week, and possibly longer, as no definite closing date has been announced.

**4**

(From Page One)  
**Definitions Given**  
 Range land, under the conservation program, means any land which produces forage without cultivation or general irrigation and which is used for the pasturing of range livestock.  
 Ranch land means all range land, other than that owned or controlled by the United States government or any agency of it, in which an operator has such a legal estate or interest as to give him control of it for the duration of the 1937 agricultural conservation program, which was used by the operator in 1937 as a single unit in producing range

livestock.  
 Range livestock means beef cattle, sheep, goats or horses grazed on range land.

An animal unit means the unit of measurement of the number of livestock in terms of one cow, one horse, five sheep, five goats or the equivalent.

Deferred grazing implies the withholding from grazing a portion of the ranch during the period from the time range vegetation starts growth in the spring until seed has matured in the fall for the purpose of permitting the reseeding of the range land.

Blanks for application for determination of grazing capacity may be secured from the county agent. Beginning of the program does not compel the operator to finish the contract, Godwin said, but payment will be made only on compliance with the terms agreed upon.

**ATTEND COUSIN'S FUNERAL AT BRADY**

Mr. and Mrs. Sam Jones and Mr. and Mrs. Lewis Whitten attended the funeral of Mrs. Jones' cousin, Miss Eula Duke, 60, at Brady last Monday afternoon. Miss Duke was fatally injured in an accident about eight miles southwest of Brady on Sunday evening at about 7:30.

Miss Duke suffered a fractured skull Sunday evening when she leaped from a moving automobile, occupied by Mr. and Mrs. Sid Espy, and driven by Mr. Espy, when she became frightened after they had discovered sparks emerging from the bottom of the automobile. Over protests and before the car could be stopped, Miss Duke was said to have opened the door and leaped. She was unconscious when the Espys reached her side, and physicians said she was dead when they reached the Brady Hospital a few minutes later.

**WOMAN'S CLUB MEETS TUESDAY IN HOME OF MRS. E. C. HILL**

Members of the Woman's Club met with Mrs. E. C. Hill on Tuesday, February 23, when a government program and southern fiction were studied. Mrs. V. G. Tisdale was leader on the program.  
 Roll call was answered by quotations about Washington.

Reports were made on the following:

Isa Glenn's "Southern Chimneys," Mrs. D. E. DeLong; Eleanor Chilton's "Shadows Waiting," Mrs. J. B. Edens; James S. Montgomery's "Tall Men," Mrs. F. B. Gunn; "Travels in the South," Mrs. N. P. Wilkinson.

A round table discussion was held on "A Woman's responsibilities in Politics." The dictation drill was led by Mrs. Gunn.

Refreshments were served to the following members: Mrs. D. C. Hill, Mrs. W. E. Eaton, Mrs. C. C. McLaughlin, Mrs. V. G. Tisdale, Mrs. L. Wheeler, Mrs. J. B. Edens, Mrs. W. T. Whitten, Mrs. F. S. Miller, Mrs. W. N. Ramsay, Mrs. N. P. Wilkinson, Mrs. F. B. Gunn, Miss Norene Ellington, Miss Tom Pearl Smith and the hostesses.

**"Coast To Coast" Is Staged Here With Splendid Cast**

A more splendid cast could not have been found than those who took part in the musical comedy, "Coast to Coast," which was sponsored by the Lions Club and staged here on Friday and Saturday nights of last week. The play was very ably directed by Miss Ardath Armstrong of the National Production Company.

A good crowd attended the showing on Friday night, although sickness in Eldorado prevented many from attending. The crowd was considerably smaller for Saturday night's production, but everyone enjoyed the play.

Mrs. Bess Andrews, as the 16-year-old mountain girl, set the audience into an uproar when she appeared on the stage minus her shoes and dressed in a costume typical of her part in the play. She would have "stolen the show" had her part been a more active one.

Miss Marshall Elmore was unable to play in Saturday night's show, due to illness, and this part was played by Miss Armstrong. The characters were as follows: Madam Hycenia, the local singing teacher, Pauline West; Don Palmer, who is in love with Jean; Glenn Raliff; Pete Perkins, a good friend of Don's; Charles McLaughlin; Sampson, the colored porter at Jean's music store; R. L. Sample; Jean Bosworth, owns the music store and needs \$1000, Marshall Elmore; Titus Pennyback, holds the mortgage on Jean's store, John Isaacs; Trixie Trimble, helps Jean and pesters Pete, Elizabeth Ballew, Jack Skinner promotes amateur contests for the Blow Hard Instrument Co., Jack Hext; Louie Dicker, helps Jack, but usually gets in his hair, Pancho Bradley; Percival Snell, Titus' Nephew,

Jack Johnson; Lizzie Lullerlittle, loves Percy, Mrs. Bess Andrews; Colonel Rowes, announces and runs the amateur contest, Horace Rees; Pianist, Maxine Wilton.

**PRESBYTERIAN CHURCH**

Sunday School at 10:00. A class for every age, and a friendly welcome to every class.

Morning Worship at 11:00. Subject of sermon: "David's Splendid Spirit." There were many fine things about David, but on one occasion he showed a fine and proper spirit about a matter on which men today often do poorly.

Evening Worship: 7:30. A Basis For Steadfastness and Confidence." There is a great truth with which we can meet the doubt that assail us, and which can give us confidence that help is available for our weaknesses.

"Pioneers" meet at 6:45.  
 "Juniors" meet at 6:45.  
 A cordial welcome awaits you at these services.  
 N. P. Wilkinson.

Mr. and Mrs. Edward Newlin of Crane, Texas, spent the weekend here with Mr. Newlin's parents, Mr. and Mrs. E. E. Newlin, and family.

J. L. Ratliff was a business visitor in San Antonio the first of this week, leaving here Tuesday night and returning late Wednesday.

**CLASSIFIED ADVERTISEMENTS**

**SALES BOOKS FOR SALE** at the Success Office.

**FEED GRINDING**—I am doing feed grinding for the public at my place. Call 7211 or see Bill Eoethe. (6t-pd.)

**FOR SALE**—Or will trade for feed or chickens, a good Corona portable typewriter. Price \$12.50 E. H. Kent (1t-pd)

**LOST**—1 ewe, branded green "D" on left hip. W. D. Gregory (1t-pd)

**NOTICE**—Apartment for rent. Mrs. J. M. Evans.

**SACKS WANTED**—Will buy your cake and meal bags. Any quantity at market price. West Texas Feed Co. Eldorado, Texas

**FOR SALE**—Baby chicks, 8 cents each; 100 for \$7.00. Custom hatching, 100 eggs \$1.75. Will pay 5 cents above cash price for hatching eggs from R. I. Reds, Barred Rocks and Buff Orphington flocks. (5-9tc) Mrs. Geo. Williams

**SELF-SERVE GROCERY HARDWARE**

WHOLESALE AND RETAIL

ELDORADO, TEXAS

Your neighbor trades at the Self Serve and saves on most every purchase. Why not you.

**A Partial List of Specials FRIDAY AND SATURDAY**

- |   |     |
|---|-----|
| Sugar, Pure Cane 20 lb                        | 98c |
| Limit 20 lb to customer with \$1 or more mdse |     |
| Corn, Del Monte, No. 2 can                    | 15c |
| Tomatoes, No. 2, 2 for                        | 15c |
| Tomatoes, No. 1, 2 for                        | 11c |
| Mixed Vegetable, No 2 can                     | 12c |
| Extract, 2 oz                                 | 18c |
| Coconut, 1 lb pk                              | 15c |
| Cocoa, Peerless 1 lb pk                       | 12c |
| Cocoamalt 16 oz                               | 43c |
| Hershey, Chocolate 1-2 lb bar                 | 15c |
| Green Beans, No. 2 can                        | 9c  |

Cabbage, While they last lb 3/4c  
 Limit 50 lb to customer

- |                                    |     |
|------------------------------------|-----|
| French Dressing 18 tall can        | 11c |
| Hypro, qt. bot.                    | 17c |
| Light House Cleaner 2 can          | 5c  |
| Soap, Blue Barrell 1g. bar         | 3c  |
| Salmon, Red Chinook the finest can | 25c |

Coffee our special peaberry 2 lb 35c

- |                              |     |
|------------------------------|-----|
| Apples, small wine-saps doz. | 10c |
| Green gauge plums gal. can   | 48c |
| Prunes, gal can              | 38c |
| Ma Brown Preserves, 4 lb jar | 75c |
| 2 lb jar                     | 39c |
| 1 lb jar                     | 20c |

Wanted 20 cases Eggs, will pay 18c in trade.

- |                            |     |
|----------------------------|-----|
| Turnips & Tops bunch       | 3c  |
| Carrots, 2 bun.            | 5c  |
| Mustard, bun.              | 3c  |
| Celery, bunch              | 10c |
| Pot Meat 6 cans            | 19c |
| Vienna Sausage 3 cans      | 19c |
| Shrimp, can                | 15c |
| Sardines, American, 6 cans | 23c |

Coffee Good Morning 3 lb pk 68c  
 Coffee Good Morning 1 lb pk 23c

- |                            |     |
|----------------------------|-----|
| Kraut No. 2, No. 2 1-2 can | 9c  |
| Pumpkin, No. 2             | 10c |
| Pineapple Tidbits can      | 8c  |
| Grape Nuts box             | 18c |
| Baking Powder K. C. 25 oz. | 16c |
| K. C. 50 oz.               | 25c |
| Matches, 6 box             | 19c |
| Tomato Soup Philipps, can  | 7c  |
| Mince meat 3 pk            | 25c |

Syrup, Pure new crop L. A. Ribbon cane, thick and heavy, gallon 65c

If you like ribbon cane you will like this.

**MEAT DEPARTMENT**

- |                       |     |                |     |
|-----------------------|-----|----------------|-----|
| 7 Stk. lb             | 14c | Rib Roast lb   | 10c |
| Balgona Sausage, 2 lb | 25c | Ground Meat lb | 12c |
| Sir Loin Stk lb       | 18c | Elk Horn Cream |     |
|                       |     | Cheese lb      | 25c |

Plenty of Fresh Fruit of all kinds.  
 Usual Drawing Sat. Evening At 5:30

**A CAR LOAD OF NEW CHEVROLET CARS**

We are expecting a car load of New Chevrolet Automobiles to arrive just any day now. In this shipment will be various new models for 1937.

These cars are outstanding in beauty, design and performance and still remain the outstanding automobile in the low priced field.

Another supply of used cars will also be on hand in the near future. Our used cars go fast because folks realize that they are real values.

VISIT OUR SHOWROOMS FOR REAL VALUES

**Benton Motor Co.**

**CITY GROCERY**

PHONE NO. 120

We have a clean line of Groceries, arranged in order and at the right price.

Along with this we offer

Quality Plus Service

COME TO SEE US