

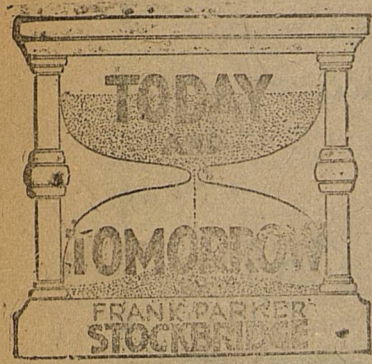
# THE ELDORADO SUCCESS

OF AND FOR ELDORADO AND SCHLEICHER COUNTY. ALL THE TIME

VOL. XXXI

Eldorado, Schleicher County, Texas. Friday, January, 16, 1931.

No. 3



## SLANG

There is nothing new under the sun. A smart scholar has been digging into the classics of literature and finds that many expressions which are generally regarded as strictly modern slang are hundreds of years old. Alexander Pope, for example, the English poet who died in 1744, originated the expression "nobody home," to signify an empty-minded person. Dean Swift, famed as the author of "Gulliver's Travels," described a middle-aged woman as "no chicken."

The phrase "twenty-three," in the sense of "it's your turn to disappear," comes from Charles Dickens. In "A Tale of Two Cities" Sydney Carton, the hero, is awaiting his turn to go to the guillotine, in the French Revolution. The old women knitting, call off the numbers as the executioner's victims pass. "Twenty-three," they call, and Carton is led to his death.

About the only "modern" slang that is really modern is derived from modern inventions. Shakespeare could never have one of his characters advising another to "step on the gas," nor Dickens refer to an individual as a "flat tire."

## FLYING

Col. Lindbergh the other day pointed out that the improvement in airplanes since he made his New York to Paris flight has been so great that it is only a question of a short time, in his opinion, before the public takes to flying as it has taken to motoring.

Planes are safer, faster and carry larger loads than a few years ago. What is needed most is landing fields closer to the centers of towns, says Col. Lindbergh. Where 90 miles an

hour was a good cruising speed in 1927, now the same type of plane makes 140 miles an hour easily, and carries 1,200 pounds as against 400 pounds then. With increased safety, flying becomes a matter of routine like driving a car.

Col. Lindbergh's opinions are entitled to respect. He probably knows more about both the science and the art of flying than anyone else living, and has proved himself a conservative and accurate prophet in the past.

## WAKEFIELD

Nearly two hundred years ago George Washington's father planted two thousand cedar trees on the family estate, "Wakefield," near Fredericksburg, Va. Today that cedar forest is the scene of the greatest activity since the birth of the first President for workmen are engaged in restoring the old house, which was burned on Christmas Day 150 years ago. The stone foundation and chimneys still stand, and a brick-kiln has been constructed to make bricks from the local clay, just like those of which the original house was built.

The restoration and preservation of the homes and birthplaces of the Fathers of our Nation is a splendid and patriotic undertaking. We paid too little attention in the early days to these historic sites, with the result that many of them have disappeared, never to be replaced.

## GLUCOSE

"Corn sugar" is the fashionable word now for what used to be called glucose. As glucose it was violently attacked a quarter of a century ago by the cane sugar and beet sugar interests, with the result that the Department of Agriculture made a ruling that all food products containing glucose should be so marked on the label.

The effort to discredit glucose—or corn sugar—as an article of food, failed because it had no sound foundation. Now the Secretary of Agriculture has removed the restriction on its use in prepared foods; the label does not need to tell whether corn sugar; cane sugar or beet sugar is

## Rainfall For 1930 As Kept By Geo. Williams

George Williams, prominent stock-farmer just south of Eldorado, was in the city Friday and brought to The Success Office the monthly rainfall during 1930 on his place, which is as follows:

January, 0.30, rain; 0.15 Snow, total for month 0.45.  
February, 0.30; March, 0.10; April, 4.30; May 2.41; June, 2.80; July, 1.70 August, 0; September, 0.35; October, 11.98; November, 2.55; December, 1.10 as a total for the year, of 23.04.

J. B. Christian, President of the First National Bank is in the Brady Hospital suffering from an enlarged ankle, caused from a thorn sticking him. His many friends trusts that he can return soon.

used for sweetening. As Mr. Hyde says, corn sugar is about three-quarters as sweet as cane sugar and contains nothing detrimental to health. He estimates that the potential market for corn for the manufacture of sugar may be as high as 100,000,000 bushels a year, or nearly 4 per cent of the nation's corn crop.

## WOOD

Nothing has ever replaced wood satisfactorily for the interior "trim" of buildings. With wood, effects can be obtained which are impossible with metal or composition. But the use of wood in large buildings in the cities has been discouraged because of the fire risk.

New York authorities are now experimenting with a new fireproofing method which seems likely to be adopted. It consists in soaking the wood in a chemical solution which, when heated, gives off a fire-extinguishing vapor and at the same time covers the surface of the wood with a protective coating.

In New York now wooden shelves, paneling, doors and trim are not permitted in tall office buildings and hotels, and wooden floors are allowed only when laid over solid concrete.

## A. A. Glover Killed In Fall From Bank Building

A. A. Glover, of San Angelo, one of the best known and liked individuals, in West Texas, met death Saturday morning when he fell from the fire escape from the Central National Bank building in San Angelo, after removing his overcoat and laying his hat on the fire escape.

Mr. Glover, head of the Martin-Glover Company and Mayor of San Angelo Teacher of an Adult Bible Class at the First Methodist Church in San Angelo, had won his way to be acclaimed one of the West biggest and most liberal hearted men, from the walks of the poor men, in all his entire life, he has never been accused of betraying a friend, had no enemies and loved and honored his fellowman. His untimely death is mourned by thousands of his admirers throughout West Texas, who have felt the touch of his hand in the business world. One of the most congenial business men of all the West. His methods of business made him one of the outstanding business men of this section of Texas, and brought him before his people who drafted him as Mayor of San Angelo, which position he held at time of his death. For the past six or eight months he has been failing in health, and arrangements had been made for another to relieve him from some of the duties of life and let him have a much needed vacation.

He had been worrying over financial problems, and had on the night previous to his death made a full report to the directors of his company.

The Funeral Service was held Sunday afternoon. He leaves a wife and three children to mourn his going. Two of the children are in the State University and one is an employe of the Martin-Glover Company.

## MRS. VAN McCORMICK ENTERTAINS ELDORADO BRIDGE CLUB

Mrs. Van McCormick entertained the Eldorado Bridge Club at her home in Eldorado Thursday January 8 at two o'clock.

After the arrival of guests, tallies were drawn and partners found. Five games of bridge were played and delicious refreshments were served to a number of sixteen. Prizes were awarded Mrs. L. T. Barber high club and Mrs. A. P. Bailey high guest.

Club members present were: Mesdames L. T. Barber, Lewis Ballew, Joe Williams, H. T. Finley, R. T. Crain, Luke Thompson, J. C. Crosby, J. W. Lawton, and Muller. Guests present were: Mesdames V. G. Tisdale, A. P. Bailey, Seth Ramsay, Ed. Reynolds, R. T. Trail, B. B. Brittain and Hines of Del Rio, sister of Mrs. V. G. Tisdale

## L. E. Sumner Says The Club Boys Lambs Looking Good

L. E. Sumner, County Agent, reports that the Boys 4-H Club have 90 lambs that are looking good and will be ready for the exhibit in March. The boys have 18 calves also, some of which are doing well, these calves will be shipped to Ft. Worth this year along with the lambs. Schleicher county did well last year with their lambs but only had one calf. But have some good ones this year.

## FIRST QUARTERLY CONFERENCE SUNDAY NIGHT

Rev. S. L. Batchelor, Presiding Elder of the San Angelo District, will preach at the First Methodist Church, next Sunday evening at 7:00 o'clock. Immediately following the preaching hour, will be held the First Quarterly Conference for this year. The Pastor Rev. McWhorter will be at Rudd Sunday morning and there will be no preaching Service Sunday morning.

Sunday School at 10:00 a. m. Preaching at 7:00 p. m. all invited to each of these services.

## Offie C. Benton Dead

Offie C. Benton, age 31, son of Mrs. W. C. Benton, died at the home of his sister Mrs. Frank Meador, Monday about 2:00 o'clock. He had been suffering of Tuberculosis for several months. Offie was born in Wood county and moved to Eldorado with his parents when a small boy, and has made Eldorado his home for most of his life, moving to Kerrville for awhile but returning here after his father's death there. His father served this county for many years as county clerk. Offie had never married. Funeral Services were conducted from the W. F. Meador ranch home Tuesday afternoon. Rev. J. D. McWhorter, pastor of the Methodist Church conducting the service with Robert Massie of San Angelo in charge. The body was interred in the Eldorado Cemetery. He leaves his mother, a sister, Mrs. W. F. Meador, and a brother, Jarvis, to mourn his early demise.

## NEW CLASSROOM AT UNIVERSITY NAMED WAGGENER

AUSTIN, Texas, Jan. 12—Regents of the University of Texas have decided to name the new \$400,000 classroom building now under construction in memory of Dr. Leslie Waggener, first chairman of the faculty of the University. The new building will be completed by September 1, 1931, it is expected, and the dedication service will doubtless be held shortly after school opens in the fall.

## Christoval Post-Master Dies After Lingerin Illness

Miss Maggie Hannum, 52 died in a San Angelo Hospital Friday morning after a lingering illness for several months. Miss Hannum has been a resident of Christoval for about 40 years, and was well and favorably known, has been postmaster or the past several years and previously taught school. A fine Christian character and none knew her but to love and admire her. She was one of the writers early school mates and many hours of social life spent together. There is no doubt that the windows of heaven swung open when Miss Maggie approached and she was ushered into that mansion prepared for those who love God and his righteousness.

Funeral services were held Saturday morning from the Grove Hotel in Christoval and her remains were consigned back to mother earth in the Christoval Cemetery where many friends had preceded her. May her soul find rest with the Master.

## Mike T. Wiggins Pioneer Died Friday At Mertzton

Mike T. Wiggins for 40 years a ranchman of the Concho County died at Mertzton Friday night, after an illness of pneumonia contracted in Oregon. He returned to Mertzton only a few hours before his death.

Mr. Wiggins was 76 years old and was associated with D. E. DeLong, Geo. Neill, T. C. Sproul, C. C. Doty, R. A. Evans and a host of other old time Cowmen of this section of Texas, in the West Texas range and ranch work in the pioneer days. He has been called to the last and final Round-up.

## County Percentage In "Eat More Lamb" Campaign Jan. 12, 1931

The "Eat More Lamb" Club is steadily growing in strength, and below is a list of the counties and percentage of quota raised to date. Kerr County still holds the lead with 88.1-2 percent, but the most noticeable advancement has been made by Val Verde County who came up from 46.1-2 percent to 88 percent, and indications are that they will pass Kerr County within a few days. This advancement is very remarkable since Val Verde County has the largest quota of any county in the state. News from the various counties is very favorable, and within the next two weeks even more marked progress is promised by County Chairmen.

Name	Percentage
1. Kerr County	88 1-2
2. Val Verde County	88
3. Pecos County	82
4. Crockett County	56
5. Uvalde County	48
6. Tom Green County	39
7. Sterling County	37
8. Terrell County	36
9. Irion County	34
10. Schleicher County	32
11. Sutton County	28 1-2
12. Edwards County	23 1-2
13. Menard County	21 1-2
14. Nolan County	19
15. Kimble County	19
16. Kendall County	19
17. Reagan County	17
18. Coke County	14
19. Mason County	12
20. McCulloch County	10
21. Concho County	6 1-2

## FIRST NATIONAL BANK STOCKHOLDERS MEET

At the regular meeting of the Stockholders of the First National Bank, Tuesday, the old directors were re-elected and the directors meeting has been postponed until a later date. As some of them could not be here.

## ARCH EDMISTON'S CAR BURNS

Sunday night while driving north on the highway near the school building Arch Edmiston met a car burning one light and in trying to get far enough away to miss the car, hit the culvert and overturned his car. The car then caught fire and burned up. Mr. Edmiston did not know who the driver was of the one-lighted car.

## Hoover Drug Store ELDORADO, TEXAS 1-12-31 Annoucement

It is with sincere regret that the unusual changes in the business world which has taken place in the last eighteen months, has compelled us to change a business policy which we have been able to maintain for the past twenty years. This policy has been the extension of credit to practically all who asked for an unlimited period of time.

The thousands of dollars in accounts which we have carried over from last year for those who were unable to pay, has made it necessary that in order to continue in business, we are compelled to place our business on a thirty day cash basis—accounts payable by the tenth of each month.

We hope to be able to carry these thirty day accounts rather than go on a strictly cash basis, because of the convenience afforded our customers who purchase often, and for those who live out of town and many times have their purchases brought out to them.

It is always our pleasure to extend every possible courtesy to our friends and patrons. Your patronage is valued highly, and we hope to see you in our store often.

We feel sure you will appreciate our position in this matter, and that the year 1931 will be a prosperous year for all.

Very respectfully,  
L. M. HOOVER.



## "THAT'S MY FATHER"

A YOUNG professional man took me to a country town to call on his parents. The old couple have raised eight children, of whom six are living and doing well. The Father runs a small store.

"I wanted you to meet my people," my friend said later. "They are poor, but I'm very proud of them. When any one talks espmistically about marriage or human life in general, I like to remember the record of those two old folks."

On my way from a summer hotel to a near-by golf course I picked up a caddy, a bright-eyed youngster of thirteen.

"Are you staying at the Inn?" he asked.

I nodded.

"Have you met the night engineer," I said that unfortunately my contacts had been entirely with the day staff.

"You should meet him," the youngster said proudly. "That's my father." It is assumed by those who view the social structure with disfavor that men work from only two motives—money or reputation.

I venture to say that after one has

laid by a few extra dollars and has seen his name in print a dozen times these two motives very rapidly lose their power.

Far stronger and more enduring motives, I take it, are the calm appraising eyes of one's children. They are our judges; their opinion counts more than that of all the rest of the world.

Samuel Butler thought it was a great mistake that the generations overlap. He pointed with approval to the example of the moths and beetles which spin their cocoons, surround the new life with enough food to start successfully in the world, and then quietly die and get out of the way.

It would be much better, he said, if each one of us could come into the world wrapped in twenty thousand dollars, which would see us through to maturity, unencumbered by any acquaintanceship with parents or relations.

Such a world would make just about as much progress as the beetles have made in the past ten thousand years. We keep going, not so much for money or fame, but in the hope that our kids can say with pride, "That's my father."

# THE NEW FORD

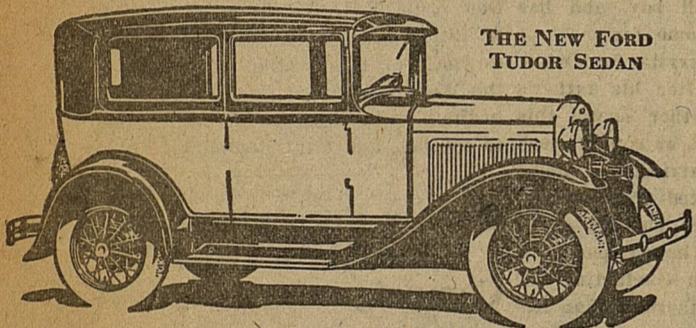
**Everything  
you want or need  
in a motor car**

THE more you see of the new Ford, the more you realize that it brings you everything you want or need in a motor car. . . . And at an unusually low price.

Its substantial beauty of line and color is apparent at a glance. Long, continuous service emphasizes the value of its simplicity of design and the high quality that has been built into every part.

The new Ford accelerates quickly and it will do 55 to 65 miles an hour. It is an easy-riding car because of its specially designed springs and four Houdaille double-acting hydraulic shock absorbers. It has fully enclosed four-wheel brakes and the added safety of a Triplex shatter-proof glass windshield. Operation and up-keep costs are low and it has the stamina and reliability that mean thousands of miles of uninterrupted service.

See the nearest dealer and have him give you a demonstration ride in the new Ford. Check up every point that goes to make a good automobile and you will know it is a value far above the price.



THE NEW FORD  
TUDOR SEDAN

LOW PRICES OF FORD CARS

**\$435 to \$660**

F. O. B. Detroit, plus freight and delivery. Bumpers and spare tire extra at small cost. You can purchase a Ford on economical terms through the Authorized Ford Finance Plans of the Universal Credit Company.



Our friend Ben Hext, who ranches down in the hills near Marblefalls, was in Eldorado last week howdying with friends. The depression has not had any effect on Ben's looks, he looks well, was wearing his old smiles and in fact seemed to be enjoying life in the good old fashioned way.

Mr. Tom R. Henderson, who has been ill for some time and in the San Angelo hospital is able to be back home in Eldorado. He returned home Friday of last week.

J. D. Westner, reports that work on the Nicks oil well will probably be resumed the latter part of this week. George Keiffmyre is here getting the pipe ready for the resumption of actual drilling the latter part of this week.

Quite a few of our time friends and acquaintances are climbing the golden stairs this week, which reminds us that man was born of woman and will some day have to lay down in death, and in this enlightened day he should be prepared for that occasion. But he who beats his fellowman, by stealing, swindling, or defaming his good name, or in any way being and acting dishonest, leaving God out of his life and community work, will probably be among those who weep and wail, and gnash their teeth.

We note from the San Angelo Standard Times that our old friend W. P. Evans at Christoval was married last Saturday at the Park Heights Baptist Church, parsonage in San Angelo, to Mrs. Annie Louise Compton.

## William's Man Shop

The Home of Good Clothes

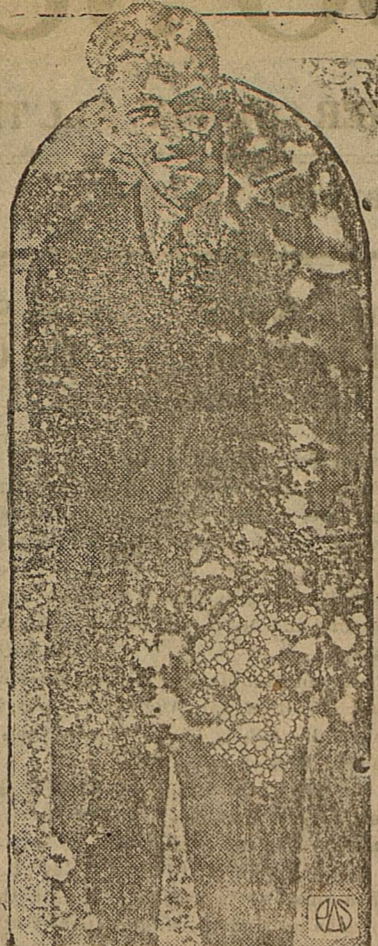
Suits made to order and guaranteed to fit. A good line of work clothing with Quality Merchandise.

CLEANING AND PRESSING

Let us make that old suit into a Sunday suit with our up-to-date cleaning and pressing departments.

Satisfaction is our Motto with Service to Please.

### Electrical Wizard



John Armstrong Cygnon was a Midshipman at Annapolis until his electrical experiments interfered with the Naval Academy elevators and he was expelled. Several electrical firms wanted to hire him but the President has appointed him to West Point.

J. H. Rodgers, was in the city Saturday from the Robinson stockfarm south of Eldorado. Mr. Rodgers just finished moving from the Faught farm near the Bailey Ranch School. He says it makes a fellow feel better when he can live near a good highway.

Joe Bradshaw is moving to Bronte this week, he has been on the Joe Pfleger farm here for the past year.

Mrs. W. G. Lewis was shopping in the city from the Pfleger farm West of Eldorado Saturday.

### Classified Ads

2c per word for first insertions; 11-2c for repeated insertions.

**FOR SALE**—History of Schleicher County, has 100 pages of information of Schleicher County, send \$1.00 to The Success for one of these books.

**FOR SALE**—Good Live Oak Wood, sawed any length, \$8.00 per cord. See LEWIS WHITTEN

**FOR SALE**—Barred Rock Cockerels, "Aristocrat" strain, large healthy, vaccinated. C. O. BRUTON

**WANTED**—At once 200 fat Turkeys and 1,000 fat hens. A. J. ROACH W. E. CLUOD

Place an ad in this column if you want to sell or wish to buy. The Success will carry your message to the people.

Place your order for Magazines and Newspaper subscriptions with The Success, we get any for you.

Plant fruit trees, and they will do the work. Plant cotton, and you will do the work. Get free catalogue from RAMSEY'S AUSTIN NURSERY, Austin, Texas.

Now is a good time to plant trees. Write for catalogue. RAMSEY'S AUSTIN NURSERY, Austin, Texas.

### NOTICE

All parties who have not discontinued use of open toilets are hereby notified to do so and all parties using Sanitary Toilets are asked to pay rentals on some to City secretary or at Bank By order or City Council.

**LOST**—Somewhere in Eldorado, a 1930 Eldorado High School Class Ring bearing initials "E. B." on inside of ring. Finder please return to Elizabeth Bradley and receive reward.

**FOR SALE**—Sudan baled hay. W. C. PARKS.

Twenty years growing and selling trees and shrubbery at the same location enables us to give you the best varieties in Budded Pecan, Fruit and shade trees, evergreens, flowering shrubs, roses and etc.

Honest dealing labeled true to name at fair prices is our Motto. Send for price list.

SAN ANGELO NURSERY  
At Oakes St. Budge  
San Angelo, Texas.

—Adv.

### SUBJECTS FOR DEBATE IN THE INTERSCHOLASTIC LEAGUE 1931

AUSTIN, Texas, Jan. 8.—Suggestion for 1931 debate subjects for the Interscholastic League have been compiled by the University of Texas League Bureau, according to Roy Bedichek, chief of the Bureau. Schools over the State which participate in the event of the League program have been requested to send other suggestions.

The suggested list includes the following questions:

Resolved: That a change to the thirteen-month calendar should be approved; Resolved: That a government fund for public works is the best safeguard against recurring periods of unemployment; Resolved: That the expansion of the chain store system is detrimental to the best interests of the American people; Resolved: That capital punishment should be retained as the penalty for premeditated murder; Resolved: That the nation should adopt a plan of complete disarmament, excepting such forces as are needed for police purposes; Resolved: That the eighteenth amendment should be repealed; Resolved: That a five-day week should be adopted in all American industries; Resolved: That the volume and methods of the present system of installment buying are economically sound; Resolved: That uniform marriage and divorce laws should be adopted; Resolved: That compulsory automobile insurance legislation should be enacted; and Resolved: That the Philippine Islands should be granted their independence.

### HOW TO DEVELOP RURAL ROADS

Road-building, in the past, has almost always been attended by a certain amount of waste, because of lack of information, "political" allocation of funds and—in a few instances—plain ordinary graft.

Now the good roads movement—with especial attention being paid to farm to market roads—is making unprecedented progress. It has been stimulated by the drought and unemployment situations, as well as by the crying for year round, surfaced arteries of transportation for agriculture. Many states and hundreds of counties in all sections of the country, are seeking ways and means of providing the farm with necessary roads as quickly and as economically as possible.

Norman M. Blaney, of the American Farm Bureau Federation, says that county road plans "should be designed so that the outlying territories will have access to the main highways." To achieve this, he points out, road committees should be formed, made up of fair-minded, unbiased citizens. It would be their duty to assemble facts and to decide just what roads are necessary for carrying on the business, social and economic life of their communities. Those roads which will serve the greatest number of people should naturally be improved first.

Modern science has given us asphaltic materials with which to construct good roads, passable in all weather, at a very low cost. Communities which take the lead in rural road construction will be leaders in progress and future prosperity.

### TEXAS FIRST TO BUILD TEACHERS' HOME

AUSTIN, Texas, Jan. 8.—Texas not only ranks in the number and value of teachers' homes, but it had the first one built in the United States, according to W. M. Eilers of the State Department of Education, who prepared an article on this subject for the last number of the Texas Interscholastic League, published by the Interscholastic League Bureau of the University of Texas.

"The audit of the reports for 1929-cation shows that the State now has 1930 in the State Department of Education 1,425 teachers' homes valued at \$1,983,000," Mr. Eilers said. "Of these, 1,186 are in the common school districts, valued at \$1,284,075, and 239 are in the independent districts, valued at \$698,924."

Oklahoma ranks second in the number of teachers' homes. It has 850. Next comes Mississippi with 456, Washington with 442, North Carolina with 210, and Alabama with 125. Texas and Oklahoma have over half of the teachers' homes in the United States.

"The first teachers' home in this country was built in the Blum school district in Guadalupe County in 1860. The second teachers' home was built in the Schumanville school district in the same county in 1862. In 1884, it was replaced by a new building. The teachers' home known as the Faculty Club erected at Edinburg in 1927 at a cost of \$100,000 is possibly the most expensive one in the United States."

Mark Holland was in from the ranch Tuesday looking after business.

## USED CARS

with an OK that counts

We have a few used cars that are priced to sell and we invite you to come look them over. All overhauled and in good condition.

We also ask that you call and settle up your 1930 account either by cash or note, lets get the New Year started right.

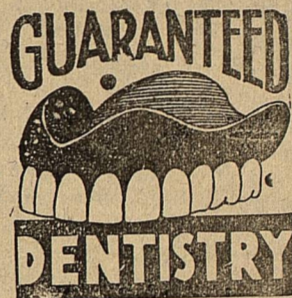
Evans Motor Co.

## Mayo Bro's Dentist

21 1-2 S. Chadbourne St.

San Angelo, Texas

OUR GREATEST SPECIAL



Full upper and

Lower Plates

ONE OF OUR BEST SETS OF TEETH

Guaranteed Fit and Material

\$20 \$20 \$20 \$20

Phone 3214

O. K. Mayo, D. D. S.

J. E. Mayo, D. D. S.

Lon J Hoover received a telegram Monday that his oldest sister Mrs. Annie Lauder had died. He was unable to attend the funeral on account of his own illness, but his nephew Jim Hoover went.

G. W. Holland was up from Christoval Tuesday, and reports Grandmother Myres very sick. Mrs. Myres was one of the early settlers of the South Conejo, and has lived on the same place for over 45 years.

### "FRIENDS HARD TO HANDLE—DON'T WELCOME SIN LEARNING THE WAYS OF WOMEN"

There used to be a man who told me I should marry again, and had a woman picked out for me. Somehow I could never squelch him. I had known him so long, although I had never intimated to him that I needed such advice. His assumption that I needed his assistance was extremely distasteful to me; no doubt he spoke to women unknown to me, and made me a fool of me, and I have never been able to get rid of them. According to my standards they are grossly impolite, but they seem to have friends, and prosper. I get along well with active enemies; they at least only scowl at me, and finally they quit talking about me behind my back—but I cannot handle some friends so successfully.

I am firmly convinced that the most sensible effort in which a man may engage is to do the best he can with such powers as Almighty God or heredity has given him. There are so many weak and unfortunate that I cannot help them all, but may I help myself? . . . I must eat to live, and food is contrary and malicious. At 9 a.m., when suffering distress from unwise or overeating, I resolve to do better thereafter, but four hours later, with agreeable friends at table, I forget the solemn warning and resolution of the morning. . . . With my striving I make

a little progress. Am I a fool for not making more, or have I inherent weaknesses of body and mind that tie me hopelessly to sin? Some say they can pray for strength, and receive it. Others say they are able to exercise their will, and overcome evil; but I have observed that both these boosters are usually as weak as I am; so generally so that their methods do not impress me. . . . Is sin the seed planted in earth, to inevitably destroy him at maturity, or earlier? . . . Anyway, I am able to regulate it a little, to my advantage, and shall persevere. I am still convinced that here is most common in life for those who resist sin as much as possible, instead of welcoming it.

I often think of a saying by Napoleon: "I will be compelled to go to school again," he said, when contemplating his second marriage, "to learn the ways of new woman."

. . . Napoleon was a king; the girl he was to marry a princess of a subject nation. She also been brought up in the simple German way; she had been assigned him for breeding purposes (and I do not say this in an offensive way, but as a mere statement of fact). . . . Why did he not say to the girl, as he said to his subjects, "Learn my ways."

Well, the great powerful man cannot do that with a woman. Let a king arrange for ultimate association with a peasant woman, and he has another war on his hands. He is no longer king of his country or of himself. He has divided his regal power; he may be a Senate of the firm, but must wrangle with the House before his acts are constitutional.



"I'll pay the price. I'll do anything you say. You can't refuse me."

**A. T. Wright, Editor and Owner**  
**Social Manager** ..... Agnes Wright  
**Subscription Rates:**  
**1 Year** ..... \$1.50  
**Months** ..... 0.75  
 All legal notices appearing as much as four issues will be charged 1-2 cents per line per insertion. Classified Advertising, 2 cents per word per issue.

JANUARY, 16, 1931.

If you happen to drop in at the Court House and want to know who the bald headed man is, that the new County Judge, he's ready to tie any kind of a knot from a love knot to a hangmans knot.

A fellow can get by pretty well with a wooden leg, but brother you had better not depend on a wooden head. Treat our fellow man just like you would want to be treated and let your brain work right and all will be right.

Again we want to warn our cotton growers that the year 1931 does not promise any money making prices for cotton, the effect of the 1930 depression will extend to some extent far into 1931. The carry over has been great, and the demand slow.

Just what have we done to bring on this depression. First we bought an auto on installment, then we bought a Frigidaire, then a radio, then we bought life insurance policy, some fire insurance, then we had to have a place to put all these nice things and we built a home on installments. Then to keep up our installments we let our grocery bill, our drug bill, our water bill, our electric bill and our butcher bill all run over and now we have stalled from installments.

After reading the rainfall figures, kept by Mr. Geo. Williams you will wonder why that Schleicher county did not have a banner year 1930, the total fall was a little over 28 inches. But we started in dry and had no rain until April, so the April rain was not sufficient to plant on and get a good crop, and the last few months of the year furnished more than half. Then the rainfall was unevenly distributed over the county, some places getting more than others.

With these fine January rains with a season already in the ground there seems to be nothing in the way for the farmers to make a good crop in 1931. With a winter season it is always easy to grow a crop. Just what the price will be is another question but the prospects for the crop is good.

We can all go and mingle together at a Tent Show in our old clothes, but stay away from church because we claim we have no clothes fit to wear. The house of God does not require fine clothes. Take time to attend the Services of God.

It looks now like that 1931 might be a banner year. With plenty of moisture now to insure plenty of feed for our sheepmen to lamb on, it looks like they are assured of a large crop, the sheep will also winter well and give their flock masters a large heavy fleece of wool, and the price is almost sure to remain good and what will hinder them from making some real money.

We feel like we ought to be poor all our life, any City that will exist for 30 years with securing any fire protection, should not be allowed to have any fire insurance, let alone have it at a high cost.

A Kansas lad, who was in the Naval Academy, at Annapolis, invented a device that he could control all electric

fixtures about the academy from his room, he got the school authorities wondering what was wrong, but they finally caught up with the lad and demanded that he resign from the school. It seems to us from the meager reports we get from the press, that the U. S. Naval Academy needs such boys as that. He will probably make another Edison.

**OLD PAPERS OF INTEREST GIVEN STATE UNIVERSITY**

AUSTIN, Texas, Jan. 8.—Secession of Texas from the United States prior to the Civil War is commemorated by an exhibit of Texasiana now on display in the lobby of the library at the University of Texas. This exhibit contains the ordinance passed by the Texas Congress of 1861, dissolving the union between the State of Texas and the other states "united under the compact styled The Constitution of the United States of America." This ordinance was drawn up on February 1, 1861, was to be submitted to the people on February 22, and was to take effect, if passed, on March 2.

The display also contains a seal of the Confederate States of America, made according to a letter of certification, by J. S. — A W Wyon of London. This letter, dated March, 6, '84, indicates that the seal was made by the engraving firm for James M. Mason, who was then in London "representing the interests of the Confederacy of which the seal was designed as the symbolic emblem of sovereignty."

**NOTICE TO CONTRACTORS STREET PAVING**

Sealed proposals addressed to the honorable Mayor and City Council of Eldorado, Texas, will be received at the office of the City Clerk until 7 p. m., Tuesday January 20, 1931, or furnishing all materials, labor and equipment, and constructing paving and accessories upon certain portions of Gillis Avenue, Murchison Avenue, Cottonwood Street, and Callender Avenue for the City of Eldorado, Texas, as per plans and specifications adopted by the City Council on November 4, 1930.

Bids will be received upon 6-inch sledge stone base with 3-4 inch Natural Limestone Rock Asphalt wearing surface; upon 6 inch compacted caliche base, with a 2-inch crushed limestone subsurface with 3-4 inch Natural Limestone Rock Asphalt wearing surface.

All lump sum and unit prices must be stated in both scrip and figures. The City reserves the right to reject any or all bids and to waive formalities. In case of ambiguity or lack of clearness in stating the prices in the bids, the City reserves the right to consider the most advantageous construction thereof, or to reject the bid. Unreasonable (or unbalanced) unit prices will authorize the City to reject any bid.

Bidders are expected to inspect the site and general location of the work and to inform themselves regarding all local conditions.

Instructions to bidders, proposal blanks, specifications and plans may be secured at the office of the City Clerk, or at the office of French & French, Engineers, 20 West Twelfth Street, San Angelo, Texas, upon payment of Five (\$5.00) Dollars which will be returned to only bonafide bidders upon return of plans and specifications.

Proposals must be accompanied by a certified or cashier's check in the sum of Five Hundred (\$500.00) Dollars, and bidders must be prepared to furnish surety bond from a company acceptable to the City. Bidders must fulfill conditions specified in "Instructions to Bidders."  
 Fred O. Green, Mayor  
 Frank Bradley, City Clerk

Charter No. 8575 Reserve District No. 11  
**Report Of Condition Of The First National Bank Of Eldorado In The State Of Texas, At The Close Of Business On December, 31st, 1930.**

RESOURCES	
1. Loans and discounts	\$ 328,813.49
2. Overdrafts	589.34
3. United States Government securities owned	20,000.00
4. Other bonds, stocks, and securities owned	3,750.00
5. Banking house, \$3,000.00 Furniture & fixtures, \$1,000.00	4,000.00
6. Real estate owned other than banking house	10,000.00
7. Reserve with Federal Reserve Bank	19,301.10
8. Cash and due from banks	61,770.71
9. Outside checks and other cash items	114.02
10. Redemption fund with U. S. Treasurer and due from U. S. Treasurer	1,000.00
<b>TOTAL</b>	<b>\$ 449,332.66</b>

LIABILITIES	
15. Capital stock paid in	\$ 75,000.00
16. Surplus	50,000.00
17. Undivided profits—net	25,818.06
18. Reserves for interest, taxes, and other expenses accrued and unpaid	2,335.92
19. Circulating notes outstanding	20,000.00
20. Due to banks, including certified and cashier's checks outstanding	13,154.74
21. Demand deposits	258,723.32
22. Time deposits	4,300.61
<b>TOTAL</b>	<b>\$ 449,332.66</b>

State of Texas, County of Schleicher, ss:  
 I, W. O. Alexander, Cashier of the above-named bank, do solemnly swear that the above statement is true to the best of my knowledge and belief.  
 W. O. Alexander, Cashier.  
 Subscribed and sworn to before me this 9th day of January, 1931.  
 O. E. Conner, Notary Public

(Seal) CORRECT—Attest:  
 J. B. Christian.  
 Sam E. Jones.  
 J. E. Hill.  
 Directors.

**EXPLAINING THE CAUSE OF THE PRESENT DEPRESSION**

FORT WORTH, Jan. 12.—How do economic depressions get that way? If the country generally could give the correct answer to this question, perhaps such depressions as the one from which we are just now emerging might be avoided. The question, put to Dr. Edwin A. Elliot, head of the department of economics at Texas Christian University, was answered by him in these words:

"The depression came about, in the main, because of overproduction. Or, better stated, it came about because of under-consumption and inflation."

"Industry and agriculture expanded greatly during the war, and found it profitable to do so. After the war producers faced a diminished market. They then hit upon the idea of installment selling and the general expansion of credit facilities, which brought about still further expansion in production. At the same time wages did not keep pace with the increased volume of production, and thus we had production expanding on the one hand and consumption contracting on the other. Finally we developed a situation where we were producing 40 per cent more than it was possible to consume. The result is the present depression, and it is the consequence of the long-time effects of the war."

Dr. Elliot; The installment plan of buying has covered our country with debts, now hard to meet.

Bill Sweatt was here last week, guest of his mother Mrs. Allie Sweatt. Bill reports that stock on the ranch near Ft. Stockton is wintering nicely.

**ANNOUNCEMENT OFFICE HOURS:**  
 1:00 P. M. — 5:00 P. M.  
 For Appointment: Telephone 121  
 DR. N. ISAACS  
 "Dentist"

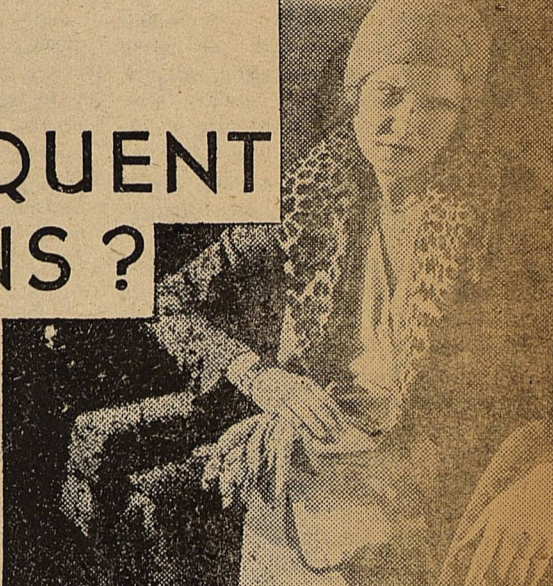
Bob Duncan of Mertzton, Texas was in Eldorado Tuesday visiting and shaking hands with friends.

Miss Jennette Henderson, who has been in the San Angelo hospital for an operation for appendicitis, returned to Eldorado last Friday. She returned to her school, Miss Hoaday, in Dallas, Wednesday of this week.

**Telephone Service**  
 When your Telephone Service is not what you think it should be, Telephone us at once. We deem it a favor, as we are prepared to render GOOD SERVICE. And anxious for you to have good service. **SAN ANGELO TELEPHONE CO.**

Sam Williams, prominent ranchman from the east side of the county, was a business visitor in the city Friday. T. M. Williams was in from the ranch Friday looking after business. Mr. Williams has a fine stockfarm west of Eldorado.

**FREQUENT PAINS ?**



NEVER let a headache interrupt your shopping! Or any other pain that Bayer Aspirin ends so quickly. These harmless tablets are an antidote for the most acute pain. Relief is almost instantaneous. Taken in time, they will break up a cold and head off discomfort. They'll relieve your suffering from neuralgia, neuritis, or the like, at any time. Thousands of women depend upon Bayer Aspirin every month to spare them from those pains peculiar to women. These tablets do not depress the heart; they may be used as frequently as there is need of their quick comfort. So, it's folly to endure any pain that Bayer Aspirin could relieve so promptly. Get the genuine, which is always to be had at any drugstore.

**BAYER ASPIRIN**

**CHEVROLET**

**Consider these outstanding Chevrolet values**

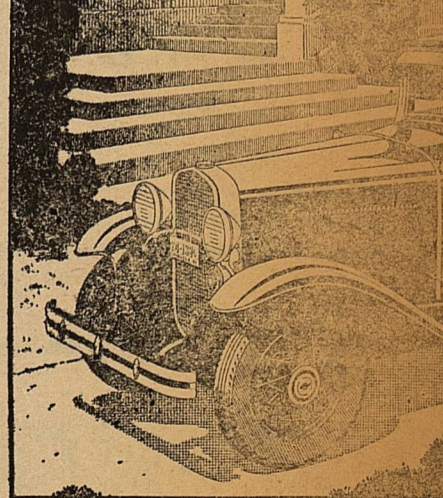
The Phaeton	\$510	Standard Coupe	\$535
The Roadster	\$475	Standard Five-Window Coupe	\$545
Sport Roadster with rumble seat	\$495	Sport Coupe with rumble seat	\$575
The Coach	\$545	Standard Sedan	\$635
Special Sedan	\$650		

Special equipment extra. All prices f. o. b. Flint, Michigan

Before investing your money in a new automobile, you will find it worth while first to learn what Chevrolet has to offer.

Each of the nine new models is a fine car—a quality product throughout. Each is designed, built, finished and equipped to standards that are entirely new in the low-price field. Yet Chevrolet's reduced prices are not only the lowest in Chevrolet history, but are among the very lowest in today's motor car market.

Come in. See the new Chevrolet Six. Drive it. Check the prices—and you will realize why it is called the Great American Value.



Front View of Chevrolet Sport Model

See your dealer below

**Evans Motor Company**

ALSO DEALERS IN CHEVROLET SIX-CYLINDER TRUCKS, \$355 to \$695, f. o. b. Flint, Michigan

**Cost Sale**

After taking invoice this week, we find that we still have considerable stock of groceries on hand, and which we will continue to offer at bargain prices until they are closed out.

We have quite a bit of Dry Goods, work trousers, shirts, handkerchiefs, men cheap hose, a few boys good hose, Ladies cotton hose from 10c to 20c in fact we have quite a bit of stock to be sold.

Face powder, talcum, vanishing cream, shampoo, 35c tube of Palmolive shaving cream and a gillett safety razor for 25c, the price of one shave.

**WRIGHT'S CASH STORE**

**Bilious, Dizzy, Drowsy Feeling**

"When I was a child, if I did not feel well, or if I had a cold, my mother gave me Black Draught," says Mrs. Orpha Hill, of Wofford, Ky. "When I was married, it became a family medicine in my own home, as it was in my mother's."

"I take it for headache and especially for constipation. When I get bilious, my skin gets yellow and I have a very bad taste in my mouth, and a drowsy feeling all during the day. My eyes burn and I get dizzy, or my head is 'swimming.' When I take Black Draught, it seems to drive the impurities out of my system and I feel fine. I am seldom without this reliable remedy."

**THE FORD'S Black-Draught**  
 For Constipation, indigestion, Biliousness

WOMEN who are run-down, nervous, or suffer every month, should take CARDUL Used for over 50 years

**CHEVROLET GAIN IN PRODUCTION; ALSO IN EMPLOYEES**

NEW YORK, Jan. 10.—December production of the Chevrolet Motor Company was 64,018 cars and trucks, more than twice the 26,000 units built last December and by a wide margin the biggest twelfth-month in the company's history. W. S. Knudsen, president and general manager, announced here today upon his arrival for the opening of the Automobile show.

Employment of the company, which has registered consistent gains since the introduction of the 1931 models in November, stood at 32,191 for the week ended December 27, a gain of 347 over the previous week, Mr. Knudsen stated. During the current month the employment figure is expected to climb to 40,000 men, Chevrolet's normal operating force.

December is the second successive month to register a new high production figure, November with an output of 45,000 Chevrolets exceeding all previous Novembers. The January schedule calls for the manufacture of 70,500 units and the tentative figure set for February, despite the short month, stands at 70,400 sixes, according to the Chevrolet executive.

When production of the new 1931 models got under way, employment in the manufacturing division of the company was 26,000, Mr. Knudsen stated. Since that time old employes have been added gradually, and with nearly 10,000 more scheduled to get back to work in January, all regular employes will be back on the job.

Mr. Knudsen said that the increase in production schedules is predicated on the highly gratifying reception of the 1931 cars, as is evidenced by the demands of dealers for cars for immediate delivery.

thus provided employment during a time of dire need.

The largest single projects completed during 1930 were the 25,000 horsepower steam-generating unit installed in the Concho Generating station at San Angelo, together with the necessary enlargements and improvements in the physical structure, and the Nasworthy Dam, also at San Angelo, which will furnish an adequate supply of water to meet the future growth and development of that territory. The Nasworthy Dam impounded 10,500 acre-feet of water, and inundated approximately 1,400 acres of land. According to information recently released, the new Nasworthy Lake is of sufficient size to be included on the new state maps.

The expansion program of the company, carrying the benefits of electric service to new cities, towns, communities and rural homes, necessitated the building of over three hundred miles of high tension transmission line—further spreading the network of trunk transmission lines, throughout the forty-eight counties served by the company.

Eleven substations were completed during the year, and enlargements and improvements were made on many others.

New local offices were erected in six cities: Memphis, Matador, Stratford, Dumas, Eldorado and Rankin. Improvements and additions were made on physical property at other points, and warehouses and ice sales stations were built.

Many miles of distribution system, rural electric lines, water and gas mains were installed. Expansion into new territories added several towns to those already receiving service from the company, and at the close of 1930, 120 cities and towns were receiving dependable electric service distributed over a network of more than 2,500 miles of transmission line.

In addition to the new construction briefly reviewed in the report, repair and maintenance crews were busy throughout the year, strengthening and improving service in all parts of the properties.

The statement pointed out that the West Texas Utilities Company would continue in its progressive program of expansion and development throughout 1931.

Louie Jones was in from the ranch Monday qualifying as a commissioner of Schleicher County. Louie is following the footsteps of his father, his father was one of Schleicher county's early commissioners serving as such some 25 or 30 years ago, we will see if the chip is any better than the block

**WEST TEXAS UTILITIES EXPAND IN 1930.**

ABILENE, Texas, Jan. 12.—The 1930 construction program of the West Texas Utilities Company, involving a considerable expenditure, included many important projects according to information received from the general offices of the company here. Facts released concerned new construction only, and did not include regular maintenance work.

It was pointed out that although general business conditions during the past year were most unfavorable, the company continued in its policy of building to meet future demands, and

**W. H. Parker & Son MARKET GROCERIES**

We have put in for your convenience a most modern Market and Grocery Store. Prices and Quality Unequaled Your Patronage Solicited FANCY & STAPLE GROCERIES

Mrs. Kate E. Robinson General Merchandise

**Business Men's Needs**

We have in stock all kinds of writing paper, Ink tablets, pencil tablets, Ink, pen points, pencils, sales tickets, bulk stationary, envelopes, adding machine paper, twine, typewriter ribbon, self-inking stamp pads.

Besides we can print anything you want in our job printing plant, get it at home and it will be just as good.

**The Eldorado Success**

31 Years in Eldorado 25 Years under one management

Joe F. Reynolds was in from the ranch west of Eldorado Monday and while here made The Success office an appreciated visit and moved his subscription up to Jan. 1, 1932.

Mr. and Mrs. Van McCormick have moved back to their home in Eldorado, after spending several weeks out in the Ito Grande section of Texas, out where the West is.

**Pale and Weak**

"I think Cardui is a wonderful medicine, for I improved greatly after taking it," says Mrs. A. W. English, of R. F. D. 4, Roanoke, Va. "When I was just a girl of 13, my mother gave this medicine to me, and it did me a great deal of good. I was weak and run-down. After I had taken Cardui awhile, I felt much better. In 1924, my health was poor. I felt miserable, and hadn't enough strength to do my household work. It took all my willpower to keep up. I was pale and weak."

"I got Cardui again and took it. My improvement was wonderful. I can recommend Cardui to others, for my health was so much better after I had taken a course of the Cardui Home Treatment."

**CARDUI** Helps Women to Health Take Theford's Black-Draught for Constipation, Indigestion, Bloating. Only 1 cent a dose.

The Electric Man Diagnoses Your Household Budget

The economy of additional electric service under the schedule of the new Home Comfort rate should influence you to take a far greater advantage of the many uses of electrical energy—especially as it applies to the comfort and happiness of your home life.

The above chart shows how your average expenditure for electric service compares with expenditures for other commodities and services. In it you will notice that everything takes rank above electricity—and yet there are few things more important than electric service.

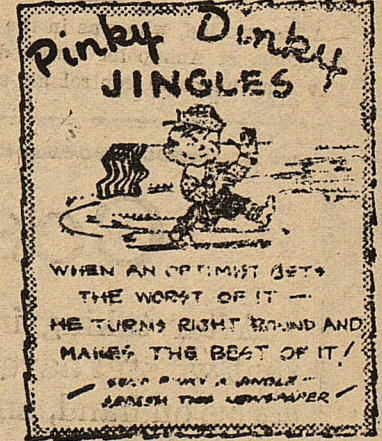
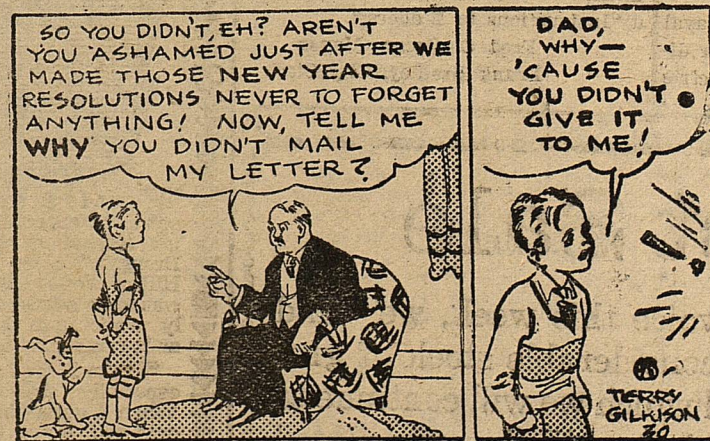
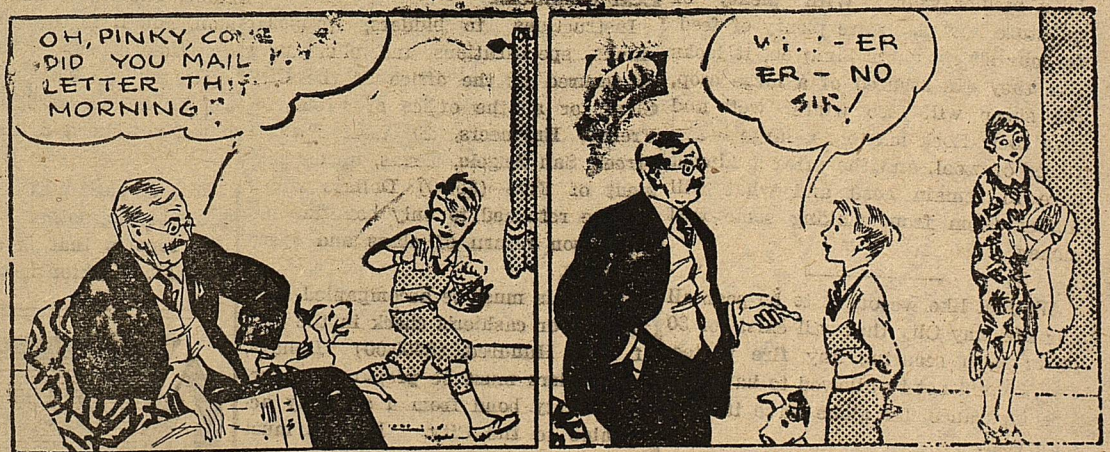
In the face of ever-mounting overhead, increased taxes, increased cost of manufacturing commodities, and increased expense of distribution—the cost to the consumer of electric service has consistently decreased. At the present time it shows a national average 28 per cent below the 1914 level, and a considerably greater reduction below that level for the West Texas territory.

And withal this effort to place the benefits of electric service within reach of all, comparatively few are taking the fullest advantage of this invaluable service. According to a report from the statistical department of the N. E. L. A.—less than 5 per cent of the electrically equipped homes are using more than 20 per cent of the total service used! And even then—electric service remains the smallest item of expense in their household budget.

When such a little of your income goes for improving the comfort and convenience of your home through the application of electric service to your domestic problems—don't you think it would be wise to investigate more thoroughly the many advantages of additional electric service made possible so inexpensively under this new Home Comfort rate schedule?

**West Texas Utilities Company**

FOOD	32%
SHELTER	24%
SUNDRIES	23%
CLOTHING	16%
FUEL	3.1%
ELECTRICITY	1.9%



# THE HI - DIVIDE

## ELDORADO HI SCHOOL NEWSPAPER

**Editor-in-chief:** Joe M. Christian  
**Reporters:** Joe H Moore, Lola Davis, Luther Kent and Raymond Smith.

**STORY OF THE MONTH**  
 January, the first month of the year according to the modern calendar, is named after Janus, the god of beginning, whose festival fell within the month, Janus is a double headed deity with one face looking forward and one looking backward, and this is the symbolical future, January was not one of the original months, the year according to the earliest Roman calendar having begun in March Numa Pompilius, traditions says, added January but gave it only thirty days.  
 Julius Caesar, gave the month thirty one days when making his reform which it has been ever since. January comes soon after the winter solstice and in most sections of the northern hemisphere is a dreary cold month. It has none of the days to remind one of the autumn.  
 —E.—H.—S.—

The sixteenth biennial edition of Who's Who in America quotes the United States census to effect that 4.55 per cent of the population are college trained, and then shows that these furnish \$3.05 per cent of the persons included in Who's Who. The four largest classes listed in Who's Who are business men, educators, clergy and lawyers in the order named.  
 —E.—H.—S.—

**481 IS TOTAL SCHOOL ENROLLMENT FOR ELDORADO DISTRICT**

According to the regular report of the teachers for the fourth month of school, ending January 2, 1931, the total scholastic enrollment of the district was 481. The enrollment was as follows: Eldorado High School—111; Eldorado Grammar School—112; Eldorado Primary grades—176; Reynolds School—24; Alexander School—8 Mexican School—52; The total enrollment of all the schools in the district last year was 542.

**SECOND GRADE HAS LOW TARDY RECORD FOR DECEMBER**  
 The second grade in the Eldorado School led in the least number of pupils tardy for the fourth month of school, ending January 2, 1931, with only six pupils tardy during the month. The enrollment of the second grade is 30. The sixth grade led with the highest number of tardies for the month, this being 63. The total number of tardies in the whole district last month was 402, or almost one tardy for each pupil in attendance.  
 —E.—H.—S.—

**EXCUSES STUDENTS MAKE FOR BEING ABSENT AND TARDY**

Most of us know that if a member of the high school is absent or tardy he is asked to sign an excuse blank stating the reason for his absence. Well, we'll say if one doesn't know, he will have to have a pretty good excuse to get an excuse blank with an O. K. on it the very first day he decides to remain at home or go to San Angelo. Now, of course, if it is a "business trip," as some of the students have to make quite often, it will be alright, usually.

Illness seems to be the most popular excuse of the entire high school and if any student feels more like going fishing than coming to school we suppose that excuse will do—until? The students are almost as glad to see it rain as are the farmers and ranchmen for muddy roads furnish a wonderful and successful excuse; that is if one does not happen to the luck of one poor "fish". The day after it had rained he came rushing into the typing room all out of breath and with a smile all over his face. When Mr. Smith asked the bright student about his absence he stood up like a Greek God and replied "Muddy Roads

Well, to the poor fellows sorrow and surprise, Mr. Smith happened to know of the cement walk and highway all the way from his house to school. No one knows what happened next but there is one question which we have been trying to solve—Why did the student get a zero in every subject during the time he was absent and is still staying in every afternoon until five o'clock writing "Do not tell a lie."  
 —E.—H.—S.—

**AMOUNT OF COAL NECESSARY TO HEAT SCHOOL BUILDING**  
 By Luther Kent

There are 45 tons of coal burned every school year (nine months). There are twenty days in a school month and the average amount of coal burned every school month is 5 tons. On an average there is about a ton and a half burned weekly. The steam system is used in heating the school building. The school building is very large when it has to be heated this way because it takes a good while to get the building warmed up. It takes a good while to get up enough steam to turn into the radiators. Mr. Pruitt gets up at five o'clock every morning to build a fire and usually has a good fire going and has the steam turned on by time the classes take up  
 —E.—H.—S.—

**PLANE GEOMETRY CLASS**

There are twenty students enrolled at the present time in the Plane Geometry class under the instruction of Miss Bradshaw. Miss Bradshaw is a very able and well liked teacher.

The class has finished the first look in the text and are preparing for the mid-term exam. So far plane geometry seems to be the easiest math we have ever studied, but by taking a glimpse of book two on circles, which we will take up immediately after the midterms it seems as if we will have to be running circles to learn it.  
 —E.—H.—S.—

**DON McCORMICK**  
 Mr. Don McCormick attended the Eldorado School from 1906 to 1910. He took part in what few sports there were and especially liked History and Mathematics. He was in the graduating class of May 1910. After finishing high school he attended A. and M. College at the age of 18 for one term. Don returned from college and began ranching. He was breaking horses in Schleicher County when the War broke out and he enlisted in the army. He returned from the war and took up gunning. He lost his right arm when it got caught in the gin saws. A short time after this he was elected County Tax Assessor. He has held this position until recently.  
 —E.—H.—S.—

**WE WONDER**

Why Exams are so popular.  
 Why Bill Currie likes to go to San Angelo.  
 Where Lefty got his sweater.  
 Why Willie Ruth Nicks laughs so much.  
 Why Mary Del Williams is wearing a patch above her eye.  
 Why Thelma can't face the front in the study hall.  
 If Ell will grow any taller.  
 —E.—H.—S.—

**FOUR BASKETBALL GAMES CALLED OFF**

There were four basketball games to be played last Friday and Saturday. The boys were to go to Sonora Friday afternoon, play Christoval here Saturday morning, the girls were to play Mertzon after dinner Saturday and the boys to play Mertzon Saturday afternoon. Due to the rainy weather, all these games had to be postponed.  
 —E.—H.—S.—

**FALCON FEATHERS**

Bill came home from school bearing evidence of having had the worst of a fight.  
 "Why, Bill!" exclaimed his mother. "How often have I told you to play

only with good little boys? Good little boys don't fight!"  
 "Well," said Billy thru his tears, "I thought he was a good little boy till I hit him."  
 \* \* \*

Miss Bradshaw was still rather new at driving a car and a little bit confused in traffic. Down Broadway she forgot to stop soon enough at the signal and show out into the middle of the street.  
 "Didn't you see me hold up my hand?" shouted the traffic officer.  
 Miss Bradshaw gasped a breathless "Yes." Pompously the traffic officer bore down upon her.  
 "Didn't you know that when I held up my hand it meant 'Stop'?"  
 "No sir; I'm just a school teacher," she said in a timid, mouse-like voice, "and when you raised your hand like that I thought you wanted to ask a question".  
 \* \* \*

A Texas state teacher writes that the following incident happened in her own class: A history pupil was writing a test. At the top of the paper appeared—"Lord God of Hosts, be with us yet, lest I forget, lest I forget." At the close of the paper he wrote—"Lord God of Hosts was with me not, for I forgot, for I forgot."  
 \* \* \*

Identity of the young lady is withheld, but the memory of her answer lingers on with the instructor conducting a science course at the high school. One of the requirements in the written quiz was: "Define a bolt and nut and explain the difference, if any." The girl wrote:—"A bolt is a hard thing like a stick of hard metal, such as iron with a square bunch of one end and a lot of scratching, wound around the other end. A nut is similar to a bolt only just the opposite, being a hole in a chunk of iron sawed off short, with wrinkles around the inside of the hole."  
 The startled professor marked that one with a large "A".  
 \* \* \*

First father: My son whistles at his work.  
 Second father: Gosh, you are lucky my son only whistles  
 \* \* \*

Miss Bradshaw: "Now we will take the Holt family, Mr. Holt, Mrs. Holt, and the baby, how many are there in the family?"  
 W. B.: "Two and one to carry"  
 \* \* \*

A small boy asked his father how war began. "Well," said the father, "suppose that England quarreled with France."  
 "But," interrupted the mother, "England mustn't quarrel with France. I know," he answered, "but I am taking a hypothetical instance! You are misleading," said the mother; "No I am not. Yes you are. No I am not. Yes, No That's all right now, said the boy. I know how.  
 —E.—H.—S.—

**EAGLES DEFEATED IN FIRST GAME OF YEAR**

Tuesday afternoon, January 13, at 4:30 p. m. the basketball game between Eldorado and Sonora began and from the looks of things the teams were pretty evenly matched. When the whistle blew for the game to begin, everyone was waiting expectantly. Sonora began breaking thru our defensive right at the start and it looked like they were going to have a run-over but we held them down pretty good. Eli McAngus, Luther Parker, Aubrey Smith, Fred Williams, and Jack Kerr played in the first quarter. Sonora got eleven shots at our goal but only put one of them through the hoop, and out of five free shots they scored one. Eldorado got eight shots at their goal but failed to score. Bill Currie, Albert Martin, Fred Logan, and Albert McGinty played in the second quarter. Brownie Bullion was substituted for Bill during the second quarter. Sonora took 23 shots at our goal and scored two. Eldorado took 8 shots at Sonora's goal but failed to score, and also failed to score on the only free shot during the quarter. The same team that played the first quarter came out for the third quarter. Out of 23 shots Sonora scored six hits and out of 4 free shots scored one. Eldorado took 19 shots and scored one, and out of 3 free shots, scored one. During the third quarter Albert Martin and Albert McGinty were substituted for Jack Kerr and Fred Williams. In the last quarter Sonora took 27 shots and scored two, and out of 2 free shots scored one. Eldorado got 9 shots and scored 3, and out of 6 free shots made one. The game ended with the total score of 19 to 10. Aubrey Smith was high point man for Eldorado.

**WANTED** At once, 200 fat Turkeys and 1,000 fat hens  
 A. J. ROACH  
 W. E. CLOUD

**NOTICE OF BIDS FOR COUNTY DEPOSITORY**  
 Notice is hereby given that bids will be received by the Commissioners' Court of Schleicher County at its February term, same being February, 9th, 1931, from any banking cooperation, association or individual banks that may desire to be selected as depository of the funds, both county and school, of Schleicher County. Each bid must be delivered to the County Judge on or before 10 o'clock February 9th. The court reserves the right to reject any and all bids.  
 F. M. BRADLEY,  
 County Judge, Schleicher County, Texas.

Mrs. Hines, of Del Rio, Texas a sister of Mrs. V. G. Tisdale is making a visit in Eldorado.

### Sample Dairy

THE HOME OF PURE MILK  
 Phone 8104  
 To the Public: My Herd of Dairy Cows have been inspected by State Veterinarians and are free from any kind of contamination, such as Tuberculosis or any other infection. Buy your milk from the following Dealers or phone my dairy.

**GROCERIES**  
 Self-Serve Grocery, M. O. Shafer, Roy Andrews, W. H. Parker & Son.

**DRUG STORES**  
 L. M. Hoover and Royster & Whitten.

**CAFES**  
 Little Cafe, Mrs. Williams (near school.)  
 State Certified Herd

**THE DISCLOSURES IN NEW YORK**  
 One of the main reasons why crime pays, when conducted on a large scale has been shown by the recent investigation of New York judges.  
 According to the New Yorker, which sums up the evidence in its issue of December 20, charges of graft or misconduct of one kind or another have been made against a federal judge, a judge of the General Sessions and four city magistrates. In other words, seven out of the hundred judges in the largest city in the world are believed to have had illegal connections. This record is illustrative of a situation that probably exists in many communities in this country.  
 And we have well-meaning reformers optimistic enough to believe that anti-gun laws to prevent the law abiding citizen from owning firearms would help remedy the crime situation. Sure punishment for the guilty instead of respective legislation for the innocent would seem to be the better course of procedure.

Ovid Wade was in from the farm Monday and qualified as one of the Commissioners of Schleicher county and for president of C. Mr. Wade takes the place of Ira McDonald who has been serving under appointment.

**SALE**

**ON COOK STOVES**

AND  
**Kerogas and Kitchen Cook**

Originally \$50.00 to \$75.00 each. Your choice of the lot in stock for \$35.00. Never before in the history of Eldorado has such bargains in Cook Stoves been offered.

**5c Sale On Dishes**

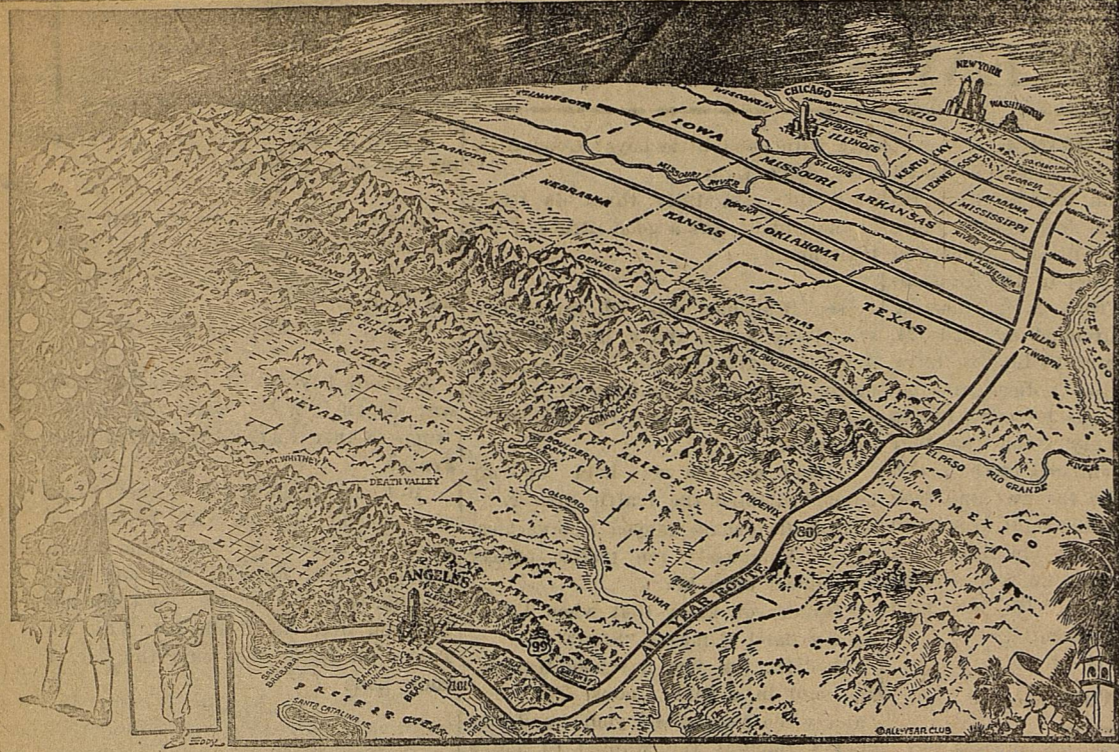
With each dish you buy at regular retail price, we will sell you another of equal value for 5c. Now is the time to replenish your china closet with new dishes.

**West Texas Lumber Co.**  
 Service and Quality

**Whitten Service Station**

THE PLACE OF SERVICE  
 HUMBLE GAS AND OILS  
 TIRES — TUBES — ACCESSORIES  
 LEWIS WITTEN, MGR. NEXT TO FORD GARAGE

## National All-Year Route No. 80 Awaits Mid-Winter, Spring Motor Vacationists



AMERICA'S mid-winter and spring "call of the open road" refers to national highway No. 80—the All-Year route between the Pacific and Atlantic coasts.

Mid-winter and spring motor vacationists will find highway No. 80 the right boulevard if Southern California is their destination.

This route is the low altitude way to the Pacific Coast, is never closed and official reports are that highway No. 80 is in good condition for immediate touring with no detours in evidence. Half of it is paved

with concrete and oil, while the balance is gravel and hard dirt.

All national highways running north and south connect with this Southern route running east and west as illustrated in the accompanying map presented as a touring service to the readers of this newspaper.

Written requests for detailed auto routing information and maps desired by prospective mid-winter and spring motor vacationists planning a Southern California tour will be answered immediately free of charge by writing the All-Year Club, 1151 South Broadway, Los Angeles.

A free illustrated itinerary covering in all points of interest in Southern California will also be sent in answer to the written requests for touring information.

On the Pacific coast there is one highway, No. 101, from Mexico, to Canada and for about half the distance there is highway No. 99. They are paved excepting a few miles.

These highways lead to, through and by a wonderful series of National parks, mountain lakes, streams, redwood groves, orange groves, golf courses and Pacific ocean beaches.

### FIRST NATIONAL BANK MAKES GOOD STATEMENT

The call for December 31, for the First National Bank, shows that it is in good financial conditions, although the deposits are some what lower than usual. The Bank nevertheless makes a splendid showing which is a credit to its managements.

If you are looking for bargains to invest your loose change in, read the advertisements in This Week's Success there is some real bargains if you have the change. Then when you are buying tell your merchant you saw his ad in The Success.

Vernon Brooks and wife were here this week meeting friends and visiting.

Miss Minnie Martin was in from the ranch Wednesday visiting her mother Mrs. S. C. Martin.

Mossie Brown, of Big Lake, was here Wednesday, shaking hands with friends and looking after business.

Henry Mund and wife were in from the stockfarm Wednesday buying.

Pat Martin and family of Rudd spent Wednesday in San Angelo on business.

There will be a pool of poultry in San Angelo Jan. 23-24, an effort is being made to have a car placed in Eldorado to be loaded here and one is promised, if this can be accomplished it will be a wonderful saving to the poultry dealers here, as it will save the time expense and loss of the long haul to San Angelo.

Kopweh—Do you think the dead can communicate with us?  
Hannruh—I know they can't. Once I managed to borrow a dollar from a Scotchman. A week later he died, and I haven't heard a word since

Phone us the news.

### ELDORADO PASTOR BEGINS FIFTH YEAR OF SERVICE

Last Sunday was the beginning of the fifth year of service by Rev. J. L. Ratliff with The First Baptist Church. During this time there were 153 additions to the church, 92 of these by letter and 61 by baptism. A net gain to the membership of 95. During these four years the church has raised for all purposes more than forty thousand dollars in cash. The membership of the church should be far from boastful, but very grateful to God for His blessings upon our work.

### WOMANS CLUB MET WITH MRS. D. E. DELONG

The Woman's Club of Eldorado met with Mrs. D. E. DeLong, Tuesday January 6, 1931 with Mrs. C. M. McWhorter presiding. Mrs. Joe Edens was leader of the program and several interesting topics were discussed as follows: "Importance of Uruguay" by Mrs. Jarvis; "Political Strife in Argentina" was discussed by Mrs. W. N. Ramsay and "Expansion of Argentina and Boundary Controversies" was discussed by Mrs. McWhorter. After the program delicious refreshments were served to all.

Officers were then elected for the new year. Mrs. C. M. McWhorter was elected President; Mrs. R. D. Holt, 1st Vice-president; Mrs. Jarvis, 2nd Vice-president; Mrs. Joe B. Edens Secretary; Mrs. D. C. Hill, Treasurer; and Mrs. H. W. Weidenmann, Parliamentarian.

### QUESTIONS FOR NEXT MEETING BRAZIL SINCE 1870

1. In 1870, what were the leading political parties in Brazil?
2. What Emperor ruled Brazil from 1840-1889? Tell what progress Brazil made during this time.
3. What was the "Rio Branco" law?
4. What caused the deposition of Pedro II?
5. What racial elements compose the population of Brazil?
6. Name the leading states of Brazil
7. Name the chief occupations of Brazil. The chief exports.
8. What was the influence of the World War upon Brazil.

R. P. Hinyard, of San Angelo was here Tuesday attending a meeting of the Stockholders and Directors of the First National Bank.

The Texas Legislature is now in session and maybe Texas will begin to do something. The making of a new Constitution would not be out of place and several changes is badly needed.

### THE FAMILY DOCTOR By John Joseph Gaines, M. D.

WINTER EPIDEMICS

I claim originality in this saying that, "infections work behind closed doors." I carry the thought with me daily, as I go about my work. The first duty, if you would dislodge the enemy, is, open the door, be it of wood, glass, or human tissue; get at the unwelcome invader and destroy his works.

The worst epidemics—small-pox, measles, diphtheria, scarlet fever, and infantile paralysis, take place at a season when our houses are tightly fortified against winter inclemencies of weather. One of the worst epidemics of small-pox that I ever experienced, ceased promptly when spring breezes were permitted to enter bedrooms, and living-rooms to "air out" residences in every remotest corners.

The worst case of small-pox I ever attended was in a family that kept every crevice of the dwelling plugged for fear outside air would enter. The patient recovered—but it was an accident!

It follows then, that if free ventilation ends the epidemic, it must be valuable as a preventive of diseases of infectious nature. I instruct my families to see that the residence from top to bottom, is thoroughly aired at least once a day; if the sun is shining an hour or two is not too long for the internal air-bath. I do not like to enter a dwelling where the first thing to greet my nostrils is the odor of meat and vegetables cooked at yesterday's dinner. Yes, it's "old stuff" I'm writing, but it's daily experience in this advanced age—and I don't live in the backwoods either—so there!

The family doctor must be just as dead against foetid air indoors, as he is against the deadly stream of night-air, pouring through an open window, over the bed where children and aged folks sleep.

Common-sense is my rule. Keep the house sweet, pure, and comfortable. It is not so, if foul with the odor of beef cabbage and tobacco-smoke. Heathen? No; just average Americans all over the land.

Rev. and Mrs. J. D. McWhorter were called to Sterling, City Wednesday to conduct the funeral of Mrs. Walker J. Mann, who died Monday in a Temple Sanitarium.

# SELF-SERVE GROCERY

WHOLESALE AND RETAIL

We pride our self in giving the most of the best, for the least money. Below you will find a few of our many specials for:

FRIDAY & SATURDAY

Sugar Pure Cane 20 lb 95c,  
Limit 20 lb with one dollar or more mds.

FLOUR  
Golden West, every sack guaranteed  
48 lb \_\_\_\_\_ \$1.35  
24 lb \_\_\_\_\_ 70c  
Worth More high pat. 48 lb \_\_\_\_\_ \$1.15  
24 lb \_\_\_\_\_ 60c

LARD  
Armours or Vegetole 8 lb bucket \_\_\_\_\_ 91c  
16 lb Bucket \_\_\_\_\_ \$1.87

Catsup Van Camps 14 oz. bottle _____ 16c	Prunes 3 lb _____ 25c
Peas Van Camps extra sifted No. 2 size 3 for _____ 49c	Raisins 4 lb pkg. _____ 32c
Beans No. 2 string- less 3 for _____ 43c	2 lb pkg. _____ 17c
Tomatos No. 2 can 3 for _____ 25c	Pepper Black 1 lb can _____ 45c
No. 1 can 3 for 20c	1-2 lb can _____ 23c
Pickles Mount. sour Qt. Jar _____ 19c	Hominy No. 2 1-2 can 3 for _____ 29c
Olives Queen Qt. Jar _____ 38c	Med. can 3 for 19c
Pork & Beans, Red Beans, or Black- eyed Peas, Wapco Med. can 3 for 23c	Kraut gal. can _____ 37c
Milk, 3 tall cans 23c	No. 2 1-2 can ea 12c
6 small cans _____ 23c	Med. size ea. _____ 9c
	Peanut Butter Veri- best 5 lb _____ 72c
	2 lb jar _____ 33c
	1 lb jar _____ 23c
	Pickles gal. can 67c
	Butter Home made a lb _____ 33c

BEANS Pinto 21 lb No. 1 Recleaned \_\_\_\_\_ 98c

CABBAGE Nice green heads a lb \_\_\_\_\_ 3c

Turnips & tops, Mustard greens & Carrots  
Nice Bunches 2 for \_\_\_\_\_ 15c

SPUDS Nice ones 10 lb \_\_\_\_\_ 23c

Baking Powder Rumfords 1 lb can \_\_\_\_\_ 25c

Soap Palm & Olive 3 cakes _____ 19c	Big 4 laundry 10 bars _____ 33c
--	------------------------------------

### COFFEE

That good Admiration a cup of Southern  
Hospitality 3 lb bucket \_\_\_\_\_ \$1.18  
1 lb can \_\_\_\_\_ 43c

Coffee Peaberry Blend 3 lb _____ 73c	Coffee 100 percent Pure 6 lb for \$1.00
---	--

CIGARETTES all 15c brands 2 for \_\_\_\_\_ 24c  
A Carton \_\_\_\_\_ \$1.19

In our market department you will find the choicest lot of baby beef, lamb, pork, hams, Bacon, Boiled Ham, ground meat & sausage.

Lamb your choice of kind a lb _____ 20c	Ham cured Armour 1-2 or whole a lb _____ 23c
Steak hind-quarter 2 lb _____ 35c	Bacon Wilsons Breakfast a lb 32c
Steak front-quarter 2 lb _____ 30c	6 to 7 lb strip a lb _____ 29c
Rib Roast or stew meat a lb _____ 10c	Sycamore a lb _____ 27c
Pork your choice of kind _____ 20c	Smoked a lb _____ 23c
Ham Boiled Arm- ours a lb _____ 37c	Jowels fine for boiling a lb _____ 14c

IF WE PLEASE YOU TELL OTHERS  
IF NOT TELL US

## M. O. SHAFER Cash & Carry Grocery

Our Stock of Groceries is Complete and we have the highest quality lines on the market. During this repressed period of time you should give these prices a moment of thought. We can save you money on what you have to buy, not only on week ends but every day.

FLOUR Majority 48 lb _____ \$1.39	COFFEE Magnolia 3 lb, plain 73c
Thrift 48 lb _____ \$1.25	Green Beans Wapco No. 2 can 2 for _____ 25c
Gallo 48 lb _____ \$1.05	BACON Swift's Oriole a lb _____ 28c
LARD Swift's Jewel 45 lb _____ \$4.98	Cranberry Sauce, Ocean Spray, Med. size each _____ 10c
16 lb _____ \$1.87	COCOA Hersheys 1 lb can ea. _____ 28c
8 lb _____ 95c	1-2 lb can ea. _____ 15c
SUGAR Pure Cane (Limit 20 lb to customer and not sold alone) 20 lb _____ \$1.00	Pork & Beans Wapco No. 303 can 3 for _____ 24c
BEANS Pinto No. 1 Recleaned 10 lb _____ 48c	Hominy Van Camps No. 2 1-2 can 3 for _____ 29c
COFFEE Canova 2 1-2 lb _____ 98c	No. 303 can 3 for _____ 19c
1 lb _____ 43c	Kraut Van Camps No. 2 1-2 can 3 for _____ 35c
MILK Armours tall can 3 for 25c	No. 303 can 3 for _____ 25c
Small cans 6 for _____ 25c	Raisins Market Day Special 4 lb pkg. for _____ 32c
SOAP Palmolive 3 for _____ 23c	PEAS Kumers super quality No. 2 can 2 for _____ 35c
JELLY H J Hieng med. size asst. flavors each _____ 22c	GINGER SNAPS old time extra special 2 lb _____ 28c
RICE, No. 1 Blue Rose, Bulk 5 lb _____ 35c	CORN Fame Fancy Country Gentlemen No. 2 can 3 for _____ 44c
PRUNES Prat Lows stewed No. 2 1-2 can each _____ 25c	CHERRIES Pitted Red Fine for Pies No. 2 can _____ 24c
PEACHES, White Swan No. 2 1-2 can 3 for _____ 65c	CHILI BEANS Wanians Chub 3 for _____ 25c
No. 1 can 3 for _____ 42c	POWDERED SUGAR White or Brown 3 for _____ 24c
CATSUP Wapco 14 oz. Bottle each _____ 17c	VIENNA SAUSAGE Veribest 3 for _____ 24c
COCONUT Bakers Premium 1 lb pkg. _____ 40c	POTTED MEAT Veribest 6 for _____ 24c
PEANUT BUTTER Smilo 5 lb can each _____ 75c	APRICOTS White Swan No. 2 1-2 can 2 for _____ 55c
PICKLES Sour sliced Qt. Jar each _____ 22c	PUMPKIN Lily of the Valley No. 2 can 2 for _____ 25c
Sweet Plain Qt. Jar each _____ 33c	OKRA & TOMATOES or Plain Okra No. 2 can 3 for _____ 50c
OLIVES Stuffed World Over full pint each _____ 39c	
SPINACH, Libbys Fancy California No. 2 1-2 can 17c No. 2 can _____ 14c; No. 1 can _____ 11c	
GRAPES for Salads, Gold Bar Muscats No. 2 1-2 can each _____ 25c	

If you want Fresh Vegetables See us first. We have every thing in season.