

**Muleshoe Chamber
64th Annual Banquet
Section Included**



**Focus On Faith:
A Need For Sleep...
Page A2**



Muleshoe Journal



Striving to be your source for local news

75¢

Volume 90, No. 13 www.muleshojournal.com Muleshoe, Texas March 27, 2014

Commissioners' Court Approves Audit Report

By Larry Thornton
Editor

The Bailey County Commissioners' Court received a "unqualified opinion" regarding its audit of the county's financial condition for the period ending Sept. 30, 2013, meaning that nothing was noted causing the auditors undue concern.

**"It was still a good year."
— Jack Kirkland**

The audit, which was performed by Pratas, Smith & Moore, LLC of Lubbock, and presented by Jack and Michelle Kirkland of Parmer County, included an audit of the county's

internal controls, which Jack Kirkland said noted nothing that raised their concerns.

And while the report stated the county's net position showed a \$148,228 decrease

compared to the 2012 audit report; however, Jack Kirkland said, "It was still a good year."

Total revenues for 2013 totaled \$4,406,714 compared to \$4,872,608. At the same time, its expenditures in 2013 were \$4,554,953 compared to \$4,677,697 the previous year.

According to the

report, the net position at the end of the 2013 fiscal year showed assets of \$1,340,325 more than its liabilities, and that \$1,016,929 of that amount could be used to meet the district's obligations, although \$790,016 of that is restricted special revenue funds.

Kirkland went on to

explain that the county's unassigned general fund balance was \$719,684, representing 28 percent of its general fund expenditures.

Later in the meeting, the commissioners discussed the percentage remaining in unrestricted general funds, which Kirkland

Continued on A2

Lady Mules Sweep Muleshoe Relays

Precure Sets 'Blistering Pace'

By Delton Wilhite
Sportswriter

The Lady Mules played host to the seven-team Mule Relays Friday, and despite being the host team they dominated the competition.

They scored 181 points to win the meet by 54 points. Littlefield, Brownfield, Post, Abernathy, Plainview and Ralls all trailed the Lady Mules in that order.

Adrienne Precure set a blistering pace for the Lady Mules as well as all the competitors in the Mule Relays

She won three gold medals and two silver medals for the Lady Mules.

Precure won back-to-back gold medals in the first two events of the meet. She leaped five feet to win the high jump.

Marilyn Melendez won the bronze medal by clearing 4-4 in the same event.

Precure soared 9-0 in the pole vault for her

second gold medal of the day. Aimee Rosas placed fourth in the same event with a height of 6-0.

A. Rosas added three gold medals later in the meet.

Katelyn Gable did her best to keep up with Precure and won three gold medals and one bronze medal in the meet.

Her bronze medal came in the long jump with a distance of 147-6.25.

Daniela Diaz was right behind Gable with a fourth place leap of 14-3.25.

A. Rosas won the bronze medal with a distance of 31-2 in the triple jump.

Mireya Ruvalcaba placed fifth with a hop, skip and jump of 30-1.50.

Shanice Rosas was sixth in the discus with a throw of 84-4.

Jasmine Garza finished with a bronze medal time in the first race of the day, the

Continued on A8



Up And Over... With A Little Help

Contrary to appearances, it was Friday's stiff West Texas breeze that's giving Lady Mule Adrienne Precure a little help, or at least a bit of a push, and not part of the high jump pit crew.

The young man's task during the competition was

simple: Keep the bar from being blown off the standards by the wind... without interfering with a vaulter's contact knocking it down. Well, maybe it is a little easier said than done.

Photograph by Gabby Perez

Get Your 'Howww-dieeee' Ready For Saturday!

Are you going to be among the Muleshoe-area residents who are "just proud to be at this year's 64th annual Muleshoe Chamber of Commerce & Agriculture banquet?"

Will you be among those in attendance with the opportunity to greet the participants in this year's "Minnie Pearl Hat Contest" with a "Howww-dieeee" of your own?

Well, in either case you won't be unless you've made plans to be there. Tickets are available from the chamber office.

This year's event theme is an "Evening

at the Grand Ole Opry," and will feature entertainment from the Cactus Theatre.

The doors will open at 6 p.m. at the Bailey County Coliseum for the gathering, which will feature a catered meal of baked chicken and chicken-fried steaks, along with a "mystery desert."

Tickets are \$15 per person, \$8 for children, and a table of eight is available for \$100.

In 1939, country comedian Sarah Colley Cannon stepped into a department store in Aiken, S.C, purchased a flowered hat for \$1.98 and performed as the character Minnie Pearl for the first time.

School Calendar Easily Approved

By Larry Thornton
Editor

The Muleshoe Independent School District's board of trustees approved the 2014-15 school calendar during Monday's regular meeting, an act that seemed to please the board members for its lack of problems.

In fact, as the board

turned to the agenda item, one board member commented, "Here's a chance for everyone to hate us," referring to difficulties that have been experienced in past years.

But if the item has created a bubble of contention between instructors and campuses in the past,

Superintendent Dr. Gene Sheets popped it, complementing Assistant Superintendent Dr. RL Richards, and the campus staff for resolving potential conflict over the issue before it was brought to the school board for consideration.

"Dr. Richards did

an outstanding job of bringing everyone together," Sheets said, noting that for the second year in a row a consensus was reached across the district.

The only change that had to be made in the calendar presented for board approval, the superintendent said,

Continued on A3

MULESHOE STATE BANK

"Where a handshake still means something."

MULESHOE • 272-4561 • 101 W. American Blvd. • FARWELL • 481-9580 • 801 Ave. A

**NEW LOW EQUIPMENT FINANCE RATES!
ASK US FOR A NO OBLIGATION QUOTE TODAY!**

www.muleshoestatebank.com



OPINION

Around Muleshoe...



Announcements from non-profit organizations in the Muleshoe area.

To post an announcement send an email to editor@muleshoejournal.com

Weekly Fish Fry

Immaculate Conception Catholic Center, 805 Hickory, will be hosting a fish fry fund raiser on Friday nights, March 14 through April 11, from 4:30 to 7 p.m.

The menu includes fish, fries, beans, coleslaw, hush puppies and desert.

Adults plates are \$8, and children 6 to 10 years of age are \$5 per plate. Carry out and delivery is available. Call 272-4167 for additional information, or to order.

Annual Chamber Banquet

Muleshoe area residents will have an opportunity to show off their "Grand Ole Opry" best this week at the annual Muleshoe Chamber of Commerce & Agriculture's annual banquet on March 29.

This year's event has a western theme, and features "an evening at the Grande Ole Opry," with the stars from the Cactus Theater, including a "Minnie Pearl" Hat contest.

The doors will open at 6 p.m. at the Bailey County Coliseum for the gathering, which includes catered meal of baked chicken and chicken-fried steaks.

There will also be a silent auction.

City Hall Blood Drive

Muleshoe City Hall will be hosting a community blood drive, with the Coffee Memorial Blood Center, on Wednesday, April 16, from 10 a.m. until 4 p.m.

Photographic identification or a donor card is required. And, while donors in the past had to be at least 17 years old to participate, Donors who are age 16 may now donate with a signed parental consent form.

For appointments, call 331-8800 or 1-877-574-8800.

Texas Milk Totals Increase

Texas milk production totaled 781 million pounds during February 2014, up 3.2 percent from last year's production of 757 million pounds.

January 2014 production totaled 845 million pounds.

The number of milk cows during February averaged 440,000 head, up 5,000 from last year but unchanged from the January 2014 number.

Production per cow averaged 1,775 pounds during February, 35 pounds higher than last year but 145 pounds lower than January 2014.

Milk production in the 23 states

participating in the monthly survey totaled 14.9 billion pounds during February 2014, up 1.4 percent from production in these same states during February 2013.

January revised production, at 16.2 billion pounds, was up 1.3 percent from January 2013.

Production per cow during February averaged 1,753 pounds, 21 pounds above February 2013.

The average number of milk cows in the 23 states was 8.51 million head — 13,000 head more than last year but 1,000 head less than January 2014.

A Need For Sleep And A Need For Humility Share The Same Pillow

I've slept since then, so I don't remember when it aired, but several years ago, *60 Minutes* did an interesting story on "sleep."

Sleeping is one thing I've always been very good at. But if anyone has pointers, I'm willing to listen. What I heard was fascinating.

Modern folks in our society have been a little snooty and dismissive about sleep, as if needing to snooze at all is something of an embarrassment, a luxury we could likely do without if we weren't so lazy and unmotivated. Not so!

In 1980 a study was done using rats who were kept awake indefinitely. After five days, they began dying. They needed sleep as badly as they needed food. All mammals do.

Recent studies show that sleep is every bit as important to our health



Focus On Faith
Curtis Shelburne

as diet and exercise, and that we need 7-1/2 to eight hours of it each day.

The lack thereof seriously affects our memory, our metabolism, our appetite, how we age, and, it seems, if we drive ourselves and/or others crazy (my phrasing here).

A study at the University of Chicago School of Medicine restricted the sleep of young, healthy test subjects to four hours a night for six consecutive nights.

At the end of that time, tests showed that each of the subjects was in a pre-diabetic state, which was naturally reversed when they

resumed sleeping normally.

They were also hungry. Lack of sleep caused a drop in levels of leptin, a hormone that tells our brains when we're not hungry.

Cheating your sleep? No problem. If you don't mind being fat and sick. One researcher said that sleep deprivation should certainly be considered a risk factor for Type II diabetes.

The program host went on to mention studies done all over the world linking lack of sleep to obesity, heart disease, high blood pressure, and stroke — not to mention the mood swings that make sleep-deprived people "hell on wheels" to harmony in their homes and workplaces, and whose brain activity on MRIs mimics that of the severely psychiatrically disturbed.

To Type A folks who think they've trained themselves to do fine with little sleep, the researchers reply, "Nonsense."

For a day or two, artificial "counter measures" such as caffeine or physical activity may mask the problem, but it is cumulative and real and can't be hidden for long.

"People who are chronically sleep-deprived, like people who have had too much to drink, often have no sense of their limitations," said Dr. David Dinges of the University of Pennsylvania School of Medicine.

"It's a convenient belief," he says. But he issues a standing invitation for "any CEO or anyone else in the world" to come to his laboratory and prove it.

We easily adopt society's lie that our true worth comes from what we produce. We're so impressed with ourselves, our indispensability, our strategies and plans.

We quit "wasting time" by sleeping much. Then the wheels come off even as we slog on physically and emotionally as if through molasses.

And the God who is real Rest and Peace but who himself never needs to sleep, chuckles and says, "Time for bed, child. Go to sleep and let me do within you what you can't do for yourself. I'll spin the world a few rotations without your help."

I need to ponder the lessons in that. But right now, I need a nap.

County Audit...

Continued from A1 said should be sufficient for the county to operate for slightly more than four months if no additional revenue was received, placing the county in line with state recommendations.

The report lists the county's outstanding debt in 2012 of \$3,615,634, due to the bonds sold to finance the construction of the Bailey County Law Enforcement Center had decreased in 2013 to \$3,482,601.

Kirkland also mentioned that several of the Bailey County EMS' outstanding accounts — along with accounts owed to the district clerk's criminal cases, were more than a year old, making it doubtful that those accounts receivable would be collected.

The doubtful accounts owed to the EMS increased in 2013 from \$396,727 to \$638,198; while the accounts owed to the district clerk increased from

\$109,826 to \$266,695.

The report also notes that the doubtful accounts in the county's general fund for services total \$783,098.

In other business Monday, the court approved payment of county bills totaling \$137,887.16.

We are passionate about your health.

Early Detection can **SAVE YOUR LIFE.**

Yearly Peace of Mind – If you're over 35 and have been putting off your annual mammogram...call today for an appointment that could save your life.

Digital mammography Close to Home.

APPOINTMENTS AVAILABLE FOR THIS MOBILE LOCATION

Muleshoe Area Medical Center
703 S. First St., Muleshoe

Wednesday, April 16
9:15 a.m. - 6:00 p.m.

CALL NOW 1-800-377-4673

Call 1-800-377-4673 to schedule your mammogram the next time our mammography coach comes to your city or for an appointment at the Harrington Breast Center in Amarillo.

Businesses, clinics and hospitals throughout the region are encouraged to invite the Mobile Mammography Coach to come to their location to offer breast screening services.

HARRINGTON Breast Center

A Department of **HARRINGTON** Hospital

1310 Wallace Blvd. • Amarillo • harringtonbreastcenter.org
806-356-1905 • 800-377-4673

Like us on Facebook! [facebook.com/HarringtonBreastCenter](https://www.facebook.com/HarringtonBreastCenter)

News about your college student

If your college student is graduating or has made the Dean's or President's List, in order for that information to appear in the *Muleshoe Journal*, we must receive notice from the respective educational institution.

Your son or daughter must sign a release so the information can be sent to us.

Have them visit their bursar's office to sign a form indicating they wish to share their good news!

Once permission to share information has been granted, the college or university should send the info via email to: editor@muleshoejournal.com.

Muleshoe Journal USPS 367820

Established Feb. 23, 1924 Published by Panhandle Weeklies, LLC.

Every Thursday at 201 W. Ave. C, P.O. Box 449, Muleshoe, TX 79347.

Periodicals paid at Muleshoe, TX, and at additional mailing offices.

Postmaster: Send address changes to the Muleshoe Journal, P.O. Box 449, Muleshoe, TX 79347.

We are qualified members of the Panhandle Press Association,

West Texas Press Association and Texas Press Association

Michael Distelhorst, Publisher

Larry Thornton, Editor

Rhea Gonzales Ad Representative

Ad Design / Classified Advertising

© 2014

mdistelhorst@hearstmp.com

editor@muleshoejournal.com

adsales@muleshoejournal.com

advertising@muleshoejournal.com

classifieds@muleshoejournal.com

Subscriptions:

By Carrier Yearly — \$27

Bailey County, by mail — \$29

Elsewhere — \$40

By E-mail — \$22

Advertising rate cards on request

Hours are 8 a.m. to 5 p.m., Monday - Thursday, and 8 a.m. to noon on Friday. *Advertisers should check their ad the first day of insertion. The Journal will not be liable for failure to publish an ad or for a typographical error or errors in publications except to the extent of the cost of the ad for the first day of insertion. Adjustment for errors will be limited to the cost of that portion of the ad where the error occurred.



Let's Talk About MISD's Award-Winning Art Students

The Muleshoe Independent School District's Fine Arts Department has added more awards and honors to its incredible success this year.

Several Muleshoe High School and Watson Junior High art students have had their art work chosen to be displayed at several art galleries and have won awards for their outstanding artwork.

Muleshoe High School student Allegra Mora has been chosen to display her artwork in the Runnels Gallery at Eastern New Mexico University.

Watson Junior High art students Jimmy Villa and Jayton Zimmerman were also selected to

Super news from MISD

By
Superintendent
Dr. Gene Sheets

display their artwork in the Runnels Gallery.

The jury panel has selected a body of artwork from the hundreds of art pieces submitted for inclusion into the fifth Annual Community Youth Art Exhibition this year.

The exhibition opened Saturday, March 1, and runs through Friday, March 28.

A closing reception will be held on Friday, March 28, from 5-6:30 p.m., at which time the gallery be presenting awards.

The Runnels Gallery

is located within the ENMU Golden Library and is open during library hours. It is an art exhibit space that offers the public a place to view the art of ENMU students, faculty and various guests.

The gallery has hosted national juried exhibitions for artists working in various mediums including two-dimensional, three-dimensional and photography.

In another exhibit, Muleshoe High School Art Students will display artwork in an

Exhibit at the Garden and Arts Center in Lubbock.

"Floral Inspirations" was the theme. Students were shown photos from the Garden and Art Center. From these photos, they were to create a work of Art using any medium they chose.

Muleshoe, Sudan, and Idalou were invited to participate in the

exhibit, which will run from the First Friday Art Trial, March 7, to the end of the month.

The following students from Muleshoe are participating in the exhibit: Shanise Rosas, Angela Rodriguez, Paylel Patel, Densie Rameriz, Mitzy Rameriz, Angela Rodriguez, Miranda Acevedo, Merian Gutierrez, Francisco Elizalde, Mitzi Rameriz, Aileen Terrazas, Valerie Godinez, Victoria Guzman and Catherine Pilman.

Rodriguez, Paylel Patel, Densie Rameriz, Mitzy Rameriz, Angela Rodriguez, Miranda Acevedo, Merian Gutierrez, Francisco Elizalde, Mitzi Rameriz, Aileen Terrazas, Valerie Godinez, Victoria Guzman and Catherine Pilman.

Muleshoe High School Art Students also participated in the Visual Art Scholastic Event (VASE). The Texas Art Education Association (TAEA) has sponsored the VASE competition since 1994.

Continued on A5

Muleshoe School Board Meeting...

Continued from A1 was due to a change in the date for the annual junior livestock show.

Even regarding that issue, Dr. Richards said the individual campuses had been contacted and had voiced their understanding and agreement with the calendar change.

Richards also presented the school board with information related to the district's instructional material certification, an item which also received board approval Monday.

The assistant superintendent explained that a district can't order the instructional material needed for next year until after the school board certifies the grade levels and courses that are being taught.

He explained that some charter schools had been buying materials that included grade levels the schools don't have, resulting in changes requiring the board to certify the school district's needs.

Richards also talked briefly about some of the problems the publishers have in determining the needs and desires of course instructions, noting that at one end of the spectrum were teachers who wanted to "touch paper," and those at the other end who didn't.

In other business, the school board:

- Considered the school district's teacher and professional personnel contracts in closed session.

Among the changes in personnel according to the superintendent,

is the reassignment of assistant girls basketball coach Carey Sudduth to position of head coach, replacing Jay Gorman whose resignation had previously been accepted by the school board.

- Cancelled the school district's May 10 election, because — as Muleshoe City Secretary LeAnn Gallman pointed out, the incumbents standing for election are unopposed.

- Noted during discussion of the school district's enrollment report that the school district is about 30 students under last year's total.

- Received a financial report from Business Manager Daniel Harper.

- Approved the minutes from the board's March 6 meeting.



Kinder Korner Presentation

On Thursday, March 20, Ken Box presented a program to Kinder Korner Preschool children about his "Honor Flight" to Washington, DC. He is a veteran of the Viet Nam War and talked of his experiences with the other veterans who were also chosen to take part in the flight.

Prices Good Thru 04/19/14

REAL DEALS No Fooling

312 W American Blvd,
Muleshoe, TX
Hwy 84 E, Sudan, TX
1200 Hwy 84, Amherst, TX



David Seeds
5.25 oz.
2 \$2.22 FOR

Come Celebrate 40 Years With
40¢ off Our Famous Burrito

40th Anniversary of our Beef & Bean Burrito
Reg. \$1.79
NOW \$1.39

World Famous Beef & Bean Burrito

Blue Bunny Big Ice Cream Sandwich
mississippi mud, vanilla, or neapolitan
69¢ each

EXTRA SAVINGS

WESTERN FAMILY
PETAL SOFT BATH TISSUE
4 ROLL PKG.
1 AT REGULAR PRICE
2 \$2.50 FOR

WESTERN FAMILY
PAPER TOWELS
1 ROLL PKG.
1 AT REGULAR PRICE
3 \$2 FOR

BAR S FRANKS
8 CT. PKG.
2 \$2 FOR

BAR S BOLOGNA
2 \$3 FOR

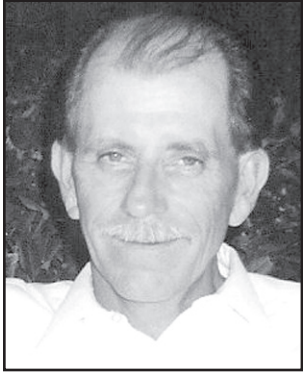
HOT LINKS
8 1/2¢ EACH OR WITH BREAD
94¢

- | | | |
|---|------------------|------------------|
| SELECT VARIETIES
Cracker Jack'D | EA. FOR | 2 \$4 |
| SELECT VARIETIES
Krave Natural Protein Bars ... | BUY ONE, GET ONE | FREE |
| SELECT VARIETIES
Mentos Gum | REG. \$2.09 | \$1.59 |
| SELECT VARIETIES
Stride Gum | REG. \$1.69 | \$1.00 |
| SELECT VARIETIES
Belvita Breakfast Biscuits | REG. \$1.39 | 79¢ |
| SELECT VARIETIES
Monster Energy Drinks | 16 OZ. | 2 \$4 FOR |
| SELECT VARIETIES
Gatorade Thirst Quencher | 28 OZ. | 2 \$3 FOR |
| SELECT VARIETIES
Pepsi Products | 12 PACK CANS | 2 \$8 FOR |

Obituaries

Andy King

Andrew Frank "Andy" King, 62, of Odessa, passed from this life on Sunday, March 23, 2014, at Hospice House of Odessa. He was born in Muleshoe on March 29, 1951, to the late Harold "H. D." King and Hope W. (McClain) King.



He was a mechanic at a bowling alley.

Andy loved to fish, go bowling, and play chess. He also enjoyed shooting pool and watching NASCAR.

He had moved to Florida, living there for 11 years. Knowing that he was not long for this world, he moved back to Odessa in January so that he could be close to family and enjoy time with his children and grandchildren.

Those left to cherish his memory include his son — Phil King of Houston; daughters — Saleana Salge and husband Woody, and Corinna Thompson and husband Jeff, all

of Odessa; brother — Max King and wife Pat of Muleshoe; sister — Jeannie King of Ruidoso, NM; and six grandchildren.

In addition to his parents, his wife — Lucky King, preceded him in death.

Memorial services will be privately held. Arrangements are entrusted to Acres West Funeral Chapel and condolences may be sent to the family online at www.acreswestfuneral.com.

In lieu of flowers, it is suggested that donations be made to Home Hospice Foundation, or the charity of your choice.

Jennyslipper News

Green Honored By Organization Membership

The Jennyslippers, Women Associated of the Muleshoe Chamber of Commerce & Agriculture, honored member Ruby Green at a recent meeting.

Green was presented with a framed certificate by organization president Nancy Kidd and the members of the organization.

Green, a pioneer in Bailey County, was praised for her continued dedication to the community and the Jennyslippers.

She has serviced as president of the organization twice.

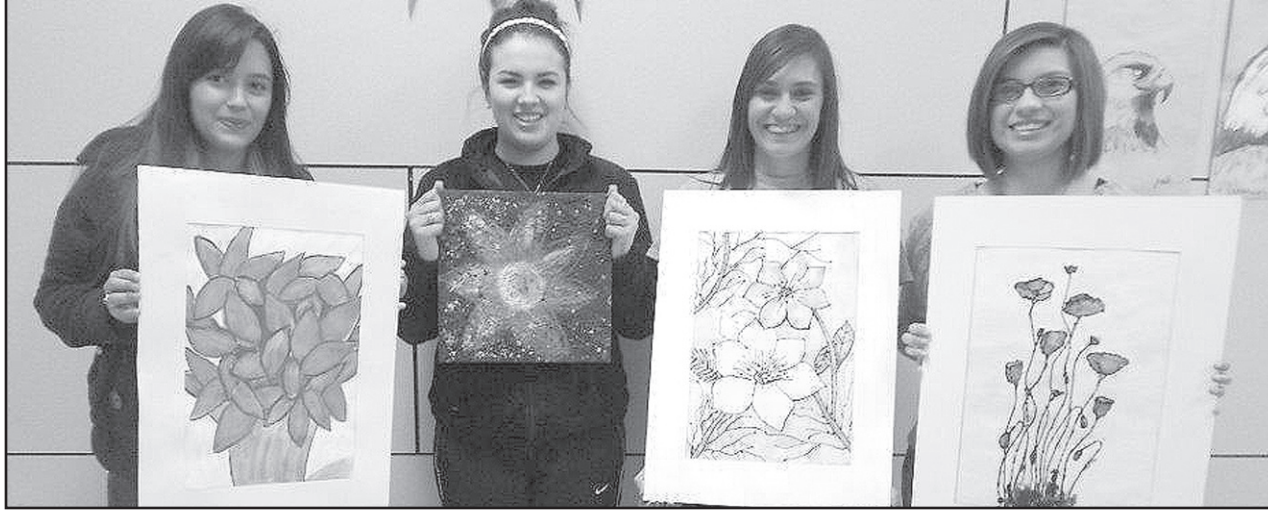
She is also a lifetime member of the Rebekahs, taking part in the organization since its inception in 1945, and serving in every office, including district deputy, and several times as Noble Grand.

An accomplished quilter, Green's work has won Best of Show at the South Plains Fair in Lubbock on three occasions.



Nancy Kidd and Ruby Green

Super News... Continued From A3



Students who are exhibiting artwork at the Garden and Arts Center in Lubbock include, pictured above, Mitzy Rameriz, Angela Rodriguez, Miranda Acevedo and Merian Gutierrez.

VASE is the only art event of its kind in the nation.

Students are provided the opportunity to bring artworks created in their art classes to their regional event where they are interviewed by a certified juror who evaluates their work based on a standard based rubric and their understanding of the art processes involved in the development of their artwork.

Only academically eligible high school students in grades 9-12 from throughout Texas can participate in VASE.

Muleshoe High School received 23 gold medals at the competition!

The following

students won gold medals in the VASE competition: Esmeralda Cabrera, Danny Campos, Gabi Chavez, Daniela Diaz, Eddie Elizalde, Victoria Guzman (2), Grey Johnson (2), Gladys Munoz (2), Rosa Munoz, Cathrine Pilman (2), Adrienne Precure, Emily Precure, Denise Rameriz (2), Alexa Reyes, Reagan Reynolds, Angela Rodriguez, Shanice Rosas, and Aaron Ross.

We are proud to support the Fine Arts in Muleshoe and help develop the talents of students interested in art, music, speech, and drama.

We are building the future, one student at a time!

Death Notices

Corina Hernandez

Muleshoe resident Corina Ramez Hernandez, 85, died on March 21, 2014, in Lubbock. She was born on July 8, 1928, to Lazarus and Maria Ramirez in Hebronville. Graveside services were held on March 24, at Muleshoe Memorial Park Cemetery.



Weather Whys: Sandstorms

Q: There seems to be a lot of sandstorms lately. What causes sandstorms?

A. Sandstorms are caused by strong winds that occur in desert or semi-arid regions, and they carry thick clouds of dust and sand, often reducing visibility to near zero in many cases, says John Nielson-Gammon of Texas A&M University.

In many parts of the world, such as the deserts of the Southwest U.S. or in Africa or the Middle East, sandstorms can create havoc with man and machine.

"A sandstorm can last for several hours to a full day," says Nielsen-Gammon. "Most of the time, sandstorms affect only the air from about 1-3 miles high, so airplanes flying above that range are okay. But on the ground, sand moving at about 50 miles an hour can be a real nightmare. It can clog up just about anything that is mechanical, from a soldier's rifle to a car or an army tank. Once the sandstorm has passed, a thorough cleaning of just about anything is required."

Q: What types of sandstorms can occur?

A: There are two types of sandstorms, says Nielsen-Gammon. "The first kind is the result of a severe thunderstorm that creates strong winds. This kind is

called a 'haboob,' which is an Arabic word for blowing dust."

"The second type is the one most Americans are familiar with. It's caused by a curving of the jet stream which brings strong winds to the surface. Sandstorms tend to be worse

Continued on A6

Weekly Fish Fry Being Held

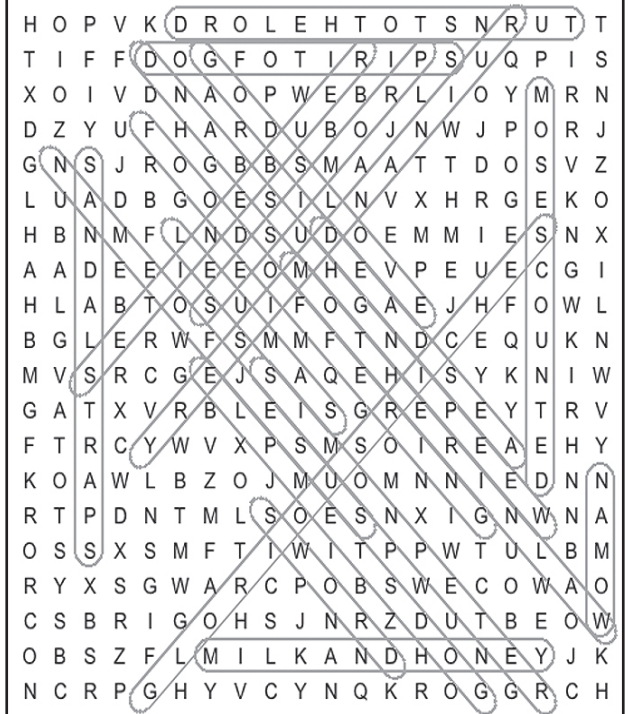
Immaculate Conception Catholic Center, 805 Hickory, will be hosting a fish fry

Local Blood Drive Set

Muleshoe City Hall will be hosting a community blood drive on Wednesday, April 16, from 10 a.m. until 4 p.m.

For appointments, call 331-8800 or 1-877-574-8800.

3:16



Beauty Care Sale!
at the Irish Inn
Make-up • Purses
Jewelry
Hair Accessories, etc.

Best Eye Vision
Walk-ins are welcome
Eye Exam @ \$40 / Contact Lens Exam \$80
Right Next to Costco Main Entrance
6020 34th St. Lubbock, Tx 79407
(806) 784-1465
(Costco Membership NOT REQUIRED)

What is in your Heart???
DISCIPLESHIP - 9:45 AM
WORSHIP - 11:00 AM
FIRST UNITED METHODIST CHURCH
507 W. 2ND

Get a Bright Smile for:
Prom ~ Graduation ~ Weddings
Come in and see
Hillary Harris,
Amber Garcia,
Jessica Haltom,
and
J.W. Haltom
Dr. J.W. Haltom Family Dentistry
• Nitrous oxide available
• Emergencies seen promptly.
• Insurance and credit cards accepted.
320 E. 8th St., Littlefield
Hours: Mon. - Thurs. 8 to 5 Fri. 8 to noon
For Appt.: 385-6935

FIVE AREA TELEPHONE COOPERATIVE, INC. AND WEST PLAINS TELECOMMUNICATIONS, INC.

CUSTOMER NOTICE

FUSC SURCHARGE FACTOR INCREASE

Effective April 1, 2014, the amount of the Federal Universal Service Charge (FUSC) appearing on your bill each month is expected to increase as a result of an increase in the Federal Communications Commission's (FCC) universal service fund contribution factor from 16.4% to 16.6%. The new FUSC amount is calculated by multiplying the FCC's universal service contribution factor against your interstate access services. The federal universal service fund program is designed to help keep local telephone service rates affordable for all customers, in all areas of the United States.

Eighth Grade Ladies Threaten To Lap Competition

By Delton Wilhite
Sportswriter

The eighth grade Lady Mules was threatening to lap the competition in the Mule Relays Thursday afternoon.

The Lady Mules had rolled up a total of 252 points to win the four team meet. Littlefield, Seagraves and Brownfield trailed the Lady Mules in that order.

Brianna Barron put the Lady Mules in front early by winning the

gold medal in the pole vault with a height of six foot six inches.

Conley Niblett, Barron and Brianna Velasquez nailed the door shut on the competition by sweeping the gold, silver and bronze medals in the high jump.

Niblett had a gold medal leap of 4-10, Barron cleared 4-4 for the silver and Velasquez won the bronze at 3-8.

Niblett won a silver medal in the long jump with a leap of 13-10.5

and Lili Barrera earned the bronze with a height of 13-1.

Yvonne Diaz placed sixth in the event with a leap of 10-11.

Velasquez earned the silver medal in the triple jump with a distance of 27-5.5 and Alexis Campos placed fifth with a 26-8.25.

Val Ambriz tossed the discus 49-7 for the bronze medal in the discus. Marki Stearmer placed fourth in the shot put with a heave of 24-

11 and Noa Rojas placed sixth with a throw of 24-0.

Jennifer Orozco and Joely Melendez won the gold and silver medals respectively in the 2400-meter run. Orozco ran a time of 11 minutes 32.47 seconds and Melendez finished with an 11:44.93.

Kimberly Lopez ran a silver medal time of 31.31 in the 200-meter dash and Campos placed fourth with a 33.34. Lopez, Melody

Moran, Barrera and Barron won the gold in the 4x100-meter relay with a time of 58.30.

Nancy Martinez took the bronze medal in the 400-meter dash with a time of 1:15.43 and Orozco finished fourth in the same race with a 1:18.65.

Barron and Moran tied for silver medals in the 100-meter dash with times of 14.41 and Lopez was fourth with a 14.72.

The 4x200-meter relay team of Barron, Niblett, Moran and Campos ran a gold medal time of 2:03.37.

Barrera and Martinez took the silver and bronze medals respectively in the 100-meter hurdles with times of 20.78 and 21.00.

Lorena Balderas finished fifth in the same race with a 26.75. Velasquez ran a silver

medal time of 1:04.00 in the 300-meter hurdles and Balderas took fifth with a 1:12.23.

Cassidy Cage won the silver medal in the 800-meter run with a time of 2:56.87 and Diaz ran a bronze medal time of 3:03.71. Hallie Myatt placed fifth in the same race with a 3:21.34.

Cage and Barrera won the gold and silver medals in the 1600-meter run with times of 6:51.40 and 7:40.43 respectively. Caroline Regalado was fifth in the same race with a time of 8:05.18.

Velasquez, Niblett, Martinez and Diaz teamed up for the gold medal in the final race of the day. The Lady Mules ran a time of 4:59.75.

The Lady Mules will compete in the Antelope Relays in Abernathy Thursday afternoon.

Early Registration For FSA Programs Encouraged

The U.S. Department of Agriculture's (USDA) Farm Service Agency (FSA) Administrator Juan M. Garcia recommends that farmers and ranchers who plan to participate in FSA programs register in advance.

Producers are

encouraged to report farm records and business structure changes to a local FSA Service Center before April 15.

Enrollment for the disaster programs authorized by the 2014 Farm Bill, including the Livestock Indemnity Program (LIP) and the Livestock Forage Disaster Program (LFP) will begin by April 15.

"We expect significant interest in these programs," said Garcia. "Early registration should help improve the sign-up process and allow us to expedite implementation of the programs. I strongly encourage producers to complete their paperwork ahead of time."

Examples of updates or changes to report include:

New producers or producers who have not reported farm records to FSA.

Producers who have recently bought, sold or rented land. Those

producers need to ensure that changes have been reported and properly recorded by local FSA county office personnel.

Reports of purchased or sold property should include a copy of the land deed, and if land has been leased, then documentation should be provided that indicates the producer had/has control of the acreage.

Producers that have changed business structures (e.g. formed a partnership or LLC) need to ensure that these relationships and shares are properly recorded with FSA.

Even family farms that have records on file may want to ensure that this is recorded accurately as it may impact payment limits.

Farm records can be updated during business hours at FSA Service Centers that administer the county where the farm or ranch is located. Producers can contact their local

FSA Service Center in advance to find out what paperwork they may need.

In addition, bank account information should be supplied or updated if necessary to ensure that producers receive payments as quickly as possible through direct deposit.

While any producer may report farm records and business structure changes, it is especially important for producers who suffered livestock, livestock grazing, honeybee, farm-raised fish, or tree/vine losses for 2011, 2012, 2013 or 2014, and may be eligible for assistance through one of the four disaster programs.

For further information about our disaster programs and USDA's Farm Bill implementation plan, visit FSA's 2014 Farm Bill webpage.

Weather Whys...

Continued from A5 during the daytime because the ground is heated up by the sun and the dust can be carried greater distances. That's why breathing can become a real problem, and some type of mask is often required. Probably the worst sandstorms occur in China and Mongolia. The sand blows so hard that there is a 'yellow rain' effect. So much sand is in the air that it changes the color of raindrops, and there appears to be a yellow rain falling from the sky."

Cattle On Feed Numbers Remain Down

Cattle and calves on feed for slaughter market in Texas feedlots with capacity of 1,000 head or more totaled 2.47 million head on March 1, down three percent from a year ago.

According to the monthly report released by the Texas Field Office, the estimate was up one percent from the Feb. 1 level.

Producers placed 410,000 head in commercial feedlots during February, up 22 percent from a year ago and up one percent from January.

Texas commercial feeders marketed 360,000 head during February, down eight percent from 2013 and

down six percent from January.

On March 1, there were 2.15 million head of cattle and calves on feed in the Northern High Plains, 87 percent of the state's total.

The number on feed across the area was down three percent from last year and up one percent from the Feb. 1 total.

February placements in the Northern High Plains totaled 371,000 head, up three percent from the January total.

Marketings were down two percent from last month at 322,000 head.

Cattle and calves on feed for slaughter market in the United States in feedlots with

a capacity of 1,000 head or more totaled 10.8 million head on March 1.

This inventory was down one percent from March 1, 2013.

Placements in feedlots during February totaled 1.65 million head, 15 percent above February 2013.

February placements of cattle and calves weighing less than 600 pounds totaled 390,000 head; 600-699 pounds totaled 330,000 head; 700-799 pounds totaled 415,000 head; 800 pounds and greater totaled 515,000 head.

Marketings of fed cattle during February totaled 1.55 million head, three percent below 2013.



SUPERIOR BEAN & SEED

INTEGRITY * CLASS * TRUST

COME GROW WITH US...

Black Eye Pea Contracts 2014
Wheat Cleaning \$2.00/Bushel

Office 806-227-2194
Jason Trotter * 806-891-3564 Anytime
580 US HWY 84 * Sudan, TX 79371

Team up with Capital Farm Credit



Experienced in agricultural production loans

Flexible loan programs to fit any operation

Eligible for patronage program

Competitive interest rates

We're the answer.

Dusty Clayton recently teamed up with Capital Farm Credit. Dusty serves as loan officer and joins Muleshoe branch manager, Greg Lance, to serve all your agricultural financing needs.

Stop by and welcome Dusty to the CFC team.

COMPOSTED CATTLE MANURE


Paco Feed Yard -- Hub
Cargill Cattle Feeders -- Bovina
Bovina Feeders -- Lazbuddie

BRANDON SCHILLING
Mobile 806-225-7700
OFFICE 1-800-650-2550

NORTH PLAINS COMPOST, INC.
PO BOX 1099
FARWELL, TEXAS 79325

Muleshoe Credit Office
Dusty Clayton (NMLS 1119145)
Greg Lance (NMLS 612366)

806.272.3010 | CapitalFarmCredit.com



TEXAS' LARGEST RURAL LENDER



The Sudan Buzz

Sudan OAP Advances To District

By Cheri Sain
Sudan Correspondent

The Sudan High School One Act Play company advanced to the District round this past Saturday.

Also, Farwell advanced to the next round from this zone

contest.

Forsan and Plains advanced out of the south zone.

These four schools will compete to move on to the area round of competition.

The order of performance at the

District contest in Sundown on Saturday, March 29, will be: Farwell, Forsan, Plains and Sudan.

The first play will begin at 1:30 p.m.

Individual awards at the Zone contest in Sudan were: Reece

Harper, Best Actor; Madi Edwards, All-Star Cast; Kendon Drennan, All-Star Cast; Ambrosia Nelson, Honorable Mention All-Star Cast; and Carson Phillips, Honorable Mention All-Star Cast.

Also acting was Kristina Thorn.

Crew members are Deric McCurry, Jacob Markham, McKenzie Conley, and Celine Sheer. Directors are Tina Altum, Neal Kleman, and Jonathan Robertson.



The Sudan OAP advances to the district contest. Pictured above are Carson Phillips, Ambrosia Nelson, Kendon Drennan, McKenzie Conley, Deric McCurry, Kristina Thorn, Jacob Markham, Sydney Goen, Madi Edwards, Celine Scheer, Tina Altum and Jonathan Robertson. Not pictured is Reece Harper

Sudan Competes At Wolverine Relays

By Cheri Sain
Sudan Correspondent

Over spring break, the Sudan track team was participating in the 2014 Wolverine Relays.

The Sudan Varsity Netties won the track meet, and the Hornets placed third overall.

Shaylee Johnson won the 100-meter dash and the 200-meter dash.

Madi Edwards placed third in the 400-meter dash followed by Amber Binion who

placed fourth.

Binion also placed second in the 800 meter run followed by Joanie Miller who placed third. Miller placed sixth in the 1600-meter run.

In the 100-meter hurdles, Ashton Sawyer placed first followed by a close Ashton Shultz who placed second.

Shultz would win the 300-meter hurdles followed by a close Sawyer who placed second.

In the 4x100-meter relay, Sawyer, Shultz, Johnson, and Daniela Tinajero placed first with a time of 52.05.

In the women's field events, Edwards placed second in the high jump.

Shultz placed second in the long jump and 1st

in the triple jump.

Bailey Slocum placed fourth in the shot put and fifth in the discus throw.

Reece Harper placed second in the 100-meter dash and 1st in the 200-meter dash.

Carson Phillips placed fifth in the 200-meter dash.

In the 400-meter dash, Landon Williamson placed third and placed first in the 800-meter run.

Omar Vasquez placed first in the 1600-meter run and 2nd in the 3200 meter run.

In the men's field events, Tanner Fisher placed first in the high jump.

BJ Johnson placed 1st in the long jump. Harper placed first in the triple jump.

Martin Places Seventh

By Cheri Sain
Sudan Correspondent

Adam Martin competed at the State Powerlifting Meet in Abilene on Saturday.

Martin placed seventh in the 132-weight class with a total of 1,005 pounds.

Out of 232 boys in class 1A, 2A, and six-man, Martin is the seventh strongest in the state in his weight class.

"Adam competed hard and showed class throughout the meet," Coach Patrick Odom said.

"As a coach, I am proud of the accomplishments Adam has made over the past three years."

Martin has finished his powerlifting career as the only boy to be a multiple state qualifier at Sudan throughout the time Sudan has had a power-lifting program.

"I would also like to thank Damion Montes and Edwin Delgado for going to help wrap and keep stats," Odom said.

"We have had a lot of success this past season in power lifting, and we will build on this and continue to have more success in the future," he said.

placed fourth.

Binion also placed second in the 800 meter run followed by Joanie Miller who placed third. Miller placed sixth in the 1600-meter run.

In the 100-meter hurdles, Ashton Sawyer placed first followed by a close Ashton Shultz who placed second.

Shultz would win the 300-meter hurdles followed by a close Sawyer who placed second.

In the 4x100-meter relay, Sawyer, Shultz, Johnson, and Daniela Tinajero placed first with a time of 52.05.

In the women's field events, Edwards placed second in the high jump.

Shultz placed second in the long jump and 1st

1 HUGE ESTATE AUCTION
SATURDAY, MARCH 29, 2014 • 10:30 AM
4200 MABRY DRIVE • CLOVIS, NM AT

"THE BIGGEST LITTLE AUCTION HOUSE IN NEW MEXICO"
(No Consignments Accepted for this Auction, Cuz it's a Big Ole' Good One!)

* ALL ITEMS ARE SOLD AS IS, WHERE IS. DIAMOND B AUCTIONS ACTS AS AN AGENT ONLY. ALL ITEMS MUST BE PAID FOR THE DAY OF SALE. DIAMOND B AUCTIONS IS NOT RESPONSIBLE FOR LOST, BROKEN, DAMAGED, OR THEFT OF ANY CONSIGNED PROPERTY. TERMS: CASH OR CHECK

DIAMOND B AUCTIONS
CALL TO CONSIGN:
575-935-SOLD • 575-683-SOLD • 575-309-3830
Monty Black-Auctioneer • diamondbauctions.com

SUDAN VETERINARY SERVICES

S&S

CHRIS LARSON D.V.M.

- ◆Specializing in Dairy Medicine◆
- ◆Small Animal & Equine◆
- ◆Same Day Minor Surgery◆
- ◆Farm & House Calls◆
- ◆Climate Controlled Boarding◆
- ◆Services by Appointment Only◆

1704 East Hwy. 84 • Sudan Tx
806-227-2444 806-241-1915

KING AG AVIATION, INC.

Specializing in Aerial Spraying - Insecticide, Herbicide & Seeding - Field Scouting Service

Johnny King Home (806) 227-2211
P.O. Box 189 Fax (806) 946-3659
Sudan, Texas 79371 Mobile (806) 946-7309
Business (806) 946-3399 Vernon Office (940) 552-6102

SUDAN ISD
EXCELLENCE
IN
EDUCATION

WWW.SUDANISD.NET
Hwy. 303 PHONE: (806) 227-2431
SUDAN, TX 79371 FAX: (806) 227-2146

www.muleshoejournal.com

Harvesting RELATIONSHIPS

CARTHEL Family
Floyd County
Great Plains Member/Owner

Successful farmers and ranchers equal a successful Farm Credit association. When Great Plains Ag Credit is profitable, we give money back to the very people who made us that way.

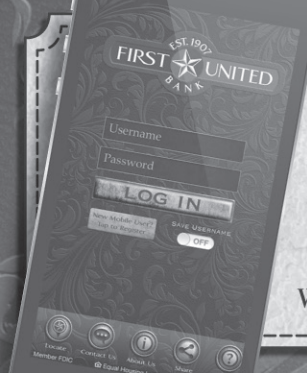
Based on the financial results for 2013, loan customers of Great Plains will share **\$5.035 million** in patronage benefits. That adds up to fourteen consecutive years of patronage allocations equaling **\$43.7 million** back into the rural communities that we serve.

GREAT PLAINS AG CREDIT
"Part of the Farm Credit System"
since 1934

GreatPlainsAgCredit.com

1602 W. Highway 60
FRIONA, TX 79035
806-250-2758

Funding GROWTH. Harvesting RELATIONSHIPS.



LOOKS GOOD, WORKS HARD AND IS FULL OF SPIRIT: THE NEW FUB MOBILE APP.

Yes, we're proud of our new state-of-the-art mobile app. Go ahead, compare it to other banks' apps. Just a few of the new features include:

- View Account Balances & Transfer Funds
- Pay Bills Using Your Camera*
- Locate Our Banking Centers & ATMs
- Deposit Checks Using Your Camera*
- Switch Your Debit Card On & Off

We'd tell you more, but that'd just be boasting. See for yourself at the App Store or Google Play.

FIRST UNITED BANK

Earth | 220 East Main | 257-3451
Littlefield | 2003 South Hall Ave. | 385-7181
Sudan | 200 Main | 227-2411
Member FDIC
*some restrictions apply
www.FirstUnited.net

SPORTS NEWS

Mules Defeat All Comers In Muleshoe Relays

By Delton Wilhite
Sportswriter

The Mules defeated all comers in the seven-team Mule Relays Friday afternoon. They scored 154 points to defeat second place Abernathy by 10 points. Plainview, Littlefield, Post, Brownfield and Ralls also trailed the Mules in that order. The Mules won four gold medals, two silver medals and five bronze medals during the meet.

Eli Leal and Tony Castillo got the Mules started in the meet with gold and silver medals respectively in the high jump. Leal cleared five feet 10 inches for the gold medal and Castillo leaped 5-8. Castillo earned a bronze medal in the pole vault by clearing a height of 10-6 in the pole vault. Austin Ross won the bronze medal in the long jump with a leap of 20-

9.50. Keagan Gonzales made a bronze medal throw in the shot put of 36-4. David Rodriguez heaved the shot 33-4 for four place and John Stiles placed sixth in the shot put with a throw of 32-3. Cristian Lopez finished fifth in the discus with a throw of 101-50 and Stiles placed sixth in the event with the same distance. Antonio Vasquez hop, skip and jumped his way to sixth place with a distance of 37-1. Ross won the silver medal in the 200-meter dash with a time of 21.75 seconds. Matthew Barron finished fourth in the same event with a time of 23.4. Ross topped the winners stand in the 400-meter dash with a gold medal time of 52.82. The 4x100-meter relay team of Jose Angel



Photograph by Gabby Perez

Mule Eli Leal competes in the high jump during Friday's relay.

Varsity Ladies Defeat Littlefield

By Delton Wilhite
Sportswriter

The Lady Mules put their 1-0 district record on the line Tuesday. The Lady Mules proved to be up to the task of not only braving a sandstorm but by defeating the Lady Cats of Littlefield 25-3. The Lady Mule had 14 hits, 13 walks, two hit by pitches and Littlefield committed four errors. The Lady Mules left seven runners stranded. The Lady Mules batted around in both the second and

third innings. Marissa Cortez pitched two complete innings. She struck out five batters, walked two, gave up two hits and one run. Miranda DeBruin pitched the final three innings and struck out one, walked two, gave up three hits and two runs. The Lady Mules committed no errors. Adrianna Loya went to the plate six times in the five innings and scored four runs. She was two of three at the plate with a single and

Mendoza, Nate Rosas, Beto Diaz and Francisco Elizalde had a silver medal time of 45.82. Jesus Manzanares and Cristian Paez ran gold and silver medal times of 2:10.18 and 2:12.14 respectively in the 800-meter run. Noah Del Toro finished sixth in the same event with a time of 2:20.55. The 4x200-meter relay

team of Diaz, Elizalde, Manzanares and Barron won the bronze medal with a time of 1:36.11. Leal finished fourth in the 300-meter hurdles with a time of 45.18. Mendoza, Rosas and Diaz finished fourth, fifth and sixth respectively in the 100-meter dash with times of 11.66, 11.69 and 11.72. Del Toro won the bronze medal in the 1600-meter run with a time of 5:22.30. The Mules and Abernathy were in a battle for first place in the meet with the final race of the day, the 4x400-meter relay,

about to start. Leal, Manzanares and Paez had the Mules in second place when Ross took the final handoff of the baton. The Mules were trailing Abernathy by 15 meters at the time Ross got the baton. Ross had made up the distance by the final curve and then was running even with Abernathy around the curve. Ross crossed the finish line a half a step in front of the Antelopes. The Mules ran a gold medal time of 3:38.73. The Mules will run in the Abernathy Antelope Relays on March 28.

Continued on A10

Lady Mules Track...

Continued from A1
3200-meter run, of 13 minutes and 59.10 seconds. Gables first gold medal came in the 200-meter dash with a time of 26.90. Jazmin Arellana ran a silver medal time in the same event of 27.81. Ruby Andrade placed sixth in the 400-meter dash with a time of 1:09.78. Gables second gold came when she ran the first leg of the 4x100-meter relay. She was joined by A. Rosas, Andrade and Arellana and they combined for a time of 54.09. Precure took the silver medal in the 100-meter hurdles with a time of 16.18 and Diaz grabbed the bronze medal in the same event with a 17.43. Ruvalcaba earned

the gold medal in the 800-meter run with a time of 2:42.87. Diaz started the 4x200-meter run and Gable, A. Rosas and Arellana zipped around the track twice for the gold medal with a time of 1:53.72. Precure's final silver medal came in the 300-meter hurdles with a time of 47.72. Miranda Acevedo ran a silver medal time of 6:19.28 in the 1600-meter run. The Lady Mules completed their sweep of the relays in the final race of the day. A. Rosas, Andrade, Ruvalcaba and Precure each ran one 400-meter lap in the 4x400-meter relay in a gold medal time of 4:23.09. The Lady Mules will travel to Abernathy on Friday to run in the Antelope Relays.

JV Mules Take Four Gold Medals

By Delton Wilhite
Sportswriter

The JV Mules won the Mule Relays with 183 points and defeated six other teams. Littlefield, Post, Abernathy, Plainview, Brownfield and Ralls all trailed the Mules in that order. The Mules earned four gold medals, five silver medals and seven bronze medals in order to win the meet. Matthew Flores and Jesse Easily earned

the silver and bronze medals in the triple jump respectively. M. Flores hop, skipped and jumped a distance of 36 feet seven inches and Easily had a distance of 35-10. Blayne Shipman cleared a height of 5-8 for the silver medal in the high jump. Trey Villa and Javy Perez finished fifth and sixth in the same event with leaps of 5-2 and 5-0

Continued on A10

ATHLETE OF THE WEEK

ADRIENNE PRECURE

Higginbotham Brothers

Serving Texas Communities Since 1881

ACE

The helpful place.

1516 W. AMERICAN BLVD. • MULESHOE, TX
806-272-3351

WE'RE AT YOUR

Service

Visit the following
local businesses for quality service
and customer satisfaction!

1411 W. AMERICAN BLVD. • MULESHOE, TX • 806-272-7511

WE NOW ARE COMPOUNDING AT K&K PHARMACY!

OUR COMPOUNDING PROFESSIONALS CAN PREPARE

* UNIQUE DOSAGE FORMS CONTAINING THE BEST DOSE OF MEDICATION FOR EACH INDIVIDUAL. * MEDICATIONS IN DOSAGE FORMS THAT ARE NOT COMMERCIALY AVAILABLE, SUCH AS TRANSDERMAL GELS, TROCHES, "CHEWIES", AND LOLLIPOPS. * MEDICATIONS FREE OF PROBLEM-CAUSING EXCIPIENTS SUCH AS DYES, SUGAR, LACTOSE, OR ALCOHOL. * COMBINATIONS OF VARIOUS COMPATIBLE MEDICATIONS INTO A SINGLE DOSAGE FORM FOR EASIER ADMINISTRATION AND IMPROVED COMPLIANCE. * MEDICATIONS THAT ARE NOT COMMERCIALY AVAILABLE.

**Interested in advertising
your business here?**

**ONLY \$10.00 PER WEEK
TO ADVERTISE HERE!**

Contact **Rhea Gonzales** at the
Muleshoe Journal 806-272-4536

Support the Boosters Who Support Our Teams, Schools and Community!

MULESHOE ANIMAL CLINIC & MULESHOE VET SUPPLY

1430 US HWY. 84, MULESHOE
272-3061 OR 272-4990

BCEC
A Touchstone Energy Cooperative

BAILEY COUNTY ELECTRIC COOPERATIVE ASSN.
610 E. American Blvd.
Muleshoe • 272-4504

Muleshoe Journal
www.muleshoejournal.com
201 W. Ave. C
272-4536
Striving to be your source for local news!

MICHELIN TIRE & SERVICE TIREWORKS TIRE PROS

Glenn Kahlich • M: 806-344-7034
220 E. American Blvd.
Muleshoe, TX 79347 • 272-4594

"Where Custom Is Attainable"

HR
Hartline Renovations
(806) 946-6652
Micah & Aubrey Rutihardt

BASEBALL

Mar. 29th • V vs. @ Olton • 12:00*
JVW • 2:30*
Mar. 31st • V • IDLE
JVW vs. Floyd, Nm • 6:00 Tx Time • JVB • 4:00 Tx Time
Apr. 5th • V vs. Dimmitt • 12:00*
JVB • 2:30*

SOFTBALL

Mar. 29th • Littlefield • Here*
12:00 V • 1:30 JV
Apr. 1st • Open
Apr. 5th • Floydada* • There
12:00 V • 1:30 JV

TRACK

Mar. 27th • Jr. High @ Abernathy
Mar. 28th • H.S. @ Abernathy
April 5th • Jr. High @ Abernathy*
April 4th • H.S. • Brownfield
April 11th • H.S. • District • Dimmitt
April 18th • Area • Panhandle

Mules Improve District Record With Win Over Hornets

By Delton Wilhite
Sports writer

The Mules improved their district record to 1-1 Saturday when they hosted the Tulia Hornets. The Mules defeated the Hornets 4-3 in a tight game.

Wes Clarkson struck out the first Hornet he faced on three straight pitches. Grey Johnson chased down a hard hit fly ball to center field for the second out.

Matt Barron charged a soft hit ground ball. He raced in on the infield grass, scooped up the ground ball and fired a strike to Dustin Smith at

first for the final out.

Barron lined the first pitch he saw past the third baseman for a single. Nathan Rejino flew out to left field and Barron had to hold at first.

Braden Bessire's hard hit ground ball bounced off the shortstop's glove and rolled into center field.

Barron was running on the pitch and round second and third and scooted home for the first run of the game.

The Mules led the game 1-0 after one inning.

Tulia's first batter

reached on an error. The Mules committed a second error to put runners at first and second.

Barron turned a ground ball to shortstop into a double play. He scooped up the ball and pitched it to Rejino at second.

Rejino stepped on second and relayed the ball to Smith at first to complete the double play. Clarkson struck out the final batter on just three pitches.

Danny Campos sent a line drive to the corner in left field for a double. Keagan Gonzales drove a double to left field to score Campos.

Nacho Elizalde bunted back to first and was thrown out at first

and Gonzales had to hold at second.

Clarkson popped out to first base and Gonzales had to stay at second. Barron's ground ball to short tied the hand of the short stop and Gonzales scored.

The third baseman bobbled Rejino's ground ball and Barron was off and running on the pitch.

The throw to first was off the mark and Barron rounded third and scored. The Mules led 4-0 after two innings.

The Mules did not score again.

Clarkson struck out the first Hornet he faced in the top of the third inning. A single to center field put a runner on first base. That was followed

with a ground ball to right for a single and put runners at first and second. The next batter hit a fly ball to right field.

Nacho Elizalde caught the fly ball and threw the ball on a line toward home plate. The runner at third tagged up and then broke toward home plate.

Smith cut the throw between first and home and relayed a strike to Bessire in time to make the tag and complete a 9-3-2 double play to keep Tulia scoreless.

The Hornets pushed a run across in the third inning and loaded the bases with two out. Elizalde came in from right field in relief and Clarkson went to right field. A ground ball to

Rejino at second ended the inning. The Mules led 4-1 after four innings.

A two run home run in the top of seventh cut the Mules lead to 4-3 with two out. Elizalde got the final batter to go down swinging and save the game.

Clarkson struck out two, gave up three hits and one run. The Mules pulled two double plays and committed three errors while Clarkson was on the hill. Tulia left four on base while Clarkson was pitching.

Elizalde struck out five, gave up four hits and two runs. The Mules committed no errors behind Elizalde. The Mules had eight hits and left five men on base. Tulia stranded one man on base when Elizalde was on the mound.

Barron, Campos and Gonzales had two hits each while Smith and Elizalde had one hit apiece.

The Mules traveled to Littlefield on Tuesday and are on the road Saturday in Olton.



Photograph by Gabby Perez

Lady Mule Adriana Loya bunts during a recent game against Floydada.

JV Mules... Continued from A8

respectively.

Issac Luebanos had a bronze medal throw of 98-8 in the discus and Danny Campos placed fourth with a distance of 87-0.

Rigo Rivas placed fourth in the shot put with a heave of 31-7.

Villa was fourth in the long jump with a leap of 17-10.75 and Matthew Flores placed sixth with a distance of 16-11.25.

Mario Flores won the Mules first gold medal in the first race of the day with a time of 12 minutes 06.67 seconds.

Edy Elizalde ran a bronze medal time of 13:36.99. Tim Perez and Aryn Ross tied for the silver medal in the 200-meter dash.

4x200-meter relay team of Evan Paez, Easily, Jorge Martinez and T. Perez ran a bronze medal time of 47.31. Shipman had gold medal time of 16.84 in the 110-meter hurdles.

M. Flores took the bronze medal with an 18.81 and Dillon Miller placed fourth with a time of 19.30.

J. Perez had a silver medal time in the 400-meter dash with a time of 59.58. JJ Gandara and Dagen Dunham placed fifth and sixth in the same race respectively with times of 59.93 and 1:00.84.

Martinez and Gandara placed fifth and sixth in the 100-meter dash respectively with times of 11.98 and 12.10.

Villa, Easily, Jason Florez and Ross teamed up in the 4x200-meter relay for a silver medal time of 1:39.50.

Ross had a gold medal time of 2:24.47 in the 800-meter run. M. Flores earned the 300-meter hurdles with a time of 47.75.

Miller was right behind in fourth place with a 48.91 and Jaime Ceja placed sixth with a time of 53.18.

M. Flores had a gold medal time of 5:34.09 in the 1600-meter run. Elizalde placed fourth with a 5:55.59.

Gandara, J. Perez, Campos and Villa

teamed up in the final race of the day and ran a time of 3:50.39 for the bronze medal.

The Mules will travel to Abernathy Friday for the Antelope Relays.

Charles Oil & Gas, Inc.
DOT Inspections on semi trucks and trailers
 Hwy. 60 Bovina, Texas
 806-251-1284

Lady Mules Softball...

Continued from A8

a double and walked twice and reached on an error.

Diamond Lopez was at the plate six times and went four for five with two singles, two doubles and a walk. She scored three runs.

Cortez was one for two at the plate, walked, scored two runs and sacrificed twice.

Amber Lopez scored four runs, walked three times, scored four runs and singled. Sasha Esparza was one for two at the plate, scored two runs, singled and walked.

DeBruin crossed the plate three times, was two for two at the plate, walked twice and was hit by a pitch.

Samantha Vasquez scored twice, was one for three at the plate with a single and was hit by a pitch.

Gabi Chavez scored three times, doubled, was one for three at the

plate and sacrificed.

Reagan Reynolds sacrificed twice, walked and scored one run. Brittany Mendoza scored and was one for two at the plate.

Forty seven Lady Mules batted in the game while only 23 Lady Cats found their way to the plate.

The Lady Mules defended their home field Saturday against the Lady Winds of Floydada in much nicer weather than the Lady Mules had played in on Tuesday.

The Lady Mules defeated the Lady Winds 9-2 in a seven inning game to improve to 3-0 and complete their first round of district.

The Lady Mules hosted the Abernathy Lady Lopes Tuesday to begin their second of three rounds of district.

The Littlefield Lady Cats will visit the Lady Mules Saturday.

CAPITAL FARM CREDIT
Capital Farm Credit Distributes Largest Ever Cash Patronage Refund

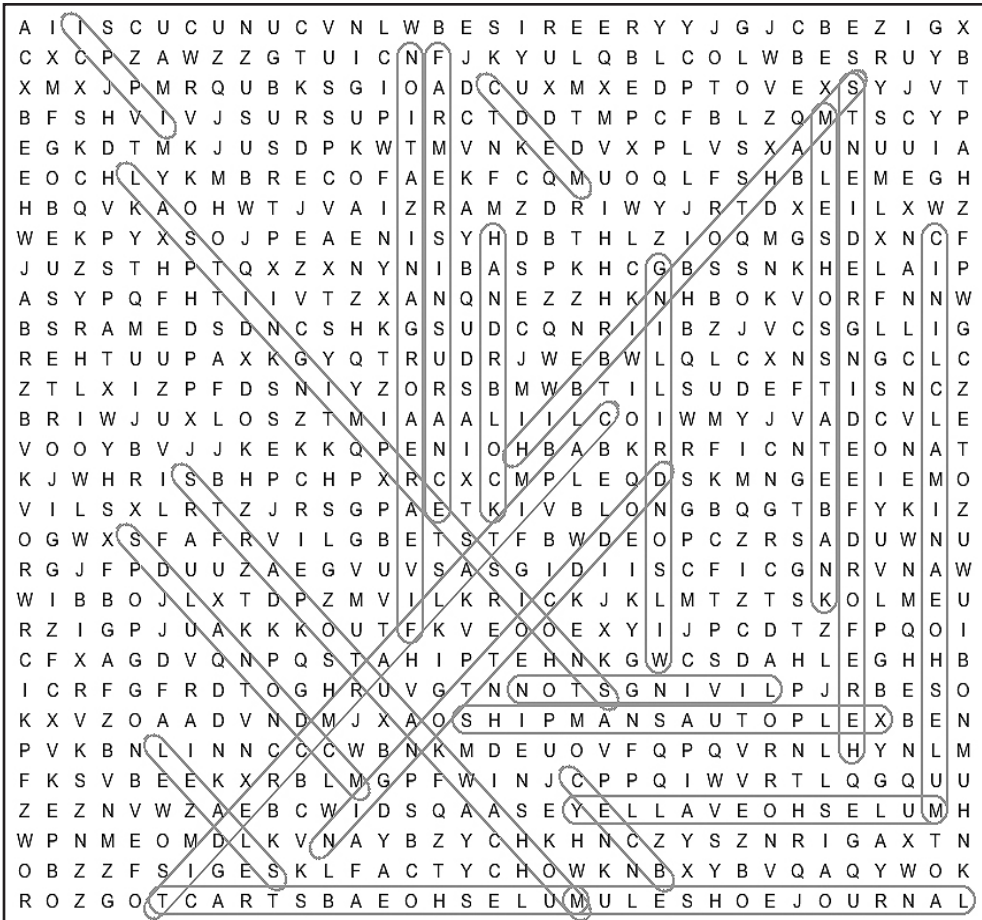
Muleshoe, Texas — Capital Farm Credit stockholders will soon receive an all-time record \$65 million cash patronage payment this spring. The customer-owned lending cooperative continued its track record of strong earnings in 2013, enabling it to maintain its long tradition of returning profits to stockholders through its patronage program. Since 2006, Capital Farm Credit has returned over \$385 million to its stockholders — equating to an effective annual rate reduction of 1.10 percent on an average loan. “Capital Farm Credit is committed to the cooperative principle of managing our capital, and our business in general, for the benefit of our customers,” said

Ben Novosad, chief executive officer. “Our ability to return patronage each year sets us apart from other financial institutions. We believe this is a benefit that strengthens customer relations and reinforces our mission to provide financing and related services to support Texas agriculture — while affording our membership lower net borrowing costs.” Capital Farm Credit has provided financing to Texas farmers, ranchers and rural property owners for nearly a century. Headquartered in Bryan, it has nearly 70 offices spanning most of Texas. For more information about Capital Farm Credit and its patronage program, visit CapitalFarmCredit.com.

CNA CLASSES

Park View Nursing Care Center will be having a C.N.A. class coming soon, if interested, please call Park View at 272-7578. **Deadline to register is March 28, 2014.**

Park View Nursing Care Center



More First Annual Muleshoe Day Photographs...



Photographs by Larry Thornton

LIVINGSTON Machinery Company

PROUD TO DO OUR PART IN HELPING FARMERS FEED THE WORLD

LIVINGSTON MACHINERY IS NOW IN MULESHOE, TEXAS

Livingston Machinery Company is proud to announce that we have just opened a new location in Muleshoe, TX. Formerly Earl Ladd & Sons Inc., this new location will help us meet the growing needs of our customers in the Texas Panhandle and New Mexico. Earl Ladd & Sons has long had a great reputation for parts and service on Hesston Hay Tools. We intend to leverage their knowledge of the Hesston and Massey Ferguson products in addition to adding more technicians, sales people and the resources we already have to give the same kind of support and service to all the lines we offer through that location like, Fendt, Gleaner, Sunflower, White Planters and more. We are excited to say that the entire staff has become a part of the LMC family as well. Look for many more big things to come from LMC Muleshoe.



Altus | 877.600.1005 | 3003 E. Broadway, Altus, OK 73522 • Chickasha | 800.259.5088 | 5201 S. HWY 81, Chickasha, OK 73018
Fairview | 800.970.9761 | 2005 N. Main St., Fairview, OK 73737 • NEW! Muleshoe | 806.272.3308 | 602 W. American Blvd., Muleshoe, TX 79347

www.livingstonmachinery.com

Massey Ferguson • Hesston • Sunflower • Gleaner • Fendt • White Planters • H&S • Manitou
Gehl • MacDon • Mahindra • Versatile • Trimble • Traeger Grills • YETI Coolers

64th Annual Muleshoe Chamber of Commerce & Agriculture Banquet

Saturday, March 29
6 p.m.

Bailey County Coliseum

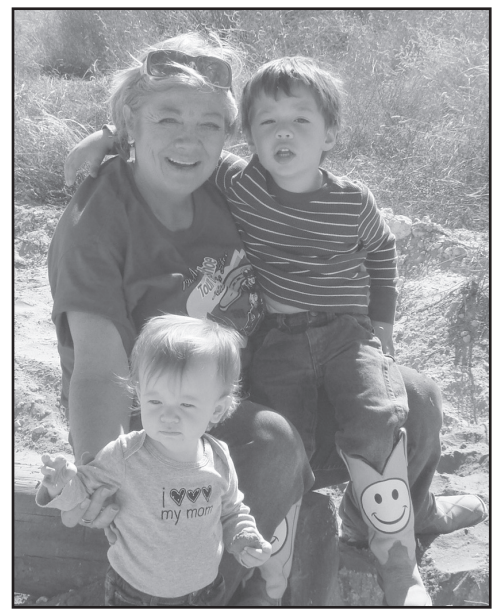


Published by the
Muleshoe Journal ©2014

Gina Wilkerson Chamber President

Gina is employed at Williams General Store and Gina was born and raised in Muleshoe.

"I would like to see the community and businesses be involved. I hope by being on the chamber, that I can help bring some of those good times back."



A letter from the president...

I am married to Ronnie Wilkerson and I have children Kolby and Brittni and their son, Kallan and daughter Birklee Wilkerson with another on the way.

I was born and raised in Muleshoe. My parents are Phyllis and the late Ken Angeley. I have two brothers Ronnie and Shelly Angeley and kids, and Michael and Tami Angeley and kids.

This is my third year as president of the Muleshoe Chamber of Commerce and my fourth year as a chamber board member.

Last year was such a great success! We had a great turn out for the chamber banquet and awesome participation for the July 4th parade. The whole town really came together in these events.

This year, I hope to keep the momentum going with the chamber events and keep growing with our community. I am also on the Bailey County Historical board and VP at the Heritage center.

Muleshoe has always been home to me and as chamber president I hope and will do anything I can for the business and community.

I want to thank all of the businesses and community for all y'all have done. We are here for you. Thank you.

Gina Wilkerson

Muleshoe Economic Development Corporation

Committed to Improving the Quality of Life of Bailey County Citizens

OUR MISSION:

The Muleshoe Economic Development Corporation (MEDC) is committed to the promotion of high quality development in the Muleshoe Area and to improvement in the quality of life for its citizens.



Joe Osterkamp
NEW MEDC Board Member



Dustin Cleavinger
MEDC President



Gil Rennels
Secretary/Treasurer



Jose Sanchez
Vice President

**WE SUPPORT THE
MULESHOE CHAMBER
OF COMMERCE!**

Director of Economic Development
Kasey Coker
215 S. First, Muleshoe
806-272-7455
FAX 806-272-5260
Email: muleshoe@fivearea.com
www.muleshoeedc.com



Muleshoe Animal Clinic & Muleshoe Vet Supply

Proudly Support the Muleshoe Chamber of Commerce & Agriculture

Muleshoe Animal Clinic
(806) 272-3061

Muleshoe Vet Supply
(806) 272-4990

Barry Cowart, D.V.M.
Dusty Urbantke, D.V.M.
Garth Cummings, D.V.M.
Elizabeth McCollum, D.V.M.

Steve Kennedy, D.V.M.
Kevin Holman, D.V.M.
Jennifer Ermon, D.V.M.

**1430 US Hwy. 84
Muleshoe, Texas**

IRRIGATION PUMPS & POWER

Proud Chamber Member
W. Hwy. 84, Muleshoe
272-5597



www.drippi.com



Jeff Ocanas

New Chamber Board Member

I am Jeff Ocanas. I am currently employed with United Supermarkets in Muleshoe, Texas.

My hometown is Plainview, Texas. I have two children, Jarett (4) and Alexis (10) and I have lived in Muleshoe for two years. I look forward to being a board member of the Muleshoe Chamber of Commerce.



Staying Active = Staying Healthy!

Kris Phillips

New Chamber Board Member

I am Kris Phillips. I am employed with United Supermarkets in Muleshoe. My hometown is New Deal.

I went to college at Texas Tech University and my wife's name is Jinnie. We have two children Anna (11) and Ellie (9).



This "Salute to Muleshoe Chamber of Commerce & Agriculture" was produced by the staff of the *Muleshoe Journal*, 201 W. Ave. C, Muleshoe, TX 79347

The Muleshoe Journal proudly supports the Muleshoe Chamber of Commerce & Agriculture and all its members.



Thanks to your commitment, Muleshoe is thriving!

Todd Shipman

Chamber Board Member

I am the owner and manager of Shipman's Body Shop, Inc., Shipman's Wrecker Service, and Shipman's Autoplex.

This is my third year on the chamber of commerce. I grew up here and have lived back in the area for 4 years.

I am married to Brenna Shipman and have four boys — Blayne, Braden, Tate, and Taylor.

It is my goal to see local businesses grow and to keep Muleshoe and the surrounding area going forward.



Use Sunscreen To Prevent Skin Cancer

Rhea Gonzales

Chamber Board Member

This is my first year to serve as a board member of the Muleshoe Chamber of Commerce and I'm excited to bring some new and exciting things to this community, such as the Farmers Market of Muleshoe, which is set to begin late May on Saturdays. So, start planting!

My husband is Rick. He is the manager at Bi-Wize Auto here in Muleshoe and we have three growing boys- Matthew, 12; Sean, 11; and Adam, 7.

I was born and raised here in Muleshoe and have always enjoyed this small town atmosphere, where everyone knows one another and says hello with a hug.

I hope to serve this community to the best of my ability. God bless!



Muleshoe Chamber Banquet 2013



The following stories were published on the front page of the Feb. 13, 1925, issue of the Muleshoe Journal.

Chamber of Commerce Was Organized On Tuesday Night

Tuesday night (Feb. 10, 1925) a meeting was called for the purpose of organizing a chamber of commerce for Muleshoe.

Taylor White was elected president; R.B. Boyle, vice president; J.D. Thomas, secretary-treasurer; and the board of directors are Levi Pressley, L.S. Barron and M.P. Smith.

A committee was appointed to draft the constitution and by-laws for the organization. Taylor White, J.D. Thomas and L.S. Barron were appointed.

Another committee was appointed for the membership drive which is going on, namely: Ray Griffith, E.J. Vance and Dr. Matthews. The membership fee was placed at \$1 for three months. See on of the men and join, help put Muleshoe on the map of progress.

The next meeting will be held on Tuesday night, Feb. 17, at the courthouse. Every man in the territory is welcome.

The chamber of commerce is the voice of the city. It reflects the ideals of the community. It expresses

the aspirations of the people. It gives directions to the aims of the citizenship. It combines the efforts of those who think in terms of helpfulness. It speaks in defense of the good name of the city. It is the spotlight that reveals activities that are worthy. It pleads in behalf of the voiceless. It is the magnet that draws the outside world to your midst. It is the clearinghouse of civic pride. It is the composite picture of a city as its citizenship would have it.

Join the chamber.

**WE SUPPORT
THE MULESHOE CHAMBER
OF COMMERCE &
AGRICULTURE**



**BAILEY COUNTY ELECTRIC
COOPERATIVE ASSOCIATION**

A Touchstone Energy® Cooperative

Bailey County Electric Co-op Assn.

610 E. American Blvd • Muleshoe • 272-4504

Bailey County And Muleshoe Coming To Front; Much Building

C.V. Wainescott, who moved here from Fredrick, Okla., is building in the Springlake community.

J.H. Pickard and O.V. Osborn of Oklahoma, have purchased land and will improve it.

J.E. Bryant and J.H. Paul of Amarillo, were here last week. Bryant owns some fine land here and J.H. Paul is the son of J.C. Paul, an extensive land owner in the county.

The Whaley Lumber Company has just finished another big lumber shed.

H.T. Jones is improving a big farm in the Springlake district.

A.L. Nix of Springlake is improving a farm.

A.P. Bohner, north of town, is improving a new farm.

M.E. Jefferies is completing a house in the Progress district.

R.E. and C.W. Good of Mangum, Okla., are improving a farm near here.

J.A. Johnson of Ashtola was here last week and purchased 240 acres. He will build a complete set of improvements.

T.D. Tipton is improving his 80 acres near town.

E.M. Nixon of Fairlawn is building a home.

R.C. Reedy of near Fairlawn is building a new farm house.

A.V. McCarty will build a new home right away, we have been informed.

A.V. McCarty Jr. has just completed his new home and move in last week.

Activity In Muleshoe School Continues

Mrs. Walker gave her musical recital in the school auditorium Friday night, Feb. 6, 1925.

The Baptist ladies gave a box and pie supper following the recital. Votes were sold for the most popular girl and the homeliest man. Miss Ruth Harden and Mr. R.L. Brown were the winners of the contest. The proceeds amounted to over \$80.

Another school truck has been added to the Muleshoe consolidated school district. It is driven by Rev. G.O. Dean.

The following have been absent from school this week on account of illness. Dollie Lawrence, Agness Abney, Winnie Crosswhite, Scott Robins, Hazel Debord, Ruth Harden, Clovis Dehond, Flavis Robinson, Houston Taylor.

Micah Ruthardt

New Chamber Board Member

Micah Ruthardt is co-owner of Hartline Renovations Inc. A 2003 MHS graduate, he attended South Plains College, where he became an EMT Intermediate.

He began working at Hartline Renovations Inc. in 2005.

He is married to Khallie and has two sons, Hunter 5, and Mason 2. He is the worship leader at Muleshoe Cowboy Fellowship, and enjoys spending time with his sons hunting.

He became a member of the chamber board to help support local business.



*We're a chamber member and proud of it!
Thanks for your dedication board of directors!*

**SHIPMAN'S BODY SHOP, INC.
SHIPMAN'S WRECKER SERVICE**

Shipman's Autoplex

410 N. First St. • Muleshoe, TX 79347



Let us find what you're looking for!

**Todd Shipman
Garry Shipman**

**Providing quality vehicles
at the RIGHT price!**

*Find us on Facebook at
Shipmans Body Shop, Inc.*



Office: 806-272-4408 • Mobile: 806-946-7493 • Fax: 806-272-3366

H&R BLOCK

Tax, Mortgage and Financial Services

**104 E. American Blvd., Muleshoe
(806) 272-3332 • FAX (806) 272-5309**

*"The chamber is vital to a community's growth. We support
the Muleshoe Chamber of Commerce & Agriculture!"*



Dodd Cotton Gin

2912 CR 504 • 965-2311

Jaimie Saylor

Chamber Board Member

Hi, I'm Jaimie Saylor! I have lived in Muleshoe for two years now and absolutely love it. I was raised outside of Denver and attended Western State College where I met my husband Jordan.

Shortly thereafter, we moved to Texas and got married in 2009. After graduating from LCU we moved to Muleshoe and the rest is history!

I'm also a brand new mom! My husband and I welcomed our daughter, Addison Lee, last October and I can't wait to see her grow up in this kind community.

I am currently an insurance agent for Great Plains Ag Insurance and "yes" we love the new building, stop by anytime to check it out!

I've served on the chamber board since March of 2012 and am so excited for our annual banquet this year! Hope to see you there!



2013 Muleshoe Chamber of Commerce & Agriculture Award Winners

At the 63th annual Muleshoe Chamber of Commerce & Agriculture Banquet awards presentation, on Saturday, April 6, the recipients were:

- Curtis Shelburne, Man of the Year
- Gina Wilkerson, Woman of the Year, with special honors to the Jennyslippers, and Francis Stegall
- Frontera Feedyard, Business of the Year
- Kathy Embry, Employee of the Year
- The Ronnie Altman Family, Farm Family of the Year

*The Original
Since 1957*

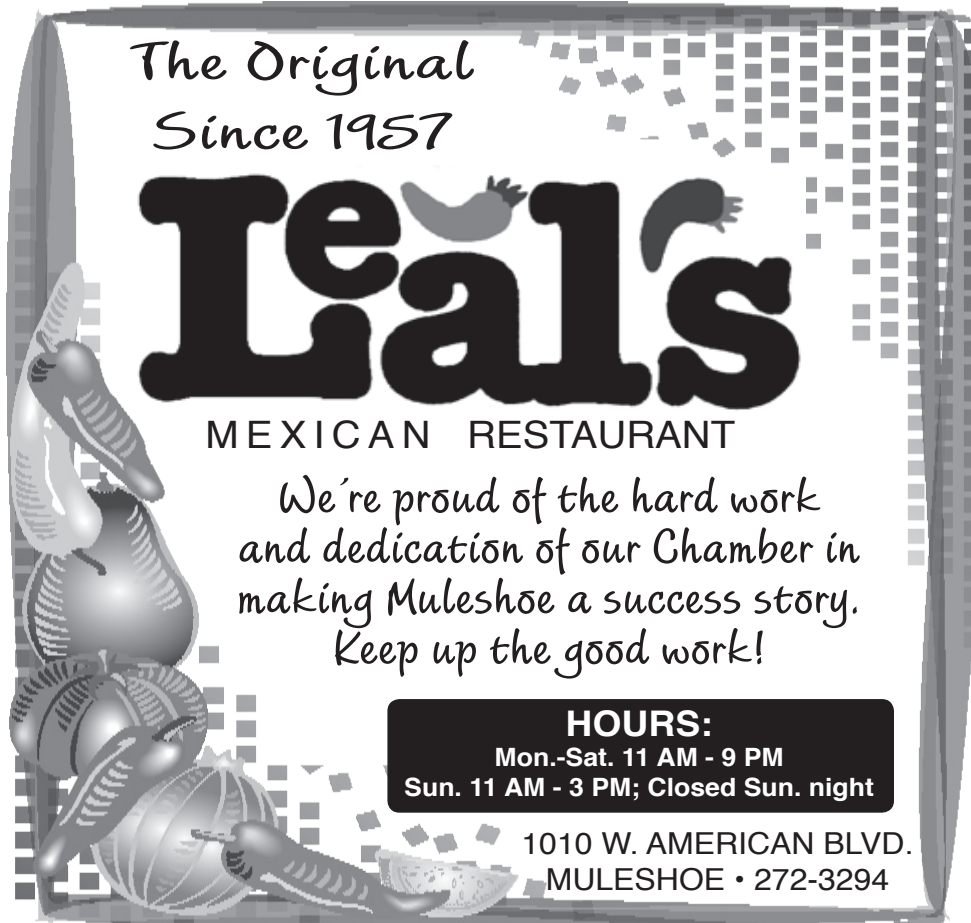
Leal's

MEXICAN RESTAURANT

*We're proud of the hard work
and dedication of our Chamber in
making Muleshoe a success story.
Keep up the good work!*

HOURS:
Mon.-Sat. 11 AM - 9 PM
Sun. 11 AM - 3 PM; Closed Sun. night

1010 W. AMERICAN BLVD.
MULESHOE • 272-3294



D'dee Ellis

New Chamber Board Member

I grew up and graduated high school in my home town of Spearman, Texas, then attended Lubbock Christian University, where I received an BS in Accounting.

I have two grown sons who live in the Farmington, NM area. Muleshoe holds a special place in my heart because I regularly visited my grandparents, John and Edith St. Clair, who lived in Muleshoe when I was a child. My mother, Darlene Pierce, currently resides here, and I moved here in 2008.

I strive to serve God in all I do. For 6 years, I worked as foster parent, have taught school, and have owned my own business. I was an advertising sales rep and worked with Chamber of Commerce in Texas and Louisiana.

Currently, I am employed by First Bank Muleshoe and Joe Ed's Auto Supply. I am honored and excited to work with the Chamber here in Muleshoe! May you always be blessed as you bless others!!



Julie DeBruin, Insurance and Financial Services Agent



FARMERS



1602 W. American Blvd.
Muleshoe, Texas 79347
Bus: 806-272-7548 • Fax: 806-272-4756
jdebruin@farmersagent.com

Registered Representative
Farmers Financial Solutions, LLC
30801 Agoura Road, Bldg. 1, Agoura Hills, CA 91301-2054
818-584-0200 Member FINRA & SIPC

**CALL FOR A
FREE QUOTE!**

- AUTO • LIFE
- HOME • BUSINESS

Higginbotham Brothers



WE SUPPORT OUR CHAMBER!

1516 W. American Blvd. • Muleshoe • 272-3351 8-5:30 M-F • 8-12:00 Sat.

Carlos Contreras, Sr.

Chamber Board Member

Carlos is employed at Savage Energy Services Tolk Station. He has been there for 32 years.

He also has two sons, Carlos Jr., and Cory Josh Contreras.

This is my second year on the Chamber of Commerce, and I am so excited to be involved for the community and bringing some of those good times back to Muleshoe.



SUPPORT the Merchants who SUPPORT the chamber!

Becky Hoksbergen

Executive Assistant

Becky has been assistant to the chamber's executive committee since 2010.

She is married to Allen who is hoof trimmer for local dairies.

Becky has four daughters, Billie, Heather, Heidi and Hillary of Iowa.

Before moving to Muleshoe four years ago Becky lived in Portales, N.M., for nine years.

Becky and her husband Allen have started a vineyard. On 10 acres they have 8,000 vines and 4,000 more coming in.

"I am from an agricultural background being raised on a farm in Iowa," said Hoksbergen.

"I felt working for the chamber would be good place to learn about the agriculture and businesses in the Muleshoe area," she said.




WE SUPPORT
THE MULESHOE CHAMBER
OF COMMERCE

GREG LANCE, BRANCH MGR. (NMLS 612366)
DUSTY CLAYTON, LOAN OFFICER (NMLS 1119145)

TEXAS LARGEST RURAL LENDER
1601 W. American Blvd. • Muleshoe, TX 79347 • 806.272.3010



Working together
to keep Muleshoe's
economy strong!



1701 W. American Blvd. • 272-4425




DAVID R. TIPPS, Representative



Your Source For
Calcium, Carbonate,
Ammonium Sulfate,
Salt & Potash

(800) 687-4106 Toll Free
(806) 272-5871 Muleshoe Office
(806) 272-5048 Muleshoe Fax
232 Main Street, Muleshoe, Texas 79347

2013 Chamber Independence Day Parade And First Annual Muleshoe Day

VALLEY
The Leader in Precision Irrigation

Muleshoe Valley, Inc.
2601 W. American Blvd.
Muleshoe, TX 79347
806-272-4266
www.valmont.com/irrigation/

Often the little things make the biggest difference. When it comes to service and parts for your pivots, a small malfunction can cause a shutdown. When that happens on the driest day of the year, it's a big deal. That's why Valley has more trained, experienced pivot repair specialists than anyone. And we have parts distribution centers across the country, for fast access to the highest quality parts, to get you up and running in a hurry. Maybe that's why there are more Valleys circling the globe than all the other brands combined. Your crops are too valuable to rely on anyone but Valley.

Photographs by Larry Thornton

Past Chamber Of Commerce Honorees

1955 — Man of the Year, R.A. "Brad" Bradley.
 1956 — Man of the Year, Jerry Kirk.
 1957 — Man of the Year, Gil Lamb.
 1958 — Man of the Year, W.T. Bovell.
 1959 — Man of the Year, C.O. Jones.
 1960 — Man of the Year, Alex Williams; Women of the Year, Lula Gorell.
 1961 — Man of the Year, All Volunteer Fireman; Women of the Year, All Volunteer Fireman's Wives.
 1962-1966 — Unavailable
 1967 — Farm family of the Year, Burley Lee Roberts.
 1968-1972 — Unavailable
 1973 — Man of the Year, unavailable; Women of the Year, unavailable; Farm Family of the Year, Ted Simpson family.
 1974 — Man of the Year, unavailable; Women of the Year, unavailable; Farm Family of the Year, Ernest Ramm family.
 1975 — Man of the Year, Bill Russell; Women of the Year, unavailable; Farm Family of the Year, Jerry Don Glover family.
 1976 — Man of the Year, H.D. Hunter; Women of the Year, unavailable; Farm Family of the Year, George Wheeler family.
 1977 — Man of the Year, Randy Gant; Women of the Year, unavailable; Farm Family of the Year, James Brown family.
 1978 — Man of the Year, unavailable; Women of the Year, Wilma Waddle; Farm Family of

the Year, Royce Turner family.
 1979 — Man of the Year, Terry Bouchelle; Women of the Year, unavailable; Farm Family of the Year, Gene Smith family.
 1980 — Man of the Year, Neal Dillman; Women of the Year, unavailable; Farm Family of the Year, Jake Saylor family.
 1981 — Man of the Year, unavailable; Women of the Year, Elizabeth Watson; Farm Family of the Year, Gene Paul Jarman family.
 1982 — Man of the Year, Bob Sanders; Women of the Year, Jenne McVicker; Farm Family of the Year, Bobby Redwine family.
 1983 — Man of the Year, Howard Watson; Women of the Year, Magann Rennels; Farm Family of the Year, Buck Campbell family;
 1984 — Man of the Year, Jeff Smith; Women of the Year, Nelda Merriott; Farm Family of the Year, Lewis Wayne Schafer family.
 1985 — Man of the Year, Bob Finney; Women of the Year, Janie Moraw; Farm Family of the Year, Harrol Redwine family.
 1986 — Man of the Year, Gordon Wilson; Women of the Year, Julie Cage; Farm Family of the Year, Gary Hooten family.
 1987 — Man of the Year, Wayne Wauson; Women of the Year, Cleta Williams; Farm Family of the Year, Sam Harlan family.
 1988 — Man of the Year, Bruce Purdy; Women of the Year, Billie Downing; Farm Family of the Year, Carl Bamert family; Couple of the Year, Hubert and Nancy Kidd; Employee of the Year, Joy

Stancell; Conservation Farmer of the Year, Ernes Ramm.
 1989 — Man of the Year, Bob Stovall; Women of the Year, Vivian White; Farm Family of the Year, Terry Hutton family; Employee of the Year, Starla Ellis; Conservation Farmer of the Year, Billy Tiller.
 1990 — Man of the Year, Harvey Bass; Women of the Year, Jean Allison; Farm Family of the Year, Alfred Hicks family; Employee of the Year, Dianne Wilson Brown; Conservation Farmer of the Year, Wilbur Kalbas.
 1991 — Man of the Year, Hubert Kidd; Women of the Year, Cindy Purdy; Employee of the Year, unavailable; Business of the

Year, Perry's; Farm Family of the Year, Larry Hancock family.
 1992 — Man of the Year, Robert Hooten; Women of the Year, Magann Rennels; Employee of the Year, Billie Downing; Business of the Year, Joe's Boot Shop; Farm Family of the Year, David McGuire family; Conservation Farmer of the Year, Rex Black.
 1993 — Man of the Year, Robert Montgomery; Women of the Year, Inez Bobo; Employee of the Year, Delores Salcedo; Business of the Year, Five Area Telephone Cooperative; Farm Family of the Year, Sam Harlan family; Conservation Farmer of the Year, Terry Pollard.

Continued on page 9

"AND ON THE 8TH DAY, GOD MADE A FARMER."

**WE PROUDLY SUPPORT THE
MULESHOE CHAMBER OF COMMERCE
AND AGRICULTURE**

"Where a handshake still means something"

MULESHOE STATE BANK

www.muleshoestatebank.com
 Muleshoe Branch: 272-4561 • Farwell Branch: 481-3681

A I I S C U C U N U C V N L W B E S I R E E R Y Y J G J C B E Z I G X
 C X C P Z A W Z Z G T U I C N F J K Y U L Q B L C O L W B E S R U Y B
 X M X J P M R Q U B K S G I O A D C U X M X E D P T O V E X S Y J V T
 B F S H V I V J S U R S U P I R C T D D T M P C F B L Z Q M T S C Y P
 E G K D T M K J U S D P K W T M V N K E D V X P L V S X A U N U U I A
 E O C H L Y K M B R E C O F A E K F C Q M U O Q L F S H B L E M E G H
 H B Q V K A O H W T J V A I Z R A M Z D R I W Y J R T D X E I L X W Z
 W E K P Y X S O J P E A E N I S Y H D B T H L Z I O Q M G S D X N C F
 J U Z S T H P T Q X Z X N Y N I B A S P K H C G B S S N K H E L A I P
 A S Y P Q F H T I I V T Z X A N Q N E Z Z H K N H B O K V O R F N N W
 B S R A M E D S D N C S H K G S U D C Q N R I I B Z J V C S G L L I G
 R E H T U U P A X K G Y Q T R U D R J W E B W L Q L C X N S N G C L C
 Z T L X I Z P F D S N I Y Z O R S B M W B T I L S U D E F T I S N C Z
 B R I W J U X L O S Z T M I A A A L I I L C O I W M Y J V A D C V L E
 V O O Y B V J J K E K K Q P E N I O H B A B K R R F I C N T E O N A T
 K J W H R I S B H P C H P X R C X C M P L E Q D S K M N G E E I E M O
 V I L S X L R T Z J R S G P A E T K I V B L O N G B Q G T B F Y K I Z
 O G W X S F A F R V I L G B E T S T F B W D E O P C Z R S A D U W N U
 R G J F P D U U Z A E G V U V S A S G I D I I S C F I C G N R V N A W
 W I B B O J L X T D P Z M V I L K R I C K J K L M T Z T S K O L M E U
 R Z I G P J U A K K K O U T F K V E O O E X Y I J P C D T Z F P Q O I
 C F X A G D V Q N P Q S T A H I P T E H N K G W C S D A H L E G H H B
 I C R F G F R D T O G H R U V G T N N O T S G N I V I L P J R B E S O
 K X V Z O A A D V N D M J X A O S H I P M A N S A U T O P L E X B E N
 P V K B N L I N N C C W B N K M D E U O V F Q P Q V R N L H Y N L M
 F K S V B E E K X R B L M G P F W I N J C P P Q I W V R T L Q G Q U U
 Z E Z N V W Z A E B C W I D S Q A A S E Y E L L A V E O H S E L U M H
 W P N M E O M D L K V N A Y B Z Y C H K H N C Z Y S Z N R I G A X T N
 O B Z Z F S I G E S K L F A C T Y C H O W K N B X Y B V Q A Q Y W O K
 R O Z G O T C A R T S B A E O H S E L U M U L E S H O E J O U R N A L

Chamber Salute Advertisers

- MEDC... Page 2
- Muleshoe Animal Clinic... 15
- Livingston... 15
- BCEC... 3
- Shipman's Autoplex... 4
- Leal's... 4
- IPPI... 15
- H and R Block... 13
- Dodd Cotton Gin... 13
- Muleshoe Abstract... 9
- Hibbinbothams'... 13
- Muleshoe Valley... 5
- Capital Farm Credit... 12
- Wilson Drilling... 9
- Farmers' Insurance... 13
- Mohawk Auto Parts... 12
- Muleshos State Bank... 6
- Lasting Impressions... 10
- Five Area Organization... 7
- Hereford Feed Ingredients... 12
- McDonald's... 8
- Muleshoe Journal... 15

Solutions on page 16

**Shop the merchants
who support
the Chamber!**

2013 Chamber Christmas Parade



Photographs by Larry Thornton



Aubrey Ruthardt

Chamber Board Member

Aubrey Ruthardt is co-owner of Hartline Renovations Inc. A 2001 graduate of MHS, he attended Texas Tech University, and began working for Hartline Renovations in 2006.

He is married to Destiny and has two children Peighton 3, and Hudson 1.

He enjoys hunting and attending Texas Tech sporting events.

He became a member of the chamber board because he feels it is important for local business to support each other and the community.



Terry Brewster

Vice President

Terry Brewster is married to Marion, and they have two sons — Nick and Robert.

They have lived in Muleshoe for 23 years.

“We live in a great community where people can come together and make great things happen,” she said.

“I hope that by being on the chamber I can be a part of helping new businesses open and keeping the ones that have made our community strong.”

As Vince Lombardi once said, “The achievements of an organization are the results of the combined effort of each individual.” Have a blessed day!”



We Proudly Support the Muleshoe Chamber of Commerce & Agriculture.

*The Muleshoe Chamber of
Commerce & Agriculture works for ever-
increasing population, assuring additional
customers and income for our community.
We congratulate the Chamber on another
successful year!*



THE FIVE AREA ORGANIZATION

Five Area Telephone Co-op, Inc.
West Plains Telecom., Inc.

Plateau Wireless Network • Five Area Systems, Inc.

Five Area Long Distance, Inc. • 5A Broadband
fivearea.com (Your local Internet provider)

Sandy Vandevender, C.E.O.

302 Uvalde - Muleshoe, Texas
806-272-5533

or 1-800-741-6925

fivearea@fivearea.com



*WE APPRECIATE THE MULESHOE
CHAMBER OF COMMERCE AND WHAT
YOU DO FOR THE COMMUNITY!*

*Sarah and Freddy Santos,
Owners*

**516 S. 1st Street
272-4287**

Lasting Impressions

Working *Together* with the Muleshoe Chamber of Commerce and Agriculture

McDonald's is proud to be a part of the communities we serve. Through involvement in youth sports, local charities, and events that inspire the world, giving back is an essential part of the way we operate every day.



**WE ARE PROUD OF OUR PEOPLE AND THE OPPORTUNITIES McDONALD'S OFFERS, FOR MORE INFORMATION VISIT OUR WEBSITE:
www.mctexas.com/36246**



Located on West American Blvd. • Muleshoe TX 79347 • For Questions or Comments: 1-866 YOUR MCD
McDonald's of Muleshoe, Hereford, Dimmitt, Littlefield, Texas are Owned and Operated by: Steve & Susan Credle

Past Chamber Of Commerce Honorees

Continued from page 6

1994 — Man of the Year, R.A. Bradley; Women of the Year, Laverne Jones; Employee of the Year, Joe Flores; Business of the Year, Leal's Restaurant; Farm Family of the Year, Travis Bessire family.

1995 — Man of the Year, Max King; Women of the Year, Joy Stancell; Employee of the Year, Jan Smith; Business of the Year, Fry & Cox True Value; Farm Family of the Year, Darrel Mason family.

1996 — Man of the Year, George Washington; Women of the Year, Rowena Myers; Employee of the Year, Angelica Toscano; Business of the Year, Western 66; Farm Family of the Year, Marshall Pool family.

1997 — Man of the year, Terry Hutto; Women of the Year, Nelda Merriott; Employee of the Year, Delores Garrett; Business of the Year, Dale Oil Co.; Farm Family of the Year, Don Bryant family.

1998 — Man of the year, Gary Gilleland; Women of the Year, Berta Combs; Employee of the Year, Mary Janis Brantley; Business of the Year, Art Loft; Farm Family of the Year, Rusty Whitt family

1999 — Man of the year, Ciff Black; Women of the Year, Kay Graves; Employee of the Year, Carl Kidd; Business of the Year, West-Tex Feedyard, Inc.; Farm Family of the Year, Gary Glover family.

2000 — Man of the year, Ronnie Holt; Women of the Year, Gail Hargrove; Employee of the Year,

Tonya Pool; Business of the Year, United Supermarkets; Farm Family of the Year, Tony Barrier family.

2001 — Man of the year, Dr. Bruce Purdy; Women of the Year, Ruby Green; Employee of the Year, David Wood; Business of the Year, Sanitary Barber Shop; Farm Family of the Year, Bobby Free family.

2002 — Man of the year, Todd Ellis; Women of the Year, Wanda Hooten; Employee of the Year, Kay Caraway; Business of the Year, Channel 6; Farm Family of the Year, Betty Kirby family.

2003 — Man of the year, Tim "Buck" Campbell; Women of the Year, Lynn Campbell; Employee of the Year, Freddie Santos; Business of the Year, Muleshoe Livestock Auction; Farm Family of the Year, James Gore family.

2004 — Man of the year, David Tipps; Women of the Year, Kay Mardis; Employee of the Year, James "Granny" Elder; Business of the Year, Burton Service Center; Farm Family of the Year, James L. Wedel family.

2005 — Man of the year, Kenneth Henry; Women of the Year, Dawn Williams; Employee of the Year, unavailable; Business of the Year, Wilson Drilling Co.; Farm Family of the Year, Don Bryant family.

2006 — Man of the year, Steve Friskup; Women of the Year, Carolyn Johnson; Employee of the Year, Bennie Parker; Business of the Year, Scott's Car Wash; Farm Family of the Year, Chris Bass family.

2007 — Man of the Year, Jearl James; Women of the Year, unavailable; Employee of the

Year, Mandi Seaton; Business of the Year, Sain Irrigation; Farm Family of the Year, Bruce Barrett family.

2008 — Man of the year, Todd Newberry; Women of the Year, Pat Angeley; Employee of the Year, Ginger Richie; Business of the Year, Leo's Blacksmith & Machine Shop/Muleshoe Metal Art; Farm Family of the Year, Brian Boehning family; Business of the Year, Bailey County Electric Cooperative.

2009 — Frank Wuerflein, Man of the Year, Jean Allison, Woman of the Year, BCEC, Business of the Year, David Wood, Employee of the Year, Jim Pat and Susie Claunch, Farm Family of the Year.

2010 — Wayne Pierson, Man of the Year; Janet Claborn, Woman of the Year; Brenda Logsdon, Employee of the Year; Channel 6, Business of the Year; Kelly Kettner family, Farm Family of the Year.

2011 — Kenneth Henry, Man of the Year; Donna Jay, Woman of the Year; The Studio, Business of the Year; Lisa Whalin, Employee of the Year; Obie and Michelle Standard, Farm Family of the Year; and the James Gore family, Farm Family of the Year.

2012 — Joe Sowder, Man of the Year; Laverne Winn, Woman of the Year; West Texas Gas, Business of the Year; Sarah Santos, Employee of the Year; Tim, Tammy, Tyler and Bobby Black, Farm Family of the Year.

The 2013 chamber award winners are on page 4.

Wilson Drilling Inc.
Family Owned and Operated for over 45 Years
2900 West American Blvd.
Muleshoe, Texas
806-272-5521

We're Proud of the
Muleshoe Chamber of Commerce!
Muleshoe Abstract
Proud Chamber Member
103 W. Ave. D, Muleshoe - 272-4732